

# 1 **Prevalence of non-tuberculous mycobacteria among people** 2 **presumed to have tuberculosis, positive for acid-fast bacilli** 3 **in Mali**

4 Aissata Boubakar CISSE<sup>1\*</sup>, Anna S. DEAN<sup>2</sup>, Armand Van DEUN<sup>3†</sup>, Jelle KEYSERS<sup>3</sup>, Willem-  
5 Bram De RIJKE<sup>3</sup>, Mourad GUMUSBOGA<sup>3</sup>, Hawa SAMAKE<sup>1</sup>, Seydou ARAMA<sup>1</sup>, Bassirou  
6 DIARRA<sup>5</sup>, Ibrahim DJILLA<sup>1</sup>, Fatoumata N. COULIBALY<sup>1</sup>, Hawa SIMPARA<sup>1</sup>, Mamadou  
7 BERTHE<sup>1</sup>, Khadidia OUATTARA<sup>6</sup>, Yacouba TOLOBA<sup>6</sup>, Ibrehima GUINDO<sup>1</sup>, Bouke de  
8 JONG<sup>3</sup>, Leen RIGOUTS<sup>3,4</sup>.

9 1- National Institute of Public Health, Bamako, Mali

10 2- World Health Organization, Geneva

11 3- Mycobacteriology Unit, Institute of Tropical Medicine, Antwerp, Belgium

12 4- Belgian Coordinated Collections of Microorganisms, Antwerp, Belgium

13 5- University Clinical Research Center, Bamako, Mali

14 6- University hospital of Point G, Bamako, Mali

15 † Deceased in September 2023

16  
17 \* Corresponding author

18 E-mail: [aissatacisse@yahoo.fr](mailto:aissatacisse@yahoo.fr) (ABC)

## 19 **Abstract**

20 **Background:** Non-tuberculosis mycobacteria (NTMs) are environmental agents that can cause  
21 opportunistic pulmonary disease in humans and animals which is often misdiagnosed as  
22 tuberculosis (TB). In this study, we describe the cases of NTMs identified during the first  
23 national anti-TB drug-resistance survey conducted in Mali, and associated risk factors.

24 **Methods:** Sputum was collected from people presenting for pulmonary TB diagnosis, from April  
25 to December 2019, regardless of age. Microscopy-positive patients were enrolled and were tested  
26 by GeneXpert MTB/RIF. Cases that tested negative for the *Mycobacterium tuberculosis* complex  
27 (MTBc) were tested for presence of mycobacteria by amplification of the IS6110 and 16SrRNA  
28 genes through double quantitative real-time PCR, followed by nested PCR and Sanger  
29 sequencing of the IS6110-negative samples for NTM species identification.

30 **Results:** A total of 1,418 sputum smear-positive patients were enrolled, including 1,199 new  
31 cases, 211 previously treated cases and 8 whose previous treatment history was unknown. Based  
32 on the results of GeneXpert MTB/RIF and in-house PCR methods, 1331 (93.9%) patients were  
33 positive for MTBc, 48 (3.4%) for NTMs and for 39 (2.7%) no species identification was  
34 possible. Advanced age (65 and over) (OR 8.8, p=0.001) and previous TB treatment (OR 3.4 and  
35 p=0.016) were the risk factors statistically associated with NTM detection. *M. avium complex*  
36 (MAC) was the predominant NTM species, detected in 20 cases.

37 **Conclusion:** Detection of NTMs in people presumed to have TB is an ongoing challenge,  
38 confounding correct TB diagnosis. Concomitant use of microscopy and GeneXpert testing  
39 among at-risk individuals could lessen confusion.

## 40 **1. Introduction**

41 The *Mycobacterium* genus groups together species of the *Mycobacterium tuberculosis* complex  
42 (MTBc) responsible for tuberculosis (TB) in humans and animals, *M. leprae*, the causative agent  
43 of leprosy, and finally, the species of mycobacteria commonly known as atypical or non-  
44 *tuberculosis* or mycobacteria (NTM) including *M. ulcerans* responsible for Buruli ulcer. NTMs  
45 are recognised as environmental bacteria(1–4), yet some species have been associated with

46 pulmonary diseases with symptoms similar to TB (5). All mycobacteria are acid-fast bacilli  
47 (AFB) detectable by microscopy after specific staining, yet an AFB-positive result by sputum  
48 smear cannot specify the species. A negative result for the MTBc by GeneXpert MTB/RIF  
49 (Xpert hereafter) when performed on AFB-positive sputum can suggest an NTM infection (6).  
50 Cases of NTM infection in Mali were described before the introduction of Xpert into the TB  
51 diagnostic algorithm, particularly in patients who have been previously treated for TB (7).

52 Unlike members of the MTBc, NTMs are not obligate parasites of humans. They are normal  
53 residents of soil and water. Over 170 species of NTM have been officially recognized(8), of  
54 which only 25 species have been strongly associated with disease in humans. Because their  
55 habitat exposes humans to these bacteria every day, the diagnosis of NTM disease must be  
56 differentiated from simple colonization or contamination of clinical specimens, for example by  
57 tap water. Identification to the species level is also important as treatment differs from one NTM  
58 species to another.

59 In this article, we describe the proportion of MTBc and of NTM detected in patients undergoing  
60 initial treatment or retreatment for TB in Mali, in the context of a drug-resistance survey. We  
61 also looked for risk factors associated with NTM detection.

## 62 **2. Methods**

### 63 **2.1. Design of the study**

64 The study was conducted from April to December 2019 in the context of the first national TB  
65 drug-resistance survey carried out in Mali (9). Consecutive eligible patients were recruited from  
66 78 of 86 TB diagnostic laboratories in the country, representing 91% of the country's TB

67 laboratory network. Laboratories that notified less than 10 new bacteriologically confirmed  
68 pulmonary TB cases in 2017 were excluded for logistic reasons. Eligible participants were  
69 defined as people undergoing evaluation for pulmonary TB, both with and without a history of  
70 prior treatment, regardless of age. The sample size of 994 new cases was calculated to meet the  
71 primary objective of the survey for measuring the percentage of new pulmonary TB cases  
72 resistant to rifampicin, for which a recruitment period of 4 months was estimated to be  
73 required(10).

## 74 **2.2. Sample collection and patient enrolment**

75 Two sputum samples, each of approximately 5 mL, were initially collected from each patient in  
76 the participating laboratories. Smears were made directly from freshly collected sputum, stained  
77 according to the acid-fast staining technique used at the center (auramine for most sites and  
78 Ziehl-Neelsen for several small centers) and following international guidelines for diagnosing  
79 TB by microscopy(11). In case one of these two sputum samples was AFB positive, the patient  
80 was included in the drug-resistance survey after giving informed consent, and an additional  
81 sample was collected.

82 The nurse completed the study questionnaire with the recruited patient. The questionnaire  
83 covered socio-demographic data, and information on previous TB treatment and pulmonary  
84 disease history (duration and chronicity of respiratory signs).

## 85 **2.3. Initial Xpert testing and specimen storage**

86 The first two sputum samples collected were preserved in 5 mL of Omnigene Sputum  
87 decontamination reagent (DNA Genotek Inc, Canada) according to the manufacturer's  
88 recommendations (12), while the third sample was preserved in 10 mL of 96% ethanol. The

89 conditioned samples were transported by public transport at ambient temperature in triple  
90 packaging to the National Tuberculosis Reference Laboratory in Bamako.

91 To detect MTBc, the GeneXpert MTB/RIF assay (Cepheid, CA, USA) was performed at the  
92 National Tuberculosis Reference Laboratory, using 2mL of the sample preserved in Omnigene,  
93 in accordance with the manufacturer's recommendations (Cepheid and Genotek).

94 Leftovers of the samples were then stored in cryotubes in the form of sediment obtained after  
95 centrifugation at 4000g for 15 minutes and mixed with 96% alcohol at an equal volume (0.5 mL  
96 sediment and 0.5 mL ethanol).

## 97 **2.4. Molecular detection and identification of NTM species**

98 For molecular detection and identification of NTM species, AFB-positive/MTBc-negative  
99 samples were transported at ambient temperature to the WHO Supranational Tuberculosis  
100 Reference Laboratory at the Institute of Tropical Medicine (ITM) in Antwerp, Belgium. Upon  
101 arrival at ITM, ethanol-preserved samples were centrifuged at 4000 g for 15 minutes, digested by  
102 overnight proteinase K incubation, followed by lysis using an internal lysis buffer, after which  
103 DNA was extracted using the Modified Maxwell-LEV® automated extraction method (Promega,  
104 USA) (13)

105 A duplex quantitative real time polymerase chain reaction (qPCR) was performed, targeting the  
106 *IS16110* gene for the detection of the MTBc and the 16S rRNA gene to detect all species of the  
107 *Mycobacterium* genus. The primers and probes used are presented in Table 1, while  
108 interpretation of results is depicted in Table 2.

109

110 **Table 1. Primers and probes for qPCR to simultaneously detect *Mycobacterium tuberculosis***  
 111 **complex and all mycobacterial species.**

Target	Name	Sequence primers and probes
<b>IS6110 qPCR</b>	Myco_Genus_S_v3	5'-ATGCAAGTCGAACGGAAAGG-3'
	Myco_Genus_AS_v2	5'-TCTGCCCCGTATCGCC-C-3'
	IS6110_S	5'-CCTGAAAGACGTTATCCACCATAC-3'
	IS6110_AS	5'-GGC-TAG-TGC-ATT-GTC-ATA-GGA-G-3'
	Myco_Genus_P_v2	FAM-CAA-AC(InC)-AC(InC)-TA(InC)-GA(InG)-CTC-EDQ
	IS6110_P_DFO	DFO-TCT-CAG-TA(InC)-AC(InA)-TC(InG)-ATC-CGG-T-BHQ2
<b>16S rRNA qPCR</b>	Myco_Genus_S_v3	5'-ATGCAAGTCGAACGGAAAGG-3'
	Myco_Genus_AS_v2	5'-TCTGCCCCGTATCGCC-C-3'
	Myco_Genus_P_v2	FAM-CAA-AC(InC)-AC(InC)-TA(InC)-GA(InG)-CTC-EDQ

112

113 **Table 2. Interpretation of duplex IS6110-16SrRNA qPCR results**

Cycle threshold (Ct) 16S rRNA	qPCR IS6110 result	
	Positive	Negative
<b>Positive with any Ct value</b>	-	No MTBc
<b>Positive and <math>\geq</math>IS6110 Ct</b>	MTBc	
<b>Positive and <math>&lt;</math>IS6110 Ct</b>	MTBc + NTM	
<b>Negative</b>	MTBc (low bacillary load)	No mycobacteria species identification possible

114

115 Subsequently, a nested conventional PCR targeting the 16S rRNA gene was performed on  
 116 samples identified as NTM by the duplex qPCR. The primers and probes used were as follows:

- 117
- P1 (first PCR): 5'-TGCTTAACACATGCAAGTCG-3'

- 118 • P2 new (first PCR): 5'-TCTCTAGACGCGTCCTGTGC-3'
- 119 • P7 (nested PCR): 5'-CATGCAAGTCGAACGGAAAGG-3'
- 120 • P16 new (nested PCR): 5'-AAGCCGTGAGATTTACGAACA3'

121 Amplicons that were clearly positive on the agarose gel underwent Sanger sequencing. A  
122 negative PCR result was interpreted as the absence of MTBc or NTM.

123 Sequencing was subcontracted to BaseClear (BE Leiden, The Netherlands). The results obtained  
124 after entering the sequence into the Basic Local Alignment Search Tool (BLAST), National  
125 Centre for Biotechnology Information (NCBI) were interpreted as follows:

- 126 • If a sequence match was found on the NCBI, the NTM species was identified.
  - 127 ○ In case of 100% similarity (no mismatches), the species name was assigned.
  - 128 ○ In case 1-3 bp mismatches with the closest species, the “species-like” name was  
129 assigned
- 130 • If no match or >3 bp difference with the closest species was found on NCBI, the result  
131 was interpreted as *Mycobacterium* species.
- 132 • If there were overlapping peaks in the sequence, indicating the presence of several  
133 NTMs, the result was interpreted as "Mixture of NTMs ".

## 134 **2.5. Data analysis**

135 The data collected using the survey forms and sample submission forms were entered into  
136 EpiInfo version 7.2.5.0. The variables analysed were age, sex, region of residence, history of  
137 illness and history of anti-TB treatment. Percentages, medians and means were calculated by

138 crosstab, and p-values and odds ratios with 95% confidence intervals were generated using  
139 regression analysis in IBM SPSS Statistics version 21X64 (IBM Corp., NY, USA).

## 140 **2.6. Ethical considerations**

141 The drug-resistance survey protocol in which a secondary analysis of samples is described in the  
142 informed consent was accepted by the ethics committee of the National Institute of Public Health  
143 Research by decision No. 08/2018/CE-INRSP on March 21, 2018. The objectives and results of  
144 the study were clearly explained in the language understood by the patient, and consent was  
145 obtained from patients over 18 years of age. For patients under the age of 18, after obtaining the  
146 prior consent of the parent or companion, the child's assent to participate in the study was  
147 obtained in the presence of a witness other than the parent or companion.

## 148 **3. Results**

### 149 **3.1. Mycobacteria detected**

150 A total of 1,418 sputum AFB-positive patients were enrolled in the drug-resistance survey,  
151 including 1,199 new cases, 211 previously treated cases and 8 whose previous treatment history  
152 was unknown (Figure 1). Based on Xpert results, 1296 (91.4%) patients were positive for MTBc  
153 while 122 (8.6%) remained negative.

154 The duplex *IS6110*-16S rRNA qPCR was performed for 119 patients with an Xpert result of  
155 “MTB not detected” by which increase the number of patients with MTBc increased to 1331  
156 (93.9%) through 35 additional cases (29.4%), for six of whom MTBc alone was detected and 29  
157 carrying probable mixtures of MTBc and NTMs. For 81 (68,1%) patients, only the 16S target  
158 reacted positive (presumed NTM), while the PCR remained negative for both targets in 3 (2,5%)



159 patients. The nested conventional 16S PCR performed for the 81 presumed NTM detected by  
160 IS6110-16SrRNA qPCR, was positive for 48 or 3.4% (48/1418) of all enrolled patients, of which  
161 33 could be identified to the species level by sequencing. For another 33 of 81 the nested PCR  
162 remained negative, thus no sequencing could be performed (Fig 1).

163 **Fig 1.** This is the **Fig 1 Sample and analysis flow with summary of results** This is the Fig 1  
164 legend. *MTBc* = *Mycobacterium tuberculosis complex*; *n*= number; *NTM* = *non-tuberculous*  
165 *mycobacteria*

166 Sequencing identified eleven species or groups of species, with predominance of the *M. avium*  
167 complex (MAC) representing 20 cases or 42% of all species detected, *M. intracellulare* complex  
168 in 13 patients (27%), *M. avium* in five (10%) and *M. colombiense* in two (4 %) (Fig 2).

169 **Fig 2.** This is the **Fig 2 Sequencing results for the identification of NTM species**

### 170 **3.2. Detection of NTM in relation to smear-microscopy results**

171 The quantification of AFB was notified for 1414 of 1418 patients by the participating  
172 laboratories. A significantly higher proportion of NTM was detected in patients with lower AFB-  
173 grades: 7% for 1+ and scanty (Table 3), compared to 2% among 3+ patients (respectively OR  
174 4.065, 95% CI: 1.876-8.808, p=0.000 and OR 4.3, 95% CI: 2.012-9.189, p=0.000). The  
175 difference was not significant compared to grade 2+ samples (p=0.462).

176

177

178

179

180 **Table 3. Proportion of NTM and MTB detection in relation to smear microscopy results**

Final smear result	MTB n (%)	NTM n (%)	No species identification possible n (%)
<b>Rares BAAR</b>	167 (83%)	13 (7%)	21 (10%)
<b>1+</b>	170 (89%)	14 (7%)	8 (4%)
<b>2+</b>	259 (94%)	7 (3%)	8 (3%)
<b>3+</b>	731 (98%)	14 (2%)	2 (0%)
<b>Total</b>	<b>1327 (93.8%)</b>	<b>48 (3.4%)</b>	<b>39 (2.8%)</b>

181 *MTBc* = *M. tuberculosis complex*; *NTM* = *non-tuberculous mycobacteria*

### 182 **3.3. Socio-demographic, clinical characteristics and risk factors for** 183 **NTM infection**

184 Male patients were more numerous among all study participants with a sex ratio of respectively  
185 2.1 and 1.5 when compared to women, but NTM presence was not associated with gender (Table  
186 4). Contrary, older age was significantly associated with NTM detection. The median age was 37  
187 years for all patients and 59.5 years for those infected with NTM detected. Compared to the  
188 under-34 age group, the 35-64 age group had a greater odds (OR 3.4, 95% CI: 1.1-10.3, p=0.03)  
189 of NTM detection, which further increased for the over-65 age group (OR 8.8, 95%CI: 2.3-33.2  
190 p=0.001 (Table 4). Also, previously treated patients were more likely than new cases to have  
191 NTMs in their sputum (OR 3.4, 95%CI: 1.2-9.6, p=0.016) (Table 4). We found no significant  
192 associations between NTM detection and HIV status or chronic respiratory signs. Regarding the  
193 patient's residence, patients from the Mopti region were more likely to have NTM detected  
194 compared to Bamako residents (OR 4.1, 95%CI: 1.0-16.4, p=0.04). (Table 4).

195 **Table 4. Multivariate logistic regression analyses of demographic and clinical variables as**  
 196 **risk factors of NTM infection**

<b>Variables</b>		<b>Total patients n (%)</b>	<b>NTM detected n (%)</b>	<b>OR</b>	<b>p-value</b>
<b>Gender n=1379</b>	Female	434 (31.5)	19 (39.6%)	0.8 [0.3-2.04]	0.7
	Male	945 (68.5)	29 (60.4%)		
<b>Age n=1379</b>	Median	37	<b>59,5</b>		
	0-34 years (Reference)	603 (43.7)	4 (8.3)		
	35-64 years	659 (47.8)	29 (60.4)	<b>3.4 [1.1-10.3]</b>	<b>0.03</b>
	≥65 years	117 (8.5)	15 (31.3)	<b>8.8 [2.3-33.2]</b>	<b>0.001</b>
<b>History of treatment n=1371</b>	New	1165 (84.5)	30 (62.5)		
	Previously treatment	206 (14.9)	18 (37.5)	<b>3.4 [1.2-9.6]</b>	<b>0.016</b>
<b>HIV status n=1092</b>	Positive	77 (5.6)	4 (8.3)	2.8 [0.8-8.9]	0.07
	Negative	1015 (73.6)	29 (60.4)		
<b>Chronic clinical signs n=1174</b>	Yes	442 (37.6)	24 (60)	0.7 [0.3-1.8]	0.5
	No	752 (62.4)	16 (40)		
<b>Region of residence at the time of diagnosis n=1348</b>	Bamako (Reference)	451 (33.5)	5 (10.9)		
	Kayes	101 (7.5)	4 (8.7)	2.7 [0.5-12.7]	0.2
	Koulikoro	217 (16.1)	7 (15.2)	1.5 [0.3-7.4]	0.5
	Sikasso	155 (11.5)	12 (26.1)	2.9 [0.7-10.8]	0.10
	Ségou	147 (10.9)	7 (15.2)	3.2 [0.8-12.7]	0.09
	Mopti	191 (14.2)	7 (15.2)	<b>4.1 [1.02-16.4]</b>	<b>0.04</b>
	Northern regions	86 (6.4)	4 (8.7)	4.2 [0.7-25.2]	0.1

197 NTM = non-tuberculous mycobacteria; n= number; OR = odds ratio

## 198 **4. Discussion**

199 The rate of sputum AFB-positive patients and MTBc detected by Xpert in our study was slightly  
200 lower than the rate reported in other drug-resistance surveys, ranging from 95.8% -97.7%(14–  
201 17).

202 The use of an additional in-house qPCR for IS6110 in our study has allowed to increase the  
203 detection of MTBc. The applied qPCR IS6110 has shown good sensitivity and specificity for the  
204 detection of MTBc (18).The observed high Ct values indicates, however, a low quantity of MTB  
205 DNA anyway for samples from these patients, that may as well have become positive upon  
206 repeated Xpert testing(19).

207 The higher positivity rate by qPCR compared to the conventional nested PCR we observed in our  
208 study could be partially attributable to the non-specificity of the 16S primers employed for the  
209 in-house qPCR which also detects species belonging to closely related genera like *Rhodococcus*  
210 and *Nocardia*, hence potentially overestimating the NTM rate. These closely related species  
211 indeed can be detected in smear-positive samples not containing tubercle bacilli, such as  
212 documented in the USA with 78.4% (134/171) of AFB-positive specimens yielding a positive  
213 culture with NTM or *Nocardia* spp, while 14.6% (25/171) of AFB-positive specimens grew  
214 MTBc and another 7% (12/171) remained negative in culture (20). The proportion of NTM  
215 versus *Nocardia* spp note the clinical relevance of these isolated bacteria were discussed in that  
216 study. In another study in Nigeria, out of 32 smear-positive samples identified as not containing  
217 tuberculosis bacilli, 6 were NTM (18.75%), 14 were Corynebacteria (43.75%) and 12  
218 Rhodococci (37.5%) (21). In our study, we did not further identify the non-MTBc/non-NTM  
219 samples. In addition, the lower sensitivity of the conventional nested PCR may have hampered

220 confirmation by sequencing in case of negative results or low amplicon yield. Indeed, the in-  
221 house qPCR has already shown good sensitivity, while limited loss of DNA has been described  
222 during multiple handling steps for conventional nested PCR(22,23). This lower sensitivity is  
223 reflected in the samples' AFB-grading, with less non-identified samples among the strong  
224 positive specimens.

225 The confirmed NTM detection rate in our study was higher (3.4%) than that obtained in TB drug  
226 resistance surveys conducted in Pakistan with 0.7% (13/1972) NTM (15,24), and in India with  
227 1.19% (35/2,938) NTM (24), but it was lower than the 6.4% (317/4917) observed in China (25) .  
228 This result may reflect regional differences in NTM occurrence and disease caused by NTMs  
229 around the world (26,27).

230 NTM detection was more likely among paucibacillary patients as determined by smear  
231 microscopy, corroborating findings from Nigeria where the AFB-smear grading was respectively  
232 lower for NTM cases than for MTBc patients (28) and was predictive for MTBc detection when  
233 it was higher (21)With age, the risk of developing NTMs infection increased, but we did not find  
234 a significant association between gender and NTM infection, contrary to other studies, where  
235 females have been more frequently associated with NTM infections, especially at older ages  
236 (6,29,30). Previous anti-TB treatment was another risk factor for NTM infection in our study,  
237 confirming findings from NTM pulmonary disease in China and South Africa (31,32).  
238 Nevertheless, we did not find an association between NTM detection and chronic respiratory  
239 signs in our study, in contrast with the described association between NTM infection and the  
240 presence of lung disease or chronic respiratory symptoms in Chinese and Danish studies(33,34).

241 HIV infection has frequently been identified as a risk factor for NTM infections and disease,  
242 especially in situations of advanced immunosuppression (28,35,36). In our study the trend

243 towards an association between HIV-positivity and NTM detection was not significant,  
244 corroborating previous observation in Mali (37,38). In the context of the drug-resistance survey,  
245 no information on anti-retroviral treatment has been collected, but such treatment is to be started  
246 upon HIV diagnosis as per national guidelines in Mali. While patients from the Mopti region had  
247 a higher odds for having NTM detected in their sputum than those from the Bamako region,  
248 further investigation of the environmental conditions in these regions would be needed,  
249 especially as NTMs are environmental bacteria and have often been isolated at different  
250 frequencies in different geographical areas(26,30,39). The MAC was the most common NTM  
251 detected. The predominance of MAC has been reported in pulmonary NTM infections in many  
252 countries around the world (26,27,40,41) 29,38,40,41. In Mali, between 2004 and 2013, *M.*  
253 *avium* was the most frequently identified species of the MAC complex (7,27,37).

254 In this study, we did not investigate whether the detected NTM were attributable to true  
255 infection, colonization or sample contamination. We could not assess the AST criterium to detect  
256 NTM in at least 3 different samples per patient given the design of the survey and the  
257 retrospective nature of molecular analysis to detect NTM. However, study participants were  
258 people with respiratory signs undergoing evaluation for pulmonary TB attending health centers  
259 or patients failing TB treatment. Also, we do not describe the outcome of patients in whom NTM  
260 was detected, but all were started on 1st line TB therapy or multidrug-resistant treatment  
261 following the results of initial microscopy and Xpert testing.

## 262 **5. Conclusion**

263 Among sputum AFB-positive patients presenting in Mali, 3.4% were due to NTM. Particular  
264 attention must be paid to populations at risk, such as elderly patients, and patients with a history

265 of previous treatment. TB prevention and care programmes in resource-limited countries should  
266 ensure that their routine diagnostic algorithms can detect such cases, based on the concurrent use  
267 of rapid molecular TB diagnostics and microscopy in the absence of other molecular assays to  
268 detect NTM. Clinical assessment and management of NTM infections however, remain a  
269 challenge worldwide.

## 270 **Acknowledgements**

271 *We would like to thank the tuberculosis management sites for recruiting patients, for collecting*  
272 *and transporting samples, the country's regional health departments for regional coordination of*  
273 *the drug resistance study and Olga Tosas Auguet for her assistance in planning the survey,*  
274 *monitoring the field activities and preliminary data analysis”.*

## References

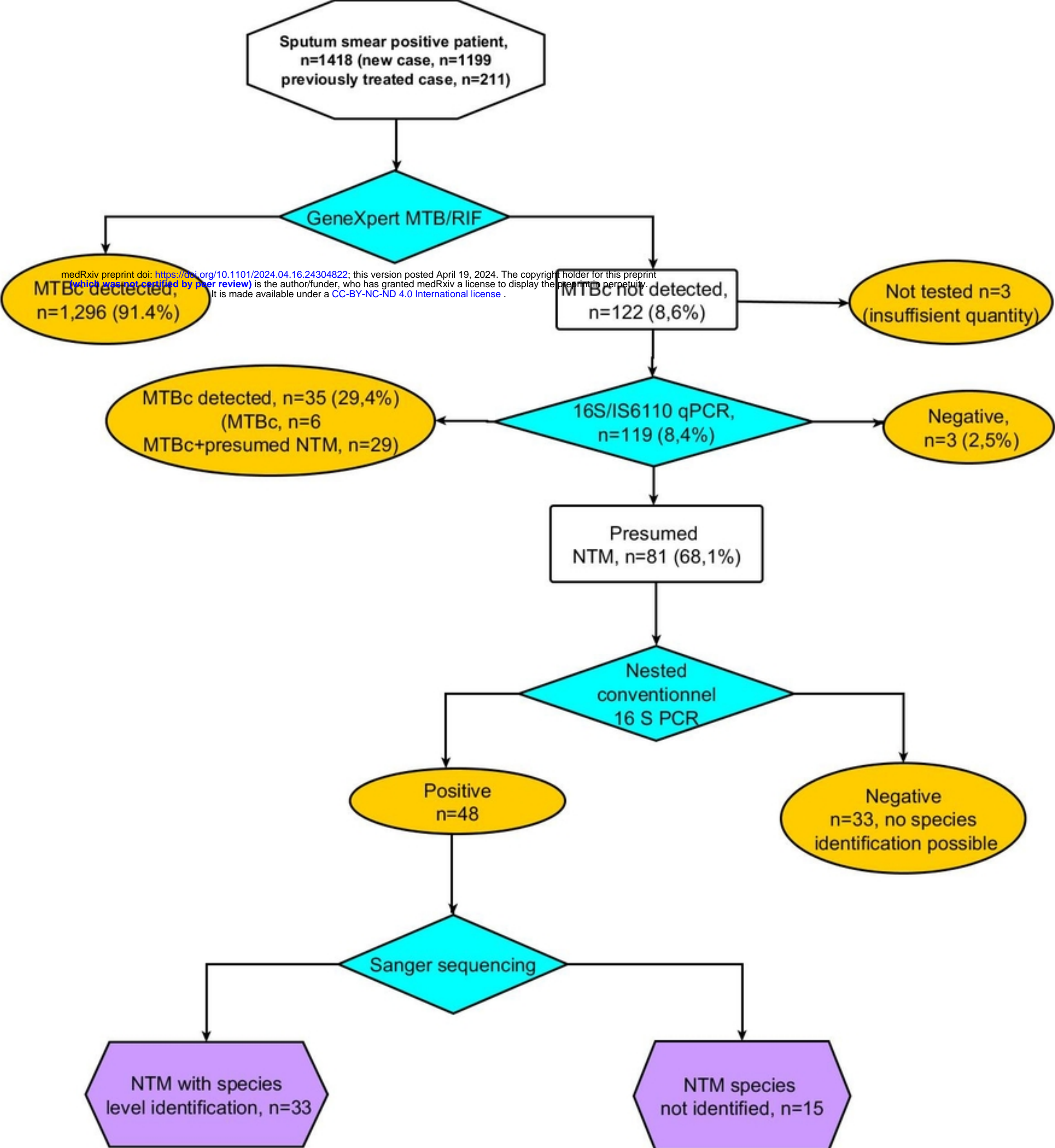
1. Claeys TA, Robinson RT. The many lives of nontuberculous mycobacteria. *J Bacteriol.* 2018;200(11).
2. Falkinham JO. Environmental sources of nontuberculous mycobacteria. Vol. 36, *Clinics in Chest Medicine.* 2015.
3. Falkinham JO. Ecology of nontuberculous mycobacteria-where do human infections come from? *Semin Respir Crit Care Med.* 2013;34(1):95–102.
4. Falkinham JO. Impact of human activities on the ecology of nontuberculous mycobacteria. Vol. 5, *Future Microbiology.* 2010.
5. American Thoracic Society. Diagnosis and treatment of disease caused by nontuberculous mycobacteria. Vol. 142, *American Review of Respiratory Disease.* 1990.
6. Kong L, Xie B, Liu Q, Hua L, Bhusal A, Bao C, et al. Application of acid-fast staining combined with GeneXpert MTB/RIF in the diagnosis of non-tuberculous mycobacteria pulmonary disease. *International Journal of Infectious Diseases.* 2021;104.
7. Maiga M, Siddiqui S, Diallo S, Diarra B, Traoré B, Shea YR, et al. Failure to recognize nontuberculous mycobacteria leads to misdiagnosis of chronic pulmonary tuberculosis. *PLoS One.* 2012 May 16;7(5).
8. Fedrizzi T, Meehan CJ, Grottola A, Giacobazzi E, Fregni Serpini G, Tagliazucchi S, et al. Genomic characterization of Nontuberculous Mycobacteria. *Sci Rep.* 2017;7.
9. World Health Organization. Global tuberculosis report 2020. World Health Organization; 2020.
10. World Health Organization. Guidelines for surveillance of drug resistance in tuberculosis 5 th Edition. 2015.
11. Lumb R, Van Deun A, Bastian I, Fitz-Gerald M, Pathology SA, Stop TB Partnership (World Health Organization). Laboratory diagnosis of tuberculosis by sputum microscopy : the handbook. 84 p.
12. How can I use OMNIgene®•SPUTUM? Use Case 4: Reflex testing: Microscopy centre with or without GeneXpert® centrifuge [Internet]. 2016. Available from: [www.dnagenotek.com](http://www.dnagenotek.com)
13. Corporation P. Maxwell(R) 16 Cell LEV DNA Purification Kit Technical Bulletin TB383 [Internet]. Available from: [www.promega.com](http://www.promega.com)
14. Lopes C, Kundu D, Da Costa Barreto I, da Cruz B, Siva Kumar S, Ramalingam S, et al. Experience on the first national anti-TB drug resistance survey (DRS) in Timor-Leste. *Glob Health Res Policy.* 2022;7(1).
15. Tahseen S, Qadeer E, Khanzada FM, Rizvi AH, Dean A, Van Deun A, et al. Use of Xpert® MTB/RIF assay in the first national antituberculosis drug resistance survey in Pakistan. Vol. 20, *International Journal of Tuberculosis and Lung Disease.* International Union against Tubercul. and Lung Dis.; 2016. p. 448–55.



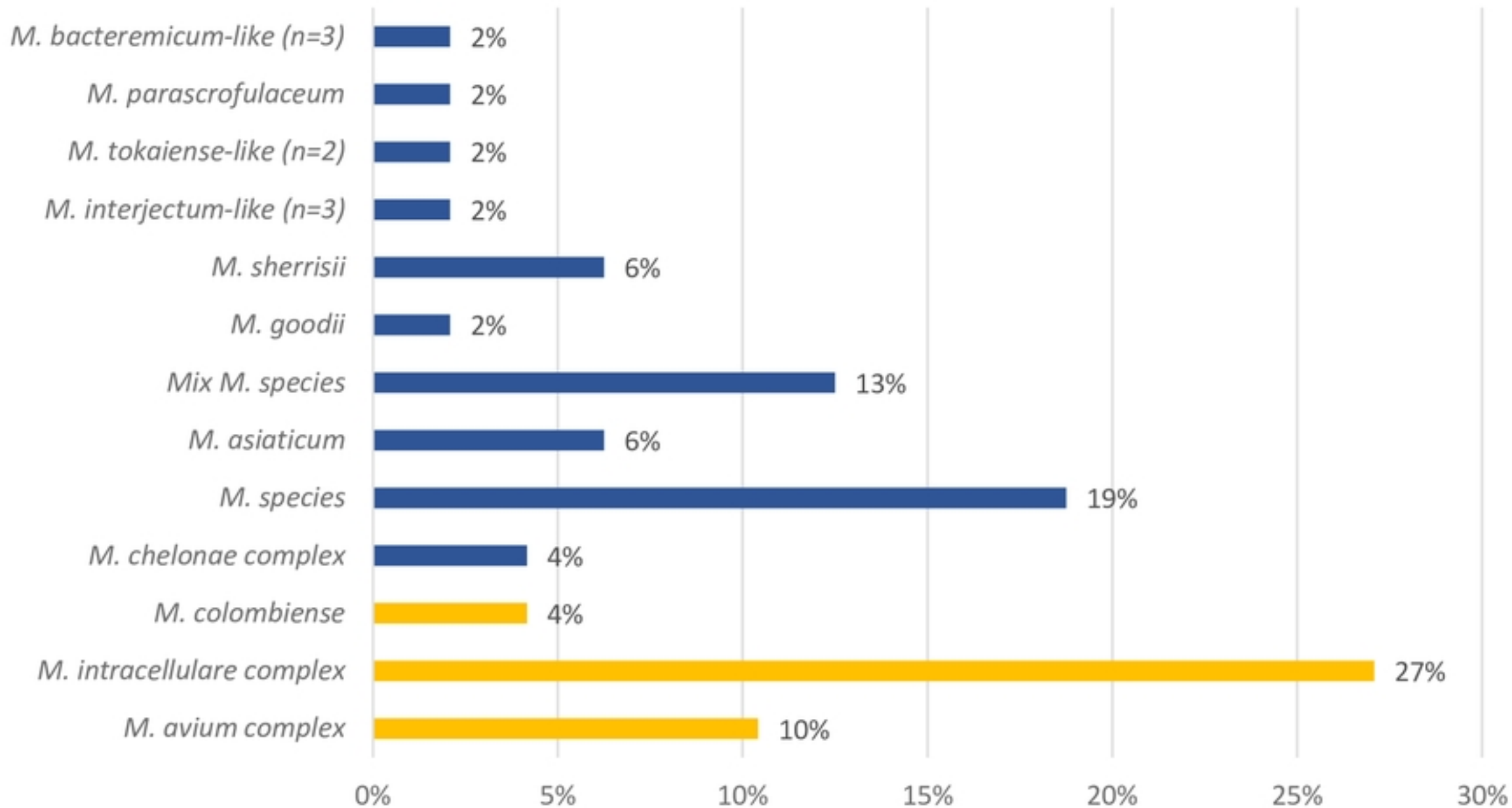
16. Aia P, Kal M, Lavu E, John LN, Johnson K, Coulter C, et al. The burden of drug-resistant tuberculosis in Papua New Guinea: Results of a large population-based survey. *PLoS One*. 2016;11(3).
17. Iem V, Dean A, Zignol M, Vongvichit P, Inthavong D, Siphanthong S, et al. Low prevalence of MDR-TB in Lao PDR: results from the first national anti-tuberculosis drug resistance survey. *Tropical Medicine and International Health*. 2019;24(4).
18. Lira LAS, Santos FCF, Carvalho MSZ, Montenegro RA, Lima JFC, Schindler HC, et al. Evaluation of a IS6110-Taqman real-time PCR assay to detect *Mycobacterium tuberculosis* in sputum samples of patients with pulmonary TB. *J Appl Microbiol*. 2013 Apr;114(4):1103–8.
19. Hanifa Y, Fielding KL, Chihota VN, Adonis L, Charalambous S, Foster N, et al. The utility of repeat Xpert MTB/RIF testing to diagnose tuberculosis in HIV-positive adults with initial negative result. *Gates Open Res*. 2018 Apr 26;2:22.
20. Hamdi A, Fida M, Deml SM, Abu Saleh O, Wengenack NL. Utility of *Mycobacterium tuberculosis* PCR in ruling out active disease and impact on isolation requirements in a low prevalence setting. *J Clin Tuberc Other Mycobact Dis*. 2020 Dec 1;21.
21. Dinic L, Idigbe OE, Meloni S, Rawizza H, Akande P, Eisen G, et al. Sputum Smear Concentration May Misidentify Acid-Fast Bacilli As *Mycobacterium Tuberculosis* in HIV-Infected Patients [Internet]. 2013. Available from: [www.jaids.com](http://www.jaids.com)
22. Fang Y, Wu WH, Pepper JL, Larsen JL, Marras SAE, Nelson EA, et al. Comparison of real-time, quantitative PCR with molecular beacons to nested PCR and culture methods for detection of *Mycobacterium avium* subsp. *paratuberculosis* in bovine fecal samples. *J Clin Microbiol*. 2002;40(1):287–91.
23. Seo AN, Park HJ, Lee HS, Park JO, Chang HE, Nam KH, et al. Performance characteristics of nested polymerase chain reaction vs real-time polymerase chain reaction methods for detecting *mycobacterium tuberculosis* complex in paraffin-embedded human tissues. *Am J Clin Pathol*. 2014 Sep 1;142(3):384–90.
24. Sharma M, Malhotra B, Tiwari J, Bhargava S. Profile of Nontuberculous *Mycobacteria* in Patients Suspected of Tuberculosis and Drug-Resistant Tuberculosis. *J Lab Physicians*. 2020;12(03).
25. Liu CF, Song YM, He WC, Liu DX, He P, Bao JJ, et al. Nontuberculous *mycobacteria* in China: incidence and antimicrobial resistance spectrum from a nationwide survey. *Infect Dis Poverty*. 2021 Dec 1;10(1).
26. Hoefsloot W, Van Ingen J, Andrejak C, Ängeby K, Bauriaud R, Bemer P, et al. The geographic diversity of nontuberculous *mycobacteria* isolated from pulmonary samples: An NTM-NET collaborative study. *European Respiratory Journal*. 2013 Dec 1;42(6):1604–13.
27. Okoi C, Anderson STB, Antonio M, Mulwa SN, Gehre F, Adetifa IMO. Non-tuberculous *Mycobacteria* isolated from Pulmonary samples in sub-Saharan Africa - A Systematic Review and Meta Analyses. *Sci Rep*. 2017;7(1).

28. Aliyu G, El-Kamary SS, Abimiku A, Brown C, Tracy K, Hungerford L, et al. Prevalence of Non-Tuberculous Mycobacterial Infections among Tuberculosis Suspects in Nigeria. *PLoS One*. 2013 May 9;8(5).
29. Kennedy TP, Weber DJ. Nontuberculous mycobacteria. An underappreciated cause of geriatric lung disease. *Am J Respir Crit Care Med*. 1994 Jun;149(6):1654–8.
30. Limo JJ, Nyerere A, Bii C. Prevalence, Species Characterization and factors associated with Non tuberculous mycobacteria among tuberculosis retreatment patients submitting samples to the National Tuberculosis Reference Laboratory, Kenya. Vol. 7, Jomo Kenyatta University of Agriculture and Technology. 2016.
31. Xu J, Li P, Zheng S, Shu W, Pang Y. Prevalence and risk factors of pulmonary nontuberculous mycobacterial infections in the Zhejiang Province of China. *Epidemiol Infect*. 2019;147.
32. Corbett EL, Churchyard GJ, Clayton T, Herselman P, Williams B, Hayes R, et al. Risk Factors for Pulmonary Mycobacterial Disease in South African Gold Miners A Case-Control Study [Internet]. Vol. 159, *Am J Respir Crit Care Med*. 1999. Available from: [www.atsjournals.org](http://www.atsjournals.org)
33. Andr jak C, Nielsen R, Thomsen V, Duhaut P, S rensen HT, Thomsen RW. Chronic respiratory disease, inhaled corticosteroids and risk of non-tuberculous mycobacteriosis. *Thorax*. 2013;68(3).
34. Feng JY, Chen WC, Chen YY, Su WJ. Clinical relevance and diagnosis of nontuberculous mycobacterial pulmonary disease in populations at risk. Vol. 119, *Journal of the Formosan Medical Association*. 2020.
35. Corbett EL, Churchyard GJ, Hay M, Herselman P, Clayton T, Williams B, et al. The Impact of HIV Infection on Mycobacterium kansasii Disease in South African Gold Miners [Internet]. Vol. 160, *Am J Respir Crit Care Med*. 1999. Available from: [www.atsjournals.org](http://www.atsjournals.org)
36. Hoza AS, Mfinanga SGM, Rodloff AC, Moser I, K nig B. Increased isolation of nontuberculous mycobacteria among TB suspects in Northeastern, Tanzania: Public health and diagnostic implications for control programmes. *BMC Res Notes*. 2016 Feb 17;9(1).
37. Kone B, Sarro YS, Maiga M, Sanogo M, Somboro AM, Diarra B, et al. Clinical characteristics of non-tuberculous mycobacterial pulmonary infections in Bamako, Mali. *Epidemiol Infect*. 2018;146(3).
38. Pokam BT, Asuquo AE. Acid-Fast Bacilli Other than Mycobacteria in Tuberculosis Patients Receiving Directly Observed Therapy Short Course in Cross River State, Nigeria. *Tuberc Res Treat*. 2012;2012:1–4.
39. Jankovic M, Samarzija M, Sabol I, Jakopovic M, Katalinic Jankovic V, Zmak L, et al. Geographical distribution and clinical relevance of non-tuberculous mycobacteria in Croatia. *International Journal of Tuberculosis and Lung Disease*. 2013 Jun 1;17(6):836–41.
40. Sun Q, Yan J, Liao X, Wang C, Wang C, Jiang G, et al. Trends and Species Diversity of Non-tuberculous Mycobacteria Isolated From Respiratory Samples in Northern China, 2014–2021. *Front Public Health*. 2022;10.

41. Farnia P, Farnia P, Ghanavi J, Velayati AA. Epidemiological Distribution of Nontuberculous Mycobacteria Using Geographical Information System. In: Nontuberculous Mycobacteria (NTM): Microbiological, Clinical and Geographical Distribution. Elsevier; 2019. p. 191–321.



Sample and analysis flow with summary of results



Sequencing results for the identification of NTM species