

Prevalence of non-tuberculous mycobacteria among people presumed to have tuberculosis, positive for acid-fast bacilli in Mali

Aissata Boubakar CISSE^{1*}, Anna S. DEAN², Armand Van DEUN^{3†}, Jelle KEYSERS³, Willem-Bram De RIJKE³, Mourad GUMUSBOGA³, Hawa SAMAKE¹, Seydou ARAMA¹, Bassirou DIARRA⁵, Ibrahim DJILLA¹, Fatoumata N. COULIBALY¹, Hawa SIMPARA¹, Mamadou BERTHE¹, Khadidia OUATTARA⁶, Yacouba TOLOBA⁶, Ibrehima GUINDO¹, Bouke de JONG³, Leen RIGOUTS^{3,4}.

1- National Institute of Public Health, Bamako, Mali

2- World Health Organization, Geneva

3- Mycobacteriology Unit, Institute of Tropical Medicine, Antwerp, Belgium

4- Belgian Coordinated Collections of Microorganisms, Antwerp, Belgium

5- University Clinical Research Center, Bamako, Mali

6- University hospital of Point G, Bamako, Mali

† Deceased in September 2023

* Corresponding author

E-mail: aissatacisse@yahoo.fr (ABC)

Abstract

Background: Non-tuberculosis mycobacteria (NTMs) are environmental agents that can cause opportunistic pulmonary disease in humans and animals which is often misdiagnosed as tuberculosis (TB). In this study, we describe the cases of NTMs identified during the first national anti-TB drug-resistance survey conducted in Mali, and associated risk factors.

Methods: Sputum was collected from people presenting for pulmonary TB diagnosis, from April to December 2019, regardless of age. Microscopy-positive patients were enrolled and were tested by GeneXpert MTB/RIF. Cases that tested negative for the *Mycobacterium tuberculosis* complex (MTBc) were tested for presence of mycobacteria by amplification of the IS6110 and 16SrRNA genes through double quantitative real-time PCR, followed by nested PCR and Sanger sequencing of the IS6110-negative samples for NTM species identification.

Results: A total of 1,418 sputum smear-positive patients were enrolled, including 1,199 new cases, 211 previously treated cases and 8 whose previous treatment history was unknown. Based on the results of GeneXpert MTB/RIF and in-house PCR methods, 1331 (93.9%) patients were positive for MTBc, 48 (3.4%) for NTMs and for 39 (2.7%) no species identification was possible. Advanced age (65 and over) (OR 8.8, p=0.001) and previous TB treatment (OR 3.4 and p=0.016) were the risk factors statistically associated with NTM detection. *M. avium complex* (MAC) was the predominant NTM species, detected in 20 cases.

Conclusion: Detection of NTMs in people presumed to have TB is an ongoing challenge, confounding correct TB diagnosis. Concomitant use of microscopy and GeneXpert testing among at-risk individuals could lessen confusion.

1. Introduction

The *Mycobacterium* genus groups together species of the *Mycobacterium tuberculosis* complex (MTBc) responsible for tuberculosis (TB) in humans and animals, *M. leprae*, the causative agent of leprosy, and finally, the species of mycobacteria commonly known as atypical or non-*tuberculosis* or mycobacteria (NTM) including *M. ulcerans* responsible for Buruli ulcer. NTMs are recognised as environmental bacteria(1–4), yet some species have been associated with

pulmonary diseases with symptoms similar to TB (5). All mycobacteria are acid-fast bacilli (AFB) detectable by microscopy after specific staining, yet an AFB-positive result by sputum smear cannot specify the species. A negative result for the MTBc by GeneXpert MTB/RIF (Xpert hereafter) when performed on AFB-positive sputum can suggest an NTM infection (6). Cases of NTM infection in Mali were described before the introduction of Xpert into the TB diagnostic algorithm, particularly in patients who have been previously treated for TB (7).

Unlike members of the MTBc, NTMs are not obligate parasites of humans. They are normal residents of soil and water. Over 170 species of NTM have been officially recognized(8), of which only 25 species have been strongly associated with disease in humans. Because their habitat exposes humans to these bacteria every day, the diagnosis of NTM disease must be differentiated from simple colonization or contamination of clinical specimens, for example by tap water. Identification to the species level is also important as treatment differs from one NTM species to another.

In this article, we describe the proportion of MTBc and of NTM detected in patients undergoing initial treatment or retreatment for TB in Mali, in the context of a drug-resistance survey. We also looked for risk factors associated with NTM detection.

2. Methods

2.1. Design of the study

The study was conducted from April to December 2019 in the context of the first national TB drug-resistance survey carried out in Mali (9). Consecutive eligible patients were recruited from 78 of 86 TB diagnostic laboratories in the country, representing 91% of the country's TB

laboratory network. Laboratories that notified less than 10 new bacteriologically confirmed pulmonary TB cases in 2017 were excluded for logistic reasons. Eligible participants were defined as people undergoing evaluation for pulmonary TB, both with and without a history of prior treatment, regardless of age. The sample size of 994 new cases was calculated to meet the primary objective of the survey for measuring the percentage of new pulmonary TB cases resistant to rifampicin, for which a recruitment period of 4 months was estimated to be required(10).

2.2. Sample collection and patient enrolment

Two sputum samples, each of approximately 5 mL, were initially collected from each patient in the participating laboratories. Smears were made directly from freshly collected sputum, stained according to the acid-fast staining technique used at the center (auramine for most sites and Ziehl-Neelsen for several small centers) and following international guidelines for diagnosing TB by microscopy(11). In case one of these two sputum samples was AFB positive, the patient was included in the drug-resistance survey after giving informed consent, and an additional sample was collected.

The nurse completed the study questionnaire with the recruited patient. The questionnaire covered socio-demographic data, and information on previous TB treatment and pulmonary disease history (duration and chronicity of respiratory signs).

2.3. Initial Xpert testing and specimen storage

The first two sputum samples collected were preserved in 5 mL of Omnigene Sputum decontamination reagent (DNA Genotek Inc, Canada) according to the manufacturer's recommendations (12), while the third sample was preserved in 10 mL of 96% ethanol. The

conditioned samples were transported by public transport at ambient temperature in triple packaging to the National Tuberculosis Reference Laboratory in Bamako.

To detect MTBc, the GeneXpert MTB/RIF assay (Cepheid, CA, USA) was performed at the National Tuberculosis Reference Laboratory, using 2mL of the sample preserved in Omnigene, in accordance with the manufacturer's recommendations (Cepheid and Genotek).

Leftovers of the samples were then stored in cryotubes in the form of sediment obtained after centrifugation at 4000g for 15 minutes and mixed with 96% alcohol at an equal volume (0.5 mL sediment and 0.5 mL ethanol).

2.4. Molecular detection and identification of NTM species

For molecular detection and identification of NTM species, AFB-positive/MTBc-negative samples were transported at ambient temperature to the WHO Supranational Tuberculosis Reference Laboratory at the Institute of Tropical Medicine (ITM) in Antwerp, Belgium. Upon arrival at ITM, ethanol-preserved samples were centrifuged at 4000 g for 15 minutes, digested by overnight proteinase K incubation, followed by lysis using an internal lysis buffer, after which DNA was extracted using the Modified Maxwell-LEV® automated extraction method (Promega, USA) (13)

A duplex quantitative real time polymerase chain reaction (qPCR) was performed, targeting the *IS16110* gene for the detection of the MTBc and the 16S rRNA gene to detect all species of the *Mycobacterium* genus. The primers and probes used are presented in Table 1, while interpretation of results is depicted in Table 2.

Table 1. Primers and probes for qPCR to simultaneously detect *Mycobacterium tuberculosis* complex and all mycobacterial species.

Target	Name	Sequence primers and probes
IS6110 qPCR	Myco_Genus_S_v3	5'-ATGCAAGTCGAACGGAAAGG-3'
	Myco_Genus_AS_v2	5'-TCTGCCCCGTATCGCC-C-3'
	IS6110_S	5'-CCTGAAAGACGTTATCCACCATAC-3'
	IS6110_AS	5'-GGC-TAG-TGC-ATT-GTC-ATA-GGA-G-3'
	Myco_Genus_P_v2	FAM-CAA-AC(InC)-AC(InC)-TA(InC)-GA(InG)-CTC-EDQ
	IS6110_P_DFO	DFO-TCT-CAG-TA(InC)-AC(InA)-TC(InG)-ATC-CGG-T-BHQ2
16S rRNA qPCR	Myco_Genus_S_v3	5'-ATGCAAGTCGAACGGAAAGG-3'
	Myco_Genus_AS_v2	5'-TCTGCCCCGTATCGCC-C-3'
	Myco_Genus_P_v2	FAM-CAA-AC(InC)-AC(InC)-TA(InC)-GA(InG)-CTC-EDQ

Table 2. Interpretation of duplex IS6110-16SrRNA qPCR results

Cycle threshold (Ct) 16S rRNA	qPCR IS6110 result	
	Positive	Negative
Positive with any Ct value	-	No MTBc
Positive and \geqIS6110 Ct	MTBc	
Positive and $<$IS6110 Ct	MTBc + NTM	
Negative	MTBc (low bacillary load)	No mycobacteria species identification possible

Subsequently, a nested conventional PCR targeting the 16S rRNA gene was performed on samples identified as NTM by the duplex qPCR. The primers and probes used were as follows:

- P1 (first PCR): 5'-TGCTTAACACATGCAAGTCG-3'

- P2 new (first PCR): 5'-TCTCTAGACGCGTCCTGTGC-3'
- P7 (nested PCR): 5'-CATGCAAGTCGAACGGAAAGG-3'
- P16 new (nested PCR): 5'-AAGCCGTGAGATTTACGAACA3'

Amplicons that were clearly positive on the agarose gel underwent Sanger sequencing. A negative PCR result was interpreted as the absence of MTBc or NTM.

Sequencing was subcontracted to BaseClear (BE Leiden, The Netherlands). The results obtained after entering the sequence into the Basic Local Alignment Search Tool (BLAST), National Centre for Biotechnology Information (NCBI) were interpreted as follows:

- If a sequence match was found on the NCBI, the NTM species was identified.
 - In case of 100% similarity (no mismatches), the species name was assigned.
 - In case 1-3 bp mismatches with the closest species, the “species-like” name was assigned
- If no match or >3 bp difference with the closest species was found on NCBI, the result was interpreted as *Mycobacterium* species.
- If there were overlapping peaks in the sequence, indicating the presence of several NTMs, the result was interpreted as "Mixture of NTMs".

2.5. Data analysis

The data collected using the survey forms and sample submission forms were entered into EpiInfo version 7.2.5.0. The variables analysed were age, sex, region of residence, history of illness and history of anti-TB treatment. Percentages, medians and means were calculated by

crosstab, and p-values and odds ratios with 95% confidence intervals were generated using regression analysis in IBM SPSS Statistics version 21X64 (IBM Corp., NY, USA).

2.6. Ethical considerations

The drug-resistance survey protocol in which a secondary analysis of samples is described in the informed consent was accepted by the ethics committee of the National Institute of Public Health Research by decision No. 08/2018/CE-INRSP on March 21, 2018. The objectives and results of the study were clearly explained in the language understood by the patient, and consent was obtained from patients over 18 years of age. For patients under the age of 18, after obtaining the prior consent of the parent or companion, the child's assent to participate in the study was obtained in the presence of a witness other than the parent or companion.

3. Results

3.1. Mycobacteria detected

A total of 1,418 sputum AFB-positive patients were enrolled in the drug-resistance survey, including 1,199 new cases, 211 previously treated cases and 8 whose previous treatment history was unknown (Figure 1). Based on Xpert results, 1296 (91.4%) patients were positive for MTBc while 122 (8.6%) remained negative.

The duplex IS6110-16S rRNA qPCR was performed for 119 patients with an Xpert result of “MTB not detected” by which increase the number of patients with MTBc increased to 1331 (93.9%) through 35 additional cases (29.4%), for six of whom MTBc alone was detected and 29 carrying probable mixtures of MTBc and NTMs. For 81 (68,1%) patients, only the 16S target reacted positive (presumed NTM), while the PCR remained negative for both targets in 3 (2,5%)

patients. The nested conventional 16S PCR performed for the 81 presumed NTM detected by IS6110-16SrRNA qPCR, was positive for 48 or 3.4% (48/1418) of all enrolled patients, of which 33 could be identified to the species level by sequencing. For another 33 of 81 the nested PCR remained negative, thus no sequencing could be performed (Fig 1).

Fig 1. This is the **Fig 1 Sample and analysis flow with summary of results** This is the Fig 1 legend. *MTBc* = *Mycobacterium tuberculosis complex*; *n*= number; *NTM* = non-tuberculous mycobacteria

Sequencing identified eleven species or groups of species, with predominance of the *M. avium* complex (MAC) representing 20 cases or 42% of all species detected, *M. intracellulare* complex in 13 patients (27%), *M. avium* in five (10%) and *M. colombiense* in two (4 %) (Fig 2).

Fig 2. This is the **Fig 2 Sequencing results for the identification of NTM species**

3.2. Detection of NTM in relation to smear-microscopy results

The quantification of AFB was notified for 1414 of 1418 patients by the participating laboratories. A significantly higher proportion of NTM was detected in patients with lower AFB-grades: 7% for 1+ and scanty (Table 3), compared to 2% among 3+ patients (respectively OR 4.065, 95% CI: 1.876-8.808, p=0.000 and OR 4.3, 95% CI: 2.012-9.189, p=0.000). The difference was not significant compared to grade 2+ samples (p=0.462).

Table 3. Proportion of NTM and MTB detection in relation to smear microscopy results

Final smear result	MTB n (%)	NTM n (%)	No species identification possible n (%)
Rares BAAR	167 (83%)	13 (7%)	21 (10%)
1+	170 (89%)	14 (7%)	8 (4%)
2+	259 (94%)	7 (3%)	8 (3%)
3+	731 (98%)	14 (2%)	2 (0%)
Total	1327 (93.8%)	48 (3.4%)	39 (2.8%)

MTBc = M. tuberculosis complex; NTM = non-tuberculous mycobacteria

3.3. Socio-demographic, clinical characteristics and risk factors for NTM infection

Male patients were more numerous among all study participants with a sex ratio of respectively 2.1 and 1.5 when compared to women, but NTM presence was not associated with gender (Table 4). Contrary, older age was significantly associated with NTM detection. The median age was 37 years for all patients and 59.5 years for those infected with NTM detected. Compared to the under-34 age group, the 35-64 age group had a greater odds (OR 3.4, 95% CI: 1.1-10.3, p=0.03) of NTM detection, which further increased for the over-65 age group (OR 8.8, 95%CI: 2.3-33.2 p=0.001 (Table 4). Also, previously treated patients were more likely than new cases to have NTMs in their sputum (OR 3.4, 95%CI: 1.2-9.6, p=0.016) (Table 4). We found no significant associations between NTM detection and HIV status or chronic respiratory signs. Regarding the patient's residence, patients from the Mopti region were more likely to have NTM detected compared to Bamako residents (OR 4.1, 95%CI: 1.0-16.4, p=0.04). (Table 4).

195 **Table 4. Multivariate logistic regression analyses of demographic and clinical variables as**
196 **risk factors of NTM infection**

Variables		Total patients n (%)	NTM detected n (%)	OR	p-value
Gender n=1379	Female	434 (31.5)	19 (39.6%)	0.8 [0.3-2.04]	0.7
	Male	945 (68.5)	29 (60.4%)		
Age n=1379	Median	37	59,5		
	0-34 years (Reference)	603 (43.7)	4 (8.3)		
	35-64 years	659 (47.8)	29 (60.4)	3.4 [1.1-10.3]	0.03
	≥65 years	117 (8.5)	15 (31.3)	8.8 [2.3-33.2]	0.001
History of treatment n=1371	New	1165 (84.5)	30 (62.5)		
	Previously treatment	206 (14.9)	18 (37.5)	3.4 [1.2-9.6]	0.016
HIV status n=1092	Positive	77 (5.6)	4 (8.3)	2.8 [0.8-8.9]	0.07
	Negative	1015 (73.6)	29 (60.4)		
Chronic clinical signs n=1174	Yes	442 (37.6)	24 (60)	0.7 [0.3-1.8]	0.5
	No	752 (62.4)	16 (40)		
Region of residence at the time of diagnosis n=1348	Bamako (Reference)	451 (33.5)	5 (10.9)		
	Kayes	101 (7.5)	4 (8.7)	2.7 [0.5-12.7]	0.2
	Koulikoro	217 (16.1)	7 (15.2)	1.5 [0.3-7.4]	0.5
	Sikasso	155 (11.5)	12 (26.1)	2.9 [0.7-10.8]	0.10
	Ségou	147 (10.9)	7 (15.2)	3.2 [0.8-12.7]	0.09
	Mopti	191 (14.2)	7 (15.2)	4.1 [1.02-16.4]	0.04
	Northern regions	86 (6.4)	4 (8.7)	4.2 [0.7-25.2]	0.1

197 NTM = non-tuberculous mycobacteria; n= number; OR = odds ratio

4. Discussion

The rate of sputum AFB-positive patients and MTBc detected by Xpert in our study was slightly lower than the rate reported in other drug-resistance surveys, ranging from 95.8% -97.7%(14–17).

The use of an additional in-house qPCR for IS6110 in our study has allowed to increase the detection of MTBc. The applied qPCR IS6110 has shown good sensitivity and specificity for the detection of MTBc (18).The observed high Ct values indicates, however, a low quantity of MTB DNA anyway for samples from these patients, that may as well have become positive upon repeated Xpert testing(19).

The higher positivity rate by qPCR compared to the conventional nested PCR we observed in our study could be partially attributable to the non-specificity of the 16S primers employed for the in-house qPCR which also detects species belonging to closely related genera like *Rhodococcus* and *Nocardia*, hence potentially overestimating the NTM rate. These closely related species indeed can be detected in smear-positive samples not containing tubercle bacilli, such as documented in the USA with 78.4% (134/171) of AFB-positive specimens yielding a positive culture with NTM or *Nocardia* spp, while 14.6% (25/171) of AFB-positive specimens grew MTBc and another 7% (12/171) remained negative in culture (20). The proportion of NTM versus *Nocardia* spp note the clinical relevance of these isolated bacteria were discussed in that study. In another study in Nigeria, out of 32 smear-positive samples identified as not containing tuberculosis bacilli, 6 were NTM (18.75%), 14 were *Corynebacteria* (43.75%) and 12 *Rhodococci* (37.5%) (21). In our study, we did not further identify the non-MTBc/non-NTM samples. In addition, the lower sensitivity of the conventional nested PCR may have hampered

confirmation by sequencing in case of negative results or low amplicon yield. Indeed, the in-house qPCR has already shown good sensitivity, while limited loss of DNA has been described during multiple handling steps for conventional nested PCR(22,23). This lower sensitivity is reflected in the samples' AFB-grading, with less non-identified samples among the strong positive specimens.

The confirmed NTM detection rate in our study was higher (3.4%) than that obtained in TB drug resistance surveys conducted in Pakistan with 0.7% (13/1972) NTM (15,24), and in India with 1.19% (35/2,938) NTM (24), but it was lower than the 6.4% (317/4917) observed in China (25). This result may reflect regional differences in NTM occurrence and disease caused by NTMs around the world (26,27).

NTM detection was more likely among paucibacillary patients as determined by smear microscopy, corroborating findings from Nigeria where the AFB-smear grading was respectively lower for NTM cases than for MTBc patients (28) and was predictive for MTBc detection when it was higher (21). With age, the risk of developing NTMs infection increased, but we did not find a significant association between gender and NTM infection, contrary to other studies, where females have been more frequently associated with NTM infections, especially at older ages (6,29,30). Previous anti-TB treatment was another risk factor for NTM infection in our study, confirming findings from NTM pulmonary disease in China and South Africa (31,32). Nevertheless, we did not find an association between NTM detection and chronic respiratory signs in our study, in contrast with the described association between NTM infection and the presence of lung disease or chronic respiratory symptoms in Chinese and Danish studies(33,34).

HIV infection has frequently been identified as a risk factor for NTM infections and disease, especially in situations of advanced immunosuppression (28,35,36). In our study the trend

towards an association between HIV-positivity and NTM detection was not significant, corroborating previous observation in Mali (37,38). In the context of the drug-resistance survey, no information on anti-retroviral treatment has been collected, but such treatment is to be started upon HIV diagnosis as per national guidelines in Mali. While patients from the Mopti region had a higher odds for having NTM detected in their sputum than those from the Bamako region, further investigation of the environmental conditions in these regions would be needed, especially as NTMs are environmental bacteria and have often been isolated at different frequencies in different geographical areas(26,30,39). The MAC was the most common NTM detected. The predominance of MAC has been reported in pulmonary NTM infections in many countries around the world (26,27,40,41) 29,38,40,41. In Mali, between 2004 and 2013, *M. avium* was the most frequently identified species of the MAC complex (7,27,37).

In this study, we did not investigate whether the detected NTM were attributable to true infection, colonization or sample contamination. We could not assess the AST criterium to detect NTM in at least 3 different samples per patient given the design of the survey and the retrospective nature of molecular analysis to detect NTM. However, study participants were people with respiratory signs undergoing evaluation for pulmonary TB attending health centers or patients failing TB treatment. Also, we do not describe the outcome of patients in whom NTM was detected, but all were started on 1st line TB therapy or multidrug-resistant treatment following the results of initial microscopy and Xpert testing.

5. Conclusion

Among sputum AFB-positive patients presenting in Mali, 3.4% were due to NTM. Particular attention must be paid to populations at risk, such as elderly patients, and patients with a history

of previous treatment. TB prevention and care programmes in resource-limited countries should ensure that their routine diagnostic algorithms can detect such cases, based on the concurrent use of rapid molecular TB diagnostics and microscopy in the absence of other molecular assays to detect NTM. Clinical assessment and management of NTM infections however, remain a challenge worldwide.

Acknowledgements

We would like to thank the tuberculosis management sites for recruiting patients, for collecting and transporting samples, the country's regional health departments for regional coordination of the drug resistance study and Olga Tosas Auguet for her assistance in planning the survey, monitoring the field activities and preliminary data analysis”.

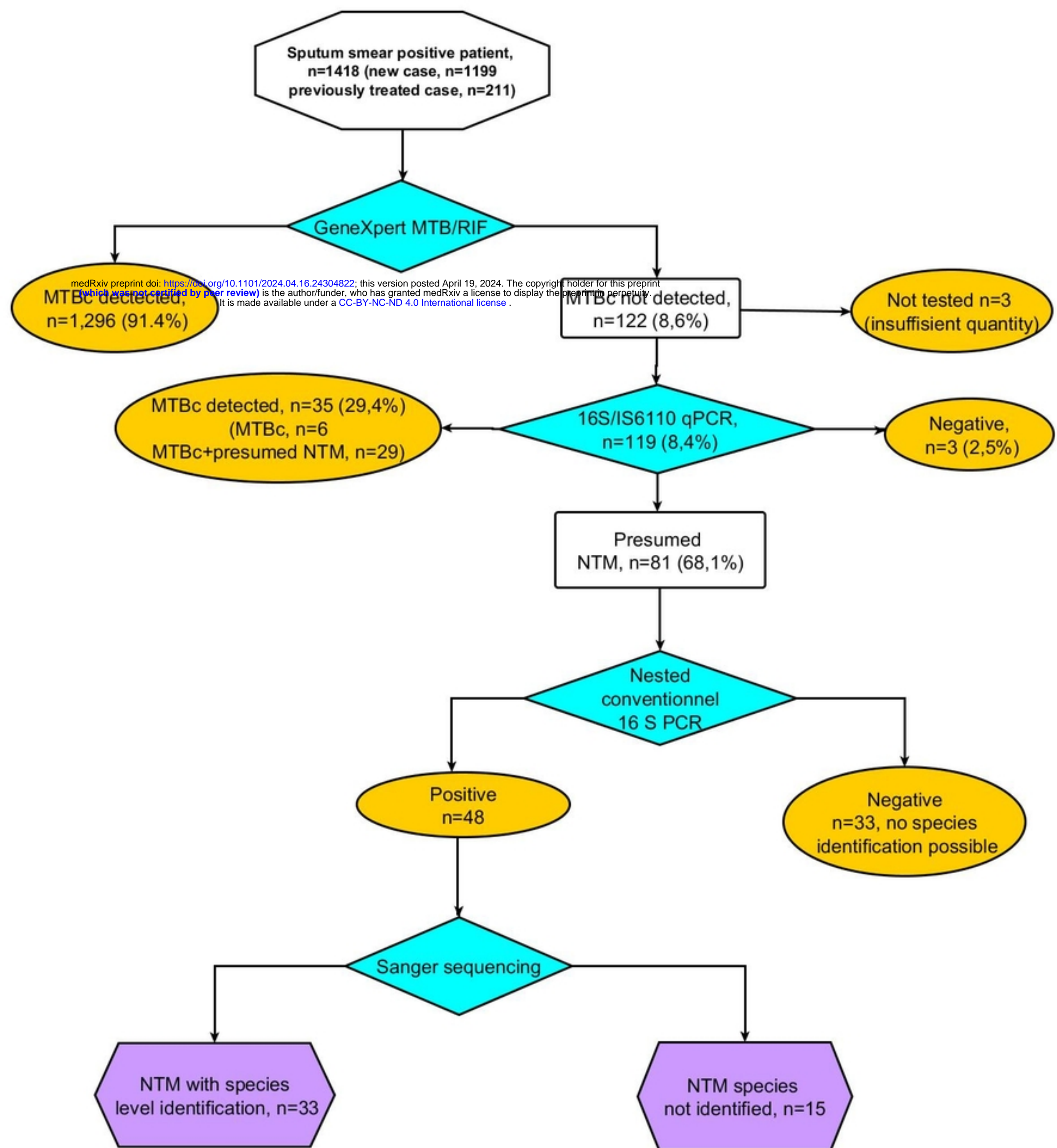
References

1. Claeys TA, Robinson RT. The many lives of nontuberculous mycobacteria. *J Bacteriol.* 2018;200(11).
2. Falkinham JO. Environmental sources of nontuberculous mycobacteria. Vol. 36, *Clinics in Chest Medicine.* 2015.
3. Falkinham JO. Ecology of nontuberculous mycobacteria-where do human infections come from? *Semin Respir Crit Care Med.* 2013;34(1):95–102.
4. Falkinham JO. Impact of human activities on the ecology of nontuberculous mycobacteria. Vol. 5, *Future Microbiology.* 2010.
5. American Thoracic Society. Diagnosis and treatment of disease caused by nontuberculous mycobacteria. Vol. 142, *American Review of Respiratory Disease.* 1990.
6. Kong L, Xie B, Liu Q, Hua L, Bhusal A, Bao C, et al. Application of acid-fast staining combined with GeneXpert MTB/RIF in the diagnosis of non-tuberculous mycobacteria pulmonary disease. *International Journal of Infectious Diseases.* 2021;104.
7. Maiga M, Siddiqui S, Diallo S, Diarra B, Traoré B, Shea YR, et al. Failure to recognize nontuberculous mycobacteria leads to misdiagnosis of chronic pulmonary tuberculosis. *PLoS One.* 2012 May 16;7(5).
8. Fedrizzi T, Meehan CJ, Grottola A, Giacobazzi E, Fregni Serpini G, Tagliazucchi S, et al. Genomic characterization of Nontuberculous Mycobacteria. *Sci Rep.* 2017;7.
9. World Health Organization. Global tuberculosis report 2020. World Health Organization; 2020.
10. World Health Organization. Guidelines for surveillance of drug resistance in tuberculosis 5 th Edition. 2015.
11. Lumb R, Van Deun A, Bastian I, Fitz-Gerald M, Pathology SA, Stop TB Partnership (World Health Organization). Laboratory diagnosis of tuberculosis by sputum microscopy : the handbook. 84 p.
12. How can I use OMNIgene®•SPUTUM? Use Case 4: Reflex testing: Microscopy centre with or without GeneXpert® centrifuge [Internet]. 2016. Available from: www.dnagenotek.com•
13. Corporation P. Maxwell(R) 16 Cell LEV DNA Purification Kit Technical Bulletin TB383 [Internet]. Available from: www.promega.com
14. Lopes C, Kundu D, Da Costa Barreto I, da Cruz B, Siva Kumar S, Ramalingam S, et al. Experience on the first national anti-TB drug resistance survey (DRS) in Timor-Leste. *Glob Health Res Policy.* 2022;7(1).
15. Tahseen S, Qadeer E, Khanzada FM, Rizvi AH, Dean A, Van Deun A, et al. Use of Xpert® MTB/RIF assay in the first national antituberculosis drug resistance survey in Pakistan. Vol. 20, *International Journal of Tuberculosis and Lung Disease.* International Union against Tubercul. and Lung Dis.; 2016. p. 448–55.

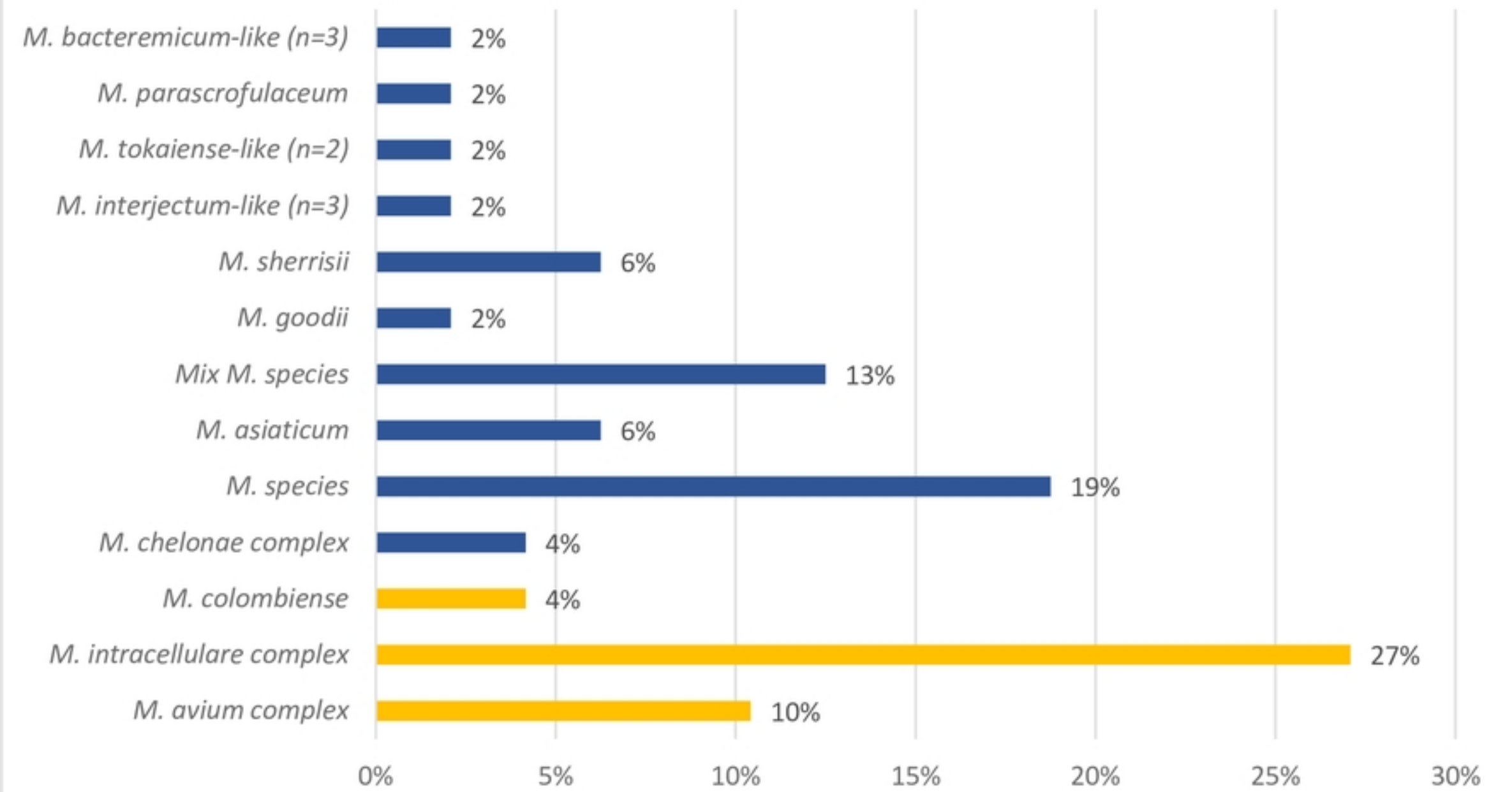
16. Aia P, Kal M, Lavu E, John LN, Johnson K, Coulter C, et al. The burden of drug-resistant tuberculosis in Papua New Guinea: Results of a large population-based survey. *PLoS One*. 2016;11(3).
17. Iem V, Dean A, Zignol M, Vongvichit P, Inthavong D, Siphanthong S, et al. Low prevalence of MDR-TB in Lao PDR: results from the first national anti-tuberculosis drug resistance survey. *Tropical Medicine and International Health*. 2019;24(4).
18. Lira LAS, Santos FCF, Carvalho MSZ, Montenegro RA, Lima JFC, Schindler HC, et al. Evaluation of a IS6110-Taqman real-time PCR assay to detect *Mycobacterium tuberculosis* in sputum samples of patients with pulmonary TB. *J Appl Microbiol*. 2013 Apr;114(4):1103–8.
19. Hanifa Y, Fielding KL, Chihota VN, Adonis L, Charalambous S, Foster N, et al. The utility of repeat Xpert MTB/RIF testing to diagnose tuberculosis in HIV-positive adults with initial negative result. *Gates Open Res*. 2018 Apr 26;2:22.
20. Hamdi A, Fida M, Deml SM, Abu Saleh O, Wengenack NL. Utility of *Mycobacterium tuberculosis* PCR in ruling out active disease and impact on isolation requirements in a low prevalence setting. *J Clin Tuberc Other Mycobact Dis*. 2020 Dec 1;21.
21. Dinic L, Idigbe OE, Meloni S, Rawizza H, Akande P, Eisen G, et al. Sputum Smear Concentration May Misidentify Acid-Fast Bacilli As *Mycobacterium Tuberculosis* in HIV-Infected Patients [Internet]. 2013. Available from: www.jaids.com
22. Fang Y, Wu WH, Pepper JL, Larsen JL, Marras SAE, Nelson EA, et al. Comparison of real-time, quantitative PCR with molecular beacons to nested PCR and culture methods for detection of *Mycobacterium avium* subsp. *paratuberculosis* in bovine fecal samples. *J Clin Microbiol*. 2002;40(1):287–91.
23. Seo AN, Park HJ, Lee HS, Park JO, Chang HE, Nam KH, et al. Performance characteristics of nested polymerase chain reaction vs real-time polymerase chain reaction methods for detecting *mycobacterium tuberculosis* complex in paraffin-embedded human tissues. *Am J Clin Pathol*. 2014 Sep 1;142(3):384–90.
24. Sharma M, Malhotra B, Tiwari J, Bhargava S. Profile of Nontuberculous *Mycobacteria* in Patients Suspected of Tuberculosis and Drug-Resistant Tuberculosis. *J Lab Physicians*. 2020;12(03).
25. Liu CF, Song YM, He WC, Liu DX, He P, Bao JJ, et al. Nontuberculous mycobacteria in China: incidence and antimicrobial resistance spectrum from a nationwide survey. *Infect Dis Poverty*. 2021 Dec 1;10(1).
26. Hoefsloot W, Van Ingen J, Andrejak C, Ängeby K, Bauriaud R, Bemer P, et al. The geographic diversity of nontuberculous mycobacteria isolated from pulmonary samples: An NTM-NET collaborative study. *European Respiratory Journal*. 2013 Dec 1;42(6):1604–13.
27. Okoi C, Anderson STB, Antonio M, Mulwa SN, Gehre F, Adetifa IMO. Non-tuberculous *Mycobacteria* isolated from Pulmonary samples in sub-Saharan Africa - A Systematic Review and Meta Analyses. *Sci Rep*. 2017;7(1).

28. Aliyu G, El-Kamary SS, Abimiku A, Brown C, Tracy K, Hungerford L, et al. Prevalence of Non-Tuberculous Mycobacterial Infections among Tuberculosis Suspects in Nigeria. *PLoS One*. 2013 May 9;8(5).
29. Kennedy TP, Weber DJ. Nontuberculous mycobacteria. An underappreciated cause of geriatric lung disease. *Am J Respir Crit Care Med*. 1994 Jun;149(6):1654–8.
30. Limo JJ, Nyerere A, Bii C. Prevalence, Species Characterization and factors associated with Non tuberculous mycobacteria among tuberculosis retreatment patients submitting samples to the National Tuberculosis Reference Laboratory, Kenya. Vol. 7, Jomo Kenyatta University of Agriculture and Technology. 2016.
31. Xu J, Li P, Zheng S, Shu W, Pang Y. Prevalence and risk factors of pulmonary nontuberculous mycobacterial infections in the Zhejiang Province of China. *Epidemiol Infect*. 2019;147.
32. Corbett EL, Churchyard GJ, Clayton T, Herselman P, Williams B, Hayes R, et al. Risk Factors for Pulmonary Mycobacterial Disease in South African Gold Miners A Case-Control Study [Internet]. Vol. 159, *Am J Respir Crit Care Med*. 1999. Available from: www.atsjournals.org
33. Andr jak C, Nielsen R, Thomsen V, Duhaut P, S rensen HT, Thomsen RW. Chronic respiratory disease, inhaled corticosteroids and risk of non-tuberculous mycobacteriosis. *Thorax*. 2013;68(3).
34. Feng JY, Chen WC, Chen YY, Su WJ. Clinical relevance and diagnosis of nontuberculous mycobacterial pulmonary disease in populations at risk. Vol. 119, *Journal of the Formosan Medical Association*. 2020.
35. Corbett EL, Churchyard GJ, Hay M, Herselman P, Clayton T, Williams B, et al. The Impact of HIV Infection on Mycobacterium kansasii Disease in South African Gold Miners [Internet]. Vol. 160, *Am J Respir Crit Care Med*. 1999. Available from: www.atsjournals.org
36. Hoza AS, Mfinanga SGM, Rodloff AC, Moser I, K nig B. Increased isolation of nontuberculous mycobacteria among TB suspects in Northeastern, Tanzania: Public health and diagnostic implications for control programmes. *BMC Res Notes*. 2016 Feb 17;9(1).
37. Kone B, Sarro YS, Maiga M, Sanogo M, Somboro AM, Diarra B, et al. Clinical characteristics of non-tuberculous mycobacterial pulmonary infections in Bamako, Mali. *Epidemiol Infect*. 2018;146(3).
38. Pokam BT, Asuquo AE. Acid-Fast Bacilli Other than Mycobacteria in Tuberculosis Patients Receiving Directly Observed Therapy Short Course in Cross River State, Nigeria. *Tuberc Res Treat*. 2012;2012:1–4.
39. Jankovic M, Samarzija M, Sabol I, Jakopovic M, Katalinic Jankovic V, Zmak L, et al. Geographical distribution and clinical relevance of non-tuberculous mycobacteria in Croatia. *International Journal of Tuberculosis and Lung Disease*. 2013 Jun 1;17(6):836–41.
40. Sun Q, Yan J, Liao X, Wang C, Wang C, Jiang G, et al. Trends and Species Diversity of Non-tuberculous Mycobacteria Isolated From Respiratory Samples in Northern China, 2014–2021. *Front Public Health*. 2022;10.

41. Farnia P, Farnia P, Ghanavi J, Velayati AA. Epidemiological Distribution of Nontuberculous Mycobacteria Using Geographical Information System. In: Nontuberculous Mycobacteria (NTM): Microbiological, Clinical and Geographical Distribution. Elsevier; 2019. p. 191–321.



Sample and analysis flow with summary of results



Sequencing results for the identification of NTM species