

1 **Prediabetes as a risk factor for all-cause and cause-specific mortality: a**  
2 **prospective analysis of 115,919 adults without diabetes in Mexico City**

3 Carlos A. Fermín-Martínez<sup>1,2\*</sup>, Omar Yaxmehen Bello-Chavolla<sup>1\*</sup>, César Daniel Paz-  
4 Cabrera<sup>1,3</sup>, Daniel Ramírez-García<sup>1,4</sup>, Jerónimo Perezalonso-Espinosa<sup>1,2</sup>, Luisa  
5 Fernández-Chirino<sup>1,5</sup>, Arsenio Vargas-Vázquez<sup>2</sup>, Juan Pablo Díaz-Sánchez<sup>1,2</sup>, Padme  
6 Nailea Méndez-Labra<sup>1,2</sup>, Alejandra Núñez-Luna<sup>1,4</sup>, Martín Roberto Basile-Alvarez<sup>1,4</sup>,  
7 Paulina Sánchez-Castro<sup>1,4</sup>, Fiona Bragg<sup>5,6</sup>, Louisa Gnatiuc Friedrichs<sup>5,6</sup>, Diego Aguilar-  
8 Ramírez,<sup>5</sup> Jonathan R. Emberson,<sup>5,6</sup> Jaime Berumen-Campos<sup>4</sup>, Pablo Kuri-Morales<sup>4,7</sup>,  
9 Roberto Tapia-Conyer<sup>4</sup>, Jesus Alegre-Díaz<sup>8,+</sup>, Jacqueline A. Seiglie<sup>9,10+</sup>, Neftali Eduardo  
10 Antonio-Villa<sup>11,+</sup>

11 *\*Equal first author, +Equal last author*

12  
13 <sup>1</sup>Research Division, Instituto Nacional de Geriátria, Mexico City, Mexico. <sup>2</sup>MD/PhD  
14 (PECEM) Program, Facultad de Medicina, Universidad Nacional Autónoma de México,  
15 Mexico City, Mexico. <sup>3</sup>Especialidad en Medicina Preventiva, Instituto Nacional de Salud  
16 Pública, Mexico City, Mexico. <sup>4</sup>Facultad de Medicina, Universidad Nacional Autónoma de  
17 México, Mexico City, Mexico. <sup>5</sup>Clinical Trial Service Unit and Epidemiological Studies Unit,  
18 Nuffield Department of Population Health, University of Oxford, Oxford, UK. <sup>6</sup>MRC  
19 Population Health Research Unit, Nuffield Department of Population Health, University of  
20 Oxford, Oxford, UK. <sup>7</sup>Instituto Tecnológico y de Estudios Superiores de Monterrey,  
21 Monterrey, Mexico. <sup>8</sup>Experimental Research Unit, Faculty of Medicine, National  
22 Autonomous University of Mexico, Mexico City, Mexico. <sup>9</sup>Diabetes Unit, Massachusetts  
23 General Hospital, Harvard Medical School, Boston, Massachusetts, USA. <sup>10</sup>Department of  
24 Medicine, Harvard Medical School, Boston, Massachusetts, USA. <sup>11</sup>Department of  
25 Endocrinology, Instituto Nacional de Cardiología Ignacio Chávez, Mexico City, Mexico.

26  
27 **Correspondence:**

28 Omar Yaxmehen Bello-Chavolla. Division of Research. Instituto Nacional de Geriátria.  
29 Anillo Perif. 2767, San Jerónimo Lídice, La Magdalena Contreras, 10200, Mexico City,  
30 Mexico. Phone: +52 (55) 5548486885. E-mail: [oybello@inger.gob.mx](mailto:oybello@inger.gob.mx).

31 Neftali Eduardo Antonio-Villa. Department of Endocrinology, Instituto Nacional de  
32 Cardiología Ignacio Chávez. Juan Badiano 1, Belisario Domínguez Secc 16, Tlalpan,  
33 14080 Mexico City, Mexico. Phone +52 (55) 5527236523. Email:  
34 [neftalivilla@comunidad.unam.mx](mailto:neftalivilla@comunidad.unam.mx)

35

36 2,803 text words; 36 references; 3 figures, 2 tables.

37 **ABSTRACT (350 WORDS)**

38 **BACKGROUND:** Prediabetes has been associated with increased all-cause and  
39 cardiovascular mortality. However, no large-scale studies have been conducted in Mexico  
40 or Latin America examining these associations.

41 **METHODS:** We analyzed data from 115,919 adults without diabetes (diagnosed or  
42 undiagnosed) aged 35-84 years who participated in the Mexico City Prospective Study  
43 between 1998 and 2004. Participants were followed until January 1<sup>st</sup>, 2021 for cause-  
44 specific mortality. We defined prediabetes according to the American Diabetes Association  
45 (ADA, HbA<sub>1c</sub> 5.7% to 6.4%) and the International Expert Committee (IEC, HbA<sub>1c</sub> 6.0-6.4%)  
46 definitions. Cox regression adjusted for confounders was used to estimate all-cause and  
47 cause-specific mortality rate ratios (RR) at ages 35-74 years associated with prediabetes.

48 **FINDINGS:** During 2,085,392 person-years of follow-up (median in survivors 19 years),  
49 there were 6,810 deaths at ages 35-74, including 1,742 from cardiovascular disease, 892  
50 from renal disease and 108 from acute diabetic crises. Of 110,405 participants aged 35-74  
51 years at recruitment, 28,852 (26%) had ADA-defined prediabetes and 7,203 (7%) had IEC-  
52 defined prediabetes. Compared with those without prediabetes, individuals with  
53 prediabetes had higher risk of all-cause mortality at ages 35-74 years (RR 1.13, 95% CI  
54 1.07-1.19 for ADA-defined prediabetes and RR 1.28, 1.18-1.39 for IEC-defined  
55 prediabetes), as well as increased risk of cardiovascular mortality (RR 1.22 [1.10-1.35] and  
56 1.42 [1.22-1.65], respectively), renal mortality (RR 1.35 [1.08-1.68] and 1.69 [1.24-2.31],  
57 respectively), and death from an acute diabetic crisis (RR 2.63 [1.76-3.94] and 3.43 [2.09-  
58 5.62], respectively). RRs were larger at younger than at older ages, and similar for men  
59 compared to women. The absolute excess risk associated with ADA and IEC-defined  
60 prediabetes at ages 35-74 accounted for 6% and 3% of cardiovascular deaths respectively,  
61 10% and 5% of renal deaths respectively, and 31% and 14% of acute diabetic deaths  
62 respectively.

63 **INTERPRETATION:** Prediabetes is a significant risk factor for all-cause, cardiovascular,  
64 renal, and acute diabetic deaths in Mexican adults. Identification and timely management  
65 of individuals with prediabetes for targeted risk reduction could contribute to reducing  
66 premature mortality from cardiometabolic causes in this population.

67 **FUNDING:** Wellcome Trust, the Mexican Health Ministry, the National Council of Science  
68 and Technology for Mexico, Cancer Research UK, British Heart Foundation, UK Medical  
69 Research Council. Instituto Nacional de Geriatria (Mexico City).

70

## 71 **RESEARCH IN CONTEXT**

### 72 **Evidence before this study**

73 We conducted a literature search in PubMed to identify articles published in English before  
74 February 27<sup>th</sup>, 2024 that reported on prospective studies examining the association  
75 between prediabetes with all-cause or cause-specific mortality or progression to diabetes  
76 in a Mexican or Latin American population, using the terms (“prediabetes” OR “impaired  
77 fasting glucose” OR “impaired glucose tolerance”) AND (“mortality” OR “death”) AND  
78 (“Mexico” OR “Mexican” OR “Latin America” OR “Latin American”). There were no studies  
79 examining risk associated with prediabetes definitions and mortality among adults in  
80 Mexico. We identified one study from Peru that included 988 participants and investigated  
81 only all-cause mortality for impaired fasting glucose and HbA<sub>1c</sub>-based definitions of  
82 prediabetes from ADA and IEC; this study reported increased mortality risk related to ADA-  
83 defined prediabetes based on HbA<sub>1c</sub> measures. Generalizability of these findings to other  
84 Latin American countries and regions with distinct cardiometabolic profiles in unclear.

### 85 **Added value of this study**

86 Our study included 115,919 participants without diabetes from Mexico City, of whom  
87 (26%) had ADA-defined prediabetes and 7,203 (7%) had IEC-defined prediabetes. We  
88 found that prediabetes is associated with higher risks of all-cause and cause-specific  
89 mortality (cardiovascular, renal, and acute diabetic causes) than among participants  
90 without prediabetes. We found RRs to be larger at younger than at older ages, and largely  
91 similar for men compared to women. Among those without previously diagnosed diabetes,  
92 we found that the excess risk associated with ADA- and IEC-defined prediabetes at ages  
93 35-74 years accounted for 6% and 3% of cardiovascular deaths, 10% and 5% of renal  
94 deaths, and 31% and 14% of acute diabetic deaths, respectively. .

### 95 **Implications of all the available evidence**

96 Our results show that prediabetes is a significant risk factor for cardiovascular, kidney, and  
97 acute diabetic deaths among Mexican adults and accounts for a notable fraction of such  
98 deaths. Identification of individuals with prediabetes should be prioritized for optimized  
99 management to improve cardiometabolic outcomes in Mexican adults.

100

101 **INTRODUCTION**

102 Although the definition of prediabetes is the subject of continuous debate, it is well-  
103 recognized as a risk factor for development of type 2 diabetes and long-term adverse  
104 cardio-metabolic outcomes<sup>1-3</sup>. Prediabetes is an early stage indicator of glycemic  
105 dysregulation, and individuals with prediabetes often present with other traits of the  
106 metabolic syndrome (i.e. dysfunctional adipose tissue accumulation, dyslipidemia, insulin  
107 resistance)<sup>4,5</sup>. Despite its pathophysiological relevance and the overwhelming increase in  
108 the incidence of metabolic syndrome in susceptible populations, routine screening for  
109 prediabetes is disputed, in part due to a lack of consensus on how it should be defined<sup>1</sup>.  
110 Growing evidence supports that beyond its well-known association with progression to  
111 diabetes, prediabetes also increases the risk of cardiovascular disease and mortality<sup>3</sup>.  
112 Nevertheless, data on prediabetes-associated complications beyond progression to  
113 diabetes are limited, particularly in low- and middle-income countries (LMICs)<sup>6</sup>.  
114 In Mexico, the prevalence of diabetes has increased at an alarming rate in recent  
115 decades<sup>7</sup>. This trend can be attributed to a complex interplay of underlying genetic risk and  
116 changes in environmental factors<sup>8-10</sup>, which have led to a steady increase in central  
117 obesity, impaired glucose tolerance and insulin resistance<sup>11-14</sup>. We recently described the  
118 trends in prediabetes prevalence in the Mexican population<sup>7</sup>; we found that although lower  
119 cut-offs of glycemic markers may be more adequate for screening strategies, they may not  
120 fully reflect the long-term health risk associated with prediabetes<sup>15</sup>. Notably, data on the  
121 risk conferred by prediabetes for all-cause and cause-specific mortality in Mexico are  
122 lacking. In this report, we aim to examine prediabetes as a risk factor for all-cause and  
123 cause-specific mortality in Mexican adults previously enrolled in the Mexico City  
124 Prospective Study (MCPS) and followed long-term for cause-specific mortality.

## 125 **METHODS**

### 126 *Study design and participants*

127 Details on recruitment and follow-up of participants in MCPS have been described  
128 previously<sup>16</sup>. Briefly, participants living in two municipalities in Mexico City (Coyoacán and  
129 Iztapalapa) aged  $\geq 35$  years were invited to participate in the study between 1998 and  
130 2004. The study was approved by Ethics Committees at the Mexican Ministry of Health,  
131 the Mexican National Council for Science and Technology, and the University of Oxford,  
132 UK. All participants provided written informed consent.

### 133 *Data collection*

134 Sociodemographic, health-related and lifestyle information were collected using an  
135 electronic questionnaire by trained nurses. All participants had their height, weight, hip  
136 circumference (HC), waist circumference (WC) and sitting blood pressure measured using  
137 calibrated instruments and standard protocols. A non-fasting venous blood sample was  
138 obtained and glycosylated hemoglobin (HbA<sub>1c</sub>) levels were measured using a validated  
139 high-performance liquid chromatography method<sup>17</sup> on HA-8180 analyzers with calibrators  
140 traceable to International Federation of Clinical Chemistry standards<sup>18</sup>.

### 141 *Mortality follow-up*

142 Participants were followed for cause-specific mortality through probabilistic linkage (based  
143 on name, age, and sex) to the Mexican electronic death registry. Death registration in  
144 Mexico City is reliable and complete, with nearly all deaths medically certified<sup>19</sup>. Diseases  
145 recorded on death certificates are coded using the International Statistical Classification of  
146 Diseases and Related Health Problems, Tenth Revision, with subsequent review by study  
147 clinicians (unaware of baseline information) to recode, where necessary, the underlying  
148 cause of death. Participant deaths for the present study were tracked up to January 1<sup>st</sup>,  
149 2021. We grouped deaths as cardiac (mainly ischemic heart disease), cerebrovascular,

150 other vascular (mainly peripheral arterial disease and thromboembolism), renal, acute  
151 diabetic crises (diabetic coma or ketoacidosis), hepatobiliary (mainly cirrhosis), other  
152 gastrointestinal (mainly peptic ulcer and gastrointestinal infections), neoplastic, respiratory  
153 (mainly pneumonia and chronic obstructive pulmonary disease), and external, ill-defined,  
154 or other causes of death. Full details on ICD-10 codes for individual causes of death are  
155 reported in **Supplementary Material**.

#### 156 *Prediabetes and diabetes definitions*

157 Prediabetes was defined according to the HbA<sub>1c</sub> cut-offs recommended by the American  
158 Diabetes Association (ADA) (HbA<sub>1c</sub> 5.7-6.4%)<sup>20</sup> and by the International Expert Committee  
159 (IEC, HbA<sub>1c</sub> 6.0-6.4%).<sup>21</sup> We excluded individuals with previously diagnosed diabetes  
160 (self-reported medical diagnosis or use of glucose-lowering pharmacotherapy), individuals  
161 who reported regular use of glucose-lowering pharmacotherapy regardless of prior  
162 diagnosis, and individuals with undiagnosed diabetes (HbA<sub>1c</sub> ≥6.5% in someone without a  
163 prior diabetes diagnosis). To explore the mortality risks in the population with HbA<sub>1c</sub> levels  
164 between the ADA and IEC cutoff points, additional analyses categorized participants  
165 according to HbA<sub>1c</sub> levels <5.7%, 5.7-5.9%, and 6.0-6.4%.

#### 166 *Statistical analysis*

167 We limited our analysis to the population with prediabetes with complete data on HbA<sub>1c</sub>,  
168 mortality, and covariates. To limit the potential effects of reverse causation, we excluded  
169 those with self-reported chronic comorbidities at baseline (ischemic heart disease, stroke,  
170 chronic kidney disease, chronic obstructive pulmonary disease, cirrhosis, or cancer).<sup>22</sup> We  
171 evaluated the prevalence of ADA and IEC-defined prediabetes in the remaining  
172 participants separately by age (in 5-year groups) and sex. Uniformly age- and sex-  
173 standardized death rates were estimated for those with and without ADA and IEC-defined

174 prediabetes, as well as for the complementary HbA1c categories (above), and reported as  
175 events per 1,000 person-years.

176 The primary analyses were restricted to deaths at ages 35-74 years (i.e., deaths one might  
177 consider to be 'premature'), but some analyses of deaths at ages 75-84 were also  
178 performed. Cox proportional hazards regression was used to estimate mortality rate ratios  
179 (RRs, estimated from the Cox hazard ratios) for all-cause and cause-specific mortality  
180 associated with prediabetes and HbA<sub>1c</sub> levels. Cox models yield cause-specific log hazard  
181 ratios that provide a weighted average of the log mortality RRs in different time periods  
182 which, irrespective of the proportional hazards assumption, provide useful summary  
183 statistics of the average death RRs during the study. Participants who did not die from the  
184 cause under study were censored at the earliest of: death from an alternative cause; the  
185 end of the risk period under consideration (e.g., age 75 years for analyses of risk during  
186 ages 35-74 years); or the end of follow-up for mortality (January 1<sup>st</sup> 2021).

187 All models were stratified by sex and age at risk (in 5-year groups) using the Lexis  
188 expansion (*Epi R* package)<sup>23,24</sup> and were progressively adjusted for confounders in the  
189 following order: 1) municipality of residence (Coyocán or Iztapalapa) (region-level  
190 variations in population characteristics have been known to influence mortality related to  
191 cardiometabolic diseases in Mexico<sup>25</sup>), and 2) education level (university/college, or other),  
192 physical activity (none, regular), smoking (never, former, current), and alcohol  
193 consumption (never, former, current). Sensitivity analyses further adjusted for adiposity  
194 markers (body mass index [BMI] and waist-to-height ratio [WHtR]). Subgroup analyses  
195 estimated mortality RRs separately by age at risk and sex. The excess mortality  
196 attributable to prediabetes (in a population without previously diagnosed or undiagnosed  
197 diabetes) was estimated by applying the cause-specific mortality RRs to the number of



198 deaths among those with prediabetes. All analyses were conducted using R (version  
199 4.2.1).

#### 200 *Role of Funding Sources*

201 The funders had no role in study design, data collection, data analysis, data interpretation,  
202 or writing of the report.

## 203 **RESULTS**

204 Of 159,517 participants who were originally recruited, 43,598 (27.3%) were excluded from  
205 the present analyses. These comprised 29,948 (18.8%) with diagnosed or undiagnosed  
206 diabetes at recruitment, a further 7,068 (4.4%) with missing data on HbA1c or covariates,  
207 or with uncertain mortality linkage, an additional 5,173 (3.2%) with chronic comorbidities at  
208 baseline, and 1,409 (0.9%) aged  $\geq 85$  years at recruitment (**Supplementary Figure 1**). Of  
209 the remaining 115,919 participants, 110,405 (95.2%) were aged 35–74 years and 5,514  
210 (4.8%) were aged 75–84 years at recruitment.

211 Participant characteristics at baseline, stratified by HbA1c categories, are summarized in  
212 Table 1. Participants in the highest HbA1c category (HbA1c 6.0%-6.4%) were older  
213 (mean age 54 years), predominantly female (70.%), had higher BMI (mean 32 kg/m<sup>2</sup>), and  
214 systolic blood pressure (mean 132 mmHg) and diastolic blood pressure (86 mmHg) than  
215 participants with a lower HbA1c (HbA1c <5.9%). Participants in the higher HbA1c were  
216 less likely to reside in Coyoacán (the more affluent of the two study districts) than  
217 participants with a lower HbA1c (HbA1c <5.9%) (**Table 1**). Among the 110,405 participants  
218 aged 35-74 years at recruitment, 28,852 individuals (26%) had ADA-defined prediabetes  
219 (HbA1c 5.7%-6.4%) and 7,203 (7%) had IEC-defined prediabetes (HbA1c 6.0%-6.4%).  
220 The prevalence of prediabetes (regardless of definition) increased with age (at least up to  
221 age 70) and was higher in women than men (at least after age 40) (**Figure 1**).

222 During a median of 18.6 (IQR 17.7-19.8) years' follow-up, there were 6,810 deaths at ages  
223 35-74 years (including 1,742 from cardiovascular causes, 892 from renal causes and 108  
224 from acute diabetic crises) and 7,067 deaths at ages 75-84 years. All-cause and cause-  
225 specific death rates (uniformly age- and sex-standardized) increased according to HbA1c  
226 category, with the highest death rates being observed in participants with HbA1c 6.0-6.4%  
227 (**Figure 2A**). Given that prediabetes prevalence markedly increased with age, we explored  
228 the influence of baseline age and HbA1c categories. For participants aged <50 years at  
229 recruitment, HbA1c 6.0%-6.4% was strongly associated with mortality risk, and this  
230 association was preserved for participants aged 50-64 years at recruitment; however, we  
231 identified that the graded increase in relative risk conferred by higher HbA1c levels was  
232 lost in older participants (**Figure 2B**). When stratified by sex, we observed broadly similar  
233 death rate ratios in men and women (**Supplementary Figure 2**). Similar results were  
234 obtained when examining deaths occurring at ages 75-84 years (**Supplementary Figures**  
235 **2 and 3**).

236 After adjustment for age, sex and confounders, each one percent higher HbA1c was  
237 associated with 11% higher risk of death from any cause at ages 35-74 years (RR 1.11  
238 [95% CI 1.03-1.20]) (**Supplementary Table 1**, which also shows the RRs with more and  
239 with less adjustment). Compared with individuals without prediabetes, those with ADA-  
240 defined prediabetes had 13% higher risk of death at ages 35-74 years (RR 1.13 [95% CI  
241 1.07-1.19]) while those with IEC-defined prediabetes had 28% higher risk (RR 1.28 [95%  
242 CI 1.18-1.39]) (**Table 2**). After further adjustment for adiposity these RRs were reduced to  
243 1.06 (1.00-1.13) and 1.16 (1.05-1.27) respectively (**Supplementary Table 1**). Estimates  
244 were similar when including participants with other comorbidities at recruitment  
245 (**Supplementary Table 2**).

246 **Figure 3** and **Table 2** show the distribution of the 6,810 deaths at ages 35-74 years in  
247 participants with and without prediabetes (ADA and IEC definitions), as well as the cause-  
248 specific mortality RRs and their 95% CIs. Both ADA- and IEC-defined prediabetes were  
249 significantly associated with increased risk of cardiac death, all cardiovascular death, renal  
250 death, and death from an acute diabetic crisis. In addition, ADA-defined prediabetes was  
251 significantly associated with death from respiratory diseases. When examining deaths  
252 occurring at ages 75-84 years, cause-specific RRs tended to be slightly weaker, although  
253 both ADA- and IEC-defined prediabetes remained strongly predictive of both renal death  
254 and death from acute diabetic crises at these older ages (**Supplementary Figure 4** and  
255 **Supplementary Table 3**).

256 Overall, between 35 and 74 years of age in the population without previously diagnosed or  
257 undiagnosed diabetes, the excess mortality risk associated with ADA-defined prediabetes  
258 accounted for 4% of all deaths, including 6% of cardiovascular deaths, 10% of renal cause  
259 deaths, and 31% of deaths from an acute diabetic crisis (**Table 2**). By contrast, the excess  
260 mortality risk associated with IEC-defined prediabetes accounted for 2% of all deaths,  
261 including 3% of cardiovascular deaths, 5% of renal deaths and 14% of deaths from an  
262 acute diabetic crisis.

## 263 **DISCUSSION**

264 In this large study of Mexican adults, we explored the association of HbA1c-defined  
265 prediabetes and all-cause and cause-specific mortality. Overall, both ADA- and IEC-  
266 defined prediabetes were associated with an increased risk of all-cause mortality. The RRs  
267 associated with IEC-defined prediabetes (HbA1c 6%-6.4%) were somewhat larger than  
268 those associated with ADA-defined prediabetes (HbA1c 5.7%-6.4%). When considering  
269 cause-specific mortality, both definitions were associated with an increased risk of  
270 mortality from cardiovascular disease, kidney disease and acute diabetic crises, but only

271 the ADA definition was significantly associated with respiratory-related mortality, perhaps  
272 reflecting increased statistical power for this definition. These results support the view that  
273 prediabetes is a significant risk factor for cardiometabolic mortality.

274 A recently updated meta-analysis of prospective cohorts reported a 13% increase in the  
275 risk of all-cause mortality when considering any definition of prediabetes<sup>3</sup>. When  
276 examining definitions based on HbA1c, the IEC definition yielded a 21% increase in risk,  
277 while the ADA definition was not significantly associated with mortality<sup>3</sup>. In the present  
278 study, we found that prediabetes was significantly associated with increased risk of  
279 premature death from cardiovascular disease, kidney disease and acute diabetic crises  
280 irrespective of the definition used. This is in line with previous reports from other  
281 populations although, unlike previous reports, we did not find any significant association  
282 with cancer death.<sup>3,26–28</sup> Notably, estimates of mortality associated with ADA and IEC  
283 definitions were reasonably consistent, with differences in attributable mortality being a  
284 function of prevalence more than associated mortality risks. Expanding prediabetes  
285 screening has been challenging given that preventive efforts should not only be aimed at  
286 predicting progression to type 2 diabetes, but also risk of all-cause and cause-specific  
287 mortality<sup>2,3,20</sup>. Our findings support the view that the IEC definition of prediabetes could be  
288 more useful at identifying individuals at the highest risk for cause-specific mortality  
289 compared to the ADA definition, at the same time limiting potential adverse impacts on  
290 individuals and healthcare systems of labelling a large proportion of the population with a  
291 diagnosis of prediabetes<sup>1</sup>. However, selecting the most optimal point for screening should  
292 also balance the relevance of additional outcomes, perhaps most importantly type 2  
293 diabetes.

294 The significance of prediabetes as a risk factor for all-cause and cause-specific mortality  
295 lies mainly within its high prevalence worldwide<sup>29</sup>. Previous efforts from our group reported

296 an increasing prevalence of HbA1c-defined prediabetes in Mexico between 2016 and  
297 2022<sup>7</sup>. Notably, the predominantly urban MCPS sample in the current report yielded a high  
298 prevalence of prediabetes (one quarter of those without diabetes had ADA-defined  
299 prediabetes), similar to that estimated in a previous cross-sectional study of adults in  
300 Mexico City (26% of the adult population as a whole)<sup>30</sup>. In the present analysis, we  
301 observed that among those without diabetes 6% of the premature cardiovascular deaths,  
302 10% of the premature renal deaths and 31% of the premature acute diabetic deaths could  
303 be attributed to the long-term hazards associated with ADA-defined prediabetes.  
304 Interestingly, we also identified that the magnitude of the risk ratio of prediabetes for all-  
305 cause and cause-specific mortality decreased at older ages, being consistent with findings  
306 from the ARIC study, which identified that regression to normoglycemia from prediabetes  
307 was more common in this population, potentially contributing to the decrease in at-risk  
308 population over time<sup>31</sup>.

309 Our study has several strengths, including its large sample size, prospective design, and  
310 prolonged follow-up, which allowed us to evaluate long-term prediabetes-related outcomes  
311 compared with previous studies. However, we also acknowledge some limitations which  
312 should be considered to adequately frame our results. First, by only using HbA1c-based  
313 definitions of prediabetes, we were unable to assess separately the mortality risks  
314 associated with impaired fasting glucose and/or glucose intolerance; this may limit our  
315 ability to identify differential risk of adverse outcomes based on the specific definition  
316 employed<sup>4,5,32</sup>. Nevertheless, by exploring both ADA and IEC HbA1c-based definitions we  
317 contribute valuable insights to inform debate regarding the most appropriate definition of  
318 prediabetes for predicting future cardiometabolic disease risks. Prediabetes has also been  
319 recognized to increase the risk of a cluster of multiple chronic comorbidities, which may  
320 underlie the associations observed for mortality<sup>33</sup>. To isolate the effect of prediabetes, we

321 excluded individuals with comorbidities from our main analyses and focused on premature  
322 death to reduce the potential influence of aging in our estimations. We expect that these  
323 adjustments were more likely to generate results which were causal, but we cannot rule  
324 out the possibility of residual confounding or reverse causality in our findings. Furthermore,  
325 due to study design, we did not have prospective data to identify participants with  
326 prediabetes who developed diabetes or other non-fatal events during follow-up; this  
327 prevented us from analyzing the relevance of prediabetes for mortality and  
328 cardiometabolic risks independent of its association with increased risk to progression to  
329 diabetes, an area which will require further evaluations with longitudinal assessments.  
330 HbA1c levels have been known to be impacted over time by individual-level factors,  
331 including chronic diseases, kidney, and liver function<sup>34</sup>; this effect may have been  
332 mitigated by excluding individuals with comorbidities, but there remains a possibility of  
333 unconsidered factors influencing HbA1c levels over time. Lastly, we acknowledge that  
334 MCPS data primarily arises from two districts in Mexico City and our estimates may not be  
335 representative of the whole Mexican population; however, large-scale prospective studies  
336 of non-representative cohorts of individuals such as MCPS can provide reliable evidence  
337 about the associations of risk factors with disease that are widely generalizable<sup>35,36</sup>.  
338 In this Mexican population prediabetes was significantly associated with increased risks of  
339 cardiovascular, renal, and acute diabetic mortality. Given the increased risks associated  
340 with prediabetes, coupled with its high prevalence in Mexican adults, population-wide  
341 screening strategies to facilitate its timely diagnosis, alongside implementation of  
342 strategies to prevent and delay associated cardiometabolic diseases and related mortality,  
343 should be considered. However, further work is needed to identify the appropriate  
344 outcome-driven definitions of prediabetes to promote efficient screening and prevention  
345 strategies that minimize overdiagnosis and improve cardiometabolic outcomes.

346

347 **ACKNOWLEDGMENTS:** This project was registered and approved by the Research  
348 Committee at Instituto Nacional de Geriatria, project number DI-PI-006/2020. CAFM is  
349 enrolled at the PECEM Program of the Faculty of Medicine at UNAM. CAFM and DRG are  
350 supported by CONAHCYT. JAS was supported by Grant Number K23DK135798 from the  
351 NIH/NIDDK and by the Massachusetts General Hospital Executive Committee and Center  
352 for Diversity and Inclusion Physician-Scientist Development Award. The authors thank the  
353 participants for their willingness to take part in this prospective study 20 years ago. This  
354 research was conducted using Mexico City Prospective Study (MCPS) data obtained  
355 through an open-access data request (application number 2022-012).

356 **AUTHOR CONTRIBUTIONS:** Establishing the cohort: PKM, JAD and RTC. Obtaining  
357 funding: JBC, JRE, PKM, JAD, RTC and OYBC. Data acquisition, analysis, or  
358 interpretation of data: CAFM, OYBC, CDPC, JPE, DRG, LFC, AVV, PSC, ANL, MRBA,  
359 JPDS, JBC, JRE, PKM, RTC, JAD, JAS, NEAV. Drafting first version of manuscript:  
360 CAFM, OYBC. Critical revision of the report for important intellectual content: All authors.  
361 All authors have seen and approved the final version and agreed to its publication. Each  
362 author contributed important intellectual content during manuscript drafting or revision and  
363 accepts accountability for the overall work by ensuring that questions pertaining to the  
364 accuracy or integrity of any portion of the work are appropriately investigated and resolved.

365 **DATA AVAILABILITY:** Data from the Mexico City Prospective Study are available to bona  
366 fide researchers. For more details, the study's Data and Sample Sharing policy may be  
367 downloaded (in English or Spanish) from <https://www.ctsu.ox.ac.uk/research/mcps>.  
368 Available study data can be examined in detail through the study's Data Showcase,  
369 available at <https://datashare.ndph.ox.ac.uk/mexico/>. Code is available for reproducibility  
370 of results at [https://github.com/oyaxbell/prediabetes\\_mcps/](https://github.com/oyaxbell/prediabetes_mcps/).

371 **CONFLICT OF INTEREST/FINANCIAL DISCLOSURE:** Nothing to disclose.

372 **FUNDING:** This research was also supported by Instituto Nacional de Geriatria in Mexico.  
373 The MCPS has received funding from the Wellcome Trust (058299/Z/99), the Mexican  
374 Health Ministry, the National Council of Science and Technology for Mexico, Cancer  
375 Research UK, British Heart Foundation, and the UK Medical Research Council  
376 (MC\_UU\_00017/2). The funding sources had no role in the design, conduct or analysis  
377 of the study or the decision to submit the manuscript for publication.

378 **RIGHTS RETENTION STATEMENT:** For the purposes of open access, the  
379 authors have applied a Creative Commons Attribution (CC BY) licence to any  
380 Author Accepted Manuscript version arising.



381 **REFERENCES**

- 382 1. Blond MB, Færch K, Herder C, Ziegler D, Stehouwer CDA. The prediabetes  
383 conundrum: striking the balance between risk and resources. *Diabetologia*.  
384 2023;66(6):1016-1023. doi:10.1007/s00125-023-05890-y
- 385 2. Echouffo-Tcheugui JB, Perreault L, Ji L, Dagogo-Jack S. Diagnosis and  
386 Management of Prediabetes: A Review. *JAMA*. 2023;329(14):1206-1216.  
387 doi:10.1001/jama.2023.4063
- 388 3. Cai X, Zhang Y, Li M, et al. Association between prediabetes and risk of all cause  
389 mortality and cardiovascular disease: updated meta-analysis. *BMJ*. 2020;370:m2297.  
390 doi:10.1136/bmj.m2297
- 391 4. Wagner R, Heni M, Tabák AG, et al. Pathophysiology-based subphenotyping of  
392 individuals at elevated risk for type 2 diabetes. *Nat Med*. 2021;27(1):49-57.  
393 doi:10.1038/s41591-020-1116-9
- 394 5. Yacamán Méndez D, Zhou M, Trolle Lagerros Y, et al. Characterization of data-  
395 driven clusters in diabetes-free adults and their utility for risk stratification of type 2  
396 diabetes. *BMC Med*. 2022;20(1):356. doi:10.1186/s12916-022-02551-6
- 397 6. Echouffo-Tcheugui JB, Selvin E. Prediabetes and What It Means: The  
398 Epidemiological Evidence. *Annu Rev Public Health*. 2021;42:59-77. doi:10.1146/annurev-  
399 pubhealth-090419-102644
- 400 7. Fermín-Martínez CA, Paz-Cabrera CD, Basile-Alvarez MR, et al. Prevalence of  
401 prediabetes in Mexico: a retrospective analysis of nationally representative surveys  
402 spanning 2016–2022. *The Lancet Regional Health – Americas*. 2023;28.  
403 doi:10.1016/j.lana.2023.100640
- 404 8. Bello-Chavolla OY, Rojas-Martinez R, Aguilar-Salinas CA, Hernández-Avila M.  
405 Epidemiology of diabetes mellitus in Mexico. *Nutr Rev*. 2017;75(suppl 1):4-12.

406 doi:10.1093/nutrit/nuw030

- 407 9. Almeda-Valdes P, Gómez Velasco DV, Arellano Campos O, et al. The SLC16A11  
408 risk haplotype is associated with decreased insulin action, higher transaminases and  
409 large-size adipocytes. *Eur J Endocrinol.* 2019;180(2):99-107. doi:10.1530/EJE-18-0677
- 410 10. Williams AL, Jacobs SBR, Moreno-Macías H, et al. Sequence variants in  
411 SLC16A11 are a common risk factor for type 2 diabetes in Mexico. *Nature.*  
412 2014;506(7486):97-101. doi:10.1038/nature12828
- 413 11. Bello-Chavolla OY, Almeda-Valdes P, Gomez-Velasco D, et al. METS-IR, a novel  
414 score to evaluate insulin sensitivity, is predictive of visceral adiposity and incident type 2  
415 diabetes. *Eur J Endocrinol.* 2018;178(5):533-544. doi:10.1530/EJE-17-0883
- 416 12. Bello-Chavolla OY, Vargas-Vázquez A, Antonio-Villa NE, et al. A High Incidence of  
417 Metabolic Syndrome Traits in Mexicans Points at Obesity-Related Metabolic Dysfunction.  
418 *Diabetes Metab Syndr Obes.* 2021;14:1073-1082. doi:10.2147/DMSO.S266568
- 419 13. Antonio-Villa NE, Bello-Chavolla OY, Vargas-Vázquez A, Mehta R, Aguilar-Salinas  
420 CA, Metabolic Syndrome Study Group. The combination of insulin resistance and visceral  
421 adipose tissue estimation improves the performance of metabolic syndrome as a predictor  
422 of type 2 diabetes. *Diabet Med.* 2020;37(7):1192-1201. doi:10.1111/dme.14274
- 423 14. Rojas-Martínez R, Aguilar-Salinas CA, Romero-Martínez M, Castro-Porras L,  
424 Gómez-Velasco D, Mehta R. Trends in the prevalence of metabolic syndrome and its  
425 components in Mexican adults, 2006-2018. *Salud Publica Mex.* 2021;63(6, Nov-Dic):713-  
426 724. doi:10.21149/12835
- 427 15. López-Jaramillo P, Nieto-Martínez RE, Aure-Fariñez G, et al. Identification and  
428 management of prediabetes: results of the Latin America Strategic Prediabetes Meeting.  
429 *Rev Panam Salud Publica.* 2017;41:e172. doi:10.26633/RPSP.2017.172
- 430 16. Tapia-Conyer R, Kuri-Morales P, Alegre-Díaz J, et al. Cohort Profile: The Mexico

- 431 City Prospective Study. *International Journal of Epidemiology*. 2006;35(2):243-249.  
432 doi:10.1093/ije/dyl042
- 433 17. Youngman LD, Clark S, Manley S, Peto R, Collins R. Reliable measurement of  
434 glycated hemoglobin in frozen blood samples: implications for epidemiologic studies. *Clin*  
435 *Chem*. 2002;48(9):1627-1629.
- 436 18. International Federation of Clinical Chemistry (IFCC) Standardization of HbA1c.  
437 NGSP. Accessed November 17, 2023. <https://ngsp.org/docs/IFCCstd.pdf>
- 438 19. Mikkelsen L, Phillips DE, AbouZahr C, et al. A global assessment of civil  
439 registration and vital statistics systems: monitoring data quality and progress. *Lancet*.  
440 2015;386(10001):1395-1406. doi:10.1016/S0140-6736(15)60171-4
- 441 20. ElSayed NA, Aleppo G, Aroda VR, et al. 2. Classification and Diagnosis of  
442 Diabetes: Standards of Care in Diabetes—2023. *Diabetes Care*.  
443 2022;46(Supplement\_1):S19-S40. doi:10.2337/dc23-S002
- 444 21. Chatterton H, Younger T, Fischer A, Khunti K. Risk identification and interventions  
445 to prevent type 2 diabetes in adults at high risk: summary of NICE guidance. *BMJ*.  
446 2012;345:e4624. doi:10.1136/bmj.e4624
- 447 22. Alegre-Díaz J, Herrington W, López-Cervantes M, et al. Diabetes and Cause-  
448 Specific Mortality in Mexico City. *N Engl J Med*. 2016;375(20):1961-1971.  
449 doi:10.1056/NEJMoa1605368
- 450 23. Carstensen B, Plummer M, Laara E, Hills M. Epi: Statistical Analysis in  
451 Epidemiology. Published online April 25, 2023. Accessed October 23, 2023. [https://cran.r-](https://cran.r-project.org/web/packages/Epi/index.html)  
452 [project.org/web/packages/Epi/index.html](https://cran.r-project.org/web/packages/Epi/index.html)
- 453 24. Plummer M, Carstensen B. Lexis: An R Class for Epidemiological Studies with  
454 Long-Term Follow-Up. *J Stat Soft*. 2011;38(5). doi:10.18637/jss.v038.i05
- 455 25. Bello-Chavolla OY, Antonio-Villa NE, Fermín-Martínez CA, et al. Diabetes-Related

- 456 Excess Mortality in Mexico: A Comparative Analysis of National Death Registries Between  
457 2017–2019 and 2020. *Diabetes Care*. 2022;45(12):2957-2966. doi:10.2337/dc22-0616
- 458 26. Zhong GC, Ye MX, Cheng JH, Zhao Y, Gong JP. HbA1c and Risks of All-Cause  
459 and Cause-Specific Death in Subjects without Known Diabetes: A Dose-Response Meta-  
460 Analysis of Prospective Cohort Studies. *Sci Rep*. 2016;6:24071. doi:10.1038/srep24071
- 461 27. Islam Z, Akter S, Inoue Y, et al. Prediabetes, Diabetes, and the Risk of All-Cause  
462 and Cause-Specific Mortality in a Japanese Working Population: Japan Epidemiology  
463 Collaboration on Occupational Health Study. *Diabetes Care*. 2021;44(3):757-764.  
464 doi:10.2337/dc20-1213
- 465 28. Kowall B, Rathmann W, Heier M, et al. Categories of glucose tolerance and  
466 continuous glycemic measures and mortality. *Eur J Epidemiol*. 2011;26(8):637-645.  
467 doi:10.1007/s10654-011-9609-y
- 468 29. Rooney MR, Fang M, Ogurtsova K, et al. Global Prevalence of Prediabetes.  
469 *Diabetes Care*. 2023;46(7):1388-1394. doi:10.2337/dc22-2376
- 470 30. Barquera S, Hernández-Alcaraz C, Jáuregui A, et al. Diabetes Awareness,  
471 Treatment, and Control among Mexico City Residents. *Diabetology*. 2021;2(1):16-30.  
472 doi:10.3390/diabetology2010002
- 473 31. Rooney MR, Rawlings AM, Pankow JS, et al. Risk of Progression to Diabetes  
474 Among Older Adults With Prediabetes. *JAMA Internal Medicine*. 2021;181(4):511-519.  
475 doi:10.1001/jamainternmed.2020.8774
- 476 32. Lee CMY, Colagiuri S, Woodward M, et al. Comparing different definitions of  
477 prediabetes with subsequent risk of diabetes: an individual participant data meta-analysis  
478 involving 76 513 individuals and 8208 cases of incident diabetes. *BMJ Open Diabetes Res*  
479 *Care*. 2019;7(1):e000794. doi:10.1136/bmjdr-2019-000794
- 480 33. Schlesinger S, Neuenschwander M, Barbaresko J, et al. Prediabetes and risk of

481 mortality, diabetes-related complications and comorbidities: umbrella review of meta-  
482 analyses of prospective studies. *Diabetologia*. 2022;65(2):275-285. doi:10.1007/s00125-  
483 021-05592-3

484 34. Guo W, Zhou Q, Jia Y, Xu J. Increased Levels of Glycated Hemoglobin A1c and  
485 Iron Deficiency Anemia: A Review. *Med Sci Monit*. 2019;25:8371-8378.  
486 doi:10.12659/MSM.916719

487 35. Chen Z, Emberson J, Collins R. Strategic Need for Large Prospective Studies in  
488 Different Populations. *JAMA*. 2020;323(4):309-310. doi:10.1001/jama.2019.19736

489 36. Rothman KJ, Gallacher JEJ, Hatch EE. Why representativeness should be  
490 avoided. *Int J Epidemiol*. 2013;42(4):1012-1014. doi:10.1093/ije/dys223

491

492 **FIGURE LEGENDS**

493 **Figure 1. Prevalence of ADA- and IEC-defined prediabetes in 115,919 MCPS participants**  
494 **without previously diagnosed or undiagnosed diabetes, by age and sex**

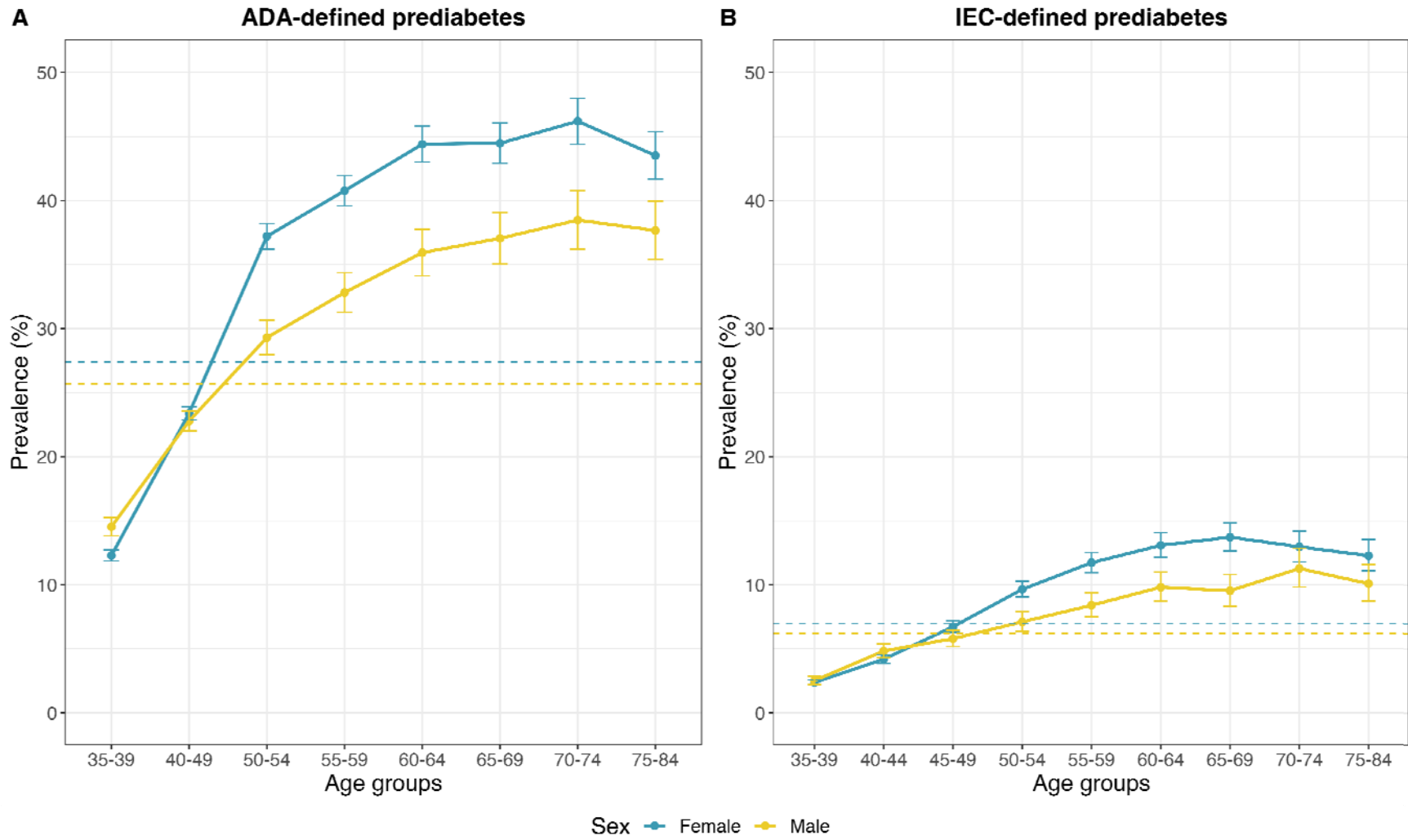
495 Dashed lines indicate overall prevalence of prediabetes for each definition stratified by sex.  
496 ADA: American Diabetes Association. IEC: International Expert Committee. Analyses limited to  
497 115,919 participants aged 35-84, and without previously diagnosed or undiagnosed diabetes (or  
498 other chronic disease) at recruitment.

499 **Figure 2. All-cause and cause-specific mortality at ages 35 to 74 years associated with**  
500 **pre-diabetes**

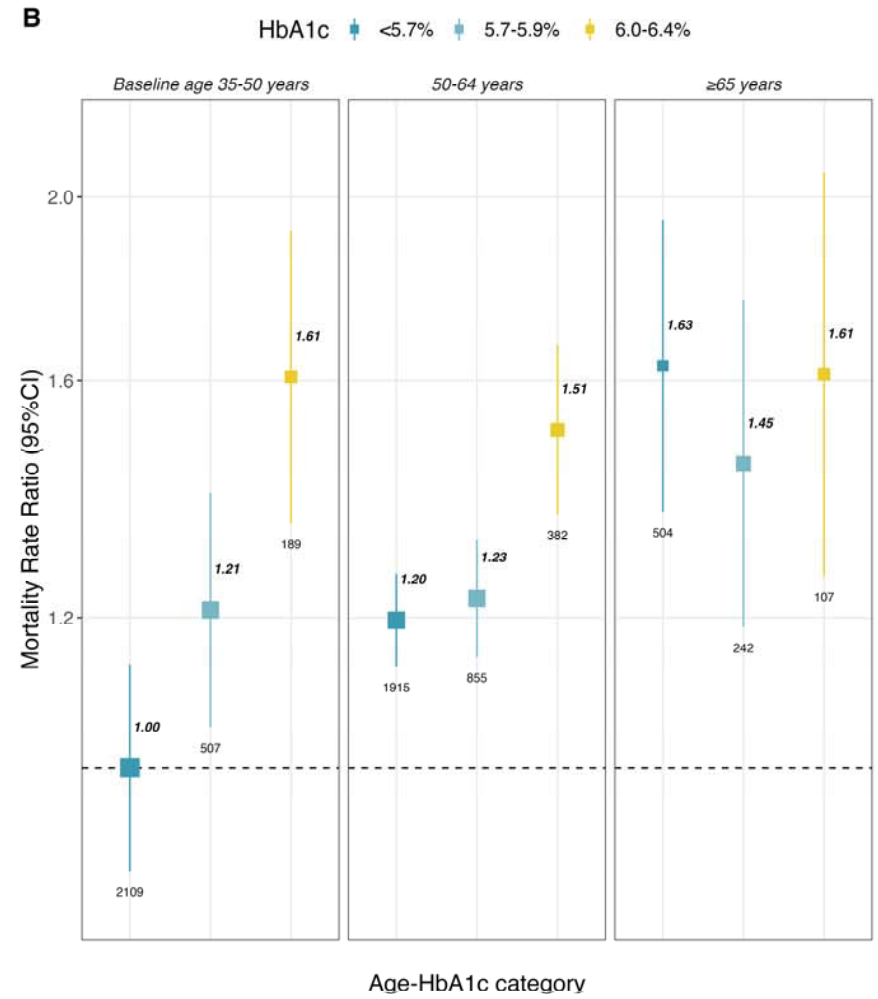
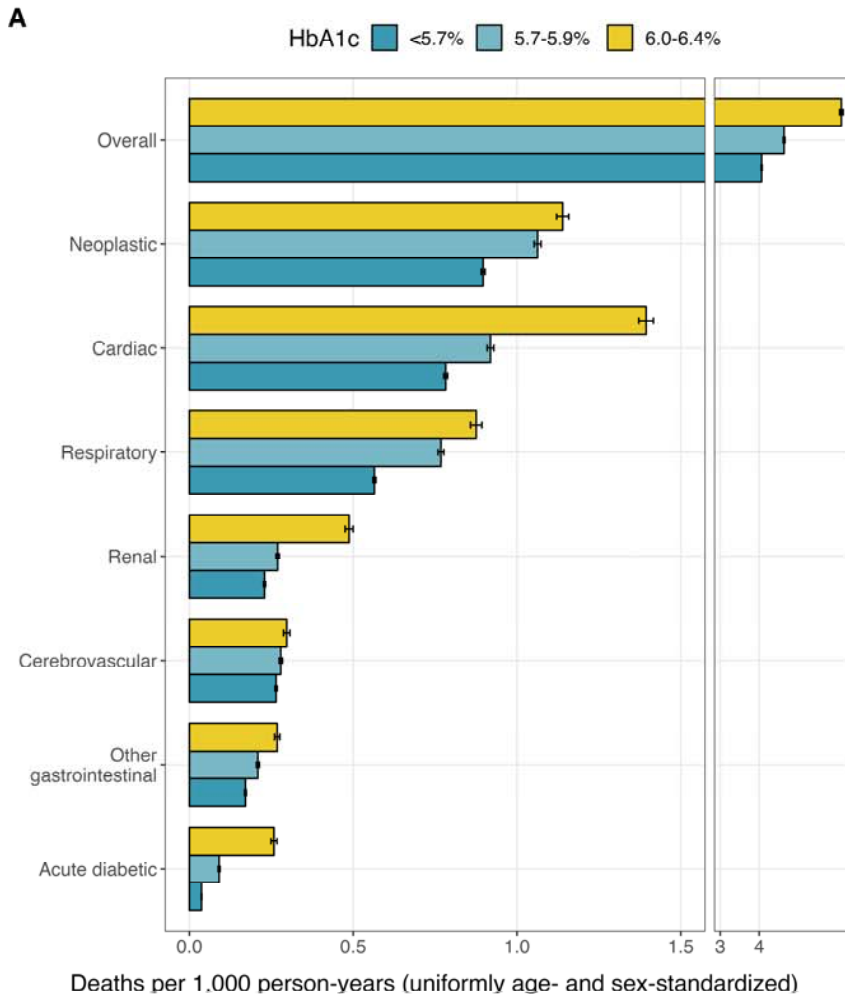
501 Analyses limited to 110,405 participants aged 35-74 and without previously diagnosed or  
502 undiagnosed diabetes (or other chronic disease) at recruitment. (A) Uniformly age- and sex-  
503 standardized mortality rates per 1,000 person-years according to HbA1c categories, error bars  
504 represent 95% confidence intervals. (B) Rate ratios with 95% confidence intervals for all-cause  
505 mortality associated with HbA1c categories, stratified by age at recruitment (<50 years, 50-64  
506 years, or ≥65 years). Labels represent the mortality rate ratio (bold) and number of events  
507 (plain) for each category, the size of the squares is proportional to the amount of statistical  
508 information. Models are stratified by sex and age at risk and adjusted for municipality, education  
509 level, physical activity, smoking, and alcohol intake. Each 95% confidence interval reflects the  
510 variance of the log risk in that 1 group.

511 **Figure 3. Cause-specific mortality rate ratios at ages 35-74 years associated with ADA-**  
512 **and IEC-defined prediabetes**

513 ADA: American Diabetes Association. IEC: International Expert Committee. RR: Mortality rate  
514 ratio. CI: Confidence Interval. Analyses limited to 110,405 participants aged 35-74 and without  
515 previously diagnosed or undiagnosed diabetes (or other chronic disease) at recruitment. RRs  
516 are stratified by sex and age at risk and adjusted for municipality, education level, physical  
517 activity, smoking, and alcohol intake.



521 **Figure 2**



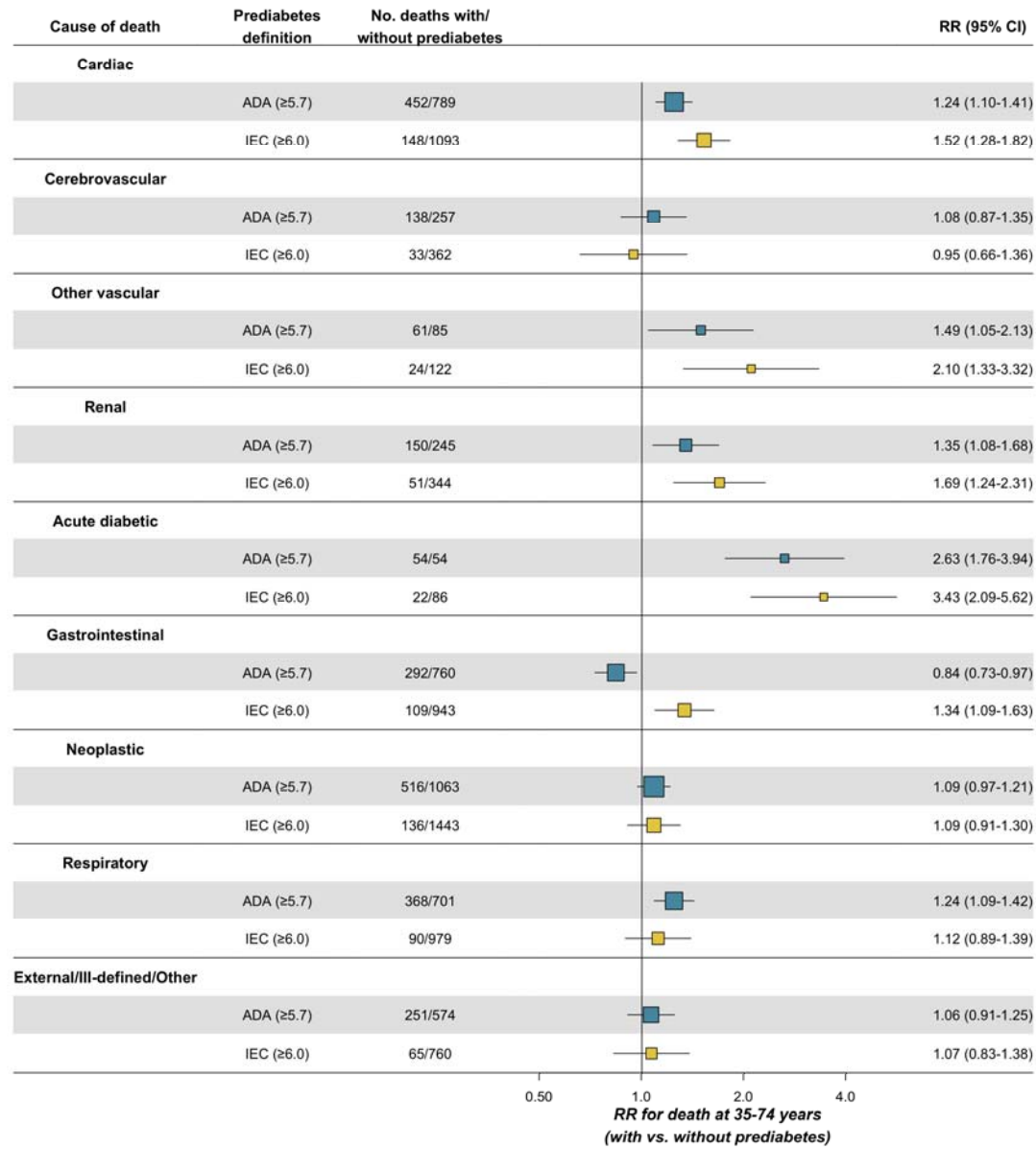
522

523

524

525





528 **Table 1. Baseline characteristics of 110,405 men and women aged 35-74 without previously diagnosed or undiagnosed**  
 529 **diabetes or other chronic disease at recruitment.**

	All participants N = 110,405	HbA1c, %		
		<5.7 N = 81,553	5.7-5.9 N = 21,649	6.0-6.4 N = 7,203
Age (Years)	49 (10)	47 (10)	52 (11)	54 (10)
HbA1c (%)	5.45 (0.37)	5.29 (0.26)	5.83 (0.10)	6.22 (0.12)
Female sex (%)	74,768 (68%)	54,829 (67%)	14,872 (69%)	5,067 (70%)
Residence in Coyoacán (%)	44,911 (41%)	37,050 (45%)	5,986 (28%)	1,875 (26%)
University/college educated (%)	19,564 (18%)	16,400 (20%)	2,486 (11%)	678 (9.4%)
Smoking (%)				
Never	53,106 (48%)	38,402 (47%)	10,910 (50%)	3,794 (53%)
Former	19,969 (18%)	14,625 (18%)	4,033 (19%)	1,311 (18%)
Current	37,330 (34%)	28,526 (35%)	6,706 (31%)	2,098 (29%)
Alcohol intake (%)				
Never	20,533 (19%)	14,633 (18%)	4,391 (20%)	1,509 (21%)
Former	6,955 (6.3%)	5,281 (6.5%)	1,265 (5.8%)	409 (5.7%)
Current	82,917 (75%)	61,639 (76%)	15,993 (74%)	5,285 (73%)
Regular leisure-time physical activity (%)	25,273 (23%)	19,812 (24%)	4,193 (19%)	1,268 (18%)
Body Mass Index (kg/m <sup>2</sup> )	29.0 (4.9)	28.3 (4.7)	30.5 (5.1)	32.0 (5.3)
Waist-to-Height Ratio	0.60 (0.08)	0.59 (0.07)	0.63 (0.08)	0.66 (0.08)
Waist-to-Hip Ratio	0.89 (0.08)	0.89 (0.07)	0.91 (0.07)	0.92 (0.07)
Systolic Blood Pressure (mmHg)	126 (16)	125 (16)	129 (17)	132 (17)
Diastolic Blood Pressure (mmHg)	83 (11)	82 (11)	84 (11)	86 (11)

530

531

532

533

534

535

536

537

538

539 **Table 2: Excess cause-specific mortality at ages 35-74 years associated with ADA and IEC definitions of prediabetes at**  
 540 **recruitment.**  
 541

Cause	ADA definition				IEC definition			
	No. deaths		Death RR* (95% CI)	Attributable mortality (%)	No. deaths		Death RR* (95% CI)	Attributable mortality (%)
	No prediabetes	Prediabetes			No prediabetes	Prediabetes		
All causes	4,528	2,282	1.13 (1.07-1.19)	4	6,132	678	1.28 (1.18-1.39)	2
Cardiac	789	452	1.24 (1.10-1.41)	7	1,093	148	1.52 (1.28-1.82)	4
Cerebrovascular	257	138	1.08 (0.87-1.35)	3	362	33	0.95 (0.66-1.36)	0
Other vascular	85	61	1.49 (1.05-2.13)	14	122	24	2.10 (1.33-3.32)	9
All cardiovascular	1,131	651	1.22 (1.10-1.35)	6	1,577	205	1.42 (1.22-1.65)	3
Renal	245	150	1.35 (1.08-1.68)	10	344	51	1.69 (1.24-2.31)	5
Acute diabetic crisis	54	54	2.63 (1.76-3.94)	31	86	22	3.43 (2.09-5.62)	14
Gastrointestinal	760	292	0.84 (0.73-0.97)	-5	943	109	1.34 (1.09-1.63)	3
Neoplastic	1,063	516	1.09 (0.97-1.21)	3	1,443	136	1.09 (0.91-1.30)	1
Respiratory	701	368	1.24 (1.09-1.42)	7	979	90	1.12 (0.89-1.39)	1
External/ill- defined/other	574	251	1.06 (0.91-1.25)	2	760	65	1.07 (0.83-1.38)	1

542 RR=Mortality Rate Ratio; CI=Confidence Interval; ADA definition= HbA1c 5.7-6.4%; IEC definition= HbA1c 6.0-6.4%\*Mortality rate  
 543 ratio estimates for those with vs without prediabetes at recruitment were stratified by sex and age at risk and adjusted for municipality,  
 544 education level, physical activity, smoking, and alcohol intake. Analyses excluded data from participants with previously diagnosed or  
 545 undiagnosed diabetes or other prior chronic disease. \*\*For each definition of prediabetes, the number of deaths attributable to the  
 546 excess risk associated with it was calculated as  $D \times (RR - 1)/RR$ , where D is the proportion of deaths in the prediabetes group and  
 547 RR is the cause-specific mortality rate ratio for prediabetes versus no prediabetes.  
 548