

Title: Screening for psychotic experiences and psychotic disorders in general psychiatric settings: a systematic review and meta-analysis

Authors and Affiliations: Jacqueline A. Clauss, MD, PhD^{*1,2}, Cheryl Y. S. Foo, PhD^{*1,2,3}, Catherine J. Leonard, BA², Katherine N. Dokholyan, BA¹, Corinne Cather, PhD^{^1,2,3}, Daphne J. Holt, MD, PhD^{^1,2}

** Contributed equally to this work*

^ Co-senior authors

¹ Psychosis Clinical and Research Program, Department of Psychiatry, Massachusetts General Hospital, Boston, Massachusetts, USA

² Department of Psychiatry, Harvard Medical School, Boston, Massachusetts, USA

³ Center of Excellence for Psychosocial and Systemic Research, Department of Psychiatry, Massachusetts General Hospital, Boston, Massachusetts, USA

Corresponding Author:

Jacqueline A. Clauss, MD, PhD
151 Merrimac St
Suite 401
Boston, MA 02114
jclauss@mgh.harvard.edu

Word Count: Abstract: 250; Manuscript: 5390

Number of Tables: 2

Number of Figures: 2

Number of References: 124

Conflicts of Interest and Sources of Funding: The authors report no conflicts of interest. Dr. Clauss was supported by the Dupont Warren Fellowship of Harvard Psychiatry, Louis V. Gerstner Scholar Award, and the Chen Institute Mass General Neuroscience Transformative Scholar Award. Dr. Foo was supported by funding from the Massachusetts Department of Mental Health to the Massachusetts General Hospital Center of Excellence for Psychosocial and Systemic Research, Sidney R. Baer, Jr Foundation, and the National Institute of Mental Health (P50 MH115846-05). Catherine Leonard was supported by funding from the Massachusetts Department of Mental Health to the Massachusetts General Hospital Center of Excellence for Psychosocial and Systemic Research. Dr. Cather was supported by funding from the Massachusetts Department of Mental Health to the Massachusetts General Hospital Center of Excellence for Psychosocial and Systemic Research. Dr. Holt was supported by funding from the National Institute of Mental Health (R01MG127265; R01MH125426; and R01MH122371-SCH), the Massachusetts Department of Mental Health, and the Sidney R. Baer, Jr Foundation.

Acknowledgments: We are grateful to Seham Albalawi, BA, Zachary Marinov, BA, and Jeffrey Kwon, BA, for contributing to the title and abstract screening of articles for inclusion in this meta-analysis.

Screening for psychotic experiences and psychotic disorders in general psychiatric settings: a systematic review and meta-analysis

ABSTRACT

Background: The absence of systematic screening for psychosis within general psychiatric services contribute to substantial treatment delays and poor long-term outcomes. We conducted a meta-analysis to estimate rates of psychotic experiences, clinical high-risk for psychosis syndrome (CHR-P), and psychotic disorders identified by screening treatment-seeking individuals to inform implementation recommendations for routine psychosis screening in general psychiatric settings.

Methods: PubMed and Web of Science databases were searched to identify empirical studies that contained information on the point prevalence of psychotic experiences, CHR-P, or psychotic disorders identified by screening inpatient and outpatient samples aged 12-64 receiving general psychiatric care. Psychotic experiences were identified by meeting threshold scores on validated self-reported questionnaires, and psychotic disorders and CHR-P by gold-standard structured interview assessments. A meta-analysis of each outcome was conducted using the Restricted Maximum Likelihood Estimator method of estimating effect sizes in a random effects model.

Results: 41 independent samples (k=36 outpatient) involving n=25,751 patients (58% female, mean age: 24.1 years) were included. Among a general psychiatric population, prevalence of psychotic experiences was 44.3% (95% CI: 35.8-52.8%; 28 samples, n=21,957); CHR-P was 26.4% (95% CI: 20.0-32.7%; 28 samples, n=14,395); and psychotic disorders was 6.6% (95% CI: 3.3-9.8%; 32 samples, n=20,371).

Conclusions: High rates of psychotic spectrum illness in general psychiatric settings underscore need for secondary prevention with psychosis screening. These base rates can be used to plan training and resources required to conduct assessments for early detection, as well as build capacity in interventions for CHR-P and early psychosis in non-specialty mental health settings.

Keywords: *prevalence, psychosis screening, clinical high risk for psychosis, psychotic experiences, general psychiatry*

INTRODUCTION

Psychotic disorders, such as schizophrenia, typically emerge during late adolescence or early adulthood, and are leading causes of disability.¹ For those with psychotic disorders, a longer duration of untreated psychosis (i.e., the length of time that psychotic symptoms remain untreated)² is associated with a poorer clinical course (greater symptom levels and lower treatment response rates) and worse long-term functional outcomes.³⁻⁵ Conversely, intervening early during the initial phase of psychotic illness (the first episode or shortly thereafter) has been shown to improve recovery outcomes.⁶ Thus, multiple lines of evidence indicate that it is important to identify and treat psychotic disorders as early as possible.

Consistent with this evidence supporting early intervention in psychosis, some studies have also shown that interventions in individuals who are at risk for developing a psychotic disorder due to the presence of subclinical symptoms of psychosis are valuable in reducing associated distress.⁷ Subclinical psychotic symptoms, often referred to as psychotic experiences (PEs), are relatively common in the general population (with ~7% prevalence)⁸ and are frequently comorbid with non-psychotic psychiatric conditions, such as mood and anxiety disorders.⁹ The presence of PEs in those diagnosed with psychiatric conditions is associated with a number of adverse outcomes including more severe psychiatric symptoms,¹⁰ and increased risk of suicidal behaviors and mortality.^{11,12} Psychotic experiences are also associated with four-fold increased likelihood of developing a psychotic disorder¹³ and a three-fold increased risk of developing a psychiatric illness in general, including an increased risk for developing anxiety disorders, mood disorders, and substance use disorders.¹⁴ Thus, based on these data, earlier conceptualizations of transdiagnostic PEs as being benign¹⁷ and representing “false positives” have been revised, given their association with poor clinical and functional outcomes.

On the more symptomatic end of the spectrum are those individuals who have PEs and evidence for symptomatic worsening over time, or a recent functional decline and genetic risk for a psychotic disorder, meeting the criteria for a clinical high-risk for psychosis syndrome (CHR-P).¹⁵ CHR-P is diagnosed using a standardized clinical interview.¹⁶⁻¹⁸ CHR-P was initially defined as a risk syndrome associated with elevated risk specifically for psychotic disorders. However, more recent evidence suggests that in addition to a 20-fold increased risk of developing a psychotic disorder,¹⁹ individuals with CHR-P have an increased risk for developing a broad range of psychiatric outcomes in the longer-term.²⁰ Intervention studies of CHR-P have had mixed success,²¹ but generally support the value of treating this condition, given the distress that is typically associated with it. Thus, specialty clinics focusing on CHR-P patients have arisen in 15 countries to both address the current clinical needs and distress of these patients and to mitigate future risk for illness and functional impairment in this population.²² Thus, taken together, the convergent lines of evidence for the benefits of early detection and intervention in help-seeking individuals with clinical or subclinical psychotic symptoms highlight the need for effective screening approaches that can facilitate the prompt detection of psychotic disorders and PEs in general mental health settings. Such screening is a critical step towards prevention of poor long-term outcomes for individuals with these symptoms who are already seeking care for mental health concerns.

Despite the importance of early identification of psychotic symptoms and psychotic disorders, screening for psychotic symptoms is not routine in mental health settings and is even rarer in primary care. In contrast, suicide risk screening is required by Medicare^{23,24} and screening for substance use,²⁵ depression²⁶ and anxiety^{26,27} is recommended by the United States Preventive Services Task Force in primary care. An estimated 90% of those with a psychotic disorder diagnosis in the United States present to general outpatient mental health services two years

prior to receiving a psychotic disorder diagnosis,²⁸ and outpatient mental health providers are most frequently identified as the first clinical encounter for help-seeking CHR-P individuals.²⁹ However, there are long referral and treatment delays for individuals with psychotic disorders^{30,31}. This may be related to the low confidence expressed by mental health professionals in their ability to identify psychotic disorders.³² However, implementing systematic screening for psychosis in outpatient mental health services is feasible and can reduce the duration of untreated psychosis.³³

Knowledge of the prevalence of psychotic symptoms and disorders, along with the psychometric properties of potential screening measures (i.e., sensitivity, specificity), is necessary for estimating the number of people needed to screen to identify a true positive case and can also inform the design of screening and triaging protocols for identifying cases in real-world systems of mental healthcare. Secondary and tertiary prevention efforts can be built using such screening protocols, with the goal of preventing the onset of more severe illness or poor functional outcomes in individuals who are already suffering from psychiatric conditions. While prevalence rates of psychotic symptoms and psychotic spectrum disorders are known for the general population^{34–36} and in educational^{37,38} and primary care settings,³⁹ little is known about the prevalence of psychotic disorders, PEs, and CHR-P in patients seeking treatment in general mental health settings. To our knowledge, there are no existing meta-analyses of rates of psychotic experiences and psychotic disorders in general psychiatric settings, although recent evidence suggests the CHR-P syndrome is common in patients presenting to psychiatric care.⁴⁰

Objectives

Therefore, we aimed to 1) provide an estimate of the prevalence rates of psychotic experiences, CHR-P, and psychotic disorders in general psychiatric settings; 2) test for the effects of demographic variables and publication-related variables on prevalence rates, 3) summarize the psychometric properties of recommended screening measures; and 4) make recommendations for implementing psychosis screening in general mental health settings.

METHODS

We conducted a systematic review and meta-analysis following the PRISMA guidelines⁴¹ to calculate the overall prevalence of psychotic experiences, CHR-P syndrome, and psychotic disorders based on screenings conducted in general psychiatry settings. General psychiatric settings were defined as community, outpatient, inpatient, and/or emergency settings providing non-specialist psychiatric, psychological, or psychosocial care. Primary medical settings and specialized psychosis programs or services were excluded.

Search strategy. Medical and social science electronic databases (Web of Science and PubMed) were searched to include studies published from January 1, 1990, to July 1, 2023. Non-peer reviewed manuscripts, theses, conference proceedings, protocols, and abstracts were not included. The references of relevant studies were reviewed to identify additional studies. Searches were based on a combination of controlled vocabulary index terms related to: 1) psychotic experiences or psychotic disorders (e.g., psychosis OR psychotic OR schizophrenia); 2) screening and detection (e.g., screen* OR detect* or identif*); and 3) general psychiatric settings (e.g., help-seeking population OR psychiatric population OR outpatient mental health OR community mental health OR inpatient mental health). Filters were used to exclude studies based on *a priori* exclusion criteria (e.g., studies on screening in older adults (ages 65+), school/primary care/traditional healer settings). See Supplemental File 1 for the full list of search terms used.

Eligibility criteria. Peer-reviewed, empirical studies written in English were eligible for inclusion if they contained original, quantitative data on point prevalence rates of psychotic experiences, psychotic disorders or CHR-P identified by screening treatment-seeking samples aged 12-64 receiving general psychiatric care. Studies were included if they used either: 1) an established/validated structured clinical interview to assess the presence of psychotic disorders diagnoses (schizophreniform disorder, schizophrenia, schizoaffective disorder, presence of psychotic symptoms in psychosis risk syndrome interview) or a psychosis-risk syndrome (attenuated psychotic symptoms syndrome, brief intermittent psychotic symptoms syndrome, or genetic risk and deterioration syndrome), or 2) a validated questionnaire to identify psychotic experiences. Studies were not excluded based on country of origin or sample size.

We excluded publications describing psychosis screening in samples that included: a) older adults, due to the diagnostic complexity and comorbidity of psychotic symptoms with other medical and neurodegenerative conditions (e.g., dementia); b) school-based settings or populations (e.g., school counseling centers), medical primary care settings, specialty psychosis detection and evaluation centers (e.g., CHR-P clinics), medical inpatient or medical emergency room settings, and traditional/indigenous healer settings; and c) criminal legal system-involved, forensic, veteran populations due to their unique healthcare systems. We excluded publications which reported on screening for biomarkers or genetic markers of psychosis risk. Unpublished theses, protocols, editorials, opinion pieces, qualitative studies, and studies without primary data (e.g., reviews) were excluded. Studies that did not use established psychometric instruments to detect psychotic symptoms and likely psychotic disorders (e.g., medical records review, insurance claims, non-structured clinical interview) were excluded. Overlapping studies, determined by the setting's name (if available), country, participating authors, recruitment period, and instruments, were excluded. In the case of overlap, the report of the largest representative sample was selected.

Screening and data extraction procedures. All identified references were managed in Covidence, a web-based collaboration software platform that streamlines the production of systematic and other literature reviews.⁴² All titles and abstracts were independently screened by at least two trained reviewers and the first authors (JAC and CYSF) resolved disagreements between coders and mutually agreed on studies eligible for full-text review. A double-screening approach was performed for subsequent eligibility screening and data extraction to avoid systematic and random errors.⁴³ Full-texts were independently reviewed by JAC and CYSF, and JAC and CYSF resolved differences in final sample. Two trained reviewers (KD, CJL) independently extracted data from included studies using structured tables, including details on: author and year; country; clinical setting (inpatient, outpatient, child/youth mental health); sample size screened; demographic characteristics (age, % female, race/ethnicity, when available); outcomes assessed (psychosis symptoms, CHR-P, and/or psychotic disorders); screening measures used (including if there was a pre-screening tool); and screening prevalence rates of psychotic symptoms, psychotic disorders, and/or CHR-P syndromes. JAC and CYSF audited extracted data for accuracy; inconsistencies were minor and resolved through consensus discussion. Quality of study was assessed with the JBI Critical Appraisal Instrument for Studies Reporting Prevalence Data that included 8 criteria: appropriate sampling strategy, sample size, sample representativeness, response rate and attrition, validity of measures, and reliability and validity of screening procedure.⁴⁴ We applied an *a priori* benchmark of $N \geq 100$ for adequate sample size. Included studies were rated as “potentially low-quality” if they did not adequately meet a minimum quality rating of 60% (i.e., 6/8).

Independent samples from included studies were categorized into three outcomes for meta-analysis, specifically, screening prevalence rates for 1) psychotic experiences, 2) CHR-P, or 3)

psychotic disorders. Screening prevalence rates for psychotic experiences were based on the cut-off score the screening measure in the study used to determine positive screen for likely psychotic disorders. In samples with screening rates derived from multiple measures, reviewers (CYSF and JAC) came to a consensus on which measure was the most well-validated and selected the prevalence rate determined by that measure.

Statistical analysis. For each sample and outcome, screening prevalence rates and their variances were calculated. A meta-analysis of combined screening prevalence rate for each outcome was estimated using the Restricted Maximum Likelihood (REML) Estimator method. The REML method uses random effects to estimate overall point prevalence and confidence intervals without requiring normal distributions and is robust to small sample sizes.^{45,46} The random effects model weights larger sample sizes with lower variance higher than smaller samples with higher variance within the meta-analysis. Meta-analyses were repeated with the following sensitivity analyses 1) excluding inpatient psychiatric samples that could potentially inflate prevalence rates of psychotic disorders, and 2) excluding studies with potentially low-quality data. Additional analyses assessing child and adolescent clinic samples were also conducted. Meta-regression analyses to determine the effects of publication year, sex (% female in sample), and age (sample mean/median, or median of study's reported age range) on overall meta-analytic prevalence rates for each outcome were tested. Two-sided statistical tests and a significance level of $\alpha = .05$ were used. Meta- and moderator analyses were performed using the Metafor package in R Studio (Version 2023.09.1+494).⁴⁶ Egger's test for publication bias was performed. For analyses with significant effects of publication bias, analyses were repeated using a trim and fill method to impute missing datapoints.

RESULTS

The search strategy yielded a total of 5,525 publications on Web of Science and 553 on PubMed. Citation searching revealed an additional 20 publications for potential inclusion. Forty studies published from 2006 to 2023 with 41 independent samples (total N = 25,751; 58% female, mean age: 24.1 years) met eligibility criteria for the systematic review (see Figure 1 for CONSORT flow diagram). Five studies had potentially low-quality data.

Table 1 summarizes the 41 independent outpatient (k=36), inpatient (k=2), and combined inpatient and outpatient (k=3) screened samples across 13 different countries. Two samples were recruited from child and adolescent inpatient units, and 14 from child, adolescent, or young adult outpatient mental health settings serving patients with variable age ranges, from 6-to 24-years-old. The majority of included studies aimed to either determine prevalence of psychotic experiences or psychosis-risk syndromes (k=6), or to examine screening properties of self-report instruments and their concordant validity against other diagnostic assessments or clinical measures (k=8). Several studies consisted of evaluations of screening methods implemented as part of research studies or quality improvement initiatives (k=9). Twenty-eight (28) samples were screened for prevalence of psychotic experiences (16 adult outpatient samples, 8 child and adolescent outpatient samples, 2 adult combined inpatient and outpatient samples, 1 inpatient adult sample, and 1 combined child and adolescent inpatient and outpatient sample), 28 samples were screened for CHR-P (14 adult outpatient samples, 9 child and adolescent outpatient samples, 2 adult combined inpatient and outpatient samples, 1 inpatient adult sample, and 1 combined child and adolescent inpatient and outpatient sample), and 32 samples were screened for psychotic disorders (18 adult outpatient samples, 10 child and adolescent outpatient samples, 2 adult combined inpatient and outpatient samples, 1 inpatient adult sample, and 1 combined child and adolescent inpatient and outpatient sample).

Table 1. Summary of studies in general psychiatric settings identifying clinically indicated psychotic symptoms, clinical high risk for psychosis, and psychotic disorders through screening.

First author, Year	Region	Clinical Setting	Primary study purpose	Outcomes	Screening measures and criteria used	Total N screened	N referred for second-stage screening (%)	Mean/Median age of total sample (SD)	N female of total sample (%)
Ben-David, 2021 ⁴⁷	NA	Outpatient	Psychosis screening for study recruitment	PE	CSI psychosis items ≥ 1	55	-	17.9 (1.1)	36 (65)
Boonstra, 2010 ⁴⁸	EU	Outpatient	Screening properties of measure implemented in clinical practice	PE; PD	CAPE-42 positive symptoms subscale ≥ 50 ; Mini-SCAN	246	-	37.5 (12.7)	128 (52)
Brandizzi, 2014 ⁴⁹	EU	Child and adolescent outpatient	Prevalence of PE	PE	PQ ≥ 18	171	-	14.8 (1.9)	81 (47)
de Jong, 2018 ⁵⁰	EU	Child and adolescent outpatient	Screening properties of measure implemented in clinical practice	PE	PQ-16 ≥ 6	176	-	14.6	79 (45)
de Jong, 2022 ⁵¹	EU	Child and adolescent outpatient	Concordant validity of screening measures	PE; CHR-P; PD	PQ-16 $\geq 6 \rightarrow$ CAARMS	817	326 (39.9)	14.7 (1.6)	554 (67.8)
EPOS Group, 2009 ⁵²	EU	Outpatient	Prevalence of CHRS; cross-sectional associations of CHRS and social relationships	PE; CHR-P; PD	Clinical review of PROD-Screen; SIPS	790	95 (12.0)	23	516 (65.3)
Francesconi, 2017 ⁵³	AU	Outpatient	Prevalence of CHRS; predictive validity of measure to predict PD transition	CHR-P; PD	CAARMS	138	-	24.3 (3.5)	65 (47)
Gaudiano, 2013 ⁵⁴	NA	Outpatient	Prevalence of PE and CHRS	PE; PD	PDSQ ≥ 1 psychotic	1257	-	37.2 (12.3)	781 (62)

First author, Year	Region	Clinical Setting	Primary study purpose	Outcomes	Screening measures and criteria used	Total N screened	N referred for second-stage screening (%)	Mean/Median age of total sample (SD)	N female of total sample (%)
Gin, 2018 ⁵⁵	EU	Child and adolescent outpatient	Screening properties of measure implemented in clinical practice	PE	experience; SCID-5 UE ≥ 1 with distress ≥ 1 or functional impairment	768	-	14.6 (1.8)	519 (68)
Hazan, 2020 ⁵⁶	AU	Child, adolescent, and young adult outpatient	Prevalence of CHR-S; predictive validity of measure to predict PD transition	CHR-P; PD	CAARMS	801	-	18.3 (3.3)	350 (68.4)
Hodgekins, 2018 ⁵⁷	EU	Adolescent and young adult outpatient	Prevalence of CHR-S; cross-sectional associations of CHR-S with functioning, and trauma history	PE	PQ-16 ≥ 6	202	-	18.4 (2.7)	133 (65.8)
Hu, 2022 ⁵⁸	Asia	Outpatient	Screening properties of measure implemented in clinical practice	PE; PD	PRIME-SR ≥ 2 five-point score endorsements; SCID-5	1931	-	25.3 (7.3)	1079 (55.9)
Ju, 2021 ⁵⁹	Asia	Outpatient	Psychosis screening for study recruitment	PE; PD	PRIME-SR ≥ 2 five-point score endorsements; SCID-5	2542	-	25.5 (7.4)	1388 (54.6)
Kline, 2012 ⁶⁰	NA	Inpatient and outpatient	Concordant validity of screening measures	PE	PRIME-SR ≥ 2 five-point score endorsements, PQ-B ≥ 6 , YPARQ-B ≥ 11	49	-	16.7	37 (76)
Knight, 2020a ⁶¹	EU	Outpatient	Screening properties of measure	PE	CAPE-P15 ≥ 1.3	38398	-	39.8 (15.34)	1411 (68.9)

First author, Year	Region	Clinical Setting	Primary study purpose	Outcomes	Screening measures and criteria used	Total N screened	N referred for second-stage screening (%)	Mean/Median age of total sample (SD)	N female of total sample (%)
			implemented in clinical practice						
Knight, 2020b ⁶²	EU	Outpatient	Screening properties of measure implemented in clinical practice	PE	CAPE-P15 \geq 1.47	1131	-	39.8 (15.3)	744 (65.8)
Kobayashi, 2008 ⁶³	Asia	Outpatient	Concordant and predictive validity of screening measures	PE; CHR-P; PD	PRIME-SR \geq 1 five-point score endorsement, or \geq 2 4-point endorsement or total score \geq 39; SIPS; SCID-5	1024	-	23.6 (4.1)	640 (62.5)
Kobayashi, 2011	Asia	Outpatient	Prevalence of PE	PE	PRIME-SR \geq 1 five-point score endorsement, or \geq 2 four-point endorsement, or total score \geq 39; SIPS; SCID-5	781	-	18.1 (1.7)	462 (59.2)
Koren, 2013*	ME	Child and adolescent outpatient	Concordant validity of screening measures	PE; CHR-P	PQ-B \geq 8 \rightarrow SIPS	82	51 (62.1)	15.9 (1.4)	32 (37)
Kotzalidis, 2017 ⁶⁴	EU	Outpatient	Concordant validity of screening measures	PE; CHR-S; PD	PQ \geq 18; SIPS; SCID-IV or KSADS	258	-	17	127 (49.2)
Lindgren, 2010 ⁶⁵	EU	Adolescent outpatient	Prevalence of CHR-S; cross-sectional associations with neurocognitive functioning	PE; CHR-P; PD	PQ \geq 18 \rightarrow SIPS; SCID-IV	836	189 (22.6)	16.5 (0.9)	146 (77.2)

First author, Year	Region	Clinical Setting	Primary study purpose	Outcomes	Screening measures and criteria used	Total N screened	N referred for second-stage screening (%)	Mean/Median age of total sample (SD)	N female of total sample (%)
Lo Cascio, 2016 ⁶⁶	EU, NA	Adolescent inpatient and outpatient	Concordant validity of screening measures	PE; CHR-P; PD	SPI-CY/A ^a ; SIPS	69	-	15.3 (1.7)	40 (58)
Loewy, 2012 ⁶⁷	EU	Outpatient	Concordant and predictive validity of screening measures implemented in practice	PE; CHR-P; PD	PQ ≥ 18 → SIPS; SCID-IV	408	99 (24.3)	16.5	273 (67)
Masillo, 2018 ⁶⁸	EU	Outpatient	Screening properties of measure implemented in clinical practice	PE; CHR-P; PD	PQ ≥ 18 → SIPS; SCID-IV or KSADS	338	166 (49.1)	17.4 (5.6)	173 (51.2)
Mourad, 2023 ⁶⁹	ME	Inpatient and outpatient	Screening properties of measure implemented in clinical practice	PE; CHR-P; PD	PQ-16 ≥ 6; CAARMS	31	-	23.5	15 (48.4)
O'Donoghue, 2018 ⁷⁰	AUS	Adolescent and young adult outpatient	Screening properties of measure implemented in clinical practice	PE; CHR-P; PD	PQ-16 ≥ 6 CAARMS	235	-	18.5 (2.7)	149 (63.4)
Parabiaghi, 2019 ⁷¹	EU	Adolescent and young adult outpatient	Screening properties of measure implemented in clinical practice	CHR-P; PD	CAARMS	364	-	19.3 (2.5)	193 (53)
Raballo, 2016 ⁷²	EU	Outpatient	Prevalence of CHRS; cross-sectional associations with symptom	PE; CHR-P; PD	EASE; SIPS	47	-	20.2 (2.9)	17 (36)

First author, Year	Region	Clinical Setting	Primary study purpose	Outcomes	Screening measures and criteria used	Total N screened	N referred for second-stage screening (%)	Mean/Median age of total sample (SD)	N female of total sample (%)
			dimensions and functioning						
Raballo, 2018 ⁷³	EU	Adolescent outpatient	Prevalence of PE	PE; CHR-P; PD	EASE; SIPS; KSADS	96	-	15.5 (1.2)	58 (60.4)
Rietdijk 2012 ³³	EU	Outpatient	Comparison of two detection methods implemented in practice: Typical referral method vs. Sequential two-stage screening	CHR-P; PD	CAARMS	193	-	22.7 (5.5)	102 (50.7)
				PE; CHR-P; PD	PQ ≥ 18 → CAARMS	3671	420 (11.4)		
Rizvi, 2019 ⁷⁴	NA	Child outpatient	Concordant validity of screening measures	CHR-P; PD	KSADS	700	-	9.7 (1.8)	224 (32)
Salazar De Pablo, 2020 ⁷⁵	NA	Child and adolescent inpatient	Concordant validity of screening measures	CHR-P; PD	SIPS	324	-	15.4 (1.5)	280 (69.4)
Salcedo, 2018 ⁷⁶	NA	Outpatient	Concordant validity of screening measures	CHR-P; PD	KSADS	694	-	11.2 (3.3)	280 (40)
Sengutta, 2021 ⁷⁷	EU	Outpatient	Prevalence of PE; concordant validity of screening measures and cross-sectional associations with trauma, depression, anxiety	PE; CHR-P; PD	IPASE; SIPS	126	-	19.7 (2.3)	86 (67.6)
Spillebout, 2023 ⁷⁸	EU	Child and adolescent outpatient	Psychometric validation of French versions	PE	PQ-16 ≥ 6 or PCA ≥ 3	87	-	14.8 (9.4)	47 (54)

First author, Year	Region	Clinical Setting	Primary study purpose	Outcomes	Screening measures and criteria used	Total N screened	N referred for second-stage screening (%)	Mean/Median age of total sample (SD)	N female of total sample (%)
Thompson, 2022 ⁷⁹	NA	Inpatient	of the screening measures Screening properties of measure implemented in clinical practice	PE; CHR-P; PD	YSR Thought Problems Scale T-score ≥ 65 SIPS	57	-	14.6 (1.7)	42 (73.7)
Tonyali, 2022 ⁸⁰	ME	Outpatient	Psychometric validation of Turkish version of SIPS	CHR-P; PD	SIPS	150	-	14.7 (1.6)	81 (53.6)
Xu, 2018 ⁸¹	Asia	Outpatient	Screening properties of measure implemented in clinical practice	PE; CHR-P; PD	PRIME-SR ≥ 2 five-point score endorsements → SIPS	566	374 (66.1)	23.1 (6.8)	311 (54.9)
Yung, 2006 ⁸²	AU	Adolescent and young adult outpatient	Predictive validity of CHRS	CHR-P; PD	CAARMS; SCID-IV	292	-	18.1	149 (51)
Zhang, 2014 ⁸³	Asia	Outpatient	Screening properties of measure implemented in clinical practice	PE; CHR-P; PD	PQ-B ≥ 6 → SIPS	2101	1461 (69.5)	27.1 (7.4)	1166 (55.5)

Note. *: Low quality risk; AU: Australia. EU: Europe. ME: Middle East. NA: North America; CHRS: clinical high risk for psychosis. PE: psychotic experiences. PD: psychotic disorders; CAARMS: Comprehensive Assessment of At-Risk Mental States; CSI: Colorado Symptom Inventory psychotic symptoms items; CAPE-42: Community Assessment of Psychic Experiences – 42 items; CAPE-P15: Community Assessment of Psychic Experiences – Positive 15-items scale. EASE: Examination of Anomalous Self-Experience; IPASE: Inventory of Psychotic-like Anomalous Self-Experiences; KSADS: Kiddie Schedule for Affective Disorders and Schizophrenia. Mini-SCAN: Schedules for Clinical Assessment in Neuropsychiatry short version; PCA: Perceptual and Cognitive Aberrations. PDSQ: Psychiatric Diagnostic Screening Questionnaire. PQ: Prodromal Questionnaire; PQ-B: Prodromal Questionnaire-Brief (21 items); PQ-16: Prodromal Questionnaire-16 items. PRIME-SR: PRIME Screen-Revised. PROD-Screen: Screen for prodromal symptoms of psychosis. SCID-IV/5: Structured Clinical Interview for DSM-IV/DSM-5. SIPS: Structured Interview for Psychosis-Risk Syndrome. SPI-CY/A: The Schizophrenia Proneness Instrument, Child and Youth/ Adult. UE: Unusual Experiences Questionnaire. YPARQ-B: Youth Psychosis At-Risk Questionnaire-Brief. YSR: Youth Self-Report form.

^a COGDIS ≥2 symptoms, occurrence 1 time a week within the last 3 months. COPER ≥1 symptom, onset/notable increase in frequency 12 months ago and occurrence 1 times a week within the last 3 months.

Screening measures. A total of 15 established self-report questionnaires and one parent-/teacher-report questionnaire, some of which were translated and validated in the local language, were used to assess psychotic experiences. Table 2 summarizes the screening properties of the more frequently used measures for each outcome among the included studies, as well as additional measures with strong validity that are brief and recommended for general psychiatric settings (see Discussion).

Table 2. Recommended screening and assessment measures for psychotic spectrum symptoms and disorders in general psychiatric settings.

Psychotic Symptoms							
Measure	Format and access ^a	Number of items (estimated assessment time in minutes)	Age range in validation study (years)	Psychotic symptom domains assessed	Suggested threshold for clinically indicated psychotic symptoms in general psychiatric settings	Sensitivity predicting CHR-P status using suggested threshold ^b	Specificity predicting CHR-P status using suggested threshold ^b
Prodromal Questionnaire (PQ) ⁸⁴	Self-report	92 (20)	12-35	Positive; Negative; Disorganized; General psychiatric; Distress from symptoms	≥18 positive symptoms	80-91% ⁸⁵	40-90% ⁸⁵
Prodromal Questionnaire-Brief (PQ-B) ⁸⁶	Self-report	21 (10)	12-17	Positive; Distress or impairment from symptoms	≥6-7 total symptoms or ≥24 total distress score	82-84% ⁸⁵	60-64% ⁸⁵
Prodromal Questionnaire-Brief Child Version (PQ-BC) ⁸⁷	Self-report	21 (10)	9-10	Positive; Distress from symptoms using a visual scale	NA	NA	NA
Prodromal Questionnaire-16 (PQ-16) ⁸⁸	Self-report	16 (5)	18-35	Positive; Negative	≥6 total symptoms or ≥8 total distress score	78-90% ⁸⁵	54-91% ⁸⁵
Prevention through Risk Identification, Management, and Education (PRIME) Screen-Revised (PS-R) ⁸⁹	Self-report	12 (5)	16-30	Positive; Loss of insight	≥1 item scored at 6 or ≥2 items scored at 5 or ≥39 total score	100%	74%
Youth Psychosis at Risk Questionnaire-Brief (YPARQ-B) ⁹⁰	Self-report	28 (10)	14-18	Positive	≥11-13 total symptoms	65-100% ⁶⁰	76-80% ⁶⁰
PROD-Screen ⁹¹	Self-report or interview screen	21 (10)	14+	Positive; Negative; Disorganized; and General psychiatric symptoms	≥2 total symptoms	80%	75%

Adolescent Psychosis Symptom Screener (APSS) ⁹²	Self-report	7 (5)	11-13	Positive	≥1 symptom, with endorsing auditory hallucinations having the highest predictive power	20-70%	87-100%
2-item psychosis screener ⁹³	Self-report	2 (1)	12-25	Positive	≥1-2 symptoms	32-59%	68-95%
Clinical High Risk for Psychosis							
Measure	Format and access	Estimated assessment time (mins)	Age range in validation study (years)	Measures and symptom domains assessed	CHR-P syndromes and diagnoses assessed	Sensitivity of CHR-P criteria predicting onset of psychotic episode ^c	Specificity of CHR-P criteria predicting onset of psychotic episode ^c
Structured Interview for Psychosis-Risk Syndromes (SIPS) ⁹⁴	Semi-structured interview by certified assessors; 1-2 day-long training	60-120	12-45	Family history of mental illness; Positive, Negative, and Disorganized prodromal psychotic symptoms and general psychiatric symptoms; Global Assessment of Functioning scale; Schizotypal personality disorder criteria checklist	Presence of psychotic syndrome; brief intermittent psychotic syndrome (BIPS); attenuated positive symptom syndrome (APSS); genetic risk and functional deterioration syndrome (GRD)	100%	71%
Comprehensive Assessment of At-Risk Mental States (CAARMS) ⁹⁵	Semi-structured Interview by mental health professionals	60-120	15-29	Disorders of thought content; perceptual abnormalities; conceptual disorganization; motor changes; concentration and attention; emotion and affect; subjectively impaired energy and impaired tolerance to normal stress; social and	Attenuated Positive Symptom Intensity and Frequency (APS); Brief Limited Intermittent Psychosis Syndrome (BLIPS); Vulnerability group	83%	74%

				occupational functioning assessment scale			
Positive Symptoms and Diagnostic Criteria for the CAARMS Harmonized with the SIPS (PSYCHS) ⁹⁶	Semi-structured interview by trained assessors	60-120	12-30	Attenuated delusions; attenuated hallucinations; attenuated thought disorder	Harmonized criteria for CAARMS/SIPS psychosis diagnosis and CHR-P syndrome criteria	NA	NA
Mini-SIPS ⁹⁷	Free 30-minute online training; publicly available	15-20	12-45	Positive psychotic symptoms	DSM-5 Attenuated Psychosis Syndrome (APS) clinical diagnosis; SIPS attenuated positive symptom syndrome (APSS) progression	NA	NA

Psychotic Disorders						
Measure	Format and access	Estimated assessment time (mins)	Age range in validation study (years)	Measures and domains assessed	Diagnoses assessed	
Schedule for Affective Disorders and Schizophrenia for School-Age Children present and lifetime version (KSADS-PL DSM-5) ⁹⁸	Semi-structured parent and child interview by mental health professional or clinically trained assessor; publicly available and free to use	90-120	6-18	Developmental history; current and past psychiatric symptoms; Children's Global Assessment Scale	DSM-5 Axis I child and adolescent psychiatric disorders including schizophrenia and schizoaffective disorder; Scores of 2 indicate sub-threshold presentation and scores of 3 indicate threshold presentation of symptoms	
Computerized versions of the Kiddie Schedule for Affective Disorders and Schizophrenia (KSADS-COMP) ⁹⁹	Web-based child and parent self-administered, and clinician-administered	50-60	6-18	Developmental history; current and past psychiatric symptoms; Children's Global Assessment Scale	DSM-5 Axis I child and adolescent psychiatric disorders including schizophrenia and schizoaffective disorder; Scores of 2 indicate sub-threshold presentation and scores of 3 indicate threshold presentation of symptoms	
Structured Clinical Interview for DSM-5 Clinician Version (SCID-5-CV) ¹⁰⁰	Semi-structured Interview by mental health professional or clinically trained assessor; publicly available and free to use	45-120	18+	Current psychiatric symptoms; Functioning	DSM-5 diagnoses	
NetSCID ¹⁰¹	Web-based version of the SCID-5; \$25 per clinician assessment	30-45	18+	Current psychiatric symptoms; Functioning	DSM-5 diagnoses	

Note. CHR-P: clinical high risk for psychosis; NA: not currently available or reported in published studies.

^a All screening measures for psychotic symptoms reported here are available in the public domain and free to use.

^b Range of sensitivity and specificity of measure based in studies that screened treatment-seeking samples in general psychiatric settings using screening thresholds for clinically indicated psychotic symptoms. Measure's positive screen criteria were validated against gold-standard, clinical interview assessments of CHR-P (e.g., SIPS, CAARMS). Screening properties of measure based on studies, where measure was validated against gold-standard, clinical interview assessment of CHR-P.

^c We reported predictive validity of the CHR-P assessment at 6 months from the original validation study. Specificity of CHR-P criteria predicting onset of psychotic episode increases with time.

The 92-item Prodromal Questionnaire (PQ) and its shorter versions (16-item PQ-16, 21-item PQ-Brief) were the most frequently used self-report screening measures for psychotic experiences (13/28 samples; 46%), followed by the PRIME Screen-Revised (PRIME-SR) (7/28; 25%). In general psychiatric settings, the concurrent validity of assessing psychotic experiences using the recommended cutoffs for PQ, PQ-16, PQ-B, or PRIME-SR against gold-standard CHR-P assessments was strong (sensitivity: 0.78 to 1.0; specificity: 0.54 to 0.91), indicating that these self-report measures can accurately distinguish between those likely to meet criteria for CHR-P syndrome and those who do not (Table 2). CHR-P status was most frequently determined using the Structured Interview for Psychosis-Risk Syndrome (SIPS; 16/28 samples with CHR-P screening; 57%), followed by the Comprehensive Assessment of At-Risk Mental States (CAARMS; 9/28, 32%), and the Kiddie Schedule for Affective Disorders and Schizophrenia (KSADS, 2/28, 7%). Psychotic disorder diagnosis was ascertained by structured clinical diagnostic interviews such as the KSADS or the Structured Clinical Interview for DSM-5 or DSM-IV (SCID-5/IV; 11/33), or meeting threshold for psychotic disorder through the SIPS or CAARMS assessments. Supplemental File 2 compiles a comprehensive list of known validated instruments for assessing psychosis symptoms and disorders, screening properties in general psychiatric settings, and languages in which they are available.

Two-stage screening. Nine samples were screened for CHR-P using a sequential, two-stage, screening method, where an enriched sample meeting a threshold for the presence of psychotic experiences on a brief screening tool was followed up with gold-standard assessments of CHR-P. Seven (77.7%) samples utilized the PQ, PQ-16, or PQ-B as the initial screening measure and six followed up with the SIPS to determine CHR-P status. The EDIE-NL study³³ was the only published study to our knowledge that compared the effectiveness of a two-stage screening strategy (PQ \geq 18 followed by the CAARMS) to a traditional clinician referral followed by CAARMS in an outpatient help-seeking population. In this study, two-stage screening identified twice as many first-episode psychosis patients and three times as many CHR-P patients at entry to mental health services than clinician referral.

Meta-analyses of point prevalence. See Figure 2 for forest plots of meta-analysis of rates identified by screening for each outcome. Heterogeneity was high for all outcomes (psychotic experiences: $I^2=99.6\%$; CHR-P: $I^2=99.3\%$). I^2 represents the percentage of variability in the effect sizes which is not caused by sampling error ($> 75\%$ = high variability). I^2 cannot be calculated for any studies for which variance is 0, thus could not be calculated for psychotic disorders. τ^2 is a measure of between-study variance and provides an estimate of underlying distribution of true effect sizes ($\tau^2 \pm$ standard error (SE): psychotic experiences: 0.052 ± 0.014 ; CHR-P: 0.028 ± 0.008 ; psychotic disorders 0.008 ± 0.002). Heterogeneity remained high for sensitivity analyses of high-quality outpatient studies (psychotic experiences: $I^2=99.7\%$, $\tau^2 \pm$ SE: 0.053 ± 0.017 ; CHR-P: $I^2=99.5\%$, $\tau^2 \pm$ SE: 0.026 ± 0.009 ; psychotic disorders: $I^2=99.5\%$, $\tau^2 \pm$ SE: 0.009 ± 0.003).

Psychotic experiences: In 28 independent samples, 21,957 participants (55.8% female; mean age: 25.7 years) were screened for psychotic symptoms, and 9,294 met established screening criteria for psychotic experiences. In the general psychiatric setting, the prevalence of psychotic experiences detected by screening across all samples was 44.3% [95% CI: 35.8-52.8%]. Among the nine samples recruited from child and adolescent clinical programs, the prevalence rate of psychotic symptoms was 44.8% [29.5-60.0%]. In sensitivity analyses excluding four samples with inpatients ($k=24$), the overall prevalence rate was 42.4% [33.3-51.5%]. Similarly, high quality studies with outpatients ($k=21$) yielded an overall prevalence rate of 41.7% [31.8-51.6%].

There was a significant effect of publication year on psychotic experiences, with higher rates for psychotic experiences reported in more recent papers ($\beta = 0.019$, $p = 0.05$). There were no significant effects of age ($\beta = 0.005$, $p = 0.31$) or sex ($\beta = 0.18$, $p = 0.67$) on prevalence rates of psychotic experiences. In comparing the two most common scales used to assess psychotic experiences, the PRIME ($k = 6$) and the Prodromal Questionnaire ($k = 14$), inclusive of all versions of each, there was no significant effect of scale on rates of psychotic experiences ($\beta = -0.06$, $p = 0.66$). There was no evidence of publication bias in samples reporting psychotic experiences (see Supplemental File 3, Egger's test for publication bias: $Z = 1.08$, $p = 0.28$).

Clinical high-risk for psychosis: In 28 independent samples, 14,395 participants were systematically assessed for CHR-P (42.2% female; mean age: 14.1 years) and 1,937 met criteria for CHR-P. The overall prevalence rate for CHR-P detected by clinical interview in the general psychiatric population was 26.4% [20.0-32.7%]. Among 11 samples recruited from child and adolescent programs, the overall prevalence rate of CHR-P was 28.1% [18.9-37.3%]. Among the nine samples that utilized secondary screening, the overall prevalence rate was lower, 11.5% [11.4-16.5%]. In sensitivity analyses excluding inpatient samples ($k=24$), the overall prevalence rate was 24.6% [17.7-31.5%]; consistent with this, high quality studies conducted in outpatient samples ($k=21$) had an overall prevalence rate of 23.7% [16.7-30.7%].

Higher rates of CHR-P were reported in more recently published papers; however, this effect was marginally significant ($\beta = 0.015$, $p = 0.06$). There were no significant effects for age ($\beta = 0.008$, $p = 0.38$) or sex ($\beta = -0.08$, $p = 0.78$) on CHR-P rates. In comparing the two most used interviews for CHR-P, the CAARMS ($k = 9$) and the SIPS ($n = 15$), there was no significant effect of interview type on CHR-P rates ($\beta = -0.098$, $p = 0.16$). In overall analysis, there was significant evidence of publication bias, such that smaller samples provided higher estimates of point prevalence (see Supplemental File 3, Egger's test for publication bias: $\beta = 0.082$ [0.01-0.15], $Z = 5.93$, $p < .0001$); however, trim and fill analysis did not change the results, as no left-sided studies were imputed.

Psychotic disorders: In 32 independent samples, 20,371 participants were assessed for psychotic disorders using structured clinical diagnostic interviews only, (55.6% female; mean age: 22.6 years) of whom 1,391 patients met criteria for a psychotic disorder. Psychotic disorders had a prevalence of 6.6% [3.3-9.8%] in the general psychiatric population. High quality studies with outpatients ($k=25$) had an overall prevalence rate of 7.1% [3.4-10.8%]. Among the 11 samples recruited from child and adolescent programs, the overall prevalence rate of psychotic disorders was 6.9% [4.4-13.4%]. For the nine samples which utilized sequential screening strategies, the overall prevalence rate was lower, 3.7% [0.0-7.4%].

There was a significant effect of publication year ($\beta = 0.007$, $p = 0.03$), with more recent papers finding higher prevalence of psychotic disorders. There were no significant effects of age ($\beta = 0.003$, $p = 0.28$) or sex ($\beta = 0.1$, $p = 0.41$) on psychotic disorder screening rates. In overall analysis, there was significant evidence of publication bias, such that smaller samples provided higher estimates of point prevalence (see Supplemental File 3, Egger's test for publication bias: $\beta = 0.08$ [-0.02-0.03], $Z = 6.95$, $p < .0001$).

DISCUSSION

This is the first study to systematically review and conduct a meta-analysis on the point prevalence of psychotic experiences, CHR-P, and psychotic disorders in general psychiatric settings. Self-reported psychotic experiences were surprisingly common, identified in approximately 42% of general psychiatric settings and 45% of child and adolescent settings

(90% outpatient samples). Prevalence estimates of CHR-P derived from psychiatric interviews was 26%, which was considerably higher than estimates based on a two-stage screening process (11%). Based on standardized clinical interviews for CHR-P syndromes and psychotic disorders, 26% and 6%, respectively, of treatment-seeking patients met criteria for these diagnoses, far exceeding the estimated general population rates of 3%⁴⁰ and 1%,¹⁰² respectively.

The high prevalence of psychotic experiences and CHR-P in treatment-seeking samples confirms that clinical settings are risk-enriched, underscoring the need for broad and regular screening for psychotic experiences and CHR-P in these settings as a strategy for preventing both the worsening of symptoms (psychotic symptoms, comorbid conditions and related distress) and functioning and the onset of additional psychiatric conditions^{103,104} including psychotic disorders.¹⁹ The prevalence of CHR-P cases observed was similar to a recent meta-analysis showing a 19.2% rate in psychiatric samples.⁴⁰ Although Salazar de Pablo and colleagues⁴⁰ did not differentiate between types of psychiatric treatment settings, we did not find significantly different rates between general inpatient, outpatient, and child and adolescent mental health settings across all outcomes. This non-significant difference between settings could be due to the small sample size for screening inpatient and youth mental health settings; rates in these settings were likely underestimated as more acute symptoms and functional impairment are associated with higher risk of CHR-P and onset of psychosis.¹⁰² We did not find a difference in prevalence based on structured interview used (SIPS versus CAARMS) similar to prior meta-analysis.⁴⁰ CHR-P rates may also be underestimated if individuals are being treated with antipsychotic medications, either for treatment of known psychotic symptoms or as adjunctive treatment for mood disorders or behavioral dysregulation. Across both psychotic experiences and CHR-P assessments, we also found a significant trend towards increased rates with more recent publications. This is in contrast with recent reports of declining rates of conversion to psychotic disorders in the CHR-P literature¹⁹ and may represent increasing awareness and referral to mental health services for individuals reporting psychotic experiences. In some countries, most notably Australia, public health campaigns have been conducted to increase awareness and reduce the stigma associated with psychosis.¹⁰⁵ Implementation of such campaigns along with routine psychosis screening may bring more attention to these symptoms and improve early detection.

Two-stage, sequential screening could be a promising strategy for improving identification of individuals with CHR-P and psychotic disorders in general psychiatric settings, increasing rates of accurate detection compared to usual clinician referral, as demonstrated by the EDIE-NL study.³³ About 20% of included studies in this review employed two-stage screening. With this screening strategy, 1 in 10 treatment-seeking individuals are likely to be detected for CHR-P and 1 in 25 are likely to be detected with psychotic disorders. Two-stage screening reduces likelihood of false positives, which can conserve resources by avoiding unnecessary service provision.^{106,107} Using sensitive pre-screening measures such as the Prodromal Questionnaire or PRIME Screen-Revised can also be more efficient and logistically feasible than conducting extensive CHR-P gold-standard structured clinical assessments. As an illustration, given that approximately 25 of 100 psychiatric outpatients are likely to meet CHR-P criteria and the Prodromal Questionnaire-Brief (PQ-B) has 80% sensitivity and 60% specificity⁸⁵ in identifying likely CHR-P (based on a screening cut off of ≥ 6), using the PQ-B as a pre-screening self-report measure will reduce the number of patients needed to be assessed by half to identify individuals with true CHR-P status (positive predictive value: 40%). Thus, a 22-item questionnaire can be completed by the patient to identify potential CHR-P, in comparison with using a 1–2-hour long SIPS interview by a trained rater. Thus, based on these data, for improved identification rates and less intensive deployment of resources for screening, we

recommend implementing a sequential screening process, in which a universal self-report psychotic symptom screening instrument is followed by secondary interview-based assessments in higher risk or more symptomatic populations.

A variety of public-domain, brief screening measures are good candidates for pre-screening clinically indicated psychotic symptoms (see Table 2); they have strong content and face validity, have similar psychometric properties,^{85,108} and are highly correlated with each other.¹⁰⁹ Most differences in these self-report assessments are in the inclusion or exclusion of items focused on negative symptoms and other symptom clusters, the number of items, and modifications to assess a pediatric population (e.g., Prodrional Questionnaire-Brief Child Version⁸⁷). As treatment-seeking individuals in general psychiatric settings are more likely to be experiencing more severe and impairing symptoms, it is recommended that more conservative and lower cut-off scores for identifying self-reported psychotic symptoms be used in these settings compared to cut-offs used during screening in the general or school populations.⁸⁵ Further, given that provider and patient time burden is a significant barrier to implementing systematic screening in these settings,¹¹⁰ using very brief and easy to administer and score measures may be important for adoption. For example, the 7-item Adolescent Psychotic-Like Symptom Screener¹¹¹ (APSS) and the 2-item psychosis screener⁹³ are comprised of items with the most predictive power of other validated questionnaires (e.g., PQ-B, YPARQ-B) and point to the importance of screening for experiences of perceptual abnormalities (e.g., "Do you see things that others can't or don't see?") and delusions or thought disorders (e.g., "Have you ever felt that someone was playing with your mind?").¹¹² More research is required to assess the feasibility and screening properties of these brief measures in general psychiatric settings specifically.

Similarly, assessing CHR-P with structured clinical interviews requires both substantial clinician time for training and establishing reliability, and a significant amount of time to complete (1-2 hours per patient interview).¹⁸ For a briefer CHR-P assessment, clinicians could consider using the Mini-SIPS, which takes approximately 15-20 minutes to administer and only requires a 30-minute online training to become familiar with the instrument.⁹⁷ While the widely-used SIPS and the Comprehensive Assessment of At-Risk Mental States (CAARMS) are highly sensitive for diagnosing CHR-P and have excellent predictive validity for the conversion to psychotic disorder,¹¹³ there is an ongoing effort to harmonize the attenuated positive symptom ratings, severity scores, and diagnostic criteria of these two instruments into the PSYCHS.^{96,114,115} Alternatively, web-based versions of clinical interview assessments, such as the Mini-SIPS, KSADS-COMP and NetSCID, take half the time of pen-and-paper clinician assessments,^{87,97} and can be easily integrated with the increase in telehealth use in mental health services.¹¹⁶ Besides more accessible administration formats, novel screening techniques, including digital phenotyping or machine learning algorithms based on electronic health record or speech and language data may improve screening techniques.¹¹⁷⁻¹¹⁹ While this field remains nascent and such automated screening methods are not yet regularly available or integrated into clinical practice, "digital phenotyping" shows significant promise for improving screening while reducing clinician burden.

Implications

With these meta-analytic base rates, along with the established screening properties of validated measures for detecting psychotic experiences and psychotic disorders, we can estimate the positive screen rates and resources required to assess and treat individuals with psychotic spectrum illnesses in general psychiatric settings. Distressing psychotic experiences were common, affecting two out of every five patients treated in a general psychiatric setting, without necessarily a psychotic disorder. Implementing psychosis screening should be

accompanied by clinician training on how to normalize transdiagnostic psychotic experiences, and communicate about psychosis-risk and psychotic disorders,¹²⁰ as well as feasible pathways for appropriate early intervention. Implementing routine screening with clinician training can overcome stigma and misinformation about psychotic disorders that persist even within psychiatric and mental health settings.¹²¹ Such training can also address knowledge gaps in terms of recognition of psychotic symptoms or disorders and both patient and provider discomfort with discussions about psychotic symptoms or psychosis-spectrum diagnoses.¹¹⁰ Systematic screening in general psychiatric settings may also help to address racial-ethnic and class disparities in diagnosis and treatment access for psychosis.^{122,123}

Ideally, positive screens can be referred to specialized treatment programs for CHR-P or early psychosis; however, few coordinated specialty care programs for early psychosis are available for the number of patients with psychotic disorders. In 2018, there were 244 coordinated specialty care programs available in the United States with a capacity to serve only 8,255 patients.¹²⁴ Thus, most patients with psychotic disorders will continue to be treated in general psychiatric settings. We anticipate that the lack of specialty care availability may reduce support for screening. However, this gap in care only further emphasizes the need to build capacity in scalable interventions and preventative approaches for CHR-P and early psychosis in general psychiatric and community care. While access to specialty treatment programs for CHR-P is limited, mental health providers in general psychiatric settings are still well-positioned to provide ongoing support and monitoring for this high-risk population.

Limitations

This study had several limitations that generally point to an underestimation of prevalence rates of psychotic experiences and likely psychotic disorders. First, the sample was composed primarily of outpatient settings, limiting our ability to generalize these findings to inpatient samples, which may have a higher prevalence of patients with psychosis. Given the small number of inpatient samples, we did not directly compare prevalence between the two settings. Second, we did not find a significant effect of age or gender in our moderator analyses, despite known differences in age-of-onset of diagnoses.¹⁰² The age range in the samples was relatively restricted (78% of sample were between 14-27-years-old). The samples screened were young (mean age: 24 years, close to the mean age of onset of psychotic disorders), which may have underestimated psychotic disorders prevalence, as psychotic disorders illness typically emerge in the twenties, with a minority of patients experiencing onset of their illness even later.¹⁰² Third, the patients included may have been treated with antipsychotic medications which may have reduced or eliminated psychotic symptoms or under-estimated the number of individuals meeting criteria for a psychotic disorder. Fourth, heterogeneity was high across outcomes likely due to the different measures used; however, random effects analyses were conducted to account for between-sample differences, and we did not find any significant differences between types of measures used. Lastly, there was evidence of significant publication bias in the CHR-P and psychotic disorders samples. The bias in these studies was towards smaller sample sizes estimating higher prevalence rates. This publication bias suggests that smaller samples which had a lower prevalence rate may have been less likely to be published. Use of the REML method down-weights the contribution of smaller sample sizes to overall point prevalence, assuming lower reliability among smaller samples.

Conclusions

Psychotic experiences, psychosis-risk syndromes, and psychotic disorders are common in general mental health settings and can be detected accurately and efficiently using less resource-intensive two-stage screening procedures and brief, validated screening tools. By elevating psychosis screening to the level of depression, anxiety, suicide risk, and substance

use screening that is routinely implemented in general psychiatric settings, secondary prevention of adverse outcomes among individuals with psychiatric illness can be greatly enhanced. Implementing systematic psychosis screening with adequate clinician training and increased availability of evidence-based interventions for CHR-P and early psychosis in non-specialty and community settings can promote early detection and reduce the duration of untreated psychosis. Complementing psychosis screening and early intervention in the frontlines of general mental health care can prevent comorbid illnesses from developing and improve functional status and overall quality of life of the large number of patients with currently under-recognized psychosis.

Figure Titles and Legends

Figure 1. CONSORT flow diagram of systematic literature review.

Figure 2. Meta-analyses of point prevalence of psychotic experiences, clinical high-risk for psychosis syndrome, and psychotic disorders in general psychiatric settings.

A. Overall prevalence rate of positive screen for psychotic symptoms in general psychiatric population. Twenty-eight samples were identified including 21,957 participants and 9,294 met established screening criteria for threshold psychotic symptoms. Overall prevalence of threshold psychotic experiences detected was 44.3% [95% CI: 35.8-52.8%]. **B. Overall prevalence rate of clinical high-risk for psychosis syndrome identified by structured clinical interview in general psychiatric settings.** Twenty-eight (28) samples were identified including 14,395 participants who were systematically assessed for CHR-P and 1,937 met criteria for CHR-P. The overall prevalence rate for CHR-P detected by screening in the general psychiatric population was 26.4% [20.0-32.7%]. **C. Overall prevalence rate of psychotic disorders identified by structured clinical interview in general psychiatric settings.** Thirty-two (32) samples were identified including 20,371 participants who were systematically assessed for psychotic disorders and 1,391 met criteria for a psychotic disorder by standardized clinical interview. The overall prevalence rate for psychotic disorder detected by screening in the general psychiatric population was 6.6% [3.3-9.8%] in the general psychiatric population.

*Indicates low quality data.

^Indicates inpatient or combined inpatient/outpatient sample.

References

1. GBD 2019 Mental Disorders Collaborators. Global, regional, and national burden of 12 mental disorders in 204 countries and territories, 1990-2019: a systematic analysis for the Global Burden of Disease Study 2019. *Lancet Psychiatry*. 2022;9(2):137-150. doi:10.1016/S2215-0366(21)00395-3
2. Compton MT, Carter T, Bergner E, et al. Defining, operationalizing and measuring the duration of untreated psychosis: advances, limitations and future directions. *Early Interv Psychiatry*. 2007;1(3):236-250. doi:10.1111/j.1751-7893.2007.00036.x
3. Cechnicki A, Cichocki Ł, Kalisz A, Błądziński P, Adamczyk P, Franczyk-Glita J. Duration of untreated psychosis (DUP) and the course of schizophrenia in a 20-year follow-up study. *Psychiatry Res*. 2014;219(3):420-425. doi:10.1016/j.psychres.2014.05.046
4. Marshall M, Lewis S, Lockwood A, Drake R, Jones P, Croudace T. Association between duration of untreated psychosis and outcome in cohorts of first-episode patients: a systematic review. *Arch Gen Psychiatry*. 2005;62(9):975-983. doi:10.1001/archpsyc.62.9.975
5. Kane JM, Robinson DG, Schooler NR, et al. Comprehensive Versus Usual Community Care For First Episode Psychosis: Two-Year Outcomes From The NIMH RAISE Early Treatment Program. *Am J Psychiatry*. 2016;173(4):362-372. doi:10.1176/appi.ajp.2015.15050632
6. Correll CU, Galling B, Pawar A, et al. Comparison of Early Intervention Services vs Treatment as Usual for Early-Phase Psychosis: A Systematic Review, Meta-analysis, and Meta-regression. *JAMA Psychiatry*. 2018;75(6):555-565. doi:10.1001/jamapsychiatry.2018.0623
7. Sonesson E, Russo D, Stochl J, et al. Psychological interventions for people with psychotic experiences: A systematic review and meta-analysis of controlled and uncontrolled effectiveness and economic studies. *Aust N Z J Psychiatry*. 2020;54(7):673-695. doi:10.1177/0004867420913118
8. Kelleher I, Keeley H, Corcoran P, et al. Clinicopathological significance of psychotic experiences in non-psychotic young people: evidence from four population-based studies. *Br J Psychiatry*. 2012;201(1):26-32. doi:10.1192/bjp.bp.111.101543
9. van Os J, Reininghaus U. Psychosis as a transdiagnostic and extended phenotype in the general population. *World Psychiatry*. 2016;15(2):118-124. doi:10.1002/wps.20310
10. Wigman JTW, van Nierop M, Vollebergh WAM, et al. Evidence That Psychotic Symptoms Are Prevalent in Disorders of Anxiety and Depression, Impacting on Illness Onset, Risk, and Severity--Implications for Diagnosis and Ultra-High Risk Research. *Schizophr Bull*. 2012;38(2):247-257. doi:10.1093/schbul/sbr196
11. Kelleher I, Corcoran P, Keeley H, et al. Psychotic symptoms and population risk for suicide attempt: a prospective cohort study. *JAMA Psychiatry*. 2013;70(9):940-948. doi:10.1001/jamapsychiatry.2013.140

12. Yates K, Lång U, Cederlöf M, et al. Association of Psychotic Experiences With Subsequent Risk of Suicidal Ideation, Suicide Attempts, and Suicide Deaths: A Systematic Review and Meta-analysis of Longitudinal Population Studies. *JAMA Psychiatry*. 2019;76(2):180-189. doi:10.1001/jamapsychiatry.2018.3514
13. Sullivan SA, Kounali D, Cannon M, et al. A Population-Based Cohort Study Examining the Incidence and Impact of Psychotic Experiences From Childhood to Adulthood, and Prediction of Psychotic Disorder. *Am J Psychiatry*. 2020;177(4):308-317. doi:10.1176/appi.ajp.2019.19060654
14. Kelleher I, Connor D, Clarke MC, Devlin N, Harley M, Cannon M. Prevalence of psychotic symptoms in childhood and adolescence: a systematic review and meta-analysis of population-based studies. *Psychol Med*. 2012;42(9):1857-1863. doi:10.1017/S0033291711002960
15. Fusar-Poli P, McGorry PD, Kane JM. Improving outcomes of first-episode psychosis: an overview. *World Psychiatry Off J World Psychiatr Assoc WPA*. 2017;16(3):251-265. doi:10.1002/wps.20446
16. Fusar-Poli P, Cappucciati M, Rutigliano G, et al. Towards a Standard Psychometric Diagnostic Interview for Subjects at Ultra High Risk of Psychosis: CAARMS versus SIPS. *Psychiatry J*. 2016;2016:1-11. doi:10.1155/2016/7146341
17. Yung AR, Yuen HP, McGorry PD, et al. Mapping the onset of psychosis: the Comprehensive Assessment of At-Risk Mental States. *Aust N Z J Psychiatry*. 2005;39:964-971.
18. Woods SW, Walsh B, Powers AR, McGlashan T. 5: Reliability, Validity, Epidemiology, and Cultural Variation of the Structured Interview for Psychosis-Risk Syndromes (SIPS) and the Scale of Psychosis-Risk Symptoms (SOPS). In: Li H, Shapiro DI, Seidman LJ, eds. *Handbook of Attenuated Psychosis Syndrome Across Cultures*. Springer; 2019.
19. Fusar-Poli P, Bonoldi I, Yung AR, et al. Predicting psychosis: meta-analysis of transition outcomes in individuals at high clinical risk. *Arch Gen Psychiatry*. 2012;69(3):220-229.
20. Addington J, Cornblatt BA, Cadenhead KS, et al. At clinical high risk for psychosis: outcome for nonconverters. *Am J Psychiatry*. 2011;168(8):800-805. doi:10.1176/appi.ajp.2011.10081191
21. McGorry PD, Mei C, Amminger GP, et al. A Sequential Adaptive Intervention Strategy Targeting Remission and Functional Recovery in Young People at Ultrahigh Risk of Psychosis: The Staged Treatment in Early Psychosis (STEP) Sequential Multiple Assignment Randomized Trial. *JAMA Psychiatry*. 2023;80(9):875-885. doi:10.1001/jamapsychiatry.2023.1947
22. Salazar de Pablo G, Estradé A, Cutroni M, Andlauer O, Fusar-Poli P. Establishing a clinical service to prevent psychosis: What, how and when? Systematic review. *Transl Psychiatry*. 2021;11:43. doi:10.1038/s41398-020-01165-x
23. Directors, Quality, Safety & Oversight Group and Survery & Operations Group. *Ligature Risk and Assessment in Hospitals*. Center for Clinical Standards and Quality, Centers for

- Medicare and Medicaid Services; 2023. Accessed March 12, 2024. <https://www.cms.gov/files/document/qso-23-19-hospitals.pdf>
24. National Action Alliance for Suicide Prevention. *Recommended Standard Care for People with Suicide Risk: Making Health Care Suicide Safe.*; 2018. Accessed March 12, 2024. https://theactionalliance.org/sites/default/files/action_alliance_recommended_standard_care_final.pdf
 25. Bradley KA, Lapham GT, Lee AK. Screening for Drug Use in Primary Care: Practical Implications of the New USPSTF Recommendation. *JAMA Intern Med.* 2020;180(8):1050-1051. doi:10.1001/jamainternmed.2019.7335
 26. Siu AL, US Preventive Services Task Force (USPSTF), Bibbins-Domingo K, et al. Screening for Depression in Adults: US Preventive Services Task Force Recommendation Statement. *JAMA.* 2016;315(4):380-387. doi:10.1001/jama.2015.18392
 27. US Preventive Services Task Force. Screening for Anxiety in Children and Adolescents: US Preventive Services Task Force Recommendation Statement. *JAMA.* 2022;328(14):1438-1444. doi:10.1001/jama.2022.16936
 28. Benson NM, Yang Z, Weiss M, et al. Identifying Diagnoses of Schizophrenia Spectrum Disorder in Large Data Sets. *Psychiatr Serv.* 2022;73(11):1210-1216. doi:10.1176/appi.ps.202100696
 29. Allan SM, Hodgekins J, Beazley P, Oduola S. Pathways to care in at-risk mental states: A systematic review. *Early Interv Psychiatry.* 2021;15(5):1092-1103. doi:10.1111/eip.13053
 30. Addington J, Heinssen RK, Robinson DG, et al. Duration of Untreated Psychosis in Community Treatment Settings in the United States. *Psychiatr Serv.* 2015;66(7):753-756. doi:10.1176/appi.ps.201400124
 31. Birchwood M, Connor C, Lester H, et al. Reducing duration of untreated psychosis: care pathways to early intervention in psychosis services. *Br J Psychiatry.* 2013;203(1):58-64. doi:10.1192/bjp.bp.112.125500
 32. Chen J, El-Den S, Pham L, O'Reilly CL, Collins JC. Healthcare professionals' knowledge, confidence and attitudes in relation to psychosis care: A systematic review. *Int J Soc Psychiatry.* 2023;69(8):1856-1868. doi:10.1177/00207640231194490
 33. Rietdijk J, Klaassen R, Ising H, et al. Detection of people at risk of developing a first psychosis: comparison of two recruitment strategies. *Acta Psychiatr Scand.* 2012;126(1):21-30. doi:10.1111/j.1600-0447.2012.01839.x
 34. Charlson FJ, Ferrari AJ, Santomauro DF, et al. Global Epidemiology and Burden of Schizophrenia: Findings From the Global Burden of Disease Study 2016. *Schizophr Bull.* 2018;44(6):1195-1203. doi:10.1093/schbul/sby058
 35. Salazar de Pablo G, Woods SW, Drymonitou G, de Diego H, Fusar-Poli P. Prevalence of Individuals at Clinical High-Risk of Psychosis in the General Population and Clinical Samples: Systematic Review and Meta-Analysis. *Brain Sci.* 2021;11(11):1544. doi:10.3390/brainsci11111544

36. Nuevo R, Chatterji S, Verdes E, Naidoo N, Arango C, Ayuso-Mateos JL. The continuum of psychotic symptoms in the general population: a cross-national study. *Schizophr Bull.* 2012;38(3):475-485. doi:10.1093/schbul/sbq099
37. Howie C, Potter C, Shannon C, Davidson G, Mulholland C. Screening for the at-risk mental state in educational settings: A systematic review. *Early Interv Psychiatry.* 2020;14(6):643-654. doi:10.1111/eip.12926
38. Meyer MS, Rosenthal A, Bolden KA, et al. Psychosis screening in schools: Considerations and implementation strategies. *Early Interv Psychiatry.* 2020;14(1):130-136. doi:10.1111/eip.12858
39. Olfson M, Lewis-Fernández R, Weissman MM, et al. Psychotic Symptoms in an Urban General Medicine Practice. *Am J Psychiatry.* 2002;159(8):1412-1419. doi:10.1176/appi.ajp.159.8.1412
40. Salazar de Pablo G, Woods SW, Drymonitou G, de Diego H, Fusar-Poli P. Prevalence of individuals at clinical high-risk of psychosis in the general population and clinical samples: systematic review and meta-analysis. *Brain Sci.* 2021;11(11):1544. doi:10.3390/brainsci11111544
41. Page MJ, Moher D, Bossuyt PM, et al. PRISMA 2020 explanation and elaboration: updated guidance and exemplars for reporting systematic reviews. *BMJ.* 2021;372:n160. doi:10.1136/bmj.n160
42. Covidence systematic review software. Published online June 28, 2022. Accessed March 25, 2024. www.covidence.org.
43. Edwards P, Clarke M, DiGuseppi C, Pratap S, Roberts I, Wentz R. Identification of randomized controlled trials in systematic reviews: accuracy and reliability of screening records. *Stat Med.* 2002;21(11):1635-1640. doi:10.1002/sim.1190
44. Munn Z, Moola S, Lisy K, Riitano D, Tufanaru C. Methodological guidance for systematic reviews of observational epidemiological studies reporting prevalence and cumulative incidence data. *Int J Evid Based Healthc.* 2015;13(3):147-153. doi:10.1097/XEB.0000000000000054
45. Veroniki AA, Jackson D, Viechtbauer W, et al. Methods to estimate the between-study variance and its uncertainty in meta-analysis. *Res Synth Methods.* 2016;7(1):55-79. doi:10.1002/jrsm.1164
46. Viechtbauer W. Conducting Meta-Analyses in R with the metafor Package. *J Stat Softw.* 2010;36(3). doi:10.18637/jss.v036.i03
47. Ben-David S, Amaro A, Munson M. Experiences of Psychosis Among Transition-Age Youth Attending an Outpatient Clinic in a Low-Resourced Community. *J Soc Soc WORK Res.* 2021;12(2):409-419. doi:10.1086/714312
48. Boonstra N, Wunderink L, Sytema S, Wiersma D. IMPROVING DETECTION OF FIRST EPISODE PSYCHOSIS BY MENTAL HEALTH CARE SERVICES USING A SELF REPORT

- EQUESTIONNAIRE. *Schizophr Res.* 2010;117(2-3):194-194.
doi:10.1016/j.schres.2010.02.254
49. Brandizzi M, Schultze-Lutter F, Masillo A, et al. Self-reported attenuated psychotic-like experiences in help-seeking adolescents and their association with age, functioning and psychopathology. *Schizophr Res.* 2014;160(1-3):110-117. doi:10.1016/j.schres.2014.10.005
 50. de Jong Y, Mulder CL, Boon AE, Deen M, van 't Hof M, van der Gaag M. Screening for psychosis risk among adolescents in Child and Adolescent Mental Health Services: a description of the first step with the 16-item version of the Prodromal Questionnaire (PQ-16). *Early Interv Psychiatry.* 2018;12(4):669-676. doi:10.1111/eip.12362
 51. De Jong Y, Boon AE, Gouw D, Van Der Gaag M, Mulder CL. Improving screening methods for psychosis in an adolescent help-seeking population using the Child Behavior Checklist (CBCL) and the Youth Self Report (YSR) versus the Prodromal Questionnaire -16 items version (PQ-16). *Child Adolesc Psychiatry Ment Health.* 2022;16(1):25. doi:10.1186/s13034-022-00459-w
 52. EPOS Group, Salokangas R, Heinimaa M, et al. Perceived negative attitude of others as an early sign of psychosis. *Eur PSYCHIATRY.* 2009;24(4):233-238.
doi:10.1016/j.eurpsy.2008.12.011
 53. Francesconi M, Minichino A, Carrión RE, et al. Psychosis prediction in secondary mental health services. A broad, comprehensive approach to the “at risk mental state” syndrome. *Eur Psychiatry.* 2017;40:96-104. doi:10.1016/j.eurpsy.2016.09.002
 54. Gaudiano BA, Zimmerman M. Prevalence of Attenuated Psychotic Symptoms and Their Relationship With DSM-IV Diagnoses in a General Psychiatric Outpatient Clinic. *J Clin Psychiatry.* 2013;73(2):15357. doi:10.4088/JCP.12m07788
 55. Gin K, Banerjea P, Abbott C, et al. Childhood unusual experiences in community Child and Adolescent Mental Health Services in South East London: Prevalence and impact. *Schizophr Res.* 2018;195:93-96. doi:10.1016/j.schres.2017.08.046
 56. Hazan H, Spelman T, Amminger G, et al. The prognostic significance of attenuated psychotic symptoms in help-seeking youth. *Schizophr Res.* 2020;215:277-283.
doi:10.1016/j.schres.2019.10.016
 57. Hodgekins J, Lower R, Wilson J, et al. Clinician-rated and self-reported psychotic-like experiences in individuals accessing a specialist Youth Mental Health Service. *Br J Clin Psychol.* 2018;57(3):367-381. doi:10.1111/bjc.12178
 58. Hu Q, Chen Z, Lin Z, et al. Gender differences in screening self-reported psychotic symptoms in a first help-seeking population. *Arch WOMENS Ment Health.* 2022;25(2):291-299. doi:10.1007/s00737-021-01170-z
 59. Ju M, Wang J, Xu L, et al. Frequency of Self-reported Psychotic Symptoms among 2542 Outpatients at Their First Visit for Mental Health Services. *Psychiatry.* 2021;84(1):57-67.
doi:10.1080/00332747.2020.1855936

60. Kline E, Wilson C, Ereshefsky S, et al. Psychosis risk screening in youth: a validation study of three self-report measures of attenuated psychosis symptoms. *Schizophr Res.* 2012;141(1):72-77. doi:10.1016/j.schres.2012.07.022
61. Knight C, Stochl J, Sonesson E, Russo D, Jones P, Perez J. Revisiting CAPE-P15 cut-off values to increase sensitivity for detecting psychotic experiences in primary care. *Schizophr Res.* 2020;216:507-510. doi:10.1016/j.schres.2019.11.051
62. Knight C, Russo D, Stochl J, Jones PB, Perez J. More sensitive identification of psychotic experiences in common mental disorder by primary mental healthcare services – effect on prevalence and recovery: casting the net wider. *BJPsych Open.* 2020;6(6):e136. doi:10.1192/bjo.2020.120
63. Kobayashi H, Nemoto T, Koshikawa H, et al. A self-reported instrument for prodromal symptoms of psychosis: Testing the clinical validity of the PRIME Screen-Revised (PS-R) in a Japanese population. *Schizophr Res.* 2008;106(2-3):356-362. doi:10.1016/j.schres.2008.08.018
64. Kotzalidis G, Solfanelli A, Piacentino D, et al. The Italian version of the 92-item Prodromal Questionnaire: Concurrent validity with the SIPS and factor analysis in a sample of 258 outpatients aged 11-36 years. *Schizophr Res.* 2017;189:50-56. doi:10.1016/j.schres.2017.02.008
65. Lindgren M, Manninen M, Laajasalo T, et al. The relationship between psychotic-like symptoms and neurocognitive performance in a general adolescent psychiatric sample. *Schizophr Res.* 2010;123(1):77-85. doi:10.1016/j.schres.2010.07.025
66. Lo Cascio N, Saba R, Hauser M, et al. Attenuated psychotic and basic symptom characteristics in adolescents with ultra-high risk criteria for psychosis, other non-psychotic psychiatric disorders and early-onset psychosis. *Eur CHILD Adolesc PSYCHIATRY.* 2016;25(10):1091-1102. doi:10.1007/s00787-016-0832-7
67. Loewy RL, Pearson R, Vinogradov S, Bearden CE, Cannon TD. Psychosis risk screening with the Prodromal Questionnaire — Brief Version (PQ-B). *Schizophr Res.* 2011;129(1):42-46. doi:10.1016/j.schres.2011.03.029
68. Masillo A, Brandizzi M, Nelson B, et al. Youth mental health services in Italy: An achievable dream? *Early Interv Psychiatry.* 2018;12(3):433-443. doi:10.1111/eip.12328
69. Mourad M, Atallah EP, Raad G, Haddad R, Richa S. Effectiveness of a two-stage strategy using the 16-item Prodromal Questionnaire (PQ16/fPQ16) and the Comprehensive Assessment of At Risk Mental States (CAARMS) in the early detection of Ultra High Risk (UHR) patients in Lebanon: a cross-sectional pilot st. *L'Encéphale.* Published online 2023. doi:10.1016/j.encep.2022.11.006
70. O'Donoghue B, Rudhran V, Kumar S, et al. Screening for the ultra-high risk state in a youth mental health service. *Schizophr Res.* 2018;202:401-403. doi:10.1016/j.schres.2018.06.045
71. Parabiaghi A, Confalonieri L, Magnani N, et al. Integrated Programs for Early Recognition of Severe Mental Disorders: Recommendations From an Italian Multicenter Project. *Front Psychiatry.* 2019;10:844. doi:10.3389/fpsyt.2019.00844

72. Raballo A, Pappagallo E, Dell' Erba A, et al. Self-Disorders and Clinical High Risk for Psychosis: An Empirical Study in Help-Seeking Youth Attending Community Mental Health Facilities. *Schizophr Bull.* 2016;42(4):926-932. doi:10.1093/schbul/sbv223
73. Raballo A, Monducci E, Ferrara M, Fiori Nastro P, Dario C. Developmental vulnerability to psychosis: Selective aggregation of basic self-disturbance in early onset schizophrenia. *Schizophr Res.* 2018;201:367-372. doi:10.1016/j.schres.2018.05.012
74. Rizvi SH, Salcedo S, Youngstrom EA, et al. Diagnostic Accuracy of the CASI-4R Psychosis Subscale for Children Evaluated in Pediatric Outpatient Clinics. *J Clin Child Adolesc Psychol.* 2019;48(4):610-621. doi:10.1080/15374416.2017.1410824
75. Salazar de Pablo G, Guinart D, Cornblatt BA, et al. DSM-5 Attenuated Psychosis Syndrome in Adolescents Hospitalized With Non-psychotic Psychiatric Disorders. *Front Psychiatry.* 2020;11:568982. doi:10.3389/fpsy.2020.568982
76. Salcedo S, Rizvi SH, Freeman LK, Youngstrom JK, Findling RL, Youngstrom EA. Diagnostic efficiency of the CBCL thought problems and DSM-oriented psychotic symptoms scales for pediatric psychotic symptoms. *Eur Child Adolesc Psychiatry.* 2018;27(11):1491-1498. doi:10.1007/s00787-018-1140-1
77. Sengutta M, Karow A, Gaweda L. Anomalous self-experiences (ASE) in relation to clinical high risk for psychosis (CHR-P), childhood trauma and general psychopathology among adolescent and young adult help seekers. *Schizophr Res.* 2021;237:182-189. doi:10.1016/j.schres.2021.09.009
78. Spillebout C, Pelluet A, Bioulac S, Fournieret P, Polosan M, Dondé C. Detection of clinical high risk for psychosis in child and adolescent mental health services: Validation of the first step with the French versions of the Prodromal Questionnaire (fPQ-16) and scale of Perceptual and Cognitive Aberrations (fPCA). *Early Interv Psychiatry.* Published online 2023. doi:10.1111/eip.13366
79. Thompson E, Visser K, Schiffman J, Spirito A, Hunt J, Wolff J. Preliminary evidence supporting the practice of psychosis-risk screening within an inpatient psychiatric setting serving adolescents. *PSYCHIATRY Res.* 2022;307. doi:10.1016/j.psychres.2021.114322
80. Tonyali A, Karacetin G, Kanik A, et al. Turkish Version of Structured Interview of Psychosis-Risk Syndromes (SIPS) and Proposal of a Brief Version of SIPS as a Pretest Risk Enrichment. *NOROPSIKIYATRI ARSIVI-Arch NEUROPSYCHIATRY.* 2022;59(2):139-146. doi:10.29399/npa.27793
81. Xu L, Wang Y, Cui H, et al. Identification and prediction of clinical high risk of psychosis in Chinese outpatients using two-stage screening. *Schizophr Res.* 2018;202:284-290. doi:10.1016/j.schres.2018.06.026
82. Yung A, Stanford C, Cosgrave E, et al. Testing the Ultra High Risk (prodromal) criteria for the prediction of psychosis in a clinical sample of young people. *Schizophr Res.* 2006;84(1):57-66. doi:10.1016/j.schres.2006.03.014

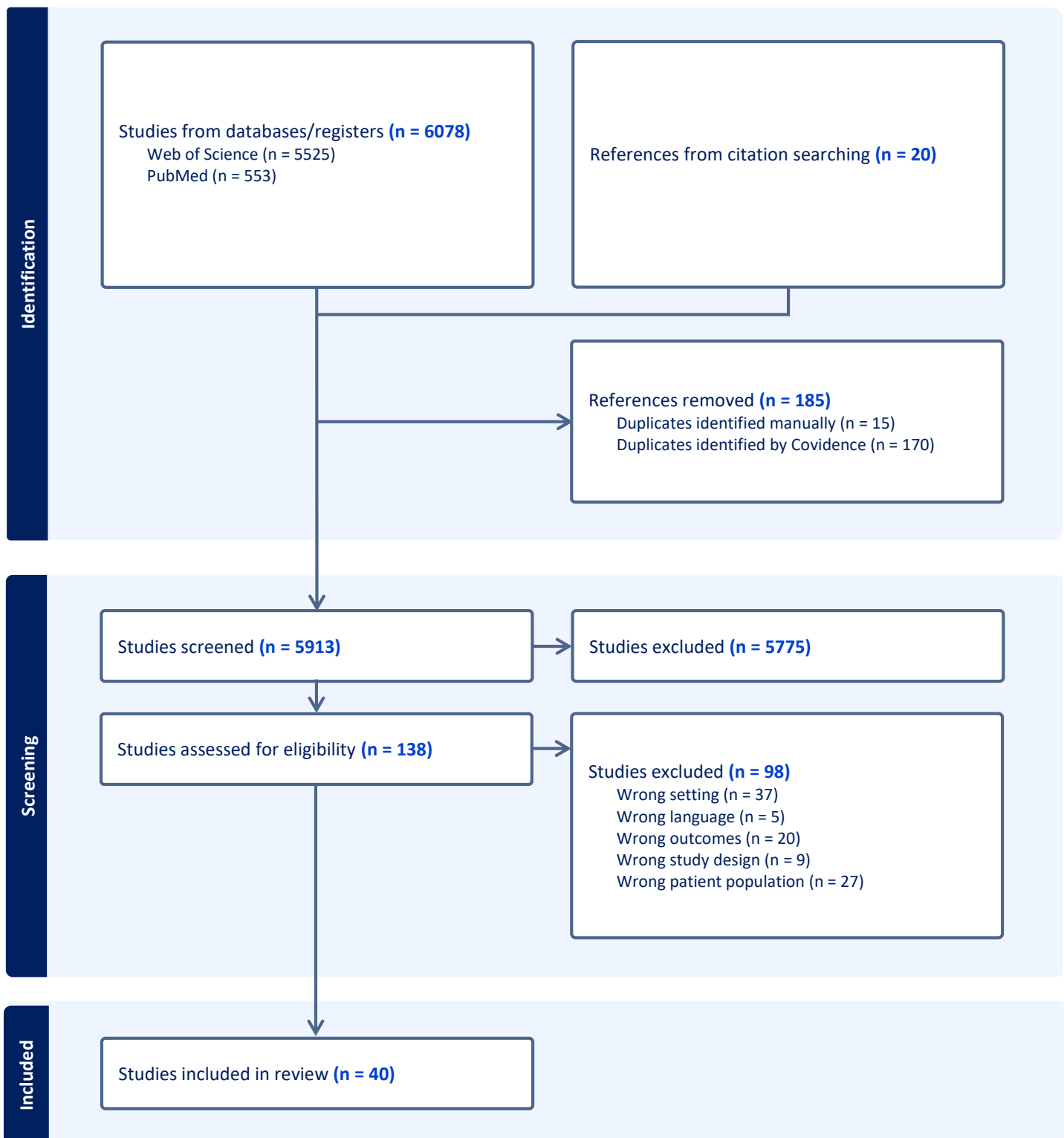
83. Zhang T, Li H, Woodberry KA, et al. Prodromal psychosis detection in a counseling center population in China: An epidemiological and clinical study. *Schizophr Res.* 2014;152(2):391-399. doi:10.1016/j.schres.2013.11.039
84. Loewy RL, Johnson JK, Cannon TD. Self-Report of Attenuated Psychotic Experiences in a College Population. *Schizophr Res.* 2007;93(1-3):144-151. doi:10.1016/j.schres.2007.02.010
85. Savill M, D'Ambrosio J, Cannon TD, Loewy RL. Psychosis risk screening in different populations using the Prodromal Questionnaire: A systematic review. *Early Interv Psychiatry.* 2018;12(1):3-14. doi:10.1111/eip.12446
86. Loewy RL, Pearson R, Vinogradov S, Bearden CE, Cannon TD. Psychosis Risk Screening with the Prodromal Questionnaire – Brief version (PQ-B). *Schizophr Res.* 2011;129(1):42-46. doi:10.1016/j.schres.2011.03.029
87. Karcher NR, Barch DM, Avenevoli S, et al. Assessment of the Prodromal Questionnaire-Brief Child Version for Measurement of Self-reported Psychoticlike Experiences in Childhood. *JAMA Psychiatry.* 2018;75(8):853-861. doi:10.1001/jamapsychiatry.2018.1334
88. Ising HK, Veling W, Loewy RL, et al. The Validity of the 16-Item Version of the Prodromal Questionnaire (PQ-16) to Screen for Ultra High Risk of Developing Psychosis in the General Help-Seeking Population. *Schizophr Bull.* 2012;38(6):1288-1296. doi:10.1093/schbul/sbs068
89. Kobayashi H, Nemoto T, Koshikawa H, et al. A self-reported instrument for prodromal symptoms of psychosis: Testing the clinical validity of the PRIME Screen-Revised (PS-R) in a Japanese population. *Schizophr Res.* 2008;106(2-3):356-362. doi:10.1016/j.schres.2008.08.018
90. Ord LM, Myles-Worsley M, Blailes F, Ngiralmu H. Screening for prodromal adolescents in an isolated high-risk population. *Schizophr Res.* 2004;71(2-3):507-508. doi:10.1016/j.schres.2004.03.014
91. Heinimaa M, Salokangas RKR, Ristkari T, et al. PROD-screen--a screen for prodromal symptoms of psychosis. *Int J Methods Psychiatr Res.* 2003;12(2):92-104. doi:10.1002/mpr.146
92. Kelleher I, Harley M, Murtagh A, Cannon M. Are Screening Instruments Valid for Psychotic-Like Experiences? A Validation Study of Screening Questions for Psychotic-Like Experiences Using In-Depth Clinical Interview. *Schizophr Bull.* 2011;37(2):362-369. doi:10.1093/schbul/sbp057
93. Phalen PL, Rouhakhtar PR, Millman ZB, et al. Validity of a Two-Item Screen for Early Psychosis. *Psychiatry Res.* 2018;270:861-868. doi:10.1016/j.psychres.2018.11.002
94. Miller TJ, McGlashan TH, Rosen JL, et al. Prodromal Assessment With the Structured Interview for Prodromal Syndromes and the Scale of Prodromal Symptoms: Predictive Validity, Interrater Reliability, and Training to Reliability. *Schizophr Bull.* 2003;29:703-715. doi:10.1093/oxfordjournals.schbul.a007040

95. Yung AR, Yung AR, Pan Yuen H, et al. Mapping the Onset of Psychosis: The Comprehensive Assessment of At-Risk Mental States. *Aust N Z J Psychiatry*. 2005;39(11-12):964-971. doi:10.1080/j.1440-1614.2005.01714.x
96. Woods SW, Parker S, Kerr MJ, et al. Development of the PSYCHS: Positive SYmptoms and Diagnostic Criteria for the CAARMS Harmonized with the SIPS. *medRxiv*. Published online May 2, 2023:2023.04.29.23289226. doi:10.1101/2023.04.29.23289226
97. Woods SW, Walsh B, Cannon T. Mini-SIPS 1.0, an abbreviated clinical version of the Structured Interview for Psychosis-risk Syndromes. Published online April 19, 2020.
98. Kaufman J, Birmaher B, Brent D, et al. Schedule for Affective Disorders and Schizophrenia for School-Age Children-Present and Lifetime Version (K-SADS-PL): initial reliability and validity data. *J Am Acad Child Adolesc Psychiatry*. 1997;36(7):980-988. doi:10.1097/00004583-199707000-00021
99. Townsend L, Kobak K, Kearney C, et al. Development of Three Web-Based Computerized Versions of the Kiddie Schedule for Affective Disorders and Schizophrenia Child Psychiatric Diagnostic Interview: Preliminary Validity Data. *J Am Acad Child Adolesc Psychiatry*. 2020;59(2):309-325. doi:10.1016/j.jaac.2019.05.009
100. APA - Structured Clinical Interview for DSM-5 Disorders-Clinician Version SCID-5-CV. Accessed March 25, 2024. <https://www.appi.org/Products/Interviewing/Structured-Clinical-Interview-for-DSM-5-Disorders>
101. NetSCID-5 - TeleSage. Accessed March 25, 2024. <https://telesage.com/netscid-5>
102. Thorup A, Waltoft BL, Pedersen CB, Mortensen PB, Nordentoft M. Young males have a higher risk of developing schizophrenia: a Danish register study. *Psychol Med*. 2007;37(04):479. doi:10.1017/S0033291707009944
103. Shah JL, Scott J, McGorry PD, et al. Transdiagnostic clinical staging in youth mental health: a first international consensus statement. *World Psychiatry*. 2020;19(2):233-242. doi:10.1002/wps.20745
104. Iorfino F, Scott EM, Carpenter JS, et al. Clinical Stage Transitions in Persons Aged 12 to 25 Years Presenting to Early Intervention Mental Health Services With Anxiety, Mood, and Psychotic Disorders. *JAMA Psychiatry*. 2019;76(11):1167. doi:10.1001/jamapsychiatry.2019.2360
105. Morgan AJ, Wright J, Reavley NJ. Review of Australian initiatives to reduce stigma towards people with complex mental illness: what exists and what works? *Int J Ment Health Syst*. 2021;15:10. doi:10.1186/s13033-020-00423-1
106. Lavigne JV, Feldman M, Meyers KM. Screening for Mental Health Problems: Addressing the Base Rate Fallacy for a Sustainable Screening Program in Integrated Primary Care. *J Pediatr Psychol*. 2016;41(10):1081-1090. doi:10.1093/jpepsy/jsw048
107. Longford NT. Classification in two-stage screening. *Stat Med*. 2015;34(25):3281-3297. doi:10.1002/sim.6554

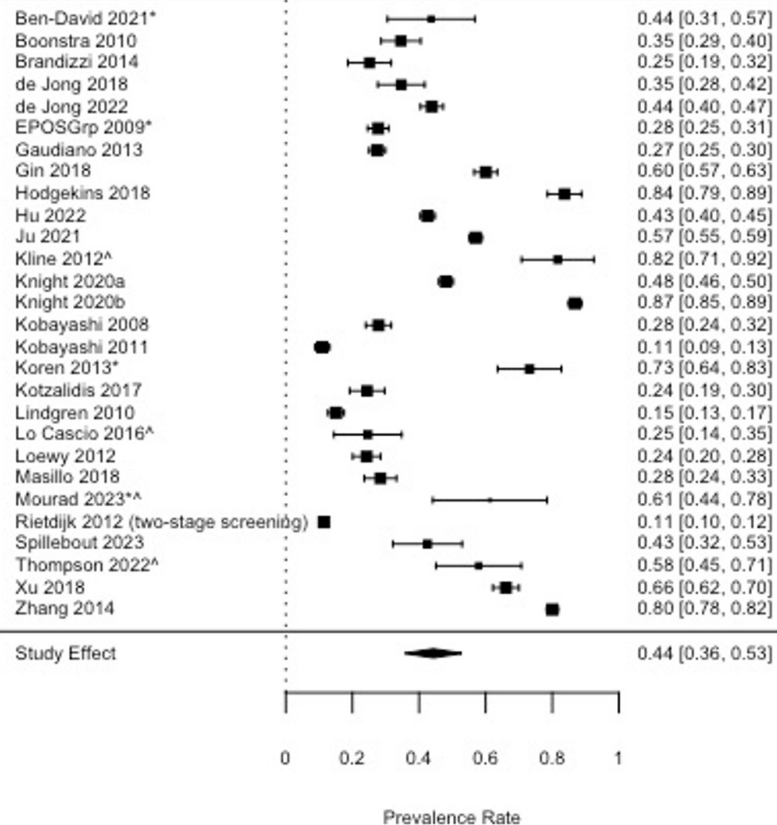
108. Kline E, Schiffman J. Psychosis risk screening: A systematic review. *Schizophr Res.* 2014;158(1):11-18. doi:10.1016/j.schres.2014.06.036
109. Kline E, Wilson C, Ereshefsky S, et al. Convergent and discriminant validity of attenuated psychosis screening tools. *Schizophr Res.* 2012;134(1):49-53. doi:10.1016/j.schres.2011.10.001
110. Thomas AC, Staiger PK. Introducing mental health and substance use screening into a community-based health service in Australia: usefulness and implications for service change. *Health Soc Care Community.* 2012;20(6):635-644. doi:10.1111/j.1365-2524.2012.01079.x
111. Kelleher I, Harley M, Murtagh A, Cannon M. Are screening instruments valid for psychotic-like experiences? A validation study of screening questions for psychotic-like experiences using in-depth clinical interview. *Schizophr Bull.* 2011;37(2):362-369. doi:10.1093/schbul/sbp057
112. Phalen PL, Rouhakhtar PR, Millman ZB, et al. Validity of a two-item screen for early psychosis. *Psychiatry Res.* 2018;270:861-868. doi:10.1016/j.psychres.2018.11.002
113. Oliver D, Arribas M, Radua J, et al. Prognostic accuracy and clinical utility of psychometric instruments for individuals at clinical high-risk of psychosis: a systematic review and meta-analysis. *Mol Psychiatry.* 2022;27(9):3670-3678. doi:10.1038/s41380-022-01611-w
114. Addington J, Woods SW, Yung AR, Calkins ME, Fusar-Poli P. Harmonizing the structured interview for psychosis-risk syndromes (SIPS) and the comprehensive assessment of at-risk mental states (CAARMS): An initial approach. *Early Interv Psychiatry.* Published online January 16, 2023. doi:10.1111/eip.13401
115. Brady LS, Larrauri CA, AMP SCZ Steering Committee. Accelerating Medicines Partnership® Schizophrenia (AMP® SCZ): developing tools to enable early intervention in the psychosis high risk state. *World Psychiatry Off J World Psychiatr Assoc WPA.* 2023;22(1):42-43. doi:10.1002/wps.21038
116. McBain RK, Schuler MS, Qureshi N, et al. Expansion of Telehealth Availability for Mental Health Care After State-Level Policy Changes From 2019 to 2022. *JAMA Netw Open.* 2023;6(6):e2318045. doi:10.1001/jamanetworkopen.2023.18045
117. Ferrara M, Franchini G, Funaro M, et al. Machine Learning and Non-Affective Psychosis: Identification, Differential Diagnosis, and Treatment. *Curr Psychiatry Rep.* Published online 2022.
118. Rezaii N, Walker E, Wolff P. A machine learning approach to predicting psychosis using semantic density and latent content analysis. *Npj Schizophr.* 2019;5(9).
119. Raket LL, Jaskolowski J, Kinon BJ, et al. Dynamic Electronic Health Record Detection (DETECT) of individuals at risk of a first episode of psychosis: a case-control development and validation study. *Lancet Digit Health.* 2020;2(5):e229-e239. doi:10.1016/S2589-7500(20)30024-8

120. Schiffman J, Horton LE, Landa Y, Woods SW. Considerations for providing feedback to patients and families regarding clinical high-risk for psychosis status. *Schizophr Res.* 2022;244:55-57. doi:10.1016/j.schres.2022.01.059
121. Valery KM, Prouteau A. Schizophrenia stigma in mental health professionals and associated factors: A systematic review. *Psychiatry Res.* 2020;290:113068. doi:10.1016/j.psychres.2020.113068
122. Schwartz RC, Blankenship DM. Racial disparities in psychotic disorder diagnosis: A review of empirical literature. *World J Psychiatry.* 2014;4(4):133-140. doi:10.5498/wjp.v4.i4.133
123. Olbert CM, Nagendra A, Buck B. Meta-analysis of Black vs. White racial disparity in schizophrenia diagnosis in the United States: Do structured assessments attenuate racial disparities? *J Abnorm Psychol.* 2018;127(1):104-115. doi:10.1037/abn0000309
124. George P, Ghose SS, Goldman HH, et al. Growth of Coordinated Specialty Care in the United States With Changes in Federal Funding Policies: 2014–2018. *Psychiatr Serv.* 2022;73(12):1346-1351. doi:10.1176/appi.ps.202100600

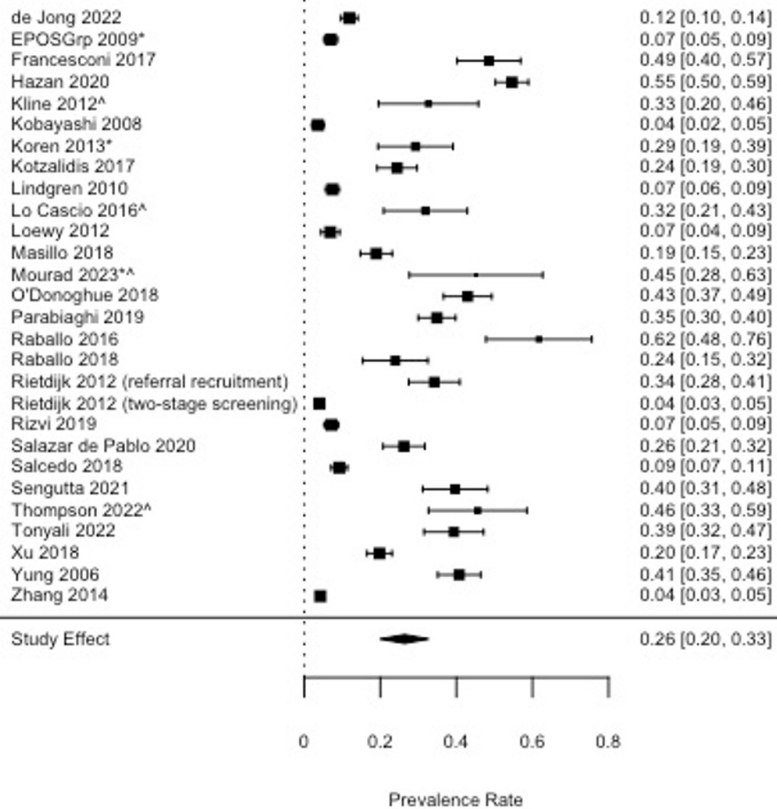
Figure 1. CONSORT Flow Diagram of Systematic Literature Review



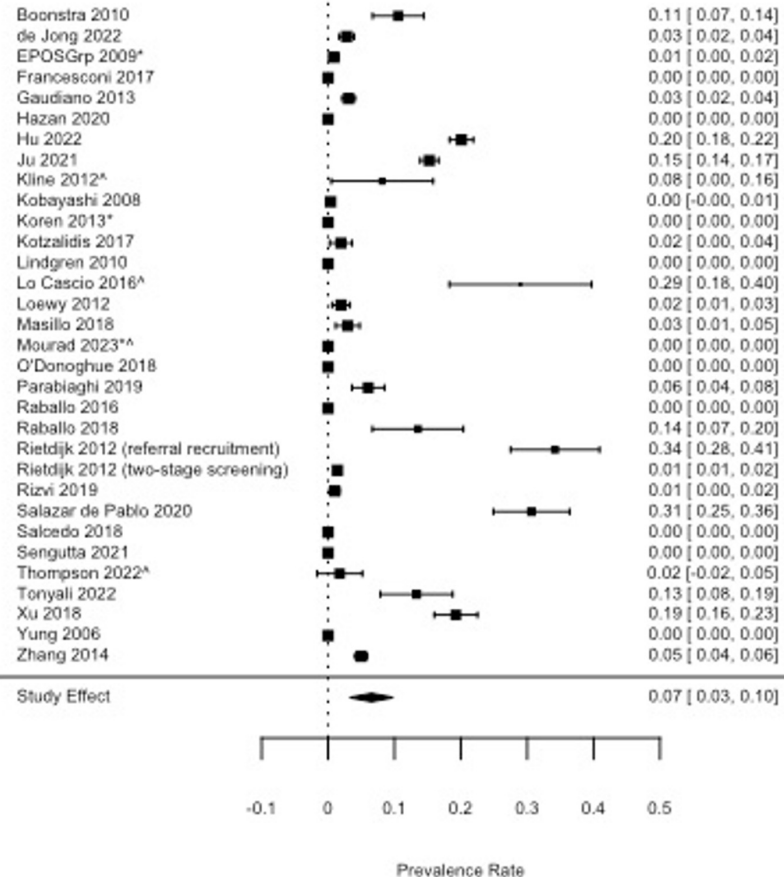
A. Psychotic Experiences (k = 28)



B. Clinical High-Risk for Psychosis (k = 28)



C. Psychotic Disorders (k = 33)



Supplemental File 1

Search Terms

Web of Science

Searched on June 29, 2023, 19:53:14 GMT

Results: N=5525

((TS=(psychosis)) OR (TS=(psychotic)) OR (TS=(clinical high-risk)) OR (TS=(schizophrenia))) AND ((TS=(screen*)) OR (TS=(detect*)) OR (TS=(identif*))) AND ((TS=(help-seeking population)) OR (TS=(general mental health)) OR (TS=(outpatient mental health)) OR (TS=(mental health clinic)) OR (TS=(community mental health)) OR (TS=(clinical population)) OR (TS=(referral triage)) OR (TS=(mental health services)) OR (TS=(psychiatric)) OR (TS=(counseling)) OR (TS=(counseling center))) NOT (TS=(school)) NOT (DT=(Conference Proceedings)) and 1.21 Psychiatry or 6.24 Psychiatry & Psychology or 1.100 Substance Abuse or 1.136 Autism & Development Disorders or 1.14 Nursing or 1.156 Healthcare Policy (Citation Topics Meso) and 1.21.24 Schizophrenia or 1.21.1363 Mental Health or 1.21.1828 Neuropsychiatric Disorders or 1.14.1293 Emergency Department or 1.14.724 Shared Decision Making or 1.14.763 Evidence-based Practice or 1.14.265 Nursing or 1.14.2063 Nurse Practitioner or 6.24.2075 Community Pediatrics or 1.14.363 Nursing Education or 1.156.1509 Unified Health System or 6.24.1266 Social Work Practice or 1.14.1957 Referrals or 1.14.2441 Public And National Health Services or 1.156.2181 Public Health Workforce (Citation Topics Micro)

PubMed

Searched on June 27, 2023, 17:53:27 GMT

Results: N=553

((("psychotic disorders"[MeSH Major Topic] OR "schizophrenia"[MeSH Major Topic] OR "psychosis"[Title/Abstract] OR "schizophrenia"[Title/Abstract]) AND ("screen*" [MeSH Major Topic] OR "early identification"[All Fields] OR "detect*" [Title/Abstract] OR "screen*" [Title/Abstract]) AND ("outpatient mental health"[All Fields] OR "mental health clinic"[All Fields] OR "community mental health"[All Fields] OR "mental health services"[All Fields] OR "help-seeking"[All Fields] OR "clinical population"[All Fields] OR "counseling"[All Fields])) NOT "school*" [All Fields] NOT "primary care"[All Fields]

Supplemental File 2
Screening measures for psychotic symptoms and likely psychotic disorders

Psychotic Symptoms								
Measure	Format and access ^a	Number of items (estimated assessment time in minutes)	Age range in validation study (years)	Psychotic symptom domains assessed	Suggested threshold for clinically indicated psychotic symptoms in general psychiatric settings	Sensitivity predicting CHR-P status using suggested threshold ^b	Specificity predicting CHR-P status using suggested threshold ^b	Available languages
Adolescent Psychosis Symptom Screener (APSS) ¹	Self-report	7 (5)	11-13	Positive	≥1 symptom, with endorsing auditory hallucinations having the highest predictive power	20-70%	87-100%	NA
Colorado Symptom Index (CSI) ²	Self-report	14 (5)	21-66	Positive; cognitive symptoms; general psychiatric symptoms	≥ 30	76%	68%	NA
Community Assessment of Psychic Experiences (CAPE-42) ³	Self-report	42 (15)	18-40	Positive; negative; mood symptoms	≥50 on the frequency or distress dimension of the positive subscale	77%	71%	French, German, Spanish, Swedish, Korean, Arabic
Community Assessment of Psychic Experiences-Positive Scale (CAPE-P15) ^{4,5}	Self-report	15 (5)	13-25	Positive	≥1.47	77%	58%	Spanish, Portuguese, Korean, Chinese, French
Examination of Anomalous Self-Experience Questionnaire (EASE) ⁶	Self-report	57 (15)	<30	Self-disturbance experiences (e.g. depersonalization and derealization)	NA	NA	NA	French
Inventory of Psychotic-Like Anomalous Self-Experiences (IPASE) ⁷	Self-report	57 (15)	18+	Self-disturbance experiences (e.g. depersonalization and derealization)	NA	NA	NA	Portuguese

Positive and Negative Syndrome Scale (PANSS-30) ^{8,9}	Interview	30 (30-40)	20-68	Positive; Negative; Loss of insight	Mildly ill: ≥58 Moderately ill: ≥75 Markedly ill: ≥95 Severely ill: ≥116	NA	NA	Swedish, Japanese, French Thai, Chinese Mandarin, Arabic, Korean Russian
Positive and Negative Syndrome Scale – 6 item (PANSS-6) ¹⁰	Interview	6 (15)	18+	Positive; Negative	NA	NA	NA	Swedish, Japanese, French Thai, Chinese Mandarin, Arabic, Korean Russian
Prevention through Risk Identification, Management, and Education (PRIME) Screen-Revised (PS-R) ¹¹	Self-report	12 (5)	16-30	Positive; Loss of insight	≥1 item scored at 6 or ≥2 items scored at 5 or ≥39 total score	100%	74%	(PRIME) Brazilian-Portuguese (PS-R) Japanese
Prodromal Questionnaire (PQ) ^{12,13}	Self-report	92 (20)	12-35	Positive; Negative; Disorganized; General psychiatric; Distress from symptoms	≥18 positive symptoms	80-91%	40-90%	Portuguese, Indonesian
Prodromal Questionnaire-Brief (PQ-B) ^{13,14}	Self-report	21 (10)	12-17	Positive; Distress or impairment from symptoms	≥6-7 total symptoms or ≥24 total distress score	82-84%	60-64%	Portuguese, Indonesian, Chinese
Prodromal Questionnaire-Brief Child Version (PQ-BC) ¹⁵	Self-report	21 (10)	9-10	Positive; Distress from symptoms using a visual scale	NA	NA	NA	Dutch
Prodromal Questionnaire-16 (PQ-16) ^{13,16}	Self-report	16 (5)	18-35	Positive; Negative	≥6 total symptoms or ≥8 total distress score	78-90%	54-91%	Brazilian-Portuguese, Korean, Dutch

PROD-Screen ¹⁷	Self-report or interview screen	21 (10)	14+	Positive; Negative; Disorganized; and General psychiatric symptoms	≥2 total symptoms	80%	75%	Hindi
Schizophrenia Proneness Instrument, Child and Youth version(SPI-CY) ¹⁸	Semi-structured interview	4 subscales, each including 8-19 items	8-18	Subclinical disturbances in basic symptoms domains: adynamia (e.g., motivation, affect); perceptual disturbances; neuroticism; thought and motor	Adynamia: ≥18; Perception Disturbances: ≥2; Neuroticism: ≥5; Thought and Motor Disturbances: ≥6	Adynamia: 73.9%; Perception Disturbances: 69.6%; Neuroticism: 73.9%; Thought and Motor Disturbances: 82.9%	Adynamia: 86.4%; Perception Disturbances: 77.3%; Neuroticism: 86.4%; Thought and Motor Disturbances: 72.7%	Italian, English
Unusual Experiences Questionnaire (UEQ) ^{19,20}	Self-report	9 (5)	9-18	Subjective unusual experiences; degree of conviction; distress; and adverse impact	≥1 unusual experience endorsed with rating of ≥1 on distress/adverse life impact scale	NA	NA	NA
Youth Psychosis at Risk Questionnaire (YPARQ) ²¹	Self-report	92 (20)	14-19	Positive; Negative; Affective symptoms	NA	NA	NA	NA
Youth Psychosis at Risk Questionnaire-Brief (YPARQ-B) ²²	Self-report	28 (10)	14-18	Positive	≥11-13 total symptoms	65-100%	76-80%	NA
2-item psychosis screener ²³	Self-report	2 (1)	12-25	Positive	≥1-2 symptoms	32-59%	68-95%	NA

Clinical High Risk for Psychosis

Measure	Format and access	Estimated assessment time (mins)	Age range in validation study (years)	Measures and symptom domains assessed	CHR-P syndromes and diagnoses assessed	Sensitivity of CHR-P criteria predicting onset of psychotic episode °	Specificity of CHR-P criteria of psychotic episode °	Available languages
Comprehensive Assessment of At-Risk Mental States (CAARMS) ²⁴	Semi-structured Interview by mental health professionals	60-120	15-29	Disorders of thought content; perceptual abnormalities; conceptual disorganization; motor changes; concentration and attention; emotion	Attenuated Positive Symptom Intensity and Frequency (APS); Brief Limited Intermittent Psychosis Syndrome (BLIPS); Vulnerability group	83%	74%	Greek, Japanese, Italian, French, Swedish, Korean, Arabic,

				and affect; subjectively impaired energy and impaired tolerance to normal stress; social and occupational functioning assessment scale				
Mini-SIPS ²⁵	Free 30- minute online training; publicly available	15-20	12-45	Positive psychotic symptoms	DSM-5 Attenuated Psychosis Syndrome (APS) clinical diagnosis; SIPS attenuated positive symptom syndrome (APSS) progression	NA	NA	NA
Positive Symptoms and Diagnostic Criteria for the CAARMS Harmonized with the SIPS (PSYCHS) ²⁶	Semi- structured interview by trained assessors	60-120	12-30	Attenuated delusions; attenuated hallucinations; attenuated thought disorder	Harmonized criteria for CAARMS/SIPS psychosis diagnosis and CHR-P syndrome criteria	NA	NA	NA
Structured Interview for Psychosis-Risk Syndromes (SIPS) ²⁷	Semi- structured interview by certified assessors; 1- 2 day-long training	60-120	12-45	Family history of mental illness; Positive, Negative, and Disorganized prodromal psychotic symptoms and general psychiatric symptoms; Global Assessment of Functioning scale; Schizotypal personality disorder criteria checklist	Presence of psychotic syndrome; brief intermittent psychotic symptom syndrome (BIPS); attenuated positive symptom syndrome (APSS); genetic risk and functional deterioration syndrome (GRD)	100%	71%	Turkish, Polish, Brazilian- Portuguese,

Psychotic Disorders

Measure	Format and access	Estimated assessment time (mins)	Age range in validation study (years)	Measures and domains assessed	Diagnoses assessed	Available languages
Computerized versions of the Kiddie Schedule for Affective Disorders	Web-based child and parent self-administered, and clinician-administered	50-60	6-18	Developmental history; current and past psychiatric symptoms; Children's	DSM-5 Axis I child and adolescent psychiatric disorders including schizophrenia and schizoaffective disorder; Scores of 2 indicate sub- threshold presentation and scores of 3	Korean, Spanish, Dutch, Danish,

and Schizophrenia (KSADS-COMP) ²⁸				Global Assessment Scale	indicate threshold presentation of symptoms	
NetSCID ²⁹	Web-based version of the SCID-5; \$25 per clinician assessment	30-45	18+	Current psychiatric symptoms; Functioning	DSM-5 diagnoses	Spanish
Schedule for Affective Disorders and Schizophrenia for School-Age Children present and lifetime version (KSADS-PL DSM-5) ³⁰	Semi-structured parent and child interview by mental health professional or clinically trained assessor; publicly available and free to use	90-120	6-18	Developmental history; current and past psychiatric symptoms; Children's Global Assessment Scale	DSM-5 Axis I child and adolescent psychiatric disorders including schizophrenia and schizoaffective disorder; Scores of 2 indicate sub-threshold presentation and scores of 3 indicate threshold presentation of symptoms	Icelandic, Urdu, Korean, Hebrew, Persian
Structured Clinical Interview for DSM-5 Clinician Version (SCID-5-CV) ³¹	Semi-structured Interview by mental health professional or clinically trained assessor; publicly available and free to use	45-120	18+	Current psychiatric symptoms; Functioning	DSM-5 diagnoses	Chinese-Simplified, Dutch, German, Greek, Hungarian, Italian, Korean, Norwegian, Portuguese, Romanian, Turkish

^a All screening measures for psychotic symptoms reported here are available in the public domain and free to use.

^b Range of sensitivity and specificity of measure based in studies that screened treatment-seeking samples in general psychiatric settings using screening thresholds for clinically indicated psychotic symptoms. Measure's positive screen criteria were validated against gold-standard, clinical interview assessments of CHR-P (e.g., SIPS, CAARMS). Screening properties of measure based on studies, where measure was validated against gold-standard, clinical interview assessment of CHR-P.

^c We reported predictive validity of the CHR-P assessment at 6 months from the original validation study. Specificity of CHR-P criteria predicting onset of psychotic episode increases with time.

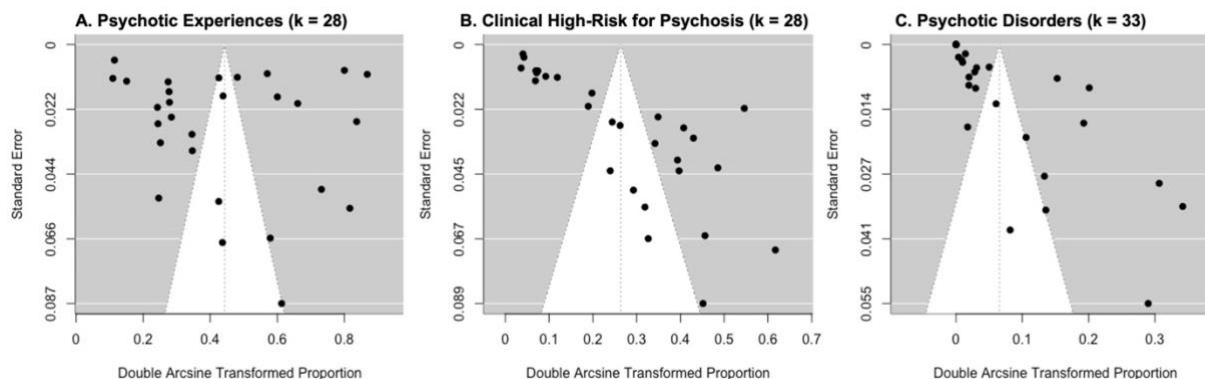
References for Supplemental File 2

1. Kelleher I, Harley M, Murtagh A, Cannon M. Are Screening Instruments Valid for Psychotic-Like Experiences? A Validation Study of Screening Questions for Psychotic-Like Experiences Using In-Depth Clinical Interview. *Schizophr Bull.* 2011;37(2):362-369. doi:10.1093/schbul/sbp057
2. Boothroyd RA, Chen HJ. The psychometric properties of the Colorado Symptom Index. *Adm Policy Ment Health.* 2008;35(5):370-378. doi:10.1007/s10488-008-0179-6
3. Stefanis NC, Hanssen M, Smirnis NK, et al. Evidence that three dimensions of psychosis have a distribution in the general population. *Psychol Med.* 2002;32(2):347-358. doi:10.1017/S0033291701005141
4. Capra C, Kavanagh DJ, Hides L, Scott J. Brief screening for psychosis-like experiences. *Schizophr Res.* 2013;149(1):104-107. doi:10.1016/j.schres.2013.05.020
5. Bukenaite A, Stochl J, Mossaheb N, et al. Usefulness of the CAPE-P15 for detecting people at ultra-high risk for psychosis: Psychometric properties and cut-off values. *Schizophr Res.* 2017;189. doi:10.1016/j.schres.2017.02.017
6. Parnas J, Møller P, Kircher T, et al. EASE: Examination of Anomalous Self-Experience. *Psychopathology.* 2005;38(5):236-258. doi:10.1159/000088441
7. Cicero DC, Neis AM, Klaunig MJ, Trask CL. The Inventory of Psychotic-Like Anomalous Self-Experiences (IPASE): Development and validation. *Psychol Assess.* 2017;29(1):13-25. doi:10.1037/pas0000304
8. Kay SR, Fiszbein A, Opler LA. The Positive and Negative Syndrome Scale (PANSS) for Schizophrenia. *Schizophr Bull.* 1987;13(2):261-276. doi:10.1093/schbul/13.2.261
9. Leucht S, Kane JM, Kissling W, Hamann J, Etschel E, Engel RR. What does the PANSS mean? *Schizophr Res.* 2005;79(2-3):231-238. doi:10.1016/j.schres.2005.04.008
10. Østergaard SD, Lemming OM, Mors O, Correll CU, Bech P. PANSS-6: a brief rating scale for the measurement of severity in schizophrenia. *Acta Psychiatr Scand.* 2016;133(6):436-444. doi:10.1111/acps.12526
11. Kobayashi H, Nemoto T, Koshikawa H, et al. A self-reported instrument for prodromal symptoms of psychosis: Testing the clinical validity of the PRIME Screen-Revised (PS-R) in a Japanese population. *Schizophr Res.* 2008;106(2-3):356-362. doi:10.1016/j.schres.2008.08.018
12. Loewy RL, Bearden CE, Johnson JK, Raine A, Cannon TD. The prodromal questionnaire (PQ): preliminary validation of a self-report screening measure for prodromal and psychotic syndromes. *Schizophr Res.* 2005;79(1):117-125.
13. Savill M, D'Ambrosio J, Cannon TD, Loewy RL. Psychosis risk screening in different populations using the Prodromal Questionnaire: A systematic review. *Early Interv Psychiatry.* 2018;12(1):3-14. doi:10.1111/eip.12446

14. Loewy RL, Pearson R, Vinogradov S, Bearden CE, Cannon TD. Psychosis Risk Screening with the Prodromal Questionnaire – Brief version (PQ-B). *Schizophr Res.* 2011;129(1):42-46. doi:10.1016/j.schres.2011.03.029
15. Karcher NR, Barch DM, Avenevoli S, et al. Assessment of the Prodromal Questionnaire-Brief Child Version for Measurement of Self-reported Psychoticlike Experiences in Childhood. *JAMA Psychiatry.* 2018;75(8):853-861. doi:10.1001/jamapsychiatry.2018.1334
16. Ising HK, Veling W, Loewy RL, et al. The Validity of the 16-Item Version of the Prodromal Questionnaire (PQ-16) to Screen for Ultra High Risk of Developing Psychosis in the General Help-Seeking Population. *Schizophr Bull.* 2012;38(6):1288-1296. doi:10.1093/schbul/sbs068
17. Heinimaa M, Salokangas RKR, Ristkari T, et al. PROD-screen--a screen for prodromal symptoms of psychosis. *Int J Methods Psychiatr Res.* 2003;12(2):92-104. doi:10.1002/mpr.146
18. Fux L, Walger P, Schimmelmann B, Schultze-Lutter F. The Schizophrenia Proneness Instrument, Child and Youth version (SPI-CY): Practicability and discriminative validity. *Schizophr Res.* 2013;146(1-3):69-78. doi:10.1016/j.schres.2013.02.014
19. Kelleher I, Devlin N, Wigman JTW, et al. Psychotic experiences in a mental health clinic sample: implications for suicidality, multimorbidity and functioning. *Psychol Med.* 2014;44(8):1615-1624. doi:10.1017/S0033291713002122
20. Laurens KR, Hodgins S, Maughan B, Murray RM, Rutter ML, Taylor EA. Community screening for psychotic-like experiences and other putative antecedents of schizophrenia in children aged 9-12 years. *Schizophr Res.* 2007;90(1-3):130-146. doi:10.1016/j.schres.2006.11.006
21. Myles-Worsley M, Blailes F, Ord LM, Weaver S, Dever G, Faraone SV. The Palau Early Psychosis Study: distribution of cases by level of genetic risk. *Am J Med Genet Part B Neuropsychiatr Genet Off Publ Int Soc Psychiatr Genet.* 2007;144B(1):5-9. doi:10.1002/ajmg.b.30362
22. Ord LM, Myles-Worsley M, Blailes F, Ngiralmu H. Screening for prodromal adolescents in an isolated high-risk population. *Schizophr Res.* 2004;71(2-3):507-508. doi:10.1016/j.schres.2004.03.014
23. Phalen PL, Rouhakhtar PR, Millman ZB, et al. Validity of a Two-Item Screen for Early Psychosis. *Psychiatry Res.* 2018;270:861-868. doi:10.1016/j.psychres.2018.11.002
24. Yung AR, Yung AR, Pan Yuen H, et al. Mapping the Onset of Psychosis: The Comprehensive Assessment of At-Risk Mental States. *Aust N Z J Psychiatry.* 2005;39(11-12):964-971. doi:10.1080/j.1440-1614.2005.01714.x
25. The Mini-SIPS: development of a brief clinical structured interview guide to diagnosing DSM-5 Attenuated Psychosis Syndrome and training outcomes | BMC Psychiatry | Full Text. Accessed March 25, 2024. <https://bmcp psychiatry.biomedcentral.com/articles/10.1186/s12888-022-04406-z#Fig1>

26. Woods SW, Parker S, Kerr MJ, et al. Development of the PSYCHS: Positive SYmptoms and Diagnostic Criteria for the CAARMS Harmonized with the SIPS. *medRxiv*. Published online May 2, 2023:2023.04.29.23289226. doi:10.1101/2023.04.29.23289226
27. Miller TJ, McGlashan TH, Rosen JL, et al. Prodromal Assessment With the Structured Interview for Prodromal Syndromes and the Scale of Prodromal Symptoms: Predictive Validity, Interrater Reliability, and Training to Reliability. *Schizophr Bull*. 2003;29:703-715. doi:10.1093/oxfordjournals.schbul.a007040
28. Townsend L, Kobak K, Kearney C, et al. Development of Three Web-Based Computerized Versions of the Kiddie Schedule for Affective Disorders and Schizophrenia Child Psychiatric Diagnostic Interview: Preliminary Validity Data. *J Am Acad Child Adolesc Psychiatry*. 2020;59(2):309-325. doi:10.1016/j.jaac.2019.05.009
29. NetSCID-5 - TeleSage. Accessed March 25, 2024. <https://telesage.com/netscid-5>
30. Kaufman J, Birmaher B, Brent D, et al. Schedule for Affective Disorders and Schizophrenia for School-Age Children-Present and Lifetime Version (K-SADS-PL): initial reliability and validity data. *J Am Acad Child Adolesc Psychiatry*. 1997;36(7):980-988. doi:10.1097/00004583-199707000-00021
31. APA - Structured Clinical Interview for DSM-5 Disorders-Clinician Version SCID-5-CV. Accessed March 25, 2024. <https://www.appi.org/Products/Interviewing/Structured-Clinical-Interview-for-DSM-5-Disorders>

Supplemental Figure 3. Funnel plots



Funnel plot of A) psychotic experiences; B) clinical high-risk for psychosis; and C) psychotic disorders. Each plot shows the effect size on the x-axis and the standard error on the y-axis. Vertical line is the overall estimate of the model. The white area represents a pseudo-confidence interval generated around the model estimate. Significant publication bias was identified in B) CHR-P and C) psychotic disorders with bias towards smaller samples representing larger prevalence rates.