

1
2
3
4
5

TITLE PAGE

Manuscript Title- Optimal Systolic Blood pressure control after thrombectomy in acute ischemic stroke-a systematic review and meta-analysis

Short title-Optimal Systolic blood pressure after thrombectomy

Authors and affiliations

Author	Qualification	Affiliation	Email IDs
Baikuntha Panigrahi	MD,DM	Department of Neurology, All India Institute of Medical Sciences, New Delhi 110029,India	baikunthap199@gmail.com
Rohit Bhatia*	MD,DM	Department of Neurology, All India Institute of Medical Sciences, New Delhi 110029,India	rohitbhatia71@yahoo.com
Partha Halдар	MD	Centre for Community Medicine, All India Institute of Medical Sciences, New Delhi 110029,India	parthahaldar@outlook.com
Risha Sarkar	MA	Department of Neurology, All India Institute of Medical Sciences, New Delhi 110029,India	risha98sarkar@gmail.com
Imnameren Longkumer	PhD	Department of Neurology, All India Institute of Medical Sciences, New Delhi 110029,India	imna01lkr@gmail.com

6
7
8
9
10
11
12
13
14
15
16
17
18
19
20
21

***Corresponding author**

Dr.Rohit Bhatia

Professor

Room 603. 6th Floor

Department of Neurology

Neurosciences Centre

All India Institute of Medical Sciences

New Delhi 110029. India

Mail-rohitbhatia71@yahoo.com

Manuscript Metadata

Abstract word count-343 words

Manuscript Total Word count-4021 words

Tables-2

Figures-6

References-22

1 **Optimal Systolic Blood pressure control after thrombectomy in acute** 2 **ischemic stroke-a systematic review and meta-analysis**

3 4 **Abstract**

5 **Background and Objectives**

6 Although endovascular thrombectomy(EVT) is the standard of care for acute large vessel
7 occlusions(LVO), optimal systolic blood pressure (SBP) control post procedure has remained
8 elusive. Our study aimed to address the question of whether in adult patients of acute
9 ischemic stroke(AIS) who undergo EVT does an intensive SBP control as compared to a less
10 intensive SBP control/conventional control up to 24 hours post procedure lead to a good
11 functional outcomes defined by modified Rankin score(mRS) of 0-2 at 90days.
12

13 **Methods**

14 This PRISMA guidelines were followed for this review. Databases(PubMed, SCOPUS,
15 EMBASE, Google Scholar and Web of Science) were searched for English language articles
16 using predefined search terms till Sep 15 2023. The inclusion criteria consisted of
17 randomized controlled trials (RCTs) and observational studies(at least total 20patients)
18 analysing intensive vs conventional SBP control in AIS due to LVO post-EVT up to 24hours.
19 Studies without a separate comparison primary outcome data, comparing SBP control in AIS
20 due to LVO treated only with IV thrombolysis (IVT) without EVT, case series and case
21 reports were excluded. The primary outcome was the rate of functional independence defined
22 by mRS 0-2 at 90days. Risk of bias was assessed using the New Castle Ottawa scale(NOS)
23 for observational studies, and the revised Cochrane risk-of-bias 2 (ROB2) tool for RCTs.
24

25 **Results**

26 Twelve studies(n=5439 patients-eight observational and four RCTs) were included in the
27 final analysis. The primary outcome was not significantly different between both the
28 arms(RR:1.16;95%CI-0.98-1.37;p=0.08).There were no significant differences in the
29 mortality at 90days(RR:0.83;95%CI-0.68-1.02;p=0.08) and the risk of symptomatic
30 intracranial haemorrhage(RR:0.84;95%CI-0.61-1.16;p=0.29). Fewer patients required
31 decompressive surgery in the intensive arm(RR-0.40; 95%CI-0.25-0.66; p=0.0003). A
32 separate analysis for the primary outcome from pooled observational data favoured intensive
33 control(RR-1.34;95%CI-1.20-1.48; p<0.00001) and data from RCTs favoured conventional
34 control(RR-0.82;95%CI-0.72-0.93;p=0.003).
35

36 **Conclusion**

37 Neither intensive nor conventional SBP control resulted in better functional outcome in the
38 combined analysis of all studies. Although, observational studies favoured intensive control,
39 data from RCTs suggested conventional management as the preferred approach which could
40 currently be a pragmatic strategy. Further ongoing RCTs using homogenous SBP cut-offs
41 will provide more clarity on the ideal SBP target after EVT.
42

1 **Keywords**-Endovascular thrombectomy, Large Vessel Occlusion, Acute Ischemic Stroke,
2 Systolic Blood pressure, modified Rankin Scale.

3 4 5 **Introduction**

6
7 Endovascular thrombectomy with or without thrombolysis is currently the standard of care in
8 patients with acute ischemic stroke due to a large vessel occlusion.¹ However, even after
9 successful radiological evidence of reperfusion a proportion of patients do not achieve the
10 desired level of functional independence.² This is dependent on numerous modifiable, non-
11 modifiable and unknown factors. Among these, blood pressure (BP) is a major modifiable
12 factor which influences the outcomes after a successful reperfusion.^{2,3} The interaction
13 between BP and outcomes is extremely complex as other critical factors including the
14 collateral status, size of the penumbra and degree of recanalization play a role in the final
15 outcome.⁴ However, the optimal blood pressure after thrombectomy is not clear. The 2019
16 American Heart Association/American Stroke Association(AHA/ASA) guidelines for acute
17 ischemic stroke recommend that it is reasonable to maintain BP at $\leq 180/105$ mm Hg during
18 and for 24 hours after the procedure (LOE-B-NR;COR-IIa)¹. It is well acknowledged in the
19 guideline that the data on optimal blood pressure target is sparse and the data supporting this
20 guideline was drawn from blood pressure management protocols in the thrombectomy trials.
21 Since a majority of the patients enrolled in the six hour time window trials had already
22 received thrombolysis, the post thrombolysis blood pressure targets applied to them.
23 Additional data was obtained from the DAWN and ESCAPE trial protocols.^{5,6} The DAWN
24 protocol recommended the systolic BP (SBP) to be maintained at <140 mmHg in the first
25 24hrs after the procedure.⁶ However, the ESCAPE protocol recommended the SBP to be
26 maintained at >150 mmHg to maintain collateral perfusion.⁵
27 Since the last recommendations, multiple randomised and observational data has become
28 available with conflicting results which makes it imperative to perform a systematic review
29 and meta-analysis to carefully address this important question. We conducted this meta-
30 analysis to address the question of whether in adult patients with an acute ischemic stroke due
31 to large vessel occlusion who undergo thrombectomy does an intensive blood pressure
32 control (Target SBP cutoff as defined by the respective study or an upper limit of SBP target
33 for defining intensive control as <140 mmHg) as compared to a less intensive blood pressure
34 control/conventional control(higher SBP targets or guideline recommended SBP control) up
35 to 24 hours after the procedure lead to a good functional outcome as defined by modified
36 Rankin score (mRS) of 0-2 at 90 days.

37 38 **Methods**

39 40 *Search strategy*

41 We used the standard PRISMA (Preferred Reporting Items for Systematic Reviews and
42 Meta-Analyses) guidelines for conducting and reporting our review (Checklist in
43 *Supplementary material-1*). The protocol was registered on PROSPERO
44 (<https://www.crd.york.ac.uk/prospero/#myprospero>) vide registration number-

1 CRD42023463173. An amendment was submitted on 28 January 2024 to define blood
2 pressure targets as per the respective study definition. A comprehensive preliminary search
3 was carried out by three authors (B.P, R.S and I.L) for English Language articles from
4 inception until September 15, 2023, using databases which included PubMed, SCOPUS,
5 EMBASE, Google Scholar, Web of Science and hand searching. The MeSH terms included
6 for the search string were – “Acute stroke”, OR “Ischemic stroke” OR “cerebrovascular
7 accident” OR “cerebral infraction” AND “thrombectomy” OR “endovascular therapy” OR
8 “mechanical aspiration” OR “endovascular technique” OR “endovascular procedure” OR
9 “stent retriever” AND “blood pressure” OR “blood pressure monitor” OR “high blood
10 pressure” OR “low blood pressure” OR “hypertension”. The search results obtained from the
11 various sources were imported to the Covidence software (<https://www.covidence.org>).
12 Duplicates were removed using the software automatically.

13

14 *Screening and Eligibility criteria*

15 Titles and abstracts were reviewed independently by four authors (B.P, RB, R.S, I.L) to
16 evaluate for inclusion and screening of full text. The review question and the PICO
17 statements are summarised in the form of a table (available as *Supplementary material-2*).
18 The inclusion criteria of the studies were-Randomized Controlled Trials (RCTs),
19 observational prospective studies, observational retrospective studies with at least a total of
20 20 patients, patients included in the study must have had a baseline mRS-0-1, patients with
21 Acute Ischemic Stroke (AIS) due to large vessel occlusion (LVO) involving either the
22 anterior or the posterior circulation and treated with thrombectomy using any technique with
23 or without bridging thrombolytic agent, systemic blood pressure monitoring during and at
24 least 24 hours after the procedure and functional outcomes using the mRS at 90days should
25 have been reported. Intensive control was defined as aggressive control of SBP to a
26 predefined target of <140mmHg or as described in the respective study with the use of anti-
27 hypertensive drugs for up to 24 hours after a successful thrombectomy irrespective of
28 whether the patient received thrombolysis or not . Less Intensive or Conventional blood
29 pressure control was defined as a liberal SBP control strategy where SBP was not lowered
30 until it was >180mmHg as per guidelines. We excluded case series, case reports, studies
31 without a separate comparison outcome data between intensive and less intensive blood
32 pressure groups, studies comparing blood pressure control in AIS due to LVO treated only
33 with Intravenous thrombolysis (IVT) without Endovascular therapy (EVT) and studies
34 without a primary efficacy outcome data. The primary efficacy outcome was the proportion
35 of patients who had a mRS of 0-2 at 90days. Other safety outcomes that were analysed were
36 death at 90 days, development of symptomatic intracranial haemorrhage(sICH) and
37 requirement of decompressive surgery. Any discrepancies were resolved by R.B. Full texts
38 were retrieved for further consideration for inclusion in the study. Individual patient data was
39 not available for the study.

40

41 *Data Extraction*

42 The data was extracted on MS Excel (Ver 16.66.1).This included: the name of the journal,
43 year of publication, 1st author’s name, study type- retrospective, prospective study or
44 randomized trial (monocentric or multicentric), number of patients, proportion of patients

1 with a history of hypertension, median NIHSS, stroke localization, intravenous thrombolysis
2 use (if provided), recanalization rates, procedure time, number of patients in the intensive and
3 conventional treatment arm as per the respective study cut-offs, BP parameters measured at
4 least for 24 hours post procedure (mean, minimum, maximum according to the study), rates
5 of symptomatic intracranial haemorrhage (ICH) at 24-36 hours as per the respective study
6 definition and the 3- month mRS according to peri-procedural BP.

7 *Risk of Bias Assessment*

8 The Newcastle Ottawa Scale (NOS) was used by B.P (reviewed by P.H) to assess the risk of
9 bias in the observational studies. The Risk of Bias (ROB2) tool was used by B.P (reviewed
10 by P.H) for assessing risk of bias in randomized controlled trials.

11 *Strategy for Data Analysis*

12 Statistical analyses were performed using Review Manager 5.4.1 software by B.P and
13 reviewed by P.H. Random-effects model was used in view of expected heterogeneity to be
14 present due to known differences in stroke patient characteristics, SBP cut-offs and different
15 types of studies(observational and RCTs). The overall effect estimate, and 95% CI was used
16 to generate Forest plots. Heterogeneity was assessed by the Higgin I^2 statistics. The primary
17 and all secondary efficacy and safety outcomes were assessed by risk ratios (RR). Sensitivity
18 analysis using the leave one study out analysis was done. GRADE pro GDT was used for
19 certainty of evidence assessment.

20 **Results**

21 *Study selection and evaluation*

22 An initial database search using the MeSH terms yielded 9883 records which included 8958
23 from PubMed, 1045 from Google Scholar, 545 from Scopus, 288 from EMBASE and 129
24 from Web of Science. 1026 duplicates were removed(Figure-1). 8857 studies entered the title
25 and abstract screening of which 8713 studies were found to be irrelevant. 72 studies were
26 assessed for full text eligibility and 60 studies were excluded(reasons in the PRISMA
27 flowchart-Figure 1). A total of twelve studies were included in the meta-analysis.

28 *Study Characteristics*

29 Of the twelve studies involving 5439 patients included in the final analysis, eight were
30 observational and four were RCTs.⁷⁻¹⁸ Observational study data for 3868 patients and data
31 from RCTs involving total of 1571 patients was also extracted separately. We used the
32 published data only for conducting the analysis. We did not have access to individual patient
33 data in any of the studies included in the meta-analysis. Five out of the eight observational
34 studies used a SBP cut-off of 140 mmHg to define intensive control.^{11,13,15-17} Two(Chang et
35 al-2019 and P.Upadhyaya et al-2023) studies used a cut-off of 130 mmHg and one
36 study(Eva.A.Mistry et al) used a cut-off of 158mmHg.^{12,14,18} In case of the RCTs the
37 ENCHANTED2/MT used a cut-off SBP of 120mmHg to define its intensive arm.⁸ The BP-
38 TARGET on the other hand used a range of SBP between 100-129mmHg to define its
39 intensive arm.⁷ There were 3 SBP groups in the BEST-II(140,160,180).⁹ For combining the
40
41
42
43
44

1 effects we clubbed the <160mmHg and <180mmHg groups into the less intensive group and
2 the <140mmHg as the intensive arm. The OPTIMAL-BP used a SBP cut-off of 140mmHg.¹⁰
3 The baseline characteristics and attributes of each study included in this meta-analysis are
4 summarised in the Table-1 and Table-2.

5 6 *Risk of Bias*

7 • Observational Studies

8 The Newcastle Ottawa Scale results are summarised in the *Supplementary material-3*. We
9 found all studies to be of good methodological quality with a median of 8 stars.

10 11 • RCTs

12 The ROB2 tool demonstrated a “high risk” of bias in the deviations from the intended
13 intervention domain (Domain-2) in three out of four included RCTs. One study had
14 “some concerns” in this domain. The other domains examined had a low risk of bias. The
15 detailed analysis is provided in the *Supplement (Supplementary material-3)*.

16 17 *Outcomes*

18 *Primary Outcome mRS 0-2*

19 Pooled data of all the twelve studies involving 5398 patients (reported outcomes) with 2983
20 patients in the intensive blood pressure control group and 2415 patients in the conventional
21 control group demonstrated that the primary outcome of mRS-0-2 was seen in
22 1508/2983(50.55%) patients in the intensive arm as compared to 1106/2415(45.8%) in the
23 conventional arm and was not significantly different between both the arms(RR-1.16 ;
24 95%CI-0.98-1.37; p=0.08) as seen in Figure-2.⁷⁻¹⁸

25 Separate analysis of data from eight observational studies showed that mRS 0-2 was seen in
26 1171 out of 2235 in the intensive control group (52.39%) as compared to 674 out of 1633
27 patients in the conventional group (41.23%) favouring intensive blood pressure control for a
28 good outcome(RR-1.34; 95%CI-1.20-1.48; p<0.00001) as shown in Figure-2.¹¹⁻¹⁷

29 Similarly, a separate analysis of data from four RCTs showed that the primary outcome was
30 seen in 337/748(45.05%) patients in the intensive arm as compared to 432/782(55.24%) in
31 the conventional arm thus favouring the conventional arm for a good outcome(RR-0.82;
32 95%CI-0.72-0.93; p=0.003) as shown in Figure-2.⁷⁻¹⁰

33 34 *Death at 90 days*

35 Outcomes for death at 90days were available for 2985 patients in the intensive arm and 2417
36 patients in the conventional arm from twelve studies. A total of 487/2985(16.3%) patients
37 died in the intensive arm as compared to 485/2417(20.06%) in the conventional arm and the
38 difference between both the arms was not significant(RR-0.83; 95%CI-0.68-1.02; p=0.08) as
39 shown in Figure-3.⁷⁻¹⁸

40 A separate analysis of data from eight observational studies showed that 373/2235(15.97%)
41 patients died in the intensive arm as compared to 375/1633(22.96%) in the conventional arm.
42 The difference between both the arms was significant with lower risk of dying in the
43 intensive arm(RR-0.72; 95%CI-0.59-0.87; p=0.0008) as shown in Figure-3.¹¹⁻¹⁷.

1 Data from the four RCTs showed that 114/750(15.2%) patients died in the intensive arm as
2 compared to 110/784(14.03%) patients in the conventional arm and the difference between
3 both the arms was not statistically significant (RR-1.13; 95%CI-0.88-1.44; p=0.34) as shown
4 in Figure-3.⁷⁻¹⁰

5 6 *Symptomatic ICH*

7 Data on symptomatic ICH(sICH) was available for nine out of twelve studies involving 2385
8 patients in the intensive arm and 1797 patients in the conventional arm. A total of
9 130/2385(5.45%) patients had sICH(as per respective study definition) in the intensive arm
10 compared to 127/1797(7.07%) in the conventional arm and the difference between the two
11 groups was not statistically significant(RR-0.84; 95%CI-0.61-1.16; p=0.29) as shown in
12 Figure-4.^{7-11,13,16-18}

13 A separate analysis of data from five observational studies showed that sICH occurred in
14 74/1632(4.53%) patients in the intensive arm compared to 76/1010(7.52%) patients in the
15 conventional arm and the risk of sICH was significantly lower in the intensive arm compared
16 to the conventional arm(RR-0.64; 95%CI-0.43-0.96; p=0.03) as shown in Figure-4.^{11,13,16-18}

17 Data from the four RCTs showed that symptomatic ICH occurred in 56/753(7.44%) patients
18 in the intensive arm compared to 51/787(6.48%) patients in the conventional arm with no
19 significant differences between the two groups(RR-1.13; 95%CI-0.78-1.63; p=0.52) as shown
20 in Figure-4.⁷⁻¹⁰

21 22 *Decompressive surgery*

23 Data on decompressive surgery was available from four out of twelve studies for 1684
24 patients in the intensive arm as compared to 959 patients in the conventional arm. A total of
25 44/1684(2.61%) patients in the intensive arm required decompression as compared to
26 54/959(5.63%) patients in the conventional arm. There was significantly higher requirement
27 of decompressive surgery in the conventional management arm compared to the intensive
28 arm (RR-0.40; 95%CI-0.25-0.66; p=0.0003) as shown in Figure-5.^{7,13,16,18}

29 A separate analysis of only observational study data from three studies showed that 43/1526
30 (2.82%) patients required decompressive surgery in the intensive arm compared to 54/797
31 (6.76%) patients in the conventional arm with the chances of needing a decompression higher
32 in the conventional arm than intensive arm(RR-0.39; 95%CI-0.25-0.59; p<0.00001) as shown
33 in Figure-5.^{13,18,19}

34 35 *Optimal Systolic Blood Pressure cut-offs*

36 We further explored the various SBP cut-offs (SBP at which anti-hypertensive medications
37 would be started and the target SBP up to 24hours after EVT) used across the studies and
38 segregated them into groups of studies using a cut-off of 140mmHg to define intensive
39 control and 130mmHg to define intensive control.

40 41 *Primary outcome for a SBP cut-off of 140mmHg*

42 Pooled analysis of seven studies(n=2156 patients in intensive arm and 1488 patients in
43 conventional arm) for the primary outcome of mRS 0-2 at 90days with a cut-off of 140mmHg
44 to define intensive control did not show in any significant differences between the intensive

1 or less intensive/conventional control(RR-1.14; 95%CI-0.96-1.36; p=0.14) as shown in the
2 Figure-6.^{9-11,13,15-17}

3 However a separate analysis of five observational studies (n=1964 patients in the intensive
4 arm and 1265 patients in conventional arm) only using the 140mmHg cut-off for the primary
5 outcome demonstrated a significant chance of favourable outcome in the intensive arm(RR-
6 1.26; 95%CI-1.13-1.40; p<0.0001) as shown in Figure-6.^{11,13,15-17}

7 A similar analysis for two RCTs (n=192 patients in intensive arm and 223 patients in the
8 conventional arm) with the SBP cut-off of 140mmHg did not show a significant difference
9 between the two groups(RR-0.79; 95%CI-0.61-1.04; p=0.09) as shown in Figure-6.^{9,10}

10 Among the other outcomes death at 90days was significantly lower in the intensive control
11 arm in the observational data involving five studies(n=1964 in intensive arm and n=1265 in
12 conventional arm) with the cut-off of 140mmHg(RR-0.76; 95%CI-0.60-0.97; p=0.03) as
13 shown in Supplemental Figure-2. The details about the other outcomes of sICH,
14 decompressive surgery at different cut-offs can be found in the *Supplemental material-4*
15 *Figures-1,2,3*.

16

17 *Primary outcome for a SBP cut-off of 130mmHg*

18 An analysis of three studies(n=244 in intensive arm and n=254 in conventional arm) with
19 respect to the primary outcome using a target SBP cut-off of 130mmHg did not show any
20 significant differences between the two groups(RR-1.27; 95%CI-0.92-1.74; p=0.15) as shown
21 in Figure-6.^{7,14,18}

22 The details about the other outcomes of sICH and decompressive surgery and different cut-
23 offs can be found in the *Supplemental material-4;Figures-1,2,3*.

24 We could not explore other lower(one study) and higher cut-offs(two studies) due to limited
25 number of studies in these groups and non-availability of individual patient data.

26

27 *Leave-out-one study Influence analysis*

28 Leaving out the ENCHANTED-2/MT and OPTIMAL-BP results resulted in a change in the
29 outcome of the pooled data such that the intensive arm had a higher odds of having a better
30 functional outcome as compared to conventional BP management.^{8,10} Leave out one study
31 analysis did not lead to any change in the primary outcome in a separate analysis of only
32 observational studies. Similar to the combined analysis, leaving out the ENCHANTED-2/MT
33 and OPTIMAL-BP results resulted in a change in the outcome of the RCT pooled data but the
34 difference was such that neither arm was preferred^{8,10}. Leaving out the other two RCTs did
35 not change outcomes. The details are provided in the supplement (*Supplementary material-*
36 *5*).

37

38 *GRADE*

39 The GRADEpro GDT (<https://www.gradepro.org>) was used to assess the certainty of
40 evidence and was found to be moderate to low in case of observational studies and moderate
41 in case of the RCTs. The summary of the GRADE findings is presented in the *Supplementary*
42 *material-6*.

43

44 **Discussion**

1 Our systematic review and meta-analysis involving eight observational studies and four
2 RCTs analysed the effects of an intensive as compared to a conventional/less intensive blood
3 pressure control up to 24 hours of thrombectomy in all strokes (eleven studies on anterior
4 circulation and one on posterior circulation stroke). The results suggest that neither intensive
5 nor conventional management of blood pressure post thrombectomy resulted in any
6 difference in the functional outcomes i.e. mRS-0-2 at 90days. Similarly the risk of death and
7 sICH were also similar in both groups. A significantly fewer patients required decompressive
8 surgery in the intensive arm as compared to the conventional arm. Separate analysis of data
9 from observational studies and data from RCTs revealed discordant results. The primary
10 outcome i.e. achieving a mRS 0-2 at 90 days was higher in the intensive arm as compared to
11 the conventional arm in observational studies whereas the conventional management was
12 favoured from RCT data. Mortality at 90 days was also lower in the intensive arm as
13 compared to the conventional arm in the observational data and both groups were comparable
14 as per pooled data from the RCTs. Similarly the observational data favoured intensive control
15 with lower rates of symptomatic ICH as compared to a conventional blood pressure control.
16 The pooled data of the RCTs did not favour any particular arm. Decompressive surgery was
17 more likely to be required in the conventional arm as compared to the intensive arm.

18

19 The optimal blood pressure after endovascular therapy has remained elusive ever since the
20 procedure was introduced. Numerous hypotheses have been suggested favouring and
21 negating intensive and conventional management. Arguments in favour of intensive
22 management primarily derived from observational studies and stemmed from the fact that
23 intensive control reduced the rates of symptomatic ICH, reduced cerebral hyper perfusion
24 thereby reducing cerebral edema and improving outcomes.^{13,19} However with the robust
25 RCTs like the ENCHANTED-2/BP-TARGET not favouring the intensive arm an alternate
26 school of thought has emerged.^{7,8} Firstly, higher SBP might be associated with maintenance
27 of perfusion to distal branches of the blood vessel after successful recanalization. A more
28 intensive SBP control would lead to focal areas of hypoperfusion leading to infarct
29 progression and poor outcomes. Secondly, a successful recanalization after EVT may have
30 persistent venous postcapillary thrombosis and an intensive BP reduction could be
31 detrimental and further promote infarct and ischemia progression.²⁰

32

33 Blood pressure is a dynamic entity subject to cerebral autoregulation which in turn is unique
34 to a patient. Blood pressure variability post EVT have also been observed to be associated
35 with poor outcomes.²¹ It is therefore important to avoid wide fluctuations in the blood
36 pressure.

37

38 The pooled data did not show any difference in outcomes with the type of BP management
39 strategy used although there was a trend towards better outcomes in the intensive arm which
40 could be due to the reduced risk of reperfusion injury and lower risk of haemorrhagic
41 transformation.^{11,16} The requirement of decompressive surgery was also significantly lower in
42 the intensive arm. This could also be explained by the fact that lower SBP probably reduced
43 the risk of reperfusion injury and subsequent infarct expansion and cerebral edema.¹⁶ The
44 separate analysis of observational and RCT data showed discordant results. This discordance

1 in the observational and randomised data could be attributed to multiple factors. First,
2 randomised trials are conducted in a controlled environment with strict BP targets and had
3 patients for longer periods of time in the intended target. The higher rates of hypotensive
4 events in the intensive group patients in the RCTs might have been a potential confounder for
5 the poor outcomes in this group. On the other hand the BP in observational studies is more
6 like the real world with some studies using the peak SBP and some using the mean SBP over
7 a period of 24 hrs after the procedure. Since BP fluctuates throughout the day and the mean
8 BP is unlikely to reflect these wide fluctuations and it is difficult to ascertain whether these so
9 called ‘intensive’ arm patients were actually intensively treated.

10

11 Second, RCTs used drugs to both increase and decrease the blood pressure to set targets and
12 it is possible that these drugs could have been a potential confounder with respect to
13 unknown pleotropic effects of the anti-hypertensive drug.⁸ Such data was not available for all
14 the observational studies.

15

16 Third, although the observational studies selected had a net low risk of bias (using the NOS
17 tool) it is not possible to completely eliminate selection and observer’s bias inherent in all
18 observational studies.

19

20 Fourth, the observational cut-offs used were different for different studies. We used the
21 definition of intensive as defined by the study which is the reason for the significant
22 heterogeneity. A total of five out of eight observational studies namely Goyal et al, Anadani
23 et al(2019), Cernik et al, Anadani et al (2020) and Han et al used a SBP cut off of 140mmHg
24 as a definition for intensive control.^{13,15,17,19,22} On the other hand 2 studies by Chang et al and
25 P Upadhyay et al used a lower cut-off of 130mmHg.¹⁴ A SBP cut-off of 158mmHg was
26 found to dichotomise functional outcomes in the Mistry et al (2019) study.¹²

27 The cut-offs used in the RCTs for defining intensive was also different across studies with the
28 ENCHANTED-2/MT and BP-TARGET defining the upper limit of SBP for the intensive arm
29 at 120mmHg and the BEST-II dividing the BP into three groups of 140,160 and 180 and the
30 OPTIMAL-BP using a upper limit SBP of 140mmHg.⁷⁻⁹ Even though we did a separate
31 analysis using different cut-offs of 140mmHg and 130mmHg to define the intensive arm
32 there was no difference in the results as the observational data favoured the intensive arm.
33 The difference was seen in the RCT data as removing ENCHANTED-2/MT and BP-
34 TARGET trials resulted in no significant difference in the two arms.^{7,8} A lower cut off of
35 130mmHg also did not result in any significant differences between the arms. Access to
36 individual patient data of these studies could have allowed us to study higher BP targets to
37 identify the SBP sweet spot across studies by pooling the blood pressure recordings and
38 subsequently dichotomising the outcomes.

39

40 Another important aspect to note is the heterogeneity in perfusion deficit of the patients
41 recruited in the study. In the RCT data the ENCHANTED2/MT had reported a considerable
42 number of patients with a significant perfusion deficit before the thrombectomy and such
43 cases are extremely prone to reinfarction and infarct progression if the blood pressure is
44 lowered.⁸

1
2
3
4
5
6
7
8
9
10
11
12
13
14
15
16
17
18
19
20
21
22
23
24
25
26
27
28
29
30
31
32
33
34
35
36
37
38
39
40
41
42
43
44

Further studies involving more patients and more uniform BP cut-offs will provide better answers in the future. The findings of our study based on RCT data which are considered Level-1 evidence favour a conventional management of blood pressure with target SBP of 140-180mmHg in line with the recommendations from the AHA/ASA.

Strengths

The major strengths of this meta-analysis is the comprehensive search methodology and an inclusive study pooling data of all the published studies till date. It also includes data of one study with posterior circulation strokes.

Limitations

The major limitation of this study is that it uses only data that was reported. A study with individual patient data could have led to better identification of the true cut-off SBP for achieving a good outcome and we could have explored higher targets in better detail. We also could not explore posterior circulation strokes separately as there was only one study exploring this.¹⁷ We could have performed meta-regression by adjusting for co-variates to predict whether age, recanalization grade or the admission blood pressure had an effect on the final outcome.

Conclusion

Results of this meta-analysis suggest that combined data from all studies does not favour either intensive or conventional SBP control after EVT. Observational data showed intensive control to be associated with higher chances of functional recovery, reduced mortality and risk of symptomatic ICH. Data from RCTs showed conventional SBP control to be associated with improved functional outcomes but no effect on mortality suggesting conventional management as the preferred pragmatic approach. Further ongoing RCTs using homogenous SBP cut-offs will provide more clarity on the ideal SBP target after EVT.

1
2
3
4
5
6
7
8
9
10
11
12
13
14
15
16
17
18
19
20
21
22
23
24
25
26
27
28
29
30
31
32
33
34
35
36
37
38
39
40

Acknowledgements

Nil

Funding

Nil

Disclosures and Conflicts of Interest

B.P, R.B, P.H, R.S and I.L report no disclosures and no conflicts of interest.

Consent

Not required as this is a systematic review and meta-analysis.

Ethical Statement

No ethical clearance was required as this is a systematic review and meta-analysis

Contributions

Baikuntha Panigrahi: Drafting/revision of the manuscript for content, including medical writing for content; Major role in the acquisition of data; Study concept or design; Analysis or interpretation of data. Rohit Bhatia: Drafting/revision of the manuscript for content, including medical writing for content; Major role in the acquisition of data; Study concept or design; Analysis or interpretation of data. Partha Haldar: Drafting/revision of the manuscript for content, including medical writing for content; Analysis or interpretation of data. Risha Sarkar: Major role in the acquisition of data. Imnameren Longkumer: Major role in the acquisition of data.

Supplemental Material(S)

- S1**-PRISMA checklist
 - S2**-Review Question and PICO Statements
 - S3**-Risk of Bias analysis
 - S4**- Outcomes analysed using different SBP cut-offs
 - S5**-Leave one study out analysis
 - S6**-GRADE assessment of certainty of evidence
- Supplemental Figures-S3

1
2
3
4
5
6
7

8 **References**

- 9 1. Powers WJ, Rabinstein AA, Ackerson T, et al. Guidelines for the Early Management of
10 Patients With Acute Ischemic Stroke: 2019 Update to the 2018 Guidelines for the Early
11 Management of Acute Ischemic Stroke: A Guideline for Healthcare Professionals From
12 the American Heart Association/American Stroke Association. *Stroke*. 2019;50(12):e344-
13 e418. doi:10.1161/STR.0000000000000211
- 14 2. Rabinstein AA, Albers GW, Brinjikji W, Koch S. Factors that may contribute to poor
15 outcome despite good reperfusion after acute endovascular stroke therapy. *International*
16 *Journal of Stroke*. 2019;14(1):23-31. doi:10.1177/1747493018799979
- 17 3. Katsanos AH, Malhotra K, Ahmed N, et al. Blood pressure after endovascular
18 thrombectomy and outcomes in patients with acute ischemic stroke: An individual patient
19 data meta-analysis. *Neurology*. 2022;98(3):e291-e301.
- 20 4. Hong L, Cheng X, Lin L, et al. The blood pressure paradox in acute ischemic stroke. *Ann*
21 *Neurol*. 2019;85(3):331-339.
- 22 5. Goyal M, Demchuk AM, Menon BK, et al. Randomized assessment of rapid
23 endovascular treatment of ischemic stroke. *N Engl J Med*. 2015;372(11):1019-1030.
24 doi:10.1056/NEJMoa1414905
- 25 6. Nogueira RG, Jadhav AP, Haussen DC, et al. Thrombectomy 6 to 24 Hours after Stroke
26 with a Mismatch between Deficit and Infarct. *N Engl J Med*. 2018;378(1):11-21.
27 doi:10.1056/NEJMoa1706442
- 28 7. Mazighi M, Richard S, Lapergue B, et al. Safety and efficacy of intensive blood pressure
29 lowering after successful endovascular therapy in acute ischaemic stroke (BP-TARGET):
30 a multicentre, open-label, randomised controlled trial. *Lancet Neurol*. 2021;20(4):265-
31 274. doi:10.1016/S1474-4422(20)30483-X
- 32 8. Yang P, Song L, Zhang Y, et al. Intensive blood pressure control after endovascular
33 thrombectomy for acute ischaemic stroke (ENCHANTED2/MT): a multicentre, open-
34 label, blinded-endpoint, randomised controlled trial. *Lancet*. 2022;400(10363):1585-
35 1596. doi:10.1016/S0140-6736(22)01882-7
- 36 9. Mistry EA, Hart KW, Davis LT, et al. Blood Pressure Management After Endovascular
37 Therapy for Acute Ischemic Stroke: The BEST-II Randomized Clinical Trial. *JAMA*.
38 2023;330(9):821. doi:10.1001/jama.2023.14330
- 39 10. Nam HS, Kim YD, Heo J, et al. Intensive vs conventional blood pressure lowering after
40 endovascular thrombectomy in acute ischemic stroke: The OPTIMAL-BP randomized
41 clinical trial. *JAMA*. 2023;330(9):832-842.

- 1 11. Goyal N, Tsivgoulis G, Pandhi A, et al. Blood pressure levels post mechanical
2 thrombectomy and outcomes in large vessel occlusion strokes. *Neurology*.
3 2017;89(6):540-547. doi:10.1212/WNL.0000000000004184
- 4 12. Mistry EA, Sucharew H, Mistry AM, et al. Blood pressure after endovascular stroke
5 therapy (BEST): Final results of a prospective multicenter cohort validation study.
6 *Stroke*. 2019;50((Mistry E.A.; Sucharew H.; Mistry A.M.; Mehta T.; Arora N.; De Los
7 Rios La Rosa F.; Starosciak A.K.; EI James S.; Barnhill N.R.; Patel K.; Assad S.;
8 Tarboosh A.T.; Dakay K.; Cruz A.; Wagner J.; Fortuny E.; Bennett A.; James R.;
9 Jagadeesan B.; Streib C.; O). doi:10.1161/str.50.suppl_1.94
- 10 13. Anadani M, Orabi MY, Alawieh A, et al. Blood pressure and outcome after mechanical
11 thrombectomy with successful revascularization. *Stroke*. 2019;50(9):2448-2454.
- 12 14. Chang JY, Han MK. Postthrombectomy systolic blood pressure and clinical outcome
13 among patients with successful recanalization. *Eur Neurol*. 2019;81(5-6):216-222.
- 14 15. Cernik D, Sanak D, Divisova P, et al. Impact of blood pressure levels within first 24
15 hours after mechanical thrombectomy on clinical outcome in acute ischemic stroke
16 patients. *Journal of NeuroInterventional Surgery*. 2019;11(8):735-739.
17 doi:10.1136/neurintsurg-2018-014548
- 18 16. Anadani M, Arthur AS, Tsivgoulis G, et al. Blood Pressure Goals and Clinical Outcomes
19 after Successful Endovascular Therapy: A Multicenter Study. *Annals of Neurology*.
20 2020;87(6):830-839. doi:10.1002/ana.25716
- 21 17. Han B, Sun X, Liu R, et al. Impact of the perioperative blood pressure on clinical
22 outcome after thrombectomy in acute basilar artery occlusion. *J Stroke Cerebrovasc Dis*.
23 2021;30(3):105590.
- 24 18. Upadhyaya P, Mehta A, Luby M, et al. Good outcome associated with blood-brain barrier
25 disruption and lower blood pressure after endovascular therapy. *Journal of Stroke and*
26 *Cerebrovascular Diseases*. 2023;32(1). doi:10.1016/j.jstrokecerebrovasdis.2022.106870
- 27 19. Anadani M, Arthur AS, Alawieh A, et al. Blood pressure reduction and outcome after
28 endovascular therapy with successful reperfusion: a multicenter study. *J Neurointerv*
29 *Surg*. 2020;12(10):932-936.
- 30 20. Deng G, Chu YH, Xiao J, et al. Risk Factors, Pathophysiologic Mechanisms, and
31 Potential Treatment Strategies of Futile Recanalization after Endovascular Therapy in
32 Acute Ischemic Stroke. *Aging Dis*. 2023;14(6):2096-2112. doi:10.14336/AD.2023.0321-
33 1
- 34 21. Nepal G, Shrestha GS, Shing YK, Muha A, Bhagat R. Systolic blood pressure variability
35 following endovascular thrombectomy and clinical outcome in acute ischemic stroke: A
36 meta-analysis. *Acta Neurol Scand*. 2021;144(4):343-354. doi:10.1111/ane.13480
- 37 22. Goyal N, Tsivgoulis G, Iftikhar S, et al. Admission systolic blood pressure and outcomes
38 in large vessel occlusion strokes treated with endovascular treatment. *Journal of*
39 *NeuroInterventional Surgery*. 2017;9(5):451-454. doi:10.1136/neurintsurg-2016-012386

40

1
2
3
4
5
6
7
8
9

Table-1-Baseline characteristics of the study population of RCTs

Characteristic	Mazighi 2021 ⁷	Yang 2022 ⁸	Mistry 2023 ⁹	Nam 2023 ¹⁰
Total number of participants randomised	324	821	120	306
Number of patients in Intensive Arm (ITT)	158	407	40	155
Number of patients in less intensive arm (ITT)	162	409	80	150
Age {Mean} Intensive Arm		68		73.2
SD Age in Intensive Arm		12		12.1
Age {Mean} Less Intensive Arm		67		72.9
SD Age in Less Intensive Arm		12		10.8
Age {Median} Intensive arm	77		74	
IQR Age Intensive Arm	66-85		66.8-84.8	
Age{Median-Less Intensive }	76			
IQR Age Less Intensive Arm	62-82			
Males n; Intensive Arm	81	249	12	92
% Males in Intensive Arm	51	61	30	59.4
Males n;Less Intensive Arm	72	257	39	88
Males(%) in Less Intensive Arm	45	63	48.75	59.9
Hypertension n; Intensive Arm	110	267	32	121
Hypertension(%) Intensive Arm	70	66	80	78.1
Hypertension n; Less Intensive Arm	113	261	60	110
Hypertension % Less Intensive Arm	71	64	75	74.8
Smoker n; Intensive Arm	19		8	39
Smokers(%) Intensive Arm	14		20	25.2
Smoker n; Less Intensive Arm	24		22	29
Smoker % Less Intensive Arm	16		27.5	19.7
Diabetes n; Intensive Arm	34	81	12	65
Diabetes(%) Intensive Arm	22	20	30	41.9
Diabetes n; Less Intensive Arm	33	82	28	62
Diabetes % Less intensive Arm	21	20	35	42.2
Atrial Fibrillation n Intensive Arm		84	19	77
Atrial Fibrillation(%) Intensive Arm		21	47.5	49.7
Atrial Fibrillation n; Less Intensive Arm		98	34	69
Atrial Fibrillation(%) Less Intensive Arm		24	42.5	46.9
Prior Stroke history n; Intensive Arm	25	107		36
Prior Stroke History(%) Intensive Arm	16	26		23.2

Prior Stroke history; n Less Intensive Arm	21	139		30
Prior Stroke % Less Intensive Arm	13	34		20.4
Median NIHSS at presentation Intensive Arm	18	15	16	13
Median NIHSS at presentation Less Intensive Arm [^]	17	15	18 ^{^(160)} +14 ^{^(180)}	12
Site M1 MCA n; Intensive Arm	117		31	
%M1 MCA-Intensive	74		77.5	
M1 MCA n; Less Intensive Arm	119		48	
M1 MCA (%) Less Intensive Arm	75		60	
ICA n; Intensive Arm			7	
ICA % Intensive Arm			17.5	
ICA n; Less Intensive Arm			14	
ICA (%) Less Intensive Arm			17.5	
IV Thrombolysis use n; Intensive Arm	85	132	17	44
IV Thrombolysis use %; Intensive Arm	54	32	42.5	28.4
IV Thrombolysis use n; Less Intensive Arm	83	115	37	54
IV Thrombolysis use (%) Less Intensive Arm	52	28	46.25	36.7
Mean SBP at presentation Intensive Arm	155	158.1	150	
SD SBP- Intensive Arm	26	25	22.5	
Mean SBP at presentation; Less Intensive Arm [^]	152	158.7	151 ^{^(146)} (160/180)	
SD SBP-Less Intensive Arm	25	23	25.3 ^{^(160)} /23 ^{^(180)}	
Mean DBP at presentation-Intensive Arm	86	89.4	82.6	
SD DBP-Intensive Arm	18	16	14.5	
Mean DBP at presentation-Less Intensive Arm	85	89.5	89 ^{^(160)} /86.6 ^{^(180)}	
SD DBP-Less Intensive Arm	15	15	18.4 ^{^(160)} /19.6 ^{^(180)}	
Onset to Puncture time in minutes-Intensive Arm				388
Onset to Puncture time in minutes-Less intensive Arm				357
Onset to recanalization time in minutes-Intensive	285			421
Onset to recanalization time in minutes-Less Intensive	297			399
Recanalization mTICI 3 (%) Intensive Arm	56		45	
Recanalization mTICI 3 (%) Less Intensive Arm	52		42.5	
Recanalization mTICI 2b (%) Intensive Arm	44		40	
Recanalization mTICI 2b (%) Less Intensive Arm	48		42.5	
Mean procedure Time in minutes - Intensive Arm		54		30
Mean procedure Time in minutes-Less Intensive Arm		60		31
Last Known well in minutes (SD) Intensive Arm		558	238	
Last Known well in minutes (SD) Less Intensive Arm		516	222	

[^]*No of patients with each individual group in brackets

1
2
3
4

1
2
3
4
5
6
7
8
9

Table-2-Baseline characteristics of the study population of Observational Studies

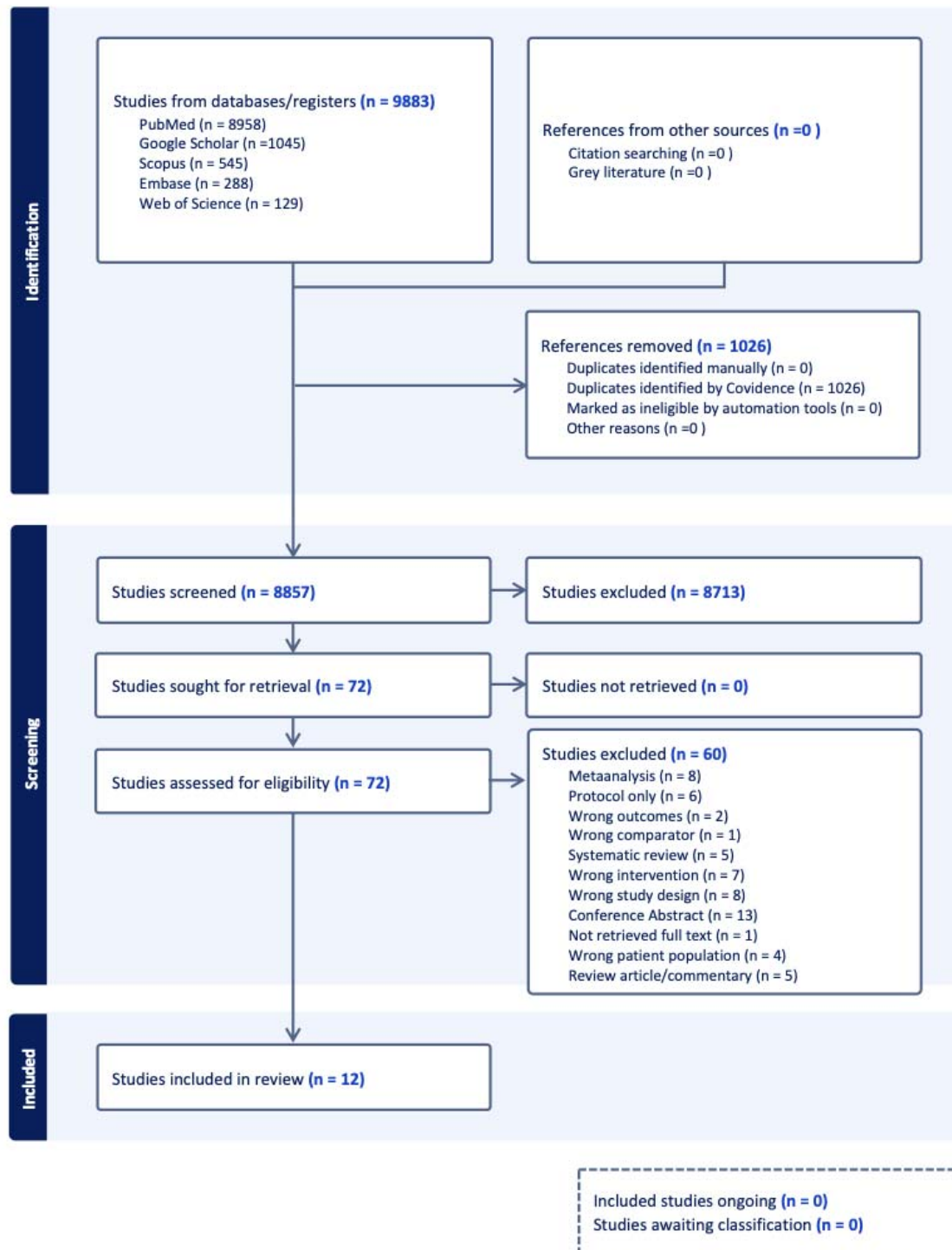
Characteristic	Goyal et al ¹¹	Eva Mistry et al ¹²	A. et al ¹³	Anadani et al ¹⁴	Chang et al ¹⁵	Cernik D et al ¹⁶	Anadani et al ¹⁷	Han et al ¹⁸	P. Upadhyaya et al ¹⁸
Year	2017	2019	2019	2019	2019	2020	2021	2023	
BP Cut-offs	140	158	140	130	140	140	140	130	
No of patients-total	217	485	1245	90	690	1019	187	103	
n-Intensive	10	195	942	48	376	540	96	44	
n-Less intensive	130	290	259	42	314	479	83	59	
Age(Mean)-Total	62		69	72.3	71		60		
Age(SD)-Total	14		14	11.8	13		10		
Age(Mean)_intensive	61.2 ± 14.2			70.1		70			
Age(Mean)-Less Intensive				74.9					
Age(Median)		69						66	
Age(IQR)		57-79						57-75	
Males(n)	108	236	614	54	352	508	157	40	
Males(%)	50	48.66	49.3	60	51	49.8	84	38.8	
Males(Intensive)-n	2			31		259		18	
% males-Intensive	20			64.6		47.96		40.9	
Males(Less Intensive)-n	68			23		249		22	
% males(Less Intensive)	52.3			54.8		51.98		37.3	
Admission NIHSS-Baseline-Total	16(12-21)	16(11-20)	16(IQR-7)	14.7±5.5	17		22(10-34)	19	
Admission NIHSS-Intensive	17	15		14.2±5.3		15		20	
Admission NIHSS-Less Intensive*		17		15.3±5.8		17*(160) 16*(180)		19	
Hypertension-Total-n	166	364	797	43	525	644	133	63	
Hypertension%-Total	77	75	64	49.4	76	62.59	71.1	61	
Hypertension-Intensive(n)	6	122		20		326		29	
Hypertension(%)-Intensive	60	62.5		43.5		60		66	
Hypertension-Less Intensive-n	100	242		23		318		34	
Hypertension(%)-Less Intensive	76.9	83.4		56.1		66.4		59	
Diabetes(Total)-n	70	139	406	25	188	356	51	17	
Diabetes(Total)-%	32	29	33	28.7	27	34.94	27.3	17	
Diabetes(Intensive)-n	3	51		12		192		7	
Diabetes(Intensive)%	30	26		26.1		36		16	
Diabetes(Less Intensive)-n	44	88		13		164		10	
Diabetes(Less Intensive%)	33.8	30		31.7		34.2		18	

Afib-Total-n	54	176	462	51	299			31
Afib-Total(%)	25	36	37	58	43			30
Afib(Intensive)-n	4	63		29		186		14
Afib(Intensive(%))	40	32		61.7		34.4		33
Afib(Less Intensive)-n	29	113		22		203		17
Afib(Less Intensive(%))	22.3	39		53.7		42.4		30
Prior Stroke-Total(n)							37	13
Prior Stroke-Total%							19.8	13
Prior Stroke-Intensive(n)								6
Prior Stroke-Intensive%								14
Prior Stroke-Less Intensive(n)								7
Prior Stroke-Less Intensive%								12
IVtPA-Total(n)	141	231	590	54	519	566	36	62
IVtPA-Total(%)	65	48	55	60	75	55.5	19.3	60
IVtPA-Intensive(n)	9	107		29		278		27
IVtPA-Intensive(%)	90	55		60.4		51		61
IVtPA-Less Intensive	84	124		25		288		35
IV tPA-Less intensive%	64.6	42		59.5		60		59
ICA-Total(n)	33	129	172	26	160	150		16
ICA-Total(%)	15	27	14.2	28.9	23	14.7		16
ICA-Intensive(n)		49		11		66		8
ICA-Intensive%		25		22.9		11		18
ICA-Less Intensive-n		80		15		84		8
ICA-Less Intensive(%)		27		35.7		17.5		14
MCA-MI-Total(n)	104	309	714	64	567	564		42
MCA-MI-Total(%)	48	64	57	71.1	82	55.35		41
M1-Intensive-n		108		37		315		19
M1 Intensive%		55.3		77.1		59		43
M1 Less Intensive(n)		148		27		249		23
M1 Less Intensive(%)		51		64.3		51.98		39
Post Circulation-Total-n	38						187	
Post Circulation-%	18						100	

*No of patients with each individual group in brackets

1
2
3
4
5
6
7
8
9
10
11
12

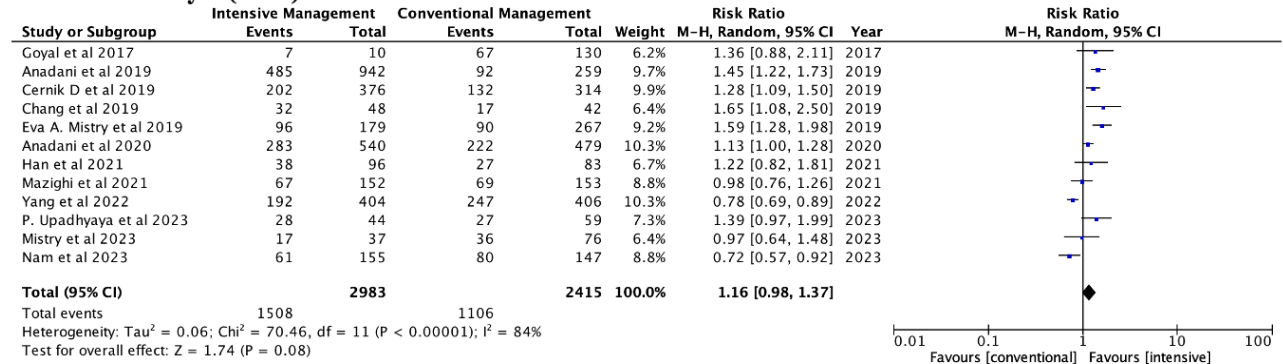
1
2
3



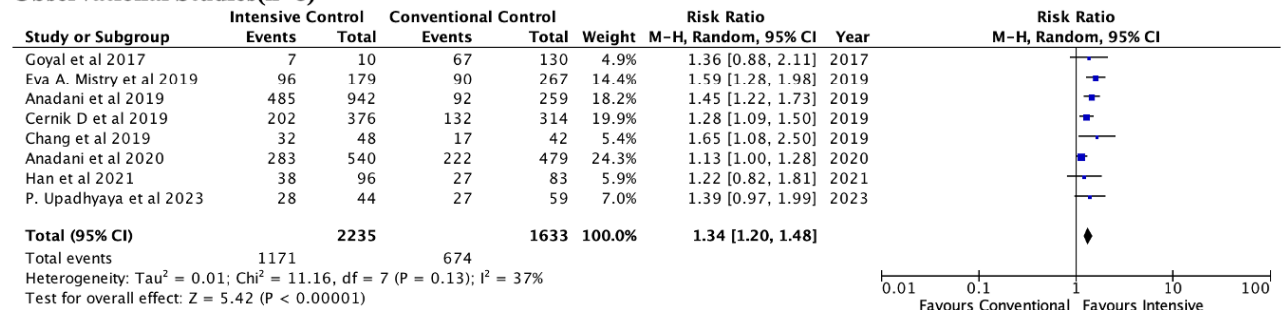
4
5
6
7
8

Figure-1-PRISMA flowchart of the study

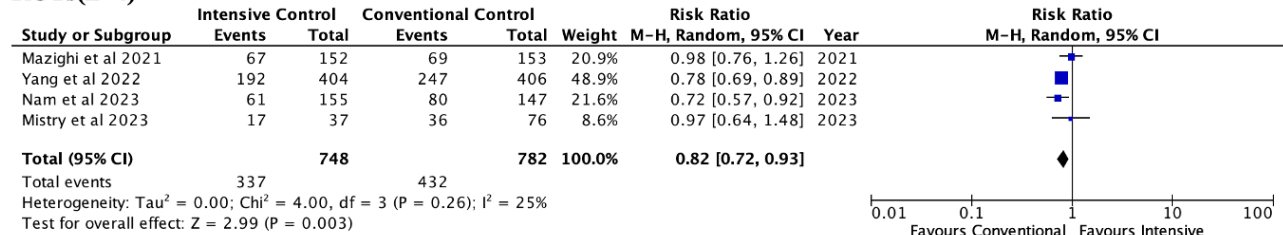
Combined Analysis(n=12)



Observational Studies(n=8)



RCTs(n=4)



1
2
3
4
5
6
7
8
9
10
11
12
13
14
15
16
17
18
19
20
21

Figure-2-Forest plot for the primary outcome of mRS 0-2 at 90 days.

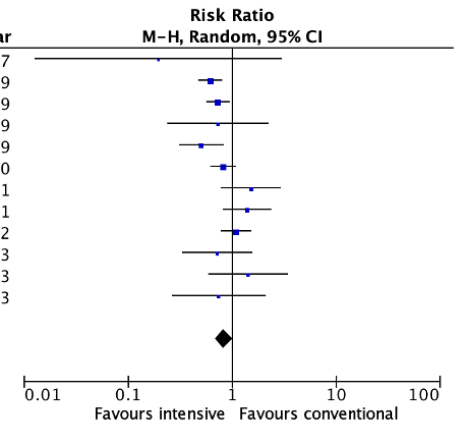
Legend- The estimated risk ratio-RR is represented by a square and the corresponding 95% CI are shown for the primary outcome(mRS-0-2) at 90 days. The square's size is proportional to the study's weight in the meta-analysis implying studies with larger squares have greater weight. The diamond beneath is the overall pooled estimate and its width denotes the 95% CI around the combined effect size.

Combined data(n=12)

Study or Subgroup	Intensive		Conventional		Weight	Risk Ratio		Year
	Events	Total	Events	Total		M-H, Random, 95% CI	Year	
Goyal et al 2017	0	10	30	130	0.5%	0.20 [0.01, 2.98]	2017	
Anadani et al 2019	150	942	67	259	15.3%	0.62 [0.48, 0.79]	2019	
Cernik D et al 2019	88	376	101	314	15.6%	0.73 [0.57, 0.93]	2019	
Chang et al 2019	5	48	6	42	2.8%	0.73 [0.24, 2.22]	2019	
Eva A. Mistry et al 2019	20	179	59	267	9.6%	0.51 [0.32, 0.81]	2019	
Anadani et al 2020	84	540	91	479	14.8%	0.82 [0.63, 1.07]	2020	
Han et al 2021	21	96	12	83	6.6%	1.51 [0.79, 2.89]	2021	
Mazighi et al 2021	29	152	21	153	8.7%	1.39 [0.83, 2.33]	2021	
Yang et al 2022	66	406	61	408	13.4%	1.09 [0.79, 1.50]	2022	
Mistry et al 2023	7	37	20	76	5.1%	0.72 [0.33, 1.55]	2023	
Nam et al 2023	12	155	8	147	4.3%	1.42 [0.60, 3.38]	2023	
P. Upadhyaya et al 2023	5	44	9	59	3.3%	0.74 [0.27, 2.07]	2023	

Total (95% CI) 2985 2417 100.0% **0.83 [0.68, 1.02]**

Total events 487 485
 Heterogeneity: Tau² = 0.05; Chi² = 22.93, df = 11 (P = 0.02); I² = 52%
 Test for overall effect: Z = 1.76 (P = 0.08)

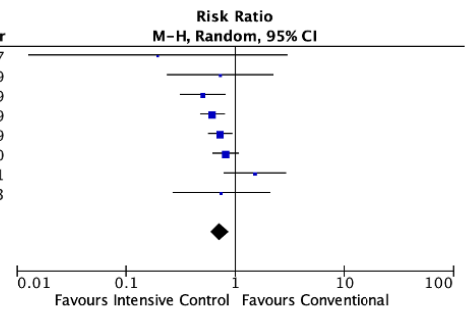


Observational Studies(n=8)

Study or Subgroup	Intensive Arm		Conventional Arm		Weight	Odds Ratio		Year
	Events	Total	Events	Total		M-H, Random, 95% CI	Year	
Goyal et al 2017	0	10	30	130	0.5%	0.20 [0.01, 2.98]	2017	
Chang et al 2019	5	48	6	42	2.8%	0.73 [0.24, 2.22]	2019	
Eva A. Mistry et al 2019	20	179	59	267	12.0%	0.51 [0.32, 0.81]	2019	
Anadani et al 2019	150	942	67	259	24.9%	0.62 [0.48, 0.79]	2019	
Cernik D et al 2019	88	376	101	314	25.7%	0.73 [0.57, 0.93]	2019	
Anadani et al 2020	84	540	91	479	23.5%	0.82 [0.63, 1.07]	2020	
Han et al 2021	21	96	12	83	7.3%	1.51 [0.79, 2.89]	2021	
P. Upadhyaya et al 2023	5	44	9	59	3.3%	0.74 [0.27, 2.07]	2023	

Total (95% CI) 2235 1633 100.0% **0.72 [0.59, 0.87]**

Total events 373 375
 Heterogeneity: Tau² = 0.02; Chi² = 10.48, df = 7 (P = 0.16); I² = 33%
 Test for overall effect: Z = 3.35 (P = 0.0008)

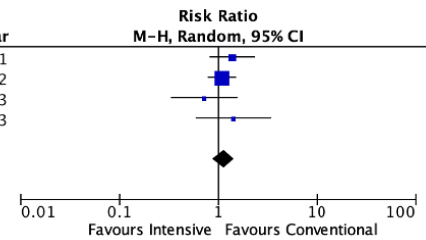


RCTs(n=4)

Study or Subgroup	Intensive Control		Conventional Control		Weight	Risk Ratio		Year
	Events	Total	Events	Total		M-H, Random, 95% CI	Year	
Mazighi et al 2021	29	152	21	153	22.7%	1.39 [0.83, 2.33]	2021	
Yang et al 2022	66	406	61	408	58.9%	1.09 [0.79, 1.50]	2022	
Mistry et al 2023	7	37	20	76	10.3%	0.72 [0.33, 1.55]	2023	
Nam et al 2023	12	155	8	147	8.0%	1.42 [0.60, 3.38]	2023	

Total (95% CI) 750 784 100.0% **1.13 [0.88, 1.44]**

Total events 114 110
 Heterogeneity: Tau² = 0.00; Chi² = 2.29, df = 3 (P = 0.51); I² = 0%
 Test for overall effect: Z = 0.95 (P = 0.34)

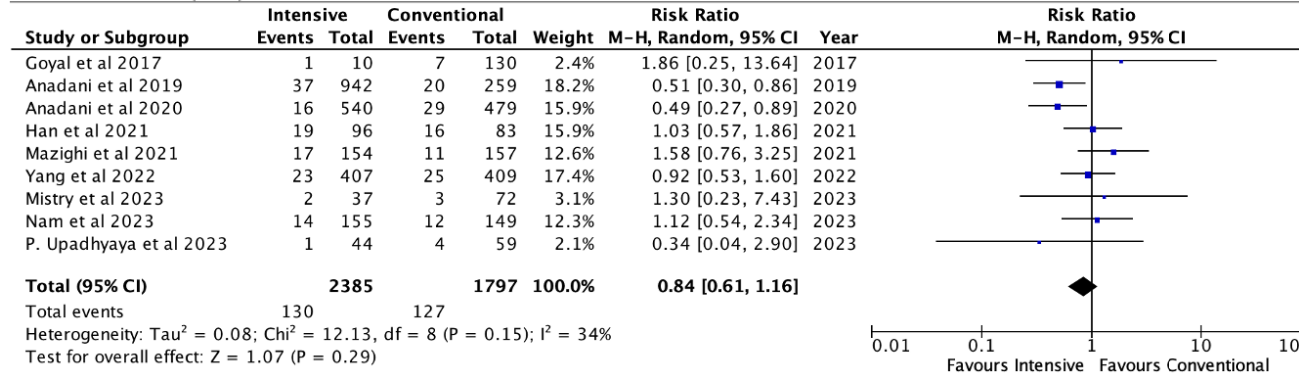


1
2
3
4
5
6
7
8
9
10
11
12
13
14
15
16
17
18
19

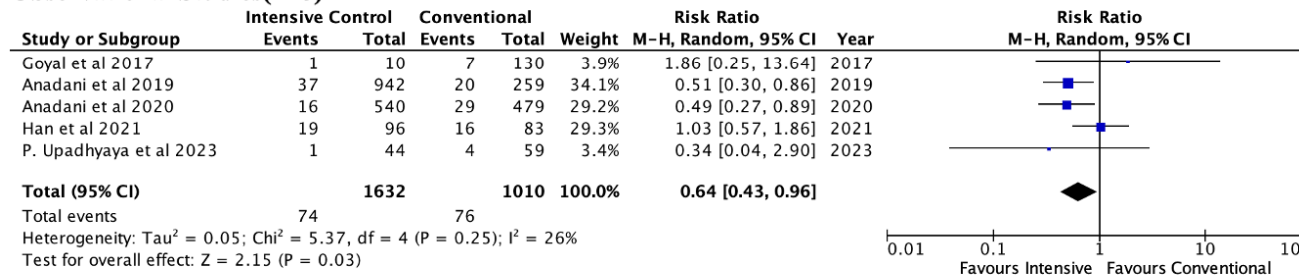
Figure-3-Forest plot for the outcome of death at 90 days

Legend-The estimated risk ratio-RR is represented by a square and the corresponding 95% CI are shown for the outcome death at 90 days. The square's size is proportional to the study's weight in the meta-analysis implying studies with larger squares have greater weight. The diamond beneath is the overall pooled estimate and its width denotes the 95%CI around the combined effect size.

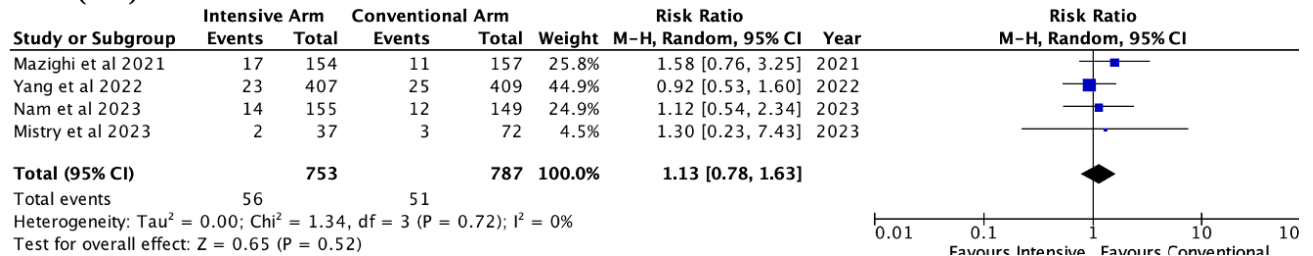
Combined data(n=9)



Observational Studies(n=5)



RCTs(n=4)



- 1
- 2
- 3
- 4
- 5
- 6
- 7
- 8
- 9
- 10
- 11
- 12
- 13
- 14
- 15
- 16
- 17
- 18
- 19
- 20
- 21
- 22

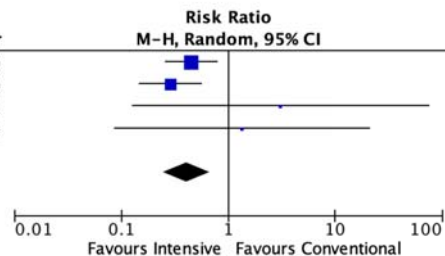
Figure-4- Forest plot for the outcome of symptomatic ICH(sICH)

Legend-The estimated risk ratio-RR is represented by a square and the corresponding 95% CI are shown for the outcome sICH. The square's size is proportional to the study's weight in the meta-analysis implying studies with larger squares have greater weight. The diamond beneath is the overall pooled estimate and its width denotes the 95%CI around the combined effect size.

1

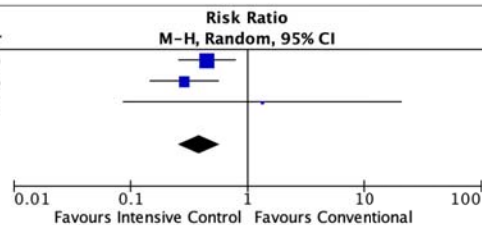
Combined data(n=4)

Study or Subgroup	Intensive		Conventional		Weight	Risk Ratio M-H, Random, 95% CI	Year
	Events	Total	Events	Total			
Anadani et al 2019	31	942	19	259	53.6%	0.45 [0.26, 0.78]	2019
Anadani et al 2020	11	540	34	479	40.9%	0.29 [0.15, 0.56]	2020
Mazighi et al 2021	1	158	0	162	2.3%	3.08 [0.13, 74.93]	2021
P. Upadhyaya et al 2023	1	44	1	59	3.2%	1.34 [0.09, 20.85]	2023
Total (95% CI)		1684		959	100.0%	0.40 [0.25, 0.66]	
Total events	44		54				
Heterogeneity: Tau ² = 0.04; Chi ² = 3.43, df = 3 (P = 0.33); I ² = 13%							
Test for overall effect: Z = 3.60 (P = 0.0003)							



Observational Studies(n=3)

Study or Subgroup	Intensive		Conventional		Weight	Risk Ratio M-H, Random, 95% CI	Year
	Events	Total	Events	Total			
Anadani et al 2019	31	942	19	259	57.9%	0.45 [0.26, 0.78]	2019
Anadani et al 2020	11	540	34	479	39.8%	0.29 [0.15, 0.56]	2020
P. Upadhyaya et al 2023	1	44	1	59	2.4%	1.34 [0.09, 20.85]	2023
Total (95% CI)		1526		797	100.0%	0.39 [0.25, 0.59]	
Total events	43		54				
Heterogeneity: Tau ² = 0.00; Chi ² = 1.85, df = 2 (P = 0.40); I ² = 0%							
Test for overall effect: Z = 4.43 (P < 0.00001)							



2

3

Figure-5- Forest plot for the outcome of decompressive surgery.

4

Legend-The estimated risk ratio-RR is represented by a square and the corresponding 95% CI are shown for the outcome requirement of decompressive surgery. The square's size is proportional to the study's weight in the meta-analysis implying studies with larger squares have greater weight. The diamond beneath is the overall pooled estimate and its width denotes the 95%CI around the combined effect size.

5

6

7

8

9

10

11

12

13

14

15

16

17

18

19

20

21

22

23

24

25

26

27

28

29

30

31

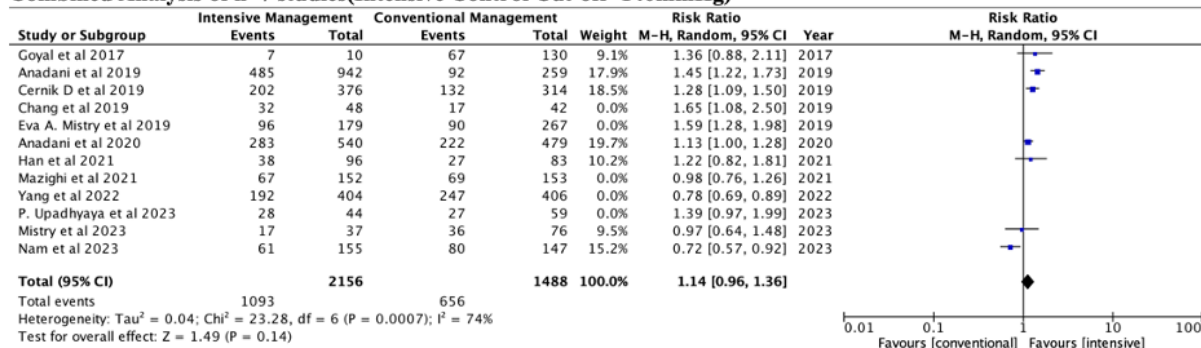
32

33

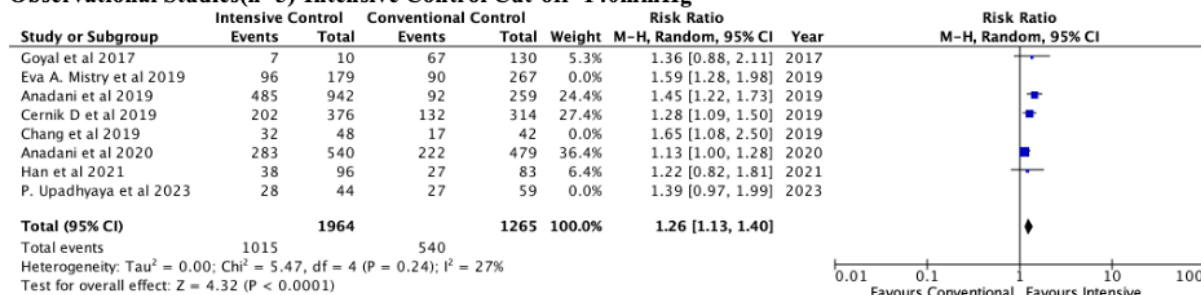
34

1

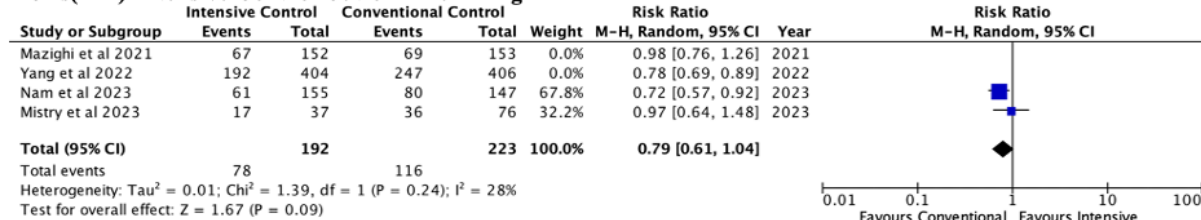
Combined Analysis of n=7 studies(Intensive Control Cut-off=140mmHg)



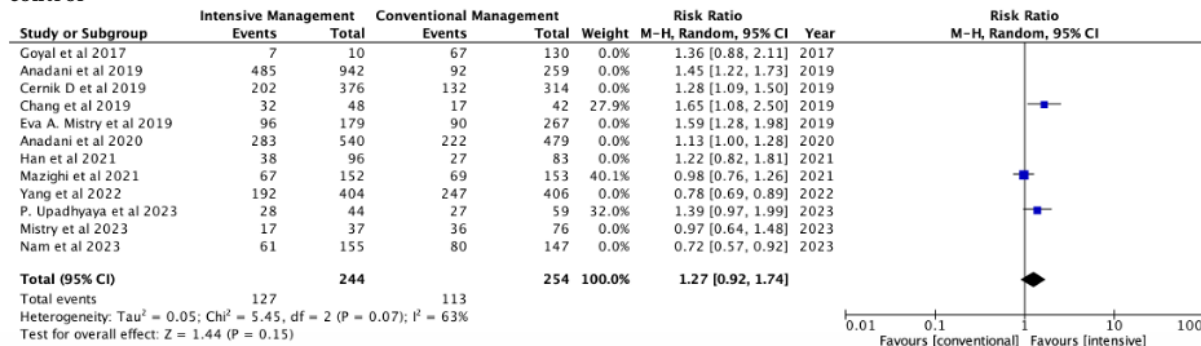
Observational Studies(n=5)-Intensive Control Cut-off=140mmHg



RCTs(n=2)-Intensive Control Cut-off=140mmHg



Combined Analysis of studies(n=3) using a SBP cut-off of 130mmHg (mRS 0-2@90d) for intensive control



2

3

Figure-6-mRS 0-2 at 90 days with different SBP cut-off to define intensive control

4

Legend- The estimated risk ratio-RR is represented by a square and the corresponding 95% CI are shown for the primary outcome(mRS-0-2) at 90 days. The square's size is proportional to the study's weight in the meta-analysis implying studies with larger squares have greater weight. The diamond beneath is the overall pooled estimate and its width denotes the 95% CI around the combined effect size.

9