

Gastric digestion and amino acid concentrations of casein from cow and goat milk: a randomized crossover trial in healthy men

Short title: Digestion of casein from cow and goat milk

Elise J.M. van Eijnatten, PhD, Guido Camps, PhD, Wolf Rombouts, PhD, Linette Pellis, PhD, Paul A.M.

Smeets, PhD

List of all authors; their positions and institutions at the time of work performed:

Elise J.M. van Eijnatten, PhD, PhD candidate at the Division of Human Nutrition and Health, Wageningen University

Guido Camps, PhD, researcher at the Division of Human Nutrition and Health, Wageningen University

Wolf Rombouts, PhD, scientist at Ausnutria

Linette Pellis, PhD, scientist at Ausnutria

Paul A.M. Smeets, PhD, senior scientist at the Division of Human Nutrition and Health, Wageningen University

Location of department and institution where the work was performed:

Division of Human Nutrition and Health, Wageningen University, Stippeneng 4, 6708 WE, Wageningen, The Netherlands.

Grant support: the study was funded by Ausnutria.

List of abbreviations:

95% CI	95% confidence interval
AA	Amino acids
AUC	Area under the curve
BCAA	Branch chained amino acids
BMI	Body mass index
Cow MC	Cow milk-derived micellar casein
EAA	Essential amino acids
FFA	Free fatty acids
GE	Gastric emptying

GE-t50	Gastric emptying half time
Goat MC	Goat milk-derived micellar casein
MD	Mean difference
MRI	Magnetic resonance imaging
NEAA	Non-essential amino acids
TG	Triglycerides
UHT	Ultra-high temperature processing

Clinical trial registry number: NL8137 (Netherlands Trial Registry), accessible through <https://onderzoekmetmensen.nl/nl/trial/28580>

Corresponding author contact information:

Name: Elise van Eijnatten

Mailing address: Stippeneng 4, 6708 WE Wageningen

Telephone number: 0031642565543

E-mail address: elisevaneijnatten@hotmail.com

Disclosures:

Elise J.M. van Eijnatten: no conflicts of interest

Guido Camps: no conflicts of interest

Wolf Rombouts: during the study employed as a scientist at Ausnutria

Linette Pellis: during the study employed as a scientist at Ausnutria

Paul A.M. Smeets: no conflicts of interest

Author contributions to manuscript:

WR, GC and PS designed the research; EE conducted the research. EE analysed the data and drafted the paper. WR and LP helped interpreting results. GC, WR and PS revised the manuscript critically for important intellectual content. PS had primary responsibility for final content. All authors read and approved the final manuscript.

Data Transparency Statement: deidentified individual participant data that underlie the reported results will be made available upon reasonable request.

Word count: 5055

Number of figures: 5

Number of tables: 1

Supplementary data submitted: yes

1 **ABSTRACT**

2 **Background:** *In vitro* studies show that goat milk proteins form less compact coagulates in
3 the stomach compared to cow milk proteins. This may increase the accessibility of the
4 proteins to digestive enzymes, thereby resulting in enhanced gastric digestion and amino
5 acid (AA) absorption. However, this needs to be confirmed *in vivo* in humans.

6 **Objective:** This study aimed to examine gastric digestion and amino acid concentrations of
7 cow milk-derived casein (cow MC) and goat milk-derived casein (goat MC).

8 **Methods:** In this single-blind randomized cross-over study 18 men (age 23 ± 1.6 years, BMI
9 23 ± 1.6 kg/m²) consumed 300 ml of a drink containing either 30 g of cow MC or goat MC.
10 Participants underwent gastric MRI scans at baseline and t = 3, 10, 20, 30, 40, 50 and 60
11 minutes after the start of consumption. Blood samples were drawn at baseline and up to 4
12 hours postprandially to determine AA concentrations. In addition, participants verbally rated
13 their appetite after each MRI measurement. Primary outcomes were gastric emptying and
14 AA concentrations. The secondary outcome was gastric coagulation as inferred by image
15 texture measures.

16 **Results:** Gastric emptying half-time was 80 ± 25 minutes for goat MC and 85 ± 24 minutes
17 for cow MC ($p = 0.395$). In line with this, gastric emptying of the drinks over time was similar
18 (MD 0.77, 95% CI [-6.9, 8.5], $p = 0.845$). Serum essential AA (MD -110 $\mu\text{mol/L}$, 95% CI [-162, -
19 58]) and branched chain AA (MD -65 $\mu\text{mol/L}$, 95% CI [-101, -29]) were significantly higher
20 over time for cow MC (both $p < 0.001$). The image texture measure contrast was significantly
21 lower for the cow MC compared with the goat MC drink (MD 0.010, 95% CI [0.001, 0.020], p
22 = 0.036).

23 **Conclusion:** Cow MC and goat MC have different coagulating properties, as measured by AA
24 concentrations and supported by image texture analysis. This possible difference in

25 coagulation did not influence overall gastric emptying or the emptying of the liquid and
26 coagulated fractions, which were similar. This warrants further research to examine
27 differences in casein coagulation *in vivo* in the food matrix of milk products to help
28 determine the optimal use for cow and goat milk and their protein fractions.

29 INTRODUCTION

30 Protein is an essential macronutrient used in many processes in the human body (Atherton
31 and Smith 2012, Do, Lewis et al. 2019). It is important that ingested protein is properly
32 digested and absorbed so that it can be used for protein synthesis (Mahé, Roos et al. 1996,
33 van Vliet, Burd et al. 2015, Fardet, Dupont et al. 2019). Dairy products constitute a significant
34 protein source globally (Lagrange, Whitsett et al. 2015). Cow milk dairy products are the
35 most commonly used, but goat milk popularity is increasing (Miller and Lu 2019). One of the
36 reasons for this is the consumer's perception of its health benefits. These health benefits are
37 hypothesized to originate from a difference in the milks' digestion due to their different
38 casein composition (Roy, Moughan et al. 2022).

39

40 Cow and goat milk generally contain about 3.5 % protein of which caseins represent about
41 80% and whey proteins about 20% (Ceballos, Morales et al. 2009). During digestion in the
42 stomach casein micelles (CM) are destabilized by pepsin proteolysis and acidification. This
43 results in the formation of coagulates containing protein, and if present, fat globules (Ye, Liu
44 et al. 2019). The physical properties of these casein coagulates could affect gastric protein
45 digestion, gastric emptying and subsequent intestinal digestion and absorption of amino
46 acids (AA) (Huppertz and Chia 2021). Previous studies, predominantly *in vitro*, have shown
47 that casein coagulation is affected by several factors including processing-induced protein
48 modifications, overall product composition (food matrix), and differences in protein
49 composition for instance between animal species (Almaas, Cases et al. 2006, Ceballos,
50 Morales et al. 2009, Wang, Ye et al. 2018, Mulet-Cabero, Mackie et al. 2019, Eijnatten,
51 Roelofs et al. 2023, Hettinga, Pellis et al. 2023). Human *in vivo* studies on protein

52 modifications, resulting in different cow casein forms, showed that coagulation and gastric
53 emptying can have strong effects on the postprandial rise in AA bioavailability (Trommelen,
54 Weijzen et al. 2020). Even though goat micellar casein seemed to have similar protein
55 structures on a molecular level in an *in vitro* study using X-ray scattering (Ingham,
56 Smialowska et al. 2018), casein micelles differ in size, hydration, and mineralization
57 compared to bovine caseins (Claeys, Verraes et al. 2014, Roy, Moughan et al. 2022). During
58 static *in vitro* digestion, more β -casein and less α s1-casein may contribute to the formation
59 of looser gastric clots in goat casein micelles and therefore greater proteolysis than cow
60 casein micelles (Zhang, Liu et al. 2023). Increased access of the enzymes to the proteins
61 might lead to faster gastric digestion of goat as compared to cow milk-derived caseins and
62 milk, as seen in *in vitro* coagulum analysis (Park 2017). In line with this, infant formula based
63 on goat milk formed smaller flocs of aggregated protein and oil droplets under gastric
64 conditions, leading to faster protein digestion in goat milk infant formula than seen in cow
65 milk based infant formula (Ye, Cui et al. 2019). Similarly, goat milk proteins were digested
66 faster than cow milk proteins in *in vitro* digestion by human gastric and duodenal enzymes
67 (Almaas, Cases et al. 2006). This was also seen in two *in vitro* studies under simulated infant
68 conditions where proteins in goat milk and goat milk-based infant formula (IF) had different
69 digestive behaviour compared to those present in cow milk and cow milk-based formula
70 (Maathuis, Havenaar et al. 2017, Hodgkinson, Wallace et al. 2018). Maathuis et al. controlled
71 for gastric emptying, therefore differences in digestion concentrations were probably due to
72 differences in coagulation. However, not all studies showed a faster digestion of goat milk
73 protein. Inglingstad et al. found in an *in vitro* study that more goat milk casein remained
74 undigested after 30 min of digestion compared to cow milk casein (Inglingstad, Devold et al.
75 2010).

76 Since most research has been done *in vitro* and results are not fully conclusive, they need to
77 be verified *in vivo* in humans. Understanding coagulation and gastric emptying of cow and
78 goat milk proteins is important, since they may influence AA concentrations.

79

80 In summary, *in vitro* results suggest that the differences in digestion between cow and goat
81 milk are due to differences in casein. Therefore, the current *in vivo* study aimed to quantify
82 gastric digestion and absorption of cow and goat milk-derived casein *in vivo* in humans. We
83 used MRI to evaluate intragastric processes and gastric emptying and examined blood AA
84 concentrations. We hypothesized that goat milk-derived casein has different coagulum
85 characteristics, faster gastric emptying and higher AA concentrations in the blood compared
86 to cow milk-derived casein.

87

88 **METHODS**

89 **Design**

90 The study was a randomized cross-over study in which healthy men underwent gastric MRI
91 scans before and after consumption of 300 ml of a cow milk-derived-casein (cow MC) or goat
92 milk-derived-casein (goat MC) drink. Primary outcomes were gastric emptying (measured by
93 gastric emptying half time (GE-t50) and gastric volume over time) and serum AA
94 concentrations. The secondary outcome was gastric coagulation. Tertiary outcomes were
95 serum glucose, insulin, free fatty acids (FFA) and triglyceride (TG) concentrations and
96 appetite ratings (hunger, fullness, desire to eat, prospective consumption and thirst). The
97 study was conducted according to the principles of the Declaration of Helsinki (October

98 2013) and registered with the Dutch Trial Register under number NL8137 (accessible through
99 <https://onderzoekmetmensen.nl/en/trial/28580>). All participants signed written informed
100 consent.

101

102 **Sample size**

103 Sample size was calculated based on the primary outcomes, gastric emptying and post
104 prandial AA profile. Given our previous work on gastric emptying of caloric liquids in adults,
105 we know that the gastric emptying half time of 500 ml dairy-based shakes differing in energy
106 density and viscosity (protein content either 6 or 30 g and energy density 0.2 kcal/ml or 1
107 kcal/ml) has an overall gastric emptying half-time (GE-t50) of 54.7 ± 3.8 min, with the
108 different shakes ranging between 26.5 ± 3.0 min and 81.9 ± 8.3 min. The goat MC drink
109 contains 0.58 kcal/ml. Based on nutrient density the expected SD of the cow MC and the
110 goat MC drinks should be somewhere between 3 and 6. Therefore, we assumed an SD of 6
111 min for both drinks. In Camps et al. 2016 the average difference in GE-t50 between a 500-ml
112 thin and thick shake was 14.5 (low-calory) and 12.4 min (high-calory). For a 300-ml load the
113 GE-t50 will be smaller. We considered a 4 min difference in gastric emptying half-time
114 between the treatments as the minimum detectable difference. A two-sided test was
115 deemed appropriate, with $Z\alpha=1.96$, $p=0.05$ and a power of 90% gives a $Z\beta$ of 1.28. Combined
116 with the SD of 6 this leads to the following formula for paired comparisons (Gogtay 2010): n
117 $= (1.96 + 1.28)^2 \times (6/4)^2 = (3.24)^2 \times 1.5 = 18$ participants.

118

119 To ensure sample size was sufficient for the other primary outcome, post prandial AA profile,
120 a second sample size calculation was performed. A priori sample size was estimated for both

121 primary outcomes, i.e. AA absorption concentrations and gastric volume over time. The
122 estimation for postprandial AA was based on the peak value and the total free AA assessed
123 in the serum after consumption of protein products. For the peak value, a difference of 100
124 $\mu\text{g}/\text{mL}$ was regarded as relevant with an individual difference in peak values of 100 $\mu\text{g}/\text{mL}$
125 (Farnfield, Trenerry et al. 2009, He, Spelbrink et al. 2013). Again we used a two-sided test,
126 with $Z\alpha=1.96$, $p=0.05$ and power of 90% gives a $Z\beta=1.28$. This leads to the following formula
127 for paired comparisons: $n = (1.96 + 1.28)^2 \times (100/100)^2 = (3.24)^2 \times 1 = 11$ participants.
128 Based on the above, we aimed to include 18 participants.

129

130 **Participants**

131 Healthy males were recruited from November 2019 until March 2020 via e-mail using a
132 database of individuals who expressed interest in participating in scientific research.
133 Healthy, non-smoking men with a BMI of 18.5-25 kg/m^2 were included. Exclusion criteria
134 were cow or goat milk allergy or lactose intolerance (self-reported), gastric disorders or
135 regular gastric complaints, use of proton pump inhibitors or other gastric medication, or a
136 contra-indication to MRI scanning (including, but not limited to pacemakers and
137 defibrillators, intraorbital or intraocular metallic fragments ferromagnetic implants or being
138 claustrophobic). Eighteen healthy men (age 23 ± 1.6 y, BMI 23 ± 1.6 kg/m^2) participated in
139 the study. The flow diagram can be found in **Supplemental figure 1**.

140

141 **Treatments**

142 Treatments were 300 ml drinks containing 30 g of protein originating from cow micellar
143 casein concentrate powder (FrieslandCampina Refit MCI80) or 30 g goat micellar casein

144 concentrate powder (Ausnutria, pilot plant). The drinks were matched on caloric content,
145 protein, lactose and dry matter content. The amount of the AA leucine was equal. Vanilla
146 extract was added to ensure similarity of taste. The drinks were prepared by slowly
147 reconstituting the caseins at 50°C and thereafter allowing them to fully rehydrate at 4°C
148 overnight using magnetic stirrer. This method assured a more similar viscosity in the drinks
149 (when resolving fast by shaking there was a larger viscosity of the cow MC drink: 200-500
150 mPa.s and goat MC drink 8-15mPa.s). Three samples of each drink were measured with a
151 rheometer to assess their viscosity using an Anton Paar Physica MCR 301 rheometer
152 equipped with a Couette geometry with a volume of 1 mL. Viscosity was determined at
153 constant shear rate of 100s⁻¹ at 20°C. The difference in viscosity of the drinks (15.9 ± 3.9
154 mPa.s for the cow MC drink and 7.2 ± 1.8 mPa.s for the goat MC drink) was deemed not
155 physiologically relevant (for instance milk 2 mPa.s vs yoghurt 150 mPa.s is a much larger and
156 more relevant difference).

157

158 The composition per 300 ml serving of the cow MC drink was 176 kcal, 30 g protein, 90:10
159 casein to whey ratio, 12 g lactose, 0.77 g fat and 81 g dry matter. For the goat MC drink this
160 was 174 kcal, 30 g protein, 90:10 casein to whey ratio, 12 g lactose, 0.60 g fat, 81 g dry
161 matter. The amino acid profiles of the drinks can be found in **Table 1**. The data were
162 analyzed by Qlip B.V. (lactose, dry matter, fat, protein) and NIZO (casein-to-whey ratio, only
163 for goat micellar casein concentrate, for cow micellar casein concentrate the 90:10 casein to
164 whey was stated by the supplier on the product data sheet).

165

166 **Study procedures**

167 Participants arrived after an overnight fast. Eating was allowed until 8 PM on the day before
168 the study and drinking water was allowed up to one hour before the visit. Participants
169 started their scan session at 8 or at 10 AM and were measured at the same time on both
170 study days. First, a canula was placed in an antecubital vein. Then, participants verbally
171 provided baseline appetite ratings after which the baseline MRI scan was performed and the
172 baseline blood sample was drawn. Subsequently, they consumed one of the 300 ml drinks
173 within two minutes. Participants were randomly allocated by block randomization using
174 randomizer.org to receive either the cow or goat MC first and participants were blinded for
175 which drink they received. Gastric MRI scans were performed at baseline and at t = 3, 10, 20,
176 30, 40, 50 and 60 minutes after the start of ingestion. During the MRI session participants
177 verbally rated hunger, fullness, prospective consumption, thirst and nausea on a scale from 0
178 (not at all) to a 100 (most imaginable) at each time point (Noble, Clark et al. 2005, Blundell,
179 de Graaf et al. 2010). A cut off of 10% is usually used as a meaningful difference (Flint, Raben
180 et al. 2000). An overview of a test session is given in **Figure 1**.

181

182 **MRI**

183 Participants were scanned in a supine position with the use of a 3 Tesla Siemens Verio MRI
184 scanner (Siemens AG, Munich, Germany) using a T₂-weighted spin echo sequence (HASTE, 24
185 6-mm slices, 2.4 mm gap, 1.19 x 1.19 mm in-plane resolution, TR 850 ms, TE 87 ms, flip angle
186 112 °C) with breath hold command on expiration to fixate the position of the diaphragm and
187 the stomach. The duration of the scan was approximately 18 seconds. The software Medical
188 Imaging Processing And Visualization (MIPAV, version 11.0.3) (McAuliffe, Lalonde et al. 2001)

189 was used to manually delineate gastric content on each slice and create a mask. Gastric
190 content volume on each time point was calculated by multiplying surface area of gastric
191 content per slice with slice thickness including gap distance and summing up the volumes of
192 all slices showing gastric content. In Matlab a bias field correction was performed using
193 multiplicative intrinsic component optimization (MICO) (Li, Gore et al. 2014). To assess
194 changes in gastric coagulation, image texture analysis of the stomach content was
195 performed using the masks in the software LIFEx (version 7.2.0, Institut national de la santé
196 et de la recherche médicale, France) (Nioche, Orhac et al. 2018). Homogeneity, coarseness,
197 contrast, and busyness were calculated. These image metrics provide information on the
198 spatial patterns of voxel intensity (Thomas, Qin et al. 2019). The Gray-Level Co-occurrence
199 Matrix (GLCM) method was used for homogeneity (degree of similarity between voxels) and
200 Neighborhood Gray-level Difference Matrix (NGLDM) difference of grey-levels between one
201 voxel and its 26 neighbors in 8 dimensions was used for contrast (local variations),
202 coarseness (spatial rate of change in intensity) and busyness (spatial frequency of changes in
203 intensity). The number of grey-levels for texture metric calculation was set at 64, intensity
204 rescaling at relative (ROI: min/max), and dimension processing at 2D. On each postprandial
205 time point, texture metrics were calculated per slice for the stomach content. Subsequently,
206 a weighted average texture metric was calculated based on the gastric content volume in
207 each slice such that slices with little stomach content contributed less to the average than
208 those with more stomach content. To quantify the (relative) volume of liquid and semi-solid
209 stomach contents the number of lighter (more liquid), intermediate and darker (semi-solid)
210 voxels was calculated by determining two intensity thresholds with the use of Otsu's method
211 (Otsu 1979) in Matlab (version R2023a, `multitresh` function), an approach previously used on
212 *in vitro* and *in vivo* MRI images of gastric milk digestion (Mayar, Smeets et al. 2023, van

213 Eijnatten, Camps et al. 2023, Mayar, de Vries et al. 2024). The number of intermediate and
214 darker voxels were summed and interpreted as reflecting voxels in which coagulation took
215 place. This was done because visual inspection of the thresholding results using one
216 threshold showed a poorer separation between lighter and darker gastric contents. In the
217 context of this study, changes in image texture metrics were interpreted as reflecting
218 changes in the degree of coagulation. An example of stomach contents with and without
219 coagulation and their corresponding image texture measures can be found in **Supplemental**
220 **figure 2.**

221

222 **Blood parameters**

223 Blood samples were collected at baseline and at t = 15, 30, 60, 90, 120, 180 and 240 min in
224 sodium-fluoride (for glucose), serum (for AA, FFA and insulin) and lithium-heparin (for
225 triglyceride) tubes. After collection, blood in the serum tube was allowed to clot for 30
226 minutes. Subsequently, all tubes were centrifuged at 1300 g for 10 minutes at 20 °C. After
227 centrifugation, the supernatant was divided into aliquots and stored in a -80°C freezer until
228 analysis. AA, FFA and insulin concentrations were measured at Wageningen University.
229 Glucose and TG concentrations were measured at the clinical chemistry lab of the Gelderse
230 Vallei hospital (Ede, The Netherlands).

231

232 AA concentrations were determined using triple quadrupole mass spectrometry (TQMS),
233 with an internal standard and ¹³C reference mix. Glucose concentrations were determined
234 using an Atellica CH Glucose Hexokinase_3 (GluH_3) assay kit and Atellica CH analyzer
235 (Siemens Healthineers, Netherlands). The lower limit of detection (LLOD) was 0.2 mmol/l

236 and intra-assay CVs were at most 4.5%. Serum insulin concentrations were determined using
237 an enzymatic immunoassay kit (ELISA, Mercodia AB, Sweden) with a LOD of 0.008 mmol/l
238 and intra assay CVs of maximal 6.9%. Serum FFA concentrations were determined using an
239 enzymatic assay kit (Instruchemie, Delfzijl) with a LOD of 4 mg/dl and intra assay CVs of at m-
240 ost 1.4%. TG concentrations were quantified using an Atellica CH TG enzymatic assay kit and
241 quantified using an Atellica CH analyzer (Siemens Healthineers, Netherlands) with a LOD of 8
242 mg/dl and intra assay CVs of at most 1.0%.

243

244 **Statistical analysis**

245 In order to estimate GE-t50, a commonly used summary measure, a curve was fitted to the
246 gastric volume over time of the cow MC and goat MC drink using R statistical software
247 according to the linear-exponential model as developed on the basis of earlier models
248 (Elashoff, Reedy et al. 1982, Fruehauf, Menne et al. 2011). Further analyses were performed
249 in SPSS (version 22, IBM, Armonk, USA). Essential amino acid (EAA), non-essential amino acid
250 (NEAA) and branch-chained amino acid (BCAA) concentrations were calculated by adding
251 individual AA concentrations. GE-t50 was compared between cow MC and goat MC drink
252 with a paired t-test. Normality was confirmed by inspecting QQ plots of the residuals. Overall
253 gastric volume, coagulation (image texture of the gastric contents as reflected in
254 homogeneity, contrast, coarseness and busyness), blood parameters and appetite ratings
255 over time were tested using linear mixed models with treatment, time and treatment*time
256 as fixed factors and baseline values as covariate. Post-hoc t-tests were performed with
257 Tukey's correction when treatments were significantly different. In addition, Pearson
258 correlation coefficients were calculated for the associations between coagulation (image

259 texture metrics at 30 minutes, chosen because 30 min was the first time point that
260 coagulation was clearly visible) and blood parameters (EAA, NEAA, BCAA, glucose and
261 insulin). The significance threshold was set at $p = 0.05$. Data are expressed as mean \pm SD
262 unless stated otherwise.

263

264 **RESULTS**

265 **Gastric emptying**

266 The curves of gastric emptying over time of cow MC and goat MC drink is shown in **Figure 2**.
267 Gastric emptying half-time was 84.6 ± 23.7 minutes for the cow MC drink, compared to 79.8
268 ± 24.7 minutes for the goat MC drink ($p = 0.395$). Furthermore, the mixed model analysis
269 showed no difference in gastric emptying over time between the drinks (MD 0.77, 95% CI [-
270 6.9, 8.5], $p = 0.845$) and there was no interaction effect of time*treatment ($p = 0.65$). Time
271 effect was significantly different ($p < 0.001$).

272

273 An example of a thresholded stomach image can be found in **Supplemental figure 3**. The
274 percentage of volume of liquid and coagulum did not differ between the cow MC and goat
275 MC drink over time (coagulum: MD 0.407 %, 95 % CI [-1.2, 2.0], $p = 0.607$) and there was no
276 interaction effect of treatment*time ($p = 0.52$). There was a significant decrease in
277 coagulated volume over time (time effect $p = 0.002$).

278

279 **Amino acids**

280 Figures of serum EAA, NEAA and BCAA can be found in **Figure 3**. Figures of all individual AAs
281 can be found in **Supplemental figure 4 and 5**. Serum concentration of EAA over time was

282 lower for goat MC (MD -110 $\mu\text{mol/L}$, 95% CI [-162, -58], $p < 0.001$). Post-hoc t-test showed
283 that this difference was driven by time points $t = 30$ ($p = 0.002$) and $t = 180$ ($p = 0.025$) and
284 that there tended to be a lower serum concentration of NEAA for goat MC over time (MD -
285 62.1 $\mu\text{mol/L}$, 95% CI [-127, 3.4], $p = 0.063$), driven by time point $t = 180$ min ($p = 0.045$).
286 Serum concentration of BCAA was also lower for goat MC (MD -65 $\mu\text{mol/L}$, 95% CI [-101, -
287 29], $p < 0.001$). This was driven by time point $t = 30$ ($p = 0.005$), and there was a trend at $t =$
288 180 ($p = 0.051$). Time effects were significant for EAA, NEAA and BCAA ($p < 0.001$) and
289 there were no interaction effects.

290

291 **Coagulation**

292 **Figure 4** shows examples of MRI images showing cross-sections of the abdomen at the level
293 of the stomach showing homogenous stomach content after casein drink consumption and
294 later coagulum formation.

295

296 The curves of the image texture metric contrast calculated over the stomach content over
297 time can be found in **Figure 5**. The other image texture metrics can be found in

298 **Supplemental figure 6**. The texture metric contrast was significantly lower in the cow MC
299 drink than the goat MC drink (MD 0.010, 95% CI [0.001, 0.020], $p = 0.036$). Homogeneity
300 (MD -0.003, 95% CI [-0.012, 0.006], $p = 0.503$), coarseness (MD 0.001, 95% CI [0.000, 0.001],
301 $p = 0.310$) and busyness (MD -0.008, 95% CI [-0.023, 0.007], $p = 0.315$) were not significantly
302 different between the drinks. Time effects were significant for all texture metrics ($p <$
303 0.001) and there were no interaction effects.

304

305 **Glucose and insulin**

306 Overall, glucose concentrations did not differ between the drinks (MD -0.055 mmol/L, 95%
307 CI [-0.14, 0.028], $p = 0.19$). Only when examining specific timepoints, glucose concentration
308 for the goat MC drink was slightly higher compared to the cow MC drink at $t = 30$ minutes
309 (MD 0.015 mmol/L, 95% CI [0.42, 0.22], $p=0.036$). Insulin concentrations did not differ
310 between cow MC and goat MC drinks (MD -1.66 mIU/L, 95% CI [1.35, -0.16], $p = 0.84$)
311 (graphs in **Supplemental figure 7**). Time effects were significant for glucose and insulin ($p <$
312 0.001) and there were no interaction effects.

313

314 **Triglycerides and free fatty acids**

315 FFA concentrations were not different between the cow MC and goat MC drinks (MD -0.032
316 mmol/L, 95% CI [0.034, 0.001], $p = 0.948$). TG concentrations over time were significantly
317 higher for goat MC (MD 0.074 mmol/L, 95% CI [0.039, 0.109], $p = 0.009$), even with baseline
318 differences as a covariate in the mixed model analysis. There were no differences for any of
319 the time points (graphs in **Supplemental figure 8**). Time effects were significant for FFA and
320 TG ($p < 0.001$) and there were no interaction effects.

321

322 **Appetite ratings**

323 Hunger and thirst did not differ between the treatments. Fullness, desire to eat and
324 prospective consumption over time were significantly lower after goat MC ingestion ($p =$
325 0.036 , $p < 0.001$, $p < 0.001$, respectively). However, as can be seen in **Supplemental figure 9**,
326 the differences are small (below 10 units as a mean difference over time).

327

328 **Correlations between image texture metrics, blood concentrations and gastric emptying**

329 To explore the associations between image texture metrics as an indicator of the degree of
330 coagulation, blood concentrations and gastric emptying, Pearson correlation coefficients
331 were calculated for image texture metrics at 30 min (because at t=30 min coagulation was
332 visible) and 4-h AUC of blood parameters (EAA, NEAA, BCAA, glucose and insulin). Overall,
333 GE-t50 negatively correlated with contrast ($r=-0.413$, 95% CI [-0.662, -0.081]) and coarseness
334 ($r=-0.38$, 95% CI [-0.640, -0.043]). NEAA correlated with insulin ($r=0.491$, 95% CI [0.152,
335 0.727]). When divided between treatments: goat MC, EAA, NEAA and BCAA were negatively
336 correlated with coarseness ($r=-0.698$, 95% CI [-0.887, -0.175], $r=-0.572$, 95% CI [-0.837, -
337 0.002] and $r = -0.690$, 95% CI [-0.891, -0.162] respectively). GE-t50 was positively correlated
338 with insulin ($r = 0.558$, 95% CI [0.130, 0.790]). For cow MC GE-t50 was positively correlated
339 with image homogeneity and busyness ($r = 0.498$, 95% CI [0.061, 0.760] and $r = 0.568$, 95% CI
340 [0.141, 0.787] respectively) and negatively correlated with contrast and coarseness ($r = -$
341 0.627 , 95% CI [-0.822, -0.217] and $r = -0.554$, 95% CI [-0.780, -0.134]). All other correlations
342 can be found in **Supplemental figure 10**.

343

344 **DISCUSSION**

345 This is the first study to explore digestion of cow and goat MC by quantifying gastric
346 emptying, gastric casein coagulation and blood concentrations in humans. Overall, serum
347 concentrations of EAA and BCAA were higher for cow MC over time. Gastric emptying curves
348 and gastric emptying half-time (GE-t50) were similar for the cow MC and goat MC drinks.
349 The image texture metric contrast was significantly different, suggesting a difference in

350 coagulation. No significant differences between cow MC and goat MC were seen for blood
351 insulin, glucose and FFA concentrations. Serum TG concentrations were significantly higher
352 in goat MC.
353
354 Coagulation was visible on the MRI scans for both the cow MC and goat MC drinks (see
355 Figure 4). In an attempt to objectively quantify this, image texture metrics were calculated
356 for the stomach contents. It could for instance be hypothesized that a lower homogeneity
357 and higher contrast could mean 'more' coagulation. Even though the actual meaning of
358 differences in image texture metrics in reference to coagulating properties of stomach
359 content requires more research, the difference in the image texture metric 'contrast' does
360 support the notion of a difference in coagulation between cow MC and goat MC. However,
361 the metrics homogeneity, coarseness and busyness did not differ between the drinks. It
362 should be taken into account that higher homogeneity could not only reflect a homogenous
363 liquid, but also the presence of a large and fairly homogenous coagulum. Another aspect to
364 consider is that not only the size, but also the structure is an important characteristic of
365 coagula. For instance, some coagulates can be firm and have a greater weight and denser
366 structure than less dense coagulates with approximately the same volume (Wang, Ye et al.
367 2018). The image texture metrics could possibly be used to quantify the density of the
368 coagulum, as MRI can detect water content contained in the coagulum. Notably, MRI image
369 texture parameters are affected by the resolution of the input images and could detect
370 differences in image intensity patterns which is more sensitive than analyzing MRI images by
371 eye. This requires further validation by concomitant analysis of MRI images and coagulates
372 that differ in size and density. To provide molecular-level information, other MRI techniques
373 are being developed such as measurement of the magnetization transfer ratio and relaxation

374 rates (Deng, Seimys et al. 2022, Deng, Mars et al. 2023, Mayar, Smeets et al. 2023). These
375 measurements require additional MRI spectra to be recorded, but could be used in follow-up
376 research to examine more subtle differences in protein coagulation *in vivo*.

377

378 Cow MC and goat MC coagulates likely differ, since *in vitro* and animal *in vivo* research
379 showed that the consistency of the gastric coagulum changes as digestion progresses (Ye, Liu
380 et al. 2019, Roy, Moughan et al. 2022). For instance, the recent research of Roy et al. showed
381 that goat milk coagulum had a softer consistency and less fused protein networks, especially
382 toward a later stage of digestion (Roy, Moughan et al. 2022). We hypothesized that this
383 would lead to a longer gastric retention of coagulum in the cow milk treatment and
384 relatively faster gastric emptying from goat milk casein in comparison to cow milk casein, as
385 previously seen in animal *in vivo* work (Roy, Moughan et al. 2022) and human *in vivo* work
386 (van Eijnatten, Roelofs et al. 2024). However, we observed that the overall gastric emptying
387 was similar and the emptying of coagulum and liquid volume fraction did not differ between
388 cow MC and goat MC. This is in line with recent findings where coagulation differences did
389 not affect GE, but did affect AA concentrations (Milan, Barnett et al. 2024).

390

391 As expected, AA concentrations differed between casein derived from these two species,
392 likely due to the differing coagulation properties of cow MC and goat MC. Goat milks' softer
393 and smaller coagulates (Park 2017) would make the proteins more accessible to digestive
394 enzymes (proteases) and allow these enzymes to more efficiently break down peptide bonds
395 so that goat milk proteins would be faster digested than cow milk proteins (Almaas, Cases et
396 al. 2006). However, this study showed more serum AA in the 5 hours measured postprandial

397 in cow milk, which seems contradictory. On the other hand, in an *in vitro* study of Inglingstad
398 et al., who used a two-step digestion model (gastric and duodenal), caseins from goat milk
399 were less digested compared to caseins from cow milk during gastric digestion (Inglingstad,
400 Devold et al. 2010). Interestingly, in our study serum EAA concentrations were higher for
401 cow MC, while we expected higher concentrations for goat MC based on previous *in vitro*
402 studies (Almaas, Cases et al. 2006, Zhang, Liu et al. 2023). However, we examined caseins in
403 relative isolation where milk fat content was negligible and the mineral profile was different
404 than casein micelles. The formation of coagulates interacts with minerals and fat and thus
405 coagulation might be different for a whole food, also named 'food matrix' (Aguilera 2019).
406 For instance, the interaction of peptides with small fat globules can slow protein breakdown
407 and thereby influence AA availability (Le Feunteun, Barbé et al. 2014, Tunick, Ren et al.
408 2016). A second factor leading to differences in coagulation might be the difference in
409 buffering capacity between cow and goat milk. Goat milk contains a higher non-protein
410 nitrogen (NPN) amount than cow milk and more NPN contributes to a 'slower' acidification
411 in the stomach (Park 1991). Roy et al also discuss the high degree of variation in casein
412 micelle characteristics within the same species. Within and across species differences in
413 breeds, genetic variants, and phosphorylation sites of the caseins may also add to the
414 variation (Crowley, Kelly et al. 2017, Roy, Moughan et al. 2022). In summary, to our
415 knowledge three factors could have contributed to the discrepancies of our study with other
416 studies: 1) the fact that this is the first human *in vivo* study on gastric digestion, 2) that we
417 assessed casein outside of the food matrix, 3) the buffering capacity and the variation in
418 casein characteristics even within species.

419

420 Fullness, desire to eat and prospective consumption were significantly lower for goat MC,
421 but these differences were small. For instance, the mean difference of desire to eat had a
422 mean difference of 7 pts over the 60 measured minutes. A difference of < 10% is usually not
423 considered as practically relevant (Flint, Raben et al. 2000). This is in line with the lack of
424 differences in gastric volume over time and coagulum volume over time between the drinks.

425

426 Future research could explore casein coagulation within a food matrix, as this study focused
427 on assessing the gastric digestion of the casein fraction from both cow and goat milk. It is
428 important to acknowledge that the food matrix significantly influences protein digestion,
429 involving interactions with components like fat (Cecchinato, Penasa et al. 2012).

430

431 In conclusion, cow MC and goat MC show a difference in coagulation characteristics as
432 measured by AA concentrations and supported by image texture analysis *in vivo* in humans.
433 This difference in coagulation did not influence overall gastric emptying or the emptied
434 fraction of the liquid and coagulum volume. Therefore gastric emptying was not the main
435 driver of AA differences. This warrants further research to examine differences in casein
436 coagulation *in vivo* in the food matrix and how this affects digestion of milk products, such as
437 infant formula or medical nutrition. This may help to determine the optimal use for cow and
438 goat milk and their protein fractions.

439

440 **ACKNOWLEDGEMENTS**

441 EE, GC, WR and PS designed the research; EE conducted the research. EE analysed the data
442 and drafted the paper. GC, WR, LP and PS revised the manuscript critically for important
443 intellectual content. PS had primary responsibility for final content. All authors read and
444 approved the final manuscript. This study was funded by Ausnutria and WR and LP were
445 employed by Ausnutria. All other authors declare no further conflict of interest. We thank
446 Julia Roelofs, Mireille Schipper, Jip Jordaan and Lisa van den Berg for assisting with data
447 collection and Jacques Vervoort and Sebas Wesseling for the amino acid analysis. The use of
448 the 3T MRI was made possible by WUR Shared Research Facilities.

REFERENCES

- Aguilera, J. M. (2019). "The food matrix: implications in processing, nutrition and health." Critical Reviews in Food Science and Nutrition **59**(22): 3612-3629.
- Almaas, H., A.-L. Cases, T. G. Devold, H. Holm, T. Langsrud, L. Aabakken, T. Aadnoey and G. E. Vegarud (2006). "In vitro digestion of bovine and caprine milk by human gastric and duodenal enzymes." International Dairy Journal **16**(9): 961-968.
- Atherton, P. J. and K. Smith (2012). "Muscle protein synthesis in response to nutrition and exercise." The Journal of physiology **590**(5): 1049-1057.
- Blundell, J., C. de Graaf, T. Hulshof, S. Jebb, B. Livingstone, A. Lluch, D. Mela, S. Salah, E. Schuring, H. van der Knaap and M. Westerterp (2010). "Appetite control: methodological aspects of the evaluation of foods." Obes Rev **11**(3): 251-270.
- Ceballos, L. S., E. R. Morales, G. de la Torre Adarve, J. D. Castro, L. P. Martínez and M. R. S. Sampelayo (2009). "Composition of goat and cow milk produced under similar conditions and analyzed by identical methodology." Journal of Food Composition and Analysis **22**(4): 322-329.
- Cecchinato, A., M. Penasa, C. Cipolat Gotet, M. De Marchi and G. Bittante (2012). "Short communication: Factors affecting coagulation properties of Mediterranean buffalo milk." Journal of Dairy Science **95**(4): 1709-1713.
- Claeys, W. L., C. Verraes, S. Cardoen, J. De Block, A. Huyghebaert, K. Raes, K. Dewettinck and L. Herman (2014). "Consumption of raw or heated milk from different species: An evaluation of the nutritional and potential health benefits." Food Control **42**: 188-201.
- Crowley, S. V., A. L. Kelly, J. A. Lucey and J. A. O'Mahony (2017). "Potential Applications of Non-Bovine Mammalian Milk in Infant Nutrition." Handbook of Milk of Non-Bovine Mammals: 625-654.
- Deng, R., M. Mars, A. E. M. Janssen and P. A. M. Smeets (2023). "Gastric digestion of whey protein gels: A randomized cross-over trial with the use of MRI." Food Hydrocolloids **141**: 108689.
- Deng, R., A. Seimys, M. Mars, A. E. M. Janssen and P. A. M. Smeets (2022). "Monitoring pH and whey protein digestion by TD-NMR and MRI in a novel semi-dynamic in vitro gastric simulator (MR-GAS)." Food Hydrocolloids **125**: 107393.
- Do, Q. N., M. A. Lewis, A. J. Madhuranthakam, Y. Xi, A. A. Bailey, R. E. Lenkinski and D. M. Twickler (2019). "Texture analysis of magnetic resonance images of the human placenta throughout gestation: A feasibility study." PloS one **14**(1): e0211060-e0211060.
- Eijnatten, E. J. M. v., J. J. M. Roelofs, G. Camps, T. Huppertz, T. T. Lambers and P. A. M. Smeets (2023). "Gastric coagulation and postprandial amino acid absorption of milk is affected by mineral composition: a randomized crossover trial." medRxiv: 2023.2009.2013.23295475.
- Elashoff, J. D., T. J. Reedy and J. H. Meyer (1982). "Analysis of gastric emptying data." Gastroenterology **83**(6): 1306-1312.
- Fardet, A., D. Dupont, L.-E. Rioux and S. L. Turgeon (2019). "Influence of food structure on dairy protein, lipid and calcium bioavailability: A narrative review of evidence." Critical Reviews in Food Science and Nutrition **59**(13): 1987-2010.
- Farnfield, M. M., C. Trenerry, K. A. Carey and D. Cameron-Smith (2009). "Plasma amino acid response after ingestion of different whey protein fractions." International Journal of Food Sciences and Nutrition **60**(6): 476-486.
- Flint, A., A. Raben, J. E. Blundell and A. Astrup (2000). "Reproducibility, power and validity of visual analogue scales in assessment of appetite sensations in single test meal studies." International Journal of Obesity **24**(1): 38-48.
- Fruehauf, H., D. Menne, M. A. Kwiatek, Z. Forras-Kaufman, E. Kaufman, O. Goetze, M. Fried, W. Schwizer and M. Fox (2011). "Inter-observer reproducibility and analysis of gastric volume measurements and gastric emptying assessed with magnetic resonance imaging." Neurogastroenterol Motil **23**(9): 854-861.
- Gogtay, N. J. (2010). "Principles of sample size calculation." Indian J Ophthalmol **58**(6): 517-518.

- He, T., R. E. J. Spelbrink, B. J. Witteman and M. L. F. Giuseppin (2013). "Digestion kinetics of potato protein isolates in vitro and in vivo." International Journal of Food Sciences and Nutrition **64**(7): 787-793.
- Hettinga, K., L. Pellis, W. Rombouts, X. Du, G. Grigorean and B. Lönnerdal (2023). "Effect of pH and protein composition on proteolysis of goat milk proteins by pepsin and pancreatin." Food Research International **173**: 113294.
- Hodgkinson, A. J., O. A. M. Wallace, I. Boggs, M. Broadhurst and C. G. Prosser (2018). "Gastric digestion of cow and goat milk: Impact of infant and young child in vitro digestion conditions." Food chemistry **245**: 275-281.
- Huppertz, T. and L. W. Chia (2021). "Milk protein coagulation under gastric conditions: A review." International Dairy Journal **113**: 104882.
- Ingham, B., A. Smialowska, N. M. Kirby, C. Wang and A. J. Carr (2018). "A structural comparison of casein micelles in cow, goat and sheep milk using X-ray scattering." Soft Matter **14**(17): 3336-3343.
- Inglingstad, R. A., T. G. Devold, E. K. Eriksen, H. Holm, M. Jacobsen, K. H. Liland, E. O. Rukke and G. E. Vegarud (2010). "Comparison of the digestion of caseins and whey proteins in equine, bovine, caprine and human milks by human gastrointestinal enzymes." Dairy science & technology **90**(5): 549-563.
- Lagrange, V., D. Whitsett and C. Burris (2015). "Global Market for Dairy Proteins." Journal of Food Science **80**(S1): A16-A22.
- Le Feunteun, S., F. Barbé, D. Rémond, O. Ménard, Y. Le Gouar, D. Dupont and B. Laroche (2014). "Impact of the Dairy Matrix Structure on Milk Protein Digestion Kinetics: Mechanistic Modelling Based on Mini-pig In Vivo Data." Food and Bioprocess Technology **7**(4): 1099-1113.
- Li, C., J. C. Gore and C. Davatzikos (2014). "Multiplicative intrinsic component optimization (MICO) for MRI bias field estimation and tissue segmentation." Magn Reson Imaging **32**(7): 913-923.
- Maathuis, A., R. Havenaar, T. He and S. Bellmann (2017). "Protein Digestion and Quality of Goat and Cow Milk Infant Formula and Human Milk Under Simulated Infant Conditions." J Pediatr Gastroenterol Nutr **65**(6): 661-666.
- Mahé, S., N. Roos, R. Benamouzig, L. Davin, C. Luengo, L. Gagnon, N. Gaussergès, J. Rautureau and D. Tomé (1996). "Gastrojejunal kinetics and the digestion of [15N]beta-lactoglobulin and casein in humans: the influence of the nature and quantity of the protein." The American Journal of Clinical Nutrition **63**(4): 546-552.
- Mayar, M., M. de Vries, P. Smeets, J. van Duynhoven and C. Terenzi (2024). "MRI assessment of pH and coagulation during semi-dynamic in vitro gastric digestion of milk proteins." Food Hydrocolloids **152**: 109866.
- Mayar, M., P. Smeets, J. van Duynhoven and C. Terenzi (2023). "In vitro 1H MT and CEST MRI mapping of gastro-intestinal milk protein breakdown." Food Structure **36**: 100314.
- McAuliffe, M. J., F. M. Lalonde, D. McGarry, W. Gandler, K. Csaky and B. L. Trus (2001). Medical Image Processing, Analysis and Visualization in clinical research. Proceedings 14th IEEE Symposium on Computer-Based Medical Systems. CBMS 2001.
- Milan, A. M., M. P. G. Barnett, W. C. McNabb, N. C. Roy, S. Coutinho, C. L. Hoad, L. Marciani, S. Nivins, H. Sharif, S. Calder, P. Du, A. A. Gharibans, G. O'Grady, K. Fraser, D. Bernstein, S. M. Rosanowski, P. Sharma, A. Shrestha and R. F. Mithen (2024). "The impact of heat treatment of bovine milk on gastric emptying and nutrient appearance in peripheral circulation in healthy females: a randomized controlled trial comparing pasteurized and ultra-high temperature milk." Am J Clin Nutr.
- Miller, B. A. and C. D. Lu (2019). "Current status of global dairy goat production: an overview." Asian-Australas J Anim Sci **32**(8): 1219-1232.
- Mulet-Cabero, A.-I., A. R. Mackie, P. J. Wilde, M. A. Fenelon and A. Brodkorb (2019). "Structural mechanism and kinetics of in vitro gastric digestion are affected by process-induced changes in bovine milk." Food hydrocolloids **86**: 172-183.
- Nioche, C., F. Orhac, S. Boughdad, S. Reuzé, J. Goya-Outi, C. Robert, C. Pellot-Barakat, M. Soussan, F. Frouin and I. Buvat (2018). "LIFEx: A Freeware for Radiomic Feature Calculation in Multimodality

- Imaging to Accelerate Advances in the Characterization of Tumor Heterogeneity." Cancer Research **78**(16): 4786.
- Noble, B., D. Clark, M. Meldrum, H. Ten Have, J. Seymour, M. Winslow and S. Paz (2005). "The measurement of pain, 1945-2000." Journal of Pain and Symptom Management **29**(1): 14-21.
- Otsu, N. (1979). "A Threshold Selection Method from Gray-Level Histograms." IEEE Transactions on Systems, Man, and Cybernetics **9**(1): 62-66.
- Park, Y. W. (1991). "Relative Buffering Capacity of Goat Milk, Cow Milk, Soy-Based Infant Formulas, and Commercial Nonprescription Antacid Drugs^{1, 2}." Journal of Dairy Science **74**(10): 3326-3333.
- Park, Y. W. (2017). Goat Milk – Chemistry and Nutrition. Handbook of Milk of Non-Bovine Mammals: 42-83.
- Roy, D., P. J. Moughan, A. Ye, S. M. Hodgkinson, N. Stroebinger, S. Li, A. C. Dave, C. A. Montoya and H. Singh (2022). "Structural changes during gastric digestion in piglets of milk from different species." Journal of Dairy Science.
- Thomas, R., L. Qin, F. Alessandrino, S. P. Sahu, P. J. Guerra, K. M. Krajewski and A. Shinagare (2019). "A review of the principles of texture analysis and its role in imaging of genitourinary neoplasms." Abdom Radiol (NY) **44**(7): 2501-2510.
- Trommelen, J., M. E. G. Weijzen, J. van Kranenburg, R. A. Ganzevles, M. Beelen, L. B. Verdijk and L. J. C. van Loon (2020). "Casein Protein Processing Strongly Modulates Post-Prandial Plasma Amino Acid Responses In Vivo in Humans." Nutrients **12**(8).
- Tunick, M. H., D. X. Ren, D. L. Van Hekken, L. Bonnaille, M. Paul, R. Kwoczak and P. M. Tomasula (2016). "Effect of heat and homogenization on in vitro digestion of milk." Journal of Dairy Science **99**(6): 4124-4139.
- van Eijnatten, E. J. M., G. Camps, M. Guerville, V. Fogliano, K. Hettinga and P. A. M. Smeets (2023). "Milk coagulation and gastric emptying in women experiencing gastrointestinal symptoms after ingestion of cow's milk." Neurogastroenterology & Motility n/a(n/a): e14696.
- van Eijnatten, E. J. M., J. J. M. Roelofs, G. Camps, T. Huppertz, T. T. Lambers and P. A. M. Smeets (2024). "Gastric coagulation and postprandial amino acid absorption of milk is affected by mineral composition: a randomized crossover trial." Food Funct **15**(6): 3098-3107.
- van Vliet, S., N. A. Burd and L. J. van Loon (2015). "The Skeletal Muscle Anabolic Response to Plant-versus Animal-Based Protein Consumption." The Journal of Nutrition **145**(9): 1981-1991.
- Wang, X., A. Ye, Q. Lin, J. Han and H. Singh (2018). "Gastric digestion of milk protein ingredients: Study using an in vitro dynamic model." Journal of Dairy Science **101**(8): 6842-6852.
- Ye, A., J. Cui, E. Carpenter, C. Prosser and H. Singh (2019). "Dynamic in vitro gastric digestion of infant formulae made with goat milk and cow milk: Influence of protein composition." International Dairy Journal **97**: 76-85.
- Ye, A., W. Liu, J. Cui, X. Kong, D. Roy, Y. Kong, J. Han and H. Singh (2019). "Coagulation behaviour of milk under gastric digestion: Effect of pasteurization and ultra-high temperature treatment." Food Chemistry **286**: 216-225.
- Zhang, J., D. Liu, Y. Xie, J. Yuan, K. Wang, X. Tao, Y. Hemar, J. M. Regenstein, X. Liu and P. Zhou (2023). "Gastrointestinal digestibility of micellar casein dispersions: Effects of caprine vs bovine origin, and partial colloidal calcium depletion using in vitro digestion models for the adults and elderly." Food Chemistry **416**: 135865.

FIGURE LEGENDS

Figure 1. Overview of a test session

Figure 2. Mean \pm SEM gastric content volume over time for the 300 ml cow (cow MC) and goat (goat MC) and milk-derived casein drinks. T=0 min is the start of ingestion. A linear mixed model analysis showed no significant difference between the drinks.

Figure 3. Mean concentration \pm SD of (A) serum essential amino acid, (B) non-essential amino acid and (C) branch-chained amino acid concentrations after cow (cow MC) and goat (goat MC) milk-derived casein drink ingestion. * $p < 0.05$ placed at the right of the graph denotes a significant treatment effect. Above a data point it denotes a significant time point (post-hoc t-test).

Figure 4. Examples of T₂-weighted MRI images showing cross-sections through an empty stomach after an overnight fast (baseline) and after 300 ml casein drink consumption. At t = 30 and 60 min coagulation can be observed.

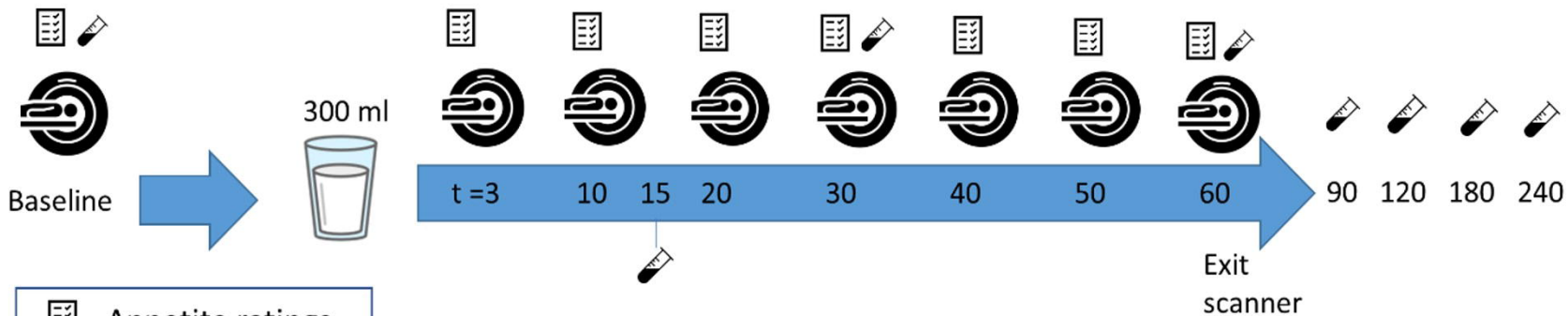
Figure 5. Mean \pm SEM of the image texture metric contrast calculated over the stomach content over time after cow (cow MC) and goat (goat MC) milk-derived casein drink ingestion. A linear mixed model analysis showed a significant higher contrast of goat MC ($p = 0.036$) driven by t = 40 min as seen with a post hoc t-test. A higher contrast reflects a greater degree of structure in the image, which we interpret as a difference in coagulation.




TABLE

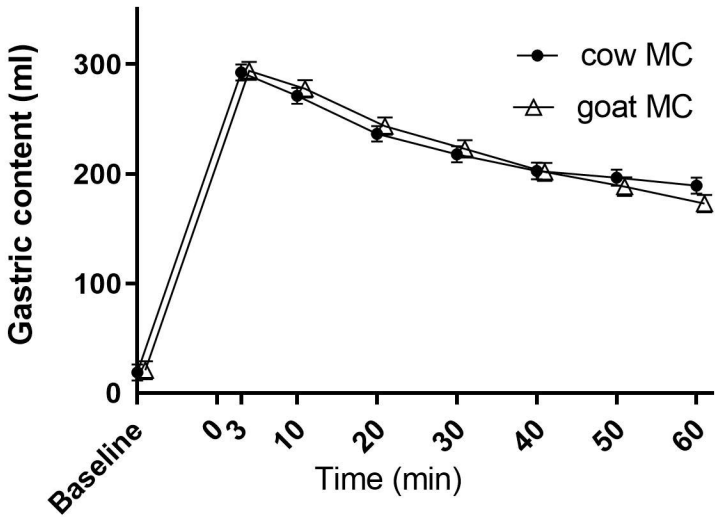
Table 1. Amino acid profile of cow and goat milk-derived casein drinks (g AA per 300 ml)

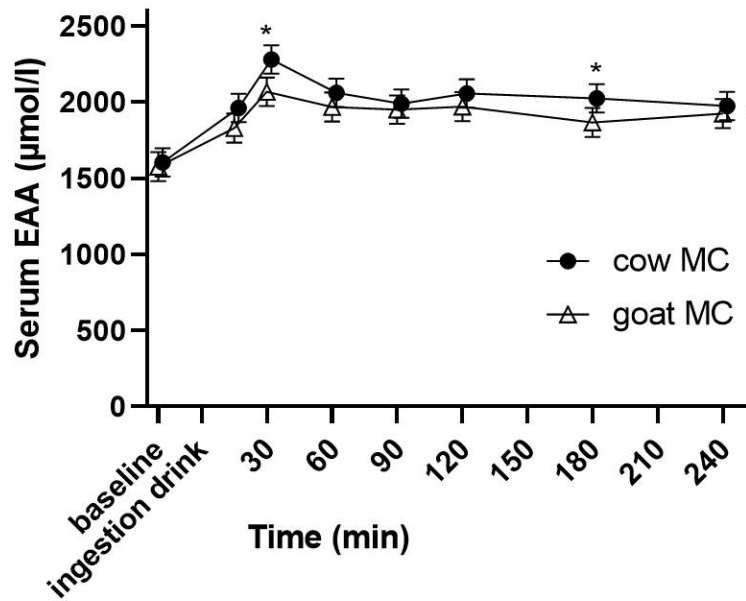
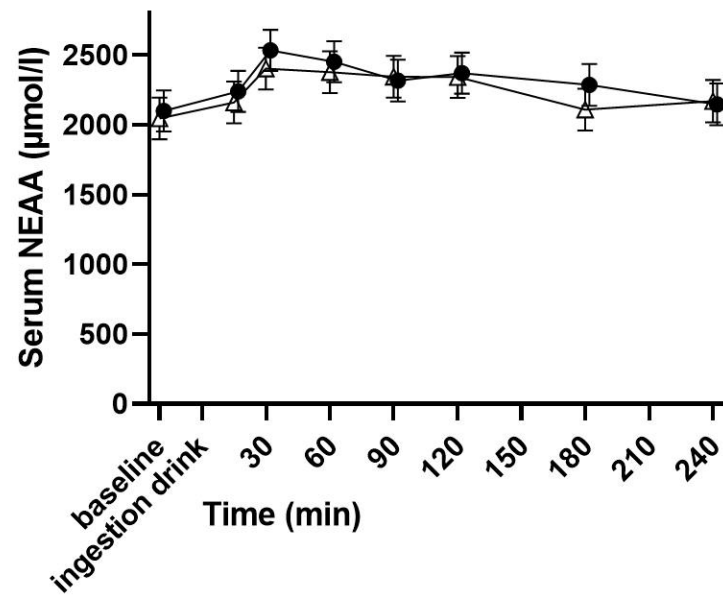
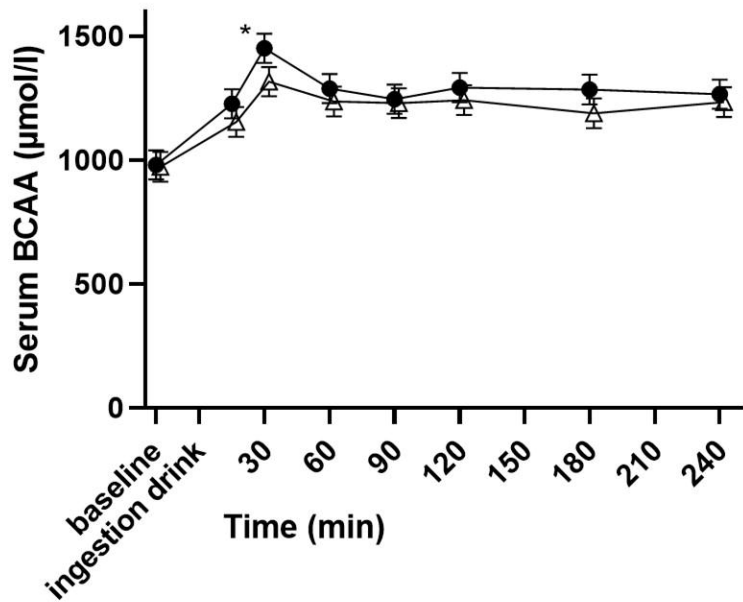
AA type	Amino acid	Cow milk-derived casein drink	Goat milk-derived casein drink
Essential	Isoleucine	1.58	1.49
	Leucine	2.96	2.96
	Valine	1.61	1.60
	Histidine	0.93	0.85
	Lysine	2.60	2.61
	Methionine	0.87	0.80
	Phenylalanine	1.61	1.60
	Threonine	1.33	1.45
	Tryptophan	0.41	0.43
Total		13.9	13.8
Non-essential (or conditionally essential)	Arginine	1.14	0.89
	Cysteine	0.19	0.25
	Glutamine	6.86	6.24
	Glycine	0.58	0.50
	Proline	3.47	3.76
	Tyrosine	1.68	1.30
	Alanine	0.98	0.94
	Asparagine	2.24	2.19
	Hydroxyproline	<0.05	<0.05
	Ornithine	<0.05	<0.05
	Serine	1.78	1.50
Total		18.9	17.6

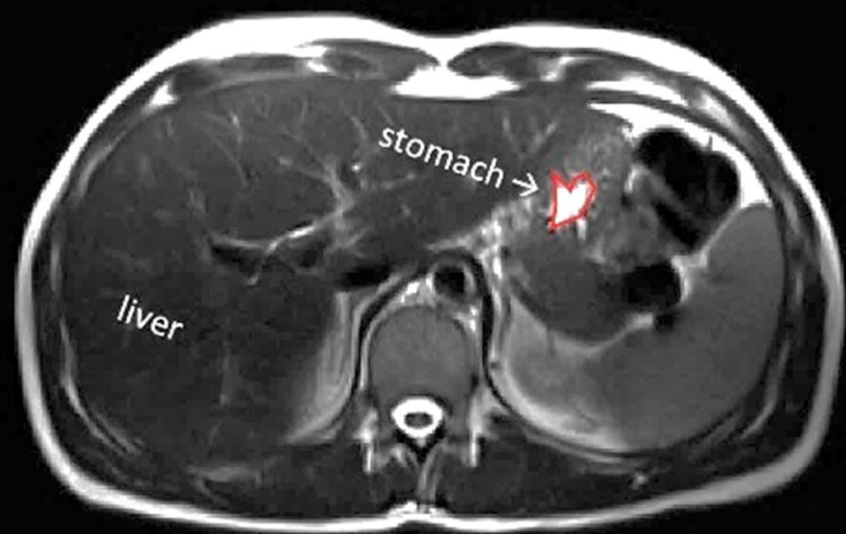
¹Analysis was performed by Eurofins Analytico B.V. (Zwolle, the Netherlands)



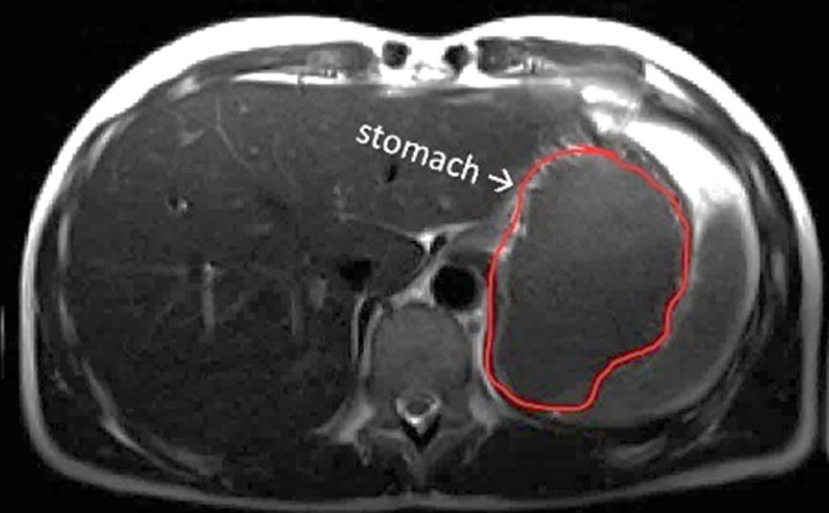
-  Appetite ratings
-  Blood draw
-  MRI scan



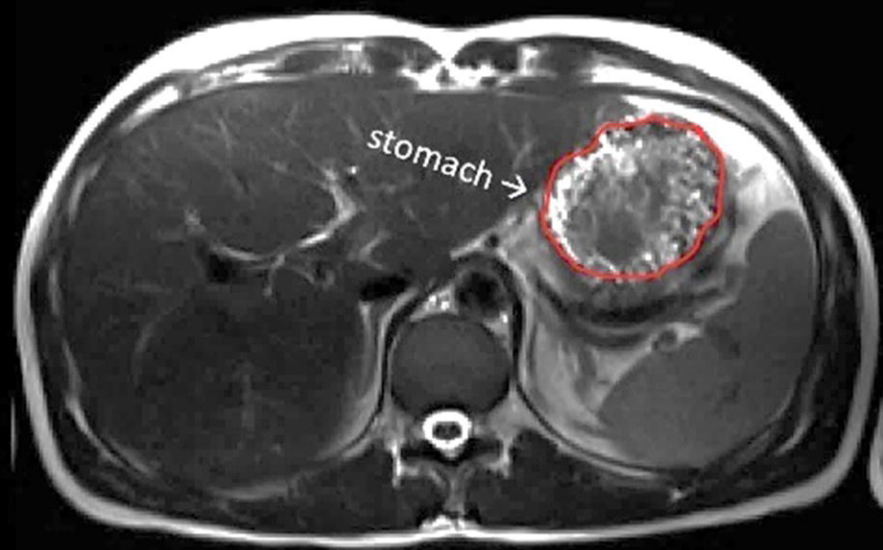
A**B****C**



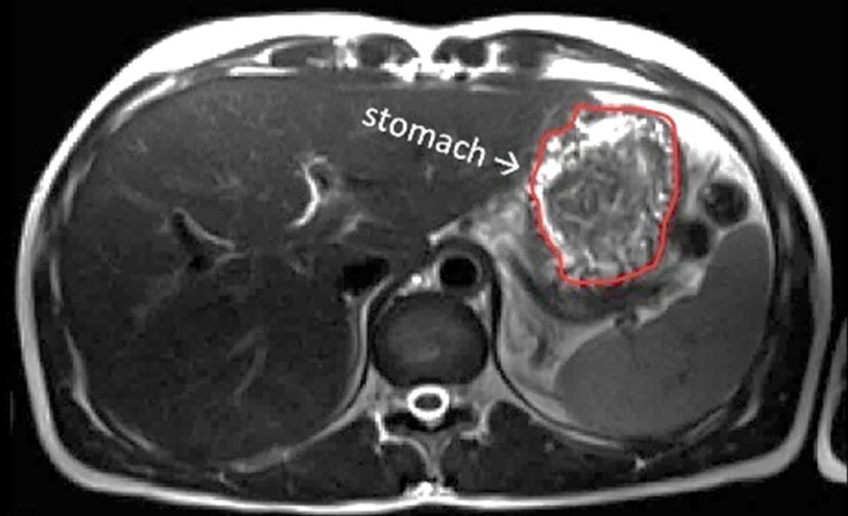
Baseline (fasted)



T = 3 min



T = 30 min



T = 60 min

