

1
2
3
4
5
6
7
8
9
10
11
12
13
14
15
16
17
18
19
20
21
22
23
24
25
26
27
28
29
30
31
32
33
34
35
36
37
38
39
40

Title: Exploring the Perspectives of Clients and Clinicians Regarding Digitally Delivered Psychotherapies Utilized for Trauma-Affected Populations.

Short title: Perspectives on Digital Psychotherapy for Trauma-Affected Populations.

Authors: Sidney Yap^{1,3}, Rashell Wozniak², Katherine Bright³, Matthew RG Brown^{3,4}, Lisa Burback¹, Jake Hayward⁵, Olga Winkler¹, Kristopher Wells⁶, Chelsea Jones³, Phillip R. Sevigny^{3,8}, Megan McElheran⁹, Keith Zukiwski¹⁰, Andrew J Greenshaw¹, Suzette Brémault-Phillips^{3,7}

¹Department of Psychiatry, Faculty of Medicine and Dentistry, University of Alberta, Edmonton, AB, Canada

²School of Clinical Child Psychology, Faculty of Education, University of Alberta, Edmonton, AB, Canada

³Heroes in Mind, Advocacy, and Research Consortium, Faculty of Rehabilitation Medicine, University of Alberta, Edmonton, AB, Canada

⁴Department of Computing Science, Faculty of Science, University of Alberta, Edmonton, AB, Canada

⁵Department of Emergency Medicine, Faculty of Medicine and Dentistry, University of Alberta, Edmonton, AB, Canada

⁶Department of Child and Youth Care, Faculty of Health and Community Studies, MacEwan University, Edmonton, Alberta, Canada

⁷Department of Occupational Therapy, Faculty of Rehabilitation Medicine, University of Alberta, Edmonton, AB, Canada

⁸Faculty of Education, University of Alberta, Edmonton, AB, Canada

⁹Wayfound Mental Health Group, Calgary, AB, Canada

¹⁰Haikei Health, Edmonton, AB, Canada

Correspondence:

Sidney Yap
syap@ualberta.ca

41 **Abstract:**

42
43 During the COVID-19 pandemic, many clinical sites shifted towards digital delivery of mental
44 health services. However, there is still much to learn regarding using digitally delivered
45 psychotherapies in trauma-affected populations, including military members, Veterans, and
46 public safety personnel. This study examined perceptions of psychotherapies utilized for trauma-
47 affected populations, as reported by Canadian military members, Veterans, and public safety
48 personnel who completed such interventions and mental health clinicians who provided them.
49 Specifically, we explored the imposed shift to digital health use, what changed with this rapid
50 shift, what needs, problems, and solutions arose, and important future considerations associated
51 with delivering trauma-focused and adjunct treatments digitally.

52
53 Quantitative survey data were collected from 11 Canadian patients (military members, Veterans,
54 and public safety personnel with post-traumatic stress injury) and 12 Canadian mental health
55 clinicians. Survey questions were adapted from the Alberta Quality Matrix for Health (AQMh)
56 and Unified Theory of Acceptance and Use of Technology (UTAUT) model. As a follow-up,
57 participants were invited to participate in either a semi-structured qualitative interview or focus
58 group to further explore their perspectives on digitally delivered trauma-focused and adjunct
59 therapies. Four clients and 19 clinician participants participated in an interview or focus group.

60
61 In survey and interview/focus group results, patient and clinician participants reported that
62 digitally delivered trauma and adjunct therapies offered similar treatment effectiveness as in-
63 person delivery while also improving treatment access. Participants indicated unique advantages
64 of digital delivery, including the increased accessibility of treatment, cost effectiveness, and

65 more efficient use of resources. However, some participants struggled with using digital
66 platforms and felt less comfortable working in a digital environment. Further research with a
67 larger, more diverse population is required to corroborate our results and identify other avenues
68 in which psychotherapies utilized for trauma-affected populations can be engaged with and
69 improved upon.

70

71 **Key Words:** Web Based Intervention, Psychotherapy, Access to Therapies, Trauma, Trauma-
72 focused Psychotherapy, Health Services, Military, Veteran, Public Safety Personnel,
73 Implementation Science

74

75 **Author Summary:**

76

77 Many mental health service sites were faced with rapid and unexpected shifts towards digital
78 delivery of mental health services to comply with mandated physical distancing restrictions put
79 in place during the COVID-19 pandemic. There is still much to learn regarding using digitally
80 delivered psychotherapies in trauma-affected populations, including military members, Veterans,
81 and public safety personnel. This study examined perceptions of Canadian military members,
82 Veterans, and public safety personnel who completed, and mental health clinicians who
83 provided, psychotherapies utilized for trauma-affected populations. This exploration aims to
84 increase our understanding of the strengths and limitations of this mode of delivery.

85 Patient and clinician participants reported that psychotherapies for trauma-affected populations
86 offered similar treatment effectiveness as in-person delivery, while also improving treatment
87 access. Participants indicated unique advantages of digital delivery, including increased
88 accessibility of treatment, cost effectiveness, and more efficient use of resources. Some
89 participants reported struggling with the use of, and felt less comfortable working on, digital

90 platforms. Further research with larger, more diverse populations is required to confirm our
91 results and identify other avenues for using, and improving on, psychotherapies for trauma-
92 affected populations.

93

94 **1. Introduction**

95 The COVID-19 pandemic substantially impacted mental health and approaches to service
96 delivery. In Canadian poll results, over 40% of individuals reported experiencing mental distress
97 early in 2021 when COVID-19 related precautions were commonplace (Statistics Canada, 2021).
98 The pandemic further stressed groups at high risk for potentially psychologically traumatic event
99 exposures (PPTEs, e.g., exposure to actual or threatened death, serious injury, or sexual
100 violence) (APA, 2022; Heber et al., 2023). Such groups include public safety personnel (PSP)
101 and frontline healthcare workers, as well as currently serving military members and Veterans
102 (Carleton et al., 2018; Heber et al., 2023). PPTEs can have physical impacts (e.g., digestive
103 distress, cardiovascular disease), result in behavioral challenges (e.g., maladaptive responses like
104 burnout, alcoholism, suicidality), and induce post-traumatic stress injuries (PTSI, e.g., post-
105 traumatic stress disorder [PTSD], major depressive disorder) (APA, 2022).

106 Even prior to the pandemic, trauma-affected populations like PSP, Veterans and military
107 members experienced a higher risk of mental health difficulties. A pre-COVID-19 survey found
108 that 44.5% of Canadian PSP self-reported a mental disorder diagnosis (Carleton et al., 2018).
109 Further, 23.2% of this Canadian PSP population yielded a positive screen for PTSD (Carleton et
110 al., 2018). Public Safety Personnel also exhibit elevated psychopathology despite prior treatment,
111 indicating clinical complexity and the potential need for transdiagnostic, specialized, or ongoing

112 mental health support (McCall et al., 2021). Canadian Armed Forces (CAF) Regular Force
113 Veterans exhibited similar prevalence for PTSD (16%) as PSP. Additionally, this population
114 reported mood disorder prevalence of 21% and anxiety disorder prevalence of 15% (Van Til et
115 al, 2016).

116 These unique mental health challenges may have been compounded by the COVID-19 pandemic
117 (Clemente-Suarez et al., 2021). According to the Public Health Agency of Canada, those who
118 met criteria for PTSD during the pandemic were more likely to report being impacted by the
119 pandemic (and mandatory public health restrictions and protocols) in terms of physical health
120 problems, difficulties in meeting financial obligations/essential needs, and facing challenges in
121 personal relationships with household members. These individuals were also more likely to
122 report symptoms of anxiety and depression within the past two weeks, greater lifetime suicidal
123 thoughts, and increased use of alcohol and cannabis (Public Health Agency of Canada, 2021).

124 Transformation in service delivery was prompted by the escalation of mental health concerns due
125 to COVID-19 and the need to adhere to physical distancing mandates and government
126 restrictions. While utilizing digital modalities to deliver psychotherapeutic interventions was not
127 a novel innovation when the COVID-19 pandemic began (see Gros et al., 2018 for a review), the
128 pandemic required an unprecedented rapid transition from in-person to digital methods (e.g.,
129 teletherapy, telemedicine, eHealth, mobile health) (Torous & Keshavan, 2020). Considering
130 mental health consequences of the COVID-19 pandemic (Statistics Canada, 2021; WHO, 2022),
131 digital mental health interventions (DMHI) offered a cost-effective alternative to in-person
132 mental health treatment while complying with public health requirements for physical distancing
133 during the pandemic (Philippe et al, 2022). Such interventions allowed for access to timely and
134 secure trauma therapies that are critical to supporting the transdiagnostic needs of PSP, military

135 members, and Veterans (Smith-MacDonald, 2020). Accordingly, the COVID-19 pandemic
136 greatly accelerated uptake of DMHI (Bautista & Schueller, 2022).

137 Research indicates that digitally delivered Prolonged Exposure (PE), Eye Movement
138 Desensitization and Reprocessing (EMDR) and Trauma-Focused Cognitive Behavioral Therapy
139 (TF-CBT) may be effective at reducing PTSD symptomatology (Jones et al., 2020; Perri et al.,
140 2021). DMHI generally provides clients with increased convenience, comfort, and access to
141 treatment (APA, 2015; Titov et al., 2019). Increased access to care can lead to substantial cost
142 and time savings for clients (Philippe et al., 2022). DMHI may also aid in decreasing stigma
143 related to accessing mental health care (Lattie et al., 2022).

144 Despite promising findings supporting the use of DMHI for general mental health care, evidence
145 supporting the wide scale use of DMHI for clients experiencing PTSI is comparatively scarce.
146 Few randomized controlled trials (RCTs) have directly compared the effectiveness of digitally
147 delivered and in-person trauma interventions (Fleuty & Almond, 2020; Jones et al., 2020). Some
148 Veteran clients reported that DMHI were negatively impacted due to Internet connection issues
149 and because therapy delivery felt distant and impersonal in the digital environment (Fleuty &
150 Almond, 2020). Those with greater symptom severity may also be less likely to complete
151 treatment programs delivered digitally, as reported in a recent study evaluating the use of
152 Internet-Delivered Cognitive Behavioral Therapy (ICBT) in PSP (Beahm et al., 2021). There is a
153 clear need to explore mitigation of potential risks and disadvantages of using digital trauma
154 interventions for those experiencing PTSI, including appropriate assessment of client
155 compatibility, obtaining consent in a secure manner, ensuring safety in the context of suicidal
156 ideation or behavior, adapting therapy protocol to the digital environment, and ensuring ongoing
157 client privacy (Jones et al., 2020).

158 Clinician experiences and comfort with delivering DMHI can also be an important contributor to
159 treatment success. Most clinicians supporting those with mental health challenges did not have
160 prior experience providing digital services, trauma-specific or otherwise, prior to the COVID-19
161 pandemic (Békés et al., 2021; Aafjes-van Doorn et al., 2022). Clinicians have reported many
162 concerns with providing DMHI, including a lack of emotional connection with patients,
163 increased distraction (for both client and clinician), concerns with privacy and confidentiality,
164 and clinician work-life balance (Békés et al., 2021). Maintaining participant engagement in
165 digitally delivered group-based treatments is an additional challenge, with therapists perceiving
166 online psychotherapy groups to be less effective, in addition to a lack of specific training for
167 providing online group therapy (Gullo et al., 2022). The highlighted research primarily focused
168 on DMHI generally and did not identify how the shift to digital delivery affected PPTE-focused
169 treatments specifically. Taken together, these challenges may contribute to the low acceptability
170 of DMHI among clinicians (Fluety and Almond, 2020), even with the knowledge that DMHI
171 may provide many unique benefits. Further, until the pandemic, many healthcare regulatory
172 bodies did not provide specific guidelines regarding the utilization of DMHI; as such, many
173 healthcare providers reported a lack of clarity with provision of PPTE-focused therapies in the
174 digital environment, given the lack of regulatory direction.

175 Most current research into the use of DMHI for the purpose of trauma-focused treatment centers
176 almost exclusively on military and Veteran populations in the United States. This geographic
177 focus highlights a critical lack of research specifically examining the experiences of Canadian
178 PSP, military members, and Veterans who have received psychotherapies utilized for trauma-
179 affected populations. Differences in social and cultural upbringing, differing experiences with
180 the healthcare system, and having comparatively less access to large urban centers compared to

181 those living in the United States may impact how Canadians interact with and experience DMHI.
182 Further research is needed to better understand if and how psychotherapies utilized for trauma-
183 affected populations can be utilized for Canadians seeking treatment following exposure to
184 PPTE.

185 The aim of this study was to investigate the perceptions of digitally delivered psychotherapies in
186 use for trauma-affected populations, as reported by Canadian military members, Veterans, and
187 PSP who have undergone these interventions. Additionally, the study sought insights from
188 mental health clinicians who provided such interventions to these populations. To understand the
189 strengths and weaknesses of these interventions, the methodological approach included surveys
190 adapted from the Alberta Quality Matrix for Health (AQMh) and the Unified Theory of
191 Acceptance and Use of Technology (UTAUT), as well as semi-structured interviews and focus
192 groups.

193 **2. Methods**

194 The current study used an embedded mixed-methods design (Barkin, Schlundt, & Smith, 2013)
195 in a community-engaged research setting (Esmail, Moor, & Rein, 2015). Client and clinician
196 study participants completed a battery of surveys administered using Research Electronic Data
197 Capture (REDCap), a secure web application used for building and managing online surveys and
198 databases (Harris et al., 2009; Harris et al., 2019). Both the client and clinician versions of the
199 survey included demographics, and a customized version of the AQMH and UTAUT survey.
200 Participants were invited to participate in either a 30–60-minute semi-structured interview or
201 focus group, conducted over Zoom, to explore further their perspectives on psychotherapies
202 utilized for trauma-affected populations.

203 Study data were stored on the REDCap server and a dedicated, encrypted, and password-
204 protected research drive hosted by the Faculty of Rehabilitation Medicine at the University of
205 Alberta. Ethics approval was obtained from the University of Alberta's Health Research Ethics
206 Board (Pro00109065).

207 **2.1 Participant Inclusion and Exclusion Criteria**

208 **Clients**

209 Currently serving military members, Veterans, and PSP who were receiving or who have
210 received digitally delivered trauma therapy from a mental health clinician in Canada, either
211 through an Operational Stress Injury Clinic (military member and Veteran clients only) or
212 private provider, were recruited. All client participants had a current or prior primary diagnosis
213 of PTSD and/or a trauma-related mental health disorder, which may have stemmed from
214 operational injuries or past adverse experiences (e.g., adverse childhood events). Individuals who
215 were under 18 years of age, and/or unable to provide informed written consent, and/or not fluent
216 in English were excluded from the study.

217 ***Mental Health Clinicians***

218 Clinician participants included multidisciplinary mental health clinicians and providers (e.g.,
219 psychiatrists, psychologists, social workers, and nurse practitioners) practicing in Canada who
220 provided psychotherapies utilized for trauma-affected populations to Canadian military
221 members, Veterans, and PSP. Participants who were not able to provide informed written
222 consent and/or were not fluent in English were also excluded.

223 **2.2 Recruitment and Data Collection**

224 Word of mouth, snowball, and purposeful sampling strategies were used to recruit participants
225 from partner and non-partner mental health clinics. Clinics were provided with study recruitment
226 materials and information, which were passed onto potential client and clinician participants.
227 Interested participants who completed a consent to contact form over REDCap were contacted
228 by a member of the research team by telephone or email to discuss the study, determine
229 eligibility, and assess their willingness to participate voluntarily. Recruitment took place between
230 January 2022 to March 2023.

231 A link to a REDCap webpage was shared with eligible and interested individuals to access and
232 complete the informed consent form. Participants who provided informed consent completed
233 survey measures and/or a semi-structured interview or focus group. Surveys were iteratively
234 developed based on the AQMH (Health Quality Council of Alberta, 2017) and UTAUT
235 (Venkatesh et al., 2003) by the research team. These measures were crafted to maximally align
236 survey language with each AQMH and UTAUT dimension, integrating principles of equity,
237 diversity, and inclusion, minimizing survey burden, and maximizing data quality, collection, and
238 analyses. Data collection took place from February 2022 to May 2023.

239 **2.3 Tools and Measures**

240 *Alberta Quality Matrix for Health Survey (AQMH)*

241 The AQMH was created in 2005 based on the work of *Crossing the Quality Chasm: A New*
242 *Health System for the 21st Century* (Institute of Medicine (IOM), 2001). The AQMH can be used
243 to organize information about complex health systems for analyses and create awareness of

244 quality in service delivery. The AQMH has the following two components: (1) dimensions of
245 quality, which focuses on aspects of the patient and client experience; and (2) areas of need,
246 which divides services provided by the health system into four distinct but related categories
247 (being healthy, getting better, living with illness or disability, and end of life). The components
248 are each considered across the following six dimensions:

- 249 1. Acceptability: health services are respectful and responsive to user needs, preferences,
250 and expectations.
- 251 2. Accessibility: health services are obtained in the most suitable setting at a reasonable
252 time and distance (for this paper, accessibility is analogous to access to care and does not
253 refer to designing services for people with disabilities).
- 254 3. Appropriateness: health services are relevant to user needs and are based on accepted or
255 evidence-based practice.
- 256 4. Effectiveness: health services are based on scientific knowledge to achieve desired
257 outcomes.
- 258 5. Efficiency: resources are optimally used in achieving desired outcomes.
- 259 6. Safety: services mitigate risks to avoid unintended or harmful results.

260 The research team iteratively developed a survey based on the AQMH and previous literature
261 (see Appendix 1 for a copy of the AQMH and the survey adapted from the AQMH). The AQMH
262 survey consisted of 10 questions, scored on a 7-point Likert-type scale from 1 (*strongly*
263 *disagree*) to 7 (*strongly agree*). The conversion allowed participants to rate the quality-of-service
264 of in-person and digital delivery of trauma therapies along AHQM dimensions, using one
265 question to assess each of the following ten criteria: ease of use, convenience, acceptability,
266 practicality, accessibility, appropriateness, effectiveness, efficiency, safety, and fit.

267

268 *Unified Theory of Acceptance and Use of Technology (UTAUT) Survey*

269

270 The UTAUT model was developed by Venkatesh et al. (2003) as a synthesis of eight technology
271 acceptance models. The UTAUT is designed to assess the acceptance of new technology and
272 may explain up to 70% of the variance in intention to use technologies (Venkatesh et al., 2003).
273 The UTAUT has well established construct and content validity. The six factors influencing
274 technology use as measured by the UTAUT include:

- 275 1. Performance Expectancy: assesses whether the participant believed that digital delivery
276 would improve the performance of the job they were trying to complete. If belief in
277 digitally delivered psychotherapies utilized for trauma-affected populations was high,
278 participants would be more likely to use the technology.
- 279 2. Effort Expectancy: the degree of ease associated with using digital delivery. If
280 participants perceived digitally delivered psychotherapies utilized for trauma-affected
281 populations to have low Effort Expectancy, it would be expected that they would be more
282 likely to use it.
- 283 3. Social Influence: the extent to which individuals surrounding the participant perceived
284 the usefulness of digitally delivered psychotherapies utilized for trauma-affected
285 populations and how much these important other's influenced participant's use.
- 286 4. Facilitating Conditions: the extent to which conditions, such as organizational and
287 technical infrastructure, surrounding the participant support the use of digitally delivered
288 psychotherapies utilized for trauma-affected populations.

- 289 5. Behavioral Intention: the degree to which participants had a conscious plan to utilize
290 digitally delivered psychotherapies utilized for trauma-affected populations. This
291 construct in turn predicts Use Behavior and technology acceptance.
- 292 6. Use Behavior: the extent to which participants used digitally delivered psychotherapies
293 utilized for trauma-affected populations.

294 The research team iteratively developed both client and clinician participant surveys based on the
295 UTAUT content and components, as well as previous literature (see Appendix 1 for a copy of the
296 UTAUT and the surveys adapted from the UTAUT). The UTAUT surveys consisted of 18
297 questions, scored on a 7-point Likert-type scale from 1 (*strongly disagree*) to 7 (*strongly agree*).
298 Each of the 6 UTAUT constructs was measured individually, with 3 questions asked per
299 construct. All construct scores were then combined to assess the overall useability of the
300 technology used for digitally delivered trauma therapy (Venkatesh et al., 2003).

301 ***Interviews and Focus Groups***

302 Qualitative data, collected via 30–60-minute semi-structured solo interviews (n=7) or focus
303 groups (n=2) conducted and recorded over Zoom (Archibald et al., 2019), served to further
304 explore participant perspectives on psychotherapies for trauma-affected populations. Separate
305 focus groups were facilitated by members of the study team for both client and clinician
306 participants using a semi-structured interview and focus group guide. Key topics of discussion
307 included the previous and current state of using psychotherapies utilized for trauma-affected
308 populations in the midst of the COVID-19 pandemic; barriers to, facilitators of, and
309 recommendations for the use of psychotherapies utilized for trauma-affected populations to
310 deliver mental health services to military members, Veterans, and PSP; acceptance and methods

311 of delivery for psychotherapies utilized for trauma-affected populations; clinical effectiveness;
312 and needs, including infrastructure and implementation. See Appendix 2 for copies of interview
313 scripts used for client and clinician interviews and focus groups.

314 Focus groups were purposely heterogeneous with respect to professional representation and
315 experience with using psychotherapies utilized for trauma-affected populations. This design
316 allowed for broad crosstalk and pollination of complementary and alternative ideas, experiences,
317 and conversation, resulting in rich comprehensive data such that sufficient information power
318 was reached (Malterud, Siersma, & Guassora, 2016).

319 **2.4 Quantitative Data Analysis**

320 After completion of data collection, all data were de-identified prior to analysis. De-identified
321 survey data were analyzed using IBM SPSS Statistics software (Version 28.0) (IBM Corp.,
322 2021), while NVIVO 13 (2021, R1) was used to facilitate qualitative analysis of de-identified
323 interview and focus group data.

324 Descriptive statistics were calculated for each survey variable for client and clinician
325 participants. Non-parametric analyses were conducted due to the relatively small sample size of
326 each participant group. Paired-samples Wilcoxon signed-rank tests were used to assess within-
327 subject differences ($p \leq 0.05$) in median AQMH survey dimension scores between digitally
328 delivered and in-person psychotherapies. One-sample Wilcoxon signed-rank tests were also used
329 to assess statistically significant within-subject differences ($p \leq 0.05$) between observed and
330 reference median UTAUT survey dimension scores, where the reference score was 12 (i.e.,
331 neutral score, based on the sum of three total questions per UTAUT dimension asked on a Likert
332 scale from 1 to 7, where 4 is the median score for each question). In total, 20 tests were

333 conducted for the AQMH survey results (10 for clients and 10 for clinicians) and 12 tests were
334 conducted for the UTAUT survey results (6 for clients and 6 for clinicians). To address multiple
335 comparisons across the 32 statistical tests, the Benjamini-Hochberg procedure was used to
336 control the False Discovery Rate (FDR). A summary of statistical tests can be found in Appendix
337 3.

338 **2.5 Qualitative Data Analysis**

339 Video-recorded interviews and focus groups were transcribed using Adobe Premiere Pro, with
340 transcription accuracy checked by a research team member (SY or RW), and thematically
341 analyzed both deductively and inductively following an iterative process (Braun & Clarke,
342 2006). Deductively, initial codes were developed based on interview and focus group topics and
343 study objectives. Inductive coding involved identifying themes that emerged from collected data.
344 Coding for each interview and focus group was independently conducted by two research team
345 members (SY, RW) after which a senior researcher (SBP) reviewed and refined the codes. These
346 were then combined and tabulated into preliminary themes. Analysis of preliminary themes by
347 the larger research team followed, with differences being resolved through discussion. A
348 proposed thematic theory then underwent collective analysis, where preliminary themes were
349 modified, and key quotes isolated to illustrate the selected themes. The final thematic narrative
350 was then prepared. The Standard for Reporting Qualitative Research was used to guide the
351 reporting process (O'Brien et al., 2014).

352 **3. Results**

353 **3.1 Demographics**

354 *Client Participants*

355 Eleven Canadian military members, Veterans, and PSP completed survey measures. Client
356 participants had an average age of 50 ± 10.5 years (range: 34 to 61 years old) and self-identified
357 as female ($n=3$), male ($n=8$), as Caucasian ($n=9$) and Aboriginal/Metis ($n=2$). No participants
358 identified as transgender or gender diverse. Our participants self-reported being in the CAF
359 ($n=7$), police force ($n=2$), or as a paramedic ($n=1$), or a correctional worker ($n=1$), with an
360 average length of service of 21 ± 9.6 years (range: 5 to 38 years). Most participants ($n=8$)
361 reported having received some form of psychotherapeutic treatment, including CBT ($n=5$), CPT
362 ($n=1$), EMDR ($n=3$), and PE ($n=2$), for their trauma prior to participating in the current study.
363 Our data, however, did not allow us to distinguish between those who had experience receiving
364 in-person trauma therapy from those who had not received non-trauma specific therapy
365 previously. Four participants had received digitally delivered therapies prior to engaging in the
366 study, while 7 were receiving digitally delivered therapies for the first-time during study
367 participation. All participants had received psychotherapies utilized for trauma-affected
368 populations via video conferencing, with some reporting having received additional services via
369 telephone ($n=3$).

370 Four client participants took part in a semi-structured interview (comprising: 2 females, 2 males;
371 3 Caucasian, 1 Aboriginal/Metis). Participants self-reported being in the CAF ($n=2$) or police
372 force ($n=2$) with an average length of service of 19 ± 11.9 years (range: 5 to 31 years). Two

373 participants reported having received some form of psychotherapeutic treatment, including CBT
374 (n=2), EMDR (n=2), and PE (n=1), for their trauma prior to participating in the current study.
375 One participant had received digitally delivered therapies prior to engaging in the study, while
376 three were receiving digitally delivered therapies for the first-time during study participation.

377 ***Mental Health Clinicians***

378 Twelve Canadian mental health clinicians completed survey measures. Clinician participants
379 self-identified as female (n=9), male (n=3), Caucasian (n=12), with an average age of 46±8.3
380 years (range: 33 to 58 years). No participants identified as transgender or gender diverse.
381 Clinician participants held a variety of clinical roles, including registered psychologist (n=4),
382 social worker (n=4), psychiatrist (n=2), and mental health therapist (n=2). Workplaces were
383 highly varied and included working at a community mental health clinic (n=5), the provincial
384 health authority (n=3), private practice (n=3), or a regional health service (n=1). On average, the
385 clinicians had 14±6.3 years (range: 5 to 25 years) of clinical experience and 9±5.3 years (range:
386 3 to 16 years) of experience specifically providing trauma therapies. Clinician participants
387 reported using several therapeutic modalities within the digital environment, including Cognitive
388 Behavioral Therapy (n=7) (it was unknown if CBT interventions were specifically trauma-
389 focused), Cognitive Processing Therapy (n=6), Eye Movement Desensitization and Reprocessing
390 (n=10), Prolonged Exposure (n=4), Somatic therapy (n=2), Mindfulness/Self-Compassion (n=3),
391 Dialectical Behavior Therapy based therapy (n=5), Acceptance and Commitment Therapy
392 (n=2), and Neurotherapy (n=1). These modalities were used to treat symptoms related to diverse
393 psychological traumas, including, but not limited to, operational/occupational injuries, adverse
394 childhood events, and sexual abuse/rape. Several participating clinicians (n=5) had not used any
395 form of digital delivery prior to the COVID-19 pandemic. At the time of study participation, six

396 clinicians exclusively provided digitally delivered care, while the remaining six clinicians
397 provided a combination of digitally delivered and in-person care.

398 In total, 24 clinician participants took part in a semi-structured interview or focus group. Three
399 clinicians participated in a semi-structured interview (2 female, 1 male), while the remaining 21
400 participated in one of two focus groups (focus group 1: 19 females, 2 males; focus group 2: 12
401 females, 2 males); there were no differences in participant sex and gender identity. Participating
402 clinician workplaces included a community mental health clinic ($n=12$), within the provincial
403 health authority ($n=10$), or private practice ($n=2$). On average, the clinicians had 13 ± 9.7 years
404 (range: 0 to 40 years) of clinical experience and 6 ± 4.4 years (range: 0 to 15 years) of experience
405 specifically providing trauma therapies.

406 **3.2 Survey Results**

407 **3.2.1 Client Participants Survey Results**

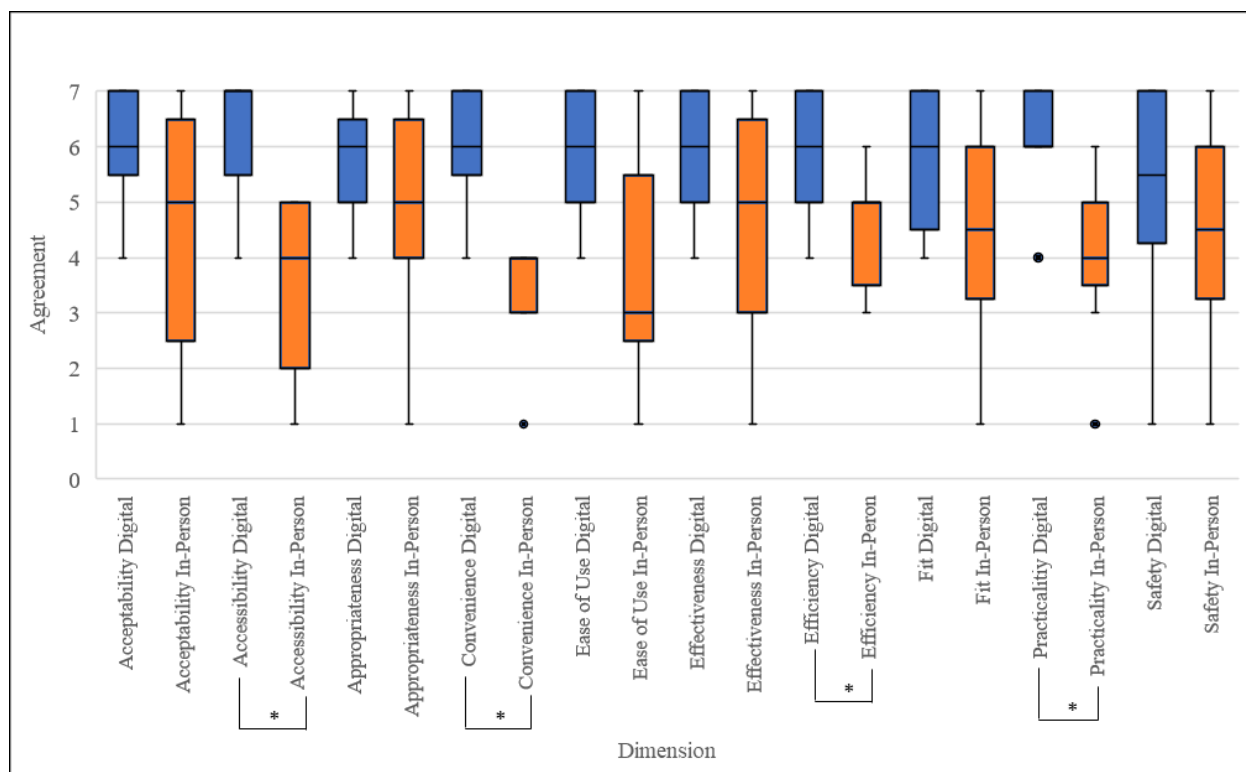
408 *Alberta Quality Matrix for Health (AQMh) Survey*

409 Participants rated convenience ($p = 0.011$), practicality ($p = 0.011$), accessibility ($p = 0.012$), and
410 efficiency ($p = 0.014$) scores statistically significantly higher for the digital delivery of trauma
411 therapy compared to in-person delivery. There were no statistically significant differences in
412 client participant ratings for the ease of use, acceptability, appropriateness, effectiveness, safety,
413 and fit dimensions between digital and in-person delivered trauma therapies (Figure 1, Table 1).

414

415

416 **Figure 1.** Box and whisker plots indicating client participant (n=11) median AQMH survey
 417 scores, first and third quartiles, and minimum and maximum scores. *=Significant difference
 418 (p<0.05) between median scores for digital delivery vs in-person therapy based on paired sample
 419 Wilcoxon signed-rank test, corrected for multiple comparisons. Blue refers to digital delivery;
 420 orange refers to in-person delivery. ● indicates outlier.



421

422

423 **Table 1.** Client participant (n=11) median AQMH survey scores with interquartile ranges.
 424 *=Significant difference (p<0.05) between median scores for digital delivery vs in-person
 425 therapy based on paired sample Wilcoxon signed-rank test, corrected for multiple comparisons.

AQMH Dimension	Client In-Person Score	Client Digital Delivery Score	P-value
Ease of Use	3 (3)	6 (2)	0.201
Convenience	4 (1)	6 (1.5)	0.011*
Acceptability	5 (4)	6 (1.5)	0.109

Practicality	4 (1.5)	6 (1)	0.011*
Accessibility	4 (3)	7 (1.5)	0.012*
Appropriateness	5 (2.5)	6 (1.5)	0.131
Effectiveness	5 (3.5)	6 (2)	0.18
Efficiency	5 (1.5)	6 (2)	0.014*
Safety	4.5 (2.5)	5.5 (2.5)	.44
Fit	4.5 (2.5)	6 (2.5)	.109

426

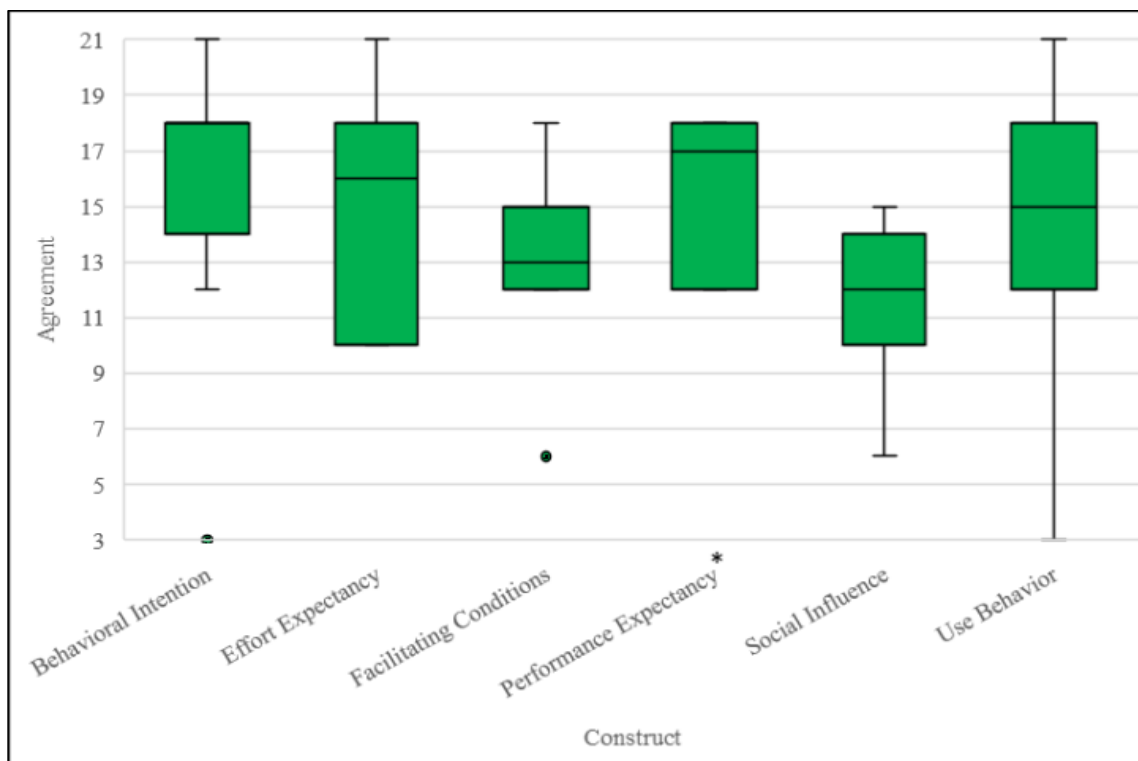
427 ***Unified Theory of Acceptance and Use of Technology (UTAUT) Survey***

428 All client participants agreed that digitally delivered trauma therapy services were a viable
 429 alternative to in-person delivery. Client participants indicated they somewhat agreed, agreed, or
 430 strongly agreed with the Effort Expectancy (score: 16/21), Performance Expectancy (score:
 431 17/21), Behavioral Intention (score: 18/21), and Use Behavior (score: 15/21) constructs. Analysis
 432 revealed that only Performance Expectancy (p=0.011) scores were significantly different
 433 compared to expected median scores. Client participants also indicated that they neither agreed
 434 nor disagreed with the Social Influence (score: 12/21) and Facilitating Conditions (score: 13/21)
 435 constructs (Figure 2, Table 2).

436

437

438 **Figure 2.** Box and whisker plots indicating client participant (n=11) median UTAUT construct
 439 scores, first and third quartile, and minimum and maximum scores. *=Significant difference
 440 (p<0.05) between median score and a reference score of 12 (total score of three questions asked
 441 based on Likert scale 1-7) based on one-sample Wilcoxon signed-rank test, corrected for
 442 multiple comparisons. ● indicates outlier.



443

444

445 **Table 2.** Client participant (n=11) median UTAUT survey scores with interquartile ranges.
 446 *=Significant difference (p<0.05) between median score and a reference score of 12 (total score
 447 of three questions asked based on Likert scale 1-7) based on one-sample Wilcoxon signed-rank
 448 test, corrected for multiple comparisons.

UTAUT Dimension	Client Median Agreement Score (interquartile range)	P-value
Performance Expectancy	17 (6)	0.011*
Effort Expectancy	16 (8)	0.032

Social Influence	12 (4)	0.67
Facilitating Conditions	13 (3)	0.368
Behavioral Intention	18 (4)	0.057
Use Behavior	15 (6)	0.182

449

450 **3.2.2 Mental Health Clinician Participant Survey Results**

451 *Alberta Quality Matrix for Health (AQMh) Survey*

452 There were no statistically significant differences between Clinician participant AQMH scores
453 for digitally delivered vs. in-person therapy for all 10 AQMH dimensions: ease of use,
454 convenience, acceptability, accessibility, practicality, appropriateness, effectiveness, efficiency,
455 safety, and fit (Figure 3, Table 3).

456

457

458

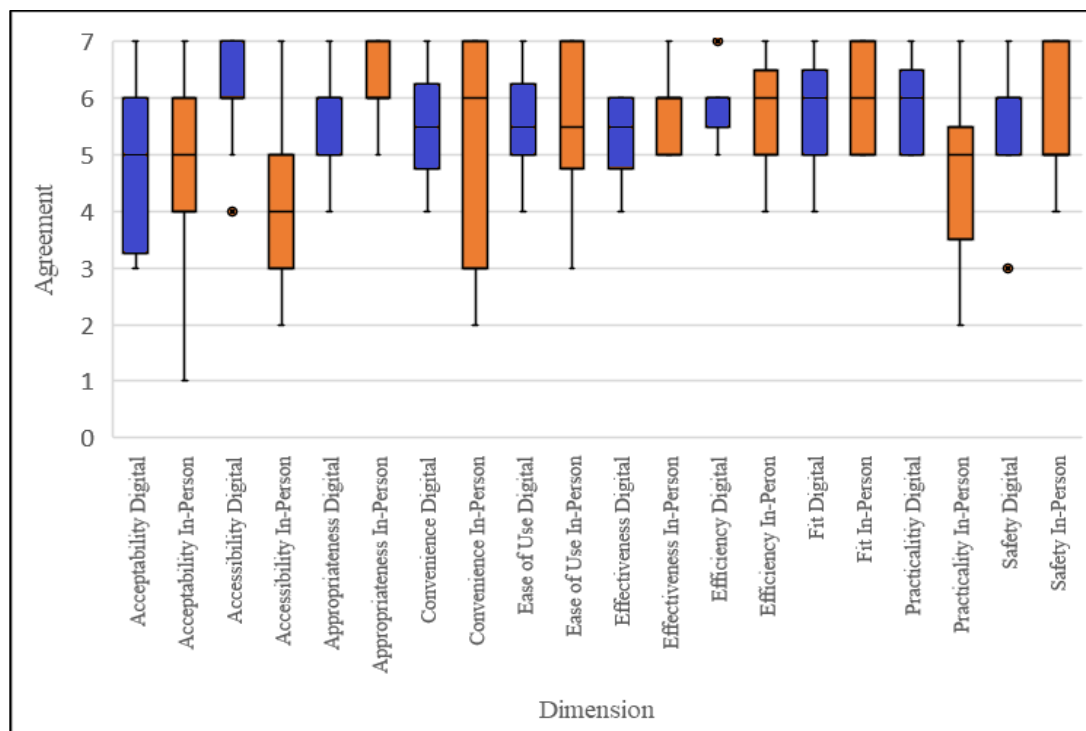
459

460

461

462

463 **Figure 3.** Box and whisker plots indicating clinician participant (n=12) median AQMH survey
 464 scores, first and third quartiles, and minimum and maximum scores. *=Significant difference
 465 (p<0.05) between median scores for digital delivery vs in-person therapy based on paired sample
 466 Wilcoxon signed-rank test, corrected for multiple comparisons. Blue refers to digital delivery;
 467 orange refers to in-person delivery. ● indicates outlier.



468

469

470 **Table 3.** Clinician participant (n=12) median AQMH survey scores with interquartile ranges.
 471 *=Significant difference (p<0.05) between median scores for digital delivery vs in-person
 472 therapy based on paired sample Wilcoxon signed-rank test, corrected for multiple comparisons.

AQMH Dimension	Clinician In-Person Score	Clinician Digital Delivery Score	P-value
Ease of Use	5.5 (2.5)	5.5 (1)	0.943
Convenience	5 (3)	5.5 (2.5)	0.681
Acceptability	5 (1.75)	5 (2.5)	0.952

Practicality	5 (2.5)	6 (1.75)	0.114
Accessibility	4 (2.75)	6 (1)	0.020
Appropriateness	6 (1.75)	6 (1)	0.046
Effectiveness	6 (1)	6 (1)	0.194
Efficiency	6 (1)	6 (0.75)	0.785
Safety	5 (2)	6 (1)	0.492
Fit	6 (2)	6 (1.75)	0.395

473

474 ***Unified Theory of Acceptance and Use of Technology (UTAUT) Survey***

475 Overall, clinician participants strongly agreed that digitally delivered psychotherapies utilized for
 476 trauma-affected populations were a viable option when compared to in-person trauma therapies.

477 Clinician participants indicated slight agreement, agreement, or strong agreement with the Effort

478 Expectancy (18/21), Performance Expectancy (18.5/21), Behavioral Intention (21/21), Use

479 Behavior (18.5/21), and Social Influence (16/21) constructs. Analysis revealed that Behavioral

480 Intention (p=0.002), Performance Expectancy (p=0.003), Use Behavior (p=0.004), and Effort

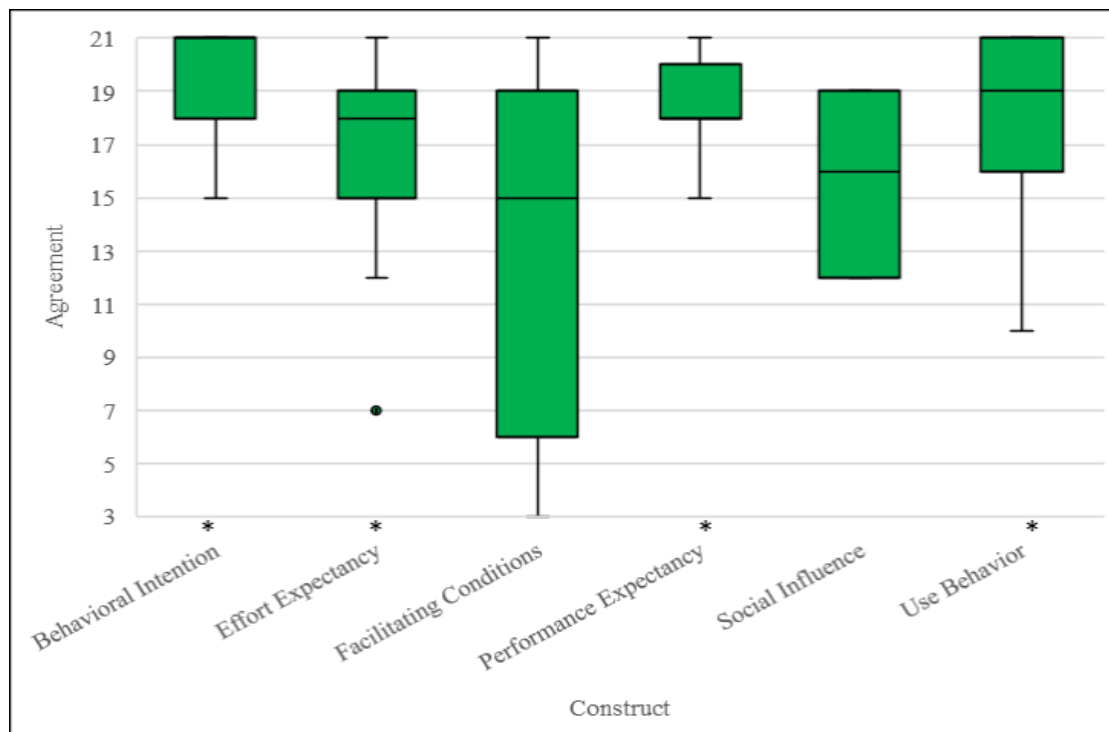
481 Expectancy (p=0.012) scores were significantly different compared to expected median score of

482 4 (on Likert scale 1-7), surviving FDR multiple comparison correction. Clinician participants

483 indicated that they neither agreed nor disagreed with the Facilitating Conditions (15/21)

484 construct (Figure 4, Table 4).

485 **Figure 4.** Box and whisker plots indicating clinician participant (n=12) median UTAUT
 486 construct scores, first and third quartiles, and minimum and maximum scores. *=Significant
 487 difference (p<0.05) between median score and a reference score of 12 (total score of three
 488 questions asked based on Likert scale 1-7) based on one-sample Wilcoxon signed-rank test,
 489 corrected for multiple comparisons. ● indicates outlier.



490

491

492 **Table 4.** Clinician participant (n=12) median UTAUT survey scores with interquartile ranges.
 493 *=Significant difference (p<0.05) between median score and a reference score of 12 (total score
 494 of three questions asked based on Likert scale 1-7) based on one-sample Wilcoxon signed-rank
 495 test, corrected for multiple comparisons.

UTAUT Dimension	Clinician Median Agreement Score (interquartile range)	P-value
Performance Expectancy	18.5 (2)	0.003*
Effort Expectancy	18 (4)	0.012*

Social Influence	16 (7)	.017
Facilitating Conditions	15 (13)	0.593
Behavioral Intention	21 (3)	0.002*
Use Behavior	18.5 (5)	0.004*

496

497 **3.3 Interview Results**

498 Thematic analysis of the interview data isolated five main themes with regard to psychotherapies
499 utilized for trauma-affected populations: (1) Digital delivery similar to in-person care; (2)
500 Unique benefits of digital delivery; (3) Digital delivery and reduced emotion; (4) Concerns
501 regarding digital delivery; and (5) Future directions and recommendations.

502 ***Theme 1: Digital delivery similar to in-person care (Table 5)***

503 Client participants (4/4) felt very comfortable receiving digitally delivered psychotherapies
504 utilized for trauma-affected populations. This comfort reportedly stemmed from their familiarity
505 using digital platforms such as Zoom in their occupations and daily lives, as these platforms saw
506 increased usage following the onset of the COVID-19 pandemic (Karl, Peluchette, and
507 Aghakhani, 2022).

508 Clinician participants (18/24) also shared that they felt that psychotherapies utilized for trauma-
509 affected populations provided similar quality of care as in-person delivery. In particular, clinician

510 participants shared that patient assessments and certain treatment modalities, including EMDR
 511 and CBT, were easy to adapt to the digital environment and resulted in successful administration
 512 of digitally delivered treatment with no discernable differences to in-person delivery.

513 Table 5. Digital Delivery Similar to In-person Care

Sub Theme	Description and Supportive Quotes
5.1 Therapy Effectiveness	<p>Certain psychotherapeutic modalities translated very well to digital delivery. This left clinician participants to perceive that digital delivery conferred similar quality of care as in-person delivery.</p> <p><i>“I’ve had people who’ve done full courses of treatment doing EMDR online, I’ve actually never met them in person. It was beautiful, very effective.” [Clinician participant 3]</i></p>
5.2 Connection with Therapist	<p>Being comfortable and familiar with working in digital environments made client participants feel more ready to engage with digitally delivered psychotherapies utilized for trauma-affected populations, which in turn aided in developing a strong therapeutic alliance with their clinician.</p> <p><i>“I didn’t because I had used it. I’ve been using it since the beginning of COVID with my work that I was doing. [...] I felt just as close to the virtual therapist as the in-person one. I did feel a real sense of bonding with them and feeling as if I could disclose things and talk to them[.] I didn’t find it different in that sense[.] I made a very strong connection with the therapist very quickly. She was excellent. Very experienced, and I felt very comfortable with her.” [Client participant 4]</i></p>

514 **Theme 2: Unique benefits of digital delivery (Table 6)**

515 Client and clinician participants all agreed that the most crucial benefit of digital delivery was
 516 that it increased the accessibility of psychotherapies utilized for trauma-affected populations.
 517 Having digital therapy sessions allowed for more flexible scheduling, allowing client participants

518 to attend sessions without sacrificing other responsibilities (e.g., not missing work or childcare
 519 responsibilities) and clinician participants to reach clients living in remote locations.

520 Some clinician participants (8/24) revealed that digital delivery aided in their therapeutic duties
 521 in creative ways not thought of when delivered in-person care. This led to clinicians conducting
 522 more comprehensive assessments of clients or creating more comfortable therapeutic
 523 environments for clients.

524 Table 6. Unique Benefits of Digital Delivery

Sub Theme	Description and Supportive Quotes
6.1 Increased access to therapeutic services	<p>Client participants indicated that the increased accessibility to treatment offered by digital delivery made it easier to attend therapy sessions.</p> <p><i>“I did find it much easier to schedule, schedule around where I was, where [my therapist was]. And it was also easy for adjustments too if I needed to postpone or change or if he needed some extra time from something else. It was a lot easier to communicate [and] arrange schedules that way, which made for less [absences or appointments] missed.” [Client participant 1]</i></p> <p><i>“I mean, if you're a, let's say you're a single, single mother with two kids and you know you can't make it downtown or you can't make it to wherever right to go and do your sessions, then you know you have to skip this one, skip that one and then eventually you're just like [inaudible] I'm not even going to bother phoning them anymore. Versus, oh, it's 1:00 I should turn on my computer and have a quick little chat with somebody here who can help me through a lot. I think it would help a lot of people[.]” [Client participant 3]</i></p> <p>Clinician participants noted that digital delivery allowed them to reach clients living in remote areas. Prior to the rise of digitally delivered psychotherapy, such clients would typically have to spend large amounts of resources to travel to urban centers to receive treatment. If clients did not have access to these resources, they would not be able to receive treatment.</p>

	<p><i>“[A]s you know we work with clients in the NorthWest Territories, and it’s kind of revolutionized care for them, because going through the old system you know they had to go to a mental health clinic, it was it was really hard for them because they were in small communities[...] The other thing is that for people who are far away, before they couldn’t take part in groups, cause it took too long to get here, now they can join any group they want.” [Clinician participant 4]</i></p>
<p>6.2 Online delivery allowed for more comprehensive assessment</p>	<p>Working digitally allowed clinician participants to see into their clients’ homes, allowing for a better understanding of their situation and clarifying next treatment steps.</p> <p><i>“[W]orking virtually actually allowed me a better assessment of what was going on. So, you know, I had one client who talked a lot about, um, you know, how messy his house is and how he can’t keep up with household tasks, and he’s just kinda failing, he has zero motivation to do the dishes. And so I actually had him bring me over and show me the dishes[...] working virtually allowed me to do CBT in action rather than kind of talking about it theoretically. So rather than talking about you know how starting you know avoiding avoidance with doing kind of small tasks improved mood, and I did this with more than one client, you know they would talk about this thing they are avoiding, you know I would have them take a step.” [Clinician participant 3]</i></p>
<p>6.3 Changing to online delivery encouraged emergence of additional therapeutic techniques</p>	<p>Providing digital care allowed clinician participants to be more creative with their therapeutic space. For one clinician, this meant seeking out ways to make the therapeutic space more comfortable for their clients in a way they would not have done had they only provided in-person therapy.</p> <p><i>“And it helps, most of them actually [like] to use sounds. And in my office, interestingly the sound is just beep, beep, beep, beep, back and forth. And on the computer there’s 30 sounds I can choose from. And so one guy[,] mainly for the calm place, I use a very simple sort of wood chopping sound during processing. But if we go to a calm place at the end of the session, one guy his calm place is a BC River Canyon where there’s a river. So we put the river back and forth and then another guy likes the beach so we put the beach back and forth in [hears] you know, the sound of the wave. So that’s kind of neat to be able to do</i></p>

	<i>that.” [Clinician participant 18]</i>
--	--

525 **Theme 3: Digital delivery and reduced emotion (Table 7)**

526 For 2 client participants, working in a digital environment left them experiencing fewer emotions
 527 compared to when they had received in-person care. One participant experienced less stress
 528 receiving digitally delivered care, while the other experienced fewer emotions in general
 529 working in the digital environment.

530 Table 7. Digital Delivery and Reduced Emotion

Sub Theme	Description and Supporting Quotes
7.1 Reduced emotion compared to in-person care	<p>One client participant shared the stress and danger of traveling to a clinic to receive treatment. Although digital delivery alleviated this stress, it is unclear if this stress is related to therapeutic content needing to be worked on.</p> <p style="text-align: center;"><i>“[It added] more stress [for] me going into therapy back then at the [Occupational Stress Injury] clinic, [being] over medicated [and] driving back and forth, not understanding what was going on in my head[...].” [Client participant 2]</i></p> <p>One client participant felt that they did not experience the same range of emotions when receiving digital care as they did in-person. This may also indicate that digital delivery may be blocking therapeutic content that should be addressed.</p> <p style="text-align: center;"><i>“[...]for some reason I didn't get as emotional as [I] knew I probably would have if I'd been in person.” [Client participant 4]</i></p>

531 **Theme 4: Concerns regarding digital delivery (Table 8)**

532 Some client participants (2/4) found that attending digital sessions could be somewhat resource
 533 intensive, with attendance typically requiring a general knowledge of using digital platforms,
 534 having access to a working computer, stable high speed internet connection, web camera with

535 clear picture, a quiet and private space to attend the session, and access to a support person
536 nearby and available in the event of an adverse emotional response. Client participants (3/4) also
537 raised concerns over family members or significant others overhearing their trauma therapy
538 sessions, raising questions regarding the security and privacy of digitally delivered
539 services. Such challenges left some client participants (2/4) feeling disconnected from their
540 clinician and the therapeutic experience in general, leading to less effective treatment and a less
541 intimate therapeutic relationship. For these participants, this left the impression that
542 psychotherapies utilized for trauma-affected populations may not be an adequate replacement for
543 in-person delivery for some patients or contexts.

544 Clinician participants (14/24) indicated that a major barrier to providing digitally delivered
545 psychotherapies for trauma-affected populations was the lack of preparedness stemming from the
546 sudden shift to using digital platforms following the onset of the COVID-19 pandemic.
547 Clinicians shared that they received little to no support to prepare for delivering digital
548 psychotherapies for trauma-affected populations and were tasked with troubleshooting technical
549 issues with very limited support, leading to frustration and discomfort. These challenges greatly
550 impacted many clinicians' therapeutic ability, disrupting the flow of treatment and leaving them
551 feeling like they were losing control over the therapeutic environment.

552 Clinician participants also raised concerns that digitally delivered psychotherapies utilized for
553 trauma-affected populations may not provide effective treatment for certain clients. Specifically,
554 clinician participants feared that clients with highly avoidant behavior, dissociative tendencies,
555 complex trauma, or emotional dysregulation may not attain the same benefits from digitally
556 delivered trauma therapy as in-person.

Table 8. Concerns Regarding Digital Delivery

Sub Theme	Description and Supporting Quotes
8.1 Privacy	<p>Client participants felt uncomfortable at the idea that other people could hear their digital therapy sessions.</p> <p><i>“Yes, so that was a little awkward because, you know, if somebody was in my house and I had to go to a different room, there was always the thought of “Can they hear me? Are they listening?” I mean, generally I was not in a house of somebody I couldn't trust anyways. But, you know, those are private sessions that you want to keep to yourself.” [Client participant 1]</i></p> <p><i>“There [are] certain things about [my] experiences that I would prefer my family not to know about[,] that I keep to myself, right? You know, [my] five year old is sitting on the couch right now while we're doing this. So, you know, that's a little bit of a negative.” [Client participant 3]</i></p> <p>Clinician participants felt a lack of control over the therapeutic space when working digitally, affecting their ability to provide care.</p> <p><i>“I could add that I have significantly less control, if not no control, over the confidential therapeutic space, at least on the end of the client in virtual therapy[...] [Clinician participant 2]</i></p>
8.2 Safety	<p>Clinician participants shared concerns about client safety. In particular, clinician participants were unsure of how to respond to dangerous relationships their clients were a part of or adverse events their clients would experience when working digitally.</p> <p><i>“If a client is in a relationship that has violence or has a history of domestic violence[,] that has been something that's come up for me[,] and I've had to kind of check in with the client every time, is your partner home, are they able to hear it hear in and listen in on this, and I was able to sort of contract with the client around having sessions when the partner was not home.” [Clinician participant 2]</i></p> <p><i>“[There] sort of [has to be] concerns for safety. How do I help my client that's having an over-the-top reaction or</i></p>

	<p><i>different reactions if there's something[?] [Y]ou're not there to deal with it directly, you know, especially then if they cut the mic or whatever, it can [happen] abruptly then you know, and you're like what the hell is happening there? I can't be there. No. So yeah, it doesn't come up very often, hardly at all. But, you know, there's something to be concerned about.”</i> <i>[Clinician participant 18]</i></p>
<p>8.3 Technological Literacy</p>	<p>Client and clinician participants acknowledged that technological literacy varies widely between individuals, and expressed concern with the lack of support being provided to those not comfortable with using digital platforms. Further, participants noted that it is unclear if digital delivery truly allows for equitable access to care.</p> <p><i>“He had to be able to talk to me through[,] to talk me through [going] on the Jane chat thing that we, right? He had to talk me through it over the phone, right, because I'm not[,] I'm not into all this stuff so[...] [I was frustrated because] I hate computers, data, and I was just like, I don't know how to operate it.” [Client participant 3]</i></p> <p><i>“[A gap that should be addressed is providing] practical training in using Zoom and troubleshooting issues for clinicians who aren't as tech savvy.” [Clinician participant 8]</i></p> <p><i>“Virtual care operates on the assumption clients have access to technology to support this, not all clients may have the funds and or literacy to access this technology” [Clinician participant 13]</i></p>
<p>8.4 Digital Environment Contributing to Emergence of Avoidance Behaviors</p>	<p>Clinician participants expressed concern that the shift to digital delivery was followed by the emergence of avoidant behaviors in their clients. As avoidance (implicit and explicit) may contribute to treatment resistance/poor treatment response, these concerns must be addressed moving forward.</p> <p><i>“I've had a few people who are a combination of really avoidant, so [strong] avoidance component of PTSD, and then also tend to have maybe some [obsessive compulsive] personality traits, where they're a combination of, if we're doing CPT for example, um there's kind of a lot of really subtle avoidance, and and often sort of getting into uh rumination in the session rather than focusing on their [stuck point][...]” [Clinician participant 7]</i></p>

	<p><i>“[W]hat I’m finding is that [clients are] starting to isolate more at home, and not engaging in their community or getting out, and everything has defaulted back to the caregivers in the home, it’s that trust. So I-I really noticed that in a couple of clients who were already highly anxious and highly avoidant. So I don’t think it [the] virtual serves a good purpose in that sense.” [Clinician participant 9]</i></p>
--	--

558 **Theme 5: Future directions and recommendations (Table 9)**

559 Client and clinician participants indicated several recommendations for integrating digital
 560 delivery into psychotherapy care for trauma-affected populations, including increasing the
 561 opportunities for and the spread of hybrid care, a combination of digital and in-person
 562 therapeutic services.

563 Table 9. Future Directions and Recommendations

Sub Theme	Description and Supporting Quotes
9.1 Hybrid care	<p>Client and clinician participants shared a common belief that hybrid care would offer a balance between providing the care clients are seeking with the delivery method they prefer.</p> <p><i>“Yeah, I think maybe something like you're offering them both and if people are selecting virtual because they can get in quicker, letting them know that it could be transitioned [by] agreement or in particular what the therapist thinks would be best if you could transition into in-person somewhere down the road during the therapy. If, if that's if it looks like it's needed. You wouldn't get absolutely stuck with one if [you] chose it. Similarly, you could switch from in-person to virtual, maybe as you're coming to the end of your therapy.” [Client participant 4]</i></p> <p><i>“Perhaps like increasing [digital delivery or hybrid care] [...] to provide clients with the care they are seeking.” [Clinician participant 17]</i></p>
9.2 Increasing spread	<p>Clinician participants encouraged the wider spread of digital delivery such that more clients would have the opportunity to receive care.</p>

	<p><i>“Perhaps like increasing [digital delivery or hybrid care] outside of the Edmonton zone. [...] So if people are interested in these groups, so having it more accessible, we got better in terms of the handouts, having it all prepackaged, everything ready to go before the group because initially we were going between all the sessions, session one, session two and so forth. So I think we're more organized, but improving it [and] having more flexibility.” [Clinician participant 17]</i></p> <p>A clinician participant also encouraged other clinicians to be open to providing digital care.</p> <p><i>“And I think the other thing is just to, you know, embrace [digital delivery] [and] recognize that there are some really significant benefits to it. You know, try it out and see because I know some people are just really reluctant to even try it, you know, some people never [used] online delivery through [the pandemic]. [Clinician participant 19]</i></p>
--	---

564 Taken together, survey and interview data indicate that clients and clinicians believe that
565 digitally delivered psychotherapies utilized for trauma-affected populations have several unique
566 benefits, including better accessibility to treatment and greater client autonomy, all while
567 offering similar therapeutic outcomes as in-person delivery. Several factors, including technical
568 difficulties inherent in use of digitally delivered treatments and potential security and
569 psychological safety, were concerning for study participants. Further investigation is warranted
570 to address the concerns and the recommendations made by client and clinician participants.

571 **4.0 Discussion**

572 The current study provides preliminary evidence of client and clinician support regarding the use
573 of DMHI in the context of providing psychotherapy to military members, Veterans, and PSP who
574 have experienced trauma. Client and clinician study participants reported that digitally delivered

575 psychotherapies utilized for trauma-affected populations appeared to offer similar treatment
576 quality of care as in-person delivery while also improving treatment access.

577 Our study also provides insight into the implementation of new DMHIs in the Canadian context.
578 Canadian clients and mental health clinicians face many unique challenges, including potentially
579 having to travel long distances from remote regions to urban centers to access evidence-based
580 specialized trauma treatment. Clinicians must provide care that is acceptable and appropriate for
581 multiple diverse populations, including Indigenous groups. This unique perspective was a
582 priority for the research team and highlights the importance of co-designing services, keeping in
583 mind the specific needs, such as treatment accessibility and appropriateness, of clients and
584 clinicians. Further, this study provides an update on previous research in the field (Smith-
585 MacDonald et al., 2020), enabling a better understanding of shifts in attitude and usage of
586 psychotherapies utilized for trauma-affected populations over the COVID-19 pandemic. These
587 findings may play an important role when considering the expansion of DMHI services within
588 the general healthcare system and for delivering care to individuals living in rural or remote
589 communities.

590 AQMH survey data indicated that client and clinician participants expressed no statistically
591 significant differences in their assessments of service quality between digitally delivered and in-
592 person trauma therapies. This is consistent with previous research suggesting equivalent quality
593 care is attainable via digital or in-person service delivery modalities (Jones et al., 2020, Perri et
594 al., 2021). Client and clinician interview data endorsed the findings of the AQMH survey. In
595 addition, client participants rated the convenience, practicality, accessibility, and efficiency of
596 psychotherapies utilized for trauma-affected populations higher than in-person delivery,
597 corroborating previous research on the unique advantages of DMHI (e.g., increased cost-

598 effectiveness, time savings, and access to therapy compared to in-person care) (Fluety and
599 Almond, 2020; Jones et al., 2020). These dimensions of healthcare appear to be highly valued by
600 clients receiving such therapies. Further research is yet needed to verify our results and better
601 understand if these dimensions of healthcare ought to be prioritized within healthcare programs.

602 Digital delivery of psychotherapies utilized for trauma-affected populations appeared to be
603 acceptable based on the UTAUT-related questions for client and clinician participants. UTAUT-
604 related questions also indicated that Social Influence and Facilitating Conditions did not appear
605 to be as important to client and clinician participants. This would appear to indicate that client
606 and clinician participants were willing to use digitally delivered psychotherapies despite a lack of
607 perceived support from important others (e.g., family) or the organizations they work for (e.g.,
608 mental health clinics). Perhaps this points to client safety and treatment needs overriding client
609 and clinician needs for social and organizational support with regards to using DMHI, including
610 psychotherapies utilized for trauma-affected populations. However, clinicians reported a range of
611 results regarding organizational support, indicating that this factor may be context and clinician
612 dependent. Organizational support therefore requires further study, as it is unclear whether
613 sufficient support is being provided to clinicians to maintain the long-term use of digitally
614 delivered psychotherapies. Finally, although there are moderators known to influence Behavioral
615 Intention and overall technology acceptance, due to the limited sample size, the influence of
616 these moderators was not evaluated.

617 Client and clinician participants raised some concerns regarding the support provided when
618 receiving or providing digitally delivered psychotherapies utilized for trauma-affected
619 populations during interview and focus group sessions. Specifically, client participants shared
620 concerns regarding accessing the appropriate technology required to attend digitally delivered

621 sessions, while clinician participants expressed frustration stemming from a lack of training and
622 easily accessible technological support. Similar findings were found in a qualitative study
623 conducted in the United States which recommended that, among other factors, providing
624 equitable device distribution and digital literacy training for clients, and adequate technology and
625 support for mental health providers and local behavioral health departments, would be necessary
626 for the successful implementation of DMHI (Zhao et al., 2023). Further research is needed to
627 better understand if these factors should be prioritized when implementing DMHI, including
628 psychotherapies utilized for trauma-affected populations.

629 Other considerations regarding implementation moving forward are the formation of the
630 therapeutic relationship and management of client distress in the digital environment. Some
631 client participants expressed difficulties in forming a strong therapeutic relationship and
632 emotional connection with their clinician, in line with previous research indicating that
633 individuals who have experienced interpersonal trauma may have difficulties developing a strong
634 therapeutic alliance (Lawson, Skidmore, and Akay-Sullivan, 2020). Such difficulties may, in
635 part, relate to why clinician participants felt less control over the therapeutic environment and
636 worried more about clients experiencing distress when providing digital care. This points to a
637 need to create clinical practice supports and guidelines regarding managing client crises when
638 working in a digital environment. Further, for the safety of mental health clinicians, future
639 guidelines should clarify the legal protections clinicians have when providing DMHI. Finally, it
640 would be useful to further evaluate if there are differences in implementation depending on the
641 context in which a clinician provides clinical services (e.g., is DMHI implementation more likely
642 in a clinic-based setting versus an independent practice).

643 **Limitations and Future Directions**

644 There were several study limitations which must be acknowledged. First, all recruitment and
645 surveys in the current study were in English, which limited responses from non-English speaking
646 communities. Second, the age and experience of our clinician population may have biased our
647 results. The clinician participants for the current study had an average of 14 years of clinical
648 experience, and the clinician experience providing DMHI services may have been different had
649 our population been younger and less experienced. Similar limitations have been described in
650 previous research (Gullo et al., 2022). Finally, the sample size and the diversity of our study
651 population were relatively limited, which precluded analyzing certain mediating effects. For
652 example, although there are moderators known to influence Behavioral Intention and overall
653 technology acceptance, due to the limited sample size, the influence of these moderators was not
654 evaluated. Similarly, potential gender and sex differences were not explored given the limited
655 sample size.

656 Future studies with larger sample sizes would be useful to replicate the findings reported here
657 and to explore potential moderating factors, such as differences related to gender, sex, and
658 sexual orientation with regards to the acceptance of digitally delivered care.

659 **Conclusion**

660 Client and mental health clinician participants shared common perspectives that demonstrated
661 unique benefits and barriers of digitally receiving/providing psychotherapies utilized for trauma-
662 affected populations. Given the high rate of PTSIs within this client base, it is critical that they
663 have access to, and clinicians are able to provide, the highest quality interventions in a secure,
664 cost-effective, and accessible manner.

665 Our results suggest that digital delivery offers an accessible and practical way for Canadian
666 military members, Veterans, and PSP to receive trauma therapy. Further, client and clinician
667 participants indicated that hybrid care, a mixture of digital and in-person delivery, should be
668 expanded upon in the future to ensure client populations are receiving care through their
669 preferred delivery method. This study adds to the growing body of evidence supporting the use
670 of DMHI in trauma-affected populations. Ultimately, the livelihoods of trauma-affected
671 populations may be directly impacted and improved with the use of DMHI.

672 **Acknowledgements**

673 Funding support for this project was provided by the following agencies:

- 674 - Government of Alberta through the Supporting Psychological Health in First Responders
675 (SPHIFR) grant program;
- 676 - Canadian Institutes of Health Research (CIHR) through the Knowledge Synthesis:
677 COVID-19 in Mental Health & Substance Use grant competition.

678 We at HiMARC would like to thank the Edmonton Operational Stress Injury Clinic for their
679 support and contributions to this project.

680 **References**

- 681 Aafjes-van Doorn K, Békés V, Luo X, Prout TA, Hoffmann L. Therapists' resilience and
682 posttraumatic growth during the COVID-19 pandemic. *Psychol Trauma*. 2022 Apr;14(S1):S165–
683 S173.
- 684 American Psychological Association. What you need to know before choosing online
685 therapy[internet]. American Psychological Association; 2015 [cited 31 January 2023]. Available
686 at: www.apa.org/topics/telehealth/online-therapy
- 687 American Psychiatric Association. *Diagnostic and Statistical Manual of Mental Disorders (5th-*
688 *ed-TR)*. APA;2022. 1120p.
- 689 Archibald MM, Ambagtsheer RC, Casey MG, Lawless M. Using Zoom videoconferencing for
690 qualitative data collection: perceptions and experiences of researchers and participants. *Int J*
691 *Qual Methods*. 2019 Sep 11;18:1-8.
- 692 Barkin S, Schlundt D, Smith P. Community-engaged research perspectives: then and now. *Acad*
693 *Pediatr*. 2013 Mar-Apr;13(2):93-97.

- 694 Bautista J, Schueller SM.(2022). Digital mental health deserves investment but the questions are
695 which interventions and where? *AJOB Neurosci.* 2022 Jul-Sep;13(3):191–193.
- 696 Beahm JD, McCall HC, Carleton RN, Titov N, Dear B, Hadjistavropoulos HD. Insights into
697 internet-delivered cognitive behavioural therapy for public safety personnel: exploration of client
698 experiences during and after treatment. *Internet Interv.* 2021 Nov 10;26:100481.
- 699 Békés V, Aafjes-van Doorn K, Luo X, Prout TA, Hoffmann L. Psychotherapists' challenges with
700 online therapy during COVID-19: concerns about connectedness predict therapists' negative
701 view of online therapy and its perceived efficacy over time. *Front Psychol.* 2021 Jul
702 22;12:705699.
- 703 Braun V, Clarke, V. Using Thematic Analysis in Psychology. *Qual Res Psychol.* 2006;3:77–101.
- 704 Carleton RN, Afifi TO, Turner S, Taillieu T, Duranceau S, LeBouthillier DM, et al. (2018)
705 Mental disorder symptoms among public safety personnel in Canada. *Can J Psychiatry.* 2018
706 Jan;63(1):54–64.
- 707 Clemente-Suárez VJ, Martínez-González MB, Benitez- Agudelo JC, Navarro-Jimenez E,
708 Beltran-Velasco AI, Ruisoto P, et al. The impact of the COVID-19 pandemic on mental
709 disorders. a critical review. *Int J Environ Res Public Health.* 2021 Sep 24;18(19):10041.
- 710 Esmail L, Moore E, Rein A. Evaluating patient and stakeholder engagement in research: moving
711 from theory to practice. *J Comp Eff Res.* 2015 Mar;4(2):133-145.
- 712 Fleuty K, Almond MK. Remote access therapy for veterans with psychological problems: current
713 state of the art. *Mil Med.* 2020 Aug;185(7-8):e1046-e1050.
- 714 Gros DF, Lancaster CL, López CM, Acierno R. Treatment satisfaction of home-based telehealth
715 versus in-person delivery of prolonged exposure for combat-related PTSD in veterans. *J Telemed*
716 *Telecare.* 2018 Jan;24(1):51-55.
- 717 Gullo S, Lo Coco G, Leszcz M, Marmarosh CL, Miles JR, Shechtman Z, et al. Therapists'
718 perceptions of online group therapeutic relationships during the COVID-19 pandemic: a survey-
719 based study. *Group Dyn-Theor Res.* 2022 Jun;26(2):103–118.
- 720 Harris PA, Taylor R, Thielke R, Payne J, Gonzalez N, Conde JG. Research electronic data
721 capture (REDCap) – a metadata-driven methodology and workflow process for providing
722 translational research informatics support. *J Biomed Inform.* 2009 Apr;42(2):377-381.
- 723 Harris PA, Taylor R, Minor BL, Elliot V, Fernandex M, O'Neal L, et al. The REDCap
724 consortium: building an international community of software partners. *J Biomed Inform.* 2019
725 Jul;95:103208.
- 726 Health Quality Council of Alberta. Healthcare quality and safety management: a framework for
727 Alberta. Report, Calgary, Alberta, Canada, 2017 July.
- 728 Heber A, Testa V, Groll D, Ritchie K, Tam-Seto L, Mulligan A, et al. Glossary of terms: a
729 shared understanding of the common terms used to describe psychological trauma, version 3.0.
730 *Health Promot Chronic Dis Prev Can.* 2023;43(10/11).

- 731 IBM Corp. Released 2021. IBM SPSS Statistics for Windows, Version 28.0. Armonk, NY: IBM
732 Corp.
- 733 Institute of Medicine (US) Committee on Quality of Health Care in America. Crossing the
734 quality chasm: a new health system for the 21st century. Washington (DC): National Academies
735 Press (US); 2001. 360p.
- 736 Jones C, Miguel-Cruz A, Smith-MacDonald L, Cruikshank E, Baghoori D, Chohan AK, et al.
737 Virtual trauma-focused therapy for military members, veterans, and public safety personnel with
738 posttraumatic stress injury: systematic scoping review. *JMIR Mhealth Uhealth*. 2020 Sep
739 21;8(9):e22079.
- 740 Karl KA, Peluchette JV, Aghakhani N. Virtual work meetings during the COVID-19 pandemic:
741 the good, bad, and ugly. *Small Group Res*. 2022 Jun;53(3):343-365.
- 742 Lattie EG, Stiles-Shields C, Graham AK. An overview of and recommendations for more
743 accessible digital mental health services. *Nat Rev Psychol*. 2022 Jan 26;1:87–100.
- 744 Lawson DM, Skidmore ST, Akay-Sullivan S. The influence of trauma symptoms on the
745 therapeutic alliance across treatment. *J Couns Dev*. 2020 Jan 2;98(1):29–40.
- 746 Malterud K, Siersma VD, Guassora AD. Sample size in qualitative interview studies: guided by
747 information power. *Qual Health Res*. 2016 July 10;26(13):1753–1760.
- 748 McCall HC, Landry CA, Ogunade A, Carleton RN, Hadjistavropoulos HD. Why do public safety
749 personnel seek tailored internet-delivered cognitive behavioural therapy? An observational study
750 of treatment-seekers. *Int J Environ Res Public Health*. 2021 Nov;18(22):11972.
- 751 O'Brien BC, Harris IB, Beckman TJ, Reed DA, Cook DA. Standards for Reporting Qualitative
752 Research. *Acad Med*. 2014 Sep;89(9):1245–1251.
- 753 Perri RL, Castelli P, La Rosa C, et al. COVID-19, isolation, quarantine: on the efficacy of
754 internet-based eye movement desensitization and reprocessing (EMDR) and cognitive-behavioral
755 therapy (CBT) for ongoing trauma. *Brain Sci*. 2021 Apr;11(5):579.
- 756 Public Health Agency of Canada. Cycle 2: Symptoms of posttraumatic stress disorder (PTSD)
757 during the COVID-19 pandemic [internet]. Public Health Agency of Canada, 2021 [cited 9
758 November 2023]. Available from: [https://www.canada.ca/en/public-
759 health/services/publications/diseases-conditions/cycle-2-symptoms-posttraumatic-stress-
760 disorder-covid-19-pandemic.html](https://www.canada.ca/en/public-health/services/publications/diseases-conditions/cycle-2-symptoms-posttraumatic-stress-disorder-covid-19-pandemic.html)
- 761 Smith-MacDonald L, Jones C, Sevigny P, White A, Laidlaw A, Voth M, et al. The experience of
762 key stakeholders during the implementation and use of trauma therapy via digital health for
763 military, veteran, and public safety personnel: qualitative thematic analysis. *JMIR Form Res*.
764 2021 Aug 12;5(8):e26369.
- 765 Statistics Canada (2021) Survey on COVID-19 and mental health (SCMH). Statistics Canada,
766 2021 [cited 30 January 2023]. Available from:
767 www23.statcan.gc.ca/imdb/p2SV.pl?Function=getSurvey&SDDS=5330

- 768 Titov N, Hadjistavropoulos HD, Nielssen O, Mohr DC, Andresson G, Dear BF. (2019) From
769 research to practice: ten lessons in delivering digital mental health services. *J Clin Med.* 2019
770 Aug;8(8):1239.
- 771 Torous J, Keshavan M. Covid-19, mobile health and serious mental illness. *Schizophr Res.* 2020
772 Apr;218:36–37.
- 773 van Til L, Sweet J, Poirier A, McKinnon K, Sudom K, Dursun S, et al. Well-being of Canadian
774 regular force veterans: findings from LASS 2016 survey. Charlottetown (PE): Veterans Affairs
775 Canada Research Directorate, Technical Report; 2017 June 23. 41p.
- 776 Venkatesh V, Morris MG, Davis GB, Davis FD. User acceptance of information technology:
777 toward a unified view. *MIS Quarterly.* 2003 Sep;27(3):425–478.
- 778 Zhao X, Stadnick NA, Ceballos-Corro E, Castro Jr J, Mallard-Swanson K, Palomares KJ, et al.
779 Facilitators of and barriers to integrating digital mental health into county mental health services:
780 qualitative interview analyses. *JMIR Form Res.* 2023 May 16;7:e45718.

781

782 **Supportive Information Captions**

783 **Figure captions:**

784 **Figure 1.** Box and whisker plots indicating client participant (n=11) median AQMH survey
785 scores, first and third quartiles, and minimum and maximum scores. *=Significant difference
786 (p<0.05) between median scores for digital delivery vs in-person therapy based on paired
787 sample Wilcoxon signed-rank test, corrected for multiple comparisons. Blue refers to digital
788 delivery; orange refers to in-person delivery. ● indicates outlier.

789 **Figure 2.** Box and whisker plots indicating client participant (n=11) median UTAUT construct
790 scores, first and third quartile, and minimum and maximum scores. *=Significant difference
791 (p<0.05) between median score and a reference score of 12 (total score of three questions asked
792 based on Likert scale 1-7) based on one-sample Wilcoxon signed-rank test, corrected for
793 multiple comparisons. ● indicates outlier.

794 **Figure 3.** Box and whisker plots indicating clinician participant (n=12) median AQMH survey
795 scores, first and third quartiles, and minimum and maximum scores. *=Significant difference
796 (p<0.05) between median scores for digital delivery vs in-person therapy based on paired
797 sample Wilcoxon signed-rank test, corrected for multiple comparisons. Blue refers to digital
798 delivery; orange refers to in-person delivery. ● indicates outlier.

799 **Figure 4.** Box and whisker plots indicating clinician participant (n=12) median UTAUT
800 construct scores, first and third quartiles, and minimum and maximum scores. *=Significant
801 difference (p<0.05) between median score and a reference score of 12 (total score of three
802 questions asked based on Likert scale 1-7) based on one-sample Wilcoxon signed-rank test,
803 corrected for multiple comparisons. ● indicates outlier.

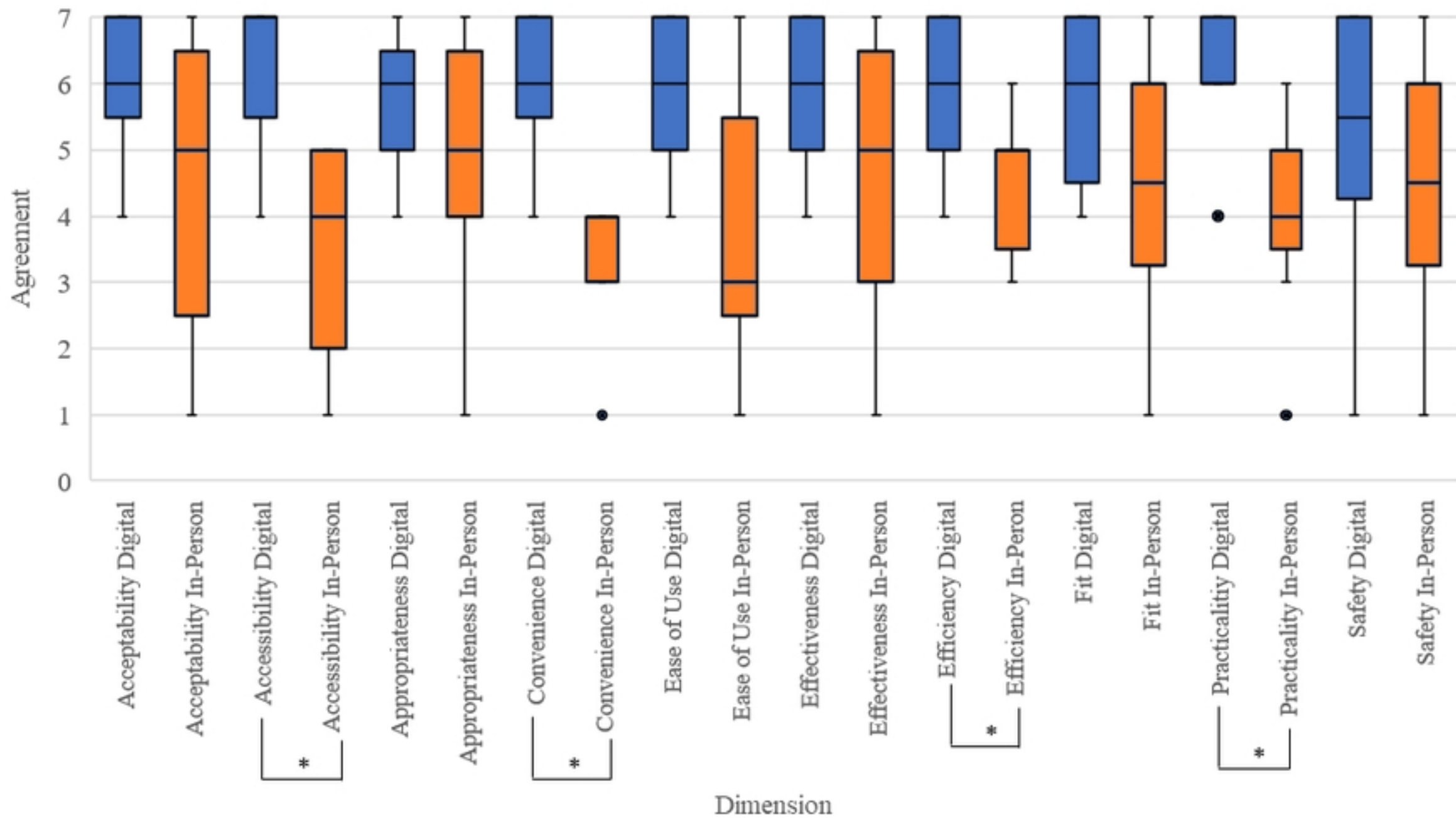


Figure 1

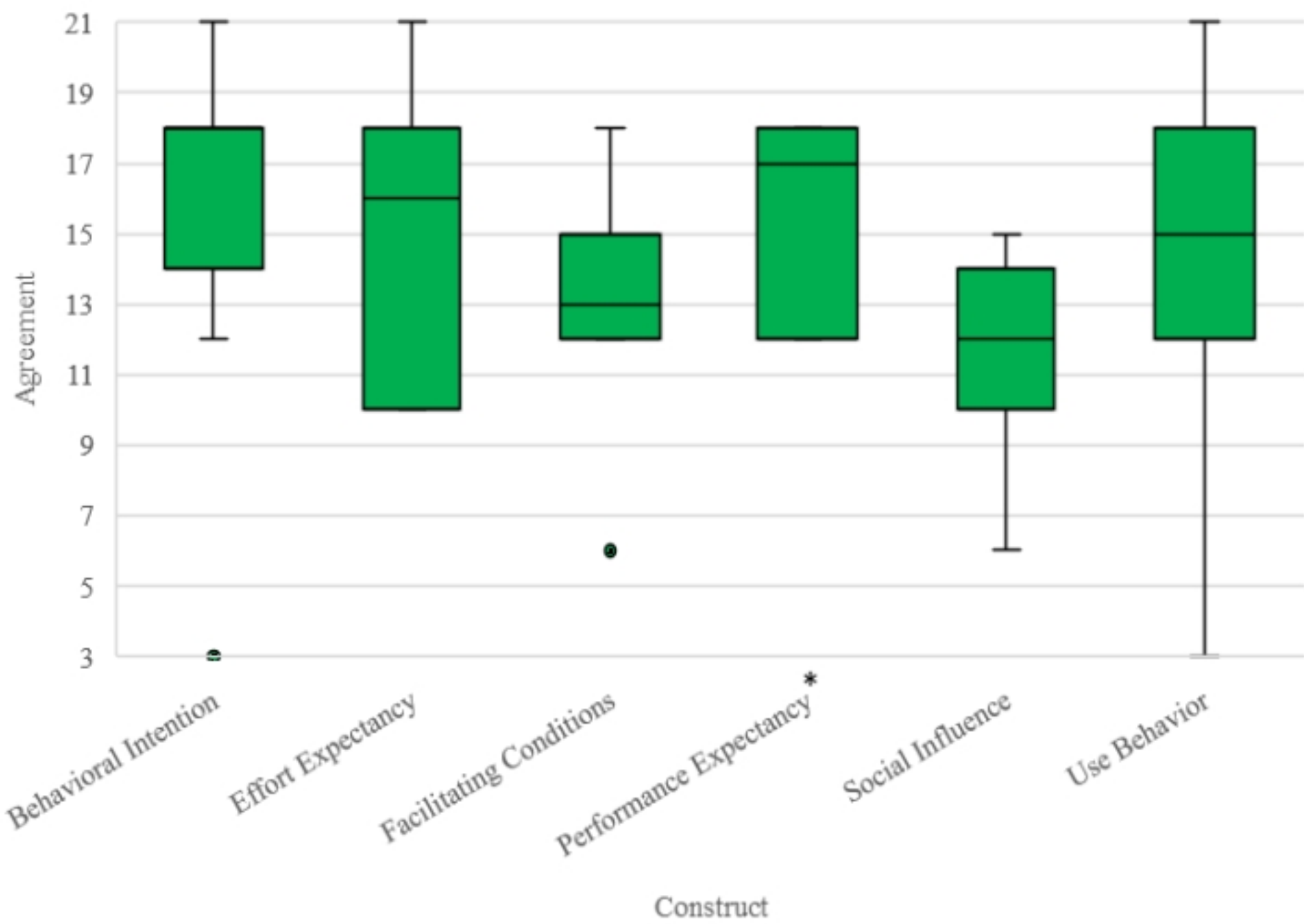


Figure 2

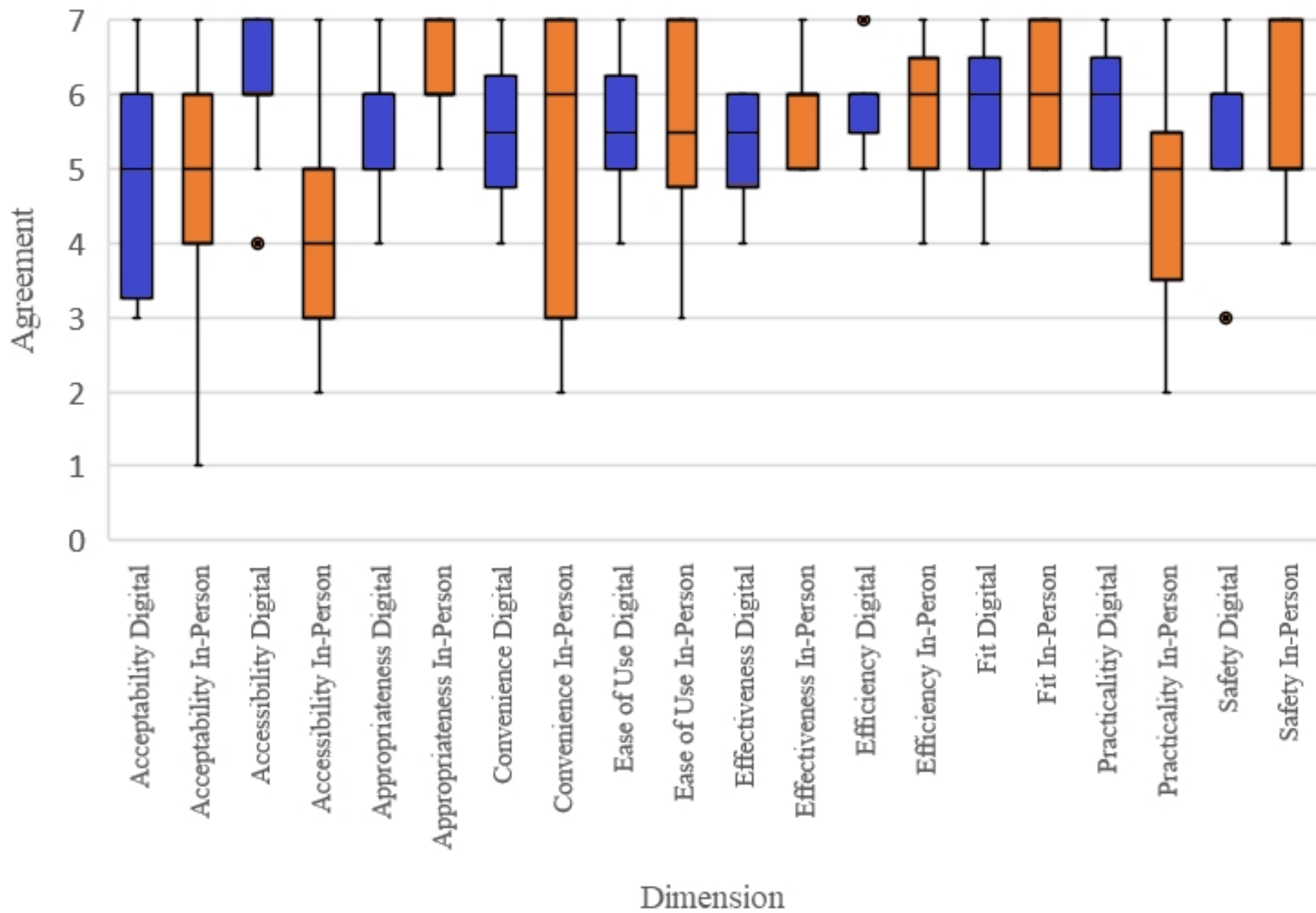


Figure 3

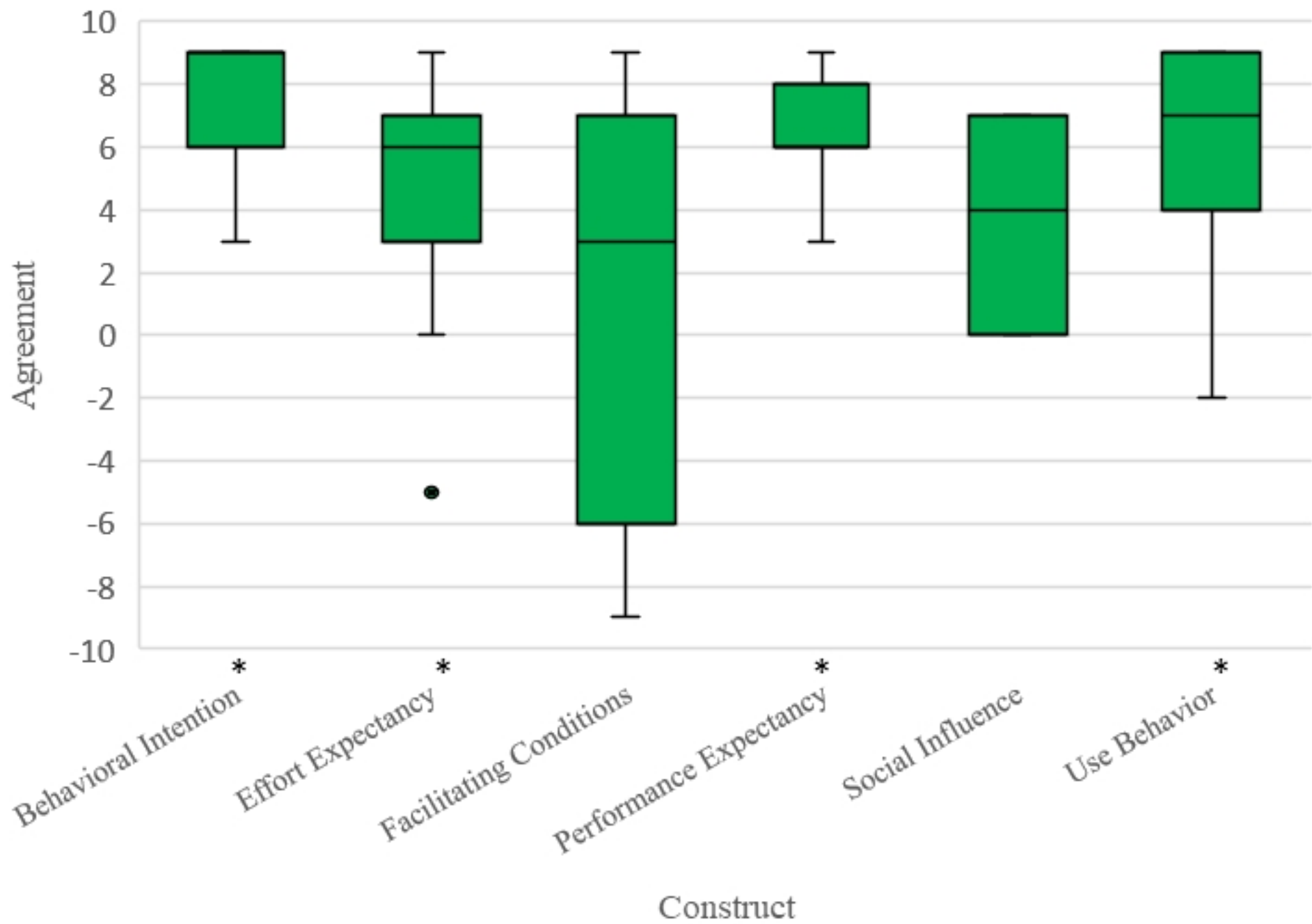


Figure 4