

1 **Conditional Survival and Nomogram for Elderly** 2 **Non-Metastatic Colon Cancer Patients Following Colectomy**

3 Yadong Gao^{1,6}, Huimin Wang^{2*}, Yi Zhang³, Jing Zhao⁴, Sujuan Feng^{5*},
4 Jianwei Qiu^{1*}

5 1. Department of Gastroenterology, Affiliated Hospital 2 of Nantong University,
6 Nantong, China

7 2. Department of Cardiology, Affiliated Hospital 2 of Nantong University, Nantong,
8 China

9 3. Department of Neurosurgery, Affiliated Hospital 2 of Nantong University,
10 Nantong, China

11 4. Department of Dermatology, Affiliated Nantong Hospital 3 of Nantong University

12 5. Department of Nephrology, Affiliated Hospital 2 of Nantong University, Nantong,
13 China

14 6. Nantong Clinical Medical College of Kangda College, Nanjing Medical
15 University, Nantong, China

16 *** Correspondence:**

17 Dr Jianwei Qiu, Department of Gastroenterology, Affiliated Hospital 2 of Nantong
18 University, 666 Shengli Road, Chongchuan District, Nantong 226001, China. E-mail:
19 ntfhqjw@163.com

20 Dr Huimin Wang, Department of Cardiology, Affiliated Hospital 2 of Nantong
21 University, 666 Shengli Road, Chongchuan District, Nantong 226001, China. E-mail:
22 wanghuimin1112@yeah.net

23 Dr Sujuan Feng, Department of Nephrology, Affiliated Hospital 2 of Nantong
24 University, 666 Shengli Road, Chongchuan District, Nantong 226001, China. E-mail:
25 takeucifsj@163.com

26 **Keywords:** Conditional Survival; Colon Cancer; Colectomy; Nomogram; SEER

27 **Ethical approval**

28 The information used in our study was obtained from the SEER database,
29 which is accessible to the public, thus eliminating the need for ethical
30 clearance.

31 **Sources of funding**

32 This work was supported by the Project of Chinese Medicine

33 **Administration of Jiangsu Provincial Health Commission (MS2021066),**
NOTE: This preprint reports new research that has not been certified by peer review and should not be used to guide clinical practice.

34 Nantong Science and Technology Bureau project (MS2022021), Nantong
35 University Clinical Basic Research Special General Project (2022JY003),
36 the Research project of Nantong Clinical Medical College of Kangda
37 College of Nanjing Medical University (KD2022KYCXTD006,
38 KD2022KYJJZD026), Open Fund for National Key Laboratory of Tumor
39 System Medicine (KF2203-93), and Nantong City Health Commission
40 Research Project (MSZ2022010, MS2023073).

41 **Acknowledgments**

42 The invaluable support of ChatGPT was instrumental in enhancing the
43 sentence structure revisions.

44 **Conflict of Interest declaration**

45 The authors declare that they have no affiliations with or involvement in
46 any organization or entity with any financial interest in the subject matter
47 or materials discussed in this manuscript.

48

49

50

51

52

53

54

55

56 **Abstract**

57 **Background:** This study aimed to evaluate the conditional survival (CS)
58 of elderly patients with non-metastatic colon cancer who underwent
59 colectomy and build conditional nomograms that can accommodate
60 varying survival periods and estimate survival rates.

61 **Methods:** Data from 9302 patients between 2004 and 2017 were obtained
62 from the Surveillance, Epidemiology, and End Results database. CS was
63 used to assess overall survival and colon-specific survival rates in patients
64 who survived beyond a certain time period. Cox regression was used to
65 select factors for nomogram development, and performance was
66 evaluated using area under the receiver operating characteristic curve
67 (AUC), calibration plot, and decision curve analysis (DCA).

68 **Results:** The 5-year conditional overall survival rates initially increased
69 slightly but then decreased over time. The rates at different time points
70 after diagnosis (baseline and 1-5 years) were 62.5, 63.2, 62.8, 62.1, 61.6,
71 and 59.8%. In contrast, 5-year conditional colon-specific survival rates
72 consistently improved over the same period. These rates were 78.1, 80.9,
73 84.2, 86.9, 89.3, and 90.9%, respectively. Nomograms were developed
74 for baseline measurements and for patients who survived 1, 3, and 5 years.
75 The performance of these nomograms, assessed using AUC, calibration
76 curves, and DCA, indicated good predictive capabilities.

77 **Conclusion:** CS provides valuable information on the medium- and

78 long-term survival probabilities of elderly patients with non-metastatic
79 colon cancer who underwent colectomy. The developed conditional
80 nomograms allowed for the estimation of survival probabilities across
81 different timeframes, facilitating a comprehensive understanding of
82 prognosis and collaborative decision making.

83

84 **1. Introduction**

85 Colon cancer is the third most common and deadly form of cancer
86 worldwide, accounting for 10% of all cancer cases¹. It mainly affects the
87 elderly population, with most patients aged > 60 years and a significant
88 number aged > 75². As the global population ages, a significant increase
89 in the prevalence of colon cancer is expected among older individuals. In
90 the United States alone, the elderly population (65 years and older) is
91 expected to increase by 20% by 2030, leading to a parallel surge in colon
92 cancer cases³. Additionally, the number of adults aged ≥ 85 years is
93 expected to triple to 19 million by 2060, further contributing to the rise in
94 colon cancer cases. While there is no standardized definition of "elderly"
95 in relation to colon cancer, it generally includes individuals aged 65-75 or
96 older⁴⁻⁶.

97 Surgery is the preferred treatment for stage I–III colon cancer. Advances
98 in medical standards have made radical surgery more feasible in elderly
99 patients. Studies have shown an increase in the rate of radical surgery

100 among colon cancer patients aged ≥ 75 years who were diagnosed with
101 stage I or II⁷. Surgical resection has been found to improve the prognosis
102 of elderly colon cancer⁸⁻⁹. Improved perioperative management and
103 comprehensive geriatric assessments have contributed to better tolerance
104 to surgical treatment and improved quality of life in the elderly¹⁰. These
105 factors have led to prolonged survival of elderly patients undergoing
106 surgery.

107 Conditional survival (CS) is a statistical measure that estimates the
108 likelihood of survival for a specific duration after diagnosis or treatment,
109 considering the patient's current survival time¹¹. This approach provides a
110 more personalized prognosis that evolves over time, making it more
111 relevant and meaningful to patients than the traditional survival analysis.
112 It allows physicians to tailor checkup schedules and content based on a
113 patient's unique survival pattern, enabling personalized adjustments.
114 Previous studies on conditional survival in colorectal cancer have been
115 conducted¹²⁻¹⁴, but most have included a diverse age range, and few have
116 focused exclusively on the older population. A nomogram, which is a
117 predictive tool for prognosis, has emerged as valuable in assessing the
118 chances of survival in elderly colon cancer patients¹⁵. However, the
119 nomogram overlooks the crucial aspect of incorporating patient survival
120 duration. This study aimed to investigate conditional survival rates in
121 elderly non-metastatic colon cancer patients who underwent colectomy,

122 while developing nomograms to assess their prognosis.

123

124 **2. Materials and methods**

125 **Data collection**

126 This study used data from the November 2020 release of the Surveillance,
127 Epidemiology, and End Results (SEER) database obtained specifically
128 from SEER*Stat Version 8.4.2. The study adhered to the guidelines of the
129 1964 Declaration of Helsinki and was conducted according to the
130 STROCSS criteria. As per our institute's Ethics Committee, this study did
131 not require approval from an institutional review board because it used
132 de-identified public database information. The study included a subset of
133 elderly colon cancer patients who underwent colectomy and met the
134 following criteria: (1) aged 70–89 years, (2) pathologically diagnosed
135 with stage I-III colon cancer, (3) had undergone colectomy, and (4) had
136 colon cancer as the only primary cancer. Patients who received
137 neoadjuvant therapy were excluded from the analysis because of their
138 potential effects on downstaging and prognostic factors. Patients without
139 clinicopathological data or survival information were excluded from this
140 study. A diagram outlining the screening process is presented in
141 Supplementary Figure 1.

142 **Statistical analyses**

143 In this study, the time from diagnosis to death from any cause was

144 referred to as overall survival (OS), while the time from diagnosis to
145 death, specifically from colon cancer, was referred to as colon-specific
146 survival (CSS). A multivariate Cox regression model was constructed to
147 assess the correlation between clinicopathological characteristics and
148 survival outcomes. Survival curves were generated using the
149 Kaplan-Meier method, and survival disparities were assessed using the
150 log-rank test. CS represents the likelihood of survival for an additional
151 specified time period (y years) after survival for a certain duration (x
152 years). This measure was derived from Kaplan-Meier survival data and
153 was mathematically expressed as $CS(x|y) = S(x+y)/S(x)$, where $S(x)$
154 represents the OS or CSS rate at x years, as estimated the Kaplan-Meier
155 method¹⁶. This study employed COS (x) and CCSS (x) as alternatives to
156 $S(x)$ to determine the number of survivors in year x. The standardized
157 differences (d) method was used to compute variations in CS across the
158 subgroups¹⁷. When |d| was less than 0.1, it indicated negligible difference
159 within each group; when it ranged from 0.1 to less than 0.3, it signified a
160 minor difference; when it fell between 0.3 and less than 0.5, it
161 suggested a moderate difference; and when |d| was 0.5 or greater, it
162 indicated a notable difference.

163 The study participants were randomly allocated to either the training or
164 validation cohort with a distribution ratio of 7:3. Univariate Cox
165 regression analysis was performed to identify potential variables for

166 inclusion in multivariate analysis, with a requirement for significance of
167 $p < 0.05$. Subsequently, variables demonstrating prognostic significance in
168 multivariate Cox regression analysis were used to construct nomograms.
169 To evaluate the discriminative ability of the nomogram, the area under the
170 receiver operating characteristic (ROC) curve (AUC) was calculated. The
171 calibration assessment was conducted using the Brier score and a
172 calibration plot, employing the bootstrapping approach with 1000
173 resampling bootstraps. After the nomogram was subjected to decision
174 curve analysis (DCA), its clinical efficacy was assessed.
175 R version 4.1.1 was employed for statistical analysis. Categorical
176 variables are presented as frequencies and percentages, and disparities
177 among various groups were examined using the chi-squared test.
178 Continuous variables were expressed as means with standard deviations
179 and compared using the t-test or rank-sum test based on data distribution.
180 Statistical significance was determined using a p-value less than 0.05.

181

182 **3. Results**

183 **Clinicopathological characteristics**

184 This study encompassed 9302 cases from 2004 to 2017 based on specific
185 criteria. As shown in Table 1, the training set consisted of 6511 patients,
186 whereas the validation set comprised 2791 patients. The patients had an
187 average age of 78.6 years with a standard deviation of 5.42. The majority

188 of these patients were female (57.4%), white (81.0%), diagnosed after
189 2010 (55.2%), and had tumors located in the proximal colon (73.1%).
190 Grade II patients constituted the largest proportion (70.2%), followed by
191 grade III (19.7%), grade I (6.64%), and grade IV (3.48%) patients. Colon
192 adenocarcinoma was the most common cancer type (89.7%). Tumors < 5
193 cm accounted for 58.0% of the cases, and the majority of patients were
194 married (51.6%) and had negative or normal carcino-embryonic antigen
195 (CEA) test results (62.6%). Tumor stages were classified as T1 (7.99%),
196 T2 (16.7%), T3 (61.2%), and T4 (14.1%). Nodal stages were classified as
197 N0 (63.4%), N1 (24.6%), and N2 (12.0%). A small proportion of the
198 patients received radiotherapy (0.8%) or chemotherapy (22.5%). The
199 training and validation cohorts exhibited no significant differences in any
200 of the variables.

201 **COS and CCSS**

202 Figure 1 shows the conditional survival curves. The analysis
203 demonstrated a consistent pattern of improvement in the actuarial OS and
204 CSS of individuals as the duration of survival increased annually.
205 Meanwhile, as shown in Table 2 and Figure 1, the COS5 rates initially
206 saw a marginal uptick, followed by a subsequent decline. Specifically, the
207 rates at baseline, one year, two years, three years, four years, and five
208 years post-diagnosis were 62.5%, 63.2%, 62.8%, 62.1%, 61.6%, and
209 59.8%, respectively. However, the CCSS5 rates exhibited an upward

210 trajectory over the five-year period, with the initial and subsequent
211 conditional survival rates at baseline and years 1 through 5 being 78.1%,
212 80.9%, 84.2%, 86.9%, 89.3%, and 90.9%, respectively (Table 3).
213 Subsequently, detailed subgroup analysis was conducted to assess the
214 impact of various factors on the rates of COS5 and CCSS5. The
215 expression rates of COS5 and CCSS5 varied across these subgroups,
216 displaying distinct patterns over time. For COS5, there were persistent
217 negligible or minor differences in survival between some subgroups
218 ($|d| < 0.1$: ≥ 2010 vs. < 2010 , Distal vs. Proximal, Grade II vs. Grade I, and
219 T2 vs. T1; $0.1 < |d| < 0.3$: Widowed vs. Married and Separated/Divorced vs.
220 Married). The differences in COS5 levels between some subgroups
221 gradually appeared over time ($|d| < 0.1 \rightarrow |d| > 0.1$: Others vs. White and
222 Chemotherapy Yes vs. None/Unknown). The disparity in COS5 rates
223 among some subgroups slowly diminished over time ($|d| > 0.1 \rightarrow |d| < 0.1$,
224 $|d| > 0.3 \rightarrow |d| < 0.3$, or $|d| > 0.5 \rightarrow |d| < 0.5$; black vs. White, Others vs.
225 proximal, grade III vs. Grade I, Grade IV vs. Grade I, Single vs. Married,
226 Positive/Elevated vs. Negative/Normal, T3 vs. T1, T4 vs. T1, N1 vs. N0,
227 and N2 vs. N0). Over time, the variance in the COS5 rate fluctuated
228 irregularly across other subgroups. Correspondingly, for CCSS5, there
229 were persistent negligible differences in survival between some
230 subgroups ($|d| < 0.1$: others vs. white, ≥ 2010 vs. < 2010 , mucinous
231 adenocarcinoma vs. adenocarcinoma, widowed vs. Married and T2 vs. T1).

232 The variance in CCSS5 among the subgroups became increasingly
233 evident as time progressed ($|d| < 0.1 \rightarrow |d| > 0.1$: Distal vs. Proximal). Over
234 time, there was a gradual reduction in the differences in CCSS5 rates
235 within certain subgroups ($|d| > 0.1 \rightarrow |d| < 0.1$, $|d| > 0.3 \rightarrow |d| < 0.3$, or $|d| > 0.5 \rightarrow$
236 $|d| < 0.5$: black vs. White, Grade II vs. Grade I, Grade IV vs. Grade I, ≥ 5
237 cm vs. < 5 cm, single vs. Married, Positive/Elevated vs. Negative/Normal,
238 T3 vs. T1, T4 vs. T1, N1 vs. N0, and N2 vs. N0). The differences in the
239 CCSS5 rate among the other subgroups fluctuated irregularly over time.

240 **Variables linked to the OS and CSS in patients who have attained a**
241 **defined duration of survival**

242 Age, race, sex, year of diagnosis, site, grade, marital status, CEA level, T
243 stage, N stage, and chemotherapy were independent prognostic factors for
244 OS at baseline (Table 4 and Supplementary Table 1). The prognostic
245 factors for patients who survived for at least one year differed from those
246 at baseline, including age, race, sex, marital status, CEA levels, T stage, N
247 stage, and chemotherapy. After three years, age, race, sex, histology type,
248 marital status, CEA levels, T stage, N stage, and chemotherapy
249 independently affected OS. At the 5-year mark, age, race, sex, marital
250 status, CEA levels, T stage, and chemotherapy were key predictors of OS,
251 consistent with the baseline and other survival intervals.

252 Age, year of diagnosis, site, grade, marital status, CEA, T stage, N stage,
253 and chemotherapy were determined to be independent prognostic factors

254 for cancer-specific survival (CSS) at baseline, as indicated in Table 5 and
255 Supplementary Table 2. After a minimum of one year of survival, age,
256 CEA levels, T stage, N stage, and chemotherapy remained significant risk
257 factors for CSS. For patients who survived beyond three years, age, sex,
258 tumor location, marital status, CEA levels, T stage, and N stage emerged
259 as influential factors. Among those who surpassed a five-year milestone,
260 age, tumor site, CEA level, and T stage were independent prognostic
261 factors. Constant predictors of CSS for newly diagnosed patients and 1-,
262 3-, and 5-year survivors were age, CEA, and T stage.

263 **Conditional nomogram construction and validation**

264 Figure 2 and 3 illustrate the OS and CSS nomograms developed for
265 cancer patients at different stages of their journey, including the start and
266 at the one-year, three-year, and five-year milestones. These nomograms
267 consider the specific risk factors for each individual. Our investigation
268 delved deeper into the performances of these nomograms. Baseline
269 analysis of the OS nomogram in the training set revealed an area under
270 the curve (AUC) of 0.703, 0.713, and 0.713 for the one-year, three-year,
271 and five-year intervals, respectively (Figure 4). In the test set, the
272 corresponding AUC were 0.714, 0.722, and 0.719, respectively
273 (Supplementary Figure 2). For patients who survived for at least one year,
274 the OS nomogram showed AUC of 0.700, 0.697, and 0.698 in the training
275 set and 0.698, 0.694, and 0.701 in the test set, respectively, for the same

276 intervals. For patients surviving for 3 years, the OS nomogram achieved
277 AUC of 0.652, 0.665, and 0.694 in the training set and 0.663, 0.666, and
278 0.688 in the test set, respectively. Additionally, for patients surviving 5
279 years, the training set's OS nomogram yielded AUC of 0.661, 0.694, and
280 0.695 for the one-year, three-year, and five-year durations. In the test set,
281 AUC were 0.590, 0.674, and 0.681 for the same intervals. Regarding the
282 CSS nomogram, at baseline, the training cohort demonstrated AUC
283 values of 0.771, 0.788, and 0.782 for the one-year, three-year, as well as
284 five-year periods (Figure 5), while the test cohort achieved corresponding
285 AUC values of 0.787, 0.804, and 0.800, respectively (Supplementary
286 Figure 3). For patients who survived for 1 year, the training cohort CSS
287 nomogram attained AUC of 0.785, 0.795, and 0.781 for the one-year,
288 three-year, and five-year intervals, whereas the test cohort displayed AUC
289 of 0.780, 0.778, and 0.761, respectively. Among patients surviving 3
290 years, the training cohort showed AUC of 0.765, 0.732, and 0.727 over
291 the one-year, three-year, and five-year periods, whereas the test cohort
292 displayed AUC of 0.786, 0.732, and 0.697, respectively, for the same
293 duration. For patients who survived for 5 years, the training cohort CSS
294 nomogram achieved AUC values of 0.664, 0.669, and 0.682 for the
295 one-year, three-year, and five-year periods, whereas the test cohort
296 showed AUC values of 0.585, 0.629, and 0.655, respectively.

297 The calibration curves of the OS and CCS nomograms when utilized for

298 these training and validation sets are also presented. The outcomes
299 demonstrated strong concordance between anticipated and observed
300 survival rates in both the training and validation sets, indicating the
301 accuracy of these nomograms in predicting survival probabilities
302 (Supplementary Figure 4-7). In addition, the DCA curves also indicated
303 the favorable clinical utility of these nomograms (Supplementary Figure
304 8-11).

305

306 **4. Discussion**

307 In this investigation, we examined the survival data of elderly patients
308 with non-metastatic colon cancer who had undergone colectomy in detail.
309 The uniqueness and notable attributes of our research encompass the
310 following: we conducted an analysis of the CS rates, allowing for a more
311 precise assessment of OS and CSS outcomes in both medium-term and
312 long-term survivors; this analysis aids in accurately forecasting survival
313 rates and advancing personalized medical approaches; our findings
314 revealed the nomograms to possess favorable discriminatory and
315 predictive capabilities when forecasting OS and CSS rates.

316 In the coming years, we expect a higher incidence of colon cancer in the
317 elderly population. This can be attributed to a longer life expectancy and
318 improved rates of survival¹⁸. Colectomy is the primary curative treatment
319 for the elderly. Previous studies have reported a notable correlation

320 between surgical resection and improved prognosis in older patients with
321 colon cancer^{8-9,19}. However, the prognosis of elderly patients differs from
322 that of younger individuals owing to the presence of other health
323 conditions, functional disabilities, more advanced tumors, and a
324 decreased ability to maintain internal balance. Elderly patients experience
325 higher rates of complications and mortality following surgery as well as a
326 less favorable overall outlook^{3,20}. Given the complexities surrounding
327 older adults with colon cancer, there is an urgent need for further research
328 focusing on this demographic, particularly on those who have undergone
329 surgical procedures. Currently, there is limited information on the
330 medium- and long-term postoperative prognoses of elderly patients with
331 colon cancer, and few studies have investigated the practical application
332 of prediction models specifically tailored to this population. Wang²¹ et al.
333 developed a prognostic model that accurately predicted the outcomes of
334 elderly patients with colorectal cancer. However, their study included
335 patients with and without metastatic disease, and it is widely recognized
336 that prognosis differs significantly between these two groups.
337 Additionally, their study focused only on CSS and not OS. To our
338 knowledge, this study is the first to investigate the development and
339 validation of a reliable nomogram for predicting both OS and CSS in
340 elderly adults with non-metastatic colon cancer who have undergone
341 colectomy. This model is expected to provide patients and healthcare

342 providers with a valuable tool for guiding follow-up care and treatment
343 decisions.

344 CS provides a precise estimation of the likelihood of a specific time point
345 in the course of a disease, closely tied to individual long-term survival
346 rates based on patients' time of survival¹¹. This allows for a more accurate
347 depiction of prognostic outcomes. To our knowledge, this study is the
348 first to show CS in elderly individuals with non-metastatic colon cancer
349 who have undergone colectomy. In this study, survival analysis revealed
350 an upward trend in actuarial OS and CSS among elderly patients as their
351 survival duration increased annually. However, COS and CCSS rates
352 showed contrasting patterns. Initially, the COS5 rates experienced a slight
353 increase, followed by a subsequent decrease, whereas the CCSS5 rates
354 demonstrated a consistent upward trend over the five-year duration.
355 Compared with the previously noted trend of annual increases in the
356 likelihood of COS rates for malignant tumors^{11,13}, particularly CRC, this
357 study revealed a distinctive pattern of change in COS rates. Our
358 hypothesis attributed this variance to disparity in the cohort composition.
359 This study differs from previous research by exclusively focusing on
360 older adults instead of encompassing individuals across all age groups.
361 Throughout the course of follow-up, the impact of non-colon
362 cancer-related death determinants accumulated at various stages of the
363 life course, leading to a growing risk of other conditions such as

364 cardiovascular and cerebrovascular diseases among elderly patients with
365 colon cancer. a recent study²², it was found that the majority of deaths in
366 patients aged > 80 years during the follow-up period were unrelated to
367 CRC. Non-CRC-related causes of death, such as respiratory failure,
368 particularly aspiration pneumonia, cardiovascular disease, and sepsis,
369 were the primary contributors to mortality. Another study suggested that
370 cerebrovascular-specific hazard ratios were 3.10-, 6.67, and 10.95 times
371 greater for CRC patients aged 50-64, 65-74, and over 75 years,
372 respectively, compared to those under 50 years old²³. One of the foremost
373 concerns for those who survive cancer is the risk of mortality. Although
374 the risk of death due to colon cancer surpasses that of other illnesses in
375 the initial years, this specific risk diminishes over time in a discernible
376 trend. Our research showed that over the span of five years, the CCSS5
377 showed a consistent increase, with the baseline and subsequent
378 conditional survival rates at years 1 through 5 documented as 78.1%,
379 80.9%, 84.2%, 86.9%, 89.3%, and 90.9%, respectively, indicating a
380 positive trend. The findings from the CS analysis could instill greater
381 optimism in the patients. For instance, consider a patient who initially has
382 a 5-year CSS of 78.1% at the time of diagnosis. Subsequently, through
383 dedicated adherence to treatment and follow-up, the patient successfully
384 achieved 5-year survival, and the CS analysis conveyed the encouraging
385 news: "Your 5-year CSS rate has risen to 90.9%." On the other hand, in

386 contrast to the general population's COS outcomes, the comparatively
387 less positive COS outcomes in the elderly indicate a greater need for
388 physicians to prioritize non-colonic causes of death as patients age.
389 Subgroup analysis was performed to further understand the influence of
390 different variables on CS. The rates of COS5 and CCSS5 expression
391 varied in these subgroups. Over time, the variation in the rates of both
392 COS5 and CCSS5 among many subgroups gradually decreased (black vs.
393 White, Grade IV vs. Grade I, Single vs. Married, Positive/Elevated vs.
394 Negative/Normal, T3 vs. T1, T4 vs. T1, N1 vs. N0, and N2 vs. N0). One
395 possible explanation is that patients in each subgroup with some high-risk
396 factors died over time, whereas the remaining patients had a better
397 prognosis, resulting in a smaller difference in survival between the
398 subgroups. The change patterns of COS5 and CCSS5 differed among the
399 subgroups, which may be influenced by multiple factors, such as those
400 affecting cardiovascular death. Future studies of CS in these subgroups
401 should be conducted.

402 Our study examined the impact of various baseline prognostic factors on
403 patients with different survival durations. Multiple factors, including age,
404 race, sex, year of diagnosis, site, grade, marital status, carcinoembryonic
405 antigen (CEA) levels, T stage, N stage, and chemotherapy, significantly
406 influenced OS according to multifactor analysis. Upon reaching the
407 critical 5-year survival milestone, we identified several key independent

408 prognostic factors that consistently influenced the patient outcomes.
409 These factors included age, race, sex, marital status, CEA levels, T stage,
410 and chemotherapy, demonstrating a predictive value for OS across
411 baseline and 1-year, 3-year, and 5-year intervals. Furthermore, we
412 observed that at the beginning of the study, age, year of diagnosis, site,
413 grade, marital status, CEA levels, T stage, N stage, and chemotherapy
414 independently influenced CSS. However, as time progressed, only age,
415 CEA level, and T stage consistently emerged as predictive factors for CSS
416 in both newly diagnosed patients and those who survived for 1, 3, and 5
417 years. These variables, as observed in previous studies, could predict OS
418 and CSS at the beginning of diagnosis^{15,19,21}, but their predictive
419 significance diminished over time. To provide more accurate prognostic
420 predictions, we utilized these variables to create nomograms for each type
421 of survival, which demonstrated good prediction performance and a
422 correspondingly good match between the predicted and observed survival
423 rates in the calibration plots. The practical application of these
424 nomograms is also supported by their favorable clinical utility, as shown
425 in the DCA curves. However, it should be noted that, as time progressed,
426 the AUC values of the nomograms gradually declined, indicating a
427 decrease in predictive accuracy. This trend can be explained by the
428 diminishing impact of clinicopathological factors on the prognosis over
429 time. Further research is needed to assess the latest clinical and laboratory

430 factors at specific time points to more accurately identify prognostic
431 factors affecting elderly colon cancer survivors. This study had some
432 limitations. First, given the retrospective nature of the study, it inevitably
433 introduced a degree of selection bias owing to its inherent design. Second,
434 obtaining postoperative complications and adjuvant treatment details
435 from the SEER database for all patients is not feasible, potentially
436 impacting the survival prognosis of elderly individuals with colon cancer.
437 Third, the analysis of CS necessitates extensive data, thus posing
438 challenges for the external validation of these nomograms. Furthermore,
439 the ongoing update of nomograms is essential to accommodate the
440 evolving treatment strategies.

441

442 **5. Conclusion**

443 We reported the rates of CS in elderly non-metastatic colon cancer
444 patients following colectomy, enhancing our understanding of survival
445 rates in the medium- and long-term. We also created personalized CS
446 nomograms to predict mortality risk at different intervals. These tools aid
447 surgeons and patients in making informed decisions, and contribute to
448 personalized medicine.

449

450

451

452

453 **Table 1.** Baseline characteristics of enrolled patients

454 **Table 2.** Five-year conditional overall survival rates (%).

455 **Table 3.** Five-year conditional colon-specific survival rates (%).

456 **Table 4.** Multivariate analyses of overall deaths in baseline, \geq one-, three-,
457 five-year survivors in the training cohort.

458 **Table 5.** Multivariate analyses of colon-specific deaths in baseline, \geq one-,
459 three-, five-year survivors in the training cohort.

460

461 **Figure 1.** Conditional survival analysis of elderly non-metastatic colon
462 cancer patients who undergo colectomy. (A) Kaplan–Meier curves
463 estimating overall survival for individuals who had successfully survived
464 a duration of 0-6 years. (B) Kaplan–Meier curves estimating
465 colon-specific survival for individuals who had successfully survived a
466 duration of 0-6 years.

467 **Figure 2.** Nomograms to predict one-, three-, and five- overall survival
468 for baseline (A), one-year (B), three-year (C), and five-year (D)
469 survivors.

470 **Figure 3.** Nomograms to predict one-, three-, and five-year colon-specific
471 survival for baseline (A), one-year (B), three-year (C), and five-year (D)
472 survivors.

473 **Figure 4.** ROC curve analyses in the training cohort for one-, three-, and

474 five-year overall survival in baseline (A), one-year (B), three-year (C),
475 and five-year (D) survivors. ROC, receiver operator characteristic curve;
476 AUC, area under the curve.

477 **Figure 5.** ROC curve analyses in the training cohort for one-, three-, and
478 five-year colon-specific survival in baseline (A), one-year (B), three-year
479 (C), and five-year (D) survivors. ROC, receiver operator characteristic
480 curve; AUC, area under the curve.

481

482 **Supplementary Table 1.** Univariate analyses of overall deaths in
483 baseline, \geq one-, three- and five-year survivors in the training cohort.

484 **Supplementary Table 2.** Univariate analysis of colon-specific deaths at
485 baseline, \geq one-, three- and five-year survivors in the training cohort.

486 **Supplementary Figure 1.** Flow diagram for enrollment of the study
487 cohort.

488 **Supplementary Figure 2.** ROC curve analyses in the test cohort for one-,
489 three-, and five-year overall survival in baseline (A), one-year (B),
490 three-year (C), and five-year (D) survivors. ROC, receiver operator
491 characteristic curve; AUC, area under the curve.

492 **Supplementary Figure 3.** ROC curve analyses in the test cohort for one-,
493 three-, and five-year colon-specific survival in baseline (A), one-year (B),
494 three-year (C), and five-year (D) survivors. ROC, receiver operator
495 characteristic curve; AUC, area under the curve.

496 **Supplementary Figure 4.** Calibration curves of baseline nomograms. (A,
497 C and E) showed Calibration curves of nomograms in predicting one-,
498 three-, and five-year OS, respectively. (B, D and F) showed Calibration
499 curves of nomograms in predicting one-, three-, and five-year CSS,
500 respectively. OS, overall survival; CSS, colon-specific survival.

501 **Supplementary Figure 5.** Calibration curves of one-year survivors
502 nomograms. (A, C and E) showed Calibration curves of nomograms in
503 predicting one-, three-, and five-year OS, respectively. (B, D and F)
504 showed Calibration curves of nomograms in predicting one-, three-, and
505 five-year CSS, respectively. OS, overall survival; CSS, colon-specific
506 survival.

507 **Supplementary Figure 6.** Calibration curves of three-year survivors
508 nomograms in the training cohort. (A, C and E) showed Calibration
509 curves of nomograms in predicting one-, three-, and five-year OS,
510 respectively. (B, D and F) showed Calibration curves of nomograms to
511 predict one-, three-, and five-year CSS, respectively. OS, overall survival;
512 CSS, colon-specific survival.

513 **Supplementary Figure 7.** Calibration curves of five-year survivors
514 nomograms in the training cohort. (A, C and E) showed Calibration
515 curves of nomograms in predicting one-, three-, and five-year OS,
516 respectively. (B, D and F) showed Calibration curves of nomograms in
517 predicting one-, three-, and five-year CSS, respectively. OS, overall

518 survival; CSS, colon-specific survival.

519 **Supplementary Figure 8.** Decision curve analysis for overall survival
520 nomograms in the training cohort. A, patients at baseline; B, Patients who
521 have survived for one year; C, Patients who have survived for three years;
522 D, Patients who have survived for five years.

523 **Supplementary Figure 9.** Decision curve analysis for overall survival
524 nomograms in the test cohort. A, patients at baseline; B, patients who
525 have survived for one year; C, patients who have survived for three years;
526 D, patients who have survived for five years.

527 **Supplementary Figure 10.** Decision curve analysis for colon-specific
528 survival nomograms in the training cohort. A, patients at baseline; B,
529 patients who have survived for one year; C, patients who have survived
530 for three years; D, patients who have survived for five years.

531 **Supplementary Figure 11.** Decision curve analysis for colon-specific
532 survival nomograms in the test cohort. A, patients at baseline; B, patients
533 who have survived for one year; C, patients who have survived for three
534 years; D, patients who have survived for five years.

535

536 **Reference**

537 1. Miller KD, Nogueira L, Mariotto AB, et al. Cancer treatment and
538 survivorship statistics, 2019. *CA Cancer J Clin.* 2019;69(5):363-385.

539 2. Papamichael D, Audisio RA, Glimelius B, et al. Treatment of

- 540 colorectal cancer in older patients: International Society of Geriatric
541 Oncology (SIOG) consensus recommendations 2013. *Ann Oncol.*
542 2015;26(3):463–476.
- 543 3. Ioffe D, Dotan E. Guidance for Treating the Older Adults with
544 Colorectal Cancer. *Curr Treat Options Oncol.* 2023;24(6):644-666.
- 545 4. Chen J, Zhang C, Wu Y. Does adjuvant chemotherapy improve
546 outcomes in elderly patients with colorectal cancer? A systematic review
547 and meta-analysis of real-world studies. *Expert Rev Gastroenterol*
548 *Hepatol.* 2022;16(4):383-391.
- 549 5. Choi DW, Kang H, Zhang HS, Jhang H, Jeong W, Park S. Association
550 of polypharmacy with all-cause mortality and adverse events among
551 elderly colorectal cancer survivors. *Cancer.* 2023;129(17):2705-2716.
- 552 6. Sanoff HK, Carpenter WR, Stürmer T, et al. Effect of adjuvant
553 chemotherapy on survival of patients with stage III colon cancer
554 diagnosed after age 75 years. *J Clin Oncol.* 2012;30(21):2624-2634. ,
- 555 7. Mitry E, Bouvier AM, Esteve J, et al. Improvement in colorectal
556 cancer survival: a population-based study. *Eur J Cancer.*
557 2005;41(15):2297-2303.
- 558 8. Bhangu A, Kiran RP, Audisio R, Tekkis P. Survival outcome of
559 operated and non-operated elderly patients with rectal cancer: A
560 Surveillance, Epidemiology, and End Results analysis. *Eur J Surg Oncol.*
561 2014;40(11):1510-1516.

- 562 9. Zhang L, Li Q, Hu C, Zhang Z, She J, Shi F. Real-world analysis of
563 survival benefit of surgery and adjuvant therapy in elderly patients with
564 colorectal cancer. *Sci Rep.* 2023;13(1):14866.
- 565 10. Ioffe D, Dotan E. Guidance for Treating the Older Adults with
566 Colorectal Cancer. *Curr Treat Options Oncol.* 2023;24(6):644-666.
- 567 11. Hagens ERC, Feenstra ML, Eshuis WJ, et al. Conditional survival
568 after neoadjuvant chemoradiotherapy and surgery for oesophageal cancer.
569 *Br J Surg.* 2020;107(8):1053-1061.
- 570 12. Qaderi SM, Dickman PW, de Wilt JHW, et al. Conditional Survival
571 and Cure of Patients With Colon or Rectal Cancer: A Population-Based
572 Study. *J Natl Compr Canc Netw.* 2020;18(9):1230-1237.
- 573 13. Han L, Dai W, Mo S, et al. Nomogram of conditional survival
574 probability of long-term Survival for Metastatic Colorectal Cancer: A
575 Real-World Data Retrospective Cohort Study from SEER database. *Int J*
576 *Surg.* 2021;92:106013.
- 577 14. Karagkounis G, Liska D, Kalady MF. Conditional Probability of
578 Survival After Neoadjuvant Chemoradiation and Proctectomy for Rectal
579 Cancer: What Matters and When. *Dis Colon Rectum.* 2019;62(1):33-39.
- 580 15. Yu C, Zhang Y. Establishment of prognostic nomogram for elderly
581 colorectal cancer patients: a SEER database analysis. *BMC Gastroenterol.*
582 2020;20(1):347.
- 583 16. Kurta ML, Edwards RP, Moysich KB, et al. Prognosis and conditional

- 584 disease-free survival among patients with ovarian cancer. *J Clin Oncol.*
585 2014;32(36):4102-4112.
- 586 17. Cucchetti A, Piscaglia F, Cescon M, et al. Conditional survival after
587 hepatic resection for hepatocellular carcinoma in cirrhotic patients. *Clin*
588 *Cancer Res.* 2012;18(16):4397-4405.
- 589 18. Quaglia A, Tavilla A, Shack L, et al. The cancer survival gap between
590 elderly and middle-aged patients in Europe is widening. *Eur J Cancer.*
591 2009;45(6):1006–1016.
- 592 19. Zheng P, Lai C, Yang W, et al. Nomogram predicting cancer-specific
593 survival in elderly patients with stages I-III colon cancer. *Scand J*
594 *Gastroenterol.* 2020;55(2):202-208.
- 595 20. Bouvier AM, Launoy G, Lepage C et al. Trends in the management
596 and survival of digestive tract cancers among patients aged over 80 years.
597 *Aliment Pharmacol Ther.* 2005;22(3):233-241.
- 598 21. Wang Z, Wang Y, Yang Y, et al. A competing-risk nomogram to
599 predict cause-specific death in elderly patients with colorectal cancer
600 after surgery (especially for colon cancer). *World J Surg Oncol.*
601 2020;18(1):30.
- 602 22. Ogata T, Yoshida N, Sadakari Y, et al. Colorectal cancer surgery in
603 elderly patients 80 years and older: a comparison with younger age
604 groups. *J Gastrointest Oncol.* 2022;13(1):137-148.
- 605 23. Dai ZH, Tang M, Chen YL, et al. Incidence and Risk Factors for

606 Cerebrovascular-Specific Mortality in Patients with Colorectal Cancer: A

607 Registry-Based Cohort Study Involving 563,298 Patients. *Cancers*

608 (Basel). 2022;14(9):2053. Published 2022 Apr 19.

609

1 Table 1 Baseline characteristics of enrolled patients

	Total (N=9302)	Train (N=6511)	Test (N=2791)	p
Age	78.6 (5.42)	78.6 (5.44)	78.6 (5.40)	0.894
Race				0.360
White	7533 (81.0%)	5293 (81.3%)	2240 (80.3%)	
Black	532 (5.72%)	359 (5.51%)	173 (6.20%)	
Others	1237 (13.3%)	859 (13.2%)	378 (13.5%)	
Sex:				0.744
Male	3964 (42.6%)	2767 (42.5%)	1197 (42.9%)	
Female	5338 (57.4%)	3744 (57.5%)	1594 (57.1%)	
Year of Diagnosis:				0.643
< 2010	4165 (44.8%)	2926 (44.9%)	1239 (44.4%)	
≥ 2010	5137 (55.2%)	3585 (55.1%)	1552 (55.6%)	
Site:				0.100
Proximal	6802 (73.1%)	4803 (73.8%)	1999 (71.6%)	
Distal	2383 (25.6%)	1629 (25.0%)	754 (27.0%)	
Others	117 (1.26%)	79 (1.21%)	38 (1.36%)	
Grade:				0.689
Grade I	618 (6.64%)	436 (6.70%)	182 (6.52%)	
Grade II	6532 (70.2%)	4549 (69.9%)	1983 (71.0%)	
Grade III	1828 (19.7%)	1299 (20.0%)	529 (19.0%)	
Grade IV	324 (3.48%)	227 (3.49%)	97 (3.48%)	
Histology Type:				0.199
Adenocarcinoma	8343 (89.7%)	5834 (89.6%)	2509 (89.9%)	
Mucinous adenocarcinoma	769 (8.27%)	533 (8.19%)	236 (8.46%)	
Others	190 (2.04%)	144 (2.21%)	46 (1.65%)	
Tumor Size:				0.961
< 5 cm	5394 (58.0%)	3774 (58.0%)	1620 (58.0%)	
≥5 cm	3908 (42.0%)	2737 (42.0%)	1171 (42.0%)	
Marital Status:				0.305
Married	4803 (51.6%)	3372 (51.8%)	1431 (51.3%)	
Single	831 (8.93%)	566 (8.69%)	265 (9.49%)	
Widowed	2892 (31.1%)	2045 (31.4%)	847 (30.3%)	
Separated/Divorced	776 (8.34%)	528 (8.11%)	248 (8.89%)	
CEA:				0.535
Negative/Normal	5825 (62.6%)	4091 (62.8%)	1734 (62.1%)	
Positive/elevated	3477 (37.4%)	2420 (37.2%)	1057 (37.9%)	
T stage:				0.282
T1	743 (7.99%)	513 (7.88%)	230 (8.24%)	
T2	1553 (16.7%)	1086 (16.7%)	467 (16.7%)	
T3	5697 (61.2%)	4022 (61.8%)	1675 (60.0%)	
T4	1309 (14.1%)	890 (13.7%)	419 (15.0%)	
N stage:				0.576
N0	5899 (63.4%)	4141 (63.6%)	1758 (63.0%)	
N1	2290 (24.6%)	1606 (24.7%)	684 (24.5%)	
N2	1113 (12.0%)	764 (11.7%)	349 (12.5%)	

Radiation					0.177
None/Unknown	9228 (99.2%)	6465 (99.3%)	2763 (99.0%)		
Yes	74 (0.80%)	46 (0.71%)	28 (1.00%)		
Chemotherapy:					0.468
None/Unknown	7206 (77.5%)	5030 (77.3%)	2176 (78.0%)		
Yes	2096 (22.5%)	1481 (22.7%)	615 (22.0%)		

Table 2 Five-year conditional overall survival rates (%).

Variables	At baseline	At 1 year	At 2 years	At 3 years	At 4 years	At 5 years
Total	62.5	63.2	62.8	62.1	61.6	59.8
Race						
White	62.4	63.0	62.2	61.4	60.6	58.8
Black	56.9	58.1	59.5	56.7	58.0	57.2
Others	65.6	66.4	67.4	68.1	68.8	66.7
d (Black vs. White)	-0.114	-0.102	-0.056	-0.097	-0.053	-0.032
d (Others vs. White)	0.066	0.071	0.108	0.138	0.167	0.161
Sex						
Male	60.2	60.3	59.1	58.6	58.3	58.1
Female	64.3	65.3	65.6	64.6	64.0	61.0
d (Female vs. Male)	0.085	0.104	0.134	0.124	0.117	0.059
Year of diagnosis						
< 2010	61.2	62.3	62.3	62.6	61.9	60.0
≥2010	63.5	63.9	63.3	61.3	61.1	60.3
d (≥2010 vs. < 2010)	0.048	0.033	0.021	-0.028	-0.016	0.006
Site						
Poximal	62.6	63.4	63.5	62.5	62.3	60.1
Distal	63.2	63.3	61.5	61.3	60.0	59.1
Others	64.14	64.78	64.90	64.87	65.52	65.90
d (Distal vs. Poximal)	0.012	-0.002	-0.041	-0.025	-0.047	-0.020
d (Others vs. Poximal)	-0.438	-0.323	-0.300	-0.284	-0.146	-0.022
Grade						
Grade I	67.4	66.5	66.2	63.9	62.7	61.1
Grade II	64.3	63.8	62.8	62.3	62.0	60.4
Grade III	56.0	60.0	62.0	61.0	60.4	57.5
Grade IV	53.3	60.9	59.3	58.5	55.5	57.2
d (Grade II vs. Grade I)	-0.064	-0.056	-0.070	-0.033	-0.014	-0.014
d (Grade III vs. Grade I)	-0.235	-0.135	-0.087	-0.060	-0.047	-0.073
d (Grade IV vs. Grade I)	-0.291	-0.116	-0.143	-0.111	-0.148	-0.080
Histology type						
Adenocarcinoma	63.0	63.6	63.1	62.3	62.2	60.7
Mucinous adenocarcinoma	58.9	58.7	59.4	57.8	54.5	51.5
Others	54.9	61.3	63.5	70.5	70.6	54.0
d (Mucinous adenocarcinoma vs. Adenocarcinoma)	-0.085	-0.102	-0.077	-0.093	-0.158	-0.188
d (Others vs. Adenocarcinoma)	-0.167	-0.048	0.008	0.169	0.173	-0.137
Tumor size						
< 5cm	65.5	65	63.5	63.3	63.5	61.8
≥5cm	58.4	60.5	61.7	60.2	58.7	56.7

	d (≥ 5 cm vs. < 5 cm)	-0.147	-0.093	-0.037	-0.064	-0.099	-0.104
Marital status	Married	65.7	66.9	66.1	65.8	65.3	63.6
	Single	59.3	60.3	62.6	63.9	64.4	63.8
	Widowed	58.7	58.3	58	55.9	55.0	53.0
	Separated/Divorced	60.2	61.0	59.9	59.4	59.4	56.8
	d (Single vs. Married)	-0.132	-0.137	-0.072	-0.039	-0.019	0.004
	d (Widowed vs. Married)	-0.145	-0.178	-0.168	-0.204	-0.212	-0.216
CEA	d (Separated/Divorced vs. Married)	-0.114	-0.122	-0.128	-0.132	-0.121	-0.139
	Negative/Normal	68.4	67.8	66.5	64.8	64.2	62.4
	Positive/Elevated	52.6	54.8	55.7	56.6	55.9	53.9
T stage	d (Positive/Elevated vs. Negative/Normal)	-0.326	-0.270	-0.223	-0.169	-0.171	-0.173
	T1	77.8	76.6	73.9	69.4	67.8	65.0
	T2	75.0	73.6	69.6	66.2	64.1	61.5
	T3	62.1	61.8	61.4	61.3	60.9	59.4
	T4	40.6	46.1	50.0	51.8	54.0	53.1
	d (T2 vs. T1)	-0.058	-0.062	-0.089	-0.066	-0.076	-0.071
	d (T3 vs. T1)	-0.324	-0.307	-0.259	-0.167	-0.142	-0.114
N stage	d (T4 vs. T1)	-0.768	-0.632	-0.494	-0.363	-0.284	-0.243
	N0	70.0	69.0	66.4	64.1	62.8	60.1
	N1	54.9	56.4	58.1	58.9	58.9	58.3
	N2	38.3	42.6	48.3	53.9	58.5	61.2
	d (N1 vs. N0)	-0.312	-0.261	-0.172	0.107	-0.080	-0.037
	d (N2 vs. N0)	-0.655	-0.547	-0.374	-0.210	-0.088	0.022
Radiation	None/Unknown	62.6	63.2	62.8	62.1	61.7	59.9
	Yes	47.3	52.8	58.3	56.1	44.5	45.7
	d (Yes vs. None/Unknown)	-0.316	-0.216	-0.093	-0.124	-0.354	-0.290
Chemotherapy	None/Unknown	62.4	63.0	62.0	60.5	59.8	57.5
	Yes	62.9	63.7	65.6	67.4	67.7	67.9
	d (Yes vs. None/Unknown)	0.010	0.015	0.074	0.142	0.162	0.212

6 Table 3 Five-year conditional colon-specific survival rates (%).

Variables		At baseline	At 1 year	At 2 years	At 3 years	At 4 years	At 5 years
Total		78.1	80.9	84.2	86.9	89.3	90.9
Race							
	White	78.3	81.5	84.8	87.3	89.5	90.8
	Black	73.1	74.5	79.1	82.5	86.5	89.5
	Others	78.4	80.0	82.2	86.2	89.4	90.4
	d (Black vs. White)	-0.126	-0.178	-0.156	-0.142	-0.097	-0.045
	d (Others vs. White)	0.002	-0.038	-0.071	-0.033	-0.003	-0.014
Sex							
	Male	77.8	80.0	82.4	84.7	87.7	89.3
	Female	78.3	81.6	85.4	88.5	90.5	91.6
	d (Female vs. Male)	0.012	0.041	0.082	0.113	0.090	0.080
Year of diagnosis							
	< 2010	77.1	80.1	83.8	87.0	89.3	90.9

	≥2010	78.9	81.7	84.4	86.7	89.2	89.6
	d (≥2010 vs. < 2010)	0.044	0.041	0.016	-0.009	-0.003	-0.045
Site	Poximal	78.1	81.5	85.6	88.2	90.7	91.9
	Distal	78.3	79.7	80.6	83.7	86.0	87.5
	Others	68.1	74.9	77.6	82.7	85.5	91.2
	d (Distal vs. Poximal)	0.005	-0.046	-0.137	-0.133	-0.152	-0.153
	d (Others vs. Poximal)	-0.242	-0.168	-0.219	-0.163	-0.168	-0.024
Grade	Grade I	85.6	86.2	87.9	89.1	91.3	92.6
	Grade II	80.0	81.5	84.0	86.7	89.4	90.7
	Grade III	70.5	77.4	83.6	86.7	88.1	89.2
	Grade IV	67.2	77.2	82.4	87.7	89.7	94.3
	d (Grade II vs. Grade I)	-0.135	-0.120	-0.107	-0.071	-0.061	-0.066
	d (Grade III vs. Grade I)	-0.365	-0.224	-0.118	-0.071	-0.104	-0.118
	d (Grade IV vs. Grade I)	-0.445	-0.229	-0.151	-0.041	-0.052	0.059
Histology type	Adenocarcinoma	78.5	81.2	84.3	86.9	89.3	90.8
	Mucinous adenocarcinoma	76.3	78.7	83.5	86.9	89.3	88.6
	Others	64.6	76.0	82.1	91.3	92.3	NA
	d (Mucinous adenocarcinoma vs. Adenocarcinoma)	-0.053	-0.064	-0.022	0	0	-0.076
	d (Others vs. Adenocarcinoma)	-0.336	-0.132	-0.060	0.130	0.097	NA
Tumor size	< 5cm	81.3	82.7	84.8	87.5	89.7	90.8
	≥5cm	73.5	78.3	83.1	86.0	88.8	90.4
	d (≥5cm vs. < 5cm)	-0.189	-0.112	-0.047	-0.044	-0.029	-0.014
Marital status	Married	79.5	82.0	84.5	87.0	89.7	91.6
	Single	75.3	77.4	80.9	84.7	88.3	90.2
	Widowed	76.8	79.8	84.1	87.2	89.2	90.0
	Separated/Divorced	76.9	82.2	85.6	87.5	87.7	86.7
	d (Single vs. Married)	-0.101	-0.117	-0.099	-0.068	-0.045	-0.014
	d (Widowed vs. Married)	-0.065	-0.056	-0.011	0.006	-0.016	-0.028
	d (Separated/Divorced vs. Married)	-0.063	0.005	0.030	0.015	-0.065	-0.143
CEA	Negative/Normal	83.8	85.4	87.6	89.5	91.1	92.0
	Positive/Elevated	68.1	72.6	77.5	81.7	85.4	87.4
	d (Positive/Elevated vs. Negative/Normal)	-0.380	-0.326	-0.277	-0.231	-0.184	-0.160
T stage	T1	94.2	95.0	94.7	94.4	94.4	94.4
	T2	92.7	93.4	93.5	93.6	93.9	93.8
	T3	78	79.9	83.1	85.9	88.3	89.8
	T4	50.8	58.2	65.7	72.7	80.5	84.8
	d (T2 vs. T1)	-0.036	-0.041	-0.033	-0.024	-0.016	-0.021
	d (T3 vs. T1)	-0.392	-0.384	-0.318	-0.252	-0.197	-0.160
	d (T4 vs. T1)	-1.049	-0.936	-0.795	-0.643	-0.450	-0.334
N stage	N0	88.1	89.2	90.2	91.0	92.1	92.4
	N1	67.9	70.8	75.6	80.7	84.5	86.9
	N2	46.2	53.2	62.3	70.0	78.3	85.2
	d (N1 vs. N0)	-0.488	-0.468	-0.400	-0.305	-0.246	-0.191
	d (N2 vs. N0)	-1.013	-0.916	-0.765	-0.622	-0.446	-0.250

Radiation	None/Unknown	78.2	81.1	84.3	87.0	89.4	90.7
	Yes	57.1	61.1	70.6	78.4	80.1	NA
	d (Yes vs. None/Unknown)	-0.510	-0.509	-0.376	-0.255	-0.301	NA
Chemotherapy	None/Unknown	80.5	83.8	86.7	89.0	91.0	91.6
	Yes	70.2	71.8	75.9	80.2	83.9	87.5
	d (Yes vs. None/Unknown)	-0.249	-0.305	-0.296	-0.261	-0.230	-0.143

7
8
9
10

Table 4. Multivariate analyses of overall deaths in baseline, \geq one-, three-, five-year survivors in the training cohort.

Variables		Baseline survivors		> 1 year survivors		> 3 year survivors		> 5 year survivors	
		HR	p	HR	p	HR	p	HR	p
Age		1.07 (1.06-1.08)	<0.001	1.08 (1.07-1.08)	<0.001	1.09 (1.08-1.10)	<0.001	1.10 (1.09-1.12)	<0.001
Race	White	Ref		Ref		Ref			
	Black	1.20 (1.04-1.38)	0.010	1.10 (0.95-1.28)	0.217	1.06 (0.87-1.29)	0.579	1.14 (0.90-1.44)	0.287
	Others	1.20 (1.04-1.38)	<0.001	0.77 (0.69-0.85)	<0.001	0.77 (0.67-0.87)	<0.001	0.69 (0.62-0.77)	<0.001
Sex	Male	Ref		Ref		Ref			
	Female	0.73 (0.68-0.78)	<0.001	0.71 (0.66-0.77)	<0.001	0.67 (0.61-0.74)	<0.001	0.69 (0.62-0.77)	<0.001
Year of diagnosis	< 2010								
	\geq 2010	0.90 (0.84-0.98)	0.004						
Site	Poximal	Ref							
	Distal	1.04 (0.97-1.12)	0.346						
	Others	1.52 (1.16-2.00)	0.003						
Grade	Grade I	Ref		Ref					
	Grade II	1.04 (0.91-1.19)	0.537	0.96 (0.83-1.10)	0.524				
	Grade III	1.17 (1.01-1.35)	0.035	0.97 (0.83-1.13)	0.672				
	Grade IV	1.21 (0.98-1.50)	0.074	0.97 (0.76-1.24)	0.672				
Histology type	Adenocarcinoma	Ref		Ref		Ref		Ref	
	Mucinous adenocarcinoma	1.04 (0.93-1.16)	0.462	1.04 (0.92-1.18)	0.494	1.06 (0.92-1.23)	0.393	1.09 (0.92-1.30)	0.311
	Others	0.81 (0.64-1.01)	0.064	0.90 (0.68-1.18)	0.452	0.65 (0.45-0.95)	0.025	0.80 (0.52-1.22)	0.297
Tumor size	< 5cm	Ref		Ref				Ref	
	\geq 5cm	1.01 (0.94-1.08)	0.794	0.96 (0.89-1.04)	0.324			1.03 (0.92-1.14)	0.608
Marital status	Married	Ref		Ref		Ref		Ref	
	Single	1.09 (0.97-1.23)	0.152	1.12 (0.98-1.28)	0.089	1.21 (1.03-1.41)	0.02	1.02 (0.83-1.24)	0.874
	Widowed	1.14 (1.05-1.23)	0.001	1.15 (1.05-1.25)	0.002	1.24 (1.12-1.37)	<0.001	1.22 (1.08-1.38)	0.002
	Separated/Divorced	1.45 (1.29-1.64)	<0.001	1.36 (1.19-1.56)	<0.001	1.47 (1.25-1.73)	<0.001	1.57 (1.29-1.92)	<0.001
CEA	Negative/Normal	Ref				Ref			
	Positive/Elevated	1.38 (1.29-1.47)	<0.001	1.35 (1.25-1.45)	<0.001	1.39 (1.26-1.50)	<0.001	1.26 (1.13-1.40)	<0.001

T stage	T1	Ref		Ref		Ref		Ref	
	T2	1.03 (0.88-1.20)	0.746	0.99 (0.84-1.16)	0.880	1.08 (0.90-1.29)	0.419	1.06 (0.86-1.31)	0.586
	T3	1.21 (1.05-1.39)	0.009	1.19 (1.03-1.38)	0.022	1.12 (0.95-1.32)	0.161	1.07 (0.88-1.30)	0.519
	T4	2.02 (1.72-2.38)	<0.001	1.84 (1.54-2.18)	<0.001	1.42 (1.16-1.73)	<0.001	1.31 (1.02-1.70)	0.037
N stage	N0	Ref		Ref		Ref			
	N1	1.47 (1.35-1.59)	<0.001	1.51 (1.38-1.66)	<0.001	1.26 (1.13-1.41)	<0.001		
	N2	2.30 (2.06-2.56)	<0.001	2.27 (2.00-2.57)	<0.001	1.64 (1.40-1.93)	<0.001		
Chemotherapy	None/Unknown	Ref		Ref		Ref		Ref	
	Yes	0.65 (0.59-0.71)	<0.001	0.65 (0.59-0.73)	<0.001	0.79 (0.70-0.90)	<0.001	0.83 (0.72-0.96)	0.009

12 HR Hazard ratio

13

14

Table 5. Multivariate analyses of colon-specific deaths in baseline, \geq one-, three-, five-year survivors in the training cohort.

Variables	Baseline survivors		> 1 year survivors		> 3 year survivors		> 5 year survivors		
	HR	p	HR	p	HR	p	HR	p	
Age	1.03 (1.02-1.04)	<0.001	1.04 (1.03-1.05)	<0.001	1.04 (1.02-1.05)	<0.001	1.06 (1.03-1.08)	<0.001	
Race	White		Ref		Ref				
	Black		1.26 (1.00-1.60)	0.052	1.32 (0.95-1.84)	0.095			
	Others		0.88 (0.75-1.05)	0.148	0.93 (0.73-1.18)	0.552			
Sex	Male				Ref				
	Female				0.70 (0.59-0.84)	<0.001			
Year of diagnosis	< 2010		Ref						
	\geq 2010		0.84 (0.76-0.93)	0.001					
Site	Poximal		Ref		Ref		Ref		
	Distal		1.09 (0.97-1.23)	0.149		1.43 (1.20-1.71)	<0.001	1.71 (1.34-2.20)	<0.001
	Others		1.79 (1.26-2.56)	0.001		0.83 (0.37-1.86)	0.649	1.32 (0.42-4.17)	0.632
Grade	Grade I		Ref		Ref				
	Grade II		1.15 (0.90-1.47)	0.266	1.00 (0.77-1.30)	0.981			
	Grade III		1.36 (1.05-1.77)	0.020	0.97 (0.73-1.28)	0.816			
	Grade IV		1.32 (0.94-1.85)	0.109	0.81 (0.54-1.21)	0.300			

Histology type	Adenocarcinoma								
	Mucinous adenocarcinoma	0.96 (0.80-1.15)	0.648						
	Others	0.94 (0.70-1.28)	0.710						
Tumor size	< 5cm	Ref		Ref					
	≥5cm	0.96 (0.87-1.07)	0.499	0.90 (0.80-1.02)	0.096				
Marital status	Married	Ref		Ref		Ref			
	Single	1.10 (0.92-1.32)	0.282	1.25 (1.02-1.52)	0.029	1.41 (1.07-1.86)	0.014		
	Widowed	0.99 (0.88-1.11)	0.842	0.98 (0.86-1.13)	0.799	1.15 (0.93-1.41)	0.195		
	Separated/Divorced	1.32 (1.10-1.59)	0.002	1.02 (0.81-1.28)	0.888	1.29 (0.95-1.76)	0.108		
CEA	Negative/Normal	Ref		Ref		Ref		Ref	
	Positive/Elevated	1.55 (1.40-1.72)	<0.001	1.48 (1.32-1.67)	<0.001	1.71 (1.45-2.01)	<0.001	1.41 (1.11-1.81)	0.006
T stage	T1	Ref		Ref		Ref		Ref	
	T2	0.98 (0.69-1.40)	0.903	1.04 (0.70-1.55)	0.844	1.31 (0.78-2.20)	0.299	1.41 (0.75-2.65)	0.281
	T3	1.98 (1.45-2.70)	<0.001	2.18 (1.54-3.09)	<0.001	2.35 (1.49-3.71)	<0.001	1.88 (1.06-3.32)	0.030
	T4	4.27 (3.09-5.91)	<0.001	4.34 (3.01-6.26)	<0.001	3.97 (2.44-6.47)	<0.001	2.77 (1.45-5.28)	0.002
N stage	N0	Ref		Ref		Ref			
	N1	2.36 (2.08-2.68)	<0.001	2.60 (2.23-3.02)	<0.001	1.82 (1.48-2.25)	<0.001	1.36 (0.99-1.87)	0.056
	N2	4.45 (3.84-5.16)	<0.001	4.89 (4.11-5.83)	<0.001	2.94 (2.28-3.79)	<0.001	1.39 (0.89-2.18)	0.148
Radiation	None/Unknown			Ref					
	Yes			1.52 (0.95-2.43)	0.078				
Chemotherapy	None/Unknown	Ref		Ref		Ref		Ref	
	Yes	0.70 (0.62-0.80)	<0.001	0.74 (0.63-0.86)	<0.001	0.94 (0.76-1.17)	0.596	1.12 (0.80-1.58)	0.498

15 HR Hazard ratio

16

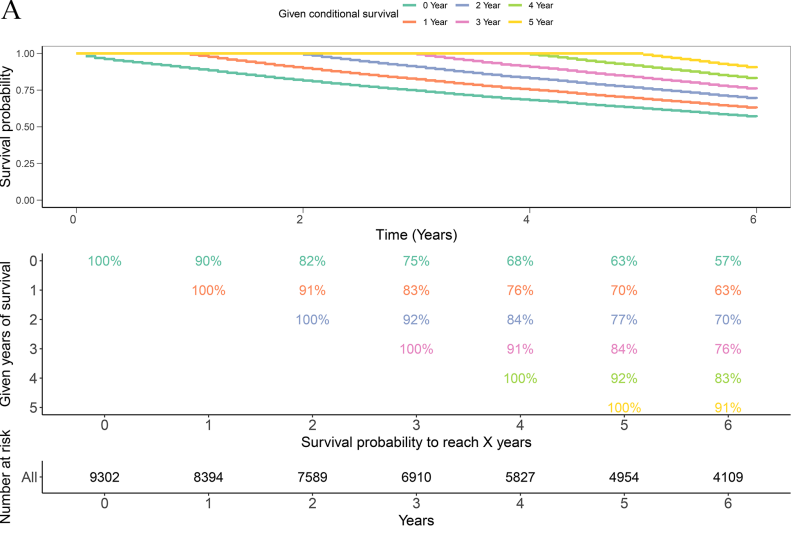
17

18

19

20

A



B

