

# Spatial heterogeneity of menstrual discriminatory practices against Nepalese women: a population-based study using the 2022 Demographic and Health Survey

Geoffrey Barini<sup>1†</sup>, Sharon Amima<sup>2</sup>, Damaris Mulwa<sup>3</sup>, Polycarp Mogeni<sup>4</sup>

1. Department of Pure and Applied Mathematics, Jomo Kenyatta University of Agriculture and Technology, Nairobi, Kenya,
2. Department of Food Science, Nutrition and Technology, University of Nairobi, Nairobi, Kenya.
3. Department of Statistics and Actuarial Sciences, Jomo Kenyatta University of Agriculture and Technology, Kenya.
4. Kenya Medical Research Institute (KEMRI), Nairobi, Kenya.

<sup>†</sup>Corresponding author: Geoffrey Barini ([barini@jkuat.ac.ke](mailto:barini@jkuat.ac.ke))

## Abstract

### Background

Menstrual discrimination hinders progress toward Sustainable Development Goals including gender equality, health, education, and sanitation. Examining spatial heterogeneity of menstrual discriminatory practices presents an opportunity for targeted interventions. Our goal was to evaluate geographical disparities in menstrual restrictions among Nepalese women and assess their association with socio-economic and demographic factors.

### Methodology

We utilized data from the 2022 Nepal Demographic and Health Survey, focusing on women aged 15 to 49 who had experienced a menstrual period in the last year. Our analysis explored the spatial patterns of menstrual restriction outcomes related to engagement in religious activities, household level restrictions, and the severe form of menstrual restrictions referred to *Chhaupadi*. The standard Gaussian kernel density estimation was used to create continuous prevalence maps and the spatial scan statistic was used to detect local clusters. The association between the different forms of menstrual restriction and the socio-economic, and demographic factors were examined using the Poisson regression model with robust standard errors.

### Findings

Overall, the prevalence of women who reported any form of menstrual restriction was 84.8% and was subject to geographical variations ranging from 79.0% in Bagmati to 95.6% in Sudurpashchim. Religious restrictions were the most prevalent (79.8%) followed by household level restrictions (39.5%) and then *Chhaupadi* (6.2%). Geographical variations were detected in all forms of menstrual restriction outcomes and were more prominent

33 for *Chhaupadi*. Individual level factors (age, sex, ethnicity/caste), household level factors (household wealth,  
34 age and sex of the household head) and regional factors (province) were significantly associated with at least  
35 one form of menstrual restriction outcome. Strikingly, women who reside in households led by female  
36 household heads were less likely to report experiencing household level restriction during menstruation  
37 (Adjusted prevalence ratio (aPR) =0.89 [95%CI: 0.84–0.94],  $p<0.001$ ) whilst those residing in wealthy households  
38 were associated with lower likelihood of experiencing *Chhaupadi* (aPR =0.26 [95%CI: 0.17-0.39] among the  
39 richest).

## 40 **Interpretation**

41 We observed geographical micro-variations in menstrual discriminatory practices in Nepal presenting an  
42 opportunity for targeted behavioral interventions. Women empowerment is a promising strategy in the fight  
43 against menstrual discrimination within the household. Therefore, community-based targeted interventions  
44 should be designed and tested to determine their utility against *Chhaupadi* in these settings.

59

## 60 **Introduction**

61 Although the last decade has witnessed significant investment in Water, Sanitation and Hygiene (WASH)  
62 programs, menstrual health and hygiene still pose a significant public health and social challenges in low- and  
63 middle-income countries (LMIC) (Hennegan et al., 2019; Kuhlmann et al., 2017; Plesons et al., 2021, 2023;  
64 UNICEF, 2022; Wood et al., 2022). Millions of women still encounter difficulties in managing their menstrual  
65 periods while preserving their dignity. This is predominantly attributed to internalized stigma and shame rooted  
66 in myths and misconceptions surrounding menstruation (ActionAid, 2024; Health, 2018; Health–Americas, 2022;  
67 Lonkhuijzen et al., 2023; UN, 2019; UNICEF, 2022). These myths and misconceptions, which regard menstrual  
68 blood as a contaminant are deeply rooted in the cultural and religious beliefs (Crawford et al., 2014; Health,  
69 2018, 2018; Lonkhuijzen et al., 2023; Olson et al., 2022; Rothchild & Piya, 2020).

70 In the South Asian context, Nepal is one of the most affected countries, with over 90% of menstruating girls and  
71 women experiencing some form of discriminatory practices during their menstrual periods (UNICEF, 2020).  
72 These practices encompass restrictions on accessing places of worship, participation in household chores,  
73 physical contact with male household members, and constraints on utilizing water sources (ActionAid, 2024;  
74 Mukherjee et al., 2020; Rothchild & Piya, 2020; Thakuri et al., 2021). The western part of Nepal is known for the  
75 infamous *Chhaupadi*—the severest form of menstrual exclusion—that designates women as impure and  
76 untouchable during menstruation or postpartum period banishing them to a separate house, cowshed or  
77 menstrual hut (ActionAid, 2024; Amatya et al., 2018; Amery et al., 2023; Thakuri et al., 2021). Despite legislative  
78 measures against menstrual discriminatory practices, recent studies reveal that this practice is still pervasive in  
79 the western part of the country (Adhikari, 2020; Amatya et al., 2018; Baumann, Merante, et al., 2021; UNFPA,  
80 2019; Vaughn, 2019), subjecting women to physical and mental health challenges, sexual abuse, snake bites and  
81 even death due to suffocation (Adhikari, 2020; Awasthi et al., 2022; Cardoso et al., 2019, 2019; Joshi & Acharya,  
82 2022; Preiss, 2016; Thakuri et al., 2021).

83 Only recently has the global health and social research community endeavored to confront menstrual hygiene  
84 management as a substantial development concern and a barrier to achieving gender equality (Bobel, 2019;  
85 Health, 2018; Hennegan, 2019; Thomson et al., 2019; UN, 2019). The societal impact of menstrual hygiene  
86 mismanagement extends beyond adolescence, affecting adult women in their occupational engagements (Borg  
87 et al., 2023; Health–Americas, 2022; Hennegan et al., 2020; Krenz & Strulik, 2021; Sumpter & Torondel, 2013).  
88 Recent studies have described the association between menstrual hygiene management and poor school

89 performance or attendance among girls, coinciding with the scale-up of WASH intervention programs in schools  
90 (Alam et al., 2017; Habtegiorgis et al., 2021; Sommer et al., 2015, 2016; Sumpter & Torondel, 2013; Tegegne &  
91 Sisay, 2014). Further progress is likely if more research is dedicated towards fighting the negative cultural  
92 believes and taboos surrounding menstrual hygiene management. Therefore, the development of risk  
93 stratification maps of menstrual discriminatory practices means that the most vulnerable populations can be  
94 identified and prioritized with scarce resources.

95 Using the 2022 Nepal Demographic and Health Survey (NDHS) dataset, we explored the spatial patterns of *a*  
96 *priori* defined menstrual restriction outcomes related to engagement in religious activities, performance of  
97 household activities/ interactions within the household and *Chhaupadi*. The second objective was to assess the  
98 social-economic and demographic factors associated with the geographical variations in risk of menstrual  
99 discrimination. This is one of the few studies to describe the spatial heterogeneity of menstrual discriminatory  
100 practices in Nepal and the first to do so among women aged 15 – 49 years using a nationally representative  
101 population-based survey.

## 102 **Materials and Methods**

### 103 **Ethics**

104 The 2022 NDHS protocol was developed and reviewed by the Nepal Health Research Council and the ICF  
105 Institutional Review Board. Written consent from the household head was a prerequisite for conducting the  
106 interviews (Corsi et al., 2012). Here we conducted a secondary data analysis using de-identified data from the  
107 2022 NDHS, which is publicly available and does not require ethical approvals. Permission to use the data was  
108 obtained through the DHS division at ICF International, following the completion of an online request form  
109 available on the DHS website (Corsi et al., 2012). Therefore, no ethical reviews or approvals were necessary for  
110 the preparation of the manuscript.

### 111 **Study site**

112 Nepal is a landlocked country situated in southern Asia between latitudes 26° and 30° N and longitudes 80° and  
113 89° E. Nestled along the southern slopes of the Himalayas, Nepal shares borders with India to the east, west,  
114 and south, and China to the north. Covering an area of 147,516 square kilometers, the country has a population  
115 of approximately 29.2 million people, with females comprising 51.1%. The country is divided into seven  
116 provinces: Koshi, Madhesh, Bagmati, Gandaki, Lumbini, Karnali, and Sudurpashchim. These provinces are

subdivided into 77 districts, housing a total of 753 local-level municipalities, with 293 classified as urban and 460 as rural. Nepal's topography encompasses three ecological zones: Terai (plains), hills, and mountains. Approximately 53.7% of the population resides in the Terai region, with 40.2% in the hilly areas and only 6.1% in the mountainous regions. Approximately, 65% of the population lives in urban centers. The country boasts a diverse culture, comprising over 120 castes/ethnicities, with Hinduism as the predominant religion (National Statistics Office, 2021).

### **Study design and data source**

The 2022 NDHS dataset is a nationally representative population-based survey that is freely available upon request (Corsi et al., 2012). Details of the study design, consenting, data collection, supervision and training procedures have been described elsewhere (ICF, 2023). Briefly, the 2022 NDHS survey adopted a two-stage stratified sampling methodology that included the segmentation of each of the seven provinces into urban and rural categories, yielding a total of 14 sampling strata. Within each stratum, the sampling frame was organized based on administrative units, and probability-proportional-to-size selection was applied in the first stage. In the initial sampling phase, 476 primary sampling units (PSUs) were chosen, with the probability proportional to PSU size and independent selection was done within each stratum. Out of these PSUs, 248 were from urban areas, and 228 were from rural areas. Prior to the main survey, a household listing exercise was conducted in all selected PSUs, establishing the sampling frame for the second-stage selection of sample households. A total of 14,280 households were selected, with thirty households chosen from each cluster. Household-level Global Positioning System (GPS) data were collected as part of the household listing process.

### **Study participants**

Our analyses are restricted to women and girls aged 15–49 years. Social and demographic characteristics of the study participants are summarized in the (**Supp. Table 1**).

### **Study variables**

Our study sought to describe menstrual discriminatory practices among Nepalese women. These practices include restrictions on activities such as entering the temple, participating in religious activities, cooking, handling food items, fetching water, eating with the family, and the change in sleeping arrangements within the household during menstruation. In our analyses, menstrual restriction activities were grouped into four binary composite outcomes: a) any form of menstrual restriction defined as any menstrual related exclusions, b)

146 religious restrictions defined as exclusions from entering the temple or participating in religious activities, c)  
147 household level restriction was defined as exclusions from fetching water, cooking and handling food items,  
148 eating with the family, sleeping in the main house, and sleeping with the husband d) *Chhaupadi* defined as  
149 exclusion from sleeping in the main house as described previously (ICF, 2023). For each composite binary  
150 outcome, {1} indicate an experience of at least one restriction within the defined sub-group and {0} otherwise.  
151 Variations in menstrual restrictions was assessed in the regression models using the participants characteristics  
152 (age, ethnicity/caste, education), household characteristics (age and sex of the household head, and wealth)  
153 and regional characteristics (urbanicity and region (province) of residence). Detailed description of these  
154 variables has been reported previously (ICF, 2023).

### 155 **Statistical analyses**

156 The prevalence of menstrual restrictions by social demographic characteristics were estimated accounting for  
157 the study design and used the Taylor linearization approach to account for the complex sampling design and  
158 clustering.

### 159 **Spatial Analyses**

160 The risk maps were created using an adaptive bandwidth in a weighted Gaussian kernel density estimation  
161 methodology (Larmarange et al., 2011) to yield spatially continuous maps and interpolate georeferenced  
162 outcomes of menstrual restriction.

### 163 **Local cluster detection**

164 We applied the Bernoulli probability model within SaTScan software to identify geographic areas with  
165 significantly higher menstrual restriction cases than expected by chance. We specified a circular, non-  
166 overlapping scanning window that systematically moves across the geographical space, with the radius varying  
167 from zero to a maximum radius determined based on a predetermined maximum enclosed population size (up  
168 to 50% in these analyses). For each location and window size, the software tallies the observed cases while the  
169 expected cases are computed assuming a uniform distribution across the population. The scan statistic  
170 compares case counts inside and outside each circle, generating an observed log likelihood statistic. To test the  
171 null hypothesis of complete spatial randomness, Monte-Carlo simulation with 999 replications is used to create  
172 permutations of the observed cases across all data locations which is used to generate the simulated log  
173 likelihoods. The observed log likelihood and the simulated log likelihoods are used to calculate the p-value  
174 for statistical significance testing. The Gini coefficient determined optimal non-overlapping cluster sizes, and

175 clusters with a p-value <0.05 were considered significant. No covariate adjustments were made in either the  
176 weighted Gaussian kernel density estimation or the local cluster analyses. This is because our focus was to  
177 describe spatial variations in menstrual restrictions without accounting for specific causes.

### 178 **Regression analyses**

179 We used a weighted modified Poisson regression model (weighted to accommodate the NDHS sampling design  
180 weights) to assess the association between menstrual restriction outcomes and the socioeconomic and  
181 demographic factors. To assess the extent to which variations on menstrual stigma are accounted for by  
182 unmeasured factor variable at the regional level, we incorporated region (province) as a fixed effect in the  
183 regression model. The McFadden's pseudo R<sup>2</sup> was used to quantify the contribution of each socioeconomic and  
184 demographic variable in the regression models. Statistical analyses were performed in software R version 4.3.2,  
185 local clusters were detected using SaTScan version 10.1.2 and maps were produced using QGIS version 3.34.2.  
186 All analyses accounted for the survey design.

## 201 Results

202 Of 14,845 women aged 15 to 49 years who participated in the 2022 NDHS, 1780 (12%) had incomplete data on  
203 menstrual restrictions. Therefore, our analysis included 13,065 (88%) study participants who reported at least  
204 one menstrual event within the last one year preceding the survey. The distribution of the study participants by  
205 social-demographic characteristics are presented in **(Supp. Table 1)**

### 206 Prevalence of menstrual restrictions

207 The overall prevalence of experiencing any type of menstrual restriction in Nepal was 84.8 % (95% CI: 84.2-85.4).  
208 Among the seven provinces, Sudurpashchim had the highest prevalence of experiencing any form of menstrual  
209 restrictions (95.6% [95% CI: 94.2-96.7]) followed by Karnali (91.7% [95%CI: 89.5-93.4]) whilst Bagmati reported  
210 the lowest prevalence (79.0% [95% CI: 77.5-80.5]). Furthermore, the prevalence of experiencing any form of  
211 menstrual restriction was highest among older women (89.9% [95%CI: 87.7 - 91.7] among women aged 45-49),  
212 those with higher education (91.5% [95%CI: 89.0 – 93.4]), Brahmin/Chhetri ethnic background (96.1% [95%CI:  
213 95.4- 96.6]), residing in households led by men (85.6% [95%CI: 84.8- 86.3]) or led by older household heads  
214 (88.0% [95%CI: 86.1- 89.6] among household heads older than 64 years) and those residing in wealthy  
215 households (87.3% [95%CI: 86.0- 88.5]). However, because of the high prevalence of experiencing any form of  
216 menstrual restrictions in this setting, variations within socioeconomic and demographic factors were moderate  
217 to small **(Table 1)**. Among the other forms of menstrual discriminatory practices, religious restrictions were the  
218 most prevalent (79.8% [95%CI: 79.1–80.5]), followed by household level restrictions (39.5% [95%CI: 38.7–40.4])  
219 and *Chhaupadi* (6.2% [95%CI: 5.8–6.6]) in that order. Further description of the socioeconomic and demographic  
220 factors for each form of menstrual restriction is presented in **Table 1**.

### 221 Spatial Heterogeneity of Menstrual Restrictions

222 At the region (province) level, there was moderate variations in the prevalence of any menstrual restriction  
223 (range: 79.0% to 95.6%) and religious restrictions (range: 73.8% to 85.2%). However, we observed marked  
224 regional variations in household level restrictions (range: 16.0% to 76.2%), and *Chhaupadi* (range: 1.8% to  
225 26.1%). Geospatial analysis using the adaptive Gaussian kernel density methodology revealed clear spatial  
226 variation in prevalence of menstrual restrictions across the study area. The kernel-derived prevalence of  
227 experiencing any type of menstrual restriction varied between 23.7% and 100%, and with mild variation defined  
228 by the country's topography **(Figure 2A)**. Similarly, the high prevalence of religious restrictions was  
229 geographically restricted to the densely populated *Terai* and Hilly areas **(Figure 2B)**. Local cluster analyses of  
230 religious restrictions revealed 17 statistically significant high-prevalence clusters ( $p < 0.05$ ), however, the ratio



231 between the risk inside and outside the clusters (RR range: 1.13 and 1.27) were small (**Table** ) suggesting a near  
232 homogeneous distribution in prevalence across the country.

233 The kernel-derived prevalence of menstrual restriction within household varied markedly over the geographical  
234 area, ranging between 0% and 100% and between 0% and 66.9% for *Chhaupadi*. These analyses reveal a clear  
235 region of high prevalence (middle and western region of Nepal) and low prevalence in the eastern region of  
236 Nepal (**Figure 2**). Local cluster analyses of household level restrictions and *Chhaupadi* revealed 11 and 1  
237 statistically significant clusters respectively. The prevalence ratios for the detected high-prevalence clusters  
238 ranged from 1.32 to 2.34 for household level restrictions, and 7.45 for *Chhaupadi*. In all the local cluster analyses,  
239 the primary clusters were located in either Sudurpashchim or Karnali or both (**Figure 2, Table** ).

#### 240 **Predictors of menstrual restrictions**

241 In the multivariable analysis, older women aged between 35-39, 40-44, and 45-49 were associated with a 5%  
242 (aPR=1.05 [95%CI: 1.01–1.09],  $P=0.021$ ), 5% (aPR=1.05 [95%CI: 1.01–1.10],  $P=0.011$ ), and 6% (aPR=1.06 [95%CI:  
243 1.01–1.11],  $P=0.022$ ) increase in the likelihood of experiencing restrictions on religious activities respectively.  
244 However, there were no clear association with household level restrictions or *Chhaupadi*. Compared to women  
245 with no education, women with primary, secondary and higher education were associated with a 13% (aPR=1.13  
246 [95%CI: 1.05–1.22],  $P=0.002$ ), 10% (aPR=1.10 [95%CI: 1.00–1.21],  $P=0.041$ ), and 17% (aPR=1.17[95%CI: 1.03–  
247 1.34],  $P=0.015$ ) increase in the likelihood of experiencing household level restrictions, however, there was no  
248 evidence of an associations between education and the other forms of menstrual restrictions. Ethnicity/caste  
249 was associated with variations in all forms of menstrual restrictions whilst rural/urban residence was only  
250 significantly associated with *Chhaupadi* in the univariable models but not in the multivariable models (**Supp.**  
251 **Table 2**). Women residing in households led by a female head were associated with 11% (aPR=0.89 [95%CI:  
252 0.84–0.94],  $p<0.001$ ) lower likelihood of experiencing household level restrictions but no evidence of an  
253 association with restrictions on religious activities or *Chhaupadi* (**Table 2**). In addition, older household heads  
254 were associated with an increased risk of experiencing household level menstrual restrictions and *Chhaupadi*.  
255 On one hand, increased household's wealth was associated with an increased risk of experiencing restrictions  
256 on religious activities. On the other hand, increased household's wealth was significantly associated with  
257 protection against *Chhaupadi* (**Table 2**).

258 The final multivariable regression model accounted for 4%, 3%, 24%, and 23% of the variability in any form of  
259 menstrual restriction, restriction on religious activities, household level restrictions and *Chhaupadi* respectively.

260 However, the variability accounted for by the variable ethnicity/caste was 3% for any form of menstrual  
261 restriction, 2% for restriction on religious activities, 19% for household level restrictions and 11% for *Chhaupadi*.

262

## 263 Discussion

264 In the global pursuit of improved Water, Sanitation, and Hygiene (WASH), menstrual health and hygiene (MHH)  
265 persist as pressing challenges in low and middle-income countries (LMICs) directly contributing to socio-  
266 economic inequity. Although there has been significant progress in other areas of WASH, millions of women  
267 still encounter obstacles in managing their menstrual periods safely and with dignity (Crawford et al., 2014;  
268 Health, 2018; Health–Americas, 2022). Our results indicate that Nepal continues to bear a disproportionate  
269 burden of menstrual-related discrimination, which manifest as exclusions from participating in social and  
270 religious activities. These findings are consistent with recent studies, which showed that *Chhaupadi* is most  
271 prevalent among the Brahmin/Chhetri ethnic community in the mid-western part of Nepal (Amery et al., 2023;  
272 Thakuri et al., 2021; UNFPA, 2019; UNICEF, 2020, 2022).

273 Overall, 84.8% of women in Nepal experienced some form of menstrual restriction that were characterized by  
274 mild geographical variations, likely due to the high prevalence observed across the entire country. Among the  
275 various forms of menstrual discriminatory practices considered, restrictions on religious activities were the most  
276 prevalent (79.8%) nationwide. This estimate reflects a 13% decline from the 2019 figures (UNICEF, 2020), a trend  
277 that could be attributed to sustained efforts various government and non-governmental agencies to eradicate  
278 menstrual discrimination (Secretariat & Durbar, 2015; ActionAid, 2024). The prevalence of *Chhaupadi* was  
279 highest in the mid and western part of Nepal, highlighting the role of regional, ethnic and religious dynamics in  
280 shaping menstrual discriminatory practices. Our estimates in Karnali and Sudurpashchim provinces are similar  
281 with the figures in the United Nations Urgency report (UNICEF, 2020), reflecting minimal gains in the efforts to  
282 eradicate the harmful practices. Achham and Deilekh districts were associated with the highest *Chhaupadi* case  
283 count per square kilometre (**Figure 3B**). This is noteworthy, considering that the two districts have previously  
284 been targeted with interventions that include destruction of the menstrual huts and prosecution of those  
285 practising the vice (Adhikari, 2020; Gurung, 2017; Vaughn, 2019). Our findings are consistent with prior studies  
286 that cite gaps in the enforcement of legislative interventions aimed at curbing the practice (Baumann, Merante,  
287 et al., 2021; Gurung, 2017; Vaughn, 2019).

288 Local cluster analyses identified specific areas in Sudurpashchim and Karnali as high-prevalence areas for all  
289 forms of menstrual restrictions. The prevalence clusters of *Chhaupadi* (**Figure 2A**) aligned with clusters of

290 absolute case counts (**Figure 3B**), suggesting that targeting these high-prevalence areas will likely lead to a  
291 significant overall decline in *Chhaupadi* case counts across the country. However, this does not hold for the  
292 other types of menstrual restrictions, in which the case counts follow the population density distribution, with  
293 notable clusters observed in the urban setting of Kathmandu where the prevalence is relatively low (**Figure 2A**  
294 compared to **Figure 3A**).

295 A key finding of our study is the continued practice of *Chhaupadi* despite legislative interventions thus  
296 highlighting the intricate interplay between cultural norms and legal frameworks (Baumann, Lhaki, et al., 2021).  
297 This underscores the need to go beyond legislative measures and emphasis on culturally sensitive community  
298 engagement and active involvement of local and religious leaders in dismantling the deeply rooted harmful  
299 cultural norms (Baumann, Merante, et al., 2021; Sommer et al., 2016). The risk maps generated through the  
300 Gaussian kernel density estimation provide a visual representation of the geographical distribution of the  
301 various menstrual discriminatory practices. Armed with this spatial intelligence, policymakers and health  
302 practitioners can strategically allocate resources by tailoring interventions to the needs of each region. By  
303 recognizing the high-prevalence clusters as focal points allows for the development of interventions  
304 characterized by cultural sensitivity. These interventions may include targeted education programs and  
305 sensitization to challenge and transform the deeply rooted beliefs perpetuating menstrual stigma (Thapa et al.,  
306 2019).

307 Untargeted interventions, while well-intentioned, may fall short in areas where menstrual discriminatory  
308 practices are deeply ingrained. We contend that high-prevalence clusters, if left unaddressed, can serve to  
309 perpetuate the harmful cultural norm thus hindering the broader efforts to eliminate the vice across the  
310 country. We hypothesize that directing community-based interventions towards these specific clusters could be  
311 a highly effective way to break the cycle of harmful cultural beliefs and expedite progress towards a society  
312 where women can manage their menstrual health without facing discrimination. In doing so, we advocate for  
313 an approach that not only aims to eliminate discriminatory practices but also seeks to empower women,  
314 challenge harmful cultural beliefs, and promote an environment of inclusivity.

315 Women residing in households led by older household heads were associated with a higher likelihood of  
316 experiencing *Chhaupadi* or household level restrictions. This observation suggests a potential manifestation of  
317 conservative attitudes towards culture within the elderly demographic. In addition, women residing in  
318 households led by female household heads were associated with lower likelihoods of experiencing *Chhaupadi*  
319 or household level restrictions, suggesting a potential role of female leadership in challenging cultural norms. In

320 keeping with previous findings, ethnicity/caste, and wealth of the household emerged as key determinants of  
321 menstrual restrictions (Baumann et al., 2019; Baumann, Lhaki, et al., 2021). Whilst richer households were  
322 associated with an increased likelihood of experiencing restrictions on religious activities, wealth was notably  
323 linked to protection against *Chhaupadi*. Furthermore, older women were associated with an increased  
324 likelihood of experiencing restrictions on religious activities, whilst education was associated with a heightened  
325 risk of menstrual restrictions within the household, but was not associated with *Chhaupadi*. Ethnicity/caste was  
326 associated with variations in all forms of menstrual restrictions, indicating the intersectionality of social  
327 demographic and cultural factors (Thapa et al., 2019).

328 Despite the robust statistical approaches used in this study, a substantial portion of the variability in the  
329 regression models remain unexplained. Therefore, there is need for additional research to identify the  
330 unmeasured determinants of menstrual discrimination that may act at various geographic scales. Understanding  
331 these unmeasured predictor variables is crucial for the development of comprehensive interventions that  
332 address the root cause of menstrual discrimination. Intervention designed against menstrual discriminatory  
333 practices should not only target high-prevalence clusters, as highlighted in our study, but also incorporate a  
334 research component to test their utility and cost effectiveness in real-world settings.

335 The significance of our study lies not only in its national scope but also in its novel approach to understanding  
336 the geographical nuances of menstrual health challenges in Nepal. Our study is the first to explore the micro-  
337 geographical variation of menstrual discriminatory practices against women aged 15–49 years. By delving into  
338 the geographical nuances of menstrual restrictions related to religious activities, household level and  
339 *Chhaupadi*, we aim to guide targeted interventions and resource allocation. Importantly, the estimation of case  
340 counts at 1 km<sup>2</sup> spatial scale ensures that precise targeting can be done at any desired geographical scale.

341 Although our analysis provides a detailed description of menstrual discriminatory practices against girls and  
342 women in Nepal, we recognize some limitations. First, we could not establish whether during *Chhaupadi*,  
343 menstruating girls and women slept in make a shift-hut, cowshed, separate house within the homestead or  
344 separate room within the main house. Future studies may consider the various types of sleeping places during  
345 *Chhaupadi* in order to understand the evolving dynamics of the practice. Another limitation of our study is that  
346 we did not distinguish between internalized and externalized stigma. Lastly our analyses relied on reported data  
347 that may be subject to social desirability bias, however, regional estimates of prevalence are consistent with  
348 previous studies suggesting that the bias is likely minimal.

In conclusion, our study contributes valuable insights into the complexity of menstrual health challenges in Nepal, shedding light on the spatial patterns and determinants of menstrual discriminatory practices. By elucidating the geographical variations, our findings provide a foundation for targeted community based interventions such as the cultural behaviour change education (Amery et al., 2023; Thapa et al., 2019; Thomson et al., 2019). The identification and prioritization of vulnerable populations are crucial steps toward dismantling the deeply rooted beliefs and promoting a more inclusive and equitable society. As Nepal progresses towards sustainable development, addressing menstrual health disparities is imperative for achieving gender equality and societal well-being. Our study calls for sustained efforts, tailored community-based interventions, community engagement and policy initiatives to break the shackles of menstrual stigma and discrimination.

### **Authors Contributors**

GB and PM conceived the study. GB curated data. GB, SA, DM and PM designed the methods and conducted literature review. GB and PM did the formal analysis. GB, SA, DM and PM wrote the original draft of the Article. GB, SA, DM and PM reviewed and edited the Article.

**All authors have read, and confirm that they meet, ICMJE criteria for authorship.**

### **Declaration of interests**

We declare no competing interests

### **Role of the funding source**

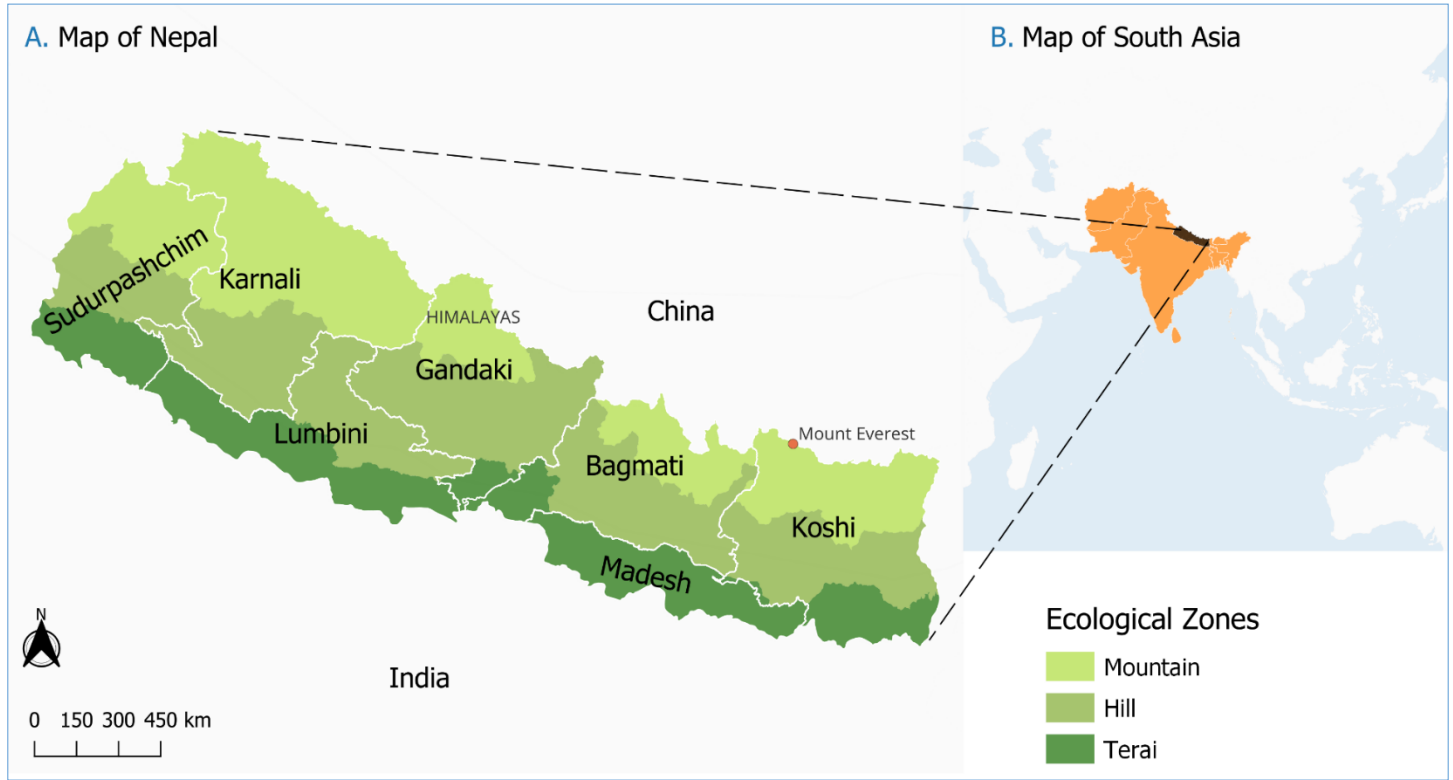
The funder of the 2022 NDHS had no role in study design, data collection, data analysis, data interpretation, or writing of the report. No funding was received by the authors to conduct the analyses and write-up. The corresponding author had full access to the dataset and had final responsibility for the decision to submit for publication.

### **Data Availability Statement:**

All health data used in this analysis are available to download free of charge by registered users from the Demographic and Health Surveys Program. Registration, instructions on data access are available online at <https://dhsprogram.com/data/new-user-registration.cfm>. For data see [https://dhsprogram.com/data/dataset\\_admin/download-manager.cfm](https://dhsprogram.com/data/dataset_admin/download-manager.cfm). For full dataset access instructions see <https://dhsprogram.com/data/Using-DataSets-for-Analysis.cfm> .

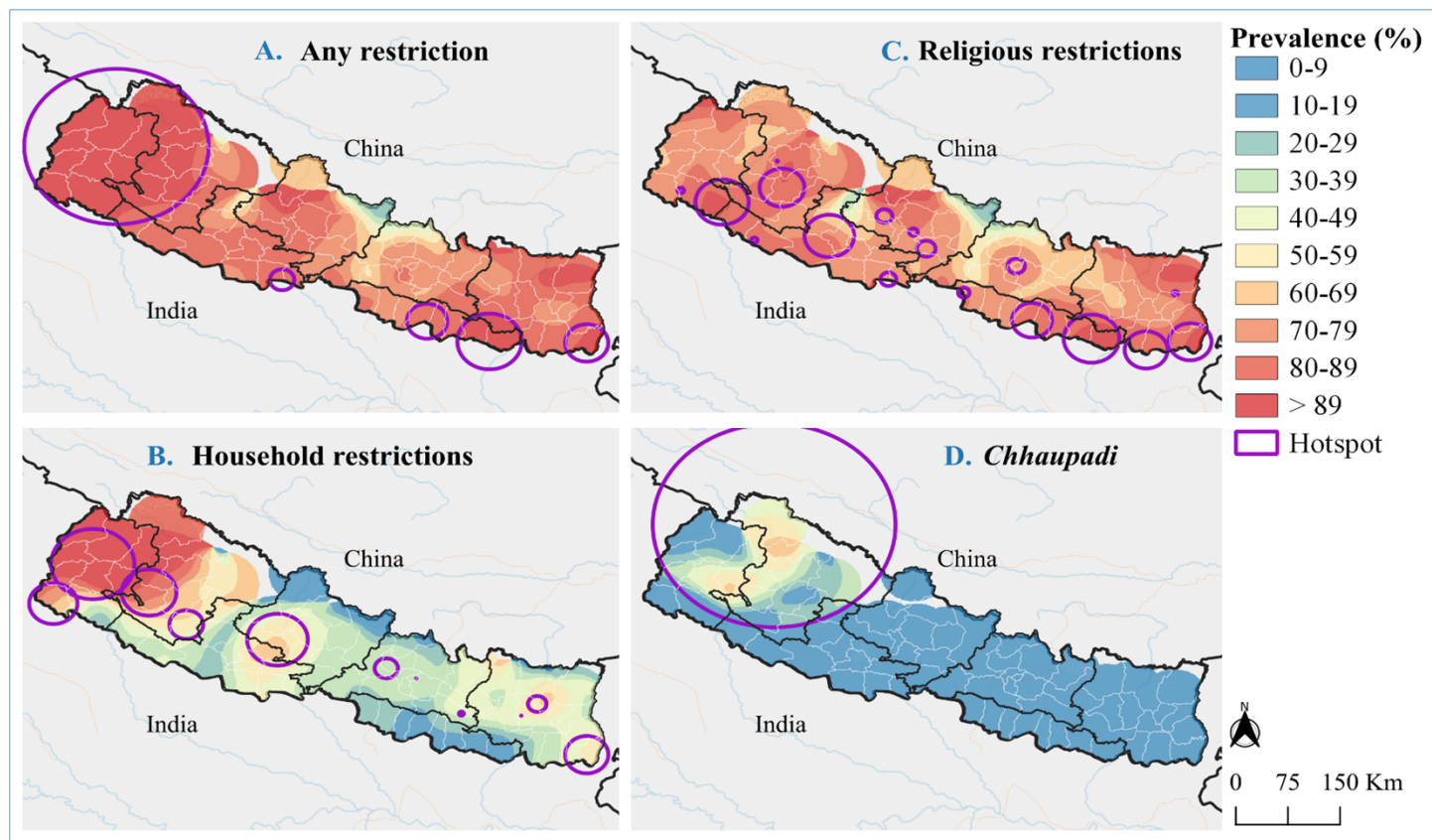
378

379 Main Figures



380

381 **Figure 1.** Map of the study area showing the various ecological zones, first level administrative divisions and  
382 the neighboring countries.



383

384

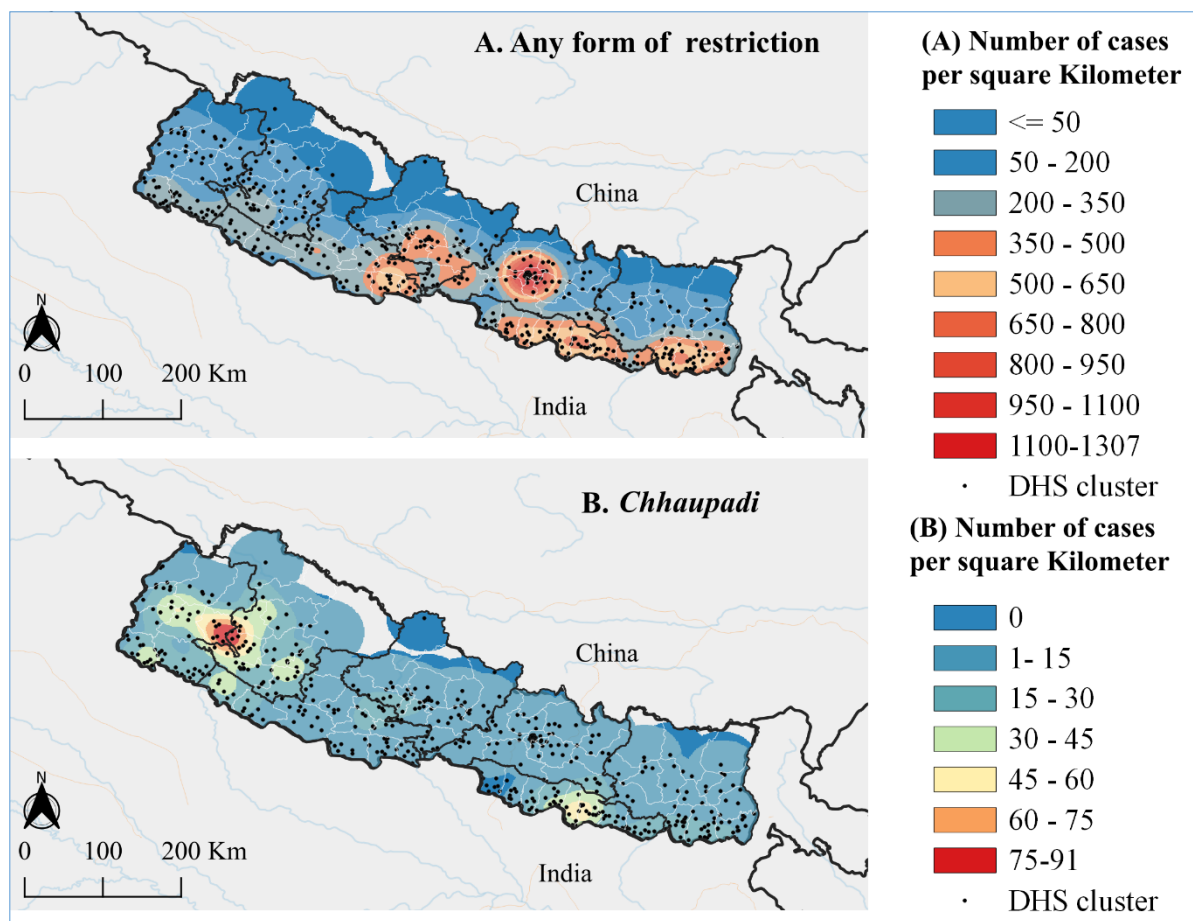
385

386

**Figure 2.** Continuous surface maps of prevalence and clusters of high prevalence of menstrual discriminatory practices in Nepal. Panels (A) to (D) show the spatial variations in the prevalence of the various forms of menstrual restrictions and the corresponding clusters of high prevalence.



387



388

389 **Figure 3.** Continuous surface map showing the spatial case counts of individuals who experienced any form of  
390 menstrual restriction (panel A) and *Chhaupadi* (panel B), and the locations of demographic and health survey  
391 clusters.





393 **Table 1:** Prevalence of menstrual restrictions by social-demographic and economic factors.

		Any Restrictions			Religious restrictions			Household level restrictions			<i>Chhaupadi</i>		
Characteristic	Characteristic	N	Prevalence n (%)	(95% CI)	N	Prevalence n (%)	(95% CI)	N	Prevalence n (%)	(95% CI)	N	Prevalence n (%)	(95% CI)
Age	15-19	2,520	2081 ( 82.6 )	81.0 – 84.0	2,520	1949 ( 77.3 )	75.7 - 78.9	2,520	1020 ( 40.5 )	38.6 - 42.4	2,520	186 ( 7.4 )	6.4 - 8.5
	20-24	2,338	1954 ( 83.6 )	82.0 - 85.0	2,338	1839 ( 78.7 )	76.9 - 80.3	2,337	849 ( 36.3 )	34.4 - 38.3	2,337	135 ( 5.8 )	4.9 - 6.8
	25-29	2,148	1799 ( 83.8 )	82.1 - 85.3	2,148	1691 ( 78.7 )	76.9 - 80.4	2,148	778 ( 36.2 )	34.2 - 38.3	2,148	105 ( 4.9 )	4.1 - 5.9
	30-34	1,937	1658 ( 85.6 )	84.0 - 87.1	1,937	1566 ( 80.8 )	79.0 - 82.5	1,937	764 ( 39.4 )	37.3 - 41.6	1,937	109 ( 5.6 )	4.7 - 6.7
	35-39	1,852	1584 ( 85.5 )	83.9 - 87.1	1,851	1504 ( 81.3 )	79.4 – 83.0	1,852	763 ( 41.2 )	39.0 - 43.5	1,852	105 ( 5.7 )	4.7 - 6.8
	40-44	1,389	1217 ( 87.6 )	85.8 - 89.2	1,389	1145 ( 82.4 )	80.3 - 84.3	1,388	573 ( 41.3 )	38.7 - 43.9	1,389	103 ( 7.4 )	6.2 - 8.9
	45-49	881	792 ( 89.9 )	87.7 - 91.7	882	734 ( 83.2 )	80.6 - 85.5	882	415 ( 47.1 )	43.8 - 50.4	882	63 ( 7.1 )	5.6 – 9.0
Education	Basic	4,084	3394 ( 83.1 )	81.9 - 84.2	4,084	3173 ( 77.7 )	76.4 - 78.9	4,083	1545 ( 37.8 )	36.4 - 39.3	4,084	246 ( 6 )	5.3 - 6.8
	Higher	623	570 ( 91.5 )	89.0 - 93.4	623	551 ( 88.4 )	85.7 - 90.7	623	329 ( 52.8 )	48.9 - 56.7	624	19 ( 3 )	2.0 - 4.7
	No education	3,036	2575 ( 84.8 )	83.5 – 86.0	3,037	2419 ( 79.7 )	78.2 – 81.0	3,037	976 ( 32.1 )	30.5 - 33.8	3,037	244 ( 8 )	7.1 - 9.1
	Secondary	5,322	4546 ( 85.4 )	84.4 - 86.3	5,322	4287 ( 80.6 )	79.5 - 81.6	5,321	2312 ( 43.5 )	42.1 - 44.8	5,321	297 ( 5.6 )	5.0 - 6.2
Province	Bagmati	2,763	2183 ( 79.0 )	77.5 - 80.5	2,763	2078 ( 75.2 )	73.6 - 76.8	2,762	1009 ( 36.5 )	34.8 - 38.3	2,763	51 ( 1.8 )	1.4 - 2.4
	Gandaki	1,292	1037 ( 80.3 )	78.0 - 82.3	1,292	953 ( 73.8 )	71.3 - 76.1	1,292	514 ( 39.8 )	37.1 - 42.5	1,292	46 ( 3.6 )	2.7 - 4.7
	Karnali	781	716 ( 91.7 )	89.5 - 93.4	782	650 ( 83.1 )	80.3 - 85.6	781	539 ( 69.0 )	65.7 - 72.2	782	204 ( 26.1 )	23.1 - 29.3
	Koshi	2,193	1895 ( 86.4 )	84.9 - 87.8	2,193	1825 ( 83.2 )	81.6 - 84.7	2,193	912 ( 41.6 )	39.5 - 43.7	2,193	72 ( 3.3 )	2.6 - 4.1
	Lumbini	2,457	2065 ( 84.0 )	82.5 - 85.4	2,456	1949 ( 79.4 )	77.7 - 80.9	2,457	985 ( 40.1 )	38.2 – 42.0	2,457	99 ( 4 )	3.3 - 4.9
	Madhesh	2,466	2126 ( 86.2 )	84.8 - 87.5	2,467	2101 ( 85.2 )	83.7 - 86.5	2,467	395 ( 16.0 )	14.6 - 17.5	2,466	116 ( 4.7 )	3.9 - 5.6
	Sudurpashchim	1,113	1064 ( 95.6 )	94.2 - 96.7	1,114	875 ( 78.5 )	76.0 - 80.9	1,113	808 ( 72.6 )	69.9 - 75.1	1,114	218 ( 19.6 )	17.3 - 22
Ethnicity	Brahmin/Chhetri	3,735	3588 ( 96.1 )	95.4 - 96.6	3,735	3253 ( 87.1 )	86.0 - 88.1	3,735	2847 ( 76.2 )	74.8 - 77.6	3,735	457 ( 12.2 )	11.2 - 13.3
	Dalit	1,933	1587 ( 82.1 )	80.3 - 83.7	1,934	1448 ( 74.9 )	72.9 - 76.8	1,934	761 ( 39.3 )	37.2 - 41.5	1,934	160 ( 8.3 )	7.1 - 9.6
	Janajati	4,879	3709 ( 76.0 )	74.8 - 77.2	4,878	3562 ( 73.0 )	71.8 - 74.2	4,879	974 ( 20.0 )	18.9 - 21.1	4,878	70 ( 1.4 )	1.1 - 1.8
	Madhesi	1,942	1778 ( 91.6 )	90.2 - 92.7	1,943	1756 ( 90.4 )	89.0 - 91.6	1,942	526 ( 27.1 )	25.2 - 29.1	1,942	117 ( 6 )	5.1 - 7.2
	Muslim	562	411 ( 73.1 )	69.3 - 76.6	562	399 ( 71.0 )	67.1 - 74.6	562	47 ( 8.4 )	6.3 - 10.9	562	0 ( 0 )	0 - 0.7
	Other	14	12 ( 85.7 )	60.1 – 96.0	14	12 ( 85.7 )	60.1 – 96.0	14	8 ( 57.1 )	32.6 - 78.6	14	2 ( 14.3 )	4.0 - 39.9
Residence	Rural	4,081	3391 ( 83.1 )	81.9 - 84.2	4,081	3126 ( 76.6 )	75.3 - 77.9	4,081	1672 ( 41.0 )	39.5 - 42.5	4,081	373 ( 9.1 )	8.3 - 10.1
	Urban	8,985	7695 ( 85.6 )	84.9 - 86.4	8,985	7304 ( 81.3 )	80.5 - 82.1	8,984	3491 ( 38.9 )	37.9 - 39.9	8,985	433 ( 4.8 )	4.4 - 5.3
Gender of Household head	Female	4,568	3811 ( 83.4 )	82.3 - 84.5	4,568	3593 ( 78.7 )	77.4 - 79.8	4,568	1647 ( 36.1 )	34.7 - 37.5	4,568	302 ( 6.6 )	5.9 - 7.4
	Male	8,497	7274 ( 85.6 )	84.8 - 86.3	8,497	6836 ( 80.5 )	79.6 - 81.3	8,497	3516 ( 41.4 )	40.3 - 42.4	8,497	504 ( 5.9 )	5.4 - 6.5
Age of household head	15-24	615	492 ( 80.0 )	76.7 – 83.0	616	465 ( 75.5 )	71.9 - 78.7	616	167 ( 27.1 )	23.7 - 30.8	616	34 ( 5.5 )	4.0 - 7.6
	25-34	2,288	1898 ( 83.0 )	81.4 - 84.4	2,288	1795 ( 78.5 )	76.7 - 80.1	2,289	724 ( 31.6 )	29.8 - 33.6	2,288	124 ( 5.4 )	4.6 - 6.4
	35-44	3,938	3299 ( 83.8 )	82.6 - 84.9	3,937	3120 ( 79.2 )	78.0 - 80.5	3,938	1528 ( 38.8 )	37.3 - 40.3	3,938	256 ( 6.5 )	5.8 - 7.3
	45-54	3,161	2711 ( 85.8 )	84.5 - 86.9	3,161	2559 ( 81.0 )	79.5 - 82.3	3,161	1289 ( 40.8 )	39.1 - 42.5	3,161	192 ( 6.1 )	5.3 – 7.0
	55-64	1,773	1550 ( 87.4 )	85.8 - 88.9	1,773	1450 ( 81.8 )	79.9 - 83.5	1,773	797 ( 45.0 )	42.6 - 47.3	1,773	105 ( 5.9 )	4.9 - 7.1
	Over 64	1,290	1135 ( 88.0 )	86.1 - 89.6	1,290	1039 ( 80.5 )	78.3 - 82.6	1,290	659 ( 51.1 )	48.4 - 53.8	1,290	95 ( 7.4 )	6.1 - 8.9
W	Poorest	2,280	1869 ( 82.0 )	80.3 - 83.5	2,281	1615 ( 70.8 )	68.9 - 72.6	2,281	1152 ( 50.5 )	48.5 - 52.6	2,281	331 ( 14.5 )	13.1 – 16.0

Characteristic	Characteristic	Any Restrictions			Religious restrictions			Household level restrictions			Chhaupadi		
		N	Prevalence n (%)	(95% CI)	N	Prevalence n (%)	(95% CI)	N	Prevalence n (%)	(95% CI)	N	Prevalence n (%)	(95% CI)
ealth index	Poorer	2,443	2077 ( 85.0 )	83.5 - 86.4	2,443	1953 ( 79.9 )	78.3 - 81.5	2,442	874 ( 35.8 )	33.9 - 37.7	2,443	155 ( 6.3 )	5.4 - 7.4
	Middle	2,636	2213 ( 84.0 )	82.5 - 85.3	2,636	2121 ( 80.5 )	78.9 - 81.9	2,636	882 ( 33.5 )	31.7 - 35.3	2,636	151 ( 5.7 )	4.9 - 6.7
	Richer	2,868	2449 ( 85.4 )	84.1 - 86.6	2,868	2343 ( 81.7 )	80.2 - 83.1	2,868	1004 ( 35 )	33.3 - 36.8	2,868	118 ( 4.1 )	3.4 - 4.9
	Richest	2,839	2478 ( 87.3 )	86.0 - 88.5	2,839	2398 ( 84.5 )	83.1 - 85.8	2,840	1251 ( 44 )	42.2 - 45.9	2,839	52 ( 1.8 )	1.4 - 2.4
<b>Total</b>		<b>13,065</b>	<b>11085 ( 84.8 )</b>	<b>84.2 - 85.4</b>	<b>13,065</b>	<b>10429 ( 79.8 )</b>	<b>79.1 - 80.5</b>	<b>13,065</b>	<b>5163 ( 39.5 )</b>	<b>38.7 - 40.4</b>	<b>13,065</b>	<b>806 ( 6.2 )</b>	<b>5.8 - 6.6</b>

394

395

396 **Table 2:** Multivariable Poisson regression of menstrual restrictions by social-demographic and economic factors.

Characteristic	Model1: Any restriction			Model2: Religious restrictions			Model3: Household level restrictions			Model4: Chhaupadi		
	aPR	95% CI	P-value	aPR	95% CI	P-value	aPR	95% CI	P-value	aPR	95% CI	P-value
<b>Age (ref: 15-19 years)</b>												
20-24	1.01	0.98-1.03	0.723	1.00	0.97-1.04	0.852	0.94	0.89-1.01	0.090	0.93	0.76-1.13	0.450
25-29	1.01	0.98-1.04	0.601	1.00	0.97-1.04	0.830	0.95	0.88-1.03	0.246	0.83	0.65-1.07	0.154
30-34	1.03	1.00-1.07	0.064	1.03	0.99-1.07	0.115	1.03	0.95-1.12	0.463	0.93	0.73-1.19	0.567
35-39	1.04	1.01-1.08	0.024	1.05	1.01-1.09	0.021	1.03	0.95-1.12	0.483	0.87	0.67-1.12	0.285
40-44	1.06	1.02-1.10	0.001	1.05	1.01-1.10	0.011	1.02	0.94-1.11	0.643	1.12	0.82-1.53	0.484
45-49	1.07	1.03-1.12	0.001	1.06	1.01-1.11	0.022	1.09	0.99-1.21	0.070	1.05	0.76-1.45	0.754
<b>Highest level of education (ref: No education)</b>												
Basic	0.99	0.96-1.02	0.599	0.98	0.95-1.01	0.220	1.13	1.05-1.22	0.002	0.94	0.76-1.17	0.600
Secondary	0.99	0.96-1.02	0.642	0.98	0.95-1.02	0.339	1.10	1.00-1.21	0.041	0.92	0.72-1.18	0.529
Higher	1.03	0.98-1.08	0.224	1.03	0.98-1.09	0.192	1.17	1.03-1.34	0.015	0.95	0.55-1.65	0.863
<b>Residence (ref: Rural)</b>												
Urban	1.02	0.98-1.05	0.37	1.02	0.98-1.06	0.378	1.02	0.93-1.11	0.707	0.81	0.63-1.05	0.11
<b>Caste/Ethnicity (ref: Janajati)</b>												
Brahmin/Chhetri	1.24	1.20-1.28	<0.001	1.19	1.14-1.23	<0.001	3.53	3.15-3.95	<0.001	5.41	3.76-7.78	<0.001
Dalit	1.07	1.03-1.12	0.002	1.02	0.97-1.08	0.376	2.26	1.97-2.59	<0.001	4.00	2.70-5.92	<0.001
Madhesi	1.17	1.12-1.22	<0.001	1.15	1.09-1.20	<0.001	2.08	1.68-2.58	<0.001	4.75	2.61-8.63	<0.001
Muslim	0.93	0.81-1.07	0.299	0.90	0.78-1.04	0.157	0.64	0.42-0.99	0.047	0.00	0.00-0.00	<0.001
Other	1.12	0.85-1.48	0.420	1.13	0.85-1.49	0.397	3.06	1.62-5.75	0.001	13.57	1.98-92.98	0.008
<b>Region/Province (ref: Bagmati)</b>												
Gandaki	1.04	0.96-1.12	0.325	1.01	0.93-1.11	0.791	1.13	0.98-1.32	0.103	1.57	0.93-2.64	0.094
Karnali	1.14	1.08-1.22	<0.001	1.17	1.09-1.25	<0.001	1.36	1.22-1.53	<0.001	5.19	3.29-8.18	<0.001
Koshi	1.13	1.06-1.20	<0.001	1.16	1.09-1.24	<0.001	1.22	1.07-1.40	0.004	1.34	0.75-2.39	0.329

Characteristic	Model1: Any restriction			Model2: Religious restrictions			Model3: Household level restrictions			Model4: <i>Chhaupadi</i>		
	aPR	95% CI	P-value	aPR	95% CI	P-value	aPR	95% CI	P-value	aPR	95% CI	P-value
Lumbini	1.08	1.02-1.14	0.014	1.08	1.02-1.16	0.016	1.06	0.93-1.22	0.370	1.46	0.81-2.62	0.206
Madhesh	1.11	1.03-1.19	0.005	1.16	1.08-1.26	<0.001	0.47	0.36-0.61	<0.001	1.40	0.72-2.70	0.319
Sudurpashchim	1.19	1.13-1.26	<0.001	1.07	1.00-1.16	0.063	1.54	1.38-1.72	<0.001	4.70	2.92-7.57	<0.001
<b>Gender of the household head (ref: Male)</b>												
Female	0.99	0.97-1.01	0.274	1.00	0.97-1.02	0.792	0.89	0.84-0.94	<0.001	1.04	0.89-1.2	0.646
<b>Age of the household head (ref 15-24 years)</b>												
25-34	1.03	0.97-1.09	0.412	1.02	0.96-1.09	0.545	1.24	1.06-1.46	0.008	1.19	0.85-1.67	0.310
35-44	1.02	0.96-1.08	0.603	1.00	0.94-1.07	0.919	1.55	1.34-1.79	<0.001	1.47	1.05-2.06	0.024
45-54	1.04	0.98-1.10	0.191	1.03	0.96-1.10	0.394	1.62	1.39-1.89	<0.001	1.52	1.08-2.14	0.018
55-64	1.06	1.00-1.13	0.046	1.04	0.97-1.11	0.266	1.78	1.52-2.07	<0.001	1.48	1.05-2.08	0.025
Over 64	1.06	1.00-1.13	0.049	1.02	0.95-1.09	0.659	1.97	1.69-2.29	<0.001	1.89	1.31-2.74	0.001
<b>Wealth Index (ref: Poorest)</b>												
Poorer	1.07	1.03-1.12	0.001	1.15	1.09-1.21	<0.001	0.96	0.89-1.04	0.297	0.79	0.62-1.01	0.058
Middle	1.06	1.01-1.12	0.012	1.15	1.09-1.22	<0.001	0.92	0.83-1.02	0.110	0.81	0.62-1.07	0.144
Richer	1.09	1.03-1.14	0.001	1.18	1.11-1.25	<0.001	0.91	0.82-1.01	0.078	0.58	0.43-0.78	<0.001
Richest	1.11	1.05-1.18	<0.001	1.23	1.16-1.32	<0.001	0.90	0.80-1.02	0.091	0.26	0.17-0.39	<0.001

398

399

**Table 3:** Characteristics of clusters of high prevalence

Restriction	Hotspot	Prevalence Risk	P-Value	Radius (KM)
Any restriction	1	1.08	0.003	28.68
	2	1.11	<0.001	30.79
	3	1.13	<0.001	45.95
	4	1.13	0.013	17.23
	5	1.16	<0.001	127.88
Religious restrictions	1	1.12	0.001	12.40
	2	1.13	0.02	35.18
	3	1.14	<0.001	30.89
	4	1.16	<0.001	28.68
	5	1.18	<0.001	31.67
	6	1.18	0.014	6.07
	7	1.19	<0.001	37.65
	8	1.20	<0.001	30.79
	9	1.21	0.042	4.62
	10	1.22	<0.001	40.03
	11	1.24	<0.001	11.32
	12	1.24	0.003	13.28
	13	1.25	0.019	8.22
	14	1.27	<0.001	0.89
	15	1.27	0.003	3.69
	16	1.27	0.005	11.26
	17	1.27	0.024	4.57
Household restrictions	1	1.32	0.001	30.79
	2	1.41	0.001	42.58
	3	1.57	0.001	33.67
	4	1.59	0.001	16.45
	5	1.69	0.001	23.68
	6	1.77	0.001	3.41
	7	1.83	0.001	13.14
	8	1.86	0.024	0.00
	9	1.91	0.001	38.12
	10	2.14	0.001	0.00
	11	2.34	0.001	57.79
<i>Chhaupadi</i>	1	7.45	<0.001	169.05

400

401

402

403

404

405

406 **Supplementary materials**

407 **Supp. Table 1: Social-demographic and economic characteristics of survey participants**

		<b>Total(N=14845)</b>	
<b>Variable</b>	<b>Category</b>	<b>Number(n)</b>	<b>Proportion (%)</b>
Age	15-19	2,643	17.8
	20-24	2,637	17.8
	25-29	2,435	16.4
	30-34	2,144	14.4
	35-39	2,025	13.6
	40-44	1,629	11.0
	45-49	1,332	9.0
Education	Basic	4,595	31.0
	Higher	656	4.4
	No education	3,796	25.6
	Secondary	5,798	39.1
Region	Bagmati	3,062	20.6
	Gandaki	1,401	9.4
	Karnali	909	6.1
	Koshi	2,493	16.8
	Lumbini	2,691	18.1
	Madhesh	3,010	20.3
	Sudurpashchim	1,279	8.6
Religion	Buddhist	970	6.5
	Christian	445	3.0
	Hindu	12,374	83.4
	Kirat	365	2.5
	Muslim	682	4.6
	Other	8	0.1
Residence	Rural	4,667	31.4
	urban	10,178	68.6
Ethnicity	Brahmin/Chhetri	4,152	28.0
	Dalit	2,240	15.1
	Janajati	5,428	36.6
	Madhesi	2,333	15.7
	muslim	676	4.6
	Other	15	0.1
Wealth Index	Middle	3,028	20.4
	Poorer	2,857	19.2
	Poorest	2,628	17.7
	Richer	3,197	21.5
	Richest	3,135	21.1

**Supp. Table 2** : Univariable Poisson regression of menstrual restrictions by social-demographic and economic factors

Characteristic	Model1: Any restriction			Model2: Religious restrictions			Model3: Household level restrictions			Model4: Chhaupadi		
	PR	95% CI	P-value	PR	95% CI	P-value	PR	95% CI	P-value	PR	95% CI	P-value
<b>Age (ref: 15-19 years)</b>												
20-24	1.01	0.98-1.04	0.424	1.02	0.98-1.05	0.323	0.90	0.83-0.97	0.008	0.79	0.64-0.97	0.023
25-29	1.01	0.98-1.05	0.391	1.02	0.98-1.06	0.337	0.89	0.82-0.98	0.017	0.66	0.53-0.83	<0.001
30-34	1.04	1.01-1.07	0.023	1.05	1.01-1.08	0.016	0.97	0.89-1.06	0.546	0.76	0.62-0.95	0.015
35-39	1.04	1-1.07	0.032	1.05	1.01-1.09	0.009	1.02	0.94-1.11	0.686	0.77	0.61-0.96	0.019
40-44	1.06	1.03-1.09	<0.001	1.07	1.03-1.1	<0.001	1.02	0.93-1.11	0.657	1.00	0.8-1.27	0.971
45-49	1.09	1.05-1.13	<0.001	1.08	1.03-1.12	0.001	1.16	1.06-1.28	0.002	0.97	0.75-1.26	0.83
<b>Highest level of education (ref: No education)</b>												
Basic	0.98	0.95-1.01	0.153	0.98	0.95-1.01	0.122	1.18	1.07-1.29	0.001	0.75	0.63-0.9	0.002
Secondary	1.01	0.98-1.04	0.61	1.01	0.98-1.04	0.484	1.35	1.22-1.5	<0.001	0.69	0.58-0.84	<0.001
Higher	1.08	1.04-1.12	<0.001	1.11	1.06-1.16	<0.001	1.64	1.43-1.9	<0.001	0.37	0.21-0.66	0.001
<b>Caste/Ethnicity (ref: Janajati)</b>												
Brahmin/Chhetri	1.26	1.22-1.31	<0.001	1.19	1.15-1.24	<0.001	3.82	3.4-4.28	<0.001	8.47	5.87-12.22	<0.001
Dalit	1.08	1.03-1.13	0.001	1.03	0.97-1.08	0.342	1.97	1.69-2.3	<0.001	5.74	3.91-8.42	<0.001
Madhesi	1.20	1.15-1.26	<0.001	1.24	1.18-1.29	<0.001	1.36	1.08-1.7	0.009	4.17	2.61-6.68	<0.001
Muslim	0.96	0.84-1.11	0.598	0.97	0.83-1.13	0.718	0.42	0.25-0.7	0.001	0.00	0-0	<0.001
other	1.13	0.88-1.46	0.33	1.18	0.92-1.52	0.198	2.93	1.53-5.6	0.001	7.60	1.73-33.39	0.007
<b>Residence (ref: Rural)</b>												
Urban	1.03	0.99-1.07	0.127	1.06	1.02-1.11	0.009	0.95	0.83-1.08	0.423	0.53	0.39-0.71	<0.001
<b>Region/Province (ref: Bagmati)</b>												
Gandaki	1.02	0.94-1.1	0.682	0.98	0.89-1.08	0.678	1.09	0.88-1.34	0.421	1.94	1.07-3.51	0.029
Karnali	1.16	1.1-1.23	<0.001	1.11	1.03-1.18	0.003	1.89	1.63-2.19	<0.001	14.07	8.71-22.73	<0.001
Koshi	1.09	1.03-1.16	0.004	1.11	1.03-1.18	0.003	1.14	0.95-1.37	0.173	1.77	0.93-3.38	0.082
Lumbini	1.06	1-1.13	0.05	1.05	0.99-1.13	0.121	1.10	0.91-1.32	0.333	2.17	1.18-3.97	0.012
Madhesh	1.09	1.02-1.16	0.008	1.13	1.06-1.21	<0.001	0.44	0.34-0.57	<0.001	2.55	1.48-4.37	0.001
Sudurpashchim	1.21	1.15-1.27	<0.001	1.04	0.97-1.12	0.224	1.99	1.67-2.37	<0.001	10.55	6.33-17.61	<0.001
<b>Gender of the head of the household (ref: Male)</b>												
Female	0.97	0.95-1	0.02	0.98	0.95-1	0.059	0.87	0.81-0.94	<0.001	1.12	0.95-1.32	0.196
<b>Age of the head of the household (ref: 15-24 years)</b>												
25-34	1.04	0.98-1.09	0.198	1.04	0.98-1.1	0.205	1.17	0.98-1.4	0.089	0.98	0.68-1.42	0.934
35-44	1.05	0.99-1.11	0.112	1.05	0.99-1.11	0.118	1.43	1.2-1.71	<0.001	1.18	0.81-1.73	0.388
45-54	1.07	1.01-1.13	0.017	1.07	1.01-1.14	0.028	1.51	1.26-1.81	<0.001	1.10	0.75-1.62	0.617
55-64	1.09	1.03-1.16	0.002	1.08	1.02-1.15	0.013	1.66	1.39-1.99	<0.001	1.08	0.74-1.58	0.693

Characteristic	Model1: Any restriction			Model2: Religious restrictions			Model3: Household level restrictions			Model4: Chhaupadi		
	PR	95% CI	P-value	PR	95% CI	P-value	PR	95% CI	P-value	PR	95% CI	P-value
>=65	1.10	1.04-1.17	0.001	1.07	1-1.14	0.055	1.89	1.57-2.26	<0.001	1.34	0.91-1.98	0.141
<b>Wealth Index (ref: Poorest)</b>												
Middle	1.02	0.98-1.07	0.333	1.14	1.08-1.2	<0.001	0.66	0.58-0.76	<0.001	0.40	0.29-0.55	<0.001
Poorer	1.04	0.99-1.08	0.104	1.13	1.07-1.19	<0.001	0.71	0.63-0.8	<0.001	0.44	0.33-0.58	<0.001
Richer	1.04	0.99-1.09	0.107	1.15	1.09-1.22	<0.001	0.69	0.6-0.8	<0.001	0.28	0.2-0.4	<0.001
Richest	1.06	1.01-1.12	0.018	1.19	1.13-1.26	<0.001	0.87	0.76-1	0.044	0.13	0.08-0.2	<0.001

410



411 **References**

- 412 ActionAid. (2024). *Chhaupadi and menstruation taboos* | ActionAid UK. [https://www.actionaid.org.uk/our-work/period-](https://www.actionaid.org.uk/our-work/period-poverty/chhaupadi-and-menstruation-taboos)  
413 [poverty/chhaupadi-and-menstruation-taboos](https://www.actionaid.org.uk/our-work/period-poverty/chhaupadi-and-menstruation-taboos)
- 414 Adhikari, R. (2020). Bringing an end to deadly “menstrual huts” is proving difficult in Nepal. *BMJ*, m536.  
415 <https://doi.org/10.1136/bmj.m536>
- 416 Alam, M.-U., Luby, S. P., Halder, A. K., Islam, K., Opel, A., Shoab, A. K., Ghosh, P. K., Rahman, M., Mahon, T., & Unicomb,  
417 L. (2017). Menstrual hygiene management among Bangladeshi adolescent schoolgirls and risk factors affecting school  
418 absence: Results from a cross-sectional survey. *BMJ Open*, 7(7), e015508. [https://doi.org/10.1136/bmjopen-2016-](https://doi.org/10.1136/bmjopen-2016-015508)  
419 [015508](https://doi.org/10.1136/bmjopen-2016-015508)
- 420 Amatya, P., Ghimire, S., Callahan, K. E., Baral, B. K., & Poudel, K. C. (2018). Practice and lived experience of menstrual  
421 exiles (Chhaupadi) among adolescent girls in far-western Nepal. *PLOS ONE*, 13(12), e0208260.  
422 <https://doi.org/10.1371/journal.pone.0208260>
- 423 Amery, F., Channon, M., Puri, M. C., & Thomson, J. (2023). Developing the menstrual justice agenda: Insights from a  
424 mixed method study in the mid-western region of Nepal. *Sexual and Reproductive Health Matters*, 31(1), 2204025.  
425 <https://doi.org/10.1080/26410397.2023.2204025>
- 426 Awasthi, K. R., Jancey, J., Clements, A. C., Sah, R. K., Koirala, M. P., Chalise, B., & Leavy, J. E. (2022). Traditional Beliefs,  
427 Practices, and Migration: A Risk to Malaria Transmission in Rural Nepal. *International Journal of Environmental Research*  
428 *and Public Health*, 19(24), 16872.
- 429 Baumann, S. E., Lhaki, P., & Burke, J. G. (2019). Assessing the Role of Caste/Ethnicity in Predicting Menstrual Knowledge,  
430 Attitudes, and Practices in Nepal. *Global Public Health*, 14(9), 1288–1301.  
431 <https://doi.org/10.1080/17441692.2019.1583267>
- 432 Baumann, S. E., Lhaki, P., Terry, M. A., Sommer, M., Cutlip, T., Merante, M., & Burke, J. G. (2021). Beyond the Menstrual  
433 Shed: Exploring Caste/Ethnic and Religious Complexities of Menstrual Practices in Far-West Nepal. *Women’s*  
434 *Reproductive Health*, 8(1), 1–28. <https://doi.org/10.1080/23293691.2020.1861413>
- 435 Baumann, S. E., Merante, M. M., Wiltrout, C. T., Cutlip, T., Finkel, M., Maharjan, B., Lhaki, P., & Burke, J. G. (2021). Is  
436 criminalization the answer? Perspectives of community members and police on menstrual seclusion policy in Far-West  
437 Nepal. *Health Policy and Planning*, 36(7), 1003–1012. <https://doi.org/10.1093/heapol/czab032>
- 438 Bobel, C. (2019). Making Menstruation Matter in the Global South: Mapping a Critical History. In C. Bobel (Ed.), *The*  
439 *Managed Body: Developing Girls and Menstrual Health in the Global South* (pp. 69–109). Springer International  
440 Publishing. [https://doi.org/10.1007/978-3-319-89414-0\\_3](https://doi.org/10.1007/978-3-319-89414-0_3)
- 441 Borg, S. A., Bukenya, J. N., Kibira, S. P., Nakamya, P., Makumbi, F. E., Exum, N. G., Schwab, K. J., & Hennegan, J. (2023).  
442 The association between menstrual hygiene, workplace sanitation practices and self-reported urogenital symptoms in a  
443 cross-sectional survey of women working in Mukono District, Uganda. *PloS One*, 18(7), e0288942.
- 444 Cardoso, L. F., Clark, C. J., Rivers, K., Ferguson, G., Shrestha, B., & Gupta, J. (2019). Menstrual restriction prevalence and  
445 association with intimate partner violence among Nepali women. *BMJ Sexual & Reproductive Health*, 45(1), 38–43.  
446 <https://doi.org/10.1136/bmjsex-2017-101908>
- 447 Corsi, D. J., Neuman, M., Finlay, J. E., & Subramanian, S. (2012). Demographic and health surveys: A profile. *International*  
448 *Journal of Epidemiology*, 41(6), 1602–1613. <https://doi.org/10.1093/ije/dys184>
- 449 Crawford, M., Menger, L. M., & Kaufman, M. R. (2014). ‘This is a natural process’: Managing menstrual stigma in Nepal.  
450 *Culture, Health & Sexuality*, 16(4), 426–439. <https://doi.org/10.1080/13691058.2014.887147>

- 451 Gurung, S. P., Karma Dolma. (2017, August 26). *Nepal outlaws menstruation huts, but what will take their place?* CNN.  
452 <https://www.cnn.com/2017/08/25/health/nepal-menstruation-huts-chhaupadi-ban/index.html>
- 453 Habtegiorgis, Y., Sisay, T., Kloos, H., Malede, A., Yalew, M., Arefaynie, M., Damtie, Y., Kefale, B., Tegegne, T. B., Addisu,  
454 E., Lingerew, M., Berhanu, L., Berihun, G., Natnael, T., Abebe, M., Feleke, A., Gizeyatu, A., Ademas, A., Fentaw, Z., ...  
455 Adane, M. (2021). Menstrual hygiene practices among high school girls in urban areas in Northeastern Ethiopia: A  
456 neglected issue in water, sanitation, and hygiene research. *PLOS ONE*, 16(6), e0248825.  
457 <https://doi.org/10.1371/journal.pone.0248825>
- 458 Health, T. L. C. & A. (2018). Normalising menstruation, empowering girls. *The Lancet Child & Adolescent Health*, 2(6),  
459 379. [https://doi.org/10.1016/S2352-4642\(18\)30143-3](https://doi.org/10.1016/S2352-4642(18)30143-3)
- 460 Health–Americas, T. L. R. (2022). Menstrual health: A neglected public health problem. *Lancet Regional Health-Americas*,  
461 15. <https://www.ncbi.nlm.nih.gov/pmc/articles/PMC9903918/>
- 462 Hennegan, J. (2019). Inserting informed choice into global menstrual product use and provision. *The Lancet Public*  
463 *Health*, 4(8), e361–e362. [https://doi.org/10.1016/S2468-2667\(19\)30126-4](https://doi.org/10.1016/S2468-2667(19)30126-4)
- 464 Hennegan, J., Kibira, S. P., Exum, N. G., Schwab, K. J., Makumbi, F. E., & Bukenya, J. (2020). ‘I do what a woman should  
465 do’: A grounded theory study of women’s menstrual experiences at work in Mukono District, Uganda. *BMJ Global*  
466 *Health*, 5(11), e003433.
- 467 Hennegan, J., Shannon, A. K., Rubli, J., Schwab, K. J., & Melendez-Torres, G. J. (2019). Women’s and girls’ experiences of  
468 menstruation in low- and middle-income countries: A systematic review and qualitative metasynthesis. *PLOS Medicine*,  
469 16(5), e1002803. <https://doi.org/10.1371/journal.pmed.1002803>
- 470 ICF, N. M. of H. and P., New ERA and. (2023). *Nepal Demographic and Health Survey 2022*.  
471 <https://dhsprogram.com/publications/publication-FR379-DHS-Final-Reports.cfm>
- 472 Joshi, S., & Acharya, Y. (2022). Women’s extreme seclusion during menstruation and children’s health in Nepal. *PLOS*  
473 *Global Public Health*, 2(7), e0000355.
- 474 Krenz, A., & Strulik, H. (2021). The impact of menstruation hygiene management on work absenteeism of women in  
475 Burkina Faso. *Economics & Human Biology*, 43, 101067.
- 476 Kuhlmann, A. S., Henry, K., & Wall, L. L. (2017). Menstrual Hygiene Management in Resource-Poor Countries. *Obstetrical*  
477 *& Gynecological Survey*, 72(6), 356–376. <https://doi.org/10.1097/OGX.0000000000000443>
- 478 Larmarange, J., Vallo, R., Yaro, S., Msellati, P., & Méda, N. (2011). Methods for mapping regional trends of HIV  
479 prevalence from Demographic and Health Surveys (DHS). *Cybergeo: European Journal of Geography*.  
480 <https://doi.org/10.4000/cybergeo.24606>
- 481 Lonkhuijzen, V. R. M., Garcia, F. K., & Wagemakers, A. (2023). The Stigma Surrounding Menstruation: Attitudes and  
482 Practices Regarding Menstruation and Sexual Activity During Menstruation. *Women’s Reproductive Health*, 10(3), 364–  
483 384. <https://doi.org/10.1080/23293691.2022.2124041>
- 484 Mukherjee, A., Lama, M., Khakurel, U., Jha, A. N., Ajose, F., Acharya, S., Tymes-Wilbekin, K., Sommer, M., Jolly, P. E.,  
485 Lhaki, P., & Shrestha, S. (2020). Perception and practices of menstruation restrictions among urban adolescent girls and  
486 women in Nepal: A cross-sectional survey. *Reproductive Health*, 17(1), 81. <https://doi.org/10.1186/s12978-020-00935-6>
- 487 National Statistics Office. (2021). *Population | National Population and and Housing Census 2021 Results*.  
488 [https://censusnepal.cbs.gov.np/results/population#population\\_size\\_and\\_distribution](https://censusnepal.cbs.gov.np/results/population#population_size_and_distribution)

- 489 Olson, M. M., Alhelou, N., Kavattur, P. S., Rountree, L., & Winkler, I. T. (2022). The persistent power of stigma: A critical  
490 review of policy initiatives to break the menstrual silence and advance menstrual literacy. *PLOS Global Public Health*,  
491 2(7), e0000070.
- 492 Plesons, M., Patkar, A., Babb, J., Balapitiya, A., Carson, F., Caruso, B. A., Franco, M., Hansen, M. M., Haver, J., Jahangir, A.,  
493 Kabiru, C. W., Kisangala, E., Phillips-Howard, P., Sharma, A., Sommer, M., & Chandra-Mouli, V. (2021). The state of  
494 adolescent menstrual health in low- and middle-income countries and suggestions for future action and research.  
495 *Reproductive Health*, 18(1), 31. <https://doi.org/10.1186/s12978-021-01082-2>
- 496 Plesons, M., Torondel, B., Caruso, B. A., Hennegan, J., Sommer, M., Haver, J., Keiser, D., van Eijk, A. M., Zulaika, G.,  
497 Mason, L., & Phillips-Howard, P. A. (2023). Research priorities for improving menstrual health across the life-course in  
498 low- and middle-income countries. *Global Health Action*, 16(1), 2279396.  
499 <https://doi.org/10.1080/16549716.2023.2279396>
- 500 Preiss, D. (2016). 15-Year-old girl found dead In a menstrual hut In Nepal. *National Public Radio*. December, 20, 2016.
- 501 Rothchild, J., & Piya, P. S. (2020). Rituals, Taboos, and Seclusion: Life Stories of Women Navigating Culture and Pushing  
502 for Change in Nepal. In C. Bobel, I. T. Winkler, B. Fahs, K. A. Hasson, E. A. Kissling, & T.-A. Roberts (Eds.), *The Palgrave*  
503 *Handbook of Critical Menstruation Studies* (pp. 915–929). Springer. [https://doi.org/10.1007/978-981-15-0614-7\\_66](https://doi.org/10.1007/978-981-15-0614-7_66)
- 504 Secretariat, C. A., & Durbar, S. (2015). Constitution of Nepal 2015. *Kathmandu: Constituent Assembly Secretariat*, 19.  
505 <https://www.equalrightstrust.org/ertdocumentbank/Constitution%20of%20Nepal%202015.pdf>
- 506 Sommer, M., Ackatia-Armah, N., Connolly, S., & Smiles, D. (2015). A comparison of the menstruation and education  
507 experiences of girls in Tanzania, Ghana, Cambodia and Ethiopia. *Compare: A Journal of Comparative and International*  
508 *Education*, 45(4), 589–609. <https://doi.org/10.1080/03057925.2013.871399>
- 509 Sommer, M., Caruso, B. A., Sahin, M., Calderon, T., Cavill, S., Mahon, T., & Phillips-Howard, P. A. (2016). A time for global  
510 action: Addressing girls' menstrual hygiene management needs in schools. *PLoS Medicine*, 13(2), e1001962.
- 511 Sumpter, C., & Torondel, B. (2013). A Systematic Review of the Health and Social Effects of Menstrual Hygiene  
512 Management. *PLOS ONE*, 8(4), e62004. <https://doi.org/10.1371/journal.pone.0062004>
- 513 Tegegne, T. K., & Sisay, M. M. (2014). Menstrual hygiene management and school absenteeism among female  
514 adolescent students in Northeast Ethiopia. *BMC Public Health*, 14(1), 1118. <https://doi.org/10.1186/1471-2458-14-1118>
- 515 Thakuri, D. S., Thapa, R. K., Singh, S., Khanal, G. N., & Khatri, R. B. (2021). A harmful religio-cultural practice (Chhaupadi)  
516 during menstruation among adolescent girls in Nepal: Prevalence and policies for eradication. *PLOS ONE*, 16(9),  
517 e0256968. <https://doi.org/10.1371/journal.pone.0256968>
- 518 Thapa, S., Bhattarai, S., & Aro, A. R. (2019). 'Menstrual blood is bad and should be cleaned': A qualitative case study on  
519 traditional menstrual practices and contextual factors in the rural communities of far-western Nepal. *SAGE Open*  
520 *Medicine*, 7, 2050312119850400. <https://doi.org/10.1177/2050312119850400>
- 521 Thomson, J., Amery, F., Channon, M., & Puri, M. (2019). What's missing in MHM? Moving beyond hygiene in menstrual  
522 hygiene management. *Sexual and Reproductive Health Matters*, 27(1), 12–15.  
523 <https://doi.org/10.1080/26410397.2019.1684231>
- 524 UN. (2019). *International Women's Day—8 March 2019 Women's menstrual health should no longer be a taboo*. OHCHR.  
525 [https://www.ohchr.org/en/press-releases/2019/03/international-womens-day-8-march-2019womens-menstrual-](https://www.ohchr.org/en/press-releases/2019/03/international-womens-day-8-march-2019womens-menstrual-health-should-no)  
526 [health-should-no](https://www.ohchr.org/en/press-releases/2019/03/international-womens-day-8-march-2019womens-menstrual-health-should-no)
- 527 UNFPA, U. (2019). *Literature Review of Harmful Practices in Nepal*.

- 528 UNICEF. (2020, December 7). *Multiple Indicator Cluster Surveys Final Report 2019 | UNICEF Nepal*.  
529 <https://www.unicef.org/nepal/reports/multiple-indicator-cluster-survey-final-report-2019>
- 530 UNICEF, U. (2022). *Menstrual hygiene | UNICEF*. Menstrual Hygiene. <https://www.unicef.org/wash/menstrual-hygiene>
- 531 Vaughn, E. (2019, December 17). Menstrual Huts Are Illegal In Nepal. So Why Are Women Still Dying In Them? *NPR*.  
532 <https://www.npr.org/sections/goatsandsoda/2019/12/17/787808530/menstrual-huts-are-illegal-in-nepal-so-why-are-women-still-dying-in-them>  
533
- 534 Wood, S. N., Milkovich, R., Thiongo, M., Byrne, M. E., Devoto, B., Wamue-Ngare, G., Decker, M. R., & Gichangi, P. (2022).  
535 Product-access challenges to menstrual health throughout the COVID-19 pandemic among a cohort of adolescent girls  
536 and young women in Nairobi, Kenya. *eClinicalMedicine*, 49. <https://doi.org/10.1016/j.eclinm.2022.101482>
- 537
- 538