

1 **Improved limit of detection for zoonotic *Plasmodium knowlesi* and *P. cynomolgi***
2 **surveillance using reverse transcription for total nucleic acid preserved samples**
3 **or dried blood spots**

4
5 Kamil A Braima^{1*}, Kim A Piera^{1*}, Inke ND Lubis^{1,2}, Rintis Noviyanti³, Giri S Rajahram^{5,6,7},
6 Pinkan Kariodimedjo⁴, Irbah RA Nainggolan², Ranti Permatasari², Leily Trianty³, Ristya
7 Amalia⁴, Sitti Saimah binti Sakam⁵, Angelica F Tan^{1,5}, Timothy William^{5,6}, Jacob AF
8 Westaway^{1,8}, PingChin Lee^{9,10}, Sylvia Daim¹¹, Henry Surendra^{12,13}, Nathaniel Christy¹⁴,
9 Andrew G Letizia¹⁴, Christopher L Peatey¹⁵, Mohd Arshil Moideen¹⁶, Bridget E Barber^{1,5,17},
10 Colin J Sutherland¹⁸, Nicholas M Anstey^{1,5}, Matthew J Grigg^{1,5}

11 *Equal contribution

12
13 **Affiliations**

- 14 1. Global and Tropical Health Division, Menzies School of Health Research and Charles Darwin University,
15 Darwin, Northern Territory, Australia
- 16 2. Faculty of Medicine, Universitas Sumatera Utara, Medan, Sumatera Utara, Indonesia
- 17 3. Eijkman Research Center for Molecular Biology, BRIN, Indonesia
- 18 4. Exeins Health Initiative, Jakarta, Indonesia
- 19 5. Infectious Diseases Society Kota Kinabalu Sabah-Menzies School of Health Research Clinical Research
20 Unit, Kota Kinabalu, Sabah, Malaysia
- 21 6. Clinical Research Centre-Queen Elizabeth Hospital, Ministry of Health, Kota Kinabalu, Sabah, Malaysia
- 22 7. School of Medicine and Health Sciences, Monash University Malaysia, Kuala Lumpur, Malaysia
- 23 8. Centre for Tropical Bioinformatics and Molecular Biology, James Cook University, Cairns, Queensland,
24 Australia
- 25 9. Biotechnology Research Institute, Universiti Malaysia Sabah, Kota Kinabalu, Sabah, Malaysia.
- 26 10. Faculty of Science and Natural Resources, Universiti Malaysia Sabah, Kota Kinabalu, Sabah Malaysia.
- 27 11. Faculty of Medicine and Health Sciences, Universiti Malaysia Sabah, Kota Kinabalu, Sabah, Malaysia

NOTE: This preprint reports new research that has not been certified by peer review and should not be used to guide clinical practice.

- 28 12. Monash University Indonesia, Tangerang, Indonesia
- 29 13. Oxford University Clinical Research Unit Indonesia, Faculty of Medicine Universitas Indonesia, Jakarta,
30 Indonesia
- 31 14. U.S. Naval Medical Research Unit INDO PACIFIC, Singapore
- 32 15. Drug Resistance and Diagnostics, Australian Defence Force Malaria and Infectious Disease Institute,
33 Brisbane, Queensland, Australia
- 34 16. Malaysian Armed Forces and Faculty of Medicine & Defence Health, National Defence University of
35 Malaysia
- 36 17. QIMR Berghofer Medical Research Institute, Brisbane, Queensland, Australia
- 37 18. Department of Infection Biology, London School of Hygiene & Tropical Medicine, London, United
38 Kingdom

39 **Corresponding authors:**

40 Matthew Grigg, Global Health Division, Menzies School of Health Research, Rocklands
41 Drive, Tiwi, NT 0810, Australia. Email: matthew.grigg@menzies.edu.au

42

43 Inke ND Lubis, Faculty of Medicine, Universitas Sumatera Utara, Jl. Dr. Mansyur No.5,
44 Padang Bulan, Kec. Medan Baru, Kota Medan, Sumatera Utara 20155, Indonesia. Email:
45 inkenadia@gmail.com

46

47 **Key words:** zoonotic malaria, *Plasmodium*, *P. knowlesi*, *P. cynomolgi*, *P. vivax*, PCR, reverse
48 transcription, limit of detection, dried blood spots

49

50 **Short title:** Reverse transcription improves detection of *P. knowlesi* and *P. cynomolgi*

51

52

53

54 **ABSTRACT**

55 **Background:**

56 Zoonotic *P. knowlesi* and *P. cynomolgi* symptomatic and asymptomatic infections occur across
57 endemic areas of Southeast Asia. Most infections are low-parasitemia, with an unknown
58 proportion below routine microscopy detection thresholds. Molecular surveillance tools
59 optimizing the limit of detection (LOD) would allow more accurate estimates of zoonotic
60 malaria prevalence.

61 **Methods:**

62 An established ultra-sensitive *Plasmodium* genus quantitative-PCR (qPCR) assay targeting the
63 18S rRNA gene underwent LOD evaluation with and without reverse transcription (RT) for *P.*
64 *knowlesi*, *P. cynomolgi* and *P. vivax* using total nucleic acid preserved (DNA/RNA Shield™)
65 isolates and archived dried blood spots (DBS). LODs for selected *P. knowlesi*-specific assays,
66 and reference *P. vivax*- and *P. cynomolgi*-specific assays were determined with RT. Assay
67 specificities were assessed using clinical malaria samples and malaria-negative controls.

68 **Results:**

69 The use of reverse transcription improved *Plasmodium* species detection by up to 10,000-fold
70 (*Plasmodium* genus), 2759-fold (*P. knowlesi*), 1000-fold (*P. vivax*) and 10-fold (*P. cynomolgi*).
71 The median LOD with RT for the Kamau et al. *Plasmodium* genus RT-qPCR assay was
72 ≤ 0.0002 parasites/ μL for *P. knowlesi* and 0.002 parasites/ μL for both *P. cynomolgi* and *P.*
73 *vivax*. The LODs with RT for *P. knowlesi*-specific PCRs were: Imwong et al. 18S rRNA
74 (0.0007 parasites/ μL); Divis et al. real-time 18S rRNA (0.0002 parasites/ μL); Lubis et al. hemi-
75 nested *SICAvar* (1.1 parasites/ μL) and Lee et al. nested 18S rRNA (11 parasites/ μL). The LOD
76 for *P. vivax*- and *P. cynomolgi*-specific assays with RT were 0.02 and 0.20 parasites/ μL
77 respectively. For DBS *P. knowlesi* samples the median LOD for the *Plasmodium* genus qPCR

78 with RT was 0.08, and without RT was 19.89 parasites/uL (249-fold change); no LOD
79 improvement was demonstrated in DBS archived beyond 6 years. The *Plasmodium* genus and
80 *P. knowlesi*-assays were 100% specific for *Plasmodium* species and *P. knowlesi* detection,
81 respectively, from 190 clinical infections and 48 healthy controls. Reference *P. vivax*-specific
82 primers demonstrated known cross-reactivity with *P. cynomolgi*.

83 **Conclusion:**

84 Our findings support the use of an 18S rRNA *Plasmodium* genus qPCR and species-specific
85 nested PCR protocol with RT for highly-sensitive surveillance of zoonotic and human
86 *Plasmodium* species infections.

87

88 **Author Summary:**

89 The monkey malaria parasite *Plasmodium knowlesi* has been found to increasingly infect
90 humans across Southeast Asia via the bite of its anopheline mosquito vectors. Human
91 infections with a similar monkey parasite, *Plasmodium cynomolgi*, have also been reported.
92 The diagnostic tools commonly used to detect these malaria species are often unable to detect
93 very low-level infections. We aimed to improve surveillance detection tools and blood
94 sample collection methods to detect these zoonotic malaria species and understand the extent
95 of transmission and the burden of disease. This study validated and compared the use of
96 molecular laboratory assays targeting these species. We found that with the use of reverse
97 transcription, large improvements in the limit of detection were possible, by up to 10,000-fold
98 for initial malaria screening, and up to 2759-fold for specific *P. knowlesi* detection. Findings
99 from this study support the use of ultrasensitive detection tools to improve surveillance
100 approaches to emerging zoonotic malaria species.

101

102 BACKGROUND

103 *Plasmodium knowlesi* is a unicellular protozoan malaria parasite present across Southeast Asia
104 within the geographical range of its natural monkey hosts and vector mosquitoes (1,2). *P.*
105 *knowlesi* is the most common cause of human malaria in Malaysia; capable of causing severe
106 disease comparable to *P. falciparum* (3–5). Human infections with other genetically similar
107 zoonotic species, such as *P. cynomolgi* which share the same natural macaque hosts, have also
108 been reported (6). Accurate detection of emerging zoonotic species such as *P. knowlesi* and *P.*
109 *cynomolgi* in co-endemic areas with other human *Plasmodium* species infections is necessary
110 to understand the geographical extent of zoonotic malaria transmission and to improve regional
111 estimates of the disease burden (7). Improving national malaria control program detection and
112 reporting of low-level *P. knowlesi* infections is also vital to demonstrate World Health
113 Organization (WHO)-certified elimination for other non-zoonotic malaria species in Southeast
114 Asia (8).

115 Conventional malaria diagnostic methods such as microscopy lack sensitivity and specificity
116 for active surveillance of *P. knowlesi* due to common low-level sub-microscopic infections and
117 an inability to accurately distinguish other morphologically similar *Plasmodium* species (7,9);
118 notably *P. malariae* and the early ring stages of *P. falciparum* (10,11). Similarly, *P. cynomolgi*
119 microscopically resembles *P. vivax* in human infections (12,13). Current malaria rapid
120 diagnostic tests which detect circulating *Plasmodium* species antigens also remain
121 insufficiently sensitive for *P. knowlesi* passive case detection at the low parasite counts able to
122 produce symptomatic infections (14–16). Multiple molecular methods to detect *P. knowlesi*
123 have been developed, including both quantitative and conventional qualitative PCR assays
124 (7,17). However, systematic comparisons of the lower limit of detection (LOD) of these assays
125 and exhaustive testing of *Plasmodium* species-specificity are currently lacking (7). The degree

126 to which the LOD is enhanced with a prior reverse transcription (RT) step is not well
127 characterised despite potential benefits in improving the detection of very low-level
128 parasitemia symptomatic or asymptomatic zoonotic *Plasmodium* species infections (18).
129 Specificity for *P. knowlesi* detection also ideally needs to be validated against other macaque
130 zoonotic *Plasmodium* species, including *P. cynomolgi* (7).

131 To support an improved molecular surveillance workflow for detection of low-level zoonotic
132 *Plasmodium* species infections (7,19), we evaluated an established *Plasmodium* genus and
133 species-specific PCR assays with the inclusion of a reverse transcription step to enhance the
134 LOD in both total nucleic acid preserved media and dried blood spot (DBS) collected samples.

135

136 **METHODS**

137 **Clinical specimen collection and storage**

138 Clinical venous whole blood samples and dried blood spots were collected prior to antimalarial
139 treatment from individuals diagnosed with malaria by routine hospital microscopy, as part of
140 an ongoing prospective malaria study in Sabah, Malaysia between April 2013 and May 2023.
141 Adult healthy individuals were recruited as malaria-negative controls. Additional *P. vivax*
142 clinical cases were enrolled from a prospective malaria study in western Indonesia between Jan
143 2022 and Aug 2023. Whole blood samples were collected in ethylenediaminetetraacetic acid
144 (EDTA) and a small subset in DNA/RNA Shield™ (Zymo Research, Irvine, CA, USA) before
145 being frozen at -80°C at the time of enrolment. DBS were concurrently made using 20µL whole
146 blood spotted on Whatman 3M filter paper and then stored in sealed bags with desiccant. A
147 single donated *P. cynomolgi*-infected sample (20) obtained from a macaque host was frozen in
148 glycerolyte and stored in liquid nitrogen prior to thawing, counting and immediately placing in
149 DNA/RNA Shield™.

150 **Microscopic parasite count quantification**

151 Microscopic diagnosis of *Plasmodium* species was undertaken by experienced research
152 microscopists using thick and thin Giemsa-stained blood films. Microscopic quantification of
153 parasitemia (parasites per microlitre) was performed using thick blood smears calculated from
154 the number of parasites per 200 white blood cells, multiplied by the individual patient's total
155 white cell count obtained from routine hospital laboratory flow cytometry (21).

156 **Total nucleic acid extraction and PCR amplification**

157 Total nucleic acids were directly extracted from 200 μ L of whole blood using a QIAamp®
158 DNA Blood Mini Kit (QIAGEN, Cat. No. 51106), with DNA/RNA Shield™ samples eluted
159 in 50ul AE buffer to account for the preservative dilution factor. DNA and RNA extraction
160 from DBS were carried out using an in-house method, established by Zainabadi *et al*, 2017
161 (22). Briefly, DBS equivalent to 40 μ l whole blood was incubated with 900 μ l lysis buffer at
162 65°C, with shaking at 250rpm for 90 minutes. Lysate was transferred to QIAamp® DNA Blood
163 Mini Kit (QIAGEN, Cat. No. 51106) columns, washed with modified buffers, dried at 65°C
164 for 10 minutes and eluted in 40 μ l buffer AE. The primers, annealing temperatures and/or probe
165 sequences for each PCR assay are described in **Table 1**. Real-time PCR amplifications were
166 performed on a QuantStudio™ 6 Flex (Applied Biosystems). Conventional PCR was performed
167 on a DNA thermal cycler (Bio-Rad T100™ thermal cycler). The amplified nested PCR products
168 were separated by electrophoresis using 2% agarose gels, stained by SYBR Safe™
169 (Invitrogen), and visualised on a UV transilluminator (Gel Doc XR+ imaging system, Bio-
170 Rad). Each PCR amplification included a *Plasmodium* species positive and negative control
171 and molecular weight standards (Applied Biosystems™).

172 **Table 1. Primer sequences and annealing temperatures of *Plasmodium* genus and species-specific PCR assays**

173

| Assay ID | PCR assays | Primer / Probe | Sequence (5' – 3') | Annealing temp. (°C) | PCR method | <i>Plasmodium</i> gene target |
|----------------------------------|---|-------------------------------|---------------------------------|----------------------|-------------|-------------------------------|
| <i>Plasmodium</i> spp. screening | Kamau et al, 2011 (26) (rRNA template) | KamGF | GCTCTTTCTTGATTTCTTGATG | 60 | RT-qPCR | 18S rRNA |
| | | KamGR | AGCAGGTTAAGATCTCGTTCG | | | |
| | | KamGP probe | FAM-ATGGCCGTTTTTAGTTCGTG-BHQ1 | | | |
| Test A (Pk) | Divis et al, 2010 (27) | Plasmo 1 | GTTAAGGGAGTGAAGACGATCAGA | 60 | qPCR | 18S rRNA |
| Plasmo 2 | AACCCAAAGACTTTGATTTCTCATAA | | | | | |
| Pk probe | FAM-CTCTCCGAGATTAGAACTCTTAGATTGCT-BHQ1 | | | | | |
| Test B (Pk) | Lubis et al, 2017 (29) | SICAf1 | GGTCCTCTTGGTAAAGGAGG | 55 | Hemi-nested | SICAvar |
| SICAr1 | CCCTTTTTGACATTCGTCC | | | | | |
| SICAf2 | CTTGGTAAAGGAGGACCACG | | | | | |
| SICAr1 | CCCTTTTTGACATTCGTCC | | | | | |
| Test C (Pk) | Lee et al, 2011 (25) | rPLU 1 | TCAAAGATTAAGCCATGCAAGTGA | 66 | Nested | 18S rRNA |
| rPLU 5 | | CCTGTTGTTGCCTTAAACTTC | | | | |
| Kn1f | | CTCAACACGGGAAAACACTACTAGTTTA | | | | |
| Kn3r | | GTATTATTAGGTACAAGGTAGCAGTATGC | | | | |
| Test D (Pcyn) | Lee et al, 2011 (25) | CY2F | GATTGCTAAATTGCGGTCCG | 66 | | |
| CY4R | CGGTATGATAAGCCAGGGAAGT | | | | | |
| Pk reference | Imwong et al, 2009 (24) | PkF1160 | GATGCCTCCGCGTATCGAC | 55 | Hemi-nested | 18S rRNA |
| | | PkF1150 | GAGTTCTAATCTCCGAGAGAAAAGA | 50 | | |
| | | PkF1140 | GATTCATCTATTAATAAATTTGCTTC | | | |
| | | PkR1150 | GAGTTCTAATCTCCGAGAGAAAAGA | | | |
| Human-species reference | Snounou et al. (1993) (23) | rPLU6 | TTAAAATTGTTGCAGTTAAAACG | 58 | Nested | 18S rRNA |
| | | rPLU5 | CCTGTTGTTGCCTTAAACTTC | | | |
| | | rFAL 1 | TTAAACTGGTTTGGGAAAACCAAATATATT | | | |
| | | rFAL 2 | ACACAATGAACTCAATCATGACTACCCGTC | | | |
| | | rVIV 1 | CGCTTCTAGCTTAATCCACATAACTGATAC | | | |
| | | rVIV 2 | ACTTCCAAGCCGAAGCAAAGAAAAGTCCTTA | | | |
| | | rMAL 1 | ATAACATAGTTGTACGTTAAGAATAACCGC | | | |
| | | rMAL 2 | AAAATTCCCATGCATAAAAAATTATACAAA | | | |
| | | rOVA 1 | ATCTCTTTTGCTATTTTTTAGTATTGGAGA | | | |
| | | rOVA 2 | GGAAAAGGACACATTAATTGTATCCTAGTG | | | |

174

175 ***Plasmodium* species confirmation using reference PCR**

176 A validated reference PCR targeting the *Plasmodium* 18S rRNA genes was used to confirm the
177 *Plasmodium* species using EDTA-whole blood clinical samples, consisting of an initial
178 *Plasmodium* genus (hereafter abbreviated to *P.* genus) nest 1, followed by species-specific nest
179 2 for *P. falciparum*, *P. vivax*, *P. malariae*, and *P. ovale* spp. (23). The *P. knowlesi*- (24) and *P.*
180 *cynomolgi*-specific (25) reference assays used also target 18S rRNA genes. The *P. knowlesi*
181 reference assay has a previously reported high sensitivity (LOD less than 10 parasite genomes)
182 when validated without reverse transcription (RT) against four *P. knowlesi* strains (Malayan,
183 H, Philippine, and Hackeri); specificity was assessed against the major human *Plasmodium*
184 species in addition to other simian *Plasmodium* species present in Southeast Asia including *P.*
185 *cynomolgi*, *P. inui*, and *P. simiovale* (24).

186 **Selection of PCR assays for LOD evaluation**

187 A reverse transcriptase real-time hydrolysis probe (RT-qPCR) assay designed to detect the *P.*
188 *lasmodium* genus was evaluated for its utility in enhancing LOD (**Figure 1A**) (26). Three
189 published *P. knowlesi* species-specific assays, which have not previously had their LODs
190 evaluated using reverse transcription, were compared to the reference assay (**Figure 1B**). Test
191 A is a qPCR assay (27) in current use in the State Public Health Laboratory (Makmal Kesihatan
192 Awam; MKA) Sabah, Malaysia, for routine *P. knowlesi* malaria detection (28). Test B is a
193 hemi-nested PCR targeting the multicopy *SICAvar* genes, previously validated for *P. knowlesi*
194 detection against *P. falciparum*, *P. vivax*, *P. malariae*, and *P. ovale* spp., in addition to clinical
195 *P. knowlesi* isolates from Sarawak, Malaysia (29). Test C is a nested conventional PCR assay
196 targeting 18S rRNA genes specific for *P. knowlesi* that has been robustly validated against *P.*
197 *vivax* and other zoonotic *Plasmodium* species (25).

198 **Limit of detection evaluation for PCR assays with and without RT**

199 The initial microscopy-quantified *Plasmodium* species infected samples collected in
200 DNA/RNA Shield™ were diluted with malaria-negative whole blood (also at the same
201 manufacturer recommended DNA/RNA Shield™ ratio) to prepare individual parasite count
202 dilutions ranging between 20 to 0.0002 parasites/μL. Total nucleic acids from samples at each
203 serial parasite count dilution were then extracted and duplicate aliquots prepared. High-
204 capacity cDNA reverse transcription (Applied Biosystems™, Thermo Fisher Scientific, MA,
205 USA) was then performed on one aliquot from each pair. PCR was performed on the paired
206 aliquots to detect *P. genus* by the qPCR assay (26), followed by species-specific assays for: *P.*
207 *knowlesi* by the reference hemi-nested assay (24) and test assays A, B , C (25,27,29); *P. vivax*
208 (23) and *P. cynomolgi* (25) by reference assays, in addition to the newly designed *P. vivax*
209 primers. The LOD was expressed as the lowest parasite count per microlitre of whole blood
210 detected by an individual PCR assay in both amplification replicates (**Figure 1C**).

211 **Limit of detection of *P. genus* qPCR assay for dried blood spots (DBS) with and without** 212 **RT**

213 The LOD for the *P. genus* qPCR assay was also evaluated using archived DBS from *P. knowlesi*
214 clinical infections with and without RT (**Figure 1C**). DBS were stored individually after
215 collection with dessicant at room temperature unexposed to light before processing. Nucleic
216 acids were extracted from the DBS samples, with 10μl immediately reverse transcribed into
217 cDNA. *P. genus* qPCR was conducted on serial 1:10 DNA and cDNA dilutions with the LOD
218 calculated using the initial enumerated parasitemia divided by the corresponding dilution level.

219 **Evaluation of PCR assay specificity on clinical malaria samples**

220 For the analysis of *P. knowlesi*, *P. falciparum*, and *P. vivax* clinical isolates, in addition to a *P.*
221 *cynomolgi* macaque-derived isolate, all samples were individually tested using the *P. genus*

222 qPCR assay and the three *P. knowlesi*-specific PCR assays. Results were compared against the
223 reference PCR. Specificity for the *P. genus* assay was evaluated for malaria detection (any
224 *Plasmodium* species) versus malaria-negative controls, and for species-specific assays using
225 the corresponding *Plasmodium* species infection versus other *Plasmodium* species and malaria-
226 negative controls combined. Clinical blood samples collected in EDTA likely had RNA
227 degradation upon thawing; therefore, reverse transcription was not performed for this part of
228 the analysis.

229 **Statistical analyses**

230 Parasite counts for each clinical *Plasmodium* species infection were summarised using median
231 and interquartile range (IQR). The median whole blood LOD was calculated with and without
232 reverse transcription for the *P. knowlesi* and *P. vivax* isolates. To calculate the LOD fold-
233 change, the LOD without RT was divided by the LOD with RT. One-way ANOVA was used
234 to test for differences in parasite count distribution across *Plasmodium* species, followed by
235 Student's t-test for pairwise comparisons of log-transformed data. Results of PCR assays
236 evaluated against reference PCR were defined as true positive (TP), false negative (FN), true
237 negative (TN), and false positive (FP), enabling calculation of diagnostic sensitivity
238 (TP/TP+FN) and specificity (TN/TN+FP) with exact binomial 95% confidence intervals. All
239 statistical analyses were performed using Stata version 17.0 (StataCorp, Texas, USA).

240

241 **RESULTS**

242 **Limit of detection of *P. genus* PCR assays**

243 The LOD was performed on *P. knowlesi* (n=4), *P. vivax* (n=4) and *P. cynomolgi* (n=1) whole
244 blood isolates. For the *P. genus* Kamau et al. qPCR assay, without reverse transcription, the
245 median LOD to detect each individual *Plasmodium* species was 2 parasites/ μ L (**Table 2** and

246 **Figure 2A**). With reverse transcription, the assay sensitivity for *P. knowlesi* improved with a
 247 LOD of ≤ 0.0002 parasites/ μL for all four isolates (10,000-fold change). The LOD for both *P.*
 248 *vivax* and *P. cynomolgi* improved to 0.002 parasites/ μL with RT (1,000-fold change); **Figure**
 249 **2B**. In comparison, the reference Snounu *P.* genus assay had a slightly higher LOD for *P. vivax*
 250 and *P. cynomolgi* without RT (0.2 parasites/ μL for both); however, with RT a less pronounced
 251 improvement in LOD was demonstrated at 0.02 and 0.01 parasites/ μL , respectively.

252

253 **Table 2. Limit of detection (LOD) of *Plasmodium* genus and species-specific PCR assays**

254

| PCR assay | Target <i>P.</i> genus/species | Tested species | LOD without RT | LOD with RT | Fold change post RT (x) |
|---------------------|--------------------------------------|-------------------|-------------------|----------------|----------------------------|
| Kamau et al. (26) | <i>P.</i> genus | Pk | 2 | ≤ 0.0002 | 10000 |
| Kamau et al. (26) | <i>P.</i> genus | Pv | 2 | 0.002 | 1000 |
| Kamau et al. (26) | <i>P.</i> genus | Pc | 2 | 0.002 | 1000 |
| Snounou et al. (23) | <i>P.</i> genus | Pk | 2 | 0.0011 | 1818 |
| Snounou et al. (23) | <i>P.</i> genus | Pv | 0.2 | 0.02 | 10 |
| Snounou et al. (23) | <i>P.</i> genus | Pc | 0.2 | 0.01 | 20 |
| Imwong et al. (24) | Pk | Pk | 2 | 0.0007 | 2759 |
| Divis et al. (27) | Pk | Pk | 0.2 | ≤ 0.0002 | 1000 |
| Lee et al. (25) | Pk | Pk | 11 | 11 | No change |
| Lubis et al. (29) | Pk | Pk | 0.11 | 1.1 | 0.1* |
| Snounou et al. (23) | Pv | Pv | 20 | 0.02 | 1000 |
| Snounou et al. (23) | Pv | #Pc | 0.2 | 0.02 | 10 |
| Lee et al. (25) | Pc | Pc | 2 | 0.2 | 10 |

255

256 Abbreviations: *P.* genus = *Plasmodium* genus; Pk = *P. knowlesi*; Pv = *P. vivax*; Pc = *P. cynomolgi*; RT = reverse
 257 transcription

258 LOD is the lowest parasitemia (parasites/ μL) detected by all three replicates for each PCR assay

259 LOD and fold-change post RT are reported as median for *P. knowlesi* (n=4)

260 *There was no improvement in LOD by Lubis PCR assay (Test B) after RT

261 #*P. vivax* assay cross-reacts with *P. cynomolgi*

262

263 **Limit of detection of *Plasmodium* species-specific PCR assays**

264 For the *P. knowlesi*-specific assays, the median LOD without and with reverse transcription
265 was 2 and 0.0007 parasites/ μ L, respectively, for the Imwong et al. reference assay (2759-fold
266 change); 0.2 and 0.0002 parasites/ μ L, respectively, for Test A (1000-fold); 0.11 and 1.1
267 parasites/ μ L, respectively, for Test B (no improvement); and 11 parasites/ μ L for both (no
268 change) for Test C (**Table 2 and Figure 2A**).

269 Without reverse transcription, the LODs using species-specific reference assays were 2
270 parasites/ μ L for *P. cynomolgi* and 20 parasites/ μ L for *P. vivax*. With reverse transcription, the
271 LODs were 0.2 (10-fold change) and 0.02 (1000-fold change) for *P. cynomolgi* and *P. vivax*
272 respectively. However, additional testing of the *P. cynomolgi* isolate using the reference *P.*
273 *vivax*-targeted rVIV1/rVIV2 primers (23) amplified this target from the macaque-origin *P.*
274 *cynomolgi* infection both without (0.2 parasites/ μ L) and with reverse transcription (0.02
275 parasites/ μ L), producing a false-positive *P. vivax* result (**Table 2 and Figure 2B**).

276 The LOD with reverse transcription of the *P.* genus assay was comparable to the LOD of the
277 best performing species-specific assay for *P. knowlesi* detection (≤ 0.0002 parasites/ μ L for
278 both). In contrast, the *P.* genus assay had a superior LOD compared to the reference species-
279 specific assays for *P. vivax* (0.002 vs 0.02 parasites/ μ L respectively) and *P. cynomolgi* (0.002
280 vs 0.2 parasites/ μ L respectively).

281 **Limit of detection of *P.* genus qPCR for dried blood spots (DBS)**

282 The median LOD between DNA and cDNA generated from dried blood spots (DBS) for 4 *P.*
283 *knowlesi* extracted samples collected 8 months prior to evaluation of the *P.* genus Kamau 2011
284 assay without and with RT was 19.86 and 0.08 parasites/ μ L, respectively (249-fold change);

285 **Table 3.** Archived DBS samples (n=12) collected more than 6 years (up to 11 years) prior to
286 extraction demonstrated a similar LOD with and without RT (median 20 parasites/ μ L).

287

288 **Table 3. Limit of detection of the 18S rRNA *P. genus* qPCR assay for *P. knowlesi* dried**
 289 **blood spot samples**

290

| Species evaluated | Initial parasitemia (μL) | Time from DBS collection | LOD without RT (DNA) | LOD with RT (cDNA) | Fold change post RT (x) |
|-------------------------------------|---------------------------------------|--------------------------|----------------------|--------------------|-------------------------|
| Recent samples | | | | | |
| Pk | 2663 | 8 months | 26.6 | 0.027 | 1000 |
| Pk | 1377 | 8 months | 13.8 | 0.138 | 100 |
| Pk | 198 | 8 months | 2.0 | 0.020 | 100 |
| Pk | 26 | 8 months | 26.0 | 2.600 | 10 |
| <i>Median</i> | 788 | 8 months | 19.9 | 0.08 | 100 |
| <i>(IQR)</i> | (198-1377) | | (13.8-26.0) | (0.03-0.14) | (100-100) |
| Archived samples[†] | | | | | |
| Pk (<i>N</i> =12) | 372 (177-2604) | 11 years (8-11)* | 20 (2.5-20) | 20 (2-20) | 1 (1-1.25) |

291

292 Limit of detection (parasites/ μL) with and without RT of each *P. knowlesi* isolate was conducted in duplicate for
 293 each target species at each dilution level.

294 [†] Results are median (IQR)

295 *Range from 6 to 11 years

296 Pk = *P. knowlesi*

297

298

299

300 **Specificity of *P. genus* and individual *Plasmodium* species PCR assays**

301 A total of 239 samples were included in the clinical evaluation of test specificity without RT,

302 consisting of 96 *P. knowlesi*, 50 *P. vivax*, 44 *P. falciparum*, and 1 *P. cynomolgi* infected

303 samples, and 48 malaria-negative controls. The median parasitemia was 1,957/ μL (IQR 261-

304 5,762; range 27-210,100 parasites/ μL) for *P. knowlesi*, 3,246/ μL (IQR 1,588-7,306; range 77-

305 20,064 parasites/ μL) for *P. vivax*, and 14,015/ μL (IQR 2,193-33,413; range 34-297,000

306 parasites/ μL) for *P. falciparum*.

307 The *P. genus* qPCR screening assay was both 100% specific and sensitive for the detection of

308 *Plasmodium* species overall compared to the reference PCR, with all 48 samples from

309 uninfected controls confirmed as malaria-negative.

310 *P. knowlesi*- assays for Tests A (27) and B (29) correctly identified all 96 *P. knowlesi* and 95
311 non-*P. knowlesi* samples, resulting in 100% specificity and sensitivity. Test C (25) was
312 negative for a single *P. knowlesi* isolate with a parasite count of 1,535 parasites/ μ L, resulting
313 in 99% (95% CI 94.3-100.0) sensitivity and 100% specificity. The reference assays for *P.*
314 *falciparum* and *P. vivax* (23), and for *P. cynomolgi* (25) were negative for all *P. knowlesi*
315 clinical isolates tested (**Table 2**).

316

317

318 **DISCUSSION**

319

320 Malaria-susceptible countries in most of Southeast Asia, including those approaching or
321 achieving WHO elimination of major human-only *Plasmodium* species, remain at-risk for
322 zoonotic malaria transmission (30,31). Understanding regional heterogeneity in *P. knowlesi*
323 transmission intensity and disease morbidity will require the selective deployment of highly
324 sensitive and specific molecular detection tools for both diagnostic and surveillance purposes
325 (19). Our major finding demonstrated that the use of a reverse-transcription step after extraction
326 of preserved total nucleic acids in clinical samples considerably improves the limit of detection
327 of both the selected *P. genus* RT-qPCR screening assay, and *P. knowlesi*-specific assays
328 (reference and Test A; both >1000-fold) by additionally amplifying ribosomal RNA sequences.
329 The enhanced limit of detection was consistent across both field-stable DNA/RNA Shield™
330 samples and to a lesser degree in recent (although not older) dried blood spots. The second key
331 finding of this study was the excellent performance of the *P. genus* screening assay, originally
332 developed and validated for use in an African context for *P. falciparum* (26), to detect
333 previously unvalidated species including *P. knowlesi*, *P. cynomolgi* and *P. vivax*. The
334 specificity of each of the *P. knowlesi*-targeted assays to exclude *P. cynomolgi* and non-zoonotic

335 *Plasmodium* species was confirmed to be excellent. Together these findings highlight the
336 potential utility of incorporating these assays in a molecular surveillance approach to detect
337 both human and zoonotic *Plasmodium* species that are well below the reported parasite count
338 detection limits for current conventional PCR, loop-mediated isothermal amplification,
339 microscopy or parasite lactate-dehydrogenase-based rapid diagnostic tests (19).

340

341 The community-based detection of submicroscopic *P. knowlesi* and *P. cynomolgi* infections,
342 both symptomatic or asymptomatic, requires ultrasensitive molecular tools to understand the
343 true extent of population-level transmission (19). Recent studies in areas of both Peninsular
344 Malaysia and the East Malaysian state of Sarawak have reported human infections in local
345 communities living in or near forested areas with other macaque malaria species, including *P.*
346 *inui*, *P. coatneyi*, *P. fieldi* and possibly *P. simiovale*, in addition to *P. knowlesi* and *P. cynomolgi*
347 (32). It is unclear whether or to what extent these low-level zoonotic infections may facilitate
348 onward transmission to humans (33,34), as occurs with low parasitemia *P. falciparum* and *P.*
349 *vivax* infections (35,36), although sustained human-to-human transmission of *P. knowlesi* has
350 not been evident to date(25,37).

351

352 The selection of the major RT-qPCR *P.* genus screening assay aimed to maximise the detection
353 limits for low-level zoonotic *Plasmodium* species infections due to the known high multicopy
354 number (5 to 10 copies per genome depending on the *Plasmodium* species) of the 18S rRNA
355 target (38), in addition to amplification of both the A- and S- type genes and their RNA
356 transcripts (26). The excellent LOD demonstrated with the *P.* genus RT-qPCR assay in the
357 current study of <0.0002 parasites/ μ L for *P. knowlesi* detection is consistent with a previously
358 reported extremely low LOD of ~0.0004 parasites/ μ L for clinical *P. falciparum* samples (26).
359 DNA-concentrated packed red blood cell samples have been demonstrated to further improve

360 sensitivity for *P. falciparum* detection in population-based malaria prevalence surveys in
361 elimination areas of Thailand (39). Comparable performance to this *P. genus* RT-qPCR assay
362 was reported with a separately established ultrasensitive quantitative PCR method (uPCR) with
363 a limit of detection of 0.022 parasites/ μ L (39), however, a major advantage of the reverse
364 transcriptase qPCR assay is the requirement for comparatively lower blood volumes (18).
365 Interestingly, in the current study the conventional PCR *P. genus* reference assay also
366 demonstrated a large increase in analytical sensitivity after reverse transcription (~1800-fold)
367 and may provide a more cost-effective option compared to qPCR for surveillance purposes.
368 DNA/RNA ShieldTM was selected as the preferred blood collection preservation method over
369 other media due to its reported ability to stabilise DNA/RNA at ambient temperatures in field
370 settings and compatibility with most DNA and RNA purification kits for subsequent high-
371 throughput workflows including reverse transcription (40).

372

373 To date, only a few studies have incorporated reverse transcription in the molecular detection
374 of *Plasmodium* species (41,42). The reverse transcription step in the present study improved
375 the analytical sensitivity of our selected assays to detect zoonotic *P. knowlesi*, *P. cynomolgi*
376 and other human malaria infections by up to 10,000-fold (*Plasmodium* genus), 2759-fold (*P.*
377 *knowlesi*), 1000-fold (*P. vivax*) and 10-fold (*P. cynomolgi*), respectively. The *P. knowlesi*-
378 specific hemi-nested reference assay with reverse transcription demonstrated a comparable
379 limit of detection to the qPCR Test A (which requires an expensive real-time hydrolysis probe),
380 and was superior to both Test B targeting *SICAvar* and Test C targeting the 18S rRNA gene.
381 Without reverse transcription, the lowest limit of detection for *P. knowlesi* was seen with Test
382 B, suggesting that the multiple chromosomal copies of the variant antigen *SICAvar* provide
383 equivalent or better signal amplification than the detection of transcripts from whichever of
384 these gene copies is activated in any particular parasite cell in the peripheral blood. Constraints

385 on the widespread use of reverse transcription include the additional cost, laboratory time, and
386 the usual rapid degradation of RNA molecules in field or laboratory settings. However, the
387 degree of RNA amplification with reverse transcription was aided in our study by collecting
388 blood samples in room-temperature stable RNA preservation media suitable for field-based
389 surveillance, which also allows other potential downstream pathophysiological or
390 transcriptomic analyses dependent on pathogen or host RNA transcripts.

391

392 The low reported limit of detection for the RT-qPCR *P. genus* assay conducted on DBS in this
393 study (~0.08 parasites/ μ L with reverse transcription) suggests this type of sample collection
394 would also enable the identification of a large proportion of submicroscopic and/or
395 asymptomatic infections. DBS collection is logistically a more feasible, inexpensive and
396 acceptable option particularly for asymptomatic or younger participants (given the need for
397 fingerprick blood collection rather than venepuncture) for large-scale malaria surveillance
398 surveys. However, the reverse transcription step only improved the LOD in DBS samples that
399 were collected within 8 months; older DBS stored in recommended conditions for more than 6
400 years did not provide any improvement in the LOD with and without RT due to likely
401 degradation of RNA. Regardless, the *P. genus* LOD of around 2 to 20 parasites/ μ L without RT
402 for DBS samples remains encouraging as a first-line option for surveillance screening purposes,
403 although the use of DBS would require further evaluation with *Plasmodium* species-specific
404 PCR assay differentiation.

405

406 The current study confirmed previous findings detailing cross-reactivity between the nested
407 PCR primers for *P. vivax* (rVIV1/rVIV2) with *P. cynomolgi* (13). A single mismatch in the 30
408 nucleotides of the rVIV2 primer sequences was reported to cross-amplify *P. cynomolgi* isolates
409 (13). The nested *P. vivax*-specific assay using the same primers rVIV1/rVIV2 designed to

410 target the 18S rRNA gene also amplified *P. cynomolgi* in our LOD analysis (23). The separate
411 *P. cynomolgi* primers remained highly specific and did not erroneously amplify *P. vivax* or
412 other closely related *Plasmodium* species DNA. In practice, the concurrent use of both assays
413 would enable accurate identification of a *P. vivax* mono-infection, however, this approach
414 would not be able to differentiate a *P. vivax/P. cynomolgi* co-infection from a *P. cynomolgi*
415 mono-infection. Mis-identification of symptomatic *P. cynomolgi* infections as *P. vivax* would
416 not result in inappropriate treatment, given both have a latent hypnozoite liver life-stage
417 requiring additional radical cure with primaquine. Most other commonly used single-round
418 multiplex (43) and qPCR assays (44) containing *P. vivax*-specific targets have also not been
419 validated against isolates of *P. cynomolgi* or other closely related macaque *Plasmodium*
420 species. However, a variety of sequencing approaches of targeted gene amplicons including
421 mitochondrial COX1 and cytochrome b, *SICAvar* and SSU 18S rRNA followed by sequencing
422 and reference alignment have been used to confirm unknown or mixed zoonotic *Plasmodium*
423 species infections following initial ambiguous PCR results (45,46).

424

425 A limitation of this study was the inability to validate submicroscopic clinical *P. knowlesi*
426 infections and other zoonotic species such as *P. fieldi*, *P. inui* and *P. coatneyi* for which samples
427 were not available. Due to the increasing number of published *P. knowlesi* assays, we were not
428 able to evaluate other *P. knowlesi* assays of possibly comparable performance within our
429 selected workflow. We were also unable to evaluate mixed infections of *P. knowlesi*, *P. vivax*
430 and *P. falciparum* despite these cases being reported in certain areas such as Indonesia (29)
431 and Vietnam (47). Due to sample availability, we were also restricted to only a single *P.*
432 *cynomolgi* sample to determine the LOD of the *P. cynomolgi*-specific assay (25). The
433 discrepancy between the LOD for the *P.* genus qPCR screening assay and the species-specific

434 assay for *P. cynomolgi* detection may mean a proportion of very low-level *P. cynomolgi*
435 infections are unable to be identified beyond a *P.* genus threshold using the current protocol.

436

437 **CONCLUSIONS**

438 The *Plasmodium* genus reverse transcriptase qPCR assay can provide highly sensitive
439 screening for zoonotic and human malaria, including for submicroscopic infections in at-risk
440 populations in endemic areas. The use of this molecular surveillance protocol for either whole
441 blood or DBS collected samples in understudied areas of Southeast Asia would enable
442 improved understanding of the regional disease burden and transmission dynamics of zoonotic
443 malaria. Enhanced molecular tools and future iterative improvements to conventional
444 surveillance protocols are especially critical as Southeast Asia continues to exert considerable
445 public health efforts towards human malaria elimination despite the challenge of additional
446 zoonotic *Plasmodium* species infections at an expanding human-animal-interface.

447

448 **DECLARATIONS**

449 **Ethics approval and consent to participate**

450 Sample collection and diagnostic evaluation were approved as part of prospective malaria
451 studies by the Medical Research and Ethics Committee (MREC), Ministry of Health Malaysia
452 (NMRR-10-754-6684, NMRR-19-4109-52172 and NMRR-19-3229-49967), Universitas
453 Sumatera Utara, Indonesia (#723/KEP/USU/2021) and by the Menzies School of Health
454 Research, Australia (HREC-2010-1431 and HREC-2022-4417) in accordance with all
455 applicable Federal and other regulations governing the protection of human subject research.

456 **Competing interests**

457 The authors declare that they have no competing interests.

458 **Funding**

459 This work was supported by the ZOOMAL project, funded through the Australian Centre for
460 International Agricultural Research and Indo-Pacific Centre for Health Security, DFAT,
461 Australian Government (#LS-2019-116), the National Institutes of Health, USA
462 (#R01AI160457-01), and DOD-DHA-Global Emerging Infections Surveillance program
463 project P0097_22_N2.). Funding support was also through the National Health and Medical
464 Research Council, Australia (Grant Numbers #1037304 and #1045156, fellowship to NMA
465 [#1042072], Emerging Leadership 2 Investigator Grants to MJG [#2017436] and BEB
466 [#2016792]), and the Ministry of Health, Malaysia (#BP00500/117/1002) awarded to GSR.

467 **Disclaimers**

468 The views expressed are those of the author(s) and do not necessarily reflect the official policy
469 or position of the Department of the Navy, Department of Defense, nor the U.S. Government.
470 Copyright Statement: NC (LCDR, MSC, USN) & AL (CAPT, MC, USN) are military service
471 members and employees of the U.S. Government. This work was prepared as part of their
472 official duties at U.S. Naval Medical Research Unit INDO PACIFIC. Title 17 U.S.C. §105
473 provides that ‘Copyright protection under this title is not available for any work of the United
474 States Government.’ Title 17 U.S.C. §101 defines a U.S. Government work as a work prepared
475 by a military service member or employee of the U.S. Government as part of that person’s
476 official duties.

477 **Authors' contributions**

478 Conceptualization, funding acquisition, methodology and resources: MG, NA, KB, KP, INL,
479 RN, CP, NC, AL. Sample processing and conduct of assays: KP and PK. Data analyses: KB,
480 MG, KP. Initial manuscript preparation and writing: KB, MG. All authors read and approved
481 the final manuscript.

482 **Acknowledgements**

483 We thank the study participants, the IDSKKS malaria research team (Mohd Rizan Osman,
484 Danshy Alaza, Azielia Elastiqaq, Sitti Saimah binti Sakam), and Bruce Russell of the
485 Department of Microbiology & Immunology, University of Otago, Dunedin, New Zealand, for
486 providing the *P. cynomolgi* isolate. We thank the Director General of Health Malaysia for the
487 permission to publish this article.

488

489

490

491 **REFERENCES**

492

493 1. Moyes CL, Henry AJ, Golding N, Huang Z, Singh B, Baird JK, et al. Defining the
494 Geographical Range of the *Plasmodium knowlesi* Reservoir. PLoS Neglected Trop Dis.
495 2014;8(3):e2780.

496 2. Cuenca PR, Key S, Jumail A, Surendra H, Ferguson HM, Drakeley C, et al. Epidemiology
497 of the zoonotic malaria *Plasmodium knowlesi* in changing landscapes. Adv Parasit.
498 2021;113:225–86.

499 3. Barber BE, William T, Grigg MJ, Menon J, Auburn S, Marfurt J, et al. A Prospective
500 Comparative Study of Knowlesi, Falciparum, and Vivax Malaria in Sabah, Malaysia: High

- 501 Proportion With Severe Disease From *Plasmodium knowlesi* and *Plasmodium vivax* But No
502 Mortality With Early Referral and Artesunate Therapy. Clin Infect Dis. 2013 Feb;56(3):383–
503 97.
- 504 4. Daneshvar C, Davis TME, Cox-Singh J, Rafa’ee MZ, Zakaria SK, Divis PCS, et al.
505 Clinical and laboratory features of human *Plasmodium knowlesi* infection. Clinical Infectious
506 Diseases [Internet]. 2009 Sep 15;49(6):852–60. Available from:
507 <http://cid.oxfordjournals.org/lookup/doi/10.1086/605439>
- 508 5. Grigg MJ, William T, Barber BE, Rajahram GS, Menon J, Schimann E, et al. Age-Related
509 Clinical Spectrum of *Plasmodium knowlesi* Malaria and Predictors of Severity. Clin Infect
510 Dis. 2018 Aug 1;67(3):350–9.
- 511 6. Kotepui M, Masangkay FR, Kotepui KU, Milanez GDJ. Preliminary review on the
512 prevalence, proportion, geographical distribution, and characteristics of naturally acquired
513 *Plasmodium cynomolgi* infection in mosquitoes, macaques, and humans: a systematic review
514 and meta-analysis. BMC Infect Dis. 2021;21(1):259.
- 515 7. Grigg MJ, Lubis IN, Tetteh KKA, Barber BE, William T, Rajahram GS, et al. *Plasmodium*
516 *knowlesi* detection methods for human infections—Diagnosis and surveillance. In: Advances
517 in Parasitology [Internet]. Academic Press; 2021. p. 77–130. (Drakeley C, editor. Advances
518 in Parasitology; vol. 113). Available from:
519 <https://www.sciencedirect.com/science/article/pii/S0065308X21000270>
- 520 8. WHO. Malaria Policy Advisory Group (MPAG) meeting (March 2022) [Internet]. 2022
521 Apr. Available from: <https://www.who.int/publications/i/item/9789240048430>

- 522 9. Barber BE, William T, Grigg MJ, Yeo TW, Anstey NM. Limitations of microscopy to
523 differentiate *Plasmodium* species in a region co-endemic for *Plasmodium falciparum*,
524 *Plasmodium vivax* and *Plasmodium knowlesi*. *Malaria J.* 2013 Jan 8;12(1):8.
- 525 10. Lee KS, Cox-Singh J, Singh B. Morphological features and differential counts of
526 *Plasmodium knowlesi* parasites in naturally acquired human infections. *Malaria J.* 2009 Apr
527 23;8(1):73–73.
- 528 11. Coutrier FN, Tirta YK, Cotter C, Zarlinda I, González IJ, Schwartz A, et al. Laboratory
529 challenges of *Plasmodium* species identification in Aceh Province, Indonesia, a malaria
530 elimination setting with newly discovered *P. knowlesi*. *PLoS Neglected Trop Dis* [Internet].
531 2018;12(11):e0006924. Available from: <https://doi.org/10.1371/journal.pntd.0006924>
- 532 12. Hartmeyer GN, Stensvold CR, Fabricius T, Marmolin ES, Hoegh SV, Nielsen HV, et al.
533 *Plasmodium cynomolgi* as Cause of Malaria in Tourist to Southeast Asia, 2018. *Emerging*
534 *infectious diseases.* 2019 Oct;25(10):1936–9.
- 535 13. Ta TH, Hisam S, Lanza M, Jiram AI, Ismail N, Rubio JM. First case of a naturally
536 acquired human infection with *Plasmodium cynomolgi*. *Malaria J.* 2014;13(1):68.
- 537 14. Barber BE, William T, Grigg MJ, Piera K, Yeo TW, Anstey NM. Evaluation of the
538 Sensitivity of a pLDH-Based and an Aldolase-Based Rapid Diagnostic Test for Diagnosis of
539 Uncomplicated and Severe Malaria Caused by PCR-Confirmed *Plasmodium knowlesi*,
540 *Plasmodium falciparum*, and *Plasmodium vivax*. *J Clin Microbiol.* 2013 Apr 1;51(4):1118–
541 23.
- 542 15. Grigg MJ, William T, Barber BE, Parameswaran U, Bird E, Piera K, et al. Combining
543 Parasite Lactate Dehydrogenase-Based and Histidine-Rich Protein 2-Based Rapid Tests To

- 544 Improve Specificity for Diagnosis of Malaria Due to *Plasmodium knowlesi* and Other
545 *Plasmodium* Species in Sabah, Malaysia. J Clin Microbiol. 2014 Apr;52(6):2053–60.
- 546 16. Tan AF, Sakam SS binti, Rajahram GS, William T, Isnadi MFAR, Daim S, et al.
547 Diagnostic accuracy and limit of detection of ten malaria parasite lactate dehydrogenase-
548 based rapid tests for *Plasmodium knowlesi* and *P. falciparum*. Front Cell Infect Microbiol
549 [Internet]. 2022;12:1023219. Available from:
550 <https://www.frontiersin.org/articles/10.3389/fcimb.2022.1023219>
- 551 17. Lee PC, Chong ETJ, Anderios F, Lim YA, Chew CH, Chua KH. Molecular detection of
552 human *Plasmodium* species in Sabah using PlasmoNex™ multiplex PCR and hydrolysis
553 probes real-time PCR. Malaria Journal. 2015 Jan 28;14(1):28.
- 554 18. Christensen P, Bozdech Z, Watthanaworawit W, Renia L, Malleret B, Ling C, et al.
555 Reverse transcription PCR to detect low density malaria infections. Wellcome Open Res.
556 2021;6:39.
- 557 19. Anstey NM, Grigg MJ. Zoonotic Malaria: The Better You Look, the More You Find. J
558 Infect Dis [Internet]. 2019;219(5):679–81. Available from:
559 <https://www.ncbi.nlm.nih.gov/pubmed/30295775>
- 560 20. Christensen P, Racklyeft A, Ward KE, Matheson J, Suwanarusk R, Chua ACY, et al.
561 Improving in vitro continuous cultivation of *Plasmodium cynomolgi*, a model for *P. vivax*.
562 Parasitol Int. 2022;89:102589.
- 563 21. WHO. Microscopy for the detection, identification and quantification of malaria parasites
564 on stained thick and thin blood films in research settings. World Health Organisation
565 [Internet]. 2015; Available from: <https://apps.who.int/iris/handle/10665/163782>

- 566 22. Zainabadi K, Adams M, Han ZY, Lwin HW, Han KT, Ouattara A, et al. A novel method
567 for extracting nucleic acids from dried blood spots for ultrasensitive detection of low-density
568 *Plasmodium falciparum* and *Plasmodium vivax* infections. *Malar J* [Internet].
569 2017;16(1):377. Available from: <https://doi.org/10.1186/s12936-017-2025-3>
- 570 23. Snounou G, Viriyakosol S, Jarra W, Thaithong S, Brown KN. Identification of the four
571 human malaria parasite species in field samples by the polymerase chain reaction and
572 detection of a high prevalence of mixed infections. *Molecular and biochemical parasitology*.
573 1993 Apr;58(2):283–92.
- 574 24. Imwong M, Tanomsing N, Pukrittayakamee S, Day NPJ, White NJ, Snounou G. Spurious
575 Amplification of a *Plasmodium vivax* Small-Subunit RNA Gene by Use of Primers Currently
576 Used To Detect *P. knowlesi*. *J Clin Microbiol* [Internet]. 2009;47(12):4173–5. Available
577 from: <https://www.ncbi.nlm.nih.gov/pubmed/19812279>
- 578 25. Lee KS, Divis PCS, Zakaria SK, Matusop A, Julin RA, Conway DJ, et al. *Plasmodium*
579 *knowlesi*: Reservoir Hosts and Tracking the Emergence in Humans and Macaques. Kazura
580 JW, editor. *PLoS Pathog*. 2011;7(4):e1002015.
- 581 26. Kamau E, Tolbert LS, Kortepeter L, Pratt M, Nyakoe N, Muringo L, et al. Development
582 of a Highly Sensitive Genus-Specific Quantitative Reverse Transcriptase Real-Time PCR
583 Assay for Detection and Quantitation of *Plasmodium* by Amplifying RNA and DNA of the
584 18S rRNA Genes. *J Clin Microbiol* [Internet]. 2011;49(8):2946–53. Available from:
585 <https://www.ncbi.nlm.nih.gov/pubmed/21653767>
- 586 27. Divis PC, Shokoples SE, Singh B, Yanow SK. A TaqMan real-time PCR assay for the
587 detection and quantitation of *Plasmodium knowlesi*. *Malar J* [Internet]. 2010;9(1):344.
588 Available from: <https://www.ncbi.nlm.nih.gov/pubmed/21114872>

- 589 28. Nuin NA, Tan AF, Lew YL, Piera KA, William T, Rajahram GS, et al. Comparative
590 evaluation of two commercial real-time PCR kits (QuantiFast™ and abTES™) for the
591 detection of *Plasmodium knowlesi* and other *Plasmodium* species in Sabah, Malaysia.
592 *Malaria J.* 2020 Aug;19(1):306.
- 593 29. Lubis IND, Wijaya H, Lubis M, Lubis CP, Divis PCS, Beshir KB, et al. Contribution of
594 *Plasmodium knowlesi* to Multispecies Human Malaria Infections in North Sumatera,
595 Indonesia. *J Infect Dis* [Internet]. 2017;215(7):1148–55. Available from:
596 <https://www.ncbi.nlm.nih.gov/pubmed/28201638>
- 597 30. Shearer FM, Huang Z, Weiss DJ, Wiebe A, Gibson HS, Battle KE, et al. Estimating
598 Geographical Variation in the Risk of Zoonotic *Plasmodium knowlesi* Infection in Countries
599 Eliminating Malaria. Churcher TS, editor. *PLoS Neglected Trop Dis* [Internet].
600 2016;10(8):e0004915. Available from: <https://doi.org/10.1371/journal.pntd.0004915>
- 601 31. Tobin RJ, Harrison LE, Tully MK, Lubis IND, Noviyanti R, Anstey NM, et al. Updating
602 estimates of *Plasmodium knowlesi* malaria risk in response to changing land use patterns
603 across Southeast Asia. *PLOS Neglected Trop Dis.* 2024;18(1):e0011570.
- 604 32. Yap NJ, Hossain H, Nada-Raja T, Ngui R, Muslim A, Hoh BP, et al. Natural Human
605 Infections with *Plasmodium cynomolgi*, *P. inui*, and 4 other Simian Malaria Parasites,
606 Malaysia - Volume 27, Number 8—August 2021 - *Emerging Infectious Diseases journal* -
607 CDC. *Emerg Infect Dis* [Internet]. 2021;27(8):2187–91. Available from:
608 <https://www.ncbi.nlm.nih.gov/pubmed/34287122>
- 609 33. Fornace KM, Nuin NA, Betson M, Grigg MJ, William T, Anstey NM, et al.
610 Asymptomatic and Submicroscopic Carriage of *Plasmodium knowlesi* Malaria in Household

- 611 and Community Members of Clinical Cases in Sabah, Malaysia. *J Infect Dis.* 2016 Mar
612 1;213(5):784–7.
- 613 34. Noordin NR, Lee PY, Bukhari FDM, Fong MY, Hamid MHA, Jelip J, et al. Prevalence of
614 Asymptomatic and/or Low-Density Malaria Infection among High-Risk Groups in Peninsular
615 Malaysia. *Am J Trop Med Hyg.* 2020;103(3):1107–10.
- 616 35. Schneider P, Bousema JT, Gouagna LC, Otieno S, Vegte-Bolmer MV de, Omar SA, et al.
617 Submicroscopic *Plasmodium falciparum* gametocyte densities frequently result in mosquito
618 infection. *American Journal of Tropical Medicine and Hygiene.* 2007;76(3):470–4.
- 619 36. Almeida ACG, Kuehn A, Castro AJM, Vitor-Silva S, Figueiredo EFG, Brasil LW, et al.
620 High proportions of asymptomatic and submicroscopic *Plasmodium vivax* infections in a
621 peri-urban area of low transmission in the Brazilian Amazon. *Parasites Vectors.*
622 2018;11(1):194.
- 623 37. Fornace KM, Topazian HM, Routledge I, Asyraf S, Jelip J, Lindblade KA, et al. No
624 evidence of sustained nonzoonotic *Plasmodium knowlesi* transmission in Malaysia from
625 modelling malaria case data. *Nat Commun.* 2023;14(1):2945.
- 626 38. Mercereau-Puijalon O, Barale JC, Bischoff E. Three multigene families in *Plasmodium*
627 parasites: facts and questions. *Int J Parasitol* [Internet]. 2002;32(11):1323–44. Available
628 from: <https://www.sciencedirect.com/science/article/pii/S002075190200111X>
- 629 39. Imwong M, Hanchana S, Malleret B, Renia L, Day NPJ, Dondorp A, et al. High-
630 throughput ultrasensitive molecular techniques for quantifying low-density malaria
631 parasitemias. Gilligan PH, editor. *Journal of clinical microbiology* [Internet]. 2014

632 Sep;52(9):3303–9. Available from:

633 <https://www.ncbi.nlm.nih.gov/pmc/articles/PMC4313154/pdf/zjm3303.pdf>

634 40. Eberhardt E, Hendrickx R, Kerkhof MV den, Monnerat S, Alves F, Hendrickx S, et al.

635 Comparative evaluation of nucleic acid stabilizing reagents for RNA- and DNA-based

636 Leishmania detection in blood as proxy for visceral burdens. *J Microbiol Methods*.

637 2020;173:105935.

638 41. Adams M, Joshi SN, Mbambo G, Mu AZ, Roemmich SM, Shrestha B, et al. An

639 ultrasensitive reverse transcription polymerase chain reaction assay to detect asymptomatic

640 low-density *Plasmodium falciparum* and *Plasmodium vivax* infections in small volume blood

641 samples. *Malar J*. 2015 Dec 23;14(1):520.

642 42. Bousema T, Banman SL, Taylor BJ, Rijpma SR, Morlais I, Yanow SK, et al. A Direct

643 from Blood Reverse Transcriptase Polymerase Chain Reaction Assay for Monitoring

644 *Falciparum* Malaria Parasite Transmission in Elimination Settings. *Am J Trop Med Hyg*.

645 2017;97(2):533–43.

646 43. Padley D, Moody AH, Chiodini PL, Saldanha J. Use of a rapid, single-round, multiplex

647 PCR to detect malarial parasites and identify the species present. *Ann Trop Med Parasitol*

648 [Internet]. 2003;97(2):131–7. Available from: <https://doi.org/10.1179/000349803125002977>

649 44. Rougemont M, Saanen MV, Sahli R, Hinrikson HP, Bille J, Jaton K. Detection of Four

650 *Plasmodium* Species in Blood from Humans by 18S rRNA Gene Subunit-Based and Species-

651 Specific Real-Time PCR Assays. *J Clin Microbiol* [Internet]. 2004;42(12):5636–43.

652 Available from: <https://journals.asm.org/doi/abs/10.1128/JCM.42.12.5636-5643.2004>

- 653 45. Imwong M, Madmanee W, Suwannasin K, Kunasol C, Peto TJ, Tripura R, et al.
654 Asymptomatic Natural Human Infections With the Simian Malaria Parasites *Plasmodium*
655 *cynomolgi* and *Plasmodium knowlesi*. J Infect Dis [Internet]. 2019;219(5):695–702. Available
656 from: <https://www.ncbi.nlm.nih.gov/pubmed/30295822>
- 657 46. Putaporntip C, Kuamsab N, Seethamchai S, Pattanawong U, Rojrung R, Yanmanee S, et
658 al. Cryptic *Plasmodium inui* and *Plasmodium fieldi* Infections Among Symptomatic Malaria
659 Patients in Thailand. Clin Infect Dis. 2021;75(5):805–12.
- 660 47. Marchand RP, Culleton R, Maeno Y, Quang NT, Nakazawa S. Co-infections of
661 *Plasmodium knowlesi*, *P. falciparum*, and *P. vivax* among Humans and *Anopheles dirus*
662 Mosquitoes, Southern Vietnam - Volume 17, Number 7—July 2011 - Emerging Infectious
663 Diseases journal - CDC. Emerg Infect Dis. 2011;17(7):1232–9.
- 664
- 665
- 666
- 667
- 668
- 669

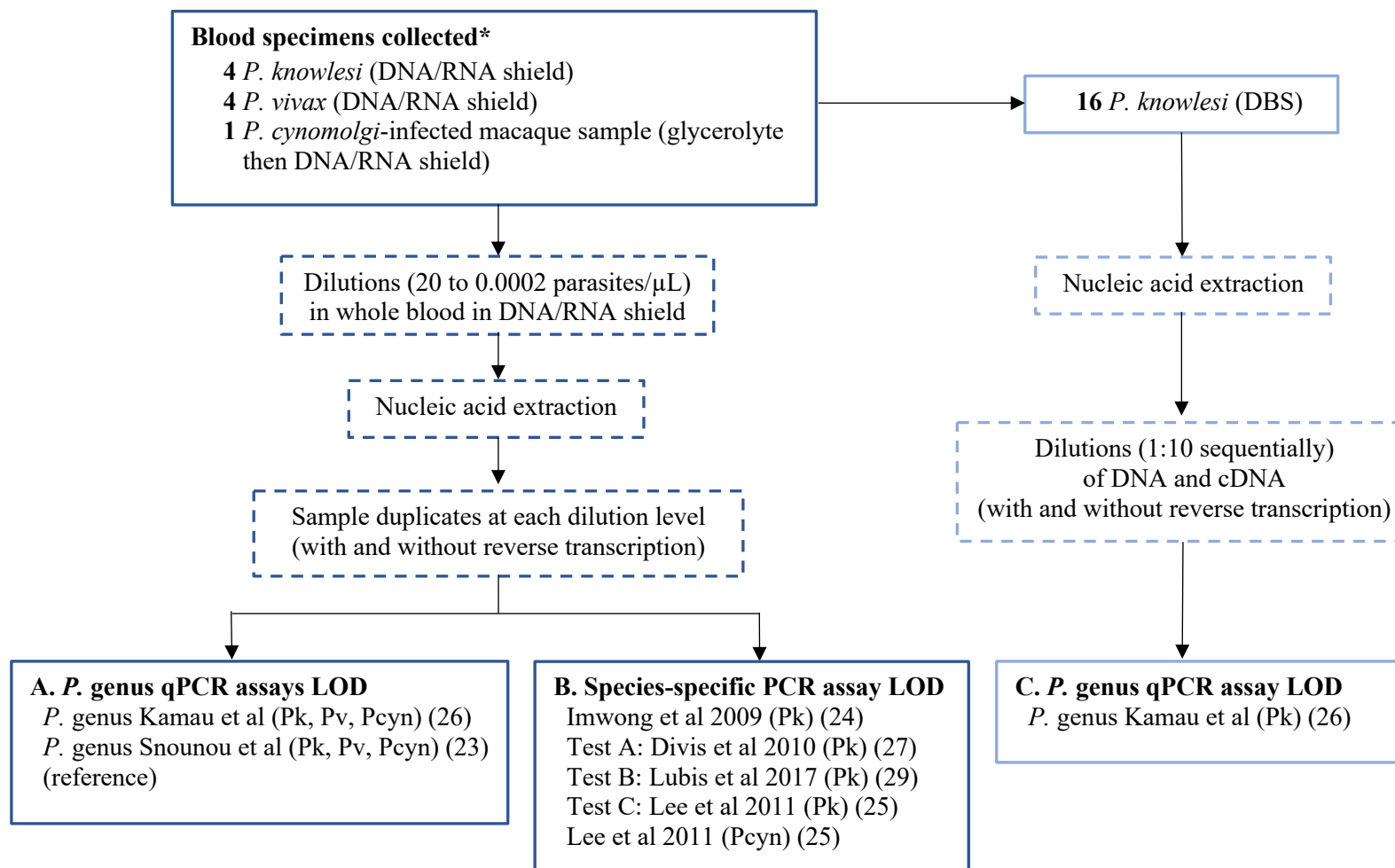


Figure 1. Limit of detection workflow for (A) *P. genus*, (B) *Plasmodium* species-specific, and (C) *P. genus* dried blood spot PCR assays

Abbreviations: DBS = dried blood spot; LOD = limit of detection; qPCR = real-time quantitative PCR; Pk = *P. knowlesi*; Pf = *P. falciparum*, Pv = *P. vivax*; Pcyn = *P. cynomolgi*; RT = reverse transcription

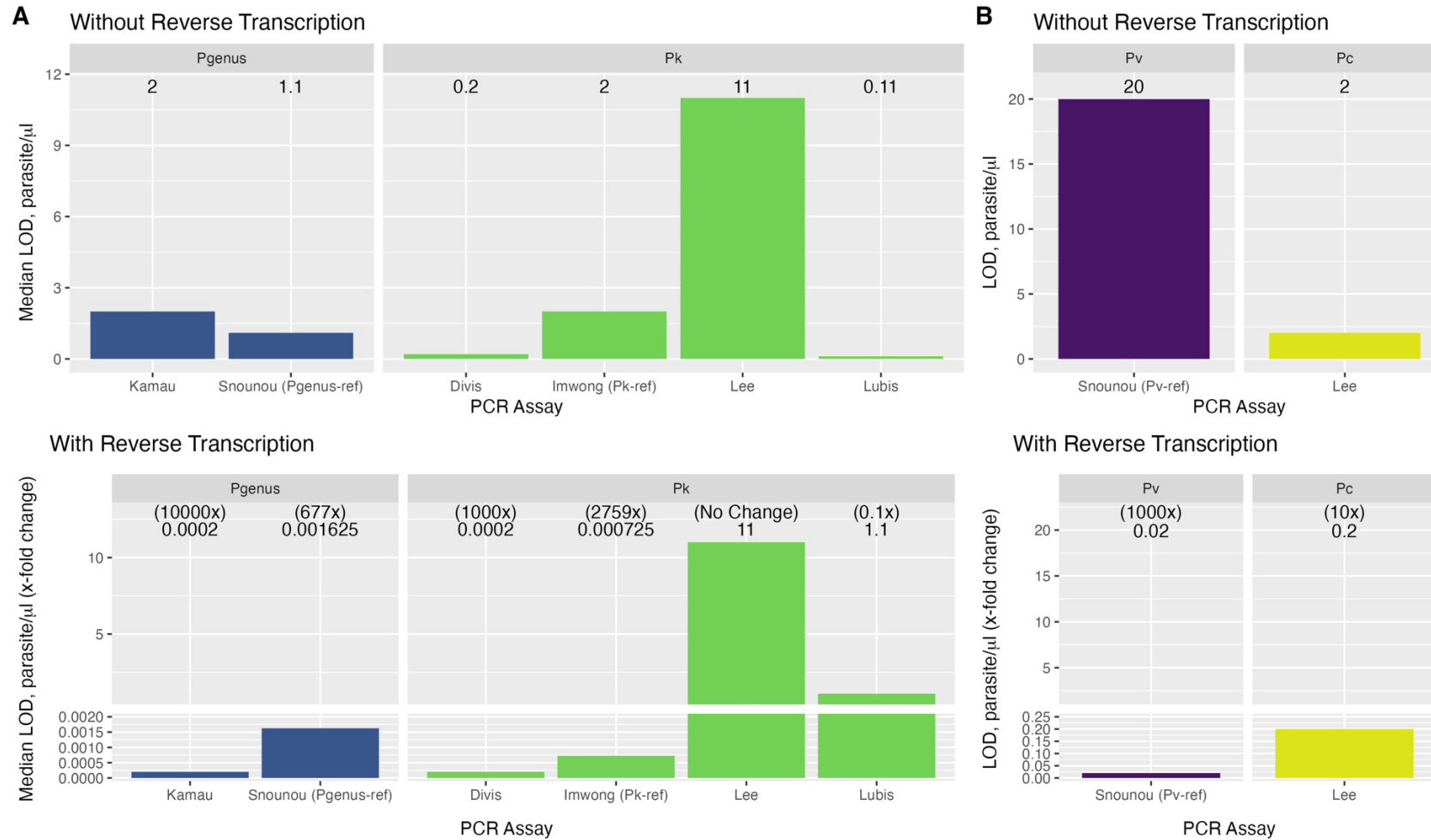


Figure 2. The median LOD and fold-change with and without reverse transcription for PCR assays to detect *Plasmodium* species.

(A) The median LOD (parasites/ μ L) for *P. genus* assays using 6 clinical isolates (*P. knowlesi*=4, *P. vivax*=1, *P. cynomolgi*=1) and *P. knowlesi*-specific assays using 4 clinical isolates; **(B)** The LOD (parasites/ μ L) for *P. vivax* (n=1) and *P. cynomolgi* (n=1) specific assays.

Abbreviations: Pgenus, *Plasmodium genus*; Pk, *P. knowlesi*; Pv, *P. vivax*; Pc, *P. cynomolgi*