

1 **Adults prenatally exposed to the Dutch Famine exhibit a metabolic**
2 **signature associated with a broad spectrum of common diseases**

3

4 M. Jazmin Taeubert¹, Thomas B. Kuipers¹, Jiayi Zhou², Chihua Li³, Shuang Wang⁴, Tian
5 Wang⁴, Elmar W. Tobi¹, BBMRI-NL Metabolomics consortium[^], Daniel W. Belsky^{2,3}, L. H.
6 Lumey^{1,3}, Bastiaan T. Heijmans^{1*}.

7

8 1. Department of Biomedical Data Sciences, Leiden University Medical Center, Leiden, The
9 Netherlands

10 2. Butler Columbia Aging Center, Columbia University, New York, United States

11 3. Department of Epidemiology, Mailman School of Public Health, Columbia University,
12 New York, United States

13 4. Department of Biostatistics, Mailman School of Public Health, Columbia University, New
14 York, United States

15

16 * Corresponding author

17 E-mail: b.t.heijmans@lumc.nl (BTH)

18

19 [^]Membership of the BBMRI-NL Metabolomics consortium is provided in the Supplemental
20 file.

21

22 **Key words:** cardiovascular disease risk, metabolomics, type-2 diabetes, prenatal adversity,
23 famine, disease association.

24

25

NOTE: This preprint reports new research that has not been certified by peer review and should not be used to guide clinical practice.

26 **Abstract**

27 **Background:** Exposure to famine in the prenatal period is associated with an increased risk of
28 metabolic disease, including obesity and type-2 diabetes. We employed nuclear magnetic
29 resonance (NMR) metabolomic profiling to provide a deeper insight into the metabolic changes
30 associated with survival of prenatal famine exposure during the Dutch Famine at the end of
31 World War II and explore their link to disease.

32 **Methods:** NMR metabolomics data were generated from serum in 480 individuals prenatally
33 exposed to famine (mean 58.8 years, 0.5 SD) and 464 controls (mean 57.9 years, 5.4 SD). We
34 tested associations of prenatal famine exposure with levels of 168 individual metabolic
35 biomarkers and compared the metabolic biomarker signature of famine exposure with those of
36 154 common diseases.

37 **Results:** Prenatal famine exposure was associated with higher concentrations of branched-
38 chain amino acids ((iso)-leucine), aromatic amino acid (tyrosine), and glucose in later life (0.2-
39 0.3 SD, $p < 3 \times 10^{-3}$). The metabolic biomarker signature of prenatal famine exposure was
40 positively correlated to that of incident type-2 diabetes ($r = 0.77$, $p = 3 \times 10^{-27}$), also when re-
41 estimating the signature of prenatal famine exposure among individuals without diabetes ($r =$
42 0.67 , $p = 1 \times 10^{-18}$). Remarkably, this association extended to 115 common diseases for which
43 signatures were available ($0.3 \leq r \leq 0.9$, $p < 3.2 \times 10^{-4}$). Correlations among metabolic signatures
44 of famine exposure and disease outcomes were attenuated when the famine signature was
45 adjusted for body mass index.

46 **Conclusions:** Prenatal famine exposure is associated with a metabolic biomarker signature that
47 strongly resembles signatures of a diverse set of diseases, an observation that can in part be
48 attributed to a shared involvement of obesity.

49

50

51 **Background**

52 Metabolomics is a powerful tool for illuminating molecular phenotypes underpinning disease
53 (1). With nuclear magnetic resonance (NMR) approaches, metabolomics is now possible within
54 large-scale epidemiologic studies and biobanks. Within these settings, NMR metabolomics is
55 revealing a range of common and unique features to a broad spectrum of diseases (2–5). Less
56 is known about how the metabolome may reflect or mediate effects of prenatal exposure
57 histories on disease pathogenesis. Here, we investigate the long-term metabolomic sequelae of
58 gestational exposure to famine, an established risk factor for the development of metabolic
59 disease (6,7).

60 The Dutch Hunger Winter of 1944-1945, a 6-month famine at the end of World War II,
61 provides a unique setting to study the long-term effects of an adverse prenatal environment
62 (6,8,9). Previous studies revealed that prenatal famine exposure is associated with an increased
63 risk in unfavourable metabolic phenotypes in adulthood including increased fasting glucose
64 and triglyceride levels, obesity, and type-2 diabetes (10–17). These associations have also been
65 observed for other historical famines (6). To date, a comprehensive view of metabolic changes
66 linked to prenatal famine exposure is lacking. In this study, we seek to provide a deeper insight
67 into the metabolomic profile associated with prenatal famine exposure.

68 We profiled samples for 944 participants from the Dutch Hunger Winter Families Study
69 using nuclear magnetic resonance (NMR) metabolomics. We compared prenatal famine-
70 exposed individuals to unexposed control participants on 168 different serum metabolic
71 biomarkers and also compared the metabolome-wide signature of prenatal famine exposure to
72 an atlas of signatures marking risk of a range of common diseases in order to characterize the
73 phenotype of prenatal famine exposure. Our study reveals specific metabolic biomarker
74 alterations and broader connections with a range of chronic diseases, providing new insights
75 into how prenatal famine exposure shapes health across the life course.

76

77 **Methods**

78

79 **Study population**

80 The Dutch Hunger Winter Families study (DHWFS) is described in detail elsewhere (18). In
81 short, historical birth records were retrieved from three institutions in famine-exposed cities of
82 all singleton births between 1 February 1945 and 31 March 1946 and a systematic sample of
83 births born in 1943 or 1947. From these records we identified infants whose mothers were
84 exposed to the famine during or immediately preceding that pregnancy and unexposed time-
85 controls born before or after the famine. These individuals were invited to participate in a
86 telephone interview and in a clinical examination, together with a same-sex sibling not exposed
87 to the famine (family-control).

88 The Dutch Hunger Winter Families study was approved by the Medical Ethics Committee of
89 Leiden University Medical Center (P02.082) and the participants provided verbal consent at
90 the start of the telephone interview and written informed consent at the start of the clinical
91 examination.

92 We conducted 1,075 interviews and 971 clinical examinations between 2003 and 2005.
93 One non-biological sibling identified with genetic analyses was excluded from the cohort.
94 NMR metabolomics profiling was performed on serum samples of 962 individuals. Our sample
95 for this study included 944 individuals after excluding non-fasted samples ($n = 17$) and an
96 outlier in the metabolomics dataset as identified with principal component analysis ($n = 1$)
97 **(Supplemental Fig. 1)**.

98

99 **Famine exposure definitions**

100 Food rations were distributed centrally and below 900 kcal/day between November 26, 1944
101 and May 15, 1945 (8). We defined famine exposure by the number of weeks during which the
102 mother was exposed to < 900 kcal/day after the last menstrual period (LMP) recorded on the
103 birth record (18). For analysis of timing of gestational exposure, we subdivide the gestational
104 period into units of 10 weeks. We considered the mother exposed in gestational weeks 1-10,
105 11-20, 21-30, or 31 to delivery if these gestational time windows were entirely contained within
106 this period and had an average exposure of < 900kcal/day during an entire gestation period of
107 10 weeks. As the famine lasted 6-months some participants were exposed to famine during two
108 adjacent 10-week periods. In chronological order, pregnancies with LMP between 30 April
109 1944 and 24 August 1944 were considered exposed in weeks 31 to delivery; between 9 July
110 1944 and 15 October 1944 in pregnancy weeks 21-30; between 17 September 1944 and 24
111 December 1944 in pregnancy weeks 11-20, between 26 November 1944 and 4 March 1945 in
112 pregnancy weeks 1-10. Individuals with a LMP between 4 February and 12 May 1945 were
113 exposed to an average of < 900kcal/day for less than 10 weeks before conception and up to 8
114 weeks post-conception, are denoted as the weeks 9-0 weeks group. We defined individuals
115 exposed to one or at most two of these definitions exposed to 'any' gestational exposure.

116

117 **Characteristics**

118 Information on health history, including information on the use of cholesterol-lowering drugs,
119 was collected through telephone interviews. Measurement of height was carried out to the
120 nearest millimeter using a portable stadiometer (Seca), and body weight was measured to the
121 nearest 100 g by a portable scale (Seca). BMI was calculated from these measures (weight (kg)
122 / [height (m)]²). Cholesterol measures were reported previously (14) and were assessed using
123 standard enzymatic assays. LDL cholesterol was calculated for individuals with a triglyceride
124 concentration lower than 400 mg/dl using the Friedewald formula. A blood draw was

125 performed at the start of a 75-g oral glucose test, and fasted glucose was quickly assessed in
126 serum by hexokinase reaction on a Modular P800 (Roche). The presence of type-2 diabetes
127 was either determined through previous health history or defined as fasting glucose \geq
128 7.0mmol/l or 2hr glucose tolerance test \geq 11.1mmol/l (19).

129

130 **Metabolic biomarker quantification**

131 Metabolic biomarkers were measured from serum samples using a high-throughput $^1\text{H-NMR}$
132 metabolomics platform developed by Nightingale Health Ltd. (Helsinki, Finland;
133 nightingalehealth.com; biomarker quantification version 2021). Details of the procedure and
134 application of the NMR metabolomics platform have been described elsewhere (20,21). This
135 method provides simultaneous quantification of 168 directly measured and 81 derived
136 metabolic biomarkers, including 37 clinically validated metabolic biomarkers certified for
137 diagnostics use. The metabolic biomarkers measured include amino acids, ketone bodies,
138 lipids, fatty acids, and lipoprotein subclass distribution, particle size and composition. A subset
139 of the biomarkers was selected for inclusion in the presented analysis, focusing on the 168
140 directly measured metabolic biomarkers.

141 Missing values were set to the minimum value for each metabolic measure. A value of one
142 was added to all metabolic biomarkers containing zeroes (i.e. $x + 1$), which indicated that they
143 were below the limit of quantification. All metabolic biomarkers were then natural logarithmic
144 transformed to obtain an approximately normal distribution. The metabolic biomarkers were
145 subsequently scaled to standard deviation (SD) units (mean 0, SD 1) for use in the analysis.

146

147 **Genotype data generation and polygenic scores**

148 From our metabolomics sample population, 931 individuals also had genotype data available.
149 Genotype data were measured using the Illumina InfiniumTM Global Screening Array (GSA)

150 genotyping platform (version 24 v3.0. Illumina Inc., San Diego, USA) by the Human Genomics
151 Facility in the Genetic Laboratory Rotterdam (Rotterdam, the Netherlands). Imputation was
152 performed using the 1000G P3v5 reference panel (22). Polygenic scores were calculated for
153 tyrosine, leucine and glucose levels with the PRSice-2 software using the independent hits of
154 publicly available genome-wide association study (GWAS) summary statistics (**Supplemental**
155 **Table 3**) (23). The base GWAS study utilized the same NMR platform and had participants
156 with the same ancestry (European) as those in our study (24). The polygenic scores were
157 residualized on the first ten genetic principal components and subsequently scaled to standard
158 deviation (SD) units (mean 0, SD 1) for analysis.

159

160 **Statistical analysis**

161 All analyses were performed in the R programming environment (R version 4.2.2).

162 For all linear regression analyses, we used linear regression within a generalized estimating
163 equations framework to account for the correlation between sibships (R geepack package,
164 version 1.3.9) (25) and adjusted for age, sex and cholesterol-lowering medication.

165 We first validated the NMR measurements by testing the consistency between glucose,
166 triglycerides, total cholesterol, LDL, and HDL cholesterol measured by routine clinical
167 chemistry and Nightingale Health NMR (**Supplemental Fig. 2**). Consistent with previous
168 studies, correlations were high ($r \geq 0.9$) for all metabolic biomarkers tested (26,27). We
169 subsequently tested whether previously observed associations between prenatal famine
170 exposure and these five metabolic biomarkers as measured by routine clinical chemistry were
171 consistently found when the same biomarkers were measured using Nightingale Health NMR.

172 Next, we performed a metabolome-wide association study of prenatal famine exposure by
173 assessing the relationship between famine exposure and 168 metabolic biomarkers. Due to the
174 correlated nature of the metabolic biomarkers, 95% of the variation in the 168 metabolic

175 biomarkers was explained by 14 principal components. Therefore, as previously described (28–
176 30), we corrected for 14 independent tests using Bonferroni multiple testing correction (p value
177 = $0.05/14 = 3.57 \times 10^{-3}$). Sensitivity analyses were performed to assess the robustness of the
178 results of the metabolome-wide association study of prenatal famine. First, to assess the effect
179 of famine exposure independent of BMI or type-2 diabetes, the main model was additionally
180 adjusted for BMI and type-2 diabetes. Second, to determine the extent to which the observed
181 associations between prenatal famine exposure and metabolic biomarkers levels could be
182 attributed to genetics, the main model was additionally adjusted for the polygenic scores of the
183 metabolic biomarkers. Third, to check for potential differences between sexes, sex-stratified
184 analyses were performed adjusting for the same covariates as the main model and an interaction
185 term for sex and metabolic marker was included in the model to test whether potential
186 differences were statistically significant. Fourth, potential gestation timing specific effects of
187 famine exposure were examined by subdividing famine exposure into 5 gestational time
188 windows. In the regression analysis, the single indicator of famine exposure was replaced with
189 indicator variables identifying exposure within each of the gestational time windows.

190 To expand our analysis from focusing on individual metabolic biomarkers to broader
191 metabolic biomarker signatures associated with disease, we compared the metabolic biomarker
192 signature associated with prenatal famine exposure to the metabolic biomarker signature
193 predicting the future risk of type-2 diabetes. For this we utilized published results from a
194 metabolome-wide study on incident type-2 diabetes using UK Biobank data (2). Specifically,
195 we correlated the effect sizes of famine exposure in DHWFS with the effect sizes in the UK
196 Biobank for incident type-2 diabetes across the 135 shared metabolic biomarkers in both
197 datasets.

198 We then extended our analysis and correlated the metabolic profile of prenatal famine to
199 the publicly available metabolic signatures of a large set of diseases as estimated with UK

200 Biobank data (4). Out of 674 incident diseases available in the metabolomics atlas, we selected
201 those with at least 1000 cases (out of a total population ranging from ~103,300 to ~118,000) to
202 represent common diseases ($n = 162$), and those with at least one significant association with
203 a metabolic biomarker in the UK Biobank analysis ($p < 5 \times 10^{-4}$) ($n = 154$), resulting in 154
204 diseases. The effect sizes of the overlapping 168 metabolic biomarkers were correlated between
205 prenatal famine and each disease. We corrected for multiple testing using Bonferroni correction
206 ($p \text{ value} = 0.05/154 = 3.2 \times 10^{-4}$). Finally, we re-estimated the effect sizes of the association
207 between prenatal famine exposure and all 168 metabolic biomarkers, while additionally
208 adjusting for BMI. We then repeated the correlation analysis comparing this BMI-adjusted
209 prenatal famine metabolic biomarker signature with the 154 metabolic biomarker disease
210 signatures from the UK Biobank.

211

212 **Results**

213

214 **Population characteristics**

215 Within the Dutch Hunger Winter Families Study, fasting NMR metabolomics data were
216 available for 944 study participants. Among these participants, 480 (51%) were prenatally
217 exposed to famine, and 464 (49%) were controls (including unexposed time controls born at
218 the same institution as the exposed individuals and unexposed same-sex sibling controls both
219 born either before or conceived after the famine). As previously reported, famine-exposed
220 participants had an increased BMI (11) and a higher prevalence of type-2 diabetes (16) and
221 controls were on average 0.9 years younger than famine-exposed. No differences were
222 observed in sex or the use of cholesterol lowering medication (**Table 1**).

223

224 **Validation of NMR metabolomics measures**

225 We first sought to validate the newly measured metabolomics measures in our study by
226 correlating them with previously measured clinical chemistry data available for five metabolic
227 biomarkers, namely fasted glucose, triglycerides, total cholesterol, LDL, and HDL cholesterol
228 (14,17). The correlations were all high ($r \geq 0.9$) in line with previous studies (**Supplemental**
229 **Fig. 2**) (4,31). Next, we examined the associations between prenatal famine exposure and these
230 five metabolic biomarkers, as measured by clinical chemistry or NMR, and found the effect
231 sizes to be consistent between the two measurements (**Supplemental Table 1**).

232

233 **Metabolome-wide association study on prenatal famine exposure**

234 Next, we examined the association of any prenatal famine exposure with all 168 metabolic
235 biomarkers individually. Prenatal famine exposure was associated with higher tyrosine (effect
236 size 0.28 SD), leucine (0.21 SD), glucose (0.23 SD), and isoleucine (0.18 SD) concentrations
237 ($p < 3 \times 10^{-3}$; all analyses adjusted for age, sex, and use of cholesterol-lowering drugs) (**Fig. 1A,**
238 **Supplemental Table 2**).

239 We performed three sets of follow-up analyses for tyrosine, leucine, and glucose to gain
240 further insight into these associations. Isoleucine was excluded because it was highly correlated
241 with leucine ($r = 0.9$), both are branched-chain amino acids, while leucine showed the stronger
242 association with famine exposure (**Fig. 1B, Supplemental Fig. 3**). First, the associations
243 between prenatal famine exposure and tyrosine, leucine, and glucose remained after including
244 BMI or type-2 diabetes as a covariate in the model (**Fig. 1C**). Second, we also considered
245 genetics as a potential explanatory factor for these associations. Since the polygenic scores of
246 each metabolic biomarker explained only approximately 1%-5% of their variance
247 (**Supplemental Table 3**), the associations were not affected by including the polygenic scores
248 as covariates (**Fig. 1C**). Third, we explored whether associations between famine exposure and
249 the three metabolic biomarkers were dependent on sex or the timing of exposure during

250 gestation (**Supplemental Fig. 4**). Effect sizes across different exposure timing subgroups were
251 similar to our estimates of the main analysis. In the sex stratified analysis, the effect sizes for
252 glucose and tyrosine were lower in females than males, but we found no statistical evidence
253 for effect modification (interaction p values > 0.39).

254

255 **Comparison to metabolic biomarker signatures of diseases**

256 The individual metabolic biomarkers associated with prenatal famine exposure were previously
257 linked to type-2 diabetes (32). To further investigate whether these associations reflect an
258 increased risk of type-2 diabetes among individuals prenatally exposed to famine, we utilized
259 a previously reported metabolic biomarker signature of incident type-2 diabetes from UK
260 Biobank (2) and compared it to the complete set of biomarker associations in our study.
261 Specifically, we took the effect sizes of 135 metabolic biomarkers for the risk of type-2 diabetes
262 and compared them to the effect sizes we observed for prenatal famine. The metabolic
263 biomarker signature of prenatal famine exposure was highly correlated with that of incident
264 type-2 diabetes ($r = 0.77$, $p = 3 \times 10^{-27}$; **Fig. 2A**). This similarity persisted when we re-estimated
265 the effect sizes for prenatal famine exposure after excluding participants with type-2 diabetes
266 ($r = 0.67$, $p = 1 \times 10^{-18}$) (**Fig. 2B**).

267 To explore whether the metabolic biomarker profile of prenatal famine exposure may
268 reflect a risk of diseases beyond type-2 diabetes, we extended the analysis to recently published
269 atlas of signatures of a wide range of diseases in the UK Biobank (4). We focused on metabolic
270 biomarker signatures for the future onset of disease obtained from individuals not affected by
271 the disease of interest at baseline. For the analysis, we utilized a subset of 154 common incident
272 diseases that had at least one metabolic biomarker association in the UK Biobank ($p < 5 \times 10^{-4}$).
273 Remarkably, the metabolic biomarker signature of prenatal famine exposure was positively
274 correlated with the metabolic biomarker signature of 115 diseases (75%; $0.3 \leq r \leq 0.9$, $p <$

275 3.2×10^{-4}), and negatively correlated with 13 diseases (8%; $-0.9 \leq r \leq -0.4$, $p < 3.2 \times 10^{-4}$)
276 (**Supplemental Table 4**). The metabolic biomarker signature of prenatal famine exposure
277 exhibited the strongest correlation with the signature of the future risk of myocardial infarction
278 ($r = 0.9$, $p = 1.8 \times 10^{-47}$). Other diseases with a strong correlation ($r \geq 0.7$) included those related
279 to the digestive system, diseases with an endocrine, nutritional and metabolic component, as
280 well as diseases of the nervous system (**Fig. 3**). The diseases displaying a negative correlation
281 were primarily associated with injury and other consequences of external causes, such as
282 fractures and open wounds (**Supplemental Table 4**).

283 We hypothesized that a potential common factor among the diseases with a similar
284 metabolic biomarker signature is obesity. To test this hypothesis, we re-estimated the effect
285 sizes for prenatal famine exposure while additionally adjusting for BMI and then re-calculated
286 the correlation between the resulting BMI-adjusted metabolic biomarker signature with the
287 signatures of the 154 common incident diseases (**Supplemental Table 4**). The strength of the
288 correlations was consistently attenuated across all diseases (mean = -58%; SD = 19%). Among
289 the 30 diseases whose metabolic biomarker signature was most similar to that of prenatal
290 famine, the attenuation ranged between 27-48% and the correlations remained moderate ($0.4 \leq$
291 $r \leq 0.6$). The degree of attenuation was not linked to whether the disease had an obvious
292 metabolic component (**Fig. 4**).

293

294 **Discussion**

295 We further defined the metabolic phenotype associated with prenatal famine exposure using
296 nuclear magnetic resonance (NMR) metabolomic profiling. We show that prenatal exposure to
297 undernutrition is associated with specific metabolic differences later in life, including higher
298 levels of branched-chain amino acids (BCAA), an aromatic amino acid, and glucose. In

299 addition, we report that the metabolic biomarker signature of prenatal famine has marked
300 similarities to the signature of a wide range of common diseases.

301 Our study indicated specific differences in the metabolic profiles of famine-exposed
302 individuals compared to controls. We observed that those exposed to famine prenatally have
303 higher levels of the aromatic amino acid tyrosine, the branched-chain amino acids leucine and
304 isoleucine, and glucose six decades after exposure. All four metabolic biomarkers have been
305 linked to type-2 diabetes and thus support the known association between prenatal famine
306 exposure and type-2 diabetes risk in adulthood (6,33). In addition, higher levels of other
307 branched-chain and aromatic amino acids such as valine and phenylalanine that have also been
308 associated with type-2 diabetes showed a nominally significant association with prenatal
309 famine exposure, further supporting the link between famine and type-2 diabetes risk (33).
310 Interestingly, the metabolic biomarker associations with prenatal famine were independent of
311 BMI and type-2 diabetes status, indicating that they may not be fully driven by the higher BMI
312 and increased prevalence of type-2 diabetes among famine-exposed individuals.

313 The link with a higher type-2 diabetes risk among individuals exposed to famine in the
314 prenatal period was reinforced by investigating the complete range of metabolic biomarkers.
315 We observed a strong resemblance in the metabolic biomarker signature of prenatal famine
316 with that of the future onset of type-2 diabetes (33). Moreover, the strong correlation of the
317 famine signature with the incident type-2 diabetes signature persisted after excluding
318 participants who were already diagnosed with type-2 diabetes at the time of assessment. This
319 result reinforces that type-2 diabetes is a main health outcome of prenatal famine exposure (6)
320 and indicates that even exposed individuals not diagnosed with type-2 diabetes have an
321 increased risk of developing this condition in the future.

322 Upon extending our analysis beyond type-2 diabetes, we observed a striking similarity
323 between the metabolic biomarker signature of famine exposure and a wide range of other

324 incident disease signatures. This included conditions like disorders of lipoprotein metabolism,
325 obesity and type-2 diabetes, but also a priori less expected diseases like osteoarthritis, kidney
326 stones, and depressive disorders. Interestingly, these high correlations were substantially
327 attenuated for all incident diseases when we repeated the analysis using a metabolic biomarker
328 profile of prenatal famine that was adjusted for BMI. Our findings suggest that BMI is a shared
329 risk factor for or consequence of the diseases and that the metabolic biomarkers measured by
330 the NMR platform used may have a particularly strong association with BMI. Of note, after
331 accounting for BMI, moderate correlations between the metabolic biomarker profiles of
332 incident disease and prenatal famine remained. Our findings and previous studies highlight that
333 the NMR platform applied is especially useful for disease risk prediction, but of limited value
334 to gain new mechanistic insights. Further studies with more comprehensive metabolomics
335 platforms are needed to fully understand why the metabolic biomarker signature of prenatal
336 famine exposure links to a broad range of diseases, including effects independent of obesity.

337

338 **Conclusions**

339 Prenatal exposure to famine is associated with marked metabolic alterations later in life.
340 Differences in individual metabolic biomarkers include higher levels of branched-chain amino
341 acids, aromatic amino acids, and glucose. Moreover, the metabolic biomarker signature
342 characteristic of prenatal famine strongly resembles that of a diverse set of diseases. Overall,
343 our findings underscore the broad impact of prenatal famine on adult health and highlight
344 obesity as a plausible contributing factor.

345

346

347

348

349 **Abbreviations**

350 BCAA: branched-chain amino acids

351 BMI: body mass index

352 DHWFS: Dutch Hunger Winter Families study

353 GWAS: genome-wide association study

354 LMP: last menstrual period

355 NMR: nuclear magnetic resonance

356 SD: standard deviation

357

358 **Declarations**

359 **Ethics approval and consent to participate**

360 The Dutch Hunger Winter Families study was approved by the Medical Ethics Committee of
361 Leiden University Medical Center (P02.082) and the participants provided verbal consent and
362 written informed consent.

363 **Consent for publication**

364 Not applicable.

365 **Availability of data and materials**

366 The datasets supporting the conclusions of this article are included within the article and its
367 additional files. The DHWFS data is available for replication purposes upon request to B. T.
368 Heijmans (b.t.heijmans@lumc.nl) and if replication is conducted within the secure Leiden
369 University Medical Center network environment.

370 **Competing interests**

371 The authors declare that they have no competing interests.

372 **Funding**

373 This research was supported by National Institute on Aging grants (R01AG066887). The NMR
374 metabolomics measurement of the DHWFS samples was funded by the BBMRI-NL
375 Metabolomics consortium (a research infrastructure financed by the Dutch government, NWO
376 184.021.007 and 184.033.111). DWB is a fellow of the CIFAR CBD Network. The funders
377 had no role in study design, data collection and analysis, decision to publish, or preparation of
378 the manuscript.

379 **Authors' contributions**

380 M.J.T., D.W.B., L.H.L. and B.T.H. were involved in the conception, design, and conduct of
381 the study and interpretation of the results. M.J.T. performed the analyses and wrote the first
382 draft of the manuscript, and all authors edited, reviewed, and approved the final version of the
383 manuscript. B.T.H. is the guarantor of this work and, as such, had full access to all the data in
384 the study and takes responsibility for the integrity of the data and the accuracy of the data
385 analysis.

386 **Acknowledgements**

387 Not applicable.

388

389 **References**

- 390 1. Wishart DS. Metabolomics for Investigating Physiological and Pathophysiological
391 Processes. *Physiol Rev.* 2019 Oct 1;99(4):1819–75.
- 392 2. Bragg F, Trichia E, Aguilar-Ramirez D, Bešević J, Lewington S, Emberson J.
393 Predictive value of circulating NMR metabolic biomarkers for type 2 diabetes risk in
394 the UK Biobank study. *BMC Med.* 2022 Dec 1;20(1).
- 395 3. Bell JA, Richardson TG, Wang Q, Sanderson E, Palmer T, Walker V, et al. Effects of
396 general and central adiposity on circulating lipoprotein, lipid, and metabolite levels in

- 397 UK Biobank: A multivariable Mendelian randomization study. *The Lancet Regional*
398 *Health - Europe* [Internet]. 2022;21:100457. Available from: <https://doi.org/10.1016/j>.
- 399 4. Julkunen H, Cichońska A, Tiainen M, Koskela H, Nybo K, Mäkelä V, et al. Atlas of
400 plasma NMR biomarkers for health and disease in 118,461 individuals from the UK
401 Biobank. *Nat Commun*. 2023 Feb 3;14(1):604.
- 402 5. Guo Y, Chen S, Zhang Y, Wang H, Huang S, Chen S, et al. Circulating metabolites
403 associated with incident myocardial infarction and stroke: A prospective cohort study
404 of 90 438 participants. *J Neurochem*. 2022 Aug 15;162(4):371–84.
- 405 6. Lumey LH, Stein AD, Susser E. Prenatal famine and adult health. *Annu Rev Public*
406 *Health*. 2011;32:237–62.
- 407 7. Liu H, Chen X, Shi T, Qu G, Zhao T, Xuan K, et al. Association of famine exposure
408 with the risk of type 2 diabetes: A meta-analysis. *Clinical Nutrition*. 2020
409 Jun;39(6):1717–23.
- 410 8. Burger GCE, Drummond JC, Sandstead HR. Malnutrition and starvation in Western
411 Netherlands: September 1944 - July 1945. General State Print. Office., The Hague;
412 1948.
- 413 9. Stein Z, Susser M, Saenger G, Marolla F. Famine and Human Development: The
414 Dutch Hunger Winter of 1944-1945. New York: Oxford University Press; 1975.
- 415 10. Ravelli AC, van Der Meulen JH, Osmond C, Barker DJ, Bleker OP. Obesity at the age
416 of 50 y in men and women exposed to famine prenatally. *Am J Clin Nutr*. 1999
417 Nov;70(5):811–6.
- 418 11. Stein AD, Kahn HS, Rundle A, Zybert PA, van der Pal-de Bruin K, Lumey LH.
419 Anthropometric measures in middle age after exposure to famine during gestation:
420 evidence from the Dutch famine. *Am J Clin Nutr*. 2007 Mar;85(3):869–76.

- 421 12. Lumey LH, Ekamper P, Bijwaard G, Conti G, van Poppel F. Overweight and obesity
422 at age 19 after pre-natal famine exposure. *Int J Obes (Lond)*. 2021 Aug;45(8):1668–76.
- 423 13. Ravelli GP, Stein ZA, Susser MW. Obesity in young men after famine exposure in
424 utero and early infancy. *N Engl J Med*. 1976 Aug 12;295(7):349–53.
- 425 14. Lumey LH, Stein AD, Kahn HS, Romijn JA. Lipid profiles in middle-aged men and
426 women after famine exposure during gestation: the Dutch Hunger Winter Families
427 Study. *Am J Clin Nutr*. 2009 Jun;89(6):1737–43.
- 428 15. Ravelli A, van der Meulen J, Michels R, Osmond C, Barker D, Hales C, et al. Glucose
429 tolerance in adults after prenatal exposure to famine. *The Lancet*. 1998
430 Jan;351(9097):173–7.
- 431 16. Lumey LH, Stein AD, Kahn H. Food restriction during gestation and impaired fasting
432 glucose or glucose tolerance and type 2 diabetes mellitus in adulthood: Evidence from
433 the DutchHunger Winter Families Study. *J Dev Orig Health Dis*. 2009 Apr;1:S164.
- 434 17. Tobi EW, Slieker RC, Luijk R, Dekkers KF, Stein AD, Xu KM, et al. DNA
435 methylation as a mediator of the association between prenatal adversity and risk
436 factors for metabolic disease in adulthood. *Sci Adv*. 2018 Jan;4(1):eaao4364.
- 437 18. Lumey LH, Stein AD, Kahn HS, van der Pal-de Bruin KM, Blauw GJ, Zybert PA, et
438 al. Cohort profile: the Dutch Hunger Winter families study. *Int J Epidemiol*. 2007
439 Dec;36(6):1196–204.
- 440 19. WHO, IDF. Definition and diagnosis of diabetes mellitus and intermediate
441 hyperglycaemia : report of a WHO/IDF consultation. World Health Organization;
442 2006. p.
- 443 20. Würtz P, Kangas AJ, Soininen P, Lawlor DA, Davey Smith G, Ala-Korpela M.
444 Quantitative Serum Nuclear Magnetic Resonance Metabolomics in Large-Scale

- 445 Epidemiology: A Primer on -Omic Technologies. *Am J Epidemiol.* 2017 Nov
446 1;186(9):1084–96.
- 447 21. Soininen P, Kangas AJ, Würtz P, Suna T, Ala-Korpela M. Quantitative serum nuclear
448 magnetic resonance metabolomics in cardiovascular epidemiology and genetics. *Circ*
449 *Cardiovasc Genet.* 2015 Feb;8(1):192–206.
- 450 22. 1000 Genomes Project Consortium, Auton A, Brooks LD, Durbin RM, Garrison EP,
451 Kang HM, et al. A global reference for human genetic variation. *Nature.* 2015 Oct
452 1;526(7571):68–74.
- 453 23. Choi SW, O'Reilly PF. PRSice-2: Polygenic Risk Score software for biobank-scale
454 data. *Gigascience.* 2019 Jul 1;8(7).
- 455 24. Smith CJ, Sinnott-Armstrong N, Cichońska A, Julkunen H, Fauman EB, Würtz P, et
456 al. Integrative analysis of metabolite GWAS illuminates the molecular basis of
457 pleiotropy and genetic correlation. *Elife.* 2022 Sep 1;11.
- 458 25. Homish GG, Edwards EP, Eiden RD, Leonard KE. Analyzing family data: A GEE
459 approach for substance use researchers. *Addictive behaviors.* 2010 Jun;35(6):558–63.
- 460 26. Julkunen H, Cichońska A, Tiainen M, Koskela H, Nybo K, Mäkelä V, et al. Atlas of
461 plasma NMR biomarkers for health and disease in 118,461 individuals from the UK
462 Biobank. *Nat Commun.* 2023 Feb 3;14(1):604.
- 463 27. Tikkanen E, Jägerroos V, Holmes M V, Sattar N, Ala-Korpela M, Jousilahti P, et al.
464 Metabolic Biomarker Discovery for Risk of Peripheral Artery Disease Compared With
465 Coronary Artery Disease: Lipoprotein and Metabolite Profiling of 31 657 Individuals
466 From 5 Prospective Cohorts. *J Am Heart Assoc.* 2021 Dec 7;10(23):e021995.
- 467 28. Al Rashid K, Taylor A, Lumsden MA, Goulding N, Lawlor DA, Nelson SM.
468 Association of the functional ovarian reserve with serum metabolomic profiling by

- 469 nuclear magnetic resonance spectroscopy: a cross-sectional study of ~ 400 women.
470 BMC Med. 2020 Aug 31;18(1):247.
- 471 29. Wang Q, Jokelainen J, Auvinen J, Puukka K, Keinänen-Kiukaanniemi S, Järvelin MR,
472 et al. Insulin resistance and systemic metabolic changes in oral glucose tolerance test
473 in 5340 individuals: an interventional study. BMC Med. 2019 Nov 29;17(1):217.
- 474 30. Santos Ferreira DL, Williams DM, Kangas AJ, Soininen P, Ala-Korpela M, Smith GD,
475 et al. Association of pre-pregnancy body mass index with offspring metabolic profile:
476 Analyses of 3 European prospective birth cohorts. PLoS Med. 2017
477 Aug;14(8):e1002376.
- 478 31. Tikkanen E, Jägerroos V, Holmes M V, Sattar N, Ala-Korpela M, Jousilahti P, et al.
479 Metabolic Biomarker Discovery for Risk of Peripheral Artery Disease Compared With
480 Coronary Artery Disease: Lipoprotein and Metabolite Profiling of 31 657 Individuals
481 From 5 Prospective Cohorts. J Am Heart Assoc. 2021 Dec 7;10(23):e021995.
- 482 32. Guasch-Ferré M, Hruby A, Toledo E, Clish CB, Martínez-González MA, Salas-
483 Salvadó J, et al. Metabolomics in Prediabetes and Diabetes: A Systematic Review and
484 Meta-analysis. Diabetes Care. 2016 May;39(5):833–46.
- 485 33. Bragg F, Trichia E, Aguilar-Ramirez D, Bešević J, Lewington S, Emberson J.
486 Predictive value of circulating NMR metabolic biomarkers for type 2 diabetes risk in
487 the UK Biobank study. BMC Med. 2022 Dec 1;20(1).

488

489

490

491

492

493

494 **Table 1.** Population characteristics

| | Controls | Famine-exposed | p value |
|---|------------------|-----------------------|----------------------|
| | (n = 464) | (n = 480) | |
| Age, years (SD) | 57.9 (5.4) | 58.8 (0.5) | 1.1x10 ⁻³ |
| Sex, males, n (%) | 200 (43.1) | 225 (46.9) | 0.24 |
| Use of cholesterol-lowering medication, n (%) | 55 (11.9) | 61 (12.7) | 0.69 |
| Body mass index, kg/m ² (SD) | 27.0 (4.2) | 28.2 (4.8) | 1.6x10 ⁻⁴ |
| Type-2 diabetes, n (%) | 38 (8.2) | 61 (12.8) | 0.02 |

495 Values are means (standard deviation) or numbers of subjects (valid %) shown for famine-exposed and
496 controls of the study population. Comparing the two categories by a two-sample t-test or chi-square
497 test, as appropriate.

498

499

500

501

502

503

504

505

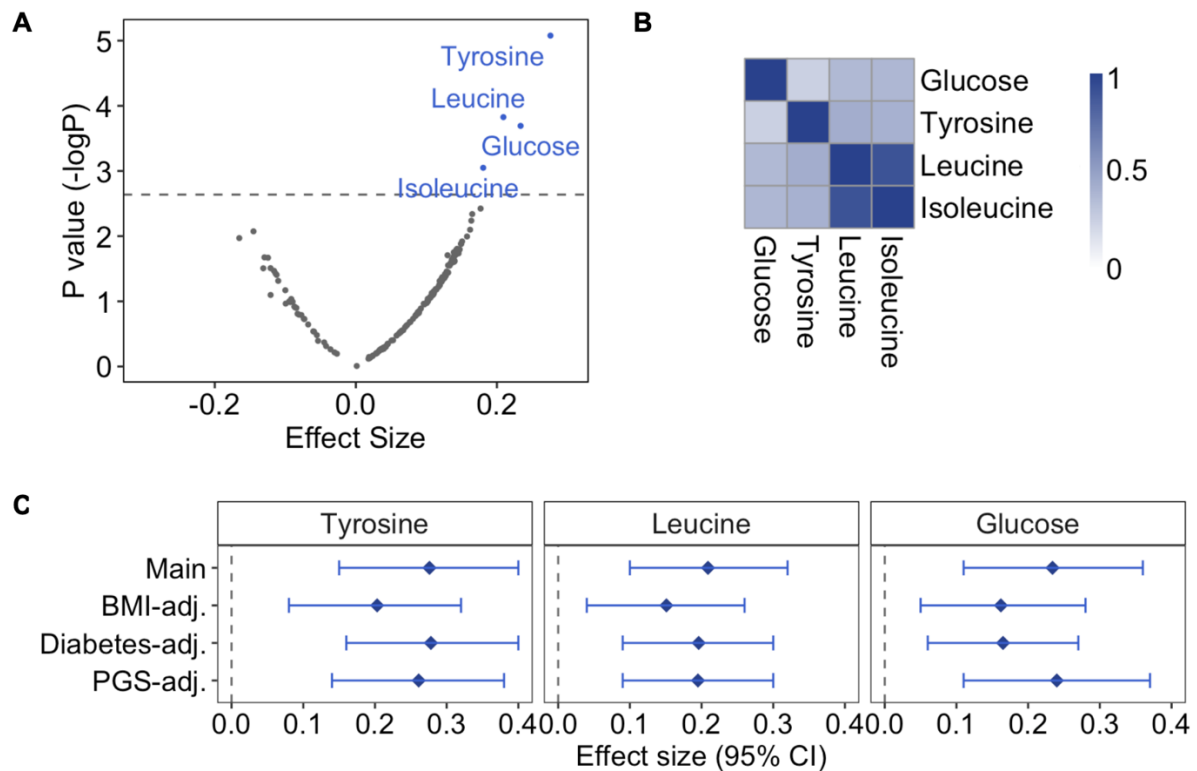
506

507

508

509

510



511

512 **Fig 1. Metabolome-wide association study on prenatal famine exposure.** **A.** Association of prenatal famine

513 exposure with 168 metabolic biomarkers. Regression models were adjusted for age, sex and cholesterol-lowering

514 medication and correlation within sibships were controlled for (main model). Scattered points represent metabolic

515 biomarkers: the x-axis shows the effect size for the association of famine with the respective metabolic biomarker,

516 while the y-axis is negative log of the p value. The grey line represents the significance threshold for this analysis

517 (p value = 3.57×10^{-3}). **B.** Heatmap showing the correlation of famine-associated metabolic biomarkers. Pearson's

518 correlation was calculated for each metabolic biomarker pair. **C.** Sensitivity analyses on famine-associated

519 metabolic biomarkers. Main: main model; BMI-adjusted: main model additionally adjusting for BMI; Diabetes-

520 adjusted: main model additionally adjusted for type-2 diabetes; polygenic score (PGS)-adjusted: main model

521 additionally adjusted for the polygenic score of the metabolic biomarkers. Effect estimates and 95% confidence

522 intervals are depicted for each model and are reported in standard-deviation (SD) units of the log-transformed

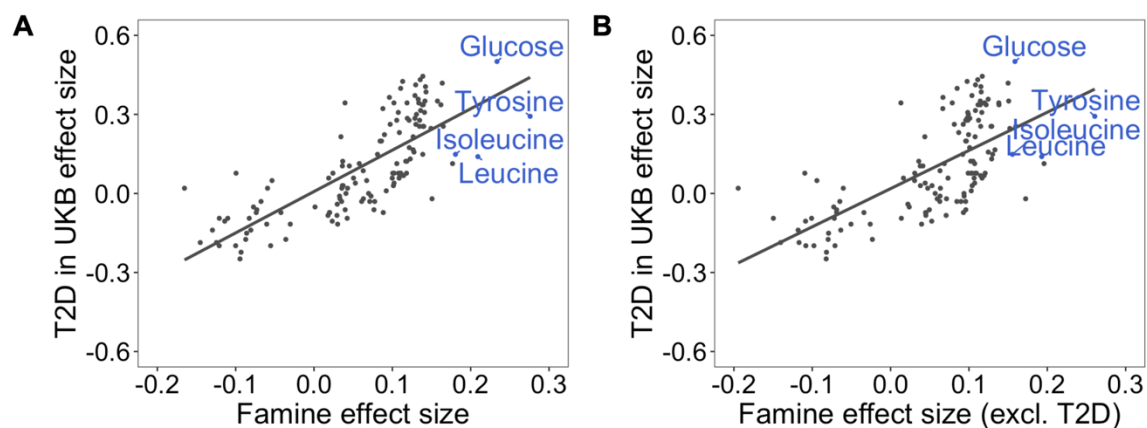
523 metabolic biomarkers.

524

525

526

527



528

529

530

531

532

533

534

535

536

537

538

539

540

541

542

543

544

545

546

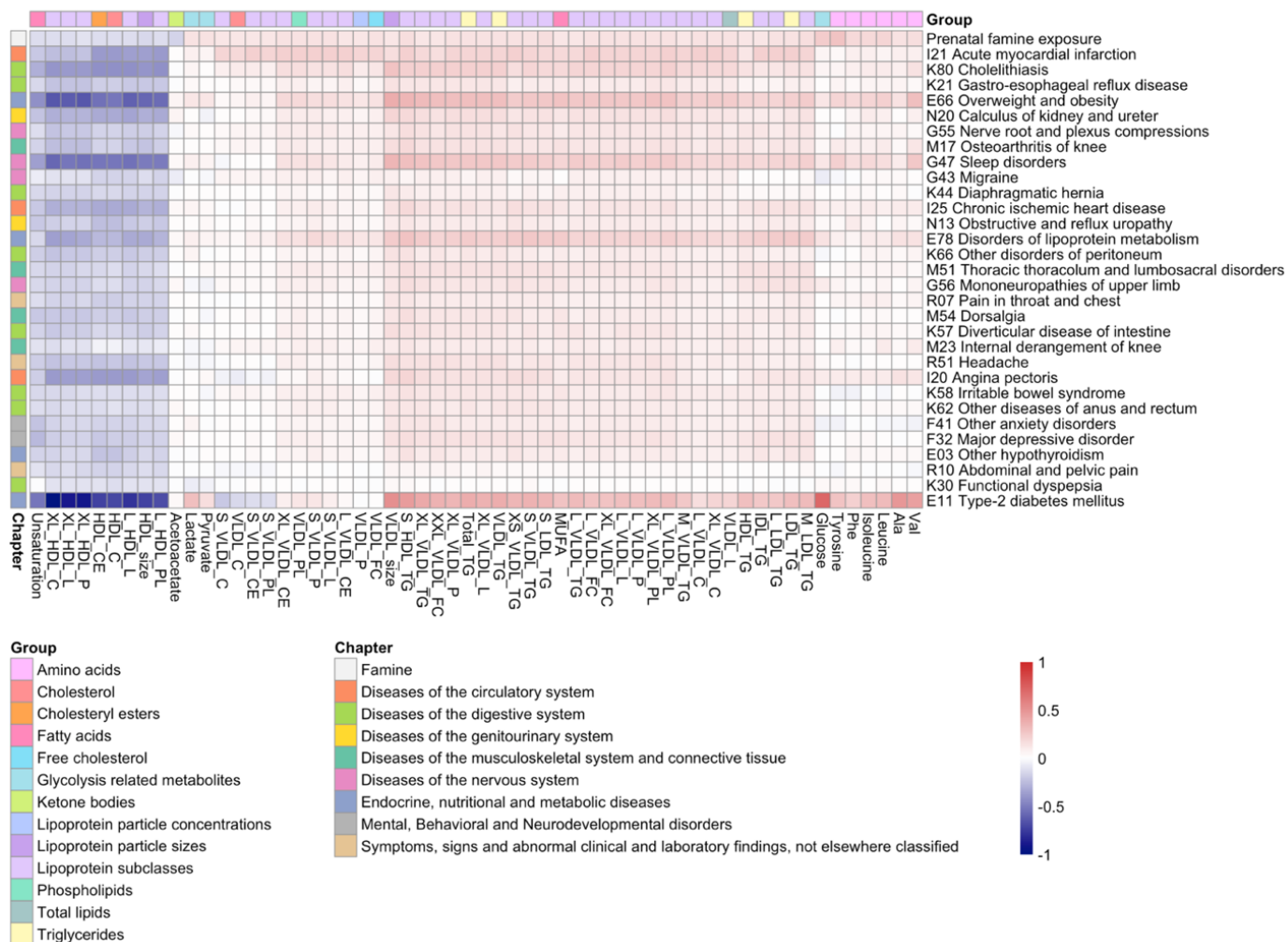
547

548

549

550

Fig 2. Correlation analysis of the metabolic biomarker signature associated with famine and the metabolic biomarker signature associated with incident type-2 diabetes. **A.** Overall metabolic biomarker signature comparison of 135 metabolic biomarkers for prenatal famine exposure and incident type-2 diabetes ($r = 0.77$, $p = 3 \times 10^{-27}$) as established in the UK Biobank Study in a 12-year follow-up. **B.** Overall metabolic biomarker signature comparison of 135 metabolic biomarkers for prenatal famine exposure (excluding 101 individuals with type-2 diabetes from the analysis) and incident type-2 diabetes as established in the UK Biobank Study in a 12-year follow-up ($r = 0.67$, $p = 1 \times 10^{-18}$). The effect size estimates for each metabolic biomarker are shown as points. Famine-associated metabolic biomarkers are indicated in blue.



551

552

553

554

555

556

557

558

559

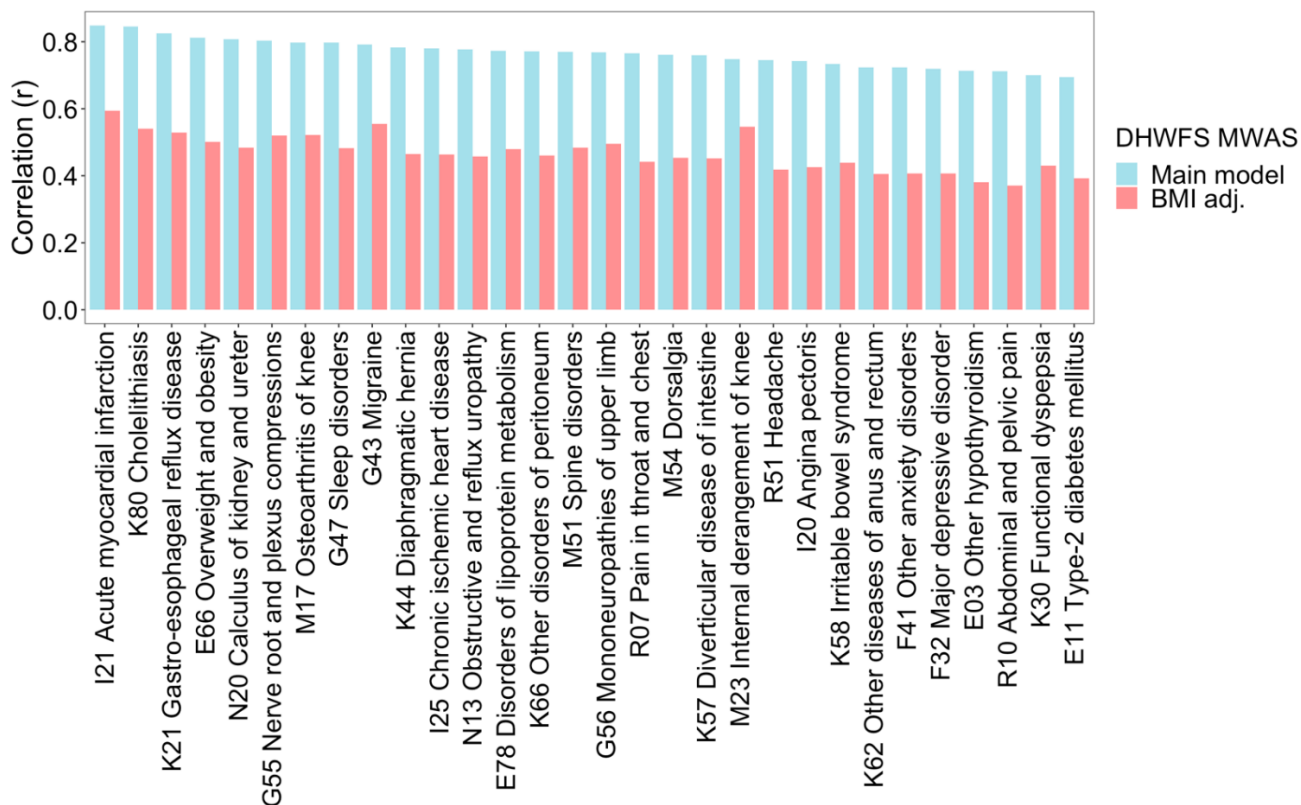
560

561

562

563

Fig 3. Correlation analysis of the metabolic biomarker signature associated with famine and the metabolic biomarker signature associated with various common diseases. Heatmap showing the effect size estimates of the 30 most correlated diseases to prenatal famine exposure. The columns are clustered according to the metabolic biomarker effect sizes and the rows are ordered according to the correlation of the metabolic biomarker signature of the disease to prenatal famine exposure (Pearson r for K21 Acute myocardial infarction = 0.85, Pearson r for E11 Type-2 diabetes mellitus = 0.69). Only metabolic biomarkers that are nominally associated with prenatal famine exposure are shown ($p < 0.05$). The diseases are shown with their ICD-10 (International Classification of Diseases 10th Revision) classification. The full names of the metabolic biomarkers can be found in **Supplemental Table 2**.



564

565 **Fig 4. Effect of additional adjustment of BMI in the correlation analysis of the metabolic biomarker**

566 **signature associated with famine and the metabolic biomarker signature associated with various common**

567 **diseases.** The main model within the DHWFS cohort was adjusted for age, sex, and cholesterol-lowering

568 medication. The BMI-adjusted model within the DHWFS cohort was adjusted for age, sex, cholesterol-lowering

569 medication, and BMI. The effect sizes estimated for these two models of prenatal famine exposure were each

570 correlated to the effect sizes estimated for the risk of common diseases. The 30 diseases most correlated to the

571 metabolic biomarker signature of prenatal famine exposure are shown.