

1 Incidence and risk factors of omicron variant SARS-CoV-2 breakthrough  
2 infection among vaccinated and boosted individuals.

3  
4 Fabiola M. Moreno-Echevarria<sup>1¶</sup>, Mathew T. Caputo<sup>2¶</sup>, Daniel M. Camp<sup>1&</sup>, Susheel Reddy<sup>2&</sup>, Chad  
5 J. Achenbach<sup>1-4¶\*</sup>

6  
7  
8 <sup>1</sup>Robert J. Havey Institute for Global Health, Feinberg School of Medicine, Northwestern  
9 University; <sup>2</sup>Department of Medicine, Division of Infectious Diseases, Feinberg School of  
10 Medicine, Northwestern University; <sup>3</sup>Department of Biomedical Engineering, McCormick School  
11 of Engineering, Northwestern University; <sup>4</sup>Department of Preventive Medicine, Feinberg School  
12 of Medicine, Northwestern University

13 \*Corresponding author: Chad J. Achenbach, M.D., M.P.H., Havey Institute for Global Health,  
14 Feinberg School of Medicine, Northwestern University, 710 N Lake Shore Drive, Chicago, IL  
15 60611, email: [c-achenbach@northwestern.edu](mailto:c-achenbach@northwestern.edu), phone: 312-503-8810, fax: 312-503-8800

16 <sup>¶</sup>These authors contributed equally to this work

17 <sup>&</sup>These authors also contributed equally to this work.

18

19

20

21

22

## 23 Abstract

24 **Background:** SARS-CoV-2 vaccines have been shown to be safe and effective against infection and severe  
25 COVID-19 disease worldwide. Certain co-morbid conditions cause immune dysfunction and may reduce  
26 immune response to vaccination. In contrast, those with co-morbidities may practice infection prevention  
27 strategies. Thus, the real-world clinical impact of co-morbidities on SARS-CoV-2 infection in the recent  
28 post-vaccination period is not well established. We performed this study to understand the epidemiology of  
29 Omicron breakthrough infection and evaluate associations with number of comorbidities in a vaccinated  
30 and boosted population.

31 **Methods and Findings:** We performed a retrospective clinical cohort study utilizing the Northwestern  
32 Medicine Enterprise Data Warehouse. Our study population was identified as fully vaccinated adults with  
33 at least one booster. The primary risk factor of interest was the number of co-morbidities. Our primary  
34 outcome was incidence and time to first positive SARS-CoV-2 molecular test in the Omicron predominant  
35 era. We performed multivariable analyses stratified by calendar time using Cox modeling to determine  
36 hazard of SARS-CoV-2. In total, 133,191 patients were analyzed. Having 3+ comorbidities was associated  
37 with increased hazard for breakthrough (HR=1.2 CI 1.2-1.6). During the second half of the study, having 2  
38 comorbidities (HR= 1.1 95% CI 1.02-1.2) and having 3+ comorbidities (HR 1.7, 95% CI 1.5-1.9) were  
39 associated with increased hazard for Omicron breakthrough. Older age was associated with decreased  
40 hazard in the first 6 months of follow-up. Interaction terms for calendar time indicated significant changes  
41 in hazard for many factors between the first and second halves of the follow-up period.

42 **Conclusions:** Omicron breakthrough is common with significantly higher risk for our most vulnerable  
43 patients with multiple co-morbidities. Age related behavioral factors play an important role in breakthrough  
44 infection with the highest incidence among young adults. Our findings reflect real-world differences in  
45 immunity and exposure risk behaviors for populations vulnerable to COVID-19.

46

## 47 **Introduction**

48 Vaccines against SARS-COV-2, have been developed and shown in numerous studies to be safe  
49 and highly effective at reducing SARS-CoV-2 infection and COVID-19 disease [1-3]. However, clinical  
50 trials and population-based observational studies excluded or did not compare certain groups at highest risk  
51 for severe outcomes of COVID-19. The impact of age and burden of immune disorders or certain chronic  
52 conditions on vaccine effectiveness (including boosting) in terms of acquisition of infection, has not been  
53 adequately studied in our current era dominated by omicron SARS-CoV-2 subvariants.

54 Although there have been impressive advances in our understanding of protective immunity against  
55 COVID-19 after vaccination and natural infection, risk of infection is not completely understood for our  
56 most vulnerable patients including individuals who are immune compromised (age, HIV, malignancies,  
57 solid organ transplant, stem cell transplant) or have chronic illnesses (diabetes, obesity, chronic liver  
58 disease, and chronic kidney disease). SARS-CoV-2 vaccines stimulate both B and T cell responses to virus  
59 spike protein to elicit an effective immune response [4]. Those with dysfunctional immunity have been  
60 observed to have lower responses to vaccination with antibody titers as indicators of immunogenicity [5].  
61 Questions remain about how lower immunogenicity translates into diminished clinical effectiveness of  
62 COVID-19 vaccines in real world populations with different co-morbidities. Individuals who have chronic  
63 disease, advanced age, and/or immunodeficiencies may be at higher risk for breakthrough infection due to  
64 poor vaccine response (defined as COVID-19 infection after completion of all require doses with a typical  
65 2-week lag period) [6]; however, they may also practice better infection prevention such as mask wearing,  
66 avoiding travel or large gatherings, and social distancing [7].

67 The incidence of SARS-CoV-2 breakthrough infection is an increasingly important issue  
68 worldwide, with vulnerable populations at high risk of infection at a time when vaccine-induced immunity  
69 may not be fully optimized. To gain insight into this issue and to inform public health decision making, our

70 study aimed and was able to determine the incidence and risk factors associated with SARS-CoV-2  
71 breakthrough infection in the Omicron-variant era among vaccinated and boosted individuals.

## 72 **Methods**

### 73 *Study Design*

74 We performed a clinical cohort study of breakthrough infection in the first year of SARS-CoV-2  
75 Omicron-variant era (January 1, 2022, until December 31, 2022) among fully vaccinated and boosted adults  
76 (18 years and older) as per CDC/FDA vaccine guidelines for COVID-19 [8], All demographic, lab, vaccine,  
77 and comorbidity data were collected from the Northwestern Medicine (NM) Enterprise Data Warehouse  
78 (EDW)[9]. Each participant had a unique study identifier and protected health information was stored  
79 separately with access limited to the principal investigator.

### 80 *Population & Definitions*

81 We included adults that were boosted prior to the Omicron era, which we defined as those who  
82 received at least 3 (first dose mRNA) or 2 (first dose J&J) SARS-CoV-2 vaccine doses prior to December  
83 15, 2021. To include a representative population that was likely to have SARS-CoV-2 testing performed  
84 within the NM system, we only included patients if they had at least two medical system visits (including  
85 inpatient, outpatient, telemedicine, and lab testing) at least 180 days apart between January 1, 2020, and  
86 December 15, 2021.

87 We observed individuals in this cohort from January 1, 2022, to December 31, 2022, for incident  
88 breakthrough infection with SARS-CoV-2 as our primary outcome defined as the first positive SARS-CoV-  
89 2 PCR test performed at an NM facility after January 1, 2022. Patients who tested positive for SARS-  
90 CoV-2 after their most recent booster dose but prior to January 1, 2022, were excluded. Data was accessed  
91 throughout this study period. Comorbidities of interest (diabetes, obesity, solid organ transplant, stem cell

92 transplant, HIV, hematologic malignancy, chronic liver disease, and chronic kidney disease) were identified  
93 using ICD9/ICD10 coding.

## 94 *Statistical Analysis*

95 Descriptive statistics, including median (IQR) and counts (%), were calculated for patient  
96 characteristics and compared between those with and without breakthrough SARS-CoV-2 infection during  
97 the study period. We calculated cumulative incidence as the number of breakthrough infections divided by  
98 the total number of those at risk (no prior breakthrough infection during study and not right censored) and  
99 plotted these curves with 95% confidence intervals assuming normality over the study period. Patients were  
100 right censored in cases of death, additional SARS-CoV-2 vaccines, or loss to follow-up. Loss to follow-up  
101 was defined as 90 days without a visit at NM (outpatient visit, hospital admission, or laboratory testing).  
102 We performed Cox regression modeling to determine proportional hazards of breakthrough infection with  
103 the following covariates: age, sex, race, ethnicity, time from booster dose to study period start, and number  
104 of comorbidities. We included the overall number of comorbidities rather than the specific comorbidities  
105 themselves as this study aimed to measure associations with overall health, not individual disease  
106 epidemiology. The proportional hazards assumption was assessed graphically with cumulative incidence  
107 curves for each covariate. For covariates that violated this assumption, interaction terms for calendar time  
108 were considered. Multicollinearity was assessed with generalized variance inflation factors (GVIFs). If  
109  $(GVIF^{1/(2 \cdot DF)})^2 > 3$ , removal of those variables from the model was considered. Linearity of log hazards for  
110 continuous covariates was examined with martingale residuals from the fitted model. The *car*, *survival* and  
111 *tidycmprsk* packages in R 4.2.3 software were used for statistical analysis and plot production[10-13].

## 112 **Results**

113 Clinical and demographic characteristics of the cohort included and analyzed are presented in  
114 **Table 1**. In total, there were 133,191 patients in the cohort with a median (IQR) age of 61 years (47, 72)  
115 63% female sex, 84% white, 95 % Non-Hispanic or Latino ethnicity, and 77% with any comorbid condition.

116 Overall, 99% of individuals received mRNA SARS-CoV-2 booster. One booster dose vaccine was  
 117 administered to 99.2% of individuals and 0.8% had received more than one booster dose.

118 **Table 1: Characteristics of patients overall, with and without breakthrough SARS-CoV-2 infection.**

| <b>Characteristic</b>               | <b>Overall,<br/>N = 133,191</b> | <b>No Breakthrough<br/>Infection, N =<br/>125,287<sup>1</sup></b> | <b>Breakthrough<br/>Infection, N =<br/>7,904<sup>1</sup></b> |
|-------------------------------------|---------------------------------|---|--|
| <b>Age</b>                          |                                 |   |  |
| 18-39                               | 19,936 (15%)                    | 18,189 (15%)  | 1,747 (22%)  |
| 40-59                               | 41,874 (31%)                    | 39,071 (31%)  | 2,803 (35%)  |
| 60-79                               | 58,857 (44%)                    | 56,105 (45%)  | 2,752 (35%)  |
| 80+                                 | 12,524 (9.4%)                   | 11,922 (9.5%)   | 602 (7.6%)   |
| <b>Sex</b>                          |                                 |   |  |
| Male                                | 49,846 (37%)                    | 46,992 (38%)  | 2,854 (36%)  |
| Female                              | 83,345 (63%)                    | 78,295 (62%)  | 5,050 (64%)  |
| <b>Race</b>                         |                                 |   |  |
| White                               | 112,542 (84%)                   | 106,077 (85%)   | 6,465 (82%)  |
| Asian                               | 6,453 (4.8%)                    | 5,930 (4.7%)  | 523 (6.6%)   |
| Black or African American           | 8,206 (6.2%)                    | 7,729 (6.2%)  | 477 (6.0%)   |
| Other                               | 5,990 (4.5%)                    | 5,551 (4.4%)  | 439 (5.6%)   |
| <b>Hispanic, Latino, or Spanish</b> | 7,055 (5.3%)                    | 6,400 (5.1%)  | 655 (8.3%)   |
| <b>First Vaccine Type</b>           |                                 |   |  |
| Adenovirus vector                   | 4,194 (3.1%)                    | 3,984 (3.2%)  | 210 (2.7%)   |
| mRNA                                | 128,997 (97%)                   | 121,303 (97%)   | 7,694 (97%)  |
| <b>Booster Type</b>                 |                                 |   |  |
| Adenovirus vector                   | 835 (0.6%)                      | 782 (0.6%)  | 53 (0.7%)  |
| mRNA                                | 132, 279 (99 %)                 | 124,434 (99%)   | 7,845 (99%)  |

|                                |               |               |             |
|--------------------------------|---------------|---------------|-------------|
| Other                          | 6 (<0.1%)     | 6 (<0.1%)     | 0 (0%)      |
| Unknown                        | 71 (<0.1%)    | 65 (<0.1%)    | 6 (<0.1%)   |
| <b>Vaccine Status</b>          |               |               |             |
| Boosted 2+ Times               | 1,025 (0.8%)  | 982 (0.8%)    | 43 (0.5%)   |
| Boosted Once                   | 132,166 (99%) | 124,305 (99%) | 7,861 (99%) |
| <b>Days since booster</b>      |               |               |             |
| 15-29                          | 20,431 (15%)  | 19,210 (15%)  | 1,221 (15%) |
| 30-59                          | 50,458 (38%)  | 47,625 (38%)  | 2,833 (36%) |
| 60-89                          | 43,353 (33%)  | 40,596 (32%)  | 2,757 (35%) |
| 90+                            | 18,949 (14%)  | 17,856 (14%)  | 1,093 (14%) |
| <b>Diabetes mellitus</b>       | 20,958 (16%)  | 19,739 (16%)  | 1,219 (15%) |
| <b>Solid Organ Transplant</b>  | 860 (0.6%)    | 779 (0.6%)    | 81 (1.0%)   |
| <b>HIV/AIDS</b>                | 6,113 (4.6%)  | 5,680 (4.5%)  | 433 (5.5%)  |
| <b>Chronic Liver Disease</b>   | 4,665 (3.5%)  | 4,343 (3.5%)  | 322 (4.1%)  |
| <b>Chronic Renal Disease</b>   | 15,084 (11%)  | 14,174 (11%)  | 910 (12%)   |
| <b>End Stage Renal Disease</b> | 940 (0.7%)    | 835 (0.7%)    | 105 (1.3%)  |
| <b>Stem Cell Transplant</b>    | 428 (0.3%)    | 408 (0.3%)    | 20 (0.3%)   |
| <b>Asthma</b>                  | 16,546 (12%)  | 15,308 (12%)  | 1,238 (16%) |
| <b>COPD</b>                    | 5,098 (3.8%)  | 4,753 (3.8%)  | 345 (4.4%)  |
| <b>Cancer</b>                  | 22,839 (17%)  | 21,701 (17%)  | 1,138 (14%) |
| <b>Hypertension</b>            | 60,112 (45%)  | 56,742 (45%)  | 3,370 (43%) |
| <b>Hematologic Malignancy</b>  | 2,936 (2.2%)  | 2,762 (2.2%)  | 174 (2.2%)  |
| <b>Immunodeficiencies</b>      | 11,865 (8.9%) | 11,113 (8.9%) | 752 (9.5%)  |
| <b>Obesity</b>                 | 45,046 (34%)  | 42,172 (34%)  | 2,874 (36%) |
| <b>Number of comorbidities</b> |               |               |             |

|                                  |              |              |             |
|----------------------------------|--------------|--------------|-------------|
| 0                                | 30,359 (23%) | 28,524 (23%) | 1,835 (23%) |
| 1                                | 32,422 (24%) | 30,495 (24%) | 1,927 (24%) |
| 2                                | 27,528 (21%) | 25,971 (21%) | 1,557 (20%) |
| 3+                               | 42,882 (32%) | 40,297 (32%) | 2,585 (33%) |
| <sup>1</sup> n (%); Median (IQR) |              |              |             |

119

120 Of the total cohort, 7,904 (5.9%) tested positive for SARS-Cov-2 infection by PCR during the study  
 121 period in a median (IQR) of 135 (34, 196) days. The infections occurred in a median (IQR) of 196 (115,  
 122 260) days after a booster dose of vaccine. Approximately 31% of the total cohort was right-censored due  
 123 to loss to follow-up, 21% due to additional boosters, and 0.4% due to death.

124 The proportional hazards assumption in Cox regression was violated for the following covariates:  
 125 age, race, days since vaccination, and number of comorbidities. Graphical assessment indicated that  
 126 significant changes in incidence rate trends began near the 6-month (halfway) mark of the study period. To  
 127 account for this, we introduced an interaction term to calculate separate hazard ratios for periods 1 (Jan 1,  
 128 2022, to June 30, 2022) and 2 (July 1, 2022, to Dec 31, 2022) for those 4 covariates.

129 In Cox regression multivariable analysis (**Table 2**), increasing age was associated with reduced  
 130 hazard during this first period when controlling for other covariates. The greatest reduction in hazard  
 131 compared to the reference age group (18-39) was seen in the 80+ age group (HR 0.41 95% CI 0.36-0.46).  
 132 Similar but lower reductions were observed in the 60-79 (HR 0.44 95% CI 0.4-0.48) and 40-59 (HR 0.71  
 133 95% CI 0.66-0.76) age groups. A significant interaction between calendar time and the hazards for age was  
 134 found in each age group compared to the reference group ( $p < .001$  for each). In the second half of the study  
 135 period, only the 60-79 age group demonstrated a significantly different hazard than the reference group  
 136 (HR 0.86, 95% CI 0.76-0.99). Trends in cumulative incidence stratified by number of comorbidities in are  
 137 observed in **Fig. 1**.



138 **Table 2: Multivariable analysis for hazard of breakthrough SARS-CoV-2 infection using Cox**  
 139 **modeling.**

| Covariate  | Hazard Ratio (95% CI),<br>Period 1 | Hazard Ratio (95% CI),<br>Period 2 | Hazard Ratio (95% CI),<br>Both Periods | Covariate x<br>Period<br>Interaction<br>Term Type 3<br>p-value |
|--|------------------------------------|------------------------------------|--|--|
| <b>Age Group</b>                                 |                                    |                                    |  |  |
| 18-39  | Ref                                | Ref                                | Ref                                    |  |
| 40-59  | 0.712 (0.664, 0.763) *             | 0.921 (0.809, 1.049)               | 0.751 (0.706, 0.798) *                 | < .001   |
| 60-79  | 0.442 (0.409, 0.477) *             | 0.863 (0.756, 0.985) *             | 0.529 (0.496, 0.565) *                 | < .001   |
| 80+  | 0.406 (0.359, 0.459) *             | 0.953 (0.800, 1.136)               | 0.522 (0.472, 0.576) *                 | < .001   |
| <b>Male</b>                                      | Ref                                | Ref                                | Ref                                    |  |
| <b>Female</b>                                    |                                    |                                    | 1.010 (0.964, 1.058)                   |  |
| <b>Race</b>                                      |                                    |                                    |  |  |
| White  | Ref                                | Ref                                | Ref                                    |  |
| Asian  | 1.320 (1.190, 1.463) *             | 1.232 (1.028, 1.476) *             | 1.305 (1.193, 1.428)                   | .517   |
| Black or African<br>American                     | 0.828 (0.734, 0.935) *             | 1.164 (1.003, 1.351) *             | 0.945 (0.861, 1.038)                   | < .001   |
| Other  | 0.944 (0.836, 1.068)               | 0.987 (0.816, 1.193)               | 0.959 (0.862, 1.067)                   | .691   |
| <b>Not Hispanic,<br/>Latino, or<br/>Spanish</b>  |                                    |                                    | Ref                                    |  |
| <b>Hispanic, Latino,<br/>or Spanish</b>          |                                    |                                    | 1.480 (1.354, 1.618) *                 |  |
| <b>Weeks from<br/>Booster to study<br/>start</b> | 1.034 (1.027, 1.040) *             | 1.013 (1.002, 1.023) *             | 1.028 (1.023, 1.033) *                 | < .001   |
| <b>Number of Comorbidities</b>                   |                                    |                                    |  |  |

| 0  | Ref                    | Ref                    | Ref                    |        |
|--|------------------------|------------------------|------------------------|--------|
| 1  | 1.009 (0.938, 1.087)   | 1.271 (1.110, 1.455) * | 1.057 (0.991, 1.127)   | .003   |
| 2  | 1.022 (0.940, 1.109)   | 1.449 (1.260, 1.665) * | 1.108 (1.033, 1.189) * | < .001 |
| 3+   | 1.163 (1.075, 1.258) * | 1.726 (1.513, 1.969) * | 1.288 (1.205, 1.377) * | < .001 |
| *p < .05   |                        |                        |                        |        |
| Period 1 = January 1, 2022, to June 30, 2022, Period 2 = July 1, 2022, to Dec 31, 2022 |                        |                        |                        |        |

140

141 **Fig. 1 Cumulative incidence curve for COVID-19 breakthrough infection by age when stratified by**  
 142 **number of comorbidities (per panel).**

143

144 Cox regression modeling (**Table 2**) also revealed an increased hazard for those of Asian race  
 145 compared to the reference group (white race) in both periods (period 1: HR 1.32 95% CI 1.19-1.46; period  
 146 2 HR 1.23 95% CI 1.03-1.48). Significant associations with hazard were seen in the Black or African  
 147 American race group compared to the reference group, though the directions of these associations differed  
 148 between study periods (period 1: HR 0.83 95% CI 0.73-0.94; period 2: HR 1.16 95% CI 1.03-1.48). People  
 149 of Hispanic, Latino, or Spanish ethnicity also had a higher hazard for COVID-19 breakthrough infection  
 150 compared to those not in that ethnic group (HR 1.48 95% CI 1.35-1.62). Days from booster to start of study  
 151 showed an increased hazard of 1.03 per week (95% CI 1.03-1.04) and later 1.01 per week (95% CI 1.00-  
 152 1.02). The interaction term for calendar time and this variable was significant (p < .001).

153 Compared to having none, having one or two comorbidities was not significantly associated with  
 154 increased hazard for Omicron infection during period 1 when controlling for other variables. In contrast,  
 155 having three or more comorbidities was associated with increased hazard for breakthrough (HR=1.16 CI  
 156 1.08-1.26). During the second half of the study, having one comorbidity (HR = 1.27 95% CI 1.11-1.46),  
 157 having two comorbidities (HR= 1.45 95% CI 1.26-1.67) and having three or more comorbidities (HR 1.73,  
 158 95% CI 1.51-1.97) were all associated with increased hazard for Omicron breakthrough compared to those

159 with no comorbidities. Cumulative incidence over time between co-morbidity groups and stratified by age  
160 category are presented in **Fig. 2**. Cumulative incidence over time between age categories and stratified by  
161 co-morbidities groups are presented in **Fig. 1**.

162 **Fig. 2 Cumulative incidence curve for COVID-19 breakthrough infection by number of comorbidities**  
163 **when stratified by age category (per panel).**

## 164 **Discussion**

165 In this large cohort study across an urban healthcare system in Chicago, we found that omicron  
166 breakthrough infections were common with a one-year cumulative incidence of 5.1% for all vaccinated and  
167 boosted individuals. We observed a higher incidence of breakthrough infections among individuals with  
168 multiple comorbidities and those who had a longer time since vaccine booster. However, age was also an  
169 important factor with increasing age independently associated with reduced risk of Omicron breakthrough  
170 likely due to less risk taking and lower exposure among the highest age groups. We found racial and Ethnic  
171 differences in infection incidence as demonstrated by increased risk of Omicron breakthrough for  
172 individuals identifying as Asian race or Hispanic/Latino ethnicity, again likely due to differences in  
173 exposure from social behaviors rather than inherent immunogenetic differences. Perhaps our most  
174 intriguing finding was that across all age groups, those with three or more co-morbidities had the highest  
175 incidence of SARS-CoV-2 infection, and this factor did not appear to alter individual behavior to lower  
176 exposure as much as age. The immune effects of co-morbidity might have overwhelmed any decrease in  
177 social behavior risk related exposure. Thus, acquisition of Omicron SARS-CoV-2 was complex with  
178 behavioral and individual risk or immunologic factors driving SARS-CoV-2 infection despite vaccination.

179 Our findings are consistent with previous studies that have reported a significant burden of  
180 breakthrough infections despite vaccination efforts. For example, a study by Stouten et al. [14] found a  
181 similar cumulative incidence of 11.2% among vaccinated individuals in a different urban setting. Similarly,  
182 Sun et al.[15] reported an incidence of 7.1% in those without immune dysfunction and slightly higher rates

183 for those with specific diseases affecting the immune system. Our cumulative incidence is lower than the  
184 ones reported in these studies. This likely relates to several factors including study population,  
185 methodologic differences, and SAR-CoV-2 variant circulating during the study period. The predominant  
186 circulating variant of concern in prior studies was the Delta variant, which has been the most studied in  
187 terms of breakthrough and consistently demonstrated high incidence rates [16]. Additionally, studies  
188 conducted in rural populations have demonstrated lower incidence of breakthrough [17, 18]. One study in  
189 a small cohort in New York City reported an incidence <1% [19], but this discrepancy is likely due to study  
190 time period and significantly smaller sample size compared to our study and others with higher incidence.  
191 As expected, and generally observed, evidence suggests that breakthrough infections are common across  
192 many different populations and healthcare settings and may vary with overtime with shifts in vaccine  
193 coverage, population immunity, and circulating SARS-CoV-2 variant strain.

194 Our study revealed an intriguing finding in that having three or more comorbid diseases heightened the  
195 risk of breakthrough infections across all age groups. Having more comorbidities increases risk of infection  
196 greater than one would expect of the individual comorbidities. Surprisingly, this heightened risk did not  
197 seem to prompt significant alterations in individual behavior. It is plausible that the impact of these  
198 comorbidities on immunity overshadowed any potential behavioral changes. Alternatively, it could be that  
199 comorbidities are not as influential in driving behavioral and lifestyle changes as age. However, the latter  
200 would contrast with prior studies suggesting that perceived vulnerability and severity, along with self-  
201 efficacy and intention, are drivers of COVID-19 protective behaviors[20-23]. Our findings align with those  
202 of Smits et al. [24], who examined four specific comorbidities and observed that patients with two or more  
203 of these conditions also faced a greater risk than would be expected based on the individual effects of each  
204 comorbidity. This contrasts with the findings of Walmsley et al. [25], who did not identify significant  
205 variations in the rate of breakthrough infections among individuals with underlying comorbidities. These  
206 investigators acknowledged that this discrepancy may be due to the low number of participants with  
207 comorbid diseases in their study, which could have hindered the identification of a clear association.

208 Immune compromising co-morbidities have been shown to increase risk of SARS-CoV-2 infection  
209 [26];[27-29], however, we did not find any significant increased risk among those in our  
210 immunocompromised groups of stem cell or solid organ transplant recipients as has been previously  
211 reported[28]. Whether due to the impact on the immune system or lack of an effect on behaviors, our  
212 findings reveal that independent of age or type of comorbidity, an increasing amount of comorbidity burden  
213 increased the risk for Omicron SARS-CoV-2 infection after vaccination within a population most  
214 vulnerable to worse outcomes and severe COVID-19 disease. Thus, public health messaging should continue  
215 to emphasize the importance of infection prevention measures within this key group.

216 We noted that older individuals became at higher risk for infection at later time points, suggesting  
217 reduction in vaccine response or increase in risk taking behaviors over time. This finding is consistent with  
218 a previous study that demonstrated an inverse association between age and antibody titers only three months  
219 after mRNA vaccination [30]. Similarly, a study focusing on immunocompromised individuals found that  
220 although vaccination was associated with a modest risk reduction, older individuals continued to have  
221 higher rates of breakthrough SARS-CoV-2 infections [15]. Research has shown that as the immune system  
222 ages, the number of naïve T and B cells decreases, which can lead to reduced vaccine efficiency and a  
223 predisposition to breakthrough infections. While the quality of antibodies remains unaffected, aging is  
224 associated with a decrease in the quantity of antibodies produced after vaccination, rendering individuals  
225 more susceptible to infection [31, 32]. Our results support prior evidence establishing that, independent of  
226 comorbidities or immunocompromised status, increased age is a strong risk factor for breakthrough  
227 infection likely due to declining immunity over time. Overall, this evidence suggest that the diminished  
228 quantity of antibodies produced in older individuals puts them at greater risk compared to the longer-lasting  
229 protection seen in younger people. Our findings also support recent recommendations for SARS-CoV-2  
230 vaccine boosting approximately twice per year among individuals over 65 years of age [33].

231 In contrast to our findings regarding older individuals, multiple studies have identified younger age as  
232 a risk factor for COVID-19 breakthrough infection[14, 25, 34] . It's important to note that these studies

233 varied in design, cohort size, and follow-up duration, which may have influenced their ability to capture  
234 current evolving trends. These findings align with our observations shortly after vaccination, where younger  
235 age emerged as an important risk factor. We attribute this phenomenon to social behaviors playing a larger  
236 role than age during earlier time periods, when immunity has not yet significantly declined and vaccine  
237 response more protective. Young adults engage in more social interactions and risk-taking behaviors for  
238 respiratory virus acquisition compared to the elderly, potentially increasing their exposure to SARS-CoV-  
239 2through daily activities [35, 36]. Certain occupations, such as healthcare work, transit operation, and retail  
240 roles, have been identified as particularly high-risk for breakthrough infection despite full vaccination [37,  
241 38]. Additionally, younger individuals may perceive themselves as less vulnerable to severe COVID-19  
242 disease and therefore be more likely to disregard public health precautions such as social distancing and  
243 mask-wearing, or they may be less adept at recognizing the signs and symptoms of the virus, leading to  
244 further spread of the disease [39, 40]. Thus, it appears that prior to a significant decline in immunity and  
245 vaccine efficacy, behaviors among younger individuals likely drive and risk for breakthrough SARS-Co-  
246 V2 infections.

247 Time since last booster dose and certain racial/ethnic group also emerged as independent risk factors.  
248 A study described a similar finding in relation to the time since second vaccine dose [41]. This finding is  
249 consistent with waning vaccine immunity that has been previously described [42-46]. Our study also  
250 highlights the increased risk of Omicron SARS-CoV-2 infection among vaccinated individuals from  
251 Hispanic, Asian, and Black ethnic/racial groups. We believe it is unlikely that there is a biological basis to  
252 these associations— rather due to well-established socioeconomic factors known to play significant roles in  
253 influencing the occurrence and outcomes of SARS-CoV-2 and COVID disease [47-49]. Prior studies  
254 examining breakthrough SARS-CoV-2 infection do not comment on demographic information, likely  
255 limited geographical regions being studied. [14, 16]. However, reports in immunocompromised populations  
256 did not find any significant racial or ethnic differences [15, 50]. Disparities in healthcare access and quality  
257 may contribute to certain demographic groups facing a higher risk of SARS-CoV-2 infection[47, 51].

258 Engagement in higher-risk occupations, larger household size, lower income level, distrust in healthcare,  
259 lack of health insurance, and unequal access to healthcare services are among the key contributors to these  
260 disparities [52]. Efforts to address these disparities and improve healthcare outcomes for high-risk  
261 demographic groups are needed and should include interventions aimed at expanding access to healthcare  
262 and insurance, establishing more equitable care models, and addressing the underlying social determinants  
263 of health.

264 Our study has several limitations that should be considered when interpreting the results. Firstly, our  
265 research was conducted using electronic medical records within a single urban healthcare system, which  
266 likely did not capture all breakthrough SARS-CoV-2 infections. Patients who sought care outside of our  
267 NM system or opted for at-home testing were not always identified in our analysis, potentially leading to  
268 an underestimation of the true cumulative incidence of breakthrough SARS-CoV-2 infections.  
269 Additionally, mild, or asymptomatic breakthrough infections may be underreported in our study, as  
270 individuals with less severe symptoms might be less likely to seek medical care or testing. Secondly, given  
271 our study population selection criteria (see above), we may have included individuals who were generally  
272 more proactive about seeking healthcare services and thus may be overrepresented. This may affect the  
273 generalizability of our findings to a broader less engaged population. Additionally, the findings of this study  
274 may not be generalizable to other populations or healthcare settings. Factors such as population  
275 demographics, vaccination rates, and healthcare infrastructure can vary widely between different regions  
276 and may impact the incidence and risk factors for breakthrough SARS-CoV-2 infections. Lastly, our study  
277 was conducted during a specific timeframe and primarily focused on the Omicron variant. The future  
278 incidence and risk factors for breakthrough SARS-Co-2 infections will likely vary with evolving population  
279 immunity (natural and/or updated vaccines) and changes in circulating immune evasive Omicron sub-  
280 variants. Despite these limitations, we studied a large population with nearly 8,000 breakthrough infection  
281 events during the Omicron era and were able to assess associations with key demographic and clinical  
282 characteristics driving SARS-CoV-2 acquisition using strong statistical methods.

283

## 284 **Conclusion**

285       Our study sheds light on the complex interplay of factors influencing Omicron breakthrough infections  
286 in a large urban healthcare system in Chicago among a population of SARS-CoV-2 vaccinated and boosted  
287 individuals. We found a substantial one-year cumulative incidence of 5.1%, highlighting the ongoing  
288 challenges posed by SARS-CoV-2 despite vaccination efforts. These findings reflect real-world differences  
289 in immunity and exposure risk behaviors for populations vulnerable to Omicron variants of SARS-CoV-2  
290 worldwide. By identifying key risk factors and disparities, our findings can inform targeted public health  
291 interventions to mitigate the impact of breakthrough infections in vaccinated populations. Public health  
292 messages should continue to emphasize the importance of considering both co-morbidities and age as  
293 critical factors in understanding and mitigating the risk of SARS-CoV-2 acquisition, ensuring that  
294 interventions are tailored to address the specific needs of vulnerable populations. As people make decisions  
295 about booster vaccinations, our findings provide more information for patients to consider personal risk in  
296 their decision making. Ongoing public health surveillance and research are crucial to understand the long-  
297 term effectiveness of vaccines against SARS-CoV-2. Future research should focus on understanding  
298 mechanisms of declining immunity, immune evasion by SARS-CoV-2 viruses, drivers of acquisition  
299 behavior, and optimizing protective vaccine.

## 300 **Financial Disclosures**

301       Research reported in this publication was supported, in part, by the National Institutes of Health's  
302 National Center for Advancing Translational Sciences (grant number UL1TR001422) which supports the  
303 Northwestern Medicine Enterprise Data Warehouse. The content is solely the responsibility of the authors  
304 and does not necessarily represent the official views of the National Institutes of Health. Research reported



305 in this publication was also supported by the Division of Infectious Diseases emerging and re-emerging  
306 pathogens program (EREPP) at the Northwestern University Feinberg School of Medicine

## 307 **References**

308 1. Heath PT, Galiza EP, Baxter DN, Boffito M, Browne D, Burns F, et al. Safety and Efficacy of the  
309 NVX-CoV2373 COVID-19 Vaccine at Completion of the Placebo-Controlled Phase of a Randomized  
310 Controlled Trial. *Clin Infect Dis*. 2022. Epub 20221010. doi: 10.1093/cid/ciac803. PubMed PMID:  
311 36210481.

312 2. Thomas SJ, Moreira ED, Jr., Kitchin N, Absalon J, Gurtman A, Lockhart S, et al. Safety and  
313 Efficacy of the BNT162b2 mRNA Covid-19 Vaccine through 6 Months. *N Engl J Med*.  
314 2021;385(19):1761-73. Epub 20210915. doi: 10.1056/NEJMoa2110345. PubMed PMID: 34525277;  
315 PubMed Central PMCID: PMCPMC8461570.

316 3. Lewis NM, Self WH, Gaglani M, Ginde AA, Douin DJ, Keipp Talbot H, et al. Effectiveness of the  
317 Ad26.COV2.S (Johnson & Johnson) Coronavirus Disease 2019 (COVID-19) Vaccine for Preventing  
318 COVID-19 Hospitalizations and Progression to High Disease Severity in the United States. *Clin Infect Dis*.  
319 2022;75(Supplement\_2):S159-S66. doi: 10.1093/cid/ciac439. PubMed PMID: 35675695; PubMed Central  
320 PMCID: PMCPMC9214149.

321 4. Sahin U, Muik A, Derhovanessian E, Vogler I, Kranz LM, Vormehr M, et al. COVID-19 vaccine  
322 BNT162b1 elicits human antibody and TH1 T cell responses. *Nature*. 2020;586(7830):594-9. Epub  
323 20200930. doi: 10.1038/s41586-020-2814-7. PubMed PMID: 32998157.

324 5. Haggensburg S, Lissenberg-Witte BI, van Binnendijk RS, den Hartog G, Bhoekhan MS, Haverkate  
325 NJE, et al. Quantitative analysis of mRNA-1273 COVID-19 vaccination response in immunocompromised  
326 adult hematology patients. *Blood Adv*. 2022;6(5):1537-46. doi: 10.1182/bloodadvances.2021006917.  
327 PubMed PMID: 35114690; PubMed Central PMCID: PMCPMC8816838.

328 6. Brosh-Nissimov T, Orenbuch-Harroch E, Chowers M, Elbaz M, Neshet L, Stein M, et al.  
329 BNT162b2 vaccine breakthrough: clinical characteristics of 152 fully vaccinated hospitalized COVID-19

- 330 patients in Israel. *Clin Microbiol Infect.* 2021;27(11):1652-7. Epub 20210707. doi:  
331 10.1016/j.cmi.2021.06.036. PubMed PMID: 34245907; PubMed Central PMCID: PMC8261136.
- 332 7. Islam JY, Vidot DC, Havanur A, Camacho-Rivera M. Preventive Behaviors and Mental Health-  
333 Related Symptoms Among Immunocompromised Adults During the COVID-19 Pandemic: An Analysis of  
334 the COVID Impact Survey. *AIDS Res Hum Retroviruses.* 2021;37(4):304-13. doi:  
335 10.1089/AID.2020.0302. PubMed PMID: 33626959; PubMed Central PMCID: PMC8035912.
- 336 8. Interim Clinical Considerations for Use of COVID-19 Vaccines in the United States: Center for  
337 Disease Control and Prevention 2023 [updated January, 2024]. Available from:  
338 <https://www.cdc.gov/vaccines/covid-19/clinical-considerations/interim-considerations-us.html>.
- 339 9. Starren JB, Winter AQ, Lloyd-Jones DM. Enabling a Learning Health System through a Unified  
340 Enterprise Data Warehouse: The Experience of the Northwestern University Clinical and Translational  
341 Sciences (NUCATS) Institute. *Clin Transl Sci.* 2015;8(4):269-71. Epub 20150601. doi: 10.1111/cts.12294.  
342 PubMed PMID: 26032246; PubMed Central PMCID: PMC4553136.
- 343 10. Fox J. *An R Companion to Applied Regression.* Third ed. Thousand Oaks, CA: Sage Publications;  
344 2019.
- 345 11. T T. *A Package for Survival Analysis in R.* R package version 3.5-5,2023.
- 346 12. Terry M, Therneau PMG. *Modeling Survival Data : Extending the Cox Model.* Springer, New York  
347 2000.
- 348 13. Sjoberg DD FT. *Competing Risks Estimation.* R package version 0.2.0. 2022.
- 349 14. Stouten V, Hubin P, Haarhuis F, van Loenhout JAF, Billuart M, Brondeel R, et al. Incidence and  
350 Risk Factors of COVID-19 Vaccine Breakthrough Infections: A Prospective Cohort Study in Belgium.  
351 *Viruses.* 2022;14(4). Epub 20220413. doi: 10.3390/v14040802. PubMed PMID: 35458532; PubMed  
352 Central PMCID: PMC9029338.
- 353 15. Sun J, Zheng Q, Madhira V, Olex AL, Anzalone AJ, Vinson A, et al. Association Between Immune  
354 Dysfunction and COVID-19 Breakthrough Infection After SARS-CoV-2 Vaccination in the US. *JAMA*

- 355 Intern Med. 2022;182(2):153-62. doi: 10.1001/jamainternmed.2021.7024. PubMed PMID: 34962505;  
356 PubMed Central PMCID: PMCPMC8715386.
- 357 16. Gopinath S, Ishak A, Dhawan N, Poudel S, Shrestha PS, Singh P, et al. Characteristics of COVID-  
358 19 Breakthrough Infections among Vaccinated Individuals and Associated Risk Factors: A Systematic  
359 Review. Trop Med Infect Dis. 2022;7(5). Epub 20220522. doi: 10.3390/tropicalmed7050081. PubMed  
360 PMID: 35622708; PubMed Central PMCID: PMCPMC9144541.
- 361 17. COVID-19 Stats: COVID-19 Incidence,\* by Urban-Rural Classification(dagger) - United States,  
362 January 22-October 31, 2020( section sign). MMWR Morb Mortal Wkly Rep. 2020;69(46):1753. Epub  
363 20201120. doi: 10.15585/mmwr.mm6946a6. PubMed PMID: 33211682; PubMed Central PMCID:  
364 PMCPMC7676636.
- 365 18. Fazili A, Ain SN, Shah RJ, Raja FN, Farhat D, Nazir I. Incidence of breakthrough infections after  
366 COVID-19 vaccination among the COVID-19 vaccine recipients at a Tertiary Care Hospital in Srinagar.  
367 Indian J Public Health. 2023;67(2):305-8. doi: 10.4103/ijph.ijph\_1403\_22. PubMed PMID: 37459029.
- 368 19. Hacısuleyman E, Hale C, Saito Y, Blachere NE, Bergh M, Conlon EG, et al. Vaccine Breakthrough  
369 Infections with SARS-CoV-2 Variants. N Engl J Med. 2021;384(23):2212-8. Epub 20210421. doi:  
370 10.1056/NEJMoa2105000. PubMed PMID: 33882219; PubMed Central PMCID: PMCPMC8117968.
- 371 20. Yazdanpanah M, Abadi B, Komendantova N, Zobeidi T, Sieber S. Some at Risk for COVID-19  
372 Are Reluctant to Take Precautions, but Others Are Not: A Case From Rural in Southern Iran. Front Public  
373 Health. 2020;8:562300. Epub 20201116. doi: 10.3389/fpubh.2020.562300. PubMed PMID: 33304873;  
374 PubMed Central PMCID: PMCPMC7701237.
- 375 21. Kukreti S, Hsieh MT, Liu CH, Chen JS, Chen YJ, Hsieh MT, et al. Fear, Stress, Susceptibility, and  
376 Problematic Social Media Use Explain Motivation for COVID-19 Preventive Behaviors Among Patients  
377 With Stroke and Their Caregivers. Inquiry. 2024;61:469580231225030. doi:  
378 10.1177/00469580231225030. PubMed PMID: 38314649; PubMed Central PMCID: PMCPMC10845975.
- 379 22. Mihelic A, Jelovcan L, Prisljan K. Internal and external drivers for compliance with the COVID-19  
380 preventive measures in Slovenia: The view from general deterrence and protection motivation. PLoS One.

- 381 2021;16(11):e0259675. Epub 20211115. doi: 10.1371/journal.pone.0259675. PubMed PMID: 34780530;  
382 PubMed Central PMCID: PMCPCMC8592422.
- 383 23. Bashirian S, Jenabi E, Khazaei S, Barati M, Karimi-Shahanjarini A, Zareian S, et al. Factors  
384 associated with preventive behaviours of COVID-19 among hospital staff in Iran in 2020: an application of  
385 the Protection Motivation Theory. *J Hosp Infect.* 2020;105(3):430-3. Epub 20200428. doi:  
386 10.1016/j.jhin.2020.04.035. PubMed PMID: 32360337; PubMed Central PMCID: PMCPCMC7194681.
- 387 24. Smits PD, Gratzl S, Simonov M, Nachimuthu SK, Goodwin Cartwright BM, Wang MD, et al. Risk  
388 of COVID-19 breakthrough infection and hospitalization in individuals with comorbidities. *Vaccine.*  
389 2023;41(15):2447-55. Epub 20230216. doi: 10.1016/j.vaccine.2023.02.038. PubMed PMID: 36803895;  
390 PubMed Central PMCID: PMCPCMC9933320.
- 391 25. Walmsley S, Nabipoor M, Lovblom LE, Ravindran R, Colwill K, McGeer A, et al. Predictors of  
392 Breakthrough SARS-CoV-2 Infection after Vaccination. *Vaccines (Basel).* 2023;12(1). Epub 20231228.  
393 doi: 10.3390/vaccines12010036. PubMed PMID: 38250849; PubMed Central PMCID:  
394 PMCPCMC10820583.
- 395 26. Willicombe M, Scanlon M, Loud F, Lightstone L. Should we be clinically assessing antibody  
396 responses to covid vaccines in immunocompromised people? *BMJ.* 2022;377:o966. Epub 20220412. doi:  
397 10.1136/bmj.o966. PubMed PMID: 35414604.
- 398 27. Hansen CH, Michlmayr D, Gubbels SM, Molbak K, Ethelberg S. Assessment of protection against  
399 reinfection with SARS-CoV-2 among 4 million PCR-tested individuals in Denmark in 2020: a population-  
400 level observational study. *Lancet.* 2021;397(10280):1204-12. Epub 20210317. doi: 10.1016/S0140-  
401 6736(21)00575-4. PubMed PMID: 33743221; PubMed Central PMCID: PMCPCMC7969130.
- 402 28. Liu C, Lee J, Ta C, Soroush A, Rogers JR, Kim JH, et al. Risk Factors Associated With SARS-  
403 CoV-2 Breakthrough Infections in Fully mRNA-Vaccinated Individuals: Retrospective Analysis. *JMIR*  
404 *Public Health Surveill.* 2022;8(5):e35311. Epub 20220524. doi: 10.2196/35311. PubMed PMID:  
405 35486806; PubMed Central PMCID: PMCPCMC9132195.

- 406 29. White EM, Yang X, Blackman C, Feifer RA, Gravenstein S, Mor V. Incident SARS-CoV-2  
407 Infection among mRNA-Vaccinated and Unvaccinated Nursing Home Residents. *N Engl J Med.*  
408 2021;385(5):474-6. Epub 20210519. doi: 10.1056/NEJMc2104849. PubMed PMID: 34010526; PubMed  
409 Central PMCID: PMCPMC8174028.
- 410 30. O'Rourke K. Age and smoking predict antibody titers after the BNT162b2 COVID-19 vaccine.  
411 *Cancer.* 2022;128(3):431. doi: 10.1002/cncr.34082. PubMed PMID: 35050525; PubMed Central PMCID:  
412 PMCPMC9015587.
- 413 31. Bartleson JM, Radenkovic D, Covarrubias AJ, Furman D, Winer DA, Verdin E. SARS-CoV-2,  
414 COVID-19 and the Ageing Immune System. *Nat Aging.* 2021;1(9):769-82. Epub 20210914. doi:  
415 10.1038/s43587-021-00114-7. PubMed PMID: 34746804; PubMed Central PMCID: PMCPMC8570568.
- 416 32. Blomberg BB, Frasca D. Quantity, not quality, of antibody response decreased in the elderly. *J Clin*  
417 *Invest.* 2011;121(8):2981-3. Epub 20110725. doi: 10.1172/JCI58406. PubMed PMID: 21785210; PubMed  
418 Central PMCID: PMCPMC3148749.
- 419 33. CDC. Interim Clinical Considerations for Use of COVID-19 Vaccines in the United States Centers  
420 for Disease and Control Prevention 2024. Available from: [https://www.cdc.gov/vaccines/covid-19/clinical-  
421 considerations/interim-considerations-  
422 us.html#:~:text=Summary%20of%20recent%20changes%20\(last,Novavax%2C%20Pfizer%2DBioNTech  
423 \).C](https://www.cdc.gov/vaccines/covid-19/clinical-considerations/interim-considerations-us.html#:~:text=Summary%20of%20recent%20changes%20(last,Novavax%2C%20Pfizer%2DBioNTech).C).
- 424 34. Dash NR, Barqawi HJ, Obaideen AA, Al Chame HQ, Samara KA, Qadri R, et al. COVID-19  
425 Breakthrough Infection Among Vaccinated Population in the United Arab Emirates. *J Epidemiol Glob*  
426 *Health.* 2023;13(1):67-90. Epub 20230216. doi: 10.1007/s44197-023-00090-8. PubMed PMID: 36795274;  
427 PubMed Central PMCID: PMCPMC9933808.
- 428 35. Wilson RF, Sharma AJ, Schluechtermann S, Currie DW, Mangan J, Kaplan B, et al. Factors  
429 Influencing Risk for COVID-19 Exposure Among Young Adults Aged 18-23 Years - Winnebago County,  
430 Wisconsin, March-July 2020. *MMWR Morb Mortal Wkly Rep.* 2020;69(41):1497-502. Epub 20201016.

- 431 doi: 10.15585/mmwr.mm6941e2. PubMed PMID: 33056953; PubMed Central PMCID:  
432 PMCPMC7561092.
- 433 36. Rolison JJ, Hanoch Y, Wood S, Liu PJ. Risk-taking differences across the adult life span: a question  
434 of age and domain. *J Gerontol B Psychol Sci Soc Sci.* 2014;69(6):870-80. Epub 20131022. doi:  
435 10.1093/geronb/gbt081. PubMed PMID: 24149517.
- 436 37. Malhotra S, Mani K, Lodha R, Bakhshi S, Mathur VP, Gupta P, et al. SARS-CoV-2 Reinfection  
437 Rate and Estimated Effectiveness of the Inactivated Whole Virion Vaccine BBV152 Against Reinfection  
438 Among Health Care Workers in New Delhi, India. *JAMA Netw Open.* 2022;5(1):e2142210. Epub  
439 20220104. doi: 10.1001/jamanetworkopen.2021.42210. PubMed PMID: 34994793; PubMed Central  
440 PMCID: PMCPMC8742193.
- 441 38. de Gier B, de Oliveira Bressane Lima P, van Gaalen RD, de Boer PT, Alblas J, Ruijten M, et al.  
442 Occupation- and age-associated risk of SARS-CoV-2 test positivity, the Netherlands, June to October 2020.  
443 *Euro Surveill.* 2020;25(50). doi: 10.2807/1560-7917.ES.2020.25.50.2001884. PubMed PMID: 33334396;  
444 PubMed Central PMCID: PMCPMC7812419.
- 445 39. Romain B, Schneiderman M, Geliebter A. Prevalence of COVID-19 in adolescents and youth  
446 compared with older adults in states experiencing surges. *PLoS One.* 2021;16(3):e0242587. Epub  
447 20210310. doi: 10.1371/journal.pone.0242587. PubMed PMID: 33690600; PubMed Central PMCID:  
448 PMCPMC7946189.
- 449 40. Schneiderman M, Romain B, Kaganovskiy L, Geliebter A. Incidence and Relative Risk of COVID-  
450 19 in Adolescents and Youth Compared With Older Adults in 19 US States, Fall 2020. *JAMA Netw Open.*  
451 2022;5(7):e2222126. Epub 20220701. doi: 10.1001/jamanetworkopen.2022.22126. PubMed PMID:  
452 35838670; PubMed Central PMCID: PMCPMC9287748.
- 453 41. McKeigue PM, McAllister DA, Hutchinson SJ, Robertson C, Stockton D, Colhoun HM. Vaccine  
454 efficacy against severe COVID-19 in relation to delta variant (B.1.617.2) and time since second dose in  
455 patients in Scotland (REACT-SCOT): a case-control study. *Lancet Respir Med.* 2022;10(6):566-72. Epub

- 456 20220225. doi: 10.1016/S2213-2600(22)00045-5. PubMed PMID: 35227416; PubMed Central PMCID:  
457 PMCPMC8880999.
- 458 42. Lim SY, Kim JY, Jung J, Yun SC, Kim SH. Waning of humoral immunity depending on the types  
459 of COVID-19 vaccine. *Infect Dis (Lond)*. 2023;55(3):216-20. Epub 20230110. doi:  
460 10.1080/23744235.2023.2165707. PubMed PMID: 36625442.
- 461 43. Andrews N, Stowe J, Kirsebom F, Toffa S, Rickeard T, Gallagher E, et al. Covid-19 Vaccine  
462 Effectiveness against the Omicron (B.1.1.529) Variant. *N Engl J Med*. 2022;386(16):1532-46. Epub  
463 20220302. doi: 10.1056/NEJMoa2119451. PubMed PMID: 35249272; PubMed Central PMCID:  
464 PMCPMC8908811.
- 465 44. Tan WC, Tan JYJ, Lim JSJ, Tan RYC, Lee A, Leong FL, et al. COVID-19 Severity and Waning  
466 Immunity After up to 4 mRNA Vaccine Doses in 73 608 Patients With Cancer and 621 475 Matched  
467 Controls in Singapore: A Nationwide Cohort Study. *JAMA Oncol*. 2023;9(9):1221-9. doi:  
468 10.1001/jamaoncol.2023.2271. PubMed PMID: 37440245; PubMed Central PMCID: PMCPMC10346511.
- 469 45. Intawong K, Chariyalertsak S, Chalom K, Wonghirundecha T, Kowatcharakul W, Thongprachum  
470 A, et al. Waning vaccine response to severe COVID-19 outcomes during omicron predominance in  
471 Thailand. *PLoS One*. 2023;18(5):e0284130. Epub 20230511. doi: 10.1371/journal.pone.0284130. PubMed  
472 PMID: 37167215; PubMed Central PMCID: PMCPMC10174527.
- 473 46. Feng A, Obolski U, Stone L, He D. Modelling COVID-19 vaccine breakthrough infections in  
474 highly vaccinated Israel-The effects of waning immunity and third vaccination dose. *PLOS Glob Public  
475 Health*. 2022;2(11):e0001211. Epub 20221109. doi: 10.1371/journal.pgph.0001211. PubMed PMID:  
476 36962648; PubMed Central PMCID: PMCPMC10021336.
- 477 47. Khanijahani A, Iezadi S, Gholipour K, Azami-Aghdash S, Naghibi D. A systematic review of  
478 racial/ethnic and socioeconomic disparities in COVID-19. *Int J Equity Health*. 2021;20(1):248. Epub  
479 20211124. doi: 10.1186/s12939-021-01582-4. PubMed PMID: 34819081; PubMed Central PMCID:  
480 PMCPMC8611382.



- 481 48. Spruce L. Back to Basics: Social Determinants of Health. *AORN J.* 2019;110(1):60-9. doi:  
482 10.1002/aorn.12722. PubMed PMID: 31246307.
- 483 49. Abrams EM, Szeffler SJ. COVID-19 and the impact of social determinants of health. *Lancet Respir*  
484 *Med.* 2020;8(7):659-61. Epub 20200518. doi: 10.1016/S2213-2600(20)30234-4. PubMed PMID:  
485 32437646; PubMed Central PMCID: PMCPMC7234789.
- 486 50. Sun J, Patel RC, Zheng Q, Madhira V, Olex AL, Islam JY, et al. COVID-19 Disease Severity  
487 among People with HIV Infection or Solid Organ Transplant in the United States: A Nationally-  
488 representative, Multicenter, Observational Cohort Study. *medRxiv.* 2021. Epub 20210728. doi:  
489 10.1101/2021.07.26.21261028. PubMed PMID: 34341798; PubMed Central PMCID: PMCPMC8328066.
- 490 51. Agyemang C, Richters A, Jolani S, Hendriks S, Zalpuri S, Yu E, et al. Ethnic minority status as  
491 social determinant for COVID-19 infection, hospitalisation, severity, ICU admission and deaths in the early  
492 phase of the pandemic: a meta-analysis. *BMJ Glob Health.* 2021;6(11). doi: 10.1136/bmjgh-2021-007433.  
493 PubMed PMID: 34740916; PubMed Central PMCID: PMCPMC8573300.
- 494 52. Lopez L, 3rd, Hart LH, 3rd, Katz MH. Racial and Ethnic Health Disparities Related to COVID-19.  
495 *JAMA.* 2021;325(8):719-20. doi: 10.1001/jama.2020.26443. PubMed PMID: 33480972.

496

## 497 **Supporting Information**

498 **S1 Dataset. Vaccine Cohort Dataset.**

499 **S2 Supporting Information. Vaccine Cohort Dataset Codebook**

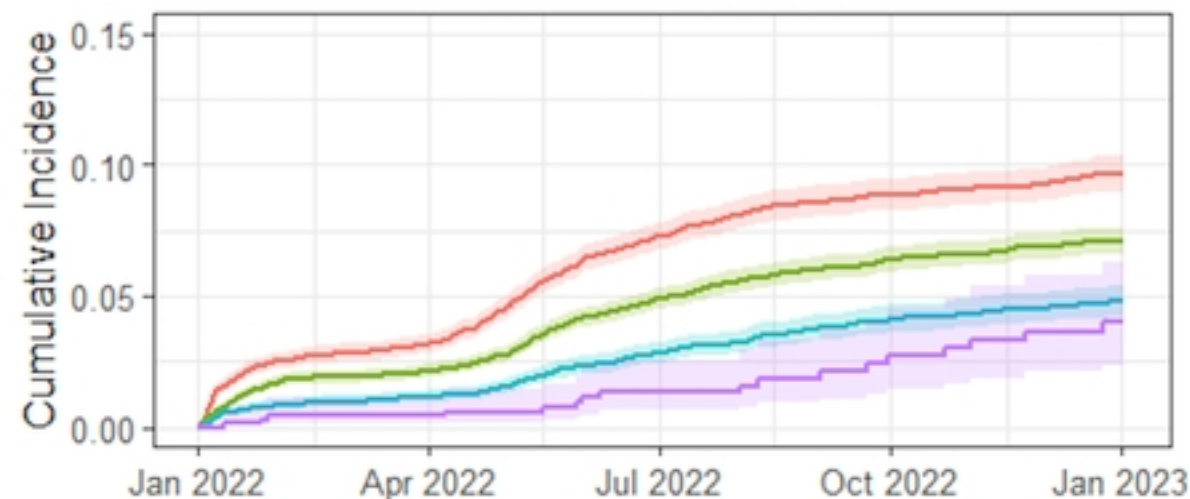
500



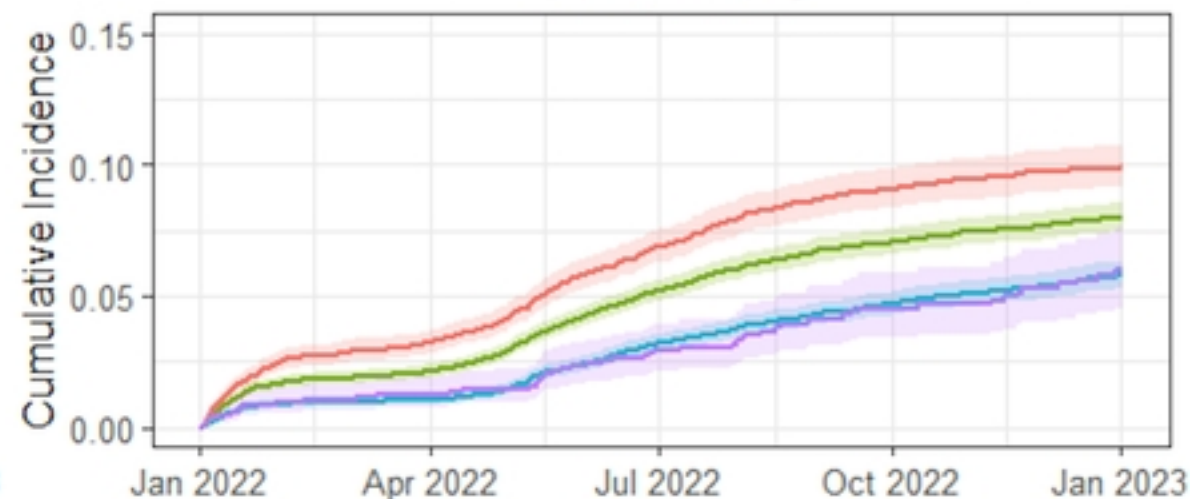
# Breakthrough Infection by Age and Comorbidities

Age 18-39 40-59 60-79 80+

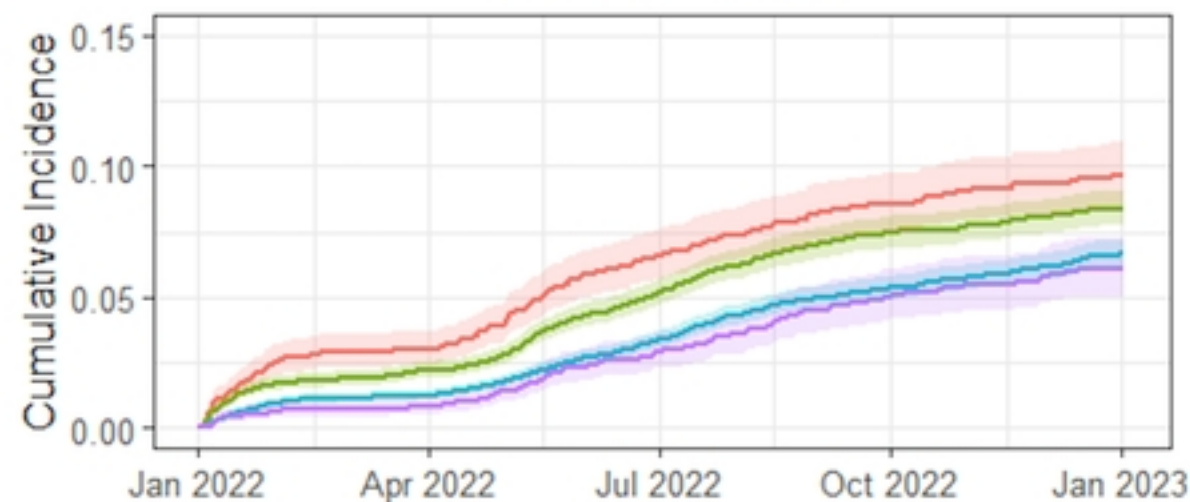
## No Comorbidities



## 1 Comorbidity



## 2 Comorbidities



## 3 Comorbidities

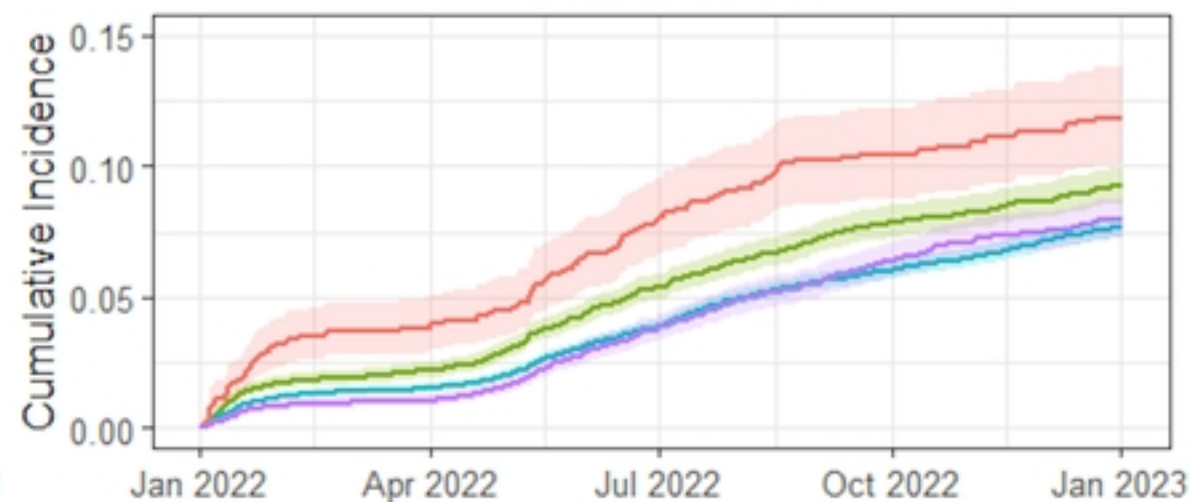


Figure 1

# Breakthrough Infection by Comorbidities and Age

Comorbidities 0 1 2 3+

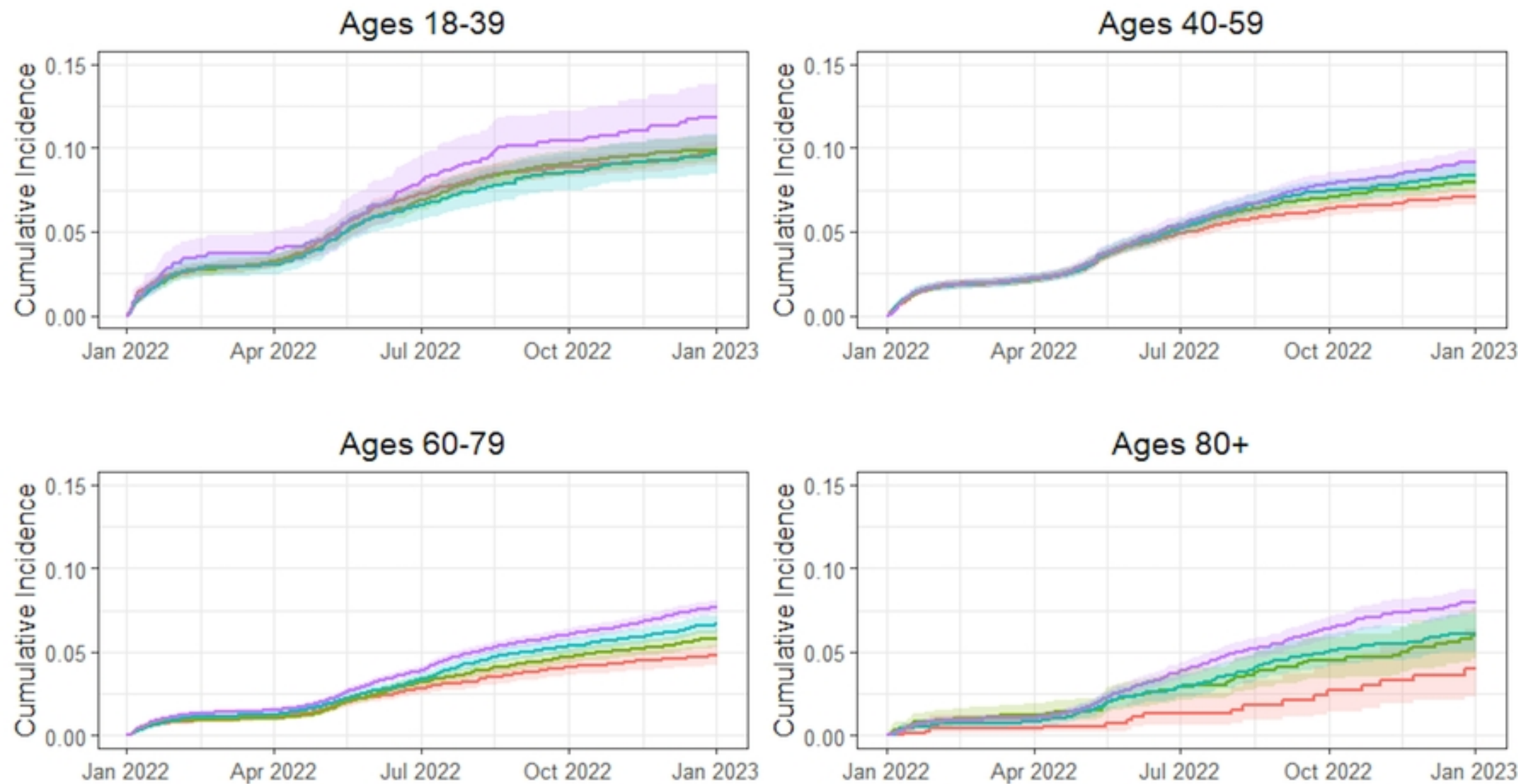


Figure 2