

1 **Alternative Approaches for Monitoring and Evaluation of Lymphatic Filariasis Following**
2 **Mass Drug Treatment with Ivermectin, Diethylcarbamazine and Albendazole in East New**
3 **Britain Province, Papua New Guinea**

4

5 **Running title: Monitoring and Evaluation for LF following MDA-IDA in Papua New**
6 **Guinea**

7 Krufinta Bun¹, Benedict Mode², Melinda Susapu³, Catherine Bjerum¹, Michael Payne¹, Daniel
8 Tisch¹, Makoto Sekihara⁵, Emanuele Giorgi⁶, Gary J. Weil⁸, Peter U Fischer⁸, Leanne Robinson⁷,
9 Moses Laman⁴, Christopher L. King^{1,9,*}

10

11 **Affiliations**

12 ¹ Center for Global Health and Disease, Department of Pathology, Case Western Reserve
13 University, Cleveland OH USA

14 ² Provincial Health Department, East New Britain Province, Papua New Guinea

15 ⁴ Papua New Guinea Institute of Medical Research, Goroka, Papua New Guinea

16 ³ Papua New Guinea Department of Health, Port Moresby, Papua New Guinea

17 ⁵ Japan International Cooperation Agency (JICA)

18 ⁶ Centre for Health Informatics, Computing and Statistics, Lancaster University, Lancaster, UK

19 ⁷ Burnet Institute, Melbourne, AU,

1

20 ⁸ Infectious Diseases Division, Department of Medicine, Washington University, St. Louis MO,
21 USA,

22 ⁹ Veterans Affairs Medical Center, Cleveland, OH.

23 *Christopher L. King, Corresponding author cxk21@case.edu

24 **Abstract**

25 **Background**

26 WHO recommends two annual rounds of mass drug administration (MDA) with ivermectin,
27 diethylcarbamazine, and albendazole (IDA) for lymphatic filariasis (LF) elimination in treatment
28 naïve areas that are not co-endemic for onchocerciasis such as Papua New Guinea (PNG).
29 Whether two rounds of MDA are necessary or sufficient and the optimal sampling strategies and
30 endpoints for stopping MDA remain undefined.

31 **Methods and Findings**

32 Two cross-sectional studies were performed, one at baseline in 2019 before MDA-IDA, and 12
33 months post-MDA-IDA. Pre-MDA, we selected 49 sentinel villages for LF in East New Britain
34 Province (ENBP, PNG) and randomly sampled ~100 individuals/village of approximately equal
35 number of children 6-9 years (N=1,906), and those ≥ 10 years (N=2,346) using population
36 proportionate and purposeful sampling. LF infection was assessed by tests for circulating filarial
37 antigenemia (CFA) and microfilariae (Mf). Children ages 6-9, 1.9% (37/1,906, range 0-21.6%)
38 were CFA positive at baseline, and 0.3% (5/1,906; range 0-7.8%) were Mf positive. Individuals
39 ≥ 10 years, 7.5% (176/2,346, range 0-52%) were CFA positive, and 2.0% (47/2,346, range 0-
40 36%) were Mf positive. Twenty-four of 49 clusters were CFA $\geq 2\%$, and 14 had Mf prevalence
41 $\geq 1\%$. Post-MDA (82% coverage), 47 clusters were selected based on geospatial modeling
42 (N=4,610), of which 38 had $>2\%$ CFA compared to 24 identified at baseline. In the 24 villages
43 evaluated pre- and post-MDA, we stratified the impact of MDA-IDA on children 6-9 and adults
44 ≥ 18 years. Children had a 34% reduction in CFA prevalence and complete Mf clearance. Adults

45 had a 39% reduction in CFA prevalence and a 96% reduction in Mf prevalence. Post-MDAx1
46 showed no villages that were Mf positive in two of four districts.

47

48 **Conclusions**

49 Geospatial modeling was more effective in sampling high-risk sites for LF than population-
50 proportional sampling. The low LF prevalence in children and slight reduction of CFA
51 prevalence limits its utility as a biomarker for LF elimination in children. A single round of
52 MDA with IDA with high coverage was sufficient to reach elimination targets in villages with
53 low baseline LF prevalence. Areas with higher baseline prevalence will require additional rounds
54 of MDA, but this could be targeted to smaller evaluation units to reduce cost.

55

56

57 **Trial registration**

58 This study is registered at Clinicaltrials.gov under the number NCT04124250

59

60 **Author Summary**

61

62 **Why was this study done?**

- 63 • WHO has targeted lymphatic filariasis (LF) for global elimination as a public health
64 problem using mass drug administration (MDA) as the primary intervention strategy.
- 65 • The WHO recently modified recommendations for MDA of LF with a combination of
66 three co-administered drugs: ivermectin, diethylcarbamazine, and albendazole. This study
67 examined the impact of one round of MDA on LF infection parameters in Papua New

68 Guinea that had not previously received MDA for LF and examined new methodologies
69 for monitoring and surveillance.

70 **What did the researcher do and find?**

- 71 • Before MDA, we randomly sampled sentinel clusters (villages) using population
72 proportional sampling of equal numbers of children 6-9 years and older children and
73 adults using well-established LF infection parameters. Post-MDA, we selected sentinel
74 villages using a geospatial modeling design and focused on sampling adults.
- 75 • Population-proportional sampling underestimated the overall LF infection because the
76 infection was more common in less-densely populated rural areas. Sampling children 6-9
77 years of age was inefficient because of very low infection rates in this age group.
78 Geospatial modeling was more effective than population proportional sampling for
79 selecting areas at high risk for LF. One round of MDA with high coverage was highly
80 effective for reducing microfilaremia prevalence to very low levels in most sampled
81 villages, but CFA prevalence decreased less dramatically.

82 **What do these findings mean?**

- 83 • Geospatial modeling and sampling adults for microfilaria are preferred methods for
84 monitoring the impact of MDA with IDA.
- 85 • Results from this study suggest that one round of high-coverage MDA may be sufficient
86 to interrupt LF transmission in areas with low baseline prevalence. Additional rounds of
87 MDA can then be targeted to areas with higher LF prevalence, thus reducing program
88 costs. This strategy requires high-quality baseline surveillance to capture the focality of
89 LF infection and high-quality MDA. This approach may be especially useful in areas like
90 Papua New Guinea, where MDA is logistically challenging.

91 Introduction

92 Lymphatic filariasis (LF) is a disease caused by parasitic nematodes transmitted by
93 mosquitoes. The infection leads to a spectrum of clinical outcomes that range from asymptomatic
94 microfilaremia (parasite larvae circulating in the blood) to hydrocele, lymphedema, and
95 elephantiasis [1]. Lymphatic filariasis is caused by the nematodes *Wuchereria bancrofti*, *Brugia*
96 *malayi* and *Brugia timori*, of which *W. bancrofti* accounts for over 90% of infection worldwide
97 [2]. The World Health Organization (WHO) currently estimates that 883 million people in 44
98 countries are at risk for LF [1] and that 15 million are disfigured and incapacitated by the
99 disease [3]. The WHO started the Global Program to Eliminate Lymphatic Filariasis (GPELF) in
100 2000 with a goal to eliminate LF by 2020 [2], which was later revised to 2030 [4]. The
101 elimination strategy comprises community-wide mass drug administration (MDA) in endemic
102 areas based on administrative units that often include a mix of areas with high and low
103 endemicity. Mass drug treatment comprises annual single-dose therapy of albendazole (ALB)
104 combined with diethylcarbamazine (DEC) in countries not co-endemic for onchocerciasis, and
105 ALB combined with ivermectin (IVM) in onchocerciasis co-endemic countries in sub-Saharan
106 Africa that are not co-endemic for *Loa loa* [5]. Areas in Africa that are co-endemic for *Loa loa*
107 and have high parasite loads should receive ALB only. The LF elimination strategy also includes
108 morbidity management of advanced clinical cases. To interrupt transmission, the current GPELF
109 strategy recommends MDA with a minimum effective coverage of $\geq 65\%$ for up to five annual
110 rounds of MDA [6]. This strategy has been highly successful in many LF endemic countries,
111 resulting in 740 million people no longer requiring MDA. This amounts to a 52% reduction in
112 the at-risk population worldwide [7]. However, this approach has been less successful in other
113 LF endemic areas because of poor uptake of drugs in people with the highest risk of infection

114 (e.g. adult men, migrants, and pregnant women), logistical challenges for drug delivery, and
115 limited efficacy of the two-drug MDA regimens.

116 In 2017, the WHO endorsed the use of a single co-administered IVM plus DEC plus ALB
117 (referred to as IDA) for LF elimination in many areas outside of Africa because it was more
118 effective than DEC plus ALB [8-13]. IDA is recommended in LF endemic settings that are
119 eligible for drug combinations that include DEC; i) where onchocerciasis is not co-endemic, ii)
120 that have not yet started MDA, iii) that have received fewer than four effective rounds of MDA,
121 or iv) in areas where MDA results have been suboptimal [14]. Currently, the WHO recommends
122 two annual rounds of MDA with IDA in eligible countries with at least 65% epidemiological
123 coverage. More data are needed on whether two rounds are necessary or sufficient to interrupt
124 LF transmission.

125 One challenge associated with MDA that is especially important in areas that distribute
126 IDA is knowing when infection prevalence has been reduced to levels that no longer can support
127 sustained transmission so that MDA can be stopped. While IDA is very efficient for clearing
128 microfilariae (Mf) from the blood, circulating filarial antigen (CFA) persists because IDA
129 sterilizes but does not kill all adult worms [9]. The current MDA stopping protocol uses
130 transmission assessment surveys (TAS) to detect CFA in children 6-7 years of age as an
131 indicator of recent transmission [15]. However, TAS can be insensitive to ongoing LF
132 transmission in areas where infection prevalence is much lower in children than adults. Before
133 proceeding to TAS, programs perform pre-TAS surveys to assess whether CFA prevalence is
134 less than 2% or Mf prevalence is <1% in one sentinel and one spot-check site within an
135 evaluation unit. However, the focal distribution of LF represents an important limitation to this
136 strategy; pre-TAS surveys may miss persistent infection when only some sites are sampled in

137 large evaluation units. Another problem with pre-TAS and TAS surveys based on the detection
138 of CFA is that the persistence of CFA after IDA may require MDA to be continued long after Mf
139 prevalence has been reduced to levels that cannot sustain transmission.

140 Cognizant of these challenges, the Task Force for Global Health (with external input)
141 developed a new monitoring and evaluation approach to evaluate the impact of MDA with
142 IDA. We applied this approach to East New Britain Province (ENBP), which had yet to
143 implement province-wide MDA for LF. Here, we aim to i) assess the impact of one round of
144 IDA on LF infection parameters, ii) provide evidence to justify adopting new elimination
145 criteria and endpoints using IDA and iii) optimize sampling strategies to capture better the
146 focality of LF in the population and to demonstrate the elimination of LF.

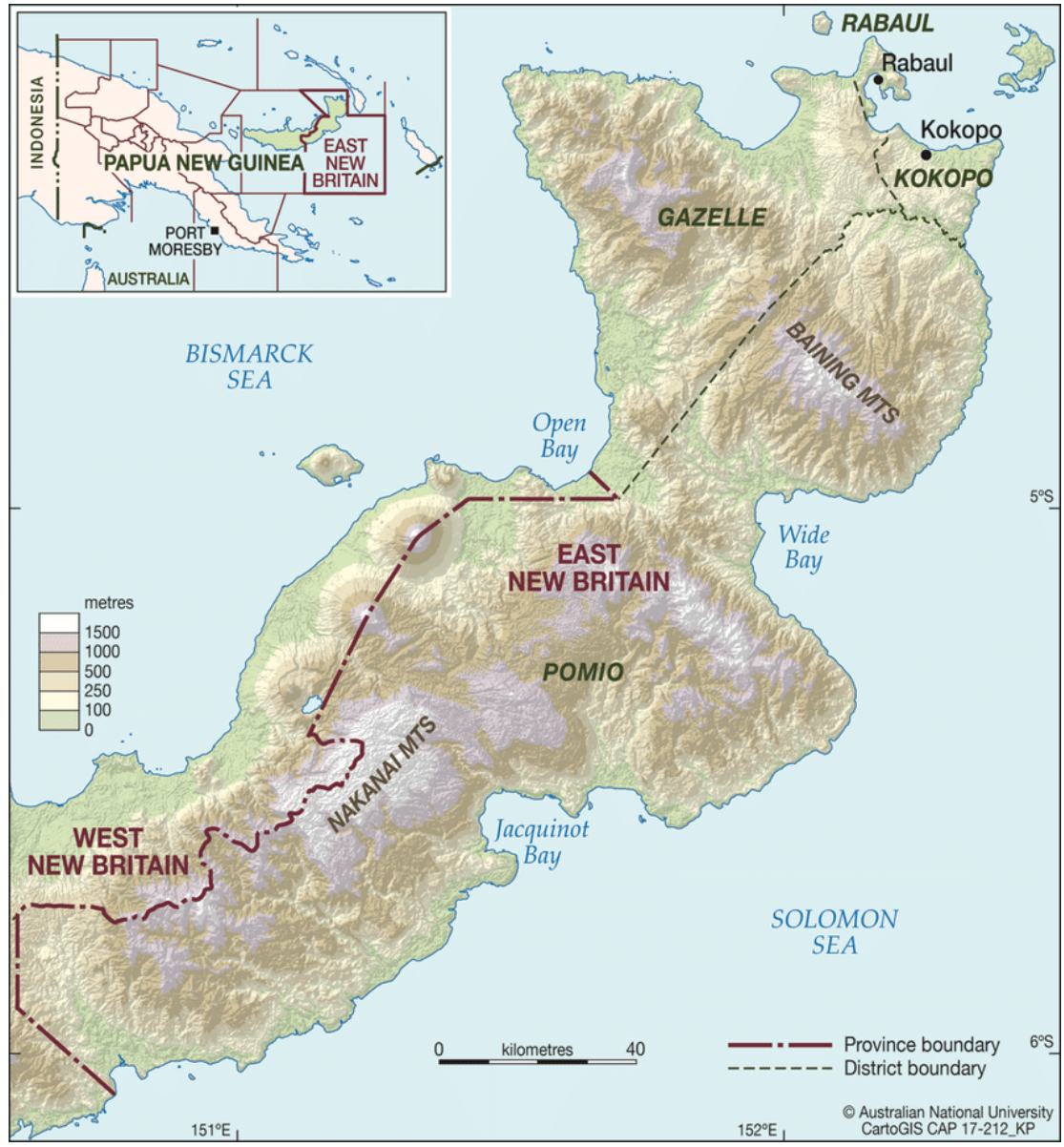
147

148 **Methods**

149 **Study Site**

150 East New Britain Province (ENBP, population approximately 376,566) comprises the eastern
151 half of the island of New Britain in PNG (5° 10' 0" S, 151° 45' 0" E). It is divided into four
152 districts: Gazelle, Pomio, Kokopo, and Rabaul (**Figure 1, Table 1**). Most people reside in the
153 less mountainous northeastern part of the province. Cocoa, copra, and palm oil are the major
154 cash crops. Rabaul and Kokopo districts are more urbanized, with more modern structures

155 (housing with window screens), easy access to paved roads, and electricity. Gazelle and
156 Pomio are rural districts with less infrastructure.



168 **Figure 1.** Map of East New Britain Province.

169

170

171

172 **Ethical approval**

173 The protocol was approved by the Medical Research Advisory Council of PNG (MRAC
174 19.14) and Case Western Reserve University IRB (STUDY20191141). Individual written
175 informed consent was provided by adults aged 18 years and older. If the individuals could not
176 read or write, a village member who could read or write served as a witness and cosigned the
177 informed consent form. Children's participation required the consent of their parents and
178 documented assent for children older than 12 years of age.

179 **Mass Drug Administration**

180 In November 2019 MDA with IDA (MDA-IDA) was conducted throughout the province.
181 Before MDA, community health workers (CHW) were essential in establishing strong
182 community engagement through meetings (known as *Toksave*), and training community
183 distributors. MDA was distributed over 3 weeks to facilitate travel to remote areas, better
184 capture mobile populations, and provide time for mop-up. The whole MDA process was
185 coordinated by a highly engaged LF/NTD task force in the province that involved community
186 leaders and other stakeholders, ensuring campaign success.

187 **Study design and village selection**

188 The primary sampling unit was the village. In September and October 2019, we conducted a
189 baseline cross-sectional survey of 30 villages in ENBP using population proportionate
190 random sampling (PPS). Five additional villages suspected to have high LF rates were
191 purposively selected by the ENBP provincial health LF Taskforce. Fourteen additional
192 villages were added to improve sampling in rural areas with lower population densities and

193 higher LF risk. The villages selected by PPS in each district (Kokopo, Rabaul, Pomio, and
194 Gazelle) were proportionate to the population size of the districts, with Gazelle having the
195 most selected villages and Rabaul having the least (**Table 1**).

196 Since the *Anopheles* mosquitos transmit LF in PNG the sample size was powered to detect a
197 2% CFA threshold for each of two groups; i) children aged 6-9 years old and other
198 community members ≥ 10 years, and ii) during the post-MDA survey children aged 6-9 years
199 old and other community members ages ≥ 18 years. The post-MDA target population and
200 sample size were adjusted based on WHO interim guidelines of a 1% Mf threshold in adults
201 ≥ 18 years with a 95% confidence interval to assess the impact of IDA (IDA Technical Report
202 2022). The selected households within each cluster are adapted from the WHO guidelines for
203 evaluating coverage surveys and monitoring [16]. Fifty households were randomly selected
204 from a starting point in the center of the community using a pen or spin bottle. Before the
205 survey, each household within the villages was assigned a number with the help of a village
206 recorder or leader. Household numbers were written on cut paperboard placed in a large jar,
207 and we randomly drew numbers until 50 households were selected. If a cluster of households
208 consisted of family groups, the cluster was considered ‘one’ household unit. All members of
209 the 50 households were surveyed for children aged 6-9 years and individuals ≥ 10 years until
210 100 participants were reached (50 children and 50 adults). Demographic surveys recorded the
211 number of people per household, the age and sex of individuals, the number of children ages
212 6-9, and the number of persons ≥ 10 years of age.

213 **Socio-economic assessment**

214 At baseline, we compiled a socioeconomic impact (SEI) score for each village by assessing
215 access to potable water, the use of window screens, and the level of education for each
216 household. In calculating the SEI scores, we counted 1 point if a household had access to a
217 water tank or pipe (0 for river/stream or public pump/well), and 1 point if window screens
218 were used (0 for no screens). In scoring educational status, each adult (18 years or older)
219 received a score based on their highest level of education attained; 3 points for college or
220 vocational training, 2 points for high school graduates, 1 point for an 8th-grade education, and
221 a score of 0 if the adult had not attended school through the 8th-grade. The
222 composite educational score was computed by taking the average score of each adult in the
223 household. The total SEI score for each household was obtained by adding the educational
224 average to the water and screen scores. To get the SEI score for each village, we averaged all
225 the households in that village. Higher SEI scores indicate higher socioeconomic status. We
226 also computed 95% confidence intervals and ranges for village SEI scores. The SEI scores
227 were used in the geostatistical model described below.

228 **Coverage survey**

229 A cluster sampling approach was applied to determine drug coverage after one round of MDA
230 [16]. The primary sampling unit was local level government (LLG) within each of the 4
231 districts, and each LLG contained wards that consisted of many villages. The Rotary Against
232 Malaria (RAM) survey for 2016 was used as the denominator of the village population. In this
233 survey, 8 LLGs or clusters in each of the 4 districts were selected by population proportionate
234 sampling (PPS) which were: Gazelle Central Rural (Gazelle), Lasul Baining Rural (Gazelle),
235 Vunadirir Toma Rural (Gazelle), Bitapaka Rural (Kokopo), Kokopo Vunamami Urban
236 (Kokopo), East Pomio Rural (Pomio), Balanataman Rural (Rabaul) and Rabaul Urban

237 (Rabaul). Gazelle Central Rural LLG was divided into 3 independent clusters because of the
238 large population size relative to the rest of LLGs in ENBP. PPS then selected the villages
239 within the LLGs for the coverage surveys. Across the LLGs, 45 villages were surveyed for
240 drug coverage. Twenty-five of the 45 villages were in the Gazelle district, 10 in Kokopo, 5 in
241 Pomio and 5 in Rabaul. Of the 45 villages surveyed, 15 (33.3%) were included in the baseline
242 LF prevalence survey.

243 **Selection of study sites at 1-year post-MDA**

244 The post-MDA survey used model-based geostatistics (MBG) to select 50 villages with a high
245 probability of having a CFA prevalence $>2\%$ (Table 1). Twenty-four of the 50 selected
246 villages had CFA $>2\%$ in the baseline survey. Approximately 100 individuals were surveyed
247 in each village. Of the 23 newly selected villages surveyed, only adults ≥ 18 years were
248 sampled because of the low infection prevalence in young children in the baseline surveys in
249 most villages. In the 24 villages sampled pre- and post-MDA, 15 villages had CFA
250 prevalence $>2\%$ in children 6-9 years of age at baseline. Children in these 15 villages were
251 resampled post-MDA as follows: ~ 50 children ages 6-9 and ~ 50 adults ≥ 18 years to examine
252 the impact of MDA on LF infection parameters in children compared to adults.

253 **Procedures**

254 Fingertick blood samples were collected during the surveys for CFA testing with Filariasis Test
255 Strips (FTS) (Alere, Scarborough, ME, USA) according to the manufacturer's protocol. Tests
256 with no control line were invalid and repeated. The FTS detects a biomarker for infection with
257 *W. bancrofti* (Wb) adult worms, and it has a high sensitivity for detecting persons with
258 microfilaremia. In community studies in PNG, all Mf-positive individuals had positive FTS

259 results [17]. In this study, persons with positive FTS results were tested for Mf with 60- μ l thick
260 blood smears prepared from fingerstick samples collected between 9 PM and 1 AM, as
261 previously described [17]. Two microscopists reviewed the slides. If Mf counts were highly
262 discordant or one reader identified Mf and the other did not, a third reader reviewed the slide.

263

264 **Data acquisition and management**

265 The study used an electronic data capture (EDC) system using Epi InfoTM (Centers for Disease
266 Control) software to capture and transfer data to a REDCap database (v11.0.3, Vanderbilt
267 University). The data were entered by designated, trained members of the PNG research team on
268 the day of enrollment. A parallel participant key (separate from the REDCap database and
269 maintained at PNG Institute for Medical Research) linked study ID numbers with personal
270 identifying information, such as name and date of birth. The participant key was not shared with
271 Case Western Reserve University investigators or staff.

272

273 **Geospatial and Statistical analysis**

274 The geostatistical methods used to sample the number of clusters at one-year post-MDA-IDA
275 followed adaptive geostatistical designs [18]. The approach involved sampling or selecting
276 locations given previous infection data. The methodological framework includes prevalence data
277 modelled to describe the number of people infected with a particular disease or outcome, at a
278 given location, in a specific region of interest with a vector of associated covariates. The model
279 assumes a spatial Gaussian process to measure the outcome of interest (i.e., disease prevalence)
280 given a set of covariates independent from each other at specific locations. The covariates in the
281 model were environmental exposures and socio-economic impact score using the PrevMap
282 package [19]. Records with complete spatial information correspond to 47 of the 49 clusters. The

283 model accounts for the spatial correlation between clusters based on their proximity in space,
284 whereby closer clusters are assumed to be more correlated than clusters further apart. The current
285 analysis also modeled the association between locations on distinct land masses through the
286 Euclidean distance - i.e., the ordinary “straight-line” distance. The predictions were carried out
287 on a 1 by 1 km regular grid. Grid locations whose distance from the closest data-locations is
288 larger than 15 km are excluded from the predictions. This is because we estimate a scale of the
289 spatial correlation of about 15 km; hence, the data bear very little information on the prevalence
290 at those locations. There were 748 clusters in ENBP of which we selected 49 that had the
291 probability of exceeding 2% CFA prevalence threshold (**see Supplementary Methods**).

292 Descriptive statistics were calculated as frequencies and proportions for categorical variables \pm
293 95% confidence intervals. For demographic variables, median and interquartile ranges, or mean
294 \pm SD were used. Comparisons between treatment groups for demographic and infection variables
295 were performed using chi-square and Fisher’s exact tests (as appropriate) for categorical
296 variables using SAS (v 9.4, SAS Institute).

297

298 **Results**

299 The evaluation unit in PNG is the province, although the districts better capture the
300 province's considerable geographic and social heterogeneity. Overall, 4,252 participants were
301 enrolled for the baseline survey and 4,611 for the one-year post-MDA-IDA survey. **Table 1**
302 describes the population characteristics and sampling design pre- and post-MDA-IDA.

303

304 **Table 1. Baseline and one year post MDA-IDA impact survey characteristics.**

<i>Survey time</i>	<i>Cluster type</i>	<i>Age category</i>	<i>No. sampled</i>	<i>Mean Age ± SD</i> <i>(Range)</i>	
Baseline	Random N=30	Children	1,121 ^a	7.4±1.2 (6-9)	
		Adults	1,449 ^b	29.6±14.4 (10-77)	
	Purposive N=19	Child	785 ^a	7.4±1.2 (6-9)	
		Adults	906 ^b	29.9±14.3 (10-72)	
	All sites N=49	Child	1,906 ^a	7.4±1.1 (6-9)	
		Adults	2,346 ^b	29.6±14.4 (10-77)	
	One year Post- MDA	Repeat villages from Baseline N=24	Children	417 ^a	7.6±1.2 (6-9)
			Adults	2,015 ^c	34.8±14.1 (10-88)
Geo-spatial Selection N=23		Children	278 ^a	7.6±1.3 (6-9)	
		Adults	1,901 ^c	34.7±13.5 (18-81)	

	All sites N=47	Children	695 ^a	7.6±1.2 (6-9)
		Adults	3,916 ^c	34.8±13.8 (10-88)

305 ^a 6-9 years of age

306 ^b ≥10 years

307 ^c ≥18 years

308

309 **Baseline LF infection parameters**

310 At baseline, 4,252 participants in 49 clusters (villages) were examined for LF infection,
 311 of which 1,906 were children aged 6- 9 years, and 2,346 were individuals aged ≥ 10 years
 312 (**Tables 1, 2 a and b**). Females accounted for 48% of the 6-9 years sampled and 61% of those ≥
 313 10 years. Among the 6-9-year-olds, 1.9 % (95% CI 1.4-2.7; 37/1,906) were CFA positive
 314 prevalence, and 0.3% (95% CI 0.09-0.61; 5/1,906) were Mf positive. Among those ≥10 years,
 315 7.5% (95% CI 6.5-8.6; 176/2,346) were CFA positive and 2.0% (95%CI 1.5-2.7; 47/2,347) Mf
 316 positive. Circulating filarial antigen and Mf prevalence increased with age, with the highest
 317 prevalence in men between 21 and 30 (**Figure 2**). Combining all groups, twenty-four (48.9%) of
 318 the 49 villages had ≥2% CFA, and 14 met the ≥1% Mf threshold (**Supplemental Table 1A**).
 319 Based on WHO criteria, these are thresholds indicative of ongoing LF transmission. The CFA
 320 prevalence <2.0% among 6-9-year-olds would suggest that ENBP might not have ongoing LF
 321 transmission based on the WHO transmission assessment survey (TAS) of lower primary school-
 322 aged children 6-7 years of age using a 2% CFA threshold [20]. To examine this age group, we

323 stratified the 1,906 6-9 year-old children sampled into those 6-7 years of age (N=1,075),
 324 representing 54% of children examined. Thus, there would be approximately 24,000 6-7 year of
 325 age children in ENBP (Table 1; 45,188 x 0.54 = 24,400). Using a community-based TAS
 326 algorithm of a population size of ~20,000, the sample size would be ~1,500 in 30 clusters, like
 327 the current baseline survey. Based on all 6-7 year-old children surveyed in 49 clusters, CFA
 328 prevalence was 2.1% (95% CI 1.69-2.40, 22/1075), and none were Mf positive. In the 30
 329 community-based clusters selected by PPS, the CFA prevalence in 6-7-year-olds was 0.6% (95%
 330 CI 0.2-1.6%, 4/625), below the 2% CFA threshold, although this sample size is smaller than
 331 WHO recommendation, yet the upper 95% CI is <2%. Thus, using the standard TAS survey
 332 might have led to an erroneous conclusion that ENBP would not need MDA.

333

334 **Table 2. Study population demographic and infection characteristics of 6-9 and ≥ 10 years**
 335 **before MDA.**

336 **a. 6-9 years**

<i>District</i>	<i>*Total population</i>	<i>Villages surveyed</i>	<i>N</i>	<i>Percent Females</i>	<i>CFA+ (N)</i>	<i>CFA % (95%CI) [range]</i>	<i>Mf+ (N)</i>	<i>Mf % (95%CI) [range]</i>	<i>Villages ≥2% CFA</i>	<i>Villages ≥1% Mf</i>
Kokopo	10,939	11	480	47	23	4.8 (3.1-7.1) [0-21.6]	5	1.0 (0.3-2.4) [0-7.8]	3	2
Gazelle	20,396	17	660	51	10	1.5 (0.7-2.8) [0-6.0]	0	-	5	-
Pomio	10,437	17	581	45	4	0.7 (0.2-1.8) [0-7.2]	0	-	3	-
Rabaul	3,415	4	185	52	0	-	0	-	-	-
Total	45,188	49	1,906	48	37	1.9 (1.4-2.7) [0-21.6]	5	0.3 (0.1-0.6) [0-7.8]	11	2

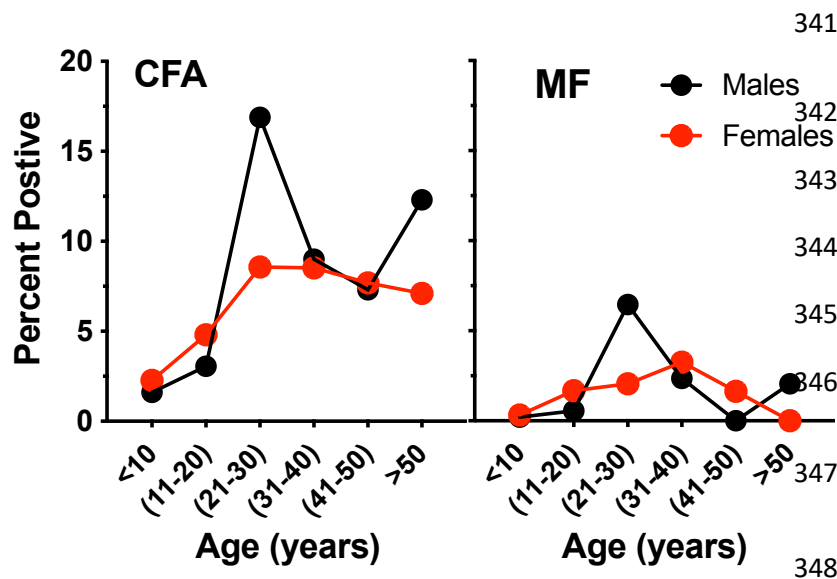
337 *The estimated population of 6-9-year-olds in ENBP according to the population pyramid rate for PNG.

338 **b. ≥ 10 years**

<i>District</i>	<i>*Total population</i>	<i>Villages surveyed</i>	<i>N</i>	<i>Percent Females</i>	<i>CFA+ (N)</i>	<i>CFA % (95%CI) [range]</i>	<i>Mf+ (N)</i>	<i>Mf % [range]</i>	<i>Villages $\geq 2\%$ CFA</i>	<i>Villages $\geq 1\%$ Mf</i>
Kokopo	69,284	11	477	66	46	9.6 (7.2-12.7) [0-52.0]	24	5.0 (3.3-7.4) [0-36.0]	6	3
Gazelle	129,174	17	827	58	30	3.6 (2.5-5.1) [0-15.7]	6	0.7 (0.3-1.6) [0-6.1]	8	3
Pomio	66,104	17	827	62	96	11.6 (9.5-14.0) [0-36.8]	16	1.9 (1.1-3.1) [0-5.8]	12	9
Rabaul	21,627	4	215	64	4	1.9 (0.5-4.7) [0-4.9]	1	0.5 (0.0-2.6) [0-2.4]	2	1
Total	286,190	49	2,346	61	176	7.5 (6.5-8.6) [0-52.0]	47	2.0 (1.5-2.7) [0-36.0]	28	16

339 *The estimated population of ≥ 10 -year-olds in ENB according to the population pyramid rate for PNG.

340



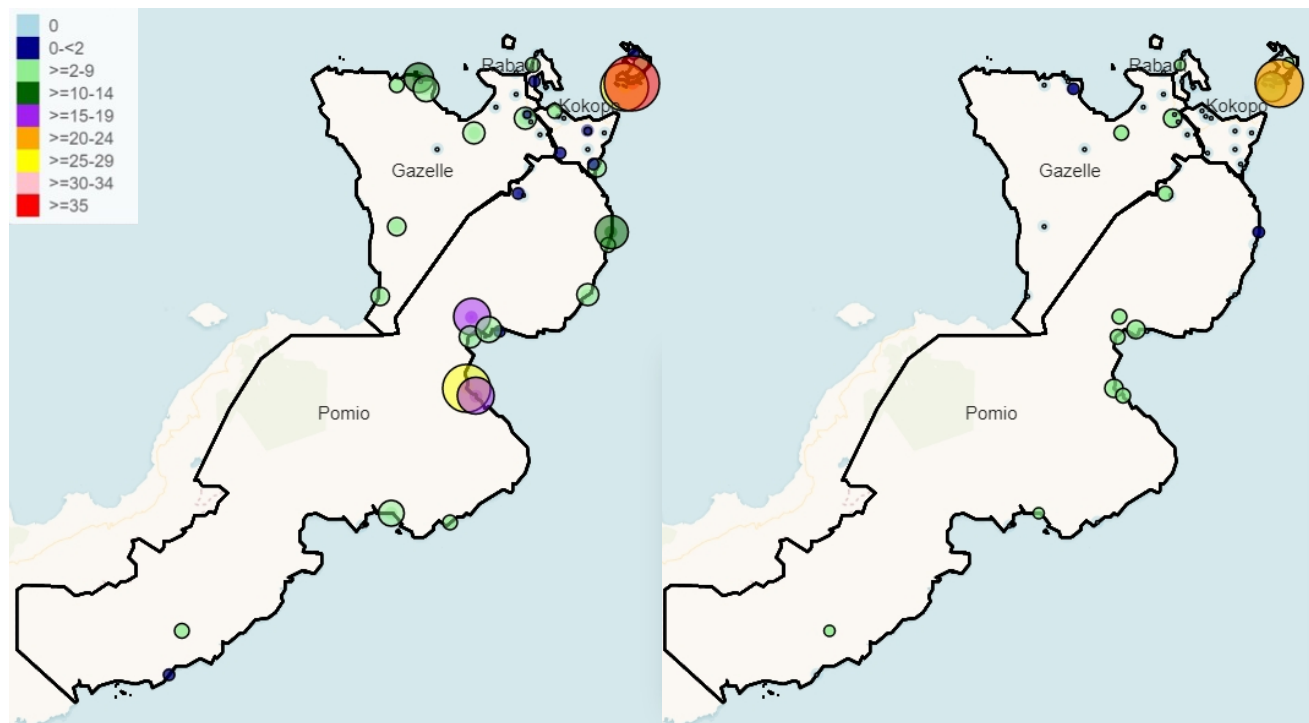
341
342 **Figure 2.** Circulating
343 filarial antigen (CFA) and
344 microfilaria (MF)
345 prevalence by age groups
346 pre-MDA for 49 clusters.
347
348

349

350 LF infection in ENBP was highly heterogeneous, with the highest prevalence concentrated in the
351 Duke of York Islands (DOY) in the Kokopo district and Wide Bay Area along the eastern coast

352 of the Pomio District (**Figure 3**). Gazelle and Rabaul Districts had lower LF infection
353 prevalence.

354



355

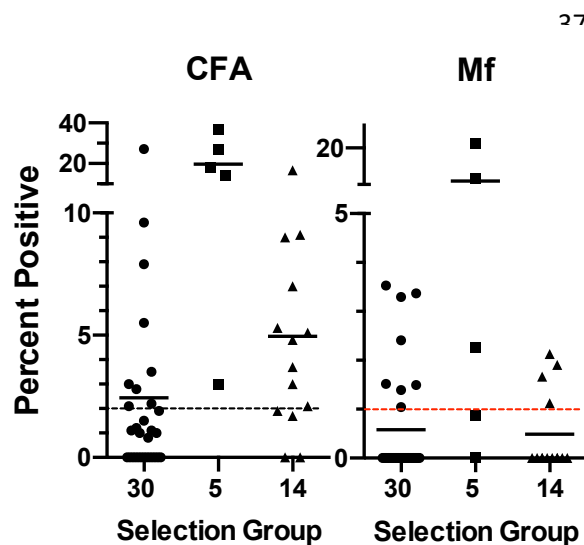
356 **Figure 3.** Spatial distribution of lymphatic filariasis circulating antigen positivity (CFA, left panel) and
357 microfilaria rates (Mf, right panel) throughout ENBP before mass drug distribution. Small solid dots
358 indicated communities without any detectable LF infection. The colors and circle size represent LF
359 prevalence for CFA or Mf.

360

361 **Effect of sampling design for detecting LF infected villages**

362 Sampling protocols affected the efficiency of detecting LF infection. In the 30 villages sampled
363 by PPS, 2.3% (95% CI 1.8-2.9%; 59/2,561) were CFA positive, and 0.6% (95% CI 0.3-0.9%;

364 14/2,561) were Mf positive. In children 6-9 years of age in the 30 villages selected by PPS, only
365 0.7% (95% CI 0.3-1.4; 8/1,121) were CFA positive, and none were Mf positive. Nine of 30
366 (30%) PPS selected villages had CFA >2%. (**Figure 5 and Supplemental Table 4**). Infection in
367 children and adults in the purposively selected villages was higher than in randomly selected
368 villages (**Figure 5, Supplemental Table 5**). The five original purposively selected villages had
369 >2% CFA positive, and 3 had Mf prevalences of >1% (**Figure 5**). Of the additional 14 villages
370 purposely selected in rural villages, 10 (71.4%) villages had $\geq 2\%$ CFA, and 4 of 14 (28.6%) had
371 >1% Mf prevalence.



372 **Figure 5.** LF infection parameters are shown
according to different sampling strategies for cluster
selection. Thirty clusters used a population
proportion random sample. ENBP Provincial Health
Authority purposefully selected five additional
clusters with prior evidence of LF. Fourteen more
clusters were chosen to adequately sample rural
areas in Pomio (N=9) and Gazelle (N=5) districts.
The dashed line on the left panel and the red line on

381 the right panel represent WHO-specified thresholds of 2% CFA and 1% MF rates, suggesting ongoing
382 transmission in the cluster if above these thresholds.

383

384 **Mass drug administration**

385 The first round MDA was administered by the ENBP Provincial Health Authority in
386 November 2019 with the support PNG National Department of Health and Japan International

387 Cooperative Agency (JICA) to 307,568 of 376,566 total residents of ENBP (81.7%, reported or
388 administrative coverage), **Supplemental Table 6**). The reported coverage varied by district;
389 from rural districts of Pomio (72.8%) and Gazelle (83.8%) to 93.3% and 96.7% coverage in the
390 more urban districts of Kokopo and Rabaul, respectively. Of note, only DEC plus Albendazole
391 was administered to children 2 to 4. In December 2019, an independent coverage survey was
392 performed to validate the administrative coverage survey. This included 2,598 individuals in 450
393 randomly selected households in 45 randomly selected villages. Over 80% of the individuals
394 reported taking treatment in all age groups except those >50 years of age (**supplemental Figure**
395 **1**). Reported MDA compliance was equivalent in males and females and >80% in males 21-30
396 years (with the highest baseline LF prevalence). The most common reason for not taking the
397 drugs was absenteeism in all 4 districts. Residents of Rabaul also reported insufficient LF
398 awareness and incorrect age classification, which sometimes led to the exclusion of individuals >
399 55 years of age.

400

401 **Model-Based geospatial sampling post-MDA LF infection parameters**

402 Because the pre-MDA population proportionate sampling oversampled urban areas with
403 lower LF prevalence and under-sampled rural areas with higher LF prevalence, we undertook a
404 sampling strategy to reflect better the geographical distribution of LF in ENBP. Thus, we used
405 model-based geospatial (MBG) as an alternative method to select clusters for monitoring and
406 evaluation during the post-MDA 1-year follow-up survey. Circulating filarial antigen (CFA)
407 prevalence data from the baseline survey was used to assess the risk probability for LF in ENBP
408 (**Figure 6**). Besides location, the model considered the following covariates: relative humidity
409 (RH), annual precipitation (AP), annual temperature (AT), elevation (E), distance from the sea

410 (DS), and socio-economic status (SEI). Because of the small sample size, we combined the
411 covariates into a single covariate using principal component analysis (PCA) and used the first
412 component (PCA1) as a predictor for LF. More specifically, $RH - 0.053$, $AP - 0.502$ gave this
413 $AT + 0.502 E + 0.502 DS$ and explained about 62% of the total variation in the environmental
414 variables. The sample size was too small to establish which variables were most informative for
415 predicting areas with $>2\%$ CFA. A hotspot area with an estimated prevalence above $>2\%$ is
416 identified in the central part of the eastern coast and in Duke of York Islands. The model selected
417 50 villages for sampling across the four districts of ENBP that were likely to have $>2\%$ of CFA
418 positivity using baseline LF data and co-variates associated with the presence of LF. Among the
419 50 sites, the model captured all 24 baseline clusters with $>2\%$ CFA and selected 26 not sampled
420 in the baseline survey.

421

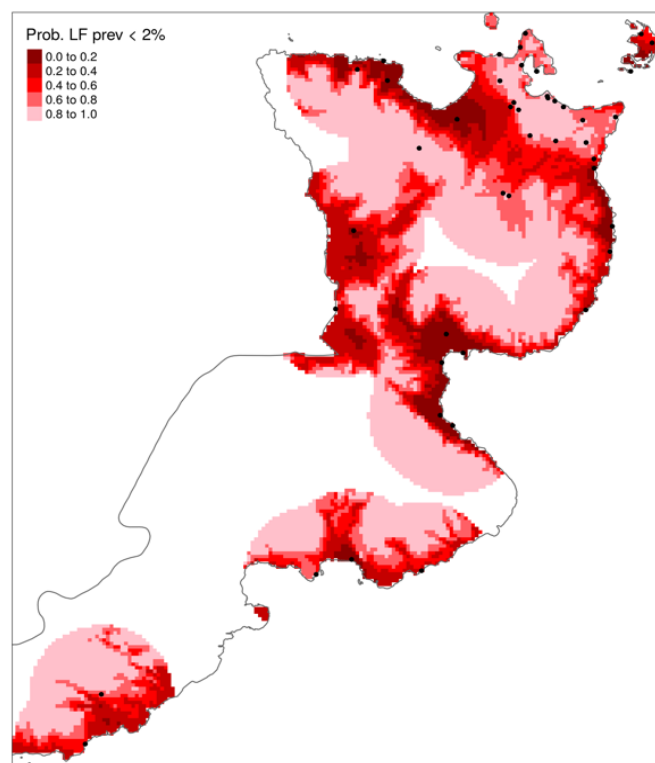


Figure 6. Geospatial probability map of LF prevalence. The dark red area has a low probability that CFA prevalence is $<2\%$; thus, these areas are more likely to have LF. The map resolution is 1 km. White areas have insufficient data to assess LF risk. Risk mapping was generated based on covariates of elevation, rainfall, temperature, distance from the sea, socioeconomic status, and LF prevalence using baseline survey clusters (black dots).

434 Of the 50 clusters selected, 47 were surveyed, with 4,611 participants from 6-9 and \geq 18-year-
435 old age groups, to capture Mf-positive individuals (**Table 1**) better. Geostatistical modeling
436 selected the 24 villages with $>2\%$ CFA identified pre-MDA (**Table 1, supplemental Table**
437 **7**). Following MDA-IDA, 20 of 23 newly selected villages had $>2\%$ CFA, indicating an
438 efficient selection of communities using MBG. Children were surveyed in 19 of the 47
439 clusters, and adults (≥ 18 years) were studied in all 47. Because of the differences in sampling
440 design pre- and post-MDA, we focused on changes in LF infection parameters in age-
441 matched groups in the 24 clusters monitored pre- and post-MDA in children and adults. In the
442 24 sentinel sites matched pre- and post-MDA for individuals ≥ 18 years of age, the CFA mean
443 prevalence decreased by 38.6% from 17.3% (95% CI 16.2-18.4; 141/816) to 10.6% (95% CI
444 10.1-11.2; 215/2,015; $P < 0.0001$). By contrast, Mf prevalence decreased by 90.1% from 4.9%
445 (95% CI 4.28-5.52; 40/816) to 0.45% (95% CI 0.2-0.8; 9/2016, $P < 0.0001$) (**Figure 7**). Eleven
446 of the 24 villages had children 6-9 years with LF infection before MDA, and 6-9 years old
447 were re-evaluated in these same villages post-MDA. CFA prevalence decreased by 30.1%
448 from a CFA prevalence of 7.2% (95% CI 4.8-10.5; 30/417) to 4.9% (95% CI 3.0-7.7; 18/365,
449 $P = 0.23$). MDA completely cleared Mf infection in children from a prevalence of 1.2% (95%
450 CI 0.4-2.7; 5/417) to 0% (95% CI 0.0-1.0; 0/365; $P = 0.065$).

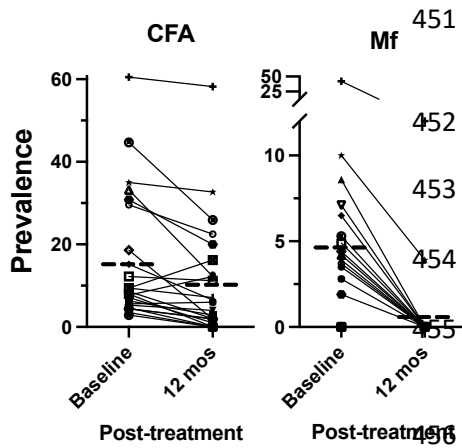


Figure 7. Impact of treatment on CFA and Mf prevalence in 24 clusters before and after MDA. Individuals shown are ≥ 18 years old with $N=816$ before MDA and $N=2015$ 12 months post-MDA. Dashed lines represent means.

457 Children 6-9 years in 8 additional villages were examined for LF infection parameters post-
 458 MDA combined with 11 villages described above for a total 19. Post-MDA CFA prevalence
 459 in children 6-9 years (in 19 villages) was 2.9% (95% CI 1.8-4.2; 20/694) was comparable to
 460 1.9% (95% CI 1.4-2.7; 37/1,906; $P=0.17$) among children pre-MDA (**Table 2a**), further
 461 demonstrating little change in CFA prevalence one-year post-MDA. By contrast, no Mf-
 462 positive children were identified post-MDA (0/694) compared to 0.3% pre-MDA (5/1,906;
 463 **Table 2a**).

464 Overall, post-MDA-IDA ≥ 18 -year-old CFA prevalence of 9.0% (95% CI 8.1-10.0;
 465 352/3,916, **Table 3b**) was comparable to pre-MDA CFA prevalence among the same age
 466 group of ≥ 18 years of 9.6% (95% CI 8.2-11.1; 151/1,581; **supplemental table 2e**). By
 467 contrast, MDA-IDA markedly reduced overall Mf prevalence to 0.33% (95% CI 0.21-0.42;
 468 15/4611). Two districts, Rabaul and Gazelle, had no sentinel villages with $\geq 1\%$ Mf positivity.
 469 However, 6 sentinel villages had $\geq 1\%$ Mf. Three clusters $\geq 1\%$ Mf occurred in the Duke of
 470 York Islands (Kabatira, Karawara, and Utuan, 1%, 2% and 7% respectively) and the
 471 remainder of the sentinel sites in the Kokopo district were Mf negative (**Figure 8**). The other

472 3 clusters with $\geq 1\%$ Mf positivity post-MDA were clustered along the East Coast in the Wide
473 Bay area of the Pomio district, areas that also had high baseline LF prevalence.

474

475

476

477

478

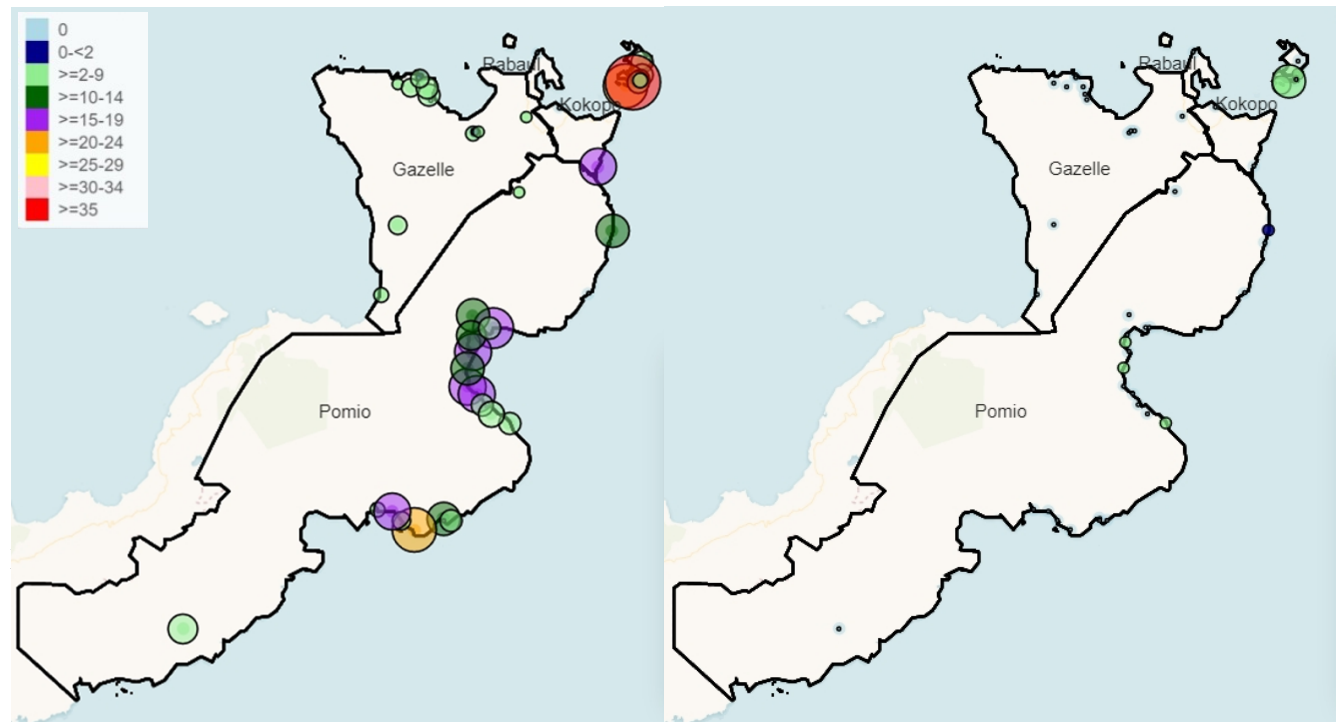
479

480

481

482

483



484 **Figure 8.** Geographic distribution and prevalence of clusters sampled following MDA. The left panel
485 shows CFA prevalence, and the right panel shows Mf prevalence. Small white dots are clusters without
486 detectable CFA or Mf in participants. The color gradient of the maps corresponds to the different CFA
487 prevalence (left panel). The size of green circles correlates with Mf prevalence, with the smallest green
488 circles being 1% Mf.

489

490

491

492 **Table 3. Study population demographic and infection characteristics of 6-9 and ≥ 18 years**
 493 **at 1 year-post MDA.**

494 **a. 6-9 years**

<i>District</i>	<i>Villages surveyed</i>	<i>N</i>	<i>Percent Females</i>	<i>CFA+</i> <i>(N)</i>	<i>CFA % (95%CI)</i> <i>[range]</i>	<i>Mf+ (N)</i> <i>[range]</i>	<i>Mf %</i>	<i>Villages ≥2% CFA</i>	<i>Villages ≥1% Mf</i>
Kokopo	5	231	50.7	9	3.9 (1.8-7.3) [0-10.6]	0	-	2	0
Gazelle	2	93	52.9	1	1.1 (0.0-5.9)	0	-	1	0
Pomio	12	370	46.6	10	2.7 (1.3-4.9)	0	-	5	0
Rabaul	0	0	-	-	-	-	-	-	-
Total	19	694	48.8	20	2.9 (1.8-4.4)	0		8	0

495

496 **b. ≥18 years**

<i>District</i>	<i>Villages surveyed</i>	<i>N</i>	<i>Percent Females</i>	<i>CFA+</i> <i>(N)</i>	<i>CFA % (95%CI)</i> <i>[range]</i>	<i>Mf+ (N)</i>	<i>Mf %</i> <i>[range]</i>	<i>Villages ≥2% CFA</i>	<i>Villages ≥1% Mf</i>
Kokopo	9	627	64.9	91	14.5 (11.9-17.6) [0-58.2]	10	1.6 (0.8-2.9) [0-12.7]	8	3
Gazelle	12	1,107	54.2	34	3.1 (2.1-4.3) [0-18.7]	0	0.1 (0.0-0.1) [0.9]	9	0
Pomio	25	2,083	55.8	227	10.9 (9.6-12.4) [0-28.4]	5	0.3 (0.1-0.5) [0.9-1.0]	22	3
Rabaul	1	99	57.6	0	0	0	0	0	0
Total	47	3,916	56.84	352	9.0 (8.1-10.0) [0-58.2]	15	0.4 (0.2-0.6) [0-12.7]	39	6

497

498 **Discussion**

499 East New Britain was the first treatment province in PNG to implement MDA with
500 IDA. The program was highly successful and achieved >80% drug coverage after the first
501 round of MDA. Following one round of MDA, overall Mf prevalence decreased from 1.2%
502 pre-MDA to 0.3%, well below the WHO pre-TAS Mf prevalence target of <1%. However,
503 some areas with high prevalence at baseline failed to reach this target. One of the four
504 districts in the province detected no Mf-positive individuals, and another district one Mf-
505 positive individual following MDA-IDA, suggesting little risk of ongoing LF transmission.
506 By contrast, 6 of 47 villages surveyed had post-MDA Mf prevalence $\geq 1\%$, indicating ongoing
507 risk for LF transmission in these areas. These remaining Mf-positive communities were
508 clustered in small geographic areas with high LF prevalence pre-MDA. Current WHO
509 guidelines recommend another round of MDA for the whole province [14], which has the
510 advantage of treating other parasitic infections or capturing Mf carriers from nearby
511 unsampled villages.

512 This study highlights the strengths and weaknesses of different sampling strategies
513 and endpoints to assess LF prevalence where infections are highly focal and prior information
514 on LF is limited. The population proportional sampling strategy (PPS, WHO recommended)
515 used at baseline underestimated the LF burden. This is because PPS oversampled
516 communities in urban areas with little LF and under sampled communities in rural areas with
517 more LF. Results from this study also add to recent reports that highlight the limitations of
518 TAS of young school-aged children for post-MDA stopping decisions. Before MDA, only
519 0.7% of children 6-9 years of age in ENBP were CFA positive, and 0.6% among children 6-7
520 years old, the TAS target population, which is well below the 2% threshold believed to

521 suggest recent or ongoing LF transmission. Indeed, ENBP probably could have passed TAS
522 performed according to WHO protocols before any MDA, even though the province had areas
523 with high endemicity at that time. Since only a few infections in young children were detected
524 before MDA, TAS would have provided unreliable information for MDA-stopping decisions
525 following MDA. Despite low infection prevalence in children, ENBP was known to be
526 endemic for LF based on prior surveys conducted by health officials and confirmed by
527 baseline surveys reported here. However, many other areas in PNG do not have detailed
528 information on LF prevalence because LF testing and reporting are not included in the
529 country's National Health Information Surveillance System. Our results from ENBP suggest
530 that PPS and TAS may not be the best way forward for LF elimination efforts in other regions
531 in PNG.

532 This study reinforced the difficulty of using CFA alone as an endpoint for assessing
533 the impact of IDA on LF transmission. One round of MDA reduced CFA prevalence by
534 30.1% in children 6-9 years of age and 38.6% in adults; this lower CFA reduction in adults
535 has been observed in prior clinical trials [8, 9, 11-13]. However, worms that survive IDA
536 treatment can continue to release CFA for years after Mf clearance [9]. One approach to this
537 problem for MDA-stopping decisions and post-MDA surveillance is to use CFA as a
538 screening test in adults, with Mf testing restricted to those with positive antigen tests. It
539 should be safe to stop MDA if Mf prevalence has been reduced to very low levels in adults
540 despite CFA prevalence >2%. Mosquitoes cannot transmit LF without access to Mf.

541 We used geospatial modeling to more efficiently identify communities at risk for LF
542 and assess the impact of one round of MDA. Geospatial modeling is increasingly used for
543 mapping tropical diseases in low-resource settings where disease distribution data are limited

544 or non-existent [21]. It incorporates information on known environmental and
545 sociodemographic risk factors for LF, including elevation, vegetation, and population density.
546 It has been increasingly used to map tropical diseases, such as malaria, Chagas disease, LF,
547 and trachoma [22-24] [25]. The method has also been applied to predict residual LF hotspots
548 post-MDA. Our results show that geospatial modeling was more helpful than PPS for
549 identifying communities with high CFA post-MDA using baseline infection data and
550 environmental variables. By facilitating the detection of persistent infections, this approach
551 should help inform programmatic decisions [26]. Because of the small sample size, the
552 analysis could not identify individual factors in the model most predictive of LF infection.

553 Prior WHO recommendations that stopping decisions for MDA based on the mean
554 prevalence in an EU is insufficient. As LF transmission approaches interruption, the
555 remaining LF infection becomes increasingly focal, and these foci should be targeted for
556 possible further MDA-IDA. This study highlights the concept. One round of MDA-IDA with
557 high coverage likely eliminated LF transmission in two of four districts in ENBP with low
558 baseline LF prevalence. Additional rounds of MDA-IDA could target the two districts with
559 clusters that have >1% Mf, or focus on clusters within the district, e.g. the Duke of York
560 Islands. The WHO recommends two rounds of MDA-IDA, which may capture those who
561 missed the first round of MDA and further treat other infections. However, in LF-endemic
562 areas like PNG, where LF infection may be highly focal, MDA costly, a single round of
563 MDA-IDA that achieves >80% coverage, the IDA impact survey could occur after the first
564 round of MDA. This would allow additional rounds of MDA-IDA to target areas with >1%
565 Mf prevalence.

566 Several limitations should be mentioned regarding this study. Before MDA, we
567 sampled many children so that the median age of our sample was 12 years. In contrast, our
568 post-MDA survey focused more on adults (median age of 29 years). Since LF is age-
569 dependent, a direct comparison of infection prevalence before and after MDA required a
570 comparison of an age-matched subset of individuals sampled before and after MDA. Another
571 limitation of the study is that it only assessed the impact of one round of MDA, although
572 WHO recommends two rounds. This was intentional because we wanted to determine
573 whether a single round of MDA with high coverage would reduce Mf prevalence to <1%.
574 This did occur in many areas, but hotspots remained.

575 In conclusion, this study showed that a single round of MDA-IDA effectively reduced
576 Mf prevalence to very low levels in most endemic localities in ENBP. This was due to the
577 excellent efficacy of IDA in clearing Mf in PNG and the high MDA coverage provided by
578 public health officials in ENBP. Additional surveys will be needed to determine whether a
579 second round of MDA-IDA has been sufficient to clear up remaining hot spots of infection.
580 Results from this study will support the expanded use of IDA for LF elimination in
581 logistically challenging areas with significant resource limitations. They also clearly
582 demonstrated the importance of sampling adults rather than young children post-MDA and
583 the value of geospatial modeling for identifying high risk locations better to target monitoring
584 and evaluation efforts for LF elimination programs.

585

586 **Acknowledgments**

587 We thank the staff of the East New Britain Provincial Health Authority and Papua New
588 Guinea National Department of Health. In addition, we thank the teams who undertook the

589 sample collections. We also thank the regional health directors, village leaders, and especially
590 our study participants. The Bill & Melinda Gates Foundation (OPPGH5342 to GW and PF)
591 funded the project.

592

593 **Contributors**

594 KB, BM, CB, DT, MS, GW, PF, LR, ML, and CK were responsible for the study design. KB
595 performed a literature search. KB, CB, MP, DT, and MS collected data; KB, DT, JK, EG, GW,
596 PD, and CK analyzed and interpreted the data. KB and CK wrote the manuscript, which was
597 revised by GW and PF.

598

599 **References**

- 600 1. Nutman, T.B., *Insights into the pathogenesis of disease in human lymphatic filariasis*.
601 *Lymphat Res Biol*, 2013. **11**(3): p. 144-8.
- 602 2. WHO, *Progress Report 2000-2009 and Strategic Plan 2010-2020*, in *Global Programme*
603 *to Eliminate Lymphatic Filariasis*. 2010, WHO.
- 604 3. WHO. *Lymphatic filariasis: Key facts*. 2020 [cited 2021 4/27/2021]; Available from:
605 [https://www.who.int/news-room/fact-sheets/detail/lymphatic-](https://www.who.int/news-room/fact-sheets/detail/lymphatic-filariasis#:~:text=893%20million%20people%20in%2049,and%20incapacitated%20by%20the%20disease)
606 [filariasis#:~:text=893%20million%20people%20in%2049,and%20incapacitated%20by%20the%20disease](https://www.who.int/news-room/fact-sheets/detail/lymphatic-filariasis#:~:text=893%20million%20people%20in%2049,and%20incapacitated%20by%20the%20disease).
607 [20the%20disease](https://www.who.int/news-room/fact-sheets/detail/lymphatic-filariasis#:~:text=893%20million%20people%20in%2049,and%20incapacitated%20by%20the%20disease).
- 608 4. null, n., *The roadmap towards elimination of lymphatic filariasis by 2030: insights from*
609 *quantitative and mathematical modelling [version 1; peer review: 2 approved]*. *Gates*
610 *Open Research*, 2019. **3**(1538).

- 611 5. *Lymphatic filariasis - managing morbidity and preventing disability: An aide-mémoire*
612 *for national programme managers, Second edition.* 2021, World Health Organization:
613 Geneva.
- 614 6. Stolk, W.A., et al., *Prospects for elimination of bancroftian filariasis by mass drug*
615 *treatment in Pondicherry, India: a simulation study.* Journal of Infectious Diseases, 2003.
616 **188**(9): p. 1371-81.
- 617 7. WHO, *Global programme to eliminate lymphatic filariasis: progress report, 2021*, in
618 *Weekly epidemiological record.* 2022, World Health Organization Geneva.
- 619 8. King, C.L., et al., *A Trial of a Triple-Drug Treatment for Lymphatic Filariasis.* N Engl J
620 Med, 2018. **379**(19): p. 1801-1810.
- 621 9. King, C.L., G.J. Weil, and J.W. Kazura, *Single-Dose Triple-Drug Therapy for*
622 *Wuchereria bancrofti - 5-Year Follow-up.* N Engl J Med, 2020. **382**(20): p. 1956-1957.
- 623 10. Thomsen, E.K., et al., *Efficacy, Safety, and Pharmacokinetics of Coadministered*
624 *Diethylcarbamazine, Albendazole, and Ivermectin for Treatment of Bancroftian*
625 *Filariasis.* Clin Infect Dis, 2016. **62**(3): p. 334-41.
- 626 11. Laman, M., et al., *Mass drug administration of ivermectin, diethylcarbamazine, plus*
627 *albendazole compared with diethylcarbamazine plus albendazole for reduction of*
628 *lymphatic filariasis endemicity in Papua New Guinea: a cluster-randomised trial.* Lancet
629 Infect Dis, 2022. **22**(8): p. 1200-1209.
- 630 12. Jambulingam, P., et al., *An open label, block randomized, community study of the safety*
631 *and efficacy of co-administered ivermectin, diethylcarbamazine plus albendazole vs.*
632 *diethylcarbamazine plus albendazole for lymphatic filariasis in India.* PLoS Negl Trop
633 Dis, 2021. **15**(2): p. e0009069.

- 634 13. Bjerum, C.M., et al., *Efficacy and Safety of a Single Dose of Ivermectin,*
635 *Diethylcarbamazine, and Albendazole for Treatment of Lymphatic Filariasis in Cote*
636 *d'Ivoire: An Open-label Randomized Controlled Trial.* Clin Infect Dis, 2020. **71**(7): p.
637 e68-e75.
- 638 14. *Guideline: Alternative Mass Drug Administration Regimens to Eliminate Lymphatic*
639 *Filariasis* 2017, Geneva: World Health Organization.
- 640 15. *Transmission assessment surveys in the Global Programme to Eliminate Lymphatic*
641 *Filariasis: WHO position statement.* Wkly Epidemiol Rec, 2012. **87**(48): p. 478-82.
- 642 16. Organization, W.H., *Monitoring Drug Coverage for Preventive Chemotherapy.* 2010,
643 WHO: Geneva.
- 644 17. Weil, G.J., et al., *The impact of repeated rounds of mass drug administration with*
645 *diethylcarbamazine plus albendazole on bancroftian filariasis in Papua New Guinea.*
646 PLoS Negl Trop Dis, 2008. **2**(12): p. e344.
- 647 18. Chipeta, M.G., et al., *Adaptive geostatistical design and analysis for prevalence surveys.*
648 Spatial Statistics, 2016. **15**: p. 70-84.
- 649 19. Giorgi, E. and P.J. Diggle, *PrevMap: An R Package for Prevalence Mapping.* 2017,
650 2017. **78**(8): p. 29.
- 651 20. WHO. *Lymphatic filariasis: monitoring and epidemiological assessment of mass drug*
652 *administration A manual for national elimination programmes, in Lymphatic Filariasis,*
653 2011, WHO: Geneva.
- 654 21. Diggle, P.J. and E. Giorgi, *Model-based geostatistics for global public health: Methods*
655 *and application* Interdisciplinary Statistic Series, ed. N. Keidling, et al. 2019: CRC Press.

- 656 22. Eneanya, O.A., et al., *Mapping the baseline prevalence of lymphatic filariasis across*
657 *Nigeria*. *Parasites & Vectors*, 2019. **12**(1): p. 440.
- 658 23. Mwase, E.T., et al., *Mapping the Geographical Distribution of Lymphatic Filariasis in*
659 *Zambia*. *PLOS Neglected Tropical Diseases*, 2014. **8**(2): p. e2714.
- 660 24. Slater, H. and E. Michael, *Mapping, Bayesian Geostatistical Analysis and Spatial*
661 *Prediction of Lymphatic Filariasis Prevalence in Africa*. *PLOS ONE*, 2013. **8**(8): p.
662 e71574.
- 663 25. Diggle, P.J., et al., *Rethinking neglected tropical disease prevalence survey design and*
664 *analysis: a geospatial paradigm*. *Transactions of The Royal Society of Tropical*
665 *Medicine and Hygiene*, 2021. **115**(3): p. 208-210.
- 666 26. Mayfield, H.J., et al., *Supporting elimination of lymphatic filariasis in Samoa by*
667 *predicting locations of residual infection using machine learning and geostatistics*.
668 *Scientific Reports*, 2020. **10**(1): p. 20570.

669

