

33 closely related species could complicate anthrax diagnoses with and without culture to
34 standardise the use of genetic markers using qPCR for accurate anthrax diagnosis. Using blood
35 smears from 2012-2020 from wildlife mortalities (n=1708) in Kruger National Park in South
36 Africa where anthrax is endemic, we contrasted anthrax diagnostic results based on qPCR,
37 microscopy, and culture. From smears, 113/1708 grew bacteria in culture, from which 506
38 isolates were obtained. Of these isolates, only 24.7% (125 isolates) were positive for *B.*
39 *anthracis* based on genetic markers or microscopy. However, among these, merely 4/125
40 (3.2%) were confirmed *B. anthracis* isolates (based on morphology, microscopy, and
41 sensitivity testing to penicillin and gamma-phage) from the blood smear, likely due to poor
42 survival of spores on stored smears. This study identified *B. cereus sensu lato*, which included
43 *B. cereus* and *B. anthracis*, *Peribacillus spp.*, and *Priestia spp.* clusters using *gyrB* gene in
44 selected bacterial isolates positive for BAPA. Using qPCR on blood smears, 52.1% (890
45 samples) tested positive for *B. anthracis* based on one or a combination of genetic markers
46 which included the 25 positive controls. Notably, the standard *lef* primer set displayed the
47 lowest specificity and accuracy. Interestingly, various marker combinations, such as Ba-
48 1+*capB*, BAPA+*capB*, Ba-1+BAPA+*capB*+*lef*, and BAPA+*lef*+*capB*, all demonstrated
49 100.0% specificity and 98.7% accuracy, while maintaining a sensitivity of 96.6%. The
50 BAPA+*lef*+Ba-1 combination showed 100% specificity, sensitivity, and accuracy. Using Ba-
51 1+BAPA+*lef*+*capB*, as well as Ba-1+BAPA+*lef* with molecular diagnosis accurately detects
52 *B. anthracis* in the absence of bacterial culture. Systematically combining microscopy and
53 molecular markers holds promise for notably reducing false positives, thereby significantly
54 enhancing the detection and surveillance of diseases like anthrax in southern Africa and beyond
55 and reducing the need for propagation of the bacteria in culture.

56
57 **Keywords:** archival blood smears, *Bacillus*, disease surveillance, genetic markers,
58 microscopy, molecular diagnostics, passive specificity, wildlife disease

59 **Introduction**

60 Anthrax is an ancient zoonotic disease with a documented history dating back to the Bible
61 (Ben-Noun, 2002). While the disease affects many host species, herbivorous mammals are
62 most susceptible, with fatalities often observed in wildlife and livestock. In addition, humans
63 are susceptible to anthrax infections, and cases occur largely due to the handling or
64 consumption of carcasses, infected meat, and hides (Kamal et al., 2011, W.H.O., 2008).
65 Anthrax is generally known to be caused by *Bacillus anthracis*, which is an aerobic or
66 facultative anaerobic, non-motile, Gram-positive, rod-shaped bacterium that produces
67 endospores. This bacterium occurs in two forms, the spore form and the vegetative form
68 (Vilas-Bôas et al., 2007). The virulence factors of *B. anthracis* are encoded on two plasmids:
69 pXO1, which is largely responsible for the production of the toxins, and pXO2, which
70 synthesizes the poly-γ-D-glutamic acid capsule (Makino et al., 1989, Okinaka, 1999a). The
71 pXO1 plasmid contains genes responsible for the production of protective antigen (PA, often
72 indicated as BAPA), lethal factor (LF) and oedema factor (EF) proteins. These proteins are

73 grouped as AB-toxins. The A form, which consists of the EF or LF, bears the enzymatic
74 activity (Moayeri and Leppla, 2004, Moayeri and Leppla, 2009, Leppla, 1982). The B
75 component consists of PA, which is the receptor-binding component of the lethal toxin (LT)
76 and oedema toxin (ET), and the courier of LF and EF respectively, into the host cells (Smith
77 et al., 1955, Barth et al., 2004, Moayeri and Leppla, 2009, Leppla, 1982). The PA combines
78 with LF to produce LT, which is responsible for the death of macrophages; the PA also
79 combines with the EF to produce the ET that deactivates the phagocytes of the host (Leppla,
80 1982).

81 For a century, the laboratory identification of the disease and its causative agent (*B. anthracis*)
82 was believed to be well described and involved microbiological culture, microscopy, and
83 biochemistry. However, in recent decades, new hypotheses with regards to the disease's
84 presentation, prevention and infective organisms have been elucidated on the African
85 continent (Antonation et al., 2016, Norris et al., 2021, Tamborrini et al., 2011, Klee et al.,
86 2006). There have been reports of a close relationship of pathogenic and non-pathogenic
87 *Bacillus* spp. resulting in serological cross-reactivity (Marston et al., 2016, Zimmermann et
88 al., 2017) which was also reported in the anthrax endemic region in northern Kruger National
89 Park (KNP) (Steenkamp et al., 2018, Ochai et al., 2022). Anti-PA and LT-neutralising
90 antibodies were also detected at higher rates than expected in animals from a low-incidence
91 area of KNP (southern region) (Ochai et al., 2022). Thus we hypothesised that the animals
92 could be reacting to “anthrax-like” microbes in the environment, which could possess genes
93 with similar homologies to *B. anthracis* (Ochai et al., 2022). These data coupled with the
94 discovery of anthrax cases caused by *B. cereus* biovar *anthracis* (Bcbva) strains in west and
95 central Africa (Hoffmann et al., 2017), prompted us to re-assess the robustness of diagnostic
96 tools currently employed in the surveillance for anthrax in southern Africa.

97 Different methods have been employed in the diagnosis of bacterial zoonoses (such as *B.*
98 *anthracis*) over the years. These methods include the identification of bacterial culture
99 isolates, microscopic examination of blood smears, molecular diagnosis targeting pathogen
100 genetic markers and serological identification employing antibodies targeting antigens
101 produced by the pathogen. The success of these techniques, however, depends largely on the
102 specificity and sensitivity of the test being employed (Trevethan, 2017). *Bacillus anthracis* is
103 in the phylum Firmicutes, family Bacillaceae, and belongs to the group referred to as the *B.*
104 *cereus* group. The *B. cereus* group consists of 8 *Bacillus* species (*B. anthracis*, *B. cereus*, *B.*

105 *thuringiensis*, *B. mycoides*, *B. pseudomycoides*, *B. weihenstephanensis*, *B. cytotoxicus*,
106 and *B. toyonensis*) that have closely related phylogenies (Radnedge et al., 2003, Rasko et al.,
107 2005) as reflected by high similarities in 16S rRNA gene sequences (Ash et al., 1991,
108 Somerville and Jones, 1972) and other genetic markers such as *gyrB* within the *B. cereus*
109 group (Liu et al., 2021). These species also differ in their aetiology, pathogenesis, clinical
110 manifestations and host preferences (Drobniewski, 1993, Rasko et al., 2005, Pilo and Frey,
111 2011, Helgason et al., 2000, Ehling-Schulz et al., 2019). The *gyrB* gene encodes the B subunit
112 of DNA gyrase, an enzyme critical for DNA replication, transcription, and repair in bacteria.
113 The *gyrB* gene sequence is highly conserved among bacterial species but varies enough to
114 distinguish between them (Yamamoto and Harayama, 1995, Liu et al., 2021). Studies have
115 shown that *gyrB* sequencing can offer higher resolution than the more commonly used 16S
116 rRNA gene sequencing in differentiating closely related bacterial species (La Duc et al., 2004,
117 Fox et al., 1992).

118 The initial step in the confirmation of *B. anthracis* in an anthrax-suspected carcass is the
119 examination of blood smears stained with either Gram or Giemsa stain to view the rod-shaped
120 bacterium (W.H.O., 2008). The presence of encapsulated square-ended rod-shaped bacteria
121 that react to the polychrome methylene blue stain indicates the presence of *B. anthracis* and
122 warrants a sample to be sent to a reference laboratory for confirmation (W.H.O., 2008). To
123 confirm the presence of *B. anthracis* in the reference laboratories, the samples are cultured
124 on blood agar to check for colony morphology (W.H.O., 2008), and the absence of haemolysis
125 and sensitivity to penicillin and bacteriophages (Turnbull et al., 1998, Turnbull, 1999). For
126 additional verification, real-time/quantitative PCR (qPCR) is conducted for the presence of
127 *pagA*/BAPA, *lef* (W.H.O., 2008), *capB* (pXO2 (W.H.O., 2008)) and/or *Ba-1* (Zincke et al.,
128 2020) genes that encode for virulence factors including the PA and capsule as well as *B.*
129 *anthracis* chromosome, respectively. The qPCR targeting *pagA*/BAPA (pXO1) (W.H.O.,
130 2008) and *capC* (pXO2) regions (W.H.O., 2008) used by Lekota et al. (2016) reported that
131 presence of *capC* to be inadequate for distinguishing closely related *Bacillus* species from
132 anthrax outbreaks, while Zincke et al. (2020) used *capB*, *lef* and *Ba-1* targets to differentiate
133 *B. anthracis* from *B. cereus sensu stricto*. Although the *Ba-1* marker seems distinctive to *B.*
134 *anthracis*, its validation has been limited to *B. anthracis* strains of *B. cereus sensu stricto*,
135 similar to the case of *lef* (Zincke et al., 2020, Blackburn et al., 2010). Typically, molecular
136 targets involve the use of specific chromosomal regions unique to *B. anthracis* together with
137 virulence factors situated on either pXO1 or pXO2 plasmids serving as markers (W.H.O.,

138 2008, Lekota et al., 2016, Blackburn et al., 2014), due to the genome similarity amongst
139 closely related *Bacillus* spp. (Léonard et al., 1997, Lechner et al., 1998) and *B. anthracis*
140 virulence plasmids or their parts detected in closely related species (Baldwin, 2020, Klee et
141 al., 2006).

142 In a typical *B. anthracis* investigation, the presence of *B. cereus* group species that are not *B.*
143 *anthracis* have been viewed as contaminants, and the absence of the genes linked to both
144 pXO1 and pXO2 further leads the investigator to view the closely related species as not of
145 importance (Logan and Turnbull, 1999). As a result, microbes that lack the *B. anthracis*-
146 specific chromosomal gene (Ba-1) or the pXO1 and pXO2 plasmids can be readily
147 overlooked. In recent years, there have been reports of atypical *B. cereus* strains that are
148 known to cause anthrax-like infections in both humans and animals (Klee et al., 2010) with
149 very similar genes to those found on pXO1 and pXO2 plasmids found in *B. anthracis*
150 (Baldwin, 2020). A number of anthrax-like pneumonia cases by atypical *B. cereus* (with the
151 pBCXO1 plasmid) have been reported in humans (Hoffmaster et al., 2004, Avashia et al.,
152 2007, Hoffmaster et al., 2006) with all cases found in individuals without underlying
153 predisposing conditions. Also, cutaneous *B. cereus* infections characterised by the presence
154 of anthrax-like eschars have been reported in humans (Marston et al., 2016, Kaiser, 2011).
155 Furthermore, anthrax-like illnesses have been reported in animals, some of which include
156 chimpanzees (*Pan troglodytes*), gorilla (*Gorilla gorilla*) (Leendertz et al., 2006, Leendertz et
157 al., 2004, Klee et al., 2006, Hoffmann et al., 2017), cattle (*Bos taurus*) (Pilo et al., 2011,
158 Somerville and Jones, 1972), elephants (*Loxodonta africana*) and goats (*Capra hircus*)
159 (Antonation et al., 2016) in west and central Africa. Most of these mortalities have been
160 attributed to atypical strains of *B. cereus* and *B. cereus* biovar *anthracis* (Bcbva). One of the
161 most common diagnostic markers used in the detection of Bcbva is the genomic island IV
162 (GI4) which is unique to Bcbva (Zincke et al., 2020). The review by Baldwin (2020) indicated
163 two *B. cereus* clades that cause anthrax-like disease namely the atypical *B. cereus* strains with
164 pXO1-like -pBCX01 causing human cases of anthrax-like pneumonia (which include G9241,
165 FL2013 and 03BB102), and Bcbva strains containing the pBCXO1 and pBCXO2 plasmids
166 that are highly similar to the pXO1 and pXO2 plasmids of *B. anthracis* (Baldwin, 2020,
167 Okinaka, 1999b, Rasko et al., 2005). Even though atypical *B. cereus* strains possess the ability
168 to cause anthrax-like disease, they are more closely phylogenetically related to other *B. cereus*
169 strains than *B. anthracis* (Antonation et al., 2016). Over the last decades, there have been calls
170 to move away from culture identification of *B. anthracis* in a bid to reduce biosafety risk and

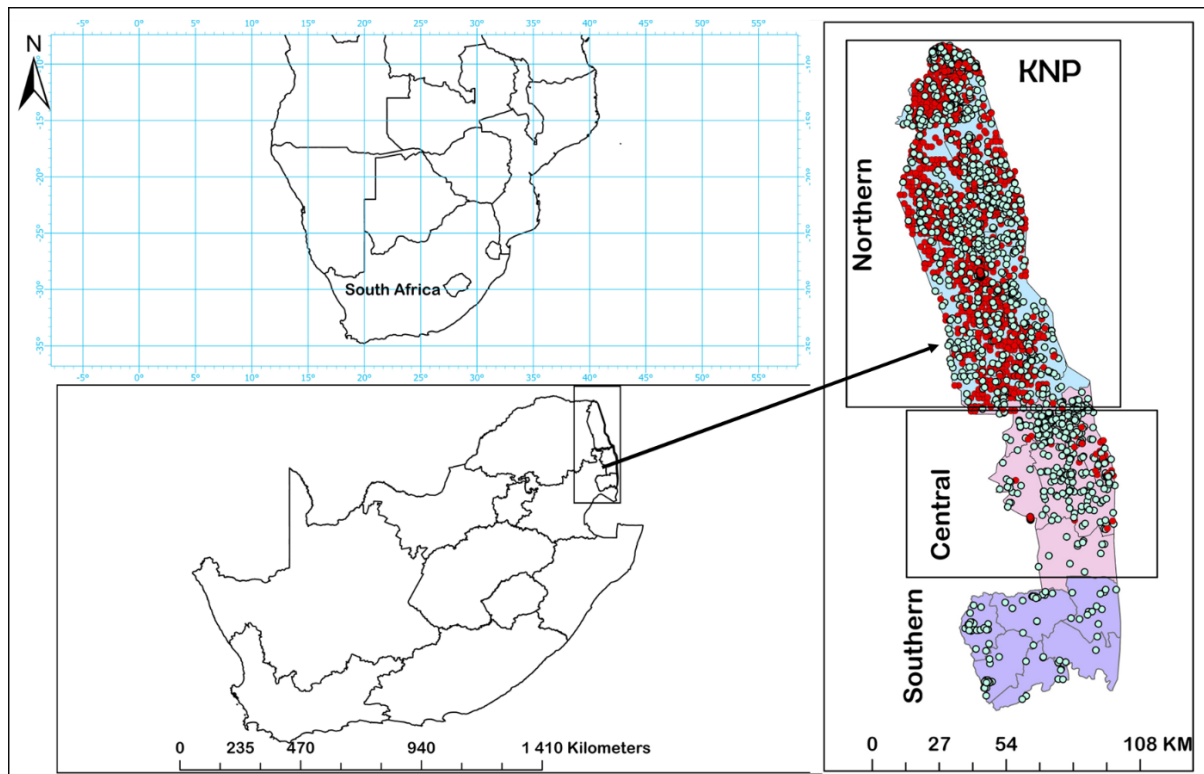
171 avoid proliferation (Riedel, 2005). Thus, the ultimate goal of this study was to investigate
172 the best practices using culture-free methods for the diagnosis of anthrax.

173 Anthrax is endemic in KNP, and park personnel employ a passive surveillance system where
174 blood smears are collected from any deceased animal and stored in an archival collection. We
175 utilised blood smears from the collection, covering the years 2012-2020. This period
176 encompassed known anthrax outbreaks from 2012 to 2015 (Hassim, 2017a, Ochai et al.,
177 2022). From these outbreaks, *B. anthracis* bacilli were initially identified using the
178 microscopic evaluation of blood smears from wildlife carcasses in KNP with follow-up
179 collection of samples (bone, hair and tissue) from these positive carcass sites in a previous
180 study (Hassim, 2017b). In this study, 25 *B. anthracis* isolates previously confirmed using
181 microbiology and PCR from tissue samples linked to positive blood smears served as positive
182 controls. Our investigation focused on employing microscopy, culture, and molecular
183 markers, including real-time/quantitative polymerase chain reaction (qPCR), to identify *B.*
184 *anthracis* and distinguish it from *B. cereus* or other closely related microbes. Specifically, we
185 examined: 1) the performance of five molecular markers currently in use (*pagA*/BAPA, Ba-
186 1, *lef*, *capB*, *GI4*) to identify *B. anthracis* from other bacteria using cultures of blood smears;
187 (2) the performance of five molecular markers to identify *B. anthracis* from *B. cereus* and
188 other closely related bacteria; and 3) we evaluated the agreement between anthrax diagnoses
189 based on blood smear microscopy versus molecular techniques.

190 **Materials and Methods**

191 **Study Area**

192 The KNP (19,485 km²; Figure 1) is situated in the northeastern part of South Africa, bordering
193 Mozambique and Zimbabwe. The northern half of KNP (Figure 1) is considered the anthrax
194 endemic region, where most of the anthrax mortalities have been reported (Ochai et al., 2022,
195 Vos, 1990); this region is classified as semi-arid and is highly wooded with some grassland
196 savannah (Huntley, 1982). KNP has variable elevations, with Pafuri (found in the northernmost
197 part of KNP; 22.4206° S, 31.2296° E) having lower elevation floodplains and mountains
198 towards the northwestern part of the park. In KNP, the high anthrax incidence (endemic) area
199 extends from Pafuri to Shingwedzi (23.1167° S, 31.4333° E) in the north, and the low incidence
200 area extends from Skukuza (24.9948° S, 31.5969° E) to Crocodile Bridge (25.3584° S,
201 31.8935° E) in the south (Figure 1).



202

203 **Figure 1:** The study area, Kruger National Park (KNP), is located in South Africa. The map of
204 KNP divides the park into three regions, with the distribution of 1708 animal mortalities (Table
205 S1) investigated in this study are shown as dots; anthrax positive cases, identified through
206 microscopic examination of blood smears, are marked with red dots, while green dots indicate
207 anthrax-negative mortalities.

208 **Sample preparation and DNA extraction**

209 Archival blood smears can be an important resource for retrospective studies and for retrieving
210 pathogens like *B. anthracis* that can remain viable for years (Vince et al., 1998, Hassim, 2017a).
211 In KNP, as part of the passive surveillance by the Skukuza State Veterinary Services, blood
212 smears have been collected from all carcasses discovered during field surveys. Two smears
213 were collected per carcass, one of which is stained (with Giemsa), while the other remains
214 unstained. Metadata captured at the carcass sites include the date, Global Positioning System
215 (GPS) coordinates, locality, species, and sex. These smears were first examined at the time of
216 collection and then stored at room temperature since collection. Aminu et al. (2020)
217 demonstrated that Azure B staining is more robust, consistent and has a higher sensitivity
218 compared to Giemsa only without Azure B and Polychrome Methylene Blue (PMB) stains.
219 The Giemsa stain used in this study contained Azure B.

220 A total of 1708 Giemsa-stained blood smear slides (from wildlife mortalities recorded 2012-
221 2020; Table S1) were examined by microscopy at 1000X magnification for the presence of
222 square-ended cells indicative of *B. anthracis*, following the methods described by the World
223 Health Organization (W.H.O., 2008). Each slide was examined by two examiners. The
224 selection of smears from this time period (2012-2020) was based on the findings of Hassim
225 (2017a) who demonstrated that isolate recovery reduced with age of the smears. We used the
226 selected unstained smears for additional genetic and microbiological work, done in 2022.

227 The unstained blood smears from each mortality were scraped into a collection plate and
228 transferred into a 1.5 mL centrifuge tube using a sterile scalpel. The smear scrapings were
229 added to 200 µL of phosphate buffered saline (PBS; Thermo Scientific, MA, USA) and divided
230 into two aliquots. The first aliquot was subjected to automated DNA extraction (QIACube,
231 QIAGEN GmbH, Hilden, Germany) using the DNA Blood Mini kit (QIAGEN QIAmp,
232 QIAGEN GmbH, Hilden, Germany) and the manufacturer's instructions for DNA extraction
233 from blood were followed. The second aliquot was inoculated on 5% Sheep Blood Agar (SBA)
234 and incubated overnight at 37 °C for use in the morphological identification of bacterial
235 colonies, as described by Parry et al. (1983). On each plate, all bacterial colonies demonstrating
236 different colony morphology were selected and treated as different isolates. All isolates
237 identified were further sub-cultured onto 5% SBA to obtain pure cultures and check for the
238 presence of haemolysis and colony morphology. The purified isolates were further subjected
239 to gamma-phage and penicillin sensitivity tests as described by W.H.O. (2008). Isolates that
240 did not present with a *B. anthracis* characteristic phenotype were retained and screened using
241 molecular methods. DNA extraction from pure isolates was performed using the Pure link
242 Genomic DNA kit (Thermo Fisher Scientific, MA USA) as prescribed by the manufacturer.

243 If a mortality was identified as positive for *B. anthracis* based on microscopy, a follow-up
244 sample (soil, bone and/or tissue) from the carcass site was collected as soon as possible (if
245 GPS coordinates were available). From these additional samples, 25 isolates confirmed to be
246 *B. anthracis* based on morphology, microscopy, haemolysis, gamma-phage and penicillin
247 sensitivity (W.H.O., 2008) were used in this study as internal positive controls.

248 **Microscopic examination of bacterial isolates derived from blood smears**

249 For the blood smear scrapings that yielded bacterial growth, the colonies were subcultured (to
250 obtain pure colonies) and transferred directly to a microscope slide, and 5 µl of saline was

251 added, emulsified, and spread evenly on the slide. The slide was allowed to dry and fixed with
252 95% methanol (Merck KGaA, Darmstadt, Germany) for one minute. The methanol was
253 allowed to dry and a Gram stain was conducted as described by W.H.O. (2008) to visualise the
254 presence of Gram positive rods. Cell morphology was observed and recorded at 1000X
255 magnification to confirm the culture results to identify square-ended rod-shaped *B. anthracis*.
256 Subsequently, to determine encapsulation, polychrome methylene blue stain was performed as
257 described by W.H.O. (2008).

258 **Quantitative polymerase chain reaction (qPCR)**

259 **qPCR on bacterial isolates derived from smears**

260 The qPCR was performed on two different sample sets. First, cultured isolates from one of the
261 two aliquots of the blood smears (506 isolates from 113 smears) were screened, targeting 5
262 genetic markers for *pagA* (BAPA), Ba-1, *lef*, GI4 and *capB* in a stepwise manner. All isolates
263 were screened even if they were not phenotypically *B. anthracis*. The isolates were first
264 screened with the SYBR Green assays using primers and targets in Table 1 as described by the
265 manufacturer (CelGREEN, Celtic Molecular Diagnostics, Cape Town, South Africa). Isolates
266 that were positive with SYBR Green (n=125) PCR assays on all the markers were then further
267 confirmed using the TaqMan assay for targeting the Ba-1, *lef*, *capB*, GI4 (chromosomal)
268 targets (Table 1) as described by Zincke et al. (2020) and the fluorescence resonance energy
269 transfer (FRET) for BAPA (W.H.O., 2008). The inclusion of the chromosomal marker, Ba-1
270 and GI4 in the assay was based on the premise that it enhances the specificity of the assay, as
271 detailed by (Ågren et al., 2013). The reaction mixtures for the SYBR Green assay, targeting
272 the *pagA* (BAPA), Ba-1, *lef*, GI4, and *capB* primer sets, consisted of 0.5 µM of each primer.
273 For Ba-1, *lef*, GI4, and *capB*, the mix included 1x SYBR Green (CelGREEN, Celtic Molecular
274 Diagnostics, Cape Town, South Africa), while the BAPA assay utilized FastStart Essential
275 Green Master (Roche, Basel, Switzerland). Each mixture also contained 5 µL of DNA,
276 resulting in a total volume of 20 µL per reaction. Cycling conditions were: a pre-incubation at
277 95°C for 10 min (20°C/sec ramp), followed by 45 cycles of 95°C for 10 sec and 55°C for 20
278 sec (both at 20°C/sec ramp), then 72°C for 30 sec (20°C/sec ramp) with signal capture post-
279 annealing. Denaturation involved an immediate 95°C step, cooling to 40°C for 30 sec (both at
280 20°C/sec ramp), then 80°C instantly with a 0.1°C/sec ramp for continuous signal reading. The
281 process concluded with a cool-down to 40°C for 30 sec (20°C/sec ramp). The assay was
282 performed using the QuantStudio 5 Real-time PCR system (Thermo Fisher Scientific, MA

283 USA). Isolates that were positive for BAPA (n=14) were selected for further identification
284 using gyrase B (*gyrB*) gene PCR as described by (Liu et al., 2021). We selected these isolates
285 that were BAPA PCR positives as it has been hypothesised that closely related bacterial species
286 might be responsible for the anti-PA serological reaction observed in anthrax nonendemic
287 regions (Ochai et al., 2022). The cycle threshold (CT) cutoff was established at 35 for Ba-1 and
288 GI4, as well as for *pagA* (BAPA), *lef*, and *capB* (Hassim, 2017b, Lekota et al., 2016, Zincke et
289 al., 2020). For *B. anthracis*, we used *B. anthracis* Vollum strain as the positive control, and
290 the 25 smear samples confirmed to be *B. anthracis* in the study of Hassim (2017a) were used
291 as internal controls. We obtained a positive control (DNA from pure culture) for Bcbva from
292 the Robert Kock Institute, Germany.

293 **qPCR from direct scrapings of blood smears**

294 Secondly, the 1708 DNA samples obtained from blood smear scrapings were screened for the
295 presence of the pXO1 plasmid, with qPCR assays targeting the *pagA* and *lef*, as well as pXO2
296 plasmid targeting *capB*. We also screened for the chromosomal markers Ba-1 of *B. anthracis*
297 and GI4 region for Bcbva. To determine the presence of *pagA* (BAPA), qPCR was conducted
298 using the FRET on the Light Cycler Nano (Roche, Basel, Switzerland). For the TaqMan assays,
299 the reaction conditions were standardized to a 20- μ L mixture containing 1 μ L of the DNA
300 template, 1x concentration of PrimeTime Gene Expression Master Mix (IDT, Coralville, IA,
301 USA, Cat No. 1055772), along with primers and probes as listed in Table 3.

302 The thermal cycling conditions for TaqMan assays were set as follows: an initial denaturation
303 at 95°C for 3 minutes, followed by 45 cycles of denaturation at 95°C for 20 sec and
304 annealing/extension at 60°C for 30 sec. For *lef*, Ba-1, *capB* and GI4, the quantitative PCR
305 TaqMan assay was performed using the QuantStudio 5 Real-time PCR system (Thermo Fisher
306 Scientific, MA USA). Two duplex assays were created for the simultaneous detection of FAM-
307 and VIC-labeled probes. The first duplex targeted Ba-1 and GI4 markers for species
308 identification, while the second targeted *lef* and *capB* virulence markers from pXO1 and pXO2
309 plasmids, respectively. To prevent spectral overlap in the QuantStudio 5 instrument, color
310 compensation was conducted with FAM and VIC probes, applying the results to duplex assay
311 data. Tests included all 26 confirmed positive *B. anthracis* strains (~1 ng DNA), and specificity
312 checks involved DNA from Bcbva, and *B. cereus* ATCC 3999. The CT cutoff for positive
313 samples was set at 35 for all the markers (Hassim, 2017b, Lekota et al., 2016).

314 Conventional PCR

315 The 14 isolates from cultured blood smears that tested positive for pagA (BAPA) by the two
 316 qPCR methods described above were subjected to conventional PCR to allow for gel
 317 visualisation as described by Lekota et al. (2016). The reaction was set up with a total volume
 318 of 10 µL, containing 1x MyTaq PCR Master Mix (Bioline, MA, USA), 2 mM MgCl₂, 0.2 µM
 319 of each *pagA* primer (Table 1), and 2 ng of the target DNA. The PCR amplification began with
 320 an initial denaturation step at 94°C for 5 min, followed by 35 cycles of denaturation at 94°C
 321 for 30 sec, annealing at 55°C for 30 sec. and extension at 72°C for 30 seconds, concluding with
 322 a final extension at 72°C for 5 min. The *B. anthracis* Vollum strain served as a positive control.
 323 *Bacillus cereus* ATCC3999 and distilled water served as negative controls, ensuring the assay's
 324 specificity. Post-amplification, the PCR products were subjected to electrophoresis on a 3%
 325 ethidium bromide-stained agarose gel at 100 V for 90 min and visualized under UV light to
 326 confirm the presence of *Bacillus anthracis*-specific amplicons.

327 Table 1: Primers, probes and gene targets for the detection of *Bacillus anthracis* from bacterial
 328 isolates cultured from blood smear samples from wildlife mortalities in Kruger National Park,
 329 South Africa by quantitative polymerase chain reaction (qPCR) assays. *Bacillus anthracis*
 330 protective antigen (BAPA), lethal factor (*lef*), chromosomal marker (Ba-1 and Genomic island
 331 4: GI4) and the capsule region (*capB*) were used as molecular markers in this study. FRET
 332 stands for fluorescence resonance energy transfer.

Primer/Probe (5'–3')	Chemistry	Target	Reference
Forward - GTACATCTTCTAGCTGTTGCAA Reverse – ACGTAGGAAGACCGTTGATTA Probe - VIC-CGTTGTTGTGTATTTG-MGB	TaqMan	Ba-1	(Zincke et al., 2020)
Forward – TAAGCCTGCGTTCTTCGTAAATG Reverse – GTTCCCAAATACGTAATGTTGATGAG Probe - NED-TTGCAGCGAATGAT-MGB	TaqMan	<i>capB</i>	
Forward – CACTATCAACACTGGAGCGATTCT Reverse – AATTATGTCATCTTTCTTTGGCTCAA Probe - Cy5-AGCTGCAGATTCC-MGB	TaqMan	<i>lef</i>	
Forward - GGAGATATTAACAAGAGATGGATTGGA Reverse - CAGTAGGCTTGTCTGCTCTAATAAAATT	Taqman	GI4	

Probe	-	FAM-		
ACATGCCAGCGTTTTTTGCCTCTACACA-BHQ1				
Forward –	CGGATCAAGTATATGGGAATATAGCAA		FRET	<i>pagA</i> (W.H.O., 2008)
Reverse -	CCGGTTT AGTCGTTT CTAATGGAT			
BAPA-FL -	TGCGGTAACACTT CACTCCAGTTCGA-			
X				
BAPA-LCRed 640 -	CCTGTATCCACCCTCACTCTT			
CCATTTT C-P				

333

334 **Molecular identification and phylogenetic analysis on bacterial isolates from smears**

335 The 14 bacterial isolates from blood smear scrapings that tested positive for BAPA by the two
336 qPCR approaches were subjected to additional molecular and phylogenetic analysis. The
337 gyrase B (*gyrB*) PCR product was sequenced for molecular taxonomic identification of the
338 isolates. The PCR fragments of the *gyrB* gene of the selected isolates (n = 14), including 4 *B.*
339 *anthracis* isolates based on microbiology (square-ended bacilli, colony morphology, penicillin
340 and gamma phage sensitive), were sequenced at Inqaba Biotechnical Industries (Pty) Ltd.,
341 Pretoria, South Africa. A BLAST search query was performed to compare the *gyrB* nucleotide
342 sequences from the *Bacillus* isolates with publicly available GenBank sequences in NCBI
343 (<http://www.ncbi.nlm.nih.gov>; accessed on 08, March, 2023). Multiple sequence alignments of
344 the mined *gyrB* reference sequences and *Bacillus* spp. strains sequenced in this study were
345 performed using BioEdit 7 (Hall, 1999) and using the algorithm found in Clustal W MEGA11
346 as described by Tamura et al. (2021). With this alignment, we inferred the phylogenetic
347 relationships of the *Bacillus* spp. isolates with respect to other related species and *B. anthracis*.
348 The p-distance model was used to generate a neighbour-joining tree with 1000 bootstrapped
349 replicates, using the MEGA 11.0 software (Tamura et al., 2021), and the phylogenetic tree was
350 visualised using ITOL 5.0 (Letunic and Bork, 2021).

351 Positive PCR fragments targeting the *pagA* using the BAPA probe sequence (W.H.O., 2008)
352 consisting of 240 bp were analyzed on the presumptive *Bacillus* spp. with sample numbers:
353 AX2015 (1122; 1136; 1152; 1511 and 1277A) and AX2016 (1708NH and 1800) isolates and
354 sequenced at Inqaba Biotechnical Industries (Pty) Ltd., Pretoria, South Africa. The BLASTn
355 homology searches of the sequences were performed to assess homologous hits against the
356 *pagA* region of the *B. anthracis* GenBank sequences available in NCBI (2023). Multiple

357 sequence alignments of the *pagA* (BAPA) probe region were performed using BioEdit 7 (Hall,
358 1999). The isolates and/or PCR fragments that failed quality control (low-base calling during
359 sequencing: the sequences where at least 90% of the nucleotides achieved a Phred score of less
360 than 30) were excluded from this analysis.

361 **Data analysis**

362 **Performance analysis of markers on bacterial isolates**

363 All results for the qPCR of the isolates were presented as counts and percentages. To assess
364 the performance of these molecular markers, we analysed 80 isolates that tested qPCR positive
365 for individual markers or combinations of molecular markers using the probe-based approach.
366 We used culture, microscopy, penicillin sensitivity, and gamma-phage sensitivity results as the
367 gold standard (true positive/negative) for comparison with the assays (W.H.O., 2008). For the
368 isolates that tested positive for any of the markers, we calculated the specificity, which detects
369 true negative, and the sensitivity, which detects true positive (Griner et al., 1981). We also
370 calculated the positive predictive value (PPV); probability that *B. anthracis* is present when
371 the test is positive, the negative predictive value (NPV), probability that *B. anthracis* is absent
372 when the test is negative, and the accuracy, which refers to the overall probability that a case
373 is correctly classified (Griner et al., 1981). Results for specificity, sensitivity, and accuracy
374 were presented in percentages and confidence intervals (CI) which are Clopper-Pearson CI
375 (Clopper and Pearson, 1934) and the CI for the predictive values was calculated using the log
376 method as described by Altman et al. (2000).

377 **Analysis of smears and direct qPCR of scrapings**

378 The outcomes of the qPCR and microscopic examination of blood smears were represented as
379 counts and percentages of positive samples. We evaluated the extent of agreement between the
380 binary outcomes of the molecular tests and the results of the microscopic examination of the
381 blood smears. This was done using a Cohen's kappa (κ) test (Cohen, 2003). For this analysis,
382 $\kappa \neq 0$ implies that the extent of agreement between the two tests mentioned was
383 significantly different from chance agreement. The measure of agreement was evaluated based
384 on the criteria of Landis and Koch (1977), where <0 = poor; 0.01-0.20 = slight; 0.21-0.40 =
385 fair; 0.41-0.60 = moderate; 0.61-0.80 = substantial; 0.81-1.00 = almost perfect.

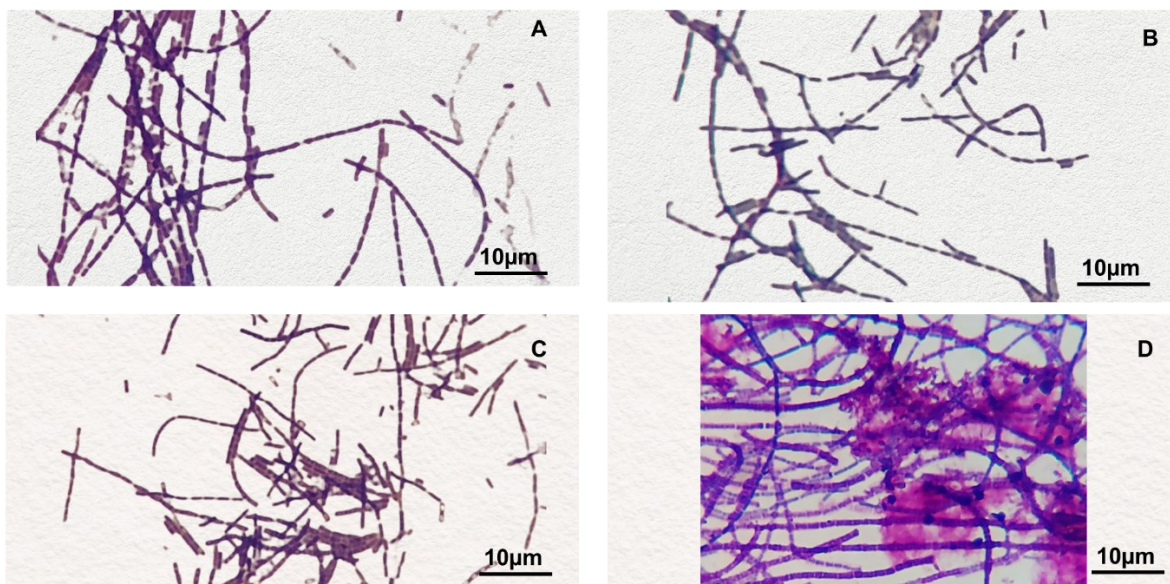
386 Statistical analyses were conducted using R version 4.1.2 (R Core Team, 2021), and
387 significance was evaluated with a threshold of $\alpha < 0.05$.

388

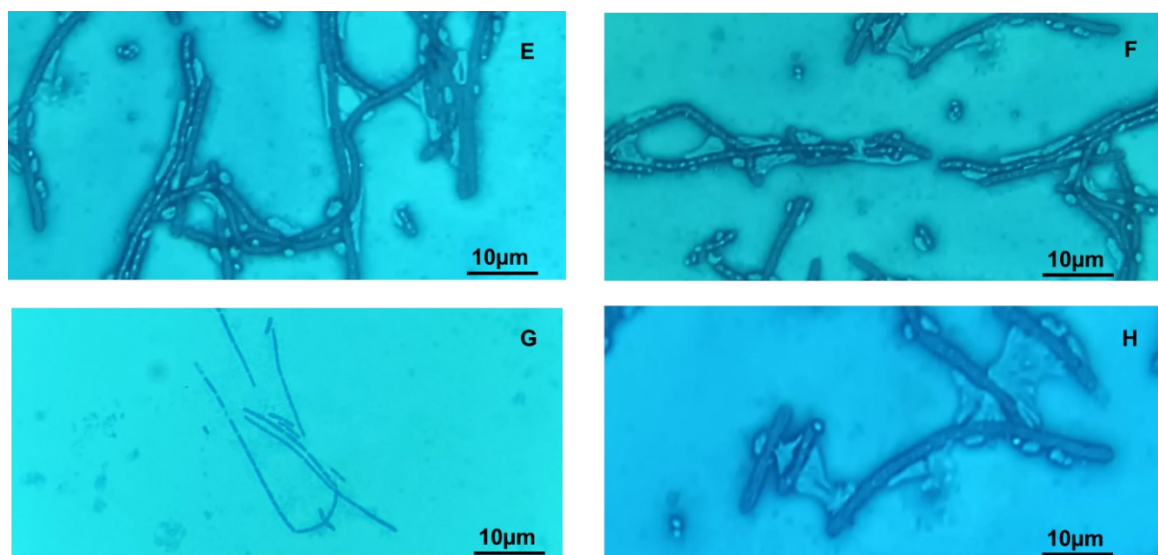
389 Results

390 Isolation and identification of cultured samples

391 Out of the 1708 blood smear scrapings that were cultured, only 113 samples had bacterial
392 growth from which a total of 506 pure colonies were isolated (some samples grew multiple
393 different bacterial colonies). Only 4/506 colonies demonstrated morphological features that
394 were consistent with those of *B. anthracis* (AX2015-1270, AX2015-1277A, AX2015-1152,
395 and AX2015-1136). The colony morphology and structure of the four isolates on 5% SBA
396 demonstrated non-hemolytic features, forming typical white-gray colonies with an oval,
397 slightly granular appearance. The Gram-stained isolate smears from the 4/506 positive samples
398 showed square-ended bacilli that are classical to *B. anthracis* (Figure 2). Upon examination of
399 the polychrome methylene blue stained smears, the identified *B. anthracis* isolates appeared
400 square-ended and encapsulated (with the exception of AX2015-1136, Figure 2G). The
401 remaining 502 isolates from this study failed on all or some of the criteria (colony morphology,
402 granularity or colour, hemolysis, capsule detection, penicillin and gamma phage sensitivity).
403 The smear samples that failed to grow colonies included the known positive samples from
404 which the 25 internal control samples were established, suggesting the *B. anthracis* endospores
405 were no longer viable to establish culture from the smears.



406



407

408 Figure 2: Microscopic examination of Gram and polychrome methylene blue stained cell
409 cultures from bacterial isolates collected from blood smears of wildlife mortalities in Kruger
410 National Park, South Africa that were identified as *Bacillus anthracis* through morphological
411 methods. Images show square-ended bacilli: (A) Micrograph of isolate AX2015-1270, (B)
412 Micrograph of AX2015-1152, (C) Micrograph of isolate AX2015-1136 and (D) Micrograph of
413 isolate 1277A. Also, images show encapsulation of the bacilli: (E) Micrograph of isolate
414 AX2015-1270, (F) Micrograph of AX2015-1152, (H) Micrograph of isolate AX2015-1277A
415 and with the exception of (G) Micrograph of isolate AX205-1136 that demonstrated no capsule.

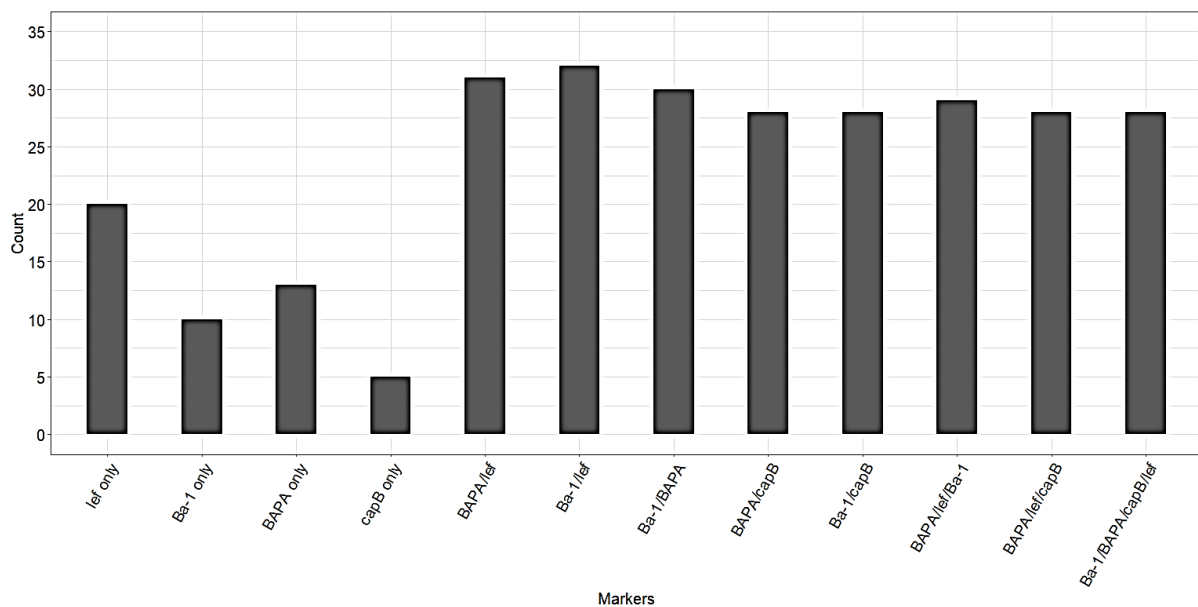
416 **Molecular analyses of bacterial isolates**

417 Of the 506 bacterial isolates, only 125 (24.7%) tested positive for one or more of the molecular
418 markers (*Ba-1*, *lef*, *pagA* (BAPA), *capB*) using SYBR Green (results not shown). Further
419 confirmation of these 125 isolates using the probe-based approach showed that 80 isolates
420 tested positive (Figure 3). The use of the "+" symbol in our context signifies the strategic
421 combination of markers. The combination of BAPA + *lef* + Ba-1 successfully identified the
422 four *B. anthracis* isolates that were confirmed through culture and microscopy. This
423 combination yielded exclusively these four positives representing 5% (n=4) of the total.

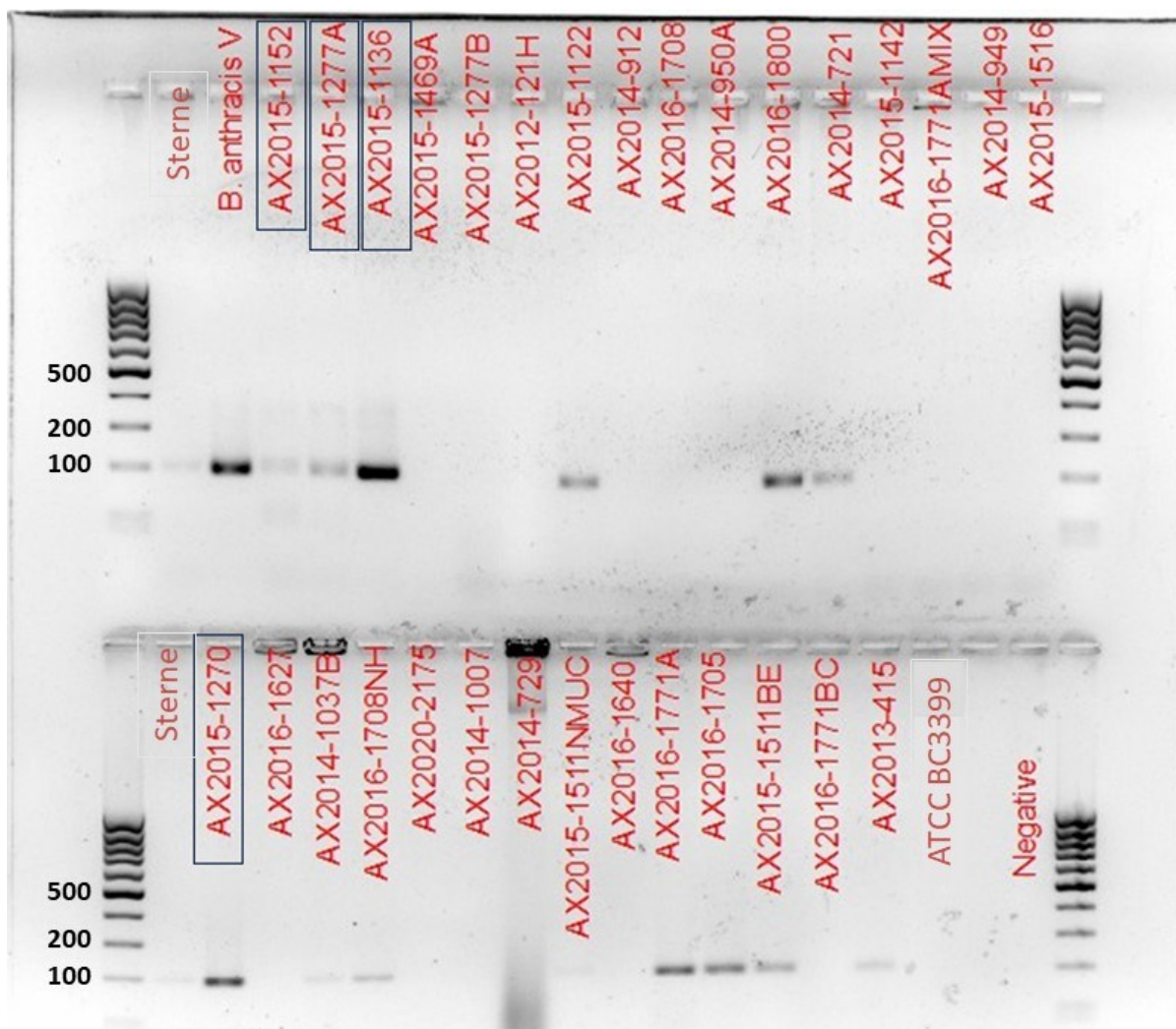
424 **Microbiological screening of the 14 bacterial isolates that were confirmed to be positive 425 on *pagA* (BAPA)**

426 The most commonly used genetic marker for the diagnosis of *B. anthracis* is *pagA* (BAPA),
427 and the use of this marker is recommended by the W.H.O. (2008); however, in our sample this
428 marker was not specific to *B. anthracis*. Following a microbiologic screening of the 14 samples
429 that tested positive for *pagA* (BAPA) by qPCR (Figure 4), 7/14 showed penicillin sensitivity,

430 while only the samples that were identified as *B. anthracis* (i.e., by colony morphology, capsule
431 staining, hemolysis and molecular markers) showed gamma phage sensitivity (Table 2). Only
432 2 of the 14 samples were haemolytic, and the *B. anthracis* strains were all non-hemolytic
433 (Table 2). The four *B. anthracis* strains were identified by qPCR markers Ba-1, *lef* and *capB*
434 (although one tested negative for *capB*). Most marker combinations of chromosome and toxin
435 genes as well as combinations of different toxin genes targets misclassified *B. anthracis*. A
436 combination of microscopy and molecular techniques consisting of chromosome and toxin
437 targets accurately detected *B. anthracis* while using capsule target underestimated *B. anthracis*
438 due to the possible loss of the capsule encoding pXO2 (Figure 3).
439
440



441
442 Figure 3: Bar plots showing counts of bacterial isolates grown from blood smears that tested
443 positive for *Bacillus anthracis* based on different individual molecular markers or
444 combinations of molecular markers. Bars show results of quantitative polymerase chain
445 reaction (qPCR) of isolates positive using probe-based qPCR (total $n = 80$ positives). Samples
446 were collected from blood smears of wildlife mortalities recorded from 2012-2020 in Kruger
447 National Park, South Africa. *Bacillus anthracis* protective antigen (BAPA), lethal factor (*lef*),
448 chromosomal marker (Ba-1) and the capsule region (*capB*) were used as molecular markers in
449 this study. Results for GI4 were not included as all isolates including the internal controls tested
450 negative. A total of 506 isolates were tested and only 80 isolates tested positive for individual
451 markers or combinations of molecular markers using the probe-based approach.



452

453

454 Figure 4: Agarose gel image of *Bacillus anthracis* protective antigen gene region, *pagA*
455 (BAPA), for *Bacillus anthracis* and other bacterial species isolated from cultured blood smears
456 obtained from wildlife mortalities in Kruger National Park, South Africa. The 100 bp (Thermo
457 Scientific, MA, USA) ladder was used. The *B. anthracis* Sterne and Vollum (labelled as *B.*
458 *anthracis* V) strains served as the positive controls. *Bacillus cereus* ATCC3999 and distilled
459 water (labelled as Negative) were used as negative controls. Sample numbers highlighted with
460 blue rectangles indicate *B. anthracis* confirmed samples. The assay was repeated three times.

461

462

463

464 **Performance of the pXO1, pXO2 gene and chromosomal markers**

465 The different molecular markers alone and in combination demonstrated varying specificity,
466 sensitivity, PPV, NPV, and accuracy (Table 3). The 80 isolates identified as positive for BAPA
467 by the qPCR/probe approach in this study include the 4 *B. anthracis* isolates identified from
468 the smears. The *lef* marker demonstrated the lowest specificity and accuracy (51.2% and
469 72.5%, respectively; Table 3). Specificity and accuracy for Ba-1, BAPA, and *capB*, for qPCR
470 were all above 60.0%, with Ba-1 having the lowest and *capB* having the highest specificity and
471 accuracy (Table 3). The combination of markers increased the specificity and accuracy of these
472 markers. Combinations of Ba-1+*lef*, BAPA+*lef*, and Ba-1+BAPA showed specificities and
473 accuracies of over 95% (Table 3). The specificity and accuracy were 100% and 98.8%,
474 respectively, for all combinations of Ba-1+*capB*, BAPA+*capB*, Ba-1+BAPA+*capB*+*lef*, and
475 BAPA+*lef*+*capB*, however, with a sensitivity of 96.55 % (Table 3). The combination of
476 BAPA+*lef*+Ba-1 showed a specificity, sensitivity, and accuracy of 100% which is the overall
477 probability that a case is correctly classified.

478 Table 2: Results of penicillin and Gamma phage sensitivity, morphology and quantitative polymerase chain reaction (qPCR) for the Taqman
 479 probe-based chemistry using four different molecular markers (*Bacillus anthracis* protective antigen (BAPA), lethal factor (*lef*), and capsule
 480 (*capB*) genes and the chromosomal region (Ba-1)) for selected bacterial isolates collected from the scrapings of carcass blood smears from 2012-
 481 2015 from Kruger National Park, South Africa. These 14 isolates were those that tested positive for the *Bacillus anthracis* protective antigen
 482 BAPA marker. Genus identity was based on the *gyrase B* sequence data. The probe-based approach was only conducted on isolates that were
 483 positive with SYBR Green assay.

Markers	Genus	Ba-1		<i>lef</i>		BAPA		<i>capB</i>		Sensitivity and morphology		
		SYBR ® Green	Probe	SYBR ® Green	Probe	SYBR ® Green	Probe	SYBR ® Green	Probe	Penicilli n	Gammaph age	Haemolys is
AX2015-1122	<i>Peribacillus</i>	+	-	-	+	+	+	-	-	+	-	-
AX2016-1800	<i>Peribacillus</i>	+	+	-	+	+	+	-	-	+	-	-
AX2015-1277A*	<i>Bacillus</i>	+	+	+	+	+	+	+	+	+	+	-
AX2015-1136*	<i>Bacillus</i>	+	+	+	+	+	+	-	-	+	+	-
AX2015-1152*	<i>Bacillus</i>	+	+	+	+	+	+	+	+	+	+	-
AX2015-1270*	<i>Bacillus</i>	+	+	+	+	+	+	+	+	+	+	-
AX2016-1771A	<i>Bacillus</i>	-	-	+	+	+	+	-	-	-	-	+

AX2014-1037	<i>Bacillus</i>	-	-	+	+	+	+	-	-	-	-	+
AX2016-1708NH1	<i>Priestia</i>	+	+	-	-	+	+	-	-	+	-	-
AX2015-1511Nm	<i>Priestia</i>	+	+	-	+	+	+	-	-	-	-	-
AX2015-1511BE	<i>Priestia</i>	+	-	-	-	+	+	-	-	-	-	-
AX2016-1705	<i>Priestia</i>	-	-	-	-	+	+	-	-	-	-	-
AX2013-415	<i>Priestia</i>	+	-	+	-	+	+	-	-	-	-	-
AX2014-721	<i>Priestia</i>	-	-	+	+	+	+	-	-	-	-	-

484 Asterisk (*) on sample IDs denotes *Bacillus anthracis*. The *Priestia* and *Peribacillus* species were previously identified as *Bacillus*: however,
485 Bergey's manual (Bergey, 1923) for the nomenclature of bacteria still refers to these as *Bacillus*.

486 Table 3: Performance of quantitative polymerase chain reaction (qPCR) probe-based diagnostic assays for detecting *Bacillus anthracis*, using
 487 individual markers as well as combinations of markers as assessed by their specificity, sensitivity, positive predictive value, negative predictive
 488 value and accuracy. All results are shown in percentages with confidence intervals (CI; 95%) in parentheses. The gold standard assessment of a
 489 true positive used in this analysis was culture identification, microscopy, and penicillin and Gamma phage sensitivity. Samples used here (n=80)
 490 include *Bacillus anthracis* (Ba) and other bacterial species isolated from cultured blood smears obtained from wildlife mortalities in Kruger
 491 National Park, South Africa. *Bacillus anthracis* protective antigen (BAPA), lethal factor (*lef*), chromosomal marker (Ba-1) and the capsule region
 492 (*capB*) were used as molecular markers in this study.

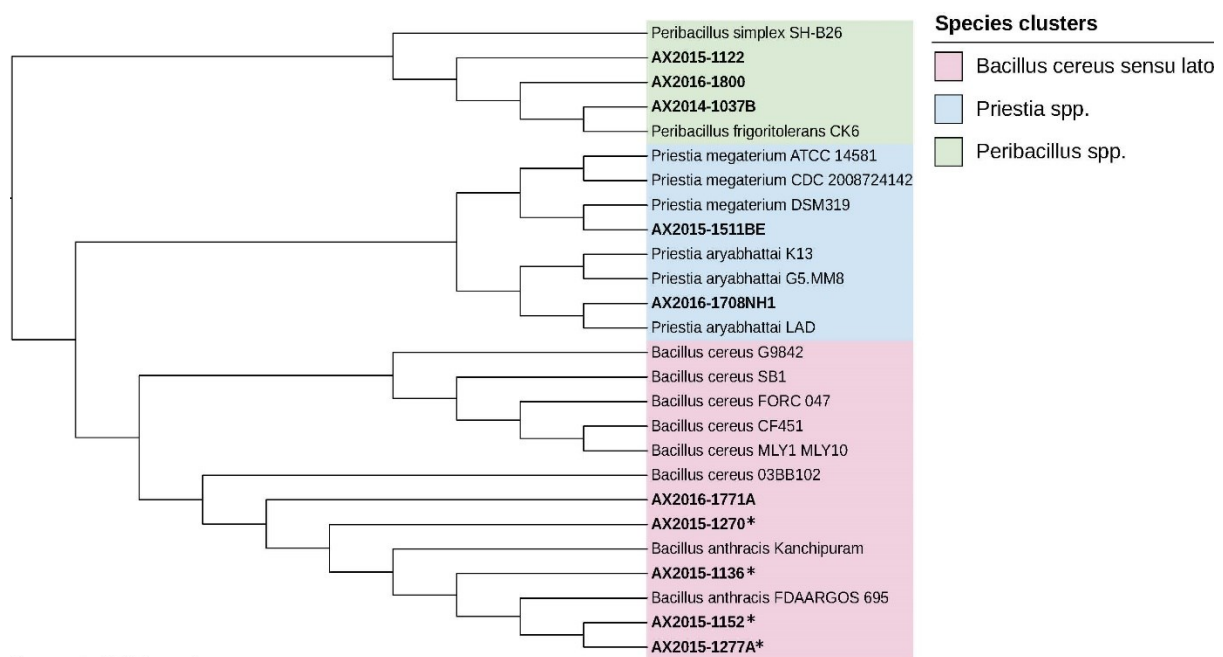
Markers	Specificity (CI) %	Sensitivity (CI) %	Positive predictive value(CI) %	Negative predictive value (CI) %	Accuracy (CI) %
Ba-1 only	75.61(59.70-87.64)	72.50 (56.11-85.40)	74.36 (62.46-83.49)	73.81 (62.33-82.76)	74.07 (63.14-83.18)
<i>lef</i> only	51.22(35.13-67.12)	72.50 (56.11-85.40)	59.18(50.75-67.11)	65.62 (51.54-77.41)	75.00 (64.06-84.01)
BAPA only	67.50 (50.87-81.43)	72.50 (56.11-85.40)	69.05 (57.85-78.38)	71.05 (58.68-80.93)	70.00 (58.72-79.74)
<i>capB</i> only	90.00 (78.19-96.67)	96.67 (82.78-99.92)	85.29 (71.58-93.03)	97.83 (86.73-99.68)	92.50 (84.39-97.20)
Ba-1 + <i>lef</i>	94.12 (83.76-98.77)	100.00 (88.06-100.00)	90.62 (76.33-96.66)	100.00 (92.60-100.00)	96.25 (89.43-99.22)
BAPA + <i>lef</i>	96.08 (86.54-99.52)	100.00 (88.06-100.00)	93.55 (78.85-98.26)	100.00 (92.75-100.00)	97.50 (91.26-99.70)
Ba-1 + <i>capB</i>	100 (93.02-100)	96.55 (82.24-99.91)	100.00 (87.66-100.00)	98.08 (88.14-99.72)	98.75 (93.23-99.97)
BAPA + <i>capB</i>	100 (93.02-100)	96.55 (82.24-99.91)	100.00 (87.66-100.00)	98.08 (88.14-99.72)	98.75 (93.23-99.97)
Ba-1 + BAPA + <i>capB</i> + <i>lef</i>	100 (93.02-100)	96.55 (82.24-99.91)	100.00 (87.66-100.00)	98.08 (88.14-99.72)	98.75 (93.23-99.97)
BAPA + <i>lef</i> + <i>capB</i>	100 (93.02-100)	96.55 (82.24-99.91)	100.00 (87.66-100.00)	98.08 (88.14-99.72)	98.75 (93.23-99.97)
BAPA + <i>lef</i> + Ba-1	100.00 (93.02-100.00)	100.00 (88.06-100.00)	100.00 (88.06-100.00)	100.00 (93.02-100.00)	100.00 (95.49-100.00)
Ba-1 + BAPA	98.04 (89.55-99.95)	100.00 (88.06-100.00)	96.67 (80.64-99.51)	100.00 (92.89-100.00)	98.75 (93.23-99.97)

493

494

495 ***Bacillus* spp. differentiation using *gyrB***

496 The BLASTn identification of the *gyrB* gene from the 14 selected bacterial isolates (i.e., those
 497 positive for BAPA) and subsequent phylogenetic analyses identified three genetic clusters, *B.*
 498 *cereus sensu lato* (comprising of *B. cereus* and *B. anthracis* found in this study), *Peribacillus*
 499 spp. and *Priestia* spp. (Figure 5). The latter two clusters were previously part of *Bacillus* and
 500 are recently proposed new genera (Gupta et al., 2020) but are still documented as *Bacillus* spp.
 501 according to the Bergey's's manual (Bergey, 1923). The AX2015 strains (1152, 1277A, 1270
 502 and 1136) grouped in the *B. cereus sensu lato* cluster with reference isolates *B. anthracis*
 503 (FDAARGOS 695 and Kanchipuram) as the closest related strains. The isolated AX2016-
 504 1771A strain clustered with *B. anthracis*, and also within a cluster including atypical *B. cereus*,
 505 although it had phenotypic characteristics with *B. cereus* as it was classified as haemolytic.
 506 AX2014-1037B; AX2015-1122 and AX2016-1800 grouped in the *Peribacillus* cluster (Figure
 507 5). AX2015-1511BE grouped with *Priestia megaterium* reference strains, and AX2016-
 508 1708NH1 grouped closely with the *Priestia aryabhatai* reference strains (Figure 5). The
 509 following isolates AX2013-415, AX2014-721, AX2015-1511 Nm and AX2016-1705 were
 510 excluded from the tree as they failed to pass the quality control.

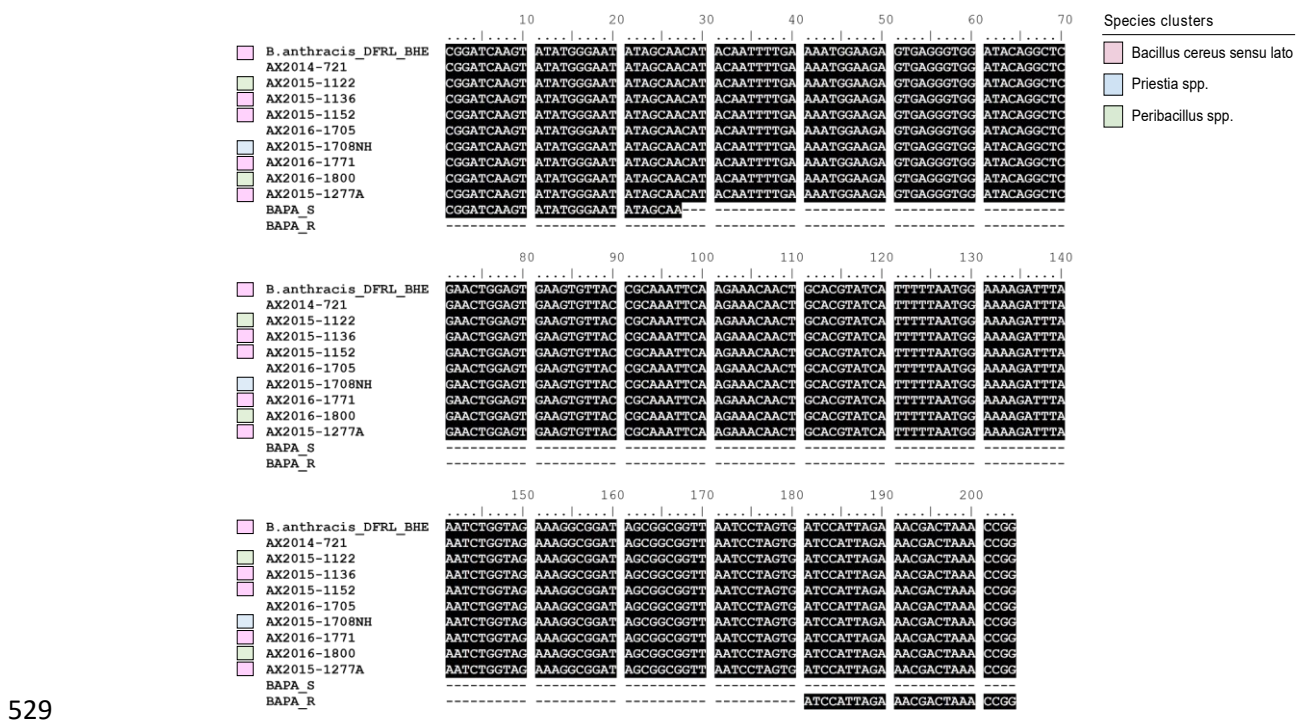


511
 512 Figure 5: Phylogenetic tree of bacterial isolates from Kruger National Park, South Africa based
 513 on the *gyrase B* gene constructed using the neighbour-joining method and p-distance model
 514 among three closely related genera (all formerly *Bacillus* spp.). Isolates starting with AX are

515 from this study and were matched against the closest National Center for Biotechnology
 516 Information (NCBI) reference isolates (through BLASTn searches) of *Bacillus cereus sensu*
 517 *lato*, *Priestia* spp., and *Peribacillus* spp. The scale bar represents 0.010 substitutions per
 518 nucleotide position. All positions containing gaps and missing data were eliminated from the
 519 dataset (complete deletion option). Isolates classified/identified as *B. anthracis* from this study
 520 following confirmation with microscopy, culture, molecular diagnosis, and penicillin and
 521 gammaphage sensitivity are denoted with an asterisk (*).

522 **The *pagA* (BAPA) sequence alignment of the selected isolates**

523 The 240 bp *pagA* (BAPA) region of AX2014-721, AX2015 (1122; 1136; 1152;1277A) and
 524 AX2016 (1771A; 1705; 1800; 1708NH1) were aligned against the NCBI reference strain of *B.*
 525 *anthracis* DFRL BHE-12 *pagA* gene region and the BAPA probes (See Figure 6 with probe
 526 sequence). The results showed no difference in comparison to the reference *B. anthracis* strains
 527 and showed the *pagA* region of the probe was completely conserved across the isolates (Figure
 528 6).



530 Figure 6: Multiple nucleotide sequence alignment of the *Bacillus anthracis* protective antigen
 531 (BAPA) probe region (targeting the *pagA* gene of *B. anthracis*) of isolates obtained from this
 532 study (starting with AX) versus the NCBI reference strain *B. anthracis* DFRL BHE-12.
 533 BAPA_S (Forward) and BAPA_R (Reverse) represent the BAPA probe sequences. Coloured

534 blocks represent the related species clusters in which the isolates grouped as shown in Figure
535 4. The nucleotide sequences were aligned using MAFFT V7.0 (Kato and Standley, 2013).
536 Two samples (AX2014-721 and AX 2016-1705) are missing colour blocks as their species'
537 clusters were not assessed in the previous analysis (Figure 5).

538 **Probe-based qPCR and microscopy results of scraped blood smears**

539 The DNA directly extracted from blood smears (n = 1708 samples) revealed 890 samples that
540 tested positive for at least one of the molecular markers evaluated (Table S1). However, of
541 these 890 samples, 165 (18.5%) tested positive for *lef* only and 112 (12.6%) for *pagA* (BAPA)
542 only, and not for any other marker. Details of other markers and combinations of markers are
543 found in Table S2. A combination of Ba-1 + BAPA + *capB* + *lef* yielded a total of 393 positive
544 samples (44.2% of the 890 samples; Table S1).

545 Microscopic evaluation of the 1708 blood smears detected 24.9% (425) of positive samples
546 based on presence of bamboo-shaped, square-ended bacilli. However, when combining
547 molecular and microscopy results, BAPA + *lef* + microscopy yielded 395 positives (23.1% of
548 1708 samples), Ba-1 + BAPA + microscopy had 398 positives (23.3% of 1708 samples), BAPA
549 + *capB* + microscopy had 400 positives (44.9% of 890 samples), *lef* + *capB* + microscopy had
550 401 positives (23.4% of 1708 samples), Ba-1 + *capB* + microscopy had 397 positives (23.2%
551 of 1708 samples), Ba-1 + BAPA + *lef* + microscopy had 393 positives (23.00% of 1708
552 samples), while Ba-1 + BAPA + *lef* + *capB* + microscopy yielded 391 positives (22.9% of
553 1708 samples). All combinations included the 25 internal controls and the four *B. anthracis*
554 isolates from this study except for AX2015-1136 which was missing in the combinations
555 including *capB*.

556

557 There was a significant and moderate agreement between the binary outcomes of the molecular
558 tests (combining Ba-1 + BAPA + *lef* + *capB*) and the results of the microscopic examination
559 of the blood smears ($\kappa = 0.73$, 95% CI: 0.67-0.78, $p < 0.0001$). All samples were negative
560 for the genomic island GI4 of Bcbva.

561

562 Discussion

563 In this study, we investigated if bacteria closely related to *B. anthracis* can complicate anthrax
564 surveillance and diagnostics based on molecular markers from wildlife mortalities in Kruger
565 National Park (KNP), South Africa. Based on variation in the *gyrB* gene, we showed that blood
566 smears can contain bacteria from *Priestia* spp., *Peribacillus* spp., (both former *Bacillus* spp.)
567 and *B. cereus sensu stricto*, that cross-react with common molecular markers used for *B.*
568 *anthracis*. Specifically, they cross-react with *pagA* (BAPA) or *lef* that have been used as the
569 antigen target in anthrax serology (Brézillon et al., 2015, Marston et al., 2016). These closely
570 related bacteria could be pathogenic, commensal, or environmental contaminants. Therefore,
571 it is important to consider the potential that molecular markers to detect pathogenic organisms
572 may risk cross-reacting with closely related organisms that co-occur with the pathogenic
573 organism, and evaluate the use of a combination of different markers as done in this study.
574 Lastly, we found good agreement between anthrax diagnoses based on microscopy of blood
575 smears and molecular techniques using a series of markers. This indicates that such methods
576 can accurately identify anthrax in diagnostic samples, which might render the conventional
577 gold standard culture confirmation unnecessary. This shift could reduce the biosafety and
578 biosecurity risks associated with the traditional approach, which are greater than those posed
579 by these proposed techniques.

580 The identification of species closely related to *B. anthracis* on diagnostic blood smears can
581 complicate anthrax diagnosis as these species may share similar genetic markers with *B.*
582 *anthracis*, leading to false positive results from molecular diagnostics. In addition, other
583 genera, such as *Peribacillus* and *Priestia* (Loong et al., 2017, Lekota et al., 2018), can also
584 complicate anthrax diagnosis. These species may not share as many genetic markers with *B.*
585 *anthracis* as the *B. cereus* group, but still have some similarities that could lead to false positive
586 results as seen in this study when performing qPCR diagnostics using only *lef*, Ba-1, or *pagA*
587 (BAPA) markers (Figure 6). For instance, *Peribacillus* and *Priestia* genera have been reported
588 to have similar 16S rRNA gene sequences and protein profiles as *Bacillus* (Bhattacharjee et al.,

589 2023), which can lead to misidentification. This suggests the presence of other bacterial species
590 that share similar *pagA* to that of *B. anthracis* with significant implications for *pagA*-based
591 ELISA. The results of our study show that other closely related organisms can react to *pagA*
592 and produce false positive results as hypothesised in a serological study conducted in KNP
593 (Ochai et al., 2022). It is therefore necessary to consider using other genetic markers or a
594 combination of markers to confirm the presence of *B. anthracis*.

595 Specifically, Lekota et al. (2018) demonstrated that the capsular region or polyglutamate
596 regions (*capABC*) are the ones that complicate anthrax diagnosis. Lekota et al. (2018) reported
597 that *capC* is not specific to *B. anthracis*. Thus, combining capsule markers such as the *capB* in
598 this study with other markers increased the specificity. However, in this study, *capB* had a
599 lower sensitivity (96.67%) that should be interpreted with caution owing to the small number
600 of samples that were confirmed as *B. anthracis*. Because the virulence factors of *B. anthracis*
601 occur in closely related *Bacillus* species (Baldwin, 2020), the combination of chromosome,
602 toxin and capsule genes may yield the best diagnostic result as seen in this study. The BAPA
603 + *lef* + Ba-1 combination showed 100% specificity, sensitivity, and accuracy.

604 Archival smears are a useful resource for retrospective studies and retrieval of environmentally
605 persistent pathogens like *B. anthracis* (Vince et al., 1998). We were only able to culture *B.*
606 *anthracis*, as defined by microscopy, culture, molecular diagnosis, and sensitivity to penicillin
607 and gammaphage, from four samples collected during the 2015 outbreak from impala
608 (*Aepyceros melampus*). These samples did not include any of the 25 *B. anthracis* internal
609 controls collected in 2012-2013. This indicates that the endospores were not viable after 10
610 years from these 25 smears, which were known to be *B. anthracis* cases from previous work.
611 This agrees with the findings of Hassim (2017b) who reported that the longer a smear is stored,
612 the harder it is to recover *B. anthracis*, and this may also affect the quality of the DNA extracted
613 from such samples. The capsule found on the pXO2 plasmid was potentially missing for 1 of
614 the 4 *B. anthracis* isolates obtained from the smears. This has previously been reported to occur
615 in the long term storage of isolates (Marston et al., 2005). The mechanism of how the plasmids
616 are lost is still not properly understood but it is hypothesised to be due to damage to the DNA
617 or following nutrient deficiency over time (Marston et al., 2005). This suggests the possibility
618 that archival smears might benefit from storage in climate-controlled conditions to prolong
619 their shelf life. Additionally, although *B. anthracis* can survive for extended periods, it doesn't
620 guarantee it always will, indicating that storage conditions warrant further evaluation.

621 The chromosomal marker Ba-1 has been reported to be very specific to *B. anthracis* (Zincke et
622 al. (2020)). However, in this study, of the isolates that tested positive for Ba-1, only 4/42 were
623 confirmed to be *B. anthracis* based on morphological, microscopic and sensitivity tests
624 (gamma-phage and penicillin). The difference between our study and Zincke et al. (2020) might
625 be due to degradation of the samples used in this study being archived over time. It may also
626 be due to the different samples pools, where Zincke et al. (2020) evaluated the Ba-1 marker
627 using samples of Bcbva, *B. cereus*, and *B. thuringiensis*, whereas the majority of the bacteria
628 isolated in this study were *Priestia* spp, and *Peribacillus* spp. It is known that *Priestia* spp. and
629 *Peribacillus* spp. are quite ubiquitous as they can be found in soil, faeces and the plant
630 rhizosphere (Gupta et al., 2020), complicating anthrax diagnosis. All the samples from this
631 study were negative for GI4, and there have been no reports of Bcbva outside of west Africa;
632 thus, Bcbva may not be present in KNP, South Africa, and the GI4 may not be a viable marker
633 for pathogenic strains in southern Africa. However, it is still important to consider GI4
634 screening for Bcbva. The ecological range of Bcbva is not fully understood, especially its
635 presence in transitional areas between humid forests and dry savannas, which are typical
636 habitats for *B. anthracis*. It is therefore important to investigate other non-traditional regions,
637 using new diagnostic tools like Bcbva-specific proteins for detection. Understanding Bcbva's
638 distribution is crucial for assessing risks in these regions and guiding future surveillance and
639 research efforts. This suggests that geographic region-specific diagnostics could be developed
640 in the identification of anthrax-like cases, if these rare cases do exist.

641 From this study, accurate detection of *B. anthracis* in a sample may be improved with a
642 stepwise approach based on multiple genetic markers, especially in situations where culture is
643 not possible. Ba-1 has been used by Blackburn et al. (2014) and Zincke et al. (2020) in the
644 diagnosis of *B. anthracis*. However, both studies performed additional MLVA-based or WGS
645 based efforts to confirm species or further characterize them which eliminated the possibility
646 of an overestimation. In our study we demonstrated that using only the Ba-1 or *lef* marker
647 produced non-specific diagnostic results, with specificities estimated as 92.1% and 79.0% for
648 the probe-based assay, respectively. However, testing for the presence of both markers
649 decreased the number of false positives, with a specificity 96.1% (Table 3). More precise
650 results were obtained while testing for the presence of BAPA + *capB*, Ba-1 + *capB*, BAPA +
651 *lef* + *capB*, and Ba-1 + BAPA + *lef* + *capB*, with all combinations having a specificity of
652 100%, sensitivity of 75.0%, and accuracy of 98.8%. However, the problem with these
653 combinations is that there is a high chance of misdiagnosing *B. anthracis* isolates that are

654 missing the capsule, as was the case of AX2015-1136. The only combination that
655 demonstrated a specificity, sensitivity and accuracy of 100% was BAPA + *lef* + Ba-1 (Table
656 3). Therefore, the combination of BAPA + *lef* + Ba-1 could be a useful molecular strategy
657 to diagnose *B. anthracis* in the absence of other methods like culture and microscopy.
658 However, the addition of *capB* is always important in identifying capsule producing *B.*
659 *anthracis*. It is however important that a negative *capB* result might stem from factors such
660 as insufficient amplification prior to the cycle threshold or DNA degradation. Using MLVA
661 and genotyping, pXO2 samples are more easily identified (Mullins et al., 2013, Easterday et
662 al., 2005), where these samples are integrated into phylogenetic trees alongside strains
663 verified via qPCR, regardless of the absence of *capB*. Although such instances in the
664 literature are not widespread and warrant further examination.

665 Of the 890 samples screened directly from the blood smear that tested positive based on at
666 least one probe-based qPCR, 15.2% tested positive for only *lef* and negative for other markers
667 and microscopy. The absence of other genetic markers and the negative result on
668 microscopic examination suggests that *lef* is also non-specific to *B. anthracis*, present in
669 other species. In this study, *lef* appears less specific to *B. anthracis* as compared to BAPA or
670 other gene markers used in the diagnosis of anthrax. This report is consistent with the work of
671 Zincke et al. (2020) who demonstrated that *lef* could also amplify *B. thuringiensis* serovar
672 Kurstaki HD1 and *B. cereus* G9241 that also possesses a pXO1-like plasmid that carries the
673 genes for anthrax toxin subunits. The presence of *lef* in non-*B. anthracis* pathogenic *B. cereus*
674 has also been reported in humans (Hoffmaster et al., 2004); incorporating other markers or
675 techniques when testing for the presence of *B. anthracis* in a sample could improve
676 diagnosis. The combination of markers from the two plasmids or from the plasmids and the
677 chromosome greatly improved the diagnosis of anthrax with fewer false positive results.
678 The addition of microscopy to the various combinations increased the accuracy of the results
679 significantly as there was very little variation on the number of positive samples when
680 comparing all the combinations with microscopy. Also, the combination of microscopy
681 and the genetic markers can accurately diagnose *B. anthracis* hence reducing the need for
682 culture and proliferation. We also found that *lef* was less specific on the isolates, as compared
683 to BAPA and *capB*. Penicillin sensitivity was also observed in two of the non-*anthracis*
684 isolates; however, sensitivity to gamma phage was only seen in the *B. anthracis* isolates. The
685 combination of Ba-1, BAPA, *capB* and *lef* was found only in the *B. anthracis* isolates with
686 the exception of AX2015-1136, which was missing the
capsule. Furthermore, the sample should test positive for BAPA+*lef*+Ba-1 or any of the

687 combinations containing *capB* (such as BAPA+*capB*, Ba-1+*capB*, BAPA+*lef*+*capB*, Ba-
688 1+BAPA+*capB*+*lef*).

689 The significant agreement between the microscopic and molecular diagnosis of anthrax in this
690 study demonstrates the usefulness of the microscopic technique in field and onsite diagnosis of
691 the pathogen. The combination of microscopy with qPCR, using DNA extracted from blood
692 smear scrapings, marks an advancement in diagnosing *B. anthracis*. This approach could
693 significantly lessen the dependency on conventional culture-based diagnostic methods.
694 Furthermore, it becomes especially critical in the context of increasing bioterrorism threats
695 (Binkley et al., 2002), offering a rapid, specific, and safer alternative for identifying *B.*
696 *anthracis*. Microscopy allows for the initial, rapid identification of the characteristic *Bacillus*
697 rods, which may be indicative of *B. anthracis*, particularly when observed in the context of a
698 clinical presentation consistent with anthrax. However, microscopy alone cannot provide a
699 definitive diagnosis due to the presence of morphologically similar *Bacillus* species. This is
700 where qPCR becomes invaluable; by targeting specific DNA sequences which together can be
701 unique to *B. anthracis*, qPCR offers a highly sensitive and specific identification method. When
702 applied to DNA extracted directly from blood smear scrapings, these two techniques can
703 rapidly confirm the presence of *B. anthracis*, circumventing the time-consuming and
704 potentially hazardous process of culture (Binkley et al., 2002). This dual approach not only
705 enhances diagnostic speed and safety but also supports early intervention and effective public
706 health responses to anthrax outbreaks (Sabra et al., 2023).

707 Microscopy has been a traditional and valuable tool in the diagnosis of anthrax. In this study,
708 24.9% (425) of the blood smears which included the 25 internal controls were positive for
709 anthrax under the microscope, while an average of 23.1% were positive for combinations of
710 markers and microscopy. This shows that molecular tests should not entirely replace
711 microscopy as a diagnostic technique for anthrax. A study comparing the performance of PCR
712 and microscopy in diagnosing cutaneous anthrax found that PCR had a higher sensitivity
713 (100.0%) compared to microscopy (60.0%) (Berg et al., 2006). However, the authors noted
714 that microscopy can still provide useful information on the clinical presentation and
715 progression of the disease as a diagnostic tool. Similar studies have reported on the usefulness
716 of microscopy as viable and important in resource-poor or field conditions using different
717 criteria (Aminu et al., 2020). The importance of combining different methods can not be over
718 emphasised especially with recent reports of Bcbva possessing several characteristics of *B.*

719 *anthracis* (Klee et al., 2006, Antonation et al., 2016). For example, organisms are non-
720 hemolytic and both form rods in chains that can be difficult to differentiate as reported by
721 Antonation et al. (2016). With ongoing advancements in next-generation sequencing and
722 decreasing costs, leveraging computational methods with robust bioinformatics can
723 significantly contribute to achieving a robust diagnostic of anthrax and successful
724 differentiation from *Bcbva* and other anthrax-like pathogens. The findings of this study offer
725 substantial implications for public health and One Health initiatives (Bhattacharya et al., 2021).
726 These insights contribute to advancing public health and One Health gains by providing more
727 accurate, efficient, and accessible diagnostic approaches for anthrax detection, ultimately
728 aiding in the prevention and control of the disease in livestock, wildlife and human populations.

729 **Limitations of the Study**

- 730 1. Despite identifying *B. anthracis* in smears from 2012-2015 outbreaks, culture success
731 from these archived slides was limited to the 2015 outbreak, possibly due to challenges
732 in the viability of *B. anthracis* endospores in blood smears over time.
- 733 2. The storage of the blood smears over time could have had an impact on the quality of
734 the smears and could introduce possible bacterial contamination.
- 735 3. The determination of sensitivity, specificity, and accuracy were based on only 4
736 positive samples plus 25 internal controls. Therefore, assessing the performance of the
737 assays on a larger number of samples that includes more culture/gold standard-
738 confirmed positive cases would be beneficial.

739

740 **Conclusion**

741 Results of this study demonstrate that diagnostic markers and techniques that are specific to *B.*
742 *anthracis* could reduce the complications in detection that are currently experienced, especially
743 with an increase in the exploration of the potential sharing of genetic material amongst the *B.*
744 *cereus sensu lato* members. Microscopy remains a very valuable tool in confirming the
745 presence of *B. anthracis* in the field and in resource-limited settings, as well as a confirmatory
746 tool. Accurate diagnosis with microscopy and combination of markers can reduce or eliminate
747 the need for culture and bacterial proliferation. The presence of non-*B. anthracis* organisms
748 harbouring similar genes may complicate anthrax diagnosis in the field. Lastly, the study
749 identifies that the combination of BAPA+*lef*+Ba-1 yields the most specific, sensitive, and
750 accurate results. Additionally, employing combinations with BAPA+*lef*+*capB*, with

751 microscopic analysis, can enhance diagnostic confirmation and reduce false positives and
752 reduce the need for culture, as revealed in this research.

753 **Suggestions for Future Research**

754 Future studies to develop gene markers that better differentiate *B. anthracis* from its close
755 neighbors in southern Africa may benefit the diagnosis of anthrax in this region. Whole genome
756 analysis looking at the presence of these genes in non-*anthracis* species could inform selection
757 of the best regions to target for primer and probe development. Studies evaluating bacterial
758 isolates from different geographical regions could be informative to test for the specificity of
759 developed markers for anthrax diagnosis and reduce or eliminate cross reactivity. Lastly,
760 exploring the diversity of non-pathogenic microbes related to pathogenic ones can provide
761 more information about the potential for the emergence of novel pathogenic microbes.

762

763 **Data Availability Statement**

764 At the time of publication, data were not publicly available from the authors. The
765 corresponding author may be contacted for questions about data availability.

766

767 **Ethics Statement**

768 This study was reviewed and approved by University of Pretoria Research Ethics Committee,
769 Animal Ethics Committee (REC 049-21), Department of Agriculture, Forestry and Fisheries
770 (DAFF) in South Africa (Ref 12/11/1/1/6 (2382SR)) in South Africa, South African National
771 Parks (SANParks), South Africa (Ref: BMTA 006/22).

772 **Author Contributions**

773 SO, AH and HH conceived the ideas of the study. SO, HH, and AH designed the study. SO,
774 and AH collected the data. SO, AH, KEL and HH designed the methodology. SO, SMM, TM
775 and KEL analysed the data. SO wrote the first draft of the manuscript. All authors contributed
776 significantly to manuscript revision, read, and gave approval for publication.

777

778 **Funding**

779 This work was supported by NSF Grant DEB-2106221 through the NSF-NIH-USDA Ecology
780 and Evolution of Infectious Diseases program to W.C.T, P.L.K and H.V.H.

781 **Acknowledgments**

782 We wish to express our appreciation to the staff of the Skukuza State Veterinary Services for
783 their critical and invaluable support during the experimental component of the research. We
784 also extend our appreciation to the SANParks and all the rangers without whom the passive
785 surveillance system would not work. We also would like to thank Dr Silke Klee of the Robert
786 Koch Institute for the *Bacillus cereus* biovar *anthracis* DNA used as a control in this study.
787 We also like to appreciate Dean J. Herbig for his assistance in the laboratory during this study.
788 Any use of trade, firm, or product names is for descriptive purposes only and does not imply
789 endorsement by the U.S. Government.

790

791 References

- 792 ÅGREN, J., HAMIDJAJA, R. A., HANSEN, T., RUULS, R., THIERRY, S., VIGRE, H., JANSE, I., SUNDSTRÖM,
793 A., SEGERMAN, B., KOENE, M., LÖFSTRÖM, C., VAN ROTTERDAM, B. & DERZELLE, S. 2013. In
794 silico and in vitro evaluation of PCR-based assays for the detection of *Bacillus anthracis*
795 chromosomal signature sequences. *Virulence*, 4, 671-85.
- 796 ALTMAN, D. G., MACHIN, D., BRYANT, T. N. & GARDNER, M. J. 2000. confidence intervals and
797 statistical guidelines. *Statistics with confidence*. soton:393017: BMJ Books.
- 798 AMINU, O. R., LEMBO, T., ZADOKS, R. N., BIEK, R., LEWIS, S., KIWELU, I., MMBAGA, B. T., MSHANGA,
799 D., SHIRIMA, G., DENWOOD, M. & FORDE, T. L. 2020. Practical and effective diagnosis of
800 animal anthrax in endemic low-resource settings. *PLOS Neglected Tropical Diseases*, 14,
801 e0008655.
- 802 ANTONATION, K. S., GRÜTZMACHER, K., DUPKE, S., MABON, P., ZIMMERMANN, F., LANKESTER, F.,
803 PELLER, T., FEISTNER, A., TODD, A., HERBINGER, I., DE NYS, H. M., MUYEMBE-TAMFUN, J.-J.,
804 KARHEMERE, S., WITTIG, R. M., COUACY-HYMAN, E., GRUNOW, R., CALVIGNAC-SPENCER,
805 S., CORBETT, C. R., KLEE, S. R. & LEENDERTZ, F. H. 2016. *Bacillus cereus* Biovar Anthracis
806 Causing Anthrax in Sub-Saharan Africa—Chromosomal Monophyly and Broad Geographic
807 Distribution. *PLoS neglected tropical diseases*, 10, e0004923-e0004923.
- 808 ASH, C., FARROW, J. A. E., WALLBANKS, S. & COLLINS, M. D. 1991. Phylogenetic heterogeneity of the
809 genus *Bacillus* revealed by comparative analysis of small-subunit-ribosomal RNA sequences.
810 *Letters in Applied Microbiology*, 13, 202-206.
- 811 AVASHIA, S. B., RIGGINS, W. S., LINDLEY, C., HOFFMASTER, A., DRUMGOOLE, R., NEKOMOTO, T.,
812 JACKSON, P. J., HILL, K. K., WILLIAMS, K., LEHMAN, L., LIBAL, M. C., WILKINS, P. P.,
813 ALEXANDER, J., TVARYANAS, A. & BETZ, T. 2007. Fatal pneumonia among metalworkers due
814 to inhalation exposure to *Bacillus cereus* Containing *Bacillus anthracis* toxin genes. *Clin Infect*
815 *Dis*, 44, 414-6.
- 816 BALDWIN, V. M. 2020. You Can't *B. cereus* - A Review of *Bacillus cereus* Strains That Cause Anthrax-
817 Like Disease. *Frontier Microbiology*, 11, 1731.
- 818 BARTH, H., AKTORIES, K., POPOFF, M. R. & STILES, B. G. 2004. Binary bacterial toxins: biochemistry,
819 biology, and applications of common *Clostridium* and *Bacillus* proteins. *Microbiol Mol Biol*
820 *Rev*, 68, 373-402, table of contents.
- 821 BEN-NOUN, L. 2002. [Characteristics of anthrax: its description and biblical name--Shehin]. *Harefuah*,
822 141 Spec No, 4-6, 124.
- 823 BERG, T., SUDDER, H., MORRICE, G. & HORNITZKY, M. 2006. Comparison of PCR, culture and
824 microscopy of blood smears for the diagnosis of anthrax in sheep and cattle. *Letters in*
825 *Applied Microbiology*, 43, 181-186.
- 826 BERGEY, D. H. 1923. *Bergey's manual of determinative bacteriology : a key for the identification of*
827 *organisms of the class schizomycetes*, Baltimore : The Williams & Wilkins Company,
828 1923.
- 829 BHATTACHARJEE, K., BARUA, S., CHRUNGOO, N. K. & JOSHI, S. R. 2023. Characterization of
830 Biomineralizing and Plant Growth-Promoting Attributes of Lithobiontic Bacteria. *Curr*
831 *Microbiol*, 80, 80.
- 832 BHATTACHARYA, D., KSHATRI, J. S., CHOUDHARY, H. R., PARAI, D., SHANDILYA, J., MANSINGH, A.,
833 PATNAIK, M., MISHRA, K., PADHI, S. P., PADHI, A. & PATI, S. 2021. One Health approach for
834 elimination of human anthrax in a tribal district of Odisha: Study protocol. *PLoS One*, 16,
835 e0251041.
- 836 BINKLEY, C. E., CINTI, S., SIMEONE, D. M. & COLLETTI, L. M. 2002. *Bacillus anthracis* as an agent of
837 bioterrorism: a review emphasizing surgical treatment. *Ann Surg*, 236, 9-16.

- 838 BLACKBURN, J. K., CURTIS, A., HADFIELD, T. L., O'SHEA, B., MITCHELL, M. A. & HUGH-JONES, M. E.
839 2010. Confirmation of *Bacillus anthracis* from flesh-eating flies collected during a West Texas
840 anthrax season. *Journal of Wildlife Diseases*, 46, 918-22.
- 841 BLACKBURN, J. K., VAN ERT, M., MULLINS, J. C., HADFIELD, T. L. & HUGH-JONES, M. E. 2014. The
842 necrophagous fly anthrax transmission pathway: empirical and genetic evidence from
843 wildlife epizootics. *Vector Borne Zoonotic Diseases*, 14, 576-83.
- 844 BRÉZILLON, C., HAUSTANT, M., DUPKE, S., JEAN-PHILIPPE, C., LANDER, A., FRANZ, T., MONOT, M.,
845 COUTURE-TOSI, E., JOUVION, G., LEENDERTZ, F., GRUNOW, R., MOCK, M., KLEE, S. &
846 GOOSSENS, P. 2015. Capsules, Toxins and AtxA as Virulence Factors of Emerging *Bacillus*
847 *cereus* Biovar anthracis. *PLoS neglected tropical diseases*, 9, e0003455.
- 848 CLOPPER, C. J. & PEARSON, E. S. 1934. The Use of Confidence or Fiducial Limits Illustrated in the Case
849 of the Binomial. *Biometrika*, 26, 404-413.
- 850 COHEN, J., COHEN, P., WEST, S., AIKEN, L. 2003. *Applied Multiple Regression/Correlation Analysis for*
851 *the Behavioral Sciences*. New York: Routledge, New York: Routledge.
- 852 DROBNIOWSKI, F. A. 1993. *Bacillus cereus* and related species. *Clinical microbiology reviews*, 6, 324-
853 338.
- 854 EASTERDAY, W. R., VAN ERT, M. N., SIMONSON, T. S., WAGNER, D. M., KENEFIC, L. J., ALLENDER, C. J.
855 & KEIM, P. 2005. Use of single nucleotide polymorphisms in the *plcR* gene for specific
856 identification of *Bacillus anthracis*. *J Clin Microbiol*, 43, 1995-7.
- 857 EHLING-SCHULZ, M., LERECLUS, D. & KOEHLER, T. M. 2019. The *Bacillus cereus* Group: *Bacillus*
858 Species with Pathogenic Potential. *Microbiology Spectrum*, 7, 10.1128/microbiolspec.gpp3-
859 0032-2018.
- 860 FOX, G. E., WISOTZKEY, J. D. & JURTSCHUK, P., JR. 1992. How close is close: 16S rRNA sequence
861 identity may not be sufficient to guarantee species identity. *Int J Syst Bacteriol*, 42, 166-70.
- 862 GRINER, P. F., MAYEWSKI, R. J., MUSHLIN, A. I. & GREENLAND, P. 1981. Selection and interpretation
863 of diagnostic tests and procedures. Principles and applications. *Ann Intern Med*, 94, 557-92.
- 864 GUPTA, R. S., PATEL, S., SAINI, N. & CHEN, S. 2020. Robust demarcation of 17 distinct *Bacillus* species
865 clades, proposed as novel Bacillaceae genera, by phylogenomics and comparative genomic
866 analyses: description of *Robertmurraya kyonggiensis* sp. nov. and proposal for an emended
867 genus *Bacillus* limiting it only to the members of the *Subtilis* and *Cereus* clades of species.
868 *International Journal of Systematic and Evolutionary Microbiology*, 70, 5753-5798.
- 869 HALL, T. A. A User-Friendly Biological Sequence Alignment Editor and Analysis Program for Windows
870 95/98/NT. Nucleic Acids Symposium Series, 1999. 95-98h.
- 871 HASSIM, A. 2017a. *Distribution and molecular characterization of South African Bacillus anthracis*
872 *strains and their associated bacteriophages*. University of Pretoria.
- 873 HASSIM, A. 2017b. *Distribution and molecular characterization of South African Bacillus anthracis*
874 *strains and their associated bacteriophages*. PhD, University of Pretoria.
- 875 HELGASON, E., ØKSTAD, O. A., CAUGANT, D. A., JOHANSEN, H. A., FOUET, A., MOCK, M., HEGNA, I. &
876 KOLSTØ, A.-B. 2000. *Bacillus anthracis*, *Bacillus cereus*, and *Bacillus thuringiensis*; One
877 Species on the Basis of Genetic Evidence. *Applied and Environmental Microbiology*, 66, 2627-
878 2630.
- 879 HOFFMANN, C., ZIMMERMANN, F., BIEK, R., KUEHL, H., NOWAK, K., MUNDRY, R., AGBOR, A.,
880 ANGEDAKIN, S., ARANDJELOVIC, M., BLANKENBURG, A., BRAZOLLA, G., COROGENES, K.,
881 COUACY-HYMAN, E., DESCHNER, T., DIEGUEZ, P., DIERKS, K., DÜX, A., DUPKE, S., ESHUIS,
882 H., FORMENTY, P., YUH, Y. G., GOEDMAKERS, A., GOGARTEN, J. F., GRANJON, A.-C.,
883 MCGRAW, S., GRUNOW, R., HART, J., JONES, S., JUNKER, J., KIANG, J., LANGERGRABER, K.,
884 LAPUENTE, J., LEE, K., LEENDERTZ, S. A., LÉGUILLON, F., LEINERT, V., LÖHRICH, T.,
885 MARROCOLI, S., MÄTZ-RENSING, K., MEIER, A., MERKEL, K., METZGER, S., MURAI, M.,
886 NIEDORF, S., DE NYS, H., SACHSE, A., VAN SCHIJNDEL, J., THIESEN, U., TON, E., WU, D.,
887 WIELER, L. H., BOESCH, C., KLEE, S. R., WITTIG, R. M., CALVIGNAC-SPENCER, S. & LEENDERTZ,

- 888 F. H. 2017. Persistent anthrax as a major driver of wildlife mortality in a tropical rainforest.
889 *Nature*, 548, 82-86.
- 890 HOFFMASTER, A. R., HILL, K. K., GEE, J. E., MARSTON, C. K., DE, B. K., POPOVIC, T., SUE, D., WILKINS,
891 P. P., AVASHIA, S. B., DRUMGOOLE, R., HELMA, C. H., TICKNOR, L. O., OKINAKA, R. T. &
892 JACKSON, P. J. 2006. Characterization of *Bacillus cereus* isolates associated with fatal
893 pneumonias: strains are closely related to *Bacillus anthracis* and harbor *B. anthracis*
894 virulence genes. *J Clin Microbiol*, 44, 3352-60.
- 895 HOFFMASTER, A. R., RAVEL, J., RASKO, D. A., CHAPMAN, G. D., CHUTE, M. D., MARSTON, C. K., DE, B.
896 K., SACCHI, C. T., FITZGERALD, C., MAYER, L. W., MAIDEN, M. C. J., PRIEST, F. G., BARKER, M.,
897 JIANG, L., CER, R. Z., RILSTONE, J., PETERSON, S. N., WEYANT, R. S., GALLOWAY, D. R., READ,
898 T. D., POPOVIC, T. & FRASER, C. M. 2004. Identification of anthrax toxin genes in a
899 *Bacillus cereus* associated with an illness resembling inhalation anthrax.
900 *Proceedings of the National Academy of Sciences of the United States of America*, 101, 8449-
901 8454.
- 902 HUNTLEY, B. J. 1982. k. In: HUNTLEY, B. J. & WALKER, B. H. (eds.) *Ecology of Tropical Savannas*.
903 Springer-Verlag.
- 904 KAISER, J. 2011. *UPDATED: University of Chicago Microbiologist Infected From Possible Lab Accident*
905 [Online]. @newsfromscience. Available: [https://www.science.org/content/article/updated-](https://www.science.org/content/article/updated-university-chicago-microbiologist-infected-possible-lab-accident)
906 [university-chicago-microbiologist-infected-possible-lab-accident](https://www.science.org/content/article/updated-university-chicago-microbiologist-infected-possible-lab-accident) [Accessed 2023].
- 907 KAMAL, S., RASHID, A., BAKAR, M. & AHAD, M. 2011. Anthrax: An update. *Asian Pacific journal of*
908 *tropical biomedicine*, 1, 496-501.
- 909 KATOH, K. & STANDLEY, D. M. 2013. MAFFT multiple sequence alignment software version 7:
910 improvements in performance and usability. *Mol Biol Evol*, 30, 772-80.
- 911 KLEE, S., OZEL, M., APPEL, B., BOESCH, C., ELLERBROK, H., JACOB, D., HOLLAND, G., LEENDERTZ, F.,
912 PAULI, G., GRUNOW, R. & NATTERMANN, H. 2006. Characterization of *Bacillus anthracis*-Like
913 Bacteria Isolated from Wild Great Apes from Cote d'Ivoire and Cameroon. *Journal of*
914 *bacteriology*, 188, 5333-44.
- 915 KLEE, S. R., BRZUSZKIEWICZ, E. B., NATTERMANN, H., BRÜGGEMANN, H., DUPKE, S., WOLLHERR, A.,
916 FRANZ, T., PAULI, G., APPEL, B., LIEBL, W., COUACY-HYMAN, E., BOESCH, C., MEYER, F.-D.,
917 LEENDERTZ, F. H., ELLERBROK, H., GOTTSCHALK, G., GRUNOW, R. & LIESEGANG, H. 2010. The
918 Genome of a *Bacillus* Isolate Causing Anthrax in Chimpanzees Combines Chromosomal
919 Properties of *B. cereus* with *B. anthracis* Virulence Plasmids. *PLOS ONE*, 5, e10986.
- 920 LA DUC, M. T., SATOMI, M., AGATA, N. & VENKATESWARAN, K. 2004. *gyrB* as a phylogenetic
921 discriminator for members of the *Bacillus anthracis*-*cereus*-*thuringiensis* group. *Journal of*
922 *Microbiological Methods*, 56, 383-394.
- 923 LANDIS, J. R. & KOCH, G. G. 1977. The measurement of observer agreement for categorical data.
924 *Biometrics*, 33, 159-74.
- 925 LECHNER, S., MAYR, R. & K.C. HEGEWISCH 1998. *Bacillus weihenstephanensis* sp. nov. is a new
926 psychrotolerant species of the *Bacillus cereus* group. *International Journal of Systematic and*
927 *Evolutionary Microbiology*, 48, 1373-1382.
- 928 LEENDERTZ, F., ELLERBROK, H., BOESCH, C., COUACY-HYMAN, E., MÄTZ-RENSING, K., HAKENBECK,
929 R., BERGMANN, C., ABAZA, P., JUNGLEN, S., MOEBIUS, Y., VIGILANT, L., FORMENTY, P. &
930 PAULI, G. 2004. Anthrax kills wild chimpanzees in a tropical rainforest. *Nature*, 430, 451-2.
- 931 LEENDERTZ, F. H., YUMLU, S., PAULI, G., BOESCH, C., COUACY-HYMAN, E., VIGILANT, L., JUNGLEN,
932 S., SCHENK, S. & ELLERBROK, H. 2006. A new *Bacillus anthracis* found in wild chimpanzees
933 and a gorilla from West and Central Africa. *PLoS Pathog*, 2, e8.
- 934 LEKOTA, K. E., BEZUIDT, O. K. I., MAFOFO, J., REES, J., MUCHADEYI, F. C., MADOROBA, E. & VAN
935 HEERDEN, H. 2018. Whole genome sequencing and identification of *Bacillus endophyticus*
936 and *B. anthracis* isolated from anthrax outbreaks in South Africa. *BMC Microbiology*, 18, 67.

- 937 LEKOTA, K. E., HASSIM, A., MAFOFO, J., REES, J., MUCHADEYI, F. C., VAN HEERDEN, H. & MADOROBA,
938 E. 2016. Polyphasic characterization of *Bacillus* species from anthrax outbreaks in animals
939 from South Africa and Lesotho. *J Infect Dev Ctries*, 10, 814-23.
- 940 LÉONARD, C., CHEN, Y. & MAHILLON, J. 1997. Diversity and differential distribution of IS231, IS232
941 and IS240 among *Bacillus cereus*, *Bacillus thuringiensis* and *Bacillus mycoides*. *Microbiology*,
942 143, 2537-2547.
- 943 LEPPLA, S. H. 1982. Anthrax toxin edema factor: a bacterial adenylate cyclase that increases cyclic
944 AMP concentrations of eukaryotic cells. *Proceedings of the National Academy of Sciences of*
945 *the United States of America*, 79, 3162-6.
- 946 LETUNIC, I. & BORK, P. 2021. Interactive Tree Of Life (iTOL) v5: an online tool for phylogenetic tree
947 display and annotation. *Nucleic Acids Res*, 49, W293-w296.
- 948 LIU, Y., PEI, T., YI, S., DU, J., ZHANG, X., DENG, X., YAO, Q., DENG, M. R. & ZHU, H. 2021.
949 Phylogenomic Analysis Substantiates the *gyrB* Gene as a Powerful Molecular Marker to
950 Efficiently Differentiate the Most Closely Related Genera *Myxococcus*, *Coralloccoccus*, and
951 *Pyxidicoccus*. *Front Microbiol*, 12, 763359.
- 952 LOGAN, N. A. & TURNBULL, P. C. B. 1999. Manual of Clinical Microbiology. In: MURRAY, P. R. (ed.).
953 Washington, DC: American Society for Microbiology.
- 954 LOONG, S. K., TEOH, B. T., JOHARI, J., KHOR, C. S., ABD-JAMIL, J., NOR'E, S. S., SAMSUDIN, N. I.,
955 AZIZAN, N. S., YAACOB, C. N., CHEMATSERI, A. A., MAHFODZ, N. H. & ABUBAKAR, S. 2017.
956 Penicillin-Susceptible, Oxidase-Negative, Nonhemolytic, Nonmotile *Bacillus megaterium* in
957 Disguise of *Bacillus anthracis*. *Case Reports in Infectious Diseases*, 2017, 2578082.
- 958 MAKINO, S., UCHIDA, I., TERAKADO, N., SASAKAWA, C. & YOSHIKAWA, M. 1989. Molecular
959 characterization and protein analysis of the cap region, which is essential for encapsulation
960 in *Bacillus anthracis*. *Journal of Bacteriology*, 171, 722.
- 961 MARSTON, C. K., HOFFMASTER, A. R., WILSON, K. E., BRAGG, S. L., PLIKAYTIS, B., BRACHMAN, P.,
962 JOHNSON, S., KAUFMANN, A. F. & POPOVIC, T. 2005. Effects of long-term storage on plasmid
963 stability in *Bacillus anthracis*. *Appl Environ Microbiol*, 71, 7778-80.
- 964 MARSTON, C. K., IBRAHIM, H., LEE, P., CHURCHWELL, G., GUMKE, M., STANEK, D., GEE, J. E., BOYER,
965 A. E., GALLEGOS-CANDELA, M., BARR, J. R., LI, H., BOULAY, D., CRONIN, L., QUINN, C. P. &
966 HOFFMASTER, A. R. 2016. Anthrax Toxin-Expressing *Bacillus cereus* Isolated from an Anthrax-
967 Like Eschar. *PLoS One*, 11, e0156987.
- 968 MOAYERI, M. & LEPPLA, S. H. 2004. The roles of anthrax toxin in pathogenesis. *Current Opinion in*
969 *Microbiology*, 7, 19-24.
- 970 MOAYERI, M. & LEPPLA, S. H. 2009. Cellular and systemic effects of anthrax lethal toxin and edema
971 toxin. *Molecular aspects of medicine*, 30, 439-455.
- 972 MULLINS, J. C., GAROFOLO, G., VAN ERT, M., FASANELLA, A., LUKHNOVA, L., HUGH-JONES, M. E. &
973 BLACKBURN, J. K. 2013. Ecological niche modeling of *Bacillus anthracis* on three continents:
974 evidence for genetic-ecological divergence? *PLoS One*, 8, e72451.
- 975 NCBI 2023. Home - Gene - NCBI.
- 976 NORRIS, M. H., KIRPICH, A., BLUHM, A. P., ZINCKE, D., HADFIELD, T., PONCIANO, J. M. & BLACKBURN,
977 J. K. 2021. Convergent evolution of diverse *Bacillus anthracis* outbreak strains toward altered
978 surface oligosaccharides that modulate anthrax pathogenesis. *PLOS Biology*, 18, e3001052.
- 979 OCHAI, S. O., CRAFFORD, J. E., HASSIM, A., BYARUHANGA, C., HUANG, Y.-H., HARTMANN, A.,
980 DEKKER, E. H., VAN SCHALKWYK, O. L., KAMATH, P. L., TURNER, W. C. & VAN HEERDEN, H.
981 2022. Immunological Evidence of Variation in Exposure and Immune Response to *Bacillus*
982 *anthracis* in Herbivores of Kruger and Etosha National Parks. *Frontiers in Immunology*, 13.
- 983 OKINAKA, R. T. 1999a. Sequence and organization of pXO1, the large *Bacillus anthracis* plasmid
984 harboring the anthrax toxin genes. *J. Bacteriol.*, 181, 6509.
- 985 OKINAKA, R. T. 1999b. Sequence and organization of pXO1, the large *Bacillus anthracis* plasmid
986 harboring the anthrax toxin genes. *Journal of Bacteriology*, 181, 6509.

- 987 PARRY, J. M., TURNBULL, P. C. B. & GIBSON, J. R. 1983. *A colour atlas of Bacillus species*, Wolfe
988 Medical Publications Ltd.
- 989 PILO, P. & FREY, J. 2011. Bacillus anthracis: Molecular taxonomy, population genetics, phylogeny and
990 patho-evolution. *Infection, Genetics and Evolution*, 11, 1218-1224.
- 991 PILO, P., ROSSANO, A., BAMAMGA, H., ABDOULKADIRI, S., PERRETEN, V. & FREY, J. 2011. Bovine
992 Bacillus anthracis in Cameroon. *Applied and environmental microbiology*, 77, 5818-5821.
- 993 R CORE TEAM. 2021. *R: A language and environment for statistical computing*. R Foundation for
994 Statistical Computing. [Online]. Vienna, Austria. Available: <http://www.R-project.org/>
995 [Accessed].
- 996 RADNEDGE, L., AGRON, P. G., HILL, K. K., JACKSON, P. J., TICKNOR, L. O., KEIM, P. & ANDERSEN, G. L.
997 2003. Genome differences that distinguish *Bacillus anthracis* from *Bacillus cereus* and
998 *Bacillus thuringiensis*. *Applied and environmental microbiology*, 69, 2755-2764.
- 999 RASKO, D. A., ALTHERR, M. R., HAN, C. S. & RAVEL, J. 2005. Genomics of the Bacillus cereus group of
1000 organisms. *FEMS Microbiology Reviews*, 29, 303-329.
- 1001 RIEDEL, S. 2005. Anthrax: a continuing concern in the era of bioterrorism. *Proc (Bayl Univ Med Cent)*,
1002 18, 234-43.
- 1003 SABRA, D. M., KRIN, A., ROMERAL, A. B., FRIEB, J. L. & JEREMIAS, G. 2023. Anthrax revisited: how
1004 assessing the unpredictable can improve biosecurity. *Frontiers in Bioengineering and*
1005 *Biotechnology*, 11.
- 1006 SMITH, H., KEPPIE, J. & STANLEY, J. L. 1955. The chemical basis of the virulence of Bacillus anthracis.
1007 V. The specific toxin produced by B. Anthracis in vivo. *Br J Exp Pathol*, 36, 460-472.
- 1008 SOMERVILLE, H. J. & JONES, M. L. 1972. DNA competition studies within the Bacillus cereus group of
1009 bacilli. *J Gen Microbiol*, 73, 257-65.
- 1010 STEENKAMP, P. J., VAN HEERDEN, H. & VAN SCHALKWYK, O. L. 2018. Ecological suitability modeling
1011 for anthrax in the Kruger National Park, South Africa. *PloS one*, 13, e0191704.
- 1012 TAMBORRINI, M., BAUER, M., BOLZ, M., MAHO, A., OBERLI, M. A., WERZ, D. B., SCHELLING, E.,
1013 ZINSSTAG, J., SEEBERGER, P. H., FREY, J. & PLUSCHKE, G. 2011. Identification of an African
1014 Bacillus anthracis lineage that lacks expression of the spore surface-associated anthrose-
1015 containing oligosaccharide. *J Bacteriol*, 193, 3506-11.
- 1016 TAMURA, K., STECHER, G. & KUMAR, S. 2021. MEGA11: Molecular Evolutionary Genetics Analysis
1017 Version 11. *Mol Biol Evol*, 38, 3022-3027.
- 1018 TREVETHAN, R. 2017. Sensitivity, Specificity, and Predictive Values: Foundations, Pliabilities, and
1019 Pitfalls in Research and Practice. *Frontiers in Public Health*, 5.
- 1020 TURNBULL, P. C. 1999. Definitive identification of Bacillus anthracis--a review. *J Appl Microbiol*, 87,
1021 237-40.
- 1022 TURNBULL, P. C., LINDEQUE, P. M., LE ROUX, J., BENNETT, A. M. & PARKS, S. R. 1998. Airborne
1023 movement of anthrax spores from carcass sites in the Etosha National Park, Namibia. *Journal*
1024 *of Applied Microbiology*, 84, 667-76.
- 1025 VILAS-BÔAS, G. T., PERUCA, A. P. & ARANTES, O. M. 2007. Biology and taxonomy of Bacillus cereus,
1026 Bacillus anthracis, and Bacillus thuringiensis. *Canadian journal of microbiology*, 53, 673-87.
- 1027 VINCE, A., POLJAK, M. & SEME, K. 1998. DNA extraction from archival Giemsa-stained bone-marrow
1028 slides: comparison of six rapid methods. *British Journal of Haematology*, 101, 349-351.
- 1029 VOS, V. D. 1990. The ecology of anthrax in the Kruger National Park, South Africa. *Salisbury Medical*
1030 *Bulletin*, 68S:, 19-23.
- 1031 W.H.O. 2008. Anthrax in humans and animals. In: ORGANIZATION, W. H. (ed.) *World Health*
1032 *Organization*. 4 ed. World Health Organization, 20 Avenue Appia, 1211 Geneva 27,
1033 Switzerland: WHO Press.
- 1034 YAMAMOTO, S. & HARAYAMA, S. 1995. PCR amplification and direct sequencing of gyrB genes with
1035 universal primers and their application to the detection and taxonomic analysis of
1036 *Pseudomonas putida* strains. *Appl Environ Microbiol*, 61, 1104-9.

- 1037 ZIMMERMANN, F., KÖHLER, S. M., NOWAK, K., DUPKE, S., BARDUHN, A., DÜX, A., LANG, A., DE NYS,
1038 H. M., GOGARTEN, J. F., GRUNOW, R., COUACY-HYMAN, E., WITTIG, R. M., KLEE, S. R. &
1039 LEENDERTZ, F. H. 2017. Low antibody prevalence against *Bacillus cereus* biovar anthracis in
1040 Taï National Park, Côte d'Ivoire, indicates high rate of lethal infections in wildlife. *PLOS*
1041 *Neglected Tropical Diseases*, 11, e0005960.
- 1042 ZINCKE, D., NORRIS, M. H., CRUZ, O., KURMANOV, B., MCGRAW, W. S., DAEGLING, D. J., KRIGBAUM,
1043 J., HOANG, T. T. H., KHANIPOV, K., GOLOVKO, G., HADFIELD, T. & BLACKBURN, J. K. 2020.
1044 TaqMan Assays for Simultaneous Detection of *Bacillus anthracis* and *Bacillus cereus* biovar
1045 anthracis. *Pathogens*, 9.
- 1046
- 1047

1048 Supplementary Information

1049 **Comparing microbiological and molecular diagnostic tools for the surveillance of**
1050 **anthrax.**

1051 Sunday O. Ochai^{1,2*}, Ayesha Hassim¹, Edgar H. Dekker³, Thuto Magome⁴, Kgaugelo E.
1052 Lekota⁴, S. Marcus Makgabo^{1,5}, Lin-Mari de Klerk-Loris², O. Louis van Schalkwyk^{1,3,6}
1053 Pauline L. Kamath⁷, Wendy C. Turner⁸, Henriette van Heerden¹

1054 ¹ Department of Veterinary Tropical Diseases, Faculty of Veterinary Science, University of
1055 Pretoria, Onderstepoort, South Africa.

1056 ²Antimicrobial Research Unit, College of Health Sciences, University of KwaZulu-Natal,
1057 Private Bag X54001, Durban, 4000, South Africa

1058 ³ Office of the State Veterinarian, Department of Agriculture, Forestry and Fisheries,
1059 Government of South Africa, Skukuza, South Africa

1060 ⁴ Unit for Environmental Sciences and Management, Microbiology, North West University,
1061 Potchefstroom, South Africa

1062 ⁵ Department of Life and Consumer Sciences, College of Agriculture and Environmental
1063 Sciences, University of South Africa (UNISA), Florida Campus, Roodepoort 1709, South
1064 Africa.

1065 ⁶ Department of Migration, Max Planck Institute of Animal Behavior, Radolfzell, Germany

1066 ⁷ School of Food and Agriculture, University of Maine, Orono, Maine, U.S.A.

1067 ⁸ U.S. Geological Survey, Wisconsin Cooperative Wildlife Research Unit, Department of
1068 Forest and Wildlife Ecology, University of Wisconsin-Madison, Madison, Wisconsin, U.S.A

1069 * Correspondence: Sunday O. Ochai; s.o.ochaijr@gmail.com

1070

1071 Any use of trade, firm, or product names is for descriptive purposes only and does not imply
1072 endorsement by the U.S. Government.

1073 Table S1: Wildlife species in Kruger National Park, South Africa that tested positive for
 1074 *Bacillus anthracis* protective antigen (BAPA), lethal factor (*lef*), chromosomal marker (Ba-1)
 1075 and the capsule region (*capB*) or a combination of these genetic markers and count of animals
 1076 positive.

Common name of species	Scientific name of species	Number examined	Percent and number (n) of smears positive for <i>B. anthracis</i> by one or more markers
African buffalo	<i>Syncerus caffer</i>	288	38.2%(110)
African Elephant	<i>Loxodonta africana</i>	142	36.0%(51)
African wild dog	<i>Lycan pictus</i>	1	0%(0)
Banana bat	<i>Musonycteris harrisoni</i>	1	0%(0)
Black-backed jackal	<i>Lupulella mesomelas</i>	2	0%(0)
Blue wildebeest	<i>Connochaetes taurinus</i>	20	20.0%(4)
Bushbuck	<i>Tragelaphus scriptus</i>	6	50.0%(3)
Brown hyena	<i>Hyaena brunnea</i>	1	0%(0)
Chacma Baboon	<i>Papio ursinus</i>	11	81.9%(9)
Cheetah	<i>Acinonyx jubatus</i>	2	0%(0)
Common duiker	<i>Sylvicapra grimmia</i>	1	0%(0)
Common eland	<i>Taurotragus oryx</i>	4	25.0%(1)
Giraffe	<i>Giraffa camelopardalis</i>	32	25.0%(8)
Hippopotamus	<i>Hippopotamus amphibius</i>	49	34.7%(17)
Impala	<i>Aepyceros melampus</i>	525	70.3%(369)
Greater kudu	<i>Tragelaphus strepsiceros</i>	120	76.7%(92)
Large-spotted genet	<i>Genetta tigrina</i>	1	100%(1)
Leopard	<i>Panthera pardus</i>	2	0%(0)
Lion	<i>Panthera leo</i>	2	0%(0)
Nile crocodile	<i>Crocodylus niloticus</i>	1	100%(1)
Nyala	<i>Tragelaphus angasii</i>	47	44.7%(21)
Ostrich	<i>Struthio camelus</i>	3	0%(0)
Roan antelope	<i>Hippotragus equinus</i>	29	72.5%(21)
Spotted hyena	<i>Crocuta crocuta</i>	16	0%(0)
Steenbok	<i>Raphicerus campestris</i>	11	27.3%(3)
Common tsessebe	<i>Damaliscus lunatus</i>	4	25.0%(1)
Vervet monkey	<i>Chlorocebus pygerythrus</i>	4	50.0%(2)
Warthog	<i>Phacochoerus africanus</i>	10	40.0%(4)
Waterbuck	<i>Kobus ellipsiprymnus</i>	22	41.0%(9)
White rhinoceros	<i>Ceratotherium simum</i>	114	18.5%(21)
Not labelled		150	64.0%(96)
	Total	1708	890

1077

1078 **Table S2:** Positive results of scraped blood smears using *Bacillus anthracis* protective antigen
1079 (BAPA), lethal factor (*lef*), chromosomal marker (Ba-1) and the capsule region (*capB*)
1080 molecular markers and marker combinations in probe-based real-time/quantitative polymerase
1081 chain reaction (qPCR), with "only" indicating exclusive positivity for the respective marker or
1082 combination.

Molecular Markers	Count (%)
Ba-1 only	13 (1.5)
<i>lef</i> only	165 (18.5)
BAPA only	112(12.6)
<i>capB</i> only	5 (0.6)
Ba-1+ <i>lef</i> only	13(1.5)
Ba-1+ <i>capB</i> only	3(0.3)
Ba-1 + BAPA only	45(5.1)
BAPA + <i>lef</i> only	131(14.7)
BAPA + <i>capB</i> only	10(1.1)
Ba-1+BAPA+ <i>capB</i> + <i>lef</i>	393 (44.2)

1083

1084