

Abnormally high exertional breathlessness predicts mortality in people referred for incremental cycle exercise testing

Viktor Elmberg, MD^{1,2}; Xingwu Zhou, PhD^{3,12}; Thomas Lindow, MD, PhD^{4,5}; Kristofer Hedman, MD, PhD⁶; Andrei Malinovski, MD, PhD³; Hayley Lewthwaite, PhD^{7,8}; Dennis Jensen, PhD^{9,10}; Lars Brudin, MD, PhD¹¹; Magnus Ekström, MD, PhD¹

¹ Respiratory Medicine, Allergology and Palliative Medicine, Department of Clinical Sciences in Lund, Lund University, Lund, Sweden.

² Department of Clinical Physiology, Blekinge Hospital, Karlskrona, Sweden.

³ Department of Medial Sciences, Clinical Physiology, Uppsala University, Uppsala, Sweden

⁴ Department of Clinical Physiology, Research and Development, Växjö Central Hospital, Region Kronoberg, and Clinical Sciences, Lund University, Sweden

⁵ Faculty of Medicine and Health, University of Sydney, Sydney, Australia

⁶ Department of Clinical Physiology in Linköping, and Department of Health, Medicine and Caring Sciences, Linköping University, Linköping, Sweden,

⁷ Centre of Research Excellence Treatable Traits, College of Health, Medicine and Wellbeing, University of Newcastle, Newcastle, NSW, Australia

⁸ Asthma and Breathing Research Program, Hunter Medical Research Institute, Newcastle, NSW, Australia

⁹ Clinical Exercise and Respiratory Physiology Laboratory, Department of Kinesiology and Physical Education, McGill University, Montreal, Quebec, Canada

¹⁰ Research Institute of the McGill University Health Centre, Translational Research in Respiratory Diseases Program, Montreal, Quebec, Canada

¹¹ Department of Clinical Physiology, Kalmar County Hospital, Kalmar, Sweden

¹² Department of Medial Sciences, Respiratory-, Allergy- and Sleep Research, Uppsala University, Uppsala, Sweden

Corresponding author: Viktor Elmberg, Department of Clinical Physiology, Blekinge Hospital, Karlskrona, Sweden. Tel: +46(0)4551000. Email: viktore@gmail.com

Funding: VE was funded by an unrestricted grant from the Scientific Committee of Blekinge Region. DJ holds a Canada Research Chair, Tier II, in Clinical Exercise and Respiratory

Physiology from the Canadian Institutes of Health Research. ME was supported by

NOTE: This preprint reports new research that has not been certified by peer review and should not be used to guide clinical practice.

unrestricted grants from the Swedish Society for Medical Research and the Swedish Research Council (Dnr: 2019-02081). HL is supported by a fellowship from the NHMRC Centre of Research Excellence in Treatable Traits.

Conflict of interest: No conflicts of interest exist for any of the authors.

Acknowledgements and authorship: VE, DJ and ME conceptualized the study; LB collected the data; XZ performed the analyses; VE, XZ, TL, KH, AM, HL, DJ, LB, and ME contributed substantially to the study design, data analysis and interpretation, and the writing of the manuscript.

ABSTRACT

Background: Exertional breathlessness is a key symptom in cardiorespiratory disease and can be quantified using incremental exercise testing (IET), but its prognostic significance is unknown.

Research question: We evaluated the ability of abnormally high breathlessness intensity during IET to predict all-cause, respiratory, and cardiac mortality.

Study Design and Methods: Longitudinal cohort study of adults referred for cycle IET followed prospectively for mortality assessed using the Swedish National Causes of Death Registry. Abnormally high exertional breathlessness was defined as a breathlessness intensity response (Borg 0-10 scale) > the upper limit of normal (ULN) using published reference equations. Mortality was analyzed using multivariable Cox regression, unadjusted and adjusted for age, sex, and body mass index.

Results: Of the 13,506 people included (46% female, age 59±15 years), 2,867 (21%) had abnormally high breathlessness during IET. Over a median follow up of 8.0 years, 1,687 (12%) people died. No participant was lost to follow-up. Compared to those within normal predicted ranges, people with abnormally high exertional breathlessness had higher mortality from all causes (adjusted hazard ratio [aHR] 2.3, [95% confidence interval] 2.1-2.6), respiratory causes (aHR 5.2 [3.4-8.0]) and cardiac causes (aHR 3.0 [2.5-3.6]). Even among people with normal exercise capacity (defined as peak Watt ≥75% of predicted exercise capacity, n=10,284) those with abnormally high exertional breathlessness were at greater risk of all-cause mortality than people with exertional breathlessness within the normal predicted range (aHR 1.5 [1.2-1.8]).

Interpretation: Among people referred for cycle IET, abnormally high exertional breathlessness, quantified using healthy reference values, independently predicted all-cause, respiratory and cardiac mortality.

INTRODUCTION

Exertional breathlessness is a cardinal symptom of cardiac and respiratory disease that often leads to a vicious cycle of reduced physical activity, with attendant further worsening of breathlessness, functional capacity, and quality of life (1, 2, 3, 4). Worse self-reported exertional breathlessness on daily life questionnaires has also been associated with higher risk of premature death (5, 6).

Breathlessness can be assessed in different ways, including questionnaires such as the modified Medical Research Council (mMRC) scale, which measures the self-reported limitation breathlessness imposes on daily life activities (7, 8). More standardized tests like incremental exercise testing (IET), with or without measurements of gas-exchange and ventilation (9, 10), are also commonly used and more optimal for measuring breathlessness as the symptom can be related to a power output (11). Reference equations derived from a Swedish cohort to predict the normal breathlessness response during cycle IET using the Borg Category-Ratio scale (Borg CR10) were recently published (12). Using these, the presence of abnormally high exertional breathlessness can be defined as a Borg CR10 intensity rating above the predicted upper limit of normal (ULN) at any given power output (W), expressed as a percentage of their predicted normal peak power output (%predW_{max}).

People referred for cardiac stress testing (IET, stress echocardiography and single-photon emission computerized tomography [SPECT]) because of breathlessness have, in a meta-analysis, been shown to have worse prognosis compared to those who were referred because of chest pain (13). Breathlessness as reason for termination of exercise during IET has also been shown to be a negative prognostic marker. In an earlier study, compared with people who stopped exercise due to “exhaustion” or “leg fatigue”, those who stopped due to breathlessness had worse survival (14). Self-reported breathlessness during stress testing has also been shown

to be independently associated with both abnormal and high risk cardiac SPECT scans, both carrying an adverse prognosis (15). However, the prognostic implication of having an abnormally high breathlessness response to IET is unknown.

The primary aim of this study was to evaluate, in a longitudinal cohort of people referred for IET, whether abnormally high breathlessness intensity in relation to workload quantified using published reference equations (12), predicts all-cause, respiratory and/or cardiac mortality. Secondary aims were to (i) evaluate which %pred W_{\max} value during the IET best predicts mortality, and (ii) assess the prognostic significance of abnormally high exertional breathlessness intensity among people with normal and abnormally low peak exercise capacity (W_{peak}).

STUDY DESIGN AND METHODS

Study design and participants

This was a longitudinal cohort study of adults aged 18 years or older who performed a standardized IET, according to the most used Swedish manual for exercise tests (16), at the Department of Clinical Physiology, Kalmar County Hospital, Sweden between 31st May 2005 and 31st October 2016 (Figure 1). The information contained in this database are such that it could potentially identify individual participants. The IET's were performed for clinical reasons with the indication in most cases being suspect stable coronary syndrome (n=10,306), occupational risk evaluation (n=439), suspect arrhythmia (n=659) or determination of exercise capacity (n=562). This cohort has earlier been used as the basis for reference values for predicted normal peak power output (W_{\max}) (17) and exercise systolic blood pressure (18, 19), and breathlessness intensity response during IET (12).

Participants that did not rate their breathlessness at any time point during IET were excluded. The primary outcome mortality (all-cause, cardiac, and respiratory) was followed longitudinally using the mandatory Swedish Causes of Death Register (up until 30 April 2019), allowing for complete coverage. This registry contains the cause of mortality as listed on the medical death certificate recorded by the patient's physician. The completeness and reliability of this registry is well established. (20). Comorbidity and hospital admissions data up until 30 December 2017 were available from the National Patient Register (21). All diagnoses from within 5 years preceding the IET were obtained and defined according to the International Classification of Diseases version 10 (ICD-10). These included for example chronic obstructive pulmonary disease (COPD), hypertension (HT), ischemic heart disease (IHD), heart failure (HF) and diabetes (DM). Data on mortality and hospitalization was accessed on the 15th of May 2019.

Ethical considerations

The study was conducted in accordance with the amended Declaration of Helsinki and was approved by the Regional Ethical Review Board in Linköping (DNr: 2018/141-31). As this was an observational study using data collected from IETs performed in clinical practice, individual participant consent was waived. The study is reported in accordance with the STrengthening the Reporting of OBServational studies in Epidemiology (STROBE) statement (22) and the TRIPOD statement (23).

Exercise test protocol

The protocol for the standardized IET has been described elsewhere (17, 18, 24). In brief, all tests were performed using an electrically braked cycle ergometer (Rodby Inc, Karlskoga,

Sweden). The initial power output (W) and ramp increment of 10, 15 or 20 W/min was selected depending on the participant's predicted W_{\max} (17), aiming at an exercise duration of 8-12 minutes (17, 18, 24). The effect of different power output increments on the achieved W_{\max} is accounted for by the Swedish reference values for W_{\max} (17, 25).

Assessments

Before IET, 12-lead electrocardiogram (ECG), body mass and height were recorded. The Borg Rating of Perceived Exertion 6-20 scale (Borg RPE) for assessment of perceived exertion and Borg CR10 scale for assessment of chest pain and breathlessness (26) were explained before commencing the IET, including the scales anchor points. When assessing breathlessness, participants were invited to rate their intensity of perceived breathlessness on the Borg CR10 scale from 0, representing 'no breathlessness', to 10, representing 'the most intense breathlessness that you've experienced or could imagine experiencing' (26). During the IET, ECG was recorded continuously, whereas systolic blood pressure, RPE, breathlessness intensity and chest pain were measured every 2 minutes.

Group allocation and breathlessness measurement

Abnormality of exertional breathlessness intensity was assessed at several %pred W_{\max} stages, specifically 25%, 50%, 75% and 100%. The stages were defined by intervals as a breathlessness rating might not be available at exactly 25% pred W_{\max} . The corresponding intervals for the %pred W_{\max} stages were: 25% (15-35%), 50% (40-60%), 75% (65-85%) and 100% (90-110%). This method of allocation meant that the participants available for analysis decreased as the %pred W_{\max} stage increased. Each participant was also added to a fifth group (last measured) representing the exact %pred W_{\max} where the last breathlessness intensity rating was obtained close to or at W_{peak} .

People were further divided into 4 groups according to exercise tolerance ($\%predW_{max}$) and exertional breathlessness response. This allowed for assessment of the impact of an abnormally high exertional breathlessness intensity response among people with normal or abnormally low exercise capacity on risk of death, as well as the interaction between abnormally low exercise capacity and abnormally high exertional breathlessness. Abnormally low exercise capacity was defined as having a $W_{peak} < 75\%$ of predicted W_{max} . The 4 groups were: Group 1 - normal exercise capacity + normal breathlessness intensity; Group 2 - normal exercise capacity + abnormally high breathlessness intensity; Group 3 - abnormally low exercise capacity + normal breathlessness intensity; and Group 4 - abnormally low exercise capacity + abnormally high breathlessness intensity.

Statistical analyses

All analysis were conducted by R version 4.2.3 (R Core Team, 2023) (27).

Characteristics were tabulated and compared using descriptive statistics.

The normality or abnormality of exertional breathlessness intensity was determined using recently published Swedish reference equations (12). The equations predict the probability of rating each score on a Borg CR10 scale among healthy people based on sex, age, height (men) and $\%predW_{max}$. A p-value of < 0.05 is then used to define the ULN. Abnormally high exertional breathlessness was defined as having a breathlessness intensity rating $> ULN$. If a breathlessness intensity rating at any one or combination of $\%predW_{max}$ stages was abnormally high (defined as “all together”), the participant was identified as having abnormally high exertional breathlessness in the main analysis. The predictive value of every $\%predW_{max}$ stage was also analyzed independently.

Associations between the presence of abnormally high exertional breathlessness intensity and all-cause, cardiac, and respiratory mortality were analyzed using Cox proportional hazard

regression expressed as hazard ratios (HRs) with 95% confidence intervals (CIs). Analyses were performed unadjusted and adjusted for age, sex, and body mass index (BMI). Kaplan-Meier plots were used to compare survival between people with and without abnormally high exertional breathlessness intensity. Association between abnormally high exertional breathlessness intensity and all-cause mortality were also analyzed separately corrected for %predW_{max} in addition to age, sex and BMI. Associations between abnormally high exertional breathlessness intensity and all-cause mortality was also analyzed for Groups 1, 2, 3 and 4, to account for the potentially confounded effect of exercise capacity on the association between abnormally high exertional breathlessness intensity and all-cause mortality.

Prognostic discriminative ability of all the models was analyzed using C-statistics, which is equal to the area under the curve (AUC) in receiver operator curve analysis.

RESULTS

Participants and breathlessness responses

A total of 13,506 participants were included (Figure 1). Their mean \pm SD age was 59 ± 15 years (range 18–94) and 46% were female (Table 1). The most common reasons for cessation of exercise were leg fatigue (35%), general exertion (31%) and breathlessness (20%).

Abnormally high exertional breathlessness intensity was present at any one or more exercise stages (all together) in 2,867 (21%) of the participants. The number of participants with normal, abnormally high, or missing breathlessness intensity ratings at each %predW_{max} stage during the IET is shown in supplemental Figure S1.

Sex distribution and anthropometric measurements were similar between people with normal and abnormally high exertional breathlessness intensity (Table 1). People with abnormally high exertional breathlessness had a higher prevalence of medical conditions, including

COPD, HF, DM, and HT (Table 1) as well as a lower W_{peak} (126 ± 50 W vs. 166 ± 60 W, $p \leq 0.001$) and $\% \text{pred}W_{\text{max}}$ (71 ± 16 % vs. 93 ± 17 %, $p \leq 0.001$).

Mean peak breathlessness intensity (7.1 ± 1.7 vs. 5.9 ± 1.6 Borg CR10 scale units, $p \leq 0.001$) and perceived exertion (17.4 ± 1.2 vs 17.1 ± 1.1 Borg RPE units, $p \leq 0.001$) were higher in the group of participants with compared to without abnormally high exertional breathlessness intensity. Peak chest pain was also slightly higher in the group with abnormally high exertional breathlessness: 0.8 ± 1.7 vs 0.5 ± 1.3 Borg CR10 scale units, $p \leq 0.001$.

Mortality

No person was lost to follow-up. During a median follow-up of 8.0 years (Interquartile Range [IQR] 5.3-10.1; range 1.3-13.8), 1,687 (12%) participants died (Figure 2 a). Compared to those with normal exertional breathlessness intensity, participants with abnormally high breathlessness intensity had higher all-cause mortality: HR = 2.3 (2.1-2.6) adjusted for age, sex, and BMI (Table 2). When $\% \text{pred}W_{\text{max}}$ was added to the adjusted analysis, the association between abnormally high exertional breathlessness and all-cause mortality was HR = 1.2 (1.0-1.3). The association between abnormally high exertional breathlessness and respiratory mortality was HR = 5.2 (3.4-8.0), whereas the association between abnormally high exertional breathlessness and cardiac mortality was HR = 3.0 (2.5-3.6) (Table 2, Figure 2 b/c). As illustrated in Figure 3, abnormally high exertional breathlessness was associated with a greater risk of all-cause mortality among people with both normal and abnormally low exercise capacity.

The association between abnormally high exertional breathlessness and all-cause mortality was similar across all $\% \text{pred}W_{\text{max}}$ stages, except at 100% $\text{pred}W_{\text{max}}$ for females, in which there were no deaths in the group with abnormally high breathlessness. The strongest

association between abnormally high exertional breathlessness and all-cause mortality was observed at 50% $\text{predW}_{\text{max}}$ for males (HR = 2.6 [2.2-3.0]) and at 25% $\text{predW}_{\text{max}}$ for females (HR = 4.8 [2.4-9.4]). The association between all-cause mortality and abnormally high exertional breathlessness intensity for the last measured breathlessness intensity rating during IET was similar to having abnormally high exertional breathlessness at any one or combination % $\text{predW}_{\text{max}}$ stages (HR = 2.4 [2.1, 2.6]) (Table 3).

Participants with normal exercise capacity + abnormally high breathlessness intensity had a HR of 1.5 (1.2-1.8) for all-cause mortality (Group 2). Participants with abnormally low exercise capacity had a HR of 2.7 (2.4-3.1) if normal breathlessness intensity (Group 3), and if abnormal breathlessness intensity a HR of 3.7 (3.3-4.1) (Group 4).

C-statistics showed a strong and similar discriminative ability with values of about 0.8 for the evaluated models and % $\text{predW}_{\text{max}}$ stages (Table 3).

DISCUSSION

This is the first study to look at the prognostic impact of having an abnormally high breathlessness response to IET, evaluated using standardized reference equations (12) for exertional breathlessness intensity during IET among people in Sweden. The primary finding is that among a large group referred for clinical IET, the presence of abnormally high breathlessness intensity was independently associated with all-cause, cardiac and respiratory mortality. The relative risk of all-cause mortality was approximately 250% in people with compared to without abnormally high exertional breathlessness intensity.

Predictive ability and association between abnormally high exertional breathlessness intensity and all-cause mortality was similar across different % $\text{predW}_{\text{max}}$ stages, although the number of participants contributing to these analyses naturally decreased as the % $\text{predW}_{\text{max}}$ stage increased.

Even though the association between breathlessness intensity and mortality was attenuated in the presence of an abnormally low exercise capacity, there remained an independent association. This attenuation is to be expected as exercise capacity is a major determinant of mortality among people performing IET (24).

Based on the present findings, we recommend using a breathlessness intensity rating obtained at peak exercise corresponding to “last measured” in this study. The “last measured” breathlessness intensity rating during IET performed equally well to other exercise stages and “all together” regarding predictive ability and might make application of the reference equations more straightforward as it would be possible to only inquire about breathlessness intensity at the end of test. It would also facilitate comparison of the breathlessness intensity response with other measures (i.e. exercise capacity and other physiological responses) at peak exercise.

As the reference equations always take $\%predW_{max}$ into account, a peak breathlessness intensity rating of 6 Borg CR10 scale units, might be abnormal at an abnormally low peak exercise capacity of 40% $predW_{max}$, but within normal limits when a person’s peak exercise capacity is 110% $predW_{max}$. Using the peak recorded value also has the advantage of greater inclusion, as everyone might not reach a specific higher $\%predW_{max}$ because of deconditioning or other reasons. Using the peak value thus has the advantage of simplicity, including all people and making comparisons with other measures at peak exercise more straightforward.

The association between abnormally high exertional breathlessness and all-cause mortality is likely driven by several factors. Firstly, in the group with abnormally high compared to normal exertional breathlessness intensity, there was a larger proportion of participants with a health condition(s), such as COPD or HF. Secondly, breathlessness often leads to reduced physical activity, which in turn can cause a vicious cycle of increased breathlessness and even

less physical activity resulting in worsening prognosis (1). There was a trend towards a greater association between respiratory mortality and abnormally high exertional breathlessness as compared to cardiac mortality, although the difference was not statistically significant and might have been influenced by the relatively low number of respiratory-related deaths in this cohort.

Measurement of breathlessness burden is often done using standardized task-based questionnaires (e.g., mMRC dyspnoea scale) in a clinical setting. Gustafsson et al. (28) showed that the mMRC was insensitive to detecting abnormally high exertional breathlessness intensity during cycle IET when evaluated against our recently published reference values for assessing the normality of breathlessness intensity during IET (12). Gustafsson et al. found that a mMRC dyspnoea rating of ≥ 2 only identified 28% of the persons with abnormally high breathlessness during IET, implying that the great majority of people with abnormally high exertional breathlessness may remain undetected if only the mMRC dyspnoea scale was used to quantify breathlessness burden. This strengthens the argument for use of a more standardized test such as IET for detection and evaluation of abnormally high exertional breathlessness as a large proportion of people at risk of premature death might otherwise remain undetected.

Breathlessness intensity ratings during IET can thus be used both to stratify the severity of exertional breathlessness as well as to determine the risk of premature death. From a clinical exercise testing perspective, the results of this analysis suggest that people undergoing a cycle IET do not necessarily need to exert maximum effort to identify abnormally high exertional breathlessness and greater risk of premature death. This could be especially beneficial in people with severe disease or other types of disabilities that preclude maximal exertion.

Strengths and limitations

Strengths of this study include the large number of people with complete and long follow up (median 8 years) to the hard endpoints of all-cause, respiratory and cardiac mortality using mandatory national registry data.

Physiological data were limited, with no access to pulmonary function tests, ventilation, or gas exchange, limiting our ability to ensure that participants provided maximal effort during the IET (i.e. respiratory exchange ratio). However, mean peak heart rate was about 90% of the predicted maximal value and mean peak Borg RPE ratings were 17-18 implying maximal effort. The present findings pertain to IET performed on a cycle ergometer (non-weight-bearing exercise and are likely not directly applicable to tests performed on a treadmill (weight-bearing exercise) given differences in cardiac, metabolic and ventilatory responses and greater difficulty quantifying power output during treadmill exercise (29, 30).

While the prevalence of some comorbidities, i.e. COPD, were likely underestimated, they were obtained from the National Patient Register which contains all physician diagnosis nationwide coded according to ICD10. This ensured that all who had received a diagnosis were identified correctly.

Further limitations include the lack of a validation cohort as well as the study being conducted at a single center in Sweden with presumably an overwhelming majority of participants being of north European ethnicity. We also had no information on the reasons behind the individual persons abnormally high exertional breathlessness during exercise. We did not have specific information on smoking in the studied group. We know however that the average prevalence of smokers in the Swedish region where the study was done varied between 14% (95% CI: 11–16) and 11% (95% CI: 9–13) during the study period. (31).

Implications

Abnormally high exertional breathlessness during cycle IET is helpful to identify people at abnormally high risk of all-cause, respiratory and cardiac mortality which could lead to further clinical evaluation. The results could also provide a basis for different types of interventions; for example, cardiopulmonary rehabilitation programs and medical interventions both from a patient and economic perspective. For example, if a person were determined to have abnormally high exertional breathlessness by cycle IET, and thus elevated risk of premature death, further clinical evaluation could be performed with for example cardiopulmonary exercise testing, and other methods to identify the cause. The cause could then be addressed with appropriate intervention.

Conclusion

Among people referred for clinical exercise testing, the presence of abnormally high breathlessness intensity during cycle IET is associated with all-cause, respiratory and cardiac mortality. Thus, applying reference equations for exertional breathlessness, it is possible not only to determine if abnormal exertional breathlessness is present during IET, but also to establish the associated increase in mortality risk, which we believe has important clinical and research implications.

TABLES

Table 1. Baseline participant characteristics stratified by the presence of a normal or abnormally high breathlessness intensity response during incremental cycle exercise testing

Characteristic	Abnormally high exertional breathlessness intensity (Borg CR10 rating > ULN) N = 2,867 (21%)	Normal exertional breathlessness intensity (Borg CR10 rating ≤ ULN) N = 10,639 (79%)
Age	61 ± 15	59 ± 15
Male	1,637 (57%)	5,692 (54%)
Body height, cm	172 ± 9	172 ± 10
Body mass, kg	81 ± 18	79 ± 15
Body mass index, kg/m ²	27 ± 5	27 ± 4
Systolic blood pressure supine, mmHg	139 ± 26	138 ± 24
Diastolic blood pressure supine, mmHg	79 ± 11	79 ± 10
Heart rate supine, beats/min	76 ± 14	74 ± 13
Comorbidities diagnosed before exercise test, n (%)		
Chronic obstructive pulmonary disease	193 (7%)	129 (1%)
Heart failure	157 (5%)	115 (1%)
Diabetes mellitus	328 (11%)	519 (5%)
Ischemic heart disease	459 (16%)	944 (9%)
Hypertension	591 (21%)	1,262 (12%)
Malignancy	340 (12%)	952 (9%)
Valvular disease	90 (3%)	135 (1%)
Rheumatic disease	107 (4%)	252 (2%)
Renal failure	96 (3%)	99 (1%)
Self-reported use of medication, n (%)		
Beta-blocker	997 (35%)	2,584 (24%)

Thrombocyte inhibitor	823 (29%)	2,062 (19%)
Statins	741 (26%)	1,949 (19%)
Warfarin/NOAC	209 (7%)	363 (34%)
ACEI/ARB	1,589 (55%)	2,640 (25%)
Calcium antagonist	424 (15%)	1,065 (10%)
Loop or Thiazide diuretics	520 (18%)	945 (9%)
Insulin	208 (7%)	343 (3%)
Other diabetic medication	214 (8%)	457 (4%)
Antidepressant	366 (13%)	886 (8%)
Measures at peak exercise		
Power output, Watt	126 ± 50	166 ± 60
Power output, %predWmax	71 ± 16	93 ± 17
Breathlessness intensity, Borg CR10 scale units	7.1± 1.7	5.9± 1.6
Exertion, Borg RPE 6-20 scale units	17.4 ± 1.2	17.1 ± 1.1
Chest pain, Borg CR10 scale units	0.8 ± 1.7	0.5 ± 1.3
Heart rate, beats/min	139 ± 27	152 ± 24
Heart rate, % of predicted*	88 ± 14	94 ± 12

Data presented as means ± standard deviation unless indicated otherwise. *Predicted peak heart rate was calculated as 220-age (years). *Abbreviations:* Borg CR10 = Borg Category-ratio scale (0-10); %predWmax = W % of predicted Wmax; Borg RPE = Borg rating of perceived exertion scale (6-20); W = Watt; NOAC = nonwarfarin oral anticoagulant; ACEI = angiotensin-converting enzyme inhibitor; ARB = angiotensin receptor blocker.

Table 2. Associations between abnormally high exertional breathlessness intensity during incremental cycle exercise testing with all-cause, respiratory and cardiac mortality.

	N	Events, n (%)	HR (95% CI)	C Statistic
All-cause	13,499	1,687	2.3 (2.1, 2.6)	0.80
Respiratory mortality	11,897	85	5.2 (3.4, 8.0)	0.87
Cardiac mortality	12,320	508	3.0 (2.5, 3.6)	0.86

Hazard ratio (HR) and 95% confidence intervals (CI) for all-cause, respiratory and cardiac mortality separately for abnormally high exertional compared with normal exertional breathlessness intensity. Adjusted by age, body mass index, and sex for the whole cohort. Abnormally high breathlessness was defined as being above the ULN at any one or more exercise stages (all-together).

Table 3. Associations between abnormally high exertional breathlessness intensity ratings at various measurement time points during incremental cycle exercise testing with all-cause mortality.

	Exercise intensity (% of predicted Wmax)					
	25% (15 to < 35)	50% (40 to < 60)	75% (65 to < 85)	100% (90 to < 110)	Last measured	All together
Males	1,014	6,485	6,049	2,767	7,326	7,326
Deaths (% deaths)	76 (7.5%)	844 (13%)	642 (11%)	141 (11%)	1,036 (14%)	1,036 (14%)
HR (95% CI)	1.8 (1.1, 3.0)	2.6 (2.2, 3.0)	1.8 (1.5, 2.2)	1.7 (0.8, 3.5)	2.4 (2.1, 2.7)	2.4 (2.1, 2.7)
C-Statistic	0.84	0.80	0.82	0.83	0.81	0.81
Females	690	5,511	5,168	2,635	6,173	6,173
Deaths (% deaths)	37 (5%)	544 (10%)	442 (9%)	120 (5%)	651 (11%)	651 (11%)
HR (95% CI)	4.8 (2.4, 9.4)	2.4 (2.0, 3.0)	1.6 (1.2, 2.0)	NA	2.2 (1.9, 2.6)	2.2 (1.8, 2.5)
C-Statistic	0.86	0.78	0.78	0.77	0.78	0.78
All	1,704	11,995	11,217	5,402	13,499	13,499
Deaths (% deaths)	113 (7%)	1,388 (12%)	1,084 (10%)	261 (5%)	1,687 (12%)	1,687 (12%)
HR (95% CI)	2.5 (1.7, 3.8)	2.5 (2.2, 2.8)	1.7 (1.5, 2.0)	1.0 (0.5, 2.0)	2.4 (2.1, 2.6)	2.3 (2.1, 2.6)
C-Statistic	0.85	0.80	0.80	0.80	0.80	0.80

Hazard ratio (HR) and 95% confidence intervals (CI) of abnormally high compared with normal exertional breathlessness intensity. Analyses adjusted by age, body mass index, and sex for the whole cohort. HR are presented for 25% intervals of W % of predicted max as well as for the last measured breathlessness intensity rating in relation to the %predWmax at that level. The HR for females at 100% is missing. The reason is that there were no death events for the abnormal group.

FIGURE LEGENDS

Figure 1. Flowchart illustrating the study design. Each individual was categorized as having normal or abnormally increased breathlessness during IET. The number of deaths in each group is shown.

Figure 2. Cumulative survival for normal and abnormally high exertional breathlessness intensity rating(s) during incremental cycle exercise testing (IET) for females and males adjusted for age and body mass index. Mortality (survival) is shown on the y-axis and time (years) on the x-axis. Panels a, b and c show all-cause, respiratory and cardiac mortality, respectively. Abnormally high exertional breathlessness intensity is associated with a higher risk of all-cause, respiratory and cardiac mortality for both males and females ($p < 0.001$ for both sexes).

Figure 3. Cumulative all-cause survival grouped by normality of exertional breathlessness and exercise capacity adjusted for age, sex and body mass index. Hazard ratio (HR) and 95% confidence intervals for all-cause mortality separately for abnormally high compared with normal exertional breathlessness intensity. Abnormally low exercise capacity was defined as having a peak exercise capacity below 75% of the predicted normal value. C-statistics showed a discriminatory value of 0.82 ($n = 13,494$, No. of events = 1,683).

Both normal ($n = 9,225$): HR = 1 (reference)

Only abnormal breathlessness ($n = 1,059$): HR = 1.5 (1.2-1.8)

Only abnormal exercise capacity ($n = 1,413$): HR = 2.7 (2.4-3.1)

Both abnormal ($n = 1,804$): HR = 3.7 (3.3-4.1)

REFERENCES

1. Ramon MA, Ter Riet G, Carsin AE, Gimeno-Santos E, Agusti A, Anto JM, et al. The dyspnoea-inactivity vicious circle in COPD: development and external validation of a conceptual model. *EUROPEAN RESPIRATORY JOURNAL*. 2018;52(3):1800079.
2. Gronseth R, Vollmer WM, Hardie JA, Olafsdottir IS, Lamprecht B, Buist AS, et al. Predictors of dyspnoea prevalence: results from the BOLD study. *The European respiratory journal*. 2014;43(6):1610-20.
3. Parshall MB, Schwartzstein RM, Adams L, Banzett RB, Manning HL, Bourbeau J, et al. An official American Thoracic Society statement: update on the mechanisms, assessment, and management of dyspnea. *American journal of respiratory and critical care medicine*. 2012;185(4):435-52.
4. Sundh J, Ekström M, Respiratory M, Allergology, Lund U, EpiHealth: Epidemiology for H, et al. Persistent disabling breathlessness in chronic obstructive pulmonary disease. *International Journal of COPD*. 2016;11(1):2805.
5. Sandberg J, Engström G, Ekström M. Breathlessness and incidence of COPD, cardiac events and all-cause mortality: A 44-year follow-up from middle age throughout life. *PLoS One*. 2019;14(3):e0214083.
6. Sethi DK, Rhodes J, Ferris R, Banka R, Clarke A, Mishra EK. Breathlessness Predicts Mortality in Adults: A Systematic Review and Meta-Analysis. *Cureus*. 2023;15(5):e39192.
7. Bestall JC, Paul EA, Garrod R, Garnham R, Jones PW, Wedzicha JA. Usefulness of the Medical Research Council (MRC) dyspnoea scale as a measure of disability in patients with chronic obstructive pulmonary disease. *Thorax*. 1999;54(7):581-6.
8. Lewthwaite H, Jensen D, Ekstrom M. How to Assess Breathlessness in Chronic Obstructive Pulmonary Disease. *International journal of chronic obstructive pulmonary disease*. 2021;16:1581-98.
9. ATS/ACCP Statement on cardiopulmonary exercise testing. *American journal of respiratory and critical care medicine*. 2003;167(2):211-77.
10. Palange P, Ward SA, Carlsen K-H, Casaburi R, Gallagher CG, Gosselink R, et al. Recommendations on the use of exercise testing in clinical practice. *European Respiratory Journal*. 2007;29(1):185-209.
11. Ekström M, Elmberg V, Lindow T, Wollmer P. Breathlessness measurement should be standardised for the level of exertion. *European Respiratory Journal*. 2018;51(5):1800486.
12. Elmberg V, Schiöler L, Lindow T, Hedman K, Malinovsky A, Lewthwaite H, et al. Reference equations for breathlessness during incremental cycle exercise testing. *ERJ Open Research*. 2023;1.
13. Argulian E, Agarwal V, Bangalore S, Chatterjee S, Makani H, Rozanski A, et al. Meta-analysis of prognostic implications of dyspnea versus chest pain in patients referred for stress testing. *Am J Cardiol*. 2014;113(3):559-64.
14. Bodegard J, Erikssen G, Bjørnholt JV, Gjesdal K, Liestøl K, Erikssen J. Reasons for terminating an exercise test provide independent prognostic information: 2014 apparently healthy men followed for 26 years. *Eur Heart J*. 2005;26(14):1394-401.
15. Balaravi B, Miller TD, Hodge DO, Gibbons RJ. The value of stress single photon emission computed tomography in patients without known coronary artery disease presenting with dyspnea. *Am Heart J*. 2006;152(3):551-7.
16. Jorfeldt L, Pahlm O. Kliniska arbetsprov: metoder för diagnos och prognos. *Studentlitteratur*. 2013.
17. Brudin L, Jorfeldt L, Pahlm O. Comparison of two commonly used reference materials for exercise bicycle tests with a Swedish clinical database of patients with normal outcome. *Clin Physiol Funct Imaging*. 2014;34(4):297-307.

18. Hedman K, Lindow T, Elmberg V, Brudin L, Ekström M. Age- and gender-specific upper limits and reference equations for workload-indexed systolic blood pressure response during bicycle ergometry. *European journal of preventive cardiology*. 2020;2047487320909667.
19. Nordlinder JH, Ekström M, Brudin L, Elmberg V, Carlén A, Hedman K, et al. Paediatric reference values for the work rate-indexed systolic blood pressure response during exercise. *European journal of preventive cardiology*. 2022;29(8):e283-e5.
20. Brooke HL, Talbäck M, Hörnblad J, Johansson LA, Ludvigsson JF, Druid H, et al. The Swedish cause of death register. *European journal of epidemiology*. 2017;32(9):765-73.
21. Ludvigsson JF, Andersson E, Ekbom A, Feychting M, Kim JL, Reuterwall C, et al. External review and validation of the Swedish national inpatient register. *BMC public health*. 2011;11:450.
22. von Elm E, Altman DG, Egger M, Pocock SJ, Gøtzsche PC, Vandenbroucke JP. The Strengthening the Reporting of Observational Studies in Epidemiology (STROBE) statement: guidelines for reporting observational studies. *Journal of clinical epidemiology*. 2008;61(4):344-9.
23. Moons KG, Altman DG, Reitsma JB, Ioannidis JP, Macaskill P, Steyerberg EW, et al. Transparent Reporting of a multivariable prediction model for Individual Prognosis or Diagnosis (TRIPOD): explanation and elaboration. *Ann Intern Med*. 2015;162(1):W1-73.
24. Lindow T, Brudin L, Elmberg V, Ekström M. Long-term follow-up of patients undergoing standardized bicycle exercise stress testing: new recommendations for grading of exercise capacity are clinically relevant. *Clinical physiology and functional imaging*. 2020;40(2):83-90.
25. Wallin L, Brudin LH. Physical working capacity determined by different types of bicycle exercise tests. *Clin Physiol*. 1988;8(5):529-37.
26. Borg GAV. Psychophysical bases of perceived exertion. *Medicine and Science in Sports and Exercise*. 1982;14(5):377-81.
27. R Core Team R: A Language and Environment for Statistical Computing. Vienna, Austria: R Foundation for Statistical Computing; 2023.
28. Gustafsson D, Elmberg V, Schiöler L, Jensen D, Ekström M. The modified Medical Research Council scale misclassifies exertional breathlessness among people referred for exercise testing. *ERJ Open Research*. 2023;9(6):00592-2023.
29. Muscat KM, Kotrach HG, Wilkinson-Maitland CA, Schaeffer MR, Mendonca CT, Jensen D. Physiological and perceptual responses to incremental exercise testing in healthy men: effect of exercise test modality. *Appl Physiol Nutr Metab*. 2015;40(11):1199-209.
30. Porszasz J, Casaburi R, Somfay A, Woodhouse LJ, Whipp BJ. A treadmill ramp protocol using simultaneous changes in speed and grade. *Med Sci Sports Exerc*. 2003;35(9):1596-603.
31. Public Health Agency of Sweden. The National Public Health Survey 2004-2016. "Hälsa på lika villkor, http://fohm-app.folkhalsomyndigheten.se/Folkhalsodata/pxweb/sv/A_Folkhalsodata/. 2018.

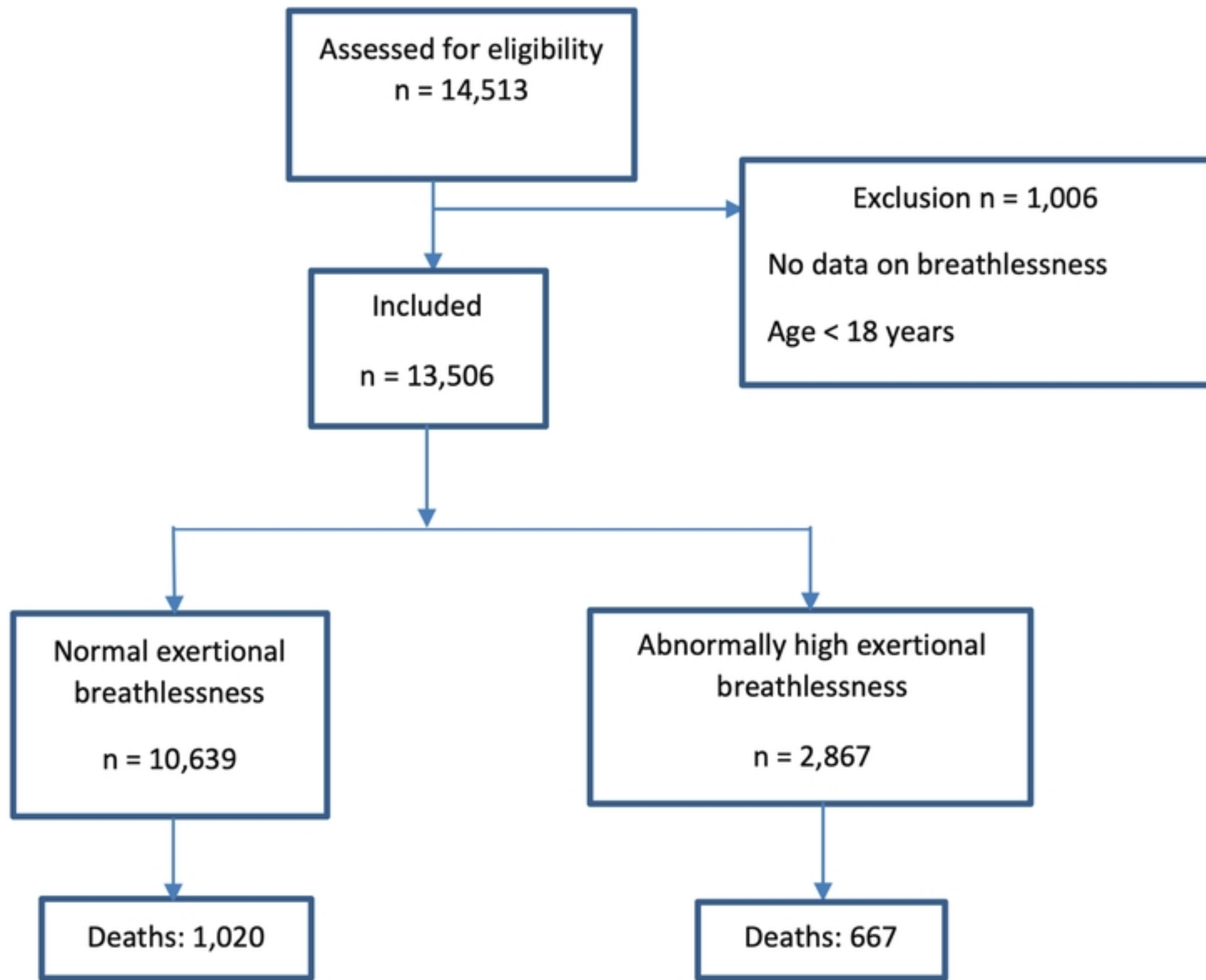
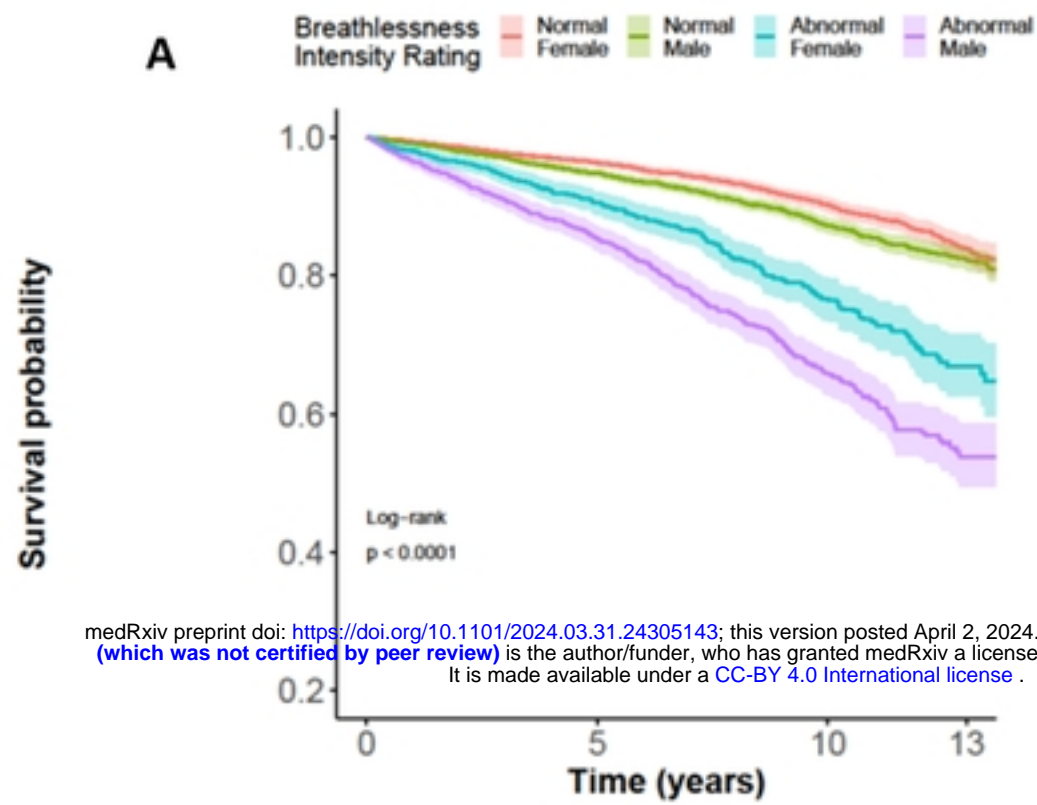


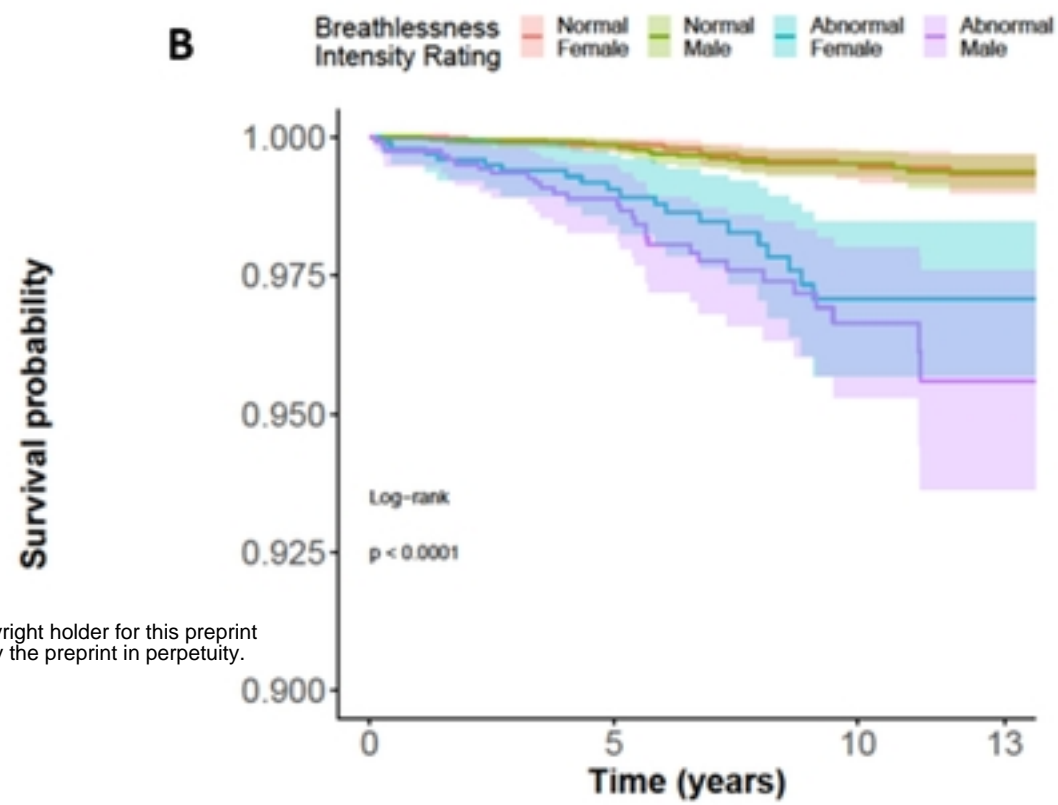
Figure 1



medRxiv preprint doi: <https://doi.org/10.1101/2024.03.31.24305143>; this version posted April 2, 2024. The copyright holder for this preprint (which was not certified by peer review) is the author/funder, who has granted medRxiv a license to display the preprint in perpetuity. It is made available under a [CC-BY 4.0 International license](https://creativecommons.org/licenses/by/4.0/).

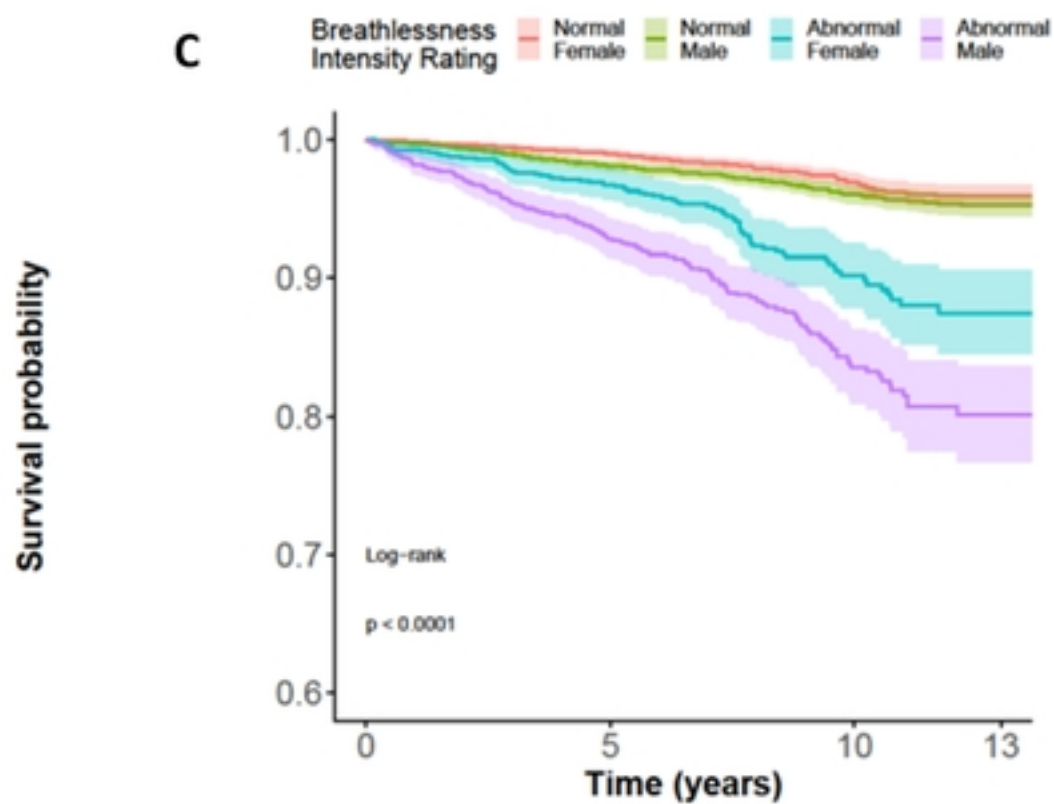
Number at risk

Normal Female	4947	3846	1670
Normal Male	5692	4315	1876
Abnormal Female	1230	900	326
Abnormal Male	1637	1086	337



Number at risk

Normal Female	4546	3614	1598
Normal Male	5110	4011	1800
Abnormal Female	1016	788	296
Abnormal Male	1232	894	301

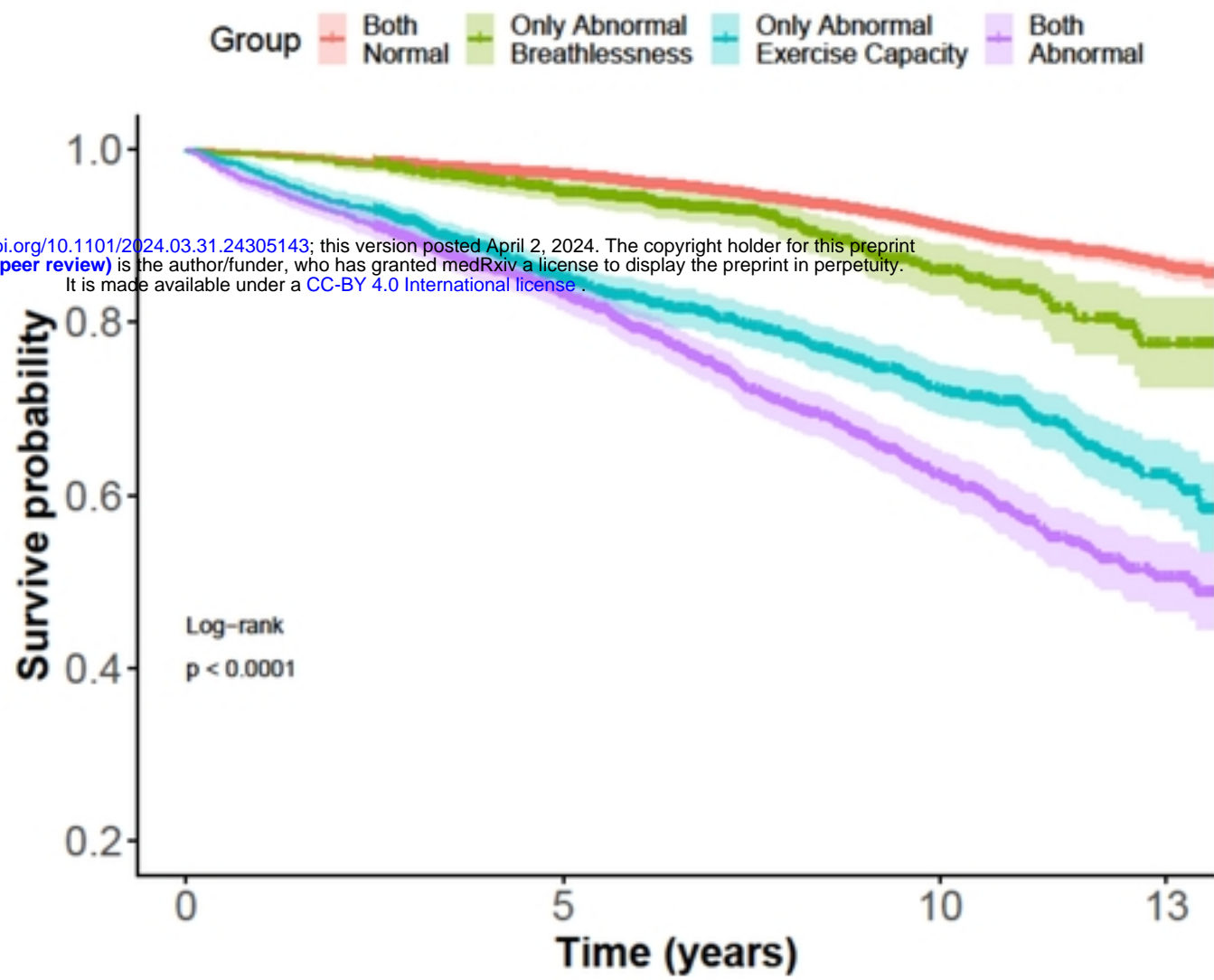


Number at risk

Normal Female	4640	3669	1610
Normal Male	5254	4067	1809
Abnormal Female	1073	821	303
Abnormal Male	1360	944	308

Figure 2

medRxiv preprint doi: <https://doi.org/10.1101/2024.03.31.24305143>; this version posted April 2, 2024. The copyright holder for this preprint (which was not certified by peer review) is the author/funder, who has granted medRxiv a license to display the preprint in perpetuity. It is made available under a [CC-BY 4.0 International license](https://creativecommons.org/licenses/by/4.0/).



	Number at risk		
9225	7232	3132	
1059	793	260	
1413	929	414	
1804	1191	403	

Figure 3