

Title: Wastewater surveillance of antibiotic resistant bacteria for public health action: Potential and Challenges

Betsy Foxman, Elizabeth Salzman, Chelsie Gesierich, Sarah Gardner, Michelle Ammerman, Marisa Eisenberg, Krista Wigginton

Author Affiliations: Center for Molecular and Clinical Epidemiology of Infectious Diseases, Department of Epidemiology, School of Public Health, University of Michigan, Ann Arbor, Michigan, United States (Betsy Foxman, Elizabeth Salzman, Chelsie Gesierich, Sarah Gardner); Department of Civil and Environmental Engineering, College of Engineering, University of Michigan, Ann Arbor, Michigan, United States (Michelle Ammerman, Krista Wigginton); Departments of Epidemiology, School of Public Health, Department of Mathematics and Center for the Study of Complex Systems, College of Literature, Sciences, and the Arts, University of Michigan, Ann Arbor, Michigan, United States (Marisa Eisenberg).

All authors contributed equally to the work.

ABSTRACT

Antibiotic resistance is an urgent public health threat: an estimated 2 out of every 5 infection deaths are associated with antibiotic resistant bacteria. Current actions to reduce this threat include requiring prescriptions for antibiotic use, antibiotic stewardship programs, educational programs targeting patients and healthcare providers, and limiting antibiotic use in agriculture, aquaculture, and animal husbandry. Early warning of the emergence and spread of antibiotic resistant bacteria would aid these efforts. The SARS-CoV-2 pandemic demonstrated the value of wastewater surveillance as an early warning system for viral spread and detection of the emergence of new viral strains. In this commentary we explore whether monitoring wastewater for antibiotic resistant genes and/or bacteria resistant to antibiotics might provide similarly useful information for public health action. Using carbapenem resistance as an example, we highlight technical challenges associated with using wastewater to quantify temporal/spatial trends in antibiotic resistant bacteria (ARBs) and antibiotic resistant genes (ARGs) and compare with clinical information. We also comment on using wastewater to track foodborne outbreaks. We conclude with our assessment that beyond source tracking the value added of screening wastewater for ARBs and ARGs for direct public health action is relatively low with current technologies compared to surveillance methods already in place.

Background:

Each year in the United States more than 2.8 million antibiotic infections occur resulting in ~35,000 deaths (1). Among the 35 countries in the Americas, an estimated 2 out of every 5 infection deaths were associated with antibiotic resistant bacteria (2). Extended spectrum beta lactamase (ESBL) producing Enterobacteriaceae and carbapenem resistant Enterobacteriaceae (CRE) are of particular concern because ESBL destroy beta-lactam antibiotics (e.g., penicillin and penicillin derivatives), and carbapenems are one of the few antibiotics effective against ESBL bacteria. The Enterobacteriaceae family includes three nosocomial pathogens, *Enterococcus faecium*, *Klebsiella pneumoniae*, and *Enterobacter spp.*, that are often resistant to multiple antibiotics, and several common foodborne pathogens, including *Escherichia coli*, *Shigella*, and *Salmonella* that are increasing antibiotic resistant. In 2019, Enterobacteriaceae producing ESBL and CRE resulted in 197,400 cases and 9,100 deaths and 13,100 cases and 1,100 deaths, respectively in the United States (1).

Relative to humans, Enterobacteriaceae have very short generation times. The generation time of *E. coli*, for example, may be as short as 15 minutes. Spontaneous mutations from errors during DNA replication or exposure to mutagens occur at a rate between 1 in 10 million to 1 in 1 billion base substitutions per nucleotide per generation, but higher mutation frequencies have been reported for *E. coli* and *Salmonella* (3). The short generation time and large population size (39 trillion bacteria cells in each human (4)) virtually ensure that with the continued use of a given antibiotic, one or more human bacterial pathogens will become resistant to that drug. Requiring prescriptions for antibiotic use, antibiotic stewardship programs, and educational programs targeting patients and healthcare providers can lengthen the time until resistance appears.

However, these prevention strategies do not address the effects of antibiotic contamination of the environment.

Before penicillin was commercially available, urine from treated patients was collected and penicillin re-extracted for re-use, because penicillin (and other antibiotics) is poorly metabolized by animals (5). Therefore, it follows that when antibiotics are used clinically, in aquaculture, and animal husbandry, antibiotics absorbed into the bloodstream are excreted renally (via the urine) or via the liver (via the feces). Antibiotics that are not absorbed are excreted in the feces. Thus, as wastewater moves from homes and businesses via the sewers towards a wastewater treatment plant, the presence of antibiotics and chemicals can induce horizontal transfer of genes for antibiotic resistance (6,7).

Antibiotic resistant bacteria (ARBs) can directly transfer antibiotic resistant genes (ARGs) to other bacteria of the same or *different* species. ARGs are found worldwide (8): a survey of untreated domestic sewage from 74 cities in 60 countries found ARGs in every country (9). Of particular concern, a 2021 survey of untreated sewage from wastewater treatment plants serving >40% of the Dutch population detected carbapenemase-producing *Enterobacterales* (this order includes the Enterobacteriaceae family) in 89 of the 100 wastewater plants surveyed (10). Wastewater treatment greatly reduces the number of bacteria and hence the number of ARBs. However, the proportion of bacteria present that are ARBs increases (11). When released into the environment and used in agriculture, aquaculture, or animal husbandry, ARGs become available to transform other bacteria, including bacteria that cause foodborne illness.

These data highlight that ARGs and ARBs can be detected in wastewater and that current wastewater treatment targets bacteria but not specifically ARGs and ARBs, although methods to do so are an active area of research (12). As ARGs and ARBs have been detected in wastewater worldwide (9), there has been an increased focus on detecting and quantifying ARGs and ARBs for wastewater-based epidemiology. To date, the literature has focused on the risks posed when ARGs and ARBs are released into the environment, rather than on whether wastewater surveillance for ARGs/ARBs provides information useful for immediate public health action. In this data driven commentary our goal is to assess whether surveilling wastewater for ARGs and

ARBs can provide public health with actionable data regarding spatial/temporal trends that complement clinical surveillance, including detection of foodborne outbreaks. We first describe our studies to assess the utility of wastewater surveillance for ARGs and ARBs. We then summarize the challenges of detecting and quantifying ARGs and ARBs in wastewater and assess what information wastewater surveillance for ARGs and ARBs might provide for public health action using examples from our ongoing research and the literature. We close with our assessment that -- at least with current technologies -- the value added of screening wastewater for ARBs and ARGs for direct public health action is relatively low compared to surveillance methods already in place.

Evaluating the Utility of Wastewater Surveillance for ARGs and ARBs

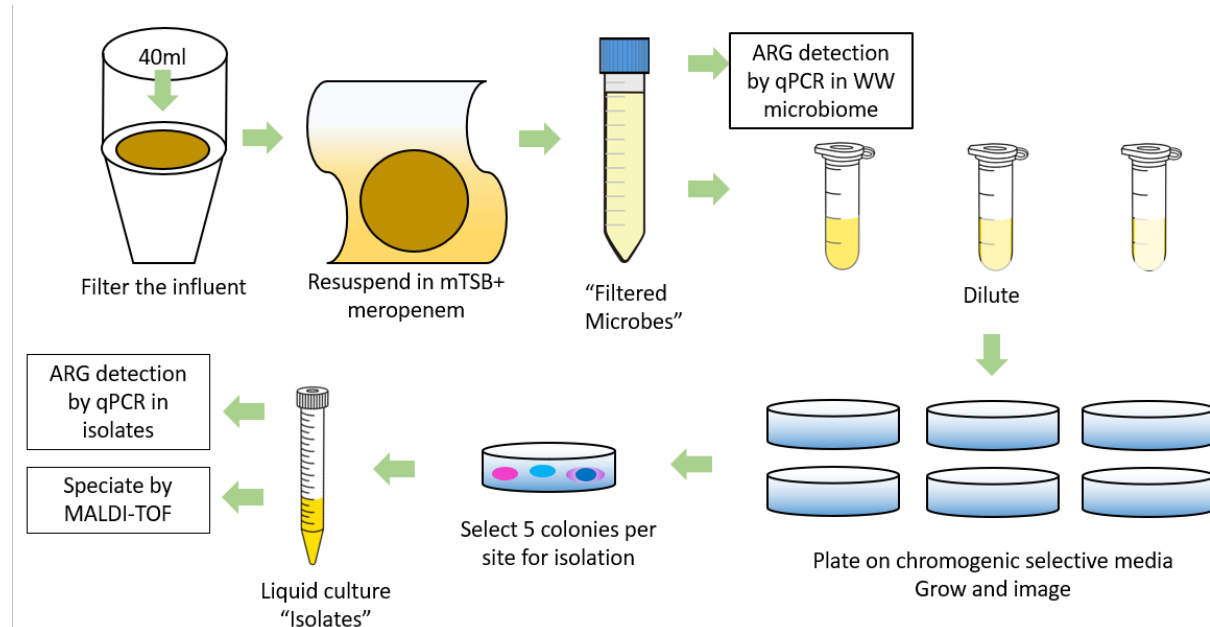
Wastewater surveillance for SARS-CoV-2 has proven benefit (13). Wastewater provides an estimate of the population prevalence of all SARS-CoV-2 cases - symptomatic and asymptomatic - and provides an early warning of the emergence and spread of new variants complementing data obtained from clinical surveillance. The value of wastewater surveillance has also been demonstrated for endemic diseases such as polio, influenza, norovirus and rotavirus: all obligate pathogens whose primary reservoir is humans (14–16). Biomarkers evaluating the amount of virus present in wastewater can be accurately quantified and normalized to account for the time-varying amount of human material in wastewater and the analytical recovery of the target from the wastewater. Wastewater surveillance provides timely, local information regarding the start of the respective seasons enabling implementation of vaccination (for influenza) and educational campaigns (for influenza, norovirus, and rotavirus) (17). For example, a recent study by Ammerman *et al.* used RT-ddPCR to evaluate wastewater surveillance of human norovirus (HuNoV GII); wastewater surveillance consistently coincided or lead syndromic surveillance for norovirus outbreaks. This finding suggests that wastewater surveillance is effective and able to inform public health interventions for human norovirus (18). Wastewater surveillance data for these viral pathogens are already available in local (e.g., <https://um.wastewatermonitoring.dataepi.org>) and national dashboards (e.g., <https://data.wastewaterscan.org>).

To inform public health action, wastewater surveillance for ARBs and ARGs needs to provide the same types of information that made wastewater surveillance for virus valuable. This information might include early warning of the emergence of bacteria resistant to current antibiotics, local population estimates of the prevalence of known resistance genes or resistant bacteria, and quantitative estimates enabling tracking time/space variation and response to interventions.

As a first step towards evaluating the utility of wastewater surveillance for ARGs and ARBs we used a laboratory pipeline enabling us to detect human pathogens with an antibiotic resistant phenotype to ARGs that code for that resistance. This multistep laboratory pipeline includes filtering influent and suspending the filtrate in media containing the target antibiotic (Figure 1). The filtrate is next diluted and streaked on chromogenic agar, which gives a presumptive species identification. The species of each isolate is confirmed using MALDI-ToF (matrix assisted laser desorption ionization time of flight) and DNA is extracted and tested for the four targeted ARGs using qPCR— *bla*_{KPC}, *bla*_{NDM}, *bla*_{OXA48}, and *bla*_{VIM}. Because our pipeline directly measures phenotype, our results do not include ARGs from dead cells and also identifies intrinsically antibiotic resistant bacteria or resistance due to unknown or untargeted mechanisms. The presence of the four ARGs was determined in “wastewater microbiome” samples by extracting DNA from the filtered microbes prior to plating. These results represent a snapshot of ARGs on a given day from each plant but may include ARGs from dead cells.

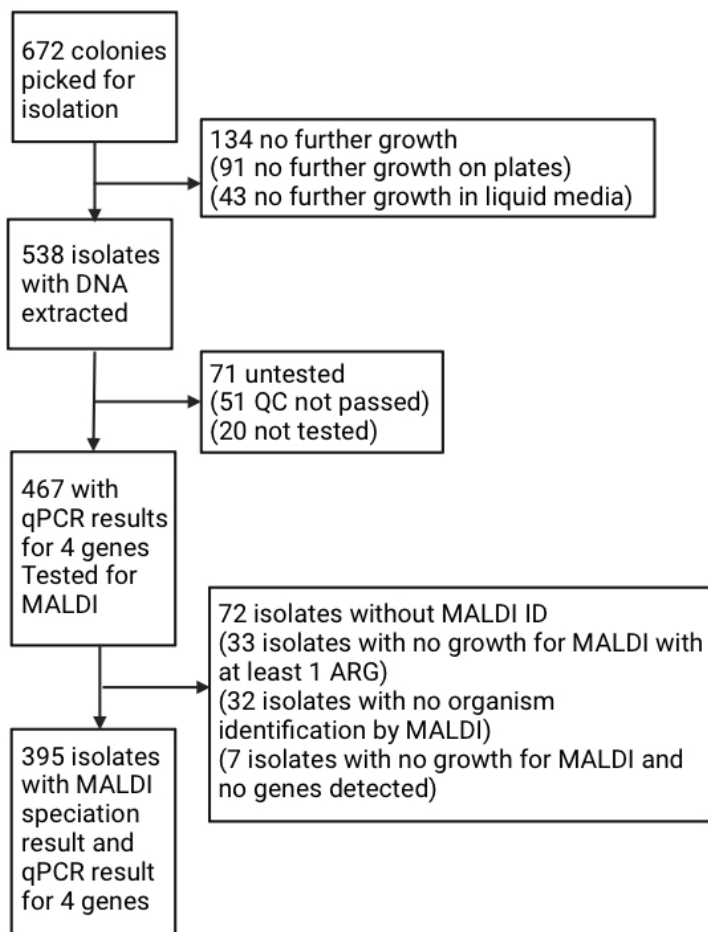
We used qPCR to directly detect carbapenemase genes from the filtered samples collected from the two wastewater treatment plants over the one-year period. *bla*_{NDM} positivity was verified by Sanger sequencing. We detected *bla*_{KPC}, *bla*_{NDM}, and *bla*_{OXA48} in virtually all samples. *bla*_{VIM} was detected less frequently, with similar patterns of detection in the two wastewater treatment plants (See Figure S1 in Appendix).

Figure 1: Laboratory pipeline for detecting and speciating antibiotic resistant human pathogens and identifying the genes coding for antibiotic resistance among the identified species. Filtered microbes captures the wastewater microbiome.



From the filtrate collected from two wastewater treatment plants between June 2022 and June 2023 and plated on chromogenic media selective for carbapenem, we picked 672 bacterial colonies, of which 467 isolates grew, for testing by qPCR and 388 of those were speciated by MALDI (Figure 2). Approximately 20% (134 of 672) of colonies picked for isolation did not grow further, highlighting the need for more extensive methods to elicit growth and suggesting that when using media that is enriched for Enterobacteriaceae there may be proximity-dependent and temporary sharing of ARGs.

Figure 2: CONSORT diagram detailing wastewater isolates detection and processing. (MALDI= matrix assisted laser desorption ionization time of flight; QC= quality control).

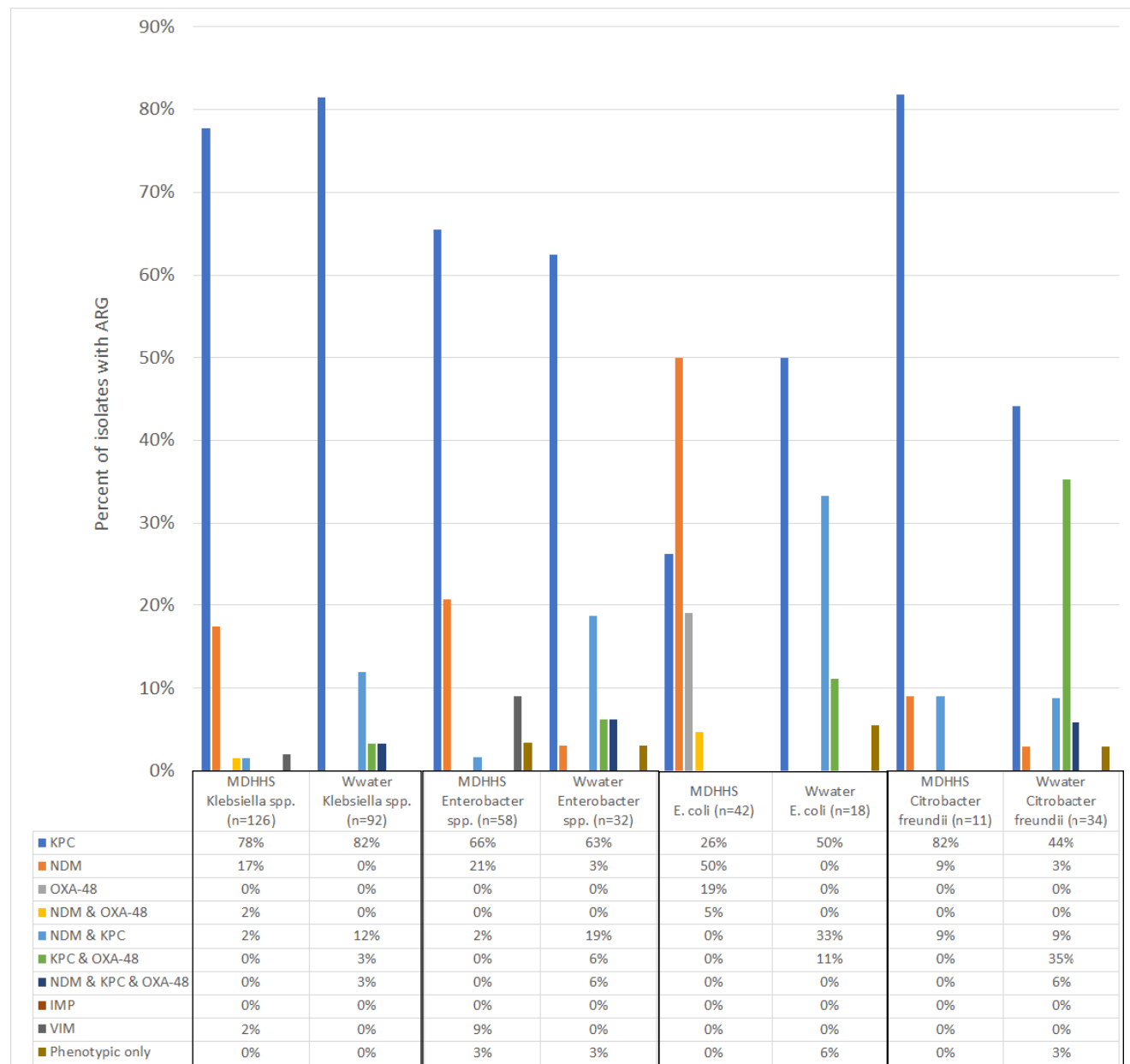


Among the 388 isolates we identified 53 species: 11 were known pathogens and multiple species fit within the *Enterobacter cloacae* complex or the *Citrobacter freundii* complex. We most frequently detected human pathobionts *Klebsiella pneumoniae*, *Enterobacter cloacae* complex, *Klebsiella oxytoca* and *Citrobacter freundii* complex. One or more known carbapenemase genes were detected in virtually all isolates: 90% had bla_{KPC} , 15% bla_{NDM} , and 12% bla_{OXA-48} (data note shown). We did not detect bla_{VIM} in any of the isolated species. Using our pipeline, we were able to detect the presence of four known clinically relevant carbapenem resistant genes in identified bacterial pathogens within 4 to 5 days following sample receipt.

We compared our results from wastewater surveillance with clinical surveillance data collected by the Michigan Department of Human Health and Services (27) for the entire State of Michigan over the same time period (Figure 3; see Figures S2 and S3 for other clinically relevant species, and Table S1 in appendix for listing of all species identified). There were some similarities and

notable differences between the frequency of carbapenem resistance mechanisms identified in the most detected clinical isolates and the same species detected in wastewater (Figure 3). Although the frequency of KPC as a single resistance mechanism in *Klebsiella spp.* was similar between clinical and wastewater isolates (78% vs. 82%, respectively), in clinical isolates NDM and OXA-48 most often occurred alone; in wastewater NDM was only found in the presence of KPC or OXA-48 or both. The pattern was similar for *E. coli* and *Enterobacter spp.* although for *Enterobacter spp.* in a small percentage (3%) of wastewater isolates NDM was the sole resistance mechanism. Further, for *E. coli* and *Citrobacter freundii* OXA-48 was only detected together with KPC in wastewater (Figure 3). Higher levels of phenotypic-only resistance were seen in the clinically relevant species that were only detected in wastewater: *Aeromonas* species, *Pseudomonas aeruginosa*, (Figure S3) and the “Other species” category (Figure S2), suggesting other mechanisms of resistance being more prevalent in wastewater than in clinical samples.

Figure 3: Percent of carbapenem-resistant *Klebsiella spp.*, *Enterobacter spp.*, *Escherichia coli* and *Citrobacter freundii* clinical isolates and wastewater-detected isolates by carbapenem genes (*bla_{KPC}*, *bla_{NDM}*, *bla_{OXA48}* and *bla_{VIM}*). Clinical cases reported to the Michigan Department of Health and Human Services (MDHHS) in 2022 (27); wastewater (Wwater) isolates samples from two wastewater treatment plants between June 6, 2022 and June 12, 2023. Wastewater samples were collected weekly. See Supplement for all carbapenem-resistant species.



Our results demonstrate that ARGs can be detected in wastewater and linked to specific ARBs relatively quickly and that similar ARGs are detected in ARBs as in clinical surveillance. However, an additional comparison of our findings with literature and clinical surveillance is illuminating. A 2023 report estimated that in 2019 among 35 countries in the Americas there were 114,000 deaths associated with carbapenem resistant infections. Most of these deaths were attributed to infections with the following carbapenem-resistant bacterial species (number of deaths): *Acinetobacter baumannii* (36,800), *Pseudomonas aeruginosa* (33,200), *Streptococcus pneumoniae* (18,100) and *K. pneumoniae* (16,500) (2). With our pipeline we identified only one *A. baumannii* and did not detect *S. pneumoniae* – but we did not use growth conditions specific for *S. pneumoniae*. We found one study that detected *Streptococcus spp.* and *Acinetobacter spp.* in wastewater; this study used 16S rRNA sequencing and did not resolve to the species level (19). We also found only one study that isolated *A. baumannii* from wastewater. Their pipeline started with 1 liter of influent which was serially diluted 10-fold and used CHROMagar to detect *A. baumannii*, then carbapenemase genes were detected using qPCR (28).

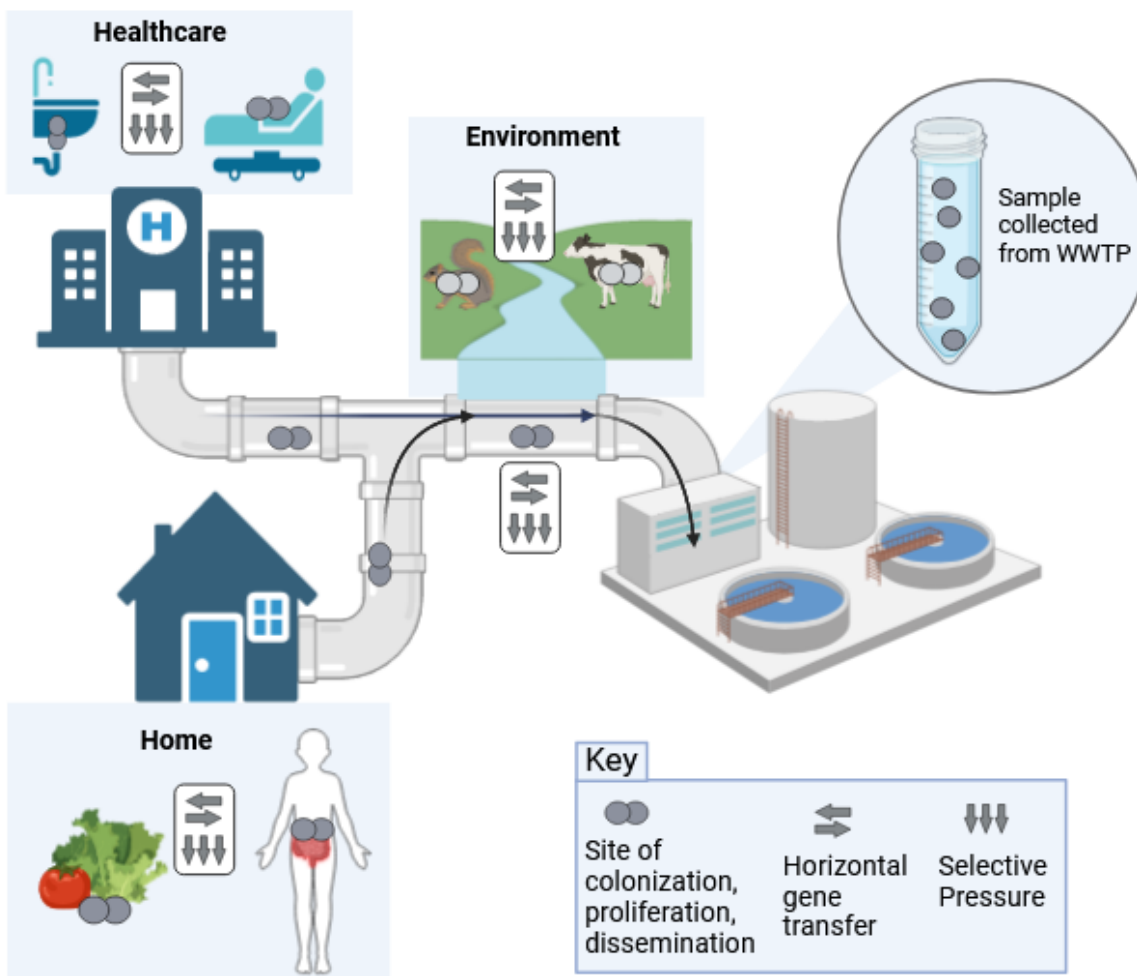


Figure 4: Sources of antibiotic resistant bacteria (ARBs) and antibiotic resistant genes (ARGs) in wastewater. ARBs found in humans, food, animals, agriculture, pipes, and sinks shed into wastewater. Within the wastewater ARGs can transfer between bacteria (horizontal gene transfer).

Challenges of detecting and quantifying ARGs and ARBs in wastewater

Bacteria are different than virus. Unlike the viral pathogens targeted for wastewater surveillance whose primary reservoir is humans, human bacterial pathogens like the ESKAPE pathogens (*Enterococcus faecium*, *Staphylococcus aureus*, *Klebsiella pneumoniae*, *Acinetobacter baumannii*, *Pseudomonas aeruginosa*, and *Enterobacter species*) – nosocomial pathogens that exhibit multidrug resistance and virulence – are found in non-humans and/or can live in the environment (Figure 4). Further, most human bacterial pathogens are pathobionts, that is, they can colonize humans (commensals or asymptomatic carriage) for extended periods only causing

symptoms (disease) under certain circumstances. Methicillin resistant *Staphylococcus aureus* (MRSA) is just one example of many.

Moreover, while using genomic sequencing to identify all species found in influent wastewater samples is technically possible, it is notable that the proportion of bacteria in influent that is from genera containing human pathogens is low. A 2019 study by Limayem *et al.* (19) used 16S rRNA sequencing to identify the bacterial genera found in a 1.5 liter sample from a single wastewater treatment plant. In this sample, 6.4% of the 195,967 reads were of the genus *Enterococcus* 0.063%, 0.004% *Staphylococcus*, 0.038% *Klebsiella*, 0.968% *Acinetobacter*, 21.356% *Pseudomonas*, 6.445% *Streptococcus*, and 0.028% *Escherichia* (19). Note that there are over 50 species in the genus *Streptococcus* of which 10 are considered clinically relevant. The genera *Staphylococcus*, *Enterococcus* and *Pseudomonas* also include many species but only a small proportion are clinically relevant. The low frequencies of tax of interest increase potential for error and missed or false detection.

Normalization is necessary to account for time-varying amounts of human material in wastewater and the analytical recovery of the target from the wastewater. The amount of material can vary with changes in flow volume, dilution from precipitation and variation in human waste input (toilet flushes). Several different human biomarkers have been used to normalize estimates of SARS-CoV-2 from wastewater, e.g., pepper mild mottle virus, creatinine, and caffeine (20). Unfortunately, although human biomarkers are useful in the case of SARS-CoV-2 and other viruses, their utility for ARBs and ARGs is less certain because ARBs and ARGs have multiple non-human sources making it difficult to determine whether the ARBs and ARGs detected come from human or environmental sources. This poses a major challenge to using wastewater to estimate population prevalence or for monitoring trends over time – even if analyses account for changes in flowrates due to precipitation: increases of precipitation may increase the ARBs and ARG from environmental sources (e.g., from animal fecal matter and soil) in an unpredictable fashion.

Focusing wastewater surveillance on ARGs instead of ARBs also is problematic. ARGs are detectable in food (21,22), food animals, and in the biofilms found in sinks and pipes (23) [Figure 1]. ARGs can be transmitted between bacteria of the same or different species by

bacterial pathogens (phage) or via horizontal gene transfer. Bacteria can also acquire ARBs by transformation, the uptake of environmental ARGs. *In vitro* experiments suggest that susceptible bacteria in the wastewater stream may acquire ARGs prior to wastewater treatment (6). Also, the same ARG sequence can be detected in multiple bacterial species isolated from different animals and environments (24). Thus, detection of ARGs in wastewater surveillance detects ARG presence, but gives little information about ARG occurrence in human pathogens or prevalence in human populations.

Nonetheless, ARG detection is not without value for public health purposes, as it can be used to identify whether an ARG has been introduced locally. Many ARGs emerge from countries with high rates of unregulated antibiotic use in humans and animals and then spread globally. Therefore, identifying ARGs in an agricultural area without clinical cases might be informative for source tracking. However, beyond source tracking it is unclear that detection in wastewater would be value added over data provided from clinical surveillance for public health decision making. If a new ARG is detected in wastewater prior to clinical identification, it seems unlikely to lead to any additional interventions beyond notification that a new ARGs has been discovered until identified locally among patients.

The final challenge is finding appropriate data to validate the utility of wastewater surveillance for ARBs and ARGs. As reviewed elsewhere (25), there are limited population-level clinical data available to correlate to what is found in wastewater. A major difficulty is that frequency of carriage of ARBs in the general population is common, can be of relatively long duration, and cofactors are major contributors to developing disease, e.g., surgery, injury, or underlying morbidity. Thus, wastewater surveillance may have insufficient resolution to detect changes in prevalence due to a clinical outbreak. Hospital effluent might be used for validation, but ARBs and ARGs colonize hospital sink traps and are shed into the hospital effluent and therefore do not accurately reflect human colonization or disease (26).

Potential of wastewater surveillance for tracking antibiotic resistant foodborne outbreaks

The ability of wastewater surveillance to conduct community level sampling and provide estimates of population prevalence may be useful for tracking antibiotic resistant foodborne

illness. Focusing on antibiotic-resistant foodborne outbreaks with a specific resistant profile would increase the potential to detect outbreaks; wastewater may include signals from commensal carriage, animal sources, or food waste. Many foodborne related pathogens have antibiotic resistance that contributes to the spread of antibiotic resistant genes (29). A significant subset of the three of the five commonly reported virulent foodborne pathogens—*Salmonella* (31%), *Campylobacter* (5%), and *Escherichia coli* O157:H7 (3%)—are antibiotic resistant (30). Currently, clinical surveillance in which health care providers submit reports to the Foodborne Disease Outbreak Surveillance System (FDOSS) (31) is the primary method for tracking foodborne illness. However, clinical surveillance often underestimates the true prevalence of foodborne illness and outbreaks often go undetected. Despite this underreporting, the Centers for Disease Control records 48 million illnesses, 128,000 hospitalizations, and 3,000 deaths that are reported each year in the United States (29). In principle, wastewater surveillance might lead to better estimates of the population burden of antibiotic resistant foodborne illnesses including the true case load, the temporality of outbreaks, and length of shedding (32). Further, improving surveillance for common foodborne-related pathogens would strengthen state and local health department capacity to investigate and report outbreaks, identify emerging food safety issues, and assess infection control interventions (31).

Given the ubiquity of foodborne bacteria in the environment and animals (including humans), it may be extremely difficult to implement wastewater surveillance to prospectively detect foodborne outbreaks (31,33). However, monitoring for foodborne bacteria with known genotypes (e.g., those with specific antibiotic resistances and virulence factors) may enable tracking of an ongoing foodborne outbreak. Currently, whole genome sequencing is the most promising method for analyzing foodborne bacterial pathogens because it is the most specific and comprehensive method of identification and can link isolates from a similar source. *Salmonella*, *Campylobacter* colonize and *Escherichia coli* O157:H7 colonize food and other animals; foodborne outbreaks often follow consumption of uncooked eggs, milk, undercooked meat from food animals, food items contaminated by food or other animal feces. However, even with whole genome sequencing we cannot determine the source of a pathogen, making it impossible to assess if a given pathogen is human related prior to an outbreak (34,35). Research is ongoing to use next generation sequencing to detect foodborne pathogens in wastewater. The

challenges include low sensitivity and false positive results at low concentrations – problems which are likely to occur in wastewater samples (36). Additionally, time and resource consuming culturing methods must be in place to select for relevant pathogens before undergoing molecular and genomic characterization, which makes practical implementation for public health surveillance daunting (34). Real time detection technologies such as Nanopore Sequencing may be useful in overcoming this barrier, but further development and investigation is needed (37).

At the time of this writing, only two outbreaks of foodborne bacterial infections, both of salmonella, have been successfully surveilled in wastewater and reported in the literature. These two reports retrospectively detected two different salmonellosis outbreaks in Honolulu, HI in wastewater samples from 2010-2011. Using genomic characterization, they were able to detect an increase in the serovar of salmonella related to an outbreak during that period. Additionally, they detected a resurgence of salmonella after the outbreak that clinical surveillance had missed (38,39). However, unlike viral pathogens, there are no reports of prospective wastewater surveillance being used to detect outbreaks of enteric bacterial pathogens.

Summary and Conclusions

The intrinsic features of human bacterial pathobionts and how bacteria acquire and exchange ARGs generally limits the utility of using wastewater surveillance for ARBs and ARGs to inform public health action. Several factors complicate quantitative estimation: bacteria proliferate and exchange ARGs outside of living hosts, qPCR and sequencing does not distinguish between viable and non-viable organisms, and multiple steps are required for laboratory processing, *e.g.* filtration, growing on selective media. Although it is feasible to detect the presence of emerging ARGs in wastewater, whether the information will lead to earlier or additional public health action beyond that suggested by existing monitoring systems is uncertain. Technological innovations, such as long read sequencing of specific bacteria species directly from wastewater (without culture) and focusing on obligate human pathogens, *e.g.*, such as *Haemophilus influenzae*, *Helicobacter pylori*, *Neisseria gonorrhoeae*, *Neisseria meningitidis*, *Mycobacterium leprae*, *Salmonella typhi*, *Streptococcus pneumoniae*, *Streptococcus pyogenes*, *Vibrio cholerae* and *Treponema pallidum* (40), would alleviate the problem of determining if a target ARG came

from a specific bacterial species, but would not alleviate other problems of interpretation: specifically, whether the bacterium came from a human and whether the ARG was acquired post shedding from the human once it entered the wastewater stream. There may be some value in screening outflow from poultry farms or feedlots but that remains to be investigated.

Monitoring wastewater for new ARGs might alert clinicians that a current antibiotic may become less effective. Of the four carbapenem resistant genes we monitored over a seven-month period, only *bla_{VIM}* –which is also the newest– showed any variation in prevalence over time in the wastewater microbiome samples. While this suggests that only emerging ARGs show significant variation in prevalence over time and space, this remains to be determined.

In summary, it is possible to detect ARGs and ARBs in wastewater, but difficult to use the results to estimate population prevalence and to monitor trends over time and space. The difficulties arise because human pathogens occur at relatively low prevalence in wastewater, and many are shed from non-human sources.

REFERENCES

1. U.S. Department of Health and Human Services. CDC. Antibiotic Resistance Threats in the United States, 2019. *CDC* [electronic article]. 2019;(http://dx.doi.org/10.15620/cdc:82532.). (Accessed January 21, 2024)
2. Aguilar GR, Swetschinski LR, Weaver ND, et al. The burden of antimicrobial resistance in the Americas in 2019: a cross-country systematic analysis. *Lancet regional health. Americas* [electronic article]. 2023;25. (<https://pubmed.ncbi.nlm.nih.gov/37727594/>). (Accessed January 21, 2024)
3. Chevallereau A, Meaden S, Van Houte S, et al. The effect of bacterial mutation rate on the evolution of CRISPR-Cas adaptive immunity. *Philos Trans R Soc Lond B Biol Sci* [electronic article]. 2019;374(1772). (<https://pubmed.ncbi.nlm.nih.gov/30905293/>). (Accessed January 21, 2024)
4. Sender R, Fuchs S, Milo R. Are We Really Vastly Outnumbered? Revisiting the Ratio of Bacterial to Host Cells in Humans. *Cell* [electronic article]. 2016;164(3):337–340. (<https://pubmed.ncbi.nlm.nih.gov/26824647/>). (Accessed January 21, 2024)
5. Humphrey JH. Excretion of Penicillin in Man. *Nature 1944 154:3920* [electronic article]. 1944;154(3920):765–765. (<https://www.nature.com/articles/154765a0>). (Accessed January 21, 2024)
6. Hutinel M, Fick J, Larsson DGJ, et al. Investigating the effects of municipal and hospital wastewaters on horizontal gene transfer. *Environ Pollut* [electronic article]. 2021;276. (<https://pubmed.ncbi.nlm.nih.gov/33631686/>). (Accessed January 21, 2024)
7. Berglund F, Ebmeyer S, Kristiansson E, et al. Evidence for wastewaters as environments where mobile antibiotic resistance genes emerge. *Commun Biol* [electronic article]. 2023;6(1). (<https://pubmed.ncbi.nlm.nih.gov/36966231/>). (Accessed January 21, 2024)
8. Miłobedzka A, Ferreira C, Vaz-Moreira I, et al. Monitoring antibiotic resistance genes in wastewater environments: The challenges of filling a gap in the One-Health cycle. *J Hazard Mater* [electronic article]. 2022;424(Pt C). (<https://pubmed.ncbi.nlm.nih.gov/34629195/>). (Accessed January 21, 2024)
9. Hendriksen RS, Munk P, Njage P, et al. Global monitoring of antimicrobial resistance based on metagenomics analyses of urban sewage. *Nat Commun* [electronic article]. 2019;10(1). (<https://pubmed.ncbi.nlm.nih.gov/30850636/>). (Accessed January 21, 2024)
10. Blaak H, Kemper MA, de Man H, et al. Nationwide surveillance reveals frequent detection of carbapenemase-producing Enterobacterales in Dutch municipal wastewater. *Science of The Total Environment*. 2021;776:145925.
11. Xi C, Zhang Y, Marrs CF, et al. Prevalence of antibiotic resistance in drinking water treatment and distribution systems. *Appl Environ Microbiol* [electronic article]. 2009;75(17):5714–5718. (<https://pubmed.ncbi.nlm.nih.gov/19581476/>). (Accessed January 21, 2024)
12. Mosaka TBM, Unuofin JO, Daramola MO, et al. Inactivation of antibiotic-resistant bacteria and antibiotic-resistance genes in wastewater streams: Current challenges and future perspectives. *Front Microbiol* [electronic article]. 2023;13. (<https://pubmed.ncbi.nlm.nih.gov/36733776/>). (Accessed January 21, 2024)
13. Yang K, Guo J, Møhlenberg M, et al. SARS-CoV-2 surveillance in medical and industrial wastewater-a global perspective: a narrative review. *Environ Sci Pollut Res Int* [electronic article]. 2023;30(23):63323–63334. (<https://pubmed.ncbi.nlm.nih.gov/36988799/>). (Accessed January 21, 2024)

14. Nomoto A. Molecular aspects of poliovirus pathogenesis. *Proc Jpn Acad Ser B Phys Biol Sci* [electronic article]. 2007;83(8):266–275. (<https://pubmed.ncbi.nlm.nih.gov/24367151/>). (Accessed January 21, 2024)
15. Sudhan SS, Sharma P. Human Viruses: Emergence and Evolution. In: *Emerging and Reemerging Viral Pathogens*. Elsevier; 2020:53–68.
16. Robilotti E, Deresinski S, Pinsky BA. Norovirus. *Clin Microbiol Rev*. 2015;28(1):134–164.
17. Kilaru P, Hill D, Anderson K, et al. Wastewater Surveillance for Infectious Disease: A Systematic Review. *Am J Epidemiol* [electronic article]. 2023;192(2):305–322. (<https://pubmed.ncbi.nlm.nih.gov/36227259/>). (Accessed January 21, 2024)
18. Ammerman M, Mullapudi S, Gilbert J, et al. Norovirus GII wastewater monitoring for epidemiological surveillance. *PLOS Water*. [electronic article]. 2024-01-18:3(1)e0000198- (Accessed March 12, 2024).
19. Limayem A, Wasson S, Mehta M, et al. High-Throughput Detection of Bacterial Community and Its Drug-Resistance Profiling From Local Reclaimed Wastewater Plants. *Front Cell Infect Microbiol* [electronic article]. 2019;9. (<https://pubmed.ncbi.nlm.nih.gov/31637218/>). (Accessed January 21, 2024)
20. Hsu SY, Bayati M, Li C, et al. Biomarkers selection for population normalization in SARS-CoV-2 wastewater-based epidemiology. *Water Res* [electronic article]. 2022;223. (<https://pubmed.ncbi.nlm.nih.gov/36030667/>). (Accessed January 21, 2024)
21. Lin WF, Guo HQ, Zhu LJ, et al. Temporal variation of antibiotic resistome and pathogens in food waste during short-term storage. *J Hazard Mater* [electronic article]. 2022;436. (<https://pubmed.ncbi.nlm.nih.gov/35739780/>). (Accessed January 21, 2024)
22. Periasamy J, Krishnamoorthy S, Nagarethinam B, et al. Food wastes as a potential hotspot of antibiotic resistance: synergistic expression of multidrug resistance and ESBL genes confer antibiotic resistance to microbial communities. *Environ Monit Assess* [electronic article]. 2023;195(6). (<https://pubmed.ncbi.nlm.nih.gov/37261634/>). (Accessed January 21, 2024)
23. Chahal C, van den Akker B, Young F, et al. Pathogen and Particle Associations in Wastewater: Significance and Implications for Treatment and Disinfection Processes. *Adv Appl Microbiol*. 2016;97:63–119.
24. Mustapha MM, Srinivasa VR, Griffith MP, et al. Genomic Diversity of Hospital-Acquired Infections Revealed through Prospective Whole-Genome Sequencing-Based Surveillance. *mSystems* [electronic article]. 2022;7(3). (<https://pubmed.ncbi.nlm.nih.gov/35695507/>). (Accessed January 21, 2024)
25. Tiwari A, Kurittu P, Al-Mustapha AI, et al. Wastewater surveillance of antibiotic-resistant bacterial pathogens: A systematic review. *Front Microbiol* [electronic article]. 2022;13. (<https://pubmed.ncbi.nlm.nih.gov/36590429/>). (Accessed January 21, 2024)
26. Regev-Yochay G, Margalit I, Smollan G, et al. Sink-traps are a major source for carbapenemase-producing Enterobacteriaceae transmission. *Infect Control Hosp Epidemiol* [electronic article]. 2023;1–8. (<https://pubmed.ncbi.nlm.nih.gov/38149351/>). (Accessed January 21, 2024)
27. Michigan Department of Health and Human Services (MDHHS) Surveillance for Healthcare-Associated and Resistant Pathogens (SHARP) Unit. Carbapenemase-Producing, Carbapenem-Resistant Enterobacterales (CP-CRE) in Michigan 2018-2022. October, 2023.

- <https://www.michigan.gov/mdhhs/-/media/Project/Websites/mdhhs/HAI-SHARP/CRE/CP-CRE-Surveillance-Report-2018-2022-Final.pdf?rev=b5ee21278e6c4c1c91e7ce116bf25403&hash=5AE501DE9961C2B742D69CD5CA453B16> (Accessed February 28, 2024)
28. Hubeny J, Korzeniewska E, Buta-Hubeny M, et al. Characterization of carbapenem resistance in environmental samples and *Acinetobacter* spp. isolates from wastewater and river water in Poland. *Sci Total Environ*. 2022;822:153437.
 29. Burden of Foodborne Illness: Overview | Estimates of Foodborne Illness in the United States | CDC. 2018;(https://www.cdc.gov/foodborneburden/estimates-overview.html). (Accessed January 21, 2024)
 30. White DG, Zhao S, Simjee S, et al. Antimicrobial resistance of foodborne pathogens. *Microbes Infect*. 2002;4(4):405–412.
 31. Dewey-Mattia D, Manikonda K, Hall AJ, et al. Surveillance for Foodborne Disease Outbreaks — United States, 2009–2015. *MMWR. Surveillance Summaries*. 2018;67(10):1–11.
 32. Levy JI, Andersen KG, Knight R, et al. Wastewater surveillance for public health. *Science (1979)*. 2023;379(6627):26–27.
 33. Bintsis T. Foodborne pathogens. *AIMS Microbiol*. 2017;3(3):529–563.
 34. Brown E, Dessai U, McGarry S, et al. Use of Whole-Genome Sequencing for Food Safety and Public Health in the United States. *Foodborne Pathog Dis*. 2019;16(7):441–450.
 35. Barretto C, Rincón C, Portmann A-C, et al. Whole Genome Sequencing Applied to Pathogen Source Tracking in Food Industry: Key Considerations for Robust Bioinformatics Data Analysis and Reliable Results Interpretation. *Genes (Basel)*. 2021;12(2):275.
 36. Park D-G, Kwon J-G, Ha E-S, et al. Novel next generation sequencing panel method for the multiple detection and identification of foodborne pathogens in agricultural wastewater. *Front Microbiol*. 2023;14:1179934.
 37. Outbreak surveillance of viral pathogens. *Oxford Nanopore Technologies*. 2020;(https://nanoporetech.com/resource-centre/casestudy/outbreak-surveillance-viral-pathogens). (Accessed January 21, 2024)
 38. Diemert S, Yan T. Municipal Wastewater Surveillance Revealed a High Community Disease Burden of a Rarely Reported and Possibly Subclinical *Salmonella enterica* Serovar Derby Strain. *Appl Environ Microbiol*. 2020;86(17).
 39. Diemert S, Yan T. Clinically Unreported Salmonellosis Outbreak Detected via Comparative Genomic Analysis of Municipal Wastewater *Salmonella* Isolates. *Appl Environ Microbiol*. 2019;85(10).
 40. Pan X, Yang Y, Zhang J-R. Molecular basis of host specificity in human pathogenic bacteria. *Emerg Microbes Infect*. 2014;3(1):1–10.