

1 The application value of Kano Model in quality of healthcare: A  
2 scoping review

3

4 **Authors**

5 Xueqing **Wang**<sup>1</sup>; Panpan **Tang**<sup>1</sup>; Yueying **Jiang**<sup>1</sup>; Yuan **Zhao**<sup>1</sup>; Leiwen **Tang**<sup>1,\*</sup>; Shina **Qiao**<sup>2</sup>;  
6 Jing **Shao**<sup>3</sup>; Dandan **Chen**<sup>2</sup>.

7

8 **Affiliations**

9 <sup>1</sup>Nursing Department, The Second Affiliated Hospital of Zhejiang University School of  
10 Medicine.

11 <sup>2</sup>Department of Nursing, Zhejiang University School of Medicine Sir Run Run Shaw  
12 Hospital, Hangzhou, Zhejiang, China.

13 <sup>3</sup>Zhejiang University School of Medicine, Hangzhou, Zhejiang, China.

14

15 **Corresponding author**

16 \*Leiwen Tang, Nursing Department, The Second Affiliated Hospital of Zhejiang  
17 University School of Medicine, No.88 Jiefang Road, Hangzhou, Zhejiang Province,  
18 310009, China.

19 Tel: 13456970742

20 Email: [tanglw@zju.edu.cn](mailto:tanglw@zju.edu.cn)

21

22 **Twitter handles & additional emails**

23 Xueqing Wang: w1998124@126.com;

24 Panpan Tang: 22118782@zju.edu.cn;

25 Yueying Jiang: 22218928@zju.edu.cn;

26 Yuan Zhao: 2971477506@qq.com

27 Shina Qiao: qiaoshina@126.com

28 Jing Shao: 11318202@zju.edu.cn:

29 Dandan Chen: 11918475@zju.edu.cn.

30

31

1     **【Abstract】**

2     Background: The Kano model has been utilized in healthcare services with a focus on capturing the  
3     patient's perspective, in order to generate reliable evidence regarding areas that require improvement..

4     Objective: The objective of this study is to provide a description of the implementation of the Kano  
5     Model in the healthcare sector and to identify the common quality attributes that have the potential to  
6     enhance patients' satisfaction.

7     Methods: Literature searches were performed using PubMed, Web of Science, Embase, Cochrane,  
8     CINAHL, Scopus, OVID, CBM, CNKI, VIP, and Wanfang Database. Primary studies of Kano model  
9     and healthcare quality in English and Chinese were included.

10    Results: 42 studies were included eventually. There are three findings: (1) the Kano model's application  
11    is not uniform; (2) dimensions of reliability, efficiency, and assurance are crucial for improving  
12    healthcare quality and satisfaction, but tangible and empathy are difficult to interpret; (3) applying Kano  
13    model to improve patient satisfaction is imperative.

14    Conclusions: The impact of specific quality attributes on healthcare services and their application in  
15    practice are highlighted in this review. Besides, future research could focus on 'Internet+' nursing  
16    applications.

17    **【Key words】** Kano Model; quality of health care; scoping review; quality attribute

18  
19    1. Introduction

20  
21    Healthcare quality plays a pivotal role in the medical industry, as it significantly impacts patient  
22    satisfaction and treatment outcomes (Shaheen et al., 2019). Kalf (2022) conducted a study which revealed  
23    a significant correlation between the quality of care and survival rates among patients diagnosed with  
24    breast, lung, and prostate cancers. This finding underscores the importance of prioritizing care quality in

1 the treatment of these conditions. Furthermore, Shie (2022) has suggested that there exists a positive  
2 correlation between the health service quality and patient loyalty and satisfaction. Kruk (2018) and the  
3 World Health Organization (WHO, 2018) have put forth significant reports emphasizing the need for the  
4 healthcare system to prioritize the improvement of care quality and reduce harm, particularly in low- and  
5 -middle-income countries. This urgency arises from the growing demand for healthcare services and the  
6 limited availability of resources (Zhou et al., 2017). Unfortunately, despite substantial investment and  
7 extensive research, the quality of healthcare quality in all countries falls significantly below the desired  
8 standards (Berwick et al., 2018). As a consequence of insufficient management of healthcare services and  
9 deficiencies in healthcare quality, there have been instances of adverse events in hospitals, excessive and  
10 inappropriate care, and other public health concerns that have led to fatalities (Tello et al., 2020).

11 According to a WHO (2018) report, low-quality health systems countries may contribute to an estimated  
12 8.6 million deaths each year. These deaths could have been prevented if high-quality care had been  
13 provided. The National Academies of Sciences (2018) have demonstrated that the issue of the "quality  
14 chasm" satisfaction among patients was the availability of pertinent a global scale, even after twenty years  
15 of development..

16 Enhancing patient value and satisfaction represent the primary objective of every healthcare system. To  
17 listen to "patients' voice", Corbella Jané (2003) introduced Kano Model into the healthcare service  
18 industry for the first time in 2003, which was established a "two-dimensional" cognitive system between  
19 whether product quality satisfies customers and customer satisfaction as well as considering patients'  
20 emotions and perceptions (Chang & Chang, 2013). The Kano model categorizes quality attributes into  
21 five categories: (1) mandatory or "must" (M), (2) Attraction (A), (3) One-dimensional (O), (4) Reverse  
22 (R), and (5) Doesn't matter (I) (Matzler (1996). Most recent studies employ Kano models to identify  
23 quality attributes that address patient needs and improve service quality. These studies have  
24 demonstrated a reduction in adverse events, improved prognosis, and increased patient (Barrios-Ipenza

1 et al., 2021; Chen et al., 2019; Lin et al., 2022) . However, the healthcare system comprises numerous  
2 subsystems, including hospitals with specialty units, clinics, and daycare centers, among others. These  
3 subsystems differ in terms of the type of care provided, the services offered, and various other  
4 characteristics. The majority of previous research has primarily concentrated on presenting individual  
5 findings pertaining to particular specific service units within the healthcare system. However, there is a  
6 noticeable dearth of research that offers a comprehensive understanding of patient satisfaction by  
7 integrating all service units. Notably, variations exist in the criteria assessed for identical quality  
8 attributes (Kuo et al., 2011; Wang et al.,2021), leading to divergent outcomes even when examining the  
9 same region (Hejaili et al., 2009). Consequently, it poses a challenge for a singular study to offer  
10 comprehensive guidance for practical application. Therefore, it is imperative to incorporate the typical  
11 quality attributes and findings from previous research in order to enhance their systematicity and  
12 practicality. This review examines the utilization of the Kano Model in the healthcare service sector and  
13 its integration with other quality approaches. It also highlights the significant findings and practices  
14 derived from these studies.

## 15 2. Methods

### 16 2.1 Protocol and Registration

17 This review was conducted using Arksey and O'Malley's methodology framework (Arksey & O'Malley,  
18 2005) and presented in accordance with the PRISMA-ScR (Preferred Reporting Items for Systematic  
19 review and Meta-Analysis extension for Scoping Review) checklist (Tricco et al., 2018). This scoping  
20 review has been registered with Open Science Framework (<https://osf.io/tegmd/>).

### 21 2.1 Eligibility and Criteria

22 The inclusion criteria for this review were: (1) If the research was a cross-sectional study using the Kano  
23 model; (2) if the study was conducted in a health care setting (e.g., hospital, clinic, nursing home, etc.),  
24 (3) if the study investigators were nurses or other health care providers, (4) if the study subject was

1 patients or other recipients who received health care service, (5) if the study was an peer reviewed article,  
 2 and (6) if the study was written in Chinese or English. Exclusion criteria included the following: (1) if  
 3 they were reviews, letters, conference abstracts, or news, (2) if the full text is not available, (3) if the  
 4 incomplete report.

5 2.3 Information sources

6 The following databases were searched from January 1984 to September 2022: PubMed, Web of Science,  
 7 Embase, The Cochrane Library, CINAHL, Scopus, OVID, China Biomedical Literature Database, China  
 8 National Knowledge Infrastructure (CNKI), VIP Chinese Science and Technology Journal Database, and  
 9 Wanfang Database. As Kano Model was proposed in 1984, the starting year for this scoping review was  
 10 chosen accordingly.

11 2.4 Search

12 The search terms (keywords) used were Kano Model and healthcare quality. To ensure adequate  
 13 coverage of the search, it was conducted by MeSH Terms and Entry Terms. Table 1 outlines the search  
 14 strategy of PubMed used.

15 Table 1: Pubmed Search Strategy

Number	Search sentence	Hits
1	"kano model"[Title/Abstract]	69
2	"quality of health care"[MeSH Terms] OR "health care quality"[Title/Abstract] OR "quality of healthcare"[Title/Abstract] OR "healthcare quality"[Title/Abstract] OR "quality of care"[Title/Abstract] OR "care quality"[Title/Abstract]	8199950
3	"health services"[MeSH Terms] OR "health service"[Title/Abstract] OR "services health"[Title/Abstract]	2476141
4	"nursing services"[MeSH Terms] OR "services nursing"[Title/Abstract] OR "nursing service"[Title/Abstract] OR "service nursing"[Title/Abstract]	53825

---

5	2 OR 3 OR 4	9368174
6	1 AND 5	31

---

1 2.5 Selection of evidence

2 The Zotero software was used to manage the reference and remove duplications. Then two reviewers  
3 independently screened the title and abstract of citations to identify articles that meet the minimum  
4 inclusion criteria. Disagreements were discussed with a third researcher and resolved by consensus.  
5 When a review was found, studies included in the review that met the inclusion criteria were taken into  
6 accounted and cross-checked with the list of retrieved articles to ensure no papers had been missed.

7 2.6 Date charting process

8 To create a descriptive summary of the results, data were charted by extracting: (1) author, year, and  
9 country; (2) design; (3) sample;(4) kano categories; (5) usage; (6) intervention; (7) evaluation; and (8)  
10 result. Two reviewers independently charted the extracted data from each eligible article and discussed  
11 disagreements.

12 2.7 Synthesis result

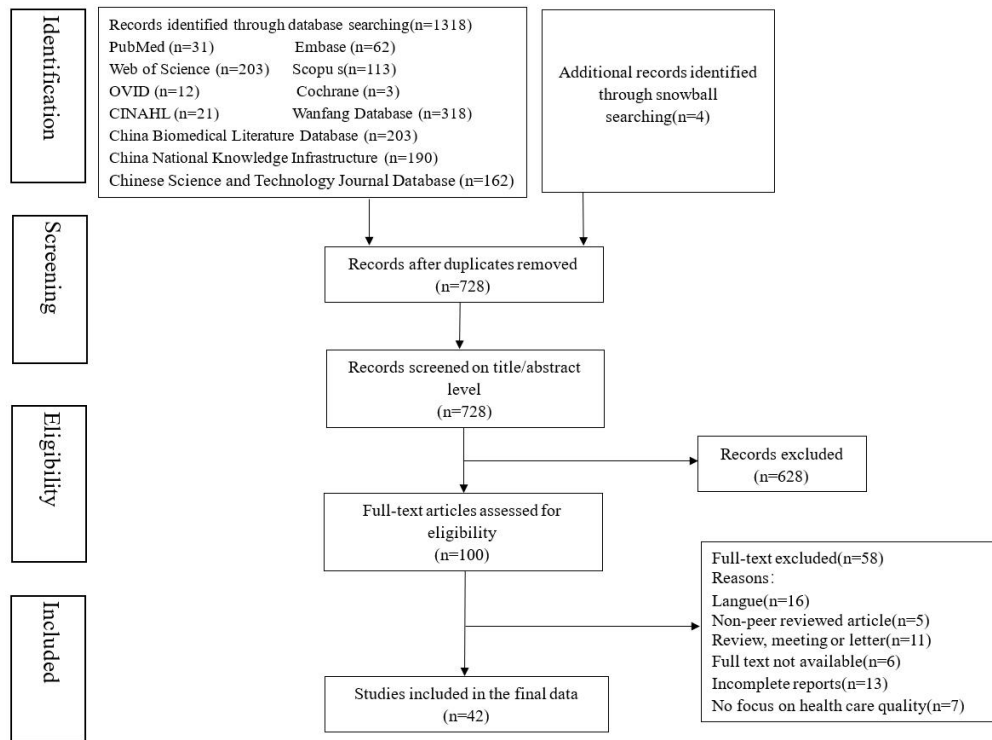
13 Reports vary in form, from simply narrating and describing the study's characteristics to presenting the  
14 common quality attributes and applied results. Tables were used to compare the features of the studies  
15 and extract data. The original quality attributes were presented in the **supplementary table** (Table S1),  
16 extracted directly from the included articles and categorized according to the five categories of Kano  
17 Model. Additionally, the original quality attributes (Table S1) were integrated and analyzed in  
18 accordance with the five attribute categories of Kano Model. The analysis involved quantifying  
19 categories to which each quality attribute in the included article belonged, followed by and then  
20 calculating the percentage to ascertain the corresponding category for each attribute. Importantly, the  
21 attributes were categorized into five dimensions, namely tangibles, efficiency, reliability, empathy, and  
22 assurance.

1  
2  
3  
4  
5  
6  
7

### 3 Result

#### 3.1 Selection of sources of evidence

The initial search identified 1174 articles and removed 689 items after duplicates. Following the screening of titles and abstracts, a total of 80 articles were selected for full-text evaluation. In the end, 42 articles were incorporated into the dataset. (see Fig.1)



8  
9

Fig.1 PRISMA flowchart

#### 3.2 Characteristics of evidence

The selected studies were published between 2005 and 2023. A total of 33 (76.2%) were published in or after 2015. The most studies (n=21) were conducted in inpatient department, following was outpatient department (n=11), emergency department (n=4), basic health unites (n=2), nursing home (n=1), walk-in clinic (n=1), school infirmary (n=1), and public hospital (n=1). Study designs included 32 cross-section studies and 10 contained both cross-sectional and experimental studies. The number of quality attributes

1 varies from 4 to 50. Thirty-two studies used only Kano Model, five studies integrated Kano Model with  
2 the SERVQUAL Model, and three articles mixed Kano Model integrated the Quality Function  
3 Development (QFD).

### 4 3.3 Synthesis of results

#### 5 3.3.1 The common quality attributes

6 From all the reports, we summarized diverse quality attributes (n=63) into five dimensions: (1)  
7 Tangibles, (2) Efficiency, (3) Reliability, (4) Empathy, and (5) Assurance, which are borrowed from the  
8 SERVQUAL model. Further descriptions of these quality attributes are reported in Table 3.

##### 9 3.3.1.1 Tangible

10 This dimension pertains to the appearance of physical facilities, equipment, personnel, and  
11 communication materials. Sixteen quality attributes are encompassed within this dimension. Among  
12 these attributes, three fall under the must-be category, indicating that patients will experience significant  
13 dissatisfaction if these services fail to meet their needs. Fifteen studies (Chiou & Cheng, 2008; Ke et al.,  
14 2021; Patel & Bhatt, 2017; He Jian-qun et al., 2022; Yao Yao et al., 2008; Zhang Zhuo-yi et al., 2013;  
15 Li Zhen, 2017; Su Yin, 2013; LI Teng-hun et al., 2015; Chen et al., 2020; Xiong Wei et al., 2012; Xiong  
16 et al., 2022; Wang Huaiyan et al., 2021; Nie Shijun, 2016; Gong et al., 2019) found patients place  
17 significant importance on the treatment environment, considering a "comfortable and hygienic hospital  
18 environment" as a fundamental requirement.

19 The one-dimensional category comprises seven quality attributes, with the highest proportion being  
20 "maternal and child room." Li Zhen (2017), Su Yin (2013), Wang Huaiyan (2021), and Gong (2019)  
21 have suggested that setting up maternal and child rooms can help mitigate disputes, complaints. Six  
22 researchers have identified three quality attributes that fall under the attractive category, with none being  
23 classified as indifferent or reverse. On the other hand, there are two attributes that do not effectively  
24 differentiate distinguish the category, namely "accessible educational brochures" and "colorful wall".



1 3.3.1.2 Efficiency

2 In the context of healthcare system, efficiency pertains to the effective utilization of resources and the  
3 management of waiting time in processes. As shown in Table 3, this dimension comprises eleven quality  
4 attributes. The majority of them (n=8) are categorized as the one-dimensional attributes, indicating that  
5 individuals have certain expectations for these services and their direct impact on patient satisfaction.  
6 According to twelve studies (Barrios-Ipenza et al., 2021; Ferreira et al., 2021; He et al., 2020; LI  
7 Teng-hun et al., 2015; Chen et al., 2022; Hu et al., 2011; He Jian-qun et al., 2022; Tao Yao et al., 2008;  
8 Zhang Qunxiang et al., 2021; Xiong Wei et al., 2012; Hun Chen et al., 2020), "the reasonable waiting  
9 time" is considered a mutual agreement between the healthcare system and patients, with the potential to  
10 greatly enhance patient satisfaction. In contrast, patients may perceive a prolonged waiting time as a  
11 breach of promise (Godley & Jenkins, 2019). Only one study involved "the level of bureaucracy" and  
12 regarded it as a must-be quality. None of the quality attributes belong to the attractive, indifferent, or  
13 reverse category. Meanwhile, the categorization of "timely resolution of potential problems" and "easy  
14 retrieval of examination results" be determined.

15 3.3.1.3 Reliability

16 Sixteen quality attributes are used to assess the dependability and accuracy of the promised service, as  
17 depicted in Table 3. Eight quality attributes belong to the one-dimensional. The two most prominent  
18 factors pertaining to security are "reliability and assurance of information" and "expected therapeutic  
19 effect," constituting a substantial proportion. Kuo (2011) demonstrated that security plays a crucial role  
20 in supporting healthcare services and can effectively minimize the burden on resources and time.  
21 Six attributes fall into the must-be category, with " professional skills" being the attribute most  
22 commonly cited. None attribute belongs to the attractive, the category and the reverse category.  
23 Moreover, it is challenging to determine the category to which certain attributes (n=2) belong.

24 3.3.1.4 Empathy

1 This dimension pertains to the delivery of personalized and attentive care to customers. Among the  
2 one-dimensional category, there are five quality attributes, with "attention to patient needs" being the  
3 most frequently cited attribute. Xiong et al. (2022) propose that nurses should adopt a proactive  
4 approach by actively inquiring about patients' needs in order to enhance compliance and enhance overall  
5 satisfaction. Three quality attributes belong to the attractive category. "Proper health education" is the  
6 most frequently cited factor, indicating that patients have a pressing demand for health education (Tian  
7 Yuan et al., 2017).  
8 "Adequate protecting patients' privacy" and "comfortable for invasive operations" belongs to the  
9 must-be category, and "respectful of religious belief" is viewed as an indifferent attribute. On the other  
10 hand, the categorization of "resolution of the complaint" remains undetermined..

#### 11 3.3.1.5 Assurance

12 This dimension encompasses eight quality attributes that exemplify employees' knowledge, courtesy,  
13 and ability to convey trust and confidence. Five quality attributes lie in the one-dimensional category.  
14 Among them, "kindness and courteous of personnel" merges as the most frequent attributes.  
15 Barrios-Ipenza (2021) study illustrated that patient satisfaction is likely to increase in direct proportion  
16 to the presence of "kind and courtesy". "Protection of patients' legal rights" falls under the category of  
17 must-be, as it plays a crucial role in effectively mitigating medical disputes ( He et al., 2020; Zhang  
18 Zhuo-yi et al., 2013; Li Zhen, 2017; Su Yin, 2013; Luming Li et al., 2022; Nie Shijun, 2016; Chen et al.,  
19 2022). In addition, it is challenging to address two quality attributes within a specific category.

#### 20 3.3.2 The application of Kano Model

21 According to the findings of the review, 32 studies exclusively utilized the Kano Model, while 10 papers  
22 employ not only Kano Model but also other models for quality improvement. Among them, 5 studies  
23 integrated Kano Model with the SERVQUAL Model (C. M. Chou et al., 2015; Gomez Martin et al.,  
24 2019; Lacerda et al., 2021; Mehrabian et al., 2021; Patel & Bhatt, 2017). In addition, three articles

1 combined Kano Model with QFD (Chiou & Cheng, 2008; Kuo et al., 2011; Zhang Qunxiang et al.,  
2 2021). One study conducted by de Vasconcelos et al. (2022) incorporated the use of the Balanced  
3 Scorecard (BSC) as a research tool. Finally, one study employed the Customer Satisfaction Index  
4 Model(Hu et al., 2011).

5 After conducting a thorough analysis of articles that exclusively utilize the Kano Model, it has been  
6 observed that the application of the Kano Model follows a consistent pattern, which can be divided  
7 into three distinct stages. Step 1 involves the development of the Kano questionnaire. 9 articles  
8 developed it by adapting the existing questionnaire (Ke et al., 2021; Lee et al., 2007; Li Zhen, 2017; Li  
9 Teng-hun et al., 2015; Luming Li et al., 2022; Xiong Wei et al., 2012; Wang Shu-yi, 2005; Zhai et al.,  
10 2015; Nie Shijun, 2016), and 3 article adopt the method of review articles (Materla & Cudney, 2020;  
11 Rozaq et al., 2019; Xiong et al., 2022). Additionally, 4 studies tested the reliability and validity of the  
12 questionnaire (Materla & Cudney, 2020; Li, 2021; Luming Li et al., 2022; Zhai et al., 2015). The Kano  
13 questionnaire consists of a set of attribute-specific questions. Each attribute is assessed through a pair of  
14 questions, comprising functional and dysfunctional aspects (Lee et al., 2007). Step 2 involves the  
15 dissemination of the Kano survey, while step 3 entails the analysis of the collected data. At this stage,  
16 the categorization of each attribute is determined based on its frequency.

17 Of the 5 studies using Kano Model and the SERVQUAL Model, 3 papers (Gomez Martin et al., 2019;  
18 Mehrabian et al., 2021; Patel & Bhatt, 2017) first used the SERVQUAL Model to determine the gap  
19 between patients' perceptions and expectations of healthcare quality, and then applied Kano Model to  
20 identify attributes that significantly influence patients' satisfaction. Chou (2015) administered both the  
21 SERVQUAL questionnaire and Kano questionnaire simultaneously, subsequently identifying the priority  
22 service through data analysis. Another recent study utilized the five dimensions of the SERVQUAL  
23 Model to develop the questionnaire as Kano Model lacked predefined quality classifications (Lacerda et  
24 al., 2021).

1 Three papers integrated Kano Model and QFD to improve healthcare service quality (Chiou & Cheng,  
2 2008; Kuo et al., 2011; Zhang Qunxiang et al., 2021). Firstly, Kano Model was employed to ascertain  
3 the service requirements of patients. Secondly, the Quality Function Deployment (QFD) methodology  
4 was utilized to convert these identified quality attributes into a comprehensive service planning  
5 framework. The final two models have the potential to compensate for the limitations of the Kano  
6 Model. de Vasconcelos (2022) used Kano -BSC to develop a strategic plan for public health. Based on  
7 the results of Kano questionnaire, BSC was employed to ascertain the which characteristics have the  
8 greatest impact on patient satisfaction. This method can not only analyze quality attributes but also  
9 control the cost. Due to the limitations of the Kano Model in analyzing patients' loyalty and complaints,  
10 Hu (2011) combined Kano Model with the Customer Satisfaction Index Model to address this issue.

11

### 12 3.3 The effects of using the Kano Model

13 Nine articles encompass experimental studies (He et al., 2020; Zhang Qi et al., 2022;Chen et al., 2022;Li  
14 Zhen, 2017;Su Yin, 2013; Wang Huaiyan et al., 2021; Tian Yuan et al., 2017; Nie Shijun, 2016; Gong et  
15 al., 2019). All implemented interventions were derived from the findings of Kano Model. Seven studies  
16 were controlled experimental studies (He et al., 2020; Zhang Qi et al., 2022;Chen et al., 2022;Su Yin,  
17 2013; Wang Huaiyan et al., 2021; Tian Yuan et al., 2017; Nie Shijun, 2016), while two studies utilized a  
18 before-after design within the same patient population (Li Zhen, 2017; Gong et al., 2019). The study  
19 sample sizes exhibited a wide range, varying from 45 to 13689. The primary criterion for evaluation was  
20 the patient's satisfaction(n=9). Other indicators of outcomes included the quality of healthcare service  
21 (n=4) and the patient's emotions (n=2). All nine studies' results indicated that the implementation of the  
22 Kano Model has a positive impact on patient satisfaction rates and enhances the overall quality of  
23 healthcare services. Zhang Qi (2022) and Wang Huaiyan (2021) have suggested that Kano Model could  
24 significantly improve patients' emotions, as evidenced by SAS, SDS, and CMFS scores.

1  
2  
3  
4  
5  
6  
7  
8  
9  
10  
11  
12  
13  
14  
15  
16  
17  
18  
19  
20  
21  
22  
23  
24

## 4 Discussion

### 4.1 Quality attributes of Kano Model

Despite the fact that the Kano Model has been the subject of research for more than four decades and has been extensively applied in healthcare services since 2015, its implementation is still in its early stages. There is a need for enhanced clarity in quality attributes pertaining to healthcare. This review reveals that the most quality attributes fall under the one-dimensional category, with the must-be and attractive categories following closely behind. According to the gathered information, the one-dimensional category was the main characteristic among the five dimensions evaluated. (Kametani et al., 2010). Therefore, in order to increase in patient satisfaction, it is advisable to prioritize the enhancement of one-dimensional attributes. In the field of medical research, it has been established that waiting time a crucial factor in patient (Du et al., 2018). Therefore, it is imperative to have adequate facilities in place. This is observation aligns with the information provided in Table 3, which categorizes "proper and adequate medical equipment" as a one-dimensional attribute. Similarly, the importance of "kindness and courteous service attitude" in influencing patient satisfaction has been emphasized in previous studies (Fang et al., 2019; Yusefi et al., 2022). To enhance the perceived value of healthcare services, it is important to address not only the basic needs and performance satisfaction of patients, but also their emotional needs. According to Nilsson-Witell and Fundin (2005), patients seek attractive quality and unexpected. The study found a negative association between spiritual encouragement received and disability, with the strongest relationship observed among individuals with lower levels of interest in encouragement. Also, support received had a large positive association with satisfaction (McWilliams et al., 2017). The need to pay attention is, compared to the other categories, attributes of the must-be category would generate less satisfaction than those involved in providing services. Still, they are the foundation of the whole healthcare system (Paraschivescu & COTÎRLEȚ, 2012).

1 From the perspective of dimensions, efficiency, assurance, and reliability were dimensions with a high  
2 percentage of one-dimensional quality attributes (over 50%), this results indicate that these quality  
3 attribute result in satisfaction when fulfilled and result in dissatisfaction when not fulfilled (Patel &  
4 Bhatt, 2017). They are clear and are something the hospital can focus on, so they are both necessary and  
5 primary conditions for patient satisfaction. In addition, nine quality attributes in the tangible dimension  
6 cannot be clearly categorized, meaning these services need further exploration. The five dimensions  
7 showed an insignificant percentage of the indifferent and reverse attributes. According to the dynamic  
8 principle of the Kano Model (Nilsson-Witell & Fundin, 2005), the quality attribute is not invariable.  
9 With time, one quality attribute can evolve into other quality attribute, showing the evolution process  
10 from indifferent, attractive, one-dimensional, and must-be attributes. Thus, no matter which category the  
11 quality attributes belong to, they still need attention.

12 Due to the shortage of nurses in China, where the nurse-patient ratio is 1:3.56, and the rising costs, nurse  
13 managers need to accurately control costs. The Kano model can be used to provide optimal service to  
14 patients by determining their needs for healthcare services and meeting their necessary needs. Also, it  
15 can integrate patients into the decision, and allocate finite resources reasonably. For example, religious  
16 consideration is the indifference, especially in China. Therefore, nurses can pay little attention to it and  
17 focus on professional skills or service attitude. On the other hand, the provision of healthcare services  
18 that respect and meet the needs of patients is essential to promote positive care outcomes. However,  
19 family overprotection can cause nurse-patient disputes and hinder normal healthcare activities.  
20 Therefore, nurse managers can significantly improve patient satisfaction by refining the nursing process  
21 based on the results of the Kano model.

#### 22 4.2 Kano Model applications and applicable outcomes

23 The healthcare system has many subsystems, such as outpatient clinics, specialized wards in hospitals,  
24 clinics, and daycare centers, which vary according to the type of care, type of service, and various other

1 characteristics (Materla, Cudney, & Antony, 2019). In this review, we find Kano Model has been applied  
2 for all most every healthcare setting. It is most commonly used in the investigation of inpatient wards, as  
3 shown in Table 2. This might relate to the special case of hospitalized patients, such as fall risk (Choi et  
4 al., 2021) and mental health (Yu et al., 2019), which are close to patient satisfaction (Crosier et al., 2012).  
5 Outpatient satisfaction is slightly different from inpatient satisfaction (Lv et al., 2016; Rho et al., 2013);  
6 they are both connected with the ability of personal healthcare communication, while the waiting time  
7 for medical exams affects outpatient satisfaction as well. Therefore, it is necessary to distinguish  
8 strategies for improving patient satisfaction among different patient types.

9 In many quality improvement models, patient satisfaction is traditionally measured unidimensional,  
10 which suggests that the more the quality level increases, the more satisfaction is attained (Huiskonen &  
11 Pirttilä, 1998). Unfortunately, this linear association between healthcare satisfaction and quality is  
12 inaccurate and disregards patients' and users' emotions and perceptions (Chang & Chang, 2013).  
13 Additionally, patient satisfaction reflects a complex mixture of needs, expectations, and healthcare  
14 experiences, which is difficult to measure (Smith, 1992). But Kano Model is based on the two-factor  
15 theory, which assumes patients' satisfaction was not linearly correlated to service functionality.  
16 Furthermore, Kano Model can make the intangible attributes of service quality visible, classify patients'  
17 needs, and use the degree of satisfaction of functional needs to influence user satisfaction. Therefore,  
18 applying Kano Model can prioritize service development and improvement, providing a broad  
19 understanding of customer needs by identifying the factors that have the greatest impact on satisfaction.

20 With the depth and purpose of the research, the integration of the Kano Model and other quality  
21 improvement models occurred. Based on the review outcome, the most common combination is the  
22 Kano Model merges with the SERVQUAL Model. The SERVQUAL Model is usually used in  
23 public-private hospitals and different populations (Parasuraman et al., 1985a), which calculates the gap  
24 between patient expectations and perceptions to enhance healthcare service quality and increase patient

1 satisfaction (Materla, Cudney, & Antony, 2019). The aforementioned statement fails to acknowledge the  
2 impact of diverse quality attributes on the level of satisfaction experienced. Therefore, combining with  
3 the Kano Model not only remedies this issue but also corrects the shortcoming that the Kano Model fails  
4 to consider the perception difference between different customers, which can develop a healthcare  
5 service management strategy. The QFD Model's prominent feature is to collect user requirements using a  
6 complex and indirect analytic hierarchy method and convert these requirements into applications  
7 through a series of images, intuitive graphics and scientific weighted evaluation methods, and then  
8 determines the service standard (Ginting et al., 2020). The problem is that it generally assumes linear  
9 relationships between customer satisfaction and the fulfillment of customer requirements. But, a linear  
10 function cannot express patient satisfaction only, and there will be an optimal satisfaction value  
11 (Kirgizov & Kwak, 2022). According to this view, satisfaction and dissatisfaction are not opposites.  
12 Instead, they should be seen as a continuum of various equilibrium states. Hence, the Kano-QFD model  
13 can make the Kano Model more operable in measured quality attributes, and potentially promising  
14 quality attributes that are often ignored can be effectively addressed.

15 The application of the Kano Model, regardless of the context, has been found to have the advantage of  
16 enhancing the quality of healthcare services. In addition to enhancing patient satisfaction rates, the  
17 implementation of the Kano Model has been found to have a positive impact on individuals suffering  
18 from anxiety or depression (Zhang Qi et al., 2022). Powell (2018) and Zhang (2022) illustrated that  
19 empathy predicted lower distress on average and psychological treatment could reduce patients' negative  
20 emotions. Additionally, it was found that psychological treatment had the potential to alleviate negative  
21 emotions experienced by patients. The quality attributes of psychological services, particularly the  
22 dimension of empathy, can be considered as essentially one-dimensional categories.

#### 23 4.3 Implication for future research

24 In Table 3, "information platform" belongs to the one-dimensional category, i.e., patients expect to have



1 an intelligent or Internet-related platform and hospital. In fact, this quality attribute is closely related to  
2 the rise of Internet+nursing. Under the concept of patient-centeredness, the components of this system  
3 can be identified through the Carnot model. Investigating the classification of patient needs and utilizing  
4 the degree of satisfaction of the needs to develop the system, which can satisfy the patient's needs as  
5 well as save resources and improve competitiveness. Also, the mobile health app can be developed in the  
6 same way. In short, Kano Model enables healthcare providers to listen to patients and maximize patient  
7 satisfaction.

8

#### 9 Limitation

10 There exist several limitations to this review. Initially, the research was limited to English and Chinese  
11 publications as translation services were not accessible. The publication that has the most influence is  
12 typically written in English. Secondly, during the phase of evidence selection, certain articles may be  
13 excluded from the review if the search term is not explicitly mentioned in the title or abstract. The search,  
14 however, produced a significant number of results, suggesting the relevance of the search. Thirdly, the  
15 evaluation of the studies' quality was not conducted. The limited scope of the review compromised its  
16 validity. The present study offers a comprehensive overview of the application of the Kano Model in  
17 enhancing the quality of healthcare research. Moreover, it adheres to the accepted methodology of  
18 scoping review.

#### 19 5 Conclusion

20 This review aimed to integrate facts regarding the varied applications of the Kano Model and the map of  
21 the most important quality criteria in the healthcare industry. Patient satisfaction is one of the most  
22 prevalent measures used to assess the quality of healthcare services. Hence, locating a proper  
23 improvement strategy to date is a central theme. We found that reliability, efficiency, and assurance  
24 dimensions are essential for preserving patient satisfaction, while the tangible and empathy dimensions

1 are hard to make clear. On the other hand, combining the Kano Model with other models compensate for  
2 its flaws and improves the credibility of the research. Meanwhile, "Internet +nursing " has played a  
3 crucial role in "high-efficiency and low-risk" healthcare delivery(Yang et al., 2021). Consequently, it is  
4 imperative for future research to prioritize the enhancement of internet-based information systems in  
5 order to effectively meet the needs of healthcare professionals and patients.

6

7

Table 2: Characteristics of included studies

Author, year, country	Design	Settings of Participants	Number of Quality attributes	Categories of Quality Attribute					Model application
				M	O	A	I	R	
Wang Shu-yi et al. 2005/China	Descriptive research	Outpatient clinic	40	16	17	3	4	0	Kano Model
Lee, Chang, and Chao 2007/Taiwan, China	Descriptive research	Inpatient department	26	0	22	0	4	0	Kano Model
Chiou and Cheng 2008/Taiwan, China	Descriptive research	Inpatient department	4	2	1	1	0	0	Kano Model + Quality Function Development (QFD)
Yao Yao et al. 2008/China	Descriptive research	Inpatient department	24	3	16	5	0	0	Kano Model
Hu et al. 2011/ Taiwan, China	Descriptive research	Inpatient department	37	8	26	3	0	0	Kano Model +the Customer Satisfaction Index Model
Kuo et al. 2011/Taiwan,China	Descriptive research	Discharged department	22	0	20	1	1	0	Kano Model + Quality Function Development (QFD)
Cordero-Ampuero et al., 2012/ Spanish	Descriptive research	Plastic Surgery Ward	13	0	1	9	2	1	Kano Model
Xiong Wei et al. 2012/China	Descriptive research	Outpatient clinic	20	7	9	3	1	0	Kano Model
Zhang Zhuo-yi et al. 2013/China	Descriptive research	Emergency department	50	25	12	8	2	3	Kano Model
Su Yin 2013/China	Descriptive + Experimental research	Pediatric outpatient and emergency department	25	10	9	6	0	0	Kano Model
Chou et al. 2015/Taiwan, China	Descriptive research	Nursing home	24	0	6	14	4	0	Kano Model +SERVQUAL model
Li Teng-hun et al. 2015/China	Descriptive research	Outpatient clinic	21	8	8	3	2	0	Kano Model
Zhai et al. 2015/China	Descriptive research	Midwife outpatient clinic	24	1	10	13	0	0	Kano Model

Author, year, country	Design	Settings of Participants	Number of Quality attributes	Categories of Quality Attribute					Model application
				M	O	A	I	R	
Li Zhen 2017/China	Descriptive + Experimental research	Pediatric Emergency department	23	14	3	3	3	0	Kano Model
Patel and Bhatt 2017/India	Descriptive research	Inpatient department	50	13	34	3	0	0	Kano Model +SERVQUAL models
Tian Yuan et al. 2017/China	Descriptive + Experimental research	Geriatric department	30	5	7	17	1	0	Kano Model
Gomez Martin et al. 2019/Spanish	Descriptive quantitatively research	Burn Unit	11	2	0	3	4	2	Kano Model +SERVQUAL model
Gong et al. 2019/China	Descriptive + Experimental research	Pediatric ward	23	9	9	5	0	0	Kano Model
Rozaq et al. 2019/Indonesia	Descriptive research	Inpatient department	20	0	11	0	9	0	Kano Model
Howsawi et al. 2020/Saudi Arabia	Descriptive research	Primary healthcare centers	16	0	12	3	1	0	Kano Model
Hun Chen et al. 2020/China	Descriptive research	Inpatient department	27	9	13	5	0	0	Kano Model
He et al. 2020/China	Descriptive + Experimental research	Outpatient clinic	15	9	3	3	0	0	Kano Model
Tejaswi Materla and Cudney 2020/the USA	Descriptive research	Walk-in clinics	18	1	15	2	0	0	Kano Model
Barrios-Ipenza et al. 2021/Peru	Descriptive research	Outpatient clinic	31	3	27	0	0	1	Kano Model
Ke, Chen, and Gou 2021/China	Descriptive research	Outpatient clinic	17	9	0	6	2	0	Kano Model
Lacerda et al. 2021/ Brazil	Descriptive research	Basic Health Units	23	0	21	1	1	0	Kano Model +SERVQUAL models
Mehrabian 2021/Iran	Descriptive research	Inpatient department	25	0	11	13	0	1	Kano Model +SERVQUAL models

Author, year, country	Design	Settings of Participants	Number of Quality attributes	Categories of Quality Attribute					Model application
				M	O	A	I	R	
Ferreira et al. 2021/ Portugal	Descriptive research	Pediatric ward	31	3	27	0	0	1	Kano Model
Wang Huaiyan et al. 2021/China	Descriptive + Experimental research	Pediatric outpatient clinic	15	3	5	4	2	1	Kano Model
Zhang Qunxiang et al. 2021/China	Descriptive research	Inpatient department	24	2	11	6	5	0	Kano Model +Quality Function Development (QFD)
de Vasconcelos et al. 2022/Brazil	Descriptive research	Public hospital	20	4	16	0	0	0	Kano Model +the Balanced Scorecard
He Jian-qun et al. 2022/China	Descriptive research	Physical examination center	21	8	9	3	1	0	Kano Model
Chen Chen et al.2022/ China	Descriptive + Experimental research	Outpatient clinic	25	14	8	0	3	0	Kano Model
Luming Li et al. 2022/China	Descriptive research	Inpatient department	26	5	10	10	1	0	Kano Model
Xiong et al. 2022/China	Descriptive research	School infirmary	12	3	3	6	0	0	Kano Model
Zhang Qi et al. 2022/China	Descriptive + Experimental research	Thoracic surgery department	17	9	7	1	0	0	Kano Model
Cudney et al., 2023/ the USA	Descriptive research	The wound care/ostomy clinic	17	0	16	1	0	0	Kano Model
Zhu et al., 2023/ China	Descriptive + Experimental research	Pediatric Medical Ward	25	11	10	4	0	0	Kano Model
Wang et al., 2023/ China	Descriptive research	Cardiology ward	12	2	5	3	1	0	Kano Model
Yao Yao et al., 2023/China	Descriptive research	Obstetrical department	25	9	8	8	0	0	Kano Model
Sun Weigeet al., 2023/ China	Descriptive research	Breast surgery ward	27	2	22	2	1	0	Kano Model

M=Must-be, O=One-dimensional, A=Attractive, I=Indifferent, R=Reverse

Table 3: The typical quality attributes

Dimension	Attribute	Kano Categories				
		M	O	A	I	R
Tangible	Systematic layout of Hospital departments	0	4 (80%)	1 (20%)	0	0
	Proper safety and comfort measures	6 (23.1%)	6 (23.1%)	9 (34.6%)	5 (19.2%)	0
	Proper medical equipment	1 (6.7%)	12 (80%)	2 (13.3%)	0	0
	Comfortable and hygienic hospital environment	15 (46.9%)	8 (25%)	7 (21.9%)	2 (6.25%)	0
	Nutritious and appropriate meals	5 (41.7%)	3 (25%)	4 (33.3%)	0	0
	Comfortable single room	0	1 (25%)	2 (50%)	1 (25%)	0
	Informatization platform	0	7 (58.3%)	5 (41.7%)	0	0
	Clear sign	7 (70%)	1 (10%)	2 (20%)	0	0
	Maternal and child room	0	4 (100%)	0	0	0
	Moving line	0	1 (100%)	0	0	0
	Clean employee's clothing	1 (12.5%)	6 (75%)	0	1 (12.5%)	0
	Adequate and intact supply (e.g.: water, electricity et.al.)	4 (36.4%)	7 (63.6%)	0	0	0
	Accessible educational brochures	2 (28.6%)	2 (28.6%)	2 (28.6%)	1 (14.3%)	0
	Voice interactive intelligent robot	0	0	1 (100%)	0	0
	Set up a complaint mailbox	0	0	0	1 (100%)	0
Colorful wall	0	0	1 (50%)	1 (50%)	0	
Efficiency	The level of bureaucracy	1 (100%)	0	0	0	0
	Reasonable waiting time for a medical consultation	1 (6.25%)	12 (75%)	3 (18.75%)	0	0
	Time spent on patient care	1 (33.3%)	2 (66.7%)	0	0	0
	Business hours	1 (9.1%)	8 (72.7%)	2 (18.2%)	0	0
	Convenience of transportation	3 (21.4%)	9 (64.2%)	1 (7.1%)	1 (7.1%)	0
	Timeliness of disease diagnosis	1 (25%)	3 (75%)	0	0	0
	Easy and convenient registration	1 (14.3%)	6 (85.7%)	0	0	0
	Timely resolution of potential problems	1 (33.3%)	1 (33.3%)	1 (33.3%)	0	0
	Easy retrieval of examination results	0	2 (50%)	2(50%)	0	0
	High efficiency of hospitalization procedures	2 (15.4%)	9 (69.2%)	2 (15.4%)	0	0
	Reasonable arrangement of physical examination	2 (33.3%)	3(50%)	1 (16.7%)	0	0

Dimension	Attribute	Kano Categories				
		M	O	A	I	R
Reliability	Professional skills	21 (52.5%)	14 (35%)	4 (10%)	1(2.5%)	0
	Detailed explanation for diagnosis and treatment	13 (43.3%)	11 (36.7%)	6 (20%)	0	0
	Quick staff response	6 (42.9%)	5 (35.7%)	3 (21.4%)	0	0
	Timely provide the promised service on	0	9 (56.3%)	7 (43.7%)	0	0
	Regular medications	1 (20%)	3 (60%)	0	1 (20%)	0
	Well-arranged medical rounds and treatment	2 (28.6%)	3 (42.8%)	2 (28.6%)	0	0
	Well-scheduled patient activities	1 (25%)	2 (50%)	0	1 (25%)	0
	All equipment work properly	0	2(66.7%)	1 (33.3%)	0	0
	Good quality medicines	1 (50%)	1 (50%)	0	0	0
	Expected therapeutic effect	5 (29.4%)	12 (70.6%)	0	1	0
	No side effect	6 (66.7%)	1 (11.1%)	1 (11.1%)	0	1 (11.1%)
	Reliability and assurance of information	2 (16.7%)	10 (83.3%)	2 (16.7%)	0	0
	Continuous whole-course team service	0	1 (50%)	1 (50%)	0	0
	Active rescue	0	1(100%)	0	0	0
	Correct and completed case history	2 (50%)	1 (25%)	1 (25%)	0	0
Accurate bills	12 (42.9%)	11 (39.3%)	2 (7.1%)	2 (7.1%)	1 (3.6%)	
Empathy	Personalized care	2 (22.2%)	6 (66.7%)	0	1(11.1%)	0
	Attention to patient needs	2 (6.7%)	22 (73.3%)	4 (13.3%)	2 (6.7%)	0
	Resolution of complaints	2 (40%)	1 (20%)	2(40%)	0	0
	Good communication and patient engagement	6 (22.2%)	18 (66.7%)	2 (7.4%)	1 (3.7%)	0
	No discrimination to the patients	1 (25%)	3 (75%)	0	0	0
	Psychological treatment for relatives	1 (16.7%)	0	4 (66.7%)	1(16.7%)	0
	Priority to patient' interests	1 (25%)	1(25%)	2 (50%)	0	0
	Adequate protection of patient's privacy	7 (46.7%)	5 (41.7%)	2 (16.7%)	1 (8.3%)	0
	Respectful of religious belief	0	1 (33.3)	0	2 (66.7%)	0
	Emotional comfort	0	2(100%)	0	0	0
	Comfortable for invasive operations	1(100%)	0	0	0	0
	Proper health education	9 (20.5%)	14 (31.8%)	17 (38.6%)	4(9.1%)	0

Dimension	Attribute	Kano Categories				
		M	O	A	I	R
Assurance	Kindness and courteous service attitude	14 (30.4%)	25 (54.3%)	6 (13.1%)	1(2.2%)	0
	Feeling safe at the hospital	0	3 (50%)	1(25%)	1(25%)	0
	Spiritual encouragement	1 (7.1%)	9 (64.3%)	4 (28.6%)	0	0
	Sympathetic staff	0	2(100%)	0	0	0
	Insurance consultant	0	1 (50%)	1(50%)	0	0
	Understandable expression	1 (50%)	0	0	1 (50%)	0
	Protection of patients' legal rights	7 (46.7%)	5 (33.3%)	3 (20%)	0	0
	Good medical ethics	0	5 (100%)	0	0	0

M=Must-be, O=One-dimensional, A=Attractive, I=Indifferent, R=Reverse



Table 4: the applicable results of Kano Model

Author, year, country	Design	Sample size	Intervention	Evaluation	Result
Su Yin 2013/China	Controlled experimental study	292	Strengthen the professional training for nurses; Improve the medical environment; Strengthen health education	The rate of patient's satisfaction	Increase satisfaction ratio
Nie Shijun 2016/China	Controlled experimental study	125	Improve hardware equipment; Improve nurses' professional knowledge and emergency response ability; Strengthen communication ability; Enhance health education; improve basic daily necessities	Satisfaction of children's families; Quality of care	① Increase satisfaction ratio ② Improved the scores of nursing service quality in all aspects
Tian Yuan et al. 2017/China	Controlled experimental study	186/190	Practice must be quality attributes; Provide rehabilitation function exercise guidance; Detailed discharge guidance; Explanation of patients' questions; Provide health education	Satisfaction of healthcare service	The satisfaction of the observation group was significantly higher than the control group
Li Zhen 2017/China	before-after study in the same patient	285	Improve the environment; Improve professional skills Develop a good medical attitude; Increase health education	The rate of patient's satisfaction	Increase satisfaction ratio
Gong et al. 2019/China	before-after study in the same patient	227	Strengthen the ability to quickly and accurately identify critically ill children; Improve the inspection system; Improve various operation standards; Pay attention to health education; Improve the ward environment	Satisfaction of children's families; Quality of care	① The scores of treatment environment, service attitude, operation technology and health education rise ② Reduced the rates of disputes and complaints
He et al. 2020/China	Controlled experimental study	13689	Enhance professional skills and etiquette	The rate of patient's satisfaction; The defect rate in outpatient clinic	① Increase satisfaction ratio; ② Reduce the number of clinic defects

Author, year, country	Design	Sample size	Intervention	Evaluation	Result
Wang Huaiyan et al. 2021/China	Controlled experimental study	45	Improve medical environment, service attitude and professional skills	Nursing satisfaction of parents; Nursing quality score; Fear during the visit; Visit compliance	① Healthcare service satisfaction in the observation group was higher than control group; ② The scores of medical environment, service attitude, professional skills and health education in the observation group were higher than the control group; ③ Frankl scale score in the observation group was higher than the control group ④ CMFS score was lower than the control group
Chen et al. 2022/China	Controlled experimental study	329	Improve the medical environment Convenient consultation and self-service; Improve the construction of specialized nursing clinics; Examination report interpretation service; Medication guidance	The rate of patient's satisfaction	Increased patient satisfaction
Zhang Qi et al. 2022/China	Controlled experimental study	120	Practice must be quality attributes; Provide rehabilitation function exercise guidance; Discharge guidance; Provide health education	Health knowledge mastery; Negative emotions; Nursing service satisfaction	① The scores of thoracic surgery-related disease knowledge, nursing points, rehabilitation knowledge, and basic nursing of health knowledge awareness in the observation group were higher than those in the control group; ② The SAS and SDS scores in the observation group were lower than those in the control group

CMFS: Child Medical Fear Scale

SAA: Self-Rating Anxiety Scale

SDS: Self-Rating Depression Scale

#### Funding

This work was supported by the Zhejiang Provincial Hospital Association [grant numbers 2022ZHA-YZJ207] and Health Commission of Zhejiang Province [grant numbers 2021RC011].

#### Declaration of Competing Interest

The authors of this manuscript have no competing interests. They moreover have no other interests that may have influenced the results and discussion of this paper.

#### Supplemental material

The supplementary file includes supplementary table (Table S1) which illustrates the original quality attributes.

#### Data Available

This is a review article, so data availability is not applicable to this article as no new data were created or analyzed in this study.

## Reference

- Arksey, H., & O'Malley, L. (2005). Scoping studies: Towards a methodological framework. *International Journal of Social Research Methodology*, 8(1), 19–32.  
<https://doi.org/10.1080/1364557032000119616>
- Barrios-Ipenza, F., Calvo-Mora, A., Criado-Garcia, F., & Curioso, W. H. (2021). Quality Evaluation of Health Services Using the Kano Model in Two Hospitals in Peru. *International Journal of Environmental Research and Public Health*, 18(11). <https://doi.org/10.3390/ijerph18116159>
- Berwick, Donald, Megan Snair, and Sania Nishtar. 2018. "Crossing the Global Health Care Quality Chasm: A Key Component of Universal Health Coverage." *JAMA*, 320 (13): 1317–18.  
<https://doi.org/10.1001/jama.2018.13696>.
- Chang, W.-J., & Chang, Y.-H. (2013). Patient satisfaction analysis: Identifying key drivers and enhancing service quality of dental care. *Journal of Dental Sciences*, 8(3), 239–247.  
<https://doi.org/10.1016/j.jds.2012.10.006>
- Chen, M. C., Hsu, C. L., & Wu, H. S. (2019). Develop the healthcare logistics service with kano model. *Journal of Quality*, 26(1), 1–22. Scopus. [https://doi.org/10.6220/joq.201902\\_26\(1\).0001](https://doi.org/10.6220/joq.201902_26(1).0001)
- Chiou, C. C., & Cheng, Y. S. (2008). An Integrated Method of Kano Model and QFD for Designing Impressive Qualities of Healthcare Service. Ieem: 2008 International Conference on Industrial Engineering and Engineering Management, (3), 590. <https://doi.org/10.1109/IEEM.2008.4737937>
- Choi, J., Choi, S. M., Lee, J. S., Seo, S. S., Kim, J. Y., Kim, H. Y., & Kim, S. R. (2021). Development and validation of the fall risk perception questionnaire for patients in acute care hospitals. *Journal of Clinical Nursing*, 30(3–4), 406–414. <https://doi.org/10.1111/jocn.15550>
- Chou, C. M., Sutanto, C., & Wu, S. K. (2015). Improving service quality by prioritizing service attributes using SERVQUAL and Kano model: A case study of nursing home in Taiwan. In S. Yamamoto (Ed.), *Lect. Notes Comput. Sci.* (9172). Springer Verlag; Scopus.

[https://doi.org/10.1007/978-3-319-20612-7\\_49](https://doi.org/10.1007/978-3-319-20612-7_49)

- Chou, C., Sutanto, C., & Chen, C. K. (2015). Integrating Kansei Engineering method and Kano model for service of nursing home in Taoyuan, Taiwan. In S. Yamamoto (Ed.), *New Ergonomics Perspective—Selected Papers of the 10th Pan-Pacific Conference on Ergonomics* (pp. 3–8). CRC Press/Balkema; Scopus. <https://doi.org/10.1201/b17990-3>
- Corbella Jané, A., & Maturana Domínguez, S. (2003). Citizens' role in health services: Satisfaction behavior: Kano's model, Part 1. *Quality Management in Health Care*, 12(1), 64–71.
- Cordero-Ampuero, J., Darder, A., Santillana, J., Caloto, M. T., & Nocea, G. (2012). Evaluation of patients' and physicians' expectations and attributes of osteoarthritis treatment using Kano methodology. *Quality of Life Research*, 21(8), 1391–1404. <https://doi.org/10.1007/s11136-011-0058-6>
- Crosier, M., Scott, J., & Steinfeld, B. (2012). Improving Satisfaction in Patients Receiving Mental Health Care: A Case Study. *The Journal of Behavioral Health Services & Research*, 39(1), 42–54. <https://doi.org/10.1007/s11414-011-9252-0>
- Cudney, E. A., Reynolds Kueny, C., & Murray, S. L. (2023). Analyzing patient satisfaction in a rural wound care center. *Tqm Journal*. <https://doi.org/10.1108/TQM-08-2022-0273>
- de Vasconcelos, C. R., de Carvalho, R. S. M. C., de Melo, F. J. C., & de Medeiros, D. D. (2022). Improving Quality in Public Health Service: An Integrated Approach to the Kano Model and the Balanced Scorecard. *Journal of Nonprofit and Public Sector Marketing*. 35:2, 215-241, <https://doi.org/10.1080/10495142.2022.2066598>
- Du, G., Li, X., Hu, H., & Ouyang, X. (2018). Optimizing Daily Service Scheduling for Medical Diagnostic Equipment Considering Patient Satisfaction and Hospital Revenue. *Sustainability*, 10(9). <https://doi.org/10.3390/su10093349>
- Fang, J., Liu, L., & Fang, P. (2019). What is the most important factor affecting patient satisfaction – a study based on gamma coefficient. *Patient Preference and Adherence*, 13, 515–525.

<https://doi.org/10.2147/PPA.S197015>

Ferreira, D. C., Marques, R. C., Nunes, A. M., & Figueira, J. R. (2021). Customers satisfaction in pediatric inpatient services: A multiple criteria satisfaction analysis. *Socio-Economic Planning Sciences*, 78.

<https://doi.org/10.1016/j.seps.2021.101036>.

Ginting, R., Ishak, A., Malik, A. F., & Satrio, M. R. (2020). Product Development with Quality Function Deployment (QFD): A Literature Review. *IOP Conference Series: Materials Science and Engineering*, 1003(1), 012022. <https://doi.org/10.1088/1757-899X/1003/1/012022>

<https://doi.org/10.1088/1757-899X/1003/1/012022>

Godley, M., & Jenkins, J. B. (2019). Decreasing Wait Times and Increasing Patient Satisfaction: A Lean Six Sigma Approach. *Journal of Nursing Care Quality*, 34(1), 61.

<https://doi.org/10.1097/NCQ.0000000000000332>.

Gomez Martin, C., Garcia Morato, R. A., de los Reyes Cortes, N., Fernandez-Canamaque, J. L., & Holguin, P. (2019). Patient satisfaction in a Spanish burn unit. *Burns*, 45(2), 341–347.

<https://doi.org/10.1016/j.burns.2018.03.015>

Hejaili, F. F., Assad, L., Shaheen, F. A., Moussa, D. H., Karkar, A., AlRukhaimi, M., Barhamein, M., Al Suwida, A., Al Alhejaili, F. F., Al Harbi, A. S., Al Homrany, M., Attar, B., & Al-Sayyari, A. A.

(2009). Culture-Related Service Expectations: A Comparative Study Using the Kano Model.

*Quality Management in Healthcare*, 18(1), 48.

<https://doi.org/10.1097/01.QMH.0000344593.40886.b5>

Howsawi, A., Althageel, M., Mohaideen, N., Khan, M., Alzahrani, A., Alkhadir, M., Alaqeel, S., Alkathiri, M., & Hawsawi, R. (2020). Application of the Kano model to determine quality attributes of patient's care at the primary healthcare centers of the Ministry of Health in Saudi Arabia, 2019.

*Journal of Family and Community Medicine*, 27(3), 178–185. Scopus.

[https://doi.org/10.4103/jfcm.JFCM\\_92\\_20](https://doi.org/10.4103/jfcm.JFCM_92_20)

Hu, H.-Y., Cheng, C.-C., Chiu, S.-I., & Hong, F.-Y. (2011). A study of customer satisfaction, customer

- loyalty and quality attributes in Taiwan's medical service industry. *African Journal of Business Management*, 5(1), 187–195.
- Kalf, R. R. J., Zuidgeest, M., Delnoij, D. M. J., Bouvy, M. L., & Goettsch, W. G. (2022). Bridging health technology assessment and healthcare quality improvement using international consortium of health outcomes measurement standard sets. *International Journal of Technology Assessment in Health Care*, 38(1), e6. <https://doi.org/10.1017/S0266462321000520>
- Kametani, T., Nishina, K., & Suzuki, K. (2010). Attractive Quality and Must-be Quality from the Viewpoint of Environmental Lifestyle in Japan. In H.-J. Lenz, P.-T. Wilrich, & W. Schmid (Eds.), *Frontiers in Statistical Quality Control 9* (pp. 315–327). Physica-Verlag HD. [https://doi.org/10.1007/978-3-7908-2380-6\\_20](https://doi.org/10.1007/978-3-7908-2380-6_20)
- Ke, J., Chen, X. J., & Gou, J. P. (2021). Follow-up data analysis of Internet hospital patients based on Kano Model. *Proceedings - 2021 International Conference on Big Data Engineering and Education, BDEE 2021*, 1–5. Scopus. <https://doi.org/10.1109/BDEE52938.2021.00007>
- Kirgizov, U. A., & Kwak, C. (2022). Quantification and integration of Kano's model into QFD for customer-focused product design. *Quality Technology & Quantitative Management*, 19(1), 95–112. <https://doi.org/10.1080/16843703.2021.1992070>
- Kruk, M. E., Gage, A. D., Arsenault, C., Jordan, K., Leslie, H. H., Roder-DeWan, S., Adeyi, O., Barker, P., Daelmans, B., Doubova, S. V., English, M., García-Elorrio, E., Guanais, F., Gureje, O., Hirschhorn, L. R., Jiang, L., Kelley, E., Lemango, E. T., Liljestrand, J., Pate, M. (2018). High-quality health systems in the Sustainable Development Goals era: Time for a revolution. *The Lancet Global Health*, 6(11), e1196–e1252. [https://doi.org/10.1016/S2214-109X\(18\)30386-3](https://doi.org/10.1016/S2214-109X(18)30386-3)
- Kuo, R. J., Wu, Y. H., Hsu, T. S., & Chen, L. K. (2011). Improving outpatient services for elderly patients in Taiwan: A qualitative study. *Archives of Gerontology and Geriatrics*, 53(2), e209–e217. <https://doi.org/10.1016/j.archger.2010.09.013>

- Lacerda, A. B., da Silva Souza, A. S., Lucia Da Silva, G. K., De Azevedo, E. H. M., & Coutinho De Melo, F. J. (2021). Basic Health Units services quality assessment through Kano and SERVQUAL models. *Benchmarking-an International Journal*, 29(9), 2858-2880.  
<https://doi.org/10.1108/BIJ-06-2021-0351>
- Lee, W. I., Chang, T. H., & Chao, P. J. (2007). The relationship between quality of healthcare service and customer satisfaction- an example of hospitals in Taiwan. *Journal of the Chinese Institute of Industrial Engineers*, 24(1), 81–95. <https://doi.org/10.1080/10170660709509024>
- Lin, F., Chen, Q., Lin, M., He, A., Chen, H., Chen, Y., Chen, H., He, W., Hu, Y., Wang, J., Lin, X., & Wang, X. (2022). Clinical Effect of Nursing Based on the Kano Model in Emergency Multiple Injuries. *Evidence-Based Complementary and Alternative Medicine*, 2022, e3586290.  
<https://doi.org/10.1155/2022/3586290>
- Lv, Y., Xue, C., Ge, Y., Ye, F., Liu, X., Liu, Y., & Zhang, L. (2016). Analysis of Factors Influencing Inpatient and Outpatient Satisfaction with the Chinese Military Health Service. *PLOS ONE*, 11(3), e0151234. <https://doi.org/10.1371/journal.pone.0151234>
- Materla, T., & Cudney, E. A. (2020). An integrated methodology for evaluating patient service quality. *Total Quality Management & Business Excellence*, 31(15–16), 1738–1759.  
<https://doi.org/10.1080/14783363.2018.1505494>
- Materla, T., Cudney, E. A., & Antony, J. (2019). The application of Kano model in the healthcare industry: A systematic literature review. *Total Quality Management and Business Excellence*, 30(5–6), 660–681. <https://doi.org/10.1080/14783363.2017.1328980>
- Materla, T., Cudney, E. A., & Hopen, D. (2019). Evaluating factors affecting patient satisfaction using the Kano model. *International Journal of Health Care Quality Assurance*, 32(1), 137–151.  
<https://doi.org/10.1108/IJHCQA-02-2018-0056>
- Matzler, K., Hinterhuber, H. H., Bailom, F., & Sauerwein, E. (1996). How to delight your customers.



Journal of Product & Brand Management, 5(2), 6–18.

<https://doi.org/10.1108/10610429610119469>

McWilliams, L. A., Kowal, J., Verrier, M. J., & Dick, B. D. (2017). Do Pain-Related Support Preferences Moderate Relationships Between Chronic Pain Patients' Reports of Support Received and Psychosocial Functioning? *Pain Medicine*, 18(12), 2331–2339.

<https://doi.org/10.1093/pm/pnw346>

Mehrabian, F., Gilani, M. H. N., & Almaee, A. (2021). Patient Satisfaction With the Quality of Health Services Provided by Public Hospitals in Rasht, Iran. *Journal of Holistic Nursing and Midwifery*, 31(1), 17–25. <https://doi.org/10.32598/jhnm.31.1.2022>

National Academies of Sciences. (2018). Crossing the Global Quality Chasm: Improving Health Care Worldwide. <https://doi.org/10.17226/25152>

Nilsson-Witell, L., & Fundin, A. (2005). Dynamics of service attributes: A test of Kano's theory of attractive quality. *International Journal of Service Industry Management*, 16(2), 152–168.

<https://doi.org/10.1108/09564230510592289>

Paraschivescu, A. O., & COTÎRLEȚ, A. (2012). Kano Model. *Economy Transdisciplinarity Cognition*, 15(2).

Parasuraman, A., Zeithaml, V. A., & Berry, L. L. (1985a). A Conceptual Model of Service Quality and Its Implications for Future Research. *Journal of Marketing*, 49(4).

<https://www.proquest.com/docview/1296654986/citation/BFB9D2962A0F4BDEPQ/1>

Patel, N., & Bhatt, N. K. H. (2017). An Empirical Study On Integration Of Servqual And Kano Model For Measuring Service Quality Of Hospitals In Ahmedabad. *Indian Journal of Commerce and Management Studies*, 8(3), 77–95. <https://doi.org/10.18843/ijcms/v8i3/10>

Powell, P. A. (2018). Individual differences in emotion regulation moderate the associations between empathy and affective distress. *Motivation and Emotion*, 42(4), 602–613.

<https://doi.org/10.1007/s11031-018-9684-4>

Rho, M. J., Suh, W. S., & Jin, K. (2013). Medical Service Factors Associated with Patient Satisfaction: The Difference between Inpatient and Outpatient of A Medium-sized Hospital. *Journal of Digital Convergence*, 11(2), 331–339.

Rozaq, R., Larasati, D. M., Tampubolon, D. H., Ramadhani, R., & Ulkhaq, M. M. (2019). An Application of the Kano Model for Assessing Customer Satisfaction of Hospital Service Quality. 2019 IEEE 6th International Conference on Industrial Engineering and Applications (ICIEA), 278–283.  
<https://doi.org/10.1109/IEA.2019.8714936>

Shaheen, A. M., El-Hneiti, M., Albqoor, M., & Ahmad, M. (2019). Predictors of quality of care provided for older adults. *Journal of Nursing Management*, 27(8), 1747–1755.  
<https://doi.org/10.1111/jonm.12869>

Shie, A.-J., Huang, Y.-F., Li, G.-Y., Lyu, W.-Y., Yang, M., Dai, Y.-Y., Su, Z.-H., & Wu, Y. J. (2022). Exploring the Relationship Between Hospital Service Quality, Patient Trust, and Loyalty From a Service Encounter Perspective in Elderly With Chronic Diseases. *Frontiers in Public Health*, 10.  
<https://www.frontiersin.org/articles/10.3389/fpubh.2022.876266>

Tello, J. E., Barbazza, E., & Waddell, K. (2020). Review of 128 quality of care mechanisms: A framework and mapping for health system stewards. *Health Policy (Amsterdam, Netherlands)*, 124(1), 12–24.  
<https://doi.org/10.1016/j.healthpol.2019.11.006>

Tricco, A. C., Lillie, E., Zarin, W., O'Brien, K. K., Colquhoun, H., Levac, D., Moher, D., Peters, M. D. J., Horsley, T., Weeks, L., Hempel, S., Akl, E. A., Chang, C., McGowan, J., Stewart, L., Hartling, L., Aldcroft, A., Wilson, M. G., Garritty, C., Straus, S. E. (2018). PRISMA Extension for Scoping Reviews (PRISMA-ScR): Checklist and Explanation. *Annals of Internal Medicine*, 169(7), 467–473. <https://doi.org/10.7326/M18-0850>

Wang, Z., Yang, Y., Zhu, Y., Liu, M., Zhao, X., Xiao, L., Zhang, Y., Liang, F., Pang, X., Yang, Z., & Weng,

- H. (2023). Spiritual care needs among Chinese elders hospitalized for severe chronic heart failure: An observational study. *Palliat Support Care*, 21(1), 108–117.  
<https://doi.org/10.1017/s1478951522001237>
- World Health Organization, World Bank Group, & OECD. (2018). *Delivering Quality Health Services: A Global Imperative for Universal Health Coverage*. Geneva: World Health Organization.  
<https://doi.org/10.1596/978-92-4-151390-6>
- Yang, F., Shu, H., & Zhang, X. (2021). Understanding “Internet Plus Healthcare” in China: Policy Text Analysis. *Journal of Medical Internet Research*, 23(7), e23779. <https://doi.org/10.2196/23779>
- Yu, J.-Y., Dong, Z.-Q., Liu, Y., Liu, Z.-H., Chen, L., Wang, J., Huang, M.-J., Mo, L.-L., Luo, S.-X., Wang, Y., Guo, W.-J., He, N., Chen, R., & Zhang, L. (2019). Patient-doctor concordance of perceived mental health service needs in Chinese hospitalized patients: A cross-sectional study. *Annals of Palliative Medicine*, 8(4). <https://doi.org/10.21037/apm.2019.08.06>
- Yusefi, A. R., Sarvestani, S. R., Kavosi, Z., Bahmaei, J., Mehrizi, M. M., & Mehralian, G. (2022). Patients’ perceptions of the quality of nursing services. *BMC Nursing*, 21(1), 131.  
<https://doi.org/10.1186/s12912-022-00906-1>
- Zhang, S., Liu, Y., Song, S., Peng, S., & Xiong, M. (2022). The Psychological Nursing Interventions Based on Pygmalion Effect Could Alleviate Negative Emotions of Patients with Suspected COVID-19 Patients: A Retrospective Analysis. *International Journal of General Medicine*, 15, 513–522.  
<https://doi.org/10.2147/IJGM.S347439>
- Zhou, W.-J., Wan, Q.-Q., Liu, C.-Y., Feng, X.-L., & Shang, S.-M. (2017). Determinants of patient loyalty to healthcare providers: An integrative review. *International Journal for Quality in Health Care*, 29(4), 442–449. <https://doi.org/10.1093/intqhc/mzx058>
- Zhu, Z., Chen, L., & Li, K. (2023). Effect of nursing interventions based on the Kano model on symptom relief and parental psychological behavior in children with febrile seizures. *Frontiers in*

Psychology, 13. <https://doi.org/10.3389/fpsyg.2022.1067727>

HE Jian-qun, XIE Xu-min, and LIU Jing. 2022. “Research on Application of Kano Model in Improving Service Quality of Physical Examination Center”. *Hospital Management Forum*, 39(5):51-54,43.

DOI:10.3969/j.issn.1671-9069.2022.05.013.

Bingwen He, Lihua Peng, Yongpin Wu, Shizhou Li, Banghui Ouyang, and Renbin Huang. 2020.

“Investigation of quality attributes of outpatient doctors based on Kano model”. *Chin J Hosp Admin*, 37(8): 666-670. DOI: 10.3760/cma.j.cn111325-20210127-0008740.

Yao Yao, Zhang Meixia, Li Miao, and Chang Wenyu. 2008. “Application of Kano model in continuous improvement of hospital service quality”. *Chin J Hosp Admin*, 24(11): 746-748.

Yao Yao, Pan Shilei, Luo Manlan, Guan Mankai, & Qin Aikai. (2023). Investigation of Service Demand for Pregnant Women during Vaginal Delivery Based on Kano Model, 30(2), 65–69.

<https://doi.org/10.13912/j.cnki.chqm.2023.30.2.15>

Sun Weige, Zhang Ran, Luo Jie, Du Yue, Cai Weixin. (2023). Survey of needs of the whole process management service in day surgery patients based on the Kano model. In *Chinese Nursing Management*, 23(07):994-998.

Qian Zhang. 2012. “Investigation and analysis of satisfaction of stroke inpatients”. (thesis), Qingdao University. DOI:10.7666/d.y2087728.

Zhang Zhuo-yi, Huang Xiao-min, Zhou Jing-jing, and Su Jian-ming. 2013. “Application of Kano Model in the Quality Improvement of Emergency Services”. *Hospital Management Forum*, (8):23-27.

DOI:10.3969/j.issn.1671-9069.2013.08.010.

Zhang Qi, Hu Junjun, Jin Wei. 2022. “Effect observation of improving nursing service based on Kano model for inpatients in thoracic surgery”. *Nursing Practice and Research*, 19(16):2492-2495.

DOI:10.3969/j.issn.1672-9676.2022.16.024.

Zhang Qunxiang, Xiong Wei, Zhu Lingfeng, and Shi Mi. 2021. “Research on medical service quality

- improvement of a public hospital based on Kano model and quality function deployment”. *Chin J Hosp Admin*, 37(4): 306-311. DOI: 10.3760/cma.j.cn111325-20210218-00128
- Chen Chen, Wang Jing, Meng Min, and Li Zongying. 2022. “Investigation and improvement strategies of outpatient service demand under Kano model”. *Journal of Qilu Nursing*, 28(1):35-38.  
DOI:10.3969/j.issn.1006-7256.2022.01.011.
- Li Zhen. 2017. “Analysis of the Factors Influencing the Satisfaction of Pediatric Emergency Nursing Patients Based on Kano Mode”. *Journal of Henan Medical College*, 29 (06): 566–68.  
DOI:10.3969/j.issn.1008-9276.2017.06.023.
- Su Ying, Li Su-fang, ZHENG Qun, Qin Shang-gou, and LI Shao-huan. 2013. “Effect of Kano model on improving satisfaction of nursing service in outpatient and emergency department of pediatrics”. *Chinese Journal of Modern Nursing*, 19(24):2885-2888.  
DOI:10.3760/cma.j.issn.1674-2907.2013.24.001.
- Li Teng-hun, SHI Ying-kang, and WEN Jin. 2015. “Survey and Analysis of Outpatient Service of the Third-level Grade-A Hospital Based on Kano Model”. *Chinese Hospital Management*, 3 (36-38).
- Li Luming, Li Wei, Wang Yingqiang et al. 2022. “Identification and Improvement of Influencing Factors of Inpatients Satisfaction Based on Kano Model”. *Chinese Health Quality Management*, 29(3):52-56. DOI:10.13912/j.cnki.chqm.2022.29.03.15.
- Lin Hai-yan, PENG Hong-mei, CHEN Ya, ZENG Jie-mei, LIU Jun-fang, MA Xin-ji, LUO Kang-feng. (2020). Application of Kano Model Analysis Method in Midwifery Outpatient Service and its Influence on Service Quality. *Smart Healthcare*, 6(22), 21–23.  
<https://doi.org/10.19335/j.cnki.2096-1219.2020.22.010>
- Wang Zhangyi; Li Xuechun; Wang Yue; Wang Zhao; Xiao Luwei; Pang Xiaoli. (2021). . Attributes of nursing service needs among the institutionalized elderly based on Kano model approach, 36(18),

78–81. <https://doi.org/10.3870/j.issn.1001-4152.2021.18.078>

Xiong Wei, Zhang Qunqun, Feng Xiaobin, and Jiang Tao. 2012. “Based on the kano model of a public hospital service quality improvement research”. *Chin J Hosp Admin*, 28(08): 592-595. DOI:

10.3760/cma.j.issn.1000-6672.2012.08.012

Xiong Jingjing, ZHU Juanfang, JIANG Qinqin, ZHANG Zehong. 2022. “Analysis on the change of non-technical service needs among young outpatients under the background of mobile

Internet-based on Kano Model”. *Chinese Hospitals*, 26(6):36-38.

DOI:10.19660/j.issn.1671-0592.2022.6.11.

Wang Huaiyan, Yu Feifei, and Li Hong. 2021. “Application effect of Kano model in the improvement of children outpatient nursing management process”. *Nursing Practice and Research*,

18(15):2326-2329. DOI:10.3969/j.issn.1672-9676.2021.15.031.

Wang Shu-yi, Qian Xing-san. 2005. “Study on Kano Model and it's Application in the Hospital Quality Management”. *Industrial Engineering and Management*, 10(4):104-106,120.

DOI:10.3969/j.issn.1007-5429.2005.04.024.

Tian Yuan, Li Ling, Hu Liping. 2017. “Improvement of elderly nursing service in the department of geriatrics based on the Kano model”. *Journal of Nursing Science*32(7):1-3,13.

DOI:10.3870/j.issn.1001-4152.2017.07.001.

Zhai Jinguo, Zheng Yanfang, Cai Wenzhi, Zhong Mei, Shen Jian, Deng Xin, and Zeng Fanli. 2015.

“The application of Kano model analysis in midwife outpatient service quality management”.

*Chin J Prac Nurs*,31(28): 2151-2154. DOI: 10.3760/cma.j.issn.1672-7088.2015.28.014

Nie Shijun. 2016. “Influences of Kano model on surgical emergency patients'satisfaction and quality of nursing care”. *Chinese Journal of Modern Nursing*, 22(7):916-919.

DOI:10.3760/cma.j.issn.1674-2907.2016.07.007.

Hun Chen, Yanhua Yao, and Feng Yang. 2020. “Satisfaction Survey and Improvement Strategy of

Inpatients in Large General Hospitals Based on Kano Model ”.Popular Science & Technology .22  
(12): 147–50.DOI:10.3969/j.issn.1008-1151.2020.12.046.

Lei Gong, Zhujun Gu, and Rongjian Pan. 2019. “Effect evaluation of process improvement based on Kano  
model in pediatric ward management”.Shanghai Nursing,19 (10): 55–58.  
<https://doi.org/10.3969/j.issn.1009-8399.2019.10.015>.