

1 **Title:**

2 **SGLT2 inhibition reduces cardiac surgery-associated acute kidney injury: An**  
3 **open-label randomized study.**

4 **Short title:**

5 MERCURI-1 trial

6 **Authors:**

7 Lars I.P. Snel<sup>1,2,3,9</sup>, Maartina J.P. Oosterom-Eijmael<sup>1,2,3</sup>, Elena Rampanelli<sup>3,4,5</sup>, Yugeesh R.

8 Lankadeva<sup>6,7</sup>, Mark P. Plummer<sup>7,8</sup>, Benedikt Preckel<sup>1,9</sup>, Jeroen Hermanides<sup>1,9</sup>, Daniel H. van

9 Raalte<sup>2,3</sup>, Abraham H. Hulst<sup>1,3,5</sup>.

10 **Affiliations:**

11 <sup>1</sup> Department of Anesthesiology, Amsterdam University Medical Center, Amsterdam, The  
12 Netherlands

13 <sup>2</sup> Department of Endocrinology, Amsterdam University Medical Center, Amsterdam, The  
14 Netherlands

15 <sup>3</sup> Amsterdam Cardiovascular Sciences Research Institute, Amsterdam, the Netherlands

16 <sup>4</sup> Department of Experimental Vascular Medicine, Amsterdam University Medical Center,  
17 Amsterdam, The Netherlands

18 <sup>5</sup> Amsterdam Gastroenterology Endocrinology Metabolism Research Institute, Amsterdam, the  
19 Netherlands

20 <sup>6</sup> Preclinical Critical Care Unit, Florey Institute of Neuroscience and Mental Health, The  
21 University of Melbourne, Melbourne, VIC, Australia.

22 <sup>7</sup> Department of Critical Care, Melbourne Medical School, The University of Melbourne,  
23 Melbourne, VIC, Australia.

24 <sup>8</sup> Intensive Care Unit Research, Royal Adelaide Hospital, Adelaide, SA, Australia.

25 <sup>9</sup> Amsterdam Public Health Research Institute, Quality of care, Amsterdam, the Netherlands

26 **Corresponding author:**

27 Maartina Oosterom-Eijmael

28 Department of Anesthesiology, Amsterdam UMC location AMC

29 Meibergdreef 9, 1105 AZ Amsterdam, The Netherlands

30 m.j.p.eijmael@amsterdamumc.nl

31 +31205669111

32 **Total word count:**

33 Abstract: 280

34 Total: 2872 (excluding title page, abstract, references, tables and figure legends)

35 **Abstract**

36 **Background**

37 Cardiac surgery-associated acute kidney injury (CSA-AKI) is a common postoperative  
38 complication. Currently, no effective preventative strategies exist to mitigate CSA-AKI. Sodium-  
39 glucose transporter-2 (SGLT2) inhibitors reduced acute kidney injury (AKI) incidence in large,  
40 randomized placebo-controlled, cardiovascular and kidney outcome trials conducted in patients  
41 with chronic kidney disease. We hypothesized that perioperative SGLT2 inhibition could also  
42 reduce CSA-AKI.

43 **Methods**

44 In this open-label phase IV, randomized, parallel-group, pilot study, adult patients undergoing  
45 elective cardiac surgery with cardiopulmonary bypass were randomized to receive the SGLT2  
46 inhibitor, empagliflozin (10 mg; oral), once daily three days prior to surgery and continued to  
47 two days after surgery compared with standard-of-care. Biomarkers for acute kidney injury  
48 (AKI), including serum and urinary neutrophil gelatinase-associated lipocalin (NGAL), serum and  
49 urinary kidney injury molecule-1 (KIM-1), and serum hypoxia-inducible factor-1 $\alpha$  (HIF-1 $\alpha$ ) were  
50 measured. Additional outcomes included AKI incidence according to Kidney Disease: Improving  
51 Global Outcomes (KDIGO) criteria as well as metabolic parameters, including ketone body  
52 concentrations and glycemic control.

53  
54

55 **Results**

56 Between March 2022 and April 2023, 55 patients were included (sex: 73% male, age:  $66 \pm 10$   
57 years, BMI:  $28 \pm 4$  kg/m<sup>2</sup>, empagliflozin n = 25, control n = 30) in the intention-to-treat analysis.  
58 Empagliflozin significantly reduced the incidence of AKI (20% vs 66.7%; absolute difference  
59 46.7%, 95% CI, -69.7 – -23.6; P=.001). Following surgery, urinary NGAL, and KIM-1 were found  
60 to increase in both arms, whereas a significant increment in serum HIF-1 $\alpha$  after surgery was  
61 solely observed in the control group. We observed no between-group differences in the  
62 incidence of (euglycemic) ketoacidosis or hypoglycemic events.

63 **Conclusions**

64 Perioperative SGLT2 inhibition, compared with standard of care, significantly reduced the  
65 incidence of CSA-AKI. These findings warrant validation in large-scale, double-blind, placebo-  
66 controlled, randomized trials.

67 **Trial Registry:**

68 <https://onderzoekmetmensen.nl/en/trial/26563> Identifier: NL9561

69

70

71

72

73

OFFICIAL

74 **Clinical perspective:**

75 **What Is New?**

- 76 • In this open-label, randomized, controlled, pilot trial perioperative use of sodium  
77 glucose transporter-2 (SGLT2) inhibition with empagliflozin significantly reduced the  
78 incidence of acute kidney injury (AKI) by 46.7% (95% CI, -69.7 – -23.6; P=.001) compared  
79 to the control group.
- 80 • The level of ketone bodies increased significantly during cardiac surgery, however, there  
81 was no additional effect of empagliflozin treatment.

82 **What Are the Clinical Implications?**

- 83 • These results suggest that perioperative treatment with SGLT2 inhibitors might decrease  
84 the risk of cardiac surgery-associated (CSA)-AKI.
- 85 • These findings warrant validation in large-scale, double-blind, placebo-controlled,  
86 randomized trial, which is currently ongoing.

87

OFFICIAL

88 **Non-standard Abbreviations and Acronyms**

89 AKI: Acute kidney injury

90 CI: Confidence interval

91 CKD: Chronic kidney disease

92 CPB: Cardiopulmonary bypass

93 CSA-AKI: Cardiac surgery-associated acute kidney injury

94 eGFR: estimated glomerular filtration rate

95 HIF1 $\alpha$ : Hypoxia-inducible factor 1 alpha

96 IU: International units

97 KIM-1: Kidney injury molecule 1

98 NGAL: Neutrophil gelatinase-associated lipocalin

99 KDIGO: Kidney Disease: Improving Global Outcomes

100 SGLT2: Sodium-glucose transporter-2

101 T1D: Type 1 diabetes

102 T2D: Type 2 diabetes

103

104

## 105 Introduction

106 Acute kidney injury (AKI) is a common complication following cardiac surgery, with a reported  
107 incidence of up to 70%. (1) Cardiac surgery-associated (CSA)-AKI is associated with  
108 postoperative morbidity and mortality, prolonged hospital stay, and increased healthcare costs.  
109 (2, 3) In addition, CSA-AKI can have long-term consequences, including the increased risk of  
110 developing chronic kidney disease (CKD) and reduced life expectancy compared to patients  
111 without CSA-AKI. (4-7)

112 Despite several attempts to prevent CSA-AKI with a variety of pharmacological interventions, no  
113 effective mitigation strategies have been developed to date. (2, 8, 9) Sodium-glucose  
114 transporter-2 (SGLT2) inhibitors have been reported to prevent AKI in large cardiovascular and  
115 kidney outcome trials in patients with or without type 2 diabetes (T2D). (10-13)

116 SGLT2 inhibitors reduce proximal sodium and glucose re-uptake, leading to an acute reduction  
117 in estimated glomerular filtration rate (eGFR) due to activation of tubuloglomerular feedback.  
118 This reduction in eGFR leads to a lesser kidney workload. Lower filtered sodium load can reduce  
119 kidney oxygen consumption, while SGLT2-induced improvements in insulin sensitivity and  
120 substrate metabolism may further reduce kidney oxidative requirements. (14-16) SGLT2  
121 inhibitors may be protective in settings of renal tissue hypoxia during cardiac surgery, which has  
122 been directly reported in clinically relevant large animal models and in humans indirectly by  
123 measurement of bladder urinary oxygenation. (17, 18) However, the safety of SGLT2 inhibitors  
124 in cardiac surgery should also be considered, given the risk of SGLT2 inhibitor-associated  
125 perioperative ketoacidosis caused by the fasted state and surgical stress. (19) This serious side

OFFICIAL

126 effect has prompted the Food and Drug Administration (FDA) to recommend interruption of  
127 SGLT2 inhibitors at least 3 days prior to major surgery. (19, 20) Here, we performed an open-  
128 label, randomized, pilot study to evaluate the effects of SGLT2 inhibition on biomarkers of AKI,  
129 AKI incidence according to Kidney Disease: Improving Global Outcomes (KDIGO) criteria and  
130 incidence of ketoacidosis and hypoglycemia in individuals undergoing cardiac surgery. We  
131 hypothesized that perioperative SGLT2 inhibition with empagliflozin would reduce both  
132 biomarkers of postoperative AKI and the incidence of AKI.

133



## 134 **Methods**

### 135 **Trial design**

136 We performed a prospective, single-center, open-label, phase IV, randomized, controlled  
137 (standard care), balanced (1:1), pilot study. The study protocol was approved by the medical  
138 ethics committee of the Amsterdam UMC and by the Dutch competent authority before the  
139 initiation of the trial. The trial protocol was registered at the Dutch Trial Register  
140 (<https://www.onderzoekmetmensen.nl>), number NTR9561. An independent study monitor  
141 validated good clinical practice adherence and data collection quality. The study was conducted  
142 in compliance with the latest version of the Declaration of Helsinki and Good Clinical Practice  
143 guidelines. Neither a data safety management board nor a steering committee was involved in  
144 the decision-making of this study. All participants signed informed consent prior to any trial-  
145 related activity.

### 146 **Study participants**

147 Patients eligible for inclusion were aged between 18 and 90 years and scheduled to undergo  
148 elective cardiopulmonary bypass (CPB) assisted cardiac surgery at the Amsterdam University  
149 Medical Centre (UMC), a tertiary academic hospital in the Netherlands. Exclusion criteria  
150 included prior treatment with SGLT2 inhibitors, type 1 diabetes (T1D), T2D with a body mass  
151 index (BMI) below 25 (possibly phenotypically resembling T1D), estimated glomerular filtration  
152 rate (eGFR) <30 ml/min, systolic blood pressure below 100 mmHg, a history of ketoacidosis, a  
153 known or suspected allergy to the trial product, or individuals who were breastfeeding,  
154 intending to become pregnant or not using adequate contraceptive methods.

155 10

156 **Intervention**

157 After providing written informed consent, participants were randomly assigned to the  
158 empagliflozin or control group. Patients in the empagliflozin group received a single dose of  
159 empagliflozin 10 mg orally (Boehringer Ingelheim International GmbH via Alliance Healthcare  
160 Nederland B.V.) every morning, starting from three days prior to surgery, until two days after  
161 surgery. The control group received no intervention and received standard perioperative care.  
162 We initially intended to start empagliflozin treatment seven days before surgery, however, due  
163 to logistical constraints in the planning of surgery, it became evident that this approach was not  
164 feasible. Therefore, we adjusted the number of treatments before surgery in the protocol from  
165 seven to three days prior to surgery before the recruitment of the first participant.

166 **Procedures**

167 Patients with T2D had their preoperative glucose management adjusted, if necessary, under the  
168 supervision of an endocrinology consultant, according to the treatment algorithm shown in  
169 Supplementary Figure 1. At the time of inclusion, on the morning of the day of surgery (before  
170 the first incision), and on the first and second morning after surgery (D1 and D2), serum and  
171 urine samples were collected to measure neutrophil gelatinase-associated lipocalin (NGAL),  
172 kidney injury molecule (KIM)-1, hypoxia-inducible factor 1 alpha (HIF1 $\alpha$ ) and creatinine.  
173 Furthermore, arterial blood gases and ketone levels were collected at four specific time points  
174 on the day of surgery: before the start of surgery (T1), at time of start of cardiopulmonary  
175 bypass (T2), at the end of cardiopulmonary bypass (T3) and at time of transport to the intensive  
176 care unit (ICU) (T4). As part of standard perioperative care, patients with insulin-dependent T2D

177 received a continuous glucose/insulin infusion preoperatively. In case ketoacidosis was  
178 suspected based on increased anion gap metabolic acidosis with the presence of ketone bodies,  
179 patients were to be treated with a mixed glucose/insulin infusion to suppress ketogenesis and  
180 subsequently closely monitored and treated according to local practice. Postoperatively,  
181 creatinine levels and urinary output were measured according to usual care (creatinine was  
182 measured daily and urinary output hourly until the removal of the urinary catheter upon  
183 patients' discharge from ICU). We also recorded glucose levels as measured during routine care  
184 (four times daily during ICU admission) and insulin administrations when prescribed by the  
185 treating physicians. Adverse events were collected by reviewing in-hospital electronic health  
186 records. The study workflow is summarized in Figure 1.

## 187 **Outcomes**

188 The primary outcome was the between-group difference of mean postoperative serum NGAL  
189 concentrations measured on postoperative day two. Other outcomes included between-group  
190 differences in any of the following measures: AKI incidence rates according to the KDIGO  
191 criteria, postoperative urinary NGAL/creatinine ratios, serum KIM-1 concentrations, urinary  
192 KIM-1/creatinine ratios, and serum HIF1 $\alpha$  levels. Additionally, we calculated the difference in  
193 biomarker concentrations between the first and second postoperative days compared to the  
194 day of surgery. Metabolic secondary outcomes include the between-group difference of  
195 intraoperative ketone levels, the number of ketoacidosis events (defined as a combination of  
196 ketonemia >3 mmol/l in combination with a high-anion gap metabolic acidosis), the mean  
197 intraoperative glucose level, the mean peak postoperative glucose level measured in the first  
198 48 hours postoperatively, the incidence of hypoglycemia (defined as glucose < 4.0 mmol/L), the

199 incidence of hyperglycemia (defined as glucose > 10.0 mmol/L) and the incidence of insulin  
200 administrations. Additionally, we compared the length of stay in the ICU and postoperative in-  
201 hospital complications such as mortality, renal replacement therapy, cerebrovascular accident  
202 (CVA), cardiac tamponade, gastrointestinal bleeding, anemia requiring transfusion, atrial  
203 fibrillation, other cardiac arrhythmia's, pacemaker implantations, infection of the mediastinum,  
204 pneumonia, and delirium.

## 205 **ELISA**

206 Serum and urinary concentrations of NGAL and KIM-1 were measured with, respectively, the  
207 LEGEND MAX™ Human NGAL (Lipocalin-2) ELISA Kit (Biolegend, cat.N. 443407) and the human  
208 KIM1 (TIM-1) ELISA Kit (ABCAM, cat.N. AB235081). Serum HIF-1A levels were detected using the  
209 HIF1A Human ELISA Kit (Invitrogen, cat.N. EHIF1A). All measurements were performed after the  
210 study had concluded and done according to the manufacturer's instructions. Urinary levels of  
211 NGAL and KIM-1 were normalized for concentrations of creatinine, detected by standard tests  
212 at the hospital laboratory of clinical chemistry.

## 213 **Sample size**

214 Based on a previous cohort study that found a difference in mean serum NGAL of 120 ng/ml  
215 between patients with and without AKI after cardiac surgery, we defined a between-group  
216 difference of 120 ng/ml in serum NGAL concentration on postoperative day 2 as a relevant  
217 outcome. (21) To detect a difference of 120 ng/ml, with 90% power, alpha at 0.05, we would  
218 need 40 patients per group.

219

220 **Randomization and blinding**

221 Randomization was performed electronically through the data management system Castor EDC  
222 (Ciwit BV, Amsterdam, the Netherlands) using balanced-block randomization, with variable-size  
223 random computer-generated blocks of two, four, or six and an allocation ratio of 1:1. By design  
224 (open-label study), patients, care providers nor study personnel were blinded to treatment  
225 allocation.

226 **Statistical analyses**

227 We performed all analyses on the intention-to-treat population. When biomarkers were below  
228 the detection limit, we assigned the value of zero. Discrete data are presented as counts with  
229 percentages per group. Continuous variables are presented as mean  $\pm$  SD or median  
230 (interquartile range), depending on the distribution of the data. Within-group comparisons  
231 were conducted using the paired Student t-test. Between-group comparisons were performed  
232 using Fisher's exact test for dichotomous outcomes and unpaired Student's t-test or Mann-  
233 Whitney U-tests for continuous variables, depending on the distribution of the data. Absolute  
234 differences between groups are presented with their corresponding 95% confidence intervals  
235 (95% CI). Repeated measurements were analyzed with generalized linear mixed models. To  
236 compare between the treatment groups, we used the interaction term of the randomization  
237 group with time. Additionally, we analyzed postoperative kidney biomarkers by calculating the  
238 change in concentration compared to the day of surgery. Statistical analyses were performed  
239 using SPSS (IBM version 24; IBM Corp., Armonk, New York).

240

## 241 **Results**

242 Between March 2022 and March 2023, we enrolled 60 patients planned to undergo cardiac  
243 surgery, of which 29 patients were included in the empagliflozin group and 31 in the control  
244 group (Figure 2). Before the start of the intervention, five patients were excluded (one  
245 withdrew consent, two surgeries were cancelled for logistic reasons, and in two cases, the type  
246 of surgery was changed, thereby not meeting the inclusion criteria). All remaining patients were  
247 included in the intention-to-treat analysis (25 in the empagliflozin group, 30 in the control  
248 group). All patients in the intervention group started with empagliflozin three days prior to  
249 surgery.

250 Baseline characteristics of all included patients are summarized in Table 1. Overall, patient  
251 characteristics were well balanced between groups, except for age, with patients in the  
252 empagliflozin group being older. Patients were predominantly male, with relevant overweight,  
253 and had normal kidney function at baseline. T2D was present in 5 (9%) patients; none of them  
254 were treated with insulin therapy prior to hospital admission.

## 255 **Kidney injury**

256 The development of AKI characterized according to KDIGO criteria was observed in 5/25 (20%)  
257 patients in the empagliflozin group and 20/30 (66.7%) patients in the control group, with a  
258 difference of 46.7% between groups (95% CI, -69.7 – -23.6; P=.001) (Figure 3). In March 2023,  
259 the trial leadership team reviewed this significant between-group disparity in clinical outcomes.  
260 Concluding that these findings would require confirmation in a large, blinded and placebo-  
261 controlled trial, the trial leadership team ceased patient enrollment in this open-label pilot trial

262 and notified the medical ethics committee of trial termination. Upon completion of data  
263 collection, blood and urine samples were sent for analysis.

#### 264 **Kidney biomarkers**

265 Serum NGAL concentrations on the second postoperative day did not differ significantly  
266 between groups, empagliflozin:  $70.8 \pm 6.0$  ng/ml vs control:  $68.5 \pm 10.0$  ng/ml, with a difference  
267 of 2.3 ng/ml (95% CI, -6.9 – 2.3;  $P=.317$ ). Other biomarkers for kidney injury, including urinary  
268 NGAL and KIM-1 in plasma and urine, did not demonstrate significant between-group  
269 differences either (Figure 4). In contrast, we did observe a difference between study groups in  
270 the development of serum HIF1 $\alpha$  in the perioperative period. In the control group, HIF1 $\alpha$   
271 increased significantly from  $110 \pm 152$  ng/ml before surgery to  $171 \pm 182$  ng/ml on the first day  
272 after surgery ( $P=.04$ ) and to  $198 \pm 268$  ng/ml on the second day ( $P=.098$ ). In contrast, in the  
273 empagliflozin group, HIF1 $\alpha$  did not change from baseline levels in the postoperative period  
274 (Figure 4). A complete overview of all biomarker concentrations is available in Supplementary  
275 Table S1.

#### 276 **Metabolic effects**

277 Ketone levels increased during surgery (Figure 5) in both groups; in 41 (76%) patients, the peak  
278 levels of ketones ( $1.1 \pm 0.6$  mmol/L) were measured at the end of CPB. The increase in ketone  
279 levels did not differ significantly between the groups. In the empagliflozin group, ketone levels  
280 increased by  $1.0 \pm 0.5$  mmol/L compared to  $0.8 \pm 0.5$  mmol/L in the control group, difference  
281 0.2 mmol/L (95% CI, -0.5 – 0.1;  $P=.208$ ). There was no significant difference in ketone

282 development between the groups (P value of the interaction term time\*group = .75).

283 Ketoacidosis was not observed in any of the patients.

284 The mean intraoperative blood glucose was  $6.6 \pm 1.1$  mmol/L in the empagliflozin group

285 compared to  $7.1 \pm 1.5$  mmol/L in the control group, difference 0.5 mmol/L (95% CI, -0.3 – 1.2;

286  $P=.194$ ). The intraoperative incidence of hyperglycemia, hypoglycemia, and insulin

287 administrations did not differ significantly between groups (Table 2). The peak glucose

288 concentration during the first 48 hours postoperative was  $9.3 \pm 1.5$  mmol/L in the empagliflozin

289 group compared to  $10.9 \pm 2.5$  mmol/L in the control group, difference of 1.6 mmol/L (95% CI,

290 0.5 – 2.8;  $P=.007$ ). During the postoperative period, the incidence of observed hyperglycemia

291 was 7/25 (28%) in the empagliflozin group compared to 18/30 (60%) in the control group,

292 difference 32% (95% CI, -56.8 – -7.2;  $P=.029$ ). In the empagliflozin group, 2/25 (8%) patients

293 required insulin administrations due to hyperglycemia, compared to 11/30 (37%) patients in the

294 control group, with a difference of 29% between groups (95% CI, 8.4 – 48.9;  $P=.023$ ). None of

295 the participants received insulin to treat ketoacidosis.

## 296 **Adverse Events**

297 No significant between-group differences were observed in the incidence of in-hospital

298 postoperative complications (Supplemental Table 2). The length of stay in ICU was 23 (19-42)

299 hours in the empagliflozin group compared to 32 (21-47) hours in the control group ( $P=.096$ ).

300



## 301 Discussion

302 In this open-label, randomized controlled, pilot study we investigated the effect of SGLT2  
303 inhibition with empagliflozin on CSA-AKI. This pilot study was prematurely stopped due to the  
304 large between-group difference in AKI incidence; empagliflozin reduced the AKI incidence by  
305 47% compared to the control group. HIF1 $\alpha$  levels significantly increased postoperatively in the  
306 control group, whereas there was no significant change observed in the empagliflozin group.  
307 AKI reduction was not reflected in changes in NGAL and KIM-1. Ketone bodies increased  
308 significantly during surgery in both groups without an additional effect of empagliflozin. There  
309 was no significant between-group difference in the incidence of hypoglycemia (which occurred  
310 only once in the control group), while hyperglycemia was reduced.

311 CSA-AKI remains a frequent unresolved complication after cardiac surgery, with reported  
312 incidences varying between 20% and 70%, depending on the type of surgery, the definition of  
313 AKI used, and the protocol for AKI monitoring. (1) Our findings align with this high incidence,  
314 exemplified by an incidence of AKI in the control group of 66.7%, which can be attributed to our  
315 meticulous monitoring regimen of hourly urine output and daily creatinine measurements. This  
316 study provides compelling evidence that perioperative SGLT2 inhibition with empagliflozin  
317 offers protection against CSA-AKI. Our findings are in agreement with three meta-analyses  
318 consistently demonstrating a reduction in AKI incidence in large-scale cardiovascular and kidney  
319 outcome trials in outpatients. (10, 13, 22) The hypothesis that SGLT2 inhibitors provide kidney  
320 protection comes from the theory that SGLT2 inhibitors reduce kidney workload and may,  
321 therefore, improve kidney tissue oxygenation.

322 To estimate the effect of empagliflozin on kidney hypoxia responses, we measured HIF1 $\alpha$  levels,  
323 an established biomarker for hypoxia. We found that serum HIF1 $\alpha$  levels remained stable in the  
324 empagliflozin group, whereas HIF1 $\alpha$  increased in the control group after surgery. This is in line  
325 with earlier studies reporting that SGLT2 inhibition suppressed the HIF1- $\alpha$  pathway. (23, 24)  
326 Additionally, it has been shown (in mice) that SGLT2 inhibition after ischemia/reperfusion injury  
327 decreased the level of endothelial thinning, hypoxia, and the development of kidney  
328 fibrosis.(25)

329 While the clinical incidence of AKI was significantly lower after SGLT2 inhibition, this was not  
330 reflected by NGAL and KIM-1 differences. We selected serum and urinary NGAL and KIM-1  
331 because they are widely studied biomarkers for AKI. (8) This study demonstrates that NGAL and  
332 KIM-1 do not reflect the kidney protective effects of SGLT2 inhibition following cardiac surgery.

333 In light of the FDA warning regarding the risk of ketoacidosis in patients perioperatively treated  
334 with SGLT2 inhibitors,(26) we measured the development of ketones during surgery. We  
335 observed a rise in ketone levels during surgery; however, no significant differences were  
336 observed between treatment groups. In addition, none of the patients were diagnosed with  
337 ketoacidosis during or after surgery. It is noteworthy that, by chance, insulin-dependent T2D  
338 patients were not included in this study. Had they been included, the risk of ketoacidosis would  
339 have been mitigated through the standard administration of glucose/insulin infusion  
340 perioperatively for insulin-dependent T2D patients. Although the limited sample size cannot  
341 prove safety, these findings are reassuring for further research. We also found no between-  
342 group differences in the incidence of hypoglycemia or other adverse events, while the risk for

343 hyperglycemia was even reduced. The lack of increased hypoglycemia fits the data from trials in  
344 patients with T2D.(27)

345 By design, this pilot study tested for feasibility and was limited by its sample size with a  
346 standard care, open-label control group. As such, our findings warrant confirmation in a larger  
347 placebo-controlled trial. Our group is currently leading such a large multi-center trial that will  
348 include 784 patients undergoing cardiac surgery at multiple centers within the Netherlands and  
349 is estimated to complete enrollment in 2025. (clinicaltrials.gov: NCT05590143).

### 350 **Conclusion**

351 This pilot study indicates that SGLT2 inhibition may be a promising intervention for the  
352 reduction of CSA-AKI, requiring confirmation in a larger placebo-controlled double-blinded  
353 randomized controlled trial.

354

355 **Acknowledgements**

356 We extend our gratitude to all the participants who generously volunteered their time and  
357 commitment to this trial. Furthermore, we want to thank all the dedicated research students  
358 who were indispensable in the process of data collection: Hoang anh Nguyen, Phebe van  
359 Straten, Mariam Zaouia, Yasmine Barkia, Gwen Blokhuis and Julika Kos.

360 **Details of authors' contributions**

361 Lars Snel: Investigation, Formal analysis, Validation, Writing - Original Draft.

362 Maartina Oosterom-Eijmael: Investigation, Formal Analysis, Validation, Writing - Original Draft.

363 Elena Rampanelli: Formal analysis, Validation, Resources.

364 Yugeesh Lankadeva: Writing - Review & Editing, Supervision.

365 Mark Plummer: Writing - Review & Editing.

366 Benedikt Preckel: Resources, Writing - Review & Editing, Supervision.

367 Daniel van Raalte: Conceptualization, Methodology, Writing - Review & Editing, Supervision.

368 Jeroen Hermanides: Conceptualization, Methodology, Writing - Review & Editing, Supervision.

369 Abraham Hulst: Conceptualization, Methodology, Writing - Review & Editing, Supervision,

370 Funding Acquisition.

371 **Sources of Funding**

372 "This project has received funding from the European Union's Horizon 2020

OFFICIAL

373 research and innovation program under the Marie Skłodowska-Curie grant

374 agreement No 101024833.”

375 **Disclosures**

376 DHR has served as a consultant and received honoraria from Boehringer Ingelheim and Lilly,

377 Merck, Novo Nordisk, Sanofi, and AstraZeneca and has received research operating funds from

378 Boehringer Ingelheim and Lilly Diabetes Alliance, AstraZeneca, and NovoNordisk; all honoraria

379 are paid to his employer (Amsterdam University Medical Center, Amsterdam). All other authors

380 declare no conflict of interests.

## 381 **References**

- 382 1. Chen JJ, Lee TH, Kuo G, Huang YT, Chen PR, Chen SW, et al. Strategies for post-cardiac  
383 surgery acute kidney injury prevention: A network meta-analysis of randomized controlled  
384 trials. *Front Cardiovasc Med*. 2022;9:960581.
- 385 2. Schurle A, Koyner JL. CSA-AKI: Incidence, Epidemiology, Clinical Outcomes, and  
386 Economic Impact. *J Clin Med*. 2021;10(24).
- 387 3. Prowle JR, Forni LG, Bell M, Chew MS, Edwards M, Grams ME, et al. Postoperative acute  
388 kidney injury in adult non-cardiac surgery: joint consensus report of the Acute Disease Quality  
389 Initiative and PeriOperative Quality Initiative. *Nat Rev Nephrol*. 2021;17(9):605-18.
- 390 4. Priyanka P, Zarbock A, Izawa J, Gleason TG, Renfurm RW, Kellum JA. The impact of acute  
391 kidney injury by serum creatinine or urine output criteria on major adverse kidney events in  
392 cardiac surgery patients. *The Journal of Thoracic and Cardiovascular Surgery*. 2021;162(1):143-  
393 51.e7.
- 394 5. Coca SG, Garg AX, Thiessen-Philbrook H, Koyner JL, Patel UD, Krumholz HM, et al.  
395 Urinary biomarkers of AKI and mortality 3 years after cardiac surgery. *J Am Soc Nephrol*.  
396 2014;25(5):1063-71.
- 397 6. Brown JR, Kramer RS, Coca SG, Parikh CR. Duration of acute kidney injury impacts long-  
398 term survival after cardiac surgery. *Ann Thorac Surg*. 2010;90(4):1142-8.
- 399 7. Hobson CE, Yavas S, Segal MS, Schold JD, Tribble CG, Layon AJ, et al. Acute Kidney Injury  
400 Is Associated With Increased Long-Term Mortality After Cardiothoracic Surgery. *Circulation*.  
401 2009;119(18):2444-53.

- 402 8. Ostermann M, Kunst G, Baker E, Weerapolchai K, Lumlertgul N. Cardiac Surgery  
403 Associated AKI Prevention Strategies and Medical Treatment for CSA-AKI. *J Clin Med*.  
404 2021;10(22).
- 405 9. Wang Y, Bellomo R. Cardiac surgery-associated acute kidney injury: risk factors,  
406 pathophysiology and treatment. *Nat Rev Nephrol*. 2017;13(11):697-711.
- 407 10. Gilbert RE, Thorpe KE. Acute kidney injury with sodium-glucose co-transporter-2  
408 inhibitors: A meta-analysis of cardiovascular outcome trials. *Diabetes Obes Metab*.  
409 2019;21(8):1996-2000.
- 410 11. Menne J, Dumann E, Haller H, Schmidt BMW. Acute kidney injury and adverse renal  
411 events in patients receiving SGLT2-inhibitors: A systematic review and meta-analysis. *PLoS Med*.  
412 2019;16(12):e1002983.
- 413 12. Seki H, Ideno S, Shiga T, Watanabe H, Ono M, Motoyasu A, et al. Sodium-glucose  
414 cotransporter 2 inhibitor-associated perioperative ketoacidosis: a systematic review of case  
415 reports. *J Anesth*. 2023;37(3):465-73.
- 416 13. Nuffield Department of Population Health Renal Studies G, Consortium SiM-AC-RT.  
417 Impact of diabetes on the effects of sodium glucose co-transporter-2 inhibitors on kidney  
418 outcomes: collaborative meta-analysis of large placebo-controlled trials. *Lancet*.  
419 2022;400(10365):1788-801.
- 420 14. Ni L, Yuan C, Chen G, Zhang C, Wu X. SGLT2i: beyond the glucose-lowering effect.  
421 *Cardiovasc Diabetol*. 2020;19(1):98.
- 422 15. D.H. van Raalte ACH, L.I.P. Snel, P.R. Scholten, L.A. Schwarte, R. Boellaard, P. Bjornstad.  
423 Sodium-glucose cotransporter-2 inhibitors decrease oxygen consumption in adults with type 2

- 424 diabetes: a randomised clinical trial using 11c-Acetate PET imaging. Proceedings of the 59th  
425 Annual Meeting of the European Association for the Study of Diabetes. 2023.
- 426 16. Ghezzi C, Wright EM. Regulation of the human Na<sup>+</sup>-dependent glucose cotransporter  
427 hSGLT2. *Am J Physiol Cell Physiol*. 2012;303(3):C348-54.
- 428 17. Hu RT, Lankadeva YR, Yanase F, Osawa EA, Evans RG, Bellomo R. Continuous bladder  
429 urinary oxygen tension as a new tool to monitor medullary oxygenation in the critically ill. *Crit*  
430 *Care*. 2022;26(1):389.
- 431 18. Lankadeva YR, Cochrane AD, Marino B, Iguchi N, Hood SG, Bellomo R, et al. Strategies  
432 that improve renal medullary oxygenation during experimental cardiopulmonary bypass may  
433 mitigate postoperative acute kidney injury. *Kidney Int*. 2019;95(6):1338-46.
- 434 19. Thiruvankatarajan V, Meyer EJ, Nanjappa N, Van Wijk RM, Jesudason D. Perioperative  
435 diabetic ketoacidosis associated with sodium-glucose co-transporter-2 inhibitors: a systematic  
436 review. *Br J Anaesth*. 2019;123(1):27-36.
- 437 20. Yang JY, Wang T, Pate V, Buse JB, Sturmer T. Real-world evidence on sodium-glucose  
438 cotransporter-2 inhibitor use and risk of Fournier's gangrene. *BMJ Open Diabetes Res Care*.  
439 2020;8(1).
- 440 21. Parikh CR, Coca SG, Thiessen-Philbrook H, Shlipak MG, Koyner JL, Wang Z, et al.  
441 Postoperative biomarkers predict acute kidney injury and poor outcomes after adult cardiac  
442 surgery. *J Am Soc Nephrol*. 2011;22(9):1748-57.
- 443 22. Neuen BL, Young T, Heerspink HJL, Neal B, Perkovic V, Billot L, et al. SGLT2 inhibitors for  
444 the prevention of kidney failure in patients with type 2 diabetes: a systematic review and meta-  
445 analysis. *The Lancet Diabetes & Endocrinology*. 2019;7(11):845-54.



- 446 23. Bessho R, Takiyama Y, Takiyama T, Kitsunai H, Takeda Y, Sakagami H, et al. Hypoxia-  
447 inducible factor-1 $\alpha$  is the therapeutic target of the SGLT2 inhibitor for diabetic nephropathy.  
448 Scientific Reports. 2019;9(1).
- 449 24. Packer M. Mechanisms Leading to Differential Hypoxia-Inducible Factor Signaling in the  
450 Diabetic Kidney: Modulation by SGLT2 Inhibitors and Hypoxia Mimetics. Am J Kidney Dis.  
451 2021;77(2):280-6.
- 452 25. Zhang Y, Nakano D, Guan Y, Hitomi H, Uemura A, Masaki T, et al. A sodium-glucose  
453 cotransporter 2 inhibitor attenuates renal capillary injury and fibrosis by a vascular endothelial  
454 growth factor-dependent pathway after renal injury in mice. Kidney Int. 2018;94(3):524-35.
- 455 26. Administration USFD. FDA Drug Safety Communication: FDA revises labels of SGLT2  
456 inhibitors for diabetes to include warnings about too much acid in the blood and serious urinary  
457 tract infections, 2016 [cited 2024 19 February]. Available from:  
458 [https://www.fda.gov/drugs/drug-safety-and-availability/fda-revises-labels-sglt2-inhibitors-](https://www.fda.gov/drugs/drug-safety-and-availability/fda-revises-labels-sglt2-inhibitors-diabetes-include-warnings-about-too-much-acid-blood-and-serious)  
459 [diabetes-include-warnings-about-too-much-acid-blood-and-serious.](https://www.fda.gov/drugs/drug-safety-and-availability/fda-revises-labels-sglt2-inhibitors-diabetes-include-warnings-about-too-much-acid-blood-and-serious)
- 460 27. Saisho Y. SGLT2 Inhibitors: the Star in the Treatment of Type 2 Diabetes? Diseases.  
461 2020;8(2).

462

463

464 **Tables**

465 **Table 1. Baseline characteristics of the intention-to-treat population.**

	<b>All (n=55)</b>	<b>Empagliflozin (n=25)</b>	<b>Control (n=30)</b>
<b>Age, mean ± SD, years</b>	66 ± 10	69 ± 8	63 ± 10
<b>Male sex, n (%)</b>	40 (73)	18 (72)	22 (73)
<b>Ethnic origin, n (%)</b>			
<b>Caucasian</b>	53 (96)	24 (96)	29 (97)
<b>Other</b>	2 (4)	1 (4)	1 (3)
<b>BMI, mean ± SD, kg/m<sup>2</sup></b>	28.0 ± 4.4	27.6 ± 3.4	28.2 ± 5.1
<b>T2D, n (%)</b>	5 (9)	3 (12)	2 (7)
<b>Diabetes medication, n (%)</b>			
<b>Metformin</b>	4 (7)	3 (12)	1 (3)
<b>Sulfonylurea derivate</b>	1 (2)	0 (0)	1 (3)
<b>Hypertension, n (%)</b>	28 (51)	13 (52)	15 (50)
<b>NYHA classification, n (%)</b>			
<b>I</b>	18 (33)	10 (40)	8 (27)
<b>II</b>	28 (51)	12 (48)	16 (53)
<b>III</b>	9 (16)	3 (12)	6 (20)
<b>LVEF, n (%)</b>			
<b>Good &gt; 50%</b>	40 (73)	20 (80)	20 (67)
<b>Moderate 31-50%</b>	15 (27)	5 (20)	10 (33)
<b>ASA physical status classification, n (%)</b>			
<b>I</b>	1 (2)	0 (0)	1 (3)
<b>II</b>	7 (13)	2 (8)	5 (17)

OFFICIAL

III	45 (82)	22 (88)	23 (77)
IV	2 (4)	1 (4)	1 (3)
<b>Creatinine clearance, mean <math>\pm</math> SD, ml/min</b>	70 $\pm$ 16	68 $\pm$ 16	73 $\pm$ 15
<b>EuroSCORE II, mean <math>\pm</math> SD, %</b>	3.0 $\pm$ 3.2	2.8 $\pm$ 3.4	3.1 $\pm$ 3.0
<b>Duration of surgery, mean <math>\pm</math> SD, min</b>	271 $\pm$ 96	249 $\pm$ 83	291 $\pm$ 104
<b>Type of surgery, n (%)</b>			
<b>CABG procedure</b>	3(5.45)	1(4.0)	2 (6.67)
<b>Single non-CABG procedure</b>	28 (50.91)	12 (48)	16 (53.3)
<b>Two or more procedures</b>	24 (43.63)	12 (48)	12 (40)

*ASA= American Society of Anesthesiologists; BMI= body mass index; CABG= coronary artery bypass graft;*

*EuroSCORE= European System for Cardiac Operative Risk Evaluation; IQR= interquartile range; LVEF= left*

*ventricular ejection fraction; NYHA= New York Heart Association; SD= standard deviation; T2D= type 2 diabetes*

466

467

468 **Table 2 Intraoperative and postoperative glycemc control and insulin administrations**

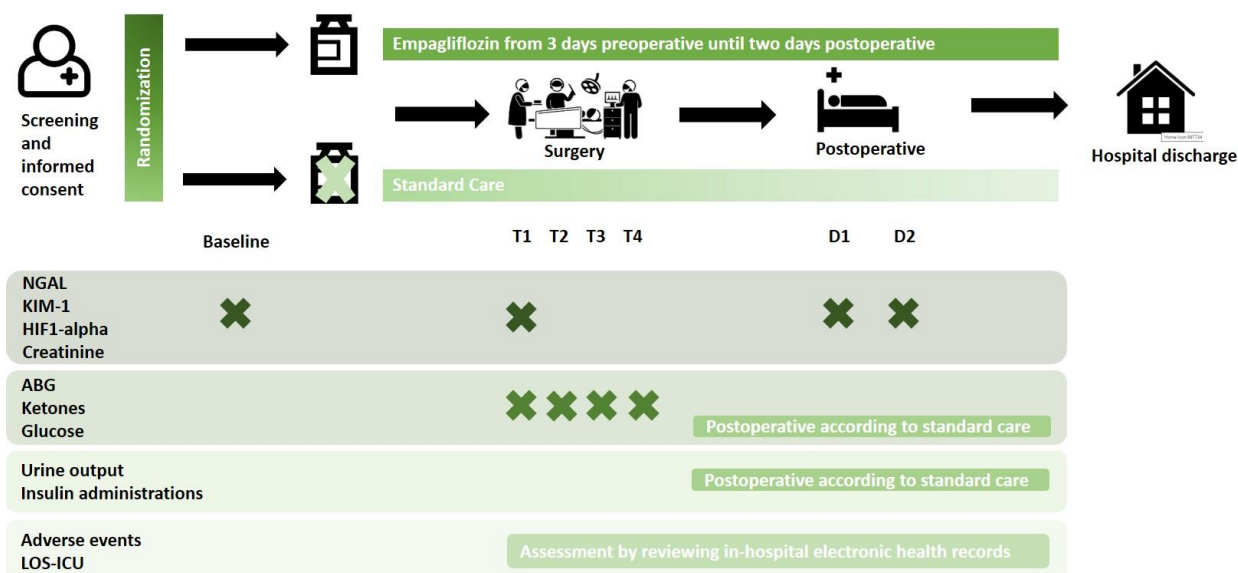
	Empagliflozin (n=25)	Control (n=30)	Absolute difference	95% CI	P value
<b>Intraoperative</b>					
Mean blood glucose, mean $\pm$ SD, mmol/L	6.6 $\pm$ 1.1	7.1 $\pm$ 1.5	0.5	-0.3 – 1.2	0.194
Hyperglycemia (>10 mmol/L), n (%)	3 (12)	6 (20)	-8	-27.2 – 11.2	0.487
Hypoglycemia (<4 mmol/L), n (%)	0 (0)	1 (3)	-3.3	-9.8 – 3.1	1.000
Insulin administration, n (%)	1 (4)	2 (7)	-2.7	-14.4 – 9.1	1.000
<b>Postoperative<sup>a</sup></b>					
Peak blood glucose, mean $\pm$ SD, mmol/L	9.3 $\pm$ 1.5	10.9 $\pm$ 2.5	1.6	0.5 – 2.8	0.007
Hyperglycemia (>10 mmol/L), n (%)	7 (28)	18 (60)	-32	-56.8 – -7.2	0.029
Hypoglycemia (<4 mmol/L), n (%)	0 (0)	0 (0)	NA	NA	NA
Insulin administration, n (%)	2 (8)	11 (37)	-29	-48.9 – -8.4	0.023

CI= confidence interval; NA= not applicable; SD= standard deviation. <sup>a</sup> The first 48 hours postoperative

469

470 **Figures**

471 **Figure 1. Summary of study workflow.**



472

473 *ABG= arterial blood gas; D1= first postoperative day; D2= second postoperative day; HIF1-alpha= Hypoxia-Inducible*

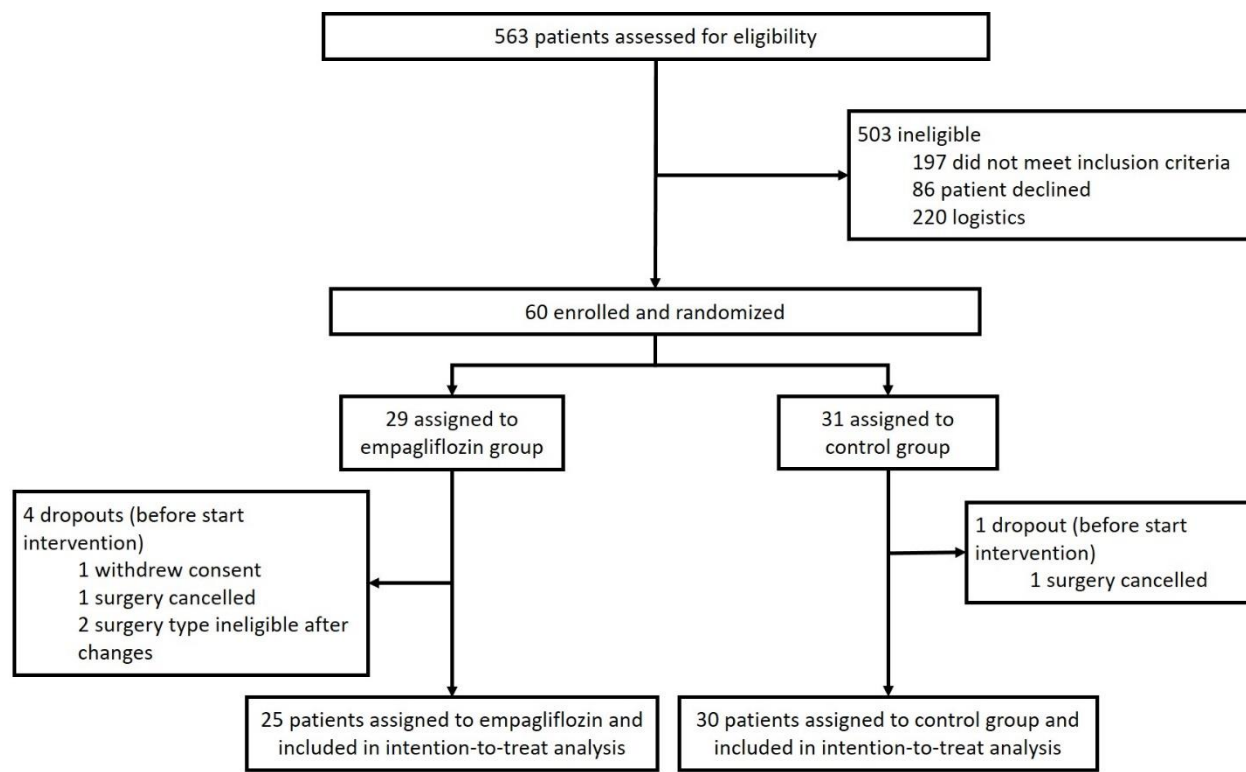
474 *Factor1-Alpha; KIM-1= Kidney Injury Molecule-1; LOS-ICU= length of stay in the Intensive Care Unit; NGAL=*

475 *Neutrophil Gelatinase-Associated Lipocalin; T1= before start of surgery; T2= at the start of cardiopulmonary*

476 *bypass; T3= at the end of cardiopulmonary bypass; T4= at time of transport to the intensive care unit.*

477

478 **Figure 2. CONSORT flowchart of patients in the study**



479

480

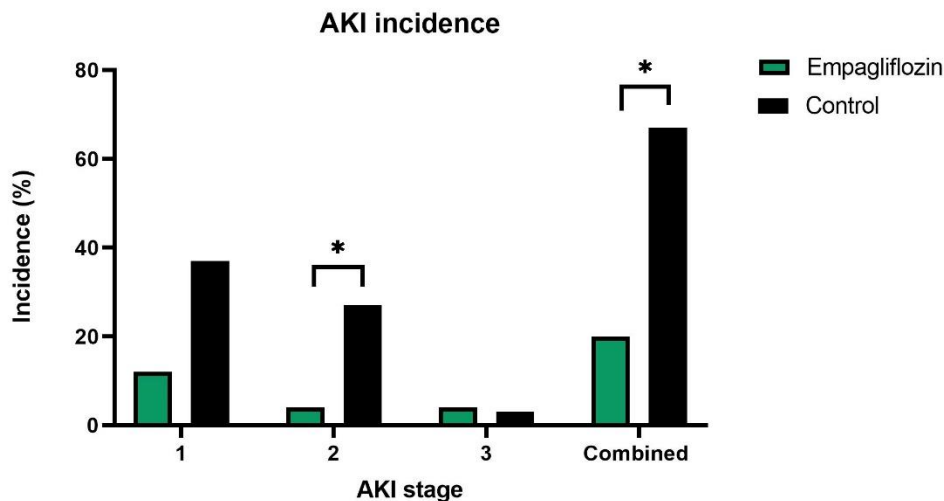
481

482

483

484

485 **Figure 3. Incidence rates of Acute Kidney Injury (AKI) across various stages compared**  
 486 **between the empagliflozin and control group.**



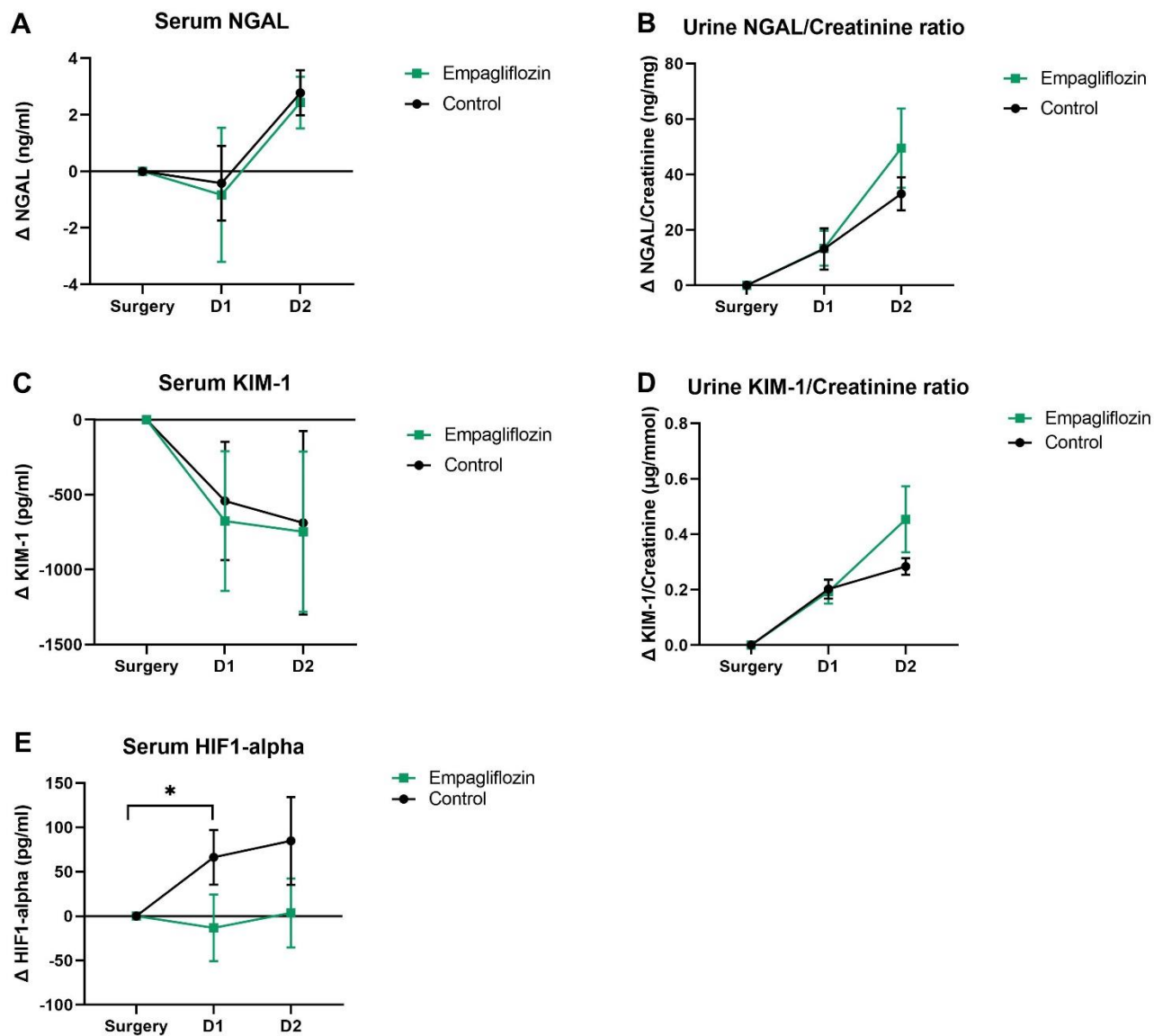
	Empagliflozin 25	Control 30	Absolute difference	95% CI	P value
AKI, n (%)					
Stage 1	3 (12)	11 (36.7)	-24.7	-46.1 – -3.3	.061
Stage 2	1 (4)	8 (26.7)	-22.7	-40.3 – -5.1	.031
Stage 3	1 (4)	1 (3.3)	0.7	-9.3 – 10.7	1.000
Combined	5 (20)	20 (66.7)	-46.7	-69.7 – -23.6	.001

487

488 *AKI= acute kidney injury; CI= confidence interval*

489

490 **Figure 4. Differences in postoperative kidney biomarkers concentrations compared to surgery**



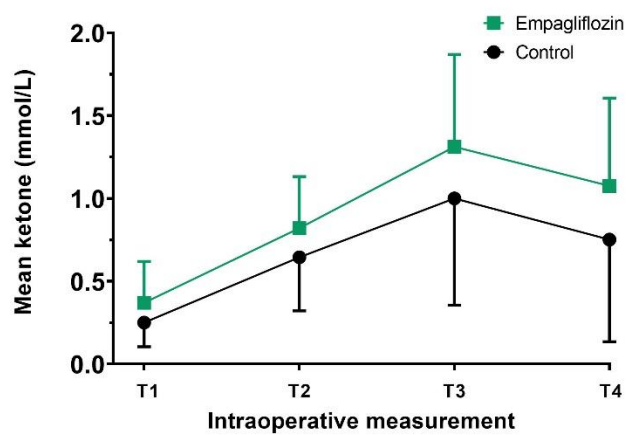
491 **day for the empagliflozin and control group.**

492 *HIF1-alpha= Hypoxia-Inducible Factor1-Alpha; KIM-1= Kidney Injury Molecule-1; NGAL= Neutrophil Gelatinase-*  
493 *Associated Lipocalin.*

494



495 **Figure 5. Intraoperative (mean  $\pm$  SD) ketone levels.**



496

497 *T1= before start of surgery; T2= at the start of cardiopulmonary bypass; T3= at the end of cardiopulmonary*

498 *bypass; T4= at time of transport to the intensive care unit)*

499

500 **Supplementary Tables**

501 **Supplementary Table 1. Kidney biomarkers were measured on surgery day and the first two**  
 502 **postoperative days.**

		<b>Empagliflozin</b>	<b>Control</b>	<b>Absolute</b>	<b>95% CI</b>	<b>P</b>
		<b>(n=25)</b>	<b>(n=30)</b>	<b>Difference</b>		<b>value</b>
<b>Serum NGAL, (ng/ml)</b>	<b>D0</b>	68.4 ± 6.0	66.3 ± 10.2	-2.1	-6.7 – 2.6	0.376
	<b>D1</b>	67.6 ± 11.4	65.4 ± 10.6	-2.2	-8.2 – 3.8	0.460
	<b>D2</b>	70.8 ± 6.0	68.5 ± 10.0	-2.3	-6.9 – 2.3	0.317
<b>Urine NGAL/Creatinine (ng/mg)</b>	<b>D0</b>	27.6 ± 58.2	9.0 ± 13.1	-18.6	-40.9 – 3.7	0.100
	<b>D1</b>	41.0 ± 74.0	21.8 ± 40.7	-19.2	-50.8 – 12.4	0.229
	<b>D2</b>	77.1 ± 120.8	41.2 ± 33.7	-35.9	-82.8 – 11.0	0.131
<b>Serum KIM-1 (pg/ml)</b>	<b>D0</b>	1458 ± 3843	1848 ± 4977	390	-2068 – 2849	0.751
	<b>D1</b>	841 ± 1694	1265 ± 3072	423	-636 – 1465	0.548
	<b>D2</b>	712 ± 1365	1126 ± 2300	414	-636 – 1465	0.432
<b>Urine KIM-1/Creatinine (µg/mmol)</b>	<b>D0</b>	0.2 ± 0.2	0.2 ± 0.1	0.0	-0.1 – 0.1	0.662
	<b>D1</b>	0.4 ± 0.3	0.4 ± 0.2	0.0	-0.1 – 0.2	0.893
	<b>D2</b>	0.7 ± 0.6	0.5 ± 0.2	-0.2	0.4 – 0.1	0.199
<b>Serum HIF1α (pg/ml)</b>	<b>D0</b>	142.7 ± 235.1	110.0 ± 151.6	-32.7	-139.3 – 73.9	0.541
	<b>D1</b>	129.5 ± 179.6	170.5 ± 182.5	41.0	-57.5 – 139.4	0.408
	<b>D2</b>	146.3 ± 134.7	198.1 ± 267.8	51.8	-66.5 – 170.1	0.384

*Values are presented as mean ± SD. CI= confidence interval; D0= day of surgery; D1= first postoperative day; D2= second postoperative day; HIF1α= Hypoxia-Inducible Factor-1 alpha; KIM-1= Kidney Injury Molecule-1; NGAL= Neutrophil Gelatinase-Associated Lipocalin. SD= standard deviation*

503

504

505 **Supplementary Table 2. Overview of in-hospital adverse events**

	<b>Empagliflozin</b>	<b>Control</b>	<b>P value</b>	
	<b>(n=25)</b>	<b>(n=30)</b>		
<b>Mortality, n (%)</b>	1 (4)	0 (0)	0.455	506
<b>Renal replacement therapy, n (%)</b>	1 (4)	1 (3)	1.000	507
<b>CVA, n (%)</b>	1 (4)	1 (3)	1.000	508
<b>Cardiac tamponade, n (%)</b>	3 (12)	4 (13)	1.000	509
<b>Pericardial effusion, n (%)</b>	0 (0)	1 (3)	1.000	
<b>Thromboembolic events, n (%)</b>	1 (4)	0 (0)	0.455	510
<b>Gastrointestinal bleeding, n (%)</b>	1 (4)	0 (0)	0.455	
<b>Anemia requiring transfusion, n (%)</b>	2(8)	3 (10)	1.000	511
<b>Atrial fibrillation, n (%)</b>	6 (24)	7 (23)	1.000	512
<b>Other cardiac arrhythmia, n (%)</b>	4 (16)	3 (10)	0.689	
<b>Pacemaker implementation, n (%)</b>	2 (8)	1 (3)	0.585	513 <i>Abbr</i>
<b>Infection mediastinum, n (%)</b>	2 (8)	0 (0)	0.202	514 <i>eviati</i>
<b>Urinary tract infection, n (%)</b>	1 (4)	0 (0)	0.455	515 <i>ons:</i>
<b>Pneumonia, n (%)</b>	1 (4)	0 (0)	0.455	516 <i>CVA,</i>
<b>Delirium, n (%)</b>	0 (0)	1 (3)	1.000	517 <i>Cereb</i>

518 *rovascular accident*

519

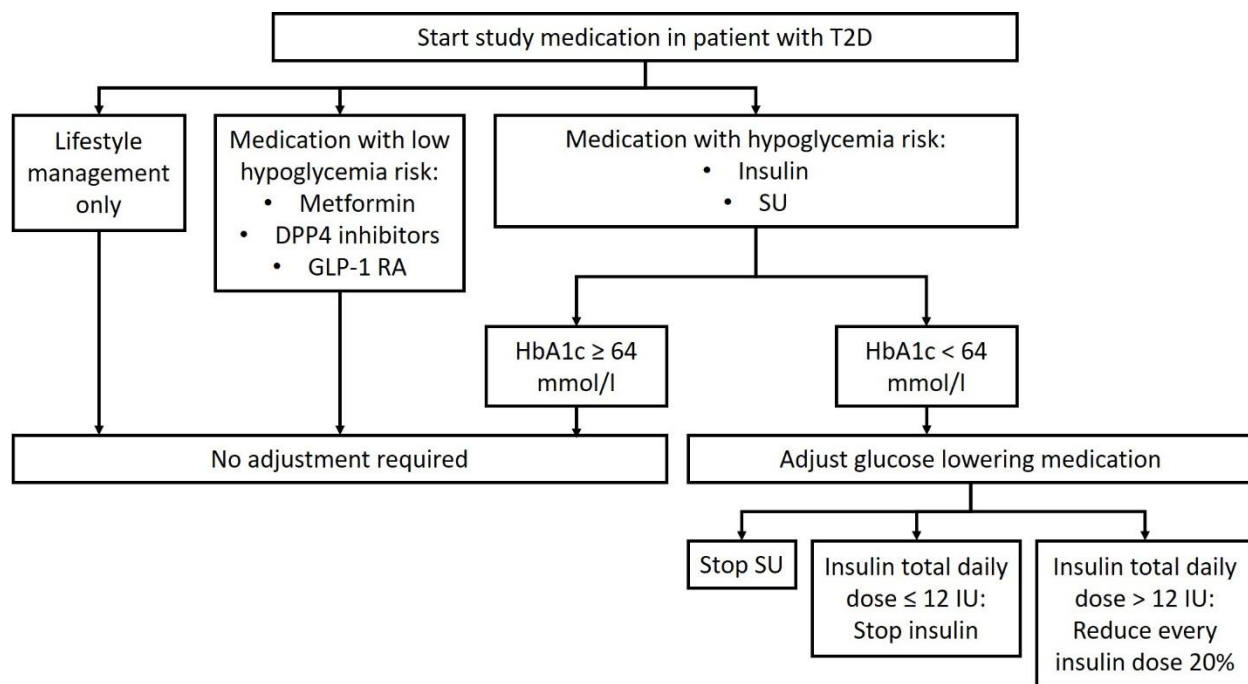
520

521

522

523 **Supplemental Figures and Figure Legends**

524 **Supplemental Figure 1. Treatment algorithm for adjustment of antihyperglycemic therapy in**  
525 **patients with a known history of type 2 diabetes**



526

527 *DPP4 inhibitors= Dipeptidyl Peptidase-4 inhibitors; GLP-1 RA= Glucagon-Like Peptide-1 Receptor Agonist; IU=*

528 *international units; SU= Sulfonylurea; T2D= Type 2 Diabetes*

529