

1 **Subtracting the background: Reducing cell-free DNA's confounding effects on**  
2 ***Mycobacterium tuberculosis* quantitation and the sputum microbiome**

3

4 **Authors:** Charissa C. Naidoo<sup>a,b†</sup>, Rouxjeane Venter<sup>a†</sup>, Francesc Codony<sup>c</sup>, Gemma Agusti<sup>d</sup>,  
5 Natasha Kitchin<sup>e</sup>, Selisha Naidoo<sup>f</sup>, Hilary Monaco<sup>g</sup>, Hridayesh Mishra<sup>a,h</sup>, Yonghua Li<sup>i</sup>, Jose C.  
6 Clemente<sup>g</sup>, Robin M. Warren<sup>a</sup>, Leopoldo N. Segal<sup>i</sup>, Grant Theron<sup>a,b #</sup>

7

8 <sup>†</sup>Contributed equally

9 <sup>#</sup>Address correspondence to Grant Theron, [gtheron@sun.ac.za](mailto:gtheron@sun.ac.za).

10

11 **Affiliations:**

12 <sup>a</sup>DSI-NRF Centre of Excellence for Biomedical Tuberculosis Research; South African  
13 Medical Research Council Centre for Tuberculosis Research; Division of Molecular Biology  
14 and Human Genetics, Faculty of Medicine and Health Sciences, Stellenbosch University,  
15 Cape Town, South Africa.

16 <sup>b</sup>African Microbiome Institute, Faculty of Medicine and Health Sciences, Stellenbosch  
17 University, Cape Town, South Africa.

18 <sup>c</sup>Municipal Laboratory – Aigües de Mataró, Mataró, Spain.

19 <sup>d</sup>Reactivos para Diagnóstico, Setmenat, Spain.

20 <sup>e</sup>Department of Psychiatry, Faculty of Medicine and Health Sciences, Stellenbosch  
21 University, Cape Town, South Africa.

22 <sup>f</sup>Institute of Infectious Disease and Molecular Medicine (IDM), Faculty of Health Sciences,  
23 University of Cape Town, Cape Town, South Africa.

24 <sup>g</sup>Department of Genetics and Genomic Sciences, Icahn School of Medicine at Mount Sinai,  
25 New York, NY, USA.

26 <sup>h</sup>Public Health Research Institute, New Jersey Medical School, Rutgers, The State  
27 University of New Jersey, Newark, NJ, USA.

28 <sup>i</sup>Division of Pulmonary, Critical Care, and Sleep Medicine, New York University School of  
29 Medicine, New York, USA.

30

31 **Running title:** Removing cell-free DNA for *Mtb* quantitation

32

33 **Abstract word count:** 250 words

34 **Text word count:** 3407 words

35

36 **Keywords:** PEMAX, propidium monoazide, DNaseI, *Mycobacterium tuberculosis*, Xpert  
37 MTB/RIF, sputum microbiome

38

39

40

41

42

43

44

45

46

47

48

49

50

51

52 **Abstract**

53 Characterising DNA in specimens from people with tuberculosis (TB), a major cause of  
54 death, is critical for evaluating diagnostics and the microbiome, yet extracellular DNA, more  
55 frequent in people on chemotherapy, confounds results. We evaluated whether nucleic acid  
56 dyes [propidium monoazide (PMA), PEMAX] and DNaseI could reduce this. PCR [16S  
57 *Mycobacterium tuberculosis* complex (*Mtb*) qPCR, Xpert MTB/RIF] was done on dilution  
58 series of untreated and treated (PMA, PEMAX, DNaseI) *Mtb*. Separately, 16S rRNA gene  
59 qPCR and sequencing were done on untreated and treated patients' sputa before (Cohort A:  
60 11 TB-negatives, 9 TB-positives; Cohort B: 19 TB-positives, PEMAX only) and after 24  
61 weeks of chemotherapy (only Cohort B). PMA and PEMAX reduced PCR-detected *Mtb* DNA  
62 for both the dilution series and Cohort A sputum versus untreated controls, suggesting non-  
63 intact *Mtb* is present before treatment start. PEMAX enabled sequencing *Mycobacterium*-  
64 detection in 5/9 (59%; Cohort A) and 2/3 (67%; Cohort B week 0) TB-positive sputa where  
65 no reads otherwise occurred. In Cohort A, PMA- and PEMAX-treated versus untreated sputa  
66 had decreased  $\alpha$ - and increased  $\beta$ -diversities. In Cohort B,  $\alpha$ -diversity differences between  
67 untreated and PEMAX-treated sputa occurred only at 24-weeks and  $\beta$ -diversity differences  
68 between timepoints were only detected after PEMAX. DNaseI had negligible effects. PMA  
69 and PEMAX (but not DNaseI) reduced extracellular DNA, improving the proportion of  
70 *Mycobacterium* reads and PCR detection. PEMAX detected chemotherapy-associated  
71 changes in the microbiome otherwise missed. Our findings suggest these dyes improve  
72 characterization of the microbiome, especially chemotherapy-associated changes, and  
73 should be included in respiratory microbiome research in TB.

74 **Introduction**

75 Tuberculosis (TB) kills an estimated 1.2 million people annually.<sup>1</sup> Although sensitive tests  
76 like Xpert MTB/RIF (Xpert) are available for *Mycobacterium tuberculosis* complex (*Mtb*)  
77 detection, PCR can be confounded by DNA from non-intact cells, including from previous  
78 TB.<sup>2-4</sup> This problem can be significant: in some settings up to 35% of notifications have  
79 recurrent TB; requiring special consideration in diagnostic algorithms<sup>3</sup>. The ability to  
80 distinguish *Mtb* DNA from old versus new episodes is therefore of clinical and  
81 epidemiological significance.

82

83 The microbiome can, in addition to the pathogen itself, influence the host immune system<sup>7</sup>.  
84 Characterising the role of microbial populations could unveil new targets for controlling TB.  
85 Unlike most other infectious diseases with short chemotherapy durations, TB requires  $\geq 6$   
86 months of antibiotics with broad-spectrum rifamycins and potentially fluoroquinolones. These  
87 antibiotics have bactericidal effects,<sup>10,11</sup> resulting in extracellular DNA accumulation that, in  
88 the case of *Mtb* DNA, can persist for years especially in people with compromised  
89 immunological clearance such as people living with HIV.<sup>12</sup> Characterisations of the  
90 microbiome in people receiving (or who have received) TB chemotherapy thus likely  
91 measure total bacterial DNA, rather than only the subset within intact (and hence live) cells.

92

93 Viability dyes such as ethidium monoazide (EMA), propidium monoazide (PMA), and  
94 PEMAX (a EMA and PMA formulation) have been widely used for discriminating intact from  
95 non-intact microbial cells<sup>13-17</sup> and act by passing through compromised membranes of non-  
96 intact cells (e.g., following heat exposure or repeated freeze-thaw<sup>20</sup>), after which they  
97 covalently cross-link with DNA to irreversibly form complexes not amplifiable by PCR<sup>21</sup>. As a  
98 result, only DNA from intact cells is, in theory, amplified once unbound dye is removed. PMA  
99 is more effective than EMA in excluding DNA from non-intact cells due to higher charge<sup>22</sup>.

100 PEMAX was developed to overcome limitations of PMA and EMA such as the inability to  
101 bind DNA from cells that are still intact but no longer metabolically active and thus may  
102 improve specificity.<sup>23</sup>

103

104 These dyes have some data when applied to *Mtb*<sup>24-28</sup>. For example, the addition of PMA to  
105 Xpert shows potential for treatment monitoring, however, specificity remains an issue. More  
106 data are needed as dye penetration through *Mtb*'s waxy cell wall may be suboptimal  
107 (especially in specimens with high bacillary load)<sup>29</sup> and sputum from diseased individuals  
108 contains high levels of host and microbial extracellular DNA that sequesters dye away,  
109 leaving insufficient dye to subtract background DNA. Combining viability dyes with 16S rRNA  
110 gene sequencing could improve the accuracy of microbial taxonomy by reducing background  
111 from non-intact taxa that, by virtue of their lack of viability, are unlikely to play a direct  
112 biological role.

113

114 We investigated the effects of nucleic acid dyes (PMA, PEMAX) and DNaseI on 1) *Mtb* PCR  
115 detection (16S, Xpert) in a dilution series (with versus without antibiotics, heat kill, freeze-  
116 thaw) and sputum from people with presumptive TB as well as 2) changes in the microbiome  
117 (compared by TB status and duration of chemotherapy exposure) by comparing sputum  
118 treated or untreated with dyes and DNaseI. Our overarching goal was to assess whether  
119 usage of dyes and/or DNaseI could enhance the detection of intact *Mtb* (*in vitro* and in  
120 sputum) and enhance analysis of the sputum microbiome.

121

122

123

124

125

126

127 **Methods**

128 Ethics

129 This study was approved by the Stellenbosch University Health Research Ethics Committee  
130 (N14/10/136, N16/05/070, M15/10/041).

131

132 *In vitro* dilution series using *Mycobacterium tuberculosis* cells

133 *Culture*

134 *Mtb* H37Rv was cultured (37°C) to an OD<sub>600nm</sub> of 1.0 in 20mL Middlebrook 7H9 liquid  
135 medium with 10% oleic acid, albumin, dextrose, and catalase (OADC; BD Diagnostics,  
136 Johannesburg, South Africa), 0.5% glycerol and 0.05% Tween-80 (Sigma-Aldrich,  
137 Modderfontein, South Africa). One millilitre aliquots were frozen (-80°C).

138

139 *Antibiotic exposure (Experiment A)*

140 Two hundred microlitres of thawed stock was inoculated into each of six flasks with 20mL  
141 7H9 and incubated until mid-log (OD<sub>600nm</sub> 0.6-0.8). Isoniazid (0.2g/mL in nuclease-free water;  
142 Thermo Fisher Scientific, Waltham, USA) and rifampicin (1g/mL in dimethyl sulfoxide;  
143 Sigma-Aldrich, Modderfontein, South Africa) were added to three of the 20mL culture flasks  
144 (three additional flasks served as non-antibiotic controls) (**Figure 1A**). All six flasks were  
145 incubated for 24-, 48-, and 72h at 37°C. To generate a 1:1 mixture of intact and non-intact  
146 cells, 5mL of the non-antibiotic and antibiotic-containing cultures after different incubation  
147 periods (24-, 48-, 72h) were combined in a separate sterile flask and, from each, a 100-fold  
148 serial dilution was done ( $10^8$ ,  $10^6$ ,  $10^4$  CFU/ml) in 7H9 to a total volume of 10 ml. This was  
149 done for three biological replicates.

150

151 *Heat kill (Experiment B)*

152 For heat-kill experiments, a single culture was grown to mid-log, 100-fold dilutions ( $10^8$ ,  $10^6$   
153 CFU/ml) done and 500 $\mu$ L of each dilution done as stated above, heated (100°C, 30 min) and  
154 cooled to room temperature (RT). This was done for three biological replicates.

155

#### 156 *Freeze-thaw (Experiment C)*

157 A freeze-thaw (FT) experiment was done with  $10^6$  dilutions after 24-, 48- and 72h incubation  
158 periods that were frozen (-20°C) and allowed to thaw at RT. One biological replicate was  
159 done due to consumable unavailability.

160

#### 161 Treatment of samples to remove background DNA

##### 162 *PMA and PEMAX treatment (Experiments A-C)*

163 For Experiments A and B, 500 $\mu$ L of each dilution was aliquoted into 1) an empty DNA  
164 LoBind tube (Eppendorf, Hamburg, Germany) without further treatment (hereafter referred to  
165 as untreated), 2) a LoBind tube containing 50 $\mu$ M PMA (Biotium, Fremont, USA) and 3) a  
166 PEMAX monodose tube (GenIUL, Barcelona, Spain). PMA- and PEMAX-containing tubes  
167 were vortexed for 5s before incubation in the dark (30min, 37°C). To crosslink dyes with  
168 DNA, photoactivation using the Phast Blue system (GenIUL; 60W, 2min for PMA, 15min for  
169 PEMAX) was done. PEMAX-treated samples were transferred to new LoBind tubes (PEMAX  
170 monodose tubes are hydrophilic and may cause DNA to not be neutralised by the dye<sup>13</sup>).  
171 The same was done for Experiment C except only PEMAX was used. At the end of dye  
172 treatment, samples were frozen (-20°C) for batched DNA isolation.

173

##### 174 *DNaseI treatment (Experiments A and B)*

175 This was done for the 48h timepoint only. 500 $\mu$ L of each dilution was aliquoted into an empty  
176 LoBind tube (hereafter referred to as untreated) or a LoBind tube containing 1 $\mu$ L of RQ1  
177 RNase-Free DNase 10X Reaction Buffer (400mM Tris-HCl, 100mM MgSO<sub>4</sub>, 10mM CaCl<sub>2</sub>;

178 Promega, Madison, USA) and 1µL RQ1 RNase-Free DNaseI (1U/µg DNA; Promega) and  
179 incubated (37°C, 30min) (hereafter referred to as treated). The treated tube was further  
180 incubated (65°C, 10min) with 1µL of RQ1 DNase Stop Solution and cooled to RT. Samples  
181 were frozen (-20°C) for batched DNA isolation.

182

### 183 Sputum processing

#### 184 *Cohort A*

185 Sputa from 20 people with presumptive TB were decontaminated with a modified  
186 decontamination protocol{Nikolayevskyy, 2015 #161} omitting sodium-hydroxide (to preserve  
187 bacterial viability) and an equal volume of *N*-acetyl-L-cysteine (NALC; Sigma-Aldrich)  
188 solution (0.5% w/v NALC, 2.7% w/v trisodium citrate) for 15min at RT, followed by  
189 neutralisation with a double phosphate buffer volume (BD Diagnostics) and centrifuged  
190 (3000xg, 15min). Pellets were resuspended in 5mL phosphate buffer and biobanked (-20°C)  
191 for PMA, PEMAX or DNaseI treatment as described earlier (**Figure 1B**). People classified as  
192 TB-negative (n=11) if they were MTBC culture-negative (or, if their culture was  
193 contaminated, sputum Xpert negative; n=1) or TB-positive (n=9) if they were MTBC culture-  
194 positive (or, if culture-contaminated, sputum Xpert-positive; n=2).

195

#### 196 *Cohort B*

197 Sputum from 23 people with multidrug resistant (MDR)-TB at two timepoints (before or  
198 shortly after chemotherapy start, after 24 weeks chemotherapy) were decontaminated and  
199 pellets resuspended in 2mL phosphate buffer, from which one 500µL aliquot was  
200 immediately PEMAX-treated as described above and the other left as is. Both aliquots were  
201 stored at -20°C for batched DNA isolation (**Figure 1C**).

202

### 203 Microbial DNA isolation



204 DNA was isolated from the Experiments A-C dilution series using the QIAGEN DNA Mini Kit  
205 (QIAGEN, Hilden, Germany) with modifications. Briefly, aliquots were heat-killed (95°C,  
206 15min), resuspended in lysozyme-containing (10mg/ml) lysis buffer, incubated (1h, 37°C),  
207 and proteinase K digestion done (56°C, 30min) before isolation. DNA was isolated from  
208 Cohort A and B sputum using the Purelink Microbiome DNA Purification Kit (Invitrogen,  
209 Carlsbad, USA) per manufacturer's instructions<sup>30</sup>.

210

#### 211 16S rRNA gene characterisation

##### 212 *Quantitative real-time PCR (qPCR) (Experiments A-C)*

213 Reactions comprised of 5µL iTaq Universal SYBR Green (Thermo Fisher Scientific,  
214 Massachusetts, United States), 0.3µL of each forward and reverse primer (10µM), 1.4µL  
215 nuclease-free water and 3µL template DNA were done using the CFX Connect Real-Time  
216 PCR Detection System (Bio-Rad, Fremont, USA). *Mtb*-specific primers were used for the  
217 dilution series and universal 16S rRNA primers<sup>31</sup> used for sputum (Cohorts A and B)  
218 (**Supplementary Table 1**). Cycling conditions were 95°C for 5min followed by 35 cycles of  
219 95°C for 5s and 60°C for 30s. All reactions were in three technical replicates and cycle  
220 thresholds ( $C_T$ ; number of cycles before product detected) recorded. In each experiment,  
221 non-template control (NTC)  $C_T$ s were averaged to derive a positivity threshold.

222

##### 223 Detection of viable bacilli by Xpert MTB/RIF (Experiments A and B)

224 500µL of each dilution ( $10^4$ ,  $10^6$ ,  $10^8$  CFU/ml) were Xpert-tested (**Figure 1**). Aliquots were  
225 either first treated with PMA, PEMAX or DNaseI as described above or were untreated. The  
226 manufacturer-recommended input volume of the (un)treated dilution (500µl) was used for  
227 PEMAX Xpert testing<sup>32</sup>. Therefore, Xpert Sample Reagent (1.5mL) was added to each 500µl  
228 aliquot and incubated (RT, 15min) with intermittent shaking before 2mL of the mixture tested  
229 (version G4; Cepheid, USA). Xpert only reports  $C_{Tmin}$  for positive results.

230

231 *Sequencing and analysis*

232 Sequences (V4 region, 150bp paired-end) generated by Illumina MiSeq as described<sup>33,34</sup>  
233 were demultiplexed (QIIME 2; v2020.2)<sup>35</sup> and denoised (DADA2)<sup>36</sup>. Taxonomic classification  
234 was done with the Naïve Bayes classifier trained on Greengenes 13.8 reference database<sup>37</sup>  
235 (pre-clustered at 99% identity with 515F/806R primers selected<sup>38</sup>). BIOM tables were  
236 rarefied by random subsampling to equal depth. Potential contaminants (in blank dyes,  
237 DNaseI and reagents) were identified using *decontam* (v1.22.0)<sup>39</sup> with a threshold of 0.5  
238 based on their prevalence in sputum vs. background samples. Contaminant amplicon  
239 sequencing variants (ASVs) were not removed but highlighted if later identified as  
240 discriminatory.  $\alpha$ - and  $\beta$ -diversities were calculated using *vegan* (v2.6-4)<sup>40</sup>. Data and code  
241 will be available upon publication.

242

243 Statistical analysis

244 The Kruskal-Wallis test with Dunn's multiple comparisons was used to compared untreated  
245 and dye-treated  $C_T$  values (Experiments A-C). The Wilcoxon matched-pairs signed rank test  
246 was used for sputum qPCR (Cohort A) and Xpert results. One-sided tests were used  
247 because we hypothesised that dyes would improve *Mtb* detection. P-values are for  
248 comparisons between untreated and treated (PMA, PEMAX, or DNaseI) and were not  
249 calculated for  $C_T$ s exceeding that of the non-template control. The Friedman test with Dunn's  
250 multiple comparisons was used to compare  $\alpha$ -diversity between untreated and treated sputa  
251 (Cohorts A and B). Bray-Curtis distances were compared using Kruskal-Wallis with Dunn's  
252 multiple comparisons. *DESeq2* (v1.42.0)<sup>41</sup> (with Benjamini–Hochberg multiple comparisons)  
253 was used for differential abundance testing. Feature tables were pruned to >1% relative  
254 abundance in >1% of samples. Analyses were done using GraphPad Prism (v8.0.1) and R  
255 (v4.3.2).  $p \leq 0.05$  and Q-values <0.2 were significant.

256 **Results**

257 PMA and PEMAX treatment reduce *Mtb* DNA detection in dilution series (Experiments A and  
258 B)

259 *16S rRNA qPCR readouts*

260 Dye-treated aliquots had lower detected mycobacterial load (increased  $C_T$ ) than untreated  
261 controls (**Figure 2A-B**). The same finding occurred using combinations of antibiotic-exposed  
262 or heat-killed cells, as well as different incubation periods (48h, 72h; **Supplementary Figure**  
263 **1**). FT resulted in lower detected mycobacterial load [24h non-antibiotic:  $\Delta C_T$  2.13 (95% CI:  
264 1.25–2.99)] compared to pre-FT samples, but when the same FT vs. pre-FT comparison was  
265 done for PEMAX-treated aliquots, a larger decrease in detected load occurred [24h non-  
266 antibiotic:  $\Delta C_T$  6.44 (5.53–7.36)] (**Supplementary Figure 2**).

267

268 *Xpert*

269 Dye reduced load readouts vs. untreated controls regardless of if aliquots underwent  
270 antibiotic or heat or no exposure (**Figure 2C-D**).

271

272 DNaseI treatment does not reduce *Mtb* DNA detection in dilution series (Experiment A and  
273 B)

274 DNaseI had no effect on  $C_T$  compared to untreated controls. Only the antibiotic-exposed  
275 cells showed, after DNaseI treatment, unexpectedly higher detected mycobacterial load [for  
276 example, the  $10^8$  CFU/ml dilution had median (IQR)  $C_T$ s of 19.24 (19.02-19.42) vs. 19.32  
277 (19.24-20.96) for untreated;  $p=0.014$ ] (**Supplementary Figure 3**). There was no significant  
278 difference in DNaseI-exposed aliquots tested with Xpert (**Supplementary Figure 4**).

279

280 Sputa from presumptive tuberculosis patients are abundant in extracellular bacterial DNA  
281 (Cohort A)

282

283 *PMA, PEMAX, and DNaseI's effect on PCR quantitation and sputum  $\alpha$ - and  $\beta$ -diversity*

284 *qPCR*: Decontaminated sputum treated with PMA or PEMAX had lower measured  
285 load than untreated controls (**Figure 3A**) whereas no differences in load resulted from  
286 DNaseI-treatment.

287 *Sequencing*: PMA- and PEMAX-treated sputum had lower  $\alpha$ -diversity, whereas  
288 DNaseI-treated sputum had similar  $\alpha$ -diversity to paired untreated controls (**Figure 3B**).  $\beta$ -  
289 diversity differed between untreated and PMA-treated ( $p=0.006$ ), untreated and PEMAX-  
290 treated ( $p=0.041$ ), and PMA-treated and DNaseI-treated sputum ( $p=0.019$ ) (**Figure 3C**).  
291 Paired  $\beta$ -diversity distances between PMA- or PEMAX-treated and untreated sputum were  
292 greater than those between DNaseI-treated and untreated sputum (**Figure 3D**). Results  
293 remained similar when TB-positive and TB-negative groups were separately analysed  
294 (**Supplementary Figure 5A-B**).

295

296 *PMA treatment reveals more taxa (versus untreated controls) than PEMAX, however, only  
297 PEMAX permits Mycobacterium detection*

298 PMA permitted 19 more differentially abundant taxa to be identified vs its untreated controls  
299 (seven enriched, 12 depleted; *Scardovia* most enriched, *Corynebacterium* most depleted)  
300 (**Figure 3E**), than PEMAX [one enriched (*Mycobacterium*), one depleted (*Neisseria*), one  
301 identified as a potential contaminant (*Bosea*)] (**Figure 3F; Supplementary Figures 6-7**).  
302 None of the seven taxa enriched due to PMA were *Mycobacterium*. In PEMAX-treated  
303 sputum from people with TB, 6/9 (67%) had an increase in detected *Mycobacterium* relative  
304 abundance compared to untreated sputa ( $p=0.031$ ) (**Figure 3G**) [5/9 (56%) of these would  
305 have not had any mycobacterial reads detected if PEMAX was not used]. No discriminatory  
306 taxa were associated with DNaseI treatment. After stratification by TB status, similar results  
307 with fewer differential taxa occurred (**Supplementary Figure 8**).

308

309 *PMA and PEMAX improve characterisation of microbiome differences by TB status*  
310 *compared to untreated controls*

311 In untreated sputum, no  $\alpha$ - and  $\beta$ -diversity differences occurred by TB status with  
312 *Gallibacterium* being the most discriminatory (enriched in TB-negatives). Upon PMA or  
313 PEMAX treatment, similar results occurred with *Scardovia* additionally enriched in TB-  
314 negatives (**Figure 4A-E, Supplementary Figure 9**). *Mycobacterium* was additionally  
315 enriched in TB-positives after PEMAX. A comparison of *Mycobacterium* relative abundances  
316 stratified by TB status and treatment method showed *Mycobacterium* enriched in PMA- and  
317 PEMAX-treated sputa from TB-positives ( $p=0.026$  and  $p=0.002$ , respectively) (**Figure 4F**).  
318 No discriminatory taxa were found between patient groups with DNaseI treatment.

319

320 PEMAX treatment reveals diversity changes from TB chemotherapy otherwise undetected  
321 (Cohort B)

322 *Comparisons within timepoints (untreated versus treated)*

323  $\alpha$ -Diversity differed only at week 24, not week 0, between treated and untreated sputa, with  
324 lower  $\alpha$ -diversity observed after PEMAX (**Figure 5A**;  $p=0.033$ ). There were no  $\beta$ -diversity  
325 differences at week 0 nor week 24 (**Figure 5B**). No taxonomic differences were found at  
326 week 0 in treated versus untreated sputum, however, at week 24, treated sputa were  
327 *Neisseria*-enriched and *Mogibacterium*-depleted (**Figure 5C**).

328

329 *Comparisons within treatment groups (week 0 versus week 24)*

330  $\alpha$ -Diversity was unchanged per patient between timepoints (**Figure 5A**).  $\beta$ -diversity only  
331 changed over time in treated sputa (**Figure 5B**;  $p=0.007$ ). In untreated sputa,  
332 *Bifidobacterium* and other taxa were enriched at week 0 vs. week 24 (**Figure 5D**). However,  
333 in treated sputum, these taxa were absent and other differences occurred (**Figure 5E**).

334 **Discussion**

335 We demonstrated 1) PMA- and PEMAX-treated samples and sputum have lower detected  
336 mycobacterial load compared to untreated counterparts, 2) PMA- and PEMAX treatment of  
337 sputa reduces  $\alpha$ -diversity and results in  $\beta$ -diversity differences compared to paired untreated  
338 sputum, 3) *Mycobacterium* is enriched in PEMAX-treated sputum from TB-positives  
339 compared to TB-negatives, a difference that was not seen in untreated sputum, 4)  
340 chemotherapy-associated microbiome changes are clearer (i.e., communities are  
341 compositionally dissimilar) in sputum treated with PEMAX versus those not treated, and 5)  
342 DNaseI treatment produces inconsistent signals in *in vitro* experiments and does not  
343 influence microbiome estimates. Together, these data have implications for characterising  
344 pathogen load and the microbiome in people with TB, including evaluating the effect of TB  
345 chemotherapy.

346

347 PMA and PEMAX improve differentiation of live from dead foodborne pathogens such as  
348 *Salmonella*, *Campylobacter*, and *Listeria*<sup>42</sup>. PMA also preferentially excludes dead rather  
349 than live *Mtb* in smear-positive sputa<sup>27,29,43</sup>, however, no studies have evaluated PEMAX in  
350 TB. Lower detected mycobacterial load was found with PMA and PEMAX treatment in PCR  
351 (qPCR, Xpert) implying some bacilli even from laboratory-generated dilution series are not  
352 intact. The effects of PMA, PEMAX, and DNaseI were not as strong as expected in the  
353 presence of increased cellular membrane disruption caused by antibiotics and heat killing  
354 (for example, PCR results becoming negative). This corroborates earlier Xpert data showing  
355 imperfect specificity and minimal improvement with PMA pre-treatment.<sup>24</sup>

356

357 Compared to paired untreated samples, PMA- and PEMAX-treated samples had lower  
358 microbial richness (i.e., suppressed DNA signals from non-intact bacteria). The inclusion of  
359 PMA or PEMAX is thus important for removing taxa likely not biologically active. These

360 methods further identified *Mycobacterium* in people with TB that would otherwise go  
361 undetected. Previously, we demonstrated how a nested mycobacteriome approach could  
362 help to resolve this<sup>8</sup>; dye treatment represents an alternative. This is relevant for microbiome  
363 studies involving people with TB, as we and others have shown that *Mycobacterium* reads  
364 are often undetectable by 16S rRNA gene sequencing in sputum.<sup>44,45</sup>

365

366 Prolonged exposure to TB chemotherapy, particularly those with broader antimicrobial  
367 spectra that are common in treatment regimens for drug-resistant TB, and host  
368 immunological responses are likely to produce non-viable bacterial populations<sup>12</sup>. PEMAX  
369 improved detection of microbiome changes in sputum before and after chemotherapy by  
370 detecting more discriminatory taxa. It is worth considering if previously documented  
371 treatment-related sputum microbiome changes<sup>46,47</sup> overlooked any taxonomic changes that  
372 could have been detected using a viability dye.

373

374 DNaseI performed poorly in dilution series and sputum microbiome evaluations. Prior  
375 research had suggested that the presence of antibiotics increased DNaseI sensitivity<sup>48</sup>, but  
376 this was not the case, which may be related to differences in specimen type or bacterial  
377 species.

378

379 The results must be viewed in the context of its limitations. Xpert assays was done using a  
380 dilution series of cells instead of sputum, in which cells are embedded within a matrix, which  
381 may affect results. Furthermore, sputum decontamination processes (commonly done as  
382 part of TB microbiology) can cause cell death while leaving cell membranes intact, in which  
383 case PMA and EMA have lower reduced ability to remove background DNA. This, however,  
384 is one reason we used PEMAX, which was designed to overcome this constraint<sup>16</sup>.  
385 Moreover, we used a modified sputum decontamination procedure<sup>44</sup> in which sodium

386 hydroxide was omitted to minimise effects on bacterial viability. Some study participants  
387 (Cohort B, who had MDR-TB) may have already been on chemotherapy at week 0, however,  
388 it is difficult to obtain a true baseline specimen from such people who are often prescribed  
389 first-line chemotherapeutics before drug resistance is discovered.

390

391 As sputum is an imperfect surrogate for the lower airways, many studies are shifting to  
392 bronchoalveolar lavage (BAL) sampling. Pre-treating low biomass specimens, such as BAL  
393 fluid or cough aerosols, where background signals from medical equipment or PCR reagents  
394 (or "reagent microbiome") can interfere with biological interpretation,<sup>51</sup> is likely to be  
395 beneficial, but further validation is required.

396

397 Our findings highlight the critical role of PMA or PEMAX pre-treatment in TB respiratory  
398 microbiome research, particularly during chemotherapy, as it provides invaluable insights  
399 into bacterial load characterisation and microbiome dynamics, especially when considering  
400 chemotherapeutics.

401



402 **Acknowledgements**

403 This work was supported by the South African National Research Foundation (#98948) and  
404 the South African Medical Research Council (SAMRC) through its Division of Research  
405 Capacity Development under the SAMRC Intramural Postdoctoral programme from funding  
406 received from the South African National Treasury. The content hereof is the sole  
407 responsibility of the authors and do not necessarily represent the official views of the  
408 SAMRC or the funders. CN and research reported in this publication was supported by the  
409 Fogarty International Center of the National Institutes of Health under Award Number  
410 K43TW012302. The content is solely the responsibility of the authors and does not  
411 necessarily represent the official views of the National Institutes of Health. RV is supported  
412 by an NRF PDP Postdoctoral fellowship through the SAMRC, the DSI-NRF Centre of  
413 Excellence for Biomedical Tuberculosis Research and the Faculty of Medicine and Health  
414 Sciences at Stellenbosch University. GT acknowledges funding from National Institute of  
415 Allergy and Infectious Diseases of the National Institutes of Health under award number  
416 R01AI136894, EDCTP programme supported by the European Union (TMA-2015-SF-1041),  
417 and the SAMRC Intramural Flagship Project. Computations were performed using facilities  
418 provided by the University of Cape Town's ICTS High Performance Computing team:  
419 <https://hpc.uct.ac.za/>.

420

421 **Conflict of Interest**

422 GT acknowledges in-kind donations from Cepheid. GT declares no other competing  
423 interests. The other authors each declare no competing interests.

424

425 **Data availability**

426 The data that support the findings of this study will be openly available in the Sequence  
427 Read Archive at <https://www.ncbi.nlm.nih.gov/sra>. Other supporting data generated in this  
428 study are available from the corresponding author on reasonable request.

429 **References**

- 430 1. World Health Organization. Global Tuberculosis Report 2023.
- 431 2. Theron G, Venter R, Calligaro G, et al. Xpert MTB/RIF results in patients with  
432 previous tuberculosis: can we distinguish true from false positive results? *Clinical Infectious*  
433 *Diseases* 2016; **62**(8): 995-1001.
- 434 3. Mishra H, Reeve BW, Palmer Z, et al. Xpert MTB/RIF Ultra and Xpert MTB/RIF for  
435 diagnosis of tuberculosis in an HIV-endemic setting with a high burden of previous  
436 tuberculosis: a two-cohort diagnostic accuracy study. *The Lancet Respiratory Medicine*  
437 2020; **8**(4): 368-82.
- 438 4. Theron G, Venter R, Smith L, et al. False-positive Xpert MTB/RIF results in retested  
439 patients with previous tuberculosis: frequency, profile, and prospective clinical outcomes.  
440 *Journal of clinical microbiology* 2018; **56**(3).
- 441 5. Jacobs R, Malherbe S, Loxton AG, et al. Identification of novel host biomarkers in  
442 plasma as candidates for the immunodiagnosis of tuberculosis disease and monitoring of  
443 tuberculosis treatment response. *Oncotarget* 2016; **7**(36): 57581.
- 444 6. Goletti D, Arlehamn CSL, Scriba TJ, et al. Can we predict tuberculosis cure? What  
445 tools are available? *European Respiratory Journal* 2018; **52**(5).
- 446 7. Namasivayam S, Diarra B, Diabate S, et al. Patients infected with *Mycobacterium*  
447 *africanum* versus *Mycobacterium tuberculosis* possess distinct intestinal microbiota. *PLoS*  
448 *neglected tropical diseases* 2020; **14**(5): e0008230.
- 449 8. Sulaiman I, Wu BG, Li Y, et al. Evaluation of the airway microbiome in  
450 nontuberculous mycobacteria disease. *European Respiratory Journal* 2018; **52**(4).
- 451 9. Diallo D, Somboro AM, Diabate S, et al. Antituberculosis therapy and gut microbiota:  
452 review of potential host microbiota directed-therapies. *Frontiers in Cellular and Infection*  
453 *Microbiology* 2021; **11**: 673100.

- 454 10. Namasivayam S, Maiga M, Yuan W, et al. Longitudinal profiling reveals a persistent  
455 intestinal dysbiosis triggered by conventional anti-tuberculosis therapy. *Microbiome* 2017;  
456 **5**(1): 1-17.
- 457 11. Burdet C, Nguyen TT, Duval X, et al. Impact of antibiotic gut exposure on the  
458 temporal changes in microbiome diversity. *Antimicrobial agents and chemotherapy* 2019;  
459 **63**(10).
- 460 12. Rogers G, Marsh P, Stressmann A, et al. The exclusion of dead bacterial cells is  
461 essential for accurate molecular analysis of clinical samples. *Clinical microbiology and*  
462 *infection* 2010; **16**(11): 1656-8.
- 463 13. Agustí G, Codony F, Fittipaldi M, Adrados B, Morató J. Viability determination of  
464 *Helicobacter pylori* using propidium monoazide quantitative PCR. *Helicobacter* 2010; **15**(5):  
465 473-6.
- 466 14. Rawsthorne H, Dock C, Jaykus L. PCR-based method using propidium monoazide to  
467 distinguish viable from nonviable *Bacillus subtilis* spores. *Applied and environmental*  
468 *microbiology* 2009; **75**(9): 2936-9.
- 469 15. Vesper S, McKinsty C, Hartmann C, Neace M, Yoder S, Vesper A. Quantifying  
470 fungal viability in air and water samples using quantitative PCR after treatment with  
471 propidium monoazide (PMA). *Journal of microbiological methods* 2008; **72**(2): 180-4.
- 472 16. Agustí G, Fittipaldi M, Codony F. False-positive viability PCR results: an association  
473 with microtubes. *Current microbiology* 2017; **74**(3): 377-80.
- 474 17. Wagner AO, Malin C, Knapp BA, Illmer P. Removal of free extracellular DNA from  
475 environmental samples by ethidium monoazide and propidium monoazide. *Applied and*  
476 *Environmental Microbiology* 2008; **74**(8): 2537-9.
- 477 18. Vondrakova L, Turonova H, Scholtz V, Pazlarova J, Demnerova K. Impact of various  
478 killing methods on EMA/PMA-qPCR efficacy. *Food Control* 2018; **85**: 23-8.

- 479 19. Kragh ML, Thykier M, Hansen LT. A long-amplicon quantitative PCR assay with  
480 propidium monoazide to enumerate viable *Listeria monocytogenes* after heat and  
481 desiccation treatments. *Food microbiology* 2020; **86**: 103310.
- 482 20. Cuthbertson L, Rogers GB, Walker AW, et al. Implications of multiple freeze-thawing  
483 on respiratory samples for culture-independent analyses. *Journal of Cystic Fibrosis* 2015;  
484 **14**(4): 464-7.
- 485 21. Nocker A, Sossa-Fernandez P, Burr MD, Camper AK. Use of propidium monoazide  
486 for live/dead distinction in microbial ecology. *Applied and environmental microbiology* 2007;  
487 **73**(16): 5111-7.
- 488 22. Nocker A, Cheung C-Y, Camper AK. Comparison of propidium monoazide with  
489 ethidium monoazide for differentiation of live vs. dead bacteria by selective removal of DNA  
490 from dead cells. *Journal of microbiological methods* 2006; **67**(2): 310-20.
- 491 23. Hortelano I, Moreno MY, Garcia-Hernandez J, Ferrús MA. Optimization of pre-  
492 treatments with Propidium Monoazide and PEMAX™ before real-time quantitative PCR for  
493 detection and quantification of viable *Helicobacter pylori* cells. *Journal of Microbiological*  
494 *Methods* 2021; **185**: 106223.
- 495 24. Kayigire XA, Friedrich SO, Karinja MN, van der Merwe L, Martinson NA, Diacon AH.  
496 Propidium monoazide and Xpert MTB/RIF to quantify *Mycobacterium tuberculosis* cells.  
497 *Tuberculosis* 2016; **101**: 79-84.
- 498 25. Nikolayevskyy V, Miotto P, Pimkina E, et al. Utility of propidium monoazide viability  
499 assay as a biomarker for a tuberculosis disease. *Tuberculosis* 2015; **95**(2): 179-85.
- 500 26. Kim YJ, Lee SM, Park BK, et al. Evaluation of propidium monoazide real-time PCR  
501 for early detection of viable *Mycobacterium tuberculosis* in clinical respiratory specimens.  
502 *Annals of laboratory medicine* 2014; **34**(3): 203.

- 503 27. de Assunção TM, Batista Jr EL, Deves C, et al. Real time PCR quantification of  
504 viable *Mycobacterium tuberculosis* from sputum samples treated with propidium monoazide.  
505 *Tuberculosis* 2014; **94**(4): 421-7.
- 506 28. Miotto P, Bigoni S, Migliori GB, Matteelli A, Cirillo DM. Early tuberculosis treatment  
507 monitoring by Xpert® MTB/RIF. *European Respiratory Journal* 2012; **39**(5): 1269-71.
- 508 29. Lu J, Zheng H, Chu P, et al. Direct detection from clinical sputum samples to  
509 differentiate live and dead *Mycobacterium Tuberculosis*. *Journal of Clinical Laboratory*  
510 *Analysis* 2019; **33**(3): e22716.
- 511 30. Invitrogen. PureLink™ Microbiome DNA Purification Kit  
512 Pub. No. MAN0014267 Rev. A.0.
- 513 31. Caporaso JG, Lauber CL, Walters WA, et al. Global patterns of 16S rRNA diversity at  
514 a depth of millions of sequences per sample. *Proceedings of the National Academy of*  
515 *Sciences* 2011; **108**(Supplement 1): 4516-22.
- 516 32. GenIUL. PEMAX 25 Reagent Monodose (TBC-Biomarker kit) INSTRUCTIONS Doc  
517 Code 450000075-00 2015.
- 518 33. Segal LN, Clemente JC, Li Y, et al. Anaerobic Bacterial Fermentation Products  
519 Increase Tuberculosis Risk in Antiretroviral-Drug-Treated HIV Patients. *Cell Host & Microbe*  
520 2017.
- 521 34. Tsay J-CJ, Wu BG, Badri MH, et al. Airway microbiota is associated with  
522 upregulation of the PI3K pathway in lung cancer. *American journal of respiratory and critical*  
523 *care medicine* 2018; **198**(9): 1188-98.
- 524 35. Bolyen E, Rideout JR, Dillon MR, et al. Reproducible, interactive, scalable and  
525 extensible microbiome data science using QIIME 2. *Nature biotechnology* 2019; **37**(8): 852-  
526 7.

- 527 36. Callahan BJ, McMurdie PJ, Rosen MJ, Han AW, Johnson AJA, Holmes SP. DADA2:  
528 high-resolution sample inference from Illumina amplicon data. *Nature methods* 2016; **13**(7):  
529 581-3.
- 530 37. McDonald D, Price MN, Goodrich J, et al. An improved Greengenes taxonomy with  
531 explicit ranks for ecological and evolutionary analyses of bacteria and archaea. *The ISME*  
532 *journal* 2012; **6**(3): 610-8.
- 533 38. Caporaso JG, Lauber CL, Walters WA, et al. Ultra-high-throughput microbial  
534 community analysis on the Illumina HiSeq and MiSeq platforms. *The ISME journal* 2012;  
535 **6**(8): 1621-4.
- 536 39. Davis NM, Proctor DM, Holmes SP, Relman DA, Callahan BJ. Simple statistical  
537 identification and removal of contaminant sequences in marker-gene and metagenomics  
538 data. *Microbiome* 2018; **6**: 1-14.
- 539 40. Oksanen J, Kindt R, Legendre P, et al. The vegan package. *Community ecology*  
540 *package* 2007; **10**: 631-7.
- 541 41. Love MI, Huber W, Anders S. Moderated estimation of fold change and dispersion for  
542 RNA-seq data with DESeq2. *Genome biology* 2014; **15**(12): 550.
- 543 42. Elizaquível P, Aznar R, Sánchez G. Recent developments in the use of viability dyes  
544 and quantitative PCR in the food microbiology field. *Journal of applied microbiology* 2014;  
545 **116**(1): 1-13.
- 546 43. Kim YJ, Lee SM, Park BK, et al. Evaluation of propidium monoazide real-time PCR  
547 for early detection of viable Mycobacterium tuberculosis in clinical respiratory specimens.  
548 *Annals of laboratory medicine* 2014; **34**(3): 203-9.
- 549 44. Naidoo CC, Nyawo GR, Sulaiman I, et al. Anaerobe-enriched gut microbiota predicts  
550 pro-inflammatory responses in pulmonary tuberculosis. *EBioMedicine* 2021; **67**: 103374.

- 551 45. Ticlla MR, Hella J, Hiza H, et al. The Sputum Microbiome in Pulmonary Tuberculosis  
552 and Its Association With Disease Manifestations: A Cross-Sectional Study. *Front Microbiol*  
553 2021; **12**: 633396.
- 554 46. Musisi E, Wyness A, Eldirdiri S, et al. Effect of seven anti-tuberculosis treatment  
555 regimens on sputum microbiome: a retrospective analysis of the HIGHRIF study 2 and  
556 PanACEA MAMS-TB clinical trials. *The Lancet Microbe* 2023; **4**(11): e913-e22.
- 557 47. Kateete DP, Mbabazi MM, Nakazzi F, et al. Sputum microbiota profiles of treatment-  
558 naïve TB patients in Uganda before and during first-line therapy. *Scientific Reports* 2021;  
559 **11**(1): 24486.
- 560 48. Pezzulo AA, Kelly PH, Nassar BS, et al. Abundant DNase I-sensitive bacterial DNA  
561 in healthy porcine lungs and its implications for the lung microbiome. *Appl Environ Microbiol*  
562 2013; **79**(19): 5936-41.
- 563 49. Nocker A, Sossa KE, Camper AK. Molecular monitoring of disinfection efficacy using  
564 propidium monoazide in combination with quantitative PCR. *Journal of microbiological*  
565 *methods* 2007; **70**(2): 252-60.
- 566 50. Codony F, Agustí G, Allué-Guardia A. Cell membrane integrity and distinguishing  
567 between metabolically active and inactive cells as a means of improving viability PCR.  
568 *Molecular and Cellular Probes* 2015; **29**(3): 190-2.
- 569 51. de Goffau MC, Lager S, Salter SJ, et al. Recognizing the reagent microbiome. *Nature*  
570 *Microbiology* 2018; **3**(8): 851-3.

571

573



574 **Figure legends**

575 **Figure 1. Experimental workflow for in vitro dilution series and sputum.** *Mycobacterium*  
576 *tuberculosis* was cultured in flasks and a dilution series prepared for testing in three separate  
577 experiments: antibiotic exposure (Experiment A), heat-kill (Experiment B) and freeze-thaw  
578 (Experiment C). Sputum was collected from two distinct cohorts: one comprising patients  
579 with presumptive tuberculosis (Cohort A) and the other involving patients treated for drug-  
580 resistant tuberculosis (Cohort B). MTBC: *Mycobacterium tuberculosis* complex.

581

582 **Figure 2. PMA and PEMAX reduce MTBC detection in dilution series (regardless of**  
583 **how aliquots were treated) and in sputum sediments from presumptive TB patients.**

584 PCR readouts for non-antibiotic (cultured in absence of antibiotics), antibiotic (cultured with  
585 isoniazid and rifampicin), 1:1 mixture (non-antibiotic: antibiotic), and heat-killed (non-  
586 antibiotic aliquots heated at 100°C for 30min) cultures after 24h of incubation.

587 **Supplementary Figure 1** has these data for the 48h and 72h exposure period. Median  $C_T$ s  
588 (IQR) are shown for **(A)**  $10^8$  and **(B)**  $10^6$  CFU/ml dilutions. Open circles denote  $C_T$ s that  
589 exceed those of the averaged non-template control (dashed line). Median Xpert  $C_{Tmin}$  (95%  
590 CI) are shown for **(C)**  $10^8$  CFU/ml and **(D)**  $10^6$  CFU/ml. Triangles on y-axes indicate  
591 decreasing load. MTBC: *Mycobacterium tuberculosis* complex;  $C_T$ : cycle threshold;  $C_{Tmin}$ :  
592 minimum cycle threshold; CI: confidence interval; IQR: interquartile range.

593

594 **Figure 3. In sputa from people with presumptive TB, PMA or PEMAX reduces**  
595 **microbial diversity estimates more than DNaseI in comparison to untreated sputum.**

596 **(A)** PCR readouts for untreated versus treated (PMA, PEMAX, or DNaseI) decontaminated  
597 sputum from TB-negatives and TB-positives (Cohort A). Triangles on y-axes indicate  
598 decreasing load. **(B)**  $\alpha$ -Diversity decreased after PMA and PEMAX treatment but not  
599 DNaseI. **(C)**  $\beta$ -diversity differences between untreated and treated groups. **(D)** Bray-Curtis

600 distance to untreated sputum was higher in PMA- and PEMAX-treated sputum versus  
601 DNaseI-treated sputum. Volcano plots depicting **(E)** many differentially abundant taxa in  
602 PMA-treated versus untreated sputum and **(F)** *Mycobacterium*-enrichment and *Neisseria*-  
603 depletion in PEMAX-treated versus untreated sputum. More discriminatory taxa appear closer  
604 to the left or right, and higher above the threshold (red dotted line, false discovery rate of  
605 0.2). Relative abundances correspond to circle size. **(G)** Use of PEMAX increased the  
606 proportion of *Mycobacterium* reads in TB-positives. ASVs: amplicon sequencing variants.

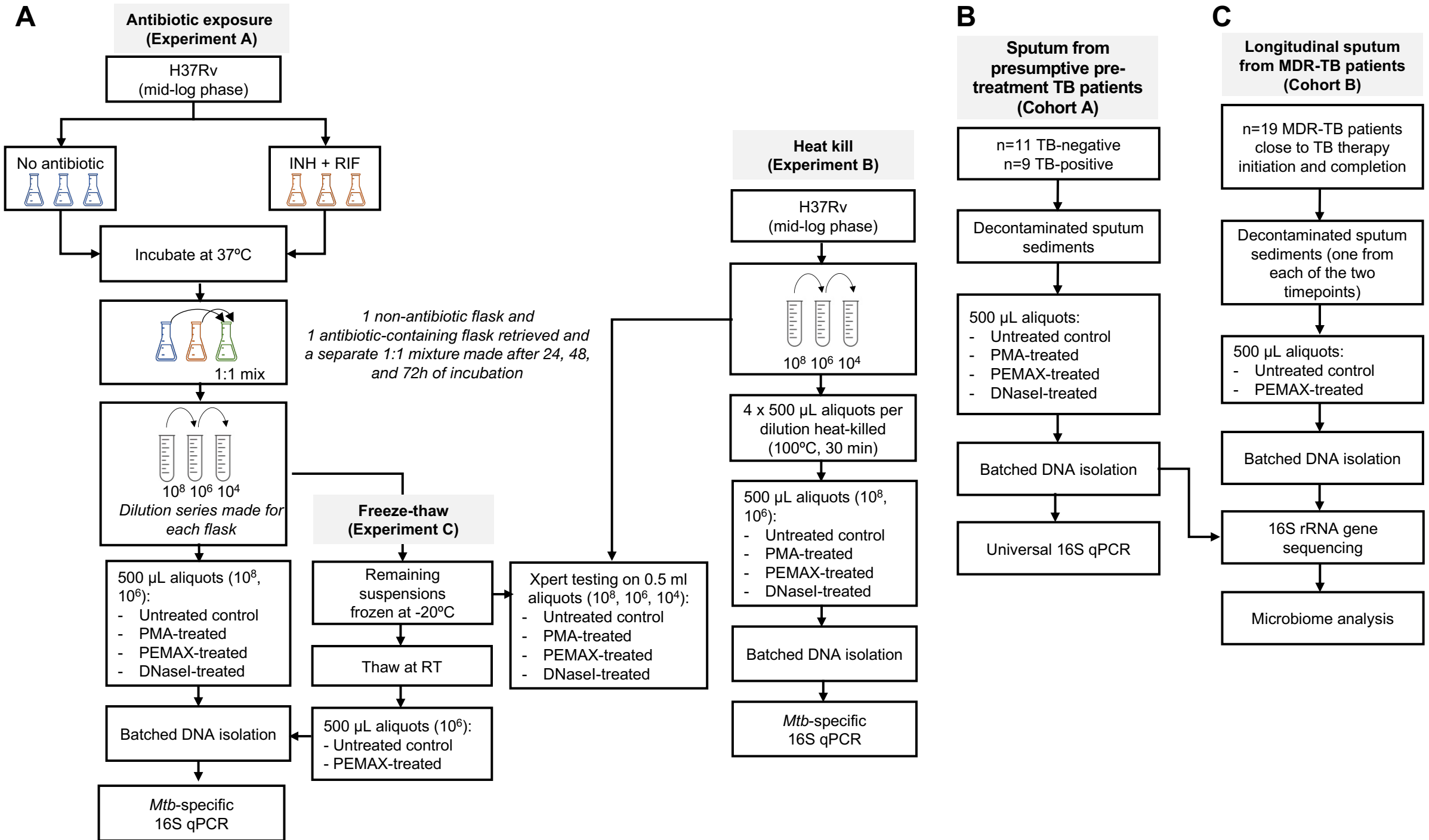
607

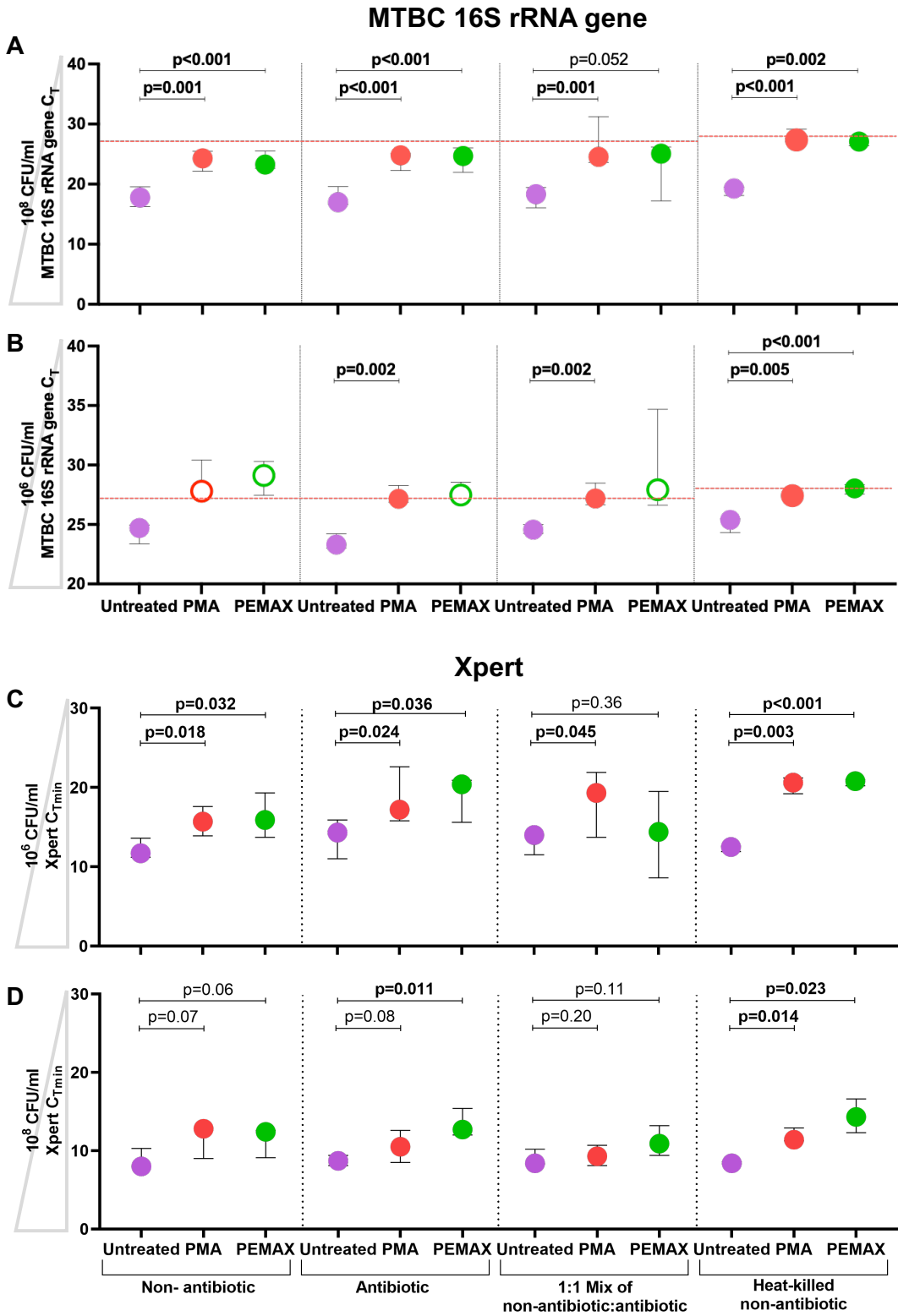
608 **Figure 4. PMA and PEMAX enhances *Mycobacterium* detection in TB-positives versus**  
609 **TB-negatives.** In untreated sputum, groups did not differ in **(A)**  $\alpha$ -diversity nor **(B)**  $\beta$ -  
610 diversity. The same was observed for PMA-, PEMAX-, and DNaseI-treated sputum (see  
611 Supplement). TB-negatives were *Gallibacterium*-enriched in **(C)** untreated, **(D)** PMA-treated  
612 and **(E)** PEMAX-treated sputum versus TB-positives. More discriminatory taxa appear closer  
613 to the left or right, and higher above the threshold (red dotted line, false discovery rate of  
614 0.2). Relative abundances correspond to circle size. **(F)** *Mycobacterium* relative abundance  
615 was higher in TB-positives than TB-negatives in sputum treated with either PMA or PEMAX,  
616 however, abundances were the same in untreated or DNaseI-treated sputum. In TB-  
617 positives, PEMAX permitted greater mycobacterial detection than PMA [0.0015 (0.0001-  
618 0.1125) vs. 0.0001(0.0001-0.0009)]. ASVs: amplicon sequencing variants.

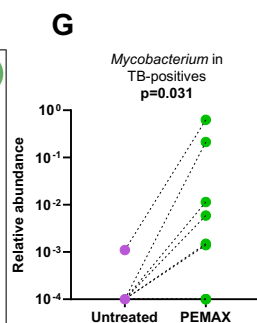
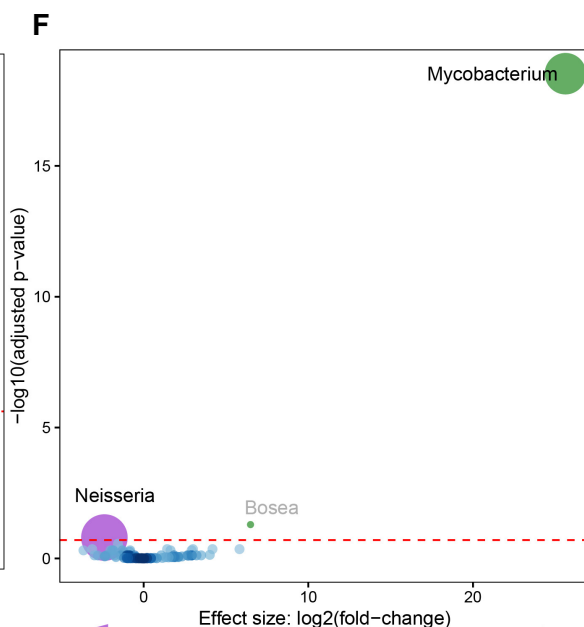
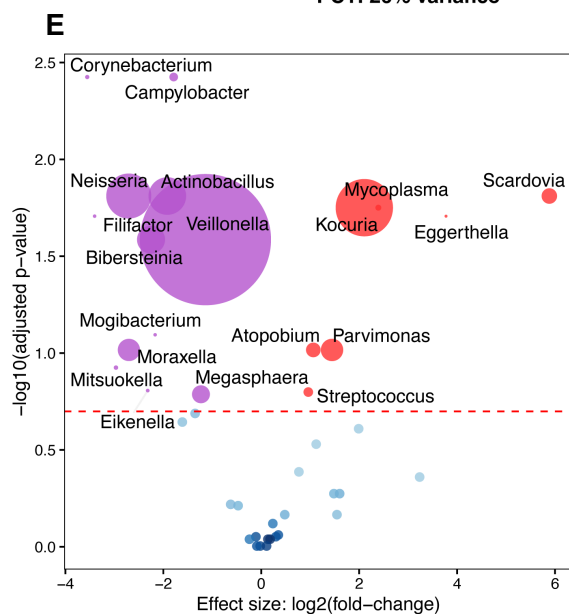
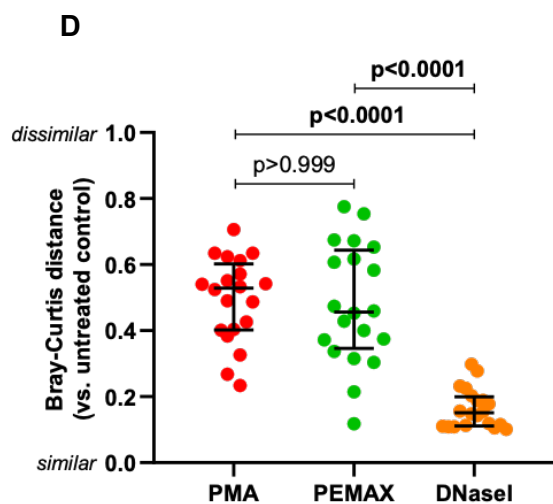
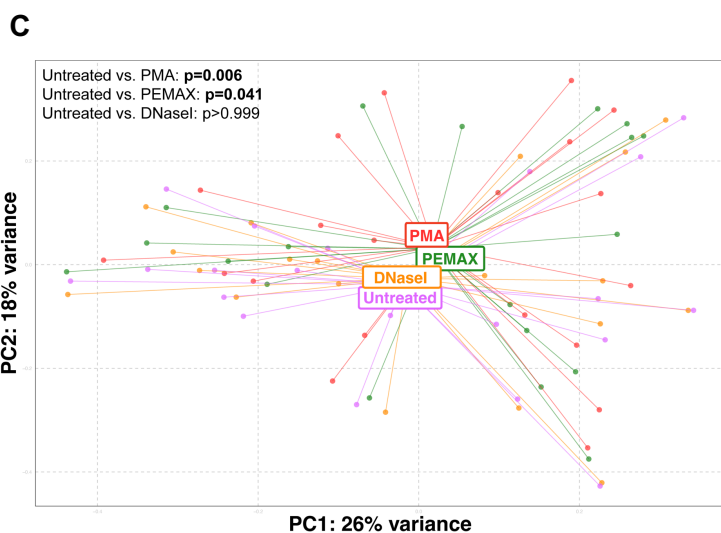
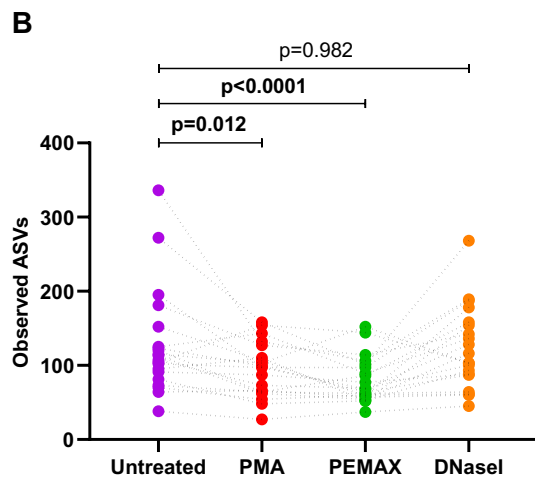
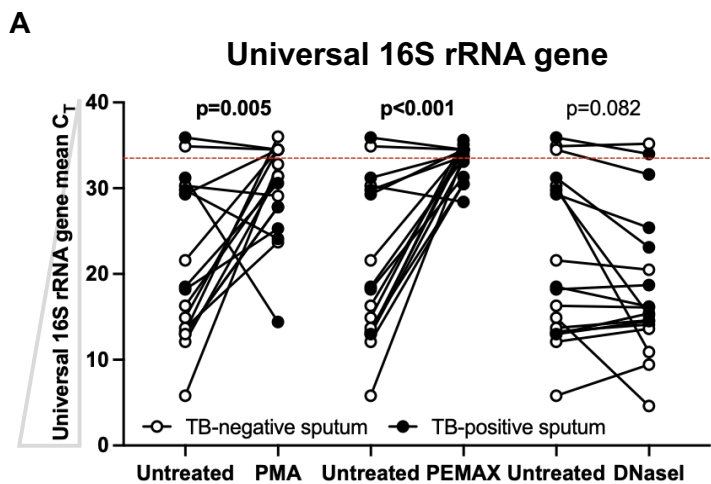
619

620 **Figure 5. Microbial changes after TB chemotherapy are only detectable with PEMAX.**  
621 **(A)**  $\alpha$ -Diversity was only different between week 24 untreated and PEMAX-treated sputum.  
622 **(B)** Unlike in untreated sputum, PEMAX enabled detection of  $\beta$ -diversity changes between  
623 weeks 0 and 24. **(C)** *Neisseria*-enrichment and *Mogibacterium*-depletion at week 24 in  
624 treated vs. untreated sputum. **(D)** Only three discriminatory taxa were identified in the  
625 absence of PEMAX between weeks 0 and 24, whereas **(E)** many were identified after

626 PEMAX-exposure. More discriminatory taxa are closer to the left or right, and higher above  
627 the threshold (red dotted line, false discovery rate of 0.2). Relative abundances of taxa are  
628 indicated by circle size. ASVs: amplicon sequencing variants.







← Enriched in untreated Enriched in PMA-treated →

← Enriched in untreated Enriched in PEMAX-treated →

