

1 **Title page**

2  
3  
4 **Full title: Clinical characteristics and outcomes of pulmonary haemorrhage in**  
5 **leptospirosis: A retrospective cohort study from Sri Lanka**

6  
7 **Short title: Characteristics and outcome of pulmonary haemorrhage in leptospirosis**  
8

9  
10  
11 Pramith Ruwanpathirana<sup>1¶\*</sup>, Nilanka Perera<sup>2¶</sup>, Roshan Rambukwella<sup>3¶</sup>, Dilshan Priyankara<sup>4¶</sup>

12  
13 1 – Professorial unit in medicine, National Hospital of Sri Lanka, Colombo, Sri Lanka

14 2 – Department of Medicine, Faculty of Medical Sciences, University of Sri  
15 Jayewardenepura, Nugegoda, Sri Lanka

16 3 - Provincial Director of Health Services, Central Province, Kandy, Sri Lanka

17 4 – Medical intensive care unit, National Hospital of Sri Lanka, Colombo, Sri Lanka  
18

19  
20 \* Corresponding author – [pramithrp@gmail.com](mailto:pramithrp@gmail.com)  
21  
22  
23  
24  
25

26 **Authors' contributions**

27 DP conceptualized, designed, and conducted the study. RH and PR analysed the data. PR  
28 drafted the initial manuscript. NP, DP, and RH critically revised the manuscript. All authors  
29 have contributed significantly to the study.  
30

31 **Abstract**

32 **Background**

33 Leptospirosis, a tropical, spirochaetal infection presents as an acute febrile illness with organ  
34 injury. There is a paucity of data on clinical characteristics and treatment for Leptospirosis  
35 Pulmonary Haemorrhage Syndrome (LPHS).

36

37 **Methodology and principal findings**

38 A retrospective cohort study was conducted including all patients with LPHS treated in the  
39 medical Intensive Care Unit (ICU), at National Hospital Sri Lanka from 2019 to 2022 to describe  
40 the clinical characteristics and factors related to poor outcomes. Survival of patients who  
41 received different treatment modalities for LPHS was compared.

42

43 Seventy patients were studied with a mean age of  $42.69 \pm 27.84$  years and 61 (87.1%) males.  
44 Forty-nine (70%) were mechanically ventilated and 16 (22.9%) died. Higher heart rate, higher  
45 lactate, lower pH on admission to ICU, and requirement of blood product transfusion were  
46 associated with increased mortality. Patients were treated with plasmapheresis (PLEX),  
47 intranasal desmopressin (DDAVP), and intravenous steroids alone or in combination as the  
48 specific treatment for LPHS. Seven (10%) patients were treated with PLEX alone, 13 (18.6%)  
49 with PLEX + DDAVP, 46 (65.7%) with PLEX + DDAVP + steroids, and 4(5.7%) were treated with  
50 steroids alone. All patients who received the PLEX and DDAVP combination survived. There  
51 were 11 (23.9%) deaths in the PLEX+ DDAVP + steroids group, 3 (49.2%) in the PLEX alone  
52 group, and 2 (50%) in the steroids alone group. Mortality was least when PLEX was done for  
53 3 days. Twenty-five (35.7%) patients developed hospital-acquired infections and risk factors  
54 were mechanical ventilation and longer ICU stay.

55

56 **Conclusions**

57 The presence of tachycardia, acidosis, and high lactate predicted death in LPHS. PLEX and  
58 DDAVP combination had better survival than other treatments alone or in combination for  
59 LPHS. Randomized clinical trials are urgently needed to identify the role of PLEX and DDAVP  
60 in treating LPHS.

61

62 **Keywords:**

63  
64 Leptospirosis, Leptospirosis pulmonary haemorrhage syndrome, plasmapheresis,  
65 desmopressin, treatment

66 **Author Summary**

67 Leptospirosis, a tropical infection causes multiple organ injury. Bleeding into the lungs  
68 (pulmonary haemorrhage) in leptospirosis is poorly studied. There is no established treatment  
69 for pulmonary haemorrhage in leptospirosis (LPHS). A large cohort of LPHS patients treated  
70 in a medical ICU in Sri Lanka was studied to identify clinical characteristics and outcomes. The  
71 presence of higher heart rate, high lactate, lower pH, need for blood product, and intravenous  
72 tranexamic acid were identified as risk factors for death. We compared different treatment  
73 modalities used for the treatment of LPHS. In addition to standard treatment with antibiotics  
74 and supportive care, a combination of steroids, plasma exchange (PLEX), and intranasal  
75 desmopressin (DDAVP) were used to treat LPHS. Mortality was least when patients were  
76 treated with DDAVP + PLEX. The optimum duration of PLEX was 3 days. Clinical trials are  
77 urgently needed to identify the benefit of PLEX and DDAVP in the treatment of LPHS.

78

## 79 Introduction

80 Leptospirosis, a zoonotic spirochaetal infection caused by *Leptospira interrogans*, results in  
81 58,900 deaths (95% CI 23,800–95,900) per annum, worldwide [1,2]. Presenting as an acute  
82 fever, leptospirosis can have multi-organ involvement including, acute kidney injury, acute  
83 liver injury, myocarditis, aseptic meningitis, and pulmonary haemorrhage. Leptospirosis is  
84 classically described as a bi-phasic illness, although it is not always obvious. The initial  
85 ‘leptosiraemic phase’ lasts for three to nine days and manifests as a febrile illness with  
86 severe myalgia, prostration, and conjunctival suffusion. In this phase, the spirochetes  
87 disseminate to the organs haematologically. This is followed by the ‘immune phase’, where  
88 IgM against *Leptospira* appears and the organisms disappear from the blood [1]. This phase  
89 is characterized by an immune response against the spirochetes residing in the organs such  
90 as the liver, lung, kidney, heart, and brain. It is believed that the resulting inflammation leads  
91 to the end-organ injury of the immune phase of leptospirosis[3].

92 Leptospirosis pulmonary haemorrhage syndrome (LPHS) is a poorly studied entity and it is  
93 believed to occur in 20% – 70% [4] of patients with a mortality rate of 43%[5] to 55%[6],  
94 occurring within the first week of illness[7,8]. Its pathogenesis is postulated to be due to the  
95 direct alveolar damage [9] caused by the organism and/or host response against it [10].  
96 Autopsy studies of lungs in LPHS have detected *Leptospira* antigens in the pulmonary vascular  
97 endothelium [11, 12], linear deposition of immunoglobulins and complements in alveolar  
98 surface [12], foci of interstitial inflammation with lymphocytes, plasma cells, and occasional  
99 eosinophils [13]. Studies suggest the occurrence of a cytokine storm in severe leptospirosis  
100 [14]. Pro-inflammatory mediators (IL-6, IL-8, and tumour necrosis factor-alpha (TNF $\alpha$ )) [3]  
101 and elevated inducible nitric oxide activity in the lungs were found to be higher in patients  
102 who developed LPHS, indicating an immune cell activation [15]. The exact pathogenesis of

103 LPHS is still debatable. Both direct alveolar-capillary damage by the spirochete and immune-  
104 mediated damage are equally plausible. In the latter instance, the *Leptospira* antigens found  
105 in the lung specimens could be those found in the antigen-antibody complexes.

106

107 Treatment of LPHS is not well established due to paucity of evidence. Randomized controlled  
108 trials are minimal and most treatment strategies are based on case reports, observational  
109 studies, or expert opinion. Steroids and plasma exchange (PLEX) have been tried as treatment  
110 modalities considering the immune-based pathogenesis. Many case reports have  
111 demonstrated improvement of pulmonary manifestations following steroid treatment in  
112 patients with LPHS although a randomized trial conducted in Thailand did not demonstrate a  
113 benefit compared to standard of care [16]. The use of steroids was associated with  
114 nosocomial infections. PLEX has been shown to significantly improve survival in observational  
115 studies with the additional advantage of removing systemic toxic mediators. However, there  
116 are no randomized trials supporting this observation. Desmopressin (DDAVP), a selective  
117 vasopressin V<sub>2</sub> agonist has been used in LPHS [17] based on its utility in treating bleeding  
118 diathesis in haemophilia A and von Willebrand disease [18].

119

120 Sri Lanka is endemic for leptospirosis, reporting many outbreaks with morbidity and mortality.  
121 There is an urgent need to generate evidence in an attempt to improve mortality. High-dose  
122 steroid therapy (intravenous methylprednisolone followed by oral prednisolone) is  
123 recommended in the national guideline of Sri Lanka based on the available limited evidence  
124 [19]. PLEX is widely used to treat LPHS in Sri Lanka due to its observed benefit.

125

126 We report an observational study on a large number of LPHS patients treated in the Medical  
127 Intensive Care Unit (MICU) of the National Hospital of Sri Lanka (NHSL). This is the first report  
128 comparing the outcome of multiple modalities of treatment such as steroids, PLEX, DDAVP,  
129 or their combinations. This study provides useful information to guide treatment and plan  
130 future clinical trials.

131

## 132 **Methods**

### 133 **Study design and study participants**

134 This retrospective cohort study was done to describe the clinical features, treatment, and  
135 disease outcomes of patients with leptospirosis who developed pulmonary haemorrhage. The  
136 study was carried out in the MICU, NHSL. All patients admitted to the study site from 1<sup>st</sup>  
137 January 2019 to 1<sup>st</sup> January 2022 with a microbiological or serological diagnosis of  
138 leptospirosis and LPHS were recruited to the study.

139

### 140 **Ethical approval**

141 Ethical approval was obtained from the Ethics Review Committee of the National Hospital of  
142 Sri Lanka. Consent was not obtained from participants as this was a retrospective study.  
143 Administrative approval from the Deputy Director of the National Hospital of Sri Lanka was  
144 obtained to collect anonymized patient details for publication in scientific journals.

145

### 146 **Study procedure**

147 The clinical details were retrospectively extracted from the medical records into a pre-formed  
148 data extraction sheet. The socio-demographic details, pre-ICU admission clinical parameters,  
149 clinical progression, and treatment given in the ICU were extracted from the medical records.

150 The definitions used to diagnose leptospirosis and its complications are given in Table 1. The  
 151 therapeutic decisions were completely under the treating physician’s discretion. Patients  
 152 were followed up until discharge from the MICU to describe the outcome.

153

154 **Table 1: Definitions used in the study population**

Condition	Definition
Microbiologically diagnosed leptospirosis	<ul style="list-style-type: none"> <li>• A positive polymerase chain reaction (PCR) for <i>Leptospira interrogans</i> DNA in the serum of the patient within the first 7 days of illness</li> </ul>
Serologically diagnosed leptospirosis[19]	<ul style="list-style-type: none"> <li>• A titer of <math>\geq 1:320</math> (cut-off recommended for Sri Lanka by the reference laboratory), OR</li> <li>• a four-fold rise in titre or seroconversion from acute and convalescent sera  using a microscopic agglutination test</li> </ul>
Pulmonary haemorrhage	<ul style="list-style-type: none"> <li>• Development of haemoptysis (or blood-stained secretions from the endotracheal tube) AND</li> <li>• Hypoxia (SpO<sub>2</sub> &lt;94%) AND</li> <li>• Bilateral fluffy opacities in the lung parenchyma in chest radiograph OR</li> <li>• HRCT evidence of pulmonary haemorrhage AND</li> <li>• Reduction of haemoglobin of more than 1g/dL within 48 hours</li> </ul>
Myocarditis	<ul style="list-style-type: none"> <li>• Echocardiographic evidence of global hypokinesia AND</li> <li>• ECG changes including ST segment and T wave changes not confined to a vascular territory AND</li> <li>• Troponin I level higher than 3 times the upper limit of normal (ULN) in the absence of renal impairment and 5 times the ULN in patients with renal impairment</li> </ul>



---

Acute kidney injury [20]

- Increase in serum creatinine by 0.3mg/dL or more within 48 hours or
  - Increase in serum creatinine to 1.5 times baseline or more within the last 7 days or
  - Urine output less than 0.5 mL/kg/h for 6 hours
- 

155 *Abbreviations: SpO<sub>2</sub>; peripheral oxygen saturation, HRCT; high resolution computed tomography,*  
156 *EKG; electrocardiograph.*  
157

## 158 **Statistical analysis**

159 Socio-demographic variables, clinical parameters, complications, treatment, and outcomes  
160 were described using descriptive statistics. Percentages were used to describe categorical  
161 data. Continuous variables were described using means with standard deviations (SD), and  
162 medians with interquartile ranges (IQRs) for variables with a normal or skewed distribution  
163 respectively. Differences between categorical variables were assessed using the Chi-square  
164 statistic or Fisher's exact test. Continuous variables with a normal distribution were compared  
165 using student t-test or one-way ANOVA. Continuous variables with a skewed distribution were  
166 compared using the Mann-Whitney U test or Kruskal-Wallis's test. Clinical, and laboratory  
167 findings and therapy were compared between patients who died and patients who made a  
168 complete recovery. The development of hospital-acquired infection and the mortality of the  
169 patients were compared between the groups who received different treatment modalities by  
170 logistic and Cox regression analysis.

171

## 172 **Results**

173 A total of seventy patients with LPHS were managed in the MICU during the study period. The  
174 mean age was 42.69 ( $\pm 13.92$ ) years with 61 (87.1%) males. Leptospirosis diagnosis was  
175 confirmed by polymerase chain reaction in 24 (34.3%) and microscopic agglutination titer in  
176 46 (65.7%). Mechanical ventilation was required for 49 (70%) patients and renal replacement

177 therapy (RRT) was performed in 43 (61.4%) patients with acute kidney injury. There were 16  
 178 (22.9%) deaths. Patients who succumbed to the illness had a higher heart rate, lower pH with  
 179 a lower base excess, and a higher serum lactate on admission to MICU than patients who  
 180 survived (Table 1). Patients who did not survive the illness, required mechanical ventilation,  
 181 blood product transfusion, and intravenous tranexamic acid than patients who survived.  
 182 Mortality was higher in patients who received steroids alone or in combination with other  
 183 treatments compared to patients who did not receive steroids (Table 2).

184 **Table 2: Comparison of clinical and laboratory parameters among patients who died and**  
 185 **patients who survived in the study population**  
 186

Parameter	Died n=16	Survived n=54	p-value
<b>Clinical parameters at the time of admission to MICU</b>			
Heart rate (bpm)	115.9(22.1)	100.5(17.7)	0.001
SBP (mmHg)	108.1(24.5)	117.0(24.4)	0.289
DBP (mmHg)	63.9(12.9)	68.5(13.4)	0.931
MAP (mmHg)	78.7(15.8)	84.7(15.9)	0.556
WBC (x10 <sup>3</sup> /μL) *	11.9(8.7 - 20.9)	15.4(9.6 - 18.4)	0.737
Haemoglobin (g/dL)	10.8(2.1)	10.3(2.3)	0.554
Platelet count (x10 <sup>3</sup> /μL) *	30.5 (20.3 - 51.3)	33.5(21.0 – 69.0)	0.585
CRP (mg/dL)	232.7 (86.7)	221.8 (89.4)	0.419
AST (U/L) *	96.5 (67.3 - 230.5)	85.0(59.5 - 168.8)	0.275
ALT (U/L) *	54.5 (39.5 - 128.7)	50.0 (34.0 - 95.8)	0.590
INR*	1.2 (1.1 - 1.4)	1.1 (1.0 - 1.4)	0.138
APTT (seconds)*	35.8 (32.0 - 39.7)	34.0 (28.2 - 40.1)	0.524
Serum creatinine (mg/dL)	392.6 (192.42)	346.0 (159.2)	0.574
Serum sodium (mmol/L) *	136.0 (132.3 - 137.8)	136.0 (132.8 -139.3)	0.533
Serum potassium(mmol/L)*	4.4 (3.9 - 4.6)	3.9 (3.5 - 4.3)	0.089
pH	7.2 (0.1)	7.3 (0.1)	0.019
Base excess (mmol/L)	-9.1 (5.9)	-6.8 (5.9)	0.093
Serum lactate (mmol/L) *	4.0 (2.6 - 6.3)	2.1 (1.6 - 3.9)	0.024
<b>Complications</b>			
Myocarditis	13 (81.3%)	45 (83.3%)	0.846

Acute kidney injury	16 (100.0%)	53 (98.1%)	0.584
Hospital-acquired infection	7 (43.8%)	18 (33.3%)	0.445
<b>Ancillary treatment</b>			
Mechanical ventilation	16 (100.0%)	33 (61.1%)	0.003
Duration of mechanical ventilation* (days)	5 (3.0 - 7.0)	5 (3.0 - 9.0)	0.814
Tranexamic acid	3 (18.8%)	2 (3.7%)	0.04
RRT	10 (62.5%)	33 (61.1%)	0.920
Packed red cell transfusion	9 (56.3%)	17 (31.5%)	0.072
Platelet transfusion	15 (93.8%)	45 (83.3%)	0.296
Cryoprecipitate transfusion	2 (12.5%)	1 (1.9%)	0.065
Fresh frozen plasma transfusion	5 (31.3%)	3 (5.6%)	0.005
Total ICU stay (days)*	5.5 (2.25 - 9.5)	6 (4 - 12.0)	0.279
<b>Specific treatment for LPHS</b>			
Treatment with steroids	16 (100.0%)	42 (77.8%)	0.038
Treatment with PLEX <sup>†</sup>	14 (87.5%)	52 (96.3%)	0.183
Treatment with DDAVP <sup>‡</sup>	11 (68.8%)	47 (87.0%)	0.088

187 *Values given as mean (SD) or frequency (%). Values marked with \* are given as median (IQR).*  
 188 *Abbreviations: SBP; systolic blood pressure, DBP; diastolic blood pressure, MAP; mean arterial*  
 189 *pressure, WBC; white blood cell count, CRP; C-reactive protein, AST; aspartate transaminase, ALT;*  
 190 *alanine transaminase, INR; international normalized ratio, APTT; activated partial thromboplastin*  
 191 *time, RRT; renal replacement therapy, <sup>†</sup>PLEX; plasmapheresis, <sup>‡</sup>DDAVP; desmopressin.*  
 192

### 193 **Treatment modalities for LPHS**

194 Specific treatments received for LPHS were intravenous steroids, intranasal DDAVP (20µg, 6  
 195 hourly), and PLEX (60 mL/kg, using fresh frozen plasma, every other day), alone or in  
 196 combination. The steroids were given as intravenous methylprednisolone (500mg/day -  
 197 1g/day) followed by oral prednisolone. The different steroid dosing regimens are given in  
 198 supplementary table 1 (S1). The characteristics of the patients in the different treatment  
 199 groups are compared in Table 3. Patient characteristics and laboratory findings revealed that  
 200 the group who received PLEX alone had a significantly higher heart rate, lower systolic blood  
 201 pressure, higher serum lactate levels, and higher serum creatinine than the other groups. In  
 202 addition, a higher proportion in this group received fresh frozen plasma, cryoprecipitate, and

203 packed red cell transfusions. Other laboratory parameters were not significantly different in  
204 the treatment groups.

205 **Table 3: Comparison of patient characteristics, treatment, and outcomes between**  
206 **treatment strategies for LPHS**

207

Parameter	Total (n=70)	Treatment modalities				p-value
		PLEX† alone (n=7)	PLEX† + DDAVP‡ (n=13)	PLEX† + DDAVP‡ + Steroids (n=46)	Steroids alone (n=4)	
<b>Clinical parameters at the time of admission to MICU</b>						
Heart rate (bpm)	104.0 (19.7)	117.3 (28.5)	87.2 (14.5)	106.4(17.4)	107.5 (14.4)	0.002
SBP (mmHg)	115.0 (24.5)	108.3 (22.6)	122.5 (21.0)	114.1 (26.5)	112.5 (12.6)	0.616
DBP (mmHg)	67.4 (13.3)	63.1 (7.4)	68.7 (9.1)	67.1 (15.1)	75.0 (9.1)	0.546
MAP (mmHg)	83.3 (16.0)	78.2 (12.2)	86.6 (12.6)	82.8 (17.8)	87.5 (8.8)	0.666
WBC (x10 <sup>3</sup> /μL) *	14.2 (9.5 - 18.4)	12.6 (11.8 - 17.1)	15.5 (11.0 - 23.3)	12.7 (7.8 - 9.2)	14.1 (10.0 - 25.3)	0.839
Haemoglobin (g/dL)	10.4 (2.2)	10.1 (2.7)	10.8 (1.5)	10.4 (2.4)	10.6 (1.3)	0.884
Platelet count (x10 <sup>3</sup> /μL) *	32.0 (21.0 - 64.3)	51.0 (34.0 - 60.0)	23.0 (20.0 - 82.5)	32.0 (23.8 - 65.8)	19.0 (16.3 - 38.3)	0.378
CRP (mg/dL)	224.3 (88.3)	177.6 (48.8)	203.3 (75.9)	234.3 (92.5)	260.5 (112.5)	0.269
AST (U/L) *	89.5 (61.0 - 178.0)	101.0 (63 - 166)	79.0 (44.5 - 225.5)	90.5 (65.5 - 178)	76.5 (62.5 - 205.25)	0.881
ALT (U/L) *	51.0 (36.25 - 95.75)	45.0 (34.0 - 134.0)	45.0 (33.5 - 100.0)	53.0 (36.3 - 90.5)	49.5 (41.0 - 94.0)	0.964
INR*	1.1 (1.0 - 4.4)	1.0 (0.9 - 1.4)	1.1 (1.1 -1.4)	1.1 (1.0 -1.4)	1.3 (1.1 - 1.9)	0.485
APTT (seconds)*	34.4 (29.6 - 40.1)	33.0 (26.0 - 35.0)	38.0 (29.3 -42.3)	34.9 (29.6 - 40.1)	31.1 (29.3 - 41.9)	0.503
Serum creatinine (μmol/L)	356.7 (167.1)	428.6 (191.1)	331.8 (178.7)	361.1 (162.9)	261.3 (126.2)	0.411
Serum sodium (mmol/L) *	136.0 (132.7-139)	135.0 (131.0 - 136.0)	136.0 (128-140.5)	136.0 (133.0 - 139.0)	137.5 (133.3 - 140.3)	0.663

Serum potassium(mmol/L) *	4.0 (3.5 - 4.4)	4.3 (3.2 - 4.6)	3.6 (3.2 - 3.95)	4.0 (3.6 - 4.5)	4.3 (3.80 - 5.15)	0.122
pH	7.3 (0.1)	7.2 (0.2)	7.4 (0.1)	7.3 (0.1)	7.2 (0.2)	0.010
Base excess (mmol/L)	-7.3 (6.0)	-5.3 (5.7)	-5.5 (6.2)	-7.8 (6.0)	-10.7 (4.7)	0.323
Serum lactate (mmol/L) *	2.6 (1.6 - 4.3)	3.8 (1.4 - 5.3)	2.1 (1.15 -2.95)	2.6 (1.7 - 4.8)	2.6 (1.325 - 6.8)	0.502
<b>Complications</b>						
Myocarditis	58 (82.9%)	4 (57.1%)	12 (92.3%)	39 (84.8%)	3 (75.0%)	0.224
Acute kidney injury	69 (98.6%)	7 (100.0%)	13 (100.0%)	45 (97.8%)	4 (100.0%)	0.912
<b>Ancillary treatment</b>						
Mechanical ventilation	49 (70.0%)	5 (71.4%)	6 (46.2%)	35 (76.1%)	3 (75.0%)	0.223
Tranexamic acid	5 (7.1%)	1 (14.3%)	0 (0.0%)	3 (6.5%)	1 (25.0%)	0.322
Renal replacement therapy	43 (61.4%)	4 (57.14%)	6 (46.2%)	32 (69.6%)	1 (25.0%)	0.182
<b>Blood product transfusion</b>						
Packed red cell transfusion	26 (37.1%)	4 (57.1%)	0 (0.0%)	21 (45.7%)	1 (25.0%)	0.014
Platelet transfusion	60 (85.7%)	6 (85.7%)	9 (69.2%)	43 (93.5%)	2 (50.0%)	0.025
Cryoprecipitate transfusion	3 (4.3%)	1 (14.3%)	0 (0.0%)	2 (4.4%)	0 (0.0%)	0.481
Fresh frozen plasma transfusion	8 (11.4%)	3 (42.9%)	0 (0.0%)	4 (8.7%)	1 (25.0%)	0.023
<b>Outcome</b>						
Death at 32 days	16 (22.9%)	3 (42.9%)	0 (0.0%)	11 (23.9%)	2 (50.0%)	0.068
Duration of mechanical ventilation*/days	5 (3.0 - 8.0)	3 (2.0 - 8.5)	3 (2.5 - 4.5)	5 (4.0 - 8.5)	1 (1)	0.194
Duration of treatment in the ICU*/days	6 (3.0 - 11.0)	5 (3.0 - 6.0)	5 (3.0 - 10.5)	6 (4.0- 11.25)	2 (1.0 - 22.5)	0.249
Hospital-acquired infection	25 (35.7%)	2 (28.6%)	1 (7.7%)	21 (45.7%)	1 (25.0%)	0.079

208 Mean (SD) or frequency (%) used. Nonparametric distributions are indicated with \* and given as  
 209 median (IQR). Abbreviations: PCR; Polymerase chain reaction, MAT; microscopic agglutination test,  
 210 SBP; systolic blood pressure, DBP; diastolic blood pressure, MAP; mean arterial pressure, WBC; white  
 211 blood cell count, CRP; C reactive protein, AST; aspartate transaminase, ALT; alanine transaminase, INR;

212 *international normalized ration, APTT; activated partial thromboplastin time, RRT; renal replacement*  
213 *therapy, †PLEX; plasmapheresis, ‡DDAVP; desmopressin*

214  
215

216 All patients treated with the PLEX and DDAVP combination survived. Mortality was low in the  
217 group treated with PLEX + DDAVP + steroids compared to PLEX alone or steroids alone. A  
218 logistic regression and a univariate Cox regression analysis were performed to calculate the  
219 odds and hazard ratios for death among different treatment modalities (Figure 1a) and  
220 treatment combinations (Figure 1b) using the group treated with steroids as the reference  
221 (Table 4). The odds ratio (OR) for the group that received PLEX + DDAVP without steroids  
222 could not be calculated as the mortality was 0%.

223 **Figure 1: Hazard regression plots for mortality in patients with LPHS.** Cox regression  
224 analysis was performed to analyze the effect of different treatments received by patients  
225 with LPHS on mortality. Patients were treated with plasmapheresis (PLEX), desmopressin  
226 (DDAVP), and steroids alone or in different combinations. Hazard regression plots  
227 demonstrate the risk of mortality (hazard ratio) and the confidence interval. (a) Patients  
228 who received each treatment modality were compared with patients who did not receive  
229 the treatment. (b) Treatment combinations were compared with the group who received  
230 steroids alone.

231  
232 **Table 4: Risk of mortality in patients with LPHS who received different treatment**  
233 **combinations**

Treatment	Total n=70	Mortality n (%)	OR (95% CI)	HR (95% CI)
PLEX alone	7	3 (42.9%)	0.75 (0.06 – 8.83)	0.65 (0.11 – 3.92)
PLEX + DDAVP	13	0 (0%)	NC	NC
PLEX + DDAVP + steroids	46	11 (23.9%)	0.31 (0.04 – 2.5)	0.29 (0.06 – 1.32)
Steroids alone	4	2 (50%)		

234 *Abbreviations: OR; odds ratio, HR; Hazards ratio, NC; Not calculated*

235

236 Transfusion of blood products and treatment with tranexamic acid did not meet statistical  
237 significance in the logistic regression analysis predictors of mortality. The Kaplan-Meier  
238 survival curves comparing the treatment combinations in patients with LPHS are given in  
239 Figure 2. All patients who were discharged to the ward after complete recovery were assumed  
240 to have survived till the end of follow up i.e.: 32 days (the maximum duration of ICU stay  
241 before death).

242

243 **Figure 2: Kaplan-Meier survival curves of patients with LPHS who received different**  
244 **treatment combinations.** The figure shows the survival of patients with LPHS who received  
245 plasmapheresis (PLEX) alone (n=7), PLEX and desmopressin (DDAVP) combination (n=13),  
246 PLEX+DDAVP and steroids combination (n=46) or steroids alone (n=4).

247

248 A Cox regression analysis was performed to assess the relationship of the duration of PLEX  
249 with mortality. Since PLEX for 1 day and 6 days were done only for 1 patient each, and PLEX  
250 for 2 days had only 2 patients, they were excluded from the analysis. The hazard ratios for  
251 death were calculated for different durations of PLEX compared to the group who received  
252 PLEX for three days. Hazard ratios were 2.46 (0.58-10.47,  $p>0.05$ ) and 5.9 (1.13-30.95,  $p$   
253 0.04) in the groups who received PLEX for 4 days and 5 days respectively. Steroids ( $p=0.620$ )  
254 and DDAVP ( $p=0.430$ ) were used equally among the groups who received different  
255 durations of PLEX. The Kaplan-Meier survival curves comparing the duration of PLEX are  
256 given in Figure 3.

257

258 **Figure 3: Kaplan-Meier survival curves of patients with LPHS who received different**  
259 **durations of plasmapheresis (PLEX).** Figure shows the survival of patients with LPHS who

260 received PLEX for 1 day (n=1), 2 days (n=2), 3 days (n=54), 4 days (n=8), 5 days (n=3) and 6  
261 days (n=1).

262

### 263 **Hospital-acquired infection (HAI) in the study population**

264 HAI occurred in 25 (35.7%) patients. Respiratory tract infections (n=16, 61.5%) and catheter-  
265 associated bloodstream infections (n=2, 7.7%) were the common sources of HAIs. Logistic  
266 regression analysis was performed to identify risk factors for the development of HAI.  
267 Mechanical ventilation (OR 30.34, CI 1.55- 592.10) and duration of ICU stay (OR 1.37, CI 1.12-  
268 1.68) were risk factors for the development of HAI. A higher proportion of patients in the PLEX  
269 + DDAVP+ steroid group developed HAI compared to the groups who received PLEX + DDAVP  
270 combination or PLEX and steroids alone (Table 3). However, different treatment modalities  
271 received by patients for LPHS (compared to receiving steroids alone), renal replacement  
272 therapy, or blood product transfusion were not significantly associated with developing HAI  
273 in logistic regression analysis.

274

### 275 **Discussion**

276 LPHS is a dreaded complication of leptospirosis due to its high mortality and challenges in  
277 management. There is a paucity of data on the clinical characteristics and outcomes of LPHS.  
278 In this retrospective cohort study of a large number of LPHS patients, we report  
279 characteristics, risk factors for death, and outcomes from different treatment modalities for  
280 LPHS. This is the first study that compares the outcome of PLEX, DDAVP, and steroid  
281 treatment alone or in combination for LPHS. Findings from this study provide a platform to  
282 design future clinical trials.

283



284 Patients who developed LPHS requiring ICU care, had myocarditis (n=58, 82.9%), acute kidney  
285 injury (n=69, 98.6%), and modest elevation in liver enzymes. A significant proportion required  
286 renal replacement therapy (n=43, 61.4%), mechanical ventilation (n=49, 70%), and blood  
287 product transfusion (n=31, 44.3%). A previous Sri Lankan study reported a 35.4% mortality in  
288 LPHS[21]. A mortality of 22.9% observed in this study is relatively lower than previous reports  
289 from Sri Lanka and other countries [22]. We found that demographic factors such as age and  
290 gender were not significantly different in the patients who died compared to patients who  
291 survived. However, tachycardia, lactataemia, and acidosis on admission to MICU were more  
292 common in the patients who died compared to the survivors. A higher proportion of patients  
293 who succumbed to the illness were mechanically ventilated and received intravenous  
294 tranexamic acid and fresh frozen plasma. This observation suggests that severe pulmonary  
295 haemorrhage leading to respiratory failure and ongoing bleeding with coagulopathy would  
296 have been present in this group.

297

298 Specific treatment for LPHS is controversial. Literature is scarce and any evidence supporting  
299 steroids, PLEX, or DDAVP is based on case reports, observational studies, and expert opinion.  
300 With the emergence of LPHS cases throughout the country, many centres in Sri Lanka use  
301 PLEX as a therapeutic measure. Evidence for PLEX was based on the benefit observed in the  
302 treatment of pulmonary haemorrhage in autoimmune diseases such as Goodpasture's  
303 syndrome, ANCA-associated vasculitis, systemic lupus erythematosus (SLE), and other  
304 autoimmune reno-pulmonary syndromes [23–25]. The above diseases arise due to either  
305 direct deposition of autoantibodies or antigen-antibody complexes in the alveolar-capillary  
306 membrane, resulting in inflammation, pulmonary vasculitis, tissue damage, necrosis, and  
307 pulmonary haemorrhage. Removal of auto-antibodies and circulating antigen-antibody

308 complexes provide the rationale for PLEX in the above conditions. As immune-mediated  
309 damage is one theory for the pathogenesis of LPHS, it can be postulated that PLEX might be  
310 an effective therapy. In a previous study of 80 patients with LPHS at Teaching Hospital  
311 Karapitiya Sri Lanka, 59 (73.75%) underwent PLEX of which 19 died (fatality rate; 32.2%)  
312 compared to 17 (fatality rate; 89.5%) in the group which did not undergo PLEX [7].  
313 Furthermore, the survival rate was higher ( $n = 35$ , 74.5%) when the PLEX was performed  
314 within the first 48 hours compared to patients in whom the procedure was done after  
315 48 hours ( $n = 5$ , 54.5%). PLEX was done for a mean duration of 3 consecutive days, using fresh  
316 frozen plasma. In an Indian study, a survival benefit was noted when two cycles of PLEX 24  
317 hours apart were combined with IV cyclophosphamide, to treat LPH[26]. Numerous case  
318 reports have described successful treatment of LPHS with PLEX, alone or in combination with  
319 steroids, extra-corporeal membrane oxygenation [15,27–29]. All patients who received  
320 PLEX+DDAVP survived. There was no statistically significant difference in the hazard ratio  
321 between different treatment combinations of LPHS when the PLEX+DDAVP group was  
322 excluded from the analysis. The PLEX + DDAVP group was excluded as its mortality was zero.  
323 However, survival curves demonstrated a favourable outcome in patients who received PLEX  
324 + DDAVP combination than the other treatment groups. The PLEX alone group had higher  
325 lactate and acidosis than the other groups on admission to MICU. As these parameters were  
326 predictors of mortality subsequently, the benefit of PLEX could have been masked by initial  
327 severe LPHS in the group. The optimal duration of PLEX is either three or four days according  
328 to the study findings.

329 Intravenous bolus doses of corticosteroids are used to treat pulmonary haemorrhages in  
330 auto-immune diseases. Using the same argument as for PLEX, corticosteroids have been used  
331 to treat LPHS. In the year 2008, Sri Lanka recorded a surge of leptospirosis cases with 7406

332 hospital admissions, 217 deaths, and a case fatality rate of 3%. Kularatne *et al* treated patients  
333 with severe leptospirosis with intravenous methyl-prednisolone 500 mg for 3 days followed  
334 by 8 mg orally for 5 days. Treatment was compared to a historical cohort without steroid  
335 treatment [30]. The outcome was analysed based on the organ dysfunction, co-morbidities,  
336 and steroids significantly ( $p=0.012$ ) reduced mortality in patients with LPHS. A mortality  
337 benefit was noted in the patients who received steroids in another study [31]. However, this  
338 effect was seen only if the steroids were given within the first 12 hours. In an Australian study  
339 describing the intensive care treatment for severe leptospirosis, IV hydrocortisone 200mg  
340 daily was used as a supportive measure [32]. There was no significant difference in the  
341 incidence of pulmonary haemorrhage between the patients who did and did not receive  
342 steroids. The mortality did not differ between the two groups. However, the patients treated  
343 with steroids were sicker with a high APACHE III score and required more vasopressor  
344 support. As per PLEX, numerous case reports describe successful management of LPHS with  
345 high-dose bolus steroids. A concern of steroid treatment has been the increased incidence of  
346 HAIs. In our study, univariate analysis revealed that steroid treatment compared to no  
347 steroids, increased mortality. This observation was not statistically significant on Cox  
348 regression analysis. However, the addition of steroids to PLEX+DDAVP reduced survival  
349 compared to PLEX+DDAVP alone. In addition, there was a non-significant increase of HAIs in  
350 steroid-treated groups compared to the PLEX+ DDAVP group.

351

352 Evidence for DDAVP in LPHS is limited. DDAVP releases endothelial haemostatic factors  
353 thereby, shortens prolonged bleeding times, and enhancing platelet adhesiveness to injured  
354 vessels[18] by activation and secretion of von Willebrand (vWF) factor from the endothelial  
355 cells. Leptospirosis is associated with bleeding beyond the lung ranging from petechiae,

356 ecchymoses, and epistaxis to massive gastro-intestinal bleeds. A platelet dysfunction is known  
357 to occur in leptospirosis [33]. Furthermore, a coagulopathy associated with leptospirosis has  
358 been described. In an animal study, *Leptospira* infected hamsters had a prolonged PT, APTT,  
359 and a thrombin time in all organ extracts, especially in the lung and the liver, probably due to  
360 interference with the prothrombinase complex [34]. Platelet dysfunction, coagulopathy, and  
361 thrombocytopenia might be contributing to the increased bleeding observed in leptospirosis.  
362 DDAVP might be acting by increasing the platelet activation and local production and  
363 secretion of vWF and factor VIII. A theoretical risk of causing, aggravating disseminated  
364 intravascular coagulation is present with the use of DDAVP in severe leptospirosis. Pea *et al*  
365 described six patients with LPHS treated with intravenous DDAVP [35]. Bleeding from the  
366 endotracheal tube had reduced in intubated patients within one hour of DDAVP infusion,  
367 despite repeated aspiration. An open randomized controlled trial of high-dose  
368 dexamethasone and intravenous desmopressin alone or in combination did not alter the  
369 outcome compared to placebo [16]. Intranasal DDAVP in LPHS has not been studied  
370 previously. Further studies are needed to explore its efficacy. In the interim, it can be stated  
371 that DDAVP seems to be effective in combination with PLEX as a treatment for LPHS.

372

373 There was no statistically significant difference in mortality between different treatment  
374 groups when the PLEX+DDAVP group was excluded. However, our results demonstrate a clear  
375 survival benefit in PLEX+ DDAVP treatment compared to the addition of steroids, PLEX alone,  
376 or steroids alone. Reduced overall mortality in the study population compared to previous  
377 literature could also be due to the use of such therapeutic measures. Differences in the  
378 severity of the underlying disease could have played a role in interpreting the findings of this

379 study. As such, appropriately designed randomized controlled trials are urgently needed to  
380 generate evidence and improve patient outcomes.

381 Patients who developed HAIs had a higher heart rate, INR, and a lower base excess. They were  
382 mechanically ventilated for a longer period, and treated with steroids and renal replacement  
383 therapy compared to the group that did not develop HAIs. Transfusion (FFP, RCC, platelet)  
384 rates were higher in the group that developed HAIs. However, only mechanical ventilation  
385 and duration of ICU stay were predictive of the development of HAI.

386

387 Treatment of LPHS is challenging due to the paucity of evidence. We have compared PLEX,  
388 DDAVP, and the use of steroids in the management of LPHS alone or in combination. A major  
389 limitation of this study is that the treatment was solely under the treating physician's  
390 discretion. Hence, the comparison between the treatment strategies is not ideal. Similarly,  
391 the duration of PLEX and the steroid regimens used were not uniform. Furthermore, the  
392 extent of lung involvement in LPHS has not been described or compared in this study and  
393 poses a limitation in interpreting the results. However, the important observations of this  
394 cohort of large numbers of LPHS patients lay a foundation to conduct future studies and  
395 randomized controlled trials.

396

### 397 **Conclusions**

398 Patients admitted with LPHS to an intensive care setting had renal, liver, and myocardial  
399 involvement requiring organ support, renal replacement therapy, and blood product  
400 transfusion. The presence of tachycardia, acidosis, and high lactate predicted death in LPHS.  
401 PLEX and DDAVP combination had better survival than other treatments alone or in

402 combination for LPHS. Randomized clinical trials are urgently needed to identify the role of  
403 PLEX and DDAVP in treating LPHS.

404

#### 405 **Abbreviations**

406 AKI – acute kidney injury  
407 DDAVP – desmopressin  
408 FFP – Fresh frozen plasma  
409 HR – hazard ratio  
410 ICU – intensive care unit  
411 LPHS – Leptospirosis pulmonary haemorrhage syndrome  
412 MAT – microscopic agglutination test  
413 MICU – Medical intensive unit  
414 NHSL – National Hospital of Sri Lanka  
415 OR – odds ratio  
416 PCR – polymerase chain reaction  
417 PLEX – plasma exchange  
418 RCC – Red cell concentrate  
419 RRT – renal replacement therapy  
420 ULN – upper limit of normal  
421 vWF – von Willebrand factor

422

#### 423 **Acknowledgments**

424 The authors would like to acknowledge the staff of MICU, National Hospital of Sri Lanka for  
425 their assistance in conducting the study.

426

#### 427 **References**

- 428 1. Rajapakse S. Leptospirosis: clinical aspects. *Clinical Medicine*. 2022;22: 14.  
429 doi:10.7861/CLINMED.2021-0784
- 430 2. Costa F, Hagan JE, Calcagno J, Kane M, Torgerson P, Martinez-Silveira MS, et al. Global  
431 Morbidity and Mortality of Leptospirosis: A Systematic Review. *PLoS Negl Trop Dis*. 2015;9.  
432 doi:10.1371/JOURNAL.PNTD.0003898
- 433 3. Cagliero J, Villanueva SYAM, Matsui M. Leptospirosis pathophysiology: Into the storm of  
434 cytokines. *Front Cell Infect Microbiol*. 2018;8: 274770.  
435 doi:10.3389/FCIMB.2018.00204/BIBTEX
- 436 4. Carvalho CRR, Bethlem EP. Pulmonary complications of leptospirosis. *Clin Chest Med*.  
437 2002;23: 469–478. doi:10.1016/S0272-5231(01)00010-7
- 438 5. Singh SS, Vijayachari P, Sinha A, Sugunan AP, Rasheed MA, Sehgal SC. Clinico-epidemiological  
439 study of hospitalized cases of severe leptospirosis. *Indian J Med Res*. 1999;109: 94–99.
- 440 6. Marotto PCF, Nascimento CMR, Eluf-Neto J, Marotto MS, Andrade L, Sztajnbok J, et al. Acute  
441 lung injury in leptospirosis: clinical and laboratory features, outcome, and factors associated  
442 with mortality. *Clin Infect Dis*. 1999;29: 1561–1563. doi:10.1086/313501
- 443 7. Herath N, Uluwattage W, Weliwitiya T, Karunanayake L, Lekamwasam S, Ratnatunga N, et al.  
444 Sequel and therapeutic modalities of leptospirosis associated severe pulmonary  
445 haemorrhagic syndrome (SPHS); A Sri Lankan experience. *BMC Infect Dis*. 2019;19: 1–8.  
446 doi:10.1186/S12879-019-4094-0/TABLES/7

- 447 8. Fonseka CL, Dahanayake NJ, Mihiran DJD, Wijesinghe KM, Liyanage LN, Wickramasuriya HS,  
448 et al. Pulmonary haemorrhage as a frequent cause of death among patients with severe  
449 complicated Leptospirosis in Southern Sri Lanka. *PLoS Negl Trop Dis*. 2023;17: e0011352.  
450 doi:10.1371/JOURNAL.PNTD.0011352
- 451 9. Luks AM, Lakshminarayanan S, Hirschmann J V. Leptospirosis presenting as diffuse alveolar  
452 hemorrhage: case report and literature review. *Chest*. 2003;123: 639–643.  
453 doi:10.1378/CHEST.123.2.639
- 454 10. Dolhnikoff M, Mauad T, Bethlem EP, Carvalho CRR. Pathology and pathophysiology of  
455 pulmonary manifestations in leptospirosis. *Braz J Infect Dis*. 2007;11: 142–148.  
456 doi:10.1590/S1413-86702007000100029
- 457 11. Nicodemo AC, Duarte MIS, Alves VAF, Takakura CFH, Santos RTM, Nicodemo EL. Lung lesions  
458 in human leptospirosis: microscopic, immunohistochemical, and ultrastructural features  
459 related to thrombocytopenia. *Am J Trop Med Hyg*. 1997;56: 181–187.  
460 doi:10.4269/AJTMH.1997.56.181
- 461 12. Croda J, Neto AND, Brasil RA, Pagliari C, Nicodemo AC, Duarte MIS. Leptospirosis pulmonary  
462 haemorrhage syndrome is associated with linear deposition of immunoglobulin and  
463 complement on the alveolar surface. *Clinical Microbiology and Infection*. 2010;16: 593–599.  
464 doi:10.1111/J.1469-0691.2009.02916.X
- 465 13. AREAN VM. The Pathologic Anatomy and Pathogenesis of Fatal Human Leptospirosis (Weil’s  
466 Disease). *Am J Pathol*. 1962;40: 393.
- 467 14. Reis EAG, Hagan JE, Ribeiro GS, Teixeira-Carvalho A, Martins-Filho OA, Montgomery RR, et al.  
468 Cytokine Response Signatures in Disease Progression and Development of Severe Clinical  
469 Outcomes for Leptospirosis. *PLoS Negl Trop Dis*. 2013;7: e2457.  
470 doi:10.1371/JOURNAL.PNTD.0002457
- 471 15. Chen HI, Kao SJ, Hsu YH. Pathophysiological mechanism of lung injury in patients with  
472 leptospirosis. *Pathology*. 2007;39: 339–344. doi:10.1080/00313020701329740
- 473 16. Niwattayakul K, Kaewtasi S, Chueasuwanchai S, Hoontrakul S, Chareonwat S, Suttinont C, et  
474 al. An open randomized controlled trial of desmopressin and pulse dexamethasone as adjunct  
475 therapy in patients with pulmonary involvement associated with severe leptospirosis. *Clinical*  
476 *Microbiology and Infection*. 2010;16: 1207–1212. doi:10.1111/J.1469-0691.2009.03037.X
- 477 17. Pea L, Roda L, Boussaud V, Lonjon B. Desmopressin therapy for massive hemoptysis  
478 associated with severe leptospirosis. *Am J Respir Crit Care Med*. 2003;167: 726–728.  
479 doi:10.1164/RCCM.200205-450CR
- 480 18. Mannucci PM. Desmopressin (DDAVP) in the Treatment of Bleeding Disorders: The First 20  
481 Years. *Blood*. 1997;90: 2515–2521. doi:10.1182/BLOOD.V90.7.2515
- 482 19. National Guidelines on Management of Leptospirosis Epidemiology Unit Ministry of Health,  
483 Nutrition and Indigenous Medicine Sri Lanka. 2016.
- 484 20. KDIGO Clinical Practice Guideline for Acute Kidney Injury. doi:10.1038/kisup.2012.1
- 485 21. Fonseka CL, Dahanayake NJ, Mihiran DJD, Wijesinghe KM, Liyanage LN, Wickramasuriya HS,  
486 et al. Pulmonary haemorrhage as a frequent cause of death among patients with severe  
487 complicated Leptospirosis in Southern Sri Lanka. *PLoS Negl Trop Dis*. 2023;17.  
488 doi:10.1371/JOURNAL.PNTD.0011352
- 489 22. Dolhnikoff M, Mauad T, Bethlem EP, Carvalho CRR. Pathology and pathophysiology of  
490 pulmonary manifestations in leptospirosis. *Braz J Infect Dis*. 2007;11: 142–148.  
491 doi:10.1590/S1413-86702007000100029
- 492 23. Simpson IJ, Doak PB, Williams LC, Blacklock HA, Hill RS, Teague CA, et al. Plasma exchange in  
493 Goodpasture’s syndrome. *Am J Nephrol*. 1982;2: 301–311. doi:10.1159/000166666
- 494 24. Klemmer PJ, Chalermkulrat W, Reif MS, Hogan SL, Henke DC, Falk RJ. Plasmapheresis  
495 Therapy for Diffuse Alveolar Hemorrhage in Patients with Small-Vessel Vasculitis. *American*  
496 *Journal of Kidney Diseases*. 2003;42: 1149–1153. doi:10.1053/j.ajkd.2003.08.015

- 497 25. Abe Y, Kusaoi M, Tada K, Yamaji K, Tamura N. Efficacy of plasma exchange therapy for diffuse  
498 alveolar hemorrhage in patients with microscopic polyangiitis. *Therapeutic Apheresis and*  
499 *Dialysis*. 2022;26: 515–521. doi:10.1111/1744-9987.13824
- 500 26. Trivedi S V, Vasava AH, Bhatia LC, Patel TC, Patel NK, Patel NT. Plasma exchange with  
501 immunosuppression in pulmonary alveolar haemorrhage due to leptospirosis. *Indian J Med*  
502 *Res*. 2010;131: 429–433.
- 503 27. Dursun B, Bostan F, Artac M, Varan HI, Suleymanlar G. Severe pulmonary haemorrhage  
504 accompanying hepatorenal failure in fulminant leptospirosis. *Int J Clin Pract*. 2007;61: 164–  
505 167. doi:10.1111/J.1742-1241.2005.00638.X
- 506 28. Chaikajornwat J, Rattanajajaroen P, Srisawat N, Kawkitinarong K. Leptospirosis manifested  
507 with severe pulmonary haemorrhagic syndrome successfully treated with venovenous  
508 extracorporeal membrane oxygenation. *BMJ Case Rep*. 2020;13. doi:10.1136/BCR-2019-  
509 230075
- 510 29. Kularathna MDSV, Kularatne SAM, Pathirage M, Nanayakkara PTMA. Severe leptospirosis  
511 complicated with multiorgan dysfunction successfully managed with plasma exchange: a case  
512 report. *J Med Case Rep*. 2021;15: 1–6. doi:10.1186/S13256-021-03135-3/TABLES/1
- 513 30. Kularatne SAM, Budagoda BDSS, de Alwis VKD, Wickramasinghe WMRS, Bandara JMRS,  
514 Pathirage LPMK, et al. High efficacy of bolus methylprednisolone in severe leptospirosis: a  
515 descriptive study in Sri Lanka. *Postgrad Med J*. 2011;87: 13–17.  
516 doi:10.1136/pgmj.2009.092734
- 517 31. Shenoy V V., Nagar VS, Chowdhury AA, Bhalgat PS, Juvale NI. Pulmonary leptospirosis: an  
518 excellent response to bolus methylprednisolone. *Postgrad Med J*. 2006;82: 602.  
519 doi:10.1136/PGMJ.2005.044255
- 520 32. Smith S, Liu YH, Carter A, Kennedy BJ, Dermedgoglou A, Poulgrain SS, et al. Severe  
521 leptospirosis in tropical Australia: Optimising intensive care unit management to reduce  
522 mortality. *PLoS Negl Trop Dis*. 2019;13: e0007929. doi:10.1371/JOURNAL.PNTD.0007929
- 523 33. Tunjungputri RN, Gasem MH, van der Does W, Sasongko PH, Isbandrio B, Urbanus RT, et al.  
524 Platelet dysfunction contributes to bleeding complications in patients with probable  
525 leptospirosis. *PLoS Negl Trop Dis*. 2017;11. doi:10.1371/JOURNAL.PNTD.0005915
- 526 34. Vieira ML, de Andrade SA, Morais ZM, Vasconcellos SA, Dagli MLZ, Nascimento ALTO.  
527 *Leptospira* infection interferes with the prothrombinase complex assembly during  
528 experimental leptospirosis. *Front Microbiol*. 2017;8: 248372.  
529 doi:10.3389/FMICB.2017.00500/BIBTEX
- 530 35. Pea L, Roda L, Boussaud V, Lonjon B. Desmopressin Therapy for Massive Hemoptysis  
531 Associated with Severe Leptospirosis. <https://doi.org/10.1164/rccm.200205-450CR>. 2012;167:  
532 726–728. doi:10.1164/RCCM.200205-450CR

533

### 534 **Supporting information**

535 S1 Table: Different regimens of steroids used to treat LPHS

536

### 537 **Declarations**

538

### 539 **Ethics approval and consent to participate**

540

541 Ethical approval was obtained from the Ethics Review Committee of the National Hospital of

542 Sri Lanka

543



544 **Consent for publication**

545

546 As this was a retrospective study using the patient’s clinical details, consent was not obtained.

547 All collected data were anonymised. Details that would point toward patient identification  
548 were not collected. Administrative approval from the Deputy Director of the National  
549 Hospital of Sri Lanka was obtained for the collection of anonymised patient details and  
550 publication in scientific journals.

551

552 **Availability of data and materials**

553 Data are available in the BioStudies database (<https://www.ebi.ac.uk/biostudies/>) under  
554 accession number S-BSST1368.

555

556 **Competing interests**

557 The authors declare that they have no competing interests

558

559 **Funding**

560 This study did not receive any funding.

561

562

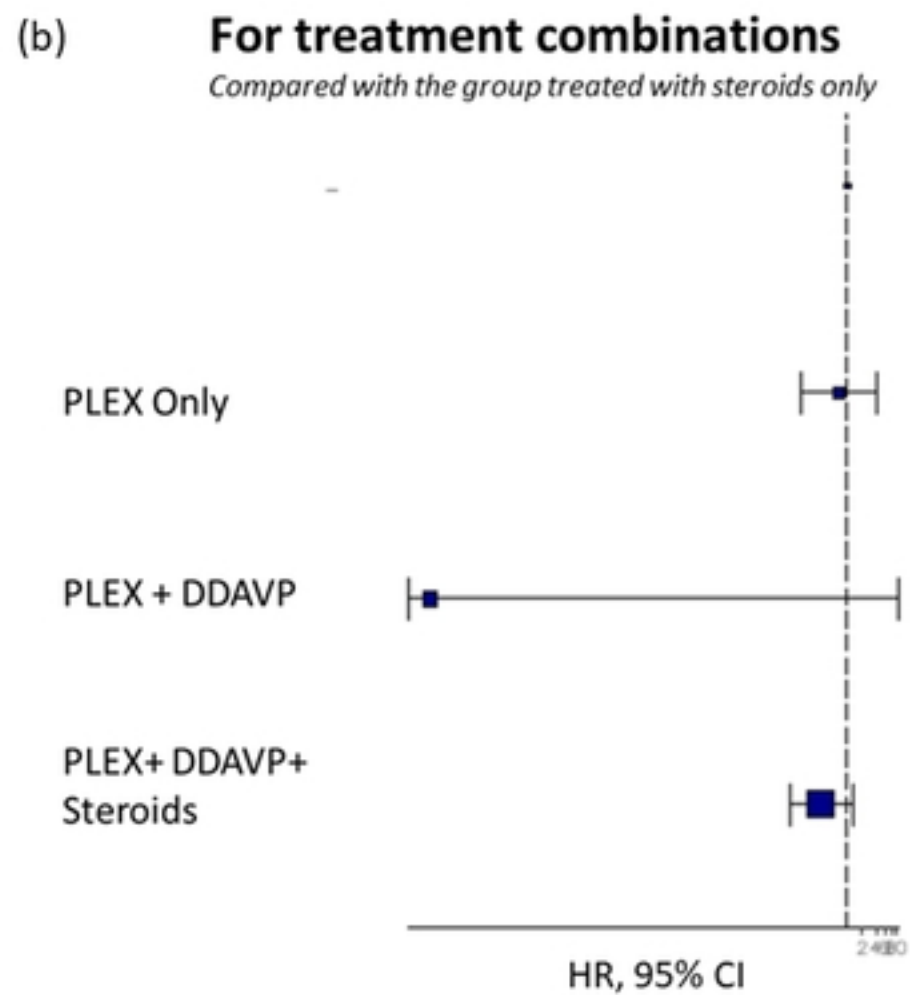
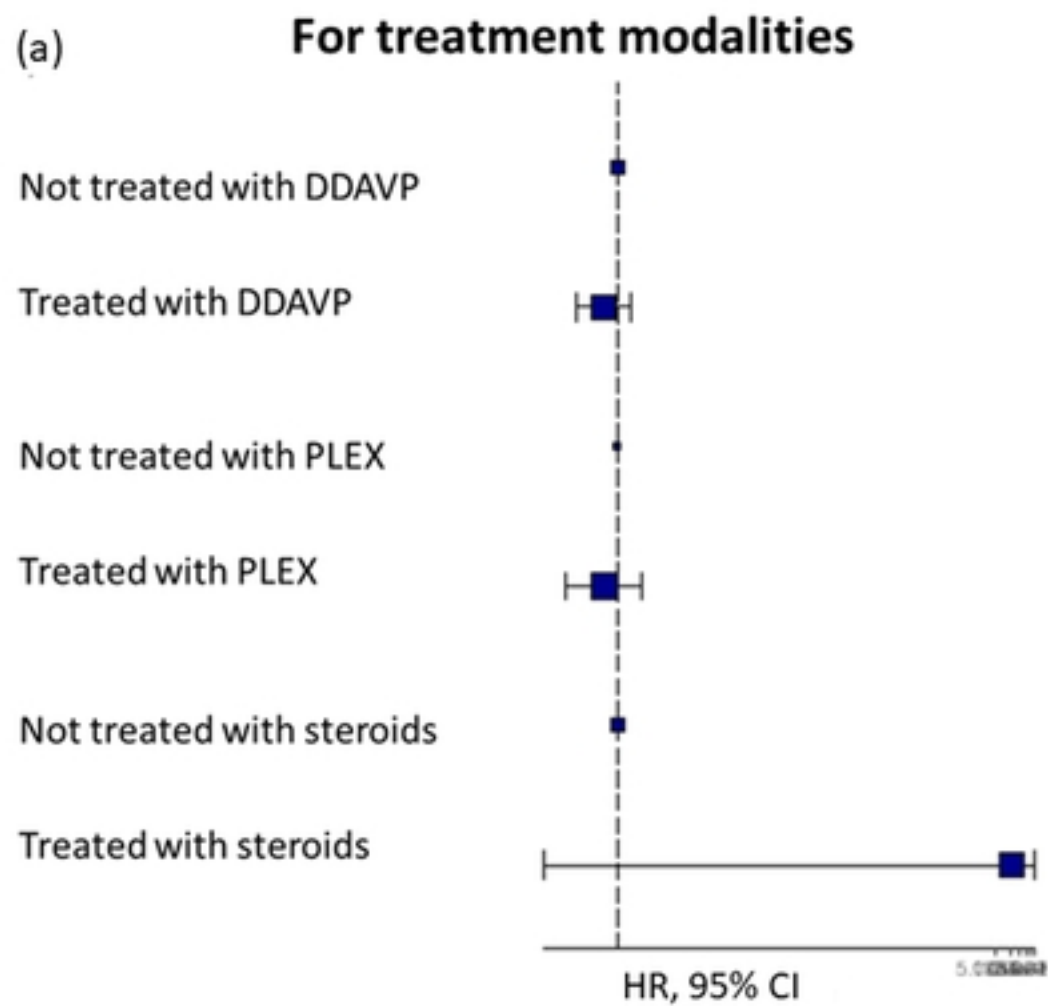


Figure 1

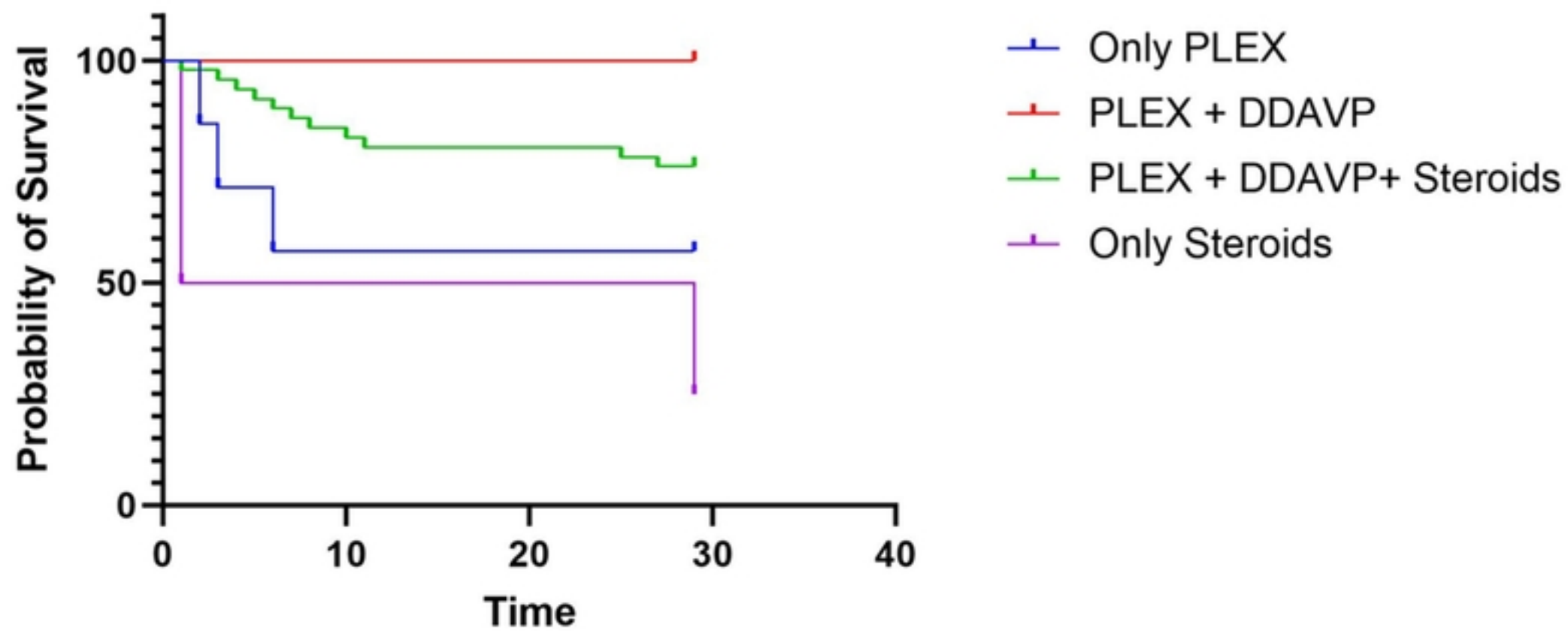


Figure 2

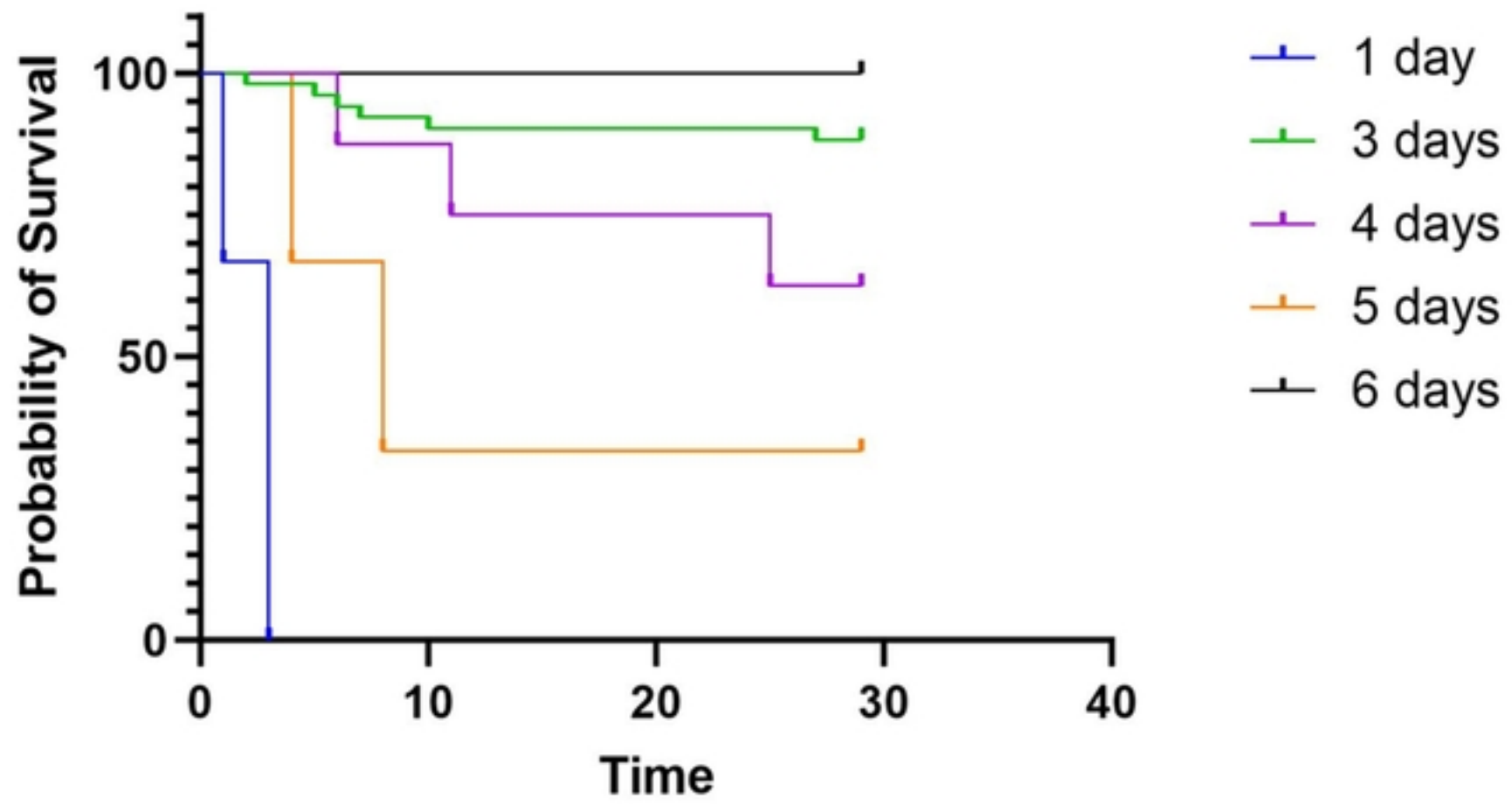


Figure 3