

1 **Incidence and survival of pediatric and adult hepatocellular carcinoma, United States, 2001-2020**

2 **Authors:** Azlann Arnett<sup>a, e</sup>, David A. Siegel<sup>b</sup>, Shifan Dai<sup>c</sup>, Trevor D. Thompson<sup>b</sup>, Jennifer Foster<sup>a, e</sup>, Erika J. di  
3 Pierro<sup>a, e</sup>, Behnoosh Momin<sup>b</sup>, Philip J. Lupo<sup>a, d, e</sup>, Andras Heczey<sup>a, e</sup>

4 **Affiliations:**

5 <sup>a</sup>Cancer and Hematology Centers, Texas Children's Hospital, Houston, Texas

6 <sup>b</sup>Division of Cancer Prevention and Control, National Center for Chronic Disease Prevention and Health  
7 Promotion, Centers for Disease Control and Prevention, Atlanta, Georgia

8 <sup>c</sup>Cyberdata Technologies, Inc., Herndon, Virginia

9 <sup>d</sup>Center for Epidemiology and Population Health, Department of Pediatrics, Baylor College of Medicine,  
L0 Houston, Texas

L1 <sup>e</sup>Division of Hematology-Oncology, Department of Pediatrics, Baylor College of Medicine, Houston, Texas

L2 **Disclaimer:** The findings and conclusions in this report are those of the authors and do not necessarily  
L3 represent the official position of the Centers for Disease Control and Prevention.

L4 **Corresponding Author:** Andras Heczey MD; Address: 1102 Bates Avenue C1760.10, Houston, TX, 77025.  
L5 Phone: 832-824-4233; E-mail: [heczey@bcm.edu](mailto:heczey@bcm.edu)

L6 **KEY POINTS**

L7 **Question:** How does incidence and survival compare between pediatric and adult hepatocellular carcinoma  
L8 (HCC)?

L9 **Findings:** In contrast to adults, pediatric incidence rates of HCC were stable, and no demographic risk factors  
L10 for incidence were identified. Pediatric HCC survival was higher than adults. Non-Hispanic Black race and  
L11 ethnicity, small metropolitan county, and non-fibrolamellar histology, were risk factors in both pediatric and adult  
L12 groups.

L13 **Meaning:** Non-Hispanic Black patients and those living in smaller metropolitan and non-metropolitan areas  
L14 irrespective of age might benefit from further research in outcome disparities, provider education, and  
L15 prospective studies to maximize outcomes through effective risk-adapted management strategies.

L16

L17

## 28 ABSTRACT

29 **Importance** Hepatocellular carcinoma accounts for approximately 80% of liver neoplasms. Globally,  
30 hepatocellular carcinoma ranks as the third most lethal cancer, with the number of deaths expected to further  
31 increase by 2040. In adults, disparities in incidence and survival are well described while pediatric  
32 epidemiology is not well characterized.

33 **Objective** To describe incidence and survival for pediatric (ages 0-19 years) hepatocellular carcinoma cases  
34 and compare these measures to adults (ages  $\geq 20$  years) diagnosed with hepatocellular carcinoma. We  
35 evaluated demographic factors and clinical characteristics that influence incidence and outcomes.

36 **Design** Population-based cohort study.

37 **Setting** Incidence data from the US Cancer Statistics database from 2003 to 2020 and 5-year relative survival  
38 from the National Program of Cancer Registries from 2001 to 2019, covering 97% and 83% of the US  
39 population, respectively.

40 **Participants** 355,349 US Cancer Statistics and 257,406 the National Program of Cancer Registries patients  
41 were identified using ICD-O-3 C22.0 and 8170-5 codes.

42 **Main Outcomes and Measures** Incidence annual percent change (APC) and average APC (AAPC) using  
43 joinpoint regression. Five-year relative survival. All-cause survival estimated using multivariate Cox modeling.  
44 Corresponding 95% confidence intervals (CI) were calculated.

45 **Results** Incidence rate per 100,000 persons was 0.056 (95%CI:0.052-0.060) for pediatric cases and 7.793  
46 (7.767-7.819) for adults. Incidence was stable in the pediatric population (0.3 AAPC, -1.1-1.7). In contrast, after  
47 periods of increase, incidence declined in adults after 2015 (-1.5 APC). Relative survival increased over time  
48 for both pediatric and adult ages and was higher for children and adolescents (46.4%, 95%CI:42.4-50.3) than  
49 adults (20.7%, 95%CI:20.5-20.9) overall and when stratified by stage. Regression modeling showed that non-  
50 Hispanic Black race and ethnicity was associated with higher risk of death in children and adolescents (1.48,  
51 95%CI:1.07-2.05) and adults (1.11, 95%CI:1.09-1.12) compared to non-Hispanic white race and ethnicity.

52 **Conclusions and Relevance** Between 2003 and 2020 in the United States, pediatric incidence was stable  
53 while incidence in adults began to decline after 2015. Survival was higher across all stages for children and

54 adolescents compared to adults. Non-Hispanic Black race and ethnicity showed a higher risk of death for both  
55 age groups. Further studies could explore the factors that influence these outcome disparities.

56

## 57 INTRODUCTION

58 Hepatocellular carcinoma (HCC) is the most common type of liver cancer worldwide. HCC has the sixth  
59 highest incidence and ranks third for cancer-related deaths with 1.4 million new cases and 1.3 million deaths  
60 per year predicted by 2040<sup>1</sup>. In children, HCC typically occurs in the absence of cirrhosis and is frequently  
61 associated with predisposing conditions while in adults, hepatitis C virus (HCV), alcoholic liver disease, and  
62 metabolic dysfunction-associated steatosis liver disease (MASLD) drive disease pathogenesis<sup>2-5</sup>. Overall,  
63 pediatric and adult HCC have comparable histology and are classified similarly though potential biological  
64 differences remain to be fully understood<sup>6,7</sup>.

65 HCC epidemiology has been well characterized in adults but is not well described in children. Reports from the  
66 Surveillance Epidemiology and End Results (SEER) database, which covered <30% of the US population, the  
67 incidence of pediatric HCC is 0.5-0.59 per million persons<sup>2-4</sup>. Compared to adult studies, analyses of racial and  
68 ethnic disparities in pediatric HCC have reported inconsistent results<sup>2-5,8</sup>. Thus, there is a need for in-depth  
69 studies with high population coverage to contextualize results from case series and other small sample studies.

70 We analyze pediatric and adult HCC incidence and outcome data sourced from the United States Cancer  
71 Statistics (USCS) and National Program Cancer Registries (NPCR) databases, which cover 97% and 83% of  
72 the population, respectively. We compare results by age to highlight differences and similarities that may inform  
73 patient management, public health planning and practice, and disease prevention efforts for these populations.

## 74 METHODS

75 Incidence data from 2003-2020 were obtained from USCS, which combines data from the NPCR (Centers for  
76 Disease Control and Prevention, CDC) and SEER programs. USCS includes all 50 states and the District of  
77 Columbia. This analysis covered 97% of the United States population as Nevada and Indiana were excluded  
78 due to incomplete data. Five-year survival data were collected from NPCR-funded registries from 2001-2019  
79 and either had active case follow-up or were linked to the CDC's National Death Index. NPCR covered 83% of  
80 the US population, excluding data from Connecticut, Hawaii, Iowa, Indiana, Massachusetts, Michigan, New  
81 Mexico, Nevada, South Dakota, Virginia, and Washington. Data from Kansas, Minnesota, North Dakota, and  
82 Wisconsin were excluded from the regression and survival curve analysis due to incomplete data. Unknown  
83 histological subtype or racial and ethnic group were additionally excluded. Cases were identified using

34 International Classification of Disease for Oncology third edition (ICD-O-3) anatomy code C22.0 and histology  
35 codes 8170 (HCC not otherwise specified), 8171 (fibrolamellar), 8172 (scirrhous), 8173 (spindle cell variant),  
36 8174 (clear cell type), and 8175 (pleomorphic type)<sup>9</sup>. Only primary tumors were included, and cases identified  
37 by autopsy or death certificate were excluded.

38 Data was stratified into ages 0-19 years old (pediatric cases: children and adolescents), and 20 years or older  
39 (adult cases), 0-14, 15-19, 20-29, 30-39, 40-64, and 65 years and older. Cases were stratified by sex, race and  
40 ethnicity, merged summary stage (local, regional, or distant)<sup>10</sup>, diagnosis year, metropolitan status by county,  
41 county-based economic status,<sup>11</sup> and histology (fibrolamellar [8171] compared to all other HCC subtypes  
42 [8170, 8172-5]). Five-year relative survival (RS) was measured from 2001-2007 versus 2008-2019,  
43 corresponding to before and after Sorafenib approval for HCC in adults. For all analyses, statistics were not  
44 shown if a cell represented <6 cases.

45 Incidence was measured by counts and rates per 100,000 persons. Rates were age-adjusted using the 2000  
46 United States standard population. Incidence trends were measured in annual percent change (APC) and  
47 average APC (AAPC) and calculated using Joinpoint software and defined as significant if different from zero  
48 using an alpha of 0.05. Trend analysis did not include the year 2020 due to data changes related to the  
49 COVID-19 pandemic<sup>12</sup>. Relative risk of incidence (RR) was estimated using negative binomial regression.

50 Five-year RS, defined as survival in the absence of death from other causes, was calculated via the complete  
51 method using expected life tables in SEER\*Stat 8.4.2 (National Cancer Institute). RS results were considered  
52 different if 95% confidence intervals (CI) did not overlap. All-cause survival curves, overall and by demographic  
53 and clinical variables, were generated using the Kaplan–Meier method. Statistical testing for survival curves  
54 was performed using the log-rank test. Multivariable Cox proportional hazards modeling used separate models  
55 for pediatric and adult ages. Missing data were imputed (m=10 imputations) using the aregImpute function  
56 (Hmisc package in R). All predictor and outcome variables were included in the imputation process. Non-  
57 Hispanic American Indian/Alaska Native (NHAIAN) and Asian/Pacific Islander (NHAPI) patients were combined  
58 in regression analysis. The linearity assumption for continuous predictors was tested using restricted cubic  
59 spline functions. The proportional hazards (PH) assumption was assessed using the Schoenfeld residual  
60 correlation test. Schoenfeld residual plots were used to help determine time intervals within which the PH  
61 assumption holds. Histology violated the PH assumption in the model for children and adolescents. Therefore,

L2 a histology x time (<1 year vs. >1-5 years) interaction was included in the model to satisfy the PH assumption.  
L3 Due to the large power to detect non-proportional hazards in the adult population, most variables violated the  
L4 PH assumption. This violation was ignored so the hazard ratio (HR) presented among adults represent the  
L5 average effect over five years of follow-up. Analysis was performed using SAS version 9.4 and R version 4.2.1.

## L6 RESULTS

### L7 Incidence of hepatocellular carcinoma

L8 During 2003-2020, the pediatric incidence rate was 0.056 (95%CI:0.052-0.060; Table 1). In adults, the  
L9 incidence rate was (7.793, 95%CI:7.767-7.819). Overall incidence was stable in the pediatric population at 0.3  
L10 average annual percent change (AAPC, 95%CI:-1.1-1.7) with no joinpoints identified (Fig.1A). In adults, AAPC  
L11 was 2.9 (95%CI:2.8-3.1) driven by an initial increase from 2003-2009 (APC of 5.8) and 2009-2015 (3.0), and  
L12 then declined during 2015-2019 (-1.5) (Fig. 1B).

L13 In adults, the incidence of localized (3.707, 95%CI:3.690-3.725) was higher than regional (1.948, 95%CI:1.935-  
L14 1.961) or distant disease (1.137, 95%CI:1.127-1.147). Among pediatric cases, incidence was similar for  
L15 localized (0.021, 95%CI:0.018-0.023), regional (0.017, 95%CI:0.015-0.019), and distant disease (0.016,  
L16 95%CI:0.014-0.018) (Fig.1E).

L17 There was no overall difference in incidence between pediatric (0.022, 95%CI:0.020-0.024) and adult (0.021,  
L18 95%CI:0.020-0.023) fibrolamellar HCC (fHCC) (Table 1). The incidence of fHCC was less than that of other  
L19 HCC types in all age groups, except for adolescents (15-19 years) who had the highest incidence (0.046,  
L20 95%CI:0.059-0.064) (eTable 1).

L21 In children and adolescents, HCC incidence was similar between males (0.058, 95%CI:0.053-0.064) and  
L22 females (0.054, 95%CI:0.048-0.059). In contrast, in adults, males had a higher incidence of HCC (12.891,  
L23 95%CI:12.842-12.941) compared to females (3.363, 95%CI:3.339-3.386) (Fig.1D). For pediatric HCC,  
L24 incidence was similar regardless of race and ethnicity, while it varied in adults (Fig. 1 E).

L25 Relative risk (RR) of developing HCC was analyzed in pediatric and adult populations. Risk increased with age  
L26 in both pediatric and adult groups. Individuals aged 15-19 years ( $p<0.001$ ) had higher risk compared to those  
L27 aged 0-14 years (3.15 95%CI:2.73-3.64), and risk was higher ( $p<0.001$ ) for all older age groups in adults

38 compared to individuals in the 20–29-year group (eTable 2). In adults, racial and ethnic group, socioeconomic  
39 status, and metropolitan county size, were risk factors, but were similar for pediatric ages.

### 40 **Five-year relative survival of patients with hepatocellular carcinoma**

41 Pediatric 5-year RS was 46.4% (95%CI:42.4-50.3) and was 20.7% (95%CI:20.5-20.9; Table 2) in adults.

42 Survival was lower with increasing disease stage for both pediatric and adult populations. Pediatric cases had  
43 better outcomes compared to adults for all stages: localized disease (75.1%, 95%CI:68.8-80.4 versus 33.6%,  
44 95%CI:33.3-34.0), regional (44.5%, 95%CI:37.1-51.6 versus 12.0% 11.7-12.2), and distant disease (14.1%,  
45 95%CI:9.5-19.7 versus 3.5%, 95%CI:3.2-3.7), in children versus adults, respectively (Fig.2A).

46 In adults, 5-year RS for with fHCC (35.3%, 95%CI:31.9-39.8) was better than for those with other HCC  
47 subtypes (20.7%, 95%CI:20.5-20.9), but these measures were similar in pediatric cases (49.3%, 95%CI:42.7-  
48 55.6 versus 44.8%, 95%CI:39.8-49.7, respectively). Unlike other HCC types, survival reported for fHCC did not  
49 improve between 2001 and 2007 versus 2008 and 2019 for either pediatric (47.3%, 95%CI:36.7-57.2 versus  
50 50.7%, 95%CI:42.1-58.6) or adult populations (33.3%, 95%CI:27.3-39.5 versus 37.6%, 95%CI:32.4-42.7).

51 Over time, in adults, RS increased overall from 16.4% (95%CI:16.1-16.7) between 2001 and 2007 to 22.2%  
52 (95%CI:22.0-22.4) between 2008 and 2019. In pediatric ages during the same periods, RS increased from  
53 37.6% (95%CI:31.7-43.5) to 52.3% (95%CI:47.0-57.3).

54 Pediatric ages had similar RS between males (46.8%, 95%CI:41.4-52.0) and females (46.0%, 95%CI:40.0-  
55 51.7). In adults, RS was lower in males (19.9%, 95%CI:19.7-20.1) than females (23.7, 95%CI:23.3-24.1)  
56 (Fig.2B). RS was also similar in pediatric ages regardless of race and ethnicity but varied in adults (Fig.2C).

### 57 **All-cause survival analysis**

58 In children and adolescents, the risk of death within five years was significantly lower for cases diagnosed in  
59 2008 or later compared to those diagnosed from 2001 to 2007 (HR =0.69, 95%CI:0.55-0.86). Compared to  
60 local disease, regional (HR=3.10, 95%CI:2.22-4.32), and distant (HR=7.18, 95%CI:5.25-9.82) disease stages  
61 were associated with a higher risk of death. Histology was also a significant predictor of 5-year survival  
62 ( $p<0.0001$ ), although this relationship varied over time. Fibrolamellar HCC was associated with a lower risk of  
63 death within the first year of follow-up compared to other HCC histology types (HR=0.38, 95%CI:0.26-0.55) but



54 after one year, the risk of death within five years for fHCC vs other HCC types was similar (HR=1.06,  
55 95%CI:0.77-1.48). Non-Hispanic Black race and ethnicity showed higher risk of death compared to non-  
56 Hispanic White race and ethnicity (HR=1.48, 95%CI:1.07-2.05). Children and adolescents diagnosed in  
57 counties with a metropolitan population of 250,000–1 million (HR=1.36, 95%CI:1.02-1.82) and non-  
58 metropolitan areas (HR=1.45, 95%CI:1.01-2.08) had a higher risk of death compared to those diagnosed in  
59 metropolitan counties with a population >1 million. Age, sex, and county economic status were not significant  
60 predictors of five-year survival (Fig.3A, eFig.1, eFig.2).

61 In adults, we assessed later diagnosis year per 1-year increase as the data was linear (HR=0.97, 95%CI:0.97-  
62 0.97). Compared to adults with local disease, regional (HR=2.07, 95%CI:2.05-2.09) and distant disease  
63 (HR=3.79, 95%CI:3.75-3.84) were also associated higher risk of death. Fibrolamellar HCC (HR=0.59,  
64 95%CI:0.54-0.65) was associated with a lower risk of death compared to other histological types of HCC. Male  
65 sex (HR=1.10, 95%CI:1.09-1.12), non-Hispanic Black race and ethnicity (HR=1.11, 95%CI:1.09-1.12 compared  
66 to non-Hispanic White), bottom 25% (HR=1.15, 95%CI:1.13-1.16 compared to top 25%) and 25%-75% county  
67 economic status (HR=1.08, 95%CI:1.07-1.09), and lower county population were all associated with higher risk  
68 of death (Fig. 3B, eFig.1, eFig.2). Age was associated with higher risk of death although the relationship was  
69 non-linear (Fig.3C).

## 30 DISCUSSION

31 Using data from high coverage databases, we described the incidence and survival of children, adolescents,  
32 and adults with HCC. We show that the recent decline in HCC incidence described in adults has not occurred  
33 in children and adolescents with HCC, extending findings from smaller studies and suggesting that incidence in  
34 children has been stable since 1973<sup>2,3,13-17</sup>. It is possible that the etiological shift from HCV- to MASLD -driven  
35 disease that has been proposed to explain this trend in adults may not apply to children<sup>13-17</sup>. Pediatric MASLD  
36 incidence is increasing in the United States, and it is unclear if the increase in this risk factor would lead to an  
37 increase in HCC in children. Our data demonstrates unchanged incidence of HCC despite the increase in  
38 pediatric MASLD in the US<sup>13-16,18,19</sup>.

39 We show that among pediatric ages, most are diagnosed with local disease as opposed to regional or distant  
40 disease, clarifying conflicting results from prior smaller studies<sup>2-4</sup>. Moreover, consistent with a prior study, we

show that children and adolescents are more frequently diagnosed with advanced disease than adults<sup>4</sup>. This finding likely reflects the higher proportion of *de novo* HCC in children, as these cases are diagnosed at more advanced disease stage while adults are surveilled after onset of cirrhosis<sup>20</sup>.

Our results confirm the well-established higher incidence of HCC in adult males versus females<sup>2-5,13,14</sup>. In contrast to most studies in the pediatric population, we found no difference in HCC incidence based on sex<sup>2-5</sup>. Recently, it was shown that the male-to-female ratio declined in adults aged <50 years from 2009-2015, with multiple studies showing a faster decline in incidence among males than females in recent years<sup>13-15</sup>. This shift from a predominantly male disease has been linked by age-period-cohort analysis to recent shifts in etiology<sup>13</sup>.

We found no increased risk of developing HCC based on demographic factors in children and adolescents. In contrast, in adults there were clear disparities based on race and ethnicity, metropolitan status, and socioeconomic status highlighting the need to incorporate demographic factors in the prevention and treatment of HCC in adults. This difference is likely due to the different etiologies in children versus adults<sup>2,3,5,8,13-17</sup>. Consistent with the adult literature, we show an increase in risk with age, which in children likely reflects the higher incidence of fHCC in adolescents<sup>2-4,13</sup>.

Interestingly, risk of death from HCC did not increase linearly with age, instead showing a plateau before a sharp increase in older ages. Although younger adults more frequently present with less favorable tumor characteristics, preserved liver function in younger individuals, more aggressive therapy, and better post-operative recovery may all contribute to this effect<sup>21-23</sup>.

Survival was higher in pediatric ages compared to adults regardless of disease stage, however pediatric ages had a higher proportion of advanced disease overall. Surgery remains the cornerstone of treatment for both pediatric and adult HCC<sup>2,4,24</sup>. A higher proportion of pediatric patients undergo surgery than adults, possibly due to the lower prevalence of underlying liver disease; this likely contributes to better survival for pediatric patients<sup>4</sup>. Multivariate analysis showed that survival improved in all groups over time, with risk of death decreasing linearly with later year of diagnosis in adults. Both children and adults had better survival in 2008-2019 versus 2001-2007. In pediatric cases, survival improved over time in all stages, but confidence intervals overlapped.

17 Consistent with other reports, we found that adult females with HCC survived longer than males. This is  
18 consistent with the idea that sex hormones may play a role in improving the survival of women with HCC<sup>8</sup>. In  
19 children, however, we found no difference between the sexes while previous reports present mixed  
20 findings<sup>2,3,8,24</sup>.

21 We found a 48% higher risk of death at 5 years for non-Hispanic Black compared to non-Hispanic White  
22 children and adolescents and an 11% higher risk for non-Hispanic Black compared to non-Hispanic White  
23 adults. This effect was apparent after controlling for socio-economic status and disease stage, which are  
24 known to influence racial and ethnic disparities<sup>8,25</sup>. Moreover, we did not find a significant difference in survival  
25 among pediatric ages according to socioeconomic status that was described in the adult population.  
26 Collectively, this disparity may be mediated by known differences in quality of care, and poor provider-patient  
27 interactions including bias or distrust.<sup>8,24,26,27</sup> Kahla et al. recently published a similar finding in  
28 hepatoblastoma<sup>28</sup>. This may point to broader inequity in the treatment of liver disease that may be driven by  
29 unequal transplant care, particularly living donor transplant and waitlist mortality that are partially independent  
30 of economic status<sup>29,30</sup>. We also found lower survival in smaller metropolitan counties, similar to what has been  
31 described for adults with HCC, which may reflect decreased quality of care<sup>31</sup>.

32 Consistent with previous population-based studies, we found that fHCC was associated with better overall  
33 survival compared to all other HCC histological types. Prior studies attributed this difference to more  
34 aggressive surgical treatment, less frequent underlying liver disease, less aggressive biology, and younger age  
35 of patients with fHCC<sup>2-4,32-34</sup>. This finding remains controversial as the International Childhood Liver Tumors  
36 Strategy Group (SIOPEL) reported no difference in three-year follow-up between fHCC and HCC but better  
37 one-year survival in HCC<sup>35</sup>. Our study reconciles the results from SIOPEL and those of population-based  
38 studies. We found lower risk in pediatric ages within one year of follow-up, but no difference with longer follow  
39 up times, possibly due to higher complete resection rate or delayed follow-up in fHCC<sup>32-35</sup>. While adults with  
40 fHCC had better overall survival than adults with other HCCs, the survival benefit persists beyond one year,  
41 possibly due to lower resection rates and higher frequency of underlying liver disease in adults compared to  
42 children<sup>32-35</sup>. Importantly, we found that fHCC survival did not improve in the 2008-2019 period compared to  
43 2001-2017 unlike other HCC type survival, suggesting that fHCC-specific treatments may be needed to  
44 improve outcomes.

15 We acknowledge several limitations of our study. First, there were insufficient numbers of NHAIAN or NHAPI  
16 cases to consider these groups separately in our survival analyses. We may be underpowered to detect small  
17 differences in incidence based on race and ethnicity. Additionally, due to significant heterogeneity and large  
18 sample size in the adult population, we were unable to satisfy the proportional hazards assumption for the  
19 multivariate survival analysis. We acknowledge that county-wide measures of socioeconomic status and  
20 population may not capture significant heterogeneity within each county. Our study is limited to the information  
21 contained in the USCS and NPCR databases and provides no validated information relating to etiology, tumor  
22 characteristics beyond stage, or treatment such as surgery.

23 In summary, the incidence of pediatric HCC remained stable between 2003-2019, unlike the adult population  
24 that experienced a recent decrease. We show that several of the demographic disparities found in adults do  
25 not extend to children and adolescents, including the higher incidence in males and in racial and ethnic groups  
26 other than non-Hispanic White, as well as better survival in females. We describe several novel differences in  
27 outcomes including a higher risk of death for non-Hispanic Black children, adolescents, and adults; additional  
28 research and potential interventions may improve outcomes in this population<sup>36</sup>. We are also the first to report  
29 on metropolitan and area-level socioeconomic status in pediatric HCC, showing a similar higher in risk of death  
30 for both pediatric and adult ages associated with decreasing county size; future research may be helpful to  
31 better understand this pattern for pediatric ages. Lastly, this is the first population-based study to confirm that  
32 compared to other HCC types, the previously described survival benefit in children with fHCC is limited to  
33 short-term follow up and does not translate to long term survival. While there are similarities between pediatric  
34 and adult HCC, there are several important differences that highlight the need for age-specific (pediatric vs  
35 adult) research and risk-adapted management strategies that incorporate the demographic vulnerabilities  
36 defined here for patients with HCC.

37 **ACKNOWLEDGEMENTS** The authors would like to thank Dr. Hashem B. El-Serag for his helpful discussion  
38 regarding the preliminary analyses.

39 **FUNDING:** This work was supported by the National Institute of General Medical Sciences of the National  
40 Institutes of Health under Award Number T32GM136554, and internal funding from the Center from Advanced  
41 Innate Cell Therapy of Texas Children's Cancer Center (AH).

72

73 **AUTHORS CONTRIBUTIONS:** AA Conceptualization, Writing- Original Draft, Visualization, Project  
74 Administration, Funding Acquisition. DAS Conceptualization, Writing- Review and Editing, Methodology,  
75 Software, Formal analysis. SD, Methodology, Software, Formal analysis. TDT Writing- Review and Editing,  
76 Methodology, Software, Formal analysis. JF Writing- Review and Editing, EJP Writing- Review and Editing, BM  
77 Writing- Review and Editing, P JL Writing- Review and Editing, AH Conceptualization, Writing- Review and  
78 Editing, Project Administration, Funding Acquisition.

79 **COMPETING INTERESTS STATEMENT** Andras Heczey has consultancy / scientific advisory roles with  
80 Waypoint Bio and Cargo Therapeutics. All the other authors declare that they have no competing financial  
81 interests.

## 82 REFERENCES

- 83 1. Runggay H, Arnold M, Ferlay J, et al. Global burden of primary liver cancer in 2020 and predictions to 2040.  
84 *J Hepatol.* 2022;77(6):1598-1606. doi:10.1016/j.jhep.2022.08.021
- 85 2. McAteer JP, Goldin AB, Healey PJ, Gow KW. Hepatocellular carcinoma in children: epidemiology and the  
86 impact of regional lymphadenectomy on surgical outcomes. *J Pediatr Surg.* 2013;48(11):2194-2201.  
87 doi:10.1016/j.jpedsurg.2013.05.007
- 88 3. Allan BJ, Wang B, Davis JS, et al. A review of 218 pediatric cases of hepatocellular carcinoma. *J Pediatr*  
89 *Surg.* 2014;49(1):166-171; discussion 171. doi:10.1016/j.jpedsurg.2013.09.050
- 90 4. Lau CSM, Mahendraraj K, Chamberlain RS. Hepatocellular Carcinoma in the Pediatric Population: A  
91 Population Based Clinical Outcomes Study Involving 257 Patients from the Surveillance, Epidemiology,  
92 and End Result (SEER) Database (1973-2011). *HPB Surg.* 2015;2015:670728. doi:10.1155/2015/670728
- 93 5. Khanna R, Verma SK. Pediatric hepatocellular carcinoma. *World J Gastroenterol.* 2018;24(35):3980-3999.  
94 doi:10.3748/wjg.v24.i35.3980
- 95 6. Czauderna P. Adult type vs. Childhood hepatocellular carcinoma--are they the same or different lesions?  
96 Biology, natural history, prognosis, and treatment. *Med Pediatr Oncol.* 2002;39(5):519-523.  
97 doi:10.1002/mpo.10178
- 98 7. Weeda VB, Aronson DC, Verheij J, Lamers WH. Is hepatocellular carcinoma the same disease in children  
99 and adults? Comparison of histology, molecular background, and treatment in pediatric and adult patients.  
100 *Pediatric Blood & Cancer.* 2019;66(2):e27475. doi:10.1002/pbc.27475
- 101 8. Guo A, Pomenti S, Wattacheril J. Health Disparities in Screening, Diagnosis, and Treatment of  
102 Hepatocellular Carcinoma. *Clin Liver Dis (Hoboken).* 2021;17(5):353-358. doi:10.1002/cld.1057
- 103 9. World Health Organization. *International Classification of Diseases for Oncology (ICD-O).* 3rd ed., 1st  
104 revision. World Health Organization; 2013. Accessed March 15, 2024.  
105 <https://iris.who.int/handle/10665/96612>

10. Review of Staging Systems | SEER Training. Accessed March 15, 2024. [https://training.seer.cancer.gov/collaborative/intro/systems\\_review.html](https://training.seer.cancer.gov/collaborative/intro/systems_review.html)
11. Distressed Designation and County Economic Status Classification System. Appalachian Regional Commission. Accessed December 1, 2023. <https://www.arc.gov/distressed-designation-and-county-economic-status-classification-system/>
12. Mariotto AB, Feuer EJ, Howlander N, Chen HS, Negoita S, Cronin KA. Interpreting cancer incidence trends: challenges due to the COVID-19 pandemic. *JNCI: Journal of the National Cancer Institute*. 2023;115(9):1109-1111. doi:10.1093/jnci/djad086
13. Zhang X, El-Serag HB, Thrift AP. Sex and Race Disparities in the Incidence of Hepatocellular Carcinoma in the United States Examined through Age–Period–Cohort Analysis. *Cancer Epidemiology, Biomarkers & Prevention*. 2020;29(1):88-94. doi:10.1158/1055-9965.EPI-19-1052
14. Rich NE, Yopp AC, Singal AG, Murphy CC. Hepatocellular Carcinoma Incidence is Decreasing Among Younger Adults in the United States. *Clin Gastroenterol Hepatol*. 2020;18(1):242-248.e5. doi:10.1016/j.cgh.2019.04.043
15. Han J, Wang B, Liu W, et al. Declining disease burden of HCC in the United States, 1992–2017: A population-based analysis. *Hepatology*. 2022;76(3):576. doi:10.1002/hep.32355
16. Shiels MS, O'Brien TR. Declining U.S. Hepatocellular Carcinoma Rates, 2014–2017. *Clin Gastroenterol Hepatol*. 2022;20(2):e330-e334. doi:10.1016/j.cgh.2021.02.011
17. Thrift AP, Liu KS, Raza SA, El-Serag HB. Recent Decline in the Incidence of Hepatocellular Carcinoma in the United States. *Clin Gastroenterol Hepatol*. 2023;21(9):2418-2420.e3. doi:10.1016/j.cgh.2022.07.034
18. Shah J, Okubote T, Alkhouri N. Overview of Updated Practice Guidelines for Pediatric Nonalcoholic Fatty Liver Disease. *Gastroenterol Hepatol (N Y)*. 2018;14(7):407-414.
19. Yu EL, Schwimmer JB. Epidemiology of Pediatric Nonalcoholic Fatty Liver Disease. *Clin Liver Dis (Hoboken)*. 2021;17(3):196-199. doi:10.1002/cld.1027
20. Cowell E, Patel K, Heczey A, et al. Predisposing Conditions to Pediatric Hepatocellular Carcinoma and Association With Outcomes: Single-center Experience. *J Pediatr Gastroenterol Nutr*. 2019;68(5):695-699. doi:10.1097/MPG.0000000000002285
21. Zhang W, Sun B. Impact of age on the survival of patients with liver cancer: an analysis of 27,255 patients in the SEER database. *Oncotarget*. 2015;6(2):633-641.
22. Ren J, Tong YM, Cui RX, et al. Comparison of survival between adolescent and young adult vs older patients with hepatocellular carcinoma. *World J Gastrointest Oncol*. 2020;12(12):1394-1406. doi:10.4251/wjgo.v12.i12.1394
23. Hasegawa K, Kokudo N, Makuuchi M, et al. Comparison of resection and ablation for hepatocellular carcinoma: A cohort study based on a Japanese nationwide survey. *Journal of Hepatology*. 2013;58(4):724-729. doi:10.1016/j.jhep.2012.11.009
24. Lee YT, Wang JJ, Luu M, et al. The Mortality and Overall Survival Trends of Primary Liver Cancer in the United States. *J Natl Cancer Inst*. 2021;113(11):1531-1541. doi:10.1093/jnci/djab079
25. Kehm RD, Spector LG, Poynter JN, Vock DM, Altekruze SF, Osypuk TL. Does socioeconomic status account for racial and ethnic disparities in childhood cancer survival? *Cancer*. 2018;124(20):4090-4097. doi:10.1002/cncr.31560

- 16 26. Delavar A, Barnes JM, Wang X, Johnson KJ. Associations Between Race/Ethnicity and US Childhood and  
17 Adolescent Cancer Survival by Treatment Amenability. *JAMA Pediatrics*. 2020;174(5):428-436.  
18 doi:10.1001/jamapediatrics.2019.6074
- 19 27. Mathur AK, Osborne NH, Lynch RJ, Ghaferi AA, Dimick JB, Sonnenday CJ. Racial/Ethnic Disparities in  
20 Access to Care and Survival for Patients With Early-Stage Hepatocellular Carcinoma. *Archives of Surgery*.  
21 2010;145(12):1158-1163. doi:10.1001/archsurg.2010.272
- 22 28. Kahla JA, Siegel DA, Dai S, et al. Incidence and 5-year survival of children and adolescents with  
23 hepatoblastoma in the United States. *Pediatr Blood Cancer*. 2022;69(10):e29763. doi:10.1002/pbc.29763
- 24 29. Wadhvani SI, Ge J, Gottlieb L, et al. Racial/Ethnic Disparities in Wait List Outcomes Are Only Partly  
25 Explained by Socioeconomic Deprivation Among Children Awaiting Liver Transplantation. *Hepatology*.  
26 2022;75(1):115-124. doi:10.1002/hep.32106
- 27 30. Ebel NH, Lai JC, Bucuvalas JC, Wadhvani SI. A Review of Racial, Socioeconomic, and Geographic  
28 Disparities in Pediatric Liver Transplantation. *Liver Transpl*. 2022;28(9):1520-1528. doi:10.1002/lt.26437
- 29 31. Zhou K, Pickering TA, Gainey CS, et al. Presentation, Management, and Outcomes Across the Rural-  
30 Urban Continuum for Hepatocellular Carcinoma. *JNCI Cancer Spectr*. 2020;5(1):pkaa100.  
31 doi:10.1093/jncics/pkaa100
- 32 32. Glavas D, Bao QR, Scarpa M, et al. Treatment and Prognosis of Fibrolamellar Hepatocellular Carcinoma: a  
33 Systematic Review of the Recent Literature and Meta-analysis. *J Gastrointest Surg*. 2023;27(4):705-715.  
34 doi:10.1007/s11605-023-05621-z
- 35 33. Eggert T, McGlynn KA, Duffy A, Manns MP, Greten TF, Altekruse SF. Fibrolamellar hepatocellular  
36 carcinoma in the USA, 2000–2010: A detailed report on frequency, treatment and outcome based on the  
37 Surveillance, Epidemiology, and End Results database. *United European Gastroenterol J*. 2013;1(5):351-  
38 357. doi:10.1177/2050640613501507
- 39 34. Stipa F, Yoon SS, Liau KH, et al. Outcome of patients with fibrolamellar hepatocellular carcinoma. *Cancer*.  
40 2006;106(6):1331-1338. doi:10.1002/cncr.21703
- 41 35. Weeda VB, Murawski M, McCabe AJ, et al. Fibrolamellar variant of hepatocellular carcinoma does not  
42 have a better survival than conventional hepatocellular carcinoma--results and treatment recommendations  
43 from the Childhood Liver Tumour Strategy Group (SIOPEL) experience. *Eur J Cancer*. 2013;49(12):2698-  
44 2704. doi:10.1016/j.ejca.2013.04.012
- 45 36. Bach PB, Pham HH, Schrag D, Tate RC, Hargraves JL. Primary Care Physicians Who Treat Blacks and  
46 Whites. *New England Journal of Medicine*. 2004;351(6):575-584. doi:10.1056/NEJMsa040609

**Table 1. Incidence of hepatocellular carcinoma cases, with multivariable negative binomial analysis, United States Cancer Statistics database, 2003-2020**

Variable	0-19 years				20+ years			
	Count	Rate (95%CI)	RR (95%CI)	p-value	Count	Rate (95%CI)	RR (95%CI)	p-value
<b>Total</b>	813	0.056 (0.052-0.060)	~	~	354,536	7.793 (7.767-7.819)	~	~
<b>Sex</b>								
Male	431	0.058 (0.053-0.064)	ref	ref	273,079	12.891 (12.842-12.941)	ref	ref
Female	382	0.054 (0.048-0.059)	0.93 (0.81-1.07)	0.31	81,457	3.363 (3.339-3.386)	0.30 (0.29-0.32)	<0.0001
<b>Race and Ethnicity</b>								
NHW	444	0.056 (0.051-0.061)	ref	ref	205,091	6.150 (6.123-6.177)	ref	ref
NHB	106	0.048 (0.039-0.058)	0.84 (0.67-1.05)	0.12	52,670	10.819 (10.724-10.914)	1.92 (1.79-2.06)	<0.0001
NHAIAN	~	~	0.69 (0.28-1.67)	0.41	3,917	13.439 (13.002-13.886)	2.21 (2.02-2.40)	<0.0001
NHAPI	52	0.069 (0.051-0.090)	1.12 (0.83-1.51)	0.46	28,918	14.706 (14.533-14.881)	2.38 (2.21-2.57)	<0.0001
Hispanic	185	0.058 (0.050-0.067)	1.02 (0.85-1.22)	0.86	56,815	14.042 (13.922-14.162)	1.83 (1.71-1.96)	<0.0001
<b>Stage</b>								
Localized	299	0.021 (0.018-0.023)	~	~	168,952	3.707 (3.690-3.725)	~	~
Regional	247	0.017 (0.015-0.019)	~	~	88,873	1.948 (1.935-1.961)	~	~
Distant	234	0.016 (0.014-0.018)	~	~	51,587	1.137 (1.127-1.147)	~	~
<b>Histology</b>								
HCC (non-fHCC)	492	0.034 (0.031-0.037)	~	~	353,648	7.772 (7.746-7.798)	~	~
fHCC	321	0.022 (0.020-0.024)	~	~	888	0.021 (0.020-0.023)	~	~

8 Rates per 100,000 persons. Three decimal places were used for pediatric ages instead of expressing rates per 1 million. Abbreviations: fibrolamellar hepatocellular  
9 carcinoma (fHCC), hepatocarcinoma (HCC), Non-Hispanic white (NHW), Non-Hispanic Black (NHB), Non-Hispanic American Indian/Alaska Native (NHAIAN),  
0 Non-Hispanic Asian and Pacific Islanders (NHAPI), relative risk (RR), confidence intervals (CI), reference group (ref), too few cases to calculate (~).

medRxiv preprint doi: <https://doi.org/10.1101/2024.03.25.24304564>; this version posted April 5, 2024. The copyright holder for this preprint (which was not certified by peer review) is the author/funder, who has granted medRxiv a license to display the preprint in perpetuity. It is not subject to copyright under 17 USC 105 and is also made available under aCC-BY 4.0 International license.



**Table 2. Relative survival of cases with hepatocellular carcinoma, National Program of Cancer Registries, 2001-2019**

Variable	Total		2001-2007		2008-2019	
	Count	Relative Survival % (95%CI)	Count	Relative Survival (95%CI)	Count	Relative Survival (95%CI)
<b>Total</b>						
0-19	702	46.4 (42.4-50.3)	256	37.6 (31.7-43.5)	446	52.3 (47.0-57.3)
20+	256,704	20.7 (20.5-20.9)	62,722	16.4 (16.1-16.7)	193,982	22.2 (22.0-22.4)
<b>Sex</b>						
<b>Male</b>						
0-19	381	46.8 (41.4-52.0)	145	37.4 (29.5-45.2)	236	53.5 (46.2-60.2)
20+	198,821	19.9 (19.7-20.1)	48,256	15.80 (15.4-16.1)	150,565	21.2 (21.0-21.5)
<b>Female</b>						
0-19	321	46.0 (40.0-51.7)	111	37.9 (28.9-46.8)	210	50.9 (43.1-58.2)
20+	57,883	23.7 (23.3-24.1)	14,466	18.50 (17.8-19.2)	43,417	25.5 (25.0-26.0)
<b>Race and Ethnicity</b>						
<b>NHW</b>						
0-19	372	48.9 (43.3-54.1)	138	41.4 (33.1-49.5)	234	53.6 (46.3-60.4)
20+	142,392	19.8 (19.5-20.0)	34,938	15.7 (15.3-16.1)	107,454	21.2 (20.9-21.5)
<b>NHB</b>						
0-19	93	41.1 (30.4-51.5)	34	29.5 (15.4-45.1)	59	48.9 (34.5-61.8)
20+	39,152	17.3 (16.9-17.8)	9,045	11.5 (10.8-12.2)	30,107	19.2 (18.6-19.7)
<b>NHAIAN</b>						
0-19	~	~	~	~	~	~
20+	2,550	17.0 (15.3-18.9)	483	13.0 (10.0-16.4)	2,067	18.0 (15.9-20.2)
<b>NHAPI</b>						
0-19	44	41.0 (25.7-55.7)	19	15.8 (3.9-35.0)	25	63.2 (39.2-79.9)
20+	21,971	31.4 (30.7-32.1)	6,578	26.0 (24.9-27.1)	15,393	33.9 (33.0-34.8)
<b>Hispanic</b>						
0-19	170	43.1 (34.9-51.0)	57	36.9 (24.6-49.2)	113	47.3 (36.6-57.3)
20+	44,990	20.8 (20.4-21.3)	10,372	16.7 (15.9-17.4)	34,618	22.0 (21.5-22.6)
<b>Stage</b>						
<b>Localized</b>						
0-19	255	75.1 (68.8-80.4)	79	71.1 (59.7-79.8)	176	77.4 (69.5-83.5)
20+	121,569	33.6 (33.3-34.0)	26,475	28.0 (27.5-28.6)	95,094	35.3 (34.9-35.6)
<b>Regional</b>						
0-19	204	44.5 (37.1-51.6)	70	37.3 (26.1-48.4)	134	48.6 (38.9-57.7)
20+	65,784	12.0 (11.7-12.2)	15,549	10.1 (9.6-10.6)	50,235	12.5 (12.2-12.9)
<b>Distant</b>						
0-19	215	14.1 (9.5-19.7)	94	7.5 (3.3-13.9)	121	20.9 (13.3-29.6)
20+	39,568	3.5 (3.2-3.7)	10,502	3.2 (2.9-3.6)	29,066	3.5 (3.3-3.8)
<b>Histology</b>						
<b>HCC (non-fHCC)</b>						
0-19	440	44.8 (39.8-49.7)	167	32.4 (25.5-39.6)	273	53.5 (46.7-59.8)
20+	255990	20.7 (20.5-20.9)	62,478	16.3 (16.0-16.7)	193512	22.1 (21.9-22.4)
<b>fHCC</b>						
0-19	262	49.3 (42.7-55.6)	89	47.3 (36.7-57.2)	173	50.7 (42.1-58.6)
20+	714	35.3 (31.9-39.8)	244	33.3 (27.3-39.5)	470	37.6 (32.4-42.7)

medRxiv preprint doi: <https://doi.org/10.1101/2024.03.25.24304564>; this version posted April 5, 2024. The copyright holder for this preprint (which was not certified by peer review) is the author/funder, who has granted medRxiv a license to display the preprint in perpetuity. This article is a US Government work. It is not subject to copyright under 17 USC 105 and is also made available for use under a CC0 license.

1 Abbreviations: fibrolamellar hepatocellular carcinoma (fHCC), hepatocarcinoma (HCC), Non-Hispanic white (NHW), Non-Hispanic Black (NHB), Non-Hispanic  
2 American Indian/Alaska Native (NHAIAN), Non-Hispanic Asian and Pacific Islanders (NHAPI), relative risk (RR) confidence intervals (CI), too few cases to  
3 calculate (~), 0-19 years of age (0-19), 20 years or older (20+).

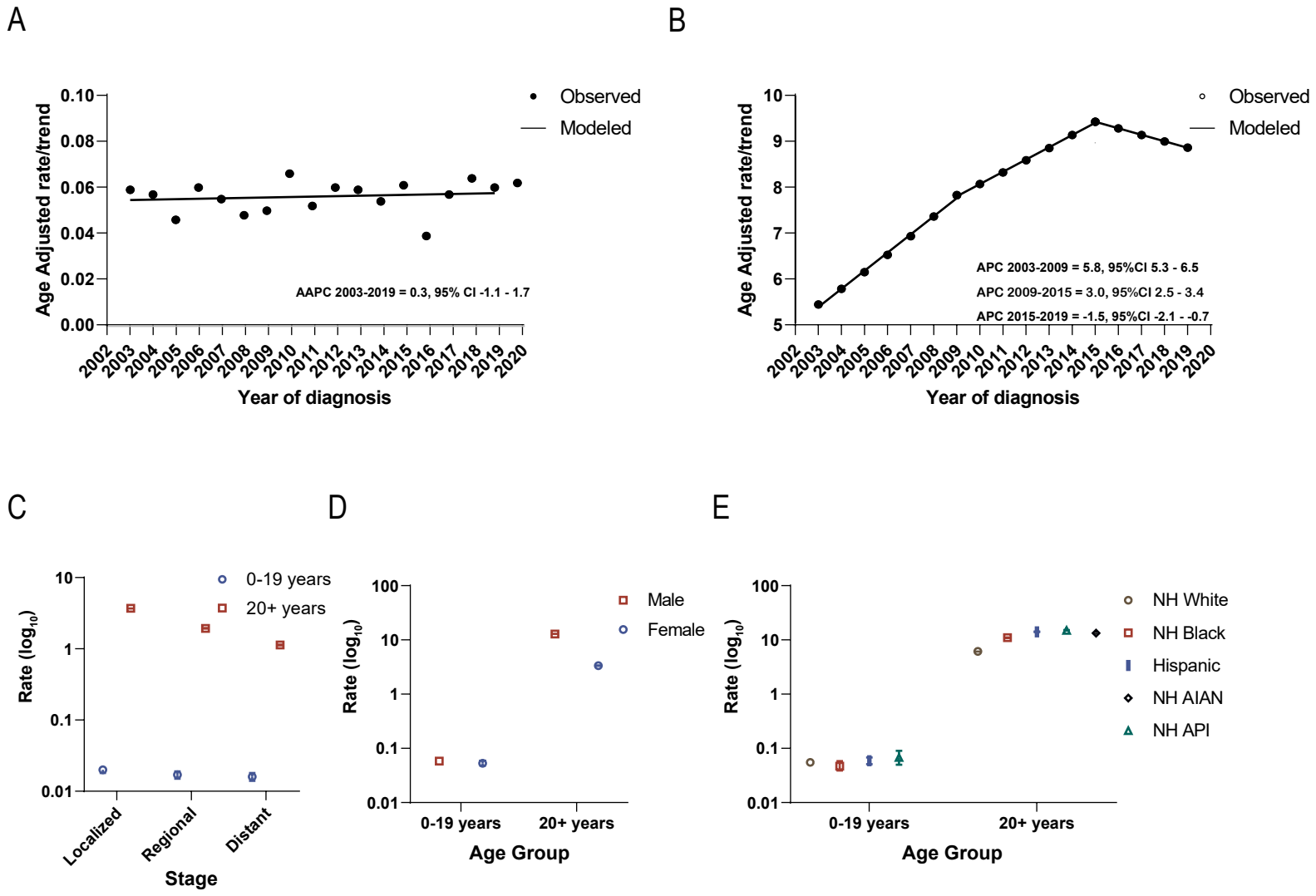
4

5 **Figure 1 Incidence in hepatocellular carcinoma** A. Incidence trend of hepatocellular carcinoma cases in children and adolescents. B. Incidence  
6 trend of hepatocellular carcinoma cases in adults. C-E. Rate by stage. D. sex. E. race/ethnicity. Rates are per 100,000 persons. Abbreviations:  
7 annual percent change (APC), average annual percent change (AAPC), non-Hispanic white (NHW), Non-Hispanic Black (NHB), Non-Hispanic  
8 American Indian/Alaska Native (NHAIAN), Non-Hispanic Asian/Pacific Islander (NHAPI). Non-Hispanic American Indian/Alaska Native were  
9 excluded in pediatric ages due to <6 cases. Incidence trends were measured in APC and AAPC and calculated using Joinpoint software and  
0 defined as significant if different from zero using an alpha of 0.05. Error bars indicate confidence intervals.

1 **Figure 2 5-year relative survival of patients with hepatocellular carcinoma** A. stage. B. sex. C. race/ethnicity. Abbreviations: Non-Hispanic  
2 (NH), American Indian/Alaskan Native (NHAIAN), Asian/Pacific Islander (NHAPI), annual percent change (APC). Non-Hispanic American  
3 Indian/Alaska Native were excluded in pediatric due to <6 cases. Error bars indicate confidence intervals.

4 **Figure 3 Overall survival of patients with hepatocellular carcinoma** A-B 5-year overall survival of patients with hepatocellular carcinoma. A.  
5 Pediatric risk factors. B. Adult risk factors C. Modeling of relative hazard against age in adults. Abbreviations: hazard ratio (HR), reference group  
6 (ref.), 95% confidence interval (CI), metropolitan (metro), Non-Hispanic American Indian/Alaska Native (NHAIAN) or Non-Hispanic Asian/Pacific  
7 Islander (NHAPI). Error bars indicate confidence intervals. P-value was calculated from multivariate Cox analysis for each group; individual  
8 subgroups were considered significant if CI did not cross 1 ( $p < .05$ ).

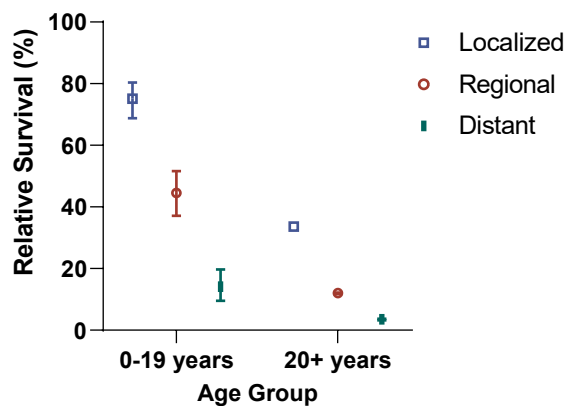
# Figure 1



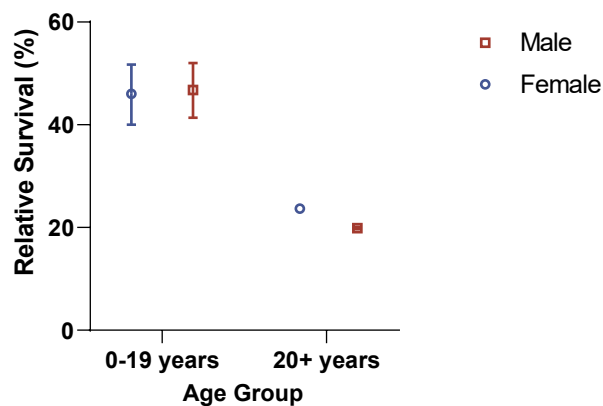
**Figure 1 Incidence in hepatocellular carcinoma.** A. Incidence trend of hepatocellular carcinoma cases in children and adolescents. B. Incidence trend of hepatocellular carcinoma cases in adults. C-E. Rate by stage. D. sex. E. race/ethnicity. Rates are per 100,000 persons. Abbreviations: annual percent change (APC), average annual percent change (AAPC), non-Hispanic white (NHW), Non-Hispanic Black (NHB), Non-Hispanic American Indian/Alaska Native (NHAIAN), Non-Hispanic Asian/Pacific Islander (NHAPI). Non-Hispanic American Indian/Alaska Native were excluded in pediatric ages due to <6 cases. Incidence trends were measured in APC and AAPC and calculated using Joinpoint software and defined as significant if different from zero using an alpha of 0.05. Error bars indicate confidence intervals.

## Figure 2

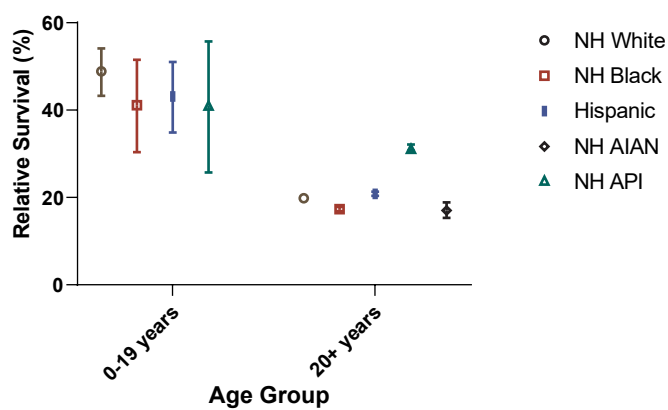
A



B



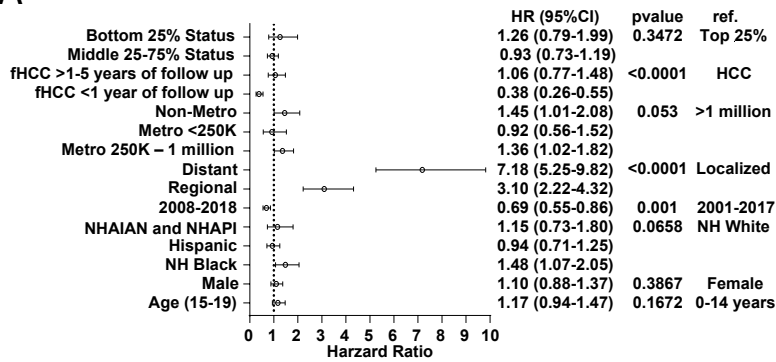
C



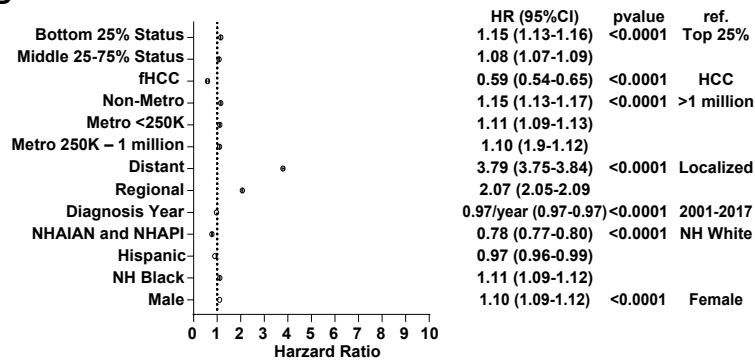
**Figure 2 5-year relative survival of patients with hepatocellular carcinoma** A. stage. B. sex. C. race/ethnicity. Abbreviations: Non-Hispanic (NH), American Indian/Alaskan Native (NHAIAN), Asian/Pacific Islander (NHAPI), annual percent change (APC). Non-Hispanic American Indian/Alaska Native were excluded in pediatric due to <6 cases. Error bars indicate confidence intervals.

### Figure 3

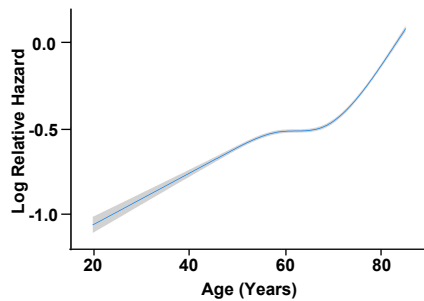
A



B



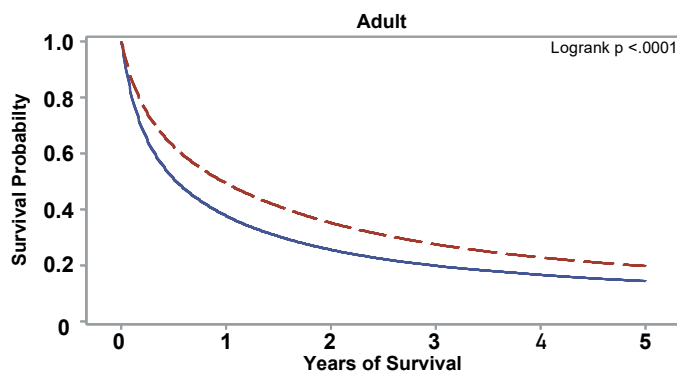
C



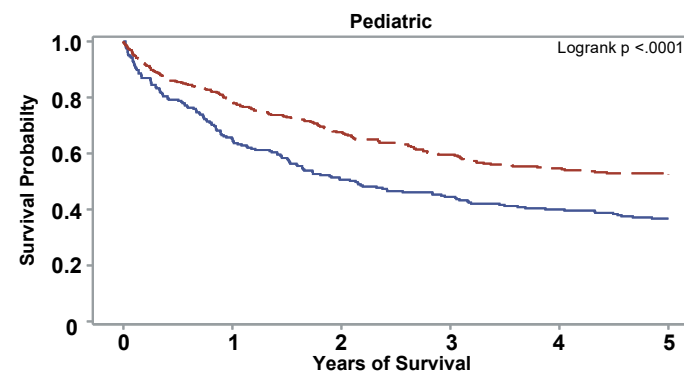
**Figure 3 Overall survival of patients with hepatocellular carcinoma** A-B-year overall survival of patients with hepatocellular carcinoma. A. Pediatric risk factors. B. Adult risk factors C. Modeling of relative hazard against age in adults. Abbreviations: hazard ratio (HR), reference group (ref.), 95% confidence interval (CI), metropolitan (metro), Non-Hispanic American Indian/Alaska Native (NHAIAN) or Non-Hispanic Asian/Pacific Islander (NHAPI). Error bars indicate confidence intervals. P-value was calculated from multivariate Cox analysis for each group; individual subgroups were considered significant if CI did not cross 1 ( $p < .05$ ).

# eFigure 1

A

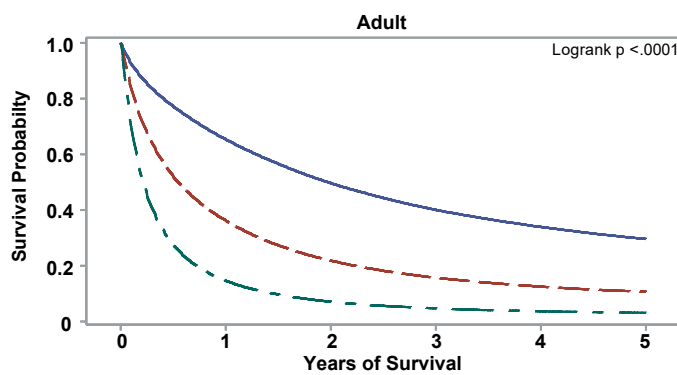


2001-2007	68230	25704	17477	13608	11367	9830
2008-2019	215624	95663	60468	41089	29076	20756

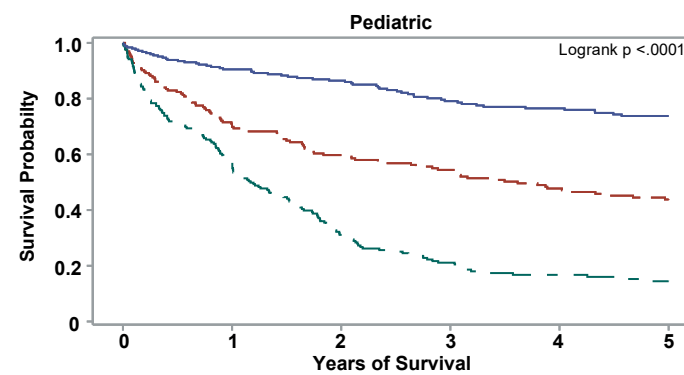


2001-2007	245	180	124	109	98	90
2008-2019	426	307	235	187	160	134

B

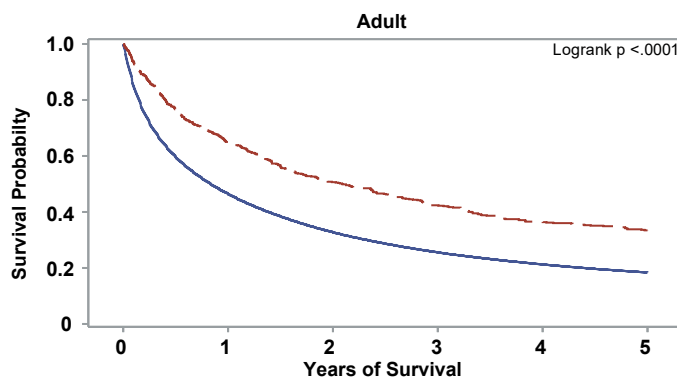


Localized	136316	81452	55915	40207	30078	22841
Regional	71503	24054	13463	8933	6484	4805
Distant	42954	5783	2559	1547	1077	803

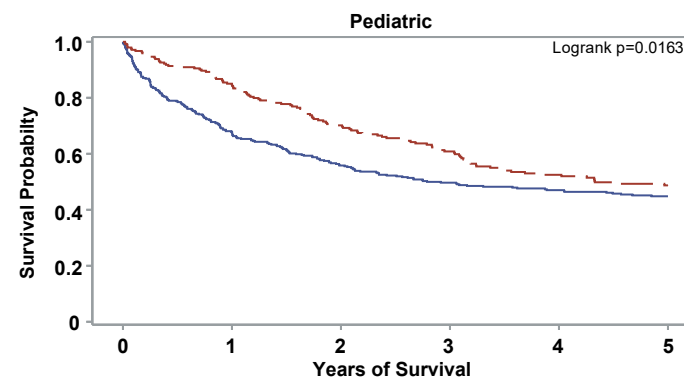


Localized	246	210	183	154	144	129
Regional	195	128	102	91	77	64
Distant	205	110	57	34	24	18

C



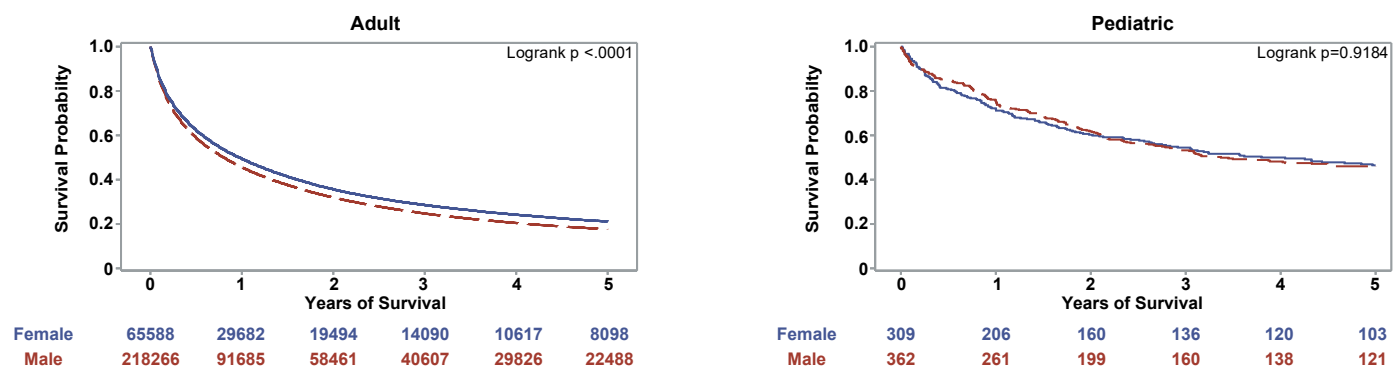
HCC Other	283100	120914	77616	54442	40239	30407
fHCC	754	453	329	255	204	179



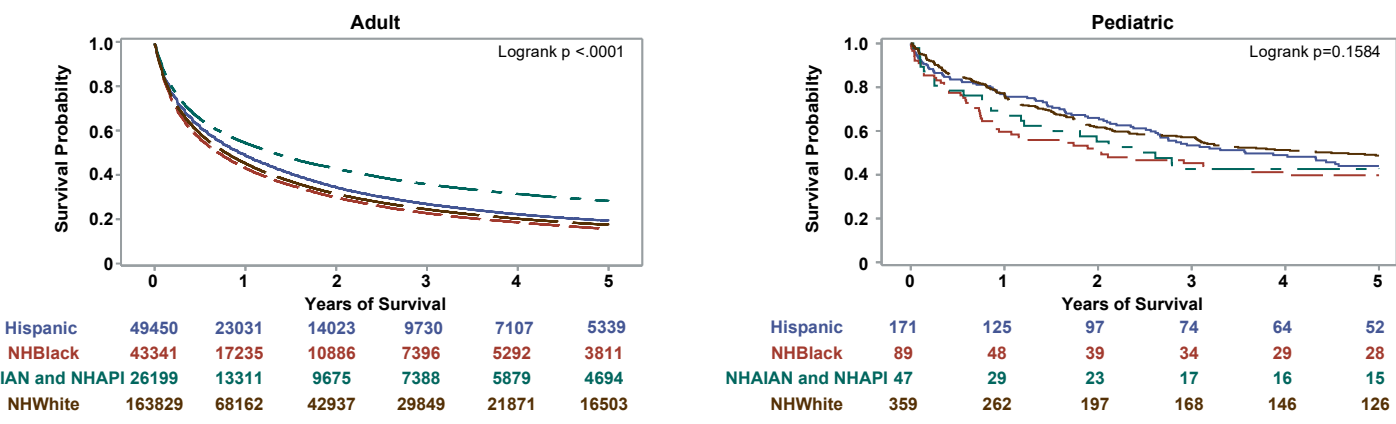
HCC Other	426	267	204	171	154	138
fHCC	245	200	155	125	104	86

**eFigure 1 5-year overall survival of adult (left) and pediatric (right) patients with hepatocellular carcinoma. A. Diagnosis year. B. Stage. C. Histology.** Abbreviation: fibrolamellar hepatocellular carcinoma (fHCC), hepatocarcinoma (HCC).

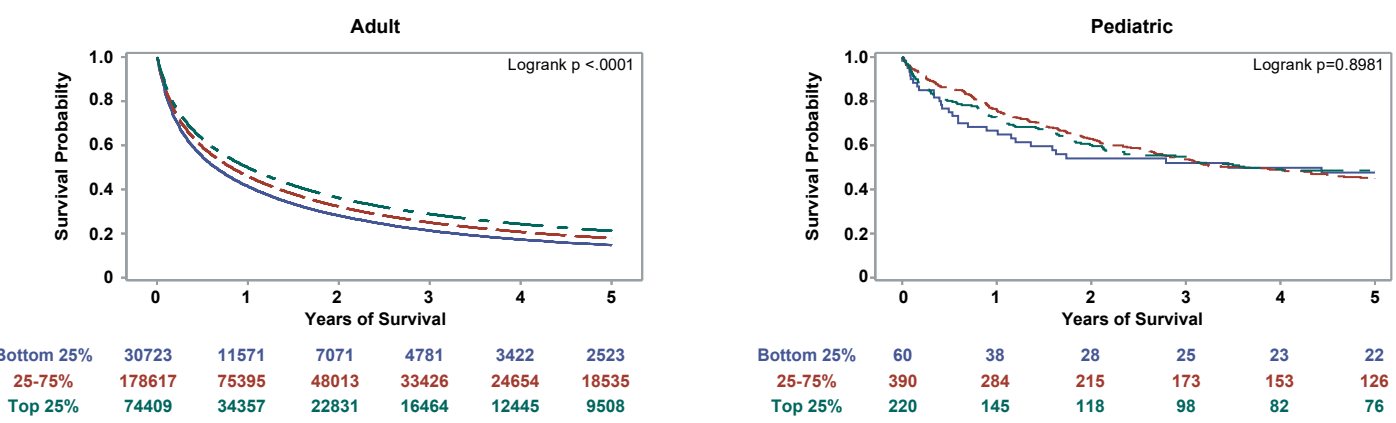
**eFigure 2**  
**A**



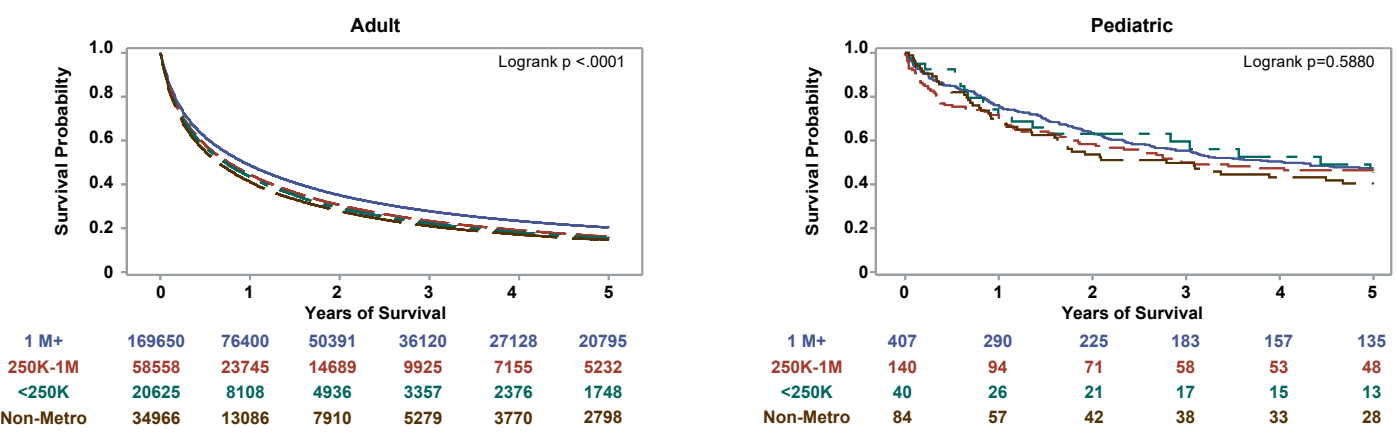
**B**



**C**



**D**



**eFigure 2** 5-year overall survival of adult (left) and pediatric (right) patients with hepatocellular carcinoma. A. Sex. B. Race and ethnicity. C. Socioeconomic status by county. D. Metropolitan status. Abbreviation: metropolitan (metro), Non-Hispanic (NH).