

1
2
3
4
5
6
7
8
9
10
11
12
13
14
15
16
17
18
19
20
21
22
23
24
25
26
27
28
29
30

Evaluating soluble Axl as a biomarker for glioblastoma: a pilot study

Daniel Raymond^{1¶}, Melanie B. Fukui^{2,#a}, Samuel Zwernik^{3,#b}, Amin Kassam^{2,#a}, Richard A. Rovin^{2¶*}, Parvez Akhtar^{3¶}

¹Department of Biology, Northern Michigan University, Marquette, Michigan, United States of America

²Aurora Neuroscience Innovation Institute, Milwaukee, Wisconsin, United States of America

³Advocate Aurora Research Institute, Milwaukee, Wisconsin, United States of America

^{#a}Current Address: Department of Neurosciences, Northwest Community Hospital, Arlington Heights, Illinois, United States of America

^{#b}Current Address: Department of Surgery, Henry Ford Health System, Detroit, Michigan, United States of America

*Corresponding author

e-mail: richard.rovin@aah.org (RAR)

¶These authors contributed equally to this work.

31 **Abstract**

32 With current imaging, discriminating tumor progression from treatment effect following
33 immunotherapy or oncolytic virotherapy of glioblastoma (GBM) is challenging. A blood based
34 diagnostic biomarker would therefore be helpful. Axl is a receptor tyrosine kinase that is highly
35 expressed by many cancers including GBM. Axl expression is regulated through enzymatic cleavage
36 of its extracellular domain. The resulting fragment can be detected in serum as soluble Axl (sAxl).
37 sAxl levels can distinguish patients with melanoma, hepatocellular carcinoma, and pancreatic ductal
38 adenocarcinoma from healthy controls. This is a pilot study to determine if sAxl is a candidate
39 biomarker for GBM. The sAxl levels in the serum of 40 healthy volunteers and 20 GBM patients
40 were determined using an enzyme-linked immunosorbent assay (ELISA). Pre- and post- operative
41 sAxl levels were obtained. Volumetric MRI evaluation provided GBM tumor volume metrics. There
42 was no significant difference in the sAxl levels of the volunteers (30.16 ± 1.88 ng/ml) and GBM
43 patients (30.74 ± 1.96 ng/ml) $p=0.27$. The postoperative sAxl levels were significantly higher than
44 preoperative levels (32.32 ± 2.26 ng/ml vs 30.74 ± 1.96 ng/ml, $p=0.03$). We found no correlation
45 between tumor volume and sAxl levels. Axl expression was low or absent in 6 of 11 (55%) patient
46 derived GBM cell lines. Given the wide range of Axl expression by GBM tumors, sAxl may not be a
47 reliable indicator of GBM. However, given the small sample size in this study, a larger study may be
48 considered.

49 **Introduction**

50 Since 1977, interval imaging to monitor a brain tumor's response to treatment has been
51 standard of care.[1] However, distinguishing true progression from treatment effect
52 (pseudoprogression) is challenging, particularly so with the advent of immunotherapy and oncolytic

53 virotherapy.[2] A circulating biomarker that reflects the biological activity of the tumor would be
54 useful. While available for breast cancer[3], lung cancer[4], melanoma[5], prostate cancer[6], and
55 colorectal cancer[7], a circulating biomarker to monitor the course of gliomas remains elusive.

56 In earlier work, we found that patient derived glioblastoma (GBM) cell lines are susceptible
57 to productive Zika virus infection especially when Axl is overexpressed.[8] Axl is a member of the
58 TAM family of receptor tyrosine kinases (RTKs) along with Tyro3 and Mer. Like other RTKs, Axl
59 has an extracellular domain for ligand binding, a transmembrane domain, and an intracellular
60 domain. When stimulated through its ligand, growth-arrest specific factor 6 (Gas6), Axl activates
61 myriad intracellular signaling pathways that contribute to the cancer phenotype, including: epithelial-
62 mesenchymal transition, survival, proliferation, angiogenesis, chemotherapy resistance, and immune
63 suppression.[9,10] (Fig 1, right)

64 **Fig 1, right. Axl signaling pathways and post-translational cleavage.** Axl is a transmembrane
65 receptor tyrosine kinase. Gas-6 ligand binding leads to dimerization and activation of cellular
66 pathways including: epithelial-mesenchymal transition, survival, proliferation, angiogenesis,
67 chemotherapy resistance, and immune suppression.

68 Soluble Axl (sAxl) is the byproduct of regulation of Axl expression through post-
69 translational deactivation by enzymatic cleavage. The sheddases ADAM10 and ADAM17 cleave the
70 extracellular domain of Axl, and this product can be identified in the bloodstream as sAxl.[9] (Fig 1,
71 left) Many cancers highly express Axl.[10] In these cancers, cleavage of the Axl ectodomain leads to
72 high levels of circulating sAxl. In this way, sAxl can serve as a biomarker for hepatocellular
73 carcinoma[11], pancreatic cancer[12], and melanoma[13].

74 **Fig 1, left. Axl signaling pathways and post-translational cleavage.** One mechanism to regulate
75 Axl expression is cleavage of the extracellular domain by the sheddases ADAM10 and ADAM17.
76 The cleavage product makes its way into the bloodstream as soluble Axl (sAxl).

77 Given that Axl is also overexpressed in GBM[14], we hypothesized that serum sAxl levels
78 should be elevated and could serve as a biomarker as it does in other solid tumors. Therefore, we
79 designed this pilot study to determine if circulating sAxl levels are elevated in patients with GBM
80 compared to healthy controls and to determine if there is a relationship between tumor volume and
81 sAxl levels.

82 **Materials and Methods**

83 This study was approved by the Northern Michigan University Institutional Review Board
84 #HS19-1033 and the Aurora St Luke's Institutional Review Board #14-79. Participants signed a
85 written informed consent document before enrolling in this study.

86 **Study Design**

87 This is a clinico-pathological correlation study using biospecimens (blood and tumor tissue)
88 collected per an existing Aurora St Luke's Medical Center biorepository protocol (Prospective
89 Biospecimen Collection, Storage, and Distribution).

90 **Study Populations**

91 Control cohort. Volunteers without pre-existing medical conditions were eligible to
92 participate. The control group included students and faculty at Northern Michigan University,
93 Marquette, Michigan. Student volunteers were recruited from the CLS 100 Phlebotomy course.

94 Their blood draws for soluble Axl analysis were part of their standard course work. Blood collection
95 for the control cohort took place between April 8th and May 6th, 2019.

96 Glioblastoma patients. Patients with preoperative imaging consistent with GBM were eligible
97 to participate in this study. Patients underwent medically indicated surgery at Aurora St Luke's
98 Medical Center, Milwaukee, Wisconsin. Blood was collected before and after surgery and did not
99 necessitate additional venipuncture. Blood collection for the GBM cohort took place between April
100 1st, 2018 and October 31st, 2018.

101 Patient derived cell lines. The patient derived GBM cell lines used to determine Axl
102 expression and sAxl levels in cell culture supernatant were previously established. They are not
103 derived from patients participating in the current study.

104 **Serum collection**

105 The blood collection tubes were labeled with a randomly generated ID number. The samples
106 were deidentified except for age, biological sex, cohort, and, for the GBM cohort, the time period
107 (pre- or post- operative) of the blood draw.

108 Serum was separated from whole blood samples using gold-top serum separator tubes,
109 which were then centrifuged at 1000 rpm for 5-10 minutes. Serum was aliquoted and stored at -80°
110 C.

111 **Enzyme-linked immunosorbent assay for sAxl concentration**

112 Serum sAxl and cell culture supernatant sAxl concentrations were determined by enzyme
113 linked immunosorbent assay (ELISA) using the commercially available human Axl DuoSet ELISA
114 kit (R&D Biosystems, Minneapolis, MN) with previously reported optimizations.[15] The 96-well

115 ELISA plates were read in a multi-mode microplate reader (BioTek Synergy H1, Agilent
116 Technologies, Santa Clara, CA). The optical density was measured at 450nm and 540nm. For
117 wavelength correction, the 540nm measurement was subtracted from the corresponding 450nm
118 value. After adjusting for background by normalizing against blank wells, a four-parameter
119 logarithmic curve-fit was generated in GraphPad Prism. A standard curve using known sAxI
120 standards was generated and used to interpolate the sAxI concentration of the samples. For each
121 plate, standards were applied in duplicate, and samples were applied in triplicate. The assay was
122 repeated either the same day using a duplicate 96-well plate on a separate day.

123 **MRI volumetric tumor analysis**

124 MRI scans were analyzed by a board certified neuroradiologist (M.B.F.) using BrightMatter
125 Plan software (Synaptive Medical, Toronto, Canada). From gadolinium enhanced T-1 weighted
126 images, a 3D model of the tumor was generated. From the pre-operative scans, total tumor volume,
127 volume of enhancing tumor, and volume of necrotic tumor were determined. The ratios of
128 enhancing tumor volume to total tumor volume, necrotic tumor volume to total tumor volume, and
129 necrotic tumor volume to enhancing tumor volume were calculated.

130

131 **Cell lines and cultures**

132 Previously established and characterized patient derived glioblastoma stem cell lines were
133 maintained in NeuroCult NS-A basal medium (Stemcell Technologies), supplemented with B-27
134 without vitamin A, N-2, GlutaMAX and Pen/Strep (Thermo Fisher Scientific), BSA and heparin
135 (Sigma-Aldrich), human recombinant bFGF and EGF (20 ng/ml each; PeproTech Inc.). All cell
136 lines were routinely tested for mycoplasma contamination by using MycoAlert Detection Kit (Lonza
137 Inc.).

138

139 **Western blotting**

140 Patient derived GBM stem cells were collected and lysed in RIPA buffer with complete
141 protease inhibitor cocktail (Roche). Lysates were resolved by 4-12% SDS/PAGE and
142 electrotransferred to nitrocellulose iBlot 2 Transfer Stacks (Life Technologies, IB23002).
143 Membranes were blocked with 5% nonfat dry milk in 1x TBS and incubated overnight at 4°C with
144 anti-AXL primary antibody (1: 1000 dilution, R&D Systems, AF154) or β -actin antibody (Sigma,
145 A2066), and subsequently incubated for 1 hour at room temperature with HRP-coupled secondary
146 antibody. All membranes were scanned using the Odyssey infrared imaging system (LI-COR
147 Biosciences) in conjunction with the Clarity Western ECL Substrate (Bio-Rad).

148

149 **RNA extraction and qRT-PCR**

150 Total RNA was extracted from patient derived GBM stem cells using the RNeasy Mini Kit
151 (Qiagen). Isolated RNAs (1 μ g total RNA) were then digested with 1 unit of DNase I (NEB) at
152 37°C for 25 min to remove genomic DNA contamination before being processed for reverse
153 transcription. Quantitative real time polymerase chain reaction (qRT-PCR) was performed using
154 iTaq Universal SYBR Green One-Step Kit (Bio-Rad, 1725151) according to the manufacturer's
155 instructions on a Roche LightCycler 480 instrument. The primers for Axl quantification were
156 Forward primer 5'-GGTGGCTGTGAAGACGATGA-3'; Reverse primer 5'-
157 CTCAGATACTCCATGCCACT-3'. The control primers were GAPDH Forward primer 5'-
158 GGATTTGGTCGTATTGGG -3'; Reverse primer 5'- GGAAGATGGTGATGGGATT -3'.
159 Relative expression quantification was performed based on the comparative CT Method ($2^{-\Delta\Delta C_t}$),
160 using GAPDH as an endogenous reference control.

161 **Statistical analysis**

162 Data from ELISAs were interpreted using a four-parameter logarithmic curve in GraphPad
163 Prism version 10.1.0 (GraphPad Software, San Diego, CA). Determination of statistically significant
164 variation between the two groups was performed using a two-tailed, unpaired student's t-test. For
165 datasets with three or more groups were analyzed using one-way ANOVA with Dunnett's post-hoc
166 multiple comparisons test. Graphical representation of datasets was performed in GraphPad with
167 error bars representing either 95% confidence intervals or mean \pm SEM. Graphical representation of
168 datasets was also performed using Stata version 15 (StataCorp, College Station, TX).

169 **Results**

170 **Baseline sAxl levels in the control and GBM populations**

171 There were 40 volunteers in the control group and 20 patients in the GBM group. The sAxl
172 level for the healthy controls of 30.16 ± 1.88 ng/ml (mean \pm SD) and the preoperative sAxl level in
173 the GBM cohort of 30.74 ± 1.96 ng/ml were not significantly different, $p=0.27$. (Table 1)

174 **Table 1. Characteristics of the healthy control and glioblastoma (GBM) cohorts.**

	Control (N=40)	GBM (N=20)	p value
Age (years)	30.7 ± 16.7	64.2 ± 10.8	=0.000
Female	27 (67.5%)	8 (40%)	
sAxl (ng/ml)	30.16 ± 1.88	30.74 ± 1.96	=0.27

175 sAxl: soluble Axl

176 **sAxl levels in response to surgery**

177 There were 19 GBM patients with matched pre- and post- operative sAxl levels. We found
178 that the post-operative sAxl level (32.32 ± 2.26 ng/ml) was significantly higher than the pre-operative

179 sAxl level (30.74 ± 1.96 ng/ml), $p=0.03$. In 11 (58%) patients, the preoperative sAxl level was greater
180 than the postoperative level. (Fig 2)

181 **Fig 2. The relationship between pre- and post-operative soluble Axl levels.** The blue closed
182 circles represent patients with postoperative sAxl levels lower than their preoperative levels. The red
183 open circles represent patients with postoperative sAxl levels higher than preoperative. The diagonal
184 line denotes pre- and post-operative sAxl equality.

185 **Correlation between preoperative tumor volume and sAxl levels**

186 Nineteen patients had matched preoperative tumor volumes and sAxl levels. There was no
187 correlation between total, enhancing, and necrotic tumor volumes and sAxl level. Nor was there a
188 correlation between necrotic to enhancing, necrotic to total, or enhancing to total volume ratios and
189 sAxl levels. (Fig 3)

190 **Fig 3. The relationship between tumor volume metrics and soluble Axl levels.** Multiple scatter
191 plots visualize the lack of correlation between tumor volume metrics and sAxl levels. The total tumor
192 volume, necrotic tumor volume, and enhancing tumor volume were determined through volumetric
193 analysis of preoperative MRI scans. The ratios of necrotic to total volume, enhancing to total volume,
194 and necrotic to enhancing volume were then calculated.

195 **Axl expression and sAxl levels in patient derived glioblastoma cell** 196 **lines**

197 Tumor Axl expression from the GBM patients participating in this study was not determined.
198 Therefore, to get a sense of Axl expression and sAxl levels in GBM, we performed Western blot (Fig
199 4A) and qRT-PCR (Fig 4B) using our previously established GBM cell lines. We also determined sAxl

200 levels in the cell culture supernatants using ELISA. No or low Axl expression was seen in 55% of cell
201 lines by Western blot and 33% of cell lines by qRT-PCR. The sAxl levels in the supernatants were not
202 detected or low in 40% of cell lines. (Table 2)

203 **Fig 4. The expression of Axl and soluble Axl in patient derived glioblastoma cell lines.** (A) Axl
204 protein expression as determined by Western blot. (B) Axl mRNA expression as determined by qRT-
205 PCR.

206 **Table 2. Axl expression and sAxl levels in patient derived glioblastoma cell lines.**

Cell Line	Western Blot	qRT-PCR	sAxl (ng/ml)
7978	No		0
7715	No		
7997	No	No	0
7753	No	Low	0
7903	Low		
8034	Low	High	0.71
7754	Med	Low	4.73
7714		Med	3.24
7730	Med	Med	5.89
8049	Med	High	1.92
8035	High	High	7.73
7759	High	High	3.17

207 This is a tabular summary of the Axl expression data from Fig 4 with the addition of sAxl levels in
208 the cell culture supernatants as determined by ELISA.

209 Western Blot and qRT-PCR expression were qualitatively categorized as No, Low, Medium, or High
210

211 Discussion

212 Soluble Axl (sAxl) has emerged as a promising biomarker for the early detection, diagnosis,
213 and monitoring of various cancers[10], including pancreatic ductal adenocarcinoma[12],
214 hepatocellular carcinoma[11,15], and melanoma[13]. We hypothesized that given the increased
215 expression of Axl in GBM[14], circulating sAxl levels would correspondingly be elevated. We

216 designed this pilot study to determine if sAxl levels were elevated in patients with GBM and if levels
 217 correlated with tumor burden. Though the sAxl levels in our GBM cohort were comparable to levels
 218 reported in the literature for other cancers, we did not find a difference in sAxl levels between
 219 healthy controls and GBM patients. (Table 3) Nor did we find a correlation between sAxl levels and
 220 tumor volume.

221 **Table 3. Serum levels of soluble Axl in several cancers.**

Cohort	Number	sAXL (ng/ml)	p value	Reference
Pancreas				Martinez-Bosch, et al 10.1016/j.ebiom.2021.103797
Hmar cohort		Median, IQR		
Normal	7	39.45, 13.03	0.002	
Chr Pancreatitis	21	44.82, 21.75	0.003	
PDAC	31	59.78, 25.38	ref	
HClinic cohort		Median, IQR		
Normal	46	40.03, 14.13	<0.0001	
Chr Pancreatitis	16	36.34, 11.05	<0.0001	
PDAC	80	52.66, 30.08	ref	
Liver Cancer		Median		Fu, et al 10.14218/JCTH.2022.00285
HCC	190	33.55	<0.05	
Cirrhosis	128	29.98		
Hepatitis	75	20.82		
Healthy Control	82	11.39		
Melanoma		Mean, 95% CI		Flem-Karlsen, et al 10.1371/journal.pone.0227187
Stage III	160	26.6, 24.3-28.9	<0.0001	
Stage IV	50	54.1, 50.7-57.6		
GBM		Mean ± SD		Current Study
Patient	20	30.74±1.96	0.27	
Healthy Control	40	30.16±1.88		

222 The serum levels of soluble Axl from patients in the current study (glioblastoma and healthy control
 223 cohorts) are compared to those reported for patients with cirrhosis, hepatocellular carcinoma
 224 (HCC), chronic pancreatitis (Chr Pancreatitis), pancreatic ductal adenocarcinoma (PDAC), and
 225 melanoma. The literature references are provided.

226 As noted in Table 2 above, we found a range of Axl expression in our established GBM cell
 227 lines, including no or low Axl expression in just over half of the specimens by Western blot.

228 Moreover, cell lines with no or low Axl expression had no or low sAxl in the cell culture
229 supernatant. A close review of Figure 1A from the Hutterer et al., paper showed 16 of 30 GBM
230 samples had no or low Axl mRNA expression.[14]

231 The regulation of Axl expression is complex and involves transcriptional, post-
232 transcriptional, and post-translational pathways.[10] The post-translational cleavage of the Axl
233 extracellular domain by ADAM10 and ADAM17 creates the soluble Axl fragments.[9,16] It is
234 possible, then, that in our small cohort, no or low Axl expressing GBMs were over represented,
235 lowering the mean sAxl level.

236 We further hypothesized that sAxl levels would decline following cytoreduction.
237 Unexpectedly, we found postoperative sAxl levels were significantly higher than preoperative. The
238 reason for this is unclear.

239 In the hope of using sAxl as a proxy for tumor burden[17], we determined total tumor
240 volume, volume of enhancing (and presumably viable) tumor, and volume of necrotic tumor. We
241 found no correlation between these tumor metrics and sAxl levels.

242 Though our findings that sAxl levels in GBM do not discriminate healthy controls from
243 patients with tumor and do not reflect tumor burden are different from findings in other cancers,
244 they are not unique. Gustafsson et al., found that sAxl levels in patients with renal cell carcinoma
245 (RCC) were lower than in healthy controls, did not correlate with tumor Axl expression, nor tumor
246 size.[18] This suggests that tumor type and its microenvironment impact Axl regulation and sAxl
247 production.

248

249 **Conclusion**

250 While this study does not support sAxl as a biomarker for GBM, it is not fair to make a
251 definitive statement given our small sample size. As identifying a GBM biomarker for detection,
252 monitoring, and prognostication, is important, a larger study can be considered.

253

254 **Acknowledgements**

255 The authors thank the Aurora St Luke's BSRC department for biospecimen management
256 and deidentification of MRI scans.

257 **References**

- 258 1. Levin VA, Crafts DC, Norman DM, Hoffer PB, Spire JP, Wilson CB. Criteria for evaluating
259 patients undergoing chemotherapy for malignant brain tumors. *J Neurosurg.* 1977
260 Sep;47(3):329–35.
- 261 2. Wen PY, van den Bent M, Youssef G, Cloughesy TF, Ellingson BM, Weller M, et al. RANO
262 2.0: Update to the Response Assessment in Neuro-Oncology Criteria for High- and Low-
263 Grade Gliomas in Adults. *J Clin Oncol.* 2023;41(33):5187–99.
- 264 3. Dawson S-J, Tsui DWY, Murtaza M, Biggs H, Rueda OM, Chin S-F, et al. Analysis of
265 circulating tumor DNA to monitor metastatic breast cancer. *N Engl J Med.* 2013
266 Mar;368(13):1199–209.
- 267 4. Oxnard GR, Paweletz CP, Kuang Y, Mach SL, O'Connell A, Messineo MM, et al.
268 Noninvasive detection of response and resistance in EGFR-mutant lung cancer using
269 quantitative next-generation genotyping of cell-free plasma DNA. *Clin cancer Res an Off J*
270 *Am Assoc Cancer Res.* 2014 Mar;20(6):1698–705.

- 271 5. Tsao SC-H, Weiss J, Hudson C, Christophi C, Cebon J, Behren A, et al. Monitoring response
272 to therapy in melanoma by quantifying circulating tumour DNA with droplet digital PCR for
273 BRAF and NRAS mutations. *Sci Rep*. 2015 Jun;5:11198.
- 274 6. Hennessey DB, Lynn C, Templeton H, Chambers K, Mulholland C. The PSA tracker: a
275 computerised health care system initiative in Northern Ireland. *Ulster Med J*. 2013
276 Sep;82(3):146–9.
- 277 7. Campos-da-Paz M, Dórea JG, Galdino AS, Lacava ZGM, de Fatima Menezes Almeida
278 Santos M. Carcinoembryonic Antigen (CEA) and Hepatic Metastasis in Colorectal Cancer:
279 Update on Biomarker for Clinical and Biotechnological Approaches. *Recent Pat Biotechnol*.
280 2018;12(4):269–79.
- 281 8. Zwernik SD, Adams BH, Raymond DA, Warner CM, Kassam AB, Rovin RA, et al. AXL
282 receptor is required for Zika virus strain MR-766 infection in human glioblastoma cell lines.
283 *Mol Ther oncolytics*. 2021 Dec;23:447–57.
- 284 9. Miller MA, Sullivan RJ, Lauffenburger DA. Molecular pathways: Receptor ectodomain
285 shedding in treatment, resistance, and monitoring of cancer. *Clin Cancer Res*.
286 2017;23(3):623–9.
- 287 10. Tang Y, Zang H, Wen Q, Fan S. AXL in cancer: a modulator of drug resistance and
288 therapeutic target. *J Exp Clin Cancer Res [Internet]*. 2023;42(1):1–14. Available from:
289 <https://doi.org/10.1186/s13046-023-02726-w>
- 290 11. Fu CX, Li J, Chen Z Da, Cao YP, Zhang HL, Sui HT, et al. Diagnostic Efficacy and Possible
291 Underlying Mechanisms of Noninvasive Clinical Markers in Hepatocellular Carcinoma. *J Clin*
292 *Transl Hepatol [Internet]*. 2023;11(4):889–98. Available from:

- 293 <https://www.doi.org/10.14218/JCTH.2022.00285>
- 294 12. Martínez-Bosch N, Cristóbal H, Iglesias M, Gironella M, Barranco L, Visa L, et al. Soluble
295 AXL is a novel blood marker for early detection of pancreatic ductal adenocarcinoma and
296 differential diagnosis from chronic pancreatitis. *eBioMedicine*. 2022;75.
- 297 13. Flem-Karlsen K, Nyakas M, Farstad IN, McFadden E, Wernhoff P, Jacobsen KD, et al.
298 Soluble AXL as a marker of disease progression and survival in melanoma. *PLoS One*.
299 2020;15(1):1–17.
- 300 14. Hutterer M, Knyazev P, Abate A, Reschke M, Maier H, Stefanova N, et al. Axl and growth
301 arrest-specific gene 6 are frequently overexpressed in human gliomas and predict poor
302 prognosis in patients with glioblastoma multiforme. *Clin Cancer Res*. 2008;14(1):130–8.
- 303 15. Dengler M, Staufer K, Huber H, Stauber R, Weiss KH, Starlinger P, et al. Soluble Axl is an
304 accurate biomarker of cirrhosis and hepatocellular carcinoma development : results from a
305 large scale multicenter analysis. 2017;8(28):46234–48.
- 306 16. Miller MA, Oudin MJ, Sullivan RJ, Wang SJ, Meyer AS, Im H, et al. Reduced proteolytic
307 shedding of receptor tyrosine kinases is a post-translational mechanism of kinase inhibitor
308 resistance. *Cancer Discov*. 2016;6(4):383–99.
- 309 17. Johansson G, Peng PC, Huang PY, Chien HF, Hua KT, Kuo ML, et al. Soluble AXL: a
310 possible circulating biomarker for neurofibromatosis type 1 related tumor burden. *PLoS One*.
311 2014;9(12):e115916.
- 312 18. Gustafsson A, Martuszewska D, Johansson M, Ekman C, Hafizi S, Ljungberg B, et al.
313 Differential expression of Axl and Gas6 in renal cell carcinoma reflecting tumor advancement
314 and survival. *Clin Cancer Res*. 2009;15(14):4742–9.

315

316

317

318

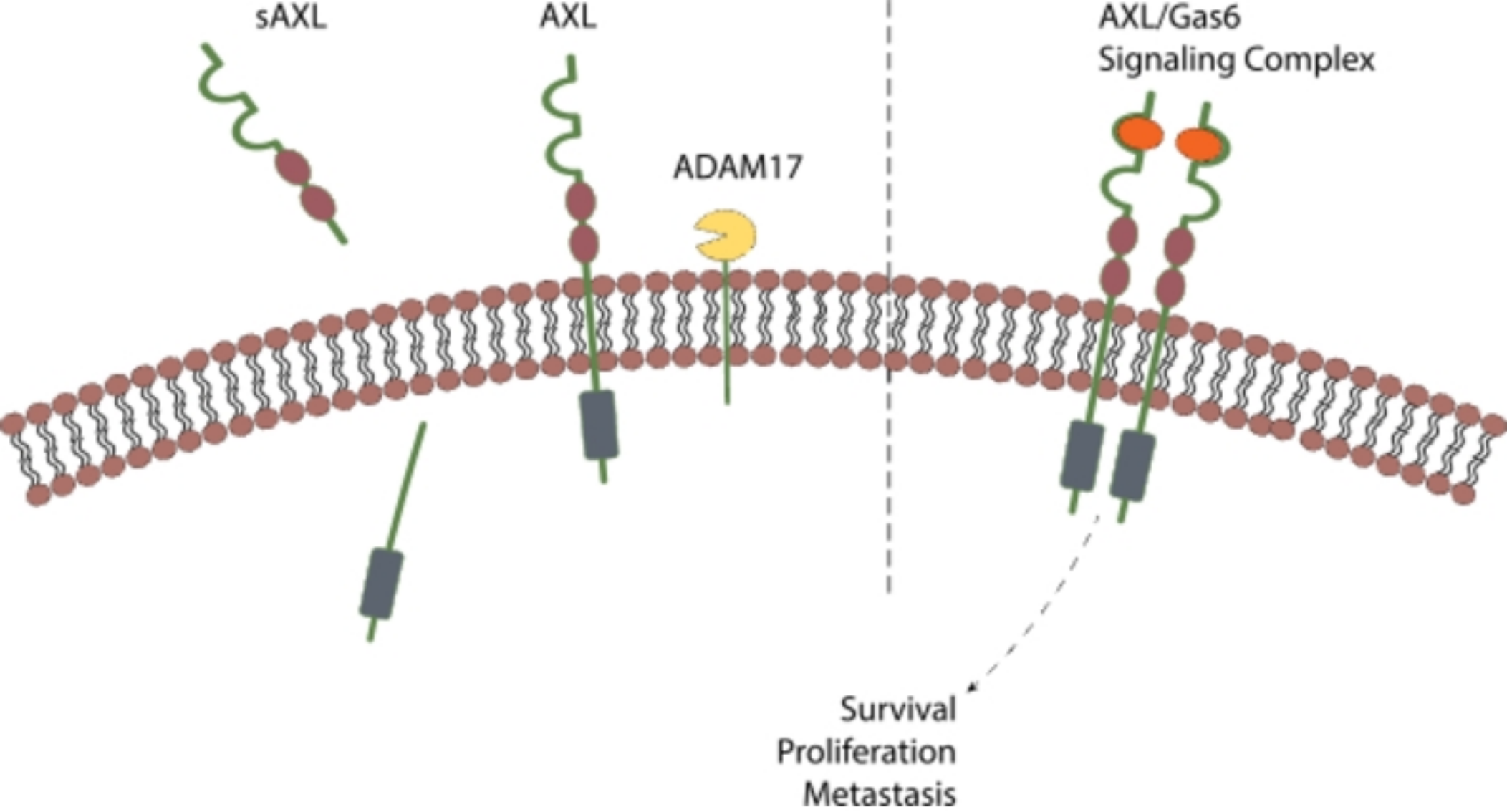


Figure 1

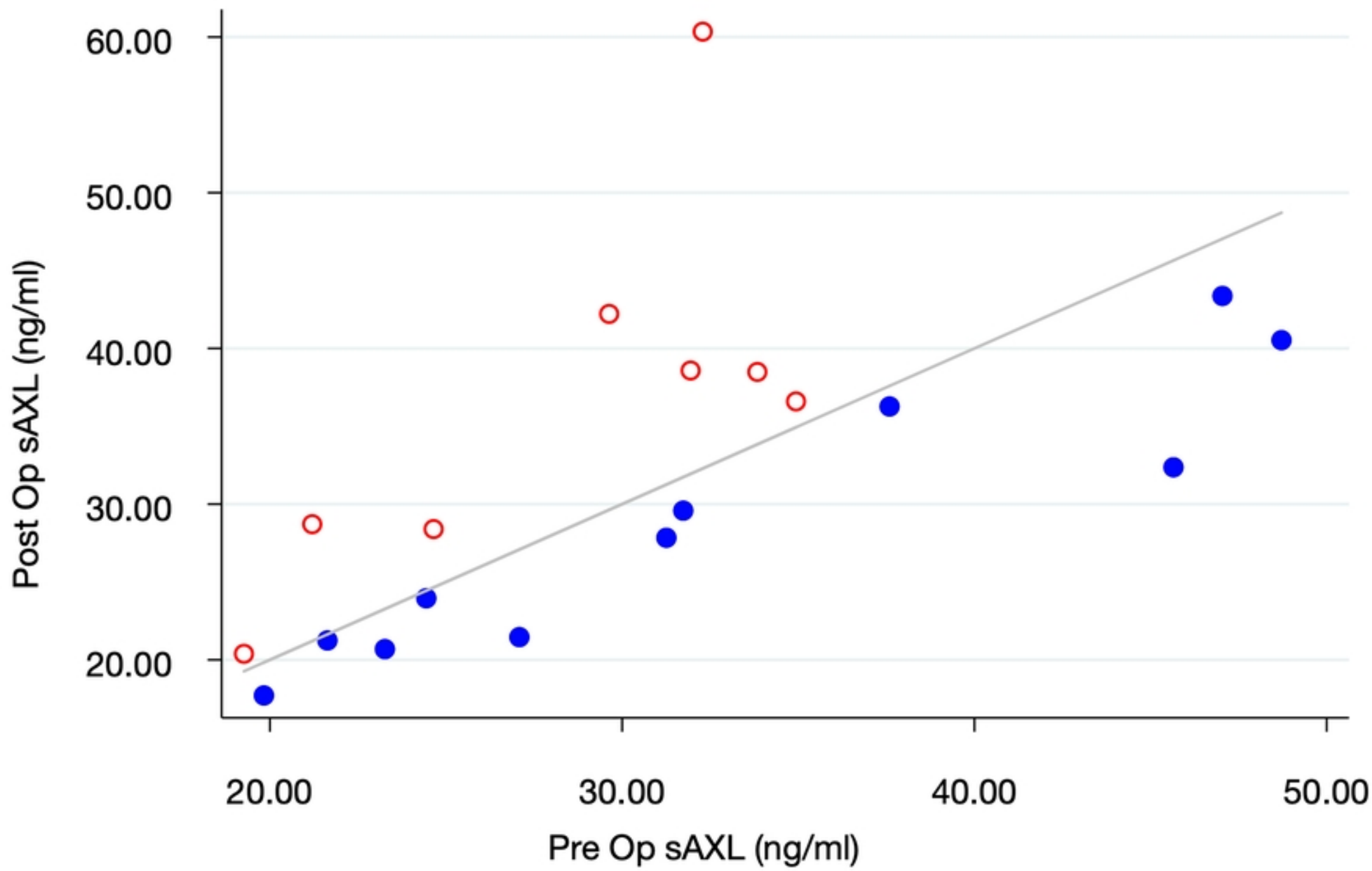


Figure 2

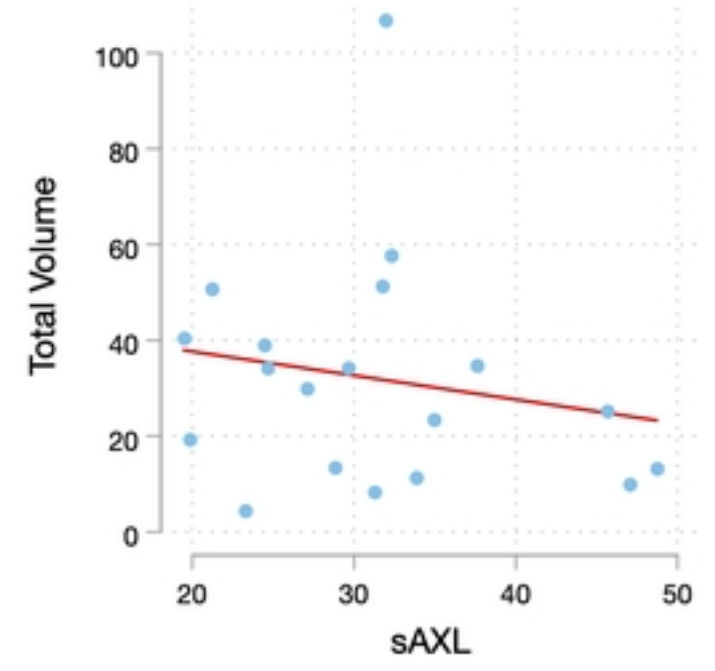
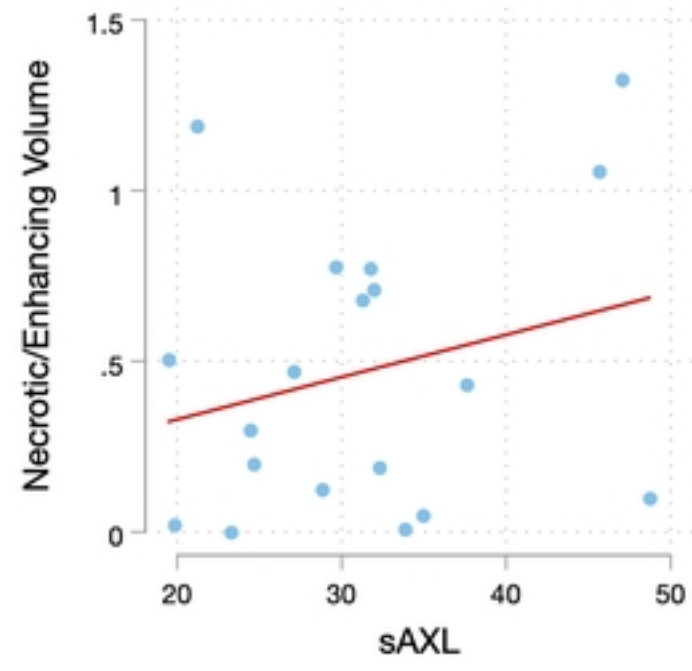
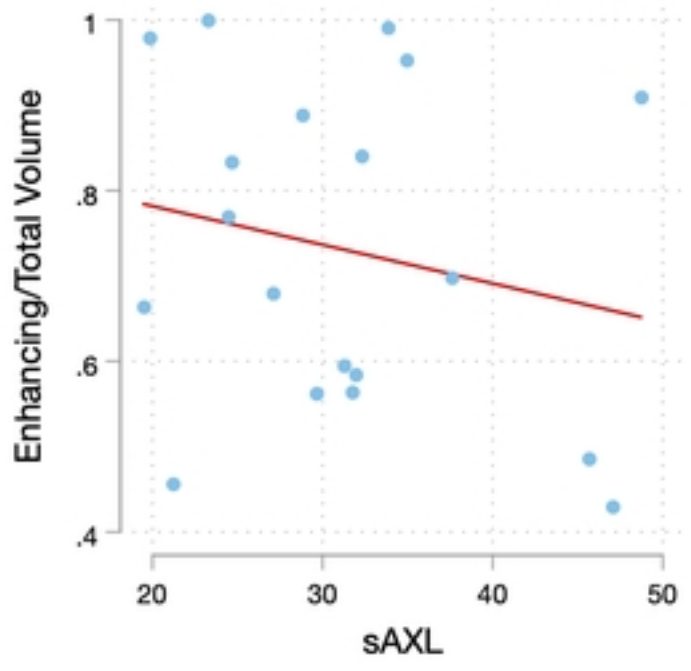
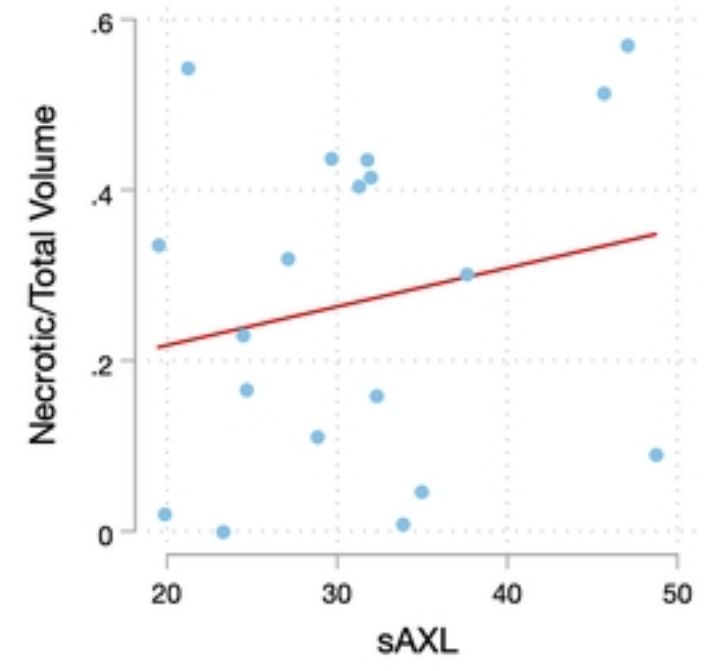
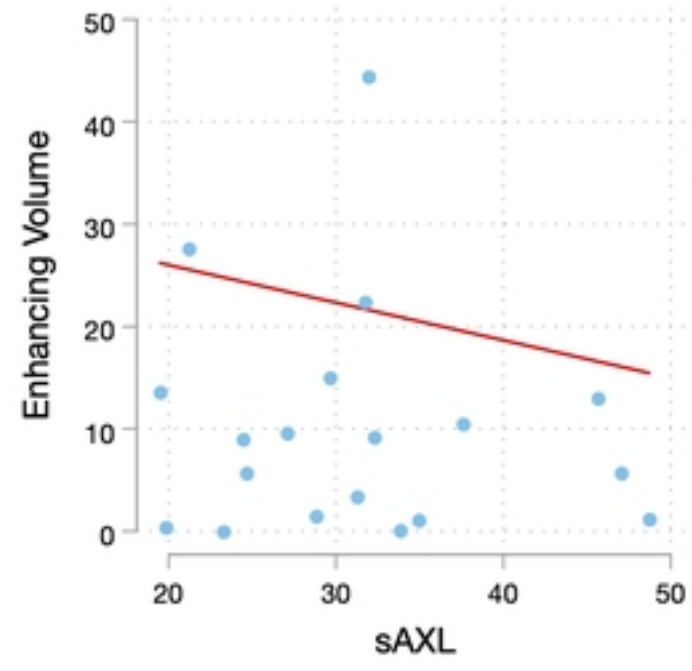
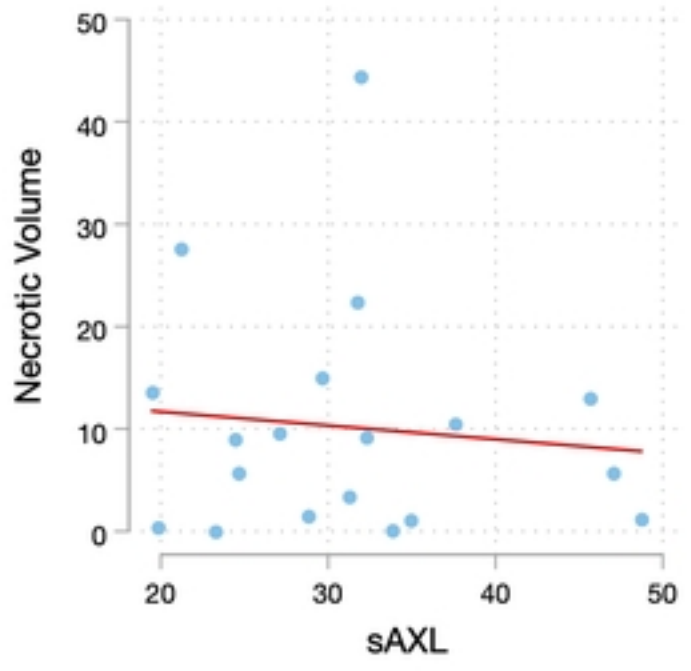


Figure 3

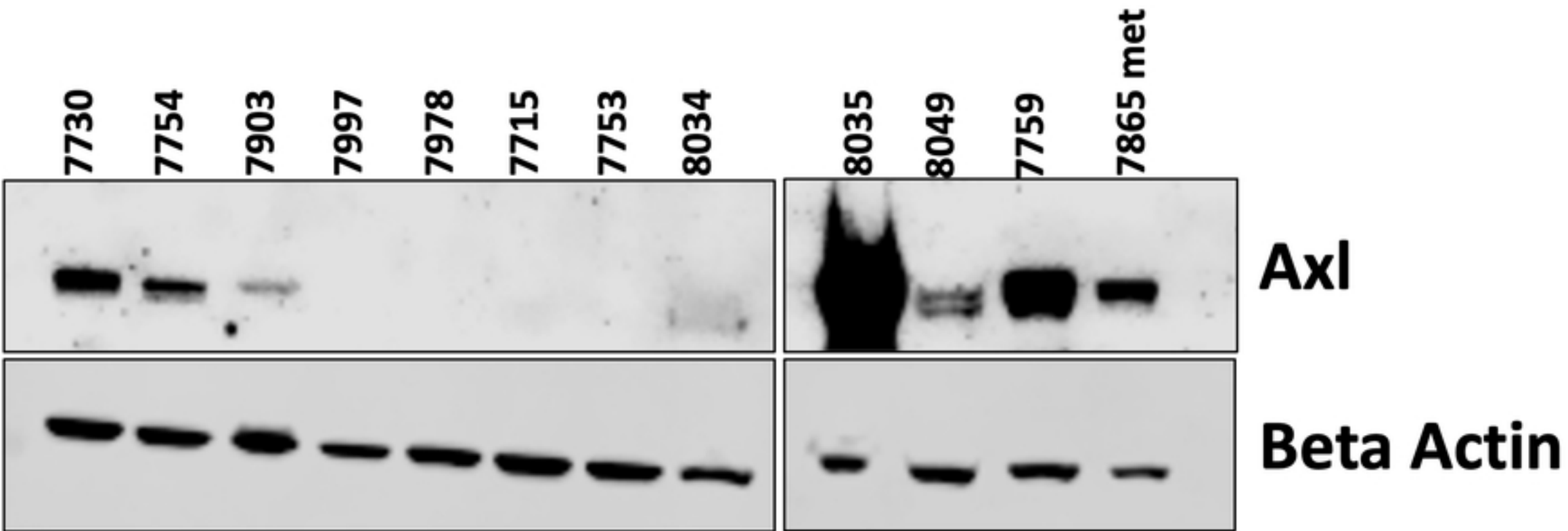


Figure 4A

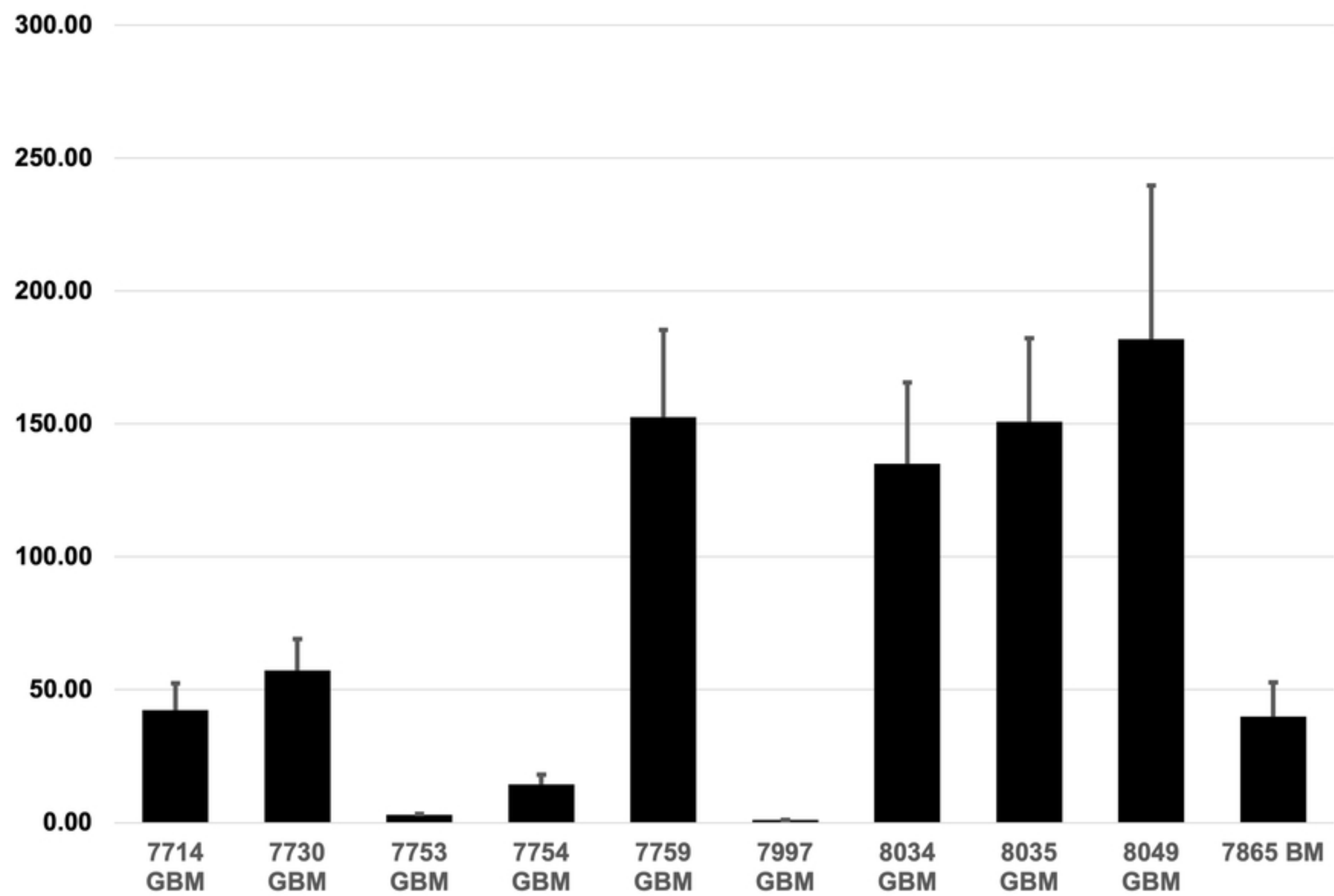


Figure 4B