

Evaluation of smartphone-based cough data in amyotrophic lateral sclerosis as a potential predictor of functional disability

Pedro Santos-Rocha^{1,2*}, Nuno Bento³, Duarte Folgado^{3,4}, André Valério Carreiro³, Miguel Oliveira Santos^{1,4}, Mamede de Carvalho^{1,2,4}, Bruno Miranda^{1,2}.

1. Institute of Physiology, Lisbon School of Medicine , University of Lisbon, Lisbon, Portugal;

2. Mamede de Carvalho Lab, Institute of Molecular Medicine - João Lobo Antunes, University of Lisbon, Portugal;

2. Fraunhofer Portugal AICOS, Lisbon, Portugal;

3. LiBPhys (Laboratory for Instrumentation Biomedical Engineering and Radiation Physics), NOVA School of Science and Technology, Lisbon, Portugal;

4. Department of Neurosciences and Mental Health, Hospital de Santa Maria -CHULN, Lisbon, Portugal.

*Correspondence: pedro.rocha@medicina.ulisboa.pt; Tel.: 913428353

*Current address: Department of Physiology, Institute of Molecular Medicine, Av. Prof. Egas Moniz, 1649-028, Lisbon, Portugal.

1 Abstract

2
3 Objectives: Cough dysfunction is a feature of patients with amyotrophic lateral sclerosis (ALS). The
4 cough sounds carry information about the respiratory system and bulbar involvement. Our goal was to
5 explore the association between cough sound characteristics and the respiratory and bulbar functions
6 in ALS.

7 Methods: This was a single-center, cross-sectional, and case-control study. On-demand coughs from
8 ALS patients and healthy controls were collected with a smartphone. A total of 31 sound features were
9 extracted for each cough recording using time-frequency signal processing analysis. Logistic regression
10 was applied to test the differences between patients and controls, and in patients with bulbar and
11 respiratory impairment. Support vector machines (SVM) were employed to estimate the accuracy of
12 classifying between patients and controls and between patients with bulbar and respiratory
13 impairment. Multiple linear regressions were applied to examine correlations between cough sound
14 features and clinical variables.

15 Results: Sixty ALS patients (28 with bulbar dysfunction, and 25 with respiratory dysfunction) and forty
16 age- and gender-matched controls were recruited. Our results revealed clear differences between
17 patients and controls, particularly within the frequency-related group of features (AUC 0.85, CI 0.79-
18 0.91). Similar results were observed when comparing patients with and without bulbar dysfunction;
19 and with and without respiratory dysfunction. Sound features related to intensity displayed the
20 strongest correlation with disease severity.

21 Discussion: We found a good relationship between specific cough sound features and clinical variables
22 related to ALS functional disability. The findings relate well with some expected impact from ALS on
23 both respiratory and bulbar contributions to the physiology of cough. Finally, our approach could be
24 relevant for clinical practice, and it also facilitates home-based data collection.

25
26
27
28
29

1. Introduction

2

3 Amyotrophic Lateral Sclerosis (ALS) is a progressive neurodegenerative disease
4 characterized by the loss of both upper and lower motor neurons (1). The consequent motor
5 dysfunction leads to symptoms affecting limbs, bulbar and respiratory muscles – and eventual
6 death by respiratory insufficiency or infection (2). In general, the disease is characterized by
7 significant variability in onset region, as well as in the pattern and rate of progression (3–7).

8 The majority of cases show either a spinal phenotype or a bulbar variant, but some
9 patients present initial trunk or respiratory involvement (5,8,9). However, an early respiratory
10 and bulbar impairment are associated with poor quality of life, malnutrition, and early mortality
11 (10,11). Non-invasive pulmonary function tests, in particular forced vital capacity (FVC), has long
12 been used for respiratory assessment and monitoring. However, they require cooperative
13 patients, good lips strength, and repeated testing to ensure consistency of measurements (12). On
14 the other hand, an established and comprehensive clinical scale to objectively monitor bulbar
15 disease and respiratory progression in ALS has yet to be achieved (13).

16 During the last few years, objective evaluation of cough sounds, in particular evaluating
17 its quantitative characteristics in terms of sound frequency or intensity, has gained popularity for
18 detecting and distinguishing different respiratory dysfunctions (12,14–18). The increasing
19 evidence concerning the objective evaluation of cough is also grounded by the physiological
20 mechanisms of coughing which require considerable coordination and timing of breathing, thus
21 being sensitive to abnormalities in the respiratory system (19,20). Physiologically, cough involves
22 a deep inspiration, followed by vigorous contraction of the expiratory muscles (in particular the
23 abdominal muscles) against a closed glottis. When a certain subglottic pressure is reached, the
24 glottis opens, producing one initial supramaximal expiratory airflow followed by a longer-lasting
25 lower expiratory flow, generating the cough sound at the same time. Importantly, such
26 physiological mechanisms for a normal cough also rely on a normal bulbar function, being

27 especially relevant for the glottis and intrinsic laryngeal muscles' performance. The latter muscles
28 are the ones responsible for the dimensions of the glottis rhyme (i.e., the tension regulation of the
29 vocal ligaments) and changes in laryngeal opening and closing – which are key properties of the
30 cough sound. In more advanced ALS, cough is generally weak and absent (21,22); this causes
31 inability to clear secretions, eases choking and impairs protection of the respiratory system –
32 often leading to aspiration pneumonia. Recent progress has been made to take advantage of
33 sensors to monitor the functional state of ALS patients, including for home-based assessments
34 (23–26). Stegmann et al. (27) used a mobile application (app) installed on the patient's mobile
35 device to record speech acoustics and to predict their forced vital capacity (FVC). Furthermore,
36 Vashkevich et al. (28) proposed an approach to voice assessment for automatic systems to
37 differentiate healthy individuals from ALS patients (based on sustained phonation of the vowels
38 /a/ and /i/). They used a wide range of acoustic features to achieve high accuracy in this
39 classification. A feasibility study utilizing cough sound to differentiate between healthy
40 individuals and those with ALS was recently conducted by Cebola et al. (29). The study endorsed
41 the viability of using coughs for remote monitoring; however, the sample size was limited and not
42 gender-matched. Despite previous efforts focused on studying speech and cough acoustics, very
43 few studies have comprehensively explored the potential of cough sound analysis in ALS.

44 In this study, we hypothesize that cough sound features obtained by a smartphone and
45 using time- and frequency-domain analysis, could inform about bulbar and respiratory
46 impairments in ALS patients. Thus, the present work aims to: 1) evaluate if the sound features of
47 a voluntary cough in ALS patients are different from age- and gender-matched healthy controls;
48 2) correlate cough sound features with functional status, respiratory and bulbar impairment in
49 ALS patients; and 3) test the hypothesis that frequency sound features have a stronger association
50 with bulbar dysfunction, while intensity sound features are more closely related to respiratory
51 dysfunction. Furthermore, we aimed to evaluate the usefulness of machine learning for
52 conducting future home-based assessments, by recording audio samples with a commonly
53 available device, in an ecological setting.

54 **2. Materials and Methods**

55 **2.1 Study design and participants**

56 This was a single-center, cross-sectional, case-control study that was part of a broader ALS
57 project (HomeSenseALS - PTDC/MEC-NEU/6855/2020). We included consecutive ALS patients
58 according to Gold Coast criteria (30). All patients were followed at our ALS clinic in Lisbon, and
59 had full neurological, neurophysiological, neuroimaging and blood tests to rule out mimicking
60 conditions (31). Patients with a previous history of lung disorders, with resting dyspnea, severe
61 cognitive involvement impairing the understanding of the voluntary coughing task, and those
62 declining to participate were excluded. In the control group we included healthy age- and gender-
63 matched controls (in general spouses of the ALS patients and people working in the institution).
64 The recruitment started on April 4, 2022, and was concluded on August 31, 2023. The study was
65 approved by the local research ethics committee of the Centro Académico de Medicina de Lisboa
66 (CAML-Ref. 146/21). All participants gave written informed consent, which was in accordance
67 with the declaration of Helsinki.

68

69 **2.2 Clinical evaluation**

70 For ALS patients, we collected demographic data including age, sex, body mass index
71 (BMI), smoking habits, disease duration, and the region of disease onset. To evaluate the
72 functional disability, we used the revised functional ALS rating scale (ALSFRS-R) (32).

73 Respiratory symptoms were determined based on the ALSFRS-R respiratory subscore
74 (which consists of questions 10 through 12 pertaining to dyspnea, orthopnea, and respiratory
75 insufficiency); patients with a score less than 12 were considered to have respiratory dysfunction.
76 Sitting predicted FVC (FVC%) was measured using a computer-based USB spirometer
77 (microQuark®, Cosmed®), the best of three reliable maneuvers was used for statistics (11). In
78 addition to FVC%, the following respiratory measures were also included: maximum expiratory
79 and inspiratory pressures (MIP% and MEP%, respectively) and cough peak flow (CPF). Similarly,

80 bulbar symptoms were evaluated using the ALSFRS-R bulbar subscore (which consists of
81 questions 1 through 3 about speech, salivation, and swallowing). Patients with a score less than
82 12 were considered having bulbar dysfunction. This data was accessed retrospectively, between
83 August 31, 2023, and October 31, 2023. The authors had no access to information that could
84 identify individual participants during or after data collection.

85

86 **2.3 Cough sound: recording, signal processing and feature extraction**

87 All subjects were instructed to perform, while seated in a quiet room, three voluntary
88 coughs (to ensure a repeatable sound relationship). The sound recordings were done using a
89 smartphone, placed approximately 20-25 cm away from the mouth and at an angle of
90 approximately 45° (as described in (12)). These procedures aimed to remove effects of wind noise
91 produced when one rapid expulsion of air directly hits the microphone. For patients, the cough
92 sounds were recorded during a routine patient's clinical visit, after ensuring that the patient was
93 resting for a period longer than 10 minutes, and comfortable without dyspnea.

94 After the cough data collection, the raw signal was processed with Librosa – a Python
95 package for audio signal analysis (33). The analysis was conducted using a frame length of 2048
96 samples per frame and a hop length of 512. In order to minimize potential biases stemming from
97 the beginning and end of the recordings (and to ensure that the analysis was focused solely on the
98 cough time frames) the split function of Librosa was employed with a cutoff of 20 decibels
99 eliminating the initial and final periods of silence in the cough recordings.

100 Once the pre-processing was completed, the generated cough sound signals were analyzed
101 to extract audio-based features. For this, we used the *Time Series Feature Extraction Library*
102 (TSFEL) that automatically extracts over 60 different features on the statistical, temporal, and
103 spectral domains (34).

104 In light of prior research findings (12,29,35,36) and relevance in general sound analysis,
105 we pre-selected 11 features based on the time domain and 20 features based on the frequency
106 domain (see details in **Table 1**). To enhance the interpretation of the results, we subsequently

107 categorized these features into three distinct groups, each pertaining to specific underlying
 108 information (with potential relevance for the various physiological steps of coughing): 1) a group
 109 encompassing sound frequency-related features – the frequency group; 2) another group
 110 comprising sound intensity-related features – the intensity group; and 3) a final group that
 111 combines features of both frequency and intensity domains – the mixed group. All extracted
 112 features were normalized to their maximum value (with a range between -1 and 1) (**Fig 1**).

113

114 **Figure 1. The workflow of feature categorization according to frequency, intensity, and mixed**
 115 **groups.**

116

117 **Table 1.** List of cough sound features subjected to analysis.

| |
|--|
| <i>Frequency group</i> |
| Maximum frequency of the signal |
| Fundamental frequency |
| Zero-crossing rate of the signal |
| Number of positive turning points of the signal |
| Spread of the spectrum around its mean value |
| Power spectrum density bandwidth of the signal |
| Spectral kurtosis: flatness of a distribution around its mean value |
| Spectral skewness: asymmetry of the distribution around its mean value |
| Spectral centroid: barycenter of the spectrum |
| Spectral roll-off of the signal |
| Number of positive turning points of the fft magnitude signal |
| <i>Intensity group</i> |
| Maximum value of the signal |
| Mean value of the signal |
| Median value of the signal |
| Minimum value of the signal |
| Standard deviation (std) of the signal |
| Variance of the signal |
| Kurtosis: where μ and σ are the mean and the standard deviation of the signal |
| Skewness: where μ and σ are the mean and the standard deviation of the signal |
| Centroid along the time axis |
| Peak to peak distance |
| <i>Mixed group</i> |

| |
|---|
| Absolute energy of the signal |
| Area under the curve of the signal computed with trapezoid rule |
| Total energy of the signal |
| Root mean square of the signal (Rms) |
| Maximum power spectrum density of the signal |
| Spectral entropy of the signal based on Fourier transform |
| Entropy of the signal using Shannon Entropy |
| Slope of the signal |
| Spectral slope |
| Duration of the signal |

118

119

120 **2.4 Machine-learning analysis**

121 After the feature extraction step, a dataset was built for the purpose of a binary
122 classification task with the objective of distinguishing between ALS patients and control subjects,
123 patients with and without bulbar dysfunction, and patients with and without respiratory
124 dysfunction. The dataset was partitioned, with 75% of the data allocated to the training set and
125 the remaining data designated for testing. The process of shuffling resulted in a well-balanced test
126 set in terms of class, age, gender, and dataset distribution. To identify a small subset of relevant
127 features for the objective analysis of bulbar and respiratory ALS dysfunction, the extracted cough
128 sound features underwent feature selection using the sequential feature selection (SFS) algorithm
129 based on a logistic regression (LR) classifier. Through SFS, we selected the cough sound features
130 that were strongly correlated with the class, thus removing the less relevant features from the
131 original dataset. Subsequently, the main classification task was performed by training a support
132 vector machine (SVM) classifier based on the linear kernel. In this process, only the most relevant
133 features, which were selected in the preceding step were considered, in an attempt to reduce the
134 potential for overfitting. For model evaluation, ROC-AUC (area under the curve) scores were
135 calculated over five iterations, each with a distinct random seed, so that it would be possible to
136 estimate the 95% confidence interval. This comprehensive procedure facilitated the assessment
137 of model stability and reliability.

138

139 **2.5 Statistical analysis**

140 Data analysis was performed using Python version 3.11.2 (Python Software Foundation).

141 For the significance level, $\alpha=0.05$ was considered. Descriptive statistics consisted of frequencies
142 (with proportions) for categorical variables and mean values (with standard deviation) for
143 continuous variables. To compare mean values, parametric tests such as the two-sample t-test or
144 the one-way ANOVA were applied. If the normality assumption of the continuous variable was
145 violated (significant Kolmogorov-Smirnov test with an absolute skewness > 2), non-parametric
146 tests such as Mann-Whitney U-test or Kruskal-Wallis test were considered and results reported,
147 if different from parametric analysis.

148 ROC analyses were performed to identify the ROC-AUC of the SVM, for discriminating
149 between:

150

151 (1) controls vs. ALS – with the frequency group of features;

152 (2) controls vs. ALS – with the intensity group of features;

153 (3) controls vs. ALS – with the mixed group of features.

154

155 Similar analyses were carried out for the comparison between patients with bulbar
156 dysfunction vs. those without; and for patients with respiratory dysfunction vs. those without. Age
157 and gender were added into each set of features, enabling the SVM model to consider these
158 important demographic factors.

159 Finally, we examined how each of the selected features related to the disability score and
160 pulmonary function tests in ALS patients. For the former, multiple linear regression models were
161 used, having the ALSFRS-R total score as dependent variable and age and gender as confounding
162 variables. On the other hand, simple linear correlations were used to elucidate associations
163 between sound features and pulmonary function measurements, including FVC%, MEP%, MIP%
164 and CPF.

165 3. Results

166 3.1 Demographics and clinical characteristics

167 We analyzed 300 cough sounds recordings from a total of 100 subjects (60 ALS patients
168 and 40 controls - 3 cough sounds each). The demographic and clinical characteristics of
169 participants are shown in **Table 2**. Groups had no significant differences in terms of age ($p= 0.79$)
170 or sex distribution ($p= 0.21$). There were no statistically significant differences between patients
171 with vs without respiratory dysfunction, as well as between patients with vs without bulbar
172 dysfunction, in terms of age, BMI, disease duration and percentage of smokers (all t-tests with p-
173 values > 0.05). However, the frequency of females was higher in the group with bulbar dysfunction
174 (71% vs 34%, $p< 0.001$) and in the group of patients with respiratory dysfunction (72% vs 43%,
175 $p< 0.05$).

176

177 **Table 2.** Baseline characteristics of whole ALS patients population ($n=60$), and controls ($N=40$).
178

| CLINICAL CHARACTERISTICS | ALS PATIENTS N=60 | CONTROLS N=40 |
|---|----------------------|------------------|
| AGE (mean±SD) | 61.87 ± 11.4 | 62.58 ± 15.63 |
| GENDER | | |
| MEN | 27 (45%) | 13 (32.5%) |
| WOMAN | 33 (55%) | 27 (64.5%) |
| BMI (KG/M ²) (mean±SD) | 26.3 ± 4.1 | |
| SYMPTOM DURATION (MONTHS) | | |
| MEDIAN | 25 | |
| 1 ST -3 RD INTERQUATILE RANGE | 6 – 141 | |
| DISEASE ONSET | | |
| BULBAR ONSET | 15 (25%) | |
| UPPER LIMB ONSET | 17 (28.3%) | |
| LOWER LIMB ONSET | 28 (46.7%) | |
| ALSFRS-R TOTAL SCORE (0-48) (mean±SD) | 34.9 (7.8) | |
| BULBAR DYSFUNCTION | 28 (46.7%) | |
| RESPIRATORY DYSFUNCTION | 25 (41.7%) | |

179

180 BMI, body mass index; ALSFRS-R, revised amyotrophic lateral sclerosis functional rating scale.

181

182

183 3.2 Cough sound features in ALS and healthy controls

184 We started by comparing the frequency group of cough sound features in ALS patients vs.
185 controls. The SFS algorithm selected six features of the thirteen initially proposed, including
186 fundamental frequency, number of the spectrum positive turning points, spectral bandwidth,
187 spectral roll-off, spectral dispersion, and zero-crossing rate (ZCR). Following ROC analysis (**Fig 2**),
188 the prediction ROC-AUC of the final model with the seven selected features was 0.85 (IC 95%:
189 0.79-0.91).

190

191 **Figure 2. Support vector machine (SVM) analysis of all cough sound samples.** Receiver operating
192 characteristic curves (ROC) were calculated with a SVM to differentiate ALS patients and controls for the
193 three different groups of cough sound features. One of the five model's iterations is demonstrated (settings:
194 k_features = 'best'; forward = 'False'; scoring = 'accuracy'; cv = '5'; random_state = '41').

195

196 Similar analyses were performed for the remaining intensity and mixed groups. The SFS
197 applied to the intensity group of features resulted in the selection of four features out of the initial
198 twelve. Specifically, these included the temporal centroid, the mean, and the kurtosis of the signal,
199 and presumed gender. However, the model with the four intensity features exhibited a modest
200 performance of 0.59 (IC 95%: 0.52-0.66). Also, to note that only the temporal centroid and the
201 kurtosis of the signal demonstrated significant discriminative capability between an ALS-related
202 cough and a control cough.

203

204 Regarding the mixed group, the model comprised the following selected features: absolute
205 energy, spectral and time entropies, maximum power of the signal, total amount of energy, and
206 presumed gender. However, similar to the intensity group, the overall model performance was
207 only modest, yielding an ROC-AUC of 0.6 (IC 95%: 0.52-0.68). To also note that only the time and
208 spectral entropies exhibited significant predictive capability for distinguishing between ALS
patients and healthy controls. **Fig 3** shows an example where it is evident that the primary

209 distinctions between an ALS and a control cough lie within the frequency group of features. **Table**
210 **3** shows all statistical values.

211

212 **Figure 3. An example of the analysis of sound waves in voluntary coughing of a healthy control**
213 **(upper row) and an ALS patient (lower row).** Each column of the image depicts different features of the
214 three distinct groups of features. The first column highlights the frequency features associated with the
215 repetition rate of one event, such as the number of times that the signal passes the zero line or the number
216 of positive turning points. The second column emphasizes the intensity features, such as the signal
217 amplitude or peak distance. Lastly, the third column shows features that provide information on both
218 frequency and intensity, such as the signal power and entropy. The main differences were observed in the
219 frequency group. To note that these cough signals did not undergo pre-processing procedures.

220

221

222 **Table 3.** F values from regression analyses contributing of Control vs. ALS classification to performance
223 on each voice sound variable.

| GROUP | FEATURES | F value | P value |
|------------------------|---|----------|---------|
| Frequency group | Fundamental frequency | 9.19** | 0.0031 |
| | Number of the spectrum positive turning points | 2.02 | 0.16 |
| | Spectral bandwidth | 8.60** | 0.0042 |
| | Spectral roll-off | 4.38* | 0.039 |
| | Spectral dispersion | 10.23** | 0.0019 |
| | ZCR | 20.19*** | < 0.001 |
| Intensity group | Temporal centroid | 11.55*** | < 0.001 |
| | Mean amplitude of the signal | 0.54 | 0.47 |
| | Kurtosis | 9.90** | 0.0022 |
| Mixed group | Absolute energy | 0.42 | 0.52 |
| | Entropy | 7.25** | 0.0083 |
| | Spectral entropy | 10.71** | 0.0015 |
| | Maximum power of the signal | 0.39 | 0.53 |
| | Total amount of energy | 1.03 | 0.31 |

224

Correlation is significant at the 0.05 level *;

225

Correlation is significant at the 0.01 level **;

226

Correlation is significant at the 0.001 level ***;

227

228 **3.3 Correlations with the overall functional disability**

229 Next, we started to focus more specifically on the ALS patients, and how the cough sound

230 features were related to the functional disability of the disease. We found that the intensity, as

231 well as the mixed group features, exhibited the strongest correlations with ALSFRS-R total score
232 – indicating that patients with more severe symptoms produced cough sounds with a greater
233 relative impact on the intensity domain (**Fig 4**). Broadly, patients in more advanced functional
234 states produce less intense cough sounds.

235

236 **Figure 4. Analysis of sound waves in voluntary coughing: comparison between patients in different**
237 **disease states.** The left image represents the cough sound of one patient in a better functional state (Female;
238 60> years old; ALSFRS-R total score of 39) versus the right image, which represents the cough sound of one
239 patient in a worse functional state (Female; 60> years old; ALSFRS-R total score of 20). The main differences
240 are presented in the intensity-related group of features. (Signal without pre-processing)

241

242 Moderate but significant correlations have been found between the ALSFRS-R total score
243 and various intensity features, including the maximum amplitude (beta= 0.43, p= 6.85e-4), the
244 standard deviation of the amplitude of the signal (beta= 0.33, p= 1.55e-5) and the peak-to-peak
245 distance (beta= 0.44, p= 4.07e-4). Moreover, we found moderate to strong negatively significant
246 correlations, with the maximum cough sound power (beta= -0.58, p= 2.54e-10); and moderate
247 positively significant correlations with the area under the curve of the signal and the absolute
248 energy (beta= 0.35, p= 9.76e-6; beta= 0.34, p= 1.67e-6, respectively).

249 Despite being effective in distinguishing cough sounds from ALS and healthy controls, the
250 frequency group of features showed weaker associations with the functional status of the disease.
251 Our analysis revealed that ZCR (beta= 0.20, p= 3.01e-6), and the number of positive turning points
252 (beta= 0.25, p= 1.10e-5) exhibited weak positively significant correlations with the ALSFRS-R total
253 score. In contrast, the spectral centroid (beta= 0.38, p= 1.97e-4), and spectral bandwidth (beta=
254 0.32, p= 8.83e-8) demonstrated stronger correlations with the functional state of the disease,
255 making them the best-correlated features in this frequency group (see **Table 4**).

256

257 **Table 4.** Correlations between the ALSFRS-R total score and different cough sound features. Results are
258 adjusted for age and gender.

259

| GROUP | FEATURES | METRICS | | |
|-------|----------|---------|---------|---------|
| | | β | T VALUE | P VALUE |

| | | | | |
|---|-----------------------------------|-------|------|--------|
| Intensity 0.59 (IC 95%: 0.52-0.66) model ROC-AUC | Maximum amplitude | 0.43 | 3.59 | <0.001 |
| | Standard deviation of the signal | 0.33 | 4.73 | <0.001 |
| | Peak distance | 0.44 | 3.76 | <0.001 |
| Mixed 0.60 (IC 95%: 0.52-0.68) model ROC-AUC | Maximum power | -0.58 | 7.68 | <0.001 |
| | Area under the curve | 0.35 | 4.86 | <0.001 |
| | Absolute energy | 0.34 | 5.35 | <0.001 |
| Frequency 0.85 (IC 95%: 0.79-0.91) model ROC-AUC | Zero-crossing rate | 0.20 | 5.19 | <0.001 |
| | Spectral centroid | 0.38 | 3.98 | <0.001 |
| | Number of positive turning points | 0.25 | 4.83 | <0.001 |
| | Spectrum bandwidth | 0.32 | 6.14 | <0.001 |

260

261

262 3.4 Differences between ALS patients with and without respiratory dysfunction

263 We identified both intensity and mixed groups of features as the most effective in
 264 distinguishing patients with respiratory dysfunction from those without (with positive
 265 associations). In terms of intensity-related features, the predictors that remained in the final
 266 model were the maximum and standard deviation of the signal as well as peak-to-peak distance,
 267 yielding a prediction ROC-AUC of 0.67 (IC 95%: 0.56-0.78).

268 Regarding the mixed group features, the SFS application resulted in a final model
 269 comprising maximum power, spectral entropy, and the spectral slope. The prediction ROC-AUC of
 270 this model was 0.65 (IC 95%: 0.55-0.75).

271 Finally, the group of frequency-related features included in the final model the spectral
 272 bandwidth and centroid, the spectral skewness, and the ZCR; and yielding a prediction ROC-AUC
 273 of 0.59 (IC 95%: 0.49-0.69). **Table 5** shows all statistical values.

274

275 **Table 5.** F values from regression analyses contributing of with respiratory vs. without respiratory
276 dysfunction classification to performance on each voice sound variable.

| GROUP | FEATURES | F value | P value |
|------------------------|--|----------|---------|
| Frequency group | Spectral bandwidth | 4.07* | 0.048 |
| | Spectral centroid | 4.03* | 0.049 |
| | Spectral skewness | 6.21* | 0.016 |
| | ZCR | 5.24* | 0.026 |
| Intensity group | Maximum amplitude of the signal | 14.49*** | <0.001 |
| | Standard deviation of the signal amplitude | 2.60 | 0.11 |
| | Peak-to-peak distance | 16.64*** | <0.001 |
| Mixed group | Maximum power of the signal | 4.31* | 0.042 |
| | Spectral entropy | 9.80** | 0.0027 |
| | Spectral slope | 7.72** | 0.0074 |

277 Correlation is significant at the 0.05 level *;
278 Correlation is significant at the 0.01 level **;
279 Correlation is significant at the 0.001 level ***;
280

281 3.4.1 Correlations between cough sound analysis and respiratory function assessments

282 Out of the complete cohort of 60 ALS patients, 47 had respiratory function testing at the
283 time of cough sound data recording (< 6 weeks). In this group, mean ALSFRS-R was 38, and the
284 average FVC%, MIP%, MEP%, and CPF were 77% (18.33 SD), 93.6% (32.8 SD), 79.8% (27 SD), and
285 288.8 L/min (109 SD), respectively.

286 **Table 6** shows that the intensity and mixed groups of features exhibited a moderate
287 (negative) significant correlations with FVC%. However, no significant correlations were
288 observed for CPF, MIP%, and MEP%.

289

290 **Table 6.** Correlations between the FVC (%), MIP (%), MEP (%), and CPF (L/min), and different cough sound
291 features.
292

| GROUP | FEATURES | FVC % | | MIP% | | MEP% | | CPF | |
|------------------|-----------------|---------|---------|--------|---------|-------|---------|--------|---------|
| | | r | P value | r | P value | r | P value | r | P value |
| Intensity | Absolute energy | -0.50** | 0.0015 | -0.091 | 0.60 | -0.29 | 0.096 | 0.0060 | 0.97 |

| | | | | | | | | | |
|--|---|----------|--------|---------|------|--------|-------|--------|-------|
| 0.59 (IC 95%: 0.52-0.66) model ROC- AUC | AUC | -0.42*** | <0.001 | -0.093 | 0.59 | -0.31 | 0.072 | 0.033 | 0.85 |
| | Spectral entropy | -0.17 | 0.32 | -0.10 | 0.56 | -0.30 | 0.079 | -0.044 | 0.80 |
| Mixed 0.60 (IC 95%: 0.52-0.68) model ROC- AUC | Temporal centroid | -0.53*** | <0.001 | -0.0076 | 0.96 | -0.26 | 0.13 | -0.031 | 0.86 |
| | Peak distance | -0.24 | 0.15 | 0.033 | 0.85 | -0.14 | 0.42 | 0.20 | 0.24 |
| Frequency 0.85 (IC 95%: 0.79-0.91) model ROC- AUC | Spectral dispersion | 0.31 | 0.066 | -0.066 | 0.70 | 0.11 | 0.54 | 0.20 | 0.26 |
| | Spectral positive turning points | -0.46** | 0.0039 | -0.017 | 0.92 | -0.36* | 0.035 | -0.032 | 0.085 |

293 Correlation is significant at the 0.05 level *;
294 Correlation is significant at the 0.01 level **;
295 Correlation is significant at the 0.001 level ***;
296

297 3.5 Differences between ALS patients with and without bulbar dysfunction

298 When comparing ALS patients with and without bulbar dysfunction, we observed that
299 frequency-related features were the best group at this discrimination (**Table 7**). The frequency
300 features that were retained in the final model included spectral bandwidth, spectral centroid,
301 spectral roll-off, and spectral kurtosis and skewness. Despite being the most significant, the
302 overall ROC-AUC of the model prediction was 0.53 (IC 95%: 0.44-0.61).

303

304 **Table 7.** F values from regression analyses contributing of with bulbar vs. without bulbar dysfunction
305 classification to performance on each voice sound variable.

| GROUP | FEATURES | F value | P value |
|------------------------|---------------------------------|---------|---------|
| Frequency group | Spectral bandwidth | 6.07* | 0.017 |
| | Spectral centroid | 11.76** | 0.0011 |
| | Spectral roll-off | 4.79* | 0.033 |
| | Spectral Kurtosis | 6.23* | 0.015 |
| | Spectral Skewness | 8.44** | 0.0052 |
| Intensity group | Temporal centroid | 1.41 | 0.24 |
| | Maximum amplitude of the signal | 2.15 | 0.15 |

| | | | |
|--------------------|--|-------|-------|
| | Mean amplitude of the signal | 1.35 | 0.25 |
| | Median amplitude of the signal | 0.38 | 0.54 |
| | Standard deviation of the signal amplitude | 0.16 | 0.70 |
| | Variance amplitude of the signal | 0.27 | 0.61 |
| | Peak-to-peak distance | 4.29* | 0.043 |
| Mixed group | Area under the curve of the signal | 0.83 | 0.37 |
| | Maximum power of the signal | 3.86 | 0.054 |
| | Spectral entropy | 0.66 | 0.42 |

306 Correlation is significant at the 0.05 level *;
307 Correlation is significant at the 0.01 level **;
308

309 As for the intensity-related features, the predictors found in the final model included
310 temporal centroid, maximum, mean, median, standard deviation, variance, and kurtosis of the
311 signal. The final ROC-AUC of the model prediction for the intensity group was 0.63 (IC 95%: 0.51-
312 0.75).

313 Lastly, for the features related to the mixed group, the ones that remained in the model were
314 the area under the curve of the signal, maximum power, spectral entropy, and gender. The final
315 ROC-AUC of the model was 0.51 (IC 95%: 0.39-0.63).

316

317 **4.0 Discussion**

318 Our study aimed to comprehensive investigate the potential of cough sound features,
319 extracted from both the time and frequency domains, as discriminators for clinical diagnosis of
320 ALS, and predictors of bulbar and respiratory impairments, at the convenience of using a simple
321 smartphone. Based on our hypothesis, significant differences were observed in the frequency
322 group of features between ALS patients and healthy controls, after adjustment for age and gender.
323 This was also the group of features that demonstrated higher correlations with bulbar
324 impairments. Conversely, the intensity and mixed groups of features were found to be highly
325 correlated with the functional status of the disease and were the most significant in detecting
326 respiratory impairments (**Table 8**).

327

328

329

330 **Table 8.** Summary of all correlations undertaken in this study. The symbol ‘*check*’ denotes statistical
 331 significance, $\alpha=0.05$ was considered.

332

| | | Control | Alsfrs-R | Bulbar | Respiratory | FVC% | MIP% | MEP% | CPF |
|------------------------|-----------------------------|---------|----------|--------|-------------|------|------|------|-----|
| Frequency group | Maximum frequency | ✓ | - | ✓ | - | - | - | - | - |
| | ZCR | ✓ | - | - | ✓ | - | - | - | - |
| | Spectral centroid | - | ✓ | ✓ | - | - | - | - | - |
| | Sp. bandwidth | ✓ | ✓ | ✓ | - | - | - | - | - |
| | Sp. dispersion | ✓ | - | - | - | - | - | - | - |
| | Sp. Positive turning points | ✓ | - | - | - | ✓ | - | ✓ | - |
| Intensity group | Maximum amplitude | - | ✓ | - | ✓ | - | - | - | - |
| | Peak distance | - | ✓ | - | ✓ | - | - | - | - |
| | Temporal centroid | ✓ | - | - | - | ✓ | - | - | - |
| Mixed group | AUC | - | ✓ | - | - | ✓ | - | - | - |
| | Maximum power | - | ✓ | - | ✓ | - | - | - | - |
| | Sp. entropy | ✓ | - | ✓ | ✓ | - | - | - | - |

333

334 Firstly, changes in sound frequencies during any type of vocalization are primarily
 335 attributed to intrinsic modifications of the vocal cords. These variations in sound tone are
 336 intricately linked to the vocal cords’ dimension, tension, and/or thickness (37). In the present
 337 work, we noticed that the disease-related ALS cough is hoarser when compared to the controls –
 338 i.e., patients’ cough depicts lower frequencies (more specifically, lower zero-crossing rates and
 339 spectral positive turning points). These results suggest that the bulbar region of the glottis in ALS
 340 patients potentially exhibits increased tension and reduced flexibility, as higher levels of tension
 341 tend to produce lower frequency sounds (38–40).

342 Another finding, closely related to the previous, was that the cough produced by ALS
343 patients displays greater sound entrainment, greater noise, and reduced sound occlusion when
344 compared to controls. Occlusive sounds result from the obstruction or blockage of airflow in the
345 vocal tract, and they are representative of functional cough sounds. In ALS, the adductor muscles
346 of the arytenoid cartilages become dysfunctional (41), the glottis is not rapidly coordinated and
347 fails to close effectively, leading to an abnormal compressive cough phase. Consequently, the
348 typical peak in cough sound amplitude is not succeeded by a period of silence, but it is rather
349 followed by an entrainment of the expiratory airflow. This was broadly represented by higher
350 spectral dispersion and bandwidths. In fact, the cough sound properties of ALS patients resemble
351 the characteristics of a sustainable vowel sound – a monophonic sound characterized by a
352 continuous flow of air through the vocal cords. Moreover, as an alternative, the representation of
353 the cough sound (presented in **Fig 3**) can also be explained by the varying properties of the
354 medium through which the sound wave travels, such as different pressures and tensions, resulting
355 in differing wave speeds and wave spread.

356 As a whole, the above-mentioned observations are in line with the evidence reported in
357 cough airflow studies and cough waveforms visual analysis in patients with motor neuron
358 diseases (42,43). Chaudri et al. (43) characterized the absence of distinct “peak expiratory spikes”
359 and associated this with reduced cough strength and increased mortality. Recently, Plowman et
360 al. (44) demonstrated that ALS patients showed lower peak expiratory flow rates and a longer
361 time to generate maximum expiratory flow during a voluntary cough. They observed that this less
362 efficient expulsive cough (as indexed by a lower cough volume acceleration) is predictive of poor
363 airway safety during swallowing. Moreover, Korpáš et al. (45) have reported that, in laryngeal
364 inflammation, the cough record consists of a large and long mono sound, where both sound
365 intensity and duration may be increased. Thus, the cough sound in ALS may be associated with a
366 secondary inflammation as well. All the aforementioned attributes collectively rendered this set
367 of features superior in discriminating between cough sounds of patients and controls, resulting in
368 a final model ROC-AUC of 0.85 (IC 95%: 0.79-0.91).

369 Emphasizing these primary distinctions in cough sounds between patients and controls, it
370 is noteworthy that the observed differences between the two groups also manifested when
371 comparing patients with and without bulbar symptoms. In this particular analysis, even though
372 the machine-learning classifier did not exhibit exceptional robustness (with comparable results
373 among frequency, intensity, and mixed feature groups), the most impactful features in
374 distinguishing the two groups were maximum frequency, spectral bandwidth, and spectral
375 centroid. Notably, these features are easily perceptible to the human ear, as healthy cough sounds
376 typically display a clear quality, even when accounting for variations in age and gender. This
377 enables clinicians to develop early suspicions regarding disease progression.

378 Furthermore, the intensity and mixed groups of features did not exhibit many significant
379 differences between patients and healthy subjects. It is established that intense or louder sounds
380 are related to higher air volumes in the lungs and consequently higher subglottic pressures.
381 Despite 25 out of the 60 patients presenting respiratory dysfunction, as defined by scores less
382 than 12 in the three respiratory-related questions of the ALSFRS- R (although many patients only
383 presented with one less point) and a moderate to low FVC in the population, we speculate that
384 these characteristics were insufficient to detect changes in intensity features, such as signal
385 amplitude or peak distance, when compared to the cough sound of controls. Additionally, bulbar
386 impairments such as a narrowed glottis are more likely to become clinically symptomatic when
387 respiratory muscles are still strong enough to generate negative airway pressure(46).
388 Nonetheless, patients exhibited higher spectral sound entropies and temporal centroids, meaning
389 that the cough sounds are more variable and difficult to predict, and the average energy of the
390 sound, occurs later in time (also related to wave spread and power). For these reasons, the sets of
391 intensity and mixed features exhibited the lowest level of ROC-AUC, with the latter outperforming
392 the former (ROC-AUC of 0.62, 95% CI: 0.55-0.69 and 0.70, 95% CI: 0.64-0.76, respectively),
393 primarily due to the presence of features associated with sound frequency.

394 To verify the relationships between cough sound features and the respiratory system, the
395 same approach was utilized, first to assess correlations with variables from respiratory function
396 tests, and second to evaluate differences in patients with and without respiratory dysfunctions.

397 In ALS patients, coughing is impaired during both the inspiratory and expiratory phases,
398 with lower volumes of inspired air during a prolonged inspiratory phase and a longer time period
399 to generate a lower peak expiratory airflow during the expulsive phase (as reported by (41)).
400 Additionally, studies have demonstrated that the volume of air achieved at the initiation of the
401 cough has the greatest influence on the volume expelled during cough (47). In sound analysis,
402 loudness and intense sounds are related to volume. This relationship further reinforces the
403 significance of the intensity-based cough sound features as the most reliable indicators of
404 respiratory impairment in patients. Furthermore, the cough sound pattern exhibited by ALS
405 patients is consistent with that observed in patients with restrictive respiratory disease,
406 characterized by reduced lung elasticity or limitations in chest wall expansion (16). In these
407 patients, there is a gradual reduction in the intensity of cough attempts over time, leading to a
408 negative slope of the signal amplitude (**Fig 4**). This is in contrast to obstructive respiratory
409 diseases, where such a phenomenon is not observed. In the machine learning analysis, the model
410 that demonstrated the highest ROC-AUC (although also not particularly robust overall), in
411 distinguishing between patients with and without respiratory symptoms was the one trained with
412 intensity-related features (0.67; IC 95%: 0.56-0.78). However, and despite these findings, the
413 exact role of different respiratory muscles and their association with these cough sound features
414 remains unclear. To understand this relation, we performed linear regressions between the cough
415 sound features and FVC% values. FVC is highly associated with CPF measurements in ALS patients
416 (Matsuda et al. 2019). Sharan et al. (12), demonstrated the potential for cough sound analysis to
417 predict spirometry results in patients with different respiratory diseases. In this work, the
418 intensity and mixed group of features, specifically the temporal centroid and absolute energy,
419 exhibited stronger correlations with FVC%. These findings provide support for the association
420 between sound energy, intensity, and lung function. Notably, the correlations between FVC% and

421 energy features are negative. This finding may indicate that patients with respiratory
422 dysfunctions often experienced increased efforts to move air in and out of the lungs and even that,
423 as it becomes difficult to fully exhale air, leading to air trapping, the trapped air during the
424 subsequent cough bouts has contributed to higher sound energies. It was also anticipated that
425 stronger correlations would be observed between cough sound features and MEP%, in
426 comparison to MIP%, given that pulmonary exhalation is the primary source of energy for sound
427 production.

428 MEP represents the highest achievable pressure during forceful expiration against a
429 closed airway and indicates the strength of the abdominal muscles and other expiratory muscles.
430 Conversely, MIP assesses the strength of inspiratory muscles, primarily the diaphragm, and
431 enables the evaluation of ventilatory insufficiency. Although only the spectral positive turning
432 points showed a significant correlation with MEP%, sound energy exhibited the potential to serve
433 as a valuable distinguishing feature as well. Moreover, no significant associations were observed
434 between cough sound features and CPF. This test involves coughing forcefully into a face mask
435 connected to a small peak flow meter, and it measures the expelled airflow. We speculate that its
436 precision may be limited by acoustic variations, particularly considering that cough sounds were
437 captured laterally from the mouth, rather than directly by the smartphone microphone, to
438 mitigate interference from wind noise. This represents a distinct analytic approach.

439 Some limitations of this study must be acknowledged. Specifically, voluntary coughs
440 bypass the sensory system and previous research has demonstrated that maximum voluntary
441 cough function tends to overestimate reflexive cough function among healthy volunteers (47,48).
442 Moreover, the current study includes patients with mild-moderate disease severity. As a result,
443 the generalization of these findings to airway defense in the event of aspiration as well as to
444 individuals in a more advanced disease state may be limited. Further, given the clinical
445 heterogeneity of ALS, it would be beneficial to document upper versus lower motor neuron
446 involvement, and slow versus fast progress to develop more homogenous groups for comparison.
447 It is also possible that more appropriate features (as well as other machine learning models) may

448 be extracted from the data, even when features that do not contribute to the model prediction
449 ROC-AUC were eliminated. Performing a longitudinal cough sound analysis, recording cough
450 sounds in a lying position, making clinical correlations with phrenic nerve conduction measures
451 and muscle strength of cervical muscles, and adjusting the results for other motor neuron diseases
452 are future perspectives that could help elucidate the results of this paper.

453 **5.0 Conclusion**

454 The present study demonstrates that analyzing cough sounds can serve as a valuable
455 technique for evaluating and monitoring ALS patients, particularly those with respiratory and
456 bulbar impairments. However, it is important to note that cough sound analysis should not be the
457 only indicator utilized to evaluate respiratory and bulbar health, as ALS is a multifaceted and
458 intricate disease. Rather, it can be used as an adjunct measure, supplementing commonly used
459 ways of disease progression. It is also noteworthy that the method used in this study was a
460 convenient smartphone-based approach, which facilitates data collection in home-based settings
461 without requiring specialized careers or equipment.

462

463

464

465

466

467

468

469 **Financial Disclosure Statement**

470 This study was part of a broader ALS project (HomeSenseALS - PTDC/MEC-NEU/6855/2020),
471 supported by the Foundation for Science and Technology.

472

473 **Competing interest**

1 No potential conflict of interest was reported by the author(s).

2
3
4
5
6

7 **References**

8

- 9 1. Hardiman O, Al-Chalabi A, Chio A, Corr EM, Logroscino G, Robberecht W, et al.
10 Amyotrophic lateral sclerosis. Vol. 3, Nature Reviews Disease Primers. Nature Publishing
11 Group; 2017.
- 12 2. De Carvalho M, Swash M, Pinto S. Diaphragmatic neurophysiology and respiratory markers
13 in ALS. Vol. 10, Frontiers in Neurology. Frontiers Media S.A.; 2019.
- 14 3. Brown RH, Al-Chalabi A. Amyotrophic Lateral Sclerosis. New England Journal of Medicine.
15 2017 Jul 13;377(2):162–72.
- 16 4. Gordon PH, Cheng B, Katz IB, Pinto M, Hays AP, Mitsumoto H, et al. The natural history of
17 primary lateral sclerosis. Neurology. 2006;66(5):647–53.
- 18 5. Wales S, C Kiernan DSc AM, Cheah M, Biostat BC, Burrell MBBS J, Zoing BNurs MC,
19 Kiernan MC, et al. Seminar Amyotrophic lateral sclerosis. Lancet [Internet]. 2011;377:942–
20 55. Available from: www.thelancet.com
- 21 6. Swinnen B, Robberecht W. The phenotypic variability of amyotrophic lateral sclerosis. Vol.
22 10, Nature Reviews Neurology. Nature Publishing Group; 2014. p. 661–70.
- 23 7. Gromicho M, Figueiral M, Uysal H, Grosskreutz J, Kuzma-Kozakiewicz M, Pinto S, et al.
24 Spreading in ALS: The relative impact of upper and lower motor neuron involvement. Ann
25 Clin Transl Neurol. 2020 Jul 1;7(7):1181–92.
- 26 8. Darrell Hulisz. Am J Manag Care. 2018. Amyotrophic Lateral Sclerosis: Disease State
27 Overview.
- 28 9. Pinto S, Gromicho M, Oliveira Santos MO, Swash M, De Carvalho M. Respiratory onset in
29 amyotrophic lateral sclerosis: clinical features and spreading pattern. Amyotroph Lateral Scler
30 Frontotemporal Degener. 2023 Jan 2;24(1–2):40–4.
- 31 10. Kaufmann P, Levy G, Thompson J, DeBene M, Battista V, Gordon P, et al. The ALSFRS
32 predicts survival time in an ALS clinic population. 2005.
- 33 11. Pinto S, de Carvalho M. Comparison of slow and forced vital capacities on ability to predict
34 survival in ALS. Amyotroph Lateral Scler Frontotemporal Degener. 2017 Oct 2;18(7–8):528–
35 33.
- 36 12. Sharan R V., Abeyratne UR, Swarnkar VR, Claxton S, Hukins C, Porter P. Predicting
37 spirometry readings using cough sound features and regression. Physiol Meas. 2018 Sep
38 5;39(9).
- 39 13. Pattee GL, Plowman EK, (Focht) Garand KL, Costello J, Brooks BR, Berry JD, et al.
40 Provisional best practices guidelines for the evaluation of bulbar dysfunction in amyotrophic
41 lateral sclerosis. Muscle Nerve. 2019 May 1;59(5):531–6.
- 42 14. Chung Y, Jin J, Jo HI, Lee H, Kim SH, Chung SJ, et al. Diagnosis of pneumonia by cough
43 sounds analyzed with statistical features and ai. Sensors. 2021 Nov 1;21(21).
- 44 15. Kosasih K, Abeyratne UR, Swarnkar V, Triasih R. Wavelet Augmented Cough Analysis for
45 Rapid Childhood Pneumonia Diagnosis. IEEE Trans Biomed Eng. 2015 Apr 1;62(4):1185–94.

- 1 16. Rudraraju G, Palreddy SD, Mamidgi B, Sripada NR, Sai YP, Vodnala NK, et al. Cough sound
2 analysis and objective correlation with spirometry and clinical diagnosis. *Inform Med*
3 *Unlocked*. 2020 Jan 1;19.
- 4 17. Sharan R V., Abeyratne UR, Swarnkar VR, Porter P. Automatic croup diagnosis using cough
5 sound recognition. *IEEE Trans Biomed Eng*. 2019 Feb 1;66(2):485–95.
- 6 18. Toop LJ, Thorpe CW, Frightt R. Cough Sound Analysis: A New Tool for the Diagnosis of
7 Asthma? [Internet]. Vol. 6, *Family Practice* ©Oxford University Press. 1989. Available from:
8 <http://fampra.oxfordjournals.org/>
- 9 19. Lee KK, Davenport PW, Smith JA, Irwin RS, McGarvey L, Mazzone SB, et al. Global
10 Physiology and Pathophysiology of Cough: Part 1: Cough Phenomenology – CHEST
11 Guideline and Expert Panel Report. Vol. 159, *Chest*. Elsevier Inc.; 2021. p. 282–93.
- 12 20. McGarvey L, Rubin BK, Ebihara S, Hegland K, Rivet A, Irwin RS, et al. Global Physiology
13 and Pathophysiology of Cough: Part 2. Demographic and Clinical Considerations: CHEST
14 Expert Panel Report. *Chest*. 2021 Oct 1;160(4):1413–23.
- 15 21. Chatwin M, Simonds AK. Long-term mechanical insufflation-exsufflation cough assistance in
16 neuromuscular disease: Patterns of use and lessons for application. *Respir Care*. 2020 Feb
17 1;65(2):135–43.
- 18 22. Plowman EK, Tabor-Gray L, Rosado KM, Vasilopoulos T, Robison R, Chapin JL, et al. Impact
19 of expiratory strength training in amyotrophic lateral sclerosis: Results of a randomized, sham-
20 controlled trial. *Muscle Nerve*. 2019 Jan 1;59(1):40–6.
- 21 23. Berry JD, Paganoni S, Carlson K, Burke K, Weber H, Staples P, et al. Design and results of a
22 smartphone-based digital phenotyping study to quantify ALS progression. *Ann Clin Transl*
23 *Neurol*. 2019 May 1;6(5):873–81.
- 24 24. van Eijk RPA, Bakers JNE, Bunte TM, de Fockert AJ, Eijkemans MJC, van den Berg LH.
25 Accelerometry for remote monitoring of physical activity in amyotrophic lateral sclerosis: a
26 longitudinal cohort study. *J Neurol*. 2019 Oct 1;266(10):2387–95.
- 27 25. Garcia-Gancedo L, Kelly ML, Lavrov A, Parr J, Hart R, Marsden R, et al. Objectively
28 monitoring amyotrophic lateral sclerosis patient symptoms during clinical trials with sensors:
29 Observational study. *JMIR Mhealth Uhealth*. 2019;7(12).
- 30 26. Haulman A, Geronimo A, Chahwala A, Simmons Z. The Use of Telehealth to Enhance Care
31 in ALS and other Neuromuscular Disorders. Vol. 61, *Muscle and Nerve*. John Wiley and Sons
32 Inc.; 2020. p. 682–91.
- 33 27. Stegmann GM, Hahn S, Duncan CJ, Rutkove SB, Liss J, Shefner JM, et al. Estimation of forced
34 vital capacity using speech acoustics in patients with ALS. *Amyotroph Lateral Scler*
35 *Frontotemporal Degener*. 2021;22(S1):14–21.
- 36 28. Vashkevich M, Rushkevich Y. Classification of ALS patients based on acoustic analysis of
37 sustained vowel phonations. *Biomed Signal Process Control*. 2021 Mar 1;65.
- 38 29. Cebola R, Folgado D, Carreiro A, Gamboa H. Speech-Based Supervised Learning Towards
39 the Diagnosis of Amyotrophic Lateral Sclerosis. In *INSTICC*; 2023. p. 74–85.
- 40 30. Shefner JM, Al-Chalabi A, Baker MR, Cui LY, de Carvalho M, Eisen A, et al. A proposal for
41 new diagnostic criteria for ALS. Vol. 131, *Clinical Neurophysiology*. Elsevier Ireland Ltd;
42 2020. p. 1975–8.
- 43 31. de Carvalho M, Reinhard Dengler, Andrew Eisen, John D England, Ryuji Kaji, Jun Kimura,
44 et al. Electrodiagnostic criteria for diagnosis of ALS. *Review Clin Neurophysiol*. 2008;
- 45 32. Cedarbaum JM, Stambler N, Malta E, Fuller C, Hilt D. The ALSFRS-R: a revised ALS
46 functional rating scale that incorporates assessments of respiratory function [Internet]. Vol.
47 169, *Journal of the Neurological Sciences*. 1999. Available from: www.elsevier.com/locate/jns
- 48 33. McFee B, McVicar M, Faronbi D, Roman I, Gover M, Balke S, et al. *librosa/librosa*:
49 0.10.0.post2. 2023 Mar 17 [cited 2023 Apr 24]; Available from:
50 <https://zenodo.org/record/7746972>

- 1 34. Barandas M, Folgado D, Fernandes L, Santos S, Abreu M, Bota P, et al. TSFEL: Time Series
2 Feature Extraction Library. *SoftwareX*. 2020 Jan 1;11.
- 3 35. Abaza AA, Day JB, Reynolds JS, Mahmoud AM, Goldsmith WT, McKinney WG, et al.
4 Classification of voluntary cough sound and airflow patterns for detecting abnormal pulmonary
5 function. *Cough*. 2009;5(1).
- 6 36. Nemati E, Rahman J, Blackstock E, Nathan V, Rahman M, Vatanparvar K, et al. Estimation
7 of the Lung Function Using Acoustic Features of the Voluntary Cough*. 2020 42nd Annual
8 International Conference of the IEEE Engineering in Medicine & Biology Society (EMBC).
9 2020.
- 10 37. Susan Stranding, Neil R Borley, Patricia Collins, Alan R Crossman, Michael A Gatzoulis,
11 Jeremiah C Healy, et al. *Gray's: Atlas de anatomia* . 40th ed. Elsevier; 2010. 592 p.
- 12 38. Fukae J, Kubo SI, Hattori N, Komatsu K, Kato M, Aoki M, et al. Hoarseness due to bilateral
13 vocal cord paralysis as an initial manifestation of familial amyotrophic lateral sclerosis.
14 *Amyotrophic Lateral Sclerosis and Other Motor Neuron Disorders*. 2005 Jun;6(2):122–4.
- 15 39. Van Der Graaff MM, Grolman W, Westermann EJ, Boogaardt HC, Koelman H, Anneke ;, et
16 al. Vocal Cord Dysfunction in Amyotrophic Lateral Sclerosis Four Cases and a Review of the
17 Literature [Internet]. Vol. 66, *Arch Neurol*. 2009. Available from:
18 <http://archneur.jamanetwork.com/>
- 19 40. Hillel A, Dray T, Miller R, Yorkston K, Konikow N, Strande E, et al. Presentation of ALS to
20 the otolaryngologist/head and neck surgeon: getting to the neurologist. *Neurology* . 1999;
- 21 41. Tabor-Gray LC, Gallestagai A, Vasilopoulos T, Plowman EK. Characteristics of impaired
22 voluntary cough function in individuals with amyotrophic lateral sclerosis. *Amyotroph Lateral*
23 *Scler Frontotemporal Degener*. 2019 Jan 2;20(1–2):37–42.
- 24 42. Tabor-Gray L, Vasilopoulos T, Plowman EK. Concordant Validity of a Digital Peak Cough
25 Flow Meter to Assess Voluntary Cough Strength in Individuals with ALS. *Dysphagia*. 2020
26 Aug 1;35(4):568–73.
- 27 43. Chaudri MB, Liu C, Hubbard R, Jefferson D, Kinnear WJ. Relationship between supramaximal
28 flow during cough and mortality in motor neurone disease. *European Respiratory Journal*.
29 2002;19(3):434–8.
- 30 44. Plowman EK, Watts SA, Robison R, Tabor L, Dion C, Gaziano J, et al. Voluntary Cough
31 Airflow Differentiates Safe Versus Unsafe Swallowing in Amyotrophic Lateral Sclerosis.
32 *Dysphagia*. 2016 Jun 1;31(3):383–90.
- 33 45. Korpáš J, Sadloňová J, Vrabec M. Analysis of the Cough Sound: an Overview. Vol. 9,
34 *Pulmonary Pharmacology*. 1996.
- 35 46. Hillel AD, Miller R. Bulbar amyotrophic lateral sclerosis: patterns of progression and
36 management. *Head Neck*. 1989;
- 37 47. Tabor-Gray L, Vasilopoulos T, Plowman EK. Differences in voluntary and reflexive cough
38 strength in individuals with amyotrophic lateral sclerosis and healthy adults. *Muscle Nerve*.
39 2020 Nov 1;62(5):597–600.
- 40 48. Brandimore AE, Troche MS, Huber JE, Hegland KW. Respiratory kinematic and
41 airflow differences between reflex and voluntary cough in healthy young adults. *Front*
42 *Physiol*. 2015;6(OCT).

45 **Supporting information**

- 46
- 47 **S1 File. Dataset encompassing all the information used for comparing a cough sound**
48 **associated with ALS and a cough sound from a healthy control.**
- 49

1 **S2 File. Dataset encompassing all the information used for comparing cough sound**
2 **features and clinical variables from ALS patients.**

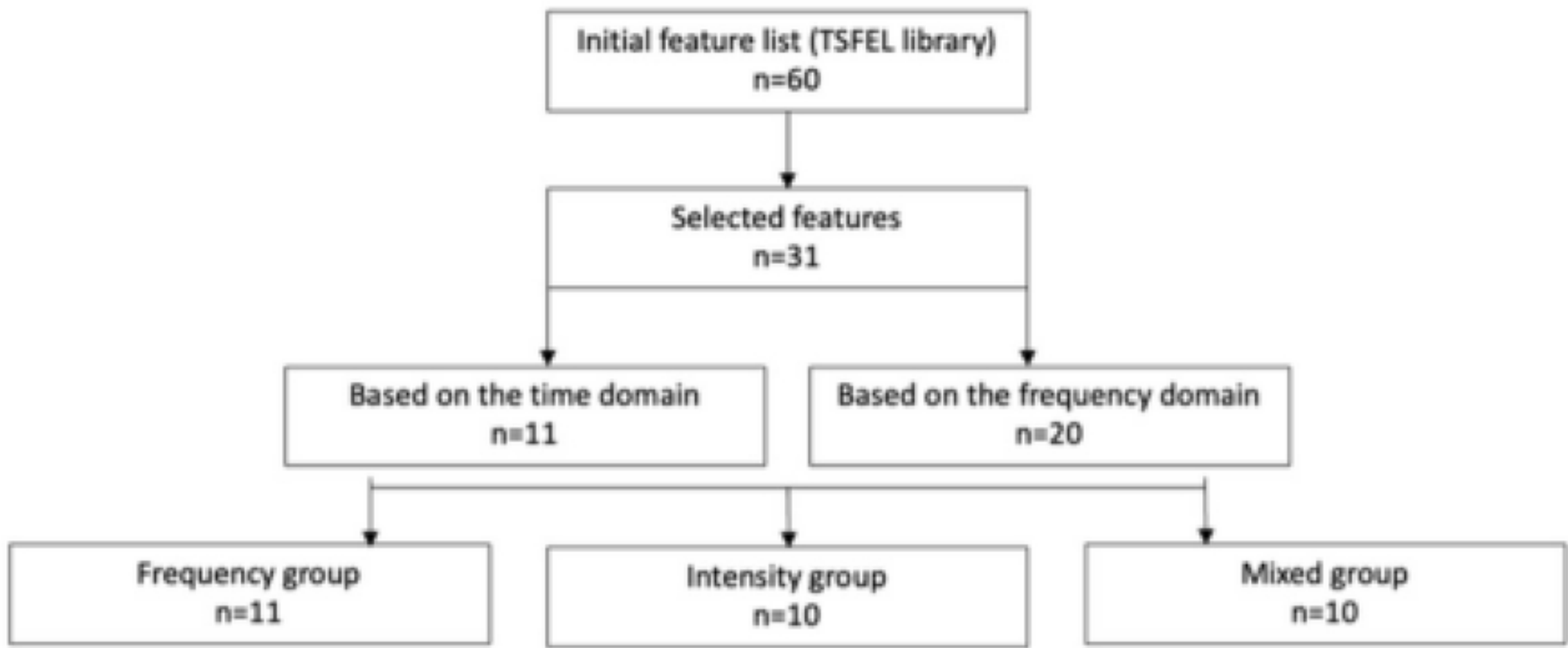


Figure 1

ALS patients vs. Controls

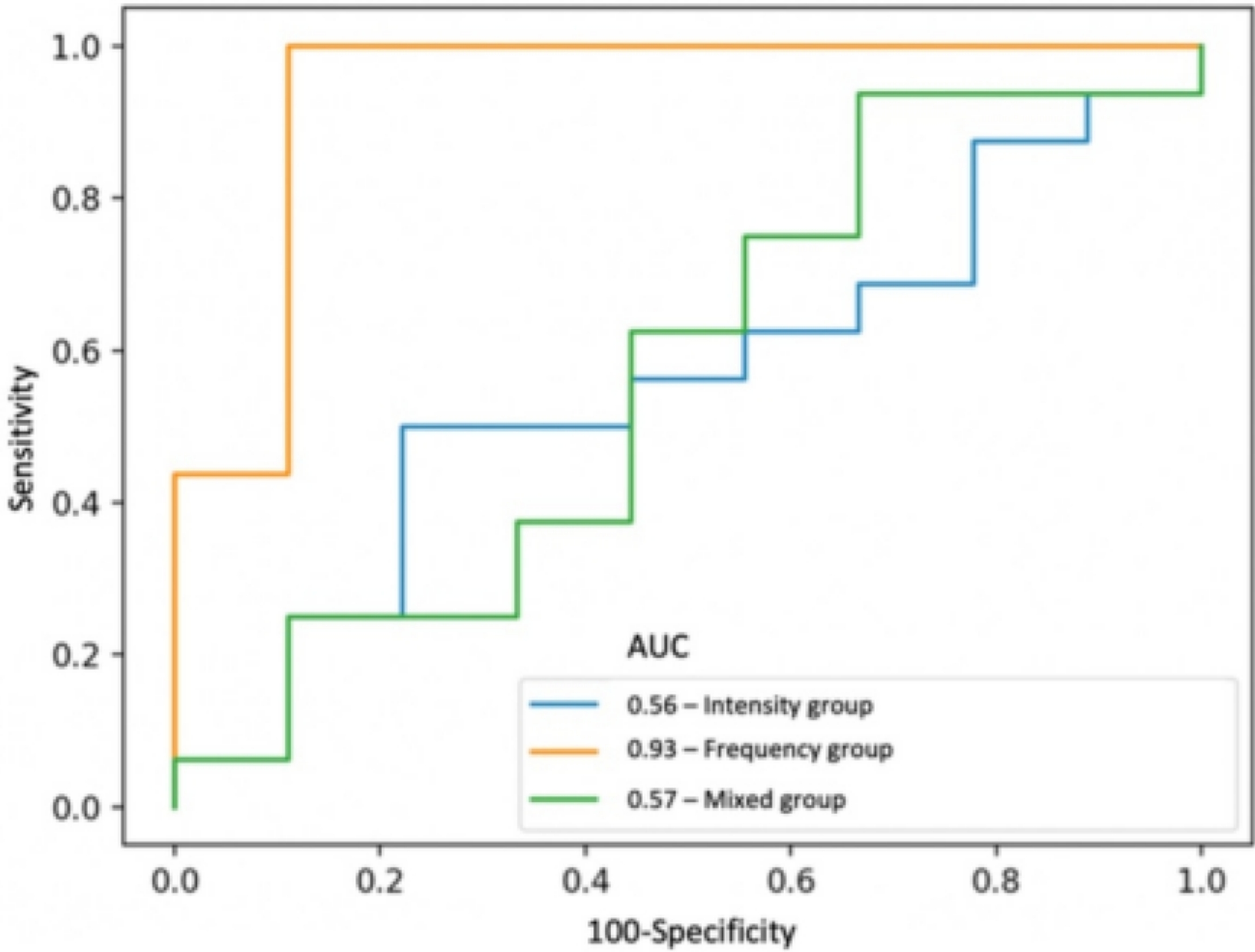


Figure 2

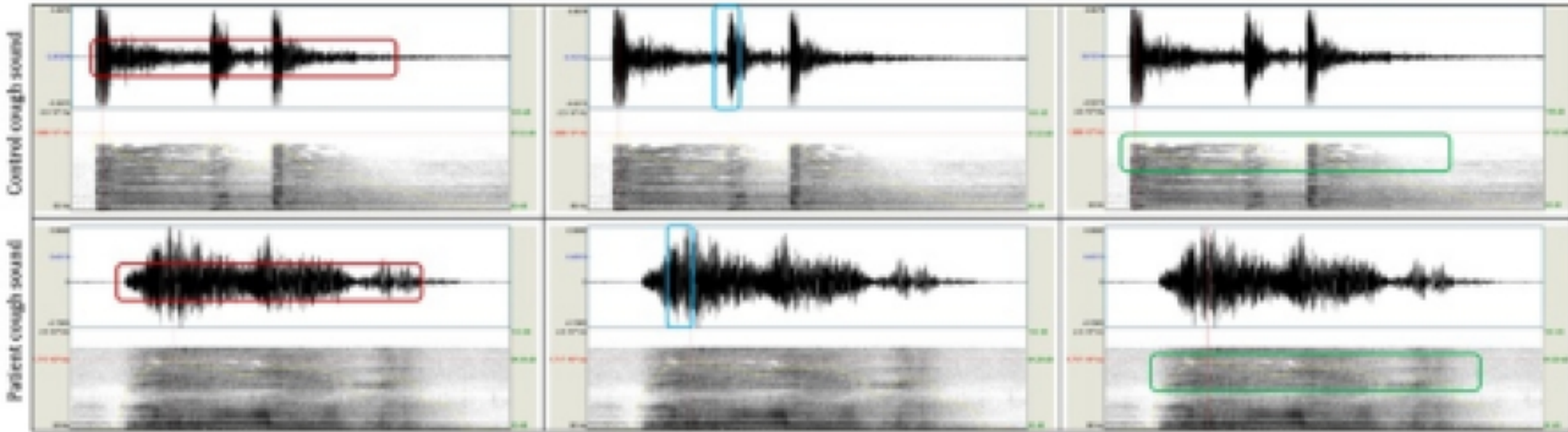
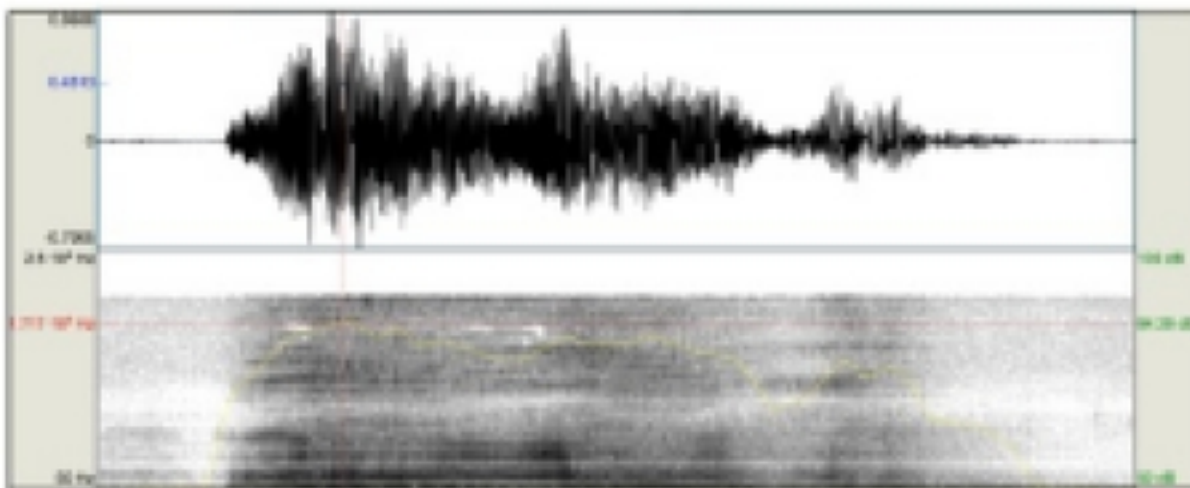


Figure 3

A) Patient in a better functional state



B) Patient in a worse functional state

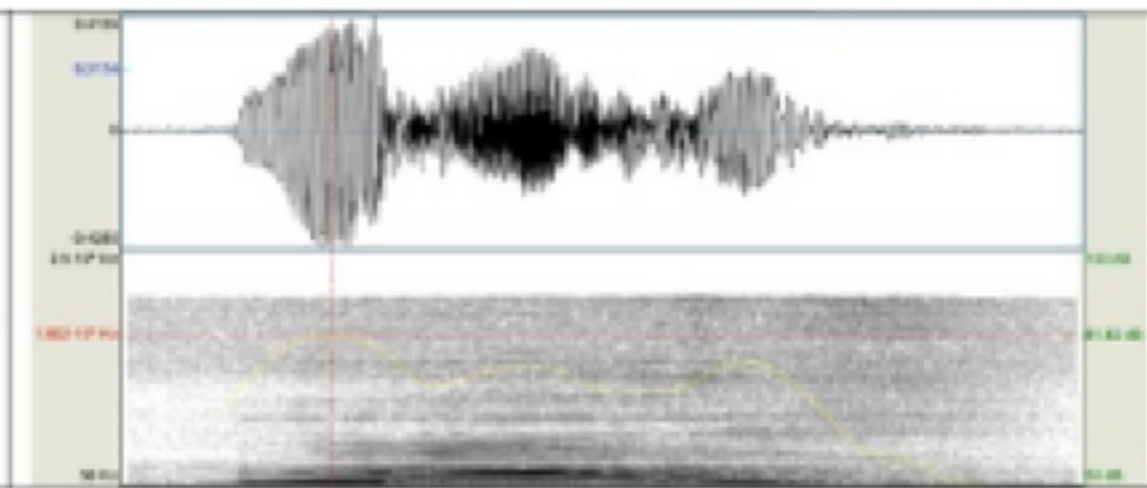


Figure 4