

1 **Full title: Repeatability of RRate measurements in children during triage in two Ugandan**  
2 **hospitals**

3 **Short title: RRate app repeatability in children**

4 **Authors:** Ahmad Asdo<sup>1,2</sup>, Alishah Mawji<sup>1,2</sup>, Isaac Omara<sup>3</sup>, Ivan Aine Aye Ishebukara<sup>4</sup>, Clare Komugisha<sup>4</sup>,  
5 Stefanie K. Novakowski<sup>1,2</sup>, Yashodani Pillay<sup>1,2</sup>, Matthew O. Wiens<sup>1,2,4</sup>, Samuel Akech<sup>5</sup>, Florence Oyella<sup>3</sup>,  
6 Abner Tagoola<sup>6</sup>, Niranjana Kissoon<sup>2,7</sup>, J. Mark Ansermino<sup>1,2</sup>, Dustin Dunsmuir<sup>1,2</sup>

- 7 1. Department of Anesthesiology, Pharmacology & Therapeutics, University of British Columbia,  
8 217-2176 Health Sciences Mall, Vancouver, BC, Canada
- 9 2. Institute for Global Health, BC Children's Hospital and BC Women's Hospital + Health Centre, 305-  
10 4088 Cambie Street, Vancouver, BC, Canada
- 11 3. Department of Pediatrics, Gulu Regional Referral Hospital, Laroo Division, Kampala Highway,  
12 Gulu, Uganda
- 13 4. WALIMU, Plot 5-7, Coral Crescent, Kololo, P.O. Box 9924, Kampala, Uganda
- 14 5. KEMRI-Wellcome Trust Research Programme, P. O. Box 43640-00100, Nairobi, Kenya
- 15 6. Department of Pediatrics, Jinja Regional Referral Hospital, Rotary Rd, Jinja, Uganda
- 16 7. Department of Pediatrics, University of British Columbia, Rm B2W, 4480 Oak Street, Vancouver,  
17 BC, Canada

18

19 Corresponding author email: [Ahmad.Asdo@bcchr.ca](mailto:Ahmad.Asdo@bcchr.ca)

20

21

22

23

24

25 **Abstract:**

26 Background:

27 Pneumonia is the leading cause of death in children globally. In low- and middle-income countries  
28 the diagnosis of pneumonia relies heavily on an accurate assessment of respiratory rate, which  
29 can be unreliable in nurses and clinicians with less advanced training. In order to inform more  
30 accurate measurements, we investigate the repeatability of the RRate app used by nurses in  
31 district hospitals in Uganda.

32 Methods:

33 This secondary analysis included 3679 children aged 0-5 years. The dataset had two sequential  
34 measurements of respiratory rate using the RRate app. We measured the agreement between  
35 respiratory rate observations and clustering around fixed thresholds defined by WHO for fast  
36 breathing, which are 60 breaths per minute (bpm) for under two months (Age-1), 50 bpm for two  
37 to 12 months (Age-2), and 40 bpm for 12.1 to 60 months (Age-3). We then assessed the  
38 repeatability of the paired measurements using the Intraclass Correlation Coefficient (ICC).

39 Results:

40 The respiratory rate measurement took less than 15 seconds for 7,277 (98.9%) of the  
41 measurements. Despite respiratory rates clustering around the WHO fast-breathing thresholds,  
42 the breathing classification based on the thresholds was changed in only 12.6% of children. The  
43 mean (SD) respiratory rate by age group was 60 (13.1) bpm for Age-1, 49 (11.9) bpm for Age-2,  
44 and 38 (10.1) for Age-3, and the bias (Limits of Agreements) were 0.3 (-10.8 – 11.3), 0.4 (-8.5 –

45 9.3), and 0.1 (-6.8, 7.0) for Age-1, Age-2, and Age-3 respectively. Most importantly, the  
46 repeatability of the two respiratory rate measurements for the 3,679 children was high, with an  
47 ICC value (95% CI) of 0.95 (0.94 – 0.95).

48 Discussion:

49 The RRate measurements were both efficient and repeatable. The simplicity, repeatability, and  
50 efficiency of the RRate app used by healthcare workers in LMICs supports more widespread  
51 adoption for clinical use.

52

53 **Introduction:**

54 Pneumonia is the leading cause of death in children worldwide, claiming the lives of 725,000  
55 children under the age of 5 every year, including 190,000 neonates.<sup>1,2</sup> Sub-Saharan Africa  
56 accounts for 30% of this global burden.<sup>3</sup> Many of these pneumonia deaths are preventable with  
57 accurate diagnosis and prompt treatment.

58 The World Health Organization (WHO) Integrated Management of Childhood Illness (IMCI)  
59 guidelines rely significantly on clinical respiratory rate measurement for diagnosing and  
60 managing pneumonia in Low- and Middle-Income Countries (LMIC). However, respiratory rate  
61 remains difficult to measure accurately despite its profound clinical importance.<sup>4</sup> First level sick-  
62 child support in LMICs is primarily done by nurses with no routine access to more sophisticated  
63 diagnostic tools.<sup>5</sup> Nurses in these settings have been shown to make less-sensitive identifications  
64 of pneumonia compared to clinicians because they do not receive tailored training on pneumonia  
65 detection.<sup>6</sup>

66 The “true” underlying physiological respiratory rate is ephemeral and time-varying; however, one  
67 factor that can be measured and optimized in clinical practice is repeatability. Repeatability is the  
68 consistency between different sets of measurements taken under similar conditions.<sup>9</sup> The  
69 uncertainty in respiratory rate measurement introduced by poor repeatability will significantly  
70 reduce the reliability of clinical decisions.<sup>10</sup> However, a simple, efficient, and repeatable method  
71 of measuring respiratory rate is likely to improve the accuracy of respiratory rate measurements  
72 by nurses in LMICs.

73 The WHO recommends the Acute Respiratory Infection (ARI) timer for measuring respiratory  
74 rate.<sup>7</sup> Unfortunately, the usability of the ARI is suboptimal when caring for a restless child who  
75 may be moving, crying, or breathing rapidly.<sup>8</sup> In addition, it takes a minimum of a full minute to  
76 measure RR with the ARI timer, which is difficult in a busy understaffed clinic or emergency  
77 department.<sup>8</sup> RRate is a smartphone application for measuring respiratory rate in LMIC hospital  
78 outpatient departments. Previous research has optimized the trade-off between usability and  
79 accuracy and compared the RRate app to the ARI timer in a controlled setting.<sup>11,12</sup> The objective  
80 of this study was to evaluate the repeatability of RRate when used to measure respiratory rate  
81 in a busy outpatient department of a Ugandan hospital.

## 82 **Methods:**

83 Data for this secondary analysis was collected during the baseline phase of a multisite  
84 implementation study for a digital triaging platform, Smart Triage (Clinical Trials.gov Identifier:  
85 NCT04304235).<sup>13,14</sup> Measurements were obtained from 4,604 children who presented to the  
86 outpatient department of Jinja Regional Referral Hospital (JRRH, 1,748 children) and Gulu  
87 Regional Referral Hospital (GRRH, 2,856 children) in Uganda from April, 27<sup>th</sup> 2020, to April 16<sup>th</sup>  
88 2022. JRRH and GRRH have admission rates of 20% and 18% respectively and both are public  
89 regional referral hospitals in an LMIC. Measurements were performed by nurses trained in the  
90 use of the RRate application.

## 91 **Data collection**

92 After consent, a nurse collected over 200 variables, including clinical signs, symptoms, and  
93 sociodemographic variables.<sup>13</sup> For each child, two measurements of respiratory rate were taken

94 using the RRate app. The user observes the patient’s chest and taps the touch screen on the onset  
95 of each inhalation. Inter-breath intervals are then calculated from the time between taps. The  
96 RRate app ensures the user taps consistently five times.<sup>15</sup>

## 97 **Data Analysis**

98 This secondary analysis only included children up to 5 years of age. We excluded children without  
99 both respiratory rate measurements, those whose paired respiratory rate measurements that  
100 were more than five minutes apart, or those who had more than 80% of their clinical data  
101 missing. We used Bland Altman plots to assess systematic errors as well as bias and limits of  
102 agreement between the first respiratory rate measurement (RR-1) and the second respiratory  
103 rate measurement (RR-2). We investigated the respiratory rates clustering around the thresholds  
104 for fast breathing, suggested by the WHO.<sup>4</sup> The thresholds for fast breathing are 60 bpm for  
105 children younger than two months (Age-1), 50 bpm for children between two to 12 months (Age-  
106 2) and 40 bpm for those between 12.1 to 60 months (Age-3). Additionally, admission rates were  
107 compared between age groups using Analysis of Variation (ANOVA).

108 The Intraclass Correlation Coefficient (ICC) was assessed as a measure of repeatability between  
109 RR-1 and RR-2. ICC values have been defined as follows: less than 0.2—slight repeatability,  
110 between 0.2 and 0.4—low repeatability, between 0.4 and 0.7—moderate repeatability, between  
111 0.7 and 0.9—high repeatability, and greater than 0.9—very high repeatability.<sup>16</sup> We first  
112 calculated an ICC for each observer (healthcare worker) using a single rater model. We then  
113 calculated the ICC using all measurement pairs with a multiple-rater model to account for any  
114 probabilistic dependency between the observers.

115 **Ethical considerations**

116 The parent study was approved by the institutional review boards at the University of British  
117 Columbia in Canada (ID: H19-02398; H20-00484), the Makerere University School of Public Health  
118 in Uganda (ID: 743) and the Uganda National Council for Science and Technology (ID: HS528ES).  
119 All participants consented to use of their data for secondary analyses. A parent or guardian  
120 provided written informed consent prior to enrollment. In addition, assent was required from  
121 children aged older than 8 years. Data for the retrospective study was accessed on January 27,  
122 2022, and there was no access to identifying patient data.

123 **Results:**

124 We reviewed 4,604 children from the two facilities and excluded 925 who did not meet the  
125 eligibility criteria. A total of 3,679 paired observations were analyzed (Figure 1). The median (IQR)  
126 time difference between the two respiratory rate measurements was 57 (25 – 91) seconds.

127 The mean (SD) respiratory rate was 44 (12.9) bpm for all children. The mean respiratory rate by  
128 age group was within two breaths of the corresponding WHO threshold for fast breathing  
129 (Table 1). The admission rate was lower for Age-2 children (Table 1 and Appendix).

130 Study nurses were able to measure respiratory rates from the first 5 breaths (5 taps on the  
131 screen, 4 inter-breath intervals) in 6,189 (84.1%) of measurements. For 6,909 (93.9%)  
132 measurements, the nurses required 6 or less breaths (6 or less taps) for measurement. A  
133 respiratory rate measurement was obtained in less than 15 seconds in 7,277 (98.9%) of the total  
134 measurements completed.

135 A Bland Altman plot for all the children showed strong agreement between RR-1 and RR-2 with  
136 a bias of 0.24 breaths per minute (Figure 2). The limits of agreements were the widest in Age-1  
137 and narrowed with increasing patient age. Additionally, bias was lowest in Age-3. (Figures 3-5).  
138 There were 463 children (12.6%) who had their respiratory rate classification changed according  
139 to IMCI (Table 2).

140 The repeatability performance between RR-1 and RR-2, indicated by the ICC, was  $\geq 0.90$  for 12 of  
141 14 users despite the variable sample size measured by each user (Table 3). The overall ICC (IQR)  
142 of the two respiratory rate measurements was 0.95 (0.94 – 0.95). This indicates the very high  
143 repeatability of the RRate app.

#### 144 **Discussion:**

145 In this secondary analysis we found a high repeatability of respiratory rate measurements taken  
146 by nurses using the RRate application on children arriving to two busy public referral hospitals in  
147 Uganda. The Bland Altman plot (Figure 2) further indicates the strong agreement between the  
148 two measurements with a bias of only 0.24 bpm. Additionally, the app measurements were  
149 completed rapidly, as 98.9% of the measurements took less than 15 seconds.

150 The RRate app is more efficient in LMICs settings compared to other devices. The RRate app and  
151 the ARI timer have previously been shown to have similar accuracy in a controlled setting where  
152 de-identified videos of anesthetized children were used as a standard.<sup>12</sup> However, RRate  
153 provides a respiratory rate in children in 15 seconds versus 60 seconds required using the ARI  
154 timer; a distinct advantage in settings where healthcare workers need to efficiently triage large  
155 numbers of children rapidly.<sup>17</sup> During the measurement, RRate does not require the child to lie



156 motionless. Another attractive feature of the RR app is its interoperability with an array of mobile  
157 devices that can run this application at no additional cost.

158 A previous study has shown a lack of accuracy in the RRate app when using a video-based  
159 counting method as a reference. However, there was no formal training in the use of RRate and  
160 repeatability was not reported.<sup>19</sup> Those findings were in contrast to another analysis, where  
161 RRate showed excellent agreement with the video-based counting reference.<sup>11</sup>

162 Evaluating respiratory rate measurement in experimental controlled settings may not be  
163 comparable to real-world settings. However, the demonstration of robust repeatability would be  
164 highly desirable for real world applications. Automated respiratory rate devices such as Masimo  
165 Rad G pulse oximeter have also been evaluated in real-world settings and have been shown to  
166 have variable accuracy with wide 95% LoAs (-34 – 6). However, automated device repeatability  
167 has not been demonstrated.<sup>18</sup>

## 168 **Implications for Clinical Care**

169 Despite the importance of respiratory rate measurement, measuring an accurate rate is an  
170 ongoing challenge to healthcare workers.<sup>4</sup> Respiratory rate assessment is relied upon to make  
171 clinical decisions in LMICs where the burden of pneumonia is highest and where nurses are  
172 heavily relied upon to identify pneumonia. Considering the relatively lower sensitivity of  
173 decisions made by nurses compared to those made by clinicians, utilizing the RRate mobile app  
174 can enhance the capabilities of nurses who heavily depend on respiratory rate to identify rapid  
175 breathing.<sup>6</sup> It will also inform decisions to implement pneumonia treatment protocols. The low

176 cost and accessibility of RRate makes it appropriate for use in low-resource settings, especially  
177 when there are many children and few healthcare workers.

178 **Limitations:**

179 The generalizability of these results may be limited since the data is from only two institutions  
180 and only includes 14 observers. The time needed to measure RRate is reported starting from  
181 when the first breath is observed (tapped). This does not include the time taken to prepare for  
182 the measurement, which may include revealing the child's chest or calming them. However, using  
183 a traditional method of counting breaths would also not start until after a child was calmed. In  
184 situations where the user failed to tap the screen consistently for 12 breaths, the app would  
185 prompt the user to redo the measurement and would not record the time taken for the failed  
186 measurement. However, given that 84.1% of measurements needed only the initial five breaths,  
187 and 93.9% needed a maximum of six breaths, it is likely that very few (if any) children needed  
188 more than one attempt.

189 **Conclusion:**

190 The RRate app is an open-source and free solution to respiratory rate measurement with very  
191 high repeatability and agreement between measurements. RRate is an efficient and repeatable  
192 alternative to the breath counting method. The screen tapping method could be incorporated  
193 into medical monitoring devices to assess respiratory rate.

194 **Acknowledgements:**

195 We express our gratitude to the Smart Triage research staff at Jinja and Gulu Regional Referral  
196 Hospitals for their assistance in data collection and staff at WALIMU for assisting with study  
197 setup and equipment procurement. We also extend our appreciation to all the participating  
198 children and caregivers in the study. Special thanks to Nurse Collins Agaba for her valuable  
199 contribution in project coordination.

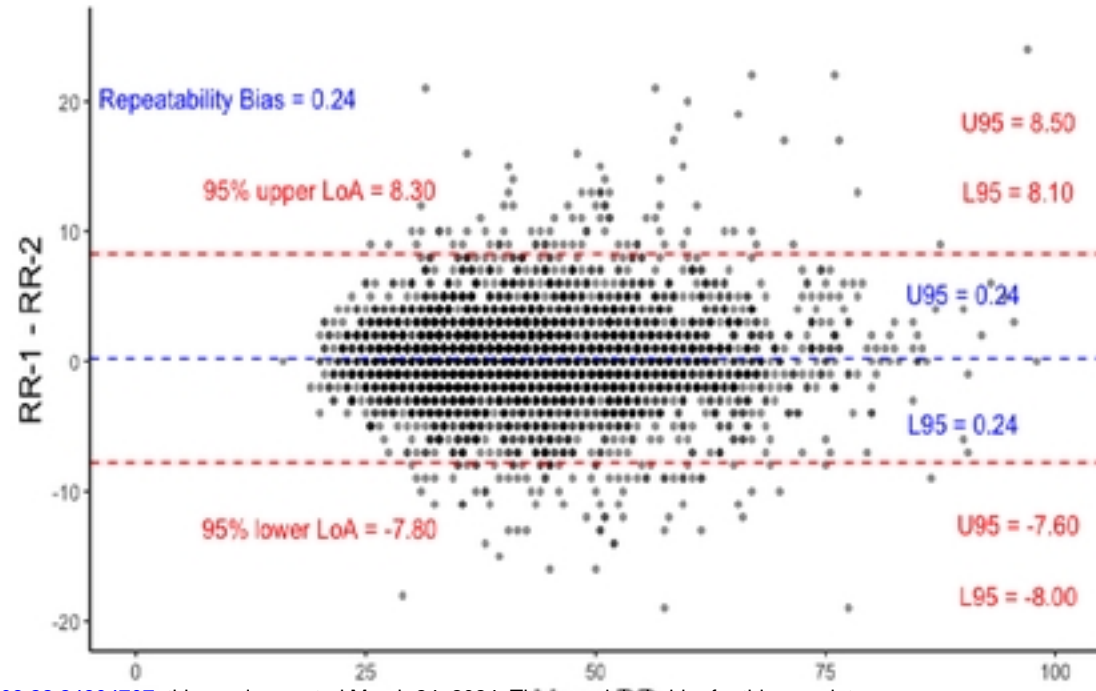
## 200 References

- 201
- 202 1. Steele A, King C, Nantanda R, Berryman E, Greenslade L, Baker K. Major gaps in  
203 childhood pneumonia research priorities remain. *Lancet Respir Med*. 2023;11(12):e96-  
204 e97. [https://doi.org/10.1016/S2213-2600\(23\)00375-22](https://doi.org/10.1016/S2213-2600(23)00375-22).
  - 205 2. UNICEF. Childhood Pneumonia Explained. [https://www.unicef.org/stories/childhood-  
206 pneumonia-  
207 explained#:~:text=Every%20year%2C%20it%20claims%20the,of%20these%20deaths%20are%20preventable](https://www.unicef.org/stories/childhood-pneumonia-explained#:~:text=Every%20year%2C%20it%20claims%20the,of%20these%20deaths%20are%20preventable). Published 2023. Accessed January 3, 2024.
  - 208 3. Walker CLF, Rudan I, Liu L, Nair H, Theodoratou E, Bhutta ZA, O'Brien KL, Campbell H, Black RE.  
209 Global burden of childhood pneumonia and diarrhoea. *Lancet*. 2013;381(9875):1405–1416.  
210 [https://doi.org/10.1016/S0140-6736\(13\)60222-6](https://doi.org/10.1016/S0140-6736(13)60222-6)
  - 211 4. Alwadhvi V, Sarin E, Kumar P, Saboth P, Khera A, Gupta S, et al. Measuring accuracy of  
212 plethysmography based respiratory rate measurement using pulse oximeter at a tertiary  
213 hospital in India. *Pneumonia*. 2020;12:4. <https://doi.org/10.1186/s41479-020-00067-2>
  - 214 5. Kalu N, Lufesi N, Havens D, Mortimer K (2016) Implementation of World Health  
215 Organization Integrated Management of Childhood Illnesses (IMCI) Guidelines for the  
216 Assessment of Pneumonia in the Under 5s in Rural Malawi. *PLOS ONE* 11(5): e0155830.  
217 <https://doi.org/10.1371/journal.pone.0155830>
  - 218 6. Uwemedimo OT, Lewis TP, Essien EA, et al. Distribution and determinants of pneumonia  
219 diagnosis using integrated management of childhood illness guidelines: a nationally  
220 representative study in Malawi. *BMJ Global Health*. 2018;3(3):e000506corr1.  
221 <https://doi.org/10.1136/bmjgh-2017-000506corr1>
  - 222 7. World Health Organization. Integrated Management of Childhood Illness (IMCI) set of  
223 distance learning modules. [https://www.who.int/publications-detail-  
224 redirect/9789241506823](https://www.who.int/publications-detail-redirect/9789241506823). Published 2014. Accessed January 3, 2024.
  - 225 8. Ginsburg, A. S., Lenahan, J. L., Izadnegahdar, R., & Ansermino, J. M. (2018). A Systematic  
226 Review of Tools to Measure Respiratory Rate in Order to Identify Childhood Pneumonia.  
227 *American journal of respiratory and critical care medicine*, 197(9), 1116–1127.  
228 <https://doi.org/10.1164/rccm.201711-2233CI>
  - 229

- 230 9. Harper DGC. Some comments on the repeatability of measurements. *Ring Migr.*  
231 1994;15(2):84–90. doi:10.1080/03078698.1994.9674078
- 232 10. Lovett PB, Buchwald JM, Stürmann K, Bijur P. The vexatious vital: neither clinical  
233 measurements by nurses nor an electronic monitor provides accurate measurements of  
234 respiratory rate in triage. *Annals of emergency medicine.* 2005;45(1):68–76.  
235 doi:10.1016/j.annemergmed.2004.06.016
- 236 11. Gan H, Karlen W, Dunsmuir D, Zhou G, Chiu M, Dumont GA, Ansermino JM. The  
237 Performance of a Mobile Phone Respiratory Rate Counter Compared to the WHO ARI  
238 Timer. *J Healthc Eng.* 2015;6(4):691–703. <https://doi.org/10.1260/2040-2295.6.4.691>
- 239 12. Karlen W, Gan H, Chiu M, Dunsmuir D, Zhou G, Dumont GA, Ansermino JM. Improving  
240 the accuracy and efficiency of respiratory rate measurements in children using mobile  
241 devices. *PLoS One.* 2014;9(6):e99266. <https://doi.org/10.1371/journal.pone.0099266>
- 242 13. Mawji A, Li E, Dunsmuir D, Komugisha C, Novakowski SK, Wiens MO, Vesuvius TA,  
243 Kisson N, Ansermino JM. Smart triage: Development of a rapid pediatric triage  
244 algorithm for use in low-and-middle-income countries. *Front Pediatr.* 2022;10:976870.  
245 <https://doi.org/10.3389/fped.2022.976870>
- 246 14. Mawji A, Li E, Komugisha C, Akech S, Dunsmuir D, Wiens MO, et al. Smart triage: triage  
247 and management of sepsis in children using the point-of-care Pediatric Rapid Sepsis  
248 Trigger (PRST) tool. *BMC Health Serv Res.* 2020;20(1):493.  
249 <https://doi.org/10.1186/s12913-020-05344-w>
- 250 15. Gan H, Karlen W, Dunsmuir D, Zhou G, Chiu M, Dumont GA, et al. The Performance of a  
251 Mobile Phone Respiratory Rate Counter Compared to the WHO ARI Timer. *J Healthc*  
252 *Eng.* 2015;6(4):691–703. <https://doi.org/10.1260/2040-2295.6.4.691>
- 253 16. Koo TK, Li MY. A Guideline of Selecting and Reporting Intraclass Correlation Coefficients  
254 for Reliability Research. *J Chiropr Med.* 2016;15(2):155–163.  
255 <https://doi.org/10.1016/j.jcm.2016.02.012>
- 256 17. Elliot M. Why is respiratory rate the neglected vital sign? A narrative review. *Int Arch*  
257 *Nurs Health Care.* 2016;2:657-659.
- 258 18. Tack B, Vita D, Mbaki TN, Lunguya O, Toelen J, Jacobs J. Performance of Automated  
259 Point-of-Care Respiratory Rate Counting versus Manual Counting in Children under Five  
260 Admitted with Severe Febrile Illness to Kisantu Hospital, DR Congo. *Diagnostics.*  
261 2021;11(11):2078. <https://doi.org/10.3390/diagnostics11112078>
- 262 19. Spurr R, Ng E, Onchiri FM, Rapha B, Nakatumba-Nabende J, Rosenfeld M, et al.  
263 Performance and usability of a new mobile application for measuring respiratory rate in  
264 young children with acute lower respiratory infections. *Pediatr Pulmonol.*  
265 2022;57(12):3009–3016. <https://doi.org/10.1002/ppul.26125>

266

267



medRxiv preprint doi: <https://doi.org/10.1101/2024.03.22.24304707>; this version posted March 24, 2024. The copyright holder for this preprint (which was not certified by peer review) is the author/funder, who has granted medRxiv a license to display the preprint in perpetuity. It is made available under a [CC-BY 4.0 International license](https://creativecommons.org/licenses/by/4.0/).

**Figure 2. Bland Altman plot for RR-1 and RR-2 across all children. Limits of Agreement (LoAs) and bias are under repeatability conditions, considering one set of samples as the test and the other as the reference.**

medRxiv preprint doi: <https://doi.org/10.1101/2024.03.22.24304707>; this version posted March 24, 2024. The copyright holder for this preprint (which was not certified by peer review) is the author/funder, who has granted medRxiv a license to display the preprint in perpetuity. It is made available under a [CC-BY 4.0 International license](https://creativecommons.org/licenses/by/4.0/).

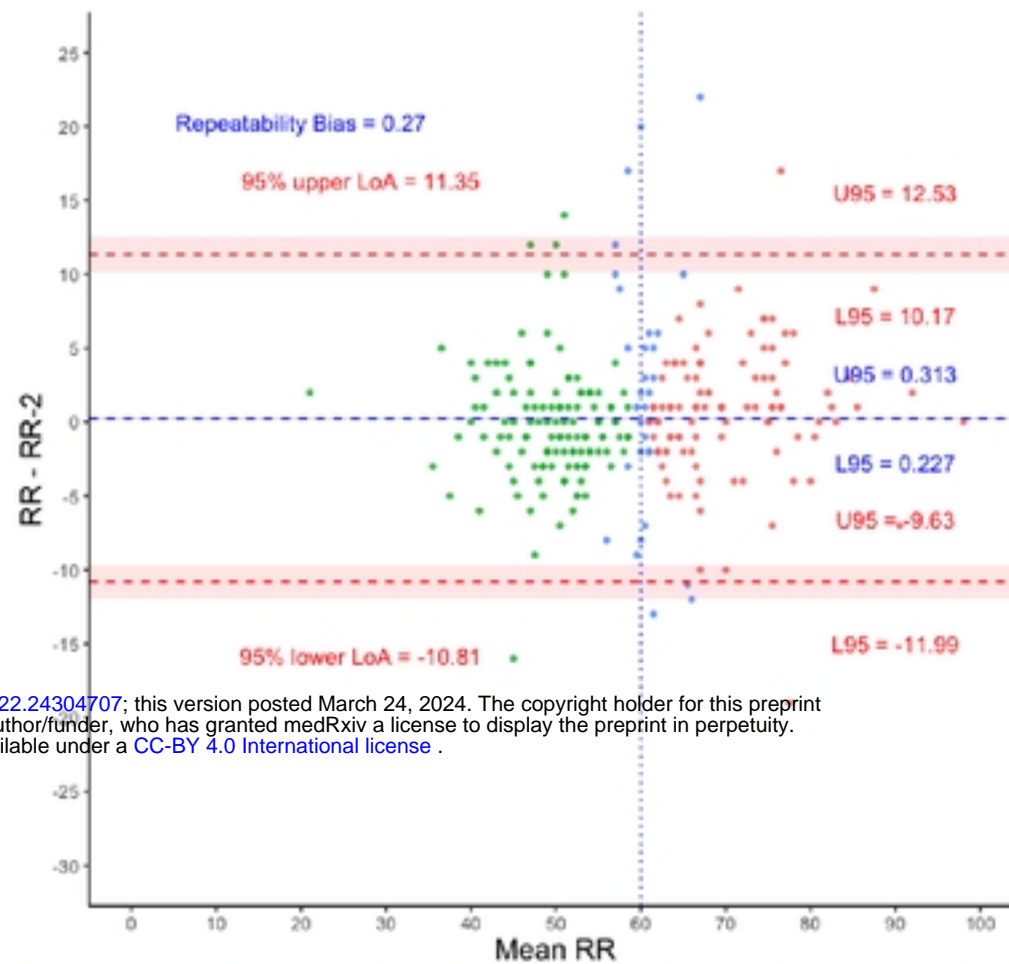
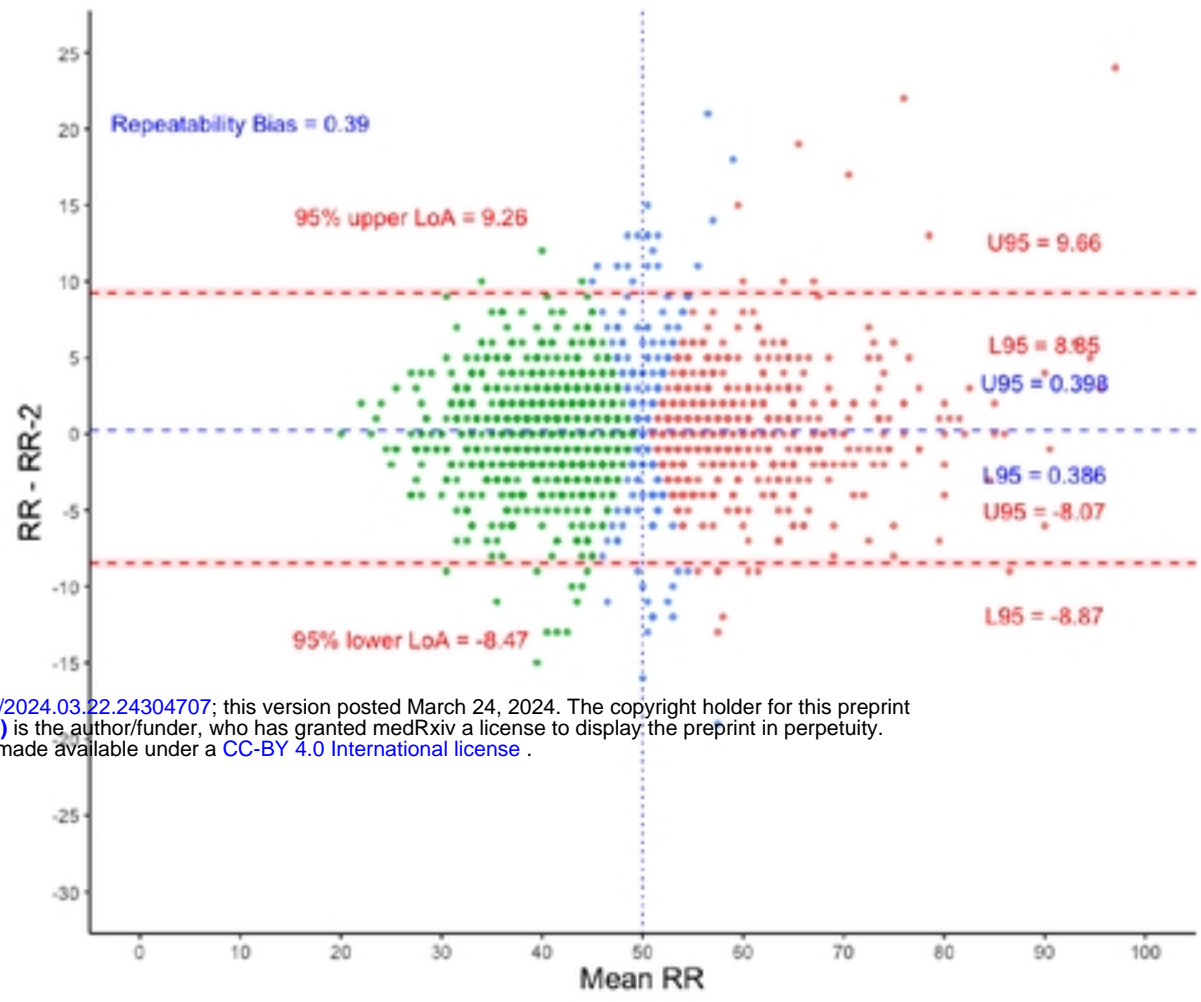
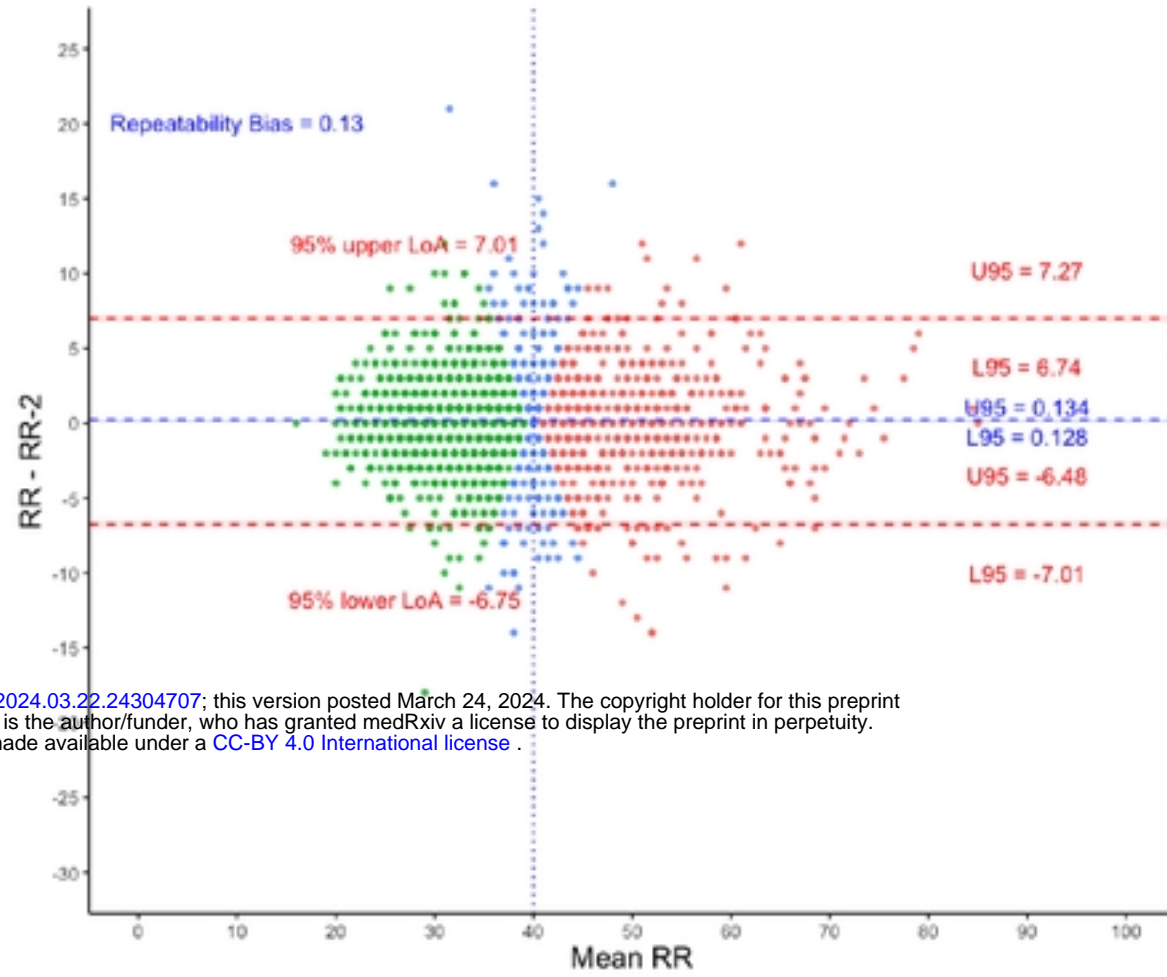


Figure 3. Bland Altman plot for Age-1. N = 259. Threshold for fast breathing is 60 bpm. Red dots represent children with two fast breathing measurements, green dots – two normal breathing, and blue dots – one fast and one normal.



medRxiv preprint doi: <https://doi.org/10.1101/2024.03.22.24304707>; this version posted March 24, 2024. The copyright holder for this preprint (which was not certified by peer review) is the author/funder, who has granted medRxiv a license to display the preprint in perpetuity. It is made available under a [CC-BY 4.0 International license](https://creativecommons.org/licenses/by/4.0/).

Figure 4. Bland Altman Plot for Age-2.  $N = 1,428$ . Threshold for fast breathing is 50 bpm. Red dots represent children with two fast breathing measurements, green dots – two normal breathing, and blue dots – one fast and one normal.



medRxiv preprint doi: <https://doi.org/10.1101/2024.03.22.24304707>; this version posted March 24, 2024. The copyright holder for this preprint (which was not certified by peer review) is the author/funder, who has granted medRxiv a license to display the preprint in perpetuity. It is made available under a [CC-BY 4.0 International license](https://creativecommons.org/licenses/by/4.0/).

*Figure 5. Bland Altman Plot for Age-3. N = 1,992. Threshold for fast breathing is 40 bpm. Red dots represent children with two fast breathing measurements, green dots – two normal breathing, and blue dots – one fast and one normal.*



<b>Age group</b>	<b>WHO Threshold for fast breathing in bpm</b>	<b>Male sex (N)</b>	<b>Age in months Median (Interquartile range)</b>	<b>RR in bpm Mean (Standard Deviation (SD))</b>	<b>Admission Rate (95% Confidence Interval)</b>
Age-1	60	58% (149)	1.1 (0.6 – 1.6)	60 (13.1)	18% (14 – 23)
Age-2	50	51% (730)	6.8 (4.7 – 9.4)	49 (11.9)	10% (9 – 12)
Age-3	40	50% (998)	24.2 (16.7 – 36.8)	38 (10.1)	14% (12 – 15)

medRxiv preprint doi: <https://doi.org/10.1101/2024.03.22.24304707>; this version posted March 24, 2024. The copyright holder for this preprint (which was not certified by peer review) is the author/funder, who has granted medRxiv a license to display the preprint in perpetuity. It is made available under a [CC-BY 4.0 International license](https://creativecommons.org/licenses/by/4.0/).

*Table 1. Demographics and parameters of respiratory rate for the study cohort*

	Percentage of Age-1	Percentage of Age-2	Percentage of Age-3	All children
Two Normal Measurements	46.7%	51.3%	57.0%	54%
Two Fast Measurements	40.5%	35.4%	30.9%	33.4%
One Normal	12.7%	13.3%	12.0%	12.6%

*Table 2. Children's breathing classification based on age group and WHO thresholds.*

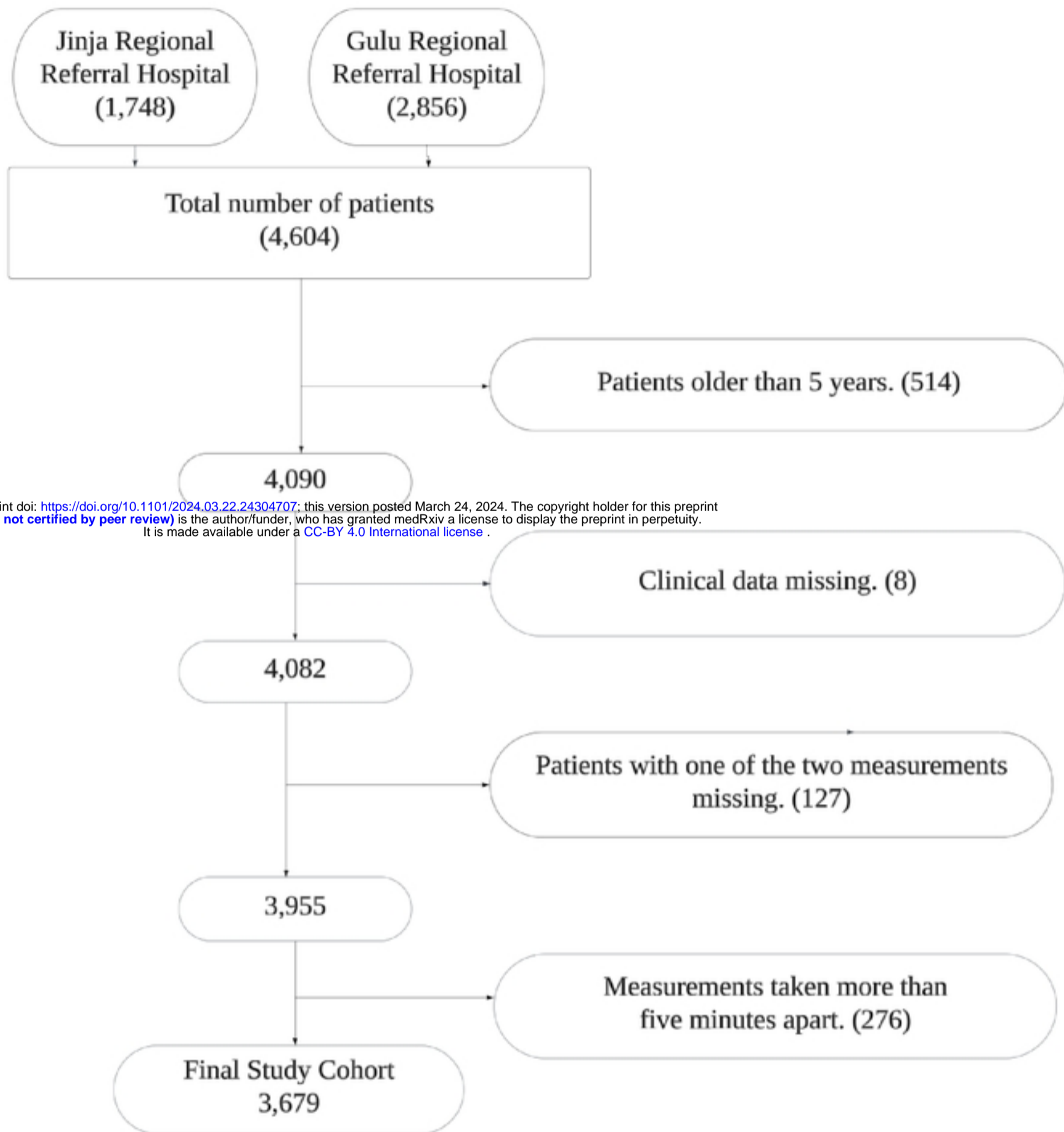
medRxiv preprint doi: <https://doi.org/10.1101/2024.03.22.24304707>; this version posted March 24, 2024. The copyright holder for this preprint (which was not certified by peer review) is the author/funder, who has granted medRxiv a license to display the preprint in perpetuity. It is made available under a [CC-BY 4.0 International license](https://creativecommons.org/licenses/by/4.0/).

User	N	ICC	95% CI
1	236	0.96	(0.95 - 0.97)
2	242	0.98	(0.97 - 0.98)
3	2	0.99	(0.69 - 0.99)
4	603	0.93	(0.91 - 0.94)
5	30	0.99	(0.98 - 0.99)
6	173	0.98	(0.97 - 0.99)
7	529	0.88	(0.85 - 0.89)
8	46	0.97	(0.94 - 0.98)
9	58	0.96	(0.93 - 0.98)
10	219	0.93	(0.91 - 0.95)
11	303	0.96	(0.96 - 0.97)
12	623	0.95	(0.94 - 0.96)
13	39	0.89	(0.80 - 0.94)
14	576	0.98	(0.97 - 0.98)

medRxiv preprint doi: <https://doi.org/10.1101/2024.03.22.24304707>; this version posted March 24, 2024. The copyright holder for this preprint (which was not certified by peer review) is the author/funder, who has granted medRxiv a license to display the preprint in perpetuity. It is made available under a [CC-BY 4.0 International license](https://creativecommons.org/licenses/by/4.0/).

*Table 3. Intraclass Correlation Coefficient (ICC) per user.*

medRxiv preprint doi: <https://doi.org/10.1101/2024.03.22.24304707>; this version posted March 24, 2024. The copyright holder for this preprint  
**(which was not certified by peer review)** is the author/funder, who has granted medRxiv a license to display the preprint in perpetuity.  
It is made available under a [CC-BY 4.0 International license](#) .



medRxiv preprint doi: <https://doi.org/10.1101/2024.03.22.24304707>; this version posted March 24, 2024. The copyright holder for this preprint (which was not certified by peer review) is the author/funder, who has granted medRxiv a license to display the preprint in perpetuity. It is made available under a [CC-BY 4.0 International license](https://creativecommons.org/licenses/by/4.0/).

Figure 1. Consort diagram for children included in the study.