

1 Equalizing prognostic disparities in stage III KRAS-mutant NSCLC: addition of  
2 durvalumab to combined chemoradiotherapy improves survival

3

4 Ella A. Eklund<sup>1,2,3</sup>, Mathilda Orgard<sup>1,2</sup>, Delice Wallin<sup>1,2</sup>, Sama I. Sayin<sup>3</sup>, Henrik Fagman<sup>4,5</sup>,  
5 Sukanya Raghavan<sup>6</sup>, Levent M Akyürek<sup>4,5</sup>, Jan Nyman<sup>3,7</sup>, Clotilde Wiel<sup>1</sup>, Andreas Hallqvist<sup>3,7</sup>,  
6 Volkan I. Sayin<sup>1,2</sup>

7 <sup>1</sup>Department of Surgery, Institute of Clinical Sciences, Sahlgrenska Center for Cancer  
8 Research, University of Gothenburg, Gothenburg, Sweden; <sup>2</sup>Wallenberg Centre for Molecular  
9 and Translational Medicine, University of Gothenburg, Gothenburg, Sweden; <sup>3</sup>Department of  
10 Oncology, Sahlgrenska University Hospital, Gothenburg, Sweden; <sup>4</sup>Department of Laboratory  
11 Medicine, Institute of Biomedicine, University of Gothenburg, Gothenburg, Sweden;  
12 <sup>5</sup>Department of Clinical Pathology, Sahlgrenska University Hospital, Gothenburg, Sweden;  
13 <sup>6</sup>Department of Microbiology and Immunology, Institute for Biomedicine, Sahlgrenska  
14 Academy, University of Gothenburg, Gothenburg, Sweden; <sup>7</sup>Department of Oncology,  
15 Institute of Clinical Sciences, University of Gothenburg, Gothenburg, Sweden

16 Correspondence to:

17 V.I.S volkan.sayin@wlab.gu.se

18 Keywords: lung cancer, NSCLC, locally advanced, stage III, KRAS, real-world data,  
19 chemoradiotherapy, immunotherapy, durvalumab

20 **Abstract**

21 **Introduction:** Stage III non-small cell lung cancer (NSCLC) is heterogeneous and  
22 identification of subgroups with differential responses is crucial to optimize treatment.  
23 Addition of durvalumab to concurrent chemoradiotherapy (cCRT) has previously been shown  
24 to improve survival outcomes. Meanwhile, subgroups harboring KRAS mutations have been  
25 shown to have worse prognosis. We investigated whether KRAS mutational status may  
26 affect survival outcomes after adjuvant durvalumab following cCRT in stage III NSCLC.

27 **Methods:** In this retrospective study, we present a real-world dataset of all stage III NSCLC  
28 patients treated with cCRT with a curative intent and molecularly assessed between 2016-  
29 2021 in West Sweden. Primary study outcomes were overall survival (OS) and progression  
30 free survival (PFS).

31 **Results:** We identified 145 patients receiving cCRT with a curative intent, 32% harbored an  
32 activating mutation in the KRAS gene (KRAS<sup>MUT</sup>). Compared to KRAS wild-type (KRAS<sup>WT</sup>),  
33 KRAS<sup>MUT</sup> had a worse OS ( $p=0.047$ ) and PFS ( $p=0.038$ ). The finding persisted on  
34 multivariate analysis with OS (HR 1.703, 95%CI 1.074-2.702,  $p = 0.024$ ) and PFS (HR 1.628,  
35 95% CI 1.081-2.453,  $p = 0.020$ ). After the addition of durvalumab to cCRT, there were no  
36 longer any significant differences between KRAS<sup>WT</sup> and KRAS<sup>MUT</sup> in OS or PFS.

37 **Conclusions:** KRAS mutations are a negative prognostic factor after cCRT in stage III  
38 NSCLC, and the addition of durvalumab equalizes the negative impact of harboring this  
39 mutation.

40

41 **1490 characters**

## 42 Introduction

43 Lung cancer remains the leading cause of cancer mortality, and non-small cell lung cancer  
44 (NSCLC) accounts for 80-85% of cases. Stage at diagnosis is an important prognostic factor  
45 in NSCLC, since patients in later stages have increasingly worse prognosis.<sup>1</sup> Staging (I-IV) is  
46 based on the TNM system, which describes the size and infiltration status of the primary  
47 tumor, number and location of regional lymph nodes involved, and number and location of  
48 metastases. About 30% of new cases of NSCLC are stage III at diagnosis. Stage III, also  
49 referred to as locally advanced NSCLC, is defined as having spread locoregionally through  
50 primary tumor extension into extrapulmonary structures and involving hilar or mediastinal  
51 lymph nodes but having no evidence of distant metastases.<sup>2-4</sup>

52 Importantly, stage III NSCLC is a heterogenous group, with overall survival (OS) rates  
53 ranging between 35% and 10%.<sup>2, 5, 6</sup> There are large variations between patients belonging to  
54 this group in the degree of local disease advancement, clinical presentation, and treatment  
55 options.<sup>7-9</sup> Treatment regimens are generally determined in multidisciplinary case discussions  
56 at high volume centers including oncologists, radiologists, pneumologists and thoracic  
57 surgeons.<sup>10, 11</sup> Treatment of stage III NSCLC patients can be highly personalized and the  
58 identification of subgroups that are more responsive to certain treatment combinations than  
59 others is

60 In recent years there has been growing interest in KRAS-mutated (KRAS<sup>MUT</sup>) NSCLC due to  
61 the introduction of new tyrosine kinase inhibitors (TKI) targeting KRAS, offering new  
62 treatment possibilities for this subgroup. KRAS mutation is the most prevalent oncogenic  
63 driver in NSCLC (35%) but the prognostic and predictive role of KRAS mutations is under  
64 debate. While we and others have shown KRAS mutations to negatively influence the  
65 prognosis of NSCLC,<sup>12-15</sup> some studies found no difference in OS.<sup>16-18</sup> In addition, some have  
66 reported shorter OS for KRAS<sup>MUT</sup> compared to wild type (KRAS<sup>WT</sup>) patients following first-line  
67 platinum-based chemotherapy.<sup>19-21</sup> Hence, the significance of KRAS mutation for prognosis  
68 and treatment response in NSCLC disease remains a pending topic.<sup>22</sup>

69 First-line treatment for unresectable stage III NSCLC is concurrent chemoradiotherapy  
70 (cCRT) provided that patients have a decent performance status, adequate lung function and  
71 no discouraging comorbidity. Treatment is typically given with a platinum doublet and  
72 conventionally fractionated radiotherapy to a total dose of 60-66 Gy.

73 Addition of immune check point blockades were first approved in stage IV treatment  
74 schedules and was found to be associated with substantial improvements in overall survival,  
75 marking a new paradigm in lung cancer care.<sup>13, 14</sup> Patients in this group receive targeted  
76 therapy depending on specific mutations if present, or immunotherapy-containing regimens,  
77 either as monotherapy or in combination with chemotherapy or a second immunotherapy  
78 drug.<sup>23</sup> Consolidation therapy with the programmed death-ligand (PD-L1) inhibitor  
79 durvalumab after chemoradiotherapy in stage III NSCLC was approved in 2018 Europe  
80 based on findings from the PACIFIC trial.<sup>15</sup> This trial demonstrated the superiority of  
81 durvalumab over placebo in terms of increased overall survival among patients with stage III  
82 NSCLC treated with chemoradiotherapy. Several studies reporting similar findings have  
83 followed<sup>16</sup>, and recently a 5-year follow up of the PACIFIC trial showed that these changes  
84 persisted over time.<sup>17</sup> Durvalumab is now part of standard treatment regimens for stage III  
85 NSCLC patients where those with no disease progression after first-line therapy with cCRT

86 and PD-L1 expression  $\geq 1\%$ , are recommended adjuvant treatment with durvalumab for 12  
87 months.<sup>18</sup>

88 Although relatively few studies have been conducted regarding the impact of KRAS mutation  
89 on prognosis after cCRT in stage III NSCLC, the available data suggests KRAS mutation as  
90 a negative predictor for treatment response and OS.<sup>20, 21</sup> Furthermore, data on KRAS<sup>MUT</sup> in  
91 the context of ICB treatment in stage III disease is scarce. In summary, given previous  
92 findings of heterogeneity of stage III NSCLC, worsened prognosis in the presence of KRAS  
93 mutations in this group, and improved prognosis after the introduction of consolidation  
94 therapy with durvalumab in the overall group, we wondered whether KRAS mutation  
95 subgroups may respond differentially to durvalumab. Here, we investigate whether  
96 consolidation therapy with durvalumab affects survival outcomes in KRAS mutated stage III  
97 NSCLC patients. Our aim with this study is to assess outcomes in KRAS<sup>MUT</sup> vs KRAS<sup>WT</sup> in  
98 locally advanced NSCLC patients receiving cCRT with and without durvalumab.

99

## 100 **Material and Methods**

### 101 ***Study Design and Study Population***

102 This retrospective cohort study includes all consecutive patients with stage III NSCLC in the  
103 Västra Götaland region, Sweden, between the years 2016-2021 who underwent molecular  
104 assessment and received combined chemoradiotherapy with curative intent ( $n = 145$ ).  
105 Patients were excluded if they underwent surgery or received sequential chemoradiotherapy  
106 ( $n = 45$ ) (Figure 1). The study period encompasses the standard practice before the  
107 introduction of durvalumab, allowing for the evaluation of the potential impact of ICB. For  
108 inclusion in the durvalumab analyses, a single dose of durvalumab was deemed sufficient.

### 109 ***Data Collection Procedures***

110 Patients were selected for the study through the pathology regional laboratory information  
111 system, where they were referred for molecular assessment. The selected patients  
112 underwent next-generation sequencing (NGS) on DNA from FFPE blocks or cytological  
113 smears using the Ion AmpliSeq<sup>TM</sup> Colon and Lung Cancer Panel v2 from Thermo Fisher  
114 Scientific until 2019 and thereafter the Thermo Fisher OncoPrint<sup>TM</sup> Focus Assay, assessing  
115 hotspot mutations in *EGFR*, *BRAF*, *KRAS* and *NRAS*. Until June 2017, *ALK*-fusions were  
116 assessed with immunohistochemistry (IHC), and with fluorescence in situ hybridization  
117 (FISH) if positive or inconclusive IHC; *ROS1* was analyzed upon request with FISH.  
118 Thereafter, *ALK*, *ROS1* and *RET* fusions were assessed on RNA using the OncoPrint Solid  
119 Tumor Fusion Panel from Thermo Fisher Scientific. The analyzes was done as a part of the  
120 diagnostic workup process at the Department of Clinical Pathology at Sahlgrenska University  
121 Hospital

122 Demographic data and pathological details were retrieved from the Swedish Lung Cancer  
123 Registry and patient charts. The trial was approved by the Swedish ethical review authority  
124 (Dnr 2019-04771, 2021-04987) and conducted in accordance with the Declaration of Helsinki  
125 and Good Clinical Practice guidelines as defined by the International Conference on  
126 Harmonization.

### 127 ***Variables***

128 Collected patient demographic details included age, sex, Eastern Cooperative Oncology  
129 Group performance status (ECOG PS) and smoking history (current/former/never).

130 Pathological details encompassed substage, histology and mutational status. All patients  
131 were classified according to TNM 8<sup>th</sup> edition. Treatment characteristics included platinum-  
132 doublet chemotherapy regimen, total radiation dose and administration of durvalumab. Time-  
133 to-event data included the date of treatment initiation, the date of disease progression and/or  
134 death and the date of last follow-up.

### 135 **Outcomes**

136 The primary endpoints were overall survival (OS) and progression free survival (PFS). OS  
137 was defined as the time interval between the date of first treatment and the date of death  
138 from any cause. PFS was defined as the time interval between the date of first treatment and  
139 the date of progression or death whichever came first. Patients without disease progression  
140 and were still alive at the time of data collection were censored at last follow-up. OS and  
141 PFS, stratified based on KRAS<sup>MUT</sup> versus KRAS<sup>WT</sup> patients, were analyzed both for the entire  
142 cohort and subgroups receiving or not receiving durvalumab.

### 143 **Statistical Analysis**

144 Descriptive statistics were used to describe the clinical characteristics, which were further  
145 evaluated using univariate analysis. OS and PFS, stratified by KRAS mutational status,  
146 PDL1 and treatment type, were estimated using the Kaplan-Meier method. Log-rank tests  
147 were used to determine significant differences in PFS and OS between groups. Multivariable  
148 Cox regression analysis was conducted to compensate for potential confounders. Median  
149 follow-up time was calculated using the reverse Kaplan-Meier method. Statistical significance  
150 was set at  $p < 0.05$ .

151

## 152 **Results**

### 153 **Patients and tumor characteristics**

154 A total number of 145 patients were included in the study (Figure 1) and their characteristics  
155 are shown in Table 1. The median age at diagnosis was 69 years for both KRAS<sup>WT</sup> patients  
156 and KRAS<sup>MUT</sup> patients. There were more females and a more substantial smoking history in  
157 the KRAS<sup>MUT</sup> population. ECOG PS 0 was more common among KRAS<sup>MUT</sup> (45%) than  
158 KRAS<sup>WT</sup> patients (34%). A greater proportion of KRAS<sup>WT</sup> patients had substage IIIC at  
159 diagnosis. Squamous cell carcinoma was non-existent in the KRAS<sup>MUT</sup> group but common in  
160 the KRAS<sup>WT</sup> group (40%). The majority of KRAS<sup>MUT</sup> patients had an adenocarcinoma (89%).  
161 The most common driver mutations were in KRAS and EGFR. KRAS<sup>G12C</sup> was the most  
162 common KRAS sub-mutation (24, 52%). Median follow-up time was 48 months (95% CI 40-  
163 48).

### 164 **KRAS mutation worsens survival outcomes in stage III NSCLC patients**

165 Among our entire study population (n=145) there was a significantly lower median OS among  
166 KRAS<sup>MUT</sup> patients (25 months) compared with KRAS<sup>WT</sup> (46 months;  $p=0.047$ ). Additionally,  
167 PFS was significantly lower among KRAS<sup>MUT</sup> patients (9 months) compared to 16 months for  
168 KRAS<sup>WT</sup> (16 months;  $p= 0.038$ ) (Figure 2A & B). The results were further controlled for  
169 confounders with multivariate cox regression. We found that KRAS mutation was an  
170 independent prognostic factor for worse OS (HR 1.703, 95% CI 1.074-2.702,  $p = 0.024$ ) and  
171 PFS (HR 1.628, 95% CI 1.081-2.453,  $p = 0.020$ ) (Figure 2C & D).

### 172 **KRAS mutation worsens survival outcomes after cCRT among stage III NSCLC patients**

174 When studying the impact of KRAS mutational status on prognosis following cCRT, we found  
175 significantly worse median OS for KRAS<sup>MUT</sup> (24 months) vs KRAS<sup>WT</sup> (35 months) ( $p = 0.036$ )  
176 (Figure 3A) and, additionally, worse median PFS of 8 vs 13 months ( $p = 0.037$ ), respectively  
177 (Figure 3B).

### 178 **Adjuvant durvalumab significantly improves survival outcomes after cCRT among all** 179 **stage III NSCLC patients**

180 When analyzing the effect of consolidation durvalumab on the full cohort we observed a  
181 significant improved OS and PFS with median OS not reached for the durvalumab group  
182 (mean OS 41 months) and 30 months for the group not receiving durvalumab ( $p = 0.037$ ) and  
183 a median PFS of 19 months vs 10 months, respectively ( $p < 0.001$ )(Supplemental figure 1A  
184 & B).

### 185 **KRAS mutation groups show improved survival outcomes after adjuvant durvalumab**

186 While KRAS<sup>MUT</sup> groups showed worse prognosis (24 months) than wildtype (35 months) after  
187 treatment with cCRT alone ( $p = 0.036$ ) (Figure 3A), addition of durvalumab to the treatment  
188 regimen equalized this difference and KRAS<sup>MUT</sup> patients had no longer any significant  
189 differences in survival outcomes (40 months) from KRAS<sup>WT</sup> (40 months) ( $p = 0.788$ ) (Figure  
190 3C). Similarly, when measuring PFS, while KRAS<sup>MUT</sup> had significantly decreased PFS (8  
191 months) compared to KRAS<sup>WT</sup> (13 months) among patients treated with cCRT alone ( $p =$   
192  $0.037$ ) (Figure 3B), addition of durvalumab to the treatment regimen abolished the  
193 additionally negative prognosis of KRAS<sup>MUT</sup>, and this group had no longer had significant  
194 difference in PFS (19 months) compared to KRAS<sup>WT</sup> (23 months) ( $p = 0.855$ ) (Figure 3D).

### 195 **Adjuvant durvalumab equalizes the negative impact of KRAS mutation on survival** 196 **outcomes after cCRT**

197 To further investigate whether KRAS<sup>MUT</sup> is a subgroup in stage III NSCLC that especially  
198 gains from adjuvant therapy with durvalumab after cCRT, we analyzed the effect of treatment  
199 within each mutational group separately. We observed that treatment with durvalumab had  
200 greater effect on improving OS in KRAS<sup>MUT</sup> group ( $p = 0.063$ ) compared to KRAS<sup>WT</sup> ( $p =$   
201  $0.345$ ) (Supplemental figure 2A, 2C). Both KRAS<sup>WT</sup> ( $p = 0.033$ ) and KRAS<sup>MUT</sup> ( $p = 0.011$ )  
202 groups had a significant benefit of adjuvant durvalumab on PFS (Supplemental figure 2B,  
203 2D).

204

## 205 **Discussion**

206 This study suggests that the previously inferior prognosis of stage III KRAS<sup>MUT</sup> compared to  
207 KRAS<sup>WT</sup> patients treated with cCRT has improved to a similar outcome in both groups due to  
208 the introduction of ICB in the stage III setting. There is no survival difference between the  
209 KRAS populations when durvalumab is administered in contrast to the findings from the era  
210 before ICB. The predictive role of KRAS mutation in relation to outcome in NSCLC is a  
211 controversial topic, particularly for stage III NSCLC where the literature is relatively sparse in  
212 contrast to earlier stages and metastatic stage IV disease. In the latter, treated with  
213 chemotherapy, some studies describe KRAS mutation as a negative prognostic factor for OS  
214 and PFS<sup>13-15</sup> while others demonstrate an equal survival benefit for KRAS<sup>MUT</sup> and KRAS<sup>WT</sup>  
215 patients<sup>16-18</sup>. After the introduction of ICB in the stage IV treatment paradigm new  
216 assessment of the impact of KRAS have been performed but do not consistently point in the  
217 same direction, and the predictive value of KRAS related to ICB treatment remains

218 debatable.<sup>21</sup> The prognostic value of mutated KRAS in stage III patients treated with  
219 concurrent chemoradiotherapy likely indicates an association with an inferior prognosis, as  
220 suggested by previous data where mutated KRAS was independently connected to a  
221 decrease in overall survival in multivariate analysis.<sup>22, 24</sup> Regarding the significance of KRAS  
222 mutations in stage III disease after the introduction of durvalumab, there are a few reported  
223 cohorts. Riudavets et al observed in a study with 323 patients that there was no PFS  
224 difference between patients with a mix of oncogenic drivers compared to wild type patients<sup>25</sup>.  
225 In the group with oncogenic drivers (n=43) the KRAS<sup>G12C</sup> mutated stage III NSCLC patients  
226 had superior PFS compared to other driver genetic alterations (EGFR<sup>del119/ex21</sup>, BRAF<sup>V600E</sup>,  
227 ALK-rearrangements) following consolidative durvalumab treatment but no difference in OS  
228 was seen at a median follow-up time of 18 months. This finding is in line with previous data  
229 where oncogenic drivers usually associated with never smokers are known not to correlate  
230 with response to ICB treatment,<sup>26</sup> at least not to ICB monotherapy.<sup>27</sup> Liu et al observed in a  
231 cohort of 104 patients a shorter PFS for both KRAS<sup>MUT</sup> and non-KRAS driver variations  
232 compared to KRAS<sup>WT</sup> in stage III NSCLC and no difference in OS was found at a median  
233 follow-up time of 23.6 months.<sup>28</sup> In accordance with the current study, Guo et al recognized  
234 KRAS mutated stage III NSCLC as having equal PFS and OS as tumors with no driver  
235 mutations in a cohort of 74 patients.<sup>8</sup> Lastly, in a recent study by Cortiula et al they assessed  
236 outcome in a cohort of 66 patients harbouring KRAS mutations and uncommon genetic  
237 alterations (PIK3CA, TP53, MET, BRAF, HER2, uncommon EGFR) where a beneficial effect  
238 of durvalumab on OS and PFS was demonstrated.<sup>29</sup>

239 Another potential improvement strategy is the addition of KRAS inhibitors in the stage III  
240 treatment schedule. At present sotorasib is the only approved drug, but only in stage IV  
241 NSCLC second line.<sup>30</sup> In theory TKI's could be added to the stage III approach, either up-  
242 front, or as an adjuvant therapy in line with the addition of EGFR and ALK-directed therapy  
243 after surgery.<sup>31, 32</sup>

244 The findings herein are limited by the retrospective design and low sample size, furthermore  
245 the impact of co-mutational partners like KEAP1 or STK11 is not known. Nevertheless, the  
246 results represent a consecutive cohort in a real-world setting. The findings contribute the  
247 knowledge in line with other small cohorts and in conclusion: addition of durvalumab after  
248 cCRT in stage III NSCLC patients has improved outcome for the KRAS<sup>MUT</sup> patients to a  
249 similar level as for the KRAS<sup>WT</sup> group.

250

## 251 **Acknowledgements**

252 We thank members of the Swedish Lung Cancer Registry and the continuous reporting by  
253 Swedish healthcare employees. This work was supported by the Swedish Research Council  
254 (2018-02318 and 2022-00971 to VIS, 2021-03138 to CW), the Swedish Cancer Society (23-  
255 3062 to VIS, 22-0612FE to CW), the Gothenburg Society of Medicine (2019; 19/889991 to  
256 EAE), Assar Gabrielsson Research Foundation (to EAE, CW, and VIS), the Swedish state  
257 under the agreement between the Swedish government and the county councils, the ALF-  
258 agreement (to HF), Department of Oncology, Sahlgrenska University Hospital (to EAE and  
259 AH), the Swedish Society for Medical Research (2018; S18-034 to VIS), the Knut and Alice  
260 Wallenberg Foundation, and the Wallenberg Centre for Molecular and Translational Medicine  
261 (to VIS).

262

263 **Authors' contributions**

264 Conceptualization, E.A.E., A.H. and V.I.S.; Data curation, E.A.E., M.O., D.W., H.F.; Formal  
265 analysis, E.A.E., M.O. and D.W.; Funding acquisition, E.A.E., H.F., S.R., L.M.A., J.N., C.W.,  
266 A.H. and V.I.S.; Methodology, E.A.E.; Resources, H.F.; Supervision, A.H. and V.I.S.;  
267 Visualization, E.A.E., S.I.S., C.W. and V.I.S.; Writing—original draft, E.A.E., S.I.S, A.H. and  
268 V.I.S.; Writing—review & editing, E.A.E., S.I.S., H.F., S.R., L.M.A., J.N., C.W., A.H. and  
269 V.I.S., Project coordination, A.H. and V.I.S. All authors have read and agreed to the  
270 published version of the manuscript.

271

272 **Declaration of potential conflict of interest**

273 The authors declare no conflicts of interest.

274 **Institutional Review Board Statement**

275 Approval from the Swedish Ethical Review Authority (Dnr 2019-04771 and 2021-04987) was  
276 obtained prior to the commencement of the study. No informed consent was required due to  
277 all data presented in a de-identified form according to the Swedish Ethical Review Authority.

278 **Consent for publication**

279 Not applicable. Patient consent statements were not required due to the retrospective nature  
280 of this study. No informed consent was required due to all data presented in a de-identified  
281 form according to the Swedish Ethical Review Authority.

282 **Data Availability Statement**

283 The datasets used and/or analyzed during the current study available from the corresponding  
284 author on reasonable request.

285



## 286 References

- 287 1. Sung H, Ferlay J, Siegel RL, et al. Global Cancer Statistics 2020: GLOBOCAN Estimates of  
288 Incidence and Mortality Worldwide for 36 Cancers in 185 Countries. *CA Cancer J Clin* 2021;71:209-  
289 249.
- 290 2. Lungcancer Nationellt Vårdprogram Version 6.0. Regionala Cancercentrum i Samverkan:  
291 2022-05-10.
- 292 3. Goldstraw P, Chansky K, Crowley J, et al. The IASLC Lung Cancer Staging Project: Proposals for  
293 Revision of the TNM Stage Groupings in the Forthcoming (Eighth) Edition of the TNM Classification  
294 for Lung Cancer. *J Thorac Oncol* 2016;11:39-51.
- 295 4. König D, Savic Prince S, Rothschild SI. Targeted Therapy in Advanced and Metastatic Non-  
296 Small Cell Lung Cancer. An Update on Treatment of the Most Important Actionable Oncogenic Driver  
297 Alterations. *Cancers* 2021;13.
- 298 5. Majem M, Hernandez-Hernandez J, Hernando-Trancho F, et al. Multidisciplinary consensus  
299 statement on the clinical management of patients with stage III non-small cell lung cancer. *Clin Transl*  
300 *Oncol* 2020;22:21-36.
- 301 6. Casal-Mourino A, Ruano-Ravina A, Lorenzo-Gonzalez M, et al. Epidemiology of stage III lung  
302 cancer: frequency, diagnostic characteristics, and survival. *Transl Lung Cancer Res* 2021;10:506-518.
- 303 7. Ferrer I, Zugazagoitia J, Herbertz S, et al. KRAS-Mutant non-small cell lung cancer: From  
304 biology to therapy. *Lung Cancer* 2018;124:53-64.
- 305 8. Guo MZ, Murray JC, Ghanem P, et al. Definitive Chemoradiation and Durvalumab  
306 Consolidation for Locally Advanced, Unresectable KRAS-mutated Non-Small Cell Lung Cancer. *Clin*  
307 *Lung Cancer* 2022;23:620-629.
- 308 9. Mascaux C, Iannino N, Martin B, et al. The role of RAS oncogene in survival of patients with  
309 lung cancer: a systematic review of the literature with meta-analysis. *Br J Cancer* 2005;92:131-139.
- 310 10. Johnson ML, Sima CS, Chaft J, et al. Association of KRAS and EGFR mutations with survival in  
311 patients with advanced lung adenocarcinomas. *Cancer* 2013;119:356-362.
- 312 11. Guan JL, Zhong WZ, An SJ, et al. KRAS mutation in patients with lung cancer: a predictor for  
313 poor prognosis but not for EGFR-TKIs or chemotherapy. *Ann Surg Oncol* 2013;20:1381-1388.
- 314 12. Meng D, Yuan M, Li X, et al. Prognostic value of K-RAS mutations in patients with non-small  
315 cell lung cancer: a systematic review with meta-analysis. *Lung Cancer* 2013;81:1-10.
- 316 13. Marabese M, Ganzinelli M, Garassino MC, et al. KRAS mutations affect prognosis of non-  
317 small-cell lung cancer patients treated with first-line platinum containing chemotherapy. *Oncotarget*  
318 2015;6:34014-34022.
- 319 14. Hames ML, Chen H, Iams W, et al. Correlation between KRAS mutation status and response  
320 to chemotherapy in patients with advanced non-small cell lung cancer. *Lung Cancer* 2016;92:29-34.
- 321 15. Eklund EA, Wiel C, Fagman H, et al. KRAS Mutations Impact Clinical Outcome in Metastatic  
322 Non-Small Cell Lung Cancer. *Cancers (Basel)* 2022;14.
- 323 16. Brady AK, McNeill JD, Judy B, et al. Survival outcome according to KRAS mutation status in  
324 newly diagnosed patients with stage IV non-small cell lung cancer treated with platinum doublet  
325 chemotherapy. *Oncotarget* 2015;6:30287-30294.
- 326 17. Mellema WW, Dingemans AM, Thunnissen E, et al. KRAS mutations in advanced  
327 nonsquamous non-small-cell lung cancer patients treated with first-line platinum-based  
328 chemotherapy have no predictive value. *J Thorac Oncol* 2013;8:1190-1195.
- 329 18. Rodenhuis S, Boerigter L, Top B, et al. Mutational activation of the K-ras oncogene and the  
330 effect of chemotherapy in advanced adenocarcinoma of the lung: a prospective study. *J Clin Oncol*  
331 1997;15:285-291.
- 332 19. Goulding RE, Chenoweth M, Carter GC, et al. KRAS mutation as a prognostic factor and  
333 predictive factor in advanced/metastatic non-small cell lung cancer: A systematic literature review  
334 and meta-analysis. *Cancer Treat Res Commun* 2020;24:100200.

- 335 20. Ma SX, Ma N, Han J, et al. [The efficacy and prognostic factors of immunotherapy in  
336 advanced non-small cell lung cancer patients with different driver gene mutations]. *Zhonghua Yi Xue  
337 Za Zhi* 2022;102:922-929.
- 338 21. Uehara Y, Watanabe K, Hakozaiki T, et al. Efficacy of first-line immune checkpoint inhibitors in  
339 patients with advanced NSCLC with KRAS, MET, FGFR, RET, BRAF, and HER2 alterations. *Thorac  
340 Cancer* 2022;13:1703-1711.
- 341 22. Yagishita S, Horinouchi H, Sunami KS, et al. Impact of KRAS mutation on response and  
342 outcome of patients with stage III non-squamous non-small cell lung cancer. *Cancer science*  
343 2015;106:1402-1407.
- 344 23. Hendriks LE, Kerr KM, Menis J, et al. Non-oncogene-addicted metastatic non-small-cell lung  
345 cancer: ESMO Clinical Practice Guideline for diagnosis, treatment and follow-up. *Annals of oncology :  
346 official journal of the European Society for Medical Oncology* 2023;34:358-376.
- 347 24. Hallqvist A, Enlund F, Andersson C, et al. Mutated KRAS Is an Independent Negative  
348 Prognostic Factor for Survival in NSCLC Stage III Disease Treated with High-Dose Radiotherapy. *Lung  
349 cancer international* 2012;2012:587424.
- 350 25. Riudavets M, Auclin E, Mosteiro M, et al. Durvalumab consolidation in patients with  
351 unresectable stage III non-small cell lung cancer with driver genomic alterations. *Eur J Cancer*  
352 2022;167:142-148.
- 353 26. Mazieres J, Drilon A, Lusque A, et al. Immune checkpoint inhibitors for patients with  
354 advanced lung cancer and oncogenic driver alterations: results from the IMMUNOTARGET registry.  
355 *Ann Oncol* 2019;30:1321-1328.
- 356 27. Hirsch FR, Scagliotti GV, Mulshine JL, et al. Lung cancer: current therapies and new targeted  
357 treatments. *Lancet* 2017;389:299-311.
- 358 28. Liu Y, Zhang Z, Rinsurongkawong W, et al. Association of Driver Oncogene Variations With  
359 Outcomes in Patients With Locally Advanced Non-Small Cell Lung Cancer Treated With  
360 Chemoradiation and Consolidative Durvalumab. *JAMA Netw Open* 2022;5:e2215589.
- 361 29. Cortiula F, De Ruyscher D, Steens M, et al. Adjuvant durvalumab after concurrent  
362 chemoradiotherapy for patients with unresectable stage III NSCLC harbouring uncommon genomic  
363 alterations. *Eur J Cancer* 2023;184:172-178.
- 364 30. Skoulidis F, Li BT, Dy GK, et al. Sotorasib for Lung Cancers with KRAS p.G12C Mutation. *The  
365 New England journal of medicine* 2021;384:2371-2381.
- 366 31. Tsuboi M, Herbst RS, John T, et al. Overall Survival with Osimertinib in Resected EGFR-  
367 Mutated NSCLC. *The New England journal of medicine* 2023;389:137-147.
- 368 32. Solomon BJ, Ahn JS, Dziadziuszko R, et al. LBA2 ALINA: Efficacy and safety of adjuvant  
369 alectinib versus chemotherapy in patients with early-stage ALK+ non-small cell lung cancer (NSCLC).  
370 *Annals of Oncology* 2023;34:S1295-S1296 %@ 0923-7534.

371

372

373 **List of Supplemental material**

374 Supplemental Figure 1. PDF

375 Supplemental Figure 2. PDF

376

377

378 **Figures legend**

379

380 **Figure 1 Patient selection**

381 Flow chart showing patient selection for the study.

382

383 NSCLC: Non-small cell lung cancer; CRT: chemoradiotherapy;  $KRAS^{WT}$ :  $KRAS$  wildtype;  
384  $KRAS^{MUT}$ :  $KRAS$  mutated

385

386

387 **Table 1** Characteristics of the total cohort as well as stratified by  $KRAS^{WT}$  and  $KRAS^{MUT}$ .  
388 Data are presented as n (%).

389

390 cCRT: concurrent chemoradiotherapy;  $KRAS^{WT}$ :  $KRAS$  wildtype;  $KRAS^{MUT}$ :  $KRAS$  mutated;  
391 ECOG PS, Eastern Cooperative Oncology Group Performance Status; NSCLC NOS: non-  
392 small cell lung cancer not otherwise specified; Gy: Gray

393

394

395 **Figure 2  $KRAS$  mutation worsens survival outcomes in stage III NSCLC patients**

396 Kaplan-Meier estimates comparing overall survival (A) and progression free survival (B)  
397 stratified on  $KRAS$  status for all patients in the cohort. Forest plot of multivariate COX  
398 regression analysis for overall survival (C) and progression free survival (D).

399

400 OS: overall survival; PFS: progression free survival; NR Not reached, cCRT: concurrent  
401 chemoradiotherapy; HR: Hazard Ratio; CI: Confidence of interval;  $KRAS^{WT}$ :  $KRAS$  wildtype;  
402  $KRAS^{MUT}$ :  $KRAS$  mutated

403

404

405 **Figure 3 Adjuvant durvalumab equalizes the negative impact of  $KRAS$  mutation on  
406 survival outcomes after cCRT**

407 Kaplan-Meier estimates comparing overall survival (A) and progression free survival (B)  
408 stratified on  $KRAS$  status for all patients receiving cCRT. Kaplan-Meier estimates comparing

409 overall survival (C) and progression free survival (D) stratified on KRAS status for all  
410 patients receiving cCRT and adjuvant durvalumab.

411

412 OS: overall survival; PFS: progression free survival; NR Not reached, cCRT: concurrent  
413 chemoradiotherapy;  $KRAS^{WT}$ :  $KRAS$  wildtype;  $KRAS^{MUT}$ :  $KRAS$  mutated

414

415

416 **Supplemental Figure 1 Adjuvant durvalumab significantly improves survival outcomes**  
417 **after cCRT among all stage III NSCLC patients**

418 Kaplan-Meier estimates comparing overall survival (A) and progression free survival (B)  
419 stratified on cCRT +/- adjuvant durvalumab.

420

421 OS: overall survival; PFS: progression free survival; cCRT: concurrent chemoradiotherapy

422

423

424

425 **Supplemental Figure 2 Improved survival outcomes after adjuvant durvalumab and**  
426 **cCRT among stage III NSCLC patients harboring KRAS mutations**

427 Kaplan-Meier estimates comparing overall survival (A) and progression free survival (B)  
428 stratified on cCRT +/- adjuvant durvalumab for all KRAS wild type patients. Kaplan-Meier  
429 estimates comparing overall survival (C) and progression free survival (D) Kaplan-Meier  
430 estimates comparing overall survival (A) and progression free survival (B) stratified on cCRT  
431 +/- adjuvant durvalumab for all KRAS mutated patients.

432

433 OS: overall survival; PFS: progression free survival; NR Not reached, cCRT: concurrent  
434 chemoradiotherapy;  $KRAS^{WT}$ :  $KRAS$  wildtype;  $KRAS^{MUT}$ :  $KRAS$  mutated

435

436

437

438

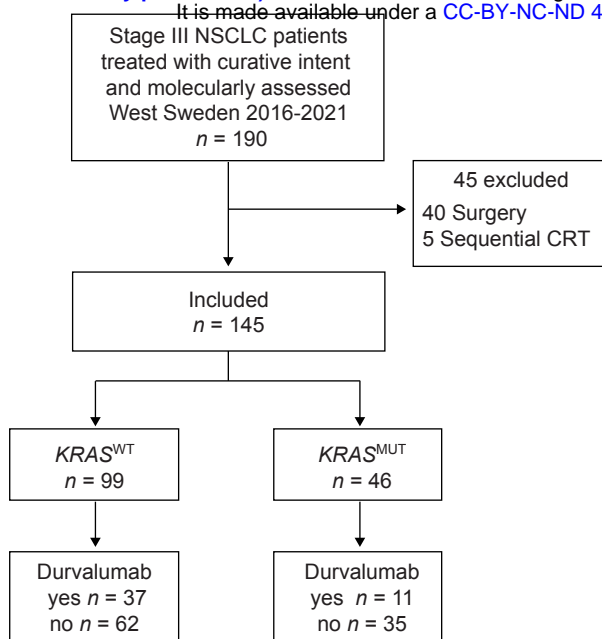
439

440

441

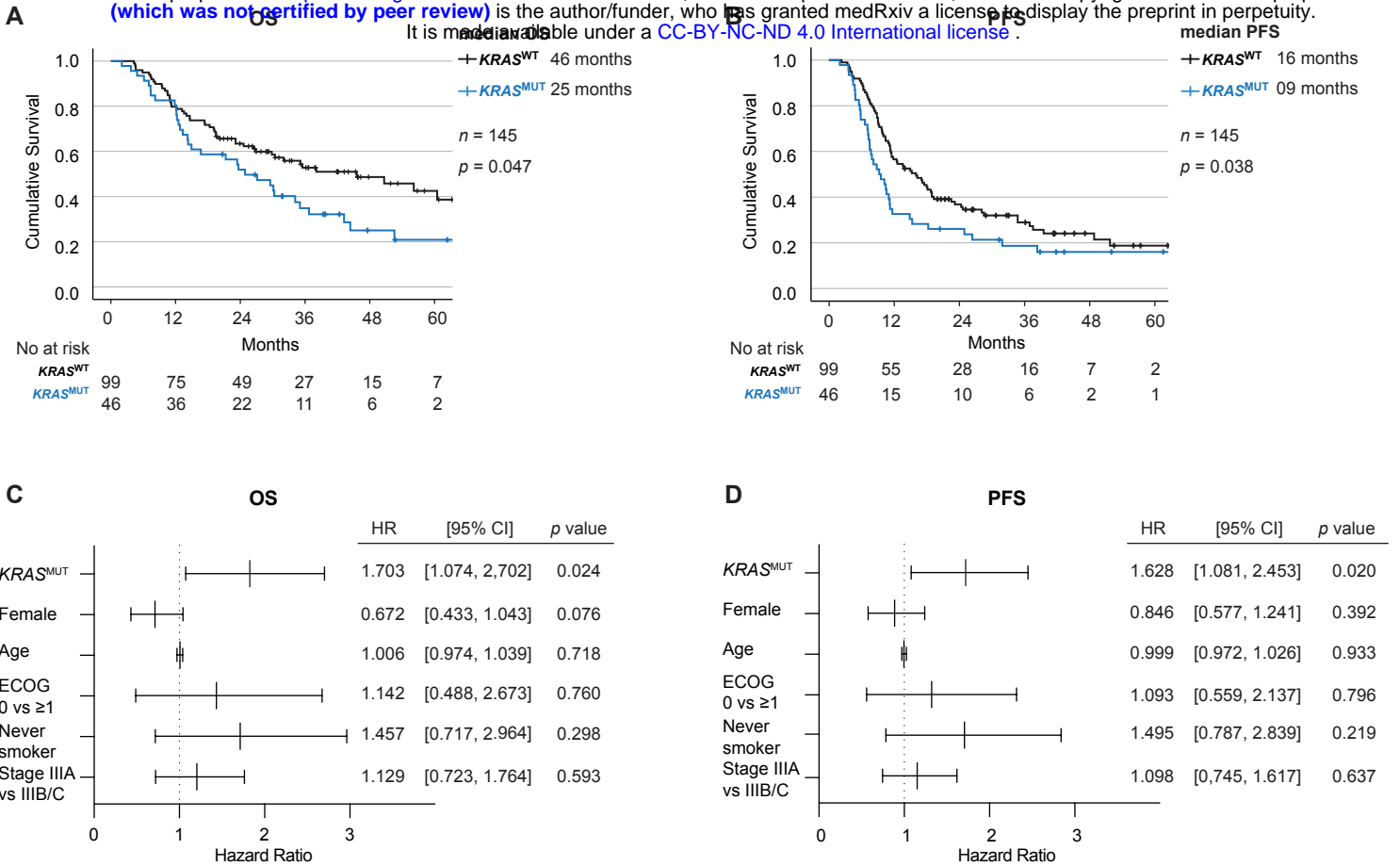
# Eklund et al. Figure 1

medRxiv preprint doi: <https://doi.org/10.1101/2024.03.21.24304669>; this version posted March 22, 2024. The copyright holder for this preprint (which was not certified by peer review) is the author/funder, who has granted medRxiv a license to display the preprint in perpetuity. It is made available under a [CC-BY-NC-ND 4.0 International license](https://creativecommons.org/licenses/by-nc-nd/4.0/).



# Eklund et al. Figure 2

medRxiv preprint doi: <https://doi.org/10.1101/2024.03.21.24304669>; this version posted March 22, 2024. The copyright holder for this preprint (which was not certified by peer review) is the author/funder, who has granted medRxiv a license to display the preprint in perpetuity. It is made available under a [CC-BY-NC-ND 4.0 International license](https://creativecommons.org/licenses/by-nc-nd/4.0/).



# Eklund et al. Figure 3

medRxiv preprint doi: <https://doi.org/10.1101/2024.03.21.24304669>; this version posted March 22, 2024. The copyright holder for this preprint (which was not certified by peer review) is the author/funder, who has granted medRxiv a license to display the preprint in perpetuity. It is made available under a [CC-BY-NC-ND 4.0 International license](https://creativecommons.org/licenses/by-nc/4.0/).

