

Title: The effect of non-genetic determinants of human milk oligosaccharide profiles in milk of Ugandan mothers

Running Title: Non-genetic maternal and infant factors and HMO profiles in Ugandan mothers

Authors: Tonny Jimmy Owalla¹, Victor Irungu Mwangi, Sara Moukarzel^{3, 4}, Emmanuel Okurut¹, Chloe Yonemitsu³, Lars Bode^{3, 4}, Thomas G. Egwang¹

Author affiliations: ¹Uganda Human Milk and Lactation Center, Med Biotech Laboratories, Kampala, Uganda; ²Programa de Pós-Graduação em Medicina Tropical, Universidade do Estado do Amazonas (UAE), Manaus, AM, Brazil; ³Department of Pediatrics, Division of Neonatology, University of California San Diego, La Jolla, California, United States of America; ⁴Larsson-Rosenquist Foundation Mother-Milk-Infant Center of Research Excellence (MOMI CORE), University of California San Diego, La Jolla, California, United States of America.

Abstract

Background: Human milk oligosaccharides (HMOs) protect against infection and promote growth and cognitive development in breastfeeding children. Non-genetic factors which influence HMO composition in breastfeeding mothers in rural Africa have not been investigated.

Objective: We undertook a cross-sectional study to determine the association between HMO profiles and non-genetic maternal factors and children's sex in Ugandan mother-children pairs.

Method: Human milk was collected from 127 breastfeeding mothers by manual expression. HMO analysis was by high performance liquid chromatography. The proportion of each HMO per total HMO concentration was calculated. Spearman's correlation and Mann-Whitney U test

NOTE: This preprint reports new research that has not been certified by peer review and should not be used to guide clinical practice.

were used to assess the relationship between individual HMOs and maternal factors and infant sex.

Result: Nineteen HMOs were assayed. The prevalence of secretor and non-secretor status, based on the proportion of mothers with high milk concentrations of 2'FL and LNFP 1, was 80.3 % and 19.7 %, respectively. In secretor mothers, 2'FL, DFLac and LNFP I constituted > 57 % while in non-secretor mothers LNT and LNFPII constituted 46.9 % of the measured total HMOs. The median 3'SL concentration in milk of all mothers of male children was significantly higher than that in all mothers of female children. The median DFLac concentration in all mothers was significantly higher in multiparous mothers compared to primiparous mothers. Higher FDSLNH and lower LNH concentrations were observed in overweight secretor and non-secretor mothers, respectively. Median concentrations of LNFP I and DSLNT were significantly higher in all mothers < 18 years old compared all mothers > 18 years old. Concentrations of specific HMOs increased, decreased, or remained unchanged with increasing lactation duration in secretor and non-secretor mothers.

Conclusions: Specific HMOs were associated with infant sex and maternal age, parity and post-partum BMI in Ugandan mothers but were different from those reported in other populations.

Key words: Human milk oligosaccharides, breastfeeding mothers and children, non-genetic factors, secretor mothers

Introduction

Human milk oligosaccharides (HMOs), comprises of over 150 non-digestible unconjugated glycans and constitutes the third most abundant solid component in human milk-besides lipids and fats (1). HMOs play a critical role in protecting infants against infection through modulation of gut microbiota and the immune system (2-6). These HMO effects are

composition- and structure-specific (3, 6). The HMOs basic structure consist of a lactose core which is modified by glycosyltransferases to form 4 main types of HMOs, namely, non-fucosylated neutral HMOs containing N-acetylglucosamine at the terminal end, neutral fucosylated HMO containing fucose at the terminal position, sialylated HMOs containing sialic acid, and HMOs containing both fucose and sialic acid (1,7,8). HMO composition and concentration are influenced by maternal genetics. Breastfeeding mothers with an active gene encoding the α (1,2)-fucosyltransferase (FUT2) enzyme have milk with characteristically high levels of 2'-FL and Lacto-N-fucopentaose I (LNFPI) and are designated secretor mothers (6). Women who do not express FUT2 have milk lacking these HMOs and are designated non-secretors. The prevalence of secretor mothers vary by geographic from a high prevalence in South America to the lowest prevalence in African countries ranging from 63% in South Africa to 75 % in Malawi and Kenya (9).

There is evidence that environmental, non-genetic maternal and infants' factors are associated with differential HMO concentration in Asian, European, Canadian and American populations (9,10, 11). However, there is a dearth of information about the non-genetic factors that influence HMO composition and concentrations in breastfeeding mothers in African rural settings. Our study investigated for the first time non-genetic maternal and infant factors that influence HMO composition and concentration in Ugandan breastfeeding mother-child pairs in rural northeastern Uganda.

Methods

Study population and design

The study population was part of a cohort who were participating in a prospective longitudinal study investigating the effectiveness of a malaria vector control intervention in Abwokodia Parish, Katakwi district in Northeastern Uganda. Details of the study site have been reported

elsewhere (12). The breast milk sub-study was a clinic based cross-sectional survey of breastfeeding mother-infant pairs. All breastfeeding infants less than two years old and their respective breastfeeding mothers were considered eligible for the study upon consent by one or both parents as applicable. The breastfeeding infants were part of 400 children under 5 years old who were being followed up for malaria prevalence and incidence. All the identified 127 mother-infant pairs were included in the study (Supplementary Figure 1).

Participants recruitment and anthropometric measurements

The study was conducted in March 2018. Mothers of all breastfeeding infants participating in the longitudinal study were mobilized by a social scientist with the help of village health teams (VHTs). Mother-infant pairs visited the study clinic at St. Anne Health Center III, Katakwi district for screening and enrolment. The objectives of the study were explained to the mothers and informed consent obtained. Human milk samples were collected from consenting mothers. The demographic characteristics (infant sex and maternal age, parity, BMI, lactation duration), and other anthropometric data for mother-child pairs were recorded on a standardized questionnaire.

Breast milk sampling and treatment

A single 5-mL human milk sample was collected from each of one hundred and twenty-seven lactating mothers using manual expression with the help of a senior midwife who is also an experienced lactation nurse. Milk samples were collected into sterile 50-mL Falcon tubes and immediately frozen in dry ice (approximately -70°C). Milk samples were transported in dry ice to Med Biotech Laboratories headquarter in Kampala before being air-freighted in dry ice to the University of California San Diego for HMO high performance liquid chromatography (HPLC) analysis.

HMO Extraction, Analysis, and Secretor Status Determination

HMO (the 19 well characterized and most abundant) analysis was performed at the University of California, San Diego, as previously described (13), by using HPLC after fluorescent derivatization. Raffinose was added to each milk sample as an internal standard for absolute quantification. The total concentration of HMOs was calculated as the sum of the specific oligosaccharides detected. The proportion of each HMO per total HMO concentration was calculated. Maternal phenotypic secretor status was determined by the relative abundance (secretor) or near absence (non-secretor) of the (α 1-2) linked Fuc (2'(-fucosyllactose (2'FL) in the respective milk samples.

Statistical Analyses

Statistical analyses were performed using GraphPad Prism version 9.0.2 and STATA version 15. The Shapiro Wilk test were used to evaluate the variables' distribution including the oligosaccharide concentrations. Normally distributed data were compared using Student's t-test, the t-test for paired samples or one-way analysis of variance for groups, while non-parametric comparisons were made using the Mann-Whitney U test for paired samples or Kruskal-Wallis test for groups. The one-way ANOVA and Kruskal-Wallis tests were followed up by the appropriate post hoc multiple comparison test. Chi-square or Fisher exact tests were also performed to compare categorical variables. Exploratory analysis were performed to compare median oligosaccharide concentrations according to infant sex, maternal age (years), current BMI (kg/m^2), maternal parity (primiparous/multiparous), and duration of lactation (weeks). The results were presented as box-plot graphs. Correlations of the oligosaccharide concentrations with other infant or maternal variables were assessed using the Spearman rank test with 95% confidence interval. Significance was defined as *P* values of less than .05.

Ethical consideration

The Uganda National Council for Science and Technology and the Research Ethics Committee of the Vector Division, Ministry of Health, approved the original HD4MC study. All mothers who donated milk samples and brought infants to the malaria clinic signed or thumb-printed an informed consent form.

Results

Characteristics of the Study Population

The study population comprised of 127 mothers and their breastfeeding children in Katakwi District in northeastern Uganda. The mothers had a mean age of 26.6 years (range 15-46) with a post-partum mean BMI of 23.3 kg/m² (**Table 1**). Most of the mothers had had several children (> 78 %) and had breastfed for a mean of 41.3 weeks (range 3-103). The children had a mean age of 46.5 weeks (range 3-110) and 52.6 % were females. The mean birth weight was 3.1 kg (range 1-4.8). The mean children's heights/lengths and weights at the time of sampling were 70.5 cm (range 50-98) and 8.80 kg (5-16), respectively. The mean mid-upper arm circumference for the children was 14.8 cm (range 12.1-18.7). The mean hemoglobin level in children was 10.9 g/dL (range 8-11.5). The children had a mean temperature of 36.5 °C (range 35.4-39.4) and the majority (97.7 %) had normal temperature at the time of sampling.

HMO profiles and prevalence of secretor and non-secretor mothers

Mothers with an active secretor (Se) gene that encodes α (1,2)-fucosyltransferase are classified as “secretors” and their milk contains significantly higher concentrations of α (1,2)-fucosylated HMOs such as 2'FL, DFLac and LNFP I (6). The prevalence of Ugandan secretor and non-secretor mothers, based on the proportion of mothers with relatively high milk concentrations of 2'FL and LNFP I was 80.3 and 19.7 %, respectively (Table 1). In secretor mothers, 2'FL, DFLac and LNFP I constituted > 57 % of the measured total HMOs (**Supplementary Table 1**). By contrast, 2'FL, DFLac and LNFP I constituted only 1.9 % of the measured HMOs in

non-secretor mothers in whom LNFP II and LNT alone constituted 46.9 % of the measured total HMOs.

Infant sex is associated with differential concentrations of 3'SL in all mothers

The median 3'SL concentration in the milk of all mothers combined of male infants was significantly higher than those in milk of all mothers combined of female infants (701.8 (454.5-1059.8) nmol/mL versus 516.6 (309.8-853.8) nmol/mL; $P = 0.035$) by the Mann-Whitney U test (**Supplementary Table 2**).

Lactation duration is associated with differential HMO composition

Breastfeeding for 24 months or more is common in the study population and it was of interest to investigate HMO profiles beyond 12 months post-partum. We used Spearman's correlation analysis to assess the relationship between HMO concentrations and lactation duration defined as the time elapsed from the time of first breastfeeding at birth to the time post-partum of breast milk sampling. Five and 10 out of the 19 HMOs had a significant positive and negative correlation, respectively, with lactation duration depending on mothers' secretor status (**Supplementary Table 3**). The results of Mann-Whitney U tests comparing median HMO concentrations between mothers at different lactation durations closely paralleled those of correlation analyses. The concentrations of 3FL, 3'SL and DFLac were significantly higher in all mothers combined at > 6 months lactation compared to ≤ 6 months lactation (**Table 2**). By contrast, the concentrations of LNnT, 6'SL, LSTc, LNH, FLNH, DFLNH, and DSLNH were significantly lower in all mothers at > 6 months lactation duration. When the mothers' secretor status was considered, LNFPI, LNnT, 6'SL, LSTc, FLNH, DFLNH, and DSLNH concentrations were significantly lower and 3 FL, 3'SL and DFLac concentrations were significantly higher in secretor mothers at > 6 months lactation (**Figure 1**). Similar HMO profiles were observed in non-secretor mothers but LNH and FDSLNH concentrations were

significantly lower while LNFP I, FLNH and LNnT concentrations were unchanged in mothers at > 6 months lactation (**Supplementary Figure 2**). To see if the dynamics of HMO composition and concentrations persisted beyond 12 months (52 weeks), we compared HMO concentrations in groups of all mothers combined at lactation durations of ≤ 12 (N=21), 12-24 (N=14), 25-48 (N=40), 49-72 (36) and > 73 (N=16) weeks, respectively. The same HMOs increased, decreased, or remained unchanged, respectively, throughout lactation beyond 52 weeks (**Figure 2**). It was not possible to assess HMO profiles in similar groups of secretor and non-secretor mothers due to the small sample sizes.

Maternal Age is associated with differential concentrations of 2'FL, DFLac and DSLNT

2'FL and DFLac concentrations had a significant positive correlation with maternal age only in non-secretor mothers (**Supplementary Table 4**). LNnT had a significant negative correlation with maternal age in all mothers and secretor mothers but not non-secretor mothers. Interestingly, DSLNT concentrations had a significant negative correlation with maternal age in secretor mothers but a positive correlation in non-secretor mothers. Median concentrations of LNFP I and DSLNT were significantly higher in all mothers < 18 years old (N=4) than in all mothers > 18 years old (N= 123) by Mann-Whitney U test (**Supplementary Table 5**). It was not possible to compare median HMO concentrations between the two age groups by secretor status and lactation duration because of the small sample size for the younger mothers.

Maternal Parity is associated with differential concentrations of DFLac in all mothers

To confirm if maternal parity affected HMO concentrations, we defined parity as primiparous mothers (N= 27) who have had one child versus multiparous mothers (N= 100) who have had more than one child. The median DFLac concentration was significantly higher in multiparous all combined mothers compared to primiparous all combined mothers by the Mann-Whitney U test (**Supplementary Table 6**). It was not possible to compare median HMO concentrations

between both parity groups by secretor status and lactation stage because of the small sample size for primiparous mothers.

Maternal BMI is associated with differential concentrations of FDSLNH and LNH

FDSLNH and LNH concentrations positively and negatively correlated with increasing maternal postpartum BMI at the time of sampling in secretor and non-secretor mothers, respectively (**Supplementary Table 7**). None of the other HMOs had any correlation with maternal BMI. When secretor mothers were classified into normal weight (BMI= 18.5-24.9, N= 81) and overweight (BMI = ≥ 25 , N= 19) categories, median FDSLNH and LNH concentrations were significantly higher and lower, respectively, in overweight mothers by comparison with normal weight mothers by the Mann-Whitney U test in secretor and non-secretor mothers, respectively (**Supplementary Tables 8 and 9**).

Discussion

Non-genetic factors including infant sex and lactation duration which influence HMO composition have been investigated in breastfeeding mothers from Brazil, China, Europe, and USA (9,11,15,16,17,19, 20,21,22). The majority of studies of the effect of lactation duration on HMO composition investigated limited lactation durations of 3-6 months; only one longitudinal study followed up breastfeeding mothers for 24 months (35). Despite the burgeoning literature on HMOs in breastfeeding mothers in African countries (9,33,35,36, 37, 38), there is a knowledge gap about non-genetic factors which influence HMO composition in mothers in rural and urban African settings. The aim of this study was to determine HMO profiles in 127 rural Ugandan mothers and assess their relationship with various maternal and infant factors. HMO profiles in Ugandan mothers demonstrated a high prevalence of secretors (80.3 %) with 2'FL and LNFP I predominating in secretors while LNFP II and LNT

predominated in non-secretors (prevalence 19.7 %). Lower secretor prevalence has been reported in mothers from some African populations (9).

Infant sex and maternal parity, age, post-partum BMI and lactation duration were associated with specific HMO profiles in Ugandan mothers. First, higher concentrations of 3'SL were observed in mothers of male but not female children in this study. By contrast, in Brazilian and Chinese mothers significantly higher concentrations of LNT were associated with having male infants (15, 16). The fact that infant/child male sex is significantly associated with high concentrations of LNT and 3'SL in different studies involving different ethnicities suggests important differential roles for these HMOs in the health and development of male and female infants in the respective populations. Second, DFLac was significantly higher in milk of multiparous Ugandan mothers by comparison with primiparous mothers. Maternal parity has been associated with increased or decreased concentrations of LNT, LNnT and 3FL in European, Chinese, and Brazilian mothers (11, 15, 17). Third, LNFPI and DSLNT concentrations were significantly higher in Ugandan mothers under 18 years old by comparison with older mothers. In a single study involving a limited number of mothers of different ethnicities, maternal age was associated with increased or increased concentrations of specific HMOs which were different from those identified in this study (9). Finally, postpartum BMI was associated with higher and lower concentrations of FDSLNH and LNH, respectively, in Ugandan mothers. The relationship between pre-partum BMI and HMO composition is controversial (9, 15, 18, 19, 20,21,22). In this population of Ugandan mothers, the above maternal and infant factors were associated with specific HMOs which are different from those reported in other studies (9, 11,15,16,17,18-22); this observation underscores the importance of population context-specific HMO data. The mechanisms underlying the associations between specific HMOs with maternal factors and infant sex are not known (10).

Lactation duration was an important non-genetic maternal determinant of HMO profiles in Ugandan mothers. The fact that concentrations of the same HMOs decreased, increased, or remained unchanged with increasing lactation duration beyond 52 weeks in Ugandan mothers probably highlights their importance in the survival and development of breastfeeding infants and young children especially in resource-poor rural and urban Uganda where infant morbidity, mortality and malnutrition remains disproportionately high (23, 24, 25). In this study population, two HMOs, 2'FL and LNFPI, are associated with protection against malaria in breastfeeding children (Mwangi et al under review). In prior literature, 2'FL has been implicated in multiple functions including protection against infections, reduction of morbidity and use of antipyretics and antibiotics (26, 27); stimulation of brain development (28, 29); weight gain (19); and improvement of cognitive functions (30). 2'FL also promotes the selective growth of bifidobacteria and therefore probably influences the composition of gut microbiota (31) and microbiota-induced immune functions (32) in breastfeeding infants. 2'FL and 3'FL, which also increased during lactation in Ugandan mothers, have been implicated in the prevention of mortality in uninfected Zambian infants born to HIV-positive mothers (33). The exact mechanisms by which HMOs reduce morbidity, prevent mortality and promote growth and development are unknown but could be associated with their reported anti-infective activities and effects on immunity (31,32, 34). The mechanisms underlying differences in HMO profiles during lactation remain speculative (10). There is need for research on the regulation of the enzymes involved in HMO biosynthesis during lactation in Africa, a region fraught with the constant threat of malnutrition and food insecurity which affect HMO concentrations (39).

This study has several limitations. First, cause-effect relationships between non-genetic maternal and infant factors cannot be inferred due to the cross-sectional nature of this study. Second, due to the small sample sizes, we were unable to adjust for multiple testing in statistical

analyses nor make direct comparisons between secretor and non-secretor mothers. This limitation will be addressed in a planned powered longitudinal study of breastfeeding mother-child pairs. Third, milk samples were collected at a single time point, rather than longitudinally over several time points during lactation to monitor postpartum changes in HMO profiles over time. However, this limitation is mitigated by the fact that our cross-sectional milk sampling from mothers representing a wide range of lactation stages produced HMO profiles which closely mirrored those reported by a longitudinal study of US mothers followed over 24 months post-partum (35). Finally, the HMO profiles in mothers from north-eastern Uganda, who are predominantly of the Nilo-Hamitic Atesot tribe, may not be generalizable to mothers in other Ugandan regions with different environments, diets and tribes.

In conclusion, our studies of non-genetic determinants of HMO composition in rural Ugandan mothers identified specific HMOs which were associated with infant sex and maternal age, parity and BMI but were different from those reported in other populations, thereby underscoring the importance of generating population context-specific HMO data. Our study revealed HMO profiles in Ugandan mothers with prolonged lactation durations beyond 52 weeks which were remarkably similar to published HMO profiles from mothers with shorter lactation durations. The conservation of these HMO profiles in different populations, regardless of environments, diets and ethnicities, probably underscores their importance in infant/child growth and survival throughout lactation.

Acknowledgments: We are very grateful to the mother-infant pairs for their generosity and participation. We would like to thank the clinical and laboratory staff of Med Biotech Laboratories at St Anne HC III Usuk, Katakwi, Uganda.

Funding: Thomas Egwang received funding from the Global Innovation Fund and Grand Challenges Canada. Lars Bode is UC San Diego Chair of Collaborative Human Milk Research

endowed by the Family Larsson-Rosenquist Foundation (FLRF), Switzerland. The funders played no role in the study design, data collection and analysis nor in the preparation of the manuscript and decision to publish this paper.

Conflict of interest and funding disclosure: The authors have no conflicts of interest to disclose.

Authors' contributions to manuscript: TJO and EO conducted the study including sample collection; TJO drafted the manuscript; SM and CY performed the HMO laboratory analysis; VIM performed statistical analysis; TGE and LB conceived and directed the study. All authors read and approved the final manuscript.

Corresponding author: Tonny Jimmy Owalla, P.O. Box 9364 Kampala-Uganda,
+12068543851, owallatonny@gmail.com

TJO current address: Department of Global Health, University of Washington, Seattle, WA, USA.

Data Sharing: Data described in the manuscript, code book, and analytic code will be made available upon request from TGE.

Abbreviations:

2'FL, 2'fucosyllactose

3 FL, 3-fucosyllatose

3'SL, 3'sialyllactose

6'SL, 6'sialyllactose

BMI, body mass index

DFLac, difucosyllactose

DFLNH, Difucosyllacto-N-hexaose

DFLNT, Difucosyllacto-N-tetraose

DSLNH, disialyllacto-N-tetraose

DSLNT, Disialyllacto-N-tetraose

FDSLNH, Fucosyldisialyllacto-N-hexaose

FLNH, Fucosyllacto-N-hexaose

Fuc HMO, HMO-bound fucose

FUT2, α 1,2-fucosyltransferase gene

HMOs, human milk oligosaccharides

LNFPI, lacto-N-fucopentaose I

LNFPII, lacto-N-fucopentaose II

LNFPIII, lacto-N-fucopentaose III

LNH, Lacto-N-hexaose

LNT, Lacto-N-neotetraose

LNT, Lacto-N-tetraose

LSTb, Sialyllacto-N-tetraose b

LSTc, sialyllacto-N-tetraose c

Sia HMO, HMO-bound sialic acid

References

1. Bode L. The functional biology of human milk oligosaccharides. *Early Hum Dev.* 2015;91(11):619-622. doi: 10.1016/j.earlhumdev.2015.09.001
2. Triantis V, Bode L and van Neerven RJJ (2018) Immunological Effects of Human Milk Oligosaccharides. *Front. Pediatr.* 6:190. doi: 10.3389/fped.2018.00190
3. Ayechu-Muruzabal V, van Stigt AH, Mank M, et al. Diversity of Human Milk Oligosaccharides and Effects on Early Life Immune Development. *Front Pediatr.* 2018; 6:239. Published 2018 Sep 10. doi:10.3389/fped.2018.00239
4. Ray C, Kerketta JA, Rao S, et al. Human Milk Oligosaccharides: The Journey Ahead. *Int J Pediatr.* 2019; 2019:2390240. Published 2019 Aug 4. doi:10.1155/2019/2390240
5. Gao, X., Wu, D., Wen, Y., Gao, L., Liu, D., Zhong, R., Yang, C., Zhao, C., Antiviral effects of human milk oligosaccharides: A review, *International Dairy Journal*, <https://doi.org/10.1016/j.idairyj.2020.104784>
6. Bode L, Jantscher-Krenn E. Structure-function relationships of human milk oligosaccharides. *Adv Nutr.* 2012;3(3):383S-91S. Published 2012 May 1. doi:10.3945/an.111.001404
7. Urashima T, Asakuma S, Leo F, Fukuda K, Messer M, Oftedal OT. The predominance of type I oligosaccharides is a feature specific to human breast milk. *Adv Nutr.* 2012;3(3):473S-82S. Published 2012 May 1. doi:10.3945/an.111.001412
8. Hegar B, Wibowo Y, Basrowi RW, et al. The Role of Two Human Milk Oligosaccharides, 2'-Fucosyllactose and Lacto-N-Neotetraose, in Infant Nutrition. *Pediatr Gastroenterol Hepatol Nutr.* 2019;22(4):330-340. doi:10.5223/pghn.2019.22.4.330

9. McGuire MK, Meehan CL, McGuire MA, et al. What's normal? Oligosaccharide concentrations and profiles in milk produced by healthy women vary geographically. *Am J Clin Nutr*. 2017;105(5):1086-1100. doi:10.3945/ajcn.116.139980
10. Han SM, Derraik JGB, Binia A, Sprenger N, Vickers MH, Cutfield WS. Maternal and Infant Factors Influencing Human Milk Oligosaccharide Composition: Beyond Maternal Genetics. *J Nutr*. 2021;151(6):1383-1393. doi:10.1093/jn/nxab028
11. Azad MB, Robertson B, Atakora F, et al. Human Milk Oligosaccharide Concentrations Are Associated with Multiple Fixed and Modifiable Maternal Characteristics, Environmental Factors, and Feeding Practices. *J Nutr*. 2018;148(11):1733-1742. doi:10.1093/jn/nxy175
12. Owalla TJ, Okurut E, Apungia G, et al. Using the Ultrasensitive Alere *Plasmodium falciparum* Malaria Ag HRP-2™ Rapid Diagnostic Test in the Field and Clinic in Northeastern Uganda. *Am J Trop Med Hyg*. 2020;103(2):778-784. doi:10.4269/ajtmh.19-0653
13. Berger PK, Hampson HE, Schmidt KA, Alderete TL, Furst A, Yonemitsu C, Demerath E, Goran MI, Fields DA, Bode L. Stability of Human-Milk Oligosaccharide Concentrations Over 1 Week of Lactation and Over 6 Hours Following a Standard Meal. *J Nutr*. 2023 Jan 14;152(12):2727-2733. doi: 10.1093/jn/nxac214. PMID: 36111739; PMCID: PMC9839992.
14. Ren X, Yan J, Bi Y, et al. Human Milk Oligosaccharides Are Associated with Lactation Stage and Lewis Phenotype in a Chinese Population. *Nutrients*. 2023;15(6):1408. Published 2023 Mar 15. doi:10.3390/nu15061408
15. Tonon KM, Miranda A, Abrão ACFV, de Moraes MB, Moraes TB. Validation and application of a method for the simultaneous absolute quantification of 16 neutral and acidic human milk oligosaccharides by graphitized carbon liquid chromatography -

- electrospray ionization - mass spectrometry. *Food Chem.* 2019; 274:691-697. doi: 10.1016/j.foodchem.2018.09.036
16. Wang M, Zhao Z, Zhao A, et al. Neutral Human Milk Oligosaccharides Are Associated with Multiple Fixed and Modifiable Maternal and Infant Characteristics. *Nutrients.* 2020;12(3):826. Published 2020 Mar 20. doi:10.3390/nu12030826
17. Samuel TM, Binia A, de Castro CA, et al. Impact of maternal characteristics on human milk oligosaccharide composition over the first 4 months of lactation in a cohort of healthy European mothers. *Sci Rep.* 2019;9(1):11767. Published 2019 Aug 13. doi:10.1038/s41598-019-48337-4
18. Lagström, H., Rautava, S., Ollila, H., Kaljonen, A., Turta, O., Mäkelä, J., Yonemitsu, C., Gupta, J. and Bode, L., 2020. Associations between human milk oligosaccharides and growth in infancy and early childhood. *The American journal of clinical nutrition*, 111(4), pp.769-778.
19. Larsson MW, Lind MV, Laursen RP, et al. Human Milk Oligosaccharide Composition Is Associated with Excessive Weight Gain During Exclusive Breastfeeding-An Explorative Study [published correction appears in *Front Pediatr.* 2020 Jan 22; 7:521]. *Front Pediatr.* 2019; 7:297. Published 2019 Jul 18. doi:10.3389/fped.2019.00297
20. Elwakiel M, Hageman JA, Wang W, et al. Human Milk Oligosaccharides in Colostrum and Mature Milk of Chinese Mothers: Lewis Positive Secretor Subgroups. *J Agric Food Chem.* 2018;66(27):7036-7043. doi: 10.1021/acs.jafc.8b02021
21. Coppa GV, Gabrielli O, Pierani P, Catassi C, Carlucci A, Giorgi PL. Changes in carbohydrate composition in human milk over 4 months of lactation. *Pediatrics.* 1993;91(3):637-641.

22. Neville J, Pawlak R, Chang M, Furst A, Bode L, Perrin MT. A Cross-Sectional Assessment of Human Milk Oligosaccharide Composition of Vegan, Vegetarian, and Nonvegetarian Mothers. *Breastfeed Med.* 2022;17(3):210-217.
doi:10.1089/bfm.2021.0259
23. Kananura RM, Tetui M, Mutebi A, et al. The neonatal mortality and its determinants in rural communities of Eastern Uganda. *Reprod Health.* 2016; 13:13. Published 2016 Feb 16. doi:10.1186/s12978-016-0119-y
24. English L, Kumbakumba E, Larson CP, et al. Pediatric out-of-hospital deaths following hospital discharge: a mixed-methods study. *Afr Health Sci.* 2016;16(4):883-891. doi:10.4314/ahs.v16i4.2
25. Amegbor PM, Yankey O, Sabel CE. Examining the Effect of Geographic Region of Residence on Childhood Malnutrition in Uganda. *J Trop Pediatr.* 2020;66(6):598-611. doi:10.1093/tropej/fmaa019
26. Puccio G, Alliet P, Cajozzo C, et al. Effects of Infant Formula with Human Milk Oligosaccharides on Growth and Morbidity: A Randomized Multicenter Trial. *J Pediatr Gastroenterol Nutr.* 2017;64(4):624-631.
doi:10.1097/MPG.0000000000001520
27. Sprenger N, Binia A, Austin S. Human Milk Oligosaccharides: Factors Affecting Their Composition and Their Physiological Significance. *Nestle Nutr Inst Workshop Ser.* 2019; 90:43-56. doi:10.1159/000490292
28. Oliveros E, Ramirez M, Vazquez E, Barranco A, Gruart A, Delgado-Garcia JM, Buck R, Rueda R, Martin MJ. Oral supplementation of 2'-fucosyllactose during lactation improves memory and learning in rats. *The Journal of nutritional biochemistry.* 2016 May 1; 31:20-7.

29. Wu KJ, Chen YH, Bae EK, Song Y, Min W, Yu SJ. Human milk oligosaccharide 2'-fucosyllactose reduces neurodegeneration in stroke brain. *Translational Stroke Research*. 2020 Oct; 11:1001-11.
30. Berger PK, Plows JF, Jones RB, et al. Human milk oligosaccharide 2'-fucosyllactose links feedings at 1 month to cognitive development at 24 months in infants of normal and overweight mothers. *PLoS One*. 2020;15(2):e0228323. Published 2020 Feb 12. doi: 10.1371/journal.pone.0228323
31. Bajic D, Wiens F, Wintergerst E, Deyaert S, Baudot A, Van den Abbeele P. HMOs Exert Marked Bifidogenic Effects on Children's Gut Microbiota Ex Vivo, Due to Age-Related *Bifidobacterium* Species Composition. *Nutrients*. 2023;15(7):1701. Published 2023 Mar 30. doi:10.3390/nu15071701
32. Henrick BM, Rodriguez L, Lakshmikanth T, et al. Bifidobacteria-mediated immune system imprinting early in life. *Cell*. 2021;184(15):3884-3898.e11. doi: 10.1016/j.cell.2021.05.030
33. Kuhn L, Kim HY, Hsiao L, et al. Oligosaccharide composition of breast milk influences survival of uninfected children born to HIV-infected mothers in Lusaka, Zambia. *J Nutr*. 2015;145(1):66-72. doi:10.3945/jn.114.199794
34. Dinleyici M, Barbieur J, Dinleyici EC, Vandenplas Y. Functional effects of human milk oligosaccharides (HMOs). *Gut Microbes*. 2023;15(1):2186115. doi:10.1080/19490976.2023.2186115
35. Plows JF, Berger PK, Jones RB, et al. Longitudinal Changes in Human Milk Oligosaccharides (HMOs) Over the Course of 24 Months of Lactation. *J Nutr*. 2021;151(4):876-882. doi:10.1093/jn/nxaa427

36. Davis JC, Lewis ZT, Krishnan S, et al. Growth and Morbidity of Gambian Infants are Influenced by Maternal Milk Oligosaccharides and Infant Gut Microbiota. *Sci Rep*. 2017;7:40466. doi:10.1038/srep40466
37. Paganini D, Uyoga MA, Kortman GAM, et al. Maternal Human Milk Oligosaccharide Profile Modulates the Impact of an Intervention with Iron and Galacto-Oligosaccharides in Kenyan Infants. *Nutrients*. 2019;11(11):2596. doi:10.3390/nu11112596
38. Jorgensen JM, Young R, Ashorn P, et al. Associations of human milk oligosaccharides and bioactive proteins with infant growth and development among Malawian mother-infant dyads. *Am J Clin Nutr*. 2021;113(1):209-220. doi:10.1093/ajcn/nqaa272
39. Moya-Alvarez V, Eussen SRBM, Mank M, et al. Human milk nutritional composition across lactational stages in Central Africa. *Front Nutr*. 2022;9:1033005. doi:10.3389/fnut.2022.1033005

TABLE 1: Characteristics of the study population

Characteristic	Mean	Range	Median (IQR)
Mothers			
Age (years)	26.57	15 - 46	25 (21 - 32)
*Postpartum BMI (Kg/m ²)	23.33	18.7 - 31.8	23.1 (21.9 – 24.4)
Lactation duration (Weeks)	41.28	1 - 104	41 (23 - 60)
Infants and young children			
Age (weeks)	46.47	3 - 110	44 (28-66)
Birth weight (Kg)	3.14	1 - 4.8	3.1 (2.8 - 3.5)
*Weight (Kg)	8.80	5 - 16	9 (8-10)
*Height/length (cm)	70.50	50 - 98	70 (64 - 76)
*Mid upper arm circumference (cm)	14.82	12.1 - 18.7	14.7 (14-15.5)
*Temperature (°C)	36.5	35.4 - 39.4	36.4 (36.2 – 36.7)
*Hemoglobin (g/dL)	10.92	8 - 13.5	11 (10.3 - 11.8)

* = maternal and infant/child factors measured at sampling; Kg/m² = kilogram per meter squared; % = percent; cm = centimetre; °C = degree Celsius; g/dL = grams per decilitre; IQR = interquartile range; N = number of independent observations.

TABLE 2: Median (IQR) HMO concentrations and lactation duration in all mothers

HMOs nmol/mL	Total (N=127)	>6 months (n=89)	≤ 6 months (n=38)	Unadjusted p-value
2'FL	5929.5 (2715.8- 9271.8)	6379.9 (3640.8- 9364.7)	5189.9 (523.6- 9044.3)	0.21
3'FL	378.9 (263.8- 606.8)	452.3 (289.4- 687.0)	308.6 (209.2- 400.8)	0.002
LNNt	805.2 (578.2- 1033.5)	751.7 (506.9- 977.6)	937.7 (672.9- 1140.3)	0.020
3'SL	632.0 (353.4- 987.8)	731.6 (411.5- 1101.7)	470.0 (281.5- 737.8)	0.002
DFLac	548.4 (287.0- 881.5)	651.2 (378.9- 1128.3)	403.7 (192.0- 594.8)	<0.001
6'SL	157.8 (102.2- 270.9)	121.1 (82.3- 171.6)	403.4 (218.4- 569.7)	<0.001
LNT	1028.7 (694.8- 1618.0)	964.6 (646.1- 1618.2)	1134.7 (752.7- 1366.6)	0.42
LNFP I	599.3 (172.6- 1863.9)	493.7 (236.9- 1707.5)	1050.3 (109.3- 2411.5)	0.38
LNFP II	1411.1 (721.0- 2551.2)	1428.2 (782.5- 2492.5)	1218.7 (557.0- 2796.8)	0.89
LNFP III	70.0 (55.0-88.8)	69.0 (57.1-83.9)	79.0 (52.7-96.7)	0.18
LSTb	123.5 (90.8- 182.2)	124.7 (94.8- 181.9)	114.2 (90.8-209.9)	0.91
LSTc	46.5 (24.3-93.3)	33.8 (19.3-57.5)	133.1 (73.1-242.4)	<0.001
DFLNT	865.9 (122.3- 1576.6)	904.5 (80.4- 1481.6)	825.8 (414.1- 1677.1)	0.13
LNH	71.2 (37.7-106.4)	61.5 (37.2-90.8)	86.1 (52.5-162.0)	0.004
DSLNT	417.2 (274.3- 512.6)	426.5 (274.3- 507.4)	380.8 (280.5- 512.6)	0.98
FLNH	24.2 (13.2-57.0)	20.5 (11.9-35.6)	45.9 (19.7-101.2)	<0.001
DFLNH	24.4 (9.4-66.1)	20.3 (9.0-50.9)	32.6 (14.5-80.4)	0.030

FDSLNH	146.7 (21.1-310.1)	168.4 (16.9-290.3)	108.2 (30.6-450.2)	0.27
DSLNH	31.7 (11.6-64.5)	20.7 (6.9-38.5)	81.8 (47.0-125.6)	<0.001
Total HMO	16050.6 (13219.4-17668.9)	16162.0 (13539.2-17668.9)	15434.5 (11463.8-17416.4)	0.74
Sia HMO	2395.0 (1995.9-3149.7)	2347.5 (1926.0-2839.5)	2766.7 (2062.5-3753.1)	0.030
Fuc HMO	13962.3 (10903.9-15966.1)	14074.6 (11403.9-16138.5)	13461.9 (8989.9-14838.5)	0.16
Diversity	4.7 (3.1-6.0)	4.5 (3.0-5.9)	5.2 (3.4-6.1)	0.16

IQR = interquartile range; HMOs = human milk oligosaccharides; N = total number of mothers sampled; n = number of independent observations per category; > = greater than; ≤ less than or equal to. HMOs with significant unadjusted p values are in bold.

Figure legends

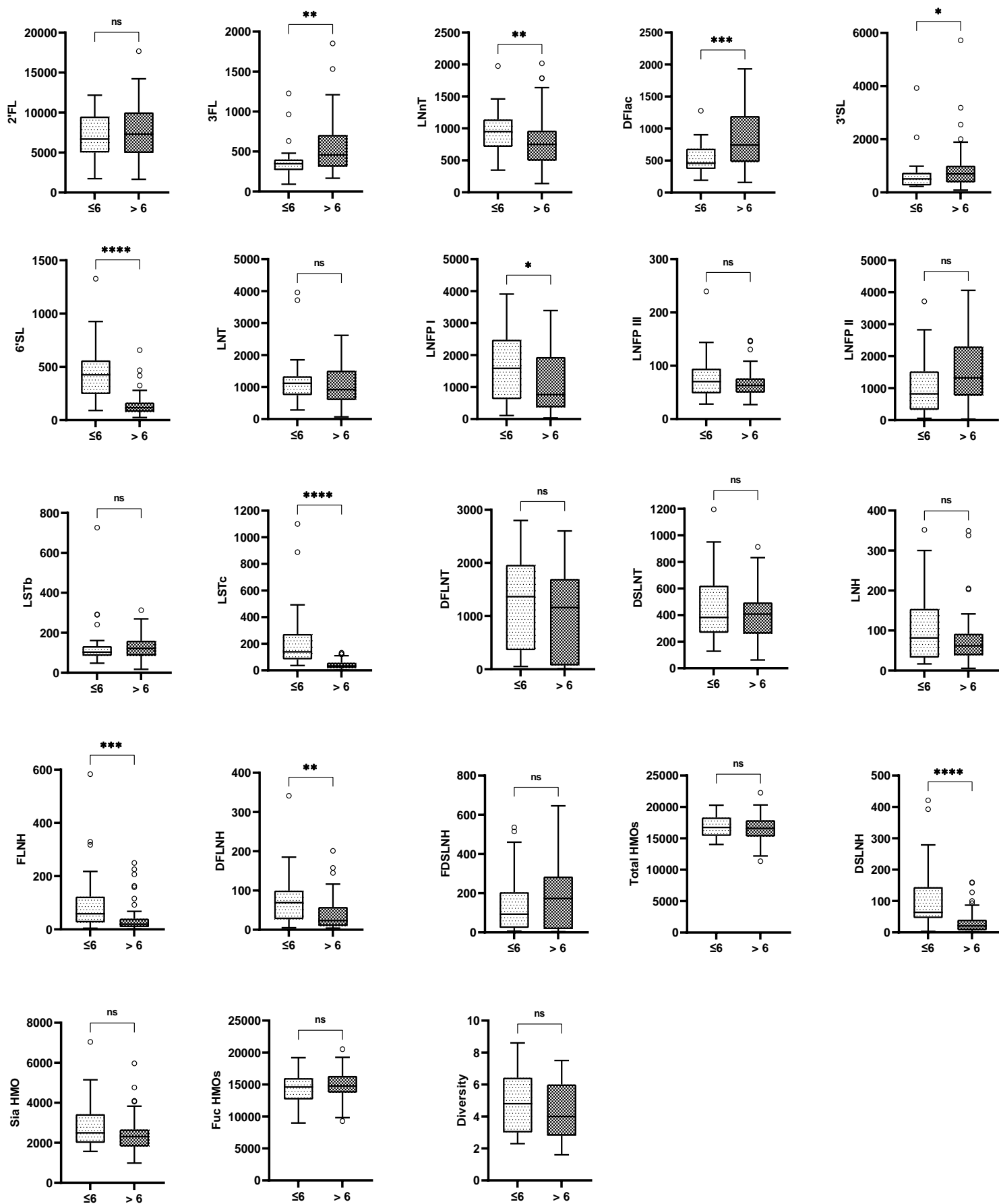
FIGURE 1 Concentrations of all measured HMOs before and after 6 months postpartum in breast milk from secretor Ugandan mother-child pairs. HMO name abbreviations are indicated in the list of abbreviations. Data are shown as box and whisker plots with the medians and the lower and upper quartiles or interquartile range (IQR). P values represent the outcomes of comparisons of two groups by the Mann-Whitney U test.

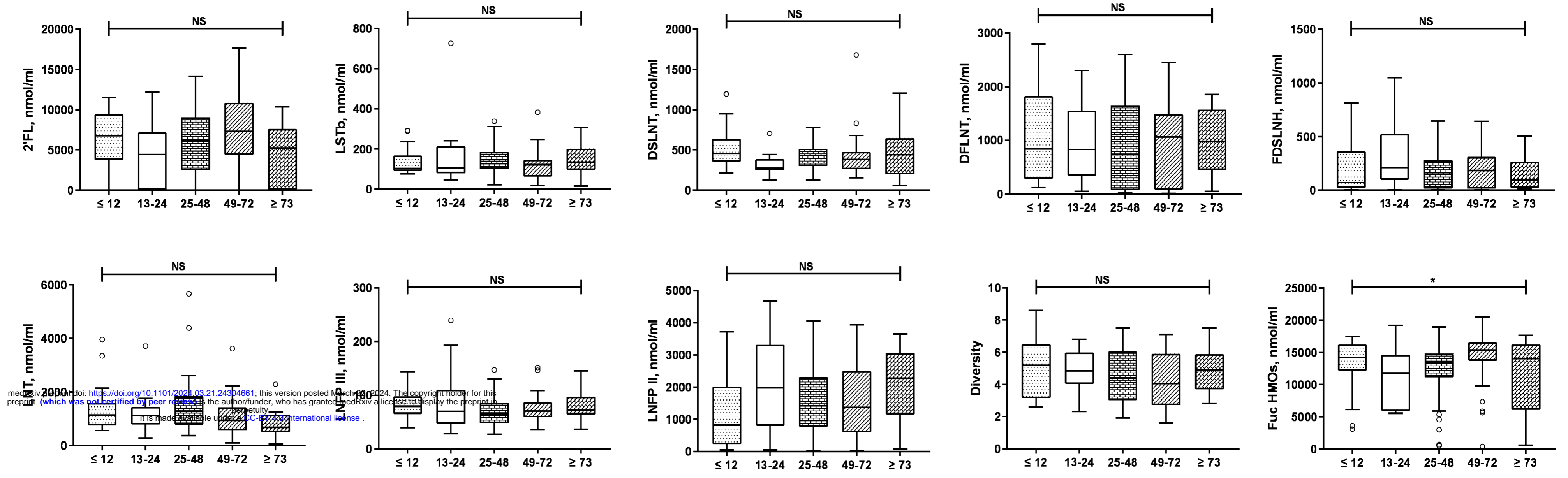
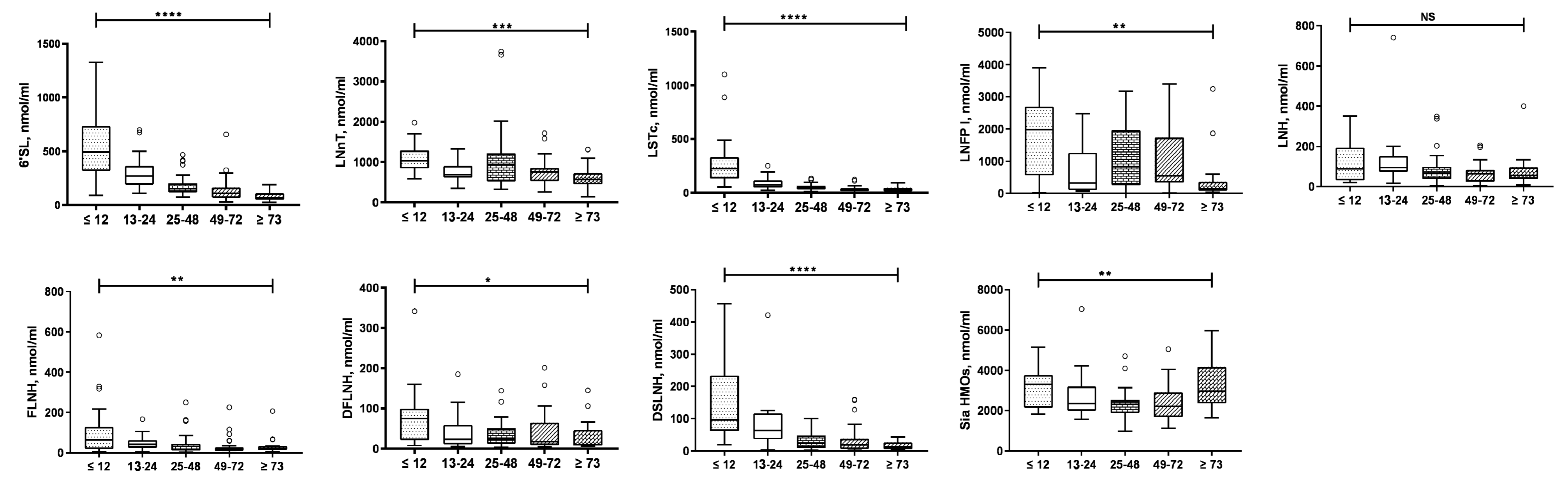
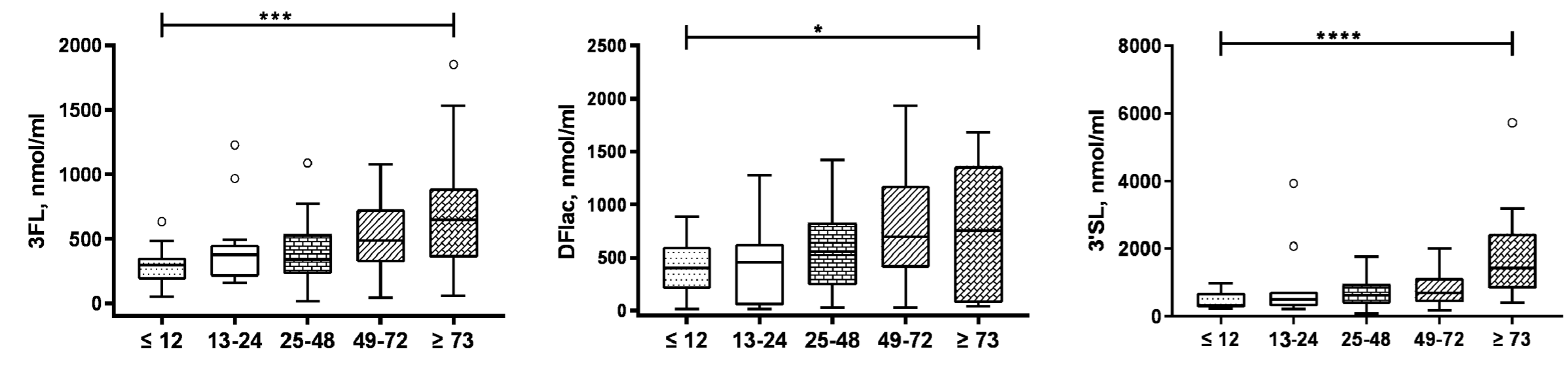
FIGURE 2 Concentrations of all measured HMOs in five groups of mothers representing different lactation stages ≤ 12 (N = 21), 13-24 (N= 14), 25-48 (N= 40), 49-72 (N= 36), ≥ 73 (N= 16) weeks postpartum in breast milk from Ugandan mother-child pairs. **A.** HMOs whose concentrations do not change from ≤ 12 to ≥ 73 weeks. **B.** HMOs whose concentrations decrease from ≤ 12 to ≥ 73 weeks. **C.** HMOs whose concentrations increase from ≤ 12 to ≥ 73 weeks. HMO name abbreviations are indicated in the list of abbreviations. Data are shown as box and whisker plots with the medians and the lower and upper quartiles or interquartile range (IQR). P values represent the outcomes of comparisons of two groups by the Mann-Whitney U test.

Supplemental Figure 1 Study participants flow chart.

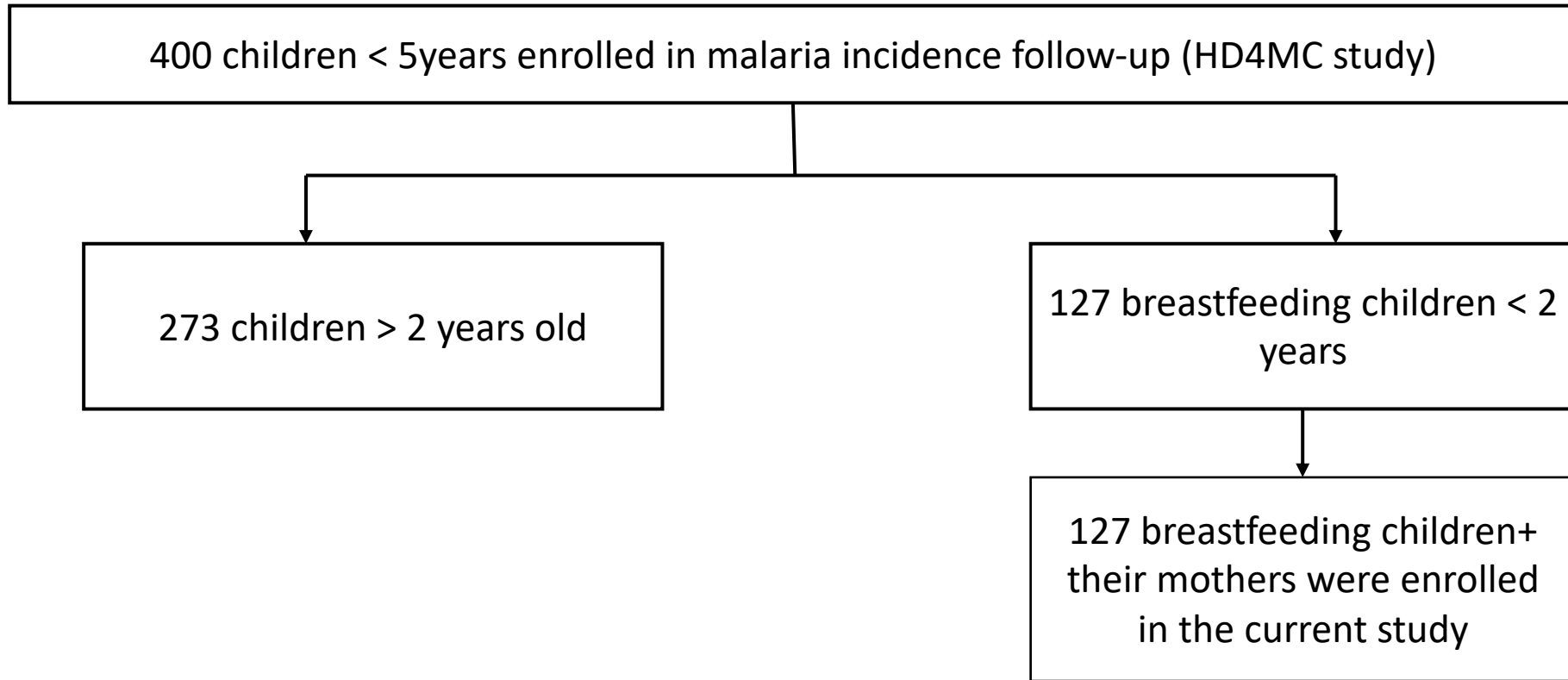
Supplemental FIGURE 2 Concentrations of all measured HMOs before and after 6 months postpartum in breast milk from non- secretor Ugandan mother-child pairs. HMO name abbreviations are indicated in the list of abbreviations. Data are shown as box and whisker plots with the medians and the lower and upper quartiles or interquartile range (IQR). P values represent the outcomes of comparisons of two groups by the Mann-Whitney U test.

Figure 1. HMO concentrations and lactation duration in Secretor Mothers



A**B****C**

medRxiv preprint doi: <https://doi.org/10.1101/2024.03.21.24304661>; this version posted March 29, 2024. The copyright holder for this preprint (which was not certified by peer review) is the author/funder, who has granted medRxiv a license to display the preprint in perpetuity. It is made available under a CC-BY 4.0 International license.



Suppl Fig 1: Participant flow chart

Suppl. Figure 2. HMO concentrations and lactation duration in Non-secretor Mothers

