

## European Health Regulations Reduce Registry-Based Research

Oscar Brück<sup>1</sup>, Enni Sanmark<sup>2</sup>, Ville Ponkilainen<sup>3</sup>, Alexander Bützow<sup>4</sup>, Aleksi Reito<sup>3</sup>,  
Joonas H. Kauppila<sup>5,6</sup>, Ilari Kuitunen<sup>7</sup>

*1 Hematoscope Lab, Comprehensive Cancer Center & Center of Diagnostics, Helsinki University Hospital, Helsinki, Finland & Department of Oncology, University of Helsinki, Helsinki, Finland*

*2 Department of Otorhinolaryngology and Phoniatics - Head and Neck Surgery, Helsinki University Hospital, Finland and Faculty of Medicine, University of Helsinki, Finland.*

*3 Center for Musculoskeletal Diseases, Tampere University Hospital, Tampere, Finland*

*4 Krogerus Attorneys Ltd, Helsinki, Finland*

*5 Department of Surgery, Oulu University Hospital, University of Oulu, Oulu, Finland*

*6 Department of Molecular medicine and Surgery, Karolinska Institutet, Karolinska University Hospital, Stockholm, Sweden*

*7 Department of Pediatrics, Institute of Clinical Medicine, University of Eastern Finland and Kuopio University Hospital, Kuopio, Finland*

### ADDRESS FOR CORRESPONDENCE

Dr. O. Brück, Hematoscope Lab, Biomedicum I, Haartmaninkatu 8, P.O. Box 700, Helsinki FIN-00290, Finland. E-mail: [oscar.bruck@hus.fi](mailto:oscar.bruck@hus.fi). ORCID <https://orcid.org/0000-0002-7842-9419>.

31 **ABSTRACT**

32 The European Health Data Space regulation (EHDS) has been proposed to harmonize  
33 health data processing. Given its parallels with the Act on Secondary Use of Health  
34 and Social Data (Secondary Use Act) implemented in Finland in 2020, this study  
35 examines the consequences of heightened privacy constraints on registry-based  
36 medical research. Between 2020 and 2023, a median of 5.5% fewer data permits were  
37 approved annually by Finnish university hospitals. Based on linear regression  
38 modelling, we estimated a reduction of 46.9% in new data permits nationally in 2023  
39 compared to the expected count. Similar changes were not observed in other medical  
40 research types highlighting the consequences of excessive data privacy laws on  
41 registry-based medical research.

## 42 INTRODUCTION

43 Registry-based medical research forms an integral pillar of modern healthcare.  
44 Medical registries are invaluable resources to generate evidence-based medical  
45 guidelines and develop innovations such as effective diagnostic and monitoring tools.  
46 However, this progress has been subjected to growing regulatory burden in the  
47 European Union (EU), particularly in the realm of data privacy and security. The  
48 General Data Protection Regulation (GDPR), implemented in 2018, has strengthened  
49 personal data protection rights by providing individuals with greater control over their  
50 data, and imposing stricter obligations on data controllers and processors. Currently,  
51 the European Health Data Space regulation (EHDS) is under preparation to establish  
52 a common framework for the governance and sharing of health data across the  
53 European Union. While this initiative holds promise for facilitating cross-border access  
54 to health data, it also introduces additional layers of bureaucracy and potential delays  
55 in research and innovation raising questions of its effectiveness<sup>1</sup>.

56 To complement the GDPR, the Ministry of Social Affairs and Health introduced the Act  
57 on the Secondary Use of Health and Social Data (Secondary Use Act) in Finland in  
58 2019 and implemented it into use in April 2020. Its primary purpose was to facilitate  
59 the effective and safe processing of personal social and health data for secondary  
60 uses, such as research, policymaking, and healthcare management, in contrast to  
61 primary uses, such as provision of healthcare services. Individual public health care  
62 entities, such as university hospitals, retained the right to grant data permits to their  
63 own data in single-registry studies. Instead, Findata was established as the centralized  
64 data permit authority, *i.e.* a one-stop-agency granting data permits for secondary use,  
65 combining data from private healthcare providers, the national Patient Data  
66 Repository, or a combination of multiple social and health registries, with multiple other  
67 tasks, such as defining policies for safe data processing.

68 Despite these positive objectives, two independent surveys conducted in 2021  
69 highlighted the discontent of the research community. The first study was directed to  
70 medical doctors and revealed that out of 430 responders 79% experienced the data  
71 permit process to have become more complex than before, 55% that research projects  
72 were delayed, and 64% that research costs had increased<sup>2</sup>. Due to these issues, 42%  
73 of responders reported that they had not initiated a study<sup>2</sup>. Similar results were  
74 reported in a second survey commissioned by the Ministry of Social Affairs and Health  
75 where responders (n=260) evaluated that the Secondary Use Act had neither  
76 simplified the application process nor the combination of multiple registries<sup>3</sup>.

77 While the EHDS regulation is expected to harmonize the principles of health data  
78 processing in the EU, there is little retrospective evidence on the impact of increasing  
79 privacy regulations on registry-based social and medical research. Given its  
80 considerable overlap with the Secondary Use Act, we sought to evaluate the impact  
81 of the regulation on registry-based research by examining data permit counts before  
82 and after the implementation of the Act.

83

## 84 METHODS

### 85 *Data permits*

86 There are five university hospitals in Finland, located in Helsinki, Tampere, Kuopio,  
87 Turku, and Oulu. When referencing these cities, we are specifically alluding to the  
88 respective university hospitals. University hospitals serve as regional hubs for  
89 specialized care and providing comprehensive medical services to their respective  
90 catchment areas. The hospitals are well-equipped for registry-based research due to  
91 their advanced IT infrastructure and larger patient populations, enabling them to  
92 effectively collect, manage, and analyze large-scale health data both for primary and  
93 secondary purposes.

94  
95 After entry into force of the Secondary Use Act, both a study permit and data permit  
96 were required to conduct registry-based research projects in Finland. In this study, we  
97 employ the term 'data permit' as university hospitals can grant both study and data  
98 permits but Findata can grant only data permits.

99  
100 In January 2024, we solicited counts of new data permits for registry-based research,  
101 specifically involving university hospital registries, from the research departments of  
102 all five university hospitals (Helsinki, Turku, Tampere, Oulu, and Kuopio). To account  
103 for variations in research funding and regulatory changes, we also requested data on  
104 study permits for medical research involving subjects, human tissue, or medical  
105 devices. Due to varying archiving practices, data from 2016-2023 were available from  
106 Tampere, Oulu, Kuopio, and Helsinki. As data was accessible only from 2020-2023,  
107 Turku was excluded in analyses requiring data prior to 2020.

108  
109 We also solicited counts of new data permit (n=375) involving clinical data from  
110 university hospitals and granted by Findata in 2020-2023. Recognizing that Findata-  
111 approved permits cover data from 1-5 hospitals, we integrated details on the annual  
112 mean count of university hospitals covered by these permits (mean 2.2-2.6 in 2021-  
113 2023).

### 114 *Statistical analysis*

115 We fitted univariate linear regression analyses using data permit counts as covariate  
116 and year as predictor and examined the slopes of the curves by extracting the  
117 coefficient. We used the Mann-Kendall test to estimate trend over time. Based on prior  
118 findings, we reasoned to test only whether the registry-based study count had  
119 decreased since its implementation with the one-sided Mann-Kendall test<sup>2,3</sup>.  
120 Elsewhere, we applied the two-sided tests. We performed statistical analyses and  
121 visualizations with R 4.0 using the packages base, sf, mapsFinland, ggplot2.  
122  
123

## 124 RESULTS

125 In 2020-2023, 1768 registry-based research data permits have been granted by  
126 university hospitals (Fig. 1a). Most of these (n=595) were approved by Helsinki,  
127 followed by Tampere (n=367), Turku (n=355), Oulu (n=231), and Kuopio (n=220).  
128 Following a stable period between 2016 and 2019 (median 517, range 497-573; Fig.  
129 1b), new data permit counts decreased rapidly across hospitals (tau -1, p=0.042, one-

130 sided Mann-Kendall test). Compared to 2019, there was a median decrease of 22.4  
131 (range 9.7-31.7) data permits per year, representing an annual median reduction of  
132 5.5% (range 3.4-10.5%). During the same time, 375 registry-based data permits were  
133 approved by Findata (Fig. 1b). For unclear reasons, the rate of Findata-approved data  
134 permits also decreased from 141 to 99 (29.8%) in 2023 (Fig. 1b).

135 Next, we examined data permit counts approved by university hospitals before and  
136 after (2016-2017 vs. 2018-2019) the implementation of the GDPR. An annual median  
137 of 152 new registry research permits were approved pre-GDPR (Fig. 1b). While the  
138 corresponding median in the following two years was 131, the count sharply increased  
139 from 121 in 2018 to 138 permits in 2019 implying the GDPR had no conclusive impact  
140 on data permit counts (Fig. 1b).

141 To estimate the decline in data permits, we examined the era before the  
142 implementation of the Secondary Use Act. From 2015 to 2019, a median of 1.9 (range  
143 1.0-7.3) additional data permits were approved corresponding to a 0.70% (range 0.20-  
144 1.3%) yearly accumulation. Assuming that similar progress would have continued until  
145 2023, we fitted a linear regression curve for each hospital and predicted that a total of  
146 586.8 new data permits would have been granted in 2023 (Fig. 1c). The figure  
147 contrasts with the 234 new data permits actually approved. Given that a portion of  
148 multi-center permits have been directed to Findata and as Turku was excluded from  
149 the analyses due to missing data, we included data permits accorded by Findata in  
150 2023 (n=99) multiplied by 78.3% reflecting the percentage of data permits approved  
151 by other university hospitals than Turku in 2023. The estimated reduction amounted  
152 to 275.3 (= 586.8 – 234.0 – (99.0 x 0.78)) data permits corresponding to a relative  
153 reduction of  $314.2/586.8 = 46.9\%$ .

154 To exclude other confounding factors, we examined the data permit counts for other  
155 types of medical research (Fig. 1d). While the proportion of approved permits  
156 decreased in 2016-2023 (tau -0.54, p=0.061, two-sided Mann-Kendall test), the  
157 changes did not coincide with neither the enactment of the GDPR nor of the Secondary  
158 Use Act.

159

## 160 **DISCUSSION**

161 This retrospective observational cohort study demonstrates the devastating impact of  
162 the Secondary Use Act on registry-based studies only three years after its  
163 implementation. The findings sharply contrast with the general positive attitude  
164 towards secondary use of personal data in medical research<sup>4</sup>.

165 This study has several implications for efforts to understand the potential impact of the  
166 EHDS regulation on research and innovations. First, while registry-based research  
167 could be previously performed with a minimal budget, solid funding has become a  
168 necessity following the enactment of the Secondary Use Act. Primarily data  
169 collections, but also application fees for submitting a study plan, adding researchers

170 to a valid permit, and processing data in secure cloud-based computing instances  
171 accumulate significant research costs.

172 Secondly, stringent data privacy laws may hinder individual countries from  
173 participating in multicenter registry studies, and potentially impede global health by  
174 slowing down responses to pandemics, such as COVID-19<sup>5</sup>. Finland has a long  
175 tradition of nationwide healthcare registries, such as the care registry for specialized  
176 healthcare, the cancer registry, and implant registries, which all have been  
177 acknowledged for their coverage and quality<sup>6-8</sup>. Integrating Finnish registry holders in  
178 international studies is possible only if data is processed in a computing environment  
179 that have been audited to meet the legal requirements. Currently, only nine such  
180 environments are eligible, and all are based in Finland, implying that international  
181 registry studies would require transferring all data to one of these environments<sup>9</sup>.

182 The main source of error in this study stems from the prediction of new data permits  
183 in 2023 in a scenario without the Secondary Use Act. However, we anticipate that  
184 registry-based research would have gained even more popularity than before, given  
185 substantial investments in healthcare information technology infrastructures  
186 facilitating the release of electronic health records to cloud-based computing  
187 instances. Thus, many researchers experienced that the regulatory environment  
188 hampered not only conventional registry-based studies but also the promising  
189 progress towards automatic computer-assisted data curation and disease  
190 phenotyping<sup>2,10</sup>.

191 In conclusion, the results emphasize the need to balance between effective and data  
192 secure research. Medical researchers should be involved in planning, interpreting and  
193 assessing health data regulations. Besides their complexity, the cumulative effect of  
194 European and national regulations has created a challenging environment for medical  
195 researchers. Instead of improving patient privacy rights, increased administrative work  
196 and excessive technology requirements to ensure security may delay research  
197 projects and accumulate steeping costs. Ultimately, the regulatory burden may turn  
198 against its objectives and impede progress in patient care<sup>11</sup>.

199 **ACKNOWLEDGMENTS**

200 The author wishes to thank Susanna Laurén (Turku University Hospital), Jaana  
201 Jäppinen (Helsinki University Hospital), Minna Mäkiniemi (Oulu University Hospital),  
202 Satu Ranta (Tampere University Hospital), and Tuomas Selander (Kuopio University  
203 Hospital) for providing the data for the data permit counts for their university hospital.  
204 In addition, we would like to thank Antti Piirainen, Maari Parkkinen, and Johanna  
205 Seppänen (Findata) for providing information on the registry holders of Findata data  
206 permits as well as for insightful comments. This study was supported by research  
207 funding from the Helsinki University Hospital, Finnish Cancer Foundation, Research  
208 Council of Finland, and the University of Helsinki.

209  
210 **DATA AVAILABILITY STATEMENT**

211 Source data and codes are available at <https://github.com/obruck/Nav-Reg-Res>.

212  
213 **AUTHORS' CONTRIBUTIONS**

214 Conception and design: O.B. Collection and assembly of data: O.B. Data analysis:  
215 O.B. Data interpretation: All authors. Manuscript writing: O.B. Manuscript editing: All  
216 authors. Final approval of manuscript: All authors.

217  
218 **COMPETING INTERESTS**

219 A.B. declares being an employee of Krogerus Attorneys Ltd and (business law firm)  
220 and has assisted private and public clients on matters relating to the relevant  
221 legislation, outside the submitted work. O.B. declares no Competing Non-Financial  
222 Interests but the following Competing Financial Interests: consultancy fees from  
223 Novartis, Sanofi, GSK, Astellas, and Amgen, outside the submitted work; research  
224 grants from Pfizer and Gilead Sciences, outside the submitted work; stock ownership  
225 (Hematoscope Oy), outside the submitted work. E.S. declares no Competing Non-  
226 Financial Interests but the following Competing Financial Interests: consultancy fees  
227 from Boehringer-Ingelheim, Pfizer and Orion, outside the submitted work; research  
228 grant from Business Finland, outside the submitted work.

## 229 REFERENCES

- 230 1 Marelli L, Stevens M, Sharon T, *et al.* The European health data space: Too big to  
231 succeed? *Health Policy* 2023; **135**: 104861.
- 232 2 Reito A, Sanmark E, Tuovinen T, *et al.* Enabler or suppressor? – Survey on the  
233 effects of the Act on the Secondary Use of Health and Social Data on medical  
234 research. *Suom Lääkärilehti* 2022; **77**. [www.laakarilehti.fi/e30589](http://www.laakarilehti.fi/e30589).
- 235 3 Koiste V, Siranko H. Preliminary investigation on the impact of the Act on the  
236 secondary use of health and social data in research, development and innovation  
237 activities and in teaching. *Gesund Partners*, 2022.
- 238 4 Richter G, Borzikowsky C, Lesch W, *et al.* Secondary research use of personal  
239 medical data: attitudes from patient and population surveys in The Netherlands  
240 and Germany. *European Journal of Human Genetics* 2021; **29**: 495–502.
- 241 5 Bak M, Madai VI, Fritzsche M-C, Mayrhofer MTh, McLennan S. You Can't Have AI  
242 Both Ways: Balancing Health Data Privacy and Access Fairly. *Frontiers in*  
243 *Genetics* 2022; **13**.  
244 <https://www.frontiersin.org/articles/10.3389/fgene.2022.929453>.
- 245 6 Mäkelä KT, Furnes O, Hallan G, *et al.* The benefits of collaboration: the Nordic  
246 Arthroplasty Register Association. *EFORT Open Reviews* 2019; **4**: 391–400.
- 247 7 Sund R. Quality of the Finnish Hospital Discharge Register: A systematic review.  
248 *Scandinavian Journal of Public Health* 2012; **40**: 505–15.
- 249 8 Leinonen MK, Miettinen J, Heikkinen S, Pitkäniemi J, Malila N. Quality measures  
250 of the population-based Finnish Cancer Registry indicate sound data quality for  
251 solid malignant tumours. *European Journal of Cancer* 2017; **77**: 31–9.
- 252 9 National Supervisory Authority for Welfare and Health. Database on secondary-  
253 use environments (TOINI). 2023.
- 254 10 Brück O, Lallukka-Brück S, Hohtari H, *et al.* Machine Learning of Bone Marrow  
255 Histopathology Identifies Genetic and Clinical Determinants in MDS Patients.  
256 *Blood Cancer Discovery* 2021; **2**: 238–49.
- 257 11 Huusko J, Kinnunen U-M, Saranto K. Medical device regulation (MDR) in health  
258 technology enterprises – perspectives of managers and regulatory professionals.  
259 *BMC Health Services Research* 2023; **23**: 310.

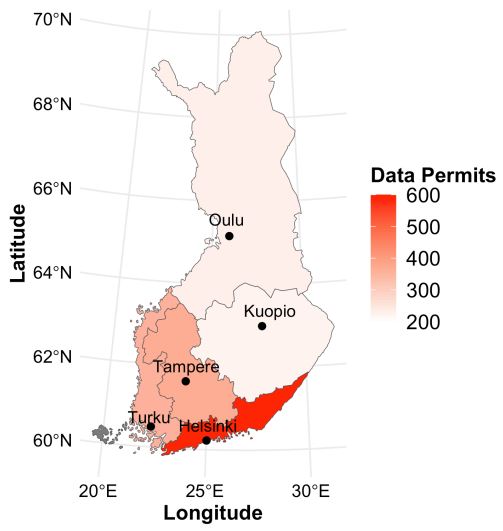
260



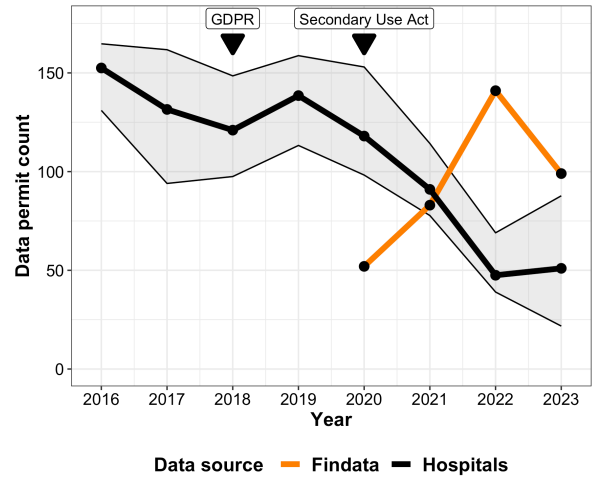
261 **FIGURE LEGENDS**

262 **Figure 1. Registry-based research in Finland.** (a) Map of Finland demonstrating  
263 cities (points) with a university hospital and their associated healthcare regions. (b)  
264 Line plots depicting the median counts of registry data permits approved by four  
265 Finnish university hospitals (black line) and data collections transferred by Findata  
266 (orange line). The gray-shaded area represents the 25-75% interquartile range of  
267 permit counts from university hospitals. (c) Line plots of median counts of approved  
268 registry data permits by distinct Finnish university hospitals in 2015-2023. These are  
269 accompanied by fitted regression curves predicting permit counts based on trends  
270 before the Secondary Use Act in 2015-2019 (dashed lines). (d) Data permit counts for  
271 other types than registry-based research are illustrated both individually (line plots)  
272 and cumulatively (bar plots) for each university hospital.

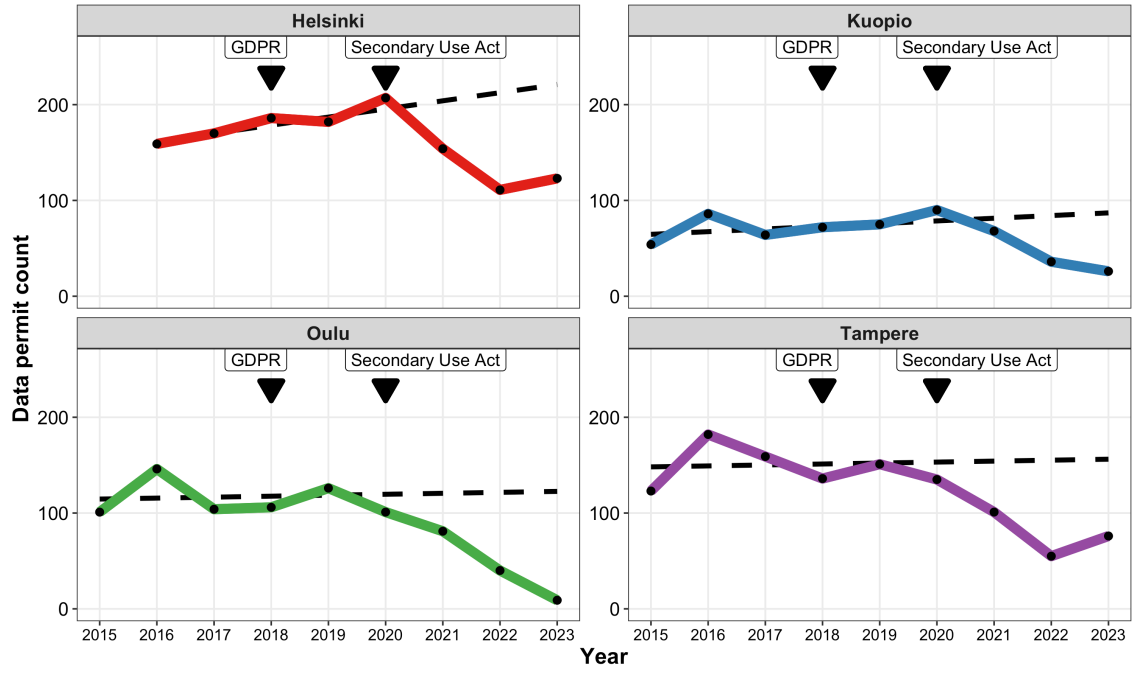
A



B



C



D

