

1 **Emergence and ongoing outbreak of ST80 vancomycin-resistant *Enterococcus***  
2 ***faecium* in Guangdong province, China from 2021 to 2023: a multicenter, time-**  
3 **series and genomic epidemiological study**

4

5 Cong Shen<sup>1,2,#,\*</sup>, Li Luo<sup>1,#</sup>, Hongyun Zhou<sup>1,#</sup>, Yinglun Xiao<sup>1</sup>, Jinxiang Zeng<sup>1</sup>, Liling  
6 Zhang<sup>1</sup>, Jieying Pu<sup>1,2</sup>, Jianming Zeng<sup>1,2</sup>, Ni Zhang<sup>3</sup>, Yueting Jiang<sup>4</sup>, Lingqing Xu<sup>5</sup>,  
7 Dingqiang Chen<sup>6</sup>, Gang Li<sup>7</sup>, Kuihai Wu<sup>8</sup>, Hua Yu<sup>9</sup>, Min Wang<sup>10</sup>, Xuemin Guo<sup>11</sup>, Juan  
8 Wang<sup>12</sup>, Bin Huang<sup>13,\*</sup>, Cha Chen<sup>1,\*</sup>

9

10 <sup>1</sup> The Second Clinical Medical College, Guangzhou University of Chinese Medicine,  
11 Clinical Laboratory/State Key Laboratory of Traditional Chinese Medicine Syndrome,  
12 Guangdong Provincial Hospital of Chinese Medicine, Guangzhou, China.

13 <sup>2</sup> Guangdong Provincial Key Laboratory of Research on Emergency in TCM,  
14 Guangzhou, China.

15 <sup>3</sup> Clinical Laboratory, Guangdong Provincial People's Hospital/Guangdong Academy  
16 of Medical Sciences, Southern Medical University, Guangzhou, China

17 <sup>4</sup> Clinical Laboratory, The First Affiliated Hospital of Guangzhou Medical University,  
18 Guangzhou, China

19 <sup>5</sup> The Sixth Affiliated Hospital of Guangzhou Medical University, Qingyuan People's  
20 Hospital

21 <sup>6</sup> Clinical Laboratory, Zhujiang Hospital, Southern Medical University, Guangzhou,  
22 China

23 <sup>7</sup> Clinical Laboratory, General Hospital of Ningxia Medical University, Yinchuan,

24 China

25 <sup>8</sup> Clinical Laboratory, The First People's Hospital of Foshan, Foshan, China

26 <sup>9</sup> Clinical Laboratory, Sichuan Provincial People's Hospital, Sichuan Academy of

27 Medical Sciences, Chengdu, China

28 <sup>10</sup> Clinical Laboratory, The Second Affiliated Hospital of Soochow University, Suzhou,

29 China

30 <sup>11</sup> Clinical Laboratory, Meizhou People's Hospital, Meizhou, China

31 <sup>12</sup> Clinical Laboratory, Zhongshan People's Hospital, Zhongshan, China

32 <sup>13</sup> Clinical Laboratory, The First Affiliated Hospital of Sun Yat-sen University,

33 Guangzhou, China

34 **Running title:** Epidemiology of vancomycin-resistant *Enterococcus faecium*

35

36 **\*These authors contributed equally to this article**

37

38 **†Corresponding author:**

39 **Cha Chen, M.D, Professor**

40 Mailing address: The Second Clinical Medical College, Guangzhou University of

41 Chinese Medicine, Neihuanxi Road, Guangzhou 510080, China. Email:

42 [chencha@gzucm.edu.cn](mailto:chencha@gzucm.edu.cn), [chencha906@163.com](mailto:chencha906@163.com)

43 **Cong Shen, Ph. D**

44 Mailing address: The Second Clinical Medical College, Guangzhou University of

45 Chinese Medicine, Neihuanxi Road, Guangzhou 510080, China. Email:

46 shencong@gzucm.edu.cn, shencong456@163.com

47 **Bin Huang, Ph. D, Professor**

48 Mailing address: The First Affiliated Hospital of Sun Yat-sen University, Guangzhou,

49 China. Zhongshan 2nd Road, Guangzhou 510080, China. Email:

50 huangb3@mail.sysu.edu.cn

51 **Abstract**

52 **Background**

53 The surveillance system revealed that the prevalence of vancomycin-resistant  
54 *Enterococcus faecium* (VREfm) has increased. We aim to investigate the  
55 epidemiological and genomic characteristics of VREfm in China.

56 **Methods**

57 We collected 20747 non-redundant *E. faecium* isolates from inpatients across 19  
58 hospitals in six provinces between Jan 2018 and June 2023. VREfm was confirmed by  
59 antimicrobial susceptibility testing. The prevalence was analyzed using changepoint  
60 package in R. Genomic characteristics were explored by whole-genome sequencing  
61 and bioinformatic analysis.

62 **Results**

63 5.59% (1159/20747) of *E. faecium* isolates were resistant to vancomycin. The  
64 prevalence of VREfm increased in Guangdong province from 5% before 2021 to  
65 20%-50% in 2023 ( $p < 0.0001$ ), but not in the other five provinces. The two  
66 predominant clones before 2021, ST17 and ST78, were substituted by an emerging  
67 clone, ST80, from 2021 to 2023 (88.63%, 195/220). All ST80 VREfm from  
68 Guangdong formed a single lineage (SC11) and were genetically distant from the  
69 ST80 VREfm from other countries, suggesting a regional outbreak. All ST80 VREfm  
70 in SC11 carried a new type of plasmid which harbored a *vanA* cassette (*vanRSHAXYZ*)  
71 flanked by Tn1546/Tn3 clusters. However, no conjugation-related gene was detected  
72 and no transconjugant was obtained in conjugation experiment, indicating that the

73 outbreak of ST80 VREfm could be attributed to clonal transmission.

74 **Conclusions**

75 We revealed an ongoing outbreak of ST80 VREfm with a new *vanA*-harboring  
76 plasmid in Guangdong, China. This clone has also been identified in other provinces  
77 and countries, foreboding a risk of wider spreading shortly. Continuous surveillance is  
78 needed to inform public health interventions.

79

80 **Keywords:** *Enterococcus faecium*, ST80, vancomycin, molecular epidemiology,  
81 whole-genome sequencing.

82

83 **Running title:** Outbreak of ST80 VREfm in Guangdong, China

84 **1. Introduction**

85 Vancomycin-resistant *Enterococcus faecium* (VREfm) is one of the leading causes of  
86 severe healthcare-associated infections, such as urinary tract infections, intra-  
87 abdominal infections and bloodstream infections, which result in high mortality rates  
88 and significant burdens of disease on human society [1-4]. Over the past decade,  
89 VREfm has emerged in the hospital setting in high prevalence, causing outbreaks and  
90 severe infections in Europe, America, and Australia [4-7]. Owing to the limited  
91 therapeutic alternatives, VREfm were classified as high-priority pathogens among  
92 antibiotic-resistant bacteria by the WHO [2].

93

94 In China, the prevalence of VREfm has remained low (average <5%) in the past  
95 decades, according to the China Antimicrobial Surveillance Network (CHINET)  
96 (<http://www.carss.cn/>). Despite this low prevalence, VREfm infections are associated  
97 with increased morbidity, mortality, healthcare costs and duration of hospital stay  
98 compared with vancomycin-susceptible (VSE) infections [8]. The routine  
99 surveillance of antimicrobial resistance in our hospital indicated that the prevalence of  
100 VREfm has increased since January 2020. However, the epidemiological and genomic  
101 characteristics of VREfm remain unknown.

102

103 Herein, we collected VREfm isolates in 19 hospitals in six provinces in China from  
104 January 2018 to June 2023, aiming to reveal the epidemiological and whole-genome  
105 sequencing-based characteristics of the VREfm outbreak in Guangdong province.

## 106 **2. Subjects**

107 We conducted a multicenter and epidemiological survey of *E. faecium* from January  
108 2018 to June 2023, in which 19 tertiary hospitals in China participated (Figure 1).  
109 Among them, eight hospitals are located in Guangzhou city of Guangdong province,  
110 five hospitals in other five cities in Guangdong province, and six hospitals in five  
111 provinces or municipalities (Yunnan, Jiangsu, Sichuan, Ningxia and Beijing). Subjects  
112 were included if clinical samples were evidenced by a positive *E. faecium* culture, and  
113 the patients had typical clinical infectious symptoms and abnormal laboratory markers  
114 of infections. Patients who exhibited no infectious symptoms were classified as  
115 colonisation and were excluded. This study was approved by the ethics committee of  
116 Guangdong Provincial Hospital of Chinese Medicine, Guangzhou, China (Ethics  
117 number ZE2023-077).

118

## 119 **3. Materials and methods**

### 120 **3.1 Clinical samples and identification of *E. faecium***

121 Samples from patients with infections with *E. faecium* were collected as part of  
122 routine clinical management and/or hospital surveillance. Clinical samples (urine,  
123 blood, sputum, wound samples) from patients were plated on Columbia blood agar  
124 (CBA) with 5% sheep blood (Luqiao, Beijing, China). Species identification was  
125 confirmed by MALDI-TOF MS (Biotyper version 3.2, Bruker Daltonik GmbH,  
126 Bremen, Germany).

127

128 **3.2 Antimicrobial susceptibility testing**

129 Vancomycin susceptibility testing was performed using the VITEK 2 (bioMérieux™)  
130 automated system. Minimum inhibitory concentrations (MICs) for 13 antimicrobials  
131 were determined by the broth dilution method.

132 We extracted the MIC breakpoints used to define resistance and non-susceptibility in  
133 *E. faecium* for the thirteen antimicrobials studied, including EUCAST  
134 epidemiological cut-offs, EUCAST clinical breakpoints v12.0 and CLSI breakpoints  
135 (M100-S33). Non-susceptibility is defined as the category comprising both the  
136 intermediate and the resistance categories. EUCAST clinical breakpoints were chosen  
137 preferentially. For antibiotics with no EUCAST clinical breakpoints set (i.e.  
138 daptomycin, rifampicin, erythromycin, and nitrofurantoin), we used CLSI breakpoints  
139 instead (Table 1).

140

141 **3.3 Change point analysis of VRE<sub>fm</sub> prevalence**

142 A three-month moving average approach was used to remove noise of monthly  
143 VRE<sub>fm</sub> prevalence. The changepoint detection was conducted to identify the  
144 significant changes. The function of `cpt.meanvar` from the changepoint package was  
145 used to explore a variety of penalty values and methods, retaining the most  
146 consistently identified changepoints with the proposed pruned exact linear time  
147 (PELT) algorithm [9].

148

149



150 **3.4 Whole-genome sequencing and bioinformatic analysis of VREfm isolates**

151 For VREfm collected from Jan 2021 to Jun 2023 in Guangdong, we randomly  
152 selected a subset (20%, n=220) of isolates from each month for WGS. For VREfm  
153 collected from 2014 to 2020, or from other province, all isolates (n=91) were included  
154 for WGS due to its low prevalence. DNA was extracted and sequenced by Illumina  
155 HiSeq 4000 platform. Draft genome was assembled using SPAdes v.13.1 [10]. *In*  
156 *silico* multilocus sequence typing (MLST), antimicrobial resistance genes (ARGs),  
157 virulence factors (VFs), insertion sequence (IS), and plasmid replicon were  
158 established using ABRicate v0.2 [11-13]. Pan-genome analysis was done using Roary  
159 v3.11.2, and core genome single-nucleotide polymorphisms (cgSNPs) were extracted  
160 using SNP-sites [14, 15]. Phylogeny was constructed by RAxML using cgSNPs [16].  
161 Sequence cluster (SC) was defined using hierBAPS [17]. Five representative isolates  
162 that harbored *vanA*-plasmids were sequenced by Illumina PacBio RSII system. The  
163 plasmid sequence was circled by Pilon, and plasmid structures were compared by  
164 Easyfig [18, 19].

165

166 **3.5 Plasmid conjugation assay**

167 Plasmid conjugation was performed using fusidic acid-resistant *Enterococcus faecium*  
168 BM4105 as the recipient. Donor and recipient isolates were cultured overnight and  
169 sub-cultured at a 1:100 ratio for 3 hours at 37°C. Then, the donor and recipient were  
170 mixed at a 1:9 ratio and incubated stationary for 6 hours at 37°C. Transconjugants  
171 were selected on BHI agar plates supplemented with fusidic acid (50 mg/L) and

172 vancomycin (8 mg/L), and verified using MALDI-TOF and PCR for *vanA*.

173

### 174 **3.6 Statistical analyses**

175 Statistical analyses and random selection were performed using R v3.4. Differences in

176 antimicrobial resistance rates were assessed using the Fisher's exact test. Given that

177 MICs were derived from isolate growth in doubling dilutions of antimicrobials, MIC

178 values were log<sub>2</sub>-transformed. Differences in distributions of MICs and cgSNPs

179 between groups assessed using Wilcoxon-Mann-Whitney tests. A p-value <0.05 was

180 considered significant.

181

## 182 **4. Results**

### 183 **4.1 The prevalence of VREfm increased in Guangdong Province, China after**

#### 184 **2021**

185 Among 19 hospitals from six provinces, 20747 non-redundant *E. faecium* isolates

186 were collected from Jan 2018 to June 2023. Overall, 5.59% (1159/20747, 95%

187 confidence interval [CI]: 5.27%-5.90%) of *E. faecium* isolates were resistant to

188 vancomycin (Figure 1). 54.79% (n=635) of VREfm were collected from urine

189 samples, followed by blood (7.77%, n=90), wound (6.99%, n=81) and sputum (4.49%,

190 n=52). The median age of patients infected with VREfm was 70 years (interquartile

191 range: 57-79).

192

193

194 Time-series analysis showed that the prevalence of VREfm in all hospitals remained  
195 low (<5%) before December 2020, except for two hospitals from Beijing were  
196 fluctuated up to 20% (Figure 2). Remarkably, the prevalence of VREfm dramatically  
197 increased up to 20%-50% after January 2021 (compared with 5% in 2014-2020,  
198  $p < 0.0001$ ) in the hospitals in Guangzhou City and other cities in Guangdong province  
199 (Figure 2A and 2B). However, no significant increase was observed in the other five  
200 provinces (Figure 2C). According to changepoint analysis, the increasing trend of  
201 VREfm prevalence in Guangdong Province started between December 2020 and  
202 December 2021 (mostly concentrated on January-June 2021), indicating an ongoing  
203 outbreak of VREfm in Guangdong Province during the first half year of 2021 (Figure  
204 2).

205

#### 206 **4.2 MLST shift in dominating clones**

207 To systematically investigate genomic characteristics, we randomly selected 291  
208 VREfm isolates collected from 2018 to 2023 and 20 VREfm isolates from 2014 to  
209 2017 in 19 hospitals for whole-genome sequencing. All isolates (N=311) were typed  
210 into 22 sequence types (STs), of which all belong to hospital-associated *E. faecium*  
211 clade A1 (Figure 3A and supplement figure 1). The most prevalent STs were ST80,  
212 ST78 and ST17, which accounted for 82.99% (n=255) of VREfm. A total of 208  
213 isolates (66.88%) belong to ST80, which have been rarely detected in China [8, 20-  
214 22], but commonly detected in Europe, Australia, and America [4-7].

215

216 We discovered that ST17 was predominant in Guangdong Province before December  
217 2020 (55%, 11/20). Remarkably, ST80 appeared in 2021 and became predominant ST  
218 from 2021 to 2023 (88.63%, 195/220), suggesting an outbreak of ST80 VREfm in  
219 Guangdong Province (Figure 3B). In other provinces, ST78 was the most prevalent  
220 ST from 2014 to 2021 (32.56%, 14/43). However, we observed that the predominant  
221 ST in 2022 and 2023 has been changed to ST80 (32.14%, 9/28), even though the  
222 prevalence of VREfm has not increased (Figure 3C). Our results demonstrated that  
223 hospital-associated clade A1 VREfm is consistently endemic in China, while the  
224 predominance of ST78 and ST17 could have been replaced by ST80 VREfm, which  
225 implied a latent risk that ST80 VREfm could trigger an outbreak in other provinces  
226 beyond Guangdong province.

227

### 228 **4.3 Antimicrobial susceptibility profile of VREfm**

229 Overall, more than 90% of VREfm isolates were non-susceptible to ampicillin (99.0%,  
230 n=308), followed by teicoplanin (98.4%, n=306), fosfomicin (98.1%, n=305),  
231 ciprofloxacin (97.4%, n=303), and levofloxacin (96.7%, n=301) (Figure 4A). A low  
232 non-susceptible rate was observed in linezolid (0.3%, n=1) and tigecycline (9.3%,  
233 n=29). Notably, 16.7% (n=52) of VREfm are non-susceptible to daptomycin, which  
234 was considered as a significant antimicrobial for treating VREfm. Non-susceptibility  
235 rate of rifampin, nitrofurantoin, daptomycin and high concentration gentamycin in  
236 ST80 VREfm were significantly higher than other STs ( $p < 0.05$ , Figure 4B). The  
237 distribution of MICs for vancomycin, teicoplanin, daptomycin, rifampin, fosfomicin,

238 nitrofurantoin and high concentration gentamycin among ST80 VREfm were  
239 significantly higher than non-ST80 ( $p < 0.05$ , supplement figure 2). In summary, the  
240 antimicrobial resistance rate and MIC of most antimicrobials were higher in ST80  
241 VREfm isolates than non-ST80 STs.

242

#### 243 **4.4 Population structure and genomic characteristics of VREfm**

244 Pan-genome analysis of 311 VREfm identified 1833 core genes representing a 1.6 Mb  
245 alignment in  $\geq 99\%$  of genomes. hierBAPS analysis of VREfm based on 6511 cgSNPs  
246 identified 12 sequence clusters (SCs), of which SC12 comprised low-frequency  
247 genotypes (Figure 5). ST80 VREfm were distributed into four SCs (SC4, SC5, SC11  
248 and SC12), of which SC11 was the leading lineage. Notably, all ST80 VREfm isolates  
249 that were collected after January 2021 belonged to SC11, indicating that the outbreak  
250 of VREfm in Guangdong was attributed to SC11. Genetic distance within SC11  
251 showed that they are highly similar (median of cgSNP distance = 6, IQR: 3-8). Six  
252 isolates in SC11 were collected from Sichuan province (n=5) and Beijing (n=1) from  
253 2021 to 2023, indicating a potential risk of causing an outbreak beyond Guangdong  
254 province.

255

256 A total of 20 ARGs were identified, which attributed to eight antimicrobial classes  
257 (Figure 5). 98.07% (306/311) of VREfm isolates harbored *vanA*, of which 7.51%  
258 (n=23) co-harbored *vanA* and *vanM*. One isolate only harbored *vanM*. Four isolates  
259 harbored *vanB* which was rarely identified in China. Ten VFs and 15 plasmid

260 replicons were verified. However, there is no significant difference in the average  
261 number of ARGs, VFs and plasmid replicons between ST80 and other STs VREfm  
262 (Supplement figure 3), although the antimicrobial resistance spectrum and MICs  
263 varied between ST80 and non-ST80. The distribution of ARGs and plasmid replicons  
264 was not significantly different between ST80 and non-ST80 VREfm isolates. Only a  
265 virulence gene *ecbA* in the non-ST80 group (17.5%, 18/103) was significantly higher  
266 than in the ST80 group (5.8%, 12/208,  $p=0.0018$ ).

267

#### 268 **4.5 Comparison of ST80 isolates in outbreaks among Guangdong and other** 269 **countries**

270 To identify the origin and global transmission of ST80 VREfm causing an outbreak in  
271 Guangdong province, we additionally included 322 genomes of ST80 VREfm from  
272 22 countries. All the VREfm isolates obtained from Guangdong province exhibit a  
273 remarkable convergence within a single lineage (SC11), which was distinctly  
274 separated from the isolates found in other countries (Figure 6A). Consistently, this  
275 lineage exhibited distinct pan-genome profiles marked by both cgSNPs and accessory  
276 genes (Figure 6B). The number of SNPs among ST80 VREfm from China is  
277 significantly lower than other countries ( $p<0.0001$ ), suggesting a clonal transmission  
278 (Figure 6C). Notably, one isolate (GCF\_012933345.2) collected in 2020 from an  
279 Indian patient with a bloodstream infection genetically belonged to this lineage.  
280 Nevertheless, ST80 VREfm are not common in India, indicating that the outbreak of  
281 ST80 VREfm in Guangdong may not associated with this strain.

282

#### 283 **4.6 Genetic context and transferability of *vanA*-harboring plasmid in ST80**

##### 284 **VREfm**

285 Among 311 VREfm isolates, the *van*-harboring contigs of 100 (32.2%) isolates were  
286 matched to the plasmid sequence on GenBank database with >99% identity. However,  
287 the *vanA*-harboring contig in 211 (67.8%) of VREfm was not identified against the  
288 non-redundant database. One typical isolate (23VRE019) harboring this unique contig  
289 was selected for third-generation sequencing, and we noticeably found that this new  
290 type of plasmid was identified in all ST80 isolates (n=195) causing outbreaks in  
291 Guangdong province from 2021 to 2023 (Figure 5).

292

293 Most of the CDSs in p23VRE019 (45,935 bp) were functionally related to IS, plasmid  
294 stability and antimicrobial resistance (Figure 7A). This plasmid harbored a *vanA*  
295 cassette (*vanRSHXYZ*) flanked by Tn1546/Tn3 clusters, and a Tn4001 containing  
296 aminoglycosides resistance gene *aac(6')-aph(2'')*, which was flanked by inverted  
297 repeats of IS256. No conjugation-related gene was detected in the plasmid. To  
298 confirm plasmid transferability, we performed conjugation experiments for all 311  
299 VREfm isolates. Among 100 VREfm carrying *van*-harboring plasmid other than  
300 p23VRE019, transconjugants were obtained in 40 isolates. Notably, no transconjugant  
301 was obtained among 211 VREfm isolates carrying p23VRE019. Therefore, we  
302 speculated that this new *vanA*-harboring plasmid is not conjugative *in vitro* under the  
303 experiment condition in this study.

304

305 Genetic context analysis revealed that p23VRE019 could be formed by three  
306 segments from three plasmids (Figure 7B). The plasmid backbone encoded several  
307 CDSs associated with plasmid stability and homologised to pW208, which is an  
308 environmental *E. faecalis* isolate from China, and pK80-15b-B which is from an *E.*  
309 *faecium* isolate in Switzerland. The *vanA* cassette of p23VRE019 was homologised to  
310 pVEF4\_A which lack of *IS1678* and *ISL3*. Overall, we concluded that outbreak of  
311 *vanA*-positive ST80 VREfm in Guangdong could be attributed to clonal transmission  
312 and transposon-mediated horizontal gene transfer of the *vanA* gene cassette.

313

## 314 **5. Discussion**

315 Emergence and transmission of VREfm pose significant challenges to public health  
316 and clinical medicine. Our investigation reveals that the prevalence of VREfm in  
317 patients with infection substantially increased in Guangdong province from 2021 to  
318 2023, which was associated with a sub-lineage of ST80 clone harboring a new type of  
319 *vanA*-plasmid. To our knowledge, this work represents the largest effort conducted to  
320 date to investigate the prevalence and genomic characterizations of VREfm at  
321 multicenter scales in China.

322

323 In recent decades, the prevalence of VREfm in China has shown low incidence rates,  
324 with an average of less than 5%. This is consistent with the findings in other five  
325 province, suggesting that the spread of VREfm has not been a significant issue in



326 China [8, 20-23]. However, the dramatic increase of VREfm prevalence in  
327 Guangdong province indicated a rapid transmission and outbreak. The monthly  
328 epidemiology presented here reflects the pattern with a sharp increase from the  
329 beginning of 2021, despite the ongoing COVID-19 containment measures being  
330 enforced during the initial half of 2021. Since the disinfectant could facilitate the  
331 tolerance of *E. faecium* [31], we speculate that the thrive of VREfm may be associated  
332 with the overwhelming use of disinfectants during COVID-19 pandemic. VREfm  
333 outbreaks have been reported in healthcare settings, particularly in ICU department,  
334 causing various types of healthcare-associated infections including bacteremia [5, 26-  
335 29]. It is worth noting that the majority of VREfm isolates were collected from  
336 urinary sample from patients suffering from urinary tract infections, indicating that  
337 this particular lineage of VREfm could be associated with uropathogenicity.

338

339 Several studies have shown that ST17 and ST78 emerged as the predominant types of  
340 VREfm in China [8, 22, 24, 25]. Our study, which covers the period from 2014 to  
341 2020, confirmed this observation. However, we noticed a change in the predominant  
342 clone of VREfm in Guangdong province since 2021, which is now ST80.

343 Phylogenetic analysis showed that ST78 and ST80 VREfm in this study are  
344 genetically distant, demonstrating that ST80 could be attributed to the introduction of  
345 a new clone into hospitals, rather than genome recombination or horizontal gene  
346 transfer. ST80 VREfm was identified as a high-risk clone causing VREfm outbreaks  
347 in America, Austrillia and Europe countries [5, 26-29]. However, the ST80 VREfm

348 isolates in our study (SC11) were genetically distinct from ST80 VREfm found in  
349 other countries. The only identical ST80 VREfm in India was identified in the  
350 Genbank database, but it is not the predominant type in India. These results implied  
351 that this sub-lineage could be sporadically distributed around the world, but certain  
352 factors could trigger and facilitate its transmission, causing outbreaks in Guangdong,  
353 China. The pan-genome analysis conducted on the isolates of SC11 signified a high  
354 degree of genomic diversity, plasticity and unique attributes, implying a potential to  
355 spreading and becoming a prevalent clone.

356

357 Based on the results of multiple antimicrobial susceptibility tests, the ST80 VREfm  
358 exhibits to have a significantly high level of resistance to vancomycin compare to  
359 non-ST80 isolates. Currently, daptomycin and linezolid are the most utilised "last-  
360 line" antibiotics for the treatment of VRE infections [1]. However, our research  
361 reveals that a significant percentage of ST80 VREfm is resistant to daptomycin,  
362 which limits treatment options. Conversely, only one single isolate was found to be  
363 resistant to linezolid, demonstrating its effectiveness against ST80 VREfm.

364

365 The vancomycin resistance mechanisms of ST80 VREfm isolates caused outbreak in  
366 other countries mostly attributed to *vanA* or *vanB* [5, 26, 27]. In this study, all VREfm  
367 isolates in Guangdong harbored a *vanA* gene flanked by *Tn1546*, which is  
368 consistently the predominant mechanism of VREfm in China [8]. *vanM* gene was first  
369 found in VREfm in Shanghai in 2006 and is locally prevalent in China [30]. In this

370 study, a small proportion of *vanA*-harboring ST80 VREfm co-carried *vanM*,  
371 suggesting a rapid genomic interaction occurring in various lineages of ST80 VREfm.  
372  
373 We found a new type of *vanA*-harboring plasmid associated with the outbreak clone of  
374 ST80-type VREfm in Guangdong. Notably, this plasmid also detected in various STs  
375 such as ST78, ST17, implying that there is an interaction and transmission of this  
376 *vanA*-plasmid among VREfm populations. However, the sequence analysis and  
377 plasmid conjugation experiments showed that this plasmid is not conjugative, at least  
378 *in vitro* and under the conditions tested in this study. This means that the  
379 dissemination and outbreak of *vanA*-harboring ST80 VREfm is likely caused by  
380 acquisition of insertion sequence element and clonal transmission. This new type of  
381 plasmid has been detected in ST80 VREfm from Beijing and Sichuan province,  
382 indicating a potential risk of spreading and outbreak in the future.  
383  
384 Our study has several limitations. First, while our study has shed light on the  
385 emergence and dramatic increase of ST80 VREfm in Guangdong, the genomic  
386 epidemiological data we have presented may not be generalisable throughout China.  
387 According to data published by CHINET, the prevalence of VREfm increased solely  
388 in Guangdong province from January to June in 2023, which is in line with the  
389 observations made in our study. Second, the underlying contributors to the rapid  
390 transmission and outbreak of ST80 VREfm have yet to be determined, especially the  
391 measures to contain COVID-19 were still being enforced during the initial half of

392 2021. Further case-control studies, risk factor analyses and metagenomic investigation  
393 would be helpful to bridge this gap. Finally, the pathogenicity of ST80 VREfm, and  
394 the stability and fitness cost of this new plasmid were not resolved, and are part of  
395 future work.

396

397 Despite of these limitations, our study revealed an ongoing outbreak of ST80 VREfm  
398 with a new type of *vanA*-harboring plasmid in Guangdong province. It is concerning  
399 that this outbreak clone has also been detected in several provinces in China and other  
400 countries, foreboding a potential risk that the prevalence of VREfm may increase in  
401 the coming years. Continuous surveillance is needed to monitor the prevalence,  
402 transmission, and outbreak of this high-risk ST80 VREfm clone to inform public  
403 health officials and adapt infection prevention and control interventions.

404

405 **Author contributions**

406 CS, LL, and YX contributed equally in this study. CS drafted the first version of the  
407 manuscript, which was reviewed and edited by CC and BH. CS, LL, and YX were  
408 responsible for concept, bioinformatical and statistical analyses. CS, LL, YX, HZ, JZ,  
409 LZ, JP, and JZ were responsible for the data collection and did the experiments. CS,  
410 LL, YX, CC, BH, NZ, YJ, DC, GL, KW, MW, XG and JW were responsible for the  
411 sample collection. All authors had full access to all the data in the study and took  
412 responsibility for the integrity of the data and the accuracy of the data analysis. All  
413 authors reviewed, revised, and approved the final submission.

414 **Transparency declaration**

415 The authors declare no conflict of interest.

416 **Data Availability**

417 The genome assemblies of VREfm reported in this study have been deposited in the  
418 NCBI GenBank genomic DNA database under BioProject accession number  
419 PRJNA1003636.

420 **Acknowledgements**

421 This work was supported by the National Natural Science Foundation of China (grant  
422 numbers 82302598 to CS), Guangzhou Basic and Applied Foundation (grant number  
423 2023A04J0456 to CS), Guangdong Basic and Applied Research Foundation (grant  
424 number 2022A1515111171 to CS), China Postdoctoral Science Foundation (grant  
425 numbers 2023T160150 and 2022M720922 to CS), Guangdong Provincial Hospital of

426 Chinese Medicine (grant numbers YN2022QN11 to CS), Guangdong Provincial Key

427 Laboratory of Research on Emergency in TCM (2023B1212060062 to CS).

428

## 429 Reference

430 [1] Cairns KA, Udy AA, Peel TN, Abbott IJ, Dooley MJ, Peleg AY. Therapeutics for vancomycin-

431 resistant enterococcal bloodstream infections. *Clin Microbiol Rev.* 2023;36:e0005922.

432 <http://doi.org/10.1128/cmr.00059-22>

433 [2] World Health Organization (WHO) Global Priority List of Antibiotic-Resistant Bacteria to Guide

434 Research, Discovery, and Development of New Antibiotics. WHO; Geneva, Switzerland: 2017.

435 [(accessed on 15 May 2018)]. Available online: [http://www.who.int/medicines/publications/WHO-PPL-](http://www.who.int/medicines/publications/WHO-PPL-Short_Summary_25Feb-ET_NM_WHO.pdf)

436 [Short\\_Summary\\_25Feb-ET\\_NM\\_WHO.pdf](http://www.who.int/medicines/publications/WHO-PPL-Short_Summary_25Feb-ET_NM_WHO.pdf)

437 [3] Werner G, Neumann B, Weber RE, Kresken M, Wendt C, Bender JK, et al. Thirty years of VRE in

438 Germany - "expect the unexpected": The view from the National Reference Centre for *Staphylococci*

439 and *Enterococci*. *Drug Resist Updat.* 2020;53:100732. <http://doi.org/10.1016/j.drup.2020.100732>

440 [4] Rohde AM, Walker S, Behnke M, Eisenbeis S, Falgenhauer L, Falgenhauer JC, et al. Vancomycin-

441 resistant *Enterococcus faecium*: admission prevalence, sequence types and risk factors-a cross-sectional

442 study in seven German university hospitals from 2014 to 2018. *Clin Microbiol Infect.* 2023;29:515-22.

443 <http://doi.org/10.1016/j.cmi.2022.11.025>

444 [5] Lee RS, Goncalves da Silva A, Baines SL, Strachan J, Ballard S, Carter GP, et al. The changing

445 landscape of vancomycin-resistant *Enterococcus faecium* in Australia: a population-level genomic

446 study. *J Antimicrob Chemother.* 2018;73:3268-78. <http://doi.org/10.1093/jac/dky331>

447 [6] Abdelbary MHH, Senn L, Greub G, Chaillou G, Moulin E, Blanc DS. Whole-genome sequencing

448 revealed independent emergence of vancomycin-resistant *Enterococcus faecium* causing sequential

449 outbreaks over 3 years in a tertiary care hospital. *Eur J Clin Microbiol Infect Dis.* 2019;38:1163-70.

450 <http://doi.org/10.1007/s10096-019-03524-z>

451 [7] Sundermann AJ, Babiker A, Marsh JW, Shutt KA, Mustapha MM, Pasculle AW, et al. Outbreak of

452 vancomycin-resistant *Enterococcus faecium* in interventional radiology: Detection through whole-

453 genome sequencing-based surveillance. *Clin Infect Dis.* 2020;70:2336-43.

- 454 <http://doi.org/10.1093/cid/ciz666>
- 455 [8] Peng Z, Yan L, Yang S, Yang D. Antimicrobial-resistant evolution and global Spread of  
456 *Enterococcus faecium* clonal complex (CC) 17: Progressive change from gut colonization to hospital-  
457 adapted pathogen. *China CDC Wkly.* 2022;4:17-21. <http://doi.org/10.46234/ccdcw2021.277>
- 458 [9] Killick R, Eckley IA. changepoint: An R package for changepoint analysis. *Journal of Statistical*  
459 *Software.* 2014;58:1 - 19. <http://doi.org/10.18637/jss.v058.i03>
- 460 [10] Bankevich A, Nurk S, Antipov D, Gurevich AA, Dvorkin M, Kulikov AS, et al. SPAdes: a new  
461 genome assembly algorithm and its applications to single-cell sequencing. *J Comput Biol.*  
462 2012;19:455-77. <http://doi.org/10.1089/cmb.2012.0021>
- 463 [11] Bortolaia V, Kaas RS, Ruppe E, Roberts MC, Schwarz S, Cattoir V, et al. ResFinder 4.0 for  
464 predictions of phenotypes from genotypes. *J Antimicrob Chemother.* 2020;75:3491-500.  
465 <http://doi.org/10.1093/jac/dkaa345>
- 466 [12] Carattoli A, Hasman H. PlasmidFinder and In Silico pMLST: Identification and typing of plasmid  
467 replicons in whole-genome sequencing (WGS). *Methods Mol Biol.* 2020;2075:285-94.  
468 [http://doi.org/10.1007/978-1-4939-9877-7\\_20](http://doi.org/10.1007/978-1-4939-9877-7_20)
- 469 [13] Liu B, Zheng D, Zhou S, Chen L, Yang J. VFDB 2022: a general classification scheme for  
470 bacterial virulence factors. *Nucleic Acids Res.* 2022;50:D912-D7. <http://doi.org/10.1093/nar/gkab1107>
- 471 [14] Page AJ, Cummins CA, Hunt M, Wong VK, Reuter S, Holden MT, et al. Roary: rapid large-scale  
472 prokaryote pan genome analysis. *Bioinformatics.* 2015;31:3691-3.  
473 <http://doi.org/10.1093/bioinformatics/btv421>
- 474 [15] Page AJ, Taylor B, Delaney AJ, Soares J, Seemann T, Keane JA, et al. SNP-sites: rapid efficient  
475 extraction of SNPs from multi-FASTA alignments. *Microb Genom.* 2016;2:e000056.  
476 <http://doi.org/10.1099/mgen.0.000056>
- 477 [16] Kozlov AM, Darriba D, Flouri T, Morel B, Stamatakis A. RAxML-NG: a fast, scalable and user-  
478 friendly tool for maximum likelihood phylogenetic inference. *Bioinformatics.* 2019;35:4453-5.  
479 <http://doi.org/10.1093/bioinformatics/btz305>
- 480 [17] Tonkin-Hill G, Lees JA, Bentley SD, Frost SDW, Corander J. RhierBAPS: An R implementation  
481 of the population clustering algorithm hierBAPS. *Wellcome Open Res.* 2018;3:93.  
482 <http://doi.org/10.12688/wellcomeopenres.14694.1>

- 483 [18] Walker BJ, Abeel T, Shea T, Priest M, Abouelliel A, Sakthikumar S, et al. Pilon: an integrated tool  
484 for comprehensive microbial variant detection and genome assembly improvement. PLoS One.  
485 2014;9:e112963. <http://doi.org/10.1371/journal.pone.0112963>
- 486 [19] Sullivan MJ, Petty NK, Beatson SA. Easyfig: a genome comparison visualizer. Bioinformatics.  
487 2011;27:1009-10. <http://doi.org/10.1093/bioinformatics/btr039>
- 488 [20] Liu S, Li Y, He Z, Wang Y, Wang J, Jin D. A molecular study regarding the spread of *vanA*  
489 vancomycin-resistant *Enterococcus faecium* in a tertiary hospital in China. J Glob Antimicrob Resist.  
490 2022;31:270-8. <http://doi.org/10.1016/j.jgar.2022.10.010>
- 491 [21] Sun HL, Liu C, Zhang JJ, Zhou YM, Xu YC. Molecular characterization of vancomycin-resistant  
492 *Enterococci* isolated from a hospital in Beijing, China. J Microbiol Immunol Infect. 2019;52:433-42.  
493 <http://doi.org/10.1016/j.jmii.2018.12.008>
- 494 [22] Yan MY, He YH, Ruan GJ, Xue F, Zheng B, Lv Y. The prevalence and molecular epidemiology of  
495 vancomycin-resistant *Enterococcus* (VRE) carriage in patients admitted to intensive care units in  
496 Beijing, China. J Microbiol Immunol Infect. 2023;56:351-7. <http://doi.org/10.1016/j.jmii.2022.07.001>
- 497 [23] Sun L, Qu T, Wang D, Chen Y, Fu Y, Yang Q, et al. Characterization of *vanM* carrying clinical  
498 *Enterococcus* isolates and diversity of the suppressed *vanM* gene cluster. Infect Genet Evol.  
499 2019;68:145-52. <http://doi.org/10.1016/j.meegid.2018.12.015>
- 500 [24] Yang J, Yuan Y, Tang M, Liu L, Yang K, Liu J. Phenotypic and genetic characteristics of  
501 vancomycin-resistant *Enterococcus faecium*. Microb Pathog. 2019;128:131-5.  
502 <http://doi.org/10.1016/j.micpath.2018.12.046>
- 503 [25] Zhou W, Zhou H, Sun Y, Gao S, Zhang Y, Cao X, et al. Characterization of clinical enterococci  
504 isolates, focusing on the vancomycin-resistant *Enterococci* in a tertiary hospital in China: based on the  
505 data from 2013 to 2018. BMC Infect Dis. 2020;20:356. <http://doi.org/10.1186/s12879-020-05078-4>
- 506 [26] Egan SA, Kavanagh NL, Shore AC, Mollerup S, Samaniego Castruita JA, O'Connell B, et al.  
507 Genomic analysis of 600 vancomycin-resistant *Enterococcus faecium* reveals a high prevalence of  
508 ST80 and spread of similar *vanA* regions via *IS1216E* and plasmid transfer in diverse genetic lineages  
509 in Ireland. J Antimicrob Chemother. 2022;77:320-30. <http://doi.org/10.1093/jac/dkab393>
- 510 [27] Leong KWC, Cooley LA, Anderson TL, Gautam SS, McEwan B, Wells A, et al. Emergence of  
511 vancomycin-resistant *Enterococcus faecium* at an Australian hospital: A whole genome sequencing



- 512 analysis. Sci Rep. 2018;8:6274. <http://doi.org/10.1038/s41598-018-24614-6>
- 513 [28] Pinholt M, Bayliss SC, Gumpert H, Worning P, Jensen VVS, Pedersen M, et al. WGS of 1058  
514 *Enterococcus faecium* from Copenhagen, Denmark, reveals rapid clonal expansion of vancomycin-  
515 resistant clone ST80 combined with widespread dissemination of a *vanA*-containing plasmid and  
516 acquisition of a heterogeneous accessory genome. J Antimicrob Chemother. 2019;74:1776-85.  
517 <http://doi.org/10.1093/jac/dkz118>
- 518 [29] Pratama R, Beukers AG, McIver CJ, Keighley CL, Taylor PC, van Hal SJ. A *vanA* vancomycin-  
519 resistant *Enterococcus faecium* ST80 outbreak resulting from a single importation event. J Antimicrob  
520 Chemother. 2021;77:31-7. <http://doi.org/10.1093/jac/dkab379>
- 521 [30] Chen C, Sun J, Guo Y, Lin D, Guo Q, Hu F, et al. High prevalence of *vanM* in vancomycin-  
522 resistant *Enterococcus faecium* isolates from Shanghai, China. Antimicrob Agents Chemother.  
523 2015;59:7795-8. <http://doi.org/10.1128/AAC.01732-15>
- 524 [31] Pidot S, Gao W, Buultjens A, Monk I, Guerillot R, Carter G, et al. Increasing tolerance of hospital  
525 *Enterococcus faecium* to handwash alcohols. Sci. Transl. Med. 2018;10:ear6115.  
526 <http://doi.org/10.1126/scitranslmed.aar6115>

527 **Table legend**

528 **Table 1. MIC breakpoints recommended by EUCAST, CLSI, and those used in**  
529 **this study.**

530

531 **Figure legends**

532 **Figure 1. Geographic location of 19 hospitals from six provinces.**

533 Data showing in the box are % (n/N). %, prevalence of VREfm. n, Number of VREfm.

534 N, sample size of *E. faecium*.

535

536 **Figure 2. Time series of monthly VREfm prevalence in Guangzhou city (A),**

537 **Guangdong province except for Guangzhou city (B) and other five provinces (C),**

538 **January 2018-June 2023.** The solid line represents the three-month moving average

539 data of VREfm prevalence for each hospital. Vertical dashed lines indicate significant

540 changepoints identified in the changepoint analysis.

541

542 **Figure 3. Minimum-spanning tree (A) and dynamic changes (B and C) of MLST**

543 **distribution from 2014-2023.**

544 (A) Each circle corresponds to a unique ST. The number outside the circle indicates

545 ST number. The size of the circle represents the number of isolates belonging to the

546 same ST. The colors inside the circle represent the proportion of the year of isolation.

547 (B) and (C) The x-axis represents the year of isolates. The y-axis represents the

548 proportion of ST.

549

550 **Figure 4. Antimicrobial susceptibility profiles of 13 antimicrobials for 311**

551 **VREfm isolates.**

552 (A) Overall antimicrobial resistance rate. (B) Antimicrobial resistance rate between

553 ST80 and non-ST80 VREfm. VAN, Vancomycin. TEC, Teicoplanin. LNZ, Linezolid.

554 TGC, Tigecycline. DAP, Daptomycin. RIF, Rifampicin. ERY, Erythromycin. AMP,

555 Ampicillin. CIP, Ciprofloxacin. LVX, Levofloxacin. FOS, Fosfomycin. NIT,

556 Nitrofurantoin. HGEN, High concentration gentamicin.

557

558 **Figure 5. Phylogenetic tree and genomic characteristics of 311 VREfm isolates in**

559 **this study.**

560 The ML phylogeny derived from cgSNPs is at the left of the plot. The lineage colors

561 in the first column denote sequence clusters (SCs). The second column represents the

562 ST. The red star in the third column represents the isolates carried the new type of

563 *vanA*-harboring plasmid. The color strip in the fourth column represents the origin

564 where the isolate from. Light blue represents Guangzhou city; Light purple represents

565 Guangdong province; Dark blue represents other provinces. The heatmaps from left to

566 right represents the presence of antimicrobial resistance genes (pink), virulence

567 factors (blue) and plasmid replicons (green).

568

569 **Figure 6. Population structure of ST80 VREfm in different countries.**

570 (A) The ML phylogeny was constructed using cgSNPs. The colored branch represents

571 the collected location of the isolate. (B) Matrixes of pairwise distance of core genes  
572 (nucleotide divergence, lower left triangle) and accessory genes (Jaccard distance,  
573 upper right triangle), ordered against the maximum likelihood phylogeny generated  
574 from cgSNPs (left-hand side of panel). The two matrices were highly correlated  
575 ( $p < 0.0001$ ,  $r = 0.7727$ , Mantel test with 1000 permutations). (C) cgSNP distance of  
576 ST80 VREfm collected in China and other countries.

577

578 **Figure 7. Genomic characteristics of the new type of *vanA*-harboring plasmid.**

579 (A) The circle plot of the plasmid profile for p23VRE019. The arrows represent the  
580 CDS with its annotated functions. Red, antimicrobial resistance. Green, plasmid  
581 stability. Yellow, insertion sequence and transposon. Blue, other functions. Gray,  
582 hypothetical proteins. (B) Comparisons of plasmid structures for p23VRE019 and  
583 other three plasmids from NCBI. The colored regions represent homologous sequence  
584 structures between the plasmids.

585

586 **Supplementary figure legends**

587 **Supplementary figure 1. Distribution of location (A) and source (B) of 311**

588 **VREfm isolates in minimum-spanning tree.**

589 **Supplementary figure 2. Comparisons of MICs for 13 antimicrobials between**

590 **ST80 and non-ST80 isolates.**

591 Vertical dash lines indicate the breakpoint of resistance according CLSI. Drug

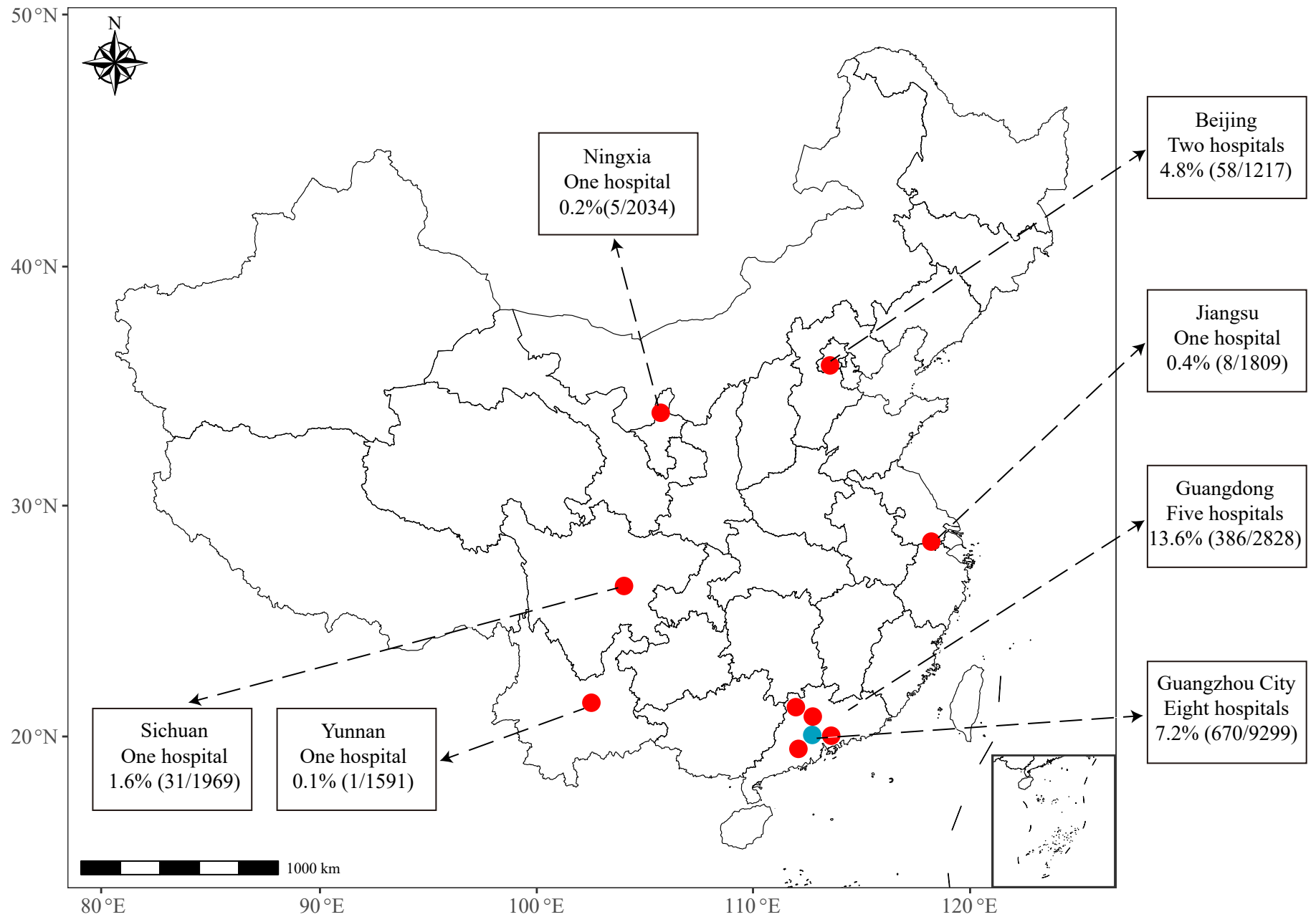
592 abbreviations are as per figure 4.

593 **Supplementary figure 3. Comparisons of ARGs, VFs and plasmid replicons**

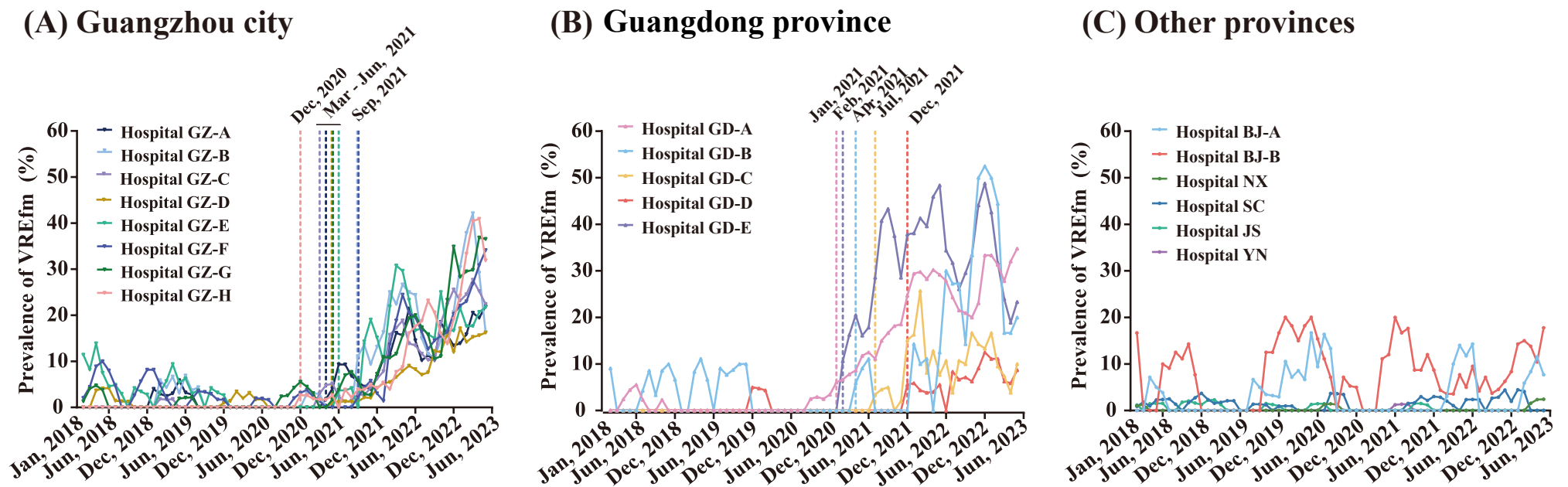
594 **between ST80 and non-ST80 VREfm.**

595 The calculations of statistical difference were done using student *t* test.

596

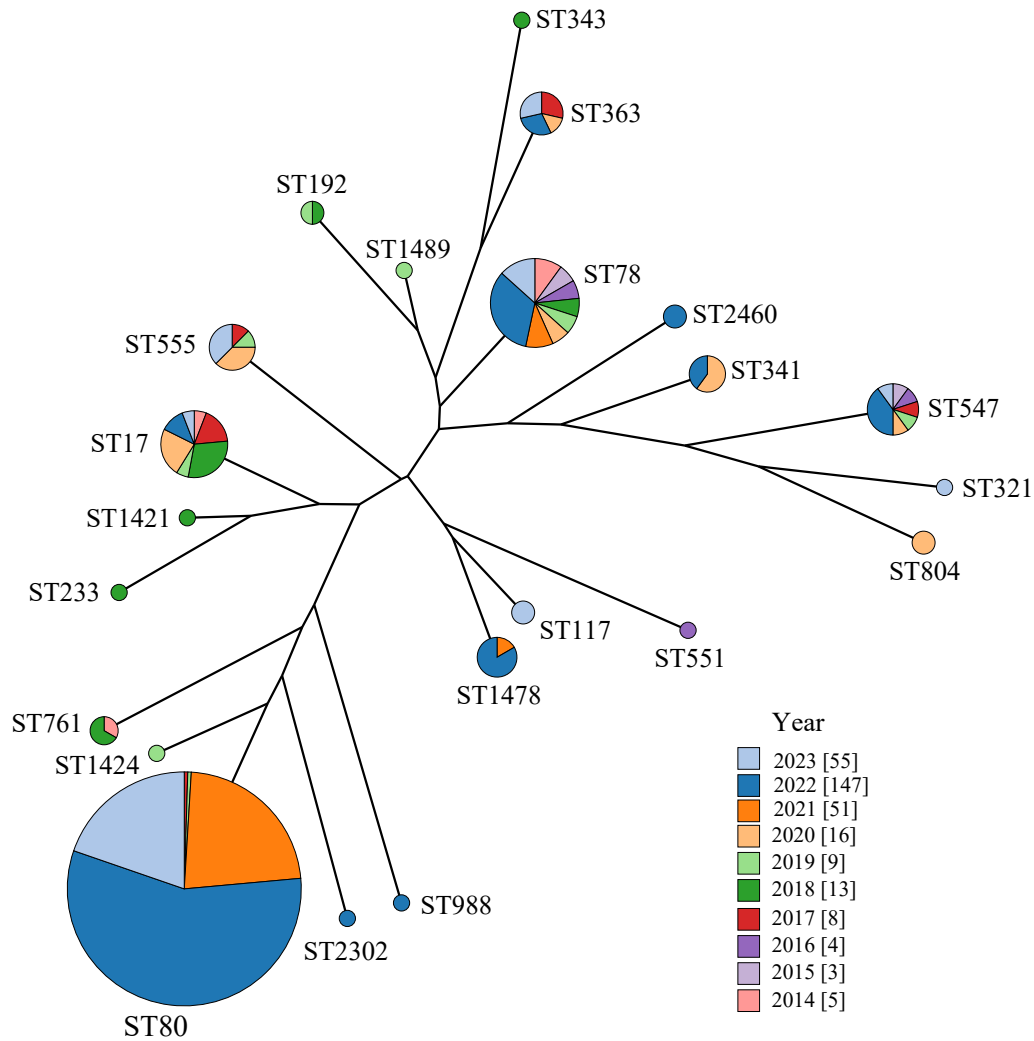


**Figure 1. Geographic location of 19 hospitals from six provinces.**

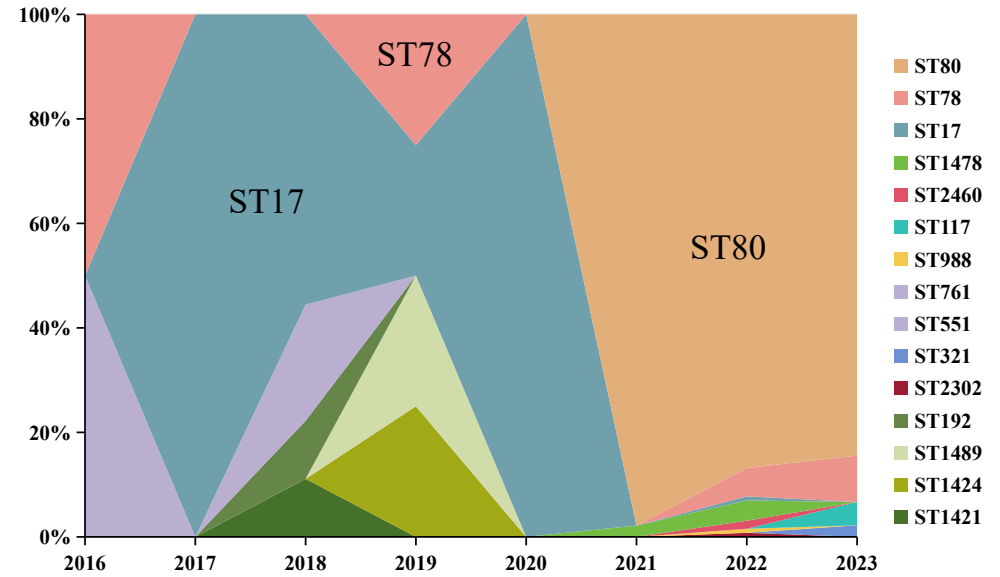


**Figure 2. Time series of monthly VREfm prevalence in Guangzhou city (A), Guangdong province except for Guangzhou city (B) and other five provinces (C), January 2018-June 2023.**

### (A) Spanning tree



### (B) Gongdong province



### (C) Other provinces

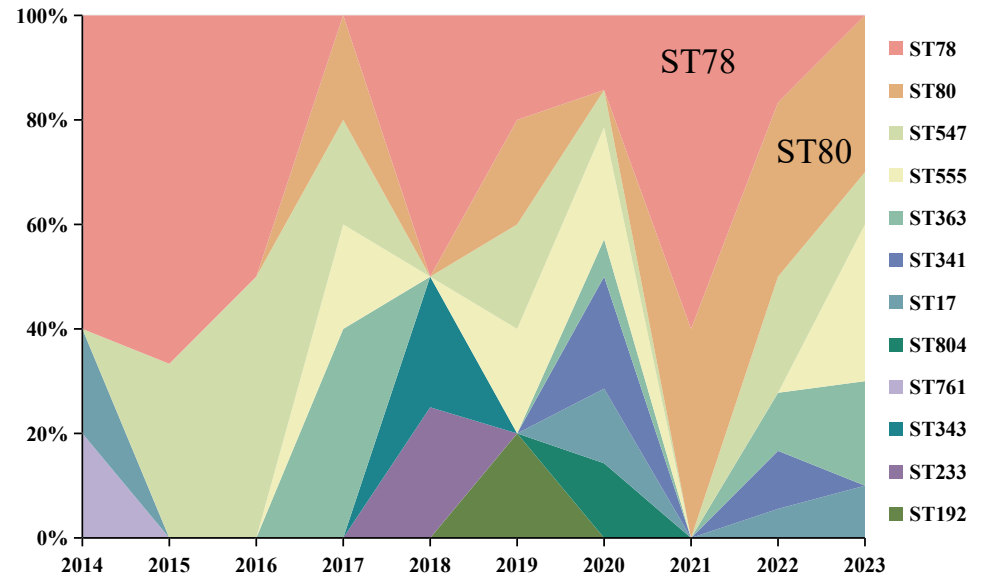
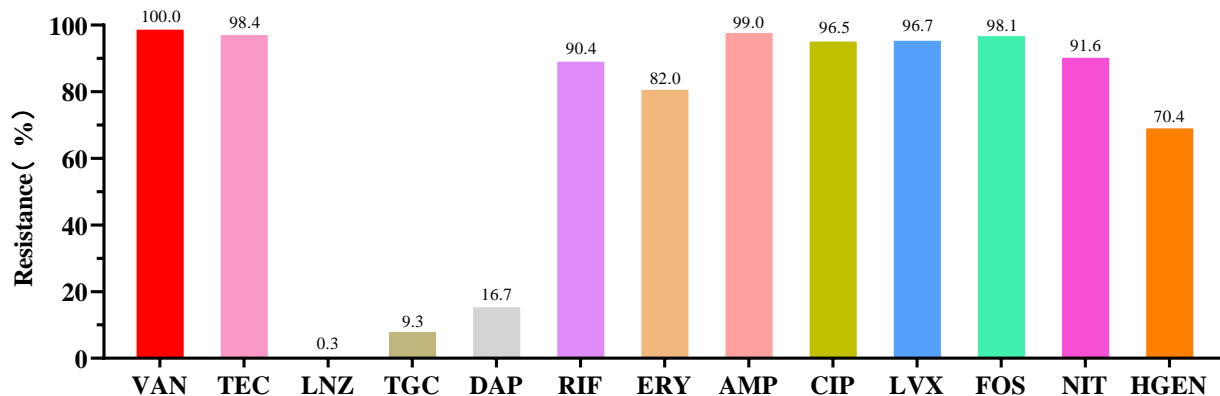


Figure 3. Minimum-spanning tree (A) and dynamic changes (B and C) of MLST distribution from 2014-2023.



(A)



(B)

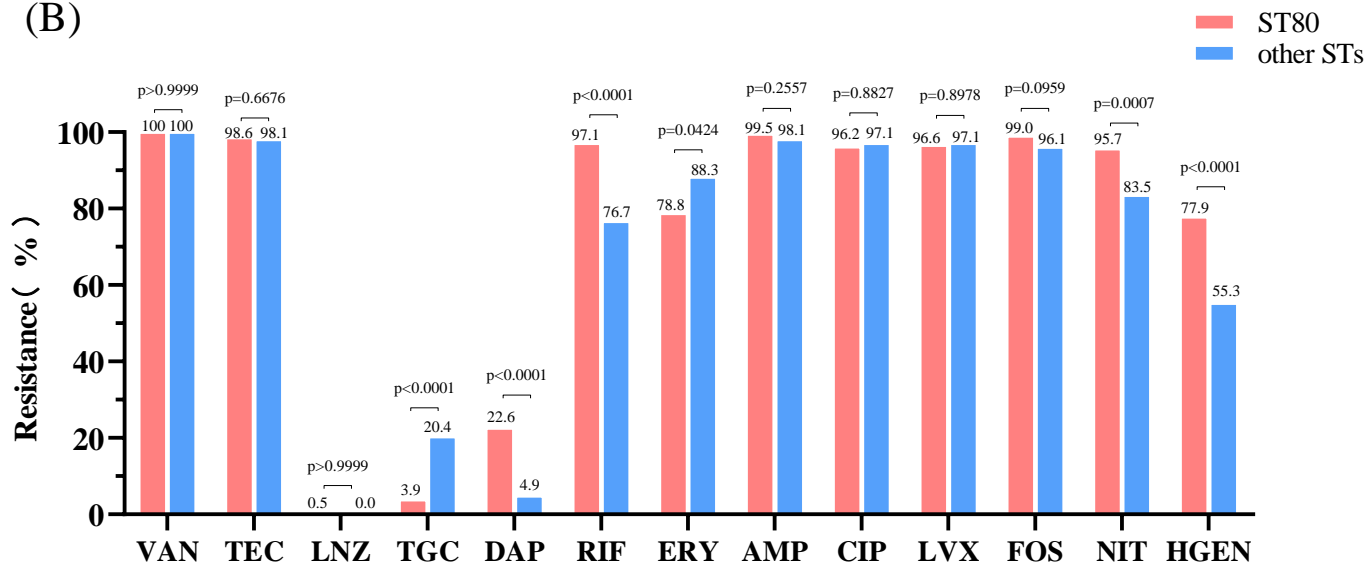
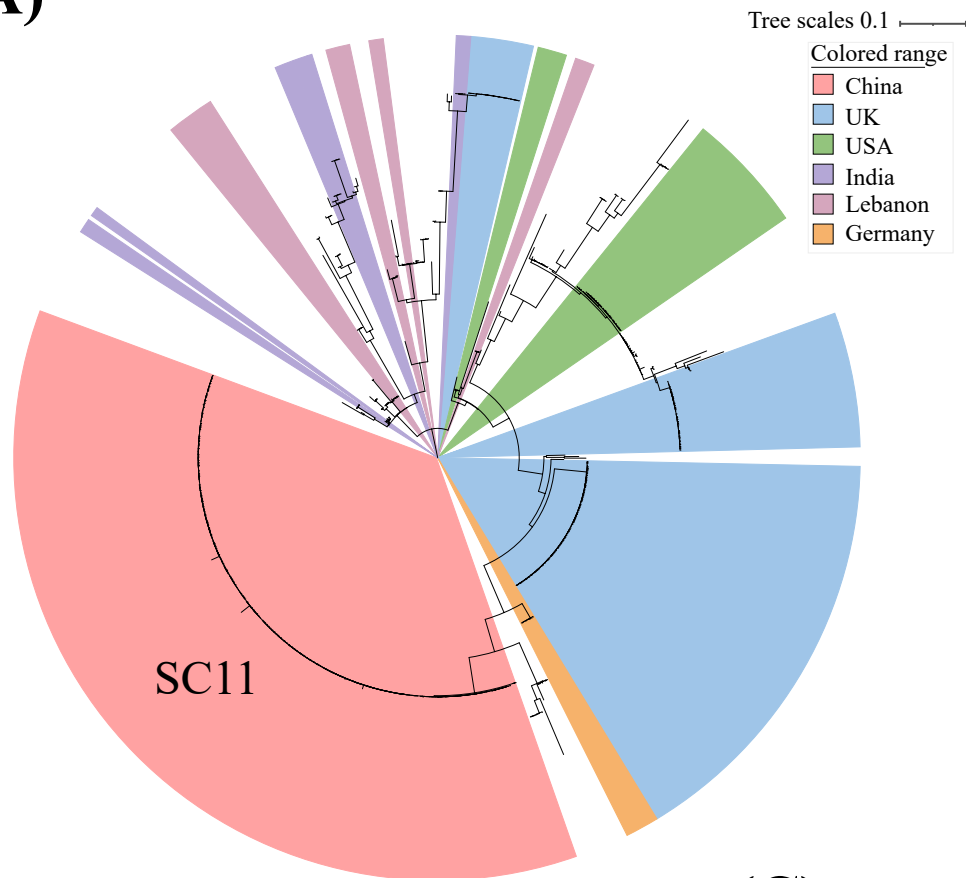
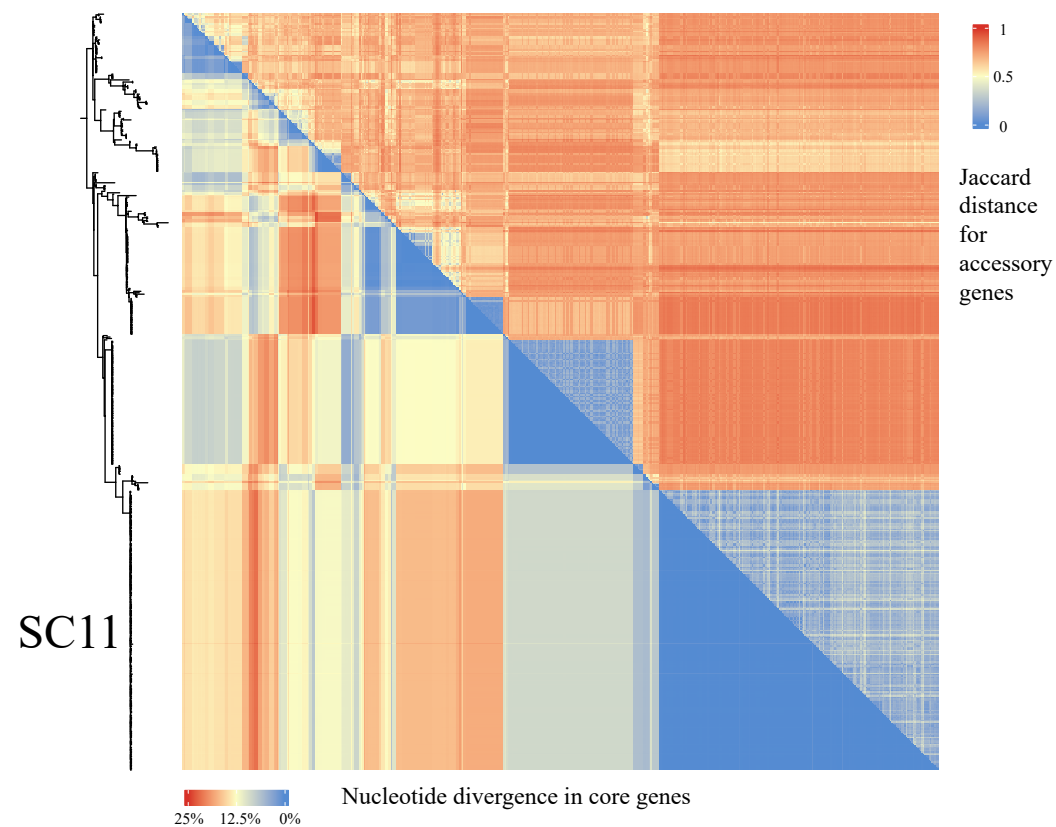
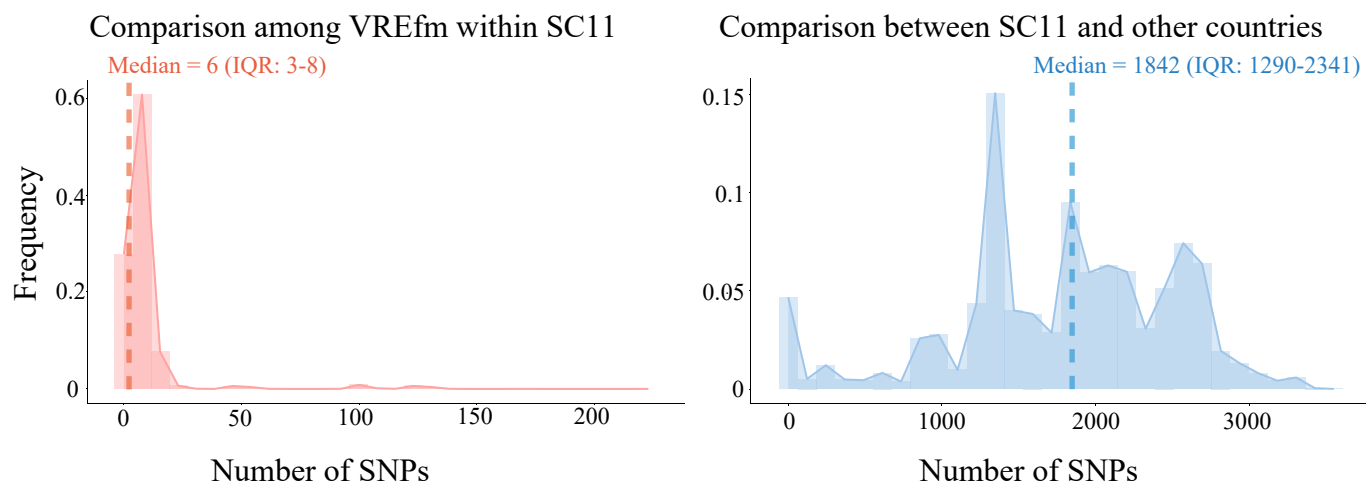


Figure 4. Antimicrobial susceptibility profiles of 13 antimicrobials for 311 VREfm isolates.



**(A)****(B)****(C)**

**Figure 6. Population structure of ST80 VREfm in different countries.**



**Table 1. MIC breakpoints recommended by EUCAST, CLSI, and those used in this study.**

Antibiotics	ECOFF	EUCAST clinical breakpoints			CLSI breakpoints			MIC breakpoints chosen in this study		Criteria for choosing breakpoint
		S	I	R	S	I	R	Non-S	R	
Vancomycin	>4	≤4	-	>4	≤4	8-16	≥32	>4	>4	EUCAST CB
Teicoplanin	>2	≤2	-	>2	≤8	16	≥32	>2	>2	EUCAST CB
Linezolid	>4	≤4	-	>4	≤2	4	≥8	>4	>4	EUCAST CB
Tigecycline	>0.25	≤0.25	-	>0.25	-	-	-	>0.25	>0.25	EUCAST CB
Daptomycin	>8	IE	IE	IE	≤4	-	≥8	>4	>4	CLSI CB
Rifampicin	ID	-	-	-	≤1	2	≥4	>1	>2	CLSI CB
Erythromycin	>4	-	-	-	≤0.5	1-4	≥8	>0.5	>4	CLSI CB
Ampicillin	>8	≤4	8	>8	≤8	-	≥16	>8	>8	EUCAST CB
Ciprofloxacin	>8	≤4	-	>4	≤1	2	≥4	>4	>4	EUCAST CB
Levofloxacin	>8	≤4	-	>4	≤2	4	≥8	>4	>4	EUCAST CB
Fosfomicin	>128	-	-	-	≤64	128	≥256	>64	>128	CLSI CB
Nitrofurantoin	>256	-	-	-	≤32	64	≥128	>32	>64	CLSI CB
HGEN	>32	≤128	-	>128	<500	-	≥ 500	>128	>128	EUCAST CB

EUCAST ECOFF extracted from <https://mic.eucast.org/search/>; EUCAST clinical breakpoints v13.0 download from [https://www.eucast.org/clinical\\_breakpoints/](https://www.eucast.org/clinical_breakpoints/); CLSI breakpoints extracted from CLSI M100-S33. CB, clinical breakpoint. CLSI, Clinical & Laboratory Standards Institute. ECOFF, epidemiological cut-off; EUCAST, The European Committee on Antimicrobial Susceptibility Testing; IE, insufficient evidence; ID, insufficient data; S, susceptible; I, intermediate; R, resistance; Non-S, non-susceptible; HGEN, high-level gentamycin resistance.