

**Title:** Navigating stroke care during the COVID-19 pandemic: A scoping review

**Short title:** Stroke care in COVID-19: A scoping review

**Authors:** Alixe Ménard<sup>1,2\*</sup>, MSc (amena069@uottawa.ca), Michelle Yang<sup>1,2</sup>, MSc (michelle.yang@uottawa.ca), Samantha Oostlander<sup>1,2</sup>, MScOT (soost009@uottawa.ca), Kanika Sarwal<sup>3</sup>, BHSc (kanika.sarwal@hotmail.com), Irfan Manji<sup>1,2</sup>, MSc (imanj083@uottawa.ca), Tracey O’Sullivan<sup>1,2</sup>, PhD (tosulliv@uottawa.ca), Sarah Fraser<sup>1,2</sup>, PhD (sarah.fraser@uottawa.ca)

1. Interdisciplinary School of Health Sciences [École interdisciplinaire des sciences de la santé], Faculty of Health Sciences [Faculté des sciences de la santé], University of Ottawa [Université d’Ottawa], Ottawa, Ontario, Canada
2. LIFE Research Institute, University of Ottawa, Ottawa, Ontario, Canada
3. School of Public Health Sciences, Waterloo University, Waterloo, Ontario, Canada

\*Corresponding author

**Corresponding Author:**

Alixé Ménard  
Interdisciplinary School of Health Sciences  
Faculty of Health Science, University of Ottawa  
200 Lees Avenue  
Office 223  
Ottawa, ON K1S 5L5  
Canada  
E: [amena069@uottawa.ca](mailto:amena069@uottawa.ca)

## Abstract

**Background:** Previous viral outbreaks have highlighted implications for the management of complex health conditions. This study delves into the repercussions of the COVID-19 pandemic on stroke care, by examining evidence of shifts in healthcare utilization, the enduring effects on post-stroke recovery, and the overall quality of life experienced by stroke survivors.

**Methods:** A scoping review was conducted following the Joanna Briggs Institute Methodology for Scoping Reviews. The search strategy encompassed electronic databases (APA PsycInfo, Embase, Medline, and CINAHL). English language articles published between December 2019 and January 2022 were included, focusing on individuals who experienced a stroke during the COVID-19 pandemic. Data extraction involved identifying study characteristics and significant findings, facilitating a qualitative and narrative synthesis of the gathered evidence.

**Results:** Seven domain summaries were identified. They all described the aspects of systemic transformations in stroke care during the COVID-19 pandemic: (1) patient behavior and awareness; (2) telemedicine and remote care; (3) delays in treatment; (4) impact on healthcare resources; (5) quality of care; (6) changes in stroke severity; and (7) reduction in stroke admissions.

**Conclusions:** This study underscored the critical need to encourage swift patient response to acute stroke symptoms, by finding new avenues for treatment, mitigating hospital-related infection fears, and advocating for the establishment of centralized stroke centers. These measures are integral to optimizing stroke care delivery and ensuring timely interventions, particularly in the challenging context of a pandemic.

**Keywords:** Cardiovascular disease, healthcare delivery, telemedicine, stroke, COVID-19

## **Non-standard Abbreviations and Acronyms**

<b>CT</b>	Computerized Tomography
<b>ELVO</b>	Emergent Large Vessel Occlusion
<b>HCP</b>	Health Care Professional
<b>MERS</b>	Middle East Respiratory Syndrome
<b>NHS</b>	National Health Service
<b>PRISMA-ScR</b>	Preferred Reporting Items for Systematic Reviews and Meta-Analyses extension for Scoping Reviews
<b>TIA</b>	Transient Ischemic Attack

## INTRODUCTION

Past large-scale outbreaks, exemplified by the 2015 Middle East Respiratory Syndrome (MERS), have been associated with changes in the utilization of emergency care services for conditions such as ischemic stroke and myocardial infarctions<sup>1</sup>. Similarly, the COVID-19 outbreak, as a result of SARS-CoV-2, demonstrated an impact on the management of cardiovascular disease<sup>2</sup>. The World Health Organization (WHO) emphasizes the necessity of drug treatment for hypertension, diabetes, and hyperlipidemia in effectively managing cardiovascular diseases<sup>3</sup>. Successful cardiovascular management requires patients to be involved in their care, having social and interprofessional support, and consistent follow-ups with healthcare providers<sup>4</sup>. Although these comprehensive approaches to stroke are crucial, when COVID-19 spread across regions worldwide, there were escalating concerns regarding the capacity of global healthcare systems to meet rising demands for acute emergencies and provide effective rehabilitation services for individuals who experienced strokes<sup>5</sup>. In this review, we assess the global impact of the COVID-19 disaster on stroke care, focusing on evidence for changes in healthcare access and utilization, long-term impacts on post-stroke recovery, and the quality of life of stroke survivors.

The WHO declared the COVID-19 pandemic on March 11<sup>th</sup>, 2020, catapulting many countries into a state of emergency<sup>6</sup>. Many institutions reported that this affected hospital resource allocation and well-established pathways for care<sup>7</sup>. This includes the protocols and process measures for the care/management of stroke<sup>7</sup>, the second leading cause of death and the foremost cause of disability worldwide<sup>8,9</sup>.

Each year, 15 million individuals around the globe experience a stroke<sup>10</sup>. To address the challenges posed by COVID-19 on healthcare systems, novel strategies were introduced to enhance in-hospital workflow, optimize the availability of healthcare workers, and minimize risks

for patients, families, and care partners<sup>8,11</sup>. These changes largely affected people experiencing stroke and other non-COVID-19 conditions, which required extensive resources related to imaging, diagnostics, treatment options, and length of stay<sup>12</sup>. The impact of the ongoing crisis on stroke care continues to be influenced by in-hospital decisions, regional public health protocols, prehospital triage, and equitable access to acute treatments<sup>13</sup>. It is also the result of different state-wide strategies to prevent and contain the spread of COVID-19<sup>14</sup>. These strategies (e.g. quarantine, isolation, screening and triage protocols), may not only influence traditional stroke pathways but also health-seeking behaviors<sup>15</sup>.

The negative impacts of preventative public health initiatives that target the spread of infections within hospitals have been recognized, and they are anticipated to give rise to various epidemiological consequences (e.g., increased mental health disorders, antibiotic resistance)<sup>16</sup>. As the pandemic persists, there will likely be a continued shift in the epidemiology of stroke and other cardiovascular events<sup>17</sup>. In Italy, the restrictive lockdown required adaptations of the integrated care pathways (ICP) serving stroke and other time-dependent conditions<sup>18</sup>. In the United Kingdom, non-urgent elective care was paused as the English National Health Service (NHS) reprioritized the delivery of care for COVID-19 patients<sup>19</sup>. In the United States, emergency treatment protocols, such as for thrombolysis and endovascular revascularization, were at risk of significant time delays<sup>20</sup>. The urgency imposed by COVID-19 pushed these rapid public health reforms. With minimal forewarning and planning, healthcare institutions were forced to swiftly formulate, communicate, and implement an organizational response to the pandemic. This involved recalibrating healthcare delivery to strike a balance between providing timely and effective care while mitigating the risk of COVID-19 infection. For example, the American Heart Association and American Stroke Association quickly issued temporary emergency guidelines for stroke

hyperacute management<sup>21</sup>, and the Canadian Stroke Best Practice recommendations were rapidly modified to provide a virtual tele-stroke healthcare management-toolkit<sup>22</sup>.

During disasters, stroke survivors are likely to experience serious disruptions that can impact social, cognitive, and motor outcomes<sup>23</sup>. The impacts of the pandemic on stroke survivors produced “collateral damage”<sup>24</sup>, yet the global evidence for the direct and indirect impacts of the COVID-19 pandemic on stroke care has yet to be synthesized. Hence, to support knowledge mobilization, the purpose of this scoping review is to form an evidence-based framework to describe the resiliency and capacity of stroke care systems during the pandemic and to formulate recommendations for reducing the risks for stroke patients during an emergency/disaster. This knowledge will inform future emergency preparedness protocols supporting effective response and highlight the needs of stroke survivors in a disaster context.

## **METHODS**

Scoping review methodology allows researchers to navigate the landscape of evidence by exploring emerging findings in situations where clarity is lacking, allowing for the formulation of more comprehensive and specific questions<sup>25</sup>. The value of conducting this study as a scoping review is that it will inform evidence-based practices in the broader field of cardiovascular healthcare service delivery by identifying gaps in the research knowledge base<sup>25</sup>. The Joanna Briggs Institute (JBI) Methodology for Scoping Reviews<sup>26</sup>, provides a contemporary methodological framework to facilitate knowledge translation in health research. This framework instructed our reporting outline, inclusion criteria, search strategy, extraction, presentation and summarization of the results, and any potential implications for research and practice.

## **Search strategy**

The following four electronic databases were systematically searched as shown in the PRISMA chart in Appendix A: APA PsycInfo, Embase, Medline, and CINAHL. Additionally, grey literature was hand-searched using open-access repositories and the reference lists from selected articles. Two levels of search terms were used: (1) terminology for stroke and (2) the COVID-19 pandemic. The protocol for the review design and search strategy was developed by study researchers (MY, SO) and health science librarians from the University of Ottawa Library (KF & NL) prior to database searches. The search strategy is presented in Appendix B. Guidelines from the Preferred Reporting Items for Systematic Reviews and Meta-Analyses extension for Scoping Reviews (PRISMA-ScR) were followed, and the PRISMA-ScR checklist, which guides the reporting of scoping reviews was completed<sup>27</sup>. This reporting guideline is consistent with the JBI guidance for scoping reviews and highlights the importance of methodological rigor in conducting scoping reviews<sup>25</sup>.

## **Study screening and selection**

All stages of the screening process (i.e., title and abstract screening, full text screening and selection) were completed using Covidence. Two researchers (MY, SO) participated independently at each stage. In the case of any discordance between authors' selection, there was a discussion between co-authors (MY, SO, IM, AM & KS) to reach a consensus regarding the inclusion or exclusion of the article.

English language articles published between December 2019 (the inception of the COVID-19 pandemic) and January 2022 were included. Population characteristics include people who had a stroke (clinically defined as hemorrhagic stroke (intracerebral and subarachnoid), ischemic stroke, TIA, or any condition that can be classified as a cerebrovascular accident) during the

COVID-19 pandemic, as defined by the period between when SARS-CoV-2 was initially identified as a threat - to January 2022. The outcomes of interest of selected articles were the impact of the COVID-19 pandemic on individuals who had a stroke, including stroke care during the pandemic, changes in healthcare delivery, functional outcomes, and quality of life after stroke. Articles presenting original research findings or analyses thereof were included, including primary and secondary data, or synthesis of available literature reflecting the functional outcomes of patients who had a stroke.

Studies were excluded if the outcomes of interest were the impact of SARS-CoV-2 on stroke symptoms, stroke as a complication or prognostic factor of SARS-CoV-2, or risk of stroke in people who contracted COVID-19. Opinion pieces, commentary papers and recommendation papers were excluded if they did not report on empirical results from an original study. Articles from the position of, or solely focusing on the experiences of, Health Care Professionals (HCPs) were excluded.

### **Data collection and analysis**

Authors (MY, IM, AM & KS) jointly developed a data-charting table to determine the variables to extract. Extraction was initially conducted by one author (MY) and confirmed for accuracy by other authors (IM, AM & KS). All authors iteratively updated the extraction tables. We extracted data on study characteristics (Appendix C), including year, country, study design, and significant findings from the manuscripts. A comprehensive qualitative and narrative synthesis of the gathered data was performed in preparation for a content analysis<sup>28</sup>. The authors refined the analysis and presentation through thoughtful deliberations and consensus-building, particularly when adjustments were required or in the presence of conflicting opinions. To establish coding reliability, title and abstracts were dually coded, followed by the full inclusion of articles. Title



and abstract screening for interrater reliability was initially performed by MY and SO, resulting in a strong agreement with a kappa value of 0.85. Following this, a secondary screening of the 84 included articles was carried out by AM and KS, yielding a kappa value of 0.9, indicating strong agreement.

## RESULTS

### Study characteristics

The search and screening processes are presented in Appendix A. We identified a total of 861 studies after the removal of duplicate studies. A total of 650 records were excluded following title and abstract screening. Of the 211 full articles assessed for eligibility, 84 met inclusion criteria and were retained.

The included articles underwent a reevaluation by three members of the research team (KS, IM & AM) to further confirm their eligibility for inclusion. The included articles were composed of 46 retrospective studies (cohort (n=7); observational (n=11); cross-sectional (n=3); archive (n=1); review (n=1); unspecified (n=23)); 10 prospective studies (cohort (n=2); observational (n=3); cross-sectional (n=3); unspecified (n=2)); 26 observational studies (reports (n=9); cohort (n=7); cross-sectional (n=1); unspecified (n=9)); one matched pairs study; and one survey and one exploratory design. The included articles demonstrated wide geographical spread spanning Bangladesh<sup>29</sup>; Canada<sup>30-32</sup>; Chile<sup>33</sup>; China<sup>15,34-37,37-44</sup>; Egypt<sup>45</sup>; Finland<sup>46</sup>; France<sup>47</sup>; Germany<sup>48-50</sup>; India<sup>51</sup>; Iran<sup>52,53</sup>; Israel<sup>54-56</sup>; Italy<sup>8,57-67</sup>; Japan<sup>9,68</sup>; Lithuania<sup>69</sup>; Malaysia<sup>70</sup>; Netherlands<sup>71</sup>; Norway<sup>72,73</sup>; Saudi Arabia<sup>74,75</sup>; Spain<sup>76-79</sup>; Switzerland<sup>80</sup>; Taiwan<sup>81</sup>; United Kingdom<sup>82-84</sup>; and United States of America<sup>7,20,24,39,85-104</sup>. The studies encompassed participants from a wide range of diverse backgrounds, including individuals from various racial and ethnic communities, linguistic

minorities, and persons with differing levels of disability. A wide range of ages was also captured in the articles ranging from early to late adulthood.

## **Review findings**

A total of seven domain summaries were identified through content analysis<sup>28</sup>. This analytical approach embraces the consideration of multiple perspectives to gain a comprehensive understanding of a specific area of focus in a given timeframe (i.e., stroke care during the COVID-19 pandemic), through systematic content analysis<sup>105</sup>. After becoming familiar with the data, domains were developed, and summaries for each domain were compiled. The domain summaries reflect the diverse ways in which the COVID-19 pandemic affected stroke care globally. They highlight the challenges faced by healthcare systems in maintaining quality stroke care amid the disruptions caused by the pandemic. These domain summaries include: (1) patient behavior and awareness; (2) telemedicine and remote care; (3) delays in treatment; (4) impact on healthcare resources; (5) quality of care; (6) changes in stroke severity; and (7) reduction in stroke admissions. The domain summaries were then grouped into three domains: patient conduct, healthcare delivery, and stroke characteristics, as depicted in Figure 1.

### **Domain 1: Patient conduct**

#### *Domain Summary 1: Patient behavior and awareness*

Patient behavior, such as the reluctance to seek medical attention, emerged as a significant factor affecting stroke outcomes during the pandemic. The fear of contracting COVID-19 and changes in healthcare-seeking behavior were recurrent themes<sup>42,77,96</sup>. Individuals experiencing mild stroke symptoms and those with lower functional abilities were less inclined to seek medical attention<sup>7,42,59,77</sup>. Patients tended to delay seeking medical help, often surpassing the eligible treatment timeframes<sup>33,39</sup>. Additionally, external factors such as national traffic control measures

(for example, in China) played a role in hindering prompt access to healthcare services<sup>15</sup>. Moreover, the implementation of additional COVID-19 prevention protocols, such as mandatory travel history checks, contributed to prolonged stroke management periods<sup>15</sup>.

### *Domain Summary 2: Telemedicine and remote care*

Amid the pandemic, there was a surge in patient reliance on telemedicine for stroke consultations and follow-ups, particularly for non-acute treatment, as noted in numerous studies<sup>31,77,79,87,90,92</sup>. This shift in healthcare delivery aimed to address pandemic-related challenges and ensure ongoing patient care. However, despite these efforts, older adults experienced a reduction in weekly telestroke consultations and decreased utilization of telestroke services<sup>24</sup>. Conversely, there was a significant decline in in-person outpatient visits and inpatient care for stroke patients, particularly affecting high-risk populations such as immunocompromised individuals and those with underlying health conditions<sup>31,77,79,87,90,92,99</sup>. While telemedicine became increasingly common for both new and existing patients in younger cohorts, outpatient clinics that remained operational implemented stringent safety measures such as the use of personal protective equipment (PPE) and isolation protocols<sup>36,37,42,46,87</sup>.

## **Domain 2: Healthcare delivery**

### *Domain Summary 3: Delays in treatment*

The focus on COVID-19 patients and facilities led to a restructuring of pre-hospital transportation, decreased interactions with stroke specialists, centralization of stroke centers and rehabilitation routes, a reduction in the availability of additional diagnostic tests, timely therapies, and emergency pathways for stroke patients<sup>45,51,82</sup>. These changes resulted in delays, which in turn affected the utilization of immediate treatments, and had implications for prognosis<sup>76</sup>. The advent

of the COVID-19 pandemic prompted a shift in healthcare priorities, diverting attention and resources away from routine stroke care, including the essential procedures of thrombolysis and thrombectomy<sup>20,45,72,104</sup>. As a result, the pandemic caused a strain on healthcare systems, resulting in a noticeable decline in the performance of these two critical interventions by skilled practitioners such as cardiologists, radiologists, vascular surgeons and emergency medicine physicians<sup>20,45,72,104</sup>. Fewer referrals for specialized stroke care were made during the pandemic<sup>48,55,69,75,83,98</sup>. Factors contributing to these delays included changes in hospital protocols, reorganization of healthcare resources, and changes in patient health-seeking behaviors as a result of fear<sup>42,77,96</sup>. The crowding of hospitals during the COVID-19 pandemic not only led to delayed acute treatment for stroke patients,<sup>75</sup> but also resulted in increased symptoms-to-door time (i.e., the time between the onset of symptoms and arrival at the hospital) and door-to-treatment time (i.e., the time between arrival at the hospital and the initiation of treatment) for reperfusion.<sup>30,34,60,76,79</sup> However, prehospital triage proved helpful in the provision of timely care in resource-limited areas<sup>69</sup>. Notably, some hospital Emergency Departments implemented two distinct intra-hospital pathways to ensure the safe management of stroke patients<sup>65</sup>.

#### *Domain Summary 4: Impact on healthcare resources*

The reorganization of healthcare resources, reallocation of stroke professionals, and the prioritization of COVID-19 patients<sup>59</sup> led to changes in stroke care pathways, delays in acute treatment<sup>75</sup>, and consequences for stroke outcomes<sup>76</sup>. Ambulance services experienced an excessive burden due to the pandemic<sup>58</sup>. There was also an increase in the demand for computed tomography (CT) scans<sup>100</sup>; discontinuation of rehabilitation programs due to the reorganization of resources; shortfalls in health insurance coverage for stroke patients; and limited access to

specialized care units and diminished workforce in hospitals<sup>59,68,74,102</sup>. Ultimately, these pandemic-related healthcare interruptions led to a fragmented stroke chain of survival and care pathways.

#### *Domain Summary 5: Quality of care*

During the COVID-19 pandemic, reductions in quality-of-care metrics, including door-to-CT (time from arrival to hospital and initiation of a CT scan), dysphagia screenings, early antithrombotic use, and rehabilitation evaluations, were observed in various studies<sup>70,77,81,83,90,99,100,102</sup>. Despite discussions about the preservation and, in some cases, improvement in stroke care quality during the pandemic<sup>20,81,82</sup>, challenges and disruptions in outpatient care, rehabilitation, and follow-up care were noted in several articles<sup>6,7,30,62,65,66</sup>. Furthermore, studies indicated that patients treated during the pandemic had worse discharge outcomes and increased mortality rates<sup>20,33,85</sup>. Regrettably, higher rates of in-hospital death and hospice discharges were observed during the pandemic period, attributed to longer treatment delays<sup>16,26,79,87</sup>. Additionally, higher post-stroke disability (e.g., loss of peripheral vision, muscle spasticity, hemiplegia<sup>106</sup>), measured using the modified Rankin Scale, was correlated with the discontinuation of rehabilitation services due to the pandemic<sup>74,102</sup>.

### **Domain 3: Stroke characteristics**

#### *Domain Summary 6: Changes in stroke severity*

During the pandemic, noticeable shifts in stroke severity were observed, with many studies highlighting an escalation in the severity of strokes compared to pre-pandemic measures<sup>33,40,48,63,91,98,103</sup>. Particularly noteworthy is the finding that stroke severity upon hospital admission was significantly higher in the pandemic period compared to pre-pandemic cohorts<sup>48,91</sup>. This phenomenon may be attributable to delayed patient presentations; a lack of close observers

to notice stroke symptoms due to lockdowns and stay-at-home directives; and a hesitancy among individuals to promptly seek medical attention.

### *Domain Summary 7: Reduction in stroke admissions*

Many articles discussed the impact of the COVID-19 pandemic on hospital admissions for stroke patients<sup>9,15,29,36,40,44,45,47–54,58,60,61,65,66,69,71,72,82,83,86,88,91,103,104</sup>. A few articles mentioned a decrease in the number of stroke admissions during the pandemic<sup>29,39,40,52,53,69,72,76,77,79,83,84,90,97,107</sup> despite reperfusion therapy, thrombolysis and thrombectomy rates remaining unchanged during this period<sup>50,54,63,65,71,91</sup>. There were also fewer presentations of emergent large vessel occlusion (ELVO) in the emergency departments<sup>45</sup>, less stroke unit admissions<sup>8,64,79</sup>, and fewer code strokes<sup>77,79</sup>. A reduction in transfers between facilities was also observed, likely attributed to precautionary measures implemented early in the pandemic to minimize the risk of COVID-19 transmission through interfacility transfers<sup>57,98,108</sup>. These reductions in stroke admissions were attributed to factors such as patient reluctance to seek medical care, fear of infection, and changes in healthcare protocols<sup>61,77,82,96</sup>.

[PLACEHOLDER – Figure 1. Systemic and interrelated transformations in stroke care during the COVID-19 pandemic presented as a framework]

## **DISCUSSION**

In this scoping review we aimed to explore the repercussions of the COVID-19 pandemic on stroke care, examining evidence concerning shifts in healthcare utilization, the enduring effects on post-stroke recovery, and the overall quality of life experienced by stroke survivors. A thorough literature search uncovered 84 articles that satisfied the inclusion criteria for this review. Included articles reflected the condition of stroke care at healthcare facilities or the stroke experiences of

individuals from several continents. Findings from the articles were analyzed using content analysis<sup>105</sup>. This resulted in three domains: patient conduct, healthcare delivery and stroke characteristics; and seven domain summaries: (1) patient behavior and awareness; (2) telemedicine and remote care; (3) delays in treatment; (4) impact on healthcare resources; (5) quality of care; (6) changes in stroke severity; and (7) reduction in stroke admissions, as presented in Figure 1.

The results of the current review align with existing literature wherein pandemic-related health measures and states of emergency affect the likelihood of seeking medical care during acute cardiovascular incidents<sup>109</sup>. Current research suggests that states of emergency influence patient behavior by decreasing admission rates for cardiovascular events and causing broader shifts in health-seeking behaviors<sup>109</sup>. Similarly, results from this review indicate that patients feared contracting SARS-CoV-2, thus when making health-related decisions, the risk of being admitted to a hospital for an acute cardiovascular event was weighed against the risk of COVID-19 mortality for older and/or institutionalized patients<sup>110</sup>.

In sum, the impact of COVID-19 on stroke care was multifaceted, with social isolation and stay-at-home orders contributing to fewer witnesses of stroke symptoms, delayed recognition of mild stroke signs, and increased avoidance of advanced care<sup>7,42,59,77</sup>. Raising awareness about stroke symptoms and the critical need for immediate medical attention, even amidst a pandemic, is paramount<sup>111</sup>. This effort can encompass diverse strategies, including public service announcements, targeted social media Face, Arm, Speech, Time (FAST) campaigns during lockdowns, and proactive community outreach initiatives<sup>112</sup>. Additionally, fostering support networks through structured systems of assistance within communities to aid individuals experiencing stroke symptoms, particularly those who are socially isolated or face barriers in seeking assistance, is essential for mitigating adverse stroke outcomes during times of crisis<sup>113</sup>.

Amidst crises, stroke care systems face numerous challenges, including delays in hospital presentation, ineligibility for time-sensitive treatment, and a reduction in thrombolysis and thrombectomies<sup>20,45,60,86</sup>. To address these challenges, adaptability in stroke care systems is essential. Recent research has indicated that the successful implementation of performance improvement programs and robust stroke care systems can help maintain high-quality care during health emergencies<sup>114</sup>. Additionally, mitigating delays and preventing reluctance to seek medical care requires addressing various factors such as overcoming fear of COVID-19 infection<sup>115</sup>; managing transportation restrictions (i.e., many individuals indicated being unsure whether travel to hospital was permitted and feared exposing patients to COVID-19<sup>116</sup>), and alleviating burdens on the healthcare system. Notably, innovations have been proposed to alleviate these burdens and safeguard stroke survivors during crises, including: (1) implementing teleneurology networks to enhance thrombolysis access for acute ischemic stroke; (2) enhancing the efficiency of emergency care for acute ischemic stroke (e.g., by preregistering patients during transport via ambulance and having the neurologist obtain clinical history electronically prior to arrival at the hospital); and (3) offering alternatives to inpatient care for transient ischemic attacks through an accelerated diagnostic protocol in the observation unit<sup>117</sup>.

This emphasizes the importance of rapid adaptation and multidisciplinary changes in stroke care protocols, including effective triage screening, proper PPE utilization, and increased equipment cleaning to minimize treatment delays<sup>118</sup>. Recognizing the impact of social isolation and the stress of the pandemic on the mental health of patients and staff also underscores the need for comprehensive psychological support measures in stroke care strategies<sup>119</sup>. To address COVID-19-related fears, stroke care must include the integration of psychological support, particularly emphasizing the consideration of physiological risk factors linked to COVID-19



comorbidities<sup>115</sup>. For future preparedness, a holistic approach that encompasses technological advancements, public education, and mental health support will be essential to ensure optimal patient outcomes and maintain the integrity of stroke care systems during crises. Findings from this review also point to a need to compare the quality of stroke care delivered through telemedicine with that provided in traditional, in-person settings.

### **Strengths and limitations**

While the scoping review offers valuable insights into the challenges faced by stroke care systems and survivors during the COVID-19 pandemic, it is important to acknowledge certain limitations. One notable limitation is the restriction of the search to English language articles, which may have resulted in the exclusion of relevant studies published in other languages, potentially limiting the comprehensiveness of the review. However, by analyzing studies from multiple continents and considering diverse populations, the review provides a global perspective on the challenges faced by stroke care systems during the pandemic. Additionally, the review includes articles published only up to January 2022, which may not capture the most recent developments in stroke care during the ongoing pandemic. Furthermore, while the review offers a qualitative synthesis of the literature, the absence of quantitative analysis limits the ability to quantify the magnitude of the impact of COVID-19 on stroke care outcomes. Despite these limitations, the review provides a thorough examination of the impact of the COVID-19 pandemic on stroke care, encompassing various aspects such as changes in healthcare utilization, long-term effects on post-stroke recovery, and quality of life considerations for stroke survivors. The use of scoping review methodology, guided by the JBI framework, ensures a systematic and transparent approach to navigating the available evidence.

### **Conclusions**

As evidenced by our scoping review, the COVID-19 pandemic has profoundly altered stroke care around the globe. Heightened patient fear and subsequent delays in seeking medical attention, coupled with rapid shifts towards telemedicine, highlight the urgent need for adaptable stroke care systems. Recommendations include prioritizing telemedicine and improving its access to older adults and high-risk populations; and implementing robust performance improvement programs to mitigate treatment delays. Future research should explore strategies for enhancing patient education and communication to address fear-related delays in seeking medical attention. Longitudinal studies tracking the long-term effects of pandemic-induced changes in stroke care delivery are also needed for understanding their sustained impact and informing future emergency preparedness protocols.

### **Acknowledgements**

We thank librarians, Karine Fournier and Nigèle Langlois, from the University of Ottawa Health Sciences Library for their invaluable assistance with our comprehensive systematic search procedure.

### **Sources of funding**

This work was supported by the Social Sciences and Humanities Research Council of Canada [435-2022-0718 to T.O.].

### **Disclosures**

None.

## REFERENCES

1. Lee SY, Khang YH, Lim HK. Impact of the 2015 Middle East Respiratory Syndrome Outbreak on Emergency Care Utilization and Mortality in South Korea. *Yonsei Medical Journal*. 2019;60(8):796-803. <https://doi.org/10.3349/ymj.2019.60.8.796>
2. Masroor S. Collateral damage of COVID-19 pandemic: Delayed medical care. *Journal of Cardiac Surgery*. 2020;35(6):1345-1347. doi:10.1111/jocs.14638
3. Management of cardiovascular disease. Accessed January 20, 2024. <https://www.who.int/southeastasia/activities/management-of-cardiovascular-disease>
4. Perrin A, Damiolini E, Schott AM, et al. Considering health literacy in cardiovascular disease management: a qualitative study on healthcare professionals' and patients' perspectives. *BMC Health Services Research*. 2022;22(1):1121. doi:10.1186/s12913-022-08455-8
5. Boldrini, P., Bernetti, A., Fiore, P., & SIMFER Executive Committee, SIMFER Committee for International Affairs (2020). Impact of COVID-19 outbreak on rehabilitation services and Physical and Rehabilitation Medicine physicians' activities in Italy. An official document of the Italian PRM Society (SIMFER). *European journal of physical and rehabilitation medicine*, 56(3), 316–318. <https://doi.org/10.23736/S1973-9087.20.06256-5>
6. Mahase E. Covid-19: WHO declares pandemic because of “alarming levels” of spread, severity, and inaction. *BMJ*. 2020;368:m1036. doi:10.1136/bmj.m1036
7. Wallace AN, Asif KS, Sahlein DH, et al. Patient Characteristics and Outcomes Associated with Decline in Stroke Volumes During the Early COVID-19 Pandemic. *J Stroke Cerebrovasc Dis*. 2021;30(6):105569. doi:10.1016/j.jstrokecerebrovasdis.2020.105569
8. Bersano A, Pantoni L. On being a neurologist in Italy at the time of the COVID-19 outbreak. *Neurology*. 2020;94(21):905-906. doi:10.1212/WNL.0000000000009508
9. Ota, T., Shiokawa, Y., & Hirano, T. (2020). Impact of COVID-19 on Stroke Admissions and the Medical Care System in the Tokyo Metropolitan Area. *Frontiers in neurology*, 11, 601652. <https://doi.org/10.3389/fneur.2020.601652>
10. WHO EMRO | Stroke, Cerebrovascular accident | Health topics. World Health Organization - Regional Office for the Eastern Mediterranean. Accessed January 20, 2024. <http://www.emro.who.int/health-topics/stroke-cerebrovascular-accident/index.html>
11. Spina S, Marrazzo F, Migliari M, Stucchi R, Sforza A, Fumagalli R. The response of Milan's Emergency Medical System to the COVID-19 outbreak in Italy. *The Lancet*. 2020;395(10227):e49-e50. doi:10.1016/S0140-6736(20)30493-1
12. Gittins M, Lugo-Palacios D, Vail A, et al. Delivery, dose, outcomes and resource use of stroke therapy: the SSNAPIEST observational study. *Health Services and Delivery Research*. 2020;8(17):1-114. doi:10.3310/hsdr08170

13. Rudd A, Bladin C, Carli P, et al. Utstein recommendation for emergency stroke care. *International Journal of Stroke*. 2020;15(5):555-564. doi:10.1177/1747493020915135
14. Cucinotta, D., & Vanelli, M. (2020). WHO Declares COVID-19 a Pandemic. *Acta bio-medica : Atenei Parmensis*, 91(1), 157–160. <https://doi.org/10.23750/abm.v91i1.9397>
15. Gu S, Dai Z, Shen H, et al. Delayed Stroke Treatment during COVID-19 Pandemic in China. *Cerebrovascular Diseases*. 2021;50(6):715-721. doi:10.1159/000517075
16. Torales J, O'Higgins M, Castaldelli-Maia JM, Ventriglio A. The outbreak of COVID-19 coronavirus and its impact on global mental health. *Int J Soc Psychiatry*. 2020;66(4):317-320. doi:10.1177/0020764020915212
17. Garcia S, Albaghdadi MS, Meraj PM, et al. Reduction in ST-Segment Elevation Cardiac Catheterization Laboratory Activations in the United States During COVID-19 Pandemic. *Journal of the American College of Cardiology*. 2020;75(22):2871-2872. doi:10.1016/j.jacc.2020.04.011
18. Government of Italy. Decree of the President of the Council of Ministers. Published 2020. Accessed October 24, 2023. <https://www.gazzettaufficiale.it/eli/id/2020/03/11/20A01605/sg>
19. NHS England. NEXT STEPS ON NHS RESPONSE TO COVID-19. Published online 2019. <https://www.england.nhs.uk/coronavirus/wp-content/uploads/sites/52/2020/03/urgent-next-steps-on-nhs-response-to-covid-19-letter-simon-stevens.pdf>
20. Agarwal S, Scher E, Rossan-Raghunath N, et al. Acute stroke care in a New York City comprehensive stroke center during the COVID-19 pandemic. *Journal of Stroke and Cerebrovascular Diseases*. 2020;29(9):105068. doi:10.1016/j.jstrokecerebrovasdis.2020.105068
21. Goyal M, Ospel JM, Southerland AM, et al. Prehospital Triage of Acute Stroke Patients During the COVID-19 Pandemic. *Stroke*. 2020;51(7):2263-2267. doi:10.1161/STROKEAHA.120.030340
22. Blacquiere D, Gubitz G, Yu A, Wein T, McGuff R, Pollard J. Candian Stroke Best Practice Recommendations, 7th Edition: Virtual Care (Telestroke) Implementation Toolkit. Heart and Stroke Foundation of Canada. Published 2020. Accessed October 24, 2023. <https://www.strokebestpractices.ca/en/resources/>
23. Pisano, F., Giachero, A., Rugiero, C., Calati, M., & Marangolo, P. (2020). Does COVID-19 Impact Less on Post-stroke Aphasia? This Is Not the Case. *Frontiers in psychology*, 11, 564717. <https://doi.org/10.3389/fpsyg.2020.564717>
24. Desai SM, Guyette FX, Martin-Gill C, Jadhav AP. Collateral damage – Impact of a pandemic on stroke emergency services. *J Stroke Cerebrovasc Dis*. 2020;29(8):104988. doi:10.1016/j.jstrokecerebrovasdis.2020.104988

25. Arksey, H., & O'Malley, L. (2005). Scoping studies: Towards a methodological framework. *International Journal of Social Research Methodology*, 8(1), 19-32. <https://doi.org/10.1080/1364557032000119616>
26. Peters, M. D. J., Marnie, C., Tricco, A. C., Pollock, D., Munn, Z., Alexander, L., McInerney, P., Godfrey, C. M., & Khalil, H. (2020). Updated methodological guidance for the conduct of scoping reviews. *JBI evidence synthesis*, 18(10), 2119–2126. <https://doi.org/10.11124/JBIES-20-00167>
27. Tricco AC, Lillie E, Zarin W, et al. PRISMA Extension for Scoping Reviews (PRISMA-ScR): Checklist and Explanation. *Ann Intern Med*. 2018;169(7):467-473. doi:10.7326/M18-0850
28. Erlingsson C, Brysiewicz P. A hands-on guide to doing content analysis. *Afr J Emerg Med*. 2017;7(3):93-99. doi:10.1016/j.afjem.2017.08.001
29. Hasan ATMH, Das SC, Islam MS, et al. Impact of COVID-19 on hospital admission of acute stroke patients in Bangladesh. *PLOS ONE*. 2021;16(1):e0240385. doi:10.1371/journal.pone.0240385
30. Katsanos AH, Boasquevisque D de S, Al-Qarni MA, et al. In-Hospital Delays for Acute Stroke Treatment Delivery During the COVID-19 Pandemic. *Canadian Journal of Neurological Sciences*. 2021;48(1):59-65. doi:10.1017/cjn.2020.170
31. Dowlatshahi D, Stotts G, Bourgoin A, et al. Decreased Stroke Presentation Rates at a Comprehensive Stroke Center during COVID-19. *Canadian Journal of Neurological Sciences*. 2021;48(1):118-121. doi:10.1017/cjn.2020.193
32. Briard JN, Ducroux C, Jacquin G, et al. Early Impact of the COVID-19 Pandemic on Acute Stroke Treatment Delays. *Canadian Journal of Neurological Sciences*. 2021;48(1):122-126. doi:10.1017/cjn.2020.160
33. Silva-Pozo A, Vallejos J, Almeida J, et al. Impact of COVID-19 Pandemic on Stroke Severity and Mortality in the South-East of Santiago, Chile. *Journal of Stroke and Cerebrovascular Diseases*. 2021;30(11):105953. doi:10.1016/j.jstrokecerebrovasdis.2021.105953
34. Chen Y, Xia F, Li Y, et al. Changes in Characteristics, Treatment and Outcome in Patients with Hemorrhagic Stroke During COVID-19. *Journal of Stroke and Cerebrovascular Diseases*. 2021;30(3):105536. doi:10.1016/j.jstrokecerebrovasdis.2020.105536
35. Chowdhury T, Rizk AA, Daniels AH, Al Azazi E, Sharma D, Venkatraghavan L. Management of Acute Ischemic Stroke in the Interventional Neuroradiology Suite During the COVID-19 Pandemic: A Global Survey. *Journal of Neurosurgical Anesthesiology*. 2021;33(1):44. doi:10.1097/ANA.0000000000000734

36. Zhao J, Li H, Kung D, Fisher M, Shen Y, Liu R. Impact of the COVID-19 Epidemic on Stroke Care and Potential Solutions. *Stroke*. 2020;51(7):1996-2001. doi:10.1161/STROKEAHA.120.030225
37. Zhao J, Wang Y, Fisher M, Liu R. Slower recovery of outpatient clinics than inpatient services for stroke and other neurological diseases after COVID-19 Pandemic. *CNS Neuroscience & Therapeutics*. 2020;26(12):1322-1326. doi:10.1111/cns.13459
38. Li S, Zeng M, Dong J, et al. Management of Endovascular Treatment for Acute Ischemic Stroke During the COVID-19 Pandemic at a Single Institution in Beijing, China: A Brief Report. *Journal of Neurosurgical Anesthesiology*. 2021;33(3):268. doi:10.1097/ANA.0000000000000748
39. Wang J, Hong Y, Ma M, et al. Mitigating the impact of coronavirus disease 2019 on emergency stroke care: an original study and meta-analysis. *Reviews in the Neurosciences*. 2021;32(4):443-457. doi:10.1515/revneuro-2020-0097
40. Wu, Y., Chen, F., Wang, Z., Feng, W., Liu, Y., Wang, Y., & Song, H. (2020). Reductions in Hospital Admissions and Delays in Acute Stroke Care During the Pandemic of COVID-19. *Frontiers in neurology*, 11, 584734. <https://doi.org/10.3389/fneur.2020.584734>
41. Xin J, Huang X, Liu C, Huang Y. Coronavirus disease 2019 is threatening stroke care systems: a real-world study. *BMC Health Services Research*. 2021;21(1):288. doi:10.1186/s12913-021-06297-4
42. Yao, S., Lin, B., Liu, Y., Luo, Y., Xu, Q., Huang, J., Yan, Z., & Liu, X. (2020). Impact of Covid-19 on the Behavior of Community Residents With Suspected Transient Ischemic Attack. *Frontiers in neurology*, 11, 590406. <https://doi.org/10.3389/fneur.2020.590406>
43. Zhang LL, Guo YJ, Lin YP, et al. Stroke Care in the First Affiliated Hospital of Chengdu Medical College during the COVID-19 Outbreak. *European Neurology*. 2020;83(6):630-635. doi:10.1159/000513097
44. Zhang T, Chen C, Xu X, et al. Impact of the COVID-19 pandemic and post-epidemic periods on the process of endovascular treatment for acute anterior circulation ischaemic stroke. *BMC Neurology*. 2021;21(1):238. doi:10.1186/s12883-021-02262-0
45. Altschul DJ, Haranhalli N, Esenwa C, et al. The Impact of COVID-19 on Emergent Large-Vessel Occlusion: Delayed Presentation Confirmed by ASPECTS. *American Journal of Neuroradiology*. 2020;41(12):2271-2273. doi:10.3174/ajnr.A6800
46. Grönroos M, Hällberg V, Tomminen T, Palomäki A. Short door-in-door-out time of stroke patients in need of thrombectomy in a primary stroke centre. *Signa Vitae-Journal of Anesthesiology, Intensive Care Journal, Emergency Medical Journal*. 2021;17(3):242-245. doi:10.22514/sv.2021.039
47. Gabet A, Grave C, Tuppin P, Chatignoux E, Béjot Y, Olié V. Impact of the COVID-19 pandemic and a national lockdown on hospitalizations for stroke and related 30-day

- mortality in France: A nationwide observational study. *European Journal of Neurology*. 2021;28(10):3279-3288. doi:10.1111/ene.14831
48. Ikenberg B, Hemmer B, Dommasch M, Kanz KG, Wunderlich S, Knier B. Code Stroke Patient Referral by Emergency Medical Services During the Public COVID-19 Pandemic Lockdown. *Journal of Stroke and Cerebrovascular Diseases*. 2020;29(11):105175. doi:10.1016/j.jstrokecerebrovasdis.2020.105175
  49. Richter D, Eyding J, Weber R, et al. Analysis of Nationwide Stroke Patient Care in Times of COVID-19 Pandemic in Germany. *Stroke*. 2021;52(2):716-721. doi:10.1161/STROKEAHA.120.033160
  50. Hoyer C, Ebert A, Huttner HB, et al. Acute Stroke in Times of the COVID-19 Pandemic. *Stroke*. 2020;51(7):2224-2227. doi:10.1161/STROKEAHA.120.030395
  51. Sylaja PN, Srivastava MVP, Shah S, et al. The SARS-CoV-2/COVID-19 pandemic and challenges in stroke care in India. *Annals of the New York Academy of Sciences*. 2020;1473(1):3-10. doi:10.1111/nyas.14379
  52. Tavanaei R, Yazdani KO, Akhlaghpasand M, Zali A, Oraee-Yazdani S. Changed pattern of hospital admission in stroke during COVID-19 pandemic period in Iran: a retrospective study. *Neurol Sci*. 2021;42(2):445-453. doi:10.1007/s10072-020-05030-z
  53. Ghoreishi A, Arsang-Jang S, Sabaa-Ayoun Z, et al. Stroke Care Trends During COVID-19 Pandemic in Zanjan Province, Iran. From the CASCADE Initiative: Statistical Analysis Plan and Preliminary Results. *Journal of Stroke and Cerebrovascular Diseases*. 2020;29(12):105321. doi:10.1016/j.jstrokecerebrovasdis.2020.105321
  54. Libruder C, Ram A, HersHKovitz Y, et al. Reduction in Acute Stroke Admissions during the COVID-19 Pandemic: Data from a National Stroke Registry. *Neuroepidemiology*. 2021;55(5):354-360. doi:10.1159/000516753
  55. Mor S, Anna R, Tal S, Roten SH. Reduction in stroke patients' referral to the ED in the COVID-19 era: A four-year comparative study. Published online June 3, 2020:2020.05.30.20118125. doi:10.1101/2020.05.30.20118125
  56. Saban M, Reznik A, Shachar T, Wilf-Miron R, Sivan-Hoffmann R. The effect of the COVID-19 pandemic on ED referrals and care for stroke patients: A four-year comparative study. *Journal of Critical Care*. 2021;62:230-234. doi:10.1016/j.jcrc.2020.12.011
  57. Frisullo G, Brunetti V, Di Iorio R, et al. Effect of lockdown on the management of ischemic stroke: an Italian experience from a COVID hospital. *Neurol Sci*. 2020;41(9):2309-2313. doi:10.1007/s10072-020-04545-9
  58. Asteggiano F, Divenuto I, Ajello D, et al. Stroke management during the COVID-19 outbreak: challenges and results of a hub-center in Lombardy, Italy. *Neuroradiology*. 2021;63(7):1087-1091. doi:10.1007/s00234-020-02617-3

59. Bersano A, Kraemer M, Touzé E, et al. Stroke care during the COVID-19 pandemic: experience from three large European countries. *European Journal of Neurology*. 2020;27(9):1794-1800. doi:10.1111/ene.14375
60. Brunetti V, Broccolini A, Caliandro P, et al. Effect of the COVID-19 pandemic and the lockdown measures on the local stroke network. *Neurol Sci*. 2021;42(4):1237-1245. doi:10.1007/s10072-021-05045-0
61. Candelaresi P, Manzo V, Servillo G, et al. The Impact of Covid-19 Lockdown on Stroke Admissions and Treatments in Campania. *Journal of Stroke and Cerebrovascular Diseases*. 2021;30(1):105448. doi:10.1016/j.jstrokecerebrovasdis.2020.105448
62. Mammi P, Bidini C, Ablondi E, David MR, Brianti R. Early Speech-Language Rehabilitation for Stroke Patients During the Covid-19 Outbreak. *Journal of Stroke and Cerebrovascular Diseases*. 2021;30(4):105218. doi:10.1016/j.jstrokecerebrovasdis.2020.105218
63. Manganotti P, Naccarato M, Scali I, et al. Stroke management during the coronavirus disease 2019 (COVID-19) pandemic: experience from three regions of the north east of Italy (Veneto, Friuli-Venezia-Giulia, Trentino-Alto-Adige). *Neurol Sci*. 2021;42(11):4599-4606. doi:10.1007/s10072-021-05066-9
64. Naccarato M, Scali I, Olivo S, et al. Has COVID-19 played an unexpected “stroke” on the chain of survival? *Journal of the Neurological Sciences*. 2020;414:116889. doi:10.1016/j.jns.2020.116889
65. Paolucci M, Biguzzi S, Cordici F, et al. Impact of COVID-19 pandemic on acute stroke care: facing an epidemiological paradox with a paradigm shift. *Neurol Sci*. 2021;42(2):399-406. doi:10.1007/s10072-020-04914-4
66. Pero G, Dória HM, Giavarini M, et al. Impact of the SARS-COV-2 Pandemic on the Endovascular Treatment of Acute Stroke – an Italian Single-Center Experience. *Journal of Stroke and Cerebrovascular Diseases*. 2021;30(10):106028. doi:10.1016/j.jstrokecerebrovasdis.2021.106028
67. Sacco S, Ricci S, Ornello R, et al. Reduced Admissions for Cerebrovascular Events During COVID-19 Outbreak in Italy. *Stroke*. 2020;51(12):3746-3750. doi:10.1161/STROKEAHA.120.031293
68. Sakamoto D, Hamaguchi T, Nakayama Y, Hada T, Abo M. Changes in motor paralysis involving upper extremities of outpatient chronic stroke patients from temporary rehabilitation interruption due to spread of COVID-19 infection: An observational study on pre- and post-survey data without a control group. *PLOS ONE*. 2021;16(12):e0260743. doi:10.1371/journal.pone.0260743
69. Melaika K, Sveikata L, Wiśniewski A, et al. Changes in Prehospital Stroke Care and Stroke Mimic Patterns during the COVID-19 Lockdown. *International Journal of Environmental Research and Public Health*. 2021;18(4):2150. doi:10.3390/ijerph18042150



70. Loh HC, Neoh KK, Tang ASN, et al. Stroke Patients' Characteristics and Clinical Outcomes: A Pre-Post COVID-19 Comparison Study. *Medicina (Kaunas)*. 2021;57(5):507. doi:10.3390/medicina57050507
71. Rinkel LA, Prick JCM, Slot RER, et al. Impact of the COVID-19 outbreak on acute stroke care. *J Neurol*. 2021;268(2):403-408. doi:10.1007/s00415-020-10069-1
72. Kristoffersen ES, Jahr SH, Thommessen B, Rønning OM. Effect of COVID-19 pandemic on stroke admission rates in a Norwegian population. *Acta Neurologica Scandinavica*. 2020;142(6):632-636. doi:10.1111/ane.13307
73. Kristoffersen ES, Jahr SH, Faiz KW, Storstein AM, Winsvold BS, Sandset EC. Acute stroke care during the first phase of COVID-19 pandemic in Norway. *Acta Neurologica Scandinavica*. 2021;143(4):349-354. doi:10.1111/ane.13392
74. Ahmed ZM, Khalil MF, Kohail AM, Eldesouky IF, Elkady A, Shuaib A. The Prevalence and Predictors of Post-Stroke Depression and Anxiety During COVID-19 Pandemic. *Journal of Stroke and Cerebrovascular Diseases*. 2020;29(12):105315. doi:10.1016/j.jstrokecerebrovasdis.2020.105315
75. Samkari ET, Alkhotani AM, Siddiqui MI. Impact of COVID-19 on the rate of stroke cases at a tertiary hospital in Makkah, Saudi Arabia. *Neurosciences Journal*. 2021;26(2):158-162. doi:10.17712/nsj.2021.2.20200141
76. Tejada Meza H, Lambea Gil Á, Sancho Saldaña A, et al. Impact of COVID-19 outbreak in reperfusion therapies of acute ischaemic stroke in northwest Spain. *European Journal of Neurology*. 2020;27(12):2491-2498. doi:10.1111/ene.14467
77. Rudilosso S, Laredo C, Vera V, et al. Acute Stroke Care Is at Risk in the Era of COVID-19. *Stroke*. 2020;51(7):1991-1995. doi:10.1161/STROKEAHA.120.030329
78. Riera-López N, Fuentes B, de Donlebún JRP. Effect of the COVID-19 pandemic in stroke code activations in the region of Madrid: A retrospective study. *Medicine*. 2021;100(43):e27634. doi:10.1097/MD.00000000000027634
79. Montaner J, Barragán-Prieto A, Pérez-Sánchez S, et al. Break in the Stroke Chain of Survival due to COVID-19. *Stroke*. 2020;51(8):2307-2314. doi:10.1161/STROKEAHA.120.030106
80. Altersberger VL, Stolze LJ, Heldner MR, et al. Maintenance of Acute Stroke Care Service During the COVID-19 Pandemic Lockdown. *Stroke*. 2021;52(5):1693-1701. doi:10.1161/STROKEAHA.120.032176
81. Chen CH, Liu CH, Chi NF, et al. Maintenance of Stroke Care Quality amid the Coronavirus Disease 2019 Outbreak in Taiwan. *J Stroke*. 2020;22(3):407-411. doi:10.5853/jos.2020.02292

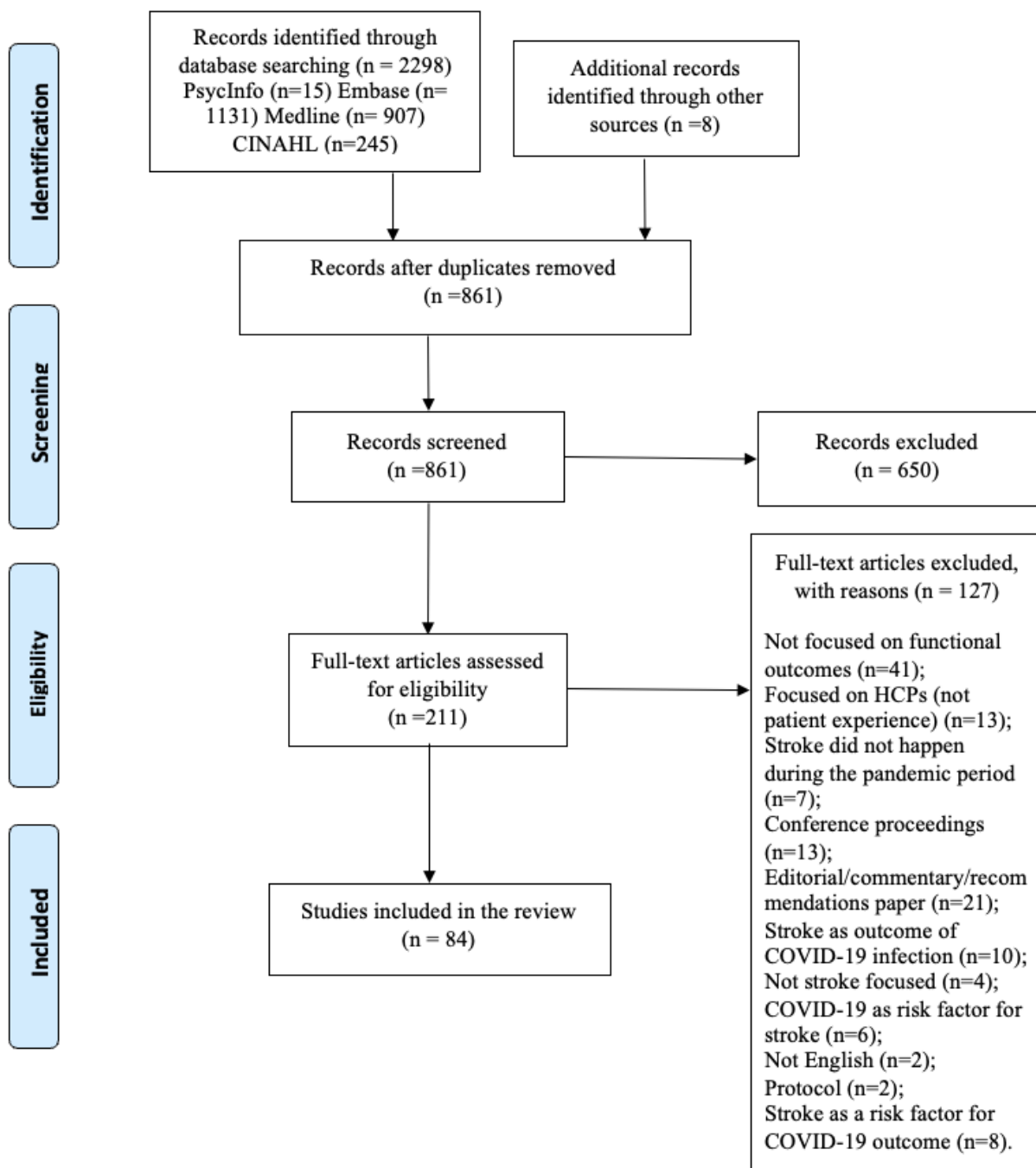
82. Douiri A, Muruet W, Bhalla A, et al. Stroke Care in the United Kingdom During the COVID-19 Pandemic. *Stroke*. 2021;52(6):2125-2133. doi:10.1161/STROKEAHA.120.032253
83. Kwan J, Brown M, Bentley P, et al. Impact of COVID-19 Pandemic on a Regional Stroke Thrombectomy Service in the United Kingdom. *Cerebrovascular Diseases*. 2020;50(2):178-184. doi:10.1159/000512603
84. Padmanabhan N, Natarajan I, Gunston R, Raseta M, Roffe C. Impact of COVID-19 on stroke admissions, treatments, and outcomes at a comprehensive stroke centre in the United Kingdom. *Neurol Sci*. 2021;42(1):15-20. doi:10.1007/s10072-020-04775-x
85. Kasab SA, Almallouhi E, Alawieh A, et al. Alarming downtrend in mechanical thrombectomy rates in African American patients during the COVID-19 pandemic-Insights from STAR. *Journal of NeuroInterventional Surgery*. 2021;13(4):304-307. doi:10.1136/neurintsurg-2020-016946
86. Balucani C, Carhuapoma JR, Canner JK, et al. Exploring the Collateral Damage of the COVID-19 Pandemic on Stroke Care. *Stroke*. 2021;52(5):1822-1825. doi:10.1161/STROKEAHA.121.034150
87. Cummings C, Almallouhi E, Al Kasab S, Spiotta AM, Holmstedt CA. Blacks Are Less Likely to Present With Strokes During the COVID-19 Pandemic. *Stroke*. 2020;51(10):3107-3111. doi:10.1161/STROKEAHA.120.031121
88. de Havenon A, Ney JP, Callaghan B, et al. Characteristics and Outcomes Among US Patients Hospitalized for Ischemic Stroke Before vs During the COVID-19 Pandemic. *JAMA Network Open*. 2021;4(5):e2110314. doi:10.1001/jamanetworkopen.2021.10314
89. de Havenon, A., Ney, J., Callaghan, B., Delic, A., Hohmann, S., Shippey, E., Yaghi, S., Anadani, M., Esper, G., & Majersik, J. (2020). A Rapid Decrease in Stroke, Acute Coronary Syndrome, and Corresponding Interventions at 65 United States Hospitals Following Emergence of COVID-19. *medRxiv : the preprint server for health sciences*, 2020.05.07.20083386. <https://doi.org/10.1101/2020.05.07.20083386>
90. Etherton MR, Zachrison KS, Yan Z, et al. Regional Changes in Patterns of Stroke Presentation During the COVID-19 Pandemic. *Stroke*. 2021;52(4):1398-1406. doi:10.1161/STROKEAHA.120.031300
91. Greenwood J, Belnap S, Dabus G, Linfante I, De Los Rios La Rosa F. Risk of contracting SARS-CoV-2 (COVID-19) from hospital admission and the impact of protection efforts on acute stroke treatment. *Clinical Neurology and Neurosurgery*. 2021;207:106793. doi:10.1016/j.clineuro.2021.106793
92. Huang JF, Greenway MRF, Nasr DM, et al. Telestroke in the Time of COVID-19: The Mayo Clinic Experience. *Mayo Clinic Proceedings*. 2020;95(8):1704-1708. doi:10.1016/j.mayocp.2020.06.007

93. Jillella DV, Nahab F, Nguyen TN, et al. Delays in thrombolysis during COVID-19 are associated with worse neurological outcomes: the Society of Vascular and Interventional Neurology Multicenter Collaboration. *J Neurol*. 2022;269(2):603-608. doi:10.1007/s00415-021-10734-z
94. Nogueira RG, Davies JM, Gupta R, et al. Epidemiological Surveillance of the Impact of the COVID-19 Pandemic on Stroke Care Using Artificial Intelligence. *Stroke*. 2021;52(5):1682-1690. doi:10.1161/STROKEAHA.120.031960
95. Rameez F, McCarthy P, Cheng Y, et al. Impact of a Stay-at-Home Order on Stroke Admission, Subtype, and Metrics during the COVID-19 Pandemic. *Cerebrovascular Diseases Extra*. 2020;10(3):159-165. doi:10.1159/000512742
96. Schirmer CM, Ringer AJ, Arthur AS, et al. Delayed presentation of acute ischemic strokes during the COVID-19 crisis. *Journal of NeuroInterventional Surgery*. 2020;12(7):639-642. doi:10.1136/neurintsurg-2020-016299
97. Sharma M, Lioutas VA, Madsen T, et al. Decline in stroke alerts and hospitalisations during the COVID-19 pandemic. *Stroke Vasc Neurol*. 2020;5(4). doi:10.1136/svn-2020-000441
98. Siegler JE, Heslin ME, Thau L, Smith A, Jovin TG. Falling stroke rates during COVID-19 pandemic at a comprehensive stroke center. *Journal of Stroke and Cerebrovascular Diseases*. 2020;29(8):104953. doi:10.1016/j.jstrokecerebrovasdis.2020.104953
99. Siegler JE, Zha AM, Czap AL, et al. Influence of the COVID-19 Pandemic on Treatment Times for Acute Ischemic Stroke. *Stroke*. 2021;52(1):40-47. doi:10.1161/STROKEAHA.120.032789
100. Srivastava PK, Zhang S, Xian Y, et al. Treatment and Outcomes of Patients With Ischemic Stroke During COVID-19. *Stroke*. 2021;52(10):3225-3232. doi:10.1161/STROKEAHA.120.034414
101. Tabibian BE, Howell SG, Salehani A, Bakradze E, Harrigan M. Adaptive Approach to Endovascular Management of Large Vessel Occlusion During the COVID-19 Pandemic. *Journal of Stroke and Cerebrovascular Diseases*. 2021;30(5):105642. doi:10.1016/j.jstrokecerebrovasdis.2021.105642
102. Thau L, Siegal T, Heslin ME, et al. Decline in Rehab Transfers Among Rehab-Eligible Stroke Patients During the COVID-19 Pandemic. *Journal of Stroke and Cerebrovascular Diseases*. 2021;30(8):105857. doi:10.1016/j.jstrokecerebrovasdis.2021.105857
103. Tong X. COVID-19 Pandemic and Quality of Care and Outcomes of Acute Stroke Hospitalizations: the Paul Coverdell National Acute Stroke Program. *Prev Chronic Dis*. 2021;18. doi:10.5888/pcd18.210130
104. Velasco C, Wattai B, Buchle S, et al. Impact of COVID-19 Pandemic on the Incidence, Prehospital Evaluation, and Presentation of Ischemic Stroke at a Nonurban Comprehensive

- Stroke Center. *Stroke Research and Treatment*. 2021;2021:e6624231. doi:10.1155/2021/6624231
105. Hsieh HF, Shannon SE. Three approaches to qualitative content analysis. *Qual Health Res*. 2005;15(9):1277-1288. doi:10.1177/1049732305276687
106. Lv Y, Sun Q, Li J, Zhang W, He Y, Zhou Y. Disability Status and Its Influencing Factors Among Stroke Patients in Northeast China: A 3-Year Follow-Up Study. *Neuropsychiatr Dis Treat*. 2021;17:2567-2573. doi:10.2147/NDT.S320785
107. Wang J, Chaudhry SA, Tahsili-Fahadan P, et al. The impact of COVID-19 on acute ischemic stroke admissions: Analysis from a community-based tertiary care center. *Journal of Stroke and Cerebrovascular Diseases*. 2020;29(12):105344. doi:10.1016/j.jstrokecerebrovasdis.2020.105344
108. White TG, Martinez G, Wang J, et al. Impact of the COVID-19 Pandemic on Acute Ischemic Stroke Presentation, Treatment, and Outcomes. *Stroke Research and Treatment*. 2021;2021:e8653396. doi:10.1155/2021/8653396
109. Arora S, Hendrickson MJ, Mazzella AJ, et al. Effect of government-issued state of emergency and reopening orders on cardiovascular hospitalizations during the COVID-19 pandemic. *Am J Prev Cardiol*. 2021;6:100172. doi:10.1016/j.ajpc.2021.100172
110. Álvarez-Martín C, Ribera A, Marsal JR, et al. Dynamics of Emergency Cardiovascular Hospital Admissions and In-Hospital Mortality During the COVID-19 Pandemic: Time Series Analysis and Impact of Socioeconomic Factors. *Frontiers in Cardiovascular Medicine*. 2022;9. doi:10.3389/fcvm.2022.827212
111. O'Sullivan T, Fahim C, Gagnon E. Asset Literacy Following Stroke: Implications for Disaster Resilience. *Disaster Medicine and Public Health Preparedness*. 2017;12:1-9. doi:10.1017/dmp.2017.66
112. Hickey A, Mellon L, Williams D, Shelley E, Conroy RM. Does stroke health promotion increase awareness of appropriate behavioural response? Impact of the face, arm, speech and time (FAST) campaign on population knowledge of stroke risk factors, warning signs and emergency response. *Eur Stroke J*. 2018;3(2):117-125. doi:10.1177/2396987317753453
113. Magwood GS, Nichols M, Jenkins C, et al. Community-Based Interventions for Stroke Provided by Nurses and Community Health Workers: A Review of the Literature. *J Neurosci Nurs*. 2020;52(4):152-159. doi:10.1097/JNN.0000000000000512
114. Lip GYH, Lane DA, Lenarczyk R, et al. Integrated care for optimizing the management of stroke and associated heart disease: a position paper of the European Society of Cardiology Council on Stroke. *Eur Heart J*. 2022;43(26):2442-2460. doi:10.1093/eurheartj/ehac245

115. Alkouri O, Khader Y, Hweidi IM, et al. COVID-19 Fear and Anxiety among Patients with Chronic Heart Failure: A Cross Sectional Study. *J Clin Med*. 2022;11(21):6586. doi:10.3390/jcm11216586
116. Zafra-Tanaka JH, Portocarrero J, Abanto C, Zunt JR, Miranda JJ. Managing Post-Stroke Care During the COVID-19 Pandemic at a Tertiary Care Level Hospital in Peru. *J Stroke Cerebrovasc Dis*. 2022;31(4):106275. doi:10.1016/j.jstrokecerebrovasdis.2021.106275
117. Tai WA, Conley J, Kalanithi L. Cost-saving innovations for acute ischemic stroke and transient ischemic attack. *Neurol Clin Pract*. 2014;4(5):427-434. doi:10.1212/CPJ.0000000000000081
118. Leira EC, Russman AN, Biller J, et al. Preserving stroke care during the COVID-19 pandemic. *Neurology*. 2020;95(3):124-133. doi:10.1212/WNL.00000000000009713
119. Jeffers A, Meehan AA, Barker J, et al. Impact of Social Isolation during the COVID-19 Pandemic on Mental Health, Substance Use, and Homelessness: Qualitative Interviews with Behavioral Health Providers. *Int J Environ Res Public Health*. 2022;19(19):12120. doi:10.3390/ijerph191912120

**Appendix A.** PRISMA chart of search and screening process.



## Appendix B. Medline Search

1. exp Coronavirus/
2. exp Coronavirus Infections/
3. coronavirus\*
4. corona virus\*
5. OC43
6. NL63
7. 229E
8. HKU1
9. HCoV\*
10. ncov\*
11. covid\*
12. sars-cov\*
13. sarscov\*
14. Sars-coronavirus\*.mp
15. hemorrhagic stroke (intracerebral and subarachnoid)
16. ischemic stroke
17. Transient Ischemic Attack (TIA)
18. any condition that can be classified as a cerebrovascular accident

**Appendix C.** Included studies exploring stroke care during the COVID-19 pandemic.

<b>Author/Year</b>	<b>Purpose</b>	<b>Design/Methods</b>	<b>Main Findings</b>
<b>Bangladesh</b>			
Hasan et al. [29]	Examine the impact of COVID-19 on the admission of acute stroke patients.	Retrospective	There was a reduction in stroke admission per month and number of patients getting reperfusion treatment.
<b>Canada</b>			
Dowlatshahi et al. [31]	Perform a rapid review of stroke care delivery at our comprehensive stroke center (CSC) and through the provincial telestroke system, both before and after the pandemic “shutdown.”	Retrospective	Thrombolysis and endovascular thrombectomy rates remained constant. Fewer patients received stroke services across the spectrum from prevention, acute care to telestroke care in Ontario, Canada, during the COVID-19 pandemic.
Katsanos et al. [30]	Investigate the impact of regional imposed social and healthcare restrictions on management of AIS patients.	Retrospective	After the state of emergency was imposed, there was an increased door-to-CT time, and DNT for those receiving intravenous tPA or EVT.
Neves Briard et al. [32]	Study the impact of the COVID-19 pandemic on stroke treatment metrics.	Observational cohort	During the pandemic, longer delays between stroke onset, initial evaluation, and reperfusion therapy was observed. In-hospital infection control measures may have delayed acute stroke management.
<b>Chile</b>			
Silva-Pozo et al. [33]	Analyze the impact of the COVID-19 pandemic outbreak on hospital ischemic stroke admissions, use of reperfusion therapies, and mortality.	Observational	There was an increase in severity of ischemic stroke on admission and in-hospital mortality during the pandemic. There were not significant changes to admission and intervention rate.
<b>China</b>			
Chen et al. [24]	Determine whether COVID-19 affected the treatment and prognosis of hemorrhagic stroke in a regional medical center.	Retrospective	During the pandemic, there were milder and less stroke presentations, longer door-to-department times, and higher rate of pneumonia complications. Clinical outcomes of patients during the pandemic were worse than those during pre-pandemic.
Gu et al. [15]	Evaluate the impacts of the COVID-19 on treatment delays of AIS.	Retrospective	Patients experienced both pre- and post-hospital delays after the start of the COVID-19 pandemic. This impacted the smaller proportion of AIS patients receiving intravenous thrombolysis. Delayed treatment was



			associated with lower education levels, rural residency, mild symptoms, small artery occlusion, and transportation of than ambulance.
Jing Zhao et al. [36]	Compare the impact of the COVID-19 pandemic on outpatient stroke clinics and inpatient services.	Survey	The COVID-19 pandemic caused a significant drop of in-person outpatient visits and inpatient services for stroke. Outpatient clinics that were open exercised increased precautions following recent guidelines regarding the use of PPE and isolation techniques. Telemedicine was used for new and follow up patients.
Li et al. [38]	Examine the management of endovascular treatment for AIS during the pandemic.	Retrospective observational	Patients admitted during the pandemic had longer time between symptom onset and recanalization, longer neuro-intensive care unit length of stay, and higher hospitalization costs.
Wang et al. [39]	Compare emergency visits and efficiency of stroke treatment pre-, early, and peak, and late pandemic	Retrospective	During early and peak pandemic, there was a lower rate of hospital admissions but higher rate of MT for stroke. Medical practice strictly followed hospitals contingency plans and the new national expert consensus on stroke treatment.
Wu et al. [40]	Investigate the impact of the COVID-19 outbreak on stroke emergency care during the pandemic.	Retrospective	There was a significant reduction and delays in stroke emergency admissions during the lockdown period. Stroke severity also increased during this time.
Xin et al. [41]	Understand how COVID-19 affected stroke care systems.	Retrospective	During the pandemic, there were no differences in pre-hospital or in-hospital workflow metrics while the degree of neurological deficit, treatment effects and long-term prognosis were worse. Rates of admission were maintained.
Yao et al. [42]	Conduct interviews with community residents to investigate actions took by community residents after onset of stroke symptoms. Explore factors associated with seeking timely	Prospective cross-sectional	Residents who suspected TIA often avoided seeking medical attention when their symptoms disappeared quickly. The pandemic was found to influence their behavior as there was fear of infection from community health centres as well as fear that the

	medical attention during the pandemic.		pandemic would necessitate complicated procedures at the centres. However, those who sought medical attention were more often males, those with a previous history of stroke, and residents who had a dual attack within a week with aphasia or dysarthria.
Zhang et al. [43]	Report on stroke care in a regional hospital.	Retrospective	A regional telestroke network was constructed as a Hub and Spoke model to extend stroke care in a resource-limited area. Fever clinical was incorporated into the stroke pathway during the pandemic. Prehospital triage provided timely transfer of stroke patients while minimizing risk of infectious exposure. There was a reduction in stroke admissions and longer treatment times.
Zhang et al. [44]	Analyze EVT in patients presenting acute anterior circulation AIS-LVO during the pandemic and post-epidemic periods.	Retrospective observational	Total patients, total time, and prehospital time were prolonged during the pandemic and post-epidemic periods. There was no difference in procedural time and clinical outcomes.
Zhao et al. [37]	Evaluate the QOL of people with stroke during the pandemic.	Match paired	Physical and mental component scores (PCS and MCS) were higher among the pandemic group than the pre-pandemic group. Pandemic stress, demographic and clinical characteristics were associated with PCS and MSC. Pandemic stress affected stroke patients' QOL, but personal recovery decreased the impacts of pandemic stress.
<b>England</b>			
Padmanabhan et al. [84]	Examine the impact of COVID-19 on stroke admissions, treatments, and outcomes.	Retrospective observational	There was a reduction in stroke admissions and arrival times during the pandemic. Rates of thrombolysis and thrombectomy were maintained. A lower number of stroke admissions allowed better service to admitted individuals.
<b>Egypt</b>			

Altschul et al. [45]	Evaluate the impact of the pandemic on ELVO systems of care, treatment, and outcomes.	Retrospective cohort	During the pandemic, there was a decreased rate of thrombolysis and mechanical thrombectomy, and less people presenting with ELVO. There was more delayed admission to the hospital, especially in younger patients who had lower outcomes scores upon admission.
<b>Finland</b>			
Gronroos et al. [46]	Describe case reports of an ultra-fast diagnostic proposal in the settings of AIS in the ED of a primary stroke centre during the pandemic.	Observational	AIS protocol during COVID-19 did not change, the circumstances could change. Patients were triaged and screened for COVID-19 upon arrival; if positive, the patient was treated in a separate cohort area. Examination and treatments were performed with full PPE and laboratory testing and radiology services in a separate CT room.
<b>France</b>			
Gabet et al. [47]	Assess the impact of the COVID-19 pandemic on stroke hospitalization rates, patient characteristics, and case fatality rates.	Observational and cross-sectional	During the lockdown, there was greater in-hospital case fatality rates, and less patients hospitalized for stroke and TIA (and they were more likely to have major stroke symptoms). Patients were more likely to be admitted to stroke care units rather than resuscitation units, and more likely to be quickly transferred to rehabilitation units after the acute stage of stroke care.
<b>Germany</b>			
Hoyer et al. [50]	Assess and quantify the dynamics of admission for stroke and TIA and rates of reperfusion therapies during the COVID-19 pandemic and to estimate a potential impact of the partial lockdown.	Retrospective cohort	During the pandemic, there was a significant decrease in stroke admission rates for TIA but reperfusion therapy rates remained unaffected. The number of ischemic events was correlated with mobility measures.
Ikenberg et al. [48]	Analyze numbers and patterns of code stroke patients dispatched by	Retrospective	Rates of Code Stroke referrals and thrombolysis and thrombectomy treatments remained stable between the pandemic and pre-pandemic groups. The

	EMS during the COVID-19 pandemic.		proportion of female patients decreased during the pandemic and stroke severity increased.
Richter et al. [49]	Investigate the number of patients hospitalized for stroke and treatment rates during the pandemic.	Cohort	There was a decline in presentation of all stroke subtypes during the pandemic compared to the pre-pandemic period. Provision of acute recanalization treatments was not affected by the pandemic.
<b>India</b>			
Sylaja et al. [51]	Identify the challenges in acute stroke care, poststroke rehabilitation, and care of stroke survivors during the pandemic in India and propose mitigating measures.	Observational report	The stroke chain of survival and care pathways were affected by the shortfall of health insurance coverage, inaccessibility of specialized stroke care units, and reduced workforce available for stroke services. There was a reduction in stroke cases, intravenous thrombolysis, and endovascular procedures observed since the lockdown. This decrease was larger than that of the US. The lockdown prevented some timely consultation with caregivers, leading minor stroke diagnoses to be missed. Patients from remote areas were at greatest risk of not reaching hospitals due to the suspension of public transport.
<b>Iran</b>			
Ghoreishi et al. [53]	Examine the changes in stroke epidemiology and care during the COVID-19 pandemic.	Cohort	Stroke hospitalization rates per 100,000 population decreased during the pandemic. Lower admission rates were also observed for patients with mild ischemic stroke.
Tavanaei et al. [52]	Examine the observed decrease in stroke admissions during the COVID-19 pandemic period and explore potential contributing factors at an academic neurology and neurosurgery center.	Retrospective cohort	The pandemic period was associated with the decline in stroke admissions, time from onset to hospital arrival, and outcomes. No substantial changes in the stroke network were found during the pandemic period.
<b>Israel</b>			

Libruder et al. [54]	Investigate the impact of COVID-19 outbreaks on admission rates and in-hospital care for stroke.	Retrospective observational	During the pandemic, there was a significant reduction in hospital admissions. Reperfusion therapy rates and in-hospital care parameters did not change.
Mor et al. [55]	Examine the effect of social distancing on AIS patients' referral to the ED.	Retrospective archive	The percentage of AIS diagnoses fell in 2020 but the number of patients receiving tPA or EVT increased. The rate of patients arriving after symptom onset was highest in 2020.
Saban et al. [56]	Examine the impact of the COVID-19 pandemic on the presentation and care to AIS patients at ED.	Retrospective	During the pandemic, there was a decline in the number of AIS patients admitted to the ED but there was an increase in number of patients who underwent EVT.
<b>Italy</b>			
Asteggiano et al. [58]	Describe the reorganization carried out during the pandemic at one stroke center in Italy.	Retrospective	Adopted measures of self-protection did not affect recanalization time. There was a significant increase in the time between hospital admissions during the pandemic as compared to the same period in 2019 for three reasons: patient's anxiety may have discouraged them from going to the hospital; available ambulances were overloaded due to COVID-19 emergency; and patients had longer distances to travel to stroke specific hospitals.
Bersano & Pantoni [8]	Discuss the main direct and indirect impacts of COVID-19 on stroke care in Italy.	Observational report	Stroke health professionals were reallocated and many stroke units became designated for COVID-19. Acute stroke patients were met with a lack of services and delays in time-dependent treatment or diagnostics. Insufficient follow-ups and management measures increased the risk of recurrent events or complications.
Brunetti et al. [60]	Evaluate the impact of the pandemic and the lockdown measures on the hub-and-spoke stroke network.	Retrospective observational	During the COVID-19 period, there was a reduction of number of thrombolysis, shorter length of hospitalization, and an increase of pneumonia. There was an increase in onset-to-door time and in door-to-

			groin time. There is no statistically significant interaction between years (2019 vs 2020) and facility of admission (hub vs spoke).
Candelaresi et al. [61]	Analyze the impact of the COVID-19 pandemic and lockdown measures on incidences of stroke.	Retrospective	The global number of patients with acute stroke did not significantly decline from 2019-2020. However, during the lockdown, there was a significant reduction in reperfusion treatments with longer time-to-imaging. Protocols were burdened by protective measures across all phases of stroke care, contributing to delays. Family members were not able to enter hospitals which created delays in obtaining patient history. Distinct pathways were created for suspected or confirmed cases of COVID-19.
Frisullo et al. [57]	Evaluate the impact of lockdown measures on performance indicators of hospital ICP dedicated to ischemic stroke.	Observational cohort	There was a significant increase in ODT indicating that pre-hospital stroke care was related to patient and bystander behaviours and efficacy of the EMS. Psychological factors could have contributed to a “wait-and-see” behavior. This led to many patients missing the time window for IVT and delays in EVT. During the pandemic, there were shorter hospitalization times due to the need to minimize risk of exposure at the hospital and a faster transfer to patients to rehabilitation units.
Mammi et al. [62]	Share experiences of delivering speech-language rehabilitation for stroke inpatients during the COVID-19 outbreak	Observational report	Providing rehabilitation services during the pandemic with a new work routine was feasible, but presented challenges including space, activity, relational, and time limitations. Appropriate interventions were important for patients’ functional progress
Manganotti et al. [63]	Examine stroke management during pre-lockdown and lockdown periods.	Retrospective observational	There was a significant decrease in thrombectomy during the lockdown period, while thrombolysis rate was unaffected. Dedicated protected rooms in stroke units for stroke patients’ emergencies and specific

			training for operators helped to maintain the rate of reperfusion therapies. More minor stroke patients were treated at home by general practitioners while severe patients presented to hospitals.
Naccarato et al. [64]	Evaluate the effects of COVID-19 pandemics on stroke management.	Retrospective cross-sectional	There was a significant reduction in total admissions to the Hub Stroke Unit and higher prevalence of severe stroke (high NIHSS) during the lockdown as compared to the pre-pandemic period. The structured pathways adopted by the local health system were effective in their prehospital and intrahospital time response.
Paolucci et al. [65]	Evaluate changes in incidence and management of suspected stroke cases in a stroke network.	Retrospective observational	During the pandemic, there was a decrease of stroke cases managed in the ED and no delays in reperfusion therapies. To screen and triage COVID-19-suspected patients, the ED adopted two parallel intra-hospital routes to manage stroke patients safely without affecting the effectiveness of the neurovascular team.
Pero et al. [66]	Characterize the impact of the pandemic on the medical system's responsiveness regarding endovascular treatment for ischaemic stroke.	Retrospective observational	During the pandemic, stroke treatment was delayed, particularly in the first wave, likely due to reallocation of resources and shutting down of spoke centers.
Sacco et al. [67]	Investigate the rate of hospital admissions for cerebrovascular events and of revascularization treatments for AIS during the coronavirus disease 2019 outbreak.	Prospective	Stroke hospitalizations and intravenous thrombolytic treatments decreased possibly due to a delay in hospital arrivals, as a consequence of patient reluctance to come to hospitals during the outbreak. COVID-19 procedures may have caused further delays. Rate of endovascular procedures did not decrease as centralization of patients was an effective strategy to limit the impact on stroke management.
<b>Japan</b>			

Ota et al. [9]	Assess the number of patients with acute stroke seeking emergency care since the declaration of the state of emergency in the COVID-19 pandemic.	Retrospective and prospective	The number of stroke patients admitted in 2020 decreased when the state of emergency was declared. The ratio of thrombectomy to LVO did not differ. After lifting the state of emergency, the reduced number of outpatient departments and elective operations recovered quickly.
Sakamoto et al. [68]	Examine changes that occurred in stroke patients who had temporary interruption of rehabilitation due to the COVID-19 pandemic.	Observational	Stroke patients had worse functional scores during the pandemic, associated with a disruption to outpatient rehabilitation and resulting inactivity.
<b>Lithuania</b>			
Melaika et al. [69]	Compare stroke care patterns before and during a state-wide lockdown.	Prospective observational	During the lockdown, there was a decrease in stroke alerts, stroke admissions, and prehospital stroke triage quality for patients with referrals for suspected stroke.
<b>Malaysia</b>			
Loh et al. [70]	Compare the admission and outcome variables between pre-pandemic and pandemic phases.	Cross sectional	The number of stroke events remained stable with an increase of recanalization therapies and better in-hospital workflow metrics during the pandemic. Time for COVID-19 screening for stroke patients was increased.
<b>Netherlands</b>			
Rinkel et al. [71]	Assess trends in hospital admissions and workflow parameters of acute stroke during the pandemic.	Retrospective cohort	There was a decreased number of patients with suspected stroke presenting in EDs. The proportion of patients who underwent reperfusion therapy and treatment times did not change. Outpatient visits were suspended during the outbreak and non-acute care was done via telephone.
<b>Norway</b>			
Kristoffersen et al. [73]	Investigate how the initial phase of COVID-19 affected hospital stroke management and research.	Prospective	Most neurological departments changed their practice during the initial phase of the COVID-19 pandemic, resulting in a worse standard of care. Hospitals took longer time than usual on thrombolysis assessments,



			reduced outpatient clinic activities during lockdowns, post-postponed follow-ups, and limited stroke rehabilitation.
Thommessen et al. [72]	Investigate how the pandemic lockdown the number of admissions of acute stroke.	Retrospective	There was significant reduction in number of admissions for stroke and TIAs during the lockdown. A large proportion of patients missed the time window for thrombolysis. The ED and stroke unit did not change criteria for stroke admissions and all treatment options were as available as before the lockdown.
<b>Saudi Arabia</b>			
Ahmed et al. [74]	Investigate rates of depression and anxiety in stroke patients during the COVID-19 pandemic to improve early psychological interventions for stroke patients during a crisis.	Prospective cross-sectional	Rates of PSD were comparable to the pre-pandemic rates; however, PSA was significantly higher in the pandemic group. Discontinuation of rehabilitation programs had a negative association with PSA but a positive association with PSD. A lack of social support during the pandemic is associated with more depression and anxiety symptoms. Higher post-stroke disability was also correlated with the discontinuation of rehabilitation services due to the pandemic, which was associated with more PSD.
Samkari et al. [75]	Assess the impact COVID-19 had on ischemic stroke admission rate and severity.	Retrospective	There was a reduction in AIS during the pandemic but no significant differences in rate of admission, stroke severity, and rate of thrombolysis before and after the outbreak. The ER was restricted to eligible patients or referrals. There was a reduction in referrals.
<b>Spain</b>			
Montaner et al. [79]	Evaluate the number of stroke cases attending and treated at a South European region before and during the outbreak.	Retrospective cross-sectional	During the confinement period of the pandemic, stroke unit admissions, number of code stroke, and telestroke consultations declined. Timely acute treatment was also delayed. This was associated with

			the increased in COVID-19 cases that crowded hospitals
Riera-Lopez et al. [78]	Examine the impact of COVID-19 on SC in the EMS.	Retrospective observational cohort	There was a significant reduction of SC cases during the COVID period as compared with the seasonal influenza period but not the same period the year before.
Rudilosso et al. [77]	Analyze how the COVID-19 pandemic affected acute stroke care in a CSC.	Retrospective	During the pandemic, there were notable reductions in Stroke Code activations, stroke admissions, and thrombectomies compared to March 2019. Despite these declines, workflow metrics and the rate of good clinical outcomes remained comparable to the data from 2019. A distinctive observation was that patients experiencing strokes during the pandemic were notably younger, suggesting that older individuals might have been more hesitant to seek emergency assistance due to fears of contracting COVID-19.
Tejada Meza et al. [76]	Analyze the impact of the COVID-19 pandemic on reperfusion therapies for stroke.	Retrospective observational	There was a decrease in admissions for ischemic stroke and reperfusion therapies during the pandemic. There was an increase in detection of symptoms-to-door time and door-to-puncture time for reperfusion.
<b>Switzerland</b>			
Altersberger et al. [80]	Investigate if the COVID-19 pandemic lockdown affected acute stroke care service.	Prospective cohort	During the lockdown, the number of patients treated with acute reperfusion therapy was lower compared with the reference period in centers with severe lockdown but not in centers with mild lockdowns. Pre-hospital and in-hospital time-based performance measures, short-term clinical and safety outcomes did not change significantly.
<b>Taiwan</b>			
Chen et al. [81]	Investigate the effects of a nationwide collaborative model to improve	Retrospective	There was a trend towards less daily stroke admissions as there were more COVID-19 cases. The quality metrics during the pandemic were

	outcomes of quality measures of AIS care during COVID-19.		comparable to the 2019 period and there was improvement in rehabilitation evaluation and stroke education.
<b>United Kingdom (not specified)</b>			
Kwan et al. [83]	Examine the impact of COVID-19 on stroke thrombectomy services.	Retrospective	During the pandemic, stroke admissions decreased but thrombectomy and successful recanalization rate were maintained. Time metrics and early neurological outcomes did not significantly change. There was a drop in external stroke thrombectomy referrals despite the referring hospitals being instructed to continue referring as before.
<b>United States</b>			
Agarwal et al. [20]	Describe experiences of providing acute stroke care at a CSC and compare time metrics for receiving thrombolysis or mechanical thrombectomy to a pre-pandemic cohort.	Retrospective	There were no significant group differences in stroke time metrics and “defect-free care” (treatment within stroke quality recommended time limits). Patients treated during the pandemic had worse discharge outcomes and increased mortality. There was a lower volume of AIS admissions during the pandemic and less thrombolysis and MT were performed.
Balucani et al. [86]	Examine the impact of the COVID-19 pandemic on stroke admissions and stroke care.	Retrospective	During the pandemic, there were decreased stroke admissions and thrombolysis treatments, and increased ‘last know well’ to hospital arrival. Rates of thrombectomies were unchanged.
Cummings et al. [87]	Investigate the trends in telestroke consults during the pandemic.	Retrospective and prospective	Weekly telestroke consults dropped during the pandemic. There were no differences in baseline features, however, black patients were less likely to present with strokes during the pandemic. There was a higher rate of tPA administered to black patients during the pandemic compared with before.
de Havenon et al. [89]	Provide descriptive statistics for stroke and ACS during and before COVID-19.	Retrospective	There was a significant decrease in the number of stroke patients discharged from hospitals and volume of tPa for AIS during the pandemic period as

			compared to the same time at different years. However, there was only a mild decrease in MT for AIS.
de Havenon et al. [88]	Assess hospital discharge rates and outcomes of ischemic stroke patients during the pandemic.	Retrospective cohort	The mean number of discharges began decreasing in Feb. 2020 but returned to pre-pandemic levels by Jul. 2020. Black and Hispanic patients accounted for more of those discharged with ischemic stroke and comorbid COVID-19.
Desai et al. [24]	Understand the impact of the COVID-19 pandemic on the utilization of stroke emergency services on a CSC.	Retrospective	Number of total ED encounters, acute ischemic strokes, and TIAs decreased between March of 2017–2019 compared to March of 2020. The number of patients undergoing EVT in March 2020 was comparable to March 2017–2019.
Etherton et al. [90]	Determine the effect of the pandemic on patterns of stroke patient presentation and quality of care.	Retrospective	During the pandemic, there were reduced quality of care metrics, telestroke consults, and ischemic stroke admissions. There were no changes in patient presentation or timeliness of in-hospital stroke evaluation and treatment. Thrombectomy rates and clinical severity did not change.
Greenwood et al. [91]	Determine the impact of COVID-19 safety protocols on the management of an acute stroke.	Retrospective	Pandemic restrictions lowered volume of stroke alerts, mostly driven by a decrease in mild stroke patients. Stroke severity at admission was significantly higher in the pandemic group. There was a significant increase in probability of patients receiving stroke treatment (thrombolytics; mechanical reperfusion). The risk of COVID-19 contraction in-hospital was low.
Huang et al. [92]	Describe the effects of the pandemic on telestroke service lines 30 days before and after the pandemic's declaration.	Cross-sectional	There was a decrease in telestroke utilization during the pandemic. The time from symptom onset to telestroke activation decreased.
Jillella et al. [93]	Investigate whether the COVID-19 pandemic led to a delay in	Observational cohort	Longer treatment delays were observed during COVID-19 and were associated with higher in-

	intravenous thrombolysis (IVT) among stroke patients.		hospital death/hospice discharge irrespective of admission period.
Nogueira et al. [94]	Evaluate the impact of COVID-19 in screening for acute stroke utilizing an artificial intelligence (AI) platform.	Prospective	There was a decrease of stroke imaging during the pandemic and more delayed hospital arrival times.
Rameez et al. [95]	Examine the impact of the stay-at-home order on stroke admission, subtype, and metrics during the pandemic.	Retrospective	Following stay-at-home orders, there was an increase in hemorrhagic stroke, and decrease in AIS. There was a delay in ED arrivals and increase in number of younger stroke patients.
Schirmer et al. [96]	Analyze the impact of the pandemic on the timing and presentation of acute ischemic stroke patients and the association between delays and pandemic-related limitations.	Retrospective	There was no significant difference between the severity of stroke presentation (NIHSS score) of the groups. The COVID-period saw higher a time interval between LKW to presentation as compared to the Baseline period but did not see an age difference. Delay in presentation may be linked to patients' perceived concerns or outright fear of interacting with the health-care system during a pandemic.
Sharma et al. [97]	Investigate a decline in admissions for stroke and TIA/stroke, and ED stroke alert activations.	Retrospective	There was a decline in hospital admission that coincide with the stay-at-home recommendations. ED stroke alerts declined. Social distancing practices may have led to lack of contact with others and under-reporting symptoms.
Siegler et al. [98]	Confirm whether anecdotal reports that stroke admission rates may decline due to the pandemic are supported by prospective observations.	Exploratory analysis	During the pandemic period, there was a fall in new stroke diagnoses in comparison to the period before March. 1st, 2020. This related to the fall in number of daily transfers from referral centers, telestroke consultations, and hospital presentations through emergency services. The severity of stroke was greater during the COVID-19 period than the months preceding it. A reduction in the utilization of MRI during the pandemic may have contributed to the lower stroke rate observed.

Siegler et al. [99]	Evaluate the effect of the COVID-19 pandemic on systems of care in the management of acute stroke.	Retrospective observational	Evaluation for AIS during the pandemic was associated with a delay in thrombolysis but not thrombectomy time metrics. There were delays in imaging to treatment initiation.
Srivastava et al. [100]	Analyze the characteristics, evaluation, treatment, and in-hospital outcomes of stroke patients during the pandemic.	Retrospective observational	Stroke presentations decreased during the COVID-19 period, but rates of intervention, computed tomography, and time metrics were maintained.
Tabibian et al. [101]	Evaluate the effects of a new thrombectomy protocol during the pandemic.	Retrospective cohort	After activation of an adaptive code stroke protocol during the pandemic, there were no significant differences in recanalization rates but worse stroke outcomes.
Thau et al. [102]	Evaluate discharge planning and long-term outcomes of stroke patients treated during the COVID-19 pandemic who were recommended for discharge to inpatient rehabilitation.	Retrospective observational	During the pandemic, there was an increase in discharge disability and decrease in discharges to inpatient rehabilitation.
Tong et al. [103]	Examine rates of stroke hospitalization and adherence to stroke quality-of-care measures during the pandemic.	Retrospective	During the COVID-19 period, there was a reduction in stroke hospitalizations with stroke severity being higher. Rates of defect-free care and stroke education delivery were not affected by the pandemic.
Velasco et al. [104]	Investigate the impact of the pandemic on acute stroke care at a nonurban medical centre without widespread community transmission.	Retrospective and prospective	During the pandemic, there was a decrease in transports to the ED. The interval between EMS dispatch to ED arrival for stroke patients was significantly longer in the pandemic period. Volumes of IV thrombolysis, DTN times, and short-term outcomes were similar.

Wallace et al. [7]	Evaluate patient characteristics, process measures, and outcomes associated with the decline in stroke during the early COVID-19 pandemic.	Retrospective cohort	Patients with milder stroke systems and lower functional status were less likely to seek medical care during the early pandemic. Process measures and outcomes of stroke patients did not change.
Wang et al. [107]	Evaluate the impact of the COVID-19 pandemic on hospital admissions and outcomes in patients with AIS.	Retrospective	There was a reduction in stroke admissions and delays in reperfusion therapy during the pandemic. There were no differences in patients' disposition including home, short-term, and long-term facility.
White et al. [108]	Assess the impact of COVID-19 on acute ischemic stroke volume, presentation, treatment, and outcomes.	Retrospective review	Overall, AIS volume decreased during the pandemic, and patients usually presented later beyond eligible treatment windows. Treatment rates and outcomes did not change significantly. There was a decreased number of transfers likely due to the practice in the initial pandemic period to limit interfacility transfer to mitigate the risk of COVID-19 infection.
<b>Multiple countries</b>			
<b>China, India, USA, Canada, UK, Australia, Indonesia, Saudi Arabia, Spain, Singapore, Denmark, Germany, Israel, Switzerland, Malaysia, South Africa, Egypt, Philippines, Bangladesh, Pakistan, Russia, Mexico, Brazil, United Arab Emirates &amp; Ireland</b>			
Chowdhury et al. [35]	Gather and summarize information from tertiary care stroke centers during the COVID-19 pandemic.	Cross-sectional study	The number of AIS patients and EVT cases decreased during the pandemic. Most centers had a dedicated stroke team and modified protocols for managing AIS. Most centers did not alter anesthetic management plans.
<b>England, Wales &amp; North Ireland</b>			
Douiri et al. [82]	Describe the impact of the initial wave of the pandemic on administrations, care quality, and outcomes of stroke patients.	Prospective cohort	There was a drastic reduction in patients presenting to hospitals with stroke during the pandemic, especially for older patients and for ischemic stroke. Prehospital routing protocols were not implemented country wide. There were no changes in stroke triage policies in hospitals. Quality of care was preserved and even improved during lockdown.
<b>Italy, France &amp; Germany</b>			

Bersano et al. [59]	Report the experiences of stroke neurologists from three European countries.	Observational report	The prioritization of COVID-19 patients and units resulted in reorganization of pre-hospital transportation, limited consultations with stroke physicians and neurologists, centralization of stroke centres and rehabilitation pathways, reduced availability of ancillary examinations, timely therapies, and emergency pathways for stroke patients. The reorganization in pathways led to consequences in delays, use of acute treatment, and prognosis. There was a reduction of hospitalization for stroke and stroke acute therapies in comparison to the same period in 2019. Fear of in-hospital infection and the advice from health authorities and the media likely contributed to the reluctance to seek when people experienced mild symptoms. The government lockdown measures led to stroke symptoms in individuals being missed by others.
<b>United States &amp; Germany</b>			
Al Kasab et al. [85]	Evaluate the impact of the pandemic on racial disparities among stroke patients receiving MT.	Prospective study	Patients who presented during the pandemic required a longer procedure time and had a higher rate of mortality. During the pandemic, there was a reduction in the number of African Americans undergoing MT.
<p><b>Abbreviations:</b> ACS: Acute Coronary Syndrome; AI: Artificial Intelligence; AIS: Acute Ischemic Stroke; AIS-LVO: Ischemic Stroke with Large-Vessel Occlusion; AMI: Acute Myocardial Infarction; CSC: Comprehensive Stroke Center; CT: Computed Tomography; DNT: Door-to-Needle Time; DTN: Door-to-Needle; ED: Emergency Department; ELVO: Emergent Large Vessel Occlusion; EMS: Emergency Medical Service; EVT: Endovascular Treatment; ICUs: Intensive Care Units; ICP: Integrated Care Pathway; IV: Intravenous; IVT: Intravenous Thrombolysis; LKW: Last Known Well; LVO: Large-Vessel Occlusion; MCS: Mental Component Score; MRI: Magnetic Resonance Imaging; MRS: Modified Rankin Score; MT: Mechanical Thrombectomy; NIHSS: National Institute of Health Stroke Scale; NPI: Non-Pharmaceutical Interventions; ODT: Onset-to-Door Time; PCS: Physical Component Score; PPE: Personal Protective Equipment; PSA: Post-Stroke Anxiety; PSD: Post-Stroke Depression; QOL: Quality of Life; SC: Stroke Codes; TIA: Transient Ischemic Attack; tPA: Tissue-Type Plasminogen Activator; TR: Telerehabilitation; US: United States.</p>			



