

1 The impact of wildtype SARS-CoV-2 on fatigue and
2 quality of life: prevalence of post COVID-19
3 condition in a Dutch population-based
4 serosurveillance cohort.

5 Elizabeth N. Mutubuki^{1,2*}, Cheyenne C.E. van Hagen^{1*}, Eric R.A. Vos¹, Gerco den
6 Hartog^{1,3}, Fiona R.M. van der Klis¹, Cees C. van den Wijngaard¹, Hester E. de
7 Melker¹, Albert Jan van Hoek¹

8 ¹National Institute for Public Health and the Environment (RIVM), Center for Infectious Disease
9 Control, Bilthoven, the Netherlands

10 ²National Institute for Public Health and the Environment (RIVM), Center for Health and Society,
11 Bilthoven, the Netherlands

12 ³Laboratory of Medical Immunology, Radboud UMC, Nijmegen, The Netherlands

13

14 * These authors contributed equally to this work.

15

16 Corresponding author: Cheyenne C.E. van Hagen (cheyenne.van.hagen@rivm.nl)

17

18

19 Manuscript word count: 3448

20 Abstract word count: 250

21 **Abstract**

22 **Background:** Our aim was to assess the relationship between (time since) wild-type SARS-CoV-2
23 infection and health-related quality of life (HRQoL) and fatigue as endpoints linked to Post COVID-19
24 condition (PCC).

25 **Methods:** Participants ≥ 15 years were selected from the February 2021 round of the population-based
26 PIENTER Corona study. We investigated the association between (time since) SARS-COV-2 infection
27 and health outcomes: HRQoL (health utility (SF-6D); physical health and mental health (both SF-12))
28 and fatigue (CIS-fatigue) using multivariable logistic regression analyses adjusted for age, sex,
29 educational level, number of comorbidities, COVID-19 vaccination status, and the intensity of
30 restrictions. For each outcome, multivariable logistic regression models were fitted at cut-off points
31 selected based on the cumulative distribution of those uninfected.

32 **Results:** Results shown correspond to the cut-off point related to the worst off 15% of each outcome.
33 Significant differences between those uninfected ($n=4,614$) and cases infected ≤ 4 months ago ($n=368$)
34 were observed for health utility (OR [95%CI]: 1.6 [1.2-2.2]), physical health (OR [95%CI]: 1.7 [1.3-2.3])
35 and fatigue (OR [95%CI]: 1.6 [1.2-2.0]), but not for mental health. There were no significant differences
36 between uninfected and cases infected >4 months ago ($n=345$) for all outcomes.

37 **Conclusions:** In a Dutch population-based cohort of seroconverted individuals, those infected with
38 wild-type SARS-CoV-2 ≤ 4 months ago more often reported poor health utility and physical health and
39 were more often severely fatigued compared to those uninfected (at the 15% cut-off). HRQoL and
40 fatigue remained below the detection limit for those infected >4 months ago, suggesting a relatively
41 low prevalence of PCC.

42

43 *Keywords:* Health-related quality of life, mental health, physical health, post-covid-19 condition,
44 fatigue, SARS-CoV-2 infection, seroepidemiology

45 **Background**

46 The overall impact of severe acute respiratory syndrome coronavirus 2 (SARS-CoV-2) on health-related
47 quality of life (HRQoL) is important to identify and measure in order to inform public health strategies.
48 During the pandemic, HRQoL of the general population was negatively affected as a result of both
49 physical (e.g. infection or disease) and psychological (e.g. anxiety or social isolation) factors and
50 different groups were disproportionately impacted (1-3). Some groups are also more at risk for
51 (severe) infection with SARS-CoV-2 (4). Clinical presentations of SARS-CoV-2 can range from no or mild
52 symptoms to critical illness and mortality. In a proportion of patients, symptoms develop or remain
53 after the acute phase resulting in long-term complaints, a condition referred to as long-covid or post-
54 COVID-19 condition (PCC) (5-8). PCC is defined by the World Health Organization as “the continuation
55 or development of new symptoms 3 months after the initial SARS-CoV-2 infection, with these
56 symptoms lasting for at least 2 months with no other explanation” (9). Symptoms of PCC include
57 shortness of breath and cognitive dysfunction, with the most common symptom being fatigue (9, 10).
58 Due to the long duration and/or detrimental impact of these symptoms, PCC may form a significant
59 proportion of the overall disease burden of SARS-CoV-2. Therefore, the impact of PCC on the
60 population in terms of HRQoL is important to investigate.

61 The population burden of PCC depends on SARS-CoV-2 infection rates and the proportion developing
62 PCC after infection. Although the prevalence of PCC has been studied in prospective cohorts and in
63 cross-sectional population samples, where patients are identified by a positive SARS-CoV-2 PCR or
64 lateral flow test (11, 12), discrepancies in PCC prevalence estimates exist (ranging from 9% to 81%)
65 (10). These result from a multitude of reasons, but predominantly arise due to variations in definitions
66 of PCC, population under investigation, identification of (re-)infection/COVID-19, or potential other
67 factors such as SARS-CoV-2 variant or time since infection. In addition, all these studies that rely on
68 positive SARS-CoV-2 testing are prone to selection bias due to testing behavior and asymptomatic
69 infections. Therefore, to establish the true prevalence of PCC after SARS-CoV-2 infection as well as its
70 impact on HRQoL on a population level, population-based serological studies are needed. Such studies
71 provide a more comprehensive and unbiased assessment of the number of infections in the general
72 population.

73 Hence, using Dutch population-based serosurveillance data from the first year of the COVID-19
74 pandemic, the aim of this study was to assess the relationship between (time since) wild-type SARS-
75 CoV-2 infection and HRQoL and fatigue as endpoints linked to PCC.

76 **Methods**

77 **Study design and population**

78 The PIENTER Corona (PICO) study is a prospective population-based cohort study aimed at monitoring
79 humoral immunity against SARS-CoV-2 in the Dutch population. The PICO study started in April 2020
80 (PICO1) when 3,244 participants aged 2-92 years were enrolled (13). These participants were sampled
81 from the PIENTER3 serosurvey, an existing cohort established in 2016/2017 (14), for which
82 participants had been randomly selected from the Dutch population registry. In the second round, in
83 June 2020 (PICO2), the study sample was supplemented with an additional sample of 4,606 randomly-
84 selected participants from the Dutch population registry in order to enhance national coverage and
85 overall power (combined response rate, 21.4%) (15). Subsequent rounds were conducted in
86 September 2020 (PICO3) and February 2021 (PICO4) using the same study sample as in PICO2 with
87 exception to dropouts and non-responders (n=1,320) (Figure 1).

88 In every study round, participants were asked to return a finger-prick blood sample in a microtainer
89 by mail and complete a questionnaire (online or on paper). The questionnaire collected information
90 on demographics, experienced COVID-19 like symptoms (i.e., respiratory, gastro-intestinal, systemic,
91 etc.), SARS-CoV-2 testing, COVID-19 vaccination, clinical risk factors for disease, contact patterns,
92 HRQoL and fatigue (only from PICO4 onwards for those 15 years and older). In this study we included
93 all PICO4 participants with questionnaire data on HRQoL and fatigue and at least one blood sample in
94 PICO1-4. The PICO study protocol was approved by the Medical Ethics Committee MEC-U, the
95 Netherlands (Clinical Trial Registration NTR8473). All participants provided written informed consent.

96 **Time since SARS-CoV-2 infection**

97 To assess SARS-CoV-2 infection, we composed two groups; those with serological proof of previous
98 SARS-CoV-2 infection (seropositives/cases) and those without (seronegatives/uninfected). Proof of
99 infection was defined as the presence of infection-induced serum immunoglobulin G (IgG) antibodies
100 against the SARS-CoV-2 spike-S1 antigen in rounds PICO1-4. This was determined using a fluorescent
101 bead-based immunoassay with a specificity and a sensitivity of 99.7% and 91.6% respectively (16-18).
102 The cut-off for seropositivity was set at a spike-S1-specific IgG antibody level of 10.08 BAU/mL, in
103 accordance with international standards (16, 17). Antibodies derived from SARS-CoV-2 infection were
104 distinguished from vaccination-induced antibodies using self-reported vaccination status, pre-
105 vaccination seropositivity, presence of Nucleoprotein-specific IgG antibodies and self-reported test
106 positivity (PCR/rapid antigen tests) (18). Participants who were seropositive for infection-induced
107 antibodies at least once were considered a case, irrespective of negative PCR/rapid antigen tests or
108 serostatus in subsequent rounds. To assess time since SARS-CoV-2 infection, cases were further

109 classified according to time since seroconversion; we distinguished participants that seroconverted in
110 PICO1-3, i.e. before or in September 2020 (cases >4 months) and participants that seroconverted in
111 PICO4, i.e. after September 2020 (cases ≤4 months). The uninfected group consisted of all participants
112 who had not been seropositive for infection-induced antibodies through PICO1-4. Uninfected
113 participants who missed serological data in PICO4 or self-reported a positive PCR or rapid antigen test
114 in one of the study rounds were excluded. Thus, three SARS-CoV-2 serostatus groups were ultimately
115 identified: uninfected, cases >4 month and cases ≤4 months.

116 **Outcome measures**

117 *HRQoL: Short Form Health Survey 12 (SF-12) and Short-Form Six Dimensions (SF-6D)*

118 HRQoL was assessed in the form of mental health, physical health and health utility. To measure these,
119 the Dutch translation of the SF-12 version 1 was used. The SF-12 consists of 12 questions from eight
120 health dimensions that can be summarized into a physical health score (physical component summary;
121 PCS) and a mental health score (mental component summary; MCS). The PCS comprises of the
122 following health dimensions; physical functioning, role limitations due to physical health problems,
123 bodily pain and general health, whereas the MCS consists of vitality (energy/fatigue), social
124 functioning, role limitations due to emotional problems and mental health (psychological distress and
125 psychological wellbeing). The summarized scores were weighted using orthogonal regression
126 coefficients from the general Dutch population (19). PCS and MCS scores range from 0 (lowest health)
127 to 100 (highest health) (20). To convert results of the SF-12 into health utility scores the SF-6D was
128 used (21). The SF-6D uses seven items from the SF-12 and consists of six dimensions: physical
129 functioning, role limitations, social functioning, pain, mental health and vitality (21). SF-6D scores
130 range from 0.3 to 1, with higher scores indicating better health (21, 22). In the online version of the
131 questionnaire, item 12 (social functioning) of the SF-12 questionnaire had a six-scale answer (SF-12
132 version 1 UK) instead of a five-scale answer (SF-12 version 1 US). Participants that selected the
133 additional answer option were equally randomized to a category below and a category above in order
134 to analyze all questionnaires in the SF-12 version 1 US format.

135 *Fatigue: Checklist Individual Strength (CIS)*

136 Fatigue severity was assessed using the subscale fatigue of the Checklist Individual Strength (CIS-
137 fatigue). The CIS-fatigue is an 8-item questionnaire (23, 24). Each item is scored on a 7-point Likert
138 scale. Scores can range from 8 to 56 with fatigue severity increasing with higher scores (25).

139 **Statistical analysis**

140 Participant demographic (age, sex and educational level) and health characteristics (BMI, smoking,
141 number of comorbidities, COVID-19 vaccination status, health utility, physical health, mental health

142 and fatigue) were presented using proportions (%) and frequencies (n). Information collected in PICO4
143 were used, except for educational level, BMI, smoking and number of comorbidities which were
144 determined at baseline. Vaccination status refers to whether participants were vaccinated in PICO4
145 regardless of moment of potential SARS-CoV-2 infection.

146 In the analyses we looked at four different outcomes: health utility (SF-6D), mental health (MCS),
147 physical health (PCS) and fatigue (CIS). To enable comparison between the four outcome variables
148 with different scales and score ranges, we opted for a uniform approach. In this approach, we
149 separately plotted the cumulative distribution of each outcome for all three SARS-CoV-2 serostatus
150 groups to visualize differences between these groups over the entire range of the outcome. Since
151 higher CIS scores indicate worse outcomes, the cumulative distribution of the CIS scale was inverted
152 for comparability. The cumulative distribution of individuals in the uninfected group guided the
153 selection of cut-off points. Cut-off points were determined at each 5% increment along the cumulative
154 distribution of the uninfected group (5% to 75%), and at each cut-off individuals were assigned 0 (score
155 above the cut-off) or 1 (score on or below the cut-off). For each of the cut-off points multivariable
156 logistic regression models were fitted separately, per outcome. The following confounders were
157 added to the multivariable logistic regression models: age group (18-35/36-65/66+ years), sex
158 (male/female), educational level (low/intermediate/high), number of comorbidities (none/one/two
159 or more), COVID-19 vaccination status (vaccinated/unvaccinated) and Stringency Index (75/79). The
160 Stringency Index measures the intensity of restrictions in the Netherlands on a scale of 0 to 100
161 (strictest) as quantified by the COVID-19 Stringency Index of the Oxford Coronavirus Government
162 Response Tracker (OxCGRT) (26, 27). The Stringency Index was dichotomized into score 75 and 79
163 because the scores remained steady during the inclusion period (78.7 from 11 February to 2 March
164 2021 and 75.0 from 3 March to 6 April 2021). Complete case data on all variables except for smoking
165 and BMI were used for the analyses, (adjusted) odds ratios (OR) and 95% confidence intervals (CI)
166 were provided and a p-value of $p < 0.05$ was considered statistically significant.

167 Post-hoc analyses were conducted to explore the power to detect a minimal difference in prevalence
168 between cases >4 months and those uninfected given the observed cases in our study. With those
169 uninfected as reference group, an iterative process was performed in which per outcome, the
170 prevalence of cases >4 months meeting the cut-off (assigned a 1) was increased until the CI of the OR
171 was above 1. In this process the cases >4 months were included at random. To account for
172 stochasticity, an average of ten independent samples was taken for each prevalence point, for each
173 cut-off point.

174 Data was cleaned in SAS (94 M7 English) and analyzed in R (version 4.1.0).

175 **Results**

176 **Demographic and clinical characteristics of the participants**

177 From a total of 5,666 participants (supplementary file – Table 1), complete case analysis was
178 conducted with 5,327 participants of which 4,614 were uninfected, 345 cases >4 months and 368
179 cases ≤4 months (Table 1), thus excluding 6% of participants (missings). All groups had a higher
180 proportion of females compared to males (56-60%). The majority of the participants in all groups were
181 aged between 36-65 years (50-54%) and had a high or intermediate educational level (79-83%). About
182 half of the participants in all groups had normal weight and were a current or ex-smoker. Among cases
183 ≤4 months there were fewer participants with comorbidities (28%) compared to those uninfected and
184 cases >4 months (35%). In all groups, a comparable small proportion had been vaccinated (5-8%).
185 Mean SF-6D scores were 0.8 for all groups. Mean MCS (47-48) and PCS scores (53-55) were also similar
186 between groups. Mean CIS scores of those uninfected and cases >4 months were comparable (22),
187 but those of cases ≤4 months deviated (24).

188 **Cumulative distribution**

189 For health utility, the cumulative distribution of SF-6D scores showed that cases ≤4 months had a
190 higher proportion of individuals with a lower score, compared to those uninfected and cases >4
191 months (Figure 2, upper panel); 20% of cases ≤4 months had an SF-6D score below 0.66, whereas for
192 those uninfected and cases >4 months 20% scored below 0.72 (supplementary file – Table 2). Looking
193 at mental health, cases ≤4 months had a higher proportion of individuals with lower MCS scores
194 compared to those uninfected (Figure 3, upper panel); among those uninfected and cases >4 months,
195 30% of participants scored below MCS 46, whereas for cases ≤4 months this was below a score of 44
196 (supplementary file – Table 3). For physical health, cases ≤4 months also had a higher proportion of
197 individuals with lower PCS scores compared to those uninfected and cases >4 months (Figure 4, upper
198 panel); 20% of those uninfected had a PCS score below 51, whereas 20% of cases ≤4 months scored
199 below 48 (supplementary file – Table 4). For fatigue, cases ≤4 months had a higher proportion of
200 individuals with higher CIS scores throughout most of the cumulative distribution (Figure 5, upper
201 panel); among those uninfected and cases >4 months 15% of participants scored above 35, whereas
202 for cases ≤4 months this was 22% (supplementary file – Table 5).

203 **Multivariable logistic regression**

204 The results of the logistic regression analyses showed that statistically significant differences between
205 the groups differed based on the cut-off point of the outcome used. The 15% cut-off point corresponds
206 to an SF-6D score of 0.66, an MCS score of 37.25, a PCS score of 48.14 and a CIS score of 35
207 (supplementary file – Table 2-5). This cut-off represents clinically relevant severity for the fatigue (CIS)

208 scale (25), hence the regression results for the 15% cut-off point are presented (to note: the regression
209 results for the other cut-off points can be found in the supplementary files (supplementary file – Table
210 6-19)). At the 15% cut-off, prevalence of cases ≤ 4 months was 5.2, 4.0, 5.7 and 7.4 percentage point
211 higher (prevalence cases ≤ 4 months minus prevalence uninfected) compared to those uninfected for
212 SF-6D, MCS, PCS and CIS respectively (supplementary file – Table 2-5). In the multivariable logistic
213 regression, significant differences between those uninfected and cases ≤ 4 months were observed for
214 health utility (OR [CI]: 1.62 [1.17-2.20]), physical health (OR [CI]: 1.73 [1.30-2.27]) and fatigue (OR [CI]:
215 1.55 [1.19-2.01]), but not for mental health (OR [CI]: 1.19 [0.89-1.57]) (Table 2). For all outcomes, there
216 was no significant difference observed between those uninfected and cases > 4 months at the 15% cut-
217 off point (or any of the other cut-off points).

218 At the 15% cut-off point, multivariable logistic regressions (Table 2) showed that older age groups (35-
219 65 and 66+ years) were significantly associated with poorer physical health, but with better health
220 utility, mental health, and fatigue ($p < 0.001$). Female sex ($p < 0.001$) and having comorbidities ($p < 0.001$
221 to $p = 0.015$) were significantly associated with poorer outcomes on all four scales. Low educational
222 level was significantly associated with better mental health ($p = 0.002$), but poorer health utility
223 ($p = 0.018$) and physical health ($p < 0.001$). Better health utility ($p = 0.003$) and fatigue ($p = 0.017$) were
224 significantly associated with a higher stringency index. Vaccination status was significantly associated
225 with mental health, where not being vaccinated indicated poorer mental health ($p = 0.037$).

226 **Post-hoc analysis**

227 In the post-hoc analysis we investigated the power to detect a minimal difference in prevalence
228 between cases > 4 months and those uninfected required to detect a significant difference (with those
229 uninfected as reference group). Given the 345 cases > 4 months, a difference in prevalence at the 15%
230 cut-off would only become significant when the prevalence in this group was at least 3.8% points
231 higher than that of the uninfected for the SF-6D, 5.5% for the MCS, 3.2% for the PCS and 5.1% for the
232 CIS. Using the given cut-offs, the largest possible difference while having a non-significant outcome of
233 the logistic regression would be 7.3%, 7.5%, 4.4% or 7.1% respectively (supplementary file – Figure 1-
234 4).

235 Discussion

236 In this nationwide Dutch cohort study, we assessed the relationship between time since serologically
237 identified wild-type SARS-CoV-2 infection and HRQoL (health utility, physical health, mental health)
238 and fatigue. Our findings show that recently infected participants (≤ 4 months ago) more often had
239 poor outcomes in health utility, physical health and fatigue compared to those uninfected (at the 15%
240 cut-off). No significant differences were observed for mental health. For participants infected more
241 than 4 months ago, no statistically significant differences were found compared to those uninfected
242 at the 15% cut-off. Similar results were observed at all other cut-offs (see Supplementary File). These
243 observations are interesting, as it suggests that at the population level (including those symptomatic
244 and asymptomatic) the impact of long-term sequelae after a SARS-CoV-2 infection was lower in our
245 sample compared to the lowest estimated prevalence of PCC (9%) (10).

246 This observed lower PCC prevalence in our study can be explained by the fact that the prevalence
247 among those infected requires to be significantly different compared to those uninfected. Such explicit
248 use of an uninfected group is lacking in many other studies (10). Our results highlight the importance
249 of doing so. Furthermore, because of the sampling there is a variety in time since infection for those
250 infected more than 4 months ago, where the majority are likely infected in March and April 2020 given
251 the epidemic curve in the Netherlands before September 2020. This equates to 10 to 11 months since
252 infection, which is long and can contribute to the lower observed prevalence. Further subdivision of
253 our cases >4 months into exact round of seroconversion was not possible due to the small numbers
254 (PICO1: N=65; PICO2: N=44; PICO3: N=10). Furthermore, our study was randomly sampled from the
255 population, therefore the impact of several risk factors such as hospitalization, admission to the
256 intensive care unit, having comorbidities, smoking and high body mass index (28, 29) are less obvious
257 from our sample, as the majority had mild infections, and these risk groups are underrepresented.

258 We observed differences in health utility between those uninfected and cases ≤ 4 months, which is in
259 line with the study by Poudel (2021) that reported that quality of life was impacted more during the
260 acute phase of SARS-CoV-2 infection (30). Although HRQoL can also be impacted among PCC patients,
261 we did not observe any significant differences in health utility between those uninfected and cases >4
262 months. There were no differences in mental health observed in our study between those uninfected
263 and cases >4 months or ≤ 4 months. This could be because the severe restrictions that were in place
264 in February 2021 (schools were closed, people had to work from home and an evening curfew was in
265 place from January 20th until April 28th) had an impact on the entire population, irrespective of
266 infection status. Literature also shows that although society as a whole was affected by the pandemic,
267 some groups in society were disproportionately affected such as females and younger age groups (31).

268 There are some limitations to consider in the interpretation of our results. Firstly, our results are
269 predominantly valid for the impact of wild-type SARS-CoV-2 infections, as the Alpha variant of concern
270 only started circulating in the end of 2020 and was not dominant until week 7 of 2021 (15-21 February
271 2021) (32). Our aim was to investigate PCC prevalence after wild-type SARS-CoV-2 infection. However,
272 follow-up research should be conducted to assess the effects of other SARS-CoV-2 variants on HRQoL
273 and fatigue. Secondly, because we use serological data, acute infections with SARS-CoV-2 just before
274 blood sampling were not included in our analysis as it takes two to three weeks to seroconvert after
275 primary infection (33). However, the use of serological data to identify cases enabled identification of
276 infections, independent of testing policies and adherence, which is a major strength of this study. In
277 addition, reinfections were not taken into account in our study as few reinfections occurred early in
278 the pandemic, and thus most likely did not affect our results (34, 35).

279 Lastly, some individuals may have been misclassified in the cases or uninfected groups due to false
280 negative or false positive serological testing. Few individuals do not seroconvert after infection (36-
281 41). To minimize the effect of misclassification on our estimation, we excluded participants that
282 reported a positive PCR or rapid antigen test from the uninfected group. However, since widescale
283 PCR testing was not available in the Netherlands until June 2020, there is still a possibility of
284 misclassification. Given that the validation studies of the assay used showed a high sensitivity and
285 specificity (16, 42), we believe these consist of a small minority, and hence the overall impact on our
286 results is limited. In this study we included a study population that was randomly selected from the
287 Dutch population in order to ascertain representativeness of the Dutch population. However, despite
288 these efforts, participants of Dutch descent and potentially more health-oriented persons were
289 overrepresented.

290 **Conclusion**

291 In a Dutch randomly-selected population-based cohort of, seroconverted, SARS-CoV-2 wild-type
292 infected individuals with low proportion of vaccinations and re-infections, those infected in the
293 previous four months more often reported poor health utility and physical health and were more often
294 severely fatigued compared to those uninfected (at the 15% cut-off). HRQoL and fatigue remained
295 below the detection limit for those infected more than four months ago, suggesting a relatively low
296 prevalence of PCC.

297

298 **Acknowledgements**

299 We would like to thank our colleagues from the National Institute of Public Health and Environment
300 (RIVM), Centre of Infectious Disease Control for their contributions regarding logistics, laboratory
301 analyses, methodological insights and manuscript reviewing.

302 This work was supported by the Ministry of Health, Welfare and Sports (VWS), the Netherlands. The
303 funders had no role in study design, data collection and analysis, decision to publish, or preparation
304 of the manuscript. There was no additional external funding received for this study.

305

306 **Data availability**

307 The data that support the findings of this study can be requested via the PICO study website
308 (<https://www.rivm.nl/en/pienter-corona-study/information-for-researchers>). Restrictions may apply
309 to the availability of these data.

310

311 **Conflicts of interest**

312 The authors report no conflicts of interest.

Figure 1. Flowchart of participant recruitment in PICO1-4

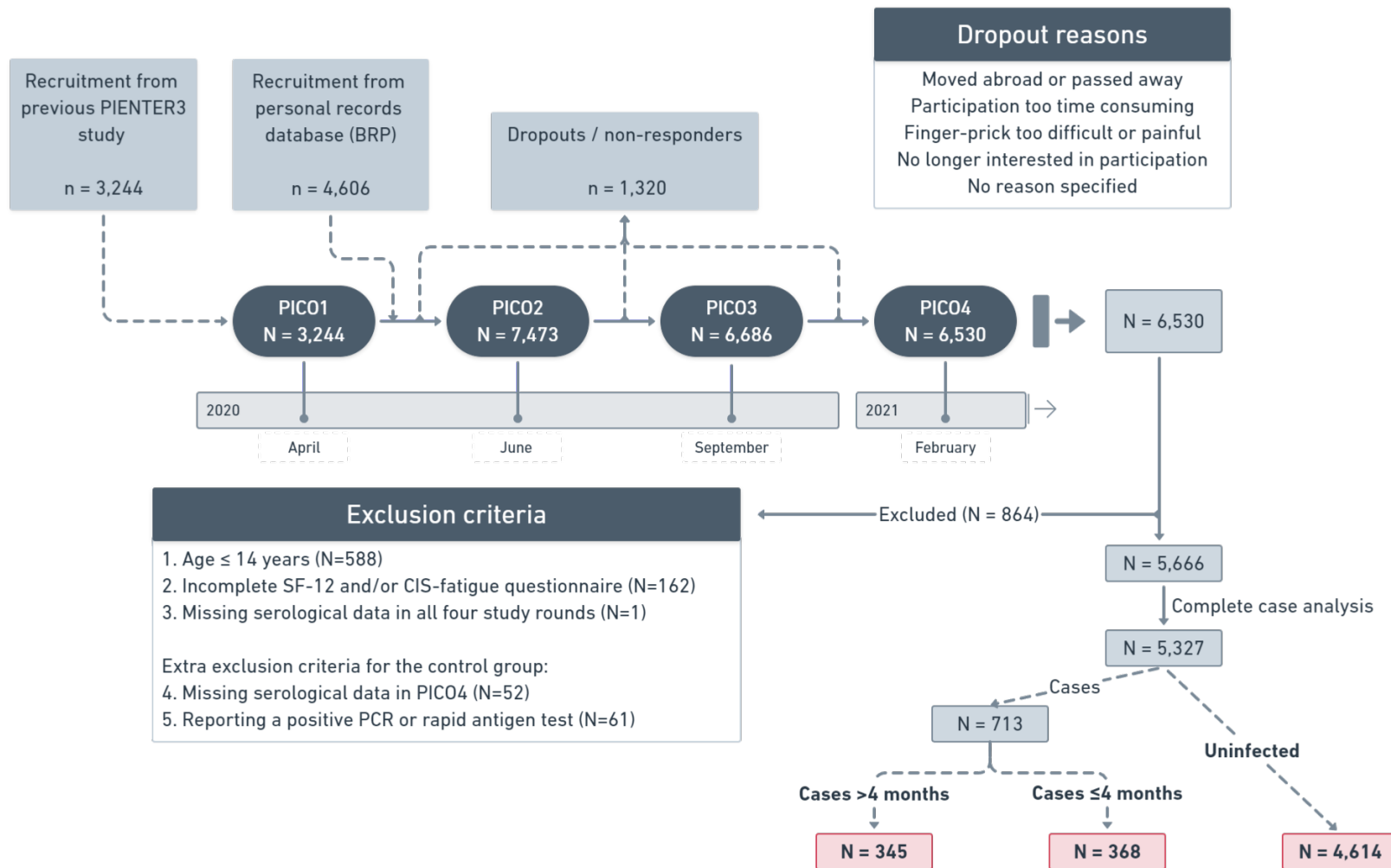


Table 1: Participant demographic and health characteristics*

	UNINFECTED	CASES >4 MONTHS	CASES ≤4 MONTHS
<i>N</i>	4,614	345	368
SEX = FEMALE % (N)	56.2 (2,593)	57.4 (198)	60.1 (221)
AGE GROUPS % (N)			
15-35	19.9 (916)	27.5 (95)	29.6 (109)
36-65	53.5 (2,467)	50.1 (173)	53.8 (198)
66+	26.7 (1,231)	22.3 (77)	16.6 (61)
EDUCATIONAL LEVEL^A % (N)			
HIGH	48.3 (2,227)	43.2 (149)	38.9 (143)
INTERMEDIATE	31.8 (1466)	39.4 (136)	40.2 (148)
LOW	20.0 (921)	17.4 (60)	20.9 (77)
BMI^B % (N)			
UNDERWEIGHT	1.0 (47)	0.0 (0)	2.4 (9)
NORMAL WEIGHT	47.6 (2,198)	47.0 (162)	45.1 (166)
OVERWEIGHT	35.0 (1,615)	35.1 (121)	35.9 (132)
OBESE	14.0 (647)	12.2 (42)	14.4 (53)
MISSING	2.3 (107)	5.8 (20)	2.2 (8)
SMOKING % (N)			
SMOKER	10.9 (501)	7.0 (24)	7.9 (29)
EX-SMOKER	38.9 (1,795)	40.0 (138)	37.0 (136)
NON-SMOKER	47.9 (2,211)	47.5 (164)	53.3 (196)
MISSING	2.3 (107)	5.5 (19)	1.9 (7)
NUMBER OF COMORBIDITIES^C % (N)			
NONE	65.2 (3,007)	65.2 (225)	72.6 (267)
ONE	25.2 (1,164)	27.5 (95)	20.4 (75)
TWO OR MORE	9.6 (443)	7.2 (25)	7.1 (26)
SARS-COV-2 VACCINATED = NO % (N)	95.3 (4,399)	92.8 (320)	91.6 (337)
HEALTH UTILITY (SF-6D) MEAN (SD)	0.82 (0.11)	0.82 (0.11)	0.80 (0.13)
MENTAL HEALTH (MCS) MEAN (SD)	48.00 (10.14)	47.31 (10.98)	46.67 (10.87)
PHYSICAL HEALTH (PCS) MEAN (SD)	54.38 (7.64)	54.96 (6.68)	53.21 (8.52)
FATIGUE (CIS) MEAN (SD)	21.71 (11.68)	21.67 (11.52)	24.45 (12.96)

* All characteristics were determined in PICO4, except for educational level, BMI, smoking and comorbidities (determined at baseline).

^A Educational level was classified as low (no education or primary education), intermediate (secondary school or vocational training), or high (bachelor's degree, university).

^B For underweight, normal weight, overweight and obesity respectively the following cut-offs were used:

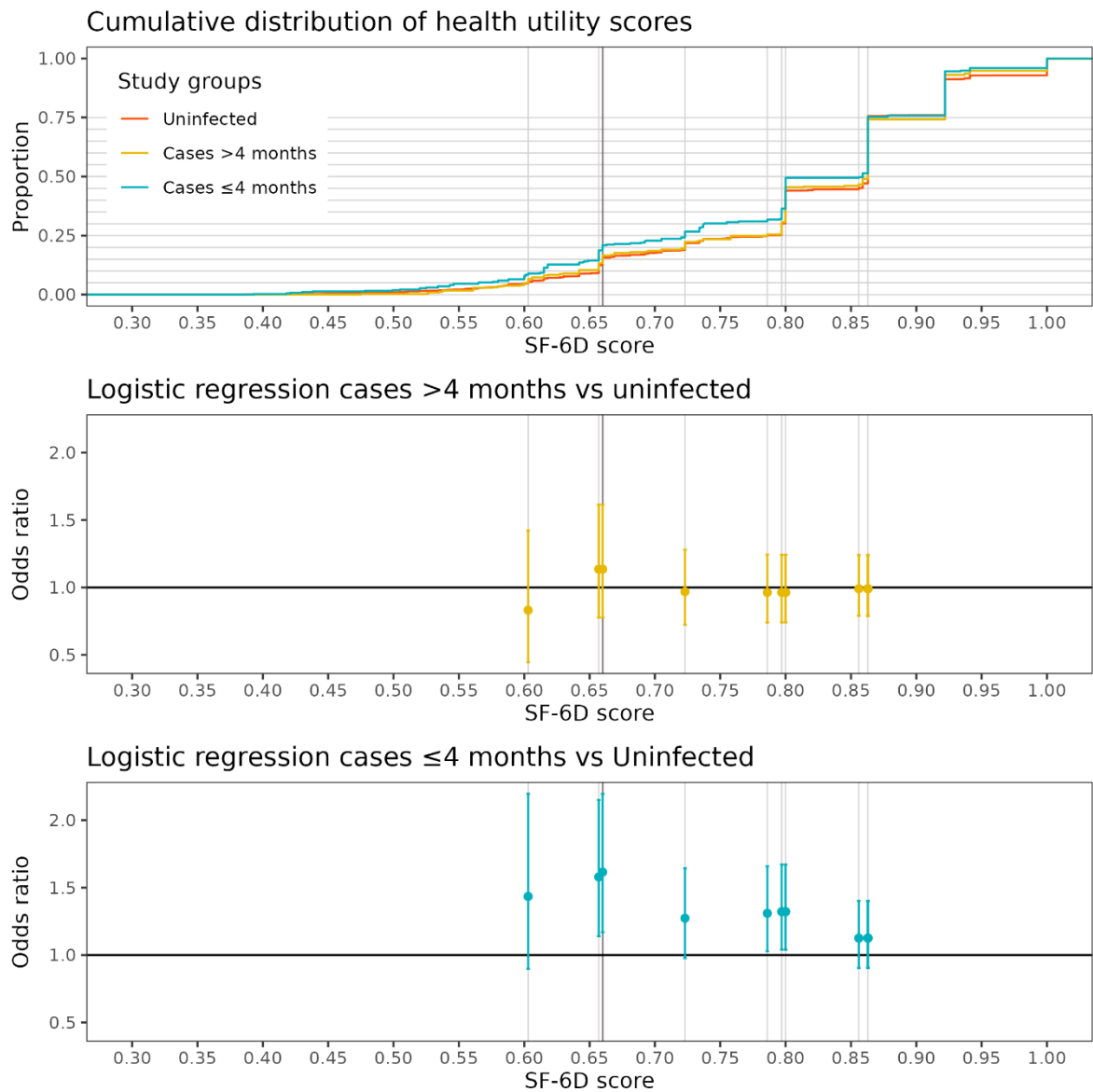
- Men 15 years old: BMI <17.0; BMI 17.0-23.3; BMI 23.3-28.3; BMI ≥28.3.
- Women 15 years old: BMI <17.5; BMI 17.5-23.9; BMI 23.9-29.1; BMI ≥29.1.
- Men 16 years old: BMI <17.5; BMI 17.5-23.9; BMI 23.9-28.9; BMI ≥28.9.
- Women 16 years old: BMI <17.9; BMI 17.9-24.4; BMI 24.4-29.4; BMI ≥29.4.
- Men 17 years old: BMI <18.1; BMI 18.1-24.5; BMI 24.5-29.4; BMI ≥29.4.
- Women 17 years old: BMI <18.3; BMI 18.3-24.7; BMI 24.7-29.7; BMI ≥29.7.
- Men 18 years and older: BMI <18.5; BMI 18.5-25.0; BMI 25.0-30.0; BMI ≥30.0.
- Women 18 years and older: BMI <18.5; BMI 18.5-25.0; BMI 25.0-30.0; BMI ≥30.0.

^C Included comorbidities are asthma, cancer, cardiovascular disease, diabetes (type 1 & 2), immunodeficiency, pulmonary disease and renal disease.

Table 2. Results of the four multivariable logistic regression models at the 15% cut-off of the cumulative distribution for health utility (SF-6D), mental health (MCS), physical health (PCS) and fatigue (CIS)

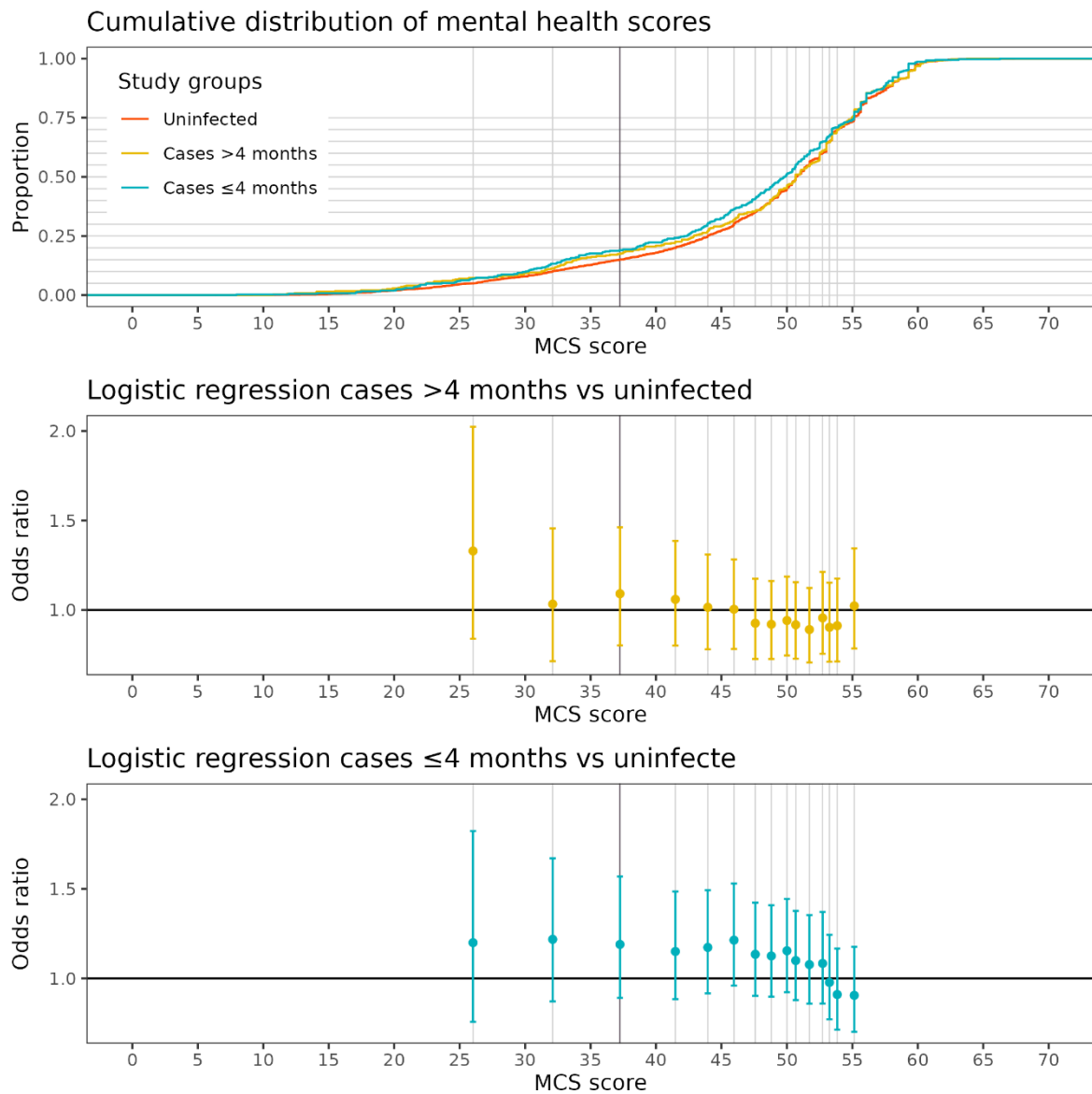
		SF-6D		MCS		PCS		CIS	
		OR [95%CI]	p-value	OR [95%CI]	p-value	OR [95%CI]	p-value	OR [95%CI]	p-value
Intercept		12311.23	0.023	1.36	0.936	87.09	0.271	610.52	0.073
SEROLOGICAL STATUS	Uninfected	1		1		1		1	
	Cases >4 months	1.14 [0.78-1.61]	0.493	1.09 [0.80-1.46]	0.567	0.81 [0.57-1.13]	0.235	1.03 [0.76-1.39]	0.833
	Cases ≤4 months	1.62 [1.17-2.20]	0.003	1.19 [0.89-1.57]	0.228	1.73 [1.30-2.27]	<0.001	1.55 [1.19-2.01]	0.001
AGE GROUP	18-35 years	1		1		1		1	
	36-65 years	0.59 [0.47-0.74]	<0.001	0.44 [0.37-0.52]	<0.001	1.63 [1.27-2.10]	<0.001	0.58 [0.48-0.69]	<0.001
	65+ years	0.43 [0.32-0.58]	<0.001	0.17 [0.13-0.22]	<0.001	2.31 [1.75-3.06]	<0.001	0.28 [0.21-0.36]	<0.001
EDUCATIONAL LEVEL	High	1		1		1		1	
	Intermediate	1.24 [1.00-1.53]	0.051	0.84 [0.71-1.00]	0.046	1.52 [1.26-1.82]	<0.001	1.15 [0.98-1.37]	0.095
	Low	1.37 [1.05-1.77]	0.018	0.68 [0.53-0.86]	0.002	1.81 [1.48-2.22]	<0.001	1.13 [0.91-1.40]	0.280
SEX	Male	1		1		1		1	
	Female	1.55 [1.27-1.89]	<0.001	1.45 [1.23-1.70]	<0.001	1.59 [1.35-1.88]	<0.001	1.84 [1.56-2.16]	<0.001
COMORBIDITIES	No comorbidities	1		1		1		1	
	1 comorbidity	1.55 [1.24-1.93]	<0.001	1.26 [1.04-1.52]	0.015	2.08 [1.74-2.48]	<0.001	1.71 [1.43-2.04]	<0.001
	2+ comorbidities	2.44 [1.80-3.27]	<0.001	1.74 [1.30-2.30]	<0.001	4.09 [3.26-5.13]	<0.001	3.00 [2.34-3.84]	<0.001
VACCINATION STATUS	Vaccinated	1		1		1		1	
	Not vaccinated	1.33 [0.87-2.13]	0.205	1.49 [1.04-2.21]	0.037	1.13 [0.80-1.63]	0.511	1.43 [1.01-2.07]	0.050
STRINGENCY INDEX	75	1		1		1		1	
	79	0.86 [0.77-0.95]	0.003	0.98 [0.89-1.08]	0.628	0.91 [0.82-1.01]	0.055	0.90 [0.82-0.98]	0.017

Figure 2. Health utility – cumulative distribution and logistic regression analyses*



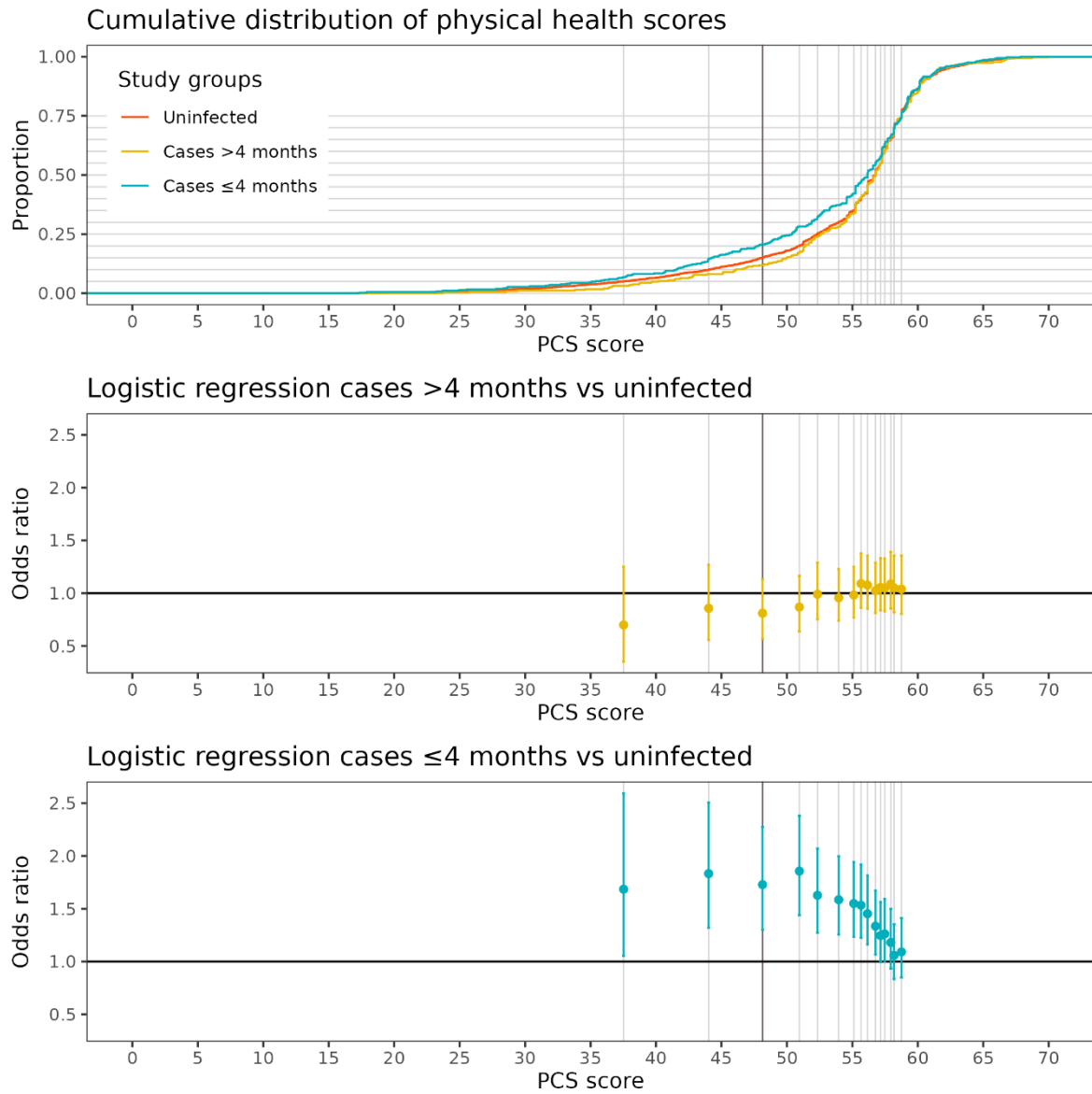
* Each 5% increment (5-75%) along the cumulative distribution of the control group is marked with a grey bar. The 15% point of the distribution is marked with a dark grey bar.

Figure 3. Mental health – cumulative distribution and logistic regression analyses*



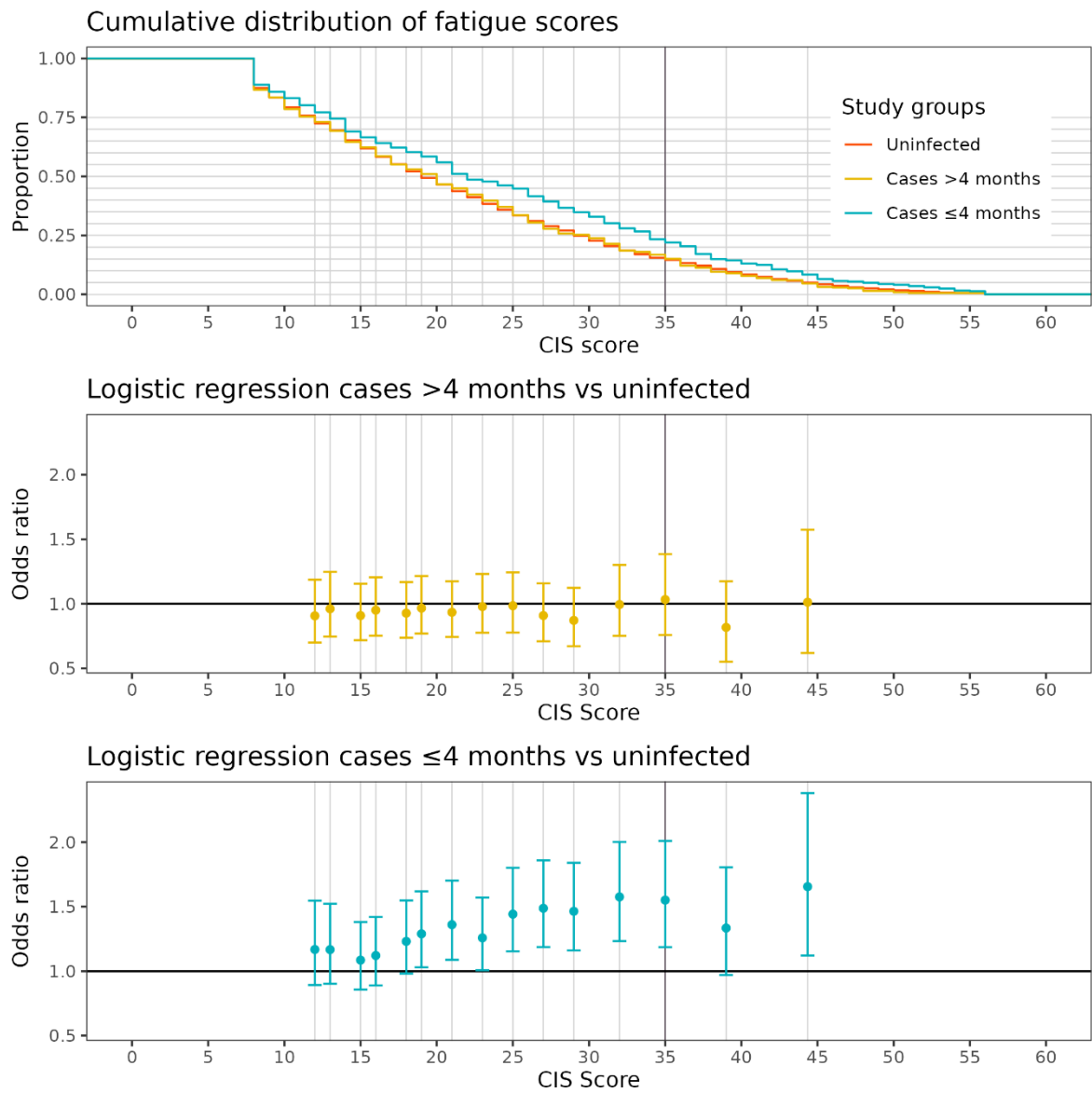
* Each 5% increment (5-75%) along the cumulative distribution of the control group is marked with a grey bar. The 15% point of the distribution is marked with a dark grey bar.

Figure 4. Physical health – cumulative distribution and logistic regression analyses*



* Each 5% increment (5-75%) along the cumulative distribution of the control group is marked with a grey bar. The 15% point of the distribution is marked with a dark grey bar.

Figure 5. Fatigue – cumulative distribution and logistic regression analyses*



* Each 5% increment (5-75%) along the cumulative distribution of the control group is marked with a grey bar. The 15% point of the distribution is marked with a dark grey bar.

References

1. Bäuerle A, Steinbach J, Schweda A, Beckord J, Hetkamp M, Weismüller B, et al. Mental Health Burden of the COVID-19 Outbreak in Germany: Predictors of Mental Health Impairment. *J Prim Care Community Health*. 2020;11:2150132720953682.
2. Hay JW, Gong CL, Jiao X, Zawadzki NK, Zawadzki RS, Pickard AS, et al. A US Population Health Survey on the Impact of COVID-19 Using the EQ-5D-5L. *J Gen Intern Med*. 2021;36(5):1292-301.
3. Lim SL, Woo KL, Lim E, Ng F, Chan MY, Gandhi M. Impact of COVID-19 on health-related quality of life in patients with cardiovascular disease: a multi-ethnic Asian study. *Health Qual Life Outcomes*. 2020;18(1):387.
4. (RIVM) RvVeM. Risk groups and COVID-19 2023 [Available from: <https://www.rivm.nl/en/coronavirus-covid-19/risk-groups>].
5. Cirulli ET, Schiabor Barrett KM, Riffle S, Bolze A, Neveux I, Dabe S, et al. Long-term COVID-19 symptoms in a large unselected population. *medRxiv*. 2020:2020.10.07.20208702.
6. Petersen MS, Kristiansen MF, Hanusson KD, Danielsen ME, B ÁS, Gaini S, et al. Long COVID in the Faroe Islands: A Longitudinal Study Among Nonhospitalized Patients. *Clin Infect Dis*. 2021;73(11):e4058-e63.
7. Ziauddeen N, Gurdasani D, O'Hara ME, Hastie C, Roderick P, Yao G, Alwan NA. Characteristics of Long Covid: findings from a social media survey. *medRxiv*. 2021:2021.03.21.21253968.
8. Nalbandian A, Sehgal K, Gupta A, Madhavan MV, McGroder C, Stevens JS, et al. Post-acute COVID-19 syndrome. *Nat Med*. 2021;27(4):601-15.
9. Organization WH. A clinical case definition of post COVID-19 condition by a Delphi consensus https://www.who.int/publications/i/item/WHO-2019-nCoV-Post_COVID-19_condition-Clinical_case_definition-2021.12021 [
10. Chen C, Hauptert SR, Zimmermann L, Shi X, Fritsche LG, Mukherjee B. Global Prevalence of Post-Coronavirus Disease 2019 (COVID-19) Condition or Long COVID: A Meta-Analysis and Systematic Review. *J Infect Dis*. 2022;226(9):1593-607.
11. Ballering AV, van Zon SKR, Olde Hartman TC, Rosmalen JGM. Persistence of somatic symptoms after COVID-19 in the Netherlands: an observational cohort study. *Lancet*. 2022;400(10350):452-61.
12. van der Maaden T, Mutubuki EN, de Bruijn S, Leung KY, Knoop H, Slootweg J, et al. Prevalence and severity of symptoms 3 months after infection with SARS-CoV-2 compared to test-negative and population controls in the Netherlands. *medRxiv*. 2022:2022.06.15.22276439.
13. Vos ERA, den Hartog G, Schepp RM, Kaaijk P, van Vliet J, Helm K, et al. Nationwide seroprevalence of SARS-CoV-2 and identification of risk factors in the general population of the Netherlands during the first epidemic wave. *J Epidemiol Community Health*. 2020;75(6):489-95.
14. Verberk JDM, Vos RA, Mollema L, van Vliet J, van Weert JWM, de Melker HE, van der Klis FRM. Third national biobank for population-based seroprevalence studies in the Netherlands, including the Caribbean Netherlands. *BMC Infectious Diseases*. 2019;19(1):470.
15. Vos ERA, van Boven M, den Hartog G, Backer JA, Klinkenberg D, van Hagen CCE, et al. Associations Between Measures of Social Distancing and Severe Acute Respiratory Syndrome Coronavirus 2 Seropositivity: A Nationwide Population-based Study in the Netherlands. *Clinical Infectious Diseases*. 2021;73(12):2318-21.
16. den Hartog G, Schepp RM, Kuijper M, GeurtsvanKessel C, van Beek J, Rots N, et al. SARS-CoV-2-Specific Antibody Detection for Seroepidemiology: A Multiplex Analysis Approach Accounting for Accurate Seroprevalence. *J Infect Dis*. 2020;222(9):1452-61.
17. Geers D, Shamier MC, Bogers S, den Hartog G, Gommers L, Nieuwkoop NN, et al. SARS-CoV-2 variants of concern partially escape humoral but not T cell responses in COVID-19 convalescent donors and vaccine recipients. *Science immunology*. 2021;6(59):eabj1750.
18. van den Hoogen LL, Smits G, van Hagen CC, Wong D, Vos ER, van Boven M, et al. Seropositivity to Nucleoprotein to detect mild and asymptomatic SARS-CoV-2 infections: A complementary tool to detect breakthrough infections after COVID-19 vaccination? vaccine. 2022.

19. Mols F, Pelle AJ, Kupper N. Normative data of the SF-12 health survey with validation using postmyocardial infarction patients in the Dutch population. *Quality of Life Research*. 2009;18(4):403-14.
20. Ware J, Kosinski M, Keller S. How to score the SF-12 physical and mental health summary scales Boston. MA: The Health Institute. 1995;2.
21. Brazier JE, Roberts J. The estimation of a preference-based measure of health from the SF-12. *Med Care*. 2004;42(9):851-9.
22. van Stel HF, Buskens E. Comparison of the SF-6D and the EQ-5D in patients with coronary heart disease. *Health Qual Life Outcomes*. 2006;4:20.
23. Vercoulen JH, Swanink CM, Fennis JF, Galama JM, van der Meer JW, Bleijenberg G. Dimensional assessment of chronic fatigue syndrome. *J Psychosom Res*. 1994;38(5):383-92.
24. Worm-Smeitink M, Gielissen M, Bloot L, Van Laarhoven H, Van Engelen B, Van Riel P, et al. The assessment of fatigue: Psychometric qualities and norms for the Checklist individual strength. *Journal of psychosomatic research*. 2017;98:40-6.
25. Checklist Individuele Spankracht (CIS) [Available from: <https://meetinstrumentenzorg.nl/wp-content/uploads/instrumenten/CIS-form.pdf>].
26. Hale T, Angrist N, Goldszmidt R, Kira B, Petherick A, Phillips T, et al. A global panel database of pandemic policies (Oxford COVID-19 Government Response Tracker). *Nature Human Behaviour*. 2021;5(4):529-38.
27. Roser M. What is the COVID-19 Stringency Index? 2021 [Available from: <https://ourworldindata.org/metrics-explained-covid19-stringency-index>].
28. Subramanian A, Nirantharakumar K, Hughes S, Myles P, Williams T, Gokhale KM, et al. Symptoms and risk factors for long COVID in non-hospitalized adults. *Nat Med*. 2022;28(8):1706-14.
29. Tziolos NR, Ioannou P, Baliou S, Kofteridis DP. Long COVID-19 Pathophysiology: What Do We Know So Far? *Microorganisms*. 2023;11(10).
30. Poudel AN, Zhu S, Cooper N, Roderick P, Alwan N, Tarrant C, et al. Impact of Covid-19 on health-related quality of life of patients: A structured review. *PLoS One*. 2021;16(10):e0259164.
31. RIVM. More than 1 in 5 young people had suicidal thoughts during last lockdown 2022 [Available from: <https://www.rivm.nl/en/news/more-than-1-in-5-young-people-had-suicidal-thoughts-during-last-lockdown>].
32. (RIVM) RvVeM. Varianten van het coronavirus SARS-CoV-2 2023 [Available from: <https://www.rivm.nl/coronavirus-covid-19/virus/varianten>].
33. Guo L, Ren L, Yang S, Xiao M, Chang D, Yang F, et al. Profiling Early Humoral Response to Diagnose Novel Coronavirus Disease (COVID-19). *Clinical Infectious Diseases*. 2020;71(15):778-85.
34. Medić S, Anastassopoulou C, Lozanov-Crvenković Z, Vuković V, Dragnić N, Petrović V, et al. Risk and severity of SARS-CoV-2 reinfections during 2020-2022 in Vojvodina, Serbia: A population-level observational study. *Lancet Reg Health Eur*. 2022;20:100453.
35. E OM, Byrne P, Carty PG, De Gascun C, Keogan M, O'Neill M, et al. Quantifying the risk of SARS-CoV-2 reinfection over time. *Rev Med Virol*. 2022;32(1):e2260.
36. Oved K, Olmer L, Shemer-Avni Y, Wolf T, Supino-Rosin L, Prajgrod G, et al. Multi-center nationwide comparison of seven serology assays reveals a SARS-CoV-2 non-responding seronegative subpopulation. *EClinicalMedicine*. 2020;29:100651.
37. Masiá M, Telenti G, Fernández M, García JA, Agulló V, Padilla S, et al. SARS-CoV-2 Seroconversion and Viral Clearance in Patients Hospitalized With COVID-19: Viral Load Predicts Antibody Response. *Open Forum Infect Dis*. 2021;8(2):ofab005.
38. Wellinghausen N, Plonné D, Voss M, Ivanova R, Frodl R, Deininger S. SARS-CoV-2-IgG response is different in COVID-19 outpatients and asymptomatic contact persons. *J Clin Virol*. 2020;130:104542.
39. Thiruvengadam R, Chattopadhyay S, Mehdi F, Desiraju BK, Chaudhuri S, Singh S, et al. Longitudinal Serology of SARS-CoV-2-Infected Individuals in India: A Prospective Cohort Study. *Am J Trop Med Hyg*. 2021;105(1):66-72.

40. Pathela P, Crawley A, Weiss D, Maldin B, Cornell J, Purdin J, et al. Seroprevalence of Severe Acute Respiratory Syndrome Coronavirus 2 Following the Largest Initial Epidemic Wave in the United States: Findings From New York City, 13 May to 21 July 2020. *J Infect Dis.* 2021;224(2):196-206.
41. Liu W, Russell RM, Bibollet-Ruche F, Skelly AN, Sherrill-Mix S, Freeman DA, et al. Predictors of Nonseroconversion after SARS-CoV-2 Infection. *Emerg Infect Dis.* 2021;27(9):2454-8.
42. den Hartog G, Vos ERA, van den Hoogen LL, van Boven M, Schepp RM, Smits G, et al. Persistence of Antibodies to Severe Acute Respiratory Syndrome Coronavirus 2 in Relation to Symptoms in a Nationwide Prospective Study. *Clin Infect Dis.* 2021;73(12):2155-62.