

Full title: Assessing Red Blood Cell Distribution Width in Vietnamese Heart Failure Patients: A Cross-Sectional Study

Short title: Red Blood Cell Distribution Width in Heart Failure Patients

- 1 Hai Nguyen Ngoc Dang^{1,2¶}, Thang Viet Luong^{3,4¶}, Mai Thi Thu Cao³, Vinh Trung Bui³,
- 2 Thanh Thien Tran³, Hung Minh Nguyen^{5,6*}
- 3 ¹The Faculty of Medicine, Duy Tan University, Da Nang, Viet Nam
- 4 ²Cardiovascular Center, Hue Central Hospital, Hue, Viet Nam
- 5 ³Hue University of Medicine and Pharmacy, Hue, Viet Nam
- 6 ⁴Hue University of Medicine and Pharmacy Hospital, Hue, Viet Nam
- 7 ⁵Vietnam National Heart Institute, Bach Mai Hospital, Hanoi, Viet Nam
- 8 ⁶Hanoi Medical University, Hanoi, Viet Nam
- 9 *Corresponding author:
- 10 Email: mdhungnguyen@gmail.com (HMN)
- 11 [¶]Hai Nguyen Ngoc Dang and Thang Luong Viet contributed equally to this work.

12 Author contributions:

13 Conceptualization: Hai Nguyen Ngoc Dang, Thang Viet Luong.

14 Data curation: Hai Nguyen Ngoc Dang, Thang Viet Luong.

15 Formal analysis: Hai Nguyen Ngoc Dang, Thang Viet Luong.

16 Investigation: Hai Nguyen Ngoc Dang, Thang Viet Luong.

17 Methodology: Hai Nguyen Ngoc Dang, Thang Viet Luong.

18 Supervision: Hai Nguyen Ngoc Dang, Thang Viet Luong, Hung Minh Nguyen.

19 Writing – original draft: Hai Nguyen Ngoc Dang, Thang Viet Luong, Mai Thi Thu Cao,

20 Vinh Trung Bui, Thanh Thien Tran, Hung Minh Nguyen.

21 Writing – review & editing: Hai Nguyen Ngoc Dang, Thang Viet Luong, Mai Thi Thu

22 Cao, Vinh Trung Bui, Thanh Thien Tran, Hung Minh Nguyen.

23 **Abstract**

24 Heart failure (HF) is a growing public health concern, with red cell distribution
25 width (RDW) gaining recognition as a cost-effective marker for predicting HF onset and
26 progression. This study, conducted from February 2022 to February 2024 at Hue Central
27 Hospital, aimed to assess RDW levels in hospitalized Vietnamese HF patients and its
28 predictive value for HF severity, involving a cross-sectional analysis of 351 patients

29 categorized into HF and non-HF groups. HF patients exhibited higher median RDW
30 levels (14.90% [13.70% - 17.00%]) compared to non-HF individuals (13.10% [12.23%
31 - 13.78%]). RDW was higher in HF patients with left ventricular ejection fraction
32 (LVEF) < 50% (15.30%) than LVEF \geq 50% (14.70%). ROC curve analysis for acute
33 heart failure (AHF) prediction yielded an AUC of 0.651 ($p < 0.001$), with a cutoff point
34 of 13.85%, sensitivity of 86.05%, and specificity of 36.94%. Elevated RDW levels were
35 associated with HF risk (OR: 1.844, $p < 0.001$) and AHF (OR: 3.612, $p < 0.001$).
36 Multivariate analysis identified associations between RDW and hemoglobin (Hb) ($\beta =$
37 2.431, $p = 0.040$) and hematocrit (HCT) ($\beta = -3.355$, $p = 0.007$) in HF. RBC and RDW
38 > 13.85% were independent risk factors for AHF. This suggests that RDW levels can
39 serve as biomarkers for diagnosing HF and predicting its severity. Their accessibility
40 and cost-effectiveness indicate the potential utility of RDW in managing HF,
41 particularly in settings with limited resources.

42 **Introduction**

43 Heart failure (HF) represents a complex and life-threatening syndrome
44 characterized by significant morbidity and mortality, limited functional capacity and
45 quality of life, and substantial economic burden [1]. Additionally, HF has emerged as
46 an increasingly critical public health concern. Given the aging population and enhanced
47 survival rates following acute myocardial infarction, these trends are expected to persist
48 [2]. HF has been recognized as a global pandemic, affecting an estimated 64.3 million

49 individuals worldwide in 2017 [3]. Despite therapeutic advancements, HF remains a
50 primary contributor to morbidity and mortality on a global scale [4].

51 The early detection and accurate diagnosis of HF are crucial for optimizing the
52 treatment and prognoses of patients with this condition. Currently, HF diagnosis relies
53 primarily on echocardiography and patients' presenting symptoms, yet there lacks a
54 definitive prognostic indicator for mortality among HF patients [5]. Biomarkers have
55 shown promise in enhancing predictive capabilities alongside clinical evaluation in
56 chronic heart failure (CHF) patients, although the incremental predictive value of
57 individual biomarkers like B-type natriuretic peptide or troponin I in acute heart failure
58 (AHF) is limited [6]. However, in Vietnam, the costs associated with these tests are
59 prohibitive, and they are only available in large medical centers, presenting a significant
60 challenge to their widespread application.

61 Red cell distribution width (RDW) is a parameter that reflects the variability in red
62 blood cell size (anisocytosis), easily obtainable from a complete blood count, and
63 represents a simple, cost-effective measure [7]. RDW is increasingly recognized as a
64 marker for predicting the onset and progression of HF. In HF patients, anisocytosis may
65 signify a homeostatic response to the disease, potentially indicating a link between
66 ineffective erythropoiesis and chronic inflammation [8]. Traditionally, RDW has been
67 underappreciated and primarily used to differentiate certain causes of anemia [9].
68 However, recent clinical evidence suggests that changes in RDW are associated with the

69 development and adverse outcomes of stroke and cardiovascular disease [7,8,10,11].
70 Particularly in HF patients, RDW has been correlated with hospitalization rates and poor
71 prognosis [12,13]. RDW is a readily applicable blood parameter for basic healthcare
72 facilities, especially in Vietnam. Nonetheless, most existing evidence originates from
73 regions such as the United States, Europe, Japan, and China, excluding Vietnam.

74 Therefore, this study aims to investigate RDW levels in hospitalized Vietnamese
75 HF patients and assess the predictive ability of RDW for the severity of HF in this
76 population.

77 **Materials and methods**

78 **Study population**

79 A cross-sectional study was conducted at Hue Central Hospital from February 2022
80 to February 2024, involving 351 patients categorized into two groups: those with HF
81 and those without (see **Fig 1**). CHF and AHF were defined and classified based on the
82 criteria outlined in the guidelines for the diagnosis and treatment of AHF and CHF of
83 the European Society of Cardiology [14]. The control group consisted of patients with
84 no history or symptoms of HF, LVEF \geq 50%, and NT-proBNP $<$ 125 pg/mL.
85 Additionally, patients who had received blood transfusions or iron supplementation
86 during hospitalization and those with a positive osmotic fragility test were excluded
87 from the study. The project received approval from Hue Central Hospital and the

88 Institutional Review Board of Duy Tan University (No: Đ23-24Y3-2) and adhered to
89 the principles of the Declaration of Helsinki (2013 version).

90 **Fig 1. The research flowchart divides the research subjects into subgroups under**
91 **the group.** HF: heart failure; CHF: chronic heart failure; AHF: acute heart failure.

92 **Data collection**

93 The baseline evaluation of the patients encompassed demographic characteristics
94 and clinical assessments, including medical history (hypertension, diabetes mellitus,
95 dyslipidemia, coronary artery disease, chronic kidney disease, valvular heart disease,
96 liver disease, and cardiac arrhythmias, as well as medication usage). Additionally, other
97 clinical data such as body mass index (BMI), waist-hip ratio, heart rate, systolic blood
98 pressure (SBP), diastolic blood pressure (DBP), and New York Heart Association
99 classification (NYHA) were collected. These details were routinely collected upon
100 admission and throughout hospitalization, utilizing a pre-established registry
101 questionnaire.

102 The echocardiographic procedure adhered to the guidelines outlined by the
103 American Society of Echocardiography for conducting a comprehensive transthoracic
104 echocardiographic examination in adults, performed by expert echocardiographers [15].

105 The laboratory analyses were performed on fasting venous blood specimens and
106 encompassed: brain natriuretic peptide, red blood cell count, hematocrit, hemoglobin,

107 mean cell volume, mean cell hemoglobin content, mean cell hemoglobin concentration,
108 platelet count, alanine aminotransferase, aspartate transaminase, glucose, urea, high-
109 sensitivity troponin T, hemoglobin A1c, total cholesterol, triglyceride, low-density
110 lipoprotein cholesterol, high-density lipoprotein cholesterol, non-high-density
111 lipoprotein cholesterol, potassium level, sodium level, chloride level, and estimated
112 glomerular filtration rate using CKD-EPI 2021 (eGFR, mL/min per 1.73 m²) [16].

113 **RDW measurement**

114 Blood samples were collected from 2 mL of the peripheral vein using an ethylene
115 diamine tetraacetic acid (EDTA) tube within 6 hours after admission and analyzed using
116 the Sysmex XS-1000i automated hematology analyzer (Japan), located in the
117 Hematology Department of Hue Central Hospital. RDW index was derived from the
118 complete blood count obtained upon patients' admission to the hospital. Two parameters
119 of RDW were calculated to measure the extent of anisocytosis: the standard deviation
120 (SD) and the coefficient variation (CV). RDW-CV is widely investigated and is
121 calculated according to the following formula: $RDW-CV = (SD \text{ of erythrocyte}$
122 $\text{volume}/\text{mean corpuscular volume}) \times 100$. The normal reference range for RDW in the
123 hospital laboratories that participated in the study was 11.5 - 15% with an intra-assay
124 variation of 2.38% and an inter-assay variation of 1% [13]. In this study, we reported
125 RDW-CV and used RDW to represent it.

126 **Fig 2. The RDW is found by the RDW-CV formula, 1 standard deviation divided**
127 **by MCV.** RDW-CV: red blood cell distribution width-coefficient of variation. RBC:
128 red blood cell. SD: standard deviation. MCV: mean corpuscular volume.

129 **Statistical analysis**

130 All statistical analyses were performed using SPSS Version 26 (IBM, New York,
131 United States), MedCalc Software Version 22.019 (MedCalc Software, Ostend,
132 Belgium), and GraphPad Prism Version 10 (GraphPad Software, Boston, United States).
133 Data normality was assessed using the Kolmogorov-Smirnov and Shapiro-Wilk tests.
134 Normally distributed continuous variables were presented as mean \pm standard deviation,
135 while non-normally distributed variables were described as median values with
136 interquartile ranges. Categorical variables were reported as frequencies and percentages.
137 Fisher's exact test was employed to assess intergroup differences in categorical
138 variables, while differences in continuous variables were analyzed using either the
139 unpaired T-test or the Mann-Whitney U test, as appropriate. Missing data were excluded
140 from the analyses. Spearman's correlation coefficient (r) and its corresponding p-value
141 were calculated to explore the correlation between continuous variables. The area under
142 the curve (AUC) was determined using the Wilson/Brown method to predict AHF. AUC
143 comparison was conducted to evaluate the diagnostic performance of RDW compared
144 to other biochemical tests, employing the Hanley and McNeil method [17].
145 Multivariable linear regression was used to evaluate the associations between clinical

146 factors and left left atrium phasic strain and left atri left atrioventricular coupling index,
147 respectively. Clinical confounding factors and variables that were significant ($p < 0.05$)
148 in the univariate analysis were included in the multivariable model. To prevent
149 multicollinearity among the univariate variables, a variance inflation factor of 5 was
150 applied. Univariate logistic regression calculated odds ratios to predict HF. All statistical
151 tests were two-sided, with a significance level of < 0.05 .

152 **Results**

153 **Baseline characteristics**

154 The study involving 351 subjects revealed significant variations in blood cell count
155 such as RBC, Hb, and RDW-CV between HF and non-HF patients. Detailed information
156 regarding these indices is presented in **Table 1**.

157 **Table 1. Baseline characteristics of the study groups.**

Characteristics	Non-HF (n= 152)	HF (n = 199)	p-value
Baseline demographic and clinical features			
Age (Years)	66.6 ± 12.1	70.1 ± 14.1	0.008
Female	115 (75.7)	119 (59.8)	0.002
Heart rate (bpm)	82 [76 - 90]	81 [75 - 95]	0.838
SBP (mmHg)	140 [130 - 170]	130 [110 - 150]	< 0.001

DBP (mmHg)	80 [80 - 90]	80 [70 - 80]	< 0.001
BMI (kg/m²)	22.4 [20.2 - 25.3]	21.0 [19.2 - 23.1]	< 0.001
WHR	1.0 [0.9 – 1.0]	1.0 [0.9 – 1.0]	0.681
NYHA		2 [2 - 3]	
LVEF (%)	62.5 [61.0 - 64.3]	55.0 [36.0 – 61.0]	< 0.001
Smoking	27.0 (17.8)	31.0 (15.6)	0.664
Alcohol	12.0 (7.9)	16.0 (8.0)	0.063
Diabetes	20.0 (13.2)	51.0 (25.6)	0.005
Dyslipidemia	39.0 (25.7)	66.0 (33.2)	0.158
Hypertension	116.0 (76.3)	130 (65.3)	0.034
Stent	3.0 (2.0)	47.0 (23.6)	< 0.001
CABG	0.0 (0.0)	11.0 (5.5)	0.003
Atrial fibrillation	1.0 (0.7)	39.0 (19.6)	< 0.001
Stroke	8.0 (5.3)	15.0 (7.5)	0.515
CKD	3.0 (2.0)	21.0 (10.6)	0.001
Medication usage			
Antiplatelet	17.0 (11.2)	25.0 (12.6)	0.005
Beta blockers	24.0 (15.8)	44.0 (22.1)	< 0.001
ACEi/ARB	81.0 (53.3)	59.0 (29.7)	0.299
MRA	4.0 (2.6)	42.0 (21.1)	< 0.001

ARNI	0.0 (0.0)	7.0 (3.5)	0.001
SGLT2i	4.0 (2.6)	26.0 (13.1)	< 0.001
Digoxin	0.0 (0.0)	7.0 (3.5)	0.001
Laboratory parameters			
WBC (10⁹/L)	7.8 [6.5 - 9.6]	7.6 [6.0 - 9.9]	0.742
RBC (10¹²/L)	4.5 [4.2 - 4.7]	3.8 [3.3 - 4.3]	< 0.001
Hb (g/dL)	13.1 [12.1 – 14.0]	10.9 [8.7 - 12.5]	< 0.001
HCT (%)	39.5 [37.5 - 41.5]	33.5 [27.3 - 38.2]	< 0.001
MCV (fL)	89.4 [86.1 - 92.6]	88.3 [81.1 - 92.8]	0.088
MCH (pg)	29.9 [28.8 - 30.9]	29.0 [26.1 - 30.6]	0.002
MCHC (g/dL)	33.2 [32.5 - 34.1]	32.6 [31.7 - 33.4]	< 0.001
RDW-CV (%)	13.10 [12.23 - 13.78]	14.90 [13.70 – 17.00]	< 0.001
PLT (10⁶/μL)	251 [215 - 294]	230 [184 - 287]	0.006
MPV (fL)	9.4 [8.3 - 9.9]	8.7 [8.0 - 9.5]	0.001
Glucose (mg/dL)	6.3 [5.3 - 7.8]	6.4 [5.3 - 7.7]	0.614
HbA1c (%)	6.3 [5.6 - 8.2]	6.5 [5.8 - 8.1]	0.634
AST (U/L)	24.0 [19.3 - 31.4]	29.7 [21.5 - 41.2]	0.002
ALT (U/L)	22.5 [15.4 - 33.2]	22.0 [14.1 - 31.8]	0.567
Cholesterol (mg/dL)	5.1 ± 1.1	4.4 ± 1.1	< 0.001
Triglyceride (mg/dL)	1.5 [1.0 - 2.4]	1.2 [0.9 - 1.8]	< 0.001

HDL-C (mg/dL)	1.3 ± 0.3	1.2 ± 0.3	0.013
Non-HDL-C (mg/dL)	3.8 ± 1.0	3.2 ± 1.0	< 0.001
LDL-C (mg/dL)	3.2 [2.5 - 3.8]	0.9 [0.6 - 2.4]	< 0.001
Urea (mg/dL)	4.7 [3.7 - 6.2]	6.3 [5.0 - 8.6]	< 0.001
Creatinine (mg/dL)	67 [55 - 79]	84 [61 - 121]	< 0.001
Potassium (mEq/L)	3.4 [3.2 - 3.8]	3.7 [3.3 - 4.2]	< 0.001
Sodium (mEq/L)	138 [134 - 139]	136 [134 - 140]	0.278
Chloride (mEq/L)	101 [99 - 103]	101 [97 - 105]	0.478
hs-TnT (ng/L)	7.0 [6.0 - 11.0]	18.5 [9.0 - 31.5]	< 0.001
NT-proBNP (pg/mL)	64 [32 - 99]	1807 [487 - 8353]	< 0.001

158 Values are presented as mean ± standard deviation, median [25th interquartile - 75th
159 interquartile], or number (%) as appropriate. SBP: systolic blood pressure; DBP:
160 diastolic blood pressure; BMI: body mass index; WHR: waist hip ratio; NYHA: New
161 York Heart Association; LVEF: left ventricular ejection fraction; CABG: coronary
162 artery bypass graft; CKD: chronic kidney disease; ACEi/ARB: angiotensin-converting
163 enzyme inhibitor/angiotensin receptor blocker; MRA: mineralocorticoid receptor
164 antagonist; ARNI: angiotensin receptor neprilysin inhibitor; SGLT2i: sodium-glucose
165 cotransporter 2 inhibitor; WBC: white blood cell; RBC: red blood cell; Hb: hemoglobin;
166 HCT: hematocrit; MCV: mean corpuscular volume; MCH: mean corpuscular
167 hemoglobin; MCHC: mean corpuscular hemoglobin concentration; RDW-CV: red
168 blood cell distribution width coefficient of variation; PLT: platelet; MPV: mean platelet

169 volume; HbA1c: hemoglobin A1c; AST: aspartate aminotransferase; ALT: alanine
170 aminotransferase; HDL-C: high-density lipoprotein cholesterol; Non-HDL-C: non-
171 high-density lipoprotein cholesterol; LDL-C: low-density lipoprotein cholesterol; hs-
172 TnT: high-sensitivity troponin T; NT-proBNP: N-terminal pro-B-type natriuretic
173 peptide.

174 **Comparison of RDW among different study groups**

175 We observed significantly higher RDW-CV levels in AHF patients compared to
176 the non-HF group. Additionally, HF patients with preserved ejection fraction had lower
177 RDW-CV values compared to those with EF < 50%. Moreover, RDW levels increased
178 with higher NYHA classifications. Detailed findings are illustrated in **Fig 3**.

179 **Fig 3. Comparison of RDW-CV among different study groups.** (A) Illustrates the
180 comparison of RDW-CV among Non-HF, CHF, and AHF groups. (B) Compares RDW-
181 CV in HF patients with LVEF ≥ 50 and < 50. (C) Compares RDW-CV in NYHA I/II
182 and NYHA III/IV groups. RDW-CV: red blood cell distribution width -coefficient of
183 variation; HF: heart failure; CHF: chronic heart failure; AHF: acute heart failure; LVEF:
184 left ventricular ejection fraction; NYHA: New York Heart Association.

185 **The predictive value of RDW for AHF**

186 The prognostic significance of AHF in patients with CHF, as determined by RDW,
187 is elucidated through ROC analysis, yielding an AUC of 0.651 ($p < 0.001$). The

188 identified cutoff point stands at 13.85%, boasting a sensitivity of 86.05% and specificity
189 of 36.94%. Comparative analysis between RDW and hs-TnT reveals a superior AUC
190 for the latter. Nevertheless, employing the Hanley and McNeil method to discern the
191 statistical significance between these AUCs, we find the discrepancy to be
192 nonsignificant ($p > 0.05$). Conversely, RDW exhibits statistically significant differences
193 ($p < 0.05$) when compared to WBC, PLT, and MCV. **Fig 4** further illustrates the
194 predictive utility of AHF across various indices, including WBC, PLT, MCV, and hs-
195 TnT.

196 **Fig 4. Receiver operating characteristic curves for predicting AHF among HF**
197 **patients.** (A-E) Depict the ROC curves of RDW-CV, WBC, PLT, MCV, and hs-TnT,
198 respectively. (F) Compares the differences between the AUCs of RDW-CV, WBC, PLT,
199 MCV, and hs-TnT using the Hanley & McNeil method. ROC: receiver operating
200 characteristic; AUC: area under the curve; RDW-CV: red blood cell distribution width
201 coefficient of variation; WBC: white blood cell; hs-TnT: high-sensitivity troponin T;
202 PLT: platelet; MCV: mean corpuscular volume; AHF: acute heart failure.

203 **Correlation analysis of RDW and clinical, subclinical indices in HF** 204 **patients**

205 There is a positive correlation between the RDW-CV index and NT-proBNP and
206 hs-TnT. Conversely, there is a negative correlation between the RDW-CV index and
207 GFR. Furthermore, other parameters are clearly depicted in the heat map (see **Fig 5**).

208 **Fig 5. The heat map shows RDW-CV's correlation with clinical and subclinical**
209 **indices in HF patients.** HR: heart rate; SBP: systolic blood pressure; DBP: diastolic
210 blood pressure; BMI: body mass index; WHR: waist hip ratio; NYHA: New York Heart
211 Association; LVEF: left ventricular ejection fraction; WBC: white blood cell; RDW-
212 CV: red blood cell distribution width coefficient of variation; PLT: platelet; MPV: mean
213 platelet volume; HbA1c: hemoglobin A1c; AST: aspartate aminotransferase; ALT:
214 alanine aminotransferase; HDL-C: high-density lipoprotein cholesterol; Non-HDL-C:
215 non-high-density lipoprotein cholesterol; LDL-C: low-density lipoprotein cholesterol;
216 GFR: glomerular filtration rate, K⁺: Potassium; Na⁺: sodium; Cl⁻: chloride; hs-TnT:
217 high-sensitivity troponin T; NT-proBNP: N-terminal pro-B-type natriuretic peptide.

218 **Linear and logistic regression analysis**

219 **Table 2** illustrates the findings from both univariate and multivariate analyses
220 conducted on RDW-CV concerning heart failure (HF). Univariate regression analysis
221 unveiled significant associations between RDW-CV and several hematological
222 parameters including RBC, Hb, HCT, MCV, MCH, MCHC, PLT, MPV, and GFR in
223 HF patients. Multivariate analysis further elucidated associations between RDW-CV
224 and Hb ($\beta = 2.431$, $p = 0.040$) as well as HCT ($\beta = -3.355$, $p = 0.007$) in this patient
225 cohort. Additionally, **Fig 6** portrays the outcomes of logistic regression analyses for
226 RDW-CV in HF patients, underscoring elevated RDW-CV levels as significant risk
227 factors for HF.

228 **Table 2. Factors associated with increasing levels of RDW in linear regression.**

Factors	Univariable				Multivariable			
	β	p-value	95% CI		β	p-value	95% CI	
Sex	0.002	0.981	-1.027	1.052				
Age (years)	-0.028	0.698	-0.043	0.029				
HR (beats/min)	-0.082	0.253	-0.04	0.011				
BMI (kg/m²)	-0.024	0.735	-0.212	0.15				
NYHA	0.118	0.099	-0.098	1.128				
Smoking	-0.038	0.601	-1.769	1.026				
Alcohol	0.026	0.798	-1.007	1.306				
Diabetes	-0.045	0.532	-1.531	0.793				
Dyslipidemia	0.100	0.161	-0.308	1.848				
Hypertension	-0.009	0.903	-1.138	1.005				
Stent	-0.048	0.501	-1.602	0.786				
CABG	-0.022	0.759	-2.570	1.878				
Atrial fibrillation	-0.031	0.666	-1.190	0.762				
Stroke	-0.058	0.417	-2.796	1.162				
CKD	-0.008	0.907	-1.748	1.553				
Antiplatelet	-0.078	0.447	-1.354	0.602				

LVEF (%)	-0.115	0.139	-0.072	0.010				
WBC (10⁹/L)	-0.048	0.642	-0.143	0.089				
RBC (10¹²/L)	-0.143	0.046	-1.287	-0.012	0.906	0.070	-0.218	5.425
Hb (g/dL)	-0.456	< 0.001	-0.906	-0.514	2.431	0.040	0.119	4.936
HCT (%)	-0.405	< 0.001	-0.283	-0.146	-3.355	0.007	-2.111	-0.343
MCV (fL)	-0.446	< 0.001	-0.202	-0.113	0.950	0.512	-0.450	0.895
MCH (pg)	-0.476	< 0.001	-0.552	-0.324	-0.507	0.777	-2.513	1.884
MCHC (g/dL)	-0.314	< 0.001	-1.083	-0.434	-0.881	0.088	-3.201	0.226
PLT (10⁹/L)	0.073	0.307	-0.003	0.008				
MPV (fL)	-0.113	0.114	-0.785	0.085				
GFR (mL/min/1.73m²)	-0.262	0.010	-0.059	-0.008	-0.143	0.053	-0.037	0.000
NT-proBNP (pg/mL)	0.097	0.176	0.000	0.000				

229 Bold value indicates statistical significance at the $p < 0.05$ level. CI: confidence interval;
230 HR: heart rate; SBP: systolic blood pressure; DBP: diastolic blood pressure; BMI: body
231 mass index; WHR: waist hip ratio; NYHA: New York Heart Association; LVEF: left
232 ventricular ejection fraction; CABG: coronary artery bypass graft; CKD: chronic kidney
233 disease; ACEi/ARB: angiotensin-converting enzyme inhibitor/angiotensin receptor
234 blocker; MRA: mineralocorticoid receptor antagonist; ARNI: angiotensin receptor
235 neprilysin inhibitor; SGLT2i: sodium-glucose cotransporter 2 inhibitor; WBC: white

236 blood cell; RBC: red blood cell; Hb: hemoglobin; HCT: hematocrit; MCV: mean
237 corpuscular volume; MCH: mean corpuscular hemoglobin; MCHC: mean corpuscular
238 hemoglobin concentration; RDW-CV: red blood cell distribution width coefficient of
239 variation; PLT: platelet; MPV: mean platelet volume; GFR: glomerular filtration rate;
240 NT-proBNP: N-terminal pro-B-type natriuretic peptide.

241 **Fig 6. HF susceptibility was predicted via logistic regression using hematologic**
242 **parameters and GFR as covariates.** In the univariable analysis, elevated levels of
243 RDW-CV along with a lower level of RBC and Hb, were identified as risk factors for
244 HF. WBC: white blood cell; RBC: red blood cell; Hb: hemoglobin; HCT: hematocrit;
245 MCV: mean corpuscular volume; MCH: mean corpuscular hemoglobin; MCHC: mean
246 corpuscular hemoglobin concentration; RDW-CV: red blood cell distribution width
247 coefficient of variation; PLT: platelet; MPV: mean platelet volume; GFR: glomerular
248 filtration rate.

249 **Table 3** outlines independent risk factors identified in the complete blood count of
250 AHF patients, where RBC and RDW-CV > 13.85% were recognized as independent risk
251 factors with corresponding odds ratios of 0.313 (95% CI, 0.140-0.701; p = 0.005) and
252 2.644 (95% CI, 1.190-5.875; p = 0.017), respectively.

253 **Table 3. Independent risk factors in complete blood count of AHF (analyzed by**
254 **logistic regression model).**

Factors	Univariable				Multivariable			
	OR ratio	p-value	95% CI		OR ratio	p-value	95% CI	
WBC (10 ⁹ /L)	1.102	0.103	0.981	1.237				
RBC (10 ¹² /L)	0.458	< 0.001	0.304	0.689	0.313	0.005	0.140	0.701
Hb (g/dL)	0.737	< 0.001	0.643	0.846	0.085	0.074	0.006	1.270
HCT (%)	0.915	< 0.001	0.874	0.957	2.294	0.068	0.940	5.595
MCV (fL)	0.998	0.877	0.971	1.026				
MCH (pg)	0.966	0.339	0.899	1.037				
MCHC (g/dL)	0.760	0.009	0.619	0.934	1.397	0.385	0.657	2.967
PLT (10 ⁹ /L)	0.998	0.299	0.995	1.001				
MPV (fL)	1.145	0.271	0.899	1.458				
RDW-CV > 13.85%	3.612	< 0.001	1.755	7.432	2.644	0.017	1.190	5.875

255 Bold value indicates statistical significance at the $p < 0.05$ level. CI: confidence interval;
 256 OR: odd ratio; WBC: white blood cell; RBC: red blood cell; Hb: hemoglobin; HCT:
 257 hematocrit; MCV: mean corpuscular volume; MCH: mean corpuscular hemoglobin;
 258 MCHC: mean corpuscular hemoglobin concentration; RDW-CV: red blood cell
 259 distribution width coefficient of variation; PLT: platelet; MPV: mean platelet volume.

260 Discussion

261 RDW is a simple, fast, cost-effective hematological parameter with results
262 routinely provided in complete blood count. Our study aimed to compare RDW values
263 between HF patients and the control group. Additionally, it evaluated the predictive
264 value of RDW in anticipating the likelihood of HF exacerbation. The study was
265 conducted on 351 subjects in Vietnam, divided into two groups: those with HF and those
266 without.

267 **RDW in HF Patients**

268 In our study, RDW levels in HF patients tended to be higher than in the non-HF
269 group with $p < 0.001$ (**Fig 3**). Moreover, patients with elevated RDW levels were more
270 likely to have HF compared to those with normal levels (**Fig 6**). Atac Celik et al. (2012)
271 also found that the HF group had higher RDW compared to the control group [18].
272 Additionally, Yuxiang Dai et al. (2014) revealed that half of the HF patients had an
273 RDW value above the upper limit of the normal range [19].

274 In our study, AHF patients had higher RDW levels compared to the CHF group
275 and the control group ($p < 0.001$). Additionally, NYHA III/IV patients had higher RDW
276 levels than NYHA I/II patients, with a significant difference observed ($p = 0.02$) (**Fig**
277 **3**). Similarly, Jaewon Oh et al. (2009) also found increased RDW levels in AHF patients
278 [20].

279 Currently, the pathophysiological mechanism underlying the increased RDW in HF
280 patients remains incompletely understood. Some recent literature suggests that
281 inflammation, activation of the neuroendocrine system, and adrenergic activation in HF
282 patients may influence the erythrocyte maturation process, leading to elevated RDW
283 [13,21,22]. Red blood cells are formed in the bone marrow from erythroid colony-
284 forming unit-erythroid progenitors and undergo maturation into mature erythrocytes
285 through a series of developmental stages [23]. Disruption of various biological
286 pathways, such as aging, inflammation, oxidative stress, nutritional deficiencies,
287 impaired renal function, dyslipidemia, and alterations in RBC deformability or
288 fragmentation, has been linked to impaired erythropoiesis, resulting in increased RDW
289 [13,21,24–26]. In our study, variations in hematological parameters (RBC, Hb, HCT,
290 MCV, MCH, and MCHC) were found to influence RDW outcomes. Particularly, Hb
291 and HCT emerged as two parameters exerting independent effects on RDW results in
292 the multivariable linear regression model (see **Table 2**).

293 Inflammation is recognized as a significant contributor to the pathophysiology of
294 HF [27]. In HF, both cell-and cytokine-mediated inflammatory pathways are activated,
295 causing bone marrow dysfunction and premature release of erythrocytes into the
296 bloodstream. Inflammation inhibits bone marrow function and iron metabolism, while
297 pro-inflammatory cytokines inhibit erythropoietin-induced erythrocyte maturation and
298 proliferation, thus increasing RDW [28]. The correlation between RDW and
299 inflammatory markers such as interleukin-6 (IL-6) and C-reactive protein (CRP) has

300 been reported [13]. Pro-inflammatory cytokines like TNF- α , IL-1 β , and IL-6 have been
301 shown to reduce renal erythropoietin (EPO) synthesis, desensitize erythroid progenitor
302 cells to EPO, and inhibit erythropoietin receptor expression, resulting in impaired
303 erythroid progenitor cell proliferation, reduced RBC maturation, and increased RDW
304 [29].

305 Neurohormonal activation is recognized as one of the primary mechanisms driving
306 the advancement of HF, and therapeutic inhibition of neurohormonal systems has
307 emerged as the fundamental approach in modern pharmacotherapy for HF [30].
308 Erythrocyte progenitor cells are stimulated by the activation of neurohumoral and
309 adrenergic systems, leading to reduced erythropoiesis and consequently, elevated RDW
310 levels. Consequently, irrespective of the underlying cause, the activation of adrenergic
311 and neurohumoral systems directly contributes to the increase in RDW [18,31].

312 HF often coexists with several comorbidities, among which renal dysfunction holds
313 particular importance. Cardiac and renal diseases intricately interact in both acute and
314 chronic settings, forming a complex bidirectional relationship. Pathophysiologically,
315 these conditions share common pathways, including inflammatory and direct cellular
316 immune-mediated mechanisms, stress-mediated and neurohormonal responses,
317 metabolic and nutritional alterations such as bone and mineral disorders, changes in
318 hemodynamics and acid-base or fluid status, and the onset of anemia [32]. These
319 mechanisms contribute to explaining the renal impairment in HF patients. Additionally,

320 these mechanisms have also been implicated in increasing the RDW levels. In fact, our
321 study observed an inverse correlation between RDW and Glomerular Filtration Rate
322 (GFR) with $r = -0.33$ and $p = 0.001$, as depicted in **Fig 5**.

323 **Predictive Ability of RDW for AHF Onset in HF Patients**

324 Previous studies have shown that an increase in RDW is associated with an
325 increased risk of hospitalization due to AHF [33,34]. The study by Ferreira et al. (2013)
326 demonstrated that high RDW at admission is a predictor of slower diuretic response
327 [35]. This provides us with a positive insight into RDW levels in AHF patients.

328 In our study, RDW demonstrated predictive capability for AHF in HF patients with
329 an AUC of 0.651, $p < 0.001$. The cutoff value of RDW in our study for predicting AHF
330 was 13.85%, with a sensitivity of 86.05% and specificity of 36.94%. Furthermore, the
331 predictive value of RDW for AHF was comparable to hs-TnT, with no significant
332 difference in the AUC for predicting acute decompensated HF between these two
333 parameters (**Fig 4**). Hs-TnT elevation is common among patients with AHF [36]. There
334 is no doubt that an increased troponin level predicts outcomes in AHF, and the greater
335 the elevation, the poorer the prognosis. It's crucial to recognize that cardiac troponin
336 indicates myocardial necrosis and is mainly employed for acute coronary syndrome
337 diagnosis, which may precipitate an AHF episode. In this context, alterations in troponin
338 levels over successive tests and the highest recorded level offer significant diagnostic

339 and prognostic insights [37,38]. We found that a cost-effective and widely available test
340 like RDW has an equivalent value to hs-TnT in predicting AHF.

341 Additionally, in our study, NT-proBNP exhibited a positive correlation with RDW
342 in HF patients (**Fig 5**). There is no disputing the value of NT-proBNP in predicting and
343 ruling out AHF. Numerous studies have demonstrated the excellent role of NT-proBNP
344 in HF patients, especially in AHF cases [39–42]. However, in developing countries, the
345 cost of performing NT-proBNP tests is prohibitively high and not available at primary
346 healthcare facilities. Conversely, RDW is readily available and very inexpensive. Our
347 study indicates that the positive correlation between RDW and NT-proBNP could open
348 the door for the application of this index in primary healthcare facilities as well as in
349 developing countries like Vietnam.

350 **Limitations of the study**

351 Our study acknowledges several limitations. Firstly, relying solely on RDW
352 without concurrent inflammatory markers such as C-reactive protein and gamma-
353 glutamyl transferase may result in an incomplete assessment of inflammatory status,
354 given RDW's susceptibility to various conditions. Additionally, we lacked control over
355 laboratory parameters linked to RDW variation and utilized a single blood analyzer
356 machine (Sysmex XS-1000i, Japan) without inter-machine comparison. Despite efforts
357 to mitigate selection bias through sequential sampling during routine HF visits, the
358 initial conduct of our study at a single hospital with a cross-sectional approach may limit

359 its generalizability. Moreover, the exclusivity of our study cohort to HF patients in
360 central Vietnam further restricts generalization. Acknowledging the absence of serum
361 iron ion data, a crucial confounder potentially affecting our results, future investigations
362 will address this and consider the influence of unmeasured variables such as iron
363 deficiency to enhance the study's robustness.

364 **Conclusions**

365 In the HF cohort, RDW levels were significantly higher compared to those in the
366 non-HF cohort, and a positive correlation with NT-proBNP concentrations was
367 observed. Additionally, RDW proved to be a valuable prognostic marker for AHF in HF
368 patients. This study underscores the importance of further RDW research in HF to
369 enhance understanding of its pathophysiology and improve risk assessment in HF
370 management. Given its affordability and accessibility, RDW offers potential for
371 application in resource-constrained environments.

372 **Acknowledgments**

373 Nil

374 **References**

- 375 1. Savarese G, Becher PM, Lund LH, Seferovic P, Rosano GMC, Coats AJS. Global
376 burden of heart failure: a comprehensive and updated review of epidemiology.
377 *Cardiovascular Research*. 2023;118: 3272–3287. doi:10.1093/cvr/cvac013

- 378 2. Lloyd-Jones DM, Larson MG, Leip EP, Beiser A, D'Agostino RB, Kannel WB,
379 et al. Lifetime Risk for Developing Congestive Heart Failure: The Framingham Heart
380 Study. *Circulation*. 2002;106: 3068–3072. doi:10.1161/01.CIR.0000039105.49749.6F
- 381 3. James SL, Abate D, Abate KH, Abay SM, Abbafati C, Abbasi N, et al. Global,
382 regional, and national incidence, prevalence, and years lived with disability for 354
383 diseases and injuries for 195 countries and territories, 1990–2017: a systematic analysis
384 for the Global Burden of Disease Study 2017. *The Lancet*. 2018;392: 1789–1858.
385 doi:10.1016/S0140-6736(18)32279-7
- 386 4. Kittleson MM, Panjra GS, Amancherla K, Davis LL, Deswal A, Dixon DL, et
387 al. 2023 ACC Expert Consensus Decision Pathway on Management of Heart Failure
388 With Preserved Ejection Fraction. *Journal of the American College of Cardiology*.
389 2023;81: 1835–1878. doi:10.1016/j.jacc.2023.03.393
- 390 5. Ji X, Ke W. Red blood cell distribution width and all-cause mortality in
391 congestive heart failure patients: a retrospective cohort study based on the Mimic-III
392 database. *Front Cardiovasc Med*. 2023;10: 1126718. doi:10.3389/fcvm.2023.1126718
- 393 6. Hullin R, Barras N, Abdurashidova T, Monney P, Regamey J. Red cell
394 distribution width and prognosis in acute heart failure: ready for prime time! *Intern
395 Emerg Med*. 2019;14: 195–197. doi:10.1007/s11739-018-1995-7

- 396 7. Diez-Silva M, Dao M, Han J, Lim C-T, Suresh S. Shape and Biomechanical
397 Characteristics of Human Red Blood Cells in Health and Disease. *MRS Bull.* 2010;35:
398 382–388. doi:10.1557/mrs2010.571
- 399 8. Danese E, Lippi G, Montagnana M. Red blood cell distribution width and
400 cardiovascular diseases. *J Thorac Dis.* 2015;7: E402-411. doi:10.3978/j.issn.2072-
401 1439.2015.10.04
- 402 9. Salvagno GL, Sanchis-Gomar F, Picanza A, Lippi G. Red blood cell distribution
403 width: A simple parameter with multiple clinical applications. *Critical Reviews in*
404 *Clinical Laboratory Sciences.* 2015;52: 86–105. doi:10.3109/10408363.2014.992064
- 405 10. Feng G-H, Li H-P, Li Q-L, Fu Y, Huang R-B. Red blood cell distribution width
406 and ischaemic stroke. *Stroke Vasc Neurol.* 2017;2: 172–175. doi:10.1136/svn-2017-
407 000071
- 408 11. Wang L, Wang C, Wu S, Li Y, Guo W, Liu M. Red blood cell distribution width
409 is associated with mortality after acute ischemic stroke: a cohort study and systematic
410 review. *Ann Transl Med.* 2020;8: 81–81. doi:10.21037/atm.2019.12.142
- 411 12. Gu F, Wu H, Jin X, Kong C, Zhao W. Association of red cell distribution width
412 with the risk of 3-month readmission in patients with heart failure: A retrospective
413 cohort study. *Front Cardiovasc Med.* 2023;10: 1123905.
414 doi:10.3389/fcvm.2023.1123905

- 415 13. Xanthopoulos A, Giamouzis G, Dimos A, Skoularigki E, Starling R, Skoularigis
416 J, et al. Red Blood Cell Distribution Width in Heart Failure: Pathophysiology,
417 Prognostic Role, Controversies and Dilemmas. JCM. 2022;11: 1951.
418 doi:10.3390/jcm11071951
- 419 14. McDonagh TA, Metra M, Adamo M, Gardner RS, Baumbach A, Böhm M, et al.
420 2023 Focused Update of the 2021 ESC Guidelines for the diagnosis and treatment of
421 acute and chronic heart failure. European Heart Journal. 2023;44: 3627–3639.
422 doi:10.1093/eurheartj/ehad195
- 423 15. Mitchell C, Rahko PS, Blauwet LA, Canaday B, Finstuen JA, Foster MC, et al.
424 Guidelines for Performing a Comprehensive Transthoracic Echocardiographic
425 Examination in Adults: Recommendations from the American Society of
426 Echocardiography. Journal of the American Society of Echocardiography. 2019;32: 1–
427 64. doi:10.1016/j.echo.2018.06.004
- 428 16. Maynard RD, Korpi-Steiner N, Cotten SW. Concordance of Chronic Kidney
429 Disease Stage and Metformin Management Using CKD-EPI 2021 Race-Free Equation
430 vs CKD-EPI 2009 Equation to Estimate Glomerular Filtration Rate. Clinical Chemistry.
431 2023;69: 202–204. doi:10.1093/clinchem/hvac195
- 432 17. Hanley JA, McNeil BJ. A method of comparing the areas under receiver operating
433 characteristic curves derived from the same cases. Radiology. 1983;148: 839–843.
434 doi:10.1148/radiology.148.3.6878708

- 435 18. Celik A, Koc F, Kadi H, Ceyhan K, Erkorkmaz U, Burucu T, et al. Relationship
436 between red cell distribution width and echocardiographic parameters in patients with
437 diastolic heart failure. *The Kaohsiung J of Med Scie.* 2012;28: 165–172.
438 doi:10.1016/j.kjms.2011.06.024
- 439 19. Dai Y, Konishi H, Takagi A, Miyauchi K, Daida H. Red cell distribution width
440 predicts short- and long-term outcomes of acute congestive heart failure more
441 effectively than hemoglobin. *Experimental and Therapeutic Medicine.* 2014;8: 600–
442 606. doi:10.3892/etm.2014.1755
- 443 20. Oh J, Kang S-M, Hong N, Choi J-W, Lee S-H, Park S, et al. Relation Between
444 Red Cell Distribution Width With Echocardiographic Parameters in Patients With Acute
445 Heart Failure. *Journal of Cardiac Failure.* 2009;15: 517–522.
446 doi:10.1016/j.cardfail.2009.01.002
- 447 21. Lippi G, Turcato G, Cervellin G, Sanchis-Gomar F. Red blood cell distribution
448 width in heart failure: A narrative review. *WJC.* 2018;10: 6. doi:10.4330/wjc.v10.i2.6
- 449 22. Bekler A, Tenekecioglu E, Erbag G, Temiz A, Altun B, Barutcu A, et al.
450 Relationship between red cell distribution width and long-term mortality in patients with
451 non-ST elevation acute coronary syndrome. *Anatol J Cardiol.* 2015;15: 634–639.
452 doi:10.5152/akd.2014.5645

- 453 23. Hattangadi SM, Wong P, Zhang L, Flygare J, Lodish HF. From stem cell to red
454 cell: regulation of erythropoiesis at multiple levels by multiple proteins, RNAs, and
455 chromatin modifications. *Blood*. 2011;118: 6258–6268. doi:10.1182/blood-2011-07-
456 356006
- 457 24. Ananthaseshan S, Bojakowski K, Sacharczuk M, Poznanski P, Skiba DS, Prah
458 Wittberg L, et al. Red blood cell distribution width is associated with increased
459 interactions of blood cells with vascular wall. *Sci Rep*. 2022;12: 13676.
460 doi:10.1038/s41598-022-17847-z
- 461 25. Miglio A, Valente C, Guglielmini C. Red Blood Cell Distribution Width as a
462 Novel Parameter in Canine Disorders: Literature Review and Future Prospective.
463 *Animals*. 2023;13: 985. doi:10.3390/ani13060985
- 464 26. Joosse H-J, Van Oirschot BA, Kooijmans SAA, Hofer IE, Van Wijk RAH,
465 Huisman A, et al. In-vitro and in-silico evidence for oxidative stress as drivers for RDW.
466 *Sci Rep*. 2023;13: 9223. doi:10.1038/s41598-023-36514-5
- 467 27. Reina-Couto M, Pereira-Terra P, Quelhas-Santos J, Silva-Pereira C, Albino-
468 Teixeira A, Sousa T. Inflammation in Human Heart Failure: Major Mediators and
469 Therapeutic Targets. *Front Physiol*. 2021;12: 746494. doi:10.3389/fphys.2021.746494
- 470 28. Khedar M, Sharma DK, Ola V. Red blood cell distribution width - A novel marker
471 of inflammation and predictor of complications and outcomes among surgically

- 472 managed patients. *Formosan Journal of Surgery*. 2021;54: 130–134.
473 doi:10.4103/fjs.fjs_109_20
- 474 29. FörhécZ Z, Gombos T, Borgulya G, Pozsonyi Z, Prohászka Z, Jánoskúti L. Red
475 cell distribution width in heart failure: Prediction of clinical events and relationship with
476 markers of ineffective erythropoiesis, inflammation, renal function, and nutritional state.
477 *American Heart Journal*. 2009;158: 659–666. doi:10.1016/j.ahj.2009.07.024
- 478 30. Hartupee J, Mann DL. Neurohormonal activation in heart failure with reduced
479 ejection fraction. *Nat Rev Cardiol*. 2017;14: 30–38. doi:10.1038/nrcardio.2016.163
- 480 31. Contreras Gutiérrez VH. Red cell distribution width: A marker of in-hospital
481 mortality in ST-segment elevation myocardial infarction patients? *Revista Médica del*
482 *Hospital General de México*. 2017;80: 165–169. doi:10.1016/j.hgmx.2016.10.001
- 483 32. Schefold JC, Filippatos G, Hasenfuss G, Anker SD, Von Haehling S. Heart failure
484 and kidney dysfunction: epidemiology, mechanisms and management. *Nat Rev*
485 *Nephrol*. 2016;12: 610–623. doi:10.1038/nrneph.2016.113
- 486 33. Felker GM, Allen LA, Pocock SJ, Shaw LK, McMurray JJV, Pfeffer MA, et al.
487 Red Cell Distribution Width as a Novel Prognostic Marker in Heart Failure. *Journal of*
488 *the American College of Cardiology*. 2007;50: 40–47. doi:10.1016/j.jacc.2007.02.067
- 489 34. Allen LA, Felker GM, Mehra MR, Chiong JR, Dunlap SH, Ghali JK, et al.
490 Validation and Potential Mechanisms of Red Cell Distribution Width as a Prognostic

- 491 Marker in Heart Failure. *Journal of Cardiac Failure*. 2010;16: 230–238.
492 doi:10.1016/j.cardfail.2009.11.003
- 493 35. Ferreira JP, Santos M, Almeida S, Marques I, Bettencourt P, Carvalho H.
494 Tailoring diuretic therapy in acute heart failure: insight into early diuretic response
495 predictors. *Clin Res Cardiol*. 2013;102: 745–753. doi:10.1007/s00392-013-0588-8
- 496 36. Newby LK. High-Sensitivity Troponin in Acute Heart Failure Triage: Tacit but
497 Not Confirmed. *Circ: Heart Failure*. 2019;12: e006241.
498 doi:10.1161/CIRCHEARTFAILURE.119.006241
- 499 37. Wettersten N, University of California San Diego, Maisel A, Veterans Affairs
500 San Diego Healthcare System, La Jolla, CA, USA. Role of Cardiac Troponin Levels in
501 Acute Heart Failure. *Cardiac Failure Review*. 2015;1: 102.
502 doi:10.15420/cfr.2015.1.2.102
- 503 38. Ledwoch J, Kraxenberger J, Krauth A, Schneider A, Leidgschwendner K,
504 Schneider V, et al. Prognostic impact of high-sensitive troponin on 30-day mortality in
505 patients with acute heart failure and different classes of left ventricular ejection fraction.
506 *Heart Vessels*. 2022;37: 1195–1202. doi:10.1007/s00380-022-02026-x
- 507 39. Richards AM, Christchurch Heart Institute, University of Otago, Christchurch,
508 New Zealand, Cardiovascular Research Institute, National University of Singapore,

- 509 Singapore. Biomarkers In Acute Heart Failure — Cardiac And Kidney. Cardiac Failure
510 Review. 2015;1: 107. doi:10.15420/cfr.2015.1.2.107
- 511 40. Adamo M, Pagnesi M, Mebazaa A, Davison B, Edwards C, Tomasoni D, et al.
512 NT-proBNP and high intensity care for acute heart failure: the STRONG-HF trial.
513 European Heart Journal. 2023;44: 2947–2962. doi:10.1093/eurheartj/ehad335
- 514 41. Singhal AK, Singh G, Singh S, Karunanand B, Agrawal S. Role of Pro-BNP in
515 predicting outcome in acute heart failure patient presenting to a medical emergency: An
516 observational study from North India. Journal of Family Medicine and Primary Care.
517 2023;12: 3156–3159. doi:10.4103/jfmmpc.jfmmpc_853_23
- 518 42. Boehmer JP, Nair DG, Wen G, An Q, Thakur PH, Gardner RS. HeartLogic
519 Performs as Well as NT-proBNP to Rule out Acute Heart Failure at Point of Care.
520 Journal of Cardiac Failure. 2019;25: S17–S18. doi:10.1016/j.cardfail.2019.07.052

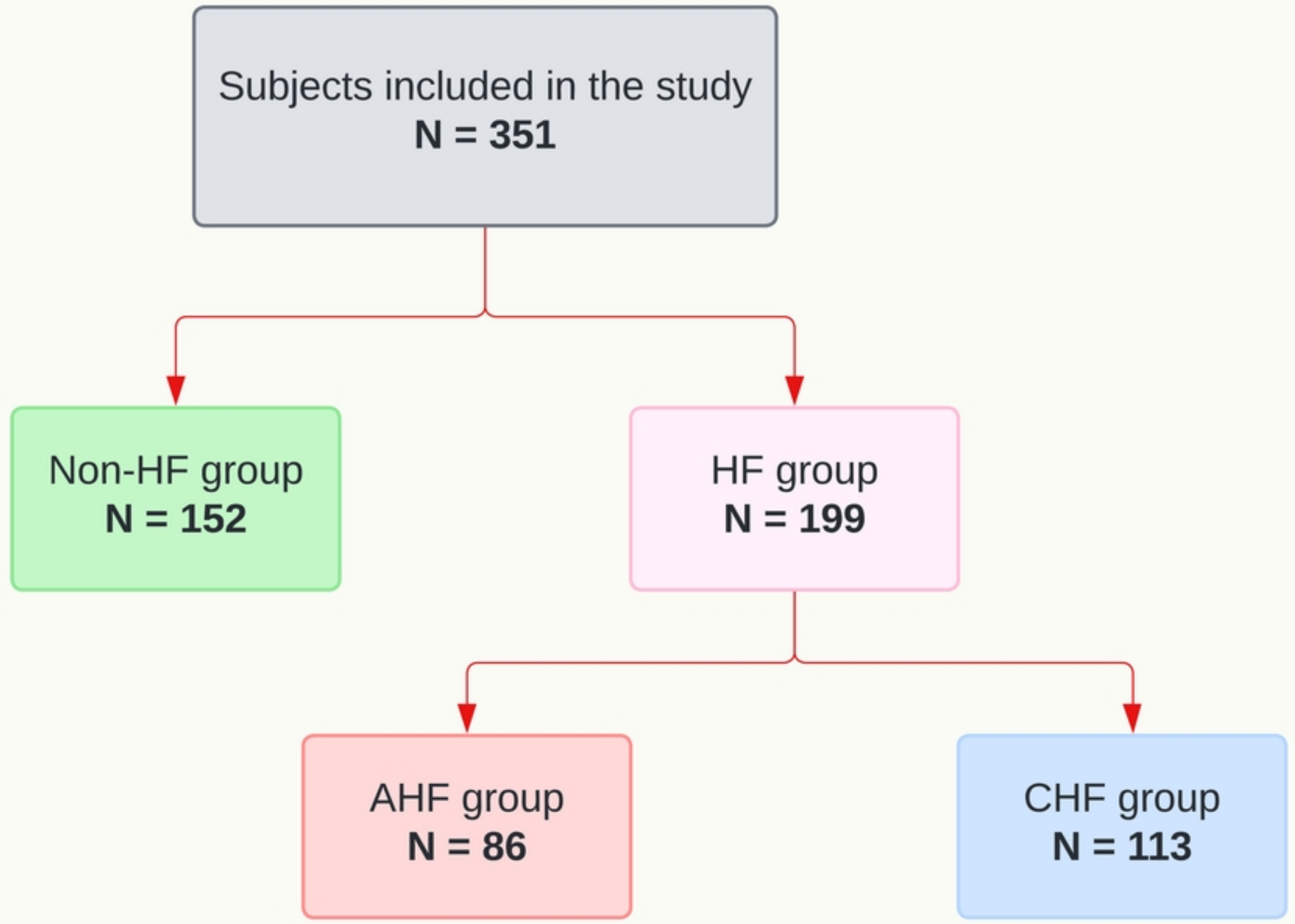
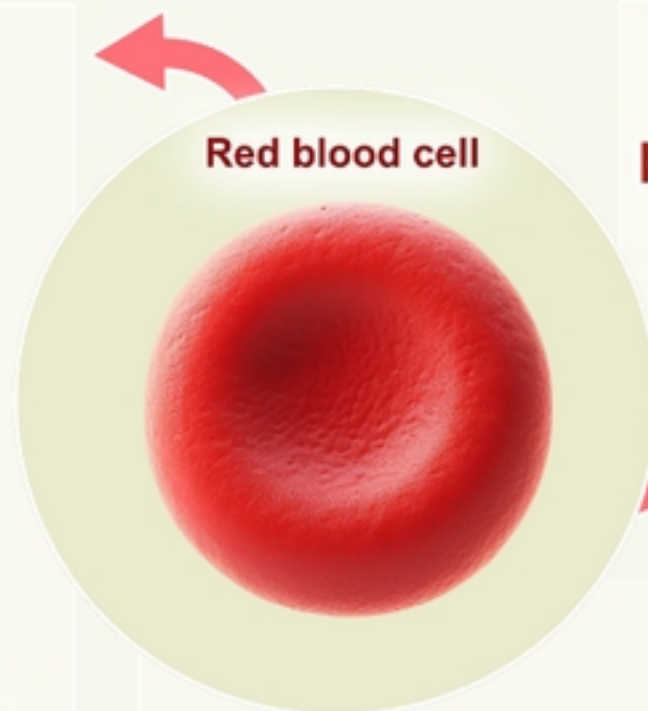
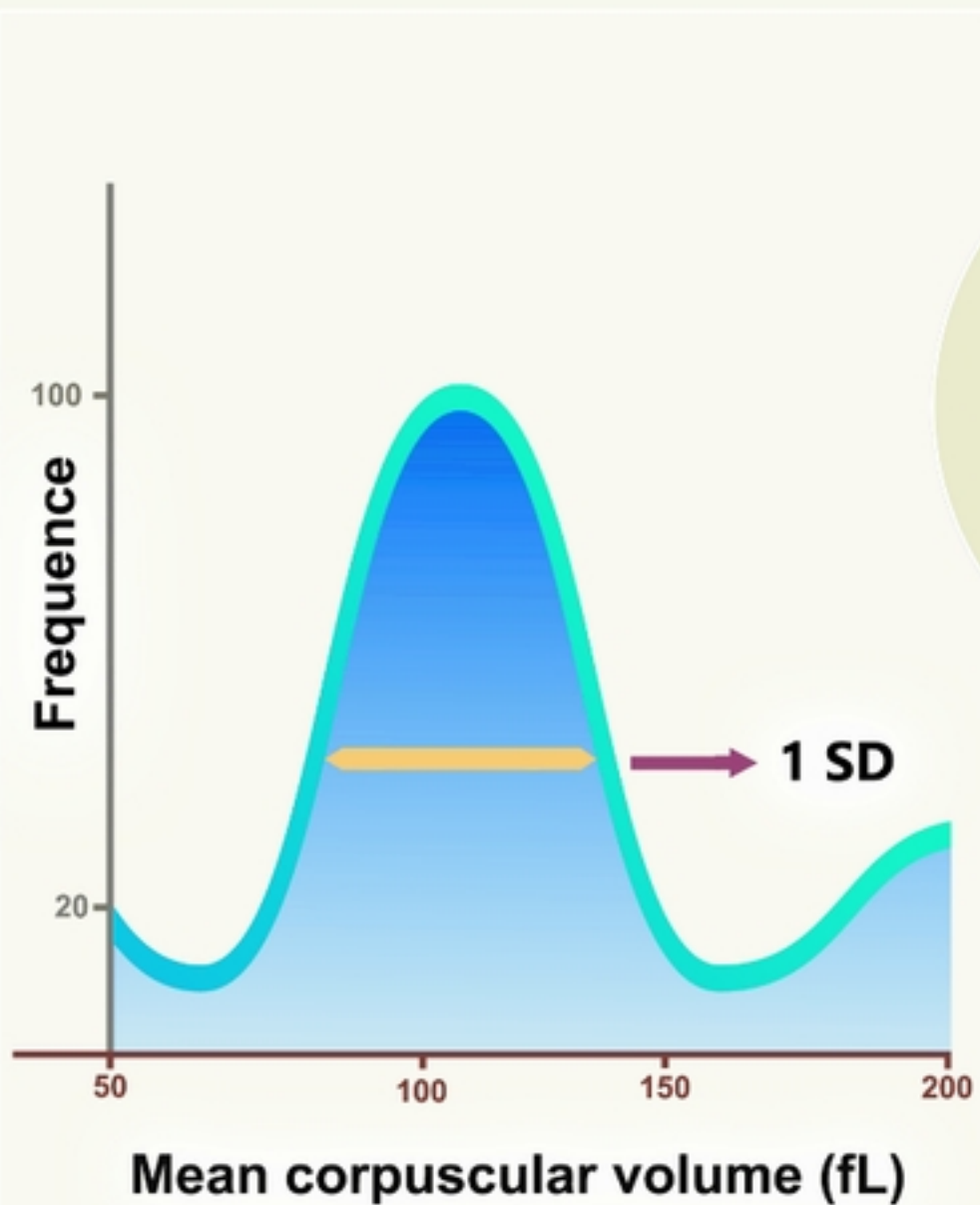


Fig1



$$\text{RDW-CV (\%)} = \frac{1 \text{ SD}}{\text{MCV}} \times 100$$

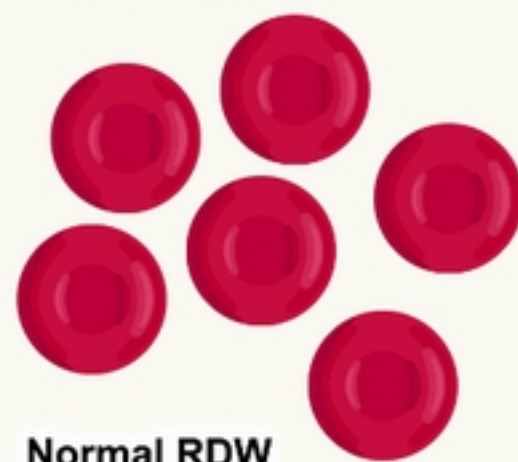


Fig2

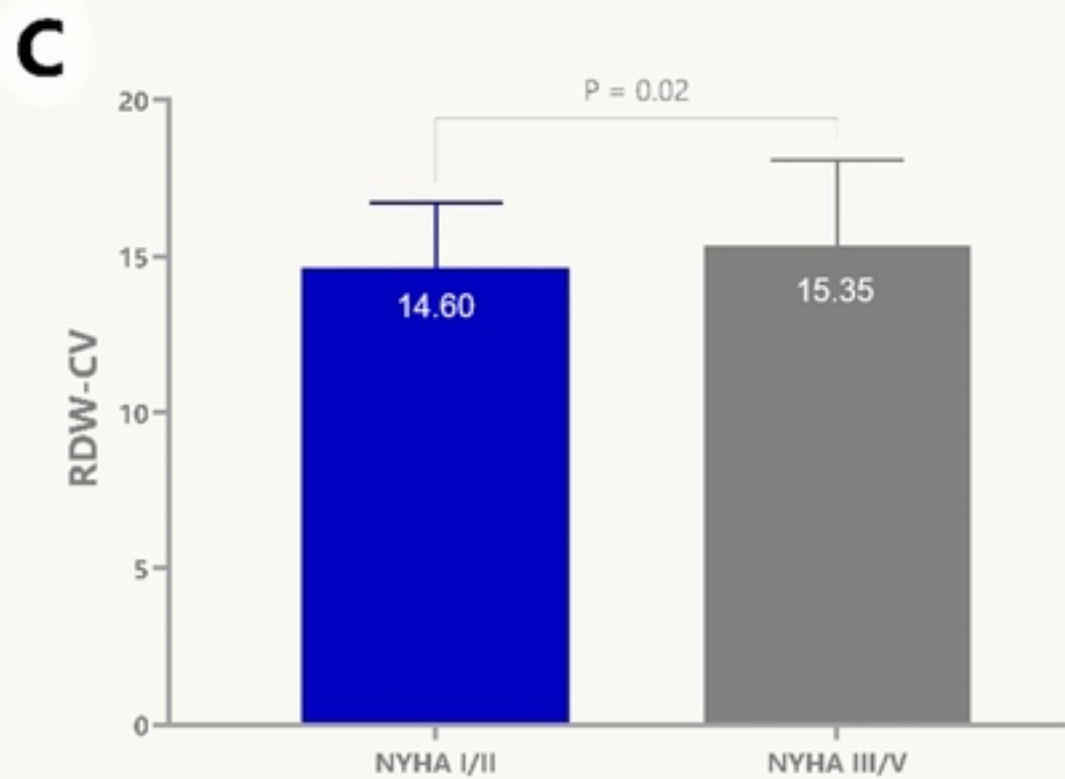
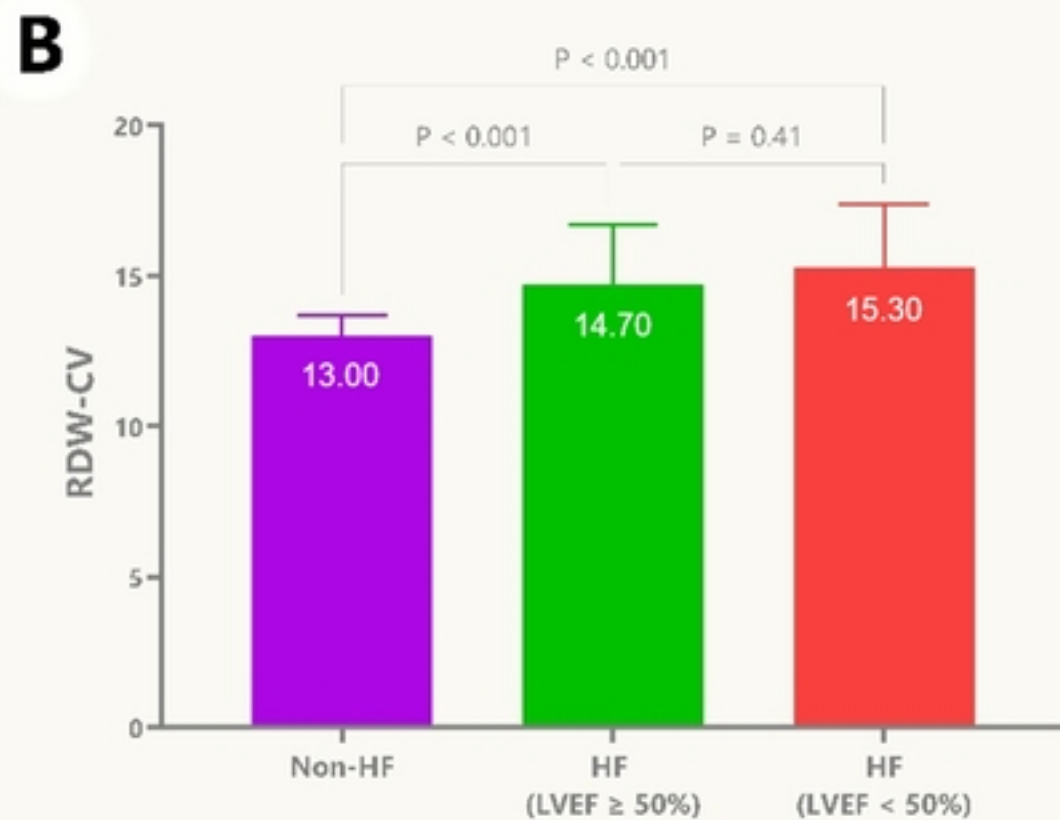
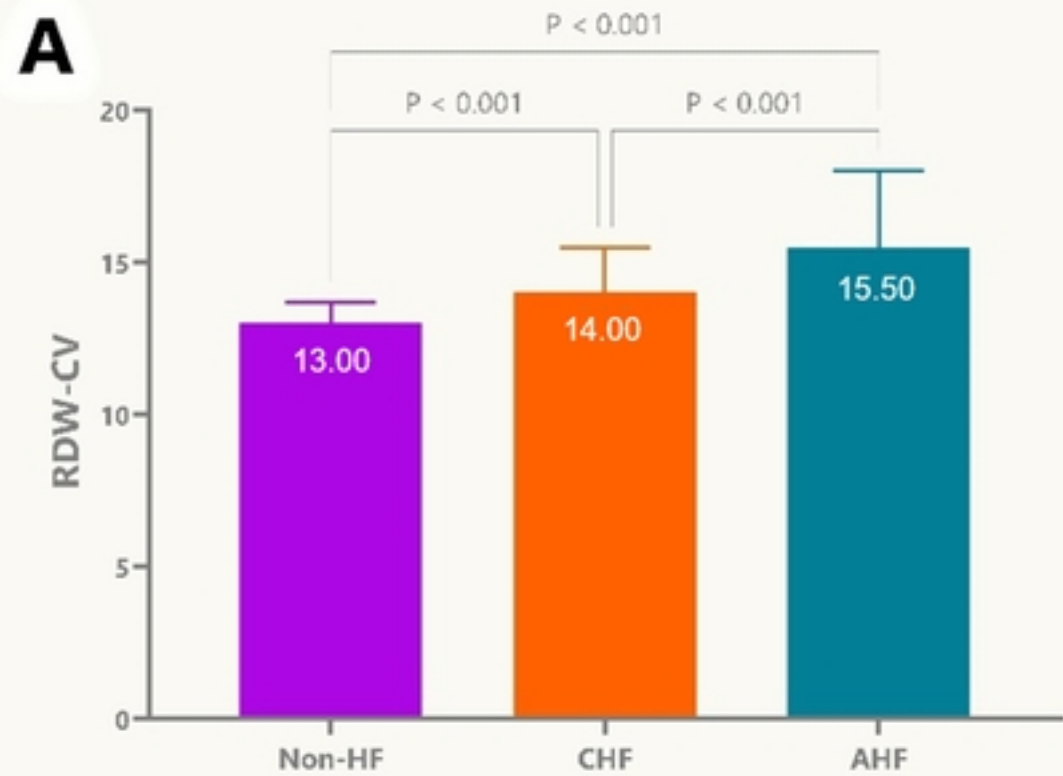
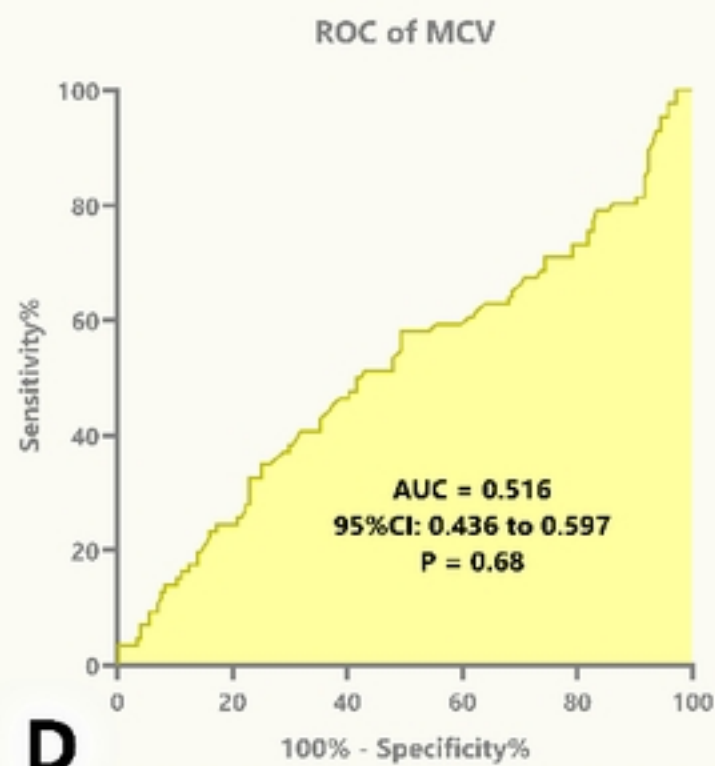
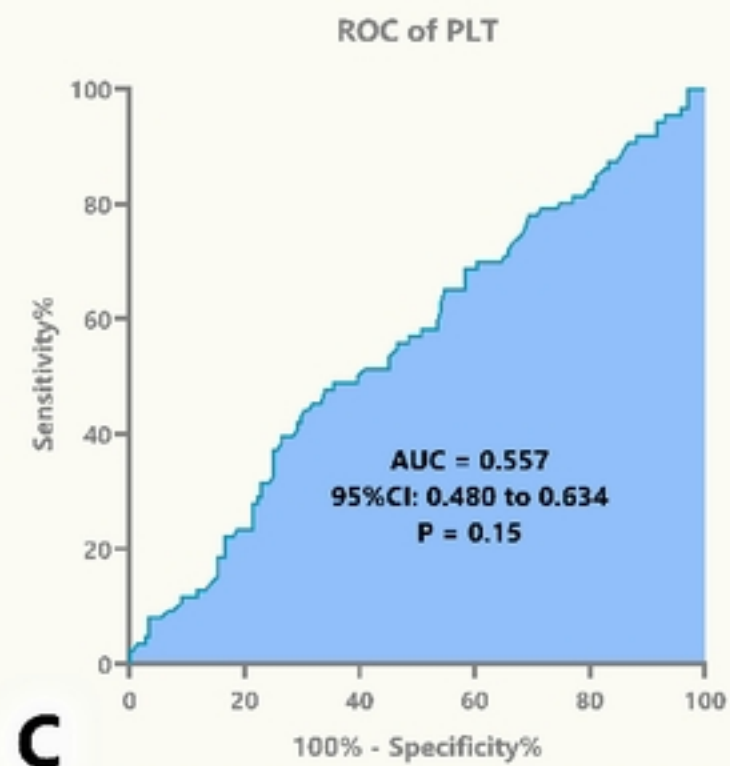
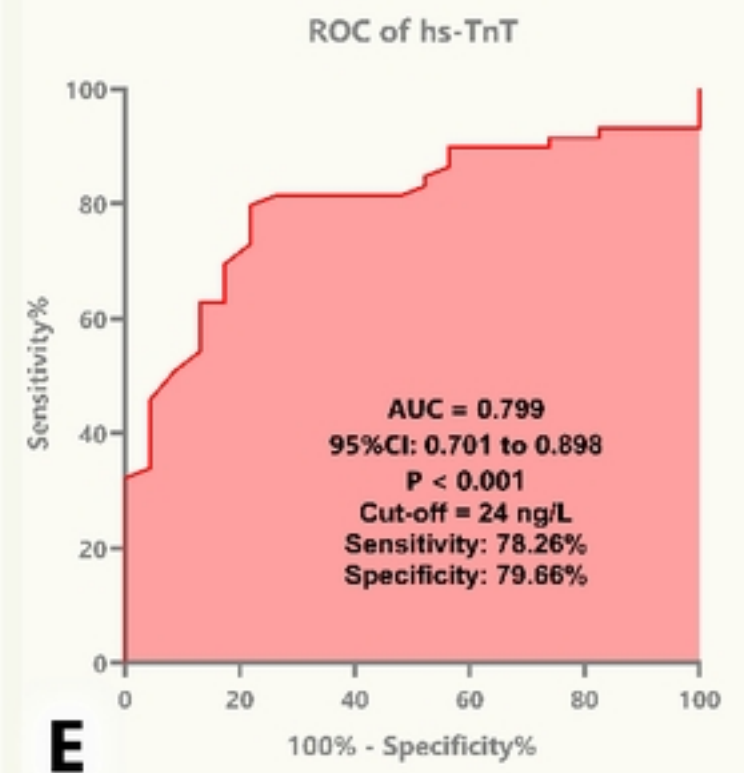
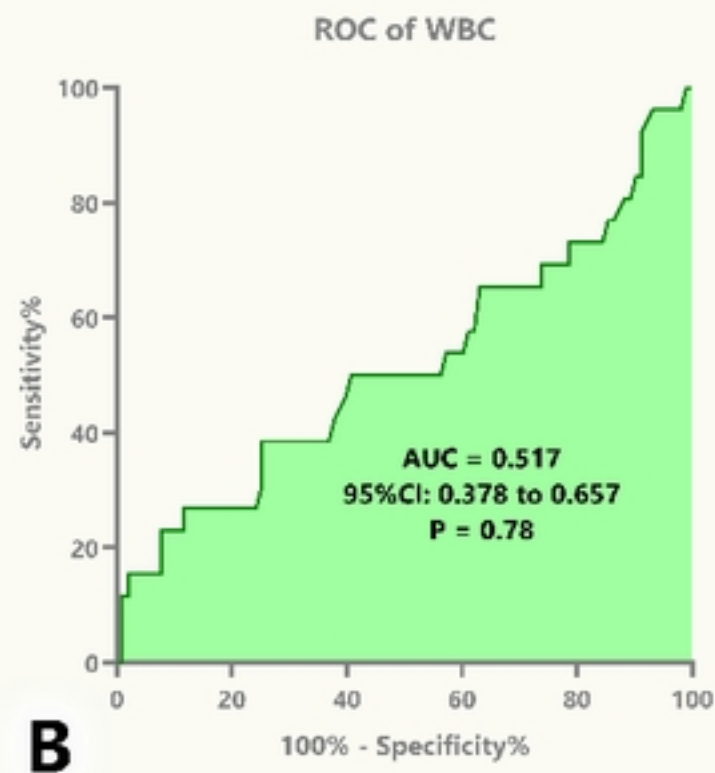
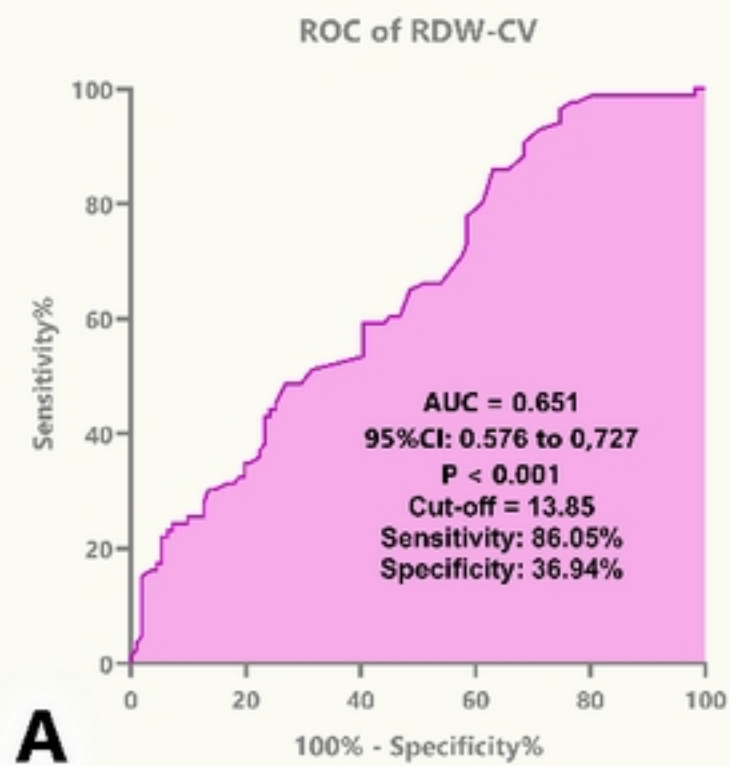


Fig3



Comparison of ROC curves using Hanley & McNeil

- RDW-CV ~ hs-TnT with $p > 0.05$
- RDW-CV ~ WBC with $p < 0.05$
- RDW-CV ~ PLT with $p < 0.05$
- RDW-CV ~ MCV with $p < 0.05$
- hs-TnT ~ WBC with $p < 0.05$
- hs-TnT ~ PLT with $p < 0.05$
- hs-TnT ~ MCV with $p < 0.05$

F

Fig4

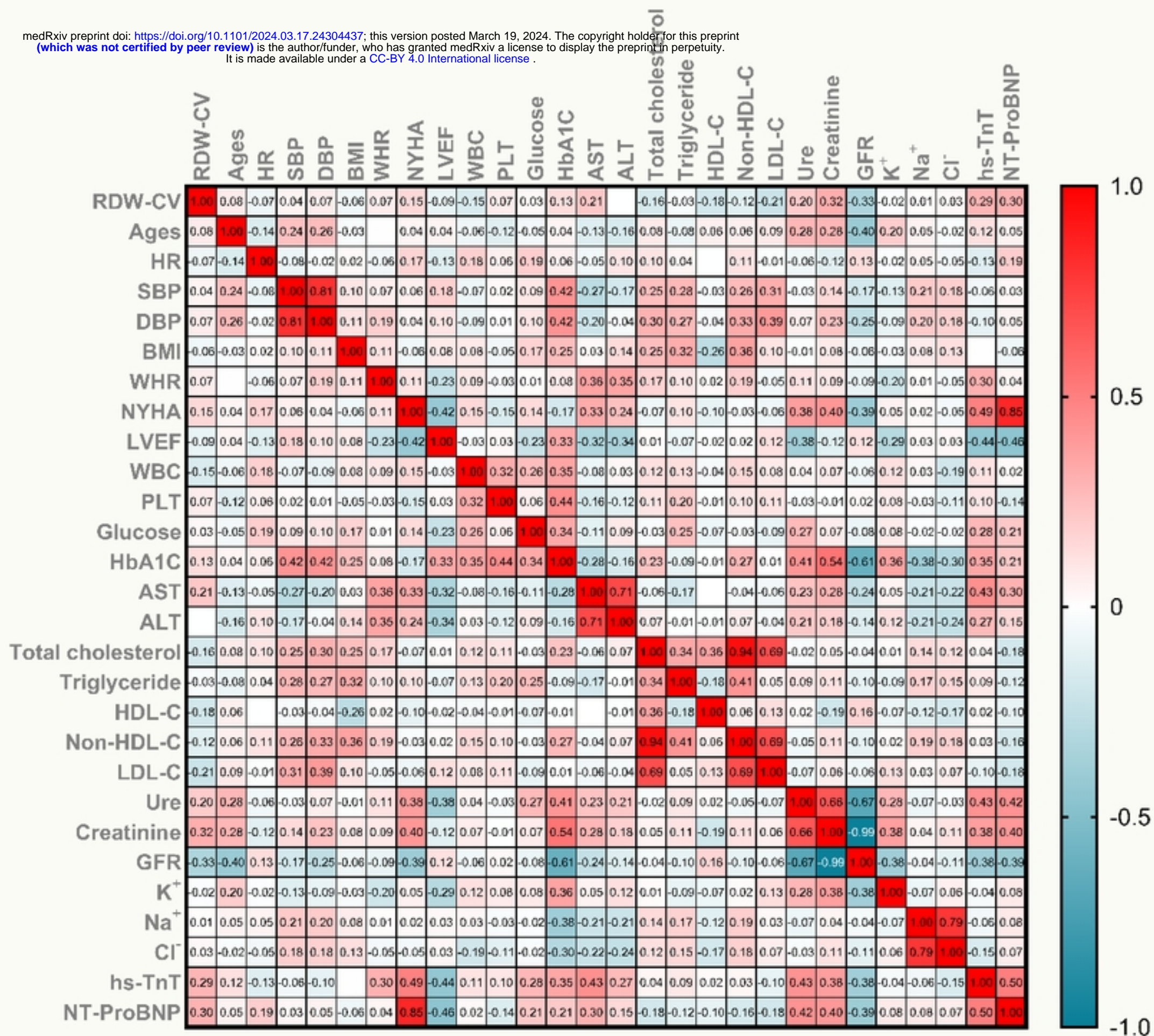


Fig5

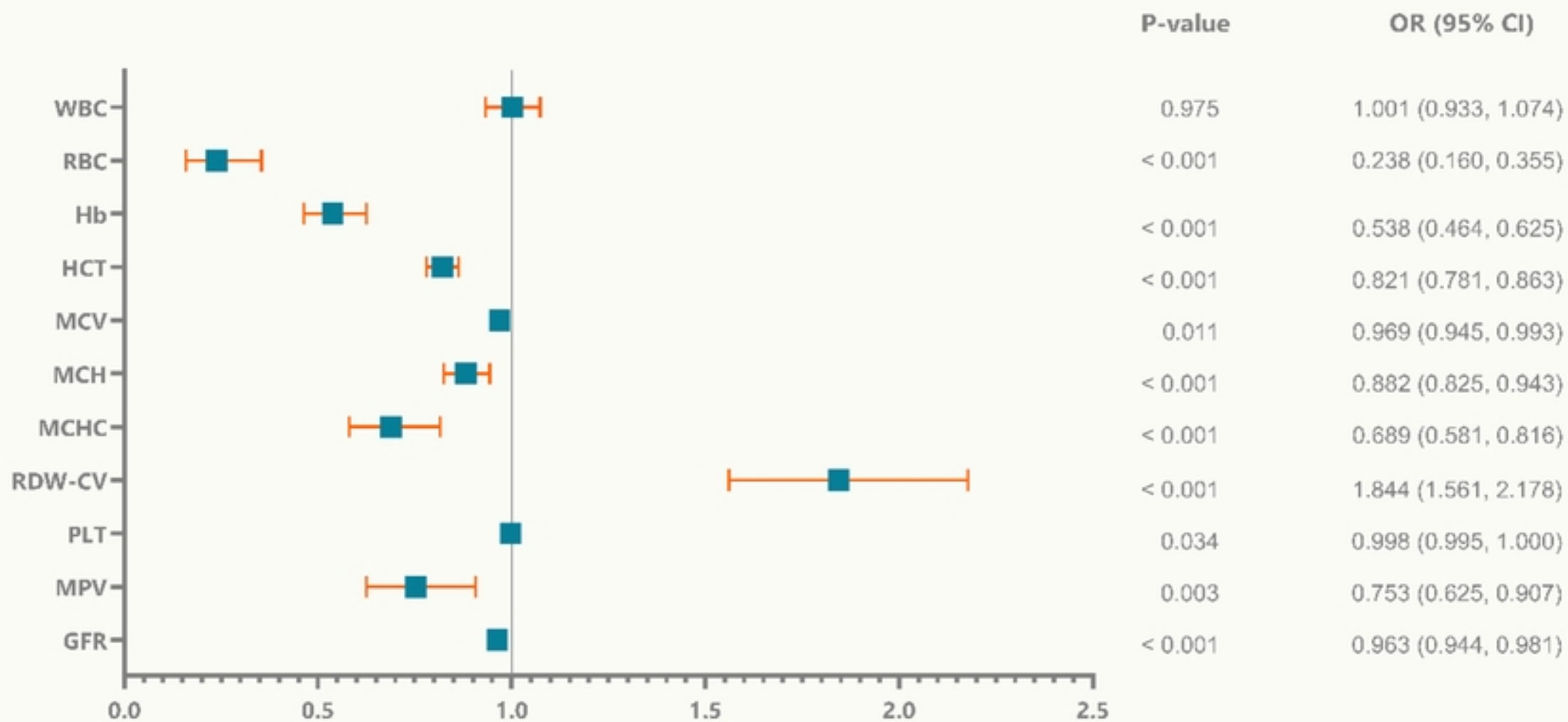


Fig6