

**The link between the ANPEP gene and type 2 diabetes mellitus may be mediated by the disruption of glutathione metabolism and redox homeostasis**

*Yaroslava Korvyakova<sup>1,2</sup>, Iuliia Azarova<sup>1,3</sup>, Elena Klyosova<sup>1,4</sup>, Maria Postnikova<sup>1</sup>, Victor Makarenko<sup>1</sup>, Olga Bushueva<sup>4,5</sup>, Maria Solodilova<sup>4</sup>, Alexey Polonikov<sup>4,6</sup>*

<sup>1</sup>Laboratory of Biochemical Genetics and Metabolomics, Research Institute for Genetic and Molecular Epidemiology, Kursk State Medical University, 18 Yamskaya St., Kursk 305041, Russian Federation

<sup>2</sup>Research Centre for Medical Genetics, 1 Moskvorechie St., Moscow, 115522, Russian Federation

<sup>3</sup>Department of Biological Chemistry, Kursk State Medical University, 3 Karl Marx Street, Kursk 305041, Russian Federation

<sup>4</sup>Department of Biology, Medical Genetics and Ecology, Kursk State Medical University, 3 Karl Marx Street, Kursk 305041, Russian Federation

<sup>5</sup>Laboratory of Genomic Research, Research Institute for Genetic and Molecular Epidemiology, Kursk State Medical University, 18 Yamskaya St., Kursk 305041, Russian Federation

<sup>6</sup>Laboratory of Statistical Genetics and Bioinformatics, Research Institute for Genetic and Molecular Epidemiology, Kursk State Medical University, 18 Yamskaya St., Kursk 305041, Russian Federation

Emails of authors

Yaroslava Korvyakova: [yasya\\_kursk@mail.ru](mailto:yasya_kursk@mail.ru)

Iuliia Azarova: [azzzzar@yandex.ru](mailto:azzzzar@yandex.ru)

Elena Klyosova: [ecless@yandex.ru](mailto:ecless@yandex.ru)

Maria Postnikova: [postnikova0700@icloud.com](mailto:postnikova0700@icloud.com)

Victor Makarenko: [vm200046@gmail.com](mailto:vm200046@gmail.com)

Olga Bushueva: [olga.bushueva@inbox.ru](mailto:olga.bushueva@inbox.ru)

Maria Solodilova: [solodilovama@kursksmu.net](mailto:solodilovama@kursksmu.net)

Alexey Polonikov: [polonikov@rambler.ru](mailto:polonikov@rambler.ru)

Corresponding Author: Alexey Polonikov, MD, PhD, Professor

Research Institute for Genetic and Molecular Epidemiology, Kursk State Medical University, 18 Yamskaya St.,

Kursk 305041, Russian Federation, [polonikov@rambler.ru](mailto:polonikov@rambler.ru)

**Abstract**

Aminopeptidase N (ANPEP), a membrane-associated ectoenzyme, has been identified as a susceptibility gene for type 2 diabetes (T2D) by genome-wide association and transcriptome studies; however, the mechanisms by which this gene contributes to disease pathogenesis remain unclear. The aim of this study was to determine the comprehensive contribution of ANPEP polymorphisms to T2D risk and annotate the underlying mechanisms. A

NOTE: This preprint reports new research that has not been certified by peer review and should not be used to guide clinical practice.

total of 3206 unrelated individuals including 1579 T2D patients and 1627 controls were recruited for the study. Twenty-three common functional single nucleotide polymorphisms (SNP) of ANPEP were genotyped by the MassArray-4 system. Six polymorphisms, rs11073891, rs12898828, rs12148357, rs9920421, rs7111, and rs25653, were found to be associated with type 2 diabetes for the first time ( $P_{\text{perm}} \leq 0.05$ ). Common haplotype rs9920421G-rs4932143G-rs7111T was strongly associated with increased risk of T2D ( $P_{\text{perm}} = 5.9 \times 10^{-12}$ ), whereas two rare haplotypes such as rs9920421G-rs4932143C-rs7111T ( $P_{\text{perm}} = 6.5 \times 10^{-40}$ ) and rs12442778A-rs12898828A-rs6496608T-rs11073891C ( $P_{\text{perm}} = 1.0 \times 10^{-7}$ ) possessed strong protection against disease. We identified 38 and 109 diplotypes associated with T2D risk in males and females, respectively ( $\text{FDR} \leq 0.05$ ). ANPEP polymorphisms showed associations with plasma levels of fasting blood glucose, aspartate aminotransferase, total protein and glutathione ( $P < 0.05$ ), and several haplotypes were strongly associated with the levels of reactive oxygen species and uric acid ( $P < 0.0001$ ). A deep literature analysis has facilitated the formulation of a hypothesis proposing that increased plasma levels of ANPEP as well as liver enzymes such as aspartate aminotransferase, alanine aminotransferase and gamma-glutamyltransferase serve as an adaptive response directed towards the restoration of glutathione deficiency in diabetics by stimulating the production of amino acid precursors for glutathione biosynthesis.

**Keywords:** type 2 diabetes, oxidative stress, redox homeostasis, glutathione metabolism, ANPEP, single nucleotide polymorphism.

### Highlights

- Polymorphisms, rs11073891, rs12898828, rs12148357, rs9920421, rs7111, and rs25653 of *ANPEP*, were discovered as novel susceptibility markers for type 2 diabetes mellitus.
- One common and two rare haplotypes of *ANPEP* are strongly associated with increased and decreased risk of type 2 diabetes, respectively.
- Thirty eight and one hundred and nine *ANPEP* diplotypes influenced disease risk in males and females, respectively.
- Polymorphisms of *ANPEP* were associated with plasma levels of fasting blood glucose, aspartate aminotransferase, total protein, glutathione, reactive oxygen species and uric acid in diabetics.
- Increased plasma levels of ANPEP and liver enzymes (AST, ALT, and GGT) in T2D patients may reflect an adaptive response to glutathione deficiency through the formation of more amino acid precursors of glutathione.

## 1. Introduction

The International Diabetes Federation reported in 2021 that approximately 537 million adults aged 20–79 years, or 10.5% of the global population, were estimated to have diabetes [1]. Type 2 diabetes (T2D) mellitus accounts for more than 90% of all diabetes cases and is attributed to defective insulin secretion by pancreatic  $\beta$ -cells and the inability of insulin-sensitive tissues to respond appropriately to insulin [2,3]. Pancreatic  $\beta$ -cell is the primary regulatory center controlling glucose homeostasis and the impairment of  $\beta$ -cells caused by islet reduced number and/or reduced number of cells is thought to be a central disorder responsible for the development and progression of type 2 diabetes [3,4,5]. The majority of T2D cases have a multifactorial origin, meaning that multiple genetic, behavioral and environmental risk factors jointly contribute to disease development and progression [6,7,8,9]. Environmental risk factors for T2D include consumption of energy-dense food, sedentary lifestyle, and aging [10,11], and numerous single nucleotide polymorphisms (SNP) have been found to be associated with disease susceptibility [7,12,13]. Frequently, impairment of insulin secretion and defects in insulin action coexist in the same patient, making it uncertain which abnormality, if either alone, is the primary cause of hyperglycemia [14]. Although endoplasmic reticulum stress, lipotoxicity, glucotoxicity, mitochondrial dysfunction, islet inflammation and oxidative stress, have been established as factors that contribute to decreased pancreatic  $\beta$ -cell function in T2D [15-20], the primary factors and molecular mechanisms initiating progressive  $\beta$ -cell failure remain unknown.

We recently proposed that a primary pathological condition responsible for oxidative stress and induces cellular stress responses, leading to pancreatic  $\beta$ -cell death and type 2 diabetes mellitus, is an endogenous deficiency of glutathione [21-23]. Glutathione, a tripeptide consisting of three amino acids: glutamate, cysteine, and glycine, is the most abundant non-protein thiol in cells, acting as the principal reducing agent and potent antioxidant, protecting the cell from oxidative damage [24]. Reduced glutathione (GSH) levels within cells are maintained at their highest (millimolar) level, suggesting their importance beyond antioxidant defense [24-26]. It also executes an array of biological functions, including xenobiotic and endogenous toxic substance detoxification, mitochondrial redox balance maintenance, antiviral defense, immune response, regeneration of vitamin C and E, regulation of cell proliferation, apoptosis, and protein folding [24-26]. The hypothesis that endogenous glutathione deficiency is the primary cause of type 2 diabetes is supported by several research findings. First, glutathione deficiency, both in the blood plasma and within cells in patients with T2D, is regularly reported in the literature [27-34]. Second, many known environmental risk factors for type 2 diabetes were found to be responsible for glutathione deficiency through decreased synthesis and increased utilization of GSH, or a combination of both [22]. Third, decreased glutathione levels are closely correlated with the pathological conditions found in T2D, and replenishment of glutathione deficiency improves them. These pathological changes include oxidative stress and mitochondrial dysfunction [31,32,35-37],  $\beta$ -cell dedifferentiation and failure [38], impaired glucose tolerance, insulin secretion

[39-41] and sensitivity [42,43]. In addition, the depletion of endogenous glutathione is correlated with increased blood glucose levels and contributes to the complications of type 2 diabetes [33,34,38]. Finally, additional evidence for glutathione deficiency in T2D is the results of genetic studies demonstrating a significant role of loss-of-function variants of genes encoding enzymes of glutathione metabolism in determining disease susceptibility [21,22,44-46], and the link of these genes to T2D risk is explained by decreased activity and/or expression of enzymes involved in glutathione biosynthesis, including in pancreatic beta cells [23,47].

ANPEP, an alanyl aminopeptidase, is a membrane-associated enzyme involved in glutathione metabolism with broad substrate specificity [48]. It catalyzes the hydrolysis of peptide bonds with the removal of amino acids from the amino termini of proteins and peptides. As a part of the glutathione metabolism pathway, ANPEP hydrolyzes the peptide L-cysteinylglycine to cysteine and glycine substrates for *de novo* biosynthesis of GSH [48,49]. A transcriptomic study performed on pancreatic beta cells has revealed *ANPEP* to be a differentially expressed (up-regulated) gene in patients with type 2 diabetes [50]. Moreover, a genome-wide association study in a South Asian population identified several SNPs located at chromosome 15 near the *ANPEP* and *AP3S2* genes that were associated with susceptibility to T2D [51]. Further study of Locke using allelic expression profiling showed that the T2D-related polymorphisms (for example, SNP rs2007084) are associated with increased expression of *ANPEP* in the pancreatic islets of diabetics [52]. Pedersen et al. [53] performed system biology and bioinformatics analyses by integrating islet gene and protein expression data with protein interactions in pancreatic islet protein complexes and identified *ANPEP* as one of the top overlapping genes closely associated with T2D susceptibility. Taken together, the above findings clearly show a plausible role for *ANPEP* in the pathogenesis of T2D; however, the mechanisms by which this gene contributes to T2D susceptibility remain unclear.

We hypothesize that *ANPEP* gene polymorphisms are associated with the risk of type 2 diabetes through the key role of this enzyme in the metabolism of glutathione. To date, no studies have comprehensively analyzed the role of functionally significant *ANPEP* polymorphisms in the development of type 2 diabetes mellitus. This has become the basis for a detailed analysis of the relationship between a wide range of functionally significant polymorphisms of the *ANPEP* gene and the risk of type 2 diabetes mellitus. Moreover, we conducted a comprehensive analysis of literature and online resources on biochemistry and metabolism related to ANPEP, which allowed us to annotate the potential molecular mechanisms by which the enzyme is involved in the pathogenesis of type 2 diabetes mellitus.

## **2. Materials and methods**

### *2.1. Study participants and diagnosis of type 2 diabetes*

The Kursk State Medical University Regional Ethics Review Committee approved the study protocol and adhered to the ethical guidelines outlined in the Declaration of Helsinki. Prior to enrollment, written informed

consent was obtained from each participant. A total of 3206 unrelated Russians participated in the study, consisting of 1579 patients with T2D and 1627 age- and sex-matched healthy individuals in the control group. Most of the participants were from the Central Russia, Kursk region. Participants were interviewed in person using a questionnaire from one of our previous studies [54]. Between November 2016 and October 2019, the Endocrinology Division of Kursk Emergency Hospital admitted patients diagnosed with type 2 diabetes according to World Health Organization criteria [55], which included an HbA1c level of 6.5%, random blood glucose level of 11.1 mmol/L, or fasting blood glucose (FBG) level of 7.0 mmol/L. The inclusion criteria were previously described [56], and written informed consent was obtained from all the study participants. The clinical, laboratory, and demographic characteristics of the research groups were reported in our most recent paper [57].

### *2.2 Genetic analysis*

Venous blood samples were obtained from the cubital veins of study participants and placed in EDTA-coated tubes. The samples were subsequently frozen and stored at  $-20^{\circ}\text{C}$  until further processing. Phenol/chloroform extraction and ethanol precipitation have been used to purify total DNA. A total of twenty three single nucleotide polymorphisms in the *ANPEP* gene (Supplementary Table A) were selected for the study based on their functional properties and linkage disequilibrium (HapMap data, European population). In particular, the selection of SNPs was conducted using the Candidate Gene SNP Selection tool (GenePipe), available online at the SNPinfo Web Server (<https://snpinfo.niehs.nih.gov/snpinfo/selegene.html>). The MALDI-TOF mass spectrometry iPLEX platform on the MassArray-4 system (Agena Bioscience, Inc., San Diego, CA, USA) was used to genotype twenty SNPs whereas the CFX-96 Thermocycler (Bio-Rad, USA) was used for real-time PCR genotyping of three remaining SNPs (rs16943590, rs753362, and rs7111). The primer sequences used for genotyping are available upon request. To ensure quality control, 5% of the DNA samples were genotyped twice by unaware researchers, and the concordance rate was greater than 99%.

### *2.3 Biochemical analysis*

The plasma levels of glutathione (GSH and GSSG) were determined in study patients using a fluorometric test method and GSH/GSSG Ratio Detection test Kit II (Abcam, USA). The concentration of reactive oxygen species (ROS) in plasma was measured using a fluorometric assay and OxiSelect™ In Vitro ROS/RNS Assay Kit (Cell Biolabs, USA) on the Varioscan Flash microplate reader (Thermo Fisher Scientific, USA). The plasma concentrations of glycated hemoglobin (HbA1c), glucose, total cholesterol, high- and low-density lipoproteins, triacylglycerol, uric acid, alanine transaminase (AST), alanine aminotransferase (ALT) and total protein in blood plasma were measured using a semi-automated biochemical analyzer (Clima MC-15, Ral Tecnica Para el Laboratorio, S.A., Spain) and reagents manufactured by DIAKON-DS (Moscow, Russia).

### *2.4 Statistical and bioinformatics analysis*

The statistical power for the genetic association study was calculated using the Michigan Power Calculator ([http://csg.sph.umich.edu/abecasis/gas\\_power\\_calculator/](http://csg.sph.umich.edu/abecasis/gas_power_calculator/)). Assuming an 85-90% power and a 5% type I error (which equals 0.05), the association study of selected polymorphisms with T2D risk could reveal a genotype relative risk of 1.26-1.51 based on the sample sizes of 1579 T2D cases and 1627 healthy controls. Differences in the genotype and allele frequencies between T2D patients and healthy controls were compared using chi-square tests. The PLINK software 1.9 [58] was used to examine allele and genotype frequencies in the study groups and their relationship with T2D risk using logistic regression analysis. The calculated odds ratio (OR) and 95% confidence intervals (95% CI) for disease risk were adjusted for age, sex, and body mass index (BMI). Allelic, recessive, dominant, and log-additive genetic models were assessed for SNP-disease relationships. The false discovery rate (FDR) procedure was used (False Discovery Rate Online Calculator, <https://www.sdmproject.com/utilities/?show=FDR>) to adjust for multiple comparisons. The Haploview program version 4.2 [59] was used to visualize the structure of the *ANPEP* haplotypes and assess their association with T2D risk by calculating P-values through adaptive permutations. The STATISTICA v.13 software was used to estimate the associations between *ANPEP* genotype combinations (diplotypes) and T2D risk. The normality of the biochemical parameters was examined using the Kolmogorov-Smirnov test, and Student's t-test was used to compare the mean with standard deviation between the groups. Non-normally distributed characteristics were expressed in median (Me) with interquartile range (IQR) and compared between the groups using the Kruskal-Wallis test. To validate the associations of the studied gene variants with the risk of T2D, replication analysis was carried out in eleven populations using summary statistics from the UK Biobank population (<http://geneatlas.roslin.ed.ac.uk>) and genome-wide association studies published at the T2D Knowledge portal (<http://www.type2diabetesgenetics.org>). Functional annotation of the studies SNPs was performed using bioinformatics online resources such as eQTLGen Consortium (<https://www.eqtlgen.org/phase1.html>) and HaploReg v4.2 (<https://pubs.broadinstitute.org/mammals/haploreg/haploreg.php>)

### 3. Results

#### 3.1 Association of the *ANPEP* gene polymorphisms with the risk of T2D

The genotype frequencies of the twenty three SNPs in the *ANPEP* gene were in Hardy-Weinberg equilibrium in both the case and control groups ( $P > 0.05$ ). A summary of the associations between polymorphisms and the risk of T2D is presented in Table 1 (the associations between SNPs and T2D in sex-stratified groups are shown in Supplementary Table B). Allelic, additive, dominant, and recessive genetic models were evaluated, and P-values were calculated using permutations. The most significant permutation P-value ( $P_{perm}$ ) was considered to select the best genetic model for SNP-disease association. The genotype and allele frequencies of the *ANPEP* gene in the study groups are shown in Table 2 (the genotype and allele frequencies of *ANPEP* in sex-stratified groups are shown

in Supplementary Table 3). As seen in Table 2, seven polymorphisms (rs25653, rs12898828, rs11073891, rs12148357, rs9920421, rs4932143, and rs7111) were significantly associations with the risk of T2D. Sex-stratified analysis (Supplementary Table C) revealed that only two SNPs (rs11073891 and rs4932143) were associated with T2D in both sexes, while rs25653 was associated with T2D risk exclusively in males (OR=0.41, 95% CI=0.52-0.96, Pperm=0.02, recessive model). Four SNPs such as rs12898828, rs6496608, rs9920421, and rs7111 were significantly associated with the risk of T2D in females. In addition, two polymorphisms of *ANPEP* were found to be associated with the age of disease onset. Specifically, individuals with the rs17240268-A/A genotype (Me=44.5 IQR 40; 49) manifested T2D 7.5 years earlier than those with G/G (Me=52 IQR 45; 58) or G/A (Me=50 IQR 45; 57) genotypes (P=0.023). Moreover, females with genotype rs72756574-G/G (Me=48.5 IQR 45; 52) manifested T2D 1.5-3 years earlier than females with rs72756574-G/T (Me=50 IQR 46; 56) or rs72756574-T/T (Me=53 IQR 46; 59) genotypes (P=0.009).

### 3.2 The joint effects of the *ANPEP* polymorphisms on the risk of T2D

The joint effects of *ANPEP* gene polymorphisms on the risk of type 2 diabetes were assessed through haplotype and diplotype association analyses. The haplotypes and their association with T2D risk are presented in Table 3 (associations of *ANPEP* haplotypes with T2D in sex-stratified groups are shown in Supplementary Table D). Figure 1 displays the linkage disequilibrium map of the *ANPEP* gene, showing four haplotype blocks identified

**Table 1**

A summary of associations between *ANPEP* gene polymorphisms and T2D risk

SNP ID	Minor Allele	Permutation p-values estimated for tested genetic models of SNP-disease associations <sup>1</sup>			
		Additive	Allelic	Dominant	Recessive
rs11073889	C	0.56	0.34	1.00	0.24
rs13380049	C	0.21	0.24	0.25	0.06
rs8034807	A	0.56	0.52	0.28	0.31
rs6496603	G	0.64	0.50	0.18	0.59
rs16974181	G	0.86	0.78	1.00	0.86
rs6496604	A	0.86	0.86	1.00	0.59
rs16943590	T	0.78	0.86	0.52	0.33
rs753362	G	0.37	0.12	0.33	0.86
rs17240268	A	0.31	0.15	0.31	0.22
rs72754570	A	0.23	0.07	0.48	0.14
rs41276922	A	0.43	0.15	0.67	0.09
rs25653	C	0.16	<b>0.02</b>	1.00	<b>0.02</b>
rs10152918	A	0.46	1.00	0.78	0.31
rs8041622	A	0.78	1.00	0.67	0.86
rs12442778	G	1.00	1.00	0.63	0.29
rs12898828	T	<b>0.05</b>	<b>0.002</b>	0.10	NA
rs6496608	A	1.00	0.64	0.86	0.07
rs11073891	C	<b>6.0×10<sup>-6</sup></b>	<b>1.0×10<sup>-6</sup></b>	<b>8.2×10<sup>-5</sup></b>	<b>0.0004</b>



rs12148357	T	0.35	0.48	<b>0.02</b>	0.37
rs9920421	G	0.23	0.11	0.86	<b>0.01</b>
rs4932143	G	<b>1.0×10<sup>-6</sup></b>	<b>1.0×10<sup>-6</sup></b>	<b>1.0×10<sup>-6</sup></b>	<b>1.0×10<sup>-6</sup></b>
rs7111	T	0.33	0.26	1.00	<b>0.05</b>
rs72756574	G	1.00	1.00	1.00	0.28

<sup>1</sup> Calculated by the PLINK software, v.1.9. Bold means statistically significant p-values ( $P_{perm}$ ).

in the gene. As can be seen from Table 3, three haplotypes AATC (block 3), GGT, and GCT (block 4) were strongly ( $P_{perm} < 0.0001$ ) associated with susceptibility to type 2 diabetes. Furthermore, two haplotypes such as GGC (block 2) and ATTA (block 3) were associated with the risk of T2D ( $P_{perm} \leq 0.05$ ).

Diplotype association analysis allowed for the identification of 136 statistically significant associations ( $FDR \leq 0.05$ ) between combinations of *ANPEP* genotypes and an increased ( $N=78$ ) or decreased ( $N=58$ ) risk of T2D (all observed associations of diplotypes with T2D risk in the entire and sex-stratified groups are presented in Supplementary Table E). The top-20 diplotypes significantly ( $FDR$ -adjusted  $P \leq 2.2 \times 10^{-8}$ ) associated with the risk of type 2 diabetes are presented in Table 4. The majority of the diplotypes (90 of 136) included the SNP rs4932143. Importantly, *ANPEP* diplotypes such as rs10152918-G/A×rs4931143-G/G (OR 3.35, 95% CI 1.95-5.77,  $FDR=0.0001$ ), rs25653-T/C×rs4931143-G/G (OR 3.29, 95% CI 1.92-5.66,  $FDR=0.0002$ ), and rs11073889-C/C×rs4931143-G/G (OR 3.03, 95% CI 1.58-5.81,  $FDR=0.01$ ) conferred more than a three-fold T2D risk. Diplotype

**Table 2**

Associations of *ANPEP* genotypes with the risk of type 2 diabetes

SNP ID	Genotype	Genotype frequencies		OR <sup>2</sup> (95% CI) $P_{perm}$ <sup>3</sup>
		Healthy controls n (%) <sup>1</sup>	Patients with T2D n (%) <sup>1</sup>	
rs11073889 T>C	T/T	403 (25.9)	416 (27.0)	0.90 (0.74-1.09) 0.24 <sup>R</sup>
	T/C	788 (50.6)	788 (51.1)	
	C/C	365 (23.5)	339 (22.0)	
rs13380049 G>C	G/G	1435 (90.9)	1434 (92.2)	0.25 (0.049-1.29) 0.06 <sup>R</sup>
	G/C	138 (8.8)	119 (7.7)	
	C/C	5 (0.3)	3 (0.2)	
rs8034807 C>A	C/C	854 (54.7)	816 (52.4)	1.10 (0.94-1.29) 0.28 <sup>D</sup>
	C/A	587 (37.6)	631 (40.5)	
	A/A	121 (7.8)	111 (7.1)	
rs6496603 A>G	A/A	625 (40)	586 (37.6)	1.12 (0.95-1.31) 0.18 <sup>D</sup>
	A/G	706 (45.2)	745 (47.9)	
	G/G	230 (14.7)	226 (14.5)	
rs16974181 C>G	C/C	1205 (79)	1184 (79.4)	0.99 (0.84-1.16) 0.78 <sup>A</sup>
	G/C	297 (19.5)	279 (18.7)	
	G/G	24 (1.6)	28 (1.9)	
rs6496604 A>G	A/A	392 (27.2)	375 (26.2)	0.97 (0.80-1.17) 0.59 <sup>R</sup>
	G/A	695 (48.2)	697 (48.7)	
	G/G	356 (24.7)	360 (25.1)	
rs16943590	C/C	689 (46.6)	699 (46.3)	0.91 (0.72-1.14)



	C>T	C/T	574 (38.8)	600 (39.7)	0.33 <sup>R</sup>
		T/T	215 (14.6)	211 (14)	
rs753362		C/C	723 (47.2)	755 (49.1)	0.92 (0.82-1.03)
	C>G	C/G	661 (43.1)	657 (42.7)	0.12 <sup>A</sup>
		G/G	149 (9.7)	127 (8.2)	
rs17240268		G/G	1441 (91)	1405 (90)	1.17 (0.93-1.47)
	G>A	G/A	141 (8.9)	148 (9.5)	0.15 <sup>A</sup>
		A/A	2 (0.1)	9 (0.6)	
rs72754570		G/G	1333 (88.4)	1350 (86.5)	1.22 (0.99-1.48)
	G>A	G/A	168 (11.1)	196 (12.6)	0.07 <sup>A</sup>
		A/A	7 (0.5)	15 (1)	
rs41276922		G/G	1393 (87.7)	1345 (86.2)	2.74 (0.85-8.81)
	G>A	A/G	191 (12)	202 (12.9)	0.088 <sup>R</sup>
		A/A	5 (0.3)	13 (0.8)	
rs25653		T/T	419 (27.4)	451 (29.1)	<b>0.78 (0.64-0.94)</b>
	T>C	T/C	764 (49.9)	810 (52.3)	<b>0.02<sup>R</sup></b>
		C/C	348 (22.7)	289 (18.6)	
rs10152918		G/G	574 (36.4)	575 (37.4)	0.90 (0.71-1.12)
	G>A	G/A	773 (49.1)	736 (47.9)	0.31 <sup>R</sup>
		A/A	228 (14.5)	227 (14.8)	
rs8041622		G/G	1349 (85.4)	1330 (85)	0.94 (0.75-1.18)
	G>A	A/G	218 (13.8)	225 (14.4)	0.67 <sup>D</sup>
		A/A	13 (0.8)	9 (0.6)	
rs12442778		A/A	511 (33.6)	548 (35.5)	1.13 (0.90-1.41)
	A>G	A/G	804 (52.8)	760 (49.2)	0.29 <sup>R</sup>
		G/G	207 (13.6)	238 (15.4)	
rs12898828		A/A	1395 (90.2)	1294 (87)	<b>1.39 (1.12-1.72)</b>
	A>T	T/A	151 (9.8)	188 (12.6)	<b>0.002<sup>A</sup></b>
		T/T	0 (0)	5 (0.3)	
rs6496608		T/T	1212 (77)	1172 (75.1)	1.22 (1.19-1.24)
	T>A	A/T	329 (20.9)	366 (23.4)	0.07 <sup>R</sup>
		A/A	34 (2.2)	23 (1.5)	
rs11073891		A/A	246 (22.3)	452 (31.2)	<b>0.73 (0.64-0.81)</b>
	A>C	C/A	589 (53.3)	746 (51.5)	<b>1.0×10<sup>-6</sup><sup>A</sup></b>
		C/C	270 (24.4)	252 (17.4)	
rs12148357		C/C	381 (24.5)	424 (27.8)	<b>0.81 (0.67-0.97)</b>
	C>T	C/T	817 (52.6)	739 (48.4)	<b>0.02<sup>D</sup></b>
		T/T	356 (22.9)	365 (23.9)	
rs9920421		A/A	819 (52.2)	795 (51.3)	<b>1.58 (1.15-2.16)</b>
	A>G	A/G	660 (42.1)	628 (40.5)	<b>0.007<sup>R</sup></b>
		G/G	89 (5.7)	126 (8.1)	
rs4932143		C/C	961 (68)	793 (50.8)	<b>2.55 (1.74-3.73)</b>
	C>G	G/C	407 (28.8)	644 (41.3)	<b>1.0×10<sup>-6</sup><sup>R</sup></b>
		G/G	45 (3.2)	124 (7.9)	
rs7111		C/C	801 (52.6)	792 (51.7)	<b>1.37 (1.01-1.87)</b>
	C>T	C/T	626 (41.1)	617 (40.2)	<b>0.05<sup>R</sup></b>
		T/T	97 (6.4)	124 (8.1)	
rs72756574		T/T	1425 (90.1)	1409 (90.6)	3.65 (0.34-38.92)
	T>G	G/T	155 (9.8)	143 (9.2)	0.28 <sup>R</sup>
		G/G	1 (0.1)	3 (0.2)	

<sup>1</sup>Absolute number and percentage of individuals with a particular genotype. <sup>2</sup>Odds ratio with 95% confidence intervals estimated for the best SNP-disease association model. <sup>3</sup>P-value estimated via adaptive permutations ( $P_{perm}$ ) for the best SNP-disease association model. Superscripts denote the best SNP-disease association models: R, recessive; D, dominant; A, additive. Bold depicts statistically significant  $P_{perm}$  and odds ratios.

**Table 3**

Haplotypes of the *ANPEP* gene and their associations with T2D risk

Haplotype	Haplotype frequencies		Chi Square	$P_{perm}$
	T2D patients	Controls		

Haplotype block 1				
rs8034807-rs6496603-rs16974181-rs6496604-rs16943590				
CACAC	0.490	0.494	0.13	1.00
AGCGT	0.268	0.262	0.32	1.00
CAGGC	0.124	0.123	0.05	1.00
CGCGT	0.066	0.070	0.31	1.00
CGCGC	0.043	0.036	2.44	0.81
Haplotype block 2				
rs72754570-rs41276922-rs25653				
GGT	0.478	0.459	2.29	0.85
GGC	0.448	0.477	5.30	<b>0.02</b>
AAT	0.071	0.062	2.00	0.90
Haplotype block 3				
rs12442778-rs12898828-rs6496608-rs11073891				
GATC	0.400	0.408	0.42	1.00
AATA	0.389	0.382	0.33	1.00
AAAA	0.129	0.124	0.42	1.00
ATTA	0.063	0.048	7.46	<b>0.05</b>
AATC	0.013	0.033	28.23	<b>1.0×10<sup>-7</sup></b>
Haplotype block 4				
rs9920421-rs4932143-rs7111				
ACC	0.710	0.724	1.50	0.98
GGT	0.274	0.200	47.38	<b>5.9×10<sup>-12</sup></b>
GCT	0.002	0.061	174.83	<b>6.5×10<sup>-40</sup></b>

The estimation of haplotype frequencies and significance levels for haplotype-disease associations was performed by the Haploview software v.4.2.

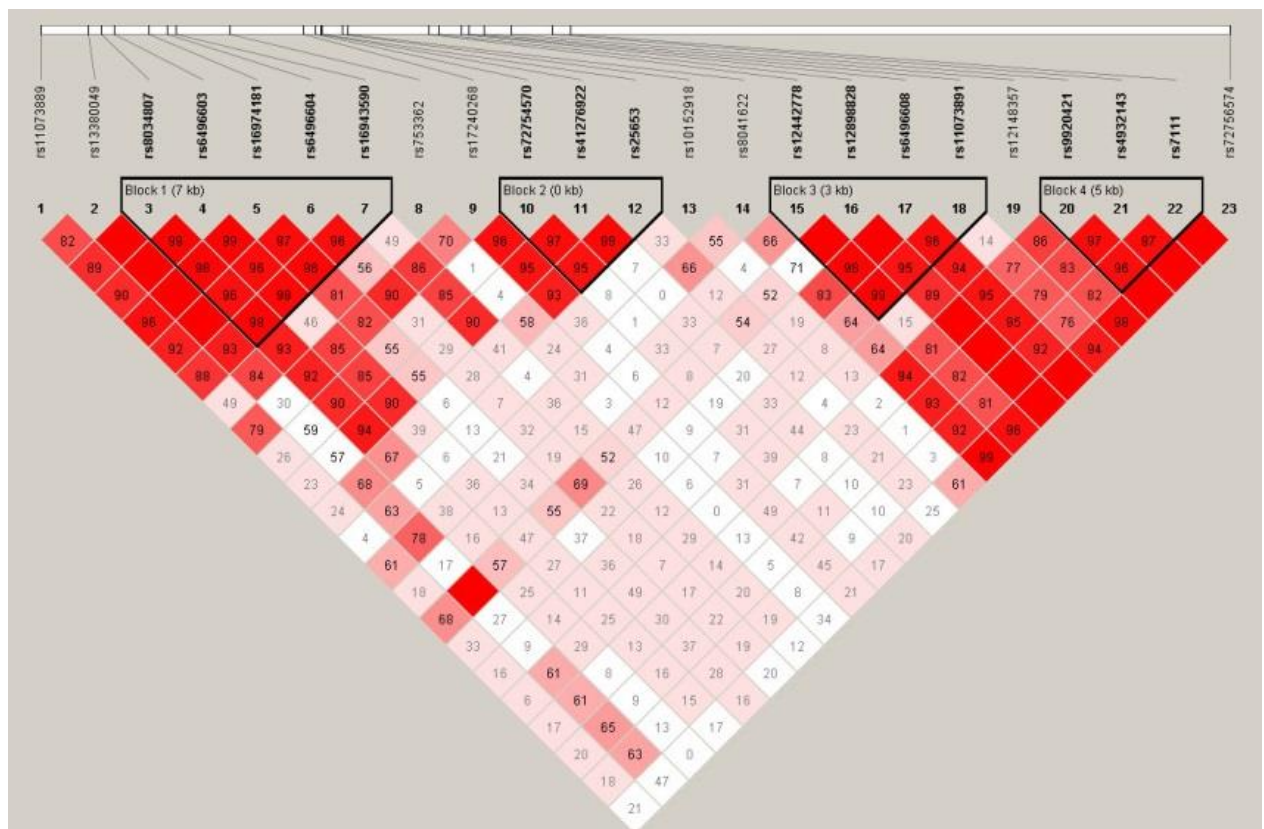


Figure 1. The linkage disequilibrium map of the *ANPEP* gene polymorphisms

Four haplotype blocks (bolded frames) were identified within the fifteen SNPs in *ANPEP*. The length of each haplotype block is shown in kilobases, and pairwise linkage disequilibrium ( $D'$ ) is given for each SNP pair. Empty squares indicate  $D=1.0$ . Linkage disequilibrium map was generated by the Haploview software 4.2

rs9920421-A/G×rs4931143-C/C showed the strongest association with decreased disease risk (OR 0.03, 95% CI 0.01-0.08,  $FDR=5.7\times 10^{-29}$ ).

### 3.3 *The link between ANPEP polymorphisms and biochemical parameters in diabetics*

The associations between *ANPEP* polymorphisms and biochemical parameters (glucose metabolism, lipid metabolism, redox homeostasis and other biochemical parameters) in the plasma of T2D patients are shown in Supplementary Table F. Figure 2 provides a schematic representation of the observed associations between *ANPEP* polymorphisms and plasma biochemical parameters in patients with type 2 diabetes. The T2D linked SNP rs25653 was associated with higher fasting blood glucose levels ( $P=0.017$ ), postprandial hyperglycemia in females ( $P=0.017$ ), and decreased total protein ( $P=0.008$ ). Polymorphism rs11073891, another variant of *ANPEP* associated with T2D, was correlated with decreased uric acid levels ( $P=0.03$ ). In females, SNP rs10152918 was positively correlated with total protein ( $P=0.006$ ) and aspartate aminotransferase ( $P=0.03$ ) levels. Increased aspartate aminotransferase levels were also associated with the polymorphism rs6496603 ( $P=0.04$ ). Polymorphism rs17240268 was associated with decreased postprandial hyperglycemia in females ( $P=0.037$ ) and increased levels of

Table 4

The top-20 ANPEP diplotypes significantly associated with the risk of type 2 diabetes

№	Diplotypes	T2D		Controls		<sup>3</sup> OR	CI-	CI+	P	FDR
		n <sup>1</sup>	% <sup>2</sup>	n <sup>1</sup>	% <sup>2</sup>					
1	rs9920421-A/G × rs4932143-C/C	5	0.3	134	9.6	0.03	0.01	0.08	4.9 × 10 <sup>-32</sup>	5.7 × 10 <sup>-29</sup>
2	rs12898828-A/A × rs4932143-C/C	611	41.1	808	59.2	0.48	0.41	0.56	5.2 × 10 <sup>-22</sup>	3.9 × 10 <sup>-19</sup>
3	rs17240268-G/G × rs4932143-C/C	688	44.1	859	61.2	0.50	0.43	0.58	1.5 × 10 <sup>-20</sup>	8.4 × 10 <sup>-18</sup>
4	rs41276922-G/G × rs4932143-C/C	686	44.0	853	60.6	0.51	0.44	0.59	2.1 × 10 <sup>-19</sup>	9.5 × 10 <sup>-17</sup>
5	rs8041622-G/G × rs4932143-C/C	620	39.7	781	55.7	0.52	0.45	0.61	3.2 × 10 <sup>-18</sup>	1.2 × 10 <sup>-15</sup>
6	rs6496608-T/T × rs4932143-C/C	521	33.4	685	49.1	0.52	0.45	0.60	4.2 × 10 <sup>-18</sup>	1.4 × 10 <sup>-15</sup>
7	rs4932143-C/C × rs72756574-T/T	680	43.8	832	59.4	0.53	0.46	0.62	2.1 × 10 <sup>-17</sup>	5.6 × 10 <sup>-15</sup>
8	rs72754570-G/G × rs4932143-C/C	689	44.2	802	60.0	0.53	0.46	0.61	2.2 × 10 <sup>-17</sup>	5.6 × 10 <sup>-15</sup>
9	rs4932143-G/G × rs7111-C/T	611	39.9	345	25.5	1.94	1.65	2.27	2.9 × 10 <sup>-16</sup>	6.6 × 10 <sup>-14</sup>
10	rs13380049-G/G × rs4932143-C/C	702	45.2	841	60.2	0.54	0.47	0.63	3.4 × 10 <sup>-16</sup>	6.9 × 10 <sup>-14</sup>
11	rs9920421-A/G × rs4932143-C/G	618	39.9	361	25.9	1.90	1.62	2.22	9.3 × 10 <sup>-16</sup>	1.7 × 10 <sup>-13</sup>
12	rs16974181-C/C × rs4932143-C/C	564	37.9	715	52.9	0.54	0.47	0.63	9.8 × 10 <sup>-16</sup>	1.7 × 10 <sup>-13</sup>
13	rs12148357-C/T × rs4932143-C/C	331	21.7	469	34.1	0.53	0.45	0.63	7.2 × 10 <sup>-14</sup>	1.2 × 10 <sup>-11</sup>
14	rs13380049-G/G × rs4932143-C/G	612	39.4	382	27.3	1.73	1.48	2.02	4.9 × 10 <sup>-12</sup>	7.4 × 10 <sup>-10</sup>
15	rs4932143-C/G × rs72756574-T/T	604	38.9	378	27.0	1.72	1.47	2.01	7.4 × 10 <sup>-12</sup>	1.1 × 10 <sup>-9</sup>
16	rs17240268-G/G × rs4932143-C/G	600	38.5	376	26.8	1.71	1.46	2.00	1.4 × 10 <sup>-11</sup>	1.9 × 10 <sup>-9</sup>
17	rs8041622-G/G × rs4932143-C/G	587	37.6	367	26.2	1.70	1.45	1.99	2.9 × 10 <sup>-11</sup>	3.8 × 10 <sup>-9</sup>
18	rs16974181-C/C × rs4932143-C/G	514	34.5	314	23.2	1.74	1.48	2.06	3.7 × 10 <sup>-11</sup>	4.4 × 10 <sup>-9</sup>
19	rs12442778-A/G × rs4932143-C/C	395	25.6	494	36.6	0.59	0.51	0.70	1.3 × 10 <sup>-10</sup>	1.5 × 10 <sup>-8</sup>
20	rs8034807-C/C × rs4932143-C/C	393	25.3	499	36.1	0.60	0.51	0.70	2.1 × 10 <sup>-10</sup>	2.2 × 10 <sup>-8</sup>

<sup>1</sup>Absolute number of individuals with particular diplotype. <sup>2</sup>Percentage of individuals with diplotype. <sup>3</sup>OR, odds ratio; 95% CI, confidence intervals.

P-values were adjusted for multiple testing by false discovery rate (FDR) using FDR online calculator (<https://www.sdmproject.com/utilities/?show=FDR>).

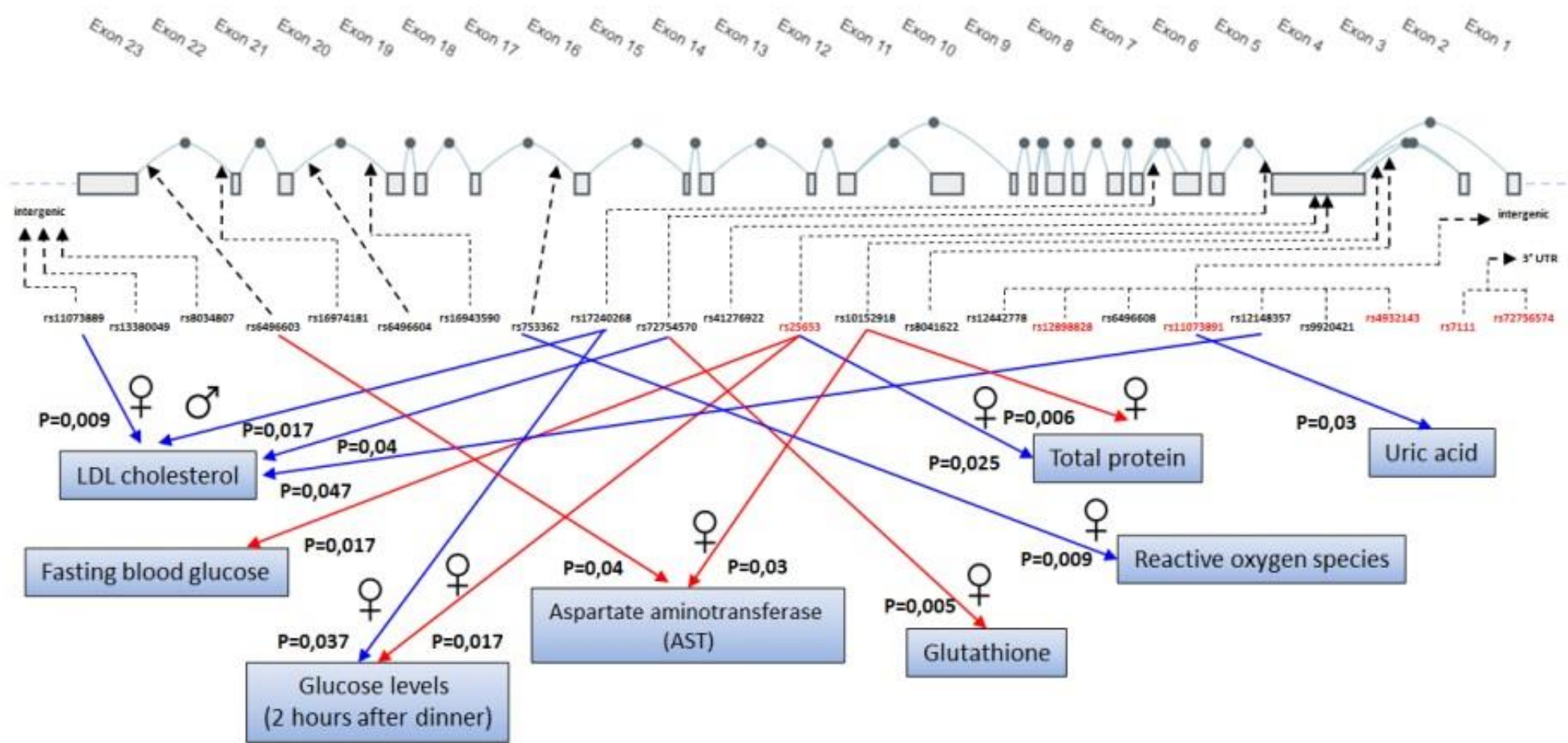


Figure 2. The relationships between *ANPEP* gene polymorphisms and plasma biochemical parameters in diabetic patients

Male and female symbols depict sex-specific SNP-trait associations. Red and blue lines indicate positive and negative associations between SNPs and biochemical parameters, respectively. SNPs associated with the risk of T2D are indicated in red

low-density lipoprotein (LDL) cholesterol in males ( $P=0.017$ ). Decreased LDL levels in the entire group ( $P=0.04$ ) and increased glutathione concentration in females ( $P=0.005$ ) correlated with SNP rs72754570. Decreased LDL levels also correlated with rs11073889 in females ( $P=0.009$ ) and rs12148357 ( $P=0.04$ ) in the entire group of T2D patients. SNP rs753362 was associated with plasma ROS level in females ( $P=0.009$ ). Supplementary Table G shows the associations of *ANPEP* haplotypes with biochemical blood plasma parameters of T2D patients. Strong haplotype-trait associations were the subject of great interest. In particular, haplotype CGCGC (haplotype block 1) was strongly associated with increased ROS levels ( $P<0.0001$ ) and decreased uric acid levels ( $P<0.0001$ ). Interestingly, haplotype AATC (haplotype block 3), which confers strong protection against type 2 diabetes, was associated with decreased plasma uric acid levels in diabetics ( $P<0.0001$ ). Meanwhile, haplotype ATTA of the same haplotype block was associated with increased uric acid levels ( $P<0.0001$ ) and also associated with increased T2D risk. Moreover, haplotype GCT (haplotype block 4), which confers strong protection against disease, was strongly associated with uric acid levels ( $P<0.0001$ ). In addition, haplotype AATA (haplotype block 3) was associated with decreased uric acid levels ( $P=0.009$ ).

#### *3.4 Replication of the observed SNP-disease associations in independent cohorts*

Supplementary Table H shows the associations between the studied *ANPEP* polymorphisms and T2D risk in 13 cohorts from diverse global populations. The vast majority of SNPs (with the exception of rs25653) including rs12898828, rs11073891, rs12148357, rs9920421, rs4932143, and rs7111, which have been linked to the risk of type 2 diabetes in our population, have been successfully validated in at least one independent population from around the world. Interestingly, ten *ANPEP* polymorphisms, namely, rs11073889, rs13380049, rs6496603, rs6496604, rs753362, rs10152918, rs8041622, rs12442778, rs6496608, and rs72756574, which were not associated with T2D risk in the present study, were found to be associated with disease susceptibility in at least one other population. The present data, despite exhibiting variability in SNP-disease correlations across different populations, unequivocally demonstrate the crucial role that *ANPEP* plays in the development of type 2 diabetes mellitus as a susceptibility gene.

#### *3.5 Functional annotation of T2D-associated polymorphisms*

Supplementary Table I displays the results of the expression Quantitative Trait Loci (eQTL) analysis for the investigated polymorphisms of the *ANPEP* gene. As per the data provided by the eQTLGen Consortium (<https://www.eqtlgen.org/phase1.html>), all of the gene variants examined in the current study exhibit an association with increased *ANPEP* expression levels in the blood. As can be seen from Supplementary Table I, the top two T2D-associated SNPs such as rs4932143 and rs11073891 ( $P_{\text{perm}}=1.0\times 10^{-6}$ ) were found to be associated with expression levels of the *AP3S2* gene in both pancreas and liver. In the blood, the T2D-associated polymorphisms are associated with expression levels of *AP3S2*, *ARPIN*, *IDH2*, *MESPI1*, and *U7* genes. Data of the Roadmap Epigenomics project



on chromatin states and histone marks in pancreatic islets, pancreas and liver for the *ANPEP* polymorphisms associated with type 2 diabetes mellitus are shown in Supplementary Table J. The region where the polymorphism rs4932143 is located has been shown to exhibit weak enhancer activity in pancreatic islets. Additionally, this region is enriched with active enhancers, which are segments of DNA that interact with transcription factors and play a crucial role in gene expression. The presence of these active enhancers is indicated by the presence of specific histone modifications, such as H3K4me1 and H3K27ac, which are known to be associated with active gene expression. Moreover, the region of rs4932143 also shows primary DNase activity in the pancreas, which suggests that this region is actively transcribed. SNP rs25653, also showed association with T2D, was significantly enriched with regions of active transcription start sites (TSS) and promoter-specific histone modification (H3K4me3) in pancreatic islets, as well as with active, transcribed, and regulatory TSS and histone marks in both the pancreas and liver.

#### 4. Discussion

Aminopeptidase N is a type II integral membrane protein that is situated on the plasma membrane as an extracellular enzyme [48,60] with a broad-specificity (there are 151 substrates according to BRENDA (<https://www.brenda-enzymes.org>). The enzyme is distributed among species and tissues and is abundant in the kidney, small intestine, placenta, and liver [48], with soluble forms found in plasma and urine [61,62]. Besides playing a role in the final digestion of peptides that generated by hydrolysis with gastric and pancreatic proteases, ANPEP is involved in many cellular processes including proliferation, apoptosis, antigen presentation, differentiation, secretion, invasion, angiogenesis, chemotaxis, modulation of bioactive peptide responses and immune functions [60,63-66]. According to the BRENDA (<https://www.brenda-enzymes.org>, EC3.4.11.2) and KEGG (<https://www.genome.jp/kegg/kegg2.html>, K11140) databases, ANPEP is a part of glutathione metabolism where the enzyme hydrolyzes dipeptides cysteinyl-glycine (Cys-Gly) and L-cysteinyl-glycine (L-Cys-Gly) generated during the catabolism of glutathione by  $\gamma$ -glutamyltranspeptidase or gamma-glutamyltransferase (GGT) [49,67]. Thus, ANPEP supplies the cell with two key amino acids required for the biosynthesis of glutathione, cysteine, and glycine.

ANPEP has become an object of interest in molecular diabetology owing to the results of genome-wide association studies (GWAS) and transcriptomic analysis of beta cells from pancreatic islets. A GWAS performed in a South Asian population by Kooner et al. was the first to identify *ANPEP* as a possible candidate gene for type 2 diabetes [51]. Two further GWAS studies have identified polymorphisms rs7168849 and rs4932143 located near or in the *ANPEP* gene, respectively, as susceptibility markers for T2D [68,69]. A transcriptome study of pancreatic beta cells from patients with type 2 diabetes showed that *ANPEP* is one of the few genes whose expression was increased in diabetic samples compared to non-diabetic controls [50]. Targeted allelic expression profiling in human



islets provided evidence that T2D-associated risk alleles exert detrimental effects by increasing the expression of the *ANPEP* gene [52]. Volkmar et al. revealed that the *ANPEP* promoter is located in a region that is hypomethylated in the pancreatic islets of patients with T2D [70]. A study by Ligthart et al. showed a tobacco smoking-associated decrease in methylation at CpG island cg23161492, located near the 5' untranslated region of *ANPEP*, which is correlated with increased expression of the gene in T2D patients [71]. Collectively, the above data clearly demonstrate the importance of *ANPEP* in pancreatic islets in the pathogenesis of type 2 diabetes; however, no studies have comprehensively assessed the contribution of *ANPEP* gene polymorphisms to the disease development. Therefore, the present study aimed to explore the joint contribution of functionally significant polymorphisms within the *ANPEP* gene to type 2 diabetes mellitus as well as their relationship with biochemical parameters in patients.

Our study is the first to demonstrate the synergistic effects of 23 *ANPEP* polymorphisms on the risk of type 2 diabetes. Six polymorphisms, rs11073891, rs12898828, rs12148357, rs9920421, rs71111, and rs25653, were found to be associated with type 2 diabetes for the first time. Some SNPs showed sex-dependent effects on disease risk. Several *ANPEP* haplotypes were strongly associated with T2D susceptibility. Diplotype analysis revealed 38 genotype combinations in males and 109 genotype combinations in females that were significantly associated with a predisposition to T2D. A replication analysis of the associations between the studied *ANPEP* gene polymorphisms and T2D susceptibility in 13 populations of the UK Biobank and T2D Knowledge portal confirmed six out of seven associations of *ANPEP* loci with T2D risk established in the Central Russian population. In addition, we found that ten SNPs not linked to T2D in our population were associated with disease risk in at least one of the analyzed independent cohorts. We also established sex-specific associations between *ANPEP* polymorphisms and biochemical parameters in patients with type 2 diabetes, such as fasting blood glucose, postprandial hyperglycemia, total blood protein, glutathione, reactive oxygen species, aspartate aminotransferase, and low-density lipoprotein cholesterol levels. Thus, the present study is the first to investigate and establish the associations of a wide range of functional SNPs of the *ANPEP* gene with the risk of developing type 2 diabetes mellitus, as well as with biochemical and metabolic parameters of patients.

We found that T2D-associated polymorphisms are functionally significant variants associated with changes in the expression of the *ANPEP* gene and genes located in close proximity to *ANPEP*, such as *AP3S2*, *ARPIN*, *IDH2*, *MESPI*, and *U7*. In particular, SNP rs11073891 is enriched with the H3K4me2 histone mark that reliably defines the transcription factor binding site [72] and at the same time is linked to lower expression of the *AP3S2* gene in the pancreas. Interestingly, *AP3S2* is involved in regulating vesicle transport in several tissues, including adipocytes and pancreatic cells, and is also associated with first-phase insulin secretion [73] and type 2 diabetes mellitus [51,74,75]. SNP rs12148357 is associated with the ATAC-seq mark, which is analogous to the DNase mark, indicates an

accessible region of chromatin [76], and is also associated with decreased pancreatic expression of the *AP3S2* gene. In the pancreas, rs25653 is enriched with enhancer (H3K4me1 and H3K27ac) and promoter (H3K4me3) histone marks that regulate cell type-specific gene expression by facilitating the transcription of target genes [77]. Moreover, in the pancreas, rs25653 falls into the DNase hypersensitive site, which corresponds to the most active regulatory region [78]. In pancreatic islets, rs25653 is associated with H3K4me3 histone mark in the *ANPEP* promoter.

Polymorphisms of the *ANPEP* gene associated with T2D are correlated with the expression of other genes, such as *ARPIN*, *MESPI*, *IDH2*, *U7*, and *PEX11A*. *ARPIN* was enriched with GO terms including biological processes such as Negative Regulation Of Cell Migration (GO:0030336), Negative Regulation Of Cell Motility (GO:2000146), and Negative Regulation Of Cytoskeleton Organization (GO:0051494). Similar to *Rac*, whose gene polymorphisms are associated with T2D risk [57], *ARPIN* regulates actin polymerization [79], a process essential for the regulation of insulin secretion in pancreatic beta cells [80]. According to the GWAS catalogue (<https://www.ebi.ac.uk/gwas/home>), several SNPs located between the *ARPIN* and *AP3S2* genes are associated with the risk of type 2 diabetes. *MESPI* (mesoderm posterior protein 1) is a transcription factor that regulates cardiac development, morphogenesis, and differentiation. *PEX11A* (peroxisomal membrane protein 11A) is a member of the peroxisome pathway, and experimental studies in *Pex11a* knockout mice have shown reduced physical activity, decreased fatty acid  $\beta$ -oxidation, and increased de novo lipogenesis, leading to dyslipidemia and obesity [81]. *U7* is a small nuclear RNA required for histone pre-mRNA processing [82]. *IDH2*, a mitochondrial NADP isocitrate dehydrogenase of the pyruvate dehydrogenase complex, plays a role in intermediary metabolism and energy production [83] and supplies NADPH to glutathione reductase for the regeneration of reduced glutathione, namely the reduction of GSSG (oxidized glutathione) to GSH [84]. In pancreatic beta cells, knockdown of mitochondrial isocitrate dehydrogenase enzyme reduces insulin secretion [85]. It has been recently found [23] that pancreatic beta cells in T2D patients exhibit decreased expression of *IDH2*, which strongly correlates with increased expression of *CTH* (cystathionine gamma-lyase), an enzyme in the transsulfuration pathway. It can be assumed that the correlations between the *ANPEP* polymorphisms and expression levels of *ARPIN*, *MESPI*, *U7*, *PEX11A*, and *IDH2* genes may be attributed to shared enhancers co-regulating the expression of these genes co-localized at the 15q26.1 region. These correlations may reflect the crosstalk between biological processes, such as glutathione and energy metabolism, vesicular transport, and insulin secretion by beta cells.

Undertaking a comprehensive analysis of the existing literature to elucidate the molecular mechanisms that underlie the association between *ANPEP* and type 2 diabetes represents the primary objective of this study. We were also interested in explaining the reasons for the changes in serum levels and other enzymes involved in the metabolism of amino acids and peptides in type 2 diabetes. Elevated plasma levels of liver enzymes, such as

gamma-glutamyltransferase (GGT), alanine aminotransferase (ALT), and aspartate aminotransferase (AST), often indicate inflammation or damage to cells in the liver, and these biochemical changes may accompany non-liver pathologies [86]. A plethora of studies [87-95] have reported increased plasma levels or activity of GGT, ALT, and AST in patients with type 2 diabetes. The causes and mechanisms of changes in these enzymes are the subject of debate, but there is still no consensus on whether they are primary or secondary in the development of diabetes or if they accompany the disease. The same can be said for ANPEP, whose expression level is increased both in the plasma and beta cells of the pancreatic islets in patients with type 2 diabetes [23,50,96]. The main assumption is that increased expression of amino acid and peptide metabolism enzymes is required to provide amino acid precursors for the biosynthesis of glutathione, the deficit of which is considered a primary cause of type 2 diabetes [21,31,35]. Numerous studies (reviewed in [22]) have shown that glutathione deficiency and impaired redox homeostasis are etiologically associated with key changes found in type 2 diabetes, such as oxidative stress, mitochondrial dysfunction, endoplasmic reticulum stress, disruption of the ubiquitin-proteasome system and autophagy, disruption of insulin secretion, beta cell dysfunction, and insulin resistance. The factors responsible for endogenous glutathione deficiency in type 2 diabetes mellitus have recently been reviewed in detail [22]. Glutathione deficiency determines the demand of the host for the amino acids such as cysteine, glutamate and glycine required for GSH production. The only mechanism by which the body can compensate for the endogenous deficiency of glutathione under conditions of insufficient dietary intake of its amino acid precursors is the activation of metabolic pathways that produce these amino acids.

We analyzed the KEGG database (<https://www.kegg.jp/kegg/>, date of access 20.02.2024) on the pathway maps supplying amino acid precursors for glutathione biosynthesis (Glutathione Metabolism, Cysteine and Methionine Metabolism, Alanine, Aspartate and Glutamate Metabolism, Glycine, Serine, and Threonine Metabolism) and summarized the biochemical reactions catalyzed by the enzymes in Figure 3. It is known that many tissues with a limited capacity to synthesize GSH, such as the pancreas, require amino acid precursors from extracellular glutathione synthesized in the liver (the primary site of glutathione synthesis within the body) to transport and enter the cell [97-99]. The figure 3 depicts the primary pathways responsible for the synthesis of precursor amino acids necessary for the production of glutathione. As shown in Figure 3, several pathways are capable of promoting the production of amino acid precursors for GSH biosynthesis. According to the KEGG database, the enzymes responsible for the formation of glutamate, the first amino acid in the glutathione structure, are primarily alanine aminotransferase and aspartate aminotransferase. In addition, glutamate can be produced in the mitochondria from glutamine in the reaction catalyzed by GLS2 (liver isoform of glutaminase, mitochondrial) and from L-1-pyrroline-5-carboxylic acid catalyzed by ALDH4A1 (delta-1-pyrroline-5-carboxylate dehydrogenase, mitochondrial). ALT and AST are enzymes expressed in the liver at high levels that catalyze the transfer of amino

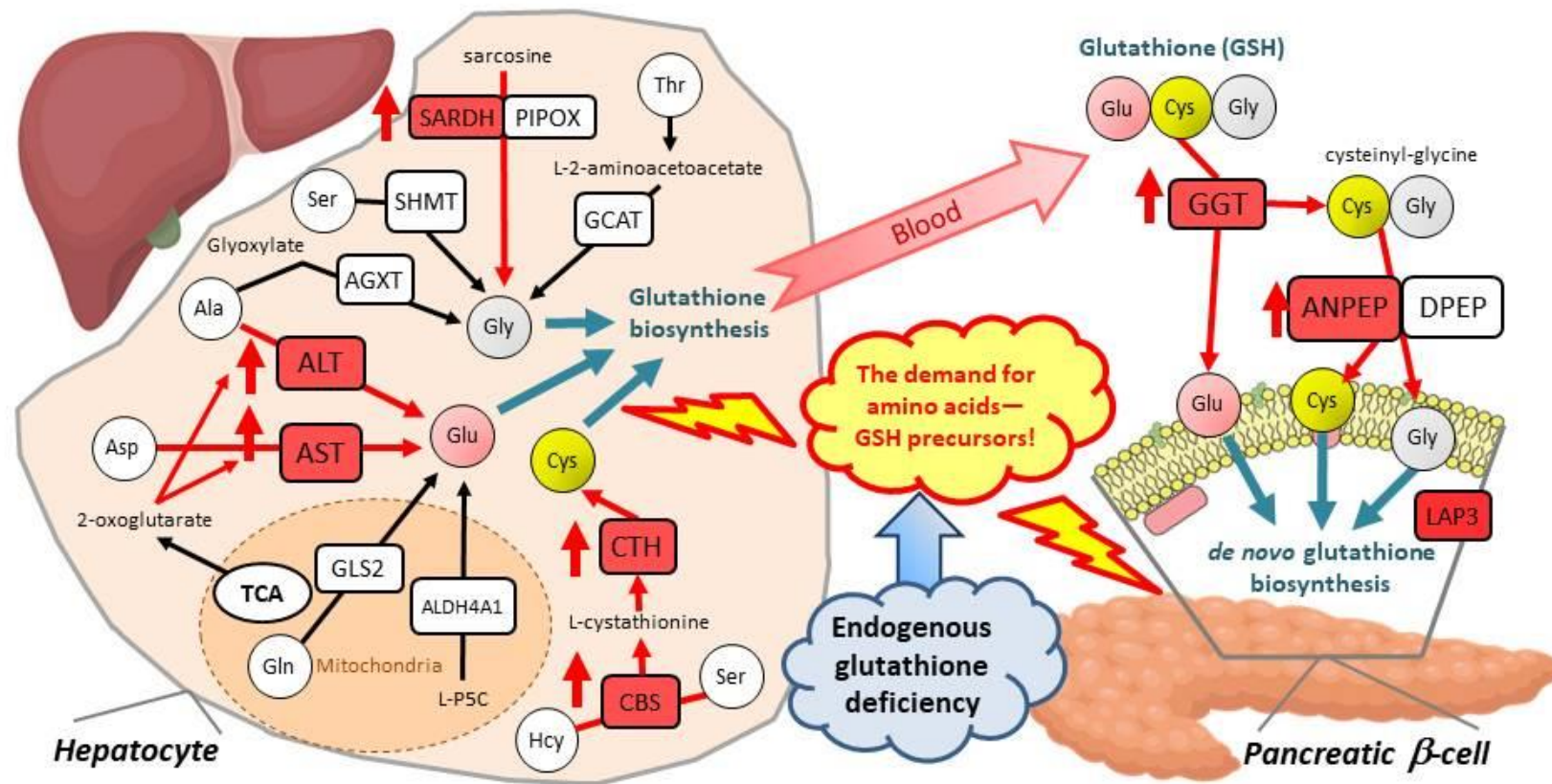


Figure 3. **The potential pathways capable of producing amino acids for replenishing glutathione deficiency in type 2 diabetes**

ANPEP, membrane alanyl aminopeptidase; GGT, gamma-glutamyltransferase; LAP3, cytosol aminopeptidase; DPEP, dipeptidase; ALT, alanine aminotransferase; AST, alanine transaminase; SARDH, sarcosine dehydrogenase; PIPOX, peroxisomal sarcosine oxidase; GCAT, mitochondrial 2-amino-3-ketobutyrate coenzyme A ligase; SHMT, serine hydroxymethyltransferase; AGXT, alanine-glyoxylate aminotransferase; GLS2, liver isoform of glutaminase (mitochondrial); ALDH4A1, Delta-1-pyrroline-5-carboxylate dehydrogenase (mitochondrial); CTH, cystathionine gamma-lyase; CBS, cystathionine  $\beta$ -synthase; TCA, Tricarboxylic acid cycle; L-P5C, L-1-Pyrroline-5-carboxylic acid. A detailed description of the scheme is presented in the main text.

groups to generate products in gluconeogenesis and amino acid metabolism. These enzymes utilize amino acids, such as L-alanine (ALT) and L-aspartate (AST), with 2-oxoglutarate derived from the tricarboxylic acid cycle to produce L-glutamate [100]. Increased plasma levels of these enzymes, regularly detected in type 2 diabetes, have been found to be associated with hyperinsulinemia, decreased insulin sensitivity, and hyperglycemia [101,102]. Moreover, the AST/ALT ratio was found to be negatively associated with type 2 diabetes [103-106]. According to the GWAS catalogue (<https://www.ebi.ac.uk/gwas/home>), the levels of both ALT and AST in the serum are associated with *ANPEP* polymorphisms. We suppose that the increased levels of the liver enzymes reflect an adaptive mechanism in type 2 diabetes aimed at replenishing glutathione deficiency by activating glutamate production for GSH biosynthesis. Cysteine, the second amino acid in the glutathione structure, is produced from the amino acid methionine in the transsulfuration pathway, which converts homocysteine to cysteine. Cystathionine  $\beta$ -synthase (CBS) is a major enzyme in the transsulfuration pathway that catalyzes the condensation of serine and homocysteine to cystathionine through the formation of hydrogen sulfide. Interestingly, the livers of streptozotocin-induced diabetic rats exhibit a marked increase in CBS mRNA levels [107]. A recent experimental study in mice showed that knockout of the CBS gene impairs stimulated insulin secretion and sensitivity [108], suggesting the importance of the transsulfuration pathway in insulin secretion and overall glucose homeostasis. Cystathionine gamma-lyase (CTH) is an enzyme that catalyzes the last step in the transsulfuration pathway by cleaving the L,L-cystathionine molecule into L-cysteine, part of which is utilized for the biosynthesis of glutathione [109]. Our recent study showed up-regulated expression of the *CTH* gene in pancreatic  $\beta$ -cells of T2D patients compared to non-diabetic controls, and the levels of *CTH* were correlated with genes regulating glutathione metabolism and protein folding [23]. Thus, the increased levels of enzymes in the transsulfuration pathway may be of great importance in providing the cell with cysteine for glutathione synthesis. Glycine, the third acid in glutathione, is generated from serine, alanine, threonine, choline, and hydroxyproline through inter-organ metabolism, principally in the liver and kidneys [110]. In particular, it can be formed from alanine and glyoxylate in a reaction catalyzed by the enzyme alanine-glyoxylate aminotransferase (AGXT), serine with the participation of serine hydroxymethyltransferase (SHMT), threonine, and sarcosine (Figure 3). The last reaction is catalyzed by sarcosine dehydrogenase (SARDH) and peroxisomal sarcosine oxidase (PIPOX). According to the TWAS hub database (<http://twas-hub.org>), increased expression of *SARDH* in a variety of human tissues is associated with the diabetic phenotype and was found to be up-regulated (alongside with *Cth*) in the liver of spontaneous diabetic gerbils [111]. Notably, sarcosine is produced by dimethylglycine-dehydrogenase from dimethylglycine, the deficiency of which is observed in type 2 diabetes [112]. Thus, several lines of evidence support the hypothesis that the up-regulation of enzymes producing amino acids such as glutamate, cysteine, and glycine is an adaptive mechanism directed at replenishing glutathione deficiency in type 2 diabetes mellitus.



It is well known that glutathione synthesized in the liver is exported to cells and organs through the blood. Since glutathione cannot enter the cell, membrane-associated enzymes such as gamma-glutamyltransferase, dipeptidase, and alanyl aminopeptidase catabolize glutathione to amino acids, which are then transported into the cell for de novo synthesis of glutathione. According to the UniProt database (<https://www.uniprot.org/>), gamma-glutamyltransferase catalyzes the transfer of gamma-glutamyl functional groups from molecules such as glutathione, glutathione conjugates, and some leukotrienes to an acceptor that may be amino acids, peptides, or water. The metabolism of glutathione by GGT releases free glutamate and the dipeptide cysteinyl-glycine, which are hydrolyzed to cysteine and glycine by dipeptidases (DPEP) and ANPEP and transported into the cell. As mentioned above, increased levels of both GGT and ANPEP have been found in type 2 diabetes mellitus in numerous studies, whereas no study has investigated the expression levels of dipeptidases in type 2 diabetes. LAP3 (leucine aminopeptidase 3) is a cytosolic metallopeptidase that displays a specific Cys-Gly hydrolyzing activity that produces cysteine and glycine from Cys-Gly-S conjugates [113]. No studies have investigated the levels of LAP3 in T2D. However, a recent study [114] showed that increased LAP3 in the rat liver and serum, as well as in humans, is associated with nonalcoholic fatty liver disease (NAFLD), a condition that regularly co-exists with type 2 diabetes [115]. Additionally, serum LAP3 levels were positively correlated with GGT and fasting blood glucose levels [114]. Moreover, according to the TWAS hub database (<http://twas-hub.org>), increased levels of LAP3 in blood and various tissue models are associated with the risk of type 2 diabetes mellitus. In the NAFLD patients, ANPEP was found to be strongly correlated with other liver enzymes, such as AST, GGT and alkaline phosphatase [116]. Notably, changes in the levels of enzymes such as GGT, AST, and ALT coexist in type 2 diabetes mellitus and are usually detected before the clinical manifestation of the disease, indicating that these changes are primary; moreover, Mendelian randomization studies did not support a causal relationship between GGT and the risk of type 2 diabetes [117,118]. Similar results were found for the enzymes AST and ALT [119]. In addition, the relationship between ANPEP expression and plasma albumin levels was found to be positively correlated [60], which suggests that co-expression of these two factors may be advantageous in conditions of glutathione deficiency. In such circumstances, ANPEP utilizes the total protein pool, primarily represented by albumin, as a source of peptides and amino acids necessary for the synthesis of GSH. Thus, we hypothesize that the amino acid and peptide metabolism enzymes discussed above are host-upregulated to replenish the glutathione deficiency existing in type 2 diabetes. This hypothesis is supported by the fact that patients with type 2 diabetes exhibit an endogenous deficiency of two amino acids, cysteine [31,120,121] and glycine [122-125]. These amino acids are consequently utilized in two-step reactions of glutathione biosynthesis catalyzed by glutamate cysteine ligase and glutathione synthetase. Notably, deficiency in these amino acids precedes the development of the disease, suggesting the primary nature of the findings. In contrast, the serum levels of glutamate, the third amino acid in the structure of GSH, were found to

be increased in T2D patients [126-128]. It cannot be ruled out that the excessive formation of glutamate in individuals with T2D is an adaptive response to glutathione deficiency and is caused by increased expression of the liver enzymes AST and ALT.

Our study has some limitations. The current study concentrated on a broad spectrum of functionally significant common *ANPEP* polymorphisms; however, it is not possible to rule out the existence of genetic variants, including those that are rare, which could affect an individual's disease susceptibility independently of the investigated SNPs. Given that polymorphisms associated with T2D are associated not only with the expression of the *ANPEP* gene (eQTL) but also with other genes, such as *MESPI*, *PEX11A*, *AP3S2*, *PLIN1*, *WDR93*, *ARPIN*, *IDH2*, and *U7*, further research, such as that conducted previously [52], should focus on functional studies assessing the phenotypic effects of these SNPs in pancreatic beta cells to identify causative genes. Moreover, further studies in other populations are needed to replicate the observed SNP-disease associations. However, given the heterogeneity of the molecular mechanisms underlying the pathogenesis of type 2 diabetes in different populations worldwide [129], interethnic differences in *ANPEP* polymorphisms associated with disease risk should be expected. Therefore, it is expected that single nucleotide polymorphisms may exhibit weak or moderate phenotypic effects that cannot be replicated in separate populations due to their genetic heterogeneity in minor allele frequencies and linkage disequilibrium between the loci. The limited number of individuals examined for the biochemical variables did not enable us to produce more precise estimates of the connections between *ANPEP* gene variations and both redox homeostasis and intermediate disease phenotypes, such as fasting blood glucose and HbA1c levels. Regrettably, the absence of biochemical data from patients, particularly their plasma levels of *ANPEP* and GGT, impeded our capacity to analyze molecular-biochemical correlations and provide empirical evidence supporting the hypothesis that *ANPEP* is associated with glutathione deficiency in individuals with type 2 diabetes. Although our findings support that *ANPEP* plays an important role in the development of type 2 diabetes, further studies are needed to fully understand the molecular and biochemical mechanisms through which this gene contributes to disease pathogenesis.

The present study generated a hypothesis regarding the role of *ANPEP* in supplying cells with precursor amino acids required for replenishing glutathione deficiency, which appears to be the primary cause of the development and progression of type 2 diabetes mellitus [21]. In turn, polymorphisms of the *ANPEP* gene are associated with susceptibility to type 2 diabetes mellitus and determine inter-individual differences in gene expression, thereby influencing the efficiency of the final stage of extracellular GSH catabolism through the hydrolysis of cysteinyl-glycine derived from the GGT reaction and providing the cells with key amino acids for de novo synthesis of glutathione. The research conducted on the *ANPEP* gene has not only provided insight into its relationship with type 2 diabetes but has also helped to explain the nature and shared roots of the increased levels of GGT, AST, and ALT



enzymes in diabetes. The hypothesis of endogenous deficiency of glutathione in T2D is appealing because it explains both co-existence and shared roots of many disease-associated abnormalities such as mitochondrial dysfunction, increased production of reactive oxygen species, oxidative stress, increased levels of ANPEP, GGT and other liver enzymes, impaired protein folding in the endoplasmic reticulum (ER), ER stress and unfolded protein response regularly observed in diabetics [57].

The traditional explanation of the mechanisms of type 2 diabetes mellitus is based on the initial hypothesis that chronic overnutrition and glucosolipotoxicity are primarily involved in the development of pancreatic beta cell dysfunction and apoptosis [15-20]. However, this hypothesis does not provide an idea of the factors that initiate the cascade of pathological changes in pancreatic  $\beta$ -cells, ultimately leading to apoptosis. We believe that hyperglycemia is a consequence of pancreatic islet cell apoptosis, which is induced by the unfolded protein response pathways due to abnormal protein folding in the endoplasmic reticulum, a condition primarily initiated by disturbances in redox homeostasis and an endogenous deficit of glutathione. Notably, in light of the COVID-19 pandemic, it is important to note that glutathione deficiency was proven by multiple studies as the most likely cause of serious manifestations and death in coronavirus disease [130-135]; thus, it becomes clear why patients with type 2 diabetes mellitus are the most at risk in this group. It is crucial to gain a comprehensive understanding of the relationship between *ANPEP* gene variations, glutathione synthesis, and type 2 diabetes in order to explore potential avenues for correcting disrupted redox homeostasis in patients and to identify scientifically sound interventions for disease prevention and treatment.

#### **CRedit authorship contribution statement**

**Yaroslava Korvyakova:** Investigation, Methodology, Writing – original draft. **Iuliia Azarova:** Resources, Investigation, Formal analysis, Writing – original draft, Funding acquisition. **Elena Klysova:** Investigation, Methodology, Funding acquisition. **Maria Postnikova:** Investigation, Methodology. **Victor Makarenko:** Software, Methodology, Formal analysis. **Olga Bushueva:** Investigation, Methodology. **Maria Solodilova:** Formal analysis, Validation, Funding acquisition. **Alexey Polonikov:** Conceptualization, Supervision, Investigation, Writing – review & editing, Visualization, Project administration and Funding acquisition.

#### **Declaration of competing interest**

The authors declare that they have no known competing financial interests or personal relationships that could have appeared to influence the work reported in this paper.

#### **Data availability**

Data supporting reported results are available upon request.

## Acknowledgments

This research was funded by the Russian Science Foundation under Grant no. 20-15-00227.

We thank all patients with type 2 diabetes and staff of the Kursk Emergency Hospital.

## Supplementary data

**Supplementary Table A:** Single nucleotide polymorphisms of the *ANPEP* gene selected for the study

**Supplementary Table B:** A summary of associations between *ANPEP* gene polymorphisms and T2D risk in the sex-stratified groups

**Supplementary Table C:** Associations of *ANPEP* genotypes with the risk of T2D in the sex-stratified groups

**Supplementary Table D:** Haplotypes of the *ANPEP* gene and their associations with T2D risk in the sex-stratified groups

**Supplementary Table E:** *ANPEP* diplotypes significantly associated with the risk of type 2 diabetes

**Supplementary Table F:** The relationships between *ANPEP* gene polymorphisms and plasma biochemical parameters in diabetic patients

**Supplementary Table G:** The associations of *ANPEP* haplotypes with biochemical blood plasma parameters of T2D patients

**Supplementary Table H:** A replication analysis for associations between *ANPEP* gene polymorphisms and the risk of type 2 diabetes in independent cohorts

**Supplementary Table I:** eQTL (expression Quantitative Trait Loci) analysis of the studied polymorphisms of the *ANPEP* gene

**Supplementary Table J:** Chromatin states and histone marks in pancreatic islets, pancreas and liver for the *ANPEP* polymorphisms associated with type 2 diabetes mellitus.

## References

1. Sun H, Saeedi P, Karuranga S, Pinkepank M, Ogurtsova K, Duncan BB, Stein C, Basit A, Chan JCN, Mbanya JC, Pavkov ME, Ramachandaran A, Wild SH, James S, Herman WH, Zhang P, Bommer C, Kuo S, Boyko EJ, Magliano DJ. IDF Diabetes Atlas: Global, regional and country-level diabetes prevalence estimates for 2021 and projections for 2045. *Diabetes Res Clin Pract.* 2022 Jan;183:109119. doi: 10.1016/j.diabres.2021.109119.
2. Robertson, R.P. (2023). Epidemiology and Pathogenesis of Type 2 Diabetes. In: Gruessner, R.W.G., Gruessner, A.C. (eds) *Transplantation of the Pancreas*. Springer, Cham. [https://doi.org/10.1007/978-3-031-20999-4\\_3](https://doi.org/10.1007/978-3-031-20999-4_3).

3. Galicia-Garcia U, Benito-Vicente A, Jebari S, Larrea-Sebal A, Siddiqi H, Uribe KB, Ostolaza H, Martín C. Pathophysiology of Type 2 Diabetes Mellitus. *Int J Mol Sci*. 2020 Aug 30;21(17):6275. doi: 10.3390/ijms21176275.
4. Porte D Jr, Kahn SE. beta-cell dysfunction and failure in type 2 diabetes: potential mechanisms. *Diabetes*. 2001 Feb;50 Suppl 1:S160-3. doi: 10.2337/diabetes.50.2007.s160.
5. Kaneto H, Kimura T, Shimoda M, Obata A, Sanada J, Fushimi Y, Matsuoka TA, Kaku K. Molecular Mechanism of Pancreatic  $\beta$ -Cell Failure in Type 2 Diabetes Mellitus. *Biomedicines*. 2022 Mar 31;10(4):818. doi: 10.3390/biomedicines10040818.
6. Kwak SH, Park KS. Recent progress in genetic and epigenetic research on type 2 diabetes. *Exp Mol Med*. 2016 Mar 11;48(3):e220. doi: 10.1038/emm.2016.7.
7. Kaul N, Ali S. Genes, Genetics, and Environment in Type 2 Diabetes: Implication in Personalized Medicine. *DNA Cell Biol*. 2016 Jan;35(1):1-12. doi: 10.1089/dna.2015.2883.
8. Chatterjee S, Khunti K, Davies MJ. Type 2 diabetes. *Lancet*. 2017 Jun 3;389(10085):2239-2251. doi: 10.1016/S0140-6736(17)30058-2.
9. Geng T, Huang T. Gene-environment interactions and type 2 diabetes. *Asia Pac J Clin Nutr*. 2020;29(2):220-226. doi: 10.6133/apjcn.202007\_29(2).0002.
10. Nolan CJ, Damm P, Prentki M. Type 2 diabetes across generations: from pathophysiology to prevention and management. *Lancet*. 2011 Jul 9;378(9786):169-81. doi: 10.1016/S0140-6736(11)60614-4.
11. Dendup T, Feng X, Clingan S, Astell-Burt T. Environmental Risk Factors for Developing Type 2 Diabetes Mellitus: A Systematic Review. *Int J Environ Res Public Health*. 2018 Jan 5;15(1):78. doi: 10.3390/ijerph15010078.
12. DeForest N, Majithia AR. Genetics of Type 2 Diabetes: Implications from Large-Scale Studies. *Curr Diab Rep*. 2022 May;22(5):227-235. doi: 10.1007/s11892-022-01462-3.
13. Shojima N, Yamauchi T. Progress in genetics of type 2 diabetes and diabetic complications. *J Diabetes Investig*. 2023 Apr;14(4):503-515. doi: 10.1111/jdi.13970.
14. American Diabetes Association. Diagnosis and classification of diabetes mellitus. *Diabetes Care*. 2014 Jan;37 Suppl 1:S81-90. doi: 10.2337/dc14-S081.
15. Shrestha N, De Franco E, Arvan P, Cnop M. Pathological  $\beta$ -Cell Endoplasmic Reticulum Stress in Type 2 Diabetes: Current Evidence. *Front Endocrinol (Lausanne)*. 2021 Apr 22;12:650158. doi: 10.3389/fendo.2021.650158.
16. Vilas-Boas EA, Almeida DC, Roma LP, Ortis F, Carpinelli AR. Lipotoxicity and  $\beta$ -Cell Failure in Type 2 Diabetes: Oxidative Stress Linked to NADPH Oxidase and ER Stress. *Cells*. 2021 Nov 26;10(12):3328. doi: 10.3390/cells10123328.

17. Kaiser N, Leibowitz G, Nesher R. Glucotoxicity and beta-cell failure in type 2 diabetes mellitus. *J Pediatr Endocrinol Metab.* 2003 Jan;16(1):5-22. doi: 10.1515/jpem.2003.16.1.5.
18. Ma ZA, Zhao Z, Turk J. Mitochondrial dysfunction and  $\beta$ -cell failure in type 2 diabetes mellitus. *Exp Diabetes Res.* 2012;2012:703538. doi: 10.1155/2012/703538.
19. Eguchi K, Nagai R. Islet inflammation in type 2 diabetes and physiology. *J Clin Invest.* 2017 Jan 3;127(1):14-23. doi: 10.1172/JCI88877.
20. Drews G, Krippeit-Drews P, Düfer M. Oxidative stress and beta-cell dysfunction. *Pflugers Arch.* 2010 Sep;460(4):703-18. doi: 10.1007/s00424-010-0862-9.
21. Azarova I, Klyosova E, Polonikov A. The Link between Type 2 Diabetes Mellitus and the Polymorphisms of Glutathione-Metabolizing Genes Suggests a New Hypothesis Explaining Disease Initiation and Progression. *Life (Basel).* 2021a Aug 28;11(9):886. doi: 10.3390/life11090886.
22. Azarova I, Polonikov A, Klyosova E. Molecular Genetics of Abnormal Redox Homeostasis in Type 2 Diabetes Mellitus. *Int J Mol Sci.* 2023a Mar 1;24(5):4738. doi: 10.3390/ijms24054738.
23. Klyosova E, Azarova I, Buikin S, Polonikov A. Differentially Expressed Genes Regulating Glutathione Metabolism, Protein-Folding, and Unfolded Protein Response in Pancreatic  $\beta$ -Cells in Type 2 Diabetes Mellitus. *Int J Mol Sci.* 2023b Jul 27;24(15):12059. doi: 10.3390/ijms241512059.
24. Forman HJ, Zhang H, Rinna A. Glutathione: overview of its protective roles, measurement, and biosynthesis. *Mol Aspects Med.* 2009 Feb-Apr;30(1-2):1-12. doi: 10.1016/j.mam.2008.08.006.
25. Wu G, Fang YZ, Yang S, Lupton JR, Turner ND. Glutathione metabolism and its implications for health. *J Nutr.* 2004 Mar;134(3):489-92. doi: 10.1093/jn/134.3.489.
26. Pizzorno J. Glutathione! *Integr Med (Encinitas).* 2014 Feb;13(1):8-12.
27. Murakami K, Kondo T, Ohtsuka Y, Fujiwara Y, Shimada M, Kawakami Y. Impairment of glutathione metabolism in erythrocytes from patients with diabetes mellitus. *Metabolism.* 1989 Aug;38(8):753-8. doi: 10.1016/0026-0495(89)90061-9.
28. Yoshida K, Hirokawa J, Tagami S, Kawakami Y, Urata Y, Kondo T. Weakened cellular scavenging activity against oxidative stress in diabetes mellitus: regulation of glutathione synthesis and efflux. *Diabetologia.* 1995 Feb;38(2):201-10. doi: 10.1007/BF00400095.
29. Aaseth J, Stoa-Birketvedt G (2000) Glutathione in overweight patients with poorly controlled type 2 diabetes. *J Trace Elem Exp Med* 13(1):105–111. doi: 10.1002/(SICI)1520-670X(2000)13:1<105::AID-JTRA12>3.0.CO;2-B.

30. Sharma A, Kharb S, Chugh SN, Kakkar R, Singh GP. Evaluation of oxidative stress before and after control of glycemia and after vitamin E supplementation in diabetic patients. *Metabolism*. 2000 Feb;49(2):160-2. doi: 10.1016/s0026-0495(00)91117-x.
31. Sekhar RV, McKay SV, Patel SG, Guthikonda AP, Reddy VT, Balasubramanyam A, Jahoor F. Glutathione synthesis is diminished in patients with uncontrolled diabetes and restored by dietary supplementation with cysteine and glycine. *Diabetes Care*. 2011 Jan;34(1):162-7. doi: 10.2337/dc10-1006.
32. Calabrese V, Cornelius C, Leso V, Trovato-Salinaro A, Ventimiglia B, Cavallaro M, Scuto M, Rizza S, Zanolli L, Neri S, Castellino P. Oxidative stress, glutathione status, sirtuin and cellular stress response in type 2 diabetes. *Biochim Biophys Acta*. 2012 May;1822(5):729-36. doi: 10.1016/j.bbadis.2011.12.003.
33. Furfaro AL, Nitti M, Marengo B, Domenicotti C, Cottalasso D, Marinari UM, Pronzato MA, Traverso N. Impaired synthesis contributes to diabetes-induced decrease in liver glutathione. *Int J Mol Med*. 2012 May;29(5):899-905. doi: 10.3892/ijmm.2012.915.
34. Lutchmansingh FK, Hsu JW, Bennett FI, Badaloo AV, McFarlane-Anderson N, Gordon-Strachan GM, Wright-Pascoe RA, Jahoor F, Boyne MS. Glutathione metabolism in type 2 diabetes and its relationship with microvascular complications and glycemia. *PLoS One*. 2018 Jun 7;13(6):e0198626. doi: 10.1371/journal.pone.0198626.
35. Tuell D, Ford G, Los E, Stone W. The Role of Glutathione and Its Precursors in Type 2 Diabetes. *Antioxidants (Basel)*. 2024 Feb 1;13(2):184. doi: 10.3390/antiox13020184.
36. Marí M, de Gregorio E, de Dios C, Roca-Agüetas V, Cucarull B, Tutusaus A, Morales A, Colell A. Mitochondrial Glutathione: Recent Insights and Role in Disease. *Antioxidants (Basel)*. 2020 Sep 24;9(10):909. doi: 10.3390/antiox9100909.
37. Kalamkar S, Acharya J, Kolappurath Madathil A, Gajjar V, Divate U, Karandikar-Iyer S, Goel P, Ghaskadbi S. Randomized Clinical Trial of How Long-Term Glutathione Supplementation Offers Protection from Oxidative Damage and Improves HbA1c in Elderly Type 2 Diabetic Patients. *Antioxidants (Basel)*. 2022 May 23;11(5):1026. doi: 10.3390/antiox11051026.
38. Zhang J, An H, Ni K, Chen B, Li H, Li Y, Sheng G, Zhou C, Xie M, Chen S, Zhou T, Yang G, Chen X, Wu G, Jin S, Li M. Glutathione prevents chronic oscillating glucose intake-induced  $\beta$ -cell dedifferentiation and failure. *Cell Death Dis*. 2019 Apr 11;10(4):321. doi: 10.1038/s41419-019-1552-y.
39. Khamaisi M, Kavel O, Rosenstock M, Porat M, Yuli M, Kaiser N, Rudich A. Effect of inhibition of glutathione synthesis on insulin action: in vivo and in vitro studies using buthionine sulfoximine. *Biochem J*. 2000 Jul 15;349(Pt 2):579-86. doi: 10.1042/bj3490579.

40. Paolisso G, Giugliano D, Pizza G, Gambardella A, Tesouro P, Varricchio M, D'Onofrio F. Glutathione infusion potentiates glucose-induced insulin secretion in aged patients with impaired glucose tolerance. *Diabetes Care*. 1992 Jan;15(1):1-7. doi: 10.2337/diacare.15.1.1.
41. Liu X, Han S, Yang Y, Kang J, Wu J. Glucose-induced glutathione reduction in mitochondria is involved in the first phase of pancreatic  $\beta$ -cell insulin secretion. *Biochem Biophys Res Commun*. 2015 Aug 28;464(3):730-6. doi: 10.1016/j.bbrc.2015.07.016.
42. De Mattia G, Bravi MC, Laurenti O, Cassone-Faldetta M, Armiento A, Ferri C, Balsano F. Influence of reduced glutathione infusion on glucose metabolism in patients with non-insulin-dependent diabetes mellitus. *Metabolism*. 1998 Aug;47(8):993-7. doi: 10.1016/s0026-0495(98)90357-2.
43. Søndergård SD, Cintin I, Kuhlman AB, Morville TH, Bergmann ML, Kjær LK, Poulsen HE, Giustarini D, Rossi R, Dela F, Helge JW, Larsen S. The effects of 3 weeks of oral glutathione supplementation on whole body insulin sensitivity in obese males with and without type 2 diabetes: a randomized trial. *Appl Physiol Nutr Metab*. 2021 Sep;46(9):1133-1142. doi: 10.1139/apnm-2020-1099.
44. Azarova I, Klyosova E, Lazarenko V, Konoplya A, Polonikov A. Genetic variants in glutamate cysteine ligase confer protection against type 2 diabetes. *Mol Biol Rep*. 2020a Aug;47(8):5793-5805. doi: 10.1007/s11033-020-05647-5.
45. Azarova, I.E.; Klyosova, E.Y.; Churilin, M.I.; Samgina, T.A.; Konoplya, A.I.; Polonikov, A.V. Genetic and biochemical investigation of the gamma-glutamylcyclotransferase role in predisposition to type 2 diabetes mellitus. *Ecol. Genet*. 2020b, 18, 215–228.
46. Azarova IE, Klyosova EY, Polonikov AV. [Polymorphic variants of glutathione reductase - new genetic markers of predisposition to type 2 diabetes mellitus]. *Ter Arkh*. 2021b Oct 15;93(10):1164-1170. Russian. doi: 10.26442/00403660.2021.10.201101.
47. Fu J, Cui Q, Yang B, Hou Y, Wang H, Xu Y, Wang D, Zhang Q, Pi J. The impairment of glucose-stimulated insulin secretion in pancreatic  $\beta$ -cells caused by prolonged glucotoxicity and lipotoxicity is associated with elevated adaptive antioxidant response. *Food Chem Toxicol*. 2017 Feb;100:161-167. doi: 10.1016/j.fct.2016.12.016.
48. Turner AJ. Aminopeptidase N. *Handbook of Proteolytic Enzymes*. 2013:397–403. doi: 10.1016/B978-0-12-382219-2.00079-X.
49. Uehara N, Fujita M, Shimizu T. Colorimetric assay of aminopeptidase N activity based on inhibition of the disassembly of gold nano-composites conjugated with a thermo-responsive copolymer. *Anal Sci*. 2009 Feb;25(2):267-73. doi: 10.2116/analsci.25.267.

50. Marselli L, Thorne J, Dahiya S, Sgroi DC, Sharma A, Bonner-Weir S, Marchetti P, Weir GC. Gene expression profiles of Beta-cell enriched tissue obtained by laser capture microdissection from subjects with type 2 diabetes. *PLoS One*. 2010 Jul 13;5(7):e11499. doi: 10.1371/journal.pone.0011499.
51. Kooner, J. S., Saleheen, D., Sim, X., Sehmi, J., Zhang, W., Frossard, P., et al. Genome-wide association study in individuals of South Asian ancestry identifies six new type 2 diabetes susceptibility loci. *Nat. Genet.* 2011; 43, 984–989. doi: 10.1038/ng.921
52. Locke JM, Hysenaj G, Wood AR, Weedon MN, Harries LW. Targeted allelic expression profiling in human islets identifies cis-regulatory effects for multiple variants identified by type 2 diabetes genome-wide association studies. *Diabetes*. 2015 Apr;64(4):1484-91. doi: 10.2337/db14-0957.
53. Pedersen HK, Gudmundsdottir V, Brunak S. Pancreatic Islet Protein Complexes and Their Dysregulation in Type 2 Diabetes. *Front Genet.* 2017 Apr 20;8:43. doi: 10.3389/fgene.2017.00043.
54. Klysova EYu, Azarova IE, Sunyaykina OA, et al. Validity of a brief screener for environmental risk factors of age-related diseases using type 2 diabetes and coronary artery disease as examples. *Research Results in Biomedicine*. 2022;8(1):130-137. Russian. DOI: 10.18413/2658-6533-2022-8-1-0-10.
55. World Health Organization. (2016). Global report on diabetes: executive summary (No. WHO/NMH/NVI/16.3). World Health Organization.
56. Azarova I.E., Klysova E.Y., Kolomoets I.I., Ivakin V.E., Konoplya A.I., Polonikov A.V., Azarova V.A. Polymorphisms of the gene encoding cytochrome b-245 beta chain of nadph oxidase: relationship with redox homeostasis markers and risk of type 2 diabetes mellitus *Russian Journal of Genetics*. 2020. T. 56. № 7. C. 856-862. DOI: 10.31857/S0016675820070012.
57. Azarova I, Klysova E, Polonikov A. Association between RAC1 gene variation, redox homeostasis and type 2 diabetes mellitus. *Eur J Clin Invest*. 2022 Aug;52(8):e13792. doi: 10.1111/eci.13792.
58. Purcell S, Neale B, Todd-Brown K, Thomas L, Ferreira MA, Bender D, Maller J, Sklar P, de Bakker PI, Daly MJ, Sham PC. PLINK: a tool set for whole-genome association and population-based linkage analyses. *Am J Hum Genet*. 2007 Sep;81(3):559-75. doi: 10.1086/519795.
59. Barrett JC, Fry B, Maller J, Daly MJ. Haploview: analysis and visualization of LD and haplotype maps. *Bioinformatics*. 2005 Jan 15;21(2):263-5. doi: 10.1093/bioinformatics/bth457.
60. Mina-Osorio P. The moonlighting enzyme CD13: old and new functions to target. *Trends Mol Med*. 2008 Aug;14(8):361-71. doi: 10.1016/j.molmed.2008.06.003.
61. Favalaro EJ, Browning T, Facey D. CD13 (GP150; aminopeptidase-N): predominant functional activity in blood is localized to plasma and is not cell-surface associated. *Exp Hematol*. 1993 Dec;21(13):1695-701.



62. Jung K, Pergande M, Wischke UW. Characterization of particulate and soluble variants of the brush-border enzymes alanine aminopeptidase, alkaline phosphatase and gamma-glutamyltransferase in human urine. *Biomed Biochim Acta*. 1984;43(12):1357-64.
63. Lendeckel, U.; Bukowska, A.; Laettig, J.H.; Brandt, W. Alanyl-aminopeptidases in human T cells. *Structures and functions* (2004), *Aminopeptidases in Biology and Disease* (Hooper, N. M. ; Lendeckel, U. , eds. ), 2, 201-227.
64. Bauvois B, Dauzonne D. Aminopeptidase-N/CD13 (EC 3.4.11.2) inhibitors: chemistry, biological evaluations, and therapeutic prospects. *Med Res Rev*. 2006 Jan;26(1):88-130. doi: 10.1002/med.20044.
65. Cowburn AS, Sobolewski A, Reed BJ, Deighton J, Murray J, Cadwallader KA, Bradley JR, Chilvers ER. Aminopeptidase N (CD13) regulates tumor necrosis factor-alpha-induced apoptosis in human neutrophils. *J Biol Chem*. 2006 May 5;281(18):12458-67. doi: 10.1074/jbc.M511277200.
66. Luan Y, Xu W. The structure and main functions of aminopeptidase N. *Curr Med Chem*. 2007;14(6):639-47. doi: 10.2174/092986707780059571.
67. Semenza G. Chromatographic purification of cysteinyl-glycinase. *Biochim Biophys Acta*. 1957a May;24(2):401-13. doi: 10.1016/0006-3002(57)90212-3.
68. Morris AP, Voight BF, Teslovich TM, Ferreira T, Segrè AV, Steinthorsdottir V, Strawbridge RJ, Khan H, Grallert H, Mahajan A, Prokopenko I, Kang HM, Dina C, Esko T, Fraser RM, Kanoni S, Kumar A, Lagou V, Langenberg C, Luan J, Lindgren CM, Müller-Nurasyid M, Pechlivanis S, Rayner NW, Scott LJ, Wiltshire S, Yengo L, Kinnunen L, Rossin EJ, Raychaudhuri S, Johnson AD, Dimas AS, Loos RJ, Vedantam S, Chen H, Florez JC, Fox C, Liu CT, Rybin D, Couper DJ, Kao WH, Li M, Cornelis MC, Kraft P, Sun Q, van Dam RM, Stringham HM, Chines PS, Fischer K, Fontanillas P, Holmen OL, Hunt SE, Jackson AU, Kong A, Lawrence R, Meyer J, Perry JR, Platou CG, Potter S, Rehnberg E, Robertson N, Sivapalaratnam S, Stančáková A, Stirrups K, Thorleifsson G, Tikkanen E, Wood AR, Almgren P, Atalay M, Benediktsson R, Bonnycastle LL, Burt N, Carey J, Charpentier G, Crenshaw AT, Doney AS, Dorkhan M, Edkins S, Emilsson V, Eury E, Forsen T, Gertow K, Gigante B, Grant GB, Groves CJ, Guiducci C, Herder C, Hreidarsson AB, Hui J, James A, Jonsson A, Rathmann W, Klopp N, Kravic J, Krjutškov K, Langford C, Leander K, Lindholm E, Lobbens S, Männistö S, Mirza G, Mühleisen TW, Musk B, Parkin M, Rallidis L, Saramies J, Sennblad B, Shah S, Sigurðsson G, Silveira A, Steinbach G, Thorand B, Trakalo J, Veglia F, Wennauer R, Winckler W, Zabaneh D, Campbell H, van Duijn C, Uitterlinden AG, Hofman A, Sijbrands E, Abecasis GR, Owen KR, Zeggini E, Trip MD, Forouhi NG, Syvänen AC, Eriksson JG, Peltonen L, Nöthen MM, Balkau B, Palmer CN, Lyssenko V, Tuomi T, Isomaa B, Hunter DJ, Qi L; Wellcome Trust Case Control Consortium; Meta-Analyses of Glucose and Insulin-related traits Consortium (MAGIC) Investigators; Genetic Investigation of ANthropometric Traits (GIANT) Consortium; Asian Genetic Epidemiology Network–Type 2

Diabetes (AGEN-T2D) Consortium; South Asian Type 2 Diabetes (SAT2D) Consortium; Shuldiner AR, Roden M, Barroso I, Wilsgaard T, Beilby J, Hovingh K, Price JF, Wilson JF, Rauramaa R, Lakka TA, Lind L, Dedoussis G, Njølstad I, Pedersen NL, Khaw KT, Wareham NJ, Keinanen-Kiukaanniemi SM, Saaristo TE, Korpi-Hyövälti E, Saltevo J, Laakso M, Kuusisto J, Metspalu A, Collins FS, Mohlke KL, Bergman RN, Tuomilehto J, Boehm BO, Gieger C, Hveem K, Cauchi S, Froguel P, Baldassarre D, Tremoli E, Humphries SE, Saleheen D, Danesh J, Ingelsson E, Ripatti S, Salomaa V, Erbel R, Jöckel KH, Moebus S, Peters A, Illig T, de Faire U, Hamsten A, Morris AD, Donnelly PJ, Frayling TM, Hattersley AT, Boerwinkle E, Melander O, Kathiresan S, Nilsson PM, Deloukas P, Thorsteinsdottir U, Groop LC, Stefansson K, Hu F, Pankow JS, Dupuis J, Meigs JB, Altshuler D, Boehnke M, McCarthy MI; DIAbetes Genetics Replication And Meta-analysis (DIAGRAM) Consortium. Large-scale association analysis provides insights into the genetic architecture and pathophysiology of type 2 diabetes. *Nat Genet.* 2012 Sep;44(9):981-90. doi: 10.1038/ng.2383.

69. Xue A, Wu Y, Zhu Z, Zhang F, Kemper KE, Zheng Z, Yengo L, Lloyd-Jones LR, Sidorenko J, Wu Y; eQTLGen Consortium; McRae AF, Visscher PM, Zeng J, Yang J. Genome-wide association analyses identify 143 risk variants and putative regulatory mechanisms for type 2 diabetes. *Nat Commun.* 2018 Jul 27;9(1):2941. doi: 10.1038/s41467-018-04951-w.

70. Volkmar, M., Dedeurwaerder, S., Cunha, D. A., Ndlovu, M. N., Defrance, M., Deplus, R., et al. (2012). DNA methylation profiling identifies epigenetic dysregulation in pancreatic islets from type 2 diabetic patients. *EMBO J.* 31, 1405–1426. doi: 10.1038/emboj.2011.503

71. Ligthart S, Steenaard RV, Peters MJ, van Meurs JB, Sijbrands EJ, Uitterlinden AG, Bonder MJ; BIOS consortium; Hofman A, Franco OH, Dehghan A. Tobacco smoking is associated with DNA methylation of diabetes susceptibility genes. *Diabetologia.* 2016 May;59(5):998-1006. doi: 10.1007/s00125-016-3872-0.

72. Wang Y, Li X, Hu H. H3K4me2 reliably defines transcription factor binding regions in different cells. *Genomics.* 2014 Feb-Mar;103(2-3):222-8. doi: 10.1016/j.ygeno.2014.02.002.

73. Wood AR, Jonsson A, Jackson AU, Wang N, van Leewen N, Palmer ND, Kobes S, Deelen J, Boquete-Vilarino L, Paananen J, Stančáková A, Boomsma DI, de Geus EJC, Eekhoff EMW, Fritsche A, Kramer M, Nijpels G, Simonis-Bik A, van Haften TW, Mahajan A, Boehnke M, Bergman RN, Tuomilehto J, Collins FS, Mohlke KL, Banasik K, Groves CJ, McCarthy MI; Diabetes Research on Patient Stratification (DIRECT); Pearson ER, Natali A, Mari A, Buchanan TA, Taylor KD, Xiang AH, Gjesing AP, Grarup N, Eiberg H, Pedersen O, Chen YD, Laakso M, Norris JM, Smith U, Wagenknecht LE, Baier L, Bowden DW, Hansen T, Walker M, Watanabe RM, 't Hart LM, Hanson RL, Frayling TM. A Genome-Wide Association Study of IVGTT-Based Measures of First-Phase Insulin Secretion Refines the Underlying Physiology of Type 2 Diabetes Variants. *Diabetes.* 2017 Aug;66(8):2296-2309. doi: 10.2337/db16-1452.

74. Kazakova EV, Zghuang T, Li T, Fang Q, Han J, Qiao H. The Gas6 gene rs8191974 and Ap3s2 gene rs2028299 are associated with type 2 diabetes in the northern Chinese Han population. *Acta Biochim Pol.* 2017;64(2):227-231. doi: 10.18388/abp.2016\_1299.
75. Fukuda H, Imamura M, Tanaka Y, Iwata M, Hirose H, Kaku K, Maegawa H, Watada H, Tobe K, Kashiwagi A, Kawamori R, Maeda S. A single nucleotide polymorphism within DUSP9 is associated with susceptibility to type 2 diabetes in a Japanese population. *PLoS One.* 2012;7(9):e46263. doi: 10.1371/journal.pone.0046263.
76. Buenrostro JD, Wu B, Chang HY, Greenleaf WJ. ATAC-seq: A Method for Assaying Chromatin Accessibility Genome-Wide. *Curr Protoc Mol Biol.* 2015 Jan 5;109:21.29.1-21.29.9. doi: 10.1002/0471142727.mb2129s109.
77. Rada-Iglesias A. Is H3K4me1 at enhancers correlative or causative? *Nat Genet.* 2018 Jan;50(1):4-5. doi: 10.1038/s41588-017-0018-3.
78. Song L, Crawford GE. DNase-seq: a high-resolution technique for mapping active gene regulatory elements across the genome from mammalian cells. *Cold Spring Harb Protoc.* 2010 Feb;2010(2):pdb.prot5384. doi: 10.1101/pdb.prot5384.
79. Dang I, Gorelik R, Sousa-Blin C, Derivery E, Guérin C, Linkner J, Nemethova M, Dumortier JG, Giger FA, Chipysheva TA, Ermilova VD, Vacher S, Campanacci V, Herrada I, Planson AG, Fetics S, Henriot V, David V, Oguievetskaia K, Lakisic G, Pierre F, Steffen A, Boyreau A, Peyriéras N, Rottner K, Zinn-Justin S, Cherfils J, Bièche I, Alexandrova AY, David NB, Small JV, Faix J, Blanchoin L, Gautreau A. Inhibitory signalling to the Arp2/3 complex steers cell migration. *Nature.* 2013 Nov 14;503(7475):281-4. doi: 10.1038/nature12611.
80. Kalwat MA, Thurmond DC. Signaling mechanisms of glucose-induced F-actin remodeling in pancreatic islet  $\beta$ -cells. *Exp Mol Med.* 2013 Aug 23;45(8):e37. doi: 10.1038/emm.2013.73.
81. Chen C, Wang H, Chen B, Chen D, Lu C, Li H, Qian Y, Tan Y, Weng H, Cai L. Pex11a deficiency causes dyslipidaemia and obesity in mice. *J Cell Mol Med.* 2019 Mar;23(3):2020-2031. doi: 10.1111/jcmm.14108.
82. Mowry KL, Steitz JA. Identification of the human U7 snRNP as one of several factors involved in the 3' end maturation of histone pre-messenger RNA's. *Science.* 1987 Dec 18;238(4834):1682-7. doi: 10.1126/science.2825355.
83. Yu W, Dittenhafer-Reed KE, Denu JM. SIRT3 protein deacetylates isocitrate dehydrogenase 2 (IDH2) and regulates mitochondrial redox status. *J Biol Chem.* 2012 Apr 20;287(17):14078-86. doi: 10.1074/jbc.M112.355206.

84. Xu Y, Liu L, Nakamura A, Someya S, Miyakawa T, Tanokura M. Studies on the regulatory mechanism of isocitrate dehydrogenase 2 using acetylation mimics. *Sci Rep*. 2017 Aug 29;7(1):9785. doi: 10.1038/s41598-017-10337-7.
85. MacDonald MJ, Brown LJ, Longacre MJ, Stoker SW, Kendrick MA, Hasan NM. Knockdown of both mitochondrial isocitrate dehydrogenase enzymes in pancreatic beta cells inhibits insulin secretion. *Biochim Biophys Acta*. 2013 Nov;1830(11):5104-11. doi: 10.1016/j.bbagen.2013.07.013.
86. Kalas MA, Chavez L, Leon M, Taweeseedt PT, Surani S. Abnormal liver enzymes: A review for clinicians. *World J Hepatol*. 2021 Nov 27;13(11):1688-1698. doi: 10.4254/wjh.v13.i11.1688.
87. Lee DH, Silventoinen K, Jacobs DR Jr, Jousilahti P, Tuomileto J. Gamma-glutamyltransferase, obesity, and the risk of type 2 diabetes: observational cohort study among 20,158 middle-aged men and women. *J Clin Endocrinol Metab*. 2004 Nov;89(11):5410-4. doi: 10.1210/jc.2004-0505.
88. Sabanayagam C, Shankar A, Li J, Pollard C, Ducatman A. Serum gamma-glutamyl transferase level and diabetes mellitus among US adults. *Eur J Epidemiol*. 2009;24(7):369-73. doi: 10.1007/s10654-009-9346-7.
89. Kunutsor SK, Abbasi A, Adler AI. Gamma-glutamyl transferase and risk of type II diabetes: an updated systematic review and dose-response meta-analysis. *Ann Epidemiol*. 2014 Nov;24(11):809-16. doi: 10.1016/j.annepidem.2014.09.001.
90. Anupam S, Goel S, Bhatti K, Mehta DK, Das R. Serum Gamma Glutamyl Transferase: Understanding its Contribution as a Potential Predictor of the Occurrence of Type 2 Diabetes. *Curr Diabetes Rev*. 2024 Jan 24. doi: 10.2174/0115733998260996231122054907.
91. Vozarova B, Stefan N, Lindsay RS, Saremi A, Pratley RE, Bogardus C, Tataranni PA. High alanine aminotransferase is associated with decreased hepatic insulin sensitivity and predicts the development of type 2 diabetes. *Diabetes*. 2002 Jun;51(6):1889-95. doi: 10.2337/diabetes.51.6.1889.
92. Schindhelm RK, Diamant M, Bakker SJ, van Dijk RA, Scheffer PG, Teerlink T, Kostense PJ, Heine RJ. Liver alanine aminotransferase, insulin resistance and endothelial dysfunction in normotriglyceridaemic subjects with type 2 diabetes mellitus. *Eur J Clin Invest*. 2005 Jun;35(6):369-74. doi: 10.1111/j.1365-2362.2005.01502.x.
93. Fraser A, Harris R, Sattar N, Ebrahim S, Davey Smith G, Lawlor DA. Alanine aminotransferase, gamma-glutamyltransferase, and incident diabetes: the British Women's Heart and Health Study and meta-analysis. *Diabetes Care*. 2009 Apr;32(4):741-50. doi: 10.2337/dc08-1870.
94. Chen SC, Tsai SP, Jhao JY, Jiang WK, Tsao CK, Chang LY. Liver Fat, Hepatic Enzymes, Alkaline Phosphatase and the Risk of Incident Type 2 Diabetes: A Prospective Study of 132,377 Adults. *Sci Rep*. 2017 Jul 5;7(1):4649. doi: 10.1038/s41598-017-04631-7

95. Lan Q, Zhang Y, Lin F, Meng Q, Buys NJ, Fan H, Sun J. Association Between Serum Aminotransferases and Risk of New-Onset Cardiometabolic Disease in a Healthy Chinese Population: A Cohort Study. *Front Public Health*. 2022 Jun 9;10:902393. doi: 10.3389/fpubh.2022.902393.
96. Ding L, Fan L, Xu X, Fu J, Xue Y. Identification of core genes and pathways in type 2 diabetes mellitus by bioinformatics analysis. *Mol Med Rep*. 2019 Sep;20(3):2597-2608. doi: 10.3892/mmr.2019.10522.
97. Neuschwander-Tetri BA, Presti ME, Wells LD. Glutathione synthesis in the exocrine pancreas. *Pancreas*. 1997 May;14(4):342-9. doi: 10.1097/00006676-199705000-00003.
98. Lu SC. Regulation of glutathione synthesis. *Mol Aspects Med*. 2009 Feb-Apr;30(1-2):42-59. doi: 10.1016/j.mam.2008.05.005.
99. Lu SC. Glutathione synthesis. *Biochim Biophys Acta*. 2013 May;1830(5):3143-53. doi: 10.1016/j.bbagen.2012.09.008.
100. Shen H, Damcott C, Shuldiner SR, Chai S, Yang R, Hu H, Gibson Q, Ryan KA, Mitchell BD, Gong DW. Genome-wide association study identifies genetic variants in GOT1 determining serum aspartate aminotransferase levels. *J Hum Genet*. 2011 Nov;56(11):801-5. doi: 10.1038/jhg.2011.105.
101. Esteghamati A, Noshad S, Khalilzadeh O, Khalili M, Zandieh A, Nakhjavani M. Insulin resistance is independently associated with liver aminotransferases in diabetic patients without ultrasound signs of nonalcoholic fatty liver disease. *Metab Syndr Relat Disord*. 2011 Apr;9(2):111-7. doi: 10.1089/met.2010.0066.
102. Huang LL, Guo DH, Xu HY, Tang ST, Wang XX, Jin YP, Wang P. Association of liver enzymes levels with fasting plasma glucose levels in Southern China: a cross-sectional study. *BMJ Open*. 2019 Oct 18;9(10):e025524. doi: 10.1136/bmjopen-2018-025524.
103. Kunutsor SK, Abbasi A, Apekey TA. Aspartate aminotransferase - risk marker for type-2 diabetes mellitus or red herring? *Front Endocrinol (Lausanne)*. 2014 Nov 4;5:189. doi: 10.3389/fendo.2014.00189.
104. Chen L, Zhang K, Li X, Wu Y, Liu Q, Xu L, Li L, Hu H. Association Between Aspartate Aminotransferase to Alanine Aminotransferase Ratio and Incidence of Type 2 Diabetes Mellitus in the Japanese Population: A Secondary Analysis of a Retrospective Cohort Study. *Diabetes Metab Syndr Obes*. 2021 Nov 9;14:4483-4495. doi: 10.2147/DMSO.S337416
105. Xie W, Yu W, Chen S, Ma Z, Yang T, Song Z. Low aspartate aminotransferase/alanine aminotransferase (DeRitis) ratio assists in predicting diabetes in Chinese population. *Front Public Health*. 2022 Nov 2;10:1049804. doi: 10.3389/fpubh.2022.1049804.
106. Wang X, Li H, Ji L, Cang J, Zhao H. Association between aspartate aminotransferase to alanine aminotransferase ratio and the risk of diabetes in Chinese prediabetic population: A retrospective cohort study. *Front Public Health*. 2023 Jan 4;10:1045141. doi: 10.3389/fpubh.2022.1045141.

107. Ratnam S, Maclean KN, Jacobs RL, Brosnan ME, Kraus JP, Brosnan JT. Hormonal regulation of cystathionine beta-synthase expression in liver. *J Biol Chem*. 2002 Nov 8;277(45):42912-8. doi: 10.1074/jbc.M206588200.
108. Cruciani-Guglielmacci C, Meneyrol K, Denom J, Kassis N, Rachdi L, Makaci F, Migrenne-Li S, Daubigney F, Georgiadou E, Denis RG, Rodriguez Sanchez-Archidona A, Paul JL, Thorens B, Rutter GA, Magnan C, Le Stunff H, Janel N. Homocysteine Metabolism Pathway Is Involved in the Control of Glucose Homeostasis: A Cystathionine Beta Synthase Deficiency Study in Mouse. *Cells*. 2022 May 25;11(11):1737. doi: 10.3390/cells11111737.
109. Zhu W, Lin A, Banerjee R. Kinetic properties of polymorphic variants and pathogenic mutants in human cystathionine gamma-lyase. *Biochemistry*. 2008 Jun 10;47(23):6226-32. doi: 10.1021/bi800351a.
110. Wang W, Wu Z, Dai Z, Yang Y, Wang J, Wu G. Glycine metabolism in animals and humans: implications for nutrition and health. *Amino Acids*. 2013 Sep;45(3):463-77. doi: 10.1007/s00726-013-1493-1.
111. Gong J, Du X, Li Z, Li X, Guo M, Lu J, Wang Y, Chen Z, Li C. Differential expression of genes identified by suppression subtractive hybridization in liver and adipose tissue of gerbils with diabetes. *PLoS One*. 2018 Feb 2;13(2):e0191212. doi: 10.1371/journal.pone.0191212.
112. Magnusson M, Wang TJ, Clish C, Engström G, Nilsson P, Gerszten RE, Melander O. Dimethylglycine Deficiency and the Development of Diabetes. *Diabetes*. 2015 Aug;64(8):3010-6. doi: 10.2337/db14-1863.
113. Matsushima M, Takahashi T, Ichinose M, Miki K, Kurokawa K, Takahashi K. Structural and immunological evidence for the identity of prolyl aminopeptidase with leucyl aminopeptidase. *Biochem Biophys Res Commun*. 1991 Aug 15;178(3):1459-64. doi: 10.1016/0006-291x(91)91057-j.
114. Feng L, Chen Y, Xu K, Li Y, Riaz F, Lu K, Chen Q, Du X, Wu L, Cao D, Li C, Lu S, Li D. Cholesterol-induced leucine aminopeptidase 3 (LAP3) upregulation inhibits cell autophagy in pathogenesis of NAFLD. *Aging (Albany NY)*. 2022 Apr 11;14(7):3259-3275. doi: 10.18632/aging.204011.
115. Hazlehurst JM, Woods C, Marjot T, Cobbold JF, Tomlinson JW. Non-alcoholic fatty liver disease and diabetes. *Metabolism*. 2016 Aug;65(8):1096-108. doi: 10.1016/j.metabol.2016.01.001.
116. Niu L, Geyer PE, Wewer Albrechtsen NJ, Gluud LL, Santos A, Doll S, Treit PV, Holst JJ, Knop FK, Vilsbøll T, Junker A, Sachs S, Stemmer K, Müller TD, Tschöp MH, Hofmann SM, Mann M. Plasma proteome profiling discovers novel proteins associated with non-alcoholic fatty liver disease. *Mol Syst Biol*. 2019 Mar 1;15(3):e8793. doi: 10.15252/msb.20188793.
117. Nano J, Muka T, Ligthart S, Hofman A, Darwish Murad S, Janssen HLA, Franco OH, Dehghan A. Gamma-glutamyltransferase levels, prediabetes and type 2 diabetes: a Mendelian randomization study. *Int J Epidemiol*. 2017 Oct 1;46(5):1400-1409. doi: 10.1093/ije/dyx006.

118. Bi Y, Yang S, Liu Y, Cao L, Gao M, Liu W, Li Y, Tian S, Sun C. To explore association between gamma-glutamyl transferase and type 2 diabetes using a real-world study and mendelian randomization analysis. *Front Endocrinol (Lausanne)*. 2022 Jul 25;13:899008. doi: 10.3389/fendo.2022.899008.
119. De Silva NMG, Borges MC, Hingorani AD, Engmann J, Shah T, Zhang X, Luan J, Langenberg C, Wong A, Kuh D, Chambers JC, Zhang W, Jarvelin MR, Sebert S, Auvinen J; UCLEB consortium; Gaunt TR, Lawlor DA. Liver Function and Risk of Type 2 Diabetes: Bidirectional Mendelian Randomization Study. *Diabetes*. 2019 Aug;68(8):1681-1691. doi: 10.2337/db18-1048.
120. Achari AE, Jain SK. L-Cysteine supplementation increases insulin sensitivity mediated by upregulation of GSH and adiponectin in high glucose treated 3T3-L1 adipocytes. *Arch Biochem Biophys*. 2017 Sep 15;630:54-65. doi: 10.1016/j.abb.2017.07.016.
121. Rizvi S.I., Srivastava N. (2010). L-Cysteine Influx in Type 2 Diabetic Erythrocytes. *Biomeditsinskaya Khimiya*, 56(5), 545-551.
122. Wang-Sattler R, Yu Z, Herder C, Messias AC, Floegel A, He Y, Heim K, Campillos M, Holzapfel C, Thorand B, Grallert H, Xu T, Bader E, Huth C, Mittelstrass K, Döring A, Meisinger C, Gieger C, Prehn C, Roemisch-Margl W, Carstensen M, Xie L, Yamanaka-Okumura H, Xing G, Ceglarek U, Thiery J, Giani G, Lickert H, Lin X, Li Y, Boeing H, Joost HG, de Angelis MH, Rathmann W, Suhre K, Prokisch H, Peters A, Meitinger T, Roden M, Wichmann HE, Pischon T, Adamski J, Illig T. Novel biomarkers for pre-diabetes identified by metabolomics. *Mol Syst Biol*. 2012;8:615. doi: 10.1038/msb.2012.43.
123. Thalacker-Mercer AE, Ingram KH, Guo F, Ilkayeva O, Newgard CB, Garvey WT. BMI, RQ, diabetes, and sex affect the relationships between amino acids and clamp measures of insulin action in humans. *Diabetes*. 2014 Feb;63(2):791-800. doi: 10.2337/db13-0396.
124. Guasch-Ferré M, Hruby A, Toledo E, Clish CB, Martínez-González MA, Salas-Salvadó J, Hu FB. Metabolomics in Prediabetes and Diabetes: A Systematic Review and Meta-analysis. *Diabetes Care*. 2016 May;39(5):833-46. doi: 10.2337/dc15-2251.
125. Adeva-Andany M, Souto-Adeva G, Ameneiros-Rodríguez E, Fernández-Fernández C, Donapetry-García C, Domínguez-Montero A. Insulin resistance and glycine metabolism in humans. *Amino Acids*. 2018 Jan;50(1):11-27. doi: 10.1007/s00726-017-2508-0.
126. Ottosson F, Smith E, Melander O, Fernandez C. Altered Asparagine and Glutamate Homeostasis Precede Coronary Artery Disease and Type 2 Diabetes. *J Clin Endocrinol Metab*. 2018 Aug 1;103(8):3060-3069. doi: 10.1210/jc.2018-00546.
127. Liu X, Zheng Y, Guasch-Ferré M, Ruiz-Canela M, Toledo E, Clish C, Liang L, Razquin C, Corella D, Estruch R, Fito M, Gómez-Gracia E, Arós F, Ros E, Lapetra J, Fiol M, Serra-Majem L, Papandreou C, Martínez-



González MA, Hu FB, Salas-Salvadó J. High plasma glutamate and low glutamine-to-glutamate ratio are associated with type 2 diabetes: Case-cohort study within the PREDIMED trial. *Nutr Metab Cardiovasc Dis*. 2019 Oct;29(10):1040-1049. doi: 10.1016/j.numecd.2019.06.005.

128. Lee HJ, Yeom JW, Yun JH, Jang HB, Yoo MG, Kim HJ, Koo SK, Lee HJ. Increased glutamate in type 2 diabetes in the Korean population is associated with increased plasminogen levels. *J Diabetes*. 2023 Sep;15(9):777-786. doi: 10.1111/1753-0407.13429.

129. Mahajan A, Spracklen CN, Zhang W, Ng MCY, Petty LE, Kitajima H, Yu GZ, Rieger S, Speidel L, Kim YJ, Horikoshi M, Mercader JM, Taliun D, Moon S, Kwak SH, Robertson NR, Rayner NW, Loh M, Kim BJ, Chiou J, Miguel-Escalada I, Della Briotta Parolo P, Lin K, Bragg F, Preuss MH, Takeuchi F, Nano J, Guo X, Lamri A, Nakatochi M, Scott RA, Lee JJ, Huerta-Chagoya A, Graff M, Chai JF, Parra EJ, Yao J, Bielak LF, Tabara Y, Hai Y, Steinthorsdottir V, Cook JP, Kals M, Grarup N, Schmidt EM, Pan I, Sofer T, Wuttke M, Sarnowski C, Gieger C, Noursome D, Trompet S, Long J, Sun M, Tong L, Chen WM, Ahmad M, Noordam R, Lim VJY, Tam CHT, Joo YY, Chen CH, Raffield LM, Lecoeur C, Prins BP, Nicolas A, Yanek LR, Chen G, Jensen RA, Tajuddin S, Kabagambe EK, An P, Xiang AH, Choi HS, Cade BE, Tan J, Flanagan J, Abaitua F, Adair LS, Adeyemo A, Aguilar-Salinas CA, Akiyama M, Anand SS, Bertoni A, Bian Z, Bork-Jensen J, Brandslund I, Brody JA, Brummett CM, Buchanan TA, Canouil M, Chan JCN, Chang LC, Chee ML, Chen J, Chen SH, Chen YT, Chen Z, Chuang LM, Cushman M, Das SK, de Silva HJ, Dedoussis G, Dimitrov L, Doumatey AP, Du S, Duan Q, Eckardt KU, Emery LS, Evans DS, Evans MK, Fischer K, Floyd JS, Ford I, Fornage M, Franco OH, Frayling TM, Freedman BI, Fuchsberger C, Genter P, Gerstein HC, Giedraitis V, González-Villalpando C, González-Villalpando ME, Goodarzi MO, Gordon-Larsen P, Gorkin D, Gross M, Guo Y, Hackinger S, Han S, Hattersley AT, Herder C, Howard AG, Hsueh W, Huang M, Huang W, Hung YJ, Hwang MY, Hwu CM, Ichihara S, Ikram MA, Ingelsson M, Islam MT, Isono M, Jang HM, Jasmine F, Jiang G, Jonas JB, Jørgensen ME, Jørgensen T, Kamatani Y, Kandeel FR, Kasturiratne A, Katsuya T, Kaur V, Kawaguchi T, Keaton JM, Kho AN, Khor CC, Kibriya MG, Kim DH, Kohara K, Kriebel J, Kronenberg F, Kuusisto J, Läll K, Lange LA, Lee MS, Lee NR, Leong A, Li L, Li Y, Li-Gao R, Ligthart S, Lindgren CM, Linneberg A, Liu CT, Liu J, Locke AE, Louie T, Luan J, Luk AO, Luo X, Lv J, Lyssenko V, Mamakou V, Mani KR, Meitinger T, Metspalu A, Morris AD, Nadkarni GN, Nadler JL, Nalls MA, Nayak U, Nongmaithem SS, Ntalla I, Okada Y, Orozco L, Patel SR, Pereira MA, Peters A, Pirie FJ, Porneala B, Prasad G, Preissl S, Rasmussen-Torvik LJ, Reiner AP, Roden M, Rohde R, Roll K, Sabanayagam C, Sander M, Sandow K, Sattar N, Schönherr S, Schurmann C, Shahriar M, Shi J, Shin DM, Shriner D, Smith JA, So WY, Stančáková A, Stilp AM, Strauch K, Suzuki K, Takahashi A, Taylor KD, Thorand B, Thorleifsson G, Thorsteinsdottir U, Tomlinson B, Torres JM, Tsai FJ, Tuomilehto J, Tusie-Luna T, Udler MS, Valladares-Salgado A, van Dam RM, van Klinken JB, Varma R, Vujkovic M, Wachter-Rodarte N, Wheeler E, Whitsel EA, Wickremasinghe AR, van Dijk KW, Witte DR, Yajnik

CS, Yamamoto K, Yamauchi T, Yengo L, Yoon K, Yu C, Yuan JM, Yusuf S, Zhang L, Zheng W; FinnGen; eMERGE Consortium; Raffel LJ, Igase M, Ipp E, Redline S, Cho YS, Lind L, Province MA, Hanis CL, Peyser PA, Ingelsson E, Zonderman AB, Psaty BM, Wang YX, Rotimi CN, Becker DM, Matsuda F, Liu Y, Zeggini E, Yokota M, Rich SS, Kooperberg C, Pankow JS, Engert JC, Chen YI, Froguel P, Wilson JG, Sheu WHH, Kardia SLR, Wu JY, Hayes MG, Ma RCW, Wong TY, Groop L, Mook-Kanamori DO, Chandak GR, Collins FS, Bharadwaj D, Paré G, Sale MM, Ahsan H, Motala AA, Shu XO, Park KS, Jukema JW, Cruz M, McKean-Cowdin R, Grallert H, Cheng CY, Bottinger EP, Dehghan A, Tai ES, Dupuis J, Kato N, Laakso M, Köttgen A, Koh WP, Palmer CNA, Liu S, Abecasis G, Kooner JS, Loos RJF, North KE, Haiman CA, Florez JC, Saleheen D, Hansen T, Pedersen O, Mägi R, Langenberg C, Wareham NJ, Maeda S, Kadowaki T, Lee J, Millwood IY, Walters RG, Stefansson K, Myers SR, Ferrer J, Gaulton KJ, Meigs JB, Mohlke KL, Gloyn AL, Bowden DW, Below JE, Chambers JC, Sim X, Boehnke M, Rotter JI, McCarthy MI, Morris AP. Multi-ancestry genetic study of type 2 diabetes highlights the power of diverse populations for discovery and translation. *Nat Genet.* 2022 May;54(5):560-572. doi: 10.1038/s41588-022-01058-3.

130. Polonikov A. Endogenous Deficiency of Glutathione as the Most Likely Cause of Serious Manifestations and Death in COVID-19 Patients. *ACS Infect Dis.* 2020 Jul 10;6(7):1558-1562. doi: 10.1021/acsinfecdis.0c00288.

131. Kumar P, Osahon O, Vides DB, Hanania N, Minard CG, Sekhar RV. Severe Glutathione Deficiency, Oxidative Stress and Oxidant Damage in Adults Hospitalized with COVID-19: Implications for GlyNAC (Glycine and N-Acetylcysteine) Supplementation. *Antioxidants (Basel).* 2021 Dec 27;11(1):50. doi: 10.3390/antiox11010050.

132. Kryukov EV, Ivanov AV, Karpov VO, Vasil'evich Alexandrin V, Dygai AM, Kruglova MP, Kostiuhenko GI, Kazakov SP, Kubatiev AA. Association of Low Molecular Weight Plasma Amino thiols with the Severity of Coronavirus Disease 2019. *Oxid Med Cell Longev.* 2021 Sep 18;2021:9221693. doi: 10.1155/2021/9221693.

133. Karkhanei B, Talebi Ghane E, Mehri F. Evaluation of oxidative stress level: total antioxidant capacity, total oxidant status and glutathione activity in patients with COVID-19. *New Microbes New Infect.* 2021 Jul;42:100897. doi: 10.1016/j.nmni.2021.100897.

134. Muhammad Y, Kani YA, Iliya S, Muhammad JB, Binji A, El-Fulaty Ahmad A, Kabir MB, Umar Bindawa K, Ahmed A. Deficiency of antioxidants and increased oxidative stress in COVID-19 patients: A cross-sectional comparative study in Jigawa, Northwestern Nigeria. *SAGE Open Med.* 2021 Feb 1;9:2050312121991246. doi: 10.1177/2050312121991246.

135. Labarrere CA, Kassab GS. Glutathione deficiency in the pathogenesis of SARS-CoV-2 infection and its effects upon the host immune response in severe COVID-19 disease. *Front Microbiol.* 2022 Oct 6;13:979719. doi: 10.3389/fmicb.2022.979719.

