

1 **Title:** Menopausal symptom burden as a predictor of mid- to late-life cognitive function and
2 mild behavioral impairment symptoms: A CAN-PROTECT study.

3 **Short Title:** Menopausal Symptom Burden

4 **Author Names:** Jasper F.E. Crockford^{1,2¶}, Dylan X Guan^{1,3,4¶}, Gillian Einstein^{5,6}, Clive Ballard⁷,
5 Bryon Creese⁷, Anne Corbett⁷, Ellie Pickering⁷, Adam Bloomfield⁷, Pamela Roach^{1,8,9}, Eric E
6 Smith^{1,2,4,8} Zahinoor Ismail^{1-2,4,7-10*}

7 (1) University of Calgary, AB, Canada

8 (2) Department of Clinical Neurosciences, University of Calgary, AB, Canada

9 (3) Faculty of Graduate Studies, University of Calgary, AB, Canada

10 (4) Hotchkiss Brain Institute, University of Calgary, AB, Canada

11 (5) Department of Psychology, University of Toronto, ON, Canada

12 (6) Rotman Research Institute, Baycrest Hospital, Toronto, ON, Canada

13 (7) Clinical and Biomedical Sciences, Faculty of Health and Life Sciences, University of Exeter,
14 Exeter, UK

15 (8) Department of Community Health Sciences, University of Calgary, AB, Canada

16 (9) O'Brien Institute for Public Health, University of Calgary, AB, Canada

17 (10) Department of Psychiatry, University of Calgary, AB, Canada

18 *Corresponding Author:

19 Email: ismailz@ucalgary.ca (ZI)

20 ¶These authors contributed equally to this work.

21 &These authors also contributed equally to this work.

22

23

24 **Abstract**

25 **Background:** Recent evidence suggests the experience of menopausal symptoms (i.e.,
26 perimenopausal symptoms) may be associated with cognitive and behavioural changes. We
27 investigated these two relationships in a sample of post-menopausal females.

28 **Design:** Cross-sectional observational study.

29 **Setting:** Participant data was collected from the Canadian Platform for Research Online to
30 Investigate Health, Quality of Life, Cognition, Behaviour, Function, and Caregiving in Aging
31 (CAN-PROTECT) study.

32 **Participants:** 896 post-menopausal female participants.

33 **Methods:** Menopausal symptom burden was operationalized by summing the total number of
34 recalled perimenopausal symptoms experienced. Cognitive function was measured using the
35 Everyday Cognition (ECog-II) Scale, with higher scores reflecting greater severity. Mild
36 Behavioral Impairment (MBI) was measured using the Mild Behavioral Impairment Checklist
37 (MBI-C), with higher scores reflecting greater severity. A negative-binomial regression model
38 examined the relationship between menopausal symptom burden and cognitive function, while a
39 zero-inflated negative binomial regression model examined the relationship between menopausal
40 symptom burden and MBI symptoms. Models adjusted for age, years of education, age of
41 menopausal onset, type of menopause, and hormone therapy (HT). Age of menopausal onset and
42 use of HT in the two associations were investigated with moderation analyses.

43 **Results:** Greater menopausal symptom burden was associated with higher ECog-II total scores
44 (b [95% confidence interval (CI)] = 5.37 [2.85, 7.97]) and higher MBI-C total scores (b [95% CI]
45 = 6.09 [2.50, 9.80]). Use of HT did not significantly associate with ECog-II total scores (b [95%

46 CI] = -10.98 [-25.33, 6.35]), however, HT was significantly associated with lower MBI-C total
47 scores (b [95% CI] = -26.90 [-43.35, -5.67]).

48 **Conclusions:** Menopausal symptom burden is associated with poorer cognitive function and
49 more MBI symptoms in mid- to late life. HT may help mitigate symptoms of MBI. These
50 findings suggest the experience of menopause may indicate susceptibility to cognitive and
51 behavioural changes, both markers of dementia.

52 Introduction

53 As the number of older adults continues to rise, those living with Alzheimer’s disease
54 (AD) and related dementias globally are estimated to increase three-fold from 50 million in 2015
55 to 152 million by 2050¹. Females (i.e., assigned female sex at birth) have a three-fold greater risk
56 of developing AD², and will be disproportionately affected by this increasing global dementia
57 burden³. As prevalence of dementia increases with age⁴, the primary explanation offered for the
58 sex discrepancy is greater longevity in females⁵. However, whether longevity alone explains this
59 sex difference remains uncertain; extant literature has proposed there are unique factors that may
60 increase female risk⁴. One proposed factor that may confer special risk to females is the loss of
61 estradiol at menopause.

62 Menopause describes the permanent cessation of menses⁶. There are “many
63 menopauses”, each with their own cognitive sequelae⁷, which can occur either spontaneously
64 (i.e., naturally) or due to medical or surgical reasons (e.g., cancer treatments, oophorectomy,
65 hysterectomy) in mid-adulthood⁸. Menopause comprises physiological, cognitive, and
66 behavioural symptoms, likely related to declining 17- β -estradiol (estradiol) levels – the most
67 common type of estrogen⁹. Menopausal symptoms (e.g., poor sleep, depression, etc.) may
68 themselves create risk of later brain pathology, such as the development of AD-related
69 neuropathologies¹⁰⁻¹³.

70 Later-life decline in cognitive function can signal risk of incident dementia^{14,15} and
71 menopause is associated with cognitive changes^{7,8,16,17}. Recent cross-sectional studies have
72 found spontaneous menopause to be associated with poorer cognitive performance in the
73 domains of language^{18,19}, memory^{8,20-23}, visuo-spatial²⁴, and executive function^{20,24-28}. However,
74 studies have not determined the nature of this association — whether cognition is related to

75 ovarian cessation, itself, or to an additive effect of multiple menopausal symptoms.
76 Longitudinally, earlier entry into menopause, whether spontaneously or surgically, has been
77 linked to greater risk of cognitive impairment, AD, and other dementias^{16,17,29-31}. Hormone
78 therapies (HT) composed of estrogen variations and hormonal contraceptives, including oral
79 contraceptive, have long been used to ameliorate menopausal symptoms. However, whether HT
80 use is associated with improvement in cognition or reduced incidence of dementia remains
81 unclear^{8,32-35}.

82 Analogous to cognitive changes, later-life behavioural changes can also signal risk for
83 incident dementia. The International Society to Advance Alzheimer's Research and Treatment's
84 criteria for the syndrome Mild Behavioral Impairment (MBI)³⁶ operationalizes risk by
85 identifying behavioural and neuropsychiatric symptoms (NPS) that are later-life emergent and
86 persistent. NPS meeting these criteria confer significantly higher risk of incident cognitive
87 decline and dementia compared to conventionally measured behavioural and psychiatric
88 symptomatology³⁷⁻⁴⁷. However, unlike the relationship between ovarian cessation (i.e., any type
89 of menopause) and cognition, evidence is sparse on the association between ovarian cessation
90 and MBI. This evidence gap warrants further investigation.

91 We investigated the relationship between menopausal symptoms and later-life changes in
92 cognitive function and behaviour; both risk factors for dementia, which may also represent
93 preclinical/prodromal AD^{14,15,42,43,48-55}. We hypothesized that individuals who experienced a
94 greater number of menopausal symptoms (i.e., greater menopausal symptom burden) would
95 subsequently experience poorer cognitive function and greater MBI symptom burden compared
96 to individuals who experienced fewer menopausal symptoms.

97 **Methods**

98 **CAN-PROTECT study**

99 Data were collected from the ongoing Canadian Platform for Research Online to
100 Investigate Health, Quality of Life, Cognition, Behaviour, Function, and Caregiving in Aging
101 (CAN-PROTECT) study⁵⁶. CAN-PROTECT is a Canada-wide online observational cohort study
102 of brain aging that seeks to assess the roles of demographic, medical, environmental, and
103 lifestyle factors on risk and resilience. To participate in CAN-PROTECT, individuals must be
104 dementia-free residents of Canada, aged ≥ 18 years, with access to an internet-connected
105 computer or tablet. In CAN-PROTECT, participants complete a detailed demographics
106 questionnaire, and an annual series of mandatory and optional online assessments of cognition,
107 behaviour, function, health, wellness, quality of life, medical/psychiatric history, and lifestyle.
108 CAN-PROTECT was approved by the Conjoint Health Research Ethics Board at the University
109 of Calgary and began participant recruitment on March 8, 2024. Informed consent was obtained
110 from all participants at registration.

111 **Participants**

112 Baseline participant responses pertaining to demographics, cognition, and
113 emotional/psychiatric symptoms were analyzed, in addition to the optional fertility and
114 menopause questionnaire. From the initial sample of 1984 participants (77.7% female), 896
115 (100% female) who reported being post-menopausal were included here. Of these, 667 had
116 spontaneous menopause, 162 menopause due to hysterectomy/oophorectomy, and 67 menopause
117 due to other medical reasons (Figure 1).

118 **Figure 1. Flowchart of participants from CAN-PROTECT included for analysis.**

119 Abbreviations: CAN-PROTECT, Canadian Platform for Research Online to Investigate Health,
120 Quality of Life, Cognition, Behaviour, Function, and Caregiving in Aging.

121 **Measurements**

122 **Menopausal symptom burden scale**

123 The recalled presence or absence of 11 perimenopausal symptoms reflecting vasomotor,
124 cognitive, and behavioural/neuropsychiatric symptoms was assessed using the fertility and
125 menopause questionnaire. The scale comprised 11 symptoms including irregular periods, hot
126 flashes, chills, vaginal dryness, weight gain, slowed metabolism, night sweats, sleep problems,
127 mood symptoms, inattention or forgetfulness, and other unnamed symptoms. Total menopausal
128 symptom burden was calculated by summing the number of self-reported menopausal symptoms
129 experienced by participants. Menopausal symptom burden scores ranged from 0 to 11, with 0
130 representing the least burden (i.e., no symptoms present) and 11 representing the greatest burden
131 (i.e., presence of all 11 symptoms).

132 **Everyday cognition scale**

133 Cognitive function was measured with the revised Everyday Cognition (ECog-II) Scale⁵⁷,
134 developed to identify new onset cognitive symptoms in dementia at-risk populations. The scale
135 consists of 41 questions that assess changes in memory (9 items), language (8 items), visual-
136 spatial and perceptual abilities (8 items), planning (5 items), organization (4 items), and
137 executive function (4 items). Questions are rated from 0-3 (0 = no change, 1 = occasionally
138 worse, 2 = consistently a little worse, 3 = much worse) relative to a participant's own baseline,
139 with higher scores reflecting more consistent impairment. Total ECog-II scores were calculated
140 by summing all item scores. Thus, a higher ECog-II total score indicate worse cognitive
141 function.

142 **Mild Behavioral Impairment checklist**

143 MBI symptoms were assessed using the Mild Behavioral Impairment Checklist (MBI-
144 C)^{58,59}, developed to identify new onset behavioural symptoms in dementia at-risk populations.
145 The MBI-C consists of 34 items that evaluate later-life emergent and persistent neuropsychiatric
146 symptoms in five domains: apathy (6 items), affect (6 items), impulse dyscontrol (12 items),
147 social cognition (5 items), and psychosis (5 items). Like the ECog-II, MBI-C items are scored
148 from 0-3, with higher scores reflecting greater symptom change from baseline. A total MBI
149 symptom burden score was calculated by summing all item responses to create a total out of 102.
150 Higher MBI-C total scores reflected greater MBI symptom burden.

151 **Statistical analysis**

152 Participant characteristics were summarized using descriptive statistics (count,
153 percentages, mean, and standard deviation). The data were overdispersed counts (i.e.,
154 variance>mean). Thus, to assess the relationship between menopausal symptom burden and
155 cognitive function, a negative binomial regression model was used. Menopausal symptom
156 burden was treated as the exposure variable and ECog-II total score as the outcome variable.

157 Similarly, to assess the relationship between menopausal symptom burden and MBI
158 symptoms, a zero-inflated negative binomial regression model was used. Menopausal symptom
159 burden was treated as the exposure variable and MBI-C total score as the outcome variable. Both
160 models were adjusted for age, total years of education, type of menopause, age of menopausal
161 onset, and use of HT. Type of menopause consisted of two conditions: 1) spontaneous; and 2)
162 due to surgical or medical reasons. Additionally, the use of HT consisted of three conditions: 1)
163 no HT use; 2) use of progestin or unnamed HT forms; and 3) and use of HT. In both models, two
164 interaction terms were included: 1) age of menopausal onset (participant age of menopausal
165 onset was compared to the mean age of menopausal onset); and 2) use of HT.

166 Results

167 Of the 896 included participants assigned female sex at birth, 895 identified as women,
168 while one participant identified as two-spirit. The mean (\pm standard deviation; SD) age of
169 participants was 64.2 ± 7.3 years with 15.5 ± 5.0 years of education. Participants reported the onset
170 of menopause at a mean age of 49.4 ± 6.5 years; spontaneous menopause, menopause due to
171 hysterectomy/oophorectomy, and menopause due to other medical reasons occurred at the mean
172 ages of 51.3 ± 4.2 , 42.0 ± 8.7 , and 47.3 ± 5.2 years, respectively. A total of 666 (74.3%) participants
173 experienced menopausal symptoms. To manage perimenopausal symptoms 166 (24.9%)
174 participants used HT, including estradiol-based therapy ($n = 41$, 6.2%), conjugated estrogens (n
175 $= 34$, 5.1%), estrogens-progesterone combinations ($n = 73$, 11.0%), or estrogens-progestin
176 combinations ($n = 18$, 2.7%). Twelve participants reported the use of progestin (1.8%) and 47
177 reported the use of unnamed HT types (7.1%) (see Table 1 for details of participant
178 demographics).

179 **Table 1. Demographic characteristics of participants**

Demographic Characteristic	n(%)	M(SD)	Range(years - years)
Sex at Birth		---	---
<i>Female</i>	896(100%)	---	---
<i>Male</i>	0(0%)	---	---
Identifies As			
<i>Female</i>	895(99.9%)	---	---
<i>Male</i>	0(0%)	---	---
<i>Two-Spirit</i>	1(0.1%)	---	---

<i>Non-Binary</i>	0(0.0%)	---	---
<i>Other</i>	0(0.0%)	---	---
Age		64.2(7.3)	41-88
Total Years of Education	---	15.5(5.0)	---
Age of Menopausal Onset	---	49.4(6.5)	12-62
Type of Menopause			
<i>Spontaneous</i>	667(74.4%)	51.3(4.2)	12-62
<i>Hysterectomy and/or</i>	162(18.1%)	42.0(8.7)	12-62
<i>Oophorectomy</i>			
<i>Other Medical Reasons</i>	67(7.5%)	47.5(5.2)	30-58
Experience of Perimenopausal	666(74.3%)	---	---
Symptoms			
HT Use	166(24.9%)	---	---
<i>Estradiol</i>	41(6.2%)	---	---
<i>Conjugated Estrogens</i>	34(5.1%)	---	---
<i>Combination Estrogen-</i>	73(11.0%)	---	---
<i>Progesterone</i>			
<i>Combination Estrogen-</i>	18(2.7%)	---	---
<i>Progestin</i>			
Progestin or Unnamed HT Use			
<i>Progestin</i>	12(1.8%)	---	---
<i>Unnamed HT</i>	47(7.1%)	---	---
Origin			

<i>North American</i>	444(49.6%)	---	---
<i>First Nation</i>	17(3.8%)	---	---
<i>Metis</i>	12(2.7%)	---	---
<i>Inuit</i>	0(0.0%)	---	---
<i>European</i>	764(85.3%)	---	---
<i>Caribbean</i>	7(0.8%)	---	---
<i>South American</i>	6(0.7%)	---	---
<i>African</i>	7(0.8%)	---	---
<i>Asian</i>	18(2.0%)	---	---
<i>Oceania</i>	3(0.3%)	---	---

180 Abbreviations: HT, hormone therapies

181 From the list of 11 menopausal symptoms, participants endorsed a range of 0 to 10 (see
 182 Figure 2) and reported a mean menopausal symptom burden of 3.7 ± 2.8 (spontaneous = 3.8 ± 2.8 ,
 183 due to surgical or medical reasons = 3.5 ± 2.8). The most frequently endorsed perimenopausal
 184 symptom was hot flashes (n = 583, 88%) followed by night sweats (n = 496, 70%). The least
 185 endorsed perimenopausal symptoms were chills (n = 92, 14%) and other symptoms not listed (n
 186 = 31, 5%).

187 **Figure 2. Reported perimenopausal symptoms.**

188 Frequency comparison of participant endorsed and not endorsed perimenopausal symptoms,
 189 reported from the CAN-PROTECT fertility and menopause questionnaire. Red bars indicate the
 190 number of participants who endorsed a perimenopausal symptom, while grey bars indicate the
 191 number of participants who did not.

192 **Everyday cognition and Mild Behavioral Impairment**

193 Collectively, participants reported a mean ECog-II total score of 11.1 ± 10.5 , with a range
194 of 0 to 88. Mean MBI-C total symptom burden score was 5.4 ± 7.6 , with a range of 0 to 65.

195 **Menopausal symptom burden and cognitive function**

196 Menopausal symptom burden was associated with poorer cognitive function, according to
197 the results of the negative binomial regression model (see Table 2 and Figure 3). Every
198 additional menopausal symptom was associated with a 5.37% higher ECog-II total score,
199 indicating more consistent symptoms of cognitive dysfunction (95%CI[2.85, 7.97], $p < .001$).
200 Neither the type of menopause ($b = 2.78\%$, 95%CI[-13.10, 21.91], $p = .75$) nor the age of
201 menopausal onset ($b = -1.05\%$, 95%CI[-2.13, 0.013], $p = .068$) was significantly associated with
202 ECog-II total score. Similarly, neither HT ($b = -10.98\%$, 95%CI[-25.33, 6.54], $p = .20$) nor use of
203 progestin or unnamed HT ($b = 16.93\%$, 95%CI[-10.93, 56.13], $p = .27$) were significantly
204 associated with ECog-II total score.

205 **Table 2. ECog-II total score associations**

Variable	b%[95% CI]	p
Menopausal Symptom Burden	5.37%[2.85, 7.97]	<0.001*
Type of Menopause	2.78%[-13.10, 21.91]	0.75
Age of Menopausal Onset	-1.05%[-1.17, 0.59]	0.068
Progestin or Unnamed HT Use	16.93%[-10.93, 56.13]	0.27
HT Use	-10.98%[-25.33, 6.53]	0.20
Interaction Variables		
<i>Age of Menopausal Onset</i>	0.26%[-0.26, 0.40]	0.69
<i>Progestin or Unnamed HT Use</i>	2.95%[-8.83, 16.87]	0.43
<i>HT Use</i>	0.50%[-7.30, 9.09%]	0.13

206 * Indicates a significant association

207 Abbreviations: ECog-II, revised Everyday Cognition Scale; HT, hormone therapies; CI,
208 confidence intervals

209 **Figure 3. ECog-II total score associations.**

210 Negative-binomial regression coefficient plot of the relationship between menopausal symptom
211 burden (predictor variable) and ECog-II total score (outcome variable). Lines indicate the 95%
212 confidence intervals for the estimate. Predictor variables whose confidence intervals cross the
213 reference line at 1.00 are not significant. Significant predictor variables are indicated with an
214 asterisk.

215 None of age of menopausal onset ($b=0.070\%$, $95\%CI[-0.26, 0.40]$, $p=.69$), use of HT
216 ($b=0.50\%$, $95\%CI[-7.30, 9.09]$, $p=.13$), or use of progestin or unnamed HT ($b=2.95\%$, $95\%CI[-$
217 $8.83, 16.87]$, $p=.48$) moderated the relationship between menopausal symptom burden and
218 ECog-II total score.

219 **Menopausal symptom burden and Mild Behavioral Impairment**

220 Menopausal symptom burden was associated with greater MBI symptom burden,^f
221 according to the results of the zero-inflated negative binomial regression (see Table 3 and Figure
222 4). Every additional menopausal symptom was associated with a 6.09% higher MBI-C total
223 score ($95\%CI[2.50, 9.80]$, $p<.001$), indicating more consistent symptoms of MBI. HT use was
224 associated with a 26.90% lower MBI-C total score ($95\%CI[-43.35, -5.67]$, $p<.016$). None of type
225 of menopause ($b=4.56\%$, $95\%CI[-18.17, 33.60]$, $p=.72$), age of menopausal onset ($b=-0.83\%$,
226 $95\%CI[-2.36, 0.74]$, $p=.30$), or use of progestin or unnamed HT ($b=-19.12\%$, $95\%CI[-44.60,$
227 $18.07]$, $p=.27$) were significantly associated with MBI-C total score.

228 **Table 3. MBI-C total score associations**

Variable	b%[95%CI]	p
Menopausal Symptom Burden	6.09%[2.50, 9.80]	<0.001*
Type of Menopause	4.56%[-18.17, 33.60]	0.72
Age of Menopausal Onset	-0.83%[-2.36, 0.74]	0.30
Progestin or Unnamed HT Use	-19.12%[-44.60, 18.07]	0.27
HT Use	-26.90%[-43.35, -5.67]	0.016*
Interaction Variables		
<i>Age of Menopausal Onset</i>	-0.066%[-0.50, 0.37]	0.77
<i>Progestin or Unnamed HT Use</i>	7.22%[-8.01, 25.63]	0.37
<i>HT Use</i>	-0.20%[-11.21, 12.17]	0.97

229 * Indicates a significant association

230 Abbreviations: MBI-C, Mild Behavioral Impairment Checklist; HT, hormone therapies; CI,
231 confidence intervals

232 **Figure 4. MBI-C total symptom score associations.**

233 Zero-inflated negative-binomial regression coefficient plot of the relationship between
234 menopausal symptom burden (predictor variable) and MBI-C total score (outcome variable). The
235 count model coefficient estimates are indicated by the conditional title, while the zero-inflated
236 coefficient estimates are indicated by the zero-inflated title. Lines indicate the 95% confidence
237 intervals for the estimate. Predictor variables whose confidence intervals cross the reference line
238 at 1.00 are not significant and indicated by the colour red. Significant predictor variables are
239 indicated by the colour blue.

240 Despite the main effect of HT use and lower MBI-C total score, use of HT did not
241 moderate the relationship between menopausal symptom burden and MBI-C total score (b=-

242 0.20%, 95%CI[-11.21, 12.17], $p=.97$). Similarly, neither the age of menopausal onset
243 ($b=0.066\%$, 95%CI[-0.50, 0.37], $p=.77$) nor use of progestin or unnamed HT ($b= 7.22\%$,
244 95%CI[-8.01, 25.63], $p=.37$) significantly moderated the relationship between menopausal
245 symptom burden and MBI-C total score.

246 **Discussion**

247 The experience of menopause can include persistent changes in cognitive function and
248 behaviour, which may extend into later life and identify those at greater risk for incident
249 dementia. In this study, we showed that greater menopausal symptom burden was associated
250 with significantly poorer cognitive function and greater MBI symptom burden, adjusted for age,
251 education, age of menopausal onset, type of menopause, use of HT, and use of progestin or
252 unnamed HT. While use of either HT or progestins or unnamed HT was not significantly
253 associated with changes in cognitive function, use of HT was associated with significantly fewer
254 MBI symptoms. Subsequent analyses revealed that age of menopausal onset and use of HT or
255 progestin or unnamed HT did not moderate the observed associations between menopausal
256 symptom burden and cognition or MBI.

257 Changes in cognitive function are a defining feature of the normal aging process in
258 females and males⁶⁰. However, Alzheimer disease starts long before diagnosis and understanding
259 the earliest factors influencing its progression is critical. Therefore, identifying later-life
260 emergent and persistent changes in cognitive function may aid in assessing risk for dementia.
261 Other studies have shown that select perimenopausal symptoms may be associated with
262 cognitive changes. For instance, evidence from cross-sectional studies have found
263 perimenopausal females who experienced specific symptoms were more likely to report poorer
264 cognitive function in the domains of attention^{24,26}, working memory^{8,23}, verbal memory^{18,21,24},

265 visuo-spatial skills²⁴, and processing speed^{26,27}. However, whether the additive effect of
266 experiencing more than one menopausal symptom is related to later-life changes in cognitive
267 function had yet to be determined. Our first analysis suggests that the degree of menopausal
268 symptom burden (i.e., greater number of menopausal symptoms) is indeed associated with
269 poorer mid-to-later life cognitive function. Thus, our findings are novel in that they show not
270 only are specific menopausal symptoms related to changes in cognitive function, but the overall
271 number of menopausal symptoms experienced are important as well.

272 Few studies have investigated the association between multiple perimenopausal
273 symptoms (i.e., menopausal symptom burden) with risk of dementia as determined by both
274 cognitive and behavioural changes. Studies have shown that select perimenopausal symptoms
275 may be related to AD-related neuropathological changes in the brain. For instance,
276 perimenopausal females who experienced night sweats (i.e., a vasomotor symptom) had greater
277 brain amyloid beta pathology than perimenopausal females who did not⁶¹. While such findings
278 suggest that perimenopausal symptoms may be related to risk of dementia, given that participants
279 in our study reported an average of 3.7 perimenopausal symptoms, it is important to recognize
280 that measuring only one symptom does not tell the whole story; symptomatic perimenopausal
281 females may experience more than one symptom at a time. The experience of multiple
282 menopausal symptoms may estimate dementia risk in a way not accounted for by analysis of a
283 single menopausal symptom, as evidenced by the dose effect we found. Further, to identify
284 whether the experience of multiple menopausal symptoms is related to dementia risk, both
285 markers of cognitive change and behavioural change should be used.

286 While changes in cognitive function may act as one marker of dementia risk, later-life
287 emergent and persistent changes in behaviour consistent with MBI are another marker, which

288 complements cognition³⁶. Several studies have linked MBI with cognitive decline and dementia.
289 A longitudinal study of MBI in cognitively normal older persons, using sex-stratified analyses,
290 described MBI effects for cognitive decline in both females and males⁶². In a mixed sex study
291 that explored progression to dementia in a neuropsychiatry clinic sample, participants with MBI
292 had a higher progression-rate to dementia than those with psychiatric disorders. Additionally, in
293 both female and male patients with MCI, those with comorbid MBI had a higher progression rate
294 than those without⁶³. These findings have been replicated in a geriatric psychiatry clinic sample⁴⁷
295 and in observational cohorts of older adults with normal cognition and subjective cognitive
296 decline^{37,64,65}, with MCI^{37,38}, and in mixed cognitively unimpaired/MCI samples^{42,44-46}. These
297 findings support MBI as an effect modifier in the relationship between cognitive function and
298 incident dementia. Our cross-sectional study shows that this may also be the case in a cohort of
299 females, alone. This emerging body of evidence highlights the importance of including
300 assessment of behavioural changes, consistent with MBI, in conjunction with the well-
301 established practice of determining cognitive status in dementia risk assessment⁶⁶. Despite the
302 importance of the link, sparse research has explored the relationship between menopause and
303 MBI and none exploring dose effects, i.e., number of perimenopausal symptoms and later-life
304 MBI symptoms (let alone cognitive symptoms). Our findings of a dose effect encourage further
305 investigations of this link.

306 Why some perimenopausal females and not others may experience symptoms has not
307 been elucidated; however, recent evidence suggests that differences in the experience of
308 menopause, such as in menopausal symptoms, may be linked to physiological stressors¹⁰⁻¹³.
309 Estradiol is known to lead to synapse formation, neurite outgrowth, and neurogenesis, all of
310 which decline in neurodegenerative diseases and dementia. However, in menopause, estradiol

311 naturally declines^{6,10}. Thus, the experience of menopausal symptoms may act as an indicator of
312 how well females tolerate estradiol changes^{16,67-70}. Indeed, in a 10-year longitudinal study of
313 Vitamin D exposure and incident dementia, the effect of Vitamin D for lower hazard of incident
314 dementia was greater in females, thought to be secondary to the role of estrogen in activating
315 Vitamin D⁶⁷. This evidence suggests two possible mechanisms for how menopause may be
316 related to risk for AD. The first mechanism may be the direct effect of estrogens on neurons^{17,68}
317 with greater decline in estrogens increasing risk for cognitive decline and dementia. The second
318 mechanism may be indirect and dependent on how body systems other than the brain in
319 individual females respond to estrogen decline, modifying risk of developing AD-related
320 neuropathological changes in the brain. Although further exploration is required, it is likely that
321 both mechanisms contribute to the association between estradiol loss, perimenopausal symptoms,
322 and AD.

323 HT are amongst the most effective treatments for alleviating perimenopausal symptoms
324 by mitigating menopause-related estradiol decline^{8,69}. Thus, they are essential to understanding
325 physiological responses to menopause. Given that estrogens have been shown to mitigate against
326 AD cognitive and brain changes^{16,68,70-73}, some research speculates they may help to reduce to
327 the risk of dementia^{8,16,32,74}. Despite this hypothesis, evidence remains conflicted as studies
328 continue to report mitigating^{8,32,33}, neutral^{34,35}, and harmful^{35,75,76} associations with dementia risk
329 for females. Additionally, factors such as the age at start of therapy, duration, genetic
330 interactions, and type of HT likely complicate the association, making the relationship highly
331 complex and variable person to person^{8,16,33,71,74}.

332 In our cognitive analysis, we found neither direct nor interaction effects of HT for
333 cognitive function in females independent of menopause type or age at menopause. These

334 findings contradict studies that support the role of HT to ameliorate cognitive decline in females
335 with perimenopausal symptoms^{8,32,33}. This may be due to the highly variable response of
336 individual females to estradiol loss and replacement and the direction of effect in our study does
337 suggest potential enhancement of cognitive performance. Indeed, our behavioural analysis
338 revealed a main effect for HT and behaviour without an interaction effect, suggesting potential
339 links between HT taken during perimenopause and subsequent behavioural risk for dementia in
340 our cohort. Although research remains sparse, other studies show that the use of HT has been
341 implicated in the improvement of behavioural symptoms during perimenopause, including
342 emotional symptoms^{75,77-80}. One study found that compared to females who experienced no
343 symptoms of menopause, perimenopausal females who used HT had improved depression
344 severity, but only in those who also experienced hot flashes suggesting that the beneficial effects
345 were due to treatment of the hot flashes⁷⁷. Altogether, these findings suggest that HT may
346 mitigate MBI symptoms differently from cognitive symptoms.

347 There are several limitations to this study. First, the cross-sectional design of the study
348 limits conclusions about causality. To determine temporal relationships, longitudinal data are
349 required, ideally with biomarker data (i.e., blood estradiol, phosphorylated-tau, and amyloid beta
350 levels) to further explore potential mechanisms. Second, menopausal symptom burden was
351 operationalized objectively as a symptom count, (i.e., number of menopausal symptoms) rather
352 than severity, which might be more subjective. Nonetheless, recent evidence suggests that
353 menopausal symptom severity is associated with poorer cognitive performance²⁴. Additional
354 research is required to incorporate severity into symptom count, to explore these relationships
355 further. Third, sample size limitations precluded analyses of differences between types and
356 formulations of HT and progestogens. A growing number of studies suggest that 17 β -estradiol

357 HT may exert the greatest of neuroprotective effects on cognitive function and risk for AD as
358 compared to other HT estrogens^{81,82}. As we did not find a significant association of HT with
359 cognitive function, it may be that combining different HT estrogens into one group skewed the
360 results. As CAN-PROTECT data accumulate, we may be able to address this limitation in the
361 future. Nonetheless, there are also multiple strengths to this study. The experience of menopause
362 and its association with dementia is highly complex and likely influenced by several variables
363 such as type of menopause, age of onset, and use of HT and progestogens^{8,16,33,71,74}. Our study
364 included each of these variables to represent more accurately the experience of menopause.
365 Finally, contributing to the novelty of our study, we included behaviour, operationalized as the
366 validated construct of MBI to assess risk. Together, changes in cognitive function and behaviour
367 represent two important markers for risk of dementia. Therefore, broadening our understanding
368 of how the experience of menopause may be associated with both cognition and behaviour could
369 have clinical applications for risk for incident dementia.

370 **Conclusions**

371 In conclusion, this study has demonstrated that recalled greater menopausal symptom
372 burden is associated with poorer current cognitive function and greater current MBI symptom
373 burden in mid-to-late life. Use of HT control may help to mitigate MBI symptoms more than
374 cognitive symptoms. These findings suggest menopausal symptom burden may predict
375 susceptibility to dementia, as evidenced by greater cognitive and behavioural factors in those
376 with greater menopausal symptom burden.

377 **Acknowledgements**

378 All authors contributed to the study design, data acquisition, data analysis and interpretation, and
379 manuscript revisions. All authors gave approval for the final submission.

380 REFERENCES

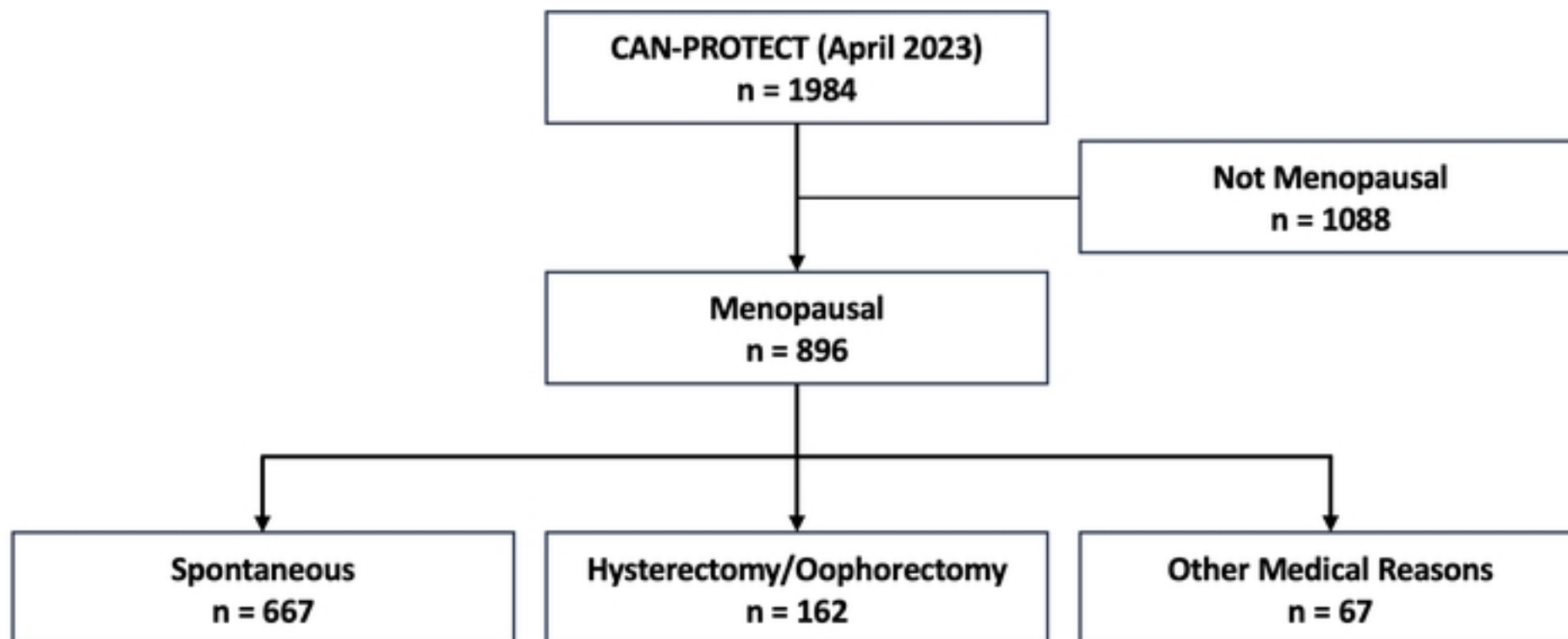
- 381
- 382 1. Nichols E, Steinmetz JD, Vollset SE, et al. Estimation of the global prevalence of
383 dementia in 2019 and forecasted prevalence in 2050: an analysis for the Global Burden of
384 Disease Study 2019. *The Lancet Public Health*. 2022;7(2):e105-e125.
 - 385 2. Subramaniapillai S, Almey A, Rajah MN, Einstein G. Sex and gender differences in
386 cognitive and brain reserve: Implications for Alzheimer's disease in women. *Frontiers in*
387 *Neuroendocrinology*. 2021;60:100879.
 - 388 3. Andersen K, Launer LJ, Dewey ME, et al. Gender differences in the incidence of AD and
389 vascular dementia: The EURODEM Studies. *Neurology*. 1999;53(9):1992-1992.
 - 390 4. Beam CR, Kaneshiro C, Jang JY, Reynolds CA, Pedersen NL, Gatz M. Differences
391 between women and men in incidence rates of dementia and Alzheimer's disease. *Journal of*
392 *Alzheimer's disease*. 2018;64(4):1077-1083.
 - 393 5. Mielke MM, Vemuri P, Rocca WA. Clinical epidemiology of Alzheimer's disease:
394 assessing sex and gender differences. *Clinical epidemiology*. 2014:37-48.
 - 395 6. Santoro N, Roeca C, Peters BA, Neal-Perry G. The menopause transition: signs,
396 symptoms, and management options. *The Journal of Clinical Endocrinology & Metabolism*.
397 2021;106(1):1-15.
 - 398 7. Edwards H, Duchesne A, Au AS, Einstein G. The many menopauses: searching the
399 cognitive research literature for menopause types. *Menopause (New York, NY)*. 2019;26(1):45.
 - 400 8. Conde DM, Verdade RC, Valadares AL, Mella LF, Pedro AO, Costa-Paiva L.
401 Menopause and cognitive impairment: A narrative review of current knowledge. *World Journal*
402 *of Psychiatry*. 2021;11(8):412.
 - 403 9. Al-Azzawi F, Palacios S. Hormonal changes during menopause. *Maturitas*.
404 2009;63(2):135-137.
 - 405 10. Santoro N, Epperson CN, Mathews SB. Menopausal symptoms and their management.
406 *Endocrinology and Metabolism Clinics*. 2015;44(3):497-515.
 - 407 11. Lobo RA, Davis SR, De Villiers T, et al. Prevention of diseases after menopause.
408 *Climacteric*. 2014;17(5):540-556.
 - 409 12. Faleschini S, Tiemeier H, Rifas-Shiman SL, et al. Longitudinal associations of
410 psychosocial stressors with menopausal symptoms and well-being among women in midlife.
411 *Menopause*. 2022;29(11):1247-1253.
 - 412 13. Simpson EE. Stress and Coping in the Menopause. *Stress: Concepts, cognition, emotion,*
413 *and behavior*. Elsevier; 2016:451-455.
 - 414 14. Farias ST, Mungas D, Reed BR, et al. The measurement of everyday cognition (ECog):
415 scale development and psychometric properties. *Neuropsychology*. 2008;22(4):531.
 - 416 15. Silverberg NB, Ryan LM, Carrillo MC, et al. Assessment of cognition in early dementia.
417 *Alzheimer's & Dementia*. 2011;7(3):e60-e76.
 - 418 16. Rocca WA, Grossardt BR, Shuster LT. Oophorectomy, estrogen, and dementia: a 2014
419 update. *Molecular and cellular endocrinology*. 2014;389(1-2):7-12.

- 420 17. Rocca W, Bower J, Maraganore D, et al. Increased risk of cognitive impairment or
421 dementia in women who underwent oophorectomy before menopause. *Neurology*.
422 2007;69(11):1074-1083.
- 423 18. Maki PM, Rubin LH, Savarese A, et al. Stellate ganglion blockade and verbal memory in
424 midlife women: evidence from a randomized trial. *Maturitas*. 2016;92:123-129.
- 425 19. Maki P, Thurston R. Menopause and brain health: hormonal changes are only part of the
426 story. *Front Neurol*. 2020; 11: 562275. 2020.
- 427 20. Gava G, Orsili I, Alvisi S, Mancini I, Seracchioli R, Meriggiola MC. Cognition, mood
428 and sleep in menopausal transition: the role of menopause hormone therapy. *Medicina*.
429 2019;55(10):668.
- 430 21. Maki PM, Drogos LL, Rubin LH, Banuvar S, Shulman LP, Geller SE. Objective hot
431 flashes are negatively related to verbal memory performance in midlife women. *Menopause*
432 (*New York, NY*). 2008;15(5):848.
- 433 22. Weber MT, Maki PM, McDermott MP. Cognition and mood in perimenopause: a
434 systematic review and meta-analysis. *The Journal of steroid biochemistry and molecular*
435 *biology*. 2014;142:90-98.
- 436 23. Hampson E. Estrogens, aging, and working memory. *Current psychiatry reports*.
437 2018;20:1-9.
- 438 24. Kaur M, Kaur M. Is cognitive performance of women sensitive to the severity of
439 menopausal symptoms? *Menopause*. 2022;29(2):170-177.
- 440 25. Fuh J-L, Wang S-J, Lu S-R, Juang K-D, Chiu LM. The Kinmen women-health
441 investigation (KIWI): a menopausal study of a population aged 40–54. *Maturitas*.
442 2001;39(2):117-124.
- 443 26. Zhu C, Thomas N, Arunogiri S, Gurvich C. Systematic review and narrative synthesis of
444 cognition in perimenopause: The role of risk factors and menopausal symptoms. *Maturitas*.
445 2022;164:76-86.
- 446 27. Jaff NG, Rubin LH, Crowther NJ, Norris SA, Maki PM. Menopausal symptoms,
447 menopausal stage and cognitive functioning in black urban African women. *Climacteric*.
448 2020;23(1):38-45.
- 449 28. Huang W, Jiang S, Geng L, Li C, Tao M. Correlation between menopausal symptoms
450 and everyday cognition in Chinese (peri) menopausal women. *Gynecological Endocrinology*.
451 2021;37(7):655-659.
- 452 29. Faubion SS, Kuhle CL, Shuster LT, Rocca WA. Long-term health consequences of
453 premature or early menopause and considerations for management. *Climacteric*. 2015;18(4):483-
454 491.
- 455 30. Georgakis MK, Beskou-Kontou T, Theodoridis I, Skalkidou A, Petridou ET. Surgical
456 menopause in association with cognitive function and risk of dementia: a systematic review and
457 meta-analysis. *Psychoneuroendocrinology*. 2019;106:9-19.
- 458 31. Wedatilake Y, Myrstad C, Tom S, Strand B, Bergh S, Selbæk G. Female Reproductive
459 Factors and Risk of Mild Cognitive Impairment and Dementia: The HUNT Study. *The Journal*
460 *of Prevention of Alzheimer's Disease*. 2024:1-10.
- 461 32. Shao H, Breitner JC, Whitmer RA, et al. Hormone therapy and Alzheimer disease
462 dementia: new findings from the Cache County Study. *Neurology*. 2012;79(18):1846-1852.
- 463 33. Resnick SM, Henderson VW. Hormone therapy and risk of Alzheimer disease: a critical
464 time. *Jama*. 2002;288(17):2170-2172.

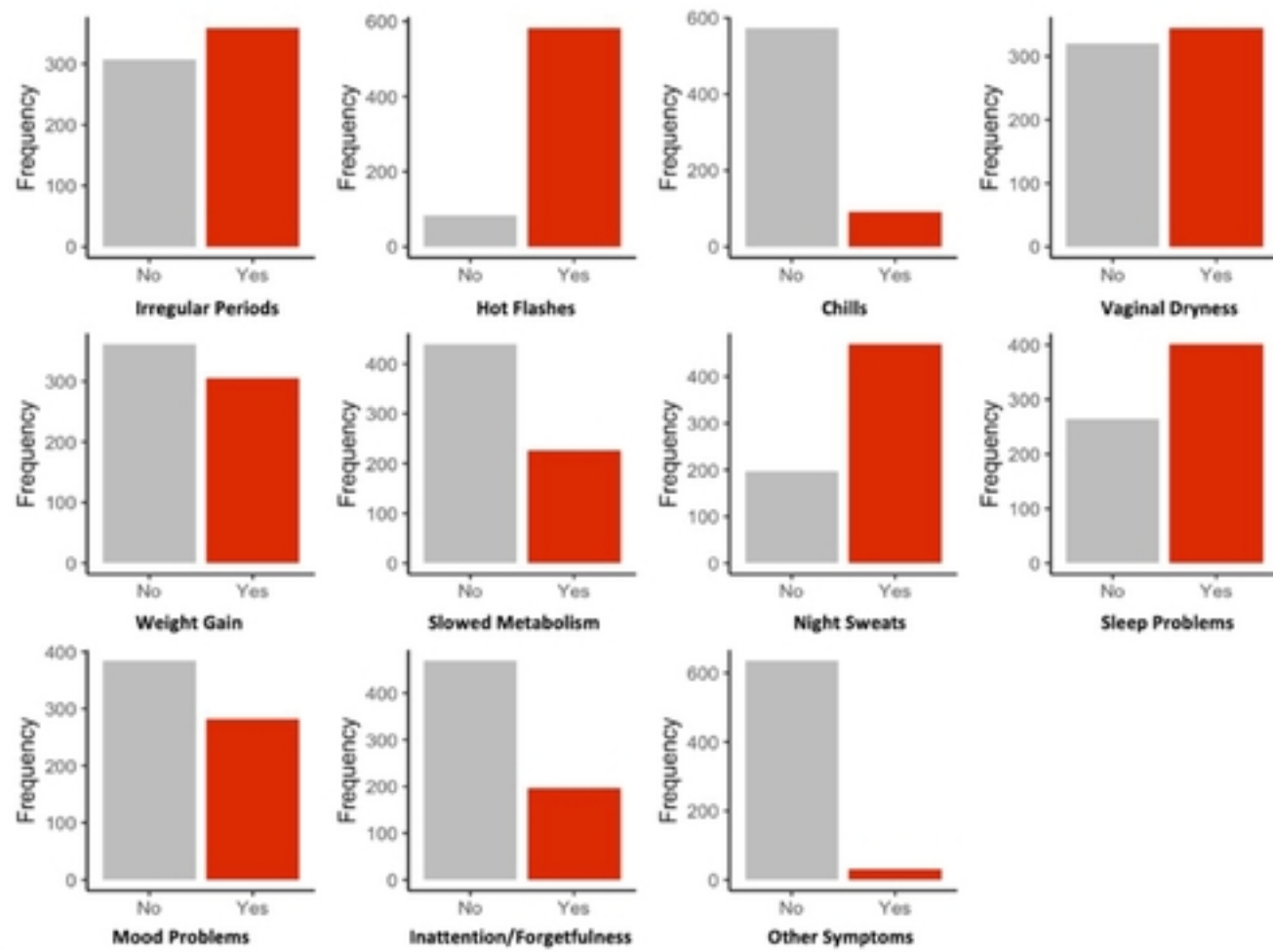
- 465 34. Seshadri S, Zornberg GL, Derby LE, Myers MW, Jick H, Drachman DA.
466 Postmenopausal estrogen replacement therapy and the risk of Alzheimer disease. *Archives of*
467 *neurology*. 2001;58(3):435-440.
- 468 35. Imtiaz B, Tuppurainen M, Rikkinen T, et al. Postmenopausal hormone therapy and
469 Alzheimer disease: A prospective cohort study. *Neurology*. 2017;88(11):1062-1068.
- 470 36. Ismail Z, Smith EE, Geda Y, et al. Neuropsychiatric symptoms as early manifestations of
471 emergent dementia: provisional diagnostic criteria for mild behavioral impairment. *Alzheimer's*
472 *& Dementia*. 2016;12(2):195-202.
- 473 37. Ismail Z, McGirr A, Gill S, Hu S, Forkert ND, Smith EE. Mild behavioral impairment
474 and subjective cognitive decline predict cognitive and functional decline. *Journal of Alzheimer's*
475 *disease*. 2021;80(1):459-469.
- 476 38. McGirr A, Nathan S, Ghahremani M, Gill S, Smith EE, Ismail Z. Progression to dementia
477 or reversion to normal cognition in mild cognitive impairment as a function of late-onset
478 neuropsychiatric symptoms. *Neurology*. 2022;98(21):e2132-e2139.
- 479 39. Rouse HJ, Ismail Z, Andel R, Molinari VA, Schinka JA, Small BJ. Impact of mild
480 behavioral impairment on longitudinal changes in cognition. *The Journals of Gerontology:*
481 *Series A*. 2024;79(1):glad098.
- 482 40. Kan CN, Cano J, Zhao X, Ismail Z, Chen CL-H, Xu X. Prevalence, Clinical Correlates,
483 Cognitive Trajectories, and Dementia Risk Associated With Mild Behavioral Impairment in
484 Asians. *The Journal of Clinical Psychiatry*. 2022;83(3):40123.
- 485 41. Wolfova K, Creese B, Aarsland D, et al. Gender/sex differences in the association of mild
486 behavioral impairment with cognitive aging. *Journal of Alzheimer's Disease*. 2022;88(1):345-
487 355.
- 488 42. Ghahremani M, Wang M, Chen H-Y, et al. Plasma Phosphorylated Tau at Threonine 181
489 and Neuropsychiatric Symptoms in Preclinical and Prodromal Alzheimer Disease. *Neurology*.
490 2023;100(7):e683-e693.
- 491 43. Ismail Z, Leon R, Creese B, Ballard C, Robert P, Smith EE. Optimizing detection of
492 Alzheimer's disease in mild cognitive impairment: a 4-year biomarker study of mild behavioral
493 impairment in ADNI and MEMENTO. *Molecular Neurodegeneration*. 2023;18(1):50.
- 494 44. Ismail Z, Ghahremani M, Amlish Munir M, Fischer CE, Smith EE, Creese B. A
495 longitudinal study of late-life psychosis and incident dementia and the potential effects of race
496 and cognition. *Nature Mental Health*. 2023;1(4):273-283.
- 497 45. Ebrahim IM, Ghahremani M, Camicioli R, Smith EE, Ismail Z. Effects of race, baseline
498 cognition, and APOE on the association of affective dysregulation with incident dementia: A
499 longitudinal study of dementia-free older adults. *Journal of Affective Disorders*. 2023;332:9-18.
- 500 46. Vellone D, Ghahremani M, Goodarzi Z, Forkert ND, Smith EE, Ismail Z. Apathy and
501 APOE in mild behavioral impairment, and risk for incident dementia. *Alzheimer's & Dementia:*
502 *Translational Research & Clinical Interventions*. 2022;8(1):e12370.
- 503 47. Matsuoka T, Ismail Z, Narumoto J. Prevalence of mild behavioral impairment and risk of
504 dementia in a psychiatric outpatient clinic. *Journal of Alzheimer's Disease*. 2019;70(2):505-513.
- 505 48. Naude JP, Gill S, Hu S, et al. Plasma neurofilament light: a marker of neurodegeneration
506 in mild behavioral impairment. *Journal of Alzheimer's disease*. 2020;76(3):1017-1027.
- 507 49. Matuskova V, Ismail Z, Nikolai T, et al. Mild behavioral impairment is associated with
508 atrophy of entorhinal cortex and hippocampus in a memory clinic cohort. *Frontiers in aging*
509 *neuroscience*. 2021;13:643271.

- 510 50. Ghahremani M, Nathan S, Smith EE, McGirr A, Goodyear B, Ismail Z. Functional
511 connectivity and mild behavioral impairment in dementia-free elderly. *Alzheimer's & Dementia:
512 Translational Research & Clinical Interventions*. 2023;9(1):e12371.
- 513 51. Wilson RS, Segawa E, Boyle PA, Anagnos SE, Hizez LP, Bennett DA. The natural
514 history of cognitive decline in Alzheimer's disease. *Psychology and aging*. 2012;27(4):1008.
- 515 52. Hall CB, Lipton RB, Sliwinski M, Stewart WF. A change point model for estimating the
516 onset of cognitive decline in preclinical Alzheimer's disease. *Statistics in medicine*.
517 2000;19(11-12):1555-1566.
- 518 53. Amieva H, Le Goff M, Millet X, et al. Prodromal Alzheimer's disease: successive
519 emergence of the clinical symptoms. *Annals of Neurology: Official Journal of the American
520 Neurological Association and the Child Neurology Society*. 2008;64(5):492-498.
- 521 54. Johnson DK, Storandt M, Morris JC, Galvin JE. Longitudinal study of the transition from
522 healthy aging to Alzheimer disease. *Archives of neurology*. 2009;66(10):1254-1259.
- 523 55. Grober E, Hall CB, Lipton RB, Zonderman AB, Resnick SM, Kawas C. Memory
524 impairment, executive dysfunction, and intellectual decline in preclinical Alzheimer's disease.
525 *Journal of the International Neuropsychological Society*. 2008;14(2):266-278.
- 526 56. Ismail Z, Guan DX, Vellone D, et al. The Canadian platform for research online to
527 investigate health, quality of life, cognition, behaviour, function, and caregiving in aging (CAN-
528 PROTECT): study protocol, platform description, and preliminary analyses. *medRxiv*.
529 2023:2023.12.16.23300094. doi:10.1101/2023.12.16.23300094
- 530 57. Farias ST, Weakley A, Harvey D, Chandler J, Huss O, Mungas D. The measurement of
531 Everyday Cognition (ECog): revisions and updates. *Alzheimer disease and associated disorders*.
532 2021;35(3):258.
- 533 58. Ismail Z, Agüera-Ortiz L, Brodaty H, et al. The Mild Behavioral Impairment Checklist
534 (MBI-C): a rating scale for neuropsychiatric symptoms in pre-dementia populations. *Journal of
535 Alzheimer's disease*. 2017;56(3):929-938.
- 536 59. Hu S, Patten S, Charlton A, et al. Validating the Mild Behavioral Impairment Checklist in
537 a Cognitive Clinic: Comparisons With the Neuropsychiatric Inventory Questionnaire. *J Geriatr
538 Psychiatry Neurol*. Mar 2023;36(2):107-120. doi:10.1177/08919887221093353
- 539 60. Kester JD, Benjamin AS, Castel AD, Craik FI. Memory in elderly people. *Handbook of
540 memory disorders*. 2002;2:543-567.
- 541 61. Thurston RC, Pauline M, Chang Y, et al. Menopausal Vasomotor Symptoms and Plasma
542 Alzheimer's Disease Biomarkers. *American Journal of Obstetrics and Gynecology*. 2023;
- 543 62. Wolfova K, Creese B, Aarsland D, et al. Gender/Sex Differences in the Association of
544 Mild Behavioral Impairment with Cognitive Aging. *J Alzheimers Dis*. May 16 2022;88(1):345-
545 355. doi:10.3233/JAD-220040
- 546 63. Taragano FE, Allegri RF, Heisecke SL, et al. Risk of conversion to dementia in a mild
547 behavioral impairment group compared to a psychiatric group and to a mild cognitive
548 impairment group. *Journal of Alzheimer's Disease*. 2018;62(1):227-238.
- 549 64. Mallo SC, Ismail Z, Pereiro AX, et al. Assessing mild behavioral impairment with the
550 mild behavioral impairment checklist in people with subjective cognitive decline. *International
551 psychogeriatrics*. 2019;31(2):231-239.
- 552 65. Creese B, Brooker H, Ismail Z, et al. Mild behavioral impairment as a marker of
553 cognitive decline in cognitively normal older adults. *The American Journal of Geriatric
554 Psychiatry*. 2019;27(8):823-834.

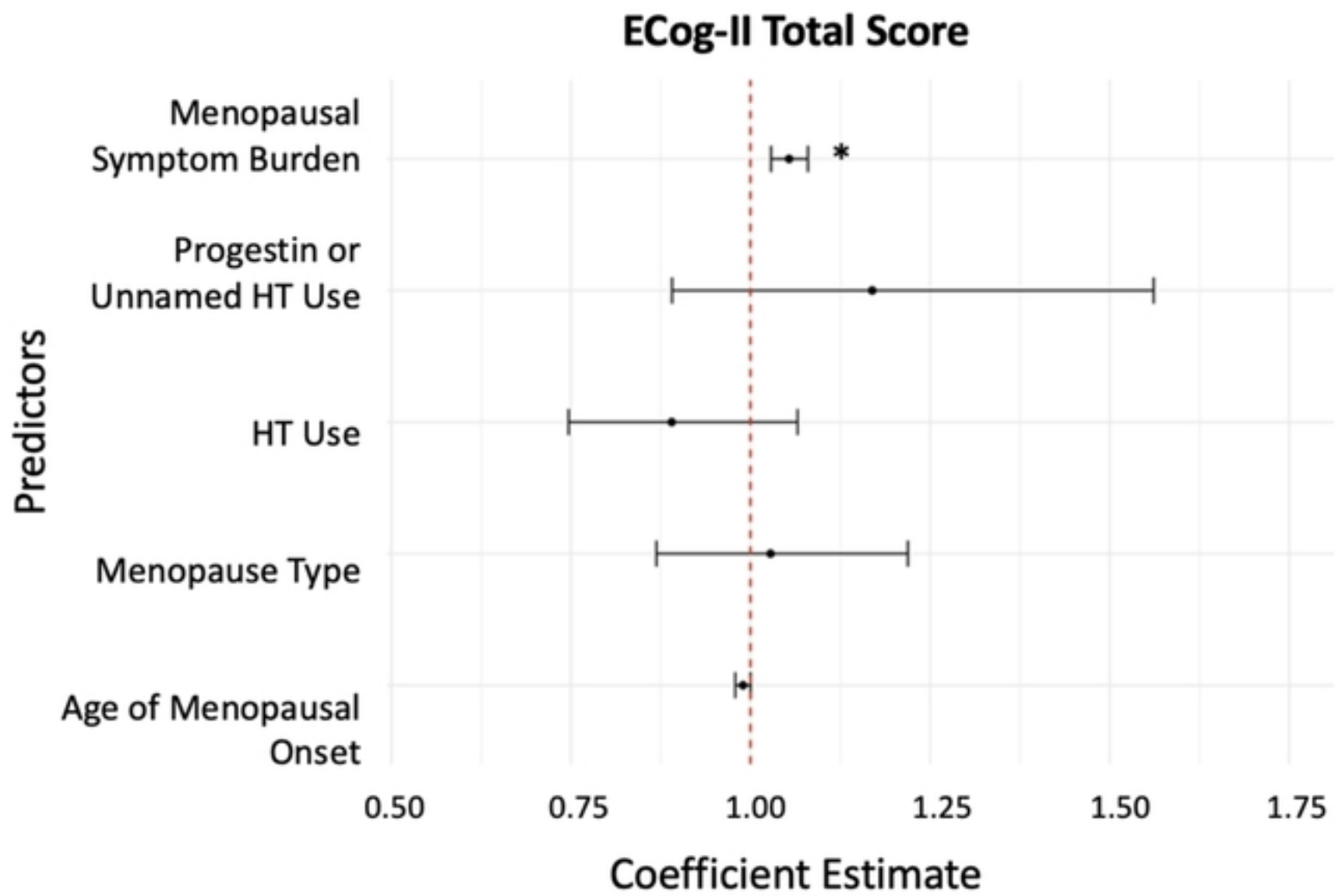
- 555 66. Ismail Z, Black SE, Camicioli R, et al. Recommendations of the 5th Canadian Consensus
556 Conference on the diagnosis and treatment of dementia. *Alzheimer's & Dementia*.
557 2020;16(8):1182-1195.
- 558 67. Ghahremani M, Smith EE, Chen HY, Creese B, Goodarzi Z, Ismail Z. Vitamin D
559 supplementation and incident dementia: Effects of sex, APOE, and baseline cognitive status.
560 *Alzheimer's & Dementia: Diagnosis, Assessment & Disease Monitoring*. 2023;15(1):e12404.
- 561 68. Norbury R, Cutter WJ, Compton J, et al. The neuroprotective effects of estrogen on the
562 aging brain. *Experimental gerontology*. 2003;38(1-2):109-117.
- 563 69. Kaunitz AM, Manson JE. Management of menopausal symptoms. *Obstetrics and*
564 *gynecology*. 2015;126(4):859.
- 565 70. C Correia S, X Santos R, Cardoso S, et al. Effects of estrogen in the brain: is it a
566 neuroprotective agent in Alzheimer's disease? *Current aging science*. 2010;3(2):113-126.
- 567 71. Pertesi S, Coughlan G, Puthusseryppady V, Morris E, Hornberger M. Menopause,
568 cognition and dementia—A review. *Post reproductive health*. 2019;25(4):200-206.
- 569 72. Rahman A, Schelbaum E, Hoffman K, et al. Sex-driven modifiers of Alzheimer risk: a
570 multimodality brain imaging study. *Neurology*. 2020;95(2):e166-e178.
- 571 73. Uddin MS, Rahman MM, Jakaria M, et al. Estrogen signaling in Alzheimer's disease:
572 molecular insights and therapeutic targets for Alzheimer's dementia. *Molecular Neurobiology*.
573 2020;57:2654-2670.
- 574 74. Yaffe K, Sawaya G, Lieberburg I, Grady D. Estrogen therapy in postmenopausal women:
575 effects on cognitive function and dementia. *Jama*. 1998;279(9):688-695.
- 576 75. Gleason CE, Dowling NM, Wharton W, et al. Effects of hormone therapy on cognition
577 and mood in recently postmenopausal women: findings from the randomized, controlled
578 KEEPS—cognitive and affective study. *PLoS medicine*. 2015;12(6):e1001833.
- 579 76. Savolainen-Peltonen H, Rahkola-Soisalo P, Hoti F, et al. Use of postmenopausal
580 hormone therapy and risk of Alzheimer's disease in Finland: nationwide case-control study. *bmj*.
581 2019;364
- 582 77. Hlatky MA, Boothroyd D, Vittinghoff E, et al. Quality-of-life and depressive symptoms
583 in postmenopausal women after receiving hormone therapy: results from the Heart and
584 Estrogen/Progestin Replacement Study (HERS) trial. *Jama*. 2002;287(5):591-597.
- 585 78. Toffol E, Heikinheimo O, Partonen T. Hormone therapy and mood in perimenopausal
586 and postmenopausal women: a narrative review. *Menopause*. 2015;22(5):564-578.
- 587 79. Kirkham C, Hahn P, VAN VUG D, Carmichael J, Reid R. A randomized, double-blind,
588 placebo-controlled, cross-over trial to assess the side effects of medroxyprogesterone acetate in
589 hormone replacement therapy. *Obstetrics & Gynecology*. 1991;78(1):93-97.
- 590 80. Gambacciani M, Ciaponi M, Cappagli B, et al. Effects of low-dose, continuous combined
591 estradiol and noretisterone acetate on menopausal quality of life in early postmenopausal
592 women. *Maturitas*. 2003;44(2):157-163.
- 593 81. Baker LD, Sambamurti K, Craft S, et al. 17 β -Estradiol reduces plasma A β 40 for HRT-
594 naive postmenopausal women with Alzheimer disease: a preliminary study. *The American*
595 *journal of geriatric psychiatry*. 2003;11(2):239-244.
- 596 82. Petrovska S, Dejanova B, Jurisic V. Estrogens: mechanisms of neuroprotective effects.
597 *Journal of Physiology and Biochemistry*. 2012;68:455-460.
- 598



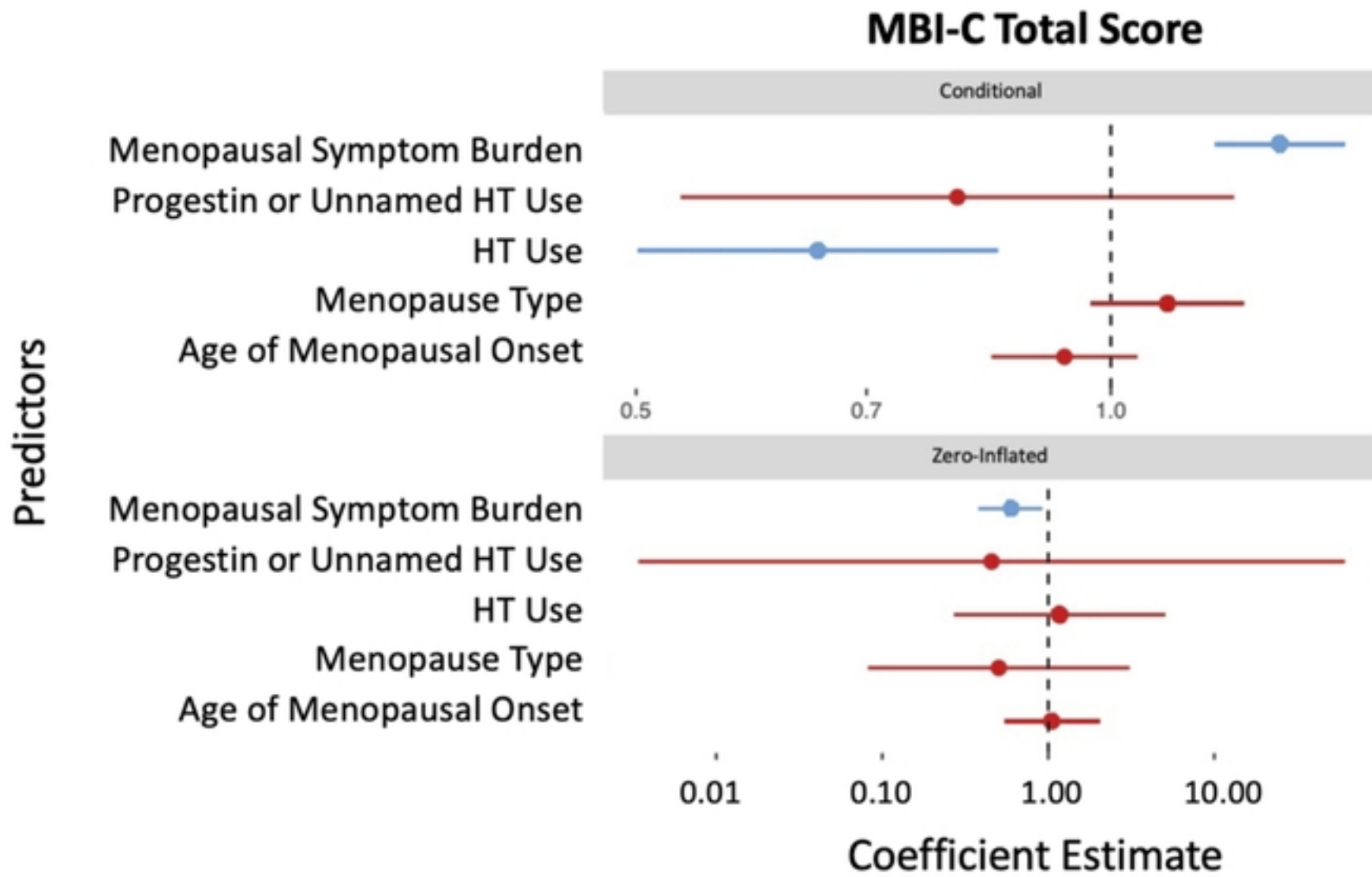
Figure



Figure



Figure



Figure