

Global burden of renal anemia in 204 countries and territories, 1990–2021: a systematic analysis for the Global Burden of Disease Study 2021

Authors:

Feifan Chu,^{1#} Jinzhong Ji,^{2#} Yuning Ma,^{1#} Qing Guan,^{3#} Lumin Chen,¹ Zujie Chen,¹ Qiwei Ji,¹ Mingxin Sun,¹ Haihan Song,^{4,5*} Xiuquan Lin,^{6*} Hao Zhou^{1*‡}

Affiliations:

1. Department of Urology, the Fourth Affiliated Hospital of School of Medicine, and International School of Medicine, International Institutes of Medicine, Zhejiang University, Yiwu, China, 322000
2. College of Clinical Medicine, Guizhou Medical University, Guiyang, China, 550025
3. School of Health Management, Fujian Medical University, Fuzhou, Fujian, China, 350122
4. Department of Immunology, DICAT Biomedical Computation Centre, Vancouver, BC, Canada
5. Central Lab, Shanghai Key Laboratory of Pathogenic Fungi Medical Testing, Shanghai Pudong New Area People's Hospital, Shanghai, China
6. Department for Chronic and Noncommunicable Disease Control and Prevention, Fujian Provincial Center for Disease Control and Prevention, Fuzhou, Fujian, China, 350012

Joint first authors

* Correspondence: haozhou@zju.edu.cn (H.Z.), linxiuquan001@163.com (X.L.), haihansong@163.com (H.S.)

‡ Lead contact

Abstract

Background: Renal anemia, one of the causes of anemia, has inflicted a certain degree of loss on global health. However, there are no comprehensive analyses on the burden of renal anemia yet. This study aims to comprehensively evaluate the age-standardized prevalence and Years Lived with Disability (YLDs) burden and trends of renal anemia across different sexes, ages, countries, and regions from 1990 to 2021.

Methods: We analyzed the prevalence and YLDs of renal anemia from 1990 to 2021 across different sexes, ages, countries, and regions. We also examined the relationship between the burden of renal anemia in various regions and the Human Development Index (HDI). Further analyses included the changes in

the rank of renal anemia among causes of anemia from 1990 to 2021. Finally, we conducted health inequality analysis, frontier analysis, and APC (age-period-cohort) model analysis on the burden of renal anemia.

Results: In 2021, the global prevalence of renal anemia across all age groups was 0.82% (95% uncertainty interval [UI] 0.73 – 0.91), equivalent to 63.92 million (59.61 – 71.81) prevalent cases, resulting in 1.70 million (1.13 – 2.43) years lived with disability (YLDs), showing an increase compared to 1990. In recent years, renal anemia has risen in rank among causes of anemia. The burden of renal anemia varies significantly across different age groups and regions, with particularly severe burdens observed among populations over sixty years of age in Central Europe, Eastern Europe, Central Asia, South Asia, Southeast Asia, southern Latin America, and North American countries. A series of analyses based on the HDI revealed the following: descriptive analysis indicated a positive correlation between the prevalence of renal anemia and HDI; cross-national inequality analysis showed an increasing disparity in prevalence and YLDs between high HDI and low HDI countries, with higher burdens in high HDI countries; although with low prevalence, frontier analysis revealed considerable opportunities to reduce the age-standardized YLDs in the Low and medium of HDI spectrum; APC analysis suggested significant differences in the prevalence of renal anemia in high HDI regions (not very high HDI regions) compared to middle and low HDI regions across age, period, and cohort analyses.

Conclusions: Although the global burden of anemia is decreasing, renal anemia remains a significant health issue, especially among older populations in mid and high-development countries. Targeted programs should be implemented, starting with enhancing diagnosis and treatment in specific regions and populations. The development of new medications should also be considered.

Introduction

Renal anemia is a common complication of chronic kidney disease (CKD) and is caused to a certain extent by the reduced production of erythropoietin due to severe renal impairment.^[1] The occurrence of renal anemia can further worsen the condition of CKD^[2] and exacerbate cardiovascular complications associated with CKD,^[3,4] posing a serious threat to patient safety.

Studies have noted that the global prevalence of CKD stages one to five is 13.4%, and for stages 3–5, the prevalence is 10.6%.^[5] In a study encompassing 19 CKD cohorts from around the world, 41% of 209,311 patients were reported to have concurrent anemia.^[6] According to an analysis from a study in the United States, which covered five million insured patients, male severe anemia incidence (hemoglobin < 10 g/dL) increased from 1.3% to 29.7% as the estimated glomerular filtration rate (eGFR) dropped from 60–74 to below 15 mL/min/1.73

m², while in females it increased from 1.9% to 37.6%.^[4] A multicenter cross-sectional study from China showed a similar trend.^[7] One of the World Health Organization's (WHO) global nutrition targets is to reduce the anemia prevalence in women of reproductive age (fifteen to forty-nine years) by 50% by 2030.^[8] GBD 2021's latest research has updated and expanded the global estimate of the anemia burden but does not detail renal anemia.^[9] Although various countries and regions have developed guidelines related to renal anemia,^[10,11] the elderly, as the main patients with CKD and the main affected subjects of renal anemia, have not received enough attention.

The 2021 Global Burden of Disease, Injuries, and Risk Factors Study (GBD) provides valuable resources for epidemiological research.^[9] The data obtained from GBD can be used for describing disease burden and analyzing trends, evaluating the current situation and temporal changes of diseases among different populations in various regions and countries, thereby providing information for the formulation of related medical practices and health policies.^[9]

This study utilized data from the GBD 2021 to describe trends in the prevalence of renal anemia globally, regionally, and nationally. Additionally, we conducted an international inequality analysis using the standard health equity analysis methodology recommended by the World Health Organization (WHO). Furthermore, cutting-edge analysis identified the achievable lowest prevalence rates and YLDs for renal anemia in regions of different developmental statuses. Lastly, we applied the APC model to analyze the prevalence and YLDs of renal anemia among the elderly at the global, regional, and national levels from 1990 to 2021.

Methods

1. Data Source

GBD 2021 offers a comprehensive assessment of health loss due to 371 diseases, injuries, and risk factors across 204 countries and territories, leveraging the latest epidemiological data available. In our study, we extracted estimates of age-standardized prevalence, age-standardized YLDs, and their 95% Uncertainty Intervals (UI) for renal anemia, sourced from the global data, continental divisions (Africa, America, Asia, Europe), and countries (204 in total) from the GBD 2021 anemia research (<https://cloud.ihme.washington.edu/s/Fo6JFktjd8gp4fJ>). Our study adheres to the Guidelines for Accurate and Transparent Health Estimates Reporting (GATHER).

2. Disease Burden Description

Our research delves into the age-standardized prevalence and YLDs burden of renal anemia across different genders, ages, countries, and regions, as well

as the trends between 1990–2021.

3. Epidemiologic Transition and Annual Change Rate

Through analysis of the relationship between the burden of renal anemia (prevalence and YLDs) in each region and the HDI, we explored the ties between renal anemia and human socioeconomic development. Owing to the unavailability of the complete 2021 Socio-demographic Index (SDI) data, the World Health Organization's HDI was used as a substitute for SDI, and a correlational analysis between the two was performed. We projected the expected prevalence and YLDs of renal anemia for each HDI value and calculated the observed-to-expected ratios for the burden of renal anemia in each region, identifying countries with significantly higher or lower renal anemia burdens relative to their socioeconomic development levels.

4. Rank Change of Renal Anemia

To reflect the shifting burden of renal anemia between 1990–2021, we conducted an in-depth analysis of the rank change of renal anemia among various anemia causes, aiming for an improved representation of the burden of renal anemia.

5. Cross-national Inequality Analysis

We employed the Inequality Slope Index and the Concentration Index to estimate renal anemia health inequalities among nations from 1990 to 2021. The Inequality Slope Index was calculated by regressing the YLD rates of all age groups across countries against relative positions related to HDI, where relative positions are defined by the midpoint of the cumulative population ranges of HDI rankings. A weighted regression model was used to analyze heteroscedasticity. The Concentration Index was derived by numerical integration of the area under the Lorenz Concentration Curve, fitted to the cumulative fraction of YLDs and the cumulative relative distribution of the population sorted by HDI.^[12]

6. Frontier Analysis

To assess the performance of YLDs in countries or regions with different levels of development, we conducted a frontier analysis based on age-standardized YLDs and HDI using data from 1990 to 2021. The effective gap representing the distance from actual to frontier values, was calculated to highlight the disparity between observed YLD rates and those potentially achievable in a country or region, based their HDI values.^[13]

7. APC Analysis

Using the APC model framework, we analyzed time trends in prevalence across age, period, and birth cohorts. To prepare input data for the APC model, estimates of renal anemia prevalence and population data for each country/region from GBD 2021 were used. In the APC model, age effects are

represented by fit longitudinal specific-age rates for a given number of birth cohorts adjusted for the period bias. Period/cohort effects are represented by relative rates of prevalence during each period/cohort, calculated as the ratio of incidence rates for specific ages in each period/cohort relative to a reference period/cohort. The choice of the reference period/cohort is arbitrary and does not affect interpretation of the results. Two-sided p-values of less than 0.05 were considered to indicate significant differences. All analyses and visualizations were performed in R (V. 4.2.1).^[14]

8. Role of the funding source

The funder of the study had no role in the study design, data collection, data analysis, data interpretation, or writing of the report. The corresponding author had full access to all the data in the study and had final responsibility for the decision to submit for publication.

Results

(1) Age and Gender Trends in Renal Anemia

Regardless of gender, the prevalence of renal anemia increases with age, with the rate of increase accelerating after the age of seventy. The number of affected individuals first rises and then decreases, peaking between ages seventy-eighty.

Before the age of seventy, the prevalence of renal anemia in men and women is similar. Between seventy to ninety-five years of age, the prevalence is consistently higher in men than in women, but this trend reverses after the age of ninety-five. In terms of the number of affected individuals, apart from children under ten, the number of cases in women always exceeds that in men, with this phenomenon being especially pronounced during the reproductive ages of fifteen to forty-nine years and in those over eighty (figure 1A).

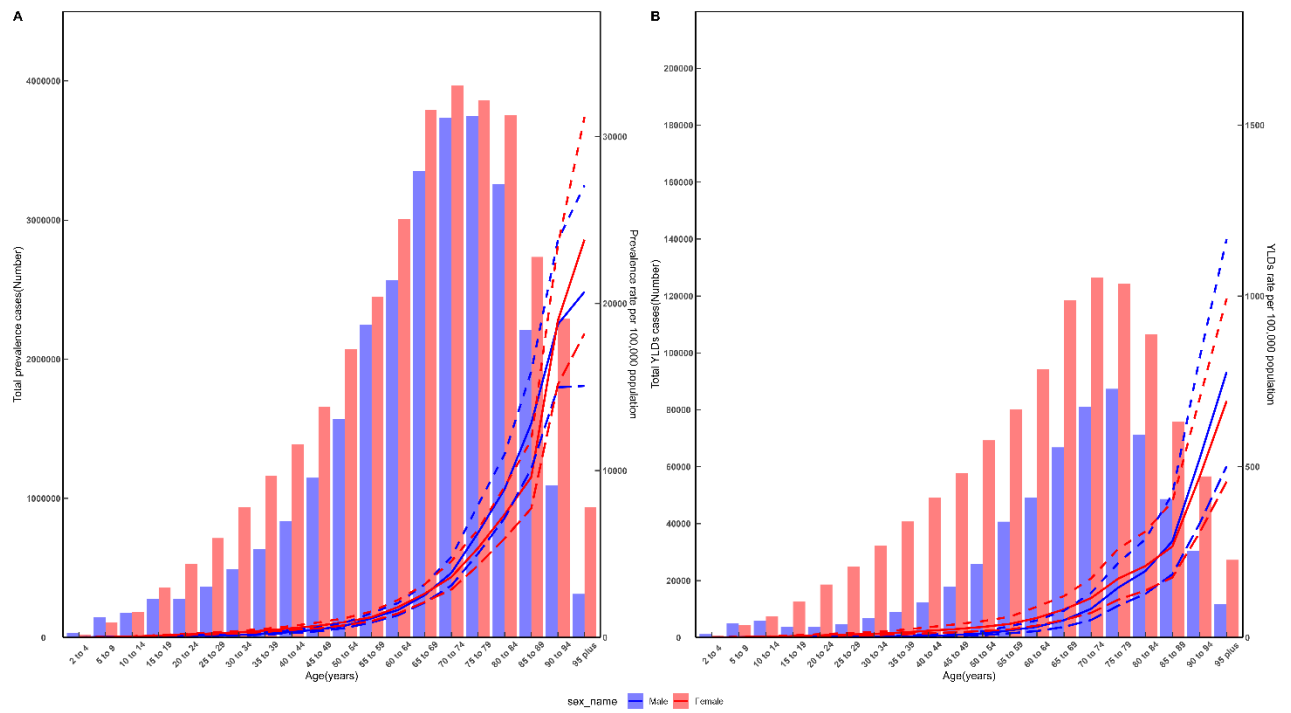
For all demographics, YLDs due to renal anemia increase with age, with the rate of increase speeding up after the age of seventy. The number of YLDs first rises and then decreases, with the highest values seen between seventy to eighty years old.

Before the age of ten, the YLDs rate for renal anemia in men and women is similar. From the ages of ten to eighty-five, however, the rate of YLDs in women is higher than in men, but this trend reverses after the age of eighty-five. Regarding the number of YLDs, apart from in children under ten, the number is consistently higher in women than in men across all age groups (figure 1B).

Over the past thirty years, the prevalence and YLDs of renal anemia in both men and women of almost all age groups have shown a downward trend, mainly focused on those under seventy-five.

Before the age of ten, there is no significant gender difference in the changes in prevalence and YLDs of renal anemia. In nearly all subsequent age

groups, the decreasing trends in both prevalence and YLDs are significantly greater in men than in women (figure 1C, D).



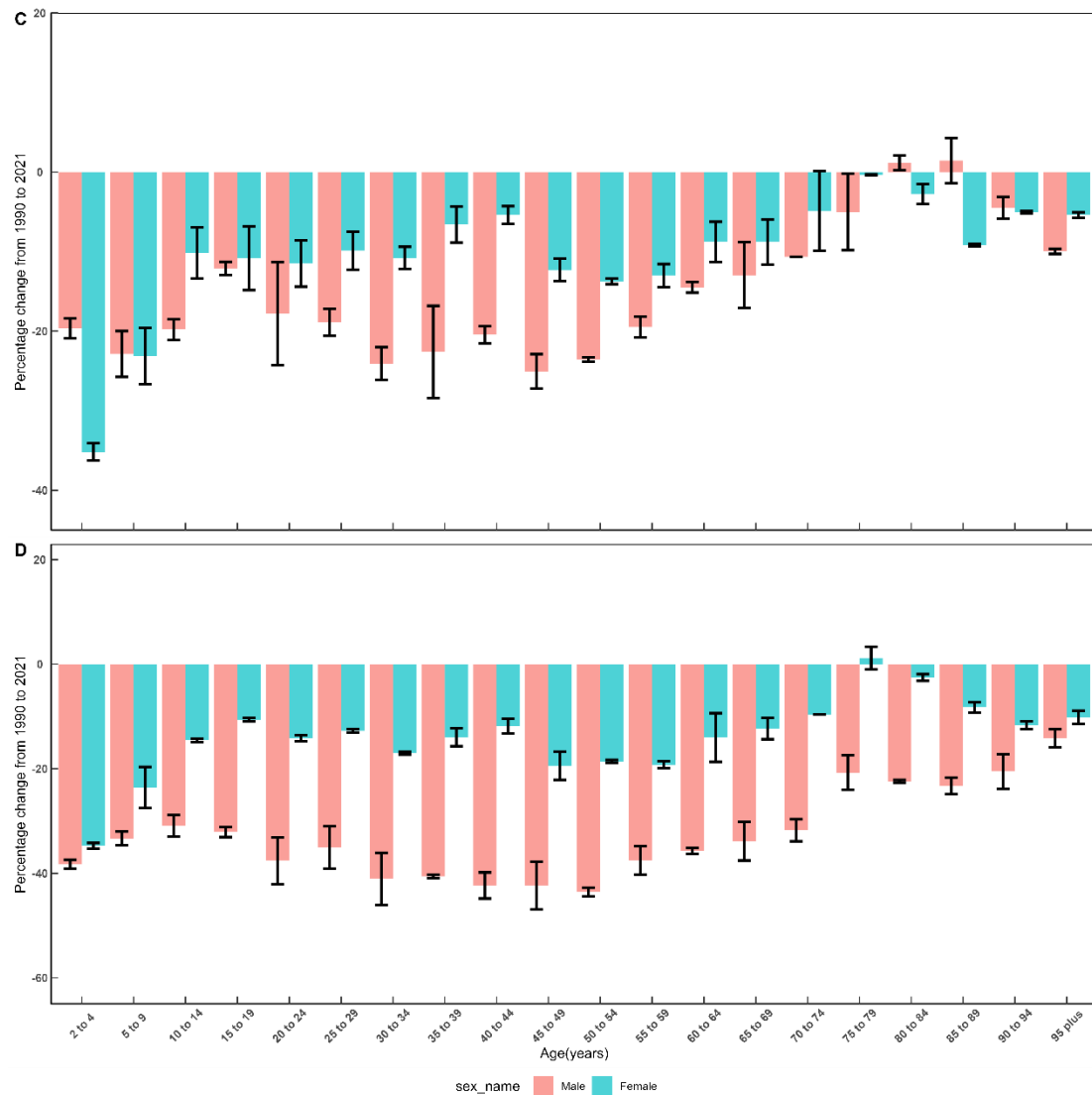


Figure 1. Prevalence and Years Lived with Disability (YLDs) Associated with Renal Anemia Globally in 2021 (A) Count and Rate of Global Renal Anemia Cases by Age and Sex in 2021, per 100,000 People; (B) Count and Rate of Renal Anemia YLDs by Age and Sex in 2021, per 100,000 People; dashed lines indicate the 95% upper and lower uncertainty intervals, respectively (C) Percentage Change in Prevalence of Anemia from 1990 to 2021 and (D) Percentage Change in YLDs (per 100,000 population) during the same timeframe.

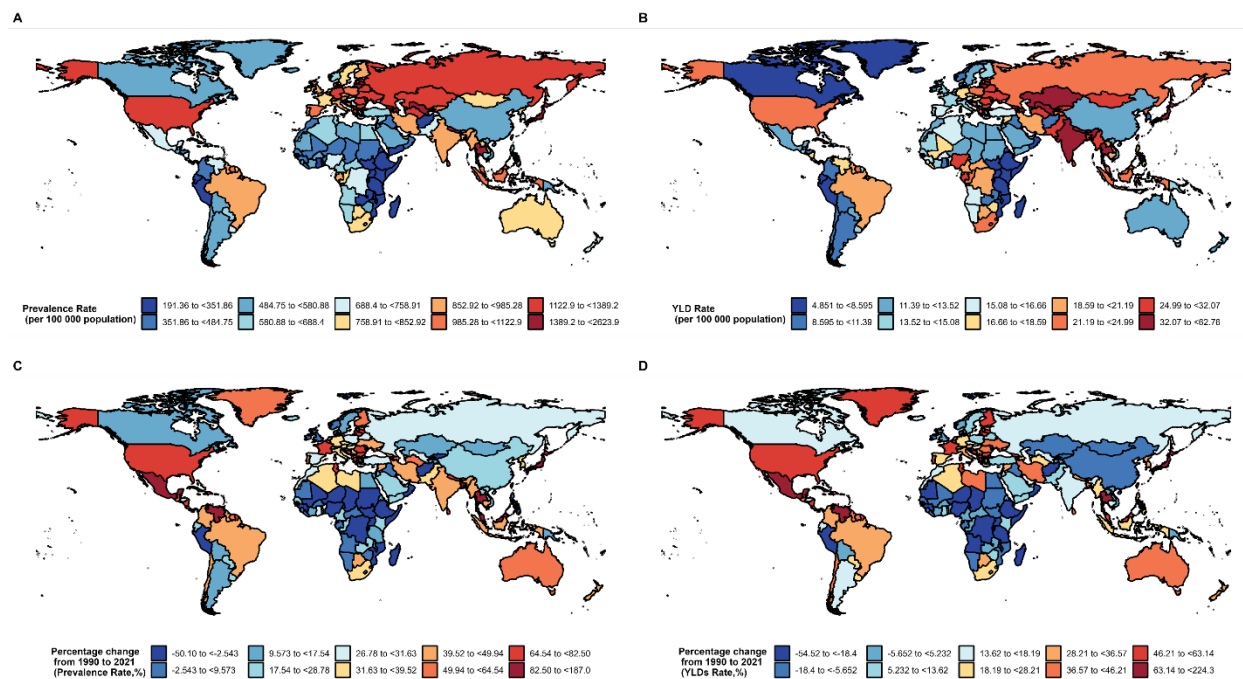
(2) Geographic Trends in Renal Anemia

Significant geographic differences exist in the burden of renal anemia. In 2021, Central Europe, Eastern Europe, and Central Asia, as well as South Asia, Southeast Asia, Southern Latin America, and North American states, experience higher rates of renal anemia. East Sub-Saharan Africa reportedly has the lowest prevalence of renal anemia—with Thailand displaying the highest incidence rate and Mozambique the lowest (figure 2A). The geographic distribution of renal anemia YLDs largely matches the prevalence rates, although there are some differences. Central and Eastern Europe, with the

highest incidence rates, do not correspond to the highest rates of YLDs. Conversely, Central and South Asian regions, with moderately high incidence rates, display the highest YLDs. For example, India, despite its high incidence rates, is one of the countries with the greatest YLD burden. Ethiopia has the lowest YLD rate (figure 2B).

From 1990 to 2021, the prevalence of renal anemia in Central Europe, Eastern Europe, Central Asia, South Asia, Southeast Asia, Southern Latin America, and North American states showed an upward trend. In contrast, Sub-Saharan Africa saw a significant decrease in prevalence—with Thailand showing the most significant increase and Afghanistan the largest decrease (figure 2C). Trends in the changes in YLDs for renal anemia generally align with prevalence rates. However, China, Mongolia, and Kazakhstan are exceptions; despite increasing trends in prevalence, YLDs unexpectedly decreased in these countries—with China's contrast being particularly pronounced (figure 2D). In 2021, the observed-to-expected ratios of YLDs due to renal anemia are higher in Central Europe, Eastern Europe, Central Asia, South Asia, Southeast Asia, Southern Latin America, Western and Southern Sub-Saharan Africa, and North American states, while East Sub-Saharan Africa has the lowest ratios (figure 2E).

In 2021, across nearly all regions, YLD rates for renal anemia in women are higher than in men, with the largest gender gap in life expectancy noted in Central Asia, Central Europe, Eastern Europe, and other places (figure 2F). In Central Europe, Eastern Europe, Central Asia, South Asia, Southeast Asia, Southern Latin America, and North American states, the prevalence and YLDs of renal anemia, as a proportion of the total for all types of anemia, remain high. In Sub-Saharan Africa, the opposite is true (figure 2G-H).



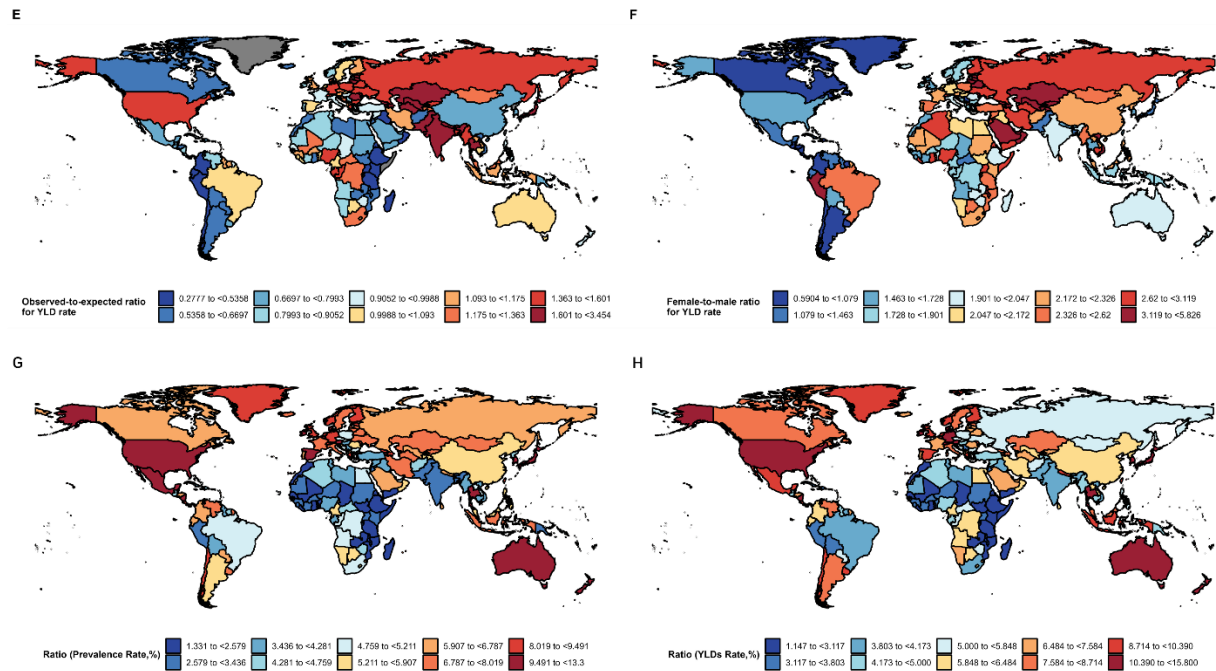


Figure 2. Global Burden of Renal Anemia in 2021 (A) Incidence Rate of Renal Anemia per 100,000 Individuals in 2021; (B) Disability-Adjusted Life Year (DALY) Rate of Renal Anemia per 100,000 Individuals in 2021; (C) Prevalence Change from 1990 to 2021; (D) Age-Standardized YLD Rate Change from 1990 to 2021; (E) Comparison of Observed versus Expected YLD Rates per 100,000 for All Ages, Male and Female in 2021, with Expected Rates Based on the Human Development Index (HDI); (F) Gender Ratio of YLD Rates per 100,000 in 2021; (G) Proportion of Renal Anemia in Total Anemia Prevalence; (H) Share of Renal Anemia YLDs in Total Anemia YLDs.

(3) Epidemiological Changes in Renal Anemia

Correlation analysis indicates that the HDI is highly correlated with the SDI (figure 3), allowing us to use HDI as a substitute for SDI in subsequent analyses.

At the regional level divided by HDI, the HDI showed a non-significant positive correlation with the age-standardized prevalence of renal anemia. South Asian regions with low HDI and high-income Asia-Pacific regions with high HDI had higher prevalence rates. No significant correlation was observed between HDI and age-standardized YLDs (figure 4).

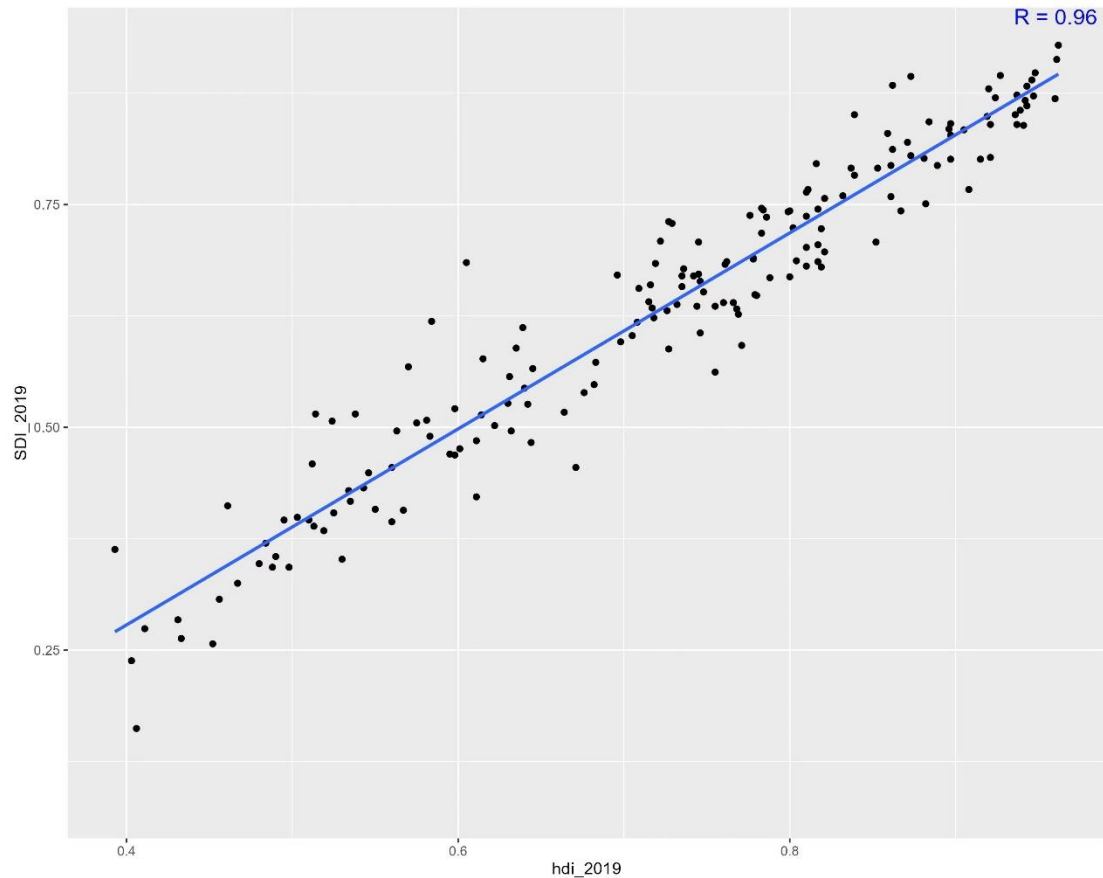


Figure 3. Correlation Analysis between the Social Demographic Index (SDI) and Human Development Index (HDI) for the Year 2019

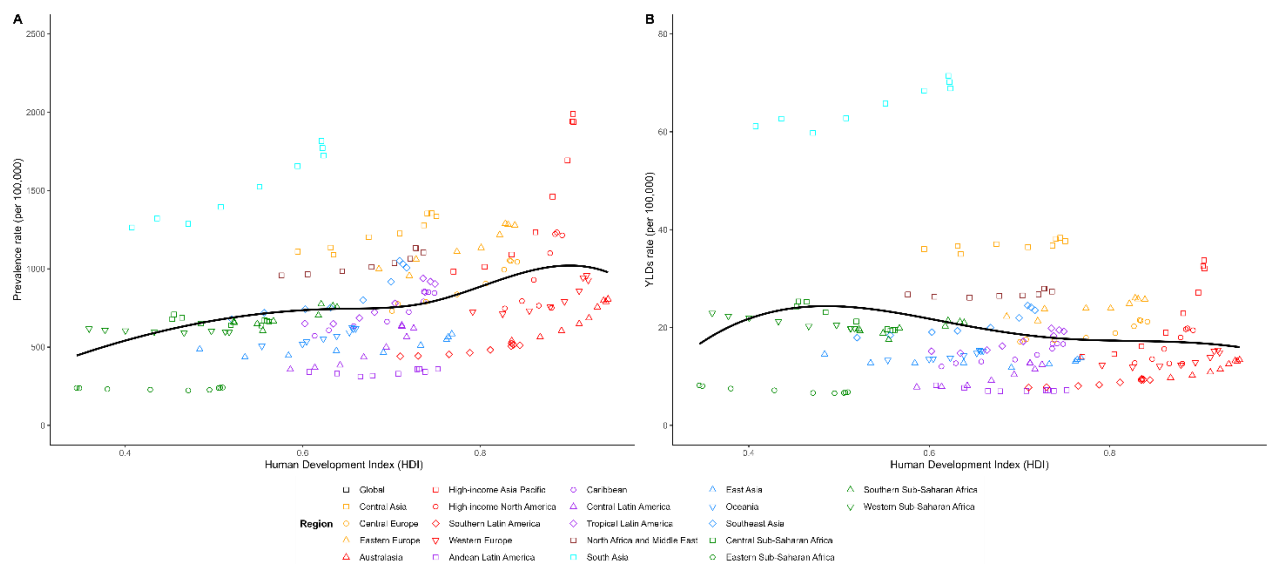


Figure 4. Age-Standardized Prevalence and YLDs of Renal Anemia in 21 Global Disease Burden Regions Stratified by SDI, 1990–2021 (A) Age-Standardized Prevalence of Renal Anemia from 1990 to 2021, in 21 Global Burden of Disease (GBD) Regions Categorized by the HDI (B) Age-Standardized YLD Rates for Renal Anemia from 1990 to 2021, in the Same GBD Regions Arranged by the HDI)

(4) Rank Changes in Renal Anemia

Overall, compared to 1990, anemia caused by CKD stages three, four, and five (dialysis-treated) experienced an increase in the rank among causes of anemia in 2021. Except for CKD stage four and CKD stage five(untreated), the ranking changes for men have increased more rapidly than women. Regionally, anemia due to CKD in Central Europe, Eastern Europe, and Central Asia saw an increase in rank among causes of anemia, whereas the Sub-Saharan Africa region showed little change (figure 5).

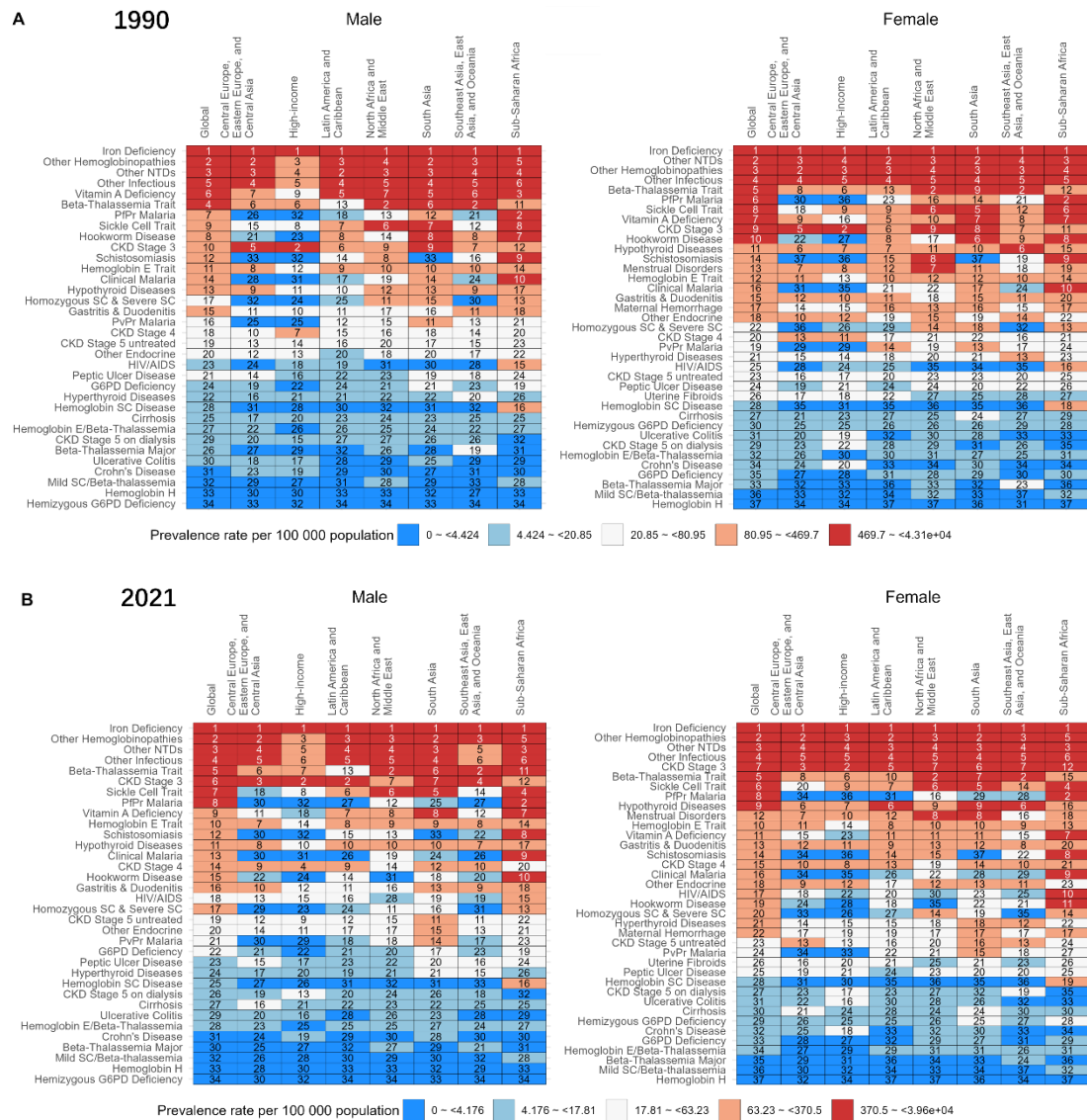


Figure 5. Ranking of Reasons for Renal Anemia (A) Global and Super-Regional Ranking of Renal Anemia Causes by YLD Rate Across All Age Groups in 1990 and (B) in 2021

(5) Cross-country inequality analysis of renal anemia prevalence and YLDs

In renal anemia, there is a significant absolute and relative HDI-related inequality, with countries of high HDI bearing a disproportionately high burden. As shown by the inequality slope index, the prevalence gap between

countries with the highest and lowest HDI increased from 286.13 in 1990 to 587.07 in 2021, while the YLDs gap increased from -4.02 in 1990 to 3.27 in 2019 (figure 6A-B). The concentration curve for renal anemia shows that the prevalence in 2021 compared to 1990 is mostly below the line of equality, indicating a shift of the major contributors to the prevalence of renal anemia towards high HDI regions. Although the YLDs of 1990 and 2021 are both above the line of equality, the curve of 2021 is closer to the line. This suggests that while YLDs caused by renal anemia are mainly contributed by low HDI regions, this inequality is narrowing (figure 6C-D).

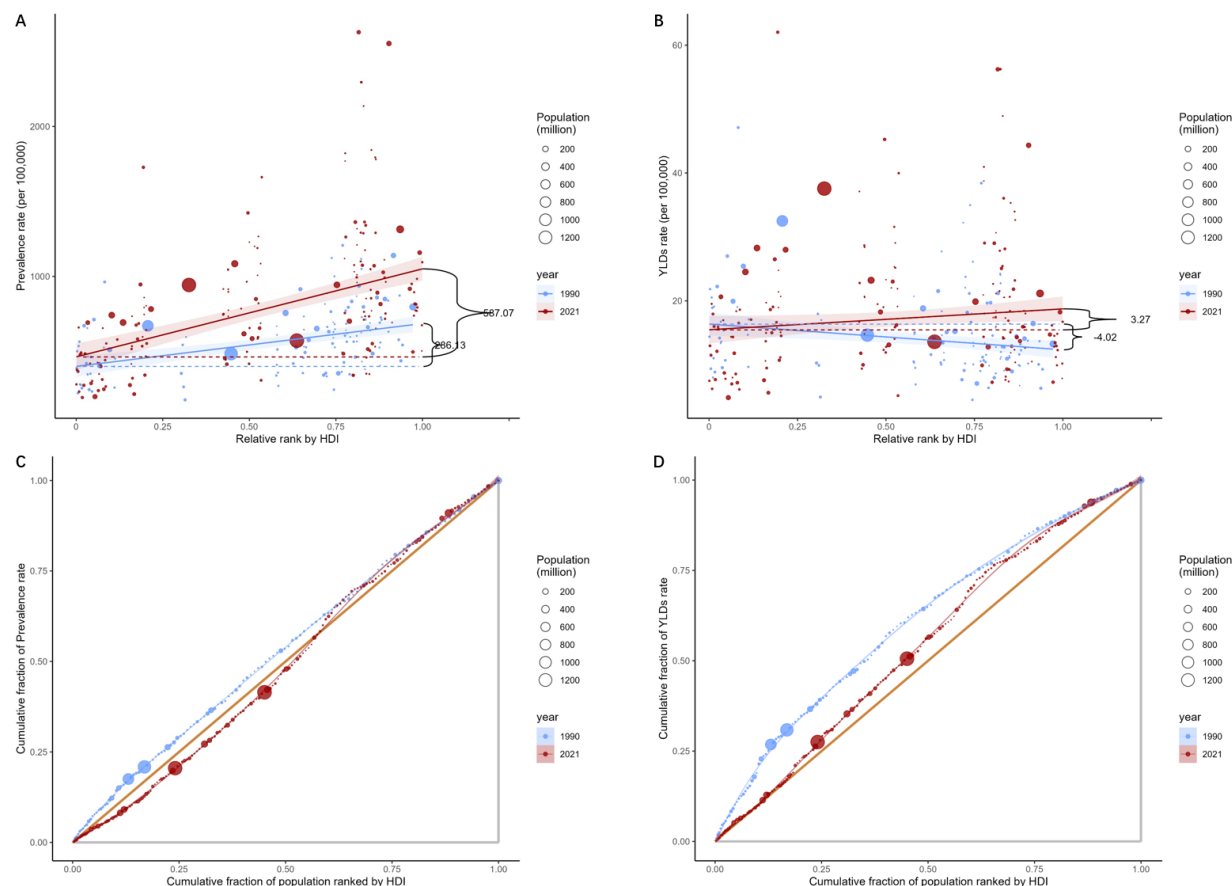


Figure 6. Health Inequity Analysis for Renal Anemia (A) Health Inequity Regression Curve for Renal Anemia Incidence Rates, and (B) Concentration Curve for Renal Anemia

(6) Frontier Analysis on the Basis of Age-Standardized YLDs

Overall, countries with higher HDI had smaller effective differences; however, the highest effective differences were found among countries with medium to low HDI (Figure 7A). Nepal, Uzbekistan, and Nigeria were the three countries most likely to narrow the gap. It is noteworthy that leaders were not limited to developed countries – Ethiopia, Eritrea, and Mozambique, which had lower HDIs, had small effective differences, while several countries with high HDIs, including Saudi Arabia, United Arab Emirates, Latvia, Bahrain, and Lithuania, performed disappointingly based on their HDI (Figure 7B).

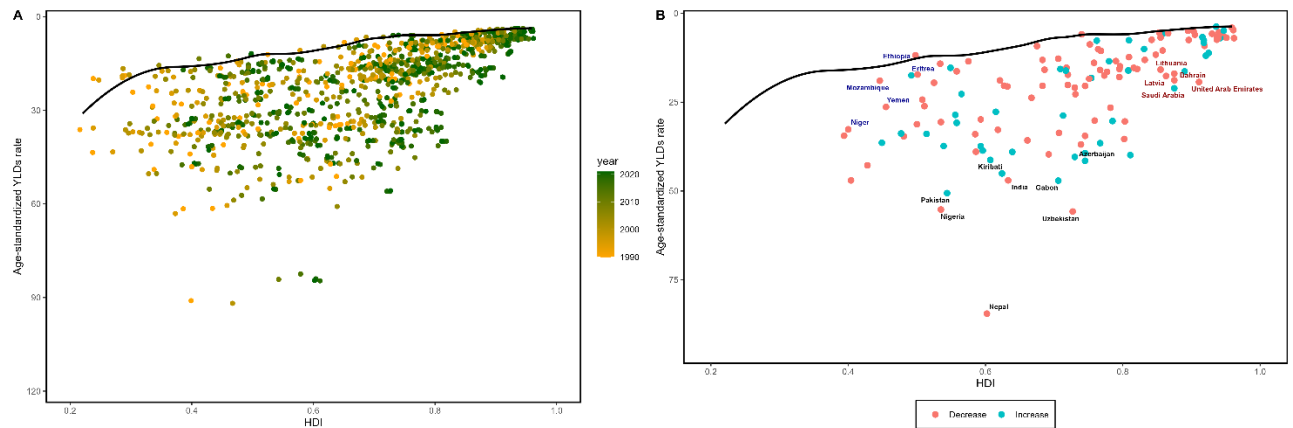


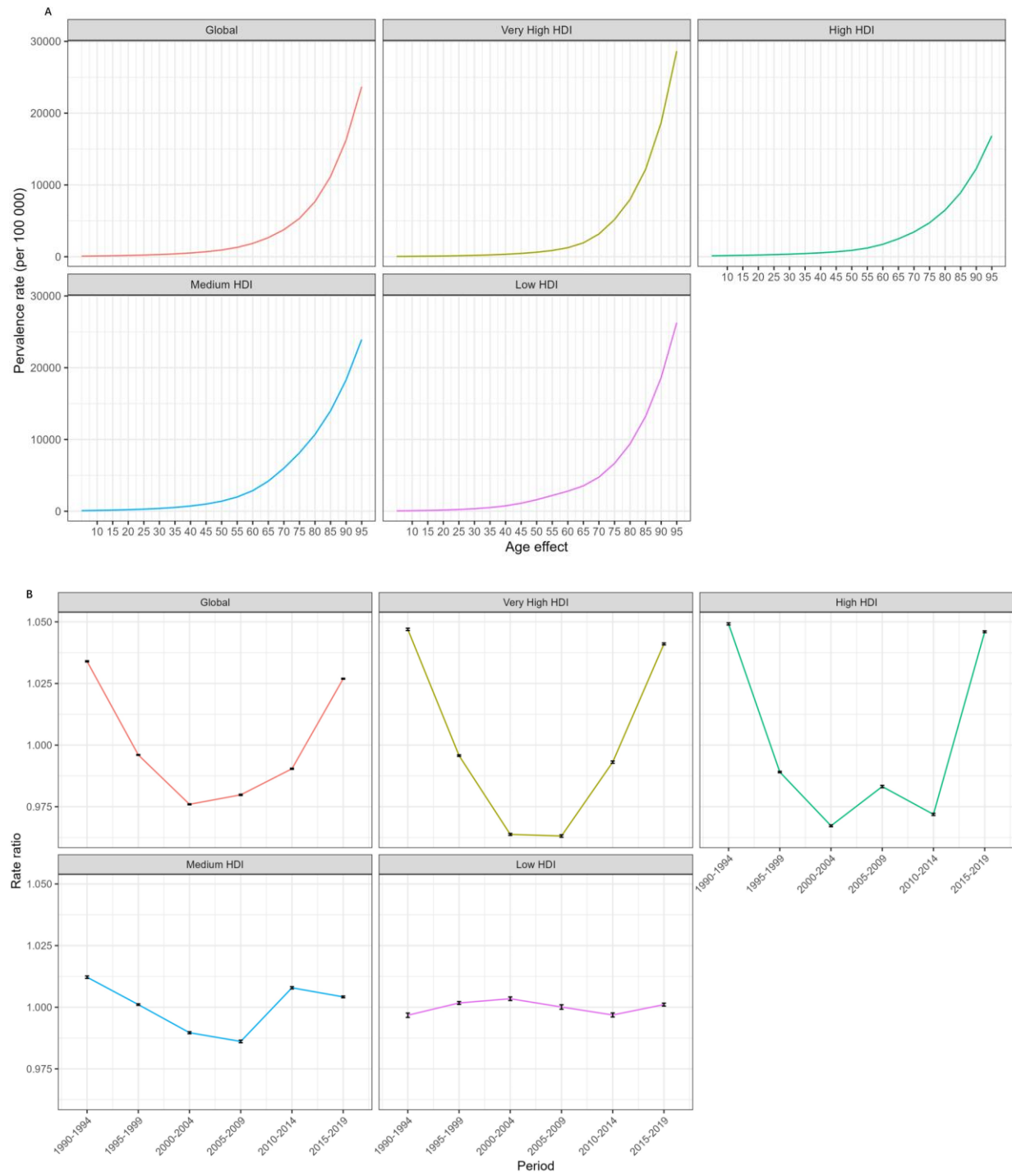
Figure 7. Frontier Analysis Based on HDI and Age-Standardized YLD Rates for Renal Anemia (A) Frontier Analysis for HDI and Age-Standardized YLD Rates for the Period 1990–2021 (B) Frontier Analysis for Different Countries Based on HDI and Age-Standardized YLD Rates in 2021. The frontier line is delineated in black, indicating the potentially achievable age-standardized YLDs on the basis of HDI; dots represent the actual age-standardized YLDs in every country and territory. The top eight countries with the highest effective difference are labeled in black; the top five countries with the lowest effective difference in low HDI are labeled in blue, whereas the highest effective difference in very high HDI are labeled in red.

(7) Age-Period-Cohort Model Analysis

Within regions divided by HDI, the age effect patterns remain the same, with the risk of prevalence increasing with age. Notably, older individuals in regions with high HDI have the lowest prevalence rates compared to other regions (figure 8A).

In period effects, during specific periods, there were no significant differences in prevalence rates in low and middle HDI regions, whereas high to very high HDI areas saw a decreasing trend in prevalence rates from 1990–2004. After a period of relative stability, rates began rising again approximately ten to fifteen years ago (figure 8B).

Regarding cohort effects, prevalence risks across successive birth cohorts were downward across HDI regions. Notably, the decline was most prominent in high but not very high HDI regions, with no clear trend in low HDI areas (figure 8C).



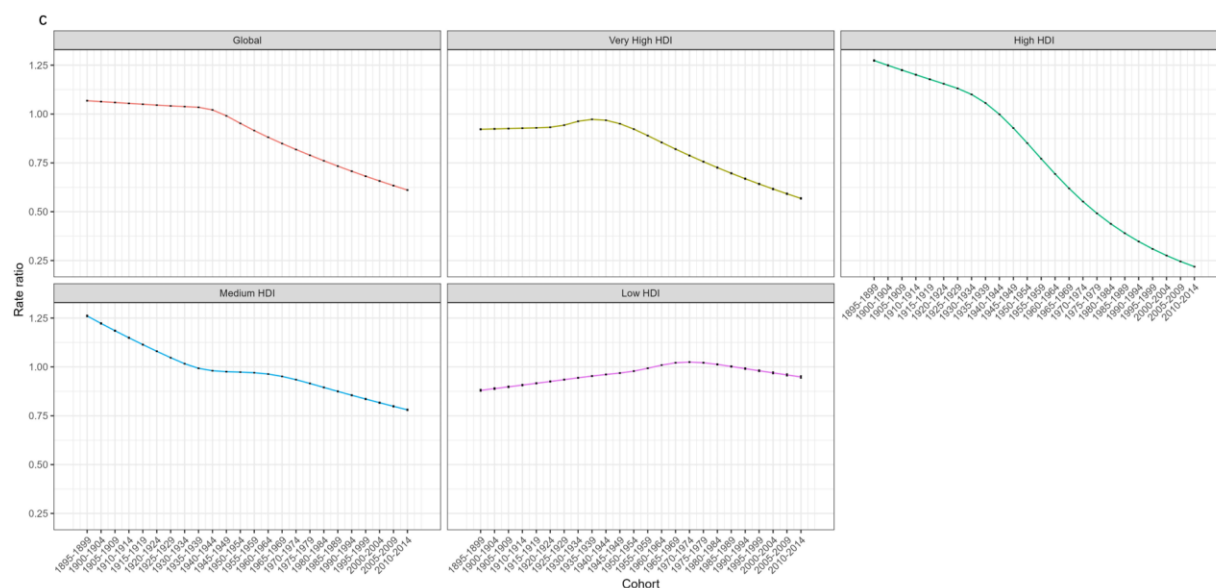


Figure 8. Age-Period-Cohort Analysis for the Prevalence of Renal Anemia Based on HDI (A) Age Effect (B) Period Effect (C) Cohort Effect

Discussion

In 2021, over a quarter of the global population was afflicted with anemia, contributing to 5.7% of the world's Years Lived with Disability (YLDs). Although the prevalence of anemia has been gradually declining in recent years,^[9] the current rates of anemia and related YLDs remain substantial and cannot be overlooked. Amidst a general decrease in the burden of anemia, the proportion attributable to chronic kidney disease has been on the rise, indicating that improvements in anemia burdens associated with CKD lag behind overall progress. Thus, for the first time, this study has analyzed the burden of renal anemia using 2021 data at global, regional, and national levels to fill this research gap.

Our findings reveal that individuals over the age of sixty bear the greatest burden of renal anemia. This age group is particularly susceptible to CKD-induced renal anemia, as CKD patients cannot combat the disease effectively due to low EPO production.^[15] A 2023 observational study in the United States corroborates these findings, involving over five million patients with an average age of fifty-four, concluding that the prevalence and severity of anemia significantly increases as the eGFR decreases.^[15] Such pronounced anemia severity is closely linked to elevated risks of cardiovascular diseases, coronary artery disease, stroke, heart failure, and increased mortality.^[15] Although the mechanisms remain unspecified, several studies demonstrate that iron deficiency is common in renal anemia.^[4,15] Consequently, iron supplements are prioritized in renal anemia guidelines in many countries,^[10] while erythropoiesis-stimulating agents (ESAs) are not usually the first choice due to potential risks of stroke, hypertension, and tumors.^[10] In 2018, the

hypoxia-inducible factor prolyl hydroxylase inhibitor (HIF-PHI) Roxadustat was approved for treatment of renal anemia in China. Japan, the European Union, India, and the United States subsequently approved Roxadustat or other HIF-PHIs for renal anemia treatment. Clinical research also verifies the efficacy of Roxadustat in treating anemia in both dialysis^[16] and non-dialysis CKD patients.^[17] This is an encouraging shift, yet globally, renal anemia still does not receive high levels of attention, and nations should fortify support for the prevention and treatment of the condition.

In 2021, Central and Eastern Europe, Central Asia, South Asia, Southern Latin America, and North America had a heavy burden of renal anemia. These regions also experienced the fastest increase in anemia burden between 1990 and 2021. Conversely, Eastern Sub-Saharan Africa had the lowest burden and slowest growth rate. This discrepancy is attributed to higher socio-economic development in the former regions, where inhabitants consume diets richer in sugars and fats, coupled with reduced physical labor from industrialization contributing to increased obesity rates. These risk factors further heighten the incidence of chronic diseases such as diabetes^[18] and hyperlipidemia,^[19] which frequently lead to CKD.^[18,19] While underdeveloped regions carry a lighter burden of renal anemia, this does not imply their populations fare better—currently, their nutrition intake levels below the global average pose a more significant threat to their health than renal anemia.

Regionally, a weak positive correlation exists between development and renal anemia prevalence, while no evident correlation is seen with YLDs. As previously mentioned, higher Human Development Index (HDI) regions with increased intake of sugars and fats face rising rates of diabetes and hyperlipidemia, precursors to CKD, thus escalating renal anemia prevalence. Lower HDI regions exhibit the opposite trend. Nevertheless, compared to low HDI areas, high HDI regions have more access to healthcare services of better quality,^[20] permitting more timely diagnosis and treatment of renal anemia. This results in high HDI areas experiencing a higher incidence of renal anemia, yet disease burdens similar to those in low HDI areas. Based on the standard health equity analysis method recommended by WHO, our cross-national inequality analysis shows countries with higher HDI bear a higher burden of renal anemia, and this inequity continues to grow over time. Interestingly, in 1990, low HDI countries bore a greater YLDs burden from renal anemia. By 2021, higher HDI countries had taken on a heavier YLDs burden. Individuals living in high HDI countries are often presumed to have access to higher quality health and medical services, potentially yielding lower disease burdens. We believe this shift is partially due to improvements in healthcare benefits enjoyed by populations in low HDI regions over the past thirty years, while medical advancements have been more constrained in high HDI areas.^[21] Additionally, the material affluence in high HDI countries, especially higher

intake of sugars and fats in diets,^[18,19] has also contributed to the renal anemia disability burden. Regardless, the burden of renal anemia associated with HDI remains inequitable across nations.

Compared to previous GBD publications on anemia, the chief advantage of our current study is that we provide deeper insight into the status and trends of renal anemia, a subset of anemia across populations, time, and space—offering valuable insights for more precise epidemiological and health policy implementations. Specifically, the latest GBD 2021 results on anemia show heavy burdens among children, women of reproductive age, and the elderly, particularly in underdeveloped areas like Sub-Saharan Africa, Central Asia, and South Asia.^[9] Existing health policies globally are largely aware of these results and have made targeted efforts to address anemia in women of reproductive age and children in underdeveloped regions.^[22,23] Accordingly, over the past thirty years, the burden of anemia has indeed been diminishing not only in these areas but globally,^[24] yet can we not do better? In regions such as Central Europe, Eastern Europe, and North America, numerous elderly individuals continue to struggle with renal anemia. Providing targeted treatment for renal anemia could yield greater benefits from limited healthcare resources. Despite these advantages, our study has limitations. Firstly, due to the lower healthcare standards in some underdeveloped countries, misdiagnosis and underdiagnosis may lead to underestimation of disease prevalence and YLDs. Secondly, current data does not include early CKD-induced renal anemia figures, which we hope can be supplemented in the future. Thirdly, substantial reliance on statistical modeling methods used by GBD collaborators, particularly at the country level, means data sourced from GBD heavily depends on modeled data due to lack of raw data. Fourthly, the absence of sub-national data precludes exploration of sub-national trends. Lastly, the latency of GBD data is also a non-negligible issue.

Anemia is a principal public health concern worldwide, with substantial inter-country variations, and different nations have different primary types of anemia; uniform healthcare policies might fall short of efficiency. While the age-standardized prevalence and YLDs of anemia have declined from 1990 to 2019, the escalating global aging population means renal anemia associated with older chronic diseases will undoubtedly constitute a larger share of the anemia burden in the future. Tackling the burden of renal anemia calls for comprehensive intervention measures, with priority consideration for the highest risk groups—mainly the elderly in medium- and highly-developed regions. Strengthening early diagnosis and treatment of CKD on one hand, and advocating for low sugar and low-fat diets to relieve the burden of diabetes and hyperlipidemia, chronic diseases inducing CKD. On the other hand, the development of more effective and low-side-effect renal anemia treatments should not be overlooked.

Contributors

HZ conceived the study and designed the protocol with FC. QG, LF, JJ, and TM analyzed the GBD data. FC, JJ and YM were responsible for the article writing. HS, HZ, and XL were responsible for the article checking and reviewing. HS, XL, and QG accessed and verified the data. HZ had access to all the data in the study and had final responsibility for the decision to submit for publication.

Declaration of interests

All authors declare no competing interests.

Data sharing

The data used in this study are freely available for download from the GBD 2021 anemia research (<https://cloud.ihme.washington.edu/s/Fo6JFktjd8gp4fJ>). All data used in this study will also be made available on request to the corresponding author.

Acknowledgments

We acknowledge the Institute for Health Metrics and Evaluation, the GBD Diseases and Injuries Collaborators, and all staff who shared their data needed for this study.

This work was supported by the National Natural Science Foundation of China [No. 82074166], Huadong Medicine Joint Funds of the Zhejiang Provincial Natural Science Foundation of China [No. LHDMZ24H050001], Fujian Provincial Natural Science Foundation [No. 2018J01121], Fujian Provincial Health Technology Project [No. 2020GGA026], and Medical Discipline Construction Project of Pudong Health Committee of Shanghai [No. PWYts2021-18].

References

- [1] Macdougall IC. Anaemia in CKD - treatment standard. *Nephrol Dial Transplant*. 2023;gfad250.
- [2] Souma T, Yamazaki S, Moriguchi T, Suzuki N, Hirano I, Pan X, et al. Plasticity of renal erythropoietin-producing cells governs fibrosis. *J Am Soc Nephrol*. 2013;24(10):1599-616.
- [3] Locatelli F, Del Vecchio L. Quality of life: a crucial aspect for the patients, a neglected goal in the treatment of anemia in patients with CKD. *Kidney Int*. 2023;103(6):1025-7.
- [4] Farrington DK, Sang Y, Grams ME, Ballew SH, Dunning S, Stempniewicz N, et al. Anemia Prevalence, Type, and Associated Risks in a Cohort of 5.0 Million Insured Patients in the United States by Level of Kidney Function. *Am J Kidney Dis*. 2023;81(2):201-9 e1.
- [5] Glasscock RJ, Warnock DG, Delanaye P. The global burden of chronic kidney disease: estimates, variability and pitfalls. *Nat Rev Nephrol*.

2017;13(2):104-14.

[6] Inker LA, Grams ME, Levey AS, Coresh J, Cirillo M, Collins JF, et al. Relationship of Estimated GFR and Albuminuria to Concurrent Laboratory Abnormalities: An Individual Participant Data Meta-analysis in a Global Consortium. *Am J Kidney Dis.* 2019;73(2):206-17.

[7] Li Y, Shi H, Wang WM, Peng A, Jiang GR, Zhang JY, et al. Prevalence, awareness, and treatment of anemia in Chinese patients with nondialysis chronic kidney disease: First multicenter, cross-sectional study. *Medicine (Baltimore).* 2016;95(24):e3872.

[8] WHO/UNICEF. The extension of the 2025 maternal, infant and young child nutrition targets to 2030. 2019.

[9] Collaborators GA. Prevalence, years lived with disability, and trends in anaemia burden by severity and cause, 1990 - 2021: findings from the Global Burden of Disease Study 2021. *The Lancet Haematology.* 2023;10(9):e713-e34.

[10] Mikhail A, Brown C, Williams JA, Mathrani V, Shrivastava R, Evans J, et al. Renal association clinical practice guideline on Anaemia of Chronic Kidney Disease. *BMC Nephrol.* 2017;18(1):345.

[11] Kliger AS, Foley RN, Goldfarb DS, Goldstein SL, Johansen K, Singh A, et al. KDOQI US commentary on the 2012 KDIGO Clinical Practice Guideline for Anemia in CKD. *Am J Kidney Dis.* 2013;62(5):849-59.

[12] Organization WH. Handbook on health inequality monitoring: With a special focus on low-and middle-income countries. 2013.

[13] Xie Y, Bowe B, Mokdad AH, Xian H, Yan Y, Li T, et al. Analysis of the Global Burden of Disease study highlights the global, regional, and national trends of chronic kidney disease epidemiology from 1990 to 2016. *Kidney Int.* 2018;94(3):567-81.

[14] Cao F, Li D-P, Wu G-C, He Y-S, Liu Y-C, Hou J-J, et al. Global, regional and national temporal trends in prevalence for musculoskeletal disorders in women of childbearing age, 1990 - 2019: an age-period-cohort analysis based on the Global Burden of Disease Study 2019. *Annals of the Rheumatic Diseases.* 2024;83(1):121-32.

[15] Stauder R, Valent P, Theurl I. Anemia at older age: etiologies, clinical implications, and management. *Blood.* 2018;131(5):505-14.

[16] Chen N, Hao C, Liu BC, Lin H, Wang C, Xing C, et al. Roxadustat Treatment for Anemia in Patients Undergoing Long-Term Dialysis. *N Engl J Med.* 2019;381(11):1011-22.

[17] Chen N, Hao C, Peng X, Lin H, Yin A, Hao L, et al. Roxadustat for Anemia in Patients with Kidney Disease Not Receiving Dialysis. *N Engl J Med.* 2019;381(11):1001-10.

[18] Ong KL, Stafford LK, McLaughlin SA, Boyko EJ, Vollset SE, Smith AE, et al. Global, regional, and national burden of diabetes from 1990 to 2021, with projections of prevalence to 2050: a systematic analysis for the Global Burden of Disease Study 2021. *Lancet.* 2023.

[19] Collaboration NCDRF. Repositioning of the global epicentre of non-

optimal cholesterol. *Nature*. 2020;582(7810):73–7.

[20] Vanholder R, Annemans L, Braks M, Brown EA, Pais P, Purnell TS, et al. Inequities in kidney health and kidney care. *Nat Rev Nephrol*. 2023;19(11):694–708.

[21] Durrani H. Healthcare and healthcare systems: inspiring progress and future prospects. *Mhealth*. 2016;2:3.

[22] Kapil U, Kapil R, Gupta A. National Iron Plus Initiative: Current status & future strategy. *Indian J Med Res*. 2019;150(3):239–47.

[23] Tiruneh FN, Asres DT, Tenagashaw MW, Assaye H. Decision-making autonomy of women and other factors of anemia among married women in Ethiopia: a multilevel analysis of a countrywide survey. *BMC Public Health*. 2021;21(1):1497.

[24] Safiri S, Kolahi A-A, Noori M, Nejadghaderi SA, Karamzad N, Bragazzi NL, et al. Burden of anemia and its underlying causes in 204 countries and territories, 1990 – 2019: results from the Global Burden of Disease Study 2019. *Journal of hematology oncology*. 2021;14(1):1–16.