

Unlocking the Treatment of Facioscapulohumeral Muscular Dystrophy Type 2: The Bisphenol Connection

Saed Sayad, MD, PhD	Mark Hiatt, MD, MBA, MS	Hazem Mustafa, DDS, MSc
Bioada Lab	Bioada Lab	Bioada Lab
saed@bioada.com	mark@bioada.com	hazem@bioada.com

Abstract

Background. Facioscapulohumeral muscular dystrophy type 2 (FSHD2) poses a significant challenge within the domain of neuromuscular disorders, marked by a progressive decline in muscle strength accompanied by tissue wasting. FSHD2 results from chromosomal deletions triggering the activation of a dormant gene known as DUX4. While DUX4 typically regulates early embryonic development, its activation in adult muscle cells leads to premature cell death. Despite this understanding, the exact pathology of FSHD2 remains unclear. To date, no effective treatment for FSHD2 exists.

Method. We acquired single-cell RNA sequencing (RNA-Seq) data (*GSE143452*) from primary myoblasts for FSHD2 from the United States National Institutes of Health (NIH) portal website. Our analysis encompassed a comprehensive examination of differentially expressed genes, alongside associated compounds sourced from the Chemical Entities of Biological Interest (ChEBI) database. Employing rigorous statistical methods, we pinpointed the most prominently upregulated and downregulated genes. Subsequently, we determined the compounds capable of modulating the expression of these top genes, either enhancing or reducing their activity.

Results. Bisphenol S (BPS) can upregulate 52 of 100 top downregulated genes in FSHD2 without downregulating any other genes and Bisphenol F (BPF) can upregulate 45 of 100 downregulated genes with downregulating only one other gene. The enrichment analysis of both sets of 52 genes related to BPS and 45 genes corresponding to BPF highlights their significant involvement in various aspects of muscle biology, particularly as pertaining to the function and dysfunction of cardiac and skeletal muscle.

Conclusions. Leveraging single-cell RNA-Seq data and computational analysis, we identified key dysregulated genes in FSHD2 and elucidated their modulation by compounds such as BPS and BPF. While effective treatments for FSHD2 remain elusive, our study provides valuable insights into potential therapeutic targets and pathways for further investigation in the pursuit of effective interventions for this debilitating condition. However, more research is needed to understand whether the roles of BPS and F are constructive or destructive.

Introduction

Facioscapulohumeral muscular dystrophy (FSHD) is a genetic condition marked by a gradual weakening of muscles, primarily in the face, shoulders, and upper arms [1]. There are two types: FSHD type 1, linked to a deletion on chromosome 4 (D4Z4), and FSHD type 2 (FSHD2), caused by mutations in the SMCHD1 gene. Both result in the activation of a dormant gene called DUX4, which normally plays a role in embryonic development but, when activated in adult muscle cells, leads to premature cell death. Despite advancements, the exact mechanisms behind FSHD2 remain incompletely understood. Currently, no cure for FSHD2 exists, with treatment focusing on managing symptoms and improving the quality of life. Research into potential targeted therapies and gene-based treatments for FSHD2 is ongoing, offering hope for future breakthroughs in disease management and ultimately a cure. Single-cell transcriptomics offer a powerful tool to investigate the molecular processes and gene-expression changes associated with FSHD2, particularly focusing on differentially expressed genes and conducting pathway, gene ontology, and gene-compound analyses within the context of FSHD2.

Data

We acquired single-cell transcriptomes (*GSE143452*) from primary myoblasts for FSHD2 from the United States National Institutes of Health (NIH) portal website (**Figure 1**). All gene-related data have been sourced from the GeneCards website. We used the g:Profiler web service to conduct enrichment analysis, leveraging its powerful tools to elucidate gene function. Additionally, we utilized the Chemical Entities of Biological Interest ([ChEBI](https://www.ebi.ac.uk/chebi/)) database to explore gene-compound relationships, drawing insights from its comprehensive collection of chemical entities of biological relevance.

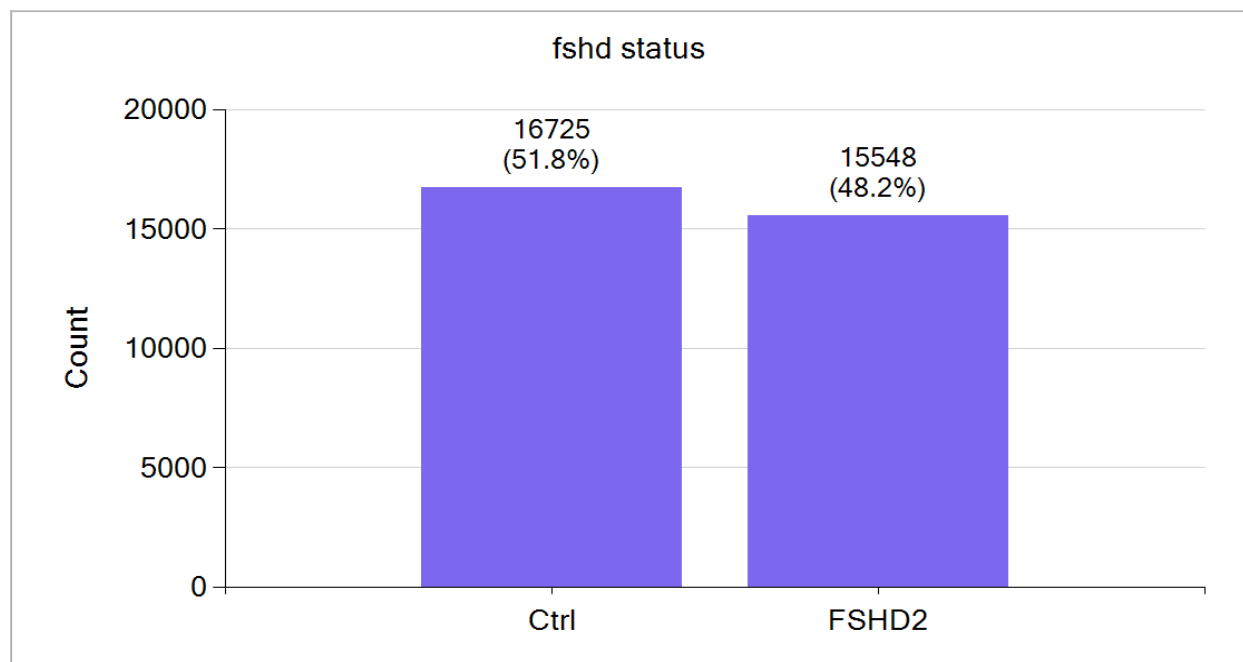


Figure 1: *GSE143452* comprises 16,725 control single cells and 15,548 FSHD2 single cells. The total number of genes is 19,615.

Data Analysis

Employing rigorous statistical techniques, we identified the differentially expressed genes displaying significant upregulation and downregulation. Furthermore, we delved deeper to discern compounds capable of modulating the expression of these critical genes, shedding light on potential avenues for therapeutic intervention or further experimental inquiry. Our analysis encompassed a comprehensive examination of differentially expressed genes, alongside associated compounds sourced from the ChEBI database. Again employing precise statistical methods, we pinpointed the most prominently upregulated and downregulated genes. Subsequently, we determined the compounds capable of modulating the expression of these top genes, either enhancing or reducing their activity.

Upregulated and Downregulated Differentially Expressed Genes

The single-cell gene expression analysis (**Table 1**) has revealed the top 10 upregulated genes. TIMP1 is known for its role in regulating metalloproteinase activity and the extracellular matrix [2]. IGFBP7 is associated with pathways involving insulin-like growth factors and cell growth regulation [3]. FN1 participates in various cellular processes such as cell adhesion and migration, crucial in embryogenesis, wound healing, blood coagulation, host defense, and metastasis [4]. CCN2, secreted by vascular endothelial cells, acts as a mitogen influencing chondrocyte proliferation and differentiation, as well as cell adhesion in diverse cell types [5]. CTSB may initiate proteolytic pathways important for inflammatory breast cancer invasion and is considered a potential prognostic marker for lymphatic metastasis [6]. TMSB4X encodes an actin-sequestering protein involved in regulating actin polymerization, cell proliferation, migration, and differentiation. IFITM3 plays a role in regulating fibrinogen endocytosis and platelet reactivity in nonviral sepsis. MT2A's function spans metal homeostasis regulation, detoxification, oxidative stress management, immune defense, cell-cycle progression, cell proliferation and differentiation, and angiogenesis [7]. ACTG1 is essential for muscle contraction, and any alterations in actin expression could directly affect muscle function and integrity [8]. SERPINE2, encoding a member of the serpin family, acts as an inhibitor of serine proteases [9].

The single-cell analysis of FSHD2 has unveiled a significant downregulation of crucial genes essential for muscle function. Among the top 10 downregulated genes are ACTC1, ACTA1, MYL11, MYH3, MYL6B, MYBPH, TPM2, MYL2, MYL1, and TNNT1, each playing pivotal roles in muscle contraction and skeletal muscle integrity. These genes encode proteins integral to the structural organization and dynamic regulation of the sarcomere, the basic contractile unit of muscle fibers. For instance, ACTC1 and ACTA1 encode actin proteins, which form the thin filaments of the sarcomere, while MYH3 encodes a myosin protein crucial for muscle contraction. Downregulation of these genes suggests a potential disruption in contractility, which could have profound implications for muscle function and integrity in FSHD2. Understanding the regulatory mechanisms governing these genes holds promise for advancing our knowledge of FSHD2 pathogenesis and developing targeted interventions aimed at restoring muscle function [10].

Top 10 Upregulated and Downregulated Differentially Expressed Genes			
Upregulated Genes		Downregulated Genes	
Gene Symbol	Gene Name	Gene Symbol	Gene Name
<i>TIMP1</i>	Metallopeptidase Inhibitor 1	<i>ACTC1</i>	Actin Alpha Cardiac Muscle 1
<i>IGFBP7</i>	<i>Insulin Like Growth Factor Binding Protein 7</i>	<i>ACTA1</i>	Actin Alpha 1, Skeletal Muscle
<i>FN1</i>	Fibronectin 1	<i>MYL11</i>	Myosin Light Chain 11
<i>CCN2</i>	Cellular Communication Network Factor 2	<i>MYH3</i>	Myosin Heavy Chain 3
<i>CTSB</i>	Cathepsin B	<i>MYL6B</i>	Myosin Light Chain 6B
<i>TMSB4X</i>	Thymosin Beta 4 X-Linked	<i>MYBPH</i>	Myosin Binding Protein H
<i>IFITM3</i>	Interferon Induced Transmembrane Protein 3	<i>TPM2</i>	Tropomyosin 2
<i>MT2A</i>	Metallothionein 2A	<i>MYL2</i>	Myosin Light Chain 2
<i>ACTG1</i>	Actin Gamma 1	<i>MYL1</i>	Myosin Light Chain 1
<i>SERPINE2</i>	Serpin Family E Member 2	<i>TNNI1</i>	Troponin I1, Slow Skeletal Type

Table 1: Top 10 upregulated and downregulated differentially expressed genes through single-cell RNA-Seq.

Gene-Compound Analysis

We mined the ChEBI database to identify compounds with similar or contrasting regulatory patterns to the top 10 upregulated and downregulated genes. Notably, Bisphenol F (BPF) and Bisphenol S (BPS) were found to upregulate eight and seven, respectively, of the top 10 downregulated genes, while not affecting any of the top 10 upregulated genes. Our investigation extended to the top 100 downregulated genes, revealing that BPS upregulate 52 genes without downregulating any others. **Table 2** shows 52 genes from the top 100 downregulated list, which BPS can upregulate.

ACTC1	MYL1	ENO3	CASQ2	H19	ITGA7	HSPB1	NEB	EHBP1L1	MYL3	COX7A1
MYL1P	TNNI1	DES	MYH8	KLHL41	ALDOA	PRUNE2	LIMCH1	MYOG	COX6A2	ELN
MYH3	CRYAB	ANKRD1	DCN	SYNPO2	TNNI2	HTRA1	HRC	MYOM2	SSPN	
TPM2	MYH7	TPM1	HSPB8	MEF2C	FLNC	LUM	ALDH1A1	MYOM1	PGAM2	
MYL2	TTN	TNNC2	ACTN2	NES	TNNC1	CSRP3	SYNPO2L	GYS1	NEXN	

Table 2: 52 of the top 100 downregulated genes that can be upregulated by BPS.

Furthermore, BPF upregulates 45 genes from this list, with only one exception in which it downregulates a single gene (HSPB2) among the top 100 downregulated genes. **Table 3** showcases 45 genes from the same list upregulated by BPF.

ACTC1	MYL2	TNNT3	ANKRD1	MYH8	KLHL41	TNNC1	LIMCH1	MYOG
ACTA1	MYL1	TTN	TPM1	DCN	SYNPO2	HTRA1	HRC	MYOM2
MYLPP	TNNI1	ENO3	TNNC2	HSPB8	MEF2C	LUM	ALDH1A1	MYL3
MYL6B	CRYAB	DES	TNNT1	ACTN2	NES	CSRP3	SYNPO2L	PGAM2
TPM2	MYH7	TNNT2	CASQ2	H19	TNNI2	NEB	EHBP1L1	ELN

Table 3: 45 of the top 100 downregulated genes that can be upregulated by BPF.

Functional-Enrichment Analysis

In the next step, we used g:Profiler, a web server designed for functional-enrichment analysis and conversions of gene lists. As a means to gain insights into the biological functions, pathways, and processes associated with a given set of genes or proteins, this tool is widely used in bioinformatics and systems biology research to interpret high-throughput experimental data and understand their underlying biological mechanisms.

In **Table 4**, the enrichment analysis of 52 genes from Table 2 using g:Profiler reveals a comprehensive involvement in muscle biology and cardiac function. The genes are notably associated with various aspects of muscle physiology, including contraction, development, and structural organization, as evidenced by enriched terms in gene ontology categories such as muscle system process and myofibril assembly. Additionally, pathways related to cardiac muscle contraction and cardiomyopathy, as well as cytoskeletal protein binding and metabolic processes, are significantly enriched. Human phenotype ontology analysis highlights associations with clinical manifestations like abnormal cardiac function and skeletal muscle abnormalities. These findings underscore the genetic underpinnings of muscular and cardiac physiology, providing insights into potential mechanisms underlying muscle-related disorders and cardiomyopathies.

Source	Name	Native
CORUM	MYOM1 homodimer complex	CORUM:1987
GO:BP	muscle contraction	GO:0006936
GO:BP	muscle system process	GO:0003012
GO:BP	muscle organ development	GO:0007517
GO:BP	muscle structure development	GO:0061061
GO:BP	myofibril assembly	GO:0030239
GO:CC	contractile fiber	GO:0043292
GO:CC	sarcomere	GO:0030017
GO:CC	myofibril	GO:0030016
GO:CC	supramolecular fiber	GO:0099512
GO:CC	supramolecular polymer	GO:0099081
GO:MF	structural constituent of muscle	GO:0008307
GO:MF	actin binding	GO:0003779
GO:MF	cytoskeletal protein binding	GO:0008092
GO:MF	actin filament binding	GO:0051015
GO:MF	structural molecule activity	GO:0005198
HP	EMG abnormality	HP:0003457
HP	Orthopnea	HP:0012764
HP	Left ventricular systolic dysfunction	HP:0025169

HP	Abnormal left ventricular function	HP:0005162
HP	Exertional dyspnea	HP:0002875
HPA	skeletal muscle; myocytes[High]	HPA:0440343
HPA	skeletal muscle; myocytes[≥Medium]	HPA:0440342
HPA	heart muscle; cardiomyocytes[High]	HPA:0241103
HPA	skeletal muscle	HPA:0440000
HPA	skeletal muscle; myocytes[≥Low]	HPA:0440341
KEGG	Motor proteins	KEGG:04814
KEGG	Cardiac muscle contraction	KEGG:04260
KEGG	Hypertrophic cardiomyopathy	KEGG:05410
KEGG	Dilated cardiomyopathy	KEGG:05414
KEGG	Adrenergic signaling in cardiomyocytes	KEGG:04261
REAC	Striated Muscle Contraction	REAC:R-has-390522
REAC	Muscle contraction	REAC:hasHSA-397014
REAC	Metabolism of carbohydrates	Rhas:R-HSA-71387
WP	Striated muscle contraction pathway	WP:WP383
WP	Cardiomyocyte signaling pathways converging on Titin	WP:WP5344

Table 4: Functional enrichment analysis of 52 genes upregulated by BPS (listed in Table 2) using g:Profiler.

In **Table 5**, analysis of the 45 genes from Table 3 highlights the significant involvement of these input genes in various aspects of muscle biology, particularly as pertaining to cardiac and skeletal muscle function. These genes are associated with processes such as muscle contraction and structure development and myofibril assembly, along with molecular functions like binding of cytoskeletal protein and actin. Phenotypic associations include such electromyographic (EMG) and cardiac abnormalities as left ventricular systolic dysfunction and hypertrophic cardiomyopathy. Enriched pathways encompass striated muscle contraction, myocardial signaling, and pathways related to cardiomyocyte differentiation and function. Overall, these findings emphasize the crucial roles of the input genes in muscle physiology and pathology, particularly in cardiac and skeletal muscle systems.

Source	Name	Native
GO:BP	muscle contraction	GO:0006936
GO:BP	muscle system process	GO:0003012
GO:BP	myofibril assembly	GO:0030239
GO:BP	striated muscle cell development	GO:0055002
GO:BP	muscle structure development	GO:0061061
GO:CC	contractile fiber	GO:0043292
GO:CC	sarcomere	GO:0030017
GO:CC	myofibril	GO:0030016
GO:CC	supramolecular fiber	GO:0099512
GO:CC	supramolecular polymer	GO:0099081
GO:CC	supramolecular complex	GO:0099080
GO:MF	structural constituent of muscle	GO:0008307
GO:MF	cytoskeletal protein binding	GO:0008092
GO:MF	actin binding	GO:0003779
GO:MF	structural molecule activity	GO:0005198
GO:MF	myosin binding	GO:0017022

HP	EMG abnormality	HP:0003457
HP	Left ventricular systolic dysfunction	HP:0025169
HP	Exertional dyspnea	HP:0002875
HP	Myopathy	HP:0003198
HP	Orthopnea	HP:0012764
HPA	skeletal muscle; myocytes[High]	HPA:0440343
HPA	heart muscle; cardiomyocytes[High]	HPA:0241103
HPA	skeletal muscle; myocytes[≥Medium]	HPA:0440342
HPA	skeletal muscle; myocytes[≥Low]	HPA:0440341
HPA	skeletal muscle	HPA:0440000
KEGG	Motor proteins	KEGG:04814
KEGG	Cardiac muscle contraction	KEGG:04260
KEGG	Hypertrophic cardiomyopathy	KEGG:05410
KEGG	Dilated cardiomyopathy	KEGG:05414
KEGG	Adrenergic signaling in cardiomyocytes	KEGG:04261
REAC	Striated Muscle Contraction	REAC:R-HSA-390522
REAC	Muscle contraction	REAC:R-HSA-397014
REAC	Smooth Muscle Contraction	REAC:R-HSA-445355
WP	Striated muscle contraction pathway	WP:WP383
WP	Cardiomyocyte signaling pathways converging on Titin	WP:WP5344
WP	Cardiac progenitor differentiation	WP:WP2406

Table 5: The functional-enrichment analysis of 45 genes upregulated by BPF (listed in Table 3) using g:Profiler.

Bisphenol S

Bisphenol S (BPS) is a chemical compound commonly used as a substitute for Bisphenol A (BPA) in various consumer products, particularly plastics, epoxy resins, and thermal paper (**Figure 2**).

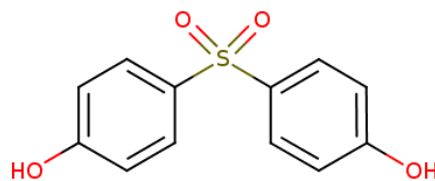


Figure 2: BPS or 4,4'-sulfonyldiphenol

While initially considered a safer alternative to BPA due to its lower estrogenic activity, BPS may still exert biological effects, particularly endocrinologically, according to emerging research. Studies have suggested that BPS can interact with hormone receptors, including estrogen receptors, albeit with lower potency compared to BPA. Like BPA, BPS has been linked to potential endocrine-disrupting consequences, impacting processes such as hormone signaling, reproduction, and development. Furthermore, BPS has been extensively detected in human biological samples, indicating widespread exposure. Concerns regarding its potential health impacts have led to increased scrutiny and calls for further investigation into its safety profile [11]. Research on the biological effects of BPS specifically on skeletal muscles is relatively limited compared to its repercussions on other systems like the endocrine

and reproductive systems. However, one study showed that BPS reduces locomotor performance and modifies muscle protein levels, but not mitochondrial bioenergetics, in adult zebrafish [12].

Bisphenol F

Bisphenol F (BPF) is another compound used as a substitute for BPA in various products (**Figure 3**). Similar to BPS, research on the specific biological effects of BPF on skeletal muscles is limited, but some general findings regarding its potential health impacts are known.

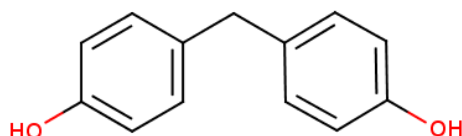


Figure 3: BPF or 4,4'-methylenebisphenol

Like BPA and BPS, BPF has been shown to have endocrine-disrupting properties, although its potency may vary. Endocrine disruptors can interfere with hormone-signaling pathways, which are involved in regulating various physiological processes, including those related to skeletal muscle function and metabolism. While direct studies on BPF's effects on skeletal muscles are scarce, research on other endocrine-disrupting compounds suggests that they can influence muscle health. For example, it has been shown that BPF induces motor degeneration and myelination defects in zebrafish larvae [13].

Overall, while more research is needed to elucidate fully the direct effects of BPS and BPF on skeletal muscles, existing evidence suggests that exposure to these compounds may have the potential to disrupt muscle function and physiology, either through direct effects on muscle cells or indirectly through endocrine disruption and metabolic disturbances. However, more research is needed to understand whether the roles of BPS and BPF are constructive or destructive.

Discussion

FSHD2 is a complex genetic disorder characterized by progressive muscle weakness, primarily affecting facial, shoulder, and upper arm muscles. FSHD2 is caused by mutations in the SMCHD1 gene, leading to the aberrant activation of the DUX4 gene in adult muscle cells. Despite advancements, the pathophysiology of FSHD2 remains incompletely understood, and effective treatments are currently lacking.

In this study, we employed single-cell transcriptomic analysis to explore the molecular mechanisms underlying FSHD2. Such an approach offers a powerful means to dissect cellular heterogeneity and identify gene expression patterns at the individual cell level, offering valuable insights into disease pathogenesis. Our examination revealed significant dysregulation of genes essential for muscle function and integrity, shedding light on potential targets for therapeutic intervention. The upregulated genes

identified in single-cell analysis encompass a diverse range of biological processes, including extracellular matrix regulation, cell growth, adhesion, and immune response. Notably, the upregulation of such genes as TIMP1, IGFBP7, and FN1 suggests aberrant tissue remodeling and inflammation, which may contribute to muscle degeneration in FSHD2. Furthermore, the downregulation of genes crucial for muscle contraction and sarcomere organization underscores the disruption of fundamental mechanisms governing muscle function.

Notably, our investigation unearthed the potential of BPS and BPF in modulating the expression of dysregulated genes in FSHD2. BPS exhibited a remarkable capacity to upregulate 52 of the top 100 downregulated genes in FSHD2, without concomitant downregulation of any other genes. Similarly, BPF demonstrated the ability to upregulate 45 of the top 100 downregulated genes, with only one gene undergoing downregulation. The enrichment analysis of these dysregulated genes underscored their profound involvement in diverse facets of muscle biology, as particularly pertaining to cardiac and skeletal muscle function. While our findings shed light on the potential therapeutic avenues involving BPS and BPF, acknowledging the nuanced role of these compounds in FSHD2 pathogenesis is imperative. Further research is warranted to delineate whether the modulation exerted by BPS and BPF is beneficial or detrimental in the context of FSHD2 progression.

Summary

Our study offers novel insights into the molecular mechanisms driving FSHD2, highlighting potential therapeutic targets and environmental factors that may influence disease pathogenesis. By leveraging single-cell transcriptomics and gene-compound analysis, we have begun to unravel the complex interplay between genetic predisposition and environmental exposures in FSHD2, identified key dysregulated genes in FSHD2, and elucidated their modulation by compounds such as BPS and BPF. We are optimistic that this study has laid the groundwork for targeted interventions and personalized-medicine approaches in managing this debilitating disorder.

References

1. Schätzl, T., Kaiser, L. & Dignier, HP. Facioscapulohumeral muscular dystrophy: genetics, gene activation and downstream signalling with regard to recent therapeutic approaches: an update. *Orphanet J Rare Dis* 16, 129 (2021).
2. Koutsoulidou A, Phylactou LA. Circulating Biomarkers in Muscular Dystrophies: Disease and Therapy Monitoring. *Mol Ther Methods Clin Dev.* 2020 May 22;18:230-239.
3. Alsulaiman SM, Abu-Safieh L, AlJarallah AS, AlAbdulhafid M, AlKahtani ES. Advanced coats-like retinopathy as the initial presentation of Familial Retinal Arterial Macroaneurysms. *Am J Ophthalmol Case Rep.* 2018 Apr 17;11:153-157.
4. Laberthonnière C et al., Facioscapulohumeral dystrophy weakened sarcomeric contractility is mimicked in induced pluripotent stem cells-derived innervated muscle fibres. *J Cachexia Sarcopenia Muscle.* 2022 Feb;13(1):621-635.

5. Petrosino JM, Leask A, Accornero F. Genetic manipulation of CCN2/CTGF unveils cell-specific ECM-remodeling effects in injured skeletal muscle. *FASEB J*. 2019 Feb;33(2):2047-2057.
6. Celegato B, Capitanio D, Pescatori M, Romualdi C, Pacchioni B, Cagnin S, Viganò A, Colantoni L, Begum S, Ricci E, Wait R, Lanfranchi G, Gelfi C. Parallel protein and transcript profiles of FSHD patient muscles correlate to the D4Z4 arrangement and reveal a common impairment of slow to fast fibre differentiation and a general deregulation of MyoD-dependent genes. *Proteomics*. 2006 Oct;6(19):5303-21.
7. Sara T. Winokur, Yi-Wen Chen, Peter S. Masny, Jorge H. Martin, Jeffrey T. Ehmsen, Stephen J. Tapscott, Silvere M. van der Maarel, Yukiko Hayashi, Kevin M. Flanigan, Expression profiling of FSHD muscle supports a defect in specific stages of myogenic differentiation, *Human Molecular Genetics*, Volume 12, Issue 22, 15 November 2003, Pages 2895–2907.
8. Liu Q, Jones TI, Tang VW, Briehner WM, Jones PL. Facioscapulohumeral muscular dystrophy region gene-1 (FRG-1) is an actin-bundling protein associated with muscle-attachment sites. *J Cell Sci*. 2010 Apr 1;123(Pt 7):1116-23.
9. Tjondrokoesoemo A, Schips T, Kanisicak O, Sargent MA, Molkentin JD. Genetic overexpression of Serpina3n attenuates muscular dystrophy in mice. *Hum Mol Genet*. 2016 Mar 15;25(6):1192-202.
10. Chiu W, Hsun YH, Chang KJ, Yarmishyn AA, Hsiao YJ, Chien Y, Chien CS, Ma C, Yang YP, Tsai PH, Chiou SH, Lin TY, Cheng HM. Current Genetic Survey and Potential Gene-Targeting Therapeutics for Neuromuscular Diseases. *Int J Mol Sci*. 2020 Dec 16;21(24):9589.
11. Frenzilli G, Martorell-Ribera J, Bernardeschi M, Scarcelli V, Jönsson E, Diano N, Moggio M, Guidi P, Sturve J, Asker N. Bisphenol A and Bisphenol S Induce Endocrine and Chromosomal Alterations in Brown Trout. *Front Endocrinol (Lausanne)*. 2021 Mar 11;12:645519.
12. Pelaia T, Rubin AM, Seebacher F. Bisphenol S reduces locomotor performance and modifies muscle protein levels but not mitochondrial bioenergetics in adult zebrafish. *Aquat Toxicol*. 2023 Apr;257:106440.
13. Kim Y, Kim SS, Park BH, Hwang KS, Bae MA, Cho SH, Kim S, Park HC. Mechanism of Bisphenol F Affecting Motor System and Motor Activity in Zebrafish. *Toxics*. 2023 May 24;11(6):477.