

# Mapping under-five mortality in Malawi: towards achieving sustainable development goals

Ruth Vellemu<sup>1,2,3</sup>, Melody Sakala<sup>2</sup>, Evetta Kuwala Chisope<sup>4</sup>, James Chirombo<sup>2\*</sup>

1. Amref Health Africa, Lilongwe, Malawi
2. Malawi-Liverpool-Wellcome Programme, Blantyre, Malawi
3. Mathematical Sciences Department, University of Malawi, Zomba, Malawi
4. Mangochi District Hospital, Mangochi, Malawi

Corresponding author

[\\*jchirombo@mlw.mw](mailto:jchirombo@mlw.mw)

## 1 Abstract

2 As many low- and middle-income countries continue making gains towards attaining  
3 sustainable development goals in under-five mortality, surveillance of mortality  
4 outcomes and indicators at the sub-district level will become important as national- and  
5 district-level estimates may mask areas with a high burden. Spatial statistical modelling  
6 techniques such as geostatistical prevalence mapping can play a role in identifying  
7 hotspots of relatively high under-five mortality. To achieve this objective, it is necessary  
8 to combine data from multiple sources with different spatial resolutions to produce maps  
9 that reveal these hotspot clusters. We pooled DHS, high-resolution census data,

10 economic vulnerability, and malaria risk data to estimate under-five mortality at a sub-  
11 district level in Malawi. Using a Bayesian hierarchical modelling approach, we fitted a  
12 binomial generalized linear geostatistical model with local area effects to generate  
13 estimates of under-five mortality at a sub-district level in Malawi. Results, in general,  
14 showed low mortality rates across the country with pockets of locations mostly in  
15 northern Malawi showing elevated risk. Rural locations were associated with higher  
16 odds of under-five mortality compared to urban locations. Our study provides a better  
17 understanding of progress made after the Millennium Development Goals in 2015 and  
18 can help improve surveillance through the application of targeted interventions which  
19 can lead to the attainment of sustainable development goals by 2030.

## 20 **Introduction**

21 Efforts to improve child health and well-being have accelerated in recent years, first with  
22 the adoption of Millennium Development Goals (MDGs) [1] until 2015 and after that the  
23 Sustainable Development Goals (SDGs) [2]. Globally, under-five mortality rate (U5MR)  
24 reduced from 93 deaths per 1000 live births in 1990 to 37.7 deaths per 1000 live births  
25 in 2019, representing a 59% decline [3,4]. However, several low and middle-income  
26 (LMIC) countries especially in Sub-Saharan Africa (SSA) did not achieve the MDG 4  
27 target of reducing U5MR between 1990 and 2015 by two-thirds with only 11 out of 48  
28 countries meeting the target [5]. In the SDG era, the target is for every country to  
29 achieve U5MR of not more than 25 per 1000 live births by 2030.

30 Despite the failures in some SSA settings to meet MDG 4, notable progress has  
31 been made. For example, Malawi is among the 11 countries in Africa to have achieved  
32 the MDG 4 target, having reduced U5MR from 247 deaths per 1000 in 1990 to 73

33 deaths per 1000 by 2013 [6]. Several interventions have been credited for this  
34 achievement in Malawi, including the adoption of integrated community case  
35 management (ICCM) for childhood diseases in 2007 [7,8]. ICCM has been a critical  
36 means for treating common illnesses such as diarrhoea, pneumonia and malaria  
37 resulting in reduced mortality through improved coverage and access for hard-to-reach  
38 populations [7–9].

39 For Malawi to achieve the SGD target of reducing U5MR to 25 per 1000 live  
40 births by 2030, the gains that have been made until now must be sustained and  
41 improved upon. There is a need to adapt interventions to address the emerging  
42 challenges. For example, novel pandemics such as COVID-19 can stretch government  
43 resources from highly effective programmes. A recent modelling study across 18  
44 countries including Malawi, found that disruptions to healthcare service utilizations had  
45 an impact on child mortality [10]. These disruptions led to an average 3.6% increase in  
46 mortality across the 18 countries. In Malawi, there was a 4.3% relative increase in  
47 under-five mortality [10]. Other disruptions such as health financing, HIV, and TB  
48 services also contributed to increased child mortality [11].

49 Apart from pandemic threats, heterogeneities in mortality persist despite a  
50 sustained downward trend resulting in some sections of the population bearing higher  
51 burdens, posing challenges to attaining SGDs. Similar challenges persist across Africa  
52 despite a continuous downward trend in U5MR across many countries. For example, a  
53 study on child mortality in Senegal, Rwanda and Uganda found that mortality had  
54 decreased in all the 3 countries [12]. Kenya registered an overall impressive decline in  
55 U5MR between 1965 and 2013. Yet, some barriers that prevented meeting the MDG 4

56 targets still exist and if not addressed can potentially derail progress towards achieving  
57 SDGs. For example, in Kenya, variations were observed in the reduction in U5MR both  
58 between and within counties [13]. These inequalities in mortality levels are possibly due  
59 to factors such as differences in deprivation, access to health care and cultural norms.  
60 Inequalities have also been found in Senegal, Rwanda, and Uganda [12]. It has been  
61 projected that 94.4 million children under 5 years will die if 2015 mortality rates remain  
62 constant while 68.8 million will die if each country continues to reduce its mortality at the  
63 pace estimated between 2000-15 [4]. With the recent 2020-2022 COVID-19 pandemic,  
64 there are concerns that global progress towards achieving SDGs including reducing  
65 child mortality will be negatively impacted [14]. Therefore, there is a need to  
66 substantially scale up interventions to reduce the inequalities in mortality reduction  
67 across most of SSA. Even the countries that achieved MDG targets must remain vigilant  
68 to achieve the SDGs by 2030. Malawi faces similar challenges. The heterogeneities  
69 observed in countries such as Kenya are observed in Malawi too. Differences in child  
70 health indicators between urban-rural areas of Malawi have been well documented with  
71 a U5MR of 77 deaths per 1000 live births in rural compared to 60 deaths per 1000 live  
72 births in urban areas. Heterogeneities also exist within localized areas [15,16]. For  
73 example, within urban areas, there is evidence of heterogeneities in child health  
74 outcomes such as under-five mortality driven by poor outcomes among the poor  
75 residing in urban slums [16].

76 To identify areas with elevated U5MR within countries, geospatial approaches  
77 are increasingly being used to map the spatial variation in risk and hence provide  
78 stakeholders with clear and actionable output and recommendations. Geostatistical

79 approaches use data collected at sparse discrete locations to provide a continuous  
80 surface covering the entire area allowing for the estimation of prevalence at unsampled  
81 locations [17,18]. Various geostatistical models have been fitted for various diseases  
82 and child mortality in Africa [19,20]. Where there is data aggregated at an administrative  
83 unit level such as a district, geospatial approaches are also used to estimate and map  
84 the relative risk of the outcome. Unlike diseases such as malaria for which there are  
85 national surveys such as the malaria indicator survey (MIS) and various community  
86 surveys, mortality data in many developing countries typically comes from large periodic  
87 surveys such as the demographic and health surveys (DHS). These surveys involve  
88 sampling at discrete locations, and it is important to get the maximum value from the  
89 data. This makes the use of spatial statistical techniques a necessary undertaking to  
90 obtain estimates in unsampled locations.

91 In this paper, we aimed to model under-five mortality at the sub-district level to  
92 reveal the heterogeneities in U5MR reduction efforts that exist in Malawi, to assess  
93 progress towards SDGs. We used a binary generalized linear geostatistical model to  
94 generate smooth maps to estimate U5MR at unsampled locations throughout Malawi to  
95 reveal locations with elevated mortality rates that may be masked by district-level  
96 estimates of mortality [21].

## 97 **Methods**

### 98 *Study setting*

99 Malawi is a small landlocked country in Southern Eastern Africa, sharing boundaries  
100 with Zambia, Tanzania, and Mozambique. The country is divided into 3 administrative

101 regions and further into 28 districts. The public health system comprises 4 central  
102 hospitals, district hospitals and health centers. At the community level, health  
103 surveillance assistants (HSAs) provide basic primary care including treatment of  
104 common illnesses in children. In addition, the faith-based health facilities primarily under  
105 the Christian Health Association of Malawi (CHAM) also provide a wide network of  
106 health facilities. Fig S1 in the supplementary materials provides more information about  
107 the districts and the distribution of public health facilities in Malawi.

#### 108 *Mortality data*

109 Data for this study were obtained from the 2015-16 Malawi Demographic and Health  
110 Survey (MDHS) [15]. The MDHS is a stratified nationally representative survey that  
111 uses a two-stage cluster sampling method and is conducted every five years [15]. DHS  
112 surveys are conducted in many countries across the globe, and they provide estimates  
113 for a range of indicators thus allowing comparison between countries [22]. At the first  
114 stage, clusters (i.e., enumeration areas) are selected using a probability sampling  
115 proportion to size approach. The second stage involves the selection of households  
116 from which eligible participants are interviewed. The 2015-16 MDHS enrolled 24,562  
117 women respondents aged between 15-49 years [15]

#### 118 *Census and population level covariates data*

119 In addition to the point-level covariate data from the MDHS referenced at each cluster,  
120 we also obtained population-level geospatial datasets covering the whole country from  
121 Humanitarian Data Exchange. We used vulnerability scores to capture the social-  
122 economic structure of the country. Additionally, being a malaria-endemic country and

123 given its status as the leading cause of mortality in children, we included malaria risk as  
124 a potential predictor of mortality [23]. The inclusion of these covariates was influenced  
125 by studies that have shown that low socio-economic status and malaria are among the  
126 factors contributing to child mortality [24]. Lastly, population data at 100 m spatial  
127 resolution were extracted from the WorldPop data sets. These data provided estimates  
128 at a high resolution thus allowing the calculation of important health indicators at a finer  
129 scale than would be possible if only district-level covariates were used.

### 130 *Dependent and independent variables*

131 The outcome variable was the survival status of a child categorized as 'yes' for alive and  
132 'no' for dead. Individual level variables from DHS included mothers' age, mother's level  
133 of education categorized as primary and below and secondary and above, area of  
134 residence classified as rural and urban and child's birth weight. We also extracted  
135 malaria risk and vulnerability, both captured as percentages at each cluster location  
136 (Supplementary material, Fig S2).

### 137 *Ethical approval*

138 The study used data from the 2015/16 MDHS survey. Access to the data was granted  
139 by the DHS program upon registration. Ethical approval for the MDHS was obtained  
140 from the National Health Sciences Research Committee (NHSRC). A written consent  
141 was obtained during the survey before any interview. For children and adolescent's  
142 participation, consent was provided by their parents/guardians. No individual identifiers  
143 were used in this secondary analysis.

### 144 *Data analysis*

145 Descriptive statistics were used to summarize study variables. We generated a table of  
146 baseline characteristics to understand key socio-demographic properties. Exploratory  
147 spatial mapping of cluster distribution within districts in Malawi and the underlying  
148 population densities was also done. To investigate factors affecting under-five mortality,  
149 all potential variables were fitted into a geostatistical model. All data analyses were  
150 done in the R environment for statistical computing using the geostatsp package [25]  
151 which uses the integrated nested Laplace approximation (INLA) on the backend [26].

### 152 *Statistical modelling*

153 Let  $n(x_i)$  be the number of children that died and  $N(x_i)$  be the total number of births  
154 recorded at location  $x_i$  respectively. We assumed that the number of deaths follows an  
155 independent binomial distribution with the number of trials  $N_i$  and probability of a  
156 positive outcome  $p(x_i)$ . The probability of death can then be modelled as a binomial  
157 generalised linear geostatistical model (GLGM) as follows.

$$158 \quad \log\left[\frac{p(x_i)}{1-p(x_i)}\right] = d(x_i)' \beta + S(x_i) + Z_i$$

159 The term  $d(x_i)'$  contains both individual level covariates measures such as age of the  
160 women and population level covariates such as malaria risk and vulnerability score of  
161 the location. For the spatially correlated term  $S(x_i)$ , a Markov random field  
162 approximation of the Matern correlation function on a regular lattice was used. The term  
163  $Z_i$  captures independent random effects. For the spatially structured random effects, we  
164 assumed an isotropic and stationary spatial process with an exponential correlation  
165 function [25]. For our analysis, model building was based on the known contribution of



166 the variables to mortality based on literature. Variables were thus added to the model  
167 based on their clinical significance. We did not fit univariate models to test the  
168 significance of a variable before adding it into the model. Such an approach has the  
169 unintended consequence of omitting variables that are important in predicting the  
170 outcome variable.

## 171 Results

### 172 *Study participants*

173 Table 1 [Error! Reference source not found.](#) shows the baseline characteristics of the  
174 study participants. There were a reported 286 deaths which was 2.5% of the recorded  
175 births. These deaths were roughly equally distributed between urban and rural (2.2%  
176 and 2.5%) respectively. There was almost equal distribution of deaths between male  
177 and female children (2.2% and 2.7% respectively). In general, the proportions of the key  
178 demographic characteristics between the outcome categories were comparable.

179 **Table 1: Baseline characteristics of mothers with children under the age of five in**  
180 **Malawi averaged across all clusters.**

	Outcome		Total
	Dead	Alive	
N	286	11394	11680
Mother's age (yrs)			
Mean (SD)	29.04 (8.04)	28.01 (6.86)	28.03 (6.89)
Birthweight (kg)			
Mean (SD)	3.16 (0.91)	3.25 (0.76)	3.25 (0.76)
Sex, N (%)			
Male	128 (2.2)	5620 (97.8)	5748 (100)
Female	158 (2.7)	5774 (97.3)	5932 (100)
Residence, N (%)			
Urban	47 (2.2)	2117 (97.8)	2164 (100)
Rural	239 (2.5)	9277 (97.5)	9516 (100)

---

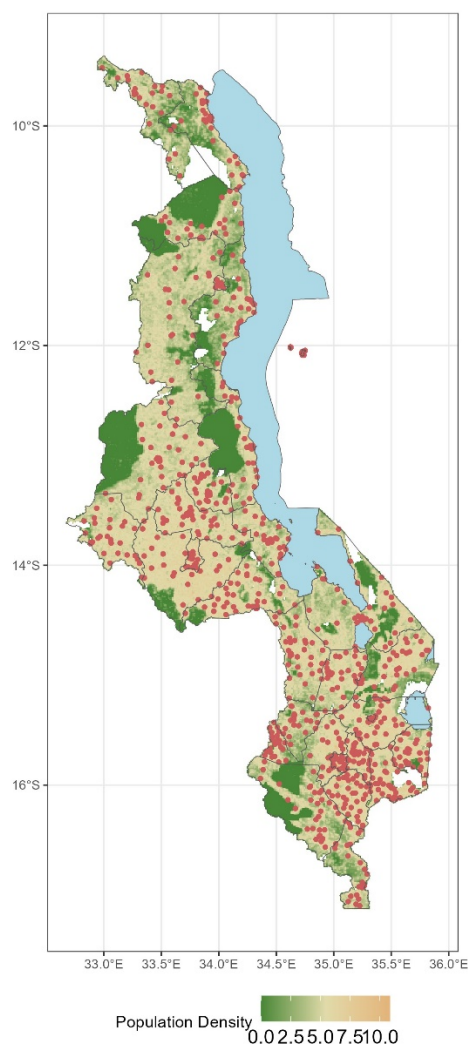
Mother's education, N (%)			
Primary and below	215 (2.5)	8520 (97.5)	8735 (100)
Secondary & higher	71 (2.4)	2874 (97.6)	2945 (100)

---

181

182 *Cluster locations and population density*

183 Fig 2 shows cluster locations within districts from which respondents for the survey were  
184 obtained and the underlying population density. High population density is observed in  
185 the cities of Mzuzu, Lilongwe and Blantyre. Lakeshore areas also have relatively higher  
186 population density.



187

188 **Fig 1: Cluster locations and the underlying population density on the log scale.**

189 The green spots are protected areas such as national parks and forest reserves.

190 *Under-five mortality rates*

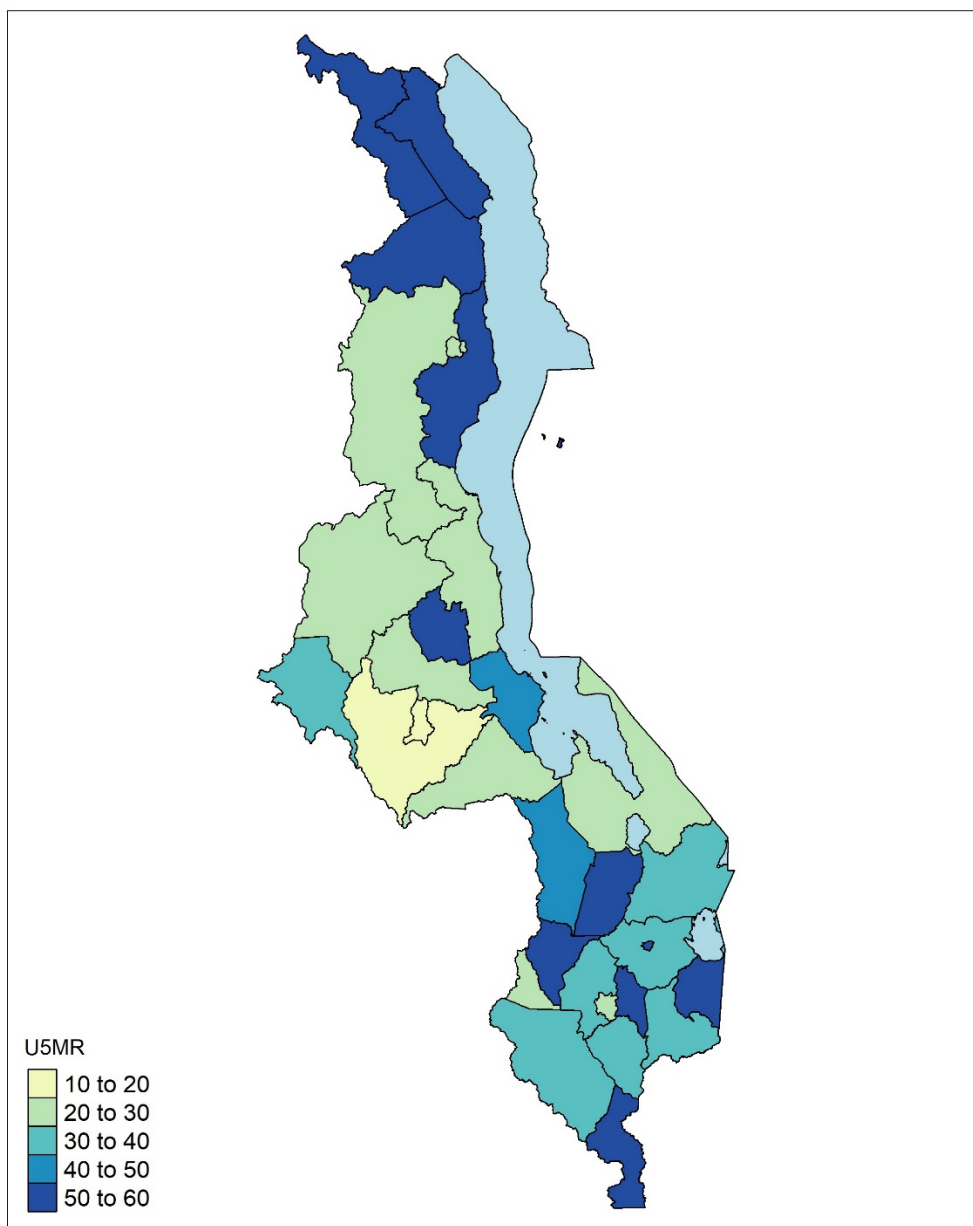
191 Fig 2 shows crude under-five mortality rates at the district level. It is observed that

192 districts with the highest under-five mortality rate are mostly in the northern and

193 southern parts of Malawi followed by the central region. However, all three cities namely

194 Mzuzu, Lilongwe and Blantyre from northern, central, and southern regions respectively

195 have lower rates of under-five mortality.



196

197 **Fig 2: Aggregate child mortality estimates at the district level.** Mortality ranges from  
198 less than 20 deaths per 1000 to over 50 deaths per 1000 live births. The lowest  
199 mortality is observed in the 3 main cities of Mzuzu, Lilongwe and Blantyre

200 *Model results*

201 Table 2 presents posterior estimates from the geostatistical model. The effect of mother's  
202 age was very marginal. For a unit increase in age, there was only a 1% increase in the  
203 odds of mortality (OR=1.01, 95% CI=0.99-1.02). The effect of birthweight was neutral  
204 (OR=1.00, 95% CI=1.00-1.02).

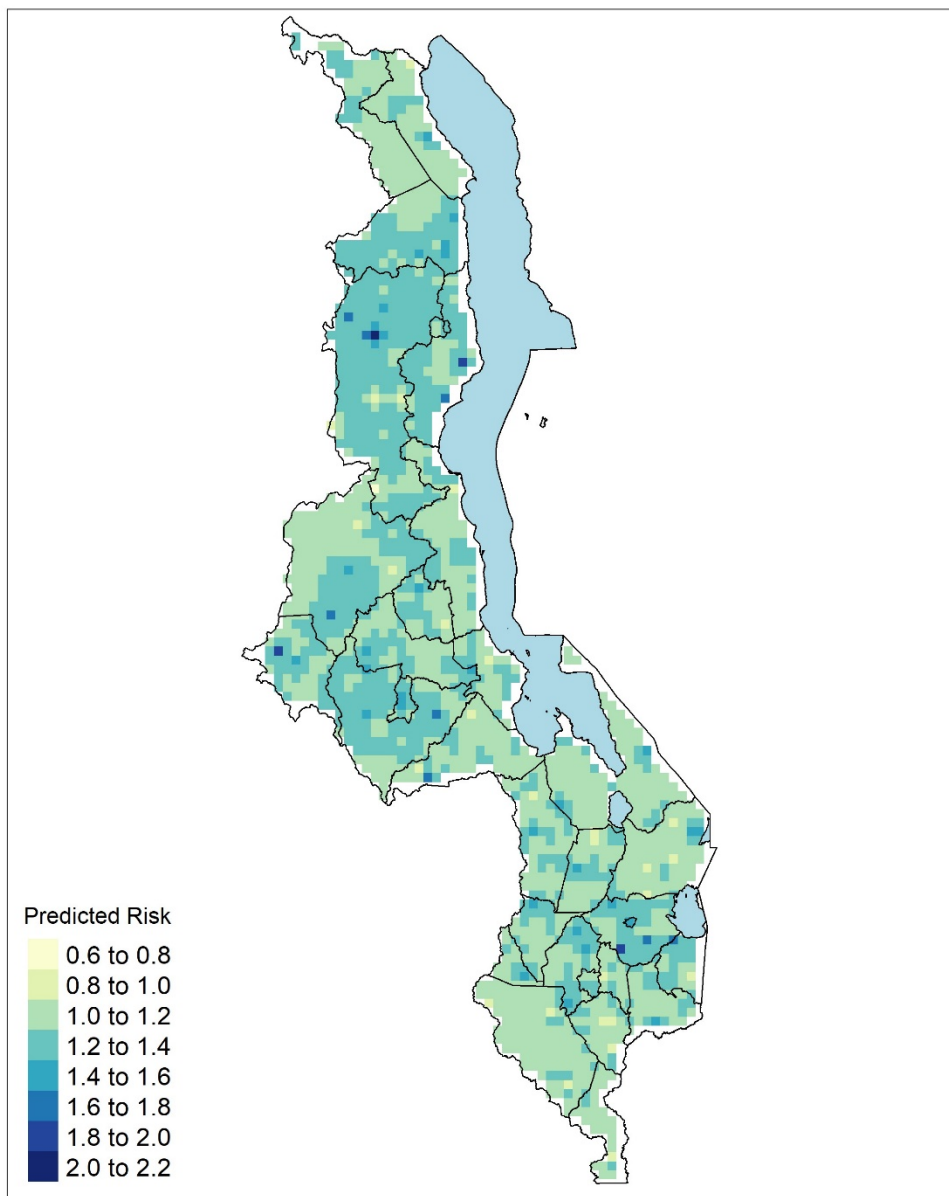
205 **Table 2: Posterior estimates of the binomial geostatistical regression model**

	OR	2.5% quintile	97.5% quintile
Mother's age	1.01	0.99	1.02
Birthweight	1.00	0.98	1.01
Residence			
Urban	REF		
Rural	1.22	1.12	1.33
Mother's education			
Secondary and above	REF		
Primary and below	1.04	0.91	1.18
Vulnerability	1.00	1.00	1.02
Malaria risk	1.00	0.99	1.03

206  
207 Children residing in rural areas had a 22% increase in the odds of mortality compared to  
208 their counterparts in urban areas (OR= 1.22, 95% CI=1.12-1.33). Malaria risk was not  
209 found to be associated with under-five mortality (OR=1.00, 95% CI=0.99-1.03). Likewise,  
210 vulnerability was not found to be associated with mortality (OR = 1.00, 95% CI = 1.00-  
211 1.02).

### 212 *Predicted mortality risk*

213 Figure 3 shows the predicted mortality risk map. Overall, the map shows  
214 heterogeneities in under-five mortality risk. The northern areas in general have a higher  
215 risk of mortality especially in Rumphu, Mzimba and parts of Nkhata Bay districts. Lower  
216 risks are observed in central and southern areas. The map shows varying risks within  
217 districts identifying the within-district heterogeneities that exist.



218

219 **Figure 3: Predicted relative risk estimates of child mortality expressed as a**  
220 **percentage.** Dark green zones show areas of elevated risk. Pale zones are areas with  
221 the lowest risk.

222 **Discussion**

223 In this study, we mapped the under-five mortality across Malawi to show spatial  
224 heterogeneities that should be taken into consideration in the continued efforts to  
225 reduce child mortality to meet the SDGs by the year 2030. There are still pockets of  
226 locations with relatively high under-five mortality rate that needs focused interventions to  
227 achieve the SDG goal of reducing under-five mortality to less than 25 deaths per 1000  
228 live births. In this study, we looked at the various factors that are still important potential  
229 drivers of child mortality in Malawi that should be addressed to help sustain the  
230 downward trend and hence achieve SDGs. Our study showed that under-five mortality  
231 was associated with the area of residence. This finding agrees with past studies in  
232 Malawi that have found that residence is positively associated with under-five mortality.  
233 In particular, the risk of children dying was higher for rural respondents compared to  
234 their urban counterparts [27,28]. Similar results showing rural-urban differential have  
235 been found in other developing countries. For example, in India, under-five mortality  
236 was 4.62% in rural areas compared to 3.28% in urban areas [29]. A rural-urban gap was  
237 also found in 35 countries in Sub-Saharan Africa [30].

238 The higher risk of mortality in rural areas compared to urban locations could be  
239 because of a lack of adequate healthcare and not following proper disease prevention  
240 strategies attributed to poor settings. Such poor setting factors would include poor  
241 healthcare-seeking behaviour in rural areas [31], not sleeping under bed nets to prevent  
242 malaria, and malnourishment resulting from a shortage of food and balanced meals.  
243 Rural areas also generally have a sparse network of health facilities leading to longer  
244 travel times to access healthcare which has been shown to lead to a greater risk of  
245 mortality [32]. It is believed the urban/rural mortality differentials are attributed to various

246 socio-economic differences that exist within the country. In addition, factors such as  
247 better education, more public infrastructure that provides sanitation services, safer  
248 water supply, better systems to handle household waste and excreta removal, and  
249 easier access to healthcare services that are more favourable in urban than in rural  
250 areas can also explain this relationship [33]. The lack of association between under-five  
251 mortality and variables such as education, malaria, vulnerability, and mother's age could  
252 be partly attributed to its general decline across the board. This result helps confirm the  
253 observations that heterogeneities exist at the subdistrict level which may not be well-  
254 captured by district-averaged covariates. Although these variables did not individually  
255 show any association with mortality in our study, differences in education, and mother's  
256 age between rural and urban likely contribute to the observed differences in rural-urban  
257 under-five mortality [34,35].

258 Our predicted risk maps indicate differences in mortality within the districts that  
259 could be masked by district-level estimation. Many factors could be responsible for  
260 relatively higher risk areas in some parts of the country including the role of infectious  
261 diseases such as HIV/AIDS and malaria [36,37]. Malaria is endemic to Malawi and has  
262 also been shown to be a key risk factor for child mortality [23,28]. Despite not being  
263 statistically significant in the model, the high malaria prevalence among children likely  
264 substantially contributes to under-five mortality. For example, the 2017 Malawi Malaria  
265 Indicator Survey (MIS) reported a prevalence rate of 24% [38]. The varying quality of  
266 health systems could also be a driving force behind the observed heterogeneities in  
267 under-five mortality within districts.



268 Our study has a few limitations. Firstly, we used data from the 2015/16 DHS.  
269 Therefore, the data are not very recent. DHS surveys are typically done every five  
270 years. However, the comprehensive nature of DHS surveys makes them quite useful for  
271 the period between successive surveys. It should also be noted that the high-resolution  
272 population estimates from WorldPop are modelled estimates and not observed  
273 population values. Modelling approaches are used to estimate population density at a  
274 remarkably high resolution from national census data. Furthermore, recall bias is  
275 another problem encountered in DHS surveys when historical information is sought.  
276 Another limitation of this study is due to potential confounding which can affect the  
277 reported associations. As this was an observation study, we did not actively control for  
278 all known confounding factors.

## 279 **Conclusion**

280 Our results showed that inequalities in the reduction of under-five mortality exist within  
281 districts in Malawi despite the general decline in under-five mortality across the country.  
282 There are areas where the risk is higher than the national average. Our modelling  
283 approach provides a picture of the heterogeneities at the sub-district level. Investigating  
284 these sub-national inequalities provides policymakers with valuable information on the  
285 state of child mortality and will help shape district-specific efforts towards achieving  
286 SDGs. To further reduce under-five mortality, efforts to close the gap in healthcare  
287 utilization, distribution of resources and the uneven use of interventions between rural  
288 and urban locations must be intensified.

## 289 **Acknowledgements**

290 RV thanks the DELTAS Africa Initiative, Sub-Saharan Africa Consortium for Advanced  
291 Biostatistics Training (SSACABT) for scholarship to pursue a MSc at the University of  
292 Malawi. We also thank the DHS program for granting free access to the 2015/16 Malawi  
293 DHS data.

294

## References

- 295 1. World Health Organization. Millennium Development Goals (MDGs). 2018 [cited 19 Feb 2024].  
296 Available: [https://www.who.int/news-room/fact-sheets/detail/millennium-development-goals-](https://www.who.int/news-room/fact-sheets/detail/millennium-development-goals-(mdgs))  
297 [mdgs\)](https://www.who.int/news-room/fact-sheets/detail/millennium-development-goals-(mdgs))
- 298 2. United Nations: Department of Economic and Social Affairs. Transforming our world: the 2030  
299 Agenda for Sustainable Development. 2015 [cited 19 Feb 2024]. Available:  
300 <https://sdgs.un.org/2030agenda>
- 301 3. Liu L, Oza S, Hogan D, Chu Y, Perin J, Zhu J, et al. Global, regional, and national causes of under-5  
302 mortality in 2000–15: an updated systematic analysis with implications for the Sustainable  
303 Development Goals. *The Lancet*. 2016;388: 3027–3035. doi:10.1016/S0140-6736(16)31593-8
- 304 4. You D, Hug L, Ejdemyr S, Idele P, Hogan D, Mathers C, et al. Global, regional, and national levels  
305 and trends in under-5 mortality between 1990 and 2015, with scenario-based projections to  
306 2030: A systematic analysis by the un Inter-Agency Group for Child Mortality Estimation. *The*  
307 *Lancet*. 2015;386: 2275–2286. doi:10.1016/S0140-6736(15)00120-8
- 308 5. Macharia PM, Giorgi E, Thurania PN, Joseph NK, Sartorius B, Snow RW, et al. Sub national  
309 variation and inequalities in under-five mortality in Kenya since 1965. *BMC Public Health*.  
310 2019;19. doi:10.1186/s12889-019-6474-1
- 311 6. Kanyuka M, Ndawala J, Mleme T, Chisesa L, Makwemba M, Amouzou A, et al. Malawi and  
312 Millennium Development Goal 4: A Countdown to 2015 country case study. *Lancet Glob Health*.  
313 2016;4: e201–e214. doi:10.1016/S2214-109X(15)00294-6
- 314 7. Rodríguez DC, Banda H, Namakhoma I. Integrated community case management in Malawi: An  
315 analysis of innovation and institutional characteristics for policy adoption. *Health Policy and*  
316 *Planning*. Oxford University Press; 2015. pp. ii74–ii83. doi:10.1093/heapol/czv063
- 317 8. Prosnitz D, Herrera S, Coelho H, Davis LM, Zalisk K, Yourkavitch J. Evidence of impact: ICCM as a  
318 strategy to save lives of children under five. *J Glob Health*. 2019;9. doi:10.7189/JOGH.09.010801
- 319 9. Allen KC, Whitfield K, Rabinovich R, Sadruddin S. The role of governance in implementing  
320 sustainable global health interventions: Review of health system integration for integrated

- 321 community case management (iCCM) of childhood illnesses. *BMJ Global Health*. BMJ Publishing  
322 Group; 2021. doi:10.1136/bmjgh-2020-003257
- 323 10. Ahmed T, Roberton T, Vergeer P, Hansen PM, Peters MA, Ofosu AA, et al. Healthcare utilization  
324 and maternal and child mortality during the COVID-19 pandemic in 18 low- and middle-income  
325 countries: An interrupted time-series analysis with mathematical modeling of administrative  
326 data. *PLoS Med*. 2022;19: e1004070. doi:10.1371/journal.pmed.1004070
- 327 11. Chiumia IK, Mosiwa BA, Nkhonjera J, Kazanga B, Mukondiwa AS, Twalibu A, et al. Emerging public  
328 health challenges during the COVID-19 pandemic in Malawi: A review. *Public Health Challenges*.  
329 2022;1. doi:10.1002/puh2.40
- 330 12. Kazembe L, Clarke A, Kandala NB. Childhood mortality in sub-Saharan Africa: Cross-sectional  
331 insight into small-scale geographical inequalities from Census data. *BMJ Open*. 2012;2.  
332 doi:10.1136/bmjopen-2012-001421
- 333 13. Bhutta ZA. Mapping the geography of child mortality: a key step in addressing disparities. *The*  
334 *Lancet Global Health*. Elsevier Ltd; 2016. pp. e877–e878. doi:10.1016/S2214-109X(16)30264-9
- 335 14. Bhutta ZA, Yount KM, Bassat Q, Moyer CE. Sustainable Developmental Goals interrupted:  
336 Overcoming challenges to global child and adolescent health. *PLoS Medicine*. Public Library of  
337 Science; 2021. doi:10.1371/journal.pmed.1003802
- 338 15. National Statistical Office (NSO) [Malawi] and ICF. *Malawi Demographic and Health Survey 2015-*  
339 *16*. Zomba, Malawi, and Rockville, Maryland, USA; 2017.
- 340 16. Lungu EA, Darker C, Biesma R. Determinants of healthcare seeking for childhood illnesses among  
341 caregivers of under-five children in urban slums in Malawi: a population-based cross-sectional  
342 study. *BMC Pediatr*. 2020;20: 20. doi:10.1186/s12887-020-1913-9
- 343 17. Diggle PJ, Tawn JA, Moyeed RA. Model-Based Geostatistics. *J R Stat Soc Ser C Appl Stat*. 1998;47:  
344 299–350. doi:10.1111/1467-9876.00113
- 345 18. Diggle PJ, Giorgi E. Model-Based Geostatistics for Prevalence Mapping in Low-Resource Settings. *J*  
346 *Am Stat Assoc*. 2016;111: 1096–1120. doi:10.1080/01621459.2015.1123158
- 347 19. Moraga P, Cano J, Baggaley RF, Gyapong JO, Njenga SM, Nikolay B, et al. Modelling the  
348 distribution and transmission intensity of lymphatic filariasis in sub-Saharan Africa prior to scaling  
349 up interventions: Integrated use of geostatistical and mathematical modelling. *Parasit Vectors*.  
350 2015;8. doi:10.1186/s13071-015-1166-x
- 351 20. Adigun AB, Gajere EN, Oresanya O, Vounatsou P. Malaria risk in Nigeria: Bayesian geostatistical  
352 modelling of 2010 malaria indicator survey data. *Malar J*. 2015;14. doi:10.1186/s12936-015-  
353 0683-6
- 354 21. Kalipeni E. Health and disease in southern Africa: a comparative and vulnerability perspective.  
355 *Soc Sci Med*. 2000;50: 965–983. doi:10.1016/S0277-9536(99)00348-2

- 356 22. Short Fabic M, Choi Y, Bird S. A systematic review of Demographic and Health Surveys: data  
357 availability and utilization for research. *Bull World Health Organ.* 2012;90: 604–612.  
358 doi:10.2471/BLT.11.095513
- 359 23. Chilanga E, Collin-Vézina D, MacIntosh H, Mitchell C, Cherney K. Prevalence and determinants of  
360 malaria infection among children of local farmers in Central Malawi. *Malar J.* 2020;19: 308.  
361 doi:10.1186/s12936-020-03382-7
- 362 24. Johnson HL, Liu L, Fischer-Walker C, Black RE. Estimating the distribution of causes of death  
363 among children age 1-59 months in highmortality countries with incomplete death certification.  
364 *Int J Epidemiol.* 2010;39: 1103–1114. doi:10.1093/ije/dyq074
- 365 25. Brown PE. Model-Based Geostatistics the Easy Way. *JSS Journal of Statistical Software.* 2015.  
366 Available: <http://www.jstatsoft.org/>
- 367 26. Lindgren F. Bayesian Spatial Modelling with R-INLA. *JSS Journal of Statistical Software.* 2015.  
368 Available: <http://www.jstatsoft.org/>
- 369 27. Ntenda PAM, Chuang KY, Tiruneh FN, Chuang YC. Factors Associated with Infant Mortality in  
370 Malawi. *Journal of Experimental and Clinical Medicine (Taiwan).* 2014;6: 125–131.  
371 doi:10.1016/j.jecm.2014.06.005
- 372 28. Kazembe LN, Appleton CC, Kleinschmidt I. Spatial analysis of the relationship between early  
373 childhood mortality and malaria endemicity in Malawi. *Geospat Health.* 2007;2: 41.  
374 doi:10.4081/gh.2007.253
- 375 29. Kumar C, Piyasa, Saikia N. An update on explaining the rural-urban gap in under-five mortality in  
376 India. *BMC Public Health.* 2022;22: 2093. doi:10.1186/s12889-022-14436-7
- 377 30. Yaya S, Uthman OA, Okonofua F, Bishwajit G. Decomposing the rural-urban gap in the factors of  
378 under-five mortality in sub-Saharan Africa? Evidence from 35 countries. *BMC Public Health.*  
379 2019;19: 616. doi:10.1186/s12889-019-6940-9
- 380 31. Van Der Hoeven M, Kruger A, Greeff M. Differences in health care seeking behaviour between  
381 rural and urban communities in South Africa. 2012. Available:  
382 <http://www.equityhealthj.com/content/11/1/31>
- 383 32. Okwaraji YB, Cousens S, Berhane Y, Mulholland K, Edmond K. Effect of Geographical Access to  
384 Health Facilities on Child Mortality in Rural Ethiopia: A Community Based Cross Sectional Study.  
385 *PLoS One.* 2012;7: e33564. doi:10.1371/journal.pone.0033564
- 386 33. Titaley CR, Dibley MJ, Agho K, Roberts CL, Hall J. Determinants of neonatal mortality in Indonesia.  
387 *BMC Public Health.* 2008;8. doi:10.1186/1471-2458-8-232
- 388 34. Sarkodie AO. Factors influencing under-five mortality in rural- urban Ghana: An applied survival  
389 analysis. *Soc Sci Med.* 2021;284: 114185. doi:10.1016/j.socscimed.2021.114185
- 390 35. Balaj M, York HW, Sripada K, Besnier E, Vonen HD, Aravkin A, et al. Parental education and  
391 inequalities in child mortality: a global systematic review and meta-analysis. *The Lancet.*  
392 2021;398: 608–620. doi:10.1016/S0140-6736(21)00534-1

- 393 36. Jahn A, Floyd S, Crampin A, Mvula H, Mwinuka V, Mwaiyeghele E, et al. Declining child mortality  
394 in northern Malawi despite high rates of infection with HIV. *Bull World Health Organ.* 2010;88:  
395 746–753. doi:10.2471/BLT.09.075085
- 396 37. Jahn A, Floyd S, McGrath N, Crampin AC, Kachiwanda L, Mwinuka V, et al. Child Mortality in Rural  
397 Malawi: HIV Closes the Survival Gap between the Socio-Economic Strata. *PLoS One.* 2010;5:  
398 e11320. doi:10.1371/journal.pone.0011320
- 399 38. National Malaria Control Programme (NMCP) and ICF. Malawi Malaria Indicator Survey 2017.  
400 Lilongwe, Malawi, and Rockville, Maryland, USA; 2018.
- 401

medRxiv preprint doi: <https://doi.org/10.1101/2024.03.11.24304141>; this version posted March 14, 2024. The copyright holder for this preprint (which was not certified by peer review) is the author/funder, who has granted medRxiv a license to display the preprint in perpetuity. It is made available under a [CC-BY 4.0 International license](https://creativecommons.org/licenses/by/4.0/).

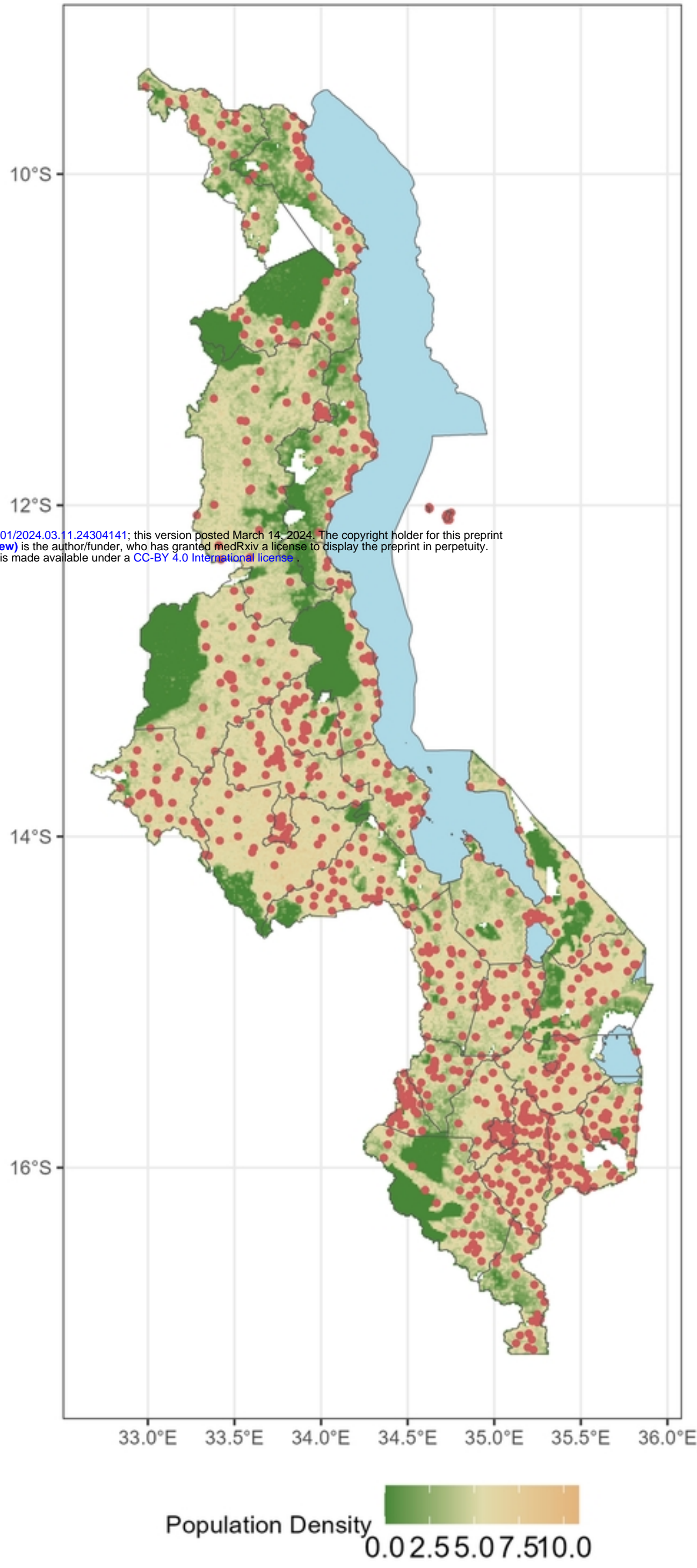


Figure 1



medRxiv preprint doi: <https://doi.org/10.1101/2024.03.11.24304141>; this version posted March 14, 2024. The copyright holder for this preprint (which was not certified by peer review) is the author/funder, who has granted medRxiv a license to display the preprint in perpetuity. It is made available under a [CC-BY 4.0 International license](#).

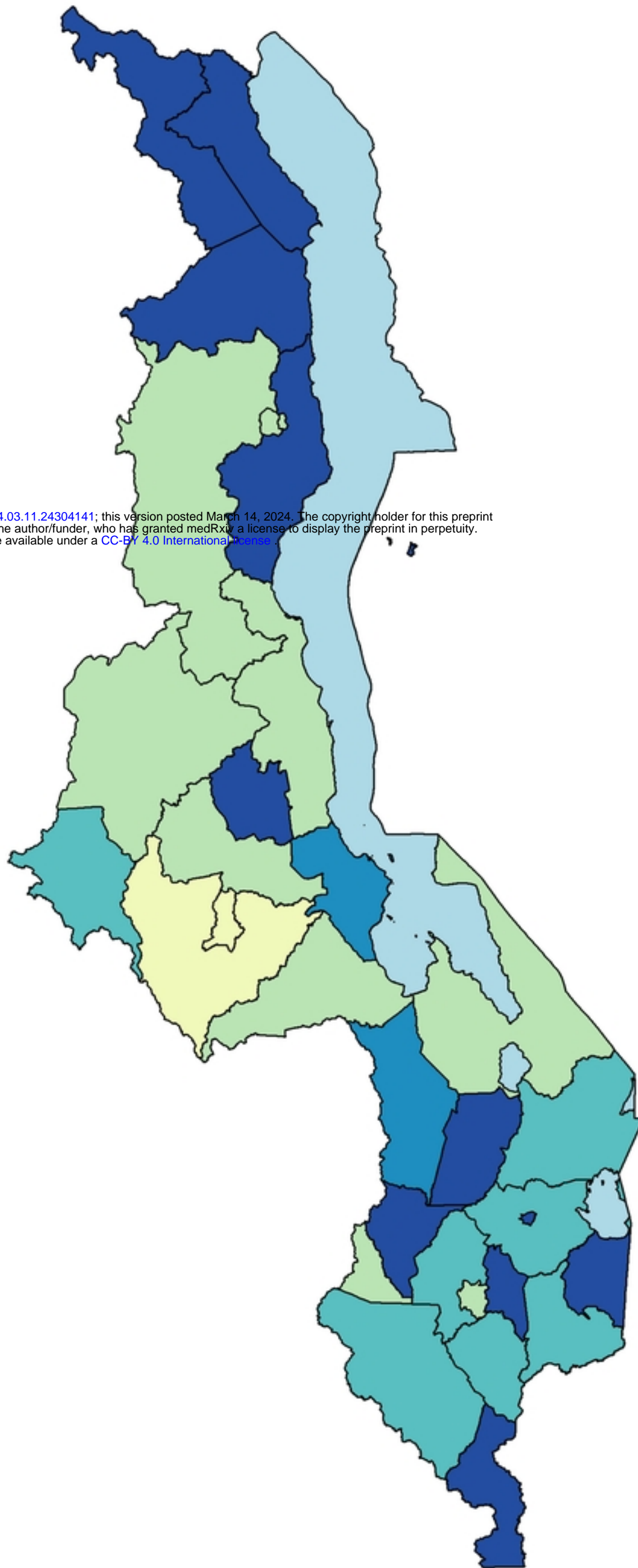
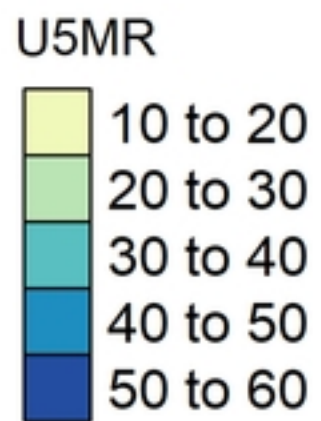


Figure 2

medRxiv preprint doi: <https://doi.org/10.1101/2024.03.11.24304141>; this version posted March 14, 2024. The copyright holder for this preprint (which was not certified by peer review) is the author/funder, who has granted medRxiv a license to display the preprint in perpetuity. It is made available under a [CC-BY 4.0 International license](#).

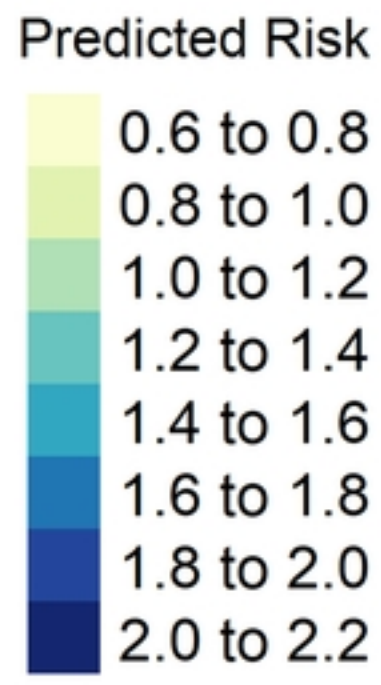
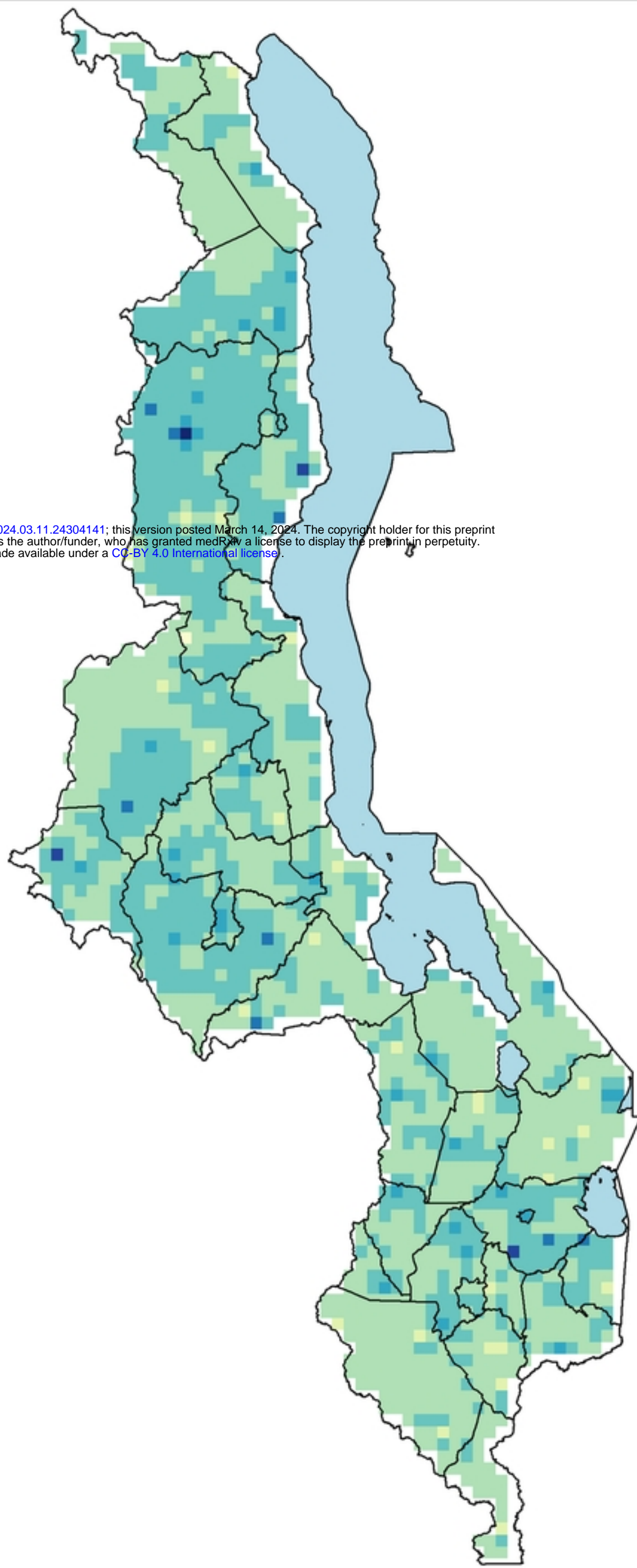


Figure 3