

1 **Prevalence of differences of sex development in children and adolescents in Switzerland**
2 **from 2000-2019**

3 Sara Metzger¹, Grit Sommer^{1,2,3*#}, Christa E. Flück^{1,2*}, on behalf of the Swiss DSD Cohort Study

4 Group

5 *co-last authors

6

7 ¹ Division of Pediatric Endocrinology, Diabetology and Metabolism, Department of Pediatrics,
8 Inselspital, Bern University Hospital, University of Bern, Switzerland

9 ² Department of Biomedical Research, University of Bern, Switzerland

10 ³ Institute of Social and Preventive Medicine, University of Bern, Switzerland

11

12 Members of the Swiss DSD Cohort Study Group in alphabetical order: Christine Aebi-Ochsner,
13 Private Practice for Paediatric Endocrinology, Biel Switzerland; Kanetee Busiah, Department of
14 Pediatric Endocrinology and Diabetology, CHUV, University Children's Hospital, Lausanne,
15 Switzerland; Mirjam Dirlwanger, Pediatric Endocrine and Diabetes Unit, Children's University
16 Hospital Geneva, Geneva, Switzerland; Sylvia Gschwend, Private Practice for Paediatric
17 Endocrinology, Zug, Switzerland; Melanie Hess, Pediatric Endocrinology and Diabetology,
18 University Children's Hospital Basel, Basel, Switzerland; Beatrice Kuhlmann, Pediatric
19 Endocrinology, Cantonal Hospital Aarau, Aarau, Switzerland and Private Practice for Paediatric
20 Endocrinology, Basel, Switzerland; Dagmar l'Allemand, Department of Endocrinology,
21 Children's Hospital of Eastern Switzerland, St. Gallen, Switzerland; Mariarosaria Lang,
22 Paediatric Endocrinology and Diabetology, University Children's Hospital Zurich, Zurich,
23 Switzerland; Kees Noordam, Centre for Paediatric Endocrinology Zurich (PEZZ), Zurich,
24 Switzerland; Franziska Phan-Hug, Department of Pediatrics, Hospital Morges, Morges and
25 Department of Pediatrics, Hospital Wallis, Sion, Switzerland; Ursina Probst, Department of
26 Pediatrics, Cantonal Hospital Winterthur, Winterthur, Switzerland; Maristella Santi, Department

1

27 of Pediatrics, Cantonal Hospital Lucerne, Lucerne, Switzerland; Silvia Schmid, Private Practice
28 for Paediatric Endocrinology, Dubendorf, Switzerland; Valérie Schwitzgebel, Pediatric Endocrine
29 and Diabetes Unit, Children's University Hospital Geneva, Geneva, Switzerland; Michael
30 Steigert, Department of Pediatrics, Cantonal Hospital Graubunden, Chur, Switzerland; Gabor
31 Szinnai, Pediatric Endocrinology and Diabetology, University Children's Hospital Basel, Basel,
32 Switzerland; Gerald Theintz, Private Practice for Paediatric Endocrinology, Lausanne,
33 Switzerland.

34

35 **#Correspondence:**

36 Grit Sommer

37 Institute of Social and Preventive Medicine

38 University of Bern

39 Mittelstrasse 43

40 3012 Bern, Switzerland

41 Phone: +4131 684 33 47

42 Email: gritti.sommer@unibe.ch

43

44 ORCID:

45 Christa Flück 0000-0002-4568-5504

46 Grit Sommer 0000-0002-4205-7932

47

48 *Key words:* DSD; intersex; sex chromosome DSD; 46,XY DSD; 46,XX DSD; CAH; gonadal
49 development

50

51 *Disclosure summary:* The authors declare no conflict of interest.

52 **Abstract** (248/250)

53 **Objective:** Reliable data on prevalence of differences of sex development (DSD) are lacking.

54 We aimed to estimate population-based prevalence of DSD in Switzerland.

55 **Design:** Retrospective population-based study including children and adolescents with DSD
56 according to Chicago Consensus, born in Switzerland from 2000-2019.

57 **Methods:** Endocrine care centers in ten Swiss Children's Hospitals and eight private endocrine
58 practices collected DSD data through the I-DSD registry or case report forms. We calculated
59 prevalence for DSD diagnostic groups and analyzed trends in prevalence.

60 **Results:** Over the 20-year study period, we identified 561 individuals with DSD. Almost half
61 (n=266, 47%) had sex chromosome DSD, 177 (32%) had 46,XY DSD and 118 (21%) had 46,
62 XX DSD. Causes for 46,XY DSD were disturbed androgen synthesis or action (37/177, 21%),
63 atypical gonadal development (28/177, 16%), or other causes (112/177, 63%). Causes for
64 46,XX DSD were androgen excess (99/118, 84%), atypical gonadal development (8/118, 7%),
65 or other causes (11/118, 9%). On average, 28 new cases were born with DSD annually.
66 Prevalence was 17 for sex chromosome DSD, 12 for 46,XY DSD and 8 for 46,XX DSD per
67 100'000 live births and year. One per 7'500 newborn girls had 46,XX congenital adrenal
68 hyperplasia (CAH).

69 **Conclusion:** Prevalence of sex chromosome DSD was lower than expected because of
70 underreporting due to late diagnosis. Prevalence of 46,XX CAH is similar to newborn screening
71 data, suggesting good completeness of cases. For complex DSD cases, we expect complete
72 coverage. This study provides a valuable resource for policymaking and (inter)national research
73 on DSD.

74 INTRODUCTION

75 Differences of sex development (DSD) is an umbrella term that stands for a heterogeneous
76 group of rare conditions that affect human sex development and maturation (1). The term DSD
77 has first been introduced with the Chicago Consensus Statement in 2006 that defined DSD as
78 "congenital conditions in which the development of chromosomal, gonadal, anatomic sex is
79 atypical" (2). Most DSDs are congenital due to their genetic origins. However, many individuals
80 never receive a genetic diagnosis but are diagnosed as DSD based on their phenotype (3).
81 Although this consensus around terminology has been widely accepted by medical
82 professionals, it remains controversial (4), and other terms have been suggested including
83 intersex, variations of sex development or more recently variations of sex characteristics. New
84 knowledge on human sex development and the introduction of a classification based on
85 genetics clarified the perspective on this broad and complex subject. A clear definition allowed
86 researchers and physicians to identify and work together with persons with DSD and improve
87 efforts towards well-integrated, progressive, patient-centered care and research across the DSD
88 spectrum. The International Registries For Rare Conditions Affecting Sex Development &
89 Maturation (SDMregistries) include international databases for DSD (e.g., the I-DSD Registry)
90 that allow for standardized and pseudonymized data collection (5). They provide valuable tools
91 for researchers and physicians to record and obtain data of individuals with DSD to solve clinical
92 and translational research questions (5, 6). As of June 2024, the I-DSD Registry included data
93 of 9165 individuals with DSD originating from 152 centers of 46 countries world-wide (7). It has
94 formed the basis of over 65 research projects addressing various topics of DSD such as
95 mechanisms of disease of specific subtypes of DSD, genetic and diagnostic approaches,
96 treatment options, long-term outcomes, quality of care and psychosocial topics.
97 Recent developments have shifted perceptions and approaches toward DSD, yet many open
98 research questions remain to improve care for individuals with DSD (1, 8-10). Provision of
99 optimal healthcare for individuals with DSD and perception by policymakers, ethical and legal

100 bodies as well as society require a clear understanding of the occurrence of these conditions.
101 However, the accurate incidence and prevalence of DSD are still unknown (11). One exception
102 are studies reporting incidences of congenital adrenal hyperplasia (CAH), because CAH is
103 included in national neonatal screening programs (12). Only few studies estimated incidence or
104 prevalence for other types of DSD, but these studies were either old, dating from 1955 to 2000
105 (13), or covered only single centers or regions and thus yielded variable results (14) (15-23). To
106 date, no country has a nation-wide registration system for DSD.
107 We aimed to calculate prevalence and trends of DSD diagnostic groups according to the
108 Chicago Consensus Classification in children and adolescents born population based from
109 2000-2019 in Switzerland.

110

111 **MATERIAL AND METHODS**

112 **Ethics, Study Design and Participants**

113 For this population-based retrospective observational study cohort, we retrospectively identified
114 patients with DSD in 18 different Swiss centers of pediatric endocrinology.
115 We included all individuals with DSD as defined by the Chicago Consensus Classification (2),
116 who were born in Switzerland between January 1, 2000 and December 31, 2019. In
117 Switzerland, care for children and adolescents with DSD is mainly provided by a specialized
118 interdisciplinary DSD team (4) at outpatient clinics of pediatric hospitals under the lead of a
119 pediatric endocrinologist. Additionally, there are pediatric endocrinologists in private practices
120 that may provide care for a few individuals, predominantly with Turner syndrome, Klinefelter
121 syndrome or CAH. We approached all 11 departments of pediatric endocrinology in pediatric
122 hospitals to collaborate for data collection, and 10 out of 11 participated covering the whole of
123 Switzerland except the canton of Ticino. We also contacted the pediatric endocrinologists in
124 private practices to participate in our study via email through the Swiss Society of Pediatric
125 Endocrinology and reminded them if we did not hear back. Of a total of 16 private practices, we

126 heard back from 13, of which 5 did not treat eligible children and adolescents. The remaining 3
127 who did not answer are small practices. The Ethics Committee of the Canton of Bern granted
128 ethical approval to the Swiss DSD Cohort Study under BASEC ID 2016-01210. With ethical
129 approval, we were able to collect a core data set without informed consent of participants.

130

131 **Data Collection**

132 Participating centers identified eligible patients through patient lists of treating physicians and
133 searches in their administrative clinical databases or hospital coding systems. Physicians
134 extracted data from medical records and filled them into the basic registration module of the I-
135 DSD Registry (<https://sdmregistries.org/>). Centers without access to the registry used a case
136 report form identical to the variables in the I-DSD Registry. Extracted data included treatment
137 center, year of birth, assigned sex at birth, country of birth, karyotype, details of DSD condition
138 including genetic analyses and current gender. We coded each individual according to the
139 diagnostic categories suggested from the Chicago Consensus Classification (2) into three DSD
140 main groups (sex chromosome DSD, 46,XY DSD, 46,XX DSD) and diagnostic subgroups (sex
141 chromosome DSD: Klinefelter syndrome and variant, Turner syndrome and variants,
142 45,X/46,XY and variants, other; 46,XY DSD: disorders of gonadal development, disorders in
143 androgen synthesis or action, other (including severe, complex hypospadias); 46,XX DSD:
144 disorders of gonadal development, androgen excess (including 46,XX CAH), other. We clarified
145 missing or inconclusive data with the collaborating physicians.

146 Population-based data on live births came from the Swiss Federal Office of Statistics (SFSO).

147 Numbers of cases of CAH identified by newborn screening came from the Swiss Neonatal

148 Screening laboratory (<https://www.neoscreening.ch/de/>).

149 To ensure that our cohort did not include duplicate entries of the same individuals with DSD, an
150 independent institution performed record linkage based on first and last name and date of birth.

151

152 **Data Analysis and Statistics**

153 We calculated prevalence based on the day the individuals were born, assuming that any DSD
154 regardless of the timing of clinical presentation, is already present at birth, similarly to a Danish
155 study on CAH (24). We calculated prevalence based on population data on live births from the
156 Swiss Federal Statistical Office (SFSO). The SFSO publishes live birth statistics by year and
157 canton, which allowed us to exclude population data of Ticino (25). We calculated the average
158 number of cases born with DSD per year for main DSD categories and specific DSD subgroups
159 during the entire observation period from 2000-2019 and for four 5-year intervals (2000-2004,
160 2005-2009, 2010-2014, 2015-2019). We calculated prevalence of DSD expressed per 100'000
161 liveborn individuals per year. Depending on the diagnosis, we calculated prevalence based on
162 all newborns, or only newborn boys or newborn girls. For all DSDs combined, for the main DSD
163 categories (sex chromosome DSD, 46,XY DSD, 46,XX DSD), and for two sex chromosome
164 DSD subgroups (45,X/46,XY and variants, other sex chromosome DSD) we used the number of
165 all newborns. For Klinefelter syndrome and variants and the 46,XY DSD subgroups (disorders
166 of gonadal development, disorders in androgen synthesis or action, other 46,XY DSD) we used
167 newborn boys. For Turner syndrome and variants and the 46,XX DSD subgroups (disorders of
168 gonadal development, androgen excess, other 46,XX DSD) we used newborn girls. We
169 calculated confidence intervals for prevalence using the Poisson distribution (26). We used
170 Stata, Version 16.1 for data preparation and descriptive statistics, and R statistic management,
171 R Version 4.2.2 for prevalence calculations.

172 To examine trends in prevalence expressed as annual percentage changes (APC), we used
173 JoinPoint, Version 4.0.2.2. JoinPoint is a statistical package originally developed by the US
174 National Cancer Institute to describe trends in cancer incidence and mortality (27). JoinPoint
175 fitted regression lines through the selected data, with the natural logarithm of proportion
176 (prevalence) as dependent variable and calendar year (2000-2019) as independent variable.
177 We allowed for a maximum number of 0 joinpoints to capture overarching trends within the data.

178 **RESULTS**

179 A total of 685 individuals with DSD born between 2000 and 2019 were treated in the 10
180 pediatric hospitals including all University Children's Hospitals in Switzerland and the 8 private
181 pediatric practices. We excluded duplicate individuals (n=56) and individuals born outside of
182 Switzerland or in the canton Ticino (n=66), leading to a final cohort of 561 individuals with DSD
183 (**Figure 1**).

184
185 We classified our cohort of 561 individuals into the three main DSD categories according to the
186 Chicago Consensus Classification (2). A total of 266 (47%) individuals had sex chromosome
187 DSD, 177 (32%) 46,XY DSD and 118 (21%) 46,XX DSD. **Table 1** gives an overview of the
188 specific diagnoses comprised within these three main DSD categories.

189
190 *Prevalence of DSD in Switzerland*

191 Throughout the entire 20-year study period spanning from 2000 to 2019, an annual average of
192 76'719 children were born in all Swiss cantons excluding Ticino. During the same period, we
193 identified an average number of 28 individuals with DSD born per year (**Table 2**), resulting in an
194 overall prevalence of 36.6 (95%CI 33.6; 39.7) per 100'000 newborns per year for all DSD
195 diagnoses (**Table 2**).

196
197 When we stratified our study period into 5-year intervals, annual DSD prevalence per 100'000
198 newborns was highest with 44.3 (95%CI 31.7; 51.7) between 2005-2009, and lowest with 28.2
199 (95%CI 23.4; 33.7) in the most recent interval between 2015-2019 (Figure 2A and Supplemental
200 Table 1 <https://boris-portal.unibe.ch/handle/20.500.12422/33491>). Sex chromosome DSD
201 accounted for the largest proportion of cases among all DSD main groups between 2000-2014.
202 Only between 2015-2019, the 46,XY DSD proportion was larger. Throughout all time intervals,
203 the 46,XX DSD group accounted for the smallest proportion of cases.

204 Sex chromosome DSD prevalence was highest with 24.0 (95%CI 19.2; 29.7) per 100'000
205 newborns per year between 2000-2004 (Figure 2B and Supplemental Table 1 <https://boris-portal.unibe.ch/handle/20.500.12422/33491>). Turner syndrome and variants accounted for the
206 largest proportion of sex chromosome DSD (prevalence 20.0 per 100'000 newborn girls, 95%CI
207 16.9;23.5), followed by Klinefelter syndrome and variants (prevalence 9.4 per 100'000 newborn
208 boys, 95%CI 7.4-11.8). Other types of sex chromosome DSD were rare (prevalence 0.5-1.7 per
209 100'000 newborns). Prevalence of sex chromosome DSD decreased from 2000-2019 with an
210 APC of -6.3 (95%CI -8.4; -4.1) which was mainly driven by the Klinefelter syndrome (APC -8.2,
211 95%CI 11.4; -4.8) and Turner syndrome group (APC -5.2, 95%CI -7.8; -2.5) (Figures 2B,
212 Supplemental Figure 1B <https://boris-portal.unibe.ch/handle/20.500.12422/33491>).

214

215 Prevalence of 46,XY DSD was 11.5 (95%CI 9.9; 13.4) per 100'000 newborns for the entire
216 study period and remained stable over time (APC 1.8, 95%CI -0.5; 4.1) (Table 2, Supplemental
217 Figure 1C <https://boris-portal.unibe.ch/handle/20.500.12422/33491>), with a slight trend towards
218 an increasing prevalence after 2014 (Figure 2C). Other 46,XY DSD (prevalence 14.2 per
219 100'000 newborn boys, 95%CI 11.7; 17.1) was highest among the group of 46,XY DSD,
220 followed by disorders in androgen synthesis or action (prevalence 4.7 per 100'000 newborn
221 boys, 95%CI 3.3; 6.5) and disorders of gonadal development (prevalence 3.5 per 100'000
222 newborn boys, 95%CI 2.4; 5.1) (Table 2). While prevalence of other 46,XY DSD increased over
223 time (APC 4.5, 95%CI 1.0-8.1), prevalence of disorders of gonadal development or disorders in
224 androgen synthesis or action remained stable (Supplemental Figure 1C <https://boris-portal.unibe.ch/handle/20.500.12422/33491>).

226

227 Prevalence of 46,XX DSD was 7.7 (95%CI 6.4; 9.2) per 100'000 newborns (Table 2, Figure 2D),
228 and remained stable over time (APC -2.3, 95%CI -5.9; 1.4) (Table 2, Supplemental Figure 1D
229 <https://boris-portal.unibe.ch/handle/20.500.12422/33491>). Among 46,XX DSD, the androgen

230 excess group had the highest prevalence with 13.3 (95%CI 10.8; 16.2) per 100'000 newborn
231 girls with stable prevalence over the study period. Other types of 46, XX DSD were rare
232 (prevalence 1.1-1.5 per 100'000 newborn girls).

233

234 *Sex registration at birth*

235 In Switzerland sex registration at birth is mandatory and only the traditional categories of either
236 male or female are officially available. We did not observe a difference in ratio of sex registration
237 over the study period (Table 1). In our cohort of 561 individuals, 301 (54%) were registered with
238 female sex at birth and 242 (43%) with male sex at birth. For 18 individuals, physicians reported
239 that sex directly at birth was not assigned (3%; n=14 46,XY and n=4 46,XX), and data on official
240 sex registration at birth was not available to us. All individuals with sex chromosome DSD were
241 registered with a female or male sex at birth. Discordance between karyotype and sex
242 registration at birth was found in 28/177 individuals with 46,XY DSD (16%) and in 12/118
243 individuals with 46,XX DSD (10%). A difference between registered sex at birth and gender at
244 last follow-up was reported in 5 individuals originally registered female at birth (1%) and in 7
245 individuals originally registered male at birth (1%) with one individual identifying as both male
246 and female.

247

248 *Where are individuals with DSD cared for?*

249 We found that most children and adolescents with DSD in Switzerland (452/561, 80%) were
250 seen by pediatric endocrinologists working in hospitals with a interdisciplinary DSD team (Figure
251 3). Pediatric endocrinologists in private practice cared predominantly for children and
252 adolescents with Turner syndrome, Klinefelter syndrome, or 46,XX androgen excess.

253

254 **DISCUSSION**

255 We report prevalence for different DSD diagnoses according to the Chicago Consensus
256 Classification in a population-based cohort between 2000-2019 in Switzerland. Prevalence of
257 DSD treated by pediatric endocrinologist was 37 per 100'000 (1 of 2'735) newborns including
258 sex chromosome, 46,XY and 46,XX DSD. Overall, DSD prevalence decreased from 2000-2019,
259 which was driven by a strong decrease in prevalence of sex chromosome DSD. Prevalence of
260 46,XY DSD tended to increase and prevalence of 46,XX DSD to decrease over time.

261
262 Most studies on epidemiology of DSD come from single centers in different countries. These
263 studies mostly describe prevalence of DSD (15, 18, 20, 21, 28) or atypical genitalia (16, 19, 22),
264 and only some used the Chicago Consensus Classification. The reported prevalence at birth
265 ranges from 280 per 100'000 (1 of 357) when including any kind of atypical genitalia (28) to 16
266 per 100'000 (1 of 6'347) when using DSD diagnoses according to the Chicago Consensus
267 Classification (21). The two existing multicenter studies from the US (17) and Scotland (23)
268 reported numbers of children with either atypical genitalia or DSD at birth. The Scottish study
269 registered atypical genitalia in Scotland prospectively between 2013-2019. They found that 53
270 per 100'000 (1 of 1'881) newborns, the treating physicians suspected a DSD and 30 per
271 100'000 (1 of 3'318) newborns required DSD specialist consultation (23). The US study by
272 Finlayson et al (17) compared relative prevalence of DSD diagnoses within a cohort of 99
273 infants with atypical genitalia to other cohorts and found large differences in relative prevalence
274 of sex chromosome, 46,XY and 46,XX DSD between cohorts. Several factors may contribute to
275 this broad variability, including definition of diagnosis (e.g. inclusion/exclusion of cases without
276 atypical genitalia), differences in study population (e.g. ethnicity, consanguinity), sampling
277 (single center versus multicenter), study design (e.g. prospective, cross-sectional), age of study
278 participants (e.g. newborns, children, all ages). Thus population-based data to obtain
279 representative estimates of prevalence for different DSD diagnoses is crucial.

280 *Sex chromosome DSD*

281 We calculated prevalence of DSD based on live birth rates in Switzerland. Our overall
282 prevalences are lower than published data for sex chromosome DSD (29, 30). Turner syndrome
283 occurs in 25-50 individuals per 100'000 females (29, 31). We found a prevalence of 24-29 per
284 100'000 newborn girls for Turner syndrome and variants during 2000-2009, which decreased to
285 9 per 100'000 during 2015-2019. The reason for this decrease is because less than one third of
286 individuals with Turner syndrome are diagnosed in childhood or adolescence (29, 31). The
287 reported prevalence for Klinefelter syndrome varies from 40-250 per 100'000 males with the
288 main proportion only diagnosed in adulthood (32, 33). For Klinefelter and variants we found a
289 prevalence of 18 per 100'000 newborn boys during 2000-2004 that decreased to 5 per 100'000
290 during 2015-2009. Our cohort included individuals with DSD who were born from 2000-2019,
291 thus a large proportion of individuals were too young to have received a Turner syndrome or
292 Klinefelter syndrome diagnosis, for example because they were still prepubertal at time of study,
293 or because fertility concerns may arise only later in adulthood. Cohort studies with systematic
294 screening or longer observation periods are needed to capture real prevalence estimates for
295 individuals with Turner and Klinefelter syndrome. Some individuals with Turner or Klinefelter
296 syndrome may not have required pediatric endocrine care and thus were missed by our cohort
297 study. Pregnancy termination after a prenatal diagnosis of sex chromosome DSD leads to
298 additional underestimation of sex chromosome prevalence (34). We only included data of live
299 births, thus we cannot determine to what extent this would affect our prevalence estimates.

300

301 *Non-chromosomal DSD*

302 We assume almost complete coverage of rare and complex subgroups of non-chromosomal
303 DSD with atypical genitalia. These individuals are mostly diagnosed at birth and require
304 extensive diagnostic assessments which leads to referral to interdisciplinary DSD teams at
305 pediatric hospitals. Specialized DSD physicians of these interdisciplinary teams reported all their

306 DSD cases to our study cohort, reducing the likelihood of missing eligible individuals.
307 Comparable prevalence data is scarce for individuals with complex forms of DSD.
308
309 46,XY DSD comprise disorders of gonadal development, disorders in androgen synthesis or
310 action, and other forms. A Swedish study (35) found a prevalence of 6.4 per 100'000 live born
311 females for individuals with a 46,XY karyotype and a female phenotype. These figures are hard
312 to compare to our results, because we calculated prevalence based on newborn boys and did
313 not include data on phenotype. We observed a prevalence of 3.5 per 100'000 newborn boys for
314 individuals with disorders of gonadal development and of 4.7 for individuals with androgen
315 synthesis or action. Our estimates for prevalence of 46,XY individuals with disorders of
316 androgen sensitivity or action likely underestimated the true prevalence, because those with a
317 female phenotype may perhaps only be evaluated after pubertal age due to primary
318 amenorrhea. The largest group among the 46,XY DSD was the heterogeneous group of other
319 46,XY DSD including complex genital and cloacal anomalies. Often individuals of this group are
320 not classified as DSD in hospital administration coding systems, as they have their first
321 presentation in departments other than endocrinology (e.g. urology). Only a fraction is referred
322 to specialized DSD teams for interdisciplinary care and genetic work-up. Genetic work-up does
323 not yield a genetic diagnosis relating to a DSD in >50% of individuals (36). In a US single center
324 study among 131 boys with proximal hypospadias, only 60 (46%) received endocrine and
325 genetic testing and 9 (7%) received a DSD diagnosis (37). In a Chinese single center study in
326 165 individuals with proximal hypospadias, only 14 (8%) obtained a DSD diagnosis (38).
327 Depending on which forms of hypospadias might qualify as DSD, we assume that we have
328 largely underestimated the prevalence of the subgroup of other 46,XY DSD in our study.
329 Interestingly, we observed the highest prevalence in the most recent study period from 2015-
330 2019. Increased awareness of DSD among different specialties may have led to more referrals
331 to pediatric endocrinologists in more recent years, particularly after the Chicago Consensus

332 Statement (2). This group may also include individuals who have not yet received a genetic
333 DSD diagnosis that would allow categorization into the more specific DSD subcategories.
334
335 46,XX DSD comprise disorders of gonadal development, androgen excess and other forms.
336 Most studies describe prevalence for individuals with androgen excess, mostly for CAH. Only
337 one nation-wide cohort study from Sweden reported data on other forms of 46,XX DSD (35).
338 They report a prevalence of 3.5-4.7 per 100'000 newborn males for individuals with a 46,XX
339 karyotype and a male phenotype who mainly presented for fertility concerns and were
340 diagnosed with DSD. Among their study cohort of 44 individuals, 33 had disorders of gonadal
341 development and 3 had CAH. Comparison to our data is difficult, because categorization of
342 46,XX DSD diagnoses differed. In our study, we calculated prevalence for 46,XX DSD based on
343 newborn girls while they used newborn boys, and we did not collect data on phenotype.
344 Because our cohort was relatively young, we may have missed individuals with 46,XX DSD who
345 only come to medical attention later in life due to fertility concerns, leading to an
346 underestimation of the prevalence in this DSD group. We also assume underreporting of 46,XX
347 disorders of gonadal development and other 46,XX DSD for the earliest interval from 2000-2004
348 due to the retrospective study design and lack of consensus on diagnostic nomenclature.
349 Several countries, including Switzerland, published CAH prevalence data from their national
350 neonatal screening programs. Our prevalence estimates are hard to compare to data from the
351 Swiss Newborn Screening (<https://www.neoscreening.ch/de>), because they do not distinguish
352 between girls and boys and they only capture individuals with classic CAH. Our cohort included
353 individuals with non-classic CAH. Prevalence of all subtypes of CAH in Danish females was
354 15.1 per 100'000 newborn girls (24), which was comparable to our study with a prevalence of
355 13.3 per 100'000 newborn girls for 46,XX androgen excess.

356 Information of population-based cohorts are important to yield reliable estimates on DSD
357 prevalence, and to provide evidence-based data for topics such as sex reassignment, genital
358 surgery, hormonal treatments and other needs of DSD care . In Switzerland, most individuals
359 with any type of DSD born between 2000 and 2019 are cared for by interdisciplinary DSD
360 teams as recommended by international recommendations (1, 4, 8, 10, 39-42). Our study
361 showed that individuals with complex forms of DSD are extremely rare in Switzerland. For
362 these, interdisciplinary care and shared decision-making are crucial, because they require
363 comprehensive diagnostic procedures, and detailed treatment guidelines are lacking. In the last
364 decades, different perspectives from patient representatives, human rights activists, medical
365 professionals and policy makers raised public awareness and led to extensive discussions
366 among stakeholders (43). Controversially discussed is, for example, whether medical
367 treatments offered to children with atypical genitalia who cannot consent should be legally
368 banned and how sex registration should be managed (4, 9). In the multicenter study from
369 Scotland, sex registration was delayed in 9 per 100'000 (1 of 11'097) newborns who had
370 atypical genitalia at birth suggesting a complex form of DSD (23). In our 20-year study period,
371 only 13/543 individuals (2.4 %) had a gender at last follow-up that differed to the registered sex
372 at birth. This indicates that sex registration at birth is mostly fitting. However, we may have
373 underestimated the frequency of gender reassignment in DSD, because data on sex registration
374 were not available in 18 individuals (3.2 %) and gender incongruence might manifest only later
375 in life in our young study cohort.

376
377 Our study has some limitations. Data collection covered the whole of Switzerland except for the
378 canton of Ticino. Ticino's population represents around 4% of the total Swiss population and
379 3.5% of the newborn population during our study period (25, 44). Ticino has a unique position
380 within Switzerland. It is the only canton where Italian is the official language and is culturally
381 influenced by Italy due to its geographical location in the South of Switzerland and its proximity

382 to Italy. It is unlikely that individuals with DSD born and living in Ticino are treated in other
383 cantons, which allowed us to calculate population-based prevalence of DSD in Switzerland. Our
384 study is also limited by underestimation of prevalence for individuals with DSD. Our time interval
385 of data collection was relatively short and very recent (from 2000-2019), leading to a young
386 study population at time of data collection. Thus, our study did not capture individuals with DSD
387 who have not yet received a diagnosis. Identification of individuals with DSD was retrospective,
388 thus we may have missed patients which were not correctly coded as DSD in the administrative
389 clinical databases or hospital coding systems. As the Chicago Consensus Classification was
390 published and implemented in 2006, and the structure of the I-DSD Registry changed during our
391 study period, classification of DSD might have differed over time. To avoid misclassification, a
392 designated study team coded all DSD cases into categories according to the Chicago
393 Consensus Classification based on extracted data. We could not calculate incidence of DSD,
394 because information on year of diagnosis was missing. We also could not calculate the external
395 genitalia score (EGS) (45) or the external masculinization score (EMS) (46), because the core
396 data set used in this study did not include phenotype information. However, the scope of our
397 study focused on prevalence of DSD according to Chicago Consensus Classification, and we
398 did not require phenotype information for coding.

399

400 In summary, we found that individuals with complex forms of DSD were rare and received
401 treatment from interdisciplinary specialized DSD teams. Our data, similar to other studies,
402 underestimated prevalence. National and international registries with complete prospective and
403 standardized follow-up, such as the International Registries For Rare Conditions Affecting Sex
404 Development & Maturation (SDMregistries) (5), are important tools to provide urgently needed
405 evidence-based data. Particularly in the field of rare diseases, international networking is very
406 important. Standard guidelines for analyzing prevalence of DSD are lacking to enable

407 comparison of countries and studies. Such guidelines should include standards on classification
408 of diagnostic groups and a definition of the population at risk for each DSD diagnostic subgroup.

409

410 **Funding**

411 This work was supported by the Swiss Society of Endocrinology and Diabetology (SGED), by
412 the Boveri Foundation Zürich and by the “Stiftung Kinderinsel”.

413

414 **Acknowledgements**

415 We thank the Swiss DSD Cohort Study Group for their support. Members of this groups who
416 helped in the collection of data are (in alphabetical order): Christine Aebi-Ochsner, Private
417 Practice for Paediatric Endocrinology, Biel Switzerland; Kanetee Busiah, Department of
418 Pediatric Endocrinology and Diabetology, CHUV, University Children's Hospital, Lausanne,
419 Switzerland; Mirjam Dirlwanger, Pediatric Endocrine and Diabetes Unit, Children's University
420 Hospital Geneva, Geneva, Switzerland; Sylvia Gschwend, Private Practice for Paediatric
421 Endocrinology, Zug, Switzerland; Melanie Hess, Pediatric Endocrinology and Diabetology,
422 University Children's Hospital Basel, Basel, Switzerland; Beatrice Kuhlmann, Pediatric
423 Endocrinology, Cantonal Hospital Aarau, Aarau, Switzerland and Private Practice for Paediatric
424 Endocrinology, Basel, Switzerland; Dagmar l'Allemand, Department of Endocrinology,
425 Children's Hospital of Eastern Switzerland, St. Gallen, Switzerland; Mariarosaria Lang,
426 Paediatric Endocrinology and Diabetology, University Children's Hospital Zurich, Zurich,
427 Switzerland; Kees Noordam, Centre for Paediatric Endocrinology Zurich (PEZZ), Zurich,
428 Switzerland; Franziska Phan-Hug, Department of Pediatrics, Hospital Morges, Morges and
429 Department of Pediatrics, Hospital Wallis, Sion, Switzerland; Ursina Probst, Department of
430 Pediatrics, Cantonal Hospital Winterthur, Winterthur, Switzerland; Maristella Santi, Department
431 of Pediatrics, Cantonal Hospital Lucerne, Lucerne, Switzerland; Silvia Schmid, Private Practice
432 for Paediatric Endocrinology, Dubendorf, Switzerland; Valérie Schwitzgebel, Pediatric Endocrine

433 and Diabetes Unit, Children's University Hospital Geneva, Geneva, Switzerland; Michael
434 Steigert, Department of Pediatrics, Cantonal Hospital Graubunden, Chur, Switzerland; Gabor
435 Szinnai, Pediatric Endocrinology and Diabetology, University Children's Hospital Basel, Basel,
436 Switzerland; Gerald Theintz, Private Practice for Paediatric Endocrinology, Lausanne,
437 Switzerland.

438

439 **Data Availability Statement**

440 Data of this study are registered in the I-DSD Registry and can be accessed upon request. I-
441 DSD governance and rules apply, see <https://sdmregistries.org/>.

442

443 **Tables**

444 **Table 1:** Numbers and proportions of DSD cases in Switzerland born between 2000 and 2019,
445 by sex at birth.

446 **Table 2.** Prevalence, average number of cases per year of children identified with DSD in
447 Switzerland, born between 2000-2019, by diagnostic group.

448

449 **Figure Legends**

450 **Figure 1:** Patient recruitment and exclusion flow chart.

451 **Figure 2:** Comparison of prevalence of identified DSDs in Switzerland between 2000-2004,
452 2005-2009, 2010-2014 and 2015-2019, by DSD diagnostic group, according to the Chicago
453 consensus classification of DSD. Error bars indicate 95% confidence intervals. Abbreviations:
454 DSD, Differences of Sex Development

455 **Figure 3:** Number of DSD diagnoses according to the Chicago consensus classification by type
456 of treatment center, identified in Switzerland between 2000-2019.

457 Abbreviations: DSD, Differences of Sex Development

458

459 **Supplemental material**

460 **Repository:** <https://boris-portal.unibe.ch/handle/20.500.12422/33491>

461 **Supplemental Table 1:** Prevalence, average number of cases per year and sex ratio of

462 children identified with DSD in Switzerland, born between 2000-2019, by diagnostic group and

463 5-year periods.

464 **Supplemental Figure 1:** Trends in prevalence of identified DSDs in Switzerland between 2000-

465 2019, by DSD diagnostic group according to the Chicago Consensus Classification.

466 References

- 467 1. Cools M, Nordenstrom A, Robeva R, Hall J, Westerveld P, Fluck C, et al. Caring for individuals with a
468 difference of sex development (DSD): a Consensus Statement. *Nat Rev Endocrinol.* 2018;14(7):415-
469 29.
- 470 2. Hughes IA, Houk C, Ahmed SF, Lee PA, Lawson Wilkins Pediatric Endocrine Society/European
471 Society for Paediatric Endocrinology Consensus G. Consensus statement on management of intersex
472 disorders. *J Pediatr Urol.* 2006;2(3):148-62.
- 473 3. Fluck CE, Guran T. Ambiguous Genitalia in the Newborn. In: Feingold KR, Anawalt B, Blackman MR,
474 Boyce A, Chrousos G, Corpas E, et al., editors. *Endotext.* South Dartmouth (MA)2000.
- 475 4. Lee PA, Nordenstrom A, Houk CP, Ahmed SF, Auchus R, Baratz A, et al. Global Disorders of Sex
476 Development Update since 2006: Perceptions, Approach and Care. *Horm Res Paediatr.*
477 2016;85(3):158-80.
- 478 5. Lucas-Herald AK, Ali SR, McMillan C, Rodie ME, McMillan M, Bryce J, et al. I-DSD: The First 10
479 Years. *Horm Res Paediatr.* 2023;96(2):238-46.
- 480 6. Ali SR, Lucas-Herald A, Bryce J, Ahmed SF. The Role of International Databases in Understanding
481 the Aetiology and Consequences of Differences/Disorders of Sex Development. *Int J Mol Sci.*
482 2019;20(18).
- 483 7. International Registries For Rare Conditions Affecting Sex Development & Maturation. The
484 SDMregistries Network Activity Report 2024 2024 [Available from: [https://sdmregistries.org/wp-](https://sdmregistries.org/wp-content/uploads/2024/07/SDMregistries-Activity-Report-June-2024-1.pdf)
485 [content/uploads/2024/07/SDMregistries-Activity-Report-June-2024-1.pdf](https://sdmregistries.org/wp-content/uploads/2024/07/SDMregistries-Activity-Report-June-2024-1.pdf)].
- 486 8. Hiort O, Cools M, Springer A, McElreavey K, Greenfield A, Wudy SA, et al. Addressing gaps in care of
487 people with conditions affecting sex development and maturation. *Nat Rev Endocrinol.*
488 2019;15(10):615-22.
- 489 9. Cools M, Simmonds M, Elford S, Gorter J, Ahmed SF, D'Alborton F, et al. Response to the Council of
490 Europe Human Rights Commissioner's Issue Paper on Human Rights and Intersex People. *Eur Urol.*
491 2016;70(3):407-9.
- 492 10. Fluck C, Nordenstrom A, Ahmed SF, Ali SR, Berra M, Hall J, et al. Standardised data collection for
493 clinical follow-up and assessment of outcomes in differences of sex development (DSD):
494 recommendations from the COST action DSDnet. *Eur J Endocrinol.* 2019;181(5):545-64.
- 495 11. Sax L. How common is intersex? a response to Anne Fausto-Sterling. *J Sex Res.* 2002;39(3):174-8.
- 496 12. Claahsen-van der Grinten HL, Speiser PW, Ahmed SF, Arlt W, Auchus RJ, Falhammar H, et al.
497 Congenital Adrenal Hyperplasia-Current Insights in Pathophysiology, Diagnostics, and Management.
498 *Endocr Rev.* 2022;43(1):91-159.
- 499 13. Blackless M, Charuvastra A, Derryck A, Fausto-Sterling A, Lauzanne K, Lee E. How sexually
500 dimorphic are we? Review and synthesis. *Am J Hum Biol.* 2000;12(2):151-66.
- 501 14. Conway GS. Differences in Sex Development (DSD) and related conditions: mechanisms,
502 prevalences and changing practice. *Int J Impot Res.* 2023;35(1):46-50.
- 503 15. Ata A, Ozen S, Onay H, Uzun S, Goksen D, Ozkinay F, et al. A large cohort of disorders of sex
504 development and their genetic characteristics: 6 novel mutations in known genes. *Eur J Med Genet.*
505 2021;64(3):104154.
- 506 16. De Paula GB, Barros BA, Carpini S, Tincani BJ, Mazzola TN, Sanches Guaragna M, et al. 408 Cases
507 of Genital Ambiguity Followed by Single Multidisciplinary Team during 23 Years: Etiologic Diagnosis
508 and Sex of Rearing. *Int J Endocrinol.* 2016;2016:4963574.
- 509 17. Finlayson C, Rosoklija I, Aston CE, Austin P, Bakula D, Baskin L, et al. Baseline Characteristics of
510 Infants With Atypical Genital Development: Phenotypes, Diagnoses, and Sex of Rearing. *J Endocr*
511 *Soc.* 2019;3(1):264-72.
- 512 18. Ganie Y, Aldous C, Balakrishna Y, Wiersma R. Disorders of sex development in children in KwaZulu-
513 Natal Durban South Africa: 20-year experience in a tertiary centre. *J Pediatr Endocrinol Metab.*
514 2017;30(1):11-8.
- 515 19. Heeley JM, Hollander AS, Austin PF, Merritt DF, Wesevich VG, Washington University School of
516 Medicine in St Louis DSDT, et al. Risk association of congenital anomalies in patients with ambiguous
517 genitalia: A 22-year single-center experience. *J Pediatr Urol.* 2018;14(2):153 e1- e7.
- 518 20. Juniarto AZ, van der Zwan YG, Santosa A, Ariani MD, Eggers S, Hersmus R, et al. Hormonal
519 evaluation in relation to phenotype and genotype in 286 patients with a disorder of sex development
520 from Indonesia. *Clin Endocrinol (Oxf).* 2016;85(2):247-57.

- 521 21. Man E, Mushtaq I, Barnicoat A, Carmichael P, Hughes CR, Davies K, et al. A Single-Center,
522 Observational Study of 607 Children and Young People Presenting With Differences of Sex
523 Development (DSD). *J Endocr Soc.* 2022;7(1):bvac165.
- 524 22. Manzoor J, Aftab S, Yaqoob M. Ambiguous genitalia: An overview of 7 years experience at the
525 Children's Hospital & Institute of Child Health, Lahore, Pakistan. *Pak J Med Sci.* 2019;35(1):151-5.
- 526 23. Rodie ME, Ali SR, Jayasena A, Alenazi NR, McMillan M, Cox K, et al. A Nationwide Study of the
527 Prevalence and Initial Management of Atypical Genitalia in the Newborn in Scotland. *Sex Dev.*
528 2022;16(1):11-8.
- 529 24. Berglund A, Ornstrup MJ, Lind-Holst M, Duno M, Baekvad-Hansen M, Juul A, et al. Epidemiology and
530 diagnostic trends of congenital adrenal hyperplasia in Denmark: a retrospective, population-based
531 study. *Lancet Reg Health Eur.* 2023;28:100598.
- 532 25. Swiss Federal Statistical Office. Lebendgeburten nach Kanton und Staatsangehörigkeitskategorie der
533 Mütter, 1970-2023 2024 [Available from: [https://www.bfs.admin.ch/bfs/en/home/statistics/catalogues-](https://www.bfs.admin.ch/bfs/en/home/statistics/catalogues-databases/tables.assetdetail.32007381.html)
534 [databases/tables.assetdetail.32007381.html](https://www.bfs.admin.ch/bfs/en/home/statistics/catalogues-databases/tables.assetdetail.32007381.html)].
- 535 26. Begaud B, Martin K, Abouelfath A, Tubert-Bitter P, Moore N, Moride Y. An easy to use method to
536 approximate Poisson confidence limits. *Eur J Epidemiol.* 2005;20(3):213-6.
- 537 27. Kim HJ, Chen HS, Byrne J, Wheeler B, Feuer EJ. Twenty years since Joinpoint 1.0: Two major
538 enhancements, their justification, and impact. *Stat Med.* 2022;41(16):3102-30.
- 539 28. Ameyaw E, Asafo-Agyei SB, Hughes IA, Zacharin M, Chanoine JP. Incidence of disorders of sexual
540 development in neonates in Ghana: prospective study. *Arch Dis Child.* 2019;104(7):636-8.
- 541 29. Gravholt CH, Andersen NH, Conway GS, Dekkers OM, Geffner ME, Klein KO, et al. Clinical practice
542 guidelines for the care of girls and women with Turner syndrome: proceedings from the 2016
543 Cincinnati International Turner Syndrome Meeting. *Eur J Endocrinol.* 2017;177(3):G1-G70.
- 544 30. Zitzmann M, Akglaede L, Corona G, Isidori AM, Juul A, T'Sjoen G, et al. European academy of
545 andrology guidelines on Klinefelter Syndrome Endorsing Organization: European Society of
546 Endocrinology. *Andrology.* 2021;9(1):145-67.
- 547 31. Stochholm K, Juul S, Juel K, Naeraa RW, Gravholt CH. Prevalence, incidence, diagnostic delay, and
548 mortality in Turner syndrome. *J Clin Endocrinol Metab.* 2006;91(10):3897-902.
- 549 32. Herlihy AS, Halliday JL, Cock ML, McLachlan RI. The prevalence and diagnosis rates of Klinefelter
550 syndrome: an Australian comparison. *Med J Aust.* 2011;194(1):24-8.
- 551 33. Bojesen A, Juul S, Gravholt CH. Prenatal and postnatal prevalence of Klinefelter syndrome: a national
552 registry study. *J Clin Endocrinol Metab.* 2003;88(2):622-6.
- 553 34. Jeon KC, Chen LS, Goodson P. Decision to abort after a prenatal diagnosis of sex chromosome
554 abnormality: a systematic review of the literature. *Genet Med.* 2012;14(1):27-38.
- 555 35. Berglund A, Johannsen TH, Stochholm K, Viuff MH, Fedder J, Main KM, et al. Incidence, Prevalence,
556 Diagnostic Delay, and Clinical Presentation of Female 46,XY Disorders of Sex Development. *J Clin*
557 *Endocrinol Metab.* 2016;101(12):4532-40.
- 558 36. Audi L, Ahmed SF, Krone N, Cools M, McElreavey K, Holterhus PM, et al. GENETICS IN
559 ENDOCRINOLOGY: Approaches to molecular genetic diagnosis in the management of
560 differences/disorders of sex development (DSD): position paper of EU COST Action BM 1303
561 'DSDnet'. *Eur J Endocrinol.* 2018;179(4):R197-R206.
- 562 37. Johnson EK, Jacobson DL, Finlayson C, Yerkes EB, Goetsch AL, Leeth EA, et al. Proximal
563 Hypospadias-Isolated Genital Condition or Marker of More? *J Urol.* 2020;204(2):345-52.
- 564 38. Wong YS, Tam YH, Pang KKY, Yau HC. Incidence and diagnoses of disorders of sex development in
565 proximal hypospadias. *J Pediatr Surg.* 2018;53(12):2498-501.
- 566 39. Lucas-Herald AK, Rodie ME, Ahmed SF. Update on the management of a newborn with a suspected
567 difference of sex development. *Arch Dis Child.* 2021.
- 568 40. Lucas-Herald AK, Scougall K, Ahmed SF. Delivery of multidisciplinary care in the field of differences
569 and disorders of sex development (DSD). *Expert Rev Endocrinol Metab.* 2022;17(3):225-34.
- 570 41. Wisniewski AB, Batista RL, Costa EMF, Finlayson C, Sircili MHP, Denes FT, et al. Management of
571 46,XY Differences/Disorders of Sex Development (DSD) Throughout Life. *Endocr Rev.*
572 2019;40(6):1547-72.
- 573 42. Bever YV, Bruggenwirth HT, Wolffenbuttel KP, Dessens AB, Groenenberg IAL, Knapen M, et al.
574 Under-reported aspects of diagnosis and treatment addressed in the Dutch-Flemish guideline for
575 comprehensive diagnostics in disorders/differences of sex development. *J Med Genet.*
576 2020;57(9):581-9.

- 577 43.Cools M, Cheng EY, Hall J, Alderson J, Amies Oelschlager AM, Balen AH, et al. Multi-stakeholder
578 opinion statement on the care of individuals born with differences of sex development: common
579 ground and opportunities for improvement. *Horm Res Paediatr*. 2024.
- 580 44.Swiss Federal Statistical Office. Regional comparison of selected indicators, 2021 (cantons) 2021
581 [Available from: [https://www.bfs.admin.ch/bfs/en/home/statistics/regional-statistics/regional-portraits-](https://www.bfs.admin.ch/bfs/en/home/statistics/regional-statistics/regional-portraits-key-figures/cantons.assetdetail.15864481.html)
582 [key-figures/cantons.assetdetail.15864481.html](https://www.bfs.admin.ch/bfs/en/home/statistics/regional-statistics/regional-portraits-key-figures/cantons.assetdetail.15864481.html)].
- 583 45.van der Straaten S, Springer A, Zecic A, Hebenstreit D, Tonnhofer U, Gawlik A, et al. The External
584 Genitalia Score (EGS): A European Multicenter Validation Study. *J Clin Endocrinol Metab*.
585 2020;105(3).
- 586 46.Ahmed SF, Khwaja O, Hughes IA. The role of a clinical score in the assessment of ambiguous
587 genitalia. *BJU Int*. 2000;85(1):120-4.
- 588

Table 1: Numbers and proportions of DSD cases in Switzerland born between 2000 and 2019, by sex at birth

	Total		Sex at birth					
			Female		Male		Other/ Not assigned	
	N=561		N=301		N=242		N=18	
	n	%	n	%	n	%	n	%
Period of birth								
2000-2004	146	26	83	28	61	25	2	11
2005-2009	160	28	92	31	60	25	8	44
2010-2014	136	24	78	26	54	22	4	22
2015-2019	119	21	48	16	67	28	4	22
Sex chromosome DSD	266	100	171	100	95	100	0	n/a
Klinefelter syndrome and variants	74	28	0	0	74	78	0	n/a
Turner syndrome and variants	149	56	148	87	1	1	0	n/a
45,X/46,XY and variants	33	12	22	13	11	12	0	n/a
Other	10	4	1	1	9	9	0	n/a
46,XY DSD	177	100	28	100	135	100	14	100
<i>Disorders of gonadal development</i>	28	16	9	32	17	13	2	14
Complete or partial gonadal dysgenesis	16		8		7		1	
Gonadal regression	9		0		9		0	
Ovotesticular DSD	3		1		1		1	
<i>Disorders in androgen synthesis or action</i>	37	21	18	64	18	13	1	7
Disorders of androgen synthesis	12		2		9		1	
Disorders of androgen action	19		16		3		0	
Disorders of AMH or AMH receptor	6		0		6		0	
<i>Other</i>	112	63	1	4	100	74	11	79
Complex genital anomalies ^a	106		1		95		10	
Cloacal anomalies	2		0		1		1	
Other	4		0		4		0	
46,XX DSD	118	100	102	100	12	100	4	100
<i>Disorders of gonadal development</i>	8	7	2	2	6	50	0	0
Gonadal dysgenesis	2		2		0		0	
Ovotesticular DSD	2		0		2		0	
Testicular DSD	4		0		4		0	
<i>Androgen excess</i>	99	84	89	87	6	50	4	100
Fetal ^b	97		87		6		4	
Fetoplacental	2		2		0		0	
Maternal	0		0		0		0	
<i>Other</i>	11	9	11	11	0	0	0	0
Cloacal anomalies	7		7		0		0	
Other	4		4		0		0	
Gender at last follow-up								
Female	304	54	294	52	5	1	5	1
Male	256	46	6	1	237	42	13	2
Both	1	0.2	1	0.2	0	0	0	0

Abbreviations: AMH, Anti-Mullerian hormone; DSD, differences of sex development; n/a, not applicable.
^aComplex genital anomalies in 46,XY DSD include severe hypospadias (penoscrotal).

^bFetal androgen excess in 46,XX DSD includes congenital adrenal hypoplasia (CAH).

Table 2

Prevalence, average number of cases per year of individuals identified with DSD in Switzerland, born between 2000-2019, by diagnostic group.

	Average number of cases/year	Prevalence per 100.000 newborns per year (95% CI)	1:N newborns
<i>All DSD diagnoses^a</i>	28.1	36.6 (33.6; 39.7)	2735
<i>DSD diagnostic group</i>			
Sex chromosome DSD ^a	13.3	17.3 (15.3; 19.5)	5768
46,XY DSD ^a	8.9	11.5 (9.9; 13.4)	8669
46,XX DSD ^a	5.9	7.7 (6.4; 9.2)	13003
<i>Sex chromosome DSD</i>			
Klinefelter syndrome and variants ^b	3.7	9.4 (7.4; 11.8)	10660
Turner syndrome and variants ^c	7.5	20.0 (16.9; 23.5)	5004
45,X/46,XY and variants ^a	1.7	2.2 (1.5; 3.0)	46496
Other ^a	0.5	0.7 (0.3; 1.2)	153437
<i>46,XY DSD</i>			
Disorders of gonadal development ^b	1.4	3.5 (2.4; 5.1)	28172
Disorders in androgen synthesis or action ^b	1.9	4.7 (3.3; 6.5)	21319
Other ^b	5.6	14.2 (11.7; 17.1)	7043
<i>46,XX DSD</i>			
Disorders of gonadal development ^c	0.4	1.1 (0.5; 2.1)	93195
Androgen excess ^c	5.0	13.3 (10.8; 16.2)	7531
Other ^c	0.6	1.5 (0.7; 2.6)	67778

Abbreviations: CI, confidence interval; DSD, differences of sex development.

Footnotes:

^aPrevalence calculated based on newborns of both sexes.

^bPrevalence calculated based on newborn boys.

^cPrevalence calculated based on newborn girls.

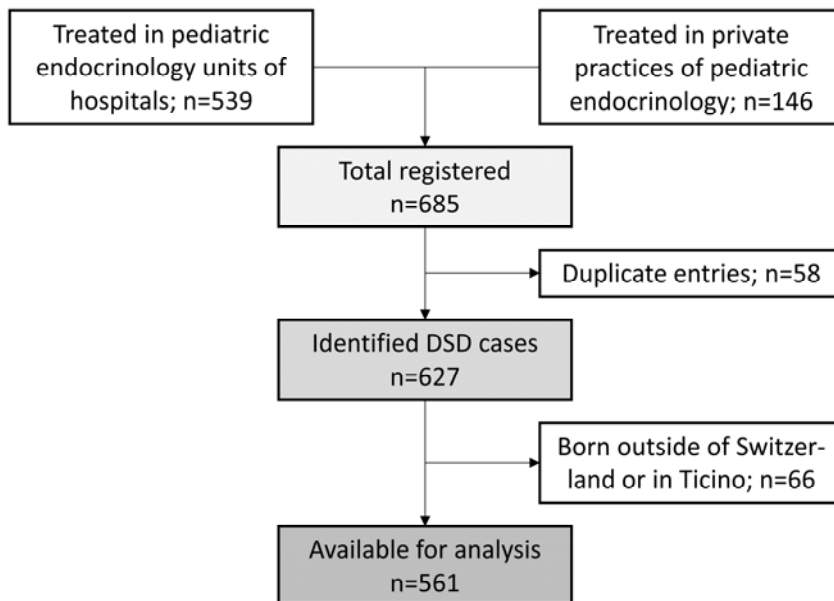


Figure 1: Identification of the Swiss DSD cohort. Study participants were identified through pediatric endocrinology departments in pediatric hospitals and private practices specialized in endocrine care.

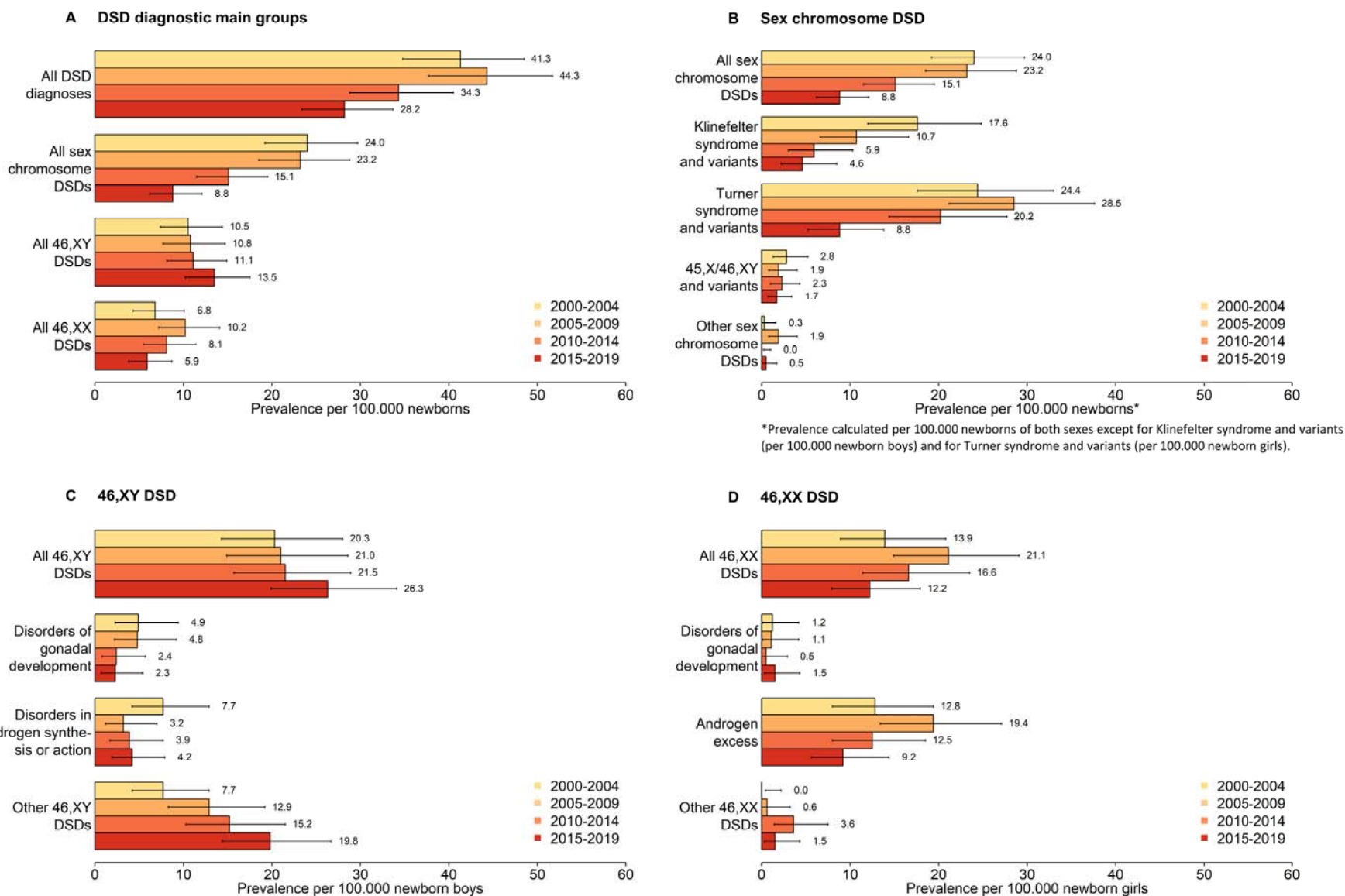


Figure 2: Comparison of prevalence of identified individuals with DSD in Switzerland between 2000-2004, 2005-2009, 2010-2014 and 2015-2019, by DSD diagnostic group, according to the Chicago Consensus Classification. Error bars indicate 95% confidence intervals. Abbreviations: DSD, differences of sex development.

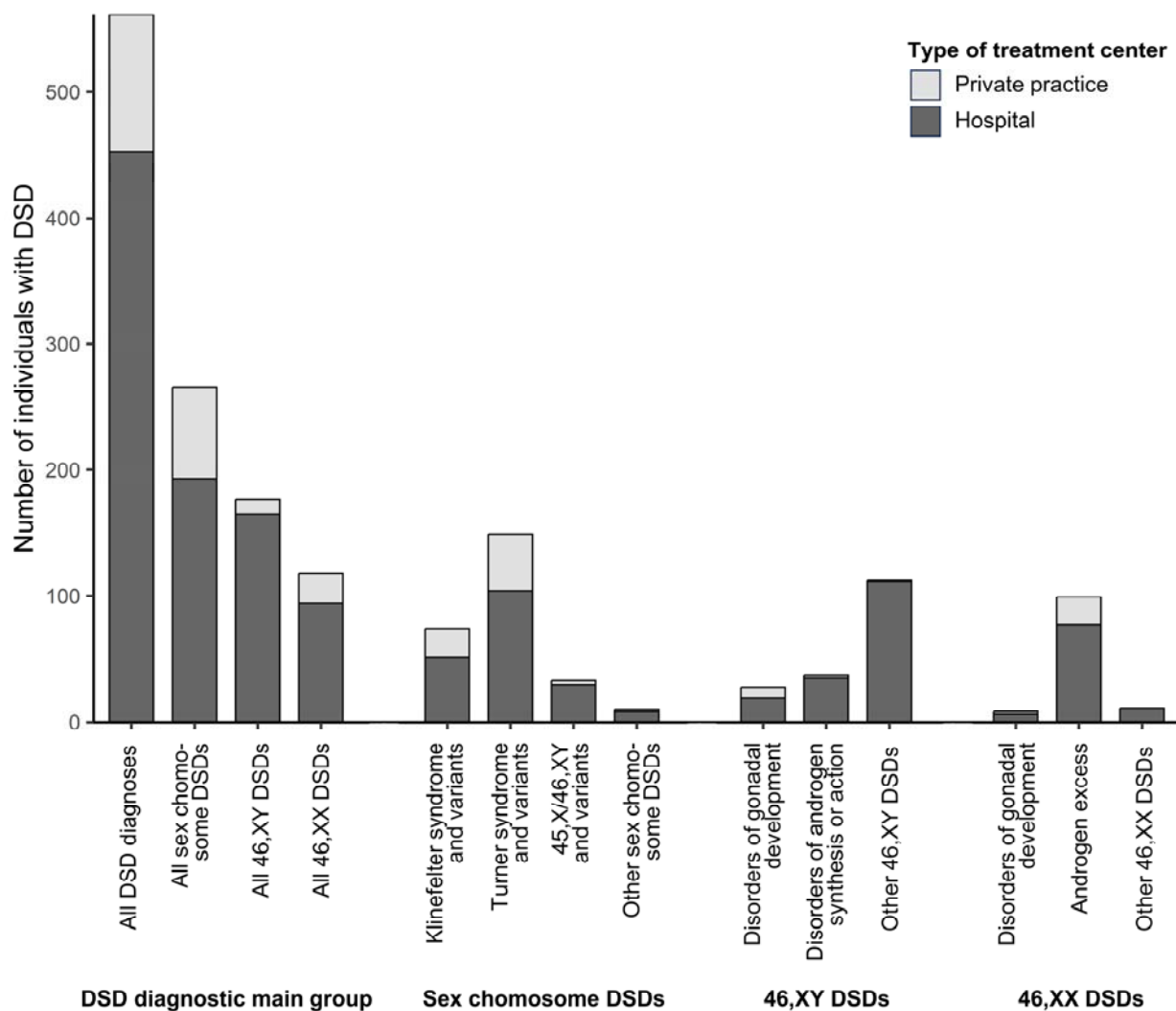


Figure 3: Number of individuals with DSD according to the Chicago Consensus Classification by type of treatment center, identified in Switzerland between 2000-2019. Abbreviations: DSD, differences of sex development.