

Complications and treatment of hypercalciuria in patients affected by Familial Hyperkalemic

Hypertension (FHHt)

Viola D'Ambrosio^{1,2}, Elizabeth R Wan¹, Gerlineke Hawkins-van der Cingel¹, Keith Siew¹, Olivia McKnight³,

Pietro Manuel Ferraro⁴, Stephen B Walsh¹

¹London Tubular Centre, Department of Renal Medicine, University College London, UK

²Università Cattolica del Sacro Cuore di Roma, Italy

³UCL, Department of Medical Physics & Biomedical Engineering, London, United Kingdom

⁴Section of Nephrology, Department of Medicine, Università degli Studi di Verona

Corresponding author:

Professor Stephen Walsh

UCL Department of Renal Medicine, University College London, London NW3 2QG, UK

stephen.walsh@ucl.ac.uk

Abstract

Background and hypothesis

Gordon syndrome (also pseudohypoaldosteronism type II (PHAII) or Familial Hyperkalemia with Hypertension (FHHT)) is a genetic condition characterised by hypertension, hyperkalaemia, hyperchloraemic metabolic acidosis and hypercalciuria caused by an activation of the thiazide-sensitive sodium-chloride cotransporter (NCC, encoded by *SLC12A3*) in the distal convoluted tubule of the kidney. Thiazides rescue the electrolyte and metabolic abnormalities however, it is not known whether they decrease urinary calcium excretion, nephrolithiasis and low bone mineral density.

Methods

We examined a cohort of 11 patients with genetically confirmed FHHT. Biochemical, radiological, and clinical data was obtained in patients before and after thiazide treatment. All patients gave informed consent.

Results

Among the FHHT cohort 5 of the 11 patients were female. 7 patients had heterozygous pathogenic variants in *KLHL3*, 3 patients had variants in *WNK4*, and one had a variant in *WNK1*. At baseline, only 1 patient was hypertensive, all patients were hyperkalemic, whereas only 40% of patients had low serum bicarbonate and increased urinary calcium excretion. 50% of patients also had low bone mineral density (either osteopenia or osteoporosis) and 1 patient had bilateral nephrolithiasis. 6 patients were treated with thiazide diuretic and therefore were suitable for comparison between pre and post treatment biochemistry and imaging data. While both serum and urinary biochemistry was completely reverted after thiazide treatment, bone mineral density had a worsening trend. 1 patient presented with bilateral nephrolithiasis after thiazide treatment.

Conclusion We demonstrate that thiazide treatment normalizes serum and urinary biochemistry. Thiazide treatment therefore has clinical utility even if hypertension or hyperkalaemia are not problematic. According to our study, thiazide treatment does not seem to revert loss of bone mineral density, however, whether thiazides have an impact in nephrolithiasis is less clear and our results may require larger samples.

Introduction

Familial Hyperkalemia with Hypertension (FHHT) (also called pseudohypoaldosteronism type II (PHAII) or Gordon syndrome) is an ultrarare monogenic condition characterised by hypertension, hyperkalaemia, hyperchloraemic metabolic acidosis, hypercalciuria, suppressed plasma renin and low aldosterone¹.

Biochemically and clinically, this condition mirrors Gitelman syndrome, a rare tubular disorder characterised by normal/low blood pressure, hypokalemia, metabolic alkalosis, hypomagnesemia, hypocalciuria and elevated renin and aldosterone².

Gordon syndrome is a genetic disease, caused by heterozygous mutations in *CUL3*, *KLHL3*, *WNK1* and *WNK4* genes (autosomal dominant [AD] mutations) or biallelic mutations in *KLHL3* (autosomal recessive [AR] mutations)³. Hypercalciuria has been described in association to Gordon syndrome⁴, especially in patients with *WNK4* mutations⁵ in whom low bone mineral density has also been described. Patients with *KLHL3* mutations tend to be hypercalciuric as well, although no clear evidence on bone mass is available¹. Patients with *WNK1* mutations appear to be normocalciuric⁶, whereas there is no data on patients with *CUL3* mutations. There is evidence that thiazides revert the electrolyte abnormalities in these patients⁷. However, there are no data on whether thiazide treatment reduces stone burden or halt the loss of bone mineral density, two consequences of hypercalciuria and FHHT.

Methods

The main aim of our study is to describe changes in serum and urinary biochemistry, stone burden and bone mineral density in a cohort of patients affected by FHHT across different disease-causing mutations and after thiazide treatment. We retrospectively collected demographic, biochemical and radiological data from 2014 to 2022 from a cohort of 11 genetically confirmed FHHT patients followed at the London Tubular Centre, Royal Free Hospital in London, UK. Hypertension was defined as systolic blood pressure (SBP) ≥ 140 mm Hg or diastolic blood pressure (DBP) ≥ 90 mm Hg, according to the most recent National Institute for Health and Care Excellence (NICE) criteria. Mean arterial blood pressure (MAP) was calculated as $DBP + 1/3(SBP - DBP)$. Estimated glomerular filtration rate (eGFR) was calculated with the CKD-EPI_{cr} formula⁸.

Hyperkalemia was defined as serum potassium > 5.0 mmol/L, hypercalciuria was defined as urinary calcium/creatinine (uCa/Cr) > 0.7 mmol/mmol and low serum bicarbonate (HCO_3^-) was defined as $HCO_3^- \leq 22$ mEq/L. Bone mineral density was evaluated by dual energy X-ray absorptiometry (DXA). Osteopenia was

considered as a T-score between -1 and -2.5 and osteoporosis as a T score < -2.5 at any site, according to the WHO guidelines. Stone burden was assessed through computed tomography of kidneys, ureters and bladder (CT KUB). The study had ethics committee approval (REC 05/Q0508/6). Data were analyzed using non-parametric tests as appropriate (Prism GraphPad 8.0.2). This study was assessed by the Health Research Authority National Research Ethics Service Ethics Committee of London-Bloomsbury (reference 05/Q0508/6). Ethical Approval was given.

Results

We included 11 genetically confirmed FHHT patients (F:M=5:6), 7 with *KLHL3* mutation, 3 with *WNK4* mutation and 1 patient had *WNK1* mutation. Our cohort included 7 unrelated families. Baseline characteristics are shown in **Table 1**. All patients were young (median age 41) and with preserved kidney function (median eGFR 95 mL/min/1.73 m²). Only 1 patient (16%) was hypertensive pre-treatment. Of note, all patients were hyperkalemic at baseline (median sK⁺ 5.4 mmol/L), 40% of patients had low serum bicarbonate (median sHCO₃⁻ 22.4 mEq/L) and 40% had increased urinary excretion of calcium (median uCa/Cr 0.6 mmol/mmol). Other parameters, including serum calcium, phosphate, alkaline phosphatase, magnesium and parathormone (PTH), were all in the normal range. At baseline, 50% of patients had low bone mineral density, 30% of patients with DEXA scans available were osteopenic, 1 patient was osteoporotic and 1 patient had bilateral nephrolithiasis (**Figure 1A**). Out of 11 patients, 6 were treated with a thiazide diuretic (bendroflumethiazide; mean dosage 2.75 mg/once daily) and were suitable for comparison of biochemical data, imaging and DEXA before and after thiazide treatment. Blood pressure did not significantly change pre and post treatment (**Figure 2**). With regards to biochemistry, thiazide diuretic normalised serum potassium and urinary calcium/creatinine ratio in all patients and in a statistically significant fashion (**Figure 3**). Serum bicarbonate improved as well although it did not reach statistical significance (**Figure 3**). All the other parameters did not significantly change after treatment and remained in the normal range. Out of the 6 patients treated with a thiazide diuretic, 5 had DEXA scans and 3 patients (60%) were osteopenic and 1 patient (20%) had DXA criteria for osteoporosis. Mean time between pre and post thiazide DXA scans was 12 months. Both osteopenia and osteoporosis were more prevalent in the lumbar spine. Pre and post thiazide comparison of total lumbar, L2 and femoral neck T-score showed a mild worsening trend, although it did not reach statistical significance (**Figure 4**). All patients treated with thiazide diuretic underwent a CT KUB; the patient that had bilateral nephrolithiasis pre thiazide (**Figure 1A**) showed

no discernable kidney stones after treatment. However, another patient had bilateral nephrolithiasis even after treatment and normalisation of serum and urinary biochemistry (**Figure 1, panel B**).

Discussion

FHHt was first reported by Paver and Pauline in 1964⁹ and then described by Richard Gordon and coworkers (1970) in patients that presented with hypertension and hyperkalemia, but normal glomerular filtration rate¹⁰⁻¹². Before knowing the underlying physiological mechanism, patients were given loop diuretics in order to control hypertension and hyperkalaemia, however, these drugs worsened the excretion of urinary calcium and consequently caused loss of bone mineral density and increased kidney stone burden. FHHt is characterised by over-activation of the thiazide-sensitive Na-Cl cotransporter (NCC) in the distal convoluted tubule (DCT). NCC activation is caused by dysregulation of the upstream serine/threonine kinase (importantly including the 'with no lysine' or 'WNK' kinases, WNK1 and WNK4) cascade that regulates NCC expression and phosphorylation. This leads to increased reabsorption of sodium and water, volume expansion, hypertension and therefore the compensatory normal-low circulating aldosterone levels and low renin levels. WNK4 also regulates the transient receptor potential V5 channel (TRPV5), a Ca²⁺ channel in the connecting tubule (CNT) that regulates calcium transport¹³. TRPV5 is an apical transporter that mediates passive transcellular calcium transport in the DCT. WNK4 mutations downregulate TRPV5 causing decreased reabsorption of calcium in the DCT and therefore hypercalciuria. An additional potential mechanism could be that the intracellular increase in Na⁺ concentration causes increased intracellular concentration of Ca²⁺ by the increased activity of the basolateral Na/Ca exchanger (NCX1)¹⁴. This could eventually lead to decreased activity of TRPV5 with consequent reduced Ca²⁺ reabsorption from the tubular lumen and hypercalciuria. Another possible mechanism that have been hypothesized is the decreased Ca²⁺ reabsorption in the upstream nephron¹⁵, more specifically in the proximal tubule as a consequence of compensatory reduced Na⁺ reabsorption¹⁶. Hypercalciuria is not a consistent finding in all the FHHt-causative mutations. In a case series published by Mayan *et al*¹ two families with *KLHL3* mutations were reported to have hypercalciuria in addition to all the typical clinical features of FHHt. In one family, the two index cases were two identical twins that were referred for short stature. All affected cases presented with hypercalciuria, although milder than the those with WNK4 mutations. Patients with *WNK1* mutations tend to be normocalciuric as described by Achard *et al* in a large family with *WNK1*-FHHt⁶. To date, there is no published data detailing whether patients with *CUL3* mutations are hyper or normocalciuric. Nephrolithiasis

has been previously described in association with FHHt although it is not a common finding. The first case report was described in 1998, a 40-year-old man with monolateral nephrolithiasis incidentally diagnosed during a routine abdomen ultrasound (US) whose composition analysis after ESWL revealed the presence of both calcium oxalate and calcium phosphate¹⁷. In the family described by Mayan *et al*¹⁸, only one patient out of eight affected presented with nephrolithiasis prior to thiazide treatment. More recently, another case report described an adult male patient affected by FHHt with a history of nephrolithiasis during adolescence that required surgical removal¹⁹. Increased urinary excretion of calcium is a well-known risk factor for nephrolithiasis, therefore it is not surprising that these patients get stones²⁰. Reduced bone mineral density is another feature of Gordon syndrome, although its prevalence and its definite etiology have not been fully elucidated. Mayan *et al* described a family with eight members affected by Gordon's syndrome, whose DXA scans showed evidence of low bone mineral density¹⁸. In a Portuguese population study, a specific WNK4 mutation (R1204C) was found to be associated with decreased bone mineral density or 'osteoporosis'²¹. More specifically, the study was conducted on hypertensive and osteoporotic patients to assess the prevalence of WNK4 genetic variants and to hypothesize its possible role in both diseases. The R1204C mutation of WNK4, although very rare among the general population, was more prevalent in osteoporotic patients. More than one mechanism could contribute to loss of bone mineral density in these patients: 1. NCC is expressed by osteoblasts²². Inactivation of NCC, either in mouse models of Gitelman syndrome or via pharmacological inhibition (thiazide treatment), increases osteoblasts differentiation and activity leading to enhanced deposition of bone²³. In Gordon syndrome, an over-activation of NCC could inhibit osteoblasts and favor bone reabsorption. 2. Hypercalciuria alone has been associated to reduced BMD²⁴, 3. Elevated parathyroid hormone (PTH) or subclinical hyperparathyroidism secondary to hypercalciuria could have a role in increased bone reabsorption and release of calcium salts in the bloodstream to maintain serum calcium concentrations within normal range (in our cohorts, all patients had an available PTH record and they were all in the normal range). In one case report, hyperparathyroidism secondary to hypercalciuria was successfully treated with thiazides²⁵. 4. Hypertension itself has been reported to be associated with reduced BMD²⁶, 5. Metabolic acidosis is a well-known risk factor for osteomalacia/low BMD. Bone represents an important source of calcium salts that buffer acidemia at the expenses of bone remodeling. Indeed, short stature related to FHHt has been previously described^{10,27}; this finding was confirmed in a study conducted by Farfel *et al*²⁸ in a family of 57 members, 30 of whom affected by FHHt with WNK4 mutations. Short stature is not a consistent finding in patients affected by FHHt nor in families with the same mutations. Speculations about the possible underlying mechanisms have been made, but not yet proven. In our cohort

of patients, none have short stature. As extensively reported, thiazides are the main treatment for FHHT as they rescue all of the electrolyte abnormalities. However, whether thiazides affect other clinical manifestations such as nephrolithiasis or low bone mineral density is not known. From our results, nephrolithiasis and low bone mineral density persist after thiazide treatment. To our knowledge this is the first study to systematically evaluate nephrolithiasis and mineral bone density in a well characterised FHHT cohort. Most patients included in the study were not related and, although our cohort was rather large for this ultra-rare disease, our study lacked genetic variability since most of the patients have either WNK4 or KLHL3 mutations.

Conclusions

Nephrolithiasis and low bone mineral density are complications of Gordon's syndrome. We propose that patients with a suspected or confirmed diagnosis of Gordon's syndrome should undergo imaging to exclude the presence of kidney stones (ideally CT KUB) and a DXA scan to assess bone mineral density. A thiazide diuretic is the current optimal treatment for Gordon's syndrome as it reverses the electrolyte and metabolic abnormalities, however whether thiazides do not reduce the risk of further kidney stones or revert low bone mineral density within the time frame studied here is not yet clear.

Data Availability Statement

The data that support the findings of this study are available from the corresponding author, SBW, upon reasonable request

Acknowledgments

We thank the patients and their families for the constant support in research.

Funding

This research was funded in whole, or in part by the Wellcome Trust [Grant number 110282/Z/15/Z]. For the purpose of open access, the author has applied a CC BY public copyright licence to any Author Accepted Manuscript version arising from this submission.

Conflict of interest statement

SBW has received honoraria from Advicenne Pharmaceuticals. VDA received consultant fees from Allena Pharmaceuticals. PMF received consultant fees and grant/other support from Allena Pharmaceuticals,

Alnylam, Amgen, AstraZeneca, Bayer, Gilead, Novo Nordisk, Otsuka Pharmaceuticals, Rocchetta, Vifor Fresenius, and royalties as an author for UpToDate.

References

1. Mayan H, Carmon V, Oleinikov K, et al. Hypercalciuria in familial hyperkalemia and hypertension with KLHL3 mutations. *Nephron*. 2015;130(1):59-65. doi:10.1159/000381563
2. Blanchard A, Bockenhauer D, Bolignano D, et al. Gitelman syndrome: consensus and guidance from a Kidney Disease: Improving Global Outcomes (KDIGO) Controversies Conference. *Kidney Int*. 2017;91(1):24-33. doi:10.1016/j.kint.2016.09.046
3. Hureaux M, Mazurkiewicz S, Boccio V, Vargas-Poussou R, Jeunemaitre X. The variety of genetic defects explains the phenotypic heterogeneity of Familial Hyperkalemic Hypertension. *Kidney Int Rep*. 2021;6(10):2639-2652. doi:10.1016/j.ekir.2021.07.025
4. Yang SS, Hsu YJ, Chiga M, et al. Mechanisms for hypercalciuria in pseudohypoaldosteronism type II-causing WNK4 knock-in mice. *Endocrinology*. 2010;151(4):1829-1836. doi:10.1210/en.2009-0951
5. Mayan H, Munter G, Shaharabany M, et al. Hypercalciuria in familial hyperkalemia and hypertension accompanies hyperkalemia and precedes hypertension: description of a large family with the Q565E WNK4 mutation. *J Clin Endocrinol Metab*. 2004;89(8):4025-4030. doi:10.1210/jc.2004-0037
6. Achard JM, Warnock DG, Disse-Nicodème S, et al. Familial hyperkalemic hypertension: phenotypic analysis in a large family with the WNK1 deletion mutation. *Am J Med*. 2003;114(6):495-498. doi:10.1016/s0002-9343(03)00054-8
7. Mabillard H, Sayer JA. The Molecular Genetics of Gordon Syndrome. *Genes (Basel)*. 2019;10(12):986. doi:10.3390/genes10120986
8. Levey AS, Stevens LA, Schmid CH, et al. A New Equation to Estimate Glomerular Filtration Rate. *Ann Intern Med*. 2009;150(9):604-612.
9. Paver W, Pauline G. Hypertension and hyperpotassaemia without renal disease in a young male. *Med J Aust* 1964; 2: 305-306.
10. Gordon RD, Ravenscroft PJ, Klemm SA, Tunny TJ, Hamlet SM. A new Australian kindred with the syndrome of hypertension and hyperkalaemia has dysregulation of atrial natriuretic factor. *J Hypertens Suppl*. 1988;6(4):S323-326. doi:10.1097/00004872-198812040-00100
11. Gordon RD, Geddes RA, Pawsey CG, O'Halloran MW. Hypertension and severe hyperkalaemia associated with suppression of renin and aldosterone and completely reversed by dietary sodium restriction. *Australas Ann Med*. 1970;19(4):287-294. doi:10.1111/imj.1970.19.4.287
12. Gordon RD. Syndrome of hypertension and hyperkalemia with normal glomerular filtration rate. *Hypertension*. 1986;8(2):93-102. doi:10.1161/01.hyp.8.2.93
13. Jiang Y, Ferguson WB, Peng JB. WNK4 enhances TRPV5-mediated calcium transport: potential role in hypercalciuria of familial hyperkalemic hypertension caused by gene mutation of WNK4. *American Journal of Physiology-Renal Physiology*. 2007;292(2):F545-F554. doi:10.1152/ajprenal.00187.2006
14. Reilly RF, Huang CL. The mechanism of hypocalciuria with NaCl cotransporter inhibition. *Nat Rev Nephrol*. 2011;7(11):669-674. doi:10.1038/nrneph.2011.138

15. Ss Y, Yj H, M C, et al. Mechanisms for hypercalciuria in pseudohypaldosteronism type II-causing WNK4 knock-in mice. *Endocrinology*. 2010;151(4). doi:10.1210/en.2009-0951
16. Pathare G, Hoenderop JGJ, Bindels RJM, San-Cristobal P. A molecular update on pseudohypaldosteronism type II. *Am J Physiol Renal Physiol*. 2013;305(11):F1513-1520. doi:10.1152/ajprenal.00440.2013
17. Stratton JD, McNicholas TA, Farrington K. Recurrent calcium stones in Gordon's syndrome. *Br J Urol*. 1998;82(6):925. doi:10.1046/j.1464-410x.1998.00840.x
18. Mayan H, Vered I, Mouallem M, Tzadok-Witkon M, Pauzner R, Farfel Z. Pseudohypaldosteronism type II: marked sensitivity to thiazides, hypercalciuria, normomagnesemia, and low bone mineral density. *J Clin Endocrinol Metab*. 2002;87(7):3248-3254. doi:10.1210/jcem.87.7.8449
19. Etges A, Hellmig N, Walenda G, et al. A Novel Homozygous KLHL3 Mutation as a Cause of Autosomal Recessive Pseudohypaldosteronism Type II Diagnosed Late in Life. *Nephron*. 2022;146(4):418-428. doi:10.1159/000521626
20. Coe FL, Worcester EM, Evan AP. Idiopathic hypercalciuria and formation of calcium renal stones. *Nat Rev Nephrol*. 2016;12(9):519-533. doi:10.1038/nrneph.2016.101
21. Mendes AI, Mascarenhas MR, Matos S, et al. A WNK4 gene variant relates to osteoporosis and not to hypertension in the Portuguese population. *Mol Genet Metab*. 2011;102(4):465-469. doi:10.1016/j.ymgme.2010.12.010
22. Dvorak MM, De Jossineau C, Carter DH, et al. Thiazide diuretics directly induce osteoblast differentiation and mineralized nodule formation by targeting a NaCl cotransporter in bone. *J Am Soc Nephrol*. 2007;18(9):2509-2516. doi:10.1681/ASN.2007030348
23. Hsu YJ, Yang SS, Cheng CJ, et al. Thiazide-sensitive Na⁺-Cl⁻ cotransporter (NCC) gene inactivation results in increased duodenal Ca²⁺ absorption, enhanced osteoblast differentiation and elevated bone mineral density. *J Bone Miner Res*. 2015;30(1):116-127. doi:10.1002/jbmr.2306
24. Sella S, Cattelan C, Realdi G, Giannini S. Bone disease in primary hypercalciuria. *Clin Cases Miner Bone Metab*. 2008;5(2):118-126.
25. Zhang R, Zhang S, Luo Y, et al. A case report of pseudohypaldosteronism type II with a homozygous KLHL3 variant accompanied by hyperthyroidism. *BMC Endocrine Disorders*. 2021;21(1):103. doi:10.1186/s12902-021-00767-w
26. Tsuda K, Nishio I, Masuyama Y. Bone mineral density in women with essential hypertension*. *American Journal of Hypertension*. 2001;14(7):704-707. doi:10.1016/S0895-7061(01)01303-6
27. Licht JH, Amundson D, Hsueh WA, Lombardo JV. Familial hyperkalaemic acidosis. *Q J Med*. 1985;54(214):161-176.
28. Farfel A, Mayan H, Melnikov S, Holtzman EJ, Pinhas-Hamiel O, Farfel Z. Effect of age and affection status on blood pressure, serum potassium and stature in familial hyperkalaemia and hypertension. *Nephrol Dial Transplant*. 2011;26(5):1547-1553. doi:10.1093/ndt/gfq612

Baseline characteristics	Medians and frequencies
F	5 (45%)
Age	41 (32-54)
BMI	22 (21-27)
<i>Mutations</i>	
KLHL3	7 (64%)
WNK4	3 (27%)
WN1	1 (9%)
<i>Hypertension</i>	
Systolic BP (mmHg)	124 (115-133)
Diastolic BP (mmHg)	81 (77-85)
MAP (mmHg)	97 (90-100)
<i>Biochemistry</i>	
eGFR (ml/min/1.73 m ²)	95 (82-98)
sK ⁺ (mmol/L)	5.4 (5.3-6.1)
sHCO ₃ ⁻ (mEq/L)	24 (20-24)
uCa/Cr (mmol/mmol)	0.6 (0.25-0.9)
Osteopenia	2 (30%)
Osteoporosis	1 (16%)
Nephrolithiasis	1 (30%)

Table 1. Baseline characteristics of the FHHt cohort. Continuous variables are reported medians and interquartile range (IQR) and categorical variables as frequencies and percentages. *BMI* body mass index; *KLHL3* kelch-like protein 3; *WNK4* and *WNK1* lysine deficient protein kinase 4 and 1; *BP* blood pressure; *MAP* mean arterial blood pressure; *eGFR* estimated glomerular filtration rate; *sK⁺* serum potassium; *sHCO₃⁻* serum bicarbonate; *uCa/Cr* urinary calcium creatinine ratio.

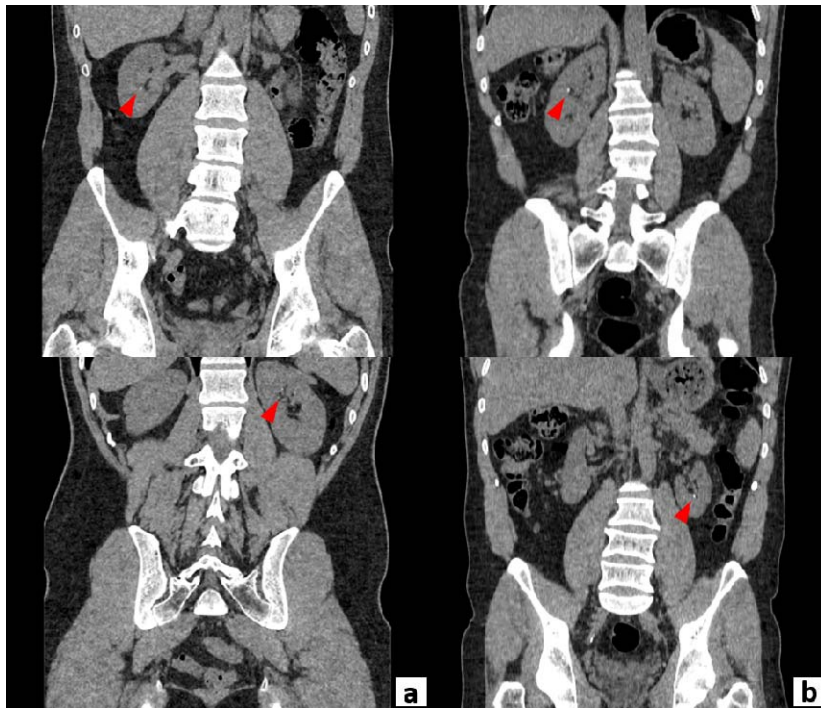
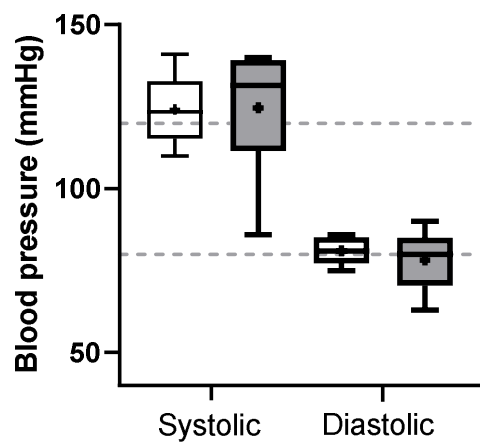


Figure 1. A Pre thiazide CT KUB showing bilateral nephrolithiasis consisting of a 2 mm calculus in the right lower pole and 1 mm calculus in the left upper pole (red arrowheads). B Post thiazide CT KUB in a different patient showing bilateral nephrolithiasis consisting of a 3 mm calculus in the interpolar region of the right kidney and a 4 mm calculus in the left lower pole (red arrowheads).



□ Pre thiazide ■ Post thiazide

Figure 2. Comparison of blood pressure pre and post thiazide treatment. Box plots show median, mean (+), minimum and maximum (whiskers) and lower Q1 and upper Q3 quartile range (lower and upper limit of the box, respectively). Grey dotted lines represent normal systolic (120 mmHg) and diastolic (80 mmHg) blood pressure values.

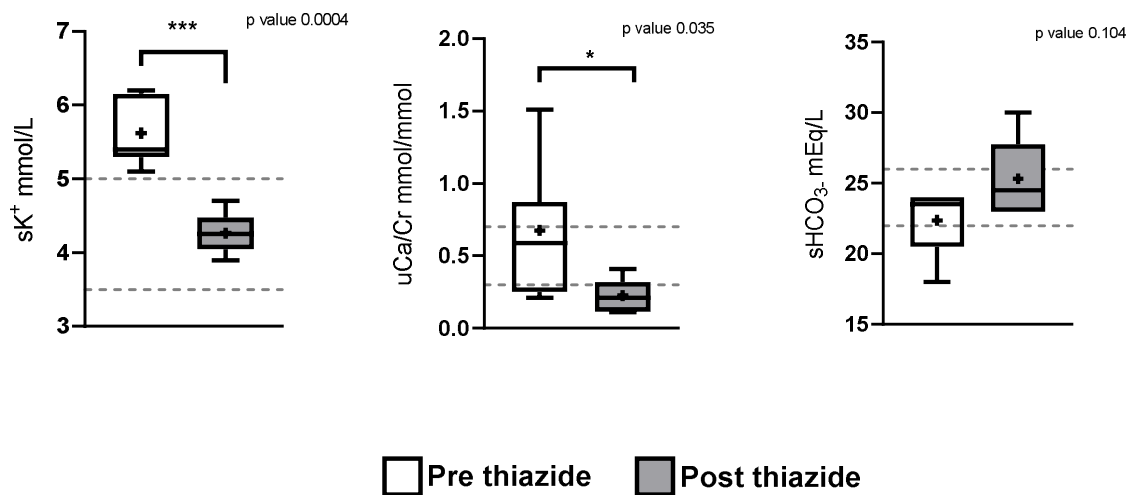


Figure 3. Comparison of biochemistry pre and post thiazide treatment. Box plots show median, mean (+), minimum and maximum (whiskers) and lower Q1 and upper Q3 quartile range (lower and upper limit of the box, respectively). Grey dotted lines represent upper and lower limit of the normal range. sK^+ serum potassium; $sHCO_3^-$ serum bicarbonate; uCa/Cr urinary calcium creatinine ratio.

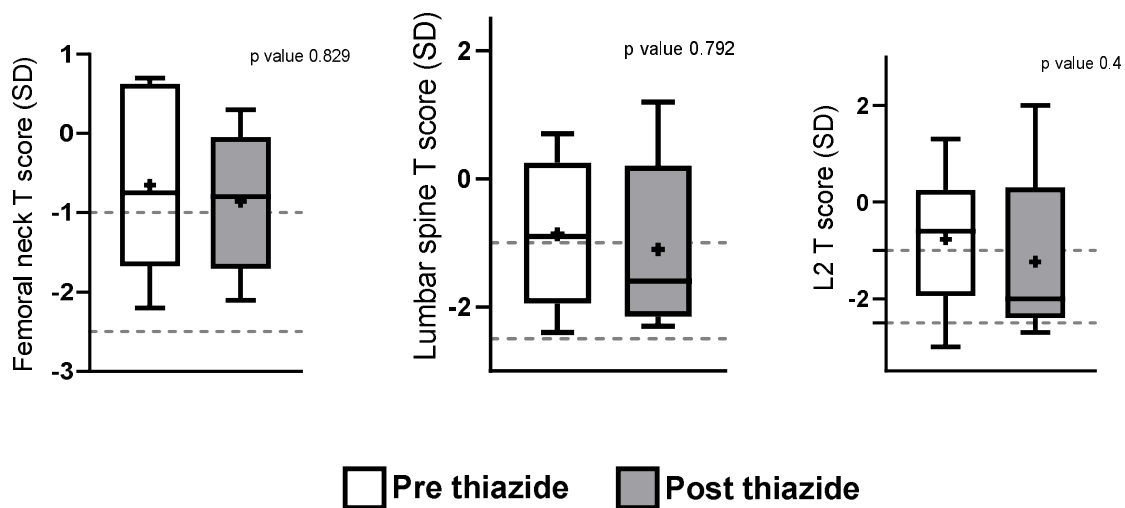


Figure 4. Comparison of lumbar spine, L2 and femoral neck T score pre and post thiazide treatment. Osteopenia was defined as a T score between -1 and -2.5; osteoporosis was defined as a T score < -2.5. Box plots show median, mean (+), minimum and maximum (whiskers) and lower Q1 and upper Q3 quartile range (lower and upper limit of the box, respectively). Grey dotted lines represent upper and lower limit of the osteopenia range.