

1 **Predictors of Interruptions in Antiretroviral Therapy among**
2 **People Living with HIV in Nigeria: A Retrospective Cohort**
3 **Study Using the Nigeria National Data Repository**

4
5 Sunday Ikpe^{1#}, Aliyu Gambo^{2&}, Rebecca Nowak^{1&}, John Sorkin^{1&}, Manhattan Charurat^{1&},

6 Timothy O'Connor^{1*}, Kristen Stafford^{1*}

7

8 ¹University of Maryland Baltimore School of Medicine, Baltimore, Maryland, United States of

9 America

10 ²Nigeria AIDS Control Agency, Abuja, Nigeria

11

12 Corresponding author:

13 sikpe@som.umaryland.edu

14

15 # Conceptualization and methods development, writing review and editing

16 & Review and Supervision

17 * Conceptualization, review and supervision

18

19 **Abstract**

20

21 This study aimed to identify predictors of time to first interruption in treatment (IIT) and predictors

22 of ever being interrupted in ART treatment among PLHIV in Nigeria using a national longitudinal

23 dataset that covers all PEPFAR-funded implementing partners to inform national strategies to
24 prevent IIT. This retrospective cohort study used data from Nigeria's National Data Repository
25 (NDR). The NDR is a de-identified longitudinal database of over 1.9 million PLHIV who received
26 ART in Nigeria beginning in 2004 and is owned by the Federal Ministry of Health (FMOH). The
27 NDR contains patient-level demographics, clinic visits, laboratory, and ART prescription and refill
28 data uploaded at least monthly. The data extracted for this study were obtained from electronic
29 medical record systems of 2,226 public facilities offering HIV care in the country. In this study,
30 we investigated the predictors of treatment interruption using data from the national HIV treatment
31 program. We identified sets of predictors of first interruption in treatment using the logistic
32 regression and these to be consistent in predicting time to first interruption including sex, non
33 NRTI drug in ART regimen, recorded HIV viral load, recorded CD4 cell count, WHO clinical
34 staging, functional status, last measured weight, highest education attained, occupation, marital
35 status, year enrolled in care, pre and post surge, pre and post-COVID and residing in a state capital,
36 Lagos, FCT (urban) versus other locations (rural). Age grouping was the only variable that was
37 predictive only for time to first interruption but not for having a first interruption. To reduce the
38 risk of IIT it is important to target interventions preemptively. We have highlighted the need for
39 tailored interventions that address the unique needs of PLHIV in Nigeria. Targeted interventions
40 focusing on those with a combination of risk factors could include education, counseling,
41 supportive services, and monitoring and outreach.

42

43

44 **Introduction**

45
46 Over 40 years since its emergence, human immunodeficiency virus (HIV) remains a significant
47 public health concern. This is particularly true in sub-Saharan Africa, which bears 67% of the
48 global burden¹⁻³, where HIV remains one of the leading causes of death.[1] Antiretroviral therapy
49 (ART) is critical for both individual-level management of HIV infection to preserve or improve
50 health, and to prevent the onward transmission of the virus for epidemic control[2], [3], [4]. While
51 tremendous progress has been made over the last 20 years with the support of the President's
52 Emergency Plan for AIDS Relief[5] and other international donors to expand access to ART[6],
53 globally 15% of people do not know they are living with HIV, 25% are not on treatment, and 32%
54 are not virally suppressed which inhibits progress towards HIV-1 epidemic control.[1] UNAIDS
55 first announced global targets for progress toward epidemic control in 2014 and then updated them
56 in 2020[7]. The current goal, known as the 95-95-95 target, is for 95% of people living with HIV
57 to be diagnosed, 95% of those who know their status to be on ART, and 95% of those on treatment
58 to be virally suppressed[1]. ART is a lifelong treatment with no cure or vaccine available for HIV.

59
60 Based on the 2018 population-based Nigeria AIDS Impact and Indicator Survey, only 47% of
61 people living with HIV have been diagnosed[8]. While the survey revealed that 96% of people
62 who had been diagnosed were on ART, viral suppression among those on treatment was only
63 81%[9], meaning across the entire cascade only 37% of PLHIV in Nigeria were virally suppressed.
64 Multiple factors may inhibit the achievement of viral suppression targets, as has been observed in
65 Nigeria. These factors may be care or person-related[10]. Interruptions in treatment (IIT) pose a
66 threat to achieving the expected gains of ART for PLHIV and their communities.

67
68 Prior studies have been carried out to understand the predictors of IIT and loss to follow-up (LTFU)
69 in not just Nigeria, but in other sub-Saharan countries, including Mali, Ethiopia, and Rwanda, and
70 have identified different sets of predictors including age, baseline CD4 count, sex, marital status,
71 education, access to care, treatment regimens, and treatment fatigue to mention a few[11], [12],
72 [13], [14], [15], [16], [17]. Most of the evidence generated from Nigeria has been based on cohorts
73 from groups of health facilities supported by individual organizations that may employ specific
74 models of care and can also limit geographic representation. These studies have employed only
75 logistic regression or survival analysis as a means of identifying predictors of LTFU or IIT. While
76 each approach is valid, each measures a different outcome. These differences may account for
77 narrow and contradictory findings related to factors driving IIT and limit the generalizability of
78 these studies to other regions[11], [17], [18].

79
80 This study aimed to identify predictors of the time to first IIT and predictors of ever being
81 interrupted in ART treatment among PLHIV in Nigeria using a national longitudinal dataset that
82 covers all PEPFAR-funded implementing partners to inform national strategies to prevent IIT.

83

84 **Methods**

85 **Design and data source**

86

87 This retrospective cohort study used medical records from Nigeria's National Data Repository
88 (NDR). The NDR is a de-identified longitudinal database of over 1.9 million PLHIV who received

89 ART in Nigeria beginning in 2004 and is owned by the Federal Ministry of Health (FMoH)[16].
90 The data was obtained on the 1st of November 2021 following a University of Maryland Baltimore
91 (UMB) institutional review board (IRB) determination that the research is nonhuman subject
92 research. At no point did we, the authors, have access to any form of personally identifiable
93 information. The NDR contains patient-level demographics, clinic visits, laboratory, and ART
94 prescription and refill data uploaded at least monthly. The data extracted for this study were
95 obtained from electronic medical record systems of 2,226 public facilities offering HIV care in the
96 country.

97

98 **Study population and variable definitions**

99

100 Data from adults ages ≥ 18 years with a first ART prescription date from January 1, 2015, to March
101 31, 2021, were eligible for inclusion in the study population. To be included in the analysis,
102 patients had to have had at least two ART visits.

103

104 The outcome variable of interest in this study was the first interruption in treatment (IIT), defined
105 as the first instance of no documented pharmacy refill within 28 days after the expiry of their last
106 ART refill, followed by a return to treatment. The variable was derived from the difference
107 between the last refill visit date and the next scheduled refill date which was then binary
108 categorized. Variables of interest included age categories (18 – 24 years and subsequently in 10-
109 year bins), sex (male, female), year of enrollment in care (2015 - 2021), local government area of
110 care (urban, rural), third drug in ART regimen, employment (employed, unemployed, student or
111 retired), marital status, measured and recorded CD4, measured and recorded HIV viral load in

112 copies per ml, WHO clinical staging (including an undocumented level as a proxy for quality of
113 HIV care), functional status (bedridden, ambulatory, working), and last measured weight measured
114 in kilograms. Additionally, a variable to assess the effect of the COVID pandemic was created
115 using a cut point of March 2020 when there was a global lockdown. Similarly, a variable was
116 created to assess the effect of a CDC, Surge initiative[19] to identify more people who were
117 infected with HIV in Nigeria in 2019.

118

119 **Statistical analysis**

120

121 The variables were analyzed considering the frequencies and proportions for categorical variables
122 and the median and interquartile ranges at each of these levels for continuous variables. Chi-square
123 and t-test p-values were reported. Logistic regression was used to estimate the odds of first
124 treatment interruption. Determining potential predictors was based on p-values less than a
125 threshold determined using the Bonferroni approach of dividing 0.05 by the number of variables
126 in the final model. Odds ratios and 95% confidence intervals were estimated for the final selected
127 predictors, along with p-values for these estimates. The outcome of survival analysis was the time
128 to the first interruption event. All individuals who did not experience interruption were censored
129 at the end of the follow-up period while those who met the definition of IIT were censored after
130 the first event. Patients who did not return to care after the interruption event were assumed to
131 have been lost to follow-up or dead and were excluded, restricting the analysis to IIT and patients
132 who continue in care. A long rank test was used to assess differences in time to IIT generated using
133 Kaplan-Meier plots for each categorical variable. Backward elimination was used to determine the

134 variables to be included in a Cox proportional hazards regression model to produce hazard ratios
135 and associated 95% confidence intervals.

136

137 The analysis was performed using R programming language version 4 and the survival package.

138

139 **Results**

140

141 The NDR dataset contained records of 4,805,247 people, 32,758,238 clinic visits, 31,612,050
142 regimen records, and 24,931,718 laboratory results. After merging the datasets, 924,847 adults
143 from 2,204 facilities were eligible for inclusion in the study. The records show an upward trend in
144 enrollment from 89,535 in 2015 to 264,777 in 2020. The 2019 and 2020 surge years had the highest
145 number of enrollees with 510,117(55.20%). The study sample was predominantly women
146 606,222(65.50%) and aged 25-34 years (Fig 1). The most commonly prescribed ART regimen
147 included integrase strand transfer inhibitors (INSTI) 434,289(47.00%), followed by non-
148 nucleoside reverse transcriptase inhibitors (NNRTI) 369,891(40.00%), protease inhibitors (PI)
149 5,624(0.60%) and nucleoside reverse transcriptase inhibitors (NRTI). There were 29,648(12.40%)
150 records of undocumented ART. Less than a quarter of the study subjects (215,389, 23.3%) had a
151 recorded CD4. Similarly, slightly over one-third (317,195, 34.3%) had a recorded HIV viral load.

152

153

154

155 **Fig 1.** Distribution of age categories

156

157

158

159 During the study period, 500,729 (54.10%) patients experienced an IIT. Within the first month of
160 care, 0.1% experienced their first interruption; within three months, this increased to 29.28%, and
161 this further increased to 46.49% in the first six months and 50.26% in the first year. The distribution
162 of participant characteristics between censored and interrupted observations is presented in Table
163 1. A higher proportion of women experienced interruptions, with 345,115 (56.93%) having an
164 interruption compared to 155,614 (48.84%) males. Age was also associated with interruptions (p
165 < 0.001). The proportion of interruptions increased progressively with increasing age categories
166 55,454 (50.16%) in the 18-24 years group and was highest in the 55-64 years group with 23,830
167 (50.58%) interruptions. The number of people aged 65 years and older who experienced IIT was
168 6,752 (59.11%).

169

170 Table 1: Variable characteristics in people who presented for a clinic visit

	No Interruption in Treatment (N/%)	Interruption in Treatment (N/%)	P-value
Sex			<0.001
Women	261,107 (43.07%)	345,115 (56.93%)	
Men	163,011 (38.4%)	155,614 (48.84%)	
Age Categories			<0.001
18-24years	54,112 (49.39%)	55,454 (50.61%)	
25-34years	172,416 (47.39%)	191,383 (52.61%)	
35-44years	124,174 (44.78%)	153,107 (55.22%)	
45-54years	52,580 (42.82%)	70,203 (57.18%)	
55-64years	16,165 (40.42%)	23,830 (59.58%)	

65+ years	4,671 (40.89%)	6,752 (59.11%)	
Anti retroviral therapy			<0.001
INSTI	284,802(65.58%)	149,487 (29.90%)	
NNRTI	70,468 (19.05%)	299,423 (80.95%)	
PI	1,013 (18.01%)	4,611 (81.99%)	
Undocumented	67,835 (58.96%)	47,208 (41.04%)	
CD4 recorded			<0.001
No	378,398 (53.34%)	331,060 (46.66%)	
Yes	45,720 (21.23%)	169,669 (78.77%)	
HIV Viral Load recorded			<0.001
No	347,586 (57.20%)	260,066 (42.80%)	
Yes	76,532 (24.13%)	240,663 (75.87%)	
WHO Clinical Stage			<0.001
Unknown	19,368 (41.23%)	27,610 (58.77%)	
Stage 1	369,282 (49:17%)	381,787 (50.83%)	
Stage 2	20,651 (26.03%)	58,678 (73.97%)	
Stage 3	13,560 (30.81%)	30,448 (69.19%)	
Stage 4	1,257 (36.30%)	2,206 (63.70%)	
Functional Status			<0.001
Unknown	14,409 (31.99%)	30,632 (68.01%)	
Bedridden	1,082 (53.62%)	936 (46.38%)	
Ambulatory	2,278 (33.09%)	4,607 (66.91%)	
Working	406,349 (46.66%)	464,554 (53.34%)	
Last measured weight*	58 (18)	57 (19)	<0.001
Highest education attained			<0.001
Unknown	198,716 (41.40%)	281,226 (58.60%)	
None	29,329 (47.49%)	32,429 (52.51%)	

Q'ranic	6,692 (33.79%)	13,115 (66.21%)	
Primary	41,198 (51.06%)	39,492 (48.94%)	
Secondary	120,869 (54.43%)	101,210 (45.57%)	
Tertiary	27,314 (45.09%)	33,257 (54.91%)	
Occupation			<0.001
Unknown	197,033 (42.52%)	266,355 (57.48%)	
Unemployed	127,083 (50.02%)	126,991 (49.98%)	
Student	14,035 (52.15%)	12,878 (47.85%)	
Employed	85,243 (8.37%)	93,403 (91.63%)	
Retired	724 (39.65%)	1,102 (60.35%)	
Marital Status			<0.001
Unknown	200,166 (41.71%)	279,713 (58.29%)	
Single	109,423 (58.63%)	77,221 (41.37%)	
Married	114,529 (44.34%)	143,794 (55.66%)	
Other	0 (0.00%)	1 (100.00%)	
Year enrolled in care			<0.001
2015	15,399 (17.20%)	74,136 (82.80%)	
2016	17,693 (16.58%)	89,044 (83.42%)	
2017	19,866 (17.60%)	93,006 (82.40%)	
2018	25,291 (23.95%)	80,295 (76.05%)	
2019	55,781 (37.59%)	92,601 (62.41%)	
2020	199,897 (74.10%)	69,880 (25.90%)	
2021	90,191 (98.08%)	1,767 (1.92%)	
Enrolled after Surge commencement			<0.001
No	78,249 (18.87%)	336,481 (81.13%)	
Yes	345,869 (67.80%)	164,248 (32.20%)	

Enrolled after COVID			<0.001
No	75,351 (16.63%)	377,656 (83.37%)	
Yes	348,767 (73.92%)	123,073 (26.08%)	
Urban vs Rural			<0.001
Urban dweller	340,328 (80.2%)	415,230 (82.9%)	
Rural dweller	83,790 (19.8%)	85,499 (17.1%)	
Hospital Encounters*	3 (2,5)	2 (2,4)	<0.001
Time to interruption event (months)*	7 (3,12)	9 (5,16)	<0.001

171 *Median(Interquartile range) reported

172 *NNRTI: Non nucleoside reverse transcriptase inhibitor*

173 *PI: Protease inhibitor*

174 *INST: Integrase strand transfer inhibitors*

175

176

177 Non-NRTI drugs in the antiretroviral therapy (ART) regimen were associated with interruptions

178 (p-value < 0.001). Among the different regimens, individuals on the INSTI had the highest

179 proportion of retention in care (Fig 2), with 284,803 (65.58%). The NNRTIs had the highest

180 interruption rate of 299,423(80.95%). PIs had 4,611(81.99%) interruptions, while undocumented

181 regimens had 67,835(58.96%) interruptions. Those with recorded CD4 levels had a higher

182 proportion of interruptions (169,669; 78.77%) compared to 46.66% for those with no records of

183 CD4 count, similarly, those with recorded viral load had higher interruptions (240,663; 75.87%)

184 compared to 42.80% for those with no recorded HIV viral load. The proportion with ambulatory

185 functional status was most likely to experience interruption with 6.885(66.91%) experiencing

186 interruption when compared to those who were bedridden (936,(46.38%)) or working
187 (464554,(53.34%)).

188

189

190 **Fig 2.** Distribution of Time to first IIT event by Antiretroviral medication

191

192

193 PLHIV with primary and secondary education had lower proportions of interruption:
194 39,492(48.94%) and 101,210(45.57%), respectively while no education, qur'anic, and tertiary
195 education had higher proportions of interruption: 32,429(52.51), 13,115(66.21%), and
196 33,257(54.91%), respectively. Employed people had the highest proportion of interruptions
197 compared with other occupation groups, with 933,403(91.63%) experiencing interruption. This
198 was followed by 1,102(60.35%) retirees. Students and unemployed had lower proportions of
199 interruptions with 12,878(47.85%) and 126,991(49.98%), respectively.

200

201 Those enrolled in 2015, 2016, and 2017 had a higher proportion of interruptions, with 74,136
202 (82.80%), 89,044 (83.42%), and 93,006 (82.40%) interruptions, respectively. A higher proportion
203 of interruptions occurred in patients who enrolled pre-surge (336,481, 81.13%) and pre-COVID
204 (75,351; 83.87%).

205

206 The median number of hospital encounters differed between those who continued in care (3, IQR
207 = (2,5)) and those interrupted (2, IQR = (2,4)) observations ($p < 0.001$). On average patients with
208 interrupted observations had fewer hospital visits. Patients with interrupted observations

209 experienced a longer time to interruption (median: 7 months; IQR: (3,9)) event than those who
210 continued receiving ART uninterrupted (median: 9 months, IQR:(5,16)) without interruption.

211

212 **Logistic regression of interruption to treatment**

213

214 The results of the statistical analysis are presented in Table 2; sex was associated with the outcome,
215 with men having 0.90 (0.89, 0.91) times lower odds of IIT compared to women. Compared to
216 people aged 25-34 years, there were no differences in the odds of experiencing IIT for those aged
217 18-24 years (aOR = 0.98, 95% CI: 0.96-1.00, p = 0.074), 35-44 years (aOR = 1.03, 95% CI: 1.01-
218 1.04, p = 0.002), 45-54 years (aOR = 1.02, 95% CI: 0.99-1.04, p = 0.136), and 55-64 years (aOR
219 = 1.02, 95% CI: 0.98-1.04, p = 0.321) and in the 65 years and above group (aOR = 0.96, 95% CI:
220 0.90-1.02, p = 0.147).

221

222 **Table 2: Factors associated with interruption in HIV treatment among people living with**

223 **HIV in Nigeria, 2015-2021**

	Adjusted Odds Ratios (aOR)	95% Confidence Interval	p-value
Male sex (Ref. Women)	0.90	0.89 – 0.91	<0.001
Age Category (Ref. 25-34years)			
18-24 years	0.98	0.96 – 1.00	0.074
35-44 years	1.03	1.01 – 1.04	0.002
45-54 years	1.02	0.99 – 1.04	0.136
55-64 years	1.02	0.98 – 1.05	0.321
65+ years	0.96	0.90 – 1.02	0.147

ART Regimen (Ref. INSTI)			
NNRTI	1.33	1.30 – 1.36	<0.001
PI	1.09	0.97 – 1.23	0.161
Undocumented	1.02	0.99 – 1.06	<0.001
Viral Load Recorded (Ref: Not recorded)	3.12	3.07 – 3.16	<0.001
CD4 Recorded (Ref. Not recorded)	1.03	1.01 – 1.05	<0.001
WHO clinical staging (Ref. Stage 1)			
Stage 2	0.99	0.97 – 1.02	<0.001
Stage 3	0.55	0.54 – 0.57	<0.001
Stage 4	0.39	0.35 – 0.43	<0.001
Undocumented	--	--	--
Functional Status (Ref. Working)			
Ambulatory	0.36	0.35 – 0.38	<0.001
Bedridden	0.49	0.42 – 0.57	<0.001
Unknown functional status	0.59	0.55 – 0.63	<0.001
Last measured Weight	3.12	3.07 – 3.16	<0.001
Highest Education (Ref. Secondary)			
No education	1.01	0.97 – 1.04	0.724
Qur'anic	0.90	0.88 – 0.93	<0.001
Primary	0.97	0.92 – 1.02	0.242
Tertiary	0.82	0.79 – 0.84	<0.001
Unknown	1.04	1.01 – 1.07	0.017
Occupation (Ref. Employed)			
Retired	0.93	0.90 – 0.96	<0.001
Student	1.12	1.07 – 1.17	<0.001
Unemployed	0.94	0.91 – 0.97	<0.001
Unknown	0.91	0.79 – 1.05	0.206

Marital Status (Ref. Married)			
Single	0.96	0.93 – 0.98	0.001
Unknown	--	--	--
Year Enrolled	0.70	0.69 – 0.70	<0.001
Surge Enrollee(Ref. Pre Surge enrollee)	1.48	1.43 – 1.52	<0.001
COVID Enrollee (Ref. Pre COVID enrollee)	0.19	0.19 – 0.19	<0.001
Urban dweller (Ref. Rural dweller)	0.83	0.80 – 0.85	<0.001

224

225 *NNRTI: Non nucleoside reverse transcriptase inhibitor*

226 *PI: Protease inhibitor*

227 *INST: Integrase strand transfer inhibitors*

228

229 The type of non-NRTI drug used in the antiretroviral (ART) regimen was associated with IIT.

230 Compared to individuals on the INSTI regimen, those on NNRTI regimen had higher odds of the

231 outcome (aOR = 1.33, 95% CI: 1.30-1.36, p = <0.001. Individuals on PI and undocumented

232 regimens showed no significant difference in adjusted odds ratios of 1.09 (0.97, 1.23) and 1.02

233 (0.99, 1.06) respectively. People with a recorded viral load had higher odds of the outcome

234 compared to those without a recorded viral load (aOR = 3.12, 95% CI: 3.07-3.16, p < 0.001) as

235 with, to a lesser degree, people with recorded CD4 levels (aOR = 1.03, 95% CI: 1.01-1.05, p <

236 0.001).

237

238 People with a WHO Stage of II(aOR = 0.99, 95% CI: 0.97-1.02, p < 0.001), Stage III (aOR =

239 0.55, 95% CI: 0.54-0.57, p < 0.001), and Stage IV (aOR = 0.39, 95% CI: 0.35-0.43, p < 0.001) had

240 lower odds of IIT compared to those in Stage I. Being ambulatory (aOR = 0.36, 95% CI: 0.35-

241 0.38, $p < 0.001$) or bedridden (aOR = 0.49, 95% CI: 0.42-0.57, $p < 0.001$) had lower odds of the
242 outcome compared to those classified as working.

243

244 Using secondary school education as a reference, no education (aOR = 1.01, 95% CI: 0.97-1.04, p

245 = 0.724), primary education (aOR = 0.97, 95% CI: 0.92-1.02, $p = 0.242$) or undocumented

246 education (aOR = 1.04, 95% CI: 1.01-1.07, $p = 0.017$) were not associated with IIT. Qur'anic

247 education (aOR = 0.90, 95% CI: 0.88-0.93, $p < 0.001$), and tertiary education (aOR = 0.82, 95%

248 CI: 0.79-0.84, $p < 0.001$) were associated with lower odds of the outcome. Retired (aOR = 0.93,

249 95% CI: 0.90-0.96, $p < 0.001$), and unemployed (aOR = 0.94, 95% CI: 0.91-0.97, $p < 0.001$)

250 individuals had lower odds of the outcome compared to employed individuals. Students (aOR =

251 1.12, 95% CI: 1.07-1.17, $p < 0.001$) had higher odds of IIT compared to employed individuals.

252 Having undocumented education was not associated with IIT (aOR=0.91, 95%CI:0.79-1.05).

253 Being single was protective against IIT (aOR = 0.96, 95% CI: 0.93-0.98, $p < 0.001$) compared to

254 those who were married.

255

256 The year PLHIV were enrolled in treatment was associated with the outcome, with lower odds of

257 the outcome for more recent enrollments (aOR = 0.70, 95% CI: 0.69-0.70, $p < 0.001$). Starting

258 ART during the national surge efforts was associated with higher odds of IIT compared to the pre-

259 surge period (aOR = 1.48, 95% CI: 1.43-1.52, $p < 0.001$), and enrollment during the early phase

260 of the COVID-19 pandemic was associated with lower odds of IIT compared to the pre-COVID-

261 19 period (aOR = 0.19, 95% CI: 0.19-0.19, $p < 0.001$). Residing in an urban area was associated

262 with lower odds of the outcome than residing in a rural area (aOR = 0.83, 95% CI: 0.80-0.85, $p <$

263 0.001).

264

265 **Survival analysis of the first interruption in care of PLHIV**

266 The initial exploration of the categorical variables using a long rank test and Kaplan-Meier plots
267 (Fig 3). All categorical variables were statistically different in the life test with p-values <0.001.
268 The results from the multivariable analysis using Cox proportional hazards regression are
269 presented in Table 3, showing the adjusted hazard ratios (aHR) along with their associated 95%
270 confidence intervals (CI) and p-values for each variable. Sex was not associated with the outcome,
271 with men having an adjusted hazard ratio of 1.00 (95% CI: 0.99-1.01) compared to women (p =
272 0.938). PLHIV aged 18-24 years had a 1.16 (1.14, 1.17) times higher hazard of the outcome
273 compared to those aged 25-34 years. Conversely, those aged 35-44 years (aHR = 0.92, 95% CI:
274 0.91-0.93, p < 0.001), 45-54 years (aHR = 0.91, 95% CI: 0.90-0.92, p < 0.001), 55-64 years (aHR
275 = 0.89, 95% CI: 0.88-0.90, p < 0.001), and 65 years and above (aHR = 0.89, 95% CI: 0.86-0.92, p
276 < 0.001) had lower hazards of the outcome.

277

278

279 **Fig 3.** Kaplan Meier plots showing time to first interruption in ART versus enrollment pre/post
280 surge commencement; pre/post-COVID pandemic; Antiretroviral therapy; and Age categories.

281

282 Table 3: Factors associated with time to first interruption in HIV treatment among people living
283 with HIV in Nigeria, 2015-2021

	Adjusted Hazard Ratios (aHR)	95 % Confidence Interval	P-value
--	---	-------------------------------------	----------------

Male sex (Ref: Women)	1.00	0.99 – 1.01	0.938
Age Category (Ref. 25-34years)			
18-24 years	1.16	1.14 – 1.17	<0.001
35-44 years	0.92	0.91 – 0.93	<0.001
45-54 years	0.91	0.90 – 0.92	<0.001
55-64 years	0.89	0.88 – 0.90	<0.001
65+ years	0.89	0.86 – 0.92	<0.001
ART Regimen (Ref. INSTI)			
NNRTI	0.80	0.80 – 0.81	<0.001
PI	1.07	1.03 – 1.11	<0.001
Undocumented	0.90	0.88 – 0.92	<0.001
Viral Load Recorded (Ref: Not recorded)	1.05	1.04 – 1.05	<0.001
CD4 Recorded (Ref. Not recorded)	0.89	0.88 – 0.89	<0.001
WHO clinical staging (Ref. Stage 1)			
Stage 2	1.19	1.18 – 1.20	<0.001
Stage 3	1.27	1.26 – 1.29	<0.001
Stage 4	1.26	1.20 – 1.33	<0.001
Missing	1.31	1.29 – 1.34	<0.001
Functional Status (Ref. Working)			
Ambulatory	0.90	0.88 – 0.92	<0.001
Bedridden	1.09	1.00 – 1.19	0.040
Unknown functional status	1.09	1.05 – 1.13	<0.001
Last measured Weight	1.00	1.00 – 1.00	<0.001
Highest Education (Ref. Secondary)			
No education	1.00	0.99 – 1.02	0.963
Q'ranic	0.98	0.97 – 0.99	0.001
Primary	1.01	0.98 – 1.03	0.666

Tertiary	0.92	0.91 – 0.94	<0.001
Unknown	0.99	0.98 – 1.01	0.311
Occupation (Ref. Employed)			
Retired	1.01	0.99 – 1.02	0.351
Student	1.01	0.98 – 1.03	0.625
Unemployed	1.04	1.03 – 1.06	0.005
Unknown	1.10	1.03 – 1.17	0.012
Marital Status (Ref. Married)			
Single	0.98	0.97 – 1.00	0.007
Unknown	--	--	--
Year Enrolled	1.21	1.20 – 1.21	<0.001
Surge Enrollee(Ref. Pre Surge enrollee)	1.14	1.12 – 1.15	<0.001
COVID Enrollee (Ref. Pre COVID enrollee)	0.17	0.17 – 0.17	<0.001
Urban dweller (Ref. Rural dweller)	1.06	1.05 – 1.07	<0.001

284

285 *NNRTI: Non nucleoside reverse transcriptase inhibitor*

286 *PI: Protease inhibitor*

287 *INST: Integrase strand transfer inhibitors*

288

289

290

291 Compared to individuals on the INSTI regimen, those on NNRTI (aHR = 0.80, 95% CI: 0.80-0.81,
 292 p < 0.001), and undocumented (aHR = 0.90, 95% CI: 0.88-0.92, p < 0.001) had a lower risk of
 293 interruptions in treatment within the same time period. Those on PI (aHR = 1.07, 95% CI: 1.03-
 294 1.11, p < 0.001) had a higher risk for interruption within the same time period when compared to
 295 those on INSTI. Patients with a recorded viral load had a 1.05 (1.04, 1.05) times higher

296 instantaneous risk of the outcome compared to those without a recorded viral load. Those with
297 recorded CD4 levels had a lower risk 0.89 (0.88, 0.89) than those without recorded CD4 levels
298 within the same time period.

299
300 Individuals with Stage II (aHR = 1.19, 95% CI: 1.18-1.20, $p < 0.001$), Stage III (aHR = 1.27, 95%
301 CI: 1.26-1.29, $p < 0.001$), Stage IV (aHR = 1.26, 95% CI: 1.20-1.33, $p < 0.001$), and those with
302 missing staging information (aHR = 1.31, 95% CI: 1.29-1.34, $p < 0.001$) had a higher risk of first
303 interruption within the same time period compared to those in Stage I. Ambulatory patients (aHR
304 = 0.90, 95% CI: 0.88-0.92, $p < 0.001$) had a lower instantaneous risk of the outcome, while being
305 bedridden (aHR = 1.09, 95% CI: 1.00-1.19, $p = 0.040$) was not associated with the outcome. Those
306 with unknown functional status (aHR = 1.00, 95% CI: 1.00-1.00, $p < 0.001$) were not associated
307 with the outcome.

308
309 Being uneducated (aHR = 0.1.00, 95% CI: 0.99-1.02, $p < 0.001$), having primary education (aHR
310 = 1.01, 95%CI: 0.98-1.03), and undocumented education (aHR = 0.99, 95%CI: 0.98-1.01) were
311 not associated with instantaneous risk of first interruption in treatment. Qur'anic education (aHR
312 = 0.98, 95% CI: 0.97-0.99, $p = 0.001$), and tertiary education (aHR = 0.92, 95%CI: 0.91-0.94)
313 were associated with a lower instantaneous risk of being interrupted compared to secondary
314 education. When comparing being employed with retired (aHR = 1.01, 95% CI: 0.99-1.02), a
315 student (aHR = 1.01, 95% CI: 0.98-1.03), unemployed (aHR = 1.04, 95%CI: 1.03-1.06), and
316 undocumented occupation (aHR = 1.10, 95%CI: 1.03-1.17) did not show any association. Being
317 single was not associated with an instantaneous risk of treatment interruption when compared to
318 being married (aHR = 0.98, 95% CI: 0.97-1.00, $p = 0.007$).

319
320 The year of enrollment in the study was associated with the outcome, with higher hazards for more
321 recent enrollments (aHR = 1.21, 95% CI: 1.20-1.21, $p < 0.001$). Being a Surge Enrollee (aHR =
322 1.14, 95% CI: 1.12-1.15, $p < 0.001$) and being a COVID Enrollee (aHR = 0.17, 95% CI: 0.17-
323 0.17, $p < 0.001$) remained significantly associated with different hazards of the outcome compared
324 with being a pre Surge or Pre COVID enrollee, respectively. Residing in an urban area showed an
325 association with the outcome, with individuals from urban areas having a 1.06 (95% CI: 1.05-1.07)
326 times higher risk of being interrupted in treatment within the same time period than those from
327 rural areas ($p < 0.001$).

328

329 **Discussion**

330 In this study, we investigated the predictors of treatment interruption using data from the national
331 HIV treatment program. We identified sets of predictors of first interruption in treatment using the
332 logistic regression and these to be consistent in predicting time to first interruption including sex,
333 non NRTI drug in ART regimen, recorded HIV viral load, recorded CD4 cell count, WHO clinical
334 staging, functional status, last measured weight, highest education attained, occupation, marital
335 status, year enrolled in care, pre and post surge, pre and post-COVID and residing in a state capital,
336 Lagos, FCT (urban) versus other locations (rural). Age grouping was the only variable that was
337 predictive only for time to first interruption but not for having a first interruption.

338 Logistic regression captured some predictors of IIT, including female sex. In the 2019 study by
339 Aliyu et al[17] 2021 study by Tomescu et al[16], the 2022 study by Hakizayezu et al[13], and a

340 2020 study by Abebe et al[20] sex was found to be predictive of interruptions in care; however, in
341 all of these studies, the men were at a higher risk of interruption or its proxy such as loss to follow
342 up. Our findings may differ from those of prior studies because we were restricted to those who
343 interrupted but re-engaged in care. It may be that men are more likely to discontinue care
344 completely and that women interrupt and return. This then requires more intense follow-up or
345 development of new strategies to keep men in care. PLHIV at WHO clinical stage I for AIDS had
346 the highest odds of experiencing IIT (this is also at variance with the Abebe et al study where
347 Stages I and II combined were demonstrated to have a lower risk of IIT[20]). PLHIV with the
348 functional status of working were most likely to experience IIT (the reverse was seen in the Abebe
349 et al study with ambulatory or bedridden at greater risk[20]). This pattern may suggest that people
350 who feel they are healthy are more likely to interrupt and consequently drop out of care hence the
351 need for educating PLHIV that as their status improves they need to remain in care as well as
352 encouraging those without symptoms to remain in care and educating them on the risks of
353 interruption. Students when compared with the employed were at higher risk of interruption. We
354 found that being retired or unemployed was more protective than employment. Being uneducated
355 was identified as a risk factor, consistent with the Abebe et al study that compared unemployment
356 to employment. The enrollment year variable was suggestive of the longer people were in care the
357 more likely they were to experience an interruption event. This is consistent with the finding in
358 the Aliyu et al study where duration on ART was found to be related to the odds of loss to follow
359 up with the odds of remaining in care improving with the longer duration of treatment[17]. PLHIV
360 enrolled after the commencement of the surge effort were at a higher risk of IIT whereas PLHIV
361 enrolled before COVID were at a higher risk of experiencing IIT. People living outside of state
362 capitals, the federal capital territory, and Lagos State were more likely to experience at least one

363 interruption event. The Hakizayezu et al study identified other predictors, including a prior history
364 of treatment interruption (which we could not explore as were looking at first interruption) and
365 good perception toward the whole-of-life treatment[13]. Aliyu et al identified additional predictors
366 including HIV viral load indication and result as well as age[17] (which was not predictive in this
367 study or in the Tomescu et al study[16]), and regimen at the start of ART. Other identified
368 predictors in the Tomescu et al study included geo-political zone, regimen line, and viral load
369 suppression[16].

370 The findings with the proportional hazards regression were in some cases as expected as opposed
371 to those of the logistic regression. Sex was not predictive of time to treatment interruption unlike
372 in predicting being interrupted. The instantaneous risk worsened as the WHO clinical stage
373 worsened in our study when compared to stage I. Age groups, which was not predictive of being
374 interrupted in treatment, were predictive of time to interruption with a trend towards a lower risk
375 with increasing age. This was consistent with the APIN study where younger age was found to be
376 predictive of people under 30 years of age at the greatest risk of LTFU[14]. We found that the
377 ART class of medication was predictive with NNRTI, and PI having greater instantaneous risk
378 than INSTI. This is contrary to the 2014 Meloni et al study that did not find starting an ART
379 regimen to be predictive[14]. Being married had a higher instantaneous risk of IIT than being
380 single contrary to the reverse that was found in the Meloni et al study in Nigeira[14]. Having HIV
381 viral load measured posed greater instantaneous risk in the case of logistic regression however the
382 reverse was found for having measured and recorded CD4 cell count. In most of the time periods
383 covered in the dataset, CD4 was not required for ART initiation and was run for cause (regimen
384 choice, etc.). In addition, HIV viral load was not run at baseline and, as such, likely is a pointer to
385 engagement in care. Consistent with logistic regression a working functional status had a higher

386 instantaneous risk than ambulatory status. Having Q'ranic or tertiary education were both
387 demonstrated to be protective of IIT when compared to secondary education, and this is consistent
388 with the Meloni et al study where tertiary education was found to be protective compared to
389 secondary education[14]. For the year of enrolment, we found the instantaneous risk increases as
390 the years become more recent (moving from 2015 to 2021), again in contrast to the findings with
391 the logistic model. The Meloni et al study did not find a significant difference in the year of ART
392 initiation[14]. However consistent with logistic regression we find that people who enrolled after
393 the commencement of the surge effort are more likely to experience interruption while those
394 enrolled after COVID are protected. Urban dwellers (in state capitals, FCT, or Lagos) have a higher
395 instantaneous risk of interruption. In the Meloni et al study, additional predictors identified
396 included CD4 cell count[11], [14] while in the NCH study baseline CD4 count was found to be a
397 predictor[11]. Across the two approaches used, we found some predictors to have intersected
398 including measured and recorded HIV viral load, surge enrollment, and COVID enrollment. Others
399 that were predictive but in different directions included sex, measured and recorded CD4 count,
400 marital status, and WHO clinical stage.

401 The rate of missed appointments increased as the duration of care progressed, emphasizing the
402 need for interventions to improve appointment adherence, not only in the early stages of care but
403 also as treatment fatigue potentially sets in[21]. The 25-34 age group constituted the largest
404 proportion of the population, indicating the importance of targeted interventions and support for
405 this age cohort who are also at higher risk of interruption in treatment. We also found weight
406 change to be influential, with weight gain associated with an increased risk of interruption.
407 Importantly, the COVID-19 pandemic had a significant impact on interruptions in care. PLHIV
408 enrolled after the outbreak demonstrated a lower risk of interruption, potentially due to increased

409 emphasis on healthcare access and continuity during the pandemic. However, individuals enrolled
410 before the pandemic experienced a higher risk of interruption, indicating the need for targeted
411 interventions to mitigate the effects of external factors on HIV care. Enrollment after the initiation
412 of the surge initiative was linked to a higher risk of interruption which begs the question of the
413 quality of follow-up after aggressive identification of cases and enrollment into care. Overall, the
414 findings of this study contribute to our understanding of care interruptions. A huge takeaway from
415 this study is the potential for differentiated service delivery, a person-centric approach to care and
416 treatment in HIV in Nigeria and sub-Saharan Africa as we see multiple factors interacting to
417 determine the outcomes of interruption in treatment and progression to loss to follow-up.

418 **Limitations of the Study**

419 Our study design was retrospective, limiting our control over data collection and the availability
420 of variables of interest including access to care and type of healthcare facility. In addition, we did
421 not include certain variables because of the degree of missingness such as CD4 cell count, HIV
422 viral load (both of which were dichotomized to included or missing), pregnancy status,
423 comorbidities including tuberculosis, and other potential confounders. The findings of this study
424 are dependent on the accuracy and completeness of the recorded data. Potential limitations such
425 as missing or incomplete data, coding errors, or inaccuracies in medical records could affect the
426 validity of the results.

427

428 **Conclusion**

429 To reduce the risk of IIT it is important to target interventions preemptively. We have highlighted
430 the need for tailored interventions that address the unique needs of PLHIV in Nigeria. Targeted
431 interventions focusing on those with a combination of risk factors could include education,
432 counseling, supportive services, and monitoring and outreach. Education and counseling are
433 critical in addressing the challenges of treatment adherence. There should be continued education,
434 and improvement on education strategies for PLHIV on the importance of adhering to treatment
435 and the risks of IIT augmented with appointment reminders and rescheduling[22]. Supportive
436 services such as case management and peer support groups can help PLHIV to stay on track with
437 their treatment and to manage any challenges they may face[22]. Monitoring and outreach are
438 essential in identifying PLHIV who are at high risk for IIT[22]. By closely monitoring PLHIV
439 closely, healthcare providers can identify signs of IIT and provide support promptly. Outreach to
440 PLHIV who are at risk of missing appointments can be helpful as a part of providing support to
441 stay in care[22].

442

443 **Acknowledgments**

444

445 We would like to acknowledge the Nigerian Federal Ministry of Health for providing the data from
446 the National Data Repository for this study. The data from the National Data Repository were
447 essential for conducting this study and we are grateful for the opportunity to have access to this
448 valuable resource.

449

450

451 **References**

452

- 453 [1] Unaid, “World AIDS Day 2021.” Accessed: May 30, 2022. [Online]. Available:
454 <https://www.unaids.org/en/resources/fact-sheet>
- 455 [2] K. H. Mayer and K. K. Venkatesh, “Chemoprophylaxis for HIV Prevention: New Opportunities
456 and New Questions WHY ANTIRETROVIRALS FOR PRIMARY HIV PREVENTION?,” *J*
457 *Acquir Immune Defic Syndr*, vol. 55, no. 2, pp. 122–127, 2010, doi: 10.1097/QAI.
- 458 [3] V. Cambiano *et al.*, “Antiretroviral therapy for prevention of HIV transmission: implications for
459 Europe.” [Online]. Available:
460 [www.eurosurveillance.orghttp://www.eurosurveillance.org/ViewArticle.aspx?ArticleId=20647](http://www.eurosurveillance.org/ViewArticle.aspx?ArticleId=20647)
- 461 [4] M. W. Hull and J. Montaner, “Antiretroviral therapy: A key component of a comprehensive HIV
462 prevention strategy,” *Curr HIV/AIDS Rep*, vol. 8, no. 2, pp. 85–93, Jun. 2011, doi:
463 10.1007/s11904-011-0076-6.
- 464 [5] A. R. Verani *et al.*, “HIV Policy Advancements in PEPFAR Partner countries: a review of data
465 from 2010–2016,” *Glob Public Health*, vol. 16, no. 3, pp. 390–400, 2021, doi:
466 10.1080/17441692.2020.1795219.
- 467 [6] R. Granich, S. Gupta, and B. Williams, “Human immunodeficiency virus funding and access to
468 treatment in sub-Saharan Africa,” *Int J STD AIDS*, vol. 33, no. 1, pp. 4–17, Jan. 2022, doi:
469 10.1177/09564624211042287.
- 470 [7] “Fast-Track Targets,” 2020.
- 471 [8] NAIIS, “Nigeria HIV/AIDS Indicator and Impact Survey - Preliminary Findings, March 2019,”
472 no. March, pp. 1–5, 2019.
- 473 [9] Osagie Ehanire *et al.*, “NIGERIA HIV/AIDS INDICATOR AND IMPACT SURVEY (NAIIS)
474 2018 TECHNICAL REPORT,” 2018. [Online]. Available: www.health.gov.ng
- 475 [10] D. Van Beckhoven *et al.*, “Incidence rate, predictors and outcomes of interruption of HIV care:
476 nationwide results from the Belgian HIV cohort,” *HIV Med*, vol. 21, no. 9, pp. 557–566, Oct.
477 2020, doi: 10.1111/hiv.12901.
- 478 [11] K. Eguzo, A. Lawal, C. Umezurike, and C. Esegbe, “Predictors of loss to follow-up among HIV-
479 infected patients in a rural South-Eastern Nigeria Hospital: A 5-year retrospective cohort study,”
480 *Ann Med Health Sci Res*, vol. 5, no. 6, p. 373, 2015, doi: 10.4103/2141-9248.177988.
- 481 [12] A. Baldé *et al.*, “Re-engagement in care of people living with HIV lost to follow-up after initiation
482 of antiretroviral therapy in Mali: Who returns to care?,” *PLoS One*, vol. 15, no. 9 September, Sep.
483 2020, doi: 10.1371/journal.pone.0238687.
- 484 [13] F. Hakizayezu, E. Biracyaza, H. Niyompano, and A. Umubyeyi, “The Frequency and Predictors of
485 Unsuppressed HIV Viral Load Among People with HIV in Nyaruguru District, Rwanda,”
486 *HIV/AIDS - Research and Palliative Care*, vol. 14, pp. 381–395, 2022, doi:
487 10.2147/HIV.S376053.
- 488 [14] S. T. Meloni *et al.*, “Time-dependent predictors of loss to follow-up in a large HIV treatment
489 cohort in Nigeria,” *Open Forum Infect Dis*, vol. 1, no. 2, Sep. 2014, doi: 10.1093/ofid/ofu055.

- 490 [15] U. Akpan *et al.*, “Predictors of treatment interruption among patients on antiretroviral therapy in
 491 Akwa Ibom, Nigeria: outcomes after 12 months,” *AIDS Care - Psychological and Socio-Medical*
 492 *Aspects of AIDS/HIV*, vol. 35, no. 1, pp. 114–122, 2023, doi: 10.1080/09540121.2022.2093826.
- 493 [16] S. Tomescu *et al.*, “Factors associated with an interruption in treatment of people living with HIV
 494 in USAID-supported states in Nigeria: a retrospective study from 2000–2020,” *BMC Public*
 495 *Health*, vol. 21, no. 1, Dec. 2021, doi: 10.1186/s12889-021-12264-9.
- 496 [17] A. Aliyu *et al.*, “Predictors of loss to follow-up in art experienced patients in Nigeria: A 13 year
 497 review (2004-2017),” *AIDS Res Ther*, vol. 16, no. 1, Oct. 2019, doi: 10.1186/s12981-019-0241-3.
- 498 [18] P. Jwanle *et al.*, “Accelerating HIV epidemic control in Benue state, Nigeria, 2019–2021: the
 499 APIN program experience,” *Ther Adv Infect Dis*, vol. 10, Jan. 2023, doi:
 500 10.1177/20499361231153549.
- 501 [19] I. Jahun *et al.*, “Optimizing community linkage to care and antiretroviral therapy Initiation:
 502 Lessons from the Nigeria HIV/AIDS Indicator and Impact Survey (NAIIS) and their adaptation in
 503 Nigeria ART Surge,” *PLoS One*, vol. 16, no. 9 September, Sep. 2021, doi:
 504 10.1371/journal.pone.0257476.
- 505 [20] N. Abebe Moges, A. Olubukola, O. Micheal, and Y. Berhane, “HIV patients retention and attrition
 506 in care and their determinants in Ethiopia: A systematic review and meta-analysis,” *BMC Infect*
 507 *Dis*, vol. 20, no. 1, pp. 1–24, 2020, doi: 10.1186/s12879-020-05168-3.
- 508 [21] H. Samji *et al.*, “Predictors of unstructured antiretroviral treatment interruption and resumption
 509 among HIV-positive individuals in Canada,” *HIV Med*, vol. 16, no. 2, pp. 76–87, Feb. 2015, doi:
 510 10.1111/hiv.12173.
- 511 [22] “Interventions that can improve the retention in care among patients with HIV: A review,” *Am J*
 512 *Hosp Med*, vol. 6, no. 3, Sep. 2022, doi: 10.24150/ajhm/2022.010.

513
 514
 515

516 Supporting Information

517 Table 4: Characteristics of Month of interruption and state (location) by interruption status

	No interruption in treatment	Interruption in treatment	p-value
Month of interruption			
January	10865 (2.6%)	50287 (10.0%)	<0.001
February	29541 (7.0%)	45649 (9.1%)	
March	42279 (10.0%)	50070 (10.0%)	
April	52780 (12.4%)	34052 (6.8%)	
May	90575 (21.4%)	35381 (7.1%)	
June	88122 (20.8%)	39169 (7.8%)	
July	56814 (13.4%)	35408 (7.1%)	

August	15981 (3.8%)	39425 (7.9%)	
September	9949 (2.3%)	41106 (8.2%)	
October	9766 (2.3%)	40996 (8.2%)	
November	8951 (2.1%)	45980 (9.2%)	
December	8495 (2.0%)	43206 (8.6%)	
State			
Abia	1758 (0.4%)	1678 (0.3%)	<0.001
Adamawa	7243 (1.7%)	12490 (2.5%)	
Akwa Ibom	82318 (19.4%)	54054 (10.8%)	
Anambra	4692 (1.1%)	13244 (2.6%)	
Bauchi	6172 (1.5%)	9539 (1.9%)	
Bayelsa	4271 (1.0%)	4026 (0.8%)	
Benue	32416 (7.6%)	31135 (6.2%)	
Borno	3028 (0.7%)	5533 (1.1%)	
Cross River	16588 (3.9%)	24123 (4.8%)	
Delta	21473 (5.1%)	9217 (1.8%)	
Ebonyi	960 (0.2%)	898 (0.2%)	
Edo	3224 (0.8%)	8567 (1.7%)	
Ekiti	563 (0.1%)	356 (0.1%)	
Enugu	7478 (1.8%)	3744 (0.7%)	
FCT	22395 (5.3%)	14832 (3.0%)	
Gombe	3605 (0.9%)	4104 (0.8%)	
Imo	4878 (1.2%)	6224 (1.2%)	
Jigawa	1457 (0.3%)	3453 (0.7%)	
Kaduna	4393 (1.0%)	4614 (0.9%)	
Kano	4217 (1.0%)	12724 (2.5%)	
Katsina	1918 (0.5%)	2465 (0.5%)	
Kebbi	2940 (0.7%)	4882 (1.0%)	
Kogi	3655 (0.9%)	4760 (1.0%)	
Kwara	1589 (0.4%)	3008 (0.6%)	
Lagos	34119 (8.0%)	34517 (6.9%)	
Nasarawa	12254 (2.9%)	11043 (2.2%)	
Niger	6481 (1.5%)	10698 (2.1%)	
Not recorded	47950 (11.3%)	123001 (24.6%)	
Ogun	3702 (0.9%)	7145 (1.4%)	
Ondo	1856 (0.4%)	1443 (0.3%)	
Osun	1068 (0.3%)	1187 (0.2%)	
Oyo	2750 (0.6%)	7664 (1.5%)	
Plateau	3222 (0.8%)	7092 (1.4%)	

Rivers	58358 (13.8%)	38431 (7.7%)	
Sokoto	1342 (0.3%)	3039 (0.6%)	
Taraba	4655 (1.1%)	10702 (2.1%)	
Yobe	1912 (0.5%)	3125 (0.6%)	
Zamfara	1218 (0.3%)	1972 (0.4%)	

518

519

520 **Table 5: Adjusted odds ratios for month of interruption and state where interruption occurred**

	Adjusted odds ratios (aOR)	95% Confidence Intervals LCB	p-value
Month of interruption (Ref=January)			
February	0.44	0.43 - 0.46	<.001
March	0.38	0.36 - 0.39	<.001
April	0.25	0.24 - 0.26	<.001
May	0.17	0.16 - 0.18	<.001
June	0.21	0.20 - 0.22	<.001
July	0.23	0.22 - 0.23	<.001
August	0.62	0.60 - 0.65	<.001
September	1.03	0.98 - 1.07	0.226
October	0.78	0.74 - 0.81	<.001
November	1.16	1.11 - 1.21	<.001
December	1.35	1.29 - 1.41	<.001
State (Ref=Akwa Ibom)			
Abia	1.36	1.24 - 1.49	<.001
Adamawa	1.36	1.27 - 1.45	<.001
Anambra	4.1	3.91 - 4.30	<.001
Bauchi	3.5	3.29 - 3.73	<.001
Bayelsa	1.98	1.86 - 2.10	<.001
Benue	1.43	1.38 - 1.47	<.001
Borno	1.5	1.40 - 1.60	<.001
Cross River	1.95	1.87 - 2.02	<.001
Delta	1.01	0.97 - 1.05	0.664
Ebonyi	1.41	1.26 - 1.58	<.001
Edo	3.35	3.17 - 3.54	<.001
Ekiti	1.19	0.99 - 1.42	0.064
Enugu	2.36	2.24 - 2.49	<.001
FCT	1.7	1.63 - 1.77	<.001
Gombe	1.51	1.42 - 1.61	<.001

Imo	3.28	3.11 - 3.47	<.001
Jigawa	2.33	2.12 - 2.56	<.001
Kaduna	1.25	1.18 - 1.33	<.001
Kano	2.98	2.82 - 3.13	<.001
Katsina	1.22	1.12 - 1.32	<.001
Kebbi	2.99	2.79 - 3.21	<.001
Kogi	1.5	1.40 - 1.60	<.001
Kwara	2.97	2.73 - 3.23	<.001
Lagos	2.09	2.01 - 2.17	<.001
Nasarawa	1.48	1.42 - 1.54	<.001
Niger	2.67	2.53 - 2.82	<.001
Ogun	2.75	2.59 - 2.92	<.001
Ondo	1.02	0.93 - 1.13	0.678
Osun	1.96	1.76 - 2.19	<.001
Oyo	2.49	2.32 - 2.67	<.001
Plateau	1.29	1.20 - 1.39	<.001
Rivers	2.17	2.12 - 2.23	<.001
Sokoto	3.05	2.78 - 3.33	<.001
Taraba	1.9	1.81 - 1.99	<.001
Yobe	1.6	1.47 - 1.74	<.001
Zamfara	1.88	1.7 - 2.08	<.001

521 Logistic regression model: IIT = LW + VL + CD4 + Ambulatory + Bedridden + Unknown_Functional_Status +
 522 Male + No_Education + Tertiary_Education + Primary_Education + Qranic_Education + Unknown_Education +
 523 Retired + Student + Unemployed + Unknown_Employment + Other_Marital_Status + Single +
 524 Unknown_Marital_Status + Year_Enrolled_in_Care + Surge + COVID + February + March + April + May + June +
 525 July + August + September + October + November + December + Urban + Abia + Adamawa + Anambra + Bauchi
 526 + Bayelsa + Benue + Borno + Cross_River + Delta + Ebonyi + Edo + Ekiti + Enugu + Federal_Capital_Territory +
 527 Gombe + Imo + Jigawa + Kaduna + Kano + Katsina + Kebbi + Kogi + Kwara + Lagos + Nasarawa + Niger + Ogun
 528 + Ondo + Osun + Oyo + Plateau + Rivers + Sokoto + Taraba + Yobe + Zamfara + Age18_24 + Age35_44 +
 529 Age45_54 + Age55_64 + Age65ge + NNRTI + Undocumented_ART + PI + WHO_missing + WHO_II + WHO_III
 530 + WHO_IV
 531

532 **Table 6: Adjusted hazard ratios (aHR) for month of interruption and state (location)**

	Adjusted hazard ratios (aHR)	95% confidence intervals	p.value
Month of interruption (Reference = January)			
February	0.9	0.88 - 0.91	<.001
March	0.79	0.78 - 0.80	<.001
April	0.86	0.85 - 0.88	<.001
May	0.7	0.69 - 0.72	<.001
June	0.76	0.75 - 0.77	<.001

July	0.83	0.82 - 0.85	<.001
August	1.18	1.16 - 1.19	<.001
September	1.2	1.18 - 1.22	<.001
October	1.11	1.09 - 1.12	<.001
November	1.22	1.20 - 1.24	<.001
December	1.19	1.17 - 1.21	<.001
State (Reference=Akwa Ibom)			
Abia	0.74	0.71 - 0.78	<.001
Adamawa	0.95	0.92 - 0.98	0.001
Anambra	0.98	0.96 - 1.00	0.106
Bauchi	1.52	1.48 - 1.55	<.001
Bayelsa	1.03	1.00 - 1.07	0.075
Benue	0.85	0.83 - 0.86	<.001
Borno	1.11	1.07 - 1.14	<.001
Cross River	1.09	1.07 - 1.11	<.001
Delta	0.78	0.76 - 0.80	<.001
Ebonyi	1.26	1.18 - 1.35	<.001
Edo	1.37	1.34 - 1.40	<.001
Ekiti	0.81	0.73 - 0.90	<.001
Enugu	1.25	1.21 - 1.30	<.001
FCT	0.81	0.79 - 0.82	<.001
Gombe	0.87	0.84 - 0.90	<.001
Imo	1.37	1.33 - 1.41	<.001
Jigawa	1.35	1.30 - 1.40	<.001
Kaduna	1.21	1.17 - 1.25	<.001
Kano	1.16	1.14 - 1.19	<.001
Katsina	0.71	0.68 - 0.74	<.001
Kebbi	0.58	0.56 - 0.59	<.001
Kogi	1.05	1.02 - 1.08	0.002
Kwara	0.79	0.76 - 0.82	<.001
Lagos	0.96	0.94 - 0.98	<.001
Nasarawa	0.97	0.95 - 0.99	0.015
Niger	0.81	0.79 - 0.83	<.001
Ogun	1.07	1.04 - 1.10	<.001
Ondo	0.77	0.73 - 0.82	<.001
Osun	0.93	0.87 - 0.98	0.014
Oyo	1.36	1.32 - 1.40	<.001
Plateau	1.23	1.20 - 1.27	<.001
Rivers	1.02	1.01 - 1.04	0.008

Sokoto	0.99	0.95 - 1.02	0.491
Taraba	0.55	0.54 - 0.56	<.001
Yobe	1.13	1.09 - 1.18	<.001
Zamfara	0.68	0.65 - 0.71	<.001

533 Cox proportional hazards model: Time to IIT event = Last_Redorded_Weight + Viral_Load_Recorded +
534 CD4_Recorded + Ambulatory + Bedridden + Unknown_Fucntional_Status + Male + No_Education + Tertiary +
535 Primary + Qranic_Education + Unknown_Education + Retired + Student + Unemployed + Unknown_Employment
536 + Other_Marital_Status + Single + Unknown_Marital_Status + Year_enrolled_in_Care + Surge + COVID +
537 February + March + April + May + June + July + August + September + October + November + December + Urban
538 + Abia + Adamawa + Anambra + Bauchi + Bayelsa + Benue + Borno + Cross_River + Delta + Ebonyi + Edo +
539 Ekiti + Enugu + Federal_Capital_Territory + Gombe + Imo + Jigawa + Kaduna + Kano + Katsina + Kebbi + Kogi +
540 Kwara + Lagos + Nasarawa + Niger + Ogun + Ondo + Osun + Oyo + Plateau + Rivers + Sokoto + Taraba + Yobe +
541 Zamfara + Age18_24 + Age35_44 + Age45_54 + Age55_64 + Aage65ge + NNRTI + Undocumented_ART + PI +
542 WHO_missing + WHO_II + WHO_III + WHO_IV
543

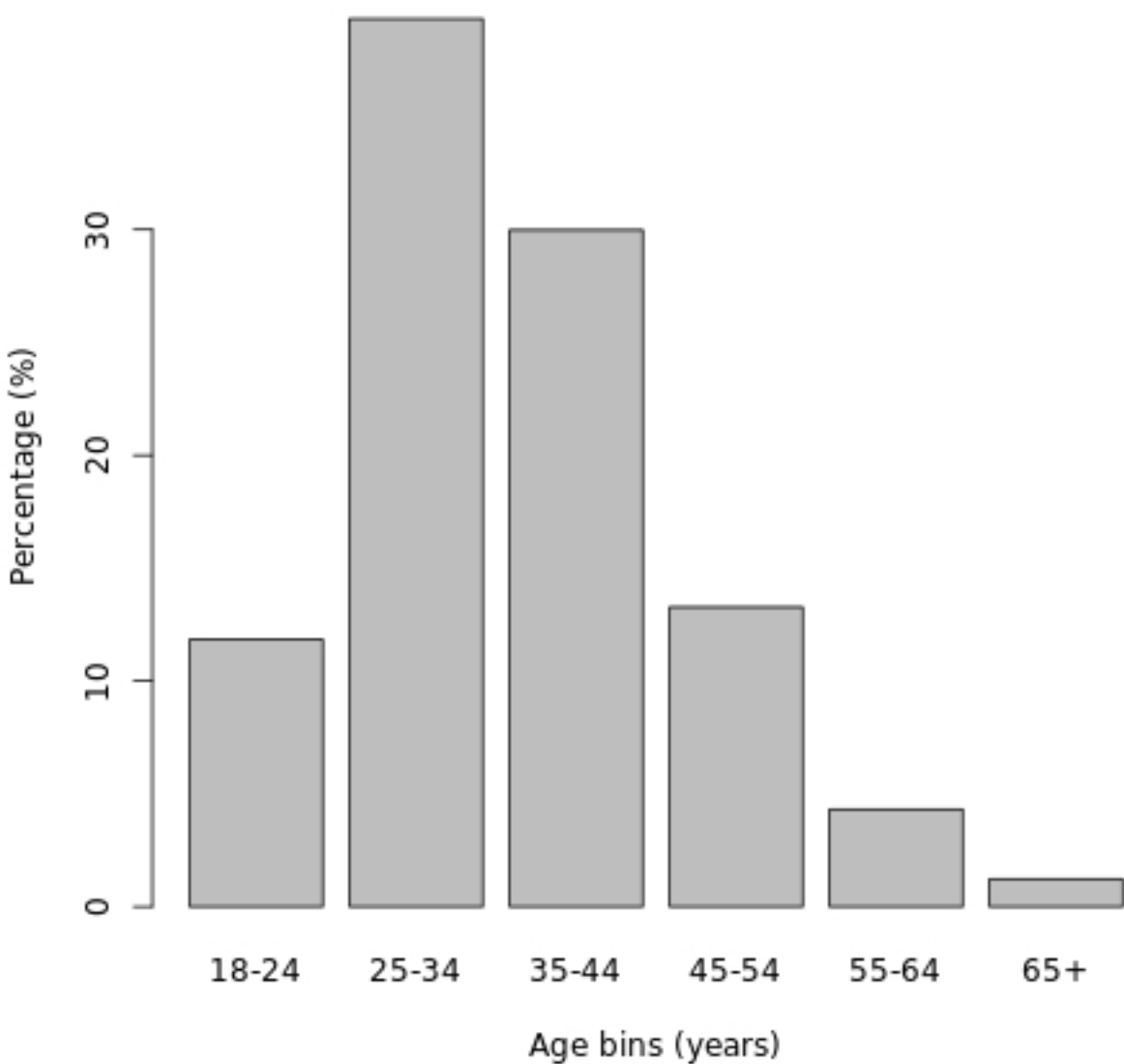


Figure 1 Age Categories

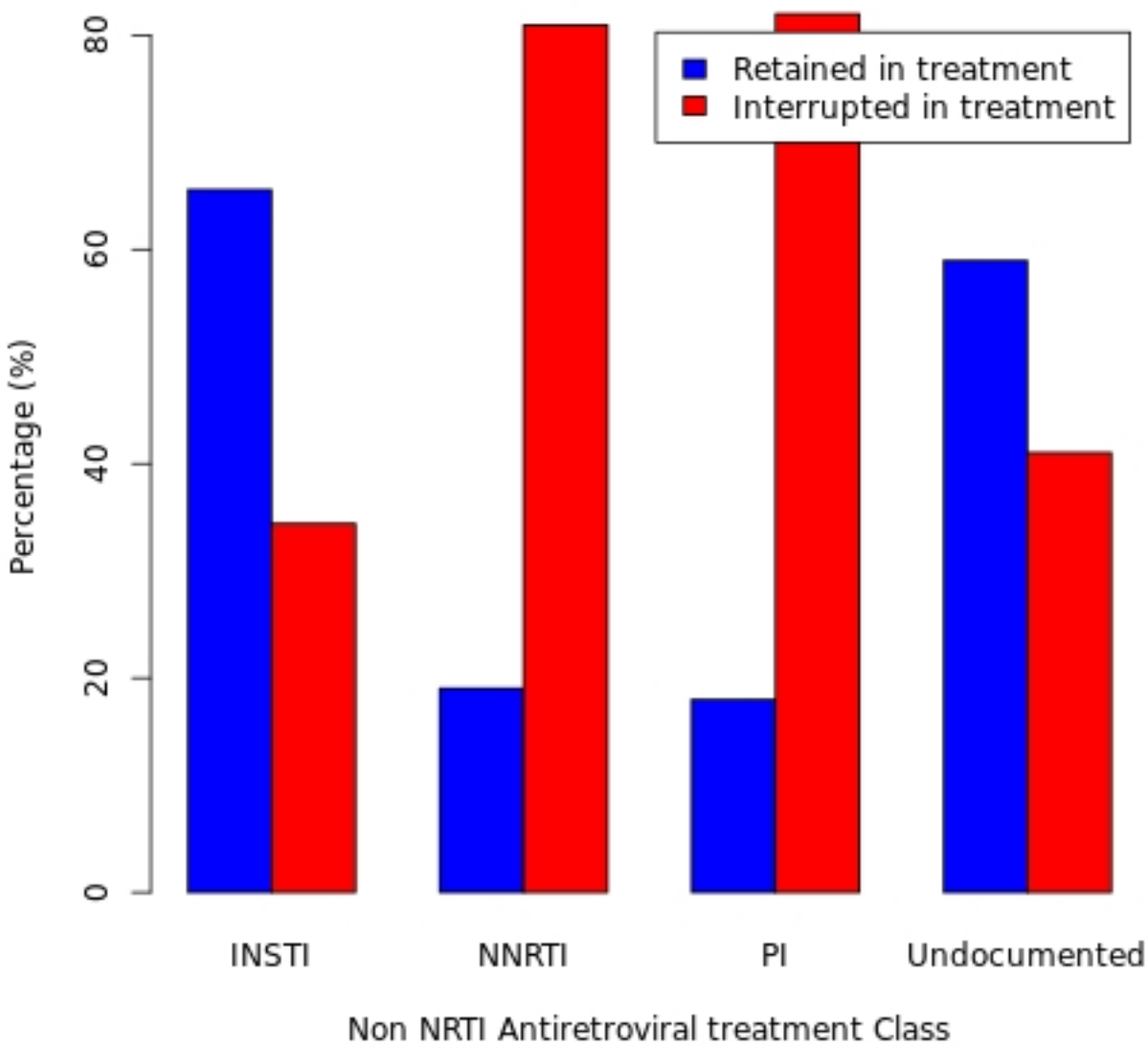
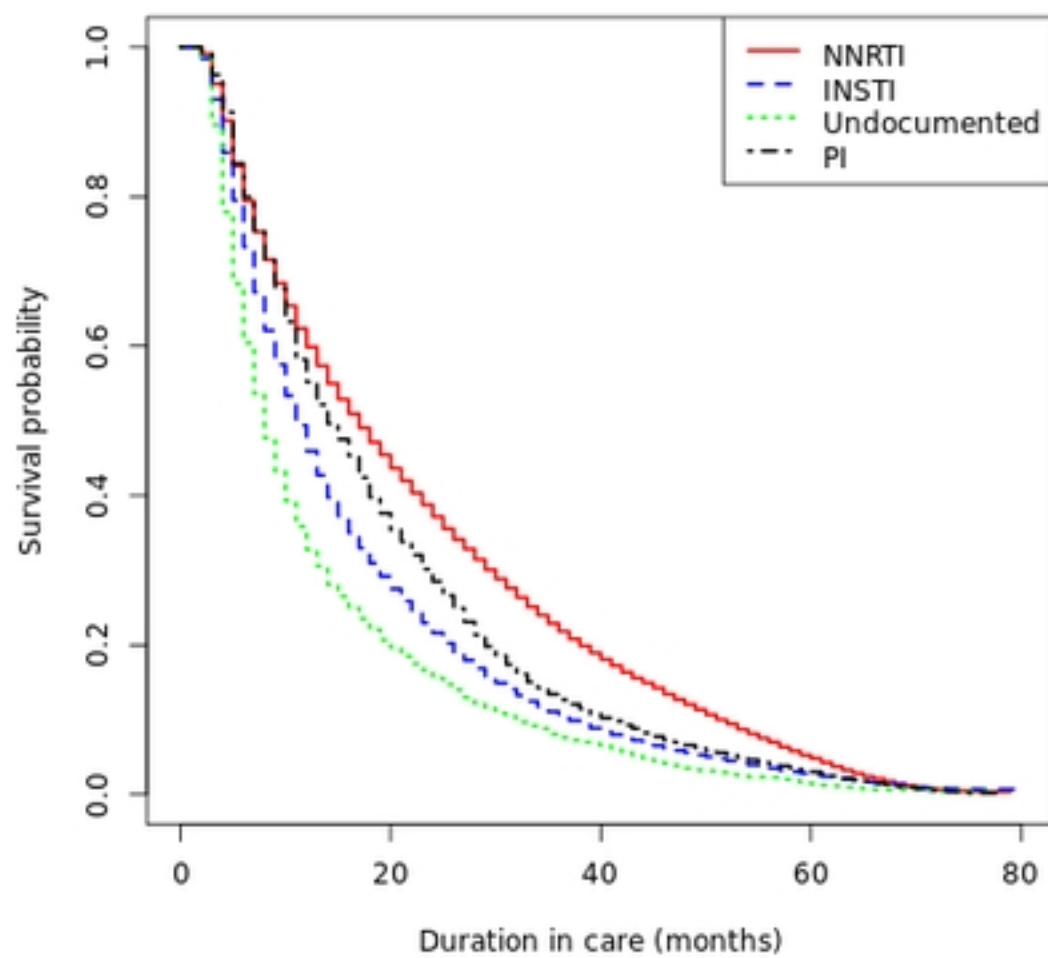
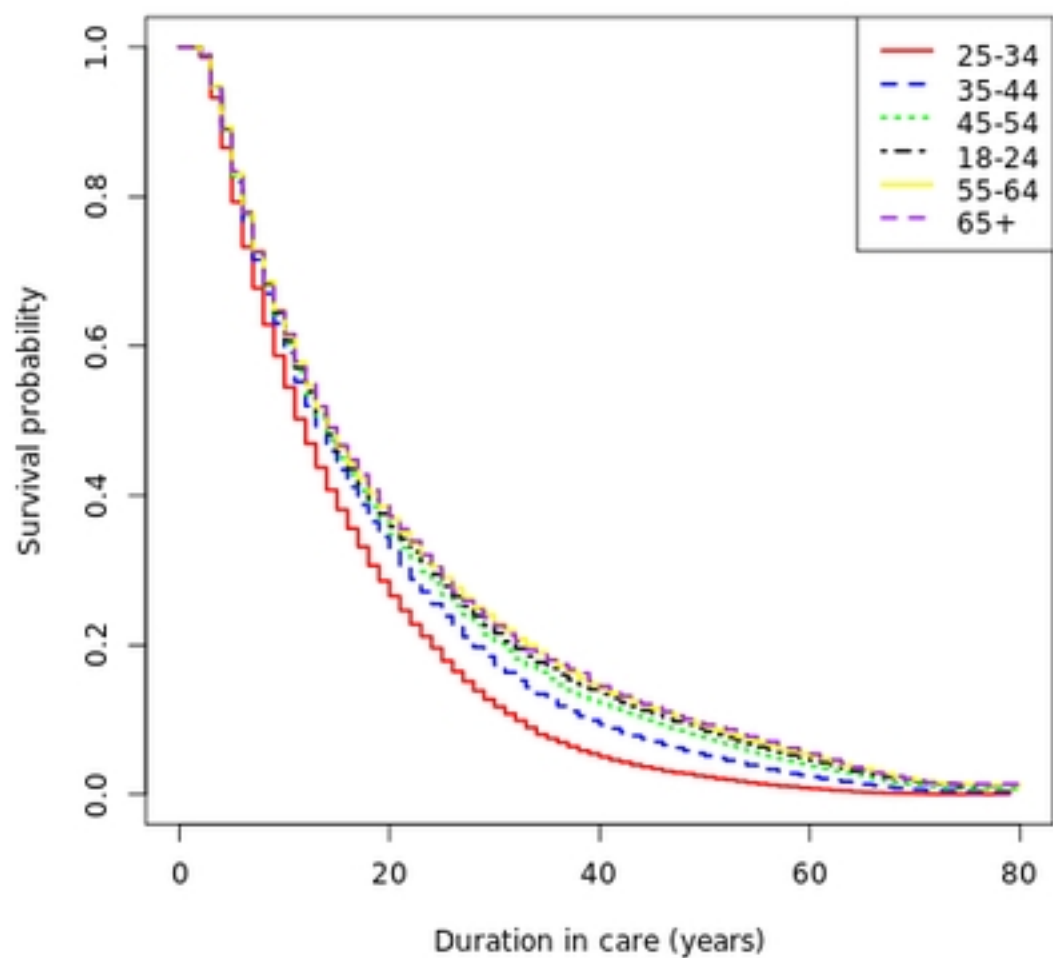
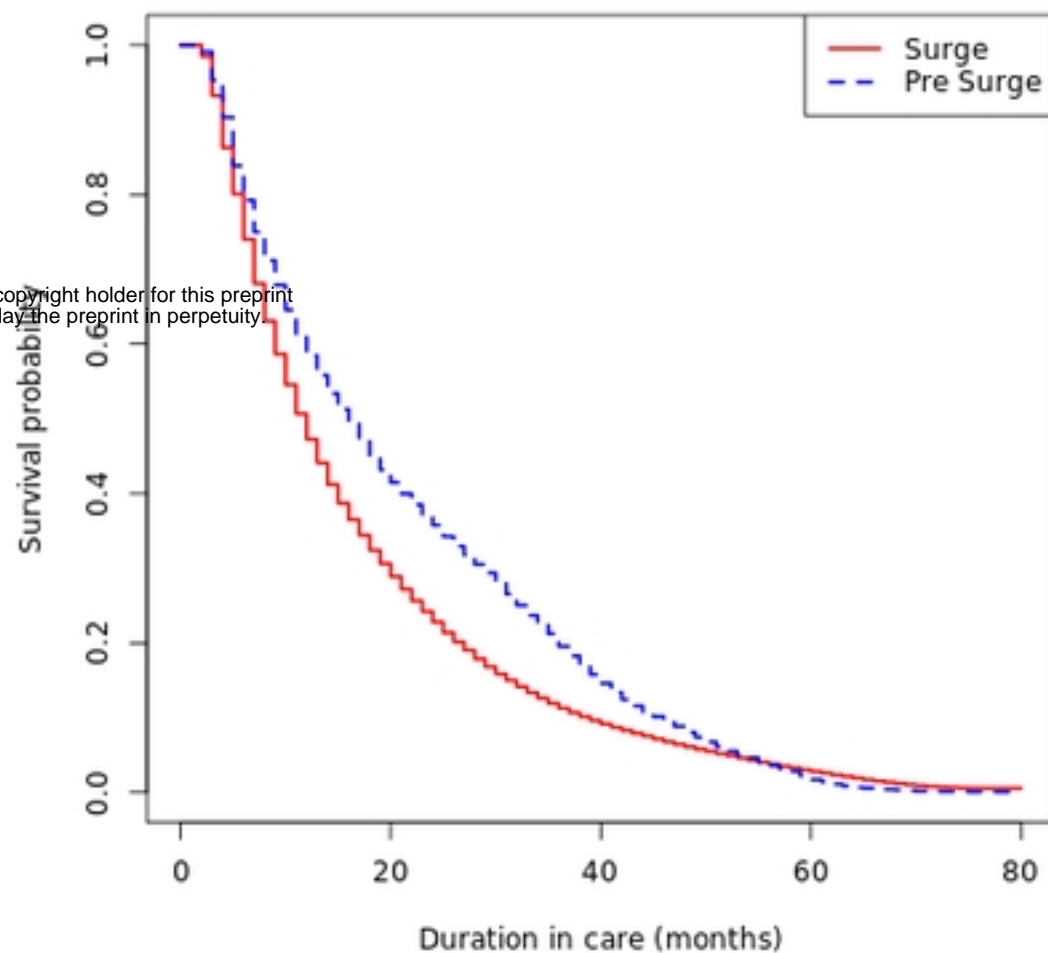
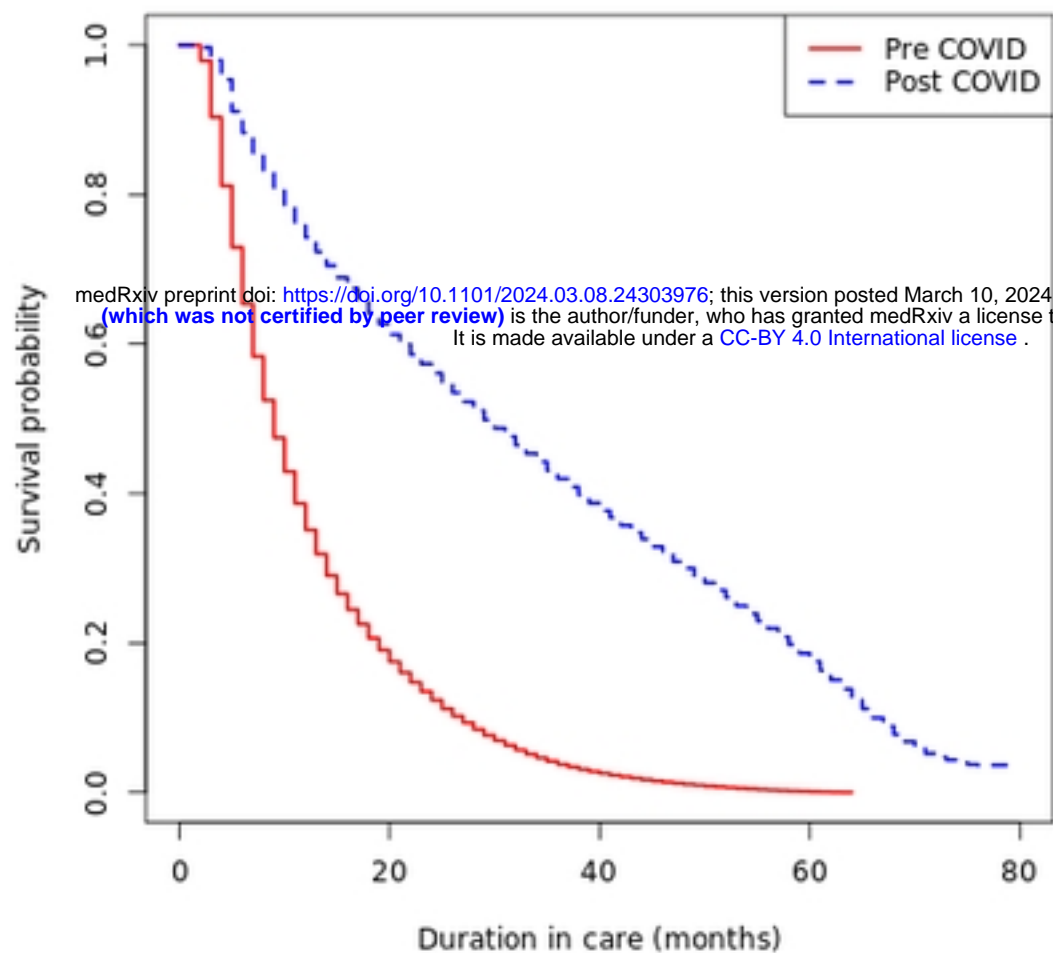


Figure 2 IIT vs ART



medRxiv preprint doi: <https://doi.org/10.1101/2024.03.08.24303976>; this version posted March 10, 2024. The copyright holder for this preprint (which was not certified by peer review) is the author/funder, who has granted medRxiv a license to display the preprint in perpetuity. It is made available under a [CC-BY 4.0 International license](https://creativecommons.org/licenses/by/4.0/).

Figure 3 Kaplan Meier Plots