

Brief psychological interventions to improve mental health outcomes in refugee populations: A systematic review

Nadia A. Daniel^{*1,2}, Xin Liu^{*1,2}, Elizabeth T. Thomas³, Emily Eraneva-Dibb^{1,2}, Al-Maz Ahmad⁴, and Carl Heneghan³

¹ Magdalen College, University of Oxford, Oxford, UK

² Medical Sciences Division, University of Oxford, Oxford, UK

³ Centre for Evidence-Based Medicine, Nuffield Department of Primary Care Health Sciences, University of Oxford, Oxford, UK

⁴ Department of Computing, Imperial College London, London, UK

* Joint first authors: Nadia A. Daniel and Xin Liu

Abstract

Background: Refugees, asylum seekers, and internally displaced people experience a high burden of mental health problems owing to their experiencing traumas and stressful events. .

Objective: To summarise the available evidence and analyse the efficacy of brief psychological interventions (< 3 months) on improving mental health outcomes, including depression, anxiety, and post-traumatic stress disorder (PTSD)-related symptoms in refugees.

Method: We searched Medline, EMBASE, PsycINFO, CINAHL, and Global Index Medicus from inception to 19 December 2023. We included controlled studies using any cognitive behavioural therapy (CBT) or CBT-based therapies delivered over a short time (< 3 months), which reported mental health outcomes pre-and post-intervention. We conducted meta-analyses using random effects to derive pooled summary statistics.

Results: 34 eligible studies across 36 publications were retrieved for analysis, and 33 studies were included in the meta-analysis. There was an overall improvement in immediate mental health outcomes for all three domains, with analysis of 13 studies on anxiety outcomes (SMD -1.12, 95% CI -1.72 to -0.52), 20 studies on depression (SMD -1.04, 95% CI -1.97 to -0.11), and 24 studies on PTSD (SMD -0.82, 95% CI -1.20 to -0.45). At 3 to 6-month follow-up, however, analysis of mental health outcomes shows no significant change from baseline, with standard mean differences of 0.24 (95% CI -0.94 to 1.42) across 4 studies, -0.73 (95% CI -2.14 to 0.68) across 9 studies, and 0.29 (95% CI -0.94 to 1.53) across 12 studies for anxiety, depression, and PTSD respectively.

Conclusion: Low-level evidence shows brief psychological interventions positively affect refugees and internally displaced people's mental well-being. Heterogeneity was high, even among subgroups, impacting our findings' generalisability.

HIGHLIGHTS

- 🔍 We analysed the evidence on the use of brief CBT-based psychological interventions to improve mental health outcomes in forcibly displaced persons.
- 🔍 These interventions had a positive effect on anxiety, depression, and PTSD, though there was high heterogeneity between studies.
- 🔍 Positive effects on mental health disappeared at long-term follow-up.

INTRODUCTION

The population of refugees, asylum seekers, and internally displaced people has grown to 110 million in 2023¹. The traumatic issues that force people to leave their homes, including persecution, violence, and human rights violations, have profound impacts on mental health²⁻⁴. They are then likely to experience additional stressful events during migration and resettlement in a new country⁴⁻⁶. As a result, forcibly displaced people have a markedly high prevalence of mental illness, notably posttraumatic stress disorder (PTSD), depression, and anxiety⁷⁻¹⁰.

Psychosocial interventions have proven to be effective in both preventing and treating mental health problems. For asylum seekers and refugees, cognitive behavioural therapy (CBT) and narrative exposure therapy (NET) have been shown to be effective in relieving symptoms of PTSD, depression, and anxiety^{11,12}. CBT is a structured, goal-orientated form of therapy that aims to identify and modify harmful patterns of thinking and behaviour¹³. NET is short-term, trauma-focused CBT whereby therapist and patient work to create a timeline of the patient's life, rebuilding the autobiographical memory, allowing for the reduction of anxiety¹⁴.

These interventions can benefit forcibly displaced people; however, they are often challenging to implement due to the short-term nature of their living situation (such as refugee camps)^{15,16}, or limited resources in host countries, with 75 percent of forcibly displaced people hosted by low- and middle-income countries¹⁷.

A possible solution to these challenges is brief psychological interventions where a restricted number of sessions are delivered over a short-term period. These are less resource intensive, particularly if delivered by trained lay workers rather than mental health specialists, and more appropriate for transient settings such as refugee camps. Examples include the low-intensity, transdiagnostic interventions developed by the World Health Organisation (WHO), including Problem Management Plus (PM+), which uses aspects of CBT to improve one's management of practical problems and associated mental health issues¹⁸ and Self-Help Plus (SH+), a guided self-help program delivered through a pre-recorded audio course, based on acceptance and commitment therapy (a form of CBT)¹⁹.

In 2020, a Cochrane scoping review²⁰ found a gap in the evidence on mental health interventions for refugees, asylum seekers, and internally displaced persons. There have been several recent systematic reviews looking at psychological interventions for refugees and asylum seekers. Two focus only on low-intensity, transdiagnostic interventions^{21,22}; one on psychological interventions in children²³; and one on psychosocial interventions for PTSD only in low- and middle-income countries²⁴. To date, no systematic review has examined the effect of brief CBT-based interventions on varied outcomes of mental health symptoms.

Therefore, to address this gap, we aimed to synthesise the body of evidence on short-term CBT-based interventions that were delivered in less than 3 months. The timing reflects the transient nature of housing situations for many forcibly displaced persons and the limited resources for their mental health provision.

METHODS

This systematic review adheres to standards outlined by Cochrane Collaboration²⁵ and is reported according to the Preferred Reporting Items for Systematic Reviews and Meta-Analyses (PRISMA²⁴). Differences between the preregistration of this review (preregistration-ID: 10.17605/OSF.IO/9CXU4) and the final review are presented in the Supplementary Material (SM1).

Search strategy

We developed the search strategy based on previous studies^{12,20} and consulted an information specialist to assess the search keywords and give recommendations for the final search strategy.

We searched databases from inception, with the search last updated on December 19, 2023. We searched five databases: Ovid Medline, Ovid EMBASE, Ovid PsycINFO, CINAHL, and Global Index Medicus. Further searches on Google Scholar and the ICTRP (International Clinical Trials Registry Platform) were conducted to ensure all relevant comprehensiveness of the search strategy.

Full search strategies are presented in **SM2**. We also screened the reference lists of included studies and related systematic reviews for inclusion.

Selection criteria

We included controlled trials using any CBT (or CBT-based therapies) delivered over a short period of time, as defined by the study, or as interventions that took place in a time frame of up to 3 months, reporting mental health outcomes pre-and post-intervention. We excluded observational studies and feasibility trials without a control group, case reports, case series and reviews of internet-delivered CBT interventions.

We used 3 months as the specific time limit because studies which describe their interventions as 'brief' generally take place within this timeframe²⁶⁻²⁸. We focussed on CBT-based interventions, as these interventions are feasible and generalisable in forcibly displaced persons and have evidence to support their use^{12,29,30}.

The review aimed to:

- 1) demonstrate if these interventions are efficacious in improving a range of mental health symptoms, particularly PTSD, anxiety, or depression,
- 2) assess if improvements can be sustained in the long term; and
- 3) identify factors that influence the effectiveness of the psychological interventions.

Study selection

All abstracts and full texts retrieved from our search strategy were screened in duplicate by three authors (ND, LX, EED), and any discrepancies were resolved by discussion with a third author.

Data extraction

Three investigators extracted data in duplicate (ND, LX, EED) using a standardised data collection template with predefined data fields, including study characteristics, participant demographics, primary and secondary outcome measures, and drop-out rate. A third investigator resolved any conflicts.

Quality appraisal

Three authors (ND, LX, EED) independently evaluated the risk of bias using the Cochrane Risk of Bias (RoB 2) tool²⁵ for randomised trials and the ROBINS-I tool for non-randomised studies²⁶. Any conflicts in the duplicated data were resolved by discussion with a third reviewer. We examined publication bias using visual inspections of funnel plots (reference) and Egger's test.

Data synthesis

As our primary outcome measure is the change in mental health outcomes as measured within 3 months of the intervention, the means for pre- and post-intervention measures were pooled, along with their standard deviations (SDs) and number of participants per study. We estimated standardised mean differences of anxiety, depression, and PTSD measures using Cohen's d and Hedge's g. Summary statistics for all trials were computed and displayed as forest plots using R version 4.3.2, using the meta package. We performed a random-effects meta-analysis for brief CBT-based psychological interventions in treating anxiety and depression and for brief CBT-based psychological interventions in treating PTSD.

We investigated the long-term effect of brief CBT-based interventions by performing post-hoc random-effects meta-analysis on mental health outcomes assessed at 3-6 months and 7-12 months post-intervention.

We examined heterogeneity by performing post-hoc subgroup analyses, grouping studies by the type of mental health assessment tools used, intervention type, population type, personnel conducting the intervention, sample size (>100 or <100), and whether the setting was in a low or high-income country.

Finally, we performed sensitivity analysis by removing studies with a moderate and high risk of bias to assess the robustness of the outcome

RESULTS

Search outcomes

The search strategy yielded 4784 hits. After de-duplication and full-text screening, 33 studies (31 unique trials) were identified. Screening the reference lists of the identified studies yielded three further studies, which were included in the subsequent analysis (**Figure 1**).

Study characteristics

Tables 1 & 2 report the characteristics of the 36 included studies and their extracted outcomes. Of these studies, 27 were carried out in adults, and the remaining nine were conducted in child and adolescent populations. Most studies were performed in Germany and Uganda (5 studies each), Jordan, Turkey, and the USA (3 studies each). Only two trials involved internally displaced persons; the rest were conducted on refugees and/or asylum seekers. Most studies were RCTs ($n=30$, 83.3%).

Commonly used intervention programs included the WHO interventions Problem Management Plus (PM+; 5 studies) and Self-Help Plus (SH+; 3 studies) in adult samples; other interventions more generally employed the principles of Cognitive Behavioural Therapy (CBT; 7 studies) as well as Narrative Exposure Therapy (NET; 6 studies). In children/adolescents, Early Adolescent Skills for Emotions (EASE; 3 studies) and Narrative Exposure Therapy for Traumatized Children and Adolescents (KIDNET; 2 studies) were employed (see **Table 1**).

Quality appraisal

Overall, 8 (27%) studies were reported as 'low risk', 16 (53%) had 'some concern', and 8 (27%) had 'high risk'. The main areas of concern of the RCTs were missing outcome data and measurement of the outcome, where the psychological assessment tools used were not validated or even shown to be inconsistent. Analysis of the six remaining non-randomised studies using the ROBINS-I tool revealed methodological biases; four studies were reported as 'serious risk' and were judged 'moderate risk' (**SM 3**). The main flaws in the non-randomised trials were due to confounding, missing data, and measurement of outcomes.

The funnel plots of anxiety and PTSD outcomes were visually symmetrical (**SM 4**); Egger's test for a regression intercept gave p -values of 0.63 and 0.07, respectively, indicating no evidence of publication bias. The funnel plot of depression outcomes showed asymmetry of effect sizes (Egger's test $p = 0.12$), suggesting possible publication bias. A search of the WHO's ICTRP (International Clinical Trials Registry Platform) did not show any unpublished studies.

Effectiveness of psychosocial outcomes

Figure 2 shows that brief psychological interventions were effective in decreasing anxiety symptoms (13 studies, 1183 participants) relative to controls (SMD -1.12, 95% CI -1.72 to -0.52, $I^2 = 95\%$). **Figure 3** shows that brief psychological interventions relative to control yielded standard mean differences -1.04, (95% CI -1.97 to -0.11, $I^2 99\%$) for depression (20 studies, 3855 participants) and **Figure 4** shows the effectiveness for PTSD (24 studies, 3,770 participants), with a SMD of -0.82 (-1.20 to -0.45, $I^2 93\%$).

Intervention method.

Four RCTs [Eskici et al., 2023; Shaw et al., 2009; Hinton et al., 2004, 2005] investigated the effectiveness of culturally adapted CBT (CA-CBT) sessions on anxiety; there was no significant

effect (SMD -1.46, 95% CI -3.17 to 0.25, $I^2 = 83\%$). Three other RCTs (Spaaij et al., 2002; Knefel et al., 2022; de Graaff et al., 2023) utilised PM+ and did not demonstrate a significant effect (SMD -0.40, 95% CI -1.50 to 0.69, $I^2 = 66\%$). These same three studies using PM+ also found this intervention had no significant effect on depression (SMD -0.41, 95% CI -1.17 to 0.34, $I^2 = 48\%$). However, in the four RCTs [de Graaff et al., 2023; Spaaij et al., 2022; Knefel et al., 2022; Acarturk et al., 2022] using PM+, there was a significant effect on PTSD (SMD -0.34, 95% CI -0.50 to -0.17, $I^2 = 0\%$) (**SM 5.1**).

Intervention type (group vs individual).

We did not find any difference between interventions conducted in a group setting versus individually on anxiety, depression, and PTSD outcomes. (**SM 5.2**).

Intervention providers.

We also examined the effectiveness of interventions conducted by trained lay persons (those in the local community or even peer refugees) versus professionals with a background in clinical psychology or psychiatry (**Figure 5**). Effect sizes were comparable for anxiety (lay persons: SMD -1.13, 95% CI -2.25 to -0.01, $I^2 = 97\%$; trained psychologists: SMD -1.09, 95% CI -1.85 to -0.33, $I^2 = 70\%$) and PTSD (lay persons: SMD -0.73, 95% CI -1.30 to -0.16, $I^2 = 95\%$; trained psychologists: SMD -0.95, -1.47 to -0.44, $I^2 = 76\%$). For depression, there was no significant difference between studies employing trained lay persons (SMD -1.27, 95% CI -2.63 to 0.08, $I^2 = 99\%$) compared to studies with interventions conducted by trained professionals (SMD -0.46, 95% CI -0.67 to -0.25, $I^2 = 0\%$).

Intervention setting.

We did not find any difference between interventions conducted in a low-to-medium resource setting versus a high-resource setting for anxiety, depression, and PTSD. (**SM 5.3**).

Population age.

We divided the studies by whether they were performed on adults or children (8-18 years old) and found that positive effects of the intervention on anxiety were only present for adults (SMD -1.17, 95% CI -1.88 to -0.45, $I^2 = 96\%$), whereas children did not experience a significant change in their symptoms (SMD -0.81, 95% CI -2.71 to 1.10, $I^2 = 0\%$). This was also apparent for depression outcomes (adults: SMD -1.12, 95% CI -2.21 to -0.04, $I^2 = 98\%$; children: SMD -0.86, -3.38 to 1.67, $I^2 = 99\%$) and PTSD outcomes (adults: SMD -0.85, 95% CI -1.22 to -0.47, $I^2 = 90\%$; children: SMD -0.72, -1.85 to 0.41, $I^2 = 97\%$) (**Figure 6**).

Sample size.

We did not find any difference between interventions conducted in a large patient population ($n > 100$) versus a smaller patient population ($n < 100$) on outcomes for anxiety, depression, and PTSD. (**SM 5.4**).

Type of mental health assessment tool.

We did not find any difference between the type of mental health assessment tool that studies used to measure depression (e.g. PHQ-9), anxiety (e.g. HSCL-25), and PTSD outcomes (e.g. PCL-5). (**SM 5.5**). We did not show results on certain intervention methods (e.g. MBTR-R, Mein Weg) and types of mental health assessment tools (e.g. CES-D) as there were too few studies (< 3) to conduct a meta-analysis.

Sensitivity analysis

Examining only studies that had low evidence of bias revealed a moderate positive effect of psychological interventions on PTSD (SMD -1.18, 95% CI -2.07 to -0.28, $I^2 = 86\%$) [Bryant et al., adult, 2022; Bryant et al., child, 2022; Tol et al., 2020; Hinton et al., 2004, 2005]. However, in the four studies assessing depression (Bryant et al., adult, 2022; Bryant et al., child, 2022; Tol et al., 2020; Hinton et al., 2004), we found no significant improvement in depression symptoms (SMD -1.64, 95% CI -8.02 to 4.73, $I^2 = 100\%$). Similarly, there was no significant effect of psychological interventions on anxiety (SMD -2.22, 95% CI -4.94 to 0.51, $I^2 = 82\%$) [Bryant et al., adult, 2022; Hinton et al., 2004, 2005] (**Figure 7**).

Long-term follow-up

Several studies reporting long-term follow-up were identified, and a post-hoc analysis of these outcomes was conducted. Follow-up durations were categorised into short-term (3-6 months) and long-term (7-12 months), in line with classifications used in similar systematic reviews^{21,31}. No study extended long-term follow-up beyond 12 months.

For short-term follow-up, there were four studies for anxiety, 9 for depression, and 12 for PTSD included in the analysis (**SM6**). The analysis revealed no significant effect for anxiety (SMD 0.24, 95% CI -0.94 to 1.42), depression (SMD -0.73, 95% CI -2.14 to 0.68), or PTSD (SMD 0.29, 95% CI -0.94 to 1.53).

For long-term follow-up, two studies reported results for depression, 1 for anxiety, and 3 for PTSD, with varying results. Bryant et al., 2022³² found no significant differences between treatment arms for depression, anxiety, and PTSD despite significant effects at post-intervention and short-term follow-up²⁶. Jordans et al., 2023³³ reported no significant long-term effects for depression or PTSD. In contrast, Neuner et al., 2004³⁴ found significant effects of the intervention on PTSD scores at 12 months.

DISCUSSION

This systematic review aimed to investigate CBT-based psychological interventions conducted in a brief time period (under three months) in forcibly displaced persons. We found low-level evidence for the favourable effects of brief psychological interventions compared to (enhanced) care as usual on varied mental health outcomes. The results were unchanged even after removing low-quality studies for PTSD but not for depression and anxiety. The effects disappeared at short-term follow-up at 3-6 months and long-term follow-up 7-12 months. Subgroup analysis revealed a strong effect of brief interventions for adults compared with children and adolescents. Furthermore, there was no significant difference between interventions conducted by trained psychologists and those conducted by lay persons.

While the favourable effects of the brief CBT-based psychological interventions were found for PTSD, depression, and anxiety, the effects were greatest for anxiety compared to depression and PTSD, which suggests brief interventions have more of a role in the former. Studies were more likely to report PTSD compared to symptoms of depression and anxiety as compared to symptoms of PTSD. This may be due to the lower rates of anxiety and depression compared to PTSD found in the refugee population⁷. Previous reviews have found similar findings in refugee populations^{11,21,22,24}; however, some only look at specific populations or single outcomes, or do not report the duration of interventional effects.

The interventional effects did not remain significant for anxiety, depression and PTSD in both short-term follow-ups of 3-6 months and in the majority of studies reporting long-term follow-ups of 7-12 months. This suggests that the benefits of these interventions may not endure despite the initial alleviation of symptoms, indicating that brief interventions are unable to comprehensively address the substantial mental health challenges faced by this population. The benefits on mental health symptoms may also diminish due to ongoing stressors experienced by forcibly displaced persons; for example, many studies took place in refugee camps, with well-documented stressors such as challenges meeting basic survival needs or unsafe living conditions^{5,6,35}. Not all studies conducted short-term follow-ups, and only a few conducted long-term follow-ups. Additionally, there are often increasing losses to follow-up over time^{32-34,36}. Therefore, more evidence is needed to investigate if the benefits of brief psychological interventions diminish over time. If confirmed, strategies should be identified to mitigate this decline, such as interventions administered over a longer timeframe or the provision of booster sessions.³⁷

Analysis of subgroups comprising studies conducted by trained psychologists and briefly trained lay persons found no significant difference in the effects of these interventions. Furthermore, psychological interventions conducted by lay persons had significant beneficial effects on PTSD symptoms, which is consistent with previous systematic reviews^{21,22}. The effectiveness of these interventions may be attributed to the robustness of underlying therapeutic materials^{18,19}. The briefly trained lay persons in the studies were also often from the same background as those undergoing the intervention³⁸⁻⁴¹, thus, perhaps factors such as their relatability and cultural alignment with the community could contribute to the enhanced effectiveness of the interventions⁴². Deploying briefly trained lay persons could reduce resource requirements,

which is advantageous for the resource-limited settings where forcibly displaced persons are usually situated^{16,17}.

Subgroup analysis of age groups revealed no evidence for favourable effects of the brief CBT-based psychological interventions in children and adolescents compared with adults, in line with previous findings^{22,43,44}. This is concerning given the high prevalence of mental health problems in forcibly displaced children and adolescents^{9,45}, as well as evidence that evidence suggests that early interventions for children and adolescents can prevent long-term psychological problems^{46,47}. The lack of significant effect in this demographic may stem from various factors. There was an overall poor quality of evidence, with the majority of studies involving this population (89%) receiving a risk of bias ratings of 'some concerns' or 'high'. This may reflect the inherent challenges of conducting research involving children, such as ethical constraints related to utilisation of control groups for forcibly displaced youth. Additionally, the success of psychological interventions in children may be enhanced by parental involvement⁴⁶, but this may be challenging in research due to the substantial number of unaccompanied and separated children in the refugee population^{1,48}. Further research is critical to identify interventions that are effective for this age group and the determinants of their success.

Limitations

The results of this study should be interpreted in light of some limitations. Firstly, our inclusion criteria were restricted to research papers published in English, and searches were conducted across only five databases, potentially resulting in the omission of relevant studies. While efforts were made to mitigate this through a comprehensive search strategy (e.g. extensive citation searching of related systematic reviews and included studies), it is possible that other relevant studies exist that were not captured by our search.

Our decision to impose a 3-month time limit for the duration of psychological intervention may have led to the exclusion of relevant studies. However, this limit was chosen to align with the focus on brief psychological interventions, which are commonly defined as interventions lasting less than 3 months. Brief psychological interventions may be more suitable for forcibly displaced persons, given the transient nature of their living situations and limited mental health resources available. An additional limitation arose from inconsistencies in the description of interventions and timing across many studies; therefore, we had to exclude studies which may have contained relevant evidence.

We found high statistical heterogeneity across all analyses. This could be attributed to multiple factors, including intervention type, intervention setting, and demographic characteristics of the study population. We performed sensitivity analysis by the quality of the study, which removed the heterogeneity for anxiety; however, only three studies were considered high quality. However, we reported the pooled estimates as the majority of studies lie in the same direction, including studies with non-significant results. When restricting this to studies with significant effects, i.e., not crossing the null line, 9/13 studies for anxiety, 9/20 studies for depression, and 14/24 studies for PTSD found a positive outcome.

Overall, the risk of bias was high, which undermined our confidence in the results. This may reflect challenges associated with conducting research with forcibly displaced populations, such as high dropout rates. Both randomised and non-randomised trials were included so as not to exclude relevant research where randomisation was not feasible due to lack of resources; however, this may have biased results. Finally, digital interventions, which may be more effective and less resource-intensive than face-to-face interventions, were excluded.⁵⁰

Implications for Practice, Policy, and Research

There is sufficient evidence to warrant brief psychological interventions for refugee populations. It is more likely that these interventions have an impact on anxiety and PTSD, whereas, without ongoing support, depression symptoms are unlikely to improve. Our findings suggest that to optimise the use of resources, brief psychological interventions can be delivered by lay people, and policymakers should consider how refugees themselves can be trained to deliver such interventions to improve the mental health outcomes of refugee populations.

From a research perspective, there is a need to undertake high-quality trials with long-term follow-up and develop reporting standards that facilitate improved descriptions of the interventions and core outcomes to aid pooled analysis. This is a particularly pressing issue in the forcibly displaced youth, in whom interventions have generally been found to be ineffective. The role of digital interventions warrants further research exploring their performance as well as accessibility and applicability.

CONCLUSION

This systematic review and meta-analysis presented a comprehensive and robust synthesis of the use of brief psychological interventions to improve mental health outcomes in forcibly displaced people. The results of this study showed low-level evidence that brief psychological interventions have positive effects in forcibly displaced persons as compared to control. There was considerable heterogeneity among studies, which remained unexplained even after conducting several subgroup and sensitivity analyses. Subgroup analysis showed that while brief psychological interventions were effective in adults, they did not appear to be effective in children and adolescents. There was no significant difference observed between interventions conducted by mental health professionals and those by briefly trained peer refugees/lay persons. The effects of the interventions did not appear to translate into long-term positive effects on mental health at 3 months and beyond.

These findings point towards the feasibility of training peer refugees to deliver psychological interventions in lower-resource settings, a need for more rigorous studies in child and adolescent populations, and more sustained intervention in order to produce positive long-term psychological effects.

Acknowledgements

We are most grateful to Georgia Richards for her guidance with publishing the protocol and Nia Roberts for her assistance in drafting our initial search strategy. We would also like to thank all the authors of the primary studies who kindly provided additional information upon request.

Sources of funding

None. This research did not receive any grants from funding agencies.

Disclosures

None. The authors report that there are no competing interests to declare.

Author contributions

Conception and design: ND, LX, EED, ET, CH

Data collection: ND, LX, EED

Data analysis and interpretation: ND, LX, ET, EA

Writing (original draft): ND, LX

Review and editing: ND, LX, ET, CH

Bibliography

1. Global Appeal 2023. Global Focus. Accessed December 9, 2023. <https://reporting.unhcr.org/globalappeal-2023>
2. Hargreaves S. A body of evidence: torture among asylum seekers to the West. *Lancet Lond Engl.* 2002;359(9308):793-794. doi:10.1016/S0140-6736(02)07888-1
3. Jud A, Pfeiffer E, Jarczok M. Epidemiology of violence against children in migration: A systematic literature review. *Child Abuse Negl.* 2020;108:104634. doi:10.1016/j.chiabu.2020.104634
4. Jolof L, Rocca P, Mazaheri M, Okenwa Emegwa L, Carlsson T. Experiences of armed conflicts and forced migration among women from countries in the Middle East, Balkans, and Africa: a systematic review of qualitative studies. *Confl Health.* 2022;16(1):46. doi:10.1186/s13031-022-00481-x
5. Oldroyd JC, Kabir A, Dzakpasu FQS, Mahmud H, Rana J, Islam RM. The experiences of children and adolescents undergoing forced separation from their parents during migration: A systematic review. *Health Soc Care Community.* 2022;30(3):888-898. doi:10.1111/hsc.13595
6. Benjeddi H, Kwee D, Gruppen M, van der Kuip M, van Hensbroek MB, Furth MT van. Nutritional status of refugee children living in temporary settlements in Europe and MENA region: a systematic review and meta-analysis. *Eur J Pediatr.* 2023;182(8):3397-3404. doi:10.1007/s00431-023-04999-x
7. Blackmore R, Boyle JA, Fazel M, et al. The prevalence of mental illness in refugees and asylum seekers: A systematic review and meta-analysis. *PLoS Med.* 2020;17(9):e1003337. doi:10.1371/journal.pmed.1003337
8. Gwynn R.C., McQuiston H.L., McVeigh K.H., Garg R.K., Frieden T.R., Thorpe L.E. Prevalence, diagnosis, and treatment of depression and generalized anxiety disorder in a diverse urban community. *Psychiatr Serv.* 2008;59(6):641-647. doi:10.1176/ps.2008.59.6.641
9. Fazel M, Wheeler J, Danesh J. Prevalence of serious mental disorder in 7000 refugees resettled in western countries: a systematic review. *Lancet Lond Engl.* 2005;365(9467):1309-1314. doi:10.1016/S0140-6736(05)61027-6
10. Hamrah M.S., Hoang H., Mond J., Pahlavanzade B., Charkazi A., Auckland S. The prevalence and correlates of symptoms of post-traumatic stress disorder (PTSD) among resettled Afghan refugees in a regional area of Australia. *J Ment Health.* 2021;30(6):674-680. doi:10.1080/09638237.2020.1739247
11. Cowling MM, Anderson JR. The effectiveness of therapeutic interventions on psychological distress in refugee children: A systematic review. *J Clin Psychol.* 2023;79(8):1857-1874. doi:10.1002/jclp.23479
12. Turrini G, Purgato M, Acarturk C, et al. Efficacy and acceptability of psychosocial interventions in asylum seekers and refugees: systematic review and meta-analysis. *Epidemiol Psychiatr Sci.* 2019;28(4):376-388. doi:10.1017/S2045796019000027
13. Chand SP, Kuckel DP, Huecker MR. Cognitive Behavior Therapy. In: *StatPearls*. StatPearls Publishing; 2023. Accessed December 27, 2023. <http://www.ncbi.nlm.nih.gov/books/NBK470241/>
14. Schauer M, Neuner F, Elbert T. *Narrative Exposure Therapy: A Short-Term Intervention for*

- Traumatic Stress Disorders after War, Terror, or Torture*. Hogrefe & Huber Publishers; 2005:viii, 68.
15. <https://www.unhcr.org/external/component/header>. UNHCR. Accessed December 27, 2023. <https://www.unhcr.org/external/component/header>
 16. Refugee Camps | Definition, facts and statistics. Accessed January 11, 2024. <https://www.unrefugees.org/news/refugee-camps-explained/>
 17. Global Trends. UNHCR UK. Accessed December 9, 2023. <https://www.unhcr.org/uk/global-trends>
 18. Dawson KS, Bryant RA, Harper M, et al. Problem Management Plus (PM+): a WHO transdiagnostic psychological intervention for common mental health problems. *World Psychiatry*. 2015;14(3):354. doi:10.1002/wps.20255
 19. Epping-Jordan JE, Harris R, Brown FL, et al. Self-Help Plus (SH+): a new WHO stress management package. *World Psychiatry*. 2016;15(3):295-296. doi:10.1002/wps.20355
 20. Uphoff E., Robertson L., Cabieses B., et al. An overview of systematic reviews on mental health promotion, prevention, and treatment of common mental disorders for refugees, asylum seekers, and internally displaced persons. *Cochrane Database Syst Rev*. 2020;2020(9):CD013458. doi:10.1002/14651858.CD013458.pub2
 21. Schäfer SK, Thomas LM, Lindner S, Lieb K. World Health Organization's low-intensity psychosocial interventions: a systematic review and meta-analysis of the effects of Problem Management Plus and Step-by-Step. *World Psychiatry*. 2023;22(3):449-462. doi:10.1002/wps.21129
 22. Schäfer SK, Kunzler AM, Lindner S, et al. Transdiagnostic psychosocial interventions to promote mental health in forcibly displaced persons: a systematic review and meta-analysis. *Eur J Psychotraumatology*. 14(2):2196762. doi:10.1080/20008066.2023.2196762
 23. Thabet A., Ghandi S., Barker E.K., Rutherford G., Malekinejad M. Interventions to enhance psychological resilience in forcibly displaced children: a systematic review. *BMJ Glob Health*. 2023;8(2):e007320. doi:10.1136/bmjgh-2021-007320
 24. Dowllah IM, Melville C. Effectiveness of psychosocial interventions for post-traumatic stress disorder in refugees and asylum seekers resettled in low- and middle-income countries: A systematic review and meta-analysis. *J Health Psychol*. Published online September 20, 2023:13591053231199254. doi:10.1177/13591053231199254
 25. Cochrane Handbook for Systematic Reviews of Interventions. Accessed December 9, 2023. <https://training.cochrane.org/handbook>
 26. Bryant RA, Bawaneh A, Awwad M, et al. Effectiveness of a brief group behavioral intervention for common mental disorders in Syrian refugees in Jordan: A randomized controlled trial. *PLoS Med*. 2022;19(3):e1003949. doi:10.1371/journal.pmed.1003949
 27. Knepfel M, Kantor V, Nicholson AA, et al. A brief transdiagnostic psychological intervention for Afghan asylum seekers and refugees in Austria: a randomized controlled trial. *Trials*. 2020;21:57. doi:10.1186/s13063-019-3839-9
 28. Shepardson RL, Buchholz LJ, Weisberg RB, Funderburk JS. Brief psychological interventions for anxiety in adult primary care patients: A review and recommendations for future research. *J Anxiety Disord*. 2018;54:71-86. doi:10.1016/j.janxdis.2017.12.004
 29. Nosè M, Ballette F, Bighelli I, et al. Psychosocial interventions for post-traumatic stress disorder in refugees and asylum seekers resettled in high-income countries: Systematic

- review and meta-analysis. *PLoS ONE*. 2017;12(2):e0171030.
doi:10.1371/journal.pone.0171030
30. Lawton K, Spencer A. A Full Systematic Review on the Effects of Cognitive Behavioural Therapy for Mental Health Symptoms in Child Refugees. *J Immigr Minor Health*. 2021;23(3):624-639. doi:10.1007/s10903-021-01151-5
 31. Roberts NP, Kitchiner NJ, Kenardy J, Lewis CE, Bisson JI. Early psychological intervention following recent trauma: A systematic review and meta-analysis. *Eur J Psychotraumatology*. 2019;10(1):1695486. doi:10.1080/20008198.2019.1695486
 32. Bryant RA, Bawaneh A, Awwad M, et al. Twelve-month follow-up of a randomised clinical trial of a brief group psychological intervention for common mental disorders in Syrian refugees in Jordan. *Epidemiol Psychiatr Sci*. 2022;31:e81. doi:10.1017/S2045796022000658
 33. Jordans MJD, Brown FL, Kane J, et al. Evaluation of the Early Adolescent Skills for Emotions (EASE) intervention in Lebanon: A randomized controlled trial. *Compr Psychiatry*. 2023;127:152424. doi:10.1016/j.comppsy.2023.152424
 34. Neuner F, Schauer M, Klaschik C, Karunakara U, Elbert T. A Comparison of Narrative Exposure Therapy, Supportive Counseling, and Psychoeducation for Treating Posttraumatic Stress Disorder in an African Refugee Settlement. *J Consult Clin Psychol*. 2004;72(4):579-587. doi:10.1037/0022-006X.72.4.579
 35. van de Wiel W, Castillo-Laborde C, Francisco Urzúa I, Fish M, Scholte WF. Mental health consequences of long-term stays in refugee camps: preliminary evidence from Moria. *BMC Public Health*. 2021;21:1290. doi:10.1186/s12889-021-11301-x
 36. Turrini G, Purgato M, Tedeschi F, et al. Long-term effectiveness of Self-Help Plus in refugees and asylum seekers resettled in Western Europe: 12-month outcomes of a randomised controlled trial. *Epidemiol Psychiatr Sci*. 2022;31:e39. doi:10.1017/S2045796022000269
 37. Gearing RE, Schwalbe CSJ, Lee R, Hoagwood KE. The Effectiveness of Booster Sessions in Cbt Treatment for Child and Adolescent Mood and Anxiety Disorders. *Depress Anxiety*. 2013;30(9):800-808. doi:10.1002/da.22118
 38. Orang TM, Missmahl I, Thoele AM, et al. New directions in the mental health care of migrants, including refugees—A randomized controlled trial investigating the efficacy of value-based counselling. *Clin Psychol Psychother*. 2022;29(4):1433-1446. doi:10.1002/cpp.2728
 39. De Graaff A.M., Cuijpers P., McDaid D., et al. Peer-provided Problem Management plus (PM+) for adult Syrian refugees: A pilot randomised controlled trial on effectiveness and cost-effectiveness. *Epidemiol Psychiatr Sci*. 2020;((De Graaff, Cuijpers, Sijbrandij) Department of Clinical Neuro, Developmental Psychology, Amsterdam Public Health Institute, Vrije Universiteit Amsterdam, Amsterdam, Netherlands):e162. doi:10.1017/S2045796020000724
 40. Purgato M., Carswell K., Tedeschi F., et al. Effectiveness of Self-Help plus in Preventing Mental Disorders in Refugees and Asylum Seekers in Western Europe: A Multinational Randomized Controlled Trial. *Psychother Psychosom*. 2021;90(6):403-414. doi:10.1159/000517504
 41. Acarturk C, Uygun E, Ilkkursun Z, et al. Group problem management plus (PM+) to decrease psychological distress among Syrian refugees in Turkey: a pilot randomised controlled trial. *BMC Psychiatry*. 2022;22(1):8. doi:10.1186/s12888-021-03645-w

42. Slobodin O, de Jong JT. Mental health interventions for traumatized asylum seekers and refugees: What do we know about their efficacy? *Int J Soc Psychiatry*. 2015;61(1):17-26. doi:10.1177/0020764014535752
43. Morina N, Sterr TN. Lack of evidence for the efficacy of psychotherapies for PTSD and depression in child and adolescent refugees. *World Psychiatry*. 2019;18(1):107-108. doi:10.1002/wps.20596
44. Alzaghoul AF, McKinlay AR, Archer M. Post-traumatic stress disorder interventions for children and adolescents affected by war in low- and middle-income countries in the Middle East: systematic review. *BJPsych Open*. 2022;8(5). doi:10.1192/bjo.2022.552
45. Reed RV, Fazel M, Jones L, Panter-Brick C, Stein A. Mental health of displaced and refugee children resettled in low-income and middle-income countries: risk and protective factors. *Lancet Lond Engl*. 2012;379(9812):250-265. doi:10.1016/S0140-6736(11)60050-0
46. Kerbage H, Bazzi O, El Hage W, Corruble E, Purper-Ouakil D. Early Interventions to Prevent Post-Traumatic Stress Disorder in Youth after Exposure to a Potentially Traumatic Event: A Scoping Review. *Healthcare*. 2022;10(5):818. doi:10.3390/healthcare10050818
47. Mullen S. Major depressive disorder in children and adolescents. *Ment Health Clin*. 2018;8(6):275-283. doi:10.9740/mhc.2018.11.275
48. Vaghri Z, Tessier Z, Whalen C. Refugee and Asylum-Seeking Children: Interrupted Child Development and Unfulfilled Child Rights. *Children*. 2019;6(11):120. doi:10.3390/children6110120
49. Huemer J, Karnik NS, Voelkl-Kernstock S, et al. Mental health issues in unaccompanied refugee minors. *Child Adolesc Psychiatry Ment Health*. 2009;3:13. doi:10.1186/1753-2000-3-13
50. Röhr S, Jung FU, Pabst A, et al. A Self-Help App for Syrian Refugees With Posttraumatic Stress (Sanadak): Randomized Controlled Trial. *JMIR MHealth UHealth*. 2021;9(1):e24807. doi:10.2196/24807

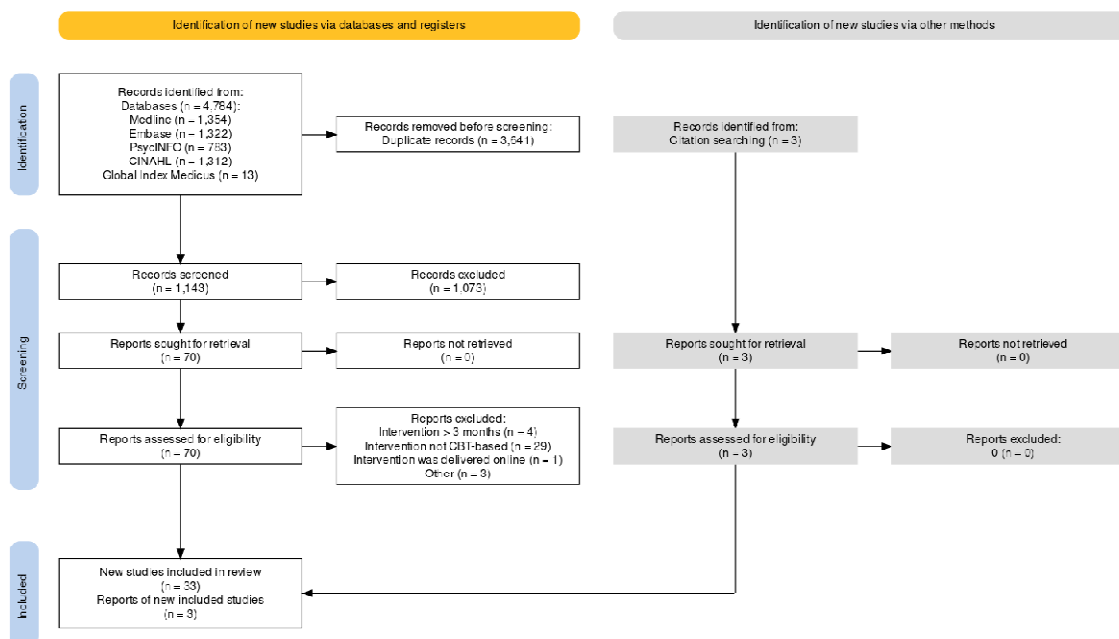


Figure 1. PRISMA flowchart of the study selection process.¹

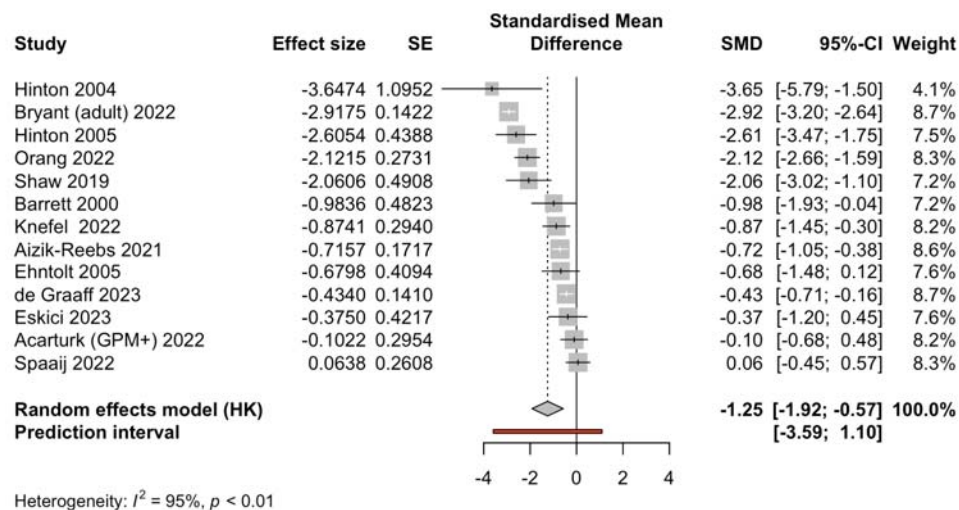


Figure 2. Effectiveness of brief CBT-based psychological interventions in treating anxiety in refugees and asylum seekers.

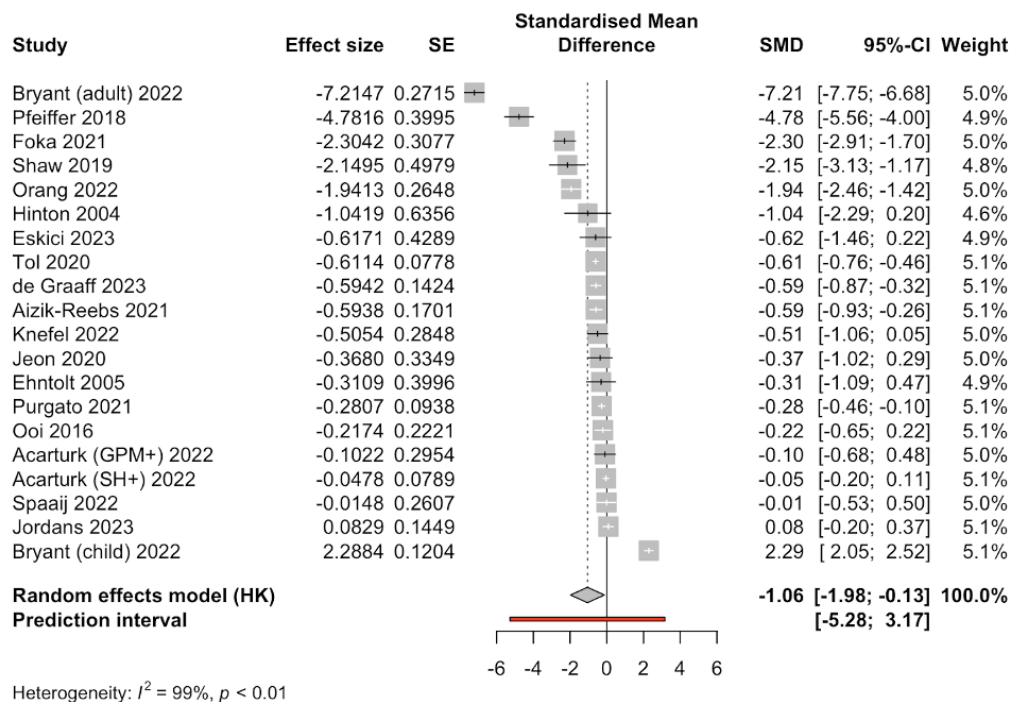


Figure 3. Effectiveness of brief CBT-based psychological interventions in treating depression in refugees and asylum seekers.

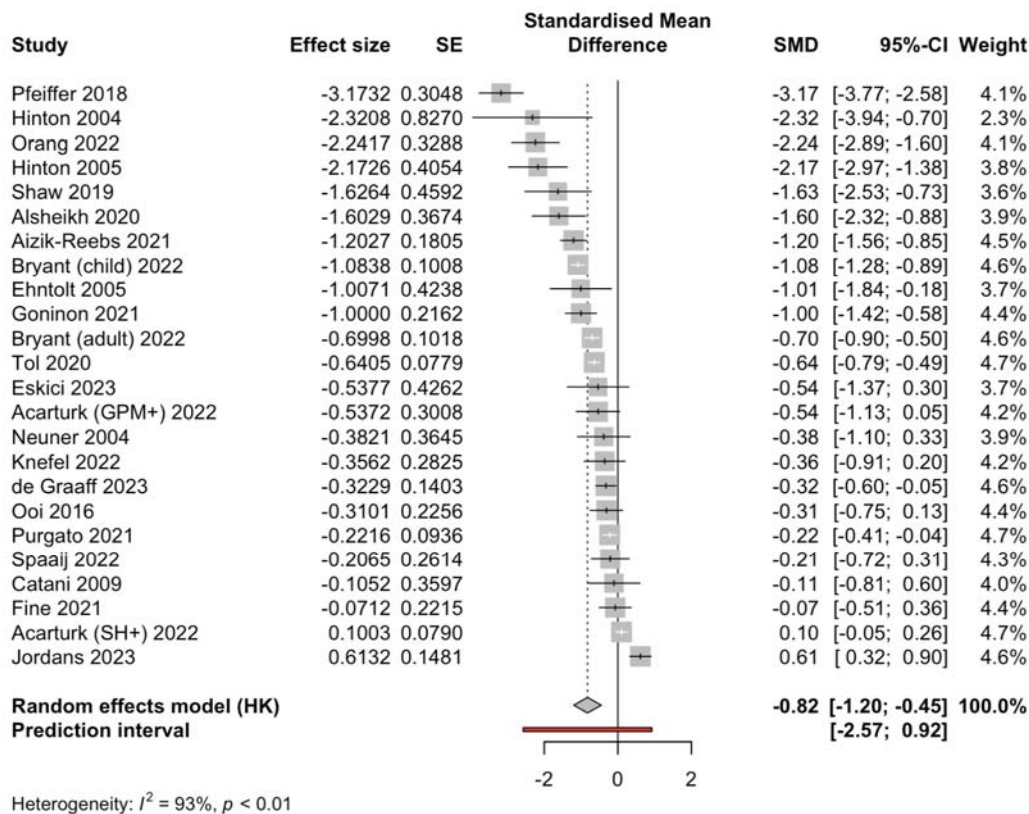


Figure 4. Effectiveness of brief CBT-based psychological interventions in treating PTSD in refugees and asylum seekers.

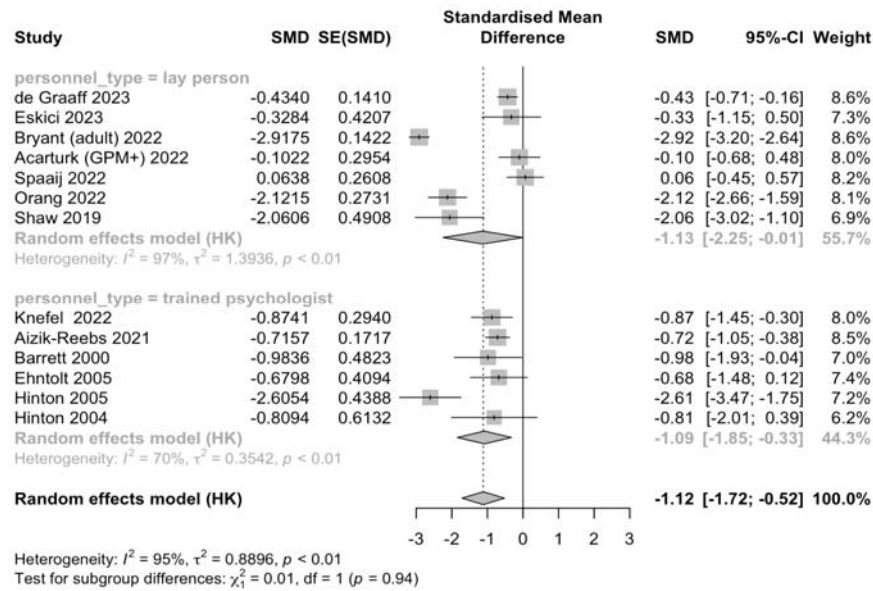


Figure 5.1. Effectiveness of interventions carried out by lay persons versus trained professionals in treating anxiety

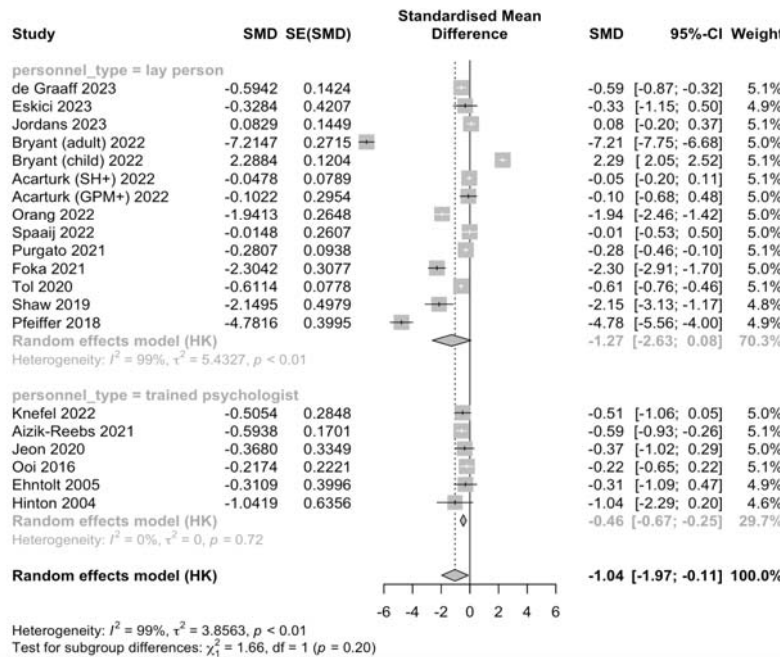


Figure 5.2. Effectiveness of interventions carried out by lay persons versus trained professionals in treating depression

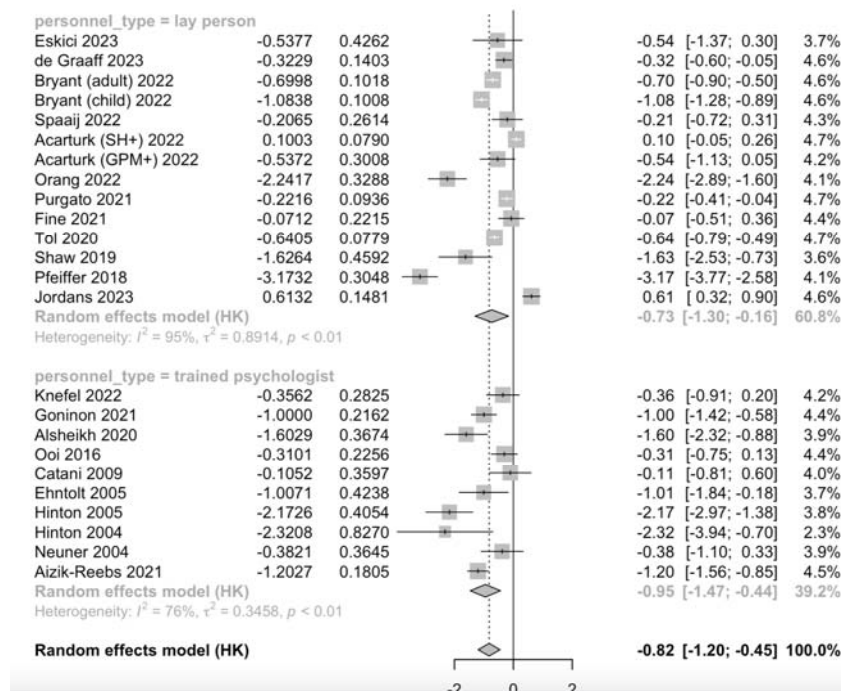


Figure 5.3. Effectiveness of interventions carried out by lay persons versus trained professionals in treating anxiety, depression, and PTSD

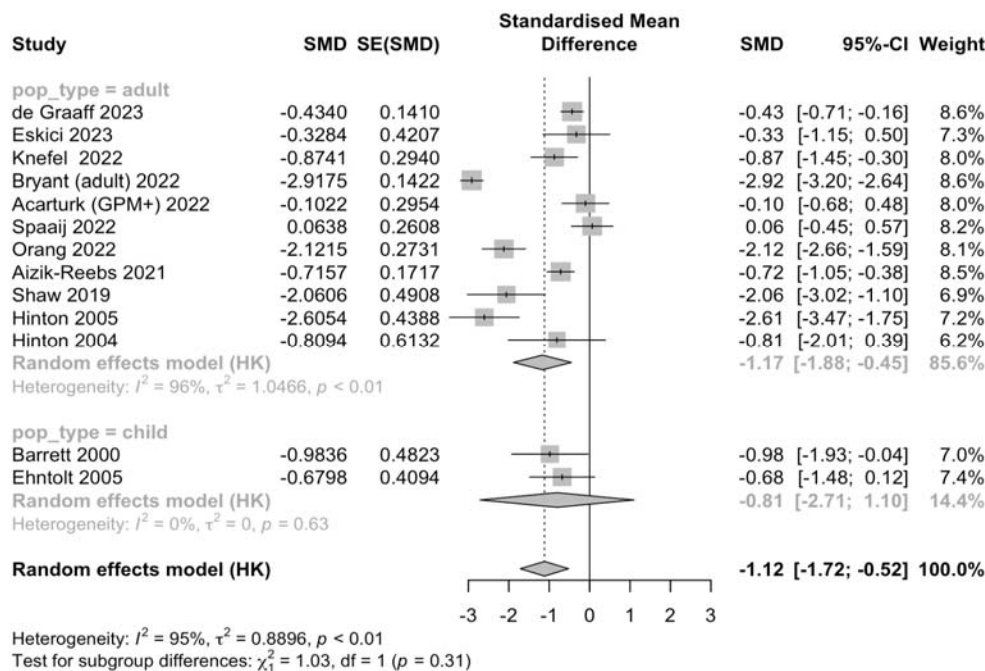


Figure 6.1. Effectiveness of interventions on adult and child populations for anxiety

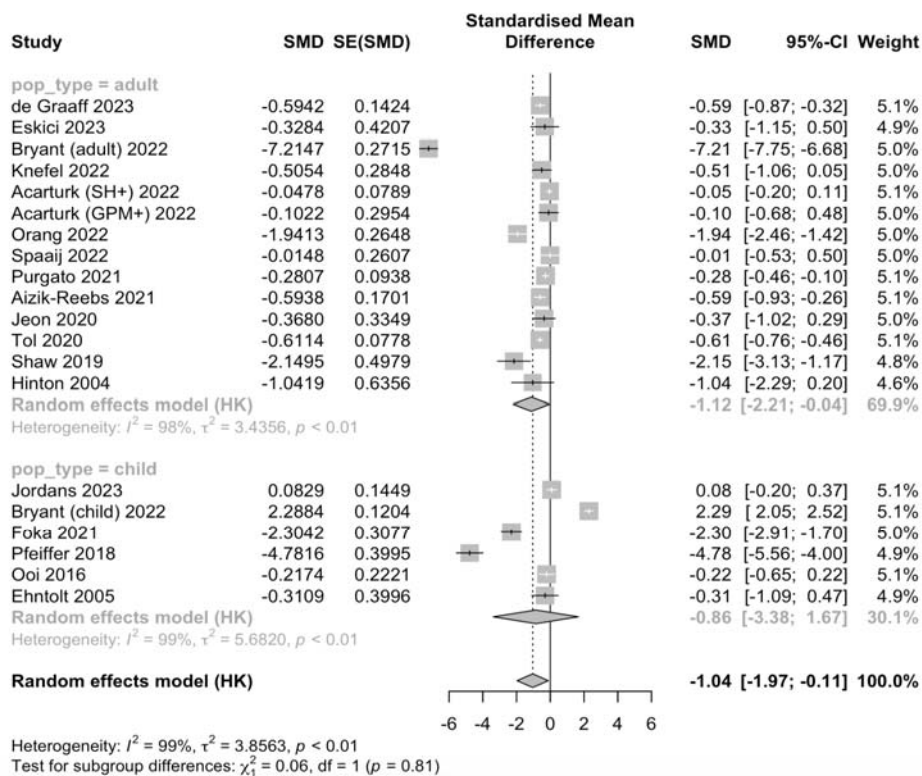


Figure 6.2. Effectiveness of interventions on adult and child populations for depression

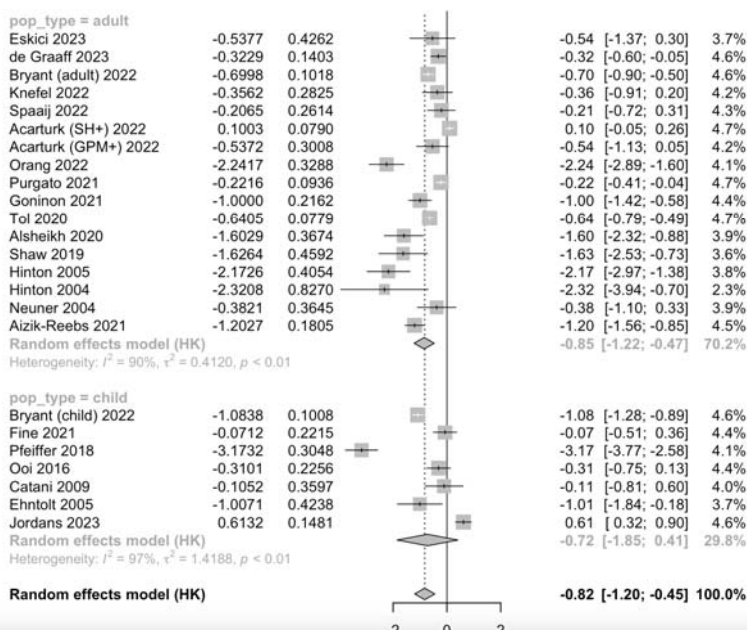


Figure 6.3. Effectiveness of interventions on adult and child populations for PTSD

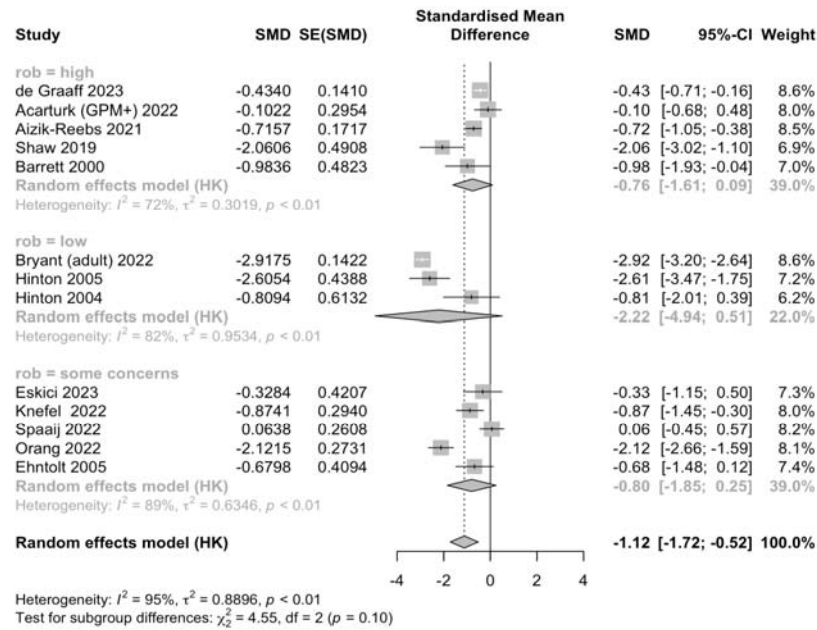


Figure 7.1. Sensitivity analysis: effectiveness of interventions carried out in studies with low, moderate, or high risk of bias for anxiety

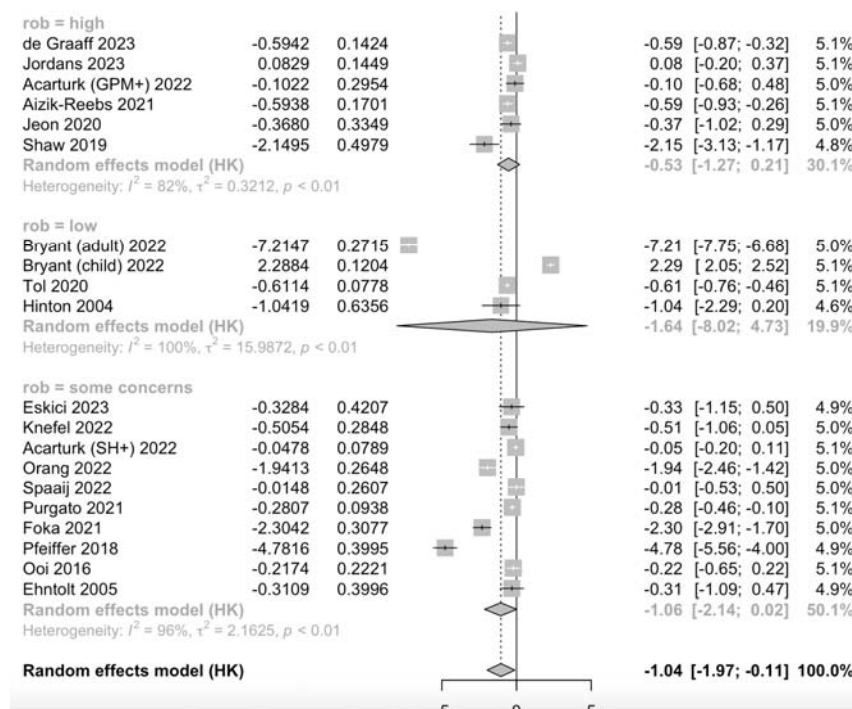


Figure 7.2. Sensitivity analysis: effectiveness of interventions carried out in studies with low, moderate, or high risk of bias for depression

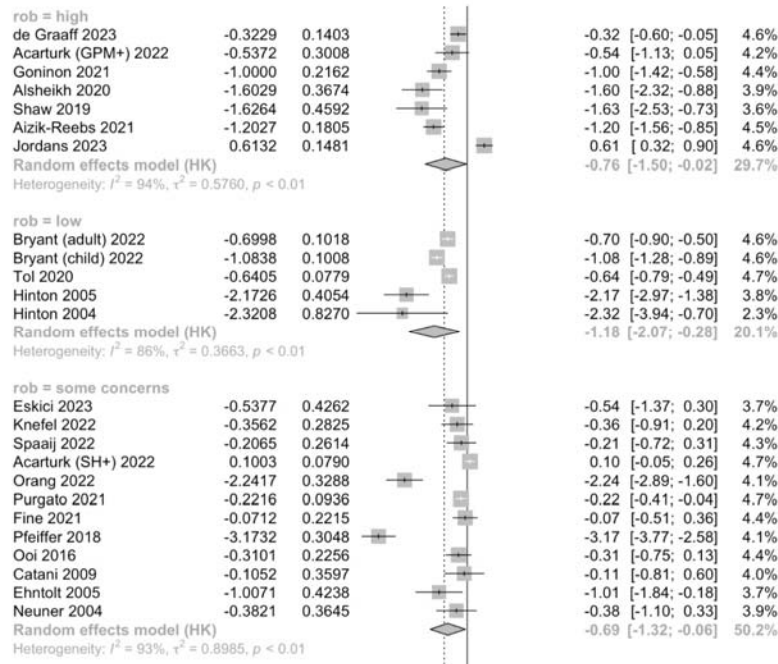


Figure 7.3. Sensitivity analysis: effectiveness of interventions carried out in studies with low, moderate, or high risk of bias for PTSD

¹ Haddaway, N. R., Page, M. J., Pritchard, C. C., & McGuinness, L. A. (2022). PRISMA2020: An R package and Shiny app for producing PRISMA 2020-compliant flow diagrams, with interactivity for optimised digital transparency and Open Synthesis Campbell Systematic Reviews, 18, e1230. <https://doi.org/10.1002/cl2.1230>

TABLES

Table 1. Characteristics of included studies.

Study	Study type	Country	Population	Intervention/control	Number of participants (males)	Age †	Outcome measures extracted	Total length of intervention (average)	Personnel administering treatment	Time elapsed since arriving in country (months)	Number of traumatic events	Maximum follow-up period (months)
de Graaff et al. (2023)	RCT	Netherlands	Syrian refugees	PM+/CAU	206 (127)	36.4 ± 11.7 (18-69)	Depression (HSCL-25), anxiety (HSCL-25), PTSD (PCL-5)	5 weeks	Trained peer refugees	42.22 (1-97)	9.90 ± 5.52 (0-26)	3
Eskici et al. (2023)	RCT	Turkey	Female Syrian refugees	CA-CBT/TAU	23 (0)	35.1 ± 8.3	Depression (HSCL-25), PTSD (HTQ)	7 weeks	Trained facilitators from local community	NR	NR	-
Jordans et al. (2023)	RCT	Lebanon	Syrian refugee adolescents	EASE/ETAU	198 (101)	11.8 ± 1.3 (10-14)	Depression (PHQ-A), PTSD (CRIS-13)	7 weeks	Trained facilitators from local community	NR	6.9 ± 3.9 (0-17)	12
Acarturk et al. (2022a)	RCT	Turkey	Syrian refugees	gPM+/ECAU	46 (15)	38.0 ± 10.9	Depression (HSCL-25), anxiety (HSCL-25), PTSD (PCL-5)	5 weeks	Trained peer refugees	NR	NR	3
Acarturk et al. (2022b)	RCT	Turkey	Syrian refugees	SH+/ECAU	322 (116)	31.2 ± 8.9	Depression (PHQ-9), PTSD (PCL-5)	5 weeks	Trained peer refugees	54.53 ± 41.44	NR	6
Bryant et al. (2022a)	RCT	Jordan	Syrian refugees	gPM+/EUC	410 (110)	40.0 ± 7.0	Depression (HSCL-25), anxiety (HSCL-25), PTSD (PCL-5)	5 weeks	Trained peer refugees	70.7 ± 20 (12-108)	NR	12
Bryant et al. (2022b)	RCT	Jordan	Adolescent Syrian refugees	EASE/EUC	471 (238)	11.6 ± 1.3 (10-14)	Depression (PHQ-A), PTSD (CRIS-13)	7 weeks	Trained facilitators from local community	NR	6.9 ± 3.8	12
Knefel et al. (2022)	RCT	Austria	Afghan refugees	aPM+/TAU	51 (26)	34.3 ± 13.6	Depression (GHQ), anxiety (GHQ), PTSD (ITQ)	6 weeks	Clinical psychologists	NR	12.7 ± 5.4	-
Orang et al. (2022)	RCT	Germany	Refugees of various nationalities	VBC/WLC	103 (63)	30.6 ± 8.1 (18-62)	Depression (PHQ-9), anxiety (GAD-7), PTSD (PCL-5)	4 weeks (2-7 weeks)	Trained migrant counsellors (mostly refugees)	34.3 ± 20.5 (1-480)	NR	3
Spaaij et al. (2022)	Pilot RCT	Switzerland	Syrian refugees	PM+/ETAU	59 (29)	39.9 ± 9.9	Depression (HSCL-25), anxiety (HSCL-25), PTSD (PCL-5)	5 weeks	Trained peer refugees	40.3 ± 25.6	10.1 ± 5.03	3
Aizik-Reebs et al. (2021)	RCT	Middle East (Israel)	Eritrean asylum seekers	MBTR-R/WLC	158 (85)	31.8 ± 5.21 (20-48)	Depression (PHQ-9), anxiety (Beck Anxiety Inventory), PTSD (HTQ)	9 weeks	Clinical psychologists	NR	6.16 ± 4.28	1.25
Fine et al. (2021)	Cluster RCT	Tanzania	Adolescent Burundian refugees	EASE/ETAU	82 (37)	12.3 ± 1.5 (10-14)	PTSD (CPSS)	7 weeks	Trained peer adult refugees	NR	NR	-
Foka et al. (2021)	CCT	Greece	Child refugees of various nationalities	SFJ/WLC	72 (25)	10.8 ± 2.0 (7-14)	Depression (CES-DC)	6 days	Trained facilitator	NR	NR	-
Goninon et al. (2021)	CCT	Uganda	Congolese refugees	EMPOWER	98 (45)	33.4 ± 11.7 (18-80)	PTSD (SPTSS)	2 weeks	Trained facilitator	20.4 ± 24	8.45 ± 3.11	1.5
Purgato et al. (2021)	RCT	Western European countries	Refugees of various nationalities	SH+/ETAU	459 (325)	32.6 ± 10.2	Depression (PHQ-9), PTSD (PCL-5)	5 weeks	Trained peer refugees	NR	NR	12
Alsheikh et al. (2020)	RCT	Jordan	Female Syrian refugees	Group counselling/ no counselling	40 (0)	NR	PTSD (PCL-5)	6 weeks	Clinical psychologist	NR	NR	-
Jeon et al. (2020)	CCT	South Korea	North Korean refugees	CBT/simple relaxation	38 (3)	38.1 (20-60)	Depression (CES-D), anxiety (STAI-S), PTSD (IES-R)	8 weeks	Clinical psychologist and psychiatrist	NR	NR	-

Kananian et al. (2020)	RCT	Germany	Male Afghan and Iranian refugees	CA-CBT+/WLC/ECAU	24 (24)	21.9 ± 3.4	PTSD (PCL-5)	6 weeks	Trained facilitator	21.8 ± 3.7	NR	12
Tol et al. (2020)	Cluster RCT	Uganda	Female South Sudanese refugees	SH+/ECAU	694 (0)	30.9 ± 10.9	Depression (PHQ-9), PTSD (PCL-C)	5 weeks	Trained facilitators	NR	NR	3
Shaw et al. (2019)	RCT	Malaysia	Female Afghan refugees	CA-CBT/WLC	29 (0)	31.9 ± 9.9	Depression (HSCL-25), anxiety (HSCL-25), PTSD (HTQ)	8 weeks	Trained facilitators from local community	21.6	NR	3
Pfeiffer et al. (2018)	RCT	Germany	Child and adolescent refugees of various nationalities	Mein Weg/UC	99 (92)	17 ± 0.95	Depression (PHQ-8), PTSD (CATS-S)	6 weeks	Trained social workers	12.7 ± 4.54	NR	-
Ooi et al. (2016)	Cluster RCT	Australia	Child and adolescent refugees of various nationalities	TRT/WLC	82 (29)	12.6 ± 1.7 (10-17)	Depression (DSRS), PTSD (CRIES-13)	8 weeks	Trained graduate psychology students	28.1 ± 21.4	4.2 ± 2.1 (0-9)	3
Bolton et al. (2014)	RCT	Thailand	Burmese refugees	CETA/WLC	347 (130)	35.5 ± 12.1 (18-85)	Depression (HSCL-25), anxiety (HSCL-25), PTSD (HTQ)	10 weeks (7-12 weeks)	Trained peer refugees	66.5 ± 57.2 (0-420)	12 ± 9 (1-24)	4
Hijazi et al. (2014)	RCT	USA	Iraqi refugees	Brief NET/WLC	63 (28)	48.2 ± 8.9	Depression (Beck-II), PTSD (HTQ)	3 weeks	Doctoral clinical psychology students	27.6 ± 27.6	19.8 ± 6.4	4
Stenmark et al. (2013)	RCT	Norway	Refugees of various nationalities	NET/TAU	81 (56)	35.3 ± 11.0	Depression (HAM-D), PTSD (CAPS)	10 weeks	Mental health professionals	56 ± 50.6	8.2 ± 2.5	6
Ertl et al. (2011)	RCT	Uganda	Former Ugandan child soldiers in IDP camps	NET/WLC	57 (29)	18.4 ± 3.6	Depression (MINI), PTSD (CAPS)	3 weeks	Trained facilitators from local community	-	21.7 ± 4.2	12
Sonderegger et al. (2011)	CCT	Uganda	Ugandan IDPs	EMPOWER/WLC	202 (82)	29.1 ± 12.6	Depression (APAI <i>Two Tam, Kumu, Par</i>), anxiety (APAI Ma Lwor)	2 weeks	Trained facilitators from local community	NR	NR	3
Neuner et al. (2010)	RCT	Germany	Refugees of various nationalities	NET/TAU	32 (22)	31.4 ± 7.6	Depression (HSCL-25), PTSD (PDS)	4 weeks (2.5-8.5 weeks)	Clinical psychologists	55.6 ± 42.7	NR	6
Ruf et al. (2010)	RCT	Germany	Child refugees of various nationalities	KIDNET/WLC	26 (14)	11.5 ± 3.1 (7-16)	PTSD (UPID)	8 weeks	Clinical psychologists	37.3 ± 46.9	4.4 ± 2.4	12
Catani et al. (2009)	RCT	Sri Lanka	Child IDPs	KIDNET/MED-RELAX	31 (17)	12 ± 2 (8-14)	PTSD (UPID)	2 weeks	Local counselor	NR	4.6 ± 2	6
Neuner et al. (2008)	RCT	Uganda	Rwandan and Somali refugees	NET/MG	166 (83)	34.8 ± 12.8	PTSD (PDS)	3 weeks	Trained lay counsellors	NR	14 ± 4.8	8
Ehntolt et al. (2005)	CCT	United Kingdom	Refugees of various nationalities	CBT/Control	26 (17)	14 ± 4.8 (11-15)	Depression (DSRS), anxiety (RCMAS), PTSD (R-IES)	6 weeks	Clinical psychology trainee	NR	NR	-
Hinton et al. (2005)	RCT	USA	Cambodian refugees	CA-CBT/Delayed treatment	40 (16)	51.8 ± 6.8	Anxiety (ASI), PTSD (CAPS)	12 weeks	Psychiatrist	206.8 ± 42.4	NR	6
Hinton et al. (2004)	RCT	USA	Vietnamese refugees	CA-CBT/Delayed treatment	12 (6)	NR	Depression (HSCL-25), anxiety (ASI), PTSD (HTQ)	11 weeks	Psychiatrist	NR	NR	9
Neuner et al. (2004)	RCT	Uganda	Sudanese refugees	NET/SC	31 (14)	32.9 ± 6.8	PTSD (PDS)	2 weeks	Clinical psychologists	39.4 ± 9.1	9.4 ± 6.6	12

Barrett et al. (2000)	CCT	Australia	Female teenage refugees from former Yugoslavia	FRIENDS/WLC	20 (0)	16.3	Anxiety (SCAS)	10 weeks	Clinical psychologist	2.4	NR	-
-----------------------	-----	-----------	--	-------------	--------	------	----------------	----------	-----------------------	-----	----	---

† Ages are reported as mean ± SD, mean (range) or mean alone.

RCT, randomized controlled trial; CCT, controlled clinical trial.

IDP, internally displaced persons.

PM+, Problem Management Plus; gPM+, group PM+; CA-CBT, Culturally-Adapted Cognitive Behavioral Therapy; EASE, Early Adolescent Skills for Emotions; MBTR-R, Mindfulness-Based Trauma Recovery for Refugees; TRT, Teaching Recovery Techniques; KIDNET, Narrative Exposure Therapy for Traumatized Children and Adolescents

CAU, care as usual; TAU, treatment as usual; ETAU, enhanced treatment as usual; EUC, Enhanced Usual Care; MG, No-Treatment Monitoring Group; SC, Supportive Counseling.

Table 2. Reported outcomes of included studies.

Study	Assessment measure used	Arm	No. of participants	Pre-intervention baseline	Post-intervention	3-month follow-up	6-month follow-up	12-month follow-up	
de Graaff et al., 2023	Anxiety (HSCL-25)	PM+	103	2.16 (0.66)	1.85 (0.65)	1.84 (0.64)	-	-	
		CAU	103	2.24 (0.61)	2.21 (0.64)	2.15 (0.64)	-	-	
	Depression (HSCL-25)	PM+	103	2.39 (0.69)	1.92 (0.64)	1.91 (0.63)	-	-	
		CAU	103	2.47 (0.72)	2.33 (0.77)	2.28 (0.69)	-	-	
	PTSD (PCL-5)	PM+	103	33.22 (17.84)	20.89 (17.49)	19.79 (16.59)	-	-	
		CAU	103	35.57 (15.96)	28.76 (16.52)	28.21 (16.38)	-	-	
Eskici et al., 2023	Anxiety (HSCL-25)	CA-CBT	12	2.39 (0.49)	2.09 (0.51)	-	-	-	
		TAU	11	2.48 (0.65)	2.39 (0.70)	-	-	-	
	Depression (HSCL-25)	CA-CBT	12	2.39 (0.49)	2.09 (0.51)	-	-	-	
		TAU	11	2.48 (0.65)	2.39 (0.70)	-	-	-	
	PTSD (HTQ)	CA-CBT	12	2.23 (0.43)	-	-	-	-	
		TAU	11	2.1 (0.61)	-	-	-	-	
Jordans et al., 2023	Depression (PHQ-A)	EASE	80	9.5 (0.8)	8.3 (0.8)	7.4 (0.9)	-	9.7 (0.8)	
		ETAU	118	9.6 (1.4)	8.3 (1.4)	8.3 (1.4)	-	10.7 (1.4)	
	PTSD (CRIES-13)	EASE	80	26.1 (2.2)	26.7 (2.2)	24.9 (2.3)	-	28.2 (2.4)	
		ETAU	118	26.3 (4.0)	24.8 (4.0)	25.0 (4.1)	-	27.5 (4.1)	
	Acarturk et al. (2022a)	Anxiety (HSCL-25)	gPM+	24	2.37 (0.58)	2.01 (0.59)	-	-	-
			ECAU	22	2.31 (0.64)	2.01 (0.43)	-	-	-
Depression (HSCL-25)		gPM+	24	2.37 (0.58)	2.01 (0.59)	2.07 (0.52)	-	-	
		ECAU	22	2.31 (0.64)	2.01 (0.43)	2.14 (0.43)	-	-	
PTSD (PCL-5)		gPM+	24	1.84 (0.88)	1.27 (0.7)	1.12 (0.85)	-	-	
		ECAU	22	1.7 (0.86)	1.59 (0.86)	1.26 (0.70)	-	-	
Acarturk et al. (2022b)	Depression (PHQ-9)	SH+	322	6.45 (4.70)	5.24 (4.91)	-	4.93 (5.05)	-	
		ECAU	320	6.30 (4.73)	5.32 (5.12)	-	6.70 (5.46)	-	
	PTSD (PCL-5)	SH+	322	20.72 (14.90)	16.82 (12.83)	-	13.99 (11.45)	-	
		ECAU	320	20.14 (14.28)	14.81 (14.60)	-	15.09 (12.86)	-	
	Bryant et al. (2022a)	Anxiety (HSCL-25)	gPM+	204	24.81 (0.43)	20.39 (0.5)	20.03 (0.50)	-	19.34 (0.54)
			EUC	206	25 (0.43)	21.93 (0.48)	19.65 (0.48)	-	17.85 (0.50)
Depression (HSCL-25)		gPM+	204	36.57 (0.63)	28.98 (0.73)	29.04 (0.72)	-	28.26 (0.78)	
		EUC	206	35.15 (0.63)	32.44 (0.70)	31.30 (0.72)	-	25.85 (0.73)	
PTSD (PCL-5)		gPM+	204	25.98 (1.02)	16.12 (1.05)	10.31 (1.02)	-	2.60 (1.07)	
		EUC	206	26.72 (1.02)	17.58 (1.01)	10.73 (0.97)	-	3.29 (1.00)	
Bryant et al. (2022b)	Depression (PHQ-A)	EASE	185	15.06 (0.43)	12.80 (0.36)	12.42 (0.35)	-	-	
		EUC	286	15.39 (0.27)	12.37 (0.29)	12.36 (0.28)	-	-	
	PTS-D (CRIES-13)	EASE	185	24.19 (0.89)	18.39 (0.63)	18.79 (0.72)	-	-	
		EUC	286	23.29 (0.71)	18.23 (0.5)	18.87 (0.58)	-	-	
Knefel et al. (2022)	Anxiety (GHQ)	aPM+	26	1.89 (0.43)	1.37 (0.66)	-	-	-	
		TAU	25	1.77 (0.75)	1.86 (0.81)	-	-	-	
	Depression (GHQ)	aPM+	26	1.31 (0.63)	0.84 (0.56)	-	-	-	
		TAU	25	1.49 (0.94)	1.41 (0.81)	-	-	-	
	PTSD (ITQ)	aPM+	26	13.67 (4.22)	10.96 (5.5)	-	-	-	
		TAU	25	14.8 (4.44)	13.96 (5.98)	-	-	-	

Orang et al. (2022)	Anxiety (GAD-7)	VBC	42	13.54 (5.1)	3.9 (4.41)	2.51 (2.6)	-	-
		WLC	43	13.32 (5.78)	14.81 (5.19)	-	-	-
	Depression (PHQ-9)	VBC	42	15.14 (6.09)	4.40 (4.6)	3.8 (3.6)	-	-
		WLC	43	16.27 (6.56)	17.39 (6.49)	-	-	-
	PTSD (PCL-5)	VBC	28	44.7 (14.46)	13.82 (10.78)	10.03 (7.77)	-	-
		WLC	34	44.55 (14.9)	48.17 (17.99)	-	-	-
Spaaij et al. (2022)	Anxiety (GAD-7)	PM+	31	22.45 (8.48)	21 (7.6)	19.55 (7.2)	-	-
		ETAU	28	19 (7.14)	17.03 (8.43)	18.05 (5.86)	-	-
	Depression (PHQ-9)	PM+	31	35.41 (11.09)	31.09 (7.53)	31.61 (9.73)	-	-
		ETAU	28	29.86 (11.26)	25.69 (9.1)	28.18 (9.04)	-	-
	PTSD (PCL-5)	PM+	31	39.26 (18.53)	26.39 (16.62)	28.51 (18.91)	-	-
		ETAU	28	26.63 (17.92)	17.44 (16.19)	20.42 (17.17)	-	-
Aizik-Reebs et al. (2021)	Anxiety (Beck Anxiety Inventory)	MBTR-R	95	32.68 (9.25)	23.53 (14.15)	-	-	-
		WLC	58	31.63 (13.18)	31.62 (14.33)	-	-	-
	Depression (PHQ-9)	MBTR-R	95	15.12 (4.08)	11.41 (5.76)	-	-	-
		WLC	58	16.03 (4.46)	15.27 (5.16)	-	-	-
	PTSD (HTQ)	MBTR-R	95	2.71 (0.45)	2.10 (0.59)	-	-	-
		WLC	58	2.85 (0.45)	2.63 (0.48)	-	-	-
Fine et al. (2021)	PTSD (CPSS)	EASE						
		ETAU						
Foka et al. (2021)	Depression (CES-DC)	SFJ	33	17.09 (7.06)	4.4 (4.39)	-	-	-
		WLC	39	17.13 (6.86)	19.04 (5.96)	-	-	-
Purgato et al. (2021)	Depression (PHQ-9)	SH+	230	8.48 (5.82)	6.10 (5.41)	-	6.06 (5.57)	4.03 (5.42)
		ETAU	229	8.38 (5.55)	7.60 (5.82)	-	6.49 (5.75)	5.81 (6.05)
	PTSD (PCL-5)	SH+	230	24.69 (16.35)	19.22 (15.82)	-	17.06 (16.10)	12.45 (15.30)
		ETAU	229	22.77 (16.24)	20.93 (17.00)	-	16.79 (15.30)	14.61 (15.31)
Alsheikh et al. (2020)	PTSD (PCL-5)	Group counselling	20	57.65 (11.19)	41.55 (7.11)	-	-	-
		No counselling	20	59.45 (8.01)	58 (8.16)	-	-	-
Jeon et al. (2020)	Depression (CES-D)	CBT	15	22.33 (13.87)	16.4 (9.12)	-	-	-
		Simple relaxation	23	20.39 (13)	19.61 (14.95)	-	-	-
Tol et al. (2020)	Depression (PHQ-9)	SH+	331	15.1 (4.7)	9.7 (5.4)	9.5 (4.2)	-	-
		ECAU	363	15.1 (4.8)	12.8 (5.3)	10.8 (5.1)	-	-
	PTSD (PCL-C)	SH+	331	22 (4.7)	16.1 (5.5)	16.1 (4.9)	-	-
		ECAU	363	21.8 (4.8)	19.2 (5.5)	17.7 (5.8)	-	-
Shaw et al. (2019)	Anxiety (HSCL-25)	CA-CBT	20	2.76 (0.49)	2.17 (0.1)	2.10 (0.16)	-	-
		WLC	9	2.71 (0.43)	2.86 (0.14)	-	-	-
	Depression (HSCL-25)	CA-CBT	20	2.79 (0.61)	1.99 (0.15)	1.92 (0.16)	-	-
		WLC	9	2.8 (0.76)	3.08 (0.22)	-	-	-
	PTSD (HTQ)	CA-CBT	20	2.58 (0.57)	2.34 (0.13)	2.15 (0.17)	-	-
		WLC	9	2.49 (0.71)	3.01 (0.19)	-	-	-
Pfeiffer et al. (2018)	Depression (PHQ-8)	Mein Weg	50	11.52 (0.71)	8.25 (0.75)	-	-	-
		UC	49	11.47 (0.71)	11.76 (0.76)	-	-	-
	PTSD (CATS-S)	Mein Weg	50	29.97 (1.22)	23.52 (1.77)	-	-	-
		UC	49	31.85 (1.23)	30.27 (1.73)	-	-	-

Ooi et al. (2016)	Depression (DSRS)	TRT	44	10.96 (5.26)	8.68 (5.48)	8.29 (4.46)	-	-
		WLC	38	9.17 (4.61)	8.03 (5.13)	-	-	-
	PTSD (CRIES-13)	TRT	43	23.02 (10.51)	15.88 (9.58)	12.71 (10.24)	-	-
		WLC	37	17.92 (11.86)	14.17 (11.06)	-	-	-
Hijazi et al. (2014)	Depression (Beck-II)	Brief NET	41	33.91 (10.46)	2 months: 27.45 (13.54)	4 months: 25.08 (13.27)	-	-
		WLC	22	33.45 (11.45)	2 months: 31.45 (12.08)	4 months: 27.38 (10.85)	-	-
	PTSD (HTQ)	Brief NET	41	2.79 (0.49)	2 months: 2.60 (0.66)	4 months: 2.55 (0.66)	-	-
		WLC	22	2.76 (0.44)	2 months: 2.76 (0.48)	4 months: 2.65 (0.52)	-	-
Ertl et al. (2011)	Depression (MINI)	NET	29	2.76 (2.87)	-	3.96 (2.72)	3.08 (2.95)	1.8 (2.18)
		WLC	28	1.71 (1.98)	-	3.68 (2.86)	3.21 (3.01)	1.75 (2.56)
	PTSD (CAPS)	NET	29	67.03 (14.74)	-	46.73 (19.24)	43.00 (21.49)	32.44 (22.84)
		WLC	28	63.61 (16.42)	-	52.93 (20.83)	48.61 (23.74)	44.29 (29.56)
Neuner et al. (2010)	Depression (HSCL-25)	NET	16	3.0 (0.4)	-	-	2.6 (0.6)	-
		TAU	16	3.0 (0.5)	-	-	2.9 (0.5)	-
	PTSD (PDS)	NET	16	38.9 (6.4)	-	-	26.0 (9.2)	-
		TAU	16	36.9 (8.0)	-	-	34.1 (6.1)	-
Ruf et al. (2010)	PTSD (UPID)	KIDNET	13	43.3 (12.3)	22.3 (18.6)	-	17.2 (14.6)	18.8 (14.8)
		WLC	13	38.3 (8.6)	-	-	33.8 (17.4)	-
Catani et al. (2009)	PTSD (UPID)	KIDNET	16	37.94 (14.8)	12.41 (14.15)	-	12.3 (10.87)	-
		MED-RELAX	15	36.56 (14.9)	12.59 (11.06)	-	9.75 (8.63)	-
Neuner et al. (2008)	PTSD (PDS)	NET	111	25.9 (13.2)	-	5.4 (6.6)	6.1 (6.8)	-
		MG	111	26.7 (12.5)	-	5.3 (5.7)	5.0 (6.6)	-
Ehntolt et al. (2005)	Anxiety (RCMAS)	CBT	15	16.87 (7.22)	14.67 (7.12)	-	-	-
		Control	11	16.18 (6.57)	8.91 (6.04)	-	-	-
	Depression (DSRS)	CBT	15	12.33 (4.7)	11.67 (3.62)	-	-	-
		Control	11	12 (5.37)	3 (6.57)	-	-	-
	PTSD (R-IES)	CBT	15	39.8 (8.4)	33.8 (9.71)	-	-	-
		Control	11	38.55 (8.37)	2.18 (9.38)	-	-	-
Hinton et al. (2005)	Anxiety (ASI)	CA-CBT	20	3.08 (0.61)	1.65 (0.45)	1.86 (0.32)	1.98 (0.40)	-
		Delayed treatment	20	3.27 (0.53)	3.19 (0.36)	1.91 (0.49)	-	-
	PTSD (CAPS)	CA-CBT	20	74.85 (14.67)	39.25 (19.92)	41.30 (13.95)	44.59 (14.58)	-
		Delayed treatment	20	75.91 (11.5)	73.05 (9.43)	43.56 (10.22)	-	-
Hinton et al. (2004)	Anxiety (ASI)	CA-CBT	6	43.5 (9.1)	18.5 (6.4)	-	8 months: 21.0 (8.0)	-
		Delayed treatment	6	38 (7.4)	20.2 (4.9)	-	-	-
	Depression (HSCL-25)	CA-CBT	6	3.1 (0.7)	2.1 (0.5)	-	8 months: 1.6 (0.6)	-
		Delayed treatment	6	3.3 (0.9)	3.2 (0.6)	-	-	-
	PTSD (HTQ)	CA-CBT	6	3.3 (0.4)	1.7 (0.5)	-	8 months: 1.8 (0.7)	-
		Delayed treatment	6	3.1 (0.7)	3.3 (0.8)	-	-	-
Neuner et al. (2004)	PTSD (PDS)	NET	17	25.2 (7.4)	19.1 (11.7)	4 months: 24.5 (7.8)	-	-
		SC	14	22.0 (8.0)	19.8 (10.9)	4 months: 22.8 (10.1)	-	-
Barrett et al. (2000)	Anxiety (SCAS)	FRIENDS	9	39.89 (13.22)	30.43 (11.37)	-	-	-
		WLC	11	30.64 (13.54)	34.2 (8.45)	-	-	-