

## **An Unhealthy Dietary Pattern during Pregnancy is Associated with Neurodevelopmental Disorders in Childhood and Adolescence**

*David Horner MD MSc1, Jens Richardt M. Jepsen, MSc PhD2+3, Bo Chawes, MD PhD DMSc1, Kristina Aagaard MD1, Julie B. Rosenberg MD1+2+4, Parisa Mohammadzadeh MD1+2+4, Astrid Sevelsted MSc PhD1, Nilo Følsgaard MD PhD1, Rebecca Vinding MD PhD1, Birgitte Fagerlund PhD2+5, Christos Pantelis MBBS MD6+7, Niels Bilenberg MD PhD8, Casper-Emil T. Pedersen, MSc PhD1, Anders Eliassen MD, PhD1+9, Yulu Chen, PhD10, Nicole Prince, PhD10, Su H. Chu, PhD10, Rachel S. Kelly, PhD10, Jessica Lasky-Su, ScD10, Thorhallur I. Halldorsson, PhD11+12, Birte Y. Glenthøj, MD DMSc2+4, Klaus Bønnelykke, MD PhD1, Bjørn H. Ebdrup\*, MD PhD2+4, Jakob Stokholm\*, MD PhD1+13, Morten Arendt Rasmussen\*, PhD1+13*

*\*These authors contributed equally to this work*

### **Affiliations:**

- 1) *COPSAC, Copenhagen Prospective Studies on Asthma in Childhood, Herlev and Gentofte Hospital, University of Copenhagen, Denmark*
- 2) *Center for Neuropsychiatric Schizophrenia Research (CNSR) & Centre for Clinical Intervention and Neuropsychiatric Schizophrenia Research (CINS), Mental Health Centre Glostrup, University of Copenhagen, Glostrup, Denmark*
- 3) *Mental Health Centre for Child and Adolescent Psychiatry - Research unit, Mental Health Services in the Capital Region of Denmark, Copenhagen, Denmark*
- 4) *Department of Clinical Medicine, Faculty of Health and Medical Sciences, University of Copenhagen, Copenhagen, Denmark*
- 5) *Department of Psychology, University of Copenhagen, Copenhagen, Denmark*
- 6) *Melbourne Neuropsychiatry Centre, Department of Psychiatry, The University of Melbourne & Melbourne Health, Carlton South, VIC, Australia*
- 7) *Florey Institute of Neuroscience & Mental Health, Parkville, VIC, Australia*
- 8) *Institute of Clinical Research, University of Southern Denmark, Odense, Denmark*
- 9) *Department of Health Technology, Section for Bioinformatics, Technical University of Denmark, Kgs. Lyngby, Denmark*

**NOTE: This preprint reports new research that has not been certified by peer review and should not be used to guide clinical practice.**

- 10) *Channing Division of Network Medicine, Brigham and Women's Hospital, Harvard Medical School, Boston, MA, USA*
- 11) *Faculty of Food Science and Nutrition, School of Health Science, University of Iceland, Health Science Institute, Unit for Nutrition Research, University of Iceland.*
- 12) *Department of Epidemiology Research, Statens Serum Institut, Copenhagen, Denmark*
- 13) *Section of Food, Microbiology and Fermentation, Department of Food Science, University of Copenhagen, Denmark*

## ABSTRACT

Despite the high prevalence of neurodevelopmental disorders, there are a lack of clinical studies examining the impact of pregnancy diet on child neurodevelopment. This observational clinical study examined the associations between pregnancy dietary patterns and neurodevelopmental diagnoses, as well as their symptoms, in a prospective cohort of 10-year-old children (n=508). Data-driven dietary patterns were derived from self-reported food frequency questionnaires. An Unhealthy dietary pattern in pregnancy (per SD change) was significantly associated with attention deficit hyperactivity disorder (ADHD) OR 1.66 [1.21 - 2.27], p=0.002 and autism diagnosis OR 2.22 [1.33 - 3.74], p=0.002 and associated symptoms p<0.001. Findings for ADHD were validated in two large (n=656, n=348), independent mother-child cohorts via blood metabolome modelling. Objective metabolite scores, assessed at five timepoints in mothers and children in two independent mother-child cohorts, indicated that the strongest association with ADHD was during early- to mid- pregnancy. These results provide evidence for targeted prenatal dietary interventions to prevent neurodevelopmental disorders in children.

## INTRODUCTION

Neurodevelopmental disorders, particularly attention-deficit/hyperactivity disorder (ADHD) and autism, are prevalent (1) and an increasing public health concern. In 2020, Danish registers reported a cumulative incidence of 5.9% in males and 3% in females for ADHD, and 4.3% in males and 1.8% in females for autism during childhood and adolescence (2). Large meta-analyses support these findings, with global estimates of 5.9% for ADHD (3) and up to 1.1% for autism (4). In addition, neurodevelopmental disorder symptoms manifest as continuous traits within the paediatric general population (5), and can be reliably captured via validated questionnaires (6,7). Studies have linked several prenatal exposures to neurodevelopmental disorders in children, including maternal obesity, metabolic disturbances, stress, and individual nutritional elements (8). Maternal dietary patterns during pregnancy are a plausible contributor to children's neurodevelopment. Numerous animal studies have shown that high-fat diets can alter brain morphology (9) and behaviour in offspring in ways resembling neurodevelopmental disorders (10,11), however these findings may not extrapolate well to human dietary patterns. Dietary constituents may contribute directly to the aforementioned aetiologies, providing both the energy substrates and building blocks for the foetal brain (12). Given the potential public health impact, it's vital to robustly investigate the link between maternal diet during pregnancy and childhood neurodevelopmental disorders. To date, existing literature lacks objective measures and comprehensive adjustments for confounding child dietary patterns when assessing associations between maternal diet and child neurodevelopment.

The placenta transfers nutrients from the mother to the developing foetus during pregnancy (13). These nutrients, which include the essential n-3 long chain polyunsaturated fatty acids (n3-LCPUFA) and micronutrients such as iron, choline, iodine, zinc, and vitamins B, D, and E, are necessary for foetal brain development and function (12,14), and are obtained as part of a healthy dietary pattern. While the precise mechanisms underlying the influence of maternal diet on offspring neurodevelopment remain to be fully elucidated, various factors might be involved. These include the potential impacts of dietary compounds (15) and lipid profiles (16). For example, certain dietary-derived metabolites may interact with developmental pathways in the foetus, potentially affecting neurodevelopmental outcomes (17). Additionally, higher maternal intakes of n3-LCPUFAs, such as docosahexaenoic acid (DHA) and

eicosapentaenoic acid (EPA), which are associated with better overall diet quality (18), have been reported to have neuroprotective effects (19).

While genetics undoubtedly contribute significantly to neurodevelopmental disorders, with heritability estimates as high as 80% (20), the increasing prevalence of these disorders (21) highlights the need for a better understanding of how environmental factors interact with genetic risk (22). In this context, pregnancy dietary influences may be modulated by the child's underlying genetic risk for neurodevelopmental disorders, which can be succinctly captured in polygenic risk scores (PRS) (23). While there is genetic evidence from twin studies supporting a substantial role for gene-environment interactions in the development of neurodevelopmental disorders, there is a lack of clinical data to support this claim (24).

In this study, we hypothesise that unhealthy dietary patterns in pregnancy are associated with adverse neurodevelopmental outcomes. We sought to bridge the research gap by leveraging the datasets and thorough clinical examinations within the Copenhagen Prospective Studies on Asthma in Childhood 2010 (COPSAC2010) mother-child cohort. We further investigate how genetic risk and established risk factors may modulate this relationship. Drawing from twelve metabolome datasets, we analyse maternal and child blood profiles to shed light on the temporality of dietary associations and their potential impact on neurodevelopment. Finally, we employ external validation approaches in two independent mother-child cohorts, and delve into which metabolites may be driving dietary associations on neurodevelopment.

## RESULTS

### Cohort Characteristics

During the 10-year clinical visit, a total of 593 children (84.7%) participating in the COpenhagen Prospective Study on Neuro-PSYCHiatric Development study (COPSYCH) underwent clinical examination for neurodevelopmental and psychiatric disorders. Additionally, 11 children who did not complete the clinical examination, had information regarding their neurodevelopmental symptom loads. There were no significant differences in baseline sociodemographic characteristics between participants and non-participants at the 10-year visit (*Table S1*), nor between male and female children (*Table S2*).

### Identification of Dietary Patterns

We used principal component analysis (PCA) on 95 nutrient constituents (*Table S3*) from 613 pregnancy food frequency questionnaires (FFQ) to identify maternal dietary patterns in the COPSAC2010 cohort (*Figure S1*). The FFQ was conducted at 24 weeks gestation, covering dietary intake over the preceding one-month period. Thirteen mothers were excluded from the analysis due to unrealistic energy intake levels, defined as less than 4,200 kJ/day or more than 16,700 kJ/day. Principal component 1 (PC1), which explains 44.3% of the total variance, had a positive association across all food groups and represents a "Varied dietary pattern". PC2, which explains 10.7% of the variance, had positive associations with intakes of animal fats, refined grains and high-energy drinks, and negative associations with intakes of fruit, fish, and vegetables, representing an "Unhealthy dietary pattern" (*Figure 1*). Regarding macronutrient intake, PC2 (Unhealthy dietary pattern) predominantly reflects a higher intake of fats (*Figure S2A*), specifically saturated fatty acids (*Figure S2B*). Using the maternal PC model, we predicted a child's 'Unhealthy dietary pattern', allowing for a consistent comparison of dietary habits. A higher Unhealthy dietary pattern during pregnancy was associated with lower social circumstances, higher maternal pre-pregnancy body mass index (BMI), smoking during pregnancy, antibiotic use during pregnancy and a higher Unhealthy dietary pattern in children at 10-years of age (*Table 1*). Of note, the Pearson correlation between an Unhealthy dietary pattern during pregnancy and in children was 0.22.

## **An Unhealthy Dietary Pattern during Pregnancy is Associated with Neurodevelopmental Disorders and Symptom Loads in Children**

We included 508 children with both pregnancy dietary and clinical data in further analysis, 77 (15.2%, 71% male) had any neurodevelopmental disorder. Specifically, 55 (10.8%, 76% male) were diagnosed with ADHD (25 ADHD predominantly inattentive presentation and 30 ADHD combined presentation) and 13 (2.6%, 69% male) with autism. The Unhealthy dietary pattern during pregnancy (PC2, per SD change), in multivariate modelling, was significantly associated with any neurodevelopmental disorder (OR 1.53 [1.17 - 2],  $p=0.002$ ), ADHD (OR 1.66 [1.21 - 2.27],  $p=0.002$ ), and autism (OR 2.22 [1.33 - 3.74],  $p=0.002$ ) (*Table 2*) (adjusted for pre-pregnancy maternal BMI, social circumstances, child sex, birth weight, gestational age, pregnancy smoking/antibiotic use, pre-eclampsia and a child Unhealthy dietary pattern). It was also significantly associated with symptom loads for ADHD (estimate=1.73 [0.98 - 2.49],  $p<0.001$ ) and autism (estimate=3.21 [1.69 - 4.74],  $p<0.001$ ). In an earlier assessment of ADHD symptom loads at 8 years, associations were consistent (estimate=1.90 [0.42 - 4.55],  $p<0.001$ ). Our findings remained significant after further adjusting for maternal genetic risk for ADHD, the prenatal nutrition supplementation randomised controlled trials (RCT) (n3-LCPUFA and high-dose D vitamin), total maternal energy intake and genomic principal components (*Table S4*). The pregnancy Unhealthy dietary pattern had comparable significant associations with both ADHD-predominantly inattentive type (OR 1.71 [1.13 - 2.56],  $p = 0.009$ ) and ADHD-combined type (OR 1.51 [1.03 - 2.20],  $p = 0.033$ ) (*Table S5*).

Associations of the pregnancy Unhealthy dietary pattern were significant for both male (1.42 [1.02 - 1.99],  $p = 0.039$ ) and female children (1.86 [1.15 - 3.07],  $p = 0.012$ ) for any neurodevelopmental disorder diagnosis (interaction  $p=0.271$ ) (*Table S6*). There was no significant sex-dependent effect modification of the pregnancy Unhealthy dietary pattern on neurodevelopmental diagnosis or symptom loads for ADHD or autism ( $p$ -interaction $>0.12$ ).

In a subanalysis of children without any neurodevelopmental disorder ( $n=428$ ) (*Table S5*), the pregnancy Unhealthy dietary patterns association with ADHD symptom load remained significant (estimate=0.63 [0.01 - 1.25],  $p=0.048$ ), with a stronger association with the hyperactivity-impulsivity subscore (0.34 [0.01 - 0.67],  $p = 0.043$ ), than the inattention subscore (0.31 [-0.08 - 0.7],  $p = 0.124$ ).

However, associations with autism symptom load and subscores were not significant (1.03 [-0.34 - 2.4],  $p = 0.141$ ).

To describe the relationships between the Unhealthy dietary pattern during pregnancy, neurodevelopmental outcomes, and model covariates, we employed Gaussian graphical models (*Figure 2*). Model A shows the significant partial correlations between ADHD Diagnosis, and Unhealthy pregnancy dietary pattern (partial correlation=0.13) and the covariates male child sex (0.16), ADHD PRS (0.13) and an Unhealthy child dietary pattern (0.12). Model B likewise illustrates significant partial correlations between ADHD symptom loads, the Unhealthy pregnancy dietary pattern (0.16), child sex (0.24), ADHD PRS (0.16) and an Unhealthy child dietary pattern (0.12), whilst also illustrating additional associations with maternal BMI (0.13), birth weight (-0.09) and social circumstances (-0.09). Model C illustrates the significant partial correlations between autism diagnosis, the Unhealthy dietary pattern (0.13) and the covariate maternal BMI (0.12). Model D likewise illustrates significant partial correlations between autism symptom loads, the Unhealthy dietary pattern (0.15) and maternal BMI (0.12), whilst also illustrating social circumstances (-0.15), child sex (0.12), an Unhealthy child dietary pattern (0.11), autism PRS (0.10) and birthweight (-0.08) as significant covariates.

### **A Blood Metabolomics-Derived Pregnancy Unhealthy Dietary Pattern Score Is Associated with Neurodevelopmental Disorders**

We used blood metabolome profiling from week 24 of pregnancy to objectively measure the pregnancy Unhealthy dietary pattern and validate our self-reported FFQ findings. We found that 43.0% of 760 metabolites were significantly associated with the pregnancy Unhealthy dietary pattern, with 34.5% surviving false discovery rate ( $p < 0.05$ ). In the best blood metabolome model for predicting the pregnancy Unhealthy dietary pattern, 43 metabolites survived regularisation in an sPLS model that was cross-validated using a 10-fold approach (RMSECV=0.87,  $R^2CV=0.24$ ). Loadings for these metabolites can be seen in *Figure 3* and *Table S7*. A pattern of missingness identified in the metabolite subset (estimate=0.106 [0.016; 0.196],  $p=0.021$ ) suggested underdetection in the Unhealthy dietary pattern, reinforcing the validity of our imputation approach. There was no corresponding bias in neurodevelopmental outcomes or across the full metabolome (*Table S8*). A pregnancy Unhealthy dietary pattern metabolite score (UDP-MS) was derived from this model and was associated (per SD change) with any neurodevelopmental disorder (OR 1.42 [1.07-1.90],  $p=0.017$ ), and ADHD diagnosis



(OR 1.39 [1.00-1.95],  $p < 0.05$ ), but not significantly with autism diagnosis (OR 1.09 [0.59-2.00],  $p = 0.781$ ).

To discern whether any of the associated 43 metabolites acted as biomarkers, or genuine mediators in the association between the Unhealthy dietary pattern and neurodevelopmental disorders, we deployed a backward elimination strategy. This approach aimed to systematically remove metabolites and identify those with the most significant mediating influence. This process was halted once the elimination of additional metabolites no longer improved the mediation. Our multivariable mediation analysis, found that 15 metabolites (*Figure 3, Table S7*) mediated the association between the Unhealthy dietary pattern and any neurodevelopmental disorder diagnosis. The Unhealthy dietary pattern had a total effect of 5.5% on any neurodevelopmental disorder diagnosis, of which 80.3% ( $p = 0.003$ ) was mediated through the selected 15 metabolites. It became evident that a predominant portion of the metabolites acting as mediators between the Unhealthy dietary pattern and neurodevelopmental disorders are derived from dietary components and lipids. Prominently, plant-based metabolites such as ergothioneine, carotene diol, and tartrate indicate potential protective effects. Conversely, many lipid-associated metabolites, such as medium chain fatty acids like caprate and caprylate, predominantly exhibited positive loadings, underscoring their possible detrimental impact on neurodevelopmental outcomes.

We explored potential time-dependent effects of the Unhealthy dietary pattern by further predicting UDP-MS at various time points for both mothers (one week postpartum) and children (6 months, 18 months, and 6 years). In this sensitivity analysis, emphasising metabolite score time points and excluding other covariates, significant associations were exclusively observed with the UDP-MS at 24 weeks of pregnancy. From this analysis emphasising the 24-week UDP-MS, we discerned associations with any neurodevelopmental disorder diagnosis (OR 1.50 [1.07-2.11],  $p = 0.020$ ), ADHD diagnosis (OR 1.58 [1.08-2.33],  $p = 0.020$ ) and directionally for autism diagnosis (OR 1.74 [0.84-3.57],  $p = 0.131$ ), despite strong correlations between maternal metabolite score timepoints ( $r = 0.68$ , *Table S9*). Findings were consistent for ADHD (estimate = 1.43 [0.41-2.45],  $p = 0.006$ ) and autism symptom loads (estimate = 2.86 [0.84-4.89],  $p = 0.006$ ).

As a further sensitivity analysis, to determine temporality in the associations of the Unhealthy dietary pattern with neurodevelopmental outcomes, we employed linear mixed models. Through this approach,

emphasising metabolite score time points and excluding other covariates, we discerned that the initial magnitude of the Unhealthy dietary pattern during pregnancy, as captured by the model's intercept, likewise served as a predictor for any neurodevelopmental disorder (OR 1.56 [1.24-1.97],  $p < 0.001$ ) and ADHD diagnosis (OR 1.63 [1.25-2.12],  $p < 0.001$ ). Similarly, the findings also indicated significant associations with ADHD symptom loads (estimate=1.69 [0.99-2.40],  $p < 0.001$ ) and autism symptom loads (estimate=3.65 [2.24-5.06],  $p < 0.001$ ). No association was observed with autism diagnosis (OR 1.34 [0.813-2.18],  $p = 0.242$ ).

### **Metabolomics-Derived Unhealthy Dietary Pattern Score Predicts ADHD in VDAART and COPSAC2000.**

As we found our metabolome modelling of the Unhealthy dietary pattern during pregnancy predicted ADHD diagnosis and symptom loads in COPSAC2010, we sought replication of our findings in two independent cohorts. In the Vitamin D Antenatal Asthma Reduction Trial cohort (VDAART), a large US-based mother-child cohort, we included participants with corresponding pregnancy blood metabolome and ADHD outcome data ( $n=656$ ). Among the children in the VDAART cohort, caregivers reported ADHD/ADD diagnosis for 18 children (2.7%) by age 6 years and 57 children (8.7%) by age 8 years. In the COPSAC2000 cohort, we included 328 participants with both neonatal dried blood spots (DBS) metabolic profiling and ADHD symptom loads from the Adult ADHD Self-Report Scale (ASRS) at the age of 18. Significant cohort characteristic differences were observed between the COPSAC2010 cohort and the VDAART/COPSAC2000 cohorts (*Table S10*), encompassing age, income, maternal education, maternal age, gestational age, and maternal smoking ( $p < 0.001$ ), emphasising the diversity among study participants. There were further differences between the COPSAC2010 and VDAART cohorts with respect to race, maternal pre-pregnancy BMI, birthweight, and caesarean section delivery ( $p < 0.001$ ). Supplementary Figures 3 and 4 show metabolomic variability in the COPSAC2010, VDAART, and COPSAC2000 cohorts, illustrating closely matched variances across both pregnancy and newborn samples.

In the VDAART cohort, which includes metabolome profiling at two timepoints during early (10-18 week) and late pregnancy (32-38 weeks), we used COPSAC2010 cohort-trained models, with overlapping metabolites, to predict two UDP-MS to assess their association with ADHD diagnosis at age 6. These metabolite scores at both time points were positively associated with intakes of deep fried foods,

processed meats and margarine, and negatively associated with intakes of various vegetables, whole grain foods and fruit in the VDAART cohort, as assessed by independent food frequency questionnaires (*Figure S5*). Despite significant differences in cohort characteristics, our blood metabolomics analysis successfully replicated the univariate association between the UDP-MS and ADHD diagnosis at age 6 in both early (OR 2.64 [1.56-4.64],  $p < 0.001$ ) and late pregnancy (OR 1.85 [1.12-3.16],  $p = 0.020$ ). After adjusting for similar covariates to those used in the COPSAC2010 cohort (pre-pregnancy maternal BMI, social circumstances, child sex, birth weight, gestational age, smoking during pregnancy, pre-eclampsia, and race), a significant association remained between the UDP-MS and ADHD diagnosis in early pregnancy (OR 2.88 [1.30-6.64],  $p = 0.010$ ) but not in late pregnancy (OR 1.96 [0.92-4.40],  $p = 0.088$ ), in the VDAART cohort. For further robustness of our findings, we assessed the children ever having had an ADHD diagnosis up to age 8. We found that the UDP-MS successfully replicated, albeit with attenuated effect sizes, based on the UDP-MS in early (OR 1.71 [1.28-2.32],  $p < 0.001$ ) and late pregnancy (OR 1.37 [1.04-1.83],  $p = 0.030$ ). However, these findings did not survive covariate adjustment.

In sensitivity analysis, we employed the backward elimination strategy, previously outlined for the COPSAC2010 cohort, on the metabolites overlapping with the VDAART 10-18 weeks and 32-38 weeks time points independently. In doing so, we identified the mediating metabolites in the association between the Unhealthy dietary pattern in COPSAC2010 to ADHD diagnosis. Leveraging these mediating metabolites (8/18 from 10-18 weeks overlap, 9/19 from 32-38 weeks, *Figure S6*) from COPSAC2010, we evaluated their predictive value for ADHD diagnosis in the VDAART cohort. At the 10-18 week timepoint, in a multivariable model, using this subset of mediating metabolites improved ADHD diagnosis prediction at 6 years (OR 3.61 [1.68-8.19],  $p = 0.001$ ), significantly more so (anova  $p = 0.040$ ) than our model with all 18 metabolites. Similarly at the 32-38 week timepoint, the OR was 2.51 [1.11-6.09],  $p = 0.032$ , showing a directionally stronger inference with the subset of mediating metabolites (anova  $p = 0.15$ ). These findings hint at the consistency of our causal mediation analysis in the COPSAC2010 cohort across diverse cohort settings.

To replicate the potential time-dependent effect of the Unhealthy dietary pattern, we also predicted UDP-MS for children in VDAART (1 year, 3 years, and 6 years). When incorporating the three child UDP-MS in a model with the two pregnancy UDP-MS timepoints, we observed significant associations

only between the early pregnancy UDP-MS for ADHD diagnosis at age 6 (OR 1.97 [1.01-3.80],  $p = 0.044$ ) and ADHD diagnosis up to age 8 (OR 1.65 [1.11-2.45],  $p=0.013$ ), despite a strong correlation between the early and late pregnancy metabolite-scores ( $r=0.72$ , *Table S9*).

In the COPSAC2000 cohort, we developed a UDP-DBS score using overlapping DBS metabolites from the COPSAC2010 cohort to predict the association with ADHD symptom load (ASRS). To substantiate the UDP-DBS score's relevance, we first confirmed its significance within the COPSAC2010 cohort, showing a strong association with ADHD symptom loads, in multivariable modelling (estimate=1.19 [0.41-1.98],  $p=0.003$ ), before applying it to COPSAC2000 data. ADHD symptom loads were no longer significant after further adjustment for the week 24 pregnancy Unhealthy dietary pattern/UDP-MS. In COPSAC2000, we successfully replicated this association between the UDP-MS and ADHD symptom loads (estimate=0.44 [0.01-0.86],  $p=0.045$ ), but this finding didn't survive covariate adjustment (social circumstances, child sex, birth weight, antibiotics during pregnancy and smoking during pregnancy) (estimate=0.34 [-0.08-0.77],  $p=0.114$ ). The UDP-DBS score in the COPSAC2000 cohort was only significant for inattentive subscales (estimate=0.28,  $p=0.045$ ) and directionally for hyperactivity (estimate=0.16,  $p=0.129$ ). This mirrors the findings in the COPSAC2010 cohort, where the association was stronger for the inattentive scale (*Table S5*,  $p<0.001$  for both scales). In sensitivity analysis, we enhanced the cross-correlations between COPSAC2010 and COPSAC2000 cohorts to from  $>0.4$  to  $>0.6$ , reducing overlapping metabolites from 951 to 774. This adjustment did not alter the sPLS model's ADHD predictions for COPSAC2000. As further sensitivity analysis we restricted our analysis to the metabolites ( $n =$  that had similar distributions between cohorts (two-sample Kolmogorov-Smirnov test  $p \geq 0.05$ ,  $n=626$ ) and found more robust univariate (estimate=0.49,  $p=0.027$ ) and multivariable associations (estimate=0.41,  $p=0.062$ ).

### **Investigating Potential Modulation By Genetics, Maternal Pre-pregnancy BMI and Child Sex**

In subanalysis, we investigated potential effect modifiers of the Unhealthy dietary pattern during pregnancy, including established risk factors such as child genetic risk (ADHD and autism PRS), maternal pre-pregnancy BMI, and child sex, to contextually determine whether these risk characteristics modulate the association between the pregnancy Unhealthy dietary pattern and neurodevelopmental outcomes in COPSAC2010. *Table S11* provides more details on the independent associations of these factors on neurodevelopmental outcomes.

ADHD (11.8%) and autism (2.7%) diagnosis, had limited variability in our dataset, prompting us to assess the association of the Unhealthy dietary pattern using strata of median split maternal pre-pregnancy BMI (above and below 23.7) and the child's PRS scores (*Figure 4A/B*). In multivariable analyses, the association of the Unhealthy dietary pattern was strongest in children born to mothers with a higher BMI and higher genetic predisposition for the respective disorder. For ADHD diagnosis, this group had an odds ratio of 2.18 [1.30-3.74] ( $p = 0.004$ ), and for autism diagnosis, it was 4.59 [2.33-9.78] ( $p=2.18 \times 10^{-5}$ ). When further stratified by child sex, findings continued to show consistent significance across both sexes (*Figure S7A/B*). Findings were again consistent when considering the objectively measured Unhealthy dietary pattern metabolite score (*Figure S8A/B*).

To assess the impact of the Unhealthy dietary pattern on ADHD and autism symptom loads, we employed a tertile split. Concordantly, we found that both ADHD and autism consistently showed that the association of the Unhealthy dietary pattern was most pronounced in children born to mothers in the highest pre-pregnancy BMI group ( $>25.4$ ) and in children with the highest genetic risk for the respective disorders (*Figure 4C/D*). For ADHD symptom loads, this group had an estimate of 5.07 [3.12-7.03],  $p=5.24 \times 10^{-7}$ , and for autism symptom loads it was 13.5 [9.51-17.5],  $p=9.07 \times 10^{-11}$ . When further stratified by child sex, this pronounced association persisted significantly only for male children (ADHD: 8.24 [5.19-11.3],  $p=2.33 \times 10^{-7}$ , autism: 24.6 [19.0-30.2],  $p=1.05 \times 10^{-15}$  (*Figure S7C/D*). Findings were once again consistent when considering the objectively measured Unhealthy dietary pattern metabolite score (*Figure S8A/B*). A further graphic is provided (*Figure S9*) for ADHD (A-C) and autism symptom loads (D-F) showing model estimates when considering maternal pre-pregnancy BMI across the categories  $<25$ , 25-30, and  $>30$ .

## DISCUSSION

In our large prospective general population COPSAC2010 mother-child cohort, we observed strong associations between an Unhealthy dietary pattern during pregnancy with ADHD and autism diagnoses, as well as related symptom loads for these disorders in 10-year-old children. Findings for ADHD were validated in the two large, independent mother-child cohorts, VDAART and COPSAC2000. We identified 15 key metabolites mediating this association, with the majority deriving from dietary compounds and lipids. In the VDAART cohort, a subset of mediating metabolites significantly improved associations with ADHD diagnosis, adding weight to the reliability of our results in diverse settings. Across the COPSAC2010 and VDAART cohort, we consistently found the earliest pregnancy metabolome time points showed the strongest associations with neurodevelopmental outcomes, suggesting that early pregnancy may be a particularly critical period. Finally, we observed that the influence of the Unhealthy dietary pattern during pregnancy on ADHD and autism diagnoses, as well as symptom loads, was markedly stronger in children with a heightened genetic predisposition for the respective disorders, those born to mothers with an elevated pre-pregnancy BMI, and in male children.

Building on previous studies, our research, bolstered by the use of clinically assessed outcomes, provides compelling evidence that dietary habits during pregnancy may have a significant impact on child neurodevelopment. Retained, albeit diminished, associations of the pregnancy Unhealthy dietary pattern on ADHD symptom loads, even in children without any neurodevelopmental disorder diagnosis, suggests that the pregnancy Unhealthy dietary pattern may also affect the subclinical population. The Raine Study linked a "Western" dietary pattern in 1,799 adolescents to ADHD. However, they didn't consider maternal dietary influences and found no associations for specific ADHD subtypes (25). A Norwegian study of 77,768 mother-child pairs found that higher maternal adherence to dietary guidelines was inversely correlated with ADHD diagnosis and symptom severity, while ultra-processed food was positively associated with ADHD symptom severity (26). This study's lack of association between a child's diet at age 3 and ADHD outcomes resonates with our findings, where significant associations were observed strongest during early pregnancy metabolome timepoints. In a cross-cohort study of 800 pregnant women in the US, weak associations were found between established reference dietary patterns and autism-related traits and diagnosis (27). Our study adds to existing literature by demonstrating a possible time-dependency effect of an Unhealthy dietary pattern on child

neurodevelopmental outcomes, using both maternal and child self-reported dietary intakes, and objective metabolome-derived modelling. Many studies have found strong dietary signatures in the metabolome, suggesting this may be a promising avenue for personalised nutrition and targeted therapeutic strategies (28).

The results of our study suggest that the interplay between the prenatal environment and child genetics plays a pivotal role in shaping child neurodevelopment. Particularly apparent for neurodevelopmental symptom loads, males with high genetic risk and high pre-pregnancy maternal BMI were the most vulnerable to the pregnancy Unhealthy dietary pattern. Twin studies support the hypothesis that such interactions play a significant role in the development of these disorders (29,30). Whilst heritability for ADHD and autism is high, with genetic influences accounting for approximately 70-80% of the phenotypic variance (31), current estimates for heritability encompass gene-environment interaction effects (32). Our findings highlight the potential significant role of the environment in the aetiology of ADHD and autism. This may aid researchers in understanding the underlying mechanisms contributing to the development of these disorders. It is worth noting that much of the heritability for ADHD and autism is explained by SNPs in regulatory regions rather than coding regions (33), providing further evidence for the role of the environment in these disorders.

The main strength of the study is the prospectively assessed COPSAC2010 cohort followed from pregnancy through childhood, with a deep psychiatric and dimensional psychopathological characterization provided by the COPSYCH project. The study uses pregnancy and early-life samples taken before onset of disease and symptoms, which allows for the identification of potential risk factors and the directionality of associations. The breadth of data from the COPSAC2010 cohort enabled the inclusion of relevant covariates, and the depth of phenotyping allowed for genetic characterisation, making assessments of gene-environment interactions possible. By utilising a validated semiquantitative food frequency questionnaire and identifying dietary patterns via data-driven approaches, our findings more accurately reflect the dietary patterns that are existing in the population (34). The pregnancy Unhealthy dietary pattern we identified was derived from estimates of nutrient constituents, this approach is not novel (35), and is supported by a recent meta-analysis across 123 studies (36), which reported the reliability of FFQs to capture nutrient constituents with correlation coefficients consistently exceeding 0.5 for most nutrients. Further, this nutrient-centric methodology



may offer accurate representation of dietary patterns across diverse populations, since nutrients align more closely with biological and physiological processes than food group categories. Acknowledging the limitations of FFQs, including recall bias and quantification challenges, our study incorporates blood metabolomics to provide objective biomarkers for dietary intake. This approach, while not without its own limitations, such as the transient nature of dietary-derived biomarkers, has validated the Unhealthy dietary pattern both internally, through a strong metabolomic imprint, and externally, against two independent FFQs in the VDAART study. The longitudinal nature of the study and the repeated measures in the metabolome datasets allowed for time-dependent analysis, revealing that the association of the Unhealthy dietary pattern was strongest during early pregnancy. Stronger temporal associations are further suggested by our main analysis, which include adjustment for the child's Unhealthy dietary pattern at 10-years of age. Our findings regarding ADHD were strengthened by validation in two independent mother-child cohorts. This validation enhances the reliability and generalisability of our results, despite the presence of notable differences in cohort characteristics and relatively weaker quality of outcome data in the VDAART and COPSAC2000 cohorts. The replication of our findings in the VDAART cohort suggests that our findings are applicable across diverse racial groups, dietary habits, and socio-economic spectra. In VDAART, our external validation was significantly strengthened by focusing on a subset of metabolites identified in causal mediation analysis from the COPSAC2010 cohort, implying these metabolites could be crucial intermediaries in the associations observed. Furthermore, our findings in VDAART complement those in COPSAC2010, with stronger associations of the Unhealthy dietary pattern on ADHD in early pregnancy (10-18 weeks), which may reflect a more sensitive period of neurodevelopment. Given this context, it may not be surprising to see weaker associations from neonatal DBS in COPSAC2000, potentially reflecting dietary intakes in late pregnancy. Adjusting for pregnancy Unhealthy dietary patterns in COPSAC2010 DSB modelling attenuated the association, adding to the evidence of stronger associations in early to mid-pregnancy. Replication of these findings strengthens the validity of our associations with ADHD and supports the hypothesis that metabolic alterations associated with dietary patterns may contribute to the aetiology of these disorders.

We cannot rule out potential confounding by maternal phenotypic factors that relate to child neurodevelopmental disorders, however supplemental analysis adjusting for maternal genetic risk did not change our main findings. Although we describe a time-dependent association of the Unhealthy



dietary pattern, we cannot further elucidate the critical window of these dietary factors. Moreover, it is possible that there are discrepancies in the metabolomics platforms concerning metabolite detection, annotations, and cross-platform compatibility, which may introduce bias. Nevertheless, the same metabolomics platform was employed for all maternal and child timepoints in the COPSAC2010 and VDAART cohorts (HD4, Metabolon, Inc.), as well as for the DBS metabolomics profiles in both the COPSAC2010 and COPSAC2000 cohorts (37). A further limitation is that metabolite scores for children, derived from modelling on pregnant mothers, might not fully reflect children's unhealthy dietary patterns. However, correlations between pregnancy and child metabolite scores were consistently  $\geq 0.33$  in both COPSAC2010 and VDAART. Research suggests that pre- and during pregnancy diets are stable (38), but we cannot differentiate any potential acute effects of a pregnancy Unhealthy dietary pattern or longer-term dietary effects in our observational data that could be related to other risk factors for neurodevelopmental outcomes such as obesity and metabolic disorders.

Moving forward, future research should focus on establishing causality to further elucidate the relationship between Unhealthy dietary patterns in pregnancy and neurodevelopmental outcomes. While animal studies have provided valuable insights (39), further clinical investigations are warranted. Our findings underscore the potential for targeted prevention strategies, and conducting a RCT would be instrumental in establishing causality. Additionally, genetic studies could strengthen causal inference in our observational data (40).

In conclusion, an Unhealthy dietary pattern in pregnancy was strongly associated with ADHD and autism, and with symptom loads for these disorders. Our findings suggest that early to mid-pregnancy may be a particularly sensitive window during which dietary influences may impact child neurodevelopment. Highlighting specific subgroup effects, our research points towards the potential for tailored dietary guidelines during pregnancy, especially for at-risk populations. Ultimately, our research underscores the importance of developing targeted dietary interventions for pregnant women to potentially mitigate the risk of neurodevelopmental disorders in children.

## **Acknowledgements**

We express our deepest gratitude to the children and families of the COPSAC2010, COPSAC2000 and VDAART cohorts for all their support and commitment. We acknowledge and appreciate the unique efforts of the COPSAC research team. We acknowledge all funding received by COPSAC, listed on [www.copsac.com](http://www.copsac.com). The Lundbeck Foundation (Grant no R16-A1694 and R269-2017-5); The Ministry of Health (Grant no 903516); Danish Council for Strategic Research (Grant no 0603-00280B) and The Capital Region Research Foundation have provided core support to the COPSAC research centre. This project has received funding from the European Research Council (ERC) under the European Union's Horizon 2020 research and innovation programme (grant agreement No. 946228) (BC). MAR is funded by the Novo Nordisk Foundation (Grant no NNF21OC0068517). CP was supported by an Australian National Health and Medical Research Council (NHMRC) L3 Investigator Grant (1196508) and by a grant from the Lundbeck Foundation (ID: R246-2016-3237). JL-S (R01HL123915, R01HL155742, and R01HL141826) and SHC (K01HL153941) are funded through the National Institute of Heart, Lung, and Blood Institute.

### **Authors Contributions:**

DH has written the first draft of the manuscript. All co-authors have provided important intellectual input and contributed considerably to the analyses and interpretation of the data. All authors guarantee that the accuracy and integrity of any part of the work have been appropriately investigated and resolved and all have approved the final version of the manuscript. The corresponding author had full access to the data and had final responsibility for the decision to submit for publication.

### **Competing Interests Statement:**

BE is part of the Advisory Board of Eli Lilly Denmark A/S, Janssen-Cilag, Lundbeck Pharma A/S, and Takeda Pharmaceutical Company Ltd; and has received lecture fees from Bristol-Myers Squibb, Boehringer Ingelheim, Otsuka Pharma Scandinavia AB, Eli Lilly Company, and Lundbeck Pharma A/S. BYG has been the leader of a Lundbeck Foundation Centre of Excellence for Clinical Intervention and Neuropsychiatric Schizophrenia Research (CINS) (January 2009 – December 2021), which was partially financed by an independent grant from the Lundbeck Foundation based on international review and partially financed by the Mental Health Services in the Capital Region of Denmark, the University of Copenhagen, and other foundations. All grants are the property of the Mental Health Services in the Capital Region of Denmark and administered by them. She has no other conflicts to disclose. JL-S is a scientific advisor for Precion Inc and a consultant to Tru Diagnostic, Inc.

Remaining authors declare no potential, perceived, or real conflict of interest regarding the content of this manuscript. The funding agencies did not have any role in design and conduct of the study; collection, management, and interpretation of the data; or preparation, review, or approval of the manuscript. No pharmaceutical company was involved in the study.

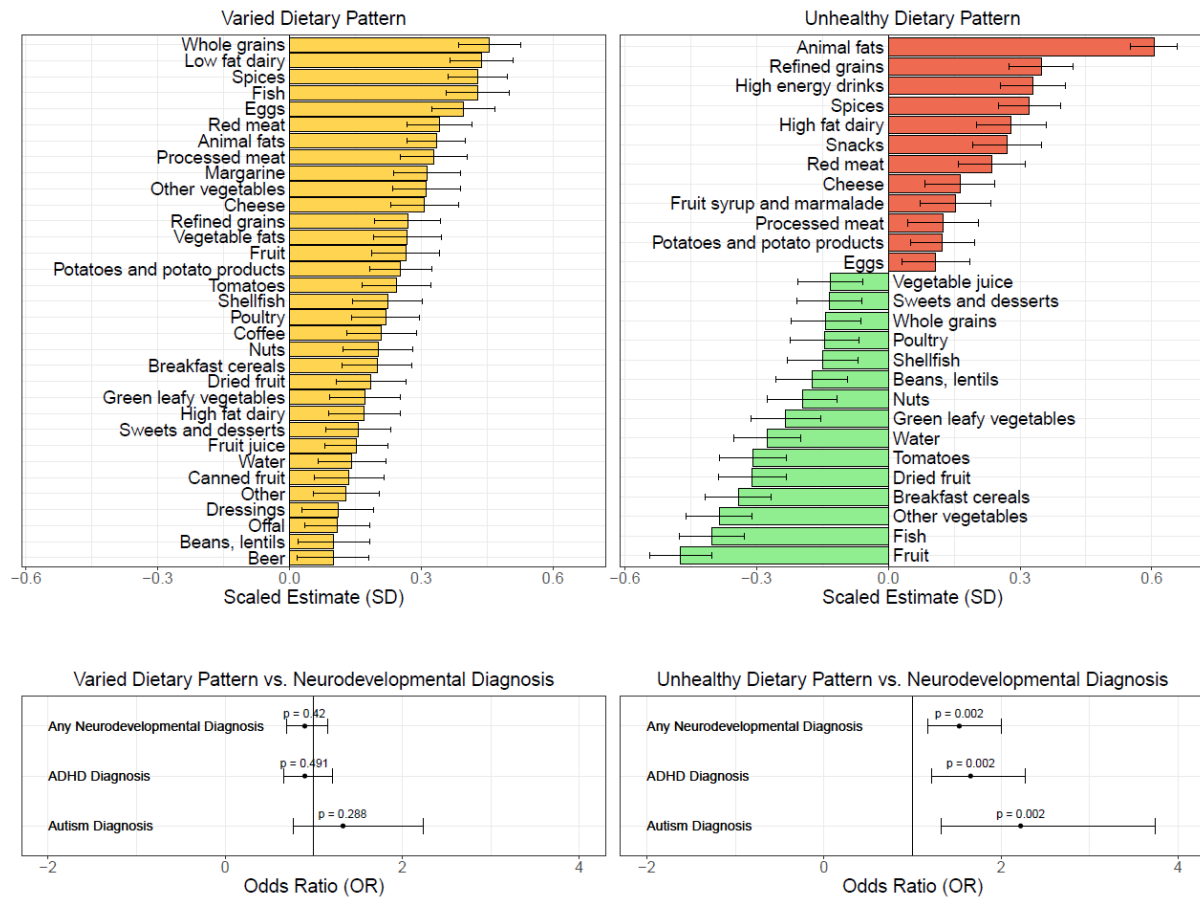
## References (Main Text)

1. Bougeard C, Picarel-Blanchot F, Schmid R, Campbell R, Buitelaar J. Prevalence of Autism Spectrum Disorder and Co-morbidities in Children and Adolescents: A Systematic Literature Review. *Front Psychiatry*. 2021 Oct 27;12:744709.
2. Dalsgaard S, Thorsteinsson E, Trabjerg BB, Schullehner J, Plana-Ripoll O, Brikell I, et al. Incidence Rates and Cumulative Incidences of the Full Spectrum of Diagnosed Mental Disorders in Childhood and Adolescence. *JAMA Psychiatry*. 2020 Feb 1;77(2):155–64.
3. Willcutt EG. The prevalence of DSM-IV attention-deficit/hyperactivity disorder: a meta-analytic review. *Neurotherapeutics*. 2012 Jul;9(3):490–9.
4. Talantseva OI, Romanova RS, Shurdova EM, Dolgorukova TA, Sologub PS, Titova OS, et al. The global prevalence of autism spectrum disorder: A three-level meta-analysis. *Front Psychiatry*. 2023 Feb 9;14:1071181.
5. Larsson H, Anckarsater H, Råstam M, Chang Z, Lichtenstein P. Childhood attention-deficit hyperactivity disorder as an extreme of a continuous trait: a quantitative genetic study of 8,500 twin pairs. *J Child Psychol Psychiatry*. 2012 Jan;53(1):73–80.
6. Makransky G, Bilenberg N. Psychometric properties of the parent and teacher ADHD Rating Scale (ADHD-RS): measurement invariance across gender, age, and informant. *Assessment*. 2014 Dec;21(6):694–705.
7. Constantino JN, Davis SA, Todd RD, Schindler MK, Gross MM, Brophy SL, et al. Validation of a brief quantitative measure of autistic traits: comparison of the social responsiveness scale with the autism diagnostic interview-revised. *J Autism Dev Disord*. 2003 Aug;33(4):427–33.
8. Cortés-Albornoz MC, García-Guáqueta DP, Velez-van-Meerbeke A, Talero-Gutiérrez C. Maternal Nutrition and Neurodevelopment: A Scoping Review. *Nutrients* [Internet]. 2021 Oct 8;13(10). Available from: <http://dx.doi.org/10.3390/nu13103530>
9. Fernandes DJ, Spring S, Roy AR, Qiu LR, Yee Y, Nieman BJ, et al. Exposure to maternal high-fat diet induces extensive changes in the brain of adult offspring. *Transl Psychiatry*. 2021 Mar 2;11(1):149.
10. Giriko CÁ, Andreoli CA, Mennitti LV, Hosoume LF, Souto TDS, Silva AV da, et al. Delayed physical and neurobehavioral development and increased aggressive and depression-like behaviors in the rat offspring of dams fed a high-fat diet. *Int J Dev Neurosci*. 2013 Dec;31(8):731–9.
11. Mitchell AJ, Khambadkone SG, Dunn G, Bagley J, Tamashiro KLK, Fair D, et al. Maternal Western-style diet reduces social engagement and increases idiosyncratic behavior in Japanese macaque offspring. *Brain Behav Immun* [Internet]. 2022 Jul 6; Available from: <http://dx.doi.org/10.1016/j.bbi.2022.07.004>
12. Prado E, Dewey K. Nutrition and Brain Development in Early Life [Internet]. *Prenatal and Childhood Nutrition*. 2015. p. 79–126. Available from: <http://dx.doi.org/10.1201/b18040-6>
13. Devarshi PP, Grant RW, Ikonte CJ, Hazels Mitmesser S. Maternal Omega-3 Nutrition, Placental Transfer and Fetal Brain Development in Gestational Diabetes and Preeclampsia. *Nutrients* [Internet]. 2019 May 18;11(5). Available from: <http://dx.doi.org/10.3390/nu11051107>
14. Taylor MR, Chuang C, Carrasco KD, Nagatomo S, Rucklidge JJ. Dietary and Micronutrient Treatments for Children with Neurodevelopment Disorders [Internet]. Vol. 5, *Current Developmental Disorders Reports*. 2018. p. 243–52. Available from: <http://dx.doi.org/10.1007/s40474-018-0150-5>

15. Halliwell B, Cheah IK, Tang RMY. Ergothioneine - a diet-derived antioxidant with therapeutic potential. *FEBS Lett.* 2018 Oct;592(20):3357–66.
16. Prince N, Chu SH, Chen Y, Mendez KM, Hanson E, Green-Snyder L, et al. Phenotypically driven subgroups of ASD display distinct metabolomic profiles. *Brain Behav Immun.* 2023 Jul;111:21–9.
17. Poornimai Abirami GP, Radhakrishnan RK, Johnson E, Roshan SA, Yesudhas A, Parveen S, et al. The Regulation of Reactive Neuroblastosis, Neuroplasticity, and Nutraceuticals for Effective Management of Autism Spectrum Disorder. *Adv Neurobiol.* 2020;24:207–22.
18. Naveed S, Lakka T, Haapala EA. An Overview on the Associations between Health Behaviors and Brain Health in Children and Adolescents with Special Reference to Diet Quality [Internet]. Vol. 17, *International Journal of Environmental Research and Public Health.* 2020. p. 953. Available from: <http://dx.doi.org/10.3390/ijerph17030953>
19. Basak S, Duttaroy AK. Maternal PUFAs, Placental Epigenetics, and Their Relevance to Fetal Growth and Brain Development. *Reprod Sci [Internet].* 2022 Jun 8; Available from: <http://dx.doi.org/10.1007/s43032-022-00989-w>
20. Pettersson E, Lichtenstein P, Larsson H, Song J, Attention Deficit/Hyperactivity Disorder Working Group of the iPSYCH-Broad-PGC Consortium, Autism Spectrum Disorder Working Group of the iPSYCH-Broad-PGC Consortium, Bipolar Disorder Working Group of the PGC, Eating Disorder Working Group of the PGC, Major Depressive Disorder Working Group of the PGC, Obsessive Compulsive Disorders and Tourette Syndrome Working Group of the PGC, Schizophrenia CLOZUK, Substance Use Disorder Working Group of the PGC, Agrawal A, et al. Genetic influences on eight psychiatric disorders based on family data of 4 408 646 full and half-siblings, and genetic data of 333 748 cases and controls - CORRIGENDUM. *Psychol Med.* 2019 Jan;49(2):351.
21. Atladottir HO, Gyllenberg D, Langridge A, Sandin S, Hansen SN, Leonard H, et al. The increasing prevalence of reported diagnoses of childhood psychiatric disorders: a descriptive multinational comparison. *Eur Child Adolesc Psychiatry.* 2015 Feb;24(2):173–83.
22. Tran NQV, Miyake K. Neurodevelopmental Disorders and Environmental Toxicants: Epigenetics as an Underlying Mechanism. *Int J Genomics Proteomics [Internet].* 2017 [cited 2023 Jan 7];2017. Available from: <https://www.ncbi.nlm.nih.gov/pmc/articles/PMC5439185/>
23. Keers R, Coleman JRI, Lester KJ, Roberts S, Breen G, Thastum M, et al. A Genome-Wide Test of the Differential Susceptibility Hypothesis Reveals a Genetic Predictor of Differential Response to Psychological Treatments for Child Anxiety Disorders. *Psychother Psychosom.* 2016 Apr 5;85(3):146–58.
24. Faraone SV, Banaschewski T, Coghill D, Zheng Y, Biederman J, Bellgrove MA, et al. The World Federation of ADHD International Consensus Statement: 208 Evidence-based conclusions about the disorder. *Neurosci Biobehav Rev.* 2021 Sep;128:789–818.
25. Howard AL, Robinson M, Smith GJ, Ambrosini GL, Piek JP, Oddy WH. ADHD is associated with a “Western” dietary pattern in adolescents. *J Atten Disord.* 2011 Jul;15(5):403–11.
26. Borge TC, Biele G, Papadopoulou E, Andersen LF, Jacka F, Eggesbø M, et al. The associations between maternal and child diet quality and child ADHD - findings from a large Norwegian pregnancy cohort study. *BMC Psychiatry.* 2021 Mar 8;21(1):139.
27. Vecchione R, Wang S, Rando J, Chavarro JE, Croen LA, Fallin MD, et al. Maternal Dietary Patterns during Pregnancy and Child Autism-Related Traits: Results from Two US Cohorts. *Nutrients [Internet].* 2022 Jun 30;14(13). Available from: <http://dx.doi.org/10.3390/nu14132729>
28. Noerman S, Landberg R. Blood metabolite profiles linking dietary patterns with health-Toward precision nutrition. *J Intern Med.* 2023 Apr;293(4):408–32.

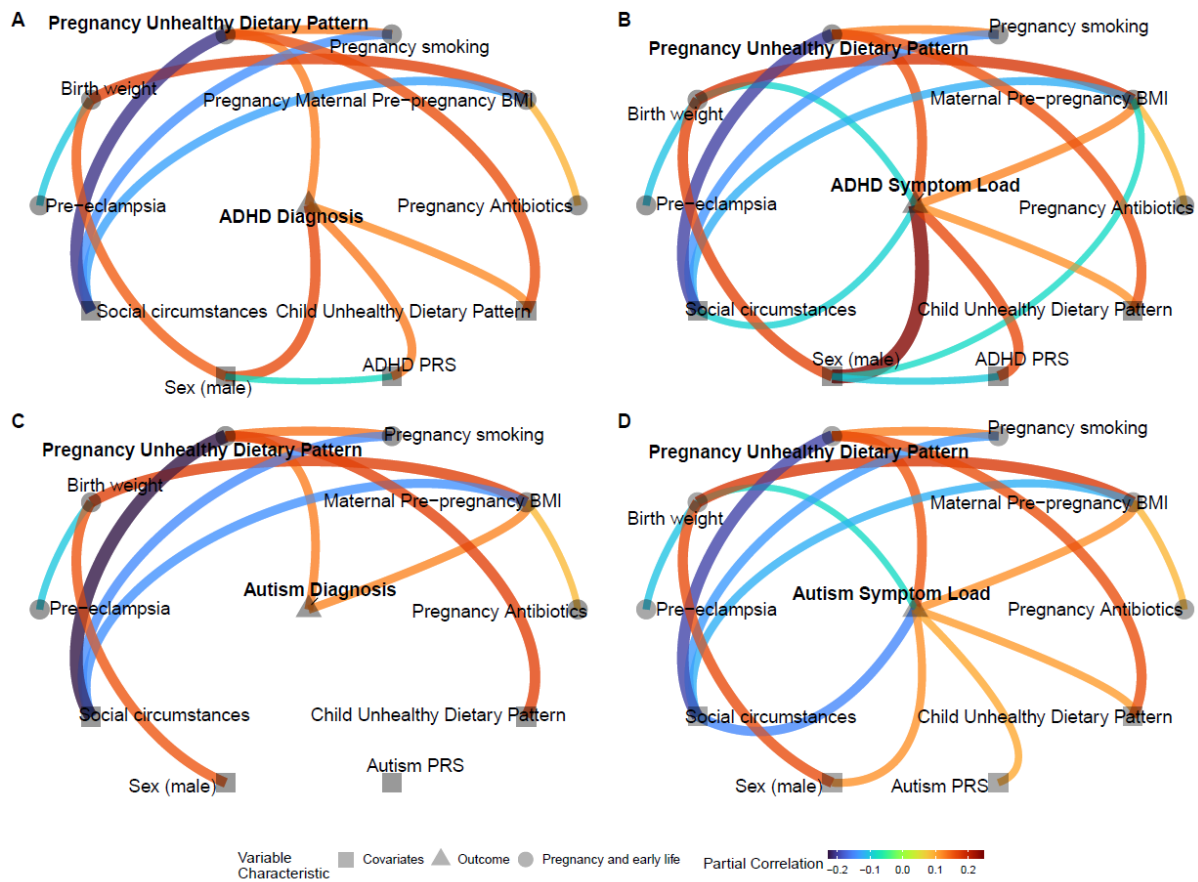
29. Faraone SV, Larsson H. Genetics of attention deficit hyperactivity disorder. *Mol Psychiatry*. 2019 Apr;24(4):562–75.
30. Santos JX, Rasga C, Marques AR, Martiniano H, Asif M, Vilela J, et al. A Role for Gene-Environment Interactions in Autism Spectrum Disorder Is Supported by Variants in Genes Regulating the Effects of Exposure to Xenobiotics. *Front Neurosci*. 2022 May 19;16:862315.
31. Ma SL, Chen LH, Lee CC, Lai KYC, Hung SF, Tang CP, et al. Genetic Overlap Between Attention Deficit/Hyperactivity Disorder and Autism Spectrum Disorder in Gene. *Front Neurosci*. 2021 Apr 27;15:649588.
32. Bateson P, Gluckman P. *Plasticity, Robustness, Development and Evolution*. Cambridge University Press; 2011. 166 p.
33. Gusev A, Lee SH, Trynka G, Finucane H, Vilhjálmsson BJ, Xu H, et al. Partitioning heritability of regulatory and cell-type-specific variants across 11 common diseases. *Am J Hum Genet*. 2014 Nov 6;95(5):535–52.
34. Newby PK, Tucker KL. Empirically derived eating patterns using factor or cluster analysis: a review. *Nutr Rev*. 2004 May;62(5):177–203.
35. Zhao J, Li Z, Gao Q, Zhao H, Chen S, Huang L, et al. A review of statistical methods for dietary pattern analysis. *Nutr J*. 2021 Apr 19;20(1):37.
36. Cui Q, Xia Y, Wu Q, Chang Q, Niu K, Zhao Y. A meta-analysis of the reproducibility of food frequency questionnaires in nutritional epidemiological studies. *Int J Behav Nutr Phys Act*. 2021 Jan 11;18(1):12.
37. Gürdeniz G, Ernst M, Rago D, Kim M, Courraud J, Stokholm J, et al. Neonatal metabolome of caesarean section and risk of childhood asthma. *Eur Respir J [Internet]*. 2022 Jun;59(6). Available from: <http://dx.doi.org/10.1183/13993003.02406-2021>
38. Savard C, Lemieux S, Weisnagel S, Fontaine-Bisson B, Gagnon C, Robitaille J, et al. Trimester-Specific Dietary Intakes in a Sample of French-Canadian Pregnant Women in Comparison with National Nutritional Guidelines [Internet]. Vol. 10, *Nutrients*. 2018. p. 768. Available from: <http://dx.doi.org/10.3390/nu10060768>
39. Urbonaite G, Knyzeliene A, Bunn FS, Smalskys A, Neniskyte U. The impact of maternal high-fat diet on offspring neurodevelopment [Internet]. Vol. 16, *Frontiers in Neuroscience*. 2022. Available from: <http://dx.doi.org/10.3389/fnins.2022.909762>
40. Pingault JB, O'Reilly PF, Schoeler T, Ploubidis GB, Rijdsdijk F, Dudbridge F. Using genetic data to strengthen causal inference in observational research. *Nat Rev Genet*. 2018 Sep;19(9):566–80.

## FIGURES



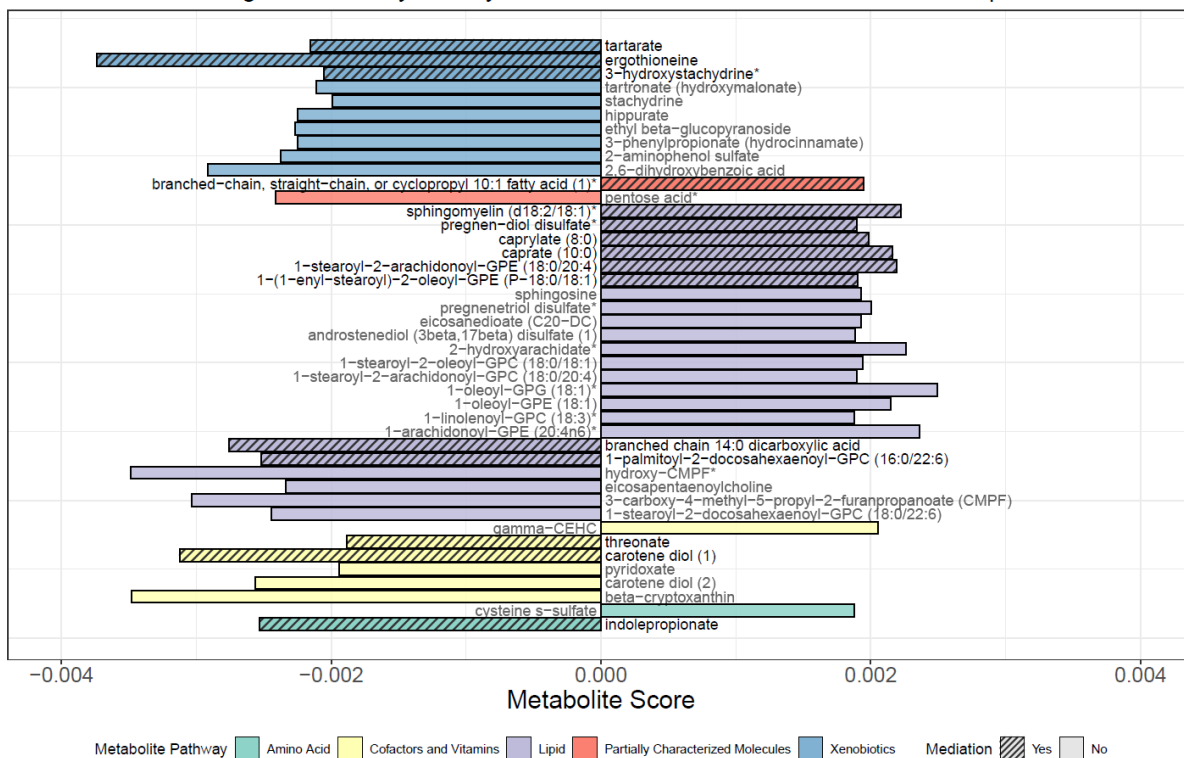
**Figure 1.** Figure showing the pregnancy Varied and Unhealthy dietary patterns derived from nutrient constituents (PC1 and PC2) and their associations with food groups. Multivariable analysis shows the Unhealthy dietary pattern is highly associated with any neurodevelopmental disorder diagnosis (OR 1.53, [1.17 - 2] ( $p = 0.002$ ), ADHD diagnosis 1.66 [1.21 - 2.27] ( $p = 0.002$ ), and autism diagnosis 2.22 [1.33 - 3.74] ( $p = 0.002$ ), but the Varied dietary pattern is not significantly associated with neurodevelopmental disorders ( $p > 0.288$ ).





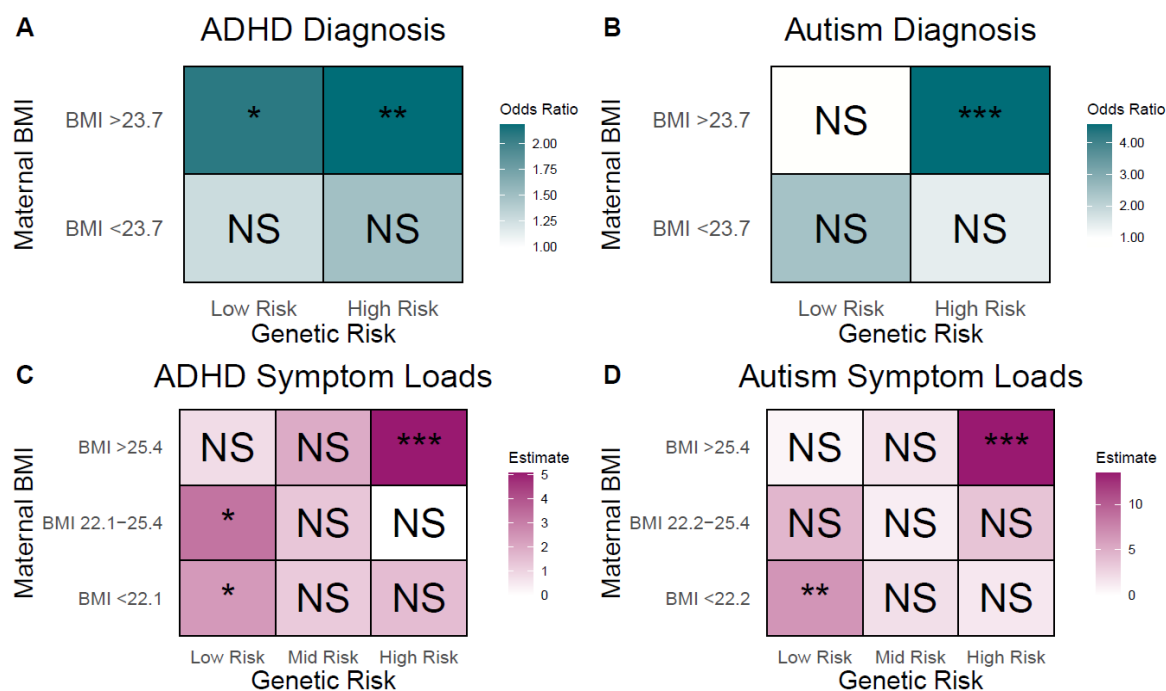
**Figure 2.** Graphical models illustrate associations (partial correlations  $p < 0.05$ ) between the Unhealthy dietary pattern during pregnancy, neurodevelopmental outcomes A: ADHD diagnosis, B: ADHD Symptom Load (ADHD-RS), C: Autism diagnosis, D: Autism Symptom Load (SRS-2), and model covariates. Models include child ADHD PRS (A&B) and autism PRS (C&D) as additional covariates.

### Metabolites Reflecting an Unhealthy Dietary Pattern and Their Mediation in Neurodevelopmental Disorders



**Figure 3.** The 43 metabolites, selected by the sparse partial least squares model, represent those associated with the Unhealthy dietary pattern during pregnancy at 24 weeks gestation in COPSAC2010. Positive metabolite scores indicate a positive association, while negative scores suggest an inverse relationship with this dietary pattern. A systematic backward elimination pinpointed 15 metabolites as mediators between the Unhealthy dietary pattern and any neurodevelopmental disorders. Notably, dietary-derived compounds, like ergothioneine, suggest potential protective roles, while certain lipid-associated metabolites hint at possible detrimental impacts on neurodevelopment.

## Unhealthy Dietary Pattern Associations with Neurodevelopmental Disorders



**Figure 4.** Modulation of the Unhealthy Dietary Pattern on Neurodevelopmental Outcomes in COPSAC2010 Cohort. Odds ratio estimates for ADHD (A) and autism diagnoses (B) based on interactions of the Unhealthy dietary pattern, maternal pre-pregnancy BMI (split at median value 23.7), and child's polygenic risk score (PRS) (median split) for ADHD and autism. Estimates for ADHD (C) and autism (D) symptom loads based on the Unhealthy dietary pattern, considering tertiles of maternal pre-pregnancy BMI and child's PRS for ADHD and autism. Odds ratios and estimates are in relation to a change of 1 SD of the Unhealthy dietary pattern. Stars represent significance levels: \* indicates  $p < 0.05$ , \*\* indicates  $p < 0.01$ , and \*\*\* indicates  $p < 0.001$ , with "NS" denoting non-significant results ( $p \geq 0.05$ ). Further details, including the individual associations of these modulating factors, can be found in Table S11.

## TABLES

Unhealthy Dietary Pattern Covariate Associations	Low Unhealthy Diet	Mid Unhealthy Diet	High Unhealthy Diet	p-value
n =	170	169	169	
Male Sex (%)	77 (45.3)	98 (58.0)	91 (53.8)	0.058
Social circumstances (mean (SD))	0.34 (0.87)	0.06 (0.94)	-0.41 (1.01)	<0.001
Maternal pre-pregnancy BMI (mean(SD))	24.12 (4.18)	24.41 (3.80)	25.36 (5.06)	0.026
Smoking during pregnancy (%)	5 ( 2.9)	7 ( 4.1)	26 (15.4)	<0.001
Gestational age in (days) (mean (SD))	279.18 (12.36)	279.62 (11.43)	279.14 (10.13)	0.911
Birthweight (kg) (mean (SD))	3.55 (0.56)	3.55 (0.53)	3.58 (0.53)	0.815
Antibiotics during pregnancy (%)	49 (29.0)	53 (31.4)	73 (43.2)	0.013
Pre-eclampsia during pregnancy (%)	5 ( 3.0)	9 ( 5.3)	8 ( 4.7)	0.539
Child Unhealthy Dietary Pattern (mean (SD))	-0.18 (0.89)	-0.07 (1.01)	0.26 (1.08)	<0.001
n3-LCPUFA Pregnancy RCT (%)	82 (48.2)	88 (52.1)	88 (52.1)	0.717
High dose Vitamin D Pregnancy RCT (%)	70 (51.1)	66 (47.1)	64 (45.4)	0.622
Total energy consumption (FFQ) (mean (SD))	9131 (1982)	8497 (1968)	9502 (2545)	<0.001
Maternal ADHD PRS (mean (SD))	-0.12 (1.00)	-0.05 (0.97)	0.09 (1.04)	0.208
Child ADHD PRS (mean (SD))	-0.17 (1.06)	-0.03 (1.00)	0.11 (0.99)	0.060
Child Autism PRS (mean (SD))	-0.01 (1.02)	-0.05 (1.05)	-0.01 (1.04)	0.921

**Table 1.** Model covariates stratified by low, middle and high (tertiles) pregnancy Unhealthy dietary pattern (PC2) for children who were clinically assessed for neurodevelopmental disorders.

	<b>Univariate Model</b>	<b>Multivariable Model</b>
<b>Neurodevelopmental Diagnosis</b>	<b>Odds Ratio [95% CI] p-value</b>	<b>Odds Ratio [95% CI] p-value</b>
Any Neurodevelopmental Disorder Diagnosis	1.66 [1.31 - 2.11] (p < 0.001)	1.53 [1.17 - 2.00] (p = 0.002)
ADHD Diagnosis	1.84 [1.42 - 2.41] (p < 0.001)	1.66 [1.21 - 2.27] (p = 0.002)
Autism Diagnosis	2.38 [1.50 - 3.79] (p < 0.001)	2.22 [1.33 - 3.74] (p = 0.002)
<b>Neurodevelopmental Symptom Loads</b>	<b>Estimate [95% CI] p-value</b>	<b>Estimate [95% CI] p-value</b>
ADHD Symptom Load (ADHD-RS)	2.26 [1.53 - 2.98] (p < 0.001)	1.73 [0.98 - 2.49] (p < 0.001)
Autism Symptom Load (SRS-2)	4.37 [2.92 - 5.81] (p < 0.001)	3.21 [1.69 - 4.74] (p < 0.001)

**Table 2.** Regression analysis of the Unhealthy dietary pattern during pregnancy and neurodevelopmental outcomes. Odds ratios and estimates are interpreted as the association of a 1 standard deviation higher pregnancy Unhealthy dietary pattern. **Model A:** Univariate analysis. **Model B:** Multivariable analysis (multivariable model adjusted for pre-pregnancy maternal BMI, social circumstances (household income, maternal education level, and maternal age), child sex, birth weight, gestational age, pregnancy smoking/antibiotic use, pre-eclampsia and a child Unhealthy dietary pattern at 10-years of age).

## METHODS

### Study Design

The COpenhagen Prospective Study on Neuro-PSYCHiatric Development (COPSYCH) study (41) was nested within the deeply phenotyped Copenhagen Prospective Studies on Asthma in Childhood (COPSAC2010) mother-child cohort, at age 10 years. The COPSAC2010 cohort includes 700 mother-child pairs with extensive phenotyping from 14 clinical visits and exposure assessments since birth (42). We used the Vitamin D Antenatal Asthma Reduction Trial (VDAART, NCT00920621) ( $n=656$ ) (43), a large independent US-based mother-child cohort, to validate our metabolome modelling (44), and further validated the findings in the COPSAC2000 cohort, using metabolic profiles from neonatal dried blood spots (DBS) (45).

### The COPSYCH 10-year visit

The COPSYCH study comprised a 2-day clinical visit that focused on neurodevelopment, reflected by neurocognition and psychopathology (41). Clinical examinations were carried out between January 2019 and December 2021.

We used both the International Classification of Disorders 10th Revision (ICD-10) of Mental and Behavioural Disorders: Clinical descriptions and diagnostic guidelines and Diagnostic and Statistical Manual of Mental Disorders, Fifth Edition (DSM-5) criteria for research diagnoses based on clinical information from the 10-year visit. ADHD ICD-10 diagnostic codes assigned at the COPSYCH visit included: DF90.0 (*Disturbance of activity and attention*), DF90.8 (*Other hyperkinetic disorders*) and DF98.8C (*Attention deficit disorder without hyperactivity*). For secondary analysis, we further specified *ADHD combined presentation* (DSM-5) (fulfilling ICD-10 DF90.0 or DF90.8) and *ADHD predominantly inattentive presentation* (DSM-5) (fulfilling ICD-10 DF98.8C). Autism ICD-10 diagnostic codes assigned were: DF84.0 (*Childhood autism*), DF84.5 (*Asperger's syndrome*) and DF84.8 (*Other pervasive developmental disorders*). For our analysis, we also included additional neurodevelopmental disorder codes under the umbrella of 'any neurodevelopmental disorder', including DF95.1 (*chronic motor or vocal tic disorder*), DF95.2 (*Tourette's syndrome*), DF88 (*Other disorders of psychological*

*development*), and DF89 (*Unspecified disorder of psychological development*), in addition to ADHD and autism as previously described.

The ADHD Rating Scale (ADHD-RS) questionnaire was completed by parents to assess the severity of inattentive and impulsive-hyperactive symptoms (6), and the Social Responsiveness Scale-2 (SRS-2) was used to assess the severity of autism traits in the whole cohort (7). Symptom loads are derived from the total scores of the ADHD-RS (Q1-Q18) and SRS-2 questionnaires. Subscales for ADHD-RS and SRS-2 are utilised in subanalysis.

The Kiddie Schedule for Affective Disorders and Schizophrenia for School-Age Children Present and Lifetime Version (K-SADS-PL) (25) was used to assess current and lifetime psychopathology through a general screening interview and supplementary interview for relevant disorders (46). All K-SADS-PL interviews were conducted by a trained clinician. If certain thresholds are reached, a supplementary interview is conducted to assign relevant diagnoses based on all available information. Consensus diagnoses were made between senior researcher and psychologist with specialty in child and adolescent psychiatry (JRMJ) and at least two examiners according to both the Diagnostic and Statistical Manual of Mental Disorders, Fifth Edition (47) and the International Classification of Disorders 10th Revision (ICD-10) of Mental and Behavioural Disorders: Clinical descriptions and diagnostic guidelines (48). Diagnostic classification was further validated by a professor in child and adolescent psychiatry (NB). An estimation of interrater reliability on the symptom level was performed based on video recordings of 10 participants with JRMJ as the gold standard. The overall agreement, including both currently present and not present symptoms, was 99.48% (95%CI 99.25-99.66). The agreement specifically on present symptoms was 88.48% (95%CI 82.60-92.92).

### **Food Frequency Questionnaires and Pregnancy Dietary Patterns**

Mothers were recruited to the COPSAC2010 cohort at 24 weeks gestation. Mothers were asked to complete a validated semi-quantitative food frequency questionnaire (FFQ) with a one-month recall period, which included 360 items. This FFQ is the same utilised in the Danish National Birth Cohort (DNBC), and has been validated in both a group of younger women (49) and for pregnant women (50,51). Mothers reported their intake of foods with natural units like apples, while for items without natural units, such as lasagne, they indicated frequency of consumption. Nutrient intakes were

estimated using standard portion sizes and recipes, with frequency categories converted to daily intake. Intakes of various food items were calculated based on standard portion size assumptions, measured in grams per day. Nutrient constituents were then determined using the National Food Institute's Food Composition Databank, version 7 (52). Nutrient constituents were selected for analysis due to its association with physiological and metabolic functions, which provides a perspective on biological mechanisms applicable across various populations. During the COPSYPH clinical assessment at the age of 10, we collected data on the dietary habits of children. The FFQ, encompassing 145 distinct food items, aimed to capture the consistent dietary habits of children. It has been previously validated for use among adolescents aged 12-15 in the DNBC study (53). Intakes of food groups and nutrient components were measured using the same method as the pregnancy questionnaire mentioned above.

Principal component analysis (PCA) was used to identify maternal dietary patterns based on the calculated estimates of energy, macronutrient, and micronutrient intake. Derived dietary patterns were associated with estimates for food groups for interpretability. The sum totals of nutrient constituents were excluded to avoid redundancy in the PCA.

In the VDAART cohort, mothers were asked to complete a semi-quantitative food frequency questionnaire (FFQ) during the clinical visit corresponding to when the blood metabolome samples were taken: 10-18 weeks and 32-38 weeks gestation (54). The FFQ captured the average weekly consumption of each food item(s) over the past year using the following ordinal categories: "Less than once per week" as 0, "Once per week" as 1, "2-4 times per week" as 2, "Nearly daily or daily" as 3, and "Twice or more per day" as 4.

### **Polygenic Risk Scores**

Maternal and child genotypes in the COPSAC2010 cohort were analysed using the Illumina Infinium HumanOmniExpressExome BeadChip. To calculate PRS for ADHD and autism, we used data from genome-wide association meta-analyses of diagnosed ADHD cases ( $n=20,183$ ) and controls ( $n=35,191$ ) (55) and autism cases ( $n=18,381$ ) and controls ( $n=27,969$ ) (56).

The software package Polygenic risk score continuous shrinkage (CS) was used for PRS construction through regularising SNP effects using a shrinkage prior (57). PRS-CS uses a linkage disequilibrium (LD) reference panel constructed via European ancestry samples from the 1000 genomes project. We



used the automatic estimation of the polygenicity parameter ( $\phi$ ). Subsequent to SNP effect adjustment with PRS-CS, we used the software PLINK2 (58) to aggregate SNP effects into PRSs for each individual. The scores were scaled to mean 0 and SD 1 for each phenotype.

### **Blood Metabolome**

Untargeted plasma metabolomics data was collected from mothers at mid-pregnancy (24 weeks gestation) and one week postpartum, and from children at ages 6 months, 18 months, and 6 years. We used two VDAART blood metabolome pregnancy time points (10-18 weeks and 32-38 weeks) measured on the same platform as the COPSAC2010 samples to replicate our findings for ADHD. A blood sample was collected using an EDTA tube during the visit to the research clinic site, then centrifuged for 10 minutes at 4000 rpm to extract the plasma. The supernatant was secured and stored at  $-80^{\circ}\text{C}$  for future analysis. The untargeted metabolomic analysis of the plasma samples for both COPSAC2010 and the VDAART cohorts were carried out by Metabolon, Inc. (NC, USA).

For sample preparation, we employed the MicroLab STAR® system from Hamilton Company, which is an automated process. Each sample was enhanced with recovery standards to ensure quality control (QC) before metabolites were extracted using methanol. This extraction process involved vigorous shaking for 2 minutes using a Glen Mills GenoGrinder 2000, followed by centrifugation, to precipitate proteins. The extract was then divided into four aliquots for further analysis on four different LC-MS/MS platforms. The aliquots were dried using a TurboVap® (Zymark) to evaporate the organic solvent, then stored under nitrogen overnight prior to LC-MS/MS preparation.

The analysis through LC-MS/MS was conducted using an ACQUITY Ultra-Performance Liquid Chromatography (UPLC) system by Waters, Milford, USA, coupled with a Q Exactive™ Hybrid Quadrupole-Orbitrap™ mass spectrometer, which includes a heated electrospray ionisation (HESI-II) source, provided by ThermoFisher Scientific, Waltham, Massachusetts, USA. We prepared the sample extracts in solvent mixes specifically chosen for each of the four LC methods applied: two methods were reverse phase UPLC-ESI(+) MS/MS for analysing both hydrophilic and hydrophobic molecules; another was a reverse phase UPLC-(-) MS/MS; and the last was HILIC/UPLC-(-) MS/MS. The mass spectrometry analysis alternated between full scan MS and data-dependent MS<sub>n</sub> scans with dynamic exclusion, covering a scan range from 70 to 1000 m/z for both ion modes.

In terms of data collection and quality control, the raw data was subjected to extraction, peak identification and followed by QC procedures. The semi-quantification of samples was based on the area-under-the-curve method. Further details are discussed in our previously published work (59).

Data preprocessing was done by excluding metabolites with >33% missingness. Remaining missing data was imputed using random forest imputation (missForest package, v1.5) (60) and the metabolome data was log-transformed, centred and scaled, prior to analysis. The metabolome data for mothers at mid-pregnancy (24 weeks gestation) had a total of 760 annotated metabolites for analysis. Of these, 744 metabolites overlapped between the 24-week gestation period and one week postpartum, 516 metabolites overlapped with 6-month data, 707 metabolites overlapped with 18-month data and 540 metabolites overlapped with 6-year data.

We attempted to validate our metabolite score findings using a large independent US based cohort of children (VDAART). The 24-week pregnancy time point in COPSAC2010 was compared with those for early pregnancy (10-18 weeks gestation) and late pregnancy (32-38 weeks gestation) in VDAART, identifying 640 and 689 overlapping metabolites, respectively. We further predicted metabolite scores for the VDAART children, with 523 overlapping metabolites at 1 year, 530 at 3 years, and 677 overlapping metabolites at 6 years. The metabolite scores were predicted using the model trained on COPSAC2010 data; applied to log-transformed, centred and scaled VDAART data. The metabolite score predictions were subsequently scaled, and thus results should be interpreted as per SD change in the given population.

### **VDAART and COPSAC2000 ADHD Outcomes**

Parents of VDAART children at the six-, seven- and eight-year follow-up visits were asked if their child “*had ever received a physician diagnosis of ADD or ADHD*” or “*had ever received a physician diagnosis of autism*”. Our main analysis was on children at the age of 6. Further for an analysis of robustness we assessed associations on whether children had ever had a diagnosis of ADD/ADHD or autism up to the age of eight.

In COPSAC2000, participants were asked to complete the Adult ADHD Self-Report Scale v1.1 (ASRS) at the 18-year clinical cohort visit (61). The ASRS has been validated and demonstrated good reliability and validity in screening for ADHD in adults. In our analysis, participants received a score of 1 for any

question that deemed a symptom of ADHD (such that total scores could range from 0 to 18) (62). As a subanalysis we stratified inattention-based questions (Q1-Q4, Q7-Q11) and hyperactivity-impulsivity questions (Q5-Q6, Q12-Q18).

### **Neonatal Dried Blood Spot samples**

DBS samples from COPSAC2010 ( $n=677$ ) and COPSAC2000 ( $n=387$ ) were respectively collected at age 2-3 days and 1-12 days after birth, and stored at  $-20^{\circ}\text{C}$  at the Danish National Biobank until analysis. Metabolic profiles of the DBS samples were acquired by liquid chromatography mass spectrometry (LC-MS). Data preprocessing was executed using both XCMS and MZmine, with the quality assessed based on the distribution of pooled samples (37). Metabolite extraction from DBS samples, a 3.2mm punch in diameter, was conducted using a Microlab STAR automated liquid handler from Hamilton Bonaduz AG, Bonaduz, Switzerland. These samples were extracted onto 96-well plates in batches with 100  $\mu\text{L}$  of 80% methanol, specifically designed for analytical processes. Subsequently, 75  $\mu\text{L}$  of the supernatants were shifted to fresh plates, air-dried under a nitrogen atmosphere, and reconstituted in 75  $\mu\text{L}$  of 2.5% methanol. Before injection, 65  $\mu\text{L}$  was transferred onto the final plates. For the analysis, samples from both COPSAC2000 and COPSAC2010 were divided, with the former distributed across six batches and the latter across ten. Each batch or plate comprised eight water blanks, an internal standard mix, four external controls, three paper blanks, four pooled samples, two diluted pools, and 74 cohort samples. All extractions utilised LC-MS grade solvents provided by Thermo Fisher Scientific, Waltham, MA, USA. An addition of 24 isotope-labelled internal standards, encompassing amino acids and acylcarnitines, was made to the extraction solvents. These standards, consistent in concentration across samples, were employed to ensure quality and evaluate the efficacy of batch correction and normalisation that followed. To further gauge the variability in sample preparation, acquisition, and preprocessing, quality control pooled samples (PSs) were periodically assessed throughout the analysis run. Metabolic profiles were generated using a high-resolution Thermo Scientific Q-Exactive Orbitrap mass spectrometer, linked to a Dionex Ultimate 3000 UPLC. This complex procedure involved a series of specific injection, gradient operation, and parameters for mass spectrometric analysis. Preprocessing of the acquired data involved the use of software like XCMS, MZmine, and MSconvert, with specific protocols established for peak detection, alignment, deconvolution, and filtering. Ensuring data quality was paramount, and this was maintained through the

use of internal standards and a series of checks, including principal component analysis (PCA) to confirm the clustering of pooled samples. For a more detailed insight into the equipment settings, data preprocessing steps, and quality controls, refer to the specific sections on mass spectrometry settings, LC-MS/MS data preprocessing, and quality control in the supplementary information. Further in-depth description of sample preparation, LC-MS metabolic profiling, and data pre-processing for both cohorts can be found in previous work (37). There were 2313 features detected in COPSAC2010 and 2363 features in COPSAC2000. As the majority of features were unnamed, we merged both datasets using an inexact matching criterion (mass  $\pm 0.01$ , retention time  $\pm 0.1$ ) using the fuzzyjoin R package (v0.1.6) (63) and subsequently found 1253 overlapping metabolites between cohorts. For further robustness, we applied a further filter, only retaining features that had a cross-correlation between cohorts of  $>0.4$ , ending with 951 overlapping features between cohorts.

### **Information on Covariates**

In our multivariable analysis, we included the following covariates: pre-pregnancy maternal BMI, social circumstances (the first principal component of household income, maternal education level, and maternal age at birth), child sex, birth weight, gestational age, smoking during pregnancy, antibiotic use during pregnancy, pre-eclampsia and a child Unhealthy dietary pattern, assessed by a FFQ from children at 10 years old. The child sex variable in COPSAC2010, COPSAC2000 and VDAART was interpreted as sex assigned at birth. Additionally, we conducted sensitivity analysis to explore the influence of the following variables: the results of two randomised controlled trials conducted within the COPSAC2010 cohort (n3-LCPUFA supplementation and high-dose vitamin D during pregnancy) (42), total energy intake derived from the maternal FFQ, maternal ADHD genetic risk and genomic PCs, missing data were also imputed using the same approach.

### **Statistical Analysis**

Logistic regression models were used to determine the associations of maternal dietary patterns on neurodevelopmental disorders, and linear regression models were used to assess the associations of maternal dietary patterns on parentally reported symptom loads for ADHD and autism. All multivariable models were adjusted for the previously mentioned covariates. We excluded five individuals from the

analysis. Specifically, we removed the second twin from twin pairs since the exposure of interest was not independent.

We used the caret package in R (v6.0.90) to establish Unhealthy dietary pattern metabolite scores (UDP-MS), via sparse partial least squares regression on the COPSAC2010 metabolomics datasets, with the pregnancy dietary pattern as response. Individual models were created for predicting UDP-MS at other timepoints, using the subset of overlapping metabolites (See `Blood Metabolome`). To improve interpretability and reduce the risk of overfitting, we chose single-component models, applying cross-validated predictions (repeated cv, number of segments=5, repeats=10). We selected the model with the lowest RMSECV, and we assessed sparsity in 0.1 increments from 0 to 1. For external validation between COPSAC2010 and VDAART, we adjusted our model parameters to balance against overfitting whilst ensuring optimal performance. We accordingly chose a model within +0.01 RMSECV of the top-performing one. Likewise, five UDP-MS were made using the VDAART cohort for mothers at week 10-18 pregnancy and week 32-38 pregnancy, and children at 1 year, 3 years and 6 years. We similarly trained a sPLS model in the COPSAC2010 cohort on the Unhealthy dietary pattern from DBS metabolic profiles that overlapped with the COPSAC2000 cohort.

To elucidate the role of metabolites as potential biomarkers or mediators in the association between an Unhealthy dietary pattern and neurodevelopmental disorders, we employed a systematic backward elimination strategy. This approach was designed to iteratively exclude metabolites, aiming to identify those with the most profound mediating influence on the outcome. We employed 10,000 iterations for each step of this elimination. We used two linear models: one linking a composite metabolite score to the Unhealthy dietary pattern and covariates, and another assessing its mediating role between dietary patterns and neurodevelopmental outcome. This causal mediation analysis was conducted with the mediation package in R (v4.5.0).

We used Gaussian graphical network models via the framework described by Williams and Rast to illustrate the results (64). Gaussian graphical models show the non-zero relationships (95% CI) between the dietary pattern, neurodevelopmental outcomes and model covariates, controlling for the linear effects of all covariates expressed as partial correlations. We integrated gestational age and birthweight to refine our Gaussian graphical network models as these variables are highly collinear (65). From these models, significant associations in the resulting precision matrices were visualised as interconnected

network diagrams utilising the ggraph (v2.1.0), igraph (v1.2.11), and qgraph (v1.9.2) libraries in R. All p-values <0.05 were considered statistically significant. We used linear interaction models to examine the modulating effects of genetics, child sex and maternal BMI on neurodevelopmental outcomes. All interaction models were multivariable (see `Information on covariates`), additionally including genetic risk (see `Polygenic Risk Scores`).

When comparing the UDP-MS in logistic regression, we utilised the missMDA package (v1.18) (66) to impute missing data (12.5% in COPSAC2010). This was done using the available metabolite scores as a reference, ensuring that our analyses were not biased due to incomplete data. Linear mixed models with variable slopes and intercepts were applied to the UDP-MS data, integrating gestational age alongside chronological age. The slopes and intercepts were treated as random effects, allowing for modelling of the longitudinal effect of the identified maternal dietary pattern on neurodevelopmental outcomes. Accordingly, the random effects were extracted for inference, the "lme4" R- package (1.1.28) was used for modelling (67), both slopes and intercepts were scaled (estimates are interpreted as per SD change). Likewise, dietary principal components and metabolite scores are scaled for interpretation. A significance level of 0.05 was used in all analyses and false-discovery rate control (FDR) applied where relevant (<0.05). All data analyses were performed with the statistical software R version 4.1.1. Other R packages utilised in this analysis include tidyverse (v1.3.1), dplyr (v1.0.10), broom (v0.7.12), lubridate (v1.8.0), ggpubr (v0.4.0) and tableone (v0.13.0).

**Data Availability:** Participant-level personally identifiable data are protected under the Danish Data Protection Act and European Regulation 2016/679 of the European Parliament and of the Council (GDPR) that prohibit distribution even in pseudo-anonymized form. However, participant-level data can be made available under a data transfer agreement as part of a collaboration effort.

**Code Availability:** The custom code employed in this research is freely accessible to the public for transparency and reproducibility purposes.

**Inclusion and Ethics:** The study was approved by The Local Ethics Committee (H-B-2008-093), and the Danish Data Protection Agency (2015-41-3696).

**Governance:** We are aware of and comply with recognized codes of good research practice, including the Danish Code of Conduct for Research Integrity. We comply with national and international rules on the safety and rights of patients and healthy subjects, including Good Clinical Practice (GCP) as defined in the EU's Directive on Good Clinical Practice, the International Conference on Harmonisation's (ICH) good clinical practice guidelines and the Helsinki Declaration. Privacy is important to us which is why we follow national and international legislation on General Data Protection Regulation (GDPR), the Danish Act on Processing of Personal Data and the practice of the Danish Data Inspectorate.

## Methods-only References

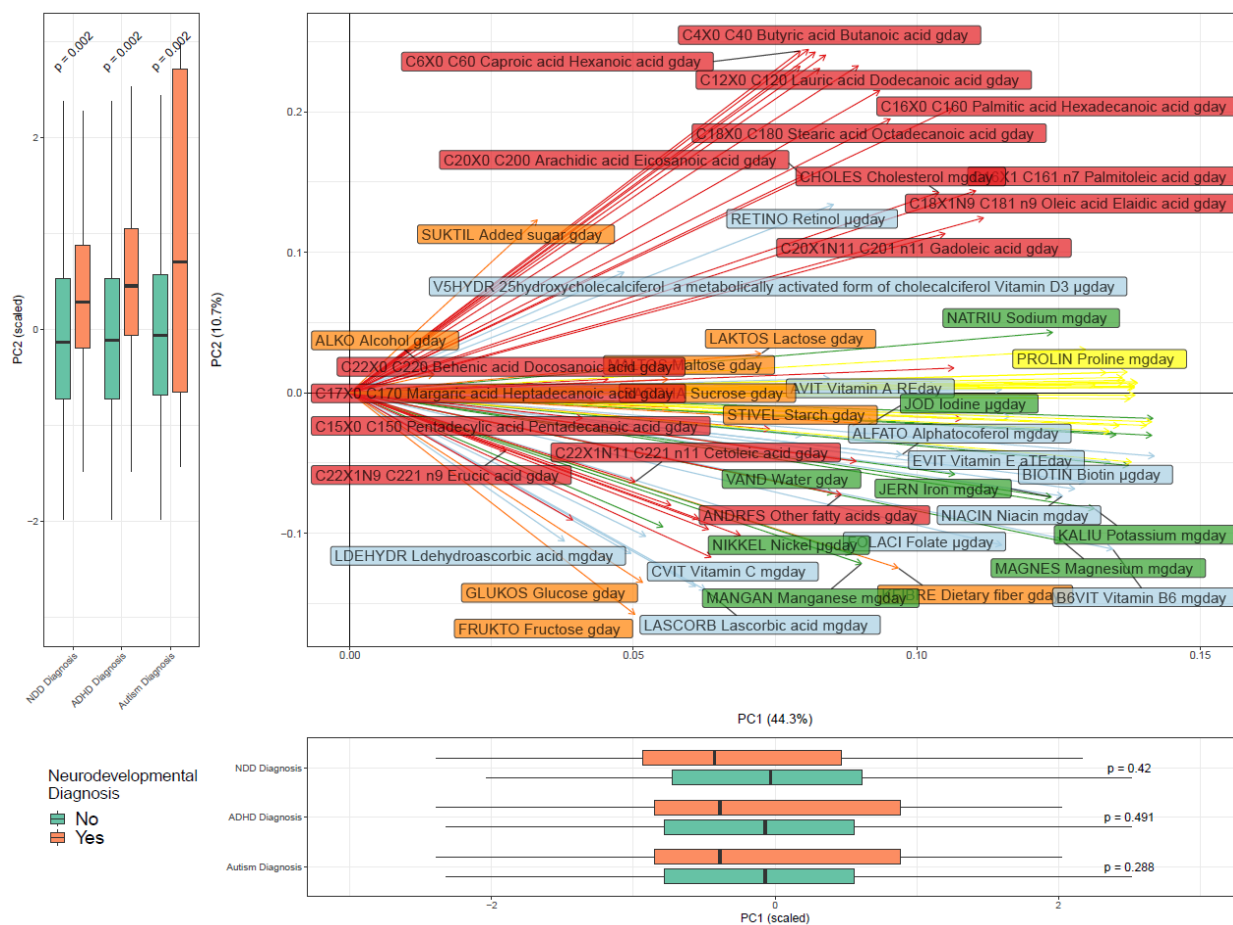
41. Mohammadzadeh P, Rosenberg JB, Vinding R, Møllegaard Jepsen JR, Lindberg U, Følsgaard N, et al. Effects of prenatal nutrient supplementation and early life exposures on neurodevelopment at age 10: a randomised controlled trial - the COPSYPH study protocol. *BMJ Open*. 2022 Feb 1;12(2):e047706.
42. Bisgaard H, Vissing NH, Carson CG, Bischoff AL, Følsgaard NV, Kreiner-Møller E, et al. Deep phenotyping of the unselected COPSAC<sub>2010</sub> birth cohort study [Internet]. Vol. 43, *Clinical & Experimental Allergy*. 2013. p. 1384–94. Available from: <http://dx.doi.org/10.1111/cea.12213>
43. Litonjua AA, Lange NE, Carey VJ, Brown S, Laranjo N, Harshfield BJ, et al. The Vitamin D Antenatal Asthma Reduction Trial (VDAART): rationale, design, and methods of a randomized, controlled trial of vitamin D supplementation in pregnancy for the primary prevention of asthma and allergies in children. *Contemp Clin Trials*. 2014 May;38(1):37–50.
44. Kelly RS, Boulin A, Laranjo N, Lee-Sarwar K, Chu SH, Yadama AP, et al. Metabolomics and Communication Skills Development in Children; Evidence from the Ages and Stages Questionnaire. *Metabolites* [Internet]. 2019 Mar 5;9(3). Available from: <http://dx.doi.org/10.3390/metabo9030042>
45. Bisgaard H. The Copenhagen Prospective Study on Asthma in Childhood (COPSAC): design, rationale, and baseline data from a longitudinal birth cohort study. *Ann Allergy Asthma Immunol*. 2004 Oct;93(4):381–9.
46. Kaufman J, Birmaher B, Brent D, Rao U, Flynn C, Moreci P, et al. Schedule for Affective Disorders and Schizophrenia for School-Age Children-Present and Lifetime Version (K-SADS-PL): initial reliability and validity data. *J Am Acad Child Adolesc Psychiatry*. 1997 Jul;36(7):980–8.
47. American Psychiatric Association. *Diagnostic and Statistical Manual of Mental Disorders: DSM-5-TR*. 2022. 1120 p.
48. World Health Organization. *The International Statistical Classification of Diseases and Health Related Problems ICD-10: Tenth Revision. Volume 2: Instruction Manual*. World Health Organization; 2004. 198 p.
49. Friis S, Kruger Kjaer S, Stripp C, Overvad K. Reproducibility and relative validity of a self-administered semiquantitative food frequency questionnaire applied to younger women. *J Clin Epidemiol*. 1997 Mar;50(3):303–11.
50. Mikkelsen TB, Olsen SF, Rasmussen SE, Osler M. Relative validity of fruit and vegetable intake estimated by the food frequency questionnaire used in the Danish National Birth Cohort. *Scand J Public Health*. 2007;35(2):172–9.
51. Mikkelsen TB, Osler M, Olsen SF. Validity of protein, retinol, folic acid and n-3 fatty acid intakes estimated from the food-frequency questionnaire used in the Danish National Birth Cohort. *Public Health Nutr*. 2006 Sep;9(6):771–8.
52. Paperpile [Internet]. [cited 2023 Oct 26]. Danish Food Composition Data, Version 7. Available from: <https://paperpile.com/app/p/49f46071-353d-0183-9823-b8b1c9c5898d>
53. Bjerregaard AA, Halldorsson TI, Kampmann FB, Olsen SF, Tetens I. Relative validity of a web-based food frequency questionnaire for Danish adolescents. *Nutr J*. 2018 Jan 12;17(1):9.
54. Kachroo P, Kelly RS, Mirzakhani H, Lee-Sarwar K, Chawes BL, Blighe K, et al. Fish oil supplementation during pregnancy is protective against asthma/wheeze in offspring. *J Allergy Clin Immunol Pract*. 2020 Jan;8(1):388–91.e2.
55. Demontis D, Walters RK, Martin J, Mattheisen M, Als TD, Agerbo E, et al. Discovery of the first



- genome-wide significant risk loci for attention deficit/hyperactivity disorder. *Nat Genet.* 2019 Jan;51(1):63–75.
56. Grove J, Ripke S, Als TD, Mattheisen M, Walters RK, Won H, et al. Identification of common genetic risk variants for autism spectrum disorder. *Nat Genet.* 2019 Mar;51(3):431–44.
57. Ge T, Chen CY, Ni Y, Feng YCA, Smoller JW. Polygenic prediction via Bayesian regression and continuous shrinkage priors. *Nat Commun.* 2019 Apr 16;10(1):1776.
58. PLINK 2.0 [Internet]. [cited 2023 Mar 29]. Available from: <https://www.cog-genomics.org/plink/2.0/>
59. Rago D, Rasmussen MA, Lee-Sarwar KA, Weiss ST, Lasky-Su J, Stokholm J, et al. Fish-oil supplementation in pregnancy, child metabolomics and asthma risk. *EBioMedicine.* 2019 Aug;46:399–410.
60. Stekhoven DJ, Bühlmann P. MissForest--non-parametric missing value imputation for mixed-type data. *Bioinformatics.* 2012 Jan 1;28(1):112–8.
61. Kessler RC, Adler L, Ames M, Demler O, Faraone S, Hiripi E, et al. The World Health Organization Adult ADHD Self-Report Scale (ASRS): a short screening scale for use in the general population. *Psychol Med.* 2005 Feb;35(2):245–56.
62. Adler LA, Faraone SV, Sarocco P, Atkins N, Khachatryan A. Establishing US norms for the Adult ADHD Self-Report Scale (ASRS-v1.1) and characterising symptom burden among adults with self-reported ADHD. *Int J Clin Pract.* 2019 Jan;73(1):e13260.
63. Website [Internet]. Available from: Robinson D Bryan J Elias. 2020. “Fuzzyjoin: Join Tables Together on Inexact Matching. 2020” Version 0.1.6 (May). <https://cran.r-project.org/web/packages/fuzzyjoin/index.html>.
64. Williams DR, Rast P. Back to the basics: Rethinking partial correlation network methodology. *Br J Math Stat Psychol.* 2020 May;73(2):187–212.
65. Marsál K, Persson PH, Larsen T, Lilja H, Selbing A, Sultan B. Intrauterine growth curves based on ultrasonically estimated foetal weights. *Acta Paediatr.* 1996 Jul;85(7):843–8.
66. Josse J, Husson F. **missMDA**: A Package for Handling Missing Values in Multivariate Data Analysis [Internet]. Vol. 70, *Journal of Statistical Software*. 2016. Available from: <http://dx.doi.org/10.18637/jss.v070.i01>
67. Bates D, Mächler M, Bolker B, Walker S. Fitting Linear Mixed-Effects Models Using **lme4** [Internet]. Vol. 67, *Journal of Statistical Software*. 2015. Available from: <http://dx.doi.org/10.18637/jss.v067.i01>

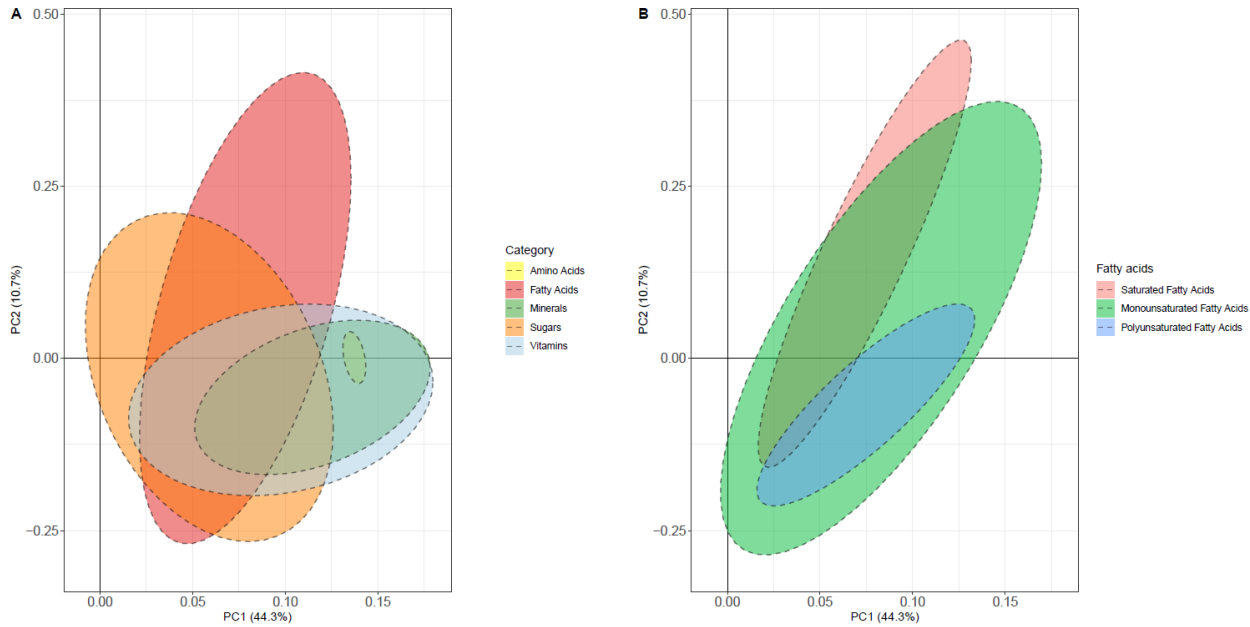
An Unhealthy Dietary Pattern during Pregnancy is Associated with Neurodevelopmental Disorders in Childhood and Adolescence.

SUPPLEMENTARY FIGURES



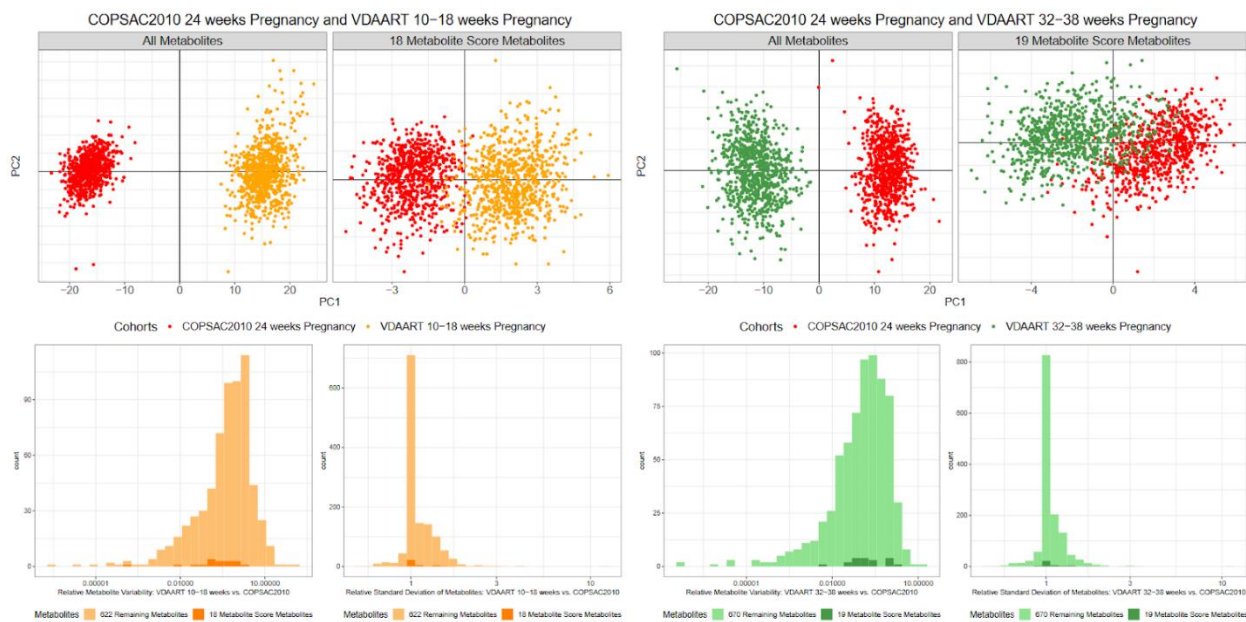
**Supplementary Figure 1.** Biplot of the first two principal components (PCs) from the maternal food frequency questionnaire-derived nutrient constituents. PC2 (Unhealthy dietary pattern) is significantly associated with any neurodevelopmental disorder (OR 1.53 [1.17 - 2.00],  $p=0.002$ ), ADHD (OR 1.66 [1.21 - 2.27],  $p = 0.002$ ), and autism diagnosis (OR 2.22 [1.33 - 3.74],  $p = 0.002$ ). PC1 is not significantly associated with any neurodevelopmental disorders ( $p > 0.288$ ). Further details of the loadings for each of the 95 nutrient constituents can be viewed in supplementary table 2.

## An Unhealthy Dietary Pattern during Pregnancy is Associated with Neurodevelopmental Disorders in Childhood and Adolescence.



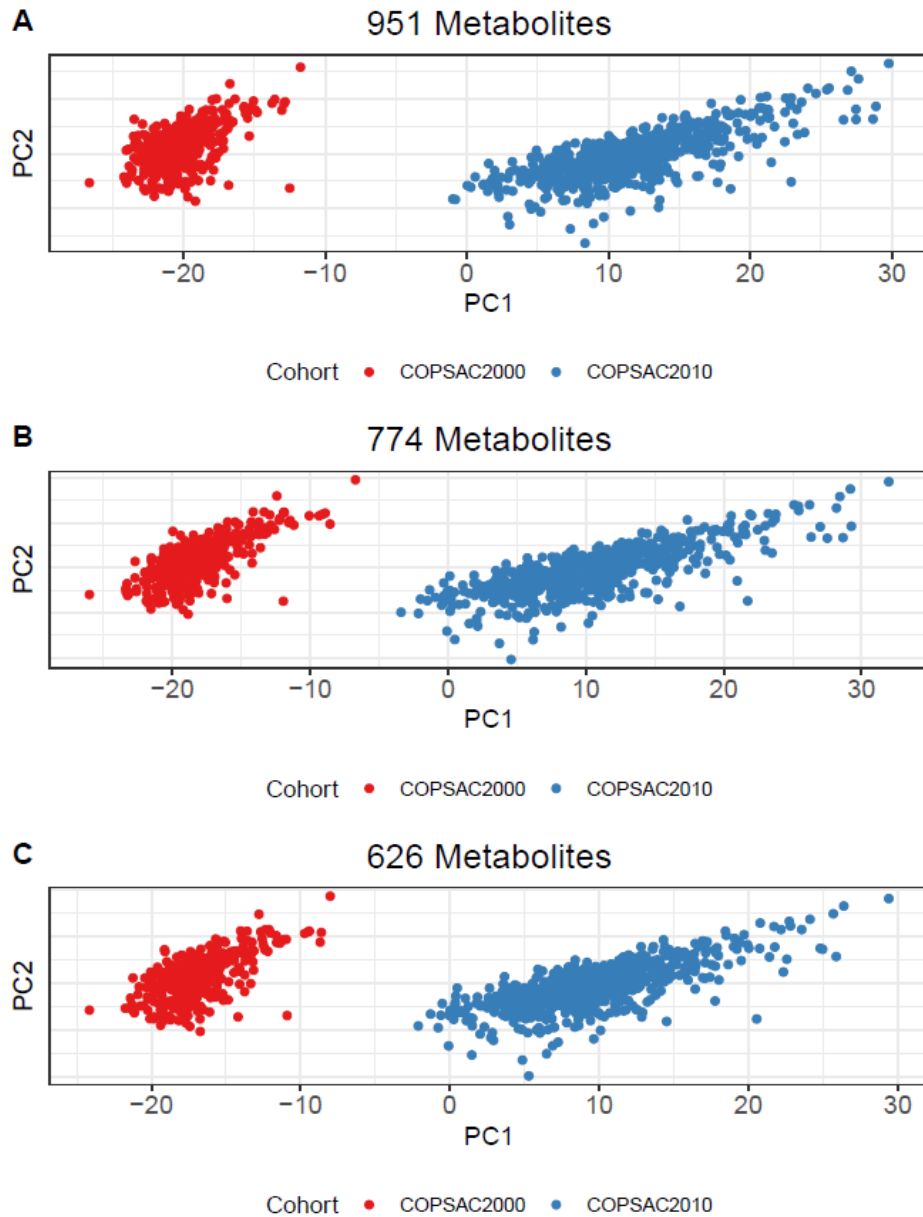
**Supplementary Figure 2.** Biplot of the first two principal components from the maternal FFQ-derived nutrient constituents **A)** Nutrient constituents are categorised into fatty acids, amino acids, sugars, minerals and vitamins. Fatty acids are a key determinant of PC2 (Unhealthy dietary pattern) **B)** Stratified further by fatty acid type, saturated fatty acids are most associated with PC2 (Unhealthy dietary pattern).

## An Unhealthy Dietary Pattern during Pregnancy is Associated with Neurodevelopmental Disorders in Childhood and Adolescence.



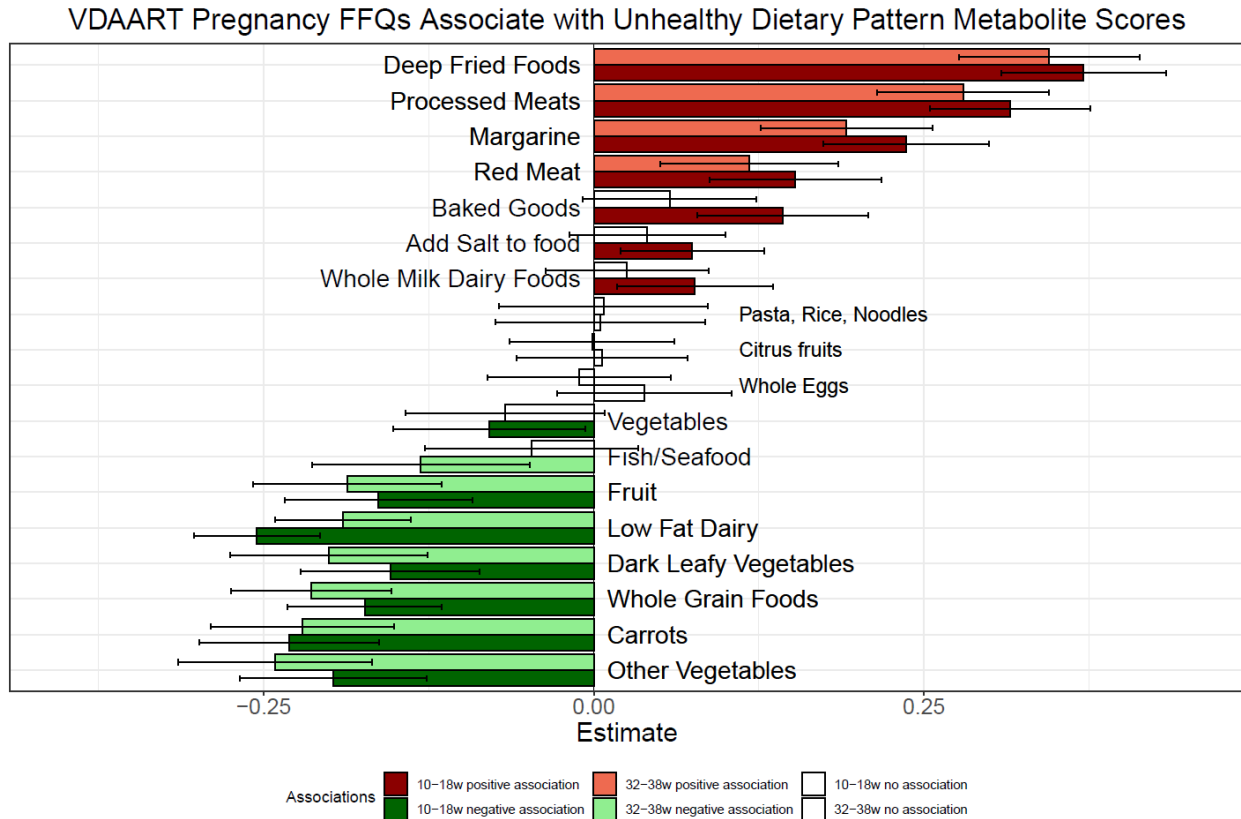
**Supplementary Figure 3.** Comparison of maternal blood metabolomes at three different pregnancy timepoints from two mother-child cohorts. Top panels show a Principal Component Analysis (PCA) scoreplot on all metabolites, as well as the selected metabolite scores for the COPSAC2010 vs VDAART 10-18 weeks (left) and COPSAC2010 vs VDAART 32-38 weeks (right). Bottom panels show the relative variation per metabolite computed by the ratio of sums of squares ( $SSQ_{time} / SSQ_{residual}$ ) from a one-way anova model with Time/Cohort at predictor and Comparison of per metabolite standard deviation within cohort relative to 24 week gestation pregnancy time point from COPSAC2010 for the COPSAC2010 vs VDAART 10-18 weeks (left) and COPSAC2010 vs VDAART 32-38 weeks (right).

## An Unhealthy Dietary Pattern during Pregnancy is Associated with Neurodevelopmental Disorders in Childhood and Adolescence.



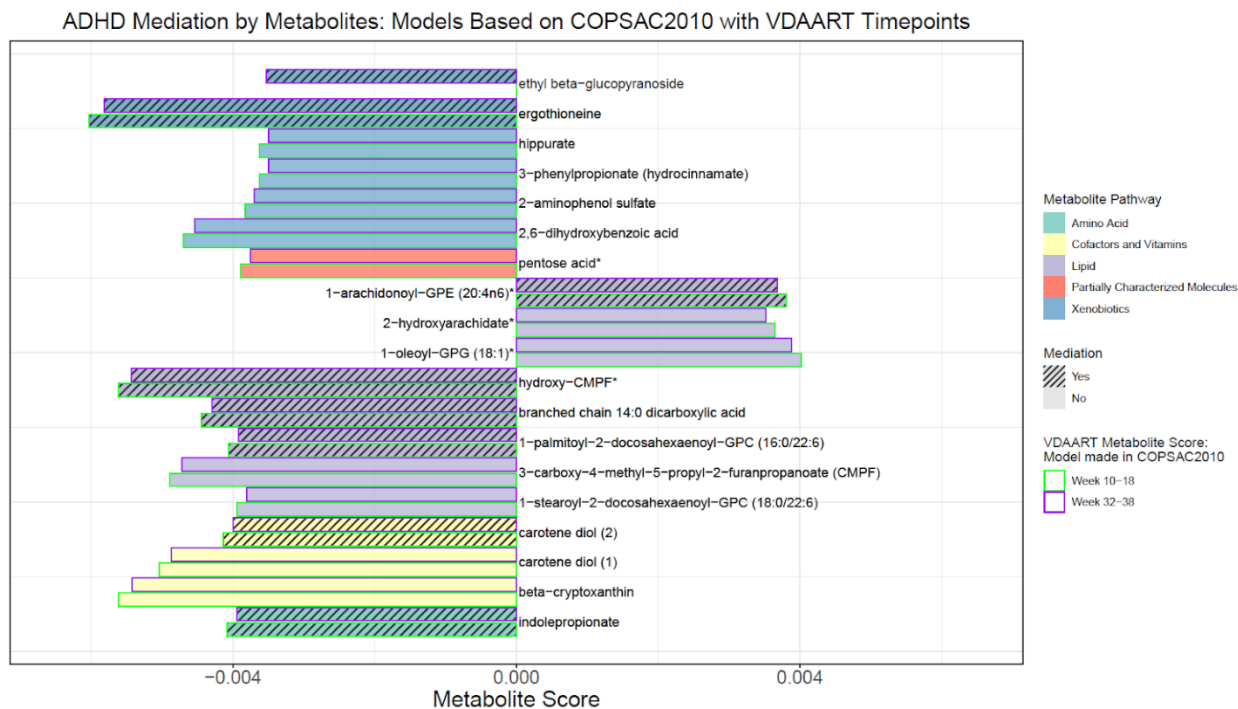
**Supplementary Figure 4.** Comparative analysis of metabolomic data across newborn dry blood spots from the COPSAC2010 and COPSAC2000 mother-child cohorts. Principal Component Analysis (PCA) plots illustrate the distribution and separation of metabolomic data between cohorts. Panels A-C represent overlapping metabolomes used in our analysis (n=951, n=774, n=626), showcasing subsets of metabolites selected based on varying degrees of correlation and distributional similarity between cohorts. **A:** displays the PCA for metabolites with correlations greater than 0.4 (n=951), **B:** Correlations greater than 0.6 (n=774), and **C:** Metabolites with a correlation greater than 0.6 passing the two-sample Kolmogorov-Smirnov test with a threshold of  $\geq 0.05$  (n=626).

An Unhealthy Dietary Pattern during Pregnancy is Associated with Neurodevelopmental Disorders in Childhood and Adolescence.



**Supplementary Figure 5.** Associations between dietary intake from food frequency questionnaires (FFQs) during pregnancy and Unhealthy Dietary Pattern Metabolite Scores (UDP-MS) at two distinct timepoints (10-18 weeks and 32-38 weeks) in the VDAART cohort. The depicted associations, based on the VDAART cohort, were assessed using COPSAC2010 cohort-trained models that shared overlapping metabolites.

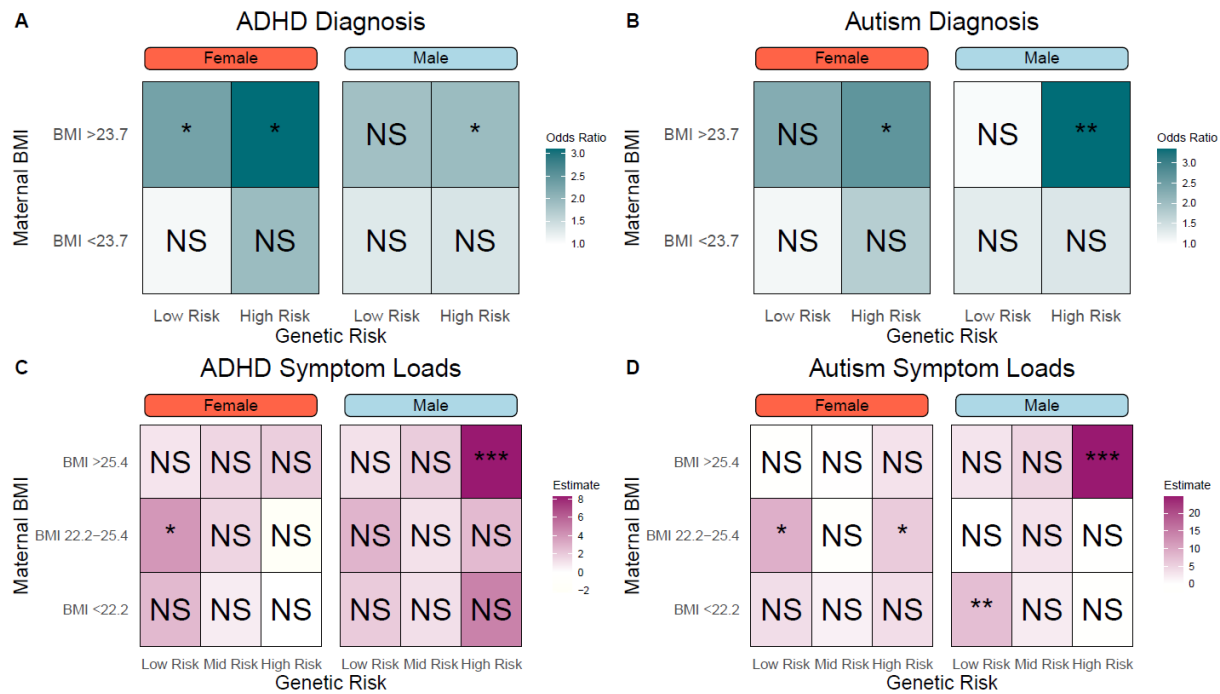
## An Unhealthy Dietary Pattern during Pregnancy is Associated with Neurodevelopmental Disorders in Childhood and Adolescence.



**Supplementary Figure 6.** Metabolites associated with an Unhealthy dietary pattern at VDAART gestational timepoints (10-18 weeks and 32-38 weeks), based on models from the COPSAC2010 cohort. The selected metabolite scores are depicted by bars, distinguished by their metabolic pathway. Striped bars indicate metabolites that mediate the association with ADHD Diagnosis in COPSAC2010, while solid bars signify non-mediating metabolites. The directionality of the bars represents the positive or negative metabolite score. Metabolite scores from VDAART are colour-coded for each timepoint: 10-18 weeks (green) and 32-38 weeks (purple).

An Unhealthy Dietary Pattern during Pregnancy is Associated with Neurodevelopmental Disorders in Childhood and Adolescence.

Sex Stratified: Unhealthy Dietary Pattern Associations with Neurodevelopmental Disorders

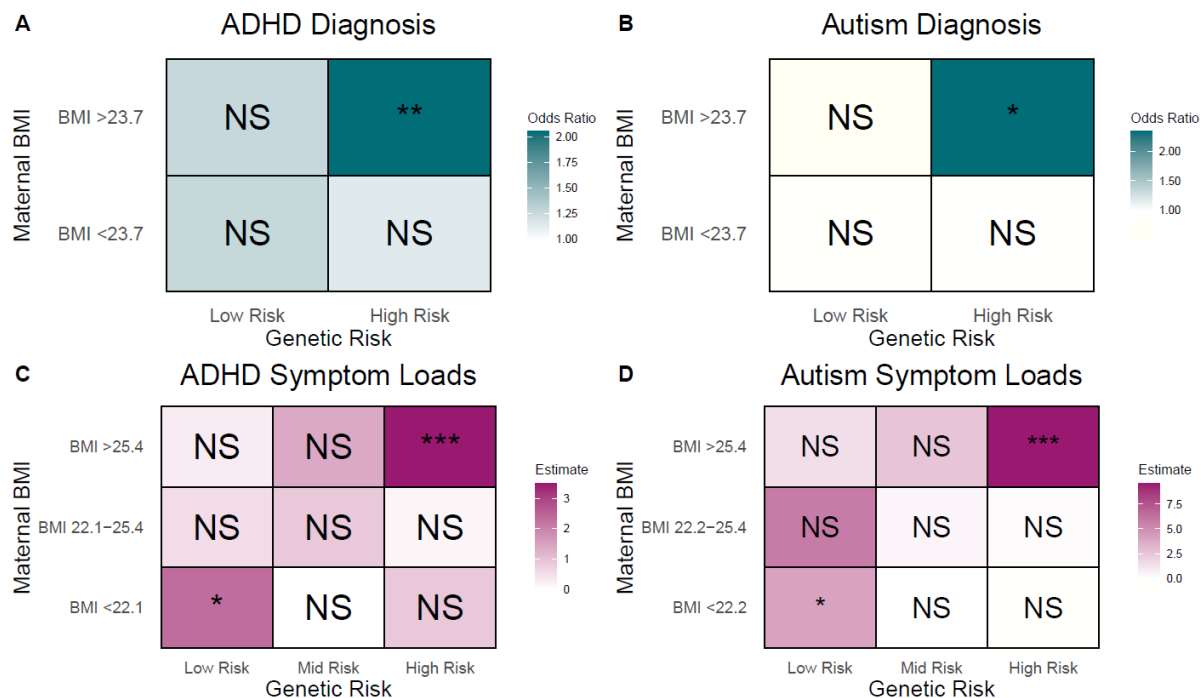


**Supplementary Figure 7.** Modulation of the Unhealthy Dietary Pattern, Stratified by Child Sex, on Neurodevelopmental Outcomes. Odds ratio estimates of ADHD (A) and autism diagnoses (B) based on interactions of the Unhealthy dietary pattern, maternal pre-pregnancy BMI (split at median value 23.7), and child's polygenic risk score (PRS) (median split) for ADHD and autism, stratified by child sex. Estimates for ADHD and autism symptom loads based on the Unhealthy dietary pattern, considering tertiles of maternal pre-pregnancy BMI (<22.2, 22.2-25.4, >25.4) and child's PRS for ADHD and autism, stratified by child sex. Stars represent significance levels: \* indicates  $p < 0.05$ , \*\* indicates  $p < 0.01$ , and \*\*\* indicates  $p < 0.001$ , with "NS" denoting non-significant results ( $p \geq 0.05$ ). Further details, including the individual associations of these modulating factors, can be found in Table S11.



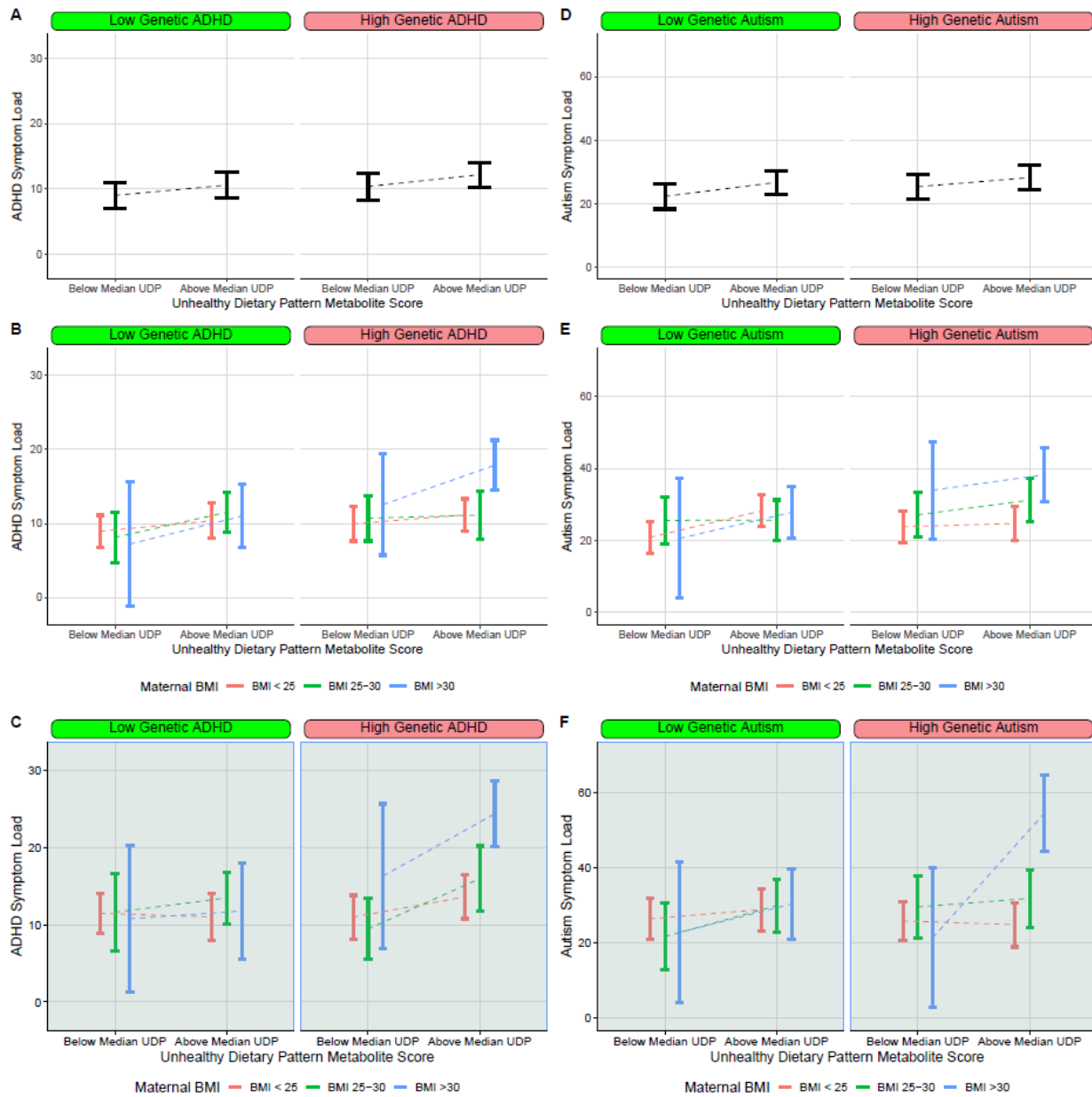
## An Unhealthy Dietary Pattern during Pregnancy is Associated with Neurodevelopmental Disorders in Childhood and Adolescence.

## Unhealthy Dietary Pattern Metabolite Score Associations with Neurodevelopmental Disorders



**Supplementary Figure 8.** Modulation of the Unhealthy Dietary Pattern Metabolite Score on Neurodevelopmental Outcomes in COPSAC2010 Cohort. Odds ratio estimates for ADHD (A) and autism diagnoses (B) based on interactions of the Unhealthy dietary pattern metabolite score, maternal pre-pregnancy BMI (split at median value 23.7), and child's polygenic risk score (PRS) (median split) for ADHD and autism. Estimates for ADHD (C) and autism (D) symptom loads are based on the Unhealthy dietary pattern metabolite score, considering tertiles of maternal pre-pregnancy BMI and child's PRS for ADHD and autism. Stars represent significance levels: \* indicates  $p < 0.05$ , \*\* indicates  $p < 0.01$ , and \*\*\* indicates  $p < 0.001$ , with "NS" denoting non-significant results ( $p \geq 0.05$ ). Further details, including the individual associations of these modulating factors, can be found in Table S11.

An Unhealthy Dietary Pattern during Pregnancy is Associated with Neurodevelopmental Disorders in Childhood and Adolescence.



**Supplementary Figure 9.** The Unhealthy dietary patterns metabolite scores association with ADHD and autism symptom loads, considering standard clinical classifications of maternal pre-pregnancy BMI. Panels A and D represent ADHD and autism symptom loads respectively, stratified by low/high genetic risk (median cut). Panels B and E further contextualise these associations based on maternal pre-pregnancy BMI categories. Panels C and F again contextualise these associations by stratifying by child sex (male sex shown).

## An Unhealthy Dietary Pattern during Pregnancy is Associated with Neurodevelopmental Disorders in Childhood and Adolescence.

## SUPPLEMENTARY TABLES

Cohort Characteristics	Participated	Not Participated
n =	600	95
Age (mean (SD))	10.3 (0.4)	-
Male Sex (%)	310 (51.7)	47 (49.5)
Caucasian Race (%)	573 (95.5)	93 (97.9)
Income type (%)		
Low (<50,000 euro)	48 (13.0)	12 (18.2)
Medium (50,000 - 110,000 euro)	114 (31.0)	17 (25.8)
High (>110,000 euro)	206 (56.0)	37 (56.1)
Maternal Education Level at Birth		
Low (primary, secondary, or college graduate)	46 ( 7.7)	5 ( 5.3)
Medium (tradesman or bachelor's degree)	373 (62.2)	68 (71.6)
High (Masters degree)	181 (30.2)	22 (23.2)
Maternal age at birth (mean (SD))	32.4 (4.3)	31.8 (4.5)
Birthweight (mean (SD))	3.5 (0.5)	3.5 (0.6)
Gestational age (mean (SD))	279 (12)	278 (11)
Cesarean section (%)	125 (20.8)	25 (26.3)
Maternal smoking during pregnancy (%)	44 ( 7.3)	10 (10.5)
Solely Breastfed (mean (SD))	105 (59)	94 (65)
Siblings (mean (SD))	1.6 (0.9)	1.6 (0.8)
Pregnancy Unhealthy Dietary Pattern (mean (SD))	0.02 (0.99)	-0.20 (1.04)
Pregnancy Unhealthy Dietary Pattern Metabolite Score (mean (SD))	-0.02 (0.99)	0.10 (1.04)

**Supplementary Table 1.** Cohort characteristics stratified by participation in the COPSAC2010 10 year clinical visit. Low, medium, and high income are defined as <50,000, 50,000 - 110,000, and >110,000 euro respectively. Low, medium and high level educational attainment are defined as “primary, secondary, or college graduate”, “tradesman or bachelor's degree” and “Masters degree”, respectively.

**An Unhealthy Dietary Pattern during Pregnancy is Associated with Neurodevelopmental Disorders in Childhood and Adolescence.**

Cohort Characteristics	Female	Male
n =	290	310
Age (mean (SD))	10.3 (0.4)	10.3 (0.3)
Caucasian Race (%)	279 (96.2)	294 (94.8)
Income type (%)		
Low (<50,000 euro)	30 (10.3)	18 ( 5.8)
Medium (50,000 - 110,000 euro)	152 (52.4)	168 (54.2)
High (>110,000 euro)	108 (37.2)	124 (40.0)
Maternal Education Level at Birth		
Low (primary, secondary, or college graduate)	24 ( 8.3)	22 ( 7.1)
Medium (tradesman or bachelor's degree)	172 (59.3)	201 (64.8)
High (Masters degree)	94 (32.4)	87 (28.1)
Maternal age at birth (mean (SD))	32.4 (4.2)	32.3 (4.5)
Birthweight (mean (SD))	3.5 (0.5)	3.6 (0.6)
Gestational age (mean (SD))	280 (10)	279 (12)
Cesarean section (%)	54 (18.6)	71 (22.9)
Maternal smoking during pregnancy (%)	22 ( 7.6)	22 ( 7.1)
Solely Breastfed (mean (SD))	106 (59)	104 (58)
Siblings (mean (SD))	1.6 (0.9)	1.6 (0.8)

**Supplementary Table 2.** Cohort characteristics stratified by child sex in COPSYPH 10 year clinical visit. Low, medium, and high income are defined as <50,000, 50,000 - 110,000, and >110,000 euro, respectively. Low, medium and high level educational attainment are defined as “*primary, secondary, or college graduate*”, “*tradesman or bachelor’s degree*” and “*Masters degree*”, respectively.

## An Unhealthy Dietary Pattern during Pregnancy is Associated with Neurodevelopmental Disorders in Childhood and Adolescence.

	Mean (SD)	PC1 Loadings	PC2 Loadings	Category
<b>FFQ nutrient constituents</b>	-	-	-	
Added sugar (g/day) (mean (SD))	36.04 (26.25)	0.033	0.123	Sugars
Dietary fiber (g/day) (mean (SD))	27.92 (9.76)	0.097	-0.125	Sugars
Alcohol (g/day) (mean (SD))	0.41 (0.75)	0.015	0.013	Sugars
Ashes (g/day) (mean (SD))	20.18 (4.99)	0.142	-0.018	Minerals
Water (g/day) (mean (SD))	2817.43 (740.48)	0.085	-0.072	Minerals
Vitamin A (RE/day) (mean (SD))	824.74 (368.58)	0.085	0.01	Vitamins
Retinol (µg/day) (mean (SD))	490.63 (241.14)	0.085	0.134	Vitamins
Betacarotene (µg/day) (mean (SD))	3958.40 (3258.49)	0.038	-0.106	Vitamins
Vitamin D (µg/day) (mean (SD))	4.86 (2.81)	0.071	-0.087	Vitamins
Vitamin D3 (cholecalciferol) (µg/day) (mean (SD))	1.11 (0.70)	0.08	-0.03	Vitamins
25-hydroxycholecalciferol - a metabolically activated form of cholecalciferol (Vitamin D3) (µg/day) (mean (SD))	0.03 (0.02)	0.048	0.086	Vitamins
Vitamin E (α-TE/day) (mean (SD))	7.93 (2.95)	0.099	-0.045	Vitamins
Alphatocoferol (mg/day) (mean (SD))	7.30 (2.82)	0.097	-0.044	Vitamins
Vitamin K (µg/day) (mean (SD))	86.50 (53.03)	0.052	-0.102	Vitamins
Vitamin B1 (thiamin) (mg/day) (mean (SD))	1.39 (0.38)	0.13	-0.063	Vitamins
Vitamin B2 (riboflavin) (mg/day) (mean (SD))	1.86 (0.66)	0.115	0.002	Vitamins
Niacin equivalents (NE/day) (mean (SD))	26.45 (6.40)	0.142	-0.045	Vitamins
Niacin (mg/day) (mean (SD))	14.49 (3.72)	0.126	-0.074	Vitamins

**An Unhealthy Dietary Pattern during Pregnancy is Associated with Neurodevelopmental Disorders in Childhood and Adolescence.**

Tryptophan (mg/day) (mean (SD))	14.68 (4.00)	0.138	-0.004	Amino Acids
Vitamin B6 (mg/day) (mean (SD))	1.61 (0.42)	0.135	-0.111	Vitamins
Pantothenic acid (mg/day) (mean (SD))	6.24 (1.73)	0.134	-0.049	Vitamins
Biotin (µg/day) (mean (SD))	42.94 (13.22)	0.128	-0.068	Vitamins
Folate (µg/day) (mean (SD))	344.59 (101.24)	0.115	-0.108	Vitamins
Vitamin B12 (µg/day) (mean (SD))	5.64 (2.14)	0.116	-0.017	Vitamins
Vitamin C (mg/day) (mean (SD))	140.14 (71.37)	0.061	-0.138	Vitamins
L-ascorbic acid (mg/day) (mean (SD))	136.31 (65.88)	0.063	-0.14	Vitamins
L-dehydroascorbic acid (mg/day) (mean (SD))	13.79 (7.42)	0.05	-0.115	Vitamins
Sodium (mg/day) (mean (SD))	2956.73 (813.05)	0.124	0.043	Minerals
Potassium (mg/day) (mean (SD))	3584.14 (941.59)	0.131	-0.083	Minerals
Calcium (mg/day) (mean (SD))	1237.53 (454.19)	0.103	0.005	Minerals
Magnesium (mg/day) (mean (SD))	399.47 (108.31)	0.126	-0.106	Minerals
Phosphor (mg/day) (mean (SD))	1654.26 (460.76)	0.135	-0.03	Minerals
Iron (mg/day) (mean (SD))	11.22 (2.89)	0.124	-0.074	Minerals
Copper (mg/day) (mean (SD))	4.88 (1.52)	0.055	-0.095	Minerals
Zink (mg/day) (mean (SD))	12.01 (2.98)	0.141	-0.03	Minerals
Iodine (µg/day) (mean (SD))	302.03 (120.03)	0.092	-0.02	Minerals
Manganese (mg/day) (mean (SD))	5.23 (2.06)	0.09	-0.122	Minerals
Chromium (µg/day) (mean (SD))	32.41 (10.28)	0.107	-0.058	Minerals
Selenium (µg/day) (mean (SD))	47.23 (12.57)	0.137	-0.052	Minerals
Nickel (µg/day) (mean (SD))	149.55 (52.65)	0.088	-0.115	Minerals

## An Unhealthy Dietary Pattern during Pregnancy is Associated with Neurodevelopmental Disorders in Childhood and Adolescence.

Fructose (g/day) (mean (SD))	13.72 (6.81)	0.05	-0.158	Sugars
Glucose (g/day) (mean (SD))	12.98 (6.50)	0.052	-0.135	Sugars
Lactose (g/day) (mean (SD))	23.29 (15.87)	0.073	0.028	Sugars
Maltose (g/day) (mean (SD))	2.26 (1.19)	0.056	0.01	Sugars
Sucrose (g/day) (mean (SD))	27.99 (12.07)	0.056	-0.01	Sugars
Starch (g/day) (mean (SD))	99.95 (35.10)	0.09	-0.022	Sugars
C4:0 (Butyric acid, Butanoic acid) (g/day) (mean (SD))	0.97 (0.54)	0.081	0.244	Fatty Acids
C6:0 (Caproic acid, Hexanoic acid) (g/day) (mean (SD))	1.01 (0.58)	0.079	0.243	Fatty Acids
C8:0 (Caprylic acid, Octanoic acid) (g/day) (mean (SD))	0.57 (0.33)	0.079	0.232	Fatty Acids
C10:0 (Capric acid, Decanoic acid) (g/day) (mean (SD))	0.84 (0.46)	0.082	0.243	Fatty Acids
C12:0 (Lauric acid, Dodecanoic acid) (g/day) (mean (SD))	1.26 (0.54)	0.093	0.215	Fatty Acids
C14:0 (Myristic acid, Tetradecanoic acid) (g/day) (mean (SD))	3.17 (1.44)	0.09	0.233	Fatty Acids
C15:0 (Pentadecylic acid, Pentadecanoic acid) (g/day) (mean (SD))	0.01 (0.01)	0.041	-0.018	Fatty Acids
C16:0 (Palmitic acid, Hexadecanoic acid) (g/day) (mean (SD))	15.63 (5.31)	0.106	0.202	Fatty Acids
C17:0 (Margaric acid, Heptadecanoic acid) (g/day) (mean (SD))	0.02 (0.01)	0.043	-0.006	Fatty Acids
C18:0 (Stearic acid, Octadecanoic acid) (g/day) (mean (SD))	6.70 (2.56)	0.095	0.195	Fatty Acids
C20:0 (Arachidic acid, Eicosanoic acid) (g/day) (mean (SD))	0.11 (0.06)	0.08	0.154	Fatty Acids
C22:0 (Behenic acid, Docosanoic acid) (g/day) (mean (SD))	0.05 (0.04)	0.046	0.01	Fatty Acids

## An Unhealthy Dietary Pattern during Pregnancy is Associated with Neurodevelopmental Disorders in Childhood and Adolescence.

C24:0 (Lignoceric acid, Tetracosanoic acid) (g/day) (mean (SD))	0.03 (0.03)	0.039	-0.091	Fatty Acids
C14:1, n-5 (Myristoleic acid) (g/day) (mean (SD))	0.37 (0.17)	0.083	0.231	Fatty Acids
C16:1, n-7 (Palmitoleic acid) (g/day) (mean (SD))	1.27 (0.38)	0.11	0.144	Fatty Acids
C18:1, n-9 (Oleic acid, Elaidic acid) (g/day) (mean (SD))	22.76 (7.61)	0.112	0.125	Fatty Acids
C18:1, n-7 (Vaccenic acid) (g/day) (mean (SD))	0.12 (0.05)	0.089	-0.049	Fatty Acids
C20:1, n-11 (Gadoleic acid) (g/day) (mean (SD))	0.52 (0.21)	0.105	0.113	Fatty Acids
C22:1, n-9 (Erucic acid) (g/day) (mean (SD))	0.02 (0.04)	0.028	-0.041	Fatty Acids
C22:1, n-11 (Cetoleic acid) (g/day) (mean (SD))	0.14 (0.17)	0.05	-0.063	Fatty Acids
C24:1, n-9 (Nervonic acid) (g/day) (mean (SD))	0.02 (0.02)	0.061	-0.09	Fatty Acids
C18:2, n-6 (Linoleic acid) (g/day) (mean (SD))	9.44 (3.25)	0.108	-0.019	Fatty Acids
C18:3, n-3 (Alpha-linolenic acid ALA) (g/day) (mean (SD))	1.92 (0.72)	0.107	0.018	Fatty Acids
C18:4, n-3 (Stearidonic acid SDA, Moroctic acid) (g/day) (mean (SD))	0.05 (0.05)	0.057	-0.08	Fatty Acids
C20:4, n-6 (Arachidonic acid AA) (g/day) (mean (SD))	0.05 (0.02)	0.074	-0.026	Fatty Acids
C20:5, n-3 (Eicosapentaenoic acid EPA, Timnodonic acid) (g/day) (mean (SD))	0.15 (0.11)	0.064	-0.117	Fatty Acids
C22:5, n-3 (Docosapentaenoic acid DPA, Clupanodonic acid) (g/day) (mean (SD))	0.04 (0.03)	0.063	-0.097	Fatty Acids
C22:6, n-3 (Docosahexaenoic acid DHA, Cervonic acid) (g/day) (mean (SD))	0.36 (0.24)	0.069	-0.102	Fatty Acids
Other fatty acids (g/day) (mean (SD))	0.17 (0.07)	0.087	-0.073	Fatty Acids
Trans fatty acids, total (g/day) (mean (SD))	1.61 (0.78)	0.084	0.24	Fatty Acids
Cholesterol (mg/day) (mean (SD))	306.56 (111.46)	0.104	0.143	Fatty Acids



**An Unhealthy Dietary Pattern during Pregnancy is Associated with Neurodevelopmental Disorders in Childhood and Adolescence.**

Isoleucine (mg/day) (mean (SD))	3257.44 (895.38)	0.137	0.009	Amino Acids
Leucine (mg/day) (mean (SD))	5356.46 (1490.08)	0.136	0.011	Amino Acids
Lysine (mg/day) (mean (SD))	4771.66 (1352.94)	0.131	0.006	Amino Acids
Methionine (mg/day) (mean (SD))	1552.75 (421.81)	0.136	0.007	Amino Acids
Cystine (mg/day) (mean (SD))	667.43 (183.60)	0.134	-0.028	Amino Acids
Phenylalanine (mg/day) (mean (SD))	3059.71 (833.10)	0.138	0.004	Amino Acids
Tyrosine (mg/day) (mean (SD))	2295.78 (659.79)	0.133	0.014	Amino Acids
Threonine (mg/day) (mean (SD))	2615.14 (699.25)	0.139	-0.002	Amino Acids
Tryptophan (mg/day) (mean (SD))	802.48 (216.52)	0.138	0.004	Amino Acids
Valine (mg/day) (mean (SD))	4098.35 (1106.25)	0.138	0.005	Amino Acids
Arginine (mg/day) (mean (SD))	3814.66 (954.91)	0.138	-0.049	Amino Acids
Histidine (mg/day) (mean (SD))	1923.77 (502.98)	0.139	0.008	Amino Acids

**An Unhealthy Dietary Pattern during Pregnancy is Associated with Neurodevelopmental Disorders in Childhood and Adolescence.**

Alanine (mg/day) (mean (SD))	3404.72 (833.44)	0.141	-0.023	Amino Acids
Asparagine acid (mg/day) (mean (SD))	6346.65 (1582.54)	0.141	-0.021	Amino Acids
Glutamic acid (mg/day) (mean (SD))	12803.38 (3446.26)	0.137	0.015	Amino Acids
Glycine (mg/day) (mean (SD))	2919.02 (713.39)	0.136	-0.023	Amino Acids
Proline (mg/day) (mean (SD))	4841.23 (1437.50)	0.13	0.031	Amino Acids
Serine (mg/day) (mean (SD))	3421.27 (925.75)	0.139	0.007	Amino Acids

**Supplementary Table 3.** Descriptive summary statistics for nutrients derived from maternal food frequency questionnaires in pregnancy and principal component loadings for principal component 1 and 2 in the COPSAC2010 cohort.

**An Unhealthy Dietary Pattern during Pregnancy is Associated with Neurodevelopmental Disorders in Childhood and Adolescence.**

	<b>Model 1 n3-LCPUFA</b>	<b>Model 2 D vitamin</b>	<b>Model 3 Energy</b>	<b>Model 4 Maternal ADHD genetic risk</b>	<b>Model 5 Genomic PCs</b>
<b>Neurodevelopmental Diagnosis</b>	<b>Odds Ratio [95% CI] p-value</b>	<b>Odds Ratio [95% CI] p-value</b>	<b>Odds Ratio [95% CI] p-value</b>	<b>Odds Ratio [95% CI] p-value</b>	<b>Odds Ratio [95% CI] p- value</b>
All Neurodevelopmental Disorder Diagnosis	1.53 [1.17 - 2.01] (p = 0.002)	1.51 [1.15 - 1.98] (p = 0.003)	1.59 [1.2 - 2.12] (p = 0.001)	1.51 [1.15 - 1.98] (p = 0.003)	1.54 [1.18 - 2.02] (p = 0.002)
ADHD Diagnosis	1.65 [1.21 - 2.26] (p = 0.002)	1.63 [1.19 - 2.24] (p = 0.002)	1.73 [1.25 - 2.44] (p = 0.001)	1.63 [1.19 - 2.24] (p = 0.003)	1.69 [1.23 - 2.35] (p = 0.001)
Autism Diagnosis	2.18 [1.32 - 3.66] (p = 0.002)	2.25 [1.34 - 3.82] (p = 0.002)	2.17 [1.22 - 3.95] (p = 0.009)	2.26 [1.34 - 3.81] (p = 0.002)	2.31 [1.34 - 4.05] (p = 0.003)
<b>Neurodevelopmental Symptom Loads</b>	<b>Estimate [95% CI] p- value</b>	<b>Estimate [95% CI] p- value</b>	<b>Estimate [95% CI] p- value</b>	<b>Estimate [95% CI] p- value</b>	<b>Estimate [95% CI] p- value</b>
ADHD Symptom Load (ADHD-RS)	1.76 [1.01 - 2.52] (p < 0.001)	1.73 [0.98 - 2.49] (p < 0.001)	1.76 [0.99 - 2.52] (p < 0.001)	1.68 [0.93 - 2.44] (p < 0.001)	1.78 [1.03 - 2.53] (p < 0.001)
Autism Symptom Load (SRS-2)	3.31 [1.79 - 4.84] (p < 0.001)	3.2 [1.68 - 4.73] (p < 0.001)	3.28 [1.73 - 4.83] (p < 0.001)	3.14 [1.61 - 4.67] (p < 0.001)	3.26 [1.74 - 4.78] (p < 0.001)

**Supplementary Table 4.** Subanalysis with extra adjustments for the pregnancy Unhealthy dietary patterns effect on neurodevelopmental outcomes (multivariable models). **Model 1:** Adjusted for prenatal RCT n-3 LCPUFA. **Model 2:** Adjusted for prenatal RCT high-dose Vitamin D. **Model 3:** Adjusted for food frequency derived estimated energy intake. **Model 4:** Adjusted for maternal ADHD genetic polygenic risk score **Model 5:** Adjusted for Genomic Principal Components.

## An Unhealthy Dietary Pattern during Pregnancy is Associated with Neurodevelopmental Disorders in Childhood and Adolescence.

ADHD Diagnosis Subtypes	n=	Odds Ratio [95% CI] p-value	n=	Odds Ratio [95% CI] p-value
ADHD combined presentation (DSM-5)	30/508	1.51 [1.03 - 2.20] (p = 0.033)	-	-
ADHD predominantly inattentive presentation (DSM-5)	25/508	1.71 [1.13 - 2.56] (p = 0.009)	-	-
Neurodevelopmental Symptom Loads	n=	Whole Cohort [95% CI] p-value	n=	Excluding Neurodevelopmental Disorder Diagnosis [95% CI] p-value
ADHD-RS Inattention Score	513	0.98 [0.52 - 1.45] (p < 0.001)	428	0.31 [-0.08 - 0.7] (p = 0.124)
ADHD-RS Hyperactivity and Impulsivity Score	509	0.74 [0.38 - 1.11] (p < 0.001)	425	0.34 [0.01 - 0.67] (p = 0.043)
ADHD-RS Total (ADHD Symptom Load)	509	1.73 [0.98 - 2.49] (p < 0.001)	425	0.63 [0.01 - 1.25] (p = 0.048)
SRS-2 Restricted interests and repetitive behaviour Score	513	0.6 [0.26 - 0.94] (p < 0.001)	428	0.15 [-0.13 - 0.44] (p = 0.296)
SRS-2 Social communication and interaction Score	513	2.61 [1.35 - 3.87] (p < 0.001)	428	0.88 [-0.29 - 2.05] (p = 0.143)
SRS-2 Total (Autism Symptom Load)	513	3.21 [1.69 - 4.74] (p < 0.001)	428	1.03 [-0.34 - 2.4] (p = 0.141)

**Supplementary Table 5.** The pregnancy Unhealthy dietary patterns effect on ADHD diagnosis subtypes, and subscores of ADHD and autism symptoms loads (multivariable models). **Column 1:** The entire COPSAC2010 **Column 2:** Subanalysis with any neurodevelopmental disorder diagnosis excluded.

**An Unhealthy Dietary Pattern during Pregnancy is Associated with Neurodevelopmental Disorders in Childhood and Adolescence.**

	<b>Male Children</b>	<b>Female Children</b>	<b>Interaction</b>
<b>Neurodevelopmental Diagnosis</b>	<b>Odds Ratio [95% CI] p-value</b>	<b>Odds Ratio [95% CI] p-value</b>	<b>Estimate [95% CI] p-value</b>
All Neurodevelopmental Disorder Diagnosis	1.42 [1.02 - 1.99] (p = 0.039)	1.86 [1.15 - 3.07] (p = 0.012)	0.75 [0.44 - 1.26] (p = 0.271)
ADHD Diagnosis	1.45 [0.99 - 2.12] (p = 0.052)	2.48 [1.33 - 4.9] (p = 0.005)	0.6 [0.31 - 1.13] (p = 0.120)
Autism Diagnosis	1.83 [0.96 - 3.32] (p = 0.049)	4.28 [1.09 - 26.98] (p = 0.059)	0.5 [0.13 - 1.52] (p = 0.247)
<b>Parental Questionnaires</b>	<b>Estimate [95% CI] p-value</b>	<b>Estimate [95% CI] p-value</b>	<b>Estimate [95% CI] p-value</b>
ADHD Symptom Load (ADHD-RS)	1.87 [0.72 - 3.02] (p = 0.002)	1.32 [0.4 - 2.25] (p = 0.005)	0.66 [-0.73 - 2.06] (p = 0.353)
Autism Symptom Load (SRS-2)	3.15 [1 - 5.31] (p = 0.004)	2.65 [0.51 - 4.79] (p = 0.016)	0.14 [-2.71 - 2.98] (p = 0.926)

**Supplementary Table 6.** Sex stratification and statistical interaction effect of the pregnancy Unhealthy dietary pattern effect on neurodevelopmental outcomes (multivariable models).

## An Unhealthy Dietary Pattern during Pregnancy is Associated with Neurodevelopmental Disorders in Childhood and Adolescence.

BIOCHEMICAL	SUPER PATHWAY	SUB PATHWAY	Comp.1 (x 10 <sup>-3</sup> )	Mediating Metabolite
ergothioneine	Xenobiotics	Food Component/Plant	-3.737	Yes
carotene diol (1)	Cofactors and Vitamins	Vitamin A Metabolism	-3.125	Yes
branched chain 14:0 dicarboxylic acid	Lipid	Fatty Acid, Dicarboxylate	-2.759	Yes
indolepropionate	Amino Acid	Tryptophan Metabolism	-2.533	Yes
1-palmitoyl-2-docosahexaenoyl-GPC (16:0/22:6)	Lipid	Phosphatidylcholine (PC)	-2.517	Yes
sphingomyelin (d18:2/18:1)*	Lipid	Sphingomyelins	2.226	Yes
1-stearoyl-2-arachidonoyl-GPE (18:0/20:4)	Lipid	Phosphatidylethanolamine (PE)	2.190	Yes
caprate (10:0)	Lipid	Medium Chain Fatty Acid	2.164	Yes
tartarate	Xenobiotics	Food Component/Plant	-2.155	Yes
3-hydroxystachydrine*	Xenobiotics	Food Component/Plant	-2.054	Yes
caprylate (8:0)	Lipid	Medium Chain Fatty Acid	1.985	Yes
branched-chain, straight-chain, or cyclopropyl 10:1 fatty acid (1)*	Partially Characterized Molecules	Partially Characterized Molecules	1.948	Yes
1-(1-enyl-stearoyl)-2-oleoyl-GPE (P-18:0/18:1)	Lipid	Plasmalogen	1.900	Yes
pregnen-diol disulfate*	Lipid	Pregnenolone Steroids	1.895	Yes
threonate	Cofactors and Vitamins	Ascorbate and Aldarate Metabolism	-1.885	Yes
hydroxy-CMPF*	Lipid	Fatty Acid, Dicarboxylate	-3.485	No
beta-cryptoxanthin	Cofactors and Vitamins	Vitamin A Metabolism	-3.482	No
3-carboxy-4-methyl-5-propyl-2-furanpropanoate (CMPF)	Lipid	Fatty Acid, Dicarboxylate	-3.032	No
2,6-dihydroxybenzoic acid	Xenobiotics	Drug - Topical Agents	-2.912	No
carotene diol (2)	Cofactors and Vitamins	Vitamin A Metabolism	-2.566	No
1-oleoyl-GPG (18:1)*	Lipid	Lysophospholipid	2.494	No
1-stearoyl-2-docosahexaenoyl-GPC (18:0/22:6)	Lipid	Phosphatidylcholine (PC)	-2.443	No

**An Unhealthy Dietary Pattern during Pregnancy is Associated with Neurodevelopmental Disorders in Childhood and Adolescence.**

pentose acid*	Partially Characterized Molecules	Partially Characterized Molecules	-2.413	No
2-aminophenol sulfate	Xenobiotics	Chemical	-2.377	No
1-arachidonoyl-GPE (20:4n6)*	Lipid	Lysophospholipid	2.363	No
eicosapentaenoylcholine	Lipid	Fatty Acid Metabolism (Acyl Choline)	-2.338	No
ethyl beta-glucopyranoside	Xenobiotics	Food Component/Plant	-2.267	No
2-hydroxyarachidate*	Lipid	Fatty Acid, Monohydroxy	2.263	No
hippurate	Xenobiotics	Benzoate Metabolism	-2.249	No
3-phenylpropionate (hydrocinnamate)	Xenobiotics	Benzoate Metabolism	-2.248	No
1-oleoyl-GPE (18:1)	Lipid	Lysophospholipid	2.147	No
tartronate (hydroxymalonate)	Xenobiotics	Food Component/Plant	-2.108	No
gamma-CEHC	Cofactors and Vitamins	Tocopherol Metabolism	2.052	No
pregnenetriol disulfate*	Lipid	Pregnenolone Steroids	2.006	No
stachydrine	Xenobiotics	Food Component/Plant	-1.994	No
pyridoxate	Cofactors and Vitamins	Vitamin B6 Metabolism	-1.944	No
1-stearoyl-2-oleoyl-GPC (18:0/18:1)	Lipid	Phosphatidylcholine (PC)	1.943	No
eicosanedioate (C20-DC)	Lipid	Fatty Acid, Dicarboxylate	1.931	No
sphingosine	Lipid	Sphingosines	1.926	No
1-stearoyl-2-arachidonoyl-GPC (18:0/20:4)	Lipid	Phosphatidylcholine (PC)	1.897	No
androstenediol (3beta,17beta) disulfate (1)	Lipid	Androgenic Steroids	1.884	No
cysteine s-sulfate	Amino Acid	Methionine, Cysteine, SAM and Taurine Metabolism	1.879	No
1-linolenoyl-GPC (18:3)*	Lipid	Lysophospholipid	1.876	No

**Supplementary Table 7.** The 43 metabolites surviving regularisation in the pregnancy Unhealthy dietary patterns sparse partial least squares model in COPSAC2010. Metabolites name, super pathway, sub pathways, loadings for component 1 and whether or not the metabolite significantly mediated the association between the Unhealthy dietary pattern and any Neurodevelopmental Disorder Diagnosis.

## An Unhealthy Dietary Pattern during Pregnancy is Associated with Neurodevelopmental Disorders in Childhood and Adolescence.

	Missingness all metabolites (#1131)		Missingness selected metabolites (#43)	
Neurodevelopmental Diagnosis	Odds Ratio [95% CI] p-value	p-value	Odds Ratio [95% CI]	p-value
Any Neurodevelopmental disorder	OR = 1.004 [0.998; 1.011]	0.2	OR = 1.097 [0.848; 1.403]	0.468
ADHD	OR = 1 [0.992; 1.008]	0.923	OR = 0.953 [0.698; 1.273]	0.753
Autism	OR = 1.009 [0.994; 1.023]	0.213	OR = 0.961 [0.516; 1.628]	0.89
Neurodevelopmental Symptom Loads	Estimate [95% CI]	p-value	Estimate [95% CI]	p-value
ADHD Symptom Loads (ADHD-RS)	B = 0.002 [0; 0.005]	0.084	B = 0.028 [-0.064; 0.12]	0.55
Autism Symptom Loads (SRS-2)	B = 0.001 [-0.001; 0.004]	0.356	B = 0.013 [-0.078; 0.105]	0.772
Exposure	Estimate [95% CI]	p-value	Estimate [95% CI]	p-value
Unhealthy Dietary Pattern	B = 0 [-0.003; 0.002]	0.904	B = 0.106 [0.016; 0.196]	0.021

**Supplementary Table 8.** Analysis of missing metabolites and their association with neurodevelopmental outcomes. Missingness rates of all metabolites and the selected 43 metabolites in the pregnancy Unhealthy dietary pattern metabolite score, alongside their odds ratios and confidence intervals for neurodevelopmental disorders, symptom loads and the Unhealthy dietary pattern.



## An Unhealthy Dietary Pattern during Pregnancy is Associated with Neurodevelopmental Disorders in Childhood and Adolescence.

<b>COPSAC2010 Unhealthy Dietary Pattern Metabolite Score Correlation Matrix</b>	<b>Maternal - 24 Weeks Gestation</b>	<b>Maternal - 1 week Postpartum</b>	<b>Child - 6 months</b>	<b>Child - 18 months</b>	<b>Child - 6 years</b>
<b>Maternal - 24 Weeks Gestation</b>	<b>1</b>	0,68	0,42	0,46	0,33
<b>Maternal - 1 week Postpartum</b>	0,68	<b>1</b>	0,38	0,40	0,27
<b>Child - 6 months</b>	0,42	0,38	<b>1</b>	0,3	0,21
<b>Child - 18 months</b>	0,46	0,40	0,30	<b>1</b>	0,39
<b>Child - 6 years</b>	0,33	0,27	0,21	0,39	<b>1</b>
<b>VDAART Unhealthy Dietary Pattern Metabolite Score Correlation Matrix</b>	<b>Maternal - 10-18 weeks Gestation</b>	<b>Maternal - 32-38 weeks gestation</b>	<b>Child - 1 year</b>	<b>Child - 3 years</b>	<b>Child - 6 years</b>
<b>Maternal - 10-18 weeks Gestation</b>	<b>1</b>	0,72	0,48	0,35	0,40
<b>Maternal - 32-38 weeks gestation</b>	0,72	<b>1</b>	0,50	0,34	0,41
<b>Child - 1 year</b>	0,48	0,50	<b>1</b>	0,64	0,54
<b>Child - 3 years</b>	0,35	0,34	0,64	<b>1</b>	0,62
<b>Child - 6 years</b>	0,40	0,41	0,54	0,62	<b>1</b>

**Supplementary Table 9.** Correlation matrices of the respective maternal and child Unhealthy dietary pattern Metabolite Scores in the COPSAC2010 and VDAART cohorts.

## An Unhealthy Dietary Pattern during Pregnancy is Associated with Neurodevelopmental Disorders in Childhood and Adolescence.

Cohort Characteristics	COPSAC2010	VDAART	p-value	COPSAC2000	p-value
n =	600	656		348	
Age (years) (mean (SD))	10.3 (0.3)	6.0 (0.1)	<0.001	17.7 (0.6)	<0.001
Male Sex (%)	310 (51.7)	341 (52.1)	0.934	172 (49.4)	0.55
Caucasian Race (%)	573 (95.5)	254 (40.3)	<0.001	339 (97.4)	0.19
Income type (%)			<0.001		<0.001
Low	48 (13.0)	81 (34.9)		90 (26.9)	
Medium	114 (31.0)	78 (33.6)		216 (64.5)	
High	206 (56.0)	73 (31.5)		29 ( 8.7)	
Maternal Education Attainment at Birth			<0.001		<0.001
Low	46 ( 7.7)	232 (36.8)		186 (55.9)	
Medium	373 (62.2)	170 (26.9)		94 (28.2)	
High	181 (30.2)	229 (36.3)		53 (15.9)	
Maternal age at birth (years) (mean (SD))	32.4 (4.3)	25.49 (5.42)	<0.001	30.1 (4.6)	<0.001
Maternal Pre-pregnancy Body Mass Index (mean(SD))	24.6 (4.4)	28.5 (7.9)	<0.001	-	-
Birthweight (kilograms) (mean (SD))	3.5 (0.5)	3.3 (0.6)	<0.001	3.5 (0.5)	0.655
Gestational age (days) (mean (SD))	279 (12)	273 (14)	<0.001	282 (11)	<0.001
Caesarean section (%)	125 (20.8)	187 (29.7)	<0.001	74 (21.3)	0.941
Maternal smoking during pregnancy (%)	44 ( 7.3)	18 ( 2.8)	<0.001	79 (22.7)	<0.001
ADHD Diagnosis (%) / 6 years (VDAART)	65 (11.0)	18 ( 2.7)	<0.001	-	-
ADHD Diagnosis (%) / Ever 8 years (VDAART)	65 (11.0)	57 ( 8.7)	0.213	-	-
ADHD-RS total score (mean(SD))	9.9 (8.7)	-	-	-	-
ASRS total score (mean(SD))	-	-	-	4.1 (3.9)	-

**Supplementary Table 10.** Cohort characteristics stratified by cohorts. P-values summarise cohort characteristic differences between COPSAC2010/VDAART and COPSAC2010/COPSAC2000 respectively. Low, medium, and high income are defined as <50,000, 50,000 - 110,000, and >110,000 euro in COPSAC2010/COPSAC2000, and <30,000, 30,000 - 99,999, and >\$100,000 USD in VDAART, respectively. Low, medium and high level educational attainment are defined as “primary, secondary, or college graduate”, “tradesman or bachelor’s degree” and “Masters degree” in COPSAC2010/COPSAC2000 and “Did not graduate from high school/Graduated from high school”, “Technical school/Junior college/some college” and “Graduate school/College graduate” in VDAART.

**An Unhealthy Dietary Pattern during Pregnancy is Associated with Neurodevelopmental Disorders in Childhood and Adolescence.**

	<b>Maternal Pre-pregnancy BMI</b>	<b>Child Sex (Male)</b>	<b>Child ADHD Polygenic Risk Score</b>	<b>Child Autism Polygenic Risk Score</b>
<b>Neurodevelopmental Diagnosis</b>	<b>Odds Ratio [95% CI] p-value</b>	<b>Odds Ratio [95% CI] p-value</b>	<b>Odds Ratio [95% CI] p-value</b>	<b>Odds Ratio [95% CI] p-value</b>
All Neurodevelopmental Disorder Diagnosis	1.04 [0.99 - 1.10] (p = 0.097)	2.74 [1.66 - 4.65] (p < 0.001)	1.50 [1.16 - 1.94] (p = 0.002)	1.30 [1.02 - 1.67] (p = 0.039)
ADHD Diagnosis	1.05 [0.99 - 1.11] (p = 0.102)	3.54 [1.94 - 6.79] (p < 0.001)	1.60 [1.19 - 2.18] (p = 0.002)	1.47 [1.10 - 1.97] (p = 0.009)
Autism Diagnosis	1.13 [1.03 - 1.24] (p = 0.006)	1.90 [0.65 - 6.06] (p = 0.250)	1.45 [0.83 - 2.56] (p = 0.197)	1.44 [0.83 - 2.54] (p = 0.196)
<b>Neurodevelopmental Symptom Loads</b>	<b>Estimate [95% CI] p-value</b>	<b>Estimate [95% CI] p-value</b>	<b>Estimate [95% CI] p-value</b>	<b>Estimate [95% CI] p-value</b>
ADHD Symptom Load (ADHD-RS)	0.24 [0.08 - 0.39] (p = 0.003)	4.04 [2.73 - 5.35] (p < 0.001)	1.37 [0.68 - 2.05] (p < 0.001)	1.20 [0.52 - 1.87] (p < 0.001)
Autism Symptom Load (SRS-2)	0.46 [0.15 - 0.78] (p = 0.004)	3.98 [1.31 - 6.65] (p = 0.004)	1.60 [0.19 - 3.00] (p = 0.026)	1.78 [0.40 - 3.16] (p = 0.012)

**Supplementary Table 11.** Maternal pre-pregnancy BMI and child sex associations on neurodevelopmental outcomes, with Unhealthy dietary pattern included in multivariable models, shows the independent associations of maternal pre-pregnancy BMI and child sex on neurodevelopmental diagnosis and symptom loads. Furthermore, models show the associations with child ADHD and autism polygenic risk scores (PRS), likewise also adjusted for the Unhealthy dietary pattern, on neurodevelopmental diagnosis and symptom loads.