

Association between Time-Weighted Remnant Cholesterol and Incident Cancer: A Population-Based Chinese Cohort Study

Lifang Li PhD ^{*1,2}, Nan Zhang BSc ^{*3}, Yifan Yang PhD ⁴, Hugo Hok Him Pui ⁵, Bosco Kwok Hei Leung ⁵, Oscar Hou In Chou MSc ⁶, Carlin Chang MBChB MPhil MRCP FHKAM ⁶, Abraham Ka Chung Wai MBChB MD FRCEM FRCP ⁵, Gregory Lip MD FRCP FESC FACC ⁷, Gary Tse DM PhD FRCP FFPH ^{1,2,3}, Tong Liu MD PhD ^{^,3}, Jiandong Zhou PhD ^{^,8,9,10,11}

¹ School of Nursing and Health Studies, Hong Kong Metropolitan University, Hong Kong SAR, China

² Family Medicine Research Unit, Cardiovascular Analytics Group, PowerHealth Research Institute, Hong Kong SAR, China

³ Tianjin Key Laboratory of Ionic-Molecular Function of Cardiovascular Disease, Department of Cardiology, Tianjin Institute of Cardiology, Second Hospital of Tianjin Medical University, Tianjin 300211, China

⁴ School of Management, Xi'an Jiaotong University, Xi'an, China

⁵ Emergency Medicine Unit, Li Ka Shing Faculty of Medicine, The University of Hong Kong, Hong Kong SAR, China

⁶ Department of Medicine, Queen Mary Hospital, Hong Kong SAR, China

⁷ Liverpool Centre for Cardiovascular Science at University of Liverpool, Liverpool John Moores University and Liverpool Heart & Chest Hospital, Liverpool, United Kingdom; and Danish Center for Health Services Research, Department of Clinical Medicine, Aalborg University, Aalborg, Denmark

⁸ Department of Family Medicine and Primary Care, Li Ka Shing Faculty of Medicine, The University of Hong Kong, Hong Kong SAR, China

⁹ School of Public Health, Li Ka Shing Faculty of Medicine, The University of Hong Kong, Hong Kong SAR, China

¹⁰ Department of Pharmacology and Pharmacy, The University of Hong Kong, Hong Kong SAR, China

¹¹ Division of Health Science, Warwick Medical School, University of Warwick, Coventry, United Kingdom

* Contributed equally

^ Correspondence to:

Tong Liu PhD,

Tianjin Key Laboratory of Ionic-Molecular Function of Cardiovascular Disease, Department of Cardiology, Tianjin Institute of Cardiology, Second Hospital of Tianjin Medical University, Tianjin 300211, China

Email: liutongdoc@126.com

Prof. Jiandong Zhou, PhD

Department of Family Medicine and Primary Care, School of Clinical Medicine, Li Ka Shing Faculty of Medicine, The University of Hong Kong, Hong Kong, China

School of Public Health, Li Ka Shing Faculty of Medicine, The University of Hong Kong, Hong Kong SAR, China

Department of Pharmacology and Pharmacy, The University of Hong Kong, Hong Kong SAR, China

Division of Health Science, Warwick Medical School, University of Warwick, United Kingdom

Email: jdzhou@hku.hk, jiandong.zhou@warwick.ac.uk

NOTE: This preprint reports new research that has not been certified by peer review and should not be used to guide clinical practice.

Study category: Original Article

46 **Abstract**

47 **Background:** Remnant cholesterol (RC) is becoming an increasingly well-recognized risk factor for
48 cardiometabolic diseases. However, no study has explored the predictive role of RC in new-onset
49 cancer. This study aimed to examine the associations between RC and time-weighted RC with incident
50 cancer in the general population.

51 **Methods:** This was a retrospective population-based study enrolling patients attending family
52 medicine clinics in Hong Kong between 1st January 2000 and 31st December 2003 with at least three
53 RC measurements during follow-up visits. The primary outcome was new-onset cancer. The secondary
54 outcome was cancer-related mortality. Multivariable Cox regression was used to evaluate
55 associations between baseline RC and time-weighted RC with outcomes.

56 **Results:** A total of 75,342 adults (39.7% males, mean age: 62.5 years old) were included. During a
57 median follow-up of 16.8 years, 8335 (11.1%) incident cancer and 4349 (5.7%) cancer-related deaths
58 were observed. After adjusting for potential confounders, one mmol/L increased of time-weighted
59 RC was associated with 41% and 62% higher risk of incident cancer (HR, 1.41; 95%CI, 1.26-1.57;
60 $p < 0.0001$) and cancer-related mortality (HR, 1.62; 95%CI, 1.43-1.85; $p < 0.0001$), respectively. However,
61 no significant association between baseline RC with risk of new-onset cancer (HR, 1.04; 95%CI, 0.82-
62 1.31; $p = 0.768$) and cancer-related mortality (HR, 0.85; 95%CI, 0.61-1.17; $p = 0.315$) in the adjusted
63 model. The association between time-weighted RC and incident cancer was significant regardless of
64 age, gender, and remained consistent amongst those with baseline use of most cardiometabolic
65 agents, as well as those complicated with most comorbidities.

66 **Conclusions:** Higher time-weighted RC was associated with increased risk of new-onset cancer and
67 cancer-related mortality amongst the general population.

68 **Keywords:** Cancer, Low-density lipoprotein, Very-low-density lipoprotein, Intermediate-density
69 lipoprotein, Remnant cholesterol.

70 Word count: 2837 (Including sections from Introduction to Conclusion)

71 **Introduction**

72 The growing global burden of cancer is rapidly exceeding the current cancer control capacity.
73 Worldwide, an estimated 28.4 million new cancer cases are projected to occur in 2040, a 47% increase
74 from the corresponding 19.3 million cases in 2020. Additionally, cancer has ranked as a leading cause
75 of death, with expected 16 million deaths from cancer in 2040 globally.¹ Therefore, it is of utmost
76 importance to develop effective preventive strategies to facilitate global cancer control, which
77 requires identification of potentially modifiable risk factors and determination of their contribution
78 to cancer burden.²

79 Dyslipidemia has been considered as an important risk factor for cancer. However, previous
80 studies regarding the association between dyslipidemia with cancer have mainly focused on other
81 lipid profiles, such as LDL and triglyceride.^{3, 4} Remnant cholesterol (RC), also called triglyceride-rich
82 lipoprotein (TRL) cholesterol, which comprises cholesterol carried in very-low-density lipoproteins
83 (VLDL), chylomicron remnants, and intermediate-density lipoproteins, has been increasingly
84 acknowledged as an important risk factor for several burdensome diseases, such as atherosclerotic
85 cardiovascular disease (ASCVD),⁵ diabetes,⁶ and nonalcoholic fatty liver disease.⁷ However, as a highly
86 burdensome disease, so far, no study has investigated the role of RC in the development of cancer.
87 Therefore, this study aimed to examine the associations between RC level and incident cancer in the
88 general population. Besides, to provide a dynamic picture of RC's long-term effects, this study also
89 focused on the associations between time-weighted RC with new-onset cancer.

91 **Methods**

92 This retrospective study was approved by the Institutional Review Board of the University of Hong
93 Kong/Hospital Authority Hong Kong West Cluster (Reference No. UW 20-250) and complied with the
94 Declaration of Helsinki. Due to the retrospective design and use of deidentified data, the need for
95 patient consent was waived.

96 *Data source*

97 Data were acquired from the Clinical Data Analysis Reporting System (CDARS) of the Hong Kong

98 Hospital Authority, a statutory body that manages all public hospitals and their affiliated outpatient
99 and day care facilities in Hong Kong, covering approximately 90% of the population and being the
100 most representative electronic medical database available in Hong Kong.⁸ CDARS prospectively
101 collects patient information including, but not limited to, demographic data, selected laboratory tests,
102 diagnoses, drug prescriptions, procedures, and episodes of hospital visits since 1993. CDARS encodes
103 diagnoses using the International Classification of Diseases, ninth revision (ICD-9), as CDARS has not
104 implemented ICD-10 codes to date.⁹ Mortality data were acquired from the linked Hong Kong Death
105 Registry, a governmental registry of mortality data for Hong Kong citizens. CDARS and the linked Hong
106 Kong Death Registry have been used extensively in research, with good coding accuracy and data
107 completeness as demonstrated in previous studies.^{10, 11}

108

109 *Study population*

110 Patients aged 18 years old or above, without prior cancer history, who attended a family medicine
111 clinic in Hong Kong between 1st Jan 2000 and 31st December 2003 were included. Those without
112 baseline RC data and at least three valid RC tests during follow-up visits were excluded.

113

114 *Follow-up and Outcomes*

115 All patients were followed up until 31st December 2019. The primary outcome of this study was
116 new-onset cancer. The secondary outcome was cancer mortality. ICD-9 codes for identifying site-
117 specific cancer were listed in **Supplemental Table 1**.

118 *Data collection*

119 The following data at baseline were collected: age, gender, Charlson's comorbidity index, prior
120 comorbidities, medication prescriptions, and selected laboratory results (kidney function, liver
121 function, glucose and lipid profiles). All comorbidities were identified using ICD-9 codes, which were
122 listed in **Supplemental Table 1**. Baseline and variability measures of blood pressure, glucose and lipid
123 profiles were presented. Variability profiles were evaluated by SD and time-weighted measures. The

124 following formula, $\sqrt{\frac{1}{n-1} \sum_{i=1}^n (x_i - \bar{x})^2}$, was used to calculate SD. Time-weighted measures were
125 computed by the products of the sums of three consecutive measurements and the time interval,
126 then divided by the total time interval.¹² In addition, RC was calculated by total cholesterol minus
127 LDL-C minus HDL-cholesterol (HDL-C).¹³ Besides, some calculated biomarkers, including the estimated
128 glomerular filtration rate based on the abbreviated modification of diet in renal disease (AMDRD)
129 formula,¹⁴ neutrophil-to-lymphocyte ratio (NLR),¹⁵ and triglyceride-glucose index (TGI) were also
130 presented.¹⁶

131 *Statistical analysis*

132 Descriptive statistics were used to summarize patients' baseline clinical and biochemical
133 characteristics. Continuous variables were presented as mean \pm standard deviation (SD) or median
134 with interquartile range (IQR) depending on their distribution. Categorical variables were presented
135 as frequencies and percentages. Baseline RC and RC variability were assessed as both quartiles and
136 continuous variables. Baseline characteristics of the included participants were compared according
137 to the quartiles of RC and time-weighted RC, respectively. Kaplan-Meier curves were used to visualize
138 the cumulative incidence of overall cancer and site-specific cancers across quartiles of baseline RC
139 and time-weighted RC, respectively. Four separate Cox models were fitted hierarchically to estimate
140 the adjusted hazard ratio (HR) and 95% CI for the associations between RC and time-weighted RC
141 with outcomes. *A priori* subgroup analyses were performed using the fully adjusted Cox model with
142 RC and time-weighted RC measures as continuous variables, according to age, gender, prior
143 comorbidities, and medication prescriptions.

144 P value <0.05 was considered statistically significant. The statistical analysis was performed with
145 RStudio software (Version 1.1.456) and Python (Version 3.6).

146 **Results**

147 Altogether, 155,066 patients were identified. After applying the exclusion criteria, 75,342 adult
148 patients with available baseline RC result and at least three RC results during follow-up visits were
149 included in the final analysis (29,905 male [39.7%]; median age 62.5 years [interquartile range 51.5,
150 71.4 years]) (**Figure 1**). The baseline characteristics of included patients by RC and RC variability

151 quartiles are summarized in **Table 1**.

152 During a median follow-up of 16.8 (14.4, 17.9) years, 8335 (11.1%) patients developed incident
153 cancer and 4349 (5.7%) died from cancer. Among the incident cancer cases, gastrointestinal cancer
154 (N=3790, 5.0%) represented the most common type, followed by genitourinary cancer (N=2117,
155 2.8%), colorectal cancer (N=2051, 2.7%) and other types (**Supplemental Table 3 and 4**). The median
156 baseline RC and time weighted RC of the overall cohort was 0.6 (0.4, 1.0) mmol/L and 0.7 (0.5, 0.9)
157 mmol/L, respectively (**Table 1**). The relationship between RC with time-weighted RC, HDL-C, LDL-C,
158 total cholesterol, and triglyceride on incident cancer were illustrated in **Supplementary Figure 1**.

159 *Association between baseline RC and outcomes*

160 Cumulative incidence curves showed that groups with incrementally higher levels of remnant
161 cholesterol had progressive higher incidences of overall cancer (**Figure 2A**). **Table 2** summarizes
162 results of multivariable Cox regression models evaluating the associations between the RC level and
163 the risk of incident cancer. After adjusting for demographics, comorbidities, medications, AMDRD,
164 NLR, TGI, baseline and variability of blood pressure, glucose and other lipid profiles, no significant
165 association was observed between baseline RC level with new-onset cancer (HR, 1.04; 95%CI, 0.82-
166 1.31; p=0.768), or cancer-related mortality (HR, 0.85; 95%CI, 0.61-1.17; p=0.315). Results for the
167 associations between RC with individual cancer types after adjusting for confounders were also in line
168 with the primary analysis (**Table 2; Supplemental Figure 2**).

169 *Association between time-weighted RC and outcomes*

170 Cumulative incidence curves showed a significant association between higher RC variability with
171 increased risk of incident cancer (**Figure 2B**). In the fully adjusted model, one mmol/L increased of
172 time-weighted RC was associated with 41% and 62% higher risk of incident cancer (HR, 1.41; 95%CI,
173 1.26-1.57; p<0.0001) and cancer-related mortality (HR, 1.62; 95%CI, 1.43-1.85; p<0.0001),
174 respectively. For individual cancer types, higher time-weighted RC was associated with significantly
175 increased risk of lung cancer (HR, 1.60, 95%CI, 1.28-2.00; p<0.0001), gastrointestinal cancer (HR, 1.39;
176 95%CI, 1.18-1.64; p=0.0001), colorectal cancer (HR, 1.47; 95%CI, 1.21-1.78; P=0.0001), ovarian cancer
177 (HR, 2.707; 95%CI, 1.231-5.954; P=0.0133), and genitourinary cancer (HR, 1.27; 95%CI, 1.00-1.61;
178 p=0.0483), but not for breast cancer (HR, 1.12; 95%CI 0.74-1.70; p=0.5904), prostate cancer (HR, 1.27;

179 95%CI, 0.91-1.77; p=0.1682), pancreatic cancer (HR, 0.45; 95%CI, 0.09-2.39; p=0.3512), liver cancer
180 (HR, 0.86; 95%CI, 0.38-1.95; p=0.7213), or bladder cancer (HR, 0.73; 95%CI, 0.31-1.73; p=0.4705)
181 (**Table 2; Supplemental Figure 3**).

182

183 *Subgroup analyses*

184 Subgroup analyses identified a significant association between time-weighted RC and incident
185 cancer both in females (HR 1.07; 95% CI 1.03-1.11; P=0.001) and males (HR 1.10; 95% CI 1.06-1.15;
186 P<0.001) (**Figure 3**). In subgroup analysis by age, the association between time-weighted RC and
187 cancer was significant among both the younger (<65 years, HR 1.07; 95% CI 1.01-1.12; P=0.013) and
188 older (>65 years, HR 1.05; 95% CI 1.02-1.09; P = 0.004) individuals (**Figure 3**).

189 Further analyses were performed according to prior comorbidities, which suggested a significant
190 association between time-weighted RC and cancer regardless of the presence of baseline
191 dyslipidemia, diabetes mellitus, ischemic heart disease, and liver disease (**Figure 3**). However, the
192 association between time-weighted RC with cancer was more prominent among those complicated
193 with baseline hypertension (HR, 1.19; 95%CI 1.15-1.23; P<0.001), but not for those without (HR, 1.01;
194 95%CI 0.96-1.05; P=0.812), with a P for interaction < 0.001. In subgroup analyses according to
195 medication use, higher time-weighted RC was consistently associated with increased risk of cancer,
196 regardless of the baseline usage of angiotensin-converting enzyme inhibitor (ACEI)/angiotensin
197 receptor blocker (ARB), beta-blockers, antiplatelets, statins and fibrates, overall lipid-lowering drugs,
198 and non-steroidal anti-inflammatory agents. Compared to patients treated with anti-diabetic drugs,
199 those without exposure to anti-diabetic drugs presented with a significant association between time-
200 weighted RC with cancer (HR, 1.09; 95%CI 1.06-1.13; P<0.001), whereas the interaction did not reach
201 the traditional significance (P_{for interaction}=0.257) (**Figure 3**).

202 Results from subgroup analyses between RC and cancer were generally consistent with those
203 observed between time-weighted RC with cancer (**Supplemental Figure 4**). Notably, higher RC level
204 was associated with significantly increased risk of new-onset cancer in female individuals (HR 1.17;
205 95% CI 1.11-1.22; P<0.001), but not for male (HR 0.96; 95% CI 0.90-1.02; P=0.199), with a p for
206 interaction < 0.001. Besides, Higher RC level was associated with significantly increased risk of cancer
207 among those without medication history of statins and fibrates (HR, 1.10; 95%CI 1.06-1.15, p<0.001),

208 but not for those exposure to statins and fibrates (HR, 0.96; 95%CI 0.88-1.05, p=0.363), with a p for
209 interaction of 0.004.

210

211 **Discussion**

212 In this population-based cohort study with over 16 years of follow-up, several key findings were
213 noted. First, higher time-weighted RC, but not single time point RC, was significantly associated with
214 increased risks of new-onset cancer, especially for lung cancer, gastrointestinal cancer, genitourinary
215 cancer, and ovarian cancer. Second, the association between time-weighted RC and incident cancer
216 was significant regardless of age and gender. The association remained consistent amongst those with
217 baseline use of most cardiometabolic agents, as well as those complicated with most comorbidities.
218 Last, higher time-weighted RC was associated with significantly increased risk of cancer-related
219 mortality, but not for single RC measurement. To our knowledge, the present study is the first to
220 demonstrate the effects of RC and time-weighted RC in the development of cancer and cancer-related
221 mortality.

222 *Comparison with previous studies*

223 Previous preclinical studies have suggested a role of cholesterol in cancer, with several
224 demonstrating that cholesterol homeostasis genes can modulate cancer development.⁴ In addition,
225 some epidemiologic studies also identified an association between higher serum cholesterol and LDL
226 level with increased risk of incident cancer.^{20, 21} In line with the prior studies, our study observed that
227 higher time-weighted RC was significantly associated with increased risk of new-onset cancer in the
228 general population, which adds to the existent evidence that time-weighted RC may be a potential
229 tool for cancer risk assessment. In the present study, the predictive role of time-weighted RC was only
230 observed in lung cancer, colorectal cancer, ovarian cancer, overall gastrointestinal cancer and
231 genitourinary cancer. The discrepancy of the predictive role of lipid profile across various site-specific
232 cancers has also been observed in other studies.²¹ Prior investigation has demonstrated that
233 intracellular cholesterol homeostasis varies among different cancer types,²² therefore, whether RC
234 plays differing roles in various cancer type needs further exploration. In addition, future large-scale
235 study to reveal the genetic architecture of RC and nonlinear Mendelian randomization study to
236 explore the causal association between RC and cancer are needed.

237 Though no study has addressed the association between RC and incident cancer, several
238 observational studies have explored the relationship between RC and cancer-related mortality but
239 yielded controversial results. Both Wadström *et al.*²³ and Bonfiglio *et al.*²⁴ have focused on the
240 association between baseline RC levels with cancer mortality, whereas they failed to observe a
241 significant correlation. In agreement with Wadström *et al.*²³ and Bonfiglio *et al.*²⁴, no significant
242 association between baseline RC and cancer-related mortality was identified in the present study,
243 whereas we found a significant association between time-weighted RC with cancer-related mortality,
244 regardless of age, gender, and presence of most comorbidities and medication history. Time-weighted
245 measurement, an index of homeostasis that takes into account the time spent at every single test,
246 has been demonstrated to be superior to and more robust than static indices.^{25, 26} Therefore, by using
247 the time-weighted measurement, our study could provide a dynamic picture of RC's homeostasis on
248 cancer risk and cancer mortality. Interestingly, in the study by Tian *et al.*, during a median follow-up
249 of 3.6 years, an association between increased baseline RC and reduced risk of overall, liver and
250 stomach cancer-related mortality was observed.²⁷ However, the prior study may be limited by the
251 relatively short follow-up and the possibility of reverse causation.²⁷ For example, liver cancer is usually
252 accompanied by cirrhosis before its onset, which lowers cholesterol levels before the onset of liver
253 cancer.^{27, 28}

254 *Potential Underlying Mechanisms*

255 The mechanisms underlying the associations between time-weighted RC with incident cancer
256 and cancer mortality have not been addressed before. Based on current studies regarding other lipid
257 traits with cancer, several hypotheses may help explain the observed associations. First of all, altered
258 lipid metabolism is known to be a prominent metabolic alterations in cancer. Enhanced synthesis or
259 uptake of lipids contributes to rapid cancer cell growth and tumor formation. Altered cholesterol
260 metabolism has been demonstrated to contribute to various aspects of carcinogenesis, such as
261 structural functions as components of cellular membranes,²⁹ controlling the communication between
262 cancer and immune cells within the cancer microenvironment,³⁰ activity of multiple signaling
263 pathways that are directly carcinogenic.^{20, 31} In addition, RC increases the production of reactive
264 oxygen species and induces inflammatory response, both of which has been considered to play a
265 critical role in the cancer development and progression.^{32, 33} Furthermore, lipid plays a major role in

266 regulation of the processes that initiate cell dissemination and metastasis formation.^{29, 34} Metastasis
267 is the prime cause of cancer-related deaths, which could help explain the association between time-
268 weighted RC with cancer mortality observed in the present study. Future studies are clearly needed
269 to investigate the mechanisms underlying the effects of RC on cancer development.

270 *Clinical Implications and the future*

271 RC has been increasingly considered as a substantial risk factor for cardiometabolic diseases.³⁵
272 Our findings add to the evidence that RC may also be a novel modifiable risk factor for new-onset
273 cancer and cancer-related mortality. One of strengths of using family medicine cohort is that
274 population in our study generally represents the least unwell patients that one would encounter in
275 daily clinical practice. Given the readily available and low cost of lipid testing, time-weighted RC has
276 the potential to achieve widespread clinical use with minimal interference of general medical
277 practices.²⁰ Our findings suggest that including time-weighted RC in general medical assessments
278 could allow not only stratification of cardiometabolic risk, but also cancer risk. Future researches are
279 warranted to evaluate the effects of RC homeostasis management, such as behavioral or
280 pharmacological intervention, on the prevention of cancer risk.

281 *Limitations*

282 First, given the retrospective nature of this study, there might be unmeasured and residual
283 confounders which have not been accounted for. Nonetheless, we have adjusted for a range of well-
284 established risk factors in the multivariable Cox regression analyses, which should account for most
285 potential confounding factors pertinent to our outcomes. Second, this study only included
286 participants from Hong Kong; therefore, the findings may not be generalizable to other populations.
287 Future studies evaluating the association between RC and incident cancer among individuals of other
288 races are needed. In addition, causation relationship between RC and cancer using Mendelian
289 randomization in Eastern Asian should be further investigated to testify our result. Last, there is
290 inherent information bias due to under-coding, coding errors, and missing data. Nevertheless,
291 previous studies have demonstrated good coding accuracy and data completeness in CDARS.^{9, 10}

292

293 **Conclusions**

294 Higher time-weighted RC was associated with increased risk of new-onset cancer and cancer-
295 related mortality amongst the general population. Time-weighted RC may be considered as a
296 potential tool for cancer risk assessment and optimization of RC homeostasis may potentially help
297 prevent cancer development.

298

299 **Funding source**

300 The authors received no funding for the research, authorship, and/or publication of this article.

301 **Conflicts of Interest**

302 G.Y.H.L. is a consultant and speaker for BMS/Pfizer, Boehringer Ingelheim, Anthos and Daiichi-Sankyo.
303 No fees are directly received personally. He is a National Institute for Health and Care Research (NIHR)
304 Senior Investigator and co-principal investigator of the AFFIRMO project on multimorbidity in AF,
305 which has received funding from the European Union's Horizon 2020 research and innovation
306 programme under grant agreement No 899871. The remaining authors have no disclosures to report.

307 **Ethical approval statement**

308 This study was approved by the Institutional Review Board of the University of Hong Kong/Hospital
309 Authority Hong Kong West Cluster (HKU/HA HKWC IRB) (UW-20-250) and complied with the
310 Declaration of Helsinki.

311 **Availability of data and materials**

312 Data are not available, as the data custodians (the Hospital Authority and the Department of Health
313 of Hong Kong SAR) have not given permission for sharing due to patient confidentiality and privacy
314 concerns. Local academic institutions, government departments, or nongovernmental organizations
315 may apply for the access to data through the Hospital Authority's data sharing portal
316 (<https://www3.ha.org.hk/data>).

317 **Guarantor Statement**

318 All authors approved the final version of the manuscript. GT is the guarantor of this work and, as such,
319 had full access to all the data in the study and takes responsibility for the integrity of the data and the
320 accuracy of the data analysis.

321 **Author contributions**

322 Data analysis: LL, NZ, JZ

323 Data review: LL, NZ, GT, JZ

324 Data acquisition: HHP, BKHL, AKCW

325 Data interpretation: LL, NZ, CC, JZ, GT

326 Critical revision of manuscript: AKCW, CC, TL, GL, GT, JZ

327 Supervision: TL, GT, JZ

328 Manuscript writing: LL, NZ, GT, JZ

329 Manuscript revision: LL, NZ, AKCW, TL, GL, GT, JZ

330 **Acknowledgements**

331 All the authors and colleagues from the Hospital Authority for providing de-identified clinical data are
332 equally thanked for their contributions to this research. Special thanks to the support of the National
333 Natural Science Foundation of China (82170327, 82370332 to TL) and the Tianjin Key Medical
334 Discipline (Specialty) Construction Project (TJYXZDXK-029A).

335 References

- 336 1. Sung H, Ferlay J, Siegel RL, et al. Global Cancer Statistics 2020: GLOBOCAN Estimates of Incidence
337 and Mortality Worldwide for 36 Cancers in 185 Countries. *CA Cancer J Clin.* 2021;71(3):209-249.
- 338 2. The global burden of cancer attributable to risk factors, 2010-19: a systematic analysis for the
339 Global Burden of Disease Study 2019. *Lancet.* 2022;400(10352):563-591.
- 340 3. Hao B, Yu M, Sang C, Bi B and Chen J. Dyslipidemia and non-small cell lung cancer risk in Chinese
341 population: a case-control study. *Lipids Health Dis.* 2018;17(1):278.
- 342 4. Kuzu OF, Noory MA and Robertson GP. The Role of Cholesterol in Cancer. *Cancer Res.*
343 2016;76(8):2063-2070.
- 344 5. Wadström BN, Wulff AB, Pedersen KM, Jensen GB and Nordestgaard BG. Elevated remnant
345 cholesterol increases the risk of peripheral artery disease, myocardial infarction, and ischaemic stroke:
346 a cohort-based study. *Eur Heart J.* 2022;43(34):3258-3269.
- 347 6. Huh JH, Roh E, Lee SJ, Ihm SH, Han KD and Kang JG. Remnant Cholesterol Is an Independent
348 Predictor of Type 2 Diabetes: A Nationwide Population-Based Cohort Study. *Diabetes Care.*
349 2023;46(2):305-312.
- 350 7. Huang H, Xie J, Zeng Y, et al. Remnant Cholesterol Independently Predicts the Development of
351 Nonalcoholic Fatty Liver Disease. *J Clin Endocrinol Metab.* 2023;108(11):2907-2915.
- 352 8. Chan JSK, Satti DI, Lee YHA, et al. Temporal trends in cardiovascular burden among patients with
353 prostate cancer receiving androgen deprivation therapy: a population-based cohort study. *Br J Cancer.*
354 2023;128(12):2253-2260.
- 355 9. Gao X, Zhang N, Lu L, et al. New-onset syncope in diabetic patients treated with sodium-glucose
356 cotransporter-2 inhibitors versus dipeptidyl peptidase-4 inhibitors: a Chinese population-based
357 cohort study. *Eur Heart J Cardiovasc Pharmacother.* 2023.
- 358 10. Ren QW, Yu SY, Teng TK, et al. Statin associated lower cancer risk and related mortality in patients
359 with heart failure. *Eur Heart J.* 2021;42(32):3049-3059.
- 360 11. Zhou J, Wang X, Lee S, et al. Proton pump inhibitor or famotidine use and severe COVID-19
361 disease: a propensity score-matched territory-wide study. *Gut.* 2021;70(10):2012-2013.
- 362 12. Wu MZ, Chandramouli C, Wong PF, et al. Risk of sepsis and pneumonia in patients initiated on
363 SGLT2 inhibitors and DPP-4 inhibitors. *Diabetes Metab.* 2022;48(6):101367.
- 364 13. Nordestgaard BG and Varbo A. Triglycerides and cardiovascular disease. *Lancet.*
365 2014;384(9943):626-635.
- 366 14. Zhou J, Liu X, Chou OH, et al. Lower risk of gout in sodium glucose cotransporter 2 (SGLT2)
367 inhibitors versus dipeptidyl peptidase-4 (DPP4) inhibitors in type-2 diabetes. *Rheumatology (Oxford).*
368 2023;62(4):1501-1510.
- 369 15. Zhang N, Tse G and Liu T. Neutrophil-lymphocyte ratio in the immune checkpoint inhibitors-
370 related atherosclerosis. *Eur Heart J.* 2021;42(22):2215.
- 371 16. Li X, Chan JSK, Guan B, et al. Triglyceride-glucose index and the risk of heart failure: Evidence from
372 two large cohorts and a mendelian randomization analysis. *Cardiovasc Diabetol.* 2022;21(1):229.
- 373 17. Navarese EP, Vine D, Proctor S, et al. Independent Causal Effect of Remnant Cholesterol on
374 Atherosclerotic Cardiovascular Outcomes: A Mendelian Randomization Study. *Arterioscler Thromb*
375 *Vasc Biol.* 2023;43(9):e373-e380.
- 376 18. Guan B, Wang A and Xu H. Causal associations of remnant cholesterol with cardiometabolic
377 diseases and risk factors: a mendelian randomization analysis. *Cardiovasc Diabetol.* 2023;22(1):207.

- 378 19. Zhang N, Jia Z, Gu T, et al. Associations between modifiable risk factors and frailty: a Mendelian
379 randomisation study. *J Epidemiol Community Health*. 2023;77(12):782-790.
- 380 20. Chan JSK, Satti DI, Lee YHA, et al. Association Between Visit-to-Visit Lipid Variability and Incident
381 Cancer: A Population-based Cohort Study. *Curr Probl Cardiol*. 2023;48(1):101421.
- 382 21. Chandler PD, Song Y, Lin J, et al. Lipid biomarkers and long-term risk of cancer in the Women's
383 Health Study. *Am J Clin Nutr*. 2016;103(6):1397-1407.
- 384 22. Swinnen JV, Brusselmans K and Verhoeven G. Increased lipogenesis in cancer cells: new players,
385 novel targets. *Curr Opin Clin Nutr Metab Care*. 2006;9(4):358-365.
- 386 23. Wadström BN, Pedersen KM, Wulff AB and Nordestgaard BG. Elevated remnant cholesterol,
387 plasma triglycerides, and cardiovascular and non-cardiovascular mortality. *Eur Heart J*.
388 2023;44(16):1432-1445.
- 389 24. Bonfiglio C, Leone CM, Silveira LVA, et al. Remnant cholesterol as a risk factor for cardiovascular,
390 cancer or other causes mortality: A competing risks analysis. *Nutr Metab Cardiovasc Dis*.
391 2020;30(11):2093-2102.
- 392 25. Teramoto K, Nadruz Junior W, Matsushita K, et al. Mid- to Late-Life Time-Averaged Cumulative
393 Blood Pressure and Late-Life Cardiac Structure, Function, and Heart Failure. *Hypertension*.
394 2020;76(3):808-818.
- 395 26. Jiang Z, Shao F, Hu J, et al. Time-weighted blood pressure with cardiovascular risk among patients
396 with or without diabetes. *Clin Cardiol*. 2024;47(1):e24213.
- 397 27. Tian Y, Wu Y, Qi M, et al. Associations of remnant cholesterol with cardiovascular and cancer
398 mortality in a nationwide cohort. *Sci Bull (Beijing)*. 2024;69(4):526-534.
- 399 28. Iso H, Ikeda A, Inoue M, Sato S and Tsugane S. Serum cholesterol levels in relation to the incidence
400 of cancer: the JPHC study cohorts. *Int J Cancer*. 2009;125(11):2679-2686.
- 401 29. Snaebjornsson MT, Janaki-Raman S and Schulze A. Greasing the Wheels of the Cancer Machine:
402 The Role of Lipid Metabolism in Cancer. *Cell Metab*. 2020;31(1):62-76.
- 403 30. King RJ, Singh PK and Mehla K. The cholesterol pathway: impact on immunity and cancer. *Trends*
404 *Immunol*. 2022;43(1):78-92.
- 405 31. Lyu J, Yang EJ and Shim JS. Cholesterol Trafficking: An Emerging Therapeutic Target for
406 Angiogenesis and Cancer. *Cells*. 2019;8(5).
- 407 32. Hayes JD, Dinkova-Kostova AT and Tew KD. Oxidative Stress in Cancer. *Cancer Cell*.
408 2020;38(2):167-197.
- 409 33. Zhao H, Wu L, Yan G, et al. Inflammation and tumor progression: signaling pathways and targeted
410 intervention. *Signal Transduct Target Ther*. 2021;6(1):263.
- 411 34. Baek AE, Yu YA, He S, et al. The cholesterol metabolite 27 hydroxycholesterol facilitates breast
412 cancer metastasis through its actions on immune cells. *Nat Commun*. 2017;8(1):864.
- 413 35. Ginsberg HN, Packard CJ, Chapman MJ, et al. Triglyceride-rich lipoproteins and their remnants:
414 metabolic insights, role in atherosclerotic cardiovascular disease, and emerging therapeutic
415 strategies-a consensus statement from the European Atherosclerosis Society. *Eur Heart J*.
416 2021;42(47):4791-4806.

417

Figures

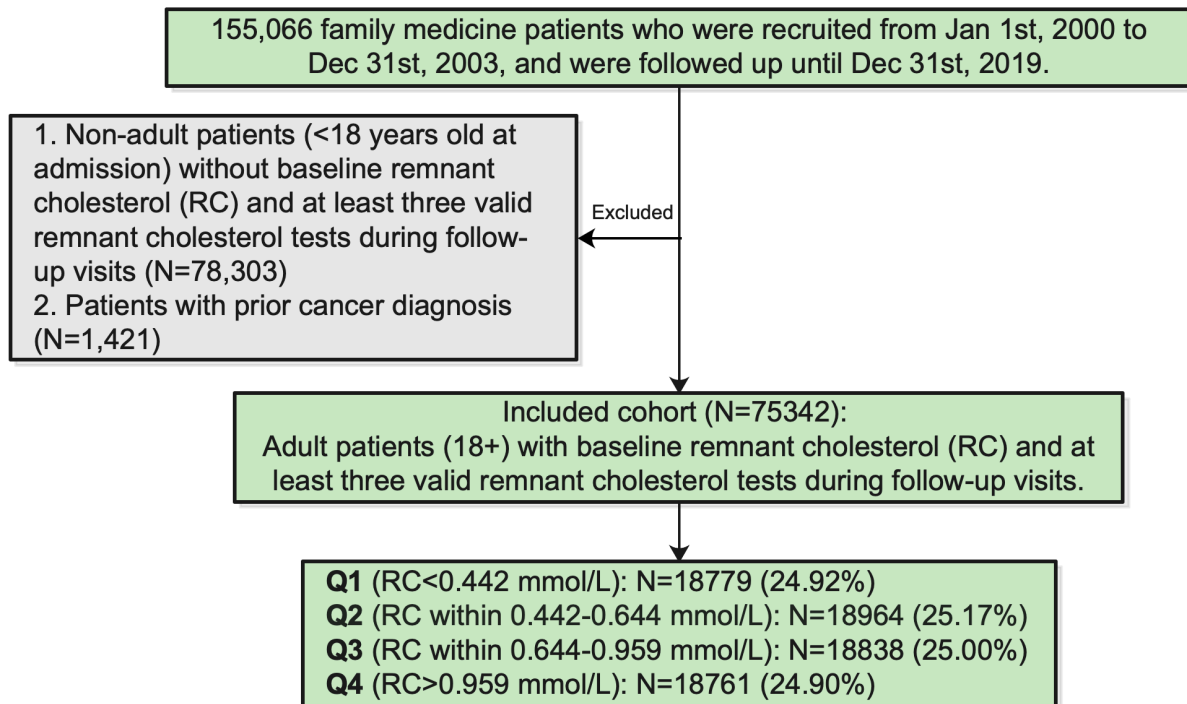


Figure 1. The flow diagram of the study

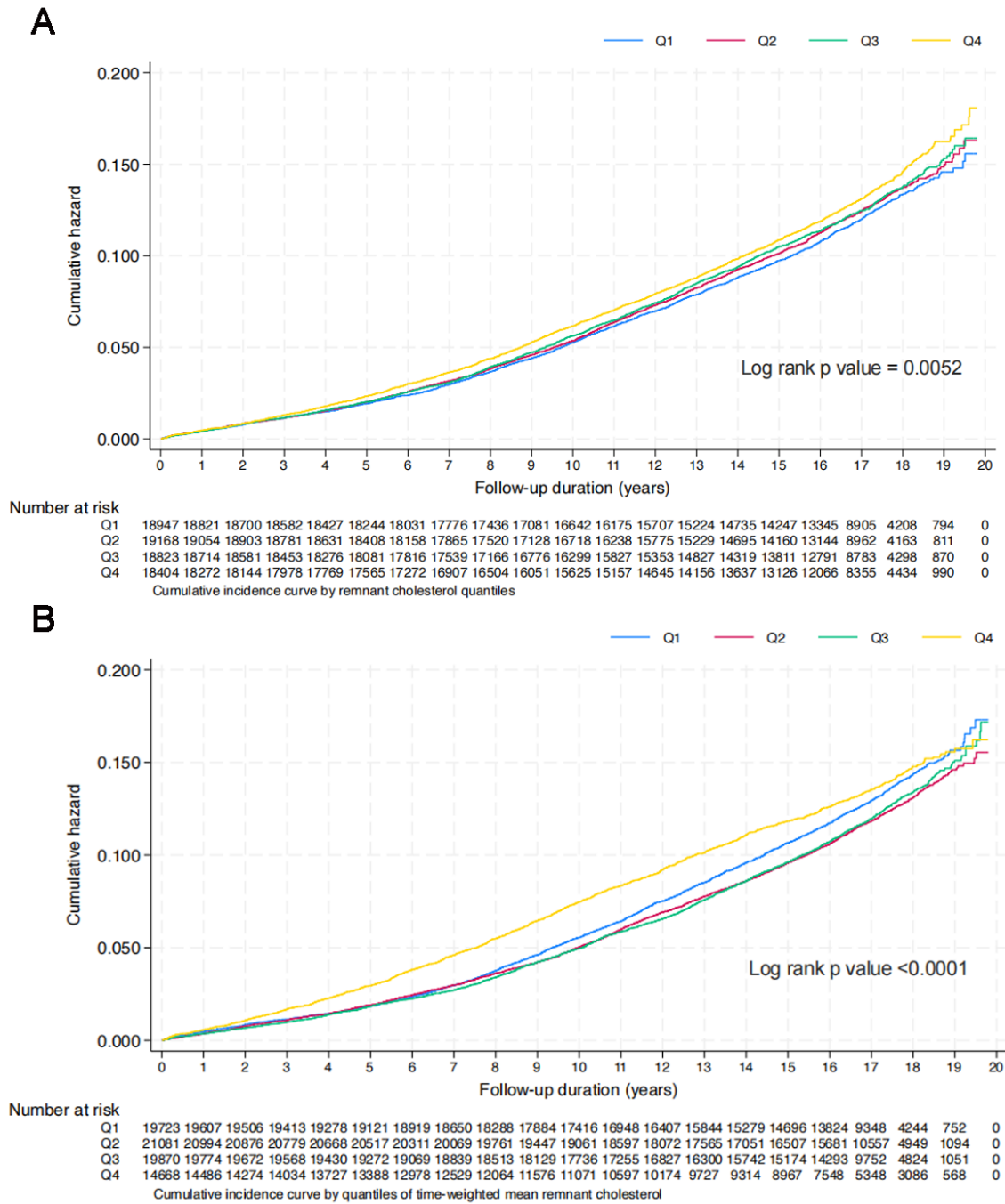


Figure 2. Cumulative incidence curves between (A) baseline remnant cholesterol and (B) time-weighted remnant cholesterol with incidence of overall cancer.

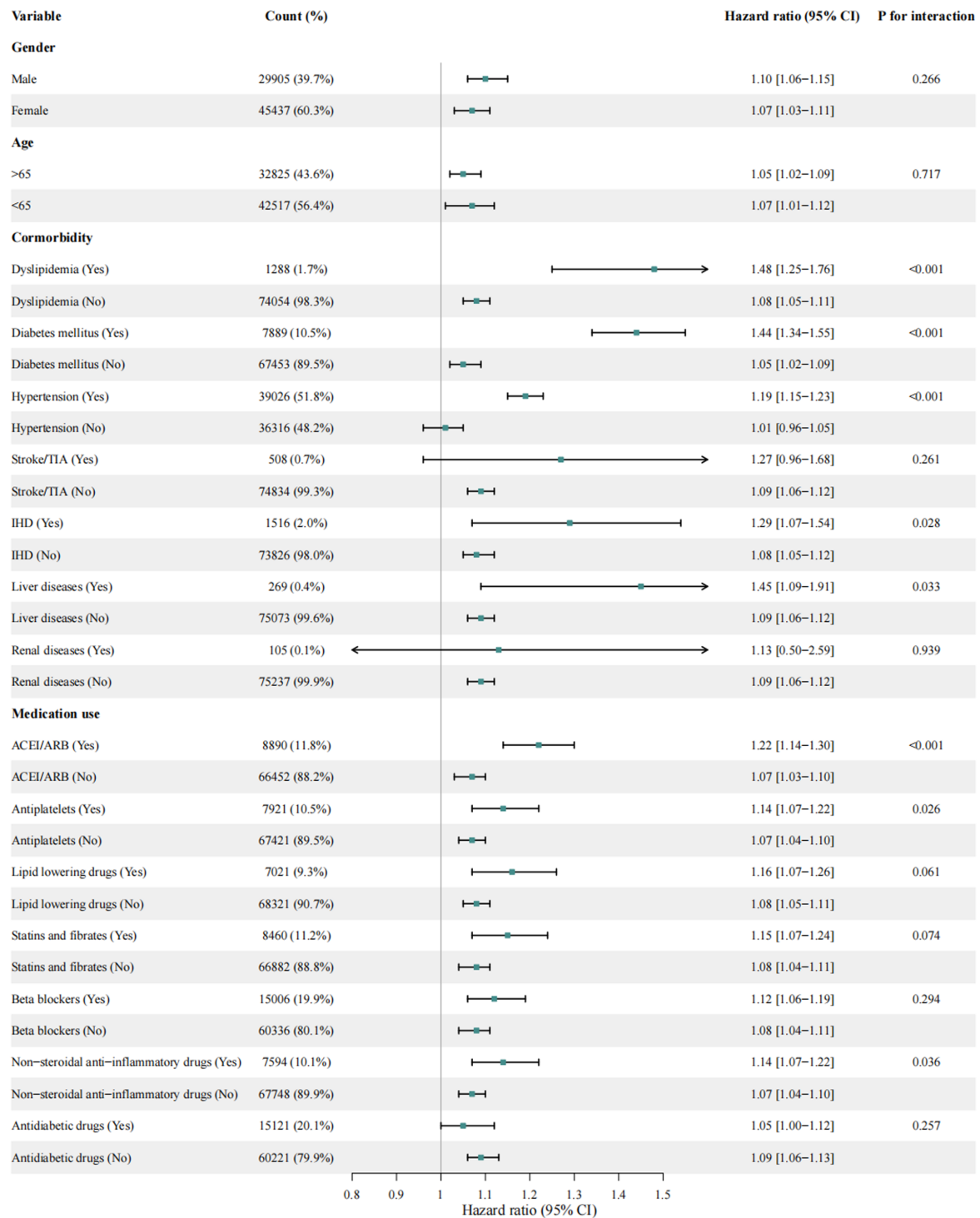


Figure 3. Forest plot of subgroup analyses between time-weighted RC with cancer.

Table 1. Baseline and clinical characteristics of family medicine patients stratified by quantiles of remnant cholesterol.

SD: standard deviation; RC: remnant cholesterol; TIA: transient ischaemic attack; ACEI: angiotensin-converting enzyme inhibitors; ARB: angiotensin II receptor blockers. MDRD: modification of diet in renal disease.

Characteristics	Baseline RC quantiles Mean(SD);N or Count(%)						Time-weighted RC quantiles Mean(SD);N or Count(%)					
	Q1 <0.44 mmol/L (N=18779)	Q2 0.44-0.64 mmol/L (N=18964)	Q3 0.64-0.96 mmol/L (N=18838)	Q4 >0.96 mmol/L (N=18761)	Total (N=75342)	P value	Q1 <0.53 mmol/L (N=18894)	Q2 0.53-0.70 mmol/L (N=18820)	Q3 0.70-0.93 mmol/L (N=18757)	Q4 <0.93 mmol/L (N=18871)	Total (N=75342)	P value
Demographic												
Sex (Male)	7697 (41.0)	7519 (39.6)	7245 (38.5)	7444 (39.7)	29905 (39.7)	<0.001	7896 (41.8)	7363 (39.1)	7120 (38.0)	7526 (39.9)	29905 (39.7)	<0.001
Baseline age, years	61.4 (49.8,71.2)	62.9 (51.9,71.6)	62.9 (52.2,71.3)	62.6 (52.0,71.3)	62.5 (51.5,71.4)	<0.001	62.9 (51.5,71.7)	61.4 (51.2,70.1)	61.3 (51.1,70.2)	64.5 (52.2,73.5)	62.5 (51.5,71.4)	<0.001
Age larger than 65	7891 (42.0)	8400 (44.3)	8327 (44.2)	8207 (43.7)	32825 (43.6)	<0.001	8413 (44.5)	7616 (40.5)	7613 (40.6)	9183 (48.7)	32825 (43.6)	<0.001
Comorbidity												
Charlson's standard comorbidity index	2.0 (0.0,3.0)	2.0 (1.0,3.0)	2.0 (1.0,3.0)	2.0 (1.0,3.0)	2.0 (1.0,3.0)	<0.001	2.0 (1.0,3.0)	2.0 (1.0,3.0)	2.0 (1.0,3.0)	2.0 (1.0,3.0)	2.0 (1.0,3.0)	<0.001
Dyslipidemia	188 (1.0)	280 (1.5)	348 (1.8)	472 (2.5)	1288 (1.7)	<0.001	259 (1.4)	279 (1.5)	368 (2.0)	382 (2.0)	1288 (1.7)	<0.001
Diabetes mellitus	1395 (7.4)	1638 (8.6)	2064 (11.0)	2792 (14.9)	7889 (10.5)	<0.001	1546 (8.2)	1834 (9.7)	2222 (11.8)	2287 (12.1)	7889 (10.5)	<0.001
Hypertension	8800 (46.9)	9815 (51.8)	10104 (53.6)	10307 (54.9)	39026 (51.8)	<0.001	9533 (50.5)	9735 (51.7)	9952 (53.1)	9806 (52.0)	39026 (51.8)	<0.001
Heart failure	557 (3.0)	652 (3.4)	784 (4.2)	939 (5.0)	2932 (3.9)	<0.001	591 (3.1)	592 (3.1)	735 (3.9)	1014 (5.4)	2932 (3.9)	<0.001
Atrial fibrillation/Atrial flutter	116 (0.6)	120 (0.6)	106 (0.6)	104 (0.6)	446 (0.6)	0.688	122 (0.6)	106 (0.6)	102 (0.5)	116 (0.6)	446 (0.6)	0.553
Stroke/TIA	92 (0.5)	135 (0.7)	139 (0.7)	142 (0.8)	508 (0.7)	0.005	128 (0.7)	113 (0.6)	121 (0.6)	146 (0.8)	508 (0.7)	0.207
Ischemic heart disease	322 (1.7)	362 (1.9)	395 (2.1)	437 (2.3)	1516 (2.0)	<0.001	345 (1.8)	407 (2.2)	391 (2.1)	373 (2.0)	1516 (2.0)	0.107
Liver diseases	87 (0.5)	68 (0.4)	56 (0.3)	58 (0.3)	269 (0.4)	0.028	75 (0.4)	78 (0.4)	65 (0.3)	51 (0.3)	269 (0.4)	0.084
Renal diseases	26 (0.1)	18 (0.1)	31 (0.2)	30 (0.2)	105 (0.1)	0.249	24 (0.1)	17 (0.1)	29 (0.2)	35 (0.2)	105 (0.1)	0.084
Medication use												
ACEI/ARB	1755 (9.3)	2100 (11.1)	2282 (12.1)	2753 (14.7)	8890 (11.8)	<0.001	1851 (9.8)	2058 (10.9)	2319 (12.4)	2662 (14.1)	8890 (11.8)	<0.001
Antiplatelets	1662 (8.9)	1966 (10.4)	2051 (10.9)	2242 (12.0)	7921 (10.5)	<0.001	1827 (9.7)	1778 (9.4)	1925 (10.3)	2391 (12.7)	7921 (10.5)	<0.001
Lipid-lowering drugs	1200 (6.4)	1624 (8.6)	1840 (9.8)	2357 (12.6)	7021 (9.3)	<0.001	1372 (7.3)	1687 (9.0)	1897 (10.1)	2065 (10.9)	7021 (9.3)	<0.001
Statins and fibrates	1353 (7.2)	1825 (9.6)	2207 (11.7)	3075 (16.4)	8460 (11.2)	<0.001	1506 (8.0)	1893 (10.1)	2348 (12.5)	2713 (14.4)	8460 (11.2)	<0.001
Beta blockers	2792 (14.9)	3503 (18.5)	4042 (21.5)	4669 (24.9)	15006 (19.9)	<0.001	3220 (17.0)	3570 (19.0)	4064 (21.7)	4152 (22.0)	15006 (19.9)	<0.001
Non-steroidal anti-inflammatory drugs	1604 (8.5)	1890 (10.0)	1964 (10.4)	2136 (11.4)	7594 (10.1)	<0.001	1759 (9.3)	1706 (9.1)	1830 (9.8)	2299 (12.2)	7594 (10.1)	<0.001
Anti-diabetic drugs	2860 (15.2)	3483 (18.4)	3996 (21.2)	4782 (25.5)	15121 (20.1)	<0.001	3104 (16.4)	3329 (17.7)	3922 (20.9)	4766 (25.3)	15121 (20.1)	<0.001
Calculated biomarkers												
eGFR (MDRD), mL/min/1.73m2	75.0 (64.4,86.4)	72.9 (62.4,84.6)	72.1 (61.5,83.9)	71.1 (60.2,82.5)	72.7 (61.9,84.3)	<0.001	73.4 (62.8,85.1)	73.6 (63.1,84.9)	73.1 (62.5,84.4)	70.8 (59.3,82.6)	72.7 (61.9,84.3)	<0.001
Neutrophil-to-lymphocyte ratio	2.3 (1.7,3.7)	2.3 (1.7,3.6)	2.2 (1.6,3.5)	2.2 (1.6,3.5)	2.2 (1.6,3.6)	0.001	2.3 (1.6,3.6)	2.2 (1.6,3.4)	2.2 (1.6,3.4)	2.3 (1.6,3.8)	2.2 (1.6,3.6)	0.004

Triglyceride–glucose index	6.7 (6.4,7.0)	7.1 (6.9,7.3)	7.4 (7.2,7.7)	7.8 (7.5,8.2)	7.3 (6.9,7.8)	<0.001	7.1 (6.7,7.5)	7.2 (6.8,7.6)	7.4 (7.0,7.8)	7.5 (7.1,8.0)	7.3 (6.9,7.8)	<0.001
kidney and liver function												
Creatinine, umol/L	81.0 (70.0,96.0)	83.0 (72.0,97.0)	84.0 (72.0,98.0)	85.0 (73.0,100.0)	84.0 (72.0,98.0)	<0.001	83.0 (72.0,98.0)	83.0 (72.0,96.0)	83.0 (71.0,97.0)	85.0 (73.0,100.0)	84.0 (72.0,98.0)	<0.001
Alkaline phosphatase, U/L	74.0 (60.0,90.0)	77.0 (63.0,94.0)	78.0 (64.0,95.0)	80.0 (66.0,97.0)	78.0 (63.0,95.0)	<0.001	76.0 (62.0,93.0)	77.0 (63.0,93.0)	78.0 (64.0,95.0)	79.0 (65.0,97.0)	78.0 (63.0,95.0)	<0.001
Aspartate transaminase, U/L	19.0 (15.0,27.0)	20.0 (15.0,28.0)	21.0 (16.0,30.0)	22.0 (17.0,31.0)	21.0 (16.0,29.0)	<0.001	20.0 (15.0,27.0)	21.0 (16.0,29.0)	21.0 (16.0,30.0)	21.0 (16.0,30.0)	21.0 (16.0,29.0)	<0.001
Alanine transaminase, U/L	19.0 (14.0,28.0)	20.0 (15.0,29.0)	22.0 (15.0,31.0)	23.0 (16.0,34.0)	21.0 (15.0,31.0)	<0.001	21.0 (15.0,29.0)	21.0 (15.0,31.0)	22.0 (16.0,32.0)	21.0 (15.0,31.0)	21.0 (15.0,31.0)	<0.001
Bilirubin, umol/L	10.0 (7.0,13.0)	9.6 (7.0,12.9)	9.5 (7.0,13.0)	9.2 (7.0,12.4)	9.5 (7.0,13.0)	0.002	9.9 (7.0,13.0)	9.9 (7.0,13.0)	9.3 (7.0,12.7)	9.3 (7.0,12.6)	9.5 (7.0,13.0)	0.001
Glucose and blood pressure profiles												
Systolic blood pressure, mmHg	136.0 (120.0,150.0)	139.0 (125.0,153.0)	140.0 (127.0,153.0)	140.0 (127.0,153.0)	139.0 (125.0,152.0)	<0.001	138.0 (123.0,152.0)	139.0 (125.0,152.0)	139.0 (126.0,152.0)	139.0 (125.0,153.0)	139.0 (125.0,152.0)	<0.001
SD of systolic blood pressure	12.9 (9.9,16.1)	13.2 (10.4,16.6)	13.3 (10.6,16.6)	13.5 (10.7,16.8)	13.2 (10.4,16.5)	<0.001	13.1 (10.3,16.4)	13.2 (10.5,16.4)	13.3 (10.5,16.4)	13.3 (10.3,16.9)	13.2 (10.4,16.5)	0.001
Diastolic blood pressure, mmHg	75.0 (68.0,82.0)	76.0 (69.0,84.0)	77.0 (69.0,84.0)	77.0 (70.0,85.0)	76.0 (69.0,84.0)	<0.001	76.0 (68.0,83.0)	76.0 (69.0,84.0)	77.0 (69.0,84.0)	76.0 (68.0,84.0)	76.0 (69.0,84.0)	<0.001
SD of diastolic blood pressure	7.5 (6.0,9.2)	7.8 (6.2,9.5)	7.8 (6.3,9.5)	7.9 (6.4,9.6)	7.8 (6.2,9.5)	<0.001	7.7 (6.1,9.4)	7.8 (6.3,9.4)	7.8 (6.3,9.5)	7.8 (6.1,9.6)	7.8 (6.2,9.5)	0.002
HbA1C, %	7.0 (6.2,8.0)	7.1 (6.3,8.1)	7.1 (6.4,8.2)	7.4 (6.5,8.5)	7.2 (6.3,8.3)	<0.001	7.1 (6.3,8.2)	7.1 (6.3,8.3)	7.2 (6.4,8.2)	7.2 (6.4,8.4)	7.2 (6.3,8.3)	0.003
SD of HbA1C	0.5 (0.3,0.9)	0.5 (0.3,0.9)	0.5 (0.3,0.9)	0.6 (0.3,1.0)	0.5 (0.3,0.9)	<0.001	0.5 (0.3,0.9)	0.5 (0.3,0.9)	0.5 (0.3,0.9)	0.6 (0.3,1.0)	0.5 (0.3,0.9)	0.001
Time weighted mean HbA1C, %	7.2 (6.7,7.8)	7.2 (6.7,7.8)	7.2 (6.7,7.8)	7.2 (6.7,7.8)	7.2 (6.7,7.8)	0.077	7.2 (6.7,7.8)	7.2 (6.7,7.8)	7.3 (6.8,7.8)	7.3 (6.7,7.8)	7.2 (6.7,7.8)	0.004
Fasting glucose, mmol/L	5.6 (5.0,7.2)	5.8 (5.1,7.5)	6.0 (5.2,7.8)	6.2 (5.3,8.1)	5.9 (5.2,7.7)	<0.001	5.8 (5.1,7.5)	5.9 (5.1,7.7)	6.0 (5.2,7.8)	6.0 (5.2,7.7)	5.9 (5.2,7.7)	<0.001
SD of fasting glucose	0.6 (0.3,1.6)	0.7 (0.3,1.6)	0.7 (0.3,1.7)	0.8 (0.3,1.7)	0.7 (0.3,1.6)	<0.001	0.7 (0.3,1.7)	0.7 (0.3,1.6)	0.7 (0.3,1.6)	0.7 (0.3,1.7)	0.7 (0.3,1.6)	0.005
Time weighted mean fasting glucose, mmol/L	6.7 (5.6,7.9)	6.8 (5.6,7.9)	6.9 (5.7,8.1)	7.0 (5.9,8.1)	6.8 (5.7,8.0)	<0.001	6.8 (5.7,8.0)	6.8 (5.6,7.9)	6.9 (5.8,8.0)	7.0 (6.0,8.2)	6.8 (5.7,8.0)	<0.001
Lipid profiles and variability												
Triglyceride, mmol/L	0.8 (0.7,0.9)	1.2 (1.1,1.3)	1.7 (1.5,1.9)	2.5 (2.1,3.1)	1.4 (1.0,1.9)	<0.001	1.1 (0.8,1.5)	1.3 (0.9,1.7)	1.5 (1.1,2.1)	1.7 (1.2,2.5)	1.4 (1.0,1.9)	<0.001
SD of triglyceride	0.2 (0.1,0.3)	0.3 (0.2,0.4)	0.4 (0.3,0.5)	0.6 (0.4,0.9)	0.3 (0.2,0.5)	<0.001	0.2 (0.2,0.4)	0.3 (0.2,0.4)	0.4 (0.3,0.6)	0.5 (0.3,0.8)	0.3 (0.2,0.5)	<0.001
Time weighted mean triglyceride, mmol/L	1.2 (1.0,1.4)	1.3 (1.2,1.6)	1.5 (1.3,1.7)	1.7 (1.5,2.1)	1.4 (1.2,1.7)	<0.001	1.2 (1.1,1.4)	1.4 (1.2,1.5)	1.6 (1.3,1.8)	1.8 (1.4,2.2)	1.4 (1.2,1.7)	<0.001
Low-density lipoprotein, mmol/L	2.9 (2.4,3.5)	3.2 (2.6,3.8)	3.3 (2.7,3.9)	3.0 (2.4,3.7)	3.1 (2.5,3.7)	<0.001	3.0 (2.5,3.6)	3.1 (2.6,3.7)	3.2 (2.6,3.8)	3.1 (2.5,3.7)	3.1 (2.5,3.7)	<0.001
SD of low-density lipoprotein	0.5 (0.3,0.7)	0.5 (0.3,0.8)	0.6 (0.4,0.8)	0.6 (0.4,0.8)	0.6 (0.3,0.8)	<0.001	0.5 (0.3,0.7)	0.6 (0.4,0.8)	0.6 (0.4,0.8)	0.6 (0.3,0.8)	0.6 (0.3,0.8)	<0.001
Time weighted mean low-density lipoprotein, mmol/L	2.7 (2.4,3.0)	2.7 (2.4,3.0)	2.7 (2.4,3.0)	2.7 (2.4,3.0)	2.7 (2.4,3.0)	<0.001	2.7 (2.5,3.1)	2.7 (2.4,3.0)	2.7 (2.4,3.0)	2.6 (2.3,3.0)	2.7 (2.4,3.0)	<0.001
High-density lipoprotein, mmol/L	1.5 (1.3,1.8)	1.4 (1.1,1.6)	1.2 (1.1,1.4)	1.1 (1.0,1.3)	1.3 (1.1,1.6)	<0.001	1.4 (1.1,1.7)	1.3 (1.1,1.6)	1.3 (1.1,1.5)	1.2 (1.0,1.4)	1.3 (1.1,1.6)	<0.001
SD of high-density lipoprotein	0.2 (0.1,0.2)	0.1 (0.1,0.2)	0.1 (0.1,0.2)	0.1 (0.1,0.2)	0.1 (0.1,0.2)	<0.001	0.2 (0.1,0.2)	0.2 (0.1,0.2)	0.1 (0.1,0.2)	0.1 (0.1,0.2)	0.1 (0.1,0.2)	<0.001
Time weighted mean high-density lipoprotein, mmol/L	1.4 (1.3,1.6)	1.3 (1.2,1.5)	1.3 (1.2,1.4)	1.2 (1.1,1.4)	1.3 (1.2,1.5)	<0.001	1.4 (1.3,1.6)	1.3 (1.2,1.5)	1.3 (1.2,1.4)	1.2 (1.1,1.3)	1.3 (1.2,1.5)	<0.001

Total cholesterol, mmol/L	4.8 (4.2,5.5)	5.1 (4.5,5.8)	5.3 (4.7,6.0)	5.6 (5.0,6.4)	5.2 (4.6,5.9)	<0.00 1	5.1 (4.5,5.8)	5.2 (4.6,5.9)	5.3 (4.7,6.0)	5.4 (4.7,6.1)	5.2 (4.6,5.9)	<0.00 1
SD of total cholesterol	0.5 (0.3,0.8)	0.6 (0.4,0.8)	0.7 (0.4,0.9)	0.8 (0.5,1.0)	0.6 (0.4,0.9)	<0.00 1	0.6 (0.4,0.8)	0.6 (0.4,0.9)	0.7 (0.4,0.9)	0.6 (0.4,0.9)	0.6 (0.4,0.9)	<0.00 1
Time weighted mean total cholesterol, mmol/L	4.7 (4.4,5.1)	4.7 (4.4,5.1)	4.8 (4.4,5.1)	4.8 (4.5,5.2)	4.7 (4.4,5.1)	<0.00 1	4.6 (4.2,4.9)	4.7 (4.4,5.0)	4.8 (4.5,5.1)	5.0 (4.7,5.4)	4.7 (4.4,5.1)	<0.00 1
Remnant cholesterol tests and variability												
Remnant cholesterol, mmol/L	0.3 (0.3,0.4)	0.5 (0.5,0.6)	0.8 (0.7,0.9)	1.3 (1.1,1.6)	0.6 (0.4,1.0)	<0.00 1	0.5 (0.4,0.7)	0.6 (0.4,0.8)	0.7 (0.5,1.0)	0.8 (0.5,1.3)	0.6 (0.4,1.0)	<0.00 1
Time weighted remnant cholesterol, mmol/L	0.6 (0.4,0.8)	0.6 (0.5,0.8)	0.7 (0.6,0.9)	0.9 (0.7,1.1)	0.7 (0.5,0.9)	<0.00 1	0.4 (0.3,0.5)	0.6 (0.6,0.7)	0.8 (0.7,0.9)	1.2 (1.0,1.8)	0.7 (0.5,0.9)	<0.00 1

Table 2. Results of multivariate Cox analyses between baseline RC and time-weighted RC with outcomes.

* for $p \leq 0.05$, ** for $p \leq 0.01$, *** for $p \leq 0.001$,

Abbreviations: AMDRD, abbreviated modification of diet in renal disease; RC, remnant cholesterol; HR, hazard ratio.

Models	Effects on RC aHR [95% CI];P value	Effects of time-weighted RC aHR [95% CI];P value
Model 1: Being adjusted for demographics		
Overall cancer	1.07[1.03-1.11];0.0003***	1.02[0.99-1.05];0.1204
Cancer mortality	1.11[1.05-1.16];0.0001***	1.24[1.21-1.27];<0.0001***
Lung cancer	1.10[1.01-1.19];0.0214*	1.13[1.07-1.19];<0.0001***
Gastrointestinal cancer	1.04[0.98-1.10];0.2246	1.03[0.99-1.07];0.1976
Breast cancer	1.18[1.08-1.28];0.0001***	0.95[0.87-1.03];0.2110
Ovarian cancer	1.15[0.86-1.55];0.3386	1.20[0.98-1.48];0.0778
Prostate cancer	0.94[0.83-1.08];0.3856	0.96[0.88-1.05];0.3372
Genitourinary cancer	1.03[0.95-1.11];0.4792	0.97[0.91-1.03];0.2569
Colorectal cancer	1.02[0.95-1.11];0.5595	0.98[0.93-1.04];0.5266
Pancreas cancer	1.19[1.03-1.38];0.0188*	0.99[0.84-1.15];0.8517
Bladder cancer	1.10[0.95-1.28];0.1864	0.91[0.81-1.03];0.1370
Liver cancer	0.81[0.68-0.97];0.0211*	1.10[1.00-1.21];0.0555
Model 2: Being adjusted for demographics, comorbidities, medications		
Overall Cancer	1.05[1.01-1.09];0.0092**	1.04[1.01-1.07];0.0045**
Cancer mortality	1.07[1.01-1.13];0.0142*	1.27[1.24-1.31];<0.0001***
Lung cancer	1.07[0.98-1.17];0.1078	1.15[1.09-1.21];<0.0001***
Gastrointestinal cancer	0.99[0.94-1.06];0.8638	1.05[1.01-1.09];0.0229*
Breast cancer	1.14[1.06-1.23];0.0008***	0.95[0.87-1.04];0.2793
Ovarian cancer	1.12[0.86-1.46];0.4052	1.18[0.96-1.46];0.1094
Prostate cancer	0.86[0.74-0.99];0.0356*	1.00[0.91-1.09];0.9494
Genitourinary cancer	1.00[0.92-1.09];0.9848	0.99[0.94-1.06];0.8574
Colorectal cancer	0.97[0.90-1.06];0.5423	1.00[0.94-1.06];0.9656
Pancreas cancer	1.20[1.02-1.42];0.0287*	1.02[0.87-1.19];0.8202
Bladder cancer	1.05[0.89-1.24];0.5406	0.96[0.85-1.09];0.5538
Liver cancer	0.77[0.64-0.93];0.0061**	1.13[1.02-1.25];0.0172*
Model 3: Being adjusted for demographics, comorbidities, medications, AMDRD, calculated biomarkers, blood pressure		
Overall Cancer	1.02[0.93-1.11];0.6660	1.26[1.20-1.32];<0.0001***
Cancer mortality	0.97[0.86-1.10];0.6764	1.49[1.42-1.57];<0.0001***
Lung cancer	1.06[0.88-1.27];0.5480	1.36[1.23-1.49];<0.0001***
Gastrointestinal cancer	0.93[0.81-1.07];0.3269	1.31[1.22-1.41];<0.0001***
Breast cancer	0.88[0.69-1.13];0.3214	1.06[0.88-1.26];0.5458
Ovarian cancer	1.61[1.04-2.50];0.0325*	1.41[0.91-2.19];0.1267
Prostate cancer	1.03[0.77-1.38];0.8209	1.11[0.92-1.33];0.2782
Genitourinary cancer	1.03[0.86-1.23];0.7636	1.12[1.00-1.26];0.0566
Colorectal cancer	0.99[0.83-1.18];0.9290	1.25[1.13-1.38];<0.0001***
Pancreas cancer	1.26[0.91-1.75];0.1706	1.44[1.15-1.81];0.0016**
Bladder cancer	1.03[0.73-1.43];0.8831	1.11[0.91-1.35];0.3218
Liver cancer	0.42[0.24-0.72];0.0016**	1.33[1.11-1.59];0.0022**
Model 4: Being adjusted for demographics, comorbidities, medications, AMDRD, calculated biomarkers, baseline and time-weighted blood pressure, glucose and lipid profiles		
Overall Cancer	1.04[0.82-1.31];0.7677	1.41[1.26-1.57];<0.0001***
Cancer mortality	0.85[0.61-1.17];0.3153	1.62[1.43-1.85];<0.0001***
Lung cancer	0.71[0.40-1.27];0.2451	1.60[1.28-2.00];<0.0001***
Gastrointestinal cancer	0.97[0.70-1.35];0.8754	1.39[1.18-1.64];0.0001***
Breast cancer	1.50[0.89-2.52];0.1259	1.12[0.74-1.70];0.5904
Ovarian cancer	1.46[0.35-6.04];0.5990	2.71[1.23-5.95];0.0133*
Prostate cancer	0.98[0.49-1.93];0.9440	1.27[0.91-1.77];0.1682
Genitourinary cancer	0.91[0.54-1.54];0.7375	1.27[1.00-1.61];0.0483*
Colorectal cancer	1.23[0.84-1.82];0.2912	1.47[1.21-1.78];0.0001***
Pancreas cancer	0.47[0.13-1.73];0.2564	0.45[0.09-2.39];0.3512
Bladder cancer	1.04[0.38-2.84];0.9388	0.73[0.31-1.73];0.4705
Liver cancer	0.79[0.30-2.07];0.6259	0.86[0.38-1.95];0.7213

medRxiv preprint doi: <https://doi.org/10.1101/2024.03.07.24303903>; this version posted March 12, 2024. The copyright holder for this preprint (which was not certified by peer review) is the author/funder, who has granted medRxiv a license to display the preprint in perpetuity. It is made available under a [CC-BY-NC 4.0 International license](https://creativecommons.org/licenses/by-nc/4.0/).