

1        **Comprehensive knowledge and positive attitudes regarding**  
2        **HIV/AIDS among reproductive-aged women in Bangladesh**  
3        **and their associated factors: a cross-sectional study using the**  
4        **Multiple Indicator Cluster Survey 2019**

7        **Authors:** Md Arif Billah<sup>1,2,\*</sup>, Raba’Aton Adawiah Mohd Yusof<sup>2</sup>, Md. Nuruzzaman Khan<sup>3,4</sup>, Ruhani

8        Mat Min<sup>2</sup>

9        **Affiliations**

10        <sup>1</sup>Health System and Population Studies Division, International Centre for Diarrhoeal Disease  
11        Research, Bangladesh (icddr,b), Dhaka, Bangladesh

12        <sup>2</sup> School of Business, Economic and Social Development, Universiti Malaysia Terengganu, Kuala  
13        Nerus, Terengganu

14        <sup>3</sup>Department of Population Science, Jatiya Kabi Kazi Nazrul Islam University, Namapara  
15        Mymensingh 2220, Bangladesh.

16        <sup>4</sup>Centre for Women’s Health Research, The University of Newcastle, Callaghan NSW 2308,  
17        Australia

18  
19        **Short title:** Comprehensive Knowledge and Positive Attitudes for HIV/AIDS Prevention

20        **\*Corresponding author:**

21        email: [arifbillah.pshrd2018@gmail.com](mailto:arifbillah.pshrd2018@gmail.com)

22        **Comprehensive knowledge and positive attitudes regarding**  
23        **HIV/AIDS among reproductive-aged women in Bangladesh**  
24        **and their associated factors: a cross-sectional study using the**  
25        **Multiple Indicator Cluster Survey 2019**  
26

27        **Abstract**

28        **Background:** HIV/AIDS remains a global health concern and understanding the knowledge and  
29        attitudes of at-risk populations is crucial for effective prevention and management. This study  
30        examines the knowledge and attitudes related to HIV/AIDS among reproductive-aged women in  
31        Bangladesh and explores associated factors.

32        **Methods:** The study analyzed data from a total of 39,066 reproductive women, obtained from the  
33        nationally representative 2019 Multiple Indicator Cluster Survey. The outcome variables assessed  
34        were the level of HIV/AIDS-related knowledge (high *vs* low) and attitudes regarding HIV/AIDS  
35        (good *vs* poor). These variables were derived by calculating the median values of scores obtained  
36        from nine and six questions in the survey that assessed knowledge and attitudes toward  
37        HIV/AIDS, respectively. The explanatory variables included sociodemographic factors and  
38        variables related to media exposure. A multivariate logistic regression model was employed to  
39        investigate the associations between the outcome and explanatory variables.

40        **Results:** Over half of the total respondents (51.6%) reported a lower level of knowledge, and a  
41        significant majority (54.2%) exhibited poor attitudes regarding HIV/AIDS, with notable variations  
42        observed across districts. Women in comparatively higher age groups, those with higher levels of  
43        education, hailing from more affluent families, residing in urban areas, and having exposure to  
44        newspapers, the internet, computers, and mobile phones displayed higher levels of knowledge  
45        regarding HIV/AIDS. Conversely, women with higher education levels, residing in rural areas, and

46 having exposure to mobile phones and the internet exhibited good attitudes regarding HIV/AIDS.

47 Unmarried respondents reported lower likelihoods of good attitude towards HIV/AIDS.

48 **Conclusion:** The findings underscores the urgent need for policies and programs designed to  
49 improve HIV/AIDS-related knowledge and attitudes, with a focus on district-level requirements.  
50 Effective strategies may include mass media campaigns and the incorporation of HIV/AIDS-  
51 related topics into the national curriculum.

52 **Keywords:** HIV/AIDS, Comprehensive knowledge, Positive attitude, Reproductive aged women,  
53 Bangladesh.

## 54 **Background**

55 Since 1981, HIV/AIDS has emerged as a prominent and enduring global epidemic. The global  
56 prevalence of HIV stands at approximately 39.0 million individuals at the end of 2022, with an  
57 estimated range of 33.1 to 45.7 million. Notably, among this affected population, approximately  
58 38.5 million are adults aged 15 and above, signifying a substantial public health burden [1]. In the  
59 year 2022 alone, more than 1.3 million individuals experienced new HIV infections, with females  
60 accounting for 49% of these cases [1]. It is worth mentioning that the regions of Asia and the  
61 Pacific occupy the second position in terms of HIV prevalence, with roughly 6 million individuals  
62 living with HIV, trailing behind sub-Saharan Africa [2, 3].

63 In the context of Bangladesh, an Asian nation with a Muslim-majority population and ranking as  
64 the 8<sup>th</sup> most populous country globally, the prevalence of HIV/AIDS remains relatively low, with  
65 a total of 15,000 diagnosed cases thus far [4]. A significant portion of these individuals are presently  
66 integrated into the government-provided healthcare service network, with 4,565 individuals  
67 receiving antiretroviral therapy (ART) treatment [4]. Nevertheless, despite this lower prevalence,  
68 Bangladesh has experienced two notable increases in HIV incidence, one in 2015 and another in  
69 2021, during which a total of 729 new cases were reported, with women accounting for 22% of  
70 these cases [5]. The newly reported cases predominantly consist of young individuals, with 96%  
71 falling within the age range of 15 and over years, including 16% from 15–24 years, 67% from  
72 25–49 years, and 13% of them from 50+ years; while a majority of them are married (60.4%) [5].  
73 Furthermore, there has been a proportional increase in HIV/AIDS-related deaths, with the highest  
74 number of such deaths (n=205) recorded in the year 2021 [5].

75 The growing trend in HIV prevalence and its geographic dispersion, the ongoing high-risk  
76 behaviours of drug users and sex workers, and the significant mixing of the most at-risk groups  
77 with the bridging populations serve as reminders that HIV may not stay isolated in any one  
78 neighbourhood or subpopulation [5-8]. Alongside, about 46% of the HIV incidence occurred due

79 to cross-border migrations [5], including forced migrants from Myanmar, i.e., the Rohingya  
80 population. These populations also elevated the prevalence of HIV/AIDS and other STIs in  
81 Bangladesh [9-11]; by integrating drug use and sex worker business with Bangladeshi locales [9,  
82 12, 13]. Bangladesh provides a huge labour market supply to developed countries, where the stigma  
83 and lack of HIV screening upon arrival and departure of those migrants caused an increased level  
84 of HIV transmission [14].

85 In all cases, women are considered the most vulnerable group due to traditional customs, power  
86 dynamics, and sexual and reproductive health practices [15-17]. All these hinder women from  
87 negotiating protective measures, such as condom use, which further exacerbates this challenge [15,  
88 18-22]. They are at greater risk of HIV/AIDS transmission due to associated socioeconomic  
89 exposures compared to men [23]. Moreover, it become worse because of persistent gender  
90 inequality and human rights violations [24]. In the last behavioural surveillance-2016, 5% of the  
91 female people who inject drugs (PWID) were recorded to have HIV infection; indications of HIV  
92 transmission are beginning to spread to female PWID [8]. This underscores the urgent need for  
93 targeted interventions and awareness campaigns aimed at preventing HIV/AIDS transmission as  
94 well as improving access to care and treatment. However, in order to effectively address these  
95 challenges, it is crucial to have a comprehensive understanding of the knowledge and attitudes  
96 regarding HIV/AIDS among the reproductive-aged women in Bangladesh.

97 There is a significant gap in the studies identifying the levels and factors, specifically the level of  
98 attitudes and geographical variations of knowledge and attitudes among the women in Bangladesh.  
99 These studies primarily focused on HIV/AIDS knowledge and its associated sociodemographic  
100 factors [23, 25-32]. According to these studies, women with higher levels of education, residing in  
101 urban areas, being exposed to mass media, working outside the home, and higher wealth quintile  
102 were played important roles in raising awareness about HIV/AIDS. Moreover, comprehensive  
103 knowledge items were often treated as separate components from sociodemographic factors [31].

104 However, these studies ignores the other online media which also plays a vital role in health literacy  
105 and disease prevention. In comparison to HIV/AIDS knowledge, there are few studies examining  
106 HIV/AIDS attitudes, which have primarily explored discrimination and stigmatization among the  
107 general population [17, 33-35], as well as among healthcare professionals [33, 36, 37]. Few studies  
108 had explored the attitudes of HIV patients, of which internal stigma and shame were common to  
109 them [17, 34]. While these stigmas and discriminatory attitudes were considered critical factors for  
110 the national approach to HIV prevention [38]. Importantly, these studies mostly overlook regional  
111 variations in HIV/AIDS prevalence, which are found to be higher in both Bangladesh and other  
112 LMICs.

113 Therefore, a lack of evidence on both HIV/AIDS-related knowledge and attitudes can create  
114 challenges in terms generalizability of the findings for vulnerable women, which is important for  
115 policymaking and program development. To address these gaps, this study was conducted to  
116 explore knowledge and attitudes regarding HIV/AIDS among reproductive-aged women in  
117 Bangladesh, while also examining regional-level variations and associated factors.

## 118 **Methods**

### 119 **Sampling and data**

120 The data for this study were obtained from the 2019 Bangladesh Multiple Indicator Cluster Survey  
121 (MICS), conducted by the Bangladesh Bureau of Statistics (BBS) in collaboration with UNICEF  
122 from January 19 to June 1, 2019. The survey employed a two-stage stratified random sampling  
123 procedure to select nationally representative households from which data were collected. In the  
124 first stage of sampling, a total of 1,300 Primary Sampling Units (PSUs) (areas with an approximate  
125 population of 200 to 300 households) were selected. In the second stage, 20 households were  
126 chosen from each PSU using systematic random sampling techniques, resulting in a total sample  
127 of 64,400 households. Among the selected households, 61,602 were occupied, and of these, 61,242

128 were successfully interviewed, resulting in a household response rate of 99.4%. Among the selected  
129 households, a total of 68,711 eligible women met the inclusion criteria: these women either resided  
130 in the selected households as usual residents or had stayed there during the most recent night. Of  
131 these eligible women, 64,378 were successfully interviewed, yielding a response rate of 93.7%. Data  
132 were collected using a pre-structured and pre-tested questionnaire implemented in all MICS  
133 surveys conducted throughout LMICs. This questionnaire captured insights on various aspects,  
134 including fertility, early childbearing, family planning, unmet need, antenatal care, neonatal tetanus,  
135 delivery care, birthweight, postnatal care, maternal morbidity, as well as knowledge and attitudes  
136 related to HIV/AIDS. For additional details about the sampling procedure, please refer to the final  
137 report of the 2019 MICS [39].

138

## 139 **Analytical sample**

140 The sample for this study was selected based on two criteria: (i) women aged 15-49 years and (ii)  
141 respondents who provided their responses to HIV/AIDS knowledge and attitude-related items  
142 during the survey. Initially, the survey inquired, "Have you ever heard about HIV/AIDS?"  
143 Respondents who answered affirmatively were then presented with knowledge and attitude-related  
144 items (see supplementary table 1). Initially, 39,009 women responded positively to the first  
145 question and were considered eligible. However, 487 of them did not respond to the knowledge  
146 and attitude-related items and were subsequently excluded from the analysis. Finally, 38,522  
147 women were included in the analysis (see the supplementary Fig 1 file).

## 148 **Outcome variables**

149 Two outcome variables were considered: (i) Level of comprehensive knowledge regarding  
150 HIV/AIDS (high, low) and (ii) Level of positive attitudes towards HIV/AIDS (good, poor). The  
151 survey included a total of nine questions for measuring knowledge and six questions for attitudes.  
152 The themes of these questions are presented in Table 2 and 3 for knowledge and attitude items,

153 respectively. The exact questions asked can be found in Supplementary Table 1 and 2. Respondents  
154 were given three response options for each question: "yes," "no," and "don't know" for knowledge  
155 items and "yes," "no," and "don't know/not sure/depends" for attitude items. We recategorized  
156 these responses as 1 for a correct answer and 0 for a wrong answer or if the answer was "don't  
157 know." This generated a continuous score ranging from 0 to 9 for knowledge items and 0 to 6 for  
158 attitude items, where a higher score indicated greater knowledge and more positive attitudes.  
159 Subsequently, we calculated the median scores for knowledge (median=6) and attitude items  
160 (median=3) and reclassified respondents as having a high level of comprehensive knowledge and  
161 good level of positive attitude regarding HIV/AIDS if their individual score was equal to or greater  
162 than the median score.

163

## 164 **Explanatory variables**

165 The selection of explanatory variables in this study occurred in three stages. Firstly, an extensive  
166 literature search was conducted across various databases to compile a list of variables considered  
167 in prior studies within LMICs [23, 26, 29, 30, 40-54]. Secondly, the survey's dataset was examined  
168 to verify the availability of these variables. Subsequently, the statistical significance of the available  
169 variables concerning the outcome variables was assessed in the third stage, and only those that  
170 displayed statistical significance were included in the final analysis. These selected variables  
171 encompassed respondents' age (15-19, 20-24, 25-29, 30-34, 35-39, 40-44, 45-49), respondents'  
172 education (no education, primary, lower secondary, higher secondary, and higher) and  
173 respondents' marital status (never married, currently married, widowed, divorced, separated). The  
174 variable of household wealth quintile, derived by MICS through principal component analysis of  
175 household assets, such as ownership of radios or televisions, was also incorporated. Additionally,  
176 factors related to media exposure were considered, including reading newspapers or magazines  
177 (yes, no), listening to the radio (yes, no), watching television (yes, no), using a computer (yes, no),



178 using the internet (yes, no), and using a mobile phone (yes, no). Geographical factors were  
179 accounted for by considering place of residence (urban and rural) and regions (Barishal,  
180 Chattogram, Dhaka, Khulna, Mymensingh, Rajshahi, Rangpur, Sylhet).

## 181 **Statistical analyses**

182 Descriptive statistics were employed to elucidate the characteristics of the respondents, with the  
183 percentage distribution of each item pertaining to comprehensive knowledge and positive attitudes  
184 being reported. However, we also examined the skewness of these dependent variables (see  
185 supplementary Figs 2 and 3). A geographical distribution was also presented to examine the  
186 geographical variability of these variables. Multivariate logistic regression analysis was applied to  
187 investigate the factors associated with a high level of knowledge regarding HIV/AIDS and good  
188 attitudes regarding HIV/AIDS. Two distinct models were employed: one for assessing a high level  
189 of knowledge regarding HIV/AIDS and another for evaluating good attitudes regarding  
190 HIV/AIDS. Prior to executing each model, we conducted a thorough check for multicollinearity.  
191 If evidence of multicollinearity was detected, signified by a variance inflation factor (VIF)  
192 exceeding 5%, the pertinent variable was removed, and the model was re-run. Furthermore, we  
193 took into account the complex survey design inherent to the MICS survey, which encompasses  
194 strata, primary sampling units, and women's sample weights [55]. For all statistical analyses, we  
195 utilized STATA software (Stata Corp, TX), while Arc GIS version 10.4 was employed to explore  
196 geographical variations.

## 197 **Results**

### 198 **Sample characteristics**

199 Table 1 provides an overview of the background characteristics of the respondents. Notably, a  
200 substantial portion of women fell within the teenage bracket (15–19 years, 21.7%). Furthermore,  
201 a significant proportion had completed their higher secondary education (46.4%), and the majority

202 of the sample were in a current marital status (76.0%). Regarding socioeconomic factors, a  
203 noteworthy share of women belonged to the richer wealth quintile (28.9%). Geographically,  
204 approximately 72.5% of the total respondents resided in rural areas, with one-fourth (26.3%)  
205 situated in the Dhaka region. In terms of media exposure, a substantial majority reported watching  
206 television (77.4%) and using mobile phones (77.1%). Moreover, 18.4% had access to the internet,  
207 13.3% engaged in reading newspapers or magazines, 7.2% utilized computers, and 3.9% tuned in  
208 to the radio.

209 **Table 1. Sociodemographic characteristics the respondents, Bangladesh (N=39,066)**

Characteristics	n	%
<b>Respondents' age</b>		
15-19	8,495	21.7
20-24	7,394	18.9
25-29	6,763	17.3
30-34	6,279	16.1
35-39	4,890	12.5
40-44	3,056	7.8
45-49	2,190	5.6
<b>Respondents' education</b>		
No education	2,277	5.8
Primary	5,982	15.3
Lower secondary	7,779	19.9
Higher secondary	18,112	46.4
Higher	4,915	12.6
<b>Respondents' marital status</b>		
Never married	8,197	21.0
Currently married	29,685	76.0
Widowed	584	1.5
Divorced	418	1.1
Separated	183	0.5
<b>Wealth index</b>		
Poorer	4,198	10.7
Poor	6,101	15.6
Middle	8,004	20.5
Rich	9,458	24.2
Richer	11,303	28.9
<b>Place of residence</b>		
Urban	10,738	27.5
Rural	28,328	72.5

**Region of place of residence**

Barishal	1,642	4.2
Chattogram	7,011	17.9
Dhaka	10,265	26.2
Khulna	5,422	13.9
Mymensingh	2,491	6.4
Rajshahi	5,228	13.4
Rangpur	3,922	10.0
Sylhet	3,085	7.9

**Reading newspaper or magazines**

No	33,850	86.6
Yes	5,216	13.4

**Listening radio**

No	37,550	96.1
Yes	1,516	3.9

**Watching television**

No	8,824	22.6
Yes	30,242	77.4

**Use computer**

No	36,263	92.8
Yes	2,803	7.2

**Use internet**

No	31,886	81.6
Yes	7,180	18.4

**Use mobile phone**

No	8,940	22.9
Yes	30,126	77.1

---

210

211 **Comprehensive knowledge and attitudes regarding HIV/AIDS**

212 For comprehensive knowledge, it's notable that nearly 48% of the total respondents reported a  
 213 high level of knowledge regarding HIV/AIDS (Table 2). In terms of individual components of  
 214 knowledge items, over two-thirds of the respondents acknowledged that HIV can be prevented  
 215 by having an uninfected partner and consistently using condoms during sexual intercourse.  
 216 Moreover, approximately 59.0% of the total respondents believed that a person who appears  
 217 healthy can still carry the HIV virus. On the other hand, one-third of the respondents held the  
 218 misconception that mosquito bites can transmit HIV from an infected person to a non-infected  
 219 person. In the context of mother-to-child transmission, 73.0% of respondents agreed that HIV

220 can be transmitted from mother to child during pregnancy, while 75.5% recognized the risk during  
 221 breastfeeding. Furthermore, 57.3% of respondents acknowledged the potential transmission of  
 222 HIV from mother to child during delivery.

223 **Table 2: Percentage distribution of items measuring respondents' HIV/AIDS knowledge**  
 224 **and composite of comprehensive knowledge level (n=39,066)**

Knowledge Assessment Items for HIV/AIDS	No %	Yes %
Can avoid HIV by having one uninfected partner	32.1	67.9
Can get HIV from mosquito bites	68.8	31.2
Can avoid HIV by using a condom correctly every time	38.1	61.9
Can get HIV by sharing food with person who has HIV	62.7	37.3
Can get HIV through supernatural means	95.9	4.1
Healthy-looking person may have HIV	41.0	59.0
HIV from mother to child during pregnancy	27.0	73.0
HIV from mother to child during delivery	42.7	57.3
HIV from mother to child through breastfeeding	24.5	75.5
Level of HIV/AIDS knowledge	Prevalence (95% CI)	
Low	51.6 (95% CI, 50.9–52.3)	
High	48.4 (95% CI, 47.7–49.1)	

225

226 When it comes to attitudes toward HIV/AIDS, it is noteworthy that almost 46% of the total  
 227 respondents exhibited a positive attitude (Table 3). Looking at individual components of attitude  
 228 items, approximately 41% of respondents concurred that children with HIV should not be allowed  
 229 to attend school alongside other children. Nevertheless, about 54.0% of women expressed their  
 230 willingness to undergo an HIV test, regardless of concerns about how others might react.  
 231 Furthermore, more than 60.7% of respondents believed that negative rumours and gossip circulate  
 232 about people infected with HIV/AIDS and those who live with them. Additionally, around 57.9%  
 233 of respondents perceived that individuals with HIV/AIDS or those living with an infected person

234 experience a loss of respect and dignity. However, roughly one out of every four respondents  
 235 admitted to feeling ashamed of residing with someone who has HIV/AIDS.

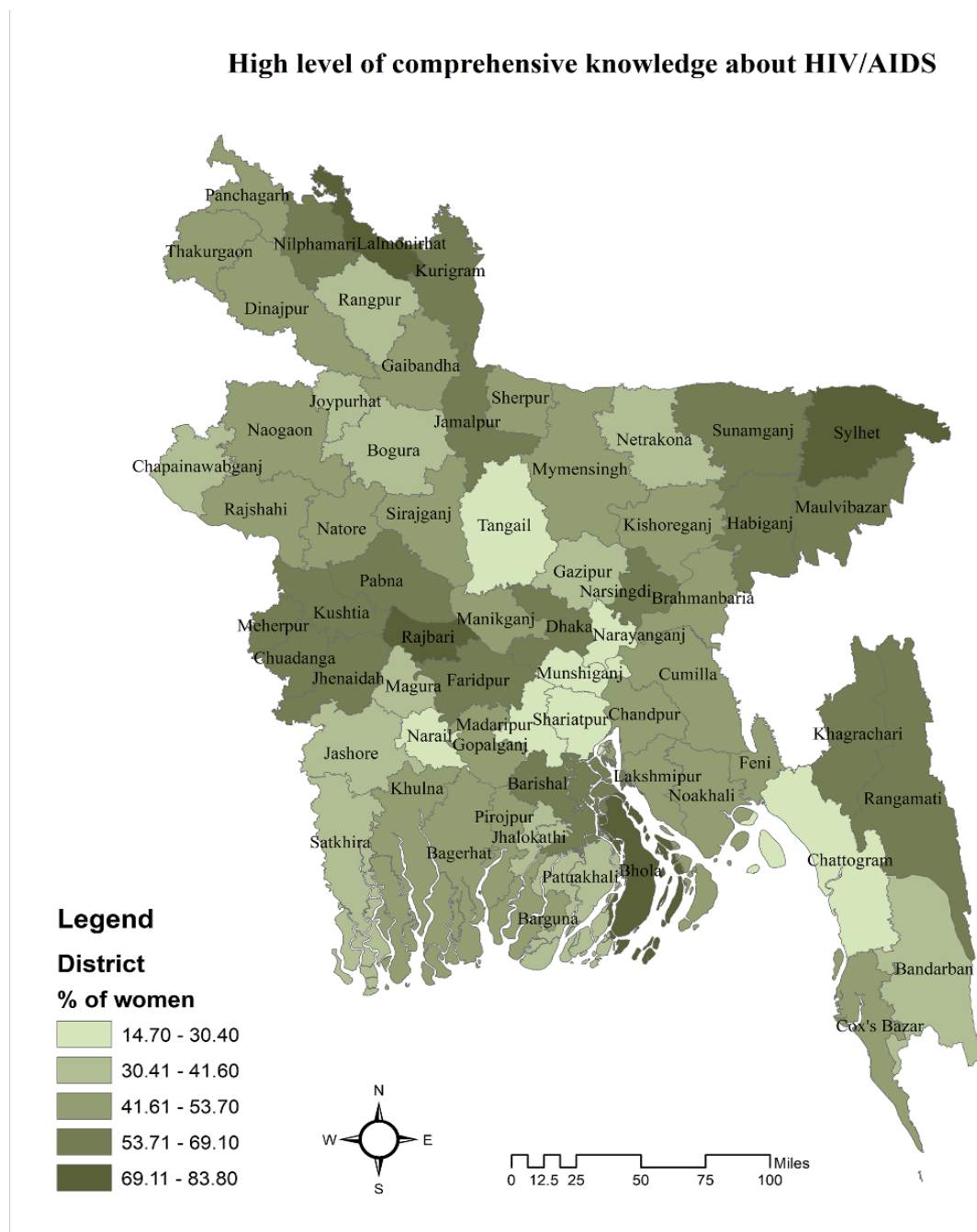
236 **Table 3: Percentage distribution of items assessing respondents' attitudes towards**  
 237 **HIV/AIDS and composite of positive attitude level (n=39,066)**

Attitude Assessment Items for HIV/AIDS	No %	Yes %
Would buy fresh vegetables from shopkeeper with AIDS virus	48.8	51.2
Children living with HIV should be allowed to attend school with other children	41.2	58.8
People hesitate to take an HIV test because they are afraid of how other people react	54.0	46.0
People talk badly about people living with HIV, or who are thought to be living	39.2	60.8
People living with HIV, or thought to be living with HIV, lose the respect of others	42.1	57.9
Agreement with the following statement: I would be ashamed if someone in my family had HIV	74.7	25.3
Level of HIV/AIDS related positive attitudes	Prevalence (95% CI)	
Poor	54.2% (95% CI: 53.5-54.9)	
Good	45.8% (95% CI: 45.1-46.5)	

238

### 239 **Geographical variations in HIV/AIDS knowledge and attitudes**

240 The geographical distribution of HIV/AIDS knowledge and attitudes is depicted in Figs 1 and 2,  
 241 respectively. Lower levels of HIV/AIDS knowledge were observed among respondents residing  
 242 in districts such as Tangail, Munshiganj, Shariatpur, Madaripur, Narail, and Chattogram.  
 243 Conversely, higher levels of HIV/AIDS knowledge were found among respondents in districts  
 244 like Sylhet, Lalmonirhat, Rajbari, and Bhola. Regarding attitudes, respondents in districts including  
 245 Panchagarh, Dinajpur, Kurigram, Lalmonirhat, Jamalpur, Mymensingh, Rajbari, Faridpur,  
 246 Satkhira, Chandpur, Laksmipur, Bhola, Khagrachari, and Rangamati reported poor attitudes  
 247 toward HIV/AIDS. Conversely, respondents in districts like Cumilla and Madaripur exhibited  
 248 good attitudes regarding HIV/AIDS.



249

250 **Fig 1. Geographical distribution of high level of comprehensive HIV/AIDS knowledge**

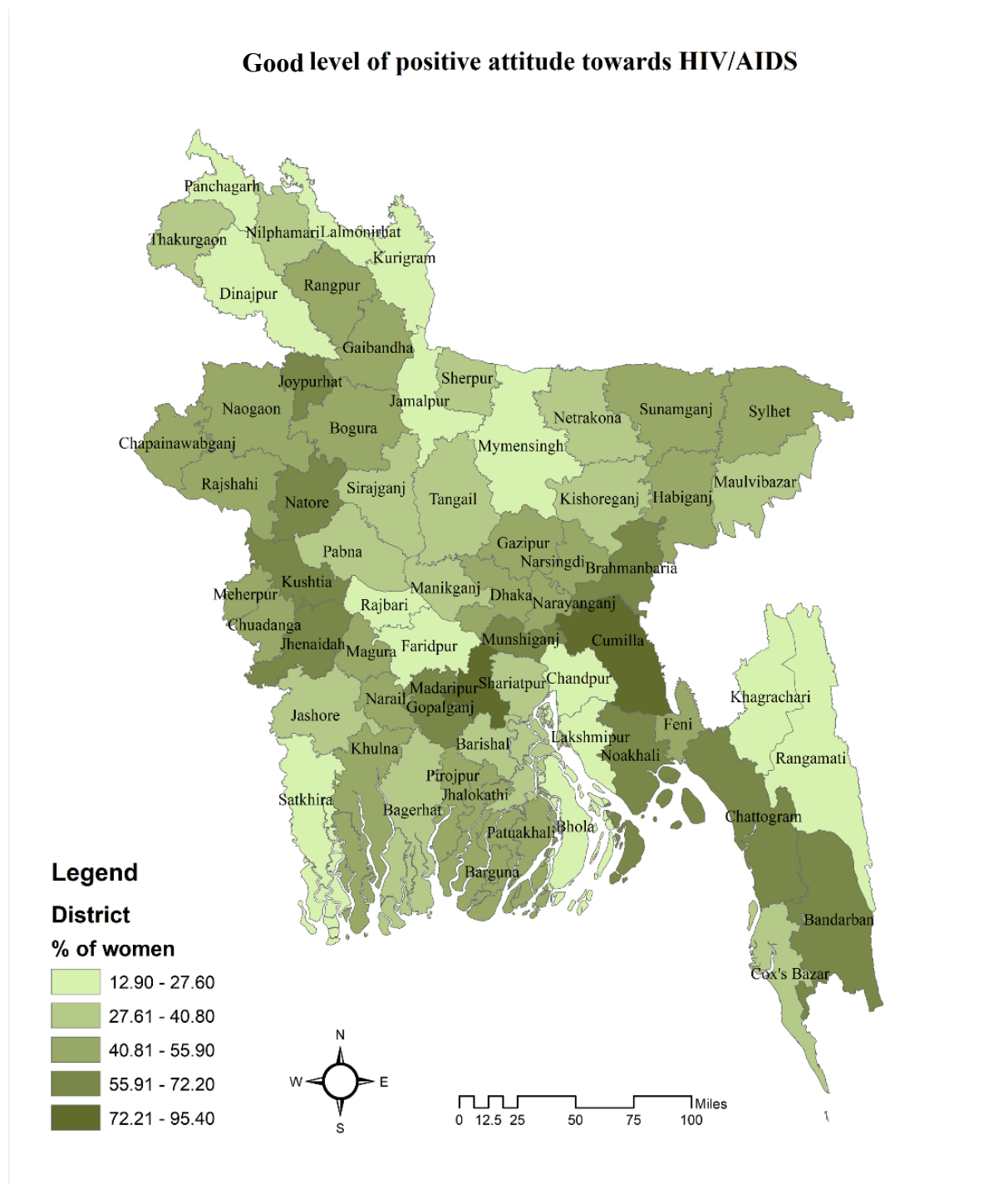
251 **among reproductive-aged women in Bangladesh (The map was created by the authors**

252 **using the freely available shape file from <https://data.humdata.org>)**

253

254

255



256

257 **Fig 2. Geographical distribution of good level of positive attitudes regarding HIV/AIDS**

258 **among reproductive-aged women in Bangladesh (The map was generated by the authors**

259 **using the freely available shape file from <https://data.humdata.org/>)**

260

261



## 262 **Multivariate modelling of factors associated with comprehensive** 263 **HIV/AIDS knowledge and positive attitude towards HIV/AIDS**

264 We employed a multivariate logistic regression model to ascertain the factors linked with a high  
265 level of HIV/AIDS knowledge and a positive attitude toward HIV/AIDS, and the findings are  
266 presented in Table 4. In comparison to women aged 15-19 years, those in the age groups of 20-24  
267 years (aOR: 1.12, 95% CI: 1.03-1.22,  $p<0.01$ ), 25-29 years (aOR: 1.16, 95% CI: 1.05-1.27,  $p<0.01$ ),  
268 30-34 years (aOR: 1.19, 95% CI: 1.08-1.31,  $p<0.001$ ), 35-39 years (aOR: 1.20, 95% CI: 1.08-1.33,  
269  $p<0.001$ ), and 40-44 years (aOR: 1.20, 95% CI: 1.07-1.35,  $p<0.001$ ) were more likely to possess  
270 higher HIV/AIDS knowledge. Women who completed lower secondary (aOR: 1.41, 95% CI: 1.25-  
271 1.59,  $p<0.001$ ), secondary (aOR: 2.34, 95% CI: 2.07-2.64,  $p<0.001$ ), and higher education (aOR:  
272 4.01, 95% CI: 3.45-4.65,  $p<0.001$ ) had a greater likelihood of having higher HIV/AIDS knowledge  
273 compared to women with no formal education. Married women had a 1.09 times (95% CI: 1.0-  
274 1.19,  $p<0.05$ ) greater chance of having higher HIV/AIDS knowledge than unmarried women.  
275 Rural women exhibited a 10% lower odds of possessing higher HIV/AIDS knowledge (aOR: 0.90,  
276 95% CI: 0.83-0.96,  $p<0.01$ ) compared to urban women. Additionally, the likelihood of having  
277 higher HIV/AIDS knowledge increased from 1.11 to 1.23 times among respondents residing in  
278 households with a better wealth quintile compared to those from poorer households. In  
279 comparison to respondents from the Barishal region, those in the Sylhet region had 2.58 times  
280 (95% CI: 2.26-2.94,  $p<0.001$ ) higher odds of reporting higher HIV/AIDS knowledge. Conversely,  
281 respondents in the Chattogram (aOR: 0.59, 95% CI: 0.53-0.66,  $p<0.001$ ), Dhaka (aOR: 0.65, 95%  
282 CI: 0.58-0.72,  $p<0.001$ ), Khulna (aOR: 0.79, 95% CI: 0.71-0.88,  $p<0.001$ ), Rajshahi (aOR: 0.84,  
283 95% CI: 0.75-0.94,  $p<0.01$ ), and Mymensingh (aOR: 0.86, 95% CI: 0.75-0.99,  $p<0.05$ ) regions  
284 reported lower likelihoods of higher HIV/AIDS knowledge compared to the respondents in the  
285 Barishal region. Women who read newspapers or magazines had 1.27 times (95% CI: 1.16-1.39,  
286  $p<0.001$ ) greater odds of reporting higher HIV/AIDS knowledge than those who did not. Online



287 media was found to be more effective than mass media. Computer user respondents reported 1.45  
288 times (95% CI: 1.28-1.64,  $p < 0.001$ ) greater odds, internet user respondents reported 1.16 times  
289 (95% CI: 1.07-1.25,  $p < 0.001$ ), and mobile user women had 1.13 times (95% CI: 1.06-1.20,  
290  $p < 0.001$ ) greater odds of having a high level of HIV/AIDS knowledge compared to women who  
291 were not exposed to these online media-related exposures.

292 We found a declining likelihood of a positive attitude regarding HIV/AIDS among older  
293 respondents, with a decrease of 11-15% compared to those aged 15-19. Respondents with higher  
294 education had 1.18 times (95% CI: 1.03-1.37,  $p < 0.05$ ) higher odds of a positive attitude toward  
295 HIV/AIDS compared to illiterate respondents. Conversely, respondents with primary education  
296 (aOR: 0.88, 95% CI: 0.78-0.98,  $p < 0.05$ ) had lower odds of a positive attitude toward HIV/AIDS  
297 compared to illiterate respondents. We found a 14% lower likelihood (95% CI: 0.80-0.94,  $p < 0.001$ )  
298 of a positive attitude toward HIV/AIDS among respondents who were currently married  
299 compared to never-married respondents. Respondents from poorer to the richest households  
300 reported 1.15-1.44 times higher odds of a positive attitude toward HIV/AIDS compared to the  
301 poorest households. Rural respondents had 1.14 times more likely to report a positive attitude  
302 (95% CI: 1.06-1.22,  $p < 0.001$ ) toward HIV/AIDS compared to urban respondents. Compared to  
303 the Barishal region, respondents who lived in Chattogram (aOR: 1.63, 95% CI: 1.47-1.81,  $p < 0.001$ )  
304 and Rajshahi region (aOR: 1.22, 95% CI: 1.10-1.37,  $p < 0.001$ ).

305

306

307

308

309

310 **Table 4:** Factors associated with higher level of HIV/AIDS knowledge and positive attitude in  
 311 Bangladesh: multivariate logistic regression analysis

Variables	High level of comprehensive knowledge HIV/AIDS		Good level of positive attitudes towards HIV/AIDS	
	aOR (95% CI)	p-value	aOR (95% CI)	p-value
<b>Respondent's age</b>				
15-19	1.00		1.00	
20-24	1.12 (1.03-1.22)	<0.01	0.96 (0.88-1.04)	0.337
25-29	1.16 (1.05-1.27)	<0.01	0.93 (0.85-1.02)	0.118
30-34	1.19 (1.08-1.31)	<0.001	0.89 (0.81-0.98)	<0.05
35-39	1.20 (1.08-1.33)	<0.001	0.85 (0.77-0.94)	<0.01
40-44	1.20 (1.07-1.35)	<0.001	0.86 (0.76-0.96)	<0.05
45-49	1.11 (0.97-1.26)	0.126	0.86 (0.76-0.97)	<0.05
<b>Respondents' education</b>				
No education	1.00		1.00	
Primary	1.11 (0.98-1.25)	0.092	0.88 (0.78-0.98)	<0.05
Lower Secondary	1.41 (1.25-1.59)	<0.001	0.93 (0.83-1.05)	0.252
Secondary	2.34 (2.07-2.64)	<0.001	1.00 (0.89-1.12)	0.987
Higher	4.01 (3.45-4.65)	<0.001	1.18 (1.03-1.37)	<0.05
<b>Respondents' marital status</b>				
Never married	1.00		1.00	
Currently married	1.09 (1.00-1.19)	<0.05	0.86 (0.80-0.94)	<0.001
Widowed	0.97 (0.78-1.20)	0.773	0.88 (0.71-1.08)	0.214
Divorced	1.11 (0.88-1.39)	0.391	0.74 (0.58-0.94)	<0.05
Separated	0.99 (0.72-1.39)	0.991	0.78 (0.56-1.10)	0.157
<b>Wealth quintile</b>				
Poorer	1.00		1.00	
Poor	1.05 (0.95-1.15)	0.325	1.15 (1.04-1.27)	<0.01
Middle	1.11 (1.01-1.22)	<0.05	1.15 (1.04-1.27)	<0.01
Rich	1.17 (1.06-1.29)	<0.01	1.22 (1.11-1.36)	<0.001
Richer	1.23 (1.10-1.38)	<0.001	1.44 (1.28-1.62)	<0.001
<b>Place of residence</b>				
Urban	1.00		1.00	
Rural	0.90 (0.83-0.96)	<0.01	1.14 (1.06-1.22)	<0.001
<b>Division</b>				
Barishal	1.00		1.00	
Chattogram	0.59 (0.53-0.66)	<0.001	1.63 (1.47-1.81)	<0.001
Dhaka	0.65 (0.58-0.72)	<0.001	1.10 (0.99-1.23)	0.081

Khulna	0.79 (0.71-0.88)	<0.001	1.04 (0.93-1.15)	0.492
Mymensingh	0.86 (0.75-0.99)	<0.05	0.46 (0.39-0.53)	<0.001
Rajshahi	0.84 (0.75-0.94)	<0.01	1.22 (1.10-1.37)	<0.001
Rangpur	1.05 (0.93-1.18)	0.406	0.69 (0.61-0.77)	<0.001
Sylhet	2.58 (2.26-2.94)	<0.001	0.97 (0.85-1.10)	0.647
<b>Reading newspaper or magazines</b>				
No	1.00		1.00	
Yes	1.27 (1.16-1.39)	<0.001	0.84 (0.77-0.92)	<0.001
<b>Listening radio</b>				
No	1.00		1.00	
Yes	0.89 (0.77-1.02)	0.093	1.01 (0.88-1.16)	0.850
<b>Watching television</b>				
No	1.00		1.00	
Yes	1.04 (0.98-1.12)	0.184	1.06 (0.99-1.13)	0.086
<b>Use computer</b>				
No	1.00		1.00	
Yes	1.45 (1.28-1.64)	<0.001	0.88 (0.79-0.98)	<0.05
<b>Use internet</b>				
No	1.00		1.00	
Yes	1.16 (1.07-1.25)	<0.001	1.05 (0.98-1.14)	0.165
<b>Use mobile phone</b>				
No	1.00		1.00	
Yes	1.13 (1.06-1.20)	<0.001	1.14 (1.07-1.22)	<0.001

312 **Note:** aOR: Adjusted Odds Ratio; CI: Confidence Interval.

313

## 314 **Discussions**

315 The objectives of this study were to investigate knowledge and attitudes concerning HIV/AIDS,  
316 as well as to identify predictors of higher levels of comprehensive knowledge and favorable  
317 attitudes toward HIV/AIDS. The findings of this study reveal that over 52% of the total  
318 respondents lack good knowledge about HIV/AIDS, and over 54% of the total respondents do  
319 not possess a favorable attitude regarding HIV/AIDS. This situation is even more poor in certain  
320 districts of Bangladesh. Various socio-demographic and mass-media-related factors were identified  
321 as associated with higher levels of knowledge and positive attitudes toward HIV/AIDS.  
322 Specifically, higher levels of HIV/AIDS knowledge and favorable attitudes were observed among

323 respondents with higher education levels, residing in households with a comparatively improved  
324 wealth quintile, and using mobile phones. Other predictors revealed conflicting associations for  
325 knowledge and attitudes regarding HIV/AIDS. For instance, an increasing age, particularly among  
326 younger respondents, was significantly associated with higher levels of knowledge about  
327 HIV/AIDS but declining favorable attitudes. Additionally, currently married women displayed  
328 good knowledge about HIV/AIDS but declining favorable attitudes, while rural women had  
329 decreasing probabilities of higher levels of knowledge about HIV/AIDS but higher probabilities  
330 of maintaining positive attitudes. These findings are robust, considering the analysis was conducted  
331 on a large sample collected from a nationally representative survey, which encompassed a broad  
332 range of explanatory variables. The results underscore the need for comprehensive policies and  
333 programs aimed at enhancing knowledge and fostering positive attitudes toward HIV/AIDS.

334 This study reveals a significant lack of sufficient knowledge and poor attitudes regarding  
335 HIV/AIDS, with more than half of the women in Bangladesh lacking these attributes, and notable  
336 regional variations observed. These findings align with the results of previous studies conducted  
337 in Bangladesh [31, 32] and neighboring countries such as India [56, 57] and Pakistan [54]. It is  
338 worth noting in general the level of knowledge and attitudes reported in this study can be  
339 considered relatively good, given that a majority of the Bangladeshi population has not had direct  
340 exposure to individuals affected by HIV/AIDS. Such exposure is an important pathway for  
341 increasing awareness and understanding of specific diseases, including HIV/AIDS. However, it is  
342 important to recognize that the level of knowledge and attitudes reported in this study pertains  
343 solely to reproductive-aged women who have heard about HIV/AIDS. Considering this, and the  
344 fact that this group of women in Bangladesh is more likely to have connections with healthcare  
345 services due to sexual and reproductive healthcare needs, the findings are concerning.  
346 Nevertheless, despite the overall poor conditions, there are a few indicators related to knowledge  
347 and attitudes concerning HIV/AIDS that offer hope for improvement. For instance,

348 approximately 75% of the total respondents reported that they would not feel ashamed if a family  
349 member had HIV, indicating a potential avenue for enhancing the situation. The reasons for such  
350 improvements in specific aspects of knowledge and attitudes are rooted in the strong traditional  
351 bonds that Bangladeshi people have with their family members, which tend to outweigh prevalent  
352 myths and misconceptions about HIV/AIDS. This situation is also observed in other LMICs [58].  
353 However, the findings of this study regarding knowledge and attitudes about HIV/AIDS also  
354 suggest that the national strategic plan in Bangladesh, implemented over the past decades to reduce  
355 HIV vulnerabilities, has not been as effective as desired in increasing knowledge and fostering  
356 positive attitudes [59].

357 We also observed variations in knowledge and attitudes regarding HIV/AIDS across several  
358 districts in Bangladesh, which are consistent with earlier observations of divisional-level variations  
359 in HIV/AIDS knowledge and attitudes in the country [31]. These variations could be attributed  
360 to differing levels of mass media presence, variations in educational prevalence at the area level,  
361 differences in population distributions, connectivity to healthcare services, and the effectiveness  
362 of healthcare service providers in these specific areas [38, 60, 61]. These findings align with  
363 previous studies, which indicated that HIV/AIDS-related knowledge and improved attitudes were  
364 more prevalent in districts where the government had previously prioritized HIV/AIDS care  
365 through hospitals and drop-in centers for HIV/AIDS counseling and treatment. This  
366 prioritization was often in response to higher HIV/AIDS prevalence in these districts [7]. These  
367 results suggest a potential pathway to enhance HIV/AIDS-related knowledge and attitudes by  
368 expanding similar programs implemented in these areas to other regions across Bangladesh.

369 This study identified several factors contributing to the lower levels of knowledge regarding  
370 HIV/AIDS among women in Bangladesh. For instance, rural women reported a reduced  
371 likelihood of possessing knowledge about HIV/AIDS and a higher likelihood of maintaining a  
372 positive attitude toward the disease. These reported associations can be attributed to multifaceted

373 reasons, with prominent factors including cultural sensitivity and prevailing social norms  
374 surrounding sexual issues among rural women. These factors often lead to feelings of shyness and  
375 reluctance to openly discuss sexual and reproductive problems [62-64]. Additionally, their lower  
376 educational participation, limited engagement outside their rural communities, and limited  
377 exposure to mass media, along with reduced use of mobile phones, further exacerbate this issue  
378 [30, 65-69]. These findings are consistent with other results of this study that highlight the  
379 association of HIV/AIDS knowledge with women's education and exposure to mass media. It is  
380 important to note that these factors, in conjunction with healthcare facility effectiveness and  
381 density, can contribute to creating regional variations in HIV/AIDS knowledge [25, 67, 69-72].  
382 These observations align with the findings of this study and are consistent with other research  
383 conducted in Bangladesh and other LMICs.

384 However, the findings of this study, which indicate a higher likelihood of a positive attitude  
385 regarding HIV/AIDS among rural women and a lower likelihood of a positive attitude among  
386 never-married women, directly contradict the prevailing understanding based on previous  
387 research. Earlier studies have reported that urban and unmarried women tend to exhibit more  
388 favorable attitudes toward HIV/AIDS [45, 73]. The reasons for these conflicting associations are  
389 not entirely clear. However, several factors could contribute to this disparity. One potential  
390 explanation could be the stronger family and community-level bonds among rural women in  
391 Bangladesh compared to urban women. Additionally, married women in Bangladesh are more  
392 likely to access healthcare services, particularly for sexual and reproductive health needs. During  
393 these healthcare visits, they may have discussions about HIV/AIDS, which could influence their  
394 attitudes toward the disease. Married women may also be more inclined to take precautions to  
395 protect themselves and their families, including children, from sensitive sexual issues and diseases,  
396 which might lead them to seek knowledge about HIV/AIDS. Moreover, within the cultural norms  
397 of Bangladesh, unmarried women often hesitate to discuss sexual health matters with anyone,

398 which significantly influences their attitudes toward HIV/AIDS. Taken together, these factors may  
399 contribute to the differences observed between unmarried and married women regarding their  
400 attitudes toward HIV/AIDS.

401 The policy implications of the findings from this study highlight the need to enhance access to  
402 awareness-building programs about HIV/AIDS to improve knowledge and attitudes, taking into  
403 account the specific needs at the district level. This should be extended to the general population,  
404 not limited to women alone, as older generations, in particular, play a crucial role in community-  
405 level awareness building. This group, which often holds superstitious beliefs and stigmatizes  
406 discussions related to sexuality, is currently not adequately included in existing programs.  
407 Textbooks, healthcare facilities, and awareness-building programs can effectively contribute to the  
408 generation of knowledge and the shaping of attitudes regarding HIV/AIDS. Although safe sexual  
409 and reproductive health-related topics are now part of the secondary education curriculum in  
410 Bangladesh, they are not consistently and effectively discussed in the classroom [74-76]. Moreover,  
411 women who drop out of primary education miss out on formal channels for acquiring knowledge  
412 about HIV/AIDS and developing appropriate attitudes. In addition, door-to-door services aimed  
413 at disseminating information about HIV/AIDS are often ineffective. Family planning workers,  
414 primarily responsible for these efforts, tend to neglect sharing such knowledge due to their limited  
415 numbers, heavy workloads, and lack of monitoring [17, 67, 77]. Addressing these issues can be an  
416 effective means of increasing knowledge and attitude toward HIV/AIDS in Bangladesh.

417 This study has several strengths as well as a few limitations. One of its strengths is the analysis of  
418 a nationally representative sample with a large sample size. The data were analyzed using  
419 sophisticated statistical methods and included a comprehensive range of explanatory variables. As  
420 a result, the findings of this study are robust and can be utilized in the development of national-  
421 level programs to increase awareness about HIV/AIDS. However, this study is limited to women  
422 who have heard of HIV/AIDS, as the MICS survey only collects knowledge and attitude data

423 from individuals who are aware of it. Additionally, this study excludes men and the hijra  
424 population, which limits the generalizability of the findings. Moreover, the data analyzed in this  
425 study are cross-sectional in nature, meaning that the reported findings are correlational rather than  
426 causal. Furthermore, the data were collected through retrospective questioning, which introduces  
427 the risk of recall bias. In addition to the factors considered in this study, it's important to  
428 acknowledge that cultural and traditional norms play a significant role in HIV/AIDS-related  
429 knowledge and attitudes. Unfortunately, these aspects were not considered in this study due to  
430 their unavailability in the survey. Nevertheless, despite these limitations, the findings generated  
431 from this study can be instrumental in shaping national-level policies and programs.

## 432 **Conclusions**

433 The study revealed that approximately half of the women in Bangladesh have insufficient  
434 knowledge and positive attitudes toward HIV/AIDS, and there are notable regional variations in  
435 these aspects. Various socio-demographic factors were identified as associated with higher levels  
436 of HIV/AIDS knowledge and favourable attitudes. These findings underscore the urgent need to  
437 develop policies and programs aimed at improving HIV/AIDS-related knowledge and attitudes,  
438 considering the specific needs at the district level. To achieve this, the utilization of mass media  
439 and the integration of HIV/AIDS-related information in textbooks, along with ensuring their  
440 effective dissemination and comprehension, can play a pivotal role in enhancing HIV/AIDS-  
441 related knowledge and attitudes in Bangladesh.

442



## 443 **Abbreviations**

444	aAOR	adjusted Odd Ratio
445	ART	Antiretroviral Treatment
446	BBS	Bangladesh Bureau of Statistics
447	CI	Confidence Interval
448	COVID-19	Coronavirus Disease 2019
449	df	Degrees of Freedom
450	HIV/AIDS	Human Immunodeficiency Virus/Acquired Immunodeficiency Syndrome
451	LMICs	Low- and Middle Income Countries
452	MICS	Multiple Indicator Cluster Survey
453	PSUs	Primary Sampling Units
454	PWID	People who inject drugs
455	SDGs	Sustainable Development Goals
456	UNICEF	United Nation's Children Emergency Fund
457	VIF	Variance Inflation Factor

## 458 **Availability of data and materials**

459 The data is openly available to the UNICEF MICS databases in <https://mics.unicef.org/surveys>.

## 460 **Competing interests**

461 There is no conflicting interest.

## 462 **Funding**

463 This research received no external funding.

## 464 **Author's contributors**

465 Conceived and designed the experiments: MAB, RAMY Analyzed the data: MAB; Supervise and  
466 Review: RAMY, RMM, MNK; Wrote the paper: MAB, MNK, RAMY, RMM.

## 467 **Ethics statement**

468 The data of this study were obtained from Multiple Indicator Cluster Survey (MICS) Archive,  
469 supported by United Nation's Children Fund (UNICEF). The survey protocol was approved by  
470 technical committee of the Government of Bangladesh lead by Bangladesh Bureau of Statistics  
471 (BBS). Verbal consent was obtained for each respondent participating in the survey. All  
472 respondents were informed of the voluntary nature of participation and the confidentiality and  
473 anonymity of information and they were informed of their right to refuse answering all or  
474 particular questions, as well as to stop the interview at any time.

## 475 **Acknowledgements**

476 We thank to the Faculty of Business, Economic and Social Development, Universiti Malaysia  
477 Terengganu for conducting the study. Besides we are also acknowledged to the UNICEF for the  
478 necessary data, materials and guidelines. Also we are grateful to icddr,b which is grateful to the  
479 Government of Bangladesh and Canada for providing core/unrestricted support to icddr,b.

## 480 References

- 481 1. UNAIDS. Global HIV & AIDS statistics — 2022 fact sheet. UNAIDS. 2022.
- 482 2. UNAIDS. HIV Prevention 2020 Road Map: Accelerating HIV prevention to reduce new  
483 infections by 75%. Geneva: Switzerland: Joint United Nations Programme on HIV/AIDS, n.d.
- 484 3. UNAIDS. HIV estimates with uncertainty bounds 1990-2018. UNAIDS. 2019.
- 485 4. AIDS Data Hub. HIV and AIDS data hub for Asia-Pacific: Evidence to Action 2021.  
486 Available from: <https://www.aidsdatahub.org/country-profiles/bangladesh>.
- 487 5. Alam MK. World AIDS Day 2021: HIV/AIDS Situation in Bangladesh. Dhaka,  
488 Bangladesh: Directorate General of Health Services, 2021.
- 489 6. Islam MM, Conigrave KM. HIV and sexual risk behaviors among recognized high-risk  
490 groups in Bangladesh: need for a comprehensive prevention program. *Int J Infect Dis*.  
491 2008;12(4):363-70. doi: 10.1016/j.ijid.2007.12.002.
- 492 7. AIDS/STD Programme (ASP) DGoHS, Ministry of Health and Family Welfare  
493 (MOHFW). Annual Report 2018. Dhaka: Directorate General of Health Services, Ministry of  
494 Health and Family Welfare, 2019.
- 495 8. Institute of Epidemiology Disease Control and Research (IEDCR), International Centre  
496 for Diarrhoeal Disease Research Bangladesh (icddr), United Nations Children's Fund, Ministry  
497 of Health and Family Welfare (MoHFW). Behavioural and Serological Surveillance amongst Key  
498 Populations at Risk of HIV in Selected Areas of Bangladesh, 2016. Dhaka, Bangladesh: Ministry  
499 of Health and Family Welfare, 2017.
- 500 9. Hossain MM, Sultana A, Mazumder H, Munzur EM. Sexually transmitted infections  
501 among Rohingya refugees in Bangladesh. *The Lancet HIV*. 2018;5(7):e342. doi: 10.1016/S2352-  
502 3018(18)30140-1.
- 503 10. Hsan K, Griffiths MD, Gozal D, Rahman MA. HIV infection in Rohingya refugees in  
504 Bangladesh. *The Lancet HIV*. 2019;6(7):e419. doi: 10.1016/S2352-3018(19)30156-0.
- 505 11. Khan MN, Rahman MM, Rahman MM, Islam MM. HIV transmission knowledge among  
506 Rohingya refugee women in Bangladesh: a cross-sectional survey. *BMJ Open*.  
507 2021;11(10):e047516. doi: 10.1136/bmjopen-2020-047516.
- 508 12. Khan MN, Islam MM, Rahman MM, Rahman MM. Access to female contraceptives by  
509 Rohingya refugees, Bangladesh. *Bull World Health Organ*. 2021;99(3):201-8. doi:  
510 10.2471/BLT.20.269779.
- 511 13. Islam MM, Rahman MM, Khan MN. Barriers to male condom use in Rohingya refugee  
512 camps in Bangladesh: A qualitative study. *The Lancet Regional Health - Southeast Asia*.  
513 2022;2:100008. doi: 10.1016/j.lansea.2022.04.004.

- 514 14. Kabir H, Fatema SR, Hoque S, Ara J, Maple M. Risks of HIV/AIDS Transmission: A  
515 Study on the Perceptions of the Wives of Migrant Workers of Bangladesh. *Journal of International*  
516 *Women's Studies*. 2020;21(6):450-71.
- 517 15. Kabir R, Alradie-Mohamed A, Ferdous N, Vinnakota D, Arafat SMY, Mahmud I.  
518 Exploring Women's Decision-Making Power and HIV/AIDS Prevention Practices in South  
519 Africa. *Int J Environ Res Public Health*. 2022;19(24). doi: 10.3390/ijerph192416626.
- 520 16. Uddin J, Hossin MZ, Pulok MH. Couple's concordance and discordance in household  
521 decision-making and married women's use of modern contraceptives in Bangladesh. *BMC*  
522 *Women's Health*. 2017;17(1):107. doi: 10.1186/s12905-017-0462-3.
- 523 17. Uddin J, Pulok MH, Sabah MN-U. Correlates of unmet need for contraception in  
524 Bangladesh: does couples' concordance in household decision making matter? *Contraception*.  
525 2016;94(1):18-26. doi: 10.1016/j.contraception.2016.02.026.
- 526 18. Islam MM, Conigrave KM, Miah MS, Kalam KA. HIV awareness of outgoing female  
527 migrant workers of Bangladesh: a pilot study. *J Immigr Minor Health*. 2010;12(6):940-6. doi:  
528 10.1007/s10903-010-9329-5.
- 529 19. Alam MS, Khan SI, Reza M, Shahriar A, Sarker MS, Rahman A, et al. Point of care HIV  
530 testing with oral fluid among returnee migrants in a rural area of Bangladesh. *Curr Opin HIV*  
531 *AIDS*. 2016;11 Suppl 1(Suppl 1):S52-8. doi: 10.1097/COH.0000000000000267.
- 532 20. Priesner BP. HIV and Bangladeshi Women Migrant Workers: An assessment of  
533 vulnerabilities and gaps in services. Geneva: International Organization for Migration; 2012.
- 534 21. Jesmin SS, Rahman M. Social inequalities and the context of vulnerabilities: HIV/AIDS  
535 awareness and prevention knowledge among married women. *Health Care Women Int*.  
536 2018;39(2):154-69. doi: 10.1080/07399332.2017.1375504.
- 537 22. Afroz T, Camellia S, Oyewale T, Uddin MZ, Mahmud I. HIV-sensitive social protection  
538 services in mitigating the challenges and vulnerability of the children affected by HIV/AIDS in  
539 Bangladesh: a qualitative study. *AIDS Care*. 2022;34(7):894-9. doi:  
540 10.1080/09540121.2021.1922575.
- 541 23. Haque MA, Hossain MSN, Chowdhury MAB, Uddin MJ. Factors associated with  
542 knowledge and awareness of HIV/AIDS among married women in Bangladesh: evidence from a  
543 nationally representative survey. *SAHARA J*. 2018;15(1):121-7. doi:  
544 10.1080/17290376.2018.1523022.
- 545 24. National AIDS/STD Programme, UNAIDS Bangladesh. Gender Assessment of the  
546 National HIV Response in Bangladesh Dhaka: Ministry of Health and Family Welfare 2014.
- 547 25. Asaduzzaman M, Higuchi M, Sarker MA, Hamajima N. Awareness and knowledge of  
548 HIV/AIDS among married women in rural Bangladesh and exposure to media: a secondary data  
549 analysis of the 2011 Bangladesh Demographic and Health Survey. *Nagoya J Med Sci*.  
550 2016;78(1):109-18.

- 551 26. Yaya S, Bishwajit G, Danhoundo G, Shah V, Ekholuenetale M. Trends and determinants  
552 of HIV/AIDS knowledge among women in Bangladesh. *BMC Public Health*. 2016;16(1):812. doi:  
553 10.1186/s12889-016-3512-0.
- 554 27. Rashid A. Assessment of Comprehensive HIV/AIDS Knowledge Level among in-School  
555 & Community Level Adolescents of Noakhali and Lakshmipur District, Bangladesh. *Sex Trans*  
556 *Infect*. 2017;93:A192-A. doi: 10.1136/sextrans-2017-053264.498.
- 557 28. Sarma H, Islam MA, Khan JR, Chowdhury KIA, Gazi R. Impact of teachers training on  
558 HIV/AIDS education program among secondary school students in Bangladesh: A cross-sectional  
559 survey. *PLoS One*. 2017;12(7):e0181627. doi: 10.1371/journal.pone.0181627.
- 560 29. Sheikh MT, Uddin MN, Khan JR. A comprehensive analysis of trends and determinants  
561 of HIV/AIDS knowledge among the Bangladeshi women based on Bangladesh Demographic and  
562 Health Surveys, 2007-2014. *Arch Public Health*. 2017;75:59. doi: 10.1186/s13690-017-0228-2.
- 563 30. Zahangir MS, Chowdhury M, Nahar MZ, Khan H, Masum M. Trends and Determinants  
564 of Knowledge and Awareness of HIV/AIDS among Married Women in Bangladesh: An Urban-  
565 Rural Comparison. *DEMOGRAFIE*. 2021;63(3):158-71.
- 566 31. Bhowmik J, Biswas RK. Knowledge About HIV/AIDS and Its Transmission and  
567 Misconception Among Women in Bangladesh. *Int J Health Policy Manag*. 2022;11(11):2542-51.  
568 doi: 10.34172/ijhpm.2022.6321.
- 569 32. Hasan MN, Tambuly S, Trisha KF, Haque MA, Chowdhury MAB, Uddin MJ. Knowledge  
570 of HIV/AIDS among married women in Bangladesh: analysis of three consecutive multiple  
571 indicator cluster surveys (MICS). *AIDS Res Ther*. 2022;19(1):68. doi: 10.1186/s12981-022-00495-  
572 8.
- 573 33. Hasan AH, Hassan R, Khan ZR, Nuzhat E, Arefin U. Influence of socio-demographic  
574 factors on awareness of HIV/AIDS among Bangladeshi garment workers. *Springerplus*.  
575 2013;2(1):174. doi: 10.1186/2193-1801-2-174.
- 576 34. Liu H, Lai G, Shi G, Zhong X. The Influencing Factors of HIV-Preventive Behavior Based  
577 on Health Belief Model among HIV-Negative MSMs in Western China: A Structural Equation  
578 Modeling Analysis. *International Journal of Environmental Research and Public Health* [Internet].  
579 2022; 19(16).
- 580 35. Teshale AB, Yeshaw Y, Alem AZ, Ayalew HG, Liyew AM, Tessema ZT, et al.  
581 Comprehensive knowledge about HIV/AIDS and associated factors among women of  
582 reproductive age in sub-Saharan Africa: a multilevel analysis using the most recent demographic  
583 and health survey of each country. *BMC Infect Dis*. 2022;22(1):130. doi: 10.1186/s12879-022-  
584 07124-9.
- 585 36. Iqbal S, Maqsood S, Zafar A, Zakar R, Zakar MZ, Fischer F. Determinants of overall  
586 knowledge of and attitudes towards HIV/AIDS transmission among ever-married women in  
587 Pakistan: evidence from the Demographic and Health Survey 2012–13. *BMC Public Health*.  
588 2019;19(1):1-14.

- 589 37. Ullah A. HIV/AIDS-Related Stigma and Discrimination: A Study of Health Care  
590 Providers in Bangladesh. *J Int Assoc Physicians AIDS Care (Chic)*. 2011;10(2):97-104. doi:  
591 10.1177/1545109710381926.
- 592 38. Hasan MT, Nath SR, Khan NS, Akram O, Gomes TM, Rashid SF. Internalized  
593 HIV/AIDS-related stigma in a sample of HIV-positive people in Bangladesh. *J Health Popul Nutr*.  
594 2012;30(1):22-30. doi: 10.3329/jhpn.v30i1.11272.
- 595 39. Islam MS, Scott J, Minichiello V. A qualitative exploration of parental experiences of  
596 stigma while living with HIV in Bangladesh. *AIDS Care*. 2016;28(2):247-9. doi:  
597 10.1080/09540121.2015.1074651.
- 598 40. Geibel S, Hossain SM, Pulerwitz J, Sultana N, Hossain T, Roy S, et al. Stigma Reduction  
599 Training Improves Healthcare Provider Attitudes Toward, and Experiences of, Young  
600 Marginalized People in Bangladesh. *J Adolesc Health*. 2017;60(2S2):S35-S44. doi:  
601 10.1016/j.jadohealth.2016.09.026.
- 602 41. Hossain MB, Kippax S. HIV-related discriminatory attitudes of healthcare workers in  
603 Bangladesh. *J Health Popul Nutr*. 2010;28(2):199-207. doi: 10.3329/jhpn.v28i2.4892.
- 604 42. Rajapaksha N, Abeysena C. HIV/AIDS Politics and Policy in South Asia. Oxford  
605 Research Encyclopedia of Politics 2021.
- 606 43. Bangladesh Bureau of Statistics, United Nations Children's Fund. Bangladesh Multiple  
607 Indicator Cluster Survey 2019. Progotir Pathay. Final Report. Dhaka, Bangladesh: BBS and  
608 UNICEF Bangladesh, 2019.
- 609 44. Pant A, Kanato M, Thapa P, Ratanasiri A. Knowledge of and attitude towards HIV/AIDS  
610 and condom use among construction workers in the Kathmandu Valley, Nepal. *J Med Assoc Thai*.  
611 2013;96 Suppl 4:S107-16.
- 612 45. Katapa RS, Rweyemamu DK. HIV/AIDS knowledge, attitude and practice among women  
613 in the least and most HIV/AIDS affected regions of mainland Tanzania. *J Biosoc Sci*.  
614 2014;46(2):168-77. doi: 10.1017/s0021932013000497.
- 615 46. Akokuwebe ME, Daini B, Falayi EO, Oyebade O. Knowledge and attitude of sexually  
616 transmitted diseases among adolescents in Ikeji-Arakeji, Osun State, in South-Western Nigeria.  
617 *Afr J Med Med Sci*. 2016;45(3):281-9.
- 618 47. Nubed CK, Akoachere JTK. Knowledge, attitudes and practices regarding HIV/AIDS  
619 among senior secondary school students in Fako Division, South West Region, Cameroon. *BMC*  
620 *Public Health*. 2016;16(1):847. doi: 10.1186/s12889-016-3516-9.
- 621 48. Gemeda TT, Gandile AU, Bikamo DS. HIV/AIDS Knowledge, Attitude and Practice  
622 among Dilla University Students, Ethiopia. *Afr J Reprod Health*. 2017;21(3):49-61. doi:  
623 10.29063/ajrh2017/v21i3.4.
- 624 49. Yaya S, Ghose B, Udenigwe O, Shah V, Hudani A, Ekholuenetale M. Knowledge and  
625 attitude of HIV/AIDS among women in Nigeria: a cross-sectional study. *Eur J Public Health*.  
626 2019;29(1):111-7. doi: 10.1093/eurpub/cky131.



- 627 50. Mekonnen AG, Bayleyegn AD, Aynalem YA, Adane TD, Muluneh MA, Zeru AB.  
628 Determinants of knowledge, attitudes, and practices in relation to HIV/AIDS and other STIs  
629 among people with disabilities in North-Shewa zone, Ethiopia. *PLoS One*. 2020;15(10):e0241312.  
630 doi: 10.1371/journal.pone.0241312.
- 631 51. Muhammad Hamid A, Tamam E, Nizam Bin Osman M. Relationships between Media  
632 Exposure and Knowledge, Attitude, and Practice on HIV/AIDS: A Cross Sectional Survey of  
633 Adolescent Islamiyya Girls in Nigeria. *Health Commun*. 2020;35(4):419-29. doi:  
634 10.1080/10410236.2018.1564960.
- 635 52. Zakaria M, Karim F, Mazumder S, Cheng F, Xu J. Knowledge on, Attitude towards, and  
636 Practice of Sexual and Reproductive Health among Older Adolescent Girls in Bangladesh: An  
637 Institution-Based Cross-Sectional Study. *Int J Environ Res Public Health*. 2020;17(21). doi:  
638 10.3390/ijerph17217720.
- 639 53. Nkoka O, Ntenda PAM, Chuang KY. Contextual factors associated with knowledge and  
640 attitudes of HIV/AIDS among Malawian women of reproductive age. *Eur J Public Health*.  
641 2021;31(6):1129-37. doi: 10.1093/eurpub/ckab110.
- 642 54. Pachuau LN, Tannous C, Agho KE. Factors Associated with Knowledge, Attitudes, and  
643 Prevention towards HIV/AIDS among Adults 15-49 Years in Mizoram, North East India: A  
644 Cross-Sectional Study. *Int J Environ Res Public Health*. 2021;19(1). doi: 10.3390/ijerph19010440.
- 645 55. Rahman MM, Kabir M, Shahidullah M. Adolescent knowledge and awareness about  
646 AIDS/HIV and factors affecting them in Bangladesh. *J Ayub Med Coll Abbottabad*. 2009;21(3):3-  
647 6.
- 648 56. StataCorp. *Stata Statistical Software: Release 15*. College Station, TX: StataCorp LLC.;  
649 2017.
- 650 57. Hazarika I. Knowledge, attitude, beliefs and practices in HIV/AIDS in India: identifying  
651 the gender and rural–urban differences. *Asian Pacific Journal of Tropical Medicine*.  
652 2010;3(10):821-7.
- 653 58. Bharat S. A systematic review of HIV/AIDS-related stigma and discrimination in India:  
654 current understanding and future needs. *SAHARA J*. 2011;8(3):138-49. doi:  
655 10.1080/17290376.2011.9724996.
- 656 59. Gagnon AJ, Merry L, Bocking J, Rosenberg E, Oxman-Martinez J. South Asian migrant  
657 women and HIV/STIs: knowledge, attitudes and practices and the role of sexual power. *Health  
658 Place*. 2010;16(1):10-5. doi: 10.1016/j.healthplace.2009.06.009.
- 659 60. National AIDS/STD Programme (NASP). *4th National Strategic Plan For HIV and AIDS  
660 Response 2018-2022*. Dhaka, Bangladesh: Ministry of Health and Family Welfare, Directorate  
661 General of Health Services; 2016.
- 662 61. Bradley J, Rajaram S, Moses S, Bhattacharjee P, Lobo AM, Ramesh BM, et al. Changes in  
663 HIV knowledge, and socio-cultural and sexual attitudes in South India from 2003-2009. *BMC  
664 Public Health*. 2011;11(6):S12. doi: 10.1186/1471-2458-11-S6-S12.

- 665 62. Fauk NK, Ward PR, Hawke K, Mwanri L. Cultural and religious determinants of HIV  
666 transmission: A qualitative study with people living with HIV in Belu and Yogyakarta, Indonesia.  
667 PLoS One. 2021;16(11):e0257906. doi: 10.1371/journal.pone.0257906.
- 668 63. Jesmin SS, Chaudhuri S. Why do some women know more? An exploration of the  
669 association of community socioeconomic characteristics, social capital, and HIV/AIDS  
670 knowledge. *Women Health*. 2013;53(7):669-92. doi: 10.1080/03630242.2013.822456.
- 671 64. Jesmin SS, Cready CM. Can a woman refuse sex if her husband has a sexually transmitted  
672 infection? Attitudes toward safer-sex negotiation among married women in Bangladesh. *Cult  
673 Health Sex*. 2014;16(6):666-82. doi: 10.1080/13691058.2014.901561.
- 674 65. Khan ME, Townsend JW, D'Costa S. Behind closed doors: A qualitative study of sexual  
675 behaviour of married women in Bangladesh. *Culture, Health & Sexuality*. 2002;4(2):237-56. doi:  
676 10.1080/13691050110102253.
- 677 66. Gani MS, Chowdhury AM, Nystrom L. Urban-rural and socioeconomic variations in the  
678 knowledge of STIs and AIDS among Bangladeshi adolescents. *Asia Pac J Public Health*.  
679 2014;26(2):182-95. doi: 10.1177/1010539511425083.
- 680 67. Haque M, Hossain S, Ahmed KR, Sultana T, Chowdhury HA, Akter J. A Comparative  
681 Study on Knowledge about Reproductive Health among Urban and Rural Women of Bangladesh.  
682 *J Family Reprod Health*. 2015;9(1):35-40.
- 683 68. Khan MA, Rahman M, Khanam PA, Barkat e K, Kane TT, Ashraf A. Awareness of  
684 sexually transmitted disease among women and service providers in rural Bangladesh. *Int J STD  
685 AIDS*. 1997;8(11):688-96. doi: 10.1258/0956462971919066.
- 686 69. Turan JM, Bukusi EA, Onono M, Holzemer WL, Miller S, Cohen CR. HIV/AIDS stigma  
687 and refusal of HIV testing among pregnant women in rural Kenya: results from the MAMAS Study.  
688 *AIDS Behav*. 2011;15(6):1111-20. doi: 10.1007/s10461-010-9798-5.
- 689 70. Uddin MJ, Choudhury AM. Reproductive health awareness among adolescent girls in rural  
690 Bangladesh. *Asia Pac J Public Health*. 2008;20(2):117-28. doi: 10.1177/1010539507311328.
- 691 71. Bhuiya A, Hanifi SMA, Hossain M, Aziz A. Effects of an AIDS Awareness Campaign on  
692 Knowledge about AIDS in a Remote Rural Area of Bangladesh. *International Quarterly of  
693 Community Health Education*. 2016;19(1):51-63. doi: 10.2190/ly5c-uc58-c608-7d04.
- 694 72. Islam MM, Shahjahan M. Exploring the reasons and factors influencing the choice of  
695 home delivery of births in rural Bangladesh: a community-based cross-sectional study. *Journal of  
696 Health Research*. 2021;36(3):503-14. doi: 10.1108/jhr-07-2020-0284.
- 697 73. Sarker BK, Rahman M, Rahman T, Hossain J, Reichenbach L, Mitra DK. Reasons for  
698 Preference of Home Delivery with Traditional Birth Attendants (TBAs) in Rural Bangladesh: A  
699 Qualitative Exploration. *PLoS One*. 2016;11(1):e0146161. doi: 10.1371/journal.pone.0146161.
- 700 74. Zegeye B, Adjei NK, Ahinkorah BO, Ameyaw EK, Budu E, Seidu AA, et al. Individual-,  
701 household-, and community-level factors associated with pregnant married women's



702 discriminatory attitude towards people living with HIV in sub-Saharan Africa: A multicountry  
703 cross-sectional study. *Health Sci Rep.* 2021;4(4):e430. doi: 10.1002/hsr2.430.

704 75. Khan SA, Alam F, Rommes E, Rashid SF. Experiencing shame: An affective reading of  
705 the sexual and reproductive health and rights classroom in Bangladesh. *Sex Education.*  
706 2020;20(6):597-611.

707 76. Islam KMM, Asadullah MN. Gender stereotypes and education: A comparative content  
708 analysis of Malaysian, Indonesian, Pakistani and Bangladeshi school textbooks. *PLoS One.*  
709 2018;13(1):e0190807. doi: 10.1371/journal.pone.0190807.

710 77. Chowdhury TBM, Siddique MNA. An explorative study on the null secondary science  
711 curriculum in Bangladesh. *Science Education International.* 2017;28(2).

712 78. Tarafder T. Reproductive health care services of rural women in Bangladesh: a case study  
713 of belief and attitude: University of Canberra; 2014.

714

715

716

717

## 718 **Supporting information**

719 **S1 table. Comprehensive knowledge items in MICS survey 2019**

720 **S2 table. Attitude items in MICS survey 2019**

721 **S1 fig. Sample selection process from the MICS datasets**

722 **S2 fig. Density function of comprehensive HIV/AIDS knowledge score**

723 **S3 figs: Density function of attitude towards HIV/AIDS score**

724