

1 ***Predictors of mortality among COVID-19 patients at Kilimanjaro Christian***  
2 ***Medical Centre in Northern Tanzania: A hospital-based retrospective cohort***  
3 ***study***

4 Gilbert G. Waria<sup>1\*</sup>, Florida J. Muro<sup>1,2,3¶</sup>, Norman Jonas<sup>3,4&</sup>, Francis Sakita<sup>6&</sup>, Laura  
5 Shirima<sup>1¶</sup>, Henry L. Mlay<sup>1&</sup>, Michael Ngowi<sup>1&</sup>, Elvis B. Meela<sup>1&</sup>, Innocent B. Mboya<sup>1,2,5¶</sup>  
6 Kajiru G. Kilonzo<sup>3,4&</sup>

7 **Affiliations**

8 <sup>1</sup>Department of Epidemiology and Biostatistics, Institute of Public Health, Kilimanjaro  
9 Christian Medical University College, Moshi Tanzania

10 <sup>2</sup>Department of Community Medicine, Institute of Public Health, Kilimanjaro  
11 Christian Medical University College, Moshi, Tanzania

12 <sup>3</sup>Kilimanjaro Christian Medical Centre, Moshi, Tanzania

13 <sup>4</sup>Department of Internal Medicine, Kilimanjaro Christian Medical University College, Moshi,  
14 Tanzania

15 <sup>5</sup>Department of Translational Medicine, Lund University, Malmö, Sweden,

16 <sup>6</sup>Emergency Medicine Department, Kilimanjaro Christian Medical Centre, Moshi, Tanzania

17  
18 **\*Corresponding author:** Gilbert G. Waria

19 E-mail: [waria751@gmail.com](mailto:waria751@gmail.com) (GGW)

20 <sup>¶</sup>These authors contributed equally to this work.

21 <sup>&</sup>These authors also contributed equally to this work.

22 **Author emails:**

23 GGW: [waria751@gmail.com](mailto:waria751@gmail.com)

24 FJM: [floridajm@yahoo.com](mailto:floridajm@yahoo.com)

25 NJ: [norman.jonas@kcmuco.ac.tz](mailto:norman.jonas@kcmuco.ac.tz)

26 FS: [francis.sakita@gmail.com](mailto:francis.sakita@gmail.com)

27 LS: [shirimalaura@gmail.com](mailto:shirimalaura@gmail.com)

28 HLM: [henrymlay54@gmail.com](mailto:henrymlay54@gmail.com)

29 MN: [michaelngowi123@gmail.com](mailto:michaelngowi123@gmail.com)

30 EBM: [elvismeela@yahoo.com](mailto:elvismeela@yahoo.com)

31 IBM: [innocent.mboya@med.lu.se](mailto:innocent.mboya@med.lu.se)

32 **NOTK** [innocent.mboya@med.lu.se](mailto:innocent.mboya@med.lu.se)

This preprint reports new research that has not been certified by peer review and should not be used to guide clinical practice.

## 33 **Abstract**

34 **Background:** COVID-19 disease is a global public health disaster causing a range of  
35 social, economic, and healthcare difficulties, border restrictions, high human loss, lockdown,  
36 and transportation challenges. Despite it being a global pandemic, there are few studies  
37 conducted in Tanzania to examine the predictors of mortality. This disease has caused a  
38 significant number of mortalities worldwide but literature shows low mortality and better  
39 survival in Africa than in other WHO regions. Therefore, this study aimed to determine the  
40 predictors of mortality among COVID-19 patients at KCMC Hospital in Northern Tanzania.

41 **Methodology:** This was the hospital-based retrospective cohort study, conducted at  
42 KCMC Hospital in Northern Tanzania among all admitted patients with confirmed COVID-  
43 19, from 10<sup>th</sup> March 2020 to 26<sup>th</sup> January 2022. The main study event was COVID-19  
44 mortality. The predictors of mortality were determined by using the Weibull survival regression  
45 model and the statistically significant results were declared at a p-value of <0.05.

46 **Results:** A total of 547 confirmed COVID-19 patient records were included in the study.  
47 Their median age was 63 (IQR; 53-83), about 60% were aged 60 years and above, and 56.7%  
48 were males. The most common clinical features were; fever (60.8%), a severe form of the  
49 disease (44.4%), difficulty in breathing (73.3%), chest pain (46.1%), and generalized body  
50 weakness (71.3%). Of all participants, over one-third (34.6%) died (95%CI; 0.31-0.39). The  
51 median survival time was 7 days (IQR; 3-12). The overall mortality rate was 32.33 per 1000  
52 person-days while the independent predictors of higher mortality risk were age  $\geq 60$  years  
53 (AHR=2.01; 95%CI 1.41-2.87; P<0.001), disease severity (AHR=4.44; 95%CI 2.56-7.73;  
54 P<0.001) and male sex (AHR=1.28; 95%CI; 0.93-1.73; P=0.128).

55 **Conclusion:** Mortality was higher in elderly male patients, with a severe form of the  
56 disease and those with any comorbidities. Therefore, more attention should be provided to older  
57 patients including uptake of the current vaccine and ensuring standard and supportive care at  
58 primary health facilities is available.

59 **Keywords:** Mortality rate, Mortality, Predictors, COVID-19, Tanzania.

## 60 **Introduction**

61 On 31 December 2019, the World Health Organization (WHO) was informed of a cluster of  
62 cases of pneumonia of unknown cause detected in Wuhan, Hubei Province, China. This  
63 condition is due to the severe acute respiratory syndrome coronavirus-2 (SARS-CoV-2),  
64 causing a range of clinical signs including fever, cough, asthenia, or respiratory distress. The  
65 virus has spread rapidly worldwide since its outbreak with the WHO declaring it a pandemic  
66 [1] As of July 8, 2022, more than 500 million cases of COVID-19 have been reported across  
67 the world, resulting in more than 6 million deaths[2].

68 The global COVID-19 data showed America, Asia, and Europe to be the most hit continents  
69 with COVID-19 with poor survival rates among cases as compared with other continents like  
70 Africa which had better survival [1]. The first confirmed case of COVID-19 in Africa was  
71 reported in Egypt on February 14, 2020, and on April 19, 2020, Egypt has reported 3144 cases  
72 of COVID-19 and 239 deaths. The case fatality rate of COVID-19 varies across countries with  
73 an average of  $4.2 \pm 3.8$ , among the older population [4, 5]

74 In China, Most of the mortality cases were reported among men, and less than half had  
75 underlying diseases including diabetes, hypertension, and cardiovascular disease [6, 7]. There  
76 is a better survival rate for COVID-19 patients, who are not living with comorbidities, such as  
77 hypertension, diabetes, liver disease, renal disease, neurological disease, and  
78 immunocompromised [8].

79 In 2020, South Africa, Egypt, Morocco, Nigeria, and Ghana were the African countries with  
80 the highest number of cases of COVID-19 [9]. Mortality was higher among older individuals  
81 (60+ years), with chronic disease and travel history, but with a lower mortality rate of 5.6%  
82 compared to European countries [10]. Nevertheless, Africa has been threatened by insufficient  
83 infrastructure and weak healthcare systems, putting the social-economic status of Africa under

84 control [11]. Some highlights in Africa that have been mentioned as predictors of low mortality  
85 include high temperature, humidity, early use of BCG vaccination, and possibly a different  
86 viral subtype [12].

87 In Tanzania, the first case of COVID-19 was imported on 16<sup>th</sup> March 2020 and declared by the  
88 Ministry of Health, Community Development, Gender, Elderly, and Children [MoHCDGEC]  
89 on 14<sup>th</sup> April 2020 that there was a community transmission, with more than five hundred (509)  
90 confirmed cases and 21 deaths related to COVID 19 [13]. Currently, we have more than 35,000  
91 confirmed cases and more than 800 deaths as of July 8, 2022 [14]

92 Interventions to improve survival among COVID-19 cases include ongoing vaccination,  
93 Infection Prevention and Control (IPC) policy through the use of personal protective  
94 equipment/gear, continuous education, community engagement, and protection of high-risk  
95 groups including healthcare workers, older adults, and those with underlying conditions or  
96 comorbidities [14-18]. However, the number of new infections and deaths attributed to  
97 COVID-19 continues to spike in various communities and regions. In 2021, Kilimanjaro and  
98 Mwanza regions which are surrounded by Kenya and Uganda in the Northern and  
99 Northwestern part of Tanzania were the most regions affected by the disease [14]Currently,  
100 more than 3 Million people have received at least one COVID-19 vaccine dose in Tanzania  
101 [19]. Despite that, Tanzania lacks studies documenting COVID-19-related mortality and  
102 associated predictors. Therefore, this study aimed to determine predictors of mortality among  
103 COVID-19 patients admitted at a zonal referral hospital in Northern Tanzania.

## 104 **Methods**

### 105 **Study design, setting, and population**

106 This was a hospital-based retrospective cohort study, which involved the analysis of all  
107 COVID-19 patients admitted at the KCMC hospital from 10<sup>th</sup> March 2020 to 26<sup>th</sup> January 2022  
108 comprising data from all four COVID-19 waves in Tanzania. We used data available in Excel  
109 format of the electronic isolation database. The data contained the patient's information on  
110 socio-demographic characteristics, clinical features, and comorbidities. The electronic patient  
111 records were collected and filled in by the clinicians at clinical examinations. A total of 1117  
112 COVID-19 patient records were retrieved from the electronic files, only 570 Confirmed  
113 COVID-19 were enrolled. The study excluded patients with incomplete information such as  
114 the unknown discharge status, and dates of admission and discharge (n=23), which was crucial  
115 for our statistical analyses and after removing duplicate patient records only 547 confirmed  
116 COVID-19 cases were available for analysis (**S1 Fig**).

### 117 **Variables**

118 The main event of interest was COVID-19 mortality which was defined based on the certified  
119 cause of death due to COVID-19 documented in the patient's electronic files. The earliest  
120 observed date was 10<sup>th</sup> March 2020 while the latest exist date was 26<sup>th</sup> Jan 2022.

121 Independent variables included patients' socio-demographic characteristics, clinical features at  
122 admission, and comorbidities. The study's selection and categorization of independent variables  
123 were based on previous literature [16]. Patients' socio-demographic characteristics included age  
124 in years (<60, ≥60 years), sex (male, female), and residence region (Arusha, Kilimanjaro, others).  
125 Clinical features at admission were measured based on the defined WHO cutoff points; Disease  
126 severity, Mild case if Oxygen saturation ≥94% on RA+ No clinical or radiological evidence of  
127 pneumonia, Moderate case if oxygen saturation 90-94% on RA+ clinical or radiological evidence  
128 of non-severe pneumonia, Severe case if oxygen saturation 80-89% on RA+ clinical or

129 radiological evidence of severe pneumonia . COVID-19 symptoms, specifically fever, headache,  
130 nausea, cough, difficulty in breathing, chest pain, generalized body weakness, sore throat, runny  
131 nose, smell loss, loss of taste, abdominal pain, and diarrhea were recorded and measured based  
132 on patient/relative report and clinician assessment (“Yes” if had any symptom and “No” if had  
133 no symptoms).

134 Furthermore, the comorbidities were the presence of hypertension, diabetes, liver disease,  
135 asthma, renal disease, neurological disease, immunodeficiency, and malignancy. Patients were  
136 also considered to have comorbidities if they had a history of comorbidities or taking any anti-  
137 comorbidities drugs such as antihypertensive, antidiabetic, antiviral, anticancer drugs, and  
138 being under current care/management receiving (Yes/No). Abnormal chest x-ray and abnormal  
139 lung auscultation were defined based on the radiological finding.

#### 140 **Data analysis**

141 We performed all statistical analyses using Stata version 15 (Stata Corp. 2017). Stata statistical  
142 software: Release 15. College Station, TX: StataCorp LLC). We summarized numerical  
143 variables (age and Oxygen saturation at admission) using median (interquartile range) and  
144 categorical variables using frequencies and percentages. The Chi-square test was used to test  
145 the association between mortality and socio-demographic characteristics, clinical features, and  
146 comorbidities at a 5% threshold level. We compared patient survival experiences using the  
147 Kaplan-Meier survival function and Nelson-Aalen cumulative hazard plots with the Log-rank  
148 test. The mortality rate was estimated using the Poisson survival regression model while the  
149 Weibull regression model was used to estimate the associated predictors [21]. Model  
150 comparison was done using the Akaike Information Criteria (AIC), the lowest value indicating  
151 the best-fitting model.

152 Crude/unadjusted Weibull regression determined the association between mortality and  
153 participant characteristics. The crude hazard ratio (CHR) and corresponding 95% confidence  
154 intervals (CI) were reported for variables of clinical importance such as hypertension, diabetes,  
155 age, and sex. We further developed a multivariable Weibull regression model to determine  
156 mortality predictors adjusted for potential confounders. The model estimated the adjusted  
157 hazard ratio (AHR) and the corresponding 95% CI.

## 158 **Ethical consideration**

159 Permission to use the COVID-19 data with reference No.KCMC/P.I/Vol.IX was granted by  
160 the KCMC Hospital executive director's office. Unique patient identification instead of hospital  
161 numbers was used to maintain confidentiality. Ethical approval to carry out the current study  
162 was obtained from the Kilimanjaro Christian Medical College Research Ethics and Review  
163 Committee (KCMU-CREC) with clearance number PG 15/2021.

## 164 **Results**

### 165 **Characteristics of the studied COVID-19 patients**

166 Among 547 patients who tested positive for COVID-19 and met inclusion criteria, 324 (60%)  
167 were aged 60 years and above with a median age of 63 (IQR: 50-75), and more than half of  
168 them were males 310 (56.7%) (**S1 Table**). Most of the study participants presented with fever  
169 333 (60.8%), a severe form of COVID-19 243 (44.4%), difficulty in breathing 424 (73.3%),  
170 chest pain 252 (46.1%), and generalized body weakness 390 (71.3%). Two-thirds of the  
171 participants 375 (68.6%) were exposed during waves 2 & 3; their median oxygen saturation at  
172 the time of attending the hospital was 70% (IQR: 53-82) (**S2 Table**). Abnormal chest x-ray 458  
173 (83.7%), abnormal lung auscultation 274 (50.1%), hypertension 255 (46.6%), and diabetes 159  
174 (29.1%) were the most common comorbidities (**S3 Table**).

## 175 **Proportions of COVID-19 deaths by participant characteristics**

176 Of 547 COVID-19 patients, 189 (34.6%) died and 358 (65.5%) were discharged alive. The  
177 median survival time was 7 days (IQR:3-12 days). The overall mortality rate was 32.33,  
178 95%CI; 27.8-37.3 per 1000 person-days. Mortality occurred in 141 (43.5%) of the elderly  
179 patients ( $P<0.001$ ) and 113 (36.5%) in male patients ( $P=0.285$ ) (**S2 and S3 Table**). The  
180 proportion of deaths was higher in 140 (57.6%) patients with a severe form of the disease  
181 ( $p<0.001$ ), among 154 (38.4%) patients who present with difficulty in breathing ( $p=0.002$ ), 133  
182 (35.5%), 31 (43.7%) in patients exposed during waves 2&3 and 4, respectively ( $p=0.03$ ), 19  
183 (25.7%) who reported to loss of taste ( $p\text{-value}=0.084$ ) and in 10 (22.7%) among those who  
184 reported having had diarrhea episodes ( $p\text{-value}=0.085$ ) (**S2 Table**).

185 Among individuals with comorbidities, 66 (41.5%) patients with diabetes ( $p=0.028$ ), 172  
186 (37.6%) with abnormal chest x-ray ( $p<0.001$ ), 110 (40.2%) with abnormal lung auscultation  
187 ( $p=0.006$ ), and 13 (54.2%) = with renal disease ( $p=0.003$ ) had died (**S3 table**).

## 188 **Mortality rate experience of COVID-19 patients**

189 The overall mortality rate was 32.33, 95%CI; 27.8-37.3 per 1000 person-days. The mortality  
190 rate (MR) per 1000 person-days was 46.7 (95%CI; 39.4-55.4) in patients over 60 and  
191 (MR=37.1, 95%CI; 30.8-44.5) in male patients. Furthermore, patients with moderate and  
192 severe forms of the disease had mortality rates of (MR=19.2, 95%CI; 13.3-27.4) and  
193 (MR=55.0, 95%CI; 46.4-65.2), respectively. The mortality rate (per 1000 person-days) among  
194 patients presenting with breathing difficulties was (MR=35.4, 95%CI; 30.1-41.6), and in  
195 diabetic patients was (MR=39.4, 95%CI; 30.7-50.6). In addition, the mortality rate was  
196 (MR=36.9, 95%CI; 30.0-45.2) in hypertensive patients, (MR=34.5, 95%CI; 29.6-40.2) among  
197 patients with abnormal chest x-rays, and (MR=37.8, 95%CI; 31.2-45.9) among those with lung  
198 auscultations. Patients with renal disease had a mortality rate of (MR=37.8, 95%CI; 31.2-45.9)  
199 per 1000 person-days (**S2 Fig**).



## 200 **Predictors of COVID-19 mortality**

201 The predictors associated with COVID-19 mortality are displayed in **(Tables S4, S5 & S6)**. In  
202 crude analysis Age, Sex, Disease severity, Difficult in breathing, Abnormal chest X-ray,  
203 Abnormal Lung auscultation and renal diseases were the significant predictor, the hazard of  
204 mortality among patients aged  $\geq 60$  years was 2.62 times significant higher, compared to those  
205 aged  $< 60$  years (CHR=2.62; 95%CI 1.88-3.66;  $P < 0.001$ ). Males had 1.35 times significant  
206 higher the hazard of mortality compared to females (CHR=1.35; 95%CI 1.00-1.83;  $P = 0.049$ ).  
207 Compared to the mild form of the disease, patients with moderate form had a 1.91 times higher  
208 hazard of mortality (CHR=1.91; 95%CI 1.03-3.53;  $P < 0.041$ ). Compared to the mild form of  
209 the disease, patients with the severe form had a 5.54 times higher hazard of mortality  
210 (CHR=5.54; 95%CI 3.25-9.44;  $P < 0.001$ ). Patients who present with Difficult breathing had  
211 1.56 times the significant higher hazard of mortality compared to those without (CHR=1.56;  
212 95%CI 1.06-2.28;  $P=0.023$ ), compared to patients living without diabetes, diabetes patients  
213 had 1.33 times the significant higher hazard of mortality (CHR=1.33; 95%CI 0.98-1.82;  $P=$   
214 0.066). Patients found with abnormal chest X-rays had 1.75 times the significant higher hazard  
215 of mortality compared to patients without abnormal chest x-ray, (CHR=1.75; 95%CI 1.06-  
216 2.88;  $P= 0.028$ ). Patients with abnormal lung auscultation had 1.41 times the significant higher  
217 hazard of mortality compared to a patient with normal lung auscultations (CHR=1.41; 95%CI  
218 1.05-1.89;  $P= 0.024$ ). Lastly, compared to patients without renal disease, patients with renal  
219 disease had a 1.89 times higher hazard of mortality (CHR=1.89; 95%CI 1.08-3.33;  $P= 0.027$ ).  
220 In the adjusted analysis, the significantly higher mortality risk was among the elderly aged  $\geq 60$   
221 years (AHR=2.01; 95%CI 1.41-2.87;  $P < 0.001$ ), male patients (AHR=1.27; 95%CI 0.93-1.73;  
222  $P=0.128$ ), patients diagnosed with moderate (AHR=1.67; 95%CI 0.89-3.13;  $P=0.112$ ) and  
223 severe form of COVID-19 (AHR=4.44; 95%CI 2.56-7.73;  $P < 0.001$ ), those exposed during

224 wave 2 & 3 (AHR=1.58; 95%CI 1.03-2.41; P=0.036), and in diabetes patients (AHR=1.25;  
225 95%CI 0.88-1.79; P=0.212) (**S7 Table**).

## 226 **Discussion**

227 This study aimed to determine the predictors of mortality among COVID-19 patients at KCMC  
228 referral Hospital in northern Tanzania. The overall proportion of death due to COVID-19  
229 among the studied patients was 34.6%, which is consistent with findings in Italy at 37.6% [3],  
230 Democratic republic of Congo at 32% [16], and in Dar es Salaam Tanzania at 31.8% [18].  
231 Much lower prevalence was reported in India (14.4%) [19] and Tanzania (14.9%) [20], due to  
232 severe form of disease,, pre-existing comorbidities, and advanced age. The overall mortality  
233 rate in this study was 32.3 per 1000 person-days, which is lower than those reported in other  
234 settings [25-29]. Possible explanation may be the healthcare setting infrastructures, Manpower  
235 and its accessibility, geographical location, or personal behaviors.

236 The median survival time was 7days (IQR:3-12] Similar to findings in East India 8days (IQR:7-  
237 10) [30], Ethiopia 9days (IQR:8-12), [26] USA 5days(IQR:3-10) [25],Tanzania 3days(IQR:1-  
238 6) [24], 12days Congo [16],Different findings in Ethiopia 44days(IQR:28-74) [29] Probable  
239 reasons living environment, Setting in which the patient receive care and attitudes toward  
240 COVID-19.

241 Older patients had a higher mortality risk compared to patients less than 60 years. The finding  
242 is similar to studies conducted in Northern Italy [5], Brazil [25], the Democratic Republic of  
243 Congo [16], and Tanzania [18]. This observation amongst the elderly may be due to  
244 immunodeficiency, and comorbidities, as it increases with age, which results in higher  
245 morbidity and mortality [26].

246 Mortality among males with COVID-19 was higher compared to females, which is similar to  
247 studies conducted elsewhere [20, 24, 32, 34-38]. The reasons for higher risk in males compared

248 to females could be due to sex-specific hormones, and immune responses. Higher expression  
249 of Angiotensin-converting enzymes, Risk-taking behaviors and lifestyle, comorbidities,  
250 irresponsible attitudes toward the COVID-19 pandemic frequent hand washing, wearing masks  
251 and homestay, and hormonal difference [37, 38].

252 COVID-19 mortality was significantly higher among patients with moderate (18.3%) and  
253 severe forms of the disease (57.6%) compared to those with mild forms (13.2%). Patients with  
254 moderate and severe forms of the disease are consistently reported to have a higher mortality  
255 risk [23, 34, 39-42]. Weak immune functions, elderly age, limited organ compensatory  
256 function, more basic disease before infections, poor history of healthcare-seeking behaviors in  
257 the African setting, higher neutrophils count, lower lymphocytes, and platelet count could  
258 explain the observed findings [23, 39, 40].

259 Being exposed during waves 2 & 3 was a significant predictor of mortality. The wave exposure  
260 happened at different times across the world. Therefore the findings of these waves are not  
261 consistent at all compared to other settings as they occurred at different times and settings. Low  
262 mortality was observed among patients exposed to waves 1 and 4 respectively.

263 Different studies reported a higher mortality risk among elderly patients with one or more than  
264 two pre-existing comorbidities, especially hypertension, diabetes, and renal disease [22, 24, 31,  
265 34, 43, 44], which was similar to the findings in this study. These studies found diabetes and  
266 hypertension as important risk factors for COVID-19 severity and mortality. The observed  
267 difference may be due to lifestyle, eating habits, sedentary lifestyle and low prevalence of Non-  
268 Communicable diseases in sub-Saharan Africa.

269

## 270 **Strengths**

271 This study is the first to determine the predictors of mortality among COVID-19 confirmed  
272 cases at KCMC zonal referral hospital in Northern Tanzania. Secondly, the survival analysis  
273 which take into account variable time was carried out which make this study unique compared  
274 to others done in Tanzania. Thirdly, Data analysis and experience set a baseline for further  
275 studies in addressing the area of improvement within our country.

## 276 **Limitations**

277 We were unable to obtain all important data related to the outcome of interest as the use of  
278 secondary data limit the prediction of the existing data and patient monitoring. Secondly, this  
279 study is single centered thus these results cannot be generalized to all COVID-19 patients  
280 admitted in the other settings. Thirdly, the external validation was limited as the studied number  
281 of patients were not sufficient enough to identify both potential predictors associated with the  
282 outcome. Fourthly, being historical cohort study, retrieving complete information was  
283 difficulty lack of some information's might underestimate or overestimate the outcome. Lastly,  
284 Patients in this study were only studied up to their date of discharge, it would be of more interest  
285 and benefit if they were studied beyond this time. Furthermore, it also includes the usual  
286 limitations of retrospective studies.

287

## 288 **Conclusion**

289 Mortality was higher in elderly male patients, with a severe form of COVID-19, who were  
290 exposed during waves 2 & 3, and those with any comorbidities. Therefore, more attention  
291 should be provided to older patients, and ensuring standard and supportive care at primary  
292 health facilities are available.

## 293 **Recommendations**

294 Ensure that standard and supportive care are also available at the primary health facilities to  
295 allow early intervention to take place among patients diagnosed with the severe form of the  
296 disease because some patients were transferred late to referral hospitals which turnout in poor  
297 clinical outcome.

298 A further large multicenter quantitative study should be carried out by using both signs,  
299 symptoms, pre-existing comorbidities, laboratory parameters, and radiological and  
300 pathological findings to identify the potential predictors of mortality among COVID-19  
301 patients, to allow external validation. Furthermore, a clinical trial study is needed to explore  
302 the sex differences in susceptibility, severity and outcomes of coronavirus diseases in 2019.

## 303 **Abbreviations**

304	COVID-19	Coronavirus disease of 2019
305	DIB	Difficulty in breathing
306	DM	Diabetes mellitus
307	GBW	Generalized Body weakness
308	HIV	Human Immunodeficiency Virus
309	IPC	Infection Prevention and Control
310	KCMC	Kilimanjaro Christian Medical Centre
311	KCMUCo	Kilimanjaro Christian Medical University College
312	MoH	Ministry of Health
313	PCR	Polymerase Chain Reaction
314	SARS-CoV-2	Severe Acute Respiratory Syndrome Coronavirus-2

315 WHO World Health Organization.

316 Consent for publication

317 Not applicable

318 Availability of data and materials

319 Data will be made available

320 Competing Interest

321 None of the authors has any conflict of interest in the content of this manuscript.

322 Acknowledgment

323 We acknowledge all doctors at KCMC who took part in data collection and all patients whose

324 information enabled the availability of data used in this study. The authors also thank the

325 KCMC isolation team for capturing these data in the electronic system.

326 Author's contributions

327 GGW, FJM, IBM, KGK and NJ contributed to the design of the study. GGW performed the  
328 statistical analysis and drafted the manuscript. LS, HLM, EBM and MN participated in  
329 statistical analysis and drafting of the manuscript. FJM, IBM, KGK and FS edited the final  
330 draft of the manuscript and approved the final manuscript.



## 331 REFERENCES

- 332 1. WHO (2020) Coronavirus Disease (COVID-19) Situation Reports Updates 27  
333 September 2020. World Health Organ Tech Rep Ser 1–23
- 334 2. WHO (2022) COVID-19 Weekly Epidemiological Update. World Heal Organ 1–23
- 335 3. Spiteri G, Fielding J, Diercke M, et al (2020) First cases of coronavirus disease 2019 (COVID-19) in the WHO European Region, 24 January to 21 February 2020. 2019:  
336
- 337 4. Alshogran OY, Altawalbeh SM, Al-azzam SI, Karasneh R (2021) Predictors of Covid-19 case fatality rate : An ecological study. *Ann Med Surg* 65:102319  
338
- 339 5. Ferroni E, Rossi PG, Alegiani SS, et al (2020) Survival of hospitalized COVID-19  
340 patients in Northern Italy: A population-based cohort study by the ITA-COVID-19  
341 network. *Int J Environ Res Public Health* 17:1–12
- 342 6. Lei J, Li M, Wang X (2021) Predicting the development trend of the second wave of  
343 COVID-19 in five European countries. *J Med Virol* 93:5896–5907
- 344 7. Wang Y, Hospital CF, Ren L, Fan G, Hospital CF, Gu X, Hospital CF (2020) Articles  
345 Clinical features of patients infected with 2019 novel coronavirus in Wuhan, China.  
346 [https://doi.org/10.1016/S0140-6736\(20\)30183-5](https://doi.org/10.1016/S0140-6736(20)30183-5)
- 347 8. Emami A, Javanmardi F, Akbari A, Kojuri J, Bakhtiari H, Rezaei T, Keshavarzi A,  
348 Falahati F (2021) Survival rate in hypertensive patients with. *Clin Exp Hypertens*  
349 43:77–80
- 350 9. Lot M, Hamblin MR, Rezaei N (2020) Since January 2020 Elsevier has created a  
351 COVID-19 resource centre with free information in English and Mandarin on the  
352 novel coronavirus COVID- 19 . The COVID-19 resource centre is hosted on Elsevier  
353 Connect , the company ' s public news and information .

- 354 10. Mohammed M, Muhammad S, Mohammed FZ, Mustapha S, Sha A, Sani NY, Ahmad  
355 MH, Bala AA (2020) Risk Factors Associated with Mortality Among Patients with  
356 Novel Coronavirus Disease ( COVID-19 ) in Africa. 6–11
- 357 11. Rosenthal PJ, Breman JG, Djimde AA, John CC, Kanya MR, Leke RGF, Moeti MR,  
358 Nkengasong J, Bausch DG (2020) Editorial COVID-19 : Shining the Light on Africa.  
359 102:1145–1148
- 360 12. Medhat MA, Kassas M El (2020) COVID-19 in Egypt : Uncovered figures or a  
361 different situation ? 10:2–5
- 362 13. Sarvas J (1987) Basic mathematical and electromagnetic concepts of the biomagnetic  
363 inverse problem. Phys Med Biol 32:11–22
- 364 14. MoHCDGEC (2021) THE UNITED REPUBLIC OF TANZANIA Weekly trend of  
365 COVID-19 Confirmed Cases. 1–7
- 366 15. Goyal ADK, Mansab AF, C BAI, D SB (2020) Early intervention likely improves  
367 mortality in COVID-19 infection. 248–250
- 368 16. Nlandu Y, Mafuta D, Sakaji J, et al (2021) Predictors of mortality in COVID - 19  
369 patients at Kinshasa Medical Center and a survival analysis : a retrospective cohort  
370 study. BMC Infect Dis 1–11
- 371 17. Methods C, Vienna LS, Vienna LS, Ducrocq V (2013) The Survival Kit : Software to  
372 analyze survival data including possibly correlated random effects.  
373 <https://doi.org/10.1016/j.cmpb.2013.01.010>
- 374 18. Aghan E, Aziz O, Mbithe H, Surani S, Orwa J, Somji S (2021) Factors Associated  
375 with Mortality Among Hospitalized Adults with COVID-19 Pneumonia at a Private  
376 Tertiary Hospital in Tanzania : A Retrospective Cohort Study. 5431–5440

- 377 19. Mammen JJ, Kumar S, Thomas L, et al (2021) Factors associated with mortality  
378 among moderate and severe patients with 19 in India : a secondary analysis of a  
379 randomised controlled trial. 1–10
- 380 20. Mnyambwa NP, Lubinza C, Ngadaya E, et al (2022) Clinical characteristics and  
381 outcomes of confirmed COVID-19 patients in the early months of the pandemic in  
382 Tanzania : a multicenter cohort study. *IJID Reg* 2:118–125
- 383 21. Agarwal N, Biswas B, Singh C, Nair R, Mounica G, Haripriya H, Jha AR, Das KM  
384 (2021) Early Determinants of Length of Hospital Stay : A Case Control Survival  
385 Analysis among COVID-19 Patients admitted in a Tertiary Healthcare Facility of East  
386 India. <https://doi.org/10.1177/21501327211054281>
- 387 22. Weya A, Id K, Id GA, Hurissa Z, Kaso T, Ewune HA, Hareru HE, Id AH (2022)  
388 Survival analysis of COVID-19 patients in Ethiopia : A hospital-based study. 1–11
- 389 23. Lacky M c. B and elisabeth m. (2020) Categorization of COVID-19 severity to  
390 determine mortality risk. *FDA* 19
- 391 24. Ayana galana mamo (2021) Predictors of Mortality Among Hospitalized COVID-19  
392 Patients at a Tertiary Care Hospital in. *Infect drug Resist* 5363–5373
- 393 25. Pereira MLD (2020) Mortality and survival of COVID-19. *Epidemiology Infect* 148:1–  
394 6
- 395 26. Ciceri F, Castagna A, Rovere-querini P, et al (2020) Early predictors of clinical  
396 outcomes of COVID-19 outbreak in Milan , Italy. *Clin Immunol* 217:108509
- 397 27. Bwire GM (2020) Coronavirus : Why Men are More Vulnerable to Covid-19 Than  
398 Women ? 874–876
- 399 28. Wahaibi (2020) COVID-19 disease severity and mortality determinants: A large

400 population-based analysis in Oman. Travel Med. Infect. Dis. 39 101923 Contents

401

402 **S1 Table: Proportions of COVID-19 patients who died by their background**

403 **characteristics (N=547)**

VARIABLE(S)	TOTAL n(%)	DEATH		P-value
		Yes n (%)	No. n (%)	
<b>Age categories in years</b>				
Median (IQR)	63 (50-75)			
<60	223 (40.8)	48 (21.5)	175(78.5)	
60+	324 (59.2)	141 (43.5)	183(56.5)	<b>&lt;0.001</b>
<b>Sex</b>				
Females	237 (43.3)	76 (32.1)	161 (67.9)	
Males	310 (56.7)	113(36.5)	197(63.5)	0.285
<b>Reporting Region</b>				
Arusha	48(8.8)	14 (29.2)	34 (70.8)	
Kilimanjaro	491(89.8)	172 (35.0)	319 (64.9)	
Others	8 (1.5)	3 (37.5)	5(62.5)	0.742

404

405

406

407

408

409

410

411

412

413

414

415 **S2 Table: Proportions of COVID-19 patients who died by clinical features at admission**

416 (N=547)

Variables	N (%)	Died		P-value
		Yes(%)	No(%)	
<b>Median (IQR) Oxygen saturation at admission in %</b>	70(53-82)			<b>&lt;0.001</b>
<b>Median Survival time (IQR) in days</b>	7(3-12)			<b>0.0004</b>
<b>Disease severity</b>				
Mild	129 (23.6)	17 (13.2)	112 (86.8)	
Moderate	175 (31.9)	32 (18.3)	143 (81.7)	
Severe	243 (44.4)	140 (57.6)	103 (42.4)	<b>&lt;0.001</b>
<i>Clinical features</i>				
<b>Fever chills</b>				
No	214 (39.1)	71 (33.2)	143(66.8)	
Yes	333 (60.8)	118 (35.4)	215 (64.6)	0.588
<b>Headache</b>				
No	455 (83.2)	159 (34.9)	296 (65.1)	
Yes	92 (16.8)	30 (32.6)	62 (67.4)	0.667
<b>Nausea/Vomiting</b>				
No	484 (88.5)	170 (35.1)	314 (64.9)	
Yes	63 (11.5)	19 (30.2)	44 (69.8)	0.436
<b>Cough</b>				
No	123 (22.5)	37 (30.1)	86 (69.9)	
Yes	424 (77.5)	152 (35.9)	272 (64.1)	0.236
<b>Difficulty in breathing</b>				
No	146 (26.7)	35 (23.9)	111(76.0)	
Yes	401 (73.3)	154 (38.4)	247 (61.6)	<b>0.002</b>
<b>Chest pain</b>				
No	295 (53.9)	96 (32.5)	199 (67.5)	
Yes	252 (46.1)	93 (36.9)	159 (63.1)	0.285
<b>GBW</b>				
No	157 (28.7)	49 (31.2)	108 (68.8)	
Yes	390 (71.3)	140 (35.9)	250 (64.1)	0.297
<b>Sore throat</b>				
No	507 (92.7)	179 (35.3)	328 (64.7)	
Yes	40 (7.3)	10 (25.0)	30 (75.0)	0.187
<b>Runny nose</b>				
No	519 (94.9)	183 (35.3)	336 (64.7)	
Yes	28 (5.1)	6 (21.4)	22 (78.6)	0.134
<b>Smell loss</b>				
No	502 (91.7)	178 (35.5)	324 (64.5)	
Yes	45 (8.2)	11 (24.4)	34 (75.6)	0.137
<b>Loss of taste</b>				
No	473 (86.5)	170 (35.9)	303 (64.1)	
Yes	74 (13.5)	19 (25.7)	55 (74.3)	0.084
<b>Abdominal pain</b>				
No	503 (91.9)	174 (34.6)	329 (65.4)	
Yes	44 (8.0)	15 (34.1)	29 (65.9)	0.947
<b>Diarrhea</b>				
No	503 (91.9)	179 (35.6)	324 (64.4)	
Yes	44 (8.0)	10 (22.7)	34 (77.3)	0.085
<b>Waves</b>				
Wave1	101 (18.5)	25 (24.8)	76 (75.3)	
Wave2&3	375(68.6)	133 (35.5)	242 (64.5)	

Wave4	71 (12.9)	31 (43.7)	40 (56.3)	<b>0.030</b>
-------	-----------	-----------	-----------	--------------

417

418 **S3 Table: Proportion of COVID-19 patients who died by comorbidities and radiological**

419 **findings (N=547)**

Variables	n (%)	Died		P-value
		Yes(%)	No(%)	
<b>Hypertension</b>				
No	292 (53.4)	94 (32.2)	198 (67.8)	
Yes	255 (46.6)	95 (37.3)	160 (62.8)	0.214
<b>Diabetes</b>				
No	388 (70.9)	123 (31.7)	265 (68.3)	
Yes	159 (29.1)	66 (41.5)	93 (58.5)	<b>0.028</b>
<b>Liver disease</b>				
No	541 (98.9)	187 (34.6)	354 (65.4)	
Yes	6 (1.1)	2 (33.3)	4 (66.7)	0.950
<b>Asthma</b>				
No	530 (96.9)	182 (34.3)	348 (65.7)	
Yes	17 (3.1)	7 (41.2)	10 (58.8)	0.560
<b>Renal disease</b>				
No	523 (95.6)	176 (33.7)	347 (66.4)	
Yes	24 (4.4)	13 (54.2)	11 (45.8)	<b>0.039</b>
<b>Neurological disease</b>				
No	534 (97.6)	182 (34.1)	352 (65.9)	
Yes	13 (2.4)	7 (53.9)	6 (46.1)	0.139
<b>HIV</b>				
No	535 (97.8)	185 (34.6)	350 (65.4)	
Yes	12 (2.2)	4 (33.3)	8 (66.7)	0.928
<b>Malignancy</b>				
No	521 (95.3)	178 (34.2)	343 (65.8)	
Yes	26 (4.7)	11 (42.3)	15 (57.7)	0.394
<i>Radiological findings</i>				
<b>Abnormal chest</b>				
No	89 (16.3)	17 (19.1)	72 (80.9)	
Yes	458 (83.7)	172 (37.6)	286 (64.5)	<b>0.001</b>
<b>Abnormal lung</b>				
No	273 (49.9)	79 (28.9)	194 (71.1)	
Yes	274 (50.1)	110 (40.2)	164 (59.8)	<b>0.006</b>

420

421

422

423

424 **S4 Table: Sociodemographic predictors of mortality among COVID-19 patients**

<b>Variables</b>	<b>CHR (95%CI)</b>	<b>P-value</b>
<b>Age cat</b>		
<60	1	
60+	2.62(1.88,3.66)	<b>&lt;0.001</b>
<b>Sex</b>		
Females	1	
Males	1.35(1.00,1.83)	<b>0.049</b>
<b>Reporting Region</b>		
Arusha	1.00(0.29,3.53)	0.993
Kilimanjaro	1.08(0.35,3.39)	0.891
Others	1	

425

426

427

428

429

430

431

432

433

434

435

436

437

438

439

440

441

442 **S5 Table: Clinical features predictors associated with mortality among COVID-19**  
 443 **patients**

<b>Variables</b>	<b>CHR (95%CI)</b>	<b>P-value</b>
<b>Disease severity</b>		
Mild	1	
Moderate	1.91(1.03,3.53)	<b>0.041</b>
Severe	5.54(3.25,9.44)	<b>&lt;0.001</b>
<b>Fever chills (Yes)</b>	1.27(0.94,1.72)	0.124
<b>Headache (Yes)</b>	1.02(0.68,1.54)	0.930
<b>Nausea/Vomiting (Yes)</b>	0.81(0.50,1.30)	0.380
<b>Cough (Yes)</b>	1.32(0.91,1.91)	0.144
<b>Difficulty in breathing (Yes)</b>	1.56(1.06,2.28)	<b>0.023</b>
<b>Chest pain (Yes)</b>	1.03(0.77,1.38)	0.833
GBW (Yes)	1.23(0.88,1.72)	0.223
<b>Sore throat (Yes)</b>	0.62 (0.32,1.21)	0.163
<b>Runny nose (Yes)</b>	0.81(0.36,1.83)	0.613
<b>Smell loss (Yes)</b>	0.93(0.50,1.70)	0.804
<b>Loss of taste (Yes)</b>	0.73(0.45,1.19)	0.206
<b>Abdominal pain (Yes)</b>	1.22(0.72,2.07)	0.466
<b>Diarrhea (Yes)</b>	0.72(0.38,1.36)	0.310
<b>Waves</b>		
Wave1	1	
Wave2&3	1.29(0.86,1.93)	0.220
Wave4	1.38(0.79,2.37)	0.257

444

445

446

447

448

449

450

451

452

453



454

455 **S6 Table: Association between comorbidities, radiological findings and COVID-19**

456 **mortality**

<b>VARIABLE(S)</b>	<b>CHR (95%CI)</b>	<b>P-value</b>
<b>Hypertension</b>		
Yes	1.27(0.95,1.71)	0.109
<b>Diabetes</b>		
Yes	1.33(0.98,1.82)	<b>0.066</b>
<b>Liver disease</b>		
Yes	1.00(0.25,4.05)	0.995
<b>Asthma</b>		
Yes	0.83(0.39,1.79)	0.652
<b>Renal disease</b>		
Yes	1.89(1.08,3.33)	<b>0.027</b>
<b>Neurological disease</b>		
Yes	1.87(0.87,3.97)	0.106
<b>Immunodeficiency</b>		
Yes	0.54(0.20,1.47)	0.228
<b>Malignancy</b>		
Yes	1.18(0.64,2.17)	0.596
<i>Radiological findings</i>		
<b>Abnormal chest x-ray</b>		
Yes	1.75(1.06,2.88)	<b>0.028</b>
<b>Abnormal lung auscultation</b>		
Yes	1.41(1.05,1.89)	<b>0.024</b>

457

458

459

460

461

462

463

464

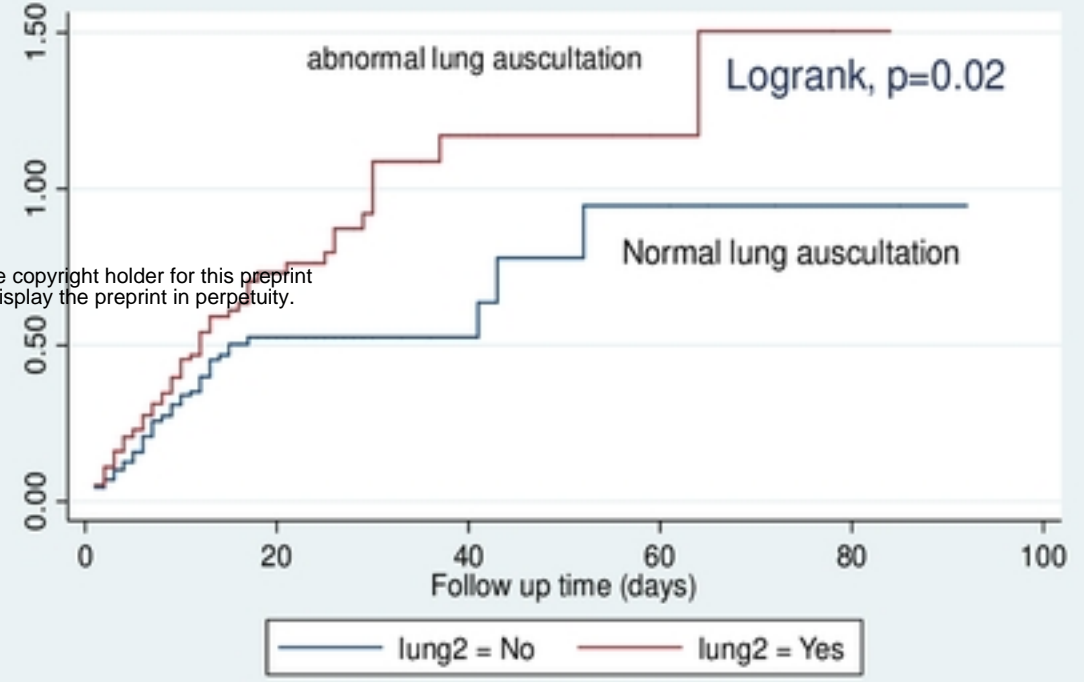
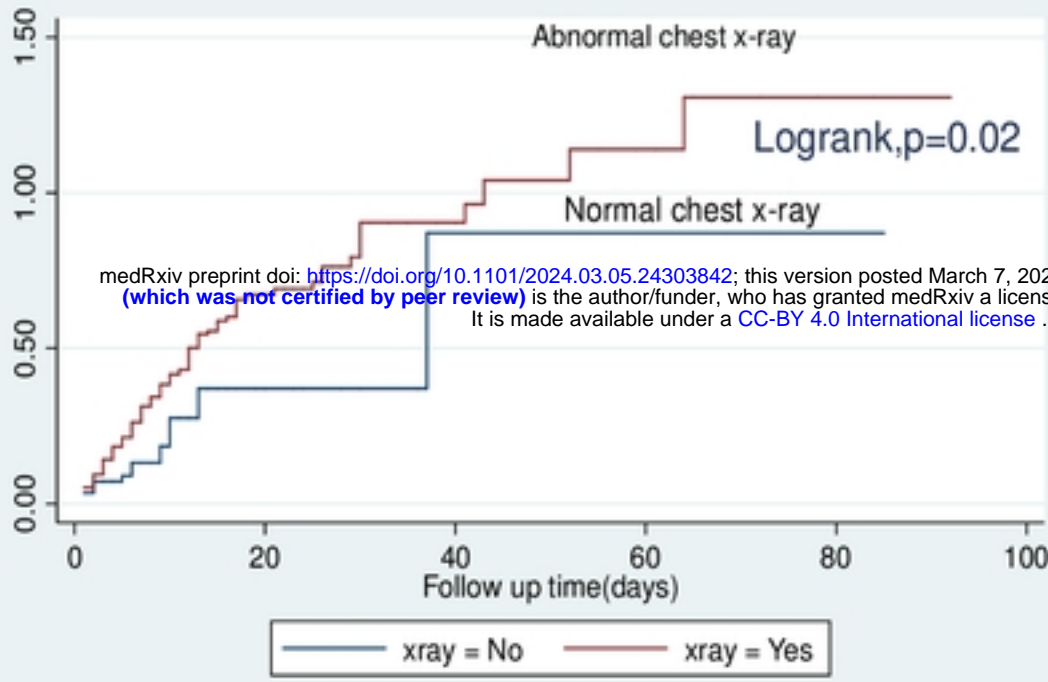
465 **S7 Table: Predictors of mortality among COVID-19 patients**

<b>VARIABLE (S)</b>	<b>CHR(95%CI)</b>	<b>P-value</b>	<b>AHR(95%CI)</b>	<b>P-value</b>
<b>Age cat</b>				
60+	2.62 (1.88,3.66)	<b>&lt;0.001</b>	2.01 (1.41,2.87)	<b>&lt;0.001</b>
<b>Sex</b>				
Male	1.35 (1.00,1.83)	<b>0.049</b>	1.27 (0.93,1.73)	0.128
<i>Clinical features</i>				
<b>Disease severity</b>				
Mild	1		1	
Moderate	1.91 (1.03,3.53)	<b>0.041</b>	1.67 (0.89,3.13)	0.112
Severe	5.54 (3.35,9.44)	<b>&lt;0.001</b>	4.44 (2.56,7.73)	<b>&lt;0.001</b>
<b>Difficultyinbreathing</b>				
Yes	1.56 (1.06,2.28)	<b>0.023</b>	1.02 (0.68,1.52)	0.940
<b>Waves</b>				
Wave1	1		1	
Wave2&3	1.29 (0.86,1.93)	0.220	1.58 (1.03,2.41)	<b>0.036</b>
Wave4	1.38 (0.79,2.37)	0.257	1.07 (0.60,1.91)	0.811
<i>Comorbidities</i>				
<b>Diabetes</b>				
Yes	1.33 (0.98,1.82)	<b>0.066</b>	1.25 (0.88,1.79)	0.212
<b>Hypertension</b>				
Yes	1.27 (0.95,1.71)	0.109	0.94 (0.66,1.32)	0.713
<b>Renal diseases</b>				
Yes	1.89 (1.08,3.33)	<b>0.027</b>	1.26 (0.69,2.29)	0.438
<i>Radiological findings</i>				
<b>Abnormal lung auscultation</b>				
Yes	1.41 (1.05,1.89)	<b>0.024</b>	1.12 (0.82,1.53)	0.472
<b>Abnormal chest x-ray</b>				
Yes	1.75 (1.06,2.88)	<b>0.028</b>	1.38 (0.81,2.36)	0.235

466 **Note:** Bolded P-values indicates statistical significance variables

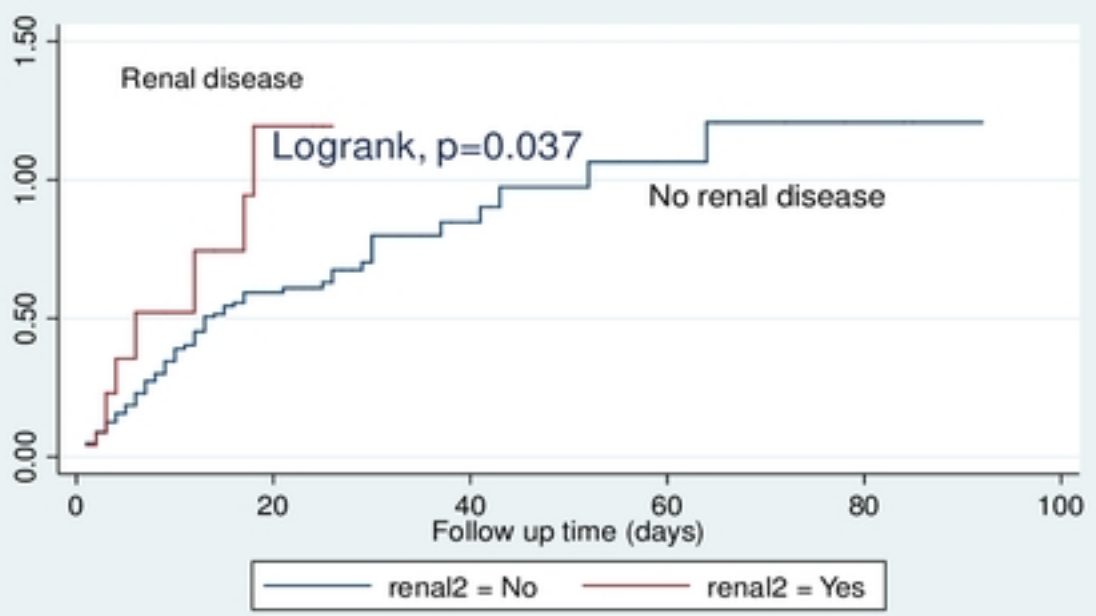
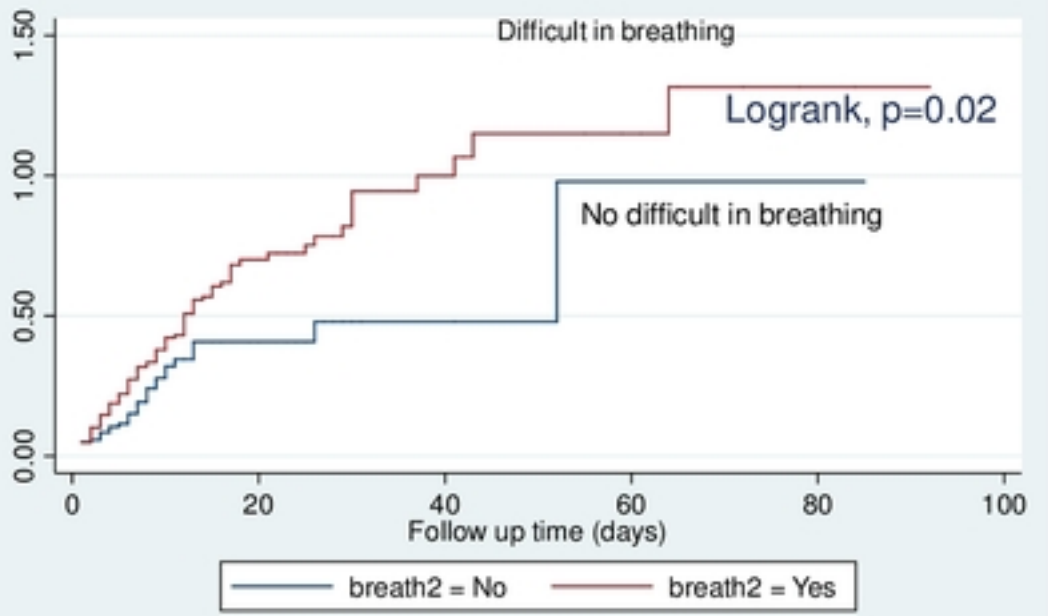
467 Key: CHR Hazard Ratio, AHR Adjusted Hazard Ratio, CI Confidence interval

468



G

H

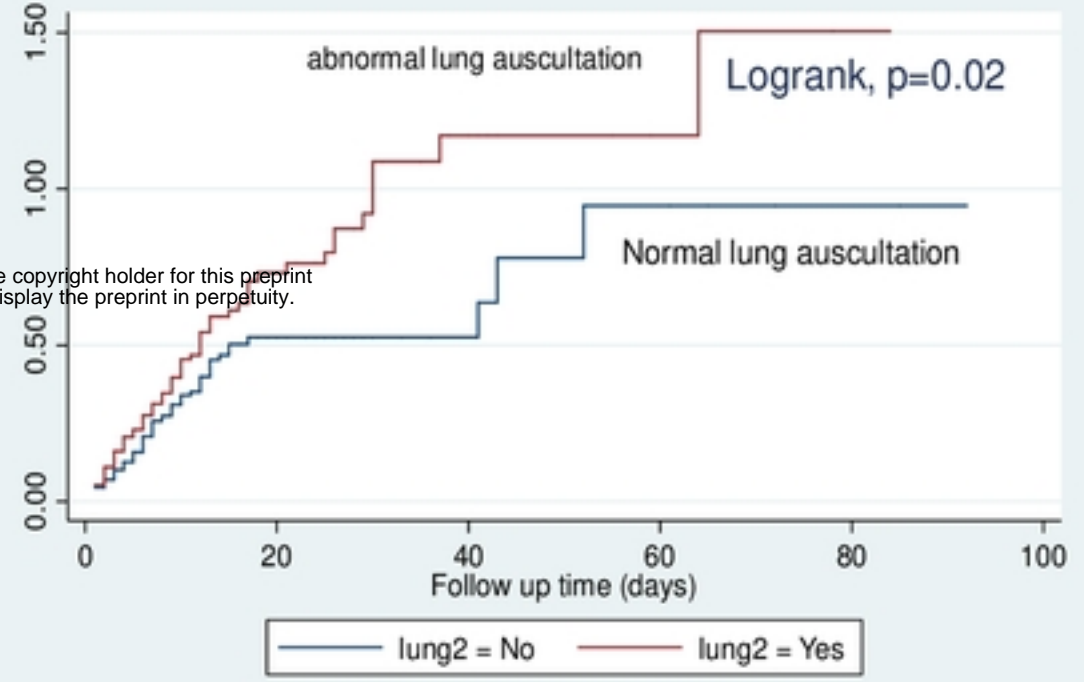
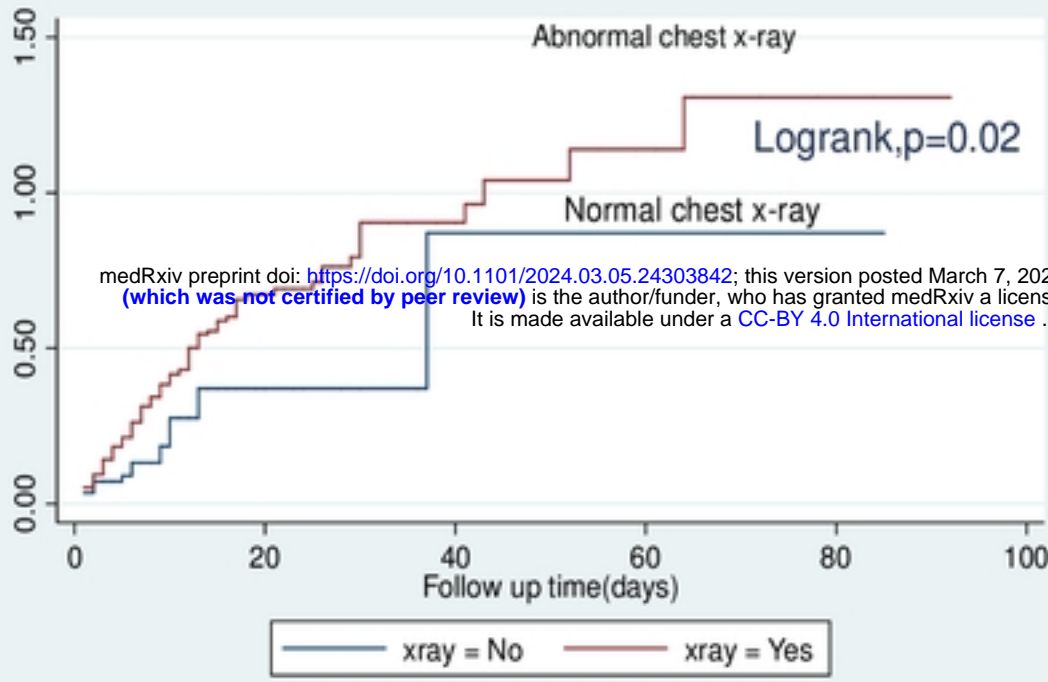


I

J

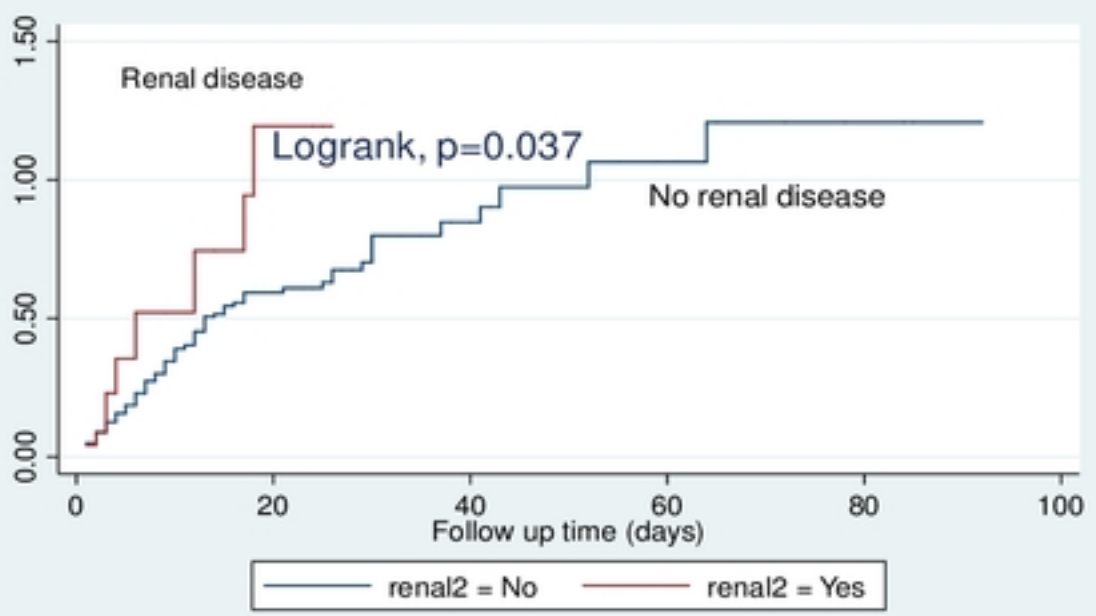
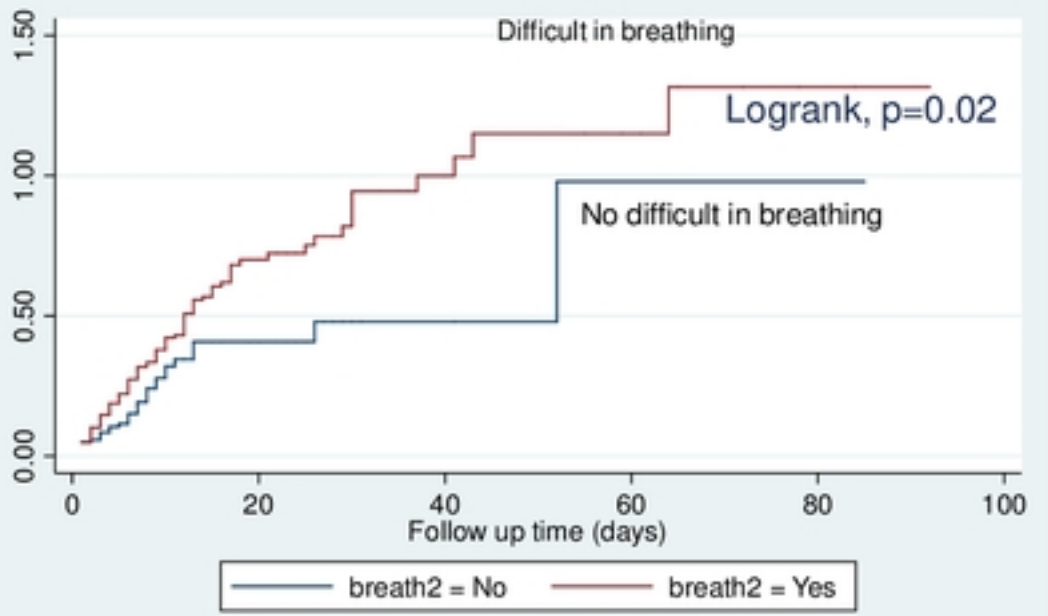
**Figure 1: (A)Kaplan-Meier survival plot showing overall survival; and Nelson-Aalen cumulative hazard plots showing mortality experience of COVID-19 patients at KCMC Hospital from 20<sup>th</sup> March 2020 to 26<sup>th</sup> Feb 2022 by (B)Age; (C)Disease severity; (D)Diabetes; (E)Sex; (F)Hypertension; (G)Lung auscultations; (H)Chest-x-ray; (I)Difficult in breathing; (J)Renal disease.**

Figure



G

H



I

J

**Figure 1: (A)Kaplan-Meier survival plot showing overall survival; and Nelson-Aalen cumulative hazard plots showing mortality experience of COVID-19 patients at KCMC Hospital from 20<sup>th</sup> March 2020 to 26<sup>th</sup> Feb 2022 by (B)Age; (C)Disease severity; (D)Diabetes; (E)Sex; (F)Hypertension; (G)Lung auscultations; (H)Chest-x-ray; (I)Difficult in breathing; (J)Renal disease.**

Figure