

The predictive value of heparin-binding protein for bacterial infections in patients with severe multiple trauma.

Li Li¹, Xiao-xi Tian¹, Gui-long Feng^{2*}, Bing Chen^{3*}

¹ Li Li, M.D.

Email: lililee@foxmail.com Tel: +86-17835152613

Department of Critical Care Medicine, The Second Hospital of Tianjin Medical University, Tianjin 300070, China

¹ Xiao-xi Tian, Master

Department of Emergency, The First Hospital of Shanxi Medical University, Taiyuan 030001, Shanxi, China

^{2*} Co-corresponding author: Gui-long Feng, Prof.

Email: fgl2008friend@163.com Tel: +86-13513516803

Department of Emergency, The First Hospital of Shanxi Medical University, Taiyuan 030001, Shanxi, China

^{3*} Corresponding author: Bing Chen, Prof.

Email: drchenb@163.com Tel: +86-16629056259

Department of Critical Care Medicine, The Second Hospital of Tianjin Medical University, Tianjin 300070, China

¹ These authors contributed equally to this work and should be considered co-first authors.

* These authors contributed equally to this work and should be considered co-corresponding authors.

1 **Abstract**

2 **Introduction:**

3 Heparin-binding protein is an inflammatory factor with predictive value and
4 participates in the inflammatory response through antibacterial effects, chemotaxis, and
5 increased vascular permeability. The role of heparin-binding protein in sepsis has been
6 progressively demonstrated, but few studies have been conducted in the context of
7 multiple trauma combined with bacterial infections. This study aims to investigate the
8 predictive value of heparin-binding protein for bacterial infections in patients with
9 severe multiple trauma.

10 **Materials and methods:**

11 Patients with multiple trauma in the emergency intensive care unit were selected for the
12 study, and plasma heparin-binding protein concentrations and other laboratory
13 parameters were measured within 48 hours of admission to the hospital. A two-sample
14 comparison and univariate logistic regression analysis were used to investigate the
15 relationship between heparin-binding protein and bacterial infection in multiple trauma
16 patients. A multifactor logistic regression model was constructed, and the ROC curve
17 was plotted.

18 **Results:**

19 Ninety-seven patients with multiple-trauma were included in the study, 43 with
20 bacterial infection and 54 without infection. According to data analysis, heparin-
21 binding protein was higher in the infected group than in the control group [(32.00±3.20)
22 ng/mL vs. (18.52±1.33) ng/mL]. Univariate logistic regression analysis shows that

23 heparin-binding protein is related to bacterial infection ($OR=1.10$, $Z=3.91$,
24 $95\%CI:1.05\sim 1.15$, $P=0.001$). Multivariate logistic regression equations showed that
25 patients were 1.12 times more likely to have bacterial infections for each value of
26 heparin-binding protein increase, holding neutrophils and PCT constant. ROC analysis
27 shows that heparin-binding protein combined with neutrophils and PCT has better
28 predictive value for bacterial infection [$AUC=0.935$, $95\%CI:0.870\sim 0.977$].

29 **Conclusions:**

30 Heparin-binding protein may predict bacterial infection in patients with severe multiple
31 trauma. Combining heparin-binding protein, PCT, and neutrophils may improve
32 bacterial infection prediction.

33 **Keywords:** multiple trauma; heparin-binding protein; bacterial; infection

34 **Introduction**

35 Multiple trauma is the fourth leading cause of death, accounting for 11.2% of
36 disability-adjusted life-years worldwide [1,2]. Infection and inflammatory response
37 after multiple trauma greatly impact the prognosis. Therefore, monitoring inflammatory
38 indicators can help early identification of infection and timely adjustment of treatment
39 strategies [3]. Although the Advanced Trauma Life Support clinical guideline and the
40 Injury Severity Score can assess the condition and guide interventions, more reliable
41 indicators of infection are needed for early prediction of infection [4]. Given the critical
42 role of inflammatory factors in multiple injuries [5], using reliable indicators to predict
43 infection is essential for early clinical intervention and reduction of mortality.

44 Heparin-binding protein (HBP) is mainly produced and stored in neutrophils [6].
45 It is released in response to numerous cytokines, inflammatory agents, chemokines, and
46 microorganisms. Monocytes can also release small amounts of it [7,8]. HBP possesses
47 chemotactic and antimicrobial activities, participates in inflammatory responses, and
48 can promote vascular permeability. It is also known as Azurocidin or 37,000 cationic
49 antimicrobial protein (CAP37) [9]. The diagnostic and prognostic predictive role of
50 heparin-binding protein in sepsis has been progressively demonstrated, but few studies
51 have been conducted in the context of multiple trauma combined with bacterial
52 infections [10~12].

53 The purpose of this study was to determine whether HBP predicts bacterial
54 infection in patients with severe multiple trauma. For this purpose, we prospectively
55 studied the correlation between HBP and bacterial infection and selected variables with

56 clinical value to construct a logistic regression model. The calibration curve and ROC
57 curve are used to evaluate the accuracy and predictive value of the model, respectively.
58 It provides a reference value for predicting bacterial infections in emergency multiple
59 trauma in clinical practice.

60 **Methods**

61 **Sample sources and ethical issues**

62 This is a prospective study of patients with multiple-trauma admitted to the
63 Emergency Intensive Care Unit of the First Hospital of Shanxi Medical University from
64 November 2022 to October 2023. All procedures were performed in accordance with
65 relevant laws and institutional guidelines, in compliance with the World Medical
66 Association Declaration of Helsinki, and were approved by the Ethics Committee of
67 the First Hospital of Shanxi Medical University [2021 Lun Review Words (K-K115)].
68 Case details and personal information included in this study were obtained with consent
69 and authorization. Written consent for this study was obtained from the participants
70 involved or from the patients' families.

71 The outcome indicators were the patients' blood, cerebrospinal fluid, and sputum
72 culture findings. Patients with no positive microbiologic culture findings were placed
73 in the control group, while those with positive bacteria culture results were placed in
74 the infection group.

75 **Inclusion and exclusion criteria**

76 The inclusion criteria included the following: Age ≥ 18 years; time from injury to
77 admission < 24 hours; patients diagnosed with severe multiple trauma; first

78 hospitalization for multiple trauma. Exclusion Criteria: Patients with a hospital stay of
79 less than three days or who are certified dead upon resuscitation; patients with other
80 infections that are not bacterial; prior use of anticoagulant medications; infectious
81 disease before the current trauma; history of severe trauma or surgery in the last three
82 months; diseases that affect coagulation or immunity.

83 **Sample detection and data collection**

84 Within 48 hours of the patient's admission, peripheral venous or preoperative
85 blood collection was performed. Avoiding blood collection with heparin-containing
86 indwelling needles. A 5 ml tube containing sodium citrate was used to collect blood.
87 Samples were centrifuged within 5 minutes of blood collection (5200 r/min, 5 min).
88 After centrifugation, the plasma was taken (20 μ l) and refrigerated at 2~8°C for five days.
89 The HBP assay was carried out in batches using rate-scattering turbidimetric assay to
90 reduce the error (The reagents and instruments used to detect HBP in this study were
91 obtained from Suzhou Kangheshun Medical Co.). Patient clinical information is based
92 on information available during this admission. Laboratory indicators are based on the
93 return of laboratory results within 48 hours of our hospital.

94 **Statistical analysis**

95 Stata MP 16 was used to carry out all statistical evaluations and visualizations.
96 Quantitative was described as mean \pm standard deviation, and qualitative was described
97 using counts and percentages. Quantitative comparisons were made using the two
98 independent samples t-test or *t-test*. Qualitative comparisons were made using the χ^2
99 or *Fisher's exact test*. $P < 0.05$ was considered statistically significant.

100 Univariate variable logistic analyses were performed on variables whose
101 differences were statistically significant after comparing the two samples. The
102 multivariate logistic regression model was constructed using forward stepwise
103 regression to screen the significant variables after univariate logistic regression analysis.
104 Hosmer-Lemeshow test was used to test the goodness of fit of the model. The
105 calibration curve and ROC curve were used to visualize and evaluate the predictive
106 efficacy of the logistic regression model.

107 **Result**

108 **clinical characteristics and comparison of two groups**

109 After screening and testing, 97 multiple-trauma patients were eligible and
110 participated in this study. Microbiological cultures were performed based on the
111 patient's blood, sputum, and cerebrospinal fluid, and 43 were eventually included in the
112 bacterial infection group and 54 in the control group. The clinical characteristics and
113 comparison of the two groups are shown in Table 1. HBP was higher in the infected
114 group than in the control group, and the difference was statistically significant
115 [(32.00±3.20) ng/mL vs. (18.52±1.33) ng/mL]. Besides, Age, smoking, respiratory rate,
116 HBP, leukocytes, neutrophils, and PCT were higher in the infected group than in the
117 control group, and the difference was statistically significant($P<0.05$). The control
118 group had a higher GCS score than the infected group, and the difference was
119 statistically significant($P<0.05$). Gender, BMI, temperature, pulse, ISS score, alcohol
120 consumption, hypertension, diabetes mellitus, lymphocytes, calcium, erythrocytes,
121 hemoglobin, platelets, PT, PTINR, APTT, TT, FDP, DD, FIBc had no statistically

122 significant difference between the two groups ($P > 0.05$).

123 Table 1 Clinical characteristics and comparison of two groups

	Infection group (<i>n</i> =43)	Control group (<i>n</i> =54)	Overall (<i>n</i> =97)	<i>P</i>
Gender, <i>n</i> (%)				0.346
Female	7 (16.28)	13 (24.07)	20 (20.62)	
Male	36 (83.72)	41 (75.93)	77 (79.38)	
Age, years	58.88±2.40	51.80±1.98	54.94±1.56	0.008
BMI (kg/m²)	23.44±0.39	24.49±0.49	24.02±0.33	0.095
Body temperature	36.67±0.08	36.60±0.07	36.63±0.05	0.854
Pulse	83.12±2.94	81.76±2.12	82.36±1.75	0.931
Respiration	19.65±0.63	18.15±0.56	18.81±0.42	0.019
ISS	20.42±1.19	18.28±1.17	19.23±0.84	0.094
GCS	8.72±0.57	11.20±0.41	10.10±0.16	0.001
Tobacco Smoking, <i>n</i> (%)	27 (62.79)	20 (37.04)	47 (48.45)	0.012
Alcohol Drinking, <i>n</i> (%)	18 (41.86)	13 (24.07)	31 (31.96)	0.062
Comorbidities, <i>n</i> (%)				
Hypertension	24 (55.81)	22 (40.74)	46 (47.42)	0.140
Diabetes	8 (18.60)	5 (9.26)	13 (13.40)	0.180
Peripheral blood				
HBP (ng/mL)	32.00±3.20	18.52±1.33	24.5±1.73	0.001
WBC (10 ⁹ /L)	14.49±0.79	8.96±0.50	11.41±0.53	0.001
Lymphocyte (10 ⁹ /L)	1.41±0.39	1.45±0.23	1.43±0.21	0.156
Neutrophil (10 ⁹ /L)	12.36±0.75	6.84±0.51	9.29±0.52	0.001
PCT (10 ⁹ /L)	1.10±0.17	0.27±0.04	0.64±0.09	0.001
Ca (mg/dL)	2.20±0.02	2.23±0.02	2.22±0.01	0.383
RBC (10 ¹² /L)	4.07±0.21	4.12±0.11	4.1±0.11	0.287
HB (g/L)	121.20±3.43	123.32±3.39	122.38±2.41	0.703
PLT (10 ⁹ /L)	197.67±14.86	193.35±7.80	195.26±7.85	0.470
PT (s)	14.80±0.43	14.65±0.17	14.72±0.21	0.850
PTINR	1.19±0.10	1.14±0.08	1.16±0.06	0.569
APTT (s)	27.24±0.57	26.76±0.38	26.97±0.33	0.700
TT (s)	15.51±0.34	15.55±0.31	15.53±0.23	0.862
FDP (ug/ml)	27.73±3.55	21.70±2.34	24.37±2.05	0.309
DD (ng/ml)	2113.28±311.89	1805.07±239.24	1941.70±191.58	0.452
FIB c (g/L)	3.40±0.17	3.10±0.10	3.23±0.10	0.110
Surgery, <i>n</i> (%)	31 (72.09)	29 (53.70)	60 (61.86)	0.064

124 Data are presented as numbers, percentages, and mean ± standard deviation; ISS, Injury Severity Score;

125 GCS, Glasgow Coma Scale; HBP, heparin-binding protein; WBC, white blood cell; PCT, procalcitonin;

126 Ca, Calcium; RBC, red blood cell; HB, hemoglobin; PLT, blood platelet; PT, prothrombin time; PTINR,

127 prothrombin time and international normalized ratio; APTT, activated partial thromboplastin time; TT,

128 thrombin time; FDP, fibrinogen degradation product; DD, D dimer; FIBc, fibrinogen.

129 A total of 43 patients were identified in the bacterial infection group by patient
130 blood, sputum, and cerebrospinal fluid cultures. Bacterial species and distribution are
131 shown in Table 2. Among the patients with positive bacterial cultures, eight patients
132 had multiple bacterial infections. More patients had positive sputum cultures for
133 bacteria ($n=39$) than cerebrospinal fluid cultures ($n=8$), and fewer patients had positive
134 blood cultures for bacteria ($n=4$). In addition, the most common result for sputum
135 cultures that were positive for bacteria was *Klebsiella pneumoniae* ($n=16$), and the most
136 common bacteria for cerebrospinal fluid infections was *Staphylococcus* ($n=5$). Bacteria
137 positive in blood culture include *Staphylococcus*, *Enterobacteriaceae*, Fungal, and
138 *Bacillus*.

139 Table 2 Bacterial species and distribution.

Bacterial species	Sputum culture	Blood Culture	Cerebrospinal Fluid
<i>Staphylococcus</i> (n)	4	1	5
<i>Klebsiella pneumoniae</i> (n)	16	0	1
<i>Enterobacteriaceae</i> (n)	7	1	1
<i>Stenotrophomonas</i> (n)	1	0	0
<i>Moraxellaceae</i> (n)	4	0	0
Fungal (n)	1	1	1
<i>Haemophilus</i> (n)	1	0	0
<i>Corynebacterium striatum</i> (n)	5	0	0
<i>Bacillus</i> (n)	0	1	0
Count (n)	39	4	8

140 Univariate logistic regression analysis

141 Univariate logistic regression was used to analyze the variables with statistically
142 significant differences between the infection and control groups, as shown in Table 3.
143 The results show that age, GCS score, smoking, HBP, WBC, neutrophils, and PCT are
144 related to bacterial infection in multiple trauma (all $P<0.05$). Besides, Respiration has
145 no significant correlation with multiple-trauma infection ($OR=1.10$, $Z=1.70$,

146 95%CI:0.99~1.22, $P=0.09$). Furthermore, HBP is associated with bacterial infections
 147 in multiple trauma ($OR=1.10$, $Z=3.91$, 95%CI:1.05~1.15, $P=0.001$). This confirms that
 148 the HBP difference between the infected and control groups was statistically significant.
 149 Table 3 Univariate logistic regression analysis.

	<i>Odds ratio</i>	<i>Standard Error</i>	<i>Z</i>	<i>P>Z</i>	<i>[95% conf. interval]</i>	
Age, years	1.03	0.02	2.19	0.028	1.00	1.06
Respiration	1.10	0.06	1.70	0.090	0.99	1.22
GCS	0.81	0.05	-3.27	0.001	0.71	0.92
Tobacco Smoking, <i>n</i> (%)	2.87	1.21	2.49	0.013	1.25	6.57
HBP (ng/mL)	1.10	0.03	3.91	0.001	1.05	1.15
WBC ($10^9/L$)	1.44	1.12	4.34	0.001	1.22	1.70
Neutrophil ($10^9/L$)	1.44	0.12	4.41	0.001	1.22	1.69
PCT ($10^9/L$)	24.47	17.92	4.37	0.001	5.83	102.78

150 GCS, Glasgow Coma Scale; HBP, heparin-binding protein; WBC, white blood cell; PCT, procalcitonin.

151 **Multivariable logistic regression model**

152 In order to further screen out variables with statistical significance and clinical
 153 value, the variables after univariate logistic analysis were screened using forward
 154 stepwise regression, and a multivariate logistic regression model was obtained, as
 155 shown in Table 4. The variables screened out by forward stepwise regression included
 156 HBP, neutrophils, and PCT. Multivariate logistic regression equations showed that
 157 patients were 1.12 times more likely to have bacterial infections for each value of
 158 heparin-binding protein increase, holding neutrophils and PCT constant.

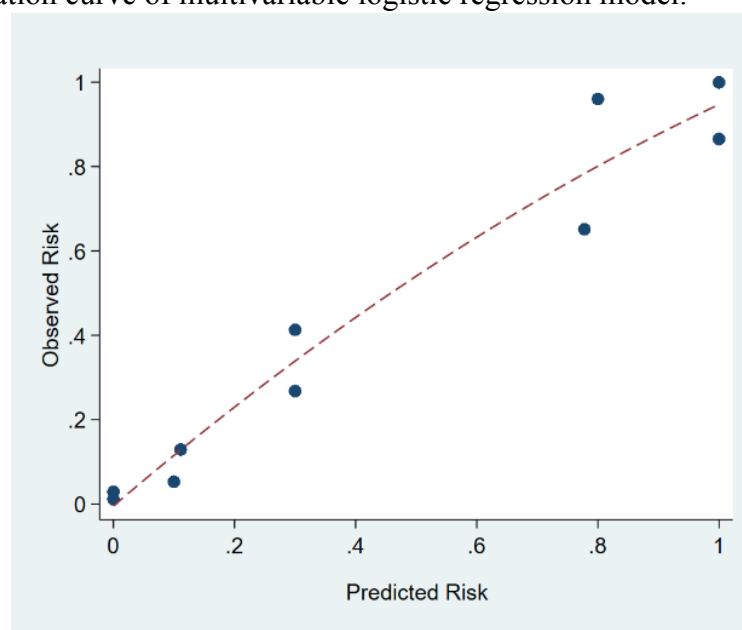
159 Table 4 Multivariable logistic regression model.

	<i>Odds ratio</i>	<i>Standard Error</i>	<i>Z</i>	<i>P</i>	<i>[95% conf. interval]</i>	
HBP	1.118	0.042	2.95	0.003	1.038	1.205
Neutrophil	1.204	0.090	2.47	0.013	1.039	1.395
PCT	53.876	57.207	3.75	0.001	6.723	431.735
constant	0.001	0.002	-4.69	0.001	0.001	0.021

160 HBP, heparin-binding protein; PCT, procalcitonin.

161 **Hosmer-Lemeshow test and Calibration curve**

162 The *Hosmer-Lemeshow test (HL test)* was used to analyze the goodness of fit of
163 the multivariable logistic regression model. The results show that the *P* value is
164 insignificant, so the PH assumption cannot be violated ($\chi^2=86.96$, $P= 0.6568>0.05$).
165 The model passes the *HL test*, and the model fit is good. The calibration curve is plotted
166 to visualize the logistic regression model based on the results of the *HL* goodness-of-fit
167 test, as shown in Figure 1. The deviation between predicted and observed risk is slight
168 and close to the reference line, indicating that the model's predictive ability is good.
169 Figure 1 Calibration curve of multivariable logistic regression model.



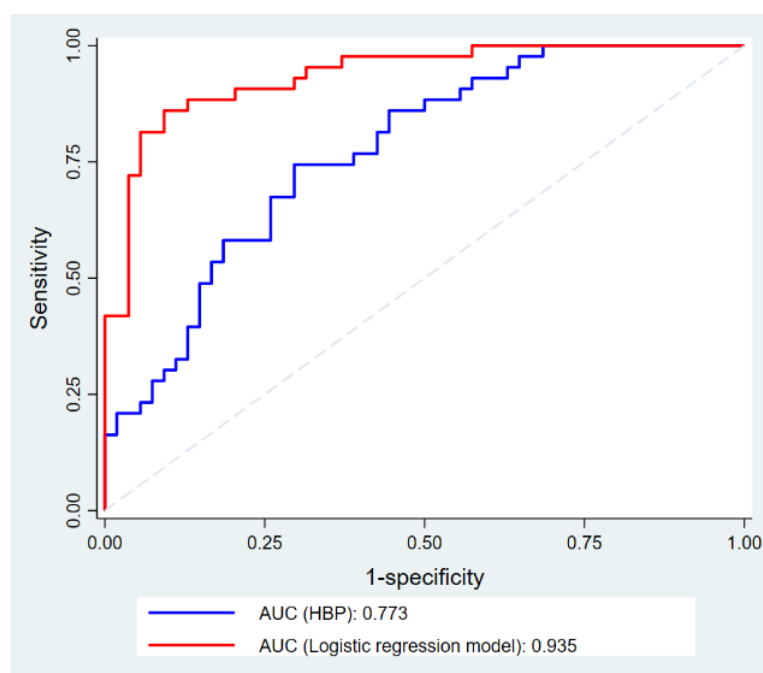
170

171 **ROC analysis**

172 ROC analysis was used to assess the predictive effectiveness of HBP and
173 multivariate logistic regression models. The results showed that the Area Under Curve
174 (*AUC*) for HBP alone to predict infection in multiple trauma was 0.773 (the optimal
175 cut-off value of HBP was 18.08, with a sensitivity of 86.05%, a specificity of 55.56%,
176 and a Yordon index of 0.416 ($AUC=0.773$, 95% *CI*: 0.677~0.852). ROC curves were
177 plotted for the multivariate logistic regression model for comparison, and the results

178 showed that the multivariate logistic regression model had an AUC of 0.935 (95%
179 *CI*:0.870~0.977), and its predictive efficacy was better than that of HBP alone, as
180 shown in Figure 2.

181 Figure 2 ROC curves for heparin-binding protein and multivariable logistic regression
182 models.



183

184 Discussion

185 To clarify the predictive value of HBP for bacterial infections in multiple trauma,
186 we utilized the parameter test and univariate logistic regression to analyze the
187 correlation between HBP and infection in multiple trauma. The forward stepwise
188 regression was utilized to screen for clinically valuable variables, a multivariate logistic
189 regression model was constructed, and the model was tested. Our study shows that HBP
190 is a potential predictor of bacterial infection in patients with severe multiple trauma.
191 Combining HBP, PCT, and neutrophils may improve the prediction of bacterial
192 infection.

193 In this study, we found that HBP concentrations were higher in the infected group

194 than in the control group, indicating a link between HBP and bacterial infections.
195 Several studies in related fields demonstrated that HBP has antibacterial activity against
196 gram-negative and gram-positive bacteria [13-15]. As shown in the research of H. Anne
197 Pereira et al., the antibacterial activity of HBP may be related to its amino acids 20-44
198 acting as antibacterial domains [16].

199 Similarly, in univariate logistic regression analysis, we found that HBP correlated
200 with bacterial infection in multiple trauma, confirming the previous parameter test
201 results. The reason for this may be the involvement of HBP in the early immune
202 response to bacterial infection in polytrauma [17-18]. In addition, univariate logistic
203 regression analysis showed that age, GCS, Tobacco Smoking, HBP, WBC, Neutrophil,
204 and PCT were all associated with bacterial infection ($P<0.05$). On the one hand, the
205 results of univariate analyses can be affected by confounding factors, so univariate
206 analyses are primarily used to make preliminary judgments about which factors are
207 associated with infection. On the other hand, the analytical results of single-centre
208 studies can be regionally biased. Therefore, we further screened for statistically
209 significant variables in univariate logistic regression analyses.

210 To clarify the predictive value of HBP for bacterial infections in patients with
211 multiple trauma, we performed multifactor logistic regression analysis using forward
212 stepwise regression. Variables that were statistically significant and clinically valuable
213 after screening were included in the optimal regression equation, including HBP,
214 neutrophils, and PCT. Multivariate logistic regression equations showed that HBP, in
215 combination with other indicators of inflammation, had a better predictive value for

216 predicting bacterial infections. The HL test and Calibration curve results show that the
217 multivariable logistic regression model has good fit and predictive ability. Our findings
218 on the predictive value of HBP combined with other inflammatory indicators agree with
219 those reported by Jin Ma et al., who discovered that adding HBP to other inflammatory
220 markers enhanced prediction accuracy [19]. Furthermore, ROC analysis confirmed that
221 the predictive value of the logistic regression model was superior to that of HBP alone,
222 showing that HBP can be used as a better complementary indicator to existing
223 inflammatory indicators.

224 The role of HBP as an inflammatory factor in infectious diseases has been
225 progressively identified and confirmed [20]. For the first time, we showed the predictive
226 value of HBP for bacterial infections in patients with multiple trauma. HBP has good
227 predictive value for bacterial infections in patients with multiple trauma patients in the
228 emergency department, and HBP combined with neutrophils and PCT better predicts
229 bacterial infections. Therefore, HBP provides a better laboratory basis for early
230 assessment of the condition of trauma patients. However, our study had several
231 limitations. First, as this was a single-centre study, multicentre studies with larger
232 sample sizes are needed to validate HBP's predictive value further. Second, the
233 condition of patients with multiple-trauma in emergency medicine is urgent and
234 complex, so we could not classify and analyze them according to the injury site. Third,
235 the role of HBP in non-bacterial infections such as viruses, parasites, and fungi needs
236 to be investigated and validated. The next step is to optimize experimental plans and
237 expand experimental samples.

238 **Conclusions**

239 In patients with severe multiple trauma, heparin-binding protein may predict
240 bacterial infection. Combining heparin-binding protein, PCT, and neutrophils may
241 improve bacterial infection prediction. HBP provides a referenceable test for early
242 disease assessment.

243 **CRedit authorship contribution statement**

244 **Li Li:** Conceptualization, Data curation, Investigation, Methodology, Software,
245 Visualization, Writing-original draft. **Xiao-xi Tian:** Data curation, Data curation,
246 Investigation, Methodology. **Gui-long Feng:** Conceptualization, Formal analysis,
247 Project administration, Resources, Writing-review. **Bing Chen:** Conceptualization,
248 Formal analysis, Project administration, Resources, Supervision, Writing-editing.
249 Bing Chen and Gui-long Feng contributed equally to this work and should be
250 considered co-corresponding authors.

251 **Conflict of Interest**

252 It should be understood that none of the authors have any financial or scientific conflicts
253 of interest in the research described in this manuscript.

254 **Funding**

255 This research did not receive any specific grant from funding agencies in the public,
256 commercial, or not-for-profit sectors.

257 **Ethical approval**

258 The study complied with the Declaration of Helsinki of the World Medical Association.
259 This study was approved by the Ethics Committee of the First Hospital of Shanxi
260 Medical University [2021 伦审字(K-K115)]. This article does not contain any studies
261 with animals performed by any authors. The study complied with the Declaration of
262 Helsinki of the World Medical Association. All participants or family members were
263 aware of the risks and signed an informed consent form. This article does not contain
264 any studies with animals performed by any authors.

265 **Reference**

- 266 [1] Murray CJ, Vos T, Lozano R, Naghavi M, Flaxman AD, Michaud C, et al.
267 Disability-adjusted life years (DALYs) for 291 diseases and injuries in 21 regions,
268 1990-2010: a systematic analysis for the Global Burden of Disease Study 2010. *Lancet*.
269 2012 Dec 15;380(9859):2197-223. doi: 10.1016/S0140-6736(12)61689-4.
- 270 [2] Mathers CD, Loncar D. Projections of global mortality and burden of disease from
271 2002 to 2030. *PLoS Med*. 2006 Nov;3(11):e442. doi: 10.1371/journal.pmed.0030442.
- 272 [3] Maleitzke T, Zhou S, Zocholl D, Fleckenstein FN, Back DA, Plewe JM, et al.
273 Routine laboratory parameters predict intensive care unit admission and hospitalization
274 in patients suffering stab injuries. *Front Immunol*. 2023 Jan 5;13:959141. doi:
275 10.3389/fimmu.2022.959141.
- 276 [4] Zhang GX, Chen KJ, Zhu HT, Lin AL, Liu ZH, Liu LC, et al. Preventable Deaths
277 in Multiple Trauma Patients: The Importance of Auditing and Continuous Quality
278 Improvement. *World J Surg*. 2020 Jun;44(6):1835-1843. doi: 10.1007/s00268-020-
279 05423-3.
- 280 [5] Halldorsdottir HD, Eriksson J, Persson BP, Herwald H, Lindbom L, Weitzberg E,
281 et al. Heparin-binding protein as a biomarker of post-injury sepsis in trauma patients.
282 *Acta Anaesthesiol Scand*. 2018 Aug;62(7):962-973. doi: 10.1111/aas.13107
- 283 [6] Mariscalco MM. Heparin-binding protein: another neutrophil granule protein ...
284 another new biomarker? *Crit Care Med*. 2011 Apr;39(4):910-1. doi:
285 10.1097/CCM.0b013e31820e6a43.
- 286 [7] Tapper H, Karlsson A, Mörgelin M, Flodgaard H, Herwald H. Secretion of heparin-

287 binding protein from human neutrophils is determined by its localization in azurophilic
288 granules and secretory vesicles. *Blood*. 2002 Mar 1;99(5):1785-93. doi:
289 10.1182/blood.v99.5.1785.

290 [8] Chen S, Xie W, Wu K, Li P, Ren Z, Li L, et al. Suilysin Stimulates the Release of
291 Heparin Binding Protein from Neutrophils and Increases Vascular Permeability in Mice.
292 *Front Microbiol*. 2016 Aug 26;7:1338. doi: 10.3389/fmicb.2016.01338.

293 [9] Soehnlein O, Lindbom L. Neutrophil-derived azurocidin alarms the immune system.
294 *J Leukoc Biol*. 2009 Mar;85(3):344-51. doi: 10.1189/jlb.0808495.

295 [10] Honore PM, Redant S, Preseau T, Kaefer K, Barreto Gutierrez L, Attou R, et al.
296 Heparin-Binding Protein Performs Better for Detecting Sepsis Among Patients
297 Presenting With Signs of Systemic Infection Compared With Procalcitonin, C-Reactive
298 Protein, and Lactate Level, and Heparin-Binding Protein Is Sufficient for Both Ruling
299 in and Out Sepsis With Organ Dysfunction: Beware of Potential Confounding Factors!
300 *Crit Care Med*. 2021 Jul 1;49(7):e733-e734. doi: 10.1097/CCM.0000000000005005.

301 [11] Wu YL, Yo CH, Hsu WT, Qian F, Wu BS, Dou QL, et al. Accuracy of Heparin-
302 Binding Protein in Diagnosing Sepsis: A Systematic Review and Meta-Analysis. *Crit*
303 *Care Med*. 2021 Jan 1;49(1):e80-e90. doi: 10.1097/CCM.0000000000004738.

304 [12] Linder A, Soehnlein O, Akesson P. Roles of heparin-binding protein in bacterial
305 infections. *J Innate Immun*. 2010;2(5):431-8. doi: 10.1159/000314853.

306 [13] Snäll J, Linnér A, Uhlmann J, Siemens N, Ibold H, Janos M, et al. Differential
307 neutrophil responses to bacterial stimuli: Streptococcal strains are potent inducers of
308 heparin-binding protein and resistin-release. *Sci Rep*. 2016 Feb 18;6:21288. doi:

309 10.1038/srep21288.

310 [14] Lauritzen B, Lykkesfeldt J, Djurup R, Flodgaard H, Svendsen O. Effects of
311 heparin-binding protein (CAP37/azurocidin) in a porcine model of *Actinobacillus*
312 *pleuropneumoniae*-induced pneumonia. *Pharmacol Res.* 2005 Jun;51(6):509-14. doi:
313 10.1016/j.phrs.2005.01.004.

314 [15] Kandil M, Khalil G, El-Attar E, Shehata G, Hassan S. Accuracy of heparin binding
315 protein: as a new marker in prediction of acute bacterial meningitis. *Braz J Microbiol.*
316 2018 Nov;49 Suppl 1(Suppl 1):213-219. doi: 10.1016/j.bjm.2018.05.007.

317 [16] Pereira HA, Erdem I, Pohl J, Spitznagel JK. Synthetic bactericidal peptide based
318 on CAP37: a 37-kDa human neutrophil granule-associated cationic antimicrobial
319 protein chemotactic for monocytes. *Proc Natl Acad Sci U S A.* 1993 May
320 15;90(10):4733-7. doi: 10.1073/pnas.90.10.4733.

321 [17] Halldorsdottir HD, Eriksson J, Persson BP, Herwald H, Lindbom L, Weitzberg E,
322 et al. Heparin-binding protein as a biomarker of post-injury sepsis in trauma patients.
323 *Acta Anaesthesiol Scand.* 2018 Aug;62(7):962-973. doi: 10.1111/aas.13107.

324 [18] Kahn F, Tverring J, Mellhammar L, Wetterberg N, Bläckberg A, Studahl E, et al.
325 Heparin-Binding Protein as a Prognostic Biomarker of Sepsis and Disease Severity at
326 the Emergency Department. *Shock.* 2019 Dec;52(6):e135-e145. doi:
327 10.1097/SHK.0000000000001332.

328 [19] Ma J, Lu Q, Tu S, Miao X, Zhao J. A diagnostic test: combined detection of
329 heparin-binding protein, procalcitonin, and C-reactive protein to improve the diagnostic
330 accuracy of bacterial respiratory tract infections. *J Thorac Dis.* 2022 Mar;14(3):721-

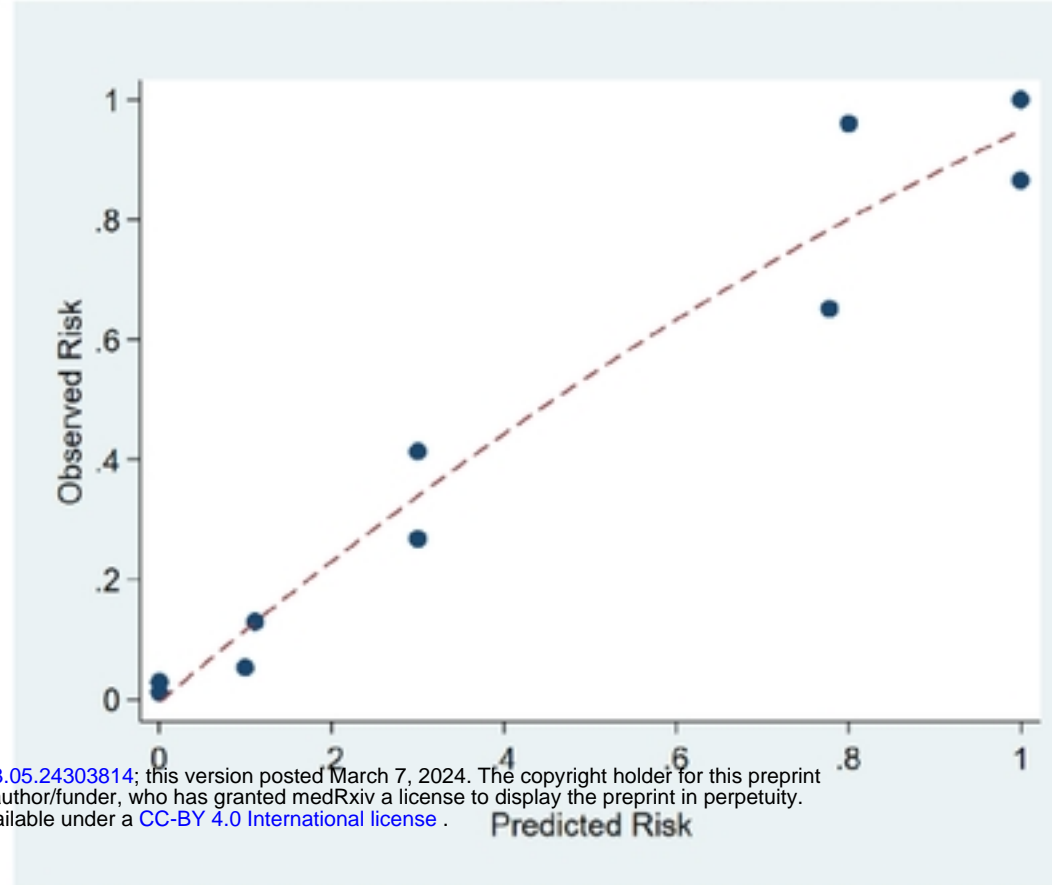
331 728. doi: 10.21037/jtd-22-260.

332 [20] Fisher J, Linder A. Heparin-binding protein: a key player in the pathophysiology

333 of organ dysfunction in sepsis. *J Intern Med.* 2017 Jun;281(6):562-574. doi:

334 10.1111/joim.12604.

Figure 1 Calibration curve of multivariable logistic regression model.



medRxiv preprint doi: <https://doi.org/10.1101/2024.03.05.24303814>; this version posted March 7, 2024. The copyright holder for this preprint (which was not certified by peer review) is the author/funder, who has granted medRxiv a license to display the preprint in perpetuity. It is made available under a [CC-BY 4.0 International license](https://creativecommons.org/licenses/by/4.0/).

Figure 2 ROC curves for heparin-binding protein and multivariable logistic regression models.

