

# The descriptive epidemiology of type 2 diabetes in the United Kingdom from 2004 to 2021

Craig J. Currie<sup>1,2</sup>, Jessica G. Currie<sup>2,3</sup>, Sarah E. Holden<sup>1</sup>, Christopher Ll. Morgan<sup>1</sup>, Benjamin R. Heywood<sup>2</sup>, John R. Peters<sup>2</sup>, and the Livingstone Development Team<sup>2\*</sup>

## Affiliations

1. Institute of Population Medicine, School of Medicine, Cardiff University, Cardiff, UK
2. Global Epidemiology, Human Data Sciences, Cardiff, UK
3. Howells School, Llandaff, UK

## Address for correspondence

Professor Craig Currie  
Professor of Applied Pharmacoepidemiology  
Institute of Population Medicine  
School of Medicine  
Cardiff University  
24 Wordsworth Avenue  
Cardiff CF24 3FR  
United Kingdom  
Email: [currie@cardiff.ac.uk](mailto:currie@cardiff.ac.uk)

Tel: +44 (0)2920 782856

## Manuscript details

Abstract	241 words
Body	2,972 words
Tables	2
Figures	2
References	13
Keywords	type 2 diabetes, epidemiology, incidence, prevalence
Funding:	no external funding was provided for this study

## Guarantor

Craig Currie is the guarantor of this work and, as such, had full access to all the data in the study and takes responsibility for the integrity of the data and the accuracy of the data analysis.

## Data and availability statement

These data can be accessed via the UK Medicine and Healthcare Products Agency (<https://cprd.com/>)

## Abstract

### Purpose

To provide contemporary estimates of the incidence and prevalence of type 2 diabetes in the UK.

### Methods

Data from UK primary care (CPRD) were analyzed using an automated, analytical platform that produces validated, rapid analytics—Livingstone.

### Results

We selected 1,125,028 people with type 2 diabetes (44.7% female). The crude incidence was stable. In 2004 the incidence rate was 4.18 cases per 1,000 people, reducing to 4.13/1,000 in 2021. There was a shift in age-specific incidence to earlier age-groups. The crude prevalence showed a marked increase, rising from 2.95% to 5.41%, levelling off slightly in later years. Increases in prevalence were observed in all groups. Northern Ireland consistently had the lowest prevalence, and Wales had a notably higher prevalence, increasing from 3.71% in 2004 to 6.37%. The mean age at diagnosis decreased in females by 5.5 years to 58.5 years, and by 2.5 years in men, to 58.8 years.

### Conclusions

The incidence of type 2 diabetes was largely stable over 20 years but there were changes over time in age-specific groups resulting from a shift to earlier onset or earlier diagnosis. The shift to earlier diagnosis was far more pronounced in women than in men. Prevalence increased markedly, but the rate of increase appeared to be leveling-off a little. There were notable differences in the epidemiology of type 2 diabetes between the four constituent countries of the UK. The number of younger people diagnosed with type 2 diabetes remains a concern.

## Introduction

Increases in recorded prevalence of a condition may be due to both a genuine increase in incidence; artefact (for example increased surveillance or screening), changes in demographics, or changes in case definition. As life expectancy increases, a larger proportion of patients live long enough to develop age-related conditions and also existing cases live longer.<sup>1</sup>

The pattern of the various risk factors predisposing to the onset of type 2 diabetes in the general population shifts continually. Regarding type 2 diabetes, the two main risk factors are the age structure of the population and the pattern of body composition. The risk of type 2 diabetes increases with increasing age, and with increasing obesity. Other factors contribute to incident risk, for instance: sex, lifestyle, and ethnicity.

In the United Kingdom (UK) there is an increasing absolute frequency and proportion of older people in the population. For instance, the number of people aged 85 and over, which was 1.7 million in 2020 (2.5% of the population), is expected to nearly double to 3.1 million by 2045, representing 4.3% of the UK population<sup>2</sup>. On the other hand, by mid-2030, the number of children (0 to 15 years) is projected to decrease by 1.1 million.

Over the past two decades, the level of obesity in the UK has seen a worrying escalation. By 2030, the UK is expected to see a further rise in obesity levels. Projections suggest 11 million more obese adults, potentially leading to an increase in associated health problems.<sup>3</sup> These worsening patterns of risk inevitably have resulted in a corresponding increase in the burden of type 2 diabetes and its related sequelae.

The objective of this study was to characterize the descriptive epidemiology of type 2 diabetes in the UK from 2004 until 2021. Continuous updates of these incidence and prevalence metrics are necessary to maintain an understanding of the evolving impact of this increasingly common disease. Unusually, we also present differing estimates for the four nations that comprise the UK. Using the same data source, but using more routine epidemiological methods of data analysis, our most recent estimate for type 2 diabetes prevalence in the UK was published in 2017, characterizing the prevalence rate in years 1991 to 2013<sup>4</sup>. We reported that the crude population prevalence in 1991 was only 1.4%, increasing to 4.5% in 2013. Again, using the same data source, our most recent estimate of the incidence of type 2 diabetes was published a little earlier, in 2013,

and related to incidence rates in 1991 to 2010.<sup>5</sup> In 2010, the crude incidence rate we reported was 0.52%, increasing from 0.17% in 1991.

## Methods

Livingstone is an automated analytical platform that produces rapid analysis of linked, UK National Health Service (NHS) data, including a validated, descriptive epidemiology module. Detailed methods that underpin the descriptive epidemiological statistics produced by Livingstone, and validation of these estimates have been published recently<sup>6</sup>. The following description is a summary.

### Data source

The source of NHS data was the Clinical Practice Research Datalink (CPRD). CPRD evolved from the General Practice Research Database (GPRD) and harnessed anonymized patient level data. It offers researchers access to comprehensive primary and linked secondary healthcare data, including information on prescribed drugs and laboratory data. For this study we utilized only data from general practice, from GOLD (Vision) and Aurum (EMIS). Patient migration between practices using these two systems was accounted for by excluding migrated practices from GOLD.

### Case identification

People were classified as having a diagnosis of type 2 diabetes if they had a relevant clinical diagnosis recorded anywhere in their case history. A second set of search criteria selected cases where there was a non-specific diagnostic code for diabetes, but the person had received a prescription of an anti-hyperglycemic drug other than insulin within two years of recorded diagnosis. Checks were made to assure that women with gestational diabetes were excluded. A full list of the diagnostic codes used here is provided at Supplementary Table 1. Whilst it is possible that patients with type 2 diabetes can revert to a state of diabetes remission, this is rare and usually transient, therefore a diagnosis was treated as a lifelong event.

### Annual incidence

Inclusion for the incidence analysis required patients in the diabetes cohort to have had an incident diagnosis date within the CPRD follow-up period within a specific year. This initial

diagnosis had to be at least 90 days after their GP registration date. The denominator for the incidence analysis included all patients of acceptable research quality in the dataset over the specific period being reported, with a minimum of 90 days' registration (person time).

## **Point prevalence**

The point prevalence was determined. The base population for this prevalence study included all patients of acceptable research quality as defined by CPRD who had CPRD follow-up coinciding with the mid-year point. This included people who were registered, but they had not necessarily had a record of an appointment with their GP on the specific day of prevalence being reported. A type 2 diabetes case would be considered prevalent if they had a relevant diagnosis recorded in their clinical history prior to (inclusive) of the day of prevalence estimation.

## **UK nationality**

Region of residence is recorded in CPRD, including whether a GP practice was located in England (83.9% of cases), Northern Ireland (1.9%), Scotland (8.0%), or Wales (6.1%). Where necessary, the denominators were adjusted to account for geographical location.

## **Statistical methods**

Age and sex-specific rates were calculated, and the denominators used were appropriate to the numerator. Otherwise, no advanced statistical methods were used in this study that were not already detailed in the Livingstone epidemiology validation study<sup>6</sup>.

## **Study approval**

CPRD RDG approval was granted for this study (22\_001774).

## Results

### Type 2 diabetes cases

We selected 1,125,028 people with a record of a clinical diagnosis of type 2 diabetes. Of these cases, 502,341 (44.7%) were female. Their mean body mass index (BMI) at diagnosis was 32.4 kg/m<sup>2</sup> with an average blood pressure (BP) at diagnosis of 137/80 mmHg; mean total cholesterol, 5.1 mmol/L; mean high density lipoprotein (HDL), 1.2 mmol/L; mean low density lipoprotein (LDL), 3.0 mmol/L; mean triglyceride 2.3 mmol/L; and their mean estimated glomerular filtration rate (eGFR), 78.8 ml/min/1.73m<sup>2</sup>. At diagnosis, 19.7% were recorded as being smokers, and 42.6% ex-smokers. These people were often treated for some of these clinical issues.

### Age and sex distribution at diagnosis

The mean age at diagnosis over the whole period was 60.3 years old. However, the pattern at diagnosis showed marked variation by age and by sex (Figure 1). The mean age at diagnosis in 2004 was 62.5 years, reducing to 58.6 years in 2021; an overall average change of 3.9 years. These changes differed between males and females. The corresponding values in females were 64.0 and 58.5 years ( $\Delta=5.5$  years), and males, 61.3 years and 58.8 ( $\Delta=2.5$  years; Figure 1).

### Incidence

The overall, crude incidence rate over time showed little variation over the period (Figure 2a), except at the time of the COVID19 pandemic. In 2004 the crude incidence rate was 4.18 cases per 1,000 people, and this had reduced slightly to 4.13/1,000 people in 2021. There was a drop in 2020 to 3.11/1,000 people, that was likely to be COVID19 related. The highest recorded crude incidence rate was in 2004.

There were notable differences in the incidence of type 2 diabetes by UK nation (Figure 2a). In general, Northern Ireland had a lower incidence rate, and Wales had a higher incidence rate in earlier years, but the incidence rates tended to converge in later years. There was a marked drop in the incidence rate of all four nations in 2020.

As an example of the differential incidence rate in males over females, in 2021 men had a crude type 2 diabetes incidence rate of 4.47/1,000 men, whereas females had an incidence rate of 3.79/1,000 women (Table 1). The incidence rate ratio of males to females changed little over time from 1.14 in 2004 to 1.18 in 2021.

In 2004, the highest incidence rate was observed in people aged between 65 to 74 years old (12.80 cases per 1,000 people, Table 1). However, the incidence rate in this age-group declined to 9.16/1,000 in 2021. It was 8.96/1,000 in 2019, pre-COVID19. There was an increase in the incidence rate between 2004 and 2021 in age groups between 5 to 54 years old, and a decrease in those groups aged older than 54 years old (Table 1).

## Prevalence

The crude prevalence of type 2 diabetes in the UK showed a marked increase from 2004 to 2021, rising from 2.95% to 5.41% of the population (Figure 2b and Table 2). The increase was not linear and appeared to be levelling-off slightly in later years (Figure 2b).

Again, there was evidence of a differential prevalence rate between the four nations of the UK. Northern Ireland consistently had the lowest prevalence rate – 2.3% in 2004, increasing to 4.96% in 2021 – and Wales had a notably higher prevalence rate, increasing from 3.71% in 2004 to 6.37% in 2021 (Figure 2b). The crude prevalence rate in England increased from 2.95% to 5.39% over the period. The pattern of the rate of increase in crude prevalence between the four nations of the UK was remarkably similar (Figure 2b).

The crude prevalence was higher in men than in women. In 2021 it was 6.00% in men versus 4.82% in women (Table 2). The crude, prevalence rate ratio of men to women increased from 1.18 in 2004 to 1.24 in 2021.

With the exception of the very elderly, 85+ years, the prevalence rate increased with increasing age. The prevalence rate increased over the observed time-period in all age groups. In 2004 the age group with highest age-specific prevalence rate was the 75 to 84-year-old group (Table 2), with a prevalence rate of 10.67%, and this increased to 19.58% in 2021. Always of interest is the number of younger people who are diagnosed with type 2 diabetes. The prevalence rate in the 35 to 44-year-old age group increased from 0.95% to 2.00% from 2004 to 2021, and from 0.25% to 0.56%, respectively, in those aged 25 to 34.



## Discussion

Although we used a novel, automated analytical platform to rapidly produce these metrics that would otherwise take months to produce using long-hand methods, this epidemiological study elicited some surprising findings. That the UK population prevalence of type 2 diabetes continued its seemingly inexorable increase was not a surprise. However, that the crude incidence of type 2 diabetes had not increased over almost 20 years was unexpected, but it transpired that this had been reported previously<sup>7</sup>. However, there was a shift to earlier onset and/or earlier diagnosis of type 2 diabetes. This was far more notable in women, with a mean, earlier diagnosis of five years. The mean age at diagnosis in men decreased by two years. It was evident that case ascertainment of type 2 diabetes during COVID19 in 2020 did have an impact, but incidence rates rebounded in 2021 back to essentially where it would have been expected to be and possibly higher due to delayed diagnosis during 2020. The temporary delay in diagnosis had little impact on the prevalence rates.

Interestingly, we report notable differences in incidence and prevalence of type 2 diabetes between UK nations, Northern Ireland producing the most favorable patterns, whilst Wales showed regrettably high rates of type 2 diabetes. Whilst incidence rates are always going to be more variable than prevalence rates, there was a period around 2004 to 2006 when the incidence rates varied markedly. This was probably due to the impact of the introduction of the Quality Outcomes Framework (QOF) in UK general practice. The introduction of QOF incentivized improved recording of diabetes and relevant clinical details in general practice. Overall disease burden remained higher in men.

The incidence of type 2 diabetes in the UK has been the subject of several studies, each shedding light on different aspects and time periods of the condition. One of our own studies reported the incidence of type 2 diabetes in the UK from 1991 to 2010 and revealed a significant increase in diagnosed cases. Specifically, the crude incidence rate in 2010 was 5.2 per 1,000 population [3.71/1,000] (corresponding findings from this study reported here in square parentheses). The study noted that the standardized incidence ratio increased across successive 5-year periods, indicating a rising trend. Additionally, the proportion of patients diagnosed under the age of 40 years increased over time, suggesting an earlier onset or earlier diagnosis of the disease<sup>5</sup>. Another study focused on the period from 2004 to 2014<sup>8</sup>. It found that while the prevalence rates of type 2 diabetes increased from 3.2% [3.0%] in 2004 to 5.3% [4.7%] in 2014, the incidence rates remained

relatively stable throughout this period. This study also highlighted higher incidence and prevalence rates among men and in individuals from deprived socio-economic backgrounds. A more recent study covering 2009 to 2018 reported a decline in the incidence of clinically diagnosed type 2 diabetes. The incidence rate in men was reported to have decreased from 5.06 [4.48] per 1,000 person-years in 2013 to 3.6 [4.2] by 2018. Similarly, in women, the incidence rate fell from 4.5 [3.6] to 2.9 [3.4] per 1,000 person years over the same period. These studies collectively illustrate the dynamic nature of type 2 diabetes incidence in the UK, with variations in trends over different time periods, with an increase in younger age groups being diagnosed. Tate and colleagues also reported that the choice of clinical codes and data quality can affect the trends in the incidence of diabetes<sup>77</sup>.

The prevalence of type 2 diabetes in the UK has also been the subject of several studies, again revealing concerning trends. In a study referred to above, the crude prevalence rates of type 2 diabetes increased from 3.2% [3.0%] in 2004 to 5.3% [4.7%] in 2014<sup>8</sup>. Sharma and colleagues reported an increase in type 2 diabetes prevalence in the UK from 2.4% in 2000 to 5.3% [4.6%] in 2013<sup>9</sup>. We ourselves reported a crude prevalence rate of 5.4% [4.6%] in 2013<sup>4</sup>. In 2020, Diabetes UK reported a crude population prevalence of all diabetes in the UK of 7%, and that this rate was said to be broadly similar across the four constituent nations of the UK<sup>10</sup>. It is unclear how they derived this value but it is believed that it came from a report from Public Health England<sup>11</sup>.

The relationship between incidence and prevalence can be complicated. Incidence can be stable whilst prevalence increases because of, say, a change in life expectancy following diagnosis because of improved care or treatment for example. Due to advances in the treatment of T2DM, and through improvements in the care of its related complications through statins and anti-hypertensives, improvements in life-expectancy for patients with T2DM may be disproportionately higher than for the population as a whole.<sup>12</sup> This may be evidence from this study which reports an increase in prevalence of T2DM in those aged 85+ from 7.44 to 19.53, whilst the incidence rate has actually decreased (7.92 to 6.39). The impact of hyperglycemia with regards to survival remains contentious<sup>13</sup>.

A plausible explanation for these differential findings between incidence and prevalence over 20 years is that the pool of people likely to ever be diagnosed with type 2 diabetes may be largely fixed, thus, the overall crude incidence remained the same but there were changes in age-specific incidence. The increasing prevalence may be due, therefore, to the increase in the typical duration

of diabetes as a consequence of earlier onset and/or diagnosis, and possibly increased life expectancy in latter years. The clinical consequence in the community of earlier onset of type 2 diabetes, and increased diabetes duration, is likely to be an associated increase in diabetes-related complications. The earlier diagnosis in women is interesting. We checked to assure ourselves that it wasn't related to gestational diabetes. We have no reason to believe that this is artefactual. This observation requires further thought and investigation but it would seem that much of the increased burden is related to this factor, although men too had two years earlier onset.

### **Study limitations**

The methods that we have used to identify cases of type 2 diabetes in previous studies were more sophisticated. For example, we also used exposure to medications specific to type 2 diabetes, and we had complicated algorithms to deal with the small number of cases who had diagnoses of both type 1 and type 2 diabetes and so on. Using the more detailed methods we used in previous studies the lifetime prevalence rates reported here – which have been validated<sup>6</sup> – are likely to be essentially the same. Importantly, these methods are hard-coded and standardized in Livingstone, so that these analyses can be replicated repeatedly using identical methods, or with audited changes to the inputs.

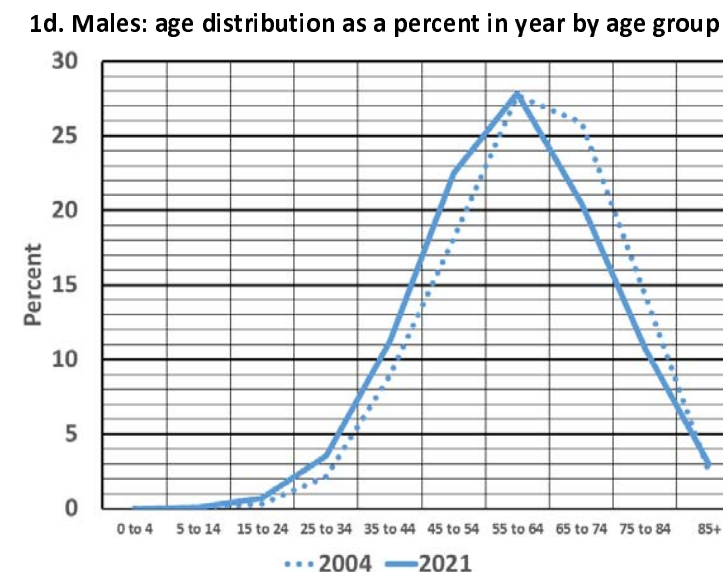
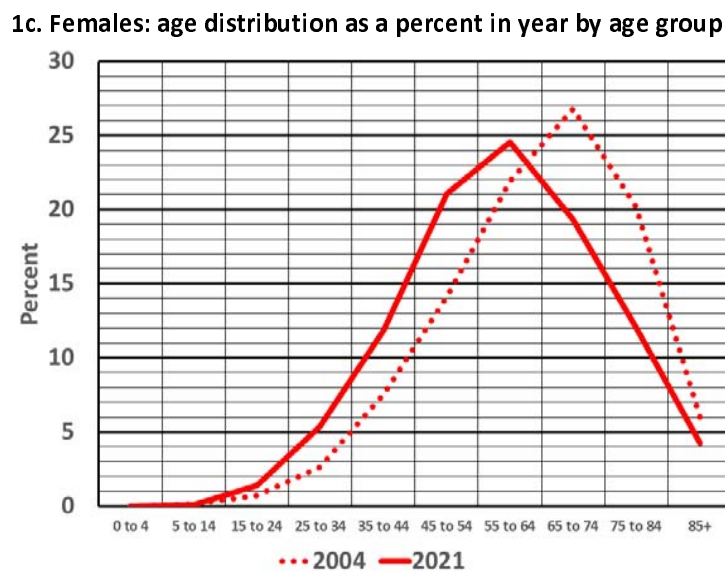
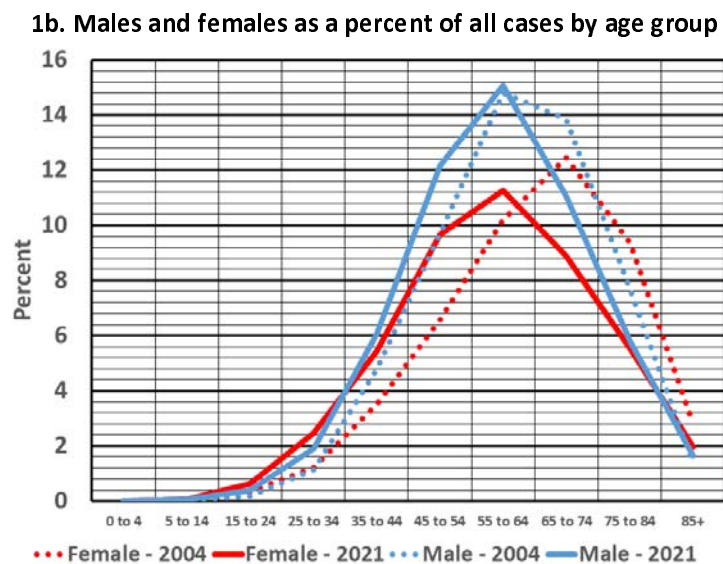
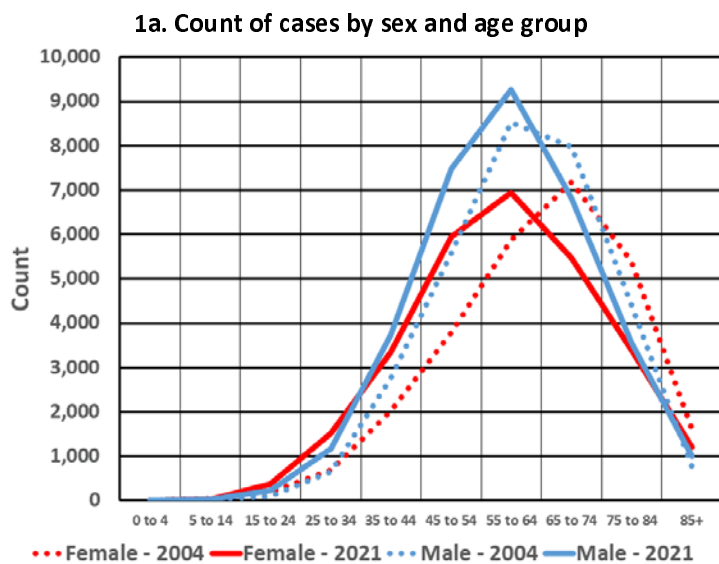
Here we did not use linked data from hospital sources in this study because it would have precluded the generation of data from nations other than England. Again, knowing the nature of type 2 diabetes, we don't expect this to have impacted our findings to any great extent. Inclusion of linked hospital data did not change the findings very much in our earlier epidemiological study<sup>54</sup>.

### **Conclusions**

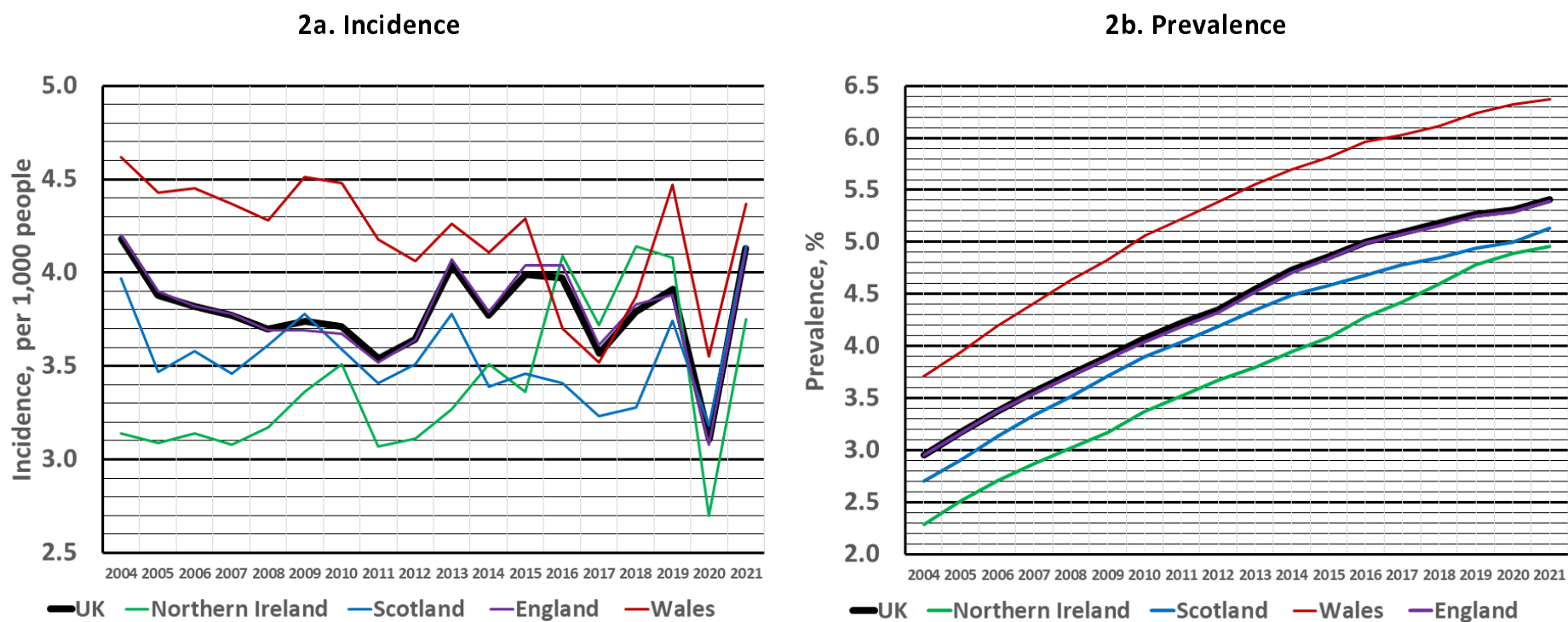
The crude incidence of type 2 diabetes was stable over 20 years but there were changes over time in age-specific groups suggesting a shift to earlier onset and diagnosis in those who would eventually be diagnosed with the 2 diabetes. The prevalence of type 2 diabetes increased but the rate of increase appeared to be leveling-off just a little. There were notable differences in the epidemiology of type 2 diabetes between the four constituent countries of the UK. Most concerning was the high prevalence rate here in Wales. The mean age at diagnosis in women was

reduced by more than five years, and around two years in men. A lot more younger people are being diagnosed with type 2 diabetes.

**Figure 1 | Age and sex distribution of people diagnosed with type 2 diabetes.**



**Figure 2 |** Crude incidence and crude prevalence of type 2 diabetes, by calendar year and by UK nation.



**Table 1** | Incidence rate per 1,000 people by year, sex, and age groups.

Group	2004	2005	2006	2007	2008	2009	2010	2011	2012	2013	2014	2015	2016	2017	2018	2019	2020	2021
All UK	4.18	3.88	3.82	3.77	3.70	3.74	3.71	3.54	3.64	4.04	3.77	3.99	3.97	3.57	3.79	3.91	3.11	4.13
Male	4.46	4.18	4.16	4.15	4.11	4.23	4.22	3.99	4.10	4.48	4.15	4.39	4.39	4.01	4.22	4.33	3.40	4.47
Female	3.90	3.57	3.48	3.39	3.29	3.24	3.19	3.09	3.18	3.60	3.38	3.58	3.54	3.13	3.37	3.49	2.81	3.79
0-4	0.00	0.00	0.00	0.00	0.00	0.00	0.00	0.01	0.00	0.00	0.00	0.00	0.00	0.00	0.00	0.00	0.00	0.00
5-14	0.04	0.03	0.04	0.03	0.03	0.03	0.02	0.02	0.02	0.02	0.03	0.02	0.03	0.03	0.03	0.03	0.03	0.04
15-24	0.19	0.20	0.19	0.20	0.19	0.20	0.20	0.21	0.22	0.26	0.28	0.31	0.31	0.29	0.28	0.30	0.27	0.35
25-34	0.74	0.75	0.73	0.75	0.80	0.81	0.83	0.81	0.88	0.97	1.01	0.99	1.06	1.01	1.03	1.05	1.01	1.27
35-44	2.19	2.11	2.20	2.22	2.37	2.41	2.51	2.49	2.64	2.86	2.79	2.96	3.01	2.86	2.89	3.02	2.54	3.41
45-54	5.19	5.04	4.99	5.12	5.15	5.21	5.23	5.11	5.23	5.61	5.44	5.80	5.89	5.49	5.85	6.01	5.02	6.77
55-64	8.87	8.14	8.05	8.14	8.04	8.20	8.17	7.83	7.97	8.68	8.00	8.46	8.45	7.59	8.04	8.3	6.89	8.84
65-74	12.80	11.73	11.38	10.92	10.29	10.22	9.99	9.30	9.32	10.30	9.09	9.50	9.15	8.15	8.70	8.96	6.59	9.16
75-84	11.76	10.57	10.39	9.88	9.28	9.49	9.00	8.29	8.78	10.43	9.18	9.88	9.56	7.99	8.78	8.87	6.14	8.01
85+	7.92	7.14	6.82	6.18	5.98	5.72	5.67	5.32	5.54	6.85	6.90	7.19	7.32	6.13	6.81	7.20	4.89	6.39

**Table 2** | Prevalence rate per 100 people by year, sex, and age groups.

Group	2004	2005	2006	2007	2008	2009	2010	2011	2012	2013	2014	2015	2016	2017	2018	2019	2020	2021
All UK	2.95	3.17	3.37	3.56	3.73	3.9	4.07	4.22	4.35	4.55	4.73	4.86	5.00	5.09	5.18	5.27	5.31	5.41
Male	3.19	3.42	3.65	3.86	4.06	4.27	4.47	4.67	4.83	5.06	5.26	5.40	5.56	5.66	5.77	5.87	5.91	6.00
Female	2.71	2.91	3.10	3.26	3.39	3.53	3.66	3.78	3.88	4.04	4.20	4.31	4.45	4.51	4.59	4.67	4.71	4.82
0-4	0.00	0.00	0.00	0.00	0.00	0.00	0.00	0.00	0.00	0.00	0.00	0.00	0.00	0.00	0.00	0.00	0.00	0.00
5-15	0.01	0.01	0.01	0.01	0.01	0.01	0.01	0.01	0.01	0.01	0.01	0.01	0.01	0.01	0.01	0.01	0.01	0.01
15-24	0.05	0.06	0.06	0.07	0.07	0.08	0.08	0.08	0.09	0.09	0.10	0.10	0.11	0.12	0.12	0.12	0.12	0.13
25-34	0.25	0.26	0.28	0.3	0.31	0.33	0.35	0.36	0.38	0.40	0.43	0.44	0.46	0.48	0.49	0.51	0.52	0.56
35-44	0.95	1.02	1.10	1.17	1.24	1.33	1.41	1.49	1.56	1.65	1.72	1.76	1.83	1.86	1.90	1.93	1.95	2.00
45-54	2.87	3.09	3.29	3.46	3.62	3.77	3.92	4.05	4.18	4.40	4.58	4.70	4.89	5.01	5.16	5.28	5.36	5.53
55-64	5.83	6.19	6.56	6.92	7.27	7.67	8.08	8.42	8.70	9.09	9.40	9.62	9.89	10.03	10.14	10.24	10.32	10.47
65-74	10.46	11.16	11.8	12.28	12.60	12.91	13.22	13.38	13.47	13.81	14.11	14.33	14.66	14.88	15.11	15.41	15.63	15.79
75-84	10.67	11.75	12.74	13.65	14.49	15.32	16.07	16.71	17.26	18.03	18.64	19.05	19.53	19.74	19.79	19.79	19.73	19.58
85+	7.44	8.16	8.85	9.45	10.01	10.72	11.31	11.93	12.52	13.79	14.92	15.77	16.66	17.44	18.05	18.67	19.14	19.53



## Acknowledgements

\* Livingstone Development Team: Christian A. Bannister, James Bateman, Thomas R. Berni, Aron Buxton, James J. Chesman, Craig J. Currie, Harry Fisher, Benjamin R. Heywood, Ellen Hubbuck, Sarah E. Holden, Bethan I. Jones, Sara Jenkins-Jones, Elgan R. Mathias, Christopher Ll. Morgan, Lauren D. Riddick, Christopher P. Shepherd, Darren R. Summers, Rhiannon K. Thomason, John Threlfall. There were no conflicts of interest.

## Supplementary Table 1 ! Medical codes used to identify type 2 diabetes.

Medical Code	Medical Name
1932051000006114	3D study - problems with diabetes management
356119011	Abnormal metabolic state in diabetes mellitus
3513752015	Absence of lower limb due to diabetes mellitus
1916521000006118	Access to online patient diabetes education given
3636752017	Acute complication co-occurrent and due to diabetes mellitus
3636751012	Acute complication with diabetes mellitus
48078	Acute painful diabetic neuropathy
297550019	Acute painful diabetic neuropathy
7059	Admit diabetic emergency
297755010	Advanced diabetic maculopathy
455408014	Advanced diabetic retinal disease
47584	Advanced diabetic retinal disease
14071371000006113	Advanced maculopathy due to diabetes mellitus
1013661000006110	Adverse reaction to Drugs Used In Diabetes
107739	Advice about diabetes and driving
2279291000000114	Advice about diabetes and driving
2548271013	Agreeing on diabetes care plan
7966931000006114	Angina associated with type 2 diabetes mellitus
1734721000000114	Assessment of diabetic erectile dysfunction
297552010	Asymptomatic diabetic neuropathy
24571	Asymptomatic diabetic neuropathy
14071341000006117	Asymptomatic neuropathy due to diabetes mellitus
93390	Attended DAFNE diabetes structured education programme
8082941000006118	Attended DESMOND (diabetes education and self management for ongoing and newly diagnosed) structured programme
493821000000118	Attended DESMOND structured programme
93530	Attended DESMOND structured programme
1979341000006116	Attended NHS diabetes prevention programme
8098241000006111	Attended XPERT (expert patient education versus routine treatment) diabetes structured education programme
546001000000113	Attended XPERT diabetes structured education programme
94011	Attended XPERT diabetes structured education programme
8082951000006116	Attended diabetes education and self management for ongoing and newly diagnosed structured programme
6843971000006117	Attended diabetes structured education program
2533102013	Attended diabetes structured education programme
26605	Attended diabetes structured education programme
8098221000006116	Attended expert patient education versus routine treatment diabetes structured education programme
6430	Attending diabetes clinic
456686014	Attending diabetes clinic
13197	Attends diabetes monitoring
285751016	Attends diabetes monitoring
11633211000006112	Atypical diabetes mellitus
17067	Autonomic neuropathy due to diabetes
7069	Background diabetic retinopathy
7306751000006110	Brittle type 2 diabetes mellitus
84871000006117	Cataract due to diabetes mellitus type 2
12078931000006114	Cataract of left eye due to diabetes mellitus
12078901000006118	Cataract of right eye due to diabetes mellitus
7328	Cellulitis in diabetic foot
308360012	Cellulitis in diabetic foot
14071441000006113	Cellulitis of foot due to diabetes mellitus
7966791000006111	Chronic kidney disease stage 1 due to type 2 diabetes mellitus
7966761000006115	Chronic kidney disease stage 2 due to type 2 diabetes mellitus
7966691000006116	Chronic kidney disease stage 3 due to type 2 diabetes mellitus
7966641000006113	Chronic kidney disease stage 4 due to type 2 diabetes mellitus
7966611000006114	Chronic kidney disease stage 5 due to type 2 diabetes mellitus
297551015	Chronic painful diabetic neuropathy
354508018	Clinical diabetic nephropathy
107881	Clinical diabetic nephropathy
12085921000006112	Clinically significant macular oedema of left eye due to diabetes mellitus
12085891000006118	Clinically significant macular oedema of right eye co-occurrent and due to diabetes mellitus
12705021000006112	Clinically significant macular oedema of right eye due to diabetes mellitus
2532967014	Clinically significant macular oedema of right eye due to diabetes mellitus
12102571000006117	Clinically significant macular oedema with diabetes mellitus
292488013	Coma associated with diabetes mellitus
14060651000006114	Complication due to diabetes mellitus
2359401000000111	Conversion to non-insulin injectable medication
109700	Conversion to non-insulin injectable medication
14015311000006110	Coronary artery disease due to type 2 diabetes mellitus

8098341000006116 DESMOND (diabetes education and self management for ongoing and newly diagnosed) structured programme completed  
546221000000114 DESMOND diabetes structured education programme completed  
93529 DESMOND diabetes structured education programme completed  
6953901000006115 DKA - diabetic ketoacidosis  
933211000006112 DM + persist microalbuminuria  
933221000006116 DM + persistent proteinuria  
3690681000006114 DM - Diabetes mellitus  
67212 DM induced by non-steroid drugs without complication  
2576431000006117 DR - Diabetic retinopathy  
68818 DTSQ - Diabetes treatment satisfaction questionnaire  
5549771000006119 DTSQ - Diabetes treatment satisfaction questionnaire  
408811014 DTSQs (Diabetes Treatment Satisfaction Questionnaire status version) score  
29041 Date diabetic treatment start  
264720011 Date diabetic treatment start  
607851000006113 Date diabetic treatment stopped  
1822391000006114 Date other antidiabetic drug started  
1139861000000119 Declined consent for diabetes year of care programme  
101190 Declined consent for diabetes year of care programme  
12734771000006118 Declined to register for access to online diabetes self-management application  
881491000006119 Diabetes + eye manifestation  
881481000006117 Diabetes + nephropathy  
881501000006110 Diabetes + neuropathy  
881521000006117 Diabetes + other complications  
881511000006113 Diabetes + periph. circulat. dis  
2287311000000111 Diabetes Year of Care annual review  
216195015 Diabetes care by hospital only  
12307 Diabetes care by hospital only  
14233341000006113 Diabetes care plan  
47032 Diabetes care plan agreed  
103743 Diabetes care plan declined  
1759911000000118 Diabetes care plan declined  
1918361000006116 Diabetes care planning test results sent to patient  
13191 Diabetes clinic administration  
2474334019 Diabetes clinical management plan  
63412 Diabetes clinical management plan  
8098321000006111 Diabetes education and self management for ongoing and newly diagnosed structured programme completed  
7567341000006113 Diabetes foot care clinic  
8836 Diabetes management plan given  
1488441010 Diabetes medication review  
11471 Diabetes medication review  
121589010 Diabetes mellitus  
711 Diabetes mellitus  
881451000006113 Diabetes mellitus -adult onset  
72345 Diabetes mellitus NOS with hyperosmolar coma  
292479016 Diabetes mellitus NOS with ketoacidosis  
42505 Diabetes mellitus NOS with ketoacidosis  
292489017 Diabetes mellitus NOS with ketoacidotic coma  
65062 Diabetes mellitus NOS with ketoacidotic coma  
292512019 Diabetes mellitus NOS with neurological manifestation  
22573 Diabetes mellitus NOS with neurological manifestation  
50972 Diabetes mellitus NOS with no mention of complication  
292475010 Diabetes mellitus NOS with no mention of complication  
292503016 Diabetes mellitus NOS with ophthalmic manifestation  
34283 Diabetes mellitus NOS with ophthalmic manifestation  
70821 Diabetes mellitus NOS with other specified manifestation  
292621010 Diabetes mellitus NOS with other specified manifestation  
292523015 Diabetes mellitus NOS with peripheral circulatory disorder  
65025 Diabetes mellitus NOS with peripheral circulatory disorder  
64357 Diabetes mellitus NOS with unspecified complication  
494831000000119 Diabetes mellitus associated with cystic fibrosis  
198461000000116 Diabetes mellitus associated with pancreatic disease  
1823921000006119 Diabetes mellitus confirmed  
200111000006116 Diabetes mellitus diet education  
2287971000000119 Diabetes mellitus in remission  
107603 Diabetes mellitus in remission  
11551 Diabetes mellitus induced by steroids  
5234 Diabetes mellitus screen  
1675511000006113 Diabetes mellitus screening risk score  
3209441000006114 Diabetes mellitus type 2  
3209431000006116 Diabetes mellitus type II  
5505651000006113 Diabetes mellitus uncontrolled

61635100006115	Diabetes mellitus with gangrene
32403	Diabetes mellitus with gangrene
292480018	Diabetes mellitus with hyperosmolar coma
21482	Diabetes mellitus with hyperosmolar coma
1682	Diabetes mellitus with ketoacidosis
2622193012	Diabetes mellitus with ketoacidosis
15690	Diabetes mellitus with ketoacidotic coma
61638100006111	Diabetes mellitus with ketoacidotic coma
292565014	Diabetes mellitus with multiple complications
35107	Diabetes mellitus with nephropathy NOS
292496015	Diabetes mellitus with nephropathy NOS
16230	Diabetes mellitus with neurological manifestation
345487013	Diabetes mellitus with neuropathy
7795	Diabetes mellitus with neuropathy
38986	Diabetes mellitus with no mention of complication
33254	Diabetes mellitus with ophthalmic manifestation
292617015	Diabetes mellitus with other specified manifestation
33343	Diabetes mellitus with other specified manifestation
35399	Diabetes mellitus with peripheral circulatory disorder
61645100006110	Diabetes mellitus with polyneuropathy
16491	Diabetes mellitus with polyneuropathy
16502	Diabetes mellitus with renal manifestation
61646100006112	Diabetes mellitus with renal manifestation
45491	Diabetes mellitus with unspecified complication
292622015	Diabetes mellitus with unspecified complication
292466013	Diabetes mellitus without complication
39317	Diabetes mellitus, adult onset, + neurological manifestation
61648100006119	Diabetes mellitus, adult onset, + neurological manifestation
41389	Diabetes mellitus, adult onset, + ophthalmic manifestation
61649100006116	Diabetes mellitus, adult onset, + ophthalmic manifestation
63762	Diabetes mellitus, adult onset, + unspecified complication
14803	Diabetes mellitus, adult onset, no mention of complication
61651100006110	Diabetes mellitus, adult onset, no mention of complication
43139	Diabetes mellitus, adult onset, with hyperosmolar coma
292483016	Diabetes mellitus, adult onset, with hyperosmolar coma
54856	Diabetes mellitus, adult onset, with ketoacidosis
61653100006116	Diabetes mellitus, adult onset, with ketoacidosis
68843	Diabetes mellitus, adult onset, with ketoacidotic coma
61654100006114	Diabetes mellitus, adult onset, with ketoacidotic coma
35105	Diabetes mellitus, adult onset, with renal manifestation
61655100006111	Diabetes mellitus, adult onset, with renal manifestation
61656100006113	Diabetes mellitus, adult with gangrene
33807	Diabetes mellitus, adult with gangrene
63371	Diabetes mellitus, adult, + other specified manifestation
61657100006118	Diabetes mellitus, adult, + other specified manifestation
63357	Diabetes mellitus, adult, + peripheral circulatory disorder
61658100006115	Diabetes mellitus, adult, + peripheral circulatory disorder
13192	Diabetes monitor. check done
9897	Diabetes monitoring admin.
16171000000110	Diabetes monitoring admin. NOS
21631000000117	Diabetes monitoring administration
5979491000006119	Diabetes monitoring call
285753018	Diabetes monitoring default
22130	Diabetes monitoring default
61674100006116	Diabetes monitoring second letter
61671100006115	Diabetes monitoring verbal invite
94647	Diabetes screening administration
621511000000117	Diabetes screening administration
7507871000006114	Diabetes self management plan
351595014	Diabetes self management plan
108993	Diabetes self-management plan agreed
2117891000000114	Diabetes self-management plan agreed
107423	Diabetes self-management plan review
2115761000000117	Diabetes self-management plan review
532331000000119	Diabetes structured education programme completed
93854	Diabetes structured education programme declined
107414	Diabetes structured education programme not available
2283241000000113	Diabetes structured education programme not available
12121371000006111	Diabetes structured education programme offered
94699	Diabetes treatment satisfaction questionnaire
6718121000006115	Diabetes type
5109461000006115	Diabetes type 2 on insulin

47957100000110	Diabetes type 2 review
83532	Diabetes type 2 review
9313441000006115	Diabetes type 2 with diabetic ulcer of left foot
914261000006119	Diabetes type 2 with nephropathy
6969931000006116	Diabetes type 2 with neurological disorder
6982521000006119	Diabetes type 2 with retinopathy
8084961000006111	Diabetes type II review
34528	Diabetes well being questionnaire
616821000006116	Diabetes wellbeing questionnaire
881471000006115	Diabetes with coma
932641000006116	Diabetes with coma
32556	Diabetes with gangrene
616831000006118	Diabetes with gangrene
881461000006110	Diabetes+ketoacidosis -no coma
12506	Diabetes: practice programme
264723013	Diabetes: practice programme
46577	Diabetes: shared care in pregnancy - diabetol and obstet
845341000006111	Diabetes: shared care in pregnancy - diabetologist and obstetrician
264724019	Diabetes: shared care programme
12675	Diabetes: shared care programme
856531000006119	Diabetic - GP eye check
264707013	Diabetic - good control
13071	Diabetic - good control
856551000006114	Diabetic - hospital eye check
616891000006119	Diabetic - moderate control
401531012	Diabetic - poor control
2378	Diabetic - poor control
264716012	Diabetic - poor control NOS
22023	Diabetic - poor control NOS
1954041000006119	Diabetic - uses carbohydrate counting
27891	Diabetic Charcot arthropathy
616971000006114	Diabetic Charcot's arthropathy
617041000006117	Diabetic Foot Risk Assessment
6953891000006119	Diabetic acidosis
65526011	Diabetic amyotrophy
616921000006113	Diabetic amyotrophy
59903	Diabetic amyotrophy
2340	Diabetic amyotrophy
102490	Diabetic assessment of erectile dysfunction
3319861000006118	Diabetic autonomic neuropathy
6444071000006112	Diabetic care education
10659	Diabetic cataract
73294018	Diabetic cataract
12078961000006117	Diabetic cataract of bilateral eyes
309737011	Diabetic cheiroarthropathy
18142	Diabetic cheiroarthropathy
57333	Diabetic cheiroopathy
309738018	Diabetic cheiroopathy
2920981000006117	Diabetic coma
292626017	Diabetic complication
282568013	Diabetic crisis monitoring
47341	Diabetic crisis monitoring
250447011	Diabetic diet
25636	Diabetic diet - poor compliance
1658821000000117	Diabetic dietary review
101177	Diabetic dietary review
101456	Diabetic dietary review declined
1658941000000115	Diabetic dietary review declined
405561000000113	Diabetic digital retinopathy screening offered
264704018	Diabetic drug side effects
2597931000006119	Diabetic education
283544013	Diabetic emergency hospital admission
1734281000000117	Diabetic erectile dysfunction review
102434	Diabetic erectile dysfunction review
2900951000006115	Diabetic eye disease
5634901000006116	Diabetic foot
2368911000000117	Diabetic foot care education
108890	Diabetic foot care education
22823	Diabetic foot examination
1780386019	Diabetic foot examination
1960611000006113	Diabetic foot examination - action required
1960621000006117	Diabetic foot examination - no action required

18824	Diabetic foot examination declined
2474309019	Diabetic foot examination declined
12247	Diabetic foot examination not indicated
2159961010	Diabetic foot examination not indicated
1488405010	Diabetic foot risk assessment
50175	Diabetic foot risk assessment
692951000000111	Diabetic foot screen
95994	Diabetic foot screen
2227781000000112	Diabetic foot screening invitation
106738	Diabetic foot screening invitation
1841451000006115	Diabetic foot screening invitation
2227861000000112	Diabetic foot screening invitation first letter
106723	Diabetic foot screening invitation first letter
1841461000006118	Diabetic foot screening invitation letter
2227981000000110	Diabetic foot screening invitation second letter
106722	Diabetic foot screening invitation second letter
1841481000006111	Diabetic foot screening invitation second letter
107793	Diabetic foot screening invitation third letter
2230301000000116	Diabetic foot screening invitation third letter
6348911000006117	Diabetic foot ulcer
305158015	Diabetic glomerulopathy
7613941000006113	Diabetic glomerulosclerosis
4808881000006117	Diabetic hand syndrome
454092018	Diabetic hyperosmolar non-ketotic state
2465001000000115	Diabetic injection administration education
17313	Diabetic iritis
297964010	Diabetic iritis
6953861000006110	Diabetic ketoacidosis
178798017	Diabetic ketoacidosis without coma
6022931000006112	Diabetic macular edema
6630571000006110	Diabetic macular edema not clinically significant
12085791000006112	Diabetic macular edema of left eye
6022921000006114	Diabetic macular oedema
6630561000006115	Diabetic macular oedema not clinically significant
12085761000006116	Diabetic macular oedema of left eye
12085721000006110	Diabetic macular oedema of right eye
347657010	Diabetic maculopathy
3837	Diabetic maculopathy
12086331000006116	Diabetic maculopathy of left eye
12086281000006113	Diabetic maculopathy of right eye
2160025013	Diabetic medicine
777231000006119	Diabetic monitoring - injection sites
66475	Diabetic monitoring - lower risk albumin excretion
17247	Diabetic mononeuritis NOS
297510017	Diabetic mononeuritis NOS
297492014	Diabetic mononeuritis multiplex
44033	Diabetic mononeuritis multiplex
37315	Diabetic mononeuropathy
345492010	Diabetic mononeuropathy
205225016	Diabetic nephropathy
2475	Diabetic nephropathy
4808921000006113	Diabetic neuropathic arthropathy
345486016	Diabetic neuropathy
2342	Diabetic neuropathy
4929251000006115	Diabetic nurse
264679015	Diabetic on diet only
7563	Diabetic on diet only
28769	Diabetic on insulin and oral treatment
1780981000006115	Diabetic on non-insulin injectable
110344	Diabetic on non-insulin injectable medication
2460251000000115	Diabetic on non-insulin injectable medication
264681018	Diabetic on oral treatment
1684	Diabetic on oral treatment
110379	Diabetic on oral treatment and glucagon-like peptide 1
1966311000006116	Diabetic on oral treatment and glucagon-like peptide 1 receptor agonist
1177721000000112	Diabetic on subcutaneous treatment
101728	Diabetic on subcutaneous treatment
34152	Diabetic peripheral angiopathy
302011	Diabetic peripheral angiopathy
109760	Diabetic peripheral neuropathic pain
2415191000000113	Diabetic peripheral neuropathic pain
7032031000006112	Diabetic peripheral neuropathy

10977	Diabetic peripheral neuropathy screening
1780286017	Diabetic peripheral neuropathy screening
82373015	Diabetic polyneuropathy
5002	Diabetic polyneuropathy
1488406011	Diabetic pre-pregnancy counselling
293759015	Diabetic renal disease
2906401000006113	Diabetic retinal microaneurysm
6630591000006111	Diabetic retinal venous beading
1323	Diabetic retinopathy
9093013	Diabetic retinopathy
11018	Diabetic retinopathy 12 month review
2159948010	Diabetic retinopathy 12 month review
18662	Diabetic retinopathy 6 month review
2159949019	Diabetic retinopathy 6 month review
297758012	Diabetic retinopathy NOS
11626	Diabetic retinopathy NOS
8242331000006114	Diabetic retinopathy detected by national screening programme
18311	Diabetic retinopathy screening
216201011	Diabetic retinopathy screening
1704651000006111	Diabetic retinopathy screening administrative status
106269	Diabetic retinopathy screening administrative status
18747	Diabetic retinopathy screening not indicated
2159960011	Diabetic retinopathy screening not indicated
12121381000006114	Diabetic retinopathy screening offered
19739	Diabetic retinopathy screening offered
2548205017	Diabetic retinopathy screening offered
12262	Diabetic retinopathy screening refused
2474671011	Diabetic retinopathy screening refused
356121018	Diabetic severe hyperglycaemia
1682801000006113	Diabetic sick day rules advice
6985411000006117	Diabetic skin ulcer
282570016	Diabetic stabilisation
24363	Diabetic stabilisation
5128751000006113	Diabetic thick skin syndrome
5030771000006114	Diabetic traction retinal detachment
264705017	Diabetic treatment changed
16490	Diabetic treatment changed
6022831000006119	Diabetic vitreous haemorrhage
13078	Diabetic weight reducing diet
459695017	Diabetic weight reducing diet
6670981000006118	Diabetic wet gangrene of the foot
264718013	Diabetic-uncooperative patient
17869	Diabetic-uncooperative patient
4726201000006118	Diabetology domiciliary visit requested
8099331000006115	Did not attend DESMOND (diabetes education and self management for ongoing and newly diagnosed) structured programme
95159	Did not attend DESMOND diabetes structured education program
1628621000006112	Did not attend DESMOND diabetes structured education programme
1979321000006111	Did not attend NHS diabetes prevention programme
8099361000006112	Did not attend XPERT (expert patient education versus routine treatment) diabetes structured education programme
548131000000119	Did not attend XPERT diabetes structured education programme
94955	Did not attend XPERT diabetes structured education programme
8099311000006114	Did not attend diabetes education and self management for ongoing and newly diagnosed structured programme
102768	Did not attend diabetes foot screening
1690631000000113	Did not attend diabetes foot screening
547191000000117	Did not attend diabetes structured education programme
95553	Did not attend diabetes structured education programme
30648	Did not attend diabetic retinopathy clinic
301191000000119	Did not attend diabetic retinopathy clinic
8099281000006112	Did not attend dose adjustment for normal eating diabetes structured education programme
8099341000006113	Did not attend expert patient education versus routine treatment diabetes structured education programme
8099181000006116	Did not complete DESMOND (diabetes education and self management for ongoing and newly diagnosed) structured programme
95093	Did not complete DESMOND diabetes structured education program
1627291000006113	Did not complete DESMOND diabetes structured education programme
94956	Did not complete XPERT diabetes structured education program
1628311000006111	Did not complete XPERT diabetes structured education programme
8099161000006114	Did not complete diabetes education and self management for ongoing and newly diagnosed structured programme
547331000000115	Did not complete diabetes structured education programme
95094	Did not complete diabetes structured education programme
8099131000006117	Did not complete dose adjustment for normal eating diabetes structured education programme
8099221000006113	Did not complete expert patient education versus routine treatment diabetes structured education programme

4636411000006110 Diet controlled diabetes mellitus  
10642 Dietary advice for diabetes mellitus  
25041 Dietary advice for type II diabetes  
7086021000006115 Dietary advice for type II diabetes  
7086001000006113 Dietary education for type 2 diabetes mellitus  
2249991000000118 Discharge from in-house diabetic foot screening  
109806 Discharge from secondary care diabetes service  
2378231000000112 Discharge from secondary care diabetes service  
47058 Discharged from care of diabetes specialist nurse  
2548430017 Discharged from care of diabetes specialist nurse  
1065811000000118 Discharged from diabetes shared care programme  
100422 Discharged from diabetes shared care programme  
616501000006112 Disorder due to type 2 diabetes mellitus  
13767911000006119 Disorder of eye due to diabetes mellitus  
84951000006118 Disorder of eye with type 2 diabetes mellitus  
914051000006113 Disorder of eye with type 2 diabetes mellitus  
14067581000006118 Disorder of kidney due to diabetes mellitus  
14092441000006112 Disorder of left macula due to diabetes mellitus  
14072591000006111 Disorder of macula due to diabetes mellitus  
14084091000006117 Disorder of nervous system due to diabetes mellitus  
14083911000006113 Disorder of nervous system due to type 2 diabetes mellitus  
14092431000006119 Disorder of right macula due to diabetes mellitus  
8035211000006110 Dyslipidemia with high density lipoprotein below reference range and triglyceride above reference range due to type 2 diabetes mellitus  
6022691000006119 Early proliferative diabetic retinopathy  
107361 Education about diabetes and driving  
2279261000000115 Education about diabetes and driving  
107560 Education about lifestyle for risk of diabetes  
1164191000000111 Education about self management of diabetes  
100436 Education in self management of diabetes  
453050019 Education score - diabetes  
1704681000006115 Eligibility temporarily inactive for diabetic retinopathy screening  
730411000000115 Eligible for diabetic retinopathy screening  
106332 Eligible for diabetic retinopathy screening  
640011000006114 Emergency Diabetic Admission since last appointment  
2380481000000115 Enquiry about diabetic erectile dysfunction declined  
109643 Enquiry about diabetic erectile dysfunction declined  
106360 Erectile dysfunction due to diabetes mellitus  
2243331000000115 Erectile dysfunction due to diabetes mellitus  
14092491000006115 Erectile dysfunction due to diabetes mellitus  
11041 Excepted from diabetes qual indicators: Patient unsuitable  
101834 Excepted from diabetes qual indicators: service unavailable  
139121000000119 Excepted from diabetes quality indicators - informed dissent  
931191000006110 Excepted from diabetes quality indicators - patient unsuitable  
11348 Excepted from diabetes quality indicators: Informed dissent  
1754911000006114 Excepted from diabetes quality indicators: service unavailable  
139001000000110 Exception reporting - diabetes quality indicators  
28574 Exception reporting: diabetes quality indicators  
106328 Excluded diabetic retinop screen as under care ophthalmologist  
110056 Excluded frm diab retinop screen as no currnt contct details  
106778 Excluded frm diabetic retinopathy screen as terminal illness  
106445 Excluded from diabetic retinopathy screen physical disorder  
737331000000117 Excluded from diabetic retinopathy screening  
106327 Excluded from diabetic retinopathy screening  
736911000000111 Excluded from diabetic retinopathy screening as blind  
106329 Excluded from diabetic retinopathy screening as blind  
1704791000006112 Excluded from diabetic retinopathy screening as learning disability  
736731000000118 Excluded from diabetic retinopathy screening as moved away  
106350 Excluded from diabetic retinopathy screening as moved away  
1704771000006111 Excluded from diabetic retinopathy screening as no current contact details  
1704801000006113 Excluded from diabetic retinopathy screening as physical disorder  
1704781000006114 Excluded from diabetic retinopathy screening as terminal illness  
1704731000006113 Excluded from diabetic retinopathy screening as under care of ophthalmologist  
107597 Excluded from diabetic retinopathy screen as learn disability  
938321000006116 Exudative maculopathy associated with type 2 diabetes mellitus  
938331000006118 Exudative maculopathy with type 2 diabetes mellitus  
616421000006118 Eye disorder due to diabetes mellitus  
1059821000000116 FINDRISC (Finnish Diabetes Risk Score) score  
967681000006119 Fibrocalculus pancreatic diabetes  
6041341000006114 Focal diabetic maculopathy  
12224911000006115 Focal exudative diabetic maculopathy  
14077861000006116 Focal exudative maculopathy due to diabetes mellitus



764191000006112 Foot abnormality - diabetes related  
764201000006110 Foot abnormality - diabetes related  
18056 Foot abnormality - diabetes related  
27921 Foot abnormality - diabetes related  
7969001000006112 Foot ulcer due to type 2 diabetes mellitus  
8026041000006113 Forefoot ulcer due to type 2 diabetes mellitus  
264701014 Fundoscopy - diabetic check  
1884591000006118 Further diabetic monitoring  
281211000006117 Gangrene associated with type 2 diabetes mellitus  
14083961000006111 Gangrene due to type 2 diabetes mellitus  
7708081000006116 Gastroparesis due to diabetes mellitus  
12705081000006111 Gastroparesis due to type 2 diabetes mellitus  
12363701000006117 Gastroparesis with diabetes mellitus  
299621000000117 Gastroparesis with type 2 diabetes mellitus  
259365016 Glucose tolerance test indicates diabetes mellitus  
63021000000116 Good compliance with diabetic diet  
7480661000006114 H/O diabetes mellitus type 2  
7045 H/O: Admission in last year for diabetes foot problem  
453100011 H/O: Admission in last year for diabetes foot problem  
6813 H/O: diabetes mellitus  
251591016 H/O: diabetes mellitus  
1957911000006111 H/O: hypoglycaemic event in diabetes  
817491000006111 Haemoglobin A1c between 7%-10% indicating borderline diabetic control  
817481000006113 Haemoglobin A1c greater than 10% indicating poor diabetic control  
817471000006110 Haemoglobin A1c less than 7% indicating good diabetic control  
264693010 Has seen dietician - diabetes  
13069 Has seen dietician - diabetes  
4636471000006118 Has seen dietitian - diabetes  
2693189019 Health education - diabetes  
30477 High risk proliferative diabetic retinopathy  
6022731000006110 High risk proliferative retinopathy  
4539561000006114 History of diabetes mellitus  
1824931000006119 Home visit for diabetes monitoring  
13833601000006113 Hyperosmolar coma due to diabetes mellitus  
14077381000006115 Hyperosmolar non-ketotic state due to diabetes mellitus  
14079871000006119 Hyperosmolar non-ketotic state due to type 2 diabetes mellitus  
36633 Hyperosmolar non-ketotic state in type 2 diabetes mellitus  
1488898011 Hyperosmolar non-ketotic state in type 2 diabetes mellitus  
850691000006118 Hyperosmolar non-ketotic state in type 2 diabetes mellitus  
34450 Hyperosmolar non-ketotic state in type 2 diabetes mellitus  
1667891000000113 Hyperosmolar non-ketotic state in type II diabetes mellitus  
107701 Hyperosmolar non-ketotic state in type II diabetes mellitus  
933231000006118 Hypo states in diabetes  
14073091000006112 Hypoglycaemia due to diabetes mellitus  
459169018 Hypoglycaemic coma co-occurrent and due to diabetes mellitus type II  
14090011000006118 Hypoglycaemic coma due to type 2 diabetes mellitus  
14073081000006114 Hypoglycaemic event due to diabetes  
5110071000006112 Hypoglycaemic event in diabetes  
5110091000006113 Hypoglycaemic state in diabetes  
101881 Impaired vision due to diabetic retinopathy  
733161000000116 Impaired vision due to diabetic retinopathy  
1853141000006111 In-house diabetes foot screening  
2249831000000111 In-house diabetic foot screening  
108634 In-house diabetic foot screening  
2249871000000113 In-house diabetic foot screening first appointment  
2249951000000114 In-house diabetic foot screening follow-up appointment  
1673591000006119 Ineligib for diab. eye screening: Learning or mental disability  
1583901000006115 Ineligibility for diab. eye screen: Blind (screening contraind)  
1583851000006113 Ineligibility for diab. eye screen: Discharged for other reason  
1583881000006117 Ineligibility for diab. eye screening: Declined to participate  
1583841000006111 Ineligibility for diabetic eye screening  
1583921000006113 Ineligibility for diabetic eye screening: Deceased  
1583931000006111 Ineligibility for diabetic eye screening: Moved away  
1583871000006115 Ineligibility for diabetic eye screening: No contact details  
1583861000006110 Ineligibility for diabetic eye screening: Persistent DNA  
1673581000006117 Ineligibility for diabetic eye screening: Physical disability  
1673601000006110 Ineligibility for diabetic eye screening: Terminal illness  
1583911000006117 Ineligibility for diabetic eye screening: Under ophthalmic care  
6931861000006110 Infection of foot associated with diabetes  
13832391000006118 Infection of foot due to diabetes mellitus  
189841000000113 Informed dissent for diabetes national audit  
851051000006110 Ins-treat non-ins-dep diab mel

1407 Insulin treated Type 2 diabetes mellitus  
18278 Insulin treated Type 2 diabetes mellitus  
840951000006119 Insulin treated Type 2 diabetes mellitus  
914391000006116 Insulin treated Type 2 diabetes mellitus  
18264 Insulin treated Type II diabetes mellitus  
841351000006110 Insulin treated Type II diabetes mellitus  
1223147012 Insulin treated Type II diabetes mellitus  
64668 Insulin treated Type II diabetes mellitus  
37648 Insulin treated non-insulin dependent diabetes mellitus  
1223148019 Insulin treated non-insulin dependent diabetes mellitus  
621911000000114 Invitation for diabetes screening  
6041411000006117 Ischaemic diabetic maculopathy  
8044221000006116 Ischaemic foot ulcer due to type 2 diabetes mellitus  
309177010 Ischaemic ulcer diabetic foot  
24327 Ischaemic ulcer diabetic foot  
14071551000006111 Ischaemic ulcer of foot due to diabetes mellitus  
1947161000006114 Joint consultation with General Practitioner and community diabetes specialist nurse  
14083991000006115 Ketoacidosis due to type 2 diabetes mellitus  
6953871000006115 Ketoacidosis in diabetes mellitus  
928581000006111 Ketoacidosis in type 2 diabetes mellitus  
6977421000006110 Ketoacidosis in type II diabetes mellitus  
14056961000006112 Ketoacidotic coma due to diabetes mellitus  
928601000006118 Ketoacidotic coma in type 2 diabetes mellitus  
12704991000006114 Ketoacidotic coma in type 2 diabetes mellitus  
928611000006115 Ketoacidotic coma in type II diabetes mellitus  
354316011 Kidney disorder due to diabetes mellitus  
856611000006114 Laser treated diabetic retinopathy  
856651000006110 Left advanced diabetic retinal disease  
856661000006112 Left diabetic foot active ulceration  
856671000006117 Left diabetic foot high risk  
856691000006116 Left diabetic foot low current risk  
856681000006119 Left diabetic foot moderate risk  
856641000006113 Left diabetic maculopathy  
856631000006115 Left laser treated diabetic retinopathy  
857031000006113 Left non-proliferative diabetic retinopathy  
857051000006118 Left preproliferative diabetic retinopathy  
856621000006118 Left proliferative diabetic retinopathy  
2369111000000112 Lifestyle education for diabetes  
109222 Lifestyle education for diabetes  
7863801000006113 Lumbosacral plexopathy co-occurrent and due to diabetes mellitus  
7863811000006111 Lumbosacral plexopathy with diabetes mellitus  
14057771000006116 Lumbosacral radiculoplexus neuropathy due to diabetes mellitus  
14085781000006119 Macroalbuminuric nephropathy due to diabetes mellitus  
13810181000006111 Macular oedema due to diabetes mellitus  
12300391000006115 Macular oedema not clinically significant with diabetes mellitus  
2159980012 Maculopathy of left eye with diabetes mellitus  
2159979014 Maculopathy of right eye with diabetes mellitus  
14889 Maturity onset diabetes  
223291000000111 Maturity onset diabetes  
8027521000006110 Microalbuminuria due to type 2 diabetes mellitus  
5095031000006114 Microalbuminuric diabetic nephropathy  
6022581000006116 Mild non-proliferative diabetic retinopathy  
12085091000006110 Mild non-proliferative diabetic retinopathy of right eye  
6022611000006112 Mild nonproliferative diabetic retinopathy  
14077691000006113 Mild nonproliferative retinopathy due to diabetes mellitus  
9881 Mixed diabetic ulcer - foot  
12224731000006112 Moderate non-proliferative diabetic retinopathy  
12085231000006118 Moderate non-proliferative diabetic retinopathy of left eye  
12085181000006113 Moderate non-proliferative diabetic retinopathy of right eye  
6022621000006116 Moderate nonproliferative diabetic retinopathy  
6022631000006118 Moderate nonproliferative retinopathy  
84901000006117 Mononeuropathy with type 2 diabetes mellitus  
14071211000006113 Multiple complications due to type 2 diabetes mellitus  
493773010 NIDDM - Non-insulin dependent diabetes mellitus  
5884 NIDDM - Non-insulin dependent diabetes mellitus  
56803 NIDDM with peripheral circulatory disorder  
12704971000006113 Neurologic disorder associated with type 2 diabetes mellitus  
914071000006115 Neurologic disorder associated with type 2 diabetes mellitus  
84931000006113 Neurological disorder with diabetes type 2  
13790071000006114 Neuropathic arthropathy due to diabetes mellitus  
309179013 Neuropathic diabetic ulcer - foot  
11663 Neuropathic diabetic ulcer - foot

8044171000006110 Neuropathic toe ulcer due to type 2 diabetes mellitus  
2014951000006115 New diabetic foot ulcer  
1694761000006113 Newly diagnosed diabetes  
13949621000006112 No diabetic maculopathy of left eye  
13949561000006119 No diabetic retinopathy of left eye  
13949591000006110 No diabetic retinopathy of right eye  
1621011000006115 No evidence of diabetic peripheral neuropathy  
13949611000006116 No maculopathy of left eye due to diabetes mellitus  
13949641000006117 No maculopathy of right eye due to diabetes mellitus  
14073101000006118 Nocturnal hypoglycaemia due to diabetes mellitus  
1484867016 Non proliferative diabetic retinopathy  
10755 Non proliferative diabetic retinopathy  
6630821000006112 Non-high-risk proliferative diabetic retinopathy with clinically significant macular oedema  
281161000006114 Non-insulin depend diabetes mellitus with diabetic cataract  
69278 Non-insulin depend diabetes mellitus with diabetic cataract  
40962 Non-insulin dependent dm with neuropathic arthropathy  
506 Non-insulin dependent diabetes mellitus  
280571000006116 Non-insulin dependent diabetes mellitus  
73466011 Non-insulin dependent diabetes mellitus  
4513 Non-insulin dependent diabetes mellitus  
8403 Non-insulin dependent diabetes mellitus - poor control  
459309011 Non-insulin dependent diabetes mellitus with arthropathy  
24693 Non-insulin dependent diabetes mellitus with arthropathy  
40401 Non-insulin dependent diabetes mellitus with gangrene  
43785 Non-insulin dependent diabetes mellitus with hypoglyca coma  
280511000006113 Non-insulin dependent diabetes mellitus with hypoglyca coma  
280521000006117 Non-insulin dependent diabetes mellitus with mononeuropathy  
72320 Non-insulin dependent diabetes mellitus with mononeuropathy  
59365 Non-insulin dependent diabetes mellitus with nephropathy  
280531000006119 Non-insulin dependent diabetes mellitus with nephropathy  
281181000006116 Non-insulin dependent diabetes mellitus with neuropathic arthropathy  
45467 Non-insulin dependent diabetes mellitus with polyneuropathy  
280541000006112 Non-insulin dependent diabetes mellitus with polyneuropathy  
34912 Non-insulin dependent diabetes mellitus with ulcer  
54212 Non-insulin-dependent dm with peripheral angiopath  
280581000006118 Non-insulin-dependent diabetes mellitus with multiple complications  
62146 Non-insulin-dependent diabetes mellitus with multiple comps  
280591000006115 Non-insulin-dependent diabetes mellitus with neuro comps  
55842 Non-insulin-dependent diabetes mellitus with neuro comps  
587111000006111 Non-insulin-dependent diabetes mellitus with ophthalm comps  
50429 Non-insulin-dependent diabetes mellitus with ophthalm comps  
280561000006111 Non-insulin-dependent diabetes mellitus with peripheral angiopathy  
52303 Non-insulin-dependent diabetes mellitus with renal comps  
587521000006111 Non-insulin-dependent diabetes mellitus with renal comps  
17262 Non-insulin-dependent diabetes mellitus with retinopathy  
641581000006115 Non-insulin-dependent diabetes mellitus with retinopathy  
280551000006114 Non-insulin-dependent diabetes mellitus with ulcer  
29979 Non-insulin-dependent diabetes mellitus without complication  
6515171000006112 Nonproliferative diabetic retinopathy  
13488541000006117 Nonproliferative retinopathy of left eye due to diabetes mellitus  
13488551000006115 Nonproliferative retinopathy of right eye due to diabetes mellitus  
35116 O/E - Left diabetic foot - ulcerated  
1488396017 O/E - Left diabetic foot - ulcerated  
31172 O/E - Left diabetic foot at high risk  
1488398016 O/E - Left diabetic foot at high risk  
1666911000000113 O/E - Left diabetic foot at increased risk  
105740 O/E - Left diabetic foot at increased risk  
26667 O/E - Left diabetic foot at low risk  
1488397014 O/E - Left diabetic foot at low risk  
1488403015 O/E - Left diabetic foot at moderate risk  
31156 O/E - Left diabetic foot at moderate risk  
451411017 O/E - Left diabetic foot at risk  
26664 O/E - Left diabetic foot at risk  
35316 O/E - Right diabetic foot - ulcerated  
1488395018 O/E - Right diabetic foot - ulcerated  
1488394019 O/E - Right diabetic foot at high risk  
31171 O/E - Right diabetic foot at high risk  
1666931000000117 O/E - Right diabetic foot at increased risk  
105741 O/E - Right diabetic foot at increased risk  
1488393013 O/E - Right diabetic foot at low risk  
26666 O/E - Right diabetic foot at low risk  
1488404014 O/E - Right diabetic foot at moderate risk

31157	O/E - Right diabetic foot at moderate risk
17095	O/E - Right diabetic foot at risk
451410016	O/E - Right diabetic foot at risk
9835	O/E - diabetic maculopathy present both eyes
1484887015	O/E - diabetic maculopathy present both eyes
49640	O/E - left chronic diabetic foot ulcer
2532976019	O/E - left chronic diabetic foot ulcer
11129	O/E - left eye background diabetic retinopathy
2159974016	O/E - left eye background diabetic retinopathy
2532971012	O/E - left eye clinically significant macular oedema
13107	O/E - left eye clinically significant macular oedema
13108	O/E - left eye diabetic maculopathy
2159976019	O/E - left eye preproliferative diabetic retinopathy
13103	O/E - left eye preproliferative diabetic retinopathy
2159978018	O/E - left eye proliferative diabetic retinopathy
13101	O/E - left eye proliferative diabetic retinopathy
52041	O/E - left eye stable treated proliferative diabetic retinopathy
975261000006113	O/E - left eye stable treated proliferative diabetic retinopathy
62384	O/E - right chronic diabetic foot ulcer
2532977011	O/E - right chronic diabetic foot ulcer
11433	O/E - right eye background diabetic retinopathy
2159973010	O/E - right eye background diabetic retinopathy
25888	O/E - right eye clinically significant macular oedema
13102	O/E - right eye diabetic maculopathy
13099	O/E - right eye preproliferative diabetic retinopathy
2159975015	O/E - right eye preproliferative diabetic retinopathy
2159977011	O/E - right eye proliferative diabetic retinopathy
13097	O/E - right eye proliferative diabetic retinopathy
47328	O/E - right eye stable treated proliferative diabetic retinopathy
975251000006111	O/E - right eye stable treated proliferative diabetic retinopathy
52630	O/E - sight threatening diabetic retinopathy
2549896013	O/E - sight threatening diabetic retinopathy
6546341000006116	On examination - Left diabetic foot at high risk
6546321000006111	On examination - Left diabetic foot at low risk
6546411000006113	On examination - Left diabetic foot at moderate risk
6546281000006117	On examination - Right diabetic foot - ulcerated
6546261000006110	On examination - Right diabetic foot at high risk
6546241000006111	On examination - Right diabetic foot at low risk
6546431000006119	On examination - Right diabetic foot at moderate risk
6761801000006113	On examination - left eye background diabetic retinopathy
6761841000006110	On examination - left eye preproliferative diabetic retinopathy
6761881000006116	On examination - left eye proliferative diabetic retinopathy
6866541000006117	On examination - left eye stable treated proliferative diabetic retinopathy
6866781000006116	On examination - right chronic diabetic foot ulcer
6761821000006115	On examination - right eye preproliferative diabetic retinopathy
6761861000006114	On examination - right eye proliferative diabetic retinopathy
6866901000006111	On examination - right eye stable treated proliferative diabetic retinopathy
59288	Other specified diabetes mellitus with coma
292478012	Other specified diabetes mellitus with ketoacidosis
38617	Other specified diabetes mellitus with ketoacidosis
13751000006117	Other specified diabetes mellitus with multiple comps
46290	Other specified diabetes mellitus with multiple comps
61523	Other specified diabetes mellitus with neurological comps
13761000006115	Other specified diabetes mellitus with neurological comps
13771000006110	Other specified diabetes mellitus with ophthalmic complicatn
47377	Other specified diabetes mellitus with ophthalmic complicatn
13781000006113	Other specified diabetes mellitus with other spec comps
10098	Other specified diabetes mellitus with other spec comps
112402	Other specified diabetes mellitus with periph circ comps
13791000006111	Other specified diabetes mellitus with periph circ comps
292495016	Other specified diabetes mellitus with renal complications
13279	Other specified diabetes mellitus with renal complications
64283	Other specified diabetes mellitus with unspecified comps
13811000006110	Other specified diabetes mellitus with unspecified comps
11599	Pan retinal photocoagulation for diabetes
2474726011	Pan retinal photocoagulation for diabetes
308071000000112	Patient consent given for addition to diabetic register
57389	Patient consent given for addition to diabetic register
856771000006110	Patient has been told has diabetes
1935341000006117	Patient in diabetes study
12682	Patient offered diabetes structured education programme
12213	Patient on maximal tolerated therapy for diabetes

4392221000006118 Peripheral angiopathy due to diabetes mellitus  
674961000006118 Peripheral circulatory disorder associated with type 2 diabetes mellitus  
616441000006113 Peripheral vascular disorder due to diabetes mellitus  
928561000006118 Persistent microalbuminuria associated with type 2 diabetes mellitus  
14083811000006118 Persistent microalbuminuria due to type 2 diabetes mellitus  
928541000006117 Persistent proteinuria associated with type 2 diabetes mellitus  
14084041000006114 Persistent proteinuria due to type 2 diabetes mellitus  
914241000006118 Polyneuropathy due to type 2 diabetes mellitus  
214921000006116 Polyneuropathy in diabetes  
308110013 Pre-existing diabetes mellitus  
8033291000006116 Pre-existing diabetes mellitus in mother complicating childbirth  
7500211000006117 Pre-existing diabetes mellitus in pregnancy  
306113018 Pre-existing diabetes mellitus, non-insulin-dependent  
50609 Pre-existing diabetes mellitus, non-insulin-dependent  
55431 Pre-existing diabetes mellitus, unspecified  
213141000006111 Pre-existing diabetes mellitus, unspecified  
4796321000006113 Pre-existing type 2 diabetes mellitus  
1988741000006117 Pregnancy and non-insulin-dependent diabetes mellitus  
5110001000006118 Pregnancy and type 2 diabetes mellitus  
2986 Proliferative diabetic retinopathy  
98476015 Proliferative diabetic retinopathy  
3286 Proliferative diabetic retinopathy  
6022721000006112 Proliferative diabetic retinopathy - high risk  
6630481000006114 Proliferative diabetic retinopathy - high risk with no macular oedema  
6022671000006115 Proliferative diabetic retinopathy - non high risk  
6022761000006118 Proliferative diabetic retinopathy - quiescent  
14059421000006119 Proliferative retinopathy due to diabetes mellitus  
8048421000006113 Proteinuria due to type 2 diabetes mellitus  
354509014 Proteinuric diabetic nephropathy  
105302 Proteinuric diabetic nephropathy  
13791991000006116 Proteinuric nephropathy due to diabetes mellitus  
2156571000000116 Provision of diabetes clinical summary  
104374 Provision of diabetes clinical summary  
2548633012 Provision of patient held diabetes record refused  
106679 Provision of written information about diabetes and driving  
2220161000000117 Provision of written information about diabetes and driving  
918281000006116 Pt advised re diabetic diet  
8414 Pt advised re diabetic diet  
1850931000006111 Reason for influenza vaccine - diabetes mellitus  
1776581000006117 Reason for referral: Diabetes  
1966441000006113 Recommendation to self-refer for diabetes structured education  
1484923019 Refer to diabetic foot screener  
1539131000006115 Referral for diabetic retinopathy screening  
406351000000114 Referral for diabetic retinopathy screening  
64142 Referral for diabetic retinopathy screening  
8098951000006115 Referral to DESMOND (diabetes education and self management for ongoing and newly diagnosed) diabetes structured programme  
8243411000006117 Referral to DESMOND (diabetes education and self management for ongoing and newly diagnosed) structured programme declined  
93657 Referral to DESMOND diabetes structured education programme  
546961000000111 Referral to DESMOND diabetes structured education programme  
103543 Referral to DESMOND structured programme declined  
8098981000006111 Referral to XPERT (expert patient education versus routine treatment) diabetes structured education programme  
547061000000110 Referral to XPERT diabetes structured education programme  
93870 Referral to XPERT diabetes structured education programme  
2182651000000118 Referral to community diabetes clinic  
105207 Referral to community diabetes clinic  
2116661000000116 Referral to community diabetes service  
104287 Referral to community diabetes service  
479981000000119 Referral to community diabetes specialist nurse  
82474 Referral to community diabetes specialist nurse  
105937 Referral to community diabetes specialist nurse declined  
2176771000000110 Referral to community diabetes specialist nurse declined  
8098931000006110 Referral to diabetes education and self management for ongoing and newly diagnosed diabetes structured programme  
1784621000006118 Referral to diabetes education and self management for ongoing and newly diagnosed structured programme declined  
8306 Referral to diabetes nurse  
456646018 Referral to diabetes nurse  
2533106011 Referral to diabetes preconception counselling clinic  
47011 Referral to diabetes structured education programme  
308811000000110 Referral to diabetic eye clinic  
19381 Referral to diabetic eye clinic  
283709014 Referral to diabetic liaison nurse

8098961000006118 Referral to expert patient education versus routine treatment diabetes structured education programme  
12623631000006115 Referral to online diabetes structured education programme  
1824571000006112 Referral to walking away from diabetes programme  
1824581000006110 Referral to walking away from diabetes programme declined  
1775381000006118 Referred to Diabetes Service  
285752011 Refuses diabetes monitoring  
26603 Refuses diabetes monitoring  
11848 Renal diabetes  
914031000006118 Renal disorder associated with type II diabetes mellitus  
84921000006110 Renal disorder due to type 2 diabetes mellitus  
22967 Retinal abnormality - diabetes related  
169731000006118 Retinal abnormality - diabetes-related  
36855 Retinal abnormality - non-diabetes  
453053017 Retinal abnormality - non-diabetes  
12166111000006116 Retinopathy due to diabetes mellitus  
14084061000006113 Retinopathy due to type 2 diabetes mellitus  
914151000006112 Retinopathy with type 2 diabetes mellitus  
857441000006114 Right advanced diabetic retinal disease  
857691000006119 Right diabetic foot active ulceration  
857721000006112 Right diabetic foot high risk  
857761000006118 Right diabetic foot low current risk  
857741000006117 Right diabetic foot moderate risk  
857431000006116 Right diabetic maculopathy  
857421000006119 Right laser treated diabetic retinopathy  
857971000006110 Right non-proliferative diabetic retinopathy  
857981000006113 Right preproliferative diabetic retinopathy  
857411000006110 Right proliferative diabetic retinopathy  
2586611000000113 Seen by diabetes specialist nurse  
32739 Seen in community diabetes specialist clinic  
9974 Seen in diabetic eye clinic  
457231013 Seen in diabetic eye clinic  
2159271018 Seen in diabetic foot clinic  
12224761000006115 Severe NPDR (nonproliferative diabetic retinopathy)  
841011000006112 Severe nonproliferative diabetic retinopathy  
12085291000006119 Severe nonproliferative diabetic retinopathy of left eye  
12085251000006113 Severe nonproliferative diabetic retinopathy of right eye  
6630721000006117 Severe nonproliferative diabetic retinopathy with clinically significant macular oedema  
6630751000006114 Severe nonproliferative diabetic retinopathy with no macular oedema  
6022651000006113 Severe nonproliferative retinopathy  
14077711000006111 Severe nonproliferative retinopathy due to diabetes mellitus  
913591000006110 Skin ulcer associated with diabetes mellitus  
14084121000006118 Skin ulcer due to diabetes mellitus  
8241041000006113 Symptomatic diabetic peripheral neuropathy  
2532974016 Transition of diabetes care options discussed  
758 Type 2 diabetes mellitus  
197761014 Type 2 diabetes mellitus  
84471000006119 Type 2 diabetes mellitus  
17859 Type 2 diabetes mellitus  
84481000006116 Type 2 diabetes mellitus - poor control  
45913 Type 2 diabetes mellitus - poor control  
25627 Type 2 diabetes mellitus - poor control  
2288071000000116 Type 2 diabetes mellitus in remission  
110611 Type 2 diabetes mellitus in remission  
8438161000006115 Type 2 diabetes mellitus risk assessment invitation  
8438281000006117 Type 2 diabetes mellitus risk assessment invitation SMS (short message service) text message  
8438181000006113 Type 2 diabetes mellitus risk assessment invitation first letter  
8438201000006114 Type 2 diabetes mellitus risk assessment invitation second letter  
8438221000006116 Type 2 diabetes mellitus risk assessment invitation third letter  
8438261000006110 Type 2 diabetes mellitus risk assessment telephone invitation  
7281511000006118 Type 2 diabetes mellitus uncontrolled  
7288191000006110 Type 2 diabetes mellitus well controlled  
459310018 Type 2 diabetes mellitus with arthropathy  
59253 Type 2 diabetes mellitus with arthropathy  
49869 Type 2 diabetes mellitus with arthropathy  
84491000006118 Type 2 diabetes mellitus with arthropathy  
84501000006114 Type 2 diabetes mellitus with diabetic cataract  
44779 Type 2 diabetes mellitus with diabetic cataract  
914301000006111 Type 2 diabetes mellitus with diabetic cataract  
44982 Type 2 diabetes mellitus with diabetic cataract  
25591 Type 2 diabetes mellitus with exudative maculopathy  
12736 Type 2 diabetes mellitus with gangrene  
84511000006112 Type 2 diabetes mellitus with gangrene

292583018	Type 2 diabetes mellitus with gangrene
46150	Type 2 diabetes mellitus with gangrene
63690	Type 2 diabetes mellitus with gastroparesis
475801100006112	Type 2 diabetes mellitus with hyperosmolar coma
459167016	Type 2 diabetes mellitus with hypoglycaemic coma
61071	Type 2 diabetes mellitus with hypoglycaemic coma
46917	Type 2 diabetes mellitus with hypoglycaemic coma
8452100006116	Type 2 diabetes mellitus with hypoglycaemic coma
32627	Type 2 diabetes mellitus with ketoacidosis
51756	Type 2 diabetes mellitus with ketoacidotic coma
62674	Type 2 diabetes mellitus with mononeuropathy
91422100006113	Type 2 diabetes mellitus with mononeuropathy
8453100006118	Type 2 diabetes mellitus with mononeuropathy
292577016	Type 2 diabetes mellitus with multiple complications
65267	Type 2 diabetes mellitus with multiple complications
108005	Type 2 diabetes mellitus with multiple complications
8454100006111	Type 2 diabetes mellitus with multiple complications
8455100006113	Type 2 diabetes mellitus with nephropathy
24836	Type 2 diabetes mellitus with nephropathy
12640	Type 2 diabetes mellitus with nephropathy
45919	Type 2 diabetes mellitus with neurological complications
34268	Type 2 diabetes mellitus with neurological complications
8456100006110	Type 2 diabetes mellitus with neurological complications
66965	Type 2 diabetes mellitus with neuropathic arthropathy
35385	Type 2 diabetes mellitus with neuropathic arthropathy
459313016	Type 2 diabetes mellitus with neuropathic arthropathy
8457100006115	Type 2 diabetes mellitus with neuropathic arthropathy
70316	Type 2 diabetes mellitus with ophthalmic complications
8458100006117	Type 2 diabetes mellitus with ophthalmic complications
47321	Type 2 diabetes mellitus with ophthalmic complications
60699	Type 2 diabetes mellitus with peripheral angiopathy
459308015	Type 2 diabetes mellitus with peripheral angiopathy
8459100006119	Type 2 diabetes mellitus with peripheral angiopathy
37806	Type 2 diabetes mellitus with peripheral angiopathy
18390	Type 2 diabetes mellitus with persistent microalbuminuria
26054	Type 2 diabetes mellitus with persistent proteinuria
8460100006110	Type 2 diabetes mellitus with polyneuropathy
109865	Type 2 diabetes mellitus with polyneuropathy
18425	Type 2 diabetes mellitus with polyneuropathy
8461100006113	Type 2 diabetes mellitus with renal complications
18777	Type 2 diabetes mellitus with renal complications
18209	Type 2 diabetes mellitus with renal complications
8462100006117	Type 2 diabetes mellitus with retinopathy
42762	Type 2 diabetes mellitus with retinopathy
18496	Type 2 diabetes mellitus with retinopathy
8463100006119	Type 2 diabetes mellitus with ulcer
292579018	Type 2 diabetes mellitus with ulcer
65704	Type 2 diabetes mellitus with ulcer
49074	Type 2 diabetes mellitus with ulcer
457329019	Type 2 diabetes mellitus without complication
8464100006112	Type 2 diabetes mellitus without complication
47954	Type 2 diabetes mellitus without complication
105784	Type 2 diabetes mellitus without complication
102611	Type 2 diabetic dietary review
166572100000112	Type 2 diabetic dietary review
8012081000006110	Type 2 diabetic on diet only
8012061000006117	Type 2 diabetic on insulin
493774016	Type II diabetes mellitus
18219	Type II diabetes mellitus
22884	Type II diabetes mellitus
8484100006113	Type II diabetes mellitus
8485100006110	Type II diabetes mellitus - poor control
292589019	Type II diabetes mellitus - poor control
24458	Type II diabetes mellitus - poor control
47315	Type II diabetes mellitus - poor control
228806100000111	Type II diabetes mellitus in remission
107824	Type II diabetes mellitus in remission
292590011	Type II diabetes mellitus poorly controlled
28117100006119	Type II diabetes mellitus uncontrolled
103902	Type II diabetes mellitus with arthropathy
8486100006112	Type II diabetes mellitus with arthropathy
459311019	Type II diabetes mellitus with arthropathy

18143	Type II diabetes mellitus with arthropathy
48192	Type II diabetes mellitus with diabetic cataract
914311000006114	Type II diabetes mellitus with diabetic cataract
93727	Type II diabetes mellitus with diabetic cataract
111798	Type II diabetes mellitus with exudative maculopathy
62107	Type II diabetes mellitus with gangrene
84881000006119	Type II diabetes mellitus with gangrene
292582011	Type II diabetes mellitus with gangrene
104323	Type II diabetes mellitus with gangrene
1667921000000117	Type II diabetes mellitus with gastroparesis
113609	Type II diabetes mellitus with gastroparesis
98723	Type II diabetes mellitus with hypoglycaemic coma
56268	Type II diabetes mellitus with hypoglycaemic coma
84891000006116	Type II diabetes mellitus with hypoglycaemic coma
928591000006114	Type II diabetes mellitus with ketoacidosis
106528	Type II diabetes mellitus with ketoacidosis
106061	Type II diabetes mellitus with ketoacidotic coma
50813	Type II diabetes mellitus with mononeuropathy
95351	Type II diabetes mellitus with mononeuropathy
914231000006111	Type II diabetes mellitus with mononeuropathy
113495	Type II diabetes mellitus with multiple complications
84911000006119	Type II diabetes mellitus with multiple complications
43227	Type II diabetes mellitus with multiple complications
292576013	Type II diabetes mellitus with multiple complications
64571	Type II diabetes mellitus with nephropathy
102201	Type II diabetes mellitus with nephropathy
914271000006114	Type II diabetes mellitus with nephropathy
914081000006117	Type II diabetes mellitus with neurological complications
67905	Type II diabetes mellitus with neurological complications
98616	Type II diabetes mellitus with neurological complications
109197	Type II diabetes mellitus with neuropathic arthropathy
459312014	Type II diabetes mellitus with neuropathic arthropathy
84941000006115	Type II diabetes mellitus with neuropathic arthropathy
47816	Type II diabetes mellitus with neuropathic arthropathy
914061000006110	Type II diabetes mellitus with ophthalmic complications
59725	Type II diabetes mellitus with ophthalmic complications
100964	Type II diabetes mellitus with ophthalmic complications
84961000006116	Type II diabetes mellitus with peripheral angiopathy
459306016	Type II diabetes mellitus with peripheral angiopathy
54899	Type II diabetes mellitus with peripheral angiopathy
104639	Type II diabetes mellitus with peripheral angiopathy
928571000006113	Type II diabetes mellitus with persistent microalbuminuria
85991	Type II diabetes mellitus with persistent microalbuminuria
60796	Type II diabetes mellitus with persistent proteinuria
928551000006115	Type II diabetes mellitus with persistent proteinuria
47409	Type II diabetes mellitus with polyneuropathy
84971000006111	Type II diabetes mellitus with polyneuropathy
50527	Type II diabetes mellitus with polyneuropathy
914251000006116	Type II diabetes mellitus with polyneuropathy
914041000006111	Type II diabetes mellitus with renal complications
84981000006114	Type II diabetes mellitus with renal complications
57278	Type II diabetes mellitus with renal complications
50225	Type II diabetes mellitus with renal complications
49655	Type II diabetes mellitus with retinopathy
58604	Type II diabetes mellitus with retinopathy
914161000006114	Type II diabetes mellitus with retinopathy
84991000006112	Type II diabetes mellitus with retinopathy
85001000006117	Type II diabetes mellitus with ulcer
292581016	Type II diabetes mellitus with ulcer
91646	Type II diabetes mellitus with ulcer
55075	Type II diabetes mellitus with ulcer
457330012	Type II diabetes mellitus without complication
85011000006119	Type II diabetes mellitus without complication
109103	Type II diabetes mellitus without complication
53392	Type II diabetes mellitus without complication
8012091000006113	Type II diabetes on diet only
8012071000006112	Type II diabetes on insulin
1658901000000118	Type II diabetic dietary review
101801 T	Type II diabetic dietary review
13953211000006119	Ulcer of left foot due to diabetes mellitus
2586731000000110	Under care of community-based diabetes specialist nurse
11930	Under care of diabetes specialist nurse



2159956013	Under care of diabetes specialist nurse
11094	Under care of diabetic foot screener
2159958014	Under care of diabetic foot screener
258669100000116	Under care of hospital-based diabetes specialist nurse
38078	Understands diet - diabetes
64449	Unspecified diabetes mellitus with multiple complications
9013	Unstable diabetes
411891014	Unstable diabetes
2683591000006110	Unstable diabetes mellitus
1920661000006119	Unsuitable for DESMOND diabetes structured education programme
1990701000006118	Unsuitable for NHS Diabetes Prevention Programme
546291000000112	XPert diabetes structured education programme completed
93631	XPert diabetes structured education programme completed
53634	[D]Gangrene of toe in diabetic
317347010	[D]Gangrene of toe in diabetic
317348017	[D]Widespread diabetic foot gangrene
31053	[D]Widespread diabetic foot gangrene
905621000006113	[RFC] Diabetes
908831000006118	[RFC] Diabetes mellitus
910501000006113	[RFC] Diabetic foot ulcer
906711000006116	[RFC] Diabetic foot/leg ulcer
910491000006117	[RFC] Diabetic leg ulcer
1227774019	[V]Dietary counselling in diabetes mellitus
16881	[V]Dietary counselling in diabetes mellitus
377001000006117	[X]Diabetes mellitus
52212	[X]Diabetes mellitus
99628	[X]Glomerular disorders in diabetes mellitus
293756010	[X]Other specified diabetes mellitus
41686	[X]Other specified diabetes mellitus
112365	[X]Pre-existing diabetes mellitus, unspecified
100292	[X]Unspecified diabetes mellitus with renal complications

## References

- <sup>1</sup> Evans JM, Barnett KN, Ogston SA, Morris AD. Increasing prevalence of type 2 diabetes in a Scottish population: effect of increasing incidence or decreasing mortality? *Diabetologia*. 2007;50:729-32
- <sup>2</sup> Office For National Statistics. National population projections: 2020-based interim. <https://www.ons.gov.uk/peoplepopulationandcommunity/populationandmigration/populationprojections/bulletins/nationalpopulationprojections/2020basedinterim>
- <sup>3</sup> Wang YC, McPherson K, Marsh T, Gortmaker SL, Brown M. Health and economic burden of the projected obesity trends in the USA and the UK. *Lancet* 2011;378:815-25
- <sup>4</sup> Holden SE, Jenkins-Jones S, Morgan CLL., Peters JR, Schernthaner G, Currie CJ. Prevalence, glucose control and relative survival of people with Type 2 diabetes in the UK from 1991 to 2013. *Diabet Med* 2017;34:770-780
- <sup>5</sup> Holden SH, Barnett AH, Peters JR, Jenkins-Jones S, Poole CD, Morgan CL, Currie CJ. The incidence of type 2 diabetes in the United Kingdom from 1991 to 2010. *Diabetes Obes Metab* 2013;15:844-52
- <sup>6</sup> Heywood BR, Morgan CLL., Berni TR, Summers DR, Jones BI, Jenkins-Jones S, Holden SE, Riddick LD, Fisher H, Bateman JD, Bannister CA, Threlfall J, Buxton A, Shepherd C, Mathias ER, Thomason RK, Hubbuck E, Currie CJ. Real-world evidence from the first online healthcare analytics platform-Livingstone. Validation of its descriptive epidemiology module. *PLOS Digit Health* 2023;2:e0000310
- <sup>7</sup> Tate AR, Dungey S, Glew S, Beloff N, Williams R, Williams T. Quality of recording of diabetes in the UK: how does the GP's method of coding clinical data affect incidence estimates? Cross-sectional study using the CPRD database. *BMJ Open* 2017;25:e012905
- <sup>8</sup> Zghebi SS, Steinke DT, Carr MJ, Rutter MK, Emsley RA, Ashcroft DM. Examining trends in type 2 diabetes incidence, prevalence and mortality in the UK between 2004 and 2014. *Diabetes Obes Metab* 2017;19:1537-1545
- <sup>9</sup> Sharma M, Nazareth I, Petersen I. Trends in incidence, prevalence and prescribing in type 2 diabetes mellitus between 2000 and 2013 in primary care: a retrospective cohort study. *BMJ Open* 2016; 6:e010210

---

<sup>10</sup> Whicher CA, O'Neill S, Holt RIG. Diabetes in the UK: 2019. *Diabet Med* 2020;37:242-247

<sup>11</sup> Public Health England. Diabetes Prevalence Model. 2016.

<https://assets.publishing.service.gov.uk/media/5a82c07340f0b6230269c82d/Diabetesprevalencemodelbriefing.pdf>

<sup>12</sup> Gæde P, Oellgaard J, Carstensen B, Rossing P, Lund-Andersen H, Parving HH et al. Years of life gained by multifactorial intervention in patients with type 2 diabetes mellitus and microalbuminuria: 21 years follow-up on the Steno-2 randomised trial. *Diabetologia*. 2016;59:2298-2307

<sup>13</sup> Currie CJ, Holden SE, Jones S, Morgan CL, Voss B, Rajpathak SN, Iemayehu B, Peters JR, Engel SS. Impact of differing glucose-lowering regimens on the pattern of association between glucose control and survival. *Diabetes Obes Metab* 2018;20:821-830