

1 **Title: Effect of modified basic package of oral care on adolescents' dental caries status in**
2 **Copperbelt Province, Zambia; A Cluster Randomized Trial**

3

4 **Authors:**

5 Severine N Anthony ^{1,2,4}, Hawa S Mbawalla², Febronia K Kahabuka², Seter Siziya ³, Anne N
6 Åstrøm⁴

7

8 **Author Affiliation**

9 ¹Department of Dental Clinical Sciences, Michael Chilufya Sata School of Medicine, The
10 Copperbelt University, Ndola, Zambia

11 ²Department of Orthodontics, Paedodontics and Community Dentistry, School of Dentistry,
12 Muhimbili University of Health and Allied Sciences, Dar es Salaam, Tanzania

13 ³Department of Public Health, Michael Chilufya Sata School of Medicine, The Copperbelt
14 University, Ndola, Zambia

15 ⁴Department of Clinical Dentistry, Faculty of Medicine and Dentistry, University of Bergen,
16 Norway

17

18

19 ***Corresponding Author:** kaitila2020@gmail.com

20

21

22 **NOTE: This preprint reports new research that has not been certified by peer review and should not be used to guide clinical practice.**

23 **Abstract**

24 **Background**

25 Dental caries remains the major oral health challenge affecting more than half of adolescents
26 globally. Most of the disease remain untreated, therefore, negatively impacting adolescents'
27 general health, well-being, and quality of life. Basic Package of Oral Care (BPOC) is a potential
28 solution to the challenge, however, evidence on its effectiveness is scarce. This study primarily
29 assessed the effects of applying modified BPOC on dental caries prevalence and secondarily on
30 knowledge and behaviors related to dental caries among adolescents in Copperbelt Province,
31 Zambia.

32 **Methods**

33 A parallel arms cluster randomized field trial (Reg-PACTR202210624926299) including 22
34 public secondary schools in Copperbelt province, Zambia, was carried out between January
35 2021 and March 2023. A pre-tested questionnaire was used to collect socio-demographics,
36 knowledge and dental caries related behaviors data, while dental caries was assessed clinically
37 using the caries assessment spectrum and treatment (CAST) at baseline and the follow-ups. The
38 1st and 2nd follow ups were conducted at 18-and 24months after baseline respectively. The
39 analysis was based on intention-to-treat protocol using generalized estimating equations (GEE)
40 and results are reported as OR (95% CI).

41 **Results**

42 Out of 1,794 participants at baseline, 1,690 (94.2%) and 1,597 (89.0%) were seen at 1st and 2nd
43 follow ups respectively. A significant interaction (BPOC x time) for dental caries models at 18
44 months {OR (95%CI) = 1.3 (1.1, 1.6), p=0.003} and 24 months {OR (95%CI) = 1.3 (1.1, 1.6),
45 p=0.004} was observed. Secondary outcomes with significant interactions included adequate
46 knowledge models at 18 months {OR (95%CI) =1.5 (1.2,1.8), p<0.001} and 24 months {OR
47 (95%CI) = 1.6 (1.3, 2.0), p<0.001} as well as use of fluoridated toothpaste twice or more per

48 day at 18 months {OR (95%CI) = 1.6 (1.3, 2.1), $p < 0.001$ } and 24 months {OR (95%CI) = 1.4
49 (1.2, 1.6), $p < 0.001$ }. Subgroup analysis showed that the intervention group had better
50 outcomes than the control group in terms of dental caries prevalence, adequate knowledge, use
51 of fluoridated toothpaste twice or more per day, at 18- and 24 months.

52 **Conclusion**

53 The modified BPOC was effective in reducing prevalence of dental caries, improving
54 knowledge on dental caries, and the frequency of using fluoridated toothpaste among Zambian
55 adolescents. Further studies need to be conducted in order to address other factors affecting oral
56 health related behaviors such as the school and home environment, social and cultural factors.

57

58 **Introduction**

59 Despite dental caries being preventable, its prevalence continues to rise, especially in low- and
60 middle-income countries [1]. A large proportion of dental caries remains untreated thus
61 increasing demand for essential oral health services and on the other hand impacting negatively
62 the individual general health and quality of life [2–4]. The World Health Organization (WHO)
63 recommends to reduce the burden of oral diseases by emphasizing comprehensive system
64 changes to shift from traditional curative approaches toward preventive approaches such as
65 application of the basic package of oral care (BPOC) [5].

66

67 BPOC is geared towards provision of oral health interventions with proven effectiveness that
68 are acceptable, practicable, and cheap to the majority of disadvantaged communities [6,7]. The
69 strategy is critical to fulfilling the core goal of primary health care, which is to provide better
70 health services to all. It is also in line with the World Health Organization's (WHO)
71 recommendation of reorienting traditional curative-oriented oral health services towards
72 approaches that adhere to the principles of primary health care (PHC) [6,7].

73

74 BPOC consists of three packages: Oral Urgent Treatment (OUT), Atraumatic Restorative
75 Treatment (ART), and Affordable Fluoride Toothpaste (AFT). OUT is achieved by offering
76 simple extraction of teeth beyond restorable state and referral of complicated cases. ART is
77 provided through restoring teeth with reversible pulpitis on cavities which can be accessed by
78 hand instruments only without a need of rotary instruments then restored using glass ionomer
79 cement. AFT can be achieved through regulatory strategies such as lowering or abolishing taxes
80 on the items with the goal of reducing their market prices [6]. The World Health Organization
81 recommends tailoring BPOC to the local environment and evaluating its effectiveness in
82 improving oral health needs in various locations around the world [6].

83

84 Although the effectiveness of the individual components of BPOC has been demonstrated,
85 evaluation of its overall success as a package has received little attention. A study in Cambodia
86 demonstrated success in increasing extractions and ART restored teeth at follow up following
87 BPOC intervention [8]. Another study reported success in reducing the incidence of early
88 childhood caries among children of women who received BPOC during pre- and post-natal
89 period [9].

90

91 No study reporting the effectiveness of BPOC as a package in preventing dental caries among
92 adolescents was retrieved. This study is, therefore, aimed at assessing the effects of modified
93 basic package of oral care on prevalence of dental caries among adolescents in Copperbelt
94 Province, Zambia. The study secondarily assessed the effects of modified basic package of oral
95 care intervention on knowledge, frequency of consuming sugary drinks and foods, frequency
96 of use of fluoridated toothpaste per day and dental visits in the previous year. The hypothesis
97 tested for the primary objective was; at follow ups the likelihood of dental caries occurrence is

98 less in the intervention than in the control group. The hypotheses for the secondary objective
99 were the likelihood of adequate knowledge, consuming sugary drinks and foods less than five
100 times per day, using fluoridated toothpaste twice or more per day, and visiting a dentist at least
101 once in the previous year are more in the intervention than in the control group.

102

103 **Methods**

104 **Study design**

105 The study used a parallel two arms cluster randomized controlled field trial design with one
106 control group and one intervention group (allocation ratio 1:1). The trial was registered by Pan
107 African Clinical Trial Registry (PACTR202210624926299) available at
108 <https://pactr.samrc.ac.za/TrialDisplay.aspx?TrialID=24046>. CONSORT reporting guidelines
109 for randomized trials (Supplementary file 1) have been adhered to in reporting all sections of
110 this study [10,11]. The study commenced in January 2021 (recruitment of participants and
111 collecting baseline data) and ended in March 2023 as illustrated in detail in the schedule of
112 study activities (Supplementary file 2). The number of follow-ups was reduced as soon as the
113 trial began from three initially intended, to two due to unanticipated school closures during
114 COVID 19 pandemic.

115 **Ethical considerations**

116 The study received ethical approval from three institutions: the study site (Tropical Diseases
117 Research Centre, Zambia -IRB 00002911 FWA 00003729), training institutions (MUHAS
118 Institutional Review Board, Tanzania -P. MUHAS-REC-4-2020-208), and the Regional Ethical
119 Committee vest 191836, Norway). National Health Research Authority (permit no -
120 NHRA00005/16/11/2020), provinial health directorate and district education board secretaries
121 granted permission to conduct the research. Written informed consent were obtained from
122 parents or gurdians and participants were requested to sign a written assent form.

123 **Participants eligibility criteria and setting**

124 All adolescents in grades eight to nine attending public secondary schools in Ndola, Masaiti
125 and Mpongwe districts of the Copperbelt Province, Zambia were eligible to participate (Fig 1).

126 The study excluded adolescents under active or passive orthodontic treatment.

127

128 **The trial intervention**

129 **Experimental group**

130 The participants in the experimental group received a modified World Health Organization -
131 Basic Package of oral care (WHO-BPOC) for a period of six months in addition to their routine
132 daily standard of oral care. The intervention adopted Oral Urgent Treatment (OUT) and
133 Atraumatic Restorative Treatment (ART) components of the conventional WHO-BPOC and
134 modified Affordable Fluoride Toothpastes (AFT) component. The conventional BPOC
135 recommends effecting AFT component by lobbying for reduction of prices of toothpastes
136 through government subsidies or tax reduction which could not be feasible in this study. In this
137 study; AFT component was modified by providing each participant a 500g pack of fluoride
138 toothpaste once every two months and a toothbrush once every three months in order to
139 encourage future usage of the oral care products. Peer- Led Oral Health Education (PL-OHE)
140 was adopted as an additional component to the three components of the conventional WHO-
141 BPOC.

142 Oral Urgent Treatment (OUT) and Atraumatic Restorative Treatment (ART) were provided at
143 schools by qualified dentists once in six months. OUT included; extraction of teeth beyond
144 restorable condition at schools and referral for teeth whose treatment required clinic set up.
145 Whereas ART included; restoring asymptomatic teeth or those in reversible pulpitis state and
146 with cavities accessible by hand instruments. Restorations were done by removing decayed part
147 of a tooth using hand instruments only followed by filling of the cavities with Fuji IX Glass-

148 ionomer cement. Oral health education was provided by trained peers by reading printed
149 messages (box 1) to their classmates once every two weeks.

150 **Box 1: Oral health messages**

1. Restrict the frequency of taking sugary food and drinks in the diet to less than five times per day.
2. Brush your teeth for 2 minutes ensuring all the surfaces are cleaned; twice per day in the morning and evening before retiring to bed.
3. Use fluoride toothpaste to brush, spit the foam but do not rinse it out.
4. Change your toothbrush every 3 months or when bristles flare out.
5. Advise your parent or guardian to buy a tooth paste containing at least 1450 ppm fluoride and to take you for dental checkup at least once a year.

151

152 **Control group**

153 The adolescents in the control group were left to continue with their routine daily oral care.
154 Routine daily oral care include all self-oral cleaning and seeking of oral treatment without help
155 from the BPOC project. Participants found with emergence conditions during baseline data
156 collection were referred to nearby dental clinics. At the end of the study, all participants
157 received peer led oral health education based on five key messages (Box 1).

158

159 **Study outcome measures**

160 The primary outcome measure of this study was prevalence of dental caries. The study also
161 measured knowledge on dental caries, frequency of consuming sugary drinks and foods per
162 day, use of fluoridated toothpaste per day, and dental visits in the previous year. The primary
163 and secondary outcomes were measured at baseline, at 18 and 24 months follow ups.

164

165

166

167

168

169

170 **Measurements**

171 **Independent variables**

172 A pre-tested self-administered questionnaire was used to access socio-demographic factors
173 which included age, sex, geographical location, parental education and socioeconomic status.
174 Participant's age was recorded as an absolute number ranging from 10 to 19, while sex was
175 recoded as 1=male and 2=female. Geographical location was recorded as 1=urban and 2=rural
176 based on Copperbelt province rural-urban delineation. Mother's and father's education were
177 recorded according to Zambian education structure [12] as follows: 1=no formal education,
178 2=up to primary, 3=secondary, 4= tertiary (college or university) and thereafter dichotomized
179 into {0=up to primary (including the original scores 1-2) and 1=Secondary or higher (including
180 the original scores 3-4)}. Socio-economic status (SES) was derived from international wealth
181 index (IWI) items [13] as elaborated in a previous publication [14] and recorded as 1= high and
182 2 =low to middle SES.

183

184 **Dependent variables (outcomes)**

185 **Dental caries**

186 Dental caries on permanent dentition was examined and scored according to categories as
187 described in the CAST manual by Frencken et al., (2015) as follows; 0=sound, 1= sealant, 2=
188 restoration, 3= caries in enamel, 4= caries in dentine without distinct cavitation (discolored
189 dentine visible through enamel), 5= caries in dentine with distinct cavitation, 6= caries in pulp,
190 7= abscess or fistula, 8= lost due to caries, 9= others [15]. The categories were thereafter grouped
191 into five diagnostic thresholds of CAST as follows; {0=CAST code 0–2 (healthy), 1=CAST code 3–4
192 (pre-morbidity), 2=CAST code 5 (morbidity), 3=CAST code 6–7 (severe morbidity) and 4= CAST code
193 8 (mortality). Prevalence of dental caries was assessed by dichotomizing CAST codes into two
194 as “with caries” for CAST codes 3 to7 and “without caries” for CAST codes 0-2, 8, and 9.

195

196

197

198 **Knowledge and behaviors related to dental caries**

199 Knowledge on dental caries was assessed using ten questions inquiring on causes, symptoms
200 and prevention of oral diseases giving minimum score of 0 and maximum of 10. A cut off point
201 of 7 correct responses was adopted for adequate knowledge; therefore, participants were
202 categorized into those having inadequate knowledge {0 = (including the original scores 0-6)}
203 and having adequate knowledge {1= (including the original scores 7-10)}. Oral health related
204 behaviors assessed were; frequencies of consuming sugary drinks and foods per day in the past
205 30 days, frequency of use of fluoridated toothpaste per day in the past 30 days, and dental visits
206 in the previous year. Frequency of consuming sugary drinks and foods were scored as {1=I
207 didn't take, 2=Occasionally per week, 3=Once per day, 4=Twice to four times per day, 5=Five
208 times or more per day} and thereafter dichotomized into {0=less than 5 times per day (including
209 the original scores 1-4)} and 1=5 times or more per day (including the original category 5)}.
210 Frequency of use of fluoridated toothpaste per day was scored as; {1=I didn't, 2=I did but not
211 every day, 3=I did once a day, 4=I did twice a day or more} and later dichotomized into {0=less
212 than twice per day (including original scores 1-3)} and 1= twice or more per day (including
213 original score 4)}. Visiting a dentist in the previous year was scored as {1=I didn't attend, 2=I
214 attended once, 3=I attended twice or more} and thereafter dichotomized into {0=I didn't attend
215 (including original score 1) and 1=I attended once or more (including original score 2-3)}.

216

217 **Examination**

218 Dental caries examination was done as prescribed in Caries Assessment Spectrum and
219 Treatment (CAST) manual [16] by four trained and calibrated dentists. A detailed description
220 of examination of dental caries is provided in the article reporting prevalence and factors
221 associated with dental caries among this group [17]. The coefficients of reliability (Cohens

222 kappa) for CAST between and within examiners ranged from 0.80 to 0.90 and 0.80 to 0.85,
223 respectively.

224 **Sample size and sampling**

225 A sample size of 1,760 participants was estimated by assuming: a 95% confidence level, 85%
226 power, 5% margin of error, 20% expected mean change in dental caries, 0.001 inter-cluster
227 correlation, a cluster size of 80 and a mean DMFT of 1.34 found in a previous study involving
228 5 to 17 years old pupils in Zambia [18]. A multistage sampling method was employed to select
229 adolescents in grades 8 and 9 attending 22 public secondary schools in three randomly selected
230 districts of the Copperbelt province in Zambia. The Copperbelt Province was conveniently
231 selected out of the ten provinces of Zambia at the first stage. The choice of Copperbelt Province
232 was based on the intention to fit the study into existing community dentistry training at the
233 university where the principal investigator is based. The second stage involved proportionate
234 stratified random sampling of three districts (one urban and two rural) out of the ten districts of
235 the Copperbelt province. In the third stage, a total of 22 out of 35 public secondary schools
236 were randomly selected guided by the number of schools in each district (21:35, =13 schools
237 for Ndola district; 8:35, = 5 schools for Masaiti district; and 6:35, = 4 schools for Mpongwe
238 district). In the fourth stage, all grade 8 and 9 adolescents enrolled in selected schools were
239 eligible to participate in the study.

240 **Randomization**

241 The unit of randomization was secondary schools. The allocation ratio of 1:1 resulted into
242 inclusion of 11 schools in the intervention group (908 participants) and 11 in the control group
243 (886 participants) at baseline (Fig 1). Stratified randomization was done in order to prevent
244 imbalance in the rural -urban characteristics of the clusters. Separate randomization was done
245 for urban district (Ndola), and rural districts (Masaiti and Mpongwe). Ndola (urban) clusters
246 were first randomized in a block of 2 by taking the first cluster to intervention and second to
247 control. After completing the Ndola clusters, Masaiti and Mpongwe were randomized in the

248 block size of 2. Sealed envelope [19] was used to create blocked randomization (Seed
249 =72084789304093, block size=2, list length Ndola 13, Actual list length Ndola= 14, List length
250 for Masaiti and Mpongwe = 9, Actual list length for Masaiti and Mpongwe =10). The opaque
251 envelopes were opened a day before intervention day. Randomization ended with 7 clusters in
252 intervention group and 6 in control for urban district (Ndola) and 4 clusters in intervention and
253 5 in control for rural districts (Masaiti and Mpongwe). The Principal Investigator (SA)
254 generated allocation sequence, four dentists enrolled participants and an independent person
255 assigned clusters into interventions.

256

257 **Blinding**

258 Single blinding was done whereby the examiners were not aware of group allocation during
259 baseline and follow-up. Blinding of the participants was not feasible because the participants in
260 intervention group received peer delivered oral health education and treatment for dental caries.

261

262 **Statistical methods**

263 Data entry, cleaning and analysis were done using IBM SPSS (version 26.0 IBM SPSS
264 Statistics) and significance level was set to $p < 0.05$. Analysis was based on intention-to-treat
265 approach and generalized estimating equation (GEE) analysis was used to include all available
266 data. The baseline, first and second follow up socio-demographics and clinical characteristics
267 of the participants in the intervention and control groups are presented in frequency tables as
268 percentages and frequencies. The patterns in socio-demographic distribution of outcome
269 variables across the three time points in intervention and control groups are also presented in a
270 frequency table as percentages and frequencies. Chi-square test was used to ascertain
271 statistically significant differences in the proportions of participants with caries in the
272 intervention and control across baseline, first and second follow up. To take into account of
273 correlated clinical observations within individuals due to repeated measurements, the likelihood

274 of change in caries across study groups was analyzed using Generalized estimating equations
275 (GEE) with binomial model, logit link function and unstructured correlation structure [20]. First
276 GEE analyses were used to analyze the overall intervention effect of the outcome variables and
277 secondly, interactions between intervention/control group and time were explored to evaluate
278 the intervention effects at follow up and whether the outcome variables showed different
279 trajectories across time. Sub group analyses were performed for the outcome variables which
280 showed interaction effects with time. Results of GEE are presented as adjusted odds ratios and
281 their 95% confidence intervals.

282 **Results**

283 **Participants flow diagram**

284 The participants flow diagram of this study is illustrated in Figure 1. A total of 35 schools from
285 Ndola, Masaiti and Mpongwe districts of the Copperbelt province were eligible to participate
286 in this trial during the enrollment period (February-May 2021). Out of the 35 schools, one
287 school declined to participate resulting into 34 schools being available for random selection.
288 Using computer generated random numbers 22 out of 34 schools were randomly selected. All
289 adolescents in grades 8 and 9 meeting inclusion criteria and were available during enrollment
290 period were invited to participate.

291 A total of 115 students were either excluded due to being under orthodontic treatment (2) or
292 declined to participate (113). The twenty-two schools were allocated randomly into intervention
293 and control in a ratio of 1:1 resulting in 908 and 886 participants in intervention and control
294 groups, respectively. Intervention group received modified BPOC from June to December 2021
295 while control group did not receive any intervention and therefore continued with their routine
296 oral care. There was no complete loss to follow up in any of the clusters at the two follow ups.
297 A total of 64 participants in the intervention and 40 in the control group were lost to follow up
298 after 18 months while 117 participants in the intervention and 80 in the control group were lost
299 to follow-up after 24 months; all of them due to being transferred from one school to another.

300 A total of 1,794 participants (908-intervention, 886- control) and 1,597 participants (791-
301 intervention, 806- control) were analyzed at baseline and after 24 months, respectively. The
302 trial ended in March 2023.

303

304 **Baseline characteristics**

305 Baseline socio-demographics, oral health related knowledge and behaviors, and clinical
306 indicators of the participants according to trial arm allocation are as shown in table 1. Despite
307 randomization chi-square test and variance analysis showed significant baseline differences
308 between the intervention and control arms on the following socio-demographic characteristics;
309 sex ($p=0.003$), mothers' education ($p=0.023$), fathers' education ($p= 0.021$), and socioeconomic
310 status ($p <0.001$). The intervention group had higher proportion of females (57.4% vs 50.5%),
311 rural participants (56.8% vs 33.2%), participants whose mothers (38.4% vs 33.3%) and fathers
312 (43.4% vs 38.0%) had attained secondary school or higher education and low to middle SES
313 (52% vs 35.3%) compared to controls. The results also show baseline difference according to
314 dental visit in previous one year ($p=0.004$), and CAST clinical severity categories ($p<0.001$).
315 The intervention group had significantly higher percentages of those who did not attend for
316 dental visits (76.5% vs 70.5%), and those with dental caries (51.3 % vs 41.3%) than control
317 group. All the effect sizes of the variances were small according to Ferguson, (2009) [21].

318

319

320

321

322

323

324

325

326 **Table 1: Socio-demographics, oral health knowledge, oral health behaviors and clinical**
 327 **characteristics by intervention arms at baseline (n=1794)**

Variables	Categories	Trial arm allocation		Cramer's V	p-value
		Intervention % (n)	Control % (n)		
Socio-demographics					
Age	11-14	54.4 (494)	57.6 (510)	0.032	0.178
	15-19	45.6 (414)	42.4 (376)		
Sex	Male	42.6 (387)	49.5 (439)	0.069	0.003
	Female	57.4 (521)	50.5 (447)		
Residence	Urban	43.2 (392)	66.8 (592)	0.238	<0.001
	Rural	56.8 (516)	33.2 (294)		
Mothers' education	Up to primary	61.6 (559)	66.7 (591)	0.054	0.023
	Secondary or higher	38.4 (349)	33.3 (295)		
Fathers' education	Up to primary	56.6 (514)	62.0 (549)	0.054	0.021
	Secondary or higher	43.4 (394)	38.0 (337)		
Socio-economic status	High	48.0 (436)	64.7 (573)	0.168	<0.001
	Low to middle	52.0 (472)	35.3 (313)		
Oral health knowledge	Inadequate knowledge	42.3 (384)	40.2 (356)	0.021	0.364
	Adequate knowledge	57.7 (524)	59.8 (530)		
Oral health related behaviors					
Frequency of intake of sugary drinks	less than 5 times per day	88.1 (800)	87.6 (776)	0.008	0.736
	5 times or more per day	11.9 (108)	12.4 (110)		
Frequency of intake of sugary foods	less than 5 times per day	87.9 (798)	88.7 (786)	0.013	0.586
	5 times or more per day	12.1 (110)	11.3 (100)		
Use of fluoridated toothpaste	less than 2 times per day	21.1 (192)	22.5 (199)	0.016	0.500
	2 times or more per day	78.9 (716)	77.5 (687)		
Dental visits in previous one year	Attended at least once	23.5 (213)	29.5 (261)	0.068	0.004
	Did not attend	76.5 (695)	70.5 (625)		
Clinical variables					
CAST clinical severity categories	Healthy (CAST0-2)	46.7 (424)	55.9 (495)	0.113	<0.001
	Pre-morbidity (CAST3)	25.9 (235)	23.7 (210)		
	Morbidity (CAST4-5)	17.8 (162)	11.4 (101)		
	Severe morbidity (CAST6-7)	7.5 (68)	6.2 (55)		
	Mortality (CAST8)	2.1 (19)	2.8 (25)		
Dental caries prevalence	Caries free	48.7 (442)	58.7 (520)	0.1	<0.001
	With caries	51.3 (466)	41.3 (366)		

328 Note: Effect sizes for Cramer's V: V = 0.1 (small), V = 0.3 (medium), V = 0.5 (large) (Ferguson, 2009).

329 Table 2 shows socio-demographics and clinical variables at baseline by response status at 18-
 330 and 24months follow up. The baseline socio-demographics (age, sex, residence, mothers’
 331 education, fathers’ education), oral health related knowledge and behaviors and clinical
 332 variables (caries) between those lost to follow up and those who remained in the study did not
 333 differ significantly (all p-values >0.05).

334 **Table 2: Socio-demographics and clinical variables at baseline by response status.**

Variables	Categories	Follow ups					
		18 months			24 months		
		Lost % (n)	Followed % (n)	p value	Lost % (n)	Followed % (n)	p value
Socio-demographics							
Age	11-14	67.3 (70)	55.3 (934)	0.016	59.4 (117)	55.5 (887)	0.305
	15-19	32.7 (34)	44.7 (756)		40.6 (80)	44.5 (710)	
Sex	Male	48.1 (50)	45.9 (776)	0.668	44.7 (88)	46.2 (738)	0.682
	Female	51.9 (54)	54.1 (914)		55.3 (109)	53.8 (859)	
Residence	Urban	58.7 (61)	54.6 (923)	0.422	53.8 (106)	55.0 (878)	0.755
	Rural	41.3 (91)	45.4 (767)		46.2 (91)	45.0 (719)	
Mothers’ education	Up to primary	65.4 (68)	64.0(1082)	0.779	62.9 (124)	64.2(1026)	0.719
	Secondary or higher	34.6 (36)	36.0 (608)		37.1 (73)	35.8 (571)	
Fathers’ education	Up to primary	66.3 (69)	58.8 (994)	0.129	62.9 (124)	58.8 (939)	0.264
	Secondary or higher	33.7 (35)	41.2 (696)		37.1 (73)	41.2 (658)	
Socio-economic status	High	65.4 (68)	55.7 (941)	0.053	60.4 (119)	55.7 (890)	0.212
	Low to middle	34.6 (36)	44.3 (749)		39.6 (78)	44.3 (707)	
Oral health knowledge							
	Inadequate	38.5 (40)	41.4 (700)	0.552	41.6 (82)	41.2 (658)	0.910
	Adequate knowledge	61.5 (64)	58.6 (990)		58.4 (115)	58.8 (939)	
Oral health related behaviors							
Frequency of intake of sugary drinks	less than 5 times per day	88.5 (92)	87.8 (1484)	0.844	88.3 (174)	87.8 (1402)	0.828
	5 times or more per day	11.5 (12)	12.2 (206)		11.7 (23)	12.2 (195)	
Frequency of intake of sugary foods	less than 5 times per day	82.7 (86)	88.6 (1498)	0.067	87.3 (172)	88.4 (1412)	0.649
	5 times or more per day	17.3 (18)	11.4 (192)		12.7 (25)	11.6 (185)	
Use of fluoridated toothpaste	less than 2 times per day	16.3 (17)	22.1 (374)	0.166	19.8 (39)	22.0 (352)	0.472
	2 times or more per day	83.7 (87)	77.9 (1316)		80.2 (158)	78.0 (1245)	
Dental visits in previous one year	Attended at least once	26.0 (27)	26.4 (447)	0.871	26.9 (53)	26.4 (421)	0.871
	Did not attend	74.0 (77)	73.6 (1243)		73.1 (144)	73.6 (1176)	
Clinical variables							
CAST clinical severity categories	Healthy (CAST0-2)	51.9 (54)	51.2 (865)	0.853	52.3 (103)	51.1 (816)	0.750
	Pre-morbidity (CAST3)	25.0 (26)	24.8 (419)		27.4 (54)	24.5 (391)	
	Morbidity (CAST4-5)	11.5 (12)	14.9 (251)		12.7 (25)	14.9 (238)	
	Severe morbidity (CAST6-7)	8.7 (9)	6.7 (114)		5.6 (11)	7.0 (112)	
	Mortality (CAST8)	2.9 (3)	2.4 (41)		2.0 (4)	2.5 (40)	
Dental caries prevalence	Caries free	54.8 (57)	53.6 (905)	0.803	54.3 (107)	53.5 (855)	0.837
	With caries	45.2 (47)	46.4 (785)		45.7 (90)	46.5 (742)	

336 **Trends in the distributions of participants' knowledge, oral health related behaviors and**
337 **dental caries prevalence by trial arms and across time**

338 Table 3 shows the trends in the distributions of participants according to knowledge, oral health
339 related behaviors and dental caries by intervention group and across time. The results show no
340 baseline differences ($p=0.364$) in knowledge between intervention and control groups.
341 However, follow up results show statistically significant difference between groups after 18
342 months ($p=0.014$) and 24 months ($p=0.002$). The percentage change in the proportion of
343 participants with adequate knowledge from baseline to 18-and-24 months follow up was
344 significant in the intervention {9.6% (5.1%, 14.1%), $p<0.001$ } at 18 months and 11.5% (5.1%,
345 14.1%), $p<0.001$) at 24 months while the change was not significant in the control group {1.8%
346 (-2.8%, 6.4%), $p=0.443$ } at 18 months and {2.1% (-2.6%, 6.7%), $p=0.377$ } at 24 months. The
347 use of fluoridated toothpaste in the intervention group increased by 4.5% (0.8%, 8.1%), $p=0.016$
348 and 4.4 % (0.6%, 8.1%), $p=0.021$ at 18 and 24 months respectively. On the other hand, the
349 results in the controls showed no significant change at 18 {-0.4% (-3.5%, 4.4%), $p=0.843$ } and
350 24 months {-0.2% (-3.8%, 4.2%), $p=0.922$ }, respectively. Frequency of dental visits was lower
351 in intervention than control group (23.5% vs 29.5%, $p<0.001$) at baseline but changed to no
352 difference at 18 months ($p=0.733$) and 24 months ($p=0.688$). Dental visit in the intervention
353 group increased by 5.6% {5.6% (1.5%, 9.7%) $p=0.008$ } and 5.4 % {5.4% (1.2%, 9.6%)
354 $p=0.011$ } at 18 and 24 months respectively while no significant change was observed in the
355 control group at 18 months {0.4% (-3.9%, 4.7%) $p=0.856$ } and at 24 months {0.3% (-4.1%,
356 4.7%) $p=0.893$ }. The prevalence of dental caries was significantly higher in the intervention
357 group than in the control group at baseline, 18 months and 24 months ($p<0.001$). The prevalence
358 of dental caries from baseline to 18 months' follow-up and from baseline to 24 months' follow-
359 up did not change significantly either in the intervention- nor in the control groups. The
360 percentage change, 95% confidence interval and p values for the intervention at 18 months and
361 24 months were {-2.5% (-2.2%, 7.2%) $p=0.296$ } and {-2.6% (-2.2%, 7.3%) $p=0.285$ }

362 respectively. The corresponding change estimates in the control group were { -0.9 (-3.7, 5.5),
363 p=0.703} at 18 months and { -2.3 (-2.3, 6.9), p=0.335} at 24 months.

364 **Table 3. Distributions of participants according to knowledge, oral health related behaviors and dental caries by trail arm across time**

Outcome variable	Percentage and number across time			Percentage change from baseline (95%CI) and p value	
	Baseline % (n)	18 months % (n)	24 months % (n)	at 18 months % Δ (95%CI), p value	at 24 months % Δ (95%CI), p value
Knowledge (adequate)					
intervention	57.7 (524)	67.3 (568) *	69.2 (547) *	9.6 (5.1, 14.1), p<0.001	11.5 (6.9, 15.9), p<0.001
control	59.8 (530)	61.6 (521)	61.9 (499)	1.8 (-2.8, 6.4), p=0.443	2.1 (-2.6, 6.7), p=0.377
Oral health behaviors					
Sugary drinks per day (less than 5 times)					
intervention	88.1 (800)	87.6 (739)	87.2 (689)	-0.5 (-2.5, 3.6), p=0.749	-0.9 (-2.2, 4.1), p=0.573
control	87.6 (776)	86.9 (735)	86.6 (698)	-0.7 (-2.4, 3.9), p=0.662	1.0 (-2.2, 4.2), p=0.539
Sugary foods per day (less than 5 times)					
intervention	87.9 (798)	87.7 (740)	87.3 (690)	-0.2 (-2.9, 3.3), p=0.898	-0.6 (-2.6, 3.8), p=0.708
control	88.7 (786)	88.8 (751)	88.3 (712)	0.1 (-2.9, 3.1), p=0.947	-0.4 (-2.6, 3.5), p=0.797
Fluoridated toothpaste per day (2 times/more)					
intervention	78.9 (716)	83.4 (704) *	83.3 (658) *	4.5 (0.8, 8.1), p=0.016	4.4 (0.6, 8.1), p=0.021
control	77.5 (687)	77.1(652)	77.3 (623)	-0.4 (-3.5, 4.4), p=0.843	-0.2 (-3.8, 4.2), p=0.922
Dental visits in previous one year (attended)					
intervention	23.5 (213) *	29.1 (246)	28.9 (228)	5.6 (1.5, 9.7), p=0.008	5.4 (1.2, 9.6), p=0.011
control	29.5 (261)	29.9 (253)	29.8 (240)	0.4 (-3.9, 4.7), p=0.856	0.3 (-4.1, 4.7), p=0.893
Dental caries (with caries)					
intervention	51.3 (466) **	48.8 (412) *	48.7 (385) *	-2.5 (-2.2, 7.2), p=0.296	-2.6 (-2.2, 7.3), p=0.285
control	41.3 (366)	40.4 (342)	39.0 (314)	-0.9 (-3.7, 5.5), p=0.703	-2.3 (-2.3, 6.9), p=0.335

365 Percentage and numbers given are for only one category of the outcome variable as indicated in bracket in front of the outcome
 366 variable, *=p value <0.05, **=p<0.001, Δ=percentage

367 Figure 2 illustrates percentage distribution of dental caries according to CAST clinical
368 categories by trial arms at baseline (T_1), first (T_2) and second (T_3) follow up. Generally, the
369 percentages of participants decreased as the severity of CAST clinical categories increased for
370 both intervention and control arms. CAST 0-2 and CAST 6-7 increased while CAST 5
371 decreased in both trial arms. There was an increase in the mortality stage (CAST 8) across time
372 in both arms however, the increase was higher in the control than intervention arm.

373

374 **Effects of the BPOC intervention on outcomes (Generalized estimating equations) at 18** 375 **months**

376 Generalized estimating equation models were used to assess the effect of the BPOC intervention
377 at 18 months follow up regarding the outcome variables (knowledge, oral health behaviors and
378 dental caries prevalence) as shown in table 4. At 18 months, a significant interaction effect
379 between time and group on adequate knowledge across time occurred after adjustment for the
380 main effects of group and time (BPOC group x time interaction) {OR (95%CI) = 1.5 (1.2,1.8),
381 $p<0.001$ }. The model for use of fluoridated toothpaste twice or more per day also showed
382 significant interaction between BPOC group and time {OR (95%CI) = 1.6 (1.3, 2.1), $p<0.001$ }.
383 Dental caries interaction model at 18 months was also significant {OR (95%CI) = 1.3 (1.1, 1.6),
384 $p=0.003$ }. There were no significant interactions between BPOC intervention and time at 18
385 months for frequency of intake of sugary drinks of less than 5 times per day model ($p=0.506$),
386 frequency of intake of sugary foods of less than 5 times per day foods model ($p=0.505$) and at
387 least once per year dental visit model ($p=0.422$).

388

389

390

391

392

393 **Table 4. Generalized estimating equation analyses of the outcome variables**
 394 **(Knowledge, behaviors and dental caries) for the study sample from**
 395 **baseline to 18 months**

Outcome variable	Parameters	Estimate (SE)	Sig.	OR (95%CI)
Adequate Knowledge				
Main effects	Time	0.274 (0.035)	< 0.001	1.3 (1.2, 1.4)
	BPOC group	0.134 (0.094)	0.154	1.1 (1.0, 1.4)
Interaction effects	BPOC group x time	0.392 (0.102)	< 0.001	1.5 (1.2, 1.8)
Behaviors				
Sugary drinks per day (less than 5 times)				
Main effects	Time	-0.062 (0.049)	0.207	0.9 (0.8, 1.0)
	BPOC group	-0.037 (0.139)	0.790	1.0 (0.7, 1.3)
Interaction effects	BPOC group x time	-0.098 (0.148)	0.506	0.9 (0.7, 1.2)
Sugary foods per day (less than 5 time)				
Main effects	Time	-0.007 (0.046)	0.873	1.0 (0.8, 1.1)
	BPOC group	-0.092 (0.142)	0.515	0.9 (0.7, 1.2)
Interaction effects	BPOC group x time	-0.100 (0.149)	0.505	0.9 (0.7, 1.2)
Fluoridated toothpaste per day (2 times/more)				
Main effects	Time	0.134 (0.041)	0.001	1.1 (1.1, 1.3)
	BPOC group	0.329 (0.114)	0.004	1.4 (1.1, 1.7)
Interaction effects	BPOC group x time	0.485 (0.125)	< 0.001	1.6 (1.3, 2.1)
Dental visits in previous one year (attended)				
Main effects	Time	0.157 (0.035)	< 0.001	1.2 (1.1, 1.3)
	BPOC group	-0.074 (0.102)	0.470	0.9 (0.8, 1.1)
Interaction effects	BPOC group x time	0.086 (0.108)	0.422	1.1 (0.9, 1.4)
Dental caries (with caries)				
Main effects	Time	-0.070 (0.025)	< 0.001	0.9 (0.8, 0.9)
	BPOC group	0.359 (0.094)	< 0.001	1.4 (1.2, 1.7)
Interaction effects	BPOC group x time	0.289 (0.098)	0.003	1.3 (1.1, 1.6)

396 Abbreviations: SE = Standard error, OR = Odds ratio, CI= confidence intervals, Sig.= significancy, BPOC –

397 Basic package of oral care. Note: results provided are based on intervention group and at 18 months with

398 reference to control group and baseline data

399

400

401

402 **Effects of the BPOC intervention on outcomes (Generalized estimating equations) at 24**
403 **months**

404 Table 5 shows the results from GEE models regarding the effect of the BPOC intervention at
405 24 months follow -up. The intervention group (BPOC group x time interaction) for adequate
406 knowledge model was significant at 24 months {OR (95%CI) = 1.6 (1.3, 2.0)}, indicating group
407 different trajectories for knowledge across time from baseline to 24 months follow-up. The
408 model for use of fluoridated toothpaste twice or more per day also showed significant
409 interaction between BPOC group and time {OR (95%CI) = 1.6 (1.3, 2.1), p<0.001} at 24
410 months. Dental caries interaction model at 24 months was significant {OR (95%CI) = 1.3 (1.1,
411 1.6), p=0.004)}.

412

413

414

415

416

417

418

419

420

421

422

423

424

425

426

427

428

429

430 **Table 5. Generalized estimating equation analyses of the outcome variables**
 431 **(Knowledge, behaviors and dental caries) for the study sample from**
 432 **baseline to 24 months**

Outcome variable	Parameters	Estimate (SE)	Sig.	OR (95%CI)
Adequate Knowledge				
Main effects	Time	0.292 (0.036)	< 0.001	1.3 (1.2, 1.4)
	BPOC group	0.131 (0.094)	0.162	1.1 (0.9, 1.4)
Interaction effects	BPOC group x time	0.476 (0.103)	< 0.001	1.6 (1.3, 2.0)
Behaviors				
Sugary drinks per day (less than 5 times)				
Main effects	Time	-0.082 (0.048)	0.089	0.9 (0.8, 1.0)
	BPOC group	-0.042 (0.139)	0.764	0.9 (0.7, 1.3)
Interaction effects	BPOC group x time	-0.124 (0.146)	0.394	0.9 (0.7, 1.2)
Sugary foods per day (less than 5 time)				
Main effects	Time	-0.057 (0.043)	0.180	0.9 (0.8, 1.0)
	BPOC group	-0.090 (0.140)	0.520	0.9 (0.7, 1.2)
Interaction effects	BPOC group x time	-0.147 (0.146)	0.317	0.8 (0.6, 1.2)
Fluoridated toothpaste per day (2 times/more)				
Main effects	Time	0.147 (0.040)	< 0.001	1.2 (1.1, 1.3)
	BPOC group	0.287 (0.113)	0.011	1.3 (1.1, 1.7)
Interaction effects	BPOC group x time	0.490 (0.124)	< 0.001	1.6 (1.3, 2.1)
Dental visits in previous one year (attended)				
Main effects	Time	0.149 (0.034)	< 0.001	1.2 (1.1, 1.3)
	BPOC group	-0.092 (0.103)	0.371	0.9 (0.7, 1.1)
Interaction effects	BPOC group x time	0.057(0.107)	0.596	1.1 (0.9, 1.3)
Dental caries (with caries)				
Main effects	Time	-0.107 (0.028)	< 0.001	0.9 (0.8, 0.9)
	BPOC group	0.384 (0.093)	< 0.001	1.5 (1.2, 1.8)
Interaction effects	BPOC group x time	0.276 (0.097)	0.004	1.3 (1.1, 1.6)

433 Abbreviations: SE = Standard error, OR = Odds ratio, CI= confidence intervals, Sig.= significance, BPOC –

434 Basic package of oral care. Note: results provided are based on intervention group and at 24 months with

435 reference to control group and baseline data

436

437

438

439 **Subgroup analyses**

440 Subgroup analyses of the outcome variables with significant interactions between BPOC group
441 and time at 18 and 24 months are as shown in table 6. The findings show that the likelihoods of
442 having adequate knowledge at 18- and 24 months follow ups compared to baseline were
443 stronger in the intervention than in the control group. The odds ratio, 95% confidence intervals
444 and p values for adequate knowledge at 18 months were {OR (95%CI) = 1.5 (1.4, 1.7),
445 $p<0.001$ } for intervention and {OR (95%CI) = 1.1 (1.0, 1.2), $p=0.020$ } control group
446 compared to baseline values. The odds ratios, 95% confidence intervals and p values for
447 intervention and control group at 24 months compared to baseline values were {OR (95%CI) =
448 1.6 (1.5, 1.9), $p<0.001$ } and {OR (95%CI) = 1.1 (1.0, 1.2), $p=0.020$ } respectively. The
449 likelihood of using fluoridated toothpaste two times or more per day at 18 and 24 months of
450 follow up compared to baseline was stronger in the intervention than in the control group. The
451 use of fluoridated toothpaste increased by about 1.4 times at both 18 months {OR (95%CI) =
452 1.4 (1.2, 1.6), $p<0.001$ } and 24 months {OR (95%CI) = 1.4 (1.2, 1.5), $p<0.001$ } in the
453 intervention group but did not change significantly for control group. The likelihood of having
454 dental caries at 18 and 24 months follow up compared to baseline decreased more in the
455 intervention than in the control group. The prevalence of dental caries in the intervention group
456 decreased by 20% at both 18 months {OR (95%CI) = 0.8 (0.8, 0.9), $p=0.013$ } and 24 months
457 {OR (95%CI) = 0.8 (0.8, 0.9), $p=0.021$ } compared to 10% decrease in the control group at 18
458 months {OR (95%CI) = 0.9 (0.8, 0.9), $p=0.002$ } and 24 months {OR (95%CI) = 0.9 (0.8, 0.9),
459 $p<0.001$ }.

460

461

462

463

464

465 **Table 6. BPOC outcome variables regressed on time (18 – and 24 months follow up**
 466 **versus baseline) separately in the intervention and control groups**

Follow up	Outcomes	Categories	Groups			
			Intervention		Control	
			Sig.	OR (95%CI)	Sig.	OR (95%CI)
At 18 months	Adequate Knowledge	18 months	<0.001	1.5 (1.4, 1.7)	0.020	1.1 (1.0, 1.2)
		Baseline		1		1
	Fluoridated toothpaste per day (2 times/more)	18 months	<0.001	1.4 (1.2, 1.6)	0.934	1.0 (0.9, 1.1)
		Baseline		1		1
	Dental caries (with caries)	18 months	0.013	0.8 (0.8, 0.9)	0.002	0.9 (0.8, 0.9)
		Baseline		1		1
At 24 months	Adequate Knowledge	24 months	<0.001	1.6 (1.5, 1.9)	0.020	1.1 (1.0, 1.2)
		Baseline		1		1
	Fluoridated toothpaste per day (2 times/more)	24 months	<0.001	1.4 (1.2, 1.5)	0.935	1.0 (0.9, 1.1)
		Baseline		1		1
	Dental caries (with caries)	24 months	0.021	0.8 (0.8, 0.9)	<0.001	0.9 (0.8, 0.9)
		Baseline		1		1

467

468

469 **Discussion**

470 This study investigated the impact of a modified basic package of oral care intervention on
 471 prevalence of dental caries as well as knowledge and oral health behaviors related to dental
 472 caries among adolescents in Copperbelt Province, Zambia.

473 The major findings of the current study indicate that at both six and twelve months after
 474 cessation of BPOC intervention, knowledge on dental caries and frequency of using fluoridated
 475 toothpastes among participants in BPOC group improved over time. The frequency of
 476 consumption of sugary drinks and foods did not significantly change over time for either the

477 intervention or control group. Over time, the prevalence of dental caries decreased in both
478 groups; however, the intervention group had a twofold decrease in dental caries compared to
479 the control group.

480 Improvement in knowledge among the participants in the BPOC group was likely attributed to
481 repetitive oral health messages delivered by peers. Comparable improvements in knowledge
482 have been reported in previous studies which used peer-led oral health education [22–24].

483 Surprisingly, the observed positive change in knowledge in the BPOC group in this study did
484 not lead to favorable behavior change over time. The lack of favorable change in the
485 consumption of sugary foods and drinks despite improvement of knowledge could be attributed
486 to immaturity in the brain pathways involved in decision making, making adolescents sensitive
487 to emotional and social influences and therefore difficulty to control their lifestyle choices [25].

488 Adolescents are also dependents, thus their eating behaviours are not only influenced by their
489 knowledge but also by what foods are available and accessible to them, which ultimately
490 influences what they consume [26]. This finding highlights the impact of other determinants
491 of behaviours such as the environment, cultural and social norms, social support from friends
492 (peers) and parents that influence behaviour change, which were not evaluated or controlled in
493 this cluster randomized trial (27). In contrast to the current findings, other authors [23,24,28]
494 have reported positive change in both knowledge and behavior following peer oral health
495 education.

496 Participants in the BPOC group used fluoridated toothpaste more frequently than controls in
497 this study. This could be attributed not only to increased knowledge about dental caries which
498 was given through peer-led OHE but also by a motivation to continue using oral cleaning
499 products after receiving free toothpaste during the six-month intervention period. The
500 importance of knowledge, particularly the benefits of fluoride use in caries prevention,
501 constitutes one of the major factors influencing adolescents' use of fluoridated toothpaste [29].

502 The more significant improvement in the intervention group than the control group, regarding
503 usage of fluoridated toothpaste is comparable with the findings of a previous trial in which free
504 toothpaste and toothbrushes were distributed along with messages and instructions on daily
505 brushing [30].

506

507 The treatment components of the BPOC intervention which included extraction of teeth and
508 atraumatic restorative treatment could explain the two-fold decrease in the prevalence of dental
509 caries among participants in BPOC compared to control group. Frequent use of fluoridated
510 toothpaste in the BPOC group compared to controls may also have contributed to higher
511 improvement in caries status in the BPOC group. Comparison with studies on the effectiveness
512 of BPOC intervention in caries prevention among adolescents was not possible due to scarcity
513 of similar studies. However, the findings are consistent with those of a study that investigated
514 the effectiveness of oral urgent treatment, one of the four components of BPOC, in lowering
515 the dental caries burden in Filipino children [31].

516 The findings of this study need to be interpreted within the strengths and limitations of a cluster
517 randomized trial. The study involved a large sample size from a total of twenty-two clusters
518 which exceed the recommended minimum number of clusters for a parallel randomized cluster
519 trials of four per arm in order to obtain a p-value less than 0.05 under a randomization-based
520 test [32]. The findings can probably be generalized to adolescents attending public secondary
521 schools in Copperbelt Province, Zambia, due to random selection and a large sample size. The
522 design employed in this study allowed prevention of contamination of the intervention which
523 could lead to false rejection of an effective intervention due to reduction of point estimates of
524 its effectiveness [33]. Data collection assistants were blinded in order to avoid bias in their
525 assessment of dental caries status which could ultimately affect assessment of the effectiveness
526 of an intervention [34]. However, it was not possible to blind the participants due to the nature

527 of the BPOC intervention which involved peer oral education, provision of fluoridated
528 toothpastes, extraction and restoration of teeth. It is also important to note that despite
529 randomization there was baseline differences in dental caries and dental visits as well as in
530 some socio-demographics between intervention and control group which could affect treatment
531 effects of the BPOC intervention. Use of a repeated measure (GEE) without the treatment
532 variable but interaction between the treatment variable and time in the models has been used to
533 overcome this shortcoming (35). The short follow-up period and age group did not allow for a
534 proper evaluation of the preventive effect of affordable fluoride and atraumatic restorative
535 treatment.

536

537 **Conclusion**

538 Basic package of oral care was effective in reducing prevalence of dental caries, improving
539 knowledge on dental caries, and the frequency of using fluoridated toothpaste among Zambian
540 adolescents. The intervention did not have any effect on adolescent's frequency of consuming
541 sugary drinks and foods. Further studies need to be conducted in order to address other factors
542 affecting consumption of sugary diet behaviors such as environmental, social and cultural
543 factors.

544

545 **Supporting information**

546 S1-CONSORT 2010 checklist of information to include when reporting a randomised trial

547 S2- Schedule of study activities.

548

549 **Funding**

550 The trial was supported by the University of Bergen in Norway through student research
551 funding, and Copperbelt University in Zambia provided logistical support.

552

553

554 **Acknowledgements**

555 We appreciate support from District Education Board Secretaries (DEBS), Head teachers &
556 study participants and Prof Stein Atle Lie (UIB-Norway) for guidance during data analysis.

557

558 **References**

559

- 560 1. Peres MA, Macpherson LMD, Weyant RJ, Daly B, Venturelli R, Mathur MR, et al. Oral
561 diseases: a global public health challenge. *Lancet*. 2019 Jul 20;394(10194):249-260. doi:
562 10.1016/S0140-6736(19)31146-8. Erratum in: *Lancet*. 2019 Sep 21;394(10203):1010.
563 PMID: 31327369.
- 564 2. Kassebaum NJ, Bernabé E, Dahiya M, Bhandari B, Murray CJ, Marcenes W. Global burden
565 of untreated caries: a systematic review and metaregression. *J Dent Res*. 2015
566 May;94(5):650-8. doi: 10.1177/0022034515573272. Epub 2015 Mar 4. PMID: 25740856.
- 567 3. Eid SA, Khattab NMA, Elheeny AAH. Untreated dental caries prevalence and impact on the
568 quality of life among 11 to14-year-old Egyptian schoolchildren: a cross-sectional study.
569 *BMC Oral Health*. 2020 Mar 19;20(1):83. doi: 10.1186/s12903-020-01077-8. PMID:
570 32192463; PMCID: PMC7083010.E.
- 571 4. Malele-Kolisa Y, Yengopal V, Igumbor J, Nqco CB, Ralephenya TRD. Systematic review
572 of factors influencing oral health-related quality of life in children in Africa. *Afr J Prim
573 Health Care Fam Med*. 2019 Jul 24;11(1):e1-e12. doi: 10.4102/phcfm.v11i1.1943. PMID:
574 31368323; PMCID: PMC6676933.
- 575 5. Global Oral Health Status Report: Towards Universal Health Coverage for Oral Health By
576 2030. World Health Organization; 2023. (Regional summary of the African Region).

- 577 6. Frencken JE, Holmgren C and Helderma VP . WHO Basic Package of Oral Care (BPOC).
578 Nijmegen, Netherlands: WHO Collaborating Centre for Oral Health Care Planning and
579 Future Scenarios, University of Nijmegen 2002
- 580 7. Batra M, Rajwar Y, Agarwal N, Singh A, Dutt M, Sinha A. Basic package for oral care: A
581 step towards primary oral health care. *TmU J Dent*. 2014 Apr;1(2):57–60.
- 582 8. Chher T, Hak S, Courtel F, Durward C. Improving the provision of the Basic Package of
583 Oral Care (BPOC) in Cambodia. *Int Dent J*. 2009 Feb;59(1):47-52. PMID: 19323311.
- 584 9. Shenoy R, D’Souza V, Kundabala M, Jain A, Suprabha B. Preventing early childhood caries
585 through oral health promotion and a basic package for oral care: A pragmatic trial. *Contemp*
586 *Clin Dent*. 2022;13(2):162.
- 587 10. Schulz, K.F., Altman, D.G., Moher, D.*et al*. CONSORT 2010 Statement: updated guidelines
588 for reporting parallel group randomised trials.*BMC Med* **8**, 18 (2010).
589 <https://doi.org/10.1186/1741-7015-8-18>.
- 590 11. Moher D, Schulz KF, Altman DG; CONSORT. The CONSORT statement: revised
591 recommendations for improving the quality of reports of parallel group randomized trials.
592 *BMC Med Res Methodol*. 2001;1:2. doi: 10.1186/1471-2288-1-2. Epub 2001 Apr 20. PMID:
593 11336663; PMCID: PMC32201.
- 594 12. Education system in Zambia [Internet]. Ministry of Education (MoE); [cited 2024 Jan 31].
595 Available from: <http://www.classbase.com/Countries/Zambia/Education-System>
- 596 13. Smits J, Steendijk R. The International Wealth Index (IWI). *Social Ind Res*. 2015 May
597 1;122(1):65–85.
- 598 14. Anthony SN, Kahabuka FK, Birungi N, Åstrøm AN, Siziya S, Mbawalla HS. Assessing
599 association of dental caries with child oral impact on daily performance; a cross-sectional
600 study of adolescents in Copperbelt province, Zambia. *Health Qual Life Outcomes*. 2023 May
601 18;21(1):47.

- 602 15. Frencken JE, De Souza AL, Van Der Sanden WJM, Bronkhorst EM, Leal SC. The Caries
603 Assessment and Treatment (CAST) instrument. *Community Dent Oral Epidemiol.* 2013
604 Feb;41(1):e71–7.
- 605 16. Frencken JoE, De Amorim RG, Faber J, Leal SC. The Caries Assessment Spectrum and
606 Treatment (CAST) index: rational and development. *International Dental Journal.* 2011
607 Jun;61(3):117–23.
- 608 17. Anthony SN, Mbawalla HS, Kahabuka FK, Siziya S. Dental caries according to CAST
609 among Zambian adolescents; pattern, socio-demographic and behavioral correlates. *BMC*
610 *Oral Health.* 2022 Dec;22(1) <https://doi.org/10.1186/s12955-023-02127-9>.
- 611 18. Simushi N, Nyerembe SA, Sasi R and Siziya S. Dental caries on permanent dentition in
612 primary school children — Ndola, Zambia, 2017 . *Health Press Zambia Bull.* 2018, 2 (4).
- 613 19. Simple randomization service [online] [Internet]. Sealed envelop Ltd; [cited 2020 Jan 20].
614 Available from: <http://www.sealedenvelop.com/simple-randomiser/v1/>
- 615 20. Ziegler A. Generalized Estimating Equations [Internet]. New York, NY: Springer New
616 York; 2011 [cited 2024 Jan 31]. (Lecture Notes in Statistics; vol. 204). Available from:
617 <https://link.springer.com/10.1007/978-1-4614-0499-6>
- 618 21. Ferguson CJ. An effect size primer: A guide for clinicians and researchers. *Professional*
619 *Psychology: Res and Prac.* 2009 Oct;40(5):532–8.
- 620 22. Haleem A, Siddiqui MI, Khan AA. School-based strategies for oral health education of
621 adolescents- a cluster randomized controlled trial. *BMC Oral Health.* 2012 Dec 18;12(1).
- 622 23. Vangipuram S, Jha A, Raju R, Bashyam M. Effectiveness of peer group and conventional
623 method (Dentist) of oral health education programme among 12-15 year old school children
624 - A randomized controlled trial. *J Clin Diagn Res.* 2016;10(5):ZC125-9.
- 625 24. Karami A, Heidarnia A, Zarei F. Comparison of peer led and teacher led oral health
626 educational program among students. *Braz J Oral Sci.* 2019 Nov 12;18:e191626.

- 627 25. Blakemore SJ, Robbins TW. Decision-making in the adolescent brain. *Nat Neurosci*. 2012
628 Sep;15(9):1184–91.
- 629 26. Scaglioni S, De Cosmi V, Ciappolino V, Parazzini F, Brambilla P, Agostoni C. Factors
630 Influencing Children's Eating Behaviours. *Nutrients*. 2018 May 31;10(6):706. doi:
631 10.3390/nu10060706. PMID: 29857549; PMCID: PMC6024598..
- 632 27. Salvy SJ, Elmo A, Nitecki LA, Kluczynski MA, Roemmich JN. Influence of parents and
633 friends on children's and adolescents' food intake and food selection. *The American J of*
634 *Clin Nutr*. 2011 Jan;93(1):87–92.
- 635 28. Bramantoro T. Cost effectiveness and quality of life assessment on dental filling and tooth
636 extraction in Balongsari Pub Health Center. *Dent J (Majalah Kedokteran Gigi)*.
637 2011;44(1):43.
- 638 29. Cui Z, Wang W, Si Y, Wang X, Feng X, Tai B, et al. Tooth brushing with fluoridated
639 toothpaste and associated factors among Chinese adolescents: a nationwide cross-sectional
640 study. *BMC Oral Health*. 2023 Oct 18;23(1):765.
- 641 30. Melo P, Fine C, Malone S, Frencken JE, Horn V. The effectiveness of the Brush Day and
642 Night programme in improving children's toothbrushing knowledge and behaviour. *Int Dent*
643 *J*. 2018 May;68 Suppl 1(Suppl 1):7-16. doi: 10.1111/idj.12410. Epub 2018 Apr 16. PMID:
644 29660791; PMCID: PMC9379073.
- 645 31. Ruff RR, Monse B, Duijster D, Itchon GS, Naliponguit E, Benzian H. Effectiveness of
646 school-based strategies to prevent tooth decay in Filipino children: A cluster-randomized
647 trial. *Comm Dent Oral Epid*. 2023 Apr;51(2):219–27.
- 648 32. Hemming K, Taljaard M. Key considerations for designing, conducting and analysing a
649 cluster randomized trial. *Int J Epidemiol*. 2023 Oct 5;52(5):1648–58.
- 650 33. Torgerson DJ. Contamination in trials: is cluster randomisation the answer? *BMJ*. 2001 Feb
651 10;322(7282):355–7.

- 652 34.Schulz KF, Grimes DA. Blinding in randomised trials: hiding who got what. *The Lancet*.
653 2002 Feb;359(9307):696–700.
- 654 35.Twisk J, Bosman L, Hoekstra T, Rijnhart J, Welten M, Heymans M. Different ways to
655 estimate treatment effects in randomised controlled trials. *Contemp Clin Trials Com*. 2018
656 Jun;10:80–5.
- 657

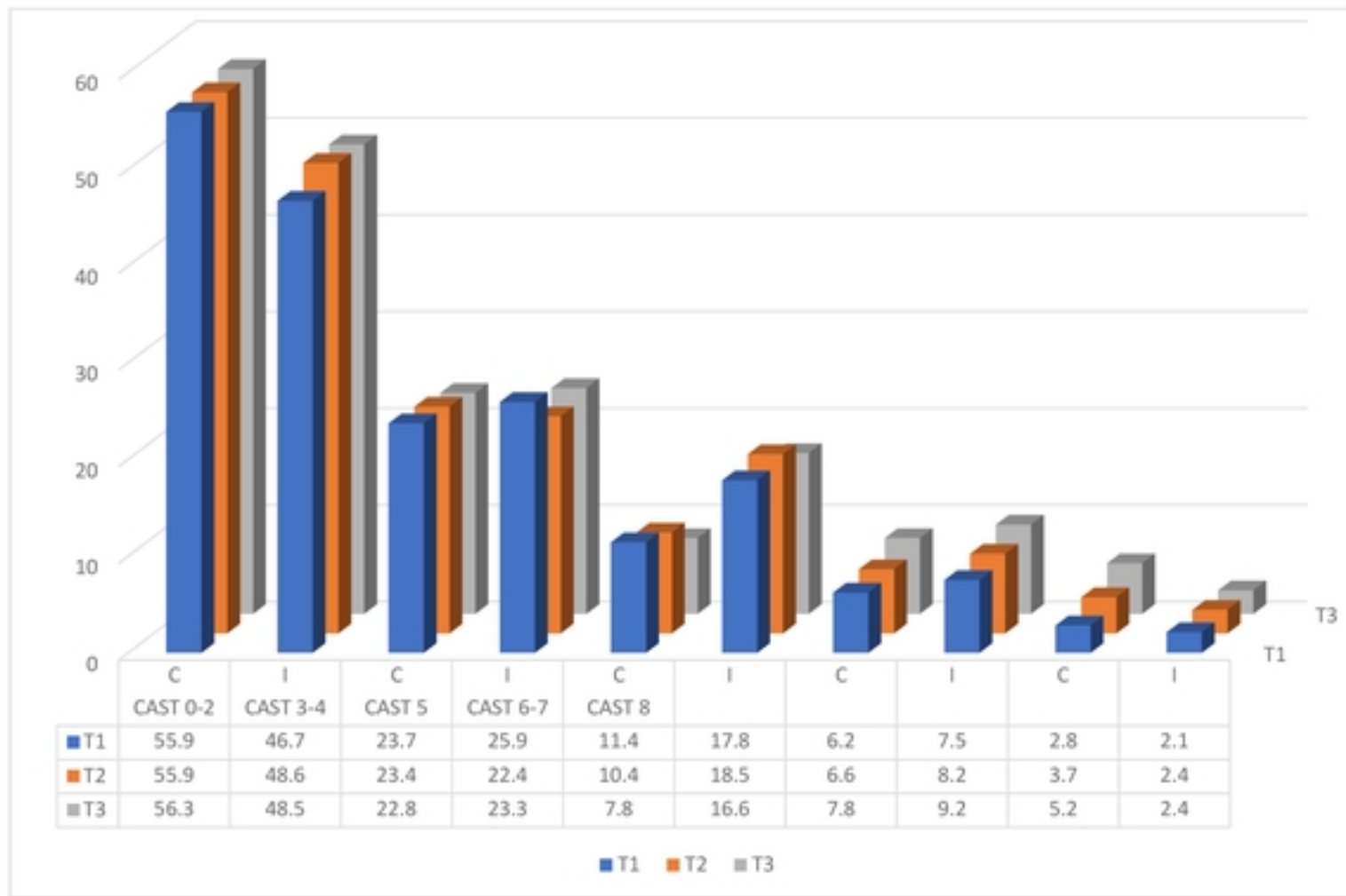


Figure 2: Trends in the distribution of dental caries clinical categories according to trial arms at baseline (T₁), 6 months (T₂) and 12 months (T₃)

Figure 2: Trends in the distribution of dental caries clinical categories

medRxiv preprint doi: <https://doi.org/10.1101/2024.03.03.24303674>; this version posted March 4, 2024. The copyright holder for this preprint (which was not certified by peer review) is the author/funder, who has granted medRxiv a license to display the preprint in perpetuity. It is made available under a [CC-BY 4.0 International license](https://creativecommons.org/licenses/by/4.0/).

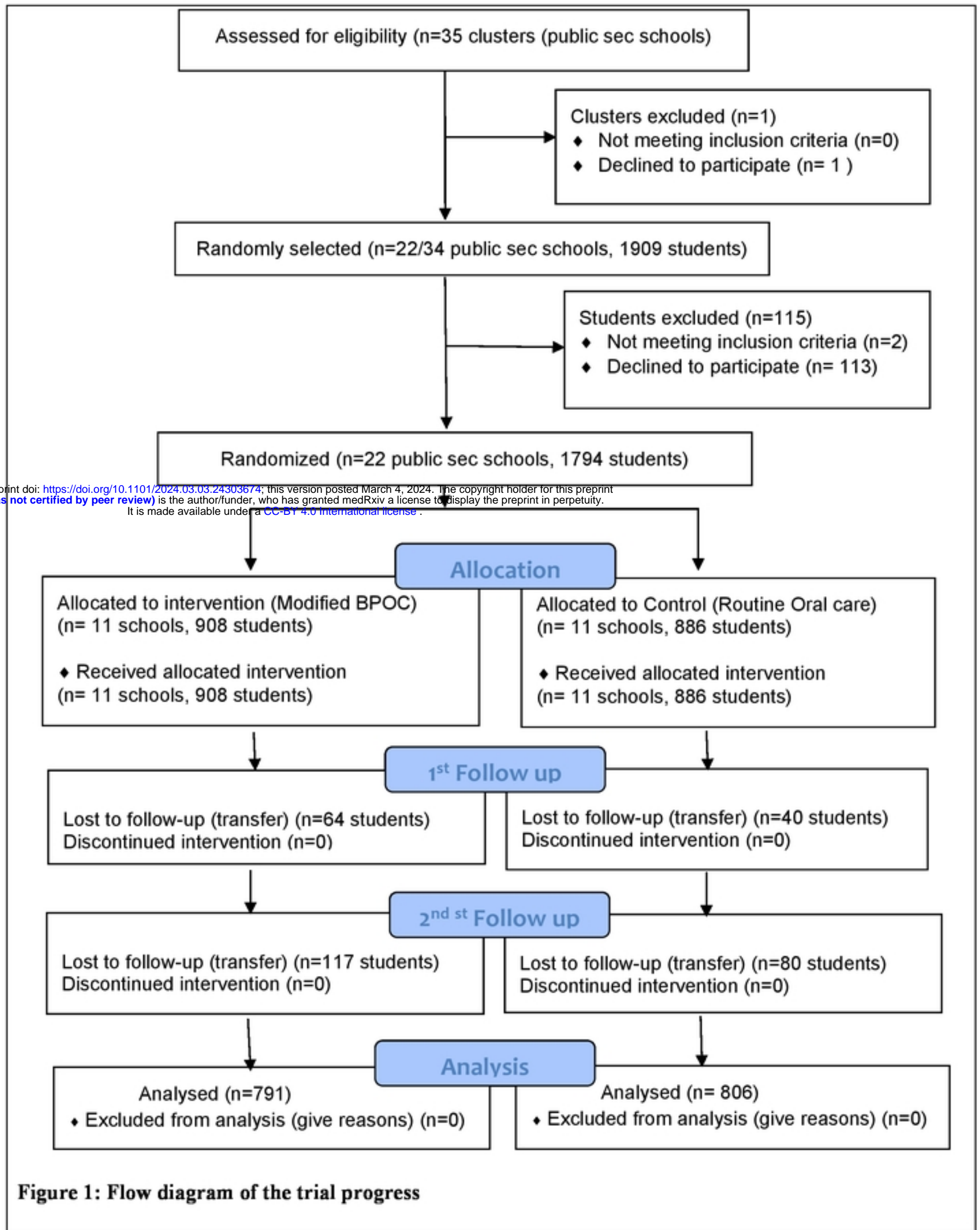


Figure 1: Flow diagram of the trial progress

Figure 1: Flow diagram of the trial progress