

1 **Title: Effect of modified basic package of oral care on adolescents' dental caries status in**  
2 **Copperbelt Province, Zambia; A Cluster Randomized Trial**

3

4 **Authors:**

5 Severine N Anthony<sup>1,2,4</sup>, Hawa S Mbawalla<sup>2</sup>, Febronia K Kahabuka<sup>2</sup>, Seter Siziya<sup>3</sup>, Anne N  
6 Åstrøm<sup>4</sup>

7

8 **Author Affiliation**

9 <sup>1</sup>Department of Dental Clinical Sciences, Michael Chilufya Sata School of Medicine, The  
10 Copperbelt University, Ndola, Zambia

11 <sup>2</sup>Department of Orthodontics, Paedodontics and Community Dentistry, School of Dentistry,  
12 Muhimbili University of Health and Allied Sciences, Dar es Salaam, Tanzania

13 <sup>3</sup>Department of Public Health, Michael Chilufya Sata School of Medicine, The Copperbelt  
14 University, Ndola, Zambia

15 <sup>4</sup>Department of Clinical Dentistry, Faculty of Medicine and Dentistry, University of Bergen,  
16 Norway

17

18

19 **\*Corresponding Author:** [kaitila2020@gmail.com](mailto:kaitila2020@gmail.com)

20

21

22 **NOTE: This preprint reports new research that has not been certified by peer review and should not be used to guide clinical practice.**

## 23 **Abstract**

### 24 **Background**

25 Dental caries remains the major oral health challenge affecting more than half of adolescents  
26 globally. Most of the disease remain untreated, therefore, negatively impacting adolescents'  
27 general health, well-being, and quality of life. Basic Package of Oral Care (BPOC) is a potential  
28 solution to the challenge, however, evidence on its effectiveness is scarce. This study primarily  
29 assessed the effects of applying modified BPOC on dental caries prevalence and secondarily on  
30 knowledge and behaviors related to dental caries among adolescents in Copperbelt Province,  
31 Zambia.

### 32 **Methods**

33 A parallel arms cluster randomized field trial (Reg-PACTR202210624926299) including 22  
34 public secondary schools in Copperbelt province, Zambia, was carried out between January  
35 2021 and March 2023. A pre-tested questionnaire was used to collect socio-demographics,  
36 knowledge and dental caries related behaviors data, while dental caries was assessed clinically  
37 using the caries assessment spectrum and treatment (CAST) at baseline and the follow-ups. The  
38 1<sup>st</sup> and 2<sup>nd</sup> follow ups were conducted at 18-and 24months after baseline respectively. The  
39 analysis was based on intention-to-treat protocol using generalized estimating equations (GEE)  
40 and results are reported as OR (95% CI).

### 41 **Results**

42 Out of 1,794 participants at baseline, 1,690 (94.2%) and 1,597 (89.0%) were seen at 1<sup>st</sup> and 2<sup>nd</sup>  
43 follow ups respectively. A significant interaction (BPOC x time) for dental caries models at 18  
44 months {OR (95%CI) = 1.3 (1.1, 1.6), p=0.003} and 24 months {OR (95%CI) = 1.3 (1.1, 1.6),  
45 p=0.004} was observed. Secondary outcomes with significant interactions included adequate  
46 knowledge models at 18 months {OR (95%CI) =1.5 (1.2,1.8), p<0.001} and 24 months {OR  
47 (95%CI) = 1.6 (1.3, 2.0), p<0.001} as well as use of fluoridated toothpaste twice or more per

48 day at 18 months {OR (95%CI) = 1.6 (1.3, 2.1),  $p < 0.001$ } and 24 months {OR (95%CI) = 1.4  
49 (1.2, 1.6),  $p < 0.001$ }. Subgroup analysis showed that the intervention group had better  
50 outcomes than the control group in terms of dental caries prevalence, adequate knowledge, use  
51 of fluoridated toothpaste twice or more per day, at 18- and 24 months.

## 52 **Conclusion**

53 The modified BPOC was effective in reducing prevalence of dental caries, improving  
54 knowledge on dental caries, and the frequency of using fluoridated toothpaste among Zambian  
55 adolescents. Further studies need to be conducted in order to address other factors affecting oral  
56 health related behaviors such as the school and home environment, social and cultural factors.

57

## 58 **Introduction**

59 Despite dental caries being preventable, its prevalence continues to rise, especially in low- and  
60 middle-income countries [1]. A large proportion of dental caries remains untreated thus  
61 increasing demand for essential oral health services and on the other hand impacting negatively  
62 the individual general health and quality of life [2–4]. The World Health Organization (WHO)  
63 recommends to reduce the burden of oral diseases by emphasizing comprehensive system  
64 changes to shift from traditional curative approaches toward preventive approaches such as  
65 application of the basic package of oral care (BPOC) [5].

66

67 BPOC is geared towards provision of oral health interventions with proven effectiveness that  
68 are acceptable, practicable, and cheap to the majority of disadvantaged communities [6,7]. The  
69 strategy is critical to fulfilling the core goal of primary health care, which is to provide better  
70 health services to all. It is also in line with the World Health Organization's (WHO)  
71 recommendation of reorienting traditional curative-oriented oral health services towards  
72 approaches that adhere to the principles of primary health care (PHC) [6,7].

73

74 BPOC consists of three packages: Oral Urgent Treatment (OUT), Atraumatic Restorative  
75 Treatment (ART), and Affordable Fluoride Toothpaste (AFT). OUT is achieved by offering  
76 simple extraction of teeth beyond restorable state and referral of complicated cases. ART is  
77 provided through restoring teeth with reversible pulpitis on cavities which can be accessed by  
78 hand instruments only without a need of rotary instruments then restored using glass ionomer  
79 cement. AFT can be achieved through regulatory strategies such as lowering or abolishing taxes  
80 on the items with the goal of reducing their market prices [6]. The World Health Organization  
81 recommends tailoring BPOC to the local environment and evaluating its effectiveness in  
82 improving oral health needs in various locations around the world [6].

83

84 Although the effectiveness of the individual components of BPOC has been demonstrated,  
85 evaluation of its overall success as a package has received little attention. A study in Cambodia  
86 demonstrated success in increasing extractions and ART restored teeth at follow up following  
87 BPOC intervention [8]. Another study reported success in reducing the incidence of early  
88 childhood caries among children of women who received BPOC during pre- and post-natal  
89 period [9].

90

91 No study reporting the effectiveness of BPOC as a package in preventing dental caries among  
92 adolescents was retrieved. This study is, therefore, aimed at assessing the effects of modified  
93 basic package of oral care on prevalence of dental caries among adolescents in Copperbelt  
94 Province, Zambia. The study secondarily assessed the effects of modified basic package of oral  
95 care intervention on knowledge, frequency of consuming sugary drinks and foods, frequency  
96 of use of fluoridated toothpaste per day and dental visits in the previous year. The hypothesis  
97 tested for the primary objective was; at follow ups the likelihood of dental caries occurrence is

98 less in the intervention than in the control group. The hypotheses for the secondary objective  
99 were the likelihood of adequate knowledge, consuming sugary drinks and foods less than five  
100 times per day, using fluoridated toothpaste twice or more per day, and visiting a dentist at least  
101 once in the previous year are more in the intervention than in the control group.

102

## 103 **Methods**

### 104 **Study design**

105 The study used a parallel two arms cluster randomized controlled field trial design with one  
106 control group and one intervention group (allocation ratio 1:1). The trial was registered by Pan  
107 African Clinical Trial Registry (PACTR202210624926299) available at  
108 <https://pactr.samrc.ac.za/TrialDisplay.aspx?TrialID=24046>. CONSORT reporting guidelines  
109 for randomized trials (Supplementary file 1) have been adhered to in reporting all sections of  
110 this study [10,11]. The study commenced in January 2021 (recruitment of participants and  
111 collecting baseline data) and ended in March 2023 as illustrated in detail in the schedule of  
112 study activities (Supplementary file 2). The number of follow-ups was reduced as soon as the  
113 trial began from three initially intended, to two due to unanticipated school closures during  
114 COVID 19 pandemic.

### 115 **Ethical considerations**

116 The study received ethical approval from three institutions: the study site (Tropical Diseases  
117 Research Centre, Zambia -IRB 00002911 FWA 00003729), training institutions (MUHAS  
118 Institutional Review Board, Tanzania -P. MUHAS-REC-4-2020-208), and the Regional Ethical  
119 Committee vest 191836, Norway). National Health Research Authority (permit no -  
120 NHRA00005/16/11/2020), provinial health directorate and district education board secretaries  
121 granted permission to conduct the research. Written informed consent were obtained from  
122 parents or gurdians and participants were requested to sign a written assent form.

## 123 **Participants eligibility criteria and setting**

124 All adolescents in grades eight to nine attending public secondary schools in Ndola, Masaiti  
125 and Mpongwe districts of the Copperbelt Province, Zambia were eligible to participate (Fig 1).

126 The study excluded adolescents under active or passive orthodontic treatment.

127

## 128 **The trial intervention**

### 129 **Experimental group**

130 The participants in the experimental group received a modified World Health Organization -  
131 Basic Package of oral care (WHO-BPOC) for a period of six months in addition to their routine  
132 daily standard of oral care. The intervention adopted Oral Urgent Treatment (OUT) and  
133 Atraumatic Restorative Treatment (ART) components of the conventional WHO-BPOC and  
134 modified Affordable Fluoride Toothpastes (AFT) component. The conventional BPOC  
135 recommends effecting AFT component by lobbying for reduction of prices of toothpastes  
136 through government subsidies or tax reduction which could not be feasible in this study. In this  
137 study; AFT component was modified by providing each participant a 500g pack of fluoride  
138 toothpaste once every two months and a toothbrush once every three months in order to  
139 encourage future usage of the oral care products. Peer- Led Oral Health Education (PL-OHE)  
140 was adopted as an additional component to the three components of the conventional WHO-  
141 BPOC.

142 Oral Urgent Treatment (OUT) and Atraumatic Restorative Treatment (ART) were provided at  
143 schools by qualified dentists once in six months. OUT included; extraction of teeth beyond  
144 restorable condition at schools and referral for teeth whose treatment required clinic set up.  
145 Whereas ART included; restoring asymptomatic teeth or those in reversible pulpitis state and  
146 with cavities accessible by hand instruments. Restorations were done by removing decayed part  
147 of a tooth using hand instruments only followed by filling of the cavities with Fuji IX Glass-

148 ionomer cement. Oral health education was provided by trained peers by reading printed  
149 messages (box 1) to their classmates once every two weeks.

150 **Box 1: Oral health messages**

1. Restrict the frequency of taking sugary food and drinks in the diet to less than five times per day.
2. Brush your teeth for 2 minutes ensuring all the surfaces are cleaned; twice per day in the morning and evening before retiring to bed.
3. Use fluoride toothpaste to brush, spit the foam but do not rinse it out.
4. Change your toothbrush every 3 months or when bristles flare out.
5. Advise your parent or guardian to buy a tooth paste containing at least 1450 ppm fluoride and to take you for dental checkup at least once a year.

151

152 **Control group**

153 The adolescents in the control group were left to continue with their routine daily oral care.  
154 Routine daily oral care include all self-oral cleaning and seeking of oral treatment without help  
155 from the BPOC project. Participants found with emergence conditions during baseline data  
156 collection were referred to nearby dental clinics. At the end of the study, all participants  
157 received peer led oral health education based on five key messages (Box 1).

158

159 **Study outcome measures**

160 The primary outcome measure of this study was prevalence of dental caries. The study also  
161 measured knowledge on dental caries, frequency of consuming sugary drinks and foods per  
162 day, use of fluoridated toothpaste per day, and dental visits in the previous year. The primary  
163 and secondary outcomes were measured at baseline, at 18 and 24 months follow ups.

164

165

166

167

168

169

170 **Measurements**

171 **Independent variables**

172 A pre-tested self-administered questionnaire was used to access socio-demographic factors  
173 which included age, sex, geographical location, parental education and socioeconomic status.  
174 Participant's age was recorded as an absolute number ranging from 10 to 19, while sex was  
175 recoded as 1=male and 2=female. Geographical location was recorded as 1=urban and 2=rural  
176 based on Copperbelt province rural-urban delineation. Mother's and father's education were  
177 recorded according to Zambian education structure [12] as follows: 1=no formal education,  
178 2=up to primary, 3=secondary, 4= tertiary (college or university) and thereafter dichotomized  
179 into {0=up to primary (including the original scores 1-2) and 1=Secondary or higher (including  
180 the original scores 3-4)}. Socio-economic status (SES) was derived from international wealth  
181 index (IWI) items [13] as elaborated in a previous publication [14] and recorded as 1= high and  
182 2 =low to middle SES.

183

184 **Dependent variables (outcomes)**

185 **Dental caries**

186 Dental caries on permanent dentition was examined and scored according to categories as  
187 described in the CAST manual by Frencken et al., (2015) as follows; 0=sound, 1= sealant, 2=  
188 restoration, 3= caries in enamel, 4= caries in dentine without distinct cavitation (discolored  
189 dentine visible through enamel), 5= caries in dentine with distinct cavitation, 6= caries in pulp,  
190 7= abscess or fistula, 8= lost due to caries, 9= others [15]. The categories were thereafter grouped  
191 into five diagnostic thresholds of CAST as follows; {0=CAST code 0–2 (healthy), 1=CAST code 3–4  
192 (pre-morbidity), 2=CAST code 5 (morbidity), 3=CAST code 6–7 (severe morbidity) and 4= CAST code  
193 8 (mortality). Prevalence of dental caries was assessed by dichotomizing CAST codes into two  
194 as “with caries” for CAST codes 3 to7 and “without caries” for CAST codes 0-2, 8, and 9.

195

196



197

## 198 **Knowledge and behaviors related to dental caries**

199 Knowledge on dental caries was assessed using ten questions inquiring on causes, symptoms  
200 and prevention of oral diseases giving minimum score of 0 and maximum of 10. A cut off point  
201 of 7 correct responses was adopted for adequate knowledge; therefore, participants were  
202 categorized into those having inadequate knowledge {0 = (including the original scores 0-6)}  
203 and having adequate knowledge {1= (including the original scores 7-10)}. Oral health related  
204 behaviors assessed were; frequencies of consuming sugary drinks and foods per day in the past  
205 30 days, frequency of use of fluoridated toothpaste per day in the past 30 days, and dental visits  
206 in the previous year. Frequency of consuming sugary drinks and foods were scored as {1=I  
207 didn't take, 2=Occasionally per week, 3=Once per day, 4=Twice to four times per day, 5=Five  
208 times or more per day} and thereafter dichotomized into {0=less than 5 times per day (including  
209 the original scores 1-4)} and 1=5 times or more per day (including the original category 5)}.  
210 Frequency of use of fluoridated toothpaste per day was scored as; {1=I didn't, 2=I did but not  
211 every day, 3=I did once a day, 4=I did twice a day or more} and later dichotomized into {0=less  
212 than twice per day (including original scores 1-3)} and 1= twice or more per day (including  
213 original score 4)}. Visiting a dentist in the previous year was scored as {1=I didn't attend, 2=I  
214 attended once, 3=I attended twice or more} and thereafter dichotomized into {0=I didn't attend  
215 (including original score 1) and 1=I attended once or more (including original score 2-3)}.

216

## 217 **Examination**

218 Dental caries examination was done as prescribed in Caries Assessment Spectrum and  
219 Treatment (CAST) manual [16] by four trained and calibrated dentists. A detailed description  
220 of examination of dental caries is provided in the article reporting prevalence and factors  
221 associated with dental caries among this group [17]. The coefficients of reliability (Cohens

222 kappa) for CAST between and within examiners ranged from 0.80 to 0.90 and 0.80 to 0.85,  
223 respectively.

### 224 **Sample size and sampling**

225 A sample size of 1,760 participants was estimated by assuming: a 95% confidence level, 85%  
226 power, 5% margin of error, 20% expected mean change in dental caries, 0.001 inter-cluster  
227 correlation, a cluster size of 80 and a mean DMFT of 1.34 found in a previous study involving  
228 5 to 17 years old pupils in Zambia [18]. A multistage sampling method was employed to select  
229 adolescents in grades 8 and 9 attending 22 public secondary schools in three randomly selected  
230 districts of the Copperbelt province in Zambia. The Copperbelt Province was conveniently  
231 selected out of the ten provinces of Zambia at the first stage. The choice of Copperbelt Province  
232 was based on the intention to fit the study into existing community dentistry training at the  
233 university where the principal investigator is based. The second stage involved proportionate  
234 stratified random sampling of three districts (one urban and two rural) out of the ten districts of  
235 the Copperbelt province. In the third stage, a total of 22 out of 35 public secondary schools  
236 were randomly selected guided by the number of schools in each district (21:35, =13 schools  
237 for Ndola district; 8:35, = 5 schools for Masaiti district; and 6:35, = 4 schools for Mpongwe  
238 district). In the fourth stage, all grade 8 and 9 adolescents enrolled in selected schools were  
239 eligible to participate in the study.

### 240 **Randomization**

241 The unit of randomization was secondary schools. The allocation ratio of 1:1 resulted into  
242 inclusion of 11 schools in the intervention group (908 participants) and 11 in the control group  
243 (886 participants) at baseline (Fig 1). Stratified randomization was done in order to prevent  
244 imbalance in the rural -urban characteristics of the clusters. Separate randomization was done  
245 for urban district (Ndola), and rural districts (Masaiti and Mpongwe). Ndola (urban) clusters  
246 were first randomized in a block of 2 by taking the first cluster to intervention and second to  
247 control. After completing the Ndola clusters, Masaiti and Mpongwe were randomized in the

248 block size of 2. Sealed envelope [19] was used to create blocked randomization (Seed  
249 =72084789304093, block size=2, list length Ndola 13, Actual list length Ndola= 14, List length  
250 for Masaiti and Mpongwe = 9, Actual list length for Masaiti and Mpongwe =10). The opaque  
251 envelopes were opened a day before intervention day. Randomization ended with 7 clusters in  
252 intervention group and 6 in control for urban district (Ndola) and 4 clusters in intervention and  
253 5 in control for rural districts (Masaiti and Mpongwe). The Principal Investigator (SA)  
254 generated allocation sequence, four dentists enrolled participants and an independent person  
255 assigned clusters into interventions.

256

### 257 **Blinding**

258 Single blinding was done whereby the examiners were not aware of group allocation during  
259 baseline and follow-up. Blinding of the participants was not feasible because the participants in  
260 intervention group received peer delivered oral health education and treatment for dental caries.

261

### 262 **Statistical methods**

263 Data entry, cleaning and analysis were done using IBM SPSS (version 26.0 IBM SPSS  
264 Statistics) and significance level was set to  $p < 0.05$ . Analysis was based on intention-to-treat  
265 approach and generalized estimating equation (GEE) analysis was used to include all available  
266 data. The baseline, first and second follow up socio-demographics and clinical characteristics  
267 of the participants in the intervention and control groups are presented in frequency tables as  
268 percentages and frequencies. The patterns in socio-demographic distribution of outcome  
269 variables across the three time points in intervention and control groups are also presented in a  
270 frequency table as percentages and frequencies. Chi-square test was used to ascertain  
271 statistically significant differences in the proportions of participants with caries in the  
272 intervention and control across baseline, first and second follow up. To take into account of  
273 correlated clinical observations within individuals due to repeated measurements, the likelihood

274 of change in caries across study groups was analyzed using Generalized estimating equations  
275 (GEE) with binomial model, logit link function and unstructured correlation structure [20]. First  
276 GEE analyses were used to analyze the overall intervention effect of the outcome variables and  
277 secondly, interactions between intervention/control group and time were explored to evaluate  
278 the intervention effects at follow up and whether the outcome variables showed different  
279 trajectories across time. Sub group analyses were performed for the outcome variables which  
280 showed interaction effects with time. Results of GEE are presented as adjusted odds ratios and  
281 their 95% confidence intervals.

## 282 **Results**

### 283 **Participants flow diagram**

284 The participants flow diagram of this study is illustrated in Figure 1. A total of 35 schools from  
285 Ndola, Masaiti and Mpongwe districts of the Copperbelt province were eligible to participate  
286 in this trial during the enrollment period (February-May 2021). Out of the 35 schools, one  
287 school declined to participate resulting into 34 schools being available for random selection.  
288 Using computer generated random numbers 22 out of 34 schools were randomly selected. All  
289 adolescents in grades 8 and 9 meeting inclusion criteria and were available during enrollment  
290 period were invited to participate.

291 A total of 115 students were either excluded due to being under orthodontic treatment (2) or  
292 declined to participate (113). The twenty-two schools were allocated randomly into intervention  
293 and control in a ratio of 1:1 resulting in 908 and 886 participants in intervention and control  
294 groups, respectively. Intervention group received modified BPOC from June to December 2021  
295 while control group did not receive any intervention and therefore continued with their routine  
296 oral care. There was no complete loss to follow up in any of the clusters at the two follow ups.  
297 A total of 64 participants in the intervention and 40 in the control group were lost to follow up  
298 after 18 months while 117 participants in the intervention and 80 in the control group were lost  
299 to follow-up after 24 months; all of them due to being transferred from one school to another.

300 A total of 1,794 participants (908-intervention, 886- control) and 1,597 participants (791-  
301 intervention, 806- control) were analyzed at baseline and after 24 months, respectively. The  
302 trial ended in March 2023.

303

#### 304 **Baseline characteristics**

305 Baseline socio-demographics, oral health related knowledge and behaviors, and clinical  
306 indicators of the participants according to trial arm allocation are as shown in table 1. Despite  
307 randomization chi-square test and variance analysis showed significant baseline differences  
308 between the intervention and control arms on the following socio-demographic characteristics;  
309 sex ( $p=0.003$ ), mothers' education ( $p=0.023$ ), fathers' education ( $p= 0.021$ ), and socioeconomic  
310 status ( $p <0.001$ ). The intervention group had higher proportion of females (57.4% vs 50.5%),  
311 rural participants (56.8% vs 33.2%), participants whose mothers (38.4% vs 33.3%) and fathers  
312 (43.4% vs 38.0%) had attained secondary school or higher education and low to middle SES  
313 (52% vs 35.3%) compared to controls. The results also show baseline difference according to  
314 dental visit in previous one year ( $p=0.004$ ), and CAST clinical severity categories ( $p<0.001$ ).  
315 The intervention group had significantly higher percentages of those who did not attend for  
316 dental visits (76.5% vs 70.5%), and those with dental caries (51.3 % vs 41.3%) than control  
317 group. All the effect sizes of the variances were small according to Ferguson, (2009) [21].

318

319

320

321

322

323

324

325

326 **Table 1: Socio-demographics, oral health knowledge, oral health behaviors and clinical**  
 327 **characteristics by intervention arms at baseline (n=1794)**

Variables	Categories	Trial arm allocation		Cramer's V	p-value
		Intervention % (n)	Control % (n)		
<b>Socio-demographics</b>					
Age	11-14	54.4 (494)	57.6 (510)	0.032	0.178
	15-19	45.6 (414)	42.4 (376)		
Sex	Male	42.6 (387)	49.5 (439)	0.069	0.003
	Female	57.4 (521)	50.5 (447)		
Residence	Urban	43.2 (392)	66.8 (592)	0.238	<0.001
	Rural	56.8 (516)	33.2 (294)		
Mothers' education	Up to primary	61.6 (559)	66.7 (591)	0.054	0.023
	Secondary or higher	38.4 (349)	33.3 (295)		
Fathers' education	Up to primary	56.6 (514)	62.0 (549)	0.054	0.021
	Secondary or higher	43.4 (394)	38.0 (337)		
Socio-economic status	High	48.0 (436)	64.7 (573)	0.168	<0.001
	Low to middle	52.0 (472)	35.3 (313)		
<b>Oral health knowledge</b>	Inadequate knowledge	42.3 (384)	40.2 (356)	0.021	0.364
	Adequate knowledge	57.7 (524)	59.8 (530)		
<b>Oral health related behaviors</b>					
Frequency of intake of sugary drinks	less than 5 times per day	88.1 (800)	87.6 (776)	0.008	0.736
	5 times or more per day	11.9 (108)	12.4 (110)		
Frequency of intake of sugary foods	less than 5 times per day	87.9 (798)	88.7 (786)	0.013	0.586
	5 times or more per day	12.1 (110)	11.3 (100)		
Use of fluoridated toothpaste	less than 2 times per day	21.1 (192)	22.5 (199)	0.016	0.500
	2 times or more per day	78.9 (716)	77.5 (687)		
Dental visits in previous one year	Attended at least once	23.5 (213)	29.5 (261)	0.068	0.004
	Did not attend	76.5 (695)	70.5 (625)		
<b>Clinical variables</b>					
CAST clinical severity categories	Healthy (CAST0-2)	46.7 (424)	55.9 (495)	0.113	<0.001
	Pre-morbidity (CAST3)	25.9 (235)	23.7 (210)		
	Morbidity (CAST4-5)	17.8 (162)	11.4 (101)		
	Severe morbidity (CAST6-7)	7.5 (68)	6.2 (55)		
	Mortality (CAST8)	2.1 (19)	2.8 (25)		
Dental caries prevalence	Caries free	48.7 (442)	58.7 (520)	0.1	<0.001
	With caries	51.3 (466)	41.3 (366)		

328 Note: Effect sizes for Cramer's V: V = 0.1 (small), V = 0.3 (medium), V = 0.5 (large) (Ferguson, 2009).

329 Table 2 shows socio-demographics and clinical variables at baseline by response status at 18-  
 330 and 24months follow up. The baseline socio-demographics (age, sex, residence, mothers’  
 331 education, fathers’ education), oral health related knowledge and behaviors and clinical  
 332 variables (caries) between those lost to follow up and those who remained in the study did not  
 333 differ significantly (all p-values >0.05).

334 **Table 2: Socio-demographics and clinical variables at baseline by response status.**

Variables	Categories	Follow ups					
		18 months			24 months		
		Lost % (n)	Followed % (n)	p value	Lost % (n)	Followed % (n)	p value
<b>Socio-demographics</b>							
Age	11-14	67.3 (70)	55.3 (934)	0.016	59.4 (117)	55.5 (887)	0.305
	15-19	32.7 (34)	44.7 (756)		40.6 (80)	44.5 (710)	
Sex	Male	48.1 (50)	45.9 (776)	0.668	44.7 (88)	46.2 (738)	0.682
	Female	51.9 (54)	54.1 (914)		55.3 (109)	53.8 (859)	
Residence	Urban	58.7 (61)	54.6 (923)	0.422	53.8 (106)	55.0 (878)	0.755
	Rural	41.3 (91)	45.4 (767)		46.2 (91)	45.0 (719)	
Mothers’ education	Up to primary	65.4 (68)	64.0(1082)	0.779	62.9 (124)	64.2(1026)	0.719
	Secondary or higher	34.6 (36)	36.0 (608)		37.1 (73)	35.8 (571)	
Fathers’ education	Up to primary	66.3 (69)	58.8 (994)	0.129	62.9 (124)	58.8 (939)	0.264
	Secondary or higher	33.7 (35)	41.2 (696)		37.1 (73)	41.2 (658)	
Socio-economic status	High	65.4 (68)	55.7 (941)	0.053	60.4 (119)	55.7 (890)	0.212
	Low to middle	34.6 (36)	44.3 (749)		39.6 (78)	44.3 (707)	
<b>Oral health knowledge</b>							
	Inadequate	38.5 (40)	41.4 (700)	0.552	41.6 (82)	41.2 (658)	0.910
	Adequate knowledge	61.5 (64)	58.6 (990)		58.4 (115)	58.8 (939)	
<b>Oral health related behaviors</b>							
Frequency of intake of sugary drinks	less than 5 times per day	88.5 (92)	87.8 (1484)	0.844	88.3 (174)	87.8 (1402)	0.828
	5 times or more per day	11.5 (12)	12.2 (206)		11.7 (23)	12.2 (195)	
Frequency of intake of sugary foods	less than 5 times per day	82.7 (86)	88.6 (1498)	0.067	87.3 (172)	88.4 (1412)	0.649
	5 times or more per day	17.3 (18)	11.4 (192)		12.7 (25)	11.6 (185)	
Use of fluoridated toothpaste	less than 2 times per day	16.3 (17)	22.1 (374)	0.166	19.8 (39)	22.0 (352)	0.472
	2 times or more per day	83.7 (87)	77.9 (1316)		80.2 (158)	78.0 (1245)	
Dental visits in previous one year	Attended at least once	26.0 (27)	26.4 (447)	0.871	26.9 (53)	26.4 (421)	0.871
	Did not attend	74.0 (77)	73.6 (1243)		73.1 (144)	73.6 (1176)	
<b>Clinical variables</b>							
CAST clinical severity categories	Healthy (CAST0-2)	51.9 (54)	51.2 (865)	0.853	52.3 (103)	51.1 (816)	0.750
	Pre-morbidity (CAST3)	25.0 (26)	24.8 (419)		27.4 (54)	24.5 (391)	
	Morbidity (CAST4-5)	11.5 (12)	14.9 (251)		12.7 (25)	14.9 (238)	
	Severe morbidity (CAST6-7)	8.7 (9)	6.7 (114)		5.6 (11)	7.0 (112)	
	Mortality (CAST8)	2.9 (3)	2.4 (41)		2.0 (4)	2.5 (40)	
Dental caries prevalence	Caries free	54.8 (57)	53.6 (905)	0.803	54.3 (107)	53.5 (855)	0.837
	With caries	45.2 (47)	46.4 (785)		45.7 (90)	46.5 (742)	

336 **Trends in the distributions of participants' knowledge, oral health related behaviors and**  
337 **dental caries prevalence by trial arms and across time**

338 Table 3 shows the trends in the distributions of participants according to knowledge, oral health  
339 related behaviors and dental caries by intervention group and across time. The results show no  
340 baseline differences ( $p=0.364$ ) in knowledge between intervention and control groups.  
341 However, follow up results show statistically significant difference between groups after 18  
342 months ( $p=0.014$ ) and 24 months ( $p=0.002$ ). The percentage change in the proportion of  
343 participants with adequate knowledge from baseline to 18-and-24 months follow up was  
344 significant in the intervention {9.6% (5.1%, 14.1%),  $p<0.001$ } at 18 months and 11.5% (5.1%,  
345 14.1%),  $p<0.001$ ) at 24 months while the change was not significant in the control group {1.8%  
346 (-2.8%, 6.4%),  $p=0.443$ } at 18 months and {2.1% (-2.6%, 6.7%),  $p=0.377$ } at 24 months. The  
347 use of fluoridated toothpaste in the intervention group increased by 4.5% (0.8%, 8.1%),  $p=0.016$   
348 and 4.4 % (0.6%, 8.1%),  $p=0.021$  at 18 and 24 months respectively. On the other hand, the  
349 results in the controls showed no significant change at 18 {-0.4% (-3.5%, 4.4%),  $p=0.843$ } and  
350 24 months {-0.2% (-3.8%, 4.2%),  $p=0.922$ }, respectively. Frequency of dental visits was lower  
351 in intervention than control group (23.5% vs 29.5%,  $p<0.001$ ) at baseline but changed to no  
352 difference at 18 months ( $p=0.733$ ) and 24 months ( $p=0.688$ ). Dental visit in the intervention  
353 group increased by 5.6% {5.6% (1.5%, 9.7%)  $p=0.008$ } and 5.4 % {5.4% (1.2%, 9.6%)  
354  $p=0.011$ } at 18 and 24 months respectively while no significant change was observed in the  
355 control group at 18 months {0.4% (-3.9%, 4.7%)  $p=0.856$ } and at 24 months {0.3% (-4.1%,  
356 4.7%)  $p=0.893$ }. The prevalence of dental caries was significantly higher in the intervention  
357 group than in the control group at baseline, 18 months and 24 months ( $p<0.001$ ). The prevalence  
358 of dental caries from baseline to 18 months' follow-up and from baseline to 24 months' follow-  
359 up did not change significantly either in the intervention- nor in the control groups. The  
360 percentage change, 95% confidence interval and p values for the intervention at 18 months and  
361 24 months were {-2.5% (-2.2%, 7.2%)  $p=0.296$ } and {-2.6% (-2.2%, 7.3%)  $p=0.285$ }



362 respectively. The corresponding change estimates in the control group were { -0.9 (-3.7, 5.5),  
363 p=0.703} at 18 months and { -2.3 (-2.3, 6.9), p=0.335} at 24 months.

364 **Table 3. Distributions of participants according to knowledge, oral health related behaviors and dental caries by trail arm across time**

Outcome variable	Percentage and number across time			Percentage change from baseline (95%CI) and p value	
	Baseline % (n)	18 months % (n)	24 months % (n)	at 18 months % Δ (95%CI), p value	at 24 months % Δ (95%CI), p value
<b>Knowledge (adequate)</b>					
intervention	57.7 (524)	67.3 (568) *	69.2 (547) *	9.6 (5.1, 14.1), p<0.001	11.5 (6.9, 15.9), p<0.001
control	59.8 (530)	61.6 (521)	61.9 (499)	1.8 (-2.8, 6.4), p=0.443	2.1 (-2.6, 6.7), p=0.377
<b>Oral health behaviors</b>					
Sugary drinks per day (less than 5 times)					
intervention	88.1 (800)	87.6 (739)	87.2 (689)	-0.5 (-2.5, 3.6), p=0.749	-0.9 (-2.2, 4.1), p=0.573
control	87.6 (776)	86.9 (735)	86.6 (698)	-0.7 (-2.4, 3.9), p=0.662	1.0 (-2.2, 4.2), p=0.539
Sugary foods per day (less than 5 times)					
intervention	87.9 (798)	87.7 (740)	87.3 (690)	-0.2 (-2.9, 3.3), p=0.898	-0.6 (-2.6, 3.8), p=0.708
control	88.7 (786)	88.8 (751)	88.3 (712)	0.1 (-2.9, 3.1), p=0.947	-0.4 (-2.6, 3.5), p=0.797
Fluoridated toothpaste per day (2 times/more)					
intervention	78.9 (716)	83.4 (704) *	83.3 (658) *	4.5 (0.8, 8.1), p=0.016	4.4 (0.6, 8.1), p=0.021
control	77.5 (687)	77.1(652)	77.3 (623)	-0.4 (-3.5, 4.4), p=0.843	-0.2 (-3.8, 4.2), p=0.922
Dental visits in previous one year (attended)					
intervention	23.5 (213) *	29.1 (246)	28.9 (228)	5.6 (1.5, 9.7), p=0.008	5.4 (1.2, 9.6), p=0.011
control	29.5 (261)	29.9 (253)	29.8 (240)	0.4 (-3.9, 4.7), p=0.856	0.3 (-4.1, 4.7), p=0.893
<b>Dental caries (with caries)</b>					
intervention	51.3 (466) **	48.8 (412) *	48.7 (385) *	-2.5 (-2.2, 7.2), p=0.296	-2.6 (-2.2, 7.3), p=0.285
control	41.3 (366)	40.4 (342)	39.0 (314)	-0.9 (-3.7, 5.5), p=0.703	-2.3 (-2.3, 6.9), p=0.335

365 Percentage and numbers given are for only one category of the outcome variable as indicated in bracket in front of the outcome  
366 variable, \*=p value <0.05, \*\*=p<0.001, Δ=percentage

367 Figure 2 illustrates percentage distribution of dental caries according to CAST clinical  
368 categories by trial arms at baseline (T<sub>1</sub>), first (T<sub>2</sub>) and second (T<sub>3</sub>) follow up. Generally, the  
369 percentages of participants decreased as the severity of CAST clinical categories increased for  
370 both intervention and control arms. CAST 0-2 and CAST 6-7 increased while CAST 5  
371 decreased in both trial arms. There was an increase in the mortality stage (CAST 8) across time  
372 in both arms however, the increase was higher in the control than intervention arm.

373

### 374 **Effects of the BPOC intervention on outcomes (Generalized estimating equations) at 18** 375 **months**

376 Generalized estimating equation models were used to assess the effect of the BPOC intervention  
377 at 18 months follow up regarding the outcome variables (knowledge, oral health behaviors and  
378 dental caries prevalence) as shown in table 4. At 18 months, a significant interaction effect  
379 between time and group on adequate knowledge across time occurred after adjustment for the  
380 main effects of group and time (BPOC group x time interaction) {OR (95%CI) = 1.5 (1.2,1.8),  
381 p<0.001}. The model for use of fluoridated toothpaste twice or more per day also showed  
382 significant interaction between BPOC group and time {OR (95%CI) = 1.6 (1.3, 2.1), p<0.001}.  
383 Dental caries interaction model at 18 months was also significant {OR (95%CI) = 1.3 (1.1, 1.6),  
384 p=0.003}. There were no significant interactions between BPOC intervention and time at 18  
385 months for frequency of intake of sugary drinks of less than 5 times per day model (p=0.506),  
386 frequency of intake of sugary foods of less than 5 times per day foods model (p=0.505) and at  
387 least once per year dental visit model (p=0.422).

388

389

390

391

392

393 **Table 4. Generalized estimating equation analyses of the outcome variables**  
 394 **(Knowledge, behaviors and dental caries) for the study sample from**  
 395 **baseline to 18 months**

Outcome variable	Parameters	Estimate (SE)	Sig.	OR (95%CI)
<b>Adequate Knowledge</b>				
Main effects	Time	0.274 (0.035)	< 0.001	1.3 (1.2, 1.4)
	BPOC group	0.134 (0.094)	0.154	1.1 (1.0, 1.4)
Interaction effects	BPOC group x time	0.392 (0.102)	< 0.001	1.5 (1.2, 1.8)
<b>Behaviors</b>				
Sugary drinks per day (less than 5 times)				
Main effects	Time	-0.062 (0.049)	0.207	0.9 (0.8, 1.0)
	BPOC group	-0.037 (0.139)	0.790	1.0 (0.7, 1.3)
Interaction effects	BPOC group x time	-0.098 (0.148)	0.506	0.9 (0.7, 1.2)
Sugary foods per day (less than 5 time)				
Main effects	Time	-0.007 (0.046)	0.873	1.0 (0.8, 1.1)
	BPOC group	-0.092 (0.142)	0.515	0.9 (0.7, 1.2)
Interaction effects	BPOC group x time	-0.100 (0.149)	0.505	0.9 (0.7, 1.2)
Fluoridated toothpaste per day (2 times/more)				
Main effects	Time	0.134 (0.041)	0.001	1.1 (1.1, 1.3)
	BPOC group	0.329 (0.114)	0.004	1.4 (1.1, 1.7)
Interaction effects	BPOC group x time	0.485 (0.125)	< 0.001	1.6 (1.3, 2.1)
Dental visits in previous one year (attended)				
Main effects	Time	0.157 (0.035)	< 0.001	1.2 (1.1, 1.3)
	BPOC group	-0.074 (0.102)	0.470	0.9 (0.8, 1.1)
Interaction effects	BPOC group x time	0.086 (0.108)	0.422	1.1 (0.9, 1.4)
<b>Dental caries (with caries)</b>				
Main effects	Time	-0.070 (0.025)	< 0.001	0.9 (0.8, 0.9)
	BPOC group	0.359 (0.094)	< 0.001	1.4 (1.2, 1.7)
Interaction effects	BPOC group x time	0.289 (0.098)	0.003	1.3 (1.1, 1.6)

396 Abbreviations: SE = Standard error, OR = Odds ratio, CI= confidence intervals, Sig.= significancy, BPOC –

397 Basic package of oral care. Note: results provided are based on intervention group and at 18 months with

398 reference to control group and baseline data

399

400

401

402 **Effects of the BPOC intervention on outcomes (Generalized estimating equations) at 24**  
403 **months**

404 Table 5 shows the results from GEE models regarding the effect of the BPOC intervention at  
405 24 months follow -up. The intervention group (BPOC group x time interaction) for adequate  
406 knowledge model was significant at 24 months {OR (95%CI) = 1.6 (1.3, 2.0)}, indicating group  
407 different trajectories for knowledge across time from baseline to 24 months follow-up. The  
408 model for use of fluoridated toothpaste twice or more per day also showed significant  
409 interaction between BPOC group and time {OR (95%CI) = 1.6 (1.3, 2.1), p<0.001} at 24  
410 months. Dental caries interaction model at 24 months was significant {OR (95%CI) = 1.3 (1.1,  
411 1.6), p=0.004)}.

412

413

414

415

416

417

418

419

420

421

422

423

424

425

426

427

428

429

430 **Table 5. Generalized estimating equation analyses of the outcome variables**  
 431 **(Knowledge, behaviors and dental caries) for the study sample from**  
 432 **baseline to 24 months**

Outcome variable	Parameters	Estimate (SE)	Sig.	OR (95%CI)
<b>Adequate Knowledge</b>				
Main effects	Time	0.292 (0.036)	< 0.001	1.3 (1.2, 1.4)
	BPOC group	0.131 (0.094)	0.162	1.1 (0.9, 1.4)
Interaction effects	BPOC group x time	0.476 (0.103)	< 0.001	1.6 (1.3, 2.0)
<b>Behaviors</b>				
Sugary drinks per day (less than 5 times)				
Main effects	Time	-0.082 (0.048)	0.089	0.9 (0.8, 1.0)
	BPOC group	-0.042 (0.139)	0.764	0.9 (0.7, 1.3)
Interaction effects	BPOC group x time	-0.124 (0.146)	0.394	0.9 (0.7, 1.2)
Sugary foods per day (less than 5 time)				
Main effects	Time	-0.057 (0.043)	0.180	0.9 (0.8, 1.0)
	BPOC group	-0.090 (0.140)	0.520	0.9 (0.7, 1.2)
Interaction effects	BPOC group x time	-0.147 (0.146)	0.317	0.8 (0.6, 1.2)
Fluoridated toothpaste per day (2 times/more)				
Main effects	Time	0.147 (0.040)	< 0.001	1.2 (1.1, 1.3)
	BPOC group	0.287 (0.113)	0.011	1.3 (1.1, 1.7)
Interaction effects	BPOC group x time	0.490 (0.124)	< 0.001	1.6 (1.3, 2.1)
Dental visits in previous one year (attended)				
Main effects	Time	0.149 (0.034)	< 0.001	1.2 (1.1, 1.3)
	BPOC group	-0.092 (0.103)	0.371	0.9 (0.7, 1.1)
Interaction effects	BPOC group x time	0.057(0.107)	0.596	1.1 (0.9, 1.3)
<b>Dental caries (with caries)</b>				
Main effects	Time	-0.107 (0.028)	< 0.001	0.9 (0.8, 0.9)
	BPOC group	0.384 (0.093)	< 0.001	1.5 (1.2, 1.8)
Interaction effects	BPOC group x time	0.276 (0.097)	0.004	1.3 (1.1, 1.6)

433 Abbreviations: SE = Standard error, OR = Odds ratio, CI= confidence intervals, Sig.= significance, BPOC –

434 Basic package of oral care. Note: results provided are based on intervention group and at 24 months with

435 reference to control group and baseline data

436

437

438

### 439 **Subgroup analyses**

440 Subgroup analyses of the outcome variables with significant interactions between BPOC group  
441 and time at 18 and 24 months are as shown in table 6. The findings show that the likelihoods of  
442 having adequate knowledge at 18- and 24 months follow ups compared to baseline were  
443 stronger in the intervention than in the control group. The odds ratio, 95% confidence intervals  
444 and p values for adequate knowledge at 18 months were {OR (95%CI) = 1.5 (1.4, 1.7),  
445  $p<0.001$ } for intervention and {OR (95%CI) = 1.1 (1.0, 1.2),  $p=0.020$ } control group  
446 compared to baseline values. The odds ratios, 95% confidence intervals and p values for  
447 intervention and control group at 24 months compared to baseline values were {OR (95%CI) =  
448 1.6 (1.5, 1.9),  $p<0.001$ } and {OR (95%CI) = 1.1 (1.0, 1.2),  $p=0.020$ } respectively. The  
449 likelihood of using fluoridated toothpaste two times or more per day at 18 and 24 months of  
450 follow up compared to baseline was stronger in the intervention than in the control group. The  
451 use of fluoridated toothpaste increased by about 1.4 times at both 18 months {OR (95%CI) =  
452 1.4 (1.2, 1.6),  $p<0.001$ } and 24 months {OR (95%CI) = 1.4 (1.2, 1.5),  $p<0.001$ } in the  
453 intervention group but did not change significantly for control group. The likelihood of having  
454 dental caries at 18 and 24 months follow up compared to baseline decreased more in the  
455 intervention than in the control group. The prevalence of dental caries in the intervention group  
456 decreased by 20% at both 18 months {OR (95%CI) = 0.8 (0.8, 0.9),  $p=0.013$ } and 24 months  
457 {OR (95%CI) = 0.8 (0.8, 0.9),  $p=0.021$ } compared to 10% decrease in the control group at 18  
458 months {OR (95%CI) = 0.9 (0.8, 0.9),  $p=0.002$ } and 24 months {OR (95%CI) = 0.9 (0.8, 0.9),  
459  $p<0.001$ }.

460

461

462

463

464

465 **Table 6. BPOC outcome variables regressed on time (18 – and 24 months follow up**  
 466 **versus baseline) separately in the intervention and control groups**

Follow up	Outcomes	Categories	Groups			
			Intervention		Control	
			Sig.	OR (95%CI)	Sig.	OR (95%CI)
At 18 months	Adequate Knowledge	18 months	<0.001	1.5 (1.4, 1.7)	0.020	1.1 (1.0, 1.2)
		Baseline		1		1
	Fluoridated toothpaste per day (2 times/more)	18 months	<0.001	1.4 (1.2, 1.6)	0.934	1.0 (0.9, 1.1)
		Baseline		1		1
	Dental caries (with caries)	18 months	0.013	0.8 (0.8, 0.9)	0.002	0.9 (0.8, 0.9)
		Baseline		1		1
At 24 months	Adequate Knowledge	24 months	<0.001	1.6 (1.5, 1.9)	0.020	1.1 (1.0, 1.2)
		Baseline		1		1
	Fluoridated toothpaste per day (2 times/more)	24 months	<0.001	1.4 (1.2, 1.5)	0.935	1.0 (0.9, 1.1)
		Baseline		1		1
	Dental caries (with caries)	24 months	0.021	0.8 (0.8, 0.9)	<0.001	0.9 (0.8, 0.9)
		Baseline		1		1

467

468

469 **Discussion**

470 This study investigated the impact of a modified basic package of oral care intervention on  
 471 prevalence of dental caries as well as knowledge and oral health behaviors related to dental  
 472 caries among adolescents in Copperbelt Province, Zambia.

473 The major findings of the current study indicate that at both six and twelve months after  
 474 cessation of BPOC intervention, knowledge on dental caries and frequency of using fluoridated  
 475 toothpastes among participants in BPOC group improved over time. The frequency of  
 476 consumption of sugary drinks and foods did not significantly change over time for either the



477 intervention or control group. Over time, the prevalence of dental caries decreased in both  
478 groups; however, the intervention group had a twofold decrease in dental caries compared to  
479 the control group.

480 Improvement in knowledge among the participants in the BPOC group was likely attributed to  
481 repetitive oral health messages delivered by peers. Comparable improvements in knowledge  
482 have been reported in previous studies which used peer-led oral health education [22–24].

483 Surprisingly, the observed positive change in knowledge in the BPOC group in this study did  
484 not lead to favorable behavior change over time. The lack of favorable change in the  
485 consumption of sugary foods and drinks despite improvement of knowledge could be attributed  
486 to immaturity in the brain pathways involved in decision making, making adolescents sensitive  
487 to emotional and social influences and therefore difficulty to control their lifestyle choices [25].

488 Adolescents are also dependents, thus their eating behaviours are not only influenced by their  
489 knowledge but also by what foods are available and accessible to them, which ultimately  
490 influences what they consume [26]. This finding highlights the impact of other determinants  
491 of behaviours such as the environment, cultural and social norms, social support from friends  
492 (peers) and parents that influence behaviour change, which were not evaluated or controlled in  
493 this cluster randomized trial (27). In contrast to the current findings, other authors [23,24,28]  
494 have reported positive change in both knowledge and behavior following peer oral health  
495 education.

496 Participants in the BPOC group used fluoridated toothpaste more frequently than controls in  
497 this study. This could be attributed not only to increased knowledge about dental caries which  
498 was given through peer-led OHE but also by a motivation to continue using oral cleaning  
499 products after receiving free toothpaste during the six-month intervention period. The  
500 importance of knowledge, particularly the benefits of fluoride use in caries prevention,  
501 constitutes one of the major factors influencing adolescents' use of fluoridated toothpaste [29].

502 The more significant improvement in the intervention group than the control group, regarding  
503 usage of fluoridated toothpaste is comparable with the findings of a previous trial in which free  
504 toothpaste and toothbrushes were distributed along with messages and instructions on daily  
505 brushing [30].

506

507 The treatment components of the BPOC intervention which included extraction of teeth and  
508 atraumatic restorative treatment could explain the two-fold decrease in the prevalence of dental  
509 caries among participants in BPOC compared to control group. Frequent use of fluoridated  
510 toothpaste in the BPOC group compared to controls may also have contributed to higher  
511 improvement in caries status in the BPOC group. Comparison with studies on the effectiveness  
512 of BPOC intervention in caries prevention among adolescents was not possible due to scarcity  
513 of similar studies. However, the findings are consistent with those of a study that investigated  
514 the effectiveness of oral urgent treatment, one of the four components of BPOC, in lowering  
515 the dental caries burden in Filipino children [31].

516 The findings of this study need to be interpreted within the strengths and limitations of a cluster  
517 randomized trial. The study involved a large sample size from a total of twenty-two clusters  
518 which exceed the recommended minimum number of clusters for a parallel randomized cluster  
519 trials of four per arm in order to obtain a p-value less than 0.05 under a randomization-based  
520 test [32]. The findings can probably be generalized to adolescents attending public secondary  
521 schools in Copperbelt Province, Zambia, due to random selection and a large sample size. The  
522 design employed in this study allowed prevention of contamination of the intervention which  
523 could lead to false rejection of an effective intervention due to reduction of point estimates of  
524 its effectiveness [33]. Data collection assistants were blinded in order to avoid bias in their  
525 assessment of dental caries status which could ultimately affect assessment of the effectiveness  
526 of an intervention [34]. However, it was not possible to blind the participants due to the nature

527 of the BPOC intervention which involved peer oral education, provision of fluoridated  
528 toothpastes, extraction and restoration of teeth. It is also important to note that despite  
529 randomization there was baseline differences in dental caries and dental visits as well as in  
530 some socio-demographics between intervention and control group which could affect treatment  
531 effects of the BPOC intervention. Use of a repeated measure (GEE) without the treatment  
532 variable but interaction between the treatment variable and time in the models has been used to  
533 overcome this shortcoming (35). The short follow-up period and age group did not allow for a  
534 proper evaluation of the preventive effect of affordable fluoride and atraumatic restorative  
535 treatment.

536

### 537 **Conclusion**

538 Basic package of oral care was effective in reducing prevalence of dental caries, improving  
539 knowledge on dental caries, and the frequency of using fluoridated toothpaste among Zambian  
540 adolescents. The intervention did not have any effect on adolescent's frequency of consuming  
541 sugary drinks and foods. Further studies need to be conducted in order to address other factors  
542 affecting consumption of sugary diet behaviors such as environmental, social and cultural  
543 factors.

544

### 545 **Supporting information**

546 S1-CONSORT 2010 checklist of information to include when reporting a randomised trial

547 S2- Schedule of study activities.

548

### 549 **Funding**

550 The trial was supported by the University of Bergen in Norway through student research  
551 funding, and Copperbelt University in Zambia provided logistical support.

552

553

## 554 **Acknowledgements**

555 We appreciate support from District Education Board Secretaries (DEBS), Head teachers &  
556 study participants and Prof Stein Atle Lie (UIB-Norway) for guidance during data analysis.

557

## 558 **References**

559

- 560 1. Peres MA, Macpherson LMD, Weyant RJ, Daly B, Venturelli R, Mathur MR, et al. Oral  
561 diseases: a global public health challenge. *Lancet*. 2019 Jul 20;394(10194):249-260. doi:  
562 10.1016/S0140-6736(19)31146-8. Erratum in: *Lancet*. 2019 Sep 21;394(10203):1010.  
563 PMID: 31327369.
- 564 2. Kassebaum NJ, Bernabé E, Dahiya M, Bhandari B, Murray CJ, Marcenes W. Global burden  
565 of untreated caries: a systematic review and metaregression. *J Dent Res*. 2015  
566 May;94(5):650-8. doi: 10.1177/0022034515573272. Epub 2015 Mar 4. PMID: 25740856.
- 567 3. Eid SA, Khattab NMA, Elheeny AAH. Untreated dental caries prevalence and impact on the  
568 quality of life among 11 to 14-year-old Egyptian schoolchildren: a cross-sectional study.  
569 *BMC Oral Health*. 2020 Mar 19;20(1):83. doi: 10.1186/s12903-020-01077-8. PMID:  
570 32192463; PMCID: PMC7083010.E.
- 571 4. Malele-Kolisa Y, Yengopal V, Igumbor J, Nqobco CB, Ralephenya TRD. Systematic review  
572 of factors influencing oral health-related quality of life in children in Africa. *Afr J Prim  
573 Health Care Fam Med*. 2019 Jul 24;11(1):e1-e12. doi: 10.4102/phcfm.v11i1.1943. PMID:  
574 31368323; PMCID: PMC6676933.
- 575 5. Global Oral Health Status Report: Towards Universal Health Coverage for Oral Health By  
576 2030. World Health Organization; 2023. (Regional summary of the African Region).

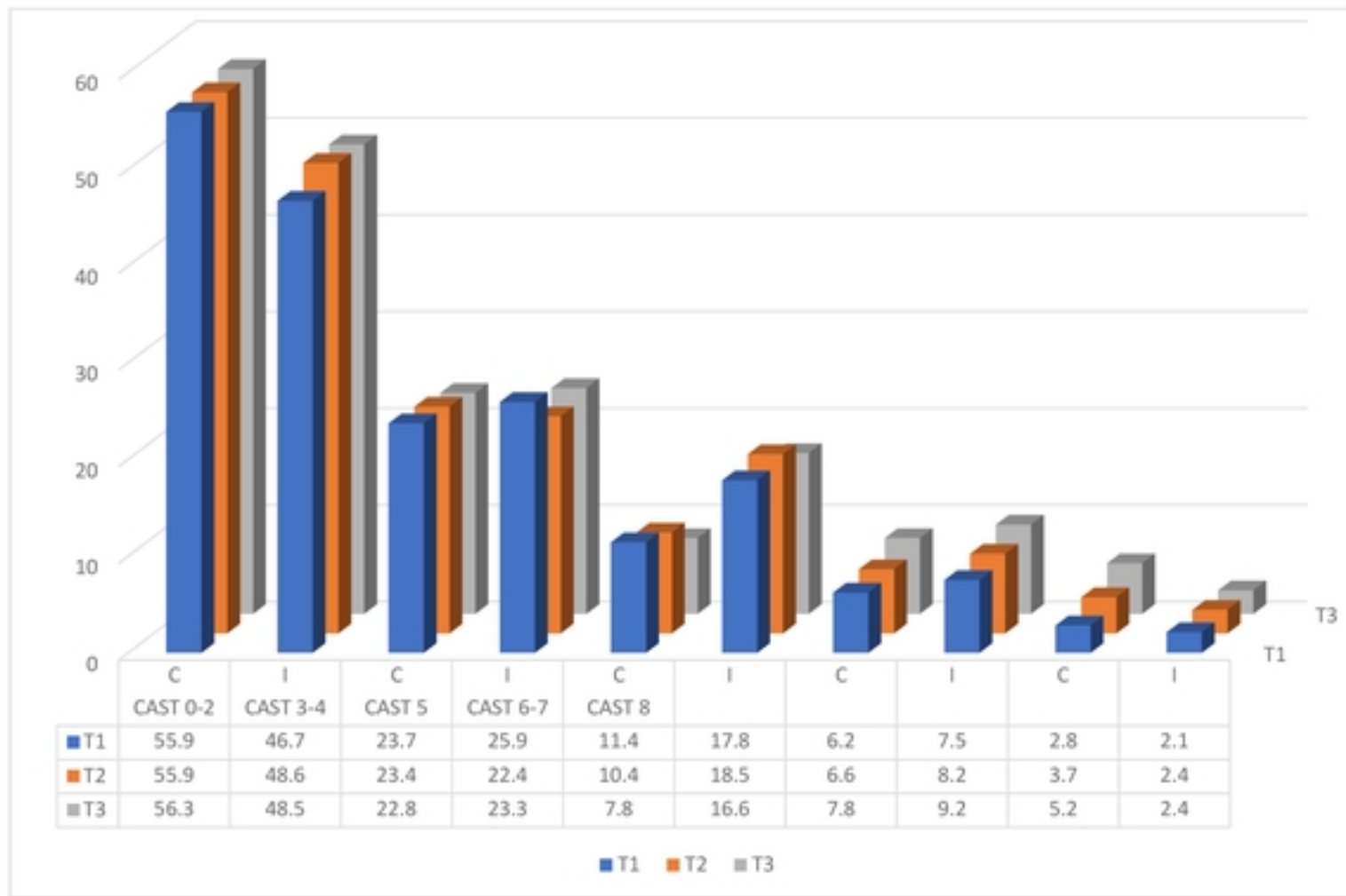
- 577 6. Frencken JE, Holmgren C and Helderma VP . WHO Basic Package of Oral Care (BPOC).  
578 Nijmegen, Netherlands: WHO Collaborating Centre for Oral Health Care Planning and  
579 Future Scenarios, University of Nijmegen 2002
- 580 7. Batra M, Rajwar Y, Agarwal N, Singh A, Dutt M, Sinha A. Basic package for oral care: A  
581 step towards primary oral health care. *TmU J Dent*. 2014 Apr;1(2):57–60.
- 582 8. Chher T, Hak S, Courtel F, Durward C. Improving the provision of the Basic Package of  
583 Oral Care (BPOC) in Cambodia. *Int Dent J*. 2009 Feb;59(1):47-52. PMID: 19323311.
- 584 9. Shenoy R, D’Souza V, Kundabala M, Jain A, Suprabha B. Preventing early childhood caries  
585 through oral health promotion and a basic package for oral care: A pragmatic trial. *Contemp*  
586 *Clin Dent*. 2022;13(2):162.
- 587 10. Schulz, K.F., Altman, D.G., Moher, D.*et al*. CONSORT 2010 Statement: updated guidelines  
588 for reporting parallel group randomised trials.*BMC Med* **8**, 18 (2010).  
589 <https://doi.org/10.1186/1741-7015-8-18>.
- 590 11. Moher D, Schulz KF, Altman DG; CONSORT. The CONSORT statement: revised  
591 recommendations for improving the quality of reports of parallel group randomized trials.  
592 *BMC Med Res Methodol*. 2001;1:2. doi: 10.1186/1471-2288-1-2. Epub 2001 Apr 20. PMID:  
593 11336663; PMCID: PMC32201.
- 594 12. Education system in Zambia [Internet]. Ministry of Education (MoE); [cited 2024 Jan 31].  
595 Available from: <http://www.classbase.com/Countries/Zambia/Education-System>
- 596 13. Smits J, Steendijk R. The International Wealth Index (IWI). *Social Ind Res*. 2015 May  
597 1;122(1):65–85.
- 598 14. Anthony SN, Kahabuka FK, Birungi N, Åstrøm AN, Siziya S, Mbawalla HS. Assessing  
599 association of dental caries with child oral impact on daily performance; a cross-sectional  
600 study of adolescents in Copperbelt province, Zambia. *Health Qual Life Outcomes*. 2023 May  
601 18;21(1):47.

- 602 15. Frencken JE, De Souza AL, Van Der Sanden WJM, Bronkhorst EM, Leal SC. The Caries  
603 Assessment and Treatment (CAST) instrument. *Community Dent Oral Epidemiol.* 2013  
604 Feb;41(1):e71–7.
- 605 16. Frencken JoE, De Amorim RG, Faber J, Leal SC. The Caries Assessment Spectrum and  
606 Treatment (CAST) index: rational and development. *International Dental Journal.* 2011  
607 Jun;61(3):117–23.
- 608 17. Anthony SN, Mbawalla HS, Kahabuka FK, Siziya S. Dental caries according to CAST  
609 among Zambian adolescents; pattern, socio-demographic and behavioral correlates. *BMC*  
610 *Oral Health.* 2022 Dec;22(1) <https://doi.org/10.1186/s12955-023-02127-9>.
- 611 18. Simushi N, Nyerembe SA, Sasi R and Siziya S. Dental caries on permanent dentition in  
612 primary school children — Ndola, Zambia, 2017 . *Health Press Zambia Bull.* 2018, 2 (4).
- 613 19. Simple randomization service [online] [Internet]. Sealed envelop Ltd; [cited 2020 Jan 20].  
614 Available from: <http://www.sealedenvelop.com/simple-randomiser/v1/>
- 615 20. Ziegler A. Generalized Estimating Equations [Internet]. New York, NY: Springer New  
616 York; 2011 [cited 2024 Jan 31]. (Lecture Notes in Statistics; vol. 204). Available from:  
617 <https://link.springer.com/10.1007/978-1-4614-0499-6>
- 618 21. Ferguson CJ. An effect size primer: A guide for clinicians and researchers. *Professional*  
619 *Psychology: Res and Prac.* 2009 Oct;40(5):532–8.
- 620 22. Haleem A, Siddiqui MI, Khan AA. School-based strategies for oral health education of  
621 adolescents- a cluster randomized controlled trial. *BMC Oral Health.* 2012 Dec 18;12(1).
- 622 23. Vangipuram S, Jha A, Raju R, Bashyam M. Effectiveness of peer group and conventional  
623 method (Dentist) of oral health education programme among 12-15 year old school children  
624 - A randomized controlled trial. *J Clin Diagn Res.* 2016;10(5):ZC125-9.
- 625 24. Karami A, Heidarnia A, Zarei F. Comparison of peer led and teacher led oral health  
626 educational program among students. *Braz J Oral Sci.* 2019 Nov 12;18:e191626.

- 627 25. Blakemore SJ, Robbins TW. Decision-making in the adolescent brain. *Nat Neurosci*. 2012  
628 Sep;15(9):1184–91.
- 629 26. Scaglioni S, De Cosmi V, Ciappolino V, Parazzini F, Brambilla P, Agostoni C. Factors  
630 Influencing Children's Eating Behaviours. *Nutrients*. 2018 May 31;10(6):706. doi:  
631 10.3390/nu10060706. PMID: 29857549; PMCID: PMC6024598..
- 632 27. Salvy SJ, Elmo A, Nitecki LA, Kluczynski MA, Roemmich JN. Influence of parents and  
633 friends on children's and adolescents' food intake and food selection. *The American J of*  
634 *Clin Nutr*. 2011 Jan;93(1):87–92.
- 635 28. Bramantoro T. Cost effectiveness and quality of life assessment on dental filling and tooth  
636 extraction in Balongsari Pub Health Center. *Dent J (Majalah Kedokteran Gigi)*.  
637 2011;44(1):43.
- 638 29. Cui Z, Wang W, Si Y, Wang X, Feng X, Tai B, et al. Tooth brushing with fluoridated  
639 toothpaste and associated factors among Chinese adolescents: a nationwide cross-sectional  
640 study. *BMC Oral Health*. 2023 Oct 18;23(1):765.
- 641 30. Melo P, Fine C, Malone S, Frencken JE, Horn V. The effectiveness of the Brush Day and  
642 Night programme in improving children's toothbrushing knowledge and behaviour. *Int Dent*  
643 *J*. 2018 May;68 Suppl 1(Suppl 1):7-16. doi: 10.1111/idj.12410. Epub 2018 Apr 16. PMID:  
644 29660791; PMCID: PMC9379073.
- 645 31. Ruff RR, Monse B, Duijster D, Itchon GS, Naliponguit E, Benzian H. Effectiveness of  
646 school-based strategies to prevent tooth decay in Filipino children: A cluster-randomized  
647 trial. *Comm Dent Oral Epid*. 2023 Apr;51(2):219–27.
- 648 32. Hemming K, Taljaard M. Key considerations for designing, conducting and analysing a  
649 cluster randomized trial. *Int J Epidemiol*. 2023 Oct 5;52(5):1648–58.
- 650 33. Torgerson DJ. Contamination in trials: is cluster randomisation the answer? *BMJ*. 2001 Feb  
651 10;322(7282):355–7.

- 652 34.Schulz KF, Grimes DA. Blinding in randomised trials: hiding who got what. *The Lancet*.  
653 2002 Feb;359(9307):696–700.
- 654 35.Twisk J, Bosman L, Hoekstra T, Rijnhart J, Welten M, Heymans M. Different ways to  
655 estimate treatment effects in randomised controlled trials. *Contemp Clin Trials Com*. 2018  
656 Jun;10:80–5.
- 657

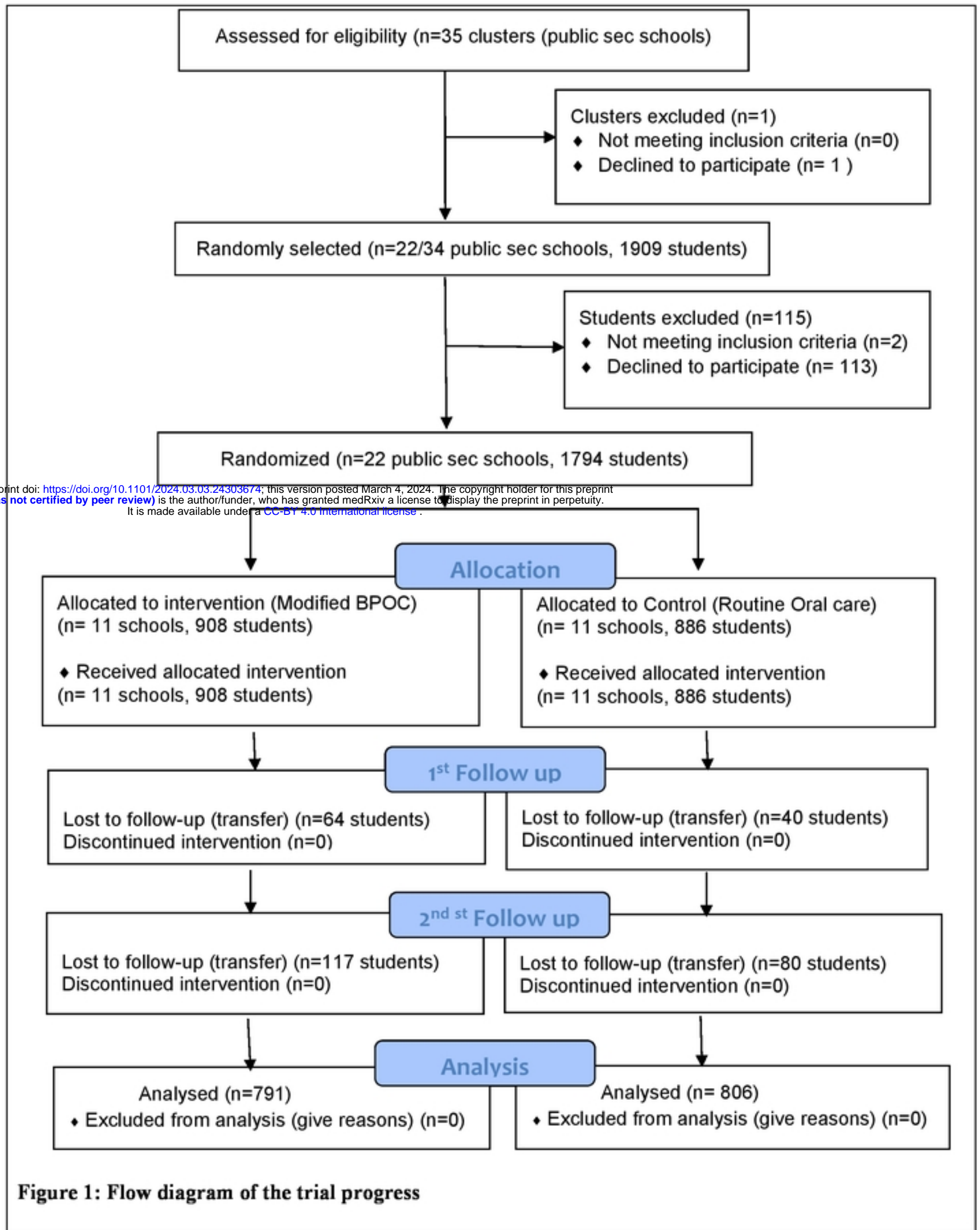




**Figure 2: Trends in the distribution of dental caries clinical categories according to trial arms at baseline (T<sub>1</sub>), 6 months (T<sub>2</sub>) and 12 months (T<sub>3</sub>)**

Figure 2: Trends in the distribution of dental caries clinical categories

medRxiv preprint doi: <https://doi.org/10.1101/2024.03.03.24303674>; this version posted March 4, 2024. The copyright holder for this preprint (which was not certified by peer review) is the author/funder, who has granted medRxiv a license to display the preprint in perpetuity. It is made available under a [CC-BY 4.0 International license](https://creativecommons.org/licenses/by/4.0/).



**Figure 1: Flow diagram of the trial progress**

**Figure 1: Flow diagram of the trial progress**