

Blood pressure management in 1,000 patients with CureApp HT digital therapeutics for hypertension

Akihiro Nomura¹⁻⁴, Yusuke Takagi^{5,6}, Tomoyuki Tanigawa⁵,
Masayuki Takamura², Koichi Node⁷, Kazuomi Kario⁸

¹College of Transdisciplinary Sciences for Innovation, Kanazawa University, Kanazawa, Japan

²Department of Cardiovascular Medicine, Kanazawa University Graduate School of Medical Sciences, Kanazawa, Japan

³Frontier Institute of Tourism Sciences, Kanazawa University, Kanazawa, Japan

⁴Department of Biomedical Informatics, CureApp Institute, Karuizawa, Japan

⁵CureApp Inc., Tokyo, Japan

⁶Teikyo Academic Research Center, Teikyo University, Tokyo, Japan

⁷Department of Cardiovascular Medicine, Saga University, Saga, Japan

⁸Division of Cardiovascular Medicine, Department of Medicine, Jichi Medical University School of Medicine, Tochigi, Japan

Corresponding author:

Akihiro Nomura, MD, PhD

Associate Professor

College of Transdisciplinary Sciences for Innovation

Kanazawa University

Kakuma-machi, Kanazawa, Ishikawa, 920-1192, Japan

Email: anomura@med.kanazawa-u.ac.jp

Summary

Background: Essential hypertension patients who utilized a new digital therapeutics (DTx) application for hypertension for up to 6 months achieved notable decreases in ambulatory, home, and office blood pressures, per the HERB-DH1 randomized controlled trial. Nevertheless, the extent of its effectiveness in clinical settings is not yet fully understood. This study seeks to evaluate blood pressure changes among the initial 1,000 hypertensive patients prescribed the DTx app in a practice-based real-world data (RWD) cohort.

Methods: Deidentified data from the CureApp HT clinical information database was examined. The primary outcome measure evaluated the difference in morning systolic blood pressure (SBP) at home between week 12 and baseline. Variations in morning home SBP from week 24 (measured from baseline) and app engagement rates from weeks 12 and 24 (measured from baseline) were significant secondary outcomes. We also used analysis of covariance to compare home morning SBPs between the RWD cohort and the historical HERB-DH1 control group.

Findings: The practice-based RWD cohort had a mean age of 54.8 ± 11.6 years, and 48.9% of them were female. Their baseline morning home SBP was 132.8 ± 12.9 mmHg, and 91.7% of them used the app. At week 12, their morning home SBP decreased by -4.9 mmHg (confidence interval (CI), -5.6 to -4.2), and at week 24, it dropped by -6.1 mmHg (CI, -7.3 to -5.0). These declines were much greater than those seen in the HERB-DH1 control group. Subgroup analysis showed pragmatic SBP reductions with DTx in patients aged ≥ 65 years or on medication at baseline, a cohort previously excluded from the HERB-DH1 trial.

Interpretation: The initial 1,000 hypertensive patients prescribed the DTx app showed significant decreases in morning home SBP. These results may suggest importance of the DTx app's engagement and effectiveness that could extend to older adult patients and those on medication.

Funding: CureApp, Inc.

Key words: digital therapeutics, mHealth, hypertension, lifestyle modification, real-world data

Introduction

Hypertension, which is defined as elevated systolic blood pressure (SBP), is a major modifiable risk factor that greatly contributes to the global prevalence of cardiovascular illnesses.¹ Experts estimate that around 43 million people in Japan are affected by it.² Essential hypertension constitutes about 90% of all cases, due to lifestyle factors like excessive salt intake, obesity, and inactivity having a critical part in its progression.² The current guidelines recommend that all hypertensive patients initially undergo lifestyle adjustments.³ However, difficulties arise due to the poor persistence of these lifestyle modifications and the problem of offering individualized lifestyle guidance within the constraints of outpatient consultation times.² The long-term maintenance of lifestyle adjustments, particularly reduced salt intake, has been observed as quite difficult⁴, underscoring the need for more potent techniques of lifestyle intervention.

To address this, the digital therapeutics (DTx) app for hypertension has been developed, aiming to offer ongoing lifestyle advice, including diet and exercise, to enhance the effectiveness of lifestyle guidance beyond the limitations of outpatient settings.⁵ The recent HERB-DH1 randomized controlled trial⁶, which involved patients with untreated essential hypertension using the DTx app (CureApp HT, CureApp, Inc., Tokyo, Japan), demonstrated significant reductions in blood pressures over 24 h at home and office, as well as its cost-effectiveness.⁷ Since the approval and reimbursement of the DTx for hypertension in Japan in September 2022, more than a thousand patients with essential hypertension have been treated using the app. However, there is limited knowledge regarding its effectiveness in clinical setting, especially concerning the impact of patient age and the use of existing medications on its efficacy.

Here, we evaluate blood pressure changes among the first 1,000 patients prescribed the DTx app for hypertension, using a practice-based real-world data (RWD) cohort. Moreover, we expanded our study to encompass demographics previously excluded from the HERB-DH1 trial, specifically elderly individuals aged 65 and above and those who had been taking medication at the time of DTx prescription. This strategy sought to offer a thorough assessment of the DTx app's efficacy across a larger patient population.

Methods

Overview

We used deidentified practice-based data from the RWD of CureApp HT clinical information to evaluate blood pressure trends in the first 1,000 consecutive patients over a period of up to 6 months. Our group safely stores this data in accordance with health information privacy guidelines. The study protocol received approval from the Institutional Review Board of Kanazawa University's Medical Ethics Committee and was registered with the UMIN Clinical Trials Registry (UMIN ID: UMIN000052169).

Criteria for inclusion and exclusion

Between September 2022 and November 2023, we enrolled patients aged 18 years or older in the CureApp HT practice-based RWD cohort. Eligible participants had recorded a morning blood pressure reading at least once during week 1 (the baseline) for analyses. Patients who did not utilize the app post-prescription were excluded. This study assessed the first 1,000 eligible patients.

Outcomes

The main goal was to examine the changes in home SBP from the first measurement to week 12. Secondary goals included alterations in home SBP from the beginning to week 24 and changes in morning diastolic blood pressure (DBP), evening SBP, and DBP from baseline to weeks 12 and 24. We also evaluated the achievement rates of each hypertension guideline-recommended blood pressure threshold ([1] SBP <135 mmHg and DBP <85 mmHg by the European Society of Hypertension (ESH) 2023⁸; [2] SBP <130 and DBP <80 by the American College of Cardiology (ACC) and American Heart Association (AHA) 2017⁹; and [3] SBP <125 and DBP <75 by the Japanese Society of Hypertension (JSH) 2019³) at weeks 12 and 24. For comparison, we used the home blood pressure readings from the general-use cohort against those from the previous HERB-DH1 pivotal trial.⁶ Additionally, the app engagement rate was computed as the ratio of the number of days the blood pressure was measured and input by the patient from day 1 to their last day of app usage entering one's blood pressure.

Practice-based real-world data extraction

As of November 27, 2023, we took deidentified baseline profiles and blood pressure readings of all candidate patients from the cohort database. The prescription date was considered day 1. Data were censored on the final day of blood pressure measurement or at the conclusion of follow-up (168 days, equivalent to 24 weeks). Weekly average blood pressures were obtained using a 7-day arithmetic mean of each blood pressure type from weeks 2 to 24. The baseline SBP for week 1 is established by averaging the 6-day SBP readings from days 2 to 7, omitting the measurement on day 1 as previously mentioned.¹⁰ Abnormal values, identified as body mass index (BMI) <10 or >100 and weekly average SBP <60 or >240, were eliminated and designated as not applicable (NA). The database did not impute missing values or NAs. In the RWD cohort, medication usage was defined based on the app user's declaration of "the use of medication" up until July 26, 2023, and "the use of antihypertensive medication" subsequent to July 27, 2023, as stated on the questionnaire within the DTx app.

Statistical analysis

The baseline characteristics section showed continuous variables as means with standard deviations or medians with interquartile ranges, depending on the data distribution. Categorical variables were reported as proportions. We computed 95% confidence intervals (CIs) for these measures where necessary. The primary endpoint was examined using summary statistics with a 95% CI based on the *t-distribution*. For comparison between the practice-based RWD cohort and the historical benchmark of the HERB-DH1 control group, we did an analysis of covariance (ANCOVA) or regression analysis. These analyses were modified for age, sex, BMI, salt check-sheet score¹¹, and

baseline home morning SBP levels. We calculated Pearson's correlation coefficients to evaluate the connection between the morning home SBP at baseline and the morning home SBP at weeks 12 and 24. Subgroup analyses for changes in home morning SBP from baseline to weeks 12 and 24 were conducted based on sex (male or female), age (<65 or ≥65 years), BMI (<25 or ≥25 kg/m²), salt check-sheet score (<14 or ≥14 points), medication status (yes, no, or unknown), and app engagement rate (<71·4 [poor] or ≥71·4% [good]). Our team set a 71·4% requirement for the app engagement rate, aligning with a reimbursement criterion for the DTx for hypertension in Japan that requires blood pressure readings to be taken at least five times per week (equivalent to 5 out of 7 days, or 71·4%). All tests were two-sided, with a significant set as a p-value of less than 0·05. The visualization and analysis of the data were performed using R, version 4.3.3, which is developed by the R Foundation for Statistical Computing in Vienna, Austria, and included the use of R packages including “dplyr,” “tidyverse,” “car,” “ggplot2,” “grid,” and “forestploter.”

Results

Baseline characteristics of the eligible 1,000 patients in the practice-based RWD cohort are displayed in **Table 1**. The median follow-up duration was 160·5 days (interquartile range [IQR], 115–168 days). Females comprised 48·9% of the sample, with a mean age of 54·8 ± 11·6 years (range, 19–90 years). Baseline home blood pressure readings were 132·8 ± 12·9 mmHg (morning SBP), 86·0 ± 10·0 mmHg (morning DBP), 128·7 ± 13·6 mmHg (evening SBP), and 81·8 ± 10·5 (evening DBP), respectively. Compared to the HERB-DH1 trial participants, the practice-based cohort had a higher percentage of females (48·9% in the practice-based cohort vs. 20·0% in the HERB-DH1 trial), included patients aged ≥65 years old (20·2% vs. 0%) and those receiving medication at baseline (43·6% vs. 0%), and showed lower baseline home blood pressures (e.g., morning home SBP, 132·8 mmHg vs. 148·1 mmHg). Furthermore, the average app engagement percentage was 92·3% (IQR, 73·8–98·8).

Changes in blood pressure from baseline

Using the DTx for hypertension, we first evaluated changes in morning home SBP from baseline in the practice-based RWD group. Changes in morning home SBP from baseline were -4·9 mmHg (CI, -5·6 to -4·2) at week 12 and -6·1 mmHg (CI, -7·3 to -5·0) at week 24 (**Figure 1**). When we compared these findings with those of the HERB-DH1 trial control group, the DTx for hypertension users in the RWD cohort showed significantly larger reductions of morning home SBP than patients in the historical HERB-DH1 control group at both week 12 (adjusted difference, -3·9 mmHg; CI, -5·9 to -1·8; $p = 3·1 \times 10^{-4}$) and week 24 (-3·0 mmHg; CI, -5·9 to -0·2; $p = 0·037$). We also assessed variations in morning home DBP, evening home SBP, and DBP (**Supplemental Figures S1–S3**). At week 24, changes in each blood pressure were -4·3 mmHg (CI, -5·0 to -3·5), -5·7 mmHg (-6·8 to -4·5), and -4·4 mmHg (-5·2 to -3·6), respectively. Additionally, accomplishment rates by each guideline-recommended blood pressure threshold were 57·8% (<135/85 mmHg), 35·7% (<130/80 mmHg), and 16·7% (<125/75 mmHg) (**Supplemental Figure S4**).

Morning home SBP transitions by baseline SBP levels

Next, we showed the transitions in morning home crude SBPs and changes in morning home SBP from baseline stratified by baseline morning home SBP values (**Figure 2**). The effects of SBP reduction were significantly impacted by the baseline morning home SBP levels: the higher the morning home SBP at baseline, the greater the reduction in SBP levels the DTx for hypertension users received. Additionally, we discovered correlations between morning home SBPs at baseline and week 12 ($r = 0.651$) and week 24 ($r = 0.513$) (**Figure 3**). It should be noted that the intersecting points of the regression line and a line of equality were 120 mmHg (week 12) and 122 mmHg (week 24), which indicated the maximum achievement targets of morning home SBP when implementing comprehensive lifestyle change using the DTx for hypertension.

Examining the variations in morning home SBP across different subgroups

Finally, we evaluated variations in morning home SBP by subgroups (**Figure 4**). We discovered that there were consistent SBP reduction effects across all subgroups except the app engagement rate category utilizing the DTx for hypertension. We could demonstrate the practical benefits of DTx for hypertension for patients (1) aged ≥ 65 years (effect size of DTx, -6.4 mmHg; CI, -9.0 to -3.8) or (2) taking medication at baseline (-4.6 mmHg; CI, -6.1 to -3.1), which were specific patient populations excluded in the HERB-DH1 pivotal trial. The group with a poor ($<71.4\%$) app engagement rate did not show a significant decrease in the reduction of morning home SBP at week 24 (-2.1 mmHg; CI, -5.4 to 1.3).

Discussion

In this study, using a practice-based RWD cohort, we evaluated blood pressure changes in the first 1,000 patients prescribed the DTx app for hypertension. Our results showed that 1) significant reductions in morning home SBP from baseline were observed at both week 12 (-4.9 mmHg) and week 24 (-6.1 mmHg), surpassing those in the historical HERB-DH1 control group after adjustment; 2) the DTx app demonstrated pragmatic benefits for hypertensive patients, especially among the elderly (aged ≥ 65 years) and those on medication, demographics previously excluded from the HERB-DH1 trial; and 3) a less pronounced reduction in morning home SBP at week 24 was noted in patients with poor app engagement rates.

This research offers several important findings. The DTx regularly and dramatically lowers blood pressure in real-world scenarios, exceeding the historical standards set by the HERB-DH1 control group at both 12- and 24-week points. Our results support the recent meta-analysis from Boima et al., which reported significant reduction in SBP through digital interventions.¹² Stratification by baseline morning home SBP values found a baseline SBP-dependent linear drop in SBP, resonating with Gazit et al.'s research on the efficacy of a smartphone-based hypertension self-management program.¹³ Despite correlations between baseline morning home SBP and subsequent measurements, the confluence of equality and regression lines around the optimal SBP threshold (120 mmHg)^{2,3,9} demonstrates the potential of comprehensive lifestyle improvements encouraged by the DTx app to attain optimal

SBP ranges. For example, the PREMIER research clearly demonstrated how total lifestyle adjustment impacted blood pressure in patients with grade 1 hypertension, resulting in an average SBP approaching 120 mmHg after a 6-month intervention.¹⁴ Conversely, patients with a baseline home morning SBP below 120 mmHg saw an increase in SBP at 12 and 24 weeks, tending toward the 120 mmHg mark. This paradoxical effect mirrors a previous study where SBP gradually approached 120 mmHg over a 3-year period in patients using smartphone-based hypertension self-management, beginning with normal blood pressure (SBP <120 mmHg) at baseline.¹³ It is conceivable that some patients might reduce or discontinue medication in favor of using the DTx, although this could not be certainly established from the database alone. In terms of medication usage, pharmacological therapies for blood pressure reduction are known to be successful in reducing cardiovascular events, regardless of age or baseline blood pressure.¹⁵ It is now important not only to investigate the mechanism, by which the DTx app influences patients already in the ideal SBP range but also to evaluate the long-term effectiveness of the DTx app on cardiovascular outcomes beyond blood pressure control.

Furthermore, the rates of blood pressure control according to the hypertension guidelines were encouraging, yet they highlight the scope for enhancement. Particularly, control rates were 57.8% by ESH2023, 35.7% by ACC/AHA2017, and 16.7% by JSH2019. In this RWD cohort, hypertensive patients demonstrated reasonably good control compared to the participants of the earlier HERB-DH1 trial, who were primarily poorly controlled with all baseline morning home SBP exceeding 135 mmHg. The blood pressure-lowering effect of the DTx seems to plateau at around a home SBP level of 120 mmHg, clearly lower than the target thresholds suggested by the three hypertension management guidelines (<135/85 mmHg by ESH2023⁸, <130/80 by ACC/AHA2017⁹, <125/75 by JSH2019³). Moreover, the J-HOP, a recent prospective study on home blood pressure management, showed the potential long-term benefit of stringent home SBP control below 125/75 mmHg.¹⁶ Nevertheless, the achieved control levels in the morning home blood pressure management levels were suboptimal, with threshold achievement rates of 46% for ESH2023, 29% for ACC/AHA2017, and 15% for JSH2019, respectively.¹⁷ Although blood pressure management within the hypertension DTx practice-based RWD cohort showed promise for long-term cardiovascular benefit, these results highlight the urgent need for additional work, especially to reach the strict <125/75 mmHg control objective established by the JSH2019 guideline.

Notably, our subgroup analysis demonstrated the consistent morning home SBP reduction benefits of the DTx app among patients over 65 years old and those medicated, emphasizing its effectiveness in populations previously excluded from the HERB-DH1 pivotal study.⁶ This analysis demonstrated the value of RWD in revealing the DTx app's efficacy in populations not included at the clinical trial stage, addressing clinical questions unanswerable by randomized controlled trials alone, e.g., the correlation between glucose status and baseline blood pressure on cardiovascular diseases from the Japanese nationwide claims-based database¹⁸ or hypertension first-line treatment choice and its medication adherence from TriNetX electronic medical records in the United States.¹⁹ The diminished SBP reduction in patients with poor app participation at week 24 might indicate the crucial importance of engagement in lifestyle improvement and the app's efficacy. Actually, the app engagement rate could be one of the important variables for both lifestyle modification and the app's efficacy.^{13,20,21} Given the small size of the poorly

engaged patient subgroup, improving engagement might be crucial. More research is required to validate the relationship between app engagement rate and the effect on blood pressure reduction.

The strength of our study is its innovative evaluation of the practical effects of an approved and reimbursed DTx for hypertension within a substantial cohort. Nevertheless, limitations exist, including the potential overestimation of engagement rates because of differences between the latest blood pressure reading and the actual last app use. Before July 27, 2023, medication usage responses may have been inaccurately recorded. However, an almost twofold attenuation in blood pressure reduction between medication users and nonusers at 24 weeks (-4.6 mmHg in medication users vs. -9.1 mmHg in nonusers) reinforces the validity of medication usage responses.

Ultimately, the DTx app for hypertension showed noteworthy morning home SBP decreases compared to the historical HERB-DH1 control group, highlighting the app's critical role in improving engagement and efficacy, especially in the elderly and medicated patients. The observed blood pressure drops and the app's capacity to include patients in their care may highlight the importance of incorporating digital health solutions into conventional hypertension treatment methods.

Contributions

AN, YT, and TT contributed to the study's conception and design. YT and TT conducted data extraction and de-identification. AN contributed to the data cleaning and statistical analyses. All authors were involved in writing the manuscript, interpreting the study findings, critically evaluating the manuscript, and approving the final form for submission.

Declaration of interests

AN was received research grants and honoraria from CureApp. YT is a CureApp employee and may own stock. TT is one of the CureApp's board members and may own stock. KN and KK received advisory board fees and honoraria from CureApp. MT has nothing to disclose.

Data sharing

Direct requests for access to the data underpinning this study to the corresponding author. The data provider will assess such requests jointly.

Acknowledgments

We would like to express our gratitude to all the participants and staff regarding this study. We would also like to thank Mitsuharu Aga, Yumi Hirayama, Fumi Hisaki, and Hiroki Irisuna for their significant contributions to productive discussions regarding this study. This study was supported by CureApp, Inc. (Tokyo, Japan). Additionally, we would like to thank Enago (www.enago.jp) for the manuscript review and editing support.

References

1. Roth GA, Mensah GA, Johnson CO, et al. Global Burden of Cardiovascular Diseases and Risk Factors, 1990-2019: Update From the GBD 2019 Study. *J Am Coll Cardiol* 2020; **76**(25): 2982-3021.
2. Williams B, Mancia G, Spiering W, et al. 2018 ESC/ESH Guidelines for the management of arterial hypertension. *Eur Heart J* 2018; **39**(33): 3021-104.
3. Umemura S, Arima H, Arima S, et al. The Japanese Society of Hypertension Guidelines for the Management of Hypertension (JSH 2019). *Hypertens Res* 2019; **42**(9): 1235-481.
4. He FJ, Li J, Macgregor GA. Effect of longer term modest salt reduction on blood pressure: Cochrane systematic review and meta-analysis of randomised trials. *BMJ* 2013; **346**: f1325.
5. Kario K, Nomura A, Harada N, et al. A multicenter clinical trial to assess the efficacy of the digital therapeutics for essential hypertension: Rationale and design of the HERB-DH1 trial. *J Clin Hypertens (Greenwich)* 2020; **22**(9): 1713-22.
6. Kario K, Nomura A, Harada N, et al. Efficacy of a digital therapeutics system in the management of essential hypertension: the HERB-DH1 pivotal trial. *Eur Heart J* 2021; **42**(40): 4111-22.
7. Nomura A, Tanigawa T, Kario K, Igarashi A. Cost-effectiveness of digital therapeutics for essential hypertension. *Hypertens Res* 2022; **45**(10): 1538-48.
8. Mancia G, Kreutz R, Brunstrom M, et al. 2023 ESH Guidelines for the management of arterial hypertension The Task Force for the management of arterial hypertension of the European Society of Hypertension: Endorsed by the International Society of Hypertension (ISH) and the European Renal Association (ERA). *J Hypertens* 2023; **41**(12): 1874-2071.
9. Whelton PK, Carey RM, Aronow WS, et al. 2017 ACC/AHA/AAPA/ABC/ACPM/AGS/APhA/ASH/ASPC/NMA/PCNA Guideline for the Prevention, Detection, Evaluation, and Management of High Blood Pressure in Adults: Executive Summary: A Report of the American College of Cardiology/American Heart Association Task Force on Clinical Practice Guidelines. *Hypertension* 2018; **71**(6): 1269-324.
10. Hoshida S, Yano Y, Mizuno H, Kanegae H, Kario K. Day-by-Day Variability of Home Blood Pressure and Incident Cardiovascular Disease in Clinical Practice: The J-HOP Study (Japan Morning Surge-Home Blood Pressure). *Hypertension* 2018; **71**(1): 177-84.
11. Yasutake K, Miyoshi E, Kajiyama T, et al. Comparison of a salt check sheet with 24-h urinary salt excretion measurement in local residents. *Hypertens Res* 2016; **39**(12): 879-85.
12. Boima V, Doku A, Agyekum F, Tuglo LS, Agyemang C. Effectiveness of digital health interventions on blood pressure control, lifestyle behaviours and adherence to medication in patients with hypertension in low-income and middle-income countries: a systematic review and meta-analysis of randomised controlled trials. *EClinicalMedicine* 2024; **69**: 102432.
13. Gazit T, Gutman M, Beatty AL. Assessment of Hypertension Control Among Adults Participating in a Mobile Technology Blood Pressure Self-management Program. *JAMA Netw Open* 2021; **4**(10): e2127008.

14. Appel LJ, Champagne CM, Harsha DW, et al. Effects of comprehensive lifestyle modification on blood pressure control: main results of the PREMIER clinical trial. *JAMA* 2003; **289**(16): 2083-93.
15. Blood Pressure Lowering Treatment Trialists C. Age-stratified and blood-pressure-stratified effects of blood-pressure-lowering pharmacotherapy for the prevention of cardiovascular disease and death: an individual participant-level data meta-analysis. *Lancet* 2021; **398**(10305): 1053-64.
16. Kario K, Okawara Y, Kanegae H, Hoshide S. Potential Long-Term Benefit of Home Systolic Blood Pressure Below 125 mm Hg for Cardiovascular Risk Reduction: The J-HOP Study Extended. *Hypertension* 2024; **81**(2): 282-90.
17. Kario K, Tomitani N, Hoshide S, et al. Different Home Blood Pressure Thresholds to Predict Perfect 24-Hour Ambulatory Blood Pressure Control in Treated Hypertension Based on an "All-in-One" Device. *Hypertension* 2023; **80**(11): 2464-72.
18. Yamada MH, Fujihara K, Kodama S, et al. Associations of Systolic Blood Pressure and Diastolic Blood Pressure With the Incidence of Coronary Artery Disease or Cerebrovascular Disease According to Glucose Status. *Diabetes Care* 2021; **44**(9): 2124-31.
19. Stapff M, Hilderbrand S. First-line treatment of essential hypertension: A real-world analysis across four antihypertensive treatment classes. *J Clin Hypertens (Greenwich)* 2019; **21**(5): 627-34.
20. Han M, Rhee SY. Effect of Adherence to Smartphone App Use on the Long-term Effectiveness of Weight Loss in Developing and OECD Countries: Retrospective Cohort Study. *JMIR Mhealth Uhealth* 2021; **9**(7): e13496.
21. Hisaki F, Aga M, Tomitani N, Okawara Y, Harada N, Kario K. Daily self-reported behavioural efficacy records on hypertension digital therapeutics as digital metrics associated with the reduction in morning home blood pressure: post-hoc analysis of HERB-DH1 trial. *Hypertens Res* 2024; **47**(1): 120-7.

Figure legends

Figure 1. Changes in morning home systolic blood pressure from baseline

Figure 2. Morning home SBP transitions of crude systolic blood pressures and changes from baseline

Figure 3. Correlations of morning home systolic blood pressure between baseline and week 12 (A) and between baseline and week 24 (B)

Figure 4. Subgroups' changes in morning home systolic blood pressure at weeks 12 (A) and 24 (B)

Tables

Table 1. Baseline characteristics of patients in the practice-based real-world data cohort compared with those in the HERB-DH1 trial

	Practice-based RWD cohort	HERB-DH1 intervention group	HERB-DH1 control group
N	1,000	199	191
Age (years), mean ± SD	54.8 ± 11.6	52.4 ± 8.1	52.0 ± 7.6
Female, n (%)	489 (48.9)	35 (17.6)	43 (22.5)
BMI, median (kg/m²), median [IQR]	24.6 [22.3–27.7]	25.2 [23.0–27.8]	25.2 [23.0–28.0]
Salt check-sheet score, median [IQR]	12 [9–16]	15 [12–17]	14 [11–17]
Medication usage at baseline, n (%)			
Yes	436 (43.6)	0 (0)	0 (0)
No	228 (22.8)	199 (100)	191 (100)
Unknown	336 (33.6)	0 (0)	0 (0)
Blood pressure (mmHg), mean ± SD			
Morning home SBP	132.8 ± 12.9	147.0 ± 13.3	149.3 ± 12.4
Morning home DBP	86.0 ± 10.0	94.0 ± 9.9	94.7 ± 8.7
Evening home SBP	128.7 ± 13.6	140.6 ± 12.6	143.3 ± 14.3
Evening home DBP	81.8 ± 10.5	88.2 ± 10.5	89.8 ± 9.9

Abbreviations: BMI, body mass index; DBP, diastolic blood pressure; IQR, interquartile range; SD, standard deviation; RWD, real-world data; SBP, systolic blood pressure.

Figures
Figure 1.

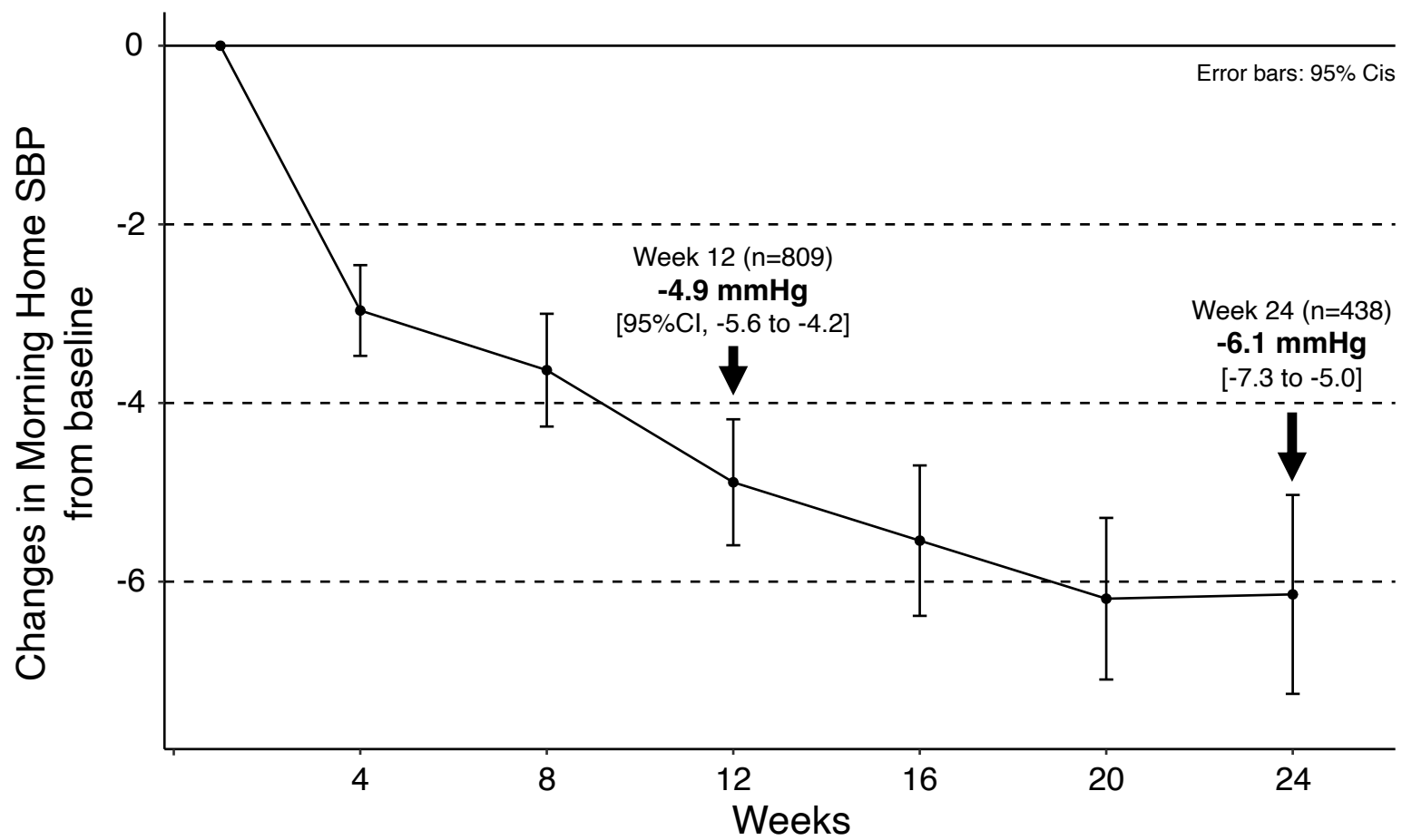


Figure 2.

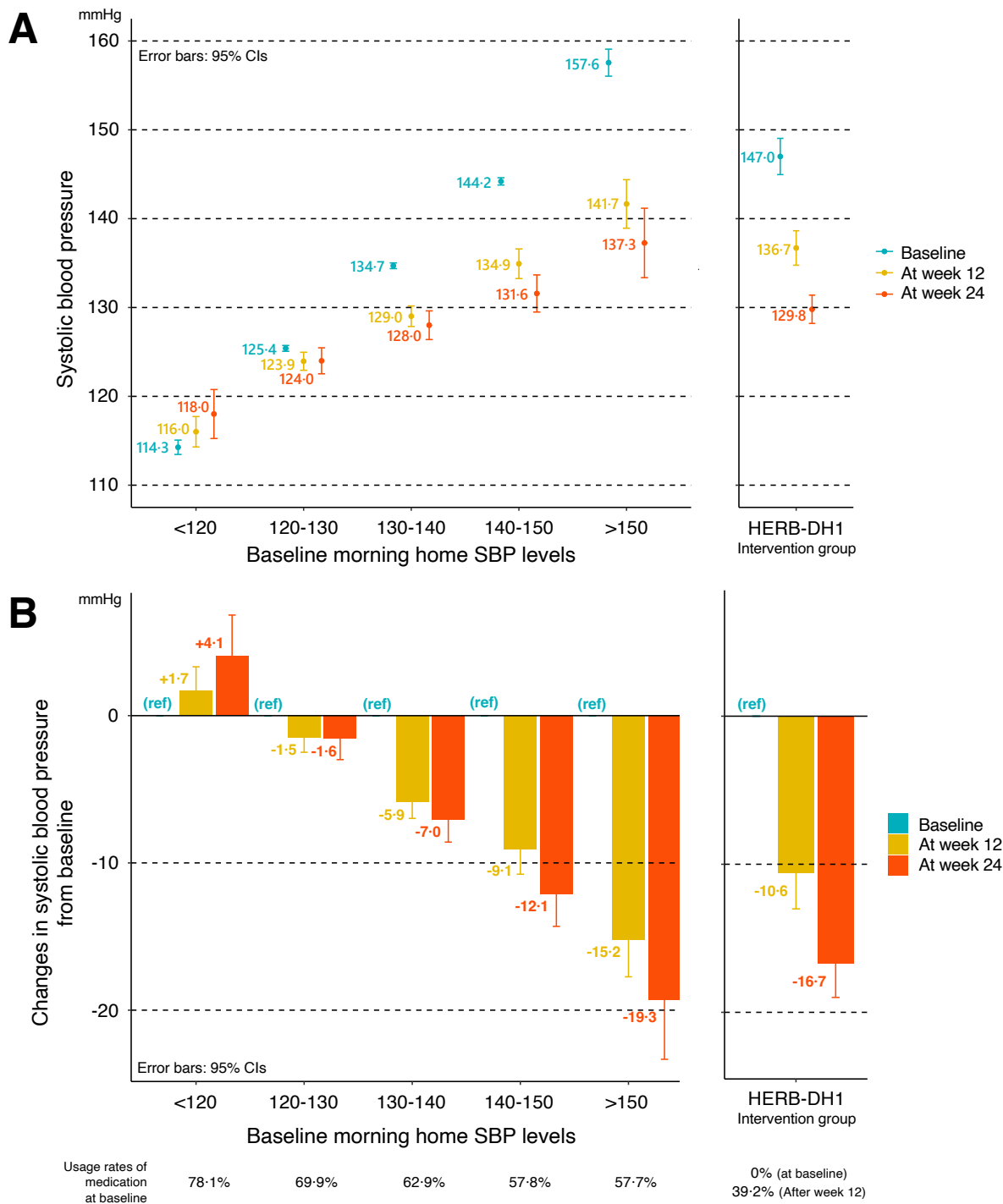
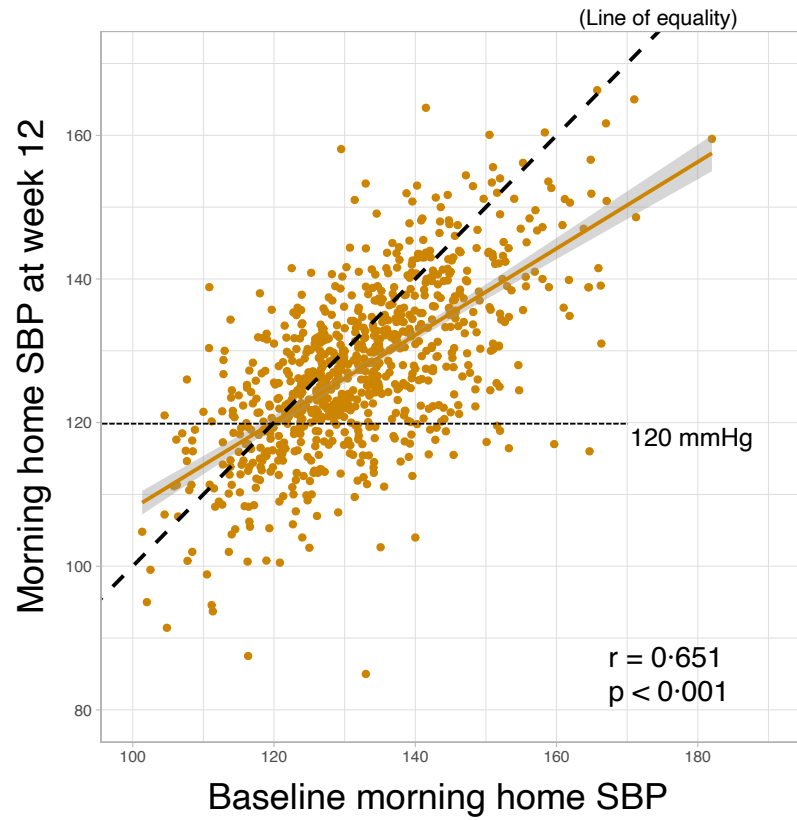


Figure 3.

A



B

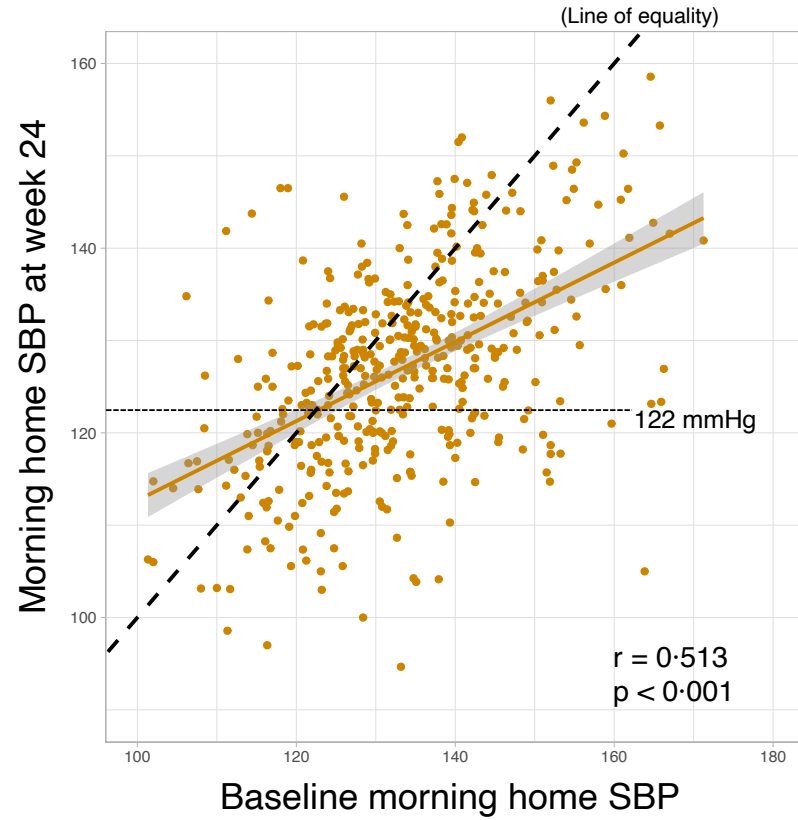
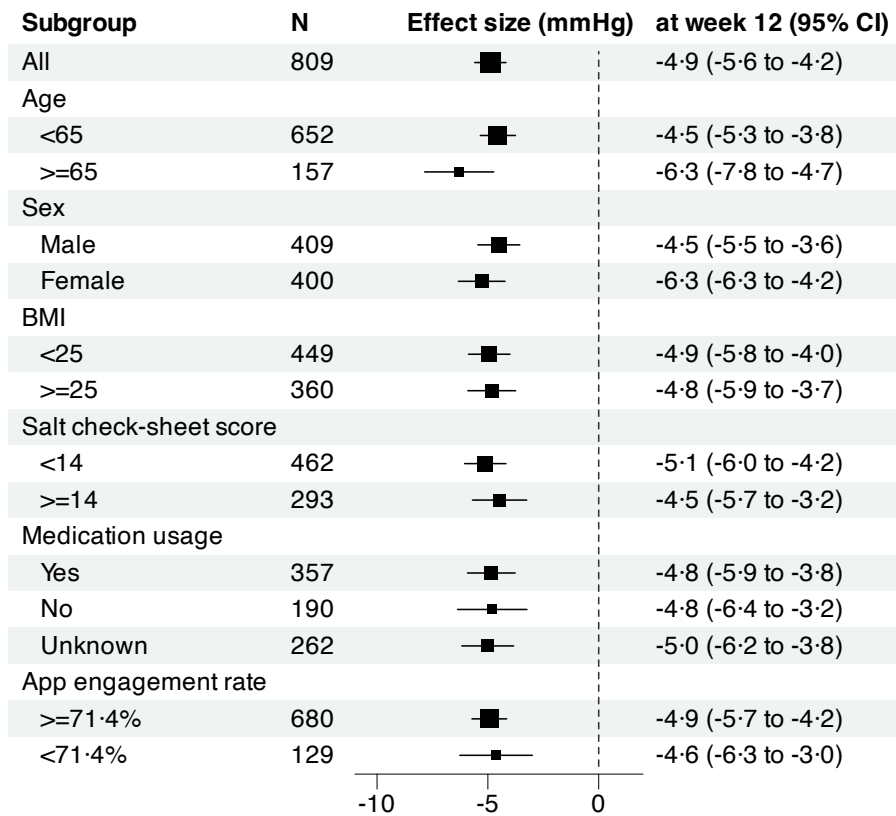
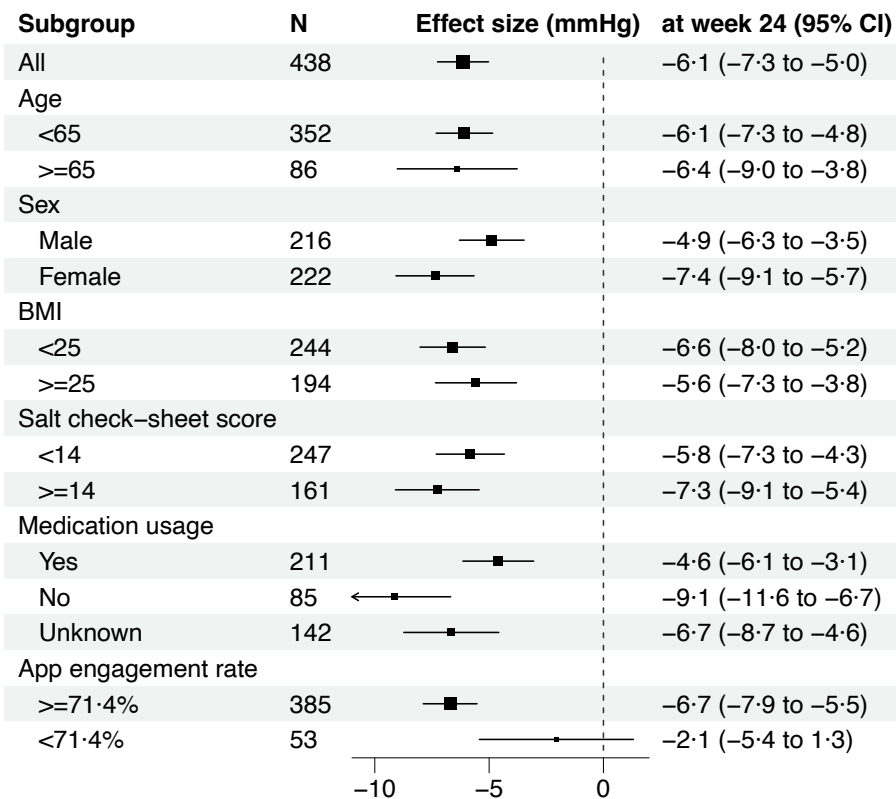


Figure 4.

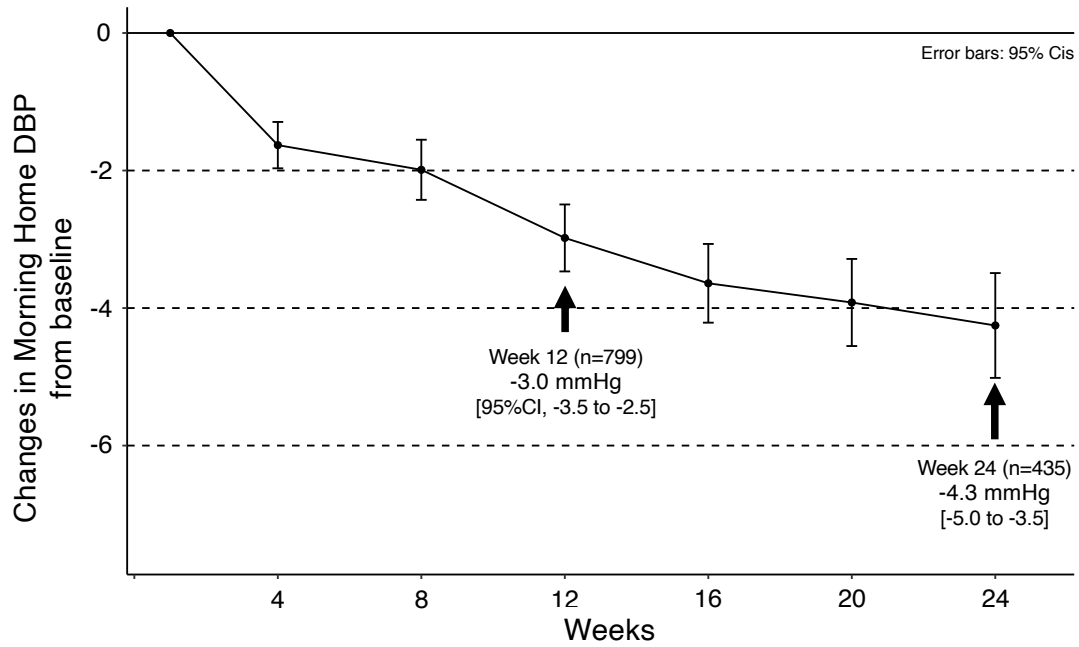
A



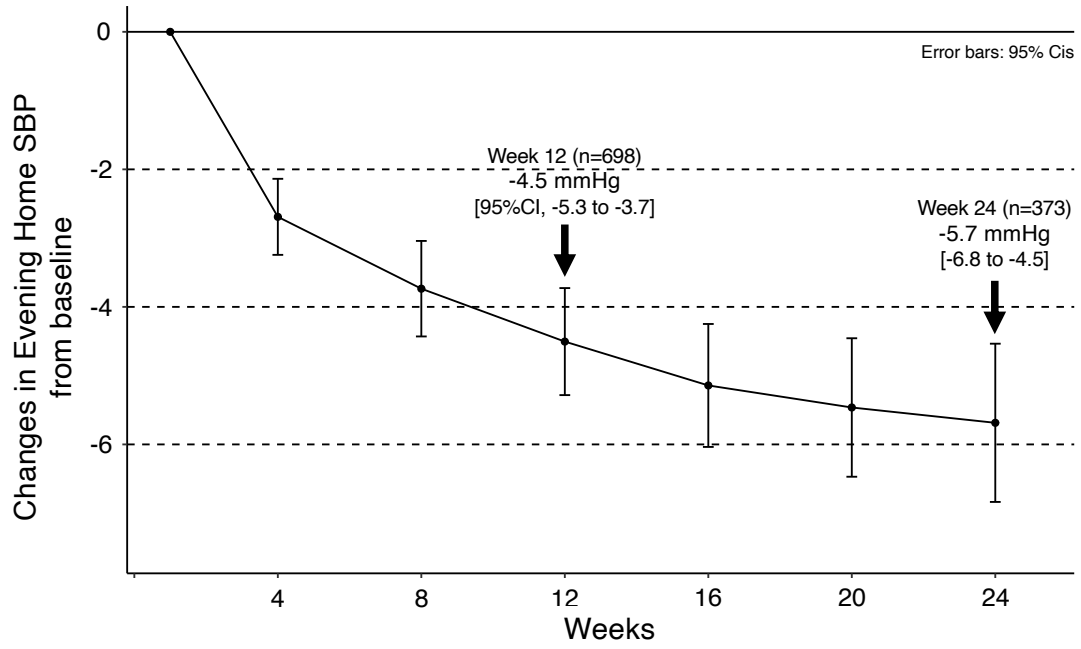
B



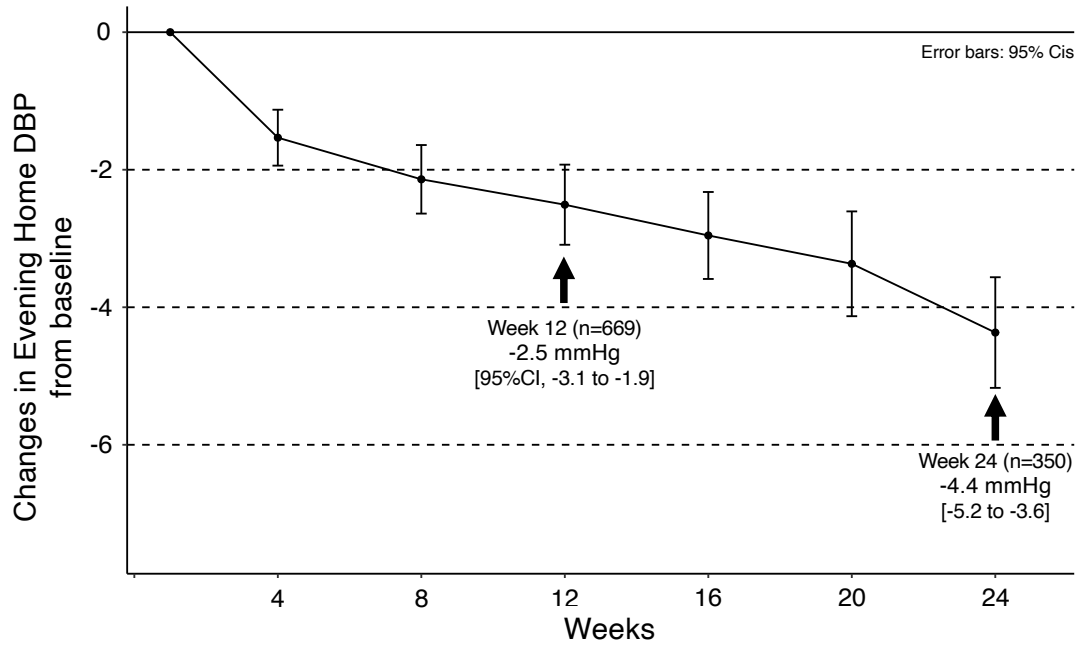
Supplementary Figure S1. Changes in morning home DBP from baseline



Supplementary Figure S2. Changes in evening home SBP from baseline



Supplementary Figure S3. Changes in evening home DBP from baseline



Supplementary Figure S4. Blood pressure threshold achievement rates by each hypertension management guideline

