

Association analysis between an epigenetic alcohol risk score and blood pressure

Helena Bui, BA^{1,2*}; Amena Keshawarz, PhD, MPH^{1,2*}; Mengyao Wang, MS^{3*}; Mikyeong Lee, PhD⁴; Scott M. Ratliff, MS⁵; Lisha Lin, MPH⁵; Kira S. Birditt, PhD⁶; Jessica D. Faul, PhD⁶; Annette Peters, PhD^{7,8,9}; Christian Gieger, PhD^{9,10}; Thomas Delerue, PhD¹⁰; Sharon L. R. Kardia, PhD⁵; Wei Zhao⁵, PhD; Xiuqing Guo, PhD¹¹; Jie Yao, MS¹¹; Jerome I. Rotter, MD¹¹; Yi Li³; Xue Liu³; Dan Liu, PhD¹²; Juliana F. Tavares, MS¹²; Gökhan Pehlivan, MD¹²; Monique M.B. Breteler, MD, PhD^{12,13}; Irma Karabegovic, DSc¹⁴; Carolina Ochoa-Rosales, PhD^{14,15}; Trudy Voortman, PhD^{14,16}; Mohsen Ghanbari, PhD¹⁴; Joyce B.J. van Meurs, PhD¹⁷; Mohamed Kamal Nasr, MS^{18,19}; Marcus Dörr, MD^{19,20}; Hans J. Grabe, MD^{21,22}; Stephanie J. London, MD, DrPH⁴; Alexander Teumer, PhD^{18,19,23}; Melanie Waldenberger, PhD^{9,10}; David R. Weir, PhD⁶; Jennifer A. Smith, PhD^{5,6}; Daniel Levy, MD^{1,2} †; Jiantao Ma, PhD²⁴ †; Chunyu Liu, PhD^{2,3} †

1. Population Sciences Branch, Division of Intramural Research, National Heart, Lung, and Blood Institute, National Institutes of Health, Bethesda, MD, USA
2. Framingham Heart Study, Framingham, MA, USA
3. Department of Biostatistics, Boston University School of Public Health, Boston, MA
4. Epidemiology Branch, National Institute of Environmental Health Sciences, National Institutes of Health, Department of Health and Human Services, Research Triangle Park, NC, USA
5. Department of Epidemiology, School of Public Health, University of Michigan, Ann Arbor, MI
6. Survey Research Center, Institute for Social Research, University of Michigan, Ann Arbor, MI
7. Institute of Epidemiology, Helmholtz Munich, German Research Center for Environmental Health, German
8. Institute for Medical Informatics, Biometrics and Epidemiology, Ludwig-Maximilians-Universität München, Munich, Germany
9. German Center for Cardiovascular Research (DZHK), Partner Site Munich Heart Alliance, Munich, Germany
10. Research Unit Molecular Epidemiology, Institute of Epidemiology, Helmholtz Munich, German Research Center for Environmental Health, Bavaria, Germany
11. The Institute for Translational Genomics and Populations, Department of Pediatrics, Lundquist Institute for Biomedical Innovation at Harbor-UCLA Medical Center, Torrance, CA 90502, USA
12. Population Health Sciences, German Center for Neurodegenerative Diseases (DZNE), Bonn, Germany
13. Institute for Medical Biometry, Informatics and Epidemiology (IMBIE), Faculty of Medicine, University of Bonn, Bonn, Germany
14. Department of Epidemiology, Erasmus MC University Medical Center, Rotterdam, The Netherlands
15. Centro de Vida Saludable de la Universidad de Concepción, Concepción, Chile
16. Division of Human Nutrition and Health, Wageningen University and Research, Wageningen, The Netherlands
17. Department of Internal Medicine, Erasmus MC University Medical Center, Rotterdam, The Netherlands
18. Institute for Community Medicine, University Medicine Greifswald, Greifswald, Germany
19. German Center for Cardiovascular Research (DZHK), Partner Site Greifswald, Greifswald, Germany
20. Department of Internal Medicine B, University Medicine Greifswald, Greifswald, Germany
21. Department of Psychiatry and Psychotherapy, University Medicine, Greifswald, Germany
22. German Center of Neurodegenerative Diseases (DZNE), Rostock/Greifswald, site Greifswald, Germany
23. Department of Population Medicine and Lifestyle Diseases Prevention, Medical University of Bialystok, Bialystok, Poland
24. Gerald J. and Dorothy R. Friedman School of Nutrition Science and Policy, Tufts University, Boston, MA, USA

* Denotes shared first authorship

† Denotes multiple corresponding authors

Corresponding Author(s):

Daniel Levy, MD
Framingham Heart Study
73 Mt. Wayte Avenue
Framingham, MA 01702
levyd@nhlbi.nih.gov
508-935-3458

Jiantao Ma
Gerald J. and Dorothy R.
Friedman School of Nutrition
Science and Policy, Tufts
University
150 Harrison Avenue
Boston, MA 02111
jiantao.ma@tufts.edu

Chunyu Liu
Boston University School of Public
Health, Boston University
715 Albany Street
Boston, MA 02118
liuc@bu.edu
(617) 638-5104

Abstract

Background

Epigenome-wide association studies have revealed multiple DNA methylation sites (CpGs) associated with alcohol consumption, an important lifestyle risk factor for cardiovascular diseases.

Results

We generated an alcohol consumption epigenetic risk score (ERS) based on previously reported 144 alcohol-associated CpGs and examined the association of the ERS with systolic blood pressure (SBP), diastolic blood pressure (DBP), and hypertension (HTN) in 3,898 Framingham Heart Study (FHS) participants. We found an association of alcohol intake with the ERS in the meta-analysis with 0.09 units higher ERS per drink consumed per day ($p < 0.0001$). Cross-sectional analyses in FHS revealed that a one-unit increment of the ERS was associated with 1.93 mm Hg higher SBP ($p = 4.64E-07$), 0.68 mm Hg higher DBP ($p = 0.006$), and an odds ratio of 1.78 for HTN ($p < 2E-16$). Meta-analysis of the cross-sectional association of the ERS with BP traits in eight independent external cohorts ($n = 11,544$) showed similar relationships with blood pressure levels, i.e., a one-unit increase in ERS was associated with 0.74 ($p = 0.002$) and 0.50 ($p = 0.0006$) mm Hg higher SBP and DBP, but could not confirm the association with hypertension. Longitudinal analyses in FHS ($n = 3,260$) and five independent external cohorts ($n = 4,021$) showed that the baseline ERS was not associated with a change in blood pressure over time or with incident HTN.

Conclusions

Our findings provide proof-of-concept that utilizing an ERS is a useful approach to capture the recent health consequences of lifestyle behaviors such as alcohol consumption.

Key words: epigenetic risk score, DNA methylation, blood pressure, hypertension, alcohol

1 **Introduction**

2 Approximately 178,307 people die annually from alcohol-related causes, making alcohol
3 consumption one of leading preventable causes of death in the United States[1]. Alcohol has
4 complex effects on multiple biological processes and systems, including the cardiovascular
5 system. Several studies suggest that habitual, heavy alcohol use can lead to cardiovascular
6 sequelae such as dilated cardiomyopathy and heart failure[2]. However, the benefits and
7 potential arms of moderate drinking have been a subject of controversy. A few studies have
8 indicated that the association presented a J-shaped curve between alcohol consumption and a
9 lower risk of cardiovascular disease[3–6]. While studies with Mendelian randomization method
10 suggested a non-linear and increased risk of cardiovascular risks with any dose of alcohol
11 intake[3,5]. Additionally, multiple studies support a causal relationship of alcohol consumption
12 with elevated blood pressure and the risk of hypertension (HTN)[2,7]. Furthermore, high blood
13 pressure is one of the leading risk factors for cardiovascular diseases (CVDs)[8,9]. Therefore,
14 understanding the molecular changes underlying alcohol consumption is crucial to comprehend
15 the relationship between alcohol consumption, high blood pressure, and CVD.

16 One of the most studied epigenetic modifications, DNA methylation, regulates gene
17 expression through the transfer of a methyl group onto DNA cytosine-phosphate-guanine (CpG)
18 sites. The extent of DNA methylation at certain CpG sites is associated with phenotypic variation
19 in numerous CVD-related traits including body mass index (BMI)[10], blood lipids[11],
20 glycemic traits[12], blood pressure[13], and inflammatory biomarkers[14]. DNA methylation has
21 also been linked to lifestyle behaviors such as alcohol consumption. A large-scale meta-analysis
22 of data from thirteen population-based cohorts including the Framingham Heart Study (FHS)
23 identified 144 differentially methylated CpG sites associated with heavy alcohol intake[15].

1 A standardized, biomarker of alcohol consumption may correct for limitations of self-
2 reported alcohol consumption, such as impression management bias[16] or faulty recall of
3 drinking history[17,18], and reveal alcohol-related disease risks that otherwise might not be
4 apparent. In this study, we used 144 alcohol-related, differentially-methylated CpGs[15] to
5 generate an alcohol consumption epigenetic risk score (ERS) and examine the association of the
6 ERS with blood pressure traits in cross-sectional and longitudinal analyses. We hypothesized
7 that a DNA methylation-based alcohol consumption ERS would be associated with blood
8 pressure, cross-sectionally and longitudinally. We tested our hypothesis by analyzing the
9 association of our alcohol-associated ERS with blood pressure traits, including systolic blood
10 pressure (SBP), diastolic blood pressure (DBP), and HTN in 3,898 FHS participants. In addition,
11 we carried out replication analyses of these findings in eight independent cohorts using meta-
12 analysis (**Figure 1**). The alcohol consumption ERS provides an opportunity to investigate the
13 relations of alcohol intake to health outcomes in situations where self-reported intake data is
14 unavailable or unreliable.

15

16 METHODS

17 **Study population**

18 Data from nine population-based cohort studies were used in the analysis. In addition to the
19 FHS[19], our investigation included the Agricultural Lung Health Study (ALHS)[20], the
20 Cooperative Health Research in the Region Augsburg (KORA)[21], the Genetic Epidemiology
21 Network on Arteriopathy (GENOA) Study[22], the Health and Retirement Study (HRS)[23], the
22 Multi-Ethnic Study of Atherosclerosis (MESA) Study[24], the Rhineland Study[25], the
23 Rotterdam Study[26], and the Study of Health in Pomerania (SHIP)[27]. Institutional review

1 committees of all cohorts approved this study, and all study participants provided written
2 informed consent. In each cohort, participants with prevalent CVD (angina pectoris, coronary
3 insufficiency, cerebrovascular accident, atherothrombotic infarction of the brain, transient
4 ischemic attack, cerebral embolism, intracerebral hemorrhage, subarachnoid hemorrhage, or
5 intermittent claudication), prevalent heart failure, and prevalent atrial fibrillation were excluded.
6 We also excluded participants without DNA methylation data at baseline examination at which
7 blood samples were collected for DNA methylation profiling. After exclusions, 3,898
8 participants in FHS and 11,544 participants in eight independent external cohorts were included
9 in cross-sectional association analyses, while 3,260 participants in FHS and 3,910 participants in
10 five external cohorts were included in longitudinal association analyses (**Figure 1**).

11 **Clinical and behavioral data collection**

12 Overall, clinical data for traits such as age, BMI, SBP, DBP, and the use of antihypertensive
13 medication were collected at in-person examinations. HTN was defined as SBP \geq 140 mm Hg,
14 DBP \geq 90 mm Hg, or use of antihypertensive medication for treating hypertension at the
15 examination. We added 15 mm Hg and 10 mm Hg to a participant's measured SBP and DBP
16 values, respectively, for participants currently using antihypertensive medication.

17 Participants' cigarette smoking status was determined based on self-reported smoking
18 behavior. Current smokers were defined as participants who smoked on average at least one
19 cigarette per day in the past year; former smokers were defined as participants who previously
20 smoked on average at least one cigarette per day but stopped smoking for at least one year; never
21 smokers were defined as participants who never smoked. Self-reported alcohol intake was
22 captured via questionnaires wherein the participants reported the frequency with which they
23 consumed various alcoholic beverages (i.e., beer, liquor, or wine). This study included nine

1 population-based cohorts, and therefore, we focused on habitual alcohol consumption in general
2 populations rather than examining specifically for alcohol disorder. Study-specific methods for
3 clinical data collection are presented in the **Supplemental Text** and **Supplemental Table 1**.

4 **DNA methylation data collection and processing**

5 Whole blood samples were assayed for DNA methylation via the Infinium Human Methylation
6 450 BeadChip platform or Infinium MethylationEPIC platform (San Diego, CA) (**Supplemental**
7 **Text**). The methylated probe intensity and total probe intensities were extracted using the
8 Illumina Genome Studio (version 2011.1) with the methylation module (version 1.9.0).
9 Preprocessing of the methylated (M) signal and unmethylated signal (U) was conducted;
10 methylation beta-value (β_M) was defined as $\beta = \frac{M}{U+M}$. Further information regarding DNA
11 extraction and processing has been outlined[15]. Further information regarding the collection of
12 DNA samples and assay details about each external cohort are presented in the Supplemental
13 Materials.

14 **Epigenetic risk score calculation**

15 To develop the ERS for this investigation, we used 144 CpGs identified in a previous EWAS
16 meta-analysis[15]. The score was calculated by multiplying individual-level methylation values
17 at each CpG site by the CpG's corresponding Least Absolute Shrinkage and Selection Operator
18 (LASSO) β estimate. LASSO is a regression analysis method that performs both variable
19 selection and regularization to enhance the prediction accuracy and interpretability of the
20 resulting statistical model by shrinking the coefficients of some variables to exactly zero[28].
21 The weighted individual values were summed across all 144 CpGs sites to create an ERS for
22 each participant, representing weighted DNA methylation levels in response to alcohol
23 consumption. This methodology was applied to all participating cohorts' methylation data to

1 generate the ERS. Across five cohorts, one drink of alcohol consumption was associated with
2 0.09 higher unit of ERS (**Supplemental Table 2**). Methods for calculating the ERS for cohorts
3 missing certain CpG methylation values can be found in the **Supplemental Text**.

4 **Analysis of the epigenetic risk score with blood pressure traits in FHS (discovery)**

5 We performed both cross-sectional and longitudinal regression analyses in FHS to examine the
6 association between the ERS (independent variable) and blood pressure traits: SBP (continuous),
7 DBP (continuous), and HTN (dichotomous) (dependent variables). Linear mixed regression
8 models were used to evaluate the association of the ERS with the two continuous blood pressure
9 traits. Generalized estimating equations (GEE) were used to evaluate the association of the ERS
10 with dichotomous HTN. A total of 3,898 participants were included in the cross-sectional
11 analysis from the FHS Offspring cohort (n = 2,393; examination 8) and FHS Third Generation
12 cohort (n = 1,505; examination 2) participants. All models were adjusted for age, age-squared,
13 sex, BMI, familial correlation (for family data), and current smoking status.

14 Longitudinal analyses of all blood pressure traits included FHS Offspring cohort
15 participants (n = 1,932) who attended both examinations 8 and 9 and Third Generation
16 participants (n = 1,328) who attended both examinations 2 and 3. Our linear mixed regression
17 models evaluated the association of change in blood pressure over time (i.e., Δ SBP and Δ DBP)
18 with the baseline ERS after adjusting for baseline age, baseline age-squared, sex, baseline BMI,
19 baseline smoking status, baseline SBP/DBP (i.e., if the model's outcome was Δ DBP, we adjusted
20 for baseline DBP), and time between baseline and the follow-up examination. Our GEE models
21 evaluated the association of incident HTN with the baseline ERS after adjusting for baseline age,
22 baseline age-squared, baseline BMI, baseline smoking status, and time between baseline and
23 follow-up examination; in addition, these GEE models excluded all participants with HTN at

1 baseline examination. In the sensitivity analysis, we defined participants with stage 1
2 hypertension using the 2017 guideline (i.e., $\geq 130/80$ SBP/DBP mm Hg or with antihypertension
3 treatment)[29]. We performed cross-sectional and longitudinal GEE models to investigate the
4 associations of ERS with prevalent and incident hypertension using the new definition.

5 **Meta-analysis (replication)**

6 For replication, independent external cohorts ($n = 11,544$) were used in an inverse-variance
7 weighted, fixed-effects meta-analysis by assuming that there is one true effect between ERS and
8 a BP trait. Eight studies were used in cross-sectional meta-analysis for replication while five
9 studies were utilized in the longitudinal meta-analysis ($n = 4,021$).

10 **Analysis of the epigenetic risk score with blood pressure traits in participants without** 11 **antihypertension medication**

12 To minimize the possible effects of antihypertension medication on DNA methylation, we
13 conducted a sensitivity-analysis among participants without antihypertension medication in five
14 cohorts (i.e., FHS, GENOA, HRS, Rhineland Study, and SHIP). Similar to the primary analysis,
15 we conducted the cross-sectional analysis using linear mixed effects model with ERS as the
16 independent variable and blood pressure traits as the dependent variables in each cohort.

17 **Analysis of the epigenetic risk score with alcohol consumption**

18 We used a linear mixed regression model to test the cross-sectional association between the ERS
19 (outcome) and self-reported alcohol intake (exposure) in each of the five cohorts (i.e., FHS,
20 GENOA, HRS, Rhineland Study, and SHIP). The change in the ERS associated with one drink
21 of alcohol consumption per day was calculated with adjustment for age, age-squared, sex, BMI,
22 current smoking status, and familial correlation.

23 **Association analysis of alcohol consumption with blood pressure traits**

1 To compare the association of blood pressure traits with ERS and questionnaire-based alcohol
2 consumption, we performed cross-sectional (i.e., FHS, GENOA, HRS, Rhineland Study, and
3 SHIP) and longitudinal (i.e., FHS, GENOA, and SHIP) analyses between blood pressure traits
4 and alcohol consumption. We used linear mixed or GEE models to quantify the associations
5 between SBP/DBP/HTN (outcome variables) and alcohol consumption (predictor). Covariates
6 included age, age-squared, sex, BMI, current smoking status, and family structure.

7 **Association of epigenetic risk score with biological biomarkers of alcohol intake**

8 We tested the association of the ERS with two established biomarkers of chronic alcohol
9 consumption: aspartate amino transferase (AST) and alanine aminotransferase (ALT)
10 concentrations. Separate linear mixed regression models were used with each enzyme as the
11 dependent variable. Serum AST and ALT were measured on fasting morning samples using the
12 kinetic method (Beckman Liquid-State Reagent Kit)[30]. Model 1 (i.e., the reduced model)
13 quantified the association between the self-reported alcohol intake and liver enzyme
14 concentrations after adjusting for age, sex, BMI, and smoking status. Model 2 (i.e., the full
15 model) further adjusted for the ERS. In order to compare the two models, we also performed a
16 likelihood ratio test (LRT) to gauge whether the addition of the ERS significantly improved
17 model fit.

18 **Analysis of individual alcohol-associated CpGs with blood pressure traits in FHS**

19 We examined the cross-sectional association of 144 DNA methylation probes from ERS with
20 blood pressure traits in the FHS. We applied the linear mixed effect model to account for the
21 pedigree with each CpG probe as the predictor variable and SBP/DBP as the outcome variable.
22 Covariates included age, age-squared, sex, BMI, and current smoking status.

1 All statistical analyses were conducted using the R (version 4.0.3) software package[31].
2 Meta-analyses was conducted with the *metafor* package (version 3.0.2)[32]. LRT was performed
3 using the ‘lrtest’ function in the R package *lmtest* in R (version 0.9.39)[33]. Statistical
4 significance was defined as two-sided $p < 0.05$.

5 RESULTS

7 **Participant characteristics**

8 This present study included discovery and replication analyses (**Figure 1**). The discovery
9 association analysis was performed in the FHS. The replication association analysis and meta-
10 analysis was performed in up to eight cohorts (**Figure 1**). At the baseline examination, FHS
11 participants ($n = 3,898$) were, on average, 58 years old ($SD = 13$ years) and consisted of slightly
12 more women (55%) than men (45%) (**Supplemental Table 3**). In addition, approximately 42%
13 of FHS participants had hypertension at baseline. Furthermore, women consumed less alcohol
14 compared to men (mean alcohol intake 0.3 drinks/day vs. 0.7 drinks/day). The FHS participants
15 ($n = 3,260$) were followed up for six years and used for longitudinal association analyses with
16 blood pressure traits (**Supplemental Table 2**).

17 Overall, mean age of participants in the eight independent cohorts ($n_{total} = 11,544$) ranged
18 from of 49 years (SHIP) to 68 years (HRS) (**Supplemental Tables 3-5**). Similar to what was
19 observed in FHS, women reported a lower average amount of alcohol consumed per day
20 compared to men. DNA methylation was measured using blood samples collected at the same
21 time when alcohol consumption data were assessed in all nine cohorts. Blood pressure traits
22 measured contemporaneously were used in cross-sectional analysis and those measured six to ten
23 years after alcohol consumption measurement were used for longitudinal studies (**Supplemental**

1 **Table 1**). Additionally, the mean values of the ERS ranged from -15.35 (SD = 0.74) to -3.85 (SD
2 = 0.61) across all cohorts at the baseline examination (**Supplemental Table 6**).

3 **Epigenetic risk score and blood pressure: cross-sectional and longitudinal analysis in FHS**

4 The alcohol intake showed a significant association with ALT ($p = 2.9E-09$) and AST ($p = 1.3E-$
5 10), but borderline for the AST/ALT ratio ($p = 0.054$) in Model 1. The addition of the ERS in
6 Model 2 (i.e., full model) improved model fit with respect to cross-sectional ALT ($p = 2.8E-07$),
7 AST ($p = 2.3E-12$), and the AST/ALT ratio ($p = 0.0076$) (**Supplemental Table 7**).

8 Cross-sectional analyses in FHS participants revealed significant association of the ERS
9 with SBP, DBP, and HTN. A one-unit increment of the ERS was associated with a 1.98 mm Hg
10 higher SBP (SE = 0.39, $p = 4.6E-07$), a 0.68 mm Hg higher DBP (SE = 0.25, $p = 0.006$), and an
11 odds ratio of 1.78 for HTN (95% CI = [1.55, 2.04], $p < 2E-16$) (**Table 1**). In contrast,
12 longitudinal analyses did not reveal significant associations of the ERS with Δ SBP, Δ DBP, or
13 incident HTN ($p > 0.3$ for all) (**Table 1**).

14 In the sensitivity analysis with the updated definition for stage 1 hypertension (i.e., \geq
15 130/80 mm Hg or with the antihypertension treatment), we observed consistent results as the
16 stage 2 hypertension definition (i.e., \geq 140/90 mm Hg or with the antihypertension treatment).
17 One-unit higher ERS was positively associated with the prevalent hypertension (OR = 1.70, 95%
18 CI = [1.54, 1.98], $p < 2E-16$) but not significantly associated with the incident hypertension ($p =$
19 0.98) (**Supplementary Table 8**).

20 **Replication meta-analysis**

21 Meta-analysis of eight independent external cohorts ($n = 11,544$) revealed significant cross-
22 sectional associations. A one-unit greater ERS was associated with a 0.74 (95% CI = [0.26,
23 1.22], $p = 0.002$) mm Hg higher SBP (**Figure 2**) and a 0.50 (95% CI = [0.21, 0.78], $p = 0.0006$)

1 mm Hg higher DBP (**Figure 3**). As can be seen in the forest plots, there was heterogeneity in the
2 meta-analysis results for SBP ($Q = 17.27, p = 0.008$), but not for DBP ($Q = 5.16, p = 0.52$). No
3 significant association was observed between the ERS and HTN in meta-analysis ($OR = 1.02,$
4 $95\% CI = [0.83, 1.24], p = 0.10$; **Supplemental Figure 1**). As a sensitivity analysis for cross-
5 sectional HTN, meta-analysis was replicated excluding the Rhineland Study, which accounted
6 for 73% of the pooled effect size, but did not change results significantly (**Supplemental Figure**
7 **2**).

8 No significant associations of the ERS with blood pressure traits in longitudinal meta-
9 analysis were observed ($\Delta SBP \beta = 0.63, 95\% CI = [-0.12, 1.38], p = 0.10$; $\Delta DBP \beta = 0.10, 95\%$
10 $CI = [-0.30, 0.50], p = 0.61$; incident HTN $\beta (\log OR) = 0.003, 95\% CI [-0.05, 0.06], p = 0.92$).
11 These analyses included five cohorts (GENOA, KORA, MESA, the Rotterdam Study, and SHIP)
12 that had follow-up examination data available (for $\Delta SBP, \Delta DBP$ total sample size $n = 3,910$; for
13 incident HTN, $n = 3,228$). **Supplemental Figures 3, 4, and 5** display the meta-analysis results
14 for $\Delta SBP, \Delta DBP,$ and incident HTN, respectively. Cross-sectional and longitudinal analysis
15 results for individual cohort are shown in **Supplemental Tables 9 and 10**, respectively.

16

17 **Sensitivity analyses**

18 *Association of epigenetic risk score with blood pressure traits in participants without*
19 *antihypertension medication*

20 We conducted sensitivity analyses between ERS and SBP/DBP in 2577 FHS participants (66.1%
21 of the entire study sample) who were not receiving antihypertension medication. We observed
22 stronger results in the participants without antihypertension treatment compared to the results in
23 all participants (**Supplementary Table 11**). One-unit higher ERS was associated with a 2.6 mm

1 Hg higher SBP ($p = 1.5E-7$) and a 1.54 mm Hg higher DBP ($p = 1.1E-6$), which were stronger
2 than the estimates obtained from all FHS participants (SBP: $\beta = 1.98$, $p = 4.6E-7$; DBP: $\beta = 0.68$,
3 $p = 0.006$). However, associations were not significant between ERS and SBP/DBP among
4 untreated participants ($p > 0.05$) in the four external independent cohorts (**Supplementary Table**
5 **11**), except a marginally significant association between ERS and DBP ($\beta = 0.40$, $p = 0.09$) in
6 Rhineland untreated participants. Of note, most of the cross-sectional associations were
7 nonsignificant in these four cohorts between ERS and blood pressure traits before treated
8 participants were removed (**Supplementary Table 9**).

9 *Association of epigenetic risk score with alcohol consumption*

10 We conducted association between ERS and alcohol consumption in FHS. Each drink of self-
11 reported alcohol consumption per day was associated with a 0.25-units higher ERS ($p < 0.0001$)
12 in FHS. Consistent positive associations were also observed in three independent cohorts,
13 GENOA, HRS, and Rhineland Study (**Supplemental Table 2**). One drink of self-reported
14 alcohol consumption per day was associated with a 0.32-unit higher ERS in GENOA ($p <$
15 0.0001), with a 0.26-unit higher ERS in HRS ($p < 0.0001$), and with a 0.01-unit higher ERS in
16 the Rhineland Study ($p = 0.02$). No significant association was observed in SHIP (**Supplemental**
17 **Table 2**).

18 *Association of alcohol consumption with blood pressure traits*

19 Alcohol consumption was associated with SBP in both cross-sectional and longitudinal analyses
20 in the FHS (**Supplemental Tables 12-13**). One additional drink/day alcohol consumption was
21 associated with a 0.88 mm Hg higher SBP ($p = 3.7e-4$) in cross-sectional analysis and with a
22 0.92 mm Hg increase in SBP ($p = 2.6e-4$) between two exams in longitudinal analysis. We also
23 found that one additional drink/day alcohol consumption was associated with 1.13 times of odds

1 of being hypertension (95% CI = 1.04, 1.22; $p = 0.006$) in cross-sectional analysis. Associations
2 of alcohol consumption with DBP were not significant ($p > 0.05$ in both cross-sectional and
3 longitudinal analyses) in FHS (**Supplemental Tables 12-13**). In Rhineland and SHIP, we
4 observed that higher alcohol consumption was significantly associated with SBP (Rhineland: $\beta =$
5 0.38 , $p = 0.006$; SHIP: $\beta = 2.94$, $p = 0.008$) and DBP (Rhineland: $\beta = 0.38$, $p = 1.6e-6$; SHIP: $\beta =$
6 2.06 , $p = 0.002$) (**Supplemental Table 12**). However, prevalent hypertension was not associated
7 with alcohol consumption in either cohort. Whereas in HRS, higher level of DBP ($\beta = 0.72$, $p =$
8 0.04) and higher odds of hypertension ($\beta = 0.17$, $p = 0.02$) were associated with higher alcohol
9 intake in cross-sectional analysis. No longitudinal significant association was observed between
10 alcohol consumption and any of the blood pressure traits in GENOA or SHIP participants
11 (**Supplemental Table 13**).

12 Additionally, we investigated whether the DNA methylation CpGs that were used for
13 constructing the ERS were associated with blood pressure traits in cross-sectional analysis in
14 FHS. When applying a relaxed threshold by false discovery rate (FDR) < 0.05 , 26 and 17 of 144
15 CpG probes were significantly associated with SBP and DBP, respectively (**Supplemental**
16 **Figures 6a-c, Supplemental Table 14-15**).

17 18 DISCUSSION

19 This investigation builds upon our previous work that identified 144 CpGs that discriminated
20 current heavy alcohol drinkers from non- and light-drinkers[15]. Using these CpGs, we
21 constructed an alcohol consumption ERS that was associated with self-reported alcohol intake
22 and explained additional variance (model $R^2 = 0.11$ vs. 0.07 for AST and 0.14 vs. 0.11 for ALT)
23 in hepatic biomarkers associated with alcohol intake. The risk score was associated with systolic

1 and diastolic blood pressure in cross-sectional analyses both in discovery and replication
2 analyses. In contrast, the risk score was not associated with longitudinal changes in blood
3 pressure or incident hypertension either in discovery or replication studies.

4 The relationship between alcohol and hypertension is fairly well-defined with a
5 comprehensive body of cross-sectional and longitudinal epidemiological studies, revealing a
6 significant association between the two[34]. In addition, intervention studies and Mendelian
7 randomization studies have suggested that the alcohol-blood pressure relationship is causal[7].
8 There are multiple mechanisms by which alcohol consumption can affect blood pressure. For
9 example, chronic alcohol consumption has been reported to interfere with nitrous oxide (NO)
10 production from endothelial cells, which affects various blood pressure regulatory
11 mechanisms[35].

12 DNA methylation is an epigenetic mechanism that involves the transfer of a methyl
13 group onto the fifth carbon position of the DNA building block, cytosine, to form 5-
14 methylcytosine. This modification regulates gene expression by recruiting proteins to primarily
15 inhibit the binding of transcription factor(s) to DNA. Therefore, certain cells may develop a
16 stable and unique DNA methylation pattern that regulates tissue-specific gene expression. As
17 previously mentioned, a prior study from our team[15] aimed to address the lack of reliable
18 measures of alcohol intake by examining DNA methylation as a novel biomarker of alcohol use.
19 As noted, DNA methylation provides a reliable measure of heavy alcohol intake and addresses a
20 critical need.

21 While our analyses reveal that a risk score comprised of 144 CpGs reveals an association
22 of current alcohol intake with blood pressure, it does not indicate an association of the risk score
23 with longitudinal change in blood pressure. Several potential reasons may explain this finding.

1 As follow-up examinations may be years apart for several of these participating cohorts,
2 participants may change their lifestyle behaviors, which may affect methylation patterns. For
3 example, participants may change their diet or initiate hypertensive medication during follow-up;
4 participants who were moderate-to-heavy drinker may also reduce their alcohol consumption
5 over time with aging. A similar finding was reported with longitudinal smoking traits and DNA
6 methylation, where the majority of the differentially methylated CpG sites observed in analysis
7 of current versus never smokers returned to the level of never-smokers within five years of
8 smoking cessation[36]. The relationship between alcohol consumption and the degree of
9 methylation changes over various periods of time is still being explored. A recent longitudinal
10 study identified that 1414 CpGs were significantly associated with alcohol consumption in cross-
11 sectional analysis while about a third of CpGs (n = 513) displayed associations between the
12 changes in the methylation levels of these CpGs and the change of alcohol consumption between
13 two exams[37]. This study indicated, as a dynamic measurement, DNA methylation may show
14 stronger associations with cross-sectional behaviors and clinical phenotypes than associations
15 with changes in traits during the follow-up, which was consistent with the findings in our study.

16 In addition, cross-sectional meta-analysis for SBP revealed significant heterogeneity. Our
17 project performed a fixed-effects, inverse-variance weighted meta-analysis which assumes all
18 independent cohorts are estimating the same underlying effect where the variation between
19 estimates is attributed to random error. This heterogeneity may be attributable to a number of
20 factors such as participants' country or origin, ethnicity, age, sex, diet, and differences in sample
21 collection methodology[38]. For example, the GENOA recruited participants who had at least 2
22 siblings diagnosed with essential hypertension before the 60-year-old[22]. Therefore, the
23 GENOA participants may be more susceptible to hypertension than the general population due to

1 common pathogenic genes and shared behavioral habits with their siblings. The SHIP recruited
2 subjects from Northeast Germany, where the population had the lowest life expectancy in
3 Germany at the time of recruitment[27]. These different recruitment criteria may distinguish
4 participants in GENOA and SHIP from the general population, which may influence the relation
5 between alcohol consumption, DNA methylation, and blood pressure traits. Furthermore,
6 measurement error and a much higher SBP and DBP in GENOA and Rotterdam Study may
7 partly explained differential associations between the ERS and alcohol consumption in these two
8 studies, compared to results in other seven cohorts. Nevertheless, there was still a significant
9 effect for this outcome, and our meta-analysis results support our findings in FHS.

10 Another key finding of our study was the improved model fit after the addition of the risk
11 score in a cross-sectional, linear mixed regression model examining the relationship between
12 self-reported alcohol intake and liver enzymes, ALT and AST, in FHS. While the association
13 between self-reported alcohol intake and these liver enzymes was significant, the risk score was
14 able to capture additional interindividual variations of the elevated liver enzymes (**Supplemental**
15 **Table 7**). Whether this observation is due to the risk score as a tool that more accurately gauge
16 degrees of alcohol consumption as survey or because the risk score represents other biological or
17 environmental factors warrants future analyses.

18 This study has several limitations. Most of the participants are of European ancestry,
19 which may render the findings of our project not applicable to other racial/ethnic populations.
20 Secondly, we validated the utility of the risk score through association analysis with two
21 enzymes associated with liver function, ALT and AST. While elevated levels of these enzymes
22 are useful, common clinical indicators of chronic alcohol consumption, the levels of these
23 enzymes can be modified by other means. Many prescription drugs such as cholesterol-lowering

1 agents, anti-tuberculosis drugs, and non-steroidal anti-inflammatory drugs including aspirin are
2 known to cause mildly elevated AST and ALT[39] which were not adjusted for. These enzyme
3 levels can also be altered due to conditions such as autoimmune hepatitis: because of lacking
4 validated data, FHS participants with such conditions were not excluded from analysis but cases
5 of such conditions are supposed to be very few in the FHS. In addition, at the time of this study,
6 the FHS did not have other biomarkers available for validation analysis such as gamma-glutamyl
7 transferase which is another enzyme marker for heavy alcohol usage[40]. Our study also has
8 several strengths. Our analyses showed that the risk score was significantly associated with self-
9 reported alcohol intake data and with clinically-useful biomarkers of alcohol consumption. Our
10 findings regarding the relationship between the risk score and blood pressure traits in FHS were
11 replicated in meta-analysis of eight independent external cohorts.

12

13 CONCLUSION

14 Our study developed an epigenetic risk score of alcohol consumption based on 144 alcohol-
15 associated CpG probes identified in a large meta-analysis. This score showed an association with
16 cross-sectional, but not longitudinal, blood pressure and prevalent hypertension among middle-
17 aged and older participants. Our findings also provide a proof-of-concept that a DNA
18 methylation-based epigenetic score capturing alcohol consumption can provide insights into
19 alcohol-related disease risks, and further help to assess specific lifestyle factors that contribute to
20 an individual's health profile. This is especially pertinent in situations where self-reported
21 behavioral data (e.g., alcohol consumption) are unavailable, susceptible to recall bias, or subject
22 to significant data loss.

1 **Abbreviations:**

2 ERS: epigenetic risk score
3 SBP: systolic blood pressure
4 DBP: diastolic blood pressure
5 HTN: hypertension
6 AST: aspartate amino transferase
7 ALT: alanine aminotransferase

8
9 **AVAILABILITY OF DATA AND MATERIALS**

10 Data and analytical codes that support our findings are available from the corresponding authors
11 upon request.

12
13 **ACKNOWLEDGEMENTS**

14 We thank all participants in the cohorts for their dedication in research.

15
16 **ETHICS DECLARATIONS**

17 **Ethics approval and consent to participate**

18 Institutional review committees of all cohorts approved this study. All study participants
19 provided written informed consent. The FHS was reviewed and approved by The Boston
20 Medical Center Institutional Review Boards. The ALHS was approved by the Institutional
21 Review Board at National Institute of Environmental Health Sciences. The KORA cohort ethical
22 approval was granted by the ethics committee of the Bavarian Medical Association (REC
23 reference numbers: F4: #06068, FF4: #06068) and all were carried out in accordance with the
24 principles of the Declaration of Helsinki. The GENOA was approved by Institutional Review
25 Boards at the University of Michigan, University of Mississippi Medical Center, and Mayo
26 Clinic. The HRS was approved by the University of Michigan. The MESA was approved by the
27 Institutional Review Board of each study site, and written informed consent was obtained from
28 all participants (IRB: #00009029). The Rhineland Study was approved by the ethics committee
29 of the University of Bonn, Medical Faculty. The Rotterdam Study was approved by the medical
30 ethics committee of the Erasmus University Medical Center, Rotterdam, the Netherlands. The
31 SHIP was approved by the medical ethics committee of the University of Greifswald.

32 **Consent for publication**

33 Not applicable.

34 **Competing Interests**

35 All first and corresponding authors of this manuscript have no conflicts of interest to disclose.

36
37 **FUNDING**

38 The FHS is supported by NIH contract N01-HC-25195. The analytical component of this project
39 was funded by the Division of Intramural Research, National Heart, Lung, and Blood Institute,
40 National Institutes of Health, Bethesda, MD (D. Levy, Principal Investigator). J. Ma is supported
41 by NIH grant R01AA028263; C. Liu is supported by R01AA028263 and R01HL15569 grants.
42 The ALHS is supported by the Intramural Research Program of the National Institutes of Health,
43 the National Institute of Environmental Health Sciences (Z01-ES102385, Z01-ES049030, Z01-
44 ES043012) and the National Cancer Institute (Z01-CP010119). The KORA study was initiated
45 and financed by the Helmholtz Zentrum München –German Research Center for Environmental
46 Health, which is funded by the German Federal Ministry of Education and Research (BMBF)

1 and by the State of Bavaria. The GENOA is supported by the National Heart, Lung and Blood
2 Institute (U10 HL054457, RC1 HL100185, R01 HL087660, R01 HL119443, R01 HL141292,
3 and R01 HL133221). The HRS is supported by the National Institute on Aging (NIA
4 U01AG009740). The MESA is supported by contracts 75N92020D00001,
5 HHSN268201500003I, N01-HC-95159, 75N92020D00005, N01-HC-95160, 75N92020D00002,
6 N01-HC-95161, 75N92020D00003, N01-HC-95162, 75N92020D00006, N01-HC-95163,
7 75N92020D00004, N01-HC-95164, 75N92020D00007, N01-HC-95165, N01-HC-95166, N01-
8 HC-95167, N01-HC-95168, N01-HC-95169, UL1-TR-000040, UL1-TR-001079, UL1-TR-
9 001420, UL1TR001881, DK063491, and R01HL105756. The Rhineland Study is supported by
10 the Diet-Body-Brain Competence Cluster in Nutrition Research funded by the Federal Ministry
11 of Education and Research (grant numbers 01EA1410C and FKZ:01EA1809C). The Rotterdam
12 Study is supported by the Erasmus MC University Medical Center and Erasmus University
13 Rotterdam; The Netherlands Organization for Scientific Research (NWO); The Netherlands
14 Organization for Health Research and Development (ZonMw); the Research Institute for
15 Diseases in the Elderly (RIDE); The Netherlands Genomics Initiative (NGI); the Ministry of
16 Education, Culture and Science; the Ministry of Health, Welfare and Sports; the European
17 Commission (DG XII); and the Municipality of Rotterdam. The SHIP is supported by the
18 Federal Ministry of Education and Research (grants no. 01ZZ9603, 01ZZ0103, and 01ZZ0403),
19 the Ministry of Cultural Affairs as well as the Social Ministry of the Federal State of
20 Mecklenburg-West Pomerania, and the network ‘Greifswald Approach to Individualized
21 Medicine (GANI_MED)’ funded by the Federal Ministry of Education and Research (grant
22 03IS2061A). DNA methylation data have been supported by the DZHK (grant 81X3400104).

23

24 AUTHOR INFORMATION

25 Helena Bui, Amena Keshawarz, and Mengyao Wang contributed equally to this work.

26 **Authors and affiliations**

27 Population Sciences Branch, Division of Intramural Research, National Heart, Lung, and Blood
28 Institute, National Institutes of Health, Bethesda, MD, USA

29 Helena Bui, Amena Keshawarz, Daniel Levy

30 Framingham Heart Study, Framingham, MA, USA

31 Helena Bui, Amena Keshawarz, Daniel Levy, Chunyu Liu

32 Department of Biostatistics, Boston University School of Public Health, Boston, MA

33 Mengyao Wang, Yi Li, Xue Liu, Chunyu Liu

34 Epidemiology Branch, National Institute of Environmental Health Sciences, National Institutes

35 of Health, Department of Health and Human Services, Research Triangle Park, NC, USA

36 Mikyong Lee, Stephanie J. London

37 Department of Epidemiology, School of Public Health, University of Michigan, Ann Arbor, MI

38 Scott M. Ratliff, Lisha Lin, Sharon L. R. Kardia, Wei Zhao, Jennifer A. Smith

39 Survey Research Center, Institute for Social Research, University of Michigan, Ann Arbor, MI

40 Kira S. Birditt, Jessica D. Faul, David R. Weir, Jennifer A. Smith

41 Institute of Epidemiology, Helmholtz Munich, German Research Center for Environmental

42 Health, German

43 Annette Peters

44 Institute for Medical Informatics, Biometrics and Epidemiology, Ludwig-Maximilians-

45 Universität München, Munich, Germany

46 Annette Peters

1 German Center for Cardiovascular Research (DZHK), Partner Site Munich Heart Alliance,
2 Munich, Germany
3 Annette Peters, Christian Gieger, Melanie Waldenberger
4 Research Unit Molecular Epidemiology, Institute of Epidemiology, Helmholtz Munich, German
5 Research Center for Environmental Health, Bavaria, Germany
6 Christian Gieger, Thomas Delerue, Melanie Waldenberger
7 The Institute for Translational Genomics and Populations, Department of Pediatrics, Lundquist
8 Institute for Biomedical Innovation at Harbor-UCLA Medical Center, Torrance, CA 90502, USA
9 Xiuqing Guo, Jie Yao, Jerome I. Rotter
10 Population Health Sciences, German Center for Neurodegenerative Diseases (DZNE), Bonn,
11 Germany
12 Dan Liu, Juliana F. Tavares, Gökhan Pehlivan, Monique M. B. Breteler
13 Institute for Medical Biometry, Informatics and Epidemiology (IMBIE), Faculty of Medicine,
14 University of Bonn, Bonn, Germany
15 Monique M. B. Breteler
16 Department of Epidemiology, Erasmus MC University Medical Center, Rotterdam, The
17 Netherlands
18 Irma Karabegovic, Carolina Ochoa-Rosales, Trudy Voortman, Mohsen Ghanbari
19 Centro de Vida Saludable de la Universidad de Concepción, Concepción, Chile
20 Irma Karabegovic, Carolina Ochoa-Rosales
21 Division of Human Nutrition and Health, Wageningen University and Research, Wageningen,
22 The Netherlands
23 Trudy Voortman
24 Department of Internal Medicine, Erasmus MC University Medical Center, Rotterdam, The
25 Netherlands
26 Joyce B.J. van Meurs
27 Institute for Community Medicine, University Medicine Greifswald, Greifswald, Germany
28 Mohamed Kamal Nars, Alexander Teumer
29 German Center for Cardiovascular Research (DZHK), Partner Site Greifswald, Greifswald,
30 Germany
31 Mohamed Kamal Nars, Marcus Dörr, Alexander Teumer
32 Department of Internal Medicine B, University Medicine Greifswald, Greifswald, Germany
33 Marcus Dörr
34 Department of Psychiatry and Psychotherapy, University Medicine, Greifswald, Germany
35 Hans J. Grabe
36 German Center for Neurodegenerative Diseases (DZNE), Rostock/Greifswald, site Greifswald,
37 Germany
38 Hans J. Grabe
39 Department of Population Medicine and Lifestyle Diseases Prevention, Medical University of
40 Bialystok, Bialystok, Poland
41 Alexander Teumer
42 Gerald J. and Dorothy R. Friedman School of Nutrition Science and Policy, Tufts University,
43 Boston, MA, USA
44 Jiantao Ma
45 **Contributions**

1 D Levy, JM, and CL designed the study. HB, AK, M Wang, ML, SMR, LL, KSB, JDF, AP, CG,
2 TD, SLRK, WZ, XG, JY, JIR, YL, XL, D Liu, JFT, GP, MMBB, IK, COR, TV, MG, JBJvM,
3 MKN, MD, HJG, SJL, AT, M Waldenberger, DRW, JAS, D Levy, JM, and CL were involved in
4 the data collection, data preparation, and statistical analyses. HB, AK, and M Wang drafted the
5 manuscript. D Levy, JM, and CL supervised the study and provided critical review. All authors
6 read and approved this manuscript.

7 **Corresponding author**

8 Correspondence to Daniel Levy, Jiantao Ma, Chunyu Liu.

Table 1. Cross-sectional and longitudinal association analyses of epigenetic risk score and blood pressure traits in the Framingham Heart Study

Continuous variable	β	SE	p
SBP	1.98	0.39	4.64E-07
DBP	0.68	0.25	0.006
Δ SBP	0.44	0.44	0.32
Δ DBP	-0.0012	0.26	0.99
Binary variable	OR	95% CI	p
Hypertension	1.78	1.55, 2.04	< 2E-16
Incident hypertension	1.02	0.83, 1.24	0.85

SBP/DBP, systolic/diastolic blood pressure; Δ SBP/ Δ DBP, longitudinal change in systolic/diastolic blood pressure; SE, standard error; OR, Odds ratio; 95% CI, 95% confidence interval. The cross-sectional and longitudinal analyses were performed on 3,898 and 3,260, respectively, Framingham Heart Study (FHS) participants.

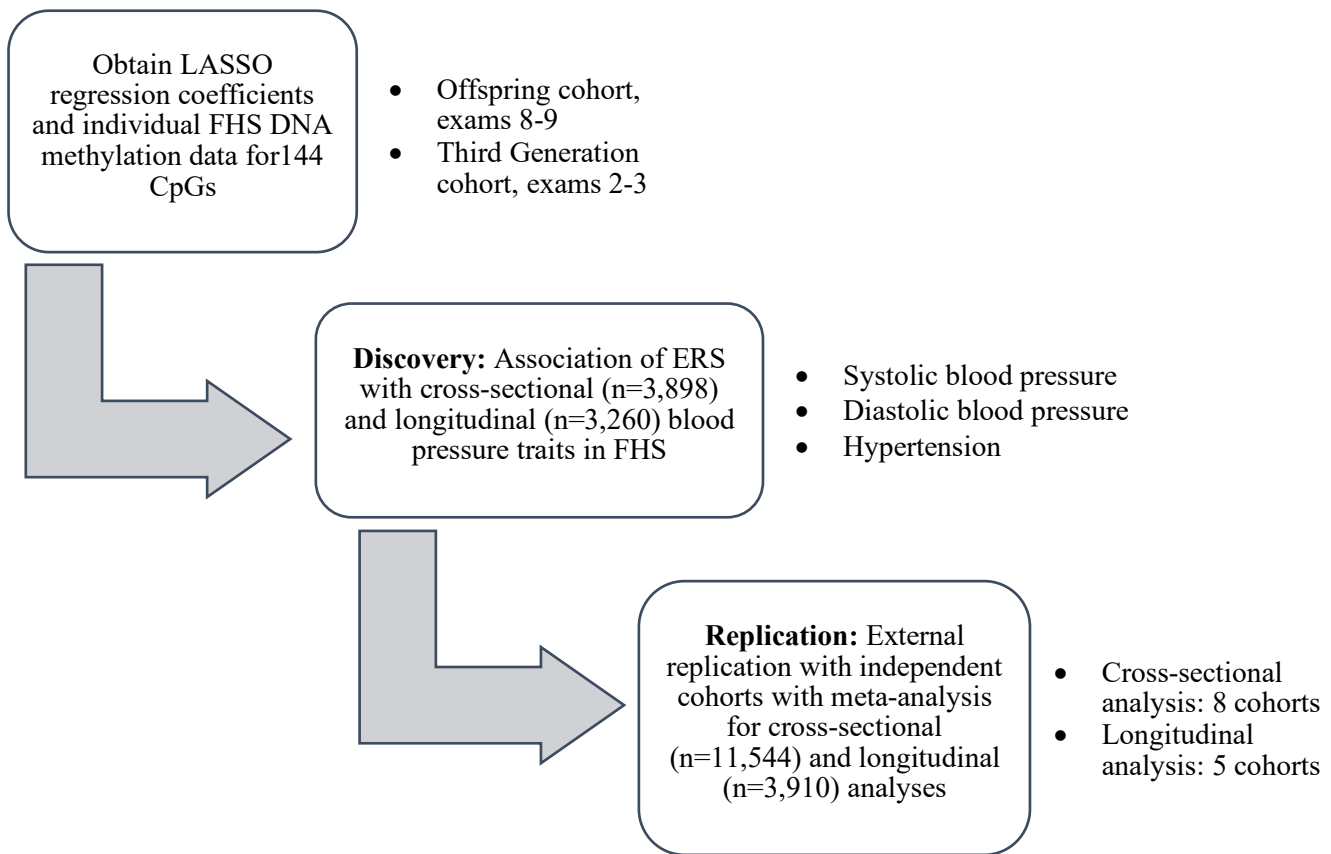


Figure 1. Study design.

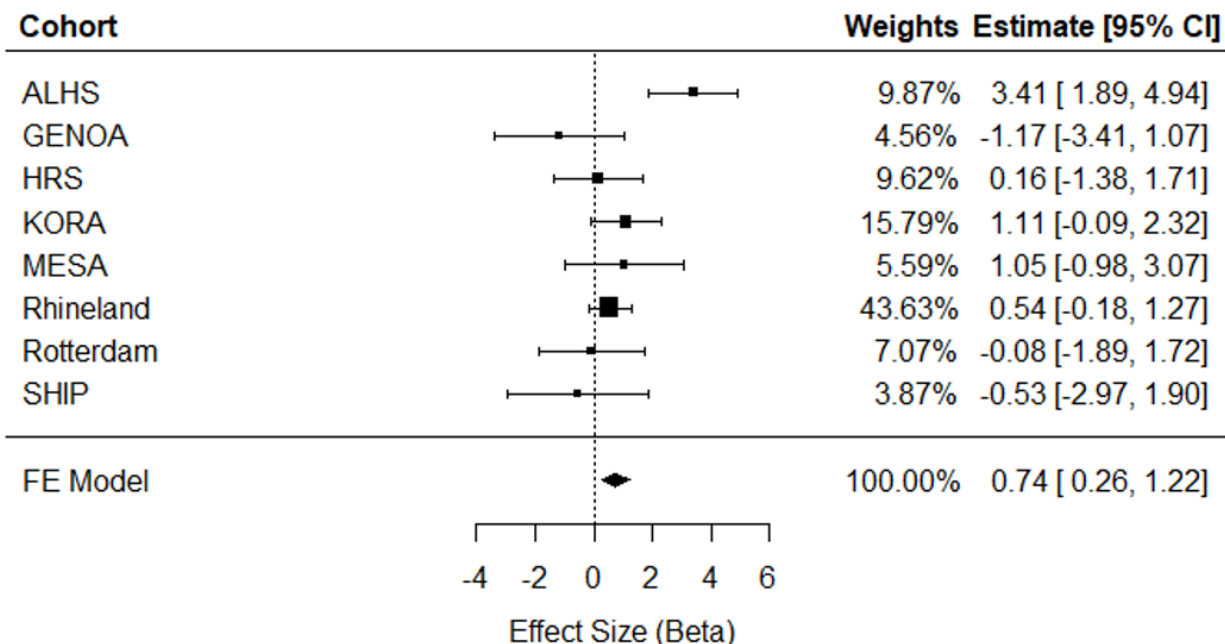


Figure 2. Meta-analysis of cross-sectional association analyses of ERS in relation to systolic blood pressure in eight independent external cohorts (n = 11,544). ALHS, Agricultural Lung Health Study; GENOA, Genetic Epidemiology Network of Arteriopathy; HRS, Health and Retirement Study; KORA, Cooperative Health Research in the Region Augsburg; MESA, Multi-Ethnic Study of Atherosclerosis; SHIP, Study of Health in Pomerania; FE, Fixed Effect; 95% CI, Confidence Interval.

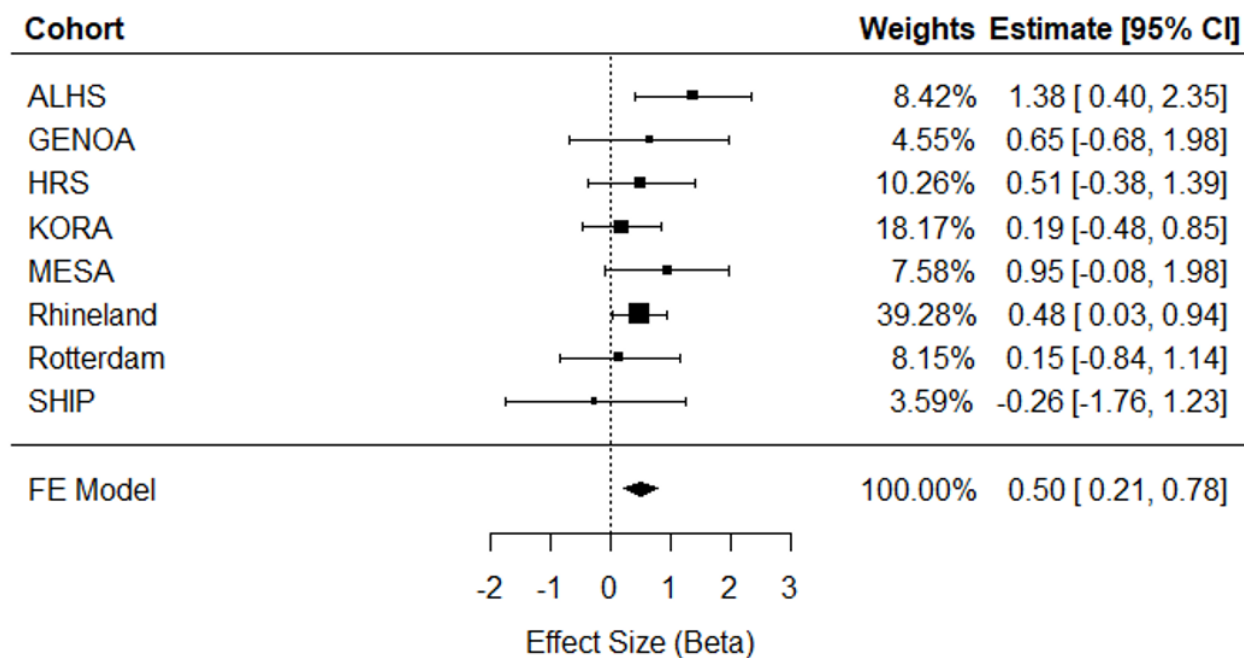


Figure 3. Cross-sectional meta-analysis of ERS in relation to diastolic blood pressure in eight independent external cohorts (n = 11,544). ALHS, Agricultural Lung Health Study; GENOA, Genetic Epidemiology Network of Arteriopathy; HRS, Health and Retirement Study; KORA, Cooperative Health Research in the Region Augsburg; MESA, Multi-Ethnic Study of Atherosclerosis; SHIP, Study of Health in Pomerania; FE, Fixed Effect; 95% CI, Confidence Interval.

References

1. Centers for Disease Control and Prevention (CDC). Alcohol Related Disease Impact (ARDI) application [Internet]. 2024 [cited 2024 Apr 2]. Available from: www.cdc.gov/ARDI
2. Piano MR. Alcohol's Effects on the Cardiovascular System. *Alcohol Res.* 2017;38:219–41.
3. Biddinger KJ, Emdin CA, Haas ME, Wang M, Hindy G, Ellinor PT, et al. Association of Habitual Alcohol Intake With Risk of Cardiovascular Disease. *JAMA Netw Open.* 2022;5:e223849.
4. Zhang X, Liu Y, Li S, Lichtenstein AH, Chen S, Na M, et al. Alcohol consumption and risk of cardiovascular disease, cancer and mortality: a prospective cohort study. *Nutr J.* 2021;20:13.
5. Fernández-Solà J. Cardiovascular risks and benefits of moderate and heavy alcohol consumption. *Nat Rev Cardiol.* 2015;12:576–87.
6. Krittanawong C, Isath A, Rosenson RS, Khawaja M, Wang Z, Fogg SE, et al. Alcohol Consumption and Cardiovascular Health. *Am J Med.* 2022;135:1213-1230.e3.
7. Puddey IB, Mori TA, Barden AE, Beilin LJ. Alcohol and Hypertension-New Insights and Lingering Controversies. *Curr Hypertens Rep.* 2019;21:79.
8. Vasan RS, O'Donnell CJ. Impact of High-Normal Blood Pressure on the Risk of Cardiovascular Disease. *The New England Journal of Medicine.* 2001;
9. Malik R, Georgakis MK, Vujkovic M, Damrauer SM, Elliott P, Karhunen V, et al. Relationship Between Blood Pressure and Incident Cardiovascular Disease: Linear and Nonlinear Mendelian Randomization Analyses. *Hypertension.* 2021;77:2004–13.
10. Samblas M, Milagro FI, Martínez A. DNA methylation markers in obesity, metabolic syndrome, and weight loss. *Epigenetics.* 2019;14:421–44.
11. Płatek T, Polus A, Góralaska J, Rażny U, Gruca A, Kieć-Wilk B, et al. DNA methylation microarrays identify epigenetically regulated lipid related genes in obese patients with hypercholesterolemia. *Mol Med.* 2020;26:93.
12. Liu J, Carnero-Montoro E, van Dongen J, Lent S, Nedeljkovic I, Ligthart S, et al. An integrative cross-omics analysis of DNA methylation sites of glucose and insulin homeostasis. *Nat Commun.* 2019;10:2581.
13. Richard MA, Huan T, Ligthart S, Gondalia R, Jhun MA, Brody JA, et al. DNA Methylation Analysis Identifies Loci for Blood Pressure Regulation. *Am J Hum Genet.* 2017;101:888–902.
14. Myte R, Sundkvist A, Van Guelpen B, Harlid S. Circulating levels of inflammatory markers and DNA methylation, an analysis of repeated samples from a population based cohort. *Epigenetics.* 2019;14:649–59.
15. Liu C, Marioni RE, Hedman ÅK, Pfeiffer L, Tsai P-C, Reynolds LM, et al. A DNA methylation biomarker of alcohol consumption. *Mol Psychiatry.* 2018;23:422–33.

16. Davis CG, Thake J, Vilhena N. Social desirability biases in self-reported alcohol consumption and harms. *Addict Behav.* 2010;35:302–11.
17. Ekholm O. Influence of the recall period on self-reported alcohol intake. *Eur J Clin Nutr.* 2004;58:60–3.
18. Stockwell T, Donath S, Cooper-Stanbury M, Chikritzhs T, Catalano P, Mateo C. Under-reporting of alcohol consumption in household surveys: a comparison of quantity-frequency, graduated-frequency and recent recall. *Addiction.* 2004;99:1024–33.
19. Mahmood SS, Levy D, Vasan RS, Wang TJ. The Framingham Heart Study and the epidemiology of cardiovascular disease: a historical perspective. *Lancet.* 2014;383:999–1008.
20. Hoang TT, Qi C, Paul KC, Lee M, White JD, Richards M, et al. Epigenome-Wide DNA Methylation and Pesticide Use in the Agricultural Lung Health Study. *Environ Health Perspect.* 2021;129:97008.
21. Holle R, Happich M, Löwel H, Wichmann HE, MONICA/KORA Study Group. KORA--a research platform for population based health research. *Gesundheitswesen.* 2005;67 Suppl 1:S19-25.
22. FBPP Investigators. Multi-center genetic study of hypertension: The Family Blood Pressure Program (FBPP). *Hypertension.* 2002;39:3–9.
23. Sonnega A, Faul JD, Ofstedal MB, Langa KM, Phillips JWR, Weir DR. Cohort Profile: the Health and Retirement Study (HRS). *Int J Epidemiol.* 2014;43:576–85.
24. Bild DE, Bluemke DA, Burke GL, Detrano R, Diez Roux AV, Folsom AR, et al. Multi-Ethnic Study of Atherosclerosis: objectives and design. *Am J Epidemiol.* 2002;156:871–81.
25. Breteler MMB, Wolf H. THE RHINELAND STUDY: A NOVEL PLATFORM FOR EPIDEMIOLOGIC RESEARCH INTO ALZHEIMER DISEASE AND RELATED DISORDERS. *Alzheimer's & Dementia* [Internet]. 2014 [cited 2024 Jan 28];10. Available from: <https://alz-journals.onlinelibrary.wiley.com/doi/10.1016/j.jalz.2014.05.810>
26. Ikram MA, Brusselle G, Ghanbari M, Goedegebure A, Ikram MK, Kavousi M, et al. Objectives, design and main findings until 2020 from the Rotterdam Study. *Eur J Epidemiol.* 2020;35:483–517.
27. Völzke H, Schössow J, Schmidt CO, Jürgens C, Richter A, Werner A, et al. Cohort Profile Update: The Study of Health in Pomerania (SHIP). *Int J Epidemiol.* 2022;51:e372–83.
28. Ye Z, Zhu Y, Coffman DL. Variable selection for causal mediation analysis using LASSO-based methods. *Stat Methods Med Res.* 2021;30:1413–27.
29. Whelton PK, Carey RM, Aronow WS, Casey DE, Collins KJ, Dennison Himmelfarb C, et al. 2017 ACC/AHA/AAPA/ABC/ACPM/AGS/APhA/ASH/ASPC/NMA/PCNA Guideline for the Prevention, Detection, Evaluation, and Management of High Blood Pressure in Adults. *Journal of the American College of Cardiology.* 2018;71:e127–248.

30. Loomba R, Hwang S-J, O'Donnell CJ, Ellison RC, Vasan RS, D'Agostino RB, et al. Parental obesity and offspring serum alanine and aspartate aminotransferase levels: the Framingham heart study. *Gastroenterology*. 2008;134:953–9.
31. R Core Team. R: A Language and Environment for Statistical Computing [Internet]. Vienna, Austria: R Foundation for Statistical Computing; 2021. Available from: <https://www.R-project.org/>
32. Viechtbauer W. Conducting Meta-Analyses in R with the **metafor** Package. *J Stat Soft* [Internet]. 2010 [cited 2024 Jan 28];36. Available from: <http://www.jstatsoft.org/v36/i03/>
33. Zeileis A, Hothorn T. Diagnostic Checking in Regression Relationships. *R News*. 2002;2.
34. Fuchs FD, Fuchs SC. The Effect of Alcohol on Blood Pressure and Hypertension. *Curr Hypertens Rep*. 2021;23:42.
35. Husain K, Ansari RA, Ferder L. Alcohol-induced hypertension: Mechanism and prevention. *WJC*. 2014;6:245.
36. Joehanes R, Just AC, Marioni RE, Pilling LC, Reynolds LM, Mandaviya PR, et al. Epigenetic Signatures of Cigarette Smoking. *Circ Cardiovasc Genet*. 2016;9:436–47.
37. Dugué P-A, Wilson R, Lehne B, Jayasekara H, Wang X, Jung C-H, et al. Alcohol consumption is associated with widespread changes in blood DNA methylation: Analysis of cross-sectional and longitudinal data. *Addict Biol*. 2021;26:e12855.
38. Ruppert T. Meta-analysis: How to quantify and explain heterogeneity? *Eur J Cardiovasc Nurs*. 2020;19:646–52.
39. Yin LK, Tong KS. Elevated Alt and Ast in an Asymptomatic Person: What the primary care doctor should do? *Malays Fam Physician*. 2009;4:98–9.
40. van Beek JHDA, de Moor MHM, Geels LM, Sinke MRT, de Geus EJC, Lubke GH, et al. The association of alcohol intake with γ -glutamyl transferase (GGT) levels: evidence for correlated genetic effects. *Drug Alcohol Depend*. 2014;134:99–105.